



HAL
open science

Elastography Study of Hamstring Behaviors during Passive Stretching

Guillaume Le Sant, Filiz Ates, Jean-Louis Brasseur, Antoine Nordez

► **To cite this version:**

Guillaume Le Sant, Filiz Ates, Jean-Louis Brasseur, Antoine Nordez. Elastography Study of Hamstring Behaviors during Passive Stretching. PLoS ONE, 2015, 10 (9), pp.e0139272. 10.1371/journal.pone.0139272 . hal-03339539

HAL Id: hal-03339539

<https://hal.science/hal-03339539>

Submitted on 20 Apr 2023

HAL is a multi-disciplinary open access archive for the deposit and dissemination of scientific research documents, whether they are published or not. The documents may come from teaching and research institutions in France or abroad, or from public or private research centers.

L'archive ouverte pluridisciplinaire **HAL**, est destinée au dépôt et à la diffusion de documents scientifiques de niveau recherche, publiés ou non, émanant des établissements d'enseignement et de recherche français ou étrangers, des laboratoires publics ou privés.

RESEARCH ARTICLE

Elastography Study of Hamstring Behaviors during Passive Stretching

Guillaume Le Sant^{1,2}, Filiz Ates¹, Jean-Louis Brasseur³, Antoine Nordez^{1*}

1 Laboratory 'Movement, Interactions, Performance' (EA 4334), Faculty of Sports Sciences, University of Nantes, Nantes, France, **2** School of Physiotherapy (IFM3R), Nantes, France, **3** Pitié Salpêtrière Hospital, radiology service, AP-HP, Paris, France

* antoine.nordez@univ-nantes.fr

Abstract

Introduction

The mechanical properties of hamstring muscles are usually inferred from global passive torque/angle relationships, in combination with adjoining tissues crossing the joint investigated. Shear modulus measurement provides an estimate of changes in muscle-tendon stiffness and passive tension. This study aimed to assess the passive individual behavior of each hamstring muscle in different stretching positions using shear wave elastography.

Methods/Results

The muscle shear modulus of each hamstring muscle was measured during a standardized slow passive knee extension (PKE, 80% of maximal range of motion) on eighteen healthy male volunteers. Firstly, we assessed the reliability of the measurements. Results were good for *semitendinosus* (*ST*, CV: 8.9%-13.4%), *semimembranosus* (*SM*, CV: 10.3%-11.2%) and *biceps femoris long-head* (*BF-lh*, CV: 8.6%-13.3%), but not for *biceps femoris short-head* (*BF-sh*, CV: 20.3%-44.9%). Secondly, we investigated each reliable muscle in three stretch positions: 70°, 90° and 110° of hip flexion. The results showed different values of shear modulus for the same amount of perceived stretch, with the highest measurements in the high-flexed hip situation. Moreover, individual muscles displayed different values, with values increasing for *BF-lh*, *SM* and *ST*, respectively. The inter-subject variability was 35.3% for *ST*, 27.4% for *SM* and 30.2% for *BF-lh*.

Conclusion

This study showed that the hip needs to be high-flexed to efficiently tension the hamstrings, and reports a higher muscle-tendon stress tolerance at 110° of hip angle. In addition muscles have different passive behaviors, and future works will clarify if it can be linked with rate of injury.



OPEN ACCESS

Citation: Le Sant G, Ates F, Brasseur J-L, Nordez A (2015) Elastography Study of Hamstring Behaviors during Passive Stretching. PLoS ONE 10(9): e0139272. doi:10.1371/journal.pone.0139272

Editor: M. A. Pérez, University of Zaragoza, SPAIN

Received: May 12, 2015

Accepted: September 9, 2015

Published: September 29, 2015

Copyright: © 2015 Le Sant et al. This is an open access article distributed under the terms of the [Creative Commons Attribution License](https://creativecommons.org/licenses/by/4.0/), which permits unrestricted use, distribution, and reproduction in any medium, provided the original author and source are credited.

Data Availability Statement: All relevant data are within the paper and its Supporting Information files.

Funding: The study was sponsored by grants from the European Regional Development Fund (no. 37400) and the University of Nantes (interdisciplinary program). The funders had no role in study design, data collection and analysis, decision to publish, or preparation of the manuscript.

Competing Interests: The authors have declared that no competing interests exist.

Introduction

Flexibility is believed to be a fundamental for daily living and well-being [1, 2] in addition to be controversially associated with the risk of sport injuries.[3–5] Therefore, stretching is popular among health therapists and athletic trainers.[6] The classical method used to study hamstrings flexibility *in vivo* focuses on the maximum range of motion (ROM) measurement and resistance to motion (ie, passive torque, expressed by angular variation) offered by the musculoarticular complex.[7, 8] However, the passive torque represents the global resistance of the whole passive musculo-articular complex to the motion, and therefore involve several structures (muscles, tendons, joint capsule, skin, nerves, etc.). [9–11] Therefore, this method does not assess the behavior of each hamstring muscle, while these muscles differ from their architectural properties [12–14] that may impact their function [15] and could lead to different levels of stiffness within in the muscle group and predispose to injury. [16]

In order to target one muscle, fascicle lengthening can be measured using ultrasound.[17–19] However, fascicle length alone cannot be used to provide information on muscle tension or stiffness. In addition, fascicle length measurements are feasible using ultrasound on only a few muscles (*gastrocnemius*, *vastus lateralis*) that have an appropriate architecture (i.e., unipennated) and with B-Mode images of sufficient quality. Thus, while hamstrings are very frequently injured with a high rate of re-injuries,[20–22] this muscle group is the focus of much less attention than the triceps surae.[23] To our knowledge, only one study has measured the fascicle length of one hamstring muscle (*semimembranosus*) during passive stretching.[24] Therefore, while strong anatomical differences between muscles suggest that they are likely to behave differently,[12, 25] the mechanical properties of each hamstring muscle has not yet been reported *in vivo*.

Elastography methods, such as *supersonic shear imaging* (SSI),[26, 27] provide the unique opportunity to assess the localized mechanical properties of muscles. It has been shown that the shear modulus measured using this technique is linearly related to the Young's modulus of the muscle [28] and to passive tension.[29, 30] Two recent studies applied this technique to the hamstrings.[31, 32] Umegaki et al. [31] showed that static stretching differently altered the shear modulus of *semitendinosus*, *semimembranosus* and *biceps femoris*, strengthening the hypothesis of different behaviors for each muscle. However, while elastography measurement can be applied during the muscle lengthening, both studies performed measurements in static condition. It could be argued that relaxation may affect such static measurement,[33] explaining that stiffness measurements of viscoelastic materials are classically performed during slow lengthening. In addition, the link with flexibility and maximal range of motion (measured during passive slow stretching) [7, 8] seems more direct for measurements performed during lengthening compared to static positions.

Stretching procedures are used daily for therapeutic interventions and athletic conditioning. However, while numerous studies have compared techniques, duration and frequency of stretching efficiency on ROM [1, 6, 34] only a few have compared positions of stretching in the same investigation.[35–38] Since the objective of stretching is mainly to tension muscles, it can be argued that a higher muscle tension will be more efficient to stretch the muscles. Thus, elastography provides an interesting approach to compare muscle shear modulus between positions in order to compare their efficiency. For example, while no muscle crosses both hip and ankle joints, a recent study showed that plantar flexors can tolerate an increase amount of passive tension with the hip extended.[39] Thus, the ability to tension muscles is not only related to muscle-tendon length, but also to the perception of the stretch, and the optimal stretching position to tension the hamstrings remains unknown.

Therefore, the objective of this study was to analyze changes in shear modulus of all hamstring muscles during passive knee extensions performed in various hip positions. Pilot studies showed a high inter individual variability in muscle shear modulus values, this variability was analyzed in details. Since hamstring muscles can be difficult to measure using ultrasound and elastography, a preliminary step was to define the reliability for the SSI measurements of each hamstring muscles during passive stretching.

Materials and Methods

Participants

A first group of subjects ($n_1 = 15$; 23.5 ± 2.3 years; height 178 ± 5 cm; weight 73.4 ± 5.4 kg) was recruited for the reliability analysis. A second group ($n_2 = 18$; 23.8 ± 2.6 years; height 178 ± 6 cm; weight 72.9 ± 8.8 kg) participated in the part focused on hamstrings behavior across hip positions. Subjects could participate in recreational sports, but not in any strength or flexibility training at the time of the study. The protocol was approved by the Institutional Ethics Comity (Nantes Ouest IV, reference: n°CCP MIP-04). Participants were informed of the nature of the study before providing a written informed consent, and the procedures were conducted according to the principles expressed in the Declaration of Helsinki.

Instrumentation

Ergometer. A Biodex system 3 Pro (Biodex medical, Shirley, USA) isokinetic ergometer was used to apply passive knee extensions (PKE) and measure knee angle while subjects were lying supine on an examination table (Fig 1A). Pelvis, the right thigh and ankle were fastened using straps. The hip flexion angle was set by inclinometry (Silverline Tools Ltd, ref.250471, Lufton, U.K.). The input axis of the dynamometer was aligned with the presumed axis of rotation of the knee joint. A knee angle of 90° from full extension was our reference and 110° of flexion was defined as the starting knee angle (Fig 1B).

Surface electromyographic (sEMG) activity. To ensure that muscles were relaxed during stretching, sEMG activities of *semitendinosus* and *biceps femoris* muscles were measured according to SENIAM recommendations [40] with hydrogel adhesive surface electrodes (Kendall™ 100 foam-series, Covidien, Mansfield, USA). The sEMG activity and passive torque were monitored in real time by both investigators and subject using a feed-back on the computer screen during the trials. The sensor gain was adjusted to ensure stretching procedures were passive (no increase of baseline). If not, procedure was cancelled and reinitiated after a minute of rest. The sEMG data was recorded at 10 kHz using a PowerLab 16/35 data acquisition device (ADInstruments Inc., Colorado Springs, U.S.A.).

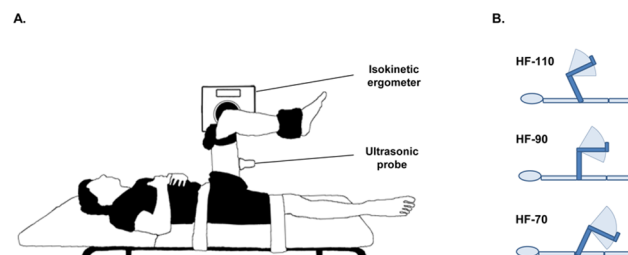


Fig 1. Schematic representation of the experimental setup. (A) Positioning of the subject in the reference position of the knee (90°) at a mid-flexed hip position. (B) Overview of the three stretches with range of motion: high-flexed hip position (HF-110), mid-flexed hip position (HF-90) and low-flexed hip position (HF-70).

doi:10.1371/journal.pone.0139272.g001

Muscle shear modulus measurements. An Aixplorer ultrasonic scanner (Supersonic Imagine, v. 6.1, Aix-en-Provence, France), coupled to a linear transducer array (2–10 MHz, SL10-2, Supersonic Imagine, Aix-en-Provence, France) was used in SSI mode (musculoskeletal preset). The SSI technique was previously described in detail.[26, 27, 41] A pushing beam is created in order to generate the propagation of a shear wave within the muscle. Note that the shear wave propagates in 3D, but shear waves velocity is measured in 2D along the principle direction of the probe.[42] Then, ultrafast ultrasound sequences are used to measure the shear wave velocity (V_s) using a time-of-flight algorithm [41] in each pixel of the map. Assuming a linear elastic behavior,[26, 27] a shear modulus (μ) is calculated using V_s as follows:

$$\mu = \rho V_s^2 \quad \text{where } \rho \text{ is the muscle mass density (1000 kg/m}^3\text{).} \quad (1)$$

The probe was orientated parallel to the main axis of the muscle to measure the shear modulus along the muscle lengthening direction.[43] Appropriate alignment was achieved when fascicles could be seen without interruption across the image during the stretch.[30, 44] The timing of each shear modulus measurement (i.e., 1 Hz) was recorded by a Powerlab 16/35 data acquisition device (ADInstruments Inc., Colorado Springs, U.S.A.) as a triggering pulse from the ultrasound scanner. Given that the pulse lasts less than 50 ms,[26] it enabled a perfectly synchronization with the knee angles and sEMG signals. Knee angles and sEMG amplitudes were calculated by LabChart software (v.8.0, ADInstruments Inc., Colorado Springs, U.S.A.).

Protocol

The protocol was designed to measure the shear modulus for each hamstring muscle during a PKE: *semitendinosus* (*ST*), *semimembranosus* (*SM*), *biceps femoris* long-head (*BF-lh*) and *biceps femoris* short-head (*BF-sh*). Based on several pilots and ultrasound of key hamstrings locations, we determined reproducible locations (Fig 2) for maintaining a shear wave map in the targeted muscle during movement.[12, 25] Briefly, we scanned *ST* proximally before the tendinous inscription dividing this muscle into 2 parts.[25] For *SM* and *BF-lh*, the probe was placed after the musculotendinous junction, close to mid-thigh where the muscle belly was sufficiently developed. Finally *BF-sh* was explored distally deeper than *BF-lh*. Based on pilots, we chose a hand-held technique which was more suitable for hamstrings scanning compared to a cast use as done for *gastrocnemius medialis*. [29, 33, 39] The examiner was trained in the use of the Aixplorer machine for hamstring scanning. This involved maintenance of minimal transducer pressure on skin, and the use of caution to not record noise appearance (e.g., flashes or saturation in the region of interest (ROI)).

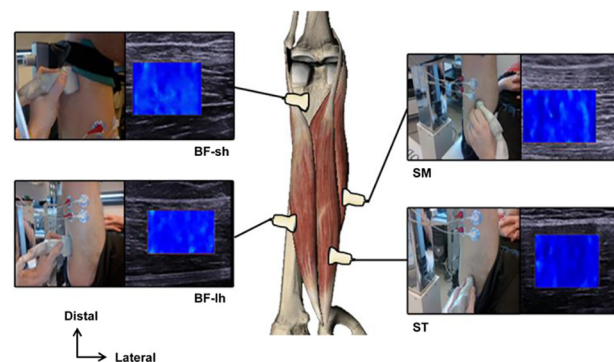


Fig 2. Probe location on each hamstring muscle.

doi:10.1371/journal.pone.0139272.g002

The first part of the study ($n_1 = 15$) was performed to assess the intra-day reliability (i.e., repeatability) of measurements with the hip joint set at 90° . Subjects were asked to stay as relaxed as possible. First, the maximal ROM was assessed as the joint angle corresponding to the maximum perceived and tolerated hamstrings PKE. The stretch ROM was set from 110° of knee flexion until 80% of the maximum ROM, to reduce a possible increase in sEMG at the end of the stretching procedure.[45] Second, five cyclic passive stretches ($10^\circ/\text{sec}$) were performed for conditioning purposes. Third, after a minute of rest, a shear modulus measurement was recorded during a PKE ($1^\circ/\text{sec}$) for each muscle in a randomized order (3 trials per muscle), with one minute of rest set between each repetition. By the end, subjects were positioned with the right hip and knee flexed at 90° (see Fig 1), and they were asked to perform three isometric maximum voluntary contractions (MVC) in knee flexion to normalize the root mean square of the sEMG signals (sEMG-RMS).

The second part of the experiment ($n_2 = 18$) was performed to assess the hamstring shear modulus among 3 stretching positions. This set of experiments was performed after the processing data from the reliability study. For each hip angle (70° , 90° and 110° of flexion; HF-70, HF-90 and HF-110 respectively; shown in Fig 1B as tested in randomized order), the same procedure was used. Initially the maximal PKE ROM was measured. The stretch ROM was also set from 110° knee flexion until 80% of the maximal ROM for the considered hip angle. Next, five repetitions ($10^\circ/\text{sec}$) were performed from 110° of knee flexion until 80 of the maximal ROM. Finally, one trial per muscle (tested in a randomized order) was performed to measure the shear modulus of each hamstring. One minute of rest was set between each trial.

Data analysis

All data were processed using standardized programs computed with Matlab[®] (R2013a, The MathWorks Inc., Natick, USA). Mean shear modulus values were obtained on the largest ROI as possible, without artifacts and aponeurosis. The average areas of the ROIs used were 174.9 mm^2 for *ST*, 196.2 mm^2 for *SM*, $194,1 \text{ mm}^2$ for *BF-lh* and 97.4 mm^2 for *BF-sh*. For that purpose, data were exported in 'mp4' format and transformed to a sequence of 'jpeg' images. Image processing then converted the resulting colored map into shear modulus values. Thus, a modulus-length relationship was obtained for each trial (Fig 3 for a typical example). The

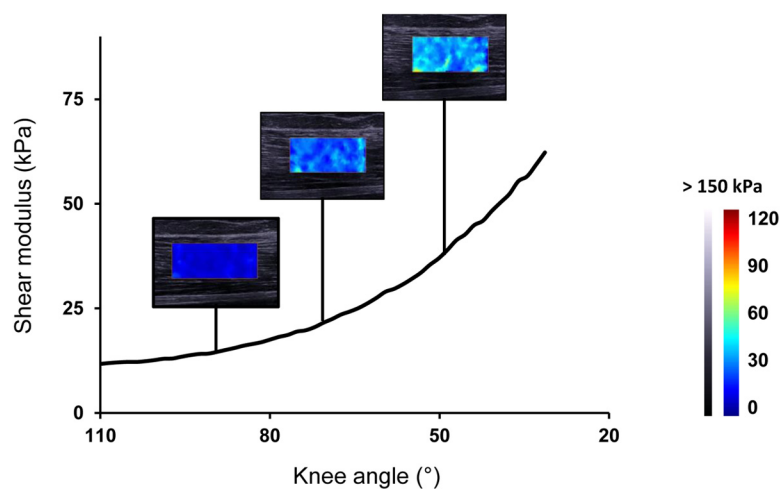


Fig 3. A typical shear modulus-lengthening relationship for *biceps femoris* long-head during the passive knee extension. The colored region represents the map of shear elastic modulus, during the passive stretching procedure at 110° of hip flexion.

doi:10.1371/journal.pone.0139272.g003

sEMG-RMS were calculated for each shear modulus measurement and each muscle (1 Hz) and normalized to the maximal values reached during MVC. Normalized sEMG-RMS values higher than 2% were excluded from further consideration.

Statistics

Data was tested for normality by Shapiro-Wilk test (p -value >0.05) using STATISTICA[®] software (v.10; StatSoft Inc., Tulsa, USA). Descriptive statistics were reported using the mean and the standard deviation (mean \pm SD).

Intra-day reliability was analyzed as proposed by Hopkins,[46] with the two-way random intraclass correlation coefficient (ICC), the standard error in measurement (SEM), and the coefficient of variation (CV) in three angles: 30%, 60%, and 90% of the stretch ROM. Pilot results showed high inter-individual variability in shear measurements. This variability was quantified using the ratio SD/mean (expressed in %) at the maximal common knee angle in HF-110.

For each trial, shear modulus was interpolated at the knee angle corresponding to 30%, 60%, and 90% of the stretch ROM in HF-110 (89.7°, 70.5°, and 50.3°, respectively). We performed one 3x3 repeated measures analysis of variance (ANOVA) to determine muscle, knee angle, and hip position effects on shear modulus. A second ANOVA was performed to determine hip position (70°, 90° and 110° of flexion) and muscle effects on shear modulus at the end of stretch ROM (i.e., 80% of maximal ROM for each hip angle, corresponding to the same subjects' perception of stretching). Bonferroni post hoc analyses were conducted when appropriate. The level of significance was set at $p<0.05$.

Results

One subject was excluded of reliability study and from the second part (effects of hip, knee and muscle) because of painful paresthesias during the experiment. Another participant was excluded from the reliability analysis because of an unsubstantial amount data recorded from the *BF-sh* muscle during the experiment. Therefore, the results below were obtained on 13 subjects (reliability) and 17 subjects (effects of hip, knee and muscle), respectively.

Results of the reliability study are reported in [Table 1](#). The within session repeatability reveals a SEM of shear modulus ranging from 1.1 to 4.2 kPa, corresponding to a CV consistently lower than 15% (8.6%- 13.4%) for *ST*, *SM* and *BF-lh* muscles. However the values are higher for *BF-sh* (CV between 20.3% and 44.9%). In addition, the ICC ranges from 0.71 (*SM*, 30% of the stretch) to 0.94 (*BF-sh*, 30% of the stretch).

The inter-individual variability of shear modulus is shown on [Fig 4](#). The modulus variation of values between participants was 35.3% for *ST*, 27.4% for *SM* and 30.2% for *BF-lh* at the maximal common knee angle (58°).

ANOVA revealed three main effects: knee angle ($p<0.001$), hip angle ($p<0.001$) and muscle ($p<0.001$). In addition, significant interactions between 'muscle x knee angle' ($p<0.001$), 'hip x muscle' ($p<0.001$), 'knee x hip' ($p<0.001$) and 'hip x muscle x angle' ($p<0.05$) were found. As expected, a notable increase in shear modulus was observed when the knee was extended ([Fig 2](#) for a typical example). Shear modulus values were, as presumed, higher in the three knee angles when the hip was flexed ($p<0.001$) for the three tested angles (black squares in [Fig 5](#)) with mean values of 12.3 ± 5.7 kPa at HF-70, 22.4 ± 12.8 kPa at HF-90, and 38.5 ± 21.3 kPa at HF-110. Averaged shear modulus-length relationships are shown for each muscle in [Fig 5](#) ([Fig 5A](#) for *ST*, [Fig 5B](#) for *SM* and [Fig 5C](#) for *BF-lh*).

Moreover, our data indicate significant differences between muscles ($p<0.05$) with higher shear modulus values for the *BF-lh* (32.6 ± 21.6 kPa) compared to the *SM* (27.8 ± 17.2 kPa), and

Table 1. Repeatability of shear modulus measurements, for the HF-90 position.

Percent of ROM		30%	60%	90%
ST	Shear elastic modulus (kPa)	9.7 (2.5)	16.8 (3.7)	29.5 (7.8)
	SEM (kPa)	1.3	1.4	3.4
	CV (%)	13.4	8.9	13.1
	ICC	0.78	0.89	0.84
SM	Shear elastic modulus (kPa)	10.4 (1.9)	20.7 (4.7)	40.5 (8.5)
	SEM (kPa)	1.1	2.5	4.0
	CV (%)	11.2	11.1	10.3
	ICC	0.71	0.76	0.81
BF-lh	Shear elastic modulus (kPa)	13.2 (3.6)	22.6 (6.3)	37.5 (8.8)
	SEM (kPa)	1.1	1.8	4.2
	CV (%)	10.4	8.6	13.3
	ICC	0.92	0.93	0.81
BF-sh	Shear elastic modulus (kPa)	11.3 (12.6)	17.2 (11.4)	35.8 (21.6)
	SEM (kPa)	3.5	5.0	10.6
	CV (%)	20.3	36.1	44.9
	ICC	0.94	0.84	0.79

Data are shown as mean values (± standard deviation)

Abbreviations: ROM: range of motion, ST: semitendinosus, SM: semimembranosus, BF-lh: biceps femoris long head, SEM: standard error in measurement, CV: coefficient of variation of the measurement, ICC: Interclass correlation coefficient factor

doi:10.1371/journal.pone.0139272.t001

the values for the SM higher than the ST (22.9±15.6 kPa). The averaged shear modulus-lengthening relationships across muscles are shown in Fig 6. For HF-70, no significant differences (p>0.05) were found between muscles responses for the three knee angles (black squares in Fig 6A). For HF-90 significant differences between the three muscles are reported in the last knee angle (p<0.001, Fig 6B). For the high-flexed hip position (HF-110), significant differences in shear modulus were found between the three muscles at the three knee angles (p<0.001, Fig 6C).

The two way ANOVA for the maximal shear modulus reached at the end of the stretch ROM, showed significant main effects of hip angle (p<0.001), muscle (p<0.05), and a

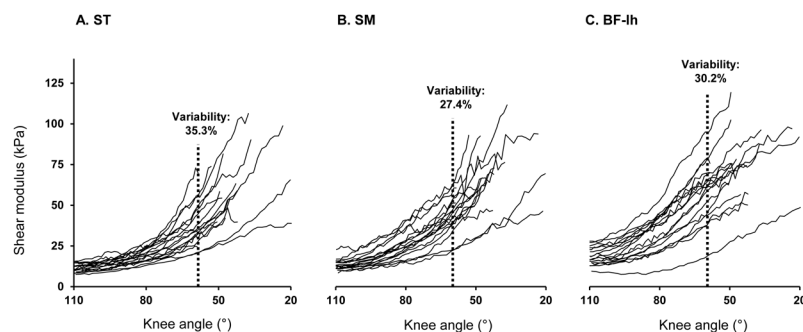


Fig 4. Shear modulus-lengthening relationships obtained for each hamstring muscle from the study participants. The variability was quantified using the ratio SD/mean (in %), expressed at the maximal common knee angle in HF-110 for (A) semitendinosus (ST), (B) semimembranosus (SM), (C) biceps-femoris long head (BF-lh).

doi:10.1371/journal.pone.0139272.g004

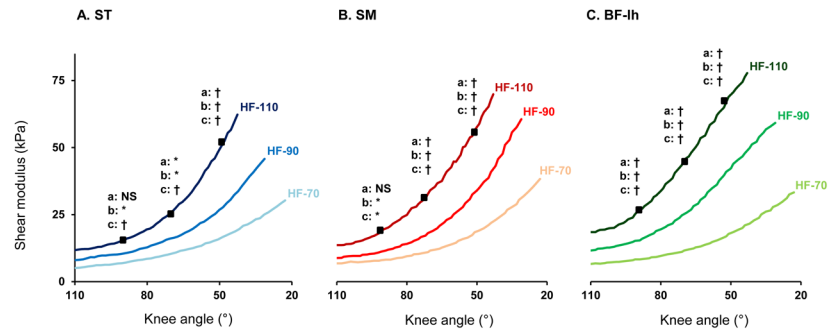


Fig 5. Comparison of hamstring responses in three positions of passive knee extensions, reported by muscle. Shear modulus-lengthening relationships shown for (A) *semitendinosus* (ST), (B) *semimembranosus* (SM), (C) *biceps-femoris* long head (BF-lh), with interactions for the three same knee angles: a: between 70° and 90° of hip flexion; b: between 90° and 110° of hip flexion; c: between 70° and 110° of hip flexion. Levels of significance: * p<0.05; † p<0.001; NS: no significant at p<0.05

doi:10.1371/journal.pone.0139272.g005

significant ‘hip x muscle’ interaction (p<0.001). Interestingly, at the end of the ROM when comparing maximal shear modulus measurements corresponding to the same maximal perception of stretch (i.e., 80% of the maximal PKE ROM for each hip angle), the highest values were always reached at HF-110 (62.3±22.0 kPa for ST, 69.9±17.8 kPa for SM, and 77.8±20.5 kPa for BF-lh) by comparison to HF-70 (30.3±11.2 kPa for ST, 38.3±10.0 kPa for SM, and 33.3±9.8kPa for BF-lh) and HF-90 (45.8±18.7 kPa for ST, 60.6±17.0 kPa for SM, and 59.2±15.2 kPa for BF-lh).

Discussion

The present study was designed to assess hamstrings response during passive stretching by measuring shear modulus using SSI elastography. Based on reliable ultrasonic key locations of the muscles (see Fig 2) [12, 25] we investigated the whole group during PKE performed in three different positions.

Considering that ICC and threshold are often used in the literature, reliability was good for all the conditions tested in the present study (Table 1).[47] However, the ICC is by definition dependent on a heterogeneous set of values. For example, if a between-subject variability is low compared to the within-subject variability, the ICC tends to be low as demonstrated by Weir.

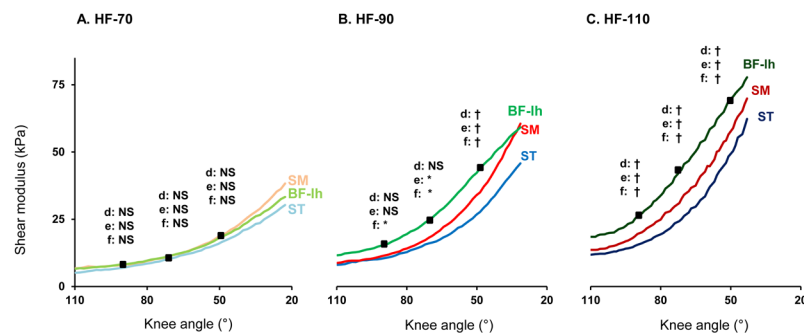


Fig 6. Comparison of hamstrings responses in the three positions of passive knee extension, reported by hip positioning. Shear modulus-lengthening relationships shown for (A) 70° of hip flexion, (B) 90° of hip flexion (C) 110° of hip flexion, with interactions for the 3 same knee angles: d: between ST and SM; e: between SM and BF-lh; f: between ST and BF-lh. Levels of significance: * p<0.05; † p<0.001; NS: no significant at p<0.05

doi:10.1371/journal.pone.0139272.g006

[48] Thus, ICC should not be reported alone, but with an absolute estimation of error such as SEM and CV. [46, 48] Therefore, the within-session intra-operator reliability was considered as acceptable for *ST*, *SM*, and *BF-lh* muscles (SEM and CV lower than 4.2 kPa and 15%, respectively). This was not the case for the *BF-sh* (SEM and CV higher than 10 kPa and 40%). Although the examiner was highly trained by pilots during the previous months, CV values reported in the present study were slightly higher than in the literature (e.g., 1.92% in *tibialis anterior* [49], 5.6% for *biceps brachii* and *vastus lateralis* [50] 7.5% in *gastrocnemius medialis* [29]). There are three main reasons that could explain this finding. First, hamstrings are more difficult to analyze using ultrasound, due to a complex organization (e.g., intra-muscular fibrous composition) [12, 25] compared to clearly structured muscles such as *gastrocnemius*, *quadriceps*, *biceps brachii*, and *tibialis anterior* muscles. Secondly and linked with the previous point, we performed hand-held measurements that may increase the variation of measurement, compared to a cast-positioned transducer on the muscle belly. Thirdly, we decided to perform measurements during passive slow stretching (i.e., dynamic condition). Static experiments would result in simplified scanning.[23] However, it would imply stress relaxation [33] and conventional methods of material testing involves characterization at a slow strain rate.[7–9] Thus, we decided to perform measurements during the stretching even if it implied an experimental lower reliability. In addition, *BF-sh* scanning was made on the distal part of the thigh close to the isokinetic ergometer (Fig 2) and corresponded to a transducer placement targeting the deepest muscle with shear waves propagating under a superficial stiff material (tendon of *BF-lh*). Both reasons could explain the low reliability obtained for this muscle (CV between 20.3% and 44.9%). Future will need to assess these problem in order to assess the particular influence of this mono-articular muscle on the stress distribution of the group.

Since *SM* and *BF-sh* activities were not measured using sEMG, it was not possible to check that these muscles were passive. However, no recommendation were made in the SENIAM project for these muscles,[40] probably because they are quite difficult to measure. Based on two muscles and a careful check of the torque-angle curve, it was assumed that the four hamstrings were passive, but it remains a limitation of the present study.

Our results demonstrate that the shear modulus of each measured hamstring is increased during the PKE at a given knee angle for more flexed hip position (Figs 5 & 6, $p < 0.001$). This result is in accordance with the biarticular behaviors of these muscles. Thus, the present study confirms that the shear modulus can be used to estimate changes in passive muscle tension or muscle-tendon length of biarticular muscles like the hamstrings.[29, 30]

In the present study, as done in most of research and clinical settings, subject sensation was used to end a stretch procedure.[9] Thus, if the perception of the stretch is directly linked to the passive muscle tension (estimated using the shear modulus), peak shear modulus values reached at the end of the stretch ROM would have been identical for each hip position. However, our results clearly show that this is not the case, with a peak shear modulus that significantly increased when the hip was flexed (Fig 5, $p < 0.001$). In other words, the amount of passive muscle tension locally reached was different at the end of the PKE for the three investigated stretch positions despite a similar perception. Therefore, these results reveal a lower ability of the hamstring muscle to tolerate stress in the low-flexed hip PKE (HF-70 and HF-90) compared to HF-110. The exact mechanism is still unknown, but it shows that tissues other than muscle play a definite role in the stress tolerance for ending the stretch, particularly in low-flexed hip situations where local muscle passive tension stay low.[9–11] These results agree with those of previous studies performed on the ankle [39, 51] that suggest the potential role of nerves or fascia in the limitation of the ROM in some joint configurations. Therefore, when the aim is to focus on the muscle-tendon component, our results suggest flexion of the

hip as much as possible to increase the efficiency of stretching procedures or hamstring flexibility measurements.

Results of the present study also showed clear differences between muscles shear modulus during a stretch. It is in accordance with a recent study that performed measurements in one static position.[31] However, *BF-lg* was found to be the stiffest muscle in the present study, while Umegaki et al. [31] showed that the shear elastic modulus was higher for the *SM* muscle. The discrepancy can not only be explained by differences in cross-sectional area, specific tension, degree of anisotropy and passive force-length relationship between muscles,[52] but also by methodological differences between the studies. Specifically, two main methodological differences were emphasized here and might partly explain the differences in results. First, Umegaki et al. [31] performed measurements at static conditions for one knee angle, while we performed measurements on the whole stretch ROM during PKE. Due to stress relaxation, the shear modulus value clearly decrease during time for a static stretching protocol.[33] Therefore, shear modulus measurements seem more appropriate during slow dynamic protocols as performed in the present study. Second, Umegaki et al. [31] placed the probe at the midpoint from the greater trochanter to the femoral epicondyle (medial or lateral). Structural organization of hamstring muscles was shown to be very variable within a muscle and between subjects. [12–14] Thus, we preferred to set locations according to hamstrings ultrasound key locations [12, 25] (described above in protocol section, and illustrated in Fig 2) in order to investigate a constant area in each muscle. Therefore probe locations varied greatly between studies, and it remains unclear how placement can influence shear modulus measurements.

In elastography studies a constant muscle density is classically assumed [26] (1000 kg/m^3 in the present study). Further elastography studies are required to better understand and clarify the spatial variability of shear measurements for different muscles of a same muscle group. In addition, the shear modulus was performed in only one location for each muscle. It remains to be determined whether shear modulus varies within one muscle during passive stretching.

Interestingly, results of the present study showed that the more the hip is flexed, the more the shear modulus differed between *BF-lh*, *SM*, and *ST* with the highest increase for *BF-lh* (Fig 6). In addition, the slack angle, defined as the angle beyond which shear modulus is increased, [29, 53] was similar between the muscles. Below the presumed slack angle, no differences between muscles in resting shear modulus were found (Fig 6A). Therefore, these results suggest that hamstring muscles display different mechanical behaviors during the PKE, also depending on the hip joint position. This could be related to differences in cross-sectional area, specific tension, degree of anisotropy, and parameters that govern the normalized passive muscle force-length relationship between muscles.[52] Particularly, the shear modulus could be influenced by the in-series organization of muscle and tendon. For instance, *BF* and *SM* display the longest length of musculotendinous junctions,[12, 25] and it may partly explain differences in values reported in the present study.

Interestingly, the shear modulus values perfectly match the prevalence of hamstring injuries.[20–22] A recent study of Hallén & Ekstrand [54] reported 83% of hamstring injuries occurring for *BF* (12% for *SM* and 5% to *ST*) in a 12 year European-level professional football teams follow. Our results would corroborate that muscle mechanical properties, may be involved in the risk of injury.[16, 55] In addition, a high inter-individual variability was found for shear modulus values at the same knee angle (35.3% for *ST*, 27.4% for *SM* and 30.2% for *BF-lh*). This heterogeneity of stress tolerance/behaviors should also be taken in account for hamstring flexibility examinations. Considering the prevalence in hamstring strain injuries and lack of progress in solving these type of injuries,[20–22, 56] further elastography studies are required and should analyze the relevance of the shear modulus measurement in the injury prediction or in the evaluation of acute and chronic effects of stretching programs.

Conclusion

This study quantified the shear modulus of hamstring muscles during a passive knee extension, and reported mechanical measurements at a more local scale than usually done by conventional methodologies. The results highlight different stress tolerances to stretching, depending on hip position, and that hip flexion level appears to be fundamental tied to efficient stretching in the muscle-tendon component during a passive knee extension. Moreover, even if hamstrings tend to have a similar slack angle, *BF* (long-head) shear modulus is higher than the other muscles. While this study was performed with healthy subjects, our methodology would also be relevant for the clinical evaluation of disorders involving these muscles. Finally future studies will help to provide an evidence based practice of hamstring extensibility examinations and stretching procedures.

Supporting Information

S1 File. Elastography data for all the participants (S1 to S18) in the various positions. (HF-70: hip flexed at 70°, HF-90: hip flexed at 90°, HF-110: hip flexed at 110).

(XLSX)

S2 File. Elastography data for the reliability analysis for all the participants (S1 to S15) in the various positions. (HF-70: hip flexed at 70°, HF-90: hip flexed at 90°, HF-110: hip flexed at 110).

(XLSX)

Author Contributions

Conceived and designed the experiments: GLS FA JLB AN. Performed the experiments: GLS FA. Analyzed the data: GLS FA. Contributed reagents/materials/analysis tools: GLS AN. Wrote the paper: GLS AN.

References

1. Chaitow L. *Muscle Energy Technique—Advanced Soft Tissue Technique*. 4 ed: Churchill Livingstone; 2013. 334 p.
2. Morris CE, Greenman PE, Bullock MI, Basmajian JV, Kobesova A, Vladimir Janda, MD, DSc: tribute to a master of rehabilitation. *Spine*. 2006; 31(9):1060–4. PMID: [16641785](#)
3. Witvrouw E, Danneels LF, Asselman P, D'Have T, Cambier D. Muscle flexibility as a risk factor for developing muscle injuries in male professional soccer players. A prospective study. *Am J Sports Med*. 2003; 31(1):41–6. PMID: [12531755](#)
4. Witvrouw E, Lysens R, Bellemans J, Cambier D, Vanderstraeten G. Intrinsic risk factors for the development of anterior knee pain in an athletic population. A two-year prospective study. *Am J Sports Med*. 2000; 28(4):480–9. PMID: [10921638](#)
5. McHugh MP, Connolly DA, Eston RG, Kremenec IJ, Nicholas SJ, Gleim GW. The role of passive muscle stiffness in symptoms of exercise-induced muscle damage. *Am J Sports Med*. 1999; 27(5):594–9. PMID: [10496575](#)
6. Decoster LC, Cleland J, Altieri C, Russell P. The effects of hamstring stretching on range of motion: a systematic literature review. *J Orthop Sports Phys Ther*. 2005; 35(6):377–87. PMID: [16001909](#)
7. Magnusson SP. Passive properties of human skeletal muscle during stretch maneuvers. A review. *Scand J Med Sci Sports*. 1998; 8(2):65–77. PMID: [9564710](#)
8. Gajdosik RL. Passive extensibility of skeletal muscle: review of the literature with clinical implications. *Clin Biomech (Bristol, Avon)*. 2001; 16(2):87–101.
9. Weppeler CH, Magnusson SP. Increasing muscle extensibility: a matter of increasing length or modifying sensation? *Phys Ther*. 2010; 90(3):438–49. doi: [10.2522/ptj.20090012](#) PMID: [20075147](#)
10. Riemann BL, DeMont RG, Ryu K, Lephart SM. The Effects of Sex, Joint Angle, and the Gastrocnemius Muscle on Passive Ankle Joint Complex Stiffness. *J Athl Train*. 2001; 36(4):369–75. PMID: [12937478](#)

11. Gajdosik RL, Vander Linden DW, McNair PJ, Riggin TJ, Albertson JS, Mattick DJ, et al. Viscoelastic properties of short calf muscle-tendon units of older women: effects of slow and fast passive dorsiflexion stretches in vivo. *Eur J Appl Physiol Occup Physiol*. 2005; 95(2–3):131–9.
12. Woodley SJ, Mercer SR. Hamstring muscles: architecture and innervation. *Cells Tissues Organs*. 2005; 179(3):125–41. PMID: [15947463](#)
13. Kellis E, Galanis N, Natsis K, Kapetanios G. Muscle architecture variations along the human semitendinosus and biceps femoris (long head) length. *J Electromyogr Kinesiol*. 2010; 20(6):1237–43. doi: [10.1016/j.jelekin.2010.07.012](#) PMID: [20727788](#)
14. Kellis E, Galanis N, Kapetanios G, Natsis K. Architectural differences between the hamstring muscles. *J Electromyogr Kinesiol*. 2012; 22(4):520–6. doi: [10.1016/j.jelekin.2012.03.012](#) PMID: [22564790](#)
15. Lieber RL, Fridén J. Clinical significance of skeletal muscle architecture. *Clin Orthop Relat Res*. 2001 (383):140–51. PMID: [11210948](#)
16. Schuermans J, Van Tiggelen D, Danneels L, Witvrouw E. Biceps femoris and semitendinosus-team-mates or competitors? New insights into hamstring injury mechanisms in male football players: a muscle functional MRI study. *Br J Sports Med*. 2014; 48(22):1599–606. doi: [10.1136/bjsports-2014-094017](#) PMID: [25388959](#)
17. Herbert RD, Moseley AM, Butler JE, Gandevia SC. Change in length of relaxed muscle fascicles and tendons with knee and ankle movement in humans. *J Physiol*. 2002; 539(2):637–45.
18. Herbert RD, Clarke J, Kwah LK, Diong J, Martin J, Clarke EC, et al. In vivo passive mechanical behaviour of muscle fascicles and tendons in human gastrocnemius muscle-tendon units. *J Physiol*. 2011; 589(Pt 21):5257–67. doi: [10.1113/jphysiol.2011.212175](#) PMID: [21825027](#)
19. Herbert RD, Heroux ME, Diong J, Bilston LE, Gandevia SC, Lichtwark GA. Changes in the length and three-dimensional orientation of muscle fascicles and aponeuroses with passive length changes in human gastrocnemius muscles. *J Physiol*. 2015; 593(1469–7793 (Electronic)):441–55. doi: [10.1113/jphysiol.2014.279166](#) PMID: [25630264](#)
20. Goldman EF, Jones DE. Interventions for preventing hamstring injuries. *Cochrane Database Syst Rev*. 2010(1:). Art. No: CD006782.
21. Opar DA, Williams MD, Shield AJ. Hamstring strain injuries: factors that lead to injury and re-injury. *Sports Med*. 2012; 42(3):209–26. doi: [10.2165/11594800-000000000-00000](#) PMID: [22239734](#)
22. Freckleton G, Pizzari T. Risk factors for hamstring muscle strain injury in sport: a systematic review and meta-analysis. *Br J Sports Med*. 2013; 47(6):351–8. doi: [10.1136/bjsports-2011-090664](#) PMID: [22763118](#)
23. Kwah LK, Pinto RZ, Diong J, Herbert RD. Reliability and validity of ultrasound measurements of muscle fascicle length and pennation in humans: a systematic review. *J Appl Physiol*. 2013; 114(6):761–9. doi: [10.1152/jappphysiol.01430.2011](#) PMID: [23305989](#)
24. Diong J, Herbert RD, Kwah LK, Clarke JL, Harvey LA. Mechanisms of increased passive compliance of hamstring muscle-tendon units after spinal cord injury. *Clin Biomech (Bristol, Avon)*. 2012; 27(9):893–8.
25. Brasseur J-L, Renoux J, Mercy G, Gault V, Zeitoun-Ess D. Anatomie échographique et pathologie des ischiojambiers. In: *Actualités en échographie de l'appareil locomoteur*. 8. Journées d'imagerie de la Pitié-Salpêtrière: Sauramps médical; 2011. p. 263–308.[French]
26. Bercoff J, Tanter M, Fink M. Supersonic shear imaging: a new technique for soft tissue elasticity mapping. *IEEE Trans Ultrason Ferroelectr Freq Control*. 2004; 51(4):396–409. PMID: [15139541](#)
27. Gennisson J-L, Deffieux T, Macé E, Montaldo G, Fink M, Tanter M. Viscoelastic and anisotropic mechanical properties of in vivo muscle tissue assessed by supersonic shear imaging. *Ultrasound Med Biol*. 2010; 36(5):789–801. doi: [10.1016/j.ultrasmedbio.2010.02.013](#) PMID: [20420970](#)
28. Eby SF, Song P, Chen S, Chen Q, Greenleaf JF, An KN. Validation of shear wave elastography in skeletal muscle. *J Biomech*. 2013; 46(14):2381–7. doi: [10.1016/j.jbiomech.2013.07.033](#) PMID: [23953670](#)
29. Maïsetti O, Hug F, Bouillard K, Nordez A. Characterization of passive elastic properties of the human medial gastrocnemius muscle belly using supersonic shear imaging. *J Biomech*. 2012; 45(6):978–84. doi: [10.1016/j.jbiomech.2012.01.009](#) PMID: [22326058](#)
30. Koo TK, Guo JY, Cohen JH, Parker KJ. Relationship between shear elastic modulus and passive muscle force: an ex-vivo study. *J Biomech*. 2013; 46(12):2053–9. doi: [10.1016/j.jbiomech.2013.05.016](#) PMID: [23769175](#)
31. Umegaki H, Ikezoe T, Nakamura M, Nishishita S, Kobayashi T, Fujita K, et al. Acute effects of static stretching on the hamstrings using shear elastic modulus determined by ultrasound shear wave elastography: Differences in flexibility between hamstring muscle components. *Man Ther*. 2015; 20(4):610–3. doi: [10.1016/j.math.2015.02.006](#) PMID: [25795108](#)
32. Umegaki H, Ikezoe T, Nakamura M, Nishishita S, Kobayashi T, Fujita K, et al. The effect of hip rotation on shear elastic modulus of the medial and lateral hamstrings during stretching. *Man Ther*. 2015; 20(1):134–7. doi: [10.1016/j.math.2014.07.016](#) PMID: [25194631](#)

33. Freitas SR, Andrade RJ, Larcoupaille L, Mil-Homens P, Nordez A. Muscle and joint responses during and after static stretching performed at different intensities. *Eur J Appl Physiol*. 2015; 115(6):1263–72. doi: [10.1007/s00421-015-3104-1](https://doi.org/10.1007/s00421-015-3104-1) PMID: [25585964](https://pubmed.ncbi.nlm.nih.gov/25585964/)
34. Kallerud H, Gleeson N. Effects of stretching on performances involving stretch-shortening cycles. *Sports Med*. 2013; 43(8):733–50. doi: [10.1007/s40279-013-0053-x](https://doi.org/10.1007/s40279-013-0053-x) PMID: [23681447](https://pubmed.ncbi.nlm.nih.gov/23681447/)
35. Sullivan MK, DeJulia JJ, Worell TW. Effect of pelvic position and stretching method on hamstring muscle flexibility. *Med Sci Sports Exerc*. 1992; 24(12):1383–9. PMID: [1470022](https://pubmed.ncbi.nlm.nih.gov/1470022/)
36. Webright WG, Randolph BJ, Perrin DH. Comparison of nonballistic active knee extension in neural slump position and static stretch techniques on hamstring flexibility. *J Orthop Sports Phys Ther*. 1997; 26(1):7–13. PMID: [9201636](https://pubmed.ncbi.nlm.nih.gov/9201636/)
37. Decoster LC, Scanlon RL, Horn KD, Cleland J. Standing and Supine Hamstring Stretching Are Equally Effective. *J Athl Train*. 2004; 39(4):330–4. PMID: [15592605](https://pubmed.ncbi.nlm.nih.gov/15592605/)
38. Herrington L. The effect of pelvic position on popliteal angle achieved during 90:90 hamstring-length test. *J Sport Rehabil*. 2013; 22(4):254–6. PMID: [23689343](https://pubmed.ncbi.nlm.nih.gov/23689343/)
39. Andrade RJ, Lacourpaille L, Freitas SR, McNair PJ, Nordez A. Effects of hip and head position on ankle range of motion, ankle passive torque, and passive gastrocnemius tension. 2015(1600–0838 (Electronic)).
40. Hermens HJ, Freriks B, Disselhorst-Klug C, Rau G. Development of recommendations for SEMG sensors and sensor placement procedures. *J Electromyogr Kinesiol*. 2000; 10(5):361–74. PMID: [11018445](https://pubmed.ncbi.nlm.nih.gov/11018445/)
41. Catheline S, Benech N, Brum J, Negreira C. Time reversal of elastic waves in soft solids. *Phys Rev Lett*. 2008; 100(6).
42. Wang M, Byram B, Palmeri M, Rouze N, Nightingale K. Imaging transverse isotropic properties of muscle by monitoring acoustic radiation force induced shear waves using a 2-D matrix ultrasound array. *IEEE Trans Med Imaging*. 2013; 32(9):1671–84. doi: [10.1109/TMI.2013.2262948](https://doi.org/10.1109/TMI.2013.2262948) PMID: [23686942](https://pubmed.ncbi.nlm.nih.gov/23686942/)
43. Lacourpaille L, Hug F, Nordez A. Influence of passive muscle tension on electromechanical delay in humans. *PLoS One*. 2013; 8(1).
44. Nordez A, Hug F. Muscle shear elastic modulus measured using supersonic shear imaging is highly related to muscle activity level. *J Appl Physiol*. 2010; 108(5):1389–94. doi: [10.1152/jappphysiol.01323.2009](https://doi.org/10.1152/jappphysiol.01323.2009) PMID: [20167669](https://pubmed.ncbi.nlm.nih.gov/20167669/)
45. Nordez A, Cornu C, McNair P. Acute effects of static stretching on passive stiffness of the hamstring muscles calculated using different mathematical models. *Clin Biomech (Bristol, Avon)*. 2006; 21(7):755–60.
46. Hopkins WG. Measures of reliability in sports medicine and science. *Sports Med*. 2000; 30(1):1–15. PMID: [10907753](https://pubmed.ncbi.nlm.nih.gov/10907753/)
47. Shrout PE, Fleiss JL. Intraclass correlations: uses in assessing rater reliability. *Psychol Bull*. 1979; 86(2):420–8. PMID: [18839484](https://pubmed.ncbi.nlm.nih.gov/18839484/)
48. Weir JP. Quantifying test-retest reliability using the intraclass correlation coefficient and the SEM. *J Strength Cond Res*. 2005; 19(1):231–40. PMID: [15705040](https://pubmed.ncbi.nlm.nih.gov/15705040/)
49. Koo TK, Guo JY, Cohen JH, Parker KJ. Quantifying the passive stretching response of human tibialis anterior muscle using shear wave elastography. *Clin Biomech (Bristol, Avon)*. 2014; 29(1):33–9.
50. Lacourpaille L, Hug F, Bouillard K, Hogrel JY, Nordez A. Supersonic shear imaging provides a reliable measurement of resting muscle shear elastic modulus. *Physiol Meas*. 2012; 33(3):N19–28. doi: [10.1088/0967-3334/33/3/N19](https://doi.org/10.1088/0967-3334/33/3/N19) PMID: [22370174](https://pubmed.ncbi.nlm.nih.gov/22370174/)
51. Mitchell B, Bressel E, McNair PJ, Bressel ME. Effect of pelvic, hip, and knee position on ankle joint range of motion. *Phys Ther Sport*. 2008; 9(4):202–8. doi: [10.1016/j.ptsp.2008.08.002](https://doi.org/10.1016/j.ptsp.2008.08.002) PMID: [19083721](https://pubmed.ncbi.nlm.nih.gov/19083721/)
52. Koo TK, Hug F. Factors that influence muscle shear modulus during passive stretch. *J Biomech*. 2015, in press.
53. Hug F, Lacourpaille L, Maisetti O, Nordez A. Slack length of gastrocnemius medialis and Achilles tendon occurs at different ankle angles. *J Biomech*. 2013; 46(14):2534–8. doi: [10.1016/j.jbiomech.2013.07.015](https://doi.org/10.1016/j.jbiomech.2013.07.015) PMID: [23953502](https://pubmed.ncbi.nlm.nih.gov/23953502/)
54. Hallén A, Ekstrand J. Return to play following muscle injuries in professional footballers. *Journal of Sports Science*. 2014; 32(13):1229–36.
55. Lieber RL, Fridén J. Functional and clinical significance of skeletal muscle architecture. *Muscle Nerve*. 2000; 23(11):1647–66. PMID: [11054744](https://pubmed.ncbi.nlm.nih.gov/11054744/)
56. Mendiguchia J, Alentorn-Geli E, Brughelli M. Hamstring strain injuries: are we heading in the right direction? *Br J Sports Med*. 2012; 46(2):81–5. doi: [10.1136/bjism.2010.081695](https://doi.org/10.1136/bjism.2010.081695) PMID: [21677318](https://pubmed.ncbi.nlm.nih.gov/21677318/)