



## Heart rate variability biofeedback in chronic disease management: A systematic review

Claire Fournié, Florian Chouchou, Georges Dalleau, Teddy Caderby, Quentin Cabrera, Chantal Verkindt

### ► To cite this version:

Claire Fournié, Florian Chouchou, Georges Dalleau, Teddy Caderby, Quentin Cabrera, et al.. Heart rate variability biofeedback in chronic disease management: A systematic review. Complementary Therapies in Medicine, 2021, 60, pp.102750. 10.1016/j.ctim.2021.102750 . hal-03338715

**HAL Id: hal-03338715**

**<https://hal.science/hal-03338715>**

Submitted on 16 Jun 2023

**HAL** is a multi-disciplinary open access archive for the deposit and dissemination of scientific research documents, whether they are published or not. The documents may come from teaching and research institutions in France or abroad, or from public or private research centers.

L'archive ouverte pluridisciplinaire **HAL**, est destinée au dépôt et à la diffusion de documents scientifiques de niveau recherche, publiés ou non, émanant des établissements d'enseignement et de recherche français ou étrangers, des laboratoires publics ou privés.



Distributed under a Creative Commons Attribution - NonCommercial 4.0 International License

# Heart rate variability biofeedback in chronic disease management: a systematic review

Claire Fournié<sup>a</sup>, Florian Chouchou<sup>a</sup>, Georges Dalleau<sup>a</sup>, Teddy Caderby<sup>a</sup>, Quentin Cabrera<sup>b</sup>, Chantal Verkindt<sup>a</sup>.

<sup>a</sup> Laboratoire IRISSE EA4075, UFR des Sciences de l'Homme et de l'Environnement, Université de la Réunion, Le Tampon, La Réunion, France

<sup>b</sup> Service d'Hématologie Clinique, CHU Sud Réunion, Saint Pierre, La Réunion, France

## **Corresponding author**

Claire Fournié, [fournie.claire@gmail.com](mailto:fournie.claire@gmail.com)

Laboratoire IRISSE - 117 rue du Général Ailleret - 97430 LE TAMPON - LA REUNION – France

## **Co-authors**

[florian.chouchou@univ-reunion.fr](mailto:florian.chouchou@univ-reunion.fr)

[georges.dalleau@univ-reunion.fr](mailto:georges.dalleau@univ-reunion.fr)

[teddy.caderby@univ-reunion.fr](mailto:teddy.caderby@univ-reunion.fr)

[quentin.cabrera@chu-reunion.fr](mailto:quentin.cabrera@chu-reunion.fr)

[chantal.verkindt@univ-reunion.fr](mailto:chantal.verkindt@univ-reunion.fr)

**Word count: 4395**

1   **Abstract:**

2   **Background:** Heart rate variability biofeedback (HRVB) is a non-pharmacological intervention  
3   used in the management of chronic diseases. **Method:** A systematic search was performed  
4   according to eligibility criteria including adult chronic patients, HRVB as main treatment with or  
5   without control conditions, and psychophysiological outcomes as dependent variables. **Results:**  
6   In total, 29 articles were included. Reported results showed the feasibility of HRVB in chronic  
7   patients without adverse effects. Significant positive effects were found in various patient profiles  
8   on hypertension and cardiovascular prognosis, inflammatory state, asthma disorders,  
9   depression and anxiety, sleep disturbances, cognitive performance and pain, which could be  
10   associated with improved quality of life. Improvements in clinical outcomes co-occurred with  
11   improvements in heart rate variability, suggesting possible regulatory effect of HRVB on  
12   autonomic function. **Conclusions:** HRVB could be effective in managing patients with chronic  
13   diseases. Further investigations are required to confirm these results and recommend the most  
14   effective method.

15   **Keywords:** Heart rate variability biofeedback, autonomic function, chronic disease, non-  
16   pharmacological intervention, symptom management.

17   **Abbreviations:** HRV: heart rate variability; ECG: electrocardiogram; ANS: autonomic nervous  
18   system; SNS: sympathetic nervous system; PNS: parasympathetic nervous system; BP: blood  
19   pressure; RSA: respiratory sinus arrhythmia; SDNN: standard deviation of normal-to-normal RR  
20   intervals; RMSSD: root mean square of successive RR interval differences; HF: high frequency;  
21   LF: low frequency; HRVB: heart rate variability biofeedback; PTSD: Post-traumatic stress  
22   disorder; RCT: randomized controlled trial.

## 1 Introduction

The World Health Organization considers that noncommunicable chronic diseases, including cardiovascular disease, cancer, chronic respiratory disease, diabetes and mental health conditions, were responsible for almost 70% of all deaths worldwide in 2016 <sup>1</sup>. Their global prevalence is increasing and this burden is leading to growing social and economic consequences <sup>2</sup>. The quality and effectiveness of disease management is therefore a major concern for improving patient care and reducing health care costs <sup>3</sup>. Chronic diseases are generally related to impairments of the autonomous nervous system (ANS) balance resulting in sympathetic overstimulation and a lack of vagal activity <sup>4</sup>. This dysautonomia could be considered as a consequence of illness but also as a major risk factor involved in the starting point of chronic diseases and in their evolution. Disease state implies several physiological alterations such as hypersecretion of stress hormones (e.g., cortisol, norepinephrine), sleep alterations, release of inflammatory mediators (e.g., IL-6), hypertension, or immune dysfunction, which may contribute to health deterioration and the development of comorbidities <sup>5</sup>. Moreover, a model based on several epidemiological studies established a link between the aetiopathogenesis of cardiovascular diseases, cancer and Alzheimer's disease with low vagus nerve activity <sup>6</sup>. Against this background, recent research has focused on interventions that can increase vagal activity and restore autonomous balance.

Heart rate variability (HRV), measured at rest, is used to index the autonomic function and is considered as a biomarker of health <sup>7</sup>. High HRV reflects the ability of the cardiac system to adapt to intrinsic and extrinsic changes (e.g., stress, exercise); while low HRV is an indicator of risk for cardiovascular morbidity and mortality <sup>8</sup>. Cardiac variability results mainly from short-term autonomic regulation by the sympathetic nervous system (SNS) and the vagus nerve of the parasympathetic nervous system (PNS) <sup>9,10</sup>. Both of these interdependent systems modulate heart rate (HR) by either accelerating or decelerating it according to physiological mechanisms

involved in short-term HRV regulation, especially baroreflex control and respiratory sinus arrhythmia (RSA) <sup>9</sup>. The first regulates blood pressure (BP) by increasing HR when BP decreases and vice versa; the second increases HR during inspiration and decreases HR during expiration <sup>11</sup>. Other physiological mechanisms are involved in the long-term regulation of HRV, such as physiological factors (e.g., hormones, inflammation), neuropsychological factors (e.g., emotions, stress, cognitive regulation) and environmental factors or lifestyle (e.g., physical exercise, tobacco, alcohol) <sup>12</sup>.

HRV is characterized by time variations between each heartbeat and is linked to the RR interval of the electrocardiogram (ECG) <sup>13</sup>. HRV level is measured in the time domain and in the frequency domain of the ECG or pulse wave recordings <sup>13,14</sup>. In the time domain, the standard deviation of normal-to-normal RR intervals (SDNN) reflects both sympathetic and parasympathetic modulations on HR; and the root mean square of successive RR interval differences (RMSSD) reflects predominantly parasympathetic activity <sup>13,14</sup>. In the frequency domain, short-term HRV analysis is mainly based on the HRV power spectrum divided into high frequency (HF; from 0.15 to 0.4Hz) and low frequency (LF; from 0.04 to 0.15Hz) bands that tend to correlate with certain physiological mechanisms. HF-band reflects respiratory effects on HR modulation (RSA) mediated by parasympathetic cardiovagal outflow producing rapid changes in HR. Beside, LF-band corresponds to baroreflex activity, a feedback loop between baroreceptors and brainstem that regulates BP by both sympathetic and parasympathetic outflow producing slightly slower changes in HR <sup>13,14</sup>. Specifically, LF-band should be considered as a reflection of the baroreflex function induced by both the sympathetic and parasympathetic HR modulations and not as the only reflection of the sympathetic tone <sup>15</sup>. Interpretation of the HRV power spectrum must therefore take into account the complexity of the physiological mechanisms involved in autonomic cardiovascular adaptations such as RSA and baroreflex activity.

Given neural exchanges between the central autonomic network and cardiac activity, HRV is influenced by the brainstem, cortical and subcortical structures and, reciprocally, cerebral activity could be influenced by HRV <sup>7,16</sup>. Current research indicates that the amygdala, insula and anterior cingulate are involved in emotional processing, which suggests a link between emotional states and HRV <sup>17,18</sup>. Since vagal outflow predominates at rest through powerful cardiomodulator effects, authors developed a neurovisceral integration model in which vagal activity supports reciprocal interaction between heart and brain, suggesting that HRV could modulate cerebral activity <sup>19</sup>. Thereafter, the psychophysiological model proposed by McCraty and these colleagues have suggested that a specific heart rhythm pattern occurs when HR synchronizes itself with other oscillatory systems, such as RSA and baroreflex at a specific resonance frequency corresponding to ~6 breaths/min. Synchronization of these oscillatory systems is displayed by sine wave oscillations of breathing, HR and BP reflecting a “coherence state”. Under these conditions, authors suggested that HRV is largely increased through the augmentation of vagal functioning, which could positively affect brain activity and especially emotional regulation <sup>20</sup>. These heart-brain interactions resulting from vagal efferents and afferents suggest the contribution of vagal nerve activity in the pathophysiological mechanisms of chronic diseases and the possible issues of vagal-activating interventions <sup>6</sup>.

Heart rate variability biofeedback (HRVB) is a non-pharmacological intervention used for its regulatory effects on autonomic cardiac regulation by increasing HRV and restoring cardiac vagal control, and improving emotional self-regulation <sup>21,22</sup>. When breathing approximates 6 breaths/min, baroreflex and breath synchronize themselves producing a specific pattern of HRV signal <sup>23</sup>. This cardiac coherence state occurs at a resonance frequency of approximately 0.1 Hz, creating high amplitudes in sine wave oscillations of the HRV signal and a notable peak in the LF-band of the HRV power spectrum <sup>24</sup>. Since the late 1990s, numerous studies have investigated the effects of HRVB on various psychophysiological symptoms related to chronic

diseases <sup>22,25</sup>, and a standardized method of training has been proposed by Lehrer <sup>26</sup>. A meta-analysis has already highlighted the positive effects of HRVB on stress <sup>27</sup>, and a systematic review indicated possible benefits of HRVB on sports performance <sup>28</sup>.

In the current systematic review, we aimed to determine whether HRVB could be a feasible and effective non-pharmacological intervention to manage patients affected by chronic diseases. Consequently, we reviewed all studies involving adult patients that investigated HRVB training effects on psychophysiological outcomes related to chronic diseases.

## **2 Method**

### *2.1 Search strategy*

Articles published up to March 31, 2020 in the electronic databases PubMed/Medline, Springer Link, and ScienceDirect/Elsevier were screened. The search strategy with keywords and filters is presented in table 1.

### *2.2 Eligibility criteria*

Included in the systematic review were all studies that met the following specific requirements of our predefined PICOS criteria relating to population, intervention, comparison, outcome and study design: scientific research articles in English and French including adult patients (older than 18 years) affected by a chronic disease; reporting the effects of HRVB as an intended treatment for psychophysiological symptoms considered as dependent variables; evaluating training effects of HRVB from at least two sessions with instructions for control frequency breathing at approximately 6 breaths/min; and using a biofeedback device displaying the HRV in real time. To provide a comprehensive review of HRVB intervention for clinical outcomes, we included all study designs and comparison methods with or without a control group. We included studies that implemented HRVB alone or HRVB associated with standard care or HRVB associated with another non-pharmacological intervention, but only if protocol provided a control group receiving the same standard care or the same non-pharmacological intervention so as to evaluate the added value of the HRVB. We excluded studies that combined

HRVB training with another non-pharmacological intervention when protocol did not include a control group that allowed to distinguish the HRVB specific effects because of the possible confounding factors in the interpretation of the findings.

### *2.3 Study selection and data extraction*

Study selection was made by manually screening abstracts and then making adjustments based on each article's content to avoid accidental inclusion and exclusion. Articles were first classified according to whether or not they met PICOS criteria; articles matching our eligibility criteria were then catalogued, specifying details on method, measurements, and results. To avoid risk of selection bias, and accidental inclusion and exclusion, the database was reviewed by all co-authors to correct errors where necessary.

## **3 Results**

Our search strategy yielded a total of 626 articles (PubMed: 95; ScienceDirect: 23; Springer Link: 508), with 3 additional publications identified from cited references. Using the selection process presented in figure 1, several records were removed because of redundancy (duplicated: 39) or were not an original research article (protocols, conference proceedings or any publication that did not specify the method and results in detail: 127). On the remaining 463 articles, 434 were excluded by applying the previously detailed eligibility criteria in this order: English or French language; adult patients with chronic disease excluding some clinical situations, such as substance use disorders (considering the complex situation involving behavioral disorders) and pregnant women (not being a chronic disease); interventional study of HRVB training (2 or more sessions with specific breathing instructions); and the use of a biofeedback tool (pulse sensor or ECG) with real-time HRV display. A total of 29 remaining research articles were included, involving 1127 patients with sample size ranged from 10 to 210 and assessing psychophysiological outcomes as a main objective. Among them, 14 were randomized controlled trials, 7 were uncontrolled studies, and the remainder were pilot, feasibility or experimental studies providing wait-list control group, healthy control group,



standard care control group or other intervention control group. For uncontrolled studies, only those evaluating the effects of HRVB alone were included. For controlled studies, the intervention and control groups differed only by the HRVB intervention: HRVB VS no intervention; HRVB VS other interventions; HRVB + standard care VS same standard care; HRVB + other intervention VS same other intervention. They are summarized in table 2 and classified by type of chronic disease.

### *3.1 Feasibility in chronic patients*

#### *3.1.1 Adhesion*

HRVB feasibility was tested among patients with various chronic diseases and in a variety of clinical contexts. The maximum dropout rate reported was of almost 25% for the HRVB participants in a one-year longitudinal study<sup>29</sup> and measured participation rates were over 70% for HRVB daily practice<sup>30,31</sup>. Studies that reported reasons for dropouts included the following explanations: time constraints, transport issues<sup>32–35</sup>, lack of motivation<sup>36</sup>, financial issues<sup>34</sup> and medical problems<sup>34,37</sup>. One protocol was terminated prematurely because of high dropout in lung cancer patients due to disease-related physical health deterioration or death (therefore, unrelated to the HRVB protocol per se)<sup>37</sup>.

#### *3.1.2 Satisfaction*

Overall, patients reported satisfaction in stress reduction and positive emotion enhancement during biofeedback and maintained long-term persistent benefits<sup>31,35,38,39</sup>. Out of all the studies reviewed, none of the participants reported dissatisfaction. Patients in remitted schizophrenia willingly completed the intervention with no attendance obligation and most wished to continue thereafter because of reported feelings of psychological benefits<sup>39</sup>. Among older patients with psychiatric symptoms, a 67% satisfaction rate was reported for positive effects on anxiety or worry, along with a 56% satisfaction rate for depressive state or sadness and 50% satisfaction regarding stress<sup>38</sup>.

### 3.1.3 Adverse effects

No serious adverse effects were related to HRVB practice, which confirms the feasibility of HRVB in chronic patients. Some slight adverse effects were reported such as anxiety because of the inherent pressure felt by patients to meet the specified breathing targets of the biofeedback device <sup>38</sup>. To avoid possible aggravations related to slow breathing and hyperventilation, a familiarization period was implemented in a protocol to progressively decrease the respiration rate from a natural rhythm of ~14 breaths/min to a target rate of ~6 breaths/min <sup>29,40</sup>.

## 3.2 Effectiveness on psychophysiological outcomes

### 3.2.1 Hypertension and cardiovascular diseases

A randomized controlled trial (RCT) totalizing 65 patients examined BP as a primary objective and concluded that HRVB was effective in reducing 24-h systolic BP ( $-2.1 \pm 0.9$  mmHg,  $p=0.03$ ) and 24-h pulse pressure ( $-1.4 \pm 0.6$  mmHg,  $p=0.02$ ) after 8 weeks of daily practice and no change was observed for controls (autogenic relaxation) <sup>41</sup>. A recent longitudinal RCT of 210 patients with coronary artery disease indicated an improvement of one-year cardiovascular prognosis, demonstrated by a reduction in readmission and all-cause emergency visits compared to controls <sup>29</sup>. In contrast, a study including 24 patients with coronary artery disease did not find a reduction in BP <sup>32</sup>. In the latter case, all baseline systolic and diastolic BP values were within normal limits because the patients were already on beta-blocker medication at the start of the study, which represents a significant limitation of the findings. As a result, HRVB seems to positively affect BP in hypertensive subjects and cardiovascular prognosis in cardiac patients.

### 3.2.2 Inflammatory state

An inverse association between changes in the inflammatory state (measured from high sensitivity C-reactive protein and interleukin-6) and efferent vagal activity (measured from HF power, RR interval and baroreflex activity) has been observed in a study of 65 hypertensive patients <sup>42</sup>. Authors assumed that an increase in efferent vagal activity could suppress pro-

inflammatory factors suggesting possible anti-inflammatory effects of HRVB. These findings are supported by the cholinergic anti-inflammatory reflex model described by Tracey (2007) according to which the efferent neural signaling of vagus nerve mediated by the cholinergic pathway could inhibit cytokine release and prevent inflammatory syndromes <sup>43</sup>.

### 3.2.3 Asthma disorders

Two RCTs including 94 and 64 patients concluded that both asthma symptoms and pulmonary function improved, and airway inflammation and medication consumption was reduced after 10 weeks of HRVB daily practice compared to controls, suggesting the high potential of HRVB in the specific management of asthma symptoms <sup>30,44</sup>. HRVB was more effective than electroencephalogram (EEG) biofeedback and standard care in reducing medication consumption <sup>30</sup> and airway inflammation <sup>44</sup>, and it was equally effective as active controls in improving asthma symptoms <sup>30,44</sup>, sensitivity of airways <sup>44</sup> and pulmonary function <sup>44</sup>.

### 3.2.4 Depression, anxiety and emotional state

Out of 15 studies investigating depression as a dependent variable, 12 reported significant positive effects of HRVB; likewise, in 12 studies examining stress and anxiety, 9 showed significant positive effects of HRVB. Depression, stress and anxiety were significantly reduced in 12 studies totaling 326 various patient profiles who suffered from depression <sup>36,45–48</sup>, chronic pain <sup>49,50</sup>, chronic stress <sup>51</sup>, psychiatric disorders <sup>38,39</sup> and obesity <sup>52</sup>. A reduction in both anxiety and depression was maintained several weeks to 1 year after HRVB training <sup>29,47–51</sup>.

Other positive outcomes related to emotional state were evaluated such as increased mindful awareness, self-compassion or well-being. A decrease in worry or hostility was reported in 2 studies totaling 151 patients affected by chronic stress <sup>33,51</sup> and 1 study of 10 patients in remitted schizophrenia <sup>39</sup>.

### 3.2.5 Sleep disturbances

Of 4 studies that investigated sleep disturbances, 3 (totaling 162 participants) showed improvements in sleep quality after HRVB in patients with major depressive disorders <sup>47</sup>, post-

traumatic stress disorder (PTSD)<sup>53</sup> and anxiety disorders<sup>51</sup>. Improvements in sleep co-occurred with decreases in depression<sup>47,53</sup>, PTSD-specific symptoms<sup>53</sup> and anxiety<sup>51,54</sup>. However, no sleep improvements were measured in 12 fibromyalgia patients despite significant improvement on the other outcomes as depression, pain, and overall functioning<sup>49</sup>.

#### 3.2.6 *Specific symptoms of post-traumatic stress disorder*

PTSD-specific symptoms reduced significantly after 4 to 8 weeks of HRVB training in 3 studies including 60 patients<sup>31,35,53</sup>. Results showed long-term effects at the 16-week follow-up<sup>31</sup> and were associated with reductions in insomnia and depression<sup>53</sup>. HRVB failed to be more effective than standard care in a study with a small sample size of 20 patients<sup>35</sup> and seemed to have equal effects as progressive muscle relaxation in another study involving 38 participants<sup>53</sup>.

#### 3.2.7 *Cognitive performances*

Improvements in cognitive abilities have been reported with significant increases of attention skills and executive functioning in patients affected by chronic stress<sup>33</sup>, attention skills in patients with psychiatric symptoms<sup>38</sup>, and memory in PTSD patients<sup>55</sup>. Additionally, 38 patients with acute ischemic stroke showed significant improvements of cognitive function<sup>40</sup>. However, in 13 patients with chronic brain injury, no enhancement of cognitive skills was found, probably due to the nature of neurological damage<sup>56</sup>.

#### 3.2.8 *Pain*

After HRVB training, refractory pain symptoms were reduced in 3 studies involving 12 fibromyalgia patients<sup>49</sup>, 61 patients with irritable bowel syndrome<sup>50</sup> and 24 patients with stress-related chronic neck-shoulder pain<sup>57</sup>. Two studies revealed that benefits were maintained 3 months after the HRVB training<sup>49,50</sup>. However, these results are nuanced by another study that did not show significant pain reduction in patients with various profiles of chronic pain<sup>58</sup>. No data was provided regarding the prescription and/or consumption of painkillers.

### 3.2.9 Lifestyle

Improvements in quality of life, especially a more active lifestyle and an increase in both social and physical functioning, co-occurred with a decrease of pain<sup>50,57</sup> and PTSD-specific symptoms<sup>31,53</sup>. In fibromyalgia patients, depressive symptoms decreased at post-intervention, and both quality of life enhancement and pain reduction were reported after 3 months<sup>49</sup>. However, whereas a study of 35 heart failure patients showed exercise tolerance improvements through greater distance covered in 6-min and less dyspnea at the 12-week follow-up, it did not observe significant improvements in quality of life<sup>34</sup>.

## 4 Discussion

### 4.1 Changes in HRV could mediate the effects of intervention

Among 31 studies of the systematic review, 18 reported the HRVB effects on HRV. The increased coherence ratio across sessions<sup>32,36,55,56</sup>, indicating high synchronization between respiratory and cardiovascular systems, and the decreased mean HR<sup>41,46,48</sup> and respiratory rate at rest<sup>47,52</sup> across sessions, suggests that patients correctly performed HRVB exercises and illustrate the effects related to regular practice. The HRV indices increasing in the time domain such as SDNN<sup>40,45–47,52,53</sup>, pNN50<sup>46</sup> or RMSSD<sup>40</sup>, and in the frequency domain such as total power<sup>30,40,47,52,59</sup>, revealed an enhancement of cardiac autonomic control<sup>13</sup>. Several studies demonstrated that improved clinical outcomes were correlated with increased HRV indices. The increased coherence ratio was associated with improved emotional status and cognitive abilities in patients with chronic brain injury<sup>56</sup> and PTSD<sup>55</sup>. The increased total HRV power and the increased SDNN were respectively associated with improved depression scores in patients after cardiac surgery<sup>59</sup> and PTSD patients<sup>53</sup>. The increased HF power was associated with improved stress and depression scores in patients with coronary heart disease<sup>60</sup> and decreased inflammatory status in hypertensive patients<sup>42</sup>. As a result, authors conclude that HRVB may have regulatory effects on the autonomic function involved in physiological systems control by increasing overall HRV and overstimulating cardiac vagus nerve traffic. In this way, the central-

autonomic integration of vagal afferents could contribute to better psychophysiological functioning in a more coherent and efficient system <sup>20</sup>. Moreover, 0.1 Hz oscillations as a resonance frequency could play a major role in physical and mental health via optimizing and facilitating interconnected biological process <sup>61</sup>. By enhancing vagal cardiac activity, HRVB could represent a promising method for the management of a wide range of chronic diseases and their symptoms <sup>22</sup>.

#### 4.2 Problematic interpretation of HRV

During spontaneous breathing at rest (approximately 10-15 breaths/min), the HF power reflects PNS arousal and the LF power mainly reflects baroreflex activity modulated by both SNS and PNS <sup>9</sup>. While an increase in HF power undoubtedly demonstrates an increase of PNS arousal, an increase in LF power could indicate an increase of baroreflex control mediated by ANS regulation and cannot unambiguously distinguish sympathetic from parasympathetic contributions. In the studies included in this review, results concerning HRV in the frequency domain were overall interpreted as the reestablishment of cardiac vagal control, represented in either HF or LF bands. Indeed, the influence of respiratory rate on HRV frequency spectrum reveals that vagal activity may cross over into the LF-band for a respiratory rate below 9 breaths/min <sup>7,14,16</sup>. This HRV power spectrum interpretation is supported by recent results showing that HRV power in the LF-band could be eliminated by parasympathetic blockade under slow paced breathing condition in healthy subjects, demonstrating the contribution of cardiac vagal activation over a low frequency range of 4 to 9 breaths/min <sup>62</sup>. In this context, some researchers suggest to reconsider the frequency limit between HF and LF-bands currently at 0.15Hz by shifting it at 0.1Hz in order to consider the specific effects of slow paced breathing on the HRV power spectrum and the complex interplay between PNS and SNS signaling heart-brain interactions <sup>61</sup>.

Several methodological aspects regarding HRV signal acquisition differed between protocols, such as recording duration, device used (ECG or pulse sensor), HRV parameters

measured and conditions of breathing. Breathing was never monitored in any of the protocols, and therefore no information about frequency breathing, tidal volume or inspiration to expiration ratio was provided despite their known effects on HRV <sup>63</sup>. Since changes in breathing patterns could influence the HRV power spectrum as a confounding factor, it is recommended that breathing parameters be monitored to interpret the results more accurately <sup>16</sup>. Additionally, other confounders that could be involved in HRV modulation, such as medication and physical activity <sup>12</sup>, must be considered. Consequently, results regarding the HRV indices improvement should be carefully interpreted as they do not demonstrate a direct cause-and-effect relationship between HRVB and ANS regulation.

#### 4.3 *HRVB versus other interventions*

As part of this systematic review, we also considered the various protocol designs. HRVB was generally effective compared to standard care or wait list control groups <sup>29,30,45,47,52,57</sup> but failed to be more effective than active controls involving other non-pharmacological interventions <sup>30,33,44,50,51,53,60</sup>. This is not surprising given that autogenic relaxation <sup>60</sup>, progressive muscle relaxation <sup>53</sup>, electroencephalogram biofeedback <sup>30,44</sup>, hypnotherapy <sup>50</sup>, mindfulness meditation and physical exercise <sup>33,51</sup> have positive effects on psychophysiological outcomes. None of the other non-pharmacological interventions used as a control condition improved HRV indices, confirming the specific effects of HRVB on autonomic cardiac regulation (table 2). When HRVB is associated with standard care <sup>45</sup>, results support the feasibility of HRVB as an adjunctive treatment for clinical patients. However, by choosing only HRVB training without other non-pharmacological intervention because of possible confounding factors, we excluded some of the studies that offer interesting prospects of combined programs of non-pharmacological interventions in chronic disease management, such as physical exercise <sup>64</sup>, health education <sup>65</sup>, or muscle relaxation <sup>66</sup>.

#### 4.4 *Recommendations related to HRVB training schedules*

Most reviewed protocols offered 4 to 12 supervised sessions supported by regular home practice. Supervised sessions were provided to ensure the achievement of HRVB exercises, while home practice was intended to reinforce diaphragmatic breathing instruction and to stimulate HRV reactivity. Authors noted a dose-response effect between HRVB practice and symptomatology reduction<sup>33,51</sup>, suggesting the importance of a regular practice and the existence of a practice threshold at which HRVB could produce the expected effects. Based on the reviewed articles, we can assume that optimal practice should include at least one supervised session followed by regular home practice of at least 10 min daily for 4 weeks. This conclusion is similar to previously published guidelines for HRVB protocols recommending 5 supervised sessions with 20-min daily practices<sup>26</sup>. Considering dropouts due to time constraints, shorter practice times might be preferred by patients. However, HRVB practice is likely effective when specifically adapted to the patient profile according to their abilities, with the possibility of offering more supervised sessions and longer protocols when necessary.

#### 4.5 *Recommendations related to HRVB training content*

A variety of recommendations have been made by authors of the reviewed protocols: include a familiarization period of slow breathing practices at the beginning of the protocol to avoid slight adverse effects (anxiety or breathlessness)<sup>29,40</sup>; introduce pursed-lips abdominal breathing with slightly prolonged exhalation to learn the slow abdominal breathing technique<sup>30,40</sup>; and progressively reduce the time exposed to visual biofeedback throughout the training to promote greater autonomy in HRVB practice<sup>58</sup>. Lehrer's protocol warns against breathing too deeply to overcompensate for slow breathing<sup>26</sup> and a brief anti-hyperventilation instruction (*"In order to avoid hyperventilation during the paced breathing task, please avoid excessively deep breathing. Breathe shallowly and naturally"*) should be provided for individuals naïve to 0.1 Hz breathing<sup>67</sup>. HRVB was often based on approximately 6 breaths/min although it has been established that the individual's HR resonance frequency makes it easier to reach cardiac



coherence state <sup>24</sup>. Regarding the inhalation/exhalation ratio (i/e), it seems that a lower i/e ratio produced increased relaxation, stress reduction, mindfulness and positive energy in participants <sup>68</sup>, and specifically a 1/2 ratio could increase baroreflex sensitivity <sup>69</sup>. However, this postulate is discussed by others results showing that a 1/1 ratio is more effective than prolonged exhalation (40% inhalation and 60% exhalation) to increase HRV <sup>70</sup>. Therefore, further research is needed to clarify these different points and determine the most effective breathing protocol.

#### 4.6 *Perspective for future research*

Our results are congruent with other reviews which report positive effects of HRVB on clinical outcomes and conclude that HRVB is feasible and promising to manage patients affected by chronic diseases <sup>22,25,27</sup>. Overall, the authors argued that HRVB could restore autonomic cardiac regulation and emotional self-regulation, which is illustrated by the positive correlation between clinical outcomes and HRV indices <sup>42,55,56,59,60</sup>. Considering the implication of the ANS on pathogenesis <sup>6</sup> and that HRV is a marker of cardiovascular morbidity <sup>8</sup>, a possible regulatory effect of HRVB on autonomic function offers promising prospects for complementary medicine. Although our work presents a qualitative synthesis of HRVB effects and protocols, it is limited by the lack of risk-of-bias assessment of the included studies. Given the heterogeneity of protocols used in HRVB research, future publications should place importance on assessing risk of bias to evaluate for each study its relevance to the findings and carry out meta-analyses to obtain more solid conclusions on the specific effects of HRVB.

Additional RCTs must be conducted to more accurately evaluate the effectiveness of HRVB compared to standard care and active control conditions (e.g., relaxation, mindfulness meditation, physical exercise). Among others, breathing pattern (frequency, tidal volume and inspiration to expiration ratio), physical exercise and medication should be monitored as confounding variables <sup>12</sup>. The different time and frequency indices of HRV must be carefully interpreted according to breathing rate and HRV signal acquisition <sup>14</sup>. An elegant study may inspire researchers for which results were published after inclusion period of the systematic

review <sup>71</sup>. It was conducted in depressive patients and protocol was based on a very comprehensive treatment including 5-week of HRVB intervention during inpatient psychiatric rehabilitation. Results showed an increase of both HRV-LF power and coherence ratio, and a decrease of both depression scores and resting breathing rate suggesting promising prospects for clinicians. For a better assessment of autonomic function using HRV, research on alternative analytical methods to improve the extraction of information contained in HRV should be developed and used in the future. Quantitative assessments could also better highlight the effects of HRVB on autonomic cardiac regulation <sup>72</sup>. Finally, with regards to both intervention methods and data reporting, standard guidelines should be followed in future studies to strengthen the impact of meta-analyses and systematic reviews <sup>16</sup>.

## **5 Conclusion**

This systematic review highlights the feasibility of HRVB as an adjunctive treatment in chronic patients. The large heterogeneity in populations and outcomes makes it difficult to draw mechanistic conclusions linking HRVB to intervention results. Our analysis suggests a possible regulatory effect of HRVB on autonomic cardiac regulation by increasing HRV and restoring vagal functioning. The increased vagal traffic could then affect brain activity and improve emotional self-regulation, supporting the utility of HRVB as complementary treatment for a wide range of chronic diseases. Given the reported positive effects of HRVB on psychophysiological outcomes in various patient profiles, it is clear that HRVB offers promising prospects in chronic diseases management. Further investigations are required to confirm these results, clarify the interpretation of the HRV power spectrum and determine the most effective method in chronic disease management.

## **6 Funding**

This work was supported by a Regional Research Grant (grant #DIRE/20161440) from the Région Réunion and from the European Regional Development Fund (FEDER), and by the ARC foundation for cancer research (grant #DOC20190508886).

## **7 Acknowledgments**

We would like to thank Kalie Tépei for her technical assistance.

## **8 Competing interests**

The authors declare that they have no conflict of interest.

## **9 Authors' contributions**

CF, FC, GD, TC, QC, CV make substantial contributions to the conception and design of the study. CF conducted the review and CV checked the search strategy and results. All authors contributed to write the manuscript, they have read and approved the manuscript.

## **10 References**

1. Noncommunicable diseases country profiles 2018. In: World Health Organization; 2018:223. <https://www.who.int/nmh/publications/ncd-profiles-2018/en/>
2. Yach D, Hawkes C, Gould CL, Hofman KJ. The Global Burden of Chronic Diseases: Overcoming Impediments to Prevention and Control. *JAMA*. 2004;291(21):2616. doi:10.1001/jama.291.21.2616
3. Ofman JJ, Badamgarav E, Henning JM, et al. Does disease management improve clinical and economic outcomes in patients with chronic diseases? A systematic review. *Am J Med*. 2004;117(3):182-192. doi:10.1016/j.amjmed.2004.03.018
4. Zalewski P, Słomko J, Zawadka-Kunikowska M. Autonomic dysfunction and chronic disease. *Br Med Bull*. 2018;128(1):61-74. doi:10.1093/bmb/ldy036
5. Chrousos GP. Stress and disorders of the stress system. *Nat Rev Endocrinol*. 2009;5(7):374-381. doi:10.1038/nrendo.2009.106
6. De Couck M, Mravec B, Gidron Y. You may need the vagus nerve to understand pathophysiology and to treat diseases. *Clin Sci*. 2012;122(7):323-328. doi:10.1042/CS20110299

7. Shaffer F, McCraty R, Zerr CL. A healthy heart is not a metronome: an integrative review of the heart's anatomy and heart rate variability. *Front Psychol.* 2014;5. doi:10.3389/fpsyg.2014.01040
8. Dekker JM, Crow RS, Folsom AR, et al. Low Heart Rate Variability in a 2-Minute Rhythm Strip Predicts Risk of Coronary Heart Disease and Mortality From Several Causes: The ARIC Study. *Circulation.* 2000;102(11):1239-1244. doi:10.1161/01.CIR.102.11.1239
9. Elghozi J-L, Julien C. Sympathetic control of short-term heart rate variability and its pharmacological modulation. *Fundam Clin Pharmacol.* 2007;21(4):337-347. doi:10.1111/j.1472-8206.2007.00502.x
10. Mourot L, Bouhaddi M, Gandelin E, et al. Conditions of autonomic reciprocal interplay versus autonomic co-activation: Effects on non-linear heart rate dynamics. *Auton Neurosci.* 2007;137(1-2):27-36. doi:10.1016/j.autneu.2007.06.284
11. Fonseca DS, Beda A, Miranda de Sá AMFL, Simpson DM. Gain and coherence estimates between respiration and heart-rate: Differences between inspiration and expiration. *Auton Neurosci.* 2013;178(1-2):89-95. doi:10.1016/j.autneu.2013.03.015
12. Fatissou J, Oswald V, Lalonde F. Influence Diagram of Physiological and Environmental Factors Affecting Heart Rate Variability: An Extended Literature Overview. *Heart Int.* 2016;11(1):heartint.500023. doi:10.5301/heartint.5000232
13. Malik M. Heart Rate Variability.: Standards of Measurement, Physiological Interpretation, and Clinical Use: Task Force of The European Society of Cardiology and the North American Society for Pacing and Electrophysiology. *Ann Noninvasive Electrocardiol.* 1996;1(2):151-181. doi:10.1111/j.1542-474X.1996.tb00275.x
14. Shaffer F, Ginsberg JP. An Overview of Heart Rate Variability Metrics and Norms. *Front Public Health.* 2017;5. doi:10.3389/fpubh.2017.00258
15. Goldstein DS, Benth O, Park M-Y, Sharabi Y. Low-frequency power of heart rate variability is not a measure of cardiac sympathetic tone but may be a measure of modulation of cardiac autonomic outflows by baroreflexes. *Exp Physiol.* 2011;96(12):1255-1261. doi:10.1113/expphysiol.2010.056259
16. Laborde S, Mosley E, Thayer JF. Heart Rate Variability and Cardiac Vagal Tone in Psychophysiological Research – Recommendations for Experiment Planning, Data Analysis, and Data Reporting. *Front Psychol.* 2017;08. doi:10.3389/fpsyg.2017.00213
17. Ruiz Vargas E, Sörös P, Shoemaker JK, Hachinski V. Human cerebral circuitry related to cardiac control: A neuroimaging meta-analysis. *Ann Neurol.* 2016;79(5):709-716. doi:10.1002/ana.24642
18. Thayer JF, Åhs F, Fredrikson M, Sollers JJ, Wager TD. A meta-analysis of heart rate variability and neuroimaging studies: Implications for heart rate variability as a marker of stress and health. *Neurosci Biobehav Rev.* 2012;36(2):747-756. doi:10.1016/j.neubiorev.2011.11.009
19. Thayer JF, Lane RD. A model of neurovisceral integration in emotion regulation and dysregulation. *J Affect Disord.* 2000;61(3):201-216. doi:10.1016/S0165-0327(00)00338-4

- 468 20. McCraty R, Childre D. Coherence: bridging personal, social, and global health. *Altern Ther*  
469 *Health Med.* 2010;16(4):10.
- 470 21. McCraty R, Zayas MA. Cardiac coherence, self-regulation, autonomic stability, and  
471 psychosocial well-being. *Front Psychol.* Published online September 29, 2014.  
472 doi:10.3389/fpsyg.2014.01090
- 473 22. Gevirtz R. The Promise of Heart Rate Variability Biofeedback: Evidence-Based  
474 Applications. *Biofeedback.* 2013;41(3):110-120. doi:10.5298/1081-5937-41.3.01
- 475 23. Lehrer PM, Gevirtz R. Heart rate variability biofeedback: how and why does it work? *Front*  
476 *Psychol.* 2014;5. doi:10.3389/fpsyg.2014.00756
- 477 24. Vaschillo EG, Vaschillo B, Lehrer PM. Characteristics of Resonance in Heart Rate  
478 Variability Stimulated by Biofeedback. *Appl Psychophysiol Biofeedback.* 2006;31(2):129-  
479 142. doi:10.1007/s10484-006-9009-3
- 480 25. Wheat AL, Larkin KT. Biofeedback of Heart Rate Variability and Related Physiology: A  
481 Critical Review. *Appl Psychophysiol Biofeedback.* 2010;35(3):229-242.  
482 doi:10.1007/s10484-010-9133-y
- 483 26. Lehrer P, Vaschillo B, Zucker T, et al. Protocol for Heart Rate Variability Biofeedback  
484 Training. *Biofeedback.* 2013;41(3):98-109. doi:10.5298/1081-5937-41.3.08
- 485 27. Goessl VC, Curtiss JE, Hofmann SG. The effect of heart rate variability biofeedback  
486 training on stress and anxiety: a meta-analysis. *Psychol Med.* Published online May 8,  
487 2017:1-9. doi:10.1017/S0033291717001003
- 488 28. Jiménez Morgan S, Molina Mora JA. Effect of Heart Rate Variability Biofeedback on Sport  
489 Performance, a Systematic Review. *Appl Psychophysiol Biofeedback.* 2017;42(3):235-245.  
490 doi:10.1007/s10484-017-9364-2
- 491 29. Yu L-C, Lin I-M, Fan S-Y, Chien C-L, Lin T-H. One-Year Cardiovascular Prognosis of the  
492 Randomized, Controlled, Short-Term Heart Rate Variability Biofeedback Among Patients  
493 with Coronary Artery Disease. *Int J Behav Med.* 2018;25(3):271-282. doi:10.1007/s12529-  
494 017-9707-7
- 495 30. Lehrer PM, Vaschillo E, Vaschillo B, et al. Biofeedback Treatment for Asthma. *Chest.*  
496 2004;126(2):352-361. doi:10.1378/chest.126.2.352
- 497 31. Schuman DL, Killian MO. Pilot Study of a Single Session Heart Rate Variability  
498 Biofeedback Intervention on Veterans' Posttraumatic Stress Symptoms. *Appl*  
499 *Psychophysiol Biofeedback.* 2019;44(1):9-20. doi:10.1007/s10484-018-9415-3
- 500 32. Klimov D, Lysy C, Berteau S, et al. Biofeedback on heart rate variability in cardiac  
501 rehabilitation: practical feasibility and psycho-physiological effects. *Acta Cardiol.*  
502 2014;(3):299-307. doi:10.2143/AC.69.3.3027833
- 503 33. de Bruin EI, van der Zwan JE, Bögels SM. A RCT Comparing Daily Mindfulness  
504 Meditations, Biofeedback Exercises, and Daily Physical Exercise on Attention Control,  
505 Executive Functioning, Mindful Awareness, Self-Compassion, and Worrying in Stressed  
506 Young Adults. *Mindfulness.* 2016;7(5):1182-1192. doi:10.1007/s12671-016-0561-5

- 507 34. Swanson KS, Gevirtz RN, Brown M, Spira J, Guarneri E, Stoletniy L. The Effect of  
508 Biofeedback on Function in Patients with Heart Failure. *Appl Psychophysiol Biofeedback*.  
509 2009;34(2):71-91. doi:10.1007/s10484-009-9077-2
- 510 35. Tan G, Dao TK, Farmer L, Sutherland RJ, Gevirtz R. Heart Rate Variability (HRV) and  
511 Posttraumatic Stress Disorder (PTSD): A Pilot Study. *Appl Psychophysiol Biofeedback*.  
512 2011;36(1):27-35. doi:10.1007/s10484-010-9141-y
- 513 36. Hartogs BM, Bartels-Velthuis AA, Van der Ploeg K, Bos EH. Heart Rate Variability  
514 Biofeedback Stress Relief Program for Depression: A Replicated Single-Subject Design.  
515 *Methods Inf Med*. 2017;56(06):419-426. doi:10.3414/ME16-02-0033
- 516 37. Greenberg BR, Grossman EF, Bolwell G, et al. Biofeedback Assisted Stress Management  
517 in Patients with Lung Cancer: A Feasibility Study. *Appl Psychophysiol Biofeedback*.  
518 2015;40(3):201-208. doi:10.1007/s10484-015-9277-x
- 519 38. Jester DJ, Rozek EK, McKelley RA. Heart rate variability biofeedback: implications for  
520 cognitive and psychiatric effects in older adults. *Aging Ment Health*. 2019;23(5):574-580.  
521 doi:10.1080/13607863.2018.1432031
- 522 39. Trousselard M, Canini F, Claverie D, Cungi C, Putois B, Franck N. Cardiac Coherence  
523 Training to Reduce Anxiety in Remitted Schizophrenia, a Pilot Study. *Appl Psychophysiol*  
524 *Biofeedback*. 2016;41(1):61-69. doi:10.1007/s10484-015-9312-y
- 525 40. Chang W-L, Lee J-T, Li C-R, Davis AHT, Yang C-C, Chen Y-J. Effects of Heart Rate  
526 Variability Biofeedback in Patients With Acute Ischemic Stroke: A Randomized Controlled  
527 Trial. *Biol Res Nurs*. 2020;22(1):34-44. doi:10.1177/1099800419881210
- 528 41. Nolan RP, Floras JS, Harvey PJ, et al. Behavioral Neurocardiac Training in Hypertension:  
529 A Randomized, Controlled Trial. *Hypertension*. 2010;55(4):1033-1039.  
530 doi:10.1161/HYPERTENSIONAHA.109.146233
- 531 42. Nolan RP, Floras JS, Ahmed L, et al. Behavioural modification of the cholinergic anti-  
532 inflammatory response to C-reactive protein in patients with hypertension: Vagal HR  
533 modulation and inflammation. *J Intern Med*. 2012;272(2):161-169. doi:10.1111/j.1365-  
534 2796.2012.02523.x
- 535 43. Tracey KJ. Physiology and immunology of the cholinergic antiinflammatory pathway. *J Clin*  
536 *Invest*. 2007;117(2):289-296. doi:10.1172/JCI30555
- 537 44. Lehrer PM, Irvin CG, Lu S-E, et al. Heart Rate Variability Biofeedback Does Not Substitute  
538 for Asthma Steroid Controller Medication. *Appl Psychophysiol Biofeedback*. 2018;43(1):57-  
539 73. doi:10.1007/s10484-017-9382-0
- 540 45. Caldwell YT, Steffen PR. Adding HRV biofeedback to psychotherapy increases heart rate  
541 variability and improves the treatment of major depressive disorder. *Int J Psychophysiol*.  
542 2018;131:96-101. doi:10.1016/j.ijpsycho.2018.01.001
- 543 46. Karavidas MK, Lehrer PM, Vaschillo E, et al. Preliminary Results of an Open Label Study  
544 of Heart Rate Variability Biofeedback for the Treatment of Major Depression. *Appl*  
545 *Psychophysiol Biofeedback*. 2007;32(1):19-30. doi:10.1007/s10484-006-9029-z

- 546 47. Lin I-M, Fan S-Y, Yen C-F, et al. Heart Rate Variability Biofeedback Increased Autonomic  
547 Activation and Improved Symptoms of Depression and Insomnia among Patients with  
548 Major Depression Disorder. *Clin Psychopharmacol Neurosci*. 2019;17(2):222-232.  
549 doi:10.9758/cpn.2019.17.2.222
- 550 48. Siepmann M, Aykac V, Unterdörfer J, Petrowski K, Mueck-Weymann M. A Pilot Study on  
551 the Effects of Heart Rate Variability Biofeedback in Patients with Depression and in Healthy  
552 Subjects. *Appl Psychophysiol Biofeedback*. 2008;33(4):195-201. doi:10.1007/s10484-008-  
553 9064-z
- 554 49. Hassett AL, Radvanski DC, Vaschillo EG, et al. A Pilot Study of the Efficacy of Heart Rate  
555 Variability (HRV) Biofeedback in Patients with Fibromyalgia. *Appl Psychophysiol*  
556 *Biofeedback*. 2007;32(1):1-10. doi:10.1007/s10484-006-9028-0
- 557 50. Dobbin A, Dobbin J, Ross S, Graham C, Ford M. Randomised controlled trial of brief  
558 intervention with biofeedback and hypnotherapy in patients. *J R Coll Physicians Edinb*.  
559 2013;43(1):15-23. doi:10.4997/JRCPE.2013.104
- 560 51. van der Zwan JE, de Vente W, Huizink AC, Bögels SM, de Bruin EI. Physical Activity,  
561 Mindfulness Meditation, or Heart Rate Variability Biofeedback for Stress Reduction: A  
562 Randomized Controlled Trial. *Appl Psychophysiol Biofeedback*. 2015;40(4):257-268.  
563 doi:10.1007/s10484-015-9293-x
- 564 52. Meyer P-W, Friederich H-C, Zastrow A. Breathe to ease - Respiratory biofeedback to  
565 improve heart rate variability and coping with stress in obese patients: A pilot study. *Ment*  
566 *Health Prev*. 2018;11:41-46. doi:10.1016/j.mhp.2018.06.001
- 567 53. Zucker TL, Samuelson KW, Muench F, Greenberg MA, Gevirtz RN. The Effects of  
568 Respiratory Sinus Arrhythmia Biofeedback on Heart Rate Variability and Posttraumatic  
569 Stress Disorder Symptoms: A Pilot Study. *Appl Psychophysiol Biofeedback*.  
570 2009;34(2):135-143. doi:10.1007/s10484-009-9085-2
- 571 54. Reiner R. Integrating a Portable Biofeedback Device into Clinical Practice for Patients with  
572 Anxiety Disorders: Results of a Pilot Study. *Appl Psychophysiol Biofeedback*.  
573 2008;33(1):55-61. doi:10.1007/s10484-007-9046-6
- 574 55. Ginsberg JP, Berry ME, Powell DA. Cardiac coherence and posttraumatic stress disorder  
575 in combat veterans. *Altern Ther Health Med*. 2010;16(4):52-60.
- 576 56. Kim S, Zemon V, Cavallo MM, Rath JF, McCraty R, Foley FW. Heart rate variability  
577 biofeedback, executive functioning and chronic brain injury. *Brain Inj*. 2013;27(2):209-222.  
578 doi:10.3109/02699052.2012.729292
- 579 57. Hallman DM, Olsson EMG, von Schéele B, Melin L, Lyskov E. Effects of Heart Rate  
580 Variability Biofeedback in Subjects with Stress-Related Chronic Neck Pain: A Pilot Study.  
581 *Appl Psychophysiol Biofeedback*. 2011;36(2):71-80. doi:10.1007/s10484-011-9147-0
- 582 58. Weeks DL, Whitney AA, Tindall AG, Carter GT. Pilot Randomized Trial Comparing  
583 Intersession Scheduling of Biofeedback Results to Individuals with Chronic Pain: Influence  
584 on Psychologic Function and Pain Intensity. *Am J Phys Med Rehabil*. 2015;94(10 Suppl  
585 1):869-878. doi:10.1097/PHM.0000000000000285

- 586 59. Patron E, Messerotti Benvenuti S, Favretto G, et al. Biofeedback Assisted Control of  
587 Respiratory Sinus Arrhythmia as a Biobehavioral Intervention for Depressive Symptoms in  
588 Patients After Cardiac Surgery: A Preliminary Study. *Appl Psychophysiol Biofeedback*.  
589 2013;38(1):1-9. doi:10.1007/s10484-012-9202-5
- 590 60. Nolan RP, Kamath MV, Floras JS, et al. Heart rate variability biofeedback as a behavioral  
591 neurocardiac intervention to enhance vagal heart rate control. *Am Heart J*.  
592 2005;149(6):1137.e1-1137.e7. doi:10.1016/j.ahj.2005.03.015
- 593 61. Schwerdtfeger AR, Schwarz G, Pfurtscheller K, Thayer JF, Jarczok MN, Pfurtscheller G.  
594 Heart rate variability (HRV): From brain death to resonance breathing at 6 breaths per  
595 minute. *Clin Neurophysiol*. 2020;131(3):676-693. doi:10.1016/j.clinph.2019.11.013
- 596 62. Kromenacker BW, Sanova AA, Marcus FI, Allen JJB, Lane RD. Vagal Mediation of Low-  
597 Frequency Heart Rate Variability During Slow Yogic Breathing: *Psychosom Med*.  
598 2018;80(6):581-587. doi:10.1097/PSY.0000000000000603
- 599 63. Larsen PD, Tzeng YC, Sin PYW, Galletly DC. Respiratory sinus arrhythmia in conscious  
600 humans during spontaneous respiration. *Respir Physiol Neurobiol*. 2010;174(1-2):111-118.  
601 doi:10.1016/j.resp.2010.04.021
- 602 64. Giardino ND, Chan L, Borson S. Combined heart rate variability and pulse oximetry  
603 biofeedback for chronic obstructive pulmonary disease: preliminary findings. *Appl*  
604 *Psychophysiol Biofeedback*. 2004;29(2):121-133.
- 605 65. Feldman JM, Matte L, Interian A, et al. Psychological treatment of comorbid asthma and  
606 panic disorder in Latino adults: Results from a randomized controlled trial. *Behav Res Ther*.  
607 2016;87:142-154. doi:10.1016/j.brat.2016.09.007
- 608 66. Lin I-M, Ko J-M, Fan S-Y, Yen C-F. Heart Rate Variability and the Efficacy of Biofeedback  
609 in Heroin Users with Depressive Symptoms. *Clin Psychopharmacol Neurosci*.  
610 2016;14(2):168-176. doi:10.9758/cpn.2016.14.2.168
- 611 67. Szulczewski MT. An Anti-hyperventilation Instruction Decreases the Drop in End-tidal CO<sub>2</sub>  
612 and Symptoms of Hyperventilation During Breathing at 0.1 Hz. *Appl Psychophysiol*  
613 *Biofeedback*. 2019;44(3):247-256. doi:10.1007/s10484-019-09438-y
- 614 68. Van Diest I, Verstappen K, Aubert AE, Widjaja D, Vansteenwegen D, Vlemincx E.  
615 Inhalation/Exhalation Ratio Modulates the Effect of Slow Breathing on Heart Rate  
616 Variability and Relaxation. *Appl Psychophysiol Biofeedback*. 2014;39(3-4):171-180.  
617 doi:10.1007/s10484-014-9253-x
- 618 69. Modesti PA, Ferrari A, Bazzini C, Boddi M. Time sequence of autonomic changes induced  
619 by daily slow-breathing sessions. *Clin Auton Res*. 2015;25(2):95-104. doi:10.1007/s10286-  
620 014-0255-9
- 621 70. Lin IM, Tai LY, Fan SY. Breathing at a rate of 5.5breaths per minute with equal inhalation-  
622 to-exhalation ratio increases heart rate variability. *Int J Psychophysiol*. 2014;91(3):206-211.  
623 doi:10.1016/j.ijpsycho.2013.12.006
- 624 71. Tatschl JM, Hochfellner SM, Schwerdtfeger AR. Implementing Mobile HRV Biofeedback as  
625 Adjunctive Therapy During Inpatient Psychiatric Rehabilitation Facilitates Recovery of



626 Depressive Symptoms and Enhances Autonomic Functioning Short-Term: A 1-Year Pre-  
627 Post-intervention Follow-Up Pilot Study. *Front Neurosci.* 2020;14:738.  
628 doi:10.3389/fnins.2020.00738

629 72. Wu JK, Huang Z, Zhang Z, Xiao W, Jiang H. Quantitative Assessment of Autonomic  
630 Regulation of the Cardiac System. *J Healthc Eng.* 2019;2019:1-8.  
631 doi:10.1155/2019/4501502

632

633

PubMed/Medline	Springer Link	ScienceDirect/Elsevier
<b>Directly in the search bar</b> (“biofeedback”) AND (“heart rate variability” OR “cardiac coherence” OR “psychophysiological coherence” OR “respiratory sinus arrhythmia”) AND (“intervention” OR “training”) AND (“pain” OR “fatigue” OR “anxiety” OR “depression” OR “quality of life” OR “sleep disturbance” OR “cognitive abilities” OR “executive functioning” OR “inflammation” OR “psychological well-being” OR “emotional distress” OR “hypertension”). Regarding research using ScienceDirect, we used the “research articles” filter and we used (“biofeedback”) AND (“heart rate variability” OR “cardiac coherence” OR “psychophysiological coherence” OR “respiratory sinus arrhythmia”) AND (“intervention” OR “training”)		<b>Advanced search</b> <b>Find articles with these terms:</b> (“pain” OR “fatigue” OR “anxiety” OR “depression” OR “quality of life” OR “sleep disturbance” OR “cognitive abilities” OR “executive functioning” OR “inflammation” OR “psychological well-being” OR “emotional distress” OR “hypertension”) <b>Title, abstract or keywords:</b> (« biofeedback ») AND (“heart rate variability” OR “cardiac coherence” OR “psychophysiological coherence” OR “respiratory sinus arrhythmia”) AND (“intervention” OR “training”)
No filters	Filters: “Articles”; English and French languages	Filters: “Research articles”

635 **Table 1:** Search strategy

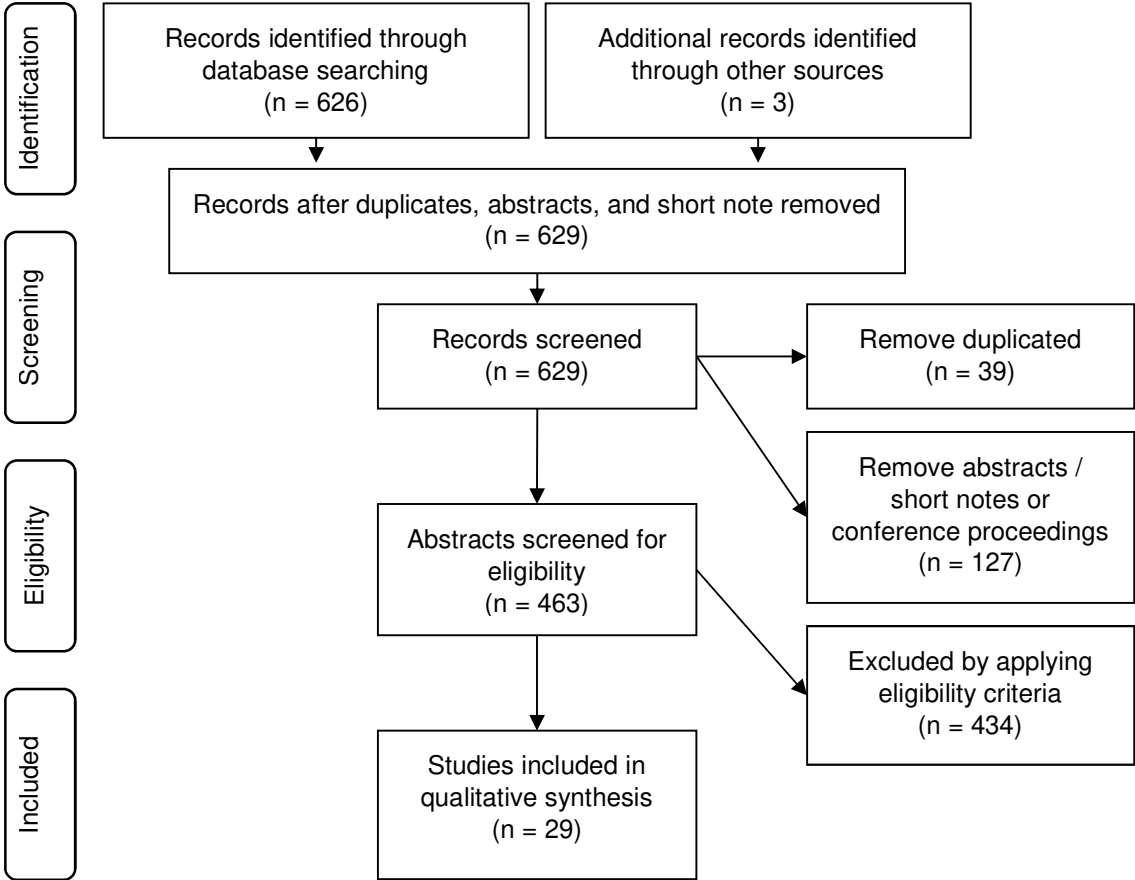


Figure 1: PRISMA flow diagram

**Table 2:** Main features of 29 included studies

<b>Cardiovascular diseases</b>								
<i>Study</i>	<i>Sample</i>	<i>Design</i>	<i>Dependent variables and assessment time</i>	<i>HRVB intervention</i>	<i>Feasibility</i>	<i>Significant improvements in HRVB group</i>	<i>HRV indices</i>	<i>Non-significant results</i>
Climov et al. (2014)	Coronary artery disease Age=45-80	<ul style="list-style-type: none"> <li>▪ RCT</li> <li>▪ HRVB + standard care (n=13)</li> <li>▪ Standard care (n=11)</li> </ul>	HADS; Type D personality; BP; HRV <ul style="list-style-type: none"> <li>▪ Pre-post-intervention</li> </ul>	10 sessions (45-60 min) twice a week + daily practice	<ul style="list-style-type: none"> <li>▪ 7 dropouts (occupations and time constraint)</li> </ul>	No data	<ul style="list-style-type: none"> <li>▪ Increase of mean coherence score** correlated with SDNN</li> </ul>	<ul style="list-style-type: none"> <li>▪ HADS; Type D personality; BP</li> </ul>
Nolan et al. (2005)	Coronary heart disease Age=unknown	<ul style="list-style-type: none"> <li>▪ RCT</li> <li>▪ HRVB (n=27);</li> <li>▪ Autogenic relaxation + psychotherapy (n=19)</li> </ul>	PSS; CES-D; HRV <ul style="list-style-type: none"> <li>▪ Pre-post-intervention</li> </ul>	5 sessions (90 min) over 4 weeks	No data	<ul style="list-style-type: none"> <li>▪ Stress (PSS**);</li> <li>▪ Depression (CES-D**)</li> </ul>	<ul style="list-style-type: none"> <li>▪ Decrease of PSS** and CES-D** associated with increase of HF power* only in HRVB group</li> </ul>	<ul style="list-style-type: none"> <li>▪ No difference between groups</li> </ul>
Nolan et al. (2010; 2012)	Hypertension Age=35-64	<ul style="list-style-type: none"> <li>▪ RCT</li> <li>▪ HRVB (n=35)</li> <li>▪ Autogenic relaxation (n=30)</li> </ul>	BP; baroreflex sensitivity; hsCRP; IL-6; HRV <ul style="list-style-type: none"> <li>▪ Pre-post-intervention</li> </ul>	6 sessions (60 min) + 20-min daily practice over 8 weeks	No data	<ul style="list-style-type: none"> <li>▪ Daytime BP** and 24h systolic BP*, and pulse pressure*</li> </ul>	<ul style="list-style-type: none"> <li>▪ Increase of HF power** and IBI** during cognitive task</li> <li>▪ Increase of hsCRP inversely associated with change in HF power*, baroreflex sensitivity*, and IBI*</li> </ul>	<ul style="list-style-type: none"> <li>▪ Baroreflex sensitivity</li> <li>▪ Change in IL-6 not associated with change in HRV indices and baroreflex sensitivity</li> </ul>
Patron et al. (2013)	After cardiac surgery Age=52-69	<ul style="list-style-type: none"> <li>▪ RCT</li> <li>▪ HRVB + stress management (n=13)</li> <li>▪ Stress management (n=13)</li> </ul>	STAI; CES-D; HRV <ul style="list-style-type: none"> <li>▪ Pre-post-intervention</li> </ul>	5 sessions (45 min) over 2 weeks + 15-min daily practice	No data	<ul style="list-style-type: none"> <li>▪ Depression (CES-D*)</li> </ul>	<ul style="list-style-type: none"> <li>▪ Increase of total power**;</li> <li>▪ Change in HRV inversely associated* with change in depression</li> </ul>	<ul style="list-style-type: none"> <li>▪ STAI</li> </ul>
Swanson et al. (2009)	Heart failure (LVEF ≤50%) Age=42-70	<ul style="list-style-type: none"> <li>▪ RCT</li> <li>▪ HRVB (n=21)</li> <li>▪ quasi-false EEG-BF training (n=14)</li> </ul>	CES-D; LFHQ; PANAS; 6MWT <ul style="list-style-type: none"> <li>▪ Pre-post-intervention</li> <li>▪ 12-week follow-up</li> </ul>	6 sessions (45 min) weekly + 20-min daily practice over 6 weeks	<ul style="list-style-type: none"> <li>▪ 4 dropouts (financial, transport or medical problems)</li> </ul>	<ul style="list-style-type: none"> <li>▪ Exercise tolerance (6MWT*) at follow-up</li> </ul>	No data	<ul style="list-style-type: none"> <li>▪ LFHQ, PANAS, and CES-D</li> </ul>
Yu et al. (2018)	Coronary artery disease Age=35-70	<ul style="list-style-type: none"> <li>▪ RCT</li> <li>▪ HRVB + standard care (n=105)</li> </ul>	BDI-II; CHI-SF; HRV; cardiovascular prognosis	6 sessions weekly	<ul style="list-style-type: none"> <li>▪ Dropout rate of 26.47% in the HRVB group and 34.44% in the control group</li> </ul>	<ul style="list-style-type: none"> <li>▪ Depression (BDI-II total score**;</li> <li>▪ cognitive depression subscale**);</li> <li>▪ Hostility** (CHI-SF);</li> </ul>	<ul style="list-style-type: none"> <li>▪ Decrease of breathing rate**;</li> <li>▪ Increase of LF power** maintained at follow-up</li> </ul>	<ul style="list-style-type: none"> <li>▪ No difference between groups at follow-up for reduction of all-cause</li> </ul>

		<ul style="list-style-type: none"> <li>Standard care (n=105)</li> </ul>	<ul style="list-style-type: none"> <li>Pre-post-intervention</li> <li>1-year follow-up</li> </ul>			<ul style="list-style-type: none"> <li>Results maintained at follow-up;</li> <li>Reduction of readmission* and emergency visits** at follow-up</li> </ul>		readmission and all-cause emergency visits
<b>Obesity</b>								
<i>Study</i>	<i>Sample</i>	<i>Design</i>	<i>Dependent variables and assessment time</i>	<i>HRVB intervention</i>	<i>Feasibility</i>	<i>Significant improvements in HRVB group</i>	<i>HRV indices</i>	<i>Non-significant results</i>
Meyer et al. (2018)	Obese patients (30<BMI<45) Age = 18-45	<ul style="list-style-type: none"> <li>Pilot study</li> <li>HRVB (n=10)</li> <li>Wait-list control (n=10)</li> </ul>	PSS; PHQ-D; SF-36; ASF; HRV  <ul style="list-style-type: none"> <li>Pre-post-intervention</li> <li>3-months follow-up</li> </ul>	6 sessions weekly	<ul style="list-style-type: none"> <li>8 discontinued the intervention</li> </ul>	<ul style="list-style-type: none"> <li>Depression (PHQ-D*);</li> <li>Stress (PSS*);</li> <li>Self-efficacy (ASF sum score*);</li> <li>Quality of life (mental sum score** maintained at follow-up and physical sum scores* at follow-up on SF-36)</li> <li>Pooled results</li> </ul>	<ul style="list-style-type: none"> <li>Increase of SDNN**, total power**;</li> <li>Decrease of breathing rate* maintained at follow-up</li> </ul>	No data
<b>Asthma</b>								
<i>Study</i>	<i>Sample</i>	<i>Design</i>	<i>Dependent variables and assessment time</i>	<i>HRVB intervention</i>	<i>Feasibility</i>	<i>Significant improvements in HRVB group</i>	<i>HRV indices</i>	<i>Non-significant results</i>
Lehrer et al. (2004)	Asthma Age=27-47	<ul style="list-style-type: none"> <li>RCT</li> <li>Full protocol: HRVB + specific instructions about breathing (n=23)</li> <li>HRVB alone (n=22)</li> <li>EEG-BF (n=24)</li> <li>Waiting-list control (n=25)</li> </ul>	Asthma symptoms; medication consumption; respiratory resistance; HRV  <ul style="list-style-type: none"> <li>Pre-post-intervention</li> </ul>	10 sessions weekly + 20-min twice daily practice	<ul style="list-style-type: none"> <li>18 dropouts;</li> <li>&gt;70% participation rate of daily practice</li> </ul>	<ul style="list-style-type: none"> <li>Medication consumption** in two HRVB groups;</li> <li>Asthma symptoms in full protocol group**, HRVB group*, and EEG-BF group*</li> </ul>	<ul style="list-style-type: none"> <li>Increase of HRV total power** and LF power** in two HRVB groups</li> </ul>	<ul style="list-style-type: none"> <li>No difference between two HRVB groups;</li> <li>No difference with EEG-BF group for asthma symptoms</li> </ul>
Lehrer et al. (2018)	Asthma Age=27-47	<ul style="list-style-type: none"> <li>RCT</li> <li>HRVB group (n=31)</li> <li>EEG-BF + relaxing music + paced</li> </ul>	MCT; ACT; AQOL; eNO; daily symptoms and peak flows; spirometry and	Short protocol (n=20): 6 HRVB sessions over 10	<ul style="list-style-type: none"> <li>19% dropout</li> </ul>	<ul style="list-style-type: none"> <li>Asthma symptoms (ACT**; AQOL**);</li> <li>Sensitivity of airways (MCT**);</li> <li>Pulmonary function (peak flow*);</li> </ul>	No data	<ul style="list-style-type: none"> <li>No difference between groups at post-intervention for ACT, AQOL,</li> </ul>

		breathing ~15 breaths/min group (n=33)	impulse oscillometry ▪ Pre-post-intervention	weeks + 20-min daily practice <i>Long protocol</i> (n=11): 10 HRVB sessions over 10 weeks + 20-min daily practice		▪ Episodes of poor asthma control* and airways inflammation (eNO*)		MCT, and peak flow; ▪ No difference between short and long protocol
<b>Chronic brain injury</b>								
<i>Study</i>	<i>Sample</i>	<i>Design</i>	<i>Dependent variables and assessment time</i>	<i>HRVB intervention</i>	<i>Feasibility</i>	<i>Significant improvements in HRVB group</i>	<i>HRV indices</i>	<i>Non-significant results</i>
Kim et al. (2013)	Chronic brain injury Age=23-63	▪ Pilot study ▪ HRVB (n=13) ▪ No control group	IVA; CPT; BRIEF-A; HRV ▪ Pre-post-intervention	10 sessions weekly + home practice from session 4	▪ No data	▪ No data	▪ Increase of coherence ratio* and LF/HF**; ▪ Emotional control and working memory (BRIEF-A) correlated with coherence ratio* and LF/HF**; ▪ Attention (IVA+CPT) correlated with LF/HF**	No data
Chang et al. (2020)	Acute ischemic stroke	▪ RCT ▪ HRVB + standard care (n=19) ▪ Standard Care (n=19)	MMSE; HADS; HRV ▪ Pre-post-intervention ▪ 1 and 3 months	4 supervised sessions in 4 days + 20 min daily practice over 3 months	▪ 3 dropped out ▪ Supervised sessions carried out on bedside	▪ Anxiety and depression (HADS*) at 1 and 3 months ▪ Cognitive functions (MMSE**) at 1 and 3 months	▪ Decrease of heart rate* at 1 and 3 months; ▪ Increase of SDNN*, RMSSD*, LF* and total power* at 1 and 3 months	No data
<b>Chronic pain</b>								
<i>Study</i>	<i>Sample</i>	<i>Design</i>	<i>Dependent variables and assessment time</i>	<i>HRVB intervention</i>	<i>Feasibility</i>	<i>Significant improvements in HRVB group</i>	<i>HRV indices</i>	<i>Non-significant results</i>
Dobbin et al. (2013)	Refractory irritable bowel syndrome Age = 18-60	▪ RCT ▪ HRVB (n=31) ▪ Hypnotherapy (n=30)	IBS-SSS; HADS ▪ Pre-post-intervention ▪ 3-month follow-up	3 sessions (60 min) + 20 min daily practice over 12 weeks	▪ 15 dropouts (7 in HRVB group)	▪ Symptoms (IBS-SSS*) at post-intervention; ▪ Anxiety and depression (HADS*) ▪ Results maintained at follow-up	No data	▪ No difference between groups for HADS at post-intervention

Hassett et al. (2007)	Fibromyalgia Age=18-60	<ul style="list-style-type: none"> <li>▪ Pilot study</li> <li>▪ HRVB (n=12)</li> <li>▪ No control group</li> </ul>	MPQ; BDI-II; FIQ; PSQI <ul style="list-style-type: none"> <li>▪ Pre-post-intervention</li> <li>▪ 3-month follow-up</li> </ul>	10 sessions weekly + 20-min daily practice	<ul style="list-style-type: none"> <li>▪ HRVB was acceptable and easily learned with no adverse effects</li> </ul>	<ul style="list-style-type: none"> <li>▪ Depression (BDI-II*) maintained at follow-up;</li> <li>▪ Functioning scores** (FIQ) at follow-up;</li> <li>▪ Pain (MPQ*) at follow-up</li> </ul>	No data	<ul style="list-style-type: none"> <li>▪ PSQI</li> </ul>
Weeks et al. (2015)	Chronic pain ≥ 3 months (fibromyalgia, headache, neuropathy, ...) Age=45-68	<ul style="list-style-type: none"> <li>▪ RCT</li> <li>▪ HRVB (n=10)</li> <li>▪ Faded feedback (n=10): progressive reduction of displaying feedback from 90% to 0%</li> </ul>	10-cm visual analog scale (VAS); PDQ; TSK-11 <ul style="list-style-type: none"> <li>▪ Pre-post-intervention</li> <li>▪ 3-month follow-up</li> </ul>	9 sessions over 3 weeks	<ul style="list-style-type: none"> <li>▪ 6 discontinued the intervention;</li> <li>▪ 3 missed at the follow-up assessment</li> </ul>	<ul style="list-style-type: none"> <li>▪ No data</li> </ul>	No data	<ul style="list-style-type: none"> <li>▪ Pain intensity on VAS, TSK-11, PDQ</li> </ul>
<b>Cancer</b>								
Study	Sample	Design	Dependent variables and assessment time	HRVB intervention	Feasibility	Significant improvements in HRVB group	HRV indices	Non-significant results
Greenberg et al. (2015)	Non-small cell lung cancer (NSCLC) Age=46-71	<ul style="list-style-type: none"> <li>▪ Feasibility study</li> <li>▪ HRVB group (n=16)</li> <li>▪ No control group</li> </ul>	HADS; PHQ-8; FACT-L; Distress Thermometer and Problem Areas <ul style="list-style-type: none"> <li>▪ Pre-post-intervention</li> </ul>	6 sessions (30-45 min) during chemotherapy + 20-min daily practice	<ul style="list-style-type: none"> <li>▪ 8 patients included;</li> <li>▪ 1 completed the protocol;</li> <li>▪ HRVB done during chemotherapy;</li> <li>▪ Ability to reduce respiration rate, decrease of heart rate and stress across training sessions</li> </ul>	<ul style="list-style-type: none"> <li>▪ No statistical analyses</li> </ul>	No data	No data
<b>Depression</b>								
Study	Sample	Design	Dependent variables and assessment time	HRVB intervention	Feasibility	Significant improvements in HRVB group	HRV indices	Non-significant results
Caldwell et al. (2018)	Major depressive disorder Age=18-25	<ul style="list-style-type: none"> <li>▪ RCT</li> <li>▪ HRVB + psychotherapy (n=10)</li> <li>▪ Psychotherapy (n=10)</li> <li>▪ Non-depressed control group (n=11)</li> </ul>	BDI-II; HRV <ul style="list-style-type: none"> <li>▪ Pre-post-intervention</li> </ul>	5 sessions + 15-20 min home-practice 4 to 5 times per week over 6 weeks	No data	<ul style="list-style-type: none"> <li>▪ Depression (BDI-II**)    ▪ SDNN**</li> </ul>		No data

Hartogs et al. (2017)	Major depressive disorder Age=23-62	<ul style="list-style-type: none"> <li>Experimental study</li> <li>HRVB (n=10)</li> <li>No control group</li> </ul>	BDI-II; POL; HRV <ul style="list-style-type: none"> <li>Pre-post-intervention</li> </ul>	8 sessions (45-60 min) weekly + 20-min daily practice	<ul style="list-style-type: none"> <li>3 dropouts (lack of motivation);</li> <li>7 completed the full protocol;</li> <li>1 deterioration in depression</li> </ul>	Clinical improvements in 5 patients: <ul style="list-style-type: none"> <li>Depression (BDI)</li> <li>Resilience (POL-Autonomy scores)</li> </ul>	<ul style="list-style-type: none"> <li>Increase of coherence score during protocol for 5 patients</li> </ul>	No data
Karavidas et al. (2007)	Major Depressive Disorder Age=25-58	<ul style="list-style-type: none"> <li>Experimental study</li> <li>HRVB (n=11)</li> <li>No control group</li> </ul>	HAM-D; BDI-II; HRV <ul style="list-style-type: none"> <li>Pre-post-intervention</li> </ul>	10 sessions (60 min) weekly + 20-min twice daily practice	<ul style="list-style-type: none"> <li>3 dropouts;</li> <li>8 completed the protocol</li> </ul>	<ul style="list-style-type: none"> <li>Depression (BDI-II total score**, cognitive**, and neurovegetative** components; HAM-D total score**)</li> </ul>	<ul style="list-style-type: none"> <li>Increase of SDNN**, pNN50**, LF power**;</li> <li>Decrease of mean HR*</li> </ul>	No data
Lin et al. (2019)	Major depressive disorder Age = 20-75	<ul style="list-style-type: none"> <li>Case-control study</li> <li>HRVB (n=24);</li> <li>Wait-list control (n=24)</li> </ul>	BAI; BDI-II; PSQI; PSAS; HRV <ul style="list-style-type: none"> <li>Pre-post-intervention</li> <li>1-month follow-up</li> </ul>	6 sessions (60-min) weekly + 10-min daily practice	<ul style="list-style-type: none"> <li>5 dropouts</li> </ul>	<ul style="list-style-type: none"> <li>Depression (BDI-II total score**, cognitive depression*, somatic depression*);</li> <li>Anxiety (BAI total score**);</li> <li>Sleep (PSAS total score*, PSQI total score**, and cognitive arousal of PSAS**)</li> <li>Results maintained at follow-up</li> </ul>	<ul style="list-style-type: none"> <li>Decrease of breathing rate**;</li> <li>Increase of SDNN**, LF power*, LF/HF*, total power**;</li> <li>Results maintained at follow-up</li> </ul>	<ul style="list-style-type: none"> <li>No difference between groups for PSQI and PSAS total scores</li> </ul>
Siepmann et al. (2008)	Depression Age=18-47	<ul style="list-style-type: none"> <li>Pilot study</li> <li>HRVB (n=14)</li> <li>Healthy control group</li> </ul>	STAI; BDI <ul style="list-style-type: none"> <li>Pre-post-intervention</li> <li>2-week follow-up</li> </ul>	6 sessions (25 min) over 2 weeks	No data	<ul style="list-style-type: none"> <li>Anxiety (STAI*);</li> <li>Depression (BDI scores*)</li> <li>Results maintained at follow-up</li> </ul>	<ul style="list-style-type: none"> <li>Decrease of heart rate** maintained at follow-up</li> </ul>	No data
<b>Chronic stress</b>								
<i>Study</i>	<i>Sample</i>	<i>Design</i>	<i>Dependent variables and assessment time</i>	<i>HRVB intervention</i>	<i>Feasibility</i>	<i>Significant improvements in HRVB group</i>	<i>HRV indices</i>	<i>Non-significant results</i>
De Bruin et al. (2016)	Chronic stress evaluated from PSS score Age=18-40	<ul style="list-style-type: none"> <li>RCT</li> <li>HRVB (n=25)</li> <li>Mindfulness meditation (n=27)</li> <li>Physical exercise (n=23)</li> </ul>	ACS; BRIEF-A; FFMQ-SF; SCS-SF; PSWQ <ul style="list-style-type: none"> <li>Pre-post-intervention</li> <li>6-week follow-up</li> </ul>	Over 5 weeks:           1st week = 10 min/day 2nd week = 15 min/day 3rd to 5th week = 20 min/day	<ul style="list-style-type: none"> <li>19 dropouts, 1 in the HRVB group (occupations and time constraint);</li> <li>Greater improvements in patients &gt;70% participation rate</li> </ul>	<ul style="list-style-type: none"> <li>Attention control* (ACS);</li> <li>Executive functioning* (BRIEF-A);</li> <li>Mindful awareness* (FFMQ-SF);</li> <li>Self-compassion* (SCS-SF);</li> <li>Worrying* (PSWQ)</li> </ul>	No data	<ul style="list-style-type: none"> <li>No difference between groups at post-intervention and follow-up</li> </ul>



						▪ Little effect sizes at follow-up for attention control and executive functioning compared to other groups		
Hallman et al. (2011)	Stress related chronic neck-shoulder pain Age=25-50	<ul style="list-style-type: none"> <li>▪ Pilot study</li> <li>▪ HRVB (n=12)</li> <li>▪ Control group took part in session 1 and 10 without instructions in between (n=12)</li> </ul>	Borg CR10; SMSS; HADS; SF-36; NDI; HRV ▪ Pre-post-intervention	10 sessions weekly	▪ No data	<ul style="list-style-type: none"> <li>▪ Quality of life (Bodily pain*, social function*, and vitality** on SF-36)</li> </ul>	<ul style="list-style-type: none"> <li>▪ Increase of LF power**;</li> <li>▪ Increase in LF power*, pNN50*, and IBI* during recovery from stress</li> </ul>	<ul style="list-style-type: none"> <li>▪ SMSS, Borg CR10, and NDI, HADS</li> </ul>
Van der Zwan et al. (2015)	Chronic stress evaluated from PSS score Age=18-40	<ul style="list-style-type: none"> <li>▪ RCT</li> <li>▪ HRVB (n=26)</li> <li>▪ Physical exercise (n=23)</li> <li>▪ Mindfulness meditation (n=27)</li> </ul>	DASS; PSQI; SPW ▪ Pre-post-intervention ▪ 6-week follow-up	Over 5 weeks: 1st week = 10 min/day 2nd week = 15 min/day 3rd to 5nd week = 20 min/day	<ul style="list-style-type: none"> <li>▪ 9 missed post-test and/or follow-up assessments;</li> <li>▪ Greater improvements in patients &gt;70% participation rate</li> </ul>	<ul style="list-style-type: none"> <li>▪ Stress**, anxiety**, and depression** (DASS);</li> <li>▪ Well-being** (SPW);</li> <li>▪ Sleep quality* (PSQI);</li> <li>▪ Results maintained at follow-up</li> </ul>	No data	<ul style="list-style-type: none"> <li>▪ No difference between groups at post-intervention and follow-up</li> </ul>
<b>Psychiatric disorders</b>								
<i>Study</i>	<i>Sample</i>	<i>Design</i>	<i>Dependent variables and assessment time</i>	<i>HRVB intervention</i>	<i>Feasibility</i>	<i>Significant improvements in HRVB group</i>	<i>HRV indices</i>	<i>Non-significant results</i>
Jester et al. (2018)	Psychiatric symptoms (depressive, anxiety, and bipolar disorders) Age=63-96	<ul style="list-style-type: none"> <li>▪ Experimental study</li> <li>▪ HRVB (n=20)</li> <li>▪ No control group</li> </ul>	STAI; BDI-II; TMT-A-B ▪ Pre-post-intervention	6 sessions (30 min) over 3 weeks + home practice twice weekly	<ul style="list-style-type: none"> <li>▪ Positive effects of HRVB on anxiety or worry (67%), on depression or sadness (56%), on stress (44%); or no effects of HRVB on stress (50%) reported by patients;</li> <li>▪ Slight negative effects on anxiety (competitive nature of BF software) reported by 1 patient</li> </ul>	<ul style="list-style-type: none"> <li>▪ Depression** (BDI-II);</li> <li>▪ State anxiety**, and trait anxiety** (STAI);</li> <li>▪ Attention skills (TMT-A**)</li> </ul>	No data	No data

Ginsberg et al. (2010)	Post-traumatic Stress Disorder Age = 27-37	<ul style="list-style-type: none"> <li>▪ Pilot study</li> <li>▪ HRVB (n=5)</li> <li>▪ Healthy control group</li> </ul>	ATTN/IM; HRV <ul style="list-style-type: none"> <li>▪ Pre-post-intervention</li> </ul>	4 sessions weekly + daily practice over 4 weeks	<ul style="list-style-type: none"> <li>▪ No data</li> </ul>	<ul style="list-style-type: none"> <li>▪ Cognitive capacities with list learning total variable** (ATTN/IM)</li> </ul>	<ul style="list-style-type: none"> <li>▪ Increase of coherence ratio** and LF power*; Change in cognitive performance correlated with change in coherence ratio**</li> </ul>	No data
Schuman et al. (2018)	Post-traumatic Stress Disorder Age=26-50	<ul style="list-style-type: none"> <li>▪ Pilot Study</li> <li>▪ HRVB (n=6)</li> <li>▪ Waiting-list control with diaphragmatic breathing (n=6)</li> </ul>	PCL-5; HRV <ul style="list-style-type: none"> <li>▪ Pre-post-intervention</li> <li>▪ 4-week and 16-week follow-up</li> </ul>	1 session + 10-15 min twice daily practice over 4 weeks	<ul style="list-style-type: none"> <li>▪ 10 completed the protocol;</li> <li>▪ &gt;70% participation rate of daily practice;</li> <li>▪ Symptoms reduction of anger, anxiety, and sleep disturbance experienced by patients</li> </ul>	<ul style="list-style-type: none"> <li>▪ PTSD-specific symptoms (PCL-5*) maintained at follows-up</li> <li>▪ Pooled results</li> </ul>	<ul style="list-style-type: none"> <li>▪ Increase of RMSSD* at 16-week follow-up</li> </ul>	No data
Tan et al. (2011)	Post-Traumatic Stress Disorder Age=24-62	<ul style="list-style-type: none"> <li>▪ Pilot study</li> <li>▪ HRVB + standard care (n=10)</li> <li>▪ Standard care (n=10)</li> </ul>	CAPS; PCL-S <ul style="list-style-type: none"> <li>▪ Pre-post-intervention</li> </ul>	8 sessions (30 min) + 20-min twice daily practice over 8 weeks	<ul style="list-style-type: none"> <li>▪ 1 dropout (transport problem);</li> <li>▪ HRVB intervention evaluated as 8/10 by patients for satisfaction who reported good experience.</li> </ul>	<ul style="list-style-type: none"> <li>▪ PTSD-specific symptoms (CAPS**; PCL-S*)</li> </ul>	No data	<ul style="list-style-type: none"> <li>▪ No difference between groups at post-intervention</li> </ul>
Trousselard et al. (2016)	Remitted schizophrenia Age=25-46	<ul style="list-style-type: none"> <li>▪ Pilot study</li> <li>▪ HRVB (n=10)</li> <li>▪ No control group</li> </ul>	STAI; DSP; PANSS; WEMWBS; FMI <ul style="list-style-type: none"> <li>▪ Pre-post-intervention</li> </ul>	8–12 sessions (60 min) weekly + daily relaxation exercises	<ul style="list-style-type: none"> <li>▪ No dropout;</li> <li>▪ Mostly would to continue after cessation;</li> <li>▪ More improvements in patients with high level of symptoms</li> </ul>	<ul style="list-style-type: none"> <li>▪ Mindfulness* (FMI);</li> <li>▪ Anxiety stressors* and emotional stressor* (DSP)</li> </ul>	No data	WEMWBS, PANSS, STAI
Zucker et al. (2009)	Post-Traumatic Stress Disorder Age=18-60	<ul style="list-style-type: none"> <li>▪ Pilot study</li> <li>▪ HRVB (n=19)</li> <li>▪ Progressive muscle relaxation (n=19)</li> </ul>	PTS-T; PCL-C; BDI-II; ISI; HRV <ul style="list-style-type: none"> <li>▪ Pre-post-intervention</li> </ul>	20-min daily practice over 4 weeks	<ul style="list-style-type: none"> <li>▪ Ability to increase HRV amplitude</li> </ul>	<ul style="list-style-type: none"> <li>▪ Depression (BDI-II*);</li> <li>▪ PTSD-specific symptoms (PTS-T**; PCL-C**);</li> <li>▪ Sleep (ISI score*)</li> </ul>	<ul style="list-style-type: none"> <li>▪ Increase of SDNN*; Change in SDNN associated with change in PCL-C* and BDI* scores</li> </ul>	<ul style="list-style-type: none"> <li>▪ No difference between groups at post-intervention for PST-T, PCL-C, and ISI</li> </ul>

\*<0.05; \*\*≤0.01; “No data” indicates that article did not mentioned this information.

**6MWT:** 6 minute walk test; **ACS:** attention control scale; **ACT:** asthma control test; **AQOL:** asthma quality of life; **ASF:** self-efficacy; **ATTN/IM:** test battery was modeled on Vasterling's studies; **BAI:** Beck anxiety inventory; **BDI-II:** Beck depression inventory; **BP:** blood pressure; **BRIEF-A:** behavior rating inventory of executive function-adult; **CAPS:** clinician-administered PTSD scale; **CES-D:** center for epidemiological studies-depression scale; **CHI-SF:** Chinese hostility inventory-short form; **CPT:** Continuous Performance Test; **DASS:** depression anxiety stress scales; **DSP:** derogatis stress profile; **EEG-BF:** electroencephalogram biofeedback; **eNO:** exhaled nitric oxide; **FACT-L:** functional assessment of cancer therapy-lung; **FFMQ-SF:** five facet mindfulness questionnaire-short form; **FIQ:** fibromyalgia impact questionnaire; **FMI:** Freiburg mindfulness inventory; **HADS:** hospital anxiety and depression scale; **HAM-D:** Hamilton depression scale; **hsCRP:** high-sensitivity C-reactive protein; **IBI:** interbeat interval; **IBS-SSS:** Irritable Bowel Syndrome Symptom Severity Scores; **IL-6:** interleukin-6; **ISI:** insomnia severity index; **IVA:** integrated visual and auditory; **LFHQ:** living with congestive heart failure questionnaire; **LVEF:** left ventricular ejection fraction; **MCT:** metacholine challenge test; **MMSE:** mini-mental status examination; **MPQ:** McGill pain questionnaire; **NDI:** neck disability index; **PANAS:** positive and negative affect scale; **PANSS:** positive and negative syndrome scale; **PCL-5:** PTSD checklist for the DSM-5; **PCL-C:** PTSD checklist- civilian version; **PCL-S:** PTSD checklist-specific; **PDQ:** pain disability questionnaire; **PHQ-8:** patient health questionnaire; **PHQ-D:** patient health questionnaire-depression and anxiety; **POL:** positive outcome list; **PSAS:** pre-sleep arousal scale; **PSQI:** Pittsburgh sleep quality index; **PSS:** perceived stress scale; **PSWQ:** Penn State Worry Questionnaire; **PTS-T scale:** PTSD-specific symptoms; **SCS-SF:** self-compassion scale-short form; **SF-36:** short form general health survey; **SMSS:** stress medicine symptom scale; **SPW:** scales of psychological well-being; **STAI:** Spielberger state anxiety inventory; **TMT-A-B:** trail making test part A and B; **TSK-11:** 11-item tampa scale of kinesiphobia; **WEMWBS:** Warwick–Edinburgh mental well-being scale.