



HAL
open science

Towards a better characterisation of deep-diving whales' distributions by using prey distribution model outputs?

Auriane Virgili, Laura Hedon, Matthieu Authier, Beatriz Calmettes, Diane Claridge, Tim Cole, Peter Corkeron, Ghislain Dorémus, Charlotte Dunn, Tim Dunn, et al.

► To cite this version:

Auriane Virgili, Laura Hedon, Matthieu Authier, Beatriz Calmettes, Diane Claridge, et al.. Towards a better characterisation of deep-diving whales' distributions by using prey distribution model outputs?. PLoS ONE, 2021, 16 (8), pp.e0255667. 10.1371/journal.pone.0255667 . hal-03335810

HAL Id: hal-03335810

<https://hal.science/hal-03335810>

Submitted on 8 Aug 2022

HAL is a multi-disciplinary open access archive for the deposit and dissemination of scientific research documents, whether they are published or not. The documents may come from teaching and research institutions in France or abroad, or from public or private research centers.

L'archive ouverte pluridisciplinaire **HAL**, est destinée au dépôt et à la diffusion de documents scientifiques de niveau recherche, publiés ou non, émanant des établissements d'enseignement et de recherche français ou étrangers, des laboratoires publics ou privés.



Distributed under a Creative Commons Attribution 4.0 International License

RESEARCH ARTICLE

Towards a better characterisation of deep-diving whales' distributions by using prey distribution model outputs?

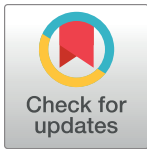
Auriane Virgili^{1*}, Laura Hedon¹, Matthieu Authier^{1,2}, Beatriz Calmettes³, Diane Claridge⁴, Tim Cole⁵, Peter Corkeron⁵, Ghislain Dorémus¹, Charlotte Dunn⁴, Tim E. Dunn⁶, Sophie Laran¹, Patrick Lehodey³, Mark Lewis⁵, Maite Louzao⁷, Laura Mannocci⁸, José Martínez-Cedeira⁹, Pascal Monestiez^{10,11}, Debra Palka⁵, Emeline Pettex^{2,12}, Jason J. Roberts¹³, Leire Ruiz¹⁴, Camilo Saavedra¹⁵, M. Begoña Santos¹⁵, Olivier Van Canneyt¹, José Antonio Vázquez Bonales¹⁶, Vincent Ridoux^{1,11}

1 Observatoire PELAGIS, UMS 3462 CNRS—La Rochelle Université, La Rochelle, France, **2** ADERA, Pessac Cedex, Pessac, France, **3** Space Oceanography Division, CLS, Ramonville, France, **4** Bahamas Marine Mammal Research Organisation, Marsh Harbour, Abaco, Bahamas, **5** Protected Species Branch, NOAA Fisheries Northeast Fisheries Science, Woods Hole, Massachusetts, United States of America, **6** Joint Nature Conservation Committee, Inverdee House, Aberdeen, United Kingdom, **7** AZTI, Marine Research, Basque Research and Technology Alliance (BRTA), Pasaia, Spain, **8** MARBEC, Univ Montpellier, CNRS, Ifremer, IRD, Sète, France, **9** CEMMA, Pontevedra, Spain, **10** BioSP, INRA, Avignon, France, **11** Centre d'Etudes Biologiques de Chizé - La Rochelle, UMR 7372 CNRS—La Rochelle Université, Villiers-en-Bois, France, **12** Cohabys—ADERA, La Rochelle Université, La Rochelle, France, **13** Marine Geospatial Ecology Laboratory, Duke University, Durham, North Carolina, United States of America, **14** AMBAR Elkartea Organisation, Bizkaia, Spain, **15** Instituto Español de Oceanografía, Centro Oceanográfico de Vigo, Vigo, Spain, **16** Alnilam Research and Conservation, Madrid, Spain

* auriane.virgili@univ-lr.fr

Abstract

In habitat modelling, environmental variables are assumed to be proxies of lower trophic levels distribution and by extension, of marine top predator distributions. More proximal variables, such as potential prey fields, could refine relationships between top predator distributions and their environment. *In situ* data on prey distributions are not available over large spatial scales but, a numerical model, the Spatial Ecosystem And POpulation DYnamics Model (SEAPODYM), provides simulations of the biomass and production of zooplankton and six functional groups of micronekton at the global scale. Here, we explored whether generalised additive models fitted to simulated prey distribution data better predicted deep-diver densities (here beaked whales *Ziphiidae* and sperm whales *Physeter macrocephalus*) than models fitted to environmental variables. We assessed whether the combination of environmental and prey distribution data would further improve model fit by comparing their explanatory power. For both taxa, results were suggestive of a preference for habitats associated with topographic features and thermal fronts but also for habitats with an extended euphotic zone and with large prey of the lower mesopelagic layer. For beaked whales, no SEAPODYM variable was selected in the best model that combined the two types of variables, possibly because SEAPODYM does not accurately simulate the organisms on which beaked whales feed on. For sperm whales, the increase model performance was only marginal. SEAPODYM outputs were at best weakly correlated with sightings of deep-diving



OPEN ACCESS

Citation: Virgili A, Hedon L, Authier M, Calmettes B, Claridge D, Cole T, et al. (2021) Towards a better characterisation of deep-diving whales' distributions by using prey distribution model outputs? PLoS ONE 16(8): e0255667. <https://doi.org/10.1371/journal.pone.0255667>

Editor: Vitor Hugo Rodrigues Paiva, MARE – Marine and Environmental Sciences Centre, PORTUGAL

Received: February 5, 2021

Accepted: July 21, 2021

Published: August 4, 2021

Peer Review History: PLOS recognizes the benefits of transparency in the peer review process; therefore, we enable the publication of all of the content of peer review and author responses alongside final, published articles. The editorial history of this article is available here: <https://doi.org/10.1371/journal.pone.0255667>

Copyright: © 2021 Virgili et al. This is an open access article distributed under the terms of the [Creative Commons Attribution License](https://creativecommons.org/licenses/by/4.0/), which permits unrestricted use, distribution, and reproduction in any medium, provided the original author and source are credited.

Data Availability Statement: The data underlying this study are available on the OBIS SEAMAP website (<http://seamap.env.duke.edu>). We confirm

that authors had no special access to the underlying data and all interested researchers can obtain the data from the OBIS SEAMAP in the same way that the authors obtained data by contacting the data providers via the OBIS SEAMAP website.

Funding: AV's doctoral research grant was funded by the Direction Générale de l'Armement (DGA). ML was funded by a Ramón y Cajal (RYC-2012-09897) postdoctoral contract of the Spanish Ministry of Economy, Industry and Competitiveness. This study is a contribution to the CHALLENGES (CTM2013-47032-R) project of the Spanish Ministry of Economy, Industry and Competitiveness. MA and EP are affiliated to ADERA a private business dedicated to providing support for the management of research project in public institutions in Region Nouvelle Aquitaine. In this study, ADERA solely provided support in the form of salaries for authors MA and EP, but did not have any additional role in the study design, data collection and analysis, decision to publish, or preparation of the manuscript. The specific roles of these authors are articulated in the 'author contributions' section.

Competing interests: MA and EP are employed by the commercial company ADERA which did not play any role in this study beyond that of employer. This does not alter our adherence to PLOS ONE policies on sharing data and materials.

cetaceans, suggesting SEAPODYM may not accurately predict the prey fields of these taxa. This study was a first investigation and mostly highlighted the importance of the physiographic variables to understand mechanisms that influence the distribution of deep-diving cetaceans. A more systematic use of SEAPODYM could allow to better define the limits of its use and a development of the model that would simulate larger prey beyond 1,000 m would probably better characterise the prey of deep-diving cetaceans.

Introduction

Cetaceans are subject to many anthropogenic threats such as vessel collisions, pollutants, bycatch and underwater noise, leading to the decline of many populations [1–3]. To develop effective conservation strategies, describing and predicting their distribution is essential because cetacean distributions, particularly deep-diving cetacean distributions, are barely known due to data scarcity which is an important pitfall for conservation. Habitat modelling is a useful tool to predict species distributions [4]. In these models, species sightings are related to proximal or distal variables that are assumed to influence their distributions. Proximal variables are biological variables to which the species is assumed to react more directly (e.g. prey distribution) than distal variables, which describe the physical environment [5]. Distal variables encompass two types of variables; physiographic variables which are static descriptors that relate to the bathymetry (e.g. depth, slope) and oceanographic variables which are dynamic predictors that describe the water masses (e.g. sea surface temperature—SST, eddy kinetic energy—EKE, surface chlorophyll *a* concentration). These variables, obtained from satellite imagery or numerical models, are more widely available than proximal data and are often used to describe and predict marine top predator distributions [6–8].

In the marine environment, the surface chlorophyll *a* concentration is commonly used as a proxy for the biomass of phytoplankton in cetacean habitat models [8–10], but the distribution and biomass of low- (phytoplankton and zooplankton) and mid- (micronekton) trophic levels are more proximal predictors of top predator distribution [7, 11]. Surface chlorophyll *a* concentration data is widely used because it is remotely-sensed from satellites and readily available at a global scale, but there is a time-lag between a change in phytoplankton biomass and its effects on upper trophic levels [7, 9, 11–14]. The use of more proximal variables, such as prey biomass, could reduce this lag because marine top predators are expected to be mostly sensitive to prey abundance and because such micronekton outputs are closer to trophic level of apex predator prey [11, 15–18]. However, the limited spatio-temporal extent of prey data available from *in situ* sampling is a major bottleneck for modelling predator distributions from the distribution of their prey over large oceanic regions. Ecosystem models simulating the biomass and production of low- and mid-trophic levels provide a new numerical way to fill the prey data gap globally [19–22]. The Spatial Ecosystem And POpulation DYnamics Model (SEAPODYM) provides simulations of the global 3-dimensional distributions of zooplankton and six functional groups of the micronekton defined by their daily vertical migration patterns in three biological layers from 0 to *ca.* 1,000 m. SEAPODYM was initially developed to model tuna populations for fishery applications [23, 24], but its usage was extended to predict turtles, cetaceans and elephant seals habitat use [20–22, 25, 26].

In a previous study [27], we developed habitat models for deep-diving cetaceans (beaked whales *Ziphiidae*, sperm whales *Physeteriidae* and *Kogia* whales *Kogiidae*) using physiographic variables together with surface oceanographic variables. Deep-divers are species of interest

because they are sensitive to underwater noise pollution [28, 29] and an accurate knowledge of their distribution is crucial to mitigate the impact of human activities. As deep-diving cetaceans spend most of their time at depth and generally feed on meso- to bathypelagic prey (e.g. [30, 31]), the use of surface variables may limit the ability to correctly infer their habitats. Consequently, using the same sighting survey data as in Virgili et al. [27], here we aimed to explore (1) if models fitted to simulated prey data explained the beaked and sperm whale distributions better than models fitted to environmental variables only and (2) if the combination of environmental and simulated prey data would further improve model fit. We compared the fit and explanatory power of three Generalised Additive Models (GAMs), fitted to beaked and sperm whales sighting data and (1) to environmental variables (hereafter ‘ENVIRONMENTAL model’), (2) to prey distribution variables simulated from SEAPODYM (hereafter ‘SEAPODYM model’, differing from ‘SEAPODYM’ alone that refers to the model of Lehodey et al. [19] that simulated the prey distribution data) and (3) to a combination of both variable types (hereafter ‘COMBINED model’). We then predicted beaked and sperm whale densities in the North Atlantic Ocean and compared the three models. We hypothesised that SEAPODYM variables would better explain the distribution of beaked whales and sperm whales because they are more proximal variables and because they characterise the deeper layers in which deep-divers feed on. We also expected a better explanatory power of the model that combined the two types of variables because it considered static variables known to influence the beaked and sperm whale distributions (e.g. [32, 33]), together with prey distribution data, presumably better suited to describe the species distributions.

Material and methods

Study area

The study area encompassed the North Atlantic Ocean from the Guiana Plateau to Iceland, *i.e.* approximately from 5–65°N, excluding semi-enclosed seas like the Gulf of Mexico, the Hudson Bay, the Baltic sea and the Mediterranean Sea (Fig 1A).

In the North Atlantic Ocean, the general thermohaline circulation is characterised by the formation of deep saline and cold-water masses flowing from the Labrador basin and Greenland Sea southward and warmer surface waters generally flowing northward but affected by a large gyre [34, 35]. This subtropical gyre is delimited by the North Atlantic, Azores and Canary Currents in the east and the North Equatorial Current and Gulf Stream in the west. The latter is narrower and swifter than its eastern counterparts and follows the continental slope from Florida to the Grand Banks off Newfoundland. Large seasonal variations of the wind field (except in the subtropical area), high salinity and a general decreasing gradient of temperature from west to east (about 8°C difference) are characteristics of the North Atlantic Ocean central gyre [35]. Within this ocean basin, primary production is quite low in the tropical zone, and varies seasonally elsewhere. Maximum productivity is reported in winter in the subtropical zone; a spring bloom and oligotrophic summer conditions are found at mid-latitude; and productivity is maximum in summer in the subpolar zone [36].

Data collection and collation

We used effort and sighting data assembled in Virgili et al. ([27]; Fig 1). We only considered beaked and sperm whale sightings and effort data recorded in the North Atlantic Ocean. As deep-divers are difficult to detect during surveys and the typically small number of sightings recorded during a single survey is insufficient to fit habitat models, we assembled visual ship-board and aerial surveys performed by nine independent organisations in the North Atlantic Ocean between 1998 and 2015 (details of the surveys in S1 Table in S1 Appendix). A single

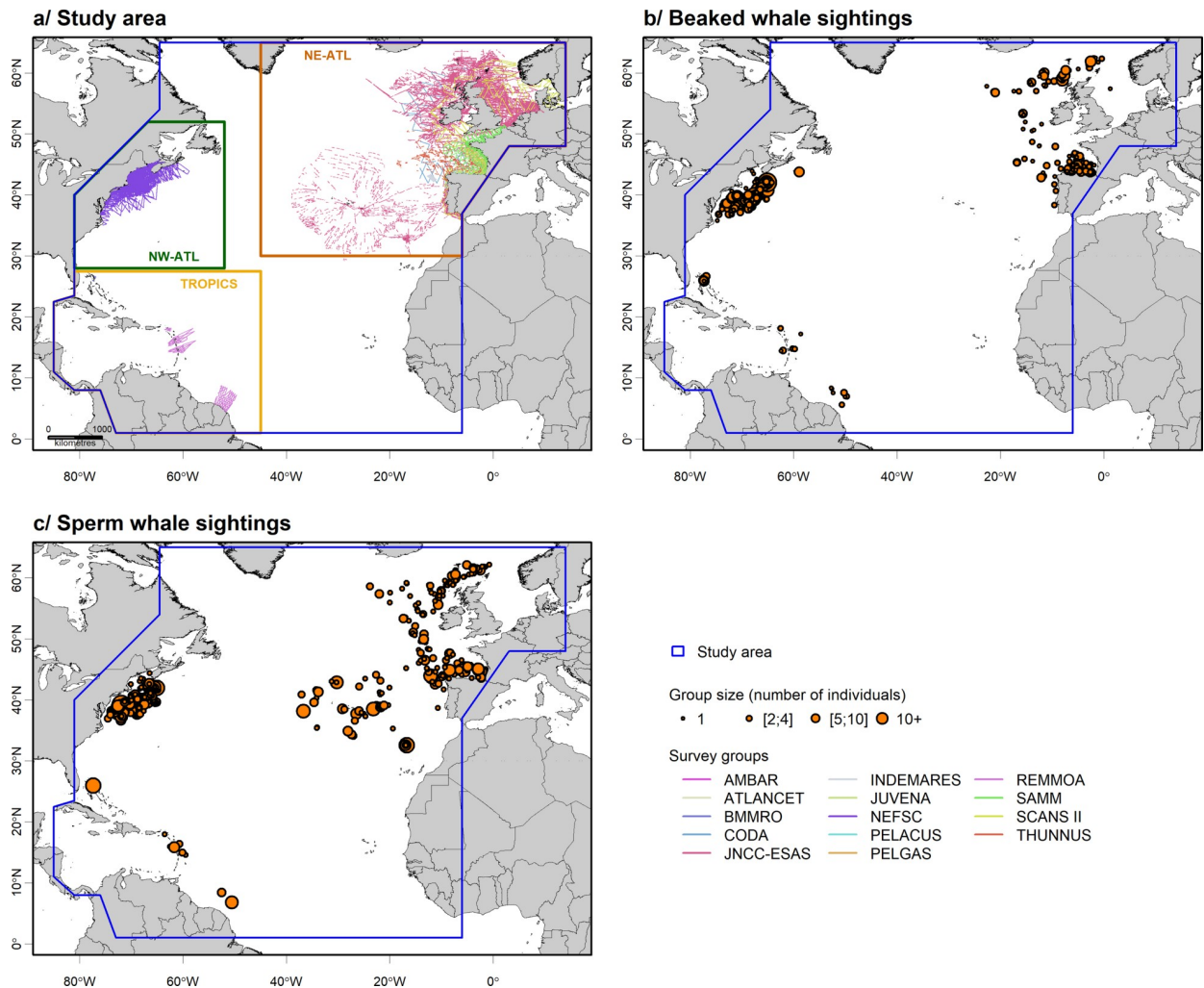


Fig 1. Study area divided into sub-regions showing assembled survey effort (a), along with beaked whale (b) and sperm whale (c) sightings recorded during all surveys. The blue polygon delineates overall study area and other polygons delineate sub-regions. Surveys were carried out along transects following a line-transect methodology (survey details in S1 Table in S1 Appendix). Sightings were classified by group sizes with each point representing one group of individuals and point size representing the number of animals in a group. Base map from <https://www.gebco.net/>.

<https://doi.org/10.1371/journal.pone.0255667.g001>

common dataset was created, aggregating all survey datasets standardised for units and formats. Effort data were linearized and divided into 5 km segments using ArcGIS 10.3 [37] and the Marine Geospatial Ecology Tools software [38].

Except for the JNCC-ESAS surveys that used a 300-m strip-transect methodology, cetacean sightings were recorded following line-transect methodologies that allow Effective Strip Width (ESW) to be estimated from the measurement of the perpendicular distances to the sightings [39]. For each taxon, we built a hierarchical model to estimate the ESW depending on observation conditions and survey types (for more details, see [27]).

To account for the difficulty to identify them at species level, beaked whale species were pooled into one group including Cuvier's beaked whales (*Ziphius cavirostris*), mesoplodonts (*Mesoplodon* spp.) and northern bottlenose whales (*Hyperoodon ampullatus*).

A total of 481 sightings of beaked whales and 542 sightings of sperm whales, mainly distributed in the northeast and the northwest Atlantic Ocean (north of the 35°N latitude) were

assembled for the present study (Fig 1B and 1C). Aggregated data represented about 1,101,200 km of on-effort transects (*i.e.* following a transect at a specified speed and altitude with a specified level of visual effort) of which 58% was carried out by plane and the rest by boat (Fig 1A and Table 1).

Moran's and Geary's indexes were calculated to ensure there was no spatial autocorrelation in the data using the 'spdep' R-package [40].

Data processing

Static and oceanographic variables. We considered static and oceanographic variables that can affect the distribution of beaked and sperm whales (Table 2). All variables were resampled at a 0.25° resolution to match the spatial resolution of the SEAPODYM variables (Table 2 and S2.1-S2.3 Fig in S2 Appendix). Depth and slope were derived from GEBCO-08 30 arc-second database (<https://www.gebco.net/>; 30 arc-second is approximately equal to 0.008°). The surface of canyons and seamounts per 0.25° cell was calculated in ArcGIS 10.3 from the shapefile of canyons and seamounts provided by Harris et al. [41]. Oceanographic variables, relating to the movements of water masses were upscaled at a monthly resolution, *i.e.* averaged over the 29 days prior to each sampled day to avoid gaps in remote sensing oceanographic variables and to consider a potential time-lag between an environmental condition and its effect on higher trophic levels. The mean, standard error and gradient of SST were calculated from the GHRSSST Level 4 CMC SST v.2.0 ([42], <https://podaac.jpl.nasa.gov/dataset/CMC0.2deg-CMC-L4-GLOB-v2.0>). Spatial gradients of SST were calculated as the difference between the minimum and maximum SST values found in the eight pixels surrounding any given pixel of the grid. The Aviso ¼° DT-MADT geostrophic currents dataset was used to compute mean and standard deviation of Sea Surface Height (SSH) and EKE (<https://www.aviso.altimetry.fr/en/data/products/sea-surface-height-products/global/madt-h-uv.html>). Net primary production (NPP) was derived from SeaWIFS and Aqua using the Vertically Generalised Production Model (<http://orca.science.oregonstate.edu/1080.by.21608day.hdf.vgpm.s.chl.a.sst.php>) and was used as a proxy of prey availability.

SEAPODYM variables. SEAPODYM is a numerical model used to compute the spatial distribution of the biomass and the production of organisms, the micronekton and the zooplankton, in different layers of the water column [19, 23, 43]. For each functional

Table 1. Effort performed by platform type and Beaufort sea-state per sector in the North Atlantic Ocean.

Sectors	Total survey effort (km and %)	Total aerial effort (km)	Total shipboard effort (km)	Total effort by Beaufort sea-state class (km)				
				0-1	1-2	2-3	3-4	4-7
NE-ATL	521,000	70,400	450,600	76,700	118,500	135,700	190,000	200
	47%							
NW-ATL	561,100	549,800	11,300	43,000	122,400	200,900	132,700	62,100
	51%							
TROPICS	19,100	15,400	3,700	10,600	2,500	3,700	2,300	0
	2%							
STUDY AREA	1,101,200	635,600	465,600	130,300	243,400	340,300	324,900	62,300
		58%	42%	11%	22%	31%	30%	6%

This table presents the total effort conducted in each sector broken down by platform type and Beaufort sea-state. Beaufort sea-state values reported with decimals in the surveys were rounded up. For the analyses, all segments with Beaufort sea-state > 4 were excluded. 'NE-ATL' means northeast Atlantic Ocean and 'NW-ATL' means northwest Atlantic Ocean.

<https://doi.org/10.1371/journal.pone.0255667.t001>

Table 2. Candidate environmental and SEAPODYM predictors used for the habitat-based density modelling.

Variables used in the study with abbreviations and units	Original Resolution	S	Effects on pelagic ecosystems of potential interest to deep-divers
Physiographic			
Depth (m)	30 arc sec	A	Deep-divers feed on squids and fish in the deep-water column
Slope (°)	30 arc sec	A	Associated with currents, high slopes induce prey aggregation or enhanced primary production
Surface of canyons and seamounts in a 0.25° cell–S.can.seam (km ²)	30 arc sec	B	Deep-divers are often associated with canyons and seamounts structures; the variable indicates the proportion of this habitat in each cell
Oceanographic			
Mean sea surface temperature–SST (°C)	0.2°, 1d	C	Variability over time and horizontal gradients of SST reveal front locations, potentially associated with prey aggregation or enhanced primary production
Mean gradient of SST–SSTgrad (°C)	0.2°, 1d	C	
Mean of sea surface height–SSH (m)	0.25°, 1d	D	High SSH is associated with high mesoscale activity and enhanced prey aggregation or primary production
Mean of eddy kinetic energy–EKE (m ² .s ⁻²)	0.25°, 1d	D	High EKE relates to the development of eddies and sediment resuspension inducing prey aggregation
Mean of net primary production–NPP (mgC.m ⁻² .day ⁻¹)	9 km, 8d	E	Net primary production as a proxy of prey availability
SEAPODYM variables			
Euphotic depth–Euph. depth (m)	0.25°, 1w	F	Depth of the euphotic zone as proxy of prey availability
Epipelagic biomass and production–Epi. B. (g.m ⁻²) and Epi. P. (g.m ⁻² .day ⁻¹)	0.25°, 1w	F	All these variables relate to the distribution of potential direct or indirect prey of deep-divers.
Non-migrant upper mesopelagic biomass and production–U. meso. B. (g.m ⁻²) and U.meso. P. (g.m ⁻² .day ⁻¹)	0.25°, 1w	F	
Migrant upper mesopelagic biomass and production–M.U. meso. B. (g.m ⁻²) and M.U.meso. P. (g.m ⁻² .day ⁻¹)	0.25°, 1w	F	
Non-migrant lower mesopelagic biomass and production–L. meso. B. (g.m ⁻²) and L.meso. P. (g.m ⁻² .day ⁻¹)	0.25°, 1w	F	
Migrant lower mesopelagic biomass and production–M.L.meso. B. (g.m ⁻²) and M.L.meso. P. (g.m ⁻² .day ⁻¹)	0.25°, 1w	F	
Highly migrant lower mesopelagic biomass and production–H. m.L.meso. B. (g.m ⁻²) and H.m.L.meso. P. (g.m ⁻² .day ⁻¹)	0.25°, 1w	F	
Zooplankton biomass and production–Pk. B. (g.m ⁻²) and Pk. P. (g.m ⁻² .day ⁻¹)	0.25°, 1w	F	

All variables were resampled at a 0.25° resolution. S: Sources. A: <https://www.gebco.net/>; 30 arc-second is approximately equal to 0.083°. B: Harris et al. [41]. C: Canada Meteorological Centre [42], <https://podaac.jpl.nasa.gov/dataset/CMC0.2deg-CMC-L4-GLOB-v2.0>. D: <https://www.avisio.altimetry.fr/en/data/products/sea-surface-height-products/global/madt-h-uv.html>. E: <http://orca.science.oregonstate.edu/1080.by.2160.8day.hdf.vgpm.s.chl.a.sst.php>. F: Lehodey et al. [19]. Although it is an oceanographic environmental variable, the euphotic depth was included in the SEAPODYM models because it is this variable that defines the three layers of SEAPODYM. 1d: daily; 8d: eight days; 1w: weekly.

<https://doi.org/10.1371/journal.pone.0255667.t002>

group (zooplankton and micronekton) biomass (in g.m⁻²) and production (in g.m⁻².day⁻¹) are simulated at a 0.25° resolution. Production is defined as the recruitment of a new cohort of organisms into a micronekton functional group when they reach 1 g body mass (fixed value). Energy transfers from the primary production to the groups of micronekton are parameterised in the model and a system of advection–diffusion–reaction equations, that take into account the vertical migrations of organisms, are used to model recruitment, ageing, mortality, and passive transport with horizontal currents [19, 23, 43]. In SEAPODYM, the zooplankton is defined as all non-migratory phytoplanktivorous organisms with a size between 200 µm and 2 cm that live in the epipelagic layer [44]. Micronekton encompasses active swimming organisms in the range of 1–20 g and 2–20 cm and includes fishes, crustaceans and cephalopods [44, 45]. Depending on the vertical

distribution of the organism biomass; three layers are defined according to the euphotic depth (*i.e.* the layer of sea water that receives enough sunlight for photosynthesis to occur; Fig 2; [45]), computed according to the VGPM model (Vertically Generalized Production Model) of Behrenfeld & Falkowski [46]. The epipelagic layer extends from the surface to 1.5* euphotic depth; the upper mesopelagic layer, between 1.5 and 4.5* euphotic depth and the lower mesopelagic layer which extends from 4.5 to 10.5* euphotic depth with a maximum set at 1,000 m [45]. Micronekton can undertake nycthemeral vertical migrations between these three layers.

According to migration patterns, micronekton includes six functional groups: epipelagic, non-migrant upper mesopelagic, migrant upper mesopelagic, non-migrant lower mesopelagic, migrant lower mesopelagic and highly migrant lower mesopelagic organisms (Fig 2; [19, 23, 45]). These migrations are induced by daylight variations and may be due to a strategy of predator avoidance: during daytime, they dive in deeper waters to avoid predation [47]. Migrant upper mesopelagic and highly migrant lower mesopelagic organisms migrate between the epipelagic layer at night and respectively the upper mesopelagic and lower mesopelagic layers during daytime while the migrant lower mesopelagic organisms migrate between the upper mesopelagic and the lower mesopelagic layers. SEAPODYM makes it possible to obtain, in each grid cell, an estimate of the total quantity of organisms of each functional group present in each layer and of the productivity of the functional group in each layer (the greater the production, the richer the environment). A positive relationship of predators with production variables would indicate a relationship with the distribution of smaller and more abundant prey of the functional group while a positive relationship with biomass variables would indicate a relationship with the distribution of larger prey.

Contrary to oceanographic environmental variables, SEAPODYM variables were available at a weekly resolution *i.e.* averaged over the 7 days prior to each sampled day, and not upscaled at a monthly resolution to observe a potentially more direct link between prey and predator distribution. Due to the absence of the lower mesopelagic layer on the continental shelf, a zero, and not an NA (for not available), was assigned to the effort segments on the continental shelf to avoid deleting the segments during model fitting.

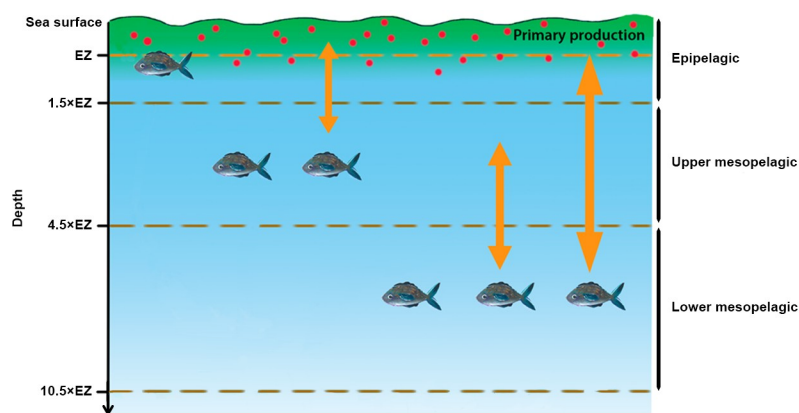


Fig 2. Vertical repartition of the functional groups of micronekton in SEAPODYM in the water column. The three depth layers, epipelagic, upper mesopelagic and lower mesopelagic layers are defined in SEAPODYM as multiples of EZ (depth of the euphotic zone set maximum at 1,000 m); fishes represent the micronekton functional groups; the red dots represent the zooplankton and the yellow arrows represent the daily vertical migrations of the functional groups between layers.

<https://doi.org/10.1371/journal.pone.0255667.g002>

Habitat-based density modelling

First, we modelled the distribution of beaked whales and sperm whales based on two habitat models: one with physiographic and oceanographic variables ('ENVIRONMENTAL model') and one with SEAPODYM variables ('SEAPODYM model'). We fitted GAMs [48, 49] with a Tweedie distribution to account for over-dispersion in the cetacean count data [50] with the 'mgcv' R-package [51]. GAMs extend Generalised Linear Models to allow for smooth nonlinear functions of predictor variables to be determined by data rather than by strict parametric relationships [48, 49]. The mean number of individuals per segment was linked to the additive predictors with a log-function with the dimension of the basis used to represent the smooth term fixed to a maximum of four to attenuate the scope for over-fitting [49]. An offset equal to segment length multiplied by twice the ESW or twice the 300 m-strip for JNCC-ESAS surveys was included ([52]; refer to Virgili et al. [27] for the ESW estimation; ESWs were calculated for each combination of platform—plane or boat, class of Beaufort sea-state and class of observation height). We removed combinations of variables with Pearson correlation coefficients higher than $|0.7|$ and tested all models with combinations of one to four variables to avoid excessive complexity [53]. Environmental variables were poorly correlated with each other and moderately correlated with the SEAPODYM variables (S3.1 Fig in S3 Appendix). However, some SEAPODYM variables were correlated with each other, notably the biomass and production variables in the same layer. The Akaike information criterion (AIC, the lower the better; [54]) and Akaike weight ('qpcR' R-package; [55]) were used for model selection.

Then we built a model, for beaked whales and sperm whales, which combined environmental and SEAPODYM variables ('COMBINED model'). To limit the computational burden, mostly induced by the extent of the study area, we reduced the number of variables implemented in the variable selection procedure of the COMBINED model. Following Symonds & Moussalli [56], we determined the importance of each variable in the ENVIRONMENTAL and SEAPODYM models by summing the Akaike weights of the models in which the variable was selected and ranked all variables (S3.2 Fig in S3 Appendix). We then included in the selection procedure of the COMBINED models all variables whose percentages of Akaike weight were greater than 25%, as these were the most important variables in the ENVIRONMENTAL and SEAPODYM models. As for the ENVIRONMENTAL and SEAPODYM models, all models with combinations of one to four variables were tested and the best COMBINED model with the lowest AIC and the highest Akaike weight was selected. By design, we expected a better fit of the COMBINED model because we only used the most important variables selected in the first procedure.

Predictions of relative densities were then provided at 0.25° resolution over the entire study area. There were not enough data to fit a model by month or by season (the number of sightings in winter was too low) so we fitted ENVIRONMENTAL, SEAPODYM and COMBINED models to all data of beaked whales and sperm whales but we predicted relative densities for each month of the period and averaged values to obtain climatological prediction maps for the 1998–2015 period. These predictive maps provided the expected distribution of beaked and sperm whales according to static and monthly oceanographic conditions, or prey distributions or a combination of both. To provide uncertainty maps over the 1998–2015 period, averaged variances around the overall predictions were computed as the mean of the standard errors of the monthly predictions; high variances indicate high errors associated with density estimates. Here we only considered uncertainty associated with the densities predicted with the generalised additive model but we ignored other sources of uncertainty such as those associated with the estimation of the SEAPODYM variables.

To model distributions of beaked whales and sperm whales in the North Atlantic Ocean, we gathered survey data from a large region collected over a long period. The cumulative effort

was not homogeneously distributed and showed extensive geographical gaps. Consequently, predicting across the entire Atlantic basin would require extensive geographical extrapolation. Therefore, we conducted a gap analysis on environmental space coverage to identify areas where habitat models could produce reliable predictions outside survey blocks, *i.e.* geographical extrapolation, whilst remaining within the ranges of surveyed conditions for the combinations of covariates selected by the models, *i.e.* areas of environmental interpolation [57–59], as in Virgili et al. [27]. We estimated the convex hull defined by the environmental data used to fit habitat models *i.e.* the smallest convex envelop that contains all the points in environmental space. We assessed whether a prediction from a set of environmental covariates fell inside or outside this convex hull with the ‘WhatIf’ R-package [60–62]. A combination of climatological predictor values that fall inside the convex hull corresponds to an interpolation. We produced maps delineating the extent of interpolation areas and overlaid them on the density prediction maps to highlight areas with greater reliability and showing that no prediction was made outside interpolation areas.

Finally, model fit was assessed with the percentage of explained deviance [49, 63], the Root Mean Squared Error (RMSE) which measures prediction errors and model accuracy (the lower, the better; [64]; ‘qpcR’ R-package [55]); and a visual inspection of predicted and observed distributions [65]. This allowed a comparison of the three models in order to assess which combination of variables better explained the distribution of beaked and sperm whales.

Results

Beaked whales

The COMBINED model was identical to the ENVIRONMENTAL model as no SEAPODYM variable was selected (Fig 3A and S3.1 Table in S3 Appendix). The percentage of explained deviance varied between the models (Fig 3 and S3.1 Table in S3 Appendix). The explained deviance of the ENVIRONMENTAL/COMBINED model was higher than the explained deviance of the SEAPODYM model (39.8% vs 27.5%). The AIC and the RMSE were the lowest for the ENVIRONMENTAL/COMBINED model ($\Delta\text{AIC} = 335$ for the SEAPOYM model and 0.49 vs 0.54 for the RMSEs; Fig 3).

In the best ENVIRONMENTAL/COMBINED model (Fig 3 and S3.1 Table in S3 Appendix), the highest beaked whale relative densities were found at depths *ca.* 2,000 m, spatial gradients of SST *ca.* 2°C, slope *ca.* 1.5° and SST higher than 15°C (Fig 3A). The highest relative densities were predicted on the western side of the North Atlantic Ocean near the Gulf Stream, along continental slopes and along the Mid-Atlantic Ridge (Fig 4A).

In the best SEAPODYM model (Fig 3 and S3.1 Table in S3 Appendix), the highest beaked whale densities were found at biomass of lower mesopelagic organisms *ca.* 1.5 g.m⁻², biomass of migrant upper mesopelagic organisms lower than 2 g.m⁻² per unit surface area, low production of migrant lower mesopelagic organisms (lower than 0.02 g.m⁻².day⁻¹) and deep euphotic depth (*ca.* 65 m; Fig 3B). This resulted in a fairly homogenous prediction of beaked whales in oceanic waters beyond the continental slope (Fig 4B).

Interpolation areas varied between the two models with the highest percentage of interpolation observed for the ENVIRONMENTAL/COMBINED model (85%) and the lowest for the SEAPODYM model (74%; Fig 4). In all cases, variances associated with the predictions were small (S4 Fig in S4 Appendix).

Sperm whale

The percentage of explained deviance varied between the three models (Fig 3 and S3.2 Table in S3 Appendix). The explained deviance of the ENVIRONMENTAL model (31.1%) was close to

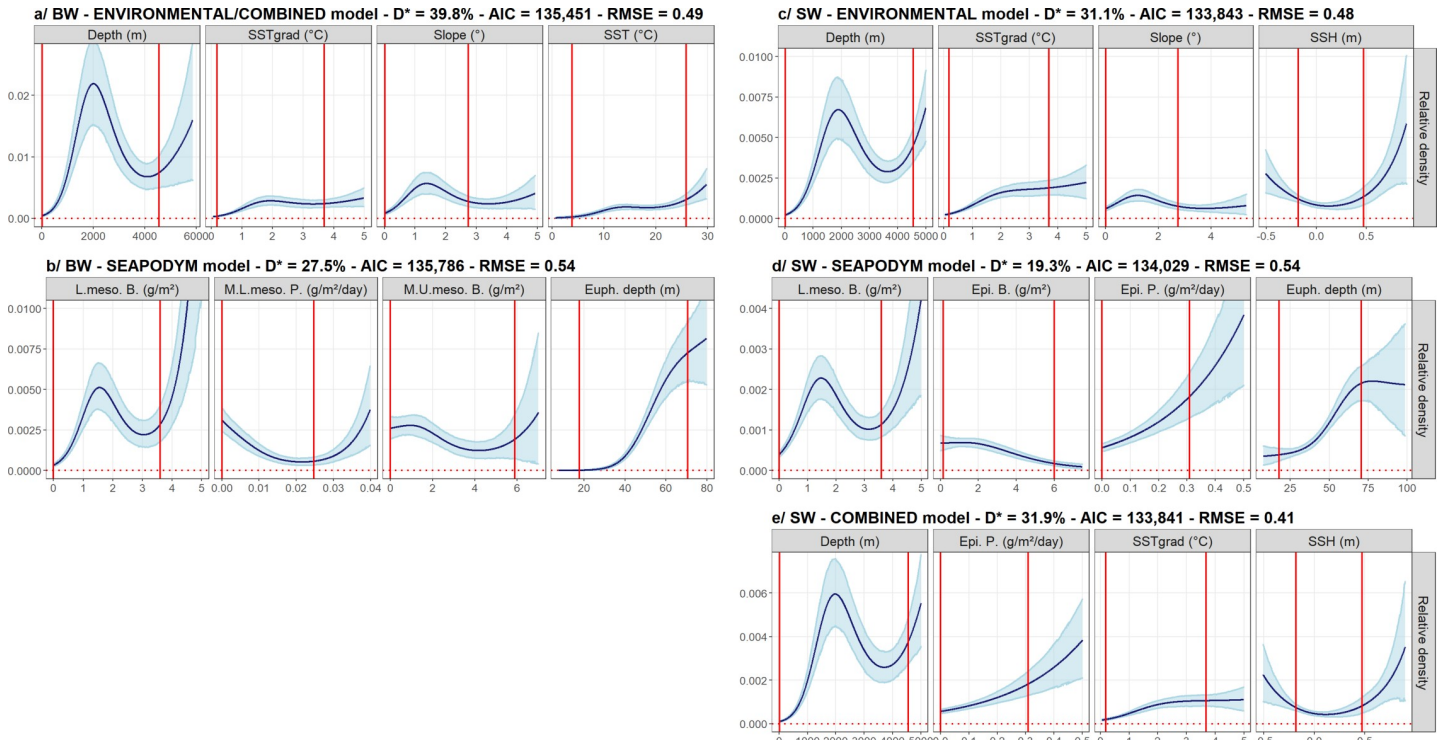


Fig 3. The functional relationships between beaked (BW) and sperm (SW) whales and the selected variables of the ENVIRONMENTAL (a, c), SEAPODYM (b, d) and COMBINED (a, e) models. The ENVIRONMENTAL and COMBINED models were identical for beaked whales thus represented only once. Solid lines represent the estimated smooth functions and the blue shaded regions show the approximate 95% confidence intervals. The relative density of individuals (individuals per 750 km²) is shown on the y-axis, where a zero indicates no effect of the covariate. Red vertical lines indicate the 2.5th and 97.5th percentile intervals corresponding to the core data. D*: explained deviance; AIC: Akaike criterion; RMSE: Root Mean Squared Error; SSTgrad: gradients of Sea Surface Temperature; L.meso. B.: lower mesopelagic biomass; M.L.meso.P.: migrant lower mesopelagic production; M.U.meso.B.: migrant upper mesopelagic biomass; Euph. depth: euphotic depth; SSH: sea surface height; Epi. B.: epipelagic biomass; Epi. P.: epipelagic production.

<https://doi.org/10.1371/journal.pone.0255667.g003>

that of the COMBINED model (31.9%) and higher than that of the SEAPODYM model (19.3%). The AICs were identical in the ENVIRONMENTAL and COMBINED models and lower than the AIC of the SEAPODYM model ($\Delta AIC = 188$ and 186 with the SEAPOYM model; Fig 3). The RMSE was the lowest for the COMBINED model (0.41) compared to the RMSEs of the ENVIRONMENTAL (0.48) and the SEAPODYM (0.54) models.

In the best ENVIRONMENTAL model (Fig 3 and S3.2 Table in S3 Appendix), the highest sperm whale densities were found at depths *ca.* 2,000 m, SSH higher than $|0.1 \text{ m}|$, spatial gradients of SST higher than 2°C and slope *ca.* 1° (Fig 3C). The highest densities were predicted on the western side of the North Atlantic Ocean, along continental slopes and along the Mid-Atlantic Ridge (Fig 4C).

In the best SEAPODYM model (Fig 3 and S3.2 Table in S3 Appendix), the highest densities were found at biomass of lower mesopelagic organisms *ca.* 1.5 g.m^{-2} , low biomass of epipelagic organisms (lower than 2 g.m^{-2}), production of epipelagic organisms higher than $0.2 \text{ g.m}^{-2}.\text{day}^{-1}$ and deep euphotic depth higher than 60 m (Fig 3D). This resulted in fairly homogenous predicted densities in oceanic waters (Fig 4D).

In the best COMBINED model (Fig 3 and S3.2 Table in S3 Appendix), the highest densities were found at depths *ca.* 2,000 m, production of epipelagic organisms higher than $0.2 \text{ g.m}^{-2}.\text{day}^{-1}$, gradients of SST higher than 2°C and SSH higher than $|0.1 \text{ m}|$ (Fig 3E). This resulted in similar patterns as for the ENVIRONMENTAL model but with more homogenous densities (Fig 4E).

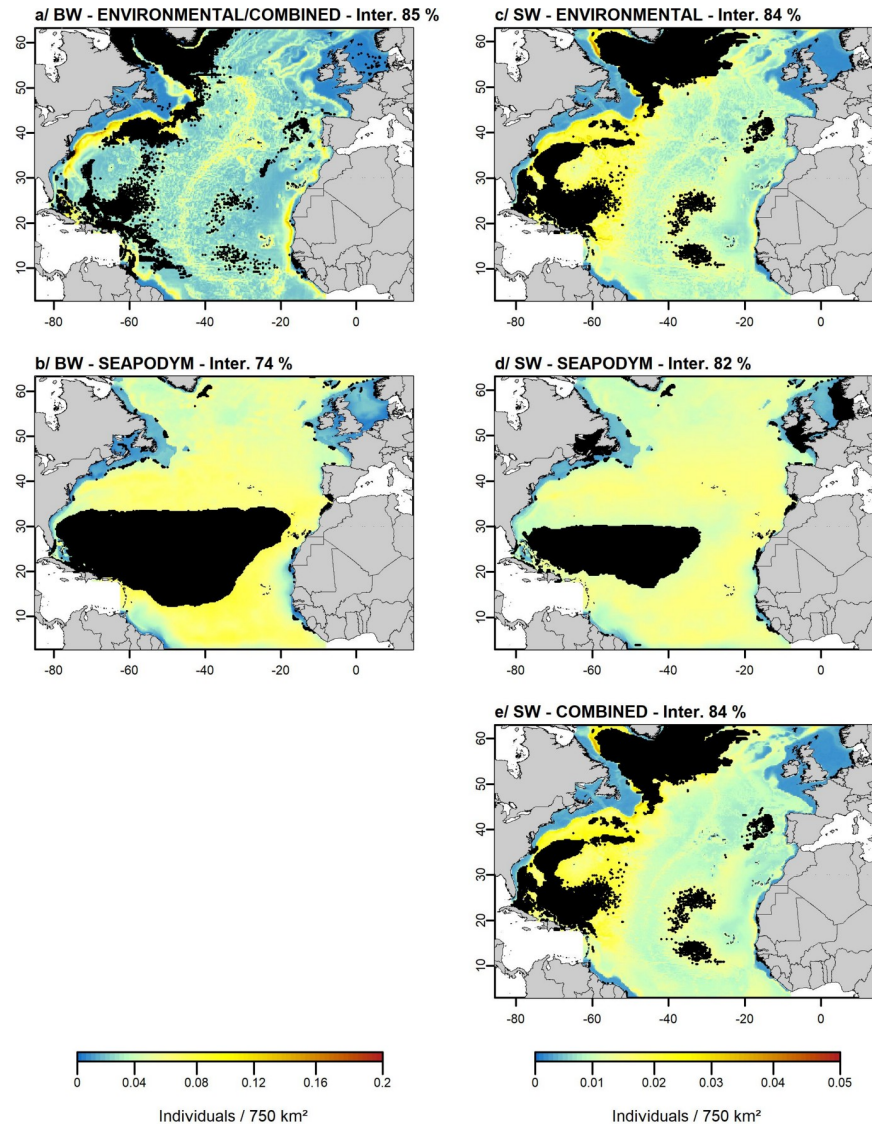


Fig 4. The predicted relative densities of beaked (BW) and sperm (SW) whales obtained from the ENVIRONMENTAL (a, c), SEAPODYM (b, d) and COMBINED (a, e) models. A square root scale has been used to visualise the predictions but the values in the legend represent the untransformed predicted values. The ENVIRONMENTAL and COMBINED models were identical for beaked whales thus represented only once. Black areas on prediction maps represent zones where we did not extrapolate the predictions. Percentages represent the proportion of the study area defined as interpolation (Inter.) with the gap analysis. Base map from <https://www.gebcos.org/>.

<https://doi.org/10.1371/journal.pone.0255667.g004>

Interpolation areas varied between the three models and were less extended for the SEAPODYM model (82%) compared to the ENVIRONMENTAL and COMBINED models (84%; Fig 4). In all cases, variances associated with the predictions were small (S4 Appendix).

Discussion

Indirect proxies of prey distribution such as SST or SSH are routinely used in habitat models to describe marine top predator distributions because prey data are generally unavailable. The relationships estimated between these proxies and predator occurrence or abundance are

therefore indirect. The integration of higher trophic levels in habitat models could improve the model performances and the ecological explanation of the relationships, as shown in Lambert et al. [21] or Putra & Mustika [66]. In this study, we incorporated potentially more direct variables into habitat-based density models by using simulated distributions of functional groups of prey. The models were fitted to sightings of deep-diving cetaceans (beaked and sperm whales) because their habitat use is still poorly known and they face important anthropogenic threats including activities producing high intensity noise (e.g., military sonars or seismic guns [29, 67]), which makes them species of major interest. For species that spend most of their time at depth, like deep-divers, information on potential prey in deep layers could improve current habitat models because they are mostly based on surface variables and not on variables that characterise deep layers [27, 32, 33, 68].

Methodological considerations

It may seem inappropriate to use prey simulations at depth to explain the distribution of surface sightings, it would be more appropriate to use tracking data [22]. However, the accepted underlying assumption (probably stronger than it is in reality) is that animals observed at the surface are present because they are mostly sensitive to the prey abundance [11, 15–18] and therefore a high prey biomass at depth could explain the presence of animals at the surface. Very few studies to date have used subsurface or depth variables to explain the distribution of predators. Brodie et al. [69] found the inclusion of two subsurface dynamic variables (bulk buoyancy frequency and isothermal layer depth) in species distribution models to better describe the habitats of four pelagic species in the California Current System and to increase model explanatory power and predictive performance for most species. A more systematic use of depth variables could improve the tools available for the planning of human activities, especially for species that would be closely linked to processes at depth.

The combination of sighting data from different ecosystems (e.g. North-East and North-West Atlantic) may mask inter-regional differences in the relationships between cetacean densities and the environmental predictors, as shown by Mannocci et al. [70] and may mask the influence of prey data on species distribution. The objective here, was to compare models using environmental variables, prey distribution variables, and a combination of the two types of variables to determine the extent to which the models could be improved and not necessarily explain precisely the mechanisms influencing the distribution of beaked and sperm whales, which would be more consistent at the scale of a smaller region. We built basin-wide models and did not investigate region-specific models (*sensu* [70]) in order to leverage large sample sizes for investigating the explanatory power of SEAPODYM variables for habitat use of deep-divers. We acknowledge that pooling regions across an oceanic basin may introduce bias, but this study is a first investigation, and appreciate region-specific models would represent an obvious improvement (once enough data are available at the regional scale). In a global conservation context, it is also important to study the broad scale cetacean distribution to obtain a more global prediction of this distribution.

One of the problems faced when studying the distribution of deep-diving cetaceans through habitat modelling is the lack of sighting data, it is necessary to assemble datasets from different surveys to obtain sufficient data to fit habitat models [27, 32, 68]. Sampling is therefore non-uniform, both spatially and temporally, with some areas, years or seasons being much more represented. For example, some years were only sampled in the northwest Atlantic area. Therefore, we chose to combine all the data to ensure we had enough data without considering a temporal effect in the models. However, temporality was taken into account when associating environmental conditions with effort segments, so when there was a sighting, it was associated with

environmental conditions averaged over the week for the SEAPODYM variables and over the month for the environmental variables before the sighting, to take into account potential time-lags [11–13]. When deep-diver data will be large enough to allow a more uniform temporal sampling, the temporal aspect will be taken into account in the models.

We took care in using appropriate statistical tools for modelling the habitat of species with few sightings [71]. Virgili et al. [71] showed that GAMs with a Tweedie distribution generated reliable habitat modelling predictions for rarely sighted marine predators. We constrained the number of variables in the models to a maximum of 4 (ensuring that they were all significant) to avoid excessive complexity of models and difficulty in their interpretation [53]. Although this could limit the purely predictive performance of our models, we were confident in the procedure parsimony for explanatory purposes. Indeed, the explained deviances obtained (between 20 and 40%) were high compared to other studies on cetaceans [63, 68], suggestive of a good fit to the data, and for each model, only four or five variables were actually important, the others representing a very small percentage of the Akaike weights (S3.2 Fig in [S3 Appendix](#)). As a result, four variable models were the best compromise between avoidance of overfitting, reduction of complexity and maximisation of interpretability.

Ability of SEAPODYM and environmental variables to model deep-diver distributions

The model comparison showed that for beaked whales, the explained deviance was higher and the RMSE was lower in the ENVIRONMENTAL model than in the SEAPODYM model, so environmental variables seemed to better explain their distribution than SEAPODYM variables; this could explain why no SEAPODYM variable was selected in the COMBINED model (most important variables for the beaked whale COMBINED model were only environmental variables; S3.2 Fig in [S3 Appendix](#)). As for Torres et al. [72], it is possible that the integration of prey data did not improve the explanatory power of the models because the prey sampling was not appropriate or there was a mismatch between the distribution of prey and predators because they respond to oceanographic processes at different spatial and temporal scales. The link between predators and the environment may therefore be simpler to model than the link between predators and prey [72] or the spatial resolution of the SEAPODYM variables (0.25°) was quite coarse to depict specific associations between an animal and its environment. In contrast, for sperm whales, the ENVIRONMENTAL and COMBINED models were comparable but the explained deviance and the RMSE were slightly better for the COMBINED model so SEAPODYM variables seemed to provide additional information to that provided by the environmental variables alone. The production of epipelagic organisms appeared to be one of the five most important variables in the sperm whale COMBINED model (S3.2 Fig in [S3 Appendix](#)). These results agreed with those of Hazen et al. [16] who showed that the performance of a model which included static (depth), oceanographic (salinity and temperature) and biological (deep scattering layer and number of available prey) variables was higher than that of the model which only included prey data. One hypothesis, suggested by Hazen et al. [16], would be that beaked whales do not necessarily track a particular type of prey but rather large-scale physiographic structures while sperm whales would be more pelagic predators, so the prey simulated by SEAPODYM would correspond more closely to the prey targeted by sperm whales than by beaked whales. Another hypothesis could be a temporal mismatch between SEAPODYM output and the growth rate of the actual prey of these species as discussed by Chambault et al. [73].

The functional groups of prey that were simulated from SEAPODYM may not directly reflect the prey targeted by deep-divers. The three biological layers of SEAPODYM are defined

between 0 and *ca.* 1,000 m with organisms ranging from 2 to 20 cm [44, 45], but deep-divers can feed beyond 1,000 m on prey bigger than 20 cm, mostly beaked whales [31, 74, 75]. From stomach contents, Spitz et al. [31] showed that the diet of Cuvier's beaked whales consisted largely of cephalopods bigger than 20 cm, *Teuthowenia megalops* ($21,2 \pm 3,3$ cm) and *Galioteuthis armata* ($24,2 \pm 2,4$ cm) and the diet of sperm whales was mostly composed of cephalopods close to 20 cm, *Histioteuthis bonnellii* ($17,8 \pm 3,7$ cm) in the north-east Atlantic Bay of Biscay. Thus, the functional groups of prey simulated in SEAPODYM may represent only a part of the prey targeted by deep-divers and the probable link could be mediated by deep-diver prey instead. The prey simulated in SEAPODYM may correspond more closely to the prey of the prey targeted by deep-divers. A similar phenomenon was observed in the study of Putra & Mustika [66] which showed that the zooplankton biomass was a strong predictor of the distribution of manta rays (*Mobula birostris*) because they feed directly on zooplankton whereas it was not a strong predictor for dolphins (*Stenella* spp.) because they are second- and third-level consumers. Nevertheless, the study shed light on dolphin foraging habits. It is likely the same situation in our study, the prey targeted by deep-divers may be larger than those simulated in SEAPODYM [31], therefore the simulated trophic levels may be lower than those actually targeted by deep-divers. This may explain why epipelagic organisms were retained in the sperm whale models, many bathypelagic squids and fishes are vertically migrating predators feeding at night in the epipelagic layer. In addition, the functional groups simulated by SEAPODYM encompass multiple organisms (fishes, cephalopods, crustaceans; [44, 45]), so deep-diver prey, which are mainly cephalopods, might be poorly represented in the functional groups in terms of biomass and production, even in upper and lower mesopelagic layers, explaining why they were not selected in the COMBINED models.

Although it would be more consistent to fit models at a regional scale, we highlighted interesting relationships with the environment and/or the simulated prey at a large scale. Relationships obtained in the ENVIRONMENTAL models suggested a preference for habitats associated with topographic features and thermal fronts for both species, as previously shown [27, 32, 33]. Comparatively, SEAPODYM variables reveal areas of prey concentration whereas environmental variables are only indirect proxies of the prey distribution. Putra & Mustika [66] suggested that chlorophyll *a* concentrations are not spatially correlated to high zooplankton biomasses because of the time lag between phytoplankton development and meso-zooplankton growth, therefore dolphin (*Stenella* spp.) densities would be higher where zooplankton biomasses would be higher but where chlorophyll *a* concentrations would be lower. SEAPODYM variables could thus give a better idea of the foraging areas used by the species [19, 23, 45]. We found that beaked whales were closely related to quite high biomass of lower mesopelagic organisms, low biomass of migrant upper mesopelagic organisms, low production of migrant lower mesopelagic organisms and deep euphotic depth. This would suggest a preference for habitats where the euphotic zone is extended and with large prey of the lower mesopelagic layer but not a preference for large organisms of the upper mesopelagic layer, which could partly correspond to the prey targeted by beaked whales [31]. Sperm whales were closely related to quite high biomass of lower mesopelagic organisms, low biomass of epipelagic organisms, high production of epipelagic organisms and deep euphotic depth. As for beaked whales, this would suggest a preference for habitats where the euphotic zone is extended, with large prey of the lower mesopelagic layer but also abundant small epipelagic prey *i.e.* a productive habitat at the surface which allow the development of large prey at depth. This is partly consistent with the diet of sperm whales which seems more flexible than the diet of beaked whales [31]. The positive relationship with epipelagic production and the negative relationship with epipelagic biomass would indicate habitats with abundant small epipelagic prey and not large epipelagic prey, which would be consistent with the previously mentioned

hypothesis that this would be the prey targeted by sperm whale prey. The variables selected in the COMBINED models (or ENVIRONMENTAL model for beaked whale) would suggest that beaked whales were more associated with physiographic features around 2,000 m deep so they might forage on organisms living close to the seabed that may be poorly modelled by SEAPODYM. By contrast, sperm whales would be less constrained by the presence of the slope, and would therefore prey on organisms that are truly pelagic [76], and therefore possibly better modelled by SEAPODYM. The addition of other depth variables such as the bottom temperature could help clarify the relationship with depth [77]. Other variables could also be considered in the models such as SSH fronts, characteristics of the eddies (e.g. radius, type), however the objective here was to compare SEAPODYM variables to environmental surface variables commonly used and known to influence the deep-diver distribution [27, 32, 33, 68]. It would be particularly interesting to characterise eddies (e.g. cyclonic or anticyclonic) to assess whether deep-divers preferentially select a certain type of eddy as it would appear that prey aggregating at eddies are different depending on their rotation cycles [78].

The euphotic depth, which is the maximum depth of the light zone suitable for phytoplankton photosynthesis, was selected for both beaked whales and sperm whales in the SEAPODYM models with increasing relationships. The euphotic depth was a variable available in SEAPODYM but the mixed layer depth would probably be more informative for deep-divers because it provides information on the depth of the thermocline which is frequently used by diving animals [77], it would therefore be interesting to explore the differences in the relationship between these two types of variables for deep-divers.

For both beaked and sperm whales, depth was selected in the models. There is a great interest in including depth in the models because it is a well-measured variable, *i.e.* with low associated measurement error, unlike remote sensed or modelled variables which may help improving the explanatory power of the models. Pendleton et al. [79] observed similar results for bowhead whales (*Balaena mysticetus*). They compared a model using only environmental and biological variables such as sea ice thickness, sea temperature, diatoms, flagellates, copepods and zooplankton from the Biology Ice Ocean Modeling and Assimilation System (BIOMAS) to a model using these variables plus bathymetry and showed that the best model included bathymetry and BIOMAS variables. The importance of bathymetry suggests there is probably a close relationship between bathymetry and the biophysical processes that determine the distribution of these cetaceans.

Overall, no beaked whales and sperm whales were predicted on the continental shelf because no sightings were recorded, which confirms the non-suitability of this habitat for these species [32, 33]. The bathymetry greatly influenced the beaked and sperm whale distributions in the ENVIRONMENTAL and COMBINED models, with the highest densities predicted near slope discontinuities where the bottom is steep and where prey aggregate [80, 81]. A west-east density gradient was also observed for both species, which is consistent with the studies of Roberts et al. [32] and Rogan et al. [33]. Sperm whales, appeared to be less linked to these structures than beaked whales and their distribution was slightly more homogeneous. With SEAPODYM variables, predicted densities were lower and prediction maps were smoother (a common scale was applied to facilitate the comparison). Beaked and sperm whales seemed homogeneously distributed in oceanic waters, which was not very consistent with the sightings and highlighted the poorer performance of the models (higher RMSEs). As previously showed in Lambert et al. [21], these smoother predictions may be due to the large resolution of the variables. The spatial resolution of the SEAPODYM variables is currently set to 0.25° but is planned to be refined to 0.08° and a finer spatial resolution may reduce this smooth effect. However, by adding environmental variables, particularly depth, in the sperm whale COMBINED model, the model performance was increased (higher explained deviance and

lower RMSE) and the prediction was more spatially detailed with highest densities predicted in the western Atlantic.

We performed a gap analysis to highlight geographical extrapolation areas in which environmental and SEAPODYM variables were out ranges of surveyed conditions. The centre of the study area, near the Mid-Atlantic Ridge, was not surveyed but variable conditions remained within the ranges of surveyed conditions, allowing to predict distribution at a large scale. The gap analysis revealed large gaps in environmental space coverage across the study area, especially in the western part of the Atlantic Ocean for the ENVIRONMENTAL models and in tropical waters for the SEAPODYM models. This suggests that sampling effort was not sufficient in deeper and steeper areas and more intensive sampling effort performed in these areas could help better describe the habitat used by deep-divers. The interpolation areas varied between the different models, from 74/82% for the SEAPODYM models to 84%/85% for the ENVIRONMENTAL and COMBINED models, which means that 18 and 26% of the area represented an environmental extrapolation with the SEAPODYM models, compared to only 16% with the COMBINED models for sperm whales and 15% in the ENVIRONMENTAL model for beaked whales. The uncertainties were thus greater with the SEAPODYM models and it appeared riskier to perform models at a large scale with SEAPODYM variables only, than with environmental variables. For sperm whales, by combining both types of variables, this risk was slightly reduced compared to the SEAPODYM model and areas of concentration seemed more spatially detailed and better characterised with the COMBINED model, as revealed by a lower RMSE. To meet sperm whale conservation objectives, it seems more valuable to use models combining environmental variables and prey distribution data. Habitat models are regularly used to identify areas where species concentrate in order to set up protection areas [82–84]. They are also useful for predicting species distribution in non-sampled or poorly documented areas [85, 86], provided that areas of interpolation and extrapolation are considered [27, 57, 58]. Considering key habitats of species, particularly foraging habitats, in the design of marine protected areas thanks to the combination of environmental and prey variables (with further development to include prey of all types of predators) would represent an improvement in the tools available for species conservation, and consideration could be given to reducing the overlap between impacting human activities and these key habitats [87, 88].

Conclusion

Prey distribution data are not widely available to model the distribution of marine top predators. However, there are models, still not widely used, such as SEAPODYM, which simulate the distribution of functional groups of prey. SEAPODYM did not seem to model accurately the prey of deep-diving cetaceans assuming the later are sighted at the surface of their foraging grounds. By combining SEAPODYM and environmental variables the increase model performance for sperm whale was only marginal. For beaked whales, combining variables did not improve the model performance at all, no SEAPODYM variable was selected in the best model, possibly because they feed on organisms more associated to seabed features and consequently less well predicted by SEAPODYM that focus on pelagic prey assemblages. This study was a first investigation and we mostly highlighted the importance of the physiographic variables to understand mechanisms that influence the distribution of deep-diving cetaceans. To improve the results, it would be interesting to refine spatial resolution of the variables, to fit region-specific models or to apply this approach to species whose functional groups of prey would be better represented in SEAPODYM such as baleen whales or small delphinids. A more systematic use of SEAPODYM could allow to better define the limits of its use and a development of the model that would simulate larger prey beyond 1,000 m would probably better characterise the prey of deep-diving cetaceans.

Supporting information

S1 Appendix. Details of surveys used in the analyses. Total effort represents the total length of transects of each survey (without removing the transects with a Beaufort sea-state > 4). NE-ATL: Northeast Atlantic Ocean; NW-ATL: Northwest Atlantic Ocean. (PDF)

S2 Appendix. Average conditions of the static, oceanographic and SEAPODYM variables over the entire period (from 1998 to 2015). Base map from <https://www.gebco.net/>. (PDF)

S3 Appendix. Correlations between environmental and SEAPODYM variables and model outputs for beaked and sperm whales. (PDF)

S4 Appendix. Uncertainty maps representing the standard error associated with the predicted relative density of beaked (BW) and sperm (SW) whales. Black areas represent extrapolation where we did not extrapolate the predictions. Base map from <https://www.gebco.net/>. (TIF)

Acknowledgments

We are grateful to the many observers who participated in the surveys and collected all the data but also the ships' captains, crews and pilots. We thank Phil Hammond and his team for providing SCANS and CODA survey data. THUNNUS survey was carried out thanks to the collaboration of the General Directorate of Fisheries and Maritime Affairs, Government of Galicia. We thank the *Direction Générale de l'Armement* (DGA), including Odile Gérard and Carole Nahum, for their support during this study. We warmly thank Charlotte Lambert for her help, support and comments. We thank Philippine Chambault and the two other anonymous referees, for their very helpful comments that led to a clearer and much improved manuscript.

Author Contributions

Conceptualization: Auriane Virgili, Vincent Ridoux.

Formal analysis: Auriane Virgili, Laura Hedon, Matthieu Authier.

Methodology: Auriane Virgili, Laura Hedon, Matthieu Authier, Beatriz Calmettes, Patrick Lehodey, Pascal Monestiez.

Resources: Beatriz Calmettes, Diane Claridge, Tim Cole, Peter Corkeron, Ghislain Dorémus, Charlotte Dunn, Tim E. Dunn, Sophie Laran, Patrick Lehodey, Mark Lewis, Maite Louzao, Laura Mannocci, José Martínez-Cedeira, Debra Palka, Emeline Pettex, Jason J. Roberts, Leire Ruiz, Camilo Saavedra, M. Begoña Santos, Olivier Van Canneyt, José Antonio Vázquez Bonales.

Supervision: Pascal Monestiez, Vincent Ridoux.

Validation: Vincent Ridoux.

Writing – original draft: Auriane Virgili.

Writing – review & editing: Auriane Virgili, Laura Hedon, Matthieu Authier, Beatriz Calmettes, Diane Claridge, Tim Cole, Peter Corkeron, Ghislain Dorémus, Charlotte Dunn, Tim

E. Dunn, Sophie Laran, Patrick Lehodey, Mark Lewis, Maite Louzao, Laura Mannocci, José Martínez-Cedeira, Pascal Monestiez, Debra Palka, Emeline Pettex, Jason J. Roberts, Leire Ruiz, Camilo Saavedra, M. Begoña Santos, Olivier Van Canneyt, José Antonio Vázquez Bonales, Vincent Ridoux.

References

1. Schipper J, Chanson J.S, Chiozza F, Cox N.A, Hoffmann M, Katariya V, et al. 2008. The Status of the World's Land and Marine Mammals: Diversity, Threat, and Knowledge. *Science*, 322: 225–230. <https://doi.org/10.1126/science.1165115> PMID: 18845749
2. Avila I.C, Kaschner K, Dormann C.F. 2018. Current global risks to marine mammals: Taking stock of the threats. *Biological Conservation*, 221: 44–58.
3. Panti C, Baini M, Lusher A, Hernandez-Milan G, Rebolledo E.L.B, Unger B, et al. 2019. Marine litter: one of the major threats for marine mammals. Outcomes from the European Cetacean Society workshop. *Environmental pollution*, 247: 72–79. <https://doi.org/10.1016/j.envpol.2019.01.029> PMID: 30654256
4. Elith J, & Leathwick J.R. 2009. Species distribution models: ecological explanation and prediction across space and time. *Annual review of ecology, evolution, and systematics*, 40: 677–697.
5. Guisan A, & Zimmermann N.E. 2000. Predictive habitat distribution models in ecology. *Ecological modelling*, 135(2–3): 147–186.
6. Yen P.P, Sydeman W.J, Hyrenbach K.D. 2004. Marine bird and cetacean associations with bathymetric habitats and shallow-water topographies: implications for trophic transfer and conservation. *Journal of Marine systems*, 50(1–2): 79–99.
7. Redfern J.V, Ferguson M.C, Becker E.A, Hyrenbach K.D, Good C, Barlow J, et al. 2006. Techniques for cetacean – habitat modeling. *Marine Ecology Progress Series*, 310: 271–295.
8. Lambert C, Laran S, David L, Dorémus G, Pettex E, Van Canneyt O, Ridoux V. 2017. How does ocean seasonality drive habitat preferences of highly mobile top predators? Part I: the north-western Mediterranean Sea. *Deep Sea Research Part II: Topical Studies in Oceanography*, 141: 115–132.
9. Jaquet N, & Whitehead H. 1996. Scale-dependent correlation of sperm whale distribution with environmental features and productivity in the South Pacific. *Marine ecology progress series*: 1–9.
10. Ferguson M.C, Barlow J, Reilly S.B, Gerrodette T. 2006. Predicting Cuvier's (*Ziphius cavirostris*) and Mesoplodon beaked whale population density from habitat characteristics in the eastern tropical Pacific Ocean. *Journal of Cetacean Research and Management*, 7: 287–299.
11. Grémillet D, Lewis S, Drapeau L, van Der Lingen C. D, Huggett J. A., Coetzee J. C, et al. 2008. Spatial match–mismatch in the Benguela upwelling zone: should we expect chlorophyll and sea-surface temperature to predict marine predator distributions? *Journal of Applied Ecology*, 45(2): 610–621.
12. Austin D, Bowen W.D, McMillan J.I, Iverson S.J. 2006. Linking Movement, Diving, and Habitat to Foraging Success in a Large Marine Predator. *Ecology*, 87: 3095–3108. [https://doi.org/10.1890/0012-9658\(2006\)87\[3095:Imdaht\]2.0.co;2](https://doi.org/10.1890/0012-9658(2006)87[3095:Imdaht]2.0.co;2) PMID: 17249234
13. Cotté C, Guinet C, Taupier-Letage I, Mate B, Petiau E. 2009. Scale-dependent habitat use by a large free-ranging predator, the Mediterranean fin whale. *Deep Sea Research Part I: Oceanographic Research Papers*, 56: 801–811.
14. Croll D.A, Marinovic B, Benson S, Chavez F.P, Black N, Ternullo R, et al. (2005). From wind to whales: trophic links in a coastal upwelling system. *Marine Ecology Progress Series*, 289: 117–130.
15. Österblom H, Olsson O, Blenckner T, Furness R.W. 2008. Junk-food in marine ecosystems. *Oikos*, 117: 967–977.
16. Hazen E.L, Nowacek D.P, Laurent L.S, Halpin P.N, Moretti D.J. 2011. The relationship among oceanography, prey fields, and beaked whale foraging habitat in the Tongue of the Ocean. *PloS one*, 6(4): e19269. <https://doi.org/10.1371/journal.pone.0019269> PMID: 21556355
17. Louzao M, Valeiras J, García-Barcelona S, González-Quirós R, Nogueira E, Iglesias M, et al. 2019. Marine megafauna niche coexistence and hotspot areas in a temperate ecosystem. *Continental Shelf Research*, 186: 77–87.
18. Rockwood R.C, Elliott M.L, Saenz B, Nur N, Jahncke J. 2020. Modeling predator and prey hotspots: Management implications of baleen whale co-occurrence with krill in Central California. *PloS one*, 15(7): e0235603. <https://doi.org/10.1371/journal.pone.0235603> PMID: 32634142
19. Lehodey P, Murtugudde R, Senina I. 2010. Bridging the gap from ocean models to population dynamics of large marine predators: a model of mid-trophic functional groups. *Progress in Oceanography*, 84(1): 69–84.

20. Abecassis M, Senina I, Lehodey P, Gaspar P, Parker D, Balazs G, et al. 2013. A model of loggerhead sea turtle (*Caretta caretta*) habitat and movement in the oceanic North Pacific. *PLoS One*, 8(9): e73274. <https://doi.org/10.1371/journal.pone.0073274> PMID: 24039901
21. Lambert C, Mannocci L, Lehodey P, Ridoux V. 2014. Predicting cetacean habitats from their energetic needs and the distribution of their prey in two contrasted tropical regions. *PloS one*, 9(8): e105958. <https://doi.org/10.1371/journal.pone.0105958> PMID: 25162643
22. Green D.B, Bestley S, Trebilco R, Corney S.P, Lehodey P, McMahon C.R, et al. 2020. Modelled mid-trophic pelagic prey fields improve understanding of marine predator foraging behaviour. *Ecography*, 43:1–13.
23. Lehodey P, Senina I, Murtugudde R. 2008. A spatial ecosystem and populations dynamics model (SEA-PODYM)—Modeling of tuna and tuna-like populations. *Progress in Oceanography*, 78(4): 304–318.
24. Briand K, Molony B, Lehodey P. 2011. A study on the variability of albacore (*Thunnus alalunga*) longline catch rates in the southwest Pacific Ocean. *Fisheries Oceanography*, 20(6): 517–529.
25. Pérez-Jorge S, Tobeña M, Prieto R, Vandepierre F, Calmettes B, Lehodey P, et al. 2020. Environmental drivers of large-scale movements of baleen whales in the mid-North Atlantic Ocean. *Diversity and Distributions*, 26: 683–698.
26. Chambault P, de Thoisy B, Heerah K, Conchon A, Barrioz S, Dos Reis V, et al. (2016). The influence of oceanographic features on the foraging behavior of the olive ridley sea turtle *Lepidochelys olivacea* along the Guiana coast. *Progress in Oceanography*, 142: 58–71.
27. Virgili A, Authier M, Boisseau O, Cañadas A, Claridge D, Cole T, et al. 2019. Combining multiple visual surveys to model the habitat of deep-diving cetaceans at the basin scale. *Global Ecology and Biogeography*, 28(3): 300–314.
28. Fernández A, Edwards J.F, Rodríguez F, Espinosa de los Monteros A, Herráez P, Castro P, et al. (2005). “Gas and fat embolic syndrome” involving a mass stranding of beaked whales (family Ziphiidae) exposed to anthropogenic sonar signals. *Veterinary Pathology*, 42: 446–457. <https://doi.org/10.1354/vp.42-4-446> PMID: 16006604
29. D’Amico A, Gisiner R.C, Ketten D.R, Hammock J.A, Johnson C, Tyack P.L, et al. (2009). Beaked whale strandings and naval exercises. *Aquatic Mammals*, 35: 452–472.
30. Perrin W.F, Würsig B, Thewissen J.G.M. (Eds.). 2009. *Encyclopedia of marine mammals*. Academic Press.
31. Spitz J, Chereil Y, Bertin S, Kiszka J, Dewez A, Ridoux V. 2011. Prey preferences among the community of deep-diving odontocetes from the Bay of Biscay, Northeast Atlantic. *Deep Sea Research I*, 58: 273–282.
32. Roberts J.J, Best B.D, Mannocci L, Fujioka E, Halpin P.N, Palka D.L, et al. 2016. Habitat-based cetacean density models for the U.S. Atlantic and Gulf of Mexico. *Scientific Report*, 6. <https://doi.org/10.1038/srep22615> PMID: 26936335
33. Rogan E, Cañadas A, Macleod K, Santos M.B, Mikkelsen B, Uriarte A, et al. 2017. Distribution abundance and habitat use of deep diving cetaceans in the North-East Atlantic. *Deep Sea Research Part II: Topical Studies in Oceanography*, 141: 8–19.
34. Levin L.A, & Gooday A. 2003. *The Deep Atlantic Ocean. Ecosystems of the deep oceans*. (Tyler PA, Ed.). pp. 111–178. Amsterdam; New York: Elsevier.
35. Tomczak M, & Godfrey J.S. 2003. *Regional oceanography: an introduction*. Elsevier.
36. Campbell J.W, & Aarup T. 1992. New production in the North Atlantic derived from seasonal patterns of surface chlorophyll. *Deep Sea Research Part A. Oceanographic Research Papers*, 39: 1669–1694.
37. ESRI. 2016. *ArcGIS—A complete integrated system*. Redlands, CA: Environmental Systems Research Institute Inc. Retrieved from <http://esri.com/arcgis>.
38. Roberts J.J, Best B.D, Dunn D.C, Trembl E.A, Halpin P.N. 2010. Marine geospatial ecology tools: An integrated framework for ecological geoprocessing with ArcGIS, Python, R, MATLAB, and C++. *Environmental Modelling and Software*, 25: 1197–1207.
39. Buckland S.T, Rexstad E.A, Marques T.A, Oedekoven C.S. 2015. *Distance sampling: methods and applications*. Springer.
40. Bivand R.S. & Wong D.W.S (2018) Comparing implementations of global and local indicators of spatial association TEST, 27(3), 716–748. Retrieved from <https://doi.org/10.1007/s11749-018-0599-x>.
41. Harris P.T, Macmillan-Lawler M, Rupp J, Baker E.K. 2014. Geomorphology of the oceans. *Marine Geology*, 352: 4–24.
42. Canada Meteorological Center. 2012. GHRSSST level 4 CMC0.2deg global foundation sea surface temperature analysis (GDS version 2). Ver. 2.0. PO.DAAC. Pasadena, CA.
43. Lehodey P, Andre J.M, Bertignac M, Hampton J, Stoens A, Menkès C, et al. 1998. Predicting skipjack tuna forage distributions in the equatorial Pacific using a coupled dynamical bio-geochemical model. *Fisheries Oceanography*, 7(3–4): 317–325.

44. Conchon A. 2016. Modeling marine zooplankton and micronekton (Doctoral dissertation, La Rochelle University).
45. Lehodey P, Conchon A, Senina I, Domokos R, Calmettes B, Jouanno J, et al. 2014. Optimization of a micronekton model with acoustic data. *ICES Journal of Marine Science*, 72(5): 1399–1412.
46. Behrenfeld M.J., & Falkowski P.G. 1997. A consumer's guide to phytoplankton primary productivity models. *Limnology and Oceanography*, 42: 1479–1491.
47. Hays G.C. 2003. A review of the adaptive significance and ecosystem consequences of zooplankton diel vertical migrations. In *Migrations and Dispersal of Marine Organisms* (pp. 163–170). Springer, Dordrecht.
48. Hastie T & Tibshirani R. 1986. Generalized Additive Models. *Statistical Science*, 3: 297–313.
49. Wood S.N. 2006. On confidence intervals for generalized additive models based on penalized regression splines. *Australian & New Zealand Journal of Statistics*, 48: 445–464.
50. Foster S.D., & Bravington M.V. 2013. A Poisson-Gamma model for analysis of ecological non-negative continuous data. *Environmental and ecological statistics*, 20: 533–552.
51. Wood S. 2013. mgcv: Mixed GAM Computation Vehicle with GCV/AIC/REML smoothness estimation. Retrieved 7 July 2014, from <http://cran.r-project.org/web/packages/mgcv/index.html>.
52. Hedley S.L., & Buckland S.T. 2004. Spatial models for line transect sampling. *Journal of Agricultural, Biological, and Environmental Statistics*, 9(2): 181–199.
53. Mannocci L, Catalogna M, Dorémus G, Laran S, Lehodey P, Massart W, et al. 2014. Predicting cetacean and seabird habitats across a productivity gradient in the South Pacific gyre. *Progress in Oceanography*, 120: 383–398.
54. Burnham K.P., & Anderson D.R. 2002. *Model selection and multimodel inference*, 2nd edn. Springer, New York.
55. Spiess A. 2014. qpcR: Modelling and analysis of real-time PCR data. R package version 1.4-0. Retrieved from <https://CRAN.R-project.org/package=qpcR>.
56. Symonds M.R., & Moussalli A. (2011). A brief guide to model selection, multimodel inference and model averaging in behavioural ecology using Akaike's information criterion. *Behavioral Ecology and Sociobiology*, 65(1): 13–21.
57. Jennings M.D. 2000. Gap analysis: Concepts, methods, and recent results. *Landscape Ecology*, 15: 5–20.
58. Mannocci L, Roberts J.J, Halpin P.N, Authier M, Boisseau O, Bradai M.N, et al. 2018. Assessing cetacean surveys throughout the Mediterranean Sea: A gap analysis in environmental space. *Scientific Reports*, 8(1): 3126. <https://doi.org/10.1038/s41598-018-19842-9> PMID: 29449646
59. Bouchet P.J, Miller D.L, Roberts J.J, Mannocci L, Harris C.M, Thomas L. 2019. From here and now to there and then: Practical recommendations for extrapolating cetacean density surface models to novel conditions. Technical report 2019–01 v1.0, Centre for Research into Ecological & Environmental Modelling (CREEM), University of St Andrews, 59 p.
60. Stoll H, King G, Zeng L. 2014. WhatIf: Software for evaluating counterfactuals. R package version 1.5-6. Retrieved from <https://cran.r-project.org/web/packages/WhatIf/index.html>.
61. Authier M, Saraux C, Péron C. 2016. Variable selection and accurate predictions in habitat modelling: A shrinkage approach. *Ecography*, 40: 549–560.
62. King G, & Zeng L. 2007. When can history be our guide? The pitfalls of counterfactual inference. *International Studies Quarterly*, 51: 183–210.
63. Becker E.A, Forney K.A, Thayre B.J, Debich A.J, Campbell G.S, Whitaker K, et al. (2017). Habitat-based density models for three cetacean species off Southern California illustrate pronounced seasonal differences. *Frontiers in Marine Science*, 4:121.
64. Neill S.P., & Hashemi M.R. (2018). *Fundamentals of ocean renewable energy: generating electricity from the sea*. Academic Press, pp 193–235.
65. Becker E.A, Carretta J.V, Forney K.A, Barlow J, Brodie S, Hoopes R, et al. (2020). Performance evaluation of cetacean species distribution models developed using generalized additive models and boosted regression trees. *Ecology and evolution*, 10(12): 5759–5784. <https://doi.org/10.1002/ece3.6316> PMID: 32607189
66. Putra M.I.H, & Mustika P.L.K. 2020. Incorporating in situ prey distribution into foraging habitat modelling for marine megafauna in the Solor waters of the Savu Sea, Indonesia. *Aquatic Conservation: marine and freshwater ecosystems*, 30(12): 2384–2401.
67. Stone C.J., & Tasker M.L (2006). The effects of seismic airguns on cetaceans in UK waters. *Journal of Cetacean Research and Management*, 8: 255–263.
68. Cañadas A, de Soto N.A, Aissi M, Arcangeli A, Azzolin M, B-Nagy A., et al. 2018. The challenge of habitat modelling for threatened low density species using heterogeneous data: The case of Cuvier's beaked whales in the Mediterranean. *Ecological Indicators*, 85: 128–136.

69. Brodie S, Jacox M.G, Bograd S.J, Welch H, Dewar H, Scales K.L, et al. (2018). Integrating dynamic subsurface habitat metrics into species distribution models. *Frontiers in Marine Science*, 5: 219.
70. Mannocci L, Roberts J.J, Pedersen E.J, Halpin P.N. 2020. Geographical differences in habitat relationships of cetaceans across an ocean basin. *Ecography*, 43:1–10
71. Virgili A, Authier M, Monestiez P, Ridoux V. (2018). How many sightings to model rare marine species distributions. *PLoS ONE*, 13(3): e0193231. <https://doi.org/10.1371/journal.pone.0193231> PMID: 29529097
72. Torres L.G, Read A.J, Halpin P. 2008. Fine-scale habitat modeling of a top marine predator: Do prey data improve predictive capacity. *Ecological Applications*, 18(7): 1702–1717. <https://doi.org/10.1890/07-1455.1> PMID: 18839765
73. Chambault P, Roquet F, Benhamou S, Baudena A, Pauthenet E, de Thoisy B, et al. (2017). The Gulf Stream frontal system: A key oceanographic feature in the habitat selection of the leatherback turtle? *Deep Sea Research Part I: Oceanographic Research Papers*, 123: 35–47.
74. Watwood S.L, Miller P.J, Johnson M, Madsen P.T, Tyack P.L. 2006. Deep-diving foraging behaviour of sperm whales (*Physeter macrocephalus*). *Journal of Animal Ecology*, 75(3): 814–825.
75. Madsen P.T, de Soto N.A, Tyack P.L., Johnson M. 2014. Beaked whales. *Current Biology*, 24(16): 728–730. <https://doi.org/10.1016/j.cub.2014.06.041> PMID: 25137578
76. Irvine L, Palacios D.M, Urbán J, Mate B. (2017). Sperm whale dive behavior characteristics derived from intermediate-duration archival tag data. *Ecology and evolution*, 7(19): 7822–7837. <https://doi.org/10.1002/ece3.3322> PMID: 29043037
77. Chambault P, Fossette S, Heide-Jørgensen M.P, Jouannet D, Vély M. (2021). Predicting seasonal movements and distribution of the sperm whale using machine learning algorithms. *Ecology and evolution*, 11(3): 1432–1445. <https://doi.org/10.1002/ece3.7154> PMID: 33598142
78. Jaquemet S, Ternon J.F, Kaehler S, Thiebot J.B, Dyer B, Bemanaja E, et al. 2014. Contrasted structuring effects of mesoscale features on the seabird community in the Mozambique Channel. *Deep Sea Research Part II: Topical Studies in Oceanography*, 100: 200–211.
79. Pendleton D.E, Holmes E.E, Redfern J, Zhang J. 2020. Using modelled prey to predict the distribution of a highly mobile marine mammal. *Diversity and Distributions*, 26(11): 1612–1626.
80. Bost C.A, Cotté C, Bailleul F, Cherel Y, Charrassin J.B, Guinet C, et al. 2009. The importance of oceanographic fronts to marine birds and mammals of the southern oceans. *Journal of Marine Systems*, 78: 363–376.
81. Woodson C.B. & Litvin S.Y. 2015. Ocean fronts drive marine fishery production and biogeochemical cycling. *Proceedings of the National Academy of Sciences*, 112(6): 1710–1715. <https://doi.org/10.1073/pnas.1417143112> PMID: 25624488
82. Cañadas A, Sagarminaga R, De Stephanis R, Urquiola E, Hammond P.S. 2005. Habitat preference modelling as a conservation tool: Proposals for marine protected areas for cetaceans in southern Spanish waters. *Aquatic Conservation: Marine and Freshwater Ecosystems*, 15(5): 495–521.
83. McShea W.J. 2014. What are the roles of species distribution models in conservation planning? *Environmental Conservation*, 41: 93–96.
84. Hazen E.L, Palacios D.M, Forney K.A, Howell E.A, Becker E, Hoover A.L, et al. 2017. WhaleWatch: A dynamic management tool for predicting blue whale density in the California Current. *Journal of Applied Ecology*, 54(5): 1415–1428.
85. Fleishman E, Nally R.M, Fay J.P, Murphy D.D. 2001. Modeling and predicting species occurrence using broad-scale environmental variables: An example with butterflies of the Great Basin. *Conservation Biology*, 15(6): 1674–1685.
86. Lumaret J.P, & Jay-Robert P. 2002. Modelling the species richness distribution of French dung beetles (Coleoptera, Scarabaeidae) and delimiting the predictive capacity of different groups of explanatory variables. *Global Ecology and Biogeography*, 11(4): 265–277.
87. Thaxter C.B, Lascelles B, Sugar K, Cook A.S, Roos S, Bolton M, et al. 2012. Seabird foraging ranges as a preliminary tool for identifying candidate Marine Protected Areas. *Biological Conservation*, 156: 53–61.
88. Young H.S, Maxwell S.M, Connors M.G, Shaffer S.A. 2015. Pelagic marine protected areas protect foraging habitat for multiple breeding seabirds in the central Pacific. *Biological Conservation*, 181: 226–235.