



**HAL**  
open science

## The Ion Transition Range of Solar Wind Turbulence in the Inner Heliosphere: Parker Solar Probe Observations

S. Huang, F. Sahraoui, N. Andrés, L. Hadid, Z. Yuan, J. He, J. Zhao, S. Galtier, J. Zhang, X. Deng, et al.

### ► To cite this version:

S. Huang, F. Sahraoui, N. Andrés, L. Hadid, Z. Yuan, et al.. The Ion Transition Range of Solar Wind Turbulence in the Inner Heliosphere: Parker Solar Probe Observations. *The Astrophysical journal letters*, 2021, 909 (1), pp.L7. 10.3847/2041-8213/abdaaf. hal-03334254

**HAL Id: hal-03334254**

**<https://hal.science/hal-03334254v1>**









Submitted on 16 Sep 2022

**HAL** is a multi-disciplinary open access archive for the deposit and dissemination of scientific research documents, whether they are published or not. The documents may come from teaching and research institutions in France or abroad, or from public or private research centers.

L'archive ouverte pluridisciplinaire **HAL**, est destinée au dépôt et à la diffusion de documents scientifiques de niveau recherche, publiés ou non, émanant des établissements d'enseignement et de recherche français ou étrangers, des laboratoires publics ou privés.



# The Ion Transition Range of Solar Wind Turbulence in the Inner Heliosphere: Parker Solar Probe Observations

S. Y. Huang<sup>1</sup>, F. Sahraoui<sup>2</sup>, N. Andrés<sup>3,4</sup> , L. Z. Hadid<sup>2</sup>, Z. G. Yuan<sup>1</sup>, J. S. He<sup>5</sup> , J. S. Zhao<sup>6</sup> , S. Galtier<sup>2</sup> , J. Zhang<sup>1</sup> , X. H. Deng<sup>7</sup>, K. Jiang<sup>1</sup>, L. Yu<sup>1</sup>, S. B. Xu<sup>1</sup>, Q. Y. Xiong<sup>1</sup>, Y. Y. Wei<sup>1</sup>, T. Dudok de Wit<sup>8</sup> , S. D. Bale<sup>9</sup> , and J. C. Kasper<sup>10</sup> 

<sup>2</sup>Laboratoire de Physique des Plasmas, CNRS-Ecole Polytechnique-Sorbonne, Université Paris-Saclay, Observatoire de Paris-Meudon, F-91128 Palaiseau, France

<sup>3</sup>Instituto de Astronomía y Física del Espacio, CONICET-UBA, Ciudad Universitaria, 1428, Buenos Aires, Argentina

<sup>4</sup>Departamento de Física, Facultad de Ciencias Exactas y Naturales, UBA, Ciudad Universitaria, 1428, Buenos Aires, Argentina

<sup>5</sup>School of Electronic Information, Wuhan University, Wuhan, 430072, People's Republic of China

<sup>6</sup>Purple Mountain Observatory, Chinese Academy of Sciences, 210023, Nanjing, People's Republic of China

<sup>7</sup>Institute of Space Science and Technology, Nanchang University, Nanchang, 330031, People's Republic of China

<sup>8</sup>LPC2E, CNRS/CNES/University of Orléans, F-45071 Orléans, France

<sup>9</sup>Space Sciences Laboratory and Physics Department, University of California, Berkeley, CA 94720-7450, USA

<sup>10</sup>Department of Climate and Space Sciences and Engineering, University of Michigan, Ann Arbor, MI 48109, USA; [shiyonghuang@whu.edu.cn](mailto:shiyonghuang@whu.edu.cn)

Received 2020 November 25; revised 2021 January 10; accepted 2021 January 11; published 2021 March 2

## Abstract

The scaling of the turbulent spectra provides a key measurement that allows us to discriminate between different theoretical predictions of turbulence. In the solar wind, this has driven a large number of studies dedicated to this issue using in situ data from various orbiting spacecraft. While a semblance of consensus exists regarding the scaling in the magnetohydrodynamic (MHD) and dispersive ranges, the precise scaling in the transition range and the actual physical mechanisms that control it remain open questions. Using the high-resolution data in the inner heliosphere from the Parker Solar Probe mission, we find that the sub-ion scales (i.e., at the frequency  $f \sim [2, 9]$  Hz) follow a power-law spectrum  $f^\alpha$  with a spectral index  $\alpha$  varying between  $-3$  and  $-5.7$ . Our results also show that there is a trend toward an anticorrelation between the spectral slopes and the power amplitudes at the MHD scales, in agreement with previous studies: the higher the power amplitude the steeper the spectrum at sub-ion scales. A similar trend toward an anticorrelation between steep spectra and increasing normalized cross helicity is found, in agreement with previous theoretical predictions about the imbalanced solar wind. We discuss the ubiquitous nature of the ion transition range in solar wind turbulence in the inner heliosphere.

*Unified Astronomy Thesaurus concepts:* [Solar wind \(1534\)](#); [Interplanetary turbulence \(830\)](#); [Solar coronal heating \(1989\)](#)

## 1. Introduction

Plasma, as the fourth state of matter in physics, is a gas consisting of roughly equal numbers of positively and negatively charged particles. It permeates various media such as the solar–terrestrial system, planetary magnetospheres, accretion disks, the interstellar medium, and fusion devices (Baumjohann & Treumann 1996). Turbulence, as a universal nonlinear phenomenon, plays a fundamental role in the mass transport and energy dissipation, which results in particle heating and/or acceleration in astrophysical plasmas (Tu & Marsch 1995; Bruno & Carbone 2005, 2013; Schekochihin et al. 2009; Howes 2010; Huang et al. 2012, 2020b; Lazarian et al. 2020; Sahraoui et al. 2020). Often, theoretical studies of hydrodynamic turbulence target the derivation of scaling laws that govern the turbulent fluctuations, which can be directly compared to the observations.

In the case of plasma turbulence, several popular analytical and numerical models have been developed to describe the turbulence cascade from the magnetohydrodynamic (MHD) to the electron scales, which led to different predictions on the scaling of the magnetic energy spectra (and other quantities, such as electric field spectra, velocity spectra, etc.). Those include the Iroshnikov–Kraichnan theory for isotropic MHD turbulence (with a  $k^{-3/2}$  spectrum; Iroshnikov 1963; Kraichnan 1965), the anisotropic MHD turbulence and the so-called critical balance hypothesis ( $k_\perp^{-5/3}$ ; Goldreich & Sridhar 1995),

the weak turbulence theory of Alfvén waves ( $k_\perp^{-2}$ ; Galtier et al. 2000), the sub-ion scale cascade of whistler or kinetic Alfvén wave (KAW) turbulence (e.g., Biskamp et al. 1996; Ghosh et al. 1996; Li et al. 2001; Stawicki et al. 2001; Galtier & Bhattacharjee 2003; Galtier & Buchlin 2007; Howes et al. 2008; Saito et al. 2008; TenBarge et al. 2013; David & Galtier 2019), and an “ultimate” electron-scale cascade (Schekochihin et al. 2009; Meyrand & Galtier 2010; Camporeale & Burgess 2011; Gary et al. 2012; Zhao et al. 2013, 2016; Andrés et al. 2016a, 2016b), to name a few.

The solar wind plasma is an ideal natural plasma laboratory in which the above (and many other) theoretical predictions can be directly tested, given the large amount of in situ data recorded by early spacecraft such as Voyager, ACE, Wind, and Helios, and more recent ones, e.g., Cluster, Magnetospheric MultiScale, and Parker Solar Probe (PSP). Usually, at MHD scales, the magnetic energy spectra generally exhibit an energy-containing range with a scaling  $\sim f^{-1}$  for the frequencies  $f < \sim 10^{-4}$  Hz (Bavassano et al. 1982; Bruno & Carbone 2005; Kiyani et al. 2015; Sahraoui et al. 2020), and an inertial range with a scaling  $\sim f^{-5/3}$  for the frequencies  $\sim [10^{-4}, 10^{-1}]$  Hz (Coleman 1968; Matthaeus & Goldstein 1982; Goldstein et al. 1994; Leamon et al. 1998; Smith et al. 2006; Chen et al. 2020). In recent years, thanks to the high-time resolution data, the studies of turbulence have been focused more on the sub-ion scales (i.e.,  $f > 0.1$  Hz) where both dispersive and dissipative effects become important (Bale et al. 2005; Kiyani et al.

2009, 2015; Sahraoui et al. 2009, 2010, 2013; Alexandrova et al. 2012; Podesta & TenBarge 2012; Salem et al. 2012; Chen et al. 2013; Wicks et al. 2013a; Andrés et al. 2014; Bruno et al. 2014; Huang et al. 2014, 2017; Goldstein et al. 2015; Duan et al. 2018; Huang & Sahraoui 2019; Bowen et al. 2020b, 2020c). The spectra for the comprehensive “3D” (dispersion, dissipation, and diffusion) characteristics of space plasma turbulence between ion and electron scales have been provided (He et al. 2020). Near the ion spectral break point (typically observed between 0.1 and 1 Hz), a steep ion transition range (referred to as the dissipation range in early studies; see, e.g., Goldstein et al. 1994; Leamon et al. 1998; Smith et al. 2006) with a scaling up to  $f^{-4.5}$  is sometimes observed (Sahraoui et al. 2010; Kiyani et al. 2012; Bruno et al. 2014; He et al. 2015). This transition range has been interpreted as a consequence of an enhancement of the energy dissipation into ion heating by kinetic effects such as the Landau damping (e.g., Leamon et al. 1998; Sahraoui et al. 2010; Kobayashi et al. 2017) or the cyclotron damping (He et al. 2011; Woodham et al. 2018; Bowen et al. 2020c; Huang et al. 2020a). A more recent theoretical model showed a possible competition between high imbalance and Landau damping (Miloshevich et al. 2020). Below the transition range ( $f \sim [3, 30]$  Hz) a power-law ion dispersive range forms with an index that varies between  $-2.3$  and  $-3.1$  with a peak around  $-2.8$  (Kiyani et al. 2013; Sahraoui et al. 2013). Also, the steep transition-range spectra can also be produced by the weak turbulence of kinetic Alfvén waves: spectra with power-law index  $-4$  and even steeper (Voitenko & De Keyser 2011).

As the electron scales are reached (i.e.,  $f > 40$  Hz), the magnetic spectra steepen again with spectral indices varying between  $-3.5$  and  $-5.5$  (e.g., Sahraoui et al. 2009, 2010, 2013). However, this power-law cascade scenario at subelectron scales, although supported by most of the existing theoretical and numerical models, is challenged by some observations that suggested an exponential fall-off model (borrowed from neutral fluid turbulence), with a scaling  $f^{-8/3} \exp(-f/f_d)$  from the ion to subelectron scales (Alexandrova et al. 2012). Due to the low signal-to-noise ratio of measurements in the solar wind at 1 au (Sahraoui et al. 2013), the actual scaling of the magnetic energy spectra around electron scales remains an unsettled question. This limitation might be overcome by the data of the PSP mission taken in the next orbits closest to the Sun.

In the present study, we use the high-time resolution data from the PSP mission in the inner heliosphere (around 0.17 au) to investigate the scaling of the magnetic energy spectra from the MHD to sub-ion scales, typically  $10^{-2}$  to  $\sim 60$  Hz. Higher frequencies that would cover the electron scales are either not accessible to measurement in during the studied orbits because of the limited sampling frequency of the data ( $f_N = 293$  Hz) or subject to high uncertainty because of the low-pass filtering applied on the data (Bowen et al. 2020a).

Besides confirming previous findings about the MHD scales, the distribution of the spectral indices from  $-3$  to  $-5.7$  at sub-ion scales clearly demonstrates the existence of a ubiquitous ion transition range in the inner heliosphere, while at 1 au its presence is only intermittently observed (Kobayashi et al. 2017). This Letter is organized as follows: In Section 2 we describe the observations data set and the selection criteria used in the present work. In Section 3 we report our main

observational results. Finally, in Section 4 we provide a short discussion and the conclusion of this study.

## 2. Data Analysis

The recent NASA PSP mission was launched on 2018 August 12 to investigate the processes of heating and acceleration of the solar wind and the solar energetic particles. Four instrument suites are carried by PSP to measure in situ electric and magnetic fields, plasma and energetic particles, and to image the solar wind (Fox et al. 2016).

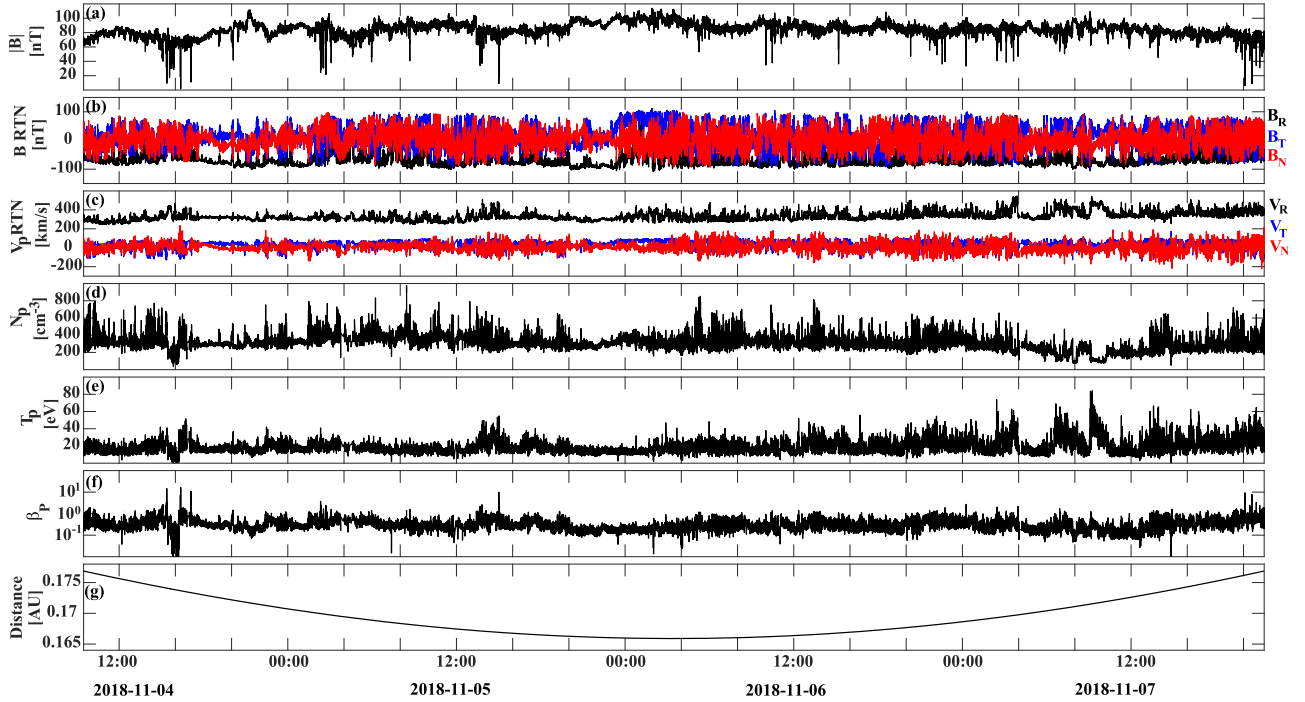
In the present study, we used the proton moments (density, velocity, and temperature) with a sampling frequency of 1 Sa cycle $^{-1}$  (1 cycle  $\approx 0.873$  s) for the Encounter mode provided by the Solar Wind Electron, Alpha, Proton (SWEAP) experiment (Kasper et al. 2016; Case et al. 2020); the magnetic field vector at the sampling frequency of 256 Sa cycle $^{-1}$  ( $\sim 292.969$  Sa s $^{-1}$ ) measured by the FIELDS flux-gate magnetometer (FGM) and the search-coil magnetometer (SCM) for the Encounter mode (Bale et al. 2016; Malaspina et al. 2016; Jannet et al. 2020). In the present study, we analyzed observations from 2018 November 4 to 7 during the first orbit of the PSP mission at a distance of about 0.17 au, and used the merged FGM and SCM data to cover from MHD to electron scales (Bowen et al. 2020a).

## 3. Observational Results

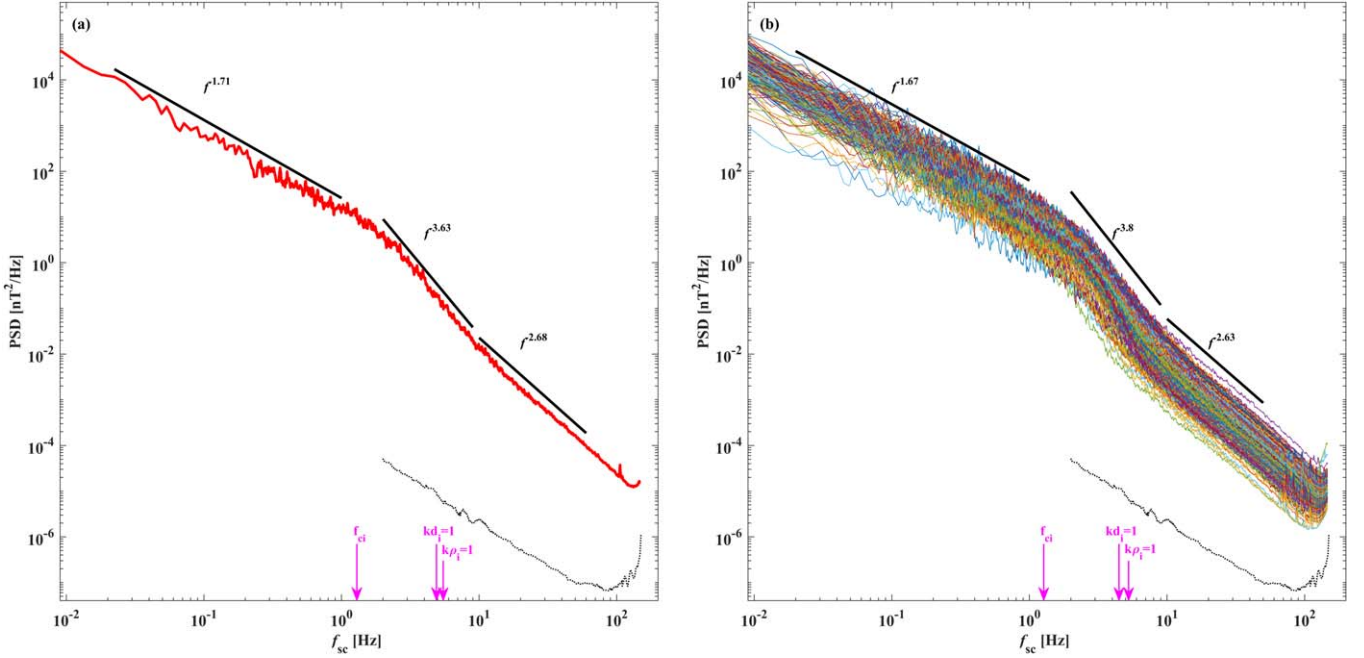
Figure 1 shows the observations from magnetic field, plasma velocity, plasma temperature, plasma density, plasma  $\beta$ , and the distance of PSP from the Sun. The magnetic field and proton velocity are presented in the heliospheric Radial–Tangential–Normal (RTN) coordinate system. The magnetic field shows large fluctuations (Figures 1(a)–(b)) in the slow solar wind (i.e.,  $V_R < 500$  km s $^{-1}$  in Figure 3(c)) accompanied by large fluctuations in the proton density and temperature (Figures 1(d)–(e)). The coexistence of kinetic Alfvén waves and Alfvén ion cyclotron waves was demonstrated in this slow solar wind during 2018 November 6 (Huang et al. 2020a), similarly to the observations in the fast solar wind at 1 au (e.g., He et al. 2011, 2012, 2015; Podesta 2013; Bruno & Telloni 2015). The plasma  $\beta$  varies from 0.1 to  $\sim 10$ , but mostly less than 1 (Figure 1(f)).

To be able to study the magnetic energy spectra at the sub-ion scales for 15 minute windows, the Fourier transform was performed for the merged FGM and SCM measurements (Bowen et al. 2020a) to obtain the magnetic energy spectra for each 15 minutes. The 15 minute duration ensures having at least one correlation time of the turbulent fluctuations (Parashar et al. 2020). Furthermore, to avoid possible “contamination” of the background turbulent spectra from intermittent but intense waves (e.g., ion cyclotron waves, whistlers), we excluded the magnetic spectra that showed clear spectral peaks from MHD to electron scales.

One should point out that the electron measurements are not available during this time interval. But we can estimate the Doppler-shifted frequency of the electron inertial length  $f_{de} \sim 180$  Hz and the Doppler-shifted frequency of the electron gyroradius  $f_{pe} \sim 320$  Hz based on the assumptions of  $N_e = N_i$  and  $T_i/T_e = 5$ . This indicates that the electron characteristic frequencies are larger than the Nyquist frequency of the magnetic field data provided by PSP, thus preventing us from investigating electron-scale turbulence.



**Figure 1.** Overview observations from 2018 November 4 to 6. (a) The magnitude of magnetic field, (b) the three components of magnetic field (c) the three components of the proton velocity in RTN coordinates, (d) the proton number density, (e) the proton temperature, (f) the proton  $\beta$ , and (g) the distance away from the Sun.

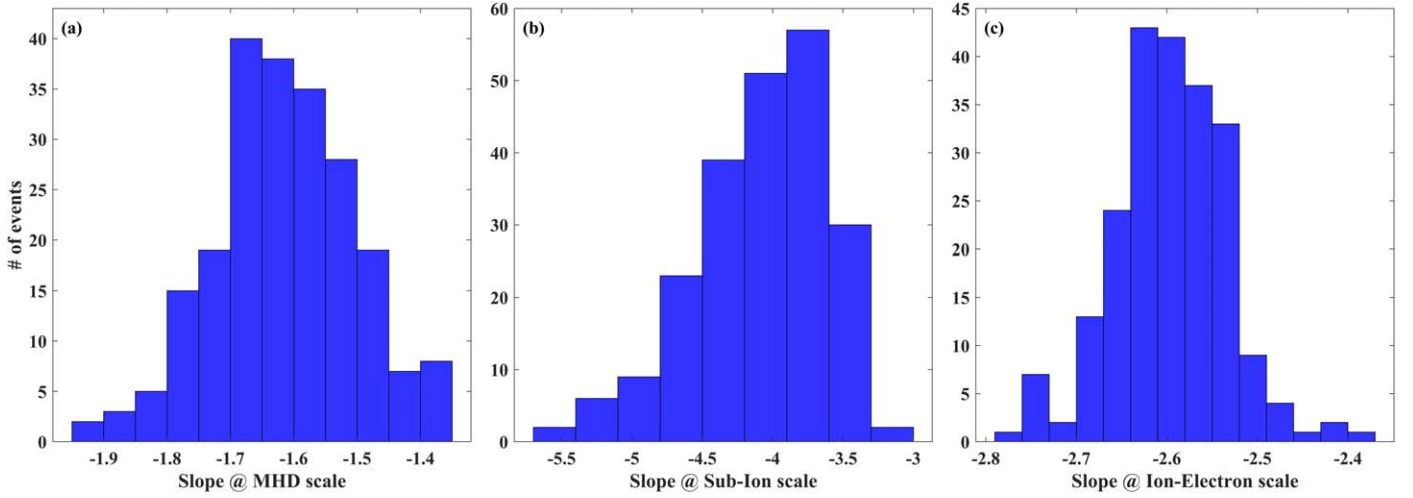


**Figure 2.** Power spectral densities of the magnetic field. (a) One example of magnetic spectrum during the time interval from 11:13:11 UT to 11:28:11 UT on 2018 November 6; (b) all selected spectra. The three vertical arrows from left to right correspond to the proton cyclotron frequency  $f_{ci}$ , the Doppler-shifted frequency of the proton inertial length  $kd_i = 1$  and the proton gyroradius  $k\rho_i = 1$ , respectively. The gray dotted curves display the noise of the SCM instrument.

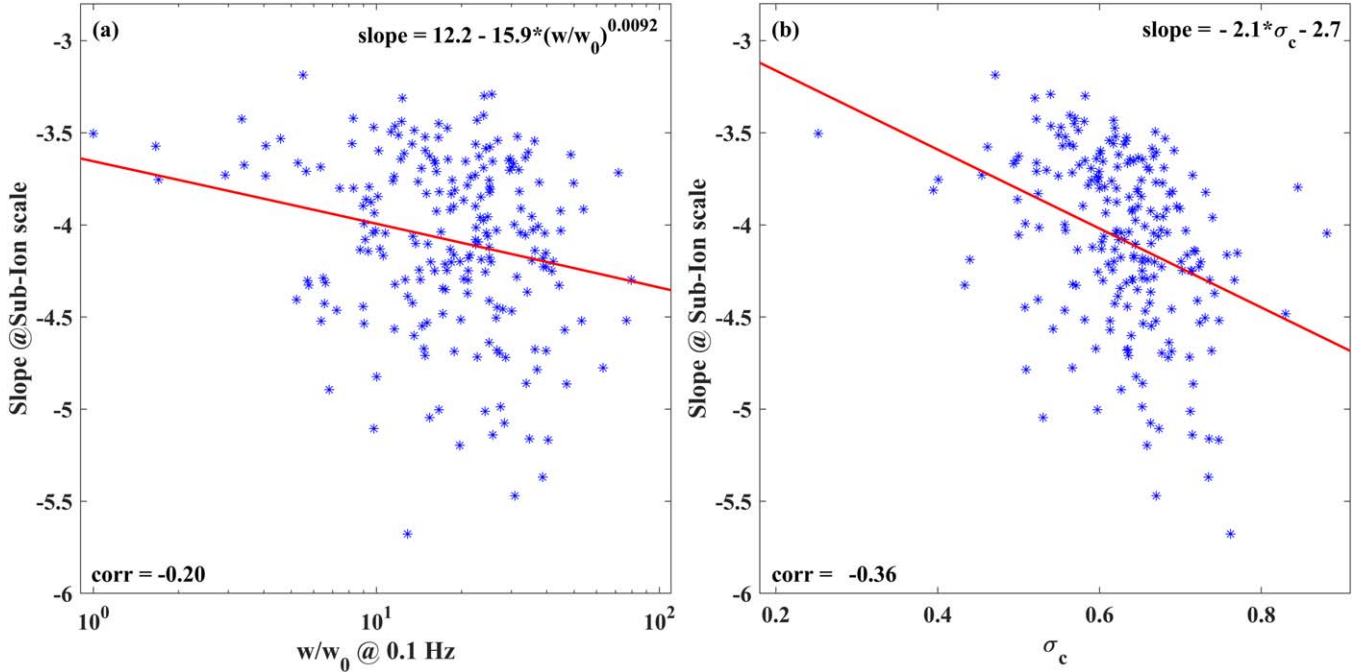
Figure 2(a) presents an example of the resulting magnetic spectra. Three distinct frequency bands can be clearly evidenced: (i) the first one is an inertial range with the slope of  $-1.71$  below 1 Hz, (ii) the second one is a steep ion transition range ( $f^{-3.63}$ ) at the scales between the proton cyclotron frequency and the Doppler-shifted frequencies of the proton inertial length  $d_i$  and gyroradius  $\rho_i$  (i.e.,  $f \sim [2, 9]$  Hz), (iii) the third one has a scaling  $f^{-2.68}$  between the ion and

electron scales ( $\sim [10, 60]$  Hz). These three distinct spectral features are also confirmed by all 219 selected spectra shown in Figure 2(b). However, the spectral indices have large variations in the ion transition range.

Figure 3 displays the histograms of the spectral indices at the MHD, sub-ion (transition range), and ion-to-electron scales, respectively. The slopes have a narrow distribution (from  $-1.95$  to  $-1.35$ ) at MHD scales (Figure 3(a)), consistent with



**Figure 3.** Histograms of spectral indices at three different ranges: (a) the MHD scales, (b) the sub-ion scales, and (c) the ion–electron scales.

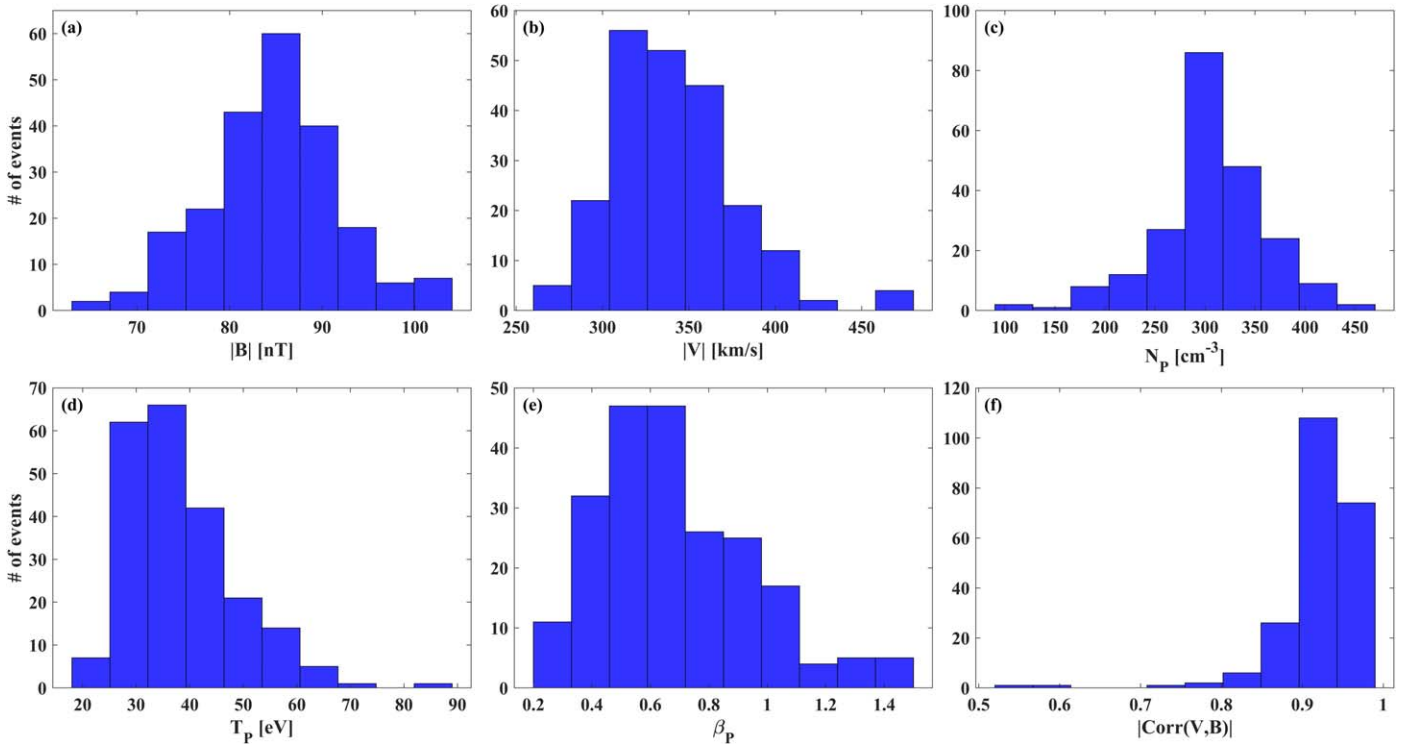


**Figure 4.** The spectral indices at sub-ion scales as a function of (a) the corresponding normalized power spectral density around 0.1 Hz ( $w/w_0$ ) and (b) the normalized cross helicity. The  $w_0$  is the minimum power spectral densities around 0.1 Hz for all selected magnetic spectra. The red line in (a) is the fitted curve given by  $\text{slope} = 12.2 - 15.9 * (w/w_0)^{0.0092}$ . The cross helicity is the average value during each time interval for all selected magnetic spectra. The red line in (b) is the fitted curve given by the  $\text{slope} = -2.1 * \sigma_c - 2.7$ .

the previous observations at 1 au (e.g., Smith et al. 2006, 2011), and a narrower distribution between ion and electron scales, i.e., from  $-2.78$  to  $-2.37$  (Figure 3(c)), highlighting the dominance of the scaling  $f^{-2.63}$ . However, the spectral indices have a broader distribution at sub-ion scales in the so-called transition range (from  $-2.75$  to  $-5.76$  in Figure 3(b)).

Figure 4(a) shows the correlation between the spectral indices at sub-ion scales and the integrated power of each spectrum near 0.1 Hz (i.e., from 0.1 to 0.12 Hz). The corresponding power around 0.1 Hz is normalized to the minimum power  $w_0$  around 0.1 Hz of all the magnetic spectra. One can see that the turbulent spectra essentially steepen at sub-ion scales for high values of the power near 0.1 Hz. The best fit is shown by the red curve that follows the equation:

$\text{slope} = 12.2 - 15.9 * (w/w_0)^{0.0092}$ . Finally, the correlation coefficient between the spectral indices and the normalized power spectral densities is  $-0.2$ . Considering the scale dependence of the normalized cross helicity in Equation (10) in Wicks et al. (2013b), we calculated the mean normalized cross helicity over each time interval (i.e., time average) at different time lags ( $\sim [9, 61]$  s), and found the correlation coefficients between the normalized cross helicity and the spectral indices are all below  $-0.3$ . Figure 4(b) displays the correlation between the spectral indices at sub-ion scales and the mean normalized cross helicity at time lag 25 s. The obtained values vary from 0.25 to 0.88. A vague anticorrelation can be seen between the spectra steepening at sub-ion scales and  $\sigma_c$ , with the best fit of the  $\text{slope} = -2.1 * \sigma_c - 2.7$ . The correlation coefficient between the spectral indices and the cross helicity is  $-0.36$ .



**Figure 5.** Histograms of the mean values of plasma parameters for all selected spectra: (a) the total magnetic field, (b) the total plasma velocity, (c) plasma density, (d) plasma temperature, (e) plasma  $\beta$ , and (f) the largest absolute values of the correlation coefficient between three components of magnetic field and the corresponding components of plasma velocity.

In order to investigate the plasma environment in the presence of a steep transition range at sub-ion scales in the inner heliosphere, Figure 5 presents the statistical histograms of the mean values of total magnetic field, plasma velocity, density, temperature, plasma  $\beta$ , and the largest absolute correlation coefficient between magnetic field and plasma velocity for the intervals of all selected spectra. It can be seen that the total magnetic field can vary from 63 to 104 nT with a peak around 86 nT, plasma velocity changes between 260 and 480 km s<sup>-1</sup>, plasma density is compact (100 ~ 460 cm<sup>-3</sup>), plasma temperature varies from 20 to 88 eV with a peak of 35 eV, and plasma  $\beta$  is mostly less than 1 with a peak around 0.5, indicating that the ion transition range could occur in different plasma environments. It is worth noticing that most of the values of the  $V - B$  correlation are larger than 0.8 (97.7%) with a peak around 0.92, implying that the transition range at sub-ion scales can be observed in essentially highly Alfvénic solar wind, although a few cases (0.9%) seem to correspond to lower  $V - B$  correlation ( $\sim 0.56$ ), suggestive of less Alfvénic wind.

#### 4. Discussion and Conclusions

The present study provides a statistical survey of the magnetic spectral features from the MHD to the sub-ion scales in the inner heliosphere using PSP measurements. Our results show that the magnetic energy spectral slopes have a low variability between the ion and electron scales (often referred to as the dispersive range; Stawicki et al. 2001), with the most probable index close to  $-2.63$ . Popular wisdom considers that this range is dominated by highly oblique KAW turbulence (Sahraoui et al. 2009; Salem et al. 2012; Chen et al. 2013), although a minor (quasi-parallel) component of the turbulence

may consist of whistler waves (or other type of fluctuations; e.g., Sahraoui et al. 2012; Podesta 2013; Klein et al. 2014). This most probable index ( $-2.63$ ) is slightly shallower than that ( $\alpha \sim -2.8$ ) reported in early observations in the solar wind at 1 au and in the terrestrial magnetosheath (Sahraoui et al. 2013, 2020; Huang et al. 2014). This difference might be due to the compensation of the antialiasing filter implemented on the merged FGM and SCM data used in this work, which may alter the accuracy of the spectra at frequencies  $\geq 40$  Hz (Bowen et al. 2020a).

On the contrary, at sub-ion scales our observations indicate a lack of universality of the turbulence scaling, with spectral slopes varying within the range  $[-3, -5.7]$ , which are steeper than those reported in previous observations of solar wind turbulence at 1 au (Smith et al. 2006; Kobayashi et al. 2017). This discrepancy remains to be explained.

The study revealed also the high variability of the spectral slopes at sub-ion scales and its dependence on the fluctuation amplitudes (or power) at the edge of the inertial range, which clearly points toward the lack of universality of the turbulent scaling near the ion scales, in agreement with the previous observations at 1 au (Bruno et al. 2014; Kobayashi et al. 2017). In addition, it is found that the spectral slopes at sub-ion scales depend on the normalized cross helicity: the larger the cross helicity, the steeper the magnetic spectra. The cross helicity could illustrate the imbalance between the outward ( $\delta z^+$ ) and inward ( $\delta z^-$ ) propagating fluctuations (Wicks et al. 2013b): the larger the cross helicity, the more imbalanced the solar wind turbulence. Recent theoretical models showed the steep spectra can form at sub-ion scales as a consequence of high imbalance (Voitenko & De Keyser 2016), or of a competition between high imbalance and Landau damping (Miloshevich et al. 2020). Our observations are consistent with those predictions.

Although several explanations have been proposed to account for the steep ion transition range, which include energy dissipation into ion heating by Landau or cyclotron damping (e.g., Leamon et al. 1998; Sahraoui et al. 2010; He et al. 2011; Woodham et al. 2018), weak turbulence of kinetic Alfvén waves (Voitenko & De Keyser 2011), dispersive turbulence and intermittency (e.g., Zhao et al. 2016), or a particular combination of waves and coherent structures (e.g., Lion et al. 2016), a unified picture of the physics occurring at the onset of the kinetic range remains to be built. This will be investigated in the future.

This work was supported by the National Natural Science Foundation of China (41874191, 41925018, 42074196), and the National Youth Talent Support Program. S.Y.H. appreciates the helpful discussions with Dr. Bowen. N.A. acknowledges financial support from the Agencia de Promoción Científica y Tecnológica (Argentina) through grant PICT 2018 1095. We thank the entire PSP team and instrument leads for data access and support. The SWEAP and FIELDS investigation and this publication are supported by the PSP mission under NASA contract NNN06AA01C. PSP data are publicly available from NASA's Space Physics Data Facility (SPDF) at <https://spdf.gsfc.nasa.gov/pub/data/psp/>.

### ORCID iDs

N. Andrés  <https://orcid.org/0000-0002-1272-2778>  
 J. S. He  <https://orcid.org/0000-0001-8179-417X>  
 J. S. Zhao  <https://orcid.org/0000-0002-3859-6394>  
 S. Galtier  <https://orcid.org/0000-0001-8685-9497>  
 J. Zhang  <https://orcid.org/0000-0001-5111-2609>  
 T. Dudok de Wit  <https://orcid.org/0000-0002-4401-0943>  
 S. D. Bale  <https://orcid.org/0000-0002-1989-3596>  
 J. C. Kasper  <https://orcid.org/0000-0002-7077-930X>

### References

- Alexandrova, O., Lacombe, C., Mangeney, A., Grappin, R., & Maksimovic, M. 2012, *ApJ*, **760**, 121
- Andrés, N., Galtier, S., & Sahraoui, F. 2016a, *PhRvE*, **94**, 063206
- Andrés, N., Gonzalez, C., Martin, L., Dmitruk, P., & Gómez, D. 2014, *PhPI*, **21**, 122305
- Andrés, N., Mininni, P. D., Dmitruk, P., & Gomez, D. O. 2016b, *PhRvE*, **93**, 063202
- Bale, S. D., Goetz, K., Harvey, P. R., et al. 2016, *SSRv*, **204**, 49
- Bale, S. D., Kellogg, P. J., Mozer, F. S., Horbury, T. S., & Reme, H. 2005, *PhRvL*, **94**, 215002
- Baumjohann, W., & Treumann, R. A. 1996, *Basic Plasma Space Physics* (London: Imperial College Press)
- Bavassano, B., Dobrowolny, M., Mariani, F., & Ness, N. F. 1982, *JGR*, **87**, 3617
- Biskamp, D., Schwarz, E., & Drake, J. F. 1996, *PhRvL*, **76**, 1264
- Bowen, T. A., Bale, S. D., Bonnell, J. W., et al. 2020a, *JGRA*, **125**, e2020JA027813
- Bowen, T. A., Mallet, A., Bale, S. D., et al. 2020b, *PhRvL*, **125**, 025102
- Bowen, T. A., Mallet, A., Huang, J., et al. 2020c, *ApJS*, **246**, 66
- Bruno, R., & Carbone, V. 2005, *LRSP*, **2**, 4
- Bruno, R., & Carbone, V. 2013, *LRSP*, **10**, 2
- Bruno, R., & Telloni, D. 2015, *ApJL*, **811**, L17
- Bruno, R., Trenchi, L., & Telloni, D. 2014, *ApJL*, **793**, L15
- Camporeale, E., & Burgess, D. 2011, *ApJ*, **730**, 114
- Case, A. C., Kasper, J. C., Stevens, M. L., et al. 2020, *ApJS*, **246**, 43
- Chen, C. H. K., Bale, S. D., Bonnell, J. W., et al. 2020, *ApJS*, **246**, 53
- Chen, C. H. K., Boldyrev, S., Xia, Q., & Perez, J. C. 2013, *PhRvL*, **110**, 225002
- Coleman, P. J., Jr. 1968, *ApJ*, **153**, 371
- David, V., & Galtier, S. 2019, *ApJL*, **880**, L10
- Duan, D., He, J., Pei, Z., et al. 2018, *ApJ*, **865**, 89
- Fox, N. J., Velli, M. C., Bale, S. D., et al. 2016, *SSRv*, **204**, 7
- Galtier, S., & Bhattacharjee, A. 2003, *PhPI*, **10**, 3065
- Galtier, S., & Buchlin, E. 2007, *ApJ*, **656**, 560
- Galtier, S., Nazarenko, S. V., Newell, A. C., & Pouquet, A. 2000, *JPIPh*, **63**, 447
- Gary, S. P., Chang, O., & Wang, J. 2012, *ApJ*, **755**, 142
- Ghosh, S., Siregar, E., Roberts, D. A., & Goldstein, M. L. 1996, *JGR*, **101**, 2493
- Goldreich, P., & Sridhar, S. 1995, *ApJ*, **438**, 763
- Goldstein, M. L., Roberts, D. A., & Fitch, C. A. 1994, *JGR*, **99**, 11519
- Goldstein, M. L., Wicks, R. T., Perri, S., & Sahraoui, F. 2015, *PSRTA*, **373**, 20140147
- He, J., Marsch, E., Tu, C., Yao, S., & Tian, H. 2011, *ApJ*, **731**, 85
- He, J., Tu, C., Marsch, E., & Yao, S. 2012, *ApJL*, **745**, L8
- He, J., Wang, L., Tu, C., Marsch, E., & Zong, Q. 2015, *ApJL*, **800**, L31
- He, J., Zhu, X., Verscharen, D., et al. 2020, *ApJ*, **898**, 43
- Howes, G. G., Dorland, W., Cowley, S. C., et al. 2008, *PhRvL*, **100**, 065004
- Howes, G. G. 2010, *MNRAS*, **409**, L104
- Huang, S. Y., Hadid, L. Z., Sahraoui, F., Yuan, Z. G., & Deng, X. H. 2017, *ApJL*, **836**, L10
- Huang, S. Y., & Sahraoui, F. 2019, *ApJ*, **876**, 138
- Huang, S. Y., Sahraoui, F., Deng, X. H., et al. 2014, *ApJL*, **789**, L28
- Huang, S. Y., Zhang, J., Sahraoui, F., et al. 2020a, *ApJL*, **897**, L3
- Huang, S. Y., Zhang, J., Sahraoui, F., et al. 2020b, *ApJL*, **898**, L18
- Huang, S. Y., Zhou, M., Sahraoui, F., et al. 2012, *GeoRL*, **39**, L11104
- Iroshnikov, P. S. 1963, *AZh*, **40**, 742
- Jannet, G., Dudok de Wit, T., Krasnoselskikh, V., et al. 2020, *JGRA*, **126**, e2020JA028543
- Kasper, J. C., Abiad, R., Austin, G., et al. 2016, *SSRv*, **204**, 131
- Kiyani, K. H., Chapman, S. C., Khotyaintsev, Yu. V., Dunlop, M. W., & Sahraoui, F. 2009, *PhRvL*, **103**, 075006
- Kiyani, K. H., Chapman, S. C., Sahraoui, F., et al. 2013, *ApJ*, **763**, 10
- Kiyani, K. H., Osman, K. T., & Chapman, S. C. 2015, *PSRTA*, **373**, 20140155
- Klein, K. G., Howes, G. G., TenBarge, J. M., & Podesta, J. J. 2014, *ApJ*, **785**, 138
- Kobayashi, S., Sahraoui, F., Passot, T., et al. 2017, *ApJ*, **839**, 122
- Kraichnan, R. H. 1965, *PhFl*, **8**, 1385
- Lazarian, A., Eyink, G. L., Jafari, A., et al. 2020, *PhPI*, **27**, 012305
- Leamon, R. J., Smith, C. W., Ness, N. F., Matthaeus, W. H., & Wong, H. K. 1998, *JGR*, **103**, 4775
- Li, X., & Habbal, S. R. 2001, *JGR*, **106**, 10669
- Lion, S., Alexandrova, O., & Zaslavsky, A. 2016, *ApJ*, **824**, 47
- Malaspina, D. M., Ergun, R. E., Bolton, M., et al. 2016, *JGRA*, **121**, 5088
- Matthaeus, W. H., & Goldstein, M. L. 1982, *JGR*, **87**, 6011
- Meyrand, R., & Galtier, S. 2010, *ApJ*, **721**, 1421
- Miloshevich, G., Laveder, D., Passot, T., & Sulem, P. L. 2020, arXiv:2007.06976
- Parashar, T. N., Goldstein, M. L., Maruca, B. A., et al. 2020, *ApJS*, **246**, 58
- Podesta, J. J. 2013, *SoPh*, **286**, 529
- Podesta, J. J., & TenBarge, J. M. 2012, *JGRA*, **117**, A10106
- Sahraoui, F., Belmont, G., & Goldstein, M. L. 2012, *ApJ*, **748**, 100
- Sahraoui, F., Goldstein, M. L., Belmont, G., Canu, P., & Rezeau, L. 2010, *PhRvL*, **105**, 131101
- Sahraoui, F., Goldstein, M. L., Robert, P., & Khotyaintsev, Y. V. 2009, *PhRvL*, **102**, 231102
- Sahraoui, F., Hadid, L. Z., & Huang, S. Y. 2020, *RvMPP*, **4**, 1
- Sahraoui, F., Huang, S. Y., Belmont, G., et al. 2013, *ApJ*, **777**, 15
- Saito, S., Gary, S. P., Li, H., & Narita, Y. 2008, *PhPI*, **15**, 102305
- Salem, C. S., Howes, G. G., Sundkvist, D., et al. 2012, *ApJL*, **745**, L9
- Schekochihin, A. A., Cowley, S. C., Dorland, W., et al. 2009, *ApJS*, **182**, 310
- Smith, C. W., Hamilton, K., Vasquez, B. J., & Leamon, R. J. 2006, *ApJL*, **645**, L85
- Smith, C. W., Vasquez, B. J., & Hollweg, J. V. 2011, *ApJ*, **745**, 8
- Stawicki, O., Gary, S. P., & Li, H. 2001, *JGR*, **106**, 8273
- TenBarge, J. M., Howes, G. G., & Dorland, W. 2013, *ApJ*, **774**, 139
- Tu, C. Y., & Marsch, E. 1995, *SSRv*, **73**, 1
- Voitenko, Y., & De Keyser, J. 2011, *NPGeo*, **18**, 587
- Voitenko, Y., & De Keyser, J. 2016, *ApJL*, **832**, L20
- Wicks, R. T., Mallet, A., Horbury, T. S., et al. 2013a, *PhRvL*, **110**, 025003
- Wicks, R. T., Roberts, D. A., Mallet, A., et al. 2013b, *ApJ*, **778**, 177
- Woodham, L. D., Wicks, R. T., Verscharen, D., & Owen, C. J. 2018, *ApJ*, **856**, 49
- Zhao, J. S., Voitenko, Y. M., Wu, D. J., & Yu, M. Y. 2016, *JGRA*, **121**, 5
- Zhao, J. S., Wu, D. J., & Lu, J. Y. 2013, *ApJ*, **767**, 109