



**HAL**  
open science

## Protist communities along freshwater–marine transition zones in Hudson Bay (Canada)

Loïc Jacquemot, Dimitri Kalenitchenko, Lisa C Matthes, Adrien Vigneron,  
Christopher J Mundy, Jean-Éric Tremblay, Connie Lovejoy

### ► To cite this version:

Loïc Jacquemot, Dimitri Kalenitchenko, Lisa C Matthes, Adrien Vigneron, Christopher J Mundy, et al.. Protist communities along freshwater–marine transition zones in Hudson Bay (Canada). *Elementa: Science of the Anthropocene*, 2021, 9, 10.1525/elementa.2021.00111 . hal-03333763

**HAL Id: hal-03333763**

**<https://hal.science/hal-03333763>**

Submitted on 3 Sep 2021

**HAL** is a multi-disciplinary open access archive for the deposit and dissemination of scientific research documents, whether they are published or not. The documents may come from teaching and research institutions in France or abroad, or from public or private research centers.

L'archive ouverte pluridisciplinaire **HAL**, est destinée au dépôt et à la diffusion de documents scientifiques de niveau recherche, publiés ou non, émanant des établissements d'enseignement et de recherche français ou étrangers, des laboratoires publics ou privés.

## RESEARCH ARTICLE

# Protist communities along freshwater–marine transition zones in Hudson Bay (Canada)

Loïc Jacquemot<sup>1,2,\*</sup>, Dimitri Kalenitchenko<sup>1,2</sup>, Lisa C. Matthes<sup>3</sup>, Adrien Vigneron<sup>1,2</sup>, Christopher J. Mundy<sup>3</sup>, Jean-Éric Tremblay<sup>1</sup>, and Connie Lovejoy<sup>1,2</sup>

One of the most striking ecological divides on Earth is between marine and nearby freshwater environments, as relatively few taxa can move between the two. Microbial eukaryotes contribute to biogeochemical and energy cycling in both fresh and marine waters, with little species overlap between the two ecosystems. Arctic and sub-Arctic marine systems are relatively fresh compared to tropical and temperate systems, but details of microbial eukaryote communities along river-to-sea transitions are poorly known. To bridge this knowledge gap, we investigated three river-to-sea transitions (Nelson, Churchill, and Great Whale Rivers) in sub-Arctic Hudson Bay through 18S rRNA amplicon sequencing to identify microbial eukaryotes along the salinity and biogeochemical gradients. Salinity acted as the principal dispersal barrier preventing freshwater microorganisms from colonizing marine coastal waters, with microbial eukaryote communities of the three rivers clustering together. Just offshore, communities clustered by coastal regions associated with nutrient concentrations. Analysis of indicator species revealed that communities in the nitrate-depleted coastal water off the Churchill and Great Whale Rivers were dominated by heterotrophic taxa and small photosynthetic protists. In contrast, the Nelson offshore community was characterized by a high proportion of the diatom *Rhizosolenia*. A distinct community of heterotrophic protists was identified in the three estuarine transition zones, suggesting specialized estuarine communities. Such specialization was most marked in the Nelson River system that was sampled more intensely and showed estuarine circulation. The autochthonous community was composed of the bacterial grazers *Katablepharis*, *Mataza*, and *Cryothecomonas*, as well as brackish species of the diatoms *Skeletonema* and *Thalassiosira*. These findings suggest that flow regulation on the Nelson River that modifies estuarine circulation would affect estuarine community composition and distribution in the transition zone.

**Keywords:** Microbial eukaryotes, Arctic Ocean, Hudson Bay, Estuary, Freshwater gradient, Maximum turbidity zone

## Introduction

The environmental gradient from rivers to the sea can be sharp or more gradual depending on hydrodynamic processes and the residence times within estuaries (Uncles et al., 2002; Burchard et al., 2018). Bridging the river and the sea, estuaries are important boundaries between two ecosystems and constitute major gateways delivering freshwater into the marine system. Freshwater entering the coastal ocean influences physical, biogeochemical, and biological properties and processes of the recipient marine system. Within estuaries, salinity is variable and driven by

circulation patterns that depend on wind, tides, estuarine geomorphology, and the volume and flow rate of riverine water entering the estuary (Simpson et al., 1990). Due to the coupling between tidal forcing and river runoff, estuaries are complex transition areas where pronounced gradients not only of salinity but also of temperature, organic matter, light, and nutrients influence bacterial (Bouvier and del Giorgio, 2002; Crump et al., 2004) and microbial eukaryote communities (Muylaert et al., 2009; Vigil et al., 2009; Bazin et al., 2014).

Discharge timing and intensity influence the maximum turbidity zone in many estuaries (Uncles et al., 2002; Burchard et al., 2018). On regulated rivers, discharge events depend on dam-controlled runoff and affect light and nutrient availability through suspended particulate matter (Domingues et al., 2012). During high-discharge events, suspended material and nutrient loading in the estuary increase, and the maximum turbidity zone moves seaward. Conversely, low-discharge events are associated with reduced nutrient inputs, sedimentation of suspended

<sup>1</sup>Département de biologie, Université Laval, Québec City, Québec, Canada

<sup>2</sup>Institut de biologie intégrative et des systèmes (IBIS), Université Laval, Québec City, Québec, Canada

<sup>3</sup>Centre for Earth Observation Science, University of Manitoba, Winnipeg, Manitoba, Canada

\* Corresponding author:  
Email: [loic.jacquemot42@gmail.com](mailto:loic.jacquemot42@gmail.com)

materials in the estuarine transition zone, increasing light availability for phytoplankton, and displacement of the remaining maximum turbidity zone toward the river. On unregulated rivers in the Arctic and sub-Arctic, seasonal discharge is usually closely tied to spring freshets when snow pack melt contributes to increased flow. All of these factors will likely affect estuarine plankton communities. Because of the inaccessibility of these regions during spring, when ice conditions are unstable, Arctic and sub-Arctic systems have been studied less compared to temperate estuaries. The moderately lower salinity of the Arctic Ocean and adjacent seas and the less abrupt salinity changes between the estuary and open water could also result in less marked community transitions between fresh and marine waters. In this study, we investigated river systems in Hudson Bay (Canada), a sub-Arctic inland sea that receives up to  $800 \text{ km}^3 \text{ year}^{-1}$  of freshwater from 23 major rivers (McClelland et al., 2012). This river runoff to the coastal Hudson Bay freshens surface waters, which can range from salinities of 25 to 29. The fresher surface waters remain on top of more saline and deeper waters with salinities up to 33 (Granskog et al., 2011).

Specifically, we compared three river systems to examine freshwater–marine coupling on biological communities shortly after ice breakup. Many larger rivers in Hudson Bay are now under the influence of hydroelectric projects that change the timing and volume of freshwater brought by rivers into the coastal sea (Déry et al., 2011). The Nelson River is the largest contributor of freshwater to Western Hudson Bay and the most impacted by hydroelectric development (Déry et al., 2016; Stadnyk et al., 2019). Since 1976, approximately 75% of the annual flow of the Churchill River has been diverted into the catchment basin of the Nelson River for enhanced hydropower production (Newbury et al., 1984; Déry et al., 2016). As a consequence, the annual freshwater discharge of the Nelson has increased and the flow regime has evolved toward a flattened hydrograph, with the high spring discharge held in reservoirs and increased winter flow to meet higher hydroelectric demand (Déry et al., 2011; Déry et al., 2016; McCullough et al., 2019). Although seasonality of the Churchill River flow was only altered slightly, the annual discharge decreased significantly since the diversion. The unregulated Great Whale River on the eastern side of Hudson Bay contributes to freshwater discharge in the same range as the Churchill River (Bhiry et al., 2011; Déry et al., 2016; Stadnyk et al., 2019) and was a counterpoint to the Churchill system.

In Hudson Bay, freshwater inflows are considered a minor source of inorganic nitrogen to the coastal sea but may contribute indirectly to the primary production by influencing large-scale estuarine circulation and input of nutrient-rich deep waters (Granskog et al., 2009; Kuzyk et al., 2010). These observations, combined with the work of Heikkilä et al. (2014) on dinoflagellate cyst distribution, support the view that coastal Hudson Bay is highly productive compared to its center. However, except for a few studies investigating the main photosynthetic protist contributors to primary production (Harvey et al., 1997; Ferland et al., 2011; Lapoussière et al., 2013), little is known

about the composition and structure of microbial eukaryote communities (hence referred to as protists) in coastal Hudson Bay.

The present study aims to make a first inventory of protist communities in the coastal and estuarine environments of the Hudson Bay sequencing the V4 region of 18 S rRNA (rRNA) and the 18S rRNA gene (rDNA). Our objective was to identify protist community composition along a salinity gradient in the Nelson, Churchill, and Great Whale River estuarine systems. Samples were collected along transects at the surface and below the fresher surface layer to capture diversity associated with the estuarine processes. Within this objective, we aimed to better understand the underlying environmental mechanisms structuring the communities in Arctic estuaries and to assess the influence of river discharge on the composition and distribution of microbial eukaryote assemblages.

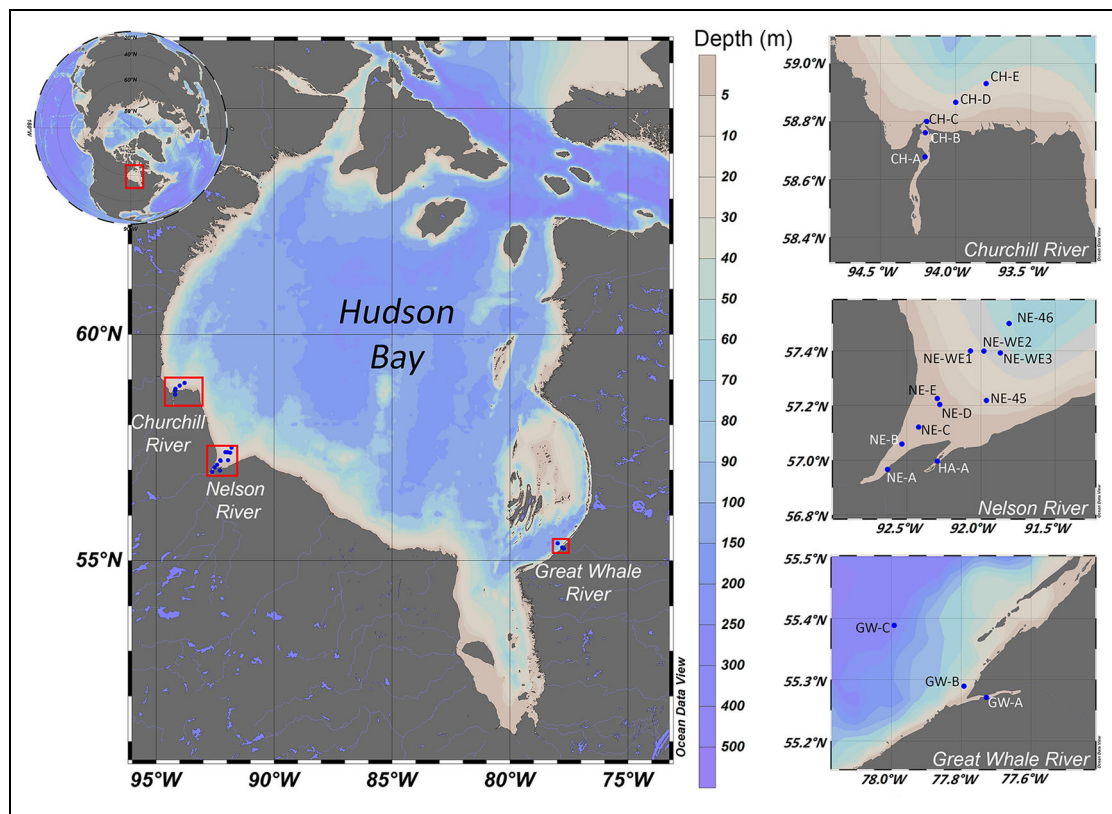
## Materials and methods

### Field sampling

The study was part of a larger multidisciplinary investigation to understand the contributions of climate change and hydroelectric regulation to the freshwater–marine coupling in the Hudson Bay System (BaySys; Barber, 2014). The main aim of the ship-based study was to sample close to the seasonal peak of freshwater discharge. The original mission was to have occurred in 2017, but due to ice and logistical constraints, the ship was not able to sample Western Hudson Bay. The Great Whale River was therefore sampled opportunistically in 2017 once the ship was able to enter Hudson Bay. The original ship-based study focusing on Western Hudson Bay was subsequently carried out in 2018.

Samples were collected from three rivers that discharge into Hudson Bay and adjacent coastal sites (**Figure 1**). All marine and outer estuarine samples were collected from the Canadian Coast Guard Icebreaker CCGS *Amundsen* using a Rosette system equipped with 12-L Niskin-type bottles and a conductivity, temperature, and depth (CTD) profiler (Sea-Bird SBE-911 CTD). The rosette was also equipped with relative nitrate (In-Situ Ultraviolet Spectrometer, ISUS, Satlantic), dissolved oxygen (Seabird SBE-43), chlorophyll fluorescence (Seapoint), fluorescent-colored dissolved organic matter ( $\text{fCDOM}$ ; Wetlabs ECO), photosynthetically active radiation (PAR; Biospherical Instruments QCP3200), and transmissometer (WETlabs C-Star, SeaBird Scientific) sensors. The dissolved oxygen sensor was calibrated onboard against Winkler titrations. Discrete water samples for nutrients, chlorophyll *a* (chl *a*), microscopy, and nucleic acids were collected directly from 12-L Niskin-type bottles that were closed on the upward cast.

The Great Whale River system was sampled on July 7, 2017, with river samples collected directly from the edge of the river using clean 10-L carboys that had been rinsed in 5% HCL, sterile water, and sample water. The Nelson and Churchill River systems were sampled from June 28, 2018, to July 4, 2018 (Table S1). The river water samples were collected directly into clean carboys from a zodiac or a barge deployed from the CCGS *Amundsen*. River conductivity and temperature were obtained using a SeaBird 19



**Figure 1.** Water sampling sites in three river systems of Hudson Bay. Left panel shows the location of Hudson Bay with red boxes indicating the Churchill, Nelson, and Great Whale Rivers and offshore sites. Water depth (m) is indicated by the color scale bar. The right panels indicate the stations sampled in the three systems. DOI: <https://doi.org/10.1525/elementa.2021.00111.f1>

+ CTD probe. Turbidity in the Nelson and Churchill Rivers was measured with a transmissometer (WETlabs C-Star, SeaBird Scientific) deployed from a barge.

Samples for chl *a*, nucleic acids, flow cytometry (FCM), and particulate organic carbon (POC) along the Nelson and Churchill River transects were collected mostly from the surface using a bucket except for stations NE-D and NE-E (**Figure 1**), where near bottom water from 5- and 7-m depths, respectively, was collected with a submersible pump (Cyclone®) mounted on a telescope pole.

For all samples, 6 L of water was subsampled for nucleic acids. This water was sequentially filtered through a 50- $\mu\text{m}$  nylon mesh, a 47-mm diameter and 3- $\mu\text{m}$  polycarbonate filter, and finally through a 0.22- $\mu\text{m}$  Sterivex™ unit (Millipore Canada Ltd, Mississauga, Ontario, Canada). Large (50–3  $\mu\text{m}$ ) and small (3–0.22  $\mu\text{m}$ ) fraction filters were retained for sequencing. The 3- $\mu\text{m}$  filters were folded and placed in 1.5-mL tubes with RNAlater™ (ThermoFisher). The RNAlater was added to the Sterivex units, and the large and small fraction samples were stored at  $-80^\circ\text{C}$  until nucleic acid extraction. Nutrients, FCM, and microscopy samples were collected from the same depths and sample bottles.

Water samples for nitrate ( $\text{NO}_3$ ) and nitrite ( $\text{NO}_2$ ; reported as the sum  $\text{NO}_3 + \text{NO}_2$ ), phosphate ( $\text{PO}_4$ ), and silicate ( $\text{Si}(\text{OH})_4$ ) measurements were collected into acid-rinsed 15-mL Falcon™ tubes (Corning) after the filtration through a 0.22- $\mu\text{m}$  syringe filter and analyzed on board the ship using a Bran-Luebbe 3 autoanalyzer (Grasshoff et

al., 1999). All FCM samples were fixed by adding 90  $\mu\text{l}$  of 25% glutaraldehyde to 1.8 mL of seawater. Preserved samples were left at  $4^\circ\text{C}$  for 30 min in the dark, deep frozen in liquid nitrogen, and stored at  $-80^\circ\text{C}$  until laboratory analysis. Water samples for chl *a* and POC were collected in dark Polycarbonate Nalgene® bottles. For chl *a*, samples were filtered onboard the ship onto 25-mm GF/F (Whatman) filters using a vacuum pump and placed in 10 mL of 90% acetone at  $5^\circ\text{C}$  for 18–24 h to extract the pigments. Fluorescence was measured using a 10AU Field Fluorometer (Turner Designs) before and after acidification with 5% HCL (Parsons et al., 1984). Chl *a* concentrations were determined using the equations by Holm-Hansen et al. (1965). For POC analysis, subsamples from the Nalgene bottles and a filtration blank (from filtered seawater) for each sampling station were filtered onto precombusted ( $450^\circ\text{C}$  for 5 h) 25-mm GF/F filters. Afterward, filters were wrapped in tinfoil and stored at  $-80^\circ\text{C}$  for later analysis using a COSTECH ECS 4010 Elemental Analyser coupled with a continuous-flow DeltaPlus XP Isotope Ratio Mass Spectrometer (IRMS, Thermo Electron Co, ThermoScientific, Waltham, MA, USA) at the University of British Columbia as in Glaz et al. (2014). Microscopy samples were filtered onto black 0.8- $\mu\text{m}$  polycarbonate filters, stained with 4',6-Diamidino-2-phenylindole dihydrochloride (DAPI), mounted in immersion oil onto glass slides and stored at  $-20^\circ\text{C}$  until they were examined (Joli et al., 2018).

DNA and RNA samples were co-extracted from the filters using AllPrep DNA/RNA Mini kit (Qiagen, Germany) following the suggested protocol. For RNA purification, an additional DNAase step was carried out to remove possible DNA contamination. Absence of residual DNA was confirmed by Polymerase Chain Reaction (PCR) with eukaryotic primers and the cleaned RNA as template showing no amplification after 30 cycles. The RNA was then converted to cDNA using the High Capacity Reverse Transcription Kit (ThermoFisher, USA). The V4 region of 18S rRNA gene (rDNA) and 18S rRNA (rRNA) was amplified to construct libraries using a combination of universal forward E572F (CYG CGG TAA TTC CAG CTC) and reverse primers E1009 R (CRA AGA YGA TYA GAT ACC RT; Comeau et al., 2016). Amplicons were tagged for multiplexing with MiSeq®-specific linking primers, and equimolar concentrations of amplicons were sequenced on an Illumina MiSeq® by the “Plateforme d’Analyses Génomiques” (IBIS, Université Laval, Quebec, Canada). Raw paired-end reads have been merged with BBMerge (Bushnell et al., 2017) and deposited in NCBI under the BioProject accession number PRJNA627250.

#### **FCM and microscopy**

Microbial cell concentrations were measured on a BD Accuri™ C6 flow cytometer equipped with a C sampler (BD Biosciences); phytoplankton cell counts were based on chlorophyll red fluorescence and forward-scattered light (Marie et al., 2005) using a 14.7 mW 640 nm Diode Red Laser and 20 mW 488 nm Solid State Blue Laser. For phytoplankton, data acquisition was performed at a fast flow rate (66 µl/min) for 10 min with three wash and three agitation cycles between each sample. Flow rate was recalibrated daily with standard-size beads to normalize cell counts. Data were processed with BD CSampler Software. We confirmed the presence of the diatom *Rhizosolenia* and other cells from the DAPI-stained filters with the 40× objective and appropriate settings for high resolution using an SP8 Leica confocal laser scanning microscope. Potential cyanobacterial symbionts within the cells were searched under blue laser excitation (488 nm, Lambda scan 500–795 nm) targeting phycocyanin and phycoerythrin by using “lightning” settings on the microscope to enhance visualization.

#### **Data analysis**

Large (50–3 µm) and small (3–0.22 µm) fractions from 37 samples were sequenced (Table S1). Overlapping paired-end reads from the *fastq* files were merged using BBMerge algorithm (Bushnell et al., 2017). The data reads were quality filtered using *vsearch* (*fastq\_maxee* = 0.5). Short sequences were identified in *vsearch* and removed from the analysis. USEARCH was used for chimera checking and Operational Taxonomic Unit (OTU) picking at a threshold of 98% similarity. The assignment of taxonomic identity was performed in *mothur* against the PR2 Database v4.9.0 (Guillou et al., 2013). Sequences affiliated to chloroplasts, Metazoa, and fungi were excluded from the diversity and protist proportional analysis. For information, fungi results are presented separately (Table S2). For the protist

cross-comparisons between samples, small and large fraction communities were summed together, and singletons were removed from the analysis using the R package *Phyloseq* (McMurdie and Holmes, 2013).

To correct for the influence of rare species and differential sequencing depth, data standardization was performed with the Hellinger method using *vegan* (Oksanen et al., 2007) and OTUs below the threshold of  $1 \times 10^{-5}$  total relative abundance were removed from the matrix table. This correction resulted in a relative abundance table of 6010 OTUs for rDNA (Table S3) and 4230 OTUs for rRNA (Table S4). A Bray–Curtis distance matrix was then calculated based on the relative abundance tables. Singletons were removed from the species table. Distance-based multivariate regression trees (db-MRT) were performed with the R package *mvpart* (De’Ath, 2002) to explore and predict the relationship between microbial community distance and environmental variables. This method allows partitioning of a group of samples where each successive partition from the Bray–Curtis distance predicts the influence of an environmental variable. Salinity, temperature, depth, total phytoplankton (from FCM), and nutrient concentrations (phosphate, nitrate + nitrite and silicate) were used as explanatory variables in the analysis. For each split, the method retains the variable and the associated value, which minimizes the resulting sum of within-group squared distance to the group mean for the response data. Six leaves were defined based on the minimum cross-validated relative error (CVRE) through 1,000 iterations. To test the robustness of our analysis, we compared this predictive model of communities with an unconstrained method of cluster analysis (nonmetric multidimensional scaling [NMDS]) to determine whether the clustering was similar between techniques. A Bray–Curtis distance matrix was performed on Hellinger-standardized density data based on the OTUs with the R package *vegan*. Environmental vectors were fitted on the ordination with the *envfit* function. The indicator value index *IndVal* was used to identify specific OTUs that characterized previously identified sample groups (Dufrière and Legendre, 1997). Indicator value analysis was run with the R package *indicspecies* (v1.7.8; Cáceres and Legendre, 2009) using the *multipatt* function “*indval.g*,” and statistical significances of indicator taxa were tested by random permutations of stations (999 permutations). Only OTUs with a *p* value  $\leq .001$ , indicator value (*stat*)  $\geq 0.9$ , and high average relative proportions (total relative abundance  $\geq 0.1\%$ ) were considered as significant, resulting in a final data set of 55 indicator OTUs. OTUs with low taxonomic assignment were further scrutinized with the “BLASTn” algorithm against the NCBI *nr* database. Indicator OTUs were represented on a ternary plot using the R package *ggtern* (Hamilton and Ferry, 2018).

To further increase the taxonomic resolution of estuarine diatom OTUs of *Thalassiosira*, *Skeletonema*, and *Rhizosolenia*, sequences were aligned with full-length 18S rRNA representative sequences using *MUSCLE* (Edgar, 2004). Representative sequences were selected based on blast results of OTU sequences on NCBI and previously published phylogenies. Reference trees were constructed

**Table 1.** Environmental data for the Churchill, Nelson, and Great Whale River systems. DOI: <https://doi.org/10.1525/elementa.2021.00111.t1>

Station <sup>a</sup>	Depth (m)	Temperature (°C)	Salinity	NO <sub>3</sub> + NO <sub>2</sub> (μmol L <sup>-1</sup> )	Si(OH) <sub>4</sub> (μmol L <sup>-1</sup> )	PO <sub>4</sub> (μmol L <sup>-1</sup> )	N:P (molar)	Chl <i>a</i> (μg L <sup>-1</sup> )	POC (μg L <sup>-2</sup> )
CH-A	0	10.54	0.11	0.32	18.11	0.05	7.16	1.85	na <sup>b</sup>
CH-B	0	9.85	10.9	0.03	17.72	0.32	0.03	0.44	na
CH-B	4.5	3.21	29.44	0.01	2.89	0.49	0.08	0.54	na
CH-C	0	8.97	23.81	0.01	6.09	0.37	0.02	0.23	na
CH-C	7	5.35	28.72	0.01	5.01	0.36	0.03	0.25	na
CH-D	0	7.6	27.79	0.01	3.73	0.43	0.02	0.10	na
CH-D	7	2.24	31.2	0.01	1.11	0.51	0.03	0.27	na
CH-E	0	4.57	30.57	0.01	1.3	0.51	0.04	0.66	na
CH-E	7	1.65	31.69	0.02	0.42	0.55	0.03	0.20	na
GW-A	0	na	0	0.25	2.74	0.03	9.54	na	na
GW-B	0	na	12.5	0.03	8.56	0.88	0.03	na	na
GW-C	0	9.56	25.33	0.07	8.36	0.27	0.24	na	na
GW-C	27	-1.19	28.75	0.03	7.79	0.3	0.09	na	na
HA-A	0	20.67	0.12	0.13	34.6	0.1	1.24	5.47	304.4
NE-45	0	6.98	20.2	0.07	1.21	0.43	0.16	0.66	64.2
NE-45	10	3.85	26.51	0.19	8.55	0.5	0.37	1.13	45.8
NE-46	0	2.47	29.46	0.42	3.5	0.58	0.29	1.19	40.6
NE-46	11	2.47	29.47	0.14	1.68	0.48	0.72	1.11	31.9
NE-A	0	21.93	0.16	0.44	38.52	0.28	1.56	1.29	400.9
NE-B	0	14.3	0.12	0.43	26.05	0.26	1.67	3.50	365.0
NE-C	0	13.08	2.45	0.34	30.06	0.28	1.22	2.91	412.6
NE-D	0	11.14	7.61	0.32	21.22	0.45	0.72	1.79	256.4
NE-D	5	8.83	14.84	0.31	21.3	0.47	0.66	3.07	674.8
NE-E	0	9.01	15.49	0.23	13.97	0.56	0.41	0.62	135.2
NE-E	7	4.79	25.07	0.1	5.75	0.53	0.19	0.50	150.4
NE-WE1	0	6.13	22.37	0.05	6.51	0.44	0.12	0.70	70.8
NE-WE1	7	3.02	27.41	0.05	2.57	0.46	0.11	1.14	59.9
NE-WE2	0	3.77	27.03	0.03	2.59	0.38	0.09	0.97	113.4
NE-WE2	7	-0.2	30.8	0.04	1.84	0.5	0.09	2.75	57.0
NE-WE3	0	2.78	27.94	0.08	2.13	0.54	0.09	1.72	140.5
NE-WE3	7	-0.94	31.4	0.04	1.18	0.43	0.15	2.60	66.1

Chl *a* = chlorophyll *a*; POC = particulate organic carbon.

<sup>a</sup>Station locations shown in **Figure 1**, except for station HA-A which was at the mouth of the Hayes River.

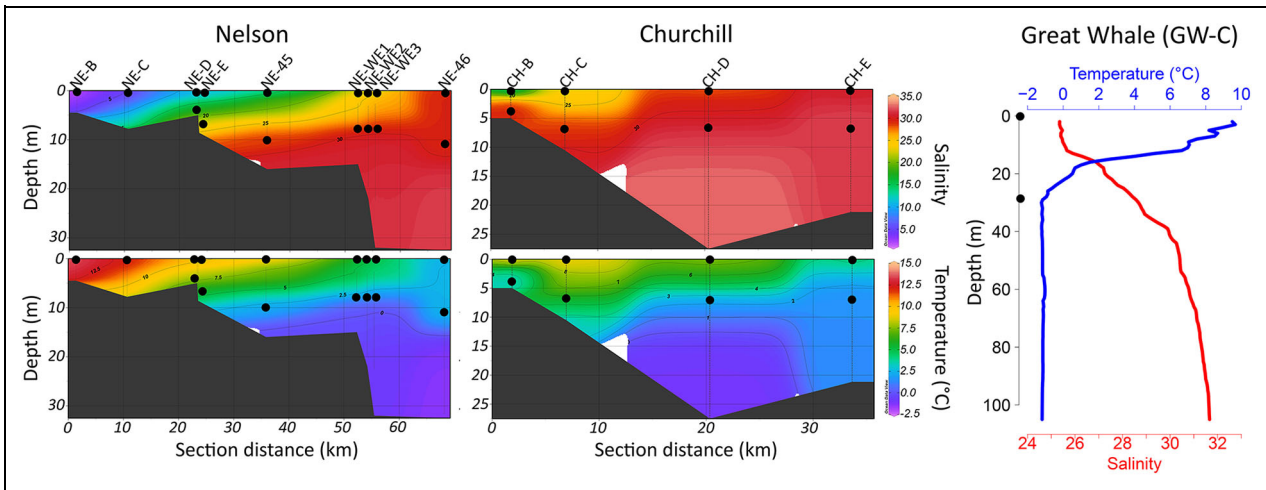
<sup>b</sup>Not available.

with RAXML (Stamatakis, 2014) under the GTR + GAMMA model of substitution from 1,000 distinct randomized maximum parsimony starting trees (Yang, 1994). OTU queries were placed on the reference trees using the evolutionary placement algorithm in RAXML, and the expected distance between placement location value was calculated with PPlacer (Matsen et al., 2010). Final trees were visualized using the R package ggtree (Yu et al., 2017).

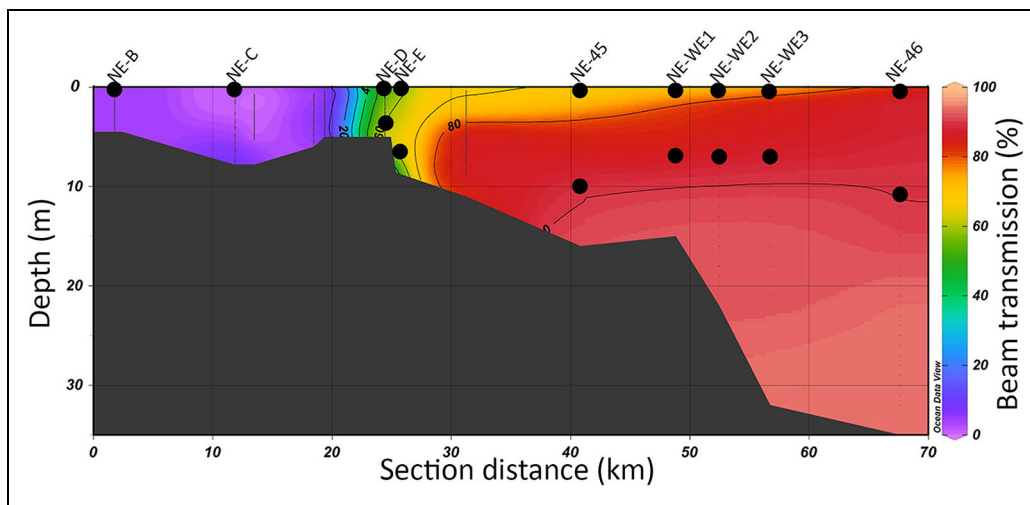
## Results

### *Environmental characteristics and estuarine circulation*

Within the Nelson River system, which included the Hayes River mouth (station HA-A), river waters were very warm (>20 °C) and fresh (salinity < 0.2; **Table 1**). The surface freshwater signal persisted and salinity increased to 20 at NE-45 (**Figure 2**). More typical marine salinities of >30



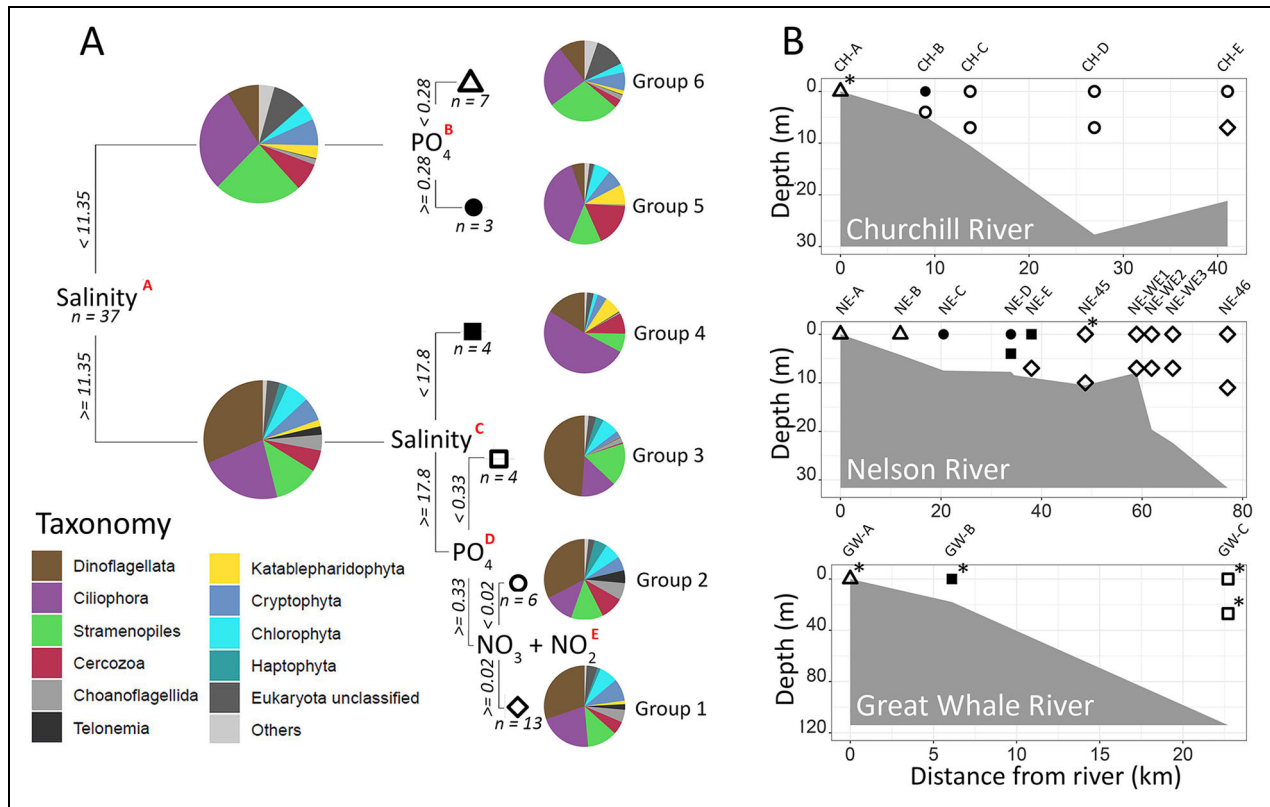
**Figure 2.** Temperature and salinity at the sample collection sites. In the left panels, transects along the Churchill and Nelson estuarine system are plotted using Ocean Data View, where black dots indicate depth and stations where water samples were collected. The deeper water sampling depths were chosen to target just off the bottom of the river channel and a similar depth once out of the channel but are somewhat variable due to sampling constraints on board the ship. These deeper offshore sample depths approximately corresponded to a subsurface chlorophyll maximum. The right panel shows a line plot of the salinity and temperature profiles of the marine site (GW-C) off the Great Whale River. Due to time and logistical constraints, we did not conduct a detailed transect of the Great Whale River. DOI: <https://doi.org/10.1525/elementa.2021.00111.f2>



**Figure 3.** Vertical beam transmission along the Nelson River system. Black dots indicate where the water samples were collected. The deeper depths at station NE-D and NE-E were just off the bottom. The deeper water sample depths were from similar depths once out of the channel but are somewhat variable due to sampling constraints on board the ship. These deeper offshore sample depths approximately corresponded to a subsurface chlorophyll maximum. DOI: <https://doi.org/10.1525/elementa.2021.00111.f3>

and colder temperatures (0 °C) were measured offshore. The deeper (32 m) marine waters at station NE-46 were even more saline (salinity: 31.7) and colder (−1.3 °C). The orientation of isopycnals supports salinity as the major parameter influencing stratification in the estuary (Figure S1). POC concentrations (Table 1) and beam transmission indicated a sharp turbidity front where the riverine water meets the seawater just before station NE-D and NE-E (Figure 3). The Churchill River water was also fresh with a low salinity of 0.1 but cooler than the Nelson River, with temperatures of approximately 10 °C at stations CH-A and

CH-B. Surface salinity and temperature profiles along that transect showed a sharp freshwater gradient highlighting low riverine discharge (Figure 2). The water column was stratified at station CH-B defined by a warm (9.8 °C) and fresher (10.9) layer in the surface on top of a salty (29.4) and cold (3.2 °C) marine layer at 4 m, indicating a marine intrusion into the enclosed estuary (Table 1). Waters offshore of the Churchill River system were warmer than those offshore of the Nelson River system (Figure S1). For the Great Whale River, we recorded a salinity of 0 at the river station GW-A and 12.5 at station GW-B (temperatures



**Figure 4.** Eukaryote community structure along the Churchill, Nelson, and Great Whale River systems. (A) Distance-based multivariate regression tree analysis based on Bray–Curtis distance between 37 samples. Distances are based on the composition of 6010 OTUs. Shapes at the tips represent the putative similar communities (Groups 1–6) with the corresponding number of samples (*n*). Pie charts represent proportions of each taxonomic category listed, first separating the fresher from more marine samples and second within the groups. Red letters indicate the variance explained (*R*<sup>2</sup>) at each separation point, specifically *A* = 0.66, *B* = 0.07, *C* = 0.06, *D* = 0.03, and *E* = 0.01. (B) Location of each sample with the groups along the transects. Asterisks indicate additional replicates. Note that the station at the Hayes River (HA-A) is not displayed on the plot but belonged to Group 6. Sample clustering was used for subsequent analysis and was referred to as “River” for Group 6, “Estuary” for Groups 4 and 5, and “Sea” for Groups 1–3. DOI: <https://doi.org/10.1525/elementa.2021.00111.f4>

not available). Surface water at station GW-C was relatively warm (9.6 °C) and less saline (25.3) compared to the more saline (31.7) and cold (−1.8 °C) deeper layer.

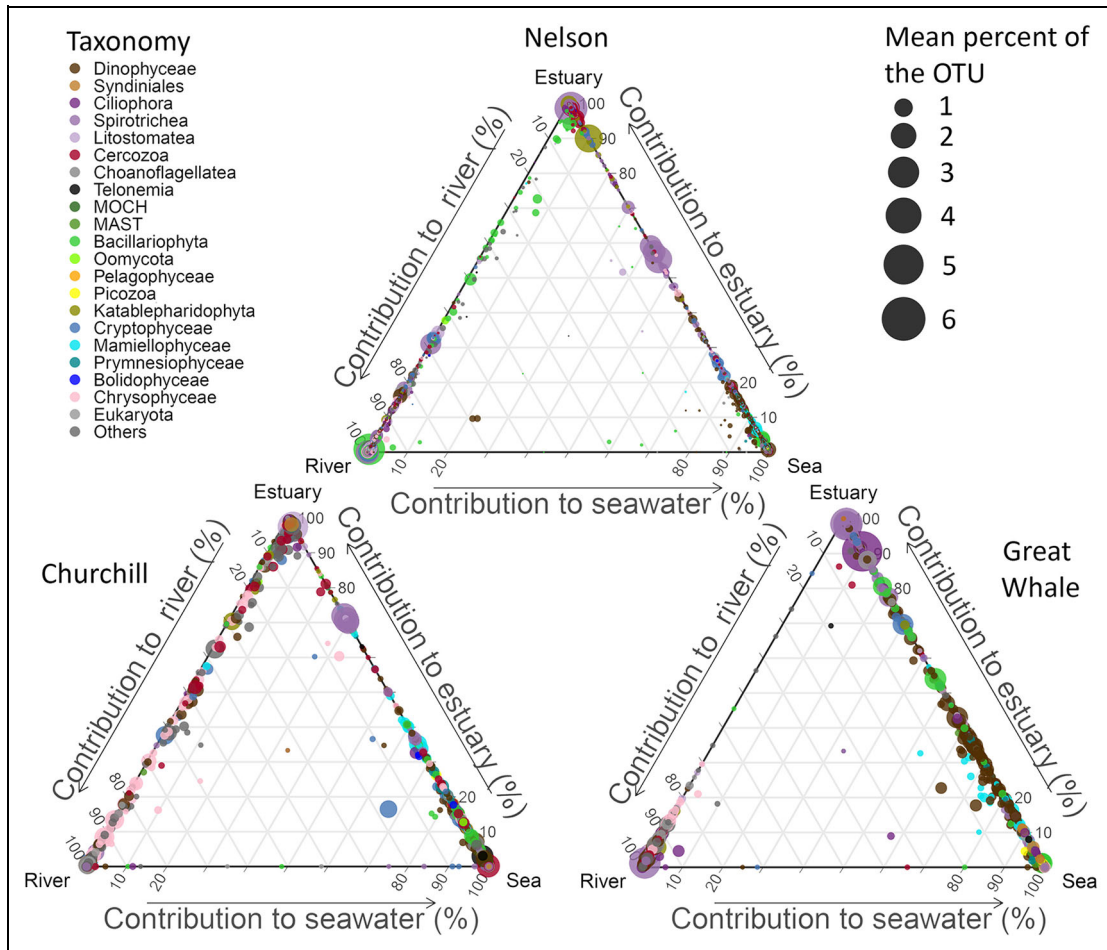
The highest concentrations of NO<sub>3</sub> + NO<sub>2</sub> were at the furthest upstream stations for the three transects with a maximum at the Nelson River station NE-A (0.44 μmol L<sup>−1</sup>; Figure S2, Table 1). Concentrations were very low in the transition and coastal zones of the Great Whale and Churchill Rivers with a maximum at the surface station GW-C (0.07 μmol L<sup>−1</sup>). Concentrations were higher in the Nelson River estuary, ranging from 0.03 to 0.43 μmol L<sup>−1</sup> of NO<sub>3</sub> + NO<sub>2</sub>. Lowest concentrations of phosphate were recorded at all of the uppermost river stations (Figure S2) and then showed an increased seaward gradient with a maximum concentration at the surface of station GW-B (0.88 μmol L<sup>−1</sup>). The nutrient molar ratio of N:P was <2 at all sites except for the Churchill and Great Whale Rivers, which were 7.16 and 9.54, respectively (Table 1). Highest silicate concentrations were observed in the Nelson River (38.5 μmol L<sup>−1</sup> at station NE-A) and decreased seaward. Silicate concentrations in the coastal waters on the Churchill and Great Whale River stations were lower with

values <10 μmol L<sup>−1</sup> and a minimum of 0.42 μmol L<sup>−1</sup> at station CH-E (Figure S2).

**Structure of microbial eukaryote communities**

A db-MRT and an NMDS analysis were conducted for both rDNA and rRNA OTU reads (Figure 4). Although no clear community patterns emerged based on rRNA, the db-MRT analysis based on rDNA separated six well-defined groups with low cumulative error (CVRE = 0.361, SE = 0.0893), showing that the model was a reasonable predictor of microbial community structure and associated environmental parameters (Figure 4). Salinity was the primary environmental predictor (*R*<sup>2</sup> = .66) of the explained variance, which first separated Groups 6 and 5 from the remaining samples. Group 6 consisted of river samples, and Group 5 tended to be more saline (*S* ≥ 1.3 and *S* < 11.35) and considered upper estuarine. Phosphate concentration was the best predictor separating Groups 5 and 6 with concentrations lowest further upstream. Salinity was also the main predictor between the lower estuarine Group 4 (*S* ≥ 11.5 and < 17.8) and three marine communities corresponding to the offshore sites of the three river



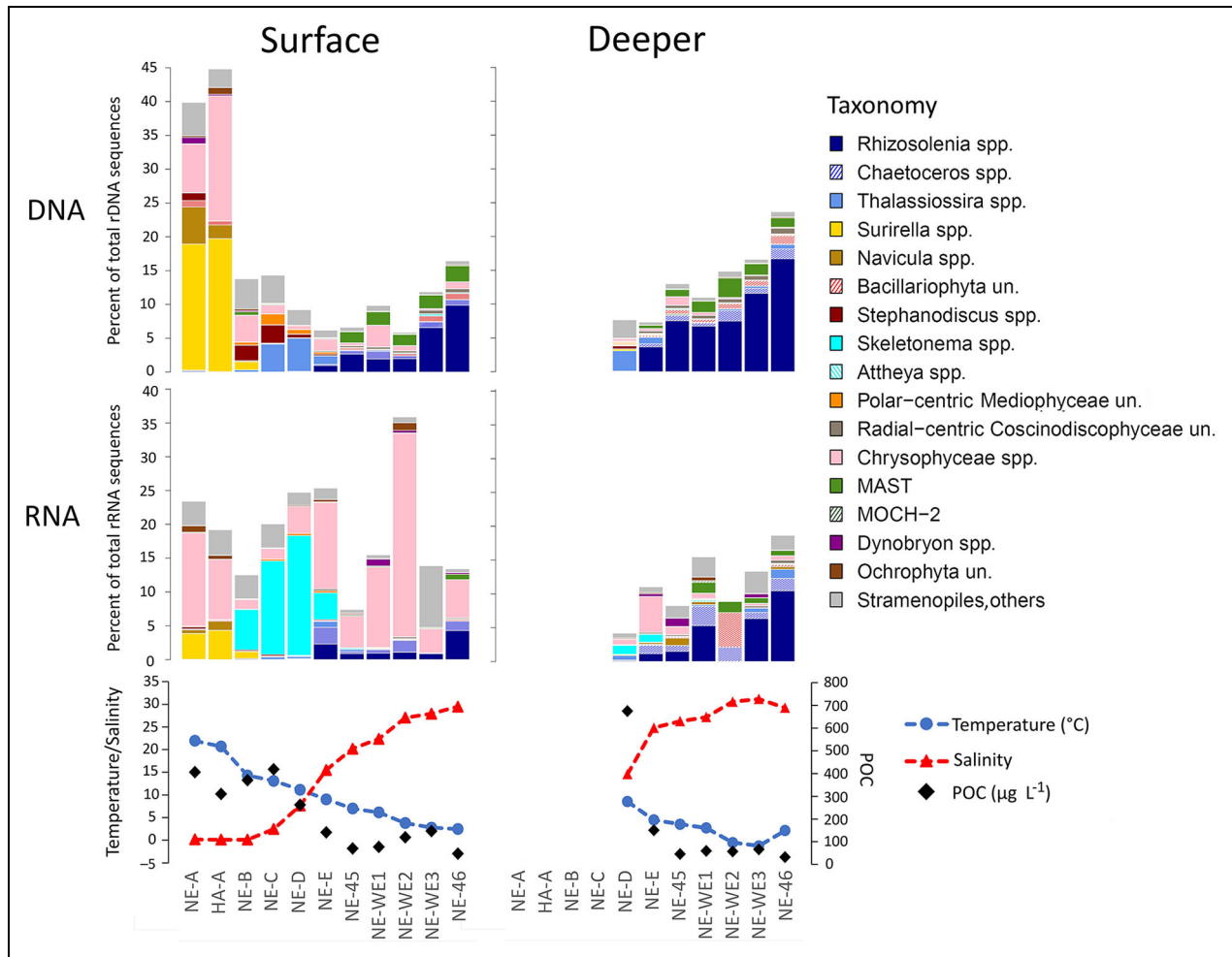


**Figure 5.** Ternary diagrams representing indicator species along the Nelson, Churchill, and Great Whale River transects. River, Estuary, and Sea groups were defined according to the distance-based multivariate regression tree analysis (Figure 4). Only indicator OTUs with a mean proportion >0.01% are shown. Colors correspond to the taxonomic level as indicated in the legend, and dot sizes indicate the mean proportion of the taxa from the three ecological categories (River, Estuary, and Sea). DOI: <https://doi.org/10.1525/elementa.2021.00111.f5>

systems (Groups 1, 2, and 3). Phosphate concentrations again were associated with the clustering of the marine stations with the Great Whale River system having the lowest values (Group 3;  $PO_4 < 0.33$ ).  $NO_3 + NO_2$  concentrations split the Western Hudson Bay marine samples into the Churchill Group 2 ( $NO_3 + NO_2 < 0.02$ ) and predominantly Nelson Group 1 ( $NO_3 + NO_2 \geq 0.02$ ). The only geographic exception was the deeper sample at station CH-E, which was associated with Group 1. These results were consistent with clustering in the unconstrained NMDS analysis (Figure S3).

Relative proportions of 18S rDNA (Figure S4) and rRNA (Figures S5 and S6) reads along the transects revealed marked changes in microbial community composition from the rivers to the oceanic waters. Relative contributions and abundance of OTUs that contributed to the three salinity environments in the three systems were plotted on ternary diagrams and showed the sharp distinction of the river and sea communities in the three systems (Figure 5). The diagrams also showed a progressive replacement, in terms of percent community contribution, among shared OTUs between the estuary and sea taxa in all three systems and the river and estuary taxa

in the Nelson and Churchill River systems. In addition, exclusive OTUs in the three salinity environments can be seen at the apex of the diagrams. Freshwater communities (Figure 4, Group 6) were characterized by higher proportions of rare taxa (indicated here as “others”) and unclassified eukaryotes. Although not classified as indicator taxa by our analysis, three offshore Great Whale River OTUs with a high proportion (0.8%–1.5%) of surface rDNA reads (Supplementary Data S1) were affiliated to the temperate *Micromonas commoda* clade (Figure S6B). The “riverine” community at all three sites was composed of typical freshwater and brackish organisms. In the Nelson River, these organisms were represented by Chrysophyceae clade C, freshwater *Dinobryon* spp., and freshwater representatives of the diatom genera *Surirella* and *Navicula* (Figure 6). The marine communities (Groups 1–3) were composed of higher proportions of Dinophyceae, Choanoflagellata, Prymnesiophyceae, Telonemia, and Mamiellophyceae. Estuarine communities (Groups 4 and 5) both showed an increase in proportions of reads affiliated with heterotrophic taxa including Cercozoa and Katablepharidaceae (Figures S4–S6). Ciliates showed an increasing proportion of reads in the estuarine transition zone of



**Figure 6.** Relative abundance of sequences assigned to diatoms and other Stramenopiles along the Nelson River transect. Top panels show data from the rDNA (gene) analysis and middle panel from the rRNA analysis. The bottom panels show (left axis) salinity and temperature (°C) and (right axis) particulate organic carbon (in  $\mu\text{g L}^{-1}$ ) at the surface and deeper samples along the same transect. DOI: <https://doi.org/10.1525/elementa.2021.00111.f6>

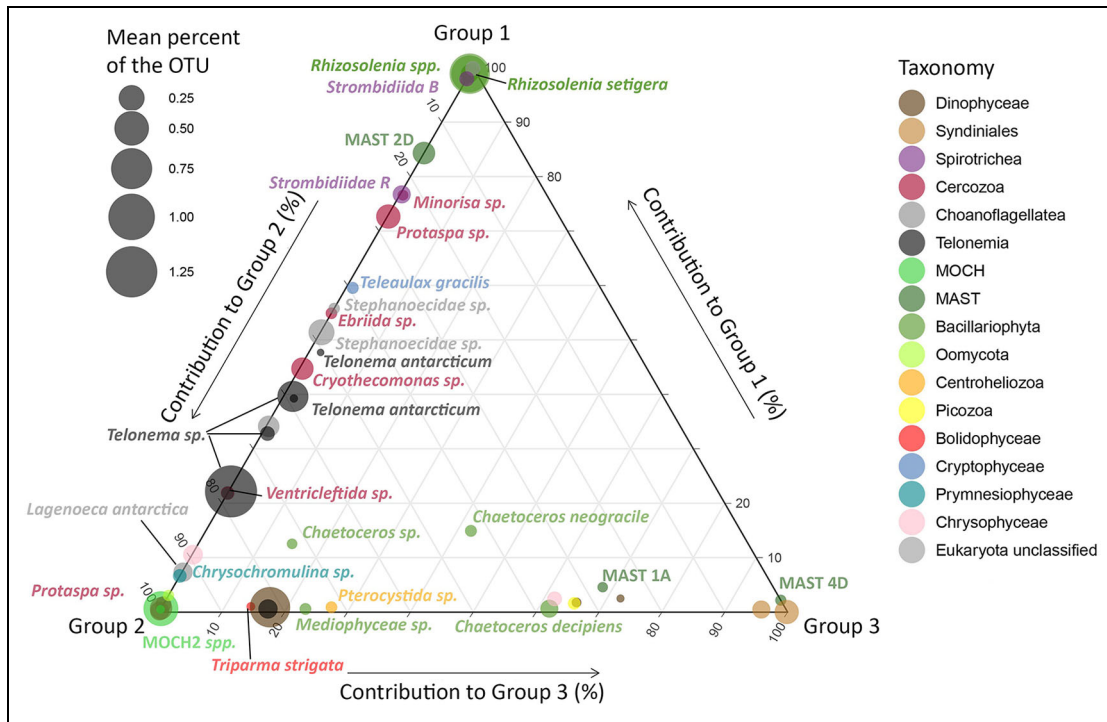
all three river systems, but the composition of the estuarine ciliate communities differed among the estuaries (Figure S7A). In the Churchill River estuary, herbivorous ciliates *Urotricha* spp. and *Didiniidae* spp. increased in relative proportions while *Mesodinium* spp. and *Strombidiium* spp. were recovered from the Great Whale River estuary. The most abundant OTU in the Great Whale River estuary was related to *Mesodinium rubrum* (*Myrionecta rubra*). The Nelson River estuarine groups included more diatoms with genera classified as *Thalassiosira* and *Skeletonema*. The *Thalassiosira* OTUs mapped to a node consisting of *Thalassiosira pseudonana* and *Thalassiosira weissflogii* (Figure S8), and the *Skeletonema* OTUs mapped to *Skeletonema potamos* (Figure S9).

**Indicator species of coastal heterogeneity**

To visualize the indicators of the three offshore groups from Figure 4, we plotted the relative proportion of indicator species (Figure 7; Table S5) based on the three groups (Groups 1–3) that segregated the three regions. This visualization highlighted species that were present in a single region and showed species present in two regions to the exclusion of a third. Churchill offshore

indicator taxa (Group 2) included two representatives of the Marine Ochrophyta group MOCH-2 (Massana et al., 2014; OTUs 2730 and 745), several Cercozoan OTUs including *Protaspa* spp. (OTU 1771), the Bolidophyceae classified as *Triparma strigata* (OTU 1205), the haptophyte *Chrysochromulina* sp. (OTU 327), and the choanoflagellate *Lagenoeca antarctica* (OTU 1323). Offshore the Great Whale River (Group 3), which included both surface and Subsurface Chlorophyll Maximum (SCM) offshore data, indicator OTUs were classified as Syndiniales (OTU 3280 and 913), and an OTU affiliated with the marine Stramenopiles MAST\_4D (OTU 587; Figure 7).

The Nelson offshore indicators (Group 1) were *Rhizosolenia* spp. and an OTU matching *Strombidiida B* (PR2 classification). We examined the Nelson offshore indicators in more detail as more samples had been taken along that marine transect. The diatoms were placed on the *Rhizosoleniales* reference tree with most at a node of *Rhizosolenia* spp. An unclassified diatom (OTU 184) was placed on the lower branches of a reference phylogenetic tree (Figure S10). These *Rhizosoleniales* were highly specialized to the Nelson River system (at the apex of the ternary plot; Figure 7).



**Figure 7.** Ternary diagram representing indicator species OTUs of the marine communities. Group 1 (offshore Great Whale River), Group 2 (mostly offshore Churchill River), and Group 3 (offshore Nelson River) were defined according to the distance-based multivariate regression tree analysis. Colors represent the higher-level taxonomy of the OTUs and dot sizes indicate the mean proportion of each OTU (species level) in the three groups. Taxa placed at the extremities of the ternary diagram can be considered specialists, while taxa placed between groups are more generalists. DOI: <https://doi.org/10.1525/elementa.2021.00111.f7>

The Churchill (Group 2) and Nelson River (Group 1) coastal systems shared a number of taxa that were absent from the Great Whale River coastal region. The Churchill River coastal system also shared taxa with the offshore Great Whale River system (Group 3). No indicator taxa were shared between the Great Whale and the Nelson Rivers. The cryptophyte *Teleaulax gracilis* (OTU 2014) was the main photosynthetic OTU in the Western Hudson Bay (Nelson and Churchill River coastal region). More strikingly was the number of heterotrophic flagellates shared between the two sites, *Ebrida* sp. (OTU 383) and *Minorisa* sp. (OTU 199), *Telonema* (OTU 222, 555, 1098, 2554 and 818), *Cryothecomonads* (*Protaspa*; OTU 712 and 543), the choanoflagellate *Stephanoecidae* (OTU 896), and a thecofilosean in the *Ventricleftida* (OTU 1239). The shared taxa between the Churchill and Great Whale coastal region included different heterotrophic flagellates: MAST\_1A (OTU 605), Picozoa—a centroheliozoan *Pterocystida* sp. (OTU 1554), and an environmental clade of Dinoflagellates (OTU 86, 21806 and 2032). In addition, there were several diatoms including *Chaetoceros neogratile* (OTU 1928) and *Chaetoceros decipiens* (OTU 7975) common to the Churchill (Group 2) and Great Whale (Group 3) Rivers.

The diatom genera in surface coastal waters were confirmed by confocal microscopy by examining the DAPI-stained microscopy filters under a range of excitation–emission settings. Major diatom taxa included Halochaete *Chaetoceros* spp. and *Rhizosolenia*. As with the indicator analysis, *Rhizosolenia* was particularly common

in the Nelson River offshore samples (Figure S11a). Although we could clearly distinguish chloroplasts, no cyanobacteria with phycocyanin or phycoerythrin fluorescent signals were detected inside of the frustules, suggesting the absence of the potential N-fixing symbionts within the *Rhizosolenia* cells (Figure S11b).

## Discussion

### Salinity as a dispersal barrier

Salinity was the major environmental parameter separating microbial communities along the three transects (Figure 4). The Nelson and Churchill River systems have very different freshwater and seawater mixing regimes. At the time of sampling, the Nelson River estuary had warm and fresh riverine water grading into cold and salty marine water. The gradual dissipation of freshwater and cooler surface waters suggested that the Nelson River plume extended up to 25 km offshore from the river mouth (Figure 2). The freshwater discharge rate, underlying geomorphology (a channel), and estuarine circulation led to the development of a strong maximum turbidity zone at the convergence of marine and riverine waters (Figures 2 and 3). In contrast, for the Churchill estuary, the salinity of the deeper layer was more uniform with open ocean salinity near the bottom of the sampled river region. This saline water below the fresh riverine water caused strong vertical stratification at the CH-B station with little evidence of freshwater offshore (Figures 2 and S1). The different salinity profiles reflected the strength of the river runoff, which

differs greatly between these two Western Hudson Bay estuaries and would have been amplified by the ongoing Churchill River diversion into the Nelson catchment beginning in 1974 (Newbury et al., 1984; Déry et al., 2016).

The influence of salinity on the microbial communities was not surprising and suggests that the sub-Arctic communities in summer are driven by similar salinity constraints as reported in temperate estuaries for protist communities (Muylaert et al., 2009; Bazin et al., 2014; Lee et al., 2017; Filker et al., 2019). The microbial communities in the three river systems all contained characteristic freshwater “riverine” taxa. The proportion of the reads from freshwater organisms abruptly declined with increasing salinity, and freshwater eukaryotes were essentially absent in marine waters, indicating a clear dispersal barrier. Both the upper and lower estuarine communities contained a mix of freshwater, marine, and presumably euryhaline or lower-salinity (brackish) taxa. Taxonomic differences between marine and freshwater groups have been observed in bacteria, archaea, and unicellular eukaryotes consistent with evolutionary separation between marine and freshwater lineages (reviewed by Logares et al., 2009). Among parameters that could prevent local adaptation of riverine organisms to high-salinity conditions is a slower cellular division rate as a cost of osmoregulation (Demmig-Adams et al., 2017) exposing taxa to competition with locally adapted lineages and net losses by predation. On the other hand, marine or ice-associated species could be selected against in the warmer surface waters from the stratified estuaries as Arctic species tend to be temperature sensitive (Lovejoy et al., 2007; Daugbjerg et al., 2018). Thus, although the temperature was not considered as the most influential parameter separating estuarine and marine groups, the estuary could also represent a possible thermal barrier for the observed marine species as the temperature in the shallower river water tended to covary with salinity.

#### **Coastal communities as an indicator of regional conditions**

The three coastal communities were composed exclusively of marine taxa (Figure 5), but the species composition differed. Based on the Bray–Curtis distance, the offshore marine coastal communities were separated into distinct Nelson, Churchill, and Great Whale River clusters (Groups 1, 2, and 3, respectively; Figure 4). The only exception was the deeper water community at CH-E, which clustered predominantly with the Nelson River Group 1. Phosphate and  $\text{NO}_3 + \text{NO}_2$  concentrations were the main factors separating the three coastal locations but accounted for <4% of the total explained variance from the db-MRT conducted using the whole data set. Similar to other regions of the Arctic Ocean in summer (Blais et al., 2012; Martin et al., 2013), low N:P ratios ( $\text{NO}_3 + \text{NO}_2:\text{PO}_4$ ) were consistent with primary production limited by the availability of inorganic nitrogen (Table 1). Arctic nutrient concentrations often closely follow the development of the spring bloom, with nitrate concentrations drawn down in surface waters as the bloom progresses (Mei et al., 2003). In Western Hudson Bay in June 2018, an ice-edge

bloom followed ice breakup in mid-May depleting nutrients in the surface mixed layer (Barbeido de Freitas et al., n.d.; Matthes et al., n.d.). The accepted phenology of Arctic phytoplankton is that assemblages move from a peak of diatom or *Phaeocystis* colonies, depending on the availability of silica, to small single-celled flagellates that rely on recycled nitrogen sources such as ammonium and urea (Mei et al., 2003; Simpson et al., 2008; Joli et al., 2017). At the time of sampling,  $\text{NO}_3 + \text{NO}_2$  and silicate concentrations were 10-fold higher in the Nelson offshore samples compared to the Churchill samples (0.1 compared to 0.01). The lower nitrate concentrations in the offshore Churchill River were consistent with the opening of the northwestern Hudson Bay coastal polynya and a precocious bloom developing at the ice edge of the polynya. The bloom was evident in the Nelson River estuary a few weeks later when *Rhizosolenia* was found at the seaward station NE-46 (Figure 6).

*Rhizosolenia* spp. are found in both marine and brackish waters and can form huge blooms in temperate estuaries and coastal waters (Rousseau et al., 2002). They have been consistently reported in Arctic Seas over the past 100 years (Lebour, 1930), and some species have a pan-Arctic distribution (Lovejoy et al., 2002; Poulin et al., 2011). Although the molar N:P ratio was low, the relatively high proportions of *Rhizosolenia* in both rDNA and rRNA reads in the offshore stations of the Churchill and Nelson Rivers suggest that *Rhizosolenia* cells were active. Some *Rhizosolenia* spp. can bypass nitrogen limitation by forming an endosymbiotic association with the nitrogen-fixing cyanobacteria *Richelia* spp. (Villareal, 1990; Singler and Villareal, 2005; Zeev et al., 2008). Although we could clearly distinguish chloroplasts, we were not able to detect cyanobacterial symbionts within the *Rhizosolenia* cells using a confocal microscope (Figure S11). At the time of the Nelson River sampling, the limit of the mobile ice cover (defined as 50% ice concentration) was approximately 90 km offshore of the estuary and a large phytoplankton bloom was observed in the open water at the ice edge (LC Matthes, personal communication). *Rhizosolenia* blooms are also reported to be associated with ice-edge conditions and have been used to trace ice conditions and carbon flow through the polar marine trophic web (Goutte et al., 2013; Brown et al., 2018), and *Rhizosolenia* may have been part of an ice-edge bloom. The healthy chloroplasts seen under confocal microscopy and the presence of *Rhizosolenia* in the rRNA libraries suggest that light and nutrient levels continued to be favorable closer inshore where they may have arrived initially through estuarine circulation.

Most of the marine specialist taxa present in the very N-depleted offshore Churchill River water were heterotrophs (Figure 7). These included OTUs affiliated with *Protaspa*, a thecofilosean (Cerozoa; Howe et al., 2011). Related species have been reported as algal predators or parasites that occur after the spring diatom bloom in San Pedro Channel, CA (reported as *Protapsis*; Berdjeb et al., 2018), which would be consistent with the Churchill River system at the end of a bloom. In Arctic marine waters, a sister taxon in the same family, *Cryothecomonas*, was associated with

waters affected by ice melt (Thaler and Lovejoy, 2012). Another identified indicator species was an environmental Marine Ochrophyta MOCH-2, which is one of the five MOCH groups described to date and most likely feeds on bacteria (Massana et al., 2014), as would the OTU with the closest match to the choanoflagellate *L. antarctica*, originally isolated from deep Antarctic waters (Nitsche et al., 2007). Two small photosynthetic protists were also recorded as indicators of Churchill River coastal waters: the Prymnesiophyceae *Chyrsochromulina* sp., a mixotrophic taxon reported in highly stratified or ice melt-freshened waters in the Arctic (Comeau et al., 2013; Lovejoy, 2014; Ardyna et al., 2017), and a Parmales (bolidophyte), with match closest to *T. strigata* (99.5%) and environmental sequences including those from the Arctic (Terrado et al., 2013). Non-silicious bolidophytes are reported to be mixotrophic, consuming bacteria (Piwosz et al., 2013), but whether the OTU represented a flagellate or silicified form cannot be stated without confirmation by electron microscopy (Yamada et al., 2020). In summary, following ice breakup about 1 month earlier (beginning of June 2018), most of the indicator species off the Churchill estuary were associated with postbloom conditions with increasing surface temperature, remaining mobile sea ice and low inorganic nutrients concentrations in the area at the time of sampling (July 4, 2018).

Two of the indicator taxa from the marine coastal Great Whale River (**Figure 7**) belonged to the marine parasitic order Syndiniales (Guillou et al., 2008). Because these parasites tend to infect dinoflagellates and other heterotrophs that occur later during the postbloom stage, their predominance is consistent with the offshore Great Whale River system being at a later bloom state on July 7 and supported by the earlier opening of Eastern Hudson Bay in 2017 relative to 2018 (Kirillov et al., 2020). The presence of *M. rubrum* along with fewer cryptophytes would also be consistent with being later in the bloom stage. A third Great Whale River marine OTU was placed within the uncultured marine stramenopile clade MAST\_4. Members of MAST\_4 are picoplanktonic protists widely reported in temperate waters but rare in Arctic samples (Massana et al., 2004, 2014). The clade was previously reported from western Arctic surface waters, however, during the then record warm summer in 2005 (Lovejoy and Potvin, 2011), which suggests that warmer water species may have been present in Hudson Bay at the time of sampling. In support of this notion was the high proportion of surface rDNA reads affiliated with the temperate *M. commoda* clade (Figure S6B). The *M. commoda* clade co-occurred with *Micromonas polaris*. *M. polaris* has a pan-Arctic distribution and has been reported throughout the year (Lovejoy et al., 2007; Joli et al., 2017). The presence of the more temperate taxa in the relatively warm surface water (9 °C) at GW-C suggests that warming of surface water favors non-Arctic populations of coastal protists in Hudson Bay, but as of yet, Arctic species are not excluded.

#### **Estuaries as a separate ecological habitat**

A distinct estuarine community was detected in the transition zones of all three river systems (**Figure 5**). The

communities were a mix of specialist taxa, freshwater and marine species. The marine diatom species, mostly *Chaetoceros* spp. found in the Churchill and Great Whale River transition zones, tended to decrease toward the shore consistent with advection and loss of taxa shoreward. In the Nelson River transition zone, several diatom OTUs with closest matches to the euryhaline species *S. potamos*, *T. pseudonana*, and *T. weissflogii* (Hevia-Orube et al., 2016) were found at the intermediate salinities in both rRNA and rDNA libraries (**Figures 6**, S8, and S9). The same species contribute to phytoplankton blooms in temperate coastal environments (Cloern et al., 1985; Urrutxurtu et al., 2003; Quinlan and Philips, 2007; O'Boyle and Silke, 2010). In particular, *S. potamos* is a common species in temperate rivers and lakes of Europe and North America but can grow at salinities up to 24 (Paasche, 1975; Torgan et al., 2009). The spatial distribution of these brackish diatoms in the Nelson River estuary coincided with silicate-rich waters and the maximum of POC concentrations measured at the surface (**Figure 6**).

Heterotrophic flagellates and ciliates have been reported from turbidity zones of major rivers flowing into the sea, for example, the Saint Lawrence (Lovejoy et al., 1993) and the Columbia River (Herfort et al., 2011). In Hudson Bay, we found distinct communities of heterotrophic protists in all three estuarine transition zones, consistent with a distinct euryhaline habitat. In the Nelson River estuary, high POC concentrations and low beam transmission signals (**Figures 3** and **6**) in the transition zone were indicative of a maximum turbidity zone. Both rDNA and rRNA Nelson River estuary data sets indicated higher proportion of phagotrophic thecofilosean Cercozoa including lineages related to *Mataza* sp. and *Ventricleiftida* sp. (Figure S5). Many of these flagellated amoebae are described from soil and freshwater habitats but are not restricted to these environments. For example, the first described *Mataza* was isolated from a surface seawater sample in Tokyo Bay (Yabuki and Ishida, 2011), and related lineages have also been detected in both fresh and brackish waters in the estuary of the Vistula River in the Baltic Sea (Piwosz et al., 2018). Katablepharidales, another phagotrophic flagellate group, were also found in the brackish environment of the Nelson River, including 13 OTUs closely related to *Katablepharis japonica*, which is a broad-spectrum predator, feeding on heterotrophic bacteria, diverse phytoplankton, dinoflagellates, and ciliates (Kwon et al., 2017). The relatively high proportions of *Katablepharis* and other phagotrophs in the Nelson estuary suggest that local conditions in the estuarine environment favor the development of an autochthonous heterotrophic community in the estuarine transition zone (Figures S4 and S5). Moreover, the peak of rDNA *Katablepharis* reads at station NE-C coincided with the position of the turbidity front (**Figures 3** and S4). A similar ecologically constrained distribution of *Katablepharis* was previously reported in the estuarine turbidity maximum zone of the Columbia River (Herfort et al., 2011; Kahn et al., 2014). Herfort et al. (2011) hypothesized that *Katablepharis* cells may be retained as cysts in the turbidity maximum; however, the co-occurrence with other bacterivores

(*Telonemia*, *Mataza*, and *Ventricleftida*) in our rRNA data would be consistent with an active in situ grazer community (Figure S5).

Ciliates accounted for a greater proportion of reads in the estuarine transition zone of all three river systems, but with species differences found in the three systems. Ciliates are a significant component of the Arctic mixotrophic protist communities (Stoecker and Lavrentyev, 2018), and in the Great Whale River estuarine region, the most abundant OTU was related to *M. rubrum* (*M. rubra*). This ciliate, which is part of a species complex (Lasek-Nesselquist and Johnson, 2019), is routinely reported from temperate estuarine communities and has also been reported to form blooms at the ice–water interface during pack ice formation in the Arctic Ocean (Olsen et al., 2019). *M. rubrum* is dependent on sequestered chloroplasts from cryptophyte prey such as *Teleaulax* and *Plagioselmis*, which were also found in the same Great Whale River samples. *Teleaulax* itself is favored by low light conditions (Johnson et al., 2006), suggesting that there may have been a turbidity zone at this site; unfortunately, we were not able to measure CDOM or POC at the time. The Nelson River brackish conditions in the estuary tended to favor ciliates *Tintinnidium* spp., Didymidae spp., and *Litostomatea* spp. These genera were previously reported from brackish environments, in the upper part of the transition zone with *Strombidium* spp. and in the lower part, as previously detected in other Arctic marine samples (Onda et al., 2017). The spatial repartition of the brackish community in the estuaries appears to be species-specific and suggests multiple ecological niches in the estuarine transition zones, especially in the Nelson River where two distinct estuarine communities were identified (Figures 6, S4, and S5).

The definition of the estuary as a boundary between freshwater and marine systems has been the subject of debate, with two types of transition zones proposed: ecocline and ecotone (Kent et al., 1997; Attrill and Rundle, 2002). For most of the protist groups, the patterns of community assemblage along the gradient resembled progressive change from fresh to brackish and from brackish to marine, with few species occurring across the whole transition (Figure 5). A gradient in protist assemblages from the river to the marine systems would support the view of the estuarine ecocline. However, we distinguished a distinct subset of estuarine species in all three systems, with the Nelson River, which was also the most intensively sampled, having the highest representation of estuarine taxa (Figure 5). These species distributions fit with the definition of an ecotone, which is a narrow ecological zone between two different and relatively homogeneous ecosystems. This community was composed of few species that may have an inherent ecological tolerance and resilience to stress induced by the high environmental variability (Elliott and Whitfield, 2011). From our observations, the definition of the estuarine boundary as an ecotone or an ecocline was variable, depending on the taxa studied, highlighting the estuarine transition zone as a combination of the two ecological concepts rather than a clear distinction between the two.

### **A specialized estuarine community in the transition zone**

The formation of a transition zone in an estuary is the result of complex freshwater and marine interactions that are highly variable in time and space and differ substantially among estuaries (Uncles et al., 2002; Burchard et al., 2018). In temperate and sub-Arctic seas, estuarine fronts observed at the convergence of river runoff and tidal forcing can trap suspended sediments and planktonic organisms in a maximum turbidity zone, which is a common feature in estuaries (Frenette et al., 1995; Hetland and Hsu, 2013). Within this “hydrodynamic trapping” environment, conditions of high turbidity, low light, high organic matter accumulation, and high microbial activity should be advantageous for heterotrophic and mixotrophic plankton. In the Nelson River, the estuarine circulation led to the formation of a turbidity front between station NE-C and NE-E that coincided with the peaks observed for several estuarine species (Figures 7, S4, and S5). Heterotrophic flagellates such as *Katablepharis* or Cercozoa and ciliates were retained there and would sustain an active microbial food web by influencing bacterial dynamics, carbon remineralization, and nutrient regeneration through phagotrophy and grazing. Diatoms were also recovered in the Nelson River turbidity maximum zone, highlighting that some taxa were able to grow and adapt to low light conditions when nutrients, especially silicate, are available. In the Churchill and the Great Whale systems, the estuarine community was constrained in a narrower transition area and was mainly composed of mixotrophic ciliates. This difference in the composition and distribution of the estuarine community may be related to geomorphology and lower river discharge of the Churchill and Great Whale Rivers compared to the Nelson River. However, for the Great Whale River sampled in 2017, inter-annual variability cannot be ruled out since the river runoff and the start of the productive season might differ. Preliminary hydrodynamic modeling in the Nelson River estuary has shown that water could reside in the transition zone more than 30 days before flushing out (K Wong and K Sydor, Manitoba Hydro, personal communication). Such a period would be long enough to allow the development of an adapted autochthonous community that may move within the turbidity front depending on river runoff and tidal cycle.

### **Perspective**

The question remains as to how protist assemblages in coastal Hudson Bay might change in response to different river flow regimes, whether as a result of climate change or managed discharge. In temperate estuaries, ecological disturbance associated with freshwater regulation has been described in the Guadiana estuary, where abundance and biomass of diatoms and cyanobacteria decreased (Domingues et al., 2014), and in the Danube River, where a shift from a diatom to a flagellate-based community was attributed to a reduction of silica discharge (Humborg et al., 1997; Rocha et al., 2002). What we have shown here is that the three estuaries had different species assemblages, with the Nelson River system being more mixotroph and heterotroph-dominated in keeping with the presence of a maximum turbidity zone. The extent, location, and

seasonal duration of this zone would be influenced by the timing of discharge and flow rate. Global climate models predict changes in precipitation that could increase annual discharge into Hudson Bay (Steiner et al., 2015); higher flow rate through the upstream reservoirs and increased permafrost melt will add uncertainty to current models (Hinzman et al., 2020). Increased flow and melting permafrost will also affect the input of labile organic material into the Nelson system (Wrona et al., 2016). Greater discharge could move the maximum turbidity zone offshore into deeper waters and limit the ability of the estuary to act as an organic carbon remineralization zone over the spring and summer. Organic nutrients could then be pushed offshore and promote harmful algal blooms that are often linked to high inputs of labile organic matter (Anderson et al., 2002). Already in other regions of the Arctic, there are reports of such species that may harm Arctic marine mammal populations (Joli et al., 2018). Historically, the high flow would have come in spring, but the managed Nelson system has dampened the seasonal signal with a flow rate that is conducive to maintaining a maximum turbidity zone, perhaps mitigating the potential for harmful blooms. Ongoing studies are needed to verify the relationship between species assemblages and changes in hydrography. Overall, the potential consequences for water quality and higher food webs indicate a need to monitor protist communities in Hudson Bay and evaluate potential harmful effects due to ongoing anthropogenic change.

### Significance

This study provides the first inventory of estuarine and coastal microbial eukaryotes in Hudson Bay using molecular techniques. We found that estuarine circulation was a major driver of the dynamics and composition of microbial eukaryote communities in these sub-Arctic estuaries, leading to the formation of ecological niches. Due to the fast response of microbes to environmental change and the complexity of the estuarine circulation processes, direct consequences of river regulation on the microbial communities of the Nelson and Churchill Rivers are difficult to predict and would require temporal monitoring on both regulated and unregulated rivers. This study gives a first glimpse of the distribution and composition of estuarine and coastal protists of Hudson Bay, providing a baseline reference for understanding potential shifts in the microbial community composition in a changing environment.

### Data accessibility statement

Raw paired-end reads have been deposited on NCBI under the BioProject accession number PRJNA627250 (<https://www.ncbi.nlm.nih.gov/bioproject/?term=PRJNA627250>). Conductivity, temperature, and depth/Rosette data used in this study are publicly available on the Canadian Watershed Information Network (CanWIN; <https://doi.org/10.5884/12713>).

### Supplemental files

The supplemental files for this article can be found as follows:

**Tables S1, S2, S5. Figures S1–S11.** Supplemental materials for the main text. File: Supplementary\_material.docx.

**Table S3.** Relative abundance table of 6010 rDNA OTUs, where each sequence has been classified according to the PR2 database (v4.9.0). File: Supplementary\_Table\_S3.DNA\_OTUs\_table\_relative6010.xlsx.

**Table S4.** Relative abundance table of 4230 rRNA OTUs, where each sequence has been classified according to the PR2 database (v4.9.0). File: Supplementary\_Table\_S4.RNA\_OTUs\_table\_relative4230.xlsx.

### Acknowledgments

The authors thank P. Guillot for processing CTD data and G. Deslongchamps and J. Gagnon for collecting and processing nutrient data. Sequencing was from the Plateforme d'Analyses Genomiques (IBIS, Université Laval and support for data analysis from Compute Canada. The CTD data were collected on board the Canadian research icebreaker CCGS *Amundsen* as part of the Hudson Bay System Study (BaySys). Logistical support was provided by the Amundsen Science program, which is supported by the Canada Foundation for Innovation. They are also grateful to the crew of the CCGS *Amundsen* for logistics and Marianne Potvin and Carlee Morency for laboratory work.

### Funding

This research is a contribution to the BaySys project funded by Natural Science and Engineering Council of Canada (NSERC) and Manitoba Hydro with additional NSERC discovery and northern supplement grants to CL. The authors also acknowledge support from ArcticNet a Network of Centres of Excellence (project Arc3Bio) and from the Fonds de recherche du Québec Nature et Technologies (FRQNT) to Québec Océan. LJ received mobility grants from Sentinelle Nord (Canada First Research Excellence Fund) and Québec Océan. Conductivity, temperature, and depth data were made available through the Amundsen Science program, supported by the Canada Foundation for Innovative and the NSERC. The analyses were conducted using Compute Canada facilities.

### Competing interests

The authors declare that they have no conflict of interest.

### Author contributions

Contributed to the conception and design: LJ, DK, CL.

Contributed to acquisition of data: LJ, DK, LCM, JÉT, CJM.

Contributed to analysis and interpretation of data: LJ, DK, LCM, AV, JÉT, CJM, CL.

Commented and/or revised the article: All authors.

Wrote the manuscript: LJ and CL with comments by all authors.

Approved the submitted version for publication: All authors.

### References

**Anderson, DM, Glibert, PM, Burkholder, JM.** 2002. Harmful algal blooms and eutrophication: Nutrient sources, composition, and consequences. *Estuaries*

- 25(4): 704–726. DOI: <https://dx.doi.org/10.1007/BF02804901>.
- Ardyna, M, Babin, M, Devred, E, Forest, A, Gosselin, M, Raimbault, P, Tremblay, JÉ.** 2017. Shelf-basin gradients shape ecological phytoplankton niches and community composition in the coastal Arctic Ocean (Beaufort Sea). *Limnology and Oceanography* **62**(5): 2113–2132. DOI: <https://dx.doi.org/10.1002/lno.10554>.
- Attrill, MJ, Rundle, SD.** 2002. Ecotone or ecocline: Ecological boundaries in estuaries. *Estuarine, Coastal and Shelf Science* **55**(6): 929–936. DOI: <https://dx.doi.org/10.1006/ecss.2002.1036>.
- Barbeido de Freitas, L, Bélanger, S, Tremblay, J-É.** n.d. Climate control of sea-ice edge phytoplankton blooms in the Hudson Bay System. *Elementa: Science of the Anthropocene*, in press.
- Barber, D.** 2014. BaySys—Contributions of climate change and hydroelectric regulation to the variability and change of freshwater–marine coupling in the Hudson Bay System. Available at [http://umanitoba.ca/faculties/environment/departments/ceos/media/BaySys\\_PROJECT\\_DESCRIPTION.pdf](http://umanitoba.ca/faculties/environment/departments/ceos/media/BaySys_PROJECT_DESCRIPTION.pdf). Accessed 25 June 2020.
- Bazin, P, Jouenne, F, Friedl, T, Deton-Cabanillas, AF, Le Roy, B, Véron, B.** 2014. Phytoplankton diversity and community composition along the estuarine gradient of a temperate macrotidal ecosystem: Combined morphological and molecular approaches. *PLoS One* **9**(4): e94110. DOI: <https://dx.doi.org/10.1371/journal.pone.0094110>.
- Berdjeb, L, Parada, A, Needham, DM, Fuhrman, JA.** 2018. Short-term dynamics and interactions of marine protist communities during the spring–summer transition. *The ISME Journal* **12**(8): 1907–1917. DOI: <https://dx.doi.org/10.1038/s41396-018-0097-x>.
- Bhiry, N, Delwaide, A, Allard, M, Bégin, Y, Filion, L, Lavoie, M, Nozais, C, Payette, S, Pienitz, R, Saulnier-Talbot, E, Vincent, WF.** 2011. Environmental change in the Great Whale River region, Hudson Bay: Five decades of multidisciplinary research by Centre d'études nordiques (CEN). *Écoscience* **18**(3): 182–203. DOI: <https://dx.doi.org/10.2980/18-3-3469>.
- Blais, M, Tremblay, JÉ, Jungblut, AD, Gagnon, J, Martin, J, Thaler, M, Lovejoy, C.** 2012. Nitrogen fixation and identification of potential diazotrophs in the Canadian Arctic. *Global Biogeochemical Cycles* **26**(3): BG3022. DOI: <https://dx.doi.org/10.1029/2011GB004096>.
- Bouvier, TC, del Giorgio, PA.** 2002. Compositional changes in free-living bacterial communities along a salinity gradient in two temperate estuaries. *Limnology and Oceanography* **47**(2): 453–470. DOI: <https://dx.doi.org/10.4319/lo.2002.47.2.0453>.
- Brown, TA, Galicia, MP, Thiemann, GW, Belt, ST, Yurkowski, DJ, Dyck, MG.** 2018. High contributions of sea ice derived carbon in polar bear (*Ursus maritimus*) tissue. *PLoS One* **13**(1): e0191631. DOI: <https://dx.doi.org/10.1371/journal.pone.0191631>.
- Burchard, H, Schuttelaars, HM, Ralston, DK.** 2018. Sediment trapping in estuaries. *Annual Review of Marine Science* **10**: 371–395. DOI: <https://dx.doi.org/10.1146/annurev-marine-010816-060535>.
- Bushnell, B, Rood, J, Singer, E.** 2017. BBMerge—accurate paired shotgun read merging via overlap. *PLoS One* **12**(10): e0185056. DOI: <https://dx.doi.org/10.1371/journal.pone.0185056>.
- Cáceres, MD, Legendre, P.** 2009. Associations between species and groups of sites: Indices and statistical inference. *Ecology* **90**(12): 3566–3574. DOI: <https://dx.doi.org/10.1890/08-1823.1>.
- Cloern, JE, Cole, BE, Wong, RL, Alpine, AE.** 1985. Temporal dynamics of estuarine phytoplankton: A case study of San Francisco Bay, in *Temporal dynamics of an estuary: San Francisco Bay*. Dordrecht, the Netherlands: Springer: 153–176. DOI: <https://dx.doi.org/10.1007/978-94-009-5528-8>.
- Comeau, AM, Philippe, B, Thaler, M, Gosselin, M, Poulin, M, Lovejoy, C.** 2013. Protists in Arctic drift and land-fast sea ice. *Journal of Phycology* **49**(2): 229–240. DOI: <https://dx.doi.org/10.1111/jpy.12026>.
- Comeau, AM, Vincent, WF, Bernier, L, Lovejoy, C.** 2016. Novel chytrid lineages dominate fungal sequences in diverse marine and freshwater habitats. *Scientific Reports* **6**(1): 1–6. DOI: <https://dx.doi.org/10.1038/srep30120>.
- Crump, BC, Hopkinson, CS, Sogin, ML, Hobbie, JE.** 2004. Microbial biogeography along an estuarine salinity gradient: Combined influences of bacterial growth and residence time. *Applied and Environmental Microbiology* **70**(3): 1494–1505. DOI: <https://dx.doi.org/10.1128/AEM.70.3.1494-1505.2004>.
- Daughjerg, N, Norlin, A, Lovejoy, C.** 2018. *Baffinella frigidus* gen. et sp. nov. (Baffinellaceae fam. nov., Cryptophyceae) from Baffin Bay: Morphology, pigment profile, phylogeny, and growth rate response to three abiotic factors. *Journal of Phycology* **54**(5): 665–680. DOI: <https://dx.doi.org/10.1111/jpy.12766>.
- De'Ath, G.** 2002. Multivariate regression trees: A new technique for modeling species–environment relationships. *Ecology* **83**(4): 1105–1117. DOI: [https://dx.doi.org/10.1890/0012-9658\(2002\)083\[1105:MRTANT\]2.0.CO;2](https://dx.doi.org/10.1890/0012-9658(2002)083[1105:MRTANT]2.0.CO;2).
- Demmig-Adams, B, Burch, TA, Stewart, JJ, Savage, EL, Adams III, WW.** 2017. Algal glycerol accumulation and release as a sink for photosynthetic electron transport. *Algal Research* **21**: 161–168. DOI: <https://dx.doi.org/10.1016/j.algal.2016.11.017>.
- Déry, SJ, Mlynowski, TJ, Hernández-Henríquez, MA, Straneo, F.** 2011. Interannual variability and interdecadal trends in Hudson Bay streamflow. *Journal of Marine Systems* **88**(3): 341–351. DOI: <https://dx.doi.org/10.1016/j.jmarsys.2010.12.002>.
- Déry, SJ, Stadnyk, TA, MacDonald, MK, Gauli-Sharma, B.** 2016. Recent trends and variability in river discharge across northern Canada. *Hydrology & Earth System Sciences* **20**(12): 4801–4818. DOI: <https://dx.doi.org/10.5194/hess-20-4801-2016>.



- Domingues, RB, Barbosa, AB, Sommer, U, Galvão, HM.** 2012. Phytoplankton composition, growth and production in the Guadiana estuary (SW Iberia): Unraveling changes induced after dam construction. *Science of the Total Environment* **416**: 300–313. DOI: <https://dx.doi.org/10.1016/j.scitotenv.2011.11.043>.
- Domingues, RB, Barbosa, AB, Galvão, HM.** 2014. River damming leads to decreased phytoplankton biomass and disappearance of cyanobacteria blooms. *Estuarine, Coastal and Shelf Science* **136**: 129–138. DOI: <https://dx.doi.org/10.1016/j.ecss.2013.11.012>.
- Dufrêne, M, Legendre, P.** 1997. Species assemblages and indicator species: The need for a flexible asymmetrical approach. *Ecological Monographs* **67**(3): 345–366. DOI: [https://dx.doi.org/10.1890/0012-9615\(1997\)067\[0345:SAAI\]2.0.CO;2](https://dx.doi.org/10.1890/0012-9615(1997)067[0345:SAAI]2.0.CO;2).
- Edgar, RC.** 2004. MUSCLE: Multiple sequence alignment with high accuracy and high throughput. *Nucleic Acids Research* **32**(5): 1792–1797. DOI: <https://dx.doi.org/10.1093/nar/gkh340>.
- Elliott, M, Whitfield, AK.** 2011. Challenging paradigms in estuarine ecology and management. *Estuarine, Coastal and Shelf Science* **94**(4): 306–314. DOI: <https://dx.doi.org/10.1016/j.ecss.2011.06.016>.
- Ferland, J, Gosselin, M, Starr, M.** 2011. Environmental control of summer primary production in the Hudson Bay system: The role of stratification. *Journal of Marine Systems* **88**(3): 385–400. DOI: <https://dx.doi.org/10.1016/j.jmarsys.2011.03.015>.
- Filker, S, Kühner, S, Heckwolf, M, Dierking, J, Stoeck, T.** 2019. A fundamental difference between macrobiota and microbial eukaryotes: Protistan plankton has a species maximum in the freshwater-marine transition zone of the Baltic Sea. *Environmental Microbiology* **21**(2): 603–617. DOI: <https://dx.doi.org/10.1111/1462-2920.14502>.
- Frenette, JJ, Vincent, WF, Dodson, JJ, Lovejoy, C.** 1995. Size-dependent variations in phytoplankton and protozoan community structure across the St. Lawrence River transition region. *Marine Ecology Progress Series. Oldendorf* **120**(1): 99–110. DOI: <https://dx.doi.org/10.3354/meps120099>.
- Glaz, P, Sirois, P, Archambault, P, Nozais, C.** 2014. Impact of forest harvesting on trophic structure of Eastern Canadian Boreal Shield Lakes, insights from stable isotope analysis. *PLoS One* **9**(4): e96143. DOI: <https://dx.doi.org/10.1371/journal.pone.0096143>.
- Goutte, A, Cherel, Y, Houssais, MN, Klein, V, Ozouf-Costaz, C, Raccurt, M, Robineau, C, Massé, G.** 2013. Diatom-specific highly branched isoprenoids as biomarkers in Antarctic consumers. *PLoS One* **8**(2): e56504. DOI: <https://dx.doi.org/10.1371/journal.pone.0056504>.
- Granskog, MA, Macdonald, RW, Kuzyk, ZZA, Senneville, S, Mundy, C, Barber, DG, Stern, GA, Saucier, F.** 2009. Coastal conduit in Southwestern Hudson Bay (Canada) in summer: Rapid transit of freshwater and significant loss of colored dissolved organic matter. *Journal of Geophysical Research: Oceans* **114**: C08012. DOI: <https://dx.doi.org/10.1029/2009JC005270>.
- Grasshoff, K, Kremling, K, Ehrhardt, M.** 1999. *Methods of sea-water analysis*. New York, NY: Wiley-VCH. DOI: <https://dx.doi.org/10.1002/9783527613984>.
- Guillou, L, Viprey, M, Chambouvet, A, Welsh, RM, Kirkham, AR, Massana, R, Scanlan, DJ, Worden, AZ.** 2008. Widespread occurrence and genetic diversity of marine parasitoids belonging to Syndiniales (Alveolata). *Environmental Microbiology* **10**(12): 3349–3365. DOI: <https://dx.doi.org/10.1111/j.1462-2920.2008.01731.x>.
- Guillou, L, Bachar, D, Audic, S, Bass, D, Berney, Bittner, L, Boutte, C, Burgaud, G, de Vargas, C, Decelle, J, del Campo, J, Dolan, JR, Dunthorn, M, Edvardsen, Em Holzmann, M, Kooistra, WH, Lara, E, Le Bescot, N, Logares, R, Mahé, F, Massana, R, Montresor, M, Morard, R, Not, F, Pawlowski, J, Probert, I, Sauvadet, AL, Siano, R, Stoeck, T, Vaulot, D, Zimmermann, P, Christen, R.** 2013. The Protist Ribosomal Reference database (PR<sup>2</sup>): A catalog of unicellular eukaryote small subunit rRNA sequences with curated taxonomy. *Nucleic Acids Research* **41**(D1): 597–604. DOI: <https://dx.doi.org/10.1093/nar/gks1160>.
- Hamilton, NE, Ferry, M.** 2018. ggtern: Ternary diagrams using ggplot2. *Journal of Statistical Software* **87**(1): 1–17. DOI: <https://dx.doi.org/10.18637/jss.v087.c03>.
- Harvey, M, Therriault, JC, Simard, N.** 1997. Late-summer distribution of phytoplankton in relation to water mass characteristics in Hudson Bay and Hudson Strait (Canada). *Canadian Journal of Fisheries and Aquatic Sciences* **54**(8): 1937–1952. DOI: <https://dx.doi.org/10.1139/cjfas-54-8-1937>.
- Heikkilä, M, Pospelova, V, Hochheim, K, Kuzyk, ZZA, Stern, GA, Barber, DG, Macdonald, RW.** 2014. Surface sediment dinoflagellate cysts from the Hudson Bay system and their relation to freshwater and nutrient cycling. *Marine Micropaleontology* **106**: 79–109. DOI: <https://dx.doi.org/10.1016/j.marmicro.2013.12.002>.
- Herfort, L, Peterson, TD, McCue, LA, Zuber, P.** 2011. Protist 18S rRNA gene sequence analysis reveals multiple sources of organic matter contributing to turbidity maxima of the Columbia River estuary. *Marine Ecology Progress Series* **438**: 19–31. DOI: <https://dx.doi.org/10.3354/meps09303>.
- Hetland, RD, Hsu, TJ.** 2013. Freshwater and sediment dispersal in large river plumes, in *Biogeochemical dynamics at large river-coastal interfaces: Linkages with global climate change*. Cambridge, UK: Cambridge University Press: 55–85. DOI: <https://dx.doi.org/10.1017/CBO9781139136853.006>.
- Hevia-Orube, J, Orive, E, David, H, Díez, A, Laza-Martínez, A, Miguel, I, Seoane, S.** 2016. Molecular and morphological analyses of solitary forms of brackish

- Thalassiosiroid diatoms (Coscinodiscophyceae), with emphasis on their phenotypic plasticity. *European Journal of Phycology* **51**(1): 11–30. DOI: <https://dx.doi.org/10.1080/09670262.2015.1077394>.
- Hinzman, AM, Sjöberg, Y, Lyon, SW, Ploum, SW, van der Velde, Y.** 2020. Increasing non-linearity of the storage-discharge relationship in sub-Arctic catchments. *Hydrological Processes* **34**(19): 3894–3909. DOI: <https://dx.doi.org/10.1002/hyp.13860>.
- Holm-Hansen, O, Lorenzen, CJ, Holmes, RW, Strickland, JDH.** 1965. Fluorometric determination of chlorophyll. *ICES Journal of Marine Science* **30**(1): 3–15. DOI: <https://dx.doi.org/10.1093/icesjms/30.1.3>.
- Howe, AT, Bass D, Scoble, JM, Lewis, R, Vickerman, K, Arndt, H, Cavalier-Smith, T.** 2011. Novel cultured protists identify deep-branching environmental DNA clades of Cercozoa: New genera *Tremula*, *Micrometopion*, *Minimassisteria*, *Nudifila*, *Peregrinia*. *Protist* **162**(2): 332–372. DOI: <https://dx.doi.org/10.1016/j.protis.2010.10.002>.
- Humborg, C, Ittekkot, V, Cociasu, A, Bodungen, BV.** 1997. Effect of Danube River dam on Black Sea biogeochemistry and ecosystem structure. *Nature* **386**(6623): 385–388. DOI: <https://dx.doi.org/10.1038/386385a0>.
- Johnson, MD, Tengs, T, Oldach, D, & Stoecker, DK.** 2006. Sequestration, performance, and functional control of cryptophyte plastids in the ciliate *Myrionecta rubra* (ciliophora). *Journal of Phycology* **42**(6): 1235–1246. DOI: <https://dx.doi.org/10.1111/j.1529-8817.2006.00275.x>.
- Joli, N, Monier, A, Logares, R, Lovejoy, C.** 2017. Seasonal patterns in Arctic prasinophytes and inferred ecology of *Bathycoccus* unveiled in an Arctic winter metagenome. *The ISME Journal* **11**(6): 1372–1385. DOI: <https://dx.doi.org/10.1038/ismej.2017.7>.
- Joli, N, Gosselin, M, Ardyna, M, Babin, M, Onda, DE, Tremblay, JÉ, Lovejoy, C.** 2018. Need for focus on microbial species following ice melt and changing freshwater regimes in a Janus Arctic Gateway. *Scientific Reports* **8**(1): 9405. DOI: <http://dx.doi.org/10.1038/s41598-018-27705-6>.
- Kahn, P, Herfort, L, Peterson, TD, Zuber, P.** 2014. Discovery of a *Katablepharis* sp. in the Columbia River estuary that is abundant during the spring and bears a unique large ribosomal subunit sequence element. *Microbiology Open* **3**(5): 764–776. DOI: <https://dx.doi.org/10.1002/mbo3.206>.
- Kent, M, Gill, WJ, Weaver, RE, Armitage, RP.** 1997. Landscape and plant community boundaries in biogeography. *Progress in Physical Geography* **21**(3): 315–353. DOI: <https://dx.doi.org/10.1177/030913339702100301>.
- Kirilov, S, Babb, D, Dmitrenko, I, Landy, J, Lukovich, J, Ehn, J, Sydor, K, Barber, D, Stroeve, J.** 2020. Atmospheric forcing drives the winter sea ice thickness asymmetry of Hudson Bay. *Journal of Geophysical Research: Oceans* **125**(2): e2019JC015756. DOI: <https://dx.doi.org/10.1029/2019JC015756>.
- Kuzyk, ZZA, Macdonald, RW, Tremblay, JÉ, Stern, GA.** 2010. Elemental and stable isotopic constraints on river influence and patterns of nitrogen cycling and biological productivity in Hudson Bay. *Continental Shelf Research* **30**(2): 163–176. DOI: <https://dx.doi.org/10.1016/j.csr.2009.10.014>.
- Kwon, JE, Jeong, HJ, Kim, SJ, Jang, SH, Lee, KH, Seong, KA.** 2017. Newly discovered role of the heterotrophic nanoflagellate *Katablepharis japonica*, a predator of toxic or harmful dinoflagellates and raphidophytes. *Harmful Algae* **68**: 224–239. DOI: <https://dx.doi.org/10.1016/j.hal.2017.08.009>.
- Lapoussière, A, Michel, C, Gosselin, M, Poulin, M, Martin, J, Tremblay, JÉ.** 2013. Primary production and sinking export during fall in the Hudson Bay system, Canada. *Continental Shelf Research* **52**: 62–72. DOI: <https://dx.doi.org/10.1016/j.csr.2012.10.013>.
- Lasek-Nesselquist, E, Johnson, MD.** 2019. A phylogenomic approach to clarifying the relationship of *Mesodinium* within the Ciliophora: A case study in the complexity of mixed-species transcriptome analyses. *Genome Biology and Evolution* **11**(11): 3218–3232. DOI: <https://dx.doi.org/10.1093/gbe/evz233>.
- Lebour, MV.** 1930. *The planktonic diatoms of Northern Seas*. London, UK: The Ray Society.
- Lee, JE, Chung, IK, Lee, SR.** 2017. Dynamic genetic features of eukaryotic plankton diversity in the Nakdong River estuary of Korea. *Chinese Journal of Oceanology and Limnology* **35**(4): 844–857. DOI: <https://dx.doi.org/10.1007/s00343-017-6076-7>.
- Logares, R, Bråte, J, Bertilsson, S, Clasen, JL, Shalchian-Tabrizi, K, Rengefors, K.** 2009. Infrequent marine–freshwater transitions in the microbial world. *Trends in Microbiology* **17**(9): 414–422. DOI: <https://dx.doi.org/10.1016/j.tim.2009.05.010>.
- Lovejoy, C.** 2014. Changing views of Arctic protists (marine microbial eukaryotes) in a changing Arctic. *Acta Protozoologica* **53**(1): 91–100. DOI: <https://dx.doi.org/10.4467/16890027AP.14.009.1446>.
- Lovejoy, C, Potvin, M.** 2011. Microbial eukaryotic distribution in a dynamic Beaufort Sea and the Arctic Ocean. *Journal of Plankton Research* **33**(3): 431–444. DOI: <https://dx.doi.org/10.1093/plankt/fbq124>.
- Lovejoy, C, Vincent, WF, Frenette, JJ, Dodson, JJ.** 1993. Microbial gradients in a turbid estuary: Application of a new method for protozoan community analysis. *Limnology and Oceanography* **38**(6): 1295–1303. DOI: <https://dx.doi.org/10.4319/lo.1993.38.6.1295>.
- Lovejoy, C, Legendre, L, Martineau, MJ, Bâcle, J, Von Quillfeldt, CH.** 2002. Distribution of phytoplankton and other protists in the North Water. *Deep Sea Research Part II: Topical Studies in Oceanography* **49**(22–23): 5027–5047. DOI: [https://dx.doi.org/10.1016/S0967-0645\(02\)00176-5](https://dx.doi.org/10.1016/S0967-0645(02)00176-5).
- Lovejoy, C, Vincent, WF, Bonilla, S, Roy, S, Martineau, MJ, Terrado, R, Potvin, M, Massana, R, Pedrós-Alió, C.** 2007. Distribution, phylogeny, and growth of cold-adapted picoprasinophytes in Arctic Seas.

- Journal of Phycology* **43**(1): 78–89. DOI: <https://dx.doi.org/10.1111/j.1529-8817.2006.00310.x>.
- Marie, D, Simon, N, Vaolot, D.** 2005. Chapter 17, Phytoplankton cell counting by flow cytometry, in Andersen, RA ed., *Algal culturing techniques*. Burlington, VT: Elsevier Academic Press: 253–267.
- Martin, J, Dumont, D, Tremblay, JÉ.** 2013. Contribution of subsurface chlorophyll maxima to primary production in the coastal Beaufort Sea (Canadian Arctic): A model assessment. *Journal of Geophysical Research: Oceans* **118**(11): 5873–5886. DOI: <https://dx.doi.org/10.1002/2013JC008843>.
- Matthes, LC, Ehn, JK, Dalman, LA, Babb, DG, Peeken, I, Harasyn, M, Kirillov, S, Lee, J, Bélanger, S, Tremblay, J-É, Barber, DG, Mundy, CJ.** n.d. First observations of spring primary production in central Hudson Bay and the role of pertinent environmental factors. *Elementa: Science of the Anthropocene*, submitted.
- Massana, R, Castresana, J, Balagué, V, Guillou, L, Romari, K, Groisillier, A, Valentin, K, Pedrós-Alió, C.** 2004. Phylogenetic and ecological analysis of novel marine Stramenopiles. *Applied and Environmental Microbiology* **70**(6): 3528–3534. DOI: <https://dx.doi.org/10.1128/AEM.70.6.3528-3534.2004>.
- Massana, R, Del Campo, J, Sieracki, ME, Audic, S, Logares, R.** 2014. Exploring the uncultured microeukaryote majority in the oceans: Reevaluation of ribogroups within Stramenopiles. *The ISME Journal* **8**(4): 854–866. DOI: <https://dx.doi.org/10.1038/ismej.2013.204>.
- Matsen, FA, Kodner, RB, Armbrust, EV.** 2010. PPlacer: Linear time maximum-likelihood and Bayesian phylogenetic placement of sequences onto a fixed reference tree. *BMC Bioinformatics* **11**(1): 538. DOI: <https://dx.doi.org/10.1186/1471-2105-11-538>.
- McClelland, JW, Holmes, RM, Dunton, KH, Macdonald, RW.** 2012. The Arctic Ocean estuary. *Estuaries and Coasts* **35**(2): 353–368. DOI: <https://dx.doi.org/10.1007/s12237-010-9357-3>.
- McCullough, G, Kuzyk, ZZ, Ehn, J, Babb, DG, Ridenour, N, Myers, PG, Wong, K, Koenig, K, Sydor, K, Barber, D.** 2019. Freshwater–marine Interactions in the Greater Hudson Bay Marine Region, in Kuzyk, ZZ, Candlish, L eds., *From science to policy in the Greater Hudson Bay Marine Region: An Integrated Regional Impact Study (IRIS) of climate change and modernization*. Québec City, Québec, Canada: ArcticNet: 155–197.
- McMurdie, PJ, Holmes, S.** 2013. Phyloseq: An R package for reproducible interactive analysis and graphics of microbiome census data. *PLoS One* **8**(4). DOI: <https://dx.doi.org/10.1371/journal.pone.0061217>.
- Mei, ZP, Legendre, L, Gratton, Y, Tremblay, JÉ, LeBlanc, B, Klein, B, Gosselin, M.** 2003. Phytoplankton production in the North Water Polynya: Size-fractions and carbon fluxes, April to July 1998. *Marine Ecology Progress Series* **256**: 13–27. DOI: <https://dx.doi.org/10.3354/meps256013>.
- Muyllaert, K, Sabbe, K, Vyverman, W.** 2009. Changes in phytoplankton diversity and community composition along the salinity gradient of the Schelde Estuary (Belgium/the Netherlands). *Estuarine, Coastal and Shelf Science* **82**(2): 335–340. DOI: <https://dx.doi.org/10.1016/j.ecss.2009.01.024>.
- Newbury, RW, McCullough, GK, Hecky, RE.** 1984. The Southern Indian Lake impoundment and Churchill River diversion. *Canadian Journal of Fisheries and Aquatic Sciences* **41**(4): 548–557. DOI: <https://dx.doi.org/10.1139/f84-068>.
- Nitsche, F, Weitere, M, Scheckenbach, F, Hausmann, K, Wylezich, C, Arndt, H.** 2007. Deep sea records of choanoflagellates with a description of two new species. *Acta Protozoologica* **46**(2): 99.
- O'Boyle, S, Silke, J.** 2010. A review of phytoplankton ecology in estuarine and coastal waters around Ireland. *Journal of Plankton Research* **32**(1): 99–118. DOI: <https://dx.doi.org/10.1093/plankt/fbp097>.
- Oksanen, J, Kindt, R, Legendre, P, O'Hara, B, Stevens, MHH, Oksanen, MJ, Suggests, MASS.** 2007. The vegan package. *Community Ecology Package* **10**: 631–637.
- Olsen, LM, Duarte, P, Peralta-Ferriz, C, Kauko, HM, Johansson, M, Peeken, I, Rózańska-Pluta, M, Tatarak, A, Wiktor, J, Fernández-Méndez, M, Wagner, PM, Pavlov, AK, Hop, H, Assmy, P.** 2019. A red tide in the pack ice of the Arctic Ocean. *Scientific Reports* **9**(1): 1–13. DOI: <https://dx.doi.org/10.1038/s41598-019-45935-0>.
- Onda, DF, Medrinal, E, Comeau, AM, Thaler, M, Babin, M, Lovejoy, C.** 2017. Seasonal and interannual changes in ciliate and dinoflagellate species assemblages in the Arctic Ocean (Amundsen Gulf, Beaufort Sea, Canada). *Frontiers in Marine Science* **4**: 16. DOI: <https://dx.doi.org/10.3389/fmars.2017.00016>.
- Paasche, E.** 1975. The influence of salinity on the growth of some plankton diatoms from brackish water. *Norwegian Journal of Botany* **22**: 209–215.
- Parsons, TR, Maita Y, Lalli CM.** 1984. *A manual of chemical & biological methods for seawater analysis*. Oxford, UK: Pergamon Press.
- Piwosz, K, Wiktor, JM, Niemi, A, Tatarak, A, Michel, C.** 2013. Mesoscale distribution and functional diversity of picoeukaryotes in the first-year sea ice of the Canadian Arctic. *The ISME Journal* **7**(8): 1461–1471. DOI: <https://dx.doi.org/10.1038/ismej.2013.39>.
- Piwosz, K, Calkiewicz, J, Gołębiewski, M, Creer, S.** 2018. Diversity and community composition of pico- and nanoplanktonic protists in the Vistula River estuary (Gulf of Gdańsk, Baltic Sea). *Estuarine, Coastal and Shelf Science* **207**: 242–249. DOI: <https://dx.doi.org/10.1016/j.ecss.2018.04.013>.
- Poulin, M, Daugbjerg, N, Gradinger, R, Ilyash, L, Ratkova, T, von Quillfeldt, C.** 2011. The pan-Arctic biodiversity of marine pelagic and sea-ice unicellular eukaryotes: A first-attempt assessment. *Marine Biodiversity* **41**(1): 13–28. DOI: <https://dx.doi.org/10.1007/s12526-010-0058-8>.

- Quinlan, EL, Philips, EJ.** 2007. Phytoplankton assemblages across the marine to low-salinity transition zone in a blackwater dominated estuary. *Journal of Plankton Research* **29**(5): 401–416. DOI: <https://dx.doi.org/10.1093/plankt/fbm024>.
- Rocha, C, Galvão, H, Barbosa, A.** 2002. Role of transient silicon limitation in the development of cyanobacteria blooms in the Guadiana estuary, south-western Iberia. *Marine Ecology Progress Series* **228**: 35–45. DOI: <https://dx.doi.org/10.3354/meps228035>.
- Rousseau, V, Leynaert, A., Daoud, N, Lancelot, C.** 2002. Diatom succession, silicification and silicic acid availability in Belgian coastal waters (Southern North Sea). *Marine Ecology Progress Series* **236**: 61–73. DOI: <https://dx.doi.org/10.3354/meps236061>.
- Simpson, JH, Brown, J, Matthews, J, Allen, G.** 1990. Tidal straining, density currents, and stirring in the control of estuarine stratification. *Estuaries* **13**(2): 125–132. DOI: <https://dx.doi.org/10.2307/1351581>.
- Simpson, KG, Tremblay, JÉ, Gratton, Y, Price, NM.** 2008. An annual study of inorganic and organic nitrogen and phosphorus and silicic acid in the southeastern Beaufort Sea. *Journal of Geophysical Research: Oceans* **113**(C7): C07016. DOI: <https://dx.doi.org/10.1029/2007JC004462>.
- Singler, HR, Villareal, TA.** 2005. Nitrogen inputs into the euphotic zone by vertically migrating *Rhizosolenia* mats. *Journal of Plankton Research* **27**(6): 545–556. DOI: <https://dx.doi.org/10.1093/plankt/fbi030>.
- Stadnyk, T, Déry, S, McDonald, M, Koenig, K.** 2019. The freshwater system, in Kuzыck, ZZ, Candlish, L eds., *From science to policy in the Greater Hudson Bay Marine Region: An Integrated Regional Impact Study (IRIS) of climate change and modernization*. Québec City, Québec, Canada: ArcticNet: 113–154.
- Stamatakis, A.** 2014. RAxML version 8: A tool for phylogenetic analysis and post-analysis of large phylogenies. *Bioinformatics* **30**(9): 1312–1313. DOI: <https://dx.doi.org/10.1093/bioinformatics/btu033>.
- Steiner, N, Azetsu-Scott, K, Hamilton, J, Hedges, K, Hu, XM, Janjua, MY, Lavoie, D, Loder, J, Melling, H, Merzouk, A, Perrie, W, Peterson, P, Scarratt, M, Sou, T, Tallmann R.** 2015. Observed trends and climate projections affecting marine ecosystems in the Canadian Arctic. *Environmental Reviews* **23**(2): 191–239. DOI: <https://dx.doi.org/10.1139/er-2014-0066>.
- Stoecker, DK, Lavrentyev, PJ.** 2018. Mixotrophic plankton in the polar seas: A pan-arctic review. *Frontiers in Marine Science* **5**: 292. DOI: <https://dx.doi.org/10.3389/fmars.2018.00292>.
- Terrado, R, Scarcella, K, Thaler, M, Vincent, WF, Lovejoy, C.** 2013. Small phytoplankton in Arctic seas: Vulnerability to climate change. *Biodiversity* **14**(1): 2–18. DOI: <https://dx.doi.org/10.1080/14888386.2012.704839>.
- Thaler, M, Lovejoy, C.** 2012. Distribution and diversity of a protist predator *Cryothecomonas* (Cercozoa) in Arctic marine waters. *Journal of Eukaryotic Microbiology* **59**(4): 291–299. DOI: <https://dx.doi.org/10.1111/j.1550-7408.2012.00631.x>.
- Torgan, LC, Becker, V, dos Santos, CB.** 2009. *Skeletone-ma potamos* (Bacillariophyta) in Patos Lagoon, southern Brazil: Taxonomy and distribution. *Revista Peruana de Biología* **16**(1): 93–96. DOI: <https://dx.doi.org/10.15381/rpb.v16i1.181>.
- Uncles, RJ, Stephens, JA, Smith, RE.** 2002. The dependence of estuarine turbidity on tidal intrusion length, tidal range and residence time. *Continental Shelf Research* **22**(11–13): 1835–1856. DOI: [https://dx.doi.org/10.1016/S0278-4343\(02\)00041-9](https://dx.doi.org/10.1016/S0278-4343(02)00041-9).
- Urrutxurtu, I, Orive, E, de la Sota, A.** 2003. Seasonal dynamics of ciliated protozoa and their potential food in an eutrophic estuary (Bay of Biscay). *Estuarine, Coastal and Shelf Science* **57**(5–6): 1169–1182. DOI: [https://dx.doi.org/10.1016/S0272-7714\(03\)00057-X](https://dx.doi.org/10.1016/S0272-7714(03)00057-X).
- Vigil, P, Countway, PD, Rose, J, Lonsdale, DJ, Gobler, CJ, Caron, DA.** 2009. Rapid shifts in dominant taxa among microbial eukaryotes in estuarine ecosystems. *Aquatic Microbial Ecology* **54**(1): 83–100. DOI: <https://dx.doi.org/10.3354/ame01252>.
- Villareal, TA.** 1990. Laboratory culture and preliminary characterization of the nitrogen-fixing *Rhizosolenia-Richelina* symbiosis. *Marine Ecology* **11**(2): 117–132. DOI: <https://dx.doi.org/10.1111/j.1439-0485.1990.tb00233.x>.
- Wrona, FJ, Johansson, M, Culp, JM, Jenkins, A, Mard, J, Myers-Smith, IH, Prowse, TD, Vincent, WF, Wookey, PA.** 2016. Transitions in Arctic ecosystems: Ecological implications of a changing hydrological regime. *Journal of Geophysical Research—Biogeosciences* **121**(3): 650–674. DOI: <https://dx.doi.org/10.1002/2015jg003133>.
- Yabuki, A, Ishida, KI.** 2011. *Mataza hastifera* n.g., n. sp.: A possible new lineage in the Thecofilosea (Cercozoa). *Journal of Eukaryotic Microbiology* **58**(2): 94–102. DOI: <https://dx.doi.org/10.1111/j.1550-7408.2010.00524.x>.
- Yamada, K, Sato, S, Yamazaki, M, Yoshikawa, S, Kuwata, A, Ichinomiya, M.** 2020. New clade of silicified bolidophytes that belong to *Triparma* (Bolidophyceae, Stramenopiles). *Phycological Research* **68**(2): 178–182. DOI: <https://dx.doi.org/10.1111/pre.12413>.
- Yang, Z.** 1994. Maximum likelihood phylogenetic estimation from DNA sequences with variable rates over sites: Approximate methods. *Journal of Molecular Evolution* **39**(3): 306–314. DOI: <https://dx.doi.org/10.1007/BF00160154>.
- Yu, G, Smith, D, Zhu, H, Guan, Y, Lam, TT.** 2017. ggtree: An R package for visualization and annotation of phylogenetic trees with their covariates and other associated data. *Methods in Ecology and Evolution* **8**: 28–36. DOI: <https://dx.doi.org/10.1111/2041-210X.12628>.
- Zeev, EB, Yogeve, T, Man-Aharonovich, D, Kress, N, Herut, B, Béja, O, Berman-Frank, I.** 2008. Seasonal dynamics of the endosymbiotic, nitrogen-fixing cyanobacterium *Richelia intracellularis* in the eastern Mediterranean Sea. *The ISME Journal* **2**(9): 911–923. DOI: <https://dx.doi.org/10.1038/ismej.2008.56>.

**How to cite this article:** Jacquemot, L, Kalenitchenko, D, Matthes, LC, Vigneron, A, Mundy, CJ, Tremblay, J-E, Lovejoy, C. 2021. Protist communities along freshwater–marine transition zones in Hudson Bay (Canada). *Elementa: Science of Anthropocene* 9(1). DOI: <https://doi.org/10.1525/elementa.2021.00111>.

**Domain Editor-in-Chief:** Jody W. Deming, University of Washington, Seattle, WA, USA

**Associate Editor:** Jeff S. Bowman, Scripps Institution of Oceanography, University of California San Diego, La Jolla, CA, USA

**Knowledge Domain:** Ocean Science

**Part of an Elementa Special Feature:** BaySys

**Published:** April 9, 2021    **Accepted:** February 22, 2021    **Submitted:** July 30, 2020

**Copyright:** © 2021 The Author(s). This is an open-access article distributed under the terms of the Creative Commons Attribution 4.0 International License (CC-BY 4.0), which permits unrestricted use, distribution, and reproduction in any medium, provided the original author and source are credited. See <http://creativecommons.org/licenses/by/4.0/>.



*Elem Sci Anth* is a peer-reviewed open access journal published by University of California Press.

OPEN ACCESS The Open Access icon, which is a stylized padlock with an open keyhole.