



HAL
open science

Rising nutrient availability may have much more impact than climate change on pearl millet in Senegal

Léo Garcia, Francois Affholder, Benjamin Sultan, Bertrand Müller, Patrice Kouakou

► To cite this version:

Léo Garcia, Francois Affholder, Benjamin Sultan, Bertrand Müller, Patrice Kouakou. Rising nutrient availability may have much more impact than climate change on pearl millet in Senegal. 2nd Agriculture and Climate Change Conference, Mar 2017, Sitges, Spain. , 2017, 10.13140/RG.2.2.21666.32965 . hal-03329839

HAL Id: hal-03329839

<https://hal.science/hal-03329839>

Submitted on 19 Sep 2022

HAL is a multi-disciplinary open access archive for the deposit and dissemination of scientific research documents, whether they are published or not. The documents may come from teaching and research institutions in France or abroad, or from public or private research centers.

L'archive ouverte pluridisciplinaire **HAL**, est destinée au dépôt et à la diffusion de documents scientifiques de niveau recherche, publiés ou non, émanant des établissements d'enseignement et de recherche français ou étrangers, des laboratoires publics ou privés.

Rising nutrient availability may have much more impact than climate change on pearl millet in Senegal

Léo Garcia ^a, François Affholder ^b, Benjamin Sultan ^c, Bertrand Muller ^{d,e}, Patrice Kouakou ^{b,f}

^a UMR System, Montpellier Supagro, France; ^b UPR AIDA, CIRAD, France

^c UMR LOCEAN, IRD, France; ^d UMR AGAP, CIRAD, France

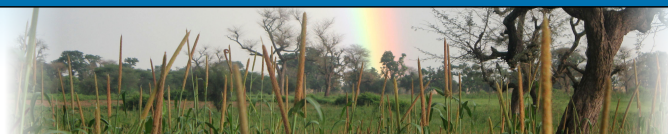
^e ISRA-CERAAS, Senegal; ^f CIRDES, Burkina-Faso

affholder@cirad.fr



Context and objectives

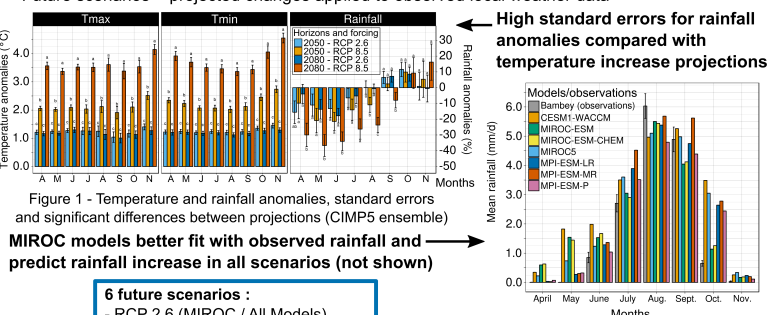
- Semi-arid Africa (Senegal)
- Traditional food crops productions low and far from attainable yields
- Assessing the impact of climate change on millet yield
- Comparing climate change impact with crop intensification (*i.e.* increased fertilization)



Methods

- CIMP5 ensemble
- 3 time horizons (1985, 2050, 2080), 30-years time spans, 2 radiative forcing (RCP 2.6, RCP 8.5)
- Future scenarios = projected changes applied to observed local weather data

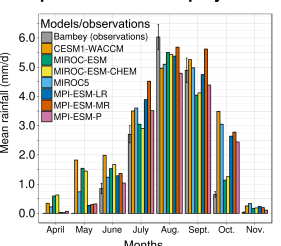
Climate modelling



MIROC models better fit with observed rainfall and predict rainfall increase in all scenarios (not shown)

- 6 future scenarios :**
- RCP 2.6 (MIROC / All Models)
 - RCP 8.5 2050 (MIROC / All Models)
 - RCP 8.5 2080 (MIROC / All Models)

High standard errors for rainfall anomalies compared with temperature increase projections



Crop modelling

- CELSIUS crop model
- Calibrated against observed data under varying weather, soil and nutrient management
- Millet crop simulations:
 - Present and future climate, 30-years time spans
 - Severe and moderate nutrient limitations.

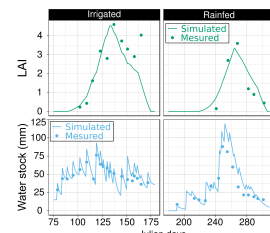
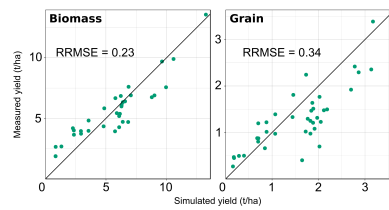
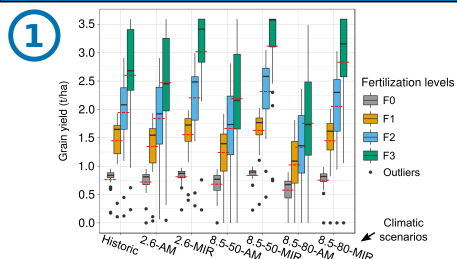


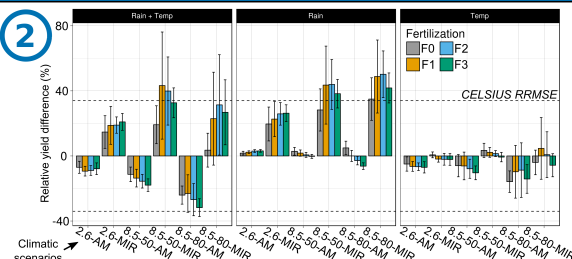
Figure 4 - Comparison between observed and simulated values for millet LAI and soil water content in two contrasted situations

- 4 nutrient limitation levels :**
- F0 : 25% of potential yield (Y_p) = current representative yield level
 - F1 : 50% of Y_p
 - F2 : 75% of Y_p
 - F3 : 100% of Y_p

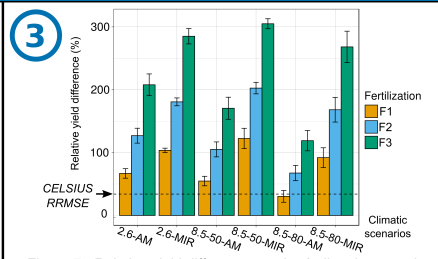
Results



- Yield interannual variability increases in the future, under CIMP5 ensemble projections
- Contrasting trends depending on climate models



- Relative yield differences lower than model RRMSE, especially for temperature impact
- Strong differences depending on rainfall projections



- The lowest tested level of nutrient supply (F1=35 kg.ha⁻¹) is sufficient to provoke a substantial increase in yield
- Relative yield differences significantly higher than CELSIUS RRMSE

Discussion

- In our simulations, climate change impact on yield differences depends above all on rainfall. However, rainfall scenarios still remain uncertain.
- Millet currently grown under severe nutrient limitations (continuous cropping, insufficient recycling and external supply)
- Our simulations suggest that fertilization have more impact on millet yield compared to climate change scenarios.
- Strong yield increase could be expected from increasing organic or inorganic fertilization.