



HAL
open science

Observation of soft apple cells in crowded environnement

Cassandre Leverrier, Gabrielle Moulin, Giana Almeida, Gérard Cuvelier

► **To cite this version:**

Cassandre Leverrier, Gabrielle Moulin, Giana Almeida, Gérard Cuvelier. Observation of soft apple cells in crowded environnement. 4th International Soft Matter Conference (ISMC 2016), Sep 2016, Grenoble, France. hal-03322540

HAL Id: hal-03322540

<https://hal.science/hal-03322540v1>

Submitted on 19 Aug 2021

HAL is a multi-disciplinary open access archive for the deposit and dissemination of scientific research documents, whether they are published or not. The documents may come from teaching and research institutions in France or abroad, or from public or private research centers.

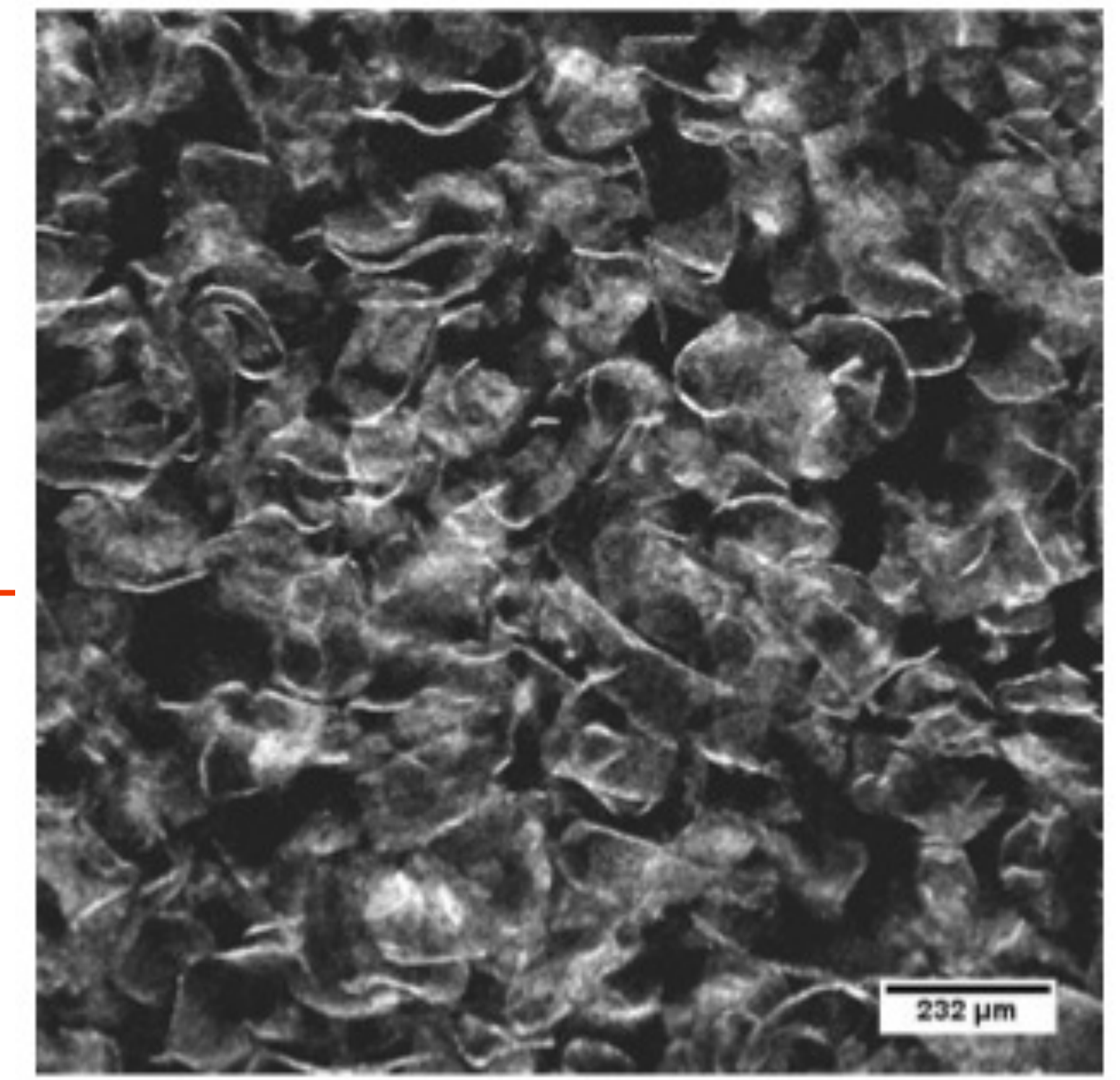
L'archive ouverte pluridisciplinaire **HAL**, est destinée au dépôt et à la diffusion de documents scientifiques de niveau recherche, publiés ou non, émanant des établissements d'enseignement et de recherche français ou étrangers, des laboratoires publics ou privés.

Observation of soft apple cells in crowded environment

Cassandra Leverrier, Gabrielle Moulin, Giana Almeida, Gérard Cuvelier

UMR Ingénierie Procédés Aliments (JRU Food & Process Engineering)

The research leading to these results has received funding from the European Union's Seventh Framework Programme for research, technological development and demonstration under grant agreement n° 311754



Research question:

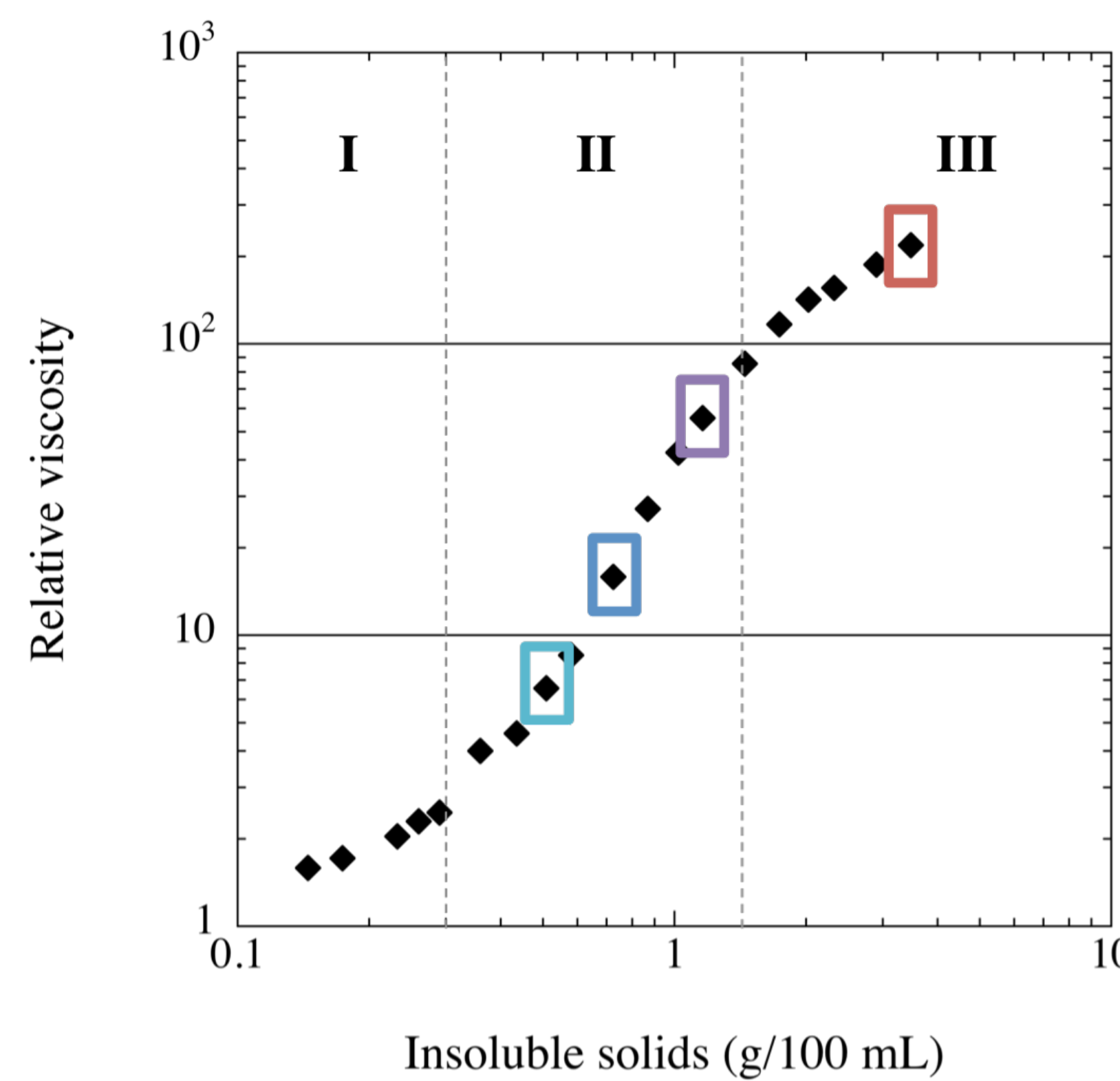
How to access to soft particle deformation and volume in crowded media ?

Background and Motivations

Fruit and vegetable cells are **soft particles whose size and volume can change** under stress [1].

Since they are delimited by a soft cell wall, they are able to highly deform and pack, and their **volume fraction in suspension is not well defined yet**. But rheological properties of plant cells suspensions will be driven by the cells volume fraction. In order to better understand the rheological behaviour of soft plant particles suspensions, it is thus necessary to estimate the volume fraction of the particles.

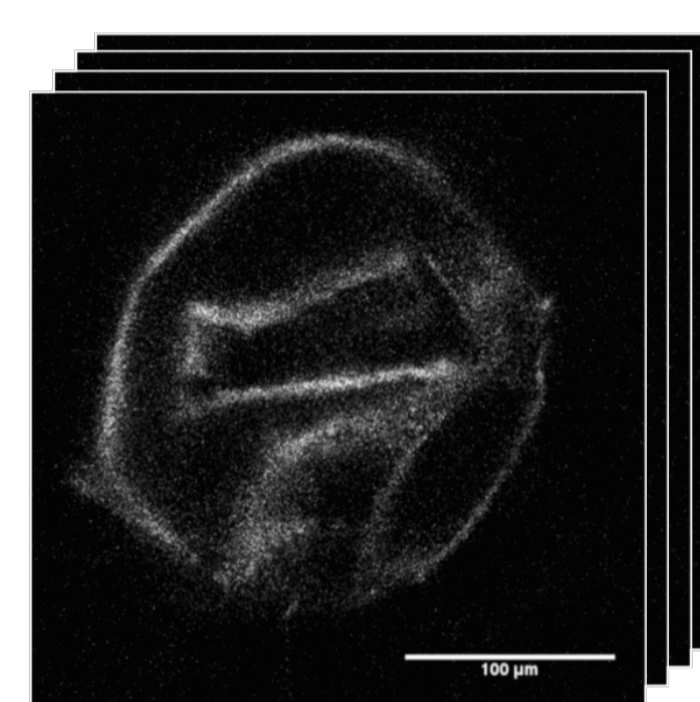
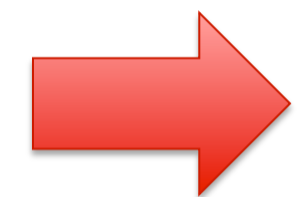
Three concentration domains have been highlighted in litterature, and particles are hypothesized to decrease their volume only in the concentrated domain.



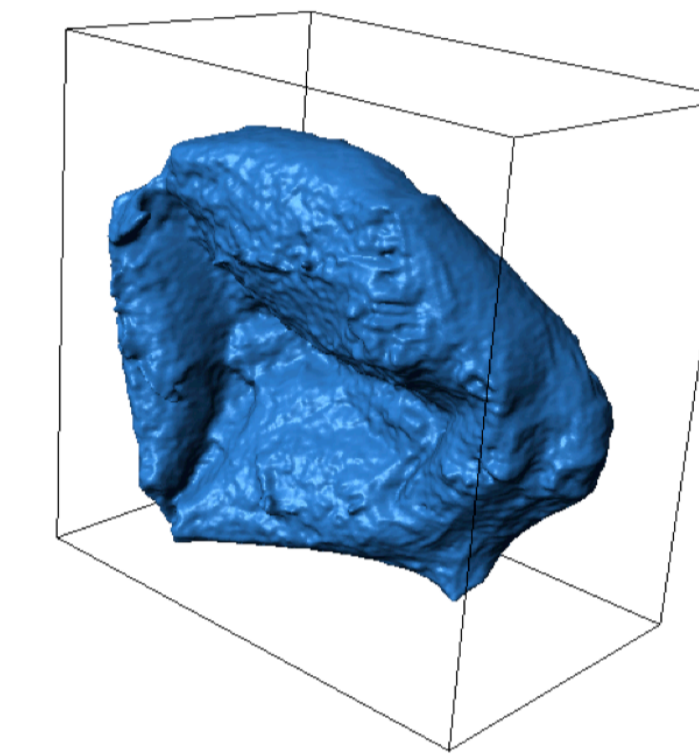
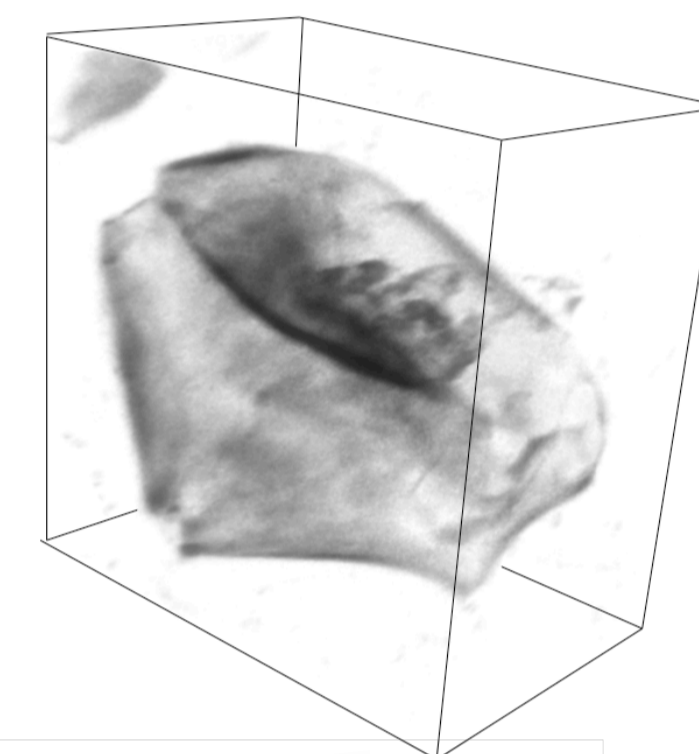
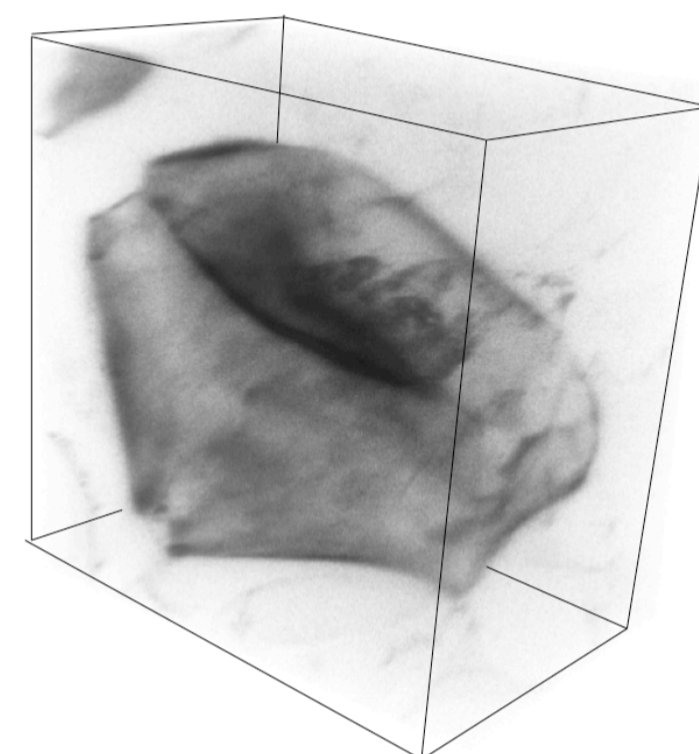
The aim of the present work is to approach the volume fraction occupied by apple cells in several concentration domains.

Material and Methods

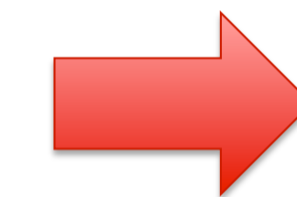
Suspension hydration and staining



Confocal microscopy



3D reconstruction



Volume acquisition

4 concentrations chosen in the intermediate and the concentrated domains

simpleware

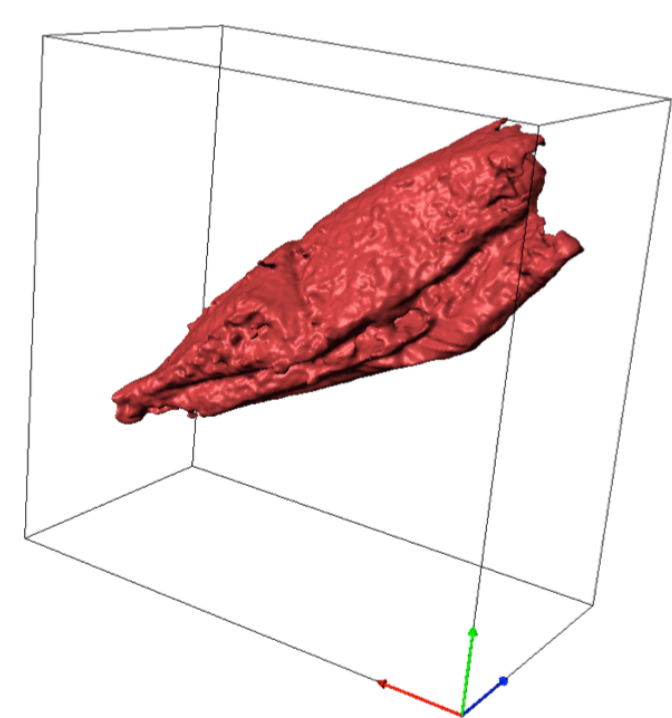
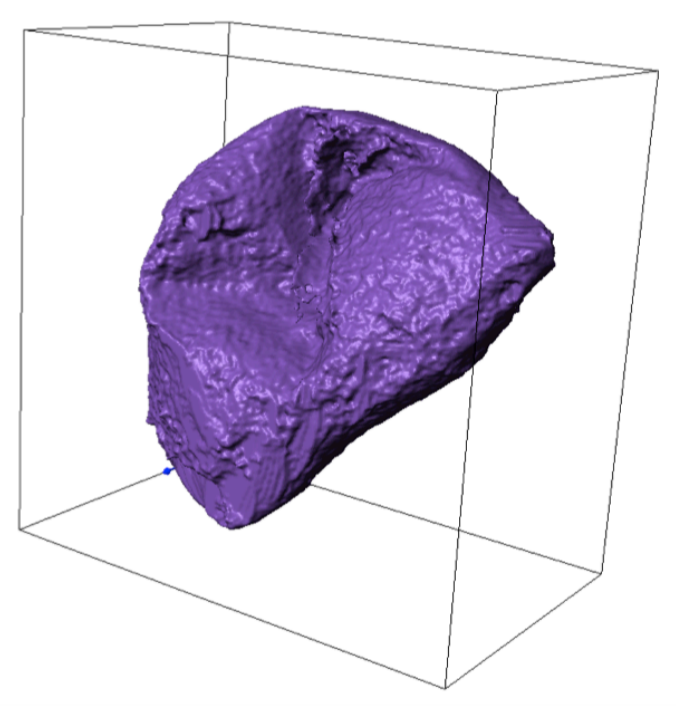
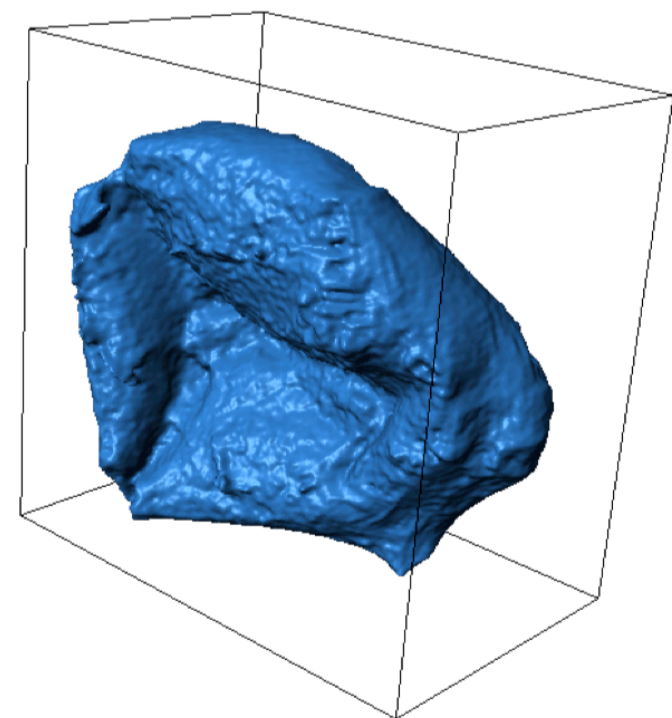
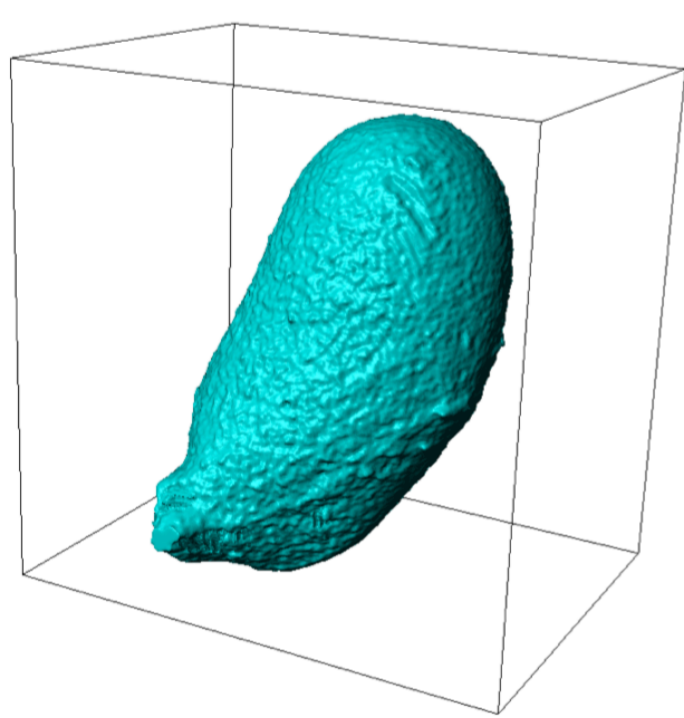
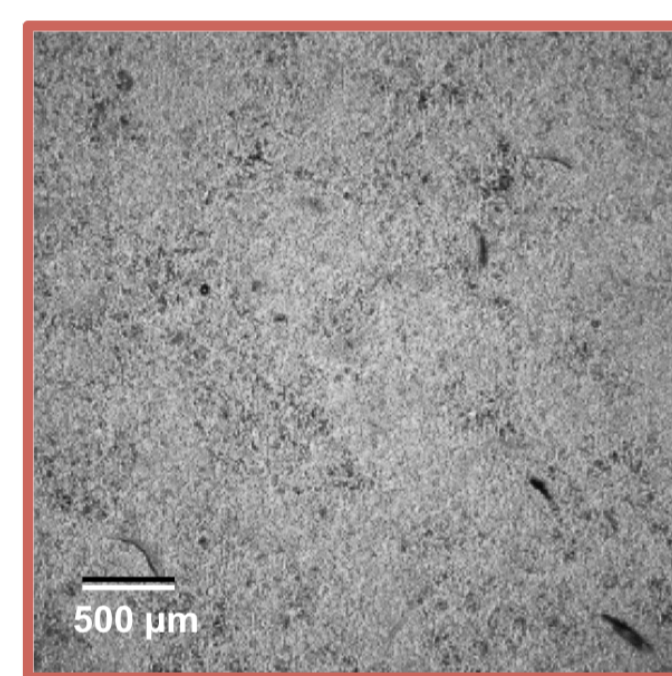
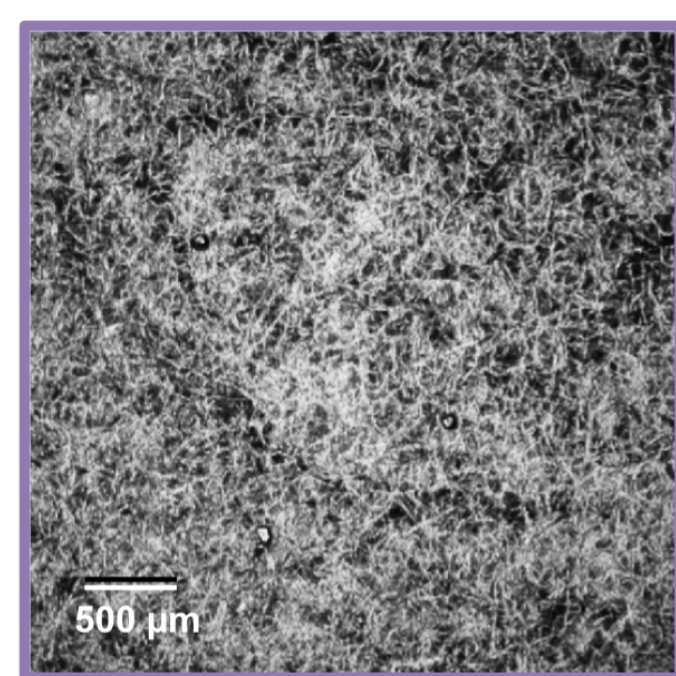
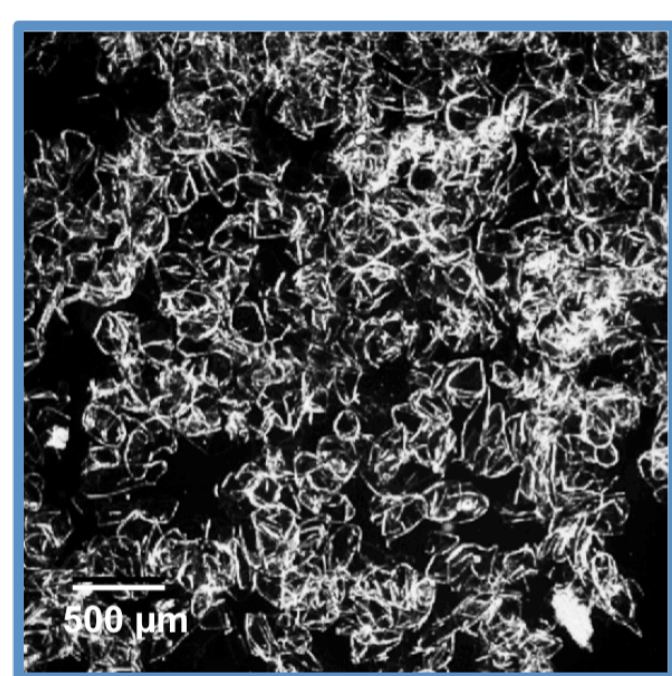
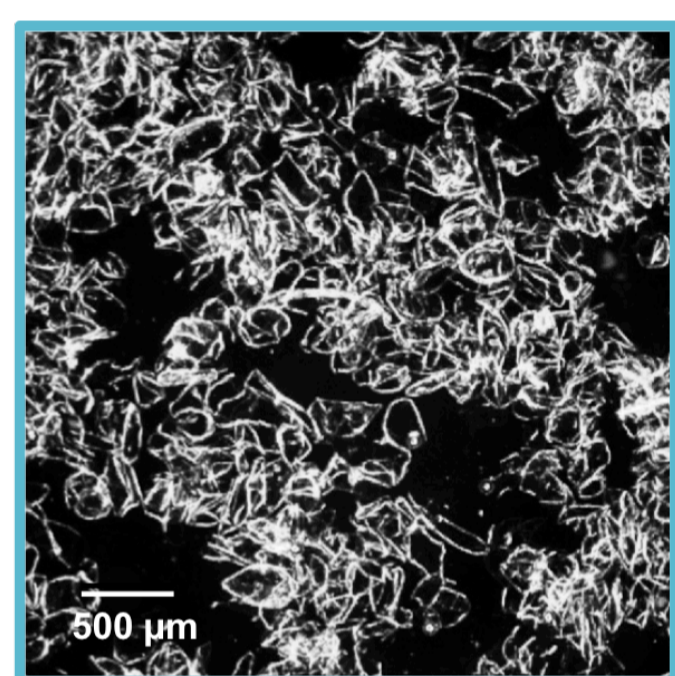
Results

0.47 g/100mL

0.725 g/100mL

1.16 g/100mL

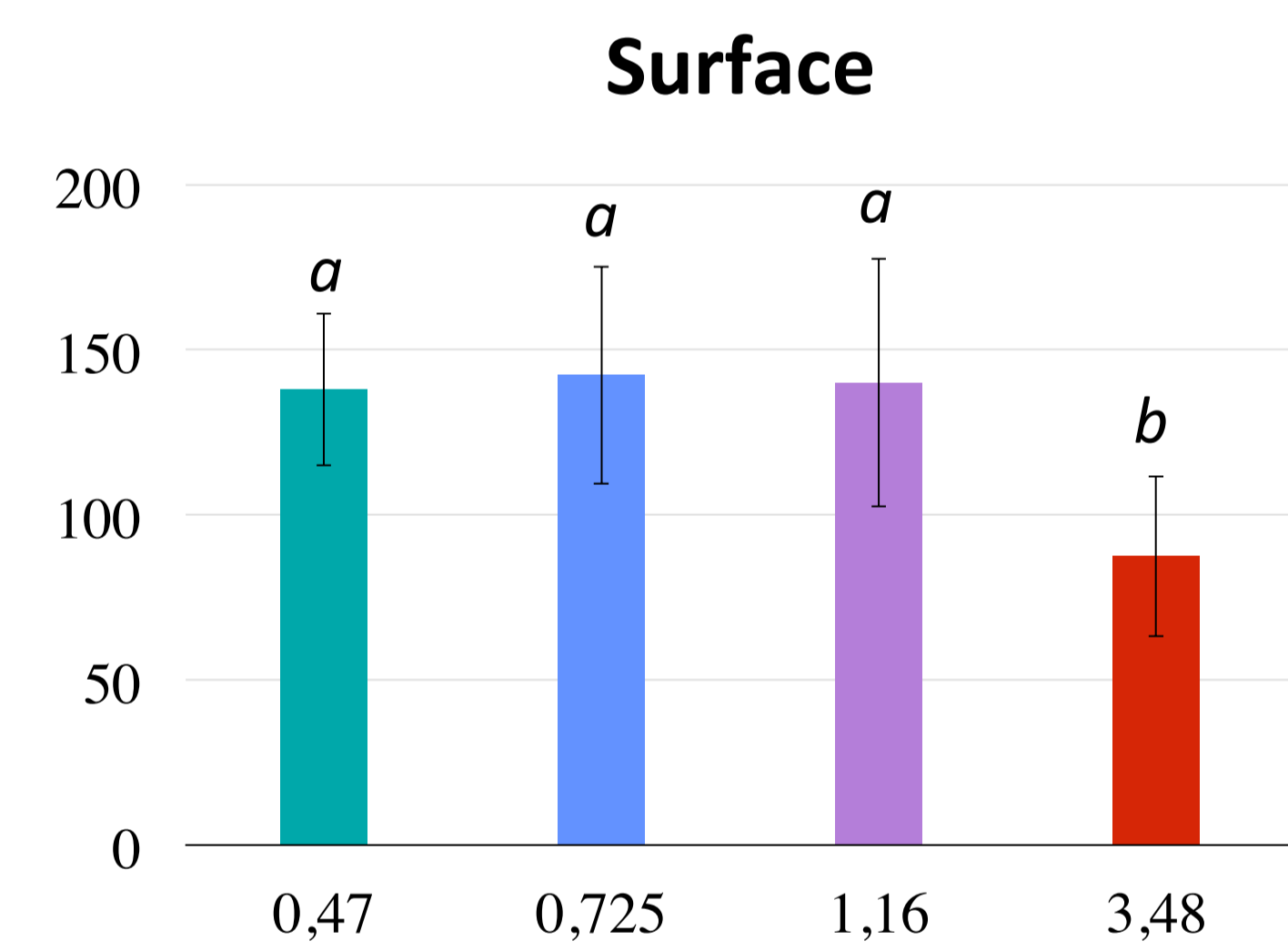
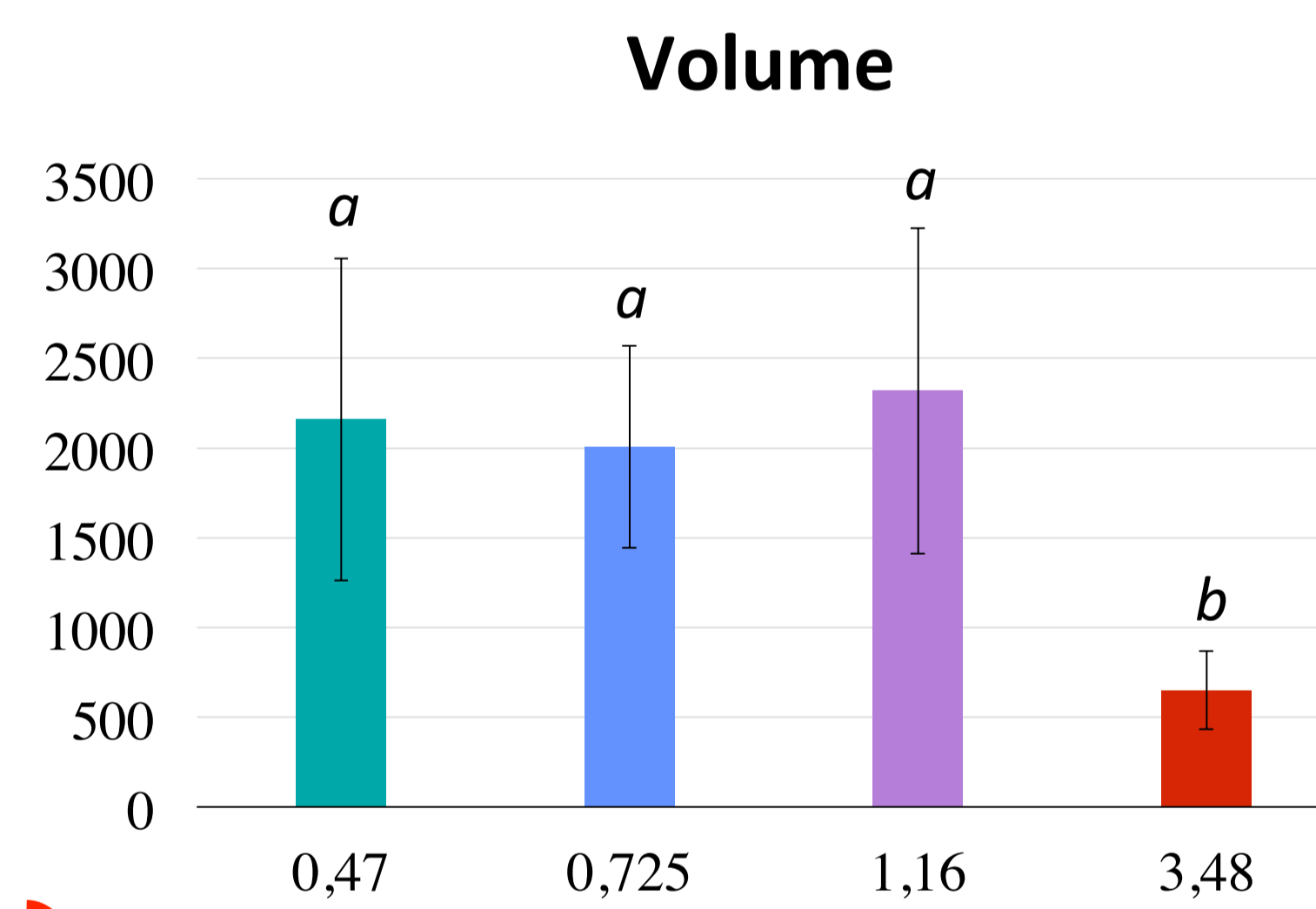
3.48 g/100mL



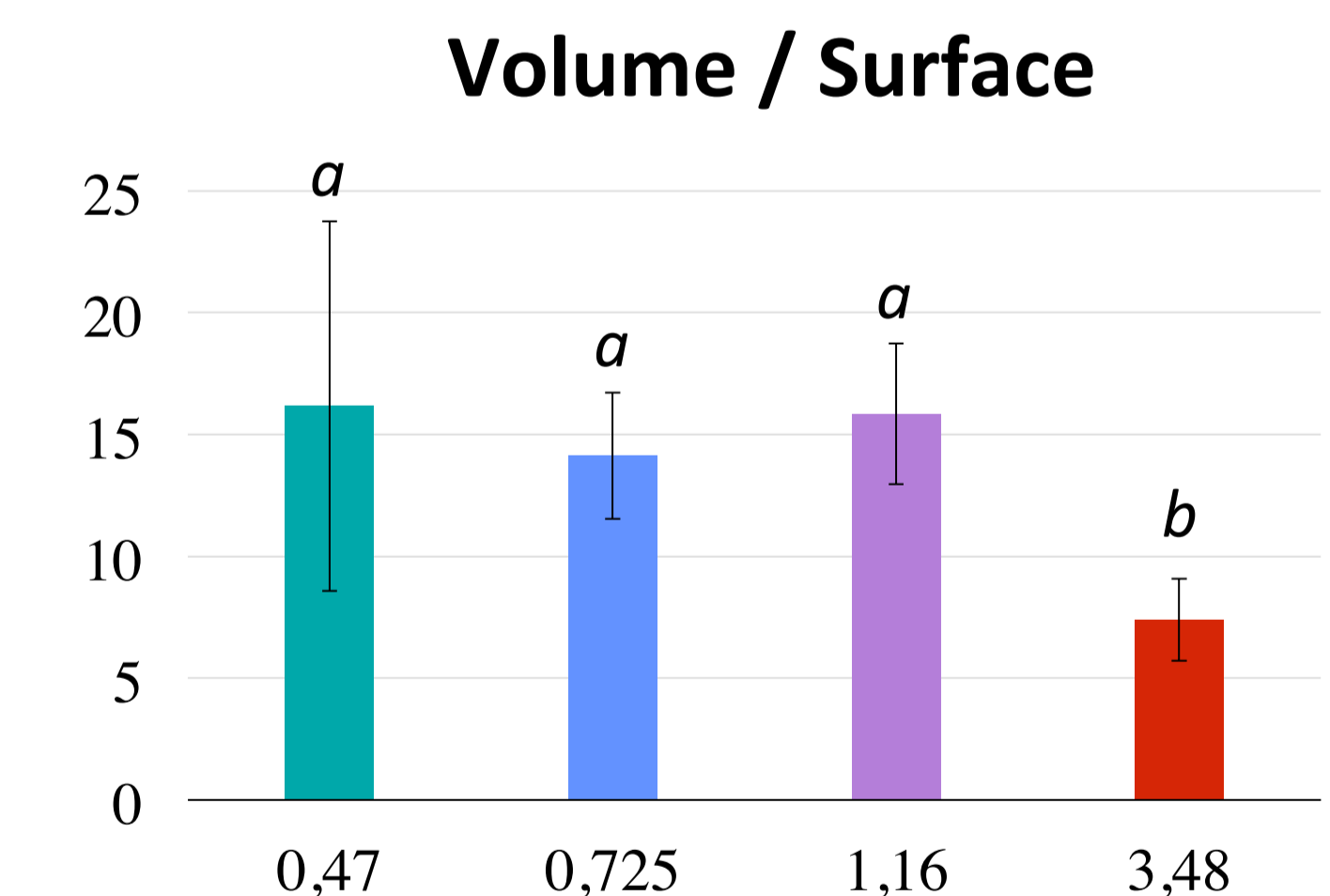
CONCENTRATION INCREASE

Table 1: Impact of insoluble solids content on the volume and the shape of the cells

Insoluble solids content g/100mL	Number of analysed cells	Volume $10^3 \mu\text{m}^3$	Surface $10^3 \mu\text{m}^2$	Ratio $\frac{V}{S}$ μm
0.47	3	2158 ± 897	138 ± 23	16 ± 6
0.725	7	2006 ± 562	142 ± 33	14 ± 3
1.16	5	2319 ± 907	140 ± 37	16 ± 3
3.48	5	650 ± 217	87 ± 24	7 ± 2

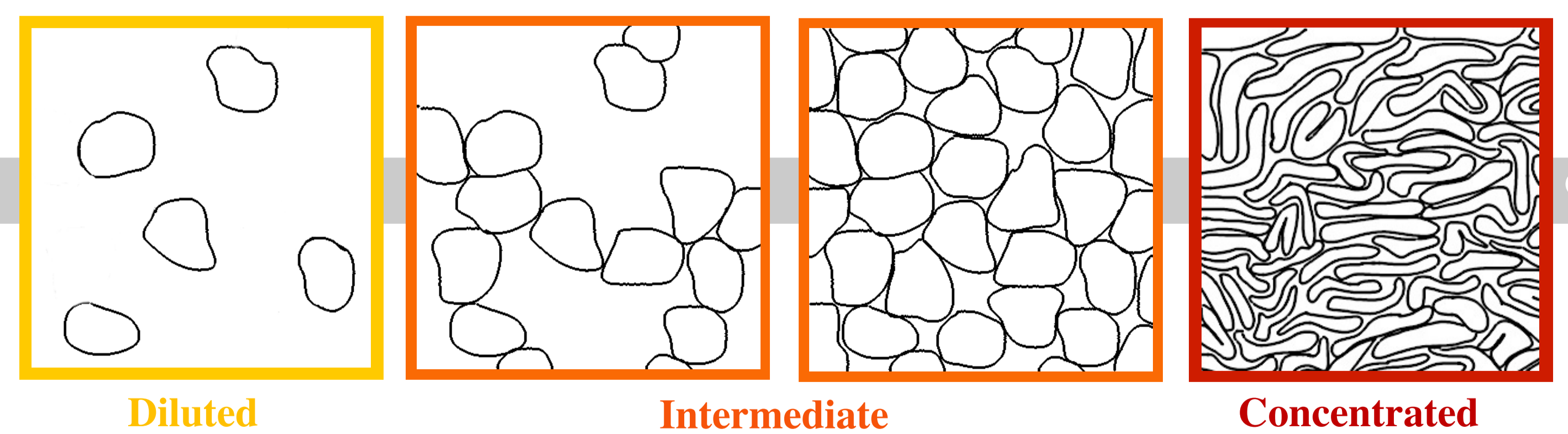


We were able to **observe each single particle** even in **highly concentrated suspensions** and to access to their volume and shape factor



Statistical analysis with Tukey, Fisher, Bonferroni & Newman Keuls

Conclusions



- ✓ Acquisition of information about the packing of plant particles
- ✓ Particle volume starts to decrease only in the concentrated domain

REFERENCES

[1] Day et al., Food and Bioprocess Technology, 3, 928–934, (2010).