



**HAL**  
open science

# Towards Histopathological Stain Invariance by Unsupervised Domain Augmentation using Generative Adversarial Networks

Jelica Vasiljevic, Friedrich Feuerhake, Cédric Wemmert, Thomas Lampert

► **To cite this version:**

Jelica Vasiljevic, Friedrich Feuerhake, Cédric Wemmert, Thomas Lampert. Towards Histopathological Stain Invariance by Unsupervised Domain Augmentation using Generative Adversarial Networks. Neurocomputing, 2021, 460, pp.277-291. 10.1016/j.neucom.2021.07.005 . hal-03321037

**HAL Id: hal-03321037**

**<https://hal.science/hal-03321037>**

Submitted on 2 Aug 2023

**HAL** is a multi-disciplinary open access archive for the deposit and dissemination of scientific research documents, whether they are published or not. The documents may come from teaching and research institutions in France or abroad, or from public or private research centers.

L'archive ouverte pluridisciplinaire **HAL**, est destinée au dépôt et à la diffusion de documents scientifiques de niveau recherche, publiés ou non, émanant des établissements d'enseignement et de recherche français ou étrangers, des laboratoires publics ou privés.



Distributed under a Creative Commons Attribution - NonCommercial 4.0 International License

# Towards Histopathological Stain Invariance by Unsupervised Domain Augmentation using Generative Adversarial Networks

Jelica Vasiljević<sup>a,b,c,\*</sup>, Friedrich Feuerhake<sup>d,e</sup>, Cédric Wemmert<sup>a</sup>, Thomas Lampert<sup>a</sup>

<sup>a</sup>*ICube, University of Strasbourg, CNRS (UMR 7357), France*

<sup>b</sup>*University of Belgrade, Belgrade, Serbia*

<sup>c</sup>*Faculty of Science, University of Kragujevac, Kragujevac, Serbia*

<sup>d</sup>*Institute of Pathology, Hannover Medical School, Germany*

<sup>e</sup>*University Clinic, Freiburg, Germany*

---

## Abstract

The application of supervised deep learning methods in digital pathology is limited due to their sensitivity to domain shift. Digital Pathology is an area prone to high variability due to many sources, including the common practice of evaluating several consecutive tissue sections stained with different staining protocols. Obtaining labels for each stain is very expensive and time consuming as it requires a high level of domain knowledge. In this article, we propose an unsupervised augmentation approach based on adversarial image-to-image translation, which facilitates the training of stain invariant supervised convolutional neural networks. By training the network on one commonly used staining modality and applying it to images that include corresponding, but differently stained, tissue structures, the presented method demonstrates significant improvements over other approaches. These benefits are illustrated in the problem of glomeruli segmentation in seven different staining modalities (PAS, Jones H&E, CD68, Sirius Red, CD34, H&E and CD3) and analysis of the learned representations demonstrate their stain invariance.

*Keywords:* deep convolutional networks, image-to-image translation, segmentation, stain invariance

---

## 1. Introduction

The introduction of Whole Slide Imaging (WSI) scanners enables the production of huge amounts of histological image data. A crucial step in the tissue preparation process is staining, which consists of dyeing the tissue slices with a specific stain in order to highlight internal structures when viewed under a microscope. Image datasets in digital pathology often consist of (nearly consecutive) tissue slides stained differently, each staining providing specific morphological information. As each staining highlights different components of the tissue, even consecutive sections largely representing almost identical anatomical structures can take on very different appearances, see [Figure 1](#).

---

\*Corresponding author

Email address: [jvasiljevic@unistra.fr](mailto:jvasiljevic@unistra.fr) (Jelica Vasiljević)

Preprint submitted to *Neurocomputing*

May 9, 2021

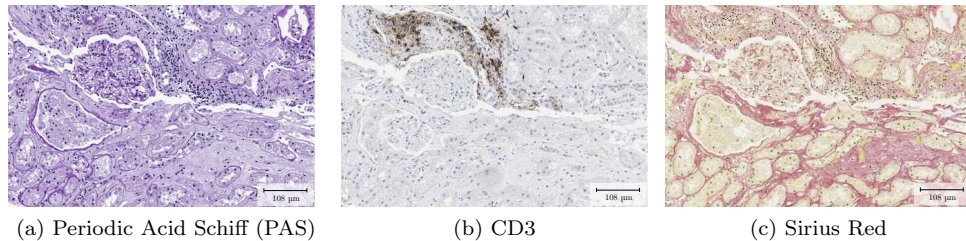


Figure 1: An example of three consecutive WSIs of a kidney nephrectomy sample with three common stains. Each staining provides different information on the tissue: general structural information in PAS, distribution of T lymphocytes in CD3, specific structures such as collagen or muscular fibres in Sirius Red.

On the other hand, the staining process itself is prone to high variability due to inter-subject differences, the staining procedure in a specific lab, or scanner characteristics, leading to different appearances of the tissues coloured with the same stain [25]. The high variability **between different stains as well as within each stain** in the appearance of digital histological images affects the performance of machine learning algorithms when used for automatic WSI analysis [45].

In specific applications such as the detection or segmentation of objects that maintain morphological consistency across stains (e.g. nuclei, glomeruli, etc), stain variability could be considered, from a computer vision viewpoint, as noise that dramatically hampers the performance of machine learning models. This motivates the development of image analysis methods that work across different stains in order to solve tasks related to morphologically consistent structures [5, 13, 17, 23].

Most state-of-the-art computer vision algorithms are sensitive to domain shift [9], **which in the context of digital histopathology can be induced by high stain variability**. This means that models trained for a specific task on histological images of stain A exhibit a significant drop in performance when applied to histological images of stain B (for the same task) [5, 17, 23] or variability of stain A (e.g. images from other laboratories) [45]. Typical solutions consider either fine tuning existing models or training a new model for each data variation, which requires the acquisition of additional labeled data. Nevertheless, medical image datasets are often characterised by their scarcity of annotations [43] and obtaining properly annotated images is time consuming and costly as expert knowledge is required for most complex annotations. Alternative approaches such as crowd sourcing are limited by the need of specific task design and intensive training [16]. **Thus, the development of solutions that are able to work in a stain invariant manner has a huge importance from both clinical and research perspectives.**

While plenty of works address the problem of **domain shift induced by intra-stain variation (that is variation in the appearance of the same stain due to different staining procedures)** [3, 11, 20, 21, 24, 28, 33, 40] there are few that address the problem of **inter-stain variation (that is variation in the appearance of different stains, see Figure 1)** [5, 13, 17, 23, 32], the latter is more relevant for developing stain invariant solutions. Some of these existing approaches are able to accomplish the task in a limited manner [13, 17, 23] however, they either require additional effort such as slide registration [17]

or post-processing of the test data [13], or do not generalise well and suffer from large variation in test-time performance [23]. In this article we build upon our existing work [23] to introduce a new, general approach able to learn stain invariant representations<sup>1</sup> from only one annotated stain, without any other additional pre- or post-processing steps.

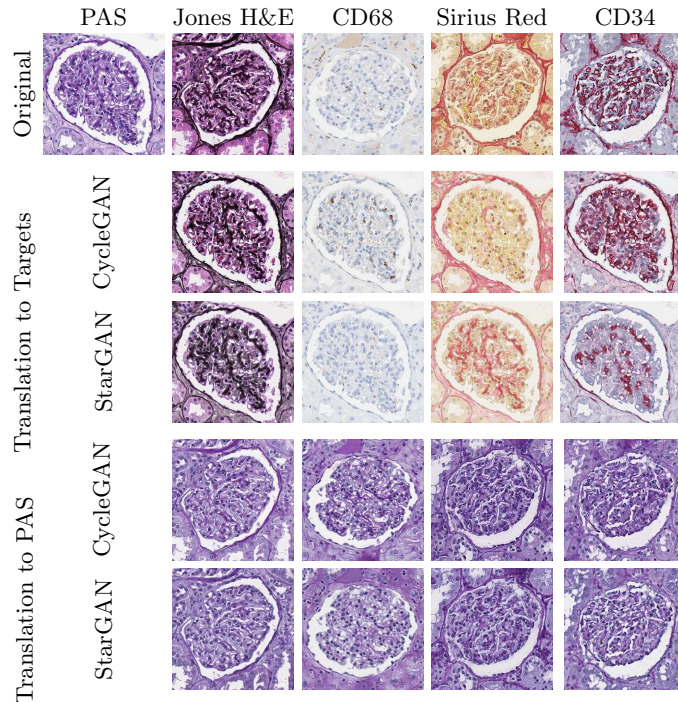


Figure 2: Examples of stain-to-stain translated images using a CycleGAN/StarGAN. The first row contains real patches from each staining. The second two rows represents the translations of a PAS patch to the target staining using CycleGAN/StarGAN model. The last two rows represents translation of real target patches to the PAS staining using CycleGAN/StarGAN model.

We focus on the segmentation of glomeruli, a highly relevant functional unit of the kidney, and consider a dataset that contains WSIs stained with a commonly used staining in renal pathology—Periodic acid-Schiff reaction (PAS)—as the annotated data (source stain), in addition to WSIs that are stained with four different stainings—two histochemical (Sirius Red and Jones’ basement membrane stain—Jones H&E) and two immunohistochemical stainings (CD34 highlighting blood vessel endothelium, CD68 for macrophages)—which are considered to be the unannotated datasets (target stains). The goal is to use the information from the PAS domain in order to learn a model that is able to segment glomeruli in all stains without additional labeling.

<sup>1</sup>‘Stain invariant’ refers to the fact that the same model can be applied to multiple stains (possibly those not seen during training) without the additional acquisition of annotations, modification of the data at test time, nor adaptation of the model after training.

Specifically, we train GAN-based stain-translation models [6, 51] in order to achieve realistic translation between source and target stains. In turn, these allow a segmentation model to be trained on source data augmented with random translations to the target stains. Compared to previous state-of-the-art approaches to stain-invariant segmentation [13, 23] the presented strategy demonstrates a significant improvement in segmentation performance.

The main contributions of this article are:

- to introduce a general, unsupervised augmentation approach that results in a stain invariant model, capable of working in unseen stains.
- the proposed method doesn't require any specific data acquisition strategy (such as consecutive slides) and it doesn't rely on any post processing methods, such as slide registration or stain transfer. Once trained, the model can be directly applied to the test data.
- to present a discussion on the limitations of GAN-based image-to-image translations for stain transfer and to raise awareness of the possibility of misinterpretation during application in clinical practice, particularly, that visual quality assessments cannot be used as a stopping criteria during training stain transfer models.

The remainder of this article is organised as follows: in Section 2, literature concerned with stain transfer and stain invariant approaches is reviewed. Section 3 gives a detailed description of the proposed method and dataset. Section 4 presents the experimental results with comparison to existing state-of-the-art methods. Finally, Section 5 analyses the approach in terms of stain invariance, quality of translations, and its limitations.

## 2. Related work

The occurrence of stain variability can be grouped into intra-stain variability (variations in appearance of a particular stain) or inter-stain variability (the variability in appearance due to different stains). As has been shown in the literature, both types of variation hamper the performance of deep models [23, 45]. When the task at hand is related to the morphological structures in the tissue (such as glomeruli or nuclei detection) rather than stain-related markers (such as macrophages) approaches invariant to inter-stain variation are highly desirable.

Increasing a model's robustness to general stain variations can be considered a domain adaptation problem, which can be approached in either pixel-space or feature space. Adaptation in pixel space offers better interpretation of the model (from a end-user, i.e. clinician or pathologist, point of view), contrary to mapping them in a feature space, since the result can be viewed as a histopathological image. This is an important consideration in medical imaging. Moreover, once the pixel-space has been aligned, any task can be performed within it.

### 2.1. Feature space alignment

In feature space, the adaptation is performed by forcing the extraction of domain invariant features during model training. Inter-stain variability approached from the

perspective of feature space alignment is addressed in recent work [19, 31] while intra-stain variability is addressed in [21].

In general, feature space alignment has proven effective in transferring knowledge from single (or multiple) source domains to a single target domain, i.e. producing a task and stain specific model [19, 31]. Recently, advances move towards single-source multi-target approaches [14], however they still rely on task specific features. Most of the work on unsupervised domain adaption (i.e. no labels in the target domain) are single-source single-target approaches [19, 31], which fail to leverage knowledge shared across multiple domains. When the task at hand is solvable in a stain invariant manner (i.e. the structure is visible under different stains), due to the scarcity of annotations in the medical domain the preferable solution would be a single-source multi-target approach.

### 2.2. Pixel space alignment

In pixel space, the adaptation can be performed by modifying the properties of a target image in order to match characteristics of the source images, so models trained on the annotated (source) domain can be applied to the modified target images. Conversely the annotated domain can be translated to match the non-annotated (in a way that annotations are preserved), and train a model on the transformed source images such that it is directly applicable in the target domain.

From a pixel-space alignment perspective, stain colour augmentation, stain normalisation and stain transfer are commonly used to prevent models from being biased towards the source stain [42]. Stain normalisation refers to the standardisation of a stain’s visual appearance and is commonly used as a pre-processing technique to reduce intra-stain variability [3, 11, 40]. Stain colour augmentation and stain transfer are broader techniques that can address inter-stain variability.

Stain augmentation approaches aim to synthesise new images to enforce colour variation robustness, assuming that objects of interests are invariant to colour intensity and illumination. A typical approach is to perturb image pixels in a random or weighted manner [23, 44, 48]. Alternatively, the stain variation problem can be bypassed by using grayscale images but several studies show this to be inferior [23, 45]. As recent studies show [23, 44], colour augmentation can be a promising solution to achieve stain invariance. Nevertheless, they are usually surpassed by stain transfer approaches [23].

Stain transfer as a virtual staining technique aims to translate an image of tissue stained with a particular stain (or even unstained tissue [2, 34]) into another stain as realistically as possible [22, 32, 49]. Earlier methods [28, 36, 46] rely on decomposing the image into concentration and colour matrices in order to stain new images using equivalent matrices from a reference image. Despite the use of a reference image, these approaches suffer from poor translational realism [23]. Recently, GANs [15] have been used for this purpose due to their ability to synthesize realistic outputs. These are applied in two settings: unpaired translations [13, 49] and paired translation [32]. The CycleGAN architecture [51], as a widely used technique for unpaired image-to-image translation, has recently been applied to stain transfer [5, 13, 32, 49]. And StarGAN [6], a technique of multi domain image-to-image translation, has recently been applied to virtual histological staining of bright-field microscopic images [26].

### 2.3. Stain invariant approaches



As a recent survey shows [42], there are not many approaches that tackle the problem of stain invariance. Although some recent works [13, 17, 23] address the problem to some extent, the resulting model usually requires extensive pre- or post-processing such as slide registration [17], stain transfer [13], or the model exhibits significant performance variation at test time [23].

Recent works [5, 13] show that, when applied to the task of histological stain transfer, CycleGAN is able to produce highly realistic translations, increasing a deep model’s robustness in both supervised and unsupervised settings. Three approaches have been proposed that use this to overcome a lack of target domain annotations [13]: 1) train a segmentation model on source data and apply it to target data translated to the source domain, referred to as MultiDomain Supervised 1 (MDS1); 2) train on the source stain translated to the target, and apply the model directly on the target images, MDS2 [5, 13]. Both MDS1 and MDS2 approaches build stain-specific models that can be applied only to a specific staining. The third approach directly trains the segmentation model by optimising unpaired image-to-segmentation translations in an adversarial manner [13]. However, due to the specificity of cycle-consistency, this approach requires that additional information be artificially generated and inserted into the annotation (e.g. cell nuclei). Furthermore, the performance of such an approach was consistently surpassed by the MDS approaches.

An alternative approach is to warp the segmentation of one slide to a consecutive, differently stained slide [17] however, this only works in the case of consecutive slides and can lead to problems when structures appear/disappear between slides. Furthermore, since it relies on a stain specific source model, it is not applicable in the general case where the stain of the source slide may vary.

On the other hand, the approach proposed by Lampert et al. [23] that we build upon here, and refer to as Unsupervised Domain Augmentation via Stain Decomposition (UDA-SD), represents the first attempt to achieve stain invariance. Nevertheless, being based on fixed-vector stain translations [28, 46], it suffers from poor realism and thus exhibits huge variation over different test stains.

The work proposed herein represents an approach that combines stain augmentation and stain transfer to form a stain-invariant model capable of direct application to several stains, even those previously unseen by the model. The presented method is general, unsupervised, and applicable to any problem that concerns training a segmentation/classification model which tackles morphologically consistent structures in digital pathology. The only existing similar approach is UDA-SD [23], which we build upon by using GANs to obtain high-quality translations between annotated and unannotated stains (Figure 2 presents examples of the translations obtained). These are used to augment a training set by random translations of the source domain, resulting in one stain-invariant model capable of segmenting various (unlabeled) domains. As such, this work proposes an single-source, multi-target unsupervised domain adaptation approach.

### 3. Method

We propose an approach for training stain invariant Convolutional Neural Networks (CNNs). It is assumed that annotated WSIs are available for a stain  $A$  while WSIs of other stains  $B_1, B_2, \dots, B_N$  are unannotated. The aim is to increase the variability of the

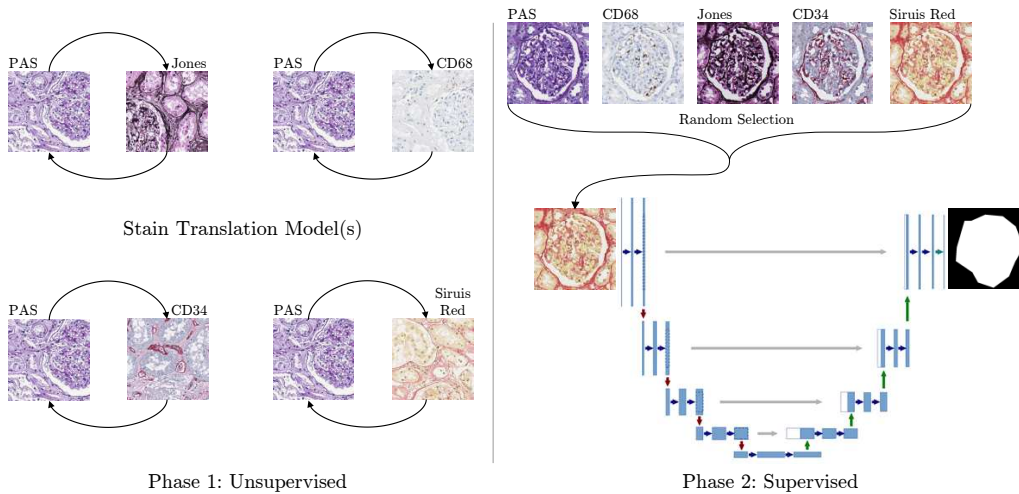


Figure 3: Overall diagram of the proposed approach. Phase 1, translation models are learnt to translate images from the source domain to the target domains; Phase 2, patches of the source domain are randomly translated to the target domains during training (U-Net image taken from [37]).

(annotated) training set through augmentation by randomly translating it to the non-annotated domains (including the original, annotated domain). The overall architecture of the proposed method is presented in Figure 3.

The method consists of the following steps.

*a) Stain Translation* - in order to obtain realistic translations of the annotated stain  $A$  to unannotated stains  $B_1, B_2, \dots, B_N$ , a GAN-based unsupervised, unpaired image-to-image translation model is employed. In this study we evaluate both the CycleGAN [51] and StarGAN [6] models (see Figure 4). Once these translation models are obtained, any supervised model (for which labels exist in the source domain and tackles morphologically consistent structures) can be trained. This study focuses on glomeruli segmentation.

*b) Segmentation Model* - this model is trained on the annotated data after being translated to a random non-annotated stain. Since translation does not change the overall structure of the image (Figure 2), the original domain’s label/ground truth is still valid. Thus, during training, various annotated samples of all available stainings are presented to the model, forcing it to learn stain invariant features. Once the segmentation model has been trained, it can be directly applied to the unannotated stains, without any further translations.

### 3.1. Stain Translation Model

The problem of stain transfer is posed as an unpaired image-to-image translation, which is approached using GAN-based models. The overall structure of these approaches assume the existence of one (or more) generators that translate an image from one domain to another, and one (or more) discriminators that distinguish between translated and real images from corresponding domains. The generator(s) and discriminator(s) play an adversarial game in which the goal of the generator(s) is to prevent the discriminator(s) from distinguishing between the translated samples and those belonging to



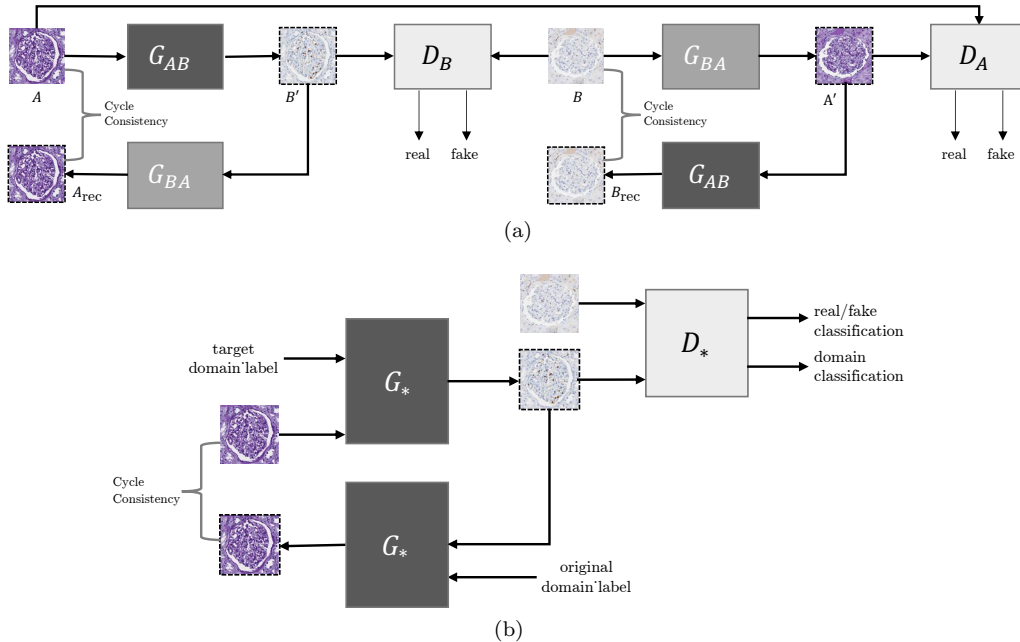


Figure 4: CycleGAN (a) and StarGAN (b) diagrams.

the real data distribution, while the goal of the discriminator(s) is to distinguish them. Eventually, this game leads to an equilibrium in which the translated and real samples are indistinguishable [6, 15, 51]. Since the task of image-to-image translation is usually applied to natural images, the visual quality and variation of translated samples are very important. Thus, various architectures have been proposed in order to obtain better quality translations and greater style transfer capabilities (e.g. StarGAN v2 [7]).

Nevertheless, since the purpose of stain transfer is to translate an image of stain  $A$  to have the appearance of stain  $B$ , it is necessary for the translation model to preserve the image’s global structure (e.g. glomeruli should remain in the same location, regardless of the target stain). Thus, image-to-image translation architectures which are less constrained and allow more diverse translation (including shape change) such as StarGAN v2 [7] are not suitable. The specific architecture used in the CycleGAN and StarGAN models, combined with the loss functions (particularly cycle-consistency) in practice prevents geometrical changes [51], as is attested by the number of prior works using CycleGANs in digital pathology [5, 11, 12, 13, 22, 32, 40].

One such example is given by Gadermayr et al. [12], who uses the CycleGAN for realistic stain-transfer. StarGAN, however, has thus-far not been used for this purpose and we observe the same geometrical consistency when applied to stain transfer.

### 3.1.1. CycleGAN Based Stain Transfer

Separate CycleGAN models, see Figure 4a, are trained to obtain translators between each target stain ( $B$ ) and the source stain ( $A$ ). Each model consists of two generators:

$G_{AB} : A \rightarrow B$  and  $G_{BA} : B \rightarrow A$ ; and two discriminators  $D_A$  and  $D_B$ . The aim of  $D_A$  is to distinguish between real source stain patches and those translated from the target stain to the source; while  $D_B$  aims to distinguish between real target stain patches and those translated from the source stain to the target. **These are trained using adversarial least-squared loss, such that**

$$\begin{aligned} \mathcal{L}_{\text{adv}}(G_{AB}, D_B, G_{BA}, D_A) = & \mathbb{E}_{s \sim A}[(D_A(s) - 1)^2] + \mathbb{E}_{t \sim B}[(D_A(G_{BA}(t)) - 1)^2] \\ & + \mathbb{E}_{t \sim B}[(D_B(t) - 1)^2] + \mathbb{E}_{s \sim A}[(D_B(G_{AB}(s)) - 1)^2]. \end{aligned} \quad (1)$$

Moreover, training is constrained by the cycle-consistency and identity losses, which are formulated as follows:

$$\begin{aligned} \mathcal{L}_{\text{cyc}}(G_{AB}, G_{BA}) = & \mathbb{E}_{s \sim A}[\|G_{BA}(G_{AB}(s)) - s\|_1] \\ & + \mathbb{E}_{t \sim B}[\|G_{AB}(G_{BA}(t)) - t\|_1], \end{aligned} \quad (2)$$

and

$$\begin{aligned} \mathcal{L}_{\text{identity}}(G_{AB}, G_{BA}) = & \mathbb{E}_{s \sim A}[\|G_{BA}(s) - s\|_1] \\ & + \mathbb{E}_{t \sim B}[\|G_{AB}(t) - t\|_1]. \end{aligned} \quad (3)$$

Thus, the full objective is

$$\begin{aligned} \mathcal{L}_{\text{CycleGAN}}(G_{AB}, G_{BA}, D_A, D_B) = & \mathcal{L}_{\text{adv}}(G_{AB}, D_B) \\ & + \mathcal{L}_{\text{adv}}(G_{BA}, D_A) + w_{\text{cyc}} \mathcal{L}_{\text{cyc}}(G_{AB}, G_{BA}) \\ & + w_{\text{id}} \mathcal{L}_{\text{identity}}(G_{AB}, G_{BA}), \end{aligned} \quad (4)$$

where  $w_{\text{cyc}}$  and  $w_{\text{id}}$  control the relative importance of the cycle-consistency and identity losses, respectively.

### 3.1.2. StarGAN Based Stain Transfer

Rather than training a translation model for each pair of stains, StarGAN [6] results in one, multi-stain translation model, see Figure 4b. This model contains one generator  $G_*$ , conditioned on the domain label (stain), which translates an input image  $x_i$  from stain  $i$  to image  $x_j$ , having the characteristics of stain  $j$ , i.e.  $G_*(x_i, j) \rightarrow x_j$ ; and one multi-task discriminator  $D_*$  that simultaneously distinguishes between real and generated samples ( $D_{\text{adv}}$ ) and classifies each patch's stain label ( $D_{\text{stain}}$ ), i.e.  $D_*(x) \rightarrow (D_{\text{stain}}(x), D_{\text{adv}}(x))$ . As such, a single discriminator controls the translation into multiple stains.

We first define the sets  $P_i$  as sets of images stained with stain  $i$ . The generator  $G_*$  and discriminator  $D_*$  are then trained in an adversarial manner [15] using the Wasserstein loss with gradient penalty, such that

$$\begin{aligned} \mathcal{L}_{\text{adv}}(G_*, D_*) = & \mathbb{E}_{x \sim P_j(x)}[D_{\text{adv}}(x)] \\ & - \mathbb{E}_{(x \sim P_i(x), j)}[D_{\text{adv}}(G_*(x, j))] \\ & - \lambda_{\text{gp}} \mathbb{E}_{\hat{x}}[(\|\nabla_{\hat{x}} D_{\text{adv}}(\hat{x})\|_2 - 1)^2], \end{aligned} \quad (5)$$

where  $\hat{x}$  is sampled uniformly between the real and generated images [6] and hyperparameter  $\lambda_{gp}$  controls the effect of the gradient penalty term. The auxiliary classifier branch of the discriminator is trained using the following classification loss

$$\begin{aligned} \mathcal{L}_{cls}(G_*, D_*) &= \mathbb{E}_{(x \sim P_i(x), j)}[-\log D_{\text{stain}}(j|G_*(x, j))] \\ &+ \mathbb{E}_{(x \sim P_i(x))}[-\log D_{\text{stain}}(i|x)]. \end{aligned} \quad (6)$$

Similarly to CycleGAN, the overall training is constrained with a cycle-consistency loss, defined as

$$\mathcal{L}_{cyc}(G_*) = \mathbb{E}_{x \sim P_i(x), i, j}[\|G_*(G_*(x, j), i) - x\|_1]. \quad (7)$$

The full objective function for training a StarGAN model is therefore given as:

$$\begin{aligned} \mathcal{L}_{\text{StarGAN}}(G_*, D_*) &= \mathcal{L}_{\text{adv}}(G_*, D_*) + w_{cyc}\mathcal{L}_{cyc}(G_*) \\ &+ w_{cls}\mathcal{L}_{cls}(G_*, D_*). \end{aligned} \quad (8)$$

where  $w_{cyc}$  and  $w_{cls}$  control the relative importance of the cycle-consistency and classification losses, respectively.

### 3.2. Segmentation Model

The U-Net [37] is adopted as it has been proven successful in biomedical imaging [27] and, in particular, glomeruli detection [10]. Glomeruli segmentation is framed as a two class problem: glomeruli (pixels that belong to glomerulus), and tissue (pixels outside a glomerulus).

During training, a training patch with a probability of  $\frac{N-1}{N}$ , where  $N$  is the number of stains, is converted into randomly selected stain using the pre-trained translator(s). Thus, all available stains (including the annotated one) are presented to the network with equal probability  $\frac{1}{N}$ , forcing the network to learn more stain invariant features

### 3.3. Training Details

Throughout the study, patches of size  $508 \times 508$  pixels are used since glomeruli and part of the surrounding fit within this size of patch at the level-of-detail used, see Section 3.4.

#### 3.3.1. Stain translation

Gadermayr et al. [12] showed that different sampling strategies for the annotated and unannotated domains could negatively impact a stain transfer model’s performance, and patches are therefore randomly extracted using a uniform sampling strategy (in an unsupervised manner).

*CycleGAN*: The loss weights and architecture are taken from the original paper ( $w_{cyc} = 10$ ,  $w_{id} = 5$ ) [51] since they produced realistic output, see Fig. 2. A translation network with nine ResNet blocks was used, as suggested by the authors for high dimensional data (above  $256 \times 256$  pixels) [51]. The models are trained for 50 epochs, with a learning rate of 0.0002, using the Adam optimiser, and a batch size of 1. From the 25<sup>th</sup> epoch, the learning rate linearly decayed to 0, and the cycle-consistency and identity weights halved. In all experiments, the translation model from last (50<sup>th</sup>) epoch is used. Moreover, to

reduce model oscillation, Shrivastava et al.’s strategy [41] of updating the discriminator using the 50 previously generated samples is adopted. Preliminary experiments showed that the visual translation quality is not highly dependent on the weight values of Eq. (4) (although some combinations required more training to obtain realistic translations). As will be discussed in more detail in Section 5.3.2, visual criteria is not a good proxy for assessing the quality of stain translation, and so the weighting values proposed by the original authors [51] are used since they already achieve visually good results.

*StarGAN*: The generator’s and discriminator’s architecture and training settings were the same as the CycleGAN model described previously (without instance normalisation in the discriminator). The loss weights are taken from the original paper ( $w_{cyc} = 10$ ,  $w_{cls} = 1$ ,  $\lambda_{gp} = 10$ ) [6] since they produced realistic output, as can be seen in Figure 2. The model is trained for 50 epochs and, similarly to the CycleGAN training strategy, the model from the 50<sup>th</sup> epoch is used. Again preliminary experiments were conducted with various values for the weight parameters in Eq. (8). Some combinations lead to unstable training or required more epochs to produce realistic translations in all stain combinations. Thus, the parameter values from the original paper were used [6].

### 3.3.2. U-Net

The same training parameters are used for all experiments: batch size of 8, learning rate of 0.0001, 250 epochs, and the network with the lowest validation loss is kept.

The slide background (non-tissue) is removed by thresholding each image by its mean value then removing small objects and closing holes.

All patches are standardised to  $[0, 1]$  and normalised by the mean and standard deviation of the (labeled) training set.

After translation (or not), the following augmentations are applied with an independent probability of 0.5 (batches are augmented ‘on the fly’), in order to further force the network to learn general features: elastic deformation ( $\sigma = 10$ ,  $\alpha = 100$ ); random rotation in the range  $[0^\circ, 180^\circ]$ , random shift sampled from  $[-205, 205]$  pixels, random magnification sampled from  $[0.8, 1.2]$ , and horizontal/vertical flip; additive Gaussian noise with  $\sigma \in [0, 2.55]$ ; Gaussian filtering with  $\sigma \in [0, 1]$ ; brightness, colour, and contrast enhancements with factors sampled from  $[0.9, 1.1]$ ; stain variation by colour deconvolution [44],  $\alpha$  sampled from  $[-0.25, 0.25]$  and  $\beta$  from  $[-0.05, 0.05]$ .

### 3.4. Data

Tissue samples were collected from a cohort of 10 patients who underwent tumor nephrectomy due to renal carcinoma. The kidney tissue was selected as distant as possible from the tumors to display largely normal renal glomeruli, some samples included variable degrees of pathological changes such as full or partial replacement of the functional tissue by fibrotic changes (“sclerosis”) reflecting normal age-related changes or the renal consequences of general cardiovascular comorbidity (e.g. cardiac arrhythmia, hypertension, arteriosclerosis). The paraffin-embedded samples were cut into  $3\mu\text{m}$  thick sections and stained with either Jones’ H&E basement membrane stain (Jones), PAS, Sirius Red or H&E, in addition to three immunohistochemistry markers (CD34, CD68 and CD3), using an automated staining instrument (Ventana Benchmark Ultra). H&E and CD3 were reserved as unseen stain, therefore the total number of augmentation stains is  $N = 5$ . Whole slide images were acquired using an Aperio AT2 scanner at  $40\times$

magnification (a resolution of  $0.253 \mu m$  / pixel). All the glomeruli in each WSI were annotated and validated by pathology experts by outlining them using Cytomine [29]. The dataset was divided into 4 training, 2 validation, and 4 test patients. The number of glomeruli in each staining dataset was: PAS - 662 (train.), 588 (valid.), 1092 (test); Jones H&E - 1043 (test); H&E - 1151; Sirius Red - 1049 (test); CD34 - 1019 (test); CD68 - 1046 (test); CD3 - 1083. The training set comprised all glomeruli from the source staining training patients (662) plus 4634 tissue (i.e. non-glomeruli) patches (to account for the variance observed in non-glomeruli tissue).

#### 4. Results

In the following, the proposed approach is referred to as Unsupervised Domain Augmentation using GANs (UDA-GAN), with two variants: with CycleGANs (UDA-CGAN) and StarGAN (UDA-\*GAN). These are presented and compared to the MDS1 [13], MDS2 [13], Unsupervised Domain Augmentation via Stain Decomposition (UDA-SD) [23] and vanilla PAS (vPAS), which is the direct application of a model trained on PAS to the target domains without any adaptation (i.e. the control).

As mentioned, the CycleGAN models obtained after 50 epochs are used, however, Brieu et al. [5] show that realistic translations are obtained even in early epochs, which is confirmed in Figure 5. They therefore train a segmentation model using translators taken from multiple epochs to increased augmentation variability. Therefore we include the Multi UDA-CGAN model in which translation models from each 5<sup>th</sup> epoch are used, resulting in 40 translation models.

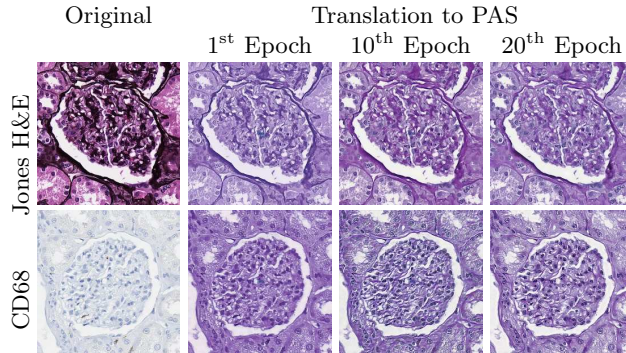


Figure 5: Jones H&E and CD68 glomeruli patches translated to PAS using CycleGAN models from different training epochs.

For MDS1 and MDS2, the translated models are trained according to Section 3.1. Variants of MDS1 and MDS2 using the StarGAN translators were evaluated, and are referred to as MDS\*1 and MDS\*2. The  $F_1$ -score, along with precision and recall, are used to measure the performance. The presented results are the averages of five independent training repetitions, with corresponding standard deviations.

The experimental results are presented in Table 1. Baseline performances (U-Net models, as described above, trained and tested on the same stain using each stain’s ground truth) were determined for each staining and presented in Table 2.

Training Strategy	Score	Test Staining					
		PAS	Jones H&E	CD68	Sirius Red	CD34	Overall
vPAS	F <sub>1</sub>	0.907 (0.009)	0.085 (0.034)	0.001 (0.002)	0.016 (0.018)	0.071 (0.063)	0.043 (0.041)
	Precision	0.885 (0.023)	0.055 (0.021)	0.097 (0.129)	0.034 (0.034)	0.257 (0.243)	0.111 (0.101)
	Recall	0.932 (0.014)	0.418 (0.316)	0.001 (0.001)	0.073 (0.101)	0.058 (0.039)	0.137 (0.190)
UDA-SD [23]	F <sub>1</sub>	0.891 (0.007)	0.791 (0.079)	0.147 (0.048)	0.828 (0.046)	0.739 (0.026)	0.679 (0.303)
	Precision	0.840 (0.018)	0.699 (0.116)	0.365 (0.238)	0.778 (0.088)	0.695 (0.054)	0.675 (0.183)
	Recall	0.950 (0.007)	0.926 (0.015)	0.099 (0.032)	0.892 (0.024)	0.795 (0.059)	0.732 (0.359)
MDS1[13]	F <sub>1</sub>	-	<b>0.872</b> (0.016)	0.395 (0.057)	0.828 (0.040)	0.673 (0.033)	0.692 (0.215)
	Precision	-	0.843 (0.036)	0.447 (0.092)	0.787 (0.071)	0.857 (0.033)	0.734 (0.193)
	Recall	-	0.904 (0.018)	0.364 (0.071)	0.877 (0.020)	0.556 (0.047)	0.675 (0.261)
MDS2[13]	F <sub>1</sub>	-	0.869 (0.020)	0.586 (0.059)	0.797 (0.040)	0.739 (0.044)	0.748 (0.121)
	Precision	-	0.833 (0.049)	0.519 (0.108)	0.699 (0.061)	0.723 (0.051)	0.695 (0.132)
	Recall	-	0.909 (0.013)	0.697 (0.059)	0.929 (0.004)	0.765 (0.106)	0.825 (0.112)
UDA-CGAN	F <sub>1</sub>	<b>0.901</b> (0.011)	0.856 (0.036)	<b>0.705</b> (0.031)	<b>0.873</b> (0.025)	0.799 (0.034)	<b>0.827</b> (0.078)
	Precision	0.869 (0.034)	0.800 (0.069)	0.690 (0.059)	0.830 (0.051)	0.754 (0.076)	0.789 (0.069)
	Recall	0.936 (0.014)	0.924 (0.012)	0.723 (0.034)	0.922 (0.009)	0.856 (0.036)	0.872 (0.089)
Multi UDA-CGAN	F <sub>1</sub>	0.897 (0.010)	0.863 (0.030)	0.684 (0.046)	0.861 (0.021)	<b>0.808</b> (0.023)	0.822 (0.084)
	Precision	0.860 (0.021)	0.812 (0.057)	0.648 (0.098)	0.813 (0.043)	0.764 (0.061)	0.779 (0.081)
	Recall	0.937 (0.007)	0.922 (0.009)	0.736 (0.038)	0.917 (0.010)	0.862 (0.032)	0.875 (0.083)
MDS*1	F <sub>1</sub>	-	0.756 (0.086)	0.092 (0.055)	0.599 (0.108)	0.751 (0.033)	0.550 (0.314)
	Precision	-	0.675 (0.136)	0.242 (0.116)	0.496 (0.123)	0.742 (0.092)	0.539 (0.223)
	Recall	-	0.881 (0.029)	0.061 (0.044)	0.780 (0.099)	0.774 (0.070)	0.624 (0.379)
MDS*2	F <sub>1</sub>	-	0.816 (0.060)	0.525 (0.048)	0.837 (0.032)	0.766 (0.030)	0.736 (0.144)
	Precision	-	0.740 (0.096)	0.874 (0.037)	0.785 (0.059)	0.752 (0.030)	0.787 (0.061)
	Recall	-	0.918 (0.008)	0.376 (0.046)	0.901 (0.014)	0.785 (0.073)	0.745 (0.253)
UDA-*GAN	F <sub>1</sub>	0.890 (0.022)	0.807 (0.031)	0.549 (0.081)	0.792 (0.052)	0.758 (0.076)	0.759 (0.127)
	Precision	0.853 (0.043)	0.717 (0.050)	0.794 (0.044)	0.703 (0.085)	0.738 (0.082)	0.761 (0.062)
	Recall	0.933 (0.008)	0.926 (0.010)	0.426 (0.090)	0.913 (0.013)	0.796 (0.135)	0.799 (0.216)

Table 1: Quantitative results for each strategy trained on PAS (source staining) and tested on different (target) stainings. Standard deviations are in parentheses, the highest F<sub>1</sub> scores for each staining are in bold (PAS is not included in the vPAS average since it is the training staining.)



	PAS	Jones H&E	CD68	Sirius Red	CD34	Overall
F <sub>1</sub>	0.907 (0.009)	0.864 (0.011)	0.853 (0.018)	0.867 (0.016)	0.888 (0.015)	0.876 (0.022)
Precision	0.885 (0.023)	0.824 (0.020)	0.846 (0.027)	0.801 (0.042)	0.862 (0.015)	0.844 (0.032)
Recall	0.932 (0.014)	0.911 (0.005)	0.856 (0.022)	0.957 (0.018)	0.929 (0.011)	0.917 (0.038)

Table 2: Quantitative baseline results (standard deviations are in parentheses).

Despite the fact that the translations obtained using both CycleGAN and StarGAN look realistic (see Figure 2), it can be observed that the direction of translation (MDS1 vs MDS2) and translation model (StarGAN vs CycleGAN) influence the results. This is best illustrated with MDS1, in which a model trained on the original PAS data is applied to target data translated to PAS. It can be observed that in each target stain, the difference between CycleGAN and StarGAN translations is significant, although there appears to be no significant difference in the quality of the translations. The proposed UDA-GAN approaches show more stable performance while the best results are obtained using UDA-CGAN and Multi UDA-CGAN.

Furthermore, UDA-CGAN reaches almost baseline performance in three out of five test stainings. Despite the fact that the model has seen data from PAS stain only 20% of the time during training, the model has baseline performance on this (source) domain. The model also approaches baseline performance in target stains Jones H&E and Sirius Red. For stains CD68 and CD34, the model reaches an F<sub>1</sub>-score of 0.705 and 0.799, meaning that it gives an improvement of 11.9% and 6% respectively over the next best CycleGAN method (MDS2). The average performance over the five different stainings show that UDA-CGAN reaches an average F<sub>1</sub>-score of 0.827 (0.808 without including the PAS staining, in order to be fairly compared to the MDS approaches), while MDS2, as the next best method, reaches an F<sub>1</sub>-score of 0.748. The biggest relative difference is observed in staining CD68 where the overall improvement is 55.8% compared to the original approach [23] and 11.9% compared to the second best performing method in this stain - (CycleGAN) MDS2. Other than the baseline, UDA-CGAN is the only model able to achieve acceptable results in this staining. Multi UDA-CGAN does not improve upon this, although it performs comparable possibly because the 40 different translation models used in this approach introduce variability that does not necessarily reflect real stain variability. More discussion about this phenomena is given in Section 5.3.2.

#### 4.1. Unseen Stains

In order to further evaluate the stain invariance of the UDA-GAN approaches, they are tested on two unseen stains (unseen to both the CycleGAN/StarGAN and UDA-GAN models), see Figure 6: histological stain H&E (a general overview staining not specific for a protein) and immunohistochemical stain CD3 (T cell marker). Even though they highlight similar structures to the ‘virtually’ seen stains, they are visually very different in appearance. For each stain, images are taken from 3 patients containing 1151 (H&E) and 1083 (CD3) glomeruli. Table 3 presents the results, averaged over the previously trained UDA-GAN models.

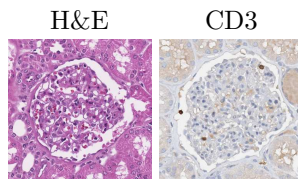


Figure 6: Examples of glomeruli from the unseen stains.

		H&E	CD3	Average
vPAS	F <sub>1</sub>	0.126 (0.066)	0.000 (0.000)	0.063
	Precision	0.070 (0.041)	0.018 (0.018)	0.044
	Recall	0.854 (0.109)	0.000 (0.000)	0.427
UDA-CGAN	F <sub>1</sub>	0.731 (0.100)	0.658 (0.075)	0.694
	Precision	0.781 (0.122)	0.569 (0.124)	0.675
	Recall	0.697 (0.123)	0.802 (0.042)	0.750
UDA-*GAN	F <sub>1</sub>	0.752 (0.087)	0.650 (0.030)	0.701
	Precision	0.824 (0.057)	0.853 (0.065)	0.839
	Recall	0.706 (0.147)	0.531 (0.058)	0.618

Table 3: Quantitative results of UDA-GAN models on unseen stains (standard deviations are in parentheses).

Although the results are lower than those obtained using stains virtually seen during training, i.e. stain translation targets during augmentation, they confirm the network’s capacity for stain invariant segmentation.

On average, both UDA-CGAN and UDA-\*GAN perform equally well on unseen stains. And when taken in context of Table 1, although they generally achieve lower results, UDA-\*GAN remains within the range previously seen and UDA-CGAN exhibits more variance. **This phenomena is analysed further in Section 5.2.3.**

A high  $F_1$  score is achieved when faced with a completely new stain colour profile (H&E). When faced with a similar stain profile to one virtually seen (CD3, similar to CD68), the corresponding UDA-CGAN  $F_1$  score is similar and UDA-\*GAN improves, likely because CD3 has more contrast (due to an unspecific reaction of the primary antibody) when compared to CD68, with which it struggles. It is worth noting that the models with the best PAS performance (which can be determined since annotations exist) are also those that perform best on the unseen stains.

## 5. Further Analysis and Discussion

In this section the results are analysed in more detail, including calculating additional statistics and, and related to those found in the literature. Further analysis of the trained models is presented by visualising their feature distributions and their attention. Finally, the topic of CycleGAN training is discussed.

### 5.1. Translation Direction

Gadermayr et al. suggest that translation “should always be performed from the difficult-to-segment to the easy-to-segment domain” and that MDS1 is the preferred method [13]. Table 2 shows that the difficult-to-segment stain is CD68 and the easy is PAS as it results in a more accurate baseline segmentation. It is also observed in Table 1 that MDS1 with PAS as the source domain is in fact surpassed by MDS2 in all but one target stainings (in which it is equal). These results suggest that the characteristics of “difficult-to-segment” stainings may vary, and the method/translation direction should be adjusted to the specific requirements of a given biological question, i.e. the panel of necessary staining methods.

### 5.2. Representation Comparison

In the case of staining CD68, neither MDS1, MDS\*1, MDS2, nor, MDS\*2 perform well. Poor MDS1 (MDS\*1) performance could indicate that the CycleGAN (StarGAN) translation between the CD68 and PAS domains do not capture the features the PAS model uses for segmentation. On the other hand, poor MDS2 and MDS\*2 performance could indicate that the translation between PAS and CD68 contains features that are not present in real CD68. **From the perspective of the image-to-image translation methods used to achieve stain transfer, this can be explained by the presence of noise injected into the translations in order to satisfy the cycle-consistency loss (equations 2, 7) due to the many-to-many mappings which exists in at least one direction of translation, a possibility that has been confirmed by various studies on natural images [1, 50].** From a biological viewpoint, this most likely represents the fact that immunohistochemistry for CD68 highlights just one specific, migratory cell population (macrophages) that is not part of the pre-existing tissue architecture, with a brown chromogen, while the anatomical structures are only faintly stained (blue “counterstain” using hemalaun). Strikingly, immunohistochemistry for CD34, a marker for vascular endothelial cells, labeled with a red chromogen, performs much better. This can probably be explained by a specific immunohistochemical labeling of anatomical structures (blood vessels) in addition to the blueish counterstain, containing more features that are also covered in the other staining methods (PAS, Jones H&E). This is particularly evident with StarGAN, which exploits common inter-stain characteristics. **Thus, some translation directions require more hidden noise to be injected in the translation, which is reflected in the performance of the pre-trained models. In the case of MDS1, the noise that is injected in the PAS translation represents a domain shift compared to real PAS images, while in case of MDS2, the model could associate the noise (which does not exist in the real data) with a decision, which hampers performance on clean (real) data.**

Between MDS1 and MDS2 (both CycleGAN and StarGAN translations) the largest difference is seen in stain CD68, which marks a protein exclusively produced by macrophages. PAS, as a chemical reaction staining glycolysated proteins in general, highlights a part of

macrophages (co-located, but not overlapping, with CD68). Thus the translation from PAS to CD68 (MDS2, MDS\*2) is easier than the reverse (MDS1, MDS\*1), since PAS contains some (but not all) of the information exposed by CD68.

The fact that UDA-CGAN outperforms both MDS1 and MDS2 using the same translation functions indicates that it is capable of extracting more general (stain invariant) features, i.e. it avoids learning stain specific and ‘false’ features introduced by the CycleGAN. This is also the case for UDA-\*GAN but to a lesser extent. UDA-\*GAN uses the same generator for all translations so it is likely to extract similar features between the source stain and all target stains. This reduces the impact of the multi-stain augmentation, which becomes evident when comparing UDA-\*GAN to MDS\*2.

### 5.2.1. Feature Distributions

In order to visualise the distributions of each model’s extracted features, Figure 7 presents UMAP (Uniform Manifold Approximation and Projection) embeddings [30] of the penultimate convolutional layer’s activations in the best performing model (over all stainings) for two hundred random glomeruli and two hundred random tissue patches of each staining using MDS1, MDS\*1, UDA-CGAN, and UDA-\*GAN (MDS2 and MDS\*2 models are stain specific, therefore cannot be applied to all stainings). For MDS1 and MDS\*1, the translations to the PAS stain is achieved using CycleGAN and StarGAN respectively, and UDA-CGAN and UDA-\*GAN are applied to original data without any modification.

In order to quantitatively measure these distributions, silhouette scores [38] have been calculated between:

- each stain’s glomeruli class and the union of the glomeruli samples from all other stains;
- PAS glomeruli and each target stain’s glomeruli;
- each stain’s glomeruli and negative samples.

These are presented in Table 4. The first should favour the UDA-GAN approaches since their goal is to learn a stain invariant representation, the second should favour MDS1 and MDS\*1, since their objective is to translate the target stainings to the PAS distribution, while the third should be the goal of all approaches.

In the first case, the UDA-GAN approaches exhibit larger (or equal) overlap between the glomeruli in all stainings, indicating greater clustering, which is reflected in the fact that these models are able to segment all stainings. Higher scores for the MDS1 approaches indicate less concentrated clustering (e.g. Jones H&E , which appears to be concentrated in one part of the glomeruli space, separate from the other stains).

Since the MDS1 approaches are trained on PAS, they rely on accurate translation models, which must result in a direct overlap with the PAS distribution. Whereas the UDA-GAN approaches can tolerate more translation variance (that does not result in glomeruli - tissue overlap) since they are trained on the translated data. Interestingly the scores for MDS1 and MDS\*1 for PAS are relatively high, indicating that this approach fails to completely overlap the target stains with PAS.

In the second case, it can be observed that UDA-GAN approaches have better (or equal) overlap with the PAS glomeruli in all stainings. The score for MDS\*1 in CD68 is

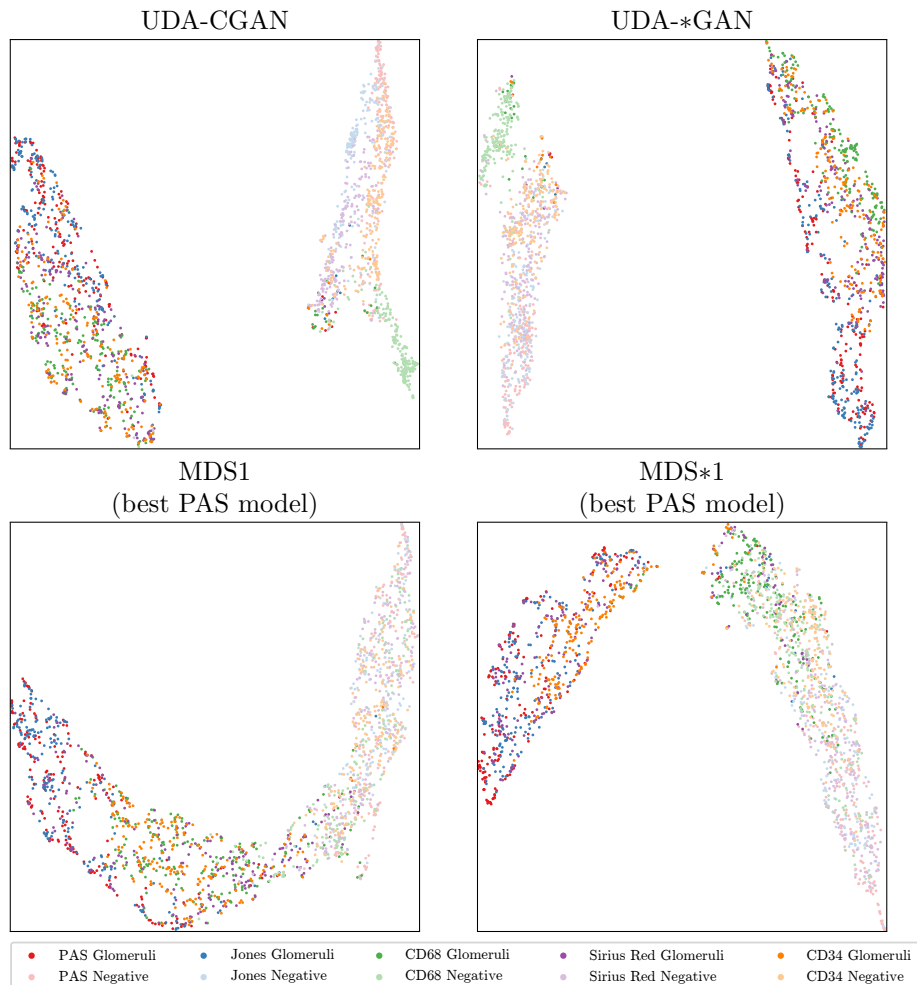


Figure 7: Two-dimensional UMAP embeddings of the representation learnt, sampled from the penultimate convolutional layer using 200 patches per stain per class from the overall best performing PAS and UDA-GAN models. Each point represents a patch from the respective class and staining (glomeruli patches are centred on a glomeruli).

much higher than for any other stain, and Figure 7 shows that the CD68 glomeruli class has been merged with the negative class, explaining the very low recall in Table 1.

In the third case, it can be observed that the UDA-GAN approaches better separate the glomeruli and tissue classes. This is especially illustrated in the case of CD68 in which UDA-\*GAN learns to separate the glomeruli and tissue classes, whereas MDS\*1 fails. As mentioned, MDS\*1 relies on accurate translations, whereas the UDA-GAN approaches are able to correct for weak translations during training.

	Training Strategy	PAS	Jones H&E	CD68	Sirius Red	CD34
Glomeruli-Combined	UDA-CGAN	0.069 (0.004)	0.106 (0.008)	<b>0.000</b> (0.007)	-0.044 (0.003)	<b>-0.019</b> (0.003)
	UDA-*GAN	<b>0.051</b> (0.008)	<b>0.094</b> (0.005)	0.069 (0.010)	-0.041 (0.003)	-0.024 (0.003)
	MDS1	0.198 (0.011)	0.176 (0.014)	-0.057 (0.002)	-0.038 (0.004)	-0.070 (0.005)
	MDS*1	0.219 (0.006)	0.048 (0.011)	0.166 (0.004)	<b>-0.027</b> (0.003)	-0.063 (0.004)
Glomeruli-PAS Glomeruli	UDA-CGAN	-	0.004 (0.002)	<b>0.123</b> (0.008)	0.078 (0.003)	<b>0.071</b> (0.006)
	UDA-*GAN	-	0.004 (0.001)	0.179 (0.003)	<b>0.070</b> (0.002)	0.090 (0.003)
	MDS1	-	<b>0.002</b> (0.001)	0.253 (0.007)	0.175 (0.009)	0.255 (0.003)
	MDS*1	-	0.037 (0.005)	0.477 (0.007)	0.098 (0.003)	0.186 (0.010)
Glomeruli-Tissue	UDA-CGAN	0.594 (0.009)	0.567 (0.017)	<b>0.533</b> (0.009)	0.554 (0.012)	<b>0.551</b> (0.010)
	UDA-*GAN	<b>0.625</b> (0.016)	<b>0.584</b> (0.015)	0.475 (0.014)	<b>0.581</b> (0.012)	0.530 (0.005)
	MDS1	0.489 (0.007)	0.481 (0.017)	0.300 (0.009)	0.300 (0.016)	0.424 (0.006)
	MDS*1	0.489 (0.007)	0.456 (0.019)	0.051 (0.004)	0.354 (0.023)	0.449 (0.005)

Table 4: Silhouette scores measuring (averaged over 3 different random samplings): the separation between the each stain’s glomeruli class and the glomeruli class formed from all other stains (Combined), the separation between the each stain’s glomeruli class and the PAS glomeruli class (PAS), and the separation between each stain’s glomeruli class and its negative class. Calculated using the features of 200 random patches per stain per class, extracted from the penultimate convolutional layer: 0 means total overlap, 1 means total separation, -1 means that samples are more similar to the other class than their own, therefore values closer to 0 are better (in bold) for Glomeruli-Combined and Glomeruli-PAS Glomeruli, and 1 is better (in bold) for Glomeruli-Tissue.

### 5.2.2. Attention

Another approach to illustrate the representations learned is to use attention visualisations. Grad-CAM [39] is used to visualise the attention of the penultimate convolutional layer, see Figure 8. For fair comparison, the best performing MDS1, MDS\*1, MDS2, and MDS\*2 model for each staining, and the baseline approaches are used. For UDA-CGAN and UDA-\*GAN, the overall best-performing model is taken.

The attention of the best-performing MDS1 (and MDS\*1, except CD68 for which MDS\*1 does not work) models in all stainings are focused on border-like features, which the model uses in the original PAS domain (on which it was trained). Poor MDS1 and MDS\*1 performance can be explained by an absence of the specific features on which the trained model is focused on, and which are not necessarily present in the target domains nor relevant for the detection of the structures in general. When comparing attention in all the baseline models, it can be observed that in each staining, the models have a tendency to focus on stain specific features. The attention of the MDS2 models is



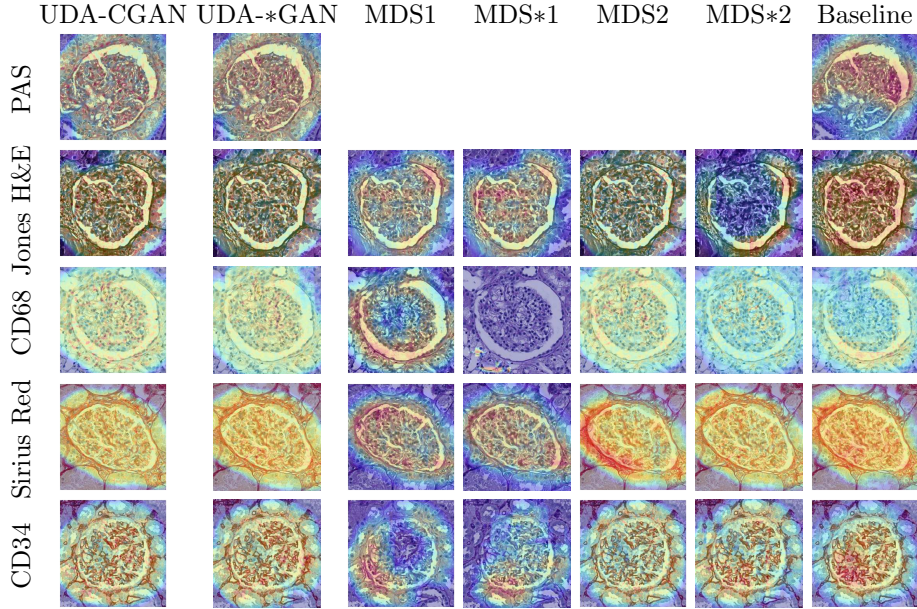


Figure 8: GradCAM visualisation of (column-wise) 1) overall best performing UDA-CGAN model; 2) overall best performing UDA-\*GAN model; 3) best MDS1 model in each particular stain; 4) best MDS\*1 model in each particular stain; 5) best MDS2 model in each particular stain; 6) best MDS\*2 model in each particular stain; 7) best baseline model in each particular stain.

more general and close to the stain-invariant model’s attention. According to the results presented in Table 1, the stain-invariant approach (UDA-CGAN) gives an improvement in precision, while the recalls of both models are similar (in all stainings except CD34). Meaning that the stain-invariant model reduces false positives and, to some extent, false negatives (while both models detect true positives similarly). Thus, attention in the true positive class is expected to be similar. Both the MDS\*2 and UDA-\*GAN use a common translation model (StarGAN), which, as previously mentioned, is biased towards common features between the stains. Thus both models are likely to focus on these common features, explaining their similar attentions (this is also confirmed in Table 1). In addition to common features, the MDS2 models can also use stain-specific features because they are only exposed to one type of image (as is the case with the presented Jones H&E example).

The main advantage of the UDA-GAN approaches is their ability to properly generalise across different stainings, as the presented attentions represent the features learnt by one model, while in all other cases a domain (stain) dependent model is obtained.

### 5.2.3. Multi vs Single Stain Translation

The fact that StarGAN has a single translator may force it to preserve common features between stains, features that UDA-\*GAN is likely to focus on. It is also likely that these features are general and present in unseen stains, therefore UDA-\*GAN’s performance is similar within the virtually seen and unseen stains. Nevertheless, the

single translator may force StarGAN to ignore hard-to-translate stains, e.g. CD68, and to minimise its loss upon the other stains. This would cause the general features to be extracted from the remaining stains. Low recall for CD68 and CD3 indicates that the model struggles to identify glomeruli, i.e. the general features do not exist in these stains. This is confirmed in Figure 7, in which the CD68 glomeruli class overlaps the negative class. UDA-CGAN, on the other hand, is trained using the translators and has more sources of variation since each augmentation translator is independent. It can therefore leverage the additional information present in the augmented translations to achieve higher accuracy during application to them, while still learning a stain invariant representation.

### 5.3. Translation Quality

#### 5.3.1. Quality Measure

One way to validate the quality of such translations is to consult a pathologist, however this is expensive and time consuming. Preliminary validation by a pathologist confirms that the translations are indistinguishable from real images.

One of the most widely used measures for validating the quality of generated natural images is the Fréchet Inception Distance (FID) [18].

FID measures the distance between features of the generated and real images extracted from the Inception network. Since this network is trained on natural images, it is not directly applicable to the medical domain. Instead, a new network could be trained on histopathological data and used as a feature extractor. However, due to (relatively) limited available data (in comparison to the ImageNet database which contains  $\sim 14$  million training images), it is likely that the trained network will capture dataset specific features (as confirmed by the experiments presented in this discussion), and thus will not reflect the accuracy of translated patches.

Moreover, FID is a highly biased estimator [4], and has been shown to not be correlated with classification accuracy [35], as is the concern of this work.

#### 5.3.2. Noise

Since both directions of translation (PAS to target and vice versa) obtain visually good results, it is unclear why the performance of MDS1 and MDS2 vary so much. Recent literature [1] indicates that cycle-consistency (Eq. 2), forces image-to-image translation models to hide information necessary for proper reconstruction of  $A_{\text{rec}}$  and  $B_{\text{rec}}$  in the form of imperceptible low amplitude, high frequency noise in  $A'$  and  $B'$  (see Figure 4). **This also has been confirmed in a recent study [50].** It is reasonable to assume that such noise will have an affect on the model’s performance.

To illustrate this phenomena, we use the composition of translations  $\text{PAS} \rightarrow \text{Target} + \mathcal{N}(0, \sigma) \rightarrow \text{PAS}$ , where  $\mathcal{N}(0, \sigma)$  is a zero mean Gaussian distribution with standard deviation  $\sigma$ . Figure 9 presents reconstructions of the same PAS image after translation to each target stain, with different standard deviation of additive noise. This shows that not all target stain translators encode information in the same way. For example, adding noise with a standard deviation of 0.5 to the CD68 intermediate stain results in a higher reconstruction error than adding the same noise in the Jones H&E intermediate stain. We suspect that the level of noise in each target staining correlates with the difficulty of translation i.e. harder translations require more noise. StarGAN appears to be more

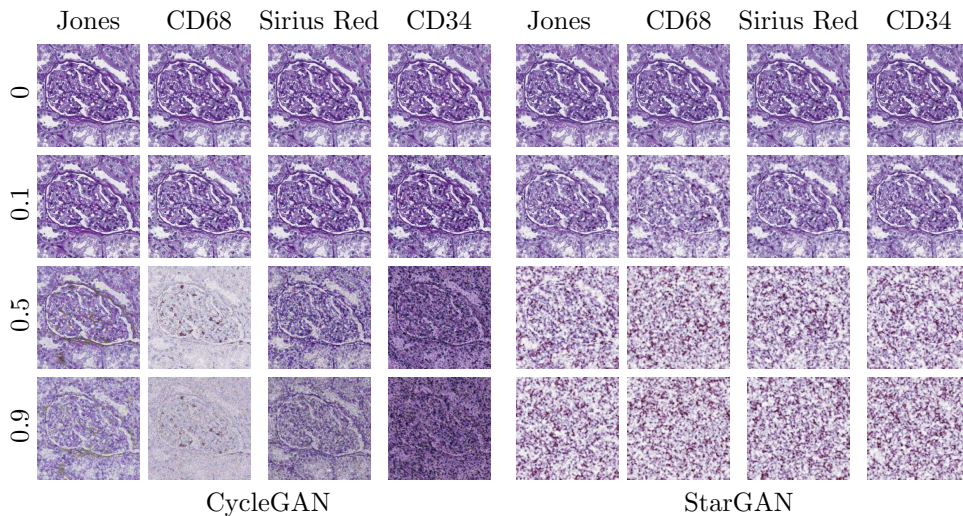


Figure 9: Effects of additive zero-mean Gaussian noise added to intermediate representation of PAS patch to reconstruction.

sensitive to the additive noise than CycleGAN. Potentially because it performs the much harder task of multi-stain translation. In order to properly reconstruct its input, more information may need to be hidden and thus it may be more sensitive to additive noise.

In order to quantify this sensitivity to noise, Bashkirova et al. [1] propose the following measure: the mean pixel difference  $\bar{\delta}$  between the translations with and without noise is measured and is repeated for a range of standard deviations  $\sigma$ . The area under the resulting  $\sigma - \bar{\delta}$  curve summarises the translator’s sensitivity (lower is better, i.e. less sensitive). This is calculated here using the target-to-source translations of 100 random PAS patches from each class and  $\sigma \in [0, 0.025, 0.05, 0.075, 0.1]$ , see Table 5.

	Jones H&E	CD68	Sirius Red	CD34
CycleGAN	5.359	14.778	7.423	11.841
StarGAN	11.672	43.602	17.28	16.288

Table 5: Sensitivity to noise calculated for each target stain based on 100 random patches from each class.

These were derived from the same PAS source patches but the generators were trained on different target data. Some caution should therefore be taken when comparing between stains, however, these are as close as possible to being comparable. The orders of sensitivity correlate with both the MDS1 and MDS\*1  $F_1$  scores presented in Table 1. It is impossible to do the same analysis for MDS2, i.e. Target  $\rightarrow$  PAS  $\rightarrow$  Target, as the target datasets are different.

The relatively high sensitivity to noise (therefore potentially high levels of noise present in the translation) offers an explanation for UDA-CGAN’s relatively low pre-

cision in CD68 and CD34, and UDA-\*GAN’s relatively low precision overall.

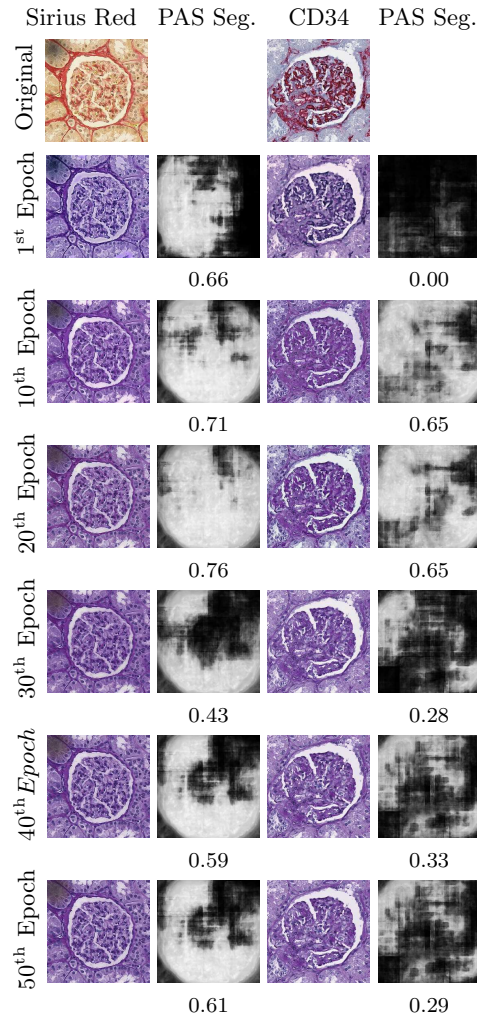


Figure 10: Glomeruli patches translated to PAS using CycleGAN models from different training epochs with PAS glomeruli segmentations (i.e. MDS1 approach) and their F<sub>1</sub> scores. N.B. images look realistic but segmentations vary widely.

For further illustration, Figure 10 presents a Sirius Red and CD34 glomerulus patch translated to PAS using translators taken from different CycleGAN training epochs, along with its segmentation using the overall best performing PAS model (which, being trained on PAS, is sensitive to its distribution). Unintuitively, good visual appearance does not correlate with reliable segmentation (this holds for all stains), which suggests that there is a limitation on the direct application of cycle-constrained image-to-image translation methods in clinical practice. Brieu et al. [5] chose the set of training epochs by visual inspection, however, these findings indicate that this is not a good strategy



and may lead to the model learning irrelevant features. Furthermore, weakly-supervised approaches based on the performance of an already trained model may not be a good alternative, as the learned features may differ between models and are not necessary task-related.

These analyses, and recent studies on the adversarial nature of CycleGANs [8, 47], lead to the hypothesis that the translations suffer from invisible artifacts produced by the CycleGAN. The extent and type of these artifacts could be related to stain differences. Stains with a greater difference require more complicated translation, forcing the translators to hallucinate specific features, as confirmed by Mercan et al. [32]. From this perspective, it can be understood why UDA-CGAN outperforms MDS1 and MDS2 as the model is forced to be robust to artifacts produced by different translations. In this sense, the lack of improvement offered by Multi UDA-CGAN model (see Table 1) over UDA-CGAN can be understood. **By analysing their performance, the recall of both models are almost the same, indicating that Multi UDA-CGAN has no additional information in order to detect more positive examples. Furthermore, adding multiple translation models (i.e. those taken from different CycleGAN epochs) does not improve performance because too much variability related to hidden noise is introduced. This is reflected in a decrease in precision.** In MDS1, these artifacts hamper the performances as translated images could act as adversarial examples, while in MDS2, these artifacts could be considered by the model as features. We hypothesise that a mechanism for assessing the quality of the translation, such as FID [18] in natural images, would offer further improvement.

This only goes to emphasise the care and consideration needed for the direct application of unpaired image-to-image translations in the medical domain, and when used in clinical practice the implications should be held up to even greater scrutiny. Since the proposed approach merely uses the translations to remove a model’s bias, see Figure 7, we largely avoid such concerns.

## 6. Conclusions

To summarise, this article presents a state-of-the-art model, UDA-GAN, that outperforms all other existing pixel-space alignment approaches in five different stainings. The model is domain invariant (including to unseen stains), can be easily extended to new stainings, and the training procedure is general, in that it can be used in different segmentation and classification tasks.

The usefulness of “translating” stainings has therefore been demonstrated in this context but it should be emphasised that diagnostically relevant information can be lost on the way. We should also emphasise that the primary intention of this translation is to save on resources and time for annotation, not to replace the process of physical staining modalities.

UDA-GAN’s stain invariance has been shown through quantitative results and by analysing its feature distribution and attention, which demonstrate that patches from all stainings are more aligned than with competing approaches. The approach uses pixel space alignment, which aids in visual interpretation and verification. The results have been discussed and related to those found in the literature. Namely that choosing translation model epochs by visual inspection is not the best approach (although no formal method for selecting the epochs to be used nor evaluating quality exists) and that the

direction of translation of the data cannot be simply prescribed a priori. Finally, UDA-GANs limitations were presented; it is still unclear exactly why the model’s performance degrades with certain stainings despite visually accurate translations. We hypothesise that some stainings are far from each other in terms of biological structures highlighted, in particular immunohistochemical staining methods highlighting migratory immune cells can be far from conventional histology staining methods making the translation task harder. Therefore, the translation model is forced to introduce hidden information.

Although UDA-GAN approaches diminish these effects to some extent, all these findings indicate that the application of image-to-image translation to medical imaging should be done with careful consideration.

## Acknowledgements

This work was supported by: ERACoSysMed and e:Med initiatives by the German Ministry of Research and Education (BMBF); SysMIFTA (project management PTJ, FKZ 031L-0085A; Agence National de la Recherche, ANR, project number ANR-15—CMED-0004); SYSIMIT (project management DLR, FKZ 01ZX1608A); and the French Government through co-tutelle PhD funding. We thank Nvidia Corporation for donating a Quadro P6000 GPU and the *Centre de Calcul de l’Université de Strasbourg* for access to the GPUs used for this research. We also thank the MHH team for providing high-quality images and annotations, specifically Nicole Kroenke for excellent technical assistance, Nadine Schaadt for image management and quality control, and Valery Volk and Jessica Schmitz for annotations under the supervision of domain experts.

- [1] Dina Bashkirova, Ben Usman, and Kate Saenko. Adversarial self-defense for cycle-consistent GANs. In *NeurIPS*, pages 635–645, 2019.
- [2] Neslihan Bayramoglu, Mika Kaakinen, Lauri Eklund, and Janne Heikkilä. Towards virtual H&E staining of hyperspectral lung histology images using conditional generative adversarial networks. In *ICCVW*, pages 64–71, 2017.
- [3] Aïcha Bentaieb and Ghassan Hamarneh. Adversarial stain transfer for histopathology image analysis. *IEEE Trans Med Imaging*, 37(3):792–802, 2018.
- [4] Mikołaj Bińkowski, Dougal J. Sutherland, Michael Arbel, and Arthur Gretton. Demystifying MMD GANs. *International Conference on Learning Representations*, 2018.
- [5] N. Brieu, Armin Meier, Ansh Kapil, Ralf Schoenmeyer, Christoc G Gavriel, Peter D. Caie, and Guenter Schmidt. Domain adaptation-based augmentation for weakly supervised nuclei detection. In *COMPAY@MICCAI*, 2019.
- [6] Yunjey Choi, Min-Je Choi, Munyoung Kim, Jung-Woo Ha, Sunghun Kim, and Jaegul Choo. StarGAN: Unified generative adversarial networks for multi-domain image-to-image translation. In *CVPR*, pages 8789–8797, 2018.
- [7] Yunjey Choi, Youngjung Uh, Jaejun Yoo, and Jung-Woo Ha. StarGAN v2: Diverse image synthesis for multiple domains. In *CVPR*, June 2020.
- [8] Casey Chu, Andrey Zhmoginov, and Mark Sandler. CycleGAN, a master of steganography. In *NIPS 2017, workshop on Machine Deception*, 2017.
- [9] Gabriela Csurka. A comprehensive survey on domain adaptation for visual applications. In *Domain adaptation in computer vision applications*, chapter 1, pages 1–35. Springer, 2017.
- [10] Thomas de Bel, Meyke Hermsen, Bart Smeets, Luuk Hilbrands, Jeroen van der Laak, and Geert Litjens. Automatic segmentation of histopathological slides of renal tissue using deep learning. In *Medical Imaging 2018: Digital Pathology*, volume 10581, page 1058112, 2018.
- [11] Thomas de Bel, Meyke Hermsen, Jesper Kers, Jeroen van der Laak, and Geert J. S. Litjens. Stain-transforming cycle-consistent generative adversarial networks for improved segmentation of renal histopathology. In *MIDL*, volume 102, pages 151–163, 2019.
- [12] Michael Gadermayr, Vitus Appel, Mara Barbara Klinkhammer, Peter Boor, and Dorit Merhof. Which way round? A study on the performance of stain-translation for segmenting arbitrarily dyed histological images. *MICCAI 2018*, 11071:165–173, 2018.



- [13] Michael Gadermayr, Laxmi Gupta, Vitus Appel, Peter Boor, Barbara M. Klinkhammer, and Dorit Merhof. Generative adversarial networks for facilitating stain-independent supervised and unsupervised segmentation: A study on kidney histology. *IEEE Trans Med Imaging*, 38:2293–2302, 2019.
- [14] B. Gholami, P. Sahu, O. Rudovic, K. Bousmalis, and V. Pavlovic. Unsupervised multi-target domain adaptation: An information theoretic approach. *IEEE Transactions on Image Processing*, 29:3993–4002, 2020.
- [15] Ian Goodfellow, Jean Pouget-Abadie, Mehdi Mirza, Bing Xu, David Warde-Farley, Sherjil Ozair, Aaron Courville, and Yoshua Bengio. Generative adversarial nets. In *NIPS*, pages 2672–2680, 2014.
- [16] Anne Grote, Nadine S Schaadt, Germain Forestier, Cédric Wemmert, and Friedrich Feuerhake. Crowdsourcing of histological image labeling and object delineation by medical students. *IEEE Trans Med Imaging*, 38:1284–1294, 2018.
- [17] Laxmi Gupta, Barbara Mara Klinkhammer, Peter Boor, Dorit Merhof, and Michael Gadermayr. Stain independent segmentation of whole slide images: A case study in renal histology. In *ISBI*, pages 1360–1364, 2018.
- [18] Martin Heusel, Hubert Ramsauer, Thomas Unterthiner, Bernhard Nessler, and Sepp Hochreiter. GANs trained by a two time-scale update rule converge to a local nash equilibrium. In *NIPS*, page 6629–6640. 2017.
- [19] Xianxu Hou, Jingxin Liu, Bolei Xu, Bozhi Liu, Xin Chen, Mohammad Ilyas, Ian O. Ellis, Jon Garibaldi, and Guoping Qiu. Dual adaptive pyramid network for cross-stain histopathology image segmentation. In *MICCAI*, 2019.
- [20] Maxime W. Lafarge, Josien P. W. Pluim, Koen A. J. Eppenhof, Pim Moeskops, and Mitko Veta. Domain-adversarial neural networks to address the appearance variability of histopathology images. In *DLMI*, 2017.
- [21] Maxime W. Lafarge, Josien P. W. Pluim, Koen A. J. Eppenhof, and Mitko Veta. Learning domain-invariant representations of histological images. *Frontiers in Medicine*, 6:162, 2019.
- [22] Amal Lahiani, Jacob Gildenblat, Irina Klamann, Shadi Albarqouni, Nassir Navab, and Eldad Klaiman. Virtualization of tissue staining in digital pathology using an unsupervised deep learning approach. *ECDP*, 11435, 2019.
- [23] Thomas Lampert, Odyssee Merveille, Jessica Schmitz, Germain Forestier, Friedrich Feuerhake, and Cédric Wemmert. Strategies for training stain invariant CNNs. In *ISBI*, pages 905–909, 2019.
- [24] Gaoyi Lei, Yuanqing Xia, Di-Hua Zhai, Wei Zhang, Duanduan Chen, and Defeng Wang. Staincnn: An efficient stain feature learning method. *Neurocomputing*, 406:267 – 273, 2020.
- [25] Patrick Leo, George Lee, Natalie N. C. Shih, Robin M. Elliott, Michael D. Feldman, and Anant Madabhushi. Evaluating stability of histomorphometric features across scanner and staining variations: prostate cancer diagnosis from whole slide images. *J Med Imaging*, 3(4), 2016.
- [26] Dan Li, Hui Hui, Yingqian Zhang, Wei Tong, Feng Tian, Xin Yang, Jie Liu, Yundai Chen, and Jie Tian. Deep learning for virtual histological staining of bright-field microscopic images of unlabeled carotid artery tissue. *Molecular imaging and biology*, 22(5):1301–1309, 2020. ISSN 1536-1632.
- [27] Geert Litjens, Thijs Kooi, Babak Ehteshami Bejnordi, Arnaud Arindra Adiyoso Setio, Francesco Ciompi, Mohsen Ghafoorian, Jeroen A.W.M. van der Laak, Bram van Ginneken, and Clara I. Sánchez. A survey on deep learning in medical image analysis. *Med Image Anal*, 42:60–88, 2017.
- [28] M. Macenko, M. Niethammer, J. S. Marron, D. Borland, J. T. Woosley, Xiaojun Guan, C. Schmitt, and N. E. Thomas. A method for normalizing histology slides for quantitative analysis. In *ISBI*, pages 1107–1110, 2009.
- [29] Raphael Marée, Loic Rollus, Benjamin Stevens, Renaud Hoyoux, Gilles Louppe, R. Vandaele, Jean-Michel Begon, Philipp Kainz, P. Geurts, and L. Wehenkel. Collaborative analysis of multi-gigapixel imaging data using cytamine. *Bioinformatics*, 32(9):1395–1401, 2016.
- [30] Leland McInnes, John Healy, Nathaniel Saul, and Lukas Großberger. UMAP: Uniform manifold approximation and projection. *J. Open Source Softw*, 3(29):861, 2018.
- [31] K. Mei, C. Zhu, L. Jiang, J. Liu, and Y. Qiao. Cross-stained segmentation from renal biopsy images using multi-level adversarial learning. In *ICASSP*, pages 1424–1428, 2020.
- [32] Caner Mercan, Germonda Reijnen-Mooij, David T. Martin, Johannes Lotz, Nick Weiss, Marcel van Gerven, and Francesco Ciompi. Virtual staining for mitosis detection in breast histopathology. In *ISBI*, 2020.
- [33] Sebastian Otálora, Manfredo Atzori, Vincent Andrearczyk, Amjad Khan, and Henning Müller. Staining invariant features for improving generalization of deep convolutional neural networks in computational pathology. *Front Bioeng and Biotech*, 7:198, 2019.
- [34] Aman Rana, Gregory Yauney, Alarice Lowe, and Pratik Shah. Computational histological staining

- and destaining of prostate core biopsy RGB images with generative adversarial neural networks. In *ICMLA*, pages 828–834, 2018.
- [35] Suman V. Ravuri and Oriol Vinyals. Seeing is not necessarily believing: Limitations of BigGANs for data augmentation. In *ICLR Learning from Limited Labeled Data Workshop*, 2019.
- [36] E. Reinhard, M. Adhikhmin, B. Gooch, and P. Shirley. Color transfer between images. *IEEE Comput Graph*, 21(5):34–41, 2001.
- [37] Olaf Ronneberger, Philipp Fischer, and Thomas Brox. U-Net: Convolutional networks for biomedical image segmentation. In *MICCAI*, pages 234–241, 2015.
- [38] Peter J. Rousseeuw. Silhouettes: A graphical aid to the interpretation and validation of cluster analysis. *J. Comput. Appl. Math*, 20:53 – 65, 1987. ISSN 0377-0427.
- [39] Ramprasaath R. Selvaraju, Michael Cogswell, Abhishek Das, Ramakrishna Vedantam, Devi Parikh, and Dhruv Batra. Grad-CAM: Visual explanations from deep networks via gradient-based localization. In *ICCV*, pages 618–626, 2017.
- [40] M. Tarek Shaban, Christoph Baur, Nassir Navab, and Shadi Albarqouni. StainGAN: Stain style transfer for digital histological images. In *ISBI*, pages 953–956, 2019.
- [41] A. Shrivastava, T. Pfister, O. Tuzel, J. Susskind, W. Wang, and R. Webb. Learning from simulated and unsupervised images through adversarial training. In *CVPR*, 2017.
- [42] Chetan L. Srinidhi, Ozan Ciga, and Anne L. Martel. Deep neural network models for computational histopathology: A survey. *Med Image Anal*, 67, 2021.
- [43] Nima Tajbakhsh, Laura Jeyaseelan, Qian Li, and Jeffrey Chiang. Embracing imperfect datasets: A review of deep learning solutions for medical image segmentation. *Med Image Anal*, 63, 2020.
- [44] David Tellez, Maschenka Balkenhol, Irene Otte-Höller, Rob Loo, Rob Vogels, Peter Bult, Carla Wauters, Willem Vreuls, Suzanne Mol, Nico Karssemeijer, Geert Litjens, Jeroen van der Laak, and Francesco Ciompi. Whole-slide mitosis detection in H&E breast histology using PHH3 as a reference to train distilled stain-invariant convolutional networks. *IEEE Trans Med Imaging*, 37(9): 2126–2136, 2018.
- [45] David Tellez, Geert J. S. Litjens, Péter Bándi, Wouter Bulten, John-Melle Bokhorst, Francesco Ciompi, and Jeroen van der Laak. Quantifying the effects of data augmentation and stain color normalization in convolutional neural networks for computational pathology. *Med Image Anal*, 58: 101544, 2019.
- [46] Abhishek Vahadane, Tingying Peng, Shadi Albarqouni, Maximilian Baust, Katja Steiger, Anna Schlitter, Amit Sethi, Irene Esposito, and Nassir Navab. Structure-preserving color normalization and sparse stain separation for histological images. *IEEE Trans Med Imaging*, 35(8):1962–1971, 2016.
- [47] Jelmer M. Wolterink, Konstantinos Kamnitsas, Christian Ledig, and Ivana Ivsgum. Deep learning: Generative adversarial networks and adversarial methods. In *Handbook of Medical Image Computing and Computer Assisted Intervention*, chapter 23, pages 547–574. Elsevier, 2020.
- [48] Y. Xiao, E. Decencière, S. Velasco-Forero, H. Burdin, T. Bornschlögl, F. Bernerd, E. Warrick, and T. Baldeweck. A new color augmentation method for deep learning segmentation of histological images. In *ISBI*, pages 886–890, 2019.
- [49] Zhaoyang Xu, Carlos Fernández Moro, Béla Bozóky, and Qianni Zhang. GAN-based virtual restaining: A promising solution for whole slide image analysis. *arXiv*, 1901.04059, 2019.
- [50] Ran Yi, Yong-Jin Liu, Yu-Kun Lai, and Paul L. Rosin. Unpaired portrait drawing generation via asymmetric cycle mapping. In *CVPR*, June 2020.
- [51] Jun-Yan Zhu, Taesung Park, Phillip Isola, and Alexei A Efros. Unpaired image-to-image translation using cycle-consistent adversarial networks. In *ICCV*, pages 2223–2232, 2017.