



HAL
open science

Mock catalogues of emission-line galaxies based on the local mass density in dark-matter only simulations

Ken Osato, Takahiro Nishimichi, Masahiro Takada

► **To cite this version:**

Ken Osato, Takahiro Nishimichi, Masahiro Takada. Mock catalogues of emission-line galaxies based on the local mass density in dark-matter only simulations. *Mon.Not.Roy.Astron.Soc.*, 2022, 511 (1), pp.1131-1140. 10.1093/mnras/stac124 . hal-03319374

HAL Id: hal-03319374

<https://hal.science/hal-03319374>

Submitted on 11 Apr 2023

HAL is a multi-disciplinary open access archive for the deposit and dissemination of scientific research documents, whether they are published or not. The documents may come from teaching and research institutions in France or abroad, or from public or private research centers.

L'archive ouverte pluridisciplinaire **HAL**, est destinée au dépôt et à la diffusion de documents scientifiques de niveau recherche, publiés ou non, émanant des établissements d'enseignement et de recherche français ou étrangers, des laboratoires publics ou privés.

Mock catalogues of emission-line galaxies based on the local mass density in dark-matter only simulations

Ken Osato^{1,2,3★}, Takahiro Nishimichi^{1,4} and Masahiro Takada⁴

¹Center for Gravitational Physics, Yukawa Institute for Theoretical Physics, Kyoto University, Kitashirakawa Oiwakecho, Sakyo-ku, Kyoto 606-8502, Japan

²LPENS, Département de Physique, École Normale Supérieure, Université PSL, CNRS, Sorbonne Université, Université de Paris, 24 rue Lhomond, F-75005 Paris, France

³Institut d'Astrophysique de Paris, Sorbonne Université, CNRS, UMR 7095, 98bis boulevard Arago, F-75014 Paris, France

⁴Kavli Institute for the Physics and Mathematics of the Universe, The University of Tokyo Institutes for Advanced Study, 5-1-5 Kashiwanoha, Kashiwa-shi, Chiba 277-8583, Japan

Accepted 2022 January 12. Received 2021 January 12; in original form 2021 July 28

ABSTRACT

The high-precision measurement of spatial clustering of emission-line galaxies (ELGs) is a primary objective for upcoming cosmological spectroscopic surveys. The source of strong emission of ELGs is nebular emission from surrounding ionized gas irradiated by massive short-lived stars in star-forming galaxies. As a result, ELGs are more likely to reside in newly formed haloes and this leads to a non-linear relation between ELG number density and matter density fields. In order to estimate the covariance matrix of cosmological observables, it is essential to produce many independent realizations to simulate ELG distributions for large survey volumes. To this end, we present a novel and fast scheme to populate ELGs in dark-matter only N -body simulations based on local density field. This method enables fast production of mock ELG catalogues suitable for verifying analysis methods and quantifying observational systematics in upcoming spectroscopic surveys and can populate ELGs in moderately high-density regions even though the halo structure cannot be resolved due to low resolution. The power spectrum of simulated ELGs is consistent with results of hydrodynamical simulations up to fairly small scales ($\lesssim 1h \text{ Mpc}^{-1}$), and the simulated ELGs are more likely to be found in filamentary structures, which is consistent with results of semi-analytic and hydrodynamical simulations. Furthermore, we address the redshift-space power spectrum of simulated ELGs. The measured multipole moments of simulated ELGs clearly exhibit a weaker Finger-of-God effect than those of matter due to infalling motions towards halo centre, rather than random virial motions inside haloes.

Key words: methods: numerical – cosmology: theory – large-scale structure of Universe.

1 INTRODUCTION

The large-scale structure of the Universe is a consequence of the gravitational amplification of the tiny primordial fluctuations, generated during an inflationary epoch, in an expanding universe (e.g. Dodelson 2003). In the structure formation, dark matter and dark energy play crucial roles; dark matter causes the gravitational instability and dark energy sources the cosmic accelerated expansion. Hence, properties of large-scale structure, measured via the distribution of matter and galaxies, can be used to probe the cosmic expansion history and constrain cosmological parameters (Weinberg et al. 2013). Ongoing and upcoming wide-area spectroscopic galaxy surveys aim at making a three-dimensional (more exactly, redshift and two-dimensional angular positions) map of galaxies over wide solid angle and large redshift leverarm. Among different tracers, star-forming, emission-line galaxies (ELGs) are the main targets of upcoming galaxy surveys such as the Subaru Prime Focus Spectrograph¹ (PFS; Takada et al.

2014), the Dark Energy Spectrograph Instrument² (DESI; DESI Collaboration 2016a,b), the ESA *Euclid*³ (Amendola et al. 2013) and the NASA Roman Space Telescope,⁴ because spectral features (e.g. 4000 Å break) in early-type galaxies become inaccessible in optical wavelength range for galaxies at $z \gtrsim 1.2$ –1.4 and, on the other hand, emission lines in star-forming galaxies (e.g. [O II]) are relatively easier to identify at such high redshifts. The baryon acoustic oscillations, measured from the large-scale clustering of galaxy distribution, are among the most powerful method of cosmological distances that are least affected by galaxy bias uncertainties (Cole et al. 2005; Eisenstein et al. 2005; Alam et al. 2021). In addition, the redshift-space distortion (RSD; Kaiser 1987) due to peculiar velocities of galaxies can be used to test properties of gravity on cosmological scales (Peacock et al. 2001; Beutler et al. 2014; Okumura et al. 2016; Alam et al. 2021). Upcoming galaxy surveys promise to make significant improvements in these cosmological constraints.

* E-mail: ken.osato@yukawa.kyoto-u.ac.jp

¹<https://pfs.ipmu.jp/intro.html>

²<https://www.desi.lbl.gov>

³<https://sci.esa.int/web/euclid>

⁴<https://roman.gsfc.nasa.gov>

However, the nature and properties of ELGs involve complicated physics. Most of ELGs are associated with star-formation activities in the host galaxy (Byler et al. 2017), where massive OB stars ionize the surrounding gas and then the ionized gas emits emission lines such as H α and [O II] lines. On the other hand, some ELGs can be sourced by active galactic nuclei (Comparat et al. 2013). Hence, it is still difficult and challenging to accurately model the formation and evolution of ELGs in the current standard structure formation model [the Lambda cold dark matter (Λ CDM) model]. The most appropriate method is a cosmological hydrodynamical simulation as represented by the IllustrisTNG simulations (Nelson et al. 2019) where the simulation takes into account key physics such as gas cooling and heating, star formation, supernovae, and AGN feedback in subgrid processes (see Somerville & Davé 2015, for a review). However, running such simulations is computationally very expensive. A cosmological analysis quite often requires a large number of mock catalogues each of which is required to cover a sufficiently large volume, more than $1 (h^{-1} \text{Gpc})^3$, to have sufficient statistics of baryonic acoustic oscillation scales (e.g. Kobayashi et al. 2020). Meeting both requirements of resolution or dynamical range and large cosmological volume for hydrodynamical simulations is still not attainable with current numerical resources. Hence, we need an alternative route to generating desired mocks of ELGs in a cosmological volume in preparation for upcoming galaxy surveys. One way is to use a high-resolution, large-volume N -body (gravity only) simulation, e.g. a simulation with trillion particles in a volume of a few $(h^{-1} \text{Gpc})^3$ size (Heitmann et al. 2019, 2021; Ishiyama et al. 2021), which can resolve down to dark matter haloes with mass of $\sim 10^{11} h^{-1} M_{\odot}$ that likely host ELGs targeted by upcoming surveys (Gonzalez-Perez et al. 2018, 2020; Hadzhiyska et al. 2021). Then the semi-analytical model (SAM) or the halo occupation distribution method can be used to populate ELGs into haloes in the simulation realization. However, having a sufficient number of mock realizations is still difficult because the original high-resolution N -body simulation is already computationally expensive. Another way is a hybrid method combining low-resolution gravity-only simulation and high-resolution (hydrodynamical) simulation, assisted with a machine-learning method (e.g. Zhang et al. 2019; Li et al. 2020). This method appears to be very promising, but the method requires a careful calibration/training of the hyperparameters for each cosmological model, and thus it is not clear whether one hybrid-method recipe, calibrated for one particular cosmology, can be used for different cosmological models.

Hence, the purpose of this paper is to develop an even easier method to general a mock catalogue of ELGs, using a low-resolution N -body simulation without resolving small haloes ($\mathcal{O}(10^3)$ particles with a volume of Gpc^3 scale), as an alternative route to the aforementioned computational needs for upcoming galaxy surveys. Our method is designed to identify ‘places’ in the cosmic web where ELGs likely form, motivated by the expectation that ELGs tend to form in filaments or sheets of cosmic web, rather than in nodes or voids (Tadaki et al. 2012; Gonzalez-Perez et al. 2018, 2020; Orsi & Angulo 2018). This is a distinct property of ELGs compared to luminous early-type galaxies that tend to reside around the center of massive host haloes, where the star formation activity is quenched and the galaxy appears to be red (therefore, no emission line). In our method, we will propose to use the local mass density at each N -body particle position, estimated by the smoothed hydrodynamical kernel, and then identify such places where ELGs likely reside, from N -body particles satisfying the tuned range of the mass density so that the distribution of the selected N -body particles can fairly well reproduce environment dependence of ELGs in the IllustrisTNG

simulation. We also study properties of mock ELGs in our method: radial profiles of ELGs in host haloes and real- and redshift-space power spectra of ELGs compared to those of dark matter or massive subhalos. We are aware that this method cannot be perfect, but gives an easy method of generating many mocks of ELGs from low-resolution large-volume N -body simulations. The mock ELG catalogues generated in our method can be used to test/calibrate analysis methods (measurement and parameter inference) and covariance matrix, including observational effects such as effects of fibre collision and masks/survey geometry (Sunayama et al. 2020) for a wide range of scales $10^{-3} \lesssim k/[h \text{Mpc}^{-1}] \lesssim 1$.

This paper is organized as follows. In Section 2, we describe the method of generating a mock ELG catalogue from an N -body simulation. In Section 3, we validate our method by comparing properties of the mock ELGs in our method with those in the hydrodynamical simulation IllustrisTNG, and investigate the clustering properties of ELGs. We conclude in Section 4. Throughout this paper, we assume the flat-geometry Λ CDM model characterized by the following cosmological parameters: the baryon density parameter $\Omega_b = 0.0486$, the matter density parameter $\Omega_m = 0.3089$, the Hubble constant $H_0 = 100 h \text{ km s}^{-1} \text{ Mpc}^{-1}$ with $h = 0.6774$, the tilt parameter of primordial curvature power spectrum $n_s = 0.9674$, and the present-day root mean square of matter fluctuations at $8 h^{-1} \text{ Mpc}$, $\sigma_8 = 0.8159$.

2 METHODS

2.1 Populating ELGs based on local density

In this section, we describe the method to populate ELGs into dark-matter only N -body simulations. Our method is designed to identify places in the cosmic web where ELGs likely form or reside, according to the *local matter density*. Hence, we first compute the local density ρ_i based on the smoothed particle hydrodynamics (SPH; Gingold & Monaghan 1977; Lucy 1977; Springel 2010a) kernel estimation:

$$\rho_i = \sum_j m_p W_{\text{SPH}}(r_{ij}/h_i), \quad (1)$$

where the subscript i denotes the label of the particle, m_p is the particle mass, r_{ij} is the distance between particle i in consideration and another particle j , h_i is the smoothing length determined so that the effective number of particles within the smoothing length should be close to 64, and the summation runs over particles closer to the particle i than h_i . The kernel function $W_{\text{SPH}}(x)$ is given as

$$W_{\text{SPH}}(x) = \frac{8}{\pi h^3} \begin{cases} 1 - 6x^2 + 6x^3, & (0 \leq x < 1/2) \\ 2(1-x)^3, & (1/2 \leq x < 1) \\ 0 & (1 \leq x) \end{cases}. \quad (2)$$

In order to populate ELGs, we select particles which reside in the local density in the *target* range $\Delta_{\min} < \rho_i/\bar{\rho}_m < \Delta_{\max}$, where $\bar{\rho}_m$ is the mean matter density, and Δ_{\min} and Δ_{\max} are the minimum and maximum density thresholds that we can specify to match to the desired clustering properties of mock galaxies. To be more precise, the maximum density threshold is introduced because ELGs are not likely to reside in the highest density regions, such as the central region of massive haloes where the star formation would be quenched. On the other hand, the minimum density threshold is introduced to avoid too low-density regions, i.e. voids. The local density depends on the resolution of the N -body simulations because the same number of neighbours in different mass resolutions leads to the different effective smoothing scale in density estimation (for detailed discussions on numerical convergence of SPH, see Zhu,

Hernquist & Li 2015). Hence, the minimum and maximum thresholds need to be chosen in such a way that the resulting mock catalogue reproduces the desired properties of ELGs (clustering strength and environments) as we will discuss in detail in Section 3.3.

For velocity, we simply assign particle velocity to bulk velocity of an ELG. Though the particle velocity may not be appropriate for central ELGs (Guo et al. 2015; Yuan et al. 2021), most of mock ELGs are satellites as seen in number density profile (Section 3.1) and thus this assignment of velocity is justified.

2.2 Simulations

SAM and/or hydrodynamical simulations are powerful tools to directly simulate the formation and evolution of ELGs. However, the computational cost is expensive and these simulations can be run only for a small volume, compared to the typical volume covered by ongoing and upcoming cosmological surveys. In practice, the dark-matter only N -body simulations, which are much faster than hydrodynamical simulations, can cover a sufficiently large cosmological volume, with reasonable computational cost. Our method presented in Section 2.1 can be readily applied to such N -body simulations to generate mock catalogues of ELGs that cover a large volume.

To implement our method, we use a large-volume N -body simulation with the following specifications. We employ GADGET-4 (Springel et al. 2021) code to simulate the gravitational evolution of the matter density field and compute the SPH local density for each particle. We run the simulations with a side length of the simulation box $L = 2 h^{-1} \text{Gpc}$ and the number of particles $N = 2048^3$, and hereafter, we refer to this simulation as ‘Large’. The particle mass is $m_p = 7.98 \times 10^{10} h^{-1} M_\odot$. In this simulation, only the haloes with the mass $\gtrsim 10^{13} h^{-1} M_\odot$ can be resolved with more than 100 N -body particles, meaning that small haloes hosting ELGs are not fully resolved. In our method, we identify N -body particles that are in the desired range of the local mass density $\Delta_{\min} < \rho_i / \bar{\rho}_m < \Delta_{\max}$. Some of the selected particles are in a halo, while other particles are not. However, we believe that, if we run a higher mass resolution simulation, the latter group of particles can be found in smaller mass haloes that are not resolved by our original simulation. Thus, our method does not entirely rely on haloes, so is different from the standard halo occupation distribution method. Throughout this paper, we apply our method to the snapshot at redshift $z = 1$ and all results are at redshift $z = 1$.

For comparison and validation of our mock catalogues, we use the publicly available IllustrisTNG simulations (Marinacci et al. 2018; Naiman et al. 2018; Nelson et al. 2018, 2019; Pillepich et al. 2018; Springel et al. 2018), which are based on the moving-mesh code AREPO (Springel 2010b). Among the IllustrisTNG simulation suite, we use the largest-volume dark-matter only simulation, TNG300-1-Dark run (hereafter, TNG300-D), which covers the comoving volume of $(205 h^{-1} \text{Mpc})^3$. The particle mass is $m_p = 5.9 \times 10^7 h^{-1} M_\odot$ and thus the simulation contains haloes with virial masses $> 10^{10} M_\odot$, where the lower bound corresponds to a typical smallest halo hosting ELGs. Furthermore, we utilize the simulated ELG catalogue created with stellar population synthesis code PÉGASE-3 (Fioc & Rocca-Volmerange 2019) with full physics TNG300-1 run (also see Osato & Okumura (in preparation), for the method of generating mock ELGs from the IllustrisTNG simulation data), which includes various galaxy formation physics. From this catalogue, we construct H α and [O II] ELG samples by selecting ELGs from the ranked list of line luminosities with the number density cuts $1.6 \times 10^{-3} (h^{-1} \text{Mpc})^{-3}$ for H α ELGs and $2.6 \times 10^{-3} (h^{-1} \text{Mpc})^{-3}$ for [O II] ELGs. The corresponding luminosity cuts are $1.10 \times 10^{42} \text{erg s}^{-1}$ for H α ELGs

and $5.01 \times 10^{41} \text{erg s}^{-1}$ for [O II] ELGs. These selection criteria are determined so that the large-scale bias is matched to that of mock ELGs (see the next paragraph). The dust attenuation effect is taken into account for the line luminosities, and thus the values above correspond to ‘observed’ luminosities.

For comparison, we also construct a mock luminous red galaxy (LRG) sample. In principle, LRGs are stellar mass limited sample in contrast to ELGs, which constitute star formation rate limited sample. We define the mock LRG samples as a sample of massive subhalos in TNG300-D and Large simulations which are composed of subhalos with the mass larger than $10^{13} h^{-1} M_\odot$. Note that (sub)haloes are identified with SUBFIND algorithm (Springel et al. 2001). The number density of the LRG samples is $n_{\text{LRG}} = 1.81 \times 10^{-4} (h^{-1} \text{Mpc})^{-3}$ for TNG300-D and $n_{\text{LRG}} = 2.58 \times 10^{-4} (h^{-1} \text{Mpc})^{-3}$ for Large, which are roughly consistent with a target number density of LRGs at $z \sim 1$ for the DESI survey (DESI Collaboration 2016a).

In our model, the particles which reside in the local density in the target range are candidates of ELGs. Although it is possible to match to the desired galaxy number density n_{ELG} by downsampling from the candidates, in order to reduce the shot noise, we use all candidate particles but impose a constant weight w to match the number density:

$$w = n_{\text{ELG}} V \left/ \sum_{\Delta_{\min} < \rho_i / \bar{\rho}_m < \Delta_{\max}}^N 1, \right. \quad (3)$$

where V is the simulation box volume and the summation runs over all particles. Throughout this paper, we adopt $n_{\text{ELG}} = 10^{-3} (h^{-1} \text{Mpc})^{-3}$, which roughly corresponds to a typical number density of ELGs that upcoming Subaru PFS ($n_{\text{ELG}} \simeq [2.0, 8.0] \times 10^{-4} (h^{-1} \text{Mpc})^{-3}$ for $0.8 < z < 2.4$; Takada et al. 2014) and DESI ($n_{\text{ELG}} \simeq [2.5, 7.0] \times 10^{-4} (h^{-1} \text{Mpc})^{-3}$ at $0.6 < z < 1.4$; DESI Collaboration 2016a) are designed to have. We adopt $\Delta_{\max} = 500$ and $\Delta_{\min} = 50$ for TNG300-D, $\Delta_{\max} = 500$ and $\Delta_{\min} = 2$ for large as our default choices. Here, Δ_{\min} is determined so that the linear bias parameter of the selected N -body particles becomes $b_1 = 1.72$, which is a typical value of the linear bias parameter of ELGs as found from mock ELGs in the hydrodynamical simulations (see the next section). On the other hand, Δ_{\max} is more responsible for small-scale dynamics. Lower Δ_{\max} removes more particles near the centre of haloes, where the velocity of particles is dominated by the virial motion, and as a result of setting Δ_{\max} , the smearing effect on anisotropic power spectrum at small scales, i.e. Finger-of-God (FoG) effect, is more suppressed. By tuning Δ_{\min} and Δ_{\max} , we can have desired properties of linear bias parameter and environment dependence. Thus, our method is designed to be simple and easy to implement with N -body simulations. Hence, we can generate a sufficiently large number of the mock realizations with our method, which is one of the main purposes.

First, in Fig. 1, we show the power spectra of mock ELGs (either H α or [O II] emitters) at $z = 1$ that are generated with our method using TNG300-D and Large simulations. For comparison, we also show the power spectra of matter in TNG300-D and Large simulations, mock LRGs in Large simulation⁵ and the result of *halofit* fitting formula (Smith et al. 2003) with refined parameters by Takahashi et al. (2012). The power spectra of mock ELGs based on our method fairly well reproduce the power spectra of the H α

⁵We do not measure the power spectrum of mock LRGs in TNG300-D because there are not enough mock LRGs in TNG300-D simulation due to the small simulation volume.

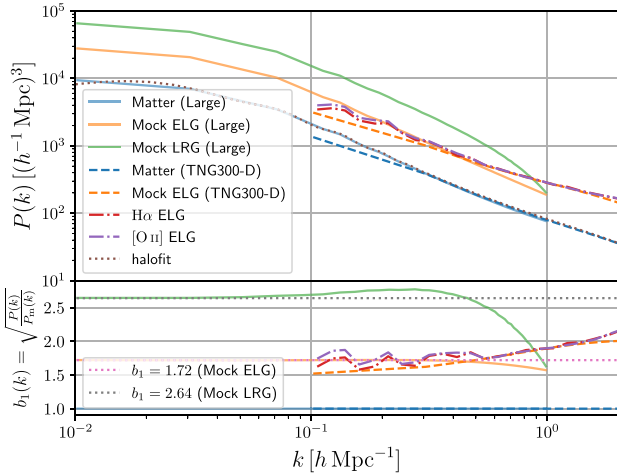


Figure 1. Power spectra of mock ELGs, mock LRGs, and matter density distributions at redshift $z = 1$ (upper panel) and scale-dependent bias of ELG and LRG power spectra (lower panel). The solid (dashed) line shows the results of the TNG300-D (Large) simulation. The power spectra of H α and [O II] ELGs generated from IllustrisTNG full physics run are also shown. The purple dot-dashed line shows the *halofit* result (Takahashi et al. 2012) for reference. In the lower panel, the constant bias ($b_1 = 1.72$ for mock ELGs and $b_1 = 2.64$ for mock LRGs) is also shown as dotted lines.

or [O II] emitters identified in the hydrodynamical simulation over the overlapping range of scales. The ratio between power spectra of matter and ELGs is almost constant at large scales but has weak-scale dependence at small scales.

3 RESULTS

Here, we present the properties of mock ELGs populated by the new scheme in more detail. We also discuss how well the mock ELGs reproduce the results of the hydrodynamical simulation. In this section, all of results are based on the snapshot at $z = 1$.

3.1 Radial profile in haloes

First, we measure the average radial number density profile of ELGs in host haloes, subdivided into different virial mass (Bryan & Norman 1998) bins: $M_{\text{vir}}/(h^{-1} M_{\odot}) \in [10^{11}, 10^{12}]$, $[10^{12}, 10^{13}]$, and $[10^{13}, 10^{14}]$ for TNG300-D and $M_{\text{vir}}/(h^{-1} M_{\odot}) \in [10^{13}, 10^{14}]$, $[10^{14}, 10^{15}]$ for Large. Fig. 2 shows the profiles of mock ELGs measured from the simulations. For comparison, we also show the scaled profile of all N -body particles, which is equivalent to the *scaled* mass density profile. The figure shows a clear depletion of ELGs in the central region of each host halo, as our method, more exactly the upper limit of the local density, prevents ELGs from residing in the highest mass density region such as the central region of host haloes. On the other hand, the lower limit of density threshold has only minor impact on the number density at the outskirts because the density is still higher than the introduced lower limit. Some studies based on the SAM (Orsi & Angulo 2018), hydrodynamical simulations (Hadzhiyska et al. 2021), and observations (Alpaslan et al. 2016; Favole et al. 2017; Khostovan et al. 2018; Guo et al. 2019) imply that some ELGs are found even near the centre of haloes, but in contrast, our results indicate a sharp cutoff of number density profile near the centre. Though this feature can be considered as one of limitations

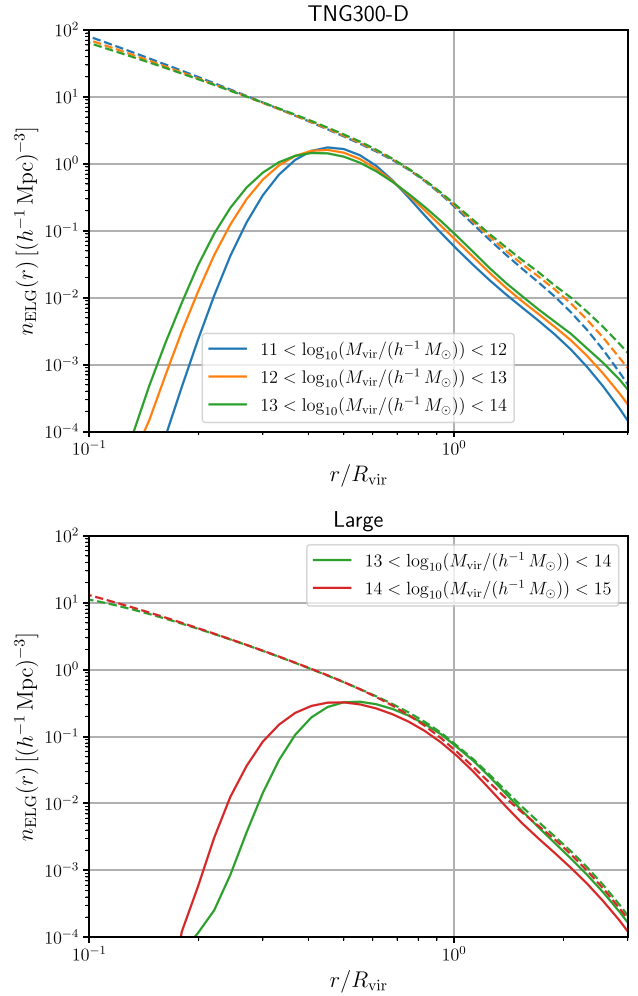


Figure 2. The radial profiles of ELGs at redshift $z = 1$ for mass bins: $M_{\text{vir}}/(h^{-1} M_{\odot}) \in [10^{11}, 10^{12}]$, $[10^{12}, 10^{13}]$, $[10^{13}, 10^{14}]$ for TNG300-D (upper panel) and $M_{\text{vir}}/(h^{-1} M_{\odot}) \in [10^{13}, 10^{14}]$, $[10^{14}, 10^{15}]$ for Large (lower panel). The profiles are normalized to match the number density $\bar{n}_{\text{ELG}} = 10^{-3} (h^{-1} \text{Mpc})^{-3}$ by introducing the constant weight (equation 3). The radius is normalized by the virial radius R_{vir} . The dashed lines show profiles for all particles with the same weight, which are proportional to matter density profile.

of our method, most of ELGs hosted in massive haloes are satellite galaxies and for low-mass haloes, the cutoff scale in physical length is quite small and thus our mock ELGs can be populated near the centre. Hence, we believe that this cutoff feature does not have critical impacts on the clustering properties.

3.2 Cosmic web classifications

In this section, we show the main results of this paper. SAM predicts that ELGs are more likely to reside in filamentary structures (Gonzalez-Perez et al. 2020) because ELGs are newly formed objects and are still in the transition stage of falling towards haloes at a later time. In order to investigate the environment dependence of ELGs, we first compute the tidal tensor of gravitational field (Hahn et al. 2007a,b; Cautun et al. 2014; Libeskind et al. 2018) to characterize different environments of the cosmic web in large-scale structure. For this purpose, we use the dimensionless tidal tensor T_{ij} , which is

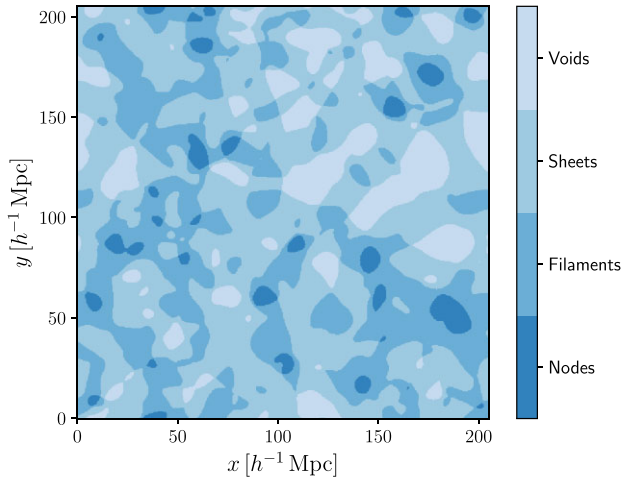


Figure 3. An example of environment classification according to the tidal tensor for the slice with thickness $0.4 h^{-1}$ Mpc in TNG300-D at redshift $z = 1$. Based on the order of eigenvalues of the tidal tensor, four cosmic web structures (nodes, filaments, sheets, and voids) are illustrated.

defined as

$$T_{ij}(\mathbf{x}) \equiv \frac{1}{4\pi G \bar{\rho}_m} \frac{\partial^2 \phi}{\partial x_i \partial x_j}, \quad (4)$$

where G is the gravitational constant, \mathbf{x} is the comoving coordinates, and the gravitational potential ϕ is obtained from the Poisson equation:

$$\nabla^2 \phi(\mathbf{x}) = 4\pi G \bar{\rho}_m \delta(\mathbf{x}). \quad (5)$$

First, we compute the density contrast field $\delta(\mathbf{x})$ with cloud-in-cell (CIC) assignment in regular grids with the number of grids on a side, $n_{\text{grid}} = 512$ (1024), corresponding to the grid size $L/n_{\text{grid}} = 0.40$ (1.95) h^{-1} Mpc for TNG300-D (Large). Next, we perform fast Fourier transform to solve the Poisson equation and convolve the transformed field with a Gaussian filter with smoothing length $R_s = 5 h^{-1}$ Mpc, to reduce transient structures. We also deconvolve aliasing effect due to CIC assignment (Jing 2005). Then, we compute the eigenvalues of the tidal tensor, which are denoted as λ_i ($i = 1, 2, 3$) in an ascending order, and each grid position can be classified into four categories according to the following conditions:

- (i) Nodes: $\lambda_{\text{th}} < \lambda_1 < \lambda_2 < \lambda_3$,
- (ii) Filaments: $\lambda_1 < \lambda_{\text{th}} < \lambda_2 < \lambda_3$,
- (iii) Sheets: $\lambda_1 < \lambda_2 < \lambda_{\text{th}} < \lambda_3$,
- (iv) Voids: $\lambda_1 < \lambda_2 < \lambda_3 < \lambda_{\text{th}}$.

For the threshold value, we adopt the fiducial threshold $\lambda_{\text{th}} = 0.01$, which reproduces well the visual impression of cosmic web classification (Forero-Romero et al. 2009; Cui et al. 2018). We have checked that the classification process is less subject to choice of the smoothing length and the threshold value. Fig. 3 visualizes environmental categories in the cosmic web for a slice of TNG300-D simulation (also see Cautun et al. 2014). It is clear that sheets and voids give a dominant volume fraction of large-scale structure, while nodes including haloes have a tiny volume fraction. However, nodes give a decent mass fraction in the cosmic web, while voids give the smallest mass fraction. Since galaxies tend to live in haloes, galaxies in massive haloes affect clustering properties as seen from those of luminous red galaxies.

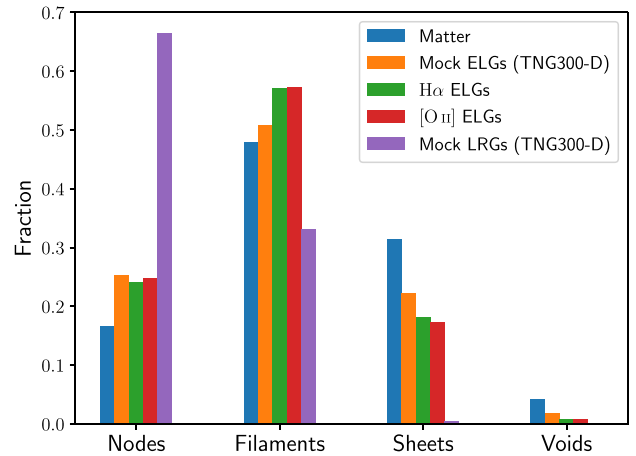


Figure 4. The fraction of four classes (nodes, filaments, sheets, and voids) at redshift $z = 1$ for different samples: matter, mock ELGs, mock LRGs, and H α and [O II] ELGs taken from full physics hydrodynamical simulation (TNG300).

Fig. 4 shows the most important result of this paper, which studies in which environment of the cosmic web, i.e. nodes, filaments, sheets or voids, mock galaxies tend to reside. Here we assign, to each galaxy or object, the environment at the nearest grid. For comparison, we also show the results for matter and the mock LRG sample. Encouragingly, our mock ELGs show a similar tendency in their environments to that of ELGs from hydrodynamical simulations; about half of ELGs reside in filaments, the remaining quarters are located in nodes and sheets, and the rest, a considerably small fraction, are in voids. On the other hand, matter is more likely to be found in sheets and most of mock LRGs are found in nodes as expected. Thus, our mock ELGs fairly well reproduce the environment dependence of ELGs as seen in hydrodynamical simulations.

3.3 Dependence of density thresholds

In principle, the density threshold is arbitrary but adjusted so that the obtained ELGs satisfy the desired property. In this work, we match the large-scale bias and environment fractions by tuning two thresholds: Δ_{min} and Δ_{max} . Fig. 5 shows how the environment fraction varies with different choices of the minimum or maximum threshold for Large simulations. As an overall trend, the minimum threshold has more impacts on the large-scale bias (Pujol et al. 2017). On the other hand, the maximum threshold is more sensitive to the small-scale clustering (see the next section).

3.4 Real- and redshift-space power spectra

In this section, we study the real- and redshift-space power spectra of mock ELGs and focus only on the Large simulation because the small volume ($0.009 (h^{-1} \text{Gpc})^3$) covered by TNG300-D is not comparable with the realistic galaxy clustering measurements. The left-hand panels of Fig. 6 show the ratio of the real-space power spectrum of ELGs to that of matter, which gives the effective bias function defined as $b_1(k) \equiv \sqrt{P(k)}/P_m(k)$. Here, we use all the candidate N -body particles of mock ELGs satisfying the target density range of $\Delta_{\text{min}} < \rho_i/\bar{\rho}_m < \Delta_{\text{max}}$, so the shot noise contamination is negligible. The figure shows that the bias approaches to a scale-independent

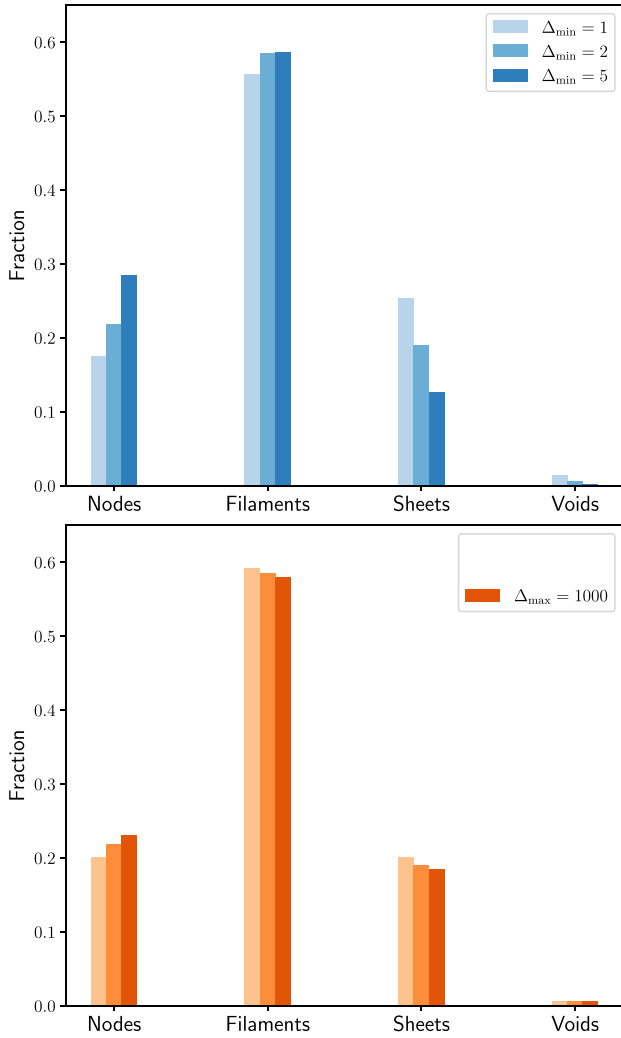


Figure 5. The dependence of environment fraction on the density thresholds for Large simulation at redshift $z = 1$. In upper (lower) panel, we vary Δ_{\min} (Δ_{\max}) and fix $\Delta_{\max} = 500$ ($\Delta_{\min} = 2$).

value, the linear bias parameter, at the limit of $k \rightarrow 0$, and the value depends on the choice of the density threshold.

Now, we study the redshift-space power spectrum of mock ELGs, which is one of the most important observables for cosmology based on galaxy clustering. The RSD effect due to peculiar velocities of ELGs causes an apparent anisotropic clustering in the redshift-space galaxy distribution. As a result, the redshift-space power spectrum is generally given as a function of two wave numbers, k_{\parallel} and k_{\perp} , which are the components of wave-numbers parallel and perpendicular to the line-of-sight direction, respectively. Since ELGs preferentially reside in filaments, the RSD effect might be different from that of massive subhalos hosting LRGs that have been well studied in the literature. Fig. 7 shows the redshift-space power spectra of matter, mock ELGs, and mock LRGs. The redshift-space power spectrum of ELGs displays a weaker stretching effect of the clustering power along the direction parallel to the line-of-sight direction on large wavenumbers, compared to that of the matter power spectrum. The stretching effect is caused by the random motions of ELGs, i.e. FoG effect. This result is as expected because ELGs would tend to reside in smaller haloes, which have a smaller velocity dispersion, and in addition avoid the central regions of massive haloes, which have a

larger velocity dispersion. In contrast, mock LRGs sample at $z = 1$ show the weakest FoG feature because most of such massive subhalos are central and thus the velocity dispersion is quite small. Note that LRGs at the lower redshifts such as those of the SDSS survey display a significant FoG feature because the sample contains more satellite LRGs in massive haloes (Reid et al. 2012). Clustering properties of LRGs at $z \sim 1$ have yet to be understood and need to be carefully studied from actual data, e.g. DESI.

On the other hand, the large-scale RSD effect (i.e. the effect on small wavenumbers) arises mainly from the coherent large-scale peculiar velocity field of ELGs (Kaiser 1987). Since ELGs preferentially reside in filaments, the large-scale RSD effect of ELGs might be different from that of LRGs that have been well studied in the literature such as the SDSS studies. To quantify the large-scale RSD effect, we use the multipole moments of the redshift-space power spectrum, defined as

$$P_{\ell}(k) = \frac{2\ell + 1}{2} \int_{-1}^{+1} P(k, \mu) L_{\ell}(\mu) d\mu, \quad (6)$$

where $L_{\ell}(x)$ is the ℓ th order Legendre polynomial. The linear theory gives the Kaiser formula for the monopole and quadrupole moments (Kaiser 1987):

$$P_0(k) = \left(b_1^2 + \frac{2}{3} f b_1 + \frac{1}{5} f^2 \right) P_{\text{lin}}(k), \quad (7)$$

$$P_2(k) = \left(\frac{4}{3} f b_1 + \frac{4}{7} f^2 \right) P_{\text{lin}}(k), \quad (8)$$

where $f \equiv d \ln D_+ / d \ln a$ is the linear growth rate, D_+ is the linear growth factor, and $P_{\text{lin}}(k)$ is the linear matter power spectrum. Thus, the linear theory predicts the ratio

$$P_2(k)/P_0(k) = \left(b_1^2 + \frac{2}{3} f b_1 + \frac{1}{5} f^2 \right) / \left(\frac{4}{3} f b_1 + \frac{4}{7} f^2 \right), \quad (9)$$

i.e. the scale-independent value that depends only on the linear bias and the growth rate.

In Fig. 8, we show the ratio of the monopole and quadrupole moments for matter, mock ELGs, and mock LRGs. The figure shows that the ratio for ELGs has a different k -dependence from that of matter and mock LRGs, which is partly due to the weaker FoG effect as discussed in Fig. 7. Encouragingly the ratio at the small k limit approaches the Kaiser formula prediction (dashed line), suggesting that the large-scale ratio should be used to extract the growth rate information as done for the LRG power spectrum. The right-hand panels of Fig. 6 show how the ratio varies with different choices of the density thresholds Δ_{\min} and Δ_{\max} in our method. For all cases, the ratio is given by the Kaiser formula using the linear bias value for each sample.

To further gain physical insight on the large-scale RSD effect of mock ELGs, we study the cross-power spectrum of the *real-space* matter field with the *redshift-space* density field of ELGs in different environments. This is not observable, but we can find some interesting features from this statistics. Using the linear theory, we can find that the cross-power spectrum, denoted as $P^{m^{\text{ELG}}}(k, \mu)$, is given as

$$P^{m^{\text{ELG}}}(k, \mu) = (b_1 + f\mu^2) P_{\text{lin}}(k). \quad (10)$$

Then, the quadrupole moment of this cross-power spectrum is given as

$$P_2^{m^{\text{ELG}}}(k) = \frac{2}{3} f P_{\text{lin}}(k). \quad (11)$$

That is, the quadrupole moment amplitude relative to the linear matter power spectrum does not depend on the linear bias, and only

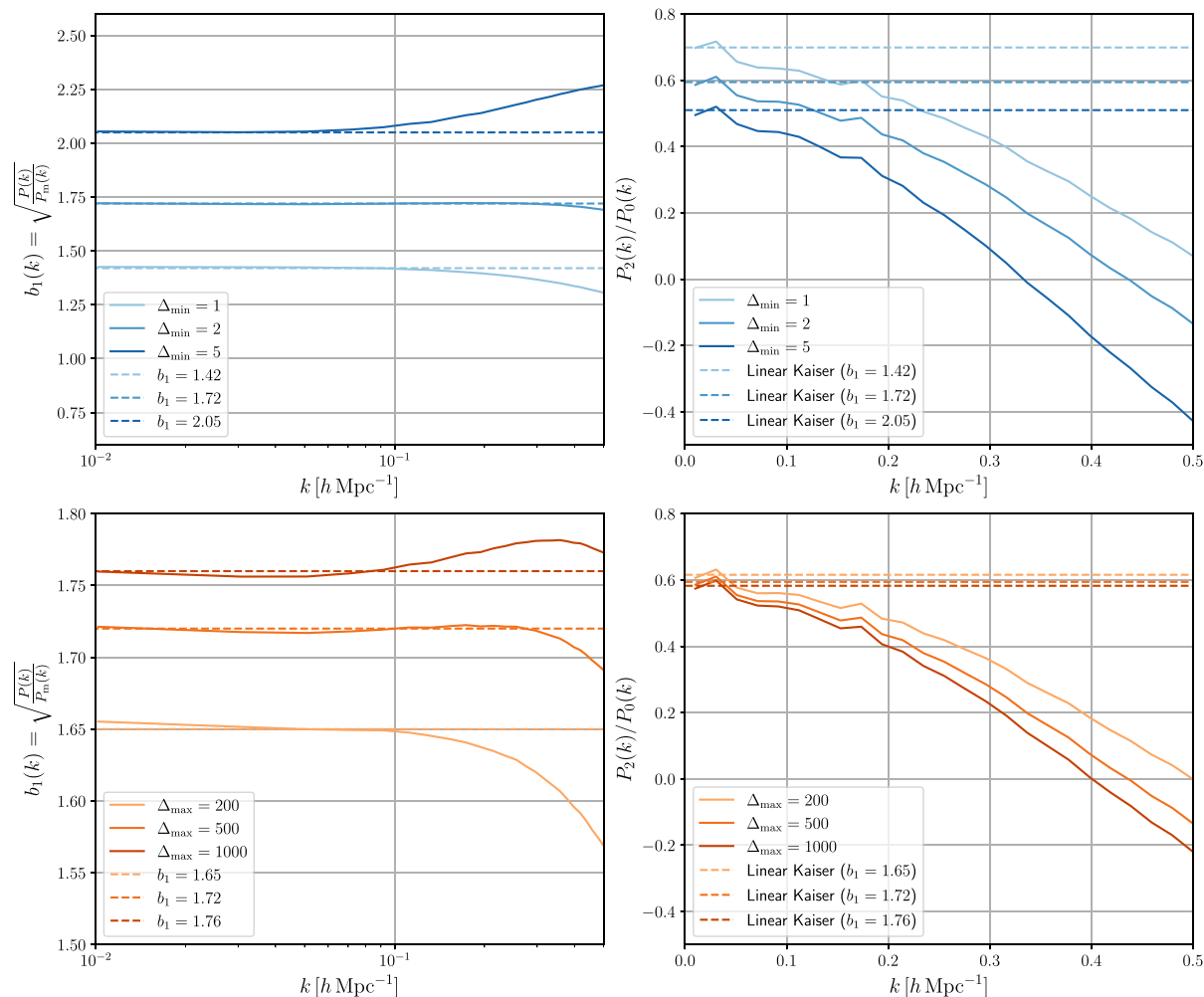


Figure 6. The dependence of power spectra on the density thresholds for Large simulation at redshift $z = 1$. In upper (lower) panels, we vary Δ_{\min} (Δ_{\max}) and fix $\Delta_{\max} = 500$ ($\Delta_{\min} = 2$). In left- and right-hand panels, the scale-dependent bias and the ratio between quadrupole and monopole moments are shown, respectively. In the left-hand panels, the dashed lines correspond to the constant bias cases, and in the right-hand panels, the linear Kaiser predictions (equation 9) with the constant bias are shown.

depends on the growth rate. Motivated by this prediction, we use the quadrupole moment of the cross-power spectrum measured from the mock ELG catalogue, and then study the ratio to the matter spectrum measured from the same simulation, $P_2^{m' \text{ELG}^s}(k)/P_m(k)$.

Fig. 9 shows the results where we use the cross-power spectra of matter, mock ELGs, and mock LRGs in different environments (see Fig. 4). The ratios for different ELG samples display different k -dependence. Intriguingly, the ratios for ELGs in filaments and sheets show greater amplitudes than predicted by the linear theory, while ELGs in nodes show a smaller amplitude (also see Kobayashi et al. 2020, for a similar discussion). The similar tendency can be seen for matter and mock LRGs. Although the large-scale RSD effect for the overall ELG sample is close to the linear theory prediction, different samples of ELGs or inhomogeneous selection of ELGs might give a non-trivial RSD effect depending on which ELGs in the cosmic web to use for the clustering analysis. In this sense, we would like to stress that it is encouraging that the fraction of ELGs in different environments can be reproduced using a simple scheme. The non-trivial large-scale limit of the anisotropic signal from galaxies in different environments needs to be kept in mind.

4 CONCLUSIONS

ELGs are the main targets of upcoming spectroscopic surveys to measure the large-scale structures of the Universe. However, modelling of ELG distribution must resort to computationally expensive methods: SAMs or hydrodynamical simulations. Since the strong emission line of ELGs is emitted by short-lived massive stars, the hosting halo sample is not always a mass-limited sample, unlike LRGs. Furthermore, the typical mass of haloes hosting ELGs is less massive, e.g. $10^{12} h^{-1} M_{\odot}$, and thus, high-mass resolution to identify such low-mass haloes is an obstacle to run large simulations. In this work, we develop a fast scheme to populate the ELGs into dark-matter only simulations. This method populates ELGs on to particles whose local density lies within the preset range. The local density is estimated with the SPH kernel and it is readily available in N -body simulations.

In this method, the particles which satisfy the local density condition are regarded as ELGs. We have introduced two density thresholds, the minimum and maximum. The minimum threshold makes particles evade low-density regions and the maximum thresh-

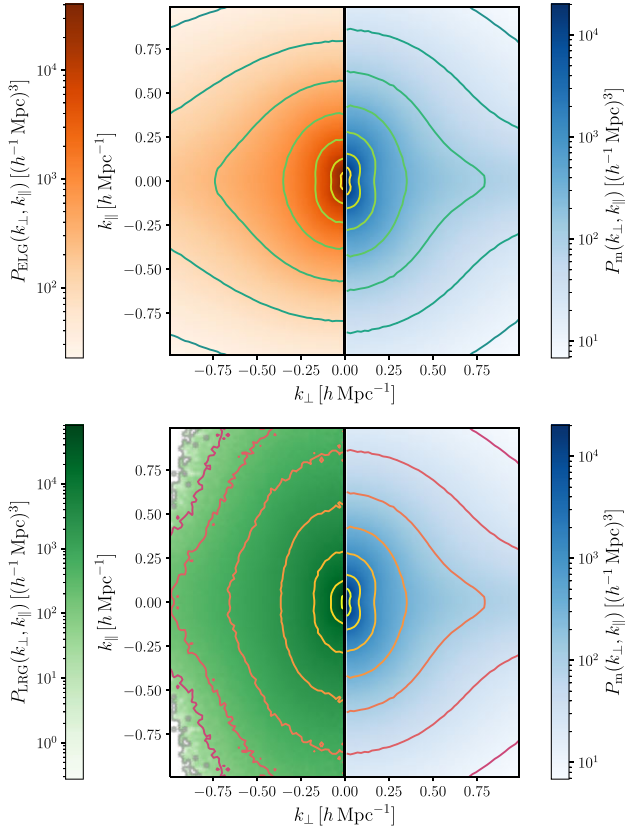


Figure 7. The 2D anisotropic power spectra of matter (upper and lower right-hand panels), mock ELGs (upper left-hand panel), and mock LRGs (lower left-hand panel) in Large simulation at redshift $z = 1$. The contours are drawn in the range $[10^1, 10^4] (h^{-1} \text{Mpc})^3$ with seven log-equally spaced levels for matter power spectrum. For ELG and LRG power spectra, the contours are drawn in the range scaled with bias $[b_1^2 10^1, b_1^2 10^4] (h^{-1} \text{Mpc})^3$ ($b_1 = 1.72$ for mock ELGs and $b_1 = 2.64$ for mock LRGs) with the same spacing.

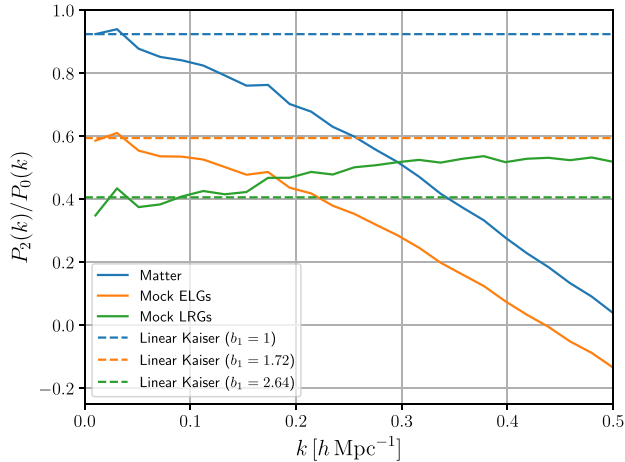


Figure 8. The ratio between quadrupole and monopole moments for matter, mock ELGs, and mock LRGs at redshift $z = 1$. The dashed line show the result of linear Kaiser formula with linear bias $b_1 = 1$ (matter), 1.72 (mock ELGs), and 2.64 (mock LRGs).

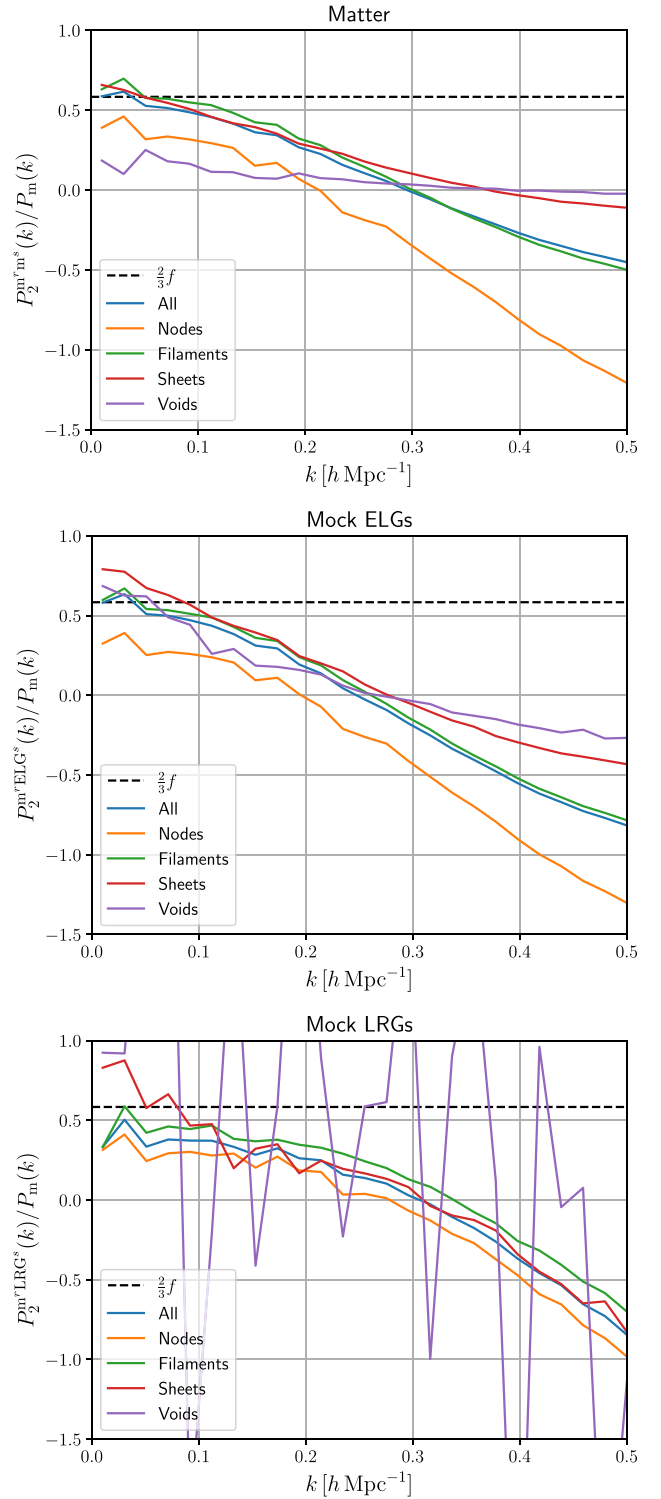


Figure 9. The ratio between quadrupole moment of real-space matter density and redshift-space number density of matter (upper panel), mock ELGs (middle panel), mock LRGs (lower panel) and cross-power spectra and matter power spectrum at redshift $z = 1$. These samples are divided according to its environment and different lines correspond to the results of four different environment (nodes, filaments, sheets, and void) or all environments. The black dashed line corresponds to the linear prediction. The cross-power spectrum of mock LRGs at void region is noisy because only a few LRGs are found in void region.

old avoids central regions of massive haloes because in general, galaxies found near the center are already quenched. Although our method utilizes such a simple criterion, the resultant ELG sample exhibits environment fraction similar to that of ELGs simulated in hydrodynamical simulations; only 20 per cent of ELGs reside in nodes, the rest of ELGs is in filaments and sheets, and ELGs in voids are quite rare. The large-scale bias and the environment fraction depends on the two density thresholds, and thus, these thresholds should be adjusted so that the obtained sample has a desired bias and small-scale anisotropic power spectrum, i.e. FoG effect. Once the bias is adjusted to a reasonable range expected for ELGs, the obtained environment fraction is consistent with hydrodynamical simulation results. The anisotropic power spectrum suggests that ELGs should be less subject to the FoG effect because they are confined to outer regions of haloes and have less virial random velocity. This behaviour is regulated by the maximum density threshold. Furthermore, we have measured the cross-power spectrum of real-space matter density field and redshift-space number density fields of ELGs in each environment. At large scales, the ratio between the quadrupole of the cross-power spectrum and the real-space matter power spectrum is proportional to the growth rate, i.e. the relation between density and velocity fields, *without* the dependence on the linear bias parameter, and thus, the ratio directly corresponds to the strength of the redshift-space distortion effect. The clear difference on the environment of ELGs can be seen, which is contradictory to the linear theory prediction, and it suggests that the ELGs in filaments or sheets should be in the course of infall. As a result, redshift-space distortion of ELGs is quite different from that of matter or LRGs.

As a result, our method realizes fast production of many realizations of mock ELG catalogues. This suite of mock catalogues has multiple use for spectroscopic surveys: estimating covariance matrix of ELG power spectra, calibrating the analysis pipeline, and quantifying various observational systematics. Furthermore, our method directly populates ELGs on particles, not on haloes. Thus, our method is independent from halo-finding algorithm and has an advantage over approaches which relies on haloes (e.g. Alam et al. 2019; Avila et al. 2020).

ACKNOWLEDGEMENTS

KO is supported by JSPS Overseas Research Fellowships and JSPS Research Fellowships for Young Scientists. This work was supported in part by Grant-in-Aid for JSPS Fellows Grant Number JP21J00011, World Premier International Research Center Initiative (WPI Initiative), MEXT, Japan, and JSPS KAKENHI Grant Numbers JP18H04350, JP18H04358, JP19H00677, JP20J22055, JP20H05850, JP20H05855, JP20H05861, and JP21H01081; and by the Basic Research Grant (Super AI) of Institute for AI and Beyond of the University of Tokyo. We also acknowledge financial support from Japan Science and Technology Agency (JST) AIP Acceleration Research Grant Number JP20317829. The numerical calculations were carried out on Yukawa-21 at Yukawa Institute for Theoretical Physics in Kyoto University.

DATA AVAILABILITY

The simulation data of IllustrisTNG is available at <https://www.tng-project.org>. Other simulation data are available upon request.

REFERENCES

- Alam S., Zu Y., Peacock J. A., Mandelbaum R., 2019, *MNRAS*, 483, 4501
 Alam S. et al., 2021, *Phys. Rev. D*, 103, 083533
 Alpaslan M. et al., 2016, *MNRAS*, 457, 2287
 Amendola L. et al., 2013, *Living Rev. Relativ.*, 16, 6
 Avila S. et al., 2020, *MNRAS*, 499, 5486
 Beutler F. et al., 2014, *MNRAS*, 443, 1065
 Bryan G. L., Norman M. L., 1998, *ApJ*, 495, 80
 Byler N., Dalcanton J. J., Conroy C., Johnson B. D., 2017, *ApJ*, 840, 44
 Cautun M., van de Weygaert R., Jones B. J. T., Frenk C. S., 2014, *MNRAS*, 441, 2923
 Cole S. et al., 2005, *MNRAS*, 362, 505
 Comparat J. et al., 2013, *MNRAS*, 428, 1498
 Cui W., Knebe A., Yepes G., Yang X., Borgani S., Kang X., Power C., Staveley-Smith L., 2018, *MNRAS*, 473, 68
 DESI Collaboration, 2016a, preprint ([arXiv:1611.00036](https://arxiv.org/abs/1611.00036))
 DESI Collaboration, 2016b, preprint ([arXiv:1611.00037](https://arxiv.org/abs/1611.00037))
 Dodelson S., 2003, *Modern Cosmology*. Academic Press, Cambridge, Massachusetts, United States
 Eisenstein D. J. et al., 2005, *ApJ*, 633, 560
 Favole G., Rodríguez-Torres S. A., Comparat J., Prada F., Guo H., Klypin A., Montero-Dorta A. D., 2017, *MNRAS*, 472, 550
 Fioc M., Rocca-Volmerange B., 2019, *A&A*, 623, A143
 Forero-Romero J. E., Hoffman Y., Gottlöber S., Klypin A., Yepes G., 2009, *MNRAS*, 396, 1815
 Gingold R. A., Monaghan J. J., 1977, *MNRAS*, 181, 375
 Gonzalez-Perez V. et al., 2018, *MNRAS*, 474, 4024
 Gonzalez-Perez V. et al., 2020, *MNRAS*, 498, 1852
 Guo H. et al., 2015, *MNRAS*, 446, 578
 Guo H. et al., 2019, *ApJ*, 871, 147
 Hadzhiyska B., Tacchella S., Bose S., Eisenstein D. J., 2021, *MNRAS*, 502, 3599
 Hahn O., Porciani C., Carollo C. M., Dekel A., 2007a, *MNRAS*, 375, 489
 Hahn O., Carollo C. M., Porciani C., Dekel A., 2007b, *MNRAS*, 381, 41
 Heitmann K. et al., 2019, *ApJS*, 245, 16
 Heitmann K. et al., 2021, *ApJS*, 252, 19
 Ishiyama T. et al., 2021, *MNRAS*, 506, 4210
 Jing Y. P., 2005, *ApJ*, 620, 559
 Kaiser N., 1987, *MNRAS*, 227, 1
 Khostovan A. A. et al., 2018, *MNRAS*, 478, 2999
 Kobayashi Y., Nishimichi T., Takada M., Takahashi R., 2020, *Phys. Rev. D*, 101, 023510
 Li Y., Ni Y., Croft R. A. C., Di Matteo T., Bird S., Feng Y., 2020, *Proc. Natl. Acad. Sci.*, 118, 19
 Libeskind N. I. et al., 2018, *MNRAS*, 473, 1195
 Lucy L. B., 1977, *AJ*, 82, 1013
 Marinacci F. et al., 2018, *MNRAS*, 480, 5113
 Naiman J. P. et al., 2018, *MNRAS*, 477, 1206
 Nelson D. et al., 2018, *MNRAS*, 475, 624
 Nelson D. et al., 2019, *Computat. Astrophys. Cosmol.*, 6, 2
 Okumura T. et al., 2016, *Publ. Astron. Soc. Japan*, 68, 38
 Orsi Á. A., Angulo R. E., 2018, *MNRAS*, 475, 2530
 Peacock J. A. et al., 2001, *Nature*, 410, 169
 Pillepich A. et al., 2018, *MNRAS*, 475, 648
 Pujol A., Hoffmann K., Jiménez N., Gaztañaga E., 2017, *A&A*, 598, A103
 Reid B. A. et al., 2012, *MNRAS*, 426, 2719
 Smith R. E. et al., 2003, *MNRAS*, 341, 1311
 Somerville R. S., Davé R., 2015, *ARA&A*, 53, 51
 Springel V., 2010a, *ARA&A*, 48, 391
 Springel V., 2010b, *MNRAS*, 401, 791
 Springel V., White S. D. M., Tormen G., Kauffmann G., 2001, *MNRAS*, 328, 726
 Springel V. et al., 2018, *MNRAS*, 475, 676
 Springel V., Pakmor R., Zier O., Reinecke M., 2021, *MNRAS*, 506, 2871
 Sunayama T. et al., 2020, *J. Cosmol. Astropart. Phys.*, 2020, 057

Tadaki K.-i. et al., 2012, *MNRAS*, 423, 2617

Takada M. et al., 2014, *Publ. Astron. Soc. Japan*, 66, R1

Takahashi R., Sato M., Nishimichi T., Taruya A., Oguri M., 2012, *ApJ*, 761, 152

Weinberg D. H., Mortonson M. J., Eisenstein D. J., Hirata C., Riess A. G., Rozo E., 2013, *Phys. Rep.*, 530, 87

Yuan S., Hadzhiyska B., Bose S., Eisenstein D. J., Guo H., 2021, *MNRAS*, 502, 3582

Zhang X., Wang Y., Zhang W., Sun Y., He S., Contardo G., Villaescusa-Navarro F., Ho S., 2019, preprint ([arXiv:1902.05965](https://arxiv.org/abs/1902.05965))

Zhu Q., Hernquist L., Li Y., 2015, *ApJ*, 800, 6

This paper has been typeset from a $\text{\TeX}/\text{\LaTeX}$ file prepared by the author.