



**HAL**  
open science

## Simplified method for rainwater harvesting tank sizing using long day-resolution rainfall time series

S. Galarza-Molina, A. Torres

► **To cite this version:**

S. Galarza-Molina, A. Torres. Simplified method for rainwater harvesting tank sizing using long day-resolution rainfall time series. Novatech 2013 - 8ème Conférence internationale sur les techniques et stratégies durables pour la gestion des eaux urbaines par temps de pluie / 8th International Conference on planning and technologies for sustainable management of Water in the City, Jun 2013, Lyon, France. hal-03303521

**HAL Id: hal-03303521**

**<https://hal.science/hal-03303521>**

Submitted on 28 Jul 2021

**HAL** is a multi-disciplinary open access archive for the deposit and dissemination of scientific research documents, whether they are published or not. The documents may come from teaching and research institutions in France or abroad, or from public or private research centers.

L'archive ouverte pluridisciplinaire **HAL**, est destinée au dépôt et à la diffusion de documents scientifiques de niveau recherche, publiés ou non, émanant des établissements d'enseignement et de recherche français ou étrangers, des laboratoires publics ou privés.

## Simplified method for rainwater harvesting tank sizing using long day-resolution rainfall time series

Méthode simplifiée de dimensionnement des réservoirs pour la réutilisation des eaux pluviales à partir de séries de pluies prolongées à résolution journalière

Galarza-Molina S.L. <sup>a,b,\*</sup>, Torres A. <sup>a</sup>

<sup>a</sup> Grupo de Investigación Ciencia e Ingeniería del Agua y el Ambiente, Facultad de Ingeniería, Pontificia Universidad Javeriana, Carrera 7 No. 40 – 62, Bogotá, Colombia. [sgalarza.andres.torres@javeriana.edu.co](mailto:sgalarza.andres.torres@javeriana.edu.co)

<sup>b</sup> CeiBA-Complejidad, Cra. 1 Este # 18 a – 70 Bogotá, Colombia

\*Corresponding author. Tel.: (57-1) 3208320 ext 5553; Fax: (57-1) 3208320 ext 5398.

### RÉSUMÉ

La présente étude a pour objectif de développer une méthode simplifiée pour le dimensionnement de réservoirs pour la réutilisation des eaux de pluies, en utilisant des séries prolongées de pluie à résolution journalière. La méthode développée considère aussi des bassins versants hétérogènes et des débits d'eau nécessaires pour la réutilisation. De manière à estimer la capacité volumétrique des bassins, il est proposé d'utiliser la probabilité nécessaire pour satisfaire le volume d'eau requis, ainsi que le pas de temps le plus probable nécessaire et leurs respectives variabilités. Cette méthode a été appliquée à un cas d'étude particulier (dimensionnement du bassin de réutilisation des eaux pluviales du campus de l'université Pontificia Universidad Javeriana –PUJ– à Bogotá), avec 73 années de données de pluie à résolution journalière (entre 1936 et 2010, sans les années 1969 et 1988 par manque de données). La méthode a été appliquée pour des différentes périodes de la base de données en obtenant les résultats suivants : (i) pour la série de pluie complète – 76 années : 395 m<sup>3</sup> (28 jours, probabilité : 78%); (ii) pour les dix dernières années : 494 m<sup>3</sup> (35 jours, probabilité : 89%); (iii) pour les cinq dernières années : 346 m<sup>3</sup> (25 jours, probabilité : 84%); (iv) pour la dernière année : 155-198 m<sup>3</sup> (11-14 jours, probabilité : 89-90%).

### ABSTRACT

This work aims to develop a simplified method for rainwater harvesting tank sizing using long day-resolution rainfall time series. The developed method, also considers heterogeneous contributing catchments and water demand flow rates. In order to estimate the tank capacities it is proposed to take into account the probability to supply the water demand, as well as the most probable time step needed and their respective variabilities. This method was applied to a specific case study (campus of the Pontificia Universidad Javeriana, Bogota –PUJ– university rainwater harvesting tank sizing), with 73 years of daily-resolution rainfall information (between 1936 and 2010, without years 1969 and 1988 with no data). The method was applied using different time periods from data-set and the results obtained are: (i) for the whole data series - 76 years: 395 m<sup>3</sup> (28 days, probability: 78%); (ii) for the last ten years: 494 m<sup>3</sup> (35 days, probability: 89%); (iii) for the last five years: 346 m<sup>3</sup> (25 days, probability: 84%); (iv) for the last year: 155-198 m<sup>3</sup> (11-14 days, probability: 89-90%).

### KEYWORDS

Rainwater harvesting system, Rainwater tank, Tank sizing, Time series, Urban water management, Water demand

## 1 INTRODUCTION

Nowadays it exists an increasing attention on the rainwater harvesting (RWH) as an alternative source of water (Hatt *et al.*, 2006) for non-potable uses (Fewkes, 1999; Herrmann and Schmida, 1999; Appan, 2000; Coombes *et al.*, 2000; Li and Gong, 2002; Handia *et al.*, 2003; Marinoski *et al.*, 2004; US EPA, 2004; Coombes and Mitchell, 2006; Wong, 2006; Ghisi *et al.*, 2009), which is additionally recognized as one of the specific adaptation strategies that the water sector should implement to deal with climate changes (Pandey *et al.*, 2003; Muller, 2007; Mukheibir, 2008; Aladenola and Adeboye, 2010; Kahinda *et al.*, 2010; Rozos *et al.*, 2010; Boelee *et al.*, 2012). This technique have been successfully implemented as alternative water source in some countries such as China (Li *et al.*, 2000), South Korea (Song *et al.*, 2003), Malaysia (Lariyah *et al.*, 2011), Australia (Duan *et al.*, 2008) and Brazil (Ghisi *et al.*, 2009). Typically, today's questions which have to be answered through research and engineering studies about the use of RWH are (Mitchell *et al.*, 2008): "How much stormwater can be harvested? How reliable is this supply source? (Farreny *et al.*, 2011) and How large a storage is required?"

One of the most widely studied options for saving the rainwater harvested is the use of rainwater tanks. Typically, the studies about rainwater tanks focus on the design optimization (Imteaz *et al.*, 2011; Seo *et al.*, 2011; Imteaz *et al.*, 2012; Campisano and Modica, 2012) and the performance of rainwater tanks considering the annual rainfall at a specific geographic location, homogeneous catchment area (only one type of surface – e.g. roofs – are considered) and water demand patterns (Fewkes, 1999; Jenkins, 2007; Khastagir and Jayasuriya, 2010). Other studies focus on the effect that produces the use of rainwater tanks on the sewer system design (Vaes and Berlamont, 2001). More recently, Youn *et al.* (2012) developed a methodology that establishes a probabilistic relationship between the storage capacity and the deficit rate of a rainwater harvesting system considering climate change.

In Colombia some researches about RWH have been developed for potable (Sánchez and Caicedo, 2003) and non-potable uses (Ballén *et al.*, 2006; Lara-Borrero *et al.*, 2007; Ramírez, 2009; Castañeda, 2010; Torres *et al.*, 2011a). Ballén *et al.* (2006) concluded that the feasibility of RWH depends on five variables: Precipitation of the area, house cover's area, water availability to supply, price per cubic meter of water and investment needed for the systems' construction and maintenance. On the other hand, in Colombia some sizing methodologies based on maximum intensities, and hence more adapted to flooding control, have been developed and implemented (Galarza and Garzón, 2005; Velez *et al.*, 2004; Navarro and Saldarriaga, 2008; Mora *et al.*, 2011; Torres *et al.*, 2012b). This paper presents a tank sizing simplified methodology specifically for RWH purposes and adapted to developing countries (low and medium hydrological data resolution) for non-potable uses of rainwater runoff from heterogeneous catchments.

## 2 MATERIALS

The study case is the Pontificia Universidad Javeriana Bogotá (PUJB) RWH project. The PUJB campus includes 18.4 ha and almost 200000 m<sup>2</sup> of constructions where academic, administrative, parking areas, chapels, banks, meeting and other service buildings, as well as sport fields and green zones can be found. Every day, approximately 30000 people enter the campus, whose some buildings are up to 70 years old, but mostly around 40 years and several are recent constructions. It is located at the north-east of Bogota's centre (Torres *et al.*, 2011c).

The RWH project in the PUJB was born within the framework of the PUJB Environmental Management Plan. A first project was proposed with the objective of assess economic and technical feasibilities of RWH as an alternative for irrigation and washing hard areas and buildings' facades. This project was leaded by the Research Group *Ciencia e Ingeniería del Agua y el Ambiente* (from the same university) in order to determine the amount of water potentially usable. Results show the possibility of using rainwater for some uses, from the standpoint of the amount of water (Lara-Borrero *et al.*, 2007). As a result, measurement campaigns were conducted to know the quality of the stormwater on campus and to identify potential uses (Torres *et al.*, 2011d). Taking into account these results, Torres *et al.* (2011c) undertook a study to identify the infrastructure requirements for the sustainable use of rainwater on the university campus. They concluded that rainwater could supply a maximum demand of 14%, requiring large investments and a change in the cultural model of water use. Subsequently, a MCA (Multi Criteria Analysis) tool (called CRIDE: multiCRITERIA DEcision support tool – it's a Celtic word that means heart (Davis, 2002)) for supporting the process of decision making for RWH in PUJB campus was developed (Galarza-Molina *et al.*, 2012). Six scenarios were proposed

for RWH and, by applying CRIDE, the University's Physical Resources Division (PRD) chose the scenario number five. This scenario consists of the runoff collection on nine basins (Figure 1) (basins number 1, 2, 3, 4, 5, 9, 10, 11 and 12) for non-potables uses quality (floor cleaning, sanitary discharge and landscape irrigation) (as recommended by Torres *et al.*, 2011c) using SUDS (Sustainable Urban Drainage Systems) as basins, bioretention gardens, permeable pavings and constructed wetlands (CIRIA, 2007) for collection and treatment of the rainwater (Galarza-Molina *et al.*, 2012).

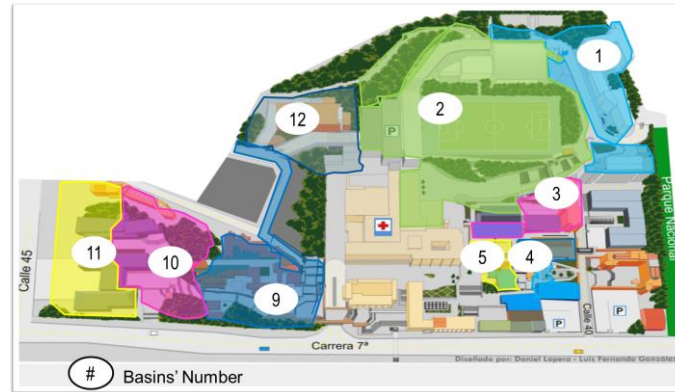


Figure 1. PUJ Campus. Basins defined for the scenario number five, base figure delivered by DPR.

The design and construction of the scenario number five will begin with the RWH of one of the nine basins (basin number 2), using a constructed-wetland / reservoir-tank system. Basin number 2 represents 15% (2.73 ha) of the total campus area, with a contributing catchment of 2.20 ha and with a weighted runoff coefficient of 0.51.

The inventory of water uses was taken from Torres *et al.* (2011c). Scenario number five considers the use of non-potable water uses. These monthly water uses range between 7.02 m<sup>3</sup>/day and 14.11 m<sup>3</sup>/day (Figure 2 - right).

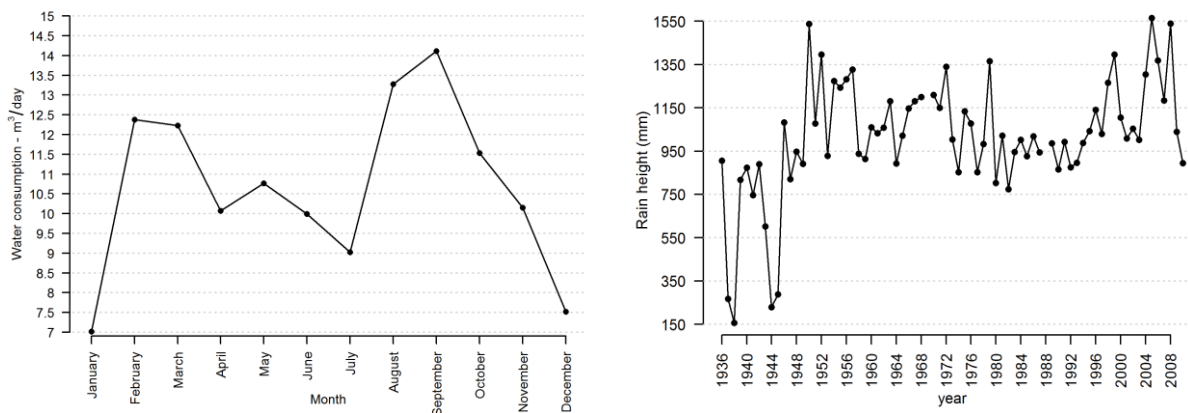


Figure 2. Monthly water uses in m<sup>3</sup>/day for floor cleaning, sanitary discharge and landscape irrigation in PUJB (right). Evolution of total rain height per year for 73 years from San Luis station (left).

### 3 METHODOLOGY

A script based on Rational Method was developed in R (R Development Core Team, 2012) considering daily rainfall, contributing catchment and water uses. The input data were the 73 years of inter-monthly precipitation information between 1936 and 2010 (without years 1969 and 1988 with no data) (Figure 2 - left) and the water uses (demand). The rainfall data-set was collected from a daily rain gauge near the university campus (San Luis - type: Pluviograph station; latitude: 4°38'; longitude: 74°02'; elevation: 3000 m). The water demand was calculated from water bills (October 2003 - March 2010) delivered by PRD. The contributing catchment has a surface of 22026.20 m<sup>2</sup>. It is composed by a sport centre, a parking structure, a sport field and green zones and roads, with a weighted runoff coefficient of 0.51.

The maximum value of storage  $H_{max}$  needed to supply the water demand is calculated using: (i) the amount of water used per month: demand volume ( $V_{dem}$ ), (ii) the contributing catchment characteristics (area ( $A$ ) and runoff coefficient ( $C$ )) and (iii) the estimated time between events ( $t_e$ ).

For the estimation of  $te_j$  (for  $j=1$ ) is necessary the following procedure (see Figure 3):

(i) The first  $te_j$  (for  $j=1$ ) is taken as a time seed ( $ts$ ) needed to begin the iterative procedure explained below, the script is executed for  $ts$  from 1 day to 100 days.

(ii) For consecutive starting days  $i$ , by screening the data-set from the first ( $i=1$ ) to the last day ( $i=n$ ), the cumulative daily rainfall height ( $H_i$ ) is computed until  $H_i$  is greater than  $H_{max}$ . For  $H_{max}$  the corresponding time is called "ending day".

(iii) When  $H_i > H_{max}$ , the number between starting and ending days (time in days needed to supply  $H_{max}$ ) is recorded as  $\Delta t_i$ , and the procedure is undertaken again with the next consecutive starting day ( $i+1$ ) (see Figure 4).

(iv) The result of this screening is a list of days needed to supply  $H_{max}$ :  $\Delta t_i, \Delta t_{i+1}, \Delta t_{i+2}, \dots, \Delta t_n$ , where  $i$  denotes the starting day.

(v) By using a frequency analysis,  $\Delta t_{mp(j)}$  (the most probable time  $\Delta t_i$ ) is calculated, and is compared with  $te_j$ . If they are equal,  $\Delta t_{mp(j)}$  is taken as the time needed to obtain the demand volume.

(vi) Otherwise the previous proceeding is repeated with  $\Delta t_{mp(j)}$  as  $te_{j+1}$  until there is no difference between  $te_{j+k}$  and  $\Delta t_{mp(j+k)}$ .

The script was executed four times using different parts of the data-set: with all the data, with the last ten years, with the last five years and the last year. For the analysis of these results it was constructed a confidence interval graph with equations 1 and 2, using the first ( $Q_1$ ) and the third quartiles ( $Q_3$ ) to define the confidence intervals bound.

(1) Upper\_bound =  $Q_3 + 1.5 * (Q_3 - Q_1)$

(2) Lower\_bound =  $Q_1 - 1.5 * (Q_3 - Q_1)$

To support the selection of  $\Delta t_{mp}$  two variability indexes ( $VI_i$ ) are calculated using equation 3 and 4: the relation between the minimum  $\Delta t_{mpi}$  and maximum  $\Delta t_{mpi}$ ; and the relation between the minimum ( $\min P(\Delta t_{mpi})$ ) and maximum ( $\max P(\Delta t_{mpi})$ ) probability which each  $\Delta t_{mp}$  would have.

(3)  $VI_{i\Delta t_{mp}} = \min(\Delta t_{mpi}) / \max(\Delta t_{mpi})$

(4)  $VI_{iProbability} = \min P(\Delta t_{mpi}) / \max P(\Delta t_{mpi})$

$\Delta t_{mp}$  is chosen taking into account three criteria: higher values of  $VI_{i\Delta t_{mp}}$  and  $VI_{iProbability}$  (difference between upper and lower bounds), lower values of  $\Delta t_{mp}$  to avoid oversized tank and high retention times (number of days are proportional to the amount of stored water) and higher values of probability of  $\Delta t_{mp}$ .

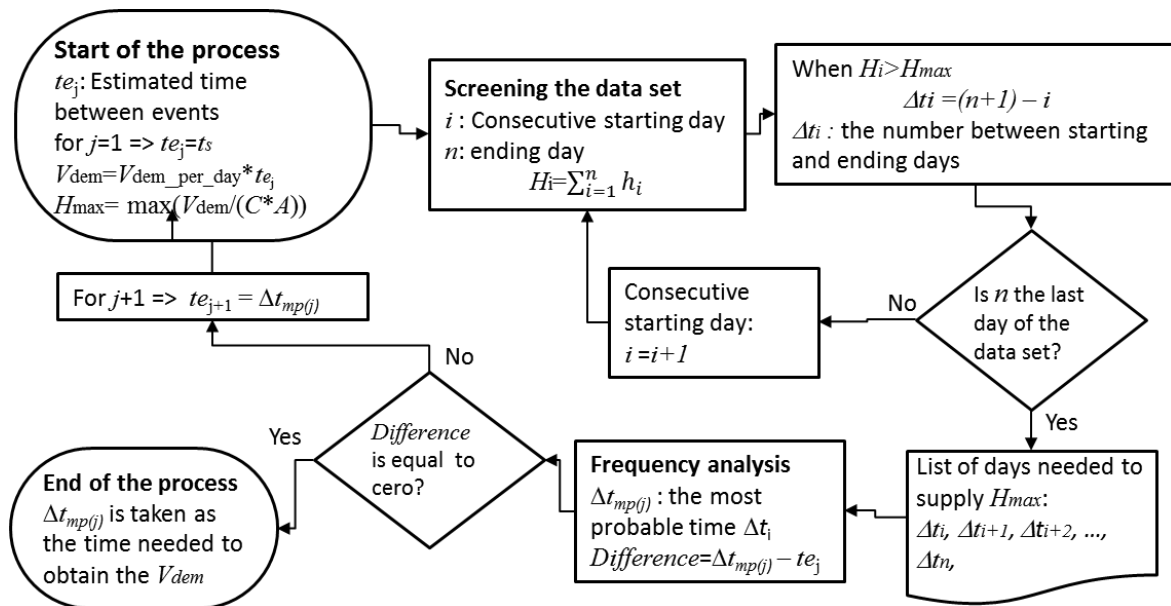


Figure 3. Procedure proposed to estimate the time between events ( $te_j$ ).

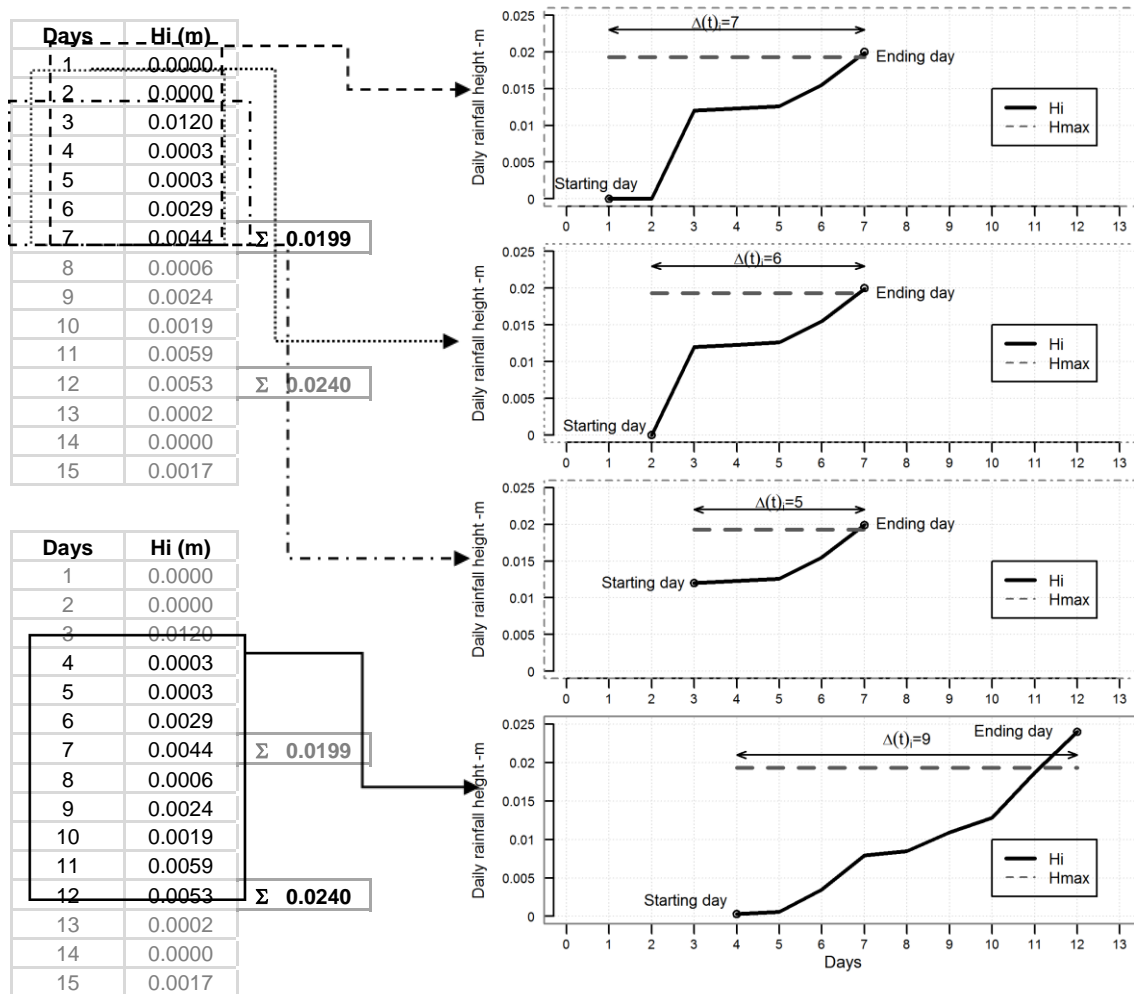


Figure 4. Rainfall data-set, the cumulative daily rainfall height ( $H_i$ ) is computed until  $H_i$  is greater than  $H_{max}$ , for which the corresponding time is called “ending day”

## 4 RESULTS AND DISCUSSION

With the script described above, the rainfall data-set, the water uses (demand volume  $V_{dem}$ ) and time seed (ts) from 1 to 100 days, the results were extracted from four executions: (i) with all the rainfall data-set, (ii) with the last ten years of the rainfall data-set, (iii) With the last five years of the rainfall data-set and (iv) with the last year of the rainfall data-set.

Taking into account the methodology for the selection of  $\Delta t_{mp}$ , the variability indexes ( $VI_{i\Delta t_{mp}}$  –using the most probable time– and  $VI_{iProbability}$  –using the probability–) were calculated.

### 4.1 All the data-set

For the first execution, (upper part of Figure 5), with all the rainfall data-set (solid line type),  $\Delta t_{mp}$  (the most probable time  $\Delta t_i$ ) varies between 1 day and 641 days. Significant differences between the probabilities' intervals of 73%-86% and 97%-99% can be observed, for the  $\Delta t_{mp}$  confidence bounds.

### 4.2 The last ten years of the rainfall data-set

For the last ten years of the rainfall data-set (dashed line type)  $\Delta t_{mp}$  varies between 1 day and 125 days. Significant differences between the probability's interval of 83% and 94% can be observed for the confidence bounds of  $\Delta t_{mp}$ .

### 4.3 The last five years of the rainfall data-set

In the case of the execution of the last five years of the rainfall data-set (dotted line type),  $\Delta t_{mp}$  varies between 1 day and 144 days. Highest differences between the confidence bounds of  $\Delta t_{mp}$  were found

in the probability's interval of 85% and 95%.

#### 4.4 The last year of the rainfall data-set

Finally, for the execution with the last year of the rainfall data-set (dot-lined type),  $\Delta t_{mp}$  varies between 1 day and 53 days. In this case significant differences for median values and confidence bounds of  $\Delta t_{mp}$  were found in the probability's interval of 93% and 99%.

#### 4.5 Variability indexes

Figure 5 shows  $VI_{\Delta t_{mp}}$  for each probability and the most probable times ( $\Delta t_{mp}$ ) needed to obtain the demand volume in days. Taking into account the first criterion (high values of VI) it was chosen a high value of  $VI_{\Delta t_{mp}} = 85\%$  (lower part of Figure 5). The results for each execution are shown in Table 1: the tank volume is calculated with the maximum demand value (14.11 m<sup>3</sup>/day, Figure 2) and the corresponding  $\Delta t_{mp}$  value.

The Figure 6 shows the  $\Delta t_{mp}$  versus  $VI_{Probability}$ . First it was chosen a high value of  $VI_{Probability} = 95\%$ . The results for each execution are shown in Table 2, the tank volume is calculated with the maximum demand value (14.11 m<sup>3</sup>/day, Figure 2) and  $\Delta t_{mp}$  values.

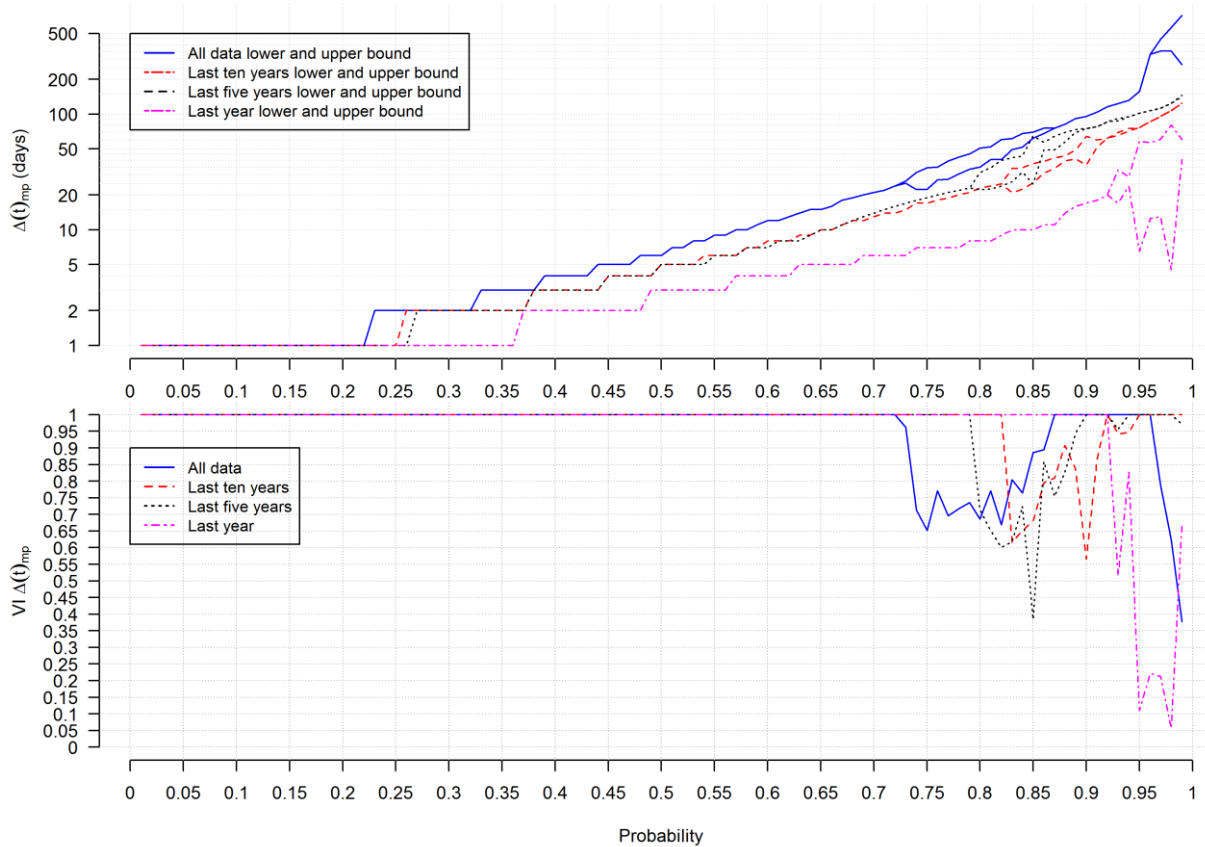


Figure 5. Variability index ( $VI_{\Delta t_{mp}}$ ) for each probability. The upper part of Figure shows the most probable time ( $\Delta t_{mp}$ ) needed to obtain the demand volume in days, extracted from the four executions. (—) All data lower and upper bound, (---) Last ten years lower and upper bound, (···) Last five years lower and upper bound and (-·-) Last year lower and upper bound.

In accordance with the second criteria (lower values of  $\Delta t_{mp}$  to avoid oversized tank and high retention times) it was chosen  $\Delta t_{mp}$  between 20 and 30 days (282 and 423 m<sup>3</sup>). For this time step the minimum  $VI_{\Delta t_{mp}}$  is 0.735 (from the all data execution, see Figure 5) and  $VI_{Probability}$  is 0.93 (from last five years execution, see Figure 6). The corresponding probabilities range between 69% and 93% for  $VI_{\Delta t_{mp}}$  (Figure 5) and between 69% and 98% for  $VI_{Probability}$  (considering all the executions, see Figure 6). If we chose another time step  $\Delta t_{mp}$  lower than 30 days, for example between 15 and 20 days (212 and 282 m<sup>3</sup>), the minimum  $VI_{\Delta t_{mp}}$  is 1 (from the all data execution, see figure 5) and  $VI_{Probability}$  is 0.985 (from the last five years execution, see Figure 6) with a probability between 64% and 94.5% for  $VI_{\Delta t_{mp}}$  (Figure 5) and between 65% and 90% for  $VI_{Probability}$  (considering all the executions, see Figure 6).



On the other hand, in accordance with the third criteria (higher values of probability of  $\Delta t_{mp}$ ) if we chose probability values upper than 60%, it can be obtained  $\Delta t_{mp}$  values higher than 12 days ( $169 \text{ m}^3$ ) (see figure 5 and 6). It seems important to study in detail the  $\Delta t_{mp}$  intervals 14 to 16 ( $198$  and  $226 \text{ m}^3$ ) days and 18 to 20 days ( $254$  and  $282 \text{ m}^3$ ) (Figure 6): in these intervals  $VI_{Probability}$  values for all the executions are the highest, with a minimum value of 0.985. The time step probability for the intervals 14 to 16 days and 18 to 20 days are between 63% and 89% and between 67% and 92%, respectively. Hence, it can be chosen any  $\Delta t_{mp}$  within these intervals – 14-16 or 18-20 days – (e.g. for  $\Delta t_{mp} = 20$  days with  $VI = 1$  and a probability between 70% and 90%, with a tank capacity of  $282 \text{ m}^3$ )

Table 1. Tank volumes of each execution for a  $VI_{\Delta t_{mp}} = 85\%$

Execution	Probability (%)	$\Delta t_{mp}$ (days)	Tank volume ( $\text{m}^3$ )
All the data	73	25–27	353 – 381
	85	60–70	847 – 988
	97.5	350–425	4939 – 5997
Last ten years	82.5	23–28	324 – 395
	87.5	35–43	494 – 607
	88.3	40–48	677 – 734
	91	52–60	734 – 847
Last five years	79.5	22.5–25	318 – 353
	86	49–57	691 – 804
	88.5	60–70	847 – 988
Last year	95.2	19–24	268 – 339

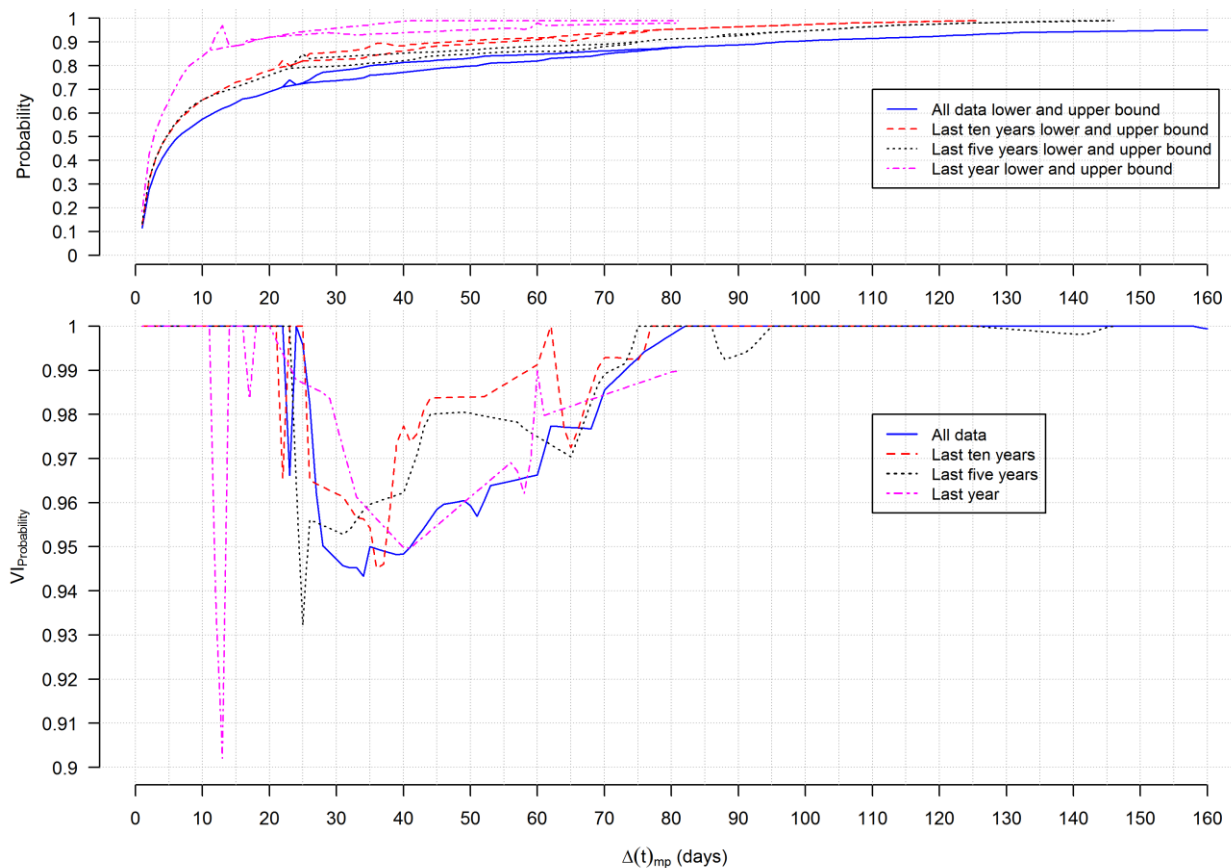


Figure 6. Zoom of the  $\Delta t_{mp}$  interval 1 – 160 days, which shows huge changes of the variability index (min/max). The upper part of the Figure represents the maximum probability of each  $\Delta t_{mp}$ . (—) All data, (---) Last ten years, (· · ·) Last five years and (- · -) Last year.



Table 2. Tank volumes of each execution for a  $VI_{Probability=95\%}$ 

Execution	$\Delta t_{mp}$ (days)	Probability (%)	Tank volume (m <sup>3</sup> )
All the data	28	73–78	395
	35	76–80	494
	42	79–82	593
Last ten years	36	84–89	508
	37.5	85–89	529
Last five years	25	79–84	346
	26	79–83	360
Last year	12	86–92	169
	14	87–94	198
	40	94–99	564
	41	94–99	579
	42	94–99	593

## 5 CONCLUSIONS

This paper proposes a simplified method to sizing rainwater tanks using long day-resolution rainfall time series for heterogeneous catchment areas. This is a specific method based on the probability that has the daily rainfall to supply the water demand, as well as the most probable time step needed and their respective variabilities.

After applying this method to a specific case study (PUJ campus rainwater harvesting tank sizing) it was found that the results differ depending on the selected period and the variability indexes: (i) whole data series - 76 years: 395 to 593 m<sup>3</sup> ( $VI_{Probability=95\%}$ : 28 to 42 days, probability range: 73-82%) and 353 to 5997 m<sup>3</sup> ( $VI_{\Delta t_{mp}=85\%}$ : 25 to 425 days, probability range: 73-97.5%); (ii) last ten years: 508 and 529 m<sup>3</sup> ( $VI_{Probability=95\%}$ : 36 and 37.5 days, probability range: 84-89%) and 324 to 847 m<sup>3</sup> ( $VI_{\Delta t_{mp}=85\%}$ : 23 to 60 days, probability range: 82.5% – 91%); (iii) last five years: 346 and 360 m<sup>3</sup> ( $VI_{Probability=95\%}$ : 25 and 26 days, probability range: 79-84%) and 318 to 988 ( $VI_{\Delta t_{mp}=85\%}$ : 22.5 to 70 days, probability range: 79.5-88.5%); (iv) last year: 169 to 593 m<sup>3</sup> ( $VI_{Probability=95\%}$ : 12 to 42 days, probability range: 86-99%) and 268 and 339 ( $VI_{\Delta t_{mp}=85\%}$ : 19 and 24 days, probability: 95.2%). The above results seem to be influenced by an evolution of rainfall heights in different selected periods, which will be studied in further researches by considering a possible climate change.

## LIST OF REFERENCES

- Aladenola O.O. and Adeboye O.B. (2010). *Assessing the potential for rainwater harvesting*. Water Resources Management, 24, 2129-2137.
- Appan A. (2000). *A dual-mode system for harnessing roofwater for non-potable uses*. Urban Water, 1(4), 317-21.
- Ballén J. A., Galarza M. Á. and Ortiz R. O. (2006). *Sistemas de aprovechamiento de agua lluvia para vivienda urbana*. Paper presented at VI SEREA - Seminario iberoamericano sobre sistemas de abastecimiento urbano de agua, João Pessoa, Brazil, 5- 7 June.
- Boelee E., Yohannes M., Poda J., McCartney M., Cecchi P., Kibret S., Hagos F. and Laamrani H. (2012). *Options for water storage and rainwater harvesting to improve health and resilience against climate change in Africa*. Regional Environmental Change, <http://dx.doi.org/10.1007/s10113-012-0287-4>.
- Campisano A. and Modica C. (2012). *Optimal sizing of storage tanks for domestic rainwater harvesting in Sicily*. Resources, Conservation and Recycling, 63, 9-16.
- Catañeda N. (2010). *Propuesta de un sistema de aprovechamiento de agua lluvia como alternativa para el ahorro de agua potable*. Revista Gestión y Ambiente, 13(2), 25-40.
- CIRIA - Construction Industry Research and Information Association. (2007). *The SUDS Manual*. London, UK. Available at: <http://www.ciria.org.uk/suds/publications.htm> [Accessed on 20 January 2011]
- Coombes, P., Argue, J., and Kuczera, G. (2000). *Figtree Place: a case study in water sensitive urban development (WSUD)*. Urban Water, 1(4), 335-343.
- Coombes, P.J., and Mitchell V.G. (2006). *Roofwater, storm water, and wastewater reuse*. In: Australian runoff quality, T.H.F. Wong (Ed.). The Institution of Engineers Australia, Sydney.
- Davis D. R. (2002). *The Development of Celtic Linguistics 1850 – 1900*. Routledge Taylor and Francis Group, New York.

- Duan, C., Attwater, R. and Min, L. (2008). *Introduction to rainwater management in Australia and suggestions for China's water problems*. Journal of Chongqing University (English Edition) [ISSN, 1671, 8224].
- Farreny R., Gabarrella X., Rieradevalla J. (2011). *Cost-efficiency of rainwater harvesting strategies in dense Mediterranean neighbourhoods*. Resources, Conservation and Recycling, 55, 686-694.
- Fewkes A. (1999). *The use of rainwater for WC flushing: the field testing of a collection system*. Building and Environment, 34(6), 765-72.
- Galarza S. and Garzón F. (2005). *Estudio de viabilidad técnica de los sistemas urbanos de drenaje sostenible para las condiciones tropicales de Colombia*. Epíclidos, 4(1), 59-70
- Galarza-Molina S., Torres A., Lara-Borrero J, Moura P. (2012). *CRIDE - Multi-criteria analysis tool for decision making support for rainwater harvesting in Javeriana University's campus*. Paper presented at XXXII Congreso Interamericano de ingeniería Sanitaria y Ambiental AIDIS 2012, Salvador Bahía, Brazil, 03-06 June
- Ghisi E., Fonseca Tavares D. and Rocha V. (2009). *Rainwater harvesting in petrol stations in Brasília: Potential for potable water savings and investment feasibility analysis*. Journal of Resources, Conservation and Recycling, 54, 79-85, doi:10.1016/j.resconrec.2009.06.010
- Handia L., Tembo J.M. and Mwiindwa C. (2003). *Potential of rainwater harvesting in urban Zambia*. Physics and Chemistry of the Earth, 28(20/27), 893-896.
- Hatt B.E., Deletic A., Fletcher T.D. (2006). *A review of integrated storm water treatment and re-use in Australia*. Journal of Environmental Management, 79(1), 102-113, doi: 10.1016/j.jenvman.2005.06.003
- Herrmann T. and Schmida U. (1999). *Rainwater utilisation in Germany: efficiency, dimensioning, hydraulic and environmental aspects*. Urban Water, 1(4), 307-16.
- Imteaz M. A., Rahmanc A., Ahsand A. (2012). *Reliability analysis of rainwater tanks: A comparison between South-East and Central Melbourne*. Resources, Conservation and Recycling, 66, 1-7.
- Imteaz M. A., Shanablehb A., Rahmanc A., Ahsand A. (2011). *Optimization of rainwater tank design from large roofs: A case study in Melbourne, Australia*. Resources, Conservation and Recycling, 55, 1022-1029.
- Jenkins G. (2007). *Use of continuous simulation for the selection of an appropriate urban rainwater tank*. Australian Journal of Water Resources, 11(2), 231-46.
- Kahinda J.M. and Taigbenu A.E. and Boroto R.J. (2010). *Domestic rainwater harvesting as an adaptation measure to climate change in South Africa*. Physics and Chemistry of the Earth, 35, 742-751.
- Khastagir A. and Jayasuriya N. (2010). *Optimal sizing of rain water tanks for domestic water conservation*. Journal of Hydrology, 381, 181-8.
- Lara-Borrero J.A., Torres A., Campos-Pinilla M.C., Duarte-Castro L., Echeverri-Robayo J.I. and Villegas-González P.A. (2007). *Aprovechamiento del agua lluvia para riego y para el lavado de zonas duras y fachadas en el campus de la Pontificia Universidad Javeriana (Bogotá)*. Ingeniería y Universidad, 11(2), 193-202.
- Lariyah M.S., Mohd Nor M.D., Mohamed Roseli, Z.A., Zulkefli M. and Amirah Hanim M.P. (2011). *Application of Water Sensitive Urban Design at Local Scale in Kuala Lumpur*. Paper presented at the 12nd International Conference on Urban Drainage, Porto Alegre, Brazil, 10-15 September.
- Li F.R., Cook S., Geballe G.T. and Burch W.R. (2000). *Rainwater harvesting agriculture: an integrated system for water management on rainfed land in China's semiarid areas*. Journal of the Human Environment, 29(8), 477-483.
- Li X-Y. and Gong J- D. (2002). *Compacted microcatchments with local earth materials for rainwater harvesting in the semiarid region of China*. Journal of Hydrology, 57(1/4), 134-144.
- Marinoski D.L., Ghisi E. and Gómez L.A. (2004). *Aproveitamento de água pluvial e dimensionamento de reservatório para fins não potáveis: estudo de caso em um conjunto residencial localizado em Florianópolis [SC Rainwater harvesting and rainwater tank sizing: a case study in a multi-storey residential building located in Florianópolis, Southern Brazil]*. Paper presented at the CLACS04—I Conferência Latino-Americana de Construção Sustentável e ENTAC04—101 Encontro Nacional de Tecnologia do Ambiente Construído, São Paulo-SP, CDRom, (in Portuguese).
- Mitchell V.G., McCarthy D.T., Deletic A. and Fletcher T.D. (2008). *Urban stormwater harvesting – sensitivity of a storage behaviour model*. Environmental Modelling & Software, 23, 782–793, doi: 10.1016/j.envsoft.2007.09.006
- Mora O., Alvarado D. and Torres A. (2011). *Economic Analysis of the application of porous pavements on Bogota roads*. Paper presented at the 12nd International Conference on Urban Drainage, Porto Alegre, Brazil, 10-15 September.
- Mukheibir P. (2008). *Water resources management strategies for adaptation to climate-induced impacts in South Africa*. Water Resources Management, 22, 1259-1276.
- Muller M. (2007). *Adapting to climate change: water management for urban resilience*. Environment and Urbanization, 19(1), 99-113.
- Navarro I. and Saldarriaga J. (2008). *Determinación de la viabilidad técnica y económica de un sistema de almacenamiento temporal de aguas de drenaje urbano para la ciudad de Bogotá*. Bachelor Thesis. Facultad

- de Ingeniería Departamento de Ingeniería Civil y Ambiental. Universidad de los Andes [http://especiales.universia.net.co/dmdocuments/Tesis\\_Ivonne\\_Navarro.pdf](http://especiales.universia.net.co/dmdocuments/Tesis_Ivonne_Navarro.pdf)
- Pandey D.N., Gupta A.K. and Anderson D.M. (2003). *Rainwater harvesting as an adaptation to climate change*. Current Science, 85(1), 46-59.
- R Development Core Team (2012). R: A language and environment for statistical computing. R Foundation for Statistical Computing, Vienna, Austria. ISBN 3-900051-07-0, URL <http://www.R-project.org/>.
- Ramírez, J. (2009). *Construcción verde en concreto*. Noticreto, revista de la técnica y la construcción, 2, 20-27.
- Rozos E., Makropoulos C. and Butler D. (2010). *Design robustness of local waterrecycling schemes*. Journal of Water Resources Planning and Management, 136(5), 531-538.
- Sánchez L.S. and Caicedo E. (2003). *Uso del Agua Lluvia en la Bocana- Buenaventura*. Paper presented at AGUA 2003 Internacional: Usos Múltiples del Agua Para la Vida y el Desarrollo Sostenible, Cartagena, Colombia, 2003.
- Seo Y., Choi N.J. and Park D. (2011). *Effect of connecting rain barrels on the storage size reduction*. Hydrological Process, <http://dx.doi.org/10.1002/hyp.8430>.
- Song M.Y., Han M.Y. and Kim S.R. (2003). *Considerations on the rainwater harvesting regulations*. Journal of Korean Society of Water and Wastewater, 17(6), 729-740 (in Korean).
- Torres A., Estupiñan J. and Zapata H. (2011c). *Proposal and assesment of rainwater haversting scenarios on the Javeriana University campus, Bogota*. Paper presented at the 12nd International Conference on Urban Drainage, Porto Alegre, Brazil, 10-15 September.
- Torres A., Lara-Borrero J., Torres O., Estupiñan J. and Mendez-Fajardo S. (2011d). *Aprovechamiento de aguas lluvias en el campus de la Pontificia Universidad Javeriana, Sede Bogotá (PUJB)*. In: Gestión integrada del Recurso Hídrico Frente al Cambio Climático, L.D. Sánchez Torres, A. Galvis Castaño, I. Restrepo Tarquino and M.R. Peña Varón (Eds.), Programa Editorial Universidad Del Valle, Cali, 325- 336, ISBN: 978958670914-9.
- Torres A., Méndez-Fajardo S., Lara-Borrero J., Estupiñan J., Zapata H. and Torres Murillo O. (2012b). *Hacia equipamiento urbanos sostenibles: Aprovechamiento de aguas lluvias en el campus de la Pontificia Universidad Javeriana en Bogotá*. Cuadernos de Vivienda y Urbanismo, 5(9), 124-141.
- Torres A., Méndez-Fajardo S., López-Kleine L., Marín V., González J.A., Suárez J.C., Pinzón J.D. and Ruiz A. (2011a). *Evaluación preliminar de la calidad de la escorrentía pluvial sobre tejados para su posible aprovechamiento en zonas periurbanas de Bogotá*. Revista U.D.C.A. Act.&Div. Cient, 14(1), 127-135.
- US EPA. (2004). *Guidelines for Water Reuse*. U.S. Environmental Protection Agency, Report No. EPA/625/R-04/108, Cincinnati, OH, USA, 445 pp.
- Vaes G. and Berlamont J. (2001). *The effect of rainwater storage tank on design storms*. Urban Water, 3, 303-307.
- Vélez, J. I., Guzmán J. V, Poveda G., Ramírez C. J., Moreno H. A., Roldán P. A. and Arango J. E.. (2004). *Evaluación de la cantidad de lluvia y su almacenamiento para abastecimiento de agua potable, aplicación en el centro de Antioquia (Colombia)*. Paper presented at the Seminario Internacional sobre Eventos Extremos Mínimos en Regímenes de Caudales: Diagnóstico, Modelamiento y Análisis, Medellín, Colombia, 23-25 June.
- Wong, T. H. F. (2006). *Water sensitive urban design – the journey thus far*. Australian Journal of Water Resources, 10(3), 213-222.
- Youn S., Chunga E-S., Kang W.G. and Sungc J.H. (2012). *Probabilistic estimation of the storage capacity of a rainwater harvesting system considering climate change*. Resources, Conservation and Recycling, 65, 136-144.