



HAL
open science

Sinorhizobium meliloti Functions Required for Resistance to Antimicrobial NCR Peptides and Bacteroid Differentiation

Quentin Nicoud, Quentin Barrière, Nicolas Busset, Sara Dendene, Dmitrii Travin, Mickaël Bourge, Romain Le Bars, Claire Boulogne, Marie Lacroël, Sándor Jenei, et al.

► **To cite this version:**

Quentin Nicoud, Quentin Barrière, Nicolas Busset, Sara Dendene, Dmitrii Travin, et al.. Sinorhizobium meliloti Functions Required for Resistance to Antimicrobial NCR Peptides and Bacteroid Differentiation. mBio, 2021, 10.1128/mbio.00895-21 . hal-03302731

HAL Id: hal-03302731

<https://hal.science/hal-03302731v1>

Submitted on 27 Jul 2021

HAL is a multi-disciplinary open access archive for the deposit and dissemination of scientific research documents, whether they are published or not. The documents may come from teaching and research institutions in France or abroad, or from public or private research centers.

L'archive ouverte pluridisciplinaire **HAL**, est destinée au dépôt et à la diffusion de documents scientifiques de niveau recherche, publiés ou non, émanant des établissements d'enseignement et de recherche français ou étrangers, des laboratoires publics ou privés.



Sinorhizobium meliloti Functions Required for Resistance to Antimicrobial NCR Peptides and Bacteroid Differentiation

Quentin Nicoud,^a Quentin Barrière,^a Nicolas Busset,^{a*} Sara Dendene,^a  Dmitrii Travin,^{b,a} Mickaël Bourge,^a Romain Le Bars,^a Claire Boulogne,^a Marie Lacroël,^a Sándor Jenei,^c  Atilla Kereszt,^c  Eva Kondorosi,^c Emanuele G. Biondi,^a Tatiana Timchenko,^a  Benoît Alunni,^a  Peter Mergaert^a

^aUniversité Paris-Saclay, CEA, CNRS, Institute for Integrative Biology of the Cell (I2BC), Gif-sur-Yvette, France

^bCenter of Life Sciences, Skolkovo Institute of Science and Technology, Moscow, Russia

^cInstitute of Plant Biology, Biological Research Centre, Szeged, Hungary

Quentin Nicoud, Quentin Barrière, and Nicolas Busset contributed equally. Author order was determined by age, from youngest to oldest.

ABSTRACT Legumes of the *Medicago* genus have a symbiotic relationship with the bacterium *Sinorhizobium meliloti* and develop root nodules housing large numbers of intracellular symbionts. Members of the odule-specific cysteine-rich peptide (NCR) family induce the endosymbionts into a terminal differentiated state. Individual cationic NCRs are antimicrobial peptides that have the capacity to kill the symbiont, but the nodule cell environment prevents killing. Moreover, the bacterial broad-specificity peptide uptake transporter BacA and exopolysaccharides contribute to protect the endosymbionts against the toxic activity of NCRs. Here, we show that other *S. meliloti* functions participate in the protection of the endosymbionts; these include an additional broad-specificity peptide uptake transporter encoded by the *yejABEF* genes and lipopolysaccharide modifications mediated by *lpsB* and *lpxXL*, as well as *rpoH1*, encoding a stress sigma factor. Strains with mutations in these genes show a strain-specific increased sensitivity profile against a panel of NCRs and form nodules in which bacteroid differentiation is affected. The *lpsB* mutant nodule bacteria do not differentiate, the *lpxXL* and *rpoH1* mutants form some seemingly fully differentiated bacteroids, although most of the nodule bacteria are undifferentiated, while the *yejABEF* mutants form hypertrophied but nitrogen-fixing bacteroids. The nodule bacteria of all the mutants have a strongly enhanced membrane permeability, which is dependent on the transport of NCRs to the endosymbionts. Our results suggest that *S. meliloti* relies on a suite of functions, including peptide transporters, the bacterial envelope structures, and stress response regulators, to resist the aggressive assault of NCR peptides in the nodule cells.

IMPORTANCE The nitrogen-fixing symbiosis of legumes with rhizobium bacteria has a predominant ecological role in the nitrogen cycle and has the potential to provide the nitrogen required for plant growth in agriculture. The host plants allow the rhizobia to colonize specific symbiotic organs, the nodules, in large numbers in order to produce sufficient reduced nitrogen for the plants' needs. Some legumes, including *Medicago* spp., produce massively antimicrobial peptides to keep this large bacterial population in check. These peptides, known as NCRs, have the potential to kill the rhizobia, but in nodules, they rather inhibit the division of the bacteria, which maintain a high nitrogen-fixing activity. In this study, we show that the tempering of the antimicrobial activity of the NCR peptides in the *Medicago* symbiont *Sinorhizobium meliloti* is multifactorial and requires the YejABEF peptide transporter, the lipopolysaccharide outer membrane, and the stress response regulator RpoH1.

Citation Nicoud Q, Barrière Q, Busset N, Dendene S, Travin D, Bourge M, Le Bars R, Boulogne C, Lacroël M, Jenei S, Kereszt A, Kondorosi E, Biondi EG, Timchenko T, Alunni B, Mergaert P. 2021. *Sinorhizobium meliloti* functions required for resistance to antimicrobial NCR peptides and bacteroid differentiation. mBio 12:e00895-21. <https://doi.org/10.1128/mBio.00895-21>.

Editor Joerg Graf, University of Connecticut

Copyright © 2021 Nicoud et al. This is an open-access article distributed under the terms of the [Creative Commons Attribution 4.0 International license](https://creativecommons.org/licenses/by/4.0/).

Address correspondence to Peter Mergaert, peter.mergaert@i2bc.paris-saclay.fr.

* Present address: Nicolas Busset, Plant Health Institute, Montpellier, France.

Received 29 March 2021

Accepted 21 June 2021

Published 27 July 2021

KEYWORDS *Sinorhizobium meliloti*, antimicrobial peptides, mechanisms of resistance, nitrogen fixation, symbiosis

Antimicrobial peptides (AMPs) are essential mediators of innate immunity in eukaryotes. Their function is to attack and kill harmful invading microbes (1–3). Many organisms have also recruited AMPs as essential regulators of bacteria in symbiotic associations (2). In symbiosis, hosts intentionally maintain bacterial partners, and the role of “symbiotic” AMPs is therefore not to eradicate the symbiotic microbes but rather to police them or to optimize their metabolic integration with the hosts (2, 4). An extreme case of deployment of AMPs for controlling endosymbiont populations, involving hundreds of peptides, has been described for the rhizobium-legume symbiosis (2, 5–9). Legumes form a symbiosis with phylogenetically diverse nitrogen-fixing soil bacteria, collectively called rhizobia. This nutritional symbiosis provides reduced nitrogen to the plants. The symbiosis implies the formation of nodules, specific symbiotic organs, on the roots of the plants. These nodules house the nitrogen-fixing rhizobia, which transfer their produced ammonia to the plant in return for the exclusive niche in the nodules, where they multiply massively from a single bacterium or very few infecting bacteria to a population of millions.

After endocytic uptake by the symbiotic nodule cells, the multiplied bacteria reside intracellularly in vesicles called symbiosomes. The nodule cells and symbiosomes establish the optimal conditions for nitrogen fixation and metabolic exchange with the endosymbionts and, at the same time, keep them in check. The low oxygen levels prevailing in the symbiotic nodule cells transform the rhizobia into a differentiated physiological state, called the bacteroid, which is adapted for nitrogen fixation. Moreover, in certain legume clades, like the Inverted Repeat-Lacking Clade (IRLC) and the Dalbergioids, the physiological transition of the bacteroids is accompanied by a remarkable differentiation process that is manifested in an irreversible loss of the capacity of bacteroids to divide (10, 11). These terminally differentiated bacteroids have a partially permeabilized cell membrane. They are giant bacterial cells. A switch in the bacterial cell cycle, from a regular succession of replication and division to a series of repeated genome replications without divisions, drives this cell enlargement, resulting in polyploid bacteroids.

The terminal differentiation is triggered by a family of nodule-specific cysteine-rich peptides (NCRs), produced by the symbiotic nodule cells (11–13). Over 600 NCR genes were identified in the *Medicago truncatula* genome, while the NCR repertoire in other species of the IRLC and the Dalbergioids ranges from a few to several hundred (11, 12, 14). The NCR genes in *M. truncatula* are specifically expressed in the symbiotic cells (15). They are activated in waves during the differentiation of the bacteroids, including sets of NCR genes activated at the onset and others at the intermediate or final stages of the differentiation. These temporal profiles indicate that the NCR genes have specific functions during the bacteroid formation process.

The NCR peptides have structural features shared with AMPs, and at least some NCRs, in particular, the cationic ones, can kill or inhibit *in vitro* the growth of not only the rhizobium symbionts but also many other bacteria and even fungi (16). Their major antibacterial activity results from their capacity to disturb the integrity of the inner and outer membranes of bacteria (13, 17), although some NCRs also have activities inhibiting essential intracellular machineries (18). However, bacteroids remain metabolically active for a very long time, despite the high burden of NCRs. Possibly, the environment of the symbiotic nodule cells and symbiosomes contributes to tempering the antimicrobial activities of the peptides. Importantly, also specific functions of the bacteria themselves are NCR resistance determinants in the bacteroids.

Sinorhizobium meliloti, the symbiont of *Medicago* plants, requires the peptide transporter BacA to counter the NCR peptides inside the symbiotic nodule cells and establish a chronic infection (19). *S. meliloti* bacA mutants are hypersensitive to the antimicrobial NCRs. They induce nodules and infect plant cells in a seemingly normal fashion,

but the mutants die rapidly after their release in the symbiotic cells. This death can be avoided by blocking NCR transport to the infecting rhizobia in the *M. truncatula dnf1* mutant (19). BacA proteins are broad-specificity peptide uptake transporters (20–22). They can promote the uptake of NCR peptides, suggesting that BacA provides resistance by redirecting the peptides away from the bacterial membrane, thereby limiting membrane damage. Exopolysaccharide (EPS) is another known factor of *S. meliloti* that helps the endosymbionts to withstand the NCRs (14, 23). This negatively charged extracellular polysaccharide traps the cationic AMPs, reducing their effective concentration in the membrane vicinity.

Bacterial resistance to AMPs is usually multifactorial (24), suggesting that besides BacA and EPS, additional functions of *S. meliloti* bacteroids contribute to resisting the NCRs in the symbiotic nodule cells. The literature on *S. meliloti* is rich in the description of bacterial genes that are required for symbiosis. However, the reporting on these mutants often lacks precise information on their bacteroid phenotype and/or on their sensitivity to NCRs. Moreover, transcriptome sequencing (RNA-seq) and transposon sequencing (Tn-seq) analyses of NCR-treated cells and NCR-protein interaction studies identified a whole suite of additional candidate NCR-responsive functions in *S. meliloti* (18, 25–27). Together with BacA and EPS, some of these *S. meliloti* functions may contribute to alleviate the NCR stress on the bacteroids. To test this hypothesis, we have selected candidate genes and analyzed the phenotype of the corresponding mutants in NCR resistance and bacteroid formation.

RESULTS

***Sinorhizobium meliloti* mutants with enhanced sensitivity to NCR peptides.** The *S. meliloti* functions selected in this study include a broad-specificity peptide uptake transporter encoded by the *yejABEF* genes (SMc02829 to SMc02832) and lipopolysaccharide (LPS) modifications mediated by *lpsB* (SMc01219) and *lpxXL* (SMc04268), as well as *rpoH1* (SMc00646), encoding a stress sigma factor. The YejABEF ABC transporter was selected on the basis of a genetic screen by Tn-seq of *S. meliloti*, revealing that mutants have an increased sensitivity to the peptide NCR247 (25). Moreover, another Tn-seq study revealed that the transporter is essential for symbiosis (28). The LPS structure is one of the major determinants of AMP resistance and sensitivity in Gram-negative bacteria (24, 29). The selected genes *lpsB* and *lpxXL* encode a glycosyltransferase involved in the synthesis of the LPS core and a very-long-chain fatty acid acyltransferase involved in the biosynthesis of lipid A, respectively. Strains with mutations in these genes are affected in their resistance to AMPs and in symbiosis (30, 31). Finally, the *rpoH1* gene is a global stress response regulator in *S. meliloti* (32). This gene, as well as its target genes, is upregulated in NCR247-treated cells (26, 27). An *rpoH1* mutant is also affected in symbiosis (33). A second gene, *rpoH2*, has no apparent function under free-living conditions or during symbiosis (34, 35). These selected genes are expressed in all nodule zones but have peak expression in different regions of the nodule, where bacteria infect plant cells, undergo the differentiation process, or fix nitrogen (36) (see Fig. S1 in the supplemental material).

The sensitivities of strains with mutations in these candidate genes (Table S1) were tested with a small panel of cationic NCR peptides that were previously shown to have antimicrobial activities (14). The tested peptides, NCR169 (isoelectric point, 8.45), NCR183 (10.10), NCR247 (10.15), and NCR280 (9.80), displayed three different expression patterns in the nodule tissues (15). The *NCR280* gene is expressed in the younger nodule cells and the *NCR169* gene in the older cells, while *NCR183* and *NCR247* have an intermediate expression pattern (Fig. S1). The selected mutants were tested along with the wild-type strain and the *bacA* mutant, which was previously shown to be hypersensitive to NCRs (19). The four tested NCR peptides had strong antimicrobial activities against the wild-type strain, which displayed a survival rate ranging from 8% to 0.03%, depending on the tested peptide (Table S2). In agreement with previous results, the *bacA* mutant was hypersensitive to the four peptides (Table S2; Fig. 1). Interestingly,

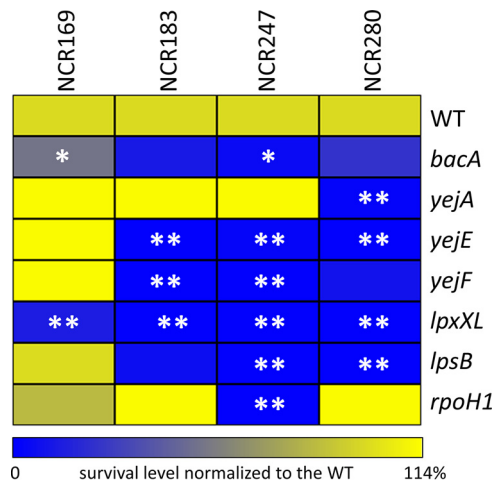


FIG 1 Sensitivity profile of *Sinorhizobium meliloti* strains to a panel of NCR peptides. The heatmap shows the survival of the mutant strains, expressed as percentages of that of the wild type (WT), set at 100%, for each peptide treatment. Nonparametric Kruskal-Wallis and *post hoc* Dunn tests were used to assess the significance of differences, which is indicated by asterisks (**, $P < 0.05$; *, $P < 0.1$). The results of one representative experiment out of two are shown.

the newly analyzed mutants all displayed a higher sensitivity to at least one of the peptides than the wild type (Table S2; Fig. 1). The *lpxXL* mutant was more sensitive to the four peptides, and the *lpsB*, *yejE*, and *yejF* mutants were more sensitive to NCR183, NCR247, and NCR280. The *yejA* mutant was more sensitive to NCR280, and the *rpoH1* mutant was more sensitive to NCR247. The differential responses to peptide NCR247 of the *yejA* mutant, on one hand, and of the *yejE* and *yejF* mutants, on the other hand, correspond to results of the previously described Tn-seq screen with this peptide (25). In contrast to the other mutants, the strains with mutations in the YejABEF transporter genes were newly constructed and not characterized before. Therefore, we confirmed that the NCR247 sensitivity phenotype was directly attributable to the inactivation of the transporter by complementation of the *yejF* mutant phenotype with a plasmid-borne copy of the *yejABEF* genes (Table S2). Taken together, our analysis indicated that each mutant displayed a sensitivity profile specific to the panel of tested peptides.

Inside the nodules, bacteroids experience (besides exposure to the NCR peptides) additional stress factors, such as elevated hydrogen peroxide levels (37), an acidic pH formed in the peribacteroid space (38), and a microaerobic environment (39). Almost all the mutants behaved very similarly to the wild type during unstressed growth in culture or in response to hydrogen peroxide, acid, and low-oxygen stress (Fig. S2). Only the *rpoH1* mutant was much less resistant to acid, in agreement with previous reports (33, 40), as well as to anaerobic stress, and it had a reduced growth rate (Fig. S2). On the other hand, the mutants were more sensitive than the wild type to the exposure to the detergent sodium dodecyl sulfate (SDS) (Fig. S2), indicating that these mutants have a reduced ability to cope with membrane-permeabilizing stresses, in agreement with their increased NCR sensitivity. Thus, except for the *rpoH1* mutant, which has a general defect in growth and stress management, the selected mutants seem to be, among the known stress factors in the nodule environment, specifically sensitive to the NCRs.

Nodule formation by NCR-sensitive *Sinorhizobium meliloti* mutants. Next, the phenotypes of these mutants in symbiosis with *M. truncatula* were compared with those of the wild-type strain and the *bacA* mutant. Measurement of the nitrogen fixation activity and macroscopic inspection of the root systems of plants inoculated with the wild type and the seven mutants (Fig. S3) revealed that, besides the wild type, strains with mutant *yejA*, *yejE*, *yejF*, or *lpxXL* genes formed functional nodules (Fix^+), although the *yejE*, *yejF*, and *lpxXL* mutants had a reduced nitrogen fixation activity. On

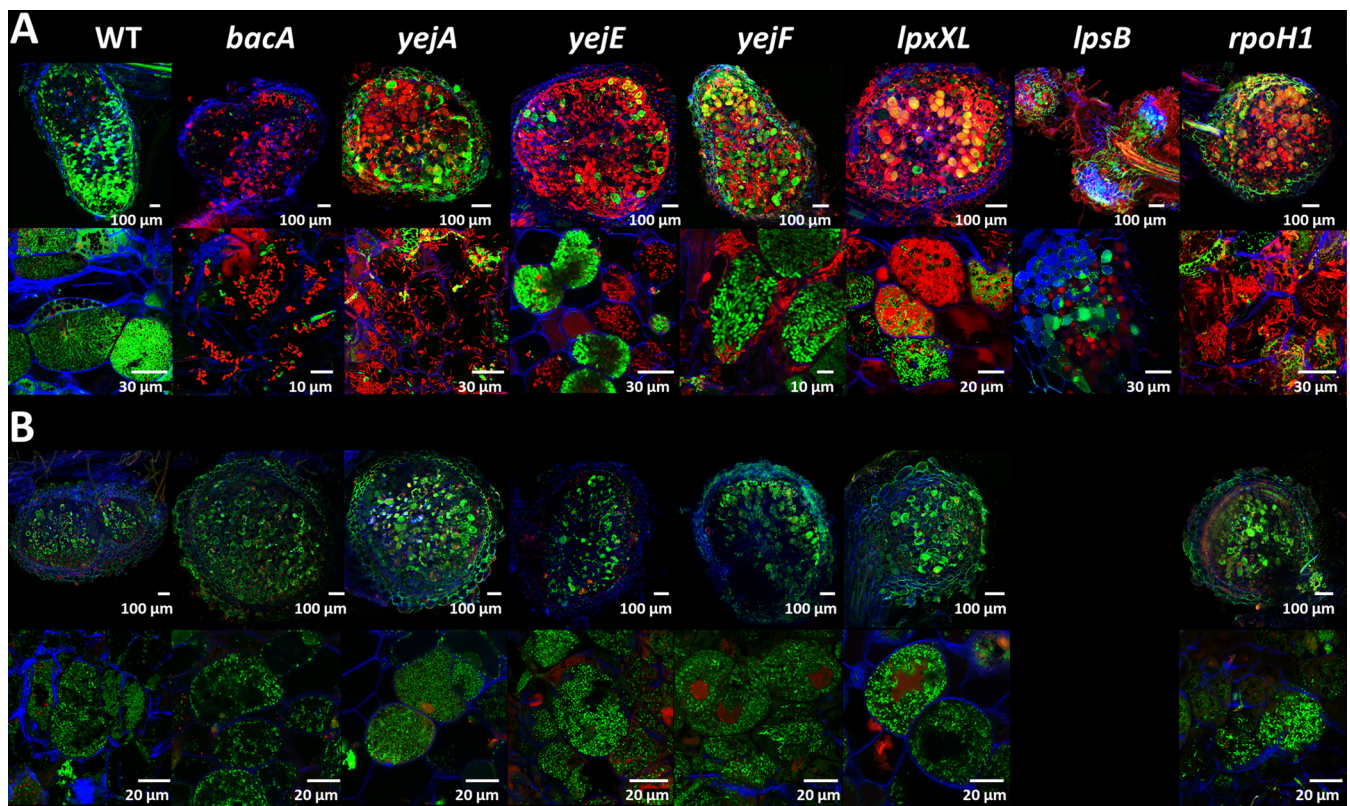


FIG 2 Symbiotic phenotypes of *Sinorhizobium meliloti* mutants during symbiosis with wild-type *Medicago truncatula* or the *dnf1* mutant. (A) Membrane permeability in bacteroids of the *S. meliloti* Sm1021 wild type and mutants in wild-type *M. truncatula* nodules, determined by live-dead staining of nodule sections and confocal microscopy. (B) Membrane permeability of the *S. meliloti* Sm1021 wild type and mutants in nodules of the *M. truncatula dnf1* mutant, determined by live-dead staining of nodule sections and confocal microscopy. Nodule phenotype at 21 days post inoculation. (Top row) Full nodule sections; (bottom row) enlarged images of symbiotic cells. Scale bars are indicated in each panel. The staining procedure of nodule sections with a mixture of the dyes propidium iodide, SYTO 9, and calcofluor white highlights the bacteroids and nodule bacteria with a green fluorescence signal (SYTO 9) when their membranes are well preserved and with a red fluorescence (propidium iodide) when their membranes are highly permeable. Plant cell walls are stained blue (calcofluor white). Representative images are shown, originating from at least two independent nodulation assays and from 5 to 10 nodules analyzed per condition.

the other hand, the *bacA*, *lpsB*, and *rpoH1* mutants formed nonfunctional (Fix⁻) and abnormal-looking nodules that were small and white, in agreement with previous descriptions (19, 30, 33).

The histological organization of the nodules formed by the mutants, the formation of infected symbiotic cells, and the viability of the bacteria that they contain were analyzed using confocal microscopy (Fig. 2A). The used staining procedure highlights the nodule bacteria with a green fluorescence signal (SYTO 9) when their membranes are well preserved and with a red fluorescence signal (propidium iodide) when their membranes are highly permeabilized. As previously reported, wild-type nodules formed symbiotic cells infected with green-labeled elongated bacteroids, while the nodules infected with the *bacA* mutant contained symbiotic cells carrying small undifferentiated bacteria stained red (19).

In contrast to what we expected from the macroscopic inspection of the nodules and their ability to fix nitrogen, the *yejA*, *yejE*, and *yejF* mutant bacteroids were substantially altered compared to wild-type bacteroids. A high proportion of them were stained red, indicating that their membranes were strongly permeabilized. Nevertheless, other host cells contained bacteroids stained green by the SYTO 9 dye. LpxXL is known to be important, but not essential, to *S. meliloti* during symbiosis with alfalfa (*Medicago sativa*) (41). The mutant forms hypertrophied bacteroids (31). In our experiments, the *lpxXL* mutant displayed elongated bacteroids that were mostly permeable to propidium iodide (stained red). This observation confirmed that *S. meliloti* LpxXL is also essential for the normal bacteroid differentiation process in *M. truncatula* but that it is not crucial for infection and

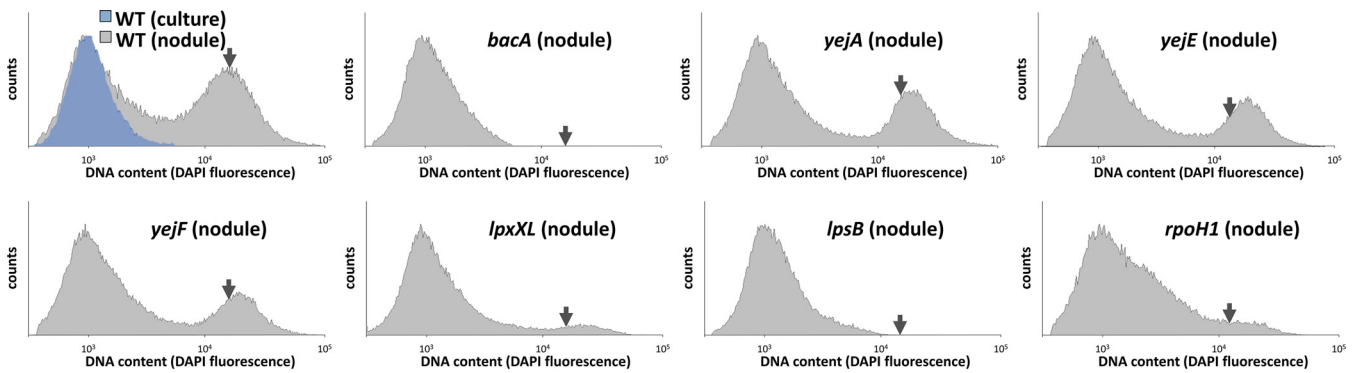


FIG 3 DNA contents of nodule bacteria in *Medicago truncatula*. Flow cytometry analysis of the DNA contents of bacteria in culture or isolated from nodules infected with the indicated strains and stained with 4',6-diamidino-2-phenylindole (DAPI). The cell counts (y axes) are represented as a function of the DAPI fluorescence intensity (x axes). The arrow in each graph indicates the mean DNA content of wild-type bacteroids, as in the upper left panel. The results of one representative experiment out of two are shown.

nitrogen fixation. The *rpoH1* mutant formed elongated bacteroids that nevertheless were strongly stained by propidium iodide, in agreement with the Fix⁻ phenotype of the nodules and the described phenotype of the mutant in alfalfa (33). Inside the small bumps elicited by the *lpsB* mutant, no cell seemed to be colonized by bacteria, as revealed by confocal microscopy. Thus, the *S. meliloti lpsB* mutant failed to colonize the host cells and was defective at a stage before plant cell infection. It was previously reported that the *lpsB* mutant colonizes nodule cells in *M. sativa*, suggesting a more severe defect in *M. truncatula* (42, 43). Therefore, we tested the phenotype of all the selected mutants also on *M. sativa* (Fig. S4). The *lpsB*, *rpoH1*, and the *yejA* mutants indeed had milder defects on this host, while the other mutants had similar phenotypes on the two hosts.

Can the increased membrane permeability of the NCR-sensitive *Sinorhizobium meliloti* mutants be attributed to the NCRs in nodules? The high membrane permeability of the *bacA* mutant nodule bacteria is the result of the action of the NCR peptides in the nodule cells of this NCR-hypersensitive mutant (19). Possibly, the same is true for the other mutants. To test this hypothesis, we made use of the *M. truncatula dnf1* mutant, which is defective in a nodule-specific subunit of the signal peptidase complex (44). This mutant cannot transport NCR peptides to the symbiosomes (13). As a result, the wild-type *S. meliloti* nodule bacteria in this mutant are not differentiated. The *bacA* mutant, which is strongly permeabilized and stained by propidium iodide in nodules of wild-type *M. truncatula* plants, is not so in the *dnf1* mutant nodule cells because the bacteria are not challenged anymore with the NCRs (Fig. 2B) (19). Similarly to the *bacA* mutant, the *yejA*, *yejE*, *yejF*, *lpxXL*, and *rpoH1* mutants did not display membrane permeability, as revealed by the absence of propidium iodide staining, in the infected nodule cells of the *dnf1* mutant (Fig. 2B). This thus suggests that these mutants become membrane permeabilized by the actions of the NCRs and that their symbiotic defects are at least in part due to their hypersensitivity to the NCRs. The *lpsB* mutant did not form detectable nodule-like structures on the *dnf1* roots. Therefore, we cannot draw conclusions about the involvement of the NCR peptides in the symbiotic phenotype of this mutant.

Bacteroid differentiation of the NCR-sensitive *Sinorhizobium meliloti* mutants.

A very strong cell enlargement and an increase in the ploidy level of the bacteria characterize the differentiated bacteroids in *Medicago* nodules. These parameters can readily be measured by DAPI (4',6-diamidino-2-phenylindole) staining and flow cytometry (10). The wild-type bacteroids from *M. truncatula* nodules had a high DNA content, over 20-fold higher than the DNA content in free-living *S. meliloti* (Fig. 3), and increased light-scattering parameters reflecting the cell enlargement (Fig. S5). As previously reported, the nodules infected by the *bacA* mutant did not contain differentiated bacteria (Fig. 3; Fig. S5) (21). The bacteria in nodules induced by the *lpsB* mutant, probably

located in infection threads, had a profile that confirmed the complete absence of differentiated bacteria (Fig. 3; Fig. S5). Nodules infected with the *rpoH1* mutant had mostly undifferentiated bacteria, although a small amount of fully differentiated cells was detected, as were cells at an intermediate stage. Also, the nodules of the *lpxXL* mutant contained many undifferentiated bacteria as well as fully differentiated ones (Fig. 3; Fig. S5). In contrast, the *yejA*, *yejE*, and *yejF* mutant nodules contained large numbers of fully differentiated bacteria (Fig. 3; Fig. S5).

It was reported previously that the *lpxXL* mutant formed nodules containing hypertrophied and larger bacteria than the wild-type bacteroids (31). In our study, this difference was detectable in the flow cytometry measurements, which showed a higher DAPI fluorescence and light scattering for the small portion of differentiated bacteria in these nodules (Fig. 3; Fig. S5). Moreover, we noticed that the bacteroids in the nodules infected with the *yejA*, *yejE*, and *yejF* mutants displayed similar higher levels of DNA fluorescence and light scattering (Fig. 3; Fig. S5), suggesting that these bacteroids also have abnormal morphologies.

These patterns in *M. truncatula* nodules were overall similar to those in *M. sativa*, although the *rpoH1* mutant showed a higher number of intermediate and fully differentiated bacteroids and the *yejA* mutant had a profile similar to that in nodules of the wild type at 21 days post inoculation (dpi), while larger-than-normal bacteroids were detected only at 32 dpi (Fig. S6). These differences corresponded well with the macroscopic and microscopic differences in the nodules between the two host plants (Fig. 2; Fig. S3 and S4).

Defective bacteroid differentiation of *yejE* and *yejF* mutants. To confirm the altered bacteroid morphologies of the *yej* mutants suggested by the cytometry analysis, the *yejE* and *yejF* mutants were observed at high magnification by microscopy. Confocal and transmission electron microscopy (TEM) of *M. sativa* nodule sections showed that the nodule cells infected with the *yejE* or *yejF* mutant contained a very heterogeneous population of abnormal bacteroid morphs, including elongated, spherical, club-shaped, or irregular blob-like cells (Fig. 4A; Fig. S7). These cells contrasted strongly with the narrow, elongated wild-type bacteroids. This aberrant bacteroid phenotype of the mutants was restored to a wild-type phenotype by the introduction of a plasmid-borne copy of the *yejABEF* genes (Fig. S7; Table S1). The difference between wild-type and mutant bacteroids was also obvious by fluorescence microscopy observations of purified nodule bacteria (Fig. 4B). The quantification of cell morphology parameters by image analysis with MicrobeJ of free-living bacteria and the purified nodule bacteria confirmed the irregular forms of *yejE* and *yejF* bacteroids, notably showing that these bacteroids are broader and more spherical than the elongated wild-type bacteroids (Fig. 4C). Transmission electron microscopy further showed that the cytoplasm and inner membranes of many of the *yejF* bacteroids were retracted, leaving very large intermembrane spaces, which in some cases even developed into vacuoles entirely surrounded by cytoplasm. Some cells had multiple small and large vacuoles (Fig. S7A). Unlike with the bacteroids, in the cultured bacteria, no differences were observed in the ultrastructure of the wild-type and *yejF* mutant bacteria (Fig. S7B).

The formation of strongly abnormal bacteroids of the *yej* mutants is *a priori* contradictory with the nitrogen fixation activity of these nodules. Expression of the *nifH* gene is a marker for nitrogen-fixing bacteroids (45). A green fluorescent protein (GFP) gene under the control of the *nifH* promoter was introduced into the wild-type strain and the *bacA*, *yejE*, and *yejF* mutants (Table S1). Analysis of the GFP fluorescence in nodule bacteria of *M. truncatula* (Fig. 5) and *M. sativa* (Fig. S8) by confocal microscopy and flow cytometry showed that despite their aberrant morphology, the *yejE* and *yejF* bacteroids were mostly functional, although some nodule cells contained highly permeable bacteroids lacking the GFP signal, suggesting that they were nonfunctional.

NCR247 uptake by the YejABEF transporter. In *Escherichia coli*, both YejABEF and the BacA homolog SbmA mediate the transport of microcin C peptide-nucleotide antibiotics. Therefore, we tested whether the overlap in the substrates of YejABEF and BacA can be extended to NCR peptides, which are known substrates of BacA (20, 21).

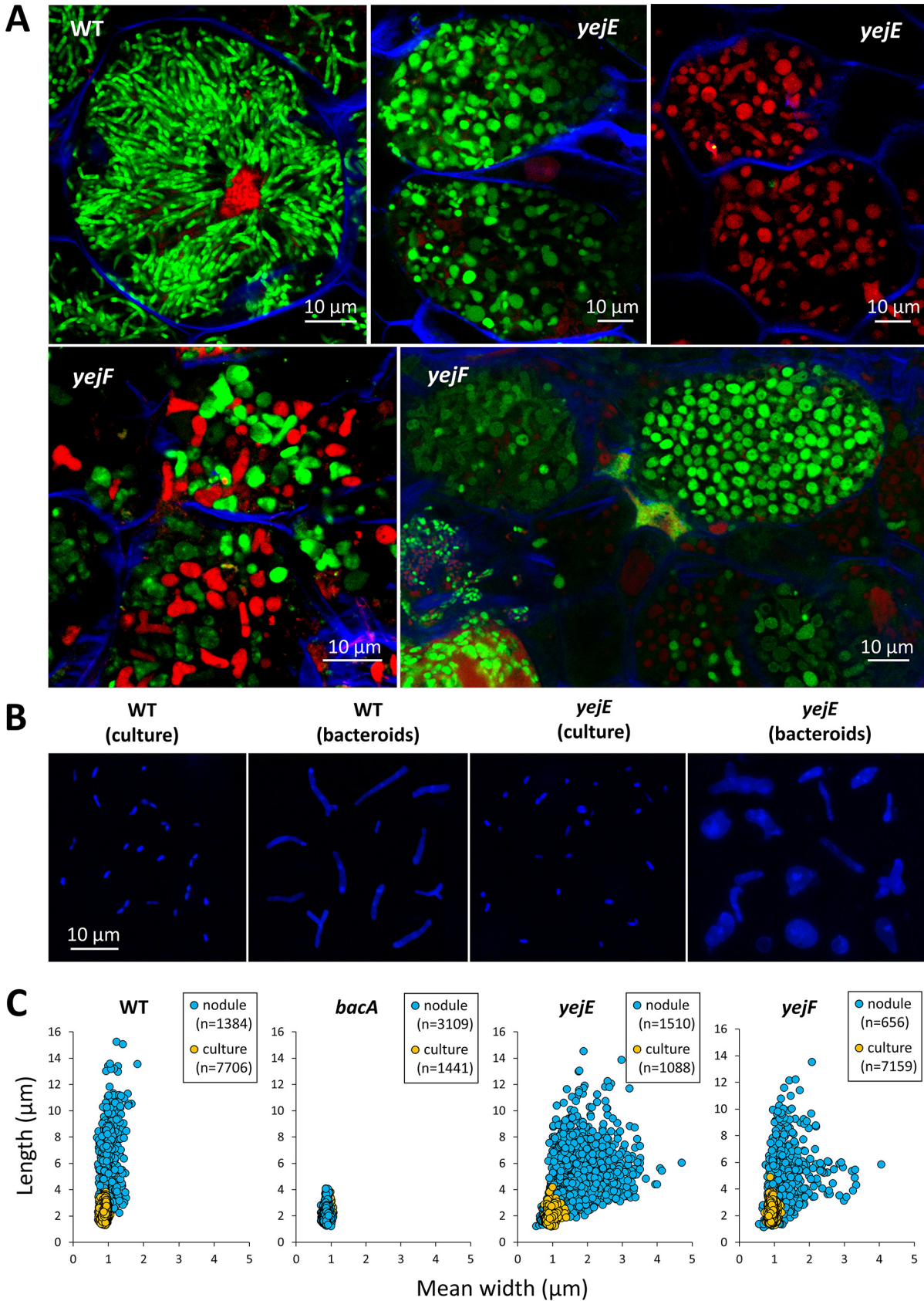


FIG 4 Bacteroid morphology of *yejE* and *yejF* mutants in *Medicago sativa* nodules. (A) Sections of nodules infected with the wild type and the *yejE* or *yejF* mutant were stained with a mixture of the dyes propidium iodide, SYTO 9, and calcofluor white and observed by confocal
(Continued on next page)

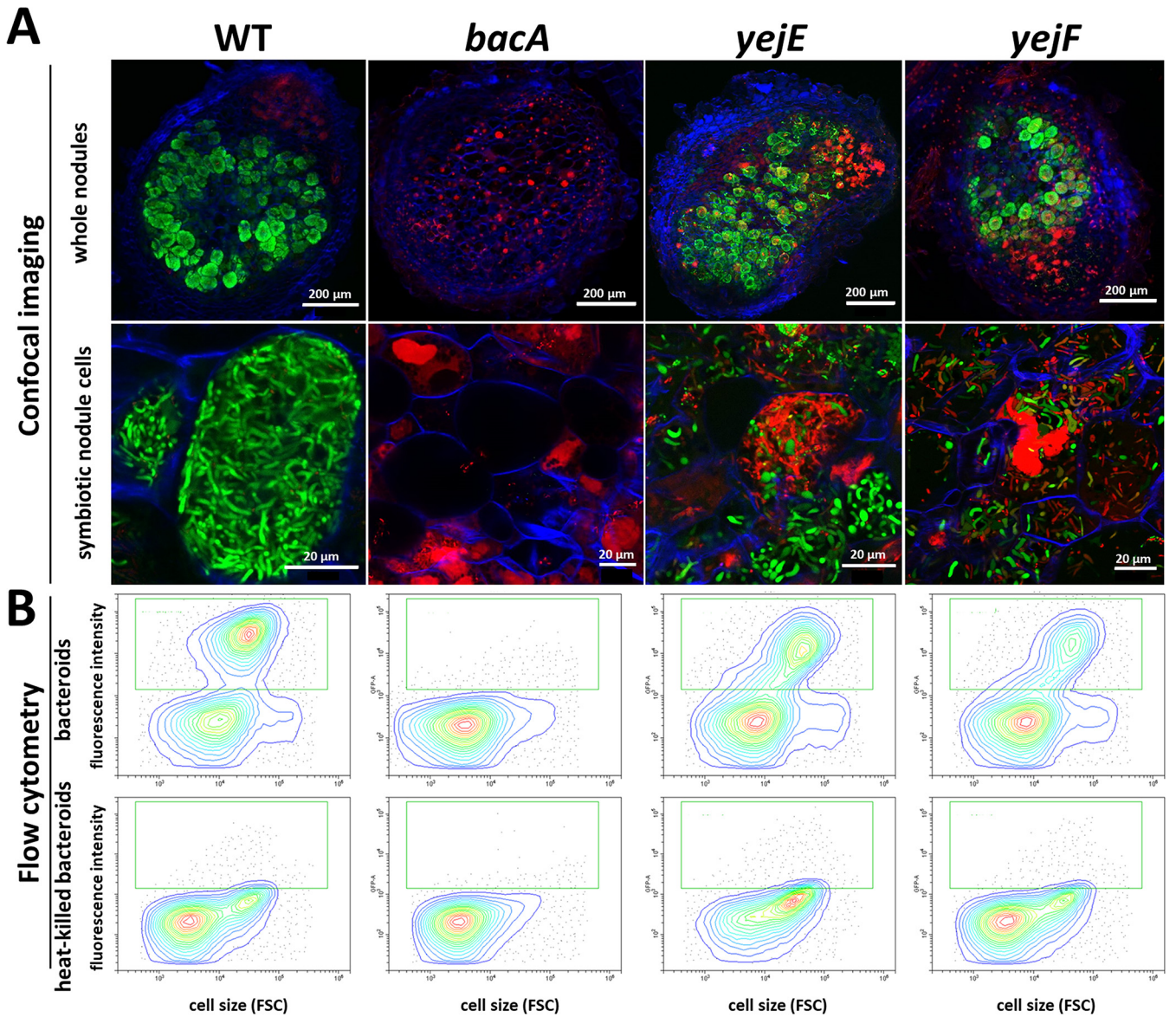


FIG 5 Nitrogenase expression in the *yejE* and *yejF* mutant bacteroids in *Medicago truncatula* nodules. (A) Confocal microscopy of sections of nodules infected with *S. meliloti* Sm1021.pHC60-*pniIFH::GFP* (WT), Sm1021.Δ*bacA*.pHC60-*pniIFH::GFP* (*bacA*), Sm1021.Δ*yejE*.pHC60-*pniIFH::GFP* (*yejE*), or Sm1021.Δ*yejF*.pHC60-*pniIFH::GFP* (*yejF*) and stained with propidium iodide (red stain). Green-stained bacteroids are functional, while red-stained bacteroids are nonfunctional. (B) Flow cytometry determination of GFP levels in nodule bacteria (upper panels) and heat-killed nodule bacteria (lower panels). The green square shows the position of the GFP-positive bacteroids. FSC, forward scatter.

We tested the impact of the mutations in the YejABEF transporter genes on NCR247 uptake and compared it with a mutation in *bacA*. With a flow cytometry-based assay and a fluorescent derivative of the NCR247 peptide, we found that while NCR247 uptake is completely abolished in the *bacA* mutant, as expected, its uptake is also reduced but not completely abolished in the *yejA*, *yejE*, and *yejF* mutants (Fig. 6). This suggests that the YejABEF transporter contributes to NCR uptake.

FIG 4 Legend (Continued)

microscopy. Scale bars (10 μm) are indicated in each panel. Representative images are shown, originating from at least two independent nodulation assays and from 5 to 10 nodules analyzed per condition. (B) Preparations of cultured bacteria or purified *M. sativa* nodule bacteria of the wild type and the *yejF* mutant were observed by fluorescence microscopy. The panels are composite images, and the shown individual cells were cut from original images and recombined in a single panel. Each panel is at the same magnification, and the scale bar (10 μm) is indicated in the left panel. (C) Cell shape parameters of free-living bacteria and bacteroids determined by MicrobeJ. Dot plots show the mean widths and lengths of cells of the indicated strains. Each point represents the values of one bacterium. Numbers of analyzed cells (n) are indicated.

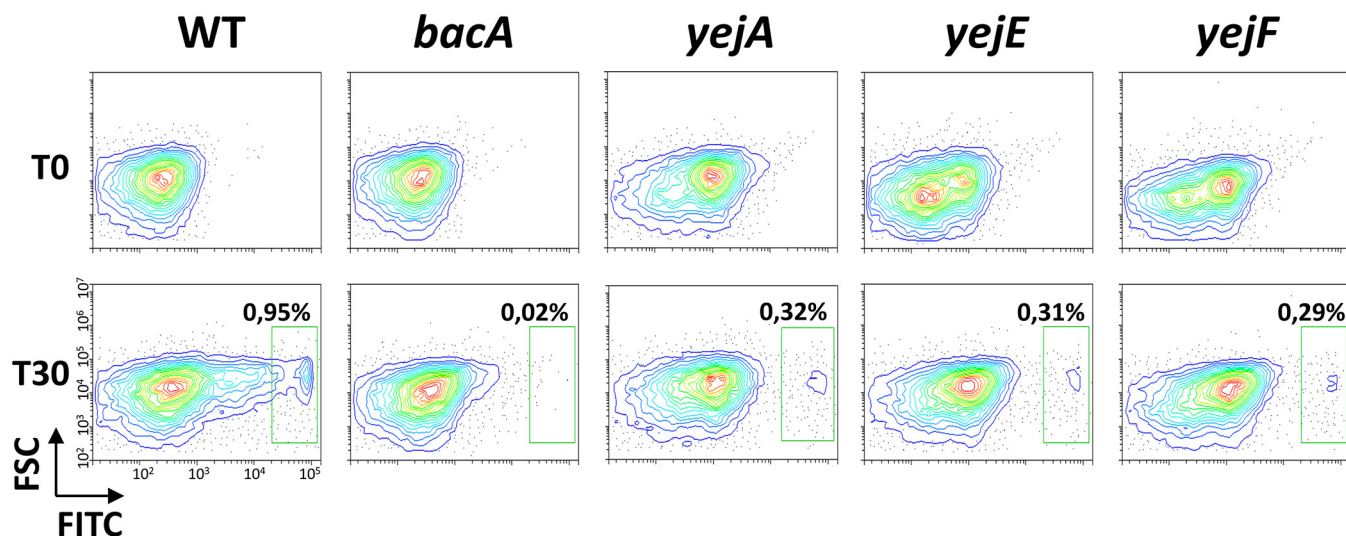


FIG 6 Uptake of NCR247 mediated by the BacA and YejABEF transporters. Flow cytometry measurement of fluorescein isothiocyanate (FITC) fluorescence in *S. meliloti* cells before (time zero [T0]) and after 30 min of incubation (T30) of the bacteria with the NCR247-FITC peptide. "FITC" on the x axis is FITC-derived fluorescence, and "FSC" on the y axis is forward scatter. In the wild type, two subpopulations of bacteria were observed, an FITC-negative population and an FITC-positive one, which has taken up the NCR247-FITC peptide. The green rectangle in the different panels shows the FITC-positive subpopulation in the wild type and the corresponding region in the analyzed mutants. In the *bacA* mutant, the FITC-positive subpopulation is absent, and in the *yejA*, *yejE*, and *yejF* mutants, it is strongly reduced compared to that of the wild type. The analysis was performed in quadruplicate, and the results of a representative example are shown.

DISCUSSION

Multiple functions of *Sinorhizobium meliloti* contribute to NCR resistance and are required for bacteroid formation and persistence. The NCR peptides are a two-edged sword. On the one hand, they maneuver the rhizobial endosymbionts into a terminally differentiated state via a multitude of activities on the bacteria, of which membrane permeabilization, cell cycle perturbation (polyploidization), and cell enlargement are the most visible ones. On the other hand, many NCRs, notably the cationic ones, have antimicrobial activities that potentially kill the endosymbionts (13, 14). Therefore, rhizobia have to defend themselves to be able to establish a chronic infection in the NCR-producing symbiotic cells of the nodules. Previous work has identified the BacA peptide transporter and the EPS barrier in the bacterial envelope as defenses of *Sinorhizobium* strains against the NCRs of their *Medicago* hosts (14, 19, 23).

Here, we defined three new functions in *S. meliloti*, the LPS, the sigma factor RpoH1, and the YejABEF peptide transporter, as additional determinants in bacteroids required to cope with NCR peptides. We show that mutants with the corresponding genes knocked out are more sensitive to a panel of antimicrobial NCRs and that this hypersensitivity is correlated with a strongly enhanced membrane permeability of the nodule bacteria and abnormalities in their morphology and ploidy levels. It is striking, however, that the different mutants have markedly different bacteroid phenotypes, ranging from undifferentiated to hyper-differentiated. This can be attributed to several factors. Each mutant has a specific NCR sensitivity profile when tested against a small panel of peptides, and the "NCR landscape" present in the developing symbiotic cells is continuously changing because of the expression of the NCR genes in different waves during symbiotic cell differentiation (15). Accordingly, the mutants may accumulate NCR-induced damage at different rates and reach the breaking point at different stages over the course of the bacteroid differentiation process (Fig. S1). Moreover, the expression patterns of the bacterial genes in the nodule zones are different, suggesting that their principal impact is realized at distinct stages of the symbiotic cell development and bacteroid differentiation.

Blocking the targeting of the NCR peptides to the nodule bacteria by the use of the *M. truncatula dnf1* mutant prevents the membrane permeabilization of the nodule bacteria in the mutants and results in the formation of very similar aberrant nodules by

the wild-type and all mutant strains (except for the *lpsB* mutant [see below]). This observation places the symbiotic role of these bacterial genes, at least in part, downstream of the peptide targeting the symbiosomes and is in agreement with the important role of these genes in responding to the NCRs. It should be noted that besides the antimicrobial NCR peptides, other stress factors, such as high H₂O₂ levels, a low pH, and low oxygen, are present in the nodule environment (37–39). We found that, except for the *rpoH1* mutant, strains with mutations in the studied genes were not affected by these stresses differently from the wild type, making it unlikely that they are the main cause of the bacteroid phenotypes in these mutants. However, our analyses do not exclude the possibility that these genes also contribute in the bacteroids to other, less-well-characterized stress factors in the nodule environment.

The functions of *S. meliloti* described here and before probably picture only part of the full toolkit of this symbiont to survive the NCR challenge. Many additional *S. meliloti* mutants are described with symbiotic phenotypes that are suggestive of a similar contribution to NCR resistance (46–57). In addition, other genes that may be important for symbiosis were discovered in a Tn-seq screen with the peptide NCR247 (25). This screen identified here-described functions, like those of the BacA and YejABEF transporters and LPS and EPS biosynthesis, but also identified never-analyzed functions. It would be of major interest to explore the functions of these genes in relation to the NCR response of bacteroids. Note that some of these genes might have escaped identification in previous genetic screens for symbiosis mutants because mutations might provoke only subtle phenotypes with a weak overall effect on nitrogen fixation under standard laboratory conditions but with bacteroid alterations in morphology and persistence, as illustrated here with the *yejABEF* mutants.

Response to NCR-induced stress regulated by the alternative sigma factor RpoH1. Bacteria deal with different types of stress conditions by global transcriptional responses mediated by alternative sigma factors. Among them, the RpoE and RpoH sigma factors are known to respond to periplasmic and membrane stressors, including AMPs (58–60). Given the membrane damage provoked by NCRs, a role of the orthologous regulators of *S. meliloti* in bacteroid differentiation and the NCR response may *a priori* have been expected. *S. meliloti* has 11 RpoE-like sigma factors. Remarkably, despite the fact that some RpoEs have a considerable effect on gene transcription, all single mutants, all possible double mutants, and even a mutant lacking all 11 genes showed no detectable phenotypic difference from the wild type in symbiosis or during many tested free-living growth conditions, including growth in the presence of membrane stresses (61, 62). Thus, the 11 *S. meliloti* RpoEs do not have the expected role in regulating the envelope stress response. This role seems to be taken up by RpoH1 in *S. meliloti*, in agreement with the observation that the growth of the *rpoH1* mutant is affected in the presence of various membrane-disrupting agents (33). We propose that the here-uncovered role of RpoH1 in NCR resistance is connected to its regulation of membrane stress. In addition, RpoH1 is crucial to various cytoplasmic stresses, including heat and osmotic and acidic stress, as well as anoxia or microoxia (33–35, 40). Thus, besides providing resistance to NCRs, RpoH1 might also be crucial for handling these additional stress factors in bacteroids. As RpoH1 controls directly and indirectly the expression of several hundreds of genes, a future challenge will be to dissect this massive response into specific stress adaptations (32, 40).

The lipopolysaccharide barrier against NCR membrane damage. In Gram-negative bacteria, LPS constitutes the first point of attack of cationic AMPs. In a two-stage process, AMPs make the first electrostatic interactions with the negatively charged LPS, allowing the AMPs to approach the membrane lipids and subsequently to insert into the lipid bilayer, perforate it, and translocate into the periplasm (63). The chemical composition of LPS can influence the efficiency of the AMP attack, and pathogens have evolved mechanisms to recognize the presence of AMPs and to modify in response the composition of the LPS to lower the potency of the AMP attack (64).

S. meliloti lpsB encodes a glycosyltransferase that participates in the biosynthesis of the LPS core (65). The mutation of the gene affects both the core structure and

O-antigen polymerization (42, 43). The O-antigen is thought to be a camouflage, masking the membrane and the charges in the membrane vicinity. In the *lpsB* mutant, the shorter O-antigen may be a less efficient shield against the NCRs, offering to the peptides an easier access to membrane-proximal charges resulting in the increased sensitivity of the *lpsB* mutant to the NCRs (this work) as well as to other AMPs (30, 43).

The *lpsB* mutant forms nodules on *M. sativa*, which contain infected cells, and it has a phenotype that is similar to that of the *bacA* mutant. However, the *lpsB* mutant forms uninfected nodules on *M. truncatula* roots. Therefore, it was not possible to test the implication of NCRs in this symbiotic phenotype with the use of the *dnf1* mutant, since the *DNF1* gene is expressed only in infected nodule cells (44). Since the NCR genes are nearly exclusively expressed in the infected symbiotic cells (15), the blockage of the mutant before the release of bacteria into nodule cells suggests that the LPS may provide protection against another stressor produced very early on in the infection process in *M. truncatula*. On the other hand, it was recently reported that some NCR genes are expressed in infected root hairs or Nod factor-stimulated root epidermal cells (66, 67). Thus, it is possible that the challenge with these early NCR peptides is already detrimental to the mutant, blocking any further progress in the infection process.

LpxXL of *S. meliloti* is a specific acyltransferase that introduces in the lipid A moiety of LPS the very-long-chain fatty acid 27-OHC28:0 (41). This LpxXL-dependent acylation is expected to make the lipid A hydrophobic, forming the biophysical basis for LpxXL-dependent NCR resistance. Indeed, it is known that the increased hydrophobicity of lipid A in bacteria increases the thickness of the outer layer of the outer membrane and reduces the membrane fluidity, which in its turn prevents or delays the insertion of diverse AMPs and subsequent membrane damage. Increasing lipid A hydrophobicity by introducing additional acyl chains is a well-known mechanism used by *Salmonella* to enhance its resistance against host AMPs during infection (64).

The YejABEF peptide transporter provides resistance to membrane-damaging peptides and sensitizes bacteria to AMPs with intracellular targets. A Tn-seq study has shown that transposon insertions in the *S. meliloti* *yejB* gene provoke a moderate growth impairment (68). Moreover, in a strain cured of the two symbiotic plasmids but not in the wild type, insertions in the four genes of the transporter resulted in a strong growth defect, signifying that a function redundant to YejABEF is encoded on one of the symbiotic plasmids (68). Additionally, the expression of the *yejA* gene, encoding the periplasmic binding protein of the transporter, was found in a systematic analysis of periplasmic binding proteins in *S. meliloti* to be induced by taurine, valine, isoleucine, and leucine, indicating that these amino acids may be substrates of YejA (69). Together, these data suggest that the YejABEF transporter of *S. meliloti* has a transport role that is important for growth in free-living bacteria. However, this ABC transporter has never been analyzed before in detail in the context of the rhizobium-legume symbiosis. Furthermore, even though this transporter is highly conserved among proteobacteria, its physiological role in whichever bacterium has been characterized in only a few instances. One of them is the uptake of microcin C in *E. coli*. This translation-inhibiting peptide-nucleotide of bacterial origin has no action on the bacterial membrane but has an intracellular target, the Asp aminoacyl-tRNA synthase (70). A strain with a mutation in the YejABEF transporter cannot take up microcin C and is resistant to it (71, 72). Conversely, the *Salmonella* and *Brucella* *yejABEF* mutants are more sensitive to peptides with membrane-damaging activities, such as defensins, polymyxin B, protamine, and melittin. Consequently, these mutants have reduced pathogenicity because their capacity to survive in macrophage cell lines or in mice is diminished (73, 74). Thus, the increased sensitivity of the *yejA*, *yejE*, and *yejF* mutants of *S. meliloti* toward NCRs is consistent with these previous findings.

The characteristics of the YejABEF peptide transporter toward membrane-damaging peptides versus peptides with intracellular actions are intriguingly parallel to the features of the BacA peptide transporter (named SbmA in *E. coli* and *Salmonella*). These transporters in *E. coli*, *Salmonella*, or *S. meliloti* are required for the import of diverse peptides with intracellular targets (microcins B17 and J25, Bac7, Bac5, and bleomycin), and mutants are

therefore resistant to them, while the same mutants are hypersensitive to membrane-active peptides (defensins, NCRs) (19, 75–78). Moreover, the ranges of peptides that can be imported overlap between these two transporters. Both, YejABEF and SbmA in *E. coli* can take up microcin C derivatives (71). Furthermore, we show that in *S. meliloti*, both BacA and YejABEF contribute to NCR247 uptake. Intriguingly, our genetic analysis suggests that both transporters cooperate to import this peptide, since inactivation of one or the other abolishes or strongly reduces uptake. How these two transporters can physically interact and cooperate is an issue of interest for future research. Nevertheless, BacA can function (partially) in the absence of YejABEF, while the inverse is not the case. This may be the basis for the markedly different symbiotic phenotype of the *bacA* and *yej* mutants. While the *bacA* mutation is detrimental from the earliest contact with NCRs, and the mutant bacteria die as soon as they are released from infection threads in the symbiotic cells, the *yej* mutants cope with the NCR peptides much longer and show abnormalities only at the end of the bacteroid differentiation process and symbiont life span. The *yejA* mutant had a different NCR sensitivity profile than the *yejE* and *yejF* mutants, and this was correlated with a different symbiotic phenotype in the *M. sativa* host. This suggests that the periplasmic binding protein YejA contributes to the interaction with only a subset of the NCR peptides. Nevertheless, YejA seems to contribute to NCR247 uptake to an extent similar to that of YejE and YejF, despite the fact that, unlike with the *yejE* and *yejF* mutants, the sensitivity of the *yejA* mutant to the NCR247 peptide is not affected compared to that of the wild type.

How do the YejABEF and BacA transporters contribute to resistance to NCRs and other membrane-damaging peptides? The most straightforward model that has been proposed before for BacA (19–21), as well as for the unrelated SapABCDF peptide uptake transporter in *Salmonella* (79), is the reduction of the AMP concentration in the vicinity of the inner membrane below a critical threshold. Alternatively, the presence or activity of the transporters might indirectly affect the bacterial envelope structure, rendering it more robust against AMPs. The higher sensitivity of the *yej* mutants toward SDS is in agreement with this possibility. Similarly, membrane alterations were reported in the *bacA* mutant of *S. meliloti* (80).

Conclusions. The multifaceted NCR resistance required for symbiosis and chronic infection of the nodule cells mirrors the multitude of AMP resistance mechanisms in animal pathogens, which collectively contribute to the pathogenicity of these bacteria (2, 3, 81). However, one dimension of this strategy in pathogens is not known in *S. meliloti* and consists of the direct recognition of host AMPs by receptors triggering an adaptive response. Probably the best-studied AMP receptor is the two-component regulator PhoPQ in *Salmonella*, which adjusts the LPS composition in response to the presence of host peptides (64). In this respect, it is of interest to note that the rhizobial LPS structure changes strongly in bacteroids of NCR-producing nodules (82, 83). Perhaps the *S. meliloti* ExoS-ChvI or FeuP-FeuQ two-component regulators, which are upregulated by NCR treatment and essential for symbiosis (26, 46, 47), form such a regulatory module, recognizing NCRs and controlling an appropriate response in the bacteroids. Strikingly, the *yejA* promoter is a proposed direct target of ChvI (84).

As shown here, rhizobia have to defend themselves to be able to establish a chronic infection in the NCR-producing symbiotic cells of the nodules. On the other hand, the profile of NCR peptides produced in the nodule cells is also determinant for the outcome of the symbiosis, and some *M. truncatula* strains with mutations in individual NCR genes or *M. truncatula* strains expressing specific NCR alleles display incompatibility with *S. meliloti* strains (85–88). Thus, a fine balance must be established in the symbiotic nodule cells between the NCR landscapes and matching multifactorial bacterial countermeasures. Perturbations in the host or in the endosymbiont, like the ones described here, affecting this equilibrium lead to a breakdown of the symbiosis.

MATERIALS AND METHODS

Bacterial strains, plant growth and nodulation assays, and analysis. The procedures for the growth of the *S. meliloti* Sm1021 strain and its derivatives (see Table S1 in the supplemental material)

and plant culture of the *M. sativa* cultivar Gabès, the *M. truncatula* accession strain Jemalong A17, and the A17 *dnf1* mutant, as well as nodulation assays, acetylene reduction assays, bacteroid isolation, flow cytometry measurements, and confocal microscopy, were performed as described before (89).

Bacterial mutants with mutations in *rpoH1*, *yejA*, *yejE*, and *yejF* were obtained by plasmid insertion or by gene deletions as described before (90). For plasmid insertion mutagenesis, PCR-amplified internal gene fragments were cloned into the pVO155-*pnpt2::GFP* plasmid (Table S1), followed by cointegration of the resulting construct in the *S. meliloti* genome. Deletion mutants of complete open reading frames were obtained by double crossover of the plasmid pNPTS129, carrying the PCR-amplified merged upstream and downstream regions of the target gene (Table S1). Constructs in the pVO155-*pnpt2::GFP* and pNPTS129 plasmids were transferred from *E. coli* into *S. meliloti* by triparental conjugation using the helper plasmid pRK600 (Table S1).

For complementation studies via merodiploid strains, a DNA fragment containing the *yejABEF* genes was PCR amplified from *S. meliloti* Sm1021 genomic DNA using primers *yejA*_NdeI_F and *yejF*_XbaI_R (Table S1) and cloned between the NdeI and XbaI restriction sites of the pSRKGm vector (91). The resulting construct, pSRK-*yejABEF* (Table S1), was confirmed by restriction analysis and sequencing. The plasmid and the empty pSRKGm vector were conjugated to wild-type Sm1021 or the *yejE* and *yejF* deletion mutants by triparental mating. In the pSRK-*yejABEF* plasmid, the *yejABEF* genes are downstream of the *lac* promoter, providing a low basal expression and an isopropyl- β -D-thiogalactopyranoside (IPTG)-inducible expression. To ensure sufficient expression of the plasmid-derived *yejABEF* genes in the nodules infected with strains carrying the pSRK-*yejABEF* plasmid, plants were watered twice per week with 50 ml 1 mM IPTG-containing nutrient solution.

Derivatives of the *S. meliloti* wild-type strain and the *bacA*, *yejE*, and *yejF* mutants, carrying a *GFP* gene under the control of the *nifH* promoter on the broad-host-range, low-copy-number IncP plasmid pHC60-*pnifH::GFP*, were obtained by triparental mating (Table S1).

The *in vitro* sensitivity assays (Fig. 1 and 6; Fig. S2) were performed with the *yejA*, *yejE*, and *yejF* plasmid insertion mutants. Initial nodulation experiments were performed with both the *yejA*, *yejE*, and *yejF* plasmid insertion mutants and the corresponding deletion mutants. Since both types of mutants displayed identical phenotypes in symbiosis, all subsequent nodulation experiments, including all experiments shown here, were performed with the deletion mutants.

Quantitative analysis of the shape of free-living bacteria and bacteroids was performed with the MicrobeJ plugin of ImageJ (92). Bacteroid extracts and exponential-phase cultures were stained with 2.5 nM SYTO 9 for 10 min at 37°C and mounted between slides and coverslips. Bacterial imaging was performed on an SP8 laser-scanning confocal microscope (Leica Microsystems) equipped with hybrid detectors and a 63 \times oil immersion objective (Plan Apo, numerical aperture [NA], 1.4; Leica). For each condition, multiple z-stacks (2.7- μ m width, 0.7- μ m step) were automatically acquired (excitation, 488 nm; collection of fluorescence, 520 to 580 nm). Stacks were transformed as maximum intensity projections using ImageJ software (93). Bacteria in the image stacks were automatically detected with MicrobeJ using an intensity-based threshold method with a combination of morphological filters. To ensure high data quality, every image was manually checked to remove false-positive objects (mainly plant cell debris). Morphological parameters were directly extracted from MicrobeJ, and figures were created with Excel or ggplot2 in R.

In vitro sensitivity and peptide uptake assays. NCR sensitivity assays were carried out essentially as described previously (20). Triplicate measurements were performed in at least two independent experiments per treatment. Nonparametric Kruskal-Wallis and *post hoc* Dunn tests were performed to assess the significance of differences between the sensitivities of the wild type and the mutant strains. To measure the resistance of strains to SDS, H₂O₂, and HCl stress, overnight cultures of the wild type and mutants were diluted to an optical density at 600 nm (OD₆₀₀) of 0.2. A total of 100 μ l of these suspensions was added to 3 ml soft agar (0.7% agar) and poured onto 1.5% agar plates. After solidification of the soft agar, filter paper disks (5-mm diameter) were placed on the center of the plate, and 5 μ l of 10% (wt/vol) SDS, 2 M HCl, or 1% H₂O₂ was added to the disks. Plates were incubated at 28°C for 3 days, and the diameter of the clearing zone was measured. For microaerobic and anaerobic treatments, cultures of the wild type and mutants were diluted to an OD₆₀₀ of 0.1, and 5-fold dilution series of each were prepared. The dilution series were subsequently spotted (5 μ l per spot) on agar plates. One series of plates was grown under aerobic conditions. A second series of plates was placed in a 2.5-liter airtight jar containing an AnaeroPack-MicroAero (Mitsubishi Gas Chemical) bag for microaerobic growth (6 to 12% O₂, according to the product specifications). The third series of plates was placed in a 2.5-liter jar containing an AnaeroGen 2.5-liter (Thermo Scientific) bag for anaerobic growth (<0.1% O₂, according to the product specifications). All plates were grown at 28°C, and after 3 days, the plates were removed from the jars for the microaerobic and anaerobic conditions. After 3 days, colonies were sufficiently grown under the aerobic condition for counting. Growth was observed under the microaerobic conditions but was less strong than under the aerobic condition, and these plates were further incubated for 1 day before colony counting. No growth was observed after 3 days under the anaerobic conditions, and plates were incubated for 4 days under aerobic conditions before colony counting. Colony counting was done using a binocular. Quadruplicate measurements and two independent experiments per treatment were performed. Nonparametric Kruskal-Wallis and *post hoc* Dunn tests were performed to assess significance of differences in all the assays. For growth curves, precultures were diluted to an OD₆₀₀ of 0.04 in YEB medium (89). Cultures were dispatched in microtiter plates with 200 μ l of culture per well. The plates were incubated in a SPECTROstar Nano (BMG Labtech) plate reader for 100 h at 28°C with 100-rpm shaking, and OD₆₀₀ measurements were taken every 30 min. Doubling times were calculated from the obtained growth curves ($n = 10$), and nonparametric Kruskal-Wallis and *post hoc* Dunn tests were performed to

assess the significance of differences between growth rates. Peptide uptake assays were performed in quadruplicate as described previously (20, 94).

TEM. OD₆₀₀ bacterial suspensions of 6- or 21-day-old nodule samples were incubated in fixative (3% glutaraldehyde, 1% paraformaldehyde in 0.1 M cacodylate, pH 6.8) for 1 to 3 h and washed with 0.1 M cacodylate buffer, pH 6.8. Samples were then incubated for 1 h in 1% osmium tetroxide, 1.5% potassium ferrocyanide in water. After being washed, bacterial suspensions were pelleted in 2% low-melting-point agarose to facilitate their manipulation. Samples were dehydrated by incubation in increasing concentrations of ethanol (nodule samples for a total of 4 h in 10, 20, 30, 50, 70, 90, and 100% absolute ethanol-propylene oxide; bacterial pellets for a total of 2 h in 10, 30, 50, 70, 90, and 100% absolute ethanol), followed by infiltration with epoxy resin (low-viscosity Premix kit medium; Agar Scientific) (for nodule samples, 3 days of infiltration; for bacterial pellets, 24 h of infiltration) and polymerization for 24 h at 60°C. Ultrathin sections (80 to 70 nm) were obtained with an ultramicrotome EM UC6 (Leica Microsystems) and collected on Formvar carbon-coated copper grids (Agar Scientific). Sections were stained with 2% uranyl acetate (Merck) and lead citrate (Agar Scientific) before being observed with a JEOL JEM-1400 transmission electron microscope operating at 120 kV. Images were acquired using a post-column chromatography high-resolution (11-megapixel) high-speed camera (SC1000 Orius; Gatan) and processed with Digital Micrograph (Gatan).

SUPPLEMENTAL MATERIAL

Supplemental material is available online only.

FIG S1, PDF file, 0.2 MB.

FIG S2, PDF file, 0.8 MB.

FIG S3, PDF file, 0.7 MB.

FIG S4, PDF file, 1 MB.

FIG S5, PDF file, 0.8 MB.

FIG S6, PDF file, 1.1 MB.

FIG S7, PDF file, 0.8 MB.

FIG S8, PDF file, 1 MB.

TABLE S1, PDF file, 0.2 MB.

TABLE S2, PDF file, 0.6 MB.

ACKNOWLEDGMENTS

We are grateful to Corinne Foucault for assistance with plant experiments and Cynthia Dupas for help with the TEM experiments.

Q.N. and S.D. were supported by Ph.D. fellowships from the Paris-Saclay University, and Q.B. and N.B. were supported by postdoc grants from the Agence Nationale de la Recherche. The present work has benefited from the Imagerie-Gif core facility, supported by the Agence Nationale de la Recherche (grant ANR-11-EQPX-0029/Morphoscope, grant ANR-10-INBS-04/FranceBioImaging; grant ANR-11-IDEX-0003-02/Saclay Plant Sciences). The E.K. laboratory is supported by the NKFIH Frontline Research project KKP129924 and a Balzan research grant. The work in the P.M. laboratory was supported by the LabEx Saclay Plant Sciences-SPS and grants ANR-17-CE20-0011 and ANR-16-CE20-0013 from the Agence Nationale de la Recherche.

Q.N., Q.B., and N.B. jointly initiated this work. Q.N., Q.B., N.B., S.D., D.T., M.L., E.G.B., and T.T. constructed strains and performed nodulation assays. Q.N., Q.B., S.D., R.L.B., C.B., and T.T. performed microscopy and flow cytometry. Q.B., S.J., A.K., and E.K. performed the *in vitro* experiments and provided reagents. Q.N., Q.B., N.B., E.G.B., T.T., B.A., and P.M. conceived the study and analyzed the data. P.M. wrote the manuscript with input from all authors.

REFERENCES

- Hanson MA, Lemaitre B. 2020. New insights on *Drosophila* antimicrobial peptide function in host defense, and beyond. *Curr Opin Immunol* 62:22–30. <https://doi.org/10.1016/j.coi.2019.11.008>.
- Mergaert P. 2018. Role of antimicrobial peptides in controlling symbiotic bacterial populations. *Nat Prod Rep* 35:336–356. <https://doi.org/10.1039/c7np00056a>.
- Maróti G, Kereszt A, Kondorosi E, Mergaert P. 2011. Natural roles of antimicrobial peptides in microbes, plants and animals. *Res Microbiol* 162:363–374. <https://doi.org/10.1016/j.resmic.2011.02.005>.
- Mergaert P, Kikuchi Y, Shigenobu S, Nowack ECM. 2017. Metabolic integration of bacterial endosymbionts through antimicrobial peptides. *Trends Microbiol* 25:703–712. <https://doi.org/10.1016/j.tim.2017.04.007>.
- Kondorosi E, Mergaert P, Kereszt A. 2013. A paradigm for endosymbiotic life: cell differentiation of *Rhizobium* bacteria provoked by host plant factors. *Annu Rev Microbiol* 67:611–628. <https://doi.org/10.1146/annurev-micro-092412-155630>.
- Alunni B, Gourion B. 2016. Terminal bacteroid differentiation in the legume-rhizobium symbiosis: nodule-specific cysteine-rich peptides

- and beyond. *New Phytol* 211:411–417. <https://doi.org/10.1111/nph.14025>.
7. Pan H, Wang D. 2017. Nodule cysteine-rich peptides maintain a working balance during nitrogen-fixing symbiosis. *Nat Plants* 3:17048. <https://doi.org/10.1038/nplants.2017.48>.
 8. Stonoha-Arther C, Wang D. 2018. Tough love: accommodating intracellular bacteria through directed secretion of antimicrobial peptides during the nitrogen-fixing symbiosis. *Curr Opin Plant Biol* 44:155–163. <https://doi.org/10.1016/j.pbi.2018.04.017>.
 9. Roy P, Achom M, Wilkinson H, Lagunas B, Gifford ML. 2020. Symbiotic outcome modified by the diversification from 7 to over 700 nodule-specific cysteine-rich peptides. *Genes* 11:348. <https://doi.org/10.3390/genes11040348>.
 10. Mergaert P, Uchiumi T, Alunni B, Evanno G, Cheron A, Catrice O, Mausset A-E, Barloy-Hubler F, Galibert F, Kondorosi A, Kondorosi E. 2006. Eukaryotic control on bacterial cell cycle and differentiation in the *Rhizobium*-legume symbiosis. *Proc Natl Acad Sci U S A* 103:5230–5235. <https://doi.org/10.1073/pnas.0600912103>.
 11. Czernic P, Gully D, Cartieaux F, Moulin L, Guefrachi I, Patrel D, Pierre O, Fardoux J, Chaintreuil C, Nguyen P, Gressent F, Da Silva C, Poulain J, Wincker P, Rofidal V, Hem S, Barrière Q, Arrighi J-F, Mergaert P, Giraud E. 2015. Convergent evolution of endosymbiont differentiation in Dalbergioid and Inverted Repeat-Lacking Clade legumes mediated by nodule-specific cysteine-rich peptides. *Plant Physiol* 169:1254–1265. <https://doi.org/10.1104/pp.15.00584>.
 12. Mergaert P, Nikovics K, Kelemen Z, Maunoury N, Vaubert D, Kondorosi A, Kondorosi E. 2003. A novel family in *Medicago truncatula* consisting of more than 300 nodule-specific genes coding for small, secreted polypeptides with conserved cysteine motifs. *Plant Physiol* 132:161–173. <https://doi.org/10.1104/pp.102.018192>.
 13. Van de Velde W, Zehirov G, Szatmari A, Debreczeny M, Ishihara H, Kevei Z, Farkas A, Mikulass K, Nagy A, Tiricz H, Satiat-Jeunemaitre B, Alunni B, Bourge M, Kucho K, Abe M, Kereszt A, Maroti G, Uchiumi T, Kondorosi E, Mergaert P. 2010. Plant peptides govern terminal differentiation of bacteria in symbiosis. *Science* 327:1122–1126. <https://doi.org/10.1126/science.1184057>.
 14. Montiel J, Downie JA, Farkas A, Bihari P, Herczeg R, Bálint B, Mergaert P, Kereszt A, Kondorosi É. 2017. Morphotype of bacteroids in different legumes correlates with the number and type of symbiotic NCR peptides. *Proc Natl Acad Sci U S A* 114:5041–5046. <https://doi.org/10.1073/pnas.1704217114>.
 15. Guefrachi I, Nagymihaly M, Pislariu Cl, Van de Velde W, Ratet P, Mars M, Udvardi MK, Kondorosi E, Mergaert P, Alunni B. 2014. Extreme specificity of NCR gene expression in *Medicago truncatula*. *BMC Genomics* 15:712. <https://doi.org/10.1186/1471-2164-15-712>.
 16. Lima RM, Kylarová S, Mergaert P, Kondorosi É. 2020. Unexplored arsenals of legume peptides with potential for their applications in medicine and agriculture. *Front Microbiol* 11:1307. <https://doi.org/10.3389/fmicb.2020.01307>.
 17. Mikuláss KR, Nagy K, Bogos B, Szegletes Z, Kovács E, Farkas A, Váró G, Kondorosi É, Kereszt A. 2016. Antimicrobial nodule-specific cysteine-rich peptides disturb the integrity of bacterial outer and inner membranes and cause loss of membrane potential. *Ann Clin Microbiol Antimicrob* 15:43. <https://doi.org/10.1186/s12941-016-0159-8>.
 18. Farkas A, Maróti G, Durgó H, Györgypál Z, Lima RM, Medzihradsky KF, Kereszt A, Mergaert P, Kondorosi É. 2014. *Medicago truncatula* symbiotic peptide NCR247 contributes to bacteroid differentiation through multiple mechanisms. *Proc Natl Acad Sci U S A* 111:5183–5188. <https://doi.org/10.1073/pnas.1404169111>.
 19. Haag AF, Baloban M, Sani M, Kerscher B, Pierre O, Farkas A, Longhi R, Boncompagni E, Hérouart D, Dall'angelo S, Kondorosi E, Zanda M, Mergaert P, Ferguson GP. 2011. Protection of *Sinorhizobium* against host cysteine-rich antimicrobial peptides is critical for symbiosis. *PLoS Biol* 9:e1001169. <https://doi.org/10.1371/journal.pbio.1001169>.
 20. Barrière Q, Guefrachi I, Gully D, Lamouche F, Pierre O, Fardoux J, Chaintreuil C, Alunni B, Timchenko T, Giraud E, Mergaert P. 2017. Integrated roles of BcIA and α -carboxypeptidase 1 in Bradyrhizobium differentiation within NCR-producing and NCR-lacking root nodules. *Sci Rep* 7:9063. <https://doi.org/10.1038/s41598-017-08830-0>.
 21. Guefrachi I, Pierre O, Timchenko T, Alunni B, Barrière Q, Czernic P, Villaécija-Aguilar J-A, Verly C, Bourge M, Fardoux J, Mars M, Kondorosi E, Giraud E, Mergaert P. 2015. *Bradyrhizobium* BcIA is a peptide transporter required for bacterial differentiation in symbiosis with *Aeschynomene* legumes. *Mol Plant Microbe Interact* 28:1155–1166. <https://doi.org/10.1094/MPMI-04-15-0094-R>.
 22. Rempel S, Gati C, Nijland M, Thangaratnarajah C, Karyolaimos A, de Gier JW, Guskov A, Slotboom DJ. 2020. A mycobacterial ABC transporter mediates the uptake of hydrophilic compounds. *Nature* 580:409–412. <https://doi.org/10.1038/s41586-020-2072-8>.
 23. Arnold MFF, Penterman J, Shabab M, Chen EJ, Walker GC. 2018. Important late-stage symbiotic role of the *Sinorhizobium meliloti* exopolysaccharide succinoglycan. *J Bacteriol* 200:e00665-17. <https://doi.org/10.1128/JB.00665-17>.
 24. Cole JN, Nizet V. 2016. Bacterial evasion of host antimicrobial peptide defenses. *Microbiol Spectr* 4:VMBF-0006-2015. <https://doi.org/10.1128/microbiolspec.VMBF-0006-2015>.
 25. Arnold MFF, Shabab M, Penterman J, Boehme KL, Griffiths JS, Walker GC. 2017. Genome-wide sensitivity analysis of the microsymbiont *Sinorhizobium meliloti* to symbiotically important, defensin-like host peptides. *mBio* 8:e01060-17. <https://doi.org/10.1128/mBio.01060-17>.
 26. Penterman J, Abo RP, De Nisco NJ, Arnold MFF, Longhi R, Zanda M, Walker GC. 2014. Host plant peptides elicit a transcriptional response to control the *Sinorhizobium meliloti* cell cycle during symbiosis. *Proc Natl Acad Sci U S A* 111:3561–3566. <https://doi.org/10.1073/pnas.1400450111>.
 27. Tiricz H, Szucs A, Farkas A, Pap B, Lima RM, Maróti G, Kondorosi É, Kereszt A. 2013. Antimicrobial nodule-specific cysteine-rich peptides induce membrane depolarization-associated changes in the transcriptome of *Sinorhizobium meliloti*. *Appl Environ Microbiol* 79:6737–6746. <https://doi.org/10.1128/AEM.01791-13>.
 28. Flores-Tinoco CE, Tschan F, Fuhrer T, Margot C, Sauer U, Christen M, Christen B. 2020. Co-catabolism of arginine and succinate drives symbiotic nitrogen fixation. *Mol Syst Biol* 16:e9419. <https://doi.org/10.15252/msb.20199419>.
 29. Simpson BW, Trent MS. 2019. Pushing the envelope: LPS modifications and their consequences. *Nat Rev Microbiol* 17:403–416. <https://doi.org/10.1038/s41579-019-0201-x>.
 30. Campbell GRO, Sharypova LA, Scheidle H, Jones KM, Niehaus K, Becker A, Walker GC. 2003. Striking complexity of lipopolysaccharide defects in a collection of *Sinorhizobium meliloti* mutants. *J Bacteriol* 185:3853–3862. <https://doi.org/10.1128/JB.185.13.3853-3862.2003>.
 31. Haag AF, Wehmeier S, Beck S, Marlow VL, Fletcher V, James EK, Ferguson GP. 2009. The *Sinorhizobium meliloti* LpxXL and AcpXL proteins play important roles in bacteroid development within alfalfa. *J Bacteriol* 191:4681–4686. <https://doi.org/10.1128/JB.00318-09>.
 32. Barnett MJ, Bittner AN, Toman CJ, Oke V, Long SR. 2012. Dual RpoH sigma factors and transcriptional plasticity in a symbiotic bacterium. *J Bacteriol* 194:4983–4994. <https://doi.org/10.1128/JB.00449-12>.
 33. Mitsui H, Sato T, Sato Y, Ito N, Minamisawa K. 2004. *Sinorhizobium meliloti* RpoH1 is required for effective nitrogen-fixing symbiosis with alfalfa. *Mol Genet Genomics* 271:416–425. <https://doi.org/10.1007/s00438-004-0992-x>.
 34. Oke V, Rushing BG, Fisher EJ, Moghadam-Tabrizi M, Long SR. 2001. Identification of the heat-shock sigma factor RopH and a second RpoH-like protein in *Sinorhizobium meliloti*. *Microbiology (Reading)* 147:2399–2408. <https://doi.org/10.1099/00221287-147-9-2399>.
 35. Ono Y, Mitsui H, Sato T, Minamisawa K. 2001. Two RpoH homologs responsible for the expression of heat shock protein genes in *Sinorhizobium meliloti*. *Mol Gen Genet* 264:902–912. <https://doi.org/10.1007/s004380000380>.
 36. Roux B, Rodde N, Jardinaud M-F, Timmers T, Sauviac L, Cottret L, Carrère S, Sallet E, Courcelle E, Moreau S, Debelle F, Capela D, de Carvalho-Niebel F, Gouzy J, Bruand C, Gamas P. 2014. An integrated analysis of plant and bacterial gene expression in symbiotic root nodules using laser-capture microdissection coupled to RNA sequencing. *Plant J* 77:817–837. <https://doi.org/10.1111/tpj.12442>.
 37. Santos R, Hérouart D, Sigaud S, Touati D, Puppo A. 2001. Oxidative burst in alfalfa-*Sinorhizobium meliloti* symbiotic interaction. *Mol Plant Microbe Interact* 14:86–89. <https://doi.org/10.1094/MPMI.2001.14.1.86>.
 38. Pierre O, Engler G, Hopkins J, Brau F, Boncompagni E, Hérouart D. 2013. Peribacteroid space acidification: a marker of mature bacteroid functioning in *Medicago truncatula* nodules. *Plant Cell Environ* 36:2059–2070. <https://doi.org/10.1111/pce.12116>.
 39. Soupène E, Foussard M, Boistard P, Truchet G, Batut J. 1995. Oxygen as a key developmental regulator of *Rhizobium meliloti* N₂-fixation gene expression within the alfalfa root nodule. *Proc Natl Acad Sci U S A* 92:3759–3763. <https://doi.org/10.1073/pnas.92.9.3759>.
 40. de Lucena DK, Pühler A, Weidner S. 2010. The role of sigma factor RpoH1 in the pH stress response of *Sinorhizobium meliloti*. *BMC Microbiol* 10:265. <https://doi.org/10.1186/1471-2180-10-265>.
 41. Ferguson GP, Datta A, Carlson RW, Walker GC. 2005. Importance of unusually modified lipid A in *Sinorhizobium* stress resistance and legume

- symbiosis. *Mol Microbiol* 56:68–80. <https://doi.org/10.1111/j.1365-2958.2005.04536.x>.
42. Niehaus K, Lagares A, Pühler A. 1998. A *Sinorhizobium meliloti* lipopolysaccharide mutant induces effective nodules on the host plant *Medicago sativa* (alfalfa) but fails to establish a symbiosis with *Medicago truncatula*. *MPMI* 11:906–914. <https://doi.org/10.1094/MPMI.1998.11.9.906>.
 43. Campbell GRO, Reuhs BL, Walker GC. 2002. Chronic intracellular infection of alfalfa nodules by *Sinorhizobium meliloti* requires correct lipopolysaccharide core. *Proc Natl Acad Sci U S A* 99:3938–3943. <https://doi.org/10.1073/pnas.062425699>.
 44. Wang D, Griffiths J, Starker C, Fedorova E, Limpens E, Ivanov S, Bisseling T, Long S. 2010. A nodule-specific protein secretory pathway required for nitrogen-fixing symbiosis. *Science* 327:1126–1129. <https://doi.org/10.1126/science.1184096>.
 45. Mendoza-Suárez MA, Geddes BA, Sánchez-Cañizares C, Ramírez-González RH, Kirchhelle C, Jorin B, Poole PS. 2020. Optimizing *Rhizobium*-legume symbioses by simultaneous measurement of rhizobial competitiveness and N₂ fixation in nodules. *Proc Natl Acad Sci U S A* 117:9822–9831. <https://doi.org/10.1073/pnas.1921225117>.
 46. Bélanger L, Dimmick KA, Fleming JS, Charles TC. 2009. Null mutations in *Sinorhizobium meliloti* *exoS* and *chvI* demonstrate the importance of this two-component regulatory system for symbiosis. *Mol Microbiol* 74:1223–1237. <https://doi.org/10.1111/j.1365-2958.2009.06931.x>.
 47. Griffiths JS, Carlyon RE, Erickson JH, Moulton JL, Barnett MJ, Toman CJ, Long SR. 2008. A *Sinorhizobium meliloti* osmosensory two-component system required for cyclic glucan export and symbiosis. *Mol Microbiol* 69:479–490. <https://doi.org/10.1111/j.1365-2958.2008.06304.x>.
 48. Santos R, Hérouart D, Puppo A, Touati D. 2000. Critical protective role of bacterial superoxide dismutase in rhizobium-legume symbiosis. *Mol Microbiol* 38:750–759. <https://doi.org/10.1046/j.1365-2958.2000.02178.x>.
 49. Jamet A, Sigaud S, Van de Sype G, Puppo A, Hérouart D. 2003. Expression of the bacterial catalase genes during *Sinorhizobium meliloti*-*Medicago sativa* symbiosis and their crucial role during the infection process. *Mol Plant Microbe Interact* 16:217–225. <https://doi.org/10.1094/MPMI.2003.16.3.217>.
 50. Castro-Sowinski S, Matan O, Bonafede P, Okon Y. 2007. A thioredoxin of *Sinorhizobium meliloti* CE52G is required for melanin production and symbiotic nitrogen fixation. *Mol Plant Microbe Interact* 20:986–993. <https://doi.org/10.1094/MPMI-20-8-0986>.
 51. Benyamina SM, Baldacci-Cresp F, Couturier J, Chibani K, Hopkins J, Bekki A, de Lajudie P, Rouhier N, Jacquot J-P, Alloing G, Puppo A, Frenedo P. 2013. Two *Sinorhizobium meliloti* glutaredoxins regulate iron metabolism and symbiotic bacteroid differentiation. *Environ Microbiol* 15:795–810. <https://doi.org/10.1111/j.1462-2920.2012.02835.x>.
 52. Tang G, Li N, Liu Y, Yu L, Yan J, Luo L. 2018. *Sinorhizobium meliloti* glutathione reductase is required for both redox homeostasis and symbiosis. *Appl Environ Microbiol* 84:e01937-17. <https://doi.org/10.1128/AEM.01937-17>.
 53. Yang L, El Msehli S, Benyamina S, Lambert A, Hopkins J, Cazareth J, Pierre O, Hérouart D, Achi-Smiti S, Boncompagni E, Frenedo P. 2020. Glutathione deficiency in *Sinorhizobium meliloti* does not impair bacteroid differentiation but induces early senescence in the interaction with *Medicago truncatula*. *Front Plant Sci* 11:137. <https://doi.org/10.3389/fpls.2020.00137>.
 54. Tang G, Xing S, Wang S, Yu L, Li X, Staehelin C, Yang M, Luo L. 2017. Regulation of cysteine residues in LsrB proteins from *Sinorhizobium meliloti* under free-living and symbiotic oxidative stress. *Environ Microbiol* 19:5130–5145. <https://doi.org/10.1111/1462-2920.13992>.
 55. Bittner AN, Foltz A, Oke V. 2007. Only one of five *groEL* genes is required for viability and successful symbiosis in *Sinorhizobium meliloti*. *J Bacteriol* 189:1884–1889. <https://doi.org/10.1128/JB.01542-06>.
 56. Ogden AJ, McAleer JM, Kahn ML. 2019. Characterization of the *Sinorhizobium meliloti* HslUV and ClpXP protease systems in free-living and symbiotic states. *J Bacteriol* 201:e00498-18. <https://doi.org/10.1128/JB.00498-18>.
 57. Cosme AM, Becker A, Santos MR, Sharypova LA, Santos PM, Moreira LM. 2008. The outer membrane protein TolC from *Sinorhizobium meliloti* affects protein secretion, polysaccharide biosynthesis, antimicrobial resistance, and symbiosis. *Mol Plant Microbe Interact* 21:947–957. <https://doi.org/10.1094/MPMI-21-7-0947>.
 58. Gruber TM, Gross CA. 2003. Multiple sigma subunits and the partitioning of bacterial transcription space. *Annu Rev Microbiol* 57:441–466. <https://doi.org/10.1146/annurev.micro.57.030502.090913>.
 59. Nonaka G, Blankschien M, Herman C, Gross CA, Rhodius VA. 2006. Regulon and promoter analysis of the *E. coli* heat-shock factor, sigma32, reveals a multifaceted cellular response to heat stress. *Genes Dev* 20:1776–1789. <https://doi.org/10.1101/gad.1428206>.
 60. Guest RL, Raivio TL. 2016. Role of the gram-negative envelope stress response in the presence of antimicrobial agents. *Trends Microbiol* 24:377–390. <https://doi.org/10.1016/j.tim.2016.03.001>.
 61. Sauviac L, Philippe H, Phok K, Bruand C. 2007. An extracytoplasmic function sigma factor acts as a general stress response regulator in *Sinorhizobium meliloti*. *J Bacteriol* 189:4204–4216. <https://doi.org/10.1128/JB.00175-07>.
 62. Lang C, Barnett MJ, Fisher RF, Smith LS, Diodati ME, Long SR. 2018. Most *Sinorhizobium meliloti* extracytoplasmic function sigma factors control accessory functions. *mSphere* 3:e00454-18. <https://doi.org/10.1128/mSphereDirect.00454-18>.
 63. Zasloff M. 2002. Antimicrobial peptides of multicellular organisms. *Nature* 415:389–395. <https://doi.org/10.1038/415389a>.
 64. Dalebroux ZD, Miller SI. 2014. *Salmonellae* PhoPQ regulation of the outer membrane to resist innate immunity. *Curr Opin Microbiol* 17:106–113. <https://doi.org/10.1016/j.mib.2013.12.005>.
 65. Lagares A, Hozbor DF, Niehaus K, Otero AJ, Lorenzen J, Arnold W, Pühler A. 2001. Genetic characterization of a *Sinorhizobium meliloti* chromosomal region in lipopolysaccharide biosynthesis. *J Bacteriol* 183:1248–1258. <https://doi.org/10.1128/JB.183.4.1248-1258.2001>.
 66. Jardinaud M-F, Boivin S, Rodde N, Catrice O, Kisiala A, Lepage A, Moreau S, Roux B, Cottret L, Sallet E, Brault M, Emery R/N, Gouzy J, Frugier F, Gamas P. 2016. A laser dissection-RNAseq analysis highlights the activation of cytokinin pathways by Nod factors in the *Medicago truncatula* root epidermis. *Plant Physiol* 171:2256–2276. <https://doi.org/10.1104/pp.16.00711>.
 67. Liu C-W, Breakspear A, Guan D, Cerri MR, Jackson K, Jiang S, Robson F, Radhakrishnan GV, Roy S, Bone C, Stacey N, Rogers C, Trick M, Niebel A, Oldroyd GED, de Carvalho-Niebel F, Murray JD. 2019. NIN acts as a network hub controlling a growth module required for rhizobial infection. *Plant Physiol* 179:1704–1722. <https://doi.org/10.1104/pp.18.01572>.
 68. diCenzo GC, Benedict AB, Fondi M, Walker GC, Finan TM, Mengoni A, Griffiths JS. 2018. Robustness encoded across essential and accessory replicons of the ecologically versatile bacterium *Sinorhizobium meliloti*. *PLoS Genet* 14:e1007357. <https://doi.org/10.1371/journal.pgen.1007357>.
 69. Mauchline TH, Fowler JE, East AK, Sartor AL, Zaheer R, Hosie AH, Poole PS, Finan TM. 2006. Mapping the *Sinorhizobium meliloti* 1021 solute-binding protein-dependent transportome. *Proc Natl Acad Sci U S A* 103:17933–17938. <https://doi.org/10.1073/pnas.0606673103>.
 70. Travin DY, Severinov K, Dubiley S. 2021. Natural Trojan horse inhibitors of aminoacyl-tRNA synthetases. *RSC Chem Biol* 2021:468–485. <https://doi.org/10.1039/D0CB00208A>.
 71. Bantysh O, Serebryakova M, Zukher I, Kulikovskaya A, Tsubulskaya D, Dubiley S, Severinov K. 2015. Enzymatic synthesis and functional characterization of bioactive microcin C-like compounds with altered peptide sequence and length. *J Bacteriol* 197:3133–3141. <https://doi.org/10.1128/JB.00271-15>.
 72. Novikova M, Metlitskaya A, Datsenko K, Kazakov T, Kazakov A, Wanner B, Severinov K. 2007. The *Escherichia coli* Yej transporter is required for the uptake of translation inhibitor microcin C. *J Bacteriol* 189:8361–8365. <https://doi.org/10.1128/JB.01028-07>.
 73. Eswarappa SM, Panguluri KK, Hensel M, Chakravorty D. 2008. The yejABEF operon of *Salmonella* confers resistance to antimicrobial peptides and contributes to its virulence. *Microbiology (Reading)* 154:666–678. <https://doi.org/10.1099/mic.0.2007/011114-0>.
 74. Wang Z, Bie P, Cheng J, Lu L, Cui B, Wu Q. 2016. The ABC transporter YejABEF is required for resistance to antimicrobial peptides and the virulence of *Bruceella melitensis*. *Sci Rep* 6:31876. <https://doi.org/10.1038/srep31876>.
 75. Salomón RA, Fariás RN. 1995. The peptide antibiotic microcin 25 is imported through the TonB pathway and the SbmA protein. *J Bacteriol* 177:3323–3325. <https://doi.org/10.1128/jb.177.11.3323-3325.1995>.
 76. Laviña M, Pugsley AP, Moreno F. 1986. Identification, mapping, cloning and characterization of a gene (*sbmA*) required for microcin B17 action on *Escherichia coli* K12. *J Gen Microbiol* 132:1685–1693. <https://doi.org/10.1099/00221287-132-6-1685>.
 77. Wehmeier S, Arnold MFF, Marlow VL, Aouida M, Myka KK, Fletcher V, Benincasa M, Scocchi M, Ramotar D, Ferguson GP. 2010. Internalization of a thiazole-modified peptide in *Sinorhizobium meliloti* occurs by BacA-dependent and -independent mechanisms. *Microbiology (Reading)* 156:2702–2713. <https://doi.org/10.1099/mic.0.039909-0>.
 78. Arnold MFF, Haag AF, Capewell S, Boshoff HI, James EK, McDonald R, Mair I, Mitchell AM, Kerscher B, Mitchell TJ, Mergaert P, Barry CE, Scocchi M, Zanda M, Campopiano DJ, Ferguson GP. 2013. Partial complementation of *Sinorhizobium meliloti* *bacA* mutant phenotypes by the *Mycobacterium tuberculosis* *BacA* protein. *J Bacteriol* 195:389–398. <https://doi.org/10.1128/JB.01445-12>.

79. Parra-Lopez C, Baer MT, Groisman EA. 1993. Molecular genetic analysis of a locus required for resistance to antimicrobial peptides in *Salmonella typhimurium*. *EMBO J* 12:4053–4062. <https://doi.org/10.1002/j.1460-2075.1993.tb06089.x>.
80. Ferguson GP, Roop RM, Walker GC. 2002. Deficiency of a *Sinorhizobium meliloti* BacA mutant in alfalfa symbiosis correlates with alteration of the cell envelope. *J Bacteriol* 184:5625–5632. <https://doi.org/10.1128/JB.184.20.5625-5632.2002>.
81. Bauer ME, Shafer WM. 2015. On the *in vivo* significance of bacterial resistance to antimicrobial peptides. *Biochim Biophys Acta* 1848:3101–3111. <https://doi.org/10.1016/j.bbame.2015.02.012>.
82. Kannenberg EL, Carlson RW. 2001. Lipid A and O-chain modifications cause *Rhizobium* lipopolysaccharides to become hydrophobic during bacteroid development. *Mol Microbiol* 39:379–391. <https://doi.org/10.1046/j.1365-2958.2001.02225.x>.
83. Crespo-Rivas JC, Guefrachi I, Mok KC, Villaécija-Aguilar JA, Acosta-Jurado S, Pierre O, Ruiz-Sainz JE, Taga ME, Mergaert P, Vinardell JM. 2016. *Sinorhizobium fredii* HH103 bacteroids are not terminally differentiated and show altered O-antigen in nodules of the inverted repeat-lacking clade legume *Glycyrrhiza uralensis*. *Environ Microbiol* 18:2392–2404. <https://doi.org/10.1111/1462-2920.13101>.
84. Ratib NR, Sabio EY, Mendoza C, Barnett MJ, Clover SB, Ortega JA, Dela Cruz FM, Balderas D, White H, Long SR, Chen EJ. 2018. Genome-wide identification of genes directly regulated by ChvI and a consensus sequence for ChvI binding in *Sinorhizobium meliloti*. *Mol Microbiol* 110:596–615. <https://doi.org/10.1111/mmi.14119>.
85. Kim M, Chen Y, Xi J, Waters C, Chen R, Wang D. 2015. An antimicrobial peptide essential for bacterial survival in the nitrogen-fixing symbiosis. *Proc Natl Acad Sci U S A* 112:15238–15243. <https://doi.org/10.1073/pnas.1500123112>.
86. Horváth B, Domonkos Á, Kereszt A, Szűcs A, Ábrahám E, Ayaydin F, Bóka K, Chen Y, Chen R, Murray JD, Udvardi MK, Kondorosi É, Kaló P. 2015. Loss of the nodule-specific cysteine rich peptide, NCR169, abolishes symbiotic nitrogen fixation in the *Medicago truncatula dnf7* mutant. *Proc Natl Acad Sci U S A* 112:15232–15237. <https://doi.org/10.1073/pnas.1500777112>.
87. Wang Q, Yang S, Liu J, Terecskei K, Ábrahám E, Gombár A, Domonkos Á, Szűcs A, Körmöczy P, Wang T, Fodor L, Mao L, Fei Z, Kondorosi É, Kaló P, Kereszt A, Zhu H. 2017. Host-secreted antimicrobial peptide enforces symbiotic selectivity in *Medicago truncatula*. *Proc Natl Acad Sci U S A* 114:6854–6859. <https://doi.org/10.1073/pnas.1700715114>.
88. Yang S, Wang Q, Fedorova E, Liu J, Qin Q, Zheng Q, Price PA, Pan H, Wang D, Griffiths JS, Bisseling T, Zhu H. 2017. Microsymbiont discrimination mediated by a host-secreted peptide in *Medicago truncatula*. *Proc Natl Acad Sci U S A* 114:6848–6853. <https://doi.org/10.1073/pnas.1700460114>.
89. Kazmierczak T, Nagymihály M, Lamouche F, Barrière Q, Guefrachi I, Alunni B, Ouadghiri M, Ibjibijen J, Kondorosi É, Mergaert P, Gruber V. 2017. Specific host-responsive associations between *Medicago truncatula* accessions and *Sinorhizobium* strains. *Mol Plant Microbe Interact* 30:399–409. <https://doi.org/10.1094/MPMI-01-17-0009-R>.
90. Gully D, Gargani D, Bonaldi K, Grangeteau C, Chaintreuil C, Fardoux J, Nguyen P, Marchetti R, Nouwen N, Molinaro A, Mergaert P, Giraud E. 2016. A peptidoglycan-remodeling enzyme is critical for bacteroid differentiation in *Bradyrhizobium* spp. during legume symbiosis. *Mol Plant Microbe Interact* 29:447–457. <https://doi.org/10.1094/MPMI-03-16-0052-R>.
91. Khan SR, Gaines J, Roop RM, II, Farrand SK. 2008. Broad-host-range expression vectors with tightly regulated promoters and their use to examine the influence of TraR and TraM expression on Ti plasmid quorum sensing. *Appl Environ Microbiol* 74:5053–5062. <https://doi.org/10.1128/AEM.01098-08>.
92. Ducret A, Quardokus EM, Brun YV. 2016. MicrobeJ, a tool for high throughput bacterial cell detection and quantitative analysis. *Nat Microbiol* 1:16077. <https://doi.org/10.1038/nmicrobiol.2016.77>.
93. Schneider CA, Rasband WS, Eliceiri KW. 2012. NIH Image to ImageJ: 25 years of image analysis. *Nat Methods* 9:671–675. <https://doi.org/10.1038/nmeth.2089>.
94. Benincasa M, Barrière Q, Runti G, Pierre O, Bourge M, Scocchi M, Mergaert P. 2016. Single cell flow cytometry assay for peptide uptake by bacteria. *Bio Protoc* 6:e2038. <https://doi.org/10.21769/BioProtoc.2038>.