



# Distinct timescales for the neuronal encoding of vocal signals in a high-order auditory area

Aurore Cazala, Catherine del Negro, Nicolas Giret

## ► To cite this version:

Aurore Cazala, Catherine del Negro, Nicolas Giret. Distinct timescales for the neuronal encoding of vocal signals in a high-order auditory area. Scientific Reports, 2021, 11 (1), pp.19672. 10.1038/s41598-021-99135-w . hal-03299433

**HAL Id: hal-03299433**

**<https://hal.science/hal-03299433>**

Submitted on 11 Nov 2021

**HAL** is a multi-disciplinary open access archive for the deposit and dissemination of scientific research documents, whether they are published or not. The documents may come from teaching and research institutions in France or abroad, or from public or private research centers.

L'archive ouverte pluridisciplinaire **HAL**, est destinée au dépôt et à la diffusion de documents scientifiques de niveau recherche, publiés ou non, émanant des établissements d'enseignement et de recherche français ou étrangers, des laboratoires publics ou privés.



Distributed under a Creative Commons Attribution - NonCommercial 4.0 International License



OPEN

# Distinct timescales for the neuronal encoding of vocal signals in a high-order auditory area

Aurore Cazala, Catherine Del Negro & Nicolas Giret✉

The ability of the auditory system to selectively recognize natural sound categories while maintaining a certain degree of tolerance towards variations within these categories, which may have functional roles, is thought to be crucial for vocal communication. To date, it is still largely unknown how the balance between tolerance and sensitivity to variations in acoustic signals is coded at a neuronal level. Here, we investigate whether neurons in a high-order auditory area in zebra finches, a songbird species, are sensitive to natural variations in vocal signals by recording their responses to repeated exposures to identical and variant sound sequences. We used the songs of male birds which tend to be highly repetitive with only subtle variations between renditions. When playing these songs to both anesthetized and awake birds, we found that variations between songs did not affect the neuron firing rate but the temporal reliability of responses. This suggests that auditory processing operates on a range of distinct timescales, namely a short one to detect variations in vocal signals, and longer ones that allow the birds to tolerate variations in vocal signal structure and to encode the global context.

Vocal communication signals can provide a richness of information through both their acoustic structure and subtle variations in their acoustic features<sup>1,2</sup>. The same word spoken by different people conveys information about the intended meaning through an invariant acoustic structure among uttered signals. Fine variations in the temporal and acoustic features between different individuals may also provide information about the gender, the emotional state, and the identity of the emitter. Vocal communication is therefore a computational challenge, requiring the auditory system to selectively extract invariant information with a certain degree of tolerance towards variations for categorization while maintaining a sufficient sensitivity to variations to be able to extract supplementary information<sup>3</sup>. Within this framework, it is still largely unknown how this balance between tolerance and sensitivity to variations in acoustic signals is coded at a neuronal level<sup>4–6</sup>.

Songbirds offer a powerful model to explore the neural coding principles that underlie this balance. Birdsong is a complex multi-cue signal that is particular to each species and exhibits subtle variations that may carry information such as group or individual identity, emotional or motivational state, or physical condition<sup>7,8</sup>. Among the different songbird species, the zebra finch is well suited to investigate how subtle variations in their highly repetitive communication sounds are encoded within the auditory system. The male zebra finch typically produces a highly specific but at the same time stereotyped song motif that differs between individuals and includes several distinctive sound elements, called syllables, that are always produced in the same order<sup>9</sup>. Despite the high level of stereotypy in their acoustic structure, motifs vary between renditions and these variations can convey information about the social context, *e.g.*, the presence or absence of females<sup>10</sup>, and a recent study has provided evidence that zebra finches are capable of perceiving these subtle variations<sup>11</sup>. Male zebra finches repeat their song many times per day and this repetition of the same stimulus is well known to elicit habituation in behavioral and neural responses, which in turn raises the question of whether variations in the stimulus could elicit changes in the listeners neural responses.

In songbirds, the processing of complex, behaviorally relevant acoustic signals, including calls and songs, involves the caudomedial nidopallium (NCM), an auditory area that is analogous to the secondary auditory cortex in mammals. The NCM thus represents a good candidate to investigate how the balance between tolerance and sensitivity to subtle variations in acoustic signals is encoded<sup>3</sup>. Neurons in this auditory area display a clear preference for natural over artificial sounds. Regarding conspecific vocal signals, they may exhibit invariant responses to call categories<sup>12,13</sup>. Despite this tolerance to variations in vocal signals, neurons in the NCM are capable to facilitate recognition of familiar vocalizations that only exhibit subtle acoustic differences between categories<sup>14–16</sup>. Neurons in the NCM also display stimulus-specific adaptation such that repeated exposure to

Université Paris-Saclay, CNRS, Institut des Neurosciences Paris-Saclay, 91400 Saclay, France. ✉email: nicolas.giret@universite-paris-saclay.fr

a given auditory stimulus induces a decrease in the response while exposure to a novel stimulus or to the same stimulus with a different order of the sound elements resets the response<sup>15,17–20</sup>. To date, this phenomenon, interpreted as reflecting memory formation, has only been reported in experiments in which the exact same sound stimuli were repeatedly presented. However, in the wild, individuals are never exposed to identical vocal signals as fine natural variations in acoustic features always occur between renditions, raising the question of whether these variations might affect the intensity and time course of neuronal responses in the NCM. Based on extracellular recordings in both anesthetized and awake zebra finches, we found that sequences of song elements that either varied in acoustic detail or remained the same between renditions differentially impacted the temporal reliability of the neuronal responses. This impact in spike timing was observed using a high temporal resolution that allows for the temporal integration of acoustic features over different time scales.

## Results

To explore the neuronal sensitivity to subtle acoustic variations between renditions of vocal signals in a high-order auditory area, we performed extracellular recordings of NCM neurons in adult male zebra finches that were either awake or anesthetized ( $n=4$  and  $n=7$ , respectively) while playing back sequences assembled using song syllables from one individual. These sequences were arranged in two different sound series, henceforth referred to as the ABAB-Same and ABAB-Var series. They consisted of two song syllables, named A and B, that were repeated twice in alternating order to form the ABAB sequence. The ABAB-Same series was built from 60 repetitions of a single ABAB sequence while the ABAB-Var series contained 60 natural variants of a given ABAB sequence (Fig. 1a–c). Both series were presented to each recording site in a random order (*i.e.*, ABAB-Same was played either before or after ABAB-Var). The acoustic similarity between sequence variants of the A and B syllables was evaluated using the percent accuracy score in Sound Analysis Pro 2011<sup>21</sup>. The average similarity of renditions of the A and B syllables in the ABAB-Var sequence was 83.2% and 81.9%, respectively. In contrast, the similarity between the A and B syllables within a given sequence was significantly lower, namely 73.5% in the ABAB-Same sequence and 68.8% (on average) in the ABAB-Var sequence (*t*-tests,  $p < 0.001$ ; Fig. 1c).

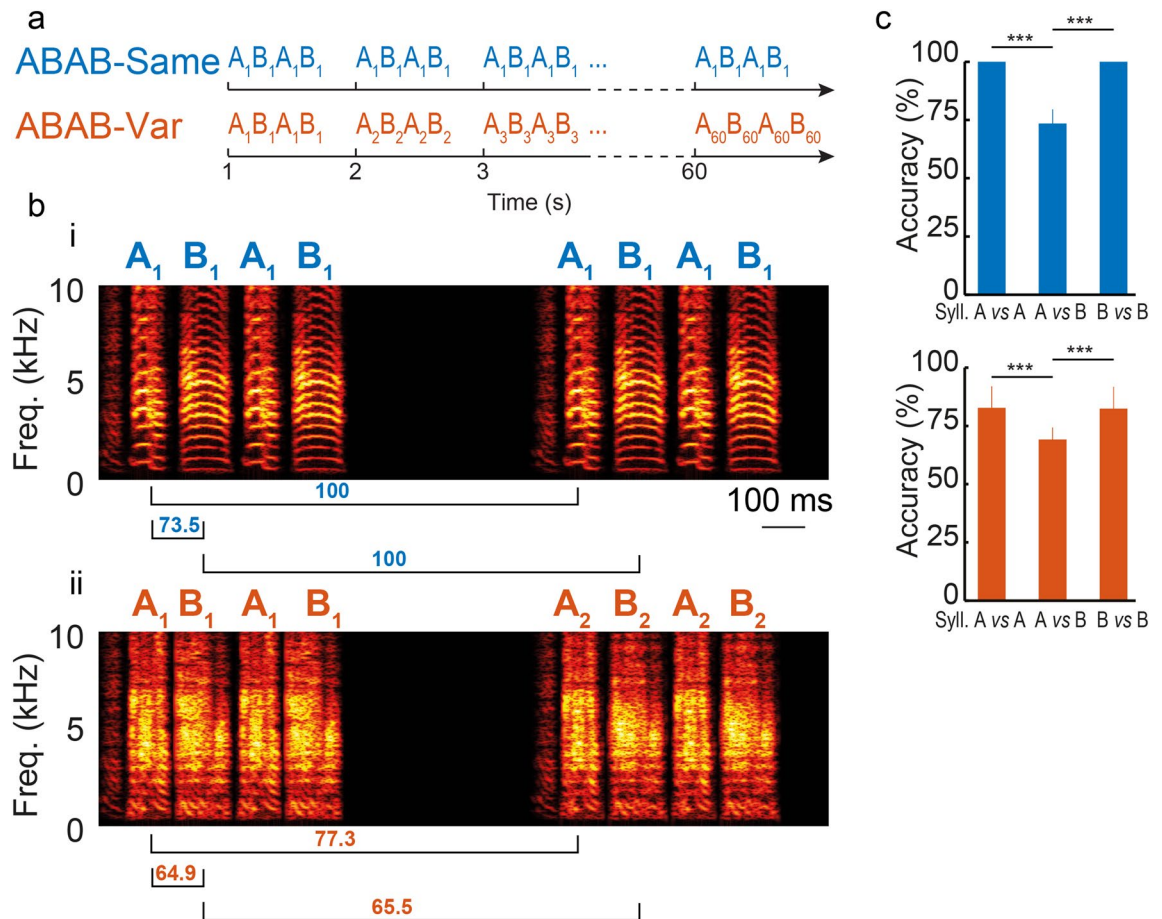
**Acoustic variations elicit no changes in response strength, neither in awake nor anesthetized birds.** Although syllables in zebra finch songs contain acoustic variability between renditions, it remains unclear whether NCM neurons are sensitive to these natural variations. Auditory responses of NCM neurons in zebra finches are known to decrease as they get exposed to repetitions of the same songs or calls<sup>15,17,19,20,22</sup>. Here, we hypothesized that if NCM neurons are sensitive to these variations, this repetition-based decrease in neuronal responses could be impacted by acoustic variability. Nevertheless, NCM neurons may possess some tolerance towards a certain level of acoustic variability which would then be reflected by a similar decrease in the response with each repetition, regardless of whether they vary acoustically.

To address this issue, we performed chronic recordings in four awake birds with three (range 2–5) recording sessions (3.6 electrodes per recording session, range 2–7) per bird with a 4.5 day gap (range 1–9) between two successive recording sessions. These recording sessions took place in a sound-attenuation chamber and birds were restrained for the duration of each session (see “Methods” for further details) to minimize movement artefacts. We analyzed the spiking activity at 56 recording sites, whose locations ranged from the dorsorostral (maximal depth 2000  $\mu\text{m}$ ) to the dorsocaudal portions. They were driven by the playback of the ABAB-Same and ABAB-Var sequences (Fig. 2a,b).

To examine whether the time course of auditory responses differed between the ABAB-Same and the ABAB-Var series, we performed a repeated measures (RM) ANOVA on the response strength (RS), computed from firing rates averaged over the entire sequence duration, using a linear mixed-effect model with sequence type and block repetition as cofactors and units as a random factor (Fig. 2c). We use the term “block” because data were averaged over 10 trials. All trials were performed using the same frequency of  $1 \text{ s}^{-1}$  for both series. Results indicated that response strength did not differ between ABAB-Same and ABAB-Var series (sequence type factor;  $F_{1,564} = 0.03$ ,  $p = 0.85$ ). The RM ANOVA revealed an effect of block repetition factor on RS values ( $F_{5,564} = 30.38$ ,  $p < 0.0001$ ) with a decrease in response strengths for both series (post-hoc tests: ABAB-Same: block 1 vs. block 2 to 6 all  $p < 0.001$ ; ABAB-Var: block 1 vs. block 3 to 6, all  $p < 0.001$ ). Statistical analysis also revealed a significant interaction between block repetition and series type factors ( $F_{5,564} = 2.26$ ,  $p = 0.047$ ) suggesting that the time course of auditory responses over the 60 renditions of ABAB sequences depended on whether the acoustic features of syllables varied. Responses change dramatically during the initial stimulus presentations<sup>22</sup>. Here, NCM neurons displayed a significant decrease in their activity between the first and second block of the ABAB-Same series. We therefore tested whether NCM neuronal responses adapted more rapidly to the ABAB-Same series compared to ABAB-Var. The adaptation rate, calculated as the slope of the linear regression over the 10 first stimulus renditions for each unit<sup>17,23–25</sup>, was indeed higher for ABAB-Same (Fig. 2d), although the difference was not statistically significant ( $t_{1,55} = 1.18$ ,  $p = 0.24$ ). Hence, there was no clear effect of inter-rendition acoustic variations in syllable features on the time course of neuronal responses.

We collected responses to single units in order to assess them with regard to the different cell types. For this purpose, we collected extracellular recordings in NCM in seven isoflurane-anesthetized adult males, selecting only well-isolated responsive single units ( $n = 82$ , example unit on Fig. 3a,b). These single units were placed at locations ranging from the dorsorostral (maximal depth 1900  $\mu\text{m}$ ) to the dorsocaudal portions (Cazala et al.<sup>20</sup>).

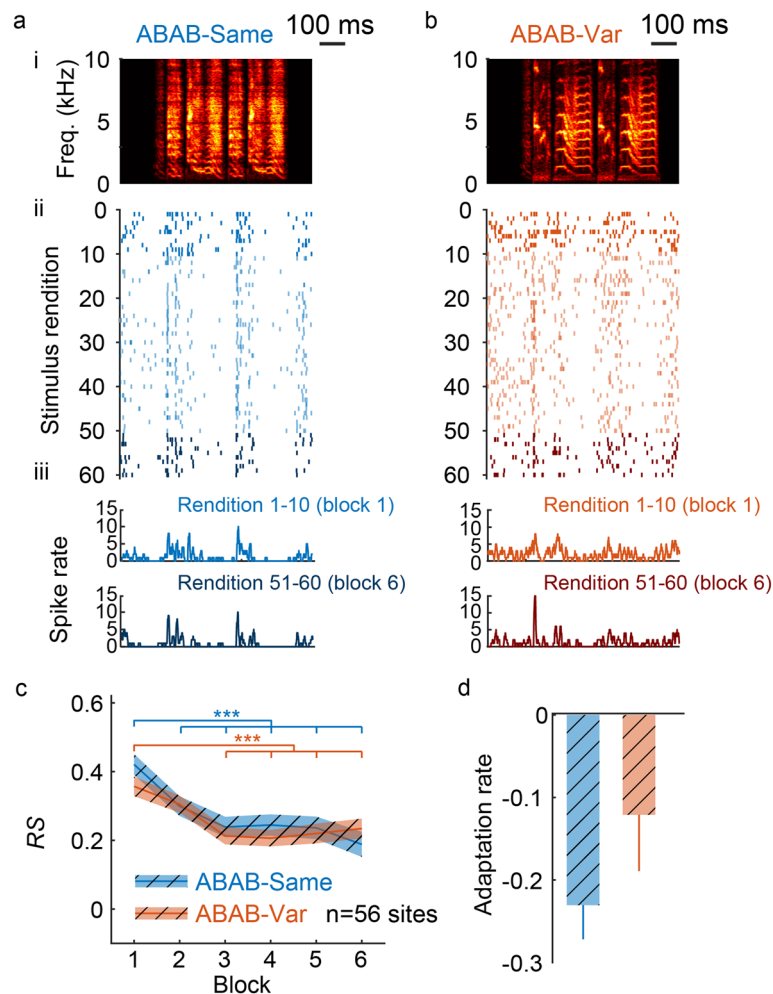
The analysis revealed that response strength, averaged over the six blocks, differed between ABAB-Same and ABAB-Var (RM ANOVA performed on RS values; series type factor:  $F_{1,1055} = 12.87$ ,  $p = 0.0003$ ). However, auditory responses did not differ in block-by-block comparisons (post-hoc tests; all  $p > 0.64$ ). As in awake birds, neuronal responses showed the well-described adaptation to block repetitions for both series (Fig. 3c; block repetition factor:  $F_{5,1055} = 13.02$ ,  $p < 0.0001$ ; post-hoc tests: ABAB-Same series: block 1 vs. block 3, 4, 5 and 6, all  $p < 0.01$ ;



**Figure 1.** A single sequence or sequences with natural variations found in individual's songs were used to build two series types: ABAB-Same and ABAB-Var series. (a) Schematic diagram of the structure of ABAB-Same (top) and ABAB-Var (bottom) series. A and B depict two syllable types used to form ABAB sequences. The ABAB-Same series consisted of 60 repetitions of a single ABAB sequence while the ABAB-Var series consisted of 60 distinct renditions of a given ABAB sequence. These renditions called sequence "variants" were labelled as A<sub>n</sub>B<sub>n</sub>A<sub>n</sub>B<sub>n</sub> (n varying from 1 to 60). A<sub>n</sub> and B<sub>n</sub> were distinct exemplars of a single syllable type that were extracted from the song's repertoire of a given individual. Each sequence was presented at a rate of one per second. (b) Example spectrograms of two consecutive sequences within an ABAB-Same (i, no variants) and ABAB-Var (ii, variants) series. Note the subtle changes between A<sub>1</sub>B<sub>1</sub>A<sub>1</sub>B<sub>1</sub> and A<sub>2</sub>B<sub>2</sub>A<sub>2</sub>B<sub>2</sub> sequences of the ABAB-Var series (e.g. power at ~5 kHz on syllable B. Underneath each spectrogram are the accuracy scores (%) computed with SAP 2011<sup>21</sup> (see main text for further details) between A and B syllables across the two successive example renditions of the ABAB-Same and ABAB-Var sequences. (c) Mean (+/- STD) of the accuracy scores computed between A and B syllables across the 60 renditions of all the ABAB-Same (top) and ABAB-Var (bottom) sequences. \*\*\*  $p < 0.001$ .

ABAB-Var series: block 1 vs. block 2,  $p < 0.0021$ , block 1 vs. block 3, 4, 5 and 6,  $p < 0.01$ ) with no difference in adaptation rate during the first ten trials ( $F_{1,81} = 0.74$ ,  $p = 0.46$ ). Therefore, subtle variations in the acoustic features of syllables in the ABAB-Var series had no discernible impact on the neuronal firing rates.

Two cell types can be distinguished in NCM<sup>3,20,26–28</sup>. Responsive NCM neurons were split into two populations according to the peak-to-peak width of their action potential: neurons with broad spikes ( $\geq 0.3$  ms;  $n = 40$ , width =  $0.49 \pm 0.10$  ms) and neurons with narrow spikes ( $< 0.3$  ms;  $n = 42$ , width =  $0.27 \pm 0.07$  ms). The RM ANOVA performed on RS values according to the block repetition revealed a significant decrease in response strength of both cell types (Fig. 3c; broad-spike cells, linear-mixed effect:  $F_{5,428} = 9.29$ ,  $p < 0.0001$ ; narrow-spikes cells, linear-mixed effect:  $F_{5,448} = 5.01$ ,  $p < 0.0003$ ) and a significant series type effect for narrow-spiked cells (broad-spike cells, series type factor:  $F_{1,428} = 3.10$ ,  $p = 0.08$ ; narrow-spikes cells, series type factor:  $F_{1,448} = 7.72$ ,  $p < 0.006$ ), but no significant interaction between the two factors in either cell type (broad-spike cells,  $F_{5,428} = 0.53$ ,  $p = 0.75$ ; narrow-spikes cells,  $F_{5,448} = 0.55$ ,  $p = 0.73$ ). When the analysis focused on the first ten renditions of the first block only, neither cell type exhibited any changes in adaptation rate in response to natural variations (Fig. 3d; broad-spike cells, paired t-test:  $t_{38} = 1.39$ ,  $p = 0.17$ ; narrow-spikes cells, paired t-test:  $t_{40} = 0.26$ ,  $p = 0.79$ ; note that for both cell types, one unit was removed because it did not spike during the first trial).

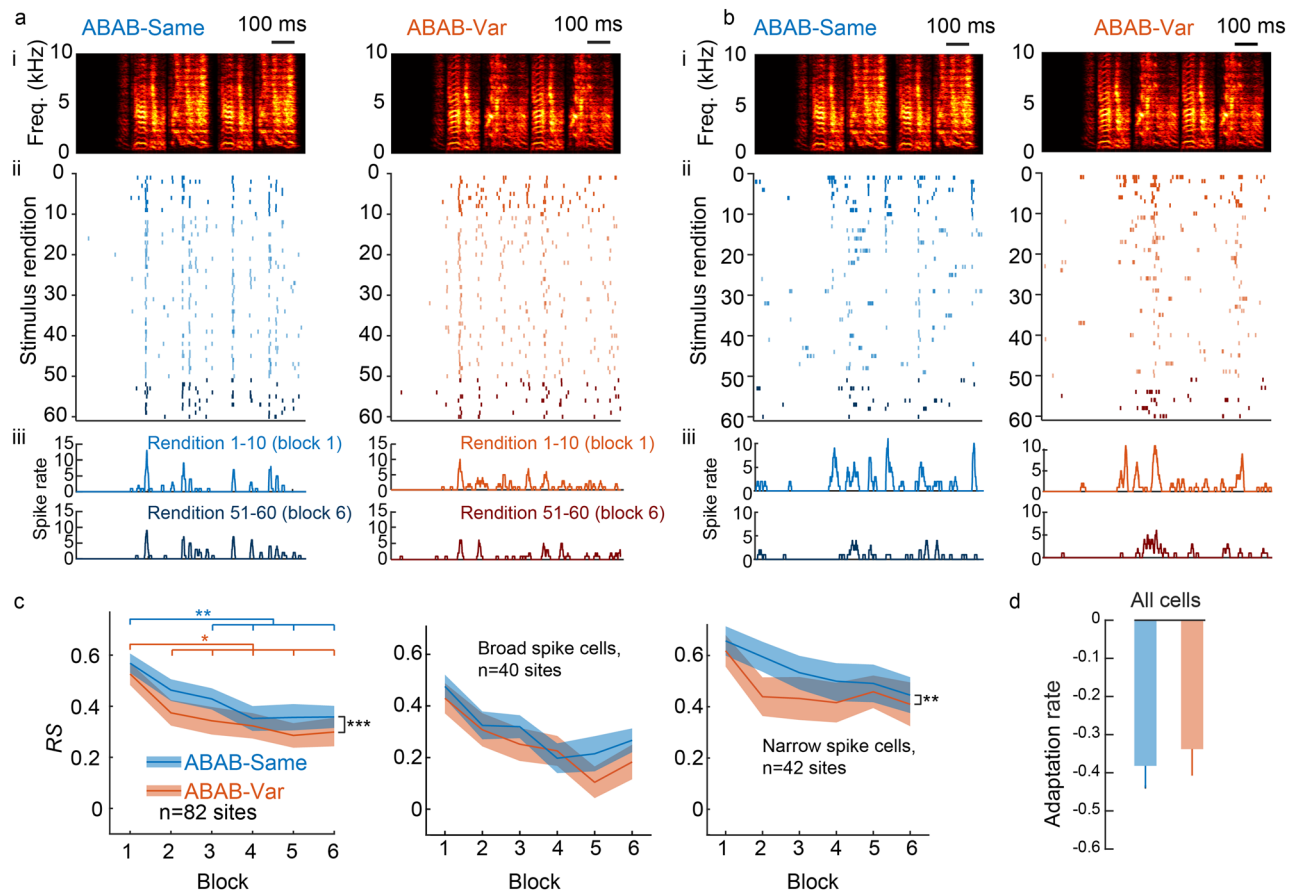


**Figure 2.** Auditory responses to 60 repetitions of a single sequence (ABAB-Same series) and to 60 sequence variants (ABAB-Var series) in awake birds. Responses of a representative unit to the ABAB-Same (a) and the ABAB-Var (b) series used as auditory stimuli. Neuronal responses that are time-aligned with sequence spectrograms (ai and bi: the sequence repeated 60 times for the ABAB-Same example series and one sequence variant for the ABAB-Var example series) are shown as raster plots (aai and bii, 60 iterations, dark colors for the 10 first and 10 last trials) and peristimulus time histograms (aiii and biii; 10 ms bin width; for the 10 first (top) and the 10 last (bottom) trials). (c) Modulation of responses over the six successive blocks of ten trials (each block for the ABAB-Var series includes 10 variants of the auditory sequence). The RS values estimated the strength of the responses driven by the series used as auditory stimulus. Thick line indicates mean responses for the population of recording sites ( $n = 56$ ). Hatched area represents SEM. (d) Adaptation rate (mean  $\pm$  SEM) of responses computed over the 10 first trials did not significantly differ between the two series.

**Impact of acoustic variations on spike-timing reliability.** The response strength index was estimated over the entire duration of sound sequences. To assess the potential impact of the acoustic variability of syllable features on neuronal responses at shorter timescales, we analyzed the temporal pattern of responses by computing the trial-to-trial spike timing reliability coefficient, the CorrCoef (Fig. 4a). Most analyses based on CorrCoef values resulted from computations based on a 10 ms Gaussian window width (see “Methods”). High values indicate a high spike train reliability across trials while low values mean great variations in temporal patterns of spike trains. This coefficient was calculated based on responses during 20 presentations, *i.e.*, ten presentations of sequence stimuli of a given block and ten presentations of each of the 6 blocks.

Results indicated that CorrCoef varied between  $[-0.07$  and  $0.69$ ; average of  $0.13$ ] and  $[-0.07$  and  $0.78$ ; average of  $0.11$ ] in awake and anesthetized birds, respectively (Fig. 4b,e), which is in the usual range for cortical<sup>29–31</sup> and NCM neurons<sup>20</sup>. Most results were consistent between awake and anesthetized birds and indicated differences in spike-train reliability between different series types, *i.e.*, depending on whether acoustic features of syllables varied across renditions (linear mixed effect model, RM ANOVA; awake birds: series type factor;  $F_{2, 221} = 63.18$ ,  $p < 0.0001$ ). The impact of sequence repetition also varied with series type in both awake and anesthetized birds (linear mixed effect model, RM ANOVA; awake birds: block repetition factor,  $F_{5, 1105} = 2.06$ ,  $p = 0.068$ ; series type and block repetition interaction,  $F_{10, 1105} = 2.80$ ,  $p = 0.002$ ; anesthetized birds: series type,

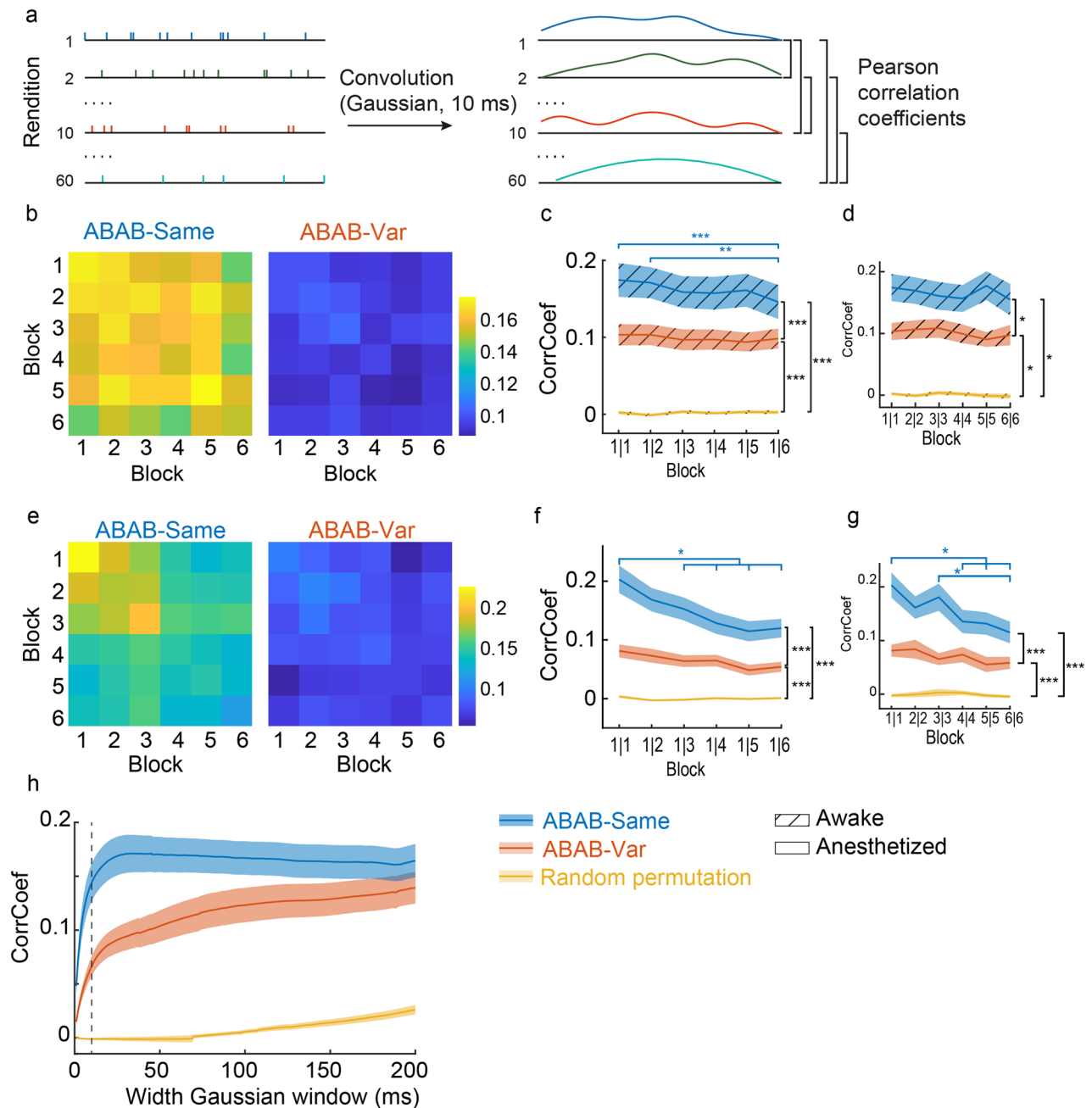




**Figure 3.** Auditory responses in anesthetized birds. From rendition to rendition, spike timing greatly changed when sequence variants (ABAB-Var series) were played back. No such changes were observed when the same sequence was repeated (ABAB-Same series). (a,b) Neuronal responses of representative putative narrow spike (a) and broad-spike (b) cells to playback of ABAB-Same (left panels) and ABAB-Var (right panels) series (spectrogram on top, ai: the sequence repeated 60 times for the ABAB-Same example series and one sequence variant for the ABAB-Var example series) are shown as raster plots (aii and bii, 60 iterations, dark colors for the 10 first and 10 last trials) and peristimulus time histograms (aiii and biii; 10 ms bin width; for the 10 first (top) and the 10 last (bottom) trials) that are time-aligned with sequence spectrograms. (c) ABAB-Same series evoked higher responses (RS values) than ABAB-Same series at the population level (left) and for the sub-population of narrow spike cells (right), but not for broad spike cells (middle). Thick line indicates mean values and shaded area represents SEM. (d) Despite of the difference in the response strength, adaptation rate computed over the first ten stimuli presentations, thus indicated that response strength similarly changed with repeated exposure to sequences. Thick line indicates mean values; shaded area represents SEM. Significant difference: \* $p < 0.05$ , \*\* $p < 0.01$ , \*\*\* $p < 0.001$ .

$F_{2,1869} = 501.09$ ,  $p < 0.0001$ ; block repetition factor,  $F_{5,1869} = 6.17$ ,  $p < 0.0001$ ; series type and block repetition interaction,  $F_{10,1869} = 4.27$ ,  $p < 0.0001$ ). The trial-to-trial spike-timing reliability was significantly lower with the ABAB-Var series (Fig. 4c,f) suggesting greater variations in the spike-timing of responses when sequences consisted of ABAB variants rather than identical ABABs. Importantly, although spike-train reliability was low for variants, this did not result from a lack of temporal organization within spike trains. In fact, the CorrCoefs of spike trains were significantly higher with variants compared to when inter-spike times were randomly distributed (awake birds; post-hoc test: ABAB-Same vs Random permutation,  $p < 0.0001$ ; ABAB-Var vs Random permutation,  $p < 0.0001$ ; anesthetized birds: post-hoc test: ABAB-Same vs Random permutation,  $p < 0.0001$ ; ABAB-Var vs Random permutation,  $p < 0.0001$ ; yellow line in Fig. 4d,g). This suggests that although the trial-to-trial reliability in spike trains varied considerably throughout the exposure to the variants a certain degree of temporal organization persisted nonetheless.

Repetition of the same sequence modulated the trial-to-trial reliability of spike trains. CorrCoefs were decreasing significantly with renditions of the ABAB-Same sequence, as indicated by post-hoc tests focused on comparisons between the first and subsequent blocks (awake birds, Fig. 4c: block 1|1 vs. block 1|6;  $p < 0.0001$ ; block 1|2 vs. block 1|6;  $p = 0.0017$ ; anesthetized birds, Fig. 4f: block 1|1 vs. block 1|3 to 1|6, multiple  $p < 0.02$ ). In contrast, the trial-to-trial reliability of spike trains evoked by variants in the ABAB-Var series remained constantly low between blocks (awake birds,  $p > 0.97$ ; anesthetized birds,  $p > 0.56$ ). The gradual decrease in spike-timing reliability that occurred with the ABAB-Same series could be due to an increased variance in trial-by-trial spike-timings across sequence renditions and/or to an overall time-shift in the spike trains evoked by later blocks. To



**Figure 4.** Reliability of spike trains in awake and anesthetized birds. **(a)** To compute the reliability of the spike trains (CorrCoef), a convolution of spike times with a Gaussian window of 10 ms was performed. Pearson correlation coefficients were computed on convoluted spike trains between two renditions. CorrCoef values within a block, e.g. block 1 vs 1 (1|1), correspond to the mean of the Pearson correlation coefficients between renditions one to ten. CorrCoef values between blocks, e.g. block 1 vs 2 (1|2), correspond to the mean of all the Pearson correlation coefficients between renditions one to ten and eleven to twenty (*i.e.* rendition 1 vs 11 to 20, rendition 2 vs 11 to 20, etc.). Reliability of spike trains in awake **(b)** and anesthetized **(e)** birds illustrated by heatmaps (right: ABAB-Same series; left: ABAB-Var series). Spike-trains reliability, quantified by the CorrCoef index, was lower when sequence variants were presented. Blue color indicates low CorrCoef values. At the population level in awake **(c,d)** and anesthetized **(f,g)** birds, differences in spike-timing reliability and in its time course between the two series. CorrCoef values were computed from spike trains evoked by the first ten trials and those evoked by the ten trials of the six blocks (block 1 to 6, **c, f**) and within each block **(d,g)**. In both awake and anesthetized birds, CorrCoef (mean  $\pm$  SEM) changed with stimulus exposure when the same sequence (blue line) was repeated while it remained similar when sequence variants (red line) were played back. CorrCoef values were higher than those of spike trains in which spike timing was randomly permuted (yellow line). **(h)** Varying the Gaussian window width used to compute the convolution of spike trains from 1 to 200 ms affects CorrCoef values. In the present study, a 10 ms Gaussian window width to compute CorrCoef values (vertical dashed line) and CorrCoef values differed between the two series. No difference between ABAB-Same and ABAB-Var was observed when the time window exceeds 98 ms. CorrCoef values were also computed on spike trains after a random permutation of the spike timing. Significant difference: \* $p < 0.05$ , \*\* $p < 0.01$ , \*\*\* $p < 0.001$  (see main text for statistics details).

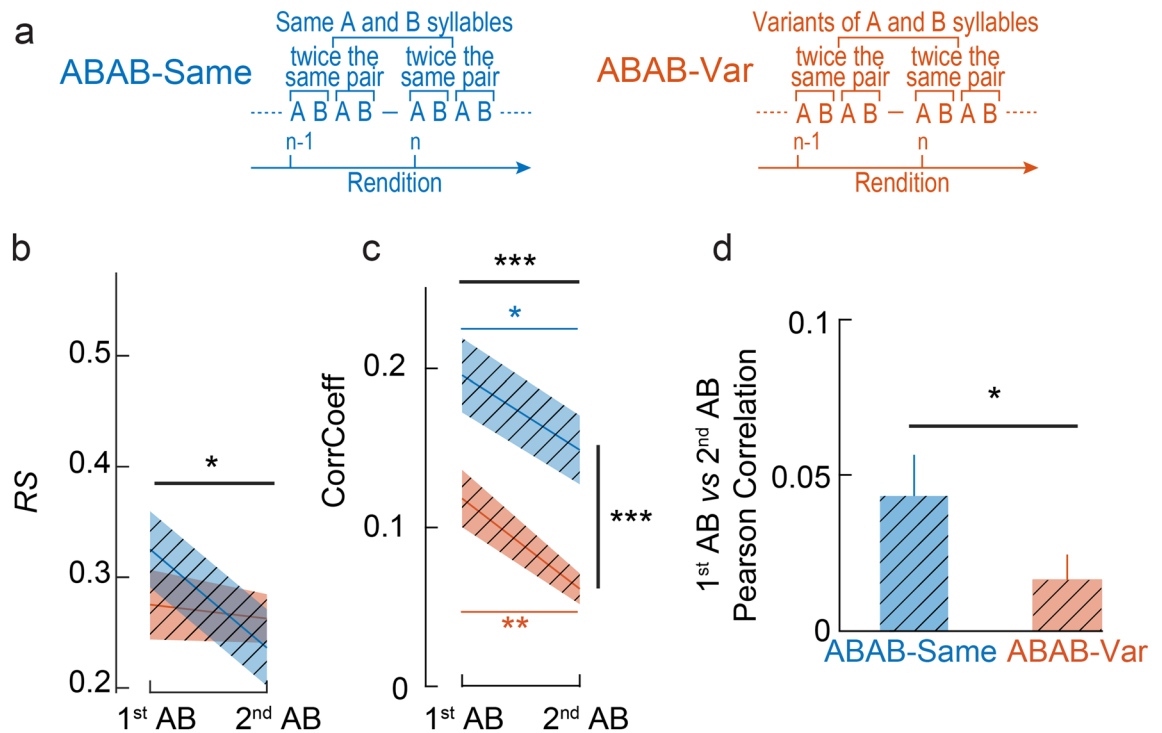
identify the underlying cause, we computed the trial-by-trial spike-timing reliability (CorrCoef) within each block and compared them between blocks (e.g., block 1|1 vs. block 2|2 compared to 6|6, block 2|2 vs. block 3|3 compared to 6|6). Identical CorrCoef values between blocks would indicate a similar variance in trial-by-trial spike-timing and, consequently, an overall change in the temporal pattern of responses driven by ABAB-Same sequences in later blocks. In awake birds, CorrCoef remained stable across block renditions (Fig. 4d, linear mixed effect model, RM ANOVA; block repetition factor:  $F_{5, 825} = 0.52$ ,  $p = 0.76$ ; series type and block repetition interaction:  $F_{10, 825} = 0.96$ ,  $p = 0.48$ ) suggesting small changes in the variance of the trial-by-trial spike-timing. In anesthetized birds, CorrCoef significantly decreased with the repetition of ABAB-Same sequences (Fig. 4g, block repetition factor:  $F_{5, 1582} = 3.30$ ,  $p < 0.006$ ; series type and block repetition interaction:  $F_{10, 1582} = 2.53$ ,  $p = 0.0051$ ; post-hoc test: block 1|1 vs block 4|4, 5|5 and 6|6, multiple  $p < 0.02$ ; block 3|3 vs block 6|6,  $p < 0.002$ ), which suggests that in anesthetized birds both factors could influence spike-timing reliability, *i.e.*, an increase in the variance of the trial-by-trial spike-timing as well as a shift in the temporal patterns of discharges.

In order to test whether the spike-timing accuracy (CorrCoef) depended on the width of the Gaussian window (we had used 10 ms—considered optimal for discriminating between conspecific songs in auditory structures<sup>31–33</sup>—to perform the previous computations), we tested Gaussian window widths ranging from 1 to 200 ms. By increasing the width of the Gaussian window, spike trains are increasingly smoothed, which in turn means that the trial-to-trial reliability of spike trains increasingly depends on firing rate rather than spike timing accuracy. Our aim was to determine the temporal resolution at which spike-timing accuracy no longer differed between the ABAB-Var and ABAB-Same series. While CorrCoef values of ABAB-Same series plateaued for a Gaussian window width of about 10 ms, those of ABAB-Var series continuously increased but remained lower for widths up to 170 ms (Fig. 4h). Both values are always considerably higher compared to values for a random permutation of spike times. The difference in spike-timing accuracy between repetitions of the ABAB-Same and -Var series decreased with increasing Gaussian window width, leaving no significant difference once this width had reached 98 ms (linear mixed-effect models at each time point). This suggests that sensitivity to subtle, natural variations in acoustic features requires a short time scale (< 100 ms) that fits within the duration range of individual syllables ([63.5–203.6 ms] in the present study).

**No relationship between responses and variations in auditory stimuli.** To investigate the extent to which the trial-to-trial variability in spike train accuracy depended on the presence and degree of variability in syllable features, we examined how variations in syllable length contributed to the reliability of spike trains. This was achieved by employing linear time warping that allows the aligning of all spike-trains evoked by individual A and B syllables from the ABAB-Var series on the same time axis (see [Methods](#)), which reduces the variability in the alignment of syllable on- and offsets. A paired t-test on CorrCoef values from comparisons of spike trains between blocks revealed that time warping significantly changed these values ( $t_{20} = -2.60$ ,  $p = 0.017$ ). However, this change was small, CorrCoef values changed only slightly after time warping (before:  $0.081 \pm 0.01$  vs after:  $0.083 \pm 0.01$ , mean  $\pm$  STD) but significant differences remained between the ABAB-Same and -Var series (mean  $\pm$  STD =  $0.16 \pm 0.026$ ;  $t_{20} = -17.6$ ,  $p < 0.0001$ ). Variations in syllable length can therefore explain only a small part of the lower reliability of spike trains evoked by the ABAB-Var series. To assess whether acoustic differences between two variants of a given ABAB-Var series are related to the reliability of spike trains evoked by these two variants, we computed similarity scores, entropy, and pitch differences between the first and 59 subsequent sequences in ABAB-Var series using Sound Analysis Pro<sup>21</sup>. Duration of stimuli was computed with Avisoft-SASLabPro (v. 5.2.15). We calculated CorrCoef for the spike trains evoked by the first and by subsequent sequences of the ABAB-Var series. The similarity score, which describes the acoustic similarity of a pair of sound stimuli based on several acoustic parameters, confirmed the existence of subtle variations in the acoustic structure of syllables (mean  $\pm$  SD:  $96.32\% \pm 3.60$ , range: [54–100%]). Linear regression based on either similarity scores, entropy, pitch differences, or stimuli duration and spike-train reliability did not reveal any significant correlations ( $p > 0.15$ ; Supplementary Fig. S1a–d). Thus, we found no relationship between trial-to-trial reliability of spike trains and the degree of variability in acoustic features across renditions, a result that provides additional support for the non-linear processing of acoustic features<sup>20,26,34–36</sup>.

**Effect of context on the repetition of the AB pair within sequences.** NCM neurons are sensitive to syllable ordering and the auditory context in which they occur, *i.e.*, the syllables that precede the syllable of interest. Sequence stimuli used in the ABAB-Same and ABAB-Var series were all built from a given pair of AB syllables repeated twice to form an ABAB sequence. What differed between the ABAB-Same and ABAB-Var series was the auditory context in which the ABAB sequences occurred, *i.e.*, the types of sequences that preceded them. For example, the 51<sup>st</sup> rendition of the ABAB sequence in the ABAB-Same series was preceded by 50 repetitions of the same ABAB sequence (so 100 times the identical pair of AB syllables) while the 51<sup>st</sup> rendition of the ABAB sequence in the ABAB-Var series was preceded by 50 natural variants of the ABAB sequence. To assess whether the type of context affected responses to the second rendition of the AB pair within ABAB sequences in awake birds (Fig. 5a), we therefore analyzed the RS values and found a significant decrease in responsiveness with AB pair repetition within the sequences used in either series ( $F_{1,172} = 5.90$ ,  $p < 0.02$ ; Fig. 5b) but no difference between the two series ( $F_{1,172} = 0.32$ ,  $p = 0.57$ ) and no significant interaction between the two factors ( $F_{1,172} = 3.34$ ,  $p = 0.07$ ). Analyses of spike timing accuracy based on CorrCoef also showed an effect of AB pair repetition on responses ( $F_{1,172} = 24.42$ ,  $p < 0.0001$ ; Fig. 5c). Interestingly, the effect of AB pair repetition was observed for both the ABAB-Same and ABAB-Var series, indicating that even if CorrCoef for spike trains evoked by ABAB-Var were low, they could reveal changes in spike train accuracy. Hence, the temporal pattern of discharges was affected by the AB pair repetition in both contexts. However, the Pearson correlation coefficient for the trial-by-trial comparisons between the spike trains evoked by either AB pair yielded a significant difference between





**Figure 5.** Responses to the two AB pairs that form ABAB sequences reflects sensitivity to the context in awake birds. **(a)** For ABAB-Same series, the same syllables A and B were used to build pairs of syllables AB that were repeated twice within a sequence, so two consecutive sequence renditions (n) include two repetitions of the same pairs of syllable AB. For ABAB-Var series, variants of the syllables A and B were used to build pairs of syllables AB that were repeated twice within a sequence so two consecutive sequence renditions include variants of the pairs of syllable AB repeated twice. **(b–d).** Strength of responses (RS values) changed from the first AB pair to the second one. The exposure to the first pair of syllables AB impacts the responses to the second pair of syllables AB within a stimulus rendition in awake birds **(b–d)**. Evoked auditory responses **(b)** and CorrCoef **(c)** were overall higher for ABAB-Same than for ABAB-Var sequences and were lower for the second pair of syllables AB than for the first pair. Yet, Pearson correlation coefficient measured on each individual spike train between the first and second pair of syllables AB was lower for ABAB-Var than ABAB-Same sequences **(d)**. \*, \*\*, and \*\*\*,  $p < 0.05$ ,  $0.01$  and  $0.001$ , respectively (see main text for statistics details).

the ABAB-Same and -Var series (paired t-test,  $t_{55} = -2.07$ ,  $p = 0.043$ ; Fig. 5d) with larger effects of the AB pair repetition on the temporal pattern of spike trains in ABAB-Var series. These results provide evidence that the auditory context affects NCM responses.

## Discussion

Across renditions vocal signals vary acoustically, which raises the question of whether these variations are detected and play any functional roles. Subtle, natural variations in the fine acoustic structure of song syllables can be behaviorally discriminated by adult zebra finches<sup>11</sup>. Our study provides evidence that these variations are encoded by neurons in a high-level auditory area where spike train reliability differs depending on whether acoustic details vary across iterations.

With regard to the functional role, we investigated the potential impact of natural variations on the adaptation of neural responses to a repeated stimulus. Such repetitions are assumed to play an important role in auditory memory formation through the binding of auditory objects, a crucial part of the auditory scene analysis<sup>37</sup>. To the best of our knowledge, this is the first study to test the stimulus-specific adaptation paradigm with repeated stimuli that contained natural variations. Zebra finches intensively repeat their vocalizations with slight variations across renditions. Our original hypothesis was that natural variations should prevent or at least slow down changes in auditory responses with stimulus repetition because variants are encoded as distinct stimuli. In such a case, regarding the functional role of the adaptation, any changes in the adaptation rate could be interpreted as maintaining stimulus detection despite its repetition. Furthermore, it would bestow a greater importance on each individual's vocalizations. If the hypothesis was true, we would also expect that variations in the time course of responses to remain unaffected because NCM neurons possess a certain level of tolerance that would allow them to encode stimuli containing slight acoustic variations as the same object. Our results provide support to both predictions and thus the original hypothesis. Depending on the time scale, the impact of variations on both responses and the time course of the adaptation differed. This is consistent with studies reporting that cortical auditory neurons exhibiting stimulus-specific adaptation showed a sensitivity to auditory stimuli that operates at multiple time scales concurrently, spanning many orders of magnitude<sup>38</sup>.

When responses were calculated from firing rates averaged over the entire sequence duration, they showed no discernible impact of slight variations in the acoustic features of syllables. Responses decreased with stimulus repetition, as previously described in high-level auditory areas in mammals<sup>39,40</sup> or songbirds<sup>17,19,20,22,24,41,42</sup>. Importantly, this decrease did not depend on whether the broadcast consisted of variants or identical sequences. In this study, we have reported a similar adaptation rate when greater changes in response magnitude occurred, *i.e.*, during the first presentation of an auditory stimulus. This suggests that, at the sequence duration time scale, responsive neurons encode entire sequences as a single object, irrespective of whether its syllables contain natural acoustic variations. This is consistent with previous studies that had reported no changes in the NCM auditory responses<sup>13</sup>, even when song stimuli were played back with an underlying environmental background noise<sup>26</sup>. This tolerance towards natural acoustic variations does not imply that the length of the time window over which a bird integrates acoustic information and distills it into a single object necessarily needs to match the length of the entire sequence duration. A time-series analysis of spike trains using a varying Gaussian window width yielded no statistically significant differences between the responses to playbacks of variants and identical sequences for time scales exceeding ~ 100 ms. This is consistent with previous studies who observed a peak invariance around 150 ms after the onset of different call-types in the avian auditory cortex including the NCM<sup>13</sup>.

Importantly, the present study also provided evidence that, at a short timescale, neuronal responses change if the acoustic features of syllables vary across renditions. Temporal reliability of spike trains was lower when the fine acoustic structure of syllables varied. Also, the time course of the spike train reliability across stimuli differed depending on whether the variant or identical sequences were played back. CorrCoef only decreased with the identical sequence. These results cannot be explained by a lack of temporal organization within spike trains evoked by playbacks of variants as this would not produce any decrease in spike-timing reliability. Although spike-train reliability was low, it remained higher than for randomly organized spike trains. Furthermore, CorrCoef decreased between the first and second AB pair (from within an ABAB sequence) even when sequence variants were used. This cannot be due to differences in firing rates as CorrCoef is independent of the firing rate<sup>29</sup>. Moreover, the firing rate decreased in a similar fashion as a result of stimulus repetition even when sequences varied acoustically across renditions. We therefore propose that the temporal resolution of spike trains depends on whether variants or identical sequences are used as stimuli. We compute the reliability coefficient for each spike-train by varying the Gaussian window width from 1 to 200 ms. Interestingly, CorrCoef plateaued at about 10 ms when the identical sequence was used as a repeated stimulus, *i.e.*, the temporal precision of spike trains evoked by identical sequences was in a time scale of about 10 ms. In contrast, no clear plateau was reached when using varying sequences for any of the tested window widths.

The non-linear integration of acoustic information by NCM neurons makes it difficult to interpret their auditory responses, as exemplified by their adaptative responses to stimulus repetition<sup>20,26,43</sup>. Unsurprisingly, we therefore did not find any significant correlation between the temporal patterns of the spike train acoustic measures (pitch, entropy, similarity score, and duration). Neither one nor a combination of acoustic features directly contributed to the neuronal auditory responses in a high-order brain area which suggests that these responses may be context-sensitive<sup>20,26,43</sup>. For example, the order of syllables within songs affected the neuronal response to individual song syllables, *i.e.*, the neuronal activity depended on which syllable immediately preceded the current syllable<sup>20</sup>. Here, we employed two series types, namely ABAB-Same and ABAB-Var, which allowed us to examine the impact of global context. The differences observed in the temporal patterns of spike trains between the first and the second pair as a result of differing contexts, lends support to the idea that neuronal responses in NCM reflect a long-term integration of auditory information that exceeds several hundreds of milliseconds, *i.e.*, the time period between two consecutive ABAB sequences. Therefore, NCM neurons are not only sensitive to the fine acoustic structure of syllables but also to the global context in which they occur. This is consistent with previous observations of information being integrated across a range of time scales in the auditory cortex and other cortical areas of both humans<sup>44</sup> and non-human mammalian species<sup>38,45,46, for a review 47</sup>. Here, we use the term of temporal integration scale to mean the time window during which neurons are sensitive to auditory stimuli, which differs from the time window size that yields the best discrimination between auditory stimuli.

Finally, by employing different types of neural computations based on distinct temporal integration periods, NCM may provide neural mechanisms to extract critical perceptual information. We propose the existence of three such integration periods, each with a different purpose: (i) a relatively short period to provide precise temporal information, (ii) an intermediate period to allow categorization of sound stimuli, and (iii) a rather long period to provide comprehension of the global context in which sounds occur. The duration of these integration periods can be related to the richness of behaviorally relevant information encoded in vocal signals, calls and songs<sup>11,48–50</sup>, and to the richness of their temporal structure over multiple time scales<sup>51,52</sup> such as in music and speech<sup>53</sup>. A hypothesis based on multiple time integration periods has already been proposed for speech and, beyond that, as a general mechanism for audition<sup>44,54,55</sup>.

In summary, our study has shown that neurons in a non-primary cortex-like auditory region were sensitive to fine, natural, acoustic variations in song elements as well as the context in which the song elements occurred, suggesting that auditory information is integrated over a range of time scales.

## Methods

**Subjects and housing conditions.** Data were collected on eleven adult male zebra finches (*Taeniopygia guttata*) reared socially in the breeding colony of the Paris-Saclay University. Birds were kept under a 12:12 light–dark cycle, with food and water *ad libitum*, and an ambient temperature of 22–25 °C.

All experiments were performed in accordance with national (JO 887–848) and European (86/609/EEC) legislation on animal experimentation and under national license 05186.01 (project 2015–3 approved by the Ethics

Committee no. 59 [CEEA (Comité d’Ethique en Expérimentation Animale) Paris Centre et Sud]). Methods used in this study followed the ARRIVE guidelines on animal experiments<sup>56</sup>.

**Auditory stimuli.** Zebra finch song syllables can be categorized into distinct syllable types. To build auditory stimuli, we first selected song syllable types from our collection of song bouts previously recorded (sampling rate: 32 kHz) from adult male zebra finches that had lived in the laboratory’s aviary for years before the experiment. Birds used in the present study had never been exposed to these songs prior to the electrophysiological investigation. A total of 81 syllable types and 60 renditions of each of them were extracted from the bird’s repertoire of twelve male zebra finches. Note that we selected any type of song syllables, so including harmonics and more noisy song syllables. From this dataset, we chose two distinct syllable types, called ‘A’ and ‘B’, that could have been sung by a single or two individuals, to form ABAB sequence stimuli of  $0.70 \pm 0.30$  s duration with 30–50 ms as inter-syllable silence intervals, as typically found in zebra finch songs. Syllable duration ranged from 57 to 235 ms (mean  $\pm$  SD:  $134.2 \pm 39.6$ ). Then, we built ABAB-Same series that each consisted of 60 repetitions of a given ABAB sequence (see an example of an ABAB sequence stimulus, called  $A_1B_1A_1B_1$ , composed of harmonic syllables, in Fig. 1) and ABAB-Var series that each consisted of 60 variants of a given ABAB sequence (example composed of noisy syllables; note that other ABAB-Var sequences included harmonic syllables). Variants were labelled as from  $A_1B_1A_1B_1$  to  $A_{60}B_{60}A_{60}B_{60}$  (Fig. 1). Seven ABAB-Same series and eight ABAB-Var series were built. We used Sound Analysis Pro 2011<sup>21</sup> to compute the accuracy score (Fig. 1c), which provides a fine-grained quantification of the acoustic similarity, between each renditions of the A and B syllables for each sequences of the ABAB-Same and ABAB-Var series, *i.e.* syllables A vs A, B vs B, A vs B. For the ABAB-Same series for which syllables A and B within a sequence were always the same, an ANOVA revealed a significant difference of the average accuracy scores of the syllables ( $F_{2,28} = 222.9$ ,  $p < 0.001$ ) and a post-hoc Tukey HSD multiple comparison analysis revealed that it was significantly lower for syllables A vs B (average accuracy score = 73.5%) than for syllables A vs A (100%) and B vs B (100%). For the ABAB-Var series, for which there were 60 variants of the A and B syllables, an ANOVA revealed a significant difference of the average accuracy scores of the syllables ( $F_{2,25} = 13.93$ ,  $p < 0.001$ ) and a post-hoc Tukey HSD multiple comparison analysis revealed that it was significantly lower for syllables A vs B (average accuracy score = 69.2%) than for syllables A vs A (82.8%) and B vs B (82.4%). None of the ABAB sequences used to build ABAB-Same series were used in ABAB-Var series. All sequences in both series types started with the same introductory note. When a series was played back, sequence stimuli were delivered at a rate of one per second.

**Electrophysiological recordings.** Neuronal activity in NCM was recorded in awake ( $n = 4$ ) and in anesthetized ( $n = 7$ ) adult male zebra finches while presenting at least one ABAB-Same and one ABAB-Var series.

**Acute recordings.** Birds were anesthetized with isoflurane gas (in oxygen; induction: 3%, maintenance: 1.5%) that flowed through a small mask over the bird’s beak. The bird was immobilized in a custom-made stereotaxic holder that allowed the head to be tilted at  $45^\circ$  and placed in a sound attenuation chamber. Lidocaine cream was applied to the skin. A window was opened in the inner skull layer and small incisions were made in the dura. A multi-electrode array of eight or 16 tungsten electrodes (1–2 M $\Omega$  impedance at 1 kHz; Alpha Omega Engineering, Nazareth, Israel) that consisted of two rows of four or eight electrodes separated by 100  $\mu$ m apart, with 100  $\mu$ m between electrodes of the same row was lowered to record extracellular activity. The array was positioned 0.3–0.5 mm lateral and 0.7–0.9 mm rostral to the bifurcation of the sagittal sinus in either the left or the right hemisphere, with a micromanipulator, as in previous studies<sup>15,16,20,22</sup>. The probe was lowered very slowly until electrode tips reached 1200  $\mu$ m below the brain surface. From 1200 to 2000  $\mu$ m below the brain surface, auditory stimuli were delivered when the amplitude of action potential waveforms recorded with at least one of the eight electrodes was clearly distinct from background noise. Recording sites were at least 100  $\mu$ m apart to minimize the possibility that the neural activity recorded from two successive sites originated from the same single units. Electrode signals were amplified and filtered (gain 10,000; bandpass: 0.3–10 kHz; AlphaLab SnR, AlphaOmega LTD) to extract multi-unit activity. During recordings, voltage traces and action potentials were monitored in real time using the AlphaLab SnR software. Auditory stimuli were concomitantly recorded and digitized to precisely determine the onset of NCM responses with respect to the sound stimulus. While spiking activity was recorded, auditory stimuli were broadcasted through a loudspeaker situated 30 cm from the bird’s head. We played back one ABAB-Same and one ABAB-Var series. From one recording site to the following one, because of the habituation phenomenon in NCM, we changed the set of series used as auditory stimuli and the order of series. All stimuli had been normalized to achieve maximal amplitude of 70 dB (Audacity software) at the level of the bird’s head. Spike sorting of neuronal activity was done offline (see below).

**Chronic recordings.** Procedure for chronic recordings were similar as described previously<sup>20</sup>. In short, we used a custom build screw microdrive that allows a microelectrode array to be dorsally repositioned. We used arrays of eight electrodes (two rows of four electrodes separated by 100  $\mu$ m apart; with a ground silver wire and a reference wire; 1–2 M $\Omega$  impedance at 1 kHz; Alpha Omega Engineering, Nazareth, Israel). Once the array was lowered into the brain to a depth of 1200  $\mu$ m and the reference wire inserted between the outer and the inner skull layers, the microdrive was secured to the skull using dental cement. Recordings started after a few days of recovery. Before a recording session, we rotated the screw by  $\frac{1}{2}$  turn to advance the microelectrode array in step as  $\sim 100$  microns. At least 24 h separated two recording sessions. From one recording session to the following one, we changed the set of series used as auditory stimuli. Birds were restrained with a jacket around their body during the recordings sessions that were performed in a sound-attenuation chamber (inner dimensions: L80xH70xP70 cm) with a loudspeaker horizontally located at 30 cm from their head.

**Data processing and analysis.** In anesthetized birds, spike sorting was performed using the template-matching algorithm of the Spike2 software (version 8.0, Cambridge Electronic Design, CED, Cambridge, UK). NCM contains at least two populations of neurons that can be distinguished on the width of the spike waveform and the firing rate<sup>20,26,27</sup>, so restricted our analyses to well-isolated units. In awake birds, neural traces of multiunit activity were subjected to amplitude thresholding spike detection. Responses to stimuli were quantified by calculating averaged firing rates during sequence presentation and by computing the RS index<sup>15,22,57</sup>. The RS index was calculated by subtracting the spontaneous firing rate ( $B_{FR}$ ) from the evoked firing rate ( $E_{FR}$ ) and then by dividing this value by their sum:

$$RS = \frac{E_{FR} - B_{FR}}{E_{FR} + B_{FR}}$$

RS values fall between +1 and -1, where values >0 indicate an excitatory response and values <0 indicate an inhibitory response. The  $B_{FR}$  was measured over the 200 ms period preceding the stimulus onset. We calculated RS values for the 60 renditions of sequence stimuli and per block of 10 presentations, giving us 6 values per series (one per block of ten iterations of the stimulus). Note that for the ABAB-Var series, each block includes 10 variants of the auditory stimuli. Auditory responses to a stimulus in NCM decrease rapidly with stimulus repetition. To examine whether the stimulus-specific adaptation differed between ABAB-Same and -Diff series, we computed a stimulus-specific adaptation rate from responses ( $E_{FR}$ ) to the 10 first stimulus renditions by extracting the slope of the linear regression for each unit<sup>17,23–25</sup>.

The temporal pattern of responses evoked by both types of songs was quantified by calculating the spike-timing reliability coefficient (CorrCoef), which was used to quantify the iteration-to-iteration reliability of responses. It was computed a) per block of ten stimulus iterations and b) per iteration: it corresponds to the normalized covariance between each pair of action potential trains and was calculated as follows:

$$CorrCoef = \frac{1}{N(N-1)} \sum_{i=1}^{N-1} \sum_{j=i+1}^N \frac{\sigma_{x_i x_j}}{\sigma_{x_i} \sigma_{x_j}}$$

where  $N$  is the number of iterations, and  $x_i x_j$  is the normalized covariance at zero lag between spike trains  $x_i$  and  $x_j$ , where  $i$  and  $j$  are the iteration numbers. Spike trains  $x_i$  and  $x_j$  were previously convolved with a width of the Gaussian window ranging from 1 to 200 ms. In the present study, most analyses were based on CorrCoef values calculated from a convolution with a 10 ms Gaussian window width<sup>20</sup>. The CorrCoef was used because this index is not influenced by fluctuations of firing rate (Gaucher et al.<sup>29</sup>). Note that we also computed CorrCoef values from spikes trains after performing a random permutation of the time at which occurred individual spikes during each stimulus rendition. This random permutation thus gave us an estimation of the CorrCoef when spikes timing is randomly distributed.

Spike-timing reliability might be impacted by the variation of syllables' duration across each rendition of the ABAB-Var sequences. Given that, we performed a linear time warping of each syllable so that all renditions of an ABAB-Var sequence were aligned on the same time axis<sup>58</sup>. Syllable boundaries were automatically detected according to the threshold crossing of the root-mean square of the amplitude of each rendition. We extracted the maximum duration of A and B syllables within the sequence and used it as a reference timing. We then linearly stretched or compressed each syllable to match its duration to the maximum duration of its reference. Each individual spike train was then projected to the time warped axis of the corresponding syllable. This algorithm thus reduces the temporal variation of the spike trains from one trial to another.

To examine whether CorrCoef values depended on acoustic variability from one variant to another, we quantified differences in acoustic features and degree of similarity between all variants used to build a given ABAB-Var series with SAP 2011<sup>21</sup>. From CorrCoef values computed from spike trains evoked by the two variants used in comparisons, we performed linear regressions.

Statistical computations were carried out in R (4.0.2) and MATLAB (2020a). Firing rates, RS and CorrCoef values were analyzed using either repeated measures (RM) ANOVA in Linear Mixed Models (R package 'nlme' version 3.1-152) or paired T-tests (R package 'stats' version 4.1.0). Depending on the analysis, the block repetition ( $n=6$ ), the series type (ABAB-Same vs. ABAB-Var) and/or AB pair identity (the first vs. the second one) were included as cofactors in the model. We used planned contrast and least-square means adjusted with the Tukey HSD tests for assessing pair-wise differences (emmeans function from R package 'emmeans' version 1.6.1).

**Histology.** At the end of each experiment, the animal was euthanized with a lethal dose of pentobarbital and the brain quickly removed from the skull and placed in a fixative solution (4% para-formaldehyde). Sections (100  $\mu$ m) were cut on a vibratome to examine the location of multielectrode array penetration tracks.

## Data availability

Data will be made available upon reasonable request.

Received: 28 June 2021; Accepted: 21 September 2021

Published online: 04 October 2021

## References

1. Tibbetts, E. A. & Dale, J. Individual recognition: It is good to be different. *Trends Ecol. Evol.* **22**, 529–537 (2007).
2. Hall, J. A., Horgan, T. G. & Murphy, N. A. Nonverbal communication. *Annu. Rev. Psychol.* **70**, 271–294 (2019).



3. Meliza, C. D. & Margoliash, D. Emergence of selectivity and tolerance in the avian auditory cortex. *J. Neurosci.* **32**, 15158–15168 (2012).
4. Kanwal, J. S. & Rauschecker, J. P. Auditory cortex of bats and primates: Managing species-specific calls for social communication. *Front. Biosci.* **12**, 4621–4640 (2007).
5. Sharpee, T. O., Nagel, K. I. & Doupe, A. J. Two-dimensional adaptation in the auditory forebrain. *J. Neurophysiol.* **106**, 1841–1861 (2011).
6. Liu, S. T., Montes-Lourido, P., Wang, X. & Sadagopan, S. Optimal features for auditory categorization. *Nat. Commun.* **10**, 1302 (2019).
7. Falls, J. B. Individual recognition by sound in birds. In *Acoustic Communication in Birds* Vol. 2 (eds Kroodsma, D. E. & Miller, E. H.) 237–278 (Academic Press, 1982).
8. Lambrechts, M. M. & Dhondt, A. A. Individual voice discrimination in birds. In *Current Ornithology* (ed. Power, D. M.) 115–139 (Springer US, 1995).
9. Hyland Bruno, J. & Tchernichovski, O. Regularities in zebra finch song beyond the repeated motif. *Behav. Proc.* **163**, 53–59 (2019).
10. Woolley, S. C. & Doupe, A. J. Social context-induced song variation affects female behavior and gene expression. *PLoS Biol.* **6**, e62 (2008).
11. Fishbein, A. R., Prior, N. H., Brown, J. A., Ball, G. F. & Dooling, R. J. Discrimination of natural acoustic variation in vocal signals. *Sci. Rep.* **11**, 916 (2021).
12. Elie, J. E. & Theunissen, F. E. Meaning in the avian auditory cortex: Neural representation of communication calls. *Eur. J. Neurosci.* **41**, 546–567 (2015).
13. Elie, J. E. & Theunissen, F. E. Invariant neural responses for sensory categories revealed by the time-varying information for communication calls. *PLOS Comput. Biol.* **15**, e1006698 (2019).
14. Thompson, J. V. & Gentner, T. Q. Song recognition learning and stimulus-specific weakening of neural responses in the avian auditory forebrain. *J. Neurophysiol.* **103**, 1785–1797 (2010).
15. Menardy, F. *et al.* Social experience affects neuronal responses to male calls in adult female zebra finches. *Eur. J. Neurosci.* **35**, 1322–1336 (2012).
16. Menardy, F., Giret, N. & Del Negro, C. The presence of an audience modulates responses to familiar call stimuli in the male zebra finch forebrain. *Eur. J. Neurosci.* **40**, 3338–3350 (2014).
17. Chew, S. J., Mello, C., Nottebohm, F., Jarvis, E. & Vicario, D. S. Decrements in auditory responses to a repeated conspecific song are long-lasting and require two periods of protein synthesis in the songbird forebrain. *Proc. Natl. Acad. Sci. USA* **92**, 3406–3410 (1995).
18. Mello, C., Nottebohm, F. & Clayton, D. Repeated exposure to one song leads to a rapid and persistent decline in an immediate early gene's response to that song in zebra finch telencephalon. *J. Neurosci.* **15**, 6919–6925 (1995).
19. Beckers, G. J. L. & Gahr, M. Neural processing of short-term recurrence in songbird vocal communication. *PLoS ONE* **5**, e11129 (2010).
20. Cazala, A., Giret, N., Edeline, J.-M. & Del Negro, C. Neuronal encoding in a high-level auditory area: From sequential order of elements to grammatical structure. *J. Neurosci.* **39**, 6150–6161 (2019).
21. Tchernichovski, O., Nottebohm, F., Ho, C. E., Pesaran, B. & Mitra, P. P. A procedure for an automated measurement of song similarity. *Anim. Behav.* **59**, 1167–1176 (2000).
22. Stripling, R., Volman, S. F. & Clayton, D. F. Response modulation in the Zebra finch neostriatum: Relationship to nuclear gene regulation. *J. Neurosci.* **17**, 3883–3893 (1997).
23. Chew, S. J., Vicario, D. S. & Nottebohm, F. A large-capacity memory system that recognizes the calls and songs of individual birds. *Proc. Natl. Acad. Sci. USA* **93**, 1950–1955 (1996).
24. Phan, M. L., Pytte, C. L. & Vicario, D. S. Early auditory experience generates long-lasting memories that may subserve vocal learning in songbirds. *Proc. Natl. Acad. Sci. USA* **103**, 1088–1093 (2006).
25. Terleph, T. A., Mello, C. V. & Vicario, D. S. Auditory topography and temporal response dynamics of canary caudal telencephalon. *J. Neurobiol.* **66**, 281–292 (2006).
26. Schneider, D. M. & Woolley, S. M. N. Sparse and background-invariant coding of vocalizations in auditory scenes. *Neuron* **79**, 141–152 (2013).
27. Ono, S., Okanoya, K. & Seki, Y. Hierarchical emergence of sequence sensitivity in the songbird auditory forebrain. *J. Comp. Physiol. A* <https://doi.org/10.1007/s00359-016-1070-7> (2016).
28. Yanagihara, S. & Yazaki-Sugiyama, Y. Auditory experience-dependent cortical circuit shaping for memory formation in bird song learning. *Nat. Commun.* **7**, 11946 (2016).
29. Gaucher, Q., Huetz, C., Gourévitch, B. & Edeline, J.-M. Cortical inhibition reduces information redundancy at presentation of communication sounds in the primary auditory cortex. *J. Neurosci.* **33**, 10713–10728 (2013).
30. Gaucher, Q. & Edeline, J.-M. Stimulus-specific effects of noradrenaline in auditory cortex: Implications for the discrimination of communication sounds. *J. Physiol.* **593**, 1003–1020 (2015).
31. Souff, S., Lorenzi, C., Varnet, L., Huetz, C. & Edeline, J.-M. Noise-sensitive but more precise subcortical representations coexist with robust cortical encoding of natural vocalizations. *J. Neurosci.* **40**, 5228–5246 (2020).
32. Huetz, C., Del Negro, C., Lebas, N., Tarroux, P. & Edeline, J.-M. Contribution of spike timing to the information transmitted by HVC neurons. *Eur. J. Neurosci.* **24**, 1091–1108 (2006).
33. Narayan, R., Graña, G. & Sen, K. Distinct time scales in cortical discrimination of natural sounds in songbirds. *J. Neurophysiol.* **96**, 252–258 (2006).
34. Ribeiro, S., Cecchi, G. A., Magnasco, M. O. & Mello, C. V. Toward a song code: Evidence for a syllabic representation in the canary brain. *Neuron* **21**, 359–371 (1998).
35. Woolley, S. M. N., Gill, P. R. & Theunissen, F. E. Stimulus-dependent auditory tuning results in synchronous population coding of vocalizations in the songbird midbrain. *J. Neurosci.* **26**, 2499–2512 (2006).
36. Laudanski, J., Edeline, J.-M. & Huetz, C. Differences between spectro-temporal receptive fields derived from artificial and natural stimuli in the auditory cortex. *PLoS ONE* **7**, e50539 (2012).
37. Winkler, I., Denham, S. L. & Nelken, I. Modeling the auditory scene: Predictive regularity representations and perceptual objects. *Trends Cogn. Sci.* **13**, 532–540 (2009).
38. Ulanovsky, N., Las, L., Farkas, D. & Nelken, I. Multiple time scales of adaptation in auditory cortex neurons. *J. Neurosci.* **24**, 10440–10453 (2004).
39. Malmierca, M. S., Sanchez-Vives, M. V., Escera, C. & Bendixen, A. Neuronal adaptation, novelty detection and regularity encoding in audition. *Front. Syst. Neurosci.* **8**, 111 (2014).
40. Khouri, L. & Nelken, I. Detecting the unexpected. *Curr. Opin. Neurobiol.* **35**, 142–147 (2015).
41. Smulders, T. V. & Jarvis, E. D. Different mechanisms are responsible for dishabituation of electrophysiological auditory responses to a change in acoustic identity than to a change in stimulus location. *Neurobiol. Learn. Mem.* **106**, 163–176 (2013).
42. Lu, K. & Vicario, D. S. Statistical learning of recurring sound patterns encodes auditory objects in songbird forebrain. *Proc. Natl. Acad. Sci. USA* **111**, 14553–14558 (2014).
43. Lu, K. & Vicario, D. S. Familiar but unexpected: Effects of sound context statistics on auditory responses in the songbird forebrain. *J. Neurosci.* **37**, 12006–12017 (2017).



44. Teng, X., Tian, X. & Poeppel, D. Testing multi-scale processing in the auditory system. *Sci. Rep.* **6**, 34390 (2016).
45. García-Rosales, F., Beetz, M. J., Cabral-Calderin, Y., Kössl, M. & Hechavarria, J. C. Neuronal coding of multiscale temporal features in communication sequences within the bat auditory cortex. *Commun. Biol.* **1**, 1–14 (2018).
46. Siegle, J. H. *et al.* Survey of spiking in the mouse visual system reveals functional hierarchy. *Nature* **592**, 86–92 (2021).
47. Cavanagh, S. E., Hunt, L. T. & Kennerley, S. W. A diversity of intrinsic timescales underlie neural computations. *Front. Neural Circuits* **14**, 615626 (2020).
48. Elie, J. E. & Theunissen, F. E. Zebra finches identify individuals using vocal signatures unique to each call type. *Nat. Commun.* **9**, 4026 (2018).
49. Perez, E. C. *et al.* The acoustic expression of stress in a songbird: Does corticosterone drive isolation-induced modifications of zebra finch calls? *Horm. Behav.* **61**, 573–581 (2012).
50. D'Amelio, P. B., Klumb, M., Adreani, M. N., Gahr, M. L. & Maat, A. Individual recognition of opposite sex vocalizations in the zebra finch. *Sci. Rep.* **7**, 5579 (2017).
51. Cynx, J., Williams, H. & Nottebohm, F. Timbre discrimination in zebra finch (*Taeniopygia guttata*) song syllables. *J. Comp. Psychol.* **104**, 303–308 (1990).
52. Lohr, B., Dooling, R. J. & Bartone, S. The discrimination of temporal fine structure in call-like harmonic sounds by birds. *J. Comp. Psychol.* **120**, 239–251 (2006).
53. Rosen, S., Carlyon, R. P., Darwin, C. J. & Russell, I. J. Temporal information in speech: Acoustic, auditory and linguistic aspects. *Philos. Trans. R. Soc. Lond. B* **336**, 367–373 (1992).
54. Poeppel, D. Pure word deafness and the bilateral processing of the speech code. *Cogn. Sci.* **25**, 679–693 (2001).
55. Poeppel, D. The analysis of speech in different temporal integration windows: Cerebral lateralization as 'asymmetric sampling in time'. *Speech Commun.* **41**, 245–255 (2003).
56. Kilkeny, C., Browne, W. J., Cuthill, I. C., Emerson, M. & Altman, D. G. Improving bioscience research reporting: The ARRIVE guidelines for reporting animal research. *PLOS Biol.* **8**, e1000412 (2010).
57. Giret, N., Menardy, F. & Del Negro, C. Sex differences in the representation of call stimuli in a songbird secondary auditory area. *Front. Behav. Neurosci.* **9**, 290 (2015).
58. Kao, M. H., Wright, B. D. & Doupe, A. J. Neurons in a forebrain nucleus required for vocal plasticity rapidly switch between precise firing and variable bursting depending on social context. *J. Neurosci.* **28**, 13232–13247 (2008).

## Acknowledgements

This work was supported by the Centre National de la Recherche Scientifique, the Idex Neuro-Saclay, and the University of Paris Sud. N.G. was supported by Idex Neuro Saclay Postdoctoral Fellowship. A.C., was supported by the French Ministry of Research and Technology. We thank Chloé Huetz for help in analyzing the data and Jean-Marc Edeline for advices on data interpretation. We thank Mélanie Dumont and Caroline Rousseau for taking care of the songbird facility.

## Author contributions

A.C., N.G., and C.D.N. performed research; A.C., N.G., and C.D.N. analyzed data; N.G. and C.D.N. designed research; N.G. and C.D.N. edited the paper; N.G. wrote the paper.

## Competing interests

The authors declare no competing interests.

## Additional information

**Supplementary Information** The online version contains supplementary material available at <https://doi.org/10.1038/s41598-021-99135-w>.

**Correspondence** and requests for materials should be addressed to N.G.

**Reprints and permissions information** is available at [www.nature.com/reprints](http://www.nature.com/reprints).

**Publisher's note** Springer Nature remains neutral with regard to jurisdictional claims in published maps and institutional affiliations.



**Open Access** This article is licensed under a Creative Commons Attribution 4.0 International License, which permits use, sharing, adaptation, distribution and reproduction in any medium or format, as long as you give appropriate credit to the original author(s) and the source, provide a link to the Creative Commons licence, and indicate if changes were made. The images or other third party material in this article are included in the article's Creative Commons licence, unless indicated otherwise in a credit line to the material. If material is not included in the article's Creative Commons licence and your intended use is not permitted by statutory regulation or exceeds the permitted use, you will need to obtain permission directly from the copyright holder. To view a copy of this licence, visit <http://creativecommons.org/licenses/by/4.0/>.

© The Author(s) 2021