



HAL
open science

Immunoglobulin-binding domains: Protein L from *Peptostreptococcus magnus*

Nicholas G Housden, Steven Harrison, Hazel R Housden, Karen-Anne Thomas, Jennifer A Beckingham, Siân E Roberts, Stephen P Bottomley, Marc Graille, Enrico Stura, Michael G Gore

► **To cite this version:**

Nicholas G Housden, Steven Harrison, Hazel R Housden, Karen-Anne Thomas, Jennifer A Beckingham, et al. Immunoglobulin-binding domains: Protein L from *Peptostreptococcus magnus*. *Journal of Biological Chemistry*, 2003, 279 (10), pp.9370 - 9378. 10.1074/jbc.m312938200 . hal-03299363

HAL Id: hal-03299363

<https://hal.science/hal-03299363>

Submitted on 26 Jul 2021

HAL is a multi-disciplinary open access archive for the deposit and dissemination of scientific research documents, whether they are published or not. The documents may come from teaching and research institutions in France or abroad, or from public or private research centers.

L'archive ouverte pluridisciplinaire **HAL**, est destinée au dépôt et à la diffusion de documents scientifiques de niveau recherche, publiés ou non, émanant des établissements d'enseignement et de recherche français ou étrangers, des laboratoires publics ou privés.

Observation and Characterization of the Interaction between a Single Immunoglobulin Binding Domain of Protein L and Two Equivalents of Human κ Light Chains*

Received for publication, November 26, 2003

Published, JBC Papers in Press, December 10, 2003, DOI 10.1074/jbc.M312938200

Nicholas G. Housden‡, Steven Harrison‡§, Hazel R. Housden‡§, Karen-Anne Thomas‡§, Jennifer A. Beckingham‡, Siân E. Roberts‡, Stephen P. Bottomley‡, Marc Graille¶, Enrico Stura¶, and Michael G. Gore‡||

From the ‡Division of Biochemistry and Molecular Biology, School of Biological Sciences, University of Southampton, Bassett Crescent East, Southampton, Hants SO16 7PX, United Kingdom and the ¶CEA, Département d'Ingénierie et d'Etudes des Protéines, (DIEP), C.E. Saclay, 91191 Gif-sur-Yvette Cedex, France

Detailed stopped-flow studies in combination with site-directed mutagenesis, isothermal titration calorimetry data and x-ray crystallographic knowledge have revealed that the biphasic pre-equilibrium fluorescence changes reported for a single Ig-binding domain of protein L from *Peptostreptococcus magnus* binding to κ light chain are due to the binding of the κ light chain at two separate sites on the protein L molecule. Elimination of binding site 2 through the mutation A66W has allowed the K_d for κ light chain binding at site 1 to be measured by stopped-flow fluorescence and isothermal titration calorimetry techniques, giving values of 48.0 ± 8.0 nM and 37.5 ± 7.3 nM respectively. Conversely, a double mutation Y53F/L57H eliminates binding at site 1 and has allowed the K_d for binding at site 2 to be determined. Stopped-flow fluorimetry suggests this to be 3.4 ± 0.8 μ M in good agreement with the value of 4.6 ± 0.8 μ M determined by isothermal titration calorimetry. The mutation Y53F reduces the affinity of site 1 to approximately that of site 2.

Protein L is a multidomain cell wall bound protein found in ~10% of the *Peptostreptococcus* isolates (1) and contains a series of repeated domains, some of which are able to bind to immunoglobulins without initiating an immune response. Expression of this protein has been correlated to the virulence of these opportunistic pathogenic bacteria (1) that are found in the gastrointestinal and urogenital tracts (2). Its presence has been found to cause cellular responses such as histamine release from basophils and mast cells (3) presumably by cross-linking IgE molecules bound to surface Ig receptors.

¹H NMR spectroscopy of a single Ig-binding domain of protein L (isolated from strain 312, PpL₃₁₂)¹ revealed that PpL₃₁₂

is a rigid structure consisting of a β -sheet, formed by two pairs of antiparallel β -strands, lying on top of a single α -helical section (4), with a flexible N terminus (5). Further NMR studies (6) led to the proposal that the binding site of PpL₃₁₂ for κ -chain involves residues from the second β -strand and from the loop between the third β -strand and the α -helix and located the binding site for PpL₃₁₂ on the κ -chain to the second β -strand and the two β -strands located on the outer surface of the framework region of the V_L domain (7).

Parallel studies on the binding interaction of a single Ig-binding domain of protein L from strain 3316 (PpL₃₃₁₆) found that it forms a high affinity complex with κ -chains with a K_d of 112 nM (8, 9). The x-ray crystallographic structure of this domain has been determined in complex with the human antibody fragment, Fab 2A2, and revealed that two Fab 2A2 fragments can in fact bind to sites on opposite faces of PpL₃₃₁₆ (10). Site 1 of PpL₃₃₁₆ is that characterized by Beckingham *et al.* (9) and equivalent to the site studied on PpL₃₁₂ using NMR by Wikström *et al.* (5). Site 2 of PpL₃₃₁₆, involving part of the helix and strands 3 and 4, was identified for the first time by the crystallographic study (10). This site has not yet been characterized although preliminary studies suggested that the affinity of site 2 is lower than that of site 1 (10).

By use of a program of site directed mutagenesis we have been able to derive the relative binding affinities of sites 1 and 2 and propose a mechanism by which PpL₃₃₁₆ binds κ light chains that is consistent with published data. The hydroxyl group of Tyr⁵³ is important for the formation of a high affinity complex at site 1. Previous enzyme-linked immunosorbent assay experiments (11) have shown that nitration of Tyr⁵³ or its mutation to Phe dramatically increases the K_d of the κ -chain-PpL₃₃₁₆ interaction. Another important residue at site 1 is Leu⁵⁷. No binding of the κ_1 -chain used in these studies can be detected at site 1 of the mutant Y53F/L57H by fluorimetry or isothermal titration calorimetry, and this mutant is thus ideal for measuring the affinity at site 2.

Important residues for binding at site 2 are Asp⁵⁵ and Ala⁶⁶. The mutation D55A eliminates a salt bridge and dramatically weakens or eliminates binding (12), and conversely, the mutation A66W is predicted to cause a steric clash removing binding at site 2. This is born out by fluorimetry experiments reported here and therefore the A66W PpL₃₃₁₆ is suitable for determining the affinity of site 1.

The fluorescence properties of tryptophan residues are highly sensitive to their immediate environment (13), and changes in the fluorescence emission from Trp residues have been used to study protein folding and unfolding events, pro-

* This work was supported by the Wellcome Trust and Biotechnology and Biological Sciences Research Council Grants 055640/Z/98/Z/ST/RC, E10136, E15767, and E11896 (to M. G. G.). The costs of publication of this article were defrayed in part by the payment of page charges. This article must therefore be hereby marked "advertisement" in accordance with 18 U.S.C. Section 1734 solely to indicate this fact.

§ These authors received a Biotechnology and Biological Sciences Research Council studentship.

|| To whom correspondence should be addressed: Dept. of Biochemistry, School of Biological Sciences, University of Southampton, Bassett Crescent East, Southampton, Hants SO16 7PX, UK. Tel.: 44-23-80594313; Fax: 44-23-80594459; E-mail: M.G.Gore@soton.ac.uk.

¹ The abbreviations used are: PpL₃₁₂, single Ig-binding domain of protein L from strain 312 of *P. magnus*; PpL₃₃₁₆, single Ig-binding domain of protein L from strain 3316 of *P. magnus*; κ -chain, κ light chain; wt, wild-type; FRET, fluorescence resonance energy transfer.

tein conformational changes, and to monitor binding interactions between proteins and various ligands (14). We have therefore introduced unique Trp residues into PpL₃₃₁₆ to monitor the binding reaction with κ -chain. Previous fluorescence studies have used F39W PpL₃₃₁₆ to report the binding interaction between κ -chain and PpL₃₃₁₆. However, upon introduction of secondary mutations into the F39W PpL₃₃₁₆ construct, expression levels and stability of the protein are compromised. Therefore the I34W PpL₃₃₁₆ mutant, which has a Trp residue located toward the N terminus of β -strand 2, has been selected to study binding at the site 1 interface (see Fig. 1a); this construct is tolerant to the introduction of further mutations. The mutant Y64W PpL₃₃₁₆ (Trp residue on β -strand 3 and close to residues Thr⁶⁵, Ala⁶⁶, Asp⁶⁷, and Leu⁶⁸, all of which are involved in site 2 contacts (10)) was made to monitor binding at site 2 (see Fig. 1b).

EXPERIMENTAL PROCEDURES

Phosphate buffers and other reagents were all of analytical grade and purchased from BDH. The human IgG and κ_1 -chain for fluorescence experiments were generous gifts from Professor Martin Glennie, Southampton General Hospital, UK.

Mutagenesis—The mutated PpL₃₃₁₆ constructs, I34W, Y64W, and Y64W/Y53F, were produced through the Kunkel method (15) of site-directed mutagenesis. The I34W/Y53F, I34W/Y53F/L57H, Y64W/Y53F/L57H, A66W, and I34W/A66W PpL₃₃₁₆ mutant proteins were made through two-sided splicing by overlap extension PCR mutagenesis (16). The presence of each mutation was confirmed by DNA sequencing and the mutant proteins were prepared in the same manner as the wild-type (wt) protein (8).

Fluorescence Measurements—Fluorescence emission spectral measurements were made on a Hitachi F-2000 fluorimeter, with the temperature of the cell being maintained at 15 °C by circulating water. All solutions were prepared in filtered 20 mM potassium phosphate buffer, pH 8.0. Scans of the emission spectra were made using excitation and emission band passes of 5 nm. Emission spectra were measured using excitation wavelengths of 280 and 295 nm, with a scan rate of 60 nm/min.

Stopped-flow Fluorescence Measurements—An Applied Photophysics SX.17MV stopped-flow spectrophotometer fitted with a 2-ml syringe was used to study pre-equilibrium fluorescence changes upon mixing of PpL₃₃₁₆ with κ -chain. The temperature was maintained at 15 °C (unless otherwise stated) using a Neslab RTE-111 circulating water bath. Measurements were made over various time courses between 0.2 and 200s, collecting 1000 data points with oversampling activated. Excitation wavelengths of 280 or 295 nm were selected by a monochromator and fluorescence emission above 335 nm was selected using a cut-off filter. All solutions were prepared in filtered and degassed 20 mM potassium phosphate buffer, pH 8.0. Each reaction was carried out in triplicate and the data averaged and analyzed using the manufacturer's software and single or double exponential curve fitting algorithms.

For the determination of the rate constants for the association and dissociation of the complex, the concentration of κ -chain was kept at 1.5 μ M, and the concentrations of the PpL₃₃₁₆ mutants were varied between 10 and 50 μ M. Alternatively, in some experiments the concentration of PpL₃₃₁₆ was kept constant at 1.5 μ M, and the concentration of κ -chain was varied.

To study the rate of dissociation of the complexes formed between PpL₃₃₁₆ mutants and κ -chain, a solution containing a preformed complex (3 μ M κ -chain and 3 μ M mutant PpL₃₃₁₆) was rapidly diluted by an equal volume of the non-fluorescent (above 335 nm) wt PpL₃₃₁₆ (30 μ M). All concentrations quoted are final concentrations after 1:1 v/v mixing.

Sequential Mixing Stopped-flow Fluorimetry—To identify any intermediate complexes in the formation of the equilibrium complex between the PpL₃₃₁₆ and κ -chain, the stopped-flow fluorimeter was reconfigured to facilitate sequential mixing. Initially 6 μ M Trp-labeled PpL₃₃₁₆ (*i.e.* I34W or Y64W PpL₃₃₁₆) was mixed with an equal volume of 6 μ M κ -chain. After a delay to allow complex formation (50 ms to 50 s), the 3 μ M Trp-labeled PpL₃₃₁₆, 3 μ M κ -chain solution was mixed with an equal volume of 30 μ M wt PpL₃₃₁₆ in 20 mM potassium phosphate buffer, pH 8.0, causing dissociation of the Trp labeled PpL₃₃₁₆/ κ -chain complex. Upon initiation of the second mixing step, fluorescence emissions above 335 nm were monitored over appropriate time courses.

Isothermal Titration Calorimetry—Isothermal titration calorimetry was carried out using a Microcal VP-ITC at 15 °C, with protein solu-

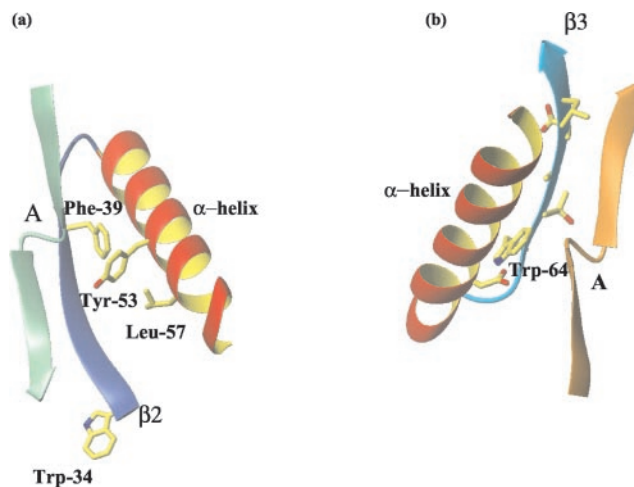


FIG. 1. Ribbon diagrams of showing features of mutated PpL₃₃₁₆ domains. *a*, the positions of the I34W, Y53F, and L57H mutations in site 1 and their relative positions to β -strand A of bound κ -chain. *b*, the position of Y64W (site 2) and its relationship to β -strand A of bound κ -chain.

tions prepared in 20 mM potassium phosphate buffer, pH 8.0. The interaction of wt PpL₃₃₁₆ with κ -chain was studied through the titration of aliquots of 360 μ M κ -chain into 15 μ M wt PpL₃₃₁₆. Heat changes associated with the dilution of the κ -chain were measured by the titration of aliquots of 360 μ M κ -chain into 20 mM potassium phosphate buffer, pH 8.0. The enthalpy profile for the control titration into buffer was subtracted from the experimental data, with the resulting binding data being analyzed using the manufacturer's software.

To further resolve the binding interactions of κ -chain at sites 1 and 2 of PpL₃₃₁₆, mutant PpL₃₃₁₆ constructs with site 2 or site 1 eliminated (737 and 650 μ M, respectively) were titrated into κ -chain (28.3 and 25 μ M, respectively). As above, binding data from these titrations were analyzed using the manufacturer's software.

Circular Dichroism—CD measurements were made using a Jasco J-720 CD spectrometer thermostated at 15 °C. The spectra between 195 and 250 nm were measured at a scan rate of 50 nm/min using a 1-mm path length. The spectra were scanned in triplicate, with a response time of 4 s, slitwidth of 500 μ m, bandwidth of 1.0 nm, and resolution of 0.2 nm. Spectral corrections and calculations were carried out using the manufacturer's software, and the units are given in mean residue ellipticity.

RESULTS AND DISCUSSION

Changes in the environment of the Trp reporter groups were examined by comparing the emission spectra of 1.5 μ M κ -chain and 1.5 μ M of each of the PpL₃₃₁₆ mutants, in free solution and complex, using excitation wavelengths of 280 and 295 nm. The spectra showed that Trp⁶⁴ and Trp³⁴ have wavelengths of maximum emission at 335 and 345 nm, respectively, indicating that Trp⁶⁴ is in a more hydrophobic environment than Trp³⁴. The latter points downwards from β -strand 2 into the solvent and away from the center of the domain, whereas the side chain of Trp⁶⁴ is surrounded by side chains from the α -helix and β -strand 2 (see Fig. 1). No detectable shift in position of maximum emission is noted for the Y64W PpL₃₃₁₆/ κ -chain complex; however, a 5-nm blue shift is seen with the I34W PpL₃₃₁₆/ κ -chain complex suggesting that Trp³⁴ becomes less solvent exposed on complex formation. Details of the spectral characteristics of the various PpL₃₃₁₆/ κ -chain complexes, and the same proteins in free solution are given in Tables I and II. The data show that both the I34W and Y64W PpL₃₃₁₆ domains exhibit fluorescence intensity changes upon complex formation with κ -chain. The intensity of Trp³⁴ decreases significantly whether excited at 280 or 295 nm, whereas that of Trp⁶⁴ increases slightly when excited at 295 nm but decreases when excited at 280 nm.

The respective distances of these residues from Tyr⁵³ are ~10 Å and 15 Å, respectively, well within the critical distance

TABLE I
Fluorescence spectral characteristics of various PpL₃₃₁₆ domains and their complexes with κ_1 -chain ($\lambda_{\text{ex}} = 280$ nm)

PpL construct	Wavelength of emission maximum		Δ Fluorescence
	PpL + κ -chain	PpL- κ -chain complex	
	<i>nm</i>		<i>%</i>
Y64W	335	335	-8.6
Y64W/Y53F	335	335	+18.6
I34W	345	340	-16.9
I34W/Y53F	345	343	-6.8

TABLE II
Fluorescence spectral characteristics of various PpL₃₃₁₆ domains and their complexes with κ_1 -chain ($\lambda_{\text{ex}} = 295$ nm)

PpL ₃₃₁₆ construct	Wavelength of emission maximum		Δ Fluorescence
	PpL ₃₃₁₆ + κ -chain	PpL ₃₃₁₆ - κ -chain complex	
	<i>nm</i>		<i>%</i>
Y64W	335	335	+11.6
Y64W/Y53F	335	335	+49.9
I34W	345	340	-5.9
I34W/Y53F	345	344	-1.7

for efficient Förster fluorescence resonance energy transfer (FRET), and Trp⁶⁴ and Trp³⁴ are almost certainly excited due to resonance energy transfer from this residue. Previous studies have shown the fluorescence of Tyr⁵³ is quenched upon complex formation with κ -chain (9), and therefore the component of Trp⁶⁴ or Trp³⁴ fluorescence arising due to FRET from Tyr⁵³ (when excited at 280 nm) will also decrease. The changes in intensity, and the location of the two Trp groups, 34 and 64, close to site 1 and in site 2, respectively, support the concept of κ -chain binding at both sites.

It should be noted that no fluorescence intensity changes (excited by light at 295 nm) occur when κ -chain is mixed with the I34W/Y53F/L57H or Y64W/A66W PpL₃₃₁₆ proteins (data not shown) suggesting that binding does not take place at site 1 or site 2 of these mutants, respectively. However, a decrease in fluorescence intensity at 335 nm or above does occur when κ -chain binds to Y64W/A66W PpL₃₃₁₆, and an excitation wavelength of 280 nm is employed. This is almost certainly due to decreased FRET from Tyr⁵³ to Trp⁶⁴ when κ -chain occupies site 1 (see above).

The largest change in fluorescence intensity occurs when Y64W/Y53F PpL₃₃₁₆ forms a complex with κ -chain ($\lambda_{\text{ex}} = 280$ nm or 295 nm). The Y53F mutation (site 1) has a clear effect on the fluorescence properties of Y64W in site 2. This could be due to a direct spectral perturbation (although the expected effect would be a decrease in fluorescence intensity from Y64W when excited at 280 nm, see above) or more probably a consequence of the decrease in affinity at site 1 caused by this mutation (9).

Under the conditions of the above experiments there is only sufficient κ -chain to form a 1:1 mol:mol complex with PpL₃₃₁₆. As a result, sites 1 and 2 are both competing for the available κ -chain, with the amount bound to each site being dependent upon the relative affinities of the sites. Therefore, any mutation (e.g. Y53F) that causes a decrease in the amount of κ -chain bound at site 1 will lead to a concomitant increase in κ -chain available to bind to site 2 and thus have an effect on the magnitude of the signal change from either Trp³⁴ or Trp⁶⁴.

Pre-equilibrium Binding Studies—Stopped-flow fluorescence techniques were used to study the binding reactions between mutant PpL₃₃₁₆ proteins and κ -chain. They illustrated that the observed fluorescence changes that occur for the Y64W/Y53F, Y64W, I34W/Y53F, and I34W mutants seen above are in fact the net results of more complex changes (Fig. 2).

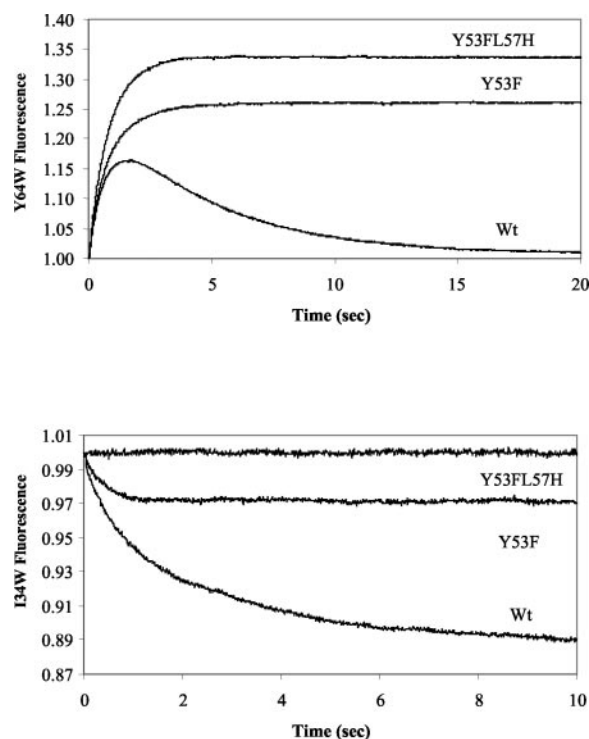
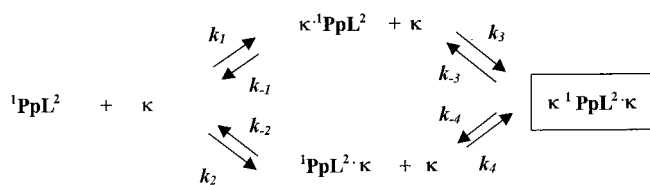


FIG. 2. Reaction progress curves showing the changes in fluorescence intensity observed upon mixing κ -chain with various PpL₃₃₁₆ mutants. 1.5 μM κ -chain was mixed with 1.5 μM PpL₃₃₁₆ mutant (Y64W/Y53F/L57H, Y64W/Y53F, Y64W, I34W/Y53F/L57H, I34W/Y53F, or I34W as indicated) in 20 mM potassium phosphate buffer, pH 8.0 at 15 °C. The fluorescence values shown are relative to the initial fluorescence observed for each reaction. Concentrations quoted are after mixing.

The single mutation Y64W produces a domain that shows large and complex changes in fluorescence when mixed with κ -chains. When excited at 280 nm a rapid increase in fluorescence intensity is followed by a slow and larger decrease. The binding of I34W to κ -chain under these conditions also appears to be a two-step process, both steps being accompanied by a decrease in fluorescence intensity. Biphasic kinetics such as these have been observed previously and occur when the mutant F39W PpL₃₃₁₆ is mixed with κ -chain (9). The unidirectional, biphasic fluorescence intensity changes observed in those studies are consistent with a system in which the rapid fluorescence change corresponds to the formation of an encounter complex that subsequently undergoes a slower local rearrangement from a low affinity complex to a high affinity equilibrium complex. However, this model cannot explain the reaction progress curves that show more complex bidirectional fluorescence changes. In view of the recent crystallographic results that detail the existence of a second, albeit much weaker, binding site for κ -chain on PpL₃₃₁₆, we can now reconcile these data with a two-site binding model. This model not only explains the complex fluorescence changes described above but also allows the K_d for the two binding sites to be determined.

In this model κ -chains bind independently to sites 1⁽¹⁾ and 2⁽²⁾ on ¹PpL². The overall K_d for each site will depend upon the ratios of their dissociation (k_{-1} and k_{-2}) and association rate constants (k_1 and k_2), respectively. Thus if the two sites have different K_d values for their respective complexes with κ -chains and the rates of association of κ -chain to the two sites are similar, then the rates of dissociation from these sites must be different. Such a phenomenon (17) will explain the biphasic fluorescence changes described above. For example, consider



SCHEME 1. Two-site binding model.

the situation when PpL₃₃₁₆ is present in excess and the rates of association to each site are similar. Under these conditions the κ -chain will initially bind to both sites 1 and 2. However, if site 2 has a higher dissociation rate than site 1 the occupancy of site 2 decreases and the κ -chain is redistributed in favor of site 1. Thus a reporter group in site 2, *e.g.* Trp⁶⁴, may show an initial fluorescence increase, as it becomes less solvent exposed due to the binding of κ -chain, followed by a decrease in fluorescence as the κ -chain is redistributed in favor of site 1. Similarly, the site 1 reporter group F39W shows a biphasic change on complex formation. In this case an initial rapid increase in fluorescence intensity, due to binding of free κ -chain to this site, followed by a slower increase, due to the further saturation of available site 1 a consequence of κ -chain being released from site 2. This is in accord with previous data (9). An alternative reporter group in site 1, I34W, which lies on the opposite side of β strand 2 and points away from the helix, interestingly shows a biphasic decrease in fluorescence on formation of a complex with κ -chain.

If the binding of κ -chain to each site is independent of the presence of κ -chain at the other site, then rates k_1 , k_{-1} , k_2 , and k_{-2} will be the same as rates k_4 , k_{-4} , k_3 , and k_{-3} , respectively. However, in the presence of excess PpL₃₃₁₆ the complex involving one PpL₃₃₁₆ domain and two κ -chains ($\kappa^{-1}\text{PpL}^2 \cdot \kappa$, shown boxed in Scheme 1) will not be present in significant amounts.

This model is supported by the dramatic effects of the additional mutation Y53F on the fluorescence properties and the reaction progress curves observed on complex formation. It virtually eliminates the second, slow decrease in fluorescence intensity shown by Trp⁶⁴ (Fig. 2) and is almost certainly attributable to the decreased affinity of site 1, a result of the Y53F replacement (9). Thus if the affinity of site 1 is decreased to, or below that, of site 2, then under the conditions used, more κ -chain will remain bound to site 2, and the fluorescence intensity at equilibrium from Trp⁶⁴ will be higher. This conclusion is supported by experiments using the mutant I34W/Y53F. This protein gives a reaction progress curve that appears to have a single-phase fluorescence change with a decreased amplitude compared with that observed for the binding of the single mutant I34W to κ -chain. These observations are consistent with the idea that the Y53F mutation reduces the affinity of site 1 close to that of site 2.

Finally, I34W/Y53F/L57H PpL₃₃₁₆ containing the binding site mutations Y53F/L57H with the site 1 reporter Trp³⁴ shows no fluorescence change when mixed with κ -chain. This is because binding at site 1 has been substantially reduced/eliminated, and any significant remaining κ -chain binding is due to site 2. This is supported by the results gained from experiments using the same site mutations but with the Y64W reporter (Y64W/Y53F/L57H PpL₃₃₁₆). This domain binds κ -chain resulting in the largest increase in fluorescence intensity (see Fig. 2). Assuming that the spectral response of the Trp⁶⁴ reporter group, excited by light at 295 nm, is not affected directly by the substitutions on the opposite side of the domain, these data suggest that the fluorescence intensity of Y64W PpL₃₃₁₆ at equilibrium reflects the occupancy of site 2 only. Thus the large fluorescence change given by Y64W/Y53F/L57H and the ab-

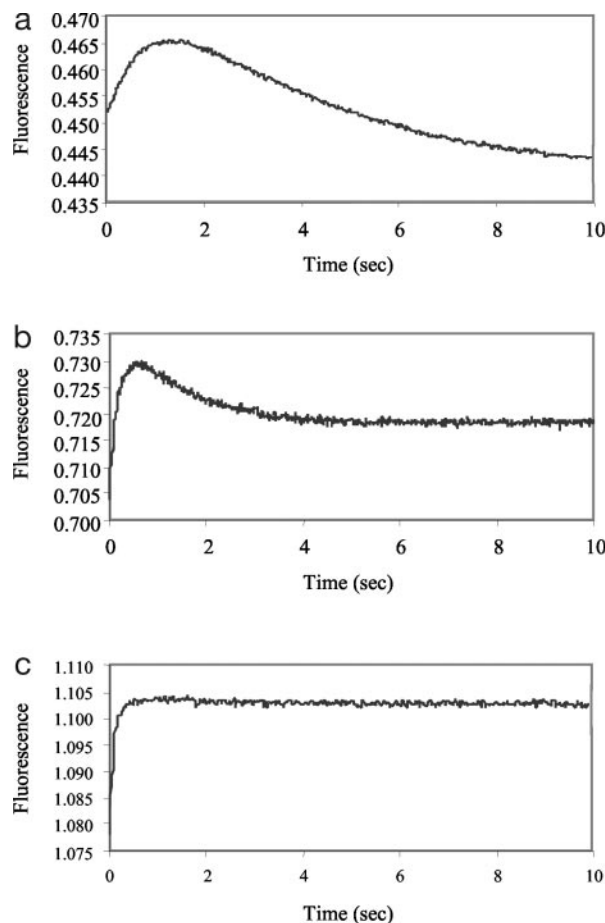


FIG. 3. Reaction progress curves showing the changes in fluorescence intensity observed upon reaction between Y64W PpL₃₃₁₆ and κ -chain. The reaction was initiated by mixing 1.5 μM Y64W PpL₃₃₁₆ with 1.8 μM κ -chain (a), 9.9 μM κ -chain (b), and 28.8 μM κ -chain (c) in 20 mM potassium phosphate buffer, pH 8.0 at 15 $^{\circ}\text{C}$. Concentrations quoted are after mixing.

sence of any fluorescence change for the same reaction with I34W/Y53F/L57H support the proposal that all of the bound κ -chain is located at site 2.

If the binding model described in the above scheme is correct then one would expect to see different reaction progress curves when the experiment is repeated with increasing concentrations of κ -chain. Eventually there will be sufficient κ -chain to occupy both binding sites to give the species $\kappa^{-1}\text{PpL}^2 \cdot \kappa$, and thus the reaction progress curves will become monophasic. Such an experiment is described in Fig. 3, which displays three reaction curves in which 1.5 μM Y64W PpL₃₃₁₆ is mixed with 1.8, 9.9, and 28.8 μM κ -chain. There is a clear reduction in the amplitude of the slow decrease in fluorescence as the concentration of κ -chain is increased. This reflects the increased occupancy of site 2 at equilibrium due to the higher concentration of κ -chain.

*Do the Mutations Alter the Structure of the PpL Domain?—*Circular dichroism studies (see Fig. 4) have shown that wt, L57H, Y53F, and Y53F/L57H domains have identical far UV CD spectra suggesting that the substitutions have not disturbed the secondary structures of the proteins. The presence of Trp residues in position 34 or 64 leads to an increase in ellipticity between 205 and 210 nm that is almost certainly due to spectral contributions from the aromatic side chains rather than disruption of the secondary folding of the protein. Furthermore, the structure of Y64W obtained by x-ray studies shows no significant backbone differences to that of the wt PpL₃₃₁₆ (18). Further mutations, *e.g.* Y53F, L57H, or Y53F/

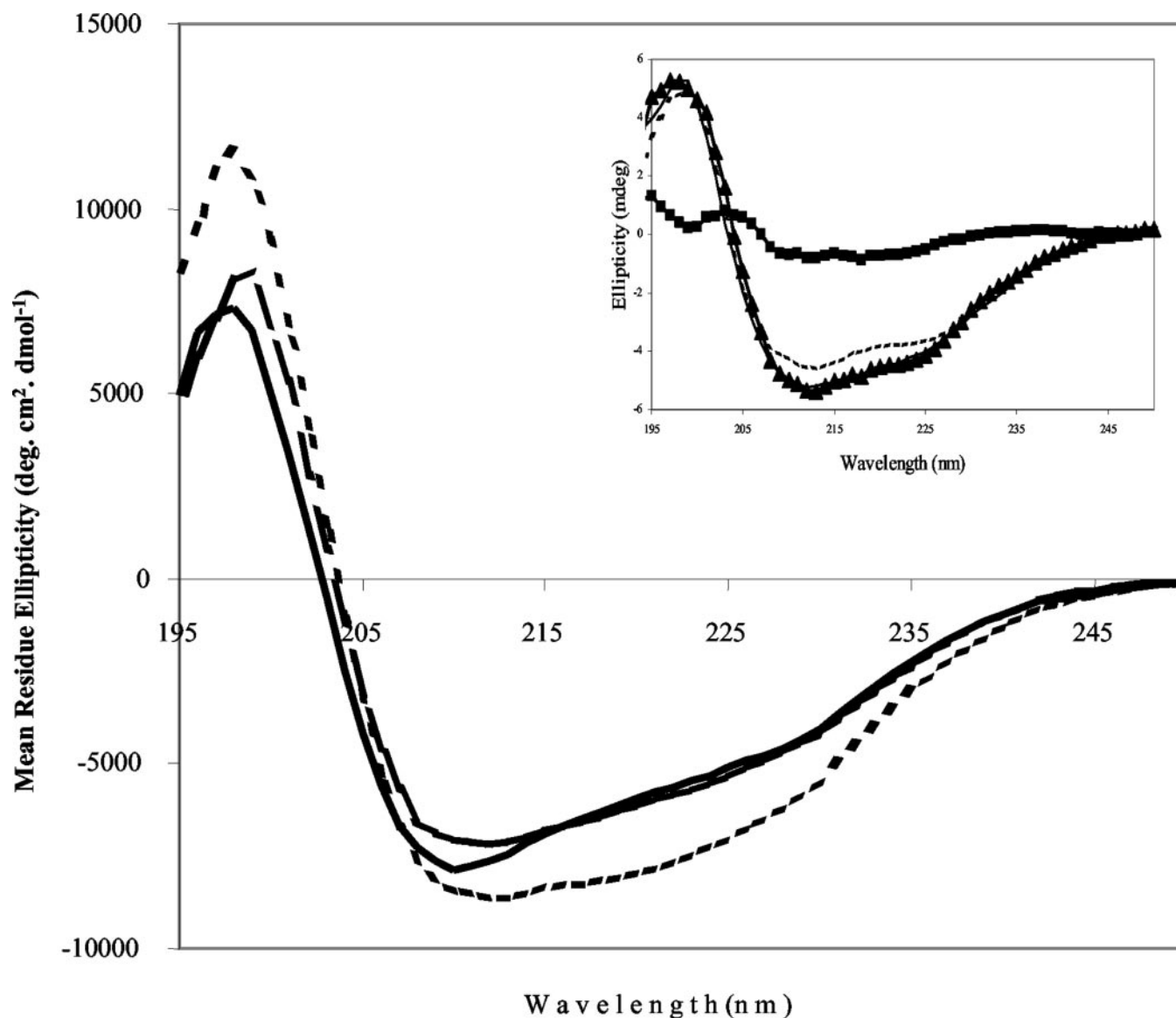


FIG. 4. Far-UV CD spectra of wt, I34W, and Y64W PpL₃₃₁₆. The spectra shown are each the average of three scans using 20 μM wt PpL₃₃₁₆ (dashed line), Y64W (solid line), or I34W (dotted line) in 20 mM potassium phosphate buffer, pH 8.0, 15 $^{\circ}\text{C}$. The inset shows the spectrum of 20 μM κ -chain (■), 20 μM wt PpL₃₃₁₆ (dotted line), the summated spectra of κ -chain (20 μM) and PpL₃₃₁₆ (20 μM) (▲), and the spectrum of a mixture of the two (solid line).

L57H made to the I34W or Y64W domains, caused no further spectral changes again indicating that they do not disrupt the folding of PpL₃₃₁₆.

Does the Binding Reaction Involve a Change in Structure of the Complex?—The determination of the x-ray crystallographic structures of the complexes between wt PpL₃₃₁₆ and a human Fab (10) and Y64W PpL₃₃₁₆ and a mouse Fab (18) have shown that the secondary structure of the free PpL₃₃₁₆ is the same as that of PpL₃₃₁₆ in the complex. Furthermore, the far-UV CD spectrum of wt PpL₃₃₁₆ is the same in the absence or presence of an equimolar concentration of κ -chain (see inset to Fig. 4) suggesting that there is no change in secondary structure on complex formation.

Determination of K_d for Complexes at Sites 1 and 2—By determining the rates k_1 , k_{-1} , k_2 , and k_{-2} for κ -chain binding to sites 1 and 2 of PpL₃₃₁₆, respectively, the K_d of the complex at each site can be determined. In experiments using domains with both sites functioning then the overall observed rate of association, k_a , will be a combination of the association rates for each site ($k_1 + k_2$, see Fig. 5). Thus to determine the

association rate to each site individually it was necessary to eliminate the alternative site in each case. This was achieved by the mutations Y53F/L57H and A66W on the I34W or Y64W templates. These remove binding capacity at sites 1 and 2, respectively. k_a can be calculated from the slope of a plot of the observed rate, k_{app} , against the concentration of the variable ligand (PpL₃₃₁₆). Such data using various PpL₃₃₁₆ mutants are given in Table III. In the absence of κ -chain binding at site 1 the reaction of κ -chain with site 2 of the Y64W/Y53F/L57H PpL₃₃₁₆ mutant is a simple bimolecular binding process and the observed rate of reaction $k_{app} = k_2[\text{Y64W/Y53F/L57H PpL}_{3316}] + k_{-2}$ (see Fig. 5). The variation of k_{app} with varying concentrations of Y64W/Y53F/L57H PpL₃₃₁₆ is shown in the inset to Fig. 5, and the value of k_2 is $0.15 \pm 0.02 \mu\text{M}^{-1} \text{s}^{-1}$ (Table III). Similarly experiments show that k_1 for binding at site 1 (using the mutant I34W/A66W) is $0.25 \pm 0.01 \mu\text{M}^{-1} \text{s}^{-1}$ at 25 $^{\circ}\text{C}$. The sum of these two association rate constants ($0.40 \mu\text{M}^{-1} \text{s}^{-1}$) is very close to that determined for domains in which binding occurs to both sites simultaneously, as described above, e.g. Y64W ($0.35 \pm 0.03 \mu\text{M}^{-1} \text{s}^{-1}$) or I34W ($0.33 \pm 0.02 \mu\text{M}^{-1} \text{s}^{-1}$).

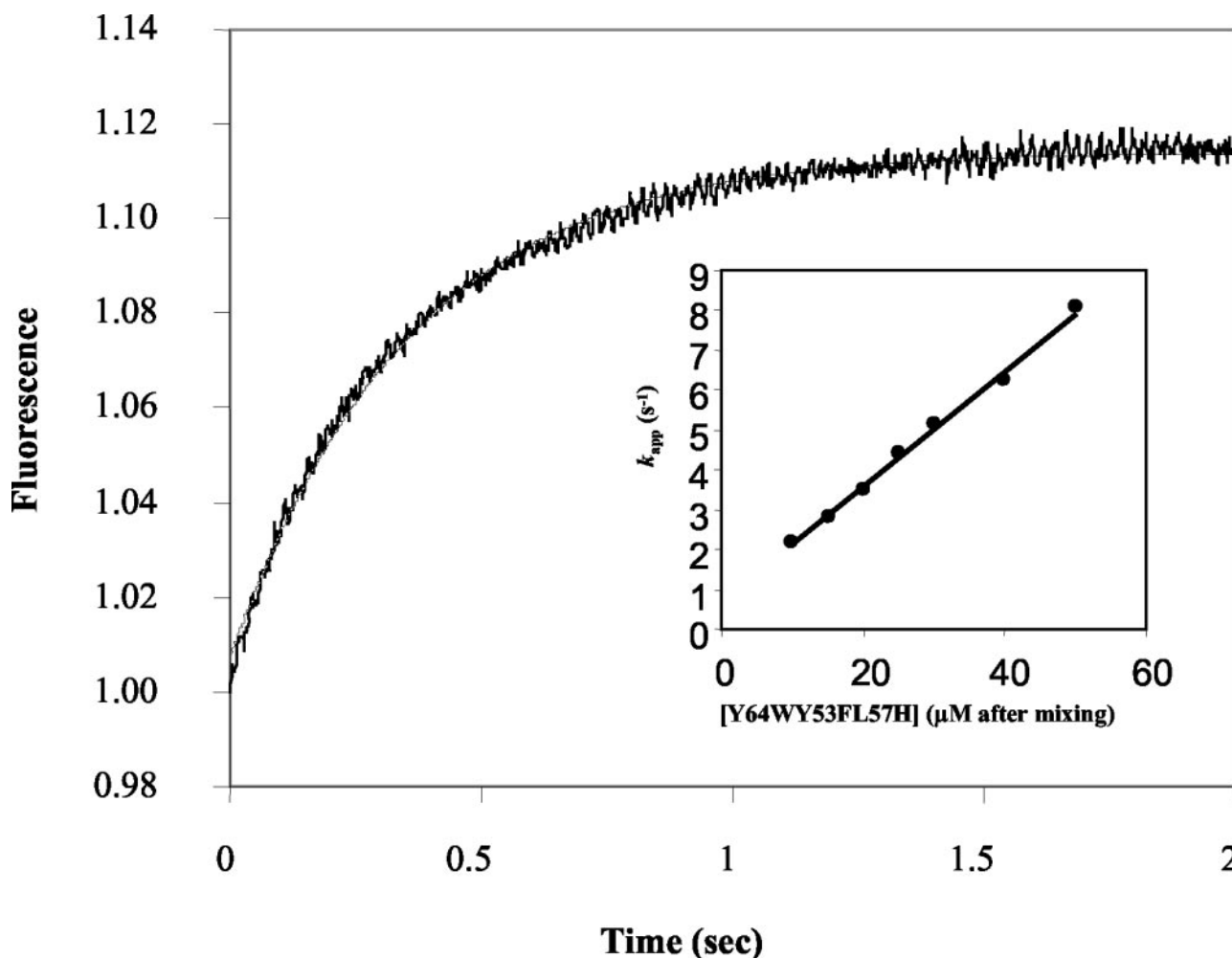


FIG. 5. A reaction progress curve showing the changes in fluorescence intensity observed upon the reaction between κ -chain and Y64W/Y53F/L57H PpL₃₃₁₆. Both proteins (1.5 μM κ -chain and 15 μM PpL₃₃₁₆ after mixing) were dissolved in 20 mM potassium phosphate buffer, pH 8.0. *Inset*, the variation of k_{app} upon mixing 1.5 μM κ -chain with various concentrations of Y64W/Y53F/L57H PpL₃₃₁₆.

TABLE III

The rates of association, dissociation, and K_d values for the various PpL₃₃₁₆- κ -chain complexes ($n = 3$)

Standard deviations are only given for experimentally determined values. ND is given where no reporter group is present in the respective site to be determined.

PpL construct	k_a	Site 1			Site 2		
		k_1	k_{-1}	K_d	k_2	k_{-2}	K_d
	$M^{-1} s^{-1} \times 10^4$	$M^{-1} s^{-1} \times 10^4$	$s^{-1} \times 10^{-3}$	$M \times 10^{-9}$	$M^{-1} s^{-1} \times 10^4$	$s^{-1} \times 10^{-3}$	$M \times 10^{-7}$
Y64W	35 ± 3	20^a	8 ± 1	38	15^b	560 ± 20	37
Y64W/Y53F	33 ± 6	18^a	ND	ND	15^b	410 ± 30	28
Y64W/Y53F/L57H	15 ± 2	No detectable binding			15 ± 2	500 ± 20	34 ± 7
I34W	33 ± 2	18^a	13 ± 1	68	15^b	ND	ND
I34W/Y53F	33 ± 3	18^a	840 ± 13	4400	15^b	ND	ND
I34W/A66W	25 ± 1	25 ± 1	12 ± 1	48 ± 8	No detectable binding		

^a Values of k_1 calculated by subtraction of k_2 (determined for the Y64W/Y53F/L57H- κ -chain interaction) from k_a (the combined rates of k_1 and k_2).

^b The value of k_2 determined from experiments using Y64W/Y53F/L57H PpL in which binding at site 1 has been eliminated.

To corroborate these calculations we used domains with the Trp³⁴ reporter and determined k_1 and k_{-1} for the reaction by rapidly mixing a constant amount of the PpL₃₃₁₆ domain with various excess concentrations of κ -chain, the latter always in large excess so that pseudo-first order conditions can be achieved. The observed rate of reaction k_{app} will depend upon the concentration of κ -chain, and a plot of k_{app} against κ -chain concentration yielded a line of slope k_1 , in this case $0.23 \pm 0.04 \mu\text{M}^{-1} \text{s}^{-1}$ (data not shown), which is in close agreement with the values determined by other methods (see Table III).

Determination of the Rates of Dissociation of the Complexes— Although estimates of the dissociation rates k_{-1} or k_{-2} can be obtained from the intercept on the ordinate of the plot shown in the *inset* to Fig. 5, these are prone to large errors when their values are so low (19). Therefore rates of dissociation of the complexes between PpL₃₃₁₆ domains and κ -chain were measured as described under “Experimental Procedures,” and the data are summarized in Fig. 6, *a–c*, and Table III. The dissociation of the κ -chain from the complex at site 1 of I34W PpL₃₃₁₆ gives rise to a slow, single-phase fluorescence increase, with a rate of $0.013 \pm 0.001 \text{s}^{-1}$. The rate of dissociation of the

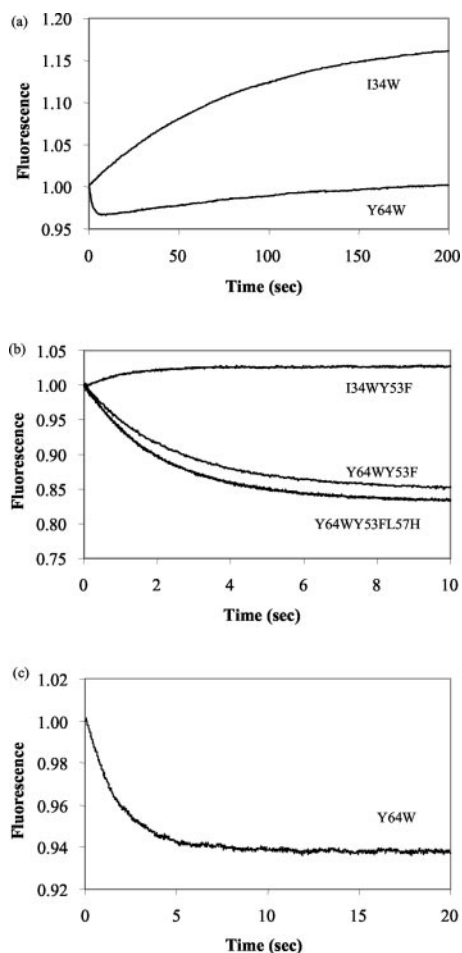


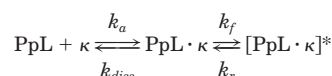
FIG. 6. Fluorescence intensity changes observed upon the dissociation of PpL₃₃₁₆- κ -chain complexes at pH 8.0 and 15 °C. *a*, emission at wavelengths greater than 335 nm, using an excitation wavelength of 280 nm, observed upon the dissociation of the I34W PpL₃₃₁₆- κ -chain and Y64W PpL₃₃₁₆- κ -chain complexes. *b*, emission at wavelengths greater than 335 nm, using an excitation wavelength of 280 nm, upon dissociation of the I34WY53F PpL₃₃₁₆- κ -chain, Y64W/Y53F, PpL₃₃₁₆- κ -chain, and Y64W/Y53F/L57H PpL₃₃₁₆- κ -chain complexes. *c*, emission at wavelengths greater than 335 nm, using an excitation wavelength of 295 nm, upon dissociation of the Y64W PpL₃₃₁₆- κ -chain complex.

I34W/Y53F PpL₃₃₁₆- κ -chain complex (containing the additional Y53F mutation) is ~ 65 -fold greater ($0.84 \pm 0.01 \text{ s}^{-1}$), thus giving rise to a large increase in the value of K_d (see Table III) as noted previously (9).

The fluorescence changes that accompany the dissociation of the Y64W PpL₃₃₁₆- κ -chain complex can be resolved into two distinct steps when an excitation wavelength of 280 nm is used. A fluorescence decrease occurs with a rate of $0.56 \pm 0.02 \text{ s}^{-1}$, followed by a much slower fluorescence increase with a rate of $0.008 \pm 0.001 \text{ s}^{-1}$, the latter of which is comparable with the rate of dissociation noted for the I34W PpL₃₃₁₆- κ -chain complex. The dissociation of the Y64W/Y53F PpL₃₃₁₆- κ -chain and Y64W/Y53F/L57H PpL₃₃₁₆- κ -chain complexes are both accompanied by single-phase fluorescence decreases with rates of $0.41 \pm 0.03 \text{ s}^{-1}$ and $0.50 \pm 0.02 \text{ s}^{-1}$, respectively. Thus by introducing the mutations Y53F or Y53F/L57H into the Y64W PpL₃₃₁₆ template the initial phase of dissociation of the PpL₃₃₁₆- κ -chain complex is relatively unaffected but the slower dissociation step is no longer observed suggesting this is due to dissociation from site 1. The K_d values for the complexes formed by the above PpL₃₃₁₆ domains and κ -chain are given in Table III.

When the dissociation experiment with the Y64W PpL₃₃₁₆- κ -chain complex was repeated using an excitation wavelength of 295 nm, only the initial fluorescence decrease was apparent (Fig. 6c). We can conclude from this that the initial fluorescence decrease is due to changes in the environment of Trp⁶⁴ as the κ -chain dissociates from site 2. The slower fluorescence change noted when the excitation wavelength is 280 nm arises from increased FRET from Tyr⁵³ as the complex at site 1 dissociates (removing quenching from Tyr⁵³). Therefore it is proposed to simultaneously observe dissociation at sites 1 and 2. Using the values of the rates of association (k_a) and dissociation (k_{-2}) of the Y64W/Y53F/L57H PpL₃₃₁₆- κ -chain complex from the above experiments the K_d at site 2 is $3.4 \pm 0.70 \mu\text{M}$ (Table III).

Sequential Mixing Stopped-flow Fluorimetry—In the original single site binding model shown below (9), it was proposed that two structurally different forms of the PpL₃₃₁₆- κ -chain complex exist.



REACTION 1

In this scheme k_a and k_{diss} represent the rates of association and dissociation, respectively, of the encounter complex PpL \cdot κ , and k_f and k_r represent the forward and reverse rates of the structural rearrangement, respectively.

In the proposed model (9) the transition from PpL \cdot κ to [PpL \cdot κ]^{*} was suggested to increase the affinity by ~ 30 -fold. Thus under equilibrium conditions, the majority of the PpL and κ -chain would be present in the form of the high affinity complex. Also dissociation of the encounter complex occurs rapidly, while dissociation of the equilibrium complex is rate limited by k_r (9). Therefore upon dissociation of the complex at equilibrium most of the observed fluorescence change would occur with the rate constant kr . However, if dissociation of the PpL \cdot κ -chain complex is invoked shortly after the mixing of PpL and κ -chain, before the encounter complex has undergone the structural rearrangement, the observed rate would be k_{diss} , that of the dissociation of the encounter complex. When both encounter and equilibrium complexes are present, the observed dissociation profile would be expected to be biphasic, the amplitude of each phase being dependent on the relative abundance of each complex.

However, sequential-mixing stopped-flow studies on the dissociation of the I34W PpL₃₃₁₆- κ -chain complex reveal a single-phase fluorescence increase upon dissociation. Regardless of the incubation time prior to initiation of dissociation, a rate constant of $\sim 0.01 \text{ s}^{-1}$ was observed. Therefore, the formation of the I34W PpL₃₃₁₆- κ -chain complex does not appear to occur by a two step process involving a structural rearrangement.

Isothermal Titration Calorimetry—Isothermal titration calorimetry was used to verify the K_d values obtained for κ -chain binding to sites 1 and 2 of PpL₃₃₁₆ determined using the fluorimetric methods above. To attempt to resolve binding to sites 1 and 2, κ -chain was titrated into wt PpL₃₃₁₆. As a result of the very high concentration of κ -chain required when used as the titrant the data required significant correction for the contribution to the enthalpy profile due to κ -chain dilution. The K_d values for sites 1 and 2 were estimated to be $21.1 \pm 10.21 \text{ nM}$ and $7.5 \pm 3.1 \mu\text{M}$, respectively (see Table IV). The enthalpic contributions to binding at sites 1 and site 2 were $-54.3 \pm 0.7 \text{ kJ/mol}$ and $-28.1 \pm 6.2 \text{ kJ/mol}$, respectively, and the entropic changes were -41.4 and 0.7 J/mol/degree , respectively.

TABLE IV
Isothermal titration calorimetric analysis of κ_1 -chain binding to sites 1 and 2 on PpL₃₃₁₆ $N =$ stoichiometry of binding sites ($n = 3$)

PpL	Site 1				Site 2			
	N	K_d	ΔH	ΔS	N	K_d	ΔH	ΔS
		<i>nM</i>	<i>kJ/mol</i>	<i>J/mol/degree</i>		μM	<i>kJ/mol</i>	<i>J/mol/degree</i>
wt ^a	1.0 ± 0.0	21.1 ± 10.2	-54.3 ± 0.7	-41.4 ^a	1.3 ± 0.2	7.5 ± 3.1	-28.2 ± 6.2	0.7 ^a
A66W	1.3 ± 0.1	37.5 ± 7.3	-40.2 ± 0.3	2.8 ± 1.1	No detectable binding			
Y53F/L57H	No detectable binding				1.3 ± 0.0	4.6 ± 0.8	-21.3 ± 1.8	28.4 ± 5.6

^a Parameters determined from the analysis of one data set. For experimental conditions see "Experimental Procedures."

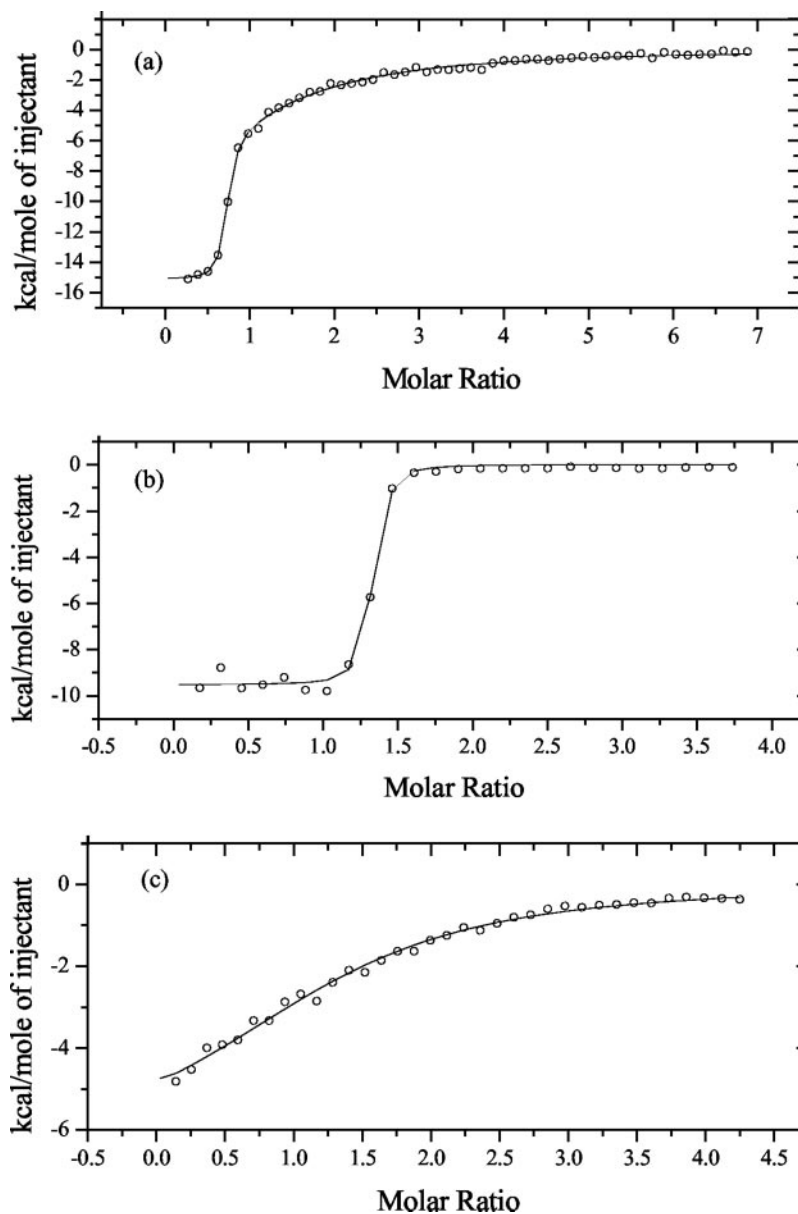


FIG. 7. Binding isotherms for the reactions between wt (a), A66W (b), and Y53F/L57H PpL₃₃₁₆ and κ_1 -light chain (c) in 20 mM potassium phosphate buffer, pH 8.0 at 15 °C. a, aliquots of 360 μM κ -chain were titrated into 15 μM wt PpL₃₃₁₆ corrected for the heat changes associated with the dilution of the κ -chain. b, 737 μM A66W PpL₃₃₁₆ was titrated into 28.3 μM κ_1 -chain. c, 650 μM Y53F/L57H PpL₃₃₁₆ were titrated into 25 μM κ_1 -chain. Binding data from these titrations were analyzed using the manufacturer's software.

However, to accurately determine these values for each site, mutants in which either site 1 or site 2 had been eliminated were used. Titration of Y64W/Y53F/L57H PpL₃₃₁₆ into κ -chain allows the binding at site 2 to be measured. Clear enthalpy profiles are obtained (see Fig. 7), while titration of Y64W/Y53F/L57H PpL₃₃₁₆ into buffer shows insignificant enthalpy changes. Analysis of the heat changes of the titrations fitted a one site binding model and indicated a K_d value of $4.6 \pm 0.8 \mu\text{M}$, an enthalpy change of $-21.3 \pm 1.2 \text{ kJ/mol}$ and an entropic change of $28.4 \pm 5.6 \text{ J/mol/degree}$.

A66W PpL₃₃₁₆ was similarly used to study binding to site 1 in the absence of binding at site 2. The A66W titration into

κ -chain gives an enthalpy profile that fits a one site binding model with a K_d equal to $37.5 \pm 7.3 \text{ nM}$, an enthalpy change of $-40.2 \pm 0.3 \text{ kJ/mol}$ and an entropic change of $2.8 \pm 1.1 \text{ J/mol/degree}$.

CONCLUSIONS

The experiments described above show conclusively that a PpL₃₃₁₆ domain has two binding sites for κ -chain of different affinities. The placement of unique Trp residues in either of the two binding sites has facilitated the binding constants to be determined and a model developed that explains the complex fluorescence signal changes noted previously. Estimates of K_d

by such techniques as enzyme-linked immunosorbent assay will reflect the presence of both sites. Thus we have resolved the issue by the production of mutants that have binding at one site or the other eliminated under these experimental conditions.

Fig. 2 shows that the final level of fluorescence ($\lambda_{\text{ex}} = 295$ nm) from the complex formed by mixing a 1:1 mol:mol ratio of Y64W PpL₃₃₁₆ and κ -chain is indicative of the relative occupancy of site 2. Thus if all of the bound κ -chain is at site 1, then there is little fluorescence increase at equilibrium from the Trp⁶⁴ and vice versa. A domain with two sites of equal affinity would show equilibrium fluorescence intensity half way between the two extremes described above. We estimate that for the Y64W PpL₃₃₁₆- κ -chain complex, greater than 95% of the κ -chain is bound to site 1, and this is reflected by an ~2% net increase in the fluorescence intensity at equilibrium. The residual fluorescence intensity at equilibrium given by Y64W/Y53F is more than half of the fluorescence intensity difference given by Y64W and Y64W/Y53F/L57H (which shows no binding at site 1). This therefore suggests that the Y64W/Y53F has an affinity for κ -chain at site 1 that is lower than its affinity at site 2. This is supported by the K_d values for the various complexes shown in Table III in which the K_d for the I34W/Y53F PpL₃₃₁₆- κ -chain complex (site 1) is 4.4 μM and that for the Y64W/Y53F/L57H PpL₃₃₁₆- κ -chain (site 2) is 3.4 μM . In the Y64W/Y53F/L57H complex 100% of the bound κ -chain is at site 2, and hence this has a K_d equal to 3.4 \pm 0.7 μM (see Table III).

The new model that explains the biphasic fluorescence changes that occur on complex formation is consistent with previous data (9), although the previously proposed structural rearrangement (9), suggested by a slow change in fluorescence with a first order rate constant that is independent of the concentration of ligand, is now known to be the dissociation of κ -chain from the weaker site. Possible alternative models involving oligomeric forms of the protein can be eliminated as sedimentation studies carried out on PpL₃₃₁₆ have confirmed that the domain exists as a monomer in solution.²

The Y53F mutation dramatically increases the rate of dissociation of κ -chain from site 1 due to the loss of the hydrogen bond formed between the hydroxyl group and the peptide carbonyl group of Thr²⁰. This leads to a decrease in affinity of at least 90-fold to yield a K_d of 4.42 μM , higher than in a previous report (9). However, it is now clear from the studies described in this paper that the affinity (3.2 μM) measured in (9) was for κ -chain binding that was occurring at the then unreported weaker binding at site 2.

To date, the binding of wt PpL₃₃₁₆ to two different κ -chains has been studied. These are a human κ 1-chain (κ 1_T) described

here and the other a human Fab (2A2 (10)). Additionally the binding of mutated PpL₃₃₁₆ domains to a murine κ 9 (Fab 19D9D6) has been studied (12). All of these confirm the presence of two binding sites per domain although the elimination of site 2 for the murine κ 9 (Fab 19D9D6) has been demonstrated for the mutant D55A (12). Binding at the second site is not easily detected due to the presence of the much higher affinity site 1. However, this problem is eliminated when site 1 is either weakened or abrogated and thus by use of suitable mutants we have in these studies been able to measure the affinity of site 2 for κ -light chains.

Because the binding interactions at sites 1 and 2 involve backbone and different side chain contacts between PpL₃₃₁₆ and κ -chain, it is probable that the relative affinities of each site for κ -chains may depend upon the subclass or origin of the κ -chain. This may well offer an advantage to the bacterium, allowing it to maximize potential binding capacity.

Acknowledgments—We thank Prof. Martin Glennie, Tenovus Laboratories, Southampton, UK, for the kind gift of κ 1_T-chain and Profs. M. T. Wilson and R. Eisenthal for helpful discussions.

REFERENCES

- Kastern, W., Holst, E., Nielsen, E., Sjöbring, U., and Björck, L. (1990) *Infect. Immun.* **58**, 1217–1222
- Åkerström, B., and Björck, L. (1989) *J. Biol. Chem.* **264**, 19740–19746
- Patella, V., Casolaro, V., Björck, L., and Marone, G. (1990) *J. Immunol.* **145**, 3054–3061
- Wikström, M., Drakenberg, T., Forsén, S., Sjöbring, U., and Björck, L. (1994) *Biochemistry* **33**, 14011–14017
- Wikström, M., Forsén, S., and Drakenberg, T. (1996) *Eur. J. Biochem.* **235**, 543–548
- Wikström, M., Sjöbring, U., Drakenberg, T., Forsén, S., and Björck, L. (1995) *J. Mol. Biol.* **250**, 128–133
- Enokizono, J., Wikström, M., Sjöbring, U., Björck, L., Forsén, S., Arata, Y., Kato, Y., and Shimada, I. (1997) *J. Mol. Biol.* **270**, 8–13
- Bottomley, S. P., Beckingham, J. A., Murphy, J. P., Atkinson, M., Atkinson, T., Hinton, R. J., and Gore, M. G. (1995) *Bioseparation* **5**, 359–367
- Beckingham, J. A., Bottomley, S. P., Hinton, R., Sutton, B. J., and Gore, M. G. (1999) *Biochem. J.* **340**, 193–199
- Graille, M., Stura, E. A., Housden, N. G., Beckingham, J. A., Bottomley, S. P., Beale, D., Taussig, M. J., Sutton, B. J., Gore, M. G., and Charbonnier, J.-B. (2001) *Structure (Lond.)* **9**, 679–687
- Beckingham, J. A., Housden, N. G., Muir, N. M., Bottomley, S. P., and Gore, M. G. (2001) *Biochem. J.* **353**, 395–401
- Graille, M., Harrison, S., Crump, M. P., Findlow, S. C., Housden, N. G., Muller, B. H., Battail-Poirot, N., Sibai, G., Sutton, B. J., Jolivet-Reynaud, C., Gore, M. G., and Stura, E. A. (2002) *J. Biol. Chem.* **277**, 47500–47506
- Lakowicz, J. R. (1999) *Principles of Fluorescence Spectroscopy*, 2nd Ed., Kluwer Academic/Plenum Press, New York
- Gore, M. G., and Bottomley, S. P. (2000) *Spectrophotometry and Spectrofluorimetry; A Practical Approach*, 2nd Ed., Oxford University Press, Oxford
- Kunkel, T. A., Roberts, J. D., and Zakour, R. A. (1987) *Methods Enzymol.* **154**, 367–382
- McPherson, S. G., and Mohler, (2000), *PCR*, BIOS Scientific Publishers, Oxford
- Hirami, K. (1979) *Kinetics of Fast Enzyme Reactions*, Halsted Press, New York
- Stura, E. A., Graille, M., Housden, N. G., and Gore, M. G. (2002) *Acta Crystallogr. Sect. D Biol. Crystallogr.* **58**, 1744–1748
- Wilson, M. T., and Torres, J. (2000) *Spectrophotometry and Spectrofluorimetry; A Practical Approach*, 2nd Ed., Oxford University Press, Oxford

² B. J. Sutton and R. Beavil, personal communication.