



**HAL**  
open science

## **From collections of independent, mindless robots to flexible, mobile, and directional superstructures**

Jean-François Boudet, Juho S. Lintuvuori, Claire Lacouture, T. Barois, Antoine Deblais, Kaili Xie, Sébastien Cassagnere, Bernard Tregon, David Brückner, Jean-Christophe Baret, et al.

► **To cite this version:**

Jean-François Boudet, Juho S. Lintuvuori, Claire Lacouture, T. Barois, Antoine Deblais, et al.. From collections of independent, mindless robots to flexible, mobile, and directional superstructures. *Science Robotics*, 2021, 6 (56), pp.eabd0272. 10.1126/scirobotics.abd0272 . hal-03298591

**HAL Id: hal-03298591**

**<https://hal.science/hal-03298591>**

Submitted on 11 Oct 2021

**HAL** is a multi-disciplinary open access archive for the deposit and dissemination of scientific research documents, whether they are published or not. The documents may come from teaching and research institutions in France or abroad, or from public or private research centers.

L'archive ouverte pluridisciplinaire **HAL**, est destinée au dépôt et à la diffusion de documents scientifiques de niveau recherche, publiés ou non, émanant des établissements d'enseignement et de recherche français ou étrangers, des laboratoires publics ou privés.

# From collections of independent, mindless robots to flexible, mobile and directional superstructures

J. F. Boudet<sup>1</sup>, J. Lintuvuori<sup>1</sup>, C. Lacouture<sup>1</sup>, T. Barois<sup>1</sup>, A. Deblais<sup>2</sup>  
K. Xie<sup>1</sup>, S. Cassagnere<sup>1</sup>, B. Tregon<sup>1</sup>,  
D. B. Brückner<sup>3</sup>, J. C. Baret<sup>4,5</sup> and H. Kellay<sup>1,5</sup>

<sup>1</sup>Univ. Bordeaux, CNRS, LOMA, UMR 5798, F-33400 Talence, France,

<sup>2</sup>Van der Waals-Zeeman Institute, Institute of Physics,  
University of Amsterdam, 1098XH Amsterdam, The Netherlands.

<sup>3</sup>Arnold Sommerfeld Center for Theoretical Physics and Center for NanoScience,  
Ludwig-Maximilian-University Munich, Theresienstr. 37, D-80333 Munich, Germany

<sup>4</sup>Univ. Bordeaux, CNRS, CRPP-UMR5031, 33600 Pessac, France.

<sup>5</sup>Institut Universitaire de France, 75005, Paris, France,

**A swarm of simple active particles confined in a flexible scaffold is a promising system to make mobile and deformable superstructures. These soft structures can perform tasks that are difficult to carry out for monolithic robots as they can infiltrate narrow spaces, smaller than their size, and move around obstacles. To achieve such tasks, the origin of the forces the superstructures develop, how they can be guided, and the effects of external environment, especially geometry and the presence of obstacles, need to be understood. Here we report measurements of the forces developed by such superstructures, enclosing a number of mindless active rod-like robots, as well as the forces exerted by these structures to achieve a simple function, crossing a constriction. We relate these forces to the self organization of the individual entities. Further, and based on a physical understanding of what controls the mobility of**

**these superstructures and the role of geometry in such a process, we devise a simple strategy where the environment can be designed to bias the mobility of the superstructure giving rise to directional motion. Simple tasks such as pulling a load, moving through an obstacle course, or cleaning up an arena are demonstrated. Rudimentary control of the superstructures using light is also proposed. The results are of relevance to the making of robust flexible superstructures with non trivial space exploration properties out of a swarm of simpler and cheaper robots.**

One Sentence Summary: Self-organization of independent simple robots confined in a flexible scaffold gives rise to a mobile and flexible structure.

## **Introduction**

Swarm robotics (*1–4*) uses a multitude of simple robots, with minimal ingredients such as self locomotion or simple configurational change, leading, through mutual interactions (*5–7*), to global organization with abilities that may go beyond those of the individual particles (*6–11*). Different types of robots have been proposed to achieve this goal from motile vibrating bots, active particles with embedded locomotion, to shape changing and/or light sensitive particles (*6–10, 12*). The use of scaffolds made of rigid or flexible boundaries enclosing several robots is emerging as a promising strategy to create superstructures with non trivial properties (*8, 10, 13–15*). These superstructures can acquire mobility even when the robots have none (*10*). Because of the flexibility of the scaffold, these superstructures can deform, go through constrictions and around obstacles giving them space exploration properties (*8, 13, 14*). Nevertheless, the origin as well as the measurement and prediction of the forces developed by such superstructures remain ill understood and strategies to direct their motion remain scarce. These forces are essential to

predict the size of constrictions that the superstructures can infiltrate and the loads they may transport.

Despite a number of studies on active particles, the simplest type of robot, and their self organization in bulk and under confinement using diverse objects spanning a wide range of spatial scales (16–23), it remains a fundamental challenge to predict macroscopic properties such as the pressure exerted by assemblies of active particles or the effect of the presence of boundaries on the spatial distribution of these particles (24–26). When the walls containing the assemblies are deformable and flexible, the physics becomes even more complex (8, 13, 27–29) giving rise to nontrivial instabilities and shapes. How such forces and pressures adapt to changing environmental and geometrical features is again not well understood. All of these elements are essential to design autonomous, scalable, robust, and multipurpose superstructures out of a swarm of robots.

Here, we confine a swarm of motile and mindless robots in a deformable scaffold, creating a superstructure whose dynamics emerges from the self-organization of the robots. The mobility of these superstructures is shown to be directly related to the ability of the rod-like robots to align parallel to each other and perpendicularly to the scaffold walls. This alignment, referred to as the polar order, gives rise to a force pointing perpendicular to the scaffold walls and to the mobility of the superstructure in the direction of this alignment. The emergent mobility of the superstructure is thus directly linked to the self organization of the individual components with the polar order being the main driving force for the locomotion. The superstructure is then subjected to perform a simple function, crossing a constriction. We uncover how the geometry of the constriction, its width and length, controls the forces developed by the superstructure to overcome geometrical obstacles and thus the passage time through the constriction. Numerical simulations as well as a simple model complement and rationalize our findings. Based on this fundamental understanding of the locomotion of the superstructure in these model confined

environments, we devise a simple strategy to direct their motion and test different possibilities for these superstructures such as pulling loads, moving through an obstacle course, cleaning up an arena, and interacting with each other. Using rudimentary light control of the individual robots, the mobility of the superstructures can be turned on and off and the organization of the individual robots can be induced leading to mobility. Figure 1 gives a summary of our findings in graphical form going from the individual robot to a controllable superstructure.

## Results

To provide a minimal system for studying the robotic potential of superstructures driven by collections of independent robots, we study the dynamics of a confined collection of such robots in flexible and deformable scaffolds moving in geometries with increasing complexity: a simple straight channel, a channel with a geometrical constriction and a channel geometry with several such constrictions. Each situation gives direct insight into the mobility of these superstructures, their ability to carry out a simple function, and finally their capacity to have directional motion.

### Superstructure mobility in a straight channel

To gain insight into the emergent dynamics of the superstructure and how it is related to the underlying driving by the robot collective, we begin by confining the superstructures in straight channels. The first set of experiments examines the mobility of flexible superstructures of different diameters  $D$ , filled with a number  $N$  of mobile centimeter sized rod-like robots (see Methods) propelled by self-vibration, in straight channels of width  $H$ , comparable to or smaller than the diameter  $D$  of the scaffold itself, and lengths of several diameters. The scaffolds are made of thin steel strips of various thicknesses  $e$ , corresponding to varying flexibility of the scaffold (8, 30, 31). Figure 2a shows snapshots of robot filled scaffolds in such channels, two channel widths are shown. The state of organization of the robots can be disordered (gas-like

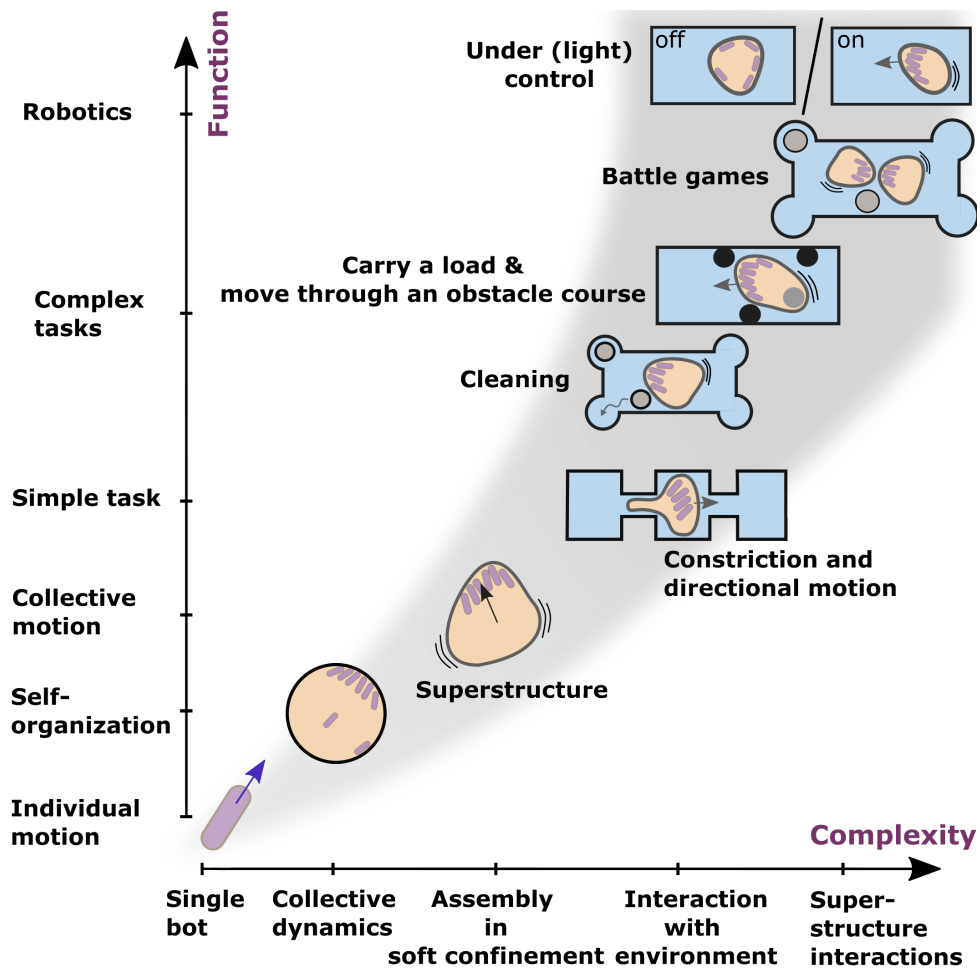


Figure 1: Paper at a glance: the experiments use centimeter sized robots enclosed in scaffolds. For flexible scaffolds, the self organization of the robots gives rise to a polar ordering of the individual robots and mobility of the structure. These superstructures can then go through constrictions, drag loads, move around obstacles and carry out simple tasks such as cleaning an arena. Rudimentary control over the individual robots can lead to control over the self organization and the mobility of the superstructure

in the center) or ordered near the boundary of the scaffold and the walls of the channel (8, 26). This ordering is of two sorts with robots either parallel or perpendicular to the walls. At low  $N$ , the robots align parallel to the scaffold walls and move along this boundary. Rapidly, after a few collisions between the robots, the majority of the robots align in the same direction giving

rise to swirling motion. In this state of organization, the superstructure only performs non-persistent stochastic motion, Fig. 2b and Movie 1. At higher  $N$ , the robots can form clusters where the individual particles point perpendicular to the surface of the scaffold as demonstrated earlier (8, 26). While these clusters are rather stable, they may lose or gain particles, and they generally drift along the boundary in the counterclockwise direction due to a small bias in the trajectory of the single robots with a tendency to have circular trajectories (8). This state of organization gives rise to persistent superstructure locomotion, Fig. 2b and Movie 2, with mean velocities that are a fraction of the single rod velocities (8).

To quantify these observations, we measure the mean value of the modulus of the velocity of the center of mass of the superstructure  $\langle V(t) \rangle$ , and the angular momentum of the robot assembly,  $\langle \mathbf{L}(t) \rangle = \langle \mathbf{r}(t) \times \mathbf{v}(t) \rangle_{t,N}$  where  $\mathbf{r}(t)$  is the vector position of the robot with respect to the center of the scaffold and  $\mathbf{v}(t)$  is the velocity of the robot, as a function of the number of robots, Fig. 2c. The brackets indicate a temporal average and an average over all the robots. At low  $N$ ,  $\mathbf{L}$  is high (close to  $RV_B$  where  $R$  is the radius of the superstructure and  $V_B$  the mean velocity of the individual robots), while  $\langle V(t) \rangle$  is low signalling the swirling motion of the robots along the scaffold surface. For intermediate values of  $N$ , between 20 and 25 for the example shown in Fig. 2c, the state of organization can be disordered with the appearance of small clusters in an intermittent manner; the super structure in this state has a low velocity (less than  $0.1V_B$ ) and no persistent motion is clearly visible (see Movie 3). For higher  $N$ , the superstructure velocity is high (0.1 to  $0.2 V_B$ ) while  $\mathbf{L}$  has low values close to zero signaling the presence of a cluster with robots perpendicular to the walls. A transition from swirling to clustering and thus superstructure mobility in the direction of the channel length occurs for high enough values of  $N$  (above 25 for the example shown). The transition number depends on scaffold diameter and flexibility and is plotted in Fig. 2d. This number increases linearly for small diameters, and corresponds roughly to full coverage of the scaffold surface with parallel

rods (highlighted by the dashed line), and starts to deviate from this trend for larger diameters for which full coverage with robots parallel to the walls is never reached before cluster formation. The band in Fig. 2d around the data points signals the fact that for an intermediate range of  $N$  values, the state of organization is ill defined. These observations and measurements set the tone for our next study which concerns superstructure mobility and link to the self organization of the robots.

For each scaffold diameter and flexibility (see SFig. 1), a sufficient number of robots has to be used to trigger the persistent mobility of the superstructure according to the phase diagram of Fig. 2d. Under these conditions, we have examined the mobility of different superstructures in channels of different widths both experimentally and numerically (see Movies 2, and 4). For the simulations (see Methods), the self-propelled robots were modeled as rigid spherocylinders built from spherical particles fused together. Each rod-like robot is described as an inertial particle and obeys a Langevin equation for translation and rotation (8). A constant force is used in the equation for the dynamics of the position of the robot to give each particle a constant velocity. An additional constant torque  $T_0$  is added to the equation for the dynamics of orientation of the robots to simulate the effect of a rotating trajectory. This torque was used to obtain a close match to the experiments (found for  $T_0 = 1$ ) for which the robots have a small bias with slightly curved trajectories. This bias and the additional torque introduce a small drift of the clusters along the scaffold walls in the counterclockwise or clockwise direction. This torque turns out to be important for the spatial exploration of the scaffold by the clusters and as we will see below has consequences on its mobility. In the simulations (see Methods), the flexible scaffolds were made of a collection of beads similar to the spherical particles used for the robots. These beads are connected together in a similar fashion as for a polymer chain which allows to modulate the flexibility of the scaffold surface.

To analyze quantitatively the mobility of the superstructure in different channels, we mea-



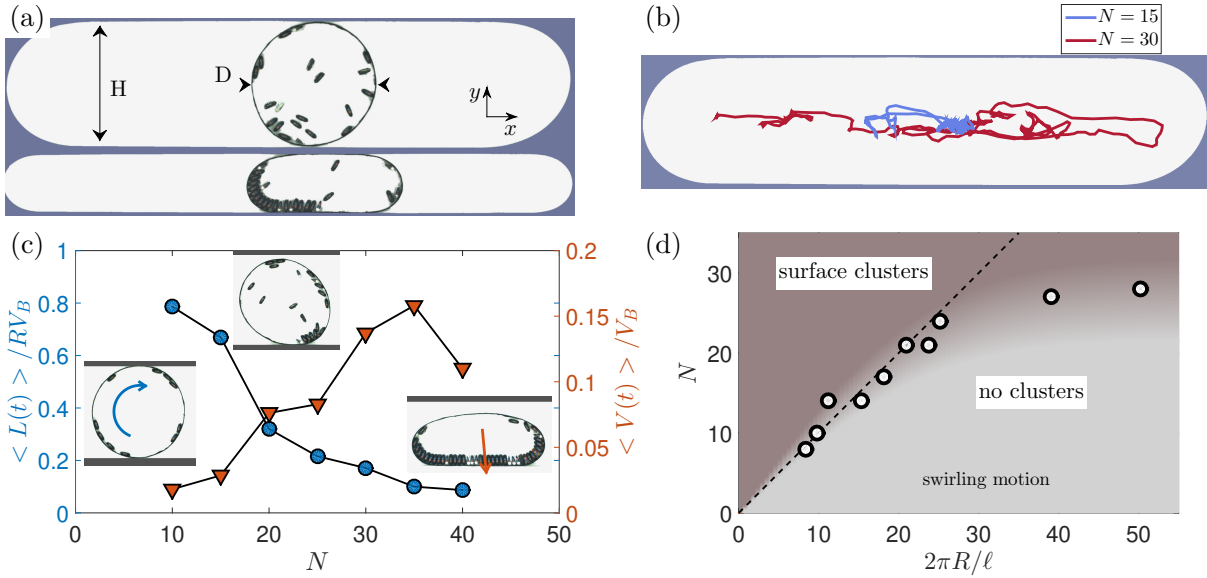


Figure 2: Robot filled scaffolds in straight channels: a) Photographs of superstructures in straight channels of different widths  $H$  of 39 and 19 cm. Here the diameter of the scaffold is  $D = 39$  cm, the number of robots is  $N = 20$  and  $N = 25$  in the upper and lower images respectively. The thickness  $e$  of the scaffold wall is  $100 \mu\text{m}$ . b) Trajectories of superstructures of  $D = 39$  cm in channels of  $H = 39$  cm with  $e = 100 \mu\text{m}$  for  $N = 15$  and  $N = 30$ . c) Angular momentum of the robot assembly  $L(t)$ , normalized by  $RV_B$  where  $R = D/2$  and  $V_B$  the mean velocity of the individual robots, and velocity of the superstructure normalized by  $V_B$  versus number of robots, for  $H = 39$  cm,  $D = 39$  cm, and  $e = 100 \mu\text{m}$ . The embedded images show the state of organization of the robots with swirling motion at low  $N$  and high polar order near the boundary (the arrow indicates the total polarization  $P$ ) at high  $N$ . For intermediate values of  $N$ , the state of organization is disordered with the appearance of small intermittent clusters. d) Phase diagram for superstructures with scaffolds of thickness  $e = 100 \mu\text{m}$ . Number of robots above which no swirling motion is observed versus superstructure perimeter normalized by the length of a robot  $l$ . Below the indicated value of  $N$  the robots undergo swirling motion along the boundary of the scaffold, while above this value, surface clusters pointing perpendicularly to the boundary start to form. The dashed line indicates full coverage of the circumference of the scaffold with robots parallel to its boundary. The band around the data points indicates the range of intermediate values of  $N$  values for which the state of organization is ill defined

sure both its velocity in the direction of the channel length,  $V_X = \mathbf{V} \cdot \mathbf{e}_x$ , as well as the ability of the robots to align in the same direction. This is measured using the polar order of the robots,  $P_X = \sum_N \mathbf{n} \cdot \mathbf{e}_x$  where  $\mathbf{n}$  is the unit vector of the robot orientation, and  $\mathbf{e}_x$  is the unit vector

along the channel direction  $x$ ; the sum is over all particles. Figure 3a and 3b show examples of such measurements for experiments and numerical simulations. For each of these measurements, a strong correlation between  $V_X$  and  $P_X$  is found as the straight line shows (see SFig. 2a for additional measurements). These measurements imply that  $V_X = \mu P_X$ . The value of  $\mu$  does not depend on  $N$  but depends on  $H$  (see SFig.2b): for example  $\mu=2/3$  cm/s for  $H = D$  while  $\mu=1/3$  cm/s for  $H = 1/2D$  for this particular example. In the numerical simulations, Fig. 3b and SFig. 2b, no dependence on channel width is observed most probably due to the fact that no solid friction is included in the simulations. The polar order of the robot assembly and in particular its component along the channel length  $e_x$  with the robots pushing against the walls of the scaffold is the driving force for the mobility of the superstructure and the value of  $1/\mu$  is the equivalent of a damping (friction) coefficient which increases as the confinement increases, at least in experiments. The cross-correlation function of  $P_X$  and  $V_X$ , displayed in the inset of Fig. 3a and 3b, is peaked around 0 showing that the two quantities have no lag time between them. The dynamics of the superstructure is thus over damped and inertial effects are negligible allowing to write a force balance between dissipation  $V_X/\mu$  and the driving force given by  $P_X$  (we here omit a constant factor  $f_0$  which is the force exerted by a single rod). The total orientation of the rods in the channel direction and therefore the driving force  $P_X$  is however a stochastic quantity. The fluctuations of  $P_X$  have different origins. If a cluster is present, the cluster as a whole may rotate and therefore induce a change of the polar order in the direction of the channel length. Further, the cluster may dissolve or may lose or gain particles giving rise to a decrease or increase of the total polar order  $P$  and of its component  $P_X$ . On average however, the rate of change of this polar order is proportional to the polarization itself with a well defined characteristic time  $\tau_c$ . Figure 3c shows that  $\langle dP_X/dt \rangle$  versus  $P_X$  is linear, a relation from which  $\tau_c$  can be estimated. This time scale is of order a few seconds and turns out to be related not only to variations in the number of particles pointing in the direction of the channel

length or in the cluster but also to the bias in particle trajectories in experiments which induces a rotation of the robots or the clusters and to the additional torque in simulations. For example, for the torque used here  $T_0 = 1$ ,  $\tau_c$  is roughly 6.5s; for a larger torque  $T_0 = 1.5$  this time scale is shorter and is roughly 2s while for a smaller torque  $T_0 = 0.6$  it is nearly 14s. In order to gain more insight on this time scale, we also calculated the auto-correlation functions of  $P_X$  with the additional condition that only small clusters are considered. This correlation function turns out to be roughly exponential with a finite correlation time as shown in Fig. 3d. We thus hypothesize, in a minimal description of the dynamics of the self organization of the robots, that  $P_X$  is a Gaussian random process with a finite correlation time. These observations can be rationalized by writing a linear relation between  $V_x$  and  $P_X$  (Eq. 1) coupled to the hypothesis supported by experiments (Eq. 2) that  $P_X$  is a Gaussian exponentially correlated process (see SFig. 3). In equation 2,  $\delta(t)$  is a Gaussian delta correlated noise (see SFig. 4) and  $\tau_c$  is the correlation time of the process.

$$V_X = \mu P_X \tag{1}$$

$$\frac{dP_X}{dt} = -\frac{P_X}{\tau_c} + \delta(t) \tag{2}$$

Our numerical simulations of superstructures confined in linear channels show similar behavior as shown in Fig. 3. The difference between simulations and experiments comes, most probably, from the friction of the channel walls which is present in the experiments but not in the simulations giving differences in the value of  $\mu$  and its dependence on the channel width  $H$ . Nevertheless, the main features of the phenomenology of superstructure mobility are captured by our numerical simulations.

To summarize, the velocity of the superstructures is directly linked to the polar order of the robots in the direction of motion which is the driving force of this locomotion. This polar order is a stochastic quantity which is reasonably well described by a Gaussian exponentially

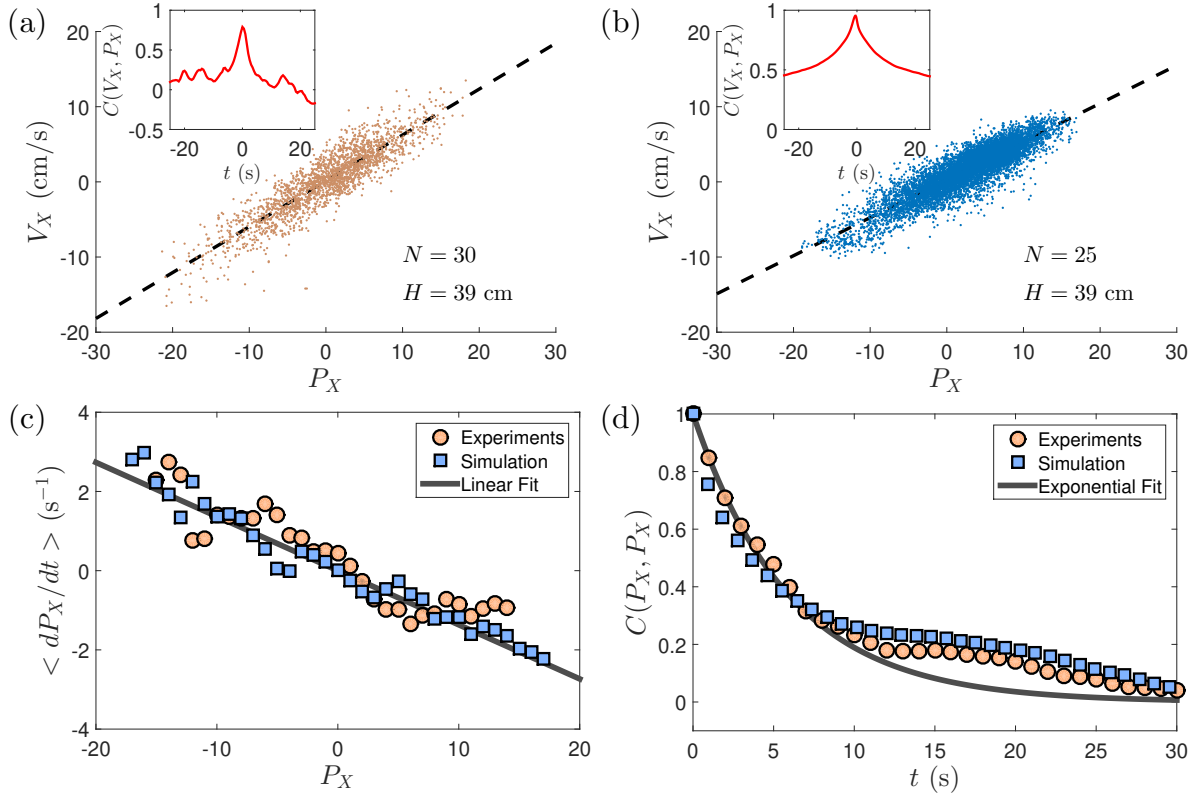


Figure 3: Properties of superstructure mobility: Velocity  $V_X$  versus polar order  $P_X$  along the channel from experiments (a) for, a number of robots  $N = 30$ , diameter  $D = 39$  cm, and thickness  $e = 100 \mu\text{m}$  and simulations (b) for a number of robots  $N = 25$  and diameter  $D = 39$  cm. Insets, cross correlation function  $C(V_X, P_X)$  of velocity and polar order. c) average rate of change of polar order  $\langle dP_X/dt \rangle$  versus polar order  $P_X$ . The slope gives the correlation time  $\tau_c$ . d) Auto-correlation function  $C(P_X, P_X)$  of the polar order  $P_X$  and an exponential fit. Both c. and d. are for the same conditions as a. and b.

correlated noise with correlation time  $\tau_c$ . The mobility of the superstructures therefore sets in only when the polar order is large and is thus linked directly to the self organization of the robots as shown in our phase diagram.

### Superstructure mobility through a constriction:

The first step towards robotic function is the ability to solve simple tasks. Thus, we study how the superstructures respond when challenged with the task of overcoming an obstacle in the

form of a thin constriction. Despite the simplicity of this function, overcoming obstacles is essential for the development of spatial exploration properties. We first focus on the statistics of the passage times of the superstructure between two compartments separated by a geometrical constriction to examine how much time is needed for the superstructure to overcome the obstacle. We follow this by a study of the forces at play to examine how the driving force of the assembly of robots adapts to the presence of such an obstacle.

### **Statistics of transitions through a constriction**

We use the same superstructures with a sufficient number of particles for mobility to set in but in a channel with an embedded constriction placed in its central part of length  $L$  and width  $H$ . Note that we have kept the same symbol for the constriction width as that of the channel width above. As we will show below, the addition of a constriction in such a channel transforms the problem into a transition from one chamber to the other (see Movies 5 and 6). This two state system, is interesting on its own and has been used previously to measure the dynamics of deformable motile entities in a recent study of migrating cells (32,33). Images of such channels as well as a montage of the superstructure going through the constriction is shown in Fig. 4a and 4b for experiments and numerical simulations. The dynamics of the center of mass of the superstructure versus time, shows a two state system with the superstructure residing in the same chamber for some time before transiting to the other chamber after a certain waiting time. This transition may occur several times for a given period of time. In Fig. 4c and 4d, several successful passages but also several unsuccessful ones can be observed.

In order to measure the statistics of this stochastic process (32), we plot in Fig. 4e and g, the probability distribution of dwell times  $\text{PDF}(\tau)$  ( $\tau$  being the time that the superstructure remains in a chamber before crossing the constriction) as well as the so called survival probability  $S(\tau) = 1 - \int_0^\tau \text{PDF}(t) dt$ . While  $\text{PDF}(\tau)$  shows a peak at small times and de-

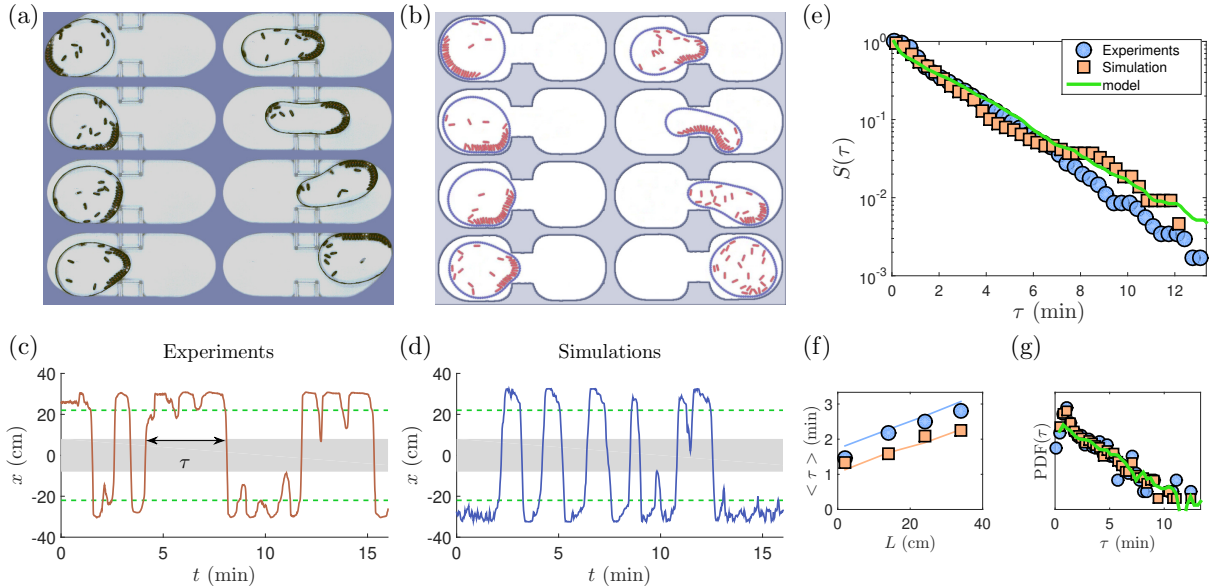


Figure 4: Transition across a constriction, a two state geometry: a) and b) Photographs of a superstructure in a channel with two compartments separated by a constriction (a. experiments, b. simulations). Note that the robots form a cluster which rotates and explores the superstructure walls to find the constriction entrance. Diameter  $D = 39$  cm, and length of the constriction  $L = 14$  cm, the thickness of the scaffold walls is  $e = 100 \mu\text{m}$  (for experiments), the number of robots is  $N = 25$ , and the width of the constriction  $H = 19$  cm. c) and d) Superstructure center of mass versus time as it passes through the constriction. The shaded region represents the constriction (length  $L = 14$  cm and width  $H = 19$  cm), the green dashed lines are the position of the center of mass of the superstructure when its walls touch the constriction. e) Survival probability functions  $S(\tau)$  of waiting times. f) Mean waiting times  $\langle \tau \rangle$  versus length of constriction  $L$ . g) pdfs of waiting times  $\tau$ . In e, f, and g, the solid lines are the results from the resolution of our model based on equations 3 and 4.

creases slowly for larger times, the survival probability shows a roughly exponential behavior giving a simple way to find a characteristic time for transiting from one chamber to the next:  $S(\tau) = \exp(-\tau / \langle \tau \rangle)$ . This characteristic time can also be obtained by counting the number of successful transits for a long enough period of time. The characteristic time  $\langle \tau \rangle$  is plotted, Fig. 4f, versus the length of the constriction  $L$ , for a fixed number  $N$  of robots. The characteristic time depends also on the flexibility of the superstructure (i.e. the thickness of the walls  $e$ ) as well as the width of the constriction  $H$  as we point out in SFig. 5. Note that for a fixed width

$H$ , the characteristic time  $\langle \tau \rangle$  increases roughly linearly with  $L$ . All these elements are reproduced nicely with our numerical simulations the results of which are superimposed on the experimental data in Fig. 4e, f, and g. The linear increase with constriction length is a feature noted previously albeit for a completely different system and rules out different scenarios for the transition such as a double well potential or other scenarios (32).

### Forces and polarization maps

While the superstructures are capable of accomplishing the function of transiting between different chambers, the forces at play need extra scrutiny. To this end, we plot in Fig. 5a and 5e the trajectories of the center of mass of the superstructure in  $(V_X, x)$  space as well as their properties (32). While in the chambers, the superstructure velocity hovers around zero. As a passage through the constriction starts, the velocity increases with a clear acceleration phase. Near the middle of the constriction, the acceleration starts to decrease before the whole superstructure starts to decelerate as it makes its way towards the second chamber. A similar scenario occurs as the structure goes from right to left. Since we track the centre of mass of the superstructure, acceleration starts before reaching the position of the constriction as the front of the superstructure situated one radius ahead is already near the constriction entrance. These positions are indicated by dashed lines in Fig. 5a and 5e while the shaded region indicates the constriction limits. Different flexibilities show qualitatively similar behavior (SFig.6). While the velocity variations indicate acceleration and deceleration phases, it should be kept in mind that such changes are due to changes of the polar order to which we now turn.

We plot in Fig. 5b and 5f, for experiments and simulations respectively, the mean polar order in the  $x$  direction,  $\langle P_X \rangle$ . This polar order is large and has the same sign as the velocity all through the phase where this velocity is non zero regardless of whether the superstructure is accelerating or decelerating (upper and lower parts of the map of  $\langle P_X \rangle$ ). In order to examine

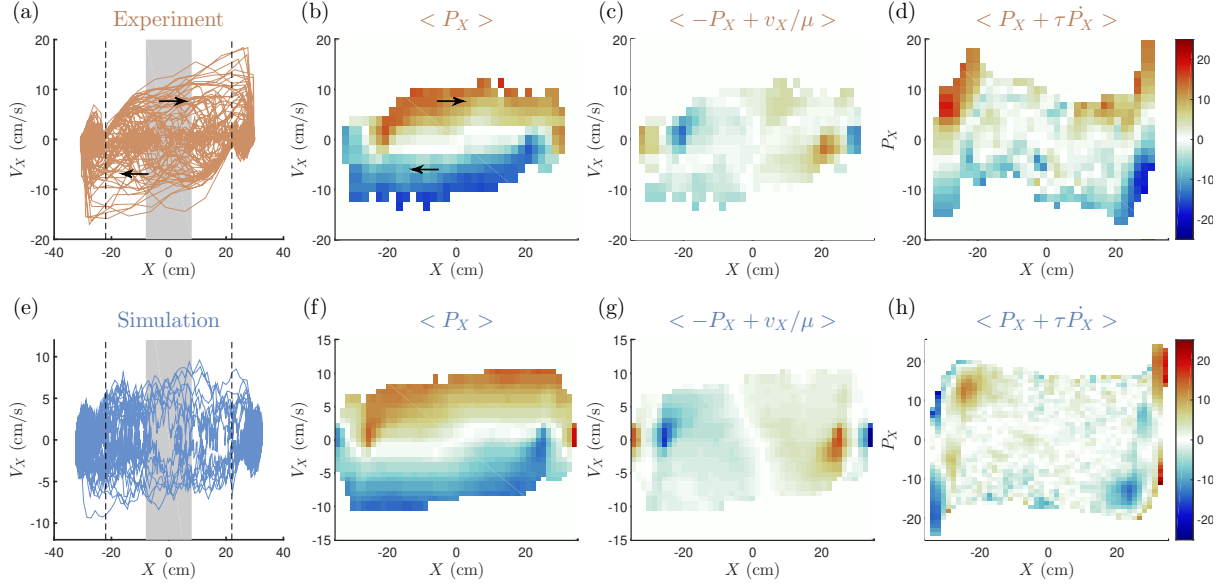


Figure 5: superstructure trajectories and forces at play in the presence of a constriction: (a-d) results from experiments, (e-h) results from simulations. a) and e) superstructure trajectories in velocity  $V_X$  versus position  $x$  representation. b) and f) Map of mean polar order  $\langle P_X \rangle$  in the direction of motion in the same representation. c) and g) Mean of the difference  $\langle V_X/\mu - P_X \rangle$  between velocity and polar order. d) and h) Mean of the difference  $\langle dP_X/dt - P_X/\tau_c \rangle$  in  $P_X$  versus  $x$  representation.  $D = 39$  cm,  $L = 14$  cm,  $H = 19$  cm and  $N = 25$ . For experiments,  $e = 100$   $\mu\text{m}$ . The scale of the color maps, where red indicates high positive values and blue high negative values, is displayed on the right.

whether  $V_X$  and  $P_X$  remain correlated as in the straight channel, we plot the mean value of their difference,  $\langle V_X/\mu - P_X \rangle$  in Fig. 5c and 5g. All along the trajectory of the structure, while the scaffold is fully within the constriction, the two quantities remain proportional (the value of the difference is small) as in the linear channel discussed above with a similar value of  $\mu$  as for a channel with a similar width  $H$  as the constriction. However, the two quantities are not equal near the entrance of the constriction (when the center of mass is at  $L/2 + R$ ). Near this entrance, an additional resistive force (its sign is opposite to that of  $\langle P_X \rangle$ ) is apparent from these maps indicating that the geometry (the sudden contraction of the channel due to the presence of the constriction), resists the passage of the superstructure. Geometry is exerting an



additional resistive force whose origin can be the elastic response of the scaffold following its large deformation but also the reaction of the walls of the channel near the constriction.

In the presence of the constriction, the equation of motion needs to be modified with respect to that in the straight channel to take into account this additional resistance. This is achieved by invoking an additional force  $F(x, V_X)$  which is unknown but can be extracted from the maps of Fig. 5c and 5g. We then write the following force balance, with  $\alpha$  being an additional constant "friction" parameter.

$$V_X = \mu P_X + \frac{1}{\alpha} F(x, V_X) \quad (3)$$

Since the orientation or polar order of the assembly, in the direction of the channel length  $x$ , as well as its temporal dynamics are crucial for the locomotion of the superstructures, we proceed in a similar manner as for the velocity and plot the map of the mean difference between  $dP_X/dt$  and  $-P_X/\tau_c$  to examine whether the proportionality between  $P_X$  and its rate of change remains true in the presence of the constriction. Again and as for the  $V_X$  versus  $P_X$  relation, additional variation is observed in Fig. 5d and 5h where a map of  $\langle \tau_c dP_X/dt + P_X \rangle$  is shown in  $(P_X, x)$  space. Near the entrance, an additional contribution is again observed as the superstructure enters the constriction. The dynamic equation for the polar order needs to be modified to take into account the role of geometry:

$$\frac{dP_X}{dt} = -\frac{P_X}{\tau_c} + \delta(t) + G(x, V_X) \quad (4)$$

The contribution  $G(x, V_X)$  is positive and helps increase the polar order near the constriction. It is this increase in polar order induced by the presence of the constriction which balances the additional resistive force  $F(x, V_X)$  and allows the passage of the superstructure through the constriction. This increase in polar order near the entrance is most probably due to the interplay between polarization and the curvature of the scaffold (see Fig. 4a and 4b) as the superstructure enters the constriction (8, 27).

With these ingredients, summarized in equations 3 and 4, the system dynamics can be captured in detail. To this end, we carried out a numerical resolution of these model equations, the results of which are shown in Fig. 4(e-g) and SFig. 7. The values of  $\mu$  and  $\tau_c$  were obtained from the simulations and the experiments in channels and similar assumptions for the noise  $\delta(t)$  and the Gaussian nature of  $P_X$  (which are tested in SFig. 3 and 4) were used. The additional terms  $F/\alpha$  and  $G$  have been approximated by appropriate functional shapes in the maps of Fig. 5 and taken into account in the resolution of the set of equations. The center of mass dynamics versus time, SFig. 7, bears much resemblance to the experimental and numerical time traces obtained above. Further, the probability distribution of dwell times as well as the survival probability are also reproduced faithfully with a roughly exponential decay for the latter, Fig. 4e and g. The variation of the mean dwell time versus length of constriction is also in agreement with experimental and numerical data shown along with the model results in Fig. 4f. Our minimal model is thus in very good agreement with observations from both the experiments and the simulations.

## Multiple constrictions

Having demonstrated the function of transiting through a constriction and revealed the nature of the forces at play, we now turn to an examination of how such superstructures handle the presence of multiple constrictions of varying lengths in a linear channel. We anticipate that the superstructure will have a tendency to move preferentially in the direction of decreasing constriction lengths and can thus be guided. Guiding through geometrical features, has for example been proposed before (34, 35). Our superstructures are capable of going through a narrow constriction by deforming and by harnessing the self organization of the robots induced by the confinement and the presence of a geometrical contraction. The mean dwell time of the superstructure in a compartment is fixed by the properties of the scaffold but also by the

geometry of the constriction. This dwell time increases roughly linearly with the constriction length for a fixed constriction width. This observation points to a simple strategy to direct the stochastic motion of such superstructures. Figure 6a shows a channel with a sequence of constrictions with increasing lengths  $L$ . The rationale behind this architecture is based on our experimental observations: a superstructure in a chamber delimited by a long and a short constriction on either side, has a higher probability of crossing the shorter constriction. In a sequence of constrictions, the superstructure may thus have a higher probability to go in the direction of decreasing constriction lengths. This is a stochastic process as shown in SFig. 8 and in Fig. 6b which display results from a series of 11 different experiments, indicated by different colors, where the superstructure was placed in a compartment and the position of its center of mass monitored for different periods of time (see Movie 7 for an example). There are 5 compartments separated by 4 different constrictions of different lengths which decrease as the compartment number goes from 1 to 5. The time series of center of mass positions (SFig. 8) shows that the superstructure can transit from one compartment to the other and so on in a stochastic manner. Figure 6b shows a sample of transits from compartment to compartment versus the transit number. The consolidated data from several runs, (11 runs and over 7 hours of monitoring) from which Fig. 6b is an example, with almost 400 transit events shows clearly the stochastic nature of such transitions. This plot shows already that transits towards compartment 5 are more probable. That the transition probabilities are asymmetric in this architecture is born out by measurements of this probability from compartment  $k$  to  $k + 1$  and from  $k$  to  $k - 1$  as shown in Fig. 6c. For example for compartment  $k = 4$ , transition to  $k = 5$  has a probability close to 0.8 as opposed to transition to  $k = 3$  which has a probability near 0.2.

In order to examine whether, statistically, transiting in the direction of decreasing constriction lengths is more likely, we examine the probability of moving from one end of the channel to the other. That this mobility is directional is summarized and quantified in Fig. 6d where we

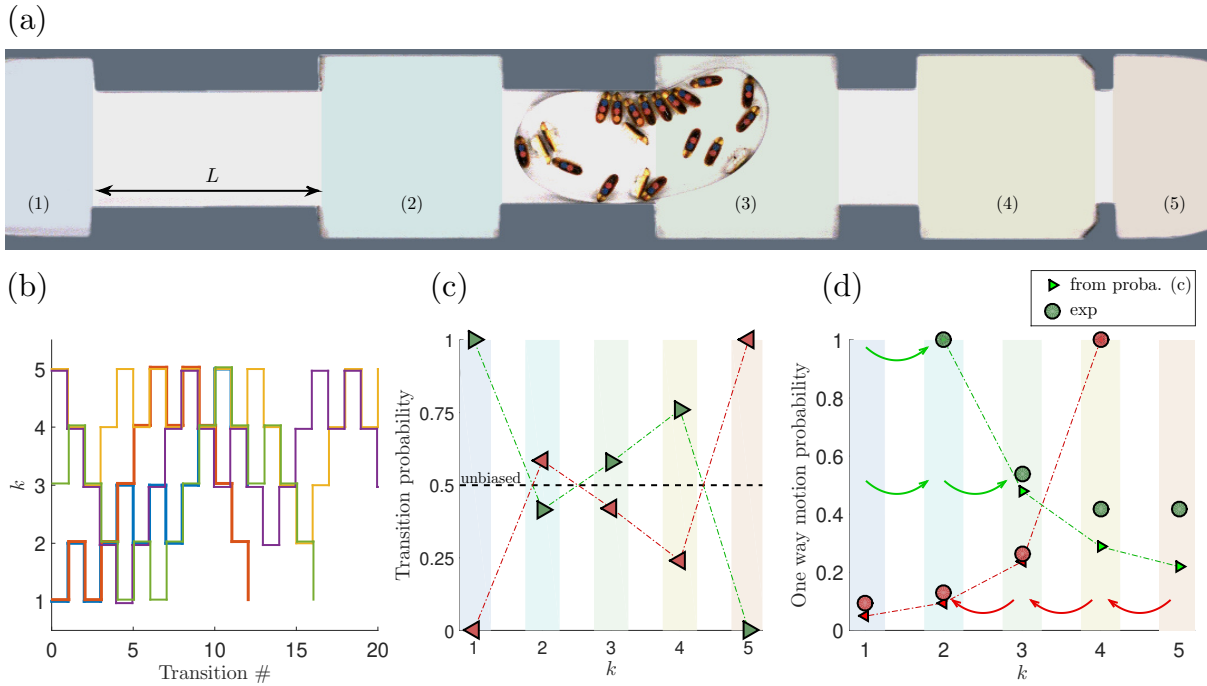


Figure 6: Guiding superstructures: a) Photograph of the multi chamber linear channel. From left to right  $L = 30$  cm,  $20$  cm,  $10$  cm, and  $2$  cm at fixed  $H = 15$  cm,  $e = 100 \mu\text{m}$  and  $D = 25$  cm for  $N = 21$ . b) Position of the superstructure in the multi-chamber channel in chamber number versus transition number representation for the same values of  $L$  as a) but for  $N = 13$ ,  $D = 23$  cm and  $H = 13$  cm. Only a small sample is represented; the full time series is shown in SFig. 8. c) transition probabilities from compartment  $k$  to  $k + 1$  (green triangles) and from  $k$  to  $k - 1$  (red triangles). d) Transition probabilities from compartment 1 to  $k$  in  $k - 1$  successive steps (green circles) and from compartment 5 to  $k$  in  $5 - k$  successive steps (red circles). These are the probabilities to undergo directed paths from one end of the channel to the other. The red and green dashed lines with triangles are calculated using the independent probabilities of transition shown in c)

plot the conditional transition probability to go from compartment 1 to compartment  $k$  in  $k-1$  successive steps and from compartment 5 to compartment  $k$  in  $5-k$  successive steps. This probability measures the likelihood of direct paths in increasing or decreasing order in  $k$  depending on whether the path starts from compartment 1 or 5 respectively. While this probability decreases as  $k$  changes, the chances of the superstructure ending up in compartment 5 starting from compartment 1 are much higher than the reverse: 40% versus 10%. The superstructure has a higher

probability of following a direct path in the direction of decreasing constriction lengths. Further, the obtained transition probabilities are not simply related to the independent probabilities from compartment  $k$  to  $k+1$  or  $k-1$  as shown by the red and green dashed lines in Fig. 6d. which underestimate our results. Transitions across the different constrictions are, in fact, correlated beyond a single constriction especially in the direction of decreasing constriction lengths. In SFig. 9 we show the conditional probabilities of transition over two compartments successively. By using these correlated probabilities (SFig. 9), we obtain a much better agreement with the data of Fig. 6d than the uncorrelated transition probabilities of Fig. 6c.

These measurements demonstrate a bias in the stochastic transition from compartment to compartment in the presence of different length obstacles giving rise to directional motion in a gradient of geometrical constriction lengths. The local self-organization of the individual rods as they get aligned in the direction of motion allows them to cross at least two constrictions in a row instead of reversing direction giving rise to correlations in transition rates. That the orientation of the robots in the direction of motion remains correlated over a certain time is crucial for this to occur and gives rise to correlations between transition events in successive transitions signalling the presence of memory effects (34). This is especially true for the transition in the direction of decreasing constriction lengths.

## Discussion

These superstructures, consisting of self-motile rods in a flexible scaffold, exert forces on their surroundings, allowing them to pass through a flexible door (Fig. S10 and Movie 8), and pull loads up to a half of their weight (Fig. 7; see also Movie 8) in straight channels or in channels with obstacles. Further, the superstructures exert sufficient force to push obstacles around and clean up an arena in a more efficient manner than individual robots, Fig. 8a and Movie 9, while two superstructures in the same arena can interact in what seems like a game of rudimentary

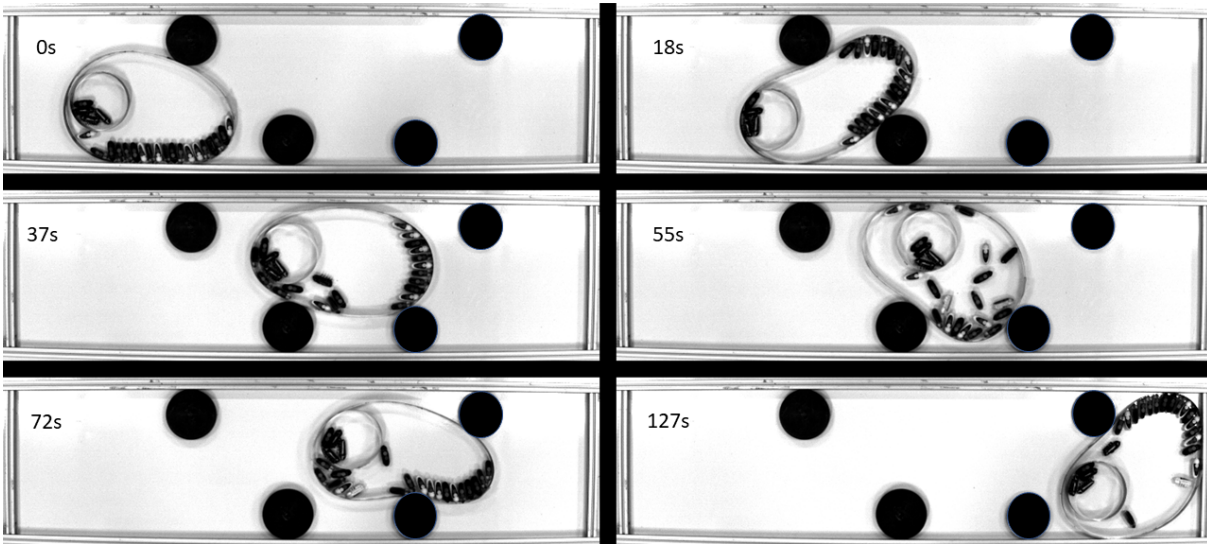


Figure 7: Pulling a load: Robot filled scaffolds pull a load (circle with four immobile robots) through an obstacle course. The obstacles are highlighted by black circles.  $D=30\text{cm}$  and  $N=19$ .

billiards (Movie 9). All these functionalities rely on the self-assembly of a cluster of the self-propelled rods inside the scaffold leading to the motility of the superstructure. Without the spontaneous polarisation, the working efficiency is reduced (see e.g. Movies 8 and 9 where the spontaneous reformation of the clusters after their destruction occurs several times).

All of these tasks are carried out by autonomous entities with no external control. Rudimentary light control can be introduced at low cost (see Methods and SFig. 11). For this purpose, we have equipped a number of individual robots with a second motor on their back. This motor being connected to a second battery, a photo transistor, and elementary electronics, can be actuated by shining sufficiently strong light on the photo transistor. Using the second motor alone, the robots start moving upon shining light on them, end up self organizing leading to mobility of the superstructure (see Movie 10). When light is turned off, the robots stop and the superstruc-

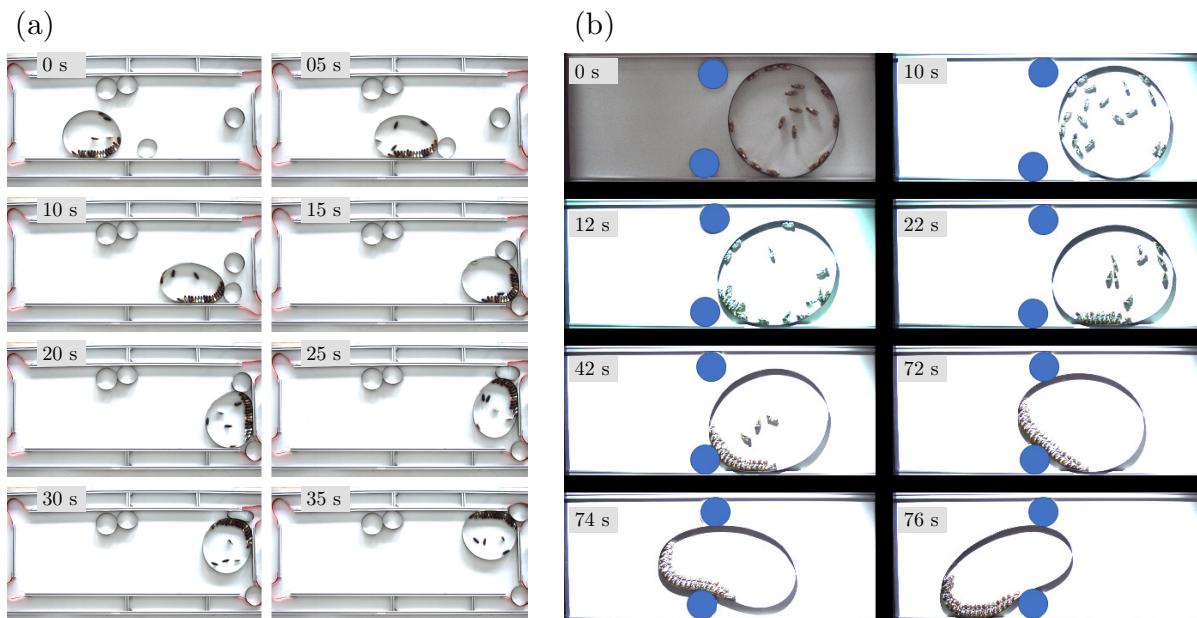


Figure 8: (a) Cleaning an arena: A robot filled scaffold pushes empty circles out of the arena and into its open corners. In less than 40s two such circles have been evacuated. The diameter the scaffold is 30cm and is filled with 20 robots. (b) Light controlled superstructure: When light is off, the robots are in the swirling state (in the counter clockwise direction) and the superstructure has little or no mobility. As the light is turned on (at 10s), the robots acquire circular trajectories in the clockwise direction triggering collisions and clustering in less than 2s (at 12s) leading to mobility of the superstructure and its crossing a constriction between two obstacles highlighted in blue.  $D=39$  cm and  $N=18$ .

ture becomes immobile. The robots can also be driven by using both the internal motor and the second external motor. The robots move as usual due to the action of the internal motor; when the second one is turned on by shining light on the photo transistors, the robots start moving in circles in the same direction as the external motor, i.e. in the clockwise direction (see Movie 10). This was achieved by carefully adjusting the chip carrying the circuitry, the additional motor and the battery on the back of the robots and by choosing the rotation direction of the external motor. The light controlled chirality can be used to control the dynamics of the robot assembly. When the second motor is turned on, the swirling state which prevails at low surface

fractions of robots, ceases to exist and gives rise to clustering of the individual robots: As the robots swirl around the scaffold in the anti-clockwise direction, if the second motor is turned on giving the robots a torque in the clockwise direction and thus rotation opposite to the swirling, collisions between robots occur leading to the formation of a cluster strong enough to induce mobility of the superstructure. This clustering, which occurs now at lower densities, and the induced mobility of the superstructure can be seen in Movie 10. This control can also be used in the presence of a constriction: When the second motor is turned on, clustering is induced, and the superstructure endowed with mobility manages to cross the constriction as seen in Fig. 8b and Movie 10. In short, the superstructures examined here, can carry out several tasks in an autonomous fashion but they can also be at least partially controlled externally using light, for example, to start or stop the superstructure or to spark their mobility by inducing clustering of the individual robots.

To summarize, swarms of simple mindless rod-like robots endowed with their own mobility harness boundary effects to self organize and propel larger and more complex entities. These superstructures have the ability to go through narrow constrictions, smaller than their size, by exerting forces produced by the local alignment of the individual robots, alignment which itself can be favorably influenced by the presence of geometrical features. Our experimental and numerical study has yielded a minimal but simple model for the mobility of superstructures made out of a swarm of simple robots as well as document the different forces engendered by these superstructures. A simple way to direct the motion of these superstructures in linear channels with a gradient in constriction properties is proposed. While the idea of crossing constrictions with variable lengths appears simple, the inherent structure of the organization of the individual robots and its temporal correlation gives rise to non trivial effects which are manifested by memory effects. Further experiments also show that these superstructures can carry out different tasks such as pulling a load, going through a simple obstacle course, and cleaning up



an arena. Using two such superstructures, the premise of a battle game also emerges. Simple rudimentary control of the individual robots brings forth ways to control the superstructure as well as the onset of self organization leading to its mobility.

## Materials and Methods

### **The robots, the superstructures and their tracking:**

The motility of the plastic robots used here is induced by the vibration of the robot itself with an embedded battery operating a vibration module working at frequencies between 150 and 60 Hz. The plastic robots have asymmetric soft legs which after a few vibration cycles give rise to a directed movement with velocities which depend on the frequency of vibration and can be varied from roughly  $V_B = 30$  to  $20\text{cm/s}$ . The workings of these bots have been described in (8, 30, 31). The bottom plate on which the robot vibrates and its defects as well as the dynamics of the asymmetric legs of the robots give rise to noise in this directed movement. The experiments are carried out using a fixed number  $N$  of these robots confined in circular scaffolds of different diameters  $D$  and their dynamics is followed by video imaging for different values of  $N$ .

These robots have dimensions of 4.5 by 1.5 cm. They are somewhat elliptical and were used at speeds near 25 cm/s. They are driven by a battery and a small vibration device which vibrates at frequencies fixed by the voltage of the battery. An eccentric rotating mass vibration motor is used to drive the vibration. Both the driving speed and the frequency can be changed but the two quantities are correlated. Further, these robots have a small bias (due most probably to the rotation of the eccentric mass of the motor) giving rise to circular trajectories (with large radii of curvature). The axis of the eccentric motor giving rise to the vibration of the robots is mounted along the longitudinal axis of the rod and the eccentric mass spins counterclockwise inducing the bias in the trajectory. This bias, difficult to observe for a single robot, gives rise

to a drift of a cluster along the boundary. This drift is systematically counterclockwise (as all the vibration motors rotate in the same direction) and allows the cluster to move around in the superstructure and eventually find the entrance of the constriction.

To track these robots, they are painted black and two colored spots are stuck on their backs. Tracking both spots simultaneously and on all visible robots in color video recordings done at different rates (going from 1kHz down to a few frames per second) allows us to extract both the orientation of the robots as well as their center of mass and therefore obtain their instantaneous translation velocity as well as their angular velocity and orientation. As such, one obtains velocity distributions, densities and other quantities such as the spatial configuration of clusters, clustering probabilities, and total polarization from video recordings.

Flexible scaffolds of different sizes (typically a few tens of cm in diameter  $D$  and 2 cm in height) are made of thin metal strips of thickness 100 or 50 micrometers. The robot filled scaffolds are then confined in linear channels, made of aluminum bars of length 2 m, height 2 cm, and widths that vary from  $D$  down to  $D/4$ . The constrictions are made of similar material and are embedded in the straight channels. The ends of the compartments are made of the same steel strips as the scaffold. Both the center of mass of the superstructure, its full contour and the position and orientation of the robots are measured from movies taken with a color camera over a duration that can reach up to 60 min depending on the experiment. Several such movies are then made and data combined from such movies to increase the statistics. For example, for the data in Fig. 1c, and for each  $N$ , a 10 minute movie was recorded to determine the corresponding value of  $L$  and  $\langle V(t) \rangle$ . For Fig. 1d, and in addition to an analysis similar to Fig. 1c, for each diameter, a movie of a few minutes was recorded for different values of  $N$  to determine visually the time spent by the robots in the swirling state or in a stable cluster. If no stable swirling or cluster is observed, the time spent in this intermediate state is measured. The swirling state or the cluster state is only taken when the time spent in this state is larger than 0.8 times the

duration of the movie. The extent of the intermediate state is noted as the band around the measurement points. For Fig. 2, for each value of  $N$ , at least 60 minutes of recording time is used to extract the velocity and polarization along with their correlation functions. Similarly for the simulations at least the equivalent of 3h of recording was used. For Fig. 3, several movies (ten in total) of 30 min duration (a total of 5 hours of recording) are used for each constriction length. For the simulations the equivalent of 30 hours of recording was used. The maps used in Fig. 4 use at least 5h of recording and are obtained by binning data in  $(V_X, x)$  or  $(P_X, x)$  space and averaging over these bins. The data for these maps come from analyzing at least 10 movies of 30 min duration. For the simulations, the equivalent of 30h of recording was used. The data of Fig. 5 use 11 movies for a total duration of over 7 hours for the analysis of probabilities; this represents a total of over 380 transitions.

The robots have been modified by attaching a small chip on their back: this chip consists of a battery (similar to the one already present), a phototransistor, a variable resistance, a transistor, and a switch to control the direction of rotation of the motor. The schematic of the circuit and its different components is shown in SFig. 11. The variable resistance allows to fix the threshold light intensity for the onset of the additional motor. The chip has the same width as the robots and has a length of 3.5 cm (smaller than the length of the robots). The chip was then fixed on the back of the robots using a plastic holder glued to the back of the robot. The chip has to be carefully centered on the back of the robot. If the rotation of the second motor is clockwise, and when both motors are on, we noted that the trajectory of the robot becomes circular with a radius of roughly two robot lengths or smaller (see Movie 10). This behavior depends on how and where the chip is fixed on the back of the robot. We have obtained roughly similar trajectories by trial and error on each individual robot equipped with the chip.

## Langevin Dynamics simulations:

The self propelled rods were modeled as rigid sphero-cylinders of total length  $l+d$  and diameter  $d$ , built from 6 spherical particles of mass  $m$  and a diameter  $d$  fused together. The cylinder length to width ratio was fixed  $l/d = 2$ . The ratio of total length to width is therefore close to the experimental ratio which is 3. The individual spherical particles interact with each other and with the boundary via a repulsive Weeks-Chandler-Andersen (WCA) potential

$$U(r_{ij}) = 4\epsilon \left[ \left( \frac{d}{r_{ij}} \right)^{12} - \left( \frac{d}{r_{ij}} \right)^6 \right] + \epsilon,$$

for  $r_{ij} \leq 2^{1/6}d$  and  $U(r_{ij}) = 0$  for  $r_{ij} > 2^{1/6}d$ .  $\epsilon$  fixes the energy scale of the system. Each rod-like particle indexed by  $i$  obeys a Langevin equation for translation and rotation:

$$\begin{aligned} m_i \frac{d^2 \mathbf{r}_i}{dt^2} &= -\nabla U_i - \gamma_r \frac{d\mathbf{r}_i}{dt} + F \hat{\mathbf{n}} + \eta(t) \\ I_i \frac{d^2 \theta_i}{dt^2} &= T_i - \gamma_\theta \frac{d\theta_i}{dt} + \Gamma(t) \end{aligned}$$

Note that in these equations we have kept the inertial terms proportional to the mass  $m_i$  of the rods and to their moment of inertia  $I_i$ . This is in line with experiments where inertial effects at the single rod level are important (8). The vectorial noise  $\eta$  and the scalar noise  $\Gamma$  are both of zero mean and delta correlated in time, with amplitudes  $\eta_0$  and  $\Gamma_0$ . Here  $F \hat{\mathbf{n}}$  is the active force giving a constant translation velocity for the rods in the direction of the long axis  $\hat{\mathbf{n}}$ .  $\gamma_r$  and  $\gamma_\theta$  are the translational and the rotational friction coefficients,  $T_i$  is the torque exerted by the other particles and related to the repulsive potential  $U_i$ . An additional constant torque  $T_0$  can be added to the second equation to simulate the effect of a rotating trajectory. This torque was used to obtain a close match to the experiments and allows for a small drift of the clusters along the superstructure walls in the counterclockwise or clockwise direction. This torque turns out to be important for the spatial exploration of the superstructure by the clusters. We fixed the mass  $m = 1$ , the energy  $\epsilon = 1$  and the length  $d = 1$ . The simulations were carried using

the parameters, unless otherwise specified,  $m_i = 6$ ,  $\gamma_r = 3$ ,  $F = 10$ ,  $\gamma_\theta = 1.4$  and  $I = 2.8$  in reduced units. The amplitudes of the noise terms are  $\eta_0 = \sqrt{2\alpha\epsilon\gamma_r}$  and  $\Gamma_0 = \sqrt{2\alpha\epsilon\gamma_\theta}$  where  $\alpha$  is a constant. The value of  $\alpha$  was fixed to 1.2. These parameters were chosen so that the simulations are in close agreement with the experiments (8).

The scaffold was modelled as a semiflexible polymer using a bead-spring model. Adjacent beads were bonded together using harmonic bonds and angles,

$$U_{ij}^{\text{bond}} = \frac{1}{2}k_b(r_{ij} - r_0)^2 \quad (5)$$

and

$$U_{ijk}^{\text{angle}} = \frac{1}{2}k_\theta(\theta_{ijk} - \theta_0)^2 \quad (6)$$

where  $r_{ij}$  is the distance and  $\theta_{ijk}$  is the angle between the neighbouring beads,  $r_0$  and  $\theta_0$  are the equilibrium bond length and angle, respectively and  $k_b$  and  $k_\theta$  are stretching and bending constants.

The angle constant was fixed to  $k_\theta = 600$ , while the bond constant was fixed to  $k_b = 10^5$  to avoid stretching of the confining polymer.

The equations of motion were solved using a modified version LAMMPS (Large scale Atomic/Molecular Massive Parallel Simulator) (36), where the active force was included, using a time-step  $\Delta t = 0.001$ . The rendering of the images from the simulations is carried out using OVITO (37).

### **List of Supplementary Figures and movies:**

SFig. 1: Phase Diagram

SFig. 2a: Properties of superstructure mobility 1

SFig. 2b: Properties of superstructure mobility 2

SFig. 3: Polarization fluctuations

SFig. 4: Noise properties

SFig. 5: Rigid and flexible scaffolds

SFig. 6: Trajectories and forces for flexible scaffolds

SFig. 7: Theoretical trajectory

SFig. 8: Time series of transitions from compartment to compartment

SFig. 9: Probabilities of transiting across multiple compartments.

SFig.10: Analysis of the force needed to open a door made of a flexible strip.

SFig. 11: Schematic of the chip and a photo of the modified robot.

Movie 1: Superstructure in a channel with  $N=10$  robots,  $D=39\text{cm}$  and  $H=39\text{cm}$ .

Movie 2: Superstructure in a channel with  $N=40$  robots,  $D=39\text{cm}$  and  $H=39\text{cm}$ .

Movie 3: Superstructure in a channel with  $N=20$  robots,  $D=39\text{cm}$  and  $H=39\text{cm}$ .

Movie 4: Superstructure in a channel from simulations with periodic boundary conditions at the two ends of the channel with  $N=25$  robots,  $D=39\text{cm}$ ,  $H=39\text{cm}$  and  $\text{Torque}=1$  at 2 images per second.

Movie 5: Superstructure in a channel with constriction, Experiments:  $L=34\text{cm}$ ,  $N=35$ ,  $D=39\text{cm}$ , and  $e=100\text{microns}$  with an image every 2s.

Movie 6: Superstructure in a channel with constriction, Simulations:  $L=14\text{cm}$ ,  $N=25$ ,  $D=39\text{cm}$  at 2 images/s.

Movie 7: Superstructure in a channel with multiple constrictions of different sizes.

Movie 8: Superstructure ability to carry out different tasks such as opening a door, carry a load or move through an obstacle course.

Movie 9: Superstructure ability to clean up an arena, a task that the individual robots cannot carry out, or play a battle or billiards game against another superstructure.

Movie 10: Superstructure with light control: the superstructure can be tuned on or off with light. Its mobility can be triggered by embedding a second motor on the back of the robots which when turned on using light imposes a circular trajectory to the individual robots. The state of

organization can go from swirling to aggregation and thus trigger superstructure mobility in a channel or through a constriction.

## References

1. M. Sitti, *Nature* **567**, 314 (2019).
2. P. Fischer, *Nature Physics* **14**, 1072 (2018).
3. M. Rubenstein, A. Cornejo, R. Nagpal, *Science* **345**, 795 (2014).
4. J. C. Barca, Y. A. Sekercioglu, *Robotica* **31**, 345 (2013).
5. T. Vicsek, A. Zafeiris, *Physics reports* **517**, 71 (2012).
6. C. Bechinger, *et al.*, *Reviews of Modern Physics* **88**, 045006 (2016).
7. G. Popkin, *Nature News* **529**, 16 (2016).
8. A. Deblais, *et al.*, *Physical Review Letters* **120**, 188002 (2018).
9. S. Li, *et al.*, *Nature* **567**, 361 (2019).
10. W. Savoie, *et al.*, *Science Robotics* **4**, eaax4316 (2019).
11. S. Li, *et al.*, *Science Advances* **7**, eabe8494 (2021).
12. J. Aguilar, *et al.*, *Reports on Progress in Physics* **79**, 110001 (2016).
13. M. Paoluzzi, R. Di Leonardo, M. C. Marchetti, L. Angelani, *Scientific reports* **6**, 34146 (2016).
14. C. Abaurrea-Velasco, T. Auth, G. Gompper, *New Journal of Physics* **21**, 123024 (2019).

15. B. Vincenti, *et al.*, *Nature communications* **10**, 1 (2019).
16. D. Saintillan, M. J. Shelley, *Complex Fluids in biological systems* (Springer, 2015), pp. 319–355.
17. F. Peruani, *The European Physical Journal Special Topics* **225**, 2301 (2016).
18. G. A. Patterson, *et al.*, *Physical Review Letters* **119**, 248301 (2017).
19. A. Bricard, J. B. Caussin, N. Desreumaux, O. Dauchot, D. Bartolo, *Nature* **503**, 95 (2013).
20. V. Narayan, S. Ramaswamy, N. Menon, *Science* **317**, 105 (2007).
21. I. Theurkauff, C. Cottin-Bizonne, J. Palacci, C. Ybert, L. Bocquet, *Physical review letters* **108**, 268303 (2012).
22. E. Lushi, H. Wioland, R. E. Goldstein, *Proceedings of the National Academy of Sciences* **111**, 9733 (2014).
23. Y. Alapan, *et al.*, *Science Robotics* **3**, eaar4423 (2018).
24. A. P. Solon, *et al.*, *Nature Physics* **11**, 673 (2015).
25. A. Kaiser, H. H. Wensink, H. Löwen, *Physical review letters* **108**, 268307 (2012).
26. H. H. Wensink, H. Löwen, *Physical Review E* **78**, 031409 (2008).
27. N. Nikola, *et al.*, *Physical review letters* **117**, 098001 (2016).
28. Y. Fily, A. Baskaran, M. F. Hagan, *Soft matter* **10**, 5609 (2014).
29. G. Junot, G. Briand, R. Ledesma-Alonso, O. Dauchot, *Physical review letters* **119**, 028002 (2017).



30. L. Giomi, N. Hawley-Weld, L. Mahadevan, *Proceedings of the Royal Society A: Mathematical, Physical and Engineering Sciences* **469**, 20120637 (2013).
31. T. Barois, J. F. Boudet, N. Lanchon, J. S. Lintuvuori, H. Kellay, *Physical Review E* **99**, 052605 (2019).
32. D. B. Brückner, *et al.*, *Nature Physics* **15**, 595 (2019).
33. A. Fink, *et al.*, *Biophysical Journal* **118**, 552 (2020).
34. D. Caballero, J. Comelles, M. Piel, R. Voituriez, D. Riveline, *Trends in cell biology* **25**, 815 (2015).
35. A. Reversat, *et al.*, *Nature* pp. 1–4 (2020).
36. S. Plimpton, *Modelling and Simulation in Materials Science and Engineering* **117**, 1 (1995).
37. A. Stukowski, *Modelling and Simulation in Materials Science and Engineering* **18**, 015012 (2009).

**Acknowledgments:** We thank R. Houques for help with the experimental set-up.

**Funding:** H. Kellay and J. C. Baret thank the IUF for partial funding. J. S. Lintuvuori acknowledges IdEx (Initiative d’Excellence) Bordeaux and the French National Research Agency (ANR) through Contract No. ANR-19-CE06-0012 for funding.

**Author contributions:** H. Kellay with help from D. Bruckner designed the experiments. C. Lacouture, J. F. Boudet, A. Deblais, and H. Kellay performed the experiments; C. Lacouture, J. F. Boudet, T. Barois, J. C. Baret, D. Bruckner and H. Kellay analyzed the data. J. F. Boudet developed the theoretical model. J. Lintuvuori performed the numerical simulations and analyzed the data with J. F. Boudet. S. Cassagnere constructed the light sensitive chip with help from B.

Tregon. K. Xie analyzed data using elasticity theory. H. Kellay wrote the paper with input from all authors.

**Competing interests:** The authors declare no competing interest.

**Data and materials availability:** All data needed to evaluate the conclusions in the paper are present in the paper or the Supplementary Materials. This data is also available upon request.