



HAL
open science

Use of a *Pleurotus ostreatus* Complex Cell Wall Extract as Elicitor of Plant Defenses: From Greenhouse to Field Trial

Céline Faugeron-Girard, Vincent Gloaguen, Rromir Koçi, Julien Célérier,
Anaïs Raynaud, Charlotte Moine

► To cite this version:

Céline Faugeron-Girard, Vincent Gloaguen, Rromir Koçi, Julien Célérier, Anaïs Raynaud, et al.. Use of a *Pleurotus ostreatus* Complex Cell Wall Extract as Elicitor of Plant Defenses: From Greenhouse to Field Trial. *Molecules*, 2020, 25 (5), pp.1094. 10.3390/molecules25051094 . hal-03291945

HAL Id: hal-03291945

<https://hal.science/hal-03291945v1>

Submitted on 10 Feb 2025

HAL is a multi-disciplinary open access archive for the deposit and dissemination of scientific research documents, whether they are published or not. The documents may come from teaching and research institutions in France or abroad, or from public or private research centers.



L'archive ouverte pluridisciplinaire **HAL**, est destinée au dépôt et à la diffusion de documents scientifiques de niveau recherche, publiés ou non, émanant des établissements d'enseignement et de recherche français ou étrangers, des laboratoires publics ou privés.



Distributed under a Creative Commons Attribution 4.0 International License

Article

Use of a *Pleurotus ostreatus* Complex Cell Wall Extract as Elicitor of Plant Defenses: From Greenhouse to Field Trial

Céline Faugeron-Girard ^{1,*}, Vincent Gloaguen ¹, Rromir Koçi ¹, Julien Célérier ²,
Anaïs Raynaud ² and Charlotte Moine ²

¹ Université de Limoges, Laboratoire Peirene (EA7500), Faculté des Sciences et Techniques, 123, avenue Albert Thomas, 87060 Limoges CEDEX, France; vincent.gloaguen@unilim.fr (V.G.); rromir.koci@unilim.fr (R.K.)

² COVERTIS SAS, Technopole d'ESTER, 1 avenue d'Estér, 87069 Limoges CEDEX, France; julien.celerier@covertis-lab.fr (J.C.); anais.raynaud@covertis-lab.fr (A.R.); charlotte.moine@covertis-lab.fr (C.M.)

* Correspondence: celine.girard@unilim.fr; Tel.: +33-5-55-45-74-76

Academic Editor: Cédric Delattre

Received: 30 January 2020; Accepted: 26 February 2020; Published: 29 February 2020



Abstract: Fungi constitute an abundant source of natural polysaccharides, some of them harboring original structures which can induce responses in mammalian or plant cells. An alkaline extract from the edible mushroom *Pleurotus ostreatus* has been obtained and called Pleuran complex cell wall extract (CCWE). It consists of a glucan-peptide complex whose components fall in a quite broad range of molecular weights, from 30 to 80 kDa. Pleuran extract has been tested on cultivated plants in laboratory conditions and also during field trial for its capacity to stimulate plant defenses in response to pathogen attack. Following Pleuran CCWE treatment, enhanced levels of various biochemical markers associated with plant responses have been observed, including enzymatic activities (e.g., peroxidase) or expression of some pathogenesis-related genes. In addition, during field experiments, we have noticed significant reductions in disease symptom levels in relation to different plant/pathogen systems (wheat/septoria, vine/mildew). These results confirmed that Pleuran CCWE could be used as an elicitor of plant defenses and could help in reducing pesticide applications against plant pathogens.

Keywords: *Pleurotus ostreatus*; glucan-rich complex; plant defenses

1. Introduction

Edible mushrooms are widely consumed all over the world and sometimes are cultivated in large amounts. An edible mushroom constitutes the aerial part of a fungus which carries the spore-bearing fruiting body. An important part of the biomass of these mushrooms is the fungal cell wall which consists of a complex assembly of different polysaccharides (α - and β -glucan, galactomannan and chitin) and various proteins [1–3]. In mushrooms, β -glucans are composed of a linear β 1 \rightarrow 3 glucan backbone harboring β 1–6 glucan side chains. Linear (1 \rightarrow 3) α -D-glucans have also been described [3]. Chitin is composed of long chains of β (1 \rightarrow 4) linked N-acetylglucosamine units. All of these polysaccharides are closely associated with fungal cell walls [4].

Some of these polysaccharides have been proposed for medicinal applications, owing to their hypocholesterolemic or immunomodulatory effects, and their antibacterial properties [5–8]. These polysaccharides could also serve as attractive substitutes for the environment- and health-unfriendly phytochemicals which are currently widely used for crop protection. Chitin, β -glucan or their derivatives can be recognized by a plant cell as pathogen signals, and can elicit plant defenses [4,9].

Designated as microbial-associated molecular patterns (MAMPs), they interact with the so-called plant-recognition receptors (PRR) [10,11]. Then, rapid intracellular responses are triggered, notably variation in cytosolic Ca^{2+} concentration, production of reactive oxygen species, and activation of MAPK (mitogen-activated protein kinases). These early events are followed by an enhanced synthesis of pathogenesis-related proteins (PR), some of them, e.g., glucanase or chitinase, directly involved in defense against pathogens, are able to degrade components of fungal cell walls. Recognition of MAMPs induces the additional synthesis of phytoalexins, secondary metabolites endowed with antimicrobial properties. The plant cell wall is also reinforced by lignification which limits its degradation by the pathogen. These plant defense responses at the site of pathogen attack also imply the production, release and transport of plant hormonal signals such as salicylic acid to the distal parts of the plant through a process called systemic acquired resistance (SAR) [12]. SAR is known to be a long-lasting and broad-spectrum resistance; this characteristic is of great advantage since these signal molecules could also be used for plant protection purposes.

MAMPs have been recently used to enhance the resistance of cultivated plants in a process called MAMP-triggered Immunity (MTI). This strategy helps the plant to defend itself from pathogen attack and diminishes fungicide application [13]. Some of these MAMPs have already been authorized for agricultural purpose. This is the case for laminarin, a β -glucan extracted from brown algae [14,15], or COS-OGA which associates oligogalacturonates (OGA), i.e., fragments of pectins, with partially acetylated chitosan (COS), derived from the exoskeletons of crustaceans whose structure mimics the fungal cell wall [16,17]. In this case, COS, a MAMP, is associated with OGA, a DAMP (damage-associated molecular pattern), also recognized as a signal of pathogen attack which enhances plant defenses.

The aim of this study was to obtain a β -glucan-enriched soluble extract from the edible mushroom *Pleurotus ostreatus*, and to determine its ability to stimulate plant defenses in response to pathogen attacks. The biological activity of the extract obtained was observed in controlled conditions on plantlets grown in a greenhouse and also during field trials.

2. Results and Discussion

2.1. Yields and Process Scale-Up

The main parameters of extraction process realized at laboratory and pilot scales are summarized in Table 1. Each one of these extracts, obtained by alkaline extraction of *Pleurotus ostreatus* has been called Pleuran complex cell wall extract (CCWE).

Table 1. Scaling-up from laboratory to pilot of Pleuran complex cell wall extract (CCWE) extraction process. Data are means \pm standard deviation ($n = 23$ for laboratory process; $n = 12$ for pilot process).

	Laboratory Process	Pilot Process
<i>Pleurotus ostreatus</i> (kg)	0.2	2.8
Volume produced (L)	1.7 \pm 0.2	22.3 \pm 1.6
Pleuran CCWE concentration (g/L)	32.9 \pm 5.0	40.7 \pm 2.9
Yield (% of dry raw material)	30.1 \pm 4.7	32.0 \pm 4.3

First of all, extraction process was realized successfully at pilot scale with a size increasing factor of more than 10. Indeed, the process was scaled-up from 0.2 kg (laboratory) to 2.8 kg (pilot) dried *Pleurotus*, paying attention to the ratio volume produced to raw material, that we kept quite constant (8.5 and 8.0 L/kg, respectively), while an increase in dry residue concentration of the liquid extract, from 32.9 to 40.7 g/L, was achieved.

2.2. β -Glucan and Crude Protein Contents

Contents of glucans and crude proteins of laboratory and pilot Pleuran CCWE, are reported in Table 2. For both extracts, the proportions of α -glucans was low compared with β -glucans. These

compounds represent a significant part of the whole extract. Chemical characterizations of the two extracts gave quite similar results. Major glucans described in *Pleurotus ostreatus* are branched (1–3), (1-6)- β -D-glucans [18,19]. They consist of a backbone of β (1-3)-linked D-glucopyranose units, in which O-6 is substituted with a single D-glucopyranosyl group every fourth residue [20]. Other different polysaccharidic structures from *Pleurotus* have been observed, for example a linear α -(1-3)-linked D-glucan, isolated from *P. ostreatus* and *P. eryngii* [21], and a β -(1-3),(1-6)-linked glucan, extracted from *P. ostreatus* [19]. Crude protein content of Pleuran CCWE represents 23% of the whole extract. Nevertheless, this fraction is actually composed of a complex mixture of proteins, peptides and free amino acids. Overall, the sum of glucans and crude proteins represents at least 40% of the dry mass, the rest is constituted by other components such as mono-, polysaccharides and minerals.

Table 2. Glucan and crude protein contents of Pleuran CCWE obtained with laboratory and pilot processes. Data are means \pm standard deviation ($n = 23$ for laboratory process; $n = 12$ for pilot process).

	% (w/w Dry Extract)	
	Laboratory	Pilot
β -glucans	15.5 \pm 4.1	17.3 \pm 4.5
α -glucans	1.4 \pm 1.0	1.5 \pm 0.8
Crude proteins ($N \times 6.25$)	22.6 \pm 2.5	23.4 \pm 1.1

2.3. Monosaccharide Composition

Analyses of monosaccharide composition are reported in Table 3. For both processes (laboratory and pilot extracts), glucose was the main monosaccharide found in Pleuran CCWE (>90%). Smaller amounts of mannose and galactose were also detected. This was consistent with the fact that polysaccharides of Pleuran CCWE are mainly glucans with the presence of a minor fraction of heteropolysaccharides, mainly mannogalactans [3].

Table 3. Molar ratio (%) of monosaccharides in Pleuran CCWE. Data are means \pm standard deviation ($n = 13$ for laboratory process).

	% Molar Ratio	
	Laboratory	Pilot
Glucose	93.3 \pm 1.8	92.6
Mannose	3.9 \pm 0.8	4.1
Galactose	2.8 \pm 1.1	3.3

2.4. Steric Exclusion Chromatography/Multi-Angle Light-Scattering/Differential Refractive Index (SEC/MALS/DRI) Analysis

The results obtained by steric exclusion chromatography (SEC) coupled with differential refractive index (DRI) and light-scattering (LS) detections are shown in Figure 1. DRI chromatogram showed 3 distinct fractions: F1 between 11 and 17 mL, F2 between 17 and 21 mL and F3 comprised between 21 and 23.5 mL. Multi-angle light scattering (MALS) analyses of the main fractions F2 and F3 were consistent with average molecular masses of 80 and 30 kDa, respectively. These fractions were characterized by a low light scattering. At lower elution volumes (V_e), between 11 and 17 mL (fraction F1), we have recorded a flat DRI signal associated with an important LS peak. The combination of these two signals indicated that this fraction contained low concentrations of very large compounds. This LS signal (at 14 mL) was linked with a slight re-increase of molecular mass. Also, a weak LS signal between 21 and 22 mL (F3) showed a slight increase in molecular mass. These observations are inconsistent with the steric exclusion chromatography of polydisperse homopolymers, for which a continuous decrease in molecular mass is concomitant with increasing elution volume. This could rather indicate the presence, in F3, of compounds, with higher V_e and then smaller V_h (hydrodynamic volume), which possess molecular masses higher than those of compounds found in F2. This conclusion implies that

the relatively small size of these molecules is the consequence of their compact conformation, which is consistent with the known packed structure of protein-polysaccharide aggregates.

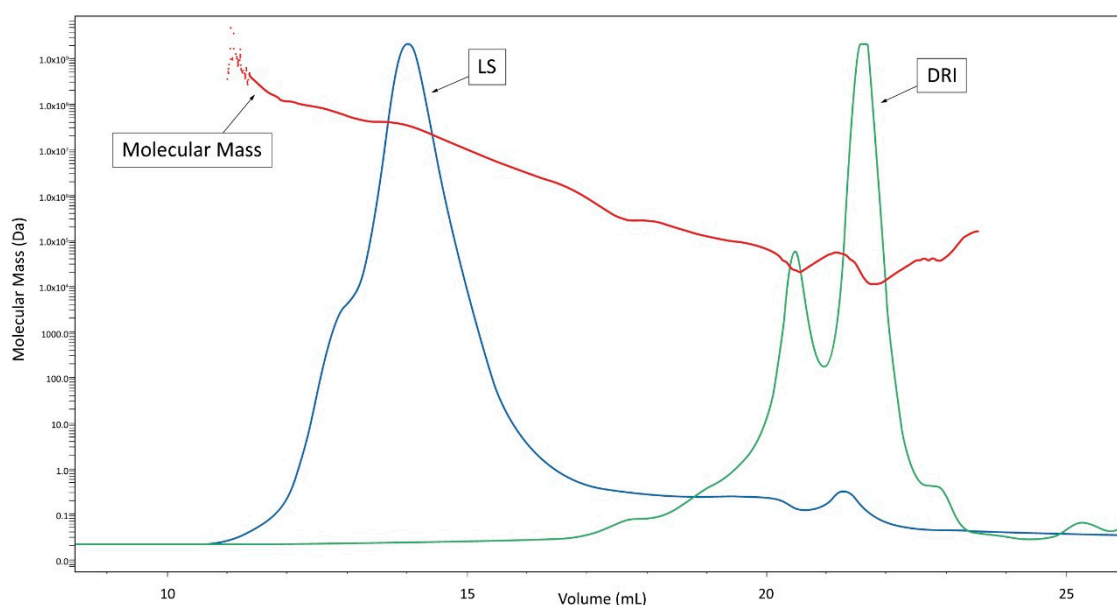


Figure 1. Steric exclusion chromatography/multi-angle light scattering/differential refractive index (SEC/MALS/DRI) analysis of Pleuran CCWE (DRI = differential refractive index, LS = light-scattering signal). The profiles shown are representative of two independently obtained extracts.

2.5. High-Performance Liquid Chromatography (HPLC)-SEC Analysis

Analysis of Pleuran CCWE by steric exclusion chromatography, coupled with ultraviolet (UV) detection ($\lambda = 225$ nm), is shown in Figure 2. Native Pleuran CCWE chromatogram (black curve) displayed a complex pattern in the 10–20 min area and, in particular, several intense peaks were recorded between 17 and 20 min; after 20 min, a few small peaks were also observed. After incubation in 0.2 M NaOH, the chromatogram of Pleuran CCWE (blue curve) showed a decrease in intensity of the peaks between 10 and 20 min, along with the vanishing of the strong peaks between 17 and 20 min, and the appearance of a large peak at 22 min. This observation could indicate that large glucan-peptide aggregates present in native Pleuran CCWE undergo dissociation under alkaline treatment and give rise to smaller species, as illustrated by the appearance of the large peak at 22 min (blue curve). These conclusions are consistent with the results obtained by SEC/MALS/DRI analysis. Such glucan-peptide complexes have already been described in aqueous extracts of *Pleurotus* species [21].

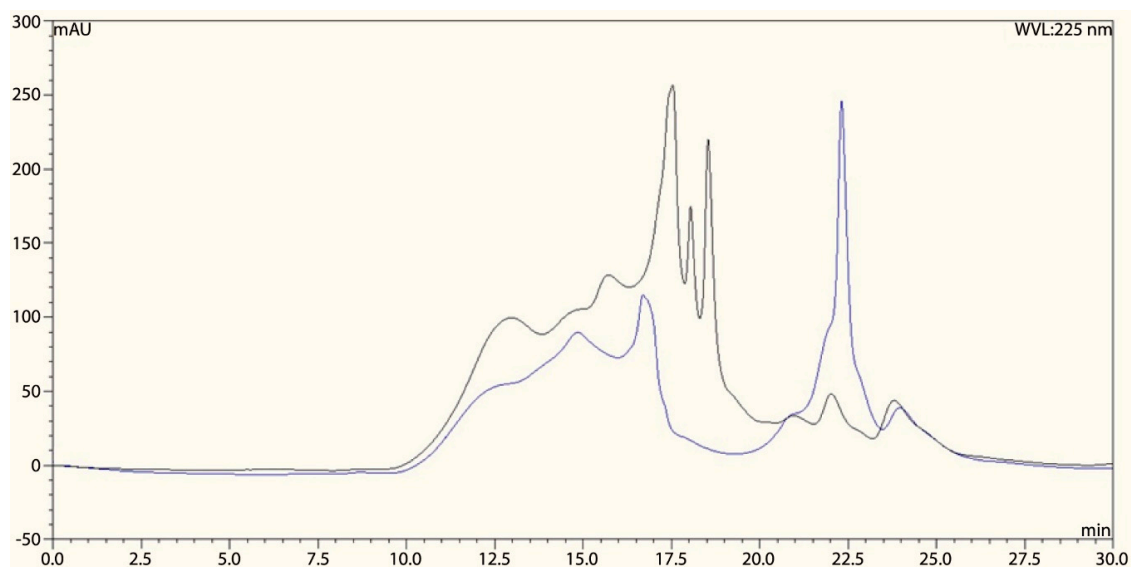


Figure 2. Chromatogram of Pleuran CCWE analysis by high-performance liquid chromatography (HPLC)-SEC (ultraviolet (UV) detection $\lambda = 225$ nm); Black: native Pleuran CCWE; blue: Pleuran CCWE after NaOH treatment. The profiles shown are representative of two independently obtained extracts.

2.6. Biological Activities of Pleuran Complex Cell Wall Extract (CCWE)

2.6.1. Controlled Conditions

The biological activity of Pleuran CCWE was firstly examined in controlled conditions on tomato plants cultivated in a greenhouse. Its capacity to elicit the plant defense responses was determined by spraying the Pleuran CCWE solution ($350 \text{ mg}\cdot\text{L}^{-1}$) on tomato leaves (three times at two days intervals) before inoculation of plants with *Botrytis cinerea* (three days after the last spraying). One day later, a few leaves (different from the inoculated ones) were collected to determine by quantitative polymerase chain reaction (qPCR) the expression level of the pathogenesis-related genes (PR) *PR1*, *PR2*, *PR4*, *PR5*, *PR8*, *PR14* and *PR15*. Expression of all these PR genes was significantly stimulated, except *PR14* whose expression did not differ from the control (Figure 3). To determine the intrinsic capacity of Pleuran CCWE to stimulate plant defenses in the context of a pathogen attack, different concentrations of Pleuran CCWE were applied on tomato plants. The reference dose, called 1N corresponding to $350 \text{ mg}\cdot\text{L}^{-1}$ expressed in dry matter, was compared with two solutions containing $700 \text{ mg}\cdot\text{L}^{-1}$ (2N) or $175 \text{ mg}\cdot\text{L}^{-1}$ (0.5N). Control plants were sprayed with a blank formulation (BF) consisting of an aqueous mixture containing only the surfactant and the preservative used to prepare the Pleuran CCWE solution.

Peroxidase activity has been chosen as a biomarker of plant defenses as it is often cited as an enzyme whose activity could be enhanced under biotic stress conditions [22]. Peroxidase can be implicated in the reinforcement of the plant cell walls by cross-linking cell wall components, in the synthesis of anti-microbial molecules such as phytoalexins and also in the metabolism of reactive oxygen species that could limit pathogen development at the infection site [22].

Pleuran CCWE treatment at dose 1N triggered an increase of peroxidase activity which was significantly different from the control, BF (Figure 4). But twice this concentration (2N) did not lead to increased activity. However, halving the concentration significantly reduced the peroxidase activity in tomato leaves. Therefore, the dose N (corresponding to $350 \text{ mg}\cdot\text{L}^{-1}$ of Pleuran CCWE) was finally retained for further experiments.

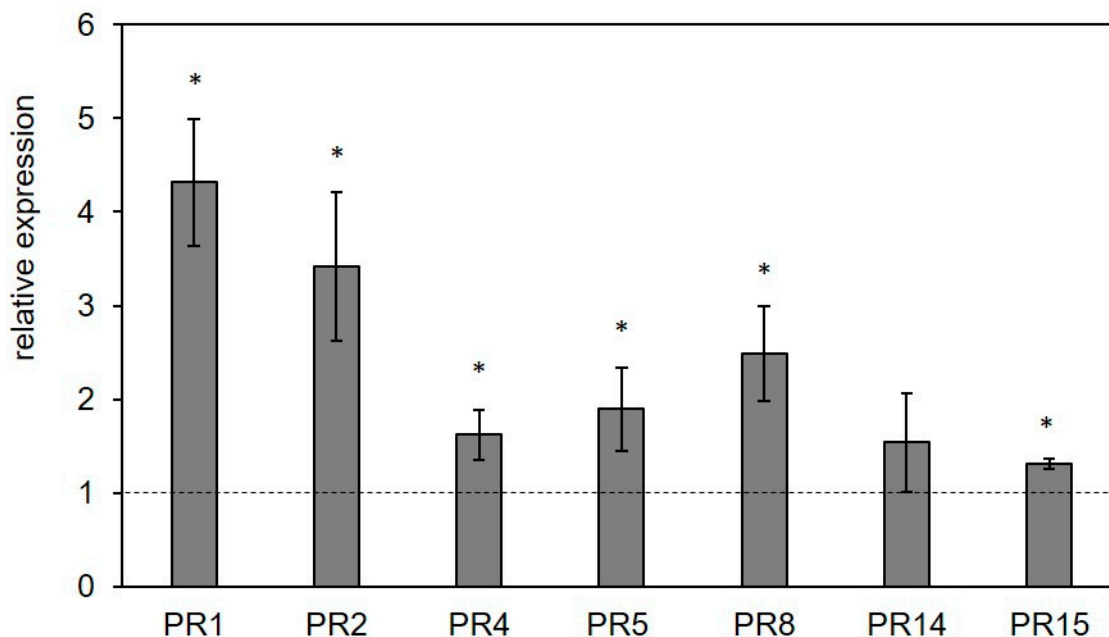


Figure 3. Relative expression levels of some pathogenesis-related (PR) genes in tomato leaves subjected to Pleuran complex cell wall extract (Pleuran CCWE) treatment (foliar application) compared to control (treatment with water; dotted line). All the plants were inoculated by infiltration of *Botrytis cinerea* conidia 24 h before analysis. Bars represent the average \pm standard deviation ($n = 3$). * means significant difference with control ($p < 0.05$).

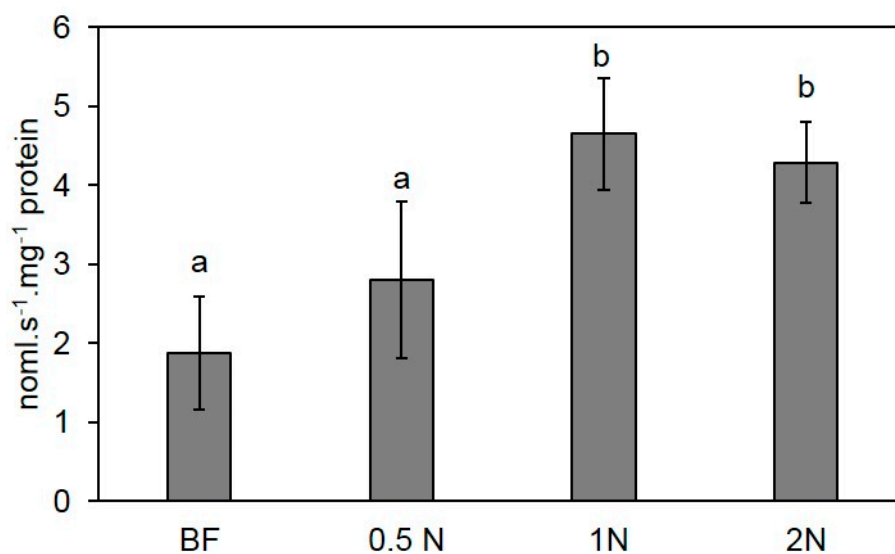


Figure 4. Peroxidase specific activities expressed in $\text{nmol.s}^{-1}.\text{mg}^{-1}$ protein in tomato leaves treated with Pleuran complex cell wall extract before inoculation with *Botrytis cinerea*. The leaves were collected seven days after inoculation. BF: blank formulation; 1N corresponds to a concentration of 350 mg.L^{-1} of Pleuran CCWE in the sprayed solution. Data are means of 6 replicates, \pm standard deviation. Different letters indicate significant differences at $p < 0.05$.

Another plant model has been subjected to Pleuran CCWE treatment in controlled conditions, *Brachypodium distachyon*, which was chosen as a model of monocotyledon species. In the context of an attack by a pathogen such as *Fusarium graminearum*, a pre-treatment by Pleuran CCWE is efficient in reducing the symptoms on spikelets (Figure 5a,b). The development of the fungus is considerably reduced in plants pre-treated with Pleuran CCWE compared with the control (Figure 5c). This could

be explained by a stimulation of the expression of some PR protein genes such as *PR9* coding for a peroxidase or *PAL* coding for phenylalanine-ammonia lyase (Figure 5d). The latter protein catalyzes the first reaction of the phenylpropanoid pathway i.e., the conversion of phenylalanine to cinnamic acid which, in turn, leads to the synthesis of phytoalexins (with antibacterial activities) or to the synthesis of monolignols involved in the formation of lignin and thought to reinforce the plant cell wall [23].

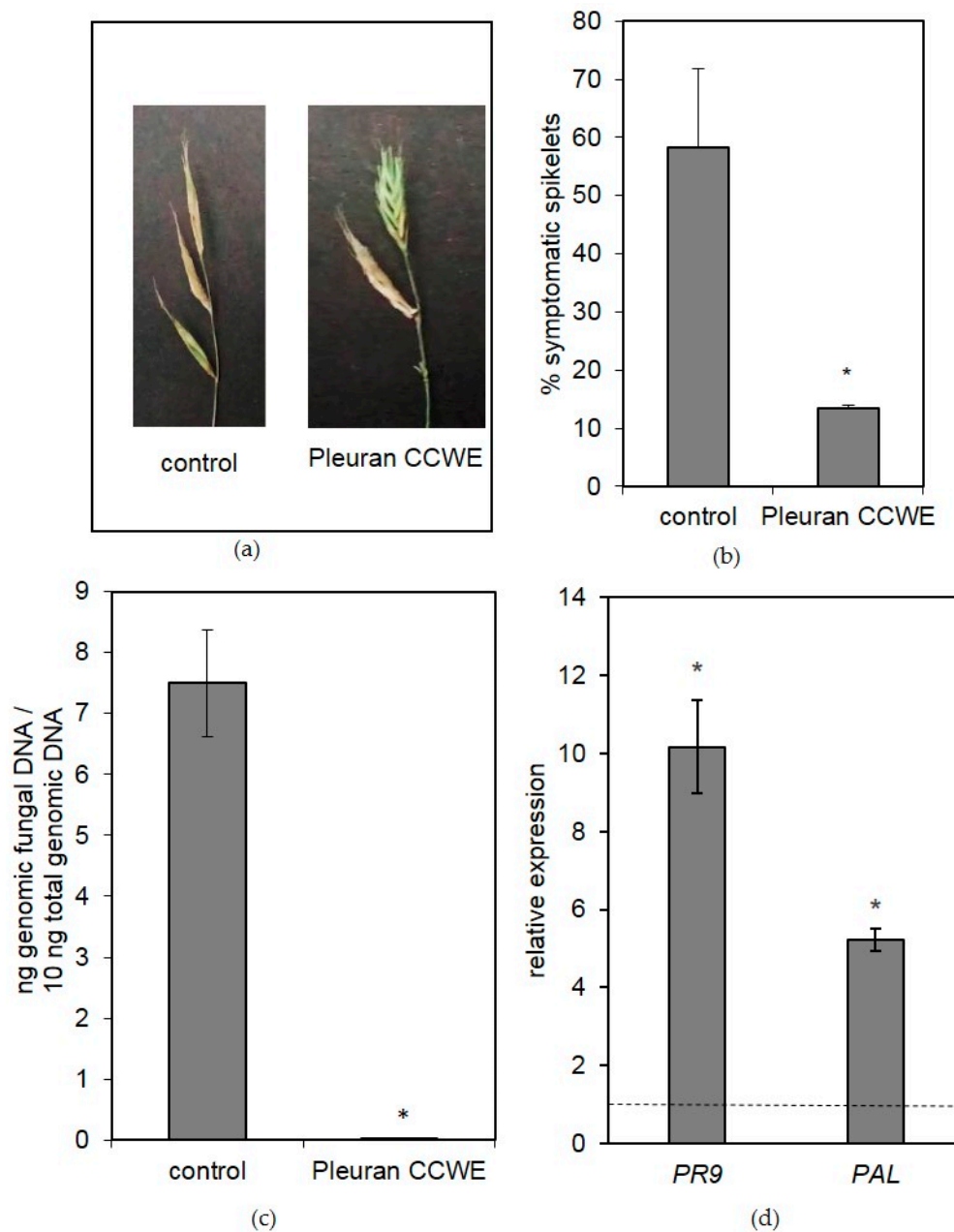


Figure 5. *B. distachyon* responses to a Pleuran complex cell wall extract (CCWE) pre-treatment before inoculation with *Fusarium graminearum*. (a) and (b): symptoms observed on spikelets (10 days post-inoculation) (c) Quantification of fungal biomass in plants determined by quantitative polymerase chain reaction (PCR) (d) Relative expression levels of *Phenylalanine-Ammonia-Lyase* (*PAL*) and *peroxidase* (*PR9*) genes in *B. distachyon* leaves 48 h post-inoculation with *Fusarium graminearum* for plants pre-treated with Pleuran CCWE related to the control (not treated; dotted line). Each value is the mean of two replicates (ten plants per replicate) and vertical bars are standard deviation. * means significant difference with control ($p < 0.05$).

2.6.2. Field Trials

As Pleuran CCWE was efficient to stimulate the plant defenses in the context of an attack by a pathogen in controlled conditions, a scale-up strategy was rolled out to confirm this activity at open field scale. Wheat (*Triticum aestivum* L.) was examined as this plant constitutes a worldwide-cultivated cereal crop. During this field trial (in 2017), the cold weather conditions led to a medium disease pressure: 45.3% of severity was observed for the control on 16 June (Figure 6). Pleuran CCWE had previously been applied by foliar spraying with two different doses levels: 1 L·ha⁻¹ or 2 L·ha⁻¹ (corresponding to doses of 35 and 70 g·ha⁻¹, respectively). Application was repeated three times (on 9 March and 30 March and then on 29 April). A positive control was also devised by spraying wheat with two conventional fungicides, namely Cherokee® (on 30 March) and Adexar® (on 29 April). Figure 6 shows the evaluation of Septoria symptoms observed on wheat leaves on 16 June. As expected, fungicide treatments were efficient enough to reduce the severity of symptoms to 5.1%, corresponding to 89% efficacy. The efficacy of Pleuran CCWE treatment with the dose 2 L·ha⁻¹ was 76%, equivalent to fungicide treatment, as the severity of Septoria symptoms in these conditions was statistically the same as the one obtained after fungicide application, although slightly higher (10.9% of severity). Also, the efficacy of Pleuran CCWE seemed to be proportional to the dose applied on wheat plants since the dose 1 L·ha⁻¹ led to a lesser efficacy (45%) (Corresponding to 25.1% severity) but nevertheless significant compared with the control.

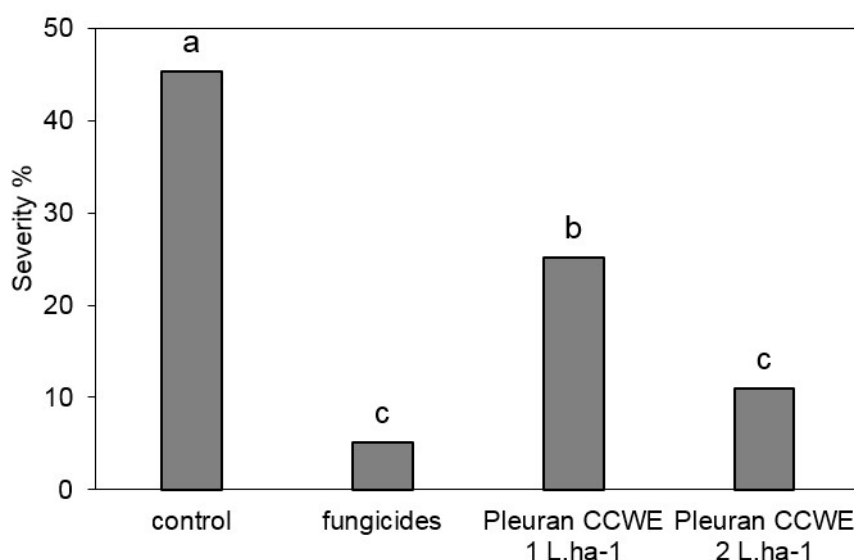


Figure 6. Severity of attacks by Septoria (*Septoria tritici*) on wheat in percentage on leaf area (T1) (field trial, notation 16 June 2017). Treatments were applied on 9 and 30 March and on 29 April 2017: control (no treatment), fungicides (Cherokee 2 L·ha⁻¹ + Adexar 2 L·ha⁻¹), Pleuran complex cell wall extract (CCWE) at concentrations either 1 L·ha⁻¹ or 2 L·ha⁻¹. Means followed by same letter or symbol do not significantly differ ($p = 0.05$, Student–Newman–Keuls).

Vine (*Vitis vinifera*) is one of the most important fruit crop in the world. Its response to Pleuran CCWE treatment has also been evaluated during a field trial realized in 2015 in the south of France; more precisely, we assessed the mildew symptoms caused by the pathogen *Plasmopara viticola*. During the year 2015, symptoms on untreated plants (control) were sufficient to evaluate the efficacy of the treatments. For example, on 20 July, the incidence of mildew attacks on grapes in control conditions was estimated at 80% and their severity to 18.6% (Figure 7). Preventive treatments were applied to a few other vine spots: foliar spraying of Pleuran CCWE at dose N (corresponding to 350 mg·L⁻¹ in the sprayed solution) realized every 8 to 10 days initiated by mid-May led to a significant reduction in incidence of mildew attacks on grapevine (50.5% for pleuran CCWE compared to 80% for control). The conventional treatment based on CuSO₄ was more efficient (only 19.5% of incidence in this case)

but this treatment led to reaching the authorized upper limit for this conventional fungicide on vine. In order to reduce fungicide use, an alternative treatment was also applied during this field trial: it consisted in three applications of Cu and three applications of Pleuran CCWE beginning by mid-May (instead of 6 applications of Cu in conventional conditions). The reduction of the incidence of mildew symptoms was statistically equivalent to the Cu treatment, despite the fact that incidence was a little higher (27.5% for Pleuran CCWE + Cu compared to 19.5% for Cu alone). The efficiency of only three applications of Cu (1/2 Cu, Figure 7) was estimated for comparison purposes: as expected, the intensity of symptoms was reduced, compared with the control and a similar level was obtained with Pleuran CCWE treatment alone (49% incidence). This experiment is a clear demonstration that Pleuran CCWE could be proposed as a complementary treatment to reduce fungicide application while maintaining the development of the pathogen sufficiently low to be used for agricultural purpose with a slight impact on crops. This strategy could also be of significant help in reducing phytochemical residues in the environment because Cu, due to its wide use for vine protection, constitutes a pollutant which accumulates in the soils of vineyards [24].

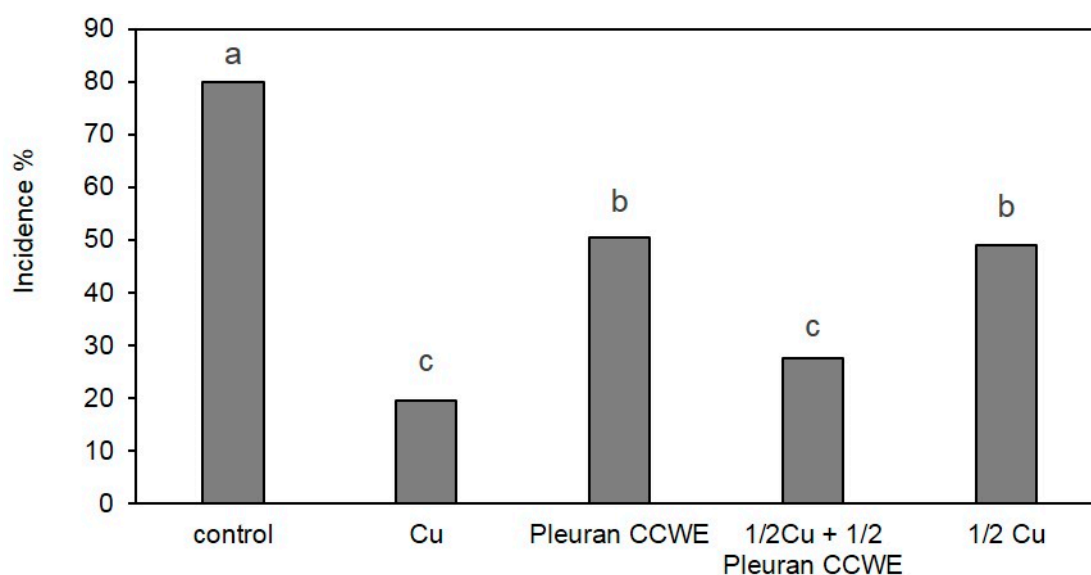


Figure 7. Effect of Pleuran CCWE treatment on incidence of downy mildew on grapevine (field trial, notation 20 July 2015) compared with conventional treatments based on Cu and alternative treatment combining Cu and Pleuran CCWE. % of attacked grapes. (Newman–Keuls test).

3. Materials and Methods

3.1. Mushroom Raw Material

Mushrooms (*Pleurotus ostreatus* var.) were obtained from Champicreuse (Saint-Yrieix-la-Montagne, France). Immediately after collection, mushrooms were dried at 30 °C in ventilated area.

3.2. Extraction of Pleuran CCWE

Pleuran CCWE was obtained from dried *Pleurotus ostreatus* as described in Patent FR1874070 (see Section 5 and Figure 8).

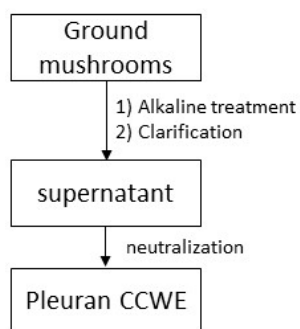


Figure 8. Pleuran CCWE extraction diagram.

3.3. β -Glucan Assay

The kit from Megazyme International (Bray, Co. Wicklow, Ireland), “MUSHROOM and YEAST B-GLUCAN” Assay Procedure K-YBGL 07/11 was used for glucans determination. The assay is based on the determination of total and α -glucans. β -glucans (non-starch) are determined by subtraction. Total glucans are determined by quantification of glucose contents after the total acidic hydrolysis and α -glucans after specific enzymatic hydrolysis of starch-like α -glucans.

3.4. Crude Proteins

Total nitrogen was determined by the Kjeldahl method. The crude protein content was calculated by multiplying the N content by the factor 6.25 [25–28].

3.5. Monosaccharide Composition

15 μ L of Pleuran CCWE extract were placed in a SVL tube and 100 μ L of internal standard (myoinositol 200 μ g/mL) were added. Tube contents were dried under N_2 stream. Under an argon stream, 1 mL of MeOH/HCl 1 M was added and the stoppered tubes were heated at 80 $^{\circ}$ C during 24 h. After drying under a stream of argon, 100 μ L of anhydrous pyridine and 100 μ L of N,O-Bis(trimethylsilyl)trifluoroacetamide (BSTFA) were added, under argon atmosphere and the tubes were then heated à 30 $^{\circ}$ C during 2 h. Injections were performed in a Gas Chromatography with Flame-Ionization Detector (GC-FID)(Perichrom PR 2100, Perichrom, Saulx les Chartreux, France), equipped with a capillary column OPTIMA[®]-1-Accent 0.25 μ M (Macherey-Nagel, Düren, Germany). Temperature of injector was 260 $^{\circ}$ C. Oven temperature program was 130 $^{\circ}$ C for 1 min, then increased to 190 $^{\circ}$ C (2 $^{\circ}$ C/min) for 5 min, then increased to 210 $^{\circ}$ C (2 $^{\circ}$ C/min) and finally increased to 260 $^{\circ}$ C (5 $^{\circ}$ C/min) and held during 10 min. Detector temperature was set at 260 $^{\circ}$ C.

3.6. SEC/MALS/DRI Analysis

Size-exclusion chromatography and multi-angle light scattering (SEC-MALS) (Wyatt Technology Inc., Santa Barbara, USA) analysis was realized as described by Picton et al. [29] and Simon et al. [30].

3.7. HPLC-SEC

Exclusion steric high-performance liquid chromatography (HPLC-SEC) analysis of Pleuran CCWE was carried out at room temperature by using a Chromoptic PL aquagel-OH (Chromoptic, Courtaboeuf, France) 20, 300 \times 7.5 mm, 8 μ m column, a Dionex P680 HPLC Pump (Dionex, Sunnyvale, CA, USA), a refractive index detector Shodex RI-101 (Showa Denko K.K., Tokyo, Japan), and a UV detector Dionex UVD170U (Dionex, Sunnyvale, CA, USA). Samples were eluted at a flow rate of 1 mL/min and 0.1 M NaNO₃ as a mobile phase. Before HPLC analysis, Pleuran CCWE was incubated in 0.2 M NaOH during 90 min at 40 $^{\circ}$ C, as described by Peng and Zhang [31].

3.8. Plant Culture and Treatments

3.8.1. Tomato Plants

Tomato seeds were sown in compost. Plantlets were grown in a greenhouse during one month and watered to maintain humidity. The plantlets harboring 2 expanded leaves, were treated with a solution of Pleuran CCWE (350 mg·L⁻¹) by foliar spraying until run-off. Application was done three times at days 0, 2, and 4. On day 7, plantlets were inoculated with a conidial suspension of *Botrytis cinerea*, strain 117017 (UBOC), (10⁵–10⁶ spores per mL). Three spots of infiltration were performed on one of the first true leaves. Sample harvests were undertaken at different times depending on the analyzed parameter: on day 8 for gene expression quantification and on day 14 for peroxidase activities. Leaf samples were obtained from a leaf localized in the upper parts (and different from the inoculated leaf). They were immediately frozen in liquid nitrogen and stored either at –20 °C for enzymatic assays or at –80 °C for gene expression quantification.

3.8.2. *Brachypodium Distachyon* Plants

B. distachyon ecotype Bd21 was used for this study. Plants were cultured as previously described by Pasquet et al. [32] for four weeks. Then, Pleuran CCWE extract solution was applied by spraying on spikelets three times at days 0, 2 and 5. *F. graminearum*, strain PH-1 (Fg DON+) was maintained on Potato Dextrose Agar (PDA) plates and a conidial suspension was obtained as described by Pasquet et al. [32]. Plant inoculation was performed at day 7 (mid-anthesis stage, five weeks after sowing) by spraying all spikes with a spore suspension (10⁵ spores per mL).

3.9. Peroxidase Activity Quantification

Plant material was ground in a mortar in presence of 0.1 M sodium phosphate buffer pH = 7.0. After centrifugation (12,000× g, 10 min, 4 °C), the supernatant was assayed for peroxidase activity using 2,2'-azino-bis(3-ethylbenzothiazoline-6-sulfonic acid) (ABTS) as a substrate [33]. Kinetics were followed spectrophotometrically at λ = 412 nm. In order to determine the specific activity, the protein content of the supernatant was determined by the Bradford method [34].

3.10. Gene Expression

3.10.1. Tomato Plantlets

Gene expression analysis in tomato plantlets was performed by Vegepolys Innovation (Angers, France) by using the quantitative RT-PCR microplate/DNA chip low density (QPFD®) method [35,36]. Briefly, after RNA extraction of leaves samples, extracts were spotted on FTA cards (Licence Nsure WO 2008018790, [37]). Reverse-transcription and quantitative real-time PCR were performed using the same patented set of primers for the 7 defense genes (*PR1*, *PR2*, *PR4*, *PR5*, *PR8*, *PR14* and *PR15*) and 3 reference genes (*GAPDH*, *actin* and *TuA*) [35]. Water control plants sampled the same day were analyzed and used as reference to determine the relative expression.

3.10.2. *Brachypodium Distachyon* Plantlets

Two days post inoculation (day 9), a first set of ten plants were collected for RNA extraction and defense gene expression quantification. Reverse-transcription, and quantitative real-time PCR were performed as previously described by Gatti et al. [38]. Primers used to quantify expression of two defense genes: *PAL* and *PR9* (peroxidase) and two reference genes from *B. distachyon* *ACT7* and *UBC18* are presented in supplementary data 1. Two analytical replicates were considered.

At day 17 (10 days post-inoculation), symptoms were observed on a second set of ten plants. Spikelets were considered as symptomatic if 50% or more of floral cavities harbored fusarium symptoms. Also, plants were collected for analysis of fungal biomass. Quantification of fungal genomic DNA in infected spikes was performed as previously described by Pasquet et al. [32].

3.11. Field Trial

3.11.1. Field Trial on Wheat

Field trial has been conducted on *Triticum aestivum* (Winter wheat, var. Rubisko) in Ecueillé (36240, France). Seed sowing was undertaken on 27 October 2017 on a total area of 500 m², subdivided in 20 plots of 25 m² (4 plots per treatment, randomly distributed).

Applications of Pleuran CCWE were performed by foliar spraying 3 times with the first application at Biologische Bundesanstalt, Bundessortenamt und Chemische Industrie (BBCH) 25 (T0 = 9 March), then at BBCH 31 (T1 = 30 March), and the last one at BBCH 37 (T2 = 29 April). Pleuran CCWE was prepared as a stock solution at a concentration of 35 g·L⁻¹. Two doses were applied on wheat, either 1 L·ha⁻¹, or 2 L·ha⁻¹. Control plants (untreated) were sprayed with water at the same times as Pleuran CCWE (T0, T1 and T2). A treatment with two fungicides was performed and served as positive control. The first one was Cherokee[®] (Syngenta, United Kingdom) containing 375 g·L⁻¹ chlorothalonil, 62.5 g·L⁻¹ propiconazole and 50 g·L⁻¹ cyproconazole. The second one was Adexar[®] (BASF, France) containing 62.5 g·L⁻¹ epoxiconazole, 62.5 g·L⁻¹ fluxapyroxad. Regarding the conventional program targeted against *Septoria tritici*, fungicides were positioned as usual i.e., Cherokee[®] at BBCH 31 (T1) and Adexar[®] at BBCH 37 (T2). Both were applied at a dose of 2 L·ha⁻¹ (as recommended by manufacturers). All treatments (Pleuran CCWE or conventional fungicides) were undertaken in a final volume of 200 L·ha⁻¹. No artificial contamination was attempted, thus *Septoria* development occurred naturally. *Septoria* symptoms were evaluated on 20 leaves per foliar level. Efficacy based on the percentage of attacked foliar area was calculated with Abbott's formula (calculated on mean value): Efficacy % = 100 – ((Treated mean × 100)/Untreated mean).

3.11.2. Field Trial on Grapevine

A field trial was conducted on grapevine (*Vitis vinifera*, var. Grenache noir) during the year 2015 in Villelongue-dels-Monts (66740, France) which had been planted at a density of 4000 vines per ha. Each elementary spot comprised 9 vine plants. For each treatment, 4 plots were randomly distributed among the field.

Grapevine were artificially contaminated with *Plasmopara viticola* on 17 May 2015 on the first vine plant of each individual plot. Also, aspersions were done during experiment to maintain humidity.

The applications of Pleuran CCWE were performed by foliar spraying six times between 12 May and 26 June, Table 4). Pleuran CCWE was prepared as a stock solution at a concentration of 35 g·L⁻¹ and was applied by foliar spraying at a dose of 1 L·ha⁻¹. To compare this treatment with a conventional fungicide, treatment with copper applied as Bordeaux mixture BB RsR Disperss NC (UPL Europe Ltd., Warrington, United Kingdom) containing 200 g Cu·kg⁻¹ was also done and called hereafter Cu. According to the manufacturer's recommendation, Cu was applied at a dose of 3.75 kg·ha⁻¹ (or 750 g metal Cu per ha). Applications were done the same days as Pleuran CCWE (Table 4). In order to test the effects of a reduction of conventional fungicide, an alternative program was designed. It consisted in alternate applications of Pleuran CCWE and Cu. As this program led to a reduction of total Cu treatment, a partial check (called 1/2 Cu hereafter) has been done, consisting of three applications of Cu instead of six (Table 1). All treatments (Pleuran CCWE or conventional fungicides) were undertaken in a final volume of 200 L·ha⁻¹.

On July 20th 2015, observations of symptoms of mildew attacks were done on grapes (50 grapes per elementary spot). Results were expressed in % of attacked grapes.

Table 4. Calendar of vine treatments during field trial. -: no treatment.

Dates	Development Stage ¹	Treatments				
		Control	Cu	Pleuran CCWE	1/2Cu + 1/2Pleuran CCWE	$\frac{1}{2}$ Cu
12 May	BBCH55	-	Cu	Pleuran CCWE	Cu	Cu
18 May	BBCH57	-	Cu	Pleuran CCWE	Pleuran CCWE	-
28 May	BBCH63	-	Cu	Pleuran CCWE	Cu	Cu
5 June	BBCH73	-	Cu	Pleuran CCWE	Pleuran CCWE	-
16 June	BBCH75	-	Cu	Pleuran CCWE	Pleuran CCWE	-
26 June	BBCH79	-	Cu	Pleuran CCWE	Cu	Cu

¹ BBCH: Biologische Bundesanstalt, Bundessortenamt und Chemische Industrie.

3.12. Statistical Analysis

Statistical analysis consisted of a one-way analysis of variance (ANOVA) test performed with the PAST software (version 2.17, University of Oslo, Oslo, Norway) to compare each set of plants with respect to the measured parameter. When significant difference was found ($p < 0.05$), Tukey's test was carried out.

For field trial experiments, the statistical significances of differences among treatments were estimated using one-way ANOVA followed by Tukey's test and the Student–Newman–Keuls test ($p < 0.05$).

4. Conclusions

An alkaline extract of the cultivated edible mushroom *P. ostreatus* has been obtained for the first time at laboratory scale. This extract is mainly composed of β -glucans (17.3%) and proteins or derivatives (23.4%). SEC-MALS and HPLC-SEC analyses confirmed that these polymers are closely associated in this extract, called Pleuran CCWE. The process has been successfully upgraded to pilot scale; the same extract was obtained with quite identical yield (about 30% of the dry raw material). Tested on plants by way of foliar spraying, Pleuran CCWE displayed remarkable elicitor activities which could be used to stimulate the plant defenses. Field trials confirmed the efficacy of Pleuran CCWE to limit the symptoms of pathogen-induced plant diseases as demonstrated on wheat and vine. Altogether, these results allowed us to propose Pleuran CCWE as an attractive alternative to pesticide use, in order to efficiently and safely protect cultivated plants against pathogen attacks in a more environment- and health-friendly way.

5. Patents

Célérier, J.; Moine, C.; Faugeron-Girard, C.; Gloaguen V. 2018. Substance biologiquement active, son procédé de fabrication et son utilisation comme agent protecteur d'un tissu biologique. Deposited on 21 December 2018 (FR 1874070).

Supplementary Materials: The following are available online: Table S1: List of primers used in qRT-PCR experiments on *Brachypodium distachyon*.

Author Contributions: Conceptualization, C.F.-G., V.G., J.C., C.M. and A.R.; methodology, C.F.-G., V.G., J.C., C.M. and A.R.; investigation, writing—original draft preparation, C.F.-G., V.G., R.K., J.C., C.M. and A.R.; writing—review and editing C.F.-G., V.G., R.K., J.C., C.M. and A.R.; funding acquisition, V.G. and C.M. All authors have read and agreed to the published version of the manuscript.

Funding: This project was supported by the European Regional Development Fund through the support of the Région Limousin and has also received financial support from the Région Nouvelle Aquitaine.

Acknowledgments: The authors are grateful to Michel Guilloton for his help in manuscript editing.

Conflicts of Interest: The authors declare no conflict of interest.

References

1. Ruthes, A.C.; Ribeiro Smiderle, F.; Iacomini, M. D-Glucans from edible mushrooms: A review on the extraction, purification and chemical characterization approaches. *Carbohydr. Polym.* **2015**, *117*, 753–761. [[CrossRef](#)]
2. Zhu, F.; Du, B.; Bian, Z.; Xu, B. Beta-glucans from edible and medicinal mushrooms: Characteristics, physicochemical and biological activities. *J. Food Compos. Anal.* **2015**, *41*, 165–173. [[CrossRef](#)]
3. Baeva, E.; Bleha, R.; Lavrova, E.; Sushytskyi, L.; Čopíková, J.; Jablonsky, I.; Klouček, P.; Synytsya, A. Polysaccharides from basidiocarps of cultivating mushroom *Pleurotus ostreatus*: Isolation and structural characterization. *Molecules* **2019**, *24*, 2740. [[CrossRef](#)]
4. Fesel, P.H.; Zuccaro, A. β -glucan: Crucial component of the fungal cell wall and elusive MAMP in plants. *Fungal Genet. Biol.* **2016**, *90*, 53–60. [[CrossRef](#)] [[PubMed](#)]
5. Bobek, P.; Ozdín, L.; Kuniak, L. Effect of oyster mushroom and isolated β -glucan on lipid peroxidation and on the activities of antioxidative enzymes in rats fed the cholesterol diet. *J. Nutr. Biochem.* **1997**, *8*, 469–471. [[CrossRef](#)]
6. Jesenak, M.; Majtan, J.; Rennerova, Z.; Kyselovic, J.; Banovcin, P.; Hrubisko, M. Immunomodulatory effect of pleuran (β -glucan from *Pleurotus ostreatus*) in children with recurrent respiratory tract infections. *Int. Immunopharmacol.* **2013**, *15*, 395–399. [[CrossRef](#)] [[PubMed](#)]
7. Majtan, J. Pleuran (β -glucan from *Pleurotus ostreatus*): An effective nutritional supplement against upper respiratory tract infections? *Med. Sport Sci.* **2012**, *59*, 57–61. [[CrossRef](#)] [[PubMed](#)]
8. Bergendiova, K.; Tibenska, E.; Majtan, J. Pleuran (β -glucan from *Pleurotus ostreatus*) supplementation, cellular immune response and respiratory tract infections in athletes. *Eur. J. Appl. Physiol.* **2011**, *111*, 2033–2040. [[CrossRef](#)] [[PubMed](#)]
9. Newman, M.-A.; Sundelin, T.; Nielsen, J.T.; Erbs, G. MAMP (microbe-associated molecular pattern) triggered immunity in plants. *Front. Plant Sci.* **2013**, *4*, 139. [[CrossRef](#)] [[PubMed](#)]
10. Tang, D.; Wang, G.; Zhou, J.M. Receptor kinases in plant-pathogen interactions: More than pattern recognition. *Plant Cell* **2017**, *29*, 618–637. [[CrossRef](#)] [[PubMed](#)]
11. Héloir, M.-C.; Adrian, M.; Brulé, D.; Claverie, J.; Cordelier, S.; Daire, X.; Dorey, S.; Gauthier, A.; Lemaître-Guillier, C.; Negrel, J.; et al. Recognition of elicitors in grapevine: From MAMP and DAMP perception to induced resistance. *Front. Plant Sci.* **2019**, *10*, 1117. [[CrossRef](#)] [[PubMed](#)]
12. Gao, Q.-M.; Zhu, S.; Kachroo, P.; Kachroo, A. Signal regulators of systemic acquired resistance. *Front. Plant Sci.* **2015**, *6*, 228. [[CrossRef](#)] [[PubMed](#)]
13. Trouvelot, S.; Héloir, M.C.; Poinssot, B.; Gauthier, A.; Paris, F.; Guillier, C.; Combier, M.; Trdà, L.; Daire, X.; Adrian, M. Carbohydrates in plant immunity and plant protection: Roles and potential application as foliar sprays. *Front. Plant Sci.* **2014**, *5*, 592. [[CrossRef](#)] [[PubMed](#)]
14. Aziz, A.; Poinssot, B.; Daire, X.; Adrian, M.; Bezier, A.; Lambert, B.; Joubert, J.M.; Pugin, A. Laminarin elicits defense responses in grapevine and induces protection against *Botrytis cinerea* and *Plasmopara viticola*. *Mol. PlantMicrobe Interact.* **2003**, *16*, 1118–1128. [[CrossRef](#)] [[PubMed](#)]
15. Ménard, R.; de Ruffray, P.; Fritig, B.; Yvin, J.C.; Kauffmann, S. Defense and resistance-inducing activities in tobacco of the sulfated β -1, 3 glucan PS3 and its synergistic activities with the unsulfated molecule. *Plant Cell Physiol.* **2005**, *46*, 1964–1972. [[CrossRef](#)] [[PubMed](#)]
16. Cabrera, J.-C.; Boland, A.; Cambier, P.; Frettinger, P.; Van Cutsem, P. Chitosan oligosaccharides modulate the supramolecular conformation and the biological activity of oligogalacturonides in *Arabidopsis*. *Glycobiology* **2010**, *20*, 775–786. [[CrossRef](#)] [[PubMed](#)]
17. van Aubel, G.; Buonatesta, R.; Van Cutsem, P. COS-OGA: A novel oligosaccharidic elicitor that protects grapes and cucumbers against powdery mildew. *Crop. Prot.* **2014**, *65*, 129–137. [[CrossRef](#)]
18. Synytsya, A.; Novak, M. Structural analysis of glucans. *Ann. Transl. Med.* **2014**, *2*, 17. [[CrossRef](#)]
19. Palacios, I.; García-Lafuente, A.; Guillamón, E.; Villares, A. Novel isolation of water-soluble polysaccharides from the fruiting bodies of *Pleurotus ostreatus* mushrooms. *Carbohydr. Res.* **2012**, *358*, 72–77. [[CrossRef](#)]
20. Karácsonyi, Š.; Kuniak, L. Polysaccharides of *Pleurotus ostreatus*: Isolation and structure of pleuran, an alkali-insoluble β -D-glucan. *Carbohydr. Polym.* **1994**, *24*, 107–111. [[CrossRef](#)]

21. Synytsya, A.; Míčková, K.; Synytsya, A.; Jablonský, I.; Spěvák, J.; Erban, V.; Kovářiková, E.; Čopíková, J. Glucans from fruit bodies of cultivated mushrooms *Pleurotus ostreatus* and *Pleurotus eryngii*: Structure and potential prebiotic activity. *Carbohydr. Polym.* **2009**, *76*, 548–556. [[CrossRef](#)]
22. Almagro, L.; Gómez Ros, L.V.; Belchi-Navarro, S.; Bru, R.; Ros Barceló, A.; Pedreño, M.A. Class III peroxidases in plant defence reactions. *J. Exp. Bot.* **2009**, *60*, 377–390. [[CrossRef](#)] [[PubMed](#)]
23. Fraser, C.M.; Chapple, C. The phenylpropanoid pathway in Arabidopsis. *Arabidopsis Book* **2011**, *9*, e0152. [[CrossRef](#)]
24. Mackie, K.A.; Müller, T.; Kandeler, E. Remediation of copper in vineyards – A mini review. *Environ. Pollut.* **2012**, *167*, 16–26. [[CrossRef](#)] [[PubMed](#)]
25. Jung, S.; Rickert, D.A.; Deak, N.A.; Aldin, E.D.; Recknor, J.; Johnson, L.A.; Murphy, P.A. Comparison of Kjeldahl and Dumas methods for determining protein contents of soybean products. *JAOCS* **2003**, *80*, 1169. [[CrossRef](#)]
26. Wong, K.H.; Cheung, P.C.; Wu, J.Z. Biochemical and microstructural characteristics of insoluble and soluble dietary fiber prepared from mushroom sclerotia of *Pleurotus tuber-regium*, *Polyporus rhinocerus*, and *Wolfiporia cocos*. *J. Agric. Food Chem.* **2003**, *51*, 7197–7202. [[CrossRef](#)]
27. Yildiz, Y.; Yeşil, Ö.F.; Karakaplan, M. Organic elements and protein in some macrofungi of south east Anatolia in Turkey. *Food Chem.* **2005**, *89*, 605–609. [[CrossRef](#)]
28. Zhong, L.; Ma, N.; Wu, Y.; Zhao, L.; Ma, G.; Pei, F.; Hu, Q. Characterization and functional evaluation of oat protein isolate-*Pleurotus ostreatus* β -glucan conjugates formed via Maillard reaction. *Food hydrocolloid.* **2019**, *87*, 459–469. [[CrossRef](#)]
29. Picton, L.; Bataille, I.; Muller, G. Analysis of a complex polysaccharide (gum arabic) by multi-angle laser light scattering coupled on-line to size exclusion chromatography and flow field flow fractionation. *Carbohydr. Polym.* **2000**, *42*, 23–31. [[CrossRef](#)]
30. Simon, S.; Le Cerf, D.; Picton, L.; Muller, G. Adsorption of cellulose derivatives onto montmorillonite: A SEC-MALLS study of molar masses influence. *Colloid. Surf. A* **2002**, *203*, 77–86. [[CrossRef](#)]
31. Peng, Y.; Zhang, L. Characterization of a polysaccharide-protein complex from *Ganoderma tsugae* mycelium by size-exclusion chromatography combined with laser light scattering. *J. Biochem. Biophys. Methods* **2003**, *56*, 243–252. [[CrossRef](#)]
32. Pasquet, J.C.; Chaouch, S.; Macadré, C.; Balzergue, S.; Huguet, S.; Martin-Magniette, M.L.; Bellvert, F.; Deguercy, X.; Thareau, V.; Heintz, D.; et al. Differential gene expression and metabolomic analyses of *Brachypodium distachyon* infected by deoxynivalenol producing and non-producing strains of *Fusarium graminearum*. *BMC Genom.* **2014**, *15*, 629. [[CrossRef](#)] [[PubMed](#)]
33. Shindler, J.S.; Childs, R.E.; Bardsley, W.G. Peroxidase from human cervical mucus: The isolation and characterization. *Eur. J. Biochem.* **1976**, *65*, 325–331. [[CrossRef](#)] [[PubMed](#)]
34. Bradford, M.M. A rapid and sensitive method for the quantification of microgram quantities of protein utilizing the principle of protein-dye binding. *Anal. Biochem.* **1976**, *72*, 248–254. [[CrossRef](#)]
35. Brisset, M.N.; Duge De Bernonville, T. Device for Determining or Studying the State of Stimulation of the Natural Defences of Plants or Portions of Plants. Patent INRA WO 2011/161388 A1, 29 December 2011.
36. Dugé De Bernonville, T.; Marolleau, B.; Staub, J.; Gaucher, M.; Brisset, M.-N. Using molecular tools to decipher the complex world of plant resistance inducers: An apple case study. *J. Agric. Food Chem.* **2014**, *62*, 11403–11411. [[CrossRef](#)]
37. Van Wordragen, M.F.; De Maagd, R.A.; Mes Jurriaan, J.; Balk, P.A. Quality Control of Agricultural Products Based on Gene Expression. Patent WO 2008018790, 3 April 2008.
38. Gatti, M.; Choulet, F.; Macadré, C.; Guérard, F.; Seng, J.-M.; Langin, T.; Dufresne, M. Identification, molecular cloning, and functional characterization of a wheat UDP-glucosyltransferase involved in resistance to fusarium head blight and to mycotoxin accumulation. *Front. Plant. Sci.* **2018**. [[CrossRef](#)]

Sample Availability: Samples of the compounds are not available from the authors.



© 2020 by the authors. Licensee MDPI, Basel, Switzerland. This article is an open access article distributed under the terms and conditions of the Creative Commons Attribution (CC BY) license (<http://creativecommons.org/licenses/by/4.0/>).