



**HAL**  
open science

## Is the southern crab *Halicarcinus planatus* (Fabricius, 1775) the next invader of Antarctica?

Zambra López-farrán, Charlène Guillaumot, Luis Vargas-chacoff, Kurt Paschke, Valérie Dulière, Bruno Danis, Elie Poulin, Thomas Saucède, Jonathan Waters, Karin Gérard

### ► To cite this version:

Zambra López-farrán, Charlène Guillaumot, Luis Vargas-chacoff, Kurt Paschke, Valérie Dulière, et al.. Is the southern crab *Halicarcinus planatus* (Fabricius, 1775) the next invader of Antarctica?. *Global Change Biology*, 2021, 27 (15), pp.3487-3504. 10.1111/gcb.15674 . hal-03288942

**HAL Id: hal-03288942**

**<https://hal.science/hal-03288942>**

Submitted on 7 Feb 2024

**HAL** is a multi-disciplinary open access archive for the deposit and dissemination of scientific research documents, whether they are published or not. The documents may come from teaching and research institutions in France or abroad, or from public or private research centers.

L'archive ouverte pluridisciplinaire **HAL**, est destinée au dépôt et à la diffusion de documents scientifiques de niveau recherche, publiés ou non, émanant des établissements d'enseignement et de recherche français ou étrangers, des laboratoires publics ou privés.



**Is the southern crab *Halicarcinus planatus* (Fabricius, 1775)  
the next invader of Antarctica?**

Journal:	<i>Global Change Biology</i>
Manuscript ID	GCB-21-0105
Wiley - Manuscript type:	Primary Research Articles
Date Submitted by the Author:	18-Jan-2021
Complete List of Authors:	López-Farran, Zambra ; Universidad de Chile, Instituto de Ecología y Biodiversidad, Facultad de Ciencias; Universidad Austral de Chile, Research Center Dynamics of High Latitude Marine Ecosystems (Fondap-IDEAL), Universidad Austral de Chile Guillaumot, Charlène; Université Libre de Bruxelles, Marine Biologie Lab; Université de Bourgogne-France-Comté, Biogeoscience UMR 6282 CNRS Vargas-Chacoff, Luis; Universidad Austral de Chile, Research Center Dynamics of High Latitude Marine Ecosystems (Fondap-IDEAL); Universidad Austral de Chile Instituto de Ciencias Marinas y Limnológicas Paschke, Kurt; Universidad Austral de Chile, Inst. Acuicultura; Universidad Austral de Chile, Research Center Dynamics of High Latitude Marine Ecosystems (Fondap-IDEAL) Dulière, Valérie; Royal Belgian Institute of Natural Sciences Danis, Bruno; Université Libre de Bruxelles, Marine Biology Laboratory Poulin, Elie; Universidad de Chile, Instituto de Ecología y Biodiversidad, Facultad de Ciencias Saucède, Thomas; Laboratoire Biogéosciences Waters, Jonathan; University of Otago, Department of Zoology Gérard, Karin; Universidad de Magallanes, Laboratorio de Ecosistemas Marinos Antárticos y Subantárticos (LEMAS), Facultad de Ciencias; Universidad de Magallanes Centro de Investigación GAIA Antártica
Keywords:	Niche modelling, Southern Ocean, Climate Change, Thermotolerance, Survival, Establishment, Reptant Crab, Non-native Species
Abstract:	The potential for biological colonisation of Antarctic shores is an increasingly important topic in the context of anthropogenic warming. Until now, successful Antarctic invasions have been recorded exclusively from terrestrial habitats. While exotic marine species such as crabs, mussels and tunicates have already been reported from Antarctic coasts, none have as yet established there. Among the potential marine invaders of Antarctic shallow waters is <i>Halicarcinus planatus</i> (Fabricius, 1775), a crab with a circum-Subantarctic distribution and substantial larval dispersal capacity. In 2010, an ovigerous female of this species was found in shallow waters of Deception Island, South Shetland islands. In the present study, a combination of physiological experiments and ecological modelling was used to assess the potential niche of <i>H. planatus</i> and estimate its future southward boundaries under IPCC predictions. We show that <i>H. planatus</i> has a minimum thermal limit of

	<p>1°C, and that its current distribution (assessed by sampling and niche modelling) is physiologically restricted to the Subantarctic region. While this species is thus presently unable to survive in Antarctica, future warming under both best-case and worst-case IPCC scenarios will favour its niche expansion to the Western Antarctic Peninsula by 2100. Future human activity also has potential to increase the probability of anthropogenic translocation of this species into Antarctic ecosystems.</p>

SCHOLARONE™  
Manuscripts

1                   Is the southern crab *Halicarcinus planatus* (Fabricius, 1775) the next  
2                   invader of Antarctica?

3  
4                   Running title: Crab biological expansion into the Antarctic  
5

6 Zambra López-Farrán<sup>1,2,3\*</sup>, Charlène Guillaumot<sup>4,5\*</sup>, Luis Vargas-Chacoff<sup>2,6</sup>, Kurt Paschke<sup>2,7</sup>, Valérie Dulière<sup>8</sup>,  
7                   Bruno Danis<sup>4</sup>, Elie Poulin<sup>1</sup>, Thomas Saucède<sup>5</sup>, Jonathan Waters<sup>9</sup>, Karin Gérard<sup>3,10\*\*</sup>.

8  
9 Zambra López-Farrán: <https://orcid.org/0000-0001-8851-3190>

10 Charlène Guillaumot: <https://orcid.org/0000-0002-5507-511X>

11 Luis Vargas-Chacoff: <https://orcid.org/0000-0002-0497-2582>

12 Kurt Paschke: <https://orcid.org/0000-0002-4785-8034>

13 Valérie Dulière: <https://orcid.org/0000-0003-3480-8166>

14 Bruno Danis: <https://orcid.org/0000-0002-9037-7623>

15 Elie Poulin: <http://orcid.org/http://orcid.org/0000-0001-7736-0969>

16 Thomas Saucède: <http://orcid.org/0000-0001-6056-4447>

17 Jonathan Waters: <https://orcid.org/0000-0002-1514-7916>

18 Karin Gérard: <https://orcid.org/0000-0003-0596-1348>

19  
20 <sup>1</sup> LEM-Laboratorio de Ecología Molecular, Instituto de Ecología y Biodiversidad, Departamento de Ciencias  
21 Ecológicas, Facultad de Ciencias, Universidad de Chile, Santiago, Chile.

22 <sup>2</sup> Research Center Dynamics of High Latitude Marine Ecosystems (Fondap-IDEAL), Universidad Austral de  
23 Chile, Valdivia, Chile

24 <sup>3</sup> LEMAS-Laboratorio de Ecología de Macroalgas Antárticas y Sub antárticas, Universidad de Magallanes,  
25 Punta Arenas, Chile

26 <sup>4</sup> Laboratoire de Biologie Marine CP160/15, Université Libre de Bruxelles, Bruxelles, Belgium.

27 <sup>5</sup> Biogéosciences, UMR 6282 CNRS, Université Bourgogne Franche-Comté, Dijon, France.

28 <sup>6</sup> Instituto de Ciencias Marinas y Limnológicas, Laboratorio de Fisiología de Peces, Universidad Austral de  
29 Chile, Valdivia, Chile

30 <sup>7</sup> Instituto de Acuicultura, Universidad Austral de Chile, Puerto Montt, Chile

31 <sup>8</sup> Royal Belgian Institute of Natural Sciences, Brussels, Belgium

32 <sup>9</sup> Otago Palaeogenetics Laboratory, Department of Zoology, University of Otago, Dunedin, New Zealand

33 <sup>10</sup> Centro de Investigación Gaia-Antártica, Universidad de Magallanes, Punta Arenas, Chile

34

35 \* **Co-first authors:** López- Farrán Zambra & Guillaumot Charlene

36

37 \*\* **Corresponding author:**

38 Karin Gérard,

39 Laboratorio de Ecología de Macroalgas Antárticas y Subantárticas (LEMAS),

40 Instituto de la Patagonia, Universidad de Magallanes,

41 Avenida Bulnes #01890, Punta Arenas, Chile.

42 Email: [karin.gerard@umag.cl](mailto:karin.gerard@umag.cl)

43

#### 44 **Funding information**

45 FONDECYT Regular 1161358; INACH DG 14-17; Chilean national doctoral scholarship CONICYT

46 21151192; Fondap-IDEAL 15150003; PIA CONICYT ACT172065; FONDECYT 1160877; “Fonds pour la

47 Formation à la Recherche dans l’Industrie et l’Agriculture” (FRIA); “Bourse Fondation de la Mer”;

48 Contribution N°23 to the “Refugia and Ecosystem Tolerance in the Southern Ocean” project (RECTO;

49 BR/154/A1/RECTO) funded by the Belgian Science Policy Office (BELSPO); IPEV program N°1044

50 Proteker; Contribution N°48 to the vERSO project (BELSPO, contract n°BR/132/A1/vERSO).

51

52

53

54 **Abstract**

55 The potential for biological colonisation of Antarctic shores is an increasingly important topic in the context of  
56 anthropogenic warming. Successful Antarctic invasions until now have been recorded exclusively from  
57 terrestrial habitats. While exotic marine species such as crabs, mussels and tunicates have already been  
58 reported from Antarctic coasts, none have as yet established there. Among the potential marine invaders of  
59 Antarctic shallow waters is *Halicarcinus planatus* (Fabricius, 1775), a crab with a circum-Subantarctic  
60 distribution and substantial larval dispersal capacity. An ovigerous female of this species was found in shallow  
61 waters of Deception Island, South Shetland Islands in 2010. A combination of physiological experiments and  
62 ecological modelling was used to assess the potential niche of *H. planatus* and estimate its future southward  
63 boundaries under IPCC predictions. We show that *H. planatus* has a minimum thermal limit of 1° C, and that  
64 its current distribution (assessed by sampling and niche modelling) is physiologically restricted to the  
65 Subantarctic region. While this species is thus presently unable to survive in Antarctica, future warming under  
66 both best case and worst case IPCC scenarios will favour its niche expansion to the Western Antarctic  
67 Peninsula (WAP) by 2100. Future human activity also has potential to increase the probability of  
68 anthropogenic translocation of this species into Antarctic ecosystem.

69

70 **Keywords (6-10):** Niche modelling, Southern Ocean, climate change, thermotolerance, survival,  
71 establishment, reptant crab, non-native species.

72

### 73 **Introduction**

74 Biological invasions are an important component of global change, and one of the most critical global threats  
75 to native biodiversity (Sax et al., 2005). According to Richardson et al. (2000), an alien species becomes an  
76 invasive species when a set of individuals is able to traverse natural barriers (whether geographical,  
77 environmental, or ecological) and subsequently establish in new habitats. While numerous anthropogenic  
78 activities can promote invasions, climate change may represent a particularly potent threat to natural  
79 ecosystems (Malcolm et al., 2006). Both the rate and dimension of biological invasions are likely to be  
80 influenced by global warming (Walther et al., 2009). Understanding the mechanisms and routes of such range  
81 shifts may help facilitate the design of strategies for controlling or preventing invasion (Estoup & Guillemaud,  
82 2010).

83  
84 Notwithstanding the wide expanse of Southern Ocean waters isolating the South American continent from  
85 other land masses, several exotic species have been reported in the Antarctic over recent decades (Smith &  
86 Richardson, 2011). These examples include the invasive grass *Poa annua* (Chwedorzewska et al., 2015;  
87 Molina-Montenegro et al., 2012), seeds of the toad rush *Juncus bufonius* (Cuba-Díaz et al., 2013), the invasive  
88 mosquito *Trichocera maculipennis* (Potocka & Krzemińska, 2018), and several South American invertebrates  
89 (e.g. insects, worms, freshwater crustaceans; Hughes & Worland, 2010). Alien species have also been  
90 reported in marine habitats and in the shallow subtidal zone, in particular in the South Shetland Islands (e.g.  
91 decapods and bivalves) and East Antarctica (i.e. bryozoans, hydrozoans, and tunicates) (Avila et al., 2020;  
92 Cárdenas et al., 2020; McCarthy et al., 2019). However, there is as yet no evidence for any exotic marine  
93 species having established in Antarctica.

94  
95 Reaching Antarctic coasts requires dispersal across vast and deep biogeographic barriers that have isolated the  
96 continent for millions of years, including traversal of the westward flowing Antarctic Circumpolar Current  
97 (ACC) that apparently impedes latitudinal dispersal (Clarke et al., 2005; Rintoul, 2009). The extreme cold  
98 temperatures of Antarctic waters (< 5°C) also imply a strong ecophysiological constraint to the survival and



99 development of exotic marine species that have not adapted to near-zero and subzero temperatures (Fraser et  
100 al., 2007; Marsh et al., 2001; Peck, 2016) that can reach down to  $-1.5^{\circ}\text{C}$  in winter. Consequently, Antarctic  
101 marine communities have been considered among the most isolated and endemic on Earth and invasion by  
102 exotic species unlikely (Clarke et al., 2005; Griffiths et al., 2009).

103  
104 Human activities such as fisheries, tourism and scientific operations rely on direct maritime traffic between  
105 Antarctica and lower latitude coasts, including potential transport of alien organisms through ship hull fouling  
106 and larval propagules via ballast water (Lewis et al., 2003; Lewis et al., 2005). With more than 50,000 tourists  
107 visiting the same west Antarctic spots each southern summer (McCarthy et al., 2019), and 4,000 scientists  
108 working in Antarctica during the summer and 1,000 in winter (Hughes & Convey, 2014), tourism and science  
109 represent the main vector of Subantarctic propagule pressure on Antarctic communities (Avila et al., 2020;  
110 Diez & Lovrich, 2010; Galera et al., 2018; Hellmann et al., 2008; Lee & Chown, 2007; Meredith & King,  
111 2005; Tavares & De Melo, 2004). Consequently, records of exotic species in Antarctica are increasing in  
112 number, with potential for establishment now primarily constrained by ecological and physiological  
113 limitations. As the climate continues to warm, the potential for successful marine invasions into Antarctica is  
114 predicted to increase substantially (Galera et al., 2018; Hellmann et al., 2008; Richardson et al., 2000).

115  
116 The West Antarctic Peninsula (WAP) is the Antarctic region where the strongest climate warming has been  
117 recorded in the continent over the last 50 years (Convey et al., 2009; Gutt et al., 2015; Turner et al., 2014).  
118 Seawater and air temperatures have increased by  $+1^{\circ}\text{C}$  and  $+7^{\circ}\text{C}$ , respectively, in the past half-century  
119 (Meredith & King, 2005; Schram et al., 2015), with particularly pronounced increases in winter air  
120 temperatures (King et al., 2003; Vaughan et al., 2003) and corresponding reductions in sea ice cover (Ducklow  
121 et al., 2013; Schofield et al., 2017; Stammerjohn et al., 2012; Turner et al., 2016). Global climate change may  
122 cause typically sub-zero Antarctic waters to warm up to (and beyond) zero, potentially providing suitable  
123 conditions for the survival of alien species along Antarctic coasts (Galera et al., 2018; Hellmann et al., 2008).

124



125 In February, 2010 an ovigerous female of *Halicarcinus planatus* (Fabricius, 1775) (Brachyura,  
126 Hymenosomatidae) was found alive in shallow subtidal waters of Deception Island (WAP; Aronson et al.,  
127 2015). *H. planatus* is the only hymenosomatid crab that inhabits shallow waters (Garth, 1958; Varisco et al.,  
128 2016) of southern South America and the Subantarctic Falkland/Malvinas, Marion, Crozet, Kerguelen and  
129 Macquarie islands (Aronson et al., 2015; Boschi et al., 1969;  fiths et al., 2013; Melrose, 1975; Richer De  
130 Forges, 1977). This small crab (carapace width up to 15 mm and 20 mm for female and male, respectively, in  
131 Punta Arenas; Fig. 1) is an opportunistic feeder (Boschi et al., 1969), commonly found sheltered under rocks  
132 in the intertidal and subtidal zones, in between holdfasts of the giant kelp *Macrocystis pyrifera* or sheltered in  
133 hydrozoans and mussel colonies (Chuang & Ng, 1994; Richer De Forges, 1977; Vinuesa & Ferrari, 2008).  
134  
135 The potential of marine taxa to invade Antarctic waters is likely heavily constrained by ecological and  
136 physiological adaptations. *H. planatus* has a strong dispersal potential mediated by an extended planktonic  
137 larval stage (Diez & Lovrich, 2010; Ferrari et al., 2011; Richer De Forges, 1977) lasting between 45 and 60  
138 days (at temperatures of 11-13 °C and 8 °C, respectively, in the laboratory) prior to benthic settlement (Boschi  
139 et al., 1969; Diez & Lovrich, 2010). This species has the physiological capacity to withstand low temperatures.  
140 Indeed, while most decapod taxa exposed to cold waters experience increased magnesium ion concentration in  
141 the hemolymph ( $[Mg^{2+}]_{HL}$ ), reducing metabolic rate and aerobic activity, potentially leading to death (Aronson  
142 et al., 2007; Diez & Lovrich, 2010; Frederich et al., 2001; Thatje et al., 2005), *H. planatus* has the capacity to  
143 overcome these issues by reducing  $[Mg^{2+}]_{HL}$  (Frederich et al., 2001), providing capacity for survival in cold  
144 waters like the Kerguelen Islands, where winter seawater temperatures range between +1.1 and +3.0 °C (Féral  
145 et al., 2019). A broad analysis Diez & Lovrich (2010) considering its broad Subantarctic distribution, high  
146 dispersal potential and ability to live at low temperatures concluded that *H. planatus* is the most likely future  
147 decapod invader  of Antarctic shallow waters.  
148  
149 Following the recent discovery of a living specimen of *H. planatus* in Deception Island, we evaluate in this  
150 study the capacity of the species to settle and invade the WAP and adjacent islands by combining experimental

151 design and a niche modelling approach. Correlative niche modelling approaches have long proved useful to  
152 predict the distribution range of species for conservation purposes under stable environmental conditions  
153 (Richardson & Whittaker, 2010). However, in the context of climate change, ecophysiological data are  
154 required to assess the capacity of organisms to survive under changing environmental conditions. In this study  
155 we assessed experimentally the physiological capacity of *H. planatus* to tolerate extreme cold conditions in  
156 laboratory, and we evaluated the probability of the species to expand its distribution range southward using a  
157 Species Distribution Model (SDM). The modelled distribution of *H. planatus* was first projected under current  
158 climatic conditions to evaluate its distribution range in Subantarctic and Antarctic regions. Then the species  
159 distribution was modelled under IPCC scenarios RCP 2.6 and RCP 8.5 for 2050 and 2100 to determine the  
160 probability that *H. planatus* will colonize Antarctic shallow water habitats in the future.

161

## 162 **Material and methods**

### 163 Experimental design

### 164 Ethical Protocol

165 All experiments were performed in compliance with bioethics guidelines established by the *Comisión*  
166 *Nacional de Ciencia y Tecnología de Chile* (CONICYT) and the CICUA of the Universidad de Chile (*Comité*  
167 *Institucional de Cuidado y Uso de Animales*).

168

### 169 Thermotolerance experiments

170 One hundred and twenty adult individuals of *H. planatus* were collected alive in the subtidal zone by SCUBA  
171 diving at *Rincón da Bulnes* (RB) (53°35'49.91"S, 70°56'5.19"W, south of Punta Arenas, Chile) on April 9,  
172 2018. Individuals were transported to the IDEAL-CENTER laboratory (Punta Arenas) and distributed into 6  
173 containers for the experiment. In each container (Appendix 1) 15 females and 5 males were isolated  
174 individually in 1 dm<sup>3</sup> glass jars of seawater containing a 2 cm-long PVC tube (2.5 cm diameter). A plastic  
175 container of seawater was used for water replacement. Each jar and container were aerated and temperature  
176 was controlled by a cooler exchanger (Alpha RA12 and RA8, Lauda-Koenigshofen®, Germany). Individuals

177 were acclimated for 15 days with temperature, salinity and photoperiod adjusted to the sampling location (9  
178 °C, 30 PSU, 11hrs light/13hrs dark on April 9, 2018). Individuals were fed every 4 days with thawed and  
179 chopped mussels and polychaetes. The next day, 30% of seawater was removed from each jar, sucking the  
180 bottom to eliminate faeces and food debris. Recipients were then refilled with clean seawater at the exact same  
181 temperature and salinity from the plastic seawater container. The latter was then refilled with new seawater,  
182 which had time to reach the specific temperature before the next refill. After acclimatization, temperature was  
183 reduced by 0.5 °C every day until it reached a threshold value set at 5°C (control; minimal seawater  
184 temperature in Punta Arenas), 2 °C, 1 °C, 0 °C, -1 °C or -1.8 °C, depending on the experiment, which was  
185 conducted for 90 days following (Vargas-Chacoff et al., 2009). The different temperature threshold values  
186 used in the experiment correspond to subtidal temperatures recorded in Fildes Bay (62°12'11.95"S  
187 58°56'37.00"W; King George Island, South Shetland Islands, WAP) which ranged between -1.9 °C and 2.1 °C;  
188 summer average 1.2 °C (-0.2 °C to 2.1 °C) and winter average -1.6 °C (-1.9 °C to -1.1 °C) in 2017 (data from  
189 IDEAL-CENTER, published by Cárdenas et al. (2020)). The 90 days simulate the duration of winter. Survival  
190 was checked each morning, and dead specimens were removed and preserved in 96° ethanol.

191

### 192 Salinity and larval experiments

193 To assess survival at different salinities, adult individuals of *H. planatus* were collected at the same location  
194 (RB) on July 5, 2018, transported to the laboratory and separated in containers. Eighteen females and 4 males  
195 were isolated in recipients of 10 dm<sup>3</sup> filled with seawater. After a 15-day acclimation period at the same  
196 temperature, salinity and photoperiod as the sampling location (5 °C, 30 PSU, 8:16 L:D), individuals were  
197 submitted to different salinities of 30 PSU (control 1), 23 PSU, 18 PSU, 11 PSU and 5 PSU for 39 days at 5  
198 °C. In parallel, some individuals submitted to natural 18-PSU seawater collected in Skyring Sound  
199 (52°33'48.07"S, 71°34'15.54"W) were used as a second control. The previously detailed protocol for feeding  
200 and cleaning was followed. Survival was checked every morning and dead specimens were removed and  
201 preserved in 96° ethanol.

202 During the salinity experiment, at 30 PSU some individuals released larvae which were subsequently collected  
203 and placed in 1 dm<sup>3</sup> glass jars (200 larvae in each) filled with seawater at 5 °C, 2 °C and 1 °C for 12 days. Crab  
204 larvae were fed daily with newly hatched nauplii. Their survival was checked on days 1, 3, 6, 8, 10 and 12 and  
205 on the cleaning day which consists in the complete seawater replacement. Dead individuals were removed and  
206 preserved in 96° ethanol.

207

### 208 Species distribution modelling

209 Species Distribution Models (SDM) are used to predict the distribution of organisms based on the statistical  
210 analysis of spatial relationships between environmental conditions and species records (Elith et al., 2006;  
211 Peterson, 2003; Peterson et al., 2011). SDMs have been widely used in past decades in various applications,  
212 including assessing species potential distribution (Guillaumot et al., 2018; Nachtsheim et al., 2017; Reiss et  
213 al., 2011) and evaluating potential changes in predicted suitable areas under environmental shifts (Berry et al.,  
214 2002; Engler et al., 2009; Meier et al., 2011; Pearson & Dawson, 2003; Thomas et al., 2004).

215

### 216 Occurrence dataset

217 The study was limited in latitude and longitude to the minimum area where occurrence records have been  
218 reported (Longitude: 70.5°E, 75.5°W, Latitude: 36°S, 70.5°S). Presence and absence data were collected  
219 during different sampling expeditions carried out between 2015 and 2019 (PROTEKER 1, 4, 5 and 6, INACH  
220 ECA 53, 54 and 55), obtained from collaborators and retrieved from IOBIS and GBIF databases and from the  
221 scientific literature (Appendix 2). The georeferencing of each occurrence was verified and for this study  
222 repeated geographical points were removed; the identification of collected specimens was checked following  
223 current taxonomy (Boschi, 1964). Occurrences located north of 34°S in Chile were not considered, since these  
224 points were outside the distribution range of the species and could not be corroborated.

225

226 A DarwinCore-compliant dataset was built using presence and absence data of *H. planatus* occurring on  
227 Subantarctic islands and South America between 1948 and 2019. Four types of records were included:

228 individualized by specimen, by groups, records obtained from bibliographic reviews and absence records. The  
229 dataset is published in GBIF (GBIF, 2018; Lopez et al. 2020).

230  
231 Distribution models were built using 314 presence records of both adults and larvae, and 57 absence records  
232 (Fig. 2, Appendix 2).

233  
234 Environmental datasets

235 The distribution of *H. planatus* was modelled using 16 available environmental parameters as descriptors of  
236 the crab habitat (Table 1). Depth and its derivatives (slope and roughness) were taken from GEBCO (Table 1).  
237 Other descriptors were compiled from the Bio-Oracle Marine layers dataset and obtained from pre-processed  
238 global ocean re-analyses, combining satellite and *in situ* observations in regular two- and three-dimensional  
239 spatial grids (Assis et al., 2018). Minimal, maximal and mean values were used as descriptors and combined  
240 as suggested in the literature (Bucklin et al., 2015; Franklin, 2010). Environmental layers provide average  
241 monthly values for the present decade [2000-2014] at a spatial resolution of 5 arc-minutes (about 8 x 8 km)  
242 and describe monthly averages for the period 2000-2014.

243  
244 Species distribution was also modelled according to IPCC (Intergovernmental Panel on Climate Change) RCP  
245 2.6 (low greenhouse gas concentration levels with a mid-century peak and reduction by 2100) and RCP 8.5  
246 (high greenhouse gas concentration levels with increasing emissions over time) scenarios for future decades  
247 2040-2050 and 2090-2100 (IPCC, 2013). The RCP 2.6 scenario (Appendix 3) predicts an increase of mean  
248 seafloor temperatures of up to +0.7 °C along the Argentinian coast by 2100, +1.3 °C in the Weddell Sea  
249 region and +1.3°C on the northern Kerguelen Plateau. Salinity is predicted to be less than RCP 8.5, along with  
250 a decrease in ice thickness with maximal depletion values of -30 cm in the south of the WAP by 2100. The  
251 RCP 8.5 scenario (Appendix 3) for decade 2040-2050 predicts that seafloor waters will warm up by +1 °C  
252 along the southern South American coasts and in the Weddell Sea, and for decade 2090-2100 predicts an  
253 increase of seafloor mean temperatures of up to +4 °C along the Argentinian coasts, +0.5 to +1 °C in the

254 WAP, up to +3 °C on the northern Kerguelen Plateau and a predicted decrease of -0.5 to -1 °C in insular  
255 regions such as South Georgia and the South Orkney Islands. Salinity is predicted to decrease in the  
256 Subantarctic and Antarctic regions by -0.1 unit and sea ice thickness to thin up to 1.2 m in some points,  
257 resulting in an expansion of ice-free areas (Fig. S3.1) in the Weddell Sea region.

258

259 Primary production and oceanographic current speed for decades 2040-2050 and 2090-2100 were considered  
260 unchanged and similar to present-day conditions as there were no predictions available for these parameters.

261

262 In order to spot and remove extrapolation errors, the Multivariate Similarity Environmental Estimate (MESS;  
263 Elith et al., 2010) was computed based on presence records (Guillaumot et al., 2019; Guillaumot et al., 2020).

264 The MESS provides an estimate of the range of environmental conditions under which species occurrences  
265 were found and used to calibrate the model. It is then used to select areas where model projections will be  
266 calculated, dismissing areas where environmental conditions are not met, and where the model extrapolates.

267

#### 268 Model calibration

269 Species distribution models were generated using the Boosted Regression Trees (BRT) algorithm with the  
270 following settings; learning rate 0.005; bag fraction 0.9 and tree complexity 4. These settings minimise the  
271 model predictive deviance according to the tests generated following Elith et al. (2008) (Appendix 4). The R  
272 package ‘gbm’ was used to run the model (Elith et al., 2008; Ridgeway, 2006). Models were calibrated using  
273 presence and absence data. Modelling performance was assessed using a spatial random cross-validation  
274 procedure adapted from Guillaumot et al. (2019) using absence records for model calibration (instead of  
275 background records). Also considering the limited number of occurrence records available and their patchy  
276 distribution at a broad spatial scale, the occurrence dataset was randomly split into 5 spatial parts, with 80% of  
277 the dataset used as a training subset and 20% used as a test subset (Elith et al., 2008). The procedure was  
278 repeated 20 times to generate a set of 100 model replicates. The proportion of presence and absence data  
279 falling into areas predicted as suitable and unsuitable for the species distribution was evaluated to assess model

280 performance. Model performance was also assessed using the Area Under the Curve (AUC; Fielding & Bell,  
281 1997), the True Skill Statistics (TSS; Allouche et al., 2006) and the Biserial Correlation metrics (COR; Elith et  
282 al., 2006).

283

#### 284 Model outputs

285 Model predictions were projected on the entire study area (Longitude -76°E, 178°W, Latitude -35°S, -68°S)  
286 with a focus on areas where the species is mainly reported presently and where it may be expected in the  
287 future, in southern South America, the Scotia Arc and the WAP, the WAP alone and the Kerguelen Plateau.

288

### 289 **Results**

#### 290 Survival rate in the temperature experiment

291 The first specimen died on the next day after reaching the target temperature in the -1.8 °C temperature  
292 experiment. Survival rate at -1.8 °C reached 0% on day 11. Survival reached 0% on day 15 at -1.0 °C. Survival  
293 rate at 0 °C was 52% on day 27 and 0% on day 59. Survival rates were 60% at 1 °C, 75% at 2 °C and 95% at 5  
294 °C on day 90. (Fig. 3).

295

#### 296 Survival rate of adults and larvae in the salinity experiment

297 Survival rate in the salinity experiment at 5 PSU was 0% on day 2. Survival rate at 11 PSU was 0% on day 14.  
298 Survival rate was 50% on day 36 and 36% on day 39 at 18 PSU. Interestingly, survival rate was over 50%  
299 (67%) for the experiment at 18 PSU performed with seawater from Skyring Sound. Survival rates were 95%  
300 on day 39 at 25 PSU and 30 PSU (Fig. 4).

301

302 Females collected on July 5 were ovigerous and released larvae at the end of August at 5 °C, 30 PSU and 25  
303 PSU. The survival rate of larvae at 1 °C was 62.5% on day 12. Survival rates at 2 °C and 5 °C were 85% and  
304 92.5%, respectively, on day 12 (Fig. 5).

305

306 SDM predictions under current environmental conditions [2000-2014]

307 SDMs showed very high AUC scores of  $0.947 \pm 0.059$ , TSS of  $0.795 \pm 0.123$  and biserial correlation COR of  
308  $0.873 \pm 0.070$ . Correctly classified test data also reached high scores ( $89.9 \pm 0.3\%$  for presence test records  
309 and  $92.9 \pm 2.2\%$  for absence test records correctly classified). The proportion of areas where the model  
310 extrapolates is very high (86.3%, Fig. 7) highlighting again the relevance of using the MESS method as  
311 recommended by Guillaumot et al. (2019, 2020).

312 Mean sea ice thickness ( $40.1 \pm 3.2\%$ ) and seafloor temperatures are the two main drivers of the species  
313 distribution (mean, maximal, and minimal seafloor temperatures with  $37.8 \pm 3.7$ ,  $7.6 \pm 1.9$  and  $6.9 \pm 2.4\%$   
314 contribution to the model, respectively, Table 2), with suitable areas corresponding to low sea ice cover  
315 ( $<0.1\%$ ) and minimum temperatures over  $+2\text{ }^{\circ}\text{C}$  (Fig. 6). These environmental values match perfectly with the  
316 latitudinal partition in the distribution of *H. planatus*, with warmer temperatures ( $>+2\text{ }^{\circ}\text{C}$ ) and lower ice  
317 coverage ( $<0.1\%$ ) at the lower latitudes associated with most presence records and few absences, and in  
318 contrast, colder temperatures ( $<+2\text{ }^{\circ}\text{C}$ ) and thicker sea ice coverage ( $>0.1\%$ ) associated with the single  
319 presence reported in the WAP and most absence records. Interestingly, primary production is not a good  
320 predictor of the species' distribution ( $<1\%$ ).

321 As occurrence records are mainly distributed in coastal shallow water areas, depth does not contribute much to  
322 the model as no contrast in bathymetry values are present in the dataset. Slope and roughness have probably  
323 more contrasting values in deep-sea habitats and consequently do not significantly contribute to the model  
324 ( $<0.2\%$ ).

325  
326 The extrapolation mask importantly reduces the area projected to shallow habitats (Fig. 7). Distribution  
327 probabilities predicted by the model were highest in southern South America, New Zealand and Australia and  
328 most Subantarctic islands (Kerguelen, Heard, Marion, Bouvet and South Sandwich Islands; Fig. 7A).  
329 Interestingly, the model predicts an intermediate probability of distribution in South Georgia, for which a  
330 single absence was reported (Fig. 2), and a high probability on Heard Island, where no occurrence data has  
331 been reported yet.



332 The WAP is predicted as unsuitable to the survival of *H. planatus*, as in the case of Deception Island (Fig. 7C).

333

#### 334 SDM predictions under future environmental conditions

335 SDM future predictions under RCP 2.6 in decades 2040-2050 and 2090-2100 predict low and intermediate  
336 probability of *H. planatus* to settle in South Georgia, Elephant Island and the WAP, respectively (Fig. 8.I,  
337 8.II).

338 The RCP 8.5 scenario showed an increase in probability for *H. planatus* to survive in the WAP (Fig. 8.III,  
339 8.IV). Models predict higher presence probabilities in South Georgia and the South Shetland Islands for both  
340 decades 2040-2050 and 2090-2100, with the highest values predicted in the northern tip of the South Shetland  
341 Islands. The South Orkneys are not predicted as suitable by 2040-2050, but some patches of suitable areas  
342 appear by 2090-2100.

343

#### 344 **Discussion**

345

346 This study combines physiological and ecological modelling approaches to highlight the increased risk of  
347 marine incursions into Antarctic coastal ecosystem over the coming century. Specifically, we reveal that the  
348 widespread Subantarctic decapod *H. planatus* has significant potential to establish in Antarctic waters under  
349 realistic climate change scenarios in the coming decades. More broadly, this prospect of future marine  
350 invasions of Antarctic ecosystem potentially has crucial implications for the conservation of endemic Antarctic  
351 coastal assemblages. Indeed, over recent decades an increasing number of alien marine taxa have been  
352 reported from Antarctic ecosystem, including: *Rochinia gracilipes* in the South Shetland Islands (Griffiths et  
353 al., 2013); *Bugula neritina* (Bryozoa) off Dronning Maud Land (East Antarctica) in the 1960s (McCarthy et  
354 al., 2019); *Hyas araneus* (Decapoda) from Elephant Island in the 1980s (McCarthy et al., 2019); *Ectopleura*  
355 *crocea* (Hydrozoa) off Dronning Maud Land and off Queen Mary Land (East Antarctica); and *Ciona*  
356 *intestinalis* (Ascidiacea) off Dronning Maud Land (East Antarctica) in the 1990s (McCarthy et al., 2019).  
357 Newer records since 2000 include *Emerita* sp. and *Pinnotheres* sp. (larval stage) in King George Islands in the

358 2000s (Thatje & Fuentes, 2003); *H. planatus* from Deception Island (Aronson et al., 2015); *Membranipora*  
359 *membranacea* (Bryozoa) and *Macrocystis pyrifera* (Brown algae) from Deception Island (Avila et al., 2020);  
360 *Durvillaea antarctica* (Brown Algae) from King George Island (Fraser et al., 2018) and Livingston Island  
361 (Avila et al., 2020); and *Mytilus cf. platensis* (Bivalvia) in King George Island (Cárdenas et al., 2020) in the  
362 2010s.

363  
364 There are potentially several different modes of dispersal for species shifting towards Antarctica. Fraser et al.  
365 (2018) and Avila et al. (2020) identified dispersal by rafting on buoyant kelps as a possible mechanism for the  
366 arrival of exotic species to Antarctica. The former study also included a Lagrangian analysis to show that  
367 particles released from South Georgia and the Kerguelen Islands were able to drift across the Polar Front and  
368 reach Antarctic coasts following strong storm events. According to this model, storm conditions may enable  
369 buoyant kelps to reach the WAP. Such conditions may not be rare, as remains of the kelp *D. antarctica* were  
370 observed onshore in the WAP in 2019 and 2020 (López-Farrán personal observation). Direct observations  
371 (from southern New Zealand) of *Halicarcinus* adult individuals associated with *D. antarctica* holdfasts, and  
372 also in detached, drifting *D. antarctica* at sea (Waters unpublished data) imply rafting as a direct mechanism  
373 for adults of this decapod taxon into Antarctic waters. Anthropogenic activities may also be potential dispersal  
374 vectors for this decapod (Avila et al., 2020; Cárdenas et al., 2020) (e.g. via ship hulls, ballast waters, outdoor  
375 and personal equipment of tourists or oceanographic equipment of scientists).

376  
377 No established alien marine species have as yet been observed in Antarctica, suggesting that physiological  
378 barriers may be key in preventing such invasions (Richardson et al., 2000). In this study we combined two  
379 independent approaches to define the environmental and geographical boundaries of *H. planatus* distribution  
380 under present and future environmental conditions. SDM provides an estimate of a species' 'realised niche'  
381 (Hutchinson, 1957; Soberón, 2005, 2010). The thermal limit of *H. planatus* corresponds to the coldest  
382 conditions of its Subantarctic distribution, located in the Kerguelen Islands, where subtidal temperature ranges  
383 between +1.1 and +3.0 °C during the Austral winter (Féral et al., 2019; Lucas, 1980; Richer De Forges, 1977).

384 This species can therefore potentially endure summer conditions in WAP (1 °C and above) in a wide range of  
385 salinity (between 18 PSU and 30-33 PSU), but would not survive during the cold winter months. Our  
386 experimental results may indicate that Antarctic seawater temperatures may impede larval development even  
387 during the summer, suggesting that this species is not able to complete its development in Antarctica under  
388 present conditions.

389

390 *Halicarcinus planatus* has previously been highlighted as a potential invader of Antarctica (Diez & Lovrich,  
391 2010), because of its potential to live in cold waters, through regulation of  $[Mg^{2+}]_{HL}$ . However, the present  
392 results demonstrated that this physiological characteristic is not sufficient to survive the sub-zero temperatures  
393 that typify current Antarctic winters (Fig. 3). The finding that brachyuran crabs cannot currently establish in  
394 Antarctica may also help to explain their extinction from shallow Antarctic habitats from the mid-Miocene,  
395 ~14 million years ago, when ACC intensification led to cooling and the establishment of a perennial sea-ice  
396 cover in the region (Crampton et al., 2016; Hansen et al., 2013; Thatje et al., 2005; Zachos et al., 2008).  
397 Numerous marine lineages including brachyurans, lobsters and sharks disappeared from Antarctic waters,  
398 along with most teleosteans except for cold-adapted nototheniids and liparids (Aronson & Blake, 2001;  
399 Aronson et al., 2007; Clarke et al., 2004). The simultaneous extinction of these diverse taxa was presumably  
400 driven by their lack of physiological tolerance to cold conditions (Aronson et al., 2007; Clarke et al., 2004;  
401 Frederich et al., 2001). Together, these data may highlight the crucial role of thermal barriers in preserving the  
402 integrity of Antarctic coastal ecosystem.

403

404 Under future warming scenarios with increased seawater temperatures and shortened sea-ice seasons,  
405 physiological barriers to Antarctic incursions are projected to weaken. For example, near Palmer Station the  
406 ice season decreased by 92 days from 1979/80 to 2012/13 (Ducklow et al., 2013; Meredith & King, 2005).  
407 According to IPCC RCP scenarios the WAP will continue to warm (Appendix 3), facilitating the  
408 establishment of alien species already arriving. *H. planatus* is not able to establish in the WAP under present  
409 conditions because it is not a suitable environment (Table 2, Fig. 6, 7), however this may change in the future.

410 In the South Shetland Islands, the worst scenario RCP 8.5 predicts a decrease in ice thickness, the expansion  
411 of ice-free areas (Appendix 3) and a 1 to 2 °C increase of seafloor temperature in 2100, leading to suitable  
412 conditions for *H. planatus* establishment. SDM predictions indicate the highest suitability for *H. planatus*  
413 presence in South Georgia and some places of the WAP (Fig. 8 IV B and C). The most optimistic climate  
414 change scenario RCP 2.6 predicts in 2100 a rise of seafloor water temperature of 0.4 °C in the South Shetland  
415 Islands, resulting in intermediate SDM predictions in the WAP and South Georgia (Fig. 8.II B and C). Thus  
416 according to these future scenarios, it is just a matter of time before the WAP would reach suitable  
417 environmental conditions for *H. planatus*.

418  
419 Survival is not the only requirement for the establishment of a species in a new area. A successful invasion  
420 also implies developing, reproducing and then dispersing to new places (Richardson, 2000 modified), and  
421 active behaviour to escape, feed and mate (Frederich et al., 2001). According to SDM predictions and the  
422 thermotolerance experiment, a successful invasion would be possible in an environment at +2 °C. Deception  
423 Island is the most active volcanic island of the South Shetland Islands, where many subtidal hydrothermal  
424 points and geothermal activity offer various temperatures that could favour the establishment of exotic species  
425 (Agusto et al., 2004), converting Port Foster into a key location for alien species colonisation (Aronson et al.,  
426 2015; Avila et al., 2020). During 3 scuba diving campaigns between 2017 and 2019 we searched for *H.*  
427 *planatus* in several places in the WAP, including where it was collected in 2010 - shallow waters off Baily  
428 Head outside the caldera of Deception Island (Aronson et al., 2015), (Aronson et al., 2015)- and other sites,  
429 active or not, within the caldera of Deception, Penguins, Paulet, Doumer, King George, Roberts islands,  
430 Coppermine Peninsula, Chile Bay in Greenwich Island, among other places, and none were found. This  
431 absence agrees with our results, but contradicts the presence of the ovigerous female in Deception Island  
432 (Aronson et al., 2015), which would need at least two years to reach pubertal molt, the time required in the  
433 Kerguelen Islands (Richer De Forges, 1977). This female certainly would not have grown up *in situ*; this place  
434 being on the outer coast under full Antarctic conditions (without geothermal activity or hydrothermal influence  
435 typical of the interior of Deception Island). Our results suggest its arrival at the mature stage or maybe the

436 ovigerous stage, implying that its development was completed elsewhere. An arrival through rafting is also  
437 unlikely. Early stages of *H. planatus* have been observed in floating kelps (*Macrocystis pyrifera*) in the  
438 Internal Sea of Chiloé (Hinojosa et al., 2010), and ~~kelp~~ have been reported in Deception Island (Avila et al.,  
439 2020). However, the journey from the Subantarctic area to the WAP implies two years across the SO riding  
440 kelps, which is highly improbable. This female was more probably brought through the Drake by ship during  
441 the southern 2009-2010 summer.

442  
443 The establishment of exotic marine species in Antarctica is an issue that is becoming more ~~and more real~~. The  
444 composition of the community may change dramatically according to which species establishes. Antarctica is  
445 characterized by the absence of durophagous predators (bony and cartilaginous fishes and brachyurans) and  
446 short food webs. Therefore, according to Aronson et al. (2007), the arrival of a reptant crab may affect  
447 Antarctic ecology and the biodiversity of the shallow Antarctic. With the arrival of the invasive red king crab  
448 *Paralithodes cambraticus* in the Barents Sea, reductions of diversity and benthic biomass were observed as a  
449 result of the predation pressure (Falk-Petersen et al., 2011), as well as shifts in interspecific competition  
450 (Britton et al., 2018; David et al., 2017) and infection of native species by parasites associated with invaders  
451 (Bevins, 2019). Although the effects of invasive species are impossible to measure, the return of durophagous  
452 predators such as decapods, chondrichthyans and teleosteans in Antarctic shallow waters is widely feared,  
453 because they can cause shifts in benthic communities, modifying trophic relationships and homogenizing the  
454 Antarctic ecosystem (Aronson et al., 2015, 2007). However, *H. planatus*, with its small size, opportunistic  
455 feeding behaviour and soft exoskeleton, is definitely not a top predator (Boschi et al., 1969). It feeds on  
456 phytoplankton remains accumulated at the bottom, such as carrion, detritus, mucopolysaccharides from algae  
457 and small soft individuals, even of its own species (López-Farrán, personal lab observation). They are prey for  
458 fishes (as *Harpagifer bispinis*, *Patagonotothen tessellata* and *Austrolycus depressiceps*; Diez et al., 2011),  
459 birds, crabs and sea stars, among others, and look for refuge among rocks and kelp holdfasts to survive  
460 (Chuang & Ng, 1994; Richer De Forges, 1977; Vinuesa & Ferrari, 2008). *H. planatus* is part of the  
461 Subantarctic ecosystem, playing a fairly important role in food webs (Diez et al., 2011; Richer De Forges,

462 1977) and may not be devastating for the Antarctic ecological community. Under warmer conditions (2 °C),  
463 the increase of seawater temperature would affect the WAP ecosystem more intensively than the arrival of a  
464 small soft-shelled detritivorous Brachyura such as *H. planatus* (Ashton et al., 2017; Clark et al., 2019;  
465 Griffiths et al., 2017; Turner et al., 2014). An example of a bioengineer species that would change the  
466 intertidal and shallow subtidal in the WAP is *Mytilus cf. platensis*, an exotic species record in 2019 (Cárdenas  
467 et al., 2020). Mussels have the capacity to provide dense three-dimensional matrices (Alvarado & Castilla,  
468 1996) that persist for long periods, constituting a micro-habitat which reduces desiccation during low tides,  
469 offering a stress-free space for small fish, invertebrate and alga species (Prado & Castilla, 2006). Therefore,  
470 those species that have an engineering role in marine ecosystems would change the habitat of the shallow  
471 waters of the WAP as we know them today. If this happens, shallow waters of Antarctic ecosystem would  
472 begin to be similar to Subantarctic areas. However, even if this crab is not a top predator or a bioengineer that  
473 could generate changes in the environment or the food web, *H. planatus* could compete with endemic species  
474 in Antarctica for space, food, niche, among others, and thus affect the populations of local species.

475  
476 Antarctic water temperature keeps on rising and stirs up the debate on the potential establishment of incoming  
477 species through transport on ship hulls, in ballast waters or on floating kelp (Aronson et al., 2015; Avila et al.,  
478 2020). Maritime traffic and tourism have increased (Kruczek et al., 2018; Lewis et al., 2005), raising the  
479 pressure of propagules in marine Antarctica, and probably this will continue to increase in next years (Kruczek  
480 et al., 2018; Lewis et al., 2005). However, the involuntary introduction of non-native species to the Antarctic  
481 Region and the movement of species and/or individuals within Antarctica from one zone to any other are  
482 among the highest priority issues considered for the Committee for Environmental Protection (CEP) and the  
483 Scientific Committee for Antarctic Research (SCAR). Therefore, a strong effort has been invested to improve  
484 the ballast water management of ships in Antarctica and to develop a strategy for biofouling (MEPC, 2011).

485  
486 Regardless of whether *H. planatus* individuals are able to reach the WAP by themselves or not, the SDM  
487 projected under conditions of IPCC RCP 2.6 or 8.5 climate scenarios indicate that individuals could survive

488 and settle, either sooner (Fig. 8.I and 8.II) or later (Fig. 8.III and 8.IV) in the future depending on the warming  
489 rapidity. *H. planatus* is highly abundant around Punta Arenas and Ushuaia, two mandatory harbours for the  
490 ships with WAP destination (Cárdenas et al., 2020). Therefore, if the vectors of *H. planatus*, ship or rafting,  
491 persist (Aronson et al., 2015; Avila et al., 2020; Hinojosa et al., 2010), some stage (larval, juvenile or adult)  
492 will reach the WAP, survive and settle.

493  
494 Our results rely on models, which are simplifications of complex facts (Mateo et al., 2011). SDMs are tuned to  
495 generate a simple spatial representation of the occurrence of a species based on environmental variables  
496 (Guisan & Zimmermann, 2000; Mateo et al., 2011). Although niche models do not include eco-evolutionary  
497 parameters such as adaptation, gene flow or dispersal capacity, they are widely used to provide an insight into  
498 present and future species distribution (Thuiller et al., 2004; Titeux et al., 2017). Combining such results with  
499 information on biological interactions, physiology, anthropic influence on individual introductions or a  
500 complete evaluation of the dispersal capacities of *H. planatus* using a spatial and dynamic approach would fill  
501 knowledge gaps about their real invasive capacities in future environmental conditions.

502  
503 In conclusion, our results suggest that *H. planatus* cannot presently establish in WAP waters, but this situation  
504 has a very strong probability to change under standard IPCC warming projections. While the full  
505 consequences of Antarctic warming are yet to be realised, some changes in the distribution and composition of  
506 communities have already been observed (Ashton et al., 2017; Clark et al., 2019; Griffiths et al., 2017; Turner  
507 et al., 2014). The key for future studies will be to track species distribution and demographic shifts directly as  
508 warming continues, to help understand and mitigate marine biological impacts on Antarctic coastal ecosystem.

509

### 510 **Acknowledgements**

511 The research was supported by projects FONDECYT Regular 1161358 to KG and EP, INACH DG 14-17 and  
512 Chilean national doctoral scholarship CONICYT 21151192 to ZLF, Fondap-IDEAL 15150003 to ZLF and  
513 LV, PIA CONICYT ACT172065 to EP and KG, and FONDECYT 1160877 to LV. This study was supported

514 by a “Fonds pour la formation à la Recherche dans l’Industrie et l’Agriculture” (FRIA) and “Bourse fondation  
515 de la mer” grants to C. Guillaumot. This study is a contribution to the French Polar Institute and LTSER Zone  
516 Atelier Antarctique et Subantarctique (ZATA) program PROTEKER (n°1044).

517 This is contribution no. 48 to the vERSO project (www.versoproject.be), funded by the Belgian Science Policy  
518 Office (BELSPO, contract n°BR/132/A1/vERSO). Research was also financed by the “Refugia and Ecosystem  
519 Tolerance in the Southern Ocean” project (RECTO; BR/154/A1/RECTO) funded by the Belgian Science  
520 Policy Office (BELSPO), this study being contribution number 25.

521 We are thankful to Renato Borrás, Daniel Ramirez, Yethro Henriquez and Eva Iglesias for help collecting  
522 individuals of *Halicarcinus planatus* for the physiological experiment (SCUBA diving work). Thanks to  
523 Alejandro Ortiz (IDEAL), Constanza Ceroni, Aurora Prado, Hermes Galo Andrade (IDEAL), Hans Bartsch  
524 (IDEAL), Camille Détrée (IDEAL) and Paola Muñoz for helping install and maintain experiments. Thanks to  
525 Hermes Galo Andrade, Jorge Navarro (IDEAL), research line Adaptation of Marine Species (IDEAL),  
526 Angelica Saldivia (IDEAL) and Luis Villegas (IDEAL) for the technical support for this project. This article  
527 contributes to the SCAR Biology Programme AntEco (State of the Antarctic Ecosystem) for travel funding.

528

### 529 **Conflict of Interest**

530 The authors declare that they have no conflict of interest.

531

### 532 **AUTHOR CONTRIBUTIONS**

533 Zambra López-Farrán, first author of this paper, participated directly in experimental design, sampling,  
534 assembly of the experiments, maintenance of experiments, obtaining data, results analyses, writing of the  
535 manuscript.

536 Charlene Guillaumot, co-first author of this manuscript participated in results analyses, writing, revision and  
537 correction of the manuscript.



538 Karin Gerard participated directly in sampling, assembly of the experiments, writing, revision and correction  
539 of the manuscript.

540 Luis Vargas-Chacoff participated directly in experimental design, assembly of the experiments, results  
541 analyses, revision and correction of manuscript.

542 Kurt Paschke participated directly in experimental design, assembly of the experiments, results analyses,  
543 revision and correction of manuscript.

544 Valerie Dulière participated in the analysis of the results, revision and correction of the manuscript.

545 Bruno Danis participated in the analysis of the results, revision and correction of the manuscript.

546 Thomas Saucède contributed to the occurrence dataset, participated in the analysis of results and manuscript  
547 revision and correction.

548 Elie Poulin participated directly in the project and experimental design, sampling, analysis of the results,  
549 revision and correction of the manuscript.

550 Jonathan Waters participated in the analysis of results, and manuscript revision and correction.

## 551 **References**

552 Augusto, M. R., Caselli, A. T., & dos Santos Afonso, M. (2004). Manifestaciones de piritas framboidales en  
553 fumarolas de la Isla Decepción (Antártida): Implicancias genéticas. *Revista de La Asociacion Geologica*  
554 *Argentina*, 59(1), 152–157.

555 Allouche, O., Tsoar, A., & Kadmon, R. (2006). Assessing the accuracy of species distribution models:  
556 Prevalence, kappa and the true skill statistic (TSS). *Journal of Applied Ecology*, 43(6), 1223–1232.  
557 <https://doi.org/10.1111/j.1365-2664.2006.01214.x>

- 558 Alvarado, J. L., & Castilla, J. C. (1996). Tridimensional matrices of mussels *Perumytilus purpuratus* on  
559 intertidal platforms with varying wave forces in central Chile. *Marine Ecology Progress Series*, 133(1–3),  
560 135–141. <https://doi.org/10.3354/meps133135>
- 561 Aronson, R. B., & Blake, D. B. (2001). Global climate change and the origin of modern benthic communities  
562 in Antarctica. *American Zoologist*, 41(1), 27–39. <https://doi.org/10.1093/icb/41.1.27>
- 563 Aronson, R. B., Frederich, M., Price, R., & Thatje, S. (2015). Prospects for the return of shell-crushing crabs  
564 to Antarctica. *Journal of Biogeography*, 42(1), 1–7. <https://doi.org/10.1111/jbi.12414>
- 565 Aronson, R. B., Thatje, S., Clarke, A., Peck, L. S., Blake, D. B., Wilga, C. D., & Seibel, B. A. (2007). Climate  
566 change and invasibility of the Antarctic benthos. *Annual Review of Ecology, Evolution, and Systematics*,  
567 38(1), 129–154. <https://doi.org/10.1146/annurev.ecolsys.38.091206.095525>
- 568 Ashton, G. V., Morley, S. A., Barnes, D. K. A., Clark, M. S., & Peck, L. S. (2017). Warming by 1°C drives  
569 species and assemblage level responses in Antarctica’s marine shallows. *Current Biology*, 27(17), 2698-  
570 2705.e3. <https://doi.org/10.1016/j.cub.2017.07.048>
- 571 Assis, J., Tyberghein, L., Bosch, S., Verbruggen, H., Serrão, E. A., & De Clerck, O. (2018). Bio-ORACLE  
572 v2.0: Extending marine data layers for bioclimatic modelling. *Global Ecology and Biogeography*, 27(3),  
573 277–284. <https://doi.org/10.1111/geb.12693>
- 574 Avila, C., Angulo-Preckler, C., Martín-Martín, R. P., Figuerola, B., Griffiths, H. J., & Waller, C. L. (2020).  
575 Invasive marine species discovered on non–native kelp rafts in the warmest Antarctic island. *Scientific*  
576 *Reports*, 10(1), 1–9. <https://doi.org/10.1038/s41598-020-58561-y>
- 577 Berry, P. M., Dawson, T. P., Harrison, P. A., & Pearson, R. G. (2002). Modelling potential impacts of climate  
578 change on the bioclimatic envelope of species in Britain and Ireland. *Global Ecology and Biogeography*,  
579 11, 453–462. <https://doi.org/10.1016/j.mambio.2012.04.008>
- 580 Bevins, S.N. 2019. Parasitism, host behavior, and invasive species. 273-278. In: J.C. Choe, editor.  
581 *Encyclopedia of Animal Behavior*, 2nd edition, vol 1. Elsevier, Academic Press. 3048 pp.
- 582 Boschi, E. E. (1964). Los crustáceos decápodos *Brachyura* del litoral bonaerense. *Boletín Instituto de Biología*  
583 *Marina*, 6, 1–99.

- 584 Boschi, E. E., Scelzo, M. A., & Goldstein, B. (1969). Desarrollo larval del cangrejo, *Halicarcinus planatus*  
585 (Fabricius) (Crustacea, Decapoda, Hymenosomidae), en el laboratorio, con observaciones sobre la  
586 distribución de la especie. *Bulletin of Marine Science*, 19(1), 225–242.
- 587 Britton, J. R., Ruiz-Navarro, A., Verreycken, H., & Amat-Trigo, F. (2018). Trophic consequences of  
588 introduced species: Comparative impacts of increased interspecific versus intraspecific competitive  
589 interactions. *Functional Ecology*, 32(2), 486–495. <https://doi.org/10.1111/1365-2435.12978>
- 590 Bucklin, D. N., Basille, M., Bencoter, A. M., Brandt, L. A., Mazzotti, F. J., Romañach, S. S., ... Watling, J. I.  
591 (2015). Comparing species distribution models constructed with different subsets of environmental  
592 predictors. *Diversity and Distributions*, 21(1), 23–35. <https://doi.org/10.1111/ddi.12247>
- 593 Cárdenas, L., Leclerc, J. C., Bruning, P., Garrido, I., Détrée, C., Figueroa, A., ... Pardo, L. (2020). First  
594 mussel settlement observed in Antarctica reveals the potential for future invasions. *Scientific Reports*,  
595 10(1), 1–8. <https://doi.org/10.1038/s41598-020-62340-0>
- 596 Chuang, C. T. N., & Ng, P. K. L. (1994). The ecology and biology of Southeast Asian false spider crabs  
597 (Crustacea: Decapoda: Brachyura: Hymenosomatidae). *Hydrobiologia*, 285(1–3), 85–92.  
598 <https://doi.org/10.1007/BF00005656>
- 599 Chwedorzewska, K. J., Gielwanowska, I., Olech, M., Molina-Montenegro, M. A., Wódkiewicz, M., & Galera,  
600 H. (2015). *Poa annua* L. in the maritime Antarctic : an overview. *Polar Record*, 51(261), 637–643.  
601 <https://doi.org/10.1017/S0032247414000916>
- 602 Clark, M. S., Villota Nieva, L., Hoffman, J. I., Davies, A. J., Trivedi, U. H., Turner, F., ... Peck, L. S. (2019).  
603 Lack of long-term acclimation in Antarctic encrusting species suggests vulnerability to warming. *Nature*  
604 *Communications*, 10(1), 1–10. <https://doi.org/10.1038/s41467-019-11348-w>
- 605 Clarke, A., Aronson, R. B., Crame, J. A., Gili, J.-M., & Blake, D. B. (2004). Evolution and diversity of the  
606 benthic fauna of the Southern Ocean continental shelf. *Antarctic Science*, 16(4), 559–568.  
607 <https://doi.org/10.1017/S0954102004002329>
- 608 Clarke, A., Barnes, D. K. A., & Hodgson, D. A. (2005). How isolated is Antarctica? *Trends in Ecology and*  
609 *Evolution*, 20(1), 1–3. <https://doi.org/10.1016/j.tree.2004.10.004>

- 610 Convey, P., Bindschadler, R., Di Prisco, G., Fahrbach, E., Gutt, J., Hodgson, D. A., ... ACCE, C. (2009).  
611 Antarctic climate change and the environment. *Antarctic Science*, 21(6), 541–563.  
612 <https://doi.org/10.1017/S0954102009990642>
- 613 Crampton, J. S., Cody, R. D., Levy, R., Harwood, D., McKay, R., & Naish, T. R. (2016). Southern Ocean  
614 phytoplankton turnover in response to stepwise Antarctic cooling over the past 15 million years.  
615 *Proceedings of the National Academy of Sciences of the United States of America*, 113(25), 6868–6873.  
616 <https://doi.org/10.1073/pnas.1600318113>
- 617 Cuba-Díaz, M., Troncoso, J. M., Cordero, C., Finot, V. L., & Rondanelli-Reyes, M. (2013). *Juncus bufonius*, a  
618 new non-native vascular plant in King George Island, South Shetland Islands. *Antarctic Science*, 25(3),  
619 385–386. <https://doi.org/10.1017/S0954102012000958>
- 620 David, P., Thébault, E., Anneville, O., Duyck, P. F., Chapuis, E., & Loeuille, N. (2017). Impacts of invasive  
621 species on food webs: A review of empirical data. *Advances in Ecological Research*, 56, 1–60.  
622 <https://doi.org/10.1016/bs.aecr.2016.10.001>
- 623 Diez, M. J., Florentín, O., & Lovrich, G. A. (2011). Distribution and population structure of the crab  
624 *Halicarcinus planatus* (Brachyura, Hymenosomatidae) in the Beagle channel, Tierra del Fuego |  
625 Distribución y estructura poblacional del cangrejo *Halicarcinus planatus* (Brachyura, Hymenosomatidae)  
626 en el Canal Beagle. *Revista de Biología Marina y Oceanografía*, 46(2), 141–155.
- 627 Diez, M. J., & Lovrich, G. A. (2010). Reproductive biology of the crab *Halicarcinus planatus* (Brachyura,  
628 Hymenosomatidae) in sub-Antarctic waters. *Polar Biology*, 33(3), 389–401.  
629 <https://doi.org/10.1007/s00300-009-0716-0>
- 630 Ducklow, H., Fraser, W., Meredith, M., Stammerjohn, S., Doney, S., Martinson, D., ... Amsler, C. (2013).  
631 West Antarctic Peninsula: An ice-dependent coastal marine ecosystem in transition. *Oceanography*,  
632 26(3), 190–203. <https://doi.org/10.5670/oceanog.2013.62>
- 633 Elith, J., Graham, C. H., Anderson, R. P., Dudík, M., Ferrier, S., Guisan, A., ... Zimmermann, N. E. (2006).  
634 Novel methods improve prediction of species' distributions from occurrence data. *Journal of Ecology*, 29,  
635 129–151. <https://doi.org/10.1111/j.1432-1033.1987.tb13499.x>

- 636 Elith, J., Kearney, M., & Phillips, S. (2010). The art of modelling range-shifting species. *Methods in Ecology*  
637 *and Evolution*, 1(4), 330–342. <https://doi.org/10.1111/j.2041-210x.2010.00036.x>
- 638 Elith, J., Leathwick, J. R., & Hastie, T. (2008). A working guide to boosted regression trees. *Journal of Animal*  
639 *Ecology*, 77(4), 802–813. <https://doi.org/10.1111/j.1365-2656.2008.01390.x>
- 640 Engler, R., Randin, C. F., Vittoz, P., Czaka, T., Beniston, M., Zimmermann, N. E., & Guisan, A. (2009).  
641 Predicting future distributions of mountain plants under climate change: Does dispersal capacity matter?  
642 *Ecography*, 32, 34–45. <https://doi.org/10.1111/j.1600-0587.2009.05789.x>
- 643 Estoup, A., & Guillemaud, T. (2010). Reconstructing routes of invasion using genetic data: Why, how and so  
644 what? *Molecular Ecology*, 19(19), 4113–4130. <https://doi.org/10.1111/j.1365-294X.2010.04773.x>
- 645 Falk-Petersen, J., Renaud, P., & Anisimova, N. (2011). Establishment and ecosystem effects of the alien  
646 invasive red king crab (*Paralithodes camtschaticus*) in the Barents Sea—a review. *ICES Journal of Marine*  
647 *Science: Journal Du Conseil*, 68(3), 479–488. <https://doi.org/10.1093/icesjms/fsq192>
- 648 Feral, J. P., Poulin, E., Gonzalez-Wevar, C., Ameziane, N., Guillaumot, C., Develay, E., & Saucede, T.  
649 (2019). Long-term monitoring of coastal benthic habitats in the Kerguelen Islands: a legacy of decades of  
650 marine biology research. *Kerguelen Plateau Symposium: Marine Ecosystem and Fisheries*, 383–402.  
651 <https://doi.org/10.5281/zenodo.3249143>
- 652 Ferrari, L., Gil, D. G., & Vinuesa, J. H. (2011). Breeding and fecundity of the sub-Antarctic crab *Halicarcinus*  
653 *planatus* (Crustacea: Hymenosomatidae) in the Deseado River estuary, Argentina. *Journal of the Marine*  
654 *Biological Association of the United Kingdom*, 91(5), 1023–1029.  
655 <https://doi.org/10.1017/S0025315410001840>
- 656 Fielding, A. H., & Bell, J. F. (1997). A review of methods for the assessment of prediction errors in  
657 conservation presence/absence models. *Environmental Conservation*, 24(1), 38–49.  
658 <https://doi.org/10.1017/S0376892997000088>
- 659 Franklin, J. (2010). Moving beyond static species distribution models in support of conservation  
660 biogeography. *Diversity and Distributions*, 16(3), 321–330. [https://doi.org/10.1111/j.1472-](https://doi.org/10.1111/j.1472-4642.2010.00641.x)  
661 [4642.2010.00641.x](https://doi.org/10.1111/j.1472-4642.2010.00641.x)

- 662 Fraser, C. I., Morrison, A. K., Hogg, A. M. C., Macaya, E. C., van Sebille, E., Ryan, P. G., ... Waters, J. M.  
663 (2018). Antarctica's ecological isolation will be broken by storm-driven dispersal and warming. *Nature*  
664 *Climate Change*, 8(8), 704–708. <https://doi.org/10.1038/s41558-018-0209-7>
- 665 Fraser, K. P. P., Clarke, A., & Peck, L. S. (2007). Growth in the slow lane: Protein metabolism in the Antarctic  
666 limpet *Nacella concinna* (Strebel 1908). *Journal of Experimental Biology*, 210(15), 2691–2699.  
667 <https://doi.org/10.1242/jeb.003715>
- 668 Frederich, M., Sartoris, J., & Pörtner, H. O. (2001). Distribution patterns of decapod crustaceans in polar  
669 areas: A result of magnesium regulation? *Polar Biology*, 24(10), 719–723.  
670 <https://doi.org/10.1007/s003000100270>
- 671 Galera, H., Chwedorzewska, K. J., Korczak-Abshire, M., & Wódkiewicz, M. (2018). What affects the  
672 probability of biological invasions in Antarctica? Using an expanded conceptual framework to anticipate  
673 the risk of alien species expansion. *Biodiversity and Conservation*, 27(8), 1789–1809.  
674 <https://doi.org/10.1007/s10531-018-1547-5>
- 675 Garth, J. S. (1958). *Brachyura of the Pacific Coast of America*. Allan Hancock Pacific Expeditions, 21, i–xii,  
676 1– 804.
- 677 GBIF.org (09 October 2018) GBIF Occurrence Download <https://doi.org/10.15468/dl.7nmvij>
- 678 Griffiths, H. J., Barnes, D. K. A., & Linse, K. (2009). Towards a generalized biogeography of the Southern  
679 Ocean benthos. *Journal of Biogeography*, 36(1), 162–177. [https://doi.org/10.1111/j.1365-](https://doi.org/10.1111/j.1365-2699.2008.01979.x)  
680 [2699.2008.01979.x](https://doi.org/10.1111/j.1365-2699.2008.01979.x)
- 681 Griffiths, H. J., Meijers, A. J. S., & Bracegirdle, T. J. (2017). More losers than winners in a century of future  
682 Southern Ocean seafloor warming. *Nature Climate Change*, 7(10), 749–754.  
683 <https://doi.org/10.1038/nclimate3377>
- 684 Griffiths, H. J., Whittle, R. J., Roberts, S. J., Belchier, M., & Linse, K. (2013). Antarctic Crabs: Invasion or  
685 Endurance? *PLoS ONE*, 8(7). <https://doi.org/10.1371/journal.pone.0066981>

- 686 Guillaumot, C., Artois, J., Saucède, T., Demoustier, L., Moreau, C., Eléaume, M., ... Danis, B. (2019). Broad-  
687 scale species distribution models applied to data-poor areas. *Progress in Oceanography*, 175, 198–207.  
688 <https://doi.org/https://doi.org/10.1016/j.pocean.2019.04.007>
- 689 Guillaumot, C., Fabri-Ruiz, S., Martin, A., Eléaume, M., Danis, B., Féral, J. P., & Saucède, T. (2018). Benthic  
690 species of the Kerguelen Plateau show contrasting distribution shifts in response to environmental  
691 changes. *Ecology and Evolution*, 8(12), 6210–6225. <https://doi.org/10.1002/ece3.4091>
- 692 Guillaumot, C., Moreau, C., Danis, B., & Saucède, T. (2020). Extrapolation in species distribution modelling.  
693 Application to Southern Ocean marine species. *Progress in Oceanography*, 102438.  
694 <https://doi.org/10.1016/j.pocean.2020.102438>
- 695 Guisan, A., & Zimmermann, N. E. (2000). Predictive habitat distribution models in ecology. *Ecological*  
696 *Modelling*, 135(2–3), 147–186. [https://doi.org/10.1016/S0304-3800\(00\)00354-9](https://doi.org/10.1016/S0304-3800(00)00354-9)
- 697 Gutt, J., Bertler, N., Bracegirdle, T. J., Buschmann, A., Comiso, J., Hosie, G., ... Xavier, J. C. (2015). The  
698 Southern Ocean ecosystem under multiple climate change stresses - an integrated circumpolar  
699 assessment. *Global Change Biology*, 21(4), 1434–1453. <https://doi.org/10.1111/gcb.12794>
- 700 Hansen, J., Sato, M., Russell, G., & Kharecha, P. (2013). Climate sensitivity, sea level and atmospheric carbon  
701 dioxide. *Philosophical Transactions of the Royal Society A*, 371: 20120294.  
702 <https://doi.org/10.1098/rsta.2012.0294>
- 703 Hellmann, J. J., Byers, J. E., Bierwagen, B. G., & Dukes, J. S. (2008). Five potential consequences of climate  
704 change for invasive species. *Conservation Biology*, 22(3), 534–543. <https://doi.org/10.1111/j.1523-1739.2008.00951.x>
- 705
- 706 Hinojosa, I. A., Gonzalez, E. R., Macaya, E. C., & Thiel, M. (2010). Macroalgas flotantes en el mar interior de  
707 Chiloé, Chile y su fauna asociada con énfasis en peracarida y estados temprano de desarrollo de  
708 Decapoda (Crustacea). *Ciencia y Tecnología Del Mar*, 33(2), 71–86.
- 709 Hughes, K. A., & Convey, P. (2014). Alien invasions in Antarctica-is anyone liable? *Polar Research*, 33(1),  
710 22103. <https://doi.org/10.3402/polar.v33.22103>

- 711 Hughes, K. A., & Worland, M. R. (2010). Spatial distribution, habitat preference and colonization status of  
712 two alien terrestrial invertebrate species in Antarctica. *Antarctic Science*, 22(3), 221–231.  
713 <https://doi.org/10.1017/S0954102009990770>
- 714 Hutchinson, G. E. (1957). Concluding Remarks. *Cold Spring Harbor Symposia on Quantitative Biology*,  
715 22(0), 415–427. <https://doi.org/10.1101/sqb.1957.022.01.039>
- 716 IOBIS.org (9th October 2018) IOBIS Occurrence Download <http://iobis.org/mapper2/?taxonid=631163>
- 717 Intergovernmental Panel on Climate Change (IPCC), (2013). *Climate Change 2013: Synthesis Report*.  
718 Contribution of Working Groups I, II and III to the Fifth Assessment Report of the Intergovernmental  
719 Panel on Climate Change [Core Writing Team, R.K. Pachauri and L.A. Meyer (eds.)]. IPCC, Geneva,  
720 Switzerland, 151 pp. <https://www.ipcc.ch/report/ar5/syr/> Accessed November 2019
- 721 King, J. C., Turner, J., Marshall, G. J., Connolley, W. M., & Lachlan-Cope, T. A. (2003). Antarctic Peninsula  
722 climate variability and its causes as revealed by analysis of instrumental records. *Antarctic Peninsula*  
723 *Climate Variability: Antarctic Research Series*, 79, 17–30. <https://doi.org/10.1029/ar079p0017>
- 724 Kruczek, Z., Kruczek, M., & Szromek, A. R. (2018). Possibilities of using the tourism area life cycle model to  
725 understand and provide sustainable solution for tourism development in the Antarctic region.  
726 *Sustainability*, 10(2), 89. <https://doi.org/10.3390/su10010089>
- 727 Lee, J. E., & Chown, S. L. (2007). *Mytilus* on the move: transport of an invasive bivalve to the Antarctic.  
728 *Marine Ecology Progress Series*, 339, 307–310. <https://doi.org/10.3354/meps339307>
- 729 Lewis, P. N., Hewitt, C. L., Riddle, M., & McMinn, A. (2003). Marine introductions in the Southern Ocean:  
730 An unrecognised hazard to biodiversity. *Marine Pollution Bulletin*, 46(2), 213–223.  
731 [https://doi.org/10.1016/S0025-326X\(02\)00364-8](https://doi.org/10.1016/S0025-326X(02)00364-8)
- 732 Lewis, P. N., Riddle, M. J., & Smith, S. D. A. (2005). Assisted passage or passive drift: A comparison of  
733 alternative transport mechanisms for non-indigenous coastal species into the Southern Ocean. *Antarctic*  
734 *Science*, 17(2), 183–191. <https://doi.org/10.1017/S0954102005002580>



- 735 López-Farrán Z., Gerard K., Saucède T., Brickle P., Waters J., González-Wevar C., Naretto J., Poulin E.,  
736 Rosenfeld S., Ojeda J., Ceroni C. (2020). Records of *Halicarcinus planatus* at sub-Antarctic regions.  
737 Version 1.2. Universidad de Magallanes. Occurrence dataset <https://doi.org/10.15468/qnqnn2>.
- 738 Lucas, J. S. (1980). Spider crabs of the family Hymenosomatidae (Crustacea; Brachyura) with particular  
739 reference to Australian species: systematics and biology. Records of the Australian Museum, 33(4), 148–  
740 247.
- 741 Malcolm, J. R., Liu, C., Neilson, R. P., Hansen, L., & Hannah, L. (2006). Global warming and extinctions of  
742 endemic species from biodiversity hotspots. Conservation Biology, 20(2), 538–548.  
743 <https://doi.org/10.1111/j.1523-1739.2006.00364.x>
- 744 Marsh, A. G., Maxson, R. E., & Manahan, D. T. (2001). High macromolecular synthesis with low metabolic  
745 cost in Antarctic sea urchin embryos. Science, 291(5510), 1950–1952.  
746 <https://doi.org/10.1126/science.1056341>
- 747 Mateo, R. G., Felicísimo, Á. M., & Muñoz, J. (2011). Modelos de distribución de especies: Una revisión  
748 sintética. Revista Chilena de Historia Natural, 84(2), 217–240. [https://doi.org/10.4067/S0716-](https://doi.org/10.4067/S0716-078X2011000200008)  
749 [078X2011000200008](https://doi.org/10.4067/S0716-078X2011000200008)
- 750 McCarthy, A. H., Peck, L. S., Hughes, K. A., & Aldridge, D. C. (2019). Antarctica: The final frontier for  
751 marine biological invasions. Global Change Biology, 1–21. <https://doi.org/10.1111/gcb.14600>
- 752 Meier, E. S., Edwards, T. C., Kienast, F., Dobbertin, M., & Zimmermann, N. E. (2011). Co-occurrence  
753 patterns of trees along macro-climatic gradients and their potential influence on the present and future  
754 distribution of *Fagus sylvatica* L. Journal of Biogeography, 38(2), 371–382.  
755 <https://doi.org/10.1111/j.1365-2699.2010.02405.x>
- 756 Melrose, M. J. (1975). The marine fauna of New Zealand: family Hymenosomatidae (Crustacea, Decapoda,  
757 Brachyura) (Vol. 34). Wellington, N.Z.
- 758 MEPC, Marine Environment Protection Committee (2011) Guidelines for the control and management of  
759 ship's biofouling to minimize the transfer of invasive aquatic species. Annex 26.

- 760 [http://www.imo.org/en/KnowledgeCentre/IndexofIMOResolutions/Marine-Environment-Protection-](http://www.imo.org/en/KnowledgeCentre/IndexofIMOResolutions/Marine-Environment-Protection-Committee-(MEPC)/Documents/MEPC.207(62).pdf)
- 761 [Committee-\(MEPC\)/Documents/MEPC.207\(62\).pdf](http://www.imo.org/en/KnowledgeCentre/IndexofIMOResolutions/Marine-Environment-Protection-Committee-(MEPC)/Documents/MEPC.207(62).pdf)
- 762 Meredith, M. P., & King, J. C. (2005). Rapid climate change in the ocean west of the Antarctic Peninsula
- 763 during the second half of the 20th century. *Geophysical Research Letters*, 32(19), 1–5.
- 764 <https://doi.org/10.1029/2005GL024042>
- 765 Molina-Montenegro, M. A., Carrasco-Urra, F., Rodrigo, C., Convey, P., Valladares, F., & Gianoli, E. (2012).
- 766 Occurrence of the non-native annual bluegrass on the Antarctic mainland and its negative effects on
- 767 native plants. *Conservation Biology*, 26(4), 717–723. <https://doi.org/10.1111/j.1523-1739.2012.01865.x>
- 768 Nachtsheim, D. A., Jerosch, K., Hagen, W., Plötz, J., & Bornemann, H. (2017). Habitat modelling of crabeater
- 769 seals (*Lobodon carcinophaga*) in the Weddell Sea using the multivariate approach Maxent. *Polar Biology*,
- 770 40(5), 961–976. <https://doi.org/10.1007/s00300-016-2020-0>
- 771 Pearson, R. G., & Dawson, T. P. (2003). Predicting the impacts of climate change on the distribution of
- 772 species: are bioclimate envelope models useful? *Global Ecology and Biogeography*, 12, 361–371.
- 773 <https://doi.org/10.1046/j.1466-822X.2003.00042.x>
- 774 Peck, L. S. (2016). A cold limit to adaptation in the sea. *Trends in Ecology and Evolution*, 31(1), 13–26.
- 775 <https://doi.org/10.1016/j.tree.2015.09.014>
- 776 Peterson, A. T. (2003). Predicting the geography of species' invasions via ecological niche modeling. *The*
- 777 *Quarterly Review of Biology*, 78(4), 419–433. <https://doi.org/10.1073/pnas.0703993104>
- 778 Peterson, A. T., Soberón, J., Pearson, R. G., Anderson, R. P., Martínez-Meyer, E., Nakamura, M., & Araújo,
- 779 M. B. (2011). *Ecological niches and geographic distributions (MPB-49)* (Vol. 49). Princeton University
- 780 Press.
- 781 Potocka, M., & Krzemińska, E. (2018). *Trichocera maculipennis* (Diptera) - an invasive species in Maritime
- 782 Antarctica. *PeerJ*, 2018(8), 1–16. <https://doi.org/10.7717/peerj.5408>
- 783 Prado, L., & Castilla, J. C. (2006). The bioengineer *Perumytilus purpuratus* (Mollusca: Bivalvia) in central
- 784 Chile: Biodiversity, habitat structural complexity and environmental heterogeneity. *Journal of the Marine*

- 785 Biological Association of the United Kingdom, 86(2), 417–421.  
786 <https://doi.org/10.1017/S0025315406013282>
- 787 Reiss, H., Cunze, S., König, K., Neumann, H., & Kröncke, I. (2011). Species distribution modelling of marine  
788 benthos: A North Sea case study. *Marine Ecology Progress Series*, 442, 71.  
789 <https://doi.org/10.3354/meps09391>
- 790 Richardson, D. M., Pyšek, P., Rejmánek, M., Barbour, M. G., Panetta, F. D., & West, C. J. (2000).  
791 Naturalization and invasion of alien plants: concepts and definition. *Diversity and Distributions*, 6, 93–  
792 107. <https://doi.org/10.1046/j.1472-4642.2000.00083.x>
- 793 Richardson, D. M., & Whittaker, R. J. (2010). Conservation biogeography - foundations, concepts and  
794 challenges. *Diversity and Distributions*, 16(3), 313–320. [https://doi.org/10.1111/j.1472-](https://doi.org/10.1111/j.1472-4642.2010.00660.x)  
795 [4642.2010.00660.x](https://doi.org/10.1111/j.1472-4642.2010.00660.x)
- 796 Richer De Forges, B. (1977). Étude du crabe des Iles Kerguelen *Halicarcinus planatus* (Fabricius). *CNFRA*,  
797 42, 71–133.
- 798 Ridgeway, G. (2006) Generalized boosted regression models. Documentation on the R Package ‘gbm’, version  
799 1.5–7. <http://www.i-pensieri.com/gregr/gbm.shtml>, accessed June 2019.
- 800 Rintoul, S. R. (2009). Antarctic Circumpolar Current. 178–190. In: Steele, J. H., Turekian, K. K., Thorpe, S.  
801 A. (Eds.), *Encyclopedia of Ocean Sciences. Antarctic Climate and Ecosystems Cooperative Research*  
802 *Centre, Australia, Tasmania*. <https://doi.org/10.1016/B978-012374473-9.00603-2>.
- 803 Sax, D.F., Stachowicz, J.J. & Gaines, S.D. (2005). *Species Invasions: Insights into Ecology, Evolution, and*  
804 *Biogeography*. Sinauer Associates, Sunderland, MA, USA.
- 805 Schofield, O., Saba, G., Coleman, K., Carvalho, F., Couto, N., Ducklow, H., ... Waite, N. (2017). Decadal  
806 variability in coastal phytoplankton community composition in a changing West Antarctic Peninsula.  
807 *Deep-Sea Research Part I: Oceanographic Research Papers*, 124, 42–54.  
808 <https://doi.org/10.1016/j.dsr.2017.04.014>

- 809 Schram, J. B., Schoenrock, K. M., McClintock, J. B., Amsler, C. D., & Angus, R. A. (2015). Multi-frequency  
810 observations of seawater carbonate chemistry on the central coast of the western Antarctic Peninsula.  
811 *Polar Research*, 34(1), 25582. <https://doi.org/10.3402/polar.v34.25582>
- 812 Smith, R. I. L., & Richardson, M. (2011). Fuegian plants in Antarctica: natural or anthropogenically assisted  
813 immigrants? *Biological Invasions*, 13(1), 1–5. <https://doi.org/10.1007/s10530-010-9784-x>
- 814 Soberón, J. M. (2005). Interpretation of models of fundamental ecological niches and species' distributional  
815 areas. *Biodiversity Informatics*, 2, 1–10. <https://doi.org/10.1002/pssc.200778935>
- 816 Soberón, J. M. (2010). Niche and area of distribution modeling: a population ecology perspective. *Ecography*,  
817 33(1), 159–167. <https://doi.org/10.1111/j.1600-0587.2009.06074.x>
- 818 Stammerjohn, S., Massom, R., Rind, D., & Martinson, D. (2012). Regions of rapid sea ice change: an inter-  
819 hemispheric seasonal comparison. *Geophysical Research Letters*, 39(6), 1–8.  
820 <https://doi.org/10.1029/2012GL050874>
- 821 Tavares, M., & De Melo, G. A. (2004). Discovery of the first known benthic invasive species in the Southern  
822 Ocean: The North Atlantic spider crab *Hyas araneus* found in the Antarctic Peninsula. *Antarctic Science*,  
823 16(2), 129–131. <https://doi.org/10.1017/S0954102004001877>
- 824 Thatje, S., Anger, K., Calcagno, J. A., Lovrich, G. A., Pörtner, H. O., & Arntz, W. E. (2005). Challenging the  
825 cold: Crabs reconquer the Antarctic. *Ecology*, 86(3), 619–625. <https://doi.org/10.1890/04-0620>
- 826 Thatje, S., & Fuentes, V. (2003). First record of anomuran and brachyuran larvae (Crustacea: Decapoda) from  
827 Antarctic waters. *Polar Biology*, 26, 279–282. <https://doi.org/10.1007/s00300-002-0476-6>
- 828 Thatje, S., Hillenbrand, C. D., & Larter, R. (2005). On the origin of Antarctic marine benthic community  
829 structure. *Trends in Ecology & Evolution*, 20(10), 534–540. <https://doi.org/10.1016/j.tree.2005.07.010>
- 830 Thomas, C. D., Cameron, A., Green, R. E., Bakkenes, M., Beaumont, L. J., Collingham, Y. C., ... Williams, S.  
831 E. (2004). Extinction risk from climate change. *Nature*, 427(6970), 145–148.  
832 <https://doi.org/10.1038/nature02121>

- 833 Thuiller, W., Brotons, L., Araújo, M. B., & Lavorel, S. (2004). Effects of restricting environmental range of  
834 data to project current and future species distributions. *Ecography*, 27(2), 165–172.  
835 <https://doi.org/10.1111/j.0906-7590.2004.03673.x>
- 836 Titeux, N., Maes, D., Van Daele, T., Onkelinx, T., Heikkinen, R. K., Romo, H., ... Luoto, M. (2017). The  
837 need for large-scale distribution data to estimate regional changes in species richness under future climate  
838 change. *Diversity and Distributions*, 23(12), 1393–1407. <https://doi.org/10.1111/ddi.12634>
- 839 Turner, J., Barrand, N. E., Bracegirdle, T. J., Convey, P., Hodgson, D. A., Jarvis, M., ... Klepikov, A. (2014).  
840 Antarctic climate change and the environment: an update. *Polar Record*, 50(3), 237–259.  
841 <https://doi.org/10.1017/S0032247413000296>
- 842 Turner, J., Lu, H., White, I., King, J. C., Phillips, T., Hosking, J. S., ... Deb, P. (2016). Absence of 21st  
843 century warming on Antarctic Peninsula consistent with natural variability. *Nature*, 535(7612), 411–415.  
844 <https://doi.org/10.1038/nature18645>
- 845 Vargas-Chacoff, L., Astola, A., Arjona, F. J., Martín del Río, M. P., García-Cózar, F., Mancera, J. M., &  
846 Martínez-Rodríguez, G. (2009). Pituitary gene and protein expression under experimental variation on  
847 salinity and temperature in gilthead sea bream *Sparus aurata*. *Comparative Biochemistry and Physiology -*  
848 *B Biochemistry and Molecular Biology*, 154(3), 303–308. <https://doi.org/10.1016/j.cbpb.2009.07.004>
- 849 Varisco, M., Colombo, J., Isola, T., & Vinuesa, J. (2016). Growth and maturity of the spider crab *Halicarcinus*  
850 *planatus* (Brachyura: Hymenosomatidae) females in the southwestern Atlantic Ocean. Can these  
851 parameters be influenced by the population sex ratio? *Marine Biology Research*, 12(6), 647–655.  
852 <https://doi.org/10.1080/17451000.2016.1183792>
- 853 Vaughan, D. G., Marshall, G. J., Connolley, W. M., Parkinson, C., Mulvaney, R., Hodgson, D. A., ... Turner,  
854 J. (2003). Recent rapid regional climate warming on the Antarctic Peninsula. *Climatic Change*, 60, 243–  
855 274.
- 856 Vinuesa, J. H., & Ferrari, L. (2008). Reproduction of *Halicarcinus planatus* (Crustacea, Decapoda,  
857 Hymenosomatidae) in the Deseado River estuary, southwestern Atlantic Ocean. *Marine Biology*, 154(2),  
858 345–351. <https://doi.org/10.1007/s00227-008-0929-8>

- 859 Walther, G. R., Roques, A., Hulme, P. E., Sykes, M. T., Pyšek, P., Kühn, I., ... Settele, J. (2009). Alien  
860 species in a warmer world: risks and opportunities. *Trends in Ecology and Evolution*, 24(12), 686–693.  
861 <https://doi.org/10.1016/j.tree.2009.06.008>
- 862 Zachos, J. C., Dickens, G. R., & Zeebe, R. E. (2008). An early Cenozoic perspective on greenhouse warming  
863 and carbon-cycle dynamics. *Nature*, 451(7176), 279–283. <https://doi.org/10.1038/nature06588>

For Review Only

864 **Figure 1.** Male (a) and female (b) specimens of *Halicarcinus planatus* (Fabricius, 1775) collected in the  
865 Magellan Strait. Scale: 1 cm. Photo credit to C. Ceroni and K.Gérard.

866 **Figure 2.** Presence (red dots) and absence (yellow dots) records of *Halicarcinus planatus* in the Southern  
867 Ocean used in the present study.

868 **Figure 3.** Survival rates of adults of *H. planatus* at different temperatures over 90 days.

869 **Figure 4.** Survival rates of adults of *H. planatus* at different salinities over 39 days.

870 **Figure 5.** Survival rates of larvae of *H. planatus* for 12 days at different temperatures.

871 **Figure 6.** Partial dependence plots for the four environmental descriptors that contribute the most to the  
872 model. Scaled density distribution of the marginal effect of the descriptors of the model, data points (grey)  
873 fitted with a generalized additive model (GAM, blue line).

874 **Figure 7.** SDM predictions of presence probability (between 0 and 1) for *Halicarcinus planatus*, projected  
875 under current environmental conditions [2000-2014] for the entire Southern Ocean (A), and with a focus on  
876 southern South America, the Scotia Arc and the West Antarctic Peninsula (WAP) (B), the WAP alone (C) and  
877 the Kerguelen Plateau (D). Black pixels correspond to extrapolation areas for which predictions are not  
878 reliable and were removed from projections (according to the Multivariate Environmental Similarity Surface  
879 index, MESS).

880 **Figure 8:** SDM predictions of presence probability (between 0 and 1) for *H. planatus*, projected under  
881 environmental conditions for the entire Southern Ocean (A), with focus on southern South America, the Scotia  
882 Arc and the Western Antarctic Peninsula (WAP) (B), the WAP alone (C), and the Kerguelen Plateau (D).  
883 Black pixels correspond to extrapolation areas for which predictions are not reliable and were removed from  
884 projection (according to the Multivariate Environmental Similarity Surface index, MESS). IPCC RCP 2.6  
885 climate scenario for 2050 (Fig. 8.I), IPCC RCP 2.6 climate scenario for 2100 (Fig. 8.II), IPCC RCP 8.5  
886 climate scenario for 2050 (Fig. 8.III) and IPCC RCP 8.5 climate scenario for 2100 (Fig. 8.IV).

887

888 **Table 1.** Environmental descriptors used for modelling and sources. Spatial resolution set at 5 arc minutes  
 889 (around 8 km).

890

<b>Descriptors</b>	<b>Present</b>	<b>Future</b>	<b>Source</b>
Depth	-	-	GEBCO <sup>1</sup>
Roughness	-	-	Modified from Depth layer, raster R package function terrain
Slope	-	-	Modified from Depth layer, raster R package function terrain
Seafloor mean temperature	2000-2014	RCP 2.6 and 8.5 for 2050 and 2100	BioOracle <sup>2</sup>
Seafloor min temperature	2000-2014	RCP 2.6 and 8.5 for 2050 and 2100	BioOracle <sup>2</sup>
Seafloor max temperature	2000-2014	RCP 2.6 and 8.5 for 2050 and 2100	BioOracle <sup>2</sup>
Seafloor mean salinity	2000-2014	RCP 2.6 and 8.5 for 2050 and 2100	BioOracle <sup>2</sup>
Seafloor min salinity	2000-2014	RCP 2.6 and 8.5 for 2050 and 2100	BioOracle <sup>2</sup>



Seafloor max salinity	2000-2014	RCP 2.6 and 8.5 for 2050 and 2100	BioOracle <sup>2</sup>
Seafloor mean primary productivity	2000-2014	Same as present conditions	BioOracle <sup>2</sup>
Seafloor min primary productivity	2000-2014	Same as present conditions	BioOracle <sup>2</sup>
Seafloor max primary productivity	2000-2014	Same as present conditions	BioOracle <sup>2</sup>
Ice mean thickness	2000-2014	RCP 2.6 and 8.5 for 2050 and 2100	BioOracle <sup>2</sup>
Ice min thickness	2000-2014	RCP 2.6 and 8.5 for 2050 and 2100	BioOracle <sup>2</sup>
Ice max thickness	2000-2014	RCP 2.6 and 8.5 for 2050 and 2100	BioOracle <sup>2</sup>
Seafloor mean current	2000-2014	Same as present conditions	BioOracle <sup>2</sup>

891 1. <https://download.gebco.net/>, accessed February 2020.

892 2. <https://www.bio-oracle.org/index.php>, accessed February 2020.

893

894 **Table 2.** Average contribution values and standard deviation (SD) of the 16 environmental descriptors to  
 895 model predictions.

Descriptor	Mean $\pm$ SD (%)	Descriptor	Mean $\pm$ SD (%)
Mean ice thickness	40.1 $\pm$ 3.2	Mean seafloor primary production	0.8 $\pm$ 0.1
Mean seafloor temperature	37.8 $\pm$ 3.7	Max seafloor primary production	0.5 $\pm$ 0.02
Max seafloor temperature	7.6 $\pm$ 1.9	Depth	0.5 $\pm$ 0.05
Min seafloor temperature	6.9 $\pm$ 2.4	Slope	0.2 $\pm$ 0.06
Min seafloor salinity	1.4 $\pm$ 0.2	Roughness	0.1 $\pm$ 0.03
Mean seafloor salinity	1.4 $\pm$ 0.1	Max seafloor salinity	0.1 $\pm$ 0.03
Mean seafloor current speed	1.3 $\pm$ 0.2	Max seafloor primary production	0.001 $\pm$ 0.001
Max ice thickness	1.1 $\pm$ 0.1	Min ice thickness	0

896

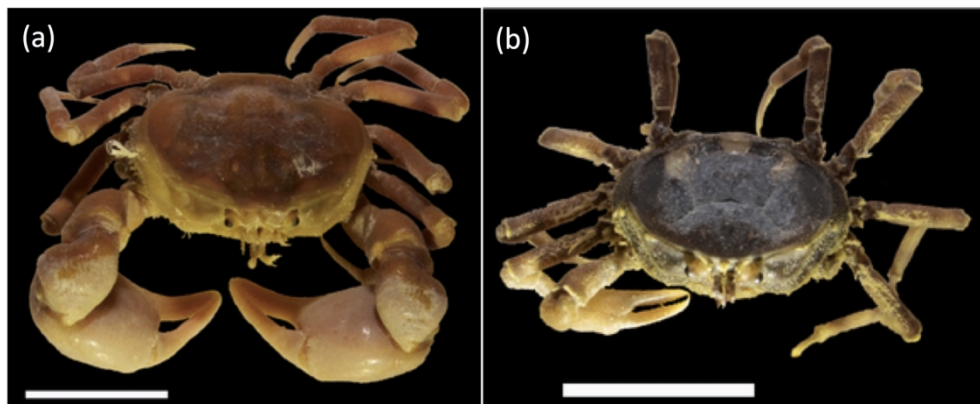


Figure 1. Male (a) and female (b) specimens of *Halicarcinus planatus* (Fabricius, 1775) collected in the Magellan Strait. Scale: 1 cm. Photo credit to C. Ceroni and K.Gérard.

178x74mm (300 x 300 DPI)

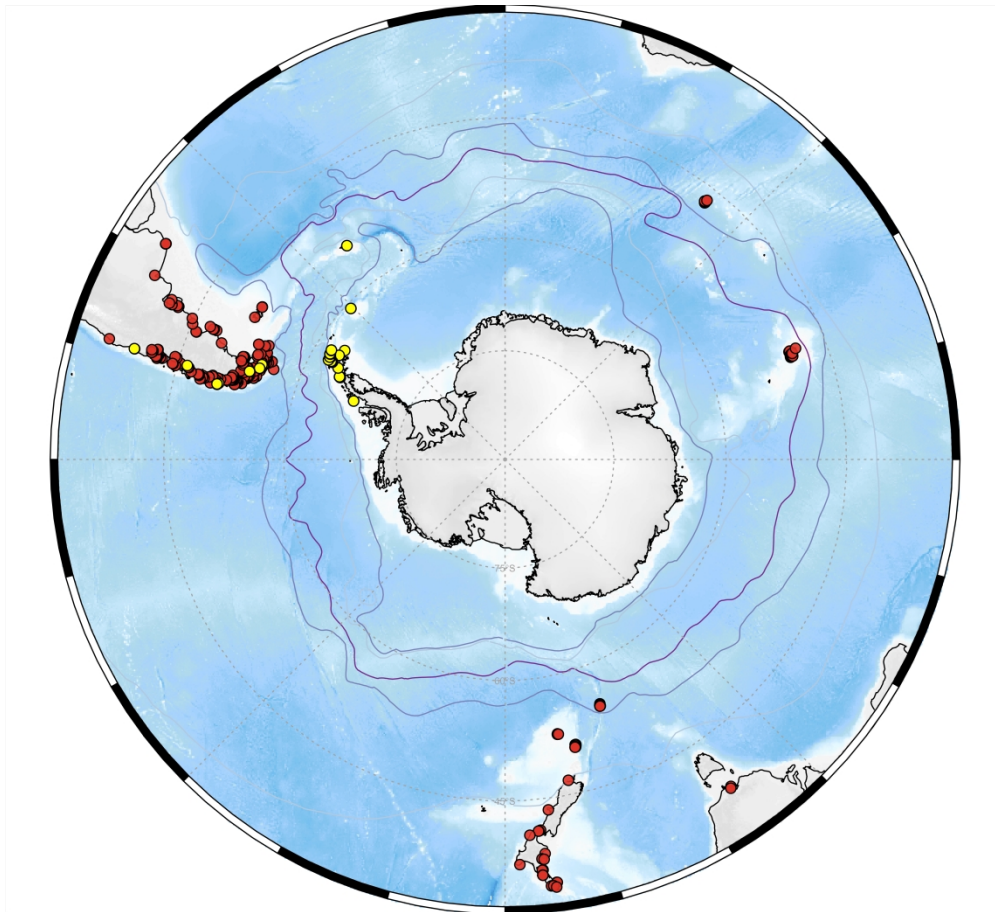


Figure 2. Presence (red dots) and absence (yellow dots) records of *Halicarcinus planatus* in the Southern Ocean used in the present study.

1833x1666mm (72 x 72 DPI)

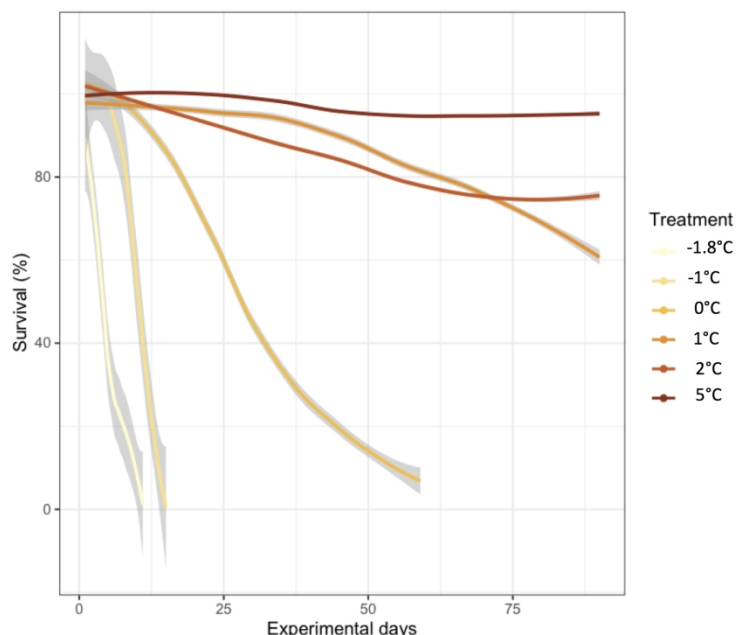


Figure 3. Survival rates of adults of *H. planatus* at different temperatures over 90 days.

297x209mm (300 x 300 DPI)

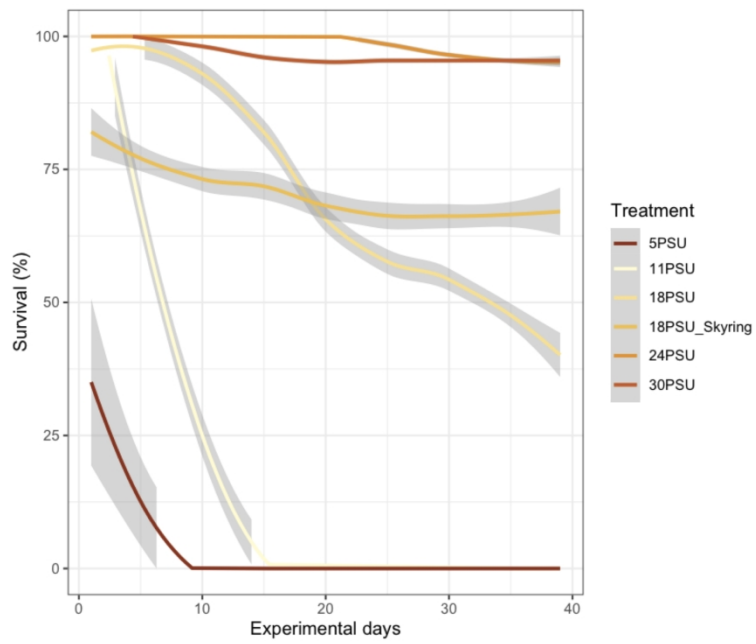


Figure 4. Survival rates of adults of *H. planatus* at different salinities over 39 days.

297x209mm (300 x 300 DPI)

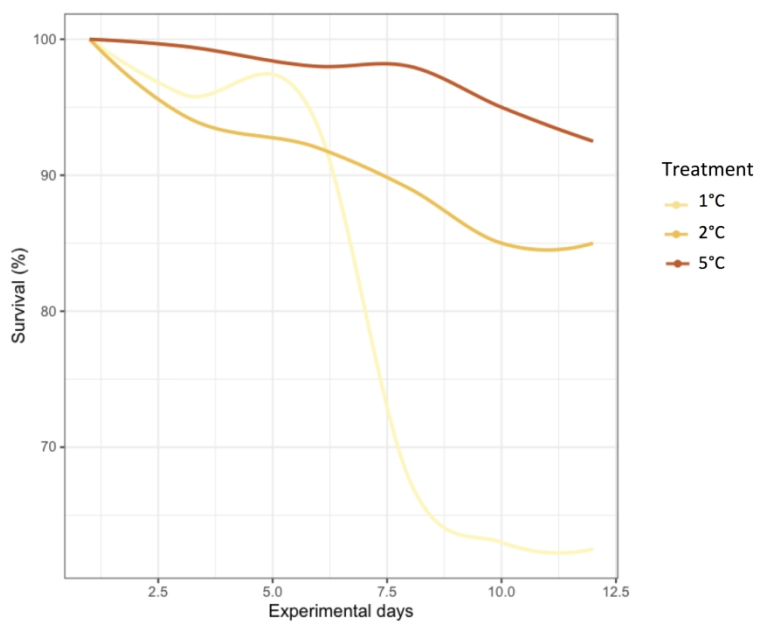


Figure 5. Survival rates of larvae of *H. planatus* for 12 days at different temperatures.

297x209mm (300 x 300 DPI)

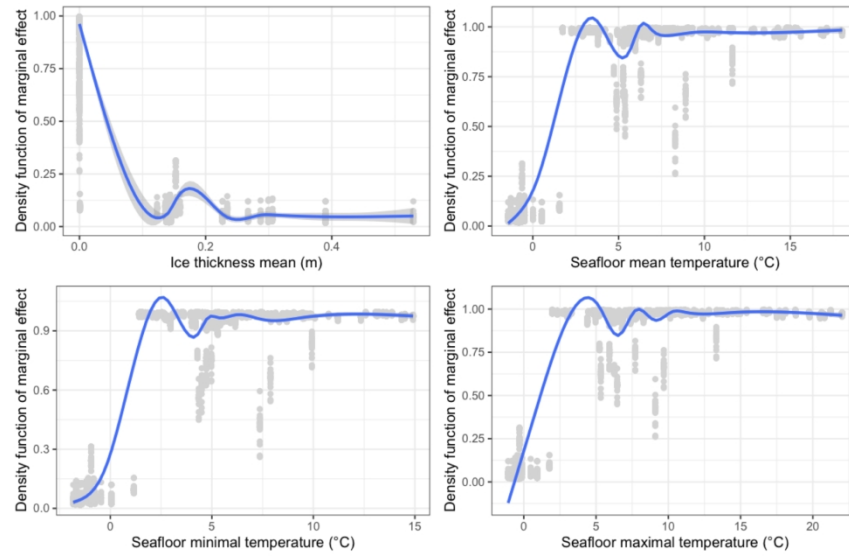


Figure 6. Partial dependence plots for the four environmental descriptors that contribute the most to the model. Scaled density distribution of the marginal effect of the descriptors of the model, data points (grey) fitted with a generalized additive model (GAM, blue line).

297x209mm (300 x 300 DPI)



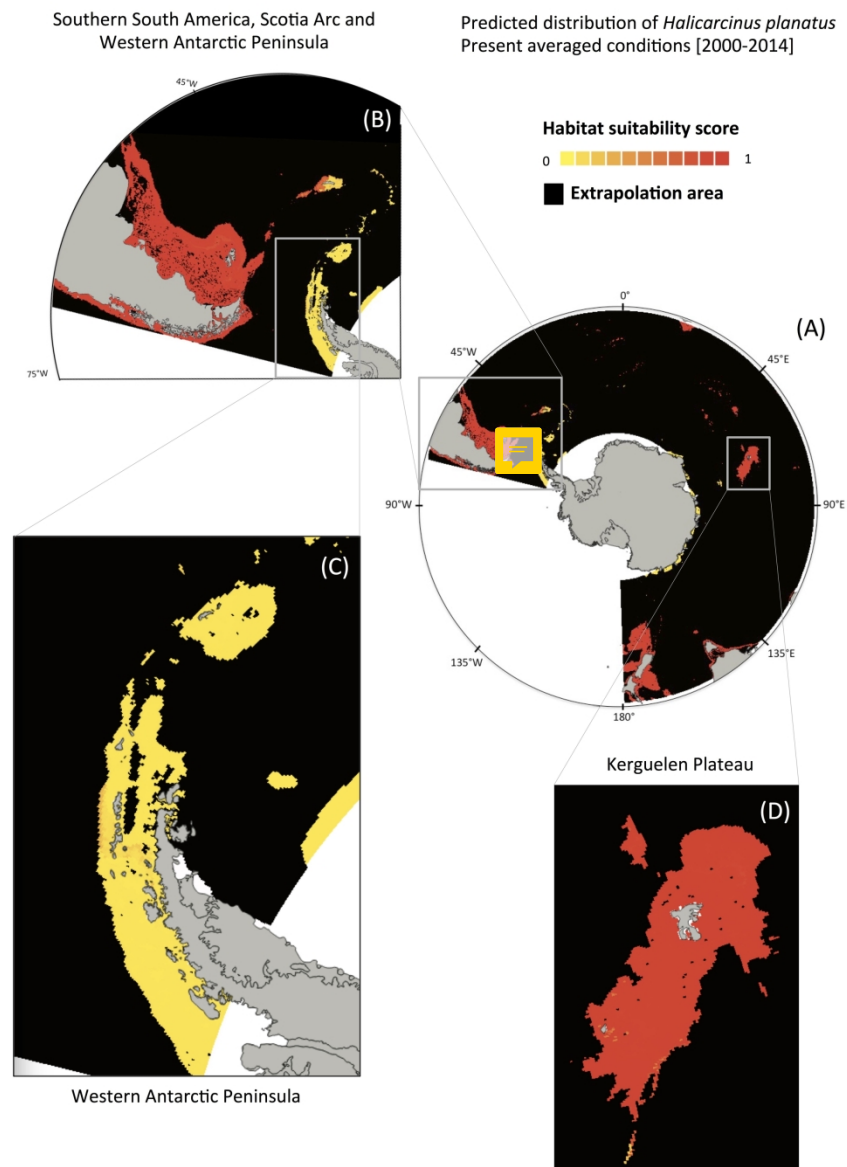


Figure 7. SDM predictions of presence probability (between 0 and 1) for *Halicarcinus planatus*, projected under current environmental conditions [2000-2014] for the entire Southern Ocean (A), and with a focus on southern South America, the Scotia Arc and the West Antarctic Peninsula (WAP) (B), the WAP alone (C) and the Kerguelen Plateau (D). Black pixels correspond to extrapolation areas for which predictions are not reliable and were removed from projections (according to the Multivariate Environmental Similarity Surface index, MESS).

209x297mm (300 x 300 DPI)

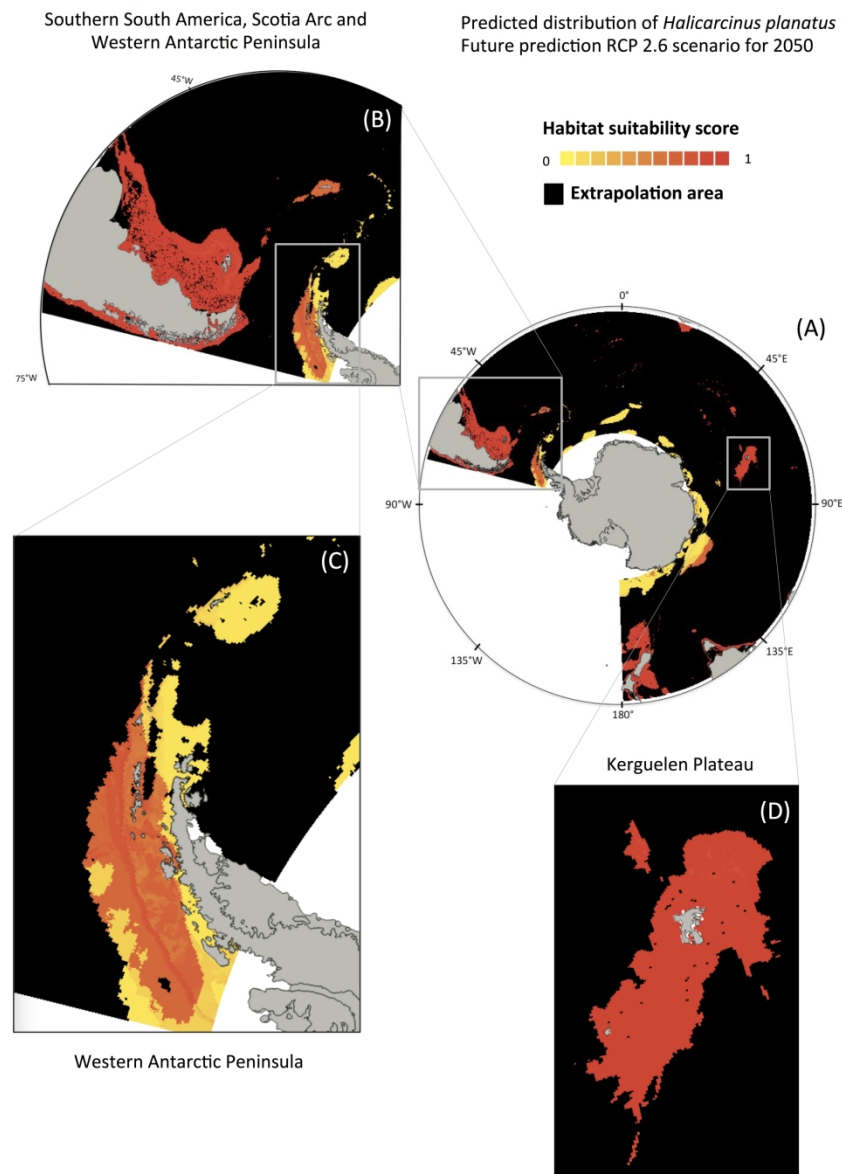


Figure 8: SDM predictions of presence probability (between 0 and 1) for *H. planatus*, projected under environmental conditions for the entire Southern Ocean (A), with focus on southern South America, the Scotia Arc and the Western Antarctic Peninsula (WAP) (B), the WAP alone (C), and the Kerguelen Plateau (D). Black pixels correspond to extrapolation areas for which predictions are not reliable and were removed from projection (according to the Multivariate Environmental Similarity Surface index, MESS). IPCC RCP 2.6 climate scenario for 2050 (Fig. 8.I), IPCC RCP 2.6 climate scenario for 2100 (Fig. 8.II), IPCC RCP 8.5 climate scenario for 2050 (Fig. 8.III) and IPCC RCP 8.5 climate scenario for 2100 (Fig. 8.IV).

209x297mm (300 x 300 DPI)

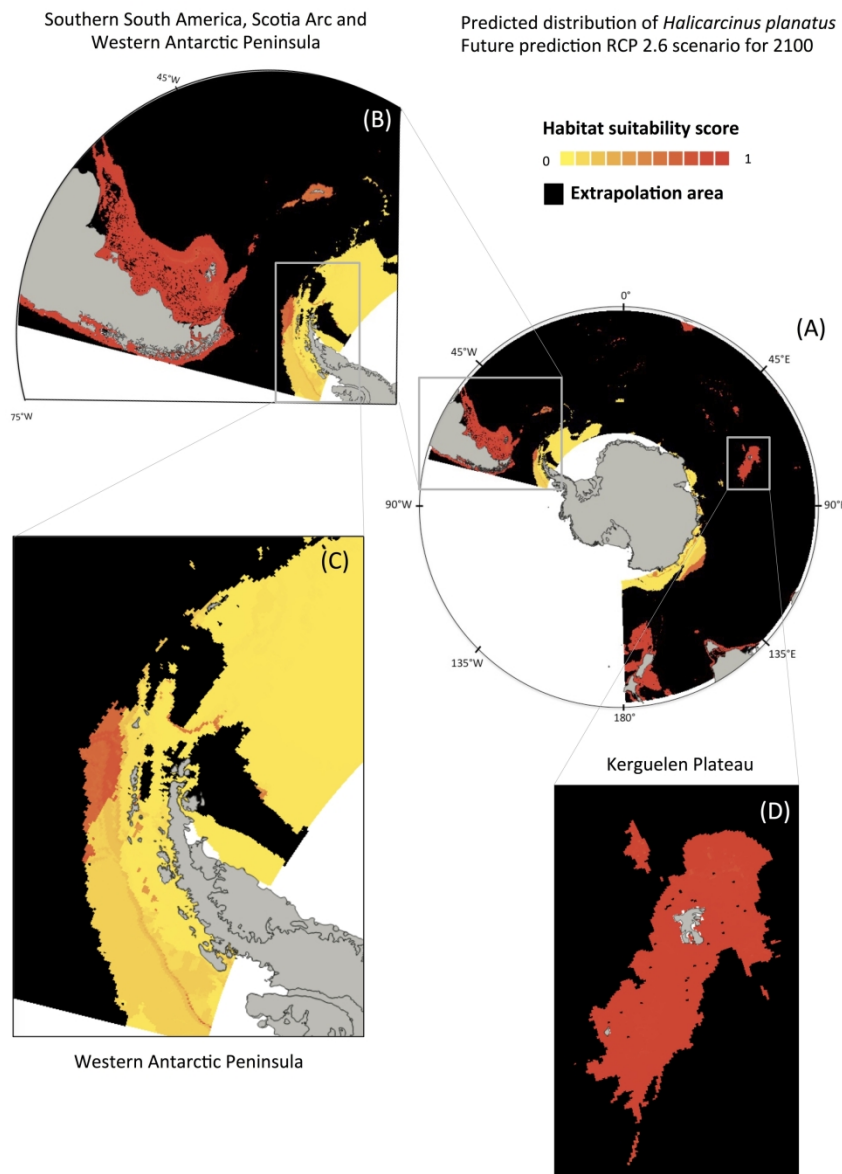


Figure 8: SDM predictions of presence probability (between 0 and 1) for *H. planatus*, projected under environmental conditions for the entire Southern Ocean (A), with focus on southern South America, the Scotia Arc and the Western Antarctic Peninsula (WAP) (B), the WAP alone (C), and the Kerguelen Plateau (D). Black pixels correspond to extrapolation areas for which predictions are not reliable and were removed from projection (according to the Multivariate Environmental Similarity Surface index, MESS). IPCC RCP 2.6 climate scenario for 2050 (Fig. 8.I), IPCC RCP 2.6 climate scenario for 2100 (Fig. 8.II), IPCC RCP 8.5 climate scenario for 2050 (Fig. 8.III) and IPCC RCP 8.5 climate scenario for 2100 (Fig. 8.IV).

209x297mm (300 x 300 DPI)

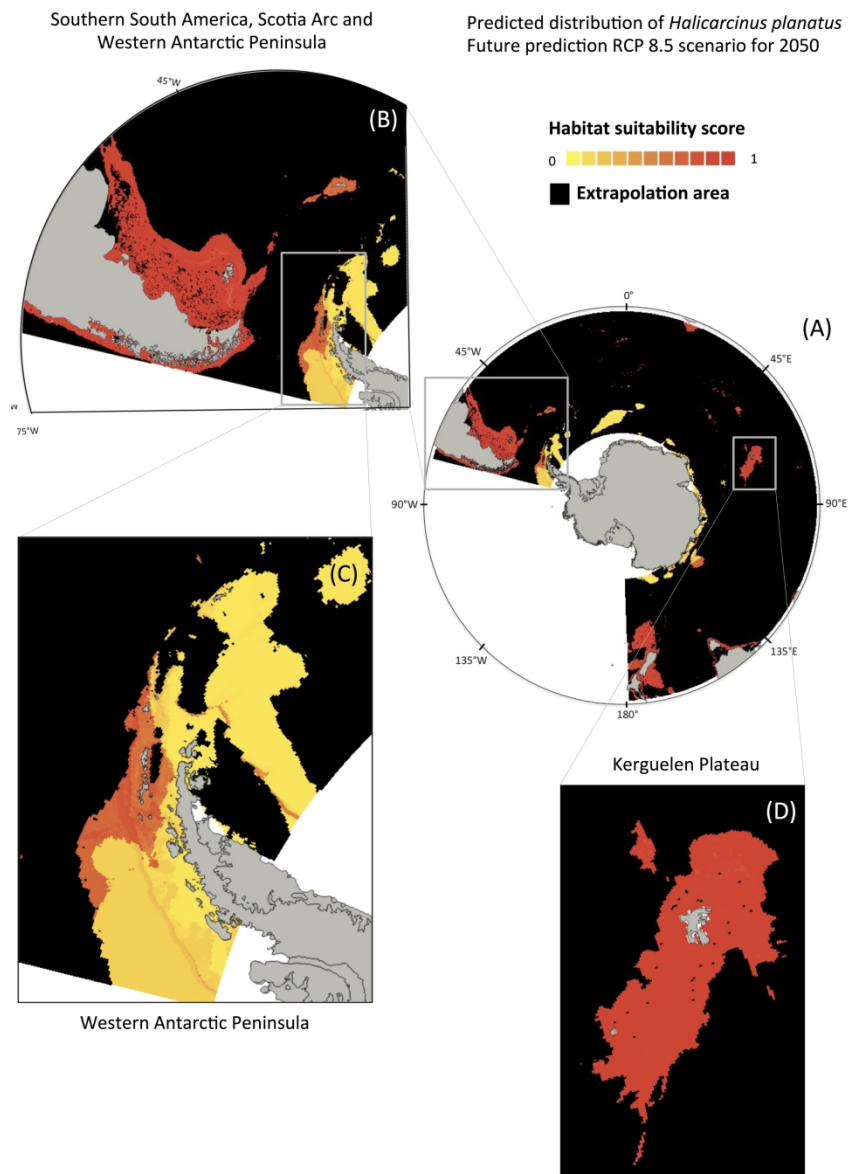


Figure 8: SDM predictions of presence probability (between 0 and 1) for *H. planatus*, projected under environmental conditions for the entire Southern Ocean (A), with focus on southern South America, the Scotia Arc and the Western Antarctic Peninsula (WAP) (B), the WAP alone (C), and the Kerguelen Plateau (D). Black pixels correspond to extrapolation areas for which predictions are not reliable and were removed from projection (according to the Multivariate Environmental Similarity Surface index, MESS). IPCC RCP 2.6 climate scenario for 2050 (Fig. 8.I), IPCC RCP 2.6 climate scenario for 2100 (Fig. 8.II), IPCC RCP 8.5 climate scenario for 2050 (Fig. 8.III) and IPCC RCP 8.5 climate scenario for 2100 (Fig. 8.IV).

209x297mm (300 x 300 DPI)

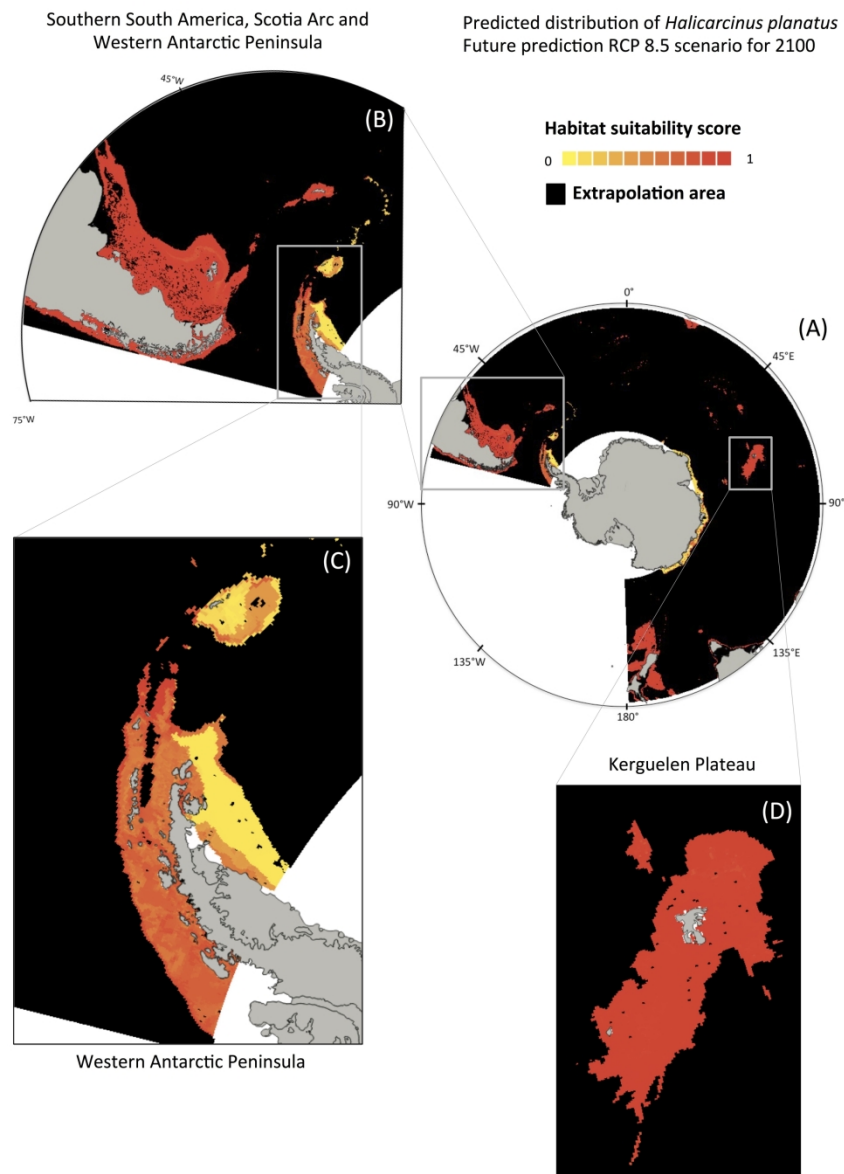


Figure 8: SDM predictions of presence probability (between 0 and 1) for *H. planatus*, projected under environmental conditions for the entire Southern Ocean (A), with focus on southern South America, the Scotia Arc and the Western Antarctic Peninsula (WAP) (B), the WAP alone (C), and the Kerguelen Plateau (D). Black pixels correspond to extrapolation areas for which predictions are not reliable and were removed from projection (according to the Multivariate Environmental Similarity Surface index, MESS). IPCC RCP 2.6 climate scenario for 2050 (Fig. 8.I), IPCC RCP 2.6 climate scenario for 2100 (Fig. 8.II), IPCC RCP 8.5 climate scenario for 2050 (Fig. 8.III) and IPCC RCP 8.5 climate scenario for 2100 (Fig. 8.IV).

209x297mm (300 x 300 DPI)