



**HAL**  
open science

## **Outcome of acute hypoxaemic respiratory failure: Insights from the LUNG SAFE Study**

Tái Pham, Antonio Pesenti, Giacomo Bellani, Gordon David Rubenfeld, Eddy Fan, Guillermo Bugedo, José Ángel A. Lorente, Antero Do Vale Fernandes, Frank M.P. van Haren, Alejandro Bruhn, et al.

### ► **To cite this version:**

Tái Pham, Antonio Pesenti, Giacomo Bellani, Gordon David Rubenfeld, Eddy Fan, et al.. Outcome of acute hypoxaemic respiratory failure: Insights from the LUNG SAFE Study. *European Respiratory Journal*, 2021, 57 (6), 10.1183/13993003.03317-2020 . hal-03287329

**HAL Id: hal-03287329**

**<https://hal.science/hal-03287329>**

Submitted on 25 Oct 2021

**HAL** is a multi-disciplinary open access archive for the deposit and dissemination of scientific research documents, whether they are published or not. The documents may come from teaching and research institutions in France or abroad, or from public or private research centers.

L'archive ouverte pluridisciplinaire **HAL**, est destinée au dépôt et à la diffusion de documents scientifiques de niveau recherche, publiés ou non, émanant des établissements d'enseignement et de recherche français ou étrangers, des laboratoires publics ou privés.



## Outcome of Acute Hypoxaemic Respiratory Failure. Insights from the Lung Safe Study

Journal:	<i>European Respiratory Journal</i>
Manuscript ID	ERJ-03317-2020.R1
Manuscript Type:	Original Article
Date Submitted by the Author:	n/a
Complete List of Authors:	<p>Pham, Tai; St Michael's Hospital, Keenan Research Centre; University of Toronto, Interdepartmental Division of Critical Care Medicine            Bellani, Giacomo; University of Milan-Bicocca, Department of Experimental Medicine; San Gerardo Hospital, Department of Perioperative Medicine and Intensive Care            Pesenti, Antonio; Ospedale Maggiore Policlinico, Anesthesia, Critical Care and Emergency            Rubinfeld, Gordon; University of Toronto Faculty of Medicine, Critical Care Medicine            Fan, Eddy; University of Toronto Faculty of Medicine, Critical care Medicine            Budgedo, Guillermo; Universidad de Santiago de Chile            Lorente, Jose; Hospital Universitario de Getafe, Critical Care; CIBERES            Fernandes, Antero; Hospital de Almada            van Haren, Frank; Australian National University, Medical School; University of Canberra Faculty of Health,            Rios, Fernando; Hospital Nacional Profesor A Posadas,            Esteban, Andres; hospital Universitario de Getafe, Intensive Care Service            Gattinoni, Luciano; Universitätsmedizin Gottingen Zentrum Innere Medizin, Department of Anesthesiology and Intensive Care; Fondazione IRCCS Ca' Granda, Ospedale Maggiore Policlinico, Università degli Studi di Milano, Dipartimento di Fisiopatologia Medico-Chirurgica e dei Trapianti            Larsson, Anders; Akademiska sjukhuset, Hedenstierna Laboratory            McAuley, Danny; Queen's University Belfast, Centre for Infection and Immunity            Ranieri, Marco; Alma Mater Studiorum – Università di Bologna Policlinico di Sant'Orsola, Anestesiologia e Terapia Intensiva Polivalente            Thompson, Boyd; Massachusetts General Hospital, Pulmonary and Critical Care Medicine            Wrigge, Hermann; Halle Hospital            Bruhn, Alejandro; Universidad de Santiago de Chile            Brochard, Laurent; University of Toronto Faculty of Medicine, Keenan Research Centre, Li Ka Shing Knowledge Intitute; St Michael's Hospital,            Laffey, John; NUI Galway, Anaesthesia &amp; Critical Care Medicine</p>
Key Words:	acute respiratory distress syndrome, acute respiratory failure, Mechanically ventilated patients, epidemiological study

1  
2  
3  
4  
5  
6  
7  
8  
9  
10  
11  
12  
13  
14  
15  
16  
17  
18  
19  
20  
21  
22  
23  
24  
25  
26  
27  
28  
29  
30  
31  
32  
33  
34  
35  
36  
37  
38  
39  
40  
41  
42  
43  
44  
45  
46  
47  
48  
49  
50  
51  
52  
53  
54  
55  
56  
57  
58  
59  
60

# Outcome of Acute Hypoxaemic Respiratory Failure. Insights from the Lung Safe Study

Tài Pham; Antonio Pesenti; Giacomo Bellani; Gordon Rubenfeld; Eddy Fan, Guillermo Bugedo; José Angel Lorente; Antero do Vale Fernandes; Frank Van Haren; Alejandro Bruhn; Fernando Rios; Andres Esteban, Luciano Gattinoni; Anders Larsson; Daniel F. McAuley; Marco Ranieri; B. Taylor Thompson; Hermann Wrigge; Laurent J. Brochard\* and John G. Laffey\* on behalf of the LUNG SAFE Investigators and the European Society of Intensive Care Medicine Trials Group

## \*co-senior authors

3384 words – 3 tables – 3 figures  
This article has an online data supplement.

Laurent J. Brochard affiliations:

- Keenan Centre for Biomedical Research, Li Ka Shing Knowledge Institute, St Michael's Hospital, Toronto, Ontario, Canada.
- Interdepartmental Division of Critical Care Medicine, University of Toronto, Toronto, Ontario, Canada.

**Running head:** Outcomes of hypoxaemic respiratory failure

**Correspondence to:** Laurent J. Brochard, M.D., Li Ka Shing Knowledge Institute, 209 Victoria Street, Room 4-08, Toronto, ON, M5B 1T8 Canada.

**E-mail:** [Laurent.brochard@unityhealth.to](mailto:Laurent.brochard@unityhealth.to)

## Abstract

**Background:** The current incidence and outcome of patients with acute hypoxaemic respiratory failure requiring mechanical ventilation in intensive care unit are unknown, especially for patients not meeting criteria for acute respiratory distress syndrome (ARDS).

**Methods:** An international, multicentre, prospective cohort study of patients presenting with hypoxemia early in the course of mechanical ventilation, conducted during four consecutive weeks in the winter of 2014 in 459 ICUs from 50 countries (LUNG SAFE). Patients were enrolled with  $\text{PaO}_2/\text{FiO}_2 \leq 300$  mmHg, new pulmonary infiltrates and need for mechanical ventilation with a positive end-expiratory pressure (PEEP) of at least 5 cm  $\text{H}_2\text{O}$ . ICU prevalence, causes of hypoxemia, hospital survival, factors associated with hospital mortality were measured. Patients with unilateral versus bilateral opacities were compared.

**Findings:** 12,906 critically ill patients received mechanical ventilation and 34.9% with hypoxaemia and new infiltrates were enrolled, separated into ARDS (69.0%), unilateral infiltrate (22.7%) and congestive heart failure (8.2%, CHF). The global hospital mortality was 38.6%. CHF patients had a mortality comparable to ARDS (44.1% vs. 40.4%). Patients with unilateral-infiltrate had lower unadjusted mortality but similar adjusted mortality than ARDS. The number of quadrants on chest imaging was associated with an increased risk of death. There was no difference in mortality comparing patients with unilateral-infiltrate and ARDS with only 2 quadrants involved.

### Interpretation

More than one third of the patients receiving mechanical ventilation have hypoxaemia and new infiltrates with an hospital mortality of 38.6%. Survival is dependent on the degree of pulmonary involvement whether or not ARDS criteria are reached.

Funding: European Society of Intensive Care Medicine

248 words.

### Trial registration

1  
2  
3 ClinicalTrials.gov Identifier: NCT02010073  
4

5 Key words: cardiac insufficiency; pneumonia; aspiration;  
6  
7

8  
9 **Take Home Message**  
10

11  
12 Patients with hypoxemic respiratory failure represent more than a third of patients  
13 requiring mechanical ventilation and their mortality is close to 40%. Mortality is similar for  
14 ARDS and for unilateral infiltrate when only two quadrants are involved on the chest X-Ray.  
15 This could justify rediscussing the current definition of ARDS.  
16  
17  
18  
19  
20  
21  
22  
23  
24  
25  
26  
27  
28  
29  
30  
31  
32  
33  
34  
35  
36  
37  
38  
39  
40  
41  
42  
43  
44  
45  
46  
47  
48  
49  
50  
51  
52  
53  
54  
55  
56  
57  
58  
59  
60

## Introduction

Acute hypoxaemic respiratory failure is a leading cause of admission and need for mechanical ventilation in Intensive Care Units (ICU). Studies have usually focused on patients meeting the criteria for Acute Respiratory Distress Syndrome (ARDS) [1–3]. There are limited data on hypoxaemic patients who do not fulfil the definition of ARDS [4–6]. A large prospective observational study in Sweden, Denmark, and Iceland, had examined patients with acute respiratory failure requiring mechanical ventilation regardless of the level of  $\text{FiO}_2$ , and found more than 20 years ago a mortality rate around 40% with or without ARDS [5].

Hypoxaemic patients without ARDS, can have cardiac failure or fluid overload, or only unilateral infiltrates on chest imaging. These patients are excluded from epidemiological studies addressing ARDS and exploring this population is important. First, the definition of ARDS is subject to variations into clinicians' interpretations such as the relative contribution of heart failure or fluid overload [7], and/or the analysis of chest X-ray for the diagnosis of bilateral pulmonary infiltrates [8–10]. Previous studies have shown that bilateral involvement in community-acquired pneumonia is an independent risk factor for mortality [11, 12]. Understanding the differential impact of unilateral versus bilateral airspace disease is also important because they may overlap with ARDS. In addition it is essential to determine whether these patients can benefit from lung protective approaches like those used for patients with ARDS [13, 14]. Although the underlying biological mechanisms may differ across these different groups, the symptomatic management of the lungs, e.g., ventilator settings, sedation, proning, could be comparable. Therefore, understanding the behaviour of hypoxaemic 'non ARDS' ventilated patients might optimize the management strategy of these acutely hypoxaemic critically ill patients and may help to better understand the limits of the current ARDS definition.

The Large Observational Study to Understand the Global Impact of Severe Acute Respiratory Failure (LUNG SAFE) is the most recent and largest international prospective cohort of hypoxaemic mechanically ventilated patients with new infiltrates [1]. In a pre-specified analysis, we set out to describe the global burden and compare the different sub-groups of hypoxaemic patients with new infiltrates: those who fulfil the criteria for the

Berlin definition of ARDS; patients whose failure was entirely explained by cardiac failure or fluid overload as declared by clinicians; and patients with unilateral infiltrate on the chest imaging.

## **MATERIALS AND METHODS**

### **Study Design**

LUNG SAFE (ClinicalTrials.gov identifier NCT02010073) was a prospective multicentre observational study conducted in 459 ICUs from 50 different countries. All participating ICUs obtained ethics committee approval and patient consent or ethics committee waiver of consent, depending on local regulations. National coordinators and site investigators were responsible for obtaining ethics committee approval and for ensuring data integrity and validity. Participating centres screened all newly admitted patients for four consecutive winter weeks (February-March 2014 in the Northern hemisphere, June-August 2014 in the Southern hemisphere). A total of 4,499 patients had acute hypoxaemic respiratory failure defined by a  $\text{PaO}_2/\text{FIO}_2 \leq 300$  mmHg, new pulmonary infiltrates on chest imaging, and requirement of ventilator support with a positive end-expiratory pressure (PEEP)  $\geq 5$  cm  $\text{H}_2\text{O}$ . The number of quadrants involved (chest X-ray or CT scan) was reported by clinicians. The detailed methods and design of LUNG SAFE have been previously described [1]; some results of this study have been reported in abstract form [15].

### **Participants and definitions**

Patients were divided into 3 groups:

- Acute Respiratory Distress Syndrome (ARDS): patients fulfilling the Berlin criteria for ARDS [4].
- Congestive Heart Failure (CHF): patients in whom respiratory failure was considered by clinicians to be fully explained by cardiac failure or fluid overload.
- Unilateral-infiltrate: patients fulfilling Berlin definition for ARDS criteria except that they presented with only unilateral infiltrates on chest imaging.

To ensure homogeneity in the analysis, we kept patients with early onset (first 48 hours post ICU admission) for meeting criteria, not treated with ECMO in the first 48h, and not admitted to another ICU for >2 days before being transferred to the participating ICU.



## Statistical analyses

Continuous variables are reported as mean  $\pm$  SD or median (interquartile range [IQR]), and categorical variables as count and proportion. Comparisons of proportions were made using Chi-square and Fisher exact tests. Three groups were compared (unilateral-infiltrate, ARDS and CHF), and continuous variables were compared using ANOVA or Kruskal-Wallis test, as appropriate. We included geo-economic grouping in multivariable analyses, using the 2016 World Bank country classification [16]. When global comparisons were statistically significant, pairwise comparisons adjusting for multiple testing were performed using Tukey or Benjamini and Hochberg method.

Prognostic risk factors from previous literature and variables found to be associated in bivariate analysis with a P value  $\leq 0.20$  were entered in stepwise (forward and backward) multivariable logistic regression analyses with significance  $\alpha$  levels of 0.05 or less for retention.

As basic analysis of chest imaging (quadrants involved) was an important focus, this component was introduced in mortality models using either: 1) considering bilateral opacities as a dichotomous variable; 2) considering the number of quadrants involved as an ordinal variable. To better examine the specific impact of bilateral versus unilateral opacities, mortality analyses were repeated restricting the population to patients having two quadrants involved whether they were unilateral (i.e. non-ARDS) or bilateral (i.e. ARDS).

Multicollinearity was evaluated with variance inflation factors for each variable and ruled out if the variance inflation factor was  $< 4$  (relatively conservative). The results are shown as odds ratios with 95% C. Models' performance was assessed using the Hosmer–Lemeshow goodness-of-fit test statistic. We used a Kaplan–Meier analysis to estimate the likelihood of hospital mortality or invasive ventilation discontinuation within 90 days of onset of acute respiratory failure.

No statistical power calculation was conducted before the study, and sample size was based on available data. For all numerical variables, outliers were assessed and corrected by contacting site investigators if needed. The remaining outliers were plausible values that

1  
2  
3 were kept in the analysis. No assumptions were made for missing data, and we followed the  
4 Strengthening the Reporting of Observational Studies in Epidemiology (STROBE)  
5 recommendations [17]. Statistical analyses were done with R (version 3.5.5, [http://cran.r-](http://cran.r-project.org)  
6 [project.org](http://cran.r-project.org), accessed August 2019). All P values were two-sided, and values <0.05 were  
7 deemed statistically significant. Data are presented unadjusted unless specifically stated.  
8 We assumed that patients discharged alive from hospital before 90 days were alive on day  
9 90.  
10  
11  
12  
13  
14  
15  
16  
17  
18  
19  
20  
21  
22  
23  
24  
25  
26  
27  
28  
29  
30  
31  
32  
33  
34  
35  
36  
37  
38  
39  
40  
41  
42  
43  
44  
45  
46  
47  
48  
49  
50  
51  
52  
53  
54  
55  
56  
57  
58  
59  
60

## RESULTS

### ***Prevalence and outcomes of hypoxaemic patients under Mechanical Ventilation***

A total of 29,144 patients were admitted to participating ICUs during the LUNG SAFE study and 12,906 patients received mechanical ventilation. Among them, 4,499 patients (15.5% of the total admissions, and 34.9% of hypoxaemic patients requiring mechanical ventilation) fulfilled our criteria for hypoxaemia. The 4,499 patients with acute hypoxemia under mechanical ventilation represented 0.63 cases/ICU bed over 4 weeks.

N=3,834 (more than 85%) had data available in the two first days (Figure 1). Patients receiving NIV or under early ECMO are shown in Figure 1 but they were not included in the subsequent analysis. Most patients (N=3,176; 83%) received invasive ventilation comprising 2193 (69.0%) who fulfilled all the Berlin criteria for ARDS, 261 (8.2%) with CHF and 722 (22.7%) with only unilateral-infiltrate, of whom 143 (19.8% of the latter group) developed full ARDS criteria (bilateral images) later during their ICU stay. The global hospital mortality of these patients was 38.6%.

### ***Patients with CHF***

Patients with congestive heart failure were older, presented more frequent comorbidities such as diabetes, chronic renal failure or chronic cardiac failure (NYHA class 3 or 4), and less frequently chronic obstructive pulmonary disease (COPD) or immunocompromised status compared to patients with ARDS (Table 1 and e-Table 1). Many baseline characteristics were similar to patients with ARDS (SOFA score, arterial pH, PaO<sub>2</sub>/FiO<sub>2</sub>) but ventilatory parameters indicated lower PaCO<sub>2</sub>, PEEP and peak inspiratory pressure (PIP) (Tables 1 and 2). They received higher tidal volumes, lower respiratory rates, and lower standardized minute ventilation (Table 2). Mortality was 44.1 %, not different from mortality of patients with ARDS (40.4%). Survivors from CHF had shorter durations of mechanical ventilation, length of stay in the ICU and in the hospital than ARDS (e-table 1).

### ***Patients with unilateral-infiltrate***

#### *Characteristics*

Compared to patients with ARDS, the 722 patients with unilateral-infiltrate had many similar characteristics. COPD was more frequent but other comorbidities did not differ

(Table 1 and e-Table 1). The three main risk factors for hypoxemia were similar in patients with unilateral-infiltrate and with ARDS, namely pneumonia, gastric aspiration and extrapulmonary sepsis. Aspiration was more frequent in patients in unilateral-infiltrate while pneumonia and extra-pulmonary sepsis rates were more prevalent in ARDS.

Patients with unilateral-infiltrate had lower baseline respiratory and systemic illness severity than patients with ARDS, lower SOFA and non-pulmonary SOFA scores, and higher arterial pH, PaO<sub>2</sub>/FiO<sub>2</sub> ratio and lower PIP (Table 1). Plateau pressure (P<sub>plat</sub>) and driving pressure (reported in only 31.1% of the patients), were lower in patients with unilateral-infiltrate than in ARDS (Table 2, e-table 1 and Figure 2).

### *Management*

Patients with unilateral-infiltrate received higher tidal volumes but lower PEEP, FiO<sub>2</sub>, respiratory rate and standardized minute ventilation than patients with ARDS (Table 2 and figure 2).

'Protective' ventilation, defined as receiving tidal volume lower than 8 mL/kg PBW and a plateau pressure lower than 30 cmH<sub>2</sub>O (when available) was delivered at a similar rate in patients with unilateral-infiltrate and in patients with ARDS (63% vs 67%, P=0.250; e-Figure 1). The use of adjunctive therapies was low in the whole population but was higher in patients with ARDS than in unilateral-infiltrate patients (e-Table 2).

### *Unadjusted outcomes*

Overall, unadjusted ICU and hospital mortality were lower in patients with unilateral-infiltrate than in patients with ARDS (26% vs. 35% and 35% vs. 40%) (Table 2, e-Table 1 and Figure 3, panel A) and patients with unilateral-infiltrate had more invasive-ventilation free days than patients with ARDS (Table 2). In an analysis confined to survivors, ICU stay was shorter in patients with unilateral-infiltrate than in patients with ARDS, but hospital length of stay was similar.

## ***Impact of the number of quadrants involved (patients without CHF)***

### *1) Risk factors for death in unilateral-infiltrate and ARDS*

Comparison of survivors vs. non-survivors is shown in e-Table 3. Multi-variable analysis of the factors contributing to outcome in these patients with ARDS or unilateral-infiltrate adjusting on main confounders demonstrated that the presence of bilateral opacities on the chest imaging (i.e. ARDS) was an independent risk factor for death (e-Table

1  
2  
3 4). A similar model adjusting on the same confounders using the number of quadrants  
4 involved instead of the bilateral opacities characteristics showed that having 3 or 4 involved  
5 quadrants was significantly associated with a higher risk of hospital mortality. Independent  
6 risk factors for mortality also included age, immunocompromised status, chronic liver  
7 failure, higher extra-pulmonary SOFA score, concomitant cardiac failure, medical indication  
8 or trauma, and location in a middle-income country, higher respiratory rate and peak  
9 inspiratory pressure and lower pH. Conversely, higher body mass index, higher PEEP, drug  
10 overdose as the cause of respiratory failure were associated with better outcomes (e-Table  
11 4). The multivariable analysis of factors associated with hospital mortality restricted to  
12 patients with unilateral-infiltrate found similar results, although with less significant  
13 variables (e-table 5).

#### 23 2) *Patients with infiltrates in only two quadrants of chest X-ray*

24 Of 1094 patients with two quadrant infiltrates on CXR, 172 (16%) had unilateral  
25 opacities (unilateral infiltrate), while 922 (84%) had bilateral opacities (ARDS) (Table 3).  
26 Unilateral-infiltrate patients had more immunosuppression, gastric aspiration, contusions,  
27 and less extra-pulmonary sepsis, but most of other patients' characteristics, gas exchange  
28 variables and ventilator management were identical. The unadjusted mortality rates and  
29 other outcomes were similar between groups (Figure 3, panel B). In a multivariable analysis  
30 adjusting on the same covariates as the model performed for the whole population, the  
31 presence of bilateral (vs. unilateral) opacities was not associated with mortality (e-Table 6).

#### 32 3) *Development of ARDS in patients presenting initially with unilateral-infiltrate*

33 Of patients with unilateral-infiltrate on day 1 and 2, 143 (20%) subsequently  
34 developed ARDS. Patients who developed bilateral infiltrates were more severely ill than  
35 patients who never developed ARDS as evidenced by lower PaO<sub>2</sub>/FIO<sub>2</sub> ratio in the first two  
36 days; higher hemodynamic SOFA score; lower pH; and higher PIP. Patients who developed  
37 ARDS had similar mortality rates but longer stays and duration of MV (e-Table 7). In  
38 multivariable analyses adjusting for age, SOFA score, pH and PF ratio, only PIP was  
39 associated with the evolution towards ARDS (e-Table 8).

## 40 Discussion

1  
2  
3 The LUNG SAFE study shows that slightly more than a third of patients requiring  
4 mechanical ventilation in the participating ICU have PaO<sub>2</sub>/FIO<sub>2</sub> ratio ≤300 mmHg. Patients  
5 with CHF receiving mechanical ventilation have a mortality rate comparable to patients with  
6 ARDS. Patients with unilateral-infiltrate have lower severity of illness than patients with  
7 ARDS and the extent of the infiltrates on the chest imaging is associated with mortality. The  
8 outcome of patients with two quadrant involvement on the chest X-ray is similar whether  
9 the distribution is bilateral (i.e. qualifying them for ARDS) or unilateral. Importantly, in  
10 patients with unilateral infiltrate, peak pressure is the only independent risk factor for  
11 developing ARDS.  
12  
13

14  
15  
16 More than 15% of all admissions and more than one third of patients who received  
17 ventilation in this large international observational study display hypoxaemia with new  
18 infiltrates. They have a high mortality rate. This condition as a whole has an important  
19 impact on health-care systems worldwide, larger than ARDS alone [1, 18, 19]. While the  
20 subgroup with ARDS is well characterized and studied [1, 4], the population not fulfilling  
21 ARDS criteria is under-appreciated as a clinical entity and incidence and outcomes have not  
22 been often reported to date [5, 6, 20, 21]. The lack of consensual definition and the  
23 heterogeneity of this group are potential explanations. In addition, ARDS is considered as an  
24 archetypal condition in the critically ill and has dominated the research agenda [22–26].  
25  
26

27  
28  
29 Few data are available for this category of patients. In a prospective study in  
30 Sweden, Denmark, and Iceland Luhr et al examined the prevalence and 90-d mortality of  
31 acute respiratory failure (ARF), defined as intubation and mechanical ventilation ≥ 24 h, as  
32 well as acute lung injury (ALI) and ARDS based on American-European consensus definition  
33 [5]. They did not use any oxygenation criteria for ARF, making comparisons difficult with our  
34 data: they included 1231 ARF patients, 287 ALI and 221 ARDS. Ninety-day mortality was 41%  
35 for all ARF, 42% for ALI and 41% for ARDS. The severity of illness and any chronic disease  
36 (except COPD) was more important for mortality and outcome than the definitions of ARDS  
37 if the patient was invasively ventilated more than 24 hours (defined as ARF). Vincent et al  
38 reported the results of a substudy to validate the sequential organ failure assessment score  
39 looking at patients having PaO<sub>2</sub>/FiO<sub>2</sub> below 200 mmHg and mechanical ventilation.[6] They  
40 reported a prevalence of 54% with an ICU mortality of 34%. In the present study the number  
41 of quadrants seems to be a strong and noteworthy marker of severity of illness independent  
42 of whether it is defined as ARDS. This was an unexpected finding given the low  
43  
44  
45  
46  
47  
48  
49  
50  
51  
52  
53  
54  
55  
56  
57  
58  
59  
60

1  
2  
3 reproducibility of X-Ray imaging in intensive care [27]. The classification based on the  
4 number of quadrants with alveolar consolidation is, however, ultra-simple and may have a  
5 better reproducibility than more specific description of the type of infiltrates. This  
6  
7 classification was one of the cardinal features of the Lung Injury Score, used for many years  
8  
9 [28]. In our study, patients presenting with ARDS and unilateral-infiltrate had quite similar  
10  
11 profiles.  
12

13  
14 Comorbidities and main reasons for hypoxemia were comparable, although patients  
15  
16 with aspiration were more frequent in unilateral injury. Patients with unilateral-infiltrate  
17  
18 received slightly higher tidal volumes and lower PEEP than patients with ARDS. After  
19  
20 adjustment, a similarly high mortality in patients with unilateral-infiltrate was observed  
21  
22 compared to patients with ARDS and the same number of quadrants involved. This suggests  
23  
24 that the extent of lung involvement is the predominant factor influencing outcome, rather  
25  
26 than the bilateral characteristic. There was a stepwise increase in mortality when the  
27  
28 number of quadrants involved raised from 2 to 4, and patients with 2 quadrants whether  
29  
30 unilateral or bilateral had the same outcomes. Therefore, a very simple approach using  
31  
32 quadrants confirmed previous findings (such as the general impact of unilateral vs bilateral  
33  
34 on outcome) but also found an association between the number of quadrants and outcome,  
35  
36 which has a biological rationale. The number of quadrants involved may grossly reflect the  
37  
38 amount of non-aerated lung. The important point raised by our study, therefore, is not to  
39  
40 emphasize the importance of the chest X ray, but at the opposite to suggest that it may be  
41  
42 debatable to continue keeping the actual current definition of the need for bilateral  
43  
44 infiltrates for defining ARDS.

45  
46 Regarding the ARDS definition, our data confirm that patients with unilateral-  
47  
48 infiltrate are not fundamentally different in terms of poor outcome from patients with ARDS  
49  
50 [5]. They also have similar underlying risk factors, comorbidity profiles, are managed  
51  
52 similarly. Importantly peak pressure was the only risk factor for developing secondary ARDS  
53  
54 in patients with unilateral infiltrate. This reinforces the need for a protective ventilation in  
55  
56 these patients. The need of subdividing these patients into ARDS and unilateral-infiltrate, at  
57  
58 least based on the current clinical criteria, can be rediscussed depending on what is studied.  
59  
60 Given the lack of knowledge regarding this condition, unilateral patients might be enrolled  
in studies of ARDS, perhaps with stratification based on the number of quadrants involved  
to understand if similar management approaches should be used. The pathophysiology or

1  
2  
3 biological mechanisms differ but the management may not be so different regarding, for  
4 instance, the ventilation of a baby lung. High PIP was the main risk factor for developing  
5 ARDS in patients with unilateral-infiltrate. The poor outcomes of this population justify  
6 further research.  
7  
8  
9

10           Physiological studies looking at unilateral versus bilateral injury are needed to  
11 understand the impact of ventilator settings. For instance, the respective effects of PEEP or  
12 large tidal volumes in the presence of asymmetrical injury is an important question to  
13 address. Our data suggest that the same ventilator parameters seem to influence outcome  
14 in unilateral or bilateral lung injury. The failure of current clinical criteria to meaningfully  
15 subgroup hypoxaemic patients underlines the need to explore alternative classification  
16 approaches, including phenotyping based on biologic/immunologic profiles [29, 30], if  
17 specific treatments can be applied according to these phenotypes [31]. In our study the  
18 basic clinical, though likely imperfect, classification of the number of quadrants involved had  
19 a strong prognostic value. Reexamining the impact of the number of quadrants may help to  
20 determine whether this parameter could be included as a severity criterion in the ARDS  
21 definition or for a definition including all hypoxaemic patients.  
22  
23  
24  
25  
26  
27  
28  
29  
30  
31

32           Patients with CHF receive a different therapeutic management approach compared  
33 to other types of respiratory failure. Although data are scarce, mechanical ventilation has  
34 always been associated with a poor prognosis [32, 33]. CHF patients had a shorter duration  
35 of support but had a similar mortality than patients with ARDS, again in line with Luhr et al  
36 [5]. One study compared outcomes of patients with cardiogenic pulmonary oedema to  
37 patients with ARDS [34]. In this retrospective study, authors found a 4 fold-increased risk of  
38 hospital mortality for patients with ARDS as compared to patients with cardiogenic  
39 pulmonary oedema but definitions differed from ours (limited to need for mechanical  
40 ventilation and a PEEP of  $\geq 5$ ). This population of patients with cardiac failure may need  
41 more specific research attention. One could question the accuracy of the clinical  
42 classification of CHF by investigators in Lung SAFE. Differentiating ARDS from pure cardiac  
43 failure can be challenging [7, 35, 36] especially since the Berlin definition clearly states that  
44 patients could present with ARDS and concomitant heart failure [4] Patients were classified  
45 as CHF in the present study when hypoxemia was fully explained by cardiac failure or fluid  
46 overload per the treating clinician. This analysis reflects clinical practice and the way  
47 patients are enrolled in or excluded from clinical trials.  
48  
49  
50  
51  
52  
53  
54  
55  
56  
57  
58  
59  
60



1  
2  
3 Our study has the limitations of an observational design with the risk of unmeasured  
4 confounding factors. Regarding quality of data collection, all numerical variables were  
5 checked, outliers were detected and queries to confirm their values were sent to  
6 investigators. This ensured quality of our dataset and explains the low number of missing  
7 data, mostly reflecting lack of clinicians' monitoring of certain variables (e.g., plateau  
8 pressure). Both the results of chest X rays and CT scans were used by clinicians for the  
9 diagnosis of ARDS and the number of quadrants but the images were not systematically  
10 validated or reviewed by independent radiologists. For performing the Kaplan Meier curves  
11 we considered hospital discharge equal to outcome at 90 days, which is a simplification.  
12 Some epidemiological data suggest that hospital outcome and 90-day mortality are very  
13 similar for this population. Patients classified in the CHF group were patients for which the  
14 clinicians considered that the respiratory failure was fully explained by cardiac failure or  
15 fluid overload. Patients with respiratory infection and concomitant fluid overload were  
16 considered in the ARDS or the unilateral-infiltrate groups. It is known that chest X ray  
17 appearance can worsen after fluid administration. We do not have this granularity of  
18 information as this is the case in all trials in ARDS. In general, we don't have systematic  
19 validation of the chest X-Ray by independent radiologists.  
20  
21  
22  
23  
24  
25  
26  
27  
28  
29  
30  
31  
32  
33  
34  
35  
36

## 37 Conclusion

38 Mechanically ventilated patients with hypoxaemia and new infiltrate represent a  
39 high global burden of illness, affecting one third of the patients receiving ventilation in the  
40 ICU with a mortality close to 40%. Patients with unilateral-infiltrate have a high mortality  
41 comparable to patients with ARDS of similar severity. Regarding outcome, the global extent  
42 of lung involvement seems more important than the unilateral vs. bilateral distribution of  
43 the lung opacities. These findings emphasize the need for greater attention to patients with  
44 unilateral-infiltrate in future studies.  
45  
46  
47  
48  
49  
50  
51  
52  
53  
54  
55  
56  
57  
58  
59  
60

## Collaborators= Lung Safe investigators

**LUNG SAFE Steering Committee:** Antonio Pesenti, M.D., John G. Laffey, M.D., Ph.D., Laurent Brochard, M.D., Andres Esteban, M.D., Luciano Gattinoni, M.D., F.R.C.P., Frank van Haren, M.D., Ph.D., Anders Larsson, M.D., Ph.D., Daniel F. McAuley, M.D., Ph.D., Marco Ranieri, M.D., Gordon Rubenfeld, M.D., M.Sc., B. Taylor Thompson, M.D., Hermann Wrigge, M.D., Ph.D., Arthur S. Slutsky, M.D.

**LUNG SAFE executive Committee:** John G. Laffey, Giacomo, Bellani, Tàì Pham, Eddy Fan

**LUNG SAFE national Coordinators:** Argentina: Fernando Rios; Australia/New Zealand: Frank Van Haren; Belgium: Thierry Sottiaux, Pieter Depuydt; Bolivia: Fredy S. Lora; Brazil: Luciano Cesar Azevedo; Canada: Eddy Fan; Chile: Guillermo Bugedo; China: Haibo Qiu; Colombia: Marcos Gonzalez; Costa Rica: Juan Silesky; Czech Republic: Vladimir Cerny; Denmark: Jonas Nielsen; Ecuador: Manuel Jibaja; France: Tàì Pham; Germany: Hermann Wrigge; Greece: Dimitrios Matamis; Guatemala: Jorge Luis Ranero; India: Pravin Amin; Iran: S.M. Hashemian; Ireland: Kevin Clarkson; Italy: Giacomo Bellani; Japan: Kiyoyasu Kurahashi; Mexico: Asisclo Villagomez; Morocco: Amine Ali Zeggwagh; Netherlands: Leo M. Heunks; Norway: Jon Henrik Laake; Philippines: Jose Emmanuel Palo; Portugal: Antero do Vale Fernandes; Romania: Dorel Sandesc; Saudi Arabia: Yaasen Arabi; Serbia: Vesna Bumbasierevic; Spain: Nicolas Nin, Jose A. Lorente; Sweden: Anders Larsson; Switzerland: Lise Piquilloud; Tunisia: Fekri Abroug; United Kingdom: Daniel F. McAuley, Lia McNamee; Uruguay: Javier Hurtado; United States: Ed Bajwa; Venezuela: Gabriel Démpaire

### LUNG SAFE Site investigators (by country):

**Albania:** Uhc Mother Theresa, Tirana: Hektor Sula, Lordian Nunci; University Hospital Shefqet Ndroqi, Tirana: Alma Cani

**Argentina:** Clinica de Especialidades, Villa Maria: Alan Zazu; Hospital Julio C. Perrando, Resistencia: Christian Dellera, Carolina S. Insaurralde; Sanatorio Las Lomas, San Isidro, Buenos Aires: Risso V. Alejandro; Sanatorio de La Trinidad San Isidro, San Isidro: Julio Daldin, Mauricio Vinzio; Hospital Español de Mendoza, Godoy Cruz-Mendoza: Ruben O. Fernandez; Hospital del Centenario, Rosario: Luis P. Cardonnet, Lisandro R. Bettini; San Antonio, Gualeguay, Entre Rios: Mariano Carboni Bisso, Emilio M. Osman; Cemic, Buenos Aires: Mariano G. Setten, Pablo Lovazzano; Hospital Universitarario Austral, Pilar: Javier Alvarez, Veronica Villar; Hospital Por + Salud, Pami Dr. Cesar Milstein, Buenos Aires: Norberto C. Pozo, Nicolas Grubissich; Sanatorio Anchorena, Buenos Aires: Gustavo A. Plotnikow, Daniela N. Vasquez; Sanatorio de La Trinidad Mitre, Buenos Aires: Santiago Ilutovich, Norberto Tiribelli; Hospital Luis agomaggiore, Mendoza: Ariel Chena, Carlos A. Pellegrini; Hospital Interzonal General de Agudos, San Martín, La Plata: María G. Saenz, Elisa Estenssoro; Hospital Misericordia, Cordoba: Matias Brizuela, Hernan Gianinetto; Sanatorio Juncal, Temperley: Pablo E. Gomez, Valeria I. Cerrato; Hospital D.F. Santojanni, Buenos Aires: Marco G. Bezzi, Silvina A. Borello; Hospital Alejandro Posadas, Buenos Aires: Flavia A. Loiacono, Adriana M. Fernandez

**Australia:** St. Vincent's Hospital, Sydney: Serena Knowles, Claire Reynolds; St. George Public Hospital, Kogarah: Deborah M. Inskip, Jennene J. Miller; Westmead Hospital, Westmead: Jing Kong, Christina Whitehead; Flinders Medical Center, Bedford Park: Shailesh Bihari; John Hunter Hospital, Newcastle: Aylin Seven, Amanda Krstevski; Canberra Hospital, Garran: Helen J. Rodgers, Rebecca T. Millar; Calvary Mater Newcastle, Waratah: Toni E. Mckenna, Irene M. Bailey; Cabrini Hospital, Melbourne: Gabrielle C. Hanlon; Liverpool Hospital, Liverpool: Anders Aneman, Joan M. Lynch; Coffs Harbour Health Campus, Coffs Harbour: Raman Azad, John Neal; Sir Charles Gairdner Hospital, Nedlands: Paul W. Woods, Brigit L. Roberts; Concord Hospital, Concord: Mark R. Kol, Helen S. Wong

**Austria:** General Hospital of Vienna/Medical University of Vienna, Vienna: Katharina C. Riss, Thomas Staudinger

**Belgium:** Cliniques Universitaires St. Luc, Université Catholique de Louvain, Brussels: Xavier Wittebole, Caroline Berghe; Center Hospitalier Universitaire DinantGodinne, Yvoir: Pierre A. Bulpa, Alain M. Dive; Acut Ziekenhuis Sint Augustinus Veurne, Veurne: Rik Verstraete, Herve Lebbinck; Ghent University Hospital, Ghent: Pieter Depuydt, Joris Vermassen; University Hospitals Leuven, Leuven: Philippe Meersseman, Helga Ceunen

**Brazil:** Hospital Renascentista, Pouso Alegre: Jonas I. Rosa, Daniel O. Beraldo; Vitoria Apart Hospital, Serra: Claudio Piras, Adenilton M. Rampinelli; Hospital Das Clinicas, São Paulo: Antonio P. Nassar, Jr.; Hospital Geral Do Grajaù, São Paulo: Sergio Mataloun, Marcelo Moock; Evangelical Hospital, Cachoeiro de Itapemirim/Espírito Santo: Marlus M. Thompson, Claudio H. Gonçalves; Hospital Moinhos de Vento, Porto Alegre: Ana Carolina P. Antônio, Aline Ascoli; Hospital Alvorada Taguatinga, Taguatinga: Rodrigo S. Biondi, Danielle C. Fontenele; Complexo Hospitalar Mngabeira Tarcisio Burity, Joao Pessoa: Danielle Nobrega, Vanessa M. Sales

**Brunei:** Raja Isteri Pengiran Anak Saleha Hospital, Bandar Seri Begawan: Ahmad Yazid Bin HJ Abul Wahab, Maizatul Ismail, Suresh Shindhe

**Canada:** Medical-Surgical Intensive Care Unit of St. Michael's Hospital, Toronto: John Laffey, Francois Beloncle; St. Joseph's Health Center, Toronto: Kyle G. Davies, Rob Cirone; Sunnybrook Health Sciences Center, Toronto: Venika Manoharan, Mehvish Ismail; Toronto Western Hospital, Toronto: Ewan C. Goligher, Mandeep Jassal; Medical Surgical Intensive Care Unit of the Toronto General Hospital, Toronto: Erin Nishikawa, Areej Javeed; Cardiovascular Intensive Care Unit of St. Michael's Hospital, Toronto: Gerard Curley, Nuttapol Rittayamai; Cardiovascular Intensive Care Unit of the Toronto General Hospital, Toronto: Matteo Parotto, Niall D. Ferguson; Mount Sinai Hospital, Toronto: Sangeeta Mehta, Jenny Knoll; Trauma-Neuro Intensive Care Unit of St. Michael's Hospital, Toronto: Antoine Pronovost, Sergio Canestrini

**Chile:** Hospital Clínico Pontificia Universidad Católica de Chile, Santiago: Alejandro R. Bruhn, Patricio H. Garcia; Hospital Militar de Santiago, Santiago: Felipe A. Aliaga, Pamela A. Farías; Clinica Davila, Santiago: Jacob S. Yumha; Hospital Guillermo Grant Benavente, Concepcion: Claudia A. Ortiz, Javier E. Salas; Clinica Las Lilas, Santiago: Alejandro A. Saez, Luis D. Vega; Hospital Naval Almirante Nef, Viña del Mar: Eduardo F. Labarca, Felipe T. Martinez; Hospital Luis Tisné Brousse, Penanolen: Nicolás G. Carreño, Pilar Lora

**China:** Second Affiliated Hospital of Harbin Medical University, Harbin: Haitao Liu; Nanjing Zhong-da Hospital, Southeast University, Nanjing: Haibo Qiu, Ling Liu; First Affiliated Hospital of Anhui Medical University, Hefei: Rui/Tang, Xiaoming Luo; Peking University People's Hospital, Beijing: Youzhong An, Huiying Zhao; Fourth Affiliated Hospital of Harbin Medical University, Harbin: Yan Gao, Zhe Zhai; Nanjing Jiangbei People's Hospital Affiliated to Medical School of Southeast University, Nanjing: Zheng L. Ye, Wei Wang; First Affiliated Hospital of Dalian Medical University, Dalian: Wenwen Li, Qingdong Li; Subei People's Hospital of Jiangsu Province, Yangzhou: Ruiqiang Zheng; Jinling Hospital, Nanjing: Wenkui Yu, Juanhong Shen; Urumqi General Hospital, Urumqi: Xinyu Li; Intensive Care Unit, First Affiliated Hospital of Wannan Medical College, Yijishan Hospital, Wuhu: Tao Yu, Weihua Lu; Sichuan Provincial People's Hospital, Chengdu: Ya Q. Wu, Xiao B. Huang; Hainan Province People's Hospital, Haikou: Zhenyang He; People's Hospital of Jiangxi Province, Nanchang: Yuanhua Lu; Qilu Hospital of Shandong University, Jinan: Hui Han, Fan Zhang; Zhejiang Provincial People's Hospital, Hangzhou: Renhua Sun; First Affiliated Hospital of Bengbu Medical College, Bengbu, Anhui: Hua X. Wang, Shu H. Qin; Nanjing Municipal Government Hospital, Nanjing: Bao H. Zhu, Jun Zhao; First Hospital of Lanzhou University, Lanzhou: Jian Liu, Bin Li; First Affiliated Hospital of Chongqing University of Medical Science, Chongqing: Jing L. Liu, Fa C. Zhou; Xuzhou Central Hospital, Xuzhou: Qiong J. Li, Xing Y. Zhang; First People's Hospital of Foshan, Foshan: Zhou Li-Xin, Qiang Xin-Hua; First Affiliated Hospital of Guangxi Medical University, Nanning: Liangyan Jiang; Renji Hospital, Shanghai Jiao Tong University School of Medicine, Shanghai: Yuan N. Gao, Xian Y. Zhao; First Hospital of Shanxi Medical University, Taiyuan: Yuan Y. Li, Xiao L. Li; Shandong Provincial Hospital, Jinan: Chunting Wang, Qingchun Yao; Fujian Provincial Hospital, Fuzhou: Rongguo Yu, Kai Chen; Henan Provincial People's Hospital, Zhengzhou: Huanzhang Shao, Bingyu Qin; Second Affiliated Hospital of Kunming Medical University, Kunming City: Qing Q. Huang, Wei H. Zhu; Xiangya Hospital, Central South University, Changsha: Ai Y. Hang, Ma X. Hua; First Affiliated Hospital of Guangzhou Medical University, Guangzhou: Yimin Li, Yonghao Xu; People's Hospital of Hebei Province, Shijiazhuang: Yu D. Di,

1  
2  
3 Long L. Ling; Guangdong General Hospital, Guangzhou; Tie H. Qin, Shou H. Wang; Beijing Tongren  
4 Hospital, Beijing; Junping Qin; Jiangsu Province Hospital, Nanjing; Yi Han, Suming Zhou  
5

6 **Colombia:** Fundación Valle del Lili, Cali: Monica P. Vargas  
7

8 **Costa rica:** Hospital San Juan De Dios, San Jose: Juan I. Silesky Jimenez, Manuel A. González Rojas, Jaime  
9 E. SolisQuesada, Christian M. Ramirez-Alfaro

10 **Czech republic:** University Hospital of Ostrava, Ostrava: Jan Máca, Peter Sklienka  
11

12 **Denmark:** Aarhus Universitetshospital, Aarhus: Jakob Gjedsted, Aage Christiansen; Rigshospitalet: Jonas  
13 Nielsen  
14

15 **Ecuador:** Hospital Militar, Quito: Boris G. Villamagua, iguel Llano  
16

17 **France:** Clinique du Millenaire, Montpellier: Philippe Burtin, Gautier Buzancais; Center Hospitalier,  
18 Roanne: Pascal Beuret, Nicolas Pelletier; Center Hospitalier Universitaire d'Angers, Angers: Satar Mortaza,  
19 Alain Mercat; Hôpital Marc Jacquet, Melun: Jonathan Chelly, Sébastien Jochmans; Center Hospitalier  
20 Universitaire Caen, Caen: Nicolas Terzi, Cédric Daubin; Henri Mondor Hospital, Créteil: Guillaume  
21 Carteaux, Nicolas de Prost; Cochin Hospital, Paris: Jean-Daniel Chiche, Fabrice Daviaud; Hôpital Tenon,  
22 Paris: Tàì Pham, Muriel Fartoukh; CH Mulhouse-Emile Muller, Mulhouse: Guillaume Barberet, Jerome  
23 Biehler; Archet 1 University Hospital, Nice: Jean Dellamonica, Denis Doyen; Hopital Sainte Musse, Toulon:  
24 Jean-Michel Arnal, Anais Briquet; Hopital Nord-Réanimation des Détresses Respiratoires et Infections  
25 Sévères, Marseille: Sami Hraiech, Laurent Papazian; Hôpital Européen Georges Pompidou, Paris: Arnaud  
26 Follin; Louis Mourier Hospital, Colombes: Damien Roux, Jonathan Messika; Center Hospitalier de  
27 Dax, Dax: Evangelos Kalaitzis; Réanimation Médicale, Groupe Hospitalier Pitié-Salpêtrière, Paris:  
28 Laurence Dangers, Alain Combes; Assistance Publique-Hôpitaux de Paris Ambroise Paré, Boulogne-  
29 Billancourt: Siu-Ming Au; University Hospital Rouen, Rouen: Gaetan Béduneau, Dorothee Carpentier;  
30 Center Hospitalier Universitaire Amiens, Amiens-Salouel: Elie H. Zogheib, Herve Dupont; Center  
31 Hospitalier Intercommunal Robert Ballanger, Aulnay-sousBois: Sylvie Ricome, Francesco L. Santoli;  
32 Center Hospitalier René Dubos, Pontoise: Sebastien L. Besset; Center Hospitalier Intercommunal Portes  
33 de l'Oise, Beaumont-sur-Oise: Philippe Michel, Bruno Gelée; Archet 2 University Hospital, Nice: Pierre-  
34 Eric Danin, Bernard Goubaux; Center Hospitalier Pierre Oudot, Bourgoin Jallieu: Philippe J. Crova, Nga T.  
35 Phan; Center Hospitalier Dunkerque, Dunkerque: Frantz Berkelmans; Center Hospitalier de Belfort  
36 Montbéliard, Belfort: Julio C. Badie, Romain Tapponnier; Center Hospitalier Emile Muller, Mulhouse:  
37 Josette Gally, Samy Khebbeb; Hôpital de Haute-pierre-Hôpitaux Universitaires de Strasbourg, Strasbourg:  
38 Jean-Etienne Herbrecht, Francis Schneider; Center Hospitalier de Dieppe, Dieppe: PierreLouis M.  
39 Declercq, Jean-Philippe Rigaud; Bicetre, Le Kremlin-Bicetre: Jacques Duranteau, Anatole Harrois; Center  
40 Hospitalier Universitaire Gabriel Montpied, Clermont-Ferrand: Russell Chabanne, Julien Marin; Center  
41 Hospitalier Universitaire Estaing, Clermont-Ferrand: Charlene Bigot, Sandrine Thibault; Center  
42 Hospitalier Intercommunal Eure-Seine Evreux, Evreux: Mohammed Ghazi, Messabi Boukhazna; Center  
43 Hospitalier de Châlons en Champagne, Châlons en Champagne: Salem Ould Zein; CH Beauvais, Beauvais:  
44 Jack R. Richecoeur, Daniele M. Combaux; Center Hospitalier Le Mans, Le Mans: Fabien Grelon, Charlene Le  
45 Moal; Hôpital Fleyriat, Bourg-en-Bresse: Elise P. Sauvadet, Adrien Robine; Hôpital Saint Louis, Paris:  
46 Virginie Lemiale, Danielle Reuter; Service de Pneumologie Pitié-Salpêtrière, Paris: Martin Dres, Alexandre  
47 Demoule; Center Hospitalier Gonesse, Gonesse: Dany Goldgran-Toledano; Hôpital Croix Rousse, Lyon:  
48 Loredana Baboi, Claude Guérin  
49

50  
51 **Germany:** St. Nikolaus-Stiftshospital, Andernach: Ralph Lohner; Fachkrankenhaus Coswig Gmbh,  
52 Coswig: Jens Kraßler, Susanne Schäfer; University Hospital Frankfurt, Frankfurt am Main: Kai D.  
53 Zacharowski, Patrick Meybohm; Department of Anesthesia and Intensive Care Medicine, University  
54 Hospital of Leipzig, Leipzig: Andreas W. Reske, Philipp Simon; Asklepios Klinik Langen, Langen:  
55 HansBernd F. Hopf, Michael Schuetz; Städtisches Krankenhaus Heinsberg, Heinsberg: Thomas Baltus  
56

57 **Greece:** Hippokrateion General Hospital of Athens, Athens: Metaxia N. Papanikolaou, Theonymfi G.  
58 Papavasiliopoulou; Gh Ahepa, Thessaloniki: Giannis A. Zacharas, Vasilis Ourailogloy; Hippokration General  
59 Hospital of Thessaloniki, Thessaloniki: Eleni K. Mouloudi, Eleni V. Massa; Hospital General of Kavala,  
60

1  
2  
3 Kavala: Eva O. Nagy, Electra E. Stamou; Papageorgiou General Hospital, Thessaloniki: Ellada V.  
4 Kiourtzieva, Marina A. Oikonomou

5  
6 **Guatemala:** Hospital General de Enfermedades, Instituto Guatemalteco de Seguridad Social, Ciudad de  
7 Guatemala: Luis E. Avila; Centro Médico Militar, Guatemala: Cesar A. Cortez, Johanna E. Citalán

8  
9 **India:** Deenanath Mangeshkar Hospital and Research Center, Pune: Sameer A. Jog, Safal D. Sable; Care  
10 Institute of Medical Sciences Hospital, Ahmedabad: Bhagyesh Shah; Sanjay Gandhi Postgraduate Institute  
11 of Medical Sciences, Lucknow: Mohan Gurjar, Arvind K. Baronia; Rajasthan Hospital, Ahmedabad:  
12 Mohammedfaruk Memon; National Institute of Mental Health and Neuro Sciences, Bangalore:  
13 Radhakrishnan Muthuchellappan, Venkatapura J. Ramesh; Anesthesiology Unit of the Kasturba Medical  
14 College and Department of Respiratory Therapy, School of Allied Health Sciences, Manipal University,  
15 Manipal: Anitha Shenoy, Ramesh Unnikrishnan; Sanjeevan Hospital, Pune: Subhal B. Dixit, Rachana V.  
16 Rhayakar; Apollo Hospitals, Chennai: Nagarajan Ramakrishnan, Vallish K. Bhardwaj; Medicine Unit of the  
17 Kasturba Medical College and Department of Respiratory Therapy, School of Allied Health Sciences,  
18 Manipal University, Manipal: Heera L. Mahto, Sudha V. Sagar; G. Kuppuswamy Naidu Memorial Hospital,  
19 Coimbatore: Vijayanand Palaniswamy, Deeban Ganesan

20  
21 **Iran:** National Research Institute of Tuberculosis and Lung Disease/Masih Daneshvari, Tehran: Seyed  
22 Mohammadreza Hashemian, Hamidreza Jamaati; Milad Hospital, Tehran: Farshad Heidari

23  
24 **Ireland:** St. Vincent's University Hospital, Dublin: Edel A. Meaney, Alistair Nichol; Mercy University  
25 Hospital, Cork: Karl M. Knapman, Donall O'Croinin; Cork University Hospital, Cork: Eimhin S. Dunne,  
26 Dorothy M. Breen; Galway University Hospital, Galway: Kevin P. Clarkson, Rola F. Jaafar; Beaumont  
27 Hospital, Dublin: Rory Dwyer, Fahd Amir; Mater Misericordiae University Hospital, Dublin: Olaitan O.  
28 Ajetunmobi, Aogan C. O'Muircheartaigh; Tallaght Hospital, Dublin: Colin S. Black, Nuala Treanor; Saint  
29 James's Hospital, Dublin: Daniel V. Collins, Wahid Altaf

30  
31 **Italy:** Santa Maria delle Croci Hospital, Ravenna: Gianluca Zani, Maurizio Fusari; Arcispedale Sant'Anna  
32 Ferrara, Ferrara: Savino Spadaro, Carlo A. Volta; Ospedale Profili, Fabriano, Ancona: Romano Graziani,  
33 Barbara Brunettini; Umberto I. Nocera Inferiore, Nocera Inferiore Salerno: Salvatore Palmese; Azienda  
34 Ospedaliera San Paolo-Polo Universitario-Università degli Studi di Milano, Milan: Paolo Formenti,  
35 Michele Umbrello; Sant'Anna, San Fermo Della Battaglia, Como: Andrea Lombardo; Spedali Civili Brescia,  
36 Brescia: Elisabetta Pecci, Marco Botteri; Fondazione Istituto di Ricovero e Cura a Carattere Scientifico Ca  
37 Granda, Ospedale Maggiore Policlinico, Milan: Monica Savioli, Alessandro Protti; University Campus  
38 Bio-Medico of Rome, Rome: Alessia Mattei, Lorenzo Schiavoni; Azienda Ospedaliera "Mellino Mellini,"  
39 Chiari, Brescia: Andrea Tinnirello, Manuel Todeschini; Policlinico P. Giaccone, University of Palermo,  
40 Palermo: Antonino Giarratano, Andrea Cortegiani; Niguarda Cà Granda Hospital, Milan: Sara Sher, Anna  
41 Rossi; A. Gemelli University Hospital, Rome: Massimo M. Antonelli, Luca M. Montini; Ospedale "Sandro  
42 Pertini," Rome: Paolo Casalena, Sergio Scafetti; Istituto Mediterraneo per i Trapianti e Terapie ad Alta  
43 Specializzazione; Istituto Di Ricovero e Cura a Carattere Scientifico; University of Pittsburgh Medical  
44 Center, Palermo: Giovanna Panarello, Giovanna Occhipinti; Ospedale San Gerardo, Monza: Nicolò  
45 Patroniti, Matteo Pozzi; Santa Maria Della Scaletta, Imola: Roberto R. Biscione, Michela M. Poli; Humanitas  
46 Research Hospital, Rozzano: Ferdinando Raimondi, Daniela Albiero; Ospedale Desio-Ao Desio-Vimercate,  
47 Desio: Giulia Crapelli, Eduardo Beck; Pinetragrande Private Hospital, Castelvoturno: Vincenzo Pota,  
48 Vincenzo Schiavone; Istituto di Ricovero e Cura a Carattere Scientifico San Martino Ist, Genova: Alexandre  
49 Molin, Fabio Tarantino; Ospedale San Raffaele, Milano: Giacomo Monti, Elena Frati; Ospedali Riuniti Di  
50 Foggia, Foggia: Lucia Mirabella, Gilda Cinnella; Azienda Ospedaliera Luigi Sacco-Polo Universitario,  
51 Milano: Tommaso Fossali, Riccardo Colombo.; Azienda OspedalieroUniversitaria Città della Salute e della  
52 Scienza di Torino, Turin: Pierpaolo Terragni Ilaria Pattarino; Università degli Studi di Pavia-Fondazione  
53 Istituto di Ricovero e Cura a Carattere Scientifico Policlinico San Matteo, Pavia: Francesco Mojoli, Antonio  
54 Braschi; Ao Ospedale Civile Legnano, Legnano: Erika E. Borotto; Arnas Ospedale Civico Di Cristina  
55 Benfratelli, Palermo: Andrea N. Cracchiolo, Daniela M. Palma; Azienda Ospedaliera Della Provincia Di  
56 Lecco-Ospedale "A. Manzoni," Lecco: Francesco Raponi, Giuseppe Foti; A.O. Provincia Di Lecco-Ospedale  
57 Alessandro Manzoni, Lecco: Ettore R. Vascotto, Andrea Coppadoro; Cliniche Universitarie Sassari, Sassari:  
58 Luca Brazzi, Leda Floris; Istituto di Ricovero e Cura a Carattere Scientifico Policlinico San Matteo, Pavia:  
59 Giorgio A. Iotti, Aaron Venti



**Japan:** Yokohama City University Hospital, Yokohama: Osamu Yamaguchi, Shunsuke Takagi; Toyooka Hospital, Toyooka City: Hiroki N. Maeyama; Chiba University Hospital, Chiba City: Eizo Watanabe, Yoshihiro Yamaji; Okayama University Hospital, Okayama: Kazuyoshi Shimizu, Kyoko Shiozaki; Japanese Foundation for Cancer Research, Cancer Institute Hospital, Department of Emergency Medicine and Critical Care, Tokyo: Satoru Futami; Ibaraki Prefectural Central Hospital, Kasama: Sekine Ryosuke; Tohoku University Hospital, Sendai-Shi: Koji Saito, Yoshinobu Kameyama; Tokyo Medical University Hachioji Medical Center, Hachioji, Tokyo: Keiko Ueno; Tokushima University Hospital, Tokushima: Masayo. Izawa, Nao Okuda; Maebashi Red Cross Hospital, Gunma Maebashi: Hiroyuki Suzuki, Tomofumi Harasawa; Urasoe General Hospital, Urasoe: Michitaka Nasu, Tadaaki Takada; Ohta General Hospital Foundation Ohta Nishinouchi Hospital, Fukushima: Fumihito Ito; Jichi Medical University Hospital, Shimotsuke: Shin Nunomiya, Kansuke Koyama; Mito Kyodo General Hospital, Tsukuba University Hospital Mito Medical Center, Mito: Toshikazu Abe; Sendai City Hospital, Sendai: Kohkichi Andoh, Kohei Kusumoto; Ja Hiroshima General Hospital, Hatsukaichi City, Hiroshima: Akira Hirata, Akihiro Takaba; Yokohama Rosai Hospital, Yokohama: Hiroyasu Kimura; Nagasaki University Hospital, Nagasaki: Shuhei Matsumoto, Ushio Higashijima; Niigata University Medical and Dental Hospital, Niigata: Hiroyuki Honda, Nobumasa Aoki; Mie University Hospital, Tsu, Mie: Hiroshi Imai; Yamaguchi University Hospital, Ube, Yamaguchi: Yasuaki Ogino, Ichiko Mizuguchi; Saiseikai Kumamoto Hospital, Kumamoto City: Kazuya Ichikado; Shinshu University School of Medicine, Matsumoto City: Kenichi Nitta, Katsunori Mochizuki; Kuki General Hospital, Kuki: Tomoaki Hashida; Kyoto Medical Center, Kyoto: Hiroyuki Tanaka; Fujita Health University, Toyoake: Tomoyuki Nakamura, Daisuke Niimi; Rakwakai Marutamachi Hospital, Kyoto: Takeshi Ueda; Osaka University Hospital, Suita City, Osaka Prefecture: Yozo Kashiwa, Akinori Uchiyama

**Latvia:** Paul Stradins Clinical University Hospital, Riga: Olegs Sabelnikovs, Peteris Oss

**Lebanon:** Kortbawi Hospital, Jounieh: Youssef Haddad

**Malaysia:** Hospital Kapit, Kapit: Kong Y. Liew

**Mexico:** Instituto Nacional de Cancerología, Mexico City: Silvio A. Namendys-Silva, Yves D. Jarquin-Badiola; Hospital de Especialidades "Antonio Fraga Mouret" Centro Medico Nacional La Raza Instituto Mexicano del Seguro Social, Mexico City: Luis A. Sanchez-Hurtado, Saira S. Gomez-Flores; Hospital Regional 1° de Octubre, Mexico City: Maria C. Marin, Asisclo J. Villagomez; Hospital General Dr. Manuel Gea Gonzalez, Mexico City: Jordana S. Lemus, Jonathan M. Fierro; Hospital General de Zona No. 1 Instituto Mexicano del Seguro Social Tepic Nayarit, Tepic: Mavy Ramirez Cervantes, Francisco Javier Flores Mejia; Centro Medico Dalinde, Mexico City: Dulce Dector, Alejandro Rojas; Opd Hospital Civil de Guadalajara Hospital Juan I. Menchaca, Guadalajara: Daniel R. Gonzalez, Claudia R. Estrella; Hospital Regional de Ciudad Madero Pemex, Ciudad Madero: Jorge R. Sanchez-Medina, Alvaro Ramirez-Gutierrez; Centro Médico American British Cowdray, Mexico City: Fernando G. George, Janet S. Aguirre; Hospital Juarez de Mexico, Mexico City: Juan A. Buensuseso, Manuel Poblano

**Morocco:** Mohammed V University, University Teaching Ibn Sina Hospital, Rabat: Tarek Dendane, Amine Ali Zeggwagh; Hopital Militaire D'Instruction Mohammed V, Rabat: Hicham Balkhi; Errazi, Marrakech: Mina Elkhayari, Nacer Samkaoui; University Teaching Hospital Ibn Rushd, Casablanca: Hanane Ezzouine, Abdellatif Benslama; Hôpital des Spécialités de Rabat, Rabat: Mourad Amor, Wajdi Maazouzi

**Netherlands:** Tjongerschans, Heerenveen: Nedim Cimic, Oliver Beck; Cwz, Nijmegen: Monique M. Bruns, Jeroen A. Schouten; Rijnstate Hospital, Arnhem: Myra Rinia, Monique Raaijmakers; Radboud Umc, Nijmegen: Leo M. Heunks, Hellen M. Van Wezel; Maastricht University Medical Center, Maastricht: Serge J. Heines, Ulrich Strauch; Catharinaziekenhuis, Eindhoven: Marc P. Buise; Academic Medical Center, Amsterdam: Fabienne D. Simonis, Marcus J. Schultz

**New Zealand:** Tauranga Hospital, Tauranga: Jennifer C. Goodson, Troy S. Browne; Wellington Hospital, Wellington: Leanlove Navarra, Anna Hunt; Dunedin Hospital, Dunedin: Robyn A. Hutchison, Mathew B. Bailey; Auckland City Hospital, Auckland: Lynette Newby, Colin McArthur; Whangarei Base Hospital, Whangarei: Michael Kalkoff, Alex Mcleod; North Shore Hospital, Auckland: Jonathan Casement, Danielle J. Hacking

**Norway:** Ålesund Hospital, Ålesund: Finn H. Andersen, Merete S. Dolva; Oslo University Hospital, Rikshospitalet Medical Center, Oslo: Jon H. Laake, Andreas Barratt-Due; Stavanger University Hospital, Stavanger: Kim Andre L. Noremark, Eldar Søreide; Haukeland University Hospital, Bergen: Brit Å. Sjøbø, Anne B. Guttormsen

**Peru:** Hospital Nacional Edgardo Rebagliati Martins, Lima: Hector H. Leon Yoshido; Clínica Ricardo Palma, Lima: Ronald Zumaran Aguilar, Fredy A. Montes Oscanoa

**Philippines:** The Medical City, Pasig: Alain U. Alisasis, Joanne B. Robles; Chong Hua Hospital, Cebu: Rossini Abbie B. Pasanting-Lim, Beatriz C. Tan

**Poland:** Warsaw University Hospital, Warsaw: Pawel Andruszkiewicz, Karina Jakubowska

**Portugal:** Centro Hospitalar Da Cova Da Beira, Covilhã: Cristina M. Coxo; Hospital Santa Maria, Chln, Lisboa: António M. Alvarez, Bruno S. Oliveira; Centro Hospitalar Trás-Os-Montes E. Alto Douro, Hospital de S. Pedro-Vila Real, Vila Real: Gustavo M. Montanha, Nelson C. Barros; Hospital Beatriz Ângelo, Loures: Carlos S. Pereira, António M. Messias; Hospital de Santa Maria, Lisboa: Jorge M. Monteiro; Centro Hospitalar Médio Tejo–Hospital de Abrantes, Abrantes: Ana M. Araujo, Nuno T. Catorze; Instituto Português de Oncologia de Lisboa, Lisboa: Susan M. Marum, Maria J. Bouw; Hospital Garcia de Orta, Almada: Rui M. Gomes, Vania A. Brito; Centro Hospitalar Do Algarve, Faro: Silvia Castro, Joana M. Estilita; Hospital de Cascais, Alcabideche: Filipa M. Barros; Hospital Prof. Doutor Fernando Fonseca Epe, Amadora: Isabel M. Serra, Aurelia M. Martinho

**Romania:** Fundeni Clinical Institute, Bucharest: Dana R. Tomescu, Alexandra Marcu; Emergency Clinical County Hospital Timisoara, Timisoara: Ovidiu H. Bedreag, Marius Papurica; Elias University Emergency Hospital, Bucharest: Dan E. Corneci, Silviu Ioan Negoita

**Russian Federation:** University Hospital, Kemerovo: Evgeny Grigoriev; Krasnoyarsk Regional Hospital, Krasnoyarsk State Medical University, Krasnoyarsk: Alexey I. Gritsan, Andrey A. Gazenkampf

**Saudi Arabia:** General Intensive Care Unit of Prince Sultan Military Medical City, Riyadh: Ghaleb Almekhlafi, Mohamad M. Albarrak; Surgical Intensive Care Unit of Prince Sultan Military Medical City, Riyadh: Ghanem M. Mustafa; King Faisal Hospital and Research Center, Riyadh: Khalid A. Maghrabi, Nawal Salahuddin; King Fahad Hospital, Baha: Tharwat M. Aisa; Neuro Critical Care Unit, King Abdulaziz Medical City, Riyadh: Ahmed S. Al Jabbary, Edgardo Tabhan; Intensive Care Unit, King Abdulaziz Medical City, Riyadh: Yaseen M. Arabi; Surgical Intensive Care Unit, King Abdulaziz Medical City, Riyadh: Yaseen M. Arabi, Olivia A. Trinidad; Trauma Intensive Care Unit, King Abdulaziz Medical City, Riyadh: Hasan M. Al Dorzi, Edgardo E. Tabhan

**Serbia:** Clinical Center of Serbia, Belgrade: Vesna Bumbasirevic, Bojan Jovanovic; Military Medical Academy, Belgrade

**South Africa:** Charlotte Maxeke Johannesburg Academic Hospital, Johannesburg: Stefan Bolon, Oliver Smith

**Spain:** Hospital Sant Pau, Barcelona: Jordi Mancebo, Hernan Aguirre-Bermeo; Hospital Universitari Bellvitge, L'Hospitalet de Llobregat, Barcelona: Juan C. Lopez-Delgado, Francisco Esteve; Hospital Son Llatzer, Palma de Mallorca: Gemma Rialp, Catalina Forteza; Sabadell Hospital, Centro de Investigación Biomédica en Red Enfermedades Respiratorias, Sabadell: Candelaria De Haro, Antonio Artigas; Hospital Universitario Central de Asturias, Oviedo: Guillermo M. Albaiceta, Sara De Cima-Iglesias; Complejo Hospitalario Universitario A Coruña, A Coruña: Leticia Seoane-Quiroga, Alexandra Cenicerros-Barros; Hospital Universitario Miguel Servet, Zaragoza: Antonio L. RuizAguilar, Luis M. Claraco-Vega; Morales Meseguer University Hospital, Murcia: Juan Alfonso Soler, Maria del Carmen Lorente; Hospital Universitario del Henares, Coslada: Cecilia Hermosa, Federico Gordo; Complejo Asistencial de Palencia, Hospital Rio Carrión, Palencia: Miryam PrietoGonzález, Juan B. López-Messa; Fundación Jiménez Díaz, Madrid: Manuel P. Perez, Cesar P. Perez; Hospital Clínico Universitario Lozano Blesa, Zaragoza: Raquel Montoiro Allue; Hospital Verge de la Cinta, Tortosa: Ferran RocheCampo, Marcos Ibañez-Santacruz; Hospital Universitario 12 de Octubre, Madrid: Susana Temprano; Hospital Universitario Príncipe de Asturias, Alcalá de Henares, Madrid: Maria C. Pintado, Raul De Pablo; Hospital Universitari Germans Trias

1  
2  
3 I Pujol, Badalona: Pilar Ricart Aroa Gómez; Hospital Universitario Arnau de Vilanova de Lleida, Lleida:  
4 Silvia Rodriguez Ruiz, Silvia Iglesias Moles; Cst Terrassa, Barcelona: M<sup>a</sup> Teresa Jurado, Alfons Arizmendi;  
5 Hospital Universitari Mútua Terrassa, Terrassa: Enrique A. Piacentini; Hospital Universitario de Móstoles,  
6 Mostoles: Nieves Franco, Teresa Honrubia; Complejo Asistencial de Salamanca, Salamanca: Meisy Perez  
7 Cheng, Elena Perez Losada; Hospital General Universitario de Ciudad Real, Ciudad Real: Javier Blanco,  
8 Luis J. Yuste; Torrecardenas, Almeria: Cecilia Carbayo-Gorriz, Francisca G. Cazorla-Barranquero; Hospital  
9 Universitario Donostia, San Sebastian: Javier G. Alonso, Rosa S. Alda; Hospital Universitario de Torrejón,  
10 Madrid: Ángela Algaba, Gonzalo Navarro; Hospital Universitario de La Princesa, Madrid: Enrique Cereijo,  
11 Esther Diaz-Rodriguez; Hospital Universitario Lucus Augusti, Lugo: Diego Pastor Marcos, Laura Alvarez  
12 Montero; Hospital Universitario Santa Lucia, Cartagena: Luis Herrera Para, Roberto Jimenez Sanchez;  
13 Hospital Universitario Severo Ochoa, Leganes, Madrid: Miguel Angel Blasco Navalpotro, Ricardo Diaz  
14 Abad; University Hospital of Nuestra Señora de Candelaria, Santa Cruz de Tenerife: Raquel Montiel  
15 González, Dácil Parrilla Toribio; Hospital Universitario Marques de Valdecilla, Santander: Alejandro  
16 G. Castro, Maria Jose D. Artiga; Hospital Infanta Cristina, Parla, Madrid: Oscar Penuelas; Hospital General  
17 de Catalunya, Sant Cugat del Valles: Tomas P. Roser, Moreno F. Olga; San Pedro de Alcántara, Cáceres:  
18 Elena Gallego Curto, Rocío Manzano Sánchez; Sant Joan de Reus, Reus: Vallverdu P. Imma, Garcia M.  
19 Elisabet; Hospital Joan XXIII, Tarragona: Laura Claverias, Monica Magret; Hospital Universitario de Getafe,  
20 Madrid: Ana M. Pellicer, Lucia L. Rodriguez; Hospital Universitario Río Hortega, Valladolid: Jesús Sánchez-  
21 Ballesteros, Ángela González-Salamanca; Hospital Arquitecto Marcide, Ferrol, La Coruña: Antonio G.  
22 Jimenez, Francisco P. Huerta; Hospital General Universitario Gregorio Marañón, Madrid: Juan Carlos J.  
23 Sotillo Diaz, Esther Bermejo Lopez; Hospital General de Segovia, Segovia: David D. Llinares Moya, Alec A.  
24 Tallet Alfonso; Hospital General Universitario Reina Sofia, Murcia: Palazon Sanchez Eugenio Luis, Palazon  
25 Sanchez Cesar; Complejo Hospitalario Universitario de Albacete, Albacete: Sánchez I. Rafael, Corcoles G.  
26 Virgilio; Hospital Infanta Elena, Valdemoro: Noelia N. Recio

27  
28  
29 **Sweden:** Sahlgrenska University Hospital, Gothenburg: Richard O. Adamsson, Christian C. Rylander;  
30 Karolinska University Hospital, Stockholm: Bernhard Holzgraefe, Lars M. Broman; Akademiska Sjukhuset  
31 Uppsala, Uppsala: Joanna Wessbergh, Linnea Persson; Vrinnevisjukhuset, Norrköping: Fredrik Schiöler,  
32 Hans Kedelv; Linköping University Hospital, Linköping: Anna Oscarsson Tibblin, Henrik Appelberg;  
33 Skellefteå Lasarett, Skellefteå: Lars Hedlund, Johan Helleberg; Karolinska University Hospital Solna,  
34 Stockholm: Karin E. Eriksson, Rita Glietsch; Umeå University Hospital, Umeå: Niklas Larsson, Ingela  
35 Nygren; Danderyd Hospital, Stockholm: Silvia L. Nunes, Anna-Karin Morin; Lund University Hospital,  
36 Lund: Thomas Kander, Anne Adolfsson

37  
38 **Switzerland:** Centre Hospitalier Universitaire Vaudois, Lausanne: Lise Piquilloud; Hôpital Neuchâtelois-  
39 La Chaux-de-Fonds, La Chaux-de-Fonds: Hervé O. Zender, Corinne Leemann-Refondini

40  
41 **Tunisia:** Hopital Taher Sfar Mahdia, Mahdia: Souheil Elatrous; University Hospital Farhat Hached Sousse,  
42 Sousse: Slaheddine Bouchoucha, Imed Chouchene; Center Hospitalier Universitaire F. Bourguiba,  
43 Monastir: Islem Ouanes; Mongi Slim University Hospital, La Marsa: Asma Ben Souissi, Salma Kamoun

44  
45 **Turkey:** Cerrahpasa Medical Faculty Emergency Intensive Care Unit, Istanbul: Oktay Demirkiran;  
46 Cerrahpasa Medical Faculty Sadi Sun Intensive Care Unit, Istanbul: Mustafa Aker, Emre Erbabacan;  
47 Uludag University Medical Faculty, Bursa: Ilkay Ceylan, Nermin Kelebek Girgin; Ankara University Faculty  
48 of Medicine, Reanimation 3<sup>rd</sup> Level Intensive Care Unit, Ankara: Menekse Ozcelik, Necmettin Ünal; Ankara  
49 University Faculty of Medicine, 2<sup>nd</sup> Level Intensive Care Unit-Postoperative Intensive Care  
50 Unit, Ankara: Basak Ceyda Meco; Istanbul Kartal Egitim Ve Arastirma Hastanesi, Istanbul: Onat O. Akyol,  
51 Suleyman S. Derman

52  
53 **United Kingdom:** Papworth Hospital, Cambridge: Barry Kennedy, Ken Parhar; Royal Glamorgan  
54 Hospital, Llantrisant: Latha Srinivasa; Royal Victoria Hospital, Belfast: Lia McNamee, Danny McAuley; Jack  
55 Steinberg Intensive Care Unit of the King's College, London: Phil Hopkins, Clare Mellis; Frank Stansil  
56 Intensive Care Unit of the King's College Hospital, London: Vivek Kakar; Liver Intensive Care Unit of the  
57 King's College, London: Dan Hadfield; Christine Brown Intensive Care Unit of the King's College, London:  
58 Andre Vercueil; West Suffolk Hospital, Bury St. Edmunds: Kaushik Bhowmick, Sally K. Humphreys;  
59 Craigavon Area Hospital, Portadown: Andrew Ferguson, Raymond Mckee; Barts Health National Health  
60 Service Trust, Whipps Cross Hospital, Leytonstone: Ashok S. Raj, Danielle A. Fawkes; Kettering General



1  
2  
3 Hospital, Foundation National Health Service Trust, Northamptonshire: Philip Watt, Linda Twohey;  
4 Barnet General Hospital, Barnet: Rajeev R. Jha, Matthew Thomas, Alex Morton, Varsha Kadaba;  
5 Rotherham General Hospital, Rotherham: Mark J. Smith, Anil P. Hormis; City Hospital, Birmingham:  
6 Santhana G. Kannan, Miriam Namih; Poole Hospital National Health Service Foundation Trust, Poole:  
7 Henrik Reschreiter, Julie Camsooksai; Weston General Hospital, Weston-Super-Mare: Alek Kumar,  
8 Szabolcs Rugonfalvi; Antrim Area Hospital, Antrim: Christopher Nutt, Orla Oneill; Aintree University  
9 Hospital, Liverpool: Colette Seaman, Ged Dempsey; Northern General Hospital, Sheffield: Christopher J.  
10 Scott, Helen E. Ellis; John Radcliffe Hospital, Oxford: Stuart Mckechnie, Paula J. Hutton; St. Georges  
11 Hospital, London: Nora N. Di Tomasso, Michela N. Vitale; Hillingdon Hospital, Uxbridge: Ruth O. Griffin,  
12 Michael N. Dean; Royal Bournemouth and Christchurch National Health Service Foundation Trust,  
13 Bournemouth: Julius H. Cranshaw, Emma L. Willett; Guy's and St. Thomas' National Health Service  
14 Foundation Trust, London: Nicholas Ioannou, Guy's and St. Thomas' Severe Respiratory Failure Service,  
15 Whittington Hospital, London: Sarah Gillis; Wexham Park Hospital, Slough: Peter Csabi; Western General  
16 Hospital, Edinburgh: Rosaleen Macfadyen, Heidi Dawson; Royal Preston Hospital, Preston: Pieter D. Preez,  
17 Alexandra J. Williams; Brighton and Sussex University Hospitals National Health Service Trust,  
18 Brighton: Owen Boyd, Laura Ortiz-Ruiz de Gordo; East and North Herts National Health Service Trust,  
19 Stevenage: Jon Bramall, Sophie Symmonds; Barnsley Hospital, Barnsley: Simon K. Chau, Tim Wenham;  
20 Prince Charles Hospital, Merthyr Tydfil: Tamas Szakmany, Piroska Toth-Tarsoly; University Hospital of  
21 South Manchester National Health Service Foundation Trust, Manchester: Katie H. Mccalman,  
22 Peter Alexander; Harrogate District Hospital, Harrogate: Lorraine Stephenson, Thomas Collyer; East and  
23 North Herts National Health Service Trust, Welwyn Garden City: Rhiannon Chapman, Raphael Cooper;  
24 Western Infirmary, Glasgow: Russell M. Allan, Malcolm Sim; Dumfries and Galloway Royal Infirmary,  
25 Dumfries: David W. Wrathall, Donald A. Irvine; Charing Cross Hospital, London: Kim S. Zantua, John C.  
26 Adams; Worcestershire Royal Hospital, Worcester: Andrew J. Burtenshaw, Gareth P. Sellors; Royal  
27 Liverpool University Hospital, Liverpool: Ingeborg D. Welters, Karen E. Williams; Royal Alexandra  
28 Hospital, Glasgow: Robert J. Hessel, Matthew G. Oldroyd; Morriston Hospital, Swansea: Ceri E. Battle,  
29 Suresh Pillai; Frimley Park Hospital, Frimley: Istvan Kajtor, Mageswaran Sivashanmugavel; Altnagelvin  
30 Hospital, Derry: Sinead C. Okane, Adrian Donnelly; Buckinghamshire Healthcare National Health Service  
31 Trust, High Wycombe, Buckinghamshire: Aniko D. Frigyik, Jon P. Careless; Milton Keynes Hospital, Milton  
32 Keynes: Martin M. May, Richard Stewart; Ulster Hospital, Belfast: T. John Trinder, Samantha J. Hagan;  
33 University Hospital of Wales, Cardiff: Jade M. Cole; Freeman Hospital, Newcastle upon Tyne: Caroline C.  
34 MacFie, Anna T. Dowling

35  
36  
37 **Uruguay:** Hospital Español, Montevideo: Javier Hurtado, Nicolás Nin; Cudam, Montevideo: Javier  
38 Hurtado; Sanatorio Mautone, Maldonado: Edgardo Nuñez; Sanatorio Americano, Montevideo: Gustavo  
39 Pittini, Ruben Rodriguez; Hospital de Clínicas, Montevideo: María C. Imperio, Cristina Santos; Circulo  
40 Católico Obreros Uruguay-Sanatorio Juan Pablo II, Montevideo: Ana G. França, Alejandro Ebeid; Centro de  
41 Asistencia del Sindicato Médico del Uruguay, Montevideo: Alberto Deicas, Carolina Serra

42  
43 **United States:** St. Louis University Hospital, St. Louis, Missouri: Aditya Uppalapati, Ghassan Kamel; Beth  
44 Israel Deaconess Medical Center, Boston, Massachusetts: Valerie M. Banner-Goodspeed, Jeremy R. Beitler;  
45 Memorial Medical Center, Springfield, Illinois: Satyanarayana Reddy Mukkera, Shreedhar Kulkarni;  
46 Massachusetts General Hospital, Boston, Massachusetts: Jarone Lee, Tomaz Mesar; University of  
47 Cincinnati Medical Center, Cincinnati, Ohio: John O. Shinn III, Dina Gomaa; Massachusetts General  
48 Hospital, Boston, Massachusetts: Christopher Tainter, Jarone Lee; Massachusetts General Hospital,  
49 Boston, Massachusetts: Tomaz Mesar, Jarone Lee; R. Adams Cowley Shock Trauma Center, Baltimore,  
50 Maryland: Dale J. Yeatts, Jessica Warren; Intermountain Medical Center, Murray, Utah: Michael J. Lanspa,  
51 Russel R. Miller; Intermountain Medical Center, Murray, Utah: Colin K. Grissom, Samuel M. Brown; Mayo  
52 Clinic, Rochester, Minnesota: Philippe R. Bauer; North Shore Medical Center, Salem, Massachusetts: Ryan  
53 J. Gosselin, Barrett T. Kitch; Albany Medical Center, Albany, New York: Jason E. Cohen, Scott H. Beegle,  
54 Shazia Choudry; John H. Stoger Hospital of Cook County, Chicago, Illinois: Renaud M. Gueret, Aiman  
55 Tulaimat; University of Alabama at Birmingham, Birmingham, Alabama: William Stigler, Hitesh Batra;  
56 Duke University Hospital, Durham, North Carolina: Nidhi G. Huff; Iowa Methodist Medical Center, Des  
57 Moines, Iowa: Keith D. Lamb, Trevor W. Oetting; Surgical and Neurosciences Intensive Care Unit of the  
58 University of Iowa Hospitals and Clinics, Iowa City, Iowa: Nicholas M. Mohr, Claine Judy; Medical Center of  
59

1  
2  
3 Louisiana at New Orleans, New Orleans, Louisiana: Shigeki Saito, Fayez M. Kheir; Tulane University, New  
4 Orleans, Louisiana: Fayez Kheir; Critical Care Unit of the University of Iowa Hospitals and Clinics, Iowa  
5 City, Iowa: Adam B. Schlichting, Angela Delsing; University of California, San Diego Medical Center, San  
6 Diego, California: Daniel R. Crouch, Mary Elmasri; University of California San Diego Thornton Hospital, La  
7 Jolla, California: Daniel R. Crouch, Dina Ismail; University Hospital, Cincinnati, Ohio: Kyle R. Dreyer,  
8 Thomas C. Blakeman, Dina Gooma; Tower 3B Medical Intensive Care Unit of Brigham and Women's  
9 Hospital, Boston, Massachusetts: Rebecca M. Baron, Carolina Quintana Grijalba; Tower 8C Burn/Trauma  
10 Intensive Care Unit of Brigham and Women's Hospital, Boston, Massachusetts: Peter C. Hou; Tower 8D  
11 Surgical Intensive Care Unit of Brigham and Women's Hospital, Boston, Massachusetts: Raghu Seethala;  
12 Tower 9C Neurosurgical Intensive Care Unit of Brigham and Women's Hospital, Boston, Massachusetts:  
13 Imo Aisiku; Tower 9D Neurological Intensive Care Unit of Brigham and Women's Hospital, Boston,  
14 Massachusetts: Galen Henderson; Tower 11C Thoracic Intensive Care Unit of Brigham and Women's  
15 Hospital, Boston, Massachusetts: Gyorgy Frenzl; Shapiro 6W Cardiac Surgery Intensive Care Unit of  
16 Brigham and Women's Hospital, Boston, Massachusetts: Sen-Kuang Hou; Shapiro 9E Coronary Care Unit  
17 of Brigham and Women's Hospital, Boston, Massachusetts: Robert L. Owens, Ashley Schomer  
18  
19  
20  
21  
22  
23  
24  
25  
26  
27  
28  
29  
30  
31  
32  
33  
34  
35  
36  
37  
38  
39  
40  
41  
42  
43  
44  
45  
46  
47  
48  
49  
50  
51  
52  
53  
54  
55  
56  
57  
58  
59  
60

**Table 1:** Baseline and outcomes of all patients and separated by population category

	<b>ARDS N= 2193</b>	<b>CHF N= 261</b>	<b>Unilateral- Infiltrate N= 722</b>	<b>Overall P value</b>	<b>N</b>
Age, y	61.0±16.8	68.1±13.5*	62.1±17.2	<0.001	3176
Female gender, n(%)	821 (37.4%)	108 (41.4%)	254 (35.2%)	0.056	3012
Weight, kg	77.6±24.0	74.9±17.4	75.8±18.6	0.056	3012
BMI, kg/m <sup>2</sup>	27.3±8.6	26.9±5.8	26.5±6.2	0.061	2938
<b>Illness Severity Indices</b>					
SOFA Score	10.0 [7.0;13.0]	10.0 [8.0;12.0]	9.0 [6.0;12.0]*	<0.001	3161
Non-pulmonary SOFA score	6.7 [4.0;10.0]	7.0 [5.0;9.0]	6.0 [3.8;9.0]*	<0.001	3139
CXR quadrants involved				<0.001	2991
1	0 (0.0%)	34 (14.9%)	429 (71.4%)		
2	922 (42.6%)	72 (31.6%)	172 (28.6%)		
3	507 (23.5%)	33 (14.5%)	0 (0.0%)		
4	733 (33.9%)	89 (39.0%)	0 (0.0%)		
Bilateral opacities	2193 (100.0%)	187 (74.8%)*	0 (0.0%)	<0.001	3165
PaCO <sub>2</sub> , mmHg	45.9±14.9	42.8±14.3*	44.8±15.2*	0.003	3133
pH	7.32±0.12	7.33±0.13	7.34±0.12*	<0.001	3133
PaO <sub>2</sub> /FiO <sub>2</sub> , mmHg	161.0±67.9	170.8±67.4	190.0±63.8*	<0.001	3159
Worst PaO <sub>2</sub> /FiO <sub>2</sub> in the first 2 days, mmHg	153.2±66.1	159.0±64.3	178.7±62.8*	<0.001	3170
Initial Severity, n(%)		*	*	<0.001	3169
Mild	663 (30.2%)	87 (34.3%)	330 (45.7%)		
Moderate	1024 (46.7%)	120 (47.2%)	313 (43.4%)		
Severe	506 (23.1%)	47 (18.5%)	79 (10.9%)		
<b>Comorbidities, n(%)</b>					
Diabetes	482 (22.0%)	79 (30.3%)*	158 (21.9%)	0.009	3176
COPD	448 (20.4%)	38 (14.6%)*	179 (24.8%)*	0.001	3176
Chronic Renal Failure	210 (9.6%)	51 (19.5%)*	68 (9.4%)	<0.001	3176
Immunosuppression	455 (20.7%)	16 (6.1%)*	133 (18.4%)	<0.001	3176
Chronic Cardiac Failure	211 (9.6%)	106 (40.6%)*	71 (9.8%)	<0.001	3176
Chronic Liver Failure	96 (4.4%)	5 (1.9%)	28 (3.9%)	0.157	3176
At least 1 comorbidity	1287 (58.7%)	181 (69.3%)*	425 (58.9%)	0.004	3176
<b>“Cause of hypoxaemia” (more than 1 cause is possible), n(%)</b>					
Pneumonia	1478 (67.4%)	17 (6.5%)*	453 (62.7%)*	<0.001	3176
Non pulmonary Sepsis	384 (17.5%)	11 (4.2%)*	103 (14.3%)*	<0.001	3176
Gastric aspiration	357 (16.3%)	22 (8.4%)*	149 (20.6%)*	<0.001	3176
Trauma	103 (4.7%)	3 (1.1%)*	47 (6.5%)	0.002	3176
Pancreatitis	47 (2.1%)	0 (0.0%)*	10 (1.4%)	0.013	3176
Pulmonary contusion	74 (3.4%)	3 (1.1%)	34 (4.7%)	0.023	3176
Pulmonary Vasculitis	29 (1.3%)	1 (0.4%)	6 (0.8%)	0.356	3176

Non cardiogenic Shock	184 (8.4%)	6 (2.3%)*	46 (6.4%)	0.001	3176
Overdose	45 (2.1%)	0 (0.0%)*	21 (2.9%)	0.018	3176
TRALI	98 (4.5%)	11 (4.2%)	24 (3.3%)	0.412	3176
CHF	326 (14.9%)	261 (100.0%)*	75 (10.4%)*	<0.001	3176
COPD	218 (9.9%)	0 (0.0%)*	103 (14.3%)*	<0.001	3176
Asthma	30 (1.4%)	0 (0.0%)	11 (1.5%)	0.101	3176
No Cause identified	94 (4.3%)	0 (0.0%)*	34 (4.7%)	0.002	3176

\*:P<0.005 vs ARDS

**Table 2:** Ventilatory Management and Outcomes by population category

	<b>ARDS patients N=2193</b>	<b>CHF N=261</b>	<b>Unilateral- Infiltrate N=722</b>	<b>P value</b>	<b>N</b>
<b>Ventilation Management</b>					
VT, ml/kg PBW	7.7±1.8	8.3±1.8*	7.9±1.9*	<0.001	3009
RR, b/min	20.8±8.7	18.9±5.6*	19.1±5.5*	<0.001	3155
PEEP, cmH2O	8.0 [5.0;10.0]	6.0 [5.0;8.0]*	6.0 [5.0;8.0]*	<0.001	3159
FiO2	0.6 [0.4;0.8]	0.6 [0.4;0.9]	0.5 [0.4;0.6]*	<0.001	3161
Plateau pressure, cmH2O	23.3±6.1	21.8±5.8	20.1±5.2*	<0.001	1002
Driving pressure, cmH2O	14.9±5.6	14.0±5.4	13.1±4.9*	<0.001	999
PIP, cmH2O	26.9±8.2	24.7±8.2*	24.8±8.0*	<0.001	3041
Minute ventilation (standardized), L/min	10.87±4.77	9.95±4.49*	10.20±4.41*	<0.001	3103
<b>Outcomes</b>					
Duration of invasive MV	8.0 [4;15]	4 [2;9]*	6 [3;12]*	<0.001	3003
- in hospital survivors, days	8.0 [4;14]	4.0 [3;10]*	6 [3;12]*	<0.001	1784
VFD, days	11.0 [0;20]	16 [0;24]	18 [0;24]*	<0.001	3003
ICU Length of Stay	10 [5;19]	6 [3;12]*	9 [5;16]*	<0.001	3176
- in ICU survivors, d	11 [6;20]	7 [4;13] *	9 [5;17]*	<0.001	2116
Hospital Length of Stay	17 [8;32]	12 [5;24]*	17 [9;30]*	<0.001	3108
- in hospital survivors, days	23 [13;40]	19 [11;31] *	21 [13;36]*	0.008	1882
ICU mortality, n(%)	774 (35.3%)	98 (37.5%)*	188 (26.0%)*	<0.001	3176
Hospital mortality, n (%)	882 (40.4%)	115 (44.1%)*	229 (31.8%)*	<0.001	3165

PBW : predicted body weight

**Table 3:** Demographics, illness severity, management and outcomes of patients with unilateral infiltrate and with ARDS with 2 CXR quadrants involved

	<b>Unilateral-infiltrate with 2 quadrants N=172</b>	<b>Bilateral with 2 quadrants(ARDS) N=922</b>	<b>p-value</b>	<b>N</b>
Age, y	61.2±18.0	62.3±16.6	0.452	1094
Female gender, n(%)	63 (36.6%)	356 (38.6%)	0.685	1094
Weight, kg	75.1±20.8	78.2±26.8	0.104	1032
BMI, kg/m <sup>2</sup>	25.9±6.5	27.6±10.2	0.008	1008
SOFA	9.6 [7.0;12.0]	9.8 [7.0;12.0]	0.249	1094
<b>Comorbidities, n(%)</b>				
Diabetes	40 (23.3%)	210 (22.8%)	0.969	1094
COPD	36 (20.9%)	201 (21.8%)	0.878	1094
Chronic Renal Failure	15 (8.7%)	96 (10.4%)	0.591	1094
Immunosuppression	43 (25.0%)	157 (17.0%)	0.018	1094
Chronic Cardiac Failure	16 (9.3%)	91 (9.9%)	0.928	1094
Chronic Liver Failure	4 (2.3%)	34 (3.7%)	0.504	1094
At least 1 comorbidity	103 (59.9%)	536 (58.1%)	0.732	1094
<b>“Cause of hypoxaemia” (more than 1 cause is possible), n(%)</b>				
Pneumonia	118 (68.6%)	584 (63.3%)	0.217	1094
Non pulmonary Sepsis	21 (12.2%)	177 (19.2%)	0.038	1094
Gastric aspiration	43 (25.0%)	147 (15.9%)	0.006	1094
Trauma	13 (7.6%)	57 (6.2%)	0.612	1094
Pancreatitis	0 (0.0%)	22 (2.4%)	0.036	1094
Pulmonary contusion	16 (9.3%)	40 (4.3%)	0.012	1094
<b>Oxygenation and Ventilation</b>				
PaO <sub>2</sub> /FiO <sub>2</sub> , mmHg	185±63	178±66	0.196	1094
Mild	56 (32.6%)	318 (34.5%)	0.509	1094
Moderate	91 (52.9%)	446 (48.4%)		
Severe	25 (14.5%)	158 (17.1%)		
PaCO <sub>2</sub> , mmHg	46±15	44±13	0.134	1084
pH	7.33±0.12	7.34±0.11	0.148	1084
FiO <sub>2</sub>	0.5 [0.4;0.8]	0.5 [0.4;0.7]	0.247	1094
Vt, ml/kg PBW	7.6±1.8	7.8±1.7	0.153	1046
RR, b/min	20±6	20±6	0.444	1091
Minute ventilation, L/min	10.33±4.50	10.31±4.62	0.942	1071
PEEP, cmH <sub>2</sub> O	6.0 [5.0;10.0]	8.0 [5.0;10.0]	0.101	1094
Plateau pressure (n=336 ), cmH <sub>2</sub> O	20.8±5.8	21.8±5.4	0.238	336
Driving pressure (n=336 ), cmH <sub>2</sub> O	13.1±5.9	14.1±4.9	0.282	336
PIP (n= 1056) , cmH <sub>2</sub> O	25.9±8.2	25.7±8.0	0.847	1056
<b>Outcomes</b>				
Duration of invasive MV - in hospital survivors, dyas	7 [3;12] 7 [4;13]	7 [4;14] 7 [4;14]	0.281 0.844	1036 652
VFD28, days	16 [0;23]	15 [0;23]	0.581	1036

ICU LOS	9 [5;16]	10 [5;19]	0.291	1094
- in ICU survivors, days	10 [6;16]	11 [6;20]	0.402	766
Hospital LOS				
- in hospital survivors, days	17 [10;35]	17 [9;33]	0.866	1070
ICU mortality, n(%)	48 (27.9%)	280 (30.4%)	0.578	1094
Hospital mortality, n(%)	58 (33.9%)	328 (35.7%)	0.720	1090

PBW : predicted body weight

## References

1. Bellani G, Laffey JG, Pham T, Fan E, Brochard L, Esteban A, Gattinoni L, van Haren F, Larsson A, McAuley DF, Ranieri M, Rubenfeld G, Thompson BT, Wrigge H, Slutsky AS, Pesenti A, LUNG SAFE Investigators, ESICM Trials Group. Epidemiology, Patterns of Care, and Mortality for Patients With Acute Respiratory Distress Syndrome in Intensive Care Units in 50 Countries. *JAMA* 2016; 315: 788–800.
2. Caser EB, Zandonade E, Pereira E, Gama AMC, Barbas CSV. Impact of distinct definitions of acute lung injury on its incidence and outcomes in Brazilian ICUs: prospective evaluation of 7,133 patients\*. *Crit. Care Med.* 2014; 42: 574–582.
3. Villar J, Blanco J, Añón JM, Santos-Bouza A, Blanch L, Ambrós A, Gandía F, Carriedo D, Mosteiro F, Basaldúa S, Fernández RL, Kacmarek RM, ALIEN Network. The ALIEN study: incidence and outcome of acute respiratory distress syndrome in the era of lung protective ventilation. *Intensive Care Med.* 2011; 37: 1932–1941.
4. ARDS Definition Task Force, Ranieri VM, Rubenfeld GD, Thompson BT, Ferguson ND, Caldwell E, Fan E, Camporota L, Slutsky AS. Acute respiratory distress syndrome: the Berlin Definition. *JAMA J. Am. Med. Assoc.* 2012; 307: 2526–2533.
5. Luhr OR, Antonsen K, Karlsson M, Aardal S, Thorsteinsson A, Frostell CG, Bonde J. Incidence and mortality after acute respiratory failure and acute respiratory distress syndrome in Sweden, Denmark, and Iceland. The ARF Study Group. *Am. J. Respir. Crit. Care Med.* 1999; 159: 1849–1861.
6. Vincent J-L, Akça S, De Mendonça A, Haji-Michael P, Sprung C, Moreno R, Antonelli M, Suter PM, SOFA Working Group. Sequential organ failure assessment. The epidemiology of acute respiratory failure in critically ill patients(\*). *Chest* 2002; 121: 1602–1609.
7. Komiya K, Akaba T, Kozaki Y, Kadota J-I, Rubin BK. A systematic review of diagnostic methods to differentiate acute lung injury/acute respiratory distress syndrome from cardiogenic pulmonary edema. *Crit. Care Lond. Engl.* 2017; 21: 228.
8. Figueroa-Casas JB, Brunner N, Dwivedi AK, Ayyappan AP. Accuracy of the chest radiograph to identify bilateral pulmonary infiltrates consistent with the diagnosis of acute respiratory distress syndrome using computed tomography as reference standard. *J. Crit. Care* 2013; 28: 352–357.
9. Goddard SL, Rubenfeld GD, Manoharan V, Dev SP, Laffey J, Bellani G, Pham T, Fan E. The Randomized Educational Acute Respiratory Distress Syndrome Diagnosis Study: A Trial to Improve the Radiographic Diagnosis of Acute Respiratory Distress Syndrome. *Crit. Care Med.* 2018; 46: 743–748.
10. Sjoding MW, Hofer TP, Co I, Courey A, Cooke CR, Iwashyna TJ. Interobserver Reliability of the Berlin ARDS Definition and Strategies to Improve the Reliability of ARDS Diagnosis. *Chest* 2018; 153: 361–367.



- 1  
2  
3 11. Almirall J, Mesalles E, Klamburg J, Parra O, Agudo A. Prognostic factors of pneumonia  
4 requiring admission to the intensive care unit. *Chest* 1995; 107: 511–516.  
5
- 6  
7 12. Liapikou A, Cillóniz C, Gabarrús A, Amaro R, De la Bellacasa JP, Mensa J, Sánchez M,  
8 Niederman M, Torres A. Multilobar bilateral and unilateral chest radiograph  
9 involvement: implications for prognosis in hospitalised community-acquired  
10 pneumonia. *Eur. Respir. J.* 2016; 48: 257–261.  
11
- 12  
13 13. Neto AS, Simonis FD, Barbas CSV, Biehl M, Determann RM, Elmer J, Friedman G, Gajic  
14 O, Goldstein JN, Linko R, Pinheiro de Oliveira R, Sundar S, Talmor D, Wolthuis EK, Gama  
15 de Abreu M, Pelosi P, Schultz MJ, PROtective Ventilation Network Investigators. Lung-  
16 Protective Ventilation With Low Tidal Volumes and the Occurrence of Pulmonary  
17 Complications in Patients Without Acute Respiratory Distress Syndrome: A Systematic  
18 Review and Individual Patient Data Analysis. *Crit. Care Med.* 2015; 43: 2155–2163.  
19
- 20  
21 14. Writing Group for the PReVENT Investigators, Simonis FD, Serpa Neto A, Binnekade JM,  
22 Braber A, Bruin KCM, Determann RM, Goekoop G-J, Heidt J, Horn J, Innemee G, de  
23 Jonge E, Juffermans NP, Spronk PE, Steuten LM, Tuinman PR, de Wilde RBP, Vriends M,  
24 Gama de Abreu M, Pelosi P, Schultz MJ. Effect of a Low vs Intermediate Tidal Volume  
25 Strategy on Ventilator-Free Days in Intensive Care Unit Patients Without ARDS: A  
26 Randomized Clinical Trial. *JAMA* 2018; 320: 1872–1880.  
27
- 28  
29 15. Pham T, Laffey JG, Bellani G, Fan E, Bugedo G, Lorente JA, Rios F, Bruhn A, Brochard LJ,  
30 Rubenfeld GD. Do patients with unilateral opacities have a similar outcome  
31 than patients with ARDS? An ancillary analysis of the LUNG SAFE stud. *Intensive Care*  
32 *Med. Exp.* 2017; 5: 0406.  
33
- 34  
35 16. Laffey JG, Madotto F, Bellani G, Pham T, Fan E, Brochard L, Amin P, Arabi Y, Bajwa EK,  
36 Bruhn A, Cerny V, Clarkson K, Heunks L, Kurahashi K, Laake JH, Lorente JA, McNamee L,  
37 Nin N, Palo JE, Piquilloud L, Qiu H, Jiménez JIS, Esteban A, McAuley DF, van Haren F,  
38 Ranieri M, Rubenfeld G, Wrigge H, Slutsky AS, Pesenti A, et al. Geo-economic variations  
39 in epidemiology, patterns of care, and outcomes in patients with acute respiratory  
40 distress syndrome: insights from the LUNG SAFE prospective cohort study. *Lancet*  
41 *Respir. Med.* 2017; 5: 627–638.  
42
- 43  
44 17. von Elm E, Altman DG, Egger M, Pocock SJ, Gøtzsche PC, Vandenbroucke JP, STROBE  
45 Initiative. The Strengthening the Reporting of Observational Studies in Epidemiology  
46 (STROBE) statement: guidelines for reporting observational studies. *Lancet Lond. Engl.*  
47 2007; 370: 1453–1457.  
48
- 49  
50 18. Herridge MS, Tansey CM, Matté A, Tomlinson G, Diaz-Granados N, Cooper A, Guest CB,  
51 Mazer CD, Mehta S, Stewart TE, Kudlow P, Cook D, Slutsky AS, Cheung AM, Canadian  
52 Critical Care Trials Group. Functional disability 5 years after acute respiratory distress  
53 syndrome. *N. Engl. J. Med.* 2011; 364: 1293–1304.  
54
- 55  
56 19. Pham T, Rubenfeld GD. Fifty Years of Research in ARDS. The Epidemiology of Acute  
57 Respiratory Distress Syndrome. A 50th Birthday Review. *Am. J. Respir. Crit. Care Med.*  
58 2017; 195: 860–870.  
59  
60

- 1
- 2
- 3
- 4 20. Prescott HC, Sjoding MW, Langa KM, Iwashyna TJ, McAuley DF. Late mortality after
- 5 acute hypoxic respiratory failure. *Thorax* 2018; 73: 618–625.
- 6
- 7 21. Peñuelas O, Muriel A, Abraira V, Frutos-Vivar F, Mancebo J, Raymondos K, Du B, Thille
- 8 AW, Ríos F, González M, Del-Sorbo L, Ferguson ND, Del Carmen Marín M, Pinheiro BV,
- 9 Soares MA, Nin N, Maggiore SM, Bersten A, Amin P, Cakar N, Suh GY, Abroug F, Jibaja
- 10 M, Matamis D, Zeggwagh AA, Sutherasan Y, Anzueto A, Esteban A. Inter-country
- 11 variability over time in the mortality of mechanically ventilated patients. *Intensive Care*
- 12 *Med.* 2020; .
- 13
- 14
- 15 22. Herridge MS, Angus DC. Acute lung injury--affecting many lives. *N. Engl. J. Med.* 2005;
- 16 353: 1736–1738.
- 17
- 18 23. Henderson WR, Chen L, Amato MBP, Brochard LJ. Fifty Years of Research in ARDS.
- 19 Respiratory Mechanics in Acute Respiratory Distress Syndrome. *Am. J. Respir. Crit. Care*
- 20 *Med.* 2017; .
- 21
- 22
- 23 24. Sahetya SK, Mancebo J, Brower RG. Fifty Years of Research in ARDS. Vt Selection in
- 24 Acute Respiratory Distress Syndrome. *Am. J. Respir. Crit. Care Med.* 2017; 196: 1519–
- 25 1525.
- 26
- 27 25. Sahetya SK, Goligher EC, Brower RG. Fifty Years of Research in ARDS. Setting Positive
- 28 End-Expiratory Pressure in Acute Respiratory Distress Syndrome. *Am. J. Respir. Crit.*
- 29 *Care Med.* 2017; 195: 1429–1438.
- 30
- 31
- 32 26. Beitler JR, Goligher EC, Schmidt M, Spieth PM, Zanella A, Martin-Loeches I, Calfee CS,
- 33 Cavalcanti AB, ARDSne(x)t Investigators. Personalized medicine for ARDS: the 2035
- 34 research agenda. *Intensive Care Med.* 2016; 42: 756–767.
- 35
- 36
- 37 27. Rubenfeld GD, Caldwell E, Granton J, Hudson LD, Matthay MA. Interobserver variability
- 38 in applying a radiographic definition for ARDS. *Chest* 1999; 116: 1347–1353.
- 39
- 40 28. Murray JF, Matthay MA, Luce JM, Flick MR. An expanded definition of the adult
- 41 respiratory distress syndrome. *Am. Rev. Respir. Dis.* 1988; 138: 720–723.
- 42
- 43
- 44 29. Calfee CS, Delucchi K, Parsons PE, Thompson BT, Ware LB, Matthay MA, NHLBI ARDS
- 45 Network. Subphenotypes in acute respiratory distress syndrome: latent class analysis
- 46 of data from two randomised controlled trials. *Lancet Respir. Med.* 2014; 2: 611–620.
- 47
- 48
- 49 30. Bos LD, Schouten LR, van Vught LA, Wiewel MA, Ong DSY, Cremer O, Artigas A, Martin-
- 50 Loeches I, Hoogendijk AJ, van der Poll T, Horn J, Juffermans N, Calfee CS, Schultz MJ,
- 51 MARS consortium. Identification and validation of distinct biological phenotypes in
- 52 patients with acute respiratory distress syndrome by cluster analysis. *Thorax* 2017; 72:
- 53 876–883.
- 54
- 55
- 56 31. Calfee CS, Delucchi KL, Sinha P, Matthay MA, Hackett J, Shankar-Hari M, McDowell C,
- 57 Laffey JG, O’Kane CM, McAuley DF, Irish Critical Care Trials Group. Acute respiratory
- 58 distress syndrome subphenotypes and differential response to simvastatin: secondary
- 59 analysis of a randomised controlled trial. *Lancet Respir. Med.* 2018; 6: 691–698.
- 60

- 1  
2  
3  
4  
5  
6  
7  
8  
9  
10  
11  
12  
13  
14  
15  
16  
17  
18  
19  
20  
21  
22  
23  
24  
25  
26  
27  
28  
29  
30  
31  
32  
33  
34  
35  
36  
37  
38  
39  
40  
41  
42  
43  
44  
45  
46  
47  
48  
49  
50  
51  
52  
53  
54  
55  
56  
57  
58  
59  
60
32. Alviar CL, Miller PE, McAreavey D, Katz JN, Lee B, Moriyama B, Soble J, van Diepen S, Solomon MA, Morrow DA, ACC Critical Care Cardiology Working Group. Positive Pressure Ventilation in the Cardiac Intensive Care Unit. *J. Am. Coll. Cardiol.* 2018; 72: 1532–1553.
  33. Vallabhajosyula S, Kashani K, Dunlay SM, Vallabhajosyula S, Vallabhajosyula S, Sundaragiri PR, Gersh BJ, Jaffe AS, Barsness GW. Acute respiratory failure and mechanical ventilation in cardiogenic shock complicating acute myocardial infarction in the USA, 2000-2014. *Ann. Intensive Care* 2019; 9: 96.
  34. Schmickl CN, Biehl M, Wilson GA, Gajic O. Comparison of hospital mortality and long-term survival in patients with acute lung injury/ARDS vs cardiogenic pulmonary edema. *Chest* 2015; 147: 618–625.
  35. Maw AM, Hassanin A, Ho PM, McInnes MDF, Moss A, Juarez-Colunga E, Soni NJ, Miglioranza MH, Platz E, DeSanto K, Sertich AP, Salame G, Daugherty SL. Diagnostic Accuracy of Point-of-Care Lung Ultrasonography and Chest Radiography in Adults With Symptoms Suggestive of Acute Decompensated Heart Failure: A Systematic Review and Meta-analysis. *JAMA Netw. Open* 2019; 2: e190703.
  36. Vassallo MC, Tartamella F, Bhakta P, Palazzolo G. ARDS Cannot Be Accurately Differentiated From Cardiogenic Pulmonary Edema Without Systematic Tissue Doppler Echocardiography. *Chest* 2018; 154: 226–227.

## Figure legends

Figure 1: Flowchart of the patients screened and included in the analysis

Abbreviations: ARDS: Acute Respiratory Distress Syndrome; CHF: Congestive Heart Failure; ECMO: ExtraCorporeal Membrane Oxygenation; NIV: Noninvasive Ventilation

Figure 2: Boxplots of respiratory parameters at day 1 according to the population category (Unilateral-infiltrate in blue vs. ARDS in black). P-values are results of Student test comparisons. Outliers appear as dots.

Panel A, B, C: Tidal Volume, PEEP, Peak pressure. Panel D, E: Plateau Pressure and Driving pressure. Data are available for 912 patients (31.2% of the patients). Panel F, G, H:

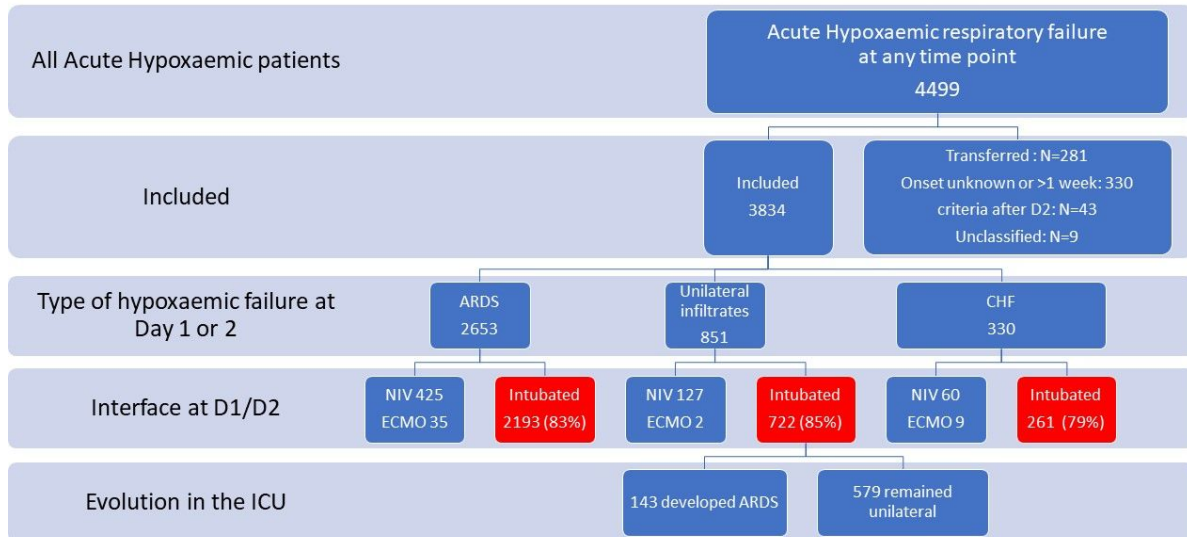
Respiratory Rate, standardized minute ventilation, FiO<sub>2</sub>.

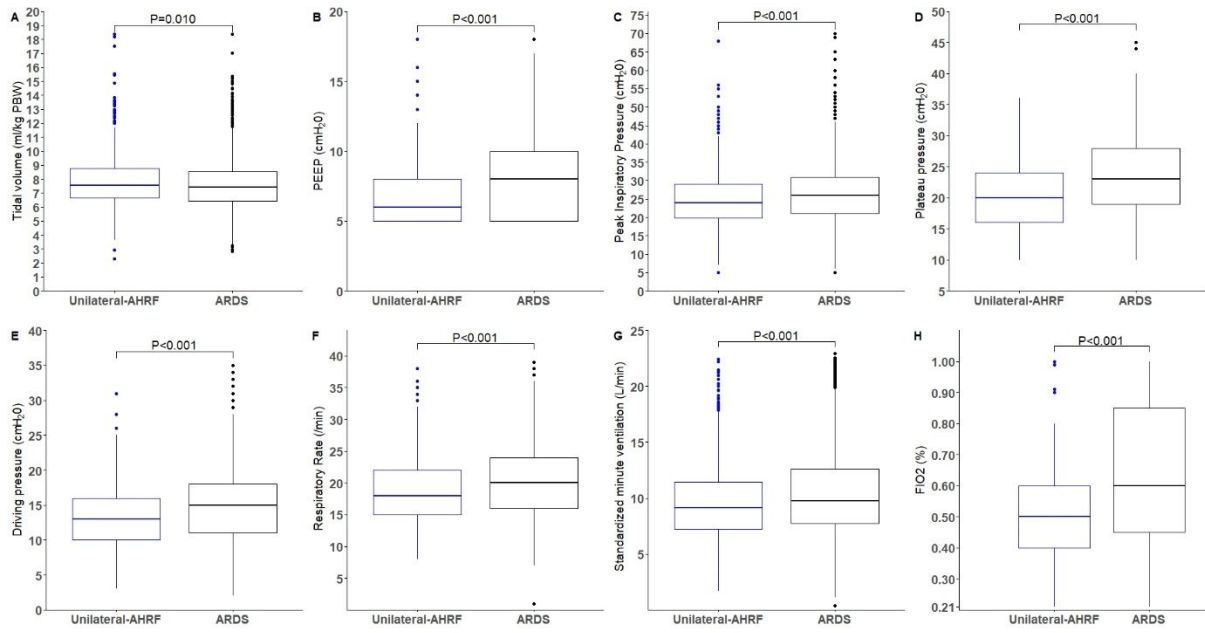
Abbreviations: ARDS: Acute Respiratory Distress Syndrome; mL/kg PBW: millilitre per kilogram of predicted body weight; Pplat: plateau pressure

Figure 3A: Probability of discontinuing mechanical ventilation and of hospital survival in patients with unilateral-infiltrate (Blue) vs ARDS (Black). Solid lines represent the probability of hospital survival and dotted lines, the probability of mechanical ventilation discontinuation. P-values are the results of log-rank tests.

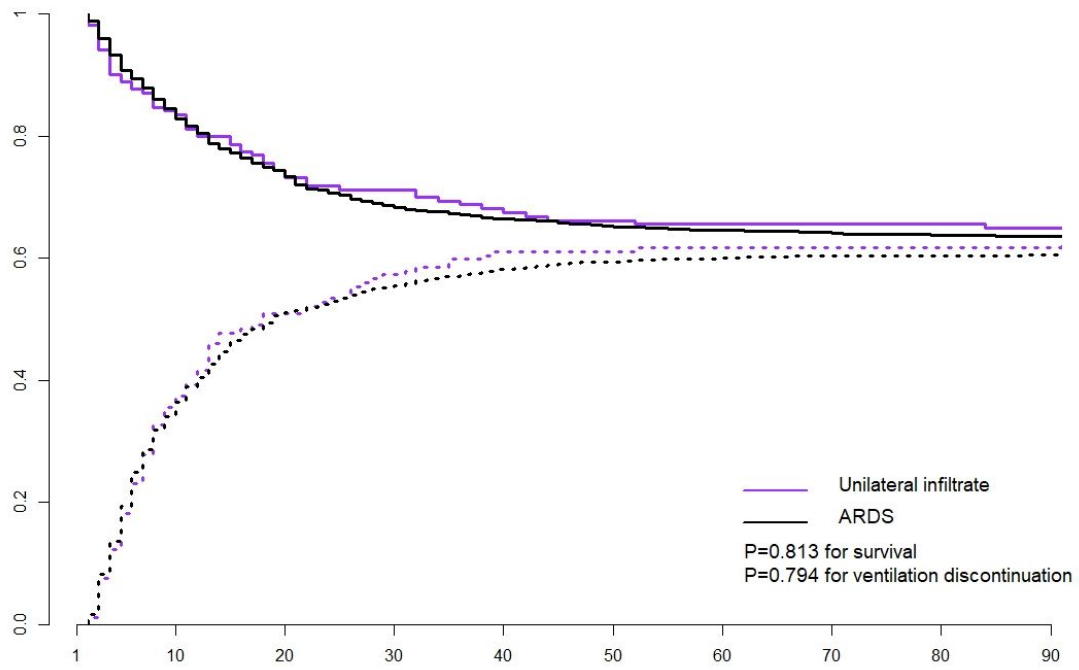
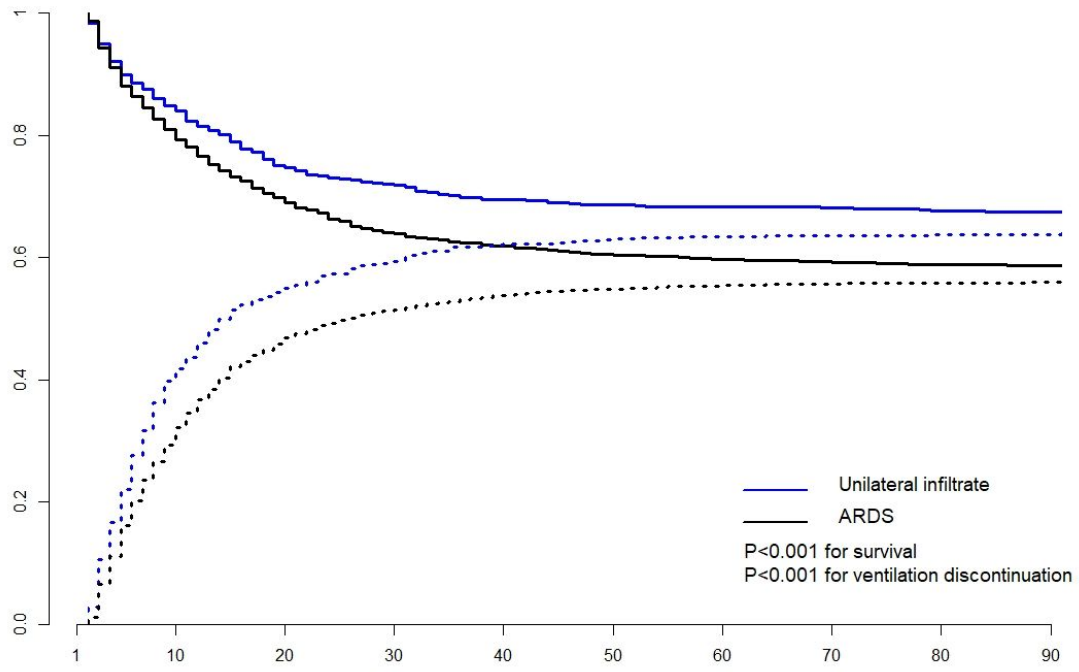
Figure 3B: Probability of discontinuing mechanical ventilation and of hospital survival in patients with 2 quadrants and unilateral-infiltrate (Blue) vs 2 quadrants and ARDS (Black). Solid lines represent the probability of hospital survival and dotted lines, the probability of mechanical ventilation

Figure 1: Flow of patients





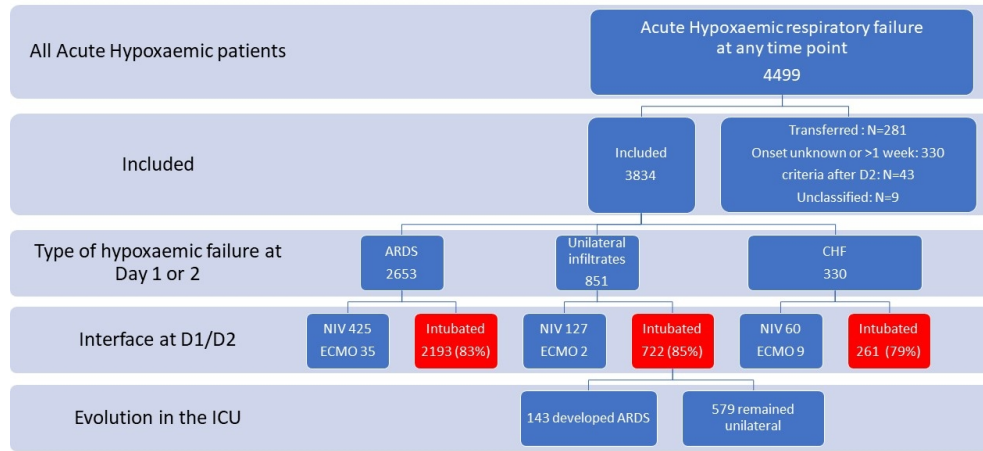
1  
2  
3  
4  
5  
6  
7  
8  
9  
10  
11  
12  
13  
14  
15  
16  
17  
18  
19  
20  
21  
22  
23  
24  
25  
26  
27  
28  
29  
30  
31  
32  
33  
34  
35  
36  
37  
38  
39  
40  
41  
42  
43  
44  
45  
46  
47  
48  
49  
50  
51  
52  
53  
54  
55  
56  
57  
58  
59  
60



1  
2  
3  
4  
5  
6  
7  
8  
9  
10  
11  
12  
13  
14  
15  
16  
17  
18  
19  
20  
21  
22  
23  
24  
25  
26  
27  
28  
29  
30  
31  
32  
33  
34  
35  
36  
37  
38  
39  
40  
41  
42  
43  
44  
45  
46  
47  
48  
49  
50  
51  
52  
53  
54  
55  
56  
57  
58  
59  
60



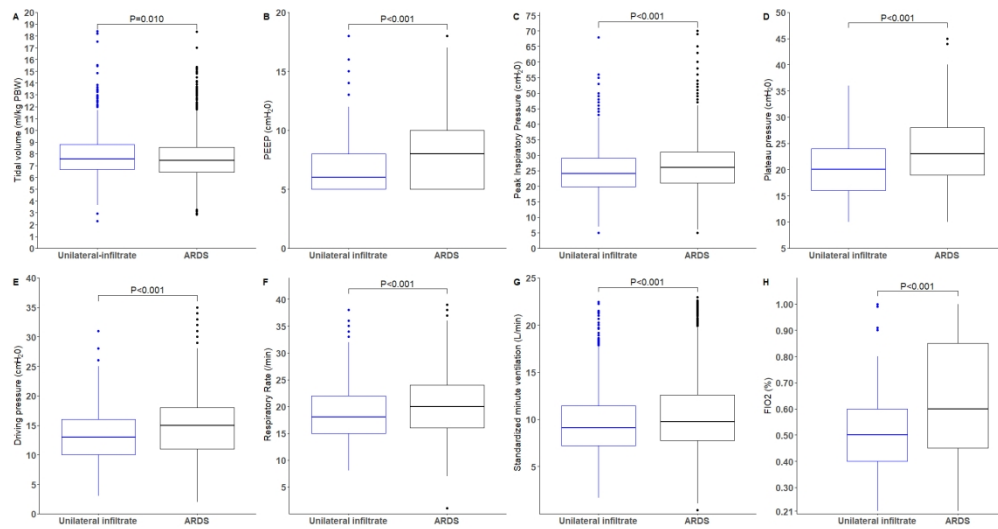
Figure 1: Flow of patients



Flowchart of the patients screened and included in the analysis

Abbreviations: ARDS: Acute Respiratory Distress Syndrome; CHF: Congestive Heart Failure; ECMO: ExtraCorporeal Membrane Oxygenation; NIV: Noninvasive Ventilation

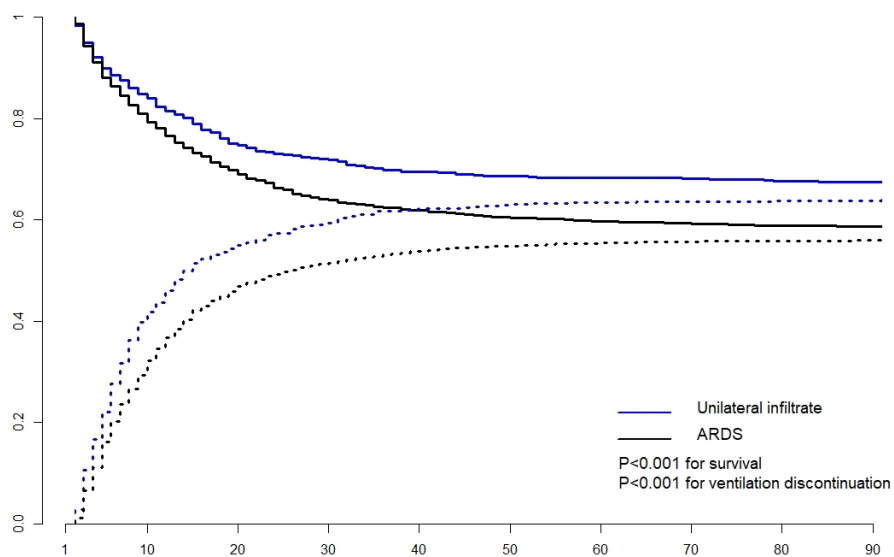
338x190mm (96 x 96 DPI)



Boxplots of respiratory parameters at day 1 according to the population category (Unilateral-infiltrate in blue vs. ARDS in black). P-values are results of Student test comparisons. Outliers appear as dots.

Panel A, B, C: Tidal Volume, PEEP, Peak pressure. Panel D, E: Plateau Pressure and Driving pressure. Data are available for 912 patients (31.2% of the patients). Panel F, G, H: Respiratory Rate, standardized minute ventilation, FiO<sub>2</sub>.

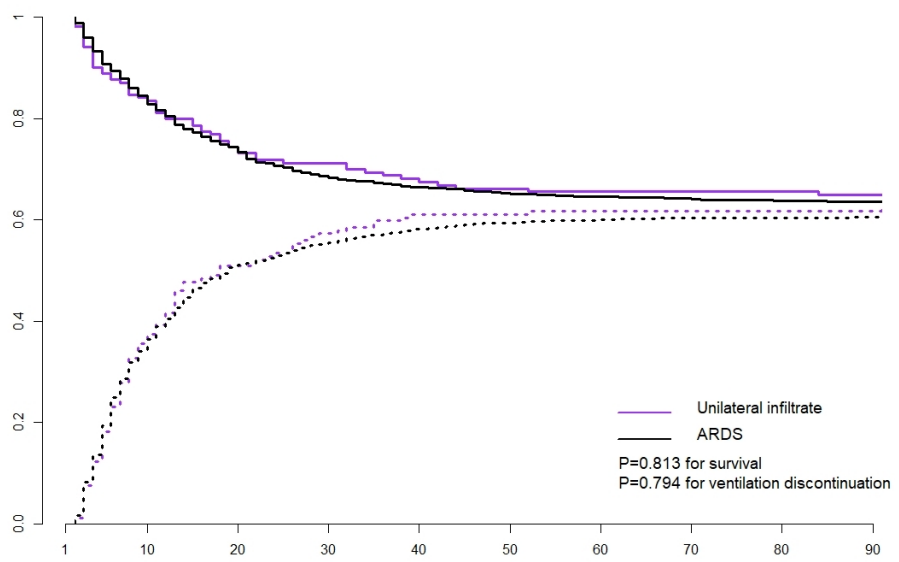
Abbreviations: ARDS: Acute Respiratory Distress Syndrome; mL/kg PBW: millilitre per kilogram of predicted body weight; Pplat: plateau pressure



Probability of discontinuing mechanical ventilation and of hospital survival in patients with unilateral-infiltrate (Blue) vs ARDS (Black). Solid lines represent the probability of hospital survival and dotted lines, the probability of mechanical ventilation discontinuation. P-values are the results of log-rank tests.

309x218mm (96 x 96 DPI)

1  
2  
3  
4  
5  
6  
7  
8  
9  
10  
11  
12  
13  
14  
15  
16  
17  
18  
19  
20  
21  
22  
23  
24  
25  
26  
27  
28  
29  
30  
31  
32  
33  
34  
35  
36  
37  
38  
39  
40  
41  
42  
43  
44  
45  
46  
47  
48  
49  
50  
51  
52  
53  
54  
55  
56  
57  
58  
59  
60



Probability of discontinuing mechanical ventilation and of hospital survival in patients with 2 quadrants and unilateral-infiltrate (Blue) vs 2 quadrants and ARDS (Black). Solid lines represent the probability of hospital survival and dotted lines, the probability of mechanical ventilation

309x218mm (96 x 96 DPI)

# Outcome of Unilateral and Bilateral Hypoxaemic Respiratory Failure. Insights from the Lung Safe Study

Online supplement

e-Table 1 : global and adjusted p-values for pairwise comparisons.....	2
e-Table 2: Use of adjunct treatments in the 3 groups.....	4
e-Table 3: Characteristics of survivors vs non-survivors.....	5
e-Table 4: multivariable analyses of factors associated with hospital death in patients with unilateral infiltrate or ARDS .....	7
<b>e-Table 5:</b> Multivariable analysis of variables associated with hospital mortality in patients with unilateral-infiltrate..	8
<b>e-Table 6:</b> Multivariable analysis of variables associated with hospital mortality in unilateral infiltrate patients with 2 quadrants involved.....	9
<b>e-Table 7:</b> Baseline and outcomes of unilateral infiltrate patients according to their evolution.....	10
e-Table 8: Multivariable analysis of factors associated with evolution to ARDS in patients with initial unilateral infiltrate.....	11
e-Figure 1: Distribution of tidal volume vs plateau pressure on day 1 in patients with unilateral infiltrate or with ARDS .....	12

e-Table 1 : global and adjusted p-values for pairwise comparisons

	<b>Global p-value</b>	ARDS vs CHF	unilateral infiltrate vs ARDS
Age	<0.001	<0.001	0.277
Female gender	0.056	0.296	0.296
BMI	0.061	0.736	0.051
<b>Illness Severity Indices</b>			
SOFA Score	<0.001	0.376	<0.001
Non-pulmonary SOFA score	<0.001	0.146	0.001
Number of CXR quadrants	<0.001	<0.001	0.000
Bilateral opacities	<0.001	<0.001	0.000
PaCO <sub>2</sub>	0.003	0.005	0.165
pH	<0.001	0.657	<0.001
PaO <sub>2</sub> /FiO <sub>2</sub>	<0.001	0.069	0.000
Worst PF in the 2 first days	<0.001	0.374	0.000
Initial Severity	<0.001	0.190	<0.001
<b>Comorbidities</b>			
Diabetes	0.009	0.010	0.999
COPD	0.001	0.030	0.023
Chronic Renal Failure	<0.001	<0.001	0.958
Immunosuppression	<0.001	<0.001	0.194
Chronic Cardiac Failure	<0.001	<0.001	0.924
Chronic Liver Failure	0.157	0.252	0.638
At least 1 comorbidity	0.004	0.003	0.968
<b>"Cause of hypoxemia"</b>			
Pneumonia	<0.001	<0.001	0.025
Non pulmonary Sepsis	<0.001	<0.001	0.049
Gastric aspiration	<0.001	0.002	0.009
Trauma	0.002	0.018	0.069
Pancreatitis	0.013	0.023	0.262
Pulmonary contusion	0.023	0.117	0.125
Pulmonary Vasculitis	0.356	0.589	0.589

1	Non cardiogenic Shock	0.001	0.002	0.096
2	Overdose	0.018	0.018	0.231
3				
4	TRALI	0.412	0.976	0.662
5				
6	CHF	<0.001	<0.001	0.003
7				
8	COPD	<0.001	0.101	0.900
9				
10	Asthma	0.101	<0.001	<0.001
11				
12				
13	No Cause identified	0.002	0.002	0.707
14				
15	Ventilation Management			
16	VT	<0.001	<0.001	0.010
17				
18	RR	<0.001	0.001	<0.001
19				
20	PEEP	<0.001	<0.001	<0.001
21				
22	FiO2	<0.001	0.668	<0.001
23				
24	Plateau pressure	<0.001	0.061	<0.001
25				
26	Driving pressure	<0.001	0.367	<0.001
27				
28	PIP	<0.001	<0.001	<0.001
29				
30	Minute ventilation	<0.001	0.008	0.002
31				
32	Outcomes			
33	Duration of invasive MV	<0.001	<0.001	<0.001
34				
35	VFD	<0.001	0.064	<0.001
36				
37	ICU Length of Stay	<0.001	<0.001	0.007
38				
39	Hospital Length of Stay	<0.001	<0.001	0.902
40				
41	ICU mortality	<0.001	0.515	<0.001
42				
43	Hospital mortality	<0.001	0.282	<0.001
44				
45				
46				
47				
48				
49				
50				
51				
52				
53				
54				
55				
56				
57				
58				
59				
60				

e-Table 2: Use of adjunct treatments in the 3 groups

Var	ALL N=3176	unilateral infiltrate N=722	ARDS N=2193	CHF N=261	Global p-value	p-value unilat vs ARDS	p-value unilat vs CHF	p-value unilat vs CHF	N
Prone	186 (5.9%)	16 (2.2%)	167 (7.6%)	3 (1.1%)	<0.001	<0.001	0.418	<0.001	3176
ECMO	18 (0.6%)	0 (0.0%)	17 (0.8%)	1 (0.4%)	0.026	0.032	0.398	0.713	3176
NMBA	575 (18.1%)	87 (12.0%)	457 (20.8%)	31 (11.9%)	<0.001	<0.001	1.000	0.001	3176
Recruitment Maneuver	575 (18.1%)	90 (12.5%)	455 (20.7%)	30 (11.5%)	<0.001	<0.001	0.764	0.001	3176
Inhaled VD	191 (6.0%)	25 (3.5%)	152 (6.9%)	14 (5.4%)	0.003	0.003	0.367	0.411	3176
HFO	27 (0.9%)	2 (0.3%)	25 (1.1%)	0 (0.0%)	0.022	0.153	1.000	0.153	3176
Any Rescue treatment	1079 (34.0%)	178 (24.7%)	835 (38.1%)	66 (25.3%)	<0.001	<0.001	0.905	<0.001	3176



e-Table 3: Characteristics of survivors vs non-survivors

	ALL N=2904	Survivors N=1793	Deceased N=1111	p-value	N
Age	61±7	59±17	65±17	<0.001	2904
Female gender	1069 (37%)	656 (37%)	413 (37%)	0.780	2904
Weight	77.2±22.8	78.9±24.9	74.5±18.5	<0.001	2758
BMI	27.1±8.1	27.6±9.0	26.5±6.3	<0.001	2691
Illness Severity Indices					
SOFA Score	9.6 [7.0;12.0]	9.0 [6.0;12.0]	11.0 [8.0;14.0]	<0.001	2893
Non-pulmonary SOFA score	6.2 [4.0;9.0]	6.0 [3.8;8.0]	8.0 [5.0;11.0]	<0.001	2872
CXR quadrants involved				<0.001	2752
1	428 (16%)	300 (18%)	128 (12%)		
2	1090 (40%)	704 (42%)	386 (36%)		
3	505 (18%)	289 (17%)	216 (20%)		
4	729 (27%)	399 (24%)	330 (31%)		
Bilateral opacities	2184 (75%)	1302 (73%)	882 (79%)	<0.001	2904
PaCO <sub>2</sub>	46±15	46±14	46±16	0.980	2867
pH	7.33±0.12	7.35±0.11	7.30±0.14	<0.001	2867
PaO <sub>2</sub> /FiO <sub>2</sub>	168±68	173±68	160±68	<0.001	2893
Initial Severity				<0.001	2904
Mild	988 (34.0)	663 (37%)	325 (29%)		
Moderate	1334 (46%)	817 (46%)	517 (47%)		
Severe	582 (20%)	313 (18%)	269 (24%)		
Comorbidities					
Diabetes	635 (22%)	372 (21%)	263 (24%)	0.071	2904
COPD	623 (22%)	385 (22%)	238 (21%)	1.000	2904
Chronic Renal Failure	277 (9.5%)	152 (8.5%)	125 (11%)	0.016	2904
Immunosuppression	582 (20.0%)	288 (16%)	294 (27%)	<0.001	2904
Chronic Cardiac Failure	280 (10%)	153 (9%)	127 (11%)	0.012	2904
Chronic Liver Failure	124 (4%)	43 (2%)	81 (7%)	<0.001	2904
At least 1 comorbidity	1701 (59%)	955 (53%)	746 (67%)	<0.001	2904
“Cause of hypoxemia” (more than 1 cause is possible)					
Pneumonia	1923 (66%)	1180 (66%)	743 (67%)	0.583	2904
Non pulmonary Sepsis	483 (17%)	259 (14%)	224 (20%)	<0.001	2904
Gastric aspiration	503 (17%)	309 (17%)	194 (18%)	0.914	2904
Trauma	150 (5%)	122 (7%)	28 (3%)	<0.001	2904
Pancreatitis	57 (2%)	29 (2%)	28 (3%)	0.117	2904
Pulmonary contusion	108 (4%)	86 (5%)	22 (2%)	<0.001	2904
Pulmonary Vasculitis	34 (1%)	14 (1%)	20 (2%)	0.021	2904
Non cardiogenic Shock	229 (8%)	114 (6%)	115 (10%)	<0.001	2904
Overdose	66 (2%)	54 (3%)	12 (1%)	0.001	2904
TRALI	122 (4%)	67 (4%)	55 (5%)	0.136	2904
CHF	399 (14%)	206 (12%)	193 (17%)	<0.001	2904
COPD	41 (1%)	29 (2%)	12 (1%)	0.303	2904
Asthma	399 (14%)	206 (12%)	193 (17%)	<0.001	2904
No Cause identified	127 (4%)	90 (5%)	37 (3%)	0.038	2904

1	Ventilation Management					
2	VT	7.7±1.8	7.8±1.8	7.7±1.8	0.215	2758
3	RR	20±8	20±6.2	21±11	<0.001	2887
4	PEEP	8.0 [5.0;10.0]	8.0 [5.0;10.0]	8.0 [5.0;10.0]	0.405	2893
5	FiO2	0.6 [0.4;0.8]	0.5 [0.4;0.8]	0.6 [0.4;0.9]	<0.001	2893
6	Plateau pressure	23±6	22±6	24±6	<0.001	907
7	Driving pressure	15±6	14±5	16±6	<0.001	905
8	PIP	26±8	26±8	28±8	<0.001	2781
9	Minute ventilation	10.7±4.7	10.6±4.5	10.9±5.0	0.113	2839
10	Outcomes					
11	Duration of invasive MV	7.0 [4.0;14.0]	7.0 [4.0;14.0]	7.0 [3.0;15.0]	0.247	2753
12	VFD	14.0 [0.0;22.0]	21.0 [14.0;24.0]	0.0 [0.0;0.0]	<0.001	2753
13	ICU Length of Stay	10.0 [5.0;18.0]	11.0 [6.0;20.0]	8.0 [4.0;16.0]	<0.001	2904
14	Hospital Length of Stay	17.0 [8.0;32.0]	22.0 [13.0;40.0]	9.0 [4.0;19.0]	<0.001	2849
15	ICU mortality	962 (33%)	0 (0%)	962 (87%)	0.000	2904
16	Hospital mortality	1111 (38%)	0 (0%)	1111 (100.0%)	0.000	2904
17						
18						
19						
20						
21						
22						
23						
24						
25						
26						
27						
28						
29						
30						
31						
32						
33						
34						
35						
36						
37						
38						
39						
40						
41						
42						
43						
44						
45						
46						
47						
48						
49						
50						
51						
52						
53						
54						
55						
56						
57						
58						
59						
60						

e-Table 4: multivariable analyses of factors associated with hospital death in patients with unilateral infiltrate or ARDS

	Model with Bilateral opacities				Model with number of quadrants		
	OR	95%CI	p-value		OR	95%CI	p-value
<b>BILATERAL opacities</b>	1.32	1.06; 1.64	<0.013		-	-	-
<b>Number of quadrants (reference: 1 quadrant)</b>	-	-	-				
2 quadrants	-	-	-		1.17	0.88; 1.56	0.284
3 quadrants	-	-	-		1.53	1.10; 2.11	0.011
4 quadrants	-	-	-		1.76	1.29; 2.41	<0.001
Age (for 1 year)	1.02	1.02; 1.03	<0.001		1.02	1.02; 1.03	<0.001
BMI (for 1 kg/m <sup>2</sup> )	0.98	0.97; 1.00	0.011		0.98	0.97; 1.00	0.015
Medical admission	1.98	1.56; 2.51	<0.001		1.86	1.46; 2.38	<0.001
Trauma admission	1.84	1.10; 3.01	0.017		1.81	1.07; 3.00	0.024
Non-pulmonary SOFA	1.13	1.10; 1.16	<0.001		1.13	1.11; 1.16	<0.001
PF (for 10 mmHg decrease)	1.02	1.00; 1.03	0.028		1.01	0.99; 1.02	0.218
pH (for 0.01 increase)	0.98	0.97; 0.99	<0.001		0.98	0.98; 0.99	<0.001
RR (for 1/min)	1.02	1.01; 1.04	0.002		1.02	1.01; 1.04	0.003
PEEP (for 1cmH <sub>2</sub> O)	0.94	0.91; 0.97	<0.001		0.94	0.91; 0.97	<0.001
PIP (for 1cmH <sub>2</sub> O)	1.02	1.01; 1.03	0.002		1.02	1.01; 1.03	0.006
immunocompromised	2.19	1.76; 2.72	<0.001		2.19	1.75; 2.74	<0.001
Chronic liver Failure	2.54	1.60; 4.11	<0.001		2.52	1.57; 4.13	<0.001
Extra-pulmonary sepsis	1.32	1.04; 1.69	0.025		1.23	0.95; 1.58	0.109
Drug overdose	0.45	0.21; 0.90	0.031		0.40	0.18; 0.83	0.019
TRALI	1.60	1.03; 2.47	0.034		1.56	1.00; 2.42	0.005
Concomitant Cardiac Failure	1.34	1.04; 1.73	0.025		1.39	1.07; 1.81	0.013
<b>Income area (reference High income Europe)</b>							
Middle Income	1.58	1.26; 1.99	<0.001		1.71	1.35; 2.17	<0.001
High Income non Europe	0.62	0.49; 0.87	<0.001		0.59	0.47; 0.75	<0.001

**e-Table 5: Multivariable analysis of variables associated with hospital mortality in patients with unilateral infiltrate**

	OR	95%CI	p-value
Age (for 1 year)	1.02	1.01; 1.03	<0.001
Medical admission	2.27	1.51; 3.44	<0.001
Non-pulmonary SOFA	1.19	1.13; 1.25	<0.001
pH (for 0.01 increase)	0.98	0.97; 1.00	0.020
PEEP (for 1cmH2O)	0.88	0.81; 0.95	0.001
Immunocompromised	2.10	1.36; 3.23	<0.001
Income area (reference High income Europe)			
Middle Income	1.94	1.23; 3.07	0.004
High Income non Europe	0.67	0.42; 1.06	0.091

**e-Table 6: Multivariable analysis of variables associated with hospital mortality in unilateral infiltrate patients with 2 quadrants involved**

	Model for patients with 2 quadrants		
	OR	95%CI	p-value
BILATERAL opacities	1.13	0.76; 1.69	0.56
Age (for 1 year)	1.02	1.01; 1.03	<0.001
BMI (for 1 kg/m <sup>2</sup> )	0.99	0.97; 1.01	0.404
Medical admission	2.42	1.67; 3.54	<0.001
Trauma admission	2.57	1.18; 5.40	0.015
Non-pulmonary SOFA	1.08	1.04; 1.13	<0.001
PF (for 10 mmHg decrease)	0.99	0.96; 1.01	0.310
pH (for 0.01 increase)	0.98	0.97; 0.99	0.003
RR (for 1/min)	1.03	1.01; 1.06	0.015
PEEP (for 1cmH <sub>2</sub> O)	0.94	0.89; 1.00	0.050
PIP (for 1cmH <sub>2</sub> O)	1.01	0.99; 1.03	0.200
immunocompromised	2.21	1.53; 3.21	<0.001
Chronic liver Failure	2.62	1.14; 6.47	0.026
Extra-pulm sepsis	1.96	1.32; 2.92	<0.001
Drug overdose	2.27	0.03; 0.98	0.080
TRALI	3.11	1.50; 6.47	0.002
Concomitant Cardiac Failure	1.50	1.00; 2.26	0.049
Income area (reference High income Europe)			
Middle Income	1.44	1.00; 2.06	0.049
High Income non Europe	0.67	0.45; 0.99	0.044

**e-Table 7: Baseline and outcomes of unilateral infiltrate patients according to their evolution**

	Never developed ARDS N=579	Did develop ARDS N=143	p-value	N
Age	61.6±17.5	64.0±16.1	0.126	722
Female gender	214 (37.0%)	40 (28.0%)	0.055	722
Weight	75.2±18.2	78.0±20.2	0.147	691
BMI	26.3±6.1	27.2±6.3	0.135	674
Obese	105 (19.5%)	31 (22.8%)	0.465	674
Comorbidities				
Diabetes	128 (22.1%)	30 (21.0%)	0.858	722
COPD	147 (25.4%)	32 (22.4%)	0.523	722
Chronic Renal Failure	56 (9.7%)	12 (8.4%)	0.757	722
Immunosuppression	111 (19.2%)	22 (15.4%)	0.355	722
Chronic Cardiac Failure	57 (9.8%)	14 (9.8%)	1.000	722
Chronic Liver Failure	23 (4.0%)	5 (3.5%)	0.982	722
At least 1 comorbidity	346 (59.8%)	79 (55.2%)	0.375	722
Risk factor for AHRF				
Pneumonia	271 (46.8%)	77 (53.8%)	0.157	722
Non pulmonary Sepsis	81 (14.0%)	22 (15.4%)	0.769	722
Gastric aspiration	124 (21.4%)	25 (17.5%)	0.355	722
Trauma	34 (5.9%)	13 (9.1%)	0.227	722
Pancreatitis	9 (1.6%)	1 (0.7%)	0.696	722
Pulmonary contusion	24 (4.1%)	10 (7.0%)	0.223	722
Pulmonary Vasculitis	5 (0.9%)	1 (0.7%)	1.000	722
Non cardiogenic Shock	38 (6.6%)	8 (5.6%)	0.815	722
Overdose	17 (2.9%)	4 (2.8%)	1.000	722
TRALI	17 (2.9%)	7 (4.9%)	0.294	722
No Risk Factor identified	58 (10.0%)	15 (10.5%)	0.990	722
Concomitant Cardiac Failure	61 (10.5%)	14 (9.8%)	0.914	722
Concomitant Asthma	8 (1.4%)	3 (2.1%)	0.463	722
Concomitant COPDE	81 (14.0%)	22 (15.4%)	0.769	722
Type of admission			0.336	722
Medical	399 (68.9%)	99 (69.2%)		
Postoperative(elective)	45 (7.8%)	6 (4.2%)		
Surgical	105 (18.1%)	27 (18.9%)		
Trauma	30 (5.2%)	11 (7.7%)		
SOFA	9.0 [6.0;12.0]	9.6 [7.0;12.0]	0.145	711
Non-pulmonary SOFA	6.0 [3.8;9.0]	6.2 [4.0;9.0]	0.247	709
HD SOFA	2.0±1.8	2.4±1.7	0.015	672
Renal SOFA	0.8±1.1	0.9±1.1	0.277	687
Nb quadrants involved			0.218	612
1	351 (72.7%)	86 (66.7%)		
2	132 (27.3%)	43 (33.3%)		
First day with bilateral opacities		62 (43.3%)		

- 5		34 (23.7%)		
- 7		25 (17.4%)		
- 10		9 (6.3%)		
- 14		10 (7.0%)		
- 21		2 (1.4%)		
- 28		1 (0.7%)		
<b>Ventilation and ABG</b>				
PCO <sub>2</sub>	44.5±15.1	45.9±15.6	0.319	707
pH	7.35±0.12	7.33±0.11	0.047	707
FiO <sub>2</sub>	0.5 [0.4;0.6]	0.5 [0.4;0.8]	0.004	711
SpO <sub>2</sub>	97.0 [95.0;99.0]	97.0 [95.0;99.0]	0.705	489
PO <sub>2</sub>	79.2±50.0	84.8±49.2	0.226	711
VT	7.9±1.9	8.0±1.9	0.664	680
PF	191.9±62.9	182.6±67.0	0.138	711
Worst PF in the 2 first days	181.7±62.1	166.5±64.3	0.012	722
Initial Severity			0.031	722
Mild	278 (48.0%)	52 (36.4%)		
Moderate	243 (42.0%)	70 (49.0%)		
Severe	58 (10.0%)	21 (14.7%)		
Worst severity in the 2 first days			0.009	722
Mild	234 (40.4%)	43 (30.1%)		
Moderate	277 (47.8%)	71 (49.7%)		
Severe	68 (11.7%)	29 (20.3%)		
RR	19.1±5.6	19.0±5.4	0.814	711
PEEP	6.0 [5.0;8.0]	6.0 [5.0;8.0]	0.050	711
Plateau pressure	19.8±5.3	20.9±4.9	0.181	210
Driving pressure	12.9±5.0	13.7±4.6	0.291	210
PIP	24.2±7.6	26.9±9.0	0.002	676
Minute ventilation	10.11±4.40	10.55±4.46	0.292	701
<b>Outcomes</b>				
Duration of invasive MV	5.0 [3.0;10.0]	12.0 [8.0;20.0]	<0.001	677
VFD	20.0 [0.0;24.0]	5.5 [0.0;18.0]	<0.001	677
ICU LOS	8.0 [4.0;14.0]	16.0 [10.5;24.5]	<0.001	722
Hosp LOS	15.0 [8.0;28.2]	23.0 [14.0;42.0]	<0.001	705
ICU mortality	146 (25.2%)	42 (29.4%)	0.364	722
Hospital mortality	177 (30.7%)	52 (36.4%)	0.227	720

**e-Table 8: Multivariable analysis of factors associated with evolution to ARDS in patients with initial unilateral infiltrate**

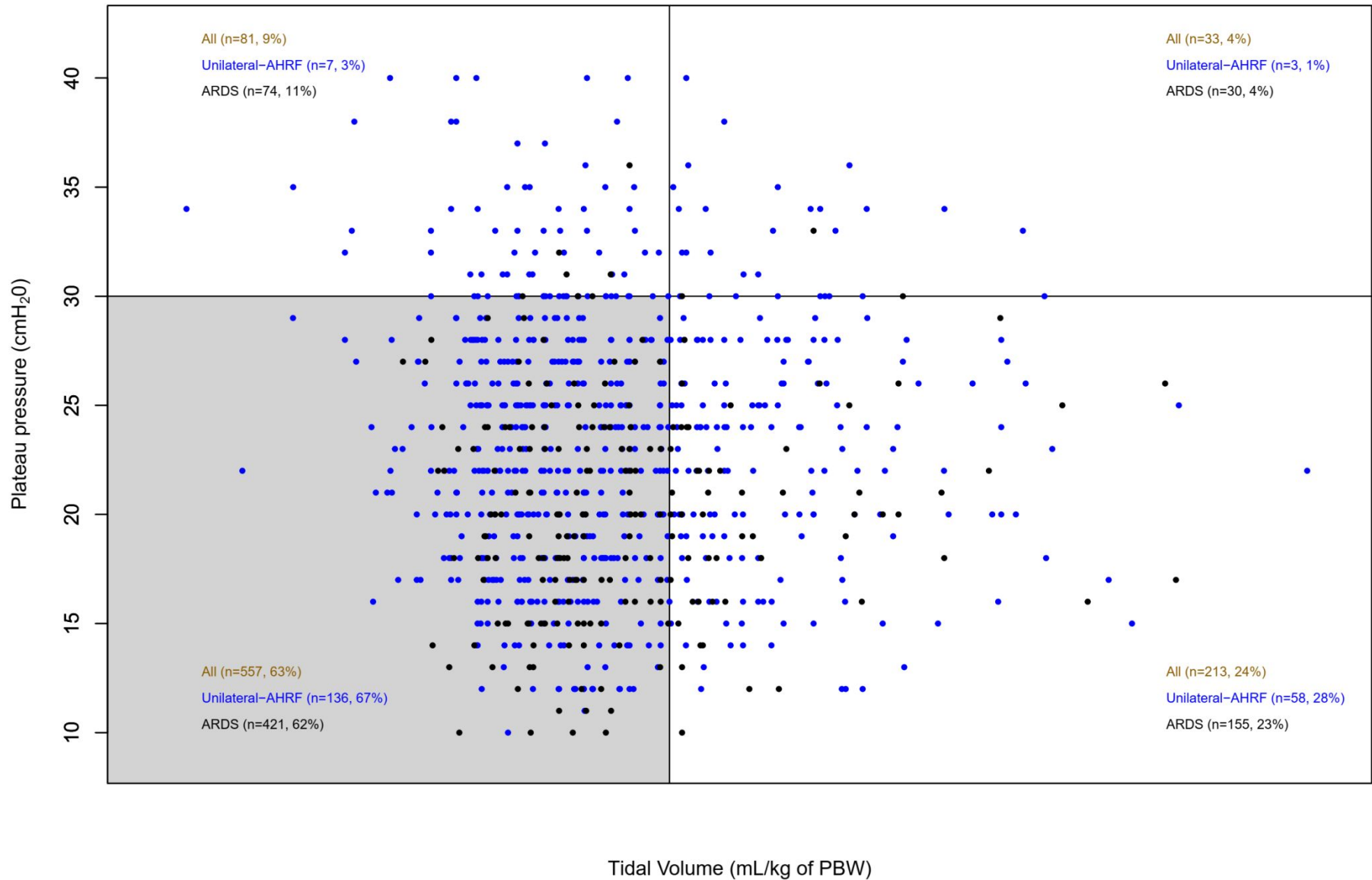
	Model for patients with 2 quadrants		
	OR	95%CI	p-value
Age (for 1 year)	1.01	1.00; 1.01	0.073
Non-pulmonary SOFA	1.01	0.95; 1.06	0.837
PF (for 10 mmHg decrease)	1.01	0.98; 1.04	0.643
pH (for 0.01 increase)	0.99	0.97; 1.00	0.280

1	PIP (for 1cmH2O)	1.04	1.01; 1.06	0.002
2				
3				
4				
5				
6				
7				
8				
9				
10				
11				
12				
13				
14				
15				
16				
17				
18				
19				
20				
21				
22				
23				
24				
25				
26				
27				
28				
29				
30				
31				
32				
33				
34				
35				
36				
37				
38				
39				
40				
41				
42				
43				
44				
45				
46				
47				
48				
49				
50				
51				
52				
53				
54				
55				
56				
57				
58				
59				
60				



1 e-Figure 1: Distribution of tidal volume vs plateau pressure on day 1 in patients with unilateral infiltrate or  
2  
3 with ARDS  
4  
5  
6  
7  
8  
9  
10  
11  
12  
13  
14  
15  
16  
17  
18  
19  
20  
21  
22  
23  
24  
25  
26  
27  
28  
29  
30  
31  
32  
33  
34  
35  
36  
37  
38  
39  
40  
41  
42  
43  
44  
45  
46

### Distribution of Tidal Volume versus Plateau Pressure



1  
2  
3  
4  
5  
6  
7  
8  
9  
10  
11  
12  
13  
14  
15  
16  
17  
18  
19  
20  
21  
22  
23  
24  
25  
26  
27  
28  
29  
30  
31  
32  
33  
34  
35  
36  
37  
38  
39  
40  
41  
42  
43  
44  
45  
46