



HAL
open science

Dyadic Motor Behavior During Co-manipulation: A Study on Humans

Waldez Gomes, Pauline Maurice, Serena Ivaldi

► **To cite this version:**

Waldez Gomes, Pauline Maurice, Serena Ivaldi. Dyadic Motor Behavior During Co-manipulation: A Study on Humans. 2018. hal-03283057

HAL Id: hal-03283057

<https://hal.science/hal-03283057v1>

Preprint submitted on 9 Jul 2021

HAL is a multi-disciplinary open access archive for the deposit and dissemination of scientific research documents, whether they are published or not. The documents may come from teaching and research institutions in France or abroad, or from public or private research centers.

L'archive ouverte pluridisciplinaire **HAL**, est destinée au dépôt et à la diffusion de documents scientifiques de niveau recherche, publiés ou non, émanant des établissements d'enseignement et de recherche français ou étrangers, des laboratoires publics ou privés.

Dyadic Motor Behavior During Co-manipulation: A Study on Humans

INRIA Nancy, LORIA, Université de Lorraine

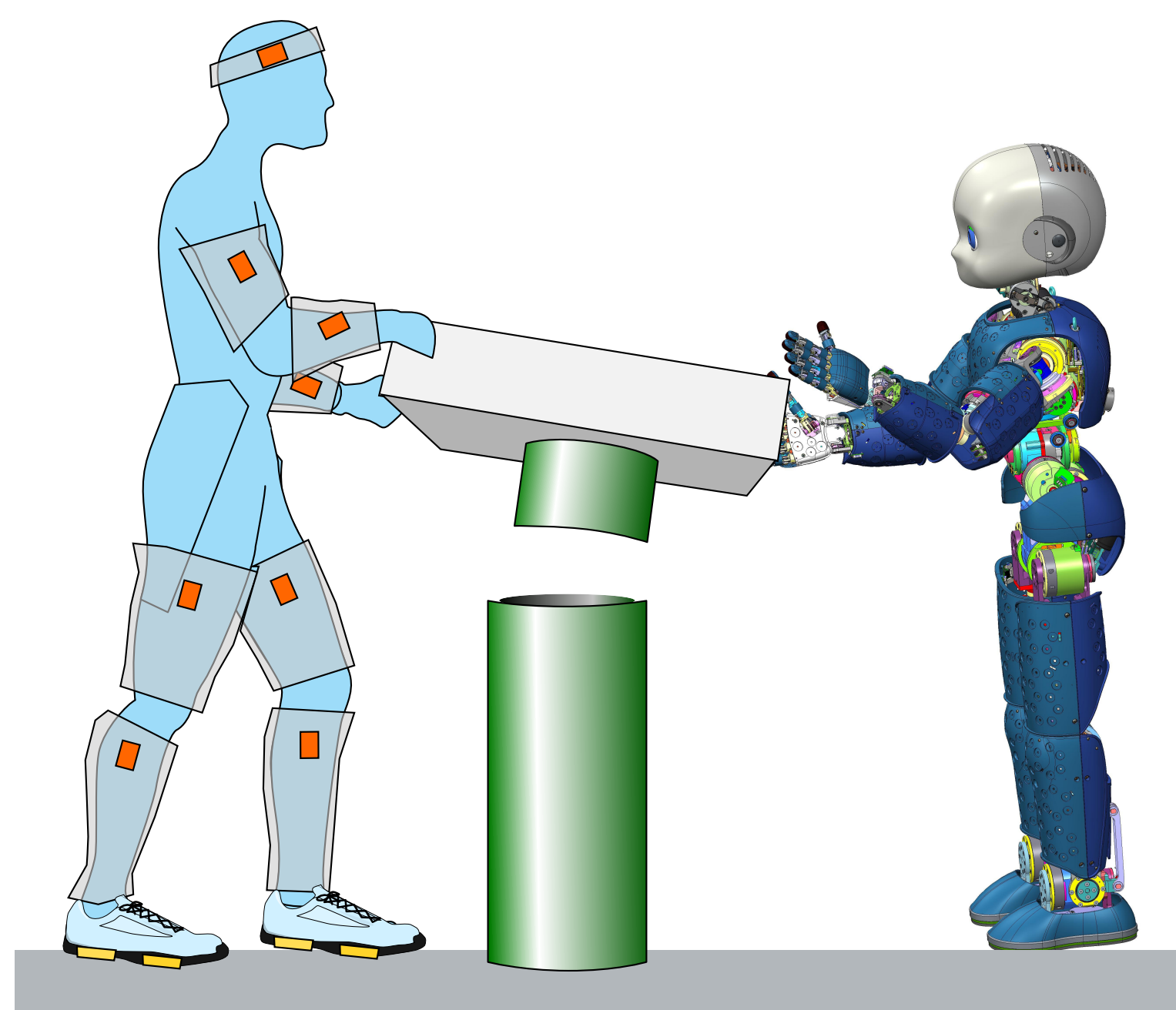
Waldez A. Gomes Jr., Pauline Maurice, Serena Ivaldi



Introduction

Human-Robot Collaboration

- Control a robot to act efficiently with a human during a task that requires **co-manipulation**;
 - Human and robot co-manipulating a shared object
- Good collaboration is not only fast and/or accurate, but it is also legible
- Good collaboration feels natural!



- Planning and execution are a responsibility of all agents
 - The task requires **coordination** and **synchronization**

- Is there a **Leader**, or a **Follower**?

- So we look into natural motor behavior in human-human dyads!

Goal

- Design a task to Investigate how human-human (HH) dyads motor behavior is influenced by different leadership conditions (leader or follower) during an object co-manipulation:
 - Hypothesis 1:** Arm stiffness is influenced by leadership conditions;
 - Hypothesis 2:** Object's trajectory is influenced by leadership conditions
 - Hypothesis 3:** Accuracy of the task execution is influenced by leadership conditions
- Investigate the same task, but with one human executing the task alone.

Methods

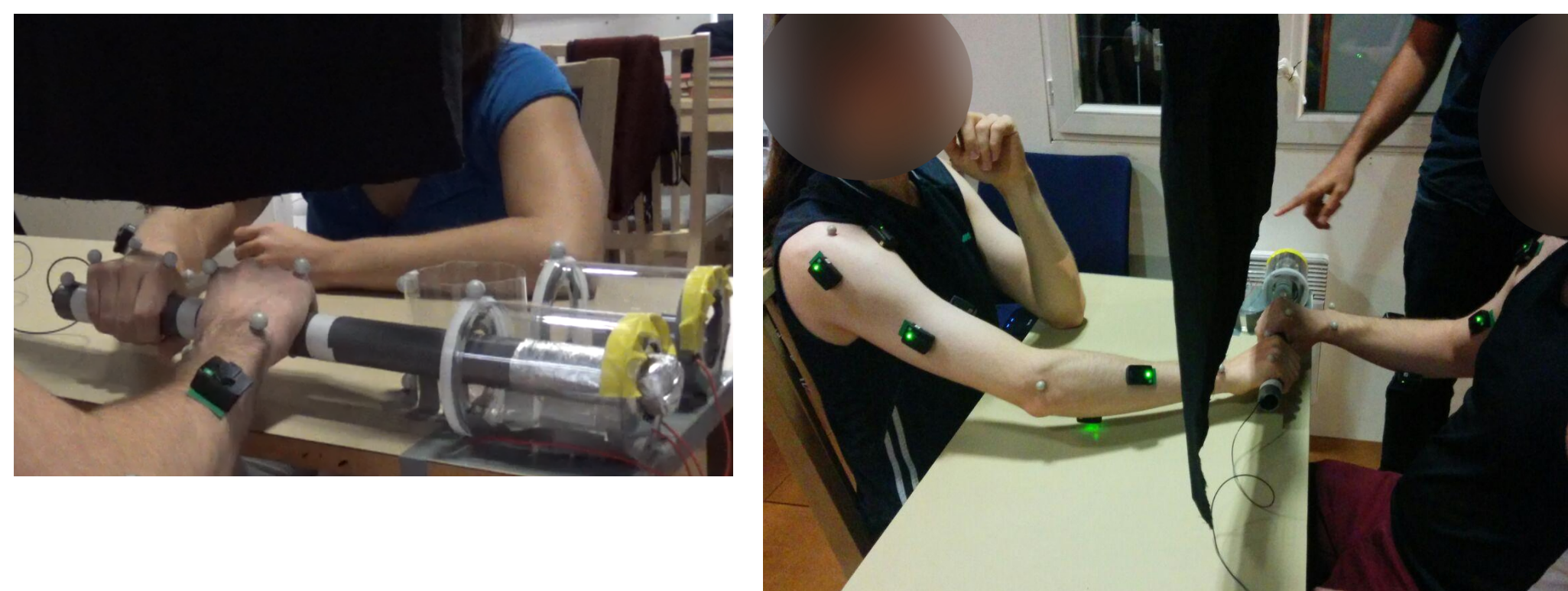
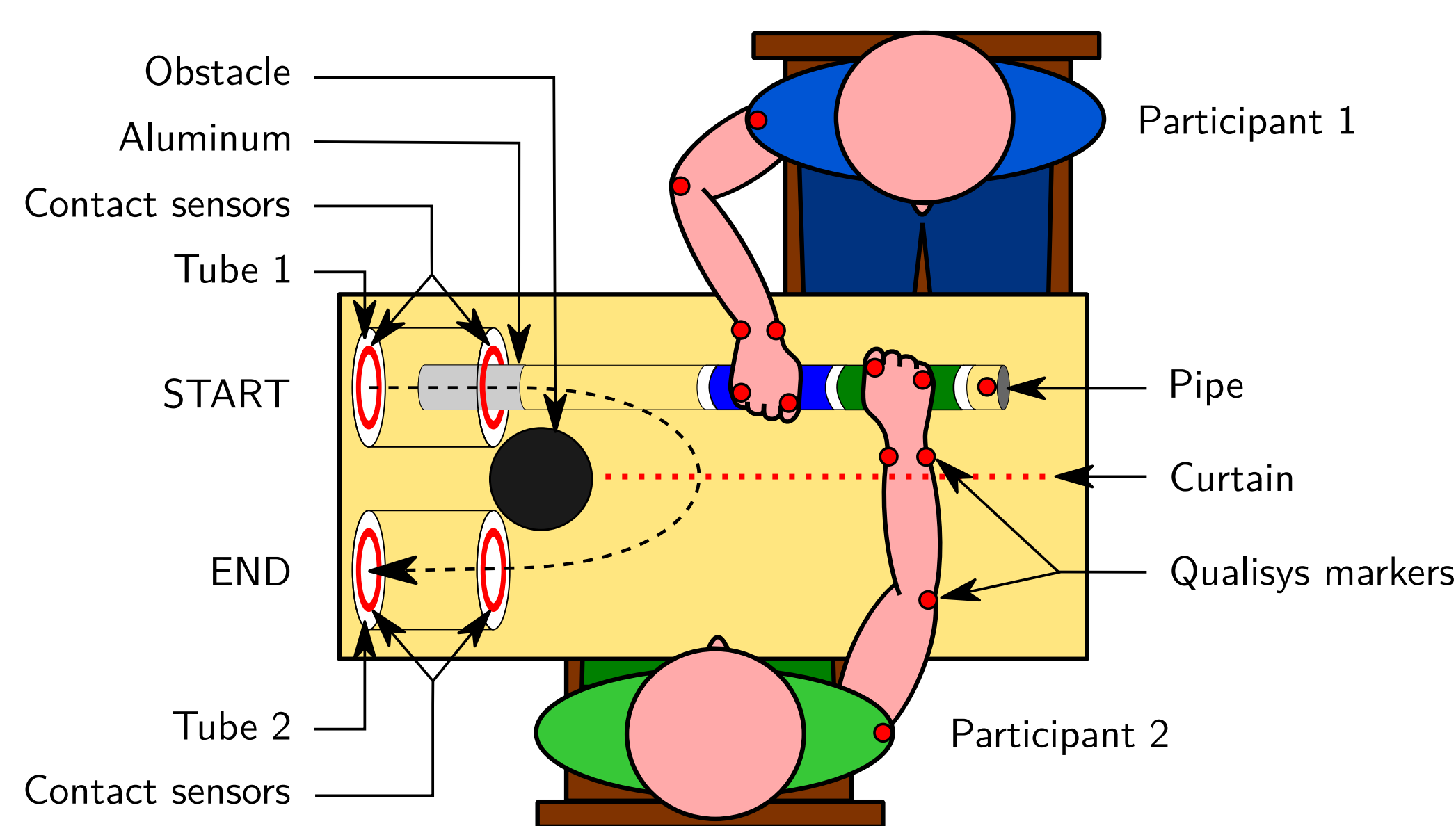
Co-manipulation by a Human Dyad

Task

- Collaborative extraction and insertion of a pipe in a tube
- Contact between the pipe and the tube should be avoided

Experiment

- 10 dyads
- 3 randomly assigned behaviors:
 - Participant 1 leader, Participant 2 follower
 - Participant 2 leader, Participant 1 follower
 - No pre-assigned leader behavior
- 5 trials per condition
- Practice trials between conditions

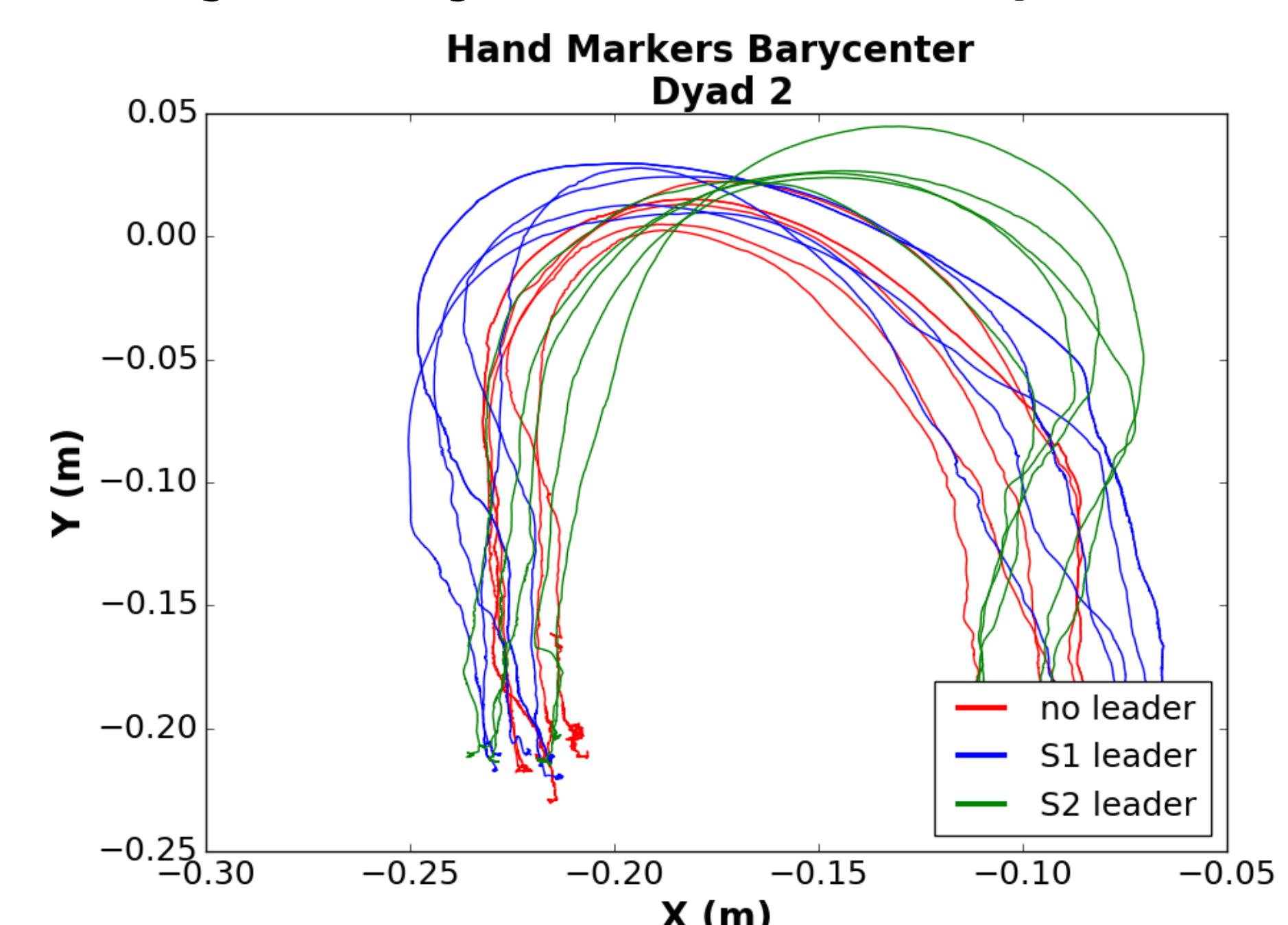


Sensors and Data

- Qualisys optical motion capture: 6 markers on each participant's right arm, 1 marker on the pipe
 - Arm kinematics
 - Pipe 3D trajectory
- Wireless EMG Delsys Trigno on 3 pairs of antagonistic muscles: forearm, arm, shoulder
 - Muscle activation → Index of Co-Contraction (ICC)
- Contact sensors on each tube (Quantitative measurement of accuracy)

Results

Trajectory in Co-Manipulation

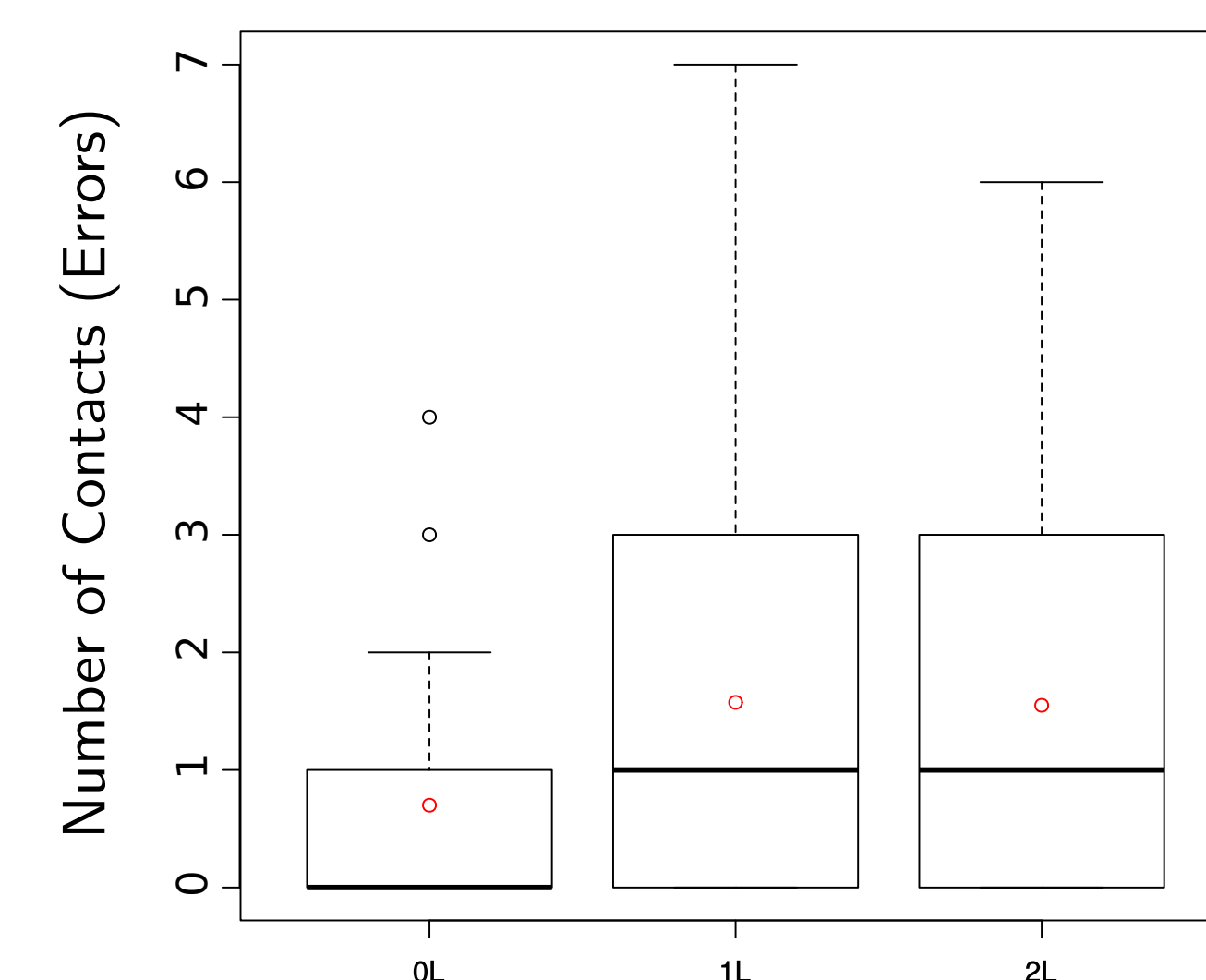


- Trajectory seems to deviate towards the position of the participant that is the leader (**Hypothesis 2**)

- When the pipe is closer to the participant, it is harder for the participant to move the hand in different directions (low arm manipulability values are expected)

- Each participant may have its own desired trajectory, that is chosen according to several criteria, including arm manipulability.

Contact Sensors



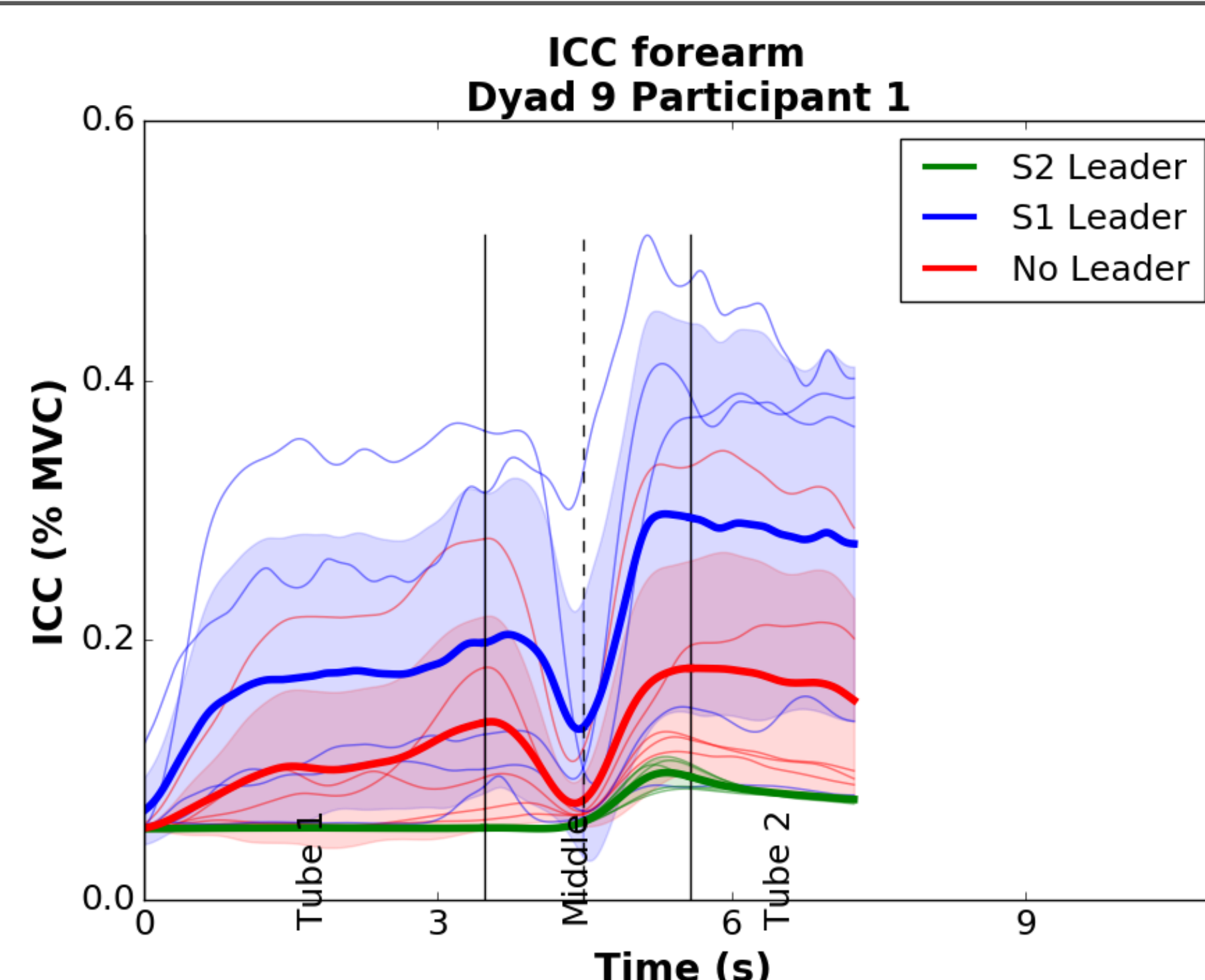
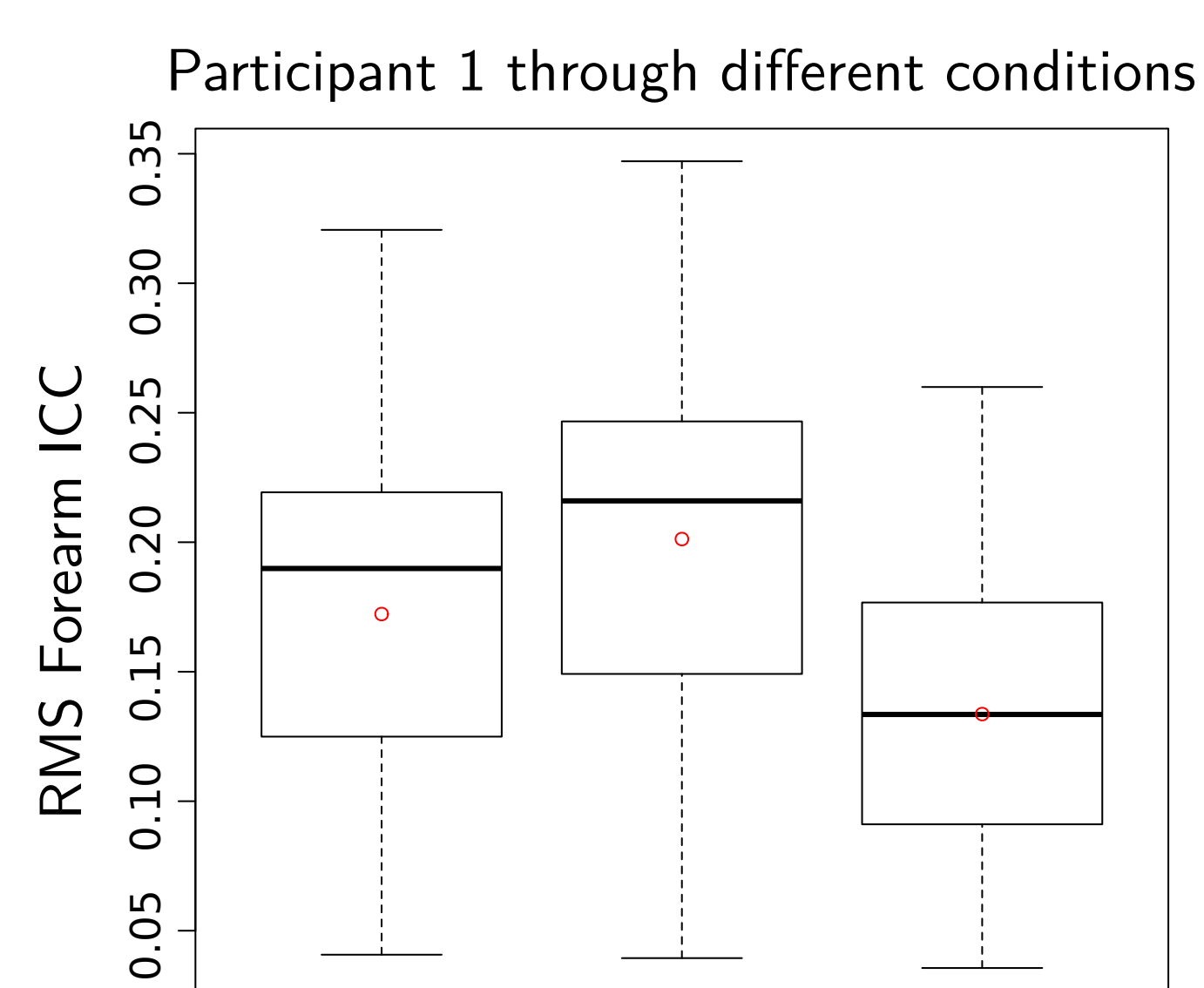
- Less contacts when there is no pre-assigned leader (**Hypothesis 3**)

- No clear difference between conditions in which there is a leader

Index of Co-Contraction

- The ICC is an indirect measure of the arm stiffness, in here, calculated from a pair of forearm antagonist muscles EMG signals:

$$ICC = \min(u_{agonist}, u_{antagonist})$$



$$ICC_{follower} < ICC_{natural} < ICC_{leader}$$

- Arm stiffness is modulated within the same participant for different conditions (**Hypothesis 1**)
- Trajectory deviation may be caused by the arm stiffness modulation.

Future Work

- Rigorous analysis of the trajectories
- Define manipulability metrics for a dyad, and apply them to all dyads
- Use the stiffness modulation from the human arm to modulate the stiffness of the robot in a human-robot collaboration

Acknowledgements

This project has received funding from the European Union's Horizon 2020 research and innovation programme under grant agreement No. 731540 (An.Dy)