



HAL
open science

Bis(imino)carbazolate lead(II) fluoride and related halides

Peter M Chapple, Ghanem Hamdoun, Thierry Roisnel, Jean-François Carpentier, Hassan Oulyadi, Yann Sarazin

► **To cite this version:**

Peter M Chapple, Ghanem Hamdoun, Thierry Roisnel, Jean-François Carpentier, Hassan Oulyadi, et al.. Bis(imino)carbazolate lead(II) fluoride and related halides. Dalton Transactions, 2021, 50 (26), pp.9021-9025. 10.1039/d1dt01615f . hal-03282745

HAL Id: hal-03282745

<https://hal.science/hal-03282745v1>

Submitted on 15 Sep 2021

HAL is a multi-disciplinary open access archive for the deposit and dissemination of scientific research documents, whether they are published or not. The documents may come from teaching and research institutions in France or abroad, or from public or private research centers.

L'archive ouverte pluridisciplinaire **HAL**, est destinée au dépôt et à la diffusion de documents scientifiques de niveau recherche, publiés ou non, émanant des établissements d'enseignement et de recherche français ou étrangers, des laboratoires publics ou privés.

Bis(imino)carbazolate lead(II) fluoride and related halides†

Peter M. Chapple,^a Ghanem Hamdoun,^b Thierry Roisnel,^a Jean-François Carpentier,^a Hassan Oulyadi^c and Yann Sarazin*^a

The versatility of a bulky bis(imino)carbazolate ligand in lead(II) chemistry is illustrated by the syntheses of a soluble, heteroleptic lead(II) fluoride and of several halide (Cl, Br I), amide and hydrocarbyl congeners. All complexes have been structurally authenticated, and a full set of ²⁰⁷Pb NMR data is discussed.

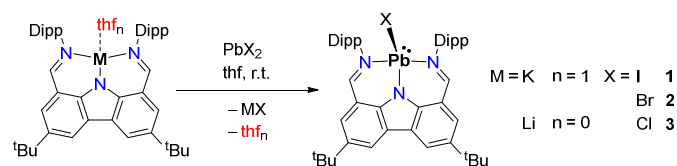
Since the seminal report of a stable σ -bonded organolead(II) complex, $[\text{Pb}\{\text{CH}(\text{SiMe}_3)_2\}_2]$,¹ low-valent lead(II) compounds have been attracting some attention, although on the whole they remain less developed than their lighter Ge(II) and Sn(II) analogues. The introduction of bulky ligands to the field has enabled the syntheses of hitherto elusive species. The molecular Pb(II)-fluoride $\{[\text{BDI}^{\text{DiPP}}]\text{PbF}\}$, where $\{[\text{BDI}^{\text{DiPP}}]\}^-$ is the versatile β -diketiminato $\text{CH}[\text{C}(\text{Me})\text{N}-2,6\text{-}^i\text{Pr}_2\text{-C}_6\text{H}_3]_2^-$, was reported in 2011.² It is only in 2017 that the first Pb(II)-hydride, the dimeric $\{[2,6\text{-Tripp}_2\text{-C}_3\text{H}_3]\text{Pb}(\mu\text{-H})_2\}$ (Tripp = 2,4,6-ⁱPr₃-C₆H₂), was described.³ $\{[\text{Carb}^{\text{tbp}}]\text{Pb}\}^+ \cdot [\text{Al}(\text{OC}_4\text{F}_9)_4]^-$, featuring a one-coordinate Pb(II) cation encapsulated in the 1,8-bis(3,5-di-*tert*-butylphenyl)-3,6-di-*tert*-butyl-carbazolate ligand (aka $\{[\text{Carb}^{\text{tbp}}]\}^-$) having bulky flanking aromatic groups, was obtained in 2019.⁴ Although Pb(II) complexes supported with amidinate and guanidinate⁵ ligands exist, the β -diketiminato ligand $\{[\text{BDI}^{\text{DiPP}}]\}^-$ is arguably the most commonly used chelating amide ligand in this area due to its simple synthesis, useful NMR resonances and relative kinetic and thermodynamic stability arising from its delocalised charge and from the chelate effect. It has been used to support a range of heteroleptic Pb(II) complexes, e.g. amides,⁶ alkyls,⁷ triflates,^{7a} halides,^{2,6a} phosphides,^{6b,8} chalcogenides⁹ and alkoxides.¹⁰

Developing new stable soluble sources of Pb(II) is potentially of interest to assist in not only expanding the range of uses for

Pb(II) materials, but also to gain further understanding about the fundamental organometallic chemistry and bonding with lead. In this regard, ²⁰⁷Pb NMR spectroscopy is a useful tool in order to gain information about the chemical environment of the Pb(II) atom. ²⁰⁷Pb NMR has many desirable characteristics; ²⁰⁷Pb is a reasonably abundant isotope (22.6%), and has a 1/2 spin and good NMR receptivity (11.9 vs ¹³C). Despite this, ²⁰⁷Pb NMR data are often not recorded for organometallic complexes, usually due to problems with chemical shift anisotropy. For instance, the set of halide complexes $\{[\text{BDI}^{\text{DiPP}}]\text{PbX}\}$ is available for X = F, Cl, Br and I,^{2,6a} but the ²⁰⁷Pb NMR chemical shift has only been reported for the fluoride² and the chloride¹¹ ($\delta_{207\text{Pb}}$ 787 and 1413 ppm, respectively).

In this context, we are reporting here on a complete series of easily prepared and soluble lead(II) halides supported by a bulky bis(imino)carbazolate, and on their full set of high resolution ²⁰⁷Pb NMR and crystallographic data. It is also shown how they can be used as convenient precursors to access organolead(II) derivatives.

We have shown that the bis(imino)carbazolate $\{[\text{Carb}^{\text{DiPP}}]\}^-$ ligand (DiPP = 2,6-ⁱPr₂-C₆H₃) effectively stabilises heteroleptic complexes of the large alkaline-earth metals.¹² The equimolar reaction in thf of $\{[\text{Carb}^{\text{DiPP}}]\text{K} \cdot (\text{thf})\}$ with PbI₂ and PbBr₂ yielded the corresponding heteroleptic, non-solvated $\{[\text{Carb}^{\text{DiPP}}]\text{PbX}\}$ in good yields (X = I, **1**, 75%; Br, **2**, 79%; Scheme 1). The chloride $\{[\text{Carb}^{\text{DiPP}}]\text{PbCl}\}$ (**3**) was obtained in 82% yield upon stoichiometric reaction in thf of the lithium precursor $\{[\text{Carb}^{\text{DiPP}}]\text{Li} \cdot (\text{thf})_2\}$ and PbCl₂. The complexes were isolated as bright yellow powders that are very soluble in aromatic solvents and ethers. However, salt metathesis reactions with PbF₂ failed to deliver the sought Pb(II)-fluoride derivative, likely due to the



Scheme 1 Syntheses of $\{[\text{Carb}^{\text{DiPP}}]\text{PbX}\}$ (X = I, **1**; Br, **2**; Cl, **3**). DiPP = 2,6-ⁱPr₂-C₆H₃.

^a Univ Rennes, CNRS, ISCR (Institut des Sciences Chimiques de Rennes) – UMR 6226, Rennes F-35000, France.

E-mail: yann.sarazin@univ-rennes1.fr; Tel: +33 223-233019.

^b Euromed University of Fes (UEMF), Fes, Morocco.

^c Normandie Université, UNIROUEN, INSA de Rouen, CNRS, Laboratoire COBRA (UMR 6014 & FR 3038), 76000 Rouen (France)

†Electronic Supplementary Information (ESI) available: Synthetic and analytical details for all compounds; X-ray data (incl. CIF files) for CCDC 2080122-2080128. See DOI: 10.1039/x0xx00000x

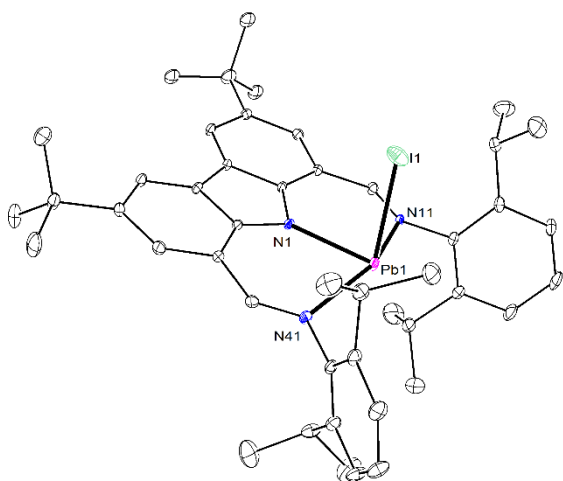


Fig. 1 ORTEP view of the molecular solid-state structure of $[\{\text{Carb}^{\text{DIPP}}\}\text{PbI}]$ (**1**). Ellipsoids at the 30% probability level. All H atoms omitted for clarity. Selected bond lengths (Å): Pb1-I1 = 2.9441(5), Pb1-N1 = 2.294(2), Pb1-N11 = 2.532(3), Pb1-N41 = 2.547(3). Selected angles (°): I1-Pb1-N1 = 88.24(7), I1-Pb1-N11 = 95.05(6), I1-Pb1-N41 = 98.35(6), N1-Pb1-N11 = 79.23(9), N1-Pb1-N41 = 80.72(9), N11-Pb1-N41 = 155.45(9), N11-N1-N41 = 105.76(10). Distance from Pb1 to N1N11N41-plane: 0.379(2) Å.

relative insolubility of PbF_2 in thf or due to the relatively high crystal lattice energy of PbF_2 (estimated by the Kapustinskii¹³ and Born-Mayer¹⁴ equations to be $-2495 \text{ kJ mol}^{-1}$ and $-2392 \text{ kJ mol}^{-1}$, respectively).¹⁵

The identity and purity of **1-3** was established on the basis of X-ray diffraction crystallography and NMR spectroscopic data recorded in benzene- d_6 . Their ^1H NMR spectra all display the same multiplicity patterns. The CH imine resonance (δ_{H} : **1**, 8.37 ppm; **2**, 8.44 ppm; **3**, 8.45 ppm) is increasingly shielded with halogen size. The isopropyl groups in the DiPP substituents are non-equivalent at room temperature, resulting in two CH heptets (**1**, δ_{H} 3.88 and 3.07 ppm; **2**, 3.84 and 3.03 ppm; **3**, 3.79 and 3.01 ppm). The ^{207}Pb NMR spectra each display a well-defined singlet [δ_{Pb} (ppm) and $\Delta\nu_{1/2}$ (Hz): **1**, 1542/239; **2**, 1054/186; **3**, 791/190], with increased shielding correlating with decreasing halogen size. ^{207}Pb NMR has a range of ca. 17000 ppm, from + 11000 to -6000 ppm, with the most deshielded signals generally being from alkyl plumbylens, while the most shielded are attributed to plumbocenes.¹⁶ There is a typically strong relation between coordination number and δ_{Pb} , with higher coordination numbers resulting in lower chemical shifts. The ^{207}Pb NMR chemical shift for **3** is noticeably upfield shifted from other known heteroleptic Pb(II) chlorides supported by monoanionic N-type ligands, e.g. the three-coordinate $[\{\text{BDI}^{\text{DiPP}}\}\text{PbCl}]$ (1413 ppm)¹¹ and $[\{\text{N}^{\wedge}\text{N}^{\text{DiPP}}\}\text{PbCl}]$ (1317 ppm, where $\{\text{N}^{\wedge}\text{N}^{\text{DiPP}}\}^-$ is an iminoanilide bearing a DiPP group),¹⁷ or also the two-coordinate $[\{\text{Carb}^{\text{tbp}}\}\text{PbCl}]$ (2398 ppm).⁴ Moreover, the ^{207}Pb resonance for the Pb(II) bromide **2** is also shifted highfield compared to the three-coordinate $[\text{Pb}\{\mu\text{-SAr}^{\text{Me6}}\}\text{Br}]_2$ (δ_{Pb} 4283 ppm; $\text{SAr}^{\text{Me6}} = \text{C}_6\text{H}_3\text{-2,6-(C}_6\text{H}_2\text{-2,4,6-Me}_3)_2$). These observations suggested that **1-3** form four-coordinate complexes. We did not find in the literature any comparative ^{207}Pb NMR data for Pb(II) iodides relevant to **1**. For instance, $[\{\text{BDI}^{\text{DiPP}}\}\text{PbI}]$ ^{3a} and $[\{\text{CH}[\text{C}(\text{Me})\text{N-4-}^i\text{Pr-C}_6\text{H}_4]_2\}\text{PbI}]$ ¹⁸

have both been structurally authenticated, but their ^{207}Pb NMR data are not available.

The XRD structures of **1-3** all reveal a single molecule in the asymmetric unit cell (plus a molecule of toluene for **2** and **3**), with very similar four-coordinate distorted see-saw geometries around the central Pb atom. The structure of the iodide **1** is displayed in Fig. 1 with its relevant metric parameters (see SI for **2** and **3**, Fig. S30 and S31). The Pb-N_{carb} interatomic distances are similar for the three compounds (**1** = 2.294(2) Å; **2** = 2.278(4) Å; **3** = 2.292(3) Å), while the Pb-X bond length obviously decreases with halogen size (**1** (I), 2.9441(5) Å; **2** (Br), 2.6925(7) Å; **3** (Cl), 2.5631(13) Å). The N_{carb}-Pb-X angle is also similar for all three compounds, in the range 87.72(11)-88.24(7)°, though all are significantly distorted from the idealised equatorial-equatorial see-saw geometry of 120°. The distance from the Pb atom to the plane defined by the N_{carb} and the two N_{imine} atoms (aka N1, N11 and N41) in **1** (0.389(2) Å) is slightly greater than in **2** and **3** (0.244(3) and 0.258(3) Å).

The heteroleptic lead(II) amide $[\{\text{Carb}^{\text{DiPP}}\}\text{PbN}(\text{SiMe}_3)_2]$ (**4**) was isolated in a near-quantitative yield as a bright yellow powder following the protonolysis reaction between $\{\text{Carb}^{\text{DiPP}}\}\text{H}$ and $[\text{Pb}\{\text{N}(\text{SiMe}_3)_2\}_2]$. The reaction required forcing conditions (refluxing toluene, 48 h) to proceed effectively. Complex **4** is surprisingly poorly soluble in aliphatic hydrocarbons, but reasonably soluble in aromatic solvents such as benzene or toluene. Single crystals suitable for XRD analysis were grown from a saturated solution in toluene- d_8 . The complex exists as a four-coordinate monomer (Fig. 2), with geometrical features and a see-saw arrangement around the central Pb atom that are reminiscent of those in **1-3**. The Pb-N_{carb} bond distance in **4** (2.3427(17) Å) is slightly longer than in **1-3**. The two Pb-N_{imine} distances in **4** (2.6203(18) and 2.6494(18) Å) are longer than in the halide complexes, as is the N_{imine}-N_{carb}-N_{imine} angle (108.55(7)°, compared to 105.76(10) in **1** for instance) indicating a widening of the ligand pocket to accommodate the bulkier

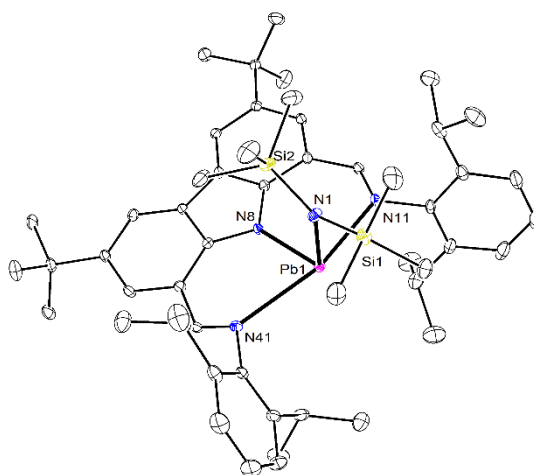
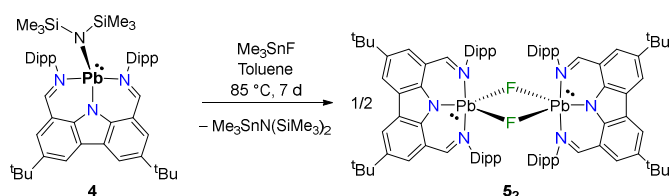


Fig. 2 ORTEP view of the molecular solid-state structure of $[\{\text{Carb}^{\text{DiPP}}\}\text{PbN}(\text{SiMe}_3)_2]$ (**4**). Ellipsoids at the 30% probability level. All H atoms omitted for clarity. Selected bond lengths (Å): Pb1-N1 = 2.2413(19), Pb1-N8 = 2.3427(17), Pb1-N11 = 2.6203(18), Pb1-N41 = 2.6494(18). Selected angles (°): N1-Pb1-N8 = 102.79(7), N1-Pb1-N11 = 94.23(6), N1-Pb1-N41 = 95.51(6), N8-Pb1-N11 = 78.56(6), N8-Pb1-N41 = 95.51(6), N11-Pb1-N41 = 158.10(6), N11-N8-N41 = 108.55(7). Distance from Pb1 to N8N11N41-plane: 0.150(1) Å.



Scheme 2 Syntheses of $[\{\text{Carb}^{\text{DIPP}}\}\text{Pb}(\mu\text{-F})_2$ (**5₂**). DiPP = 2,6-*i*-Pr₂-C₆H₃.

hexamethyldisilazide ligand. The Pb-N_{silazide} bond length in **4** (2.2413(19) Å) is half-way between those in the two-coordinate $[\{\text{Carb}^{\text{tbp}}\}\text{PbN}(\text{SiMe}_3)_2]$ (2.2008(27) Å¹⁹) and the three-coordinate $[\{\text{BDI}^{\text{DIPP}}\}\text{PbN}(\text{SiMe}_3)_2]$ (2.281(3) Å^{6a}). The ²⁰⁷Pb NMR spectrum of **4** features a broad singlet at δ_{Pb} 1347 ppm ($\Delta\nu_{1/2}$ = 517 Hz), i.e. much more highfield than these two complexes [δ_{Pb} 3345 ($\Delta\nu_{1/2}$ = 450 Hz) and 1824 ppm, respectively^{6b,19}].

The lead(II) fluoride analogue of the halide complexes **1-3** was eventually synthesised by reacting the fluorinating reagent Me₃SnF with compound **4**. The reaction proceeds smoothly (though slowly, requiring 7 days to reach completion) at 85 °C to give $[\{\text{Carb}^{\text{DIPP}}\}\text{PbF}]$, which crystallised as the unusual dimer $[\{\text{Carb}^{\text{DIPP}}\}\text{Pb}(\mu\text{-F})_2$ (**5₂**) (Scheme 2). The C₂-symmetric molecular solid-state structure displayed in Fig. 3 reveals a near-perfect square pyramidal arrangement (τ_5 = 0.02), with the N_{carb} atom in apical position, about each of the five-coordinate Pb atoms. At a distance of 1.369(2) Å, the Pb atom sits very significantly out of the ligand plane defined by N2N11N41, with relatively long Pb-N_{imine} distances (2.641(2) and 2.700(2) Å). This geometry is starkly different from that in the monomeric **1-3**, where the Pb atom sits only slightly out of the NNN ligand plane (see above); this distance is also much larger than in the amide parent **4** (0.2269(18) Å). As expected for a bridging ligand, the Pb-F interatomic distances in **5₂** (2.3042(17) and 2.3265(17) Å) are much longer than in the monomeric $[\{\text{BDI}^{\text{DIPP}}\}\text{PbF}]$ (2.088(17) Å),² the only other known molecular lead(II)-fluoride.

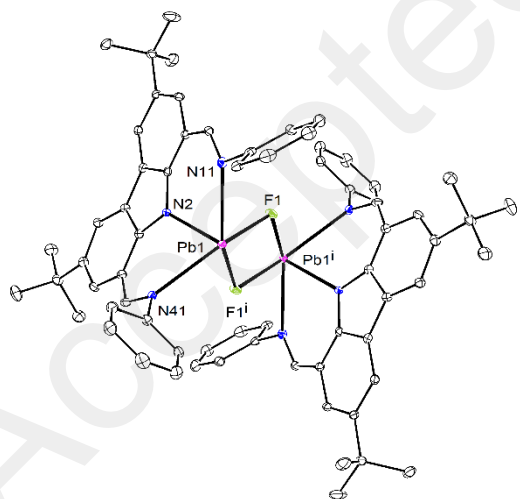


Fig. 3 ORTEP view of the molecular solid-state structure of $[\{\text{Carb}^{\text{DIPP}}\}\text{Pb}(\mu\text{-F})_2$ (**5₂**). Ellipsoids at the 30% probability level. All H atoms and ⁱPr groups omitted for clarity. Selected bond lengths (Å): Pb1-F1 = 2.3042(17), Pb1-F1ⁱ = 2.3265(17), Pb1-N2 = 2.321(2), Pb1-N11 = 2.641(2), Pb1-N41 = 2.700(2). Selected angles (°): F1-Pb1-F1ⁱ 70.67(7), F1-Pb1-N2 = 91.79(7), F1-Pb1-N11 = 78.54(7), F1-Pb1-N41 = 147.75(7), F1ⁱ-Pb1-N2 = 91.50(7), F1ⁱ-Pb1-N11 = 146.40(7), F1ⁱ-Pb1-N41 = 81.66(7), N2-Pb1-N11 = 76.06(8), N2-Pb1-N41 = 72.25(7), N11-Pb1-N41 = 122.05(7), Pb1-F1-Pb1ⁱ = 109.33(7). Distance from Pb1 to N2N11N41-plane: 1.369(2) Å.

Complex **5₂** dissolves well in aromatic hydrocarbons and ethers; as such, it is a rare example of soluble Pb(II) fluoride.² Diffusion coefficient-molecular weight analysis by DOSY NMR spectroscopy in benzene-*d*₆ (see SI) indicated with a great level of confidence that the dimer splits in solution to generate the monomeric $[\{\text{Carb}^{\text{DIPP}}\}\text{PbF}]$ (**5**). All other complexes **1-4** remain monomeric in solution. The ¹⁹F NMR spectrum of **5** exhibits a resonance at δ_{F} -110 ppm, with clearly detectable satellites due to coupling with the Pb atom (¹J_{F-Pb} ~ 3350 Hz). Accordingly, its ²⁰⁷Pb NMR spectrum reveals a doublet centred on δ_{Pb} 332 ppm with a ¹J_{Pb-F} scalar coupling constant of 3350 Hz. The ²⁰⁷Pb data is consistent with a monomeric complex and Pb(II) in a four-coordinate environment. The resonance is deshielded compared to $[\{\text{BDI}^{\text{DIPP}}\}\text{PbF}]$ (δ_{Pb} 784 ppm, ¹J_{Pb-F} = 2792 Hz).²

The chemical shift of δ_{Pb} 332 ppm for **5** (halide = F) fits well with the trend for the other Pb-halides, that is, δ_{Pb} 1542 (**1** - I), 1054 (**2** - Br) and 791 (**3** - Cl) ppm. This trend, which strongly suggests that there is a clear upfield chemical shift with increasing electronegativity of the halide, is the opposite of expectations based on σ -inductive effects. Yet, it is known that the electron-donating or -withdrawing ability of the 'X' reactive ligand does not dictate chemical shift in ²⁰⁷Pb NMR.^{7b} Instead, ²⁰⁷Pb NMR chemical shifts δ are heavily influenced by the different relative contributions to the isotropic shielding (σ) of the ²⁰⁷Pb nucleus from diamagnetic (σ^{D}), paramagnetic (σ^{P}) and spin-orbit (σ^{SO}) shieldings:^{7b,20}

$$\sigma = \sigma^{\text{D}} + \sigma^{\text{P}} + \sigma^{\text{SO}} \quad (1)$$

$$\delta = \sigma_{\text{reference}} - \sigma \quad (2)$$

The σ^{P} and σ^{SO} terms are those with the largest effect on δ for ²⁰⁷Pb NMR. The diamagnetic shielding σ^{D} results from core terms depending on the density of electrons at the nucleus (associated to the circulation of electrons in orbitals determined by the ground state wave function) that seldom vary across different lead(II) complexes, and therefore are cancelled out in the final expression of δ . The spin-orbit contribution σ^{SO} is significantly affected by changes in the atomic number of the elements directly bonded to the Pb atom, and is particularly important for elements with large spin-orbit constant (Br, I). Its value increases with atomic number, and it is likely to play a significant role in the chemical shift for **1-3** and **5**. The paramagnetic term σ^{P} is related to the movement of electrons between ground and excited states, with the main contribution coming from excitation from S₀ to S₁. Increasingly electronegative elements lower the level of the ground state S₀, resulting in a drop of σ^{P} . The outcome is a decrease of the overall isotropic shielding σ and, as a consequence, shielding of the Pb nucleus and a more highfield chemical shift.^{7b,20} Overall, the trend of increased shielding seen upon descending group 14 in the series of complexes **1-3** and **5** is therefore likely to be set by *both* the changing contributions of σ^{P} and σ^{SO} . Further comments on this trend will require a detailed DFT analysis.

The dimeric geometry of **5** was a surprise, as we expected the compound would crystallise with a terminal fluoride ligand, as for the heavier analogues **1-3** and for $[\{\text{BDI}^{\text{DIPP}}\}\text{PbF}]$.² It was also our general assumption that the $\{\text{Carb}^{\text{DIPP}}\}$ -ligand was more

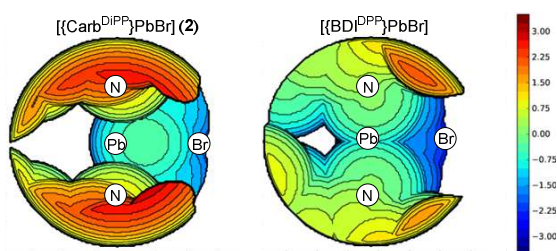


Fig. 4 Topographic steric map of the $\%V_{bur}$ bulk distribution, defined as the percent of the total volume of a sphere ($r = 3.5 \text{ \AA}$) occupied by the ligand. Left: $\{\text{Carb}^{\text{DIPP}}\}^-$ ligand in **2**. Right: $\{\text{BDI}^{\text{DIPP}}\}^-$ ligand in $\{[\text{BDI}^{\text{DIPP}}]\text{PbBr}\}$.^{6a} Isocontour scheme, in \AA , displayed on the right. The maps are a 2D isocontour representation of the interaction surface $S(x,y) = z_b$, as defined in reference 21d. See SI for details.

sterically cumbersome than $\{\text{BDI}^{\text{DIPP}}\}^-$, on account of its wider bite angle, as well as from the empirical evidence gathered from related barium chemistry.¹² To better quantify the difference in steric profiles of the $\{\text{Carb}^{\text{DIPP}}\}^-$ and $\{\text{BDI}^{\text{DIPP}}\}^-$ ligands, buried volume calculations were carried out on a range of comparable Pb(II) halide complexes (Fig. 4), using the freeware Sambvca 2.1.²¹ The different percentages of buried volume ($\%V_{bur}$) were calculated from the crystal structure for each of the halides $\{[\text{BDI}^{\text{DIPP}}]\text{PbX}\}$ ^{6a} and **1-3** for $X = \text{I, Br, Cl}$; the fluorides were left out on account of the dimeric structure of **5**. $\%V_{bur}$ is a single value parameter used to access steric bulk as a percentage of the first coordination sphere (of radius r) around the central metal atom occupied by a ligand.²¹ The qualitative results give an indication about the relative steric profiles of the ligands and show that $\%V_{bur}$ for $\{\text{BDI}^{\text{DIPP}}\}^-$ is substantially smaller than for the $\{\text{Carb}^{\text{DIPP}}\}^-$ ligand, compare the values for **1** ($\%V_{bur} = 54.5\%$), **2** (55.0%), **3** (54.9%) and for the corresponding $\{[\text{BDI}^{\text{DIPP}}]\text{PbX}\}$ complexes⁶ where $X = \text{I}$ (47.4%), Br (48.5%) and Cl (49.0%). The $\{\text{Carb}^{\text{DIPP}}\}^-$ ligand hence lends itself better to a spatially tight control of the coordination sphere around a metallic centre.

The Pb(II)-halides **1-3** and **5** constitute valuable synthetic precursors. For instance, the reaction of **3** with $[\text{LiCH}(\text{SiMe}_3)_2]$ afforded the lead(II)-alkyl $\{[\text{Carb}^{\text{DIPP}}]\text{PbCH}(\text{SiMe}_3)_2\}$ (**6**) in a non-optimised 44% yield. Complex **6** is an orange solid which crystallised from a petroleum ether solution spiked with toluene. Its identity was established by XRD analysis (Fig. S32), and purity was confirmed by NMR. Its four-coordinate molecular structure resembles closely that of **4**. The ^{207}Pb NMR spectrum of **6** exhibits a resonance at δ_{Pb} 2950 ppm ($\Delta\nu_{1/2} = 651 \text{ Hz}$), i.e. towards the highfield limit of chemical shifts for heteroleptic lead(II)-alkyl complexes.⁷ The diagnostic resonance for $\text{CH}(\text{SiMe}_3)_2$ in the ^1H NMR spectrum appears at -0.97 ppm .

In summary, the bis(imino)carbazolate $\{\text{Carb}^{\text{DIPP}}\}^-$ is a new addition to the set of tools available to organometallic and coordination synthetic chemists for the preparation of molecular lead(II) compounds. It is a versatile ligand that allows for the preparation of stable heteroleptic lead(II) halides, alkyls and amides, and as such it is a useful complement to the ever popular $\{\text{BDI}^{\text{DIPP}}\}^-$ β -diketiminato. In line with our initial insight in the chemistry of s-block metals,¹² the results disclosed herein suggest that $\{\text{Carb}^{\text{DIPP}}\}^-$ affords improved steric control over the coordination sphere around large metal ions. The synthesis and characterisation, including by ^{207}Pb NMR in solution, of a stable

Pb(II) fluoride, has been achieved, and hence a full comparative set of ^{207}Pb NMR data for Pb(II) halides is available for the first time. We will next endeavour to capitalise on these spectroscopic data with a DFT analysis of the observed chemical shifts and deconvolution of the constitutive shielding constants.

The authors thank the *Agence Nationale de la Recherche* (ANR-17-CE07-0017-01 and ANR-11-LABX-0029) for support.

Notes and references

- P. J. Davidson and M. F. Lappert, *J. Chem. Soc., Chem. Commun.*, 1973, 317.
- A. Jana, S. Pillai Sarish, H. W. Roesky, D. Leusser, I. Objartel and D. Stalke, *Chem. Commun.*, 2011, **47**, 5434.
- J. Schneider, C. P. Sindlinger, K. Eichele, H. Schubert, and L. Wesemann, *J. Am. Chem. Soc.*, 2017, **139**, 6542.
- A. Hinz, *Chem. Eur. J.*, 2019, **25**, 3267.
- (a) A. Stasch, C. M. Forsyth, C. Jones and P. C. Junk, *New J. Chem.*, 2008, **32**, 829; (b) C. Jones, S. J. Bonyhady, N. Holzmann, G. Frenking and A. Stasch, *Inorg. Chem.*, 2011, **50**, 12315.
- (a) M. Chen, J. R. Fulton, P. B. Hitchcock, N. C. Johnstone, M. F. Lappert and A. V. Protchenko, *Dalton Trans.*, 2007, 2770; (b) S. Yao, S. Block, M. Brym and M. Driess, *Chem. Commun.*, 2007, 3844.
- (a) A. Jana, S. P. Sarish, H. W. Roesky, C. Schulzke, A. Doring and M. John, *Organometallics*, 2009, **28**, 2563; (b) M. J. Taylor, E. J. Coakley, M. P. Coles, H. Cox and J. R. Fulton, *Organometallics*, 2015, **34**, 2515.
- E. C. Y. Tam, N. A. Maynard, D. C. Apperley, J. D. Smith, M. P. Coles and J. R. Fulton, *Inorg. Chem.*, 2012, **51**, 9403.
- E. C. Y. Tam, D. C. Apperley, J. D. Smith, M. P. Coles and J. R. Fulton, *Inorg. Chem.*, 2017, **56**, 14831.
- E. C. Y. Tam, N. C. Johnstone, L. Ferro, P. B. Hitchcock and J. R. Fulton, *Inorg. Chem.*, 2009, **48**, 8971.
- A. Jana, H. W. Roesky, C. Schulzke, P. P. Samuel and A. Döring, *Inorg. Chem.*, 2010, **49**, 5554.
- P. M. Chapple, S. Kahlal, J. Cartron, T. Roisnel, V. Dorcet, M. Cordier, J.-Y. Saillard, J.-F. Carpentier and Y. Sarazin, *Angew. Chem. Int. Ed.*, 2020, **59**, 9120.
- A. F. Kapustinskii, *Q. Rev. Chem. Soc.*, 1956, **10**, 283.
- M. Born and J. Mayer, *Z. Physik*, 1932, **75**, 1.
- The lattice energy in PbX_2 decreases with halide size. Other Kapustinskii and Born-Mayer energies (in kJ mol^{-1}): PbCl_2 , 2149/2061; PbBr_2 , 2059/1975; PbI_2 , 1930/1851.
- B. Wrackmeyer, *Annu. Rep. NMR Spectrosc.*, 2002, **47**, 1.
- C. Bellini, J.-F. Carpentier, V. Dorcet, A. Silvestru and Y. Sarazin, *Main Group Met. Chem.*, 2017, **40**, 73.
- E. C. Y. Tam, M. P. Coles, J. D. Smith and J. R. Fulton, *Polyhedron*, 2015, **85**, 284.
- A. Hinz, *Chem. Eur. J.*, 2019, **25**, 7843.
- (a) A. Rodriguez-Fortea, P. Alemany and T. Ziegler, *J. Phys. Chem. A*, 1999, **103**, 8288; (b) T. Müller, *J. Organomet. Chem.*, 2003, **686**, 251; (c) B. D. Reken, T. M. Brown, M. M. Olmstead, J. C. Fettingner and P. P. Power, *Inorg. Chem.*, 2013, **52**, 3054.
- (a) L. Falivene, R. Credendino, A. Poater, A. Petta, L. Serra, R. Oliva, V. Scarano and L. Cavallo, *Organometallics*, 2016, **35**, 2286; (b) L. Falivene, Z. Cao, A. Petta, L. Serra, A. Poater, R. Oliva, V. Scarano and L. Cavallo, *Nat. Chem.*, 2019, **11**, 872; (c) SambVca 2.1: www.molnac.unisa.it/OMtools/sambvca2.1; (d) A. Poater, F. Ragone, R. Mariz, R. Dorta and L. Cavallo, *Chem. Eur. J.*, 2010, **16**, 14348.