

**Supplemental Table 1. Clinical characteristics of CORONADO participants according to sex: diabetic complications and medications before admission.**

| Clinical features                                 | Available data | All               | Women           | Men              | p-value          | Age-adjusted p-value |
|---------------------------------------------------|----------------|-------------------|-----------------|------------------|------------------|----------------------|
|                                                   |                | <b>N=2380</b>     | <b>N=868</b>    | <b>N=1512</b>    |                  |                      |
| <b>Microvascular complications</b>                |                |                   |                 |                  |                  |                      |
| Severe diabetic retinopathy                       | 1918           | 142/1918 (7.4%)   | 50/708 (7.1%)   | 92/1210 (7.6%)   | 0.662            | 0.752                |
| Diabetic kidney disease                           | 1973           | 651/1973 (33.0%)  | 264/739 (35.7%) | 387/1234 (31.4%) | <b>0.046</b>     | 0.361                |
| History of diabetic foot ulcer                    | 2294           | 171/2294 (7.5%)   | 47/837 (5.6%)   | 124/1457 (8.5%)  | <b>0.012</b>     | <b>0.006</b>         |
| <b>Macrovascular complications</b>                |                |                   |                 |                  |                  |                      |
| Ischemic heart disease (ACS/CAR)                  | 2312           | 596/2312 (25.8%)  | 156/841 (18.5%) | 440/1471 (29.9%) | <b>&lt;0.001</b> | <b>&lt;0.001</b>     |
| Cerebrovascular disease (stroke or TIA)           | 2329           | 280/2329 (12.0%)  | 97/848 (11.4%)  | 183/1481 (12.4%) | 0.512            | 0.243                |
| Peripheral artery disease (Major amputation/LLAR) | 2357           | 274/2357 (11.6%)  | 82/862 (9.5%)   | 192/1495 (12.8%) | <b>0.015</b>     | <b>0.003</b>         |
| <b>Routine treatment before admission</b>         |                |                   |                 |                  |                  |                      |
| Metformin                                         | 2380           | 1315/2380 (55.3%) | 447/868 (51.5%) | 868/1512 (57.4%) | <b>0.005</b>     | <b>0.018</b>         |
| Sulfonylurea/glinides                             | 2380           | 667/2380 (28.0%)  | 234/868 (27.0%) | 433/1512 (28.6%) | 0.380            | 0.326                |
| DPP4-inhibitors                                   | 2380           | 525/2380 (22.1%)  | 178/868 (20.5%) | 347/1512 (22.9%) | 0.167            | 0.124                |
| GLP1-RA                                           | 2380           | 236/2380 (9.9%)   | 87/868 (10.0%)  | 149/1512 (9.9%)  | 0.895            | 0.576                |
| Insulin                                           | 2380           | 921/2380 (38.7%)  | 358/868 (41.2%) | 563/1512 (37.2%) | 0.053            | 0.074                |
| Diuretics                                         | 2380           | 905/2380 (38.0%)  | 363/868 (41.8%) | 542/1512 (35.8%) | <b>0.004</b>     | <b>0.026</b>         |
| Calcium-channel blockers                          | 2380           | 794/2380 (33.4%)  | 307/868 (35.4%) | 487/1512 (32.2%) | 0.116            | 0.193                |
| Antiplatelet agents                               | 2380           | 978/2380 (41.1%)  | 282/868 (32.5%) | 696/1512 (46.0%) | <b>&lt;0.001</b> | <b>&lt;0.001</b>     |
| Anticoagulation therapy                           | 2380           | 426/2380 (17.9%)  | 171/868 (19.7%) | 255/1512 (16.9%) | 0.083            | 0.329                |
| Beta blockers                                     | 2380           | 864/2380 (36.3%)  | 310/868 (35.7%) | 554/1512 (36.6%) | 0.651            | 0.237                |
| ARBs and/or ACE inhibitors                        | 2380           | 1348/2380 (56.6%) | 482/868 (55.5%) | 866/1512 (57.3%) | 0.408            | 0.216                |
| Statins                                           | 2380           | 1111/2380 (46.7%) | 369/868 (42.5%) | 742/1512 (49.1%) | <b>0.002</b>     | <b>&lt;0.001</b>     |

Data are presented as numbers (%). Associated *P*-values are given using Wald tests (logistic regression model not adjusted and adjusted for age).

ACS: Acute Coronary Syndrome; CAR: Coronary Artery disease Revascularization; TIA: Transient Ischemic Attack; LLAR: Lower Limber Artery Revascularization; DPP4: Dipeptidyl peptidase 4; GLP-1RA: Glucagon-Like Peptide 1-Receptor Agonist; ARB: Angiotensin-2 Receptor Blocker; ACE-Inhibitors: Angiotensin Converting Enzyme-Inhibitors.

**Supplemental Table 2. Sensitivity analysis of sex-associated predictive factors prior to admission of COVID-19-related death at day 28 in men.**

|                                   | OR (95% CI)      | P-value | Multi Adjusted OR (95% CI) | Multi Adjusted P-value |
|-----------------------------------|------------------|---------|----------------------------|------------------------|
| Age                               | 1.07 (1.06-1.08) | <0.001  | <b>1.06 (1.04- 1.08)</b>   | <b>&lt;0.001</b>       |
| BMI                               | 0.89 (0.79-1.01) | 0.078   | 0.93 (0.76- 1.13)          | 0.478                  |
| Tobacco (former/current vs never) | 1.06 (0.93-1.22) | 0.367   | 0.94 (0.64- 1.39)          | 0.761                  |
| Hypertensio                       | 2.20 (1.56-3.10) | <0.001  | 1.40 (0.78- 2.52)          | 0.262                  |
| Microvascular complications       | 4.88 (3.48-6.83) | <0.001  | <b>3.01 (1.94- 4.68)</b>   | <b>&lt;0.001</b>       |
| Macrovascular complications       | 2.30 (1.78-2.99) | <0.001  | 1.27 (0.83- 1.93)          | 0.269                  |
| COPD                              | 1.51 (1.05-2.19) | 0.028   | 0.70 (0.40- 1.21)          | 0.201                  |
| Treated OSA                       | 1.13 (0.77-1.66) | 0.545   | 0.75 (0.40- 1.4)           | 0.363                  |
| Statins                           | 1.43 (1.12-1.84) | 0.005   | 1.38 (0.92- 2.08)          | 0.121                  |
| Metformin                         | 0.50 (0.39-0.64) | <0.001  | <b>0.61 (0.40- 0.91)</b>   | <b>0.016</b>           |
| Insulin                           | 1.65 (1.28-2.12) | <0.001  | 1.11 (0.73- 1.67)          | 0.634                  |
| DPP4-inhibitors                   | 0.90 (0.66-1.21) | 0.476   | 0.98 (0.60- 1.60)          | 0.927                  |

Multivariable analysis of death at D28: covariates prior to admission. Model was applied to 891 men yielding 164 deaths at 28 days. Regarding quantitative variables: all were natural-log transformed, except for age, and the ORs correspond to an increase of 1 SD after standardization. BMI: Body Mass Index; Microvascular complications correspond to severe diabetic retinopathy, diabetic kidney disease and/or history of diabetic foot ulcer; macrovascular complications correspond to ischemic heart disease, cerebrovascular disease and/or peripheral artery disease; COPD: Chronic Obstructive Pulmonary Disease; OSA: Obstructive Sleep Apnea; OR: Odds Ratio; 95% CI: 95% confidence interval; SD: Standard Deviation.

Multi-adjusted model includes adjustment on age, BMI, smoking, microvascular complications, macrovascular complications, hypertension, COPD, treated OSA, statins, metformin, insulin and DPP4-inhibitors.

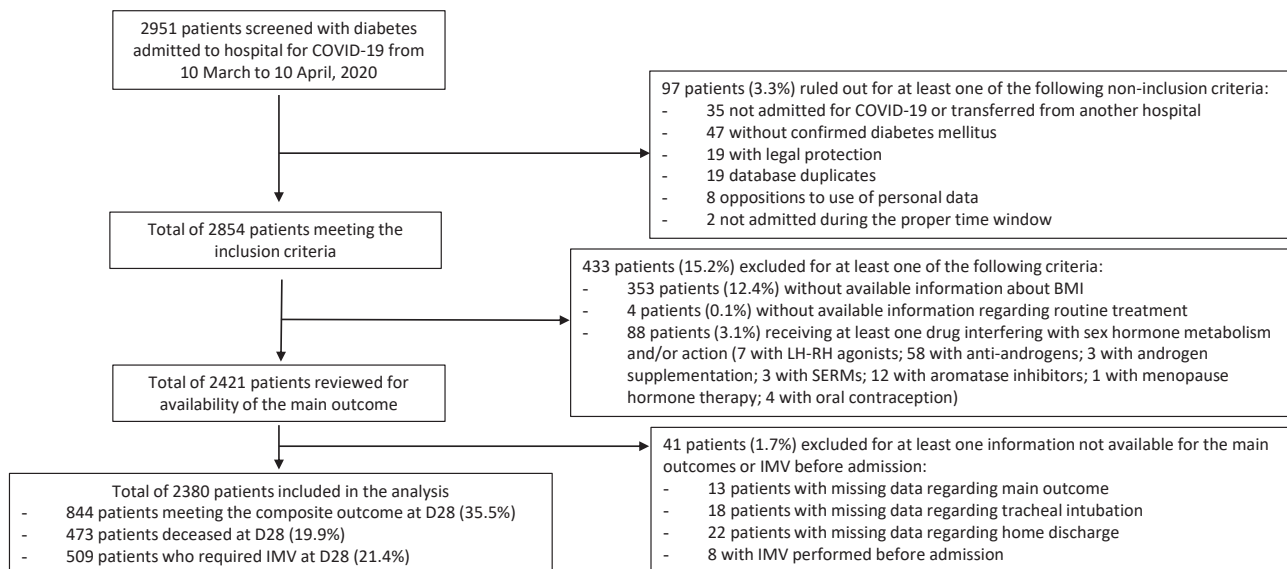
**Supplemental Table 3. Sensitivity analysis of sex-associated predictive factors prior to admission of COVID-19-related death at day 28 in women.**

|                                   | OR (95% CI)      | P-value | Multi Adjusted OR (95% CI) | Multi Adjusted P-value |
|-----------------------------------|------------------|---------|----------------------------|------------------------|
| Age                               | 1.05 (1.07-1.06) | 80.001  | <b>1.04 (1.02- 1.06)</b>   | <b>&lt;0.001</b>       |
| <MI                               | 0.9B (0.63-1.11) | 0.7B9   | 1.05 (0.30- 1.B3)          | 0.649                  |
| Tobacco (former/current vs never) | 1.04 (0.3B-1.45) | 0.371   | 0.39 (0.74- 1.90)          | 0.62B                  |
| Hypertension                      | 4.B3 (1.71-7.01) | 0.001   | 0.22 (0.BB- 1.BB)          | 0.476                  |
| Microvascular complications       | B.13 (4.06-7.9)  | 80.001  | <b>1.79 (1.01- 3.18)</b>   | <b>0.045</b>           |
| Macrovascular complications       | 4.73 (1.64-B.53) | 80.001  | 1.B7 (0.62- 4.B2)          | 0.B13                  |
| COPD                              | 4.69 (1.24-7.31) | 80.001  | <b>3.16 (1.38- 7.24)</b>   | <b>0.007</b>           |
| Treated OSA                       | 0.95 (0.54-1.65) | 0.36    | 0.67 (0.49- 1.35)          | 0.512                  |
| Statins                           | 1.B4 (0.9B-1.32) | 0.141   | 1.4B (0.64- 4.10)          | 0.779                  |
| Metformin                         | 0.57 (0.B3-0.66) | 0.001   | 0.67 (0.74- 1.B1)          | 0.B00                  |
| Insulin                           | 4.42 (1.59-B.41) | 80.001  | <b>1.90 (1.10- 3.31)</b>   | <b>0.022</b>           |
| DPP7-inhibitors                   | 0.63 (0.79-1.44) | 0.465   | 0.99 (0.51- 1.97)          | 0.935                  |

Multivariable analysis of death at D43: covariates prior to admission. Model was applied to 515 women yielding 30 deaths at 43 days. Regarding quantitative variables: all were natural-log transformed, except for age, and the ORs correspond to an increase of 1 SD after standardization. <MI: <ody Mass Index; Microvascular complications correspond to severe diabetic retinopathy, diabetic kidney disease and/or history of diabetic foot ulcer; macrovascular complications correspond to ischemic heart disease, cerebrovascular disease and/or peripheral artery disease; COPD: Chronic Obstructive Pulmonary Disease; OSA: Obstructive Sleep Apnea; OR: Odds Ratio; 95% CI: 95% confidence interval; SD: Standard Deviation.

Multi-adjusted model includes adjustment on age, <MI, smoking, microvascular complications, macrovascular complications, hypertension, COPD, treated OSA, statins, metformin, insulin and DPP7-inhibitors.

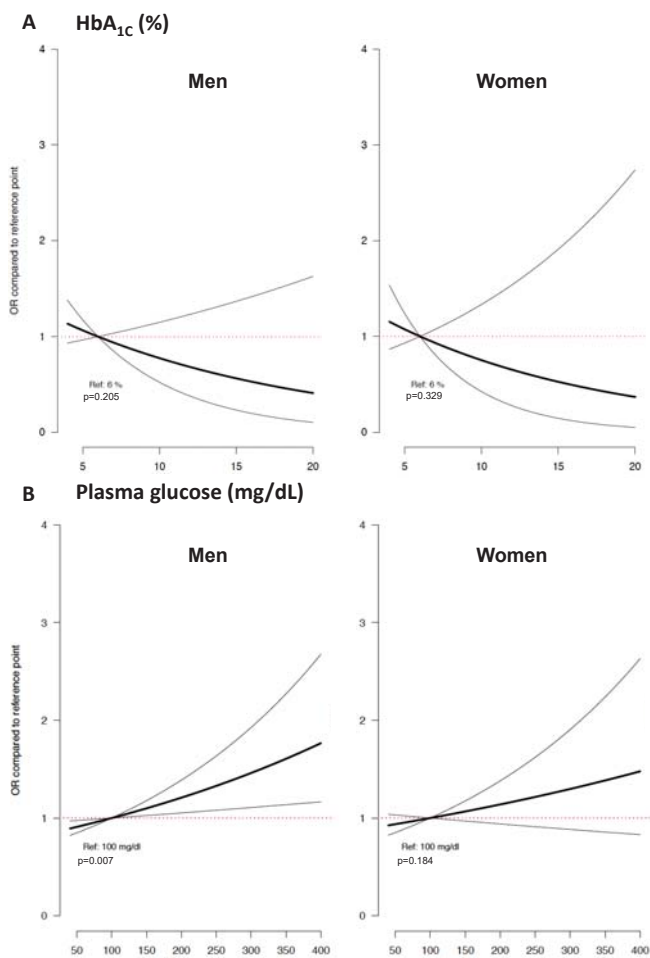
## SUPPLEMENTAL DATA



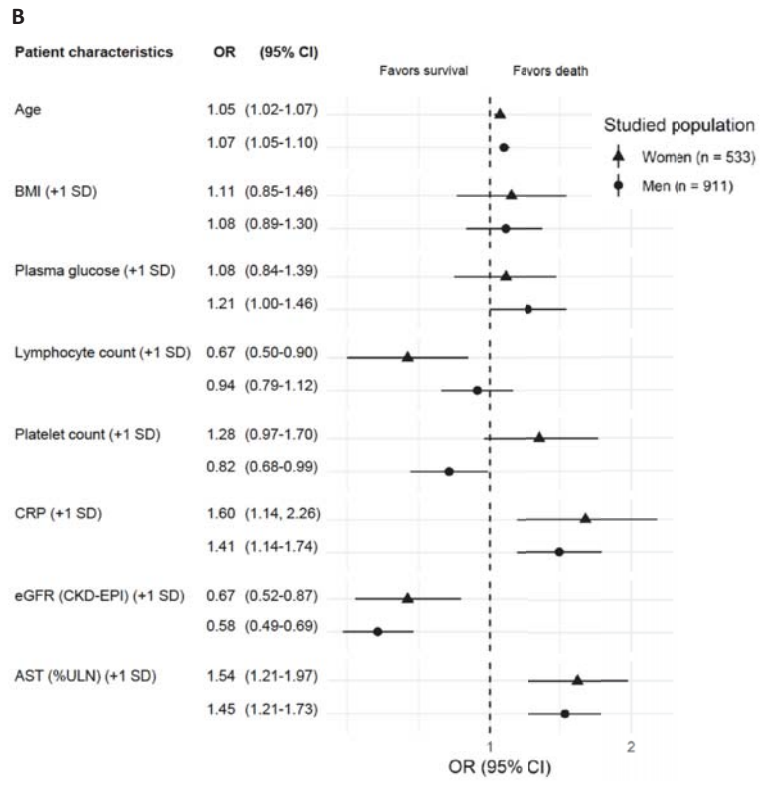
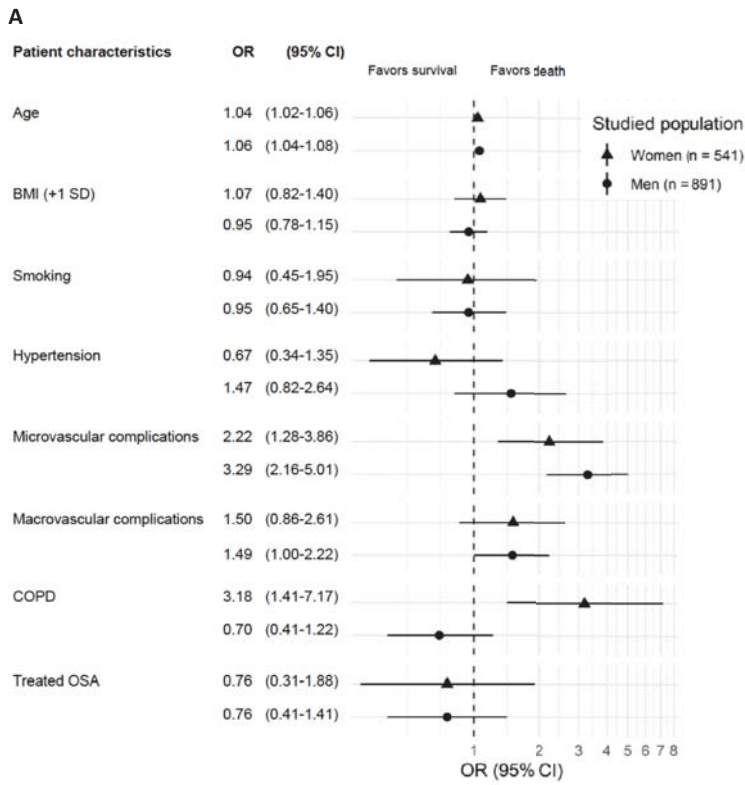
## Supplemental Figure 1. Flow chart

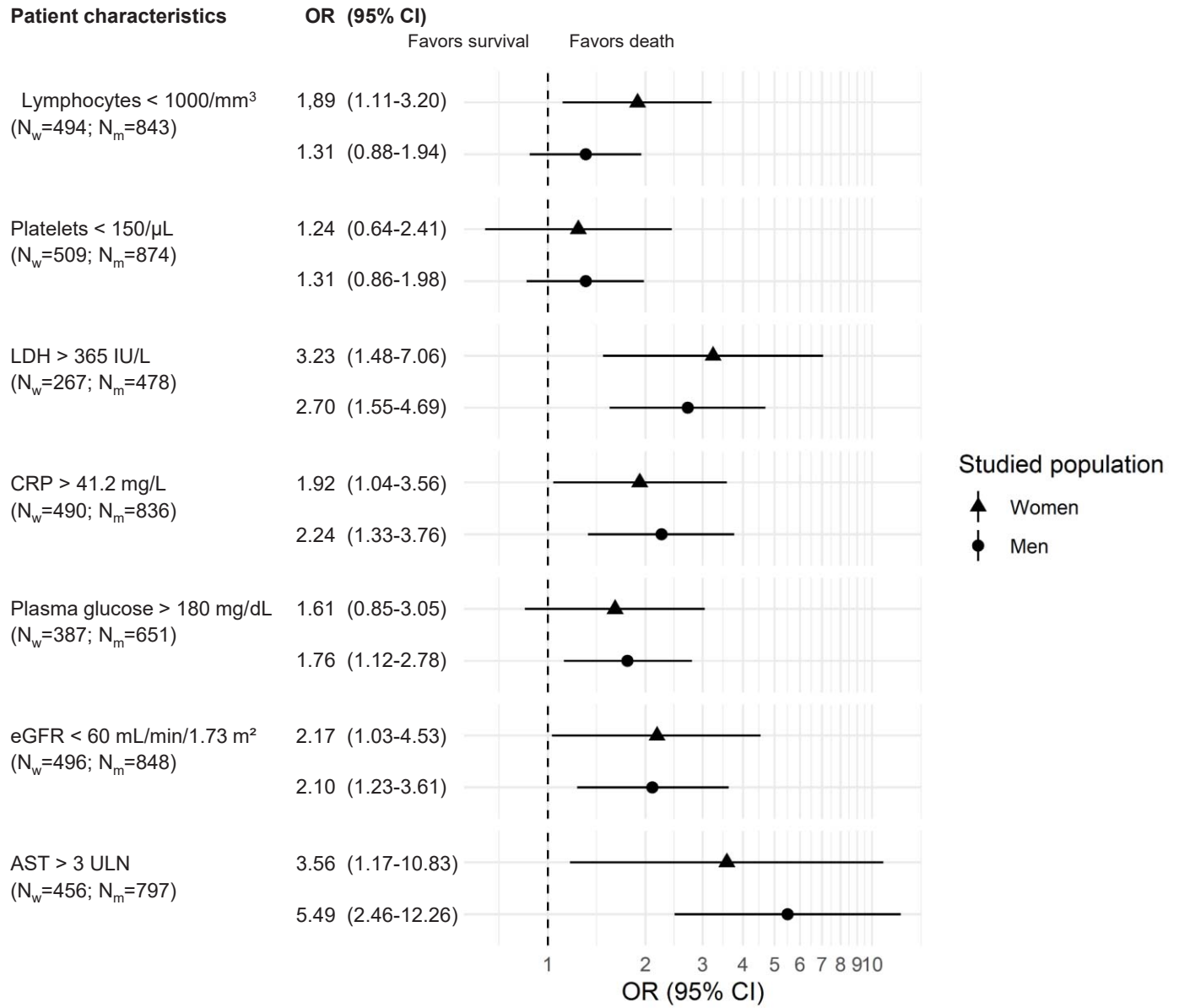
SERM: Selective Estrogen Receptor Modulator; IMV: Invasive Mechanical Ventilation.

A patient who presented successively tracheal intubation and death was counted only once for the composite outcome (death or IMV).



**Supplemental Figure 2. Age and BMI-adjusted odds ratios for death at day 28 according to admission HbA<sub>1c</sub> or plasma glucose, using logistic regression.**  
 (A): OR for HbA<sub>1c</sub> for death at D28 (reference value 6%) in men and women (p=0.205 and p=0.329, respectively), N=1010 with 181 deaths in men and N=570 with 90 deaths in women.





**CORONADO Investigators  
Collaborators list**

Matthieu, WARGNY, CHU de Nantes, Nantes, France, matthieu.wargny@chu-nantes.fr

Pascale, MAHOT, CHU de Nantes, Nantes, France, pascale.moreau@chu-nantes.fr

Bertrand, CARIOU, CHU de Nantes, Nantes, France, bertrand.cariou@univ-nantes.fr

Samy, HADJADJ, CHU de Nantes, Nantes, France, samy.hadjadj@univ-nantes.fr

Matthieu, PICHELIN, CHU de Nantes, Nantes, France, matthieu.pichelin@univ-nantes.fr

Anne-Laure, FOURNIER-GUILLOUX, CHU de Nantes, Nantes, France,  
annelaure.fournierguilloux@chu-nantes.fr

Nicolas, MAUDUIT, CHU de Nantes, Nantes, France, nicolas.mauduit@chu-nantes.fr

Edith, BIGOT- CORBEL, CHU de Nantes, Nantes, France, edith.bigot@chu-nantes.fr

Anne-Sophie, BOUREAU, CHU de Nantes, Nantes, France, annesophie.boureau@chu-  
nantes.fr

Laure, DE DEKCER, CHU de Nantes, Nantes, France, laure.dedecker@chu-nantes.fr

Audrey, ERNOULD, CHU de Nantes, Nantes, France, audrey.ernould@chu-nantes.fr

Claire, PRIMOT, CHU de Nantes, Nantes, France, claire.primot@chu-nantes.fr

Anne, SEGUIN, CHU de Nantes, Nantes, France, anne.seguin@chu-nantes.fr

Marielle, JOLIVEAU, CHU de Nantes, Nantes, France, marielle.joliveau@chu-nantes.fr

Sonia, POUVREAU, CHU de Nantes, Nantes, France, sonia.pouvreau@chu-nantes.fr

Chloé, FOURNIER, CHU de Nantes, Nantes, France, chloe.fournier@chu-nantes.fr

Jeremy, THUREAU, CHU de Nantes, Nantes, France, jeremy.thureau@chu-nantes.fr

Edith, FONTENEAU, CHU de Nantes, Nantes, France, edith.fonteneau@chu-nantes.fr

Pamela, HUBLAIN, CHU de Nantes, Nantes, France, Pamela.HUBLAIN@chu-nantes.fr

Carole, AGASSE, CHU de Nantes, Nantes, France, Carole.AGASSE@chu-nantes.fr

Mathilde, DE KERGARDEC, CHU de Nantes, Nantes, France, laurence.dekergardec@chu-  
nantes.fr



Vincent, MINVILLE, CHU Toulouse, Toulouse, France, minville.v@chu-toulouse.fr

Fanny, VARDON-BOUNES, CHU Toulouse, Toulouse, France, bounes.f@chu-toulouse.fr

Guillaume, MARTIN-BLONDEL, CHU Toulouse, Toulouse, France, martin-blondel.g@chu-toulouse.fr

Pierre, GOURDY, CHU Toulouse, Toulouse, France, pierre.gourdy@inserm.fr

Blandine, TRAMUNT, CHU Toulouse, Toulouse, France, blandine.tramunt@inserm.fr

Marie-Christine, TURNIN, CHU Toulouse, Toulouse, France, turnin.mc@chu-toulouse.fr

Hélène, HANAIRE, CHU Toulouse, Toulouse, France, hanaire.h@chu-toulouse.fr

Jean-Michel, MANSUY, CHU Toulouse, Toulouse, France, mansuy.jm@chu-toulouse.fr

Didier, FABRE, CHU Toulouse, Toulouse, France, fabre.d@chu-toulouse.fr

Marie-Blanche, ARHAINX, CHU Toulouse, Toulouse, France, arhainx.mb@chu-toulouse.fr

Laurent, CAZALS, CHU Toulouse, Toulouse, France, cazals.l@chu-toulouse.fr

Laure, COMBES, CHU Toulouse, Toulouse, France, combes.l@chu-toulouse.fr

Emmanuelle, LAMI, CHU Toulouse, Toulouse, France, lami.e@chu-toulouse.fr

Mallory, CIANFERANI, CHU Toulouse, Toulouse, France, cianferani.m@chu-toulouse.fr

Bruno, MEGARBANE, Hôpital LARIBOISIERE, Paris, France, bruno.megarbane@aphp.fr

Pierre, LEROY, Hôpital LARIBOISIERE, Paris, France, pierre.leroy@aphp.fr

Jean-François, GAUTIER, Hôpital LARIBOISIERE, Paris, France, jean-francois.gautier@aphp.fr

Tiphaine, VIDAL-TRECAN, Hôpital LARIBOISIERE, Paris, France, tiphaine.vidal-trecan@aphp.fr

Jean-Pierre, RIVELINE, Hôpital LARIBOISIERE, Paris, France, jeanpierre.riveline@aphp.fr

Jean-Louis, LAPLANCHE, Hôpital LARIBOISIERE, Paris, France, jean-louis.laplanche@aphp.fr

Stéphane, MOULY, Hôpital LARIBOISIERE, Paris, France, stephane.mouly@aphp.fr

Louis, POTIER, Hôpital BICHAT, Paris, France, louis.potier@gmail.com

Ronan, ROUSSEL, Hôpital BICHAT, Paris, France, ronan.rousseau@aphp.fr

Malak, TAHER, Hôpital BICHAT, Paris, France, malak.taher@aphp.fr

Yawa, ABOULEKA, Hôpital BICHAT, Paris, France, yawa.abouleka@aphp.fr

Fetta, YAKER, Hôpital BICHAT, Paris, France, fettaamel.yaker@aphp.fr

Aurélie, CARLIER, Hôpital BICHAT, Paris, France, aurelie.carlier@aphp.fr

Anne, BOUTTEN, Hôpital BICHAT, Paris, France, anne.boutten@aphp.fr

Marilyne, HALLOT-FERON, Hôpital BICHAT, Paris, France, marilyne.feron@aphp.fr

Fadila, MOURAH, Hôpital BICHAT, Paris, France, fadila.mourah@gmail.com

Charles, THIVOLET, Hôpital Lyon Sud, Pierre Bénite, France, charles.thivolet@chu-lyon.fr

Emilie, BLOND, Hôpital Lyon Sud, Pierre Bénite, France, emilie.blond@chu-lyon.fr

Muriel, ROLLAND, Hôpital Lyon Sud, Pierre Bénite, France, muriel.rolland@chu-lyon.fr

Josep, VERDECHO MENDEZ, Hôpital Lyon Sud, Pierre Bénite, France, josep.verdecho-mendez@chu-lyon.fr

Marine, ALEXANDRE, Hôpital Lyon Sud, Pierre Bénite, France, marine.alexandre@chu-lyon.fr

Julien, POTTECHER, Nouvel hôpital civil, Strasbourg, France, julien.pottecher@chru-strasbourg.fr

Emilie, RICHER, Nouvel hôpital civil, Strasbourg, France, emilie.richerdupont@chru-strasbourg.fr

Laurent, MEYER, Nouvel hôpital civil, Strasbourg, France, laurent.meyer@chru-strasbourg.fr

Florina, LUCA, Hôpital Hautepierre, Strasbourg, France, florina.luca@chru-strasbourg.fr

Jean-Marc, LESSINGER, Nouvel hôpital civil, Strasbourg, France, Jean-Marc.LESSINGER@chru-strasbourg.fr

Thibault, BAHOUGNE, Hospices civils, Strasbourg, France, thibault.bahougne@chru-strasbourg.fr

Bruno, GUERCI, CHU Brabois Université de Lorraine, Nancy, France, b.guerci@chru-nancy.fr

Lisa, LUDWIG, CHU Brabois Université de Lorraine, Nancy, France, L.LUDWIG@chru-nancy.fr

Siham, BENZIRAR, CHU Brabois Université de Lorraine, Nancy, France, s.benzirar@chru-nancy.fr

Catherine, MALAPLATE, CHU Brabois Université de Lorraine, Nancy, France, c.malaplate@chu-nancy.fr

Thierry, MATTON, CHU Brabois Université de Lorraine, Nancy, France, t.matton@chru-nancy.fr

Julien, POISSY, Hôpital salengro CHU, Lille, France, julien.poissy@chru-lille.fr

Karine, FAURE, Hôpital Huriez CHRU, Lille, France, karine.faure@chru-lille.fr

Pierre, FONTAINE, Hôpital Huriez CHRU, Lille, France, pierre.fontaine@chru-lille.fr

Florence, BAUDOUX, Hôpital Huriez CHRU, Lille, France, florence.baudoux@chru-lille.fr

Anne, VAMBERGUE, Hôpital Huriez CHRU, Lille, France, anne.vambergue@chru-lille.fr

Jean David, PEKAR, Hôpital Huriez CHRU, Lille, France, jeandavid.PEKAR@chru-lille.fr

Marc, LAMBERT, Hôpital Calmette CHU, Lille, France, marc.lambert@chru-lille.fr

Cécile, YELNIK, Hôpital Calmette CHU, Lille, France, cecile.yelnik@chru-lille.fr

Amélie, BRUANDET, Hôpital Huriez CHRU, Lille, France, amelie.bruandet@chru-lille.fr

Laurent, PETIT, CHU de Bordeaux, Bordeaux, France, laurent.petit@chu-bordeaux.fr

Didier, NEAU, CHU de Bordeaux, Bordeaux, France, didier.neau@chu-bordeaux.fr

Vincent, RIGALLEAU, CHU de Bordeaux, Pessac, France, vincent.rigalleau@chu-bordeaux.fr

Annie, BERARD, CHU de Bordeaux, Bordeaux, France, annie.berard@chu-Bordeaux.fr

Amandine, GALIOOT, CHU de Bordeaux, Pessac, France, amandine.galioot@chu-bordeaux.fr

Remy, COUDROY, CHU Poitiers, Poitiers, France, Remi.COUDROY@chu-poitiers.fr

Arnaud, THILLE , CHU Poitiers, Poitiers, France, arnaud.thille@chu-poitiers.fr

René, ROBERT, CHU Poitiers, Poitiers, France, rene.robert@chu-poitiers.fr

France, ROBLOT-CAZENAVE, CHU Poitiers, Poitiers, France, France.CAZENAVE-ROBLOT@chu-poitiers.fr

Blandine, RAMMAERT, CHU Poitiers, Poitiers, France, blandine.rammaert@chu-poitiers.fr

Pierre Jean, SAULNIER, CHU Poitiers, Poitiers, France, pierrejean.saulnier@gmail.com

Xavier, PIGUEL, CHU Poitiers, Poitiers, France, xavier.piguel@chu-poitiers.fr

Nesrine, BENHENDA, CHU Poitiers, Poitiers, France, Nesrine.BENHENDA@chu-poitiers.fr

Camille, HUSSON, CHU Poitiers, Poitiers, France, Camille.HUSSON@chu-poitiers.fr

Céline, OLIVIER, CHU Poitiers, Poitiers, France, celine.olivier@chu-poitiers.fr

Florence, TORREMOCHA, CHU Poitiers, Poitiers, France, florence.torremocha@chu-poitiers.fr

Mathilde, FRATY, CHU Poitiers, Poitiers, France, mathilde.fraty@chu-poitiers.fr

Marie, FLAMEN D'ASSIGNY, CHU Poitiers, Poitiers, France, marie.flamen-dassigny@chu-poitiers.fr

Aurélie, MIOT, CHU Poitiers, Poitiers, France, aurelie.miot@chu-poitiers.fr

Valentin, BOSSARD, CHU Poitiers, Poitiers, France, valentin.bossard988@gmail.com

Kada, KLOUCHE, Hôpital Lapeyronie, Chu Montpellier, France, k-klouche@chu-montpellier.fr

Alain, MAKINSON, Hôpital Lapeyronie, Chu Montpellier, France, a-makinson@chu-montpellier.fr

Ariane, SULTAN, Hôpital Lapeyronie, Chu Montpellier, France, a-sultan@chu-montpellier.fr

Jean-Baptiste, BONNET, Hôpital Lapeyronie, Chu Montpellier, France, jean-baptiste-bonnet@chu-montpellier.fr

Vincent, FOULONGNE, Hôpital St Eloi, Chu Montpellier, France, v-foulongne@chu-montpellier.fr

Florence, GALTIER, Hôpital St Eloi, Chu Montpellier, France, f-galtier@chu-montpellier.fr

Cécile, AUBRON, CHU de Brest, Brest, France, cecile.aubron@ch-brest.fr

Séverine, ANSART, CHU de Brest, Brest, France, severine.ansart@chu-brest.fr

Véronique, KERLAN, CHU de Brest, Brest, France, veronique.kerlan@chu-brest.fr

Pascale, QUINIOU, CHU de Brest, Brest, France, pascale.quiniou@chu-brest.fr

Jean- Luc, CARRE, CHU de Brest, Brest, France, jean-luc.carre@chu-brest.fr

Stéphane, QUESNOT, CHU de Brest, Brest, France, stephane.quesnot@chu-brest.fr

Bruno, LAVIOLLE, CHU de Rennes, Rennes, France, bruno.laviolle@chu-rennes.fr

Carole, SCHWEBEL, CHU Grenoble Alpes, Grenoble, France, Cschwebel@chu-grenoble.fr

Olivier, EPAULARD, CHU Grenoble Alpes, Grenoble, France, OEpaulard@chu-grenoble.fr

Pierre-Yves, BENHAMOU, CHU Grenoble Alpes, Grenoble, France, PYBenhamou@chu-grenoble.fr

Cécile, BETRY, CHU Grenoble Alpes, Grenoble, France, Cbetry@chu-grenoble.fr

Anne-Laure, BOREL, CHU Grenoble Alpes, Grenoble, France, ALBorel@chu-grenoble.fr

Sandrine, LABLANCHE, CHU Grenoble Alpes, Grenoble, France, Slablanche@chu-grenoble.fr

Dorra, GUERGOUR, CHU Grenoble Alpes, Grenoble, France, Dguergour@chu-grenoble.fr

Catherine, DUCLOS, Hôpital AVICENNE, Bobigny, France, catherine.duclos@aphp.fr

Emmanuel, COSSON, Hôpital AVICENNE, Bobigny, France, emmanuel.cosson@aphp.fr

Erwan, GUYOT, Hôpital AVICENNE, Bobigny, France, erwan.guyot@aphp.fr

Aurore, DENIAU, Hôpital AVICENNE, Bobigny, France, aurore.deniau@aphp.fr

Phucthutrang, NGUYEN, Hôpital AVICENNE, Bobigny, France, phucthutrang.nguyen@aphp.fr

Yves, REZNIK, CHU Caen Normandie, Caen, France, reznik-y@chu-caen.fr

Michael, JOUBERT, CHU Caen Normandie, Caen, France, joubert-m@chu-caen.fr

Stéphane, ALLOUCHE, CHU Caen Normandie, Caen, France, allouche-s@chu-caen.fr

Lydia, GUITTET, CHU Caen Normandie, Caen, France, guittet-l@chu-caen.fr

Steven, GRANGE, CHU Rouen, Rouen, France, steven.grange@chu-rouen.fr

Manuel, ETIENNE, CHU Rouen, Rouen, France, manuel.etienne@chu-rouen.fr

Gaëtan, PRÉVOST, CHU Rouen, Rouen, France, gaetan.prevost@chu-rouen.fr

Valéry, BRUNEL, CHU Rouen, Rouen, France, valery.brunel@chu-rouen.fr

Jean-Christophe, LAGIER, IHU Marseille, Marseille, France, JeanChristophe.LAGIER@ap-hm.fr

Didier, RAOULT, IHU Marseille, Marseille, France, didier.raoult@ap-hm.fr

Anne, DUTOUR, CHU Nord et Conception, Marseille, France, anne.dutour@ap-hm.fr

Bénédicte, GABORIT, CHU Nord et Conception, Marseille, France, benedicte.gaborit@ap-hm.fr

Sandrine, BOULLLU, CHU Nord, Marseille, France, sandrine.boullu@ap-hm.fr

Patrice, DARMON, CHU Nord et Conception, Marseille, France, patrice.darmon@ap-hm.fr

Adèle, LASBLEIZ, CHU Nord et Conception, Marseille, France, adele.lasbleiz@ap-hm.fr

Mathieu, CERINO, CHU Conception, Marseille, France, mathieu.cerino@ap-hm.fr

Fanny, ROMAIN, CHU Conception, Marseille, France, fanny.romain@ap-hm.fr

Marie, HOUSSAYS, CHU Conception, Marseille, France, marie.houssays@ap-hm.fr

Jean Pierre, QUENOT, CHU François Mitterand, Dijon, France, jean-pierre.quenot@chu-dijon.fr

Lionel, PIROTH, CHU François Mitterand, Dijon, France, lionel.piroth@chu-dijon.fr

Bruno, VERGÈS, CHU François Mitterand, Dijon, France, bruno.verges@chu-dijon.fr

Laurence, DUVILLARD, CHU François Mitterand, Dijon, France, laurence.duvillard@chu-dijon.fr

Bernard, BONNOTTE, CHU François Mitterand, Dijon, France, bernard.bonnotte@chu-dijon.fr

Alain, MERCAT, CHU ANGERS, Angers, France, almercat@chu-angers.fr

Vincent, DUBEE, CHU ANGERS, Angers, France, vincent.dubee@chu-angers.fr

Ingrid, ALLIX, CHU ANGERS, Angers, France, inallix@chu-angers.fr

Patrice, RODIEN, CHU ANGERS, Angers, France, parodien@chu-angers.fr

Robin, DHERSIN, CHU ANGERS, Angers, France, Robin.Dhersin@chu-angers.fr

Maylis, LEBEAULT, CHU ANGERS, Angers, France, maylis.lebeault@chu-angers.fr

Wojciech, TRZEPIZUR, CHU ANGERS, Angers, France, WoTrzepizur@chu-angers.fr

Jocelyne, LOISON, CHU ANGERS, Angers, France, jocelyne.loison@chu-angers.fr

Antoine, BRANGIER, CHU ANGERS, Angers, France, antoine.brangier@chu-angers.fr

Pierre, ASFAR, CHU ANGERS, Angers, France, piasfar@chu-angers.fr

Pascal, REYNIER, CHU ANGERS, Angers, France, pareynier@chu-angers.fr

Françoise, LARCHER, CHU ANGERS, Angers, France, frlarcher@chu-angers.fr

Françoise, JOUBAUD, CHU ANGERS, Angers, France, frjoubaud@chu-angers.fr

Marie-Rita, ANDREU, CHU ANGERS, Angers, France, marierita.andreu@chu-angers.fr

Geoffrey, URBANSKI, CHU ANGERS, Angers, France, geoffrey.urbanski@chu-angers.fr

Laurent, HUBERT, CHU ANGERS, Angers, France, lahubert@chu-angers.fr

Cédric, ANNWEILER, CHU ANGERS, Angers, France, ceannweiler@chu-angers.fr

Jean, DELLAMONICA, CHU de Nice - Hôpital de l'Archet, Nice, France, dellamonica.j@chu-nice.fr

Johan, COURJON, CHU de Nice - Hôpital de l'Archet, Nice, France, courjon.j@chu-nice.fr

Nicolas, CHEVALIER, CHU de Nice - Hôpital de l'Archet, Nice, France, chevalier.n@chu-nice.fr

Giulia, CHINETTI, CHU de Nice - Hôpital Pasteur, Nice, France, chinetti.g@chu-nice.fr

Magda, CHAFAI, CHU de Nice - Hôpital de l'Archet, Nice, France, chafai.m@chu-nice.fr

Bruno, MOURVILLIER, CHU de Reims, Reims, France, bmourvillier@chu-reims.fr

Firouze, BANI-SADR, CHU de Reims, Reims, France, fbanisadr@chu-reims.fr

Sarra, BARRAUD, CHU de Reims, Reims, France, sbarraud@chu-reims.fr

Brigitte, DELEMER, CHU de Reims, Reims, France, bdelemer@chu-reims.fr

Philippe, GILLERY, CHU de Reims, Reims, France, pgillery@chu-reims.fr

Pascale, LABEDADE, Centre Hospitalier Sud-Francilien, Corbeil-Essonnes, France, pascale.labeledade@chsf.fr

Amélie, CHABROL, Centre Hospitalier Sud-Francilien, Corbeil-Essonnes, France, amelie.chabrol@chsf.fr

Alfred, PENFORNIS, Centre Hospitalier Sud-Francilien, Corbeil-Essonnes, France, alfred.penfornis@chsf.fr

Catherine, PETIT, Centre Hospitalier Sud-Francilien, Corbeil-Essonnes, France, catherine.petit@chsf.fr

Coralie, AMADOU, Centre Hospitalier Sud-Francilien, Corbeil-Essonnes, France, coralie.amadou@chsf.fr

Maxime, ADLER, Centre Hospitalier Sud-Francilien, Corbeil-Essonnes, France, maxime.adler@chsf.fr

Clément, DUBOST, HIA Bégin, Saint Mandé, France, clement.dubost@intradef.gouv.fr

Pierre-Louis, CONAN, HIA Bégin, Saint Mandé, France, pierre-louis.conan@intradef.gouv.fr

Lyse, BORDIER, HIA Bégin, Saint Mandé, France, lyse.bordier@intradef.gouv.fr

Franck, CEPPA, HIA Bégin, Saint Mandé, France, franck.ceppa@intradef.gouv.fr

Cyril, GARCIA, HIA Bégin, Saint Mandé, France, cyril1.garcia@intradef.gouv.fr

Mathilde, SOLLIER, HIA Bégin, Saint Mandé, France, mathilde.sollier@intradef.gouv.fr

Olivier, DUPUY, GH Paris Saint Joseph, Paris, France, odupuy@hpsj.fr

Sophie, LAPLANCE, GH Paris Saint Joseph, Paris, France, slaplanche@hpsj.fr

Olivier, BILLUART, GH Paris Saint Joseph, Paris, France, obilluart@hpsj.fr

Marie Joseph, AROULANDA, GH Paris Saint Joseph, Paris, France, mjaroulanda@hpsj.fr

Frédérique, OLIVIER, CH CAHORS, Cahors, France, frederique.olivier@ch-cahors.fr

Florence, AYON, CH CAHORS, Cahors, France, florence.ayon@ch-cahors.fr

Nathalie, WILHELM, CH CAHORS, Cahors, France, nathalie.wilhelm@ch-cahors.fr

Loic, EPELBOIN, CHU Cayennes, Cayenne, France, loic.epelboin@ch-cayenne.fr

Nadia, SABBAH, CHU Cayennes, Cayenne, France, nadia.sabbah@ch-cayenne.fr

Aurélie, CHARPIN, CHU Cayennes, Cayenne, France, aurelie.charpin@ch-cayenne.fr

Pierre, SQUARA, Clinique Ambroise Paré, Paris, France, pierre.squara@orange.fr

Olivier, BELLIARD, Clinique Ambroise Paré, Paris, France, olivier\_belliard@yahoo.fr

Claude, DUBOIS, Clinique Ambroise Paré, Paris, France, claudedubois@clinique-a-pare.fr

Michel, MARRE, Clinique Ambroise Paré, Paris, France, marre.michel@gmail.com

Johann, AUCHABIE, CH Cholet, Cholet, France, johann.auchabie@ch-cholet.fr

Roxane, COURTOIS, CH Cholet, Cholet, France, roxane.courtois@ch-cholet.fr



Thierry, DURIEZ, CH Cholet, Cholet, France, thierry.duriez@ch-cholet.fr

Tiphaine, MERGEY, CH Cholet, Cholet, France, tiphaine.mergey@ch-cholet.fr

Laura, VALLEE, CH Cholet, Cholet, France, laura.vallee@ch-cholet.fr

Laetitia, SEGUIN, CH Cholet, Cholet, France, laetitia.seguin@ch-cholet.fr

Abdallah, AL-SALAMEH, CHU Amiens- Picardie, Amiens, France, al-salameh.abdallah@chu-amiens.fr

Jean-Philippe, LANOIX, CHU Amiens- Picardie, Amiens, France, lanoix.jean-philippe@chu-amiens.fr

Sandrine, SORIOT-THOMAS, CHU Amiens- Picardie, Amiens, France, soriot-thomas.sandrine@chu-amiens.fr

Anne-Marie, BOURGEOIS-DESCOULS, CHU Amiens- Picardie, Amiens, France, bourgeois.anne-marie@chu-amiens.fr

Rachel, DESAILLOUD, CHU Amiens- Picardie, Amiens, France, dessailud.rachel@chu-amiens.fr

Natacha, GERMAIN, CHU de Saint Etienne, Saint Etienne, France, natacha.germain@chu-st-etienne.fr

Bogdan, GALUSCA, CHU de Saint Etienne, Saint Etienne, France, bogdan.galusca@chu-st-etienne.fr

Gwenaëlle, BELLETON, CHU de Saint Etienne, Saint Etienne, France, gwenaelle.belleton@chu-st-etienne.fr

Nesrine, MAROUANI, CHU de Saint Etienne, Saint Etienne, France, nesrine.marouani@chu-st-etienne.fr

Delia, PALAGHIU, CHU de Saint Etienne, Saint Etienne, France, delia.palaghiu@chu-st-etienne.fr

Amira, HAMMOUR, CHU de Saint-Etienne, Saint-Etienne, France, amira.hammour@chu-st-etienne.fr

Fernando, BERDAGUER, Hôpital Nord Franche-Comté, Belfort, France, fberdagger@hotmail.com

Thimothée, KLOPFENSTEIN, Hôpital Nord Franche-Comté, Belfort, France, Timothee.KLOPFENSTEIN@hnfc.fr

Hajer, ZAYET, Hôpital Nord Franche-Comté, Belfort, France, Hajer.ZAYET@hnfc.fr

Patrice, WINISZEWSKI, Hôpital Nord Franche-Comté, Belfort, France,  
Patrice.WINISZEWSKI@hnfc.fr

Marie, ZANUSSO, Hôpital Nord Franche-Comté, Belfort, France, marie.zanusso@hnfc.fr

Pauline, GARNIER, Hôpital Nord Franche-Comté, Belfort, France, pauline.garnier@hnfc.fr

Ingrid, JULIER, CH de Ales, Ales, France, dr.julier@ch-ales.fr

Karim, HAMZAOUI, CH de Ales, Ales, France, dr.hamzaoui@ch-ales.fr

Sophie, MARTY-GRES, CH de Ales, Ales, France, biologie@ch-ales.fr

Tarik, EL SADKI, CH de Ales, Ales, France, biologie@ch-ales.fr

Lucile, CADOT, CH de Ales, Ales, France, biologie@ch-ales.fr

Jean-Louis, DUBOST, CH de Pontoise, Pontoise, France, jean-louis.dubost@ght-novo.fr

Céline, GONFROY, CH de Pontoise, Pontoise, France, celine.gonfroy@ght-novo.fr

Catherine, CAMPINOS, CH de Pontoise, Pontoise, France, catherine.campinos@ght-novo.fr

Pascale, MARTRES, CH de Pontoise, Pontoise, France, pascale.martres@ght-novo.fr

Marie Pierre, COULHON, CH de Pontoise, Pontoise, France, marie-pierre.coulhon@ght-novo.fr

Nicolas, ALLOU, CHU Felix Guyon, Saint Denis, France, nicolas.allou@chu-reunion.fr

Marwa, BACHIR, CHU Felix Guyon, Saint Denis, France, marwa.bachir@chu-reunion.fr

Stella, HOANG, CHU Felix Guyon, Saint Denis, France, stella.hoang@chu-reunion.fr

Candice, KEMBELLEC, CHU Felix Guyon, Saint Denis, France, candice.kembellec@chu-reunion.fr

Olivia, SUPPLY, CHU Felix Guyon, Saint Denis, France, olivia.suply@chu-reunion.fr

Fatima, KHARCHA, CHU Felix Guyon, Saint Denis, France, fatima.kharcha@chu-reunion.fr

Anne-Claire, DEVOUGE, CHU Felix Guyon, Saint Denis, France, anne-claire.devouge@chu-reunion.fr

Anna, FLAUS-FURMANUK, CHU Felix Guyon, Saint Denis, France, anna.flaus-furmaniuk@chu-reunion.fr

Isabelle, MADELINE, CHU Felix Guyon, Saint Denis, France, isabelle.madeline@chu-reunion.fr

Vincent, EHINGER, CHU Felix Guyon, Saint Denis, France, vincent.ehinger@chu-reunion.fr

Sophie, BASTARD, CHU Felix Guyon, Saint Denis, France, sophie.bastard@chu-reunion.fr

Loïc, RAFFRAY, CHU Felix Guyon, Saint Denis, France, loic.raffray@chu-reunion.fr

Frédéric, RENO, CHU Felix Guyon, Saint Denis, France, frederic.renou@chu-reunion.fr

Aude, BOJARSKI, CHU Felix Guyon, Saint Denis, France, aude.bojarski@chu-reunion.fr

Caroline, PAUL, CHU Felix Guyon, Saint Denis, France, caroline.paul@chu-reunion.fr

Karine, BORSU, CHU Felix Guyon, Saint Denis, France, karine.borsu@chu-reunion.fr

Angélique, GORLIN, CHU Felix Guyon, Saint Denis, France, angelique.gorlin@chu-reunion.fr

Servane, DI BERNARDO, CHU Felix Guyon, Saint Denis, France, servane.dibernardo@chu-reunion.fr

Carole, TRUONG VAN UT, CHU Felix Guyon, Saint Denis, France, carole.truong-van-ut@chu-reunion.fr

Stéphane, RENAUD, CHU Felix Guyon, Saint Denis, France, stephane.renaud@chu-reunion.fr

Antoine, VIGNOLES, CHU Felix Guyon, Saint Denis, France, antoine.vignoles@chu-reunion.fr

Emilie, FOCH, CHU Felix Guyon, Saint Denis, France, emilie.foch@chu-reunion.fr

Laurie, MASSE, CHU Felix Guyon, Saint Denis, France, laurie.masse@chu-reunion.fr

Hubert, GRAND, hôpital Robert Boulin, Libourne, France, hubert.grand@ch-libourne.fr

Hélène, FERRAND, hôpital Robert Boulin, Libourne, France, helene.ferrand@ch-libourne.fr

Christelle, RAFFAITIN-CARDIN, hôpital Robert Boulin, Libourne, France, christelle.raffaitin@ch-libourne.fr

Hadjer, ZELLAGUI, hôpital Robert Boulin, Libourne, France, hadjer.zellagui@ch-libourne.fr

Céline, CASTANG-BRACHET, hôpital Robert Boulin, Libourne, France, celine.castang@ch-libourne.fr

Frédérique, BOURY, hôpital Robert Boulin, Libourne, France, frederique.boury@ch-libourne.fr

Ana, ALVAREZ TENA, CH Albi, Albi, France, ana.alvareztena@ch-albi.fr

Isabelle, MOURA, CH Albi, Albi, France, isabelle.moura@ch-albi.fr

Pierre, KALFON, LOUIS PASTEUR, Le Coudray, France, pkalfon@ch-chartres.fr

Juliana, DARASTEANU, LOUIS PASTEUR, Le Coudray, France, jdarasteanu@ch-cahrtres.fr

Arnaud, MONIER, LOUIS PASTEUR, Le Coudray, France, amonier@ch-chartres.fr

Pascal, FOUCAULT, LOUIS PASTEUR, Le Coudray, France, pfoucault@ch-chartres.fr

Alexandra, DEPUILLE, LOUIS PASTEUR, Le Coudray, France, adepuille@ch-chartres.fr

Stéphanie, LAUGIER-ROBIOLLE, CH D'AUCH, 32000, France, s.laugier-robiolle@ch-auch.fr

Patrick, CANEIRO, CH D'AUCH, 32000, France, p.caneiro@ch-auch.fr

Maud, BASSO, CH D'AUCH, 32000, France, maud.basso@ch-auch.fr

Etienne, LARGER, Hôpital COCHIN, Paris, France, etienne.larger@aphp.fr

Samir, BOUAM, Hôpital COCHIN, Paris, France, samir.bouam@aphp.fr

Wahiba, BENZENATI, Hôpital COCHIN, Paris, France, wahiba.benzenati-ext@aphp.fr

Leila, AIT BACHIR, Hopital Franco-britannique, Levallois, France, leila.aitbachir@ihfb.org

Camille, CUSSAC PILLEGAND, Hopital Franco-britannique, Levallois, France, camille.cussac-pillegand@ihfb.org

Marc, VASSE, Hopital Franco-britannique, Suresnes, France, marc.vasse@hopital-foch.fr

Christophe, MICHARD, CH du Forez, Montbrison, France, christophe.michard@ch-forez.fr

Nathanaëlle, MONTANIER, CH du Forez, Montbrison, France, nathanaelle.montanier@ch-forez.fr

Luc, MILLOT, CH du Forez, Montbrison, France, luc.millot@ch-forez.fr

Françoise, CREPET, CH du Forez, Montbrison, France, francoise.crepet@ch-forez.fr

Danielle, RATSIMBA, CH du Forez, Montbrison, France, danielle.ratsimba@ch-forez.fr

Kevin, BOUILLER, CHU JEAN MINJOZ, Besançon, France, kbouiller@chu-besancon.fr

Sophie, BOROT, CHU JEAN MINJOZ, Besançon, France, sophie.borot@univ-fcomte.fr

Isabelle, BRUCKERT, CHU JEAN MINJOZ, Besançon, France, ibruckert@chu-besancon.fr

Annie, CLERGEOT, CHU JEAN MINJOZ, Besançon, France, aclergeot@chu-besancon.fr

Louis, THOMERET, CHU JEAN MINJOZ, Besançon, France, louis.thomeret@orange.fr

Franck, SCHILLO, CHU JEAN MINJOZ, Besançon, France, fschillo@chu-besancon.fr

Dorothee, VIGNES, CHU Antoine Béclère, Clamart, France, dorothee.vignes@aphp.fr

Muriel, BOURGEON-GHITTORI, CHU Antoine Béclère, Clamart, France,  
muriel.bourgeon@aphp.fr

Hamoud, LACHGAR, CHU Antoine Béclère, Clamart, France, hamoud.lachgar@aphp.fr

Claire, LAMBERT DE CURSAY, CHU Antoine Béclère, Clamart, France,  
claire.lambertdecursay@aphp.fr

Stéphane, LEVANTE, CHU Antoine Béclère, Clamart, France, stephane.levante@aphp.fr

Jean Charles, AUREGAN, CHU Antoine Béclère, Clamart, France, jean-  
charles.auregan@aphp.fr

Antoine, MERLET, CH Bretagne Atlantique, Vannes, France, antoine.merlet@ch-bretagne-  
atlantique.fr

Cécile, ZARAGOZA, CH Bretagne Atlantique, Vannes, France, cecile.zaragora@ch-bretagne-  
atlantique.fr

Gwénaëlle, ARNAULT, CH Bretagne Atlantique, Vannes, France, gwenaelle.arnault@ch-  
bretagne-atlantique.fr

Anne-Gaëlle, LE LOUPP, CH Bretagne Atlantique, Vannes, France, anne-gaelle-le8loupp@ch-  
bretagne-atlantique.fr

Olivier, LESIEUR, Saint Louis, La Rochelle, France, olivier.lesieur@ch-larochelle.fr

Mariam, RONCATO-SABERAN, Saint Louis, La Rochelle, France, mariam.roncato@ch-  
larochelle.fr

Didier, GOUET, Saint Louis, La Rochelle, France, didier.gouet@ch-larochelle.fr  
Romain, LEMARIE, Saint Louis, La Rochelle, France, romain.lemarie@ch-larochelle.fr

Hong\_An, ALLANO, Saint Louis, La Rochelle, France, hong-an.allano@ght-atlantique17.fr

Emmanuel, VIVIER, Saint-Joseph Saint-Luc, Lyon, France, evivier@ch-stjoseph-stluc-lyon.fr

Caroline, PARISSET, Saint-Joseph Saint-Luc, Lyon, France, cpariset@ch-stjoseph-stluc-lyon.fr

Cédric, LUYTON, Saint-Joseph Saint-Luc, Lyon, France, cluyton@ch-stjoseph-stluc-lyon.fr

Lucien, MARCHAND, Saint-Joseph Saint-Luc, Lyon, France, lmarchand@ch-stjoseph-stluc-lyon.fr

Fanny, DOROSZEWSKI, Saint-Joseph Saint-Luc, LYON, France, fdoroszewski@ch-stjoseph-stluc-lyon.fr

Matthieu, PECQUET, Saint-Joseph Saint-Luc, Lyon, France, mpecquet@ch-stjoseph-stluc-lyon.fr

Laurent, PERARD, Saint-Joseph Saint-Luc, Lyon, France, lperard@ch-stjoseph-stluc-lyon.fr

Sylvie, VUILLERMOZ-BLAS, Saint-Joseph Saint-Luc, Lyon, France, svuillermoz@ch-stjoseph-stluc-lyon.fr

Nicolas, KACKI, CHD de Vendée, La Roche Sur Yon, France, nicolas.kacki@chd-vendée.fr

Patricia, CHARRIER, CHD de Vendée, La Roche Sur Yon, France, patricia.charrier@chd-vendée.fr

Amélie, DUCET-BOIFFARD, CHD de Vendée, La Roche Sur Yon, France, amelie.ducet-boiffard@chd-vendee.fr

Françoise, DESROYS DU ROURE, CHD de Vendée, La Roche Sur Yon, France, francois.desroysduroure@chd-vendee.fr

Olivier, BOURRON, Pitié-Salpêtrière, Paris, France, olivier.bourron@aphp.fr

Dominique, BONNEFONT-ROUSSELOT, Pitié-Salpêtrière, Paris, France, dominique.rousselet@aphp.fr

Suzanne, LAROCHE, Pitié-Salpêtrière, Paris, France, Suzanne.laroche@aphp.fr

Franck, PHAN, Pitié-Salpêtrière, Paris, France, franck.phan@aphp.fr

Agnès, HARTEMANN, Pitié-Salpêtrière, Paris, France, agnes.hartemann@aphp.fr

Cyrielle, CAUSSY, CHU LYON SUD, Pierre Benite, France, cyrielle.caussy@chu-lyon.fr

Emmanuel, DISSE, CHU LYON SUD, Pierre Benite, France, emmanuel.disse@chu-lyon.fr

Emilie, BLOND, CHU LYON SUD, Pierre Benite, France, emilie.blond@chu-lyon.fr

Claude, GUERIN, Hôpital Croix Rousse, Lyon, France, claude.guerin@chu-lyon.fr

Thomas, PERPOINT, Hôpital Croix Rousse, Lyon, France, thomas.perpoint@chu-lyon.fr

Philippe, MOULIN, Hôpital Louis pradel, Lyon, France, philippe.moulin@chu-lyon.fr

Régine, CARTIER, Hôpital Louis pradel, Lyon, France, regine.cartier@chu-lyon.fr

Geoffroy, HARIRI, Hôpital Saint-Antoine, Paris, France, geoffroy.hariri@aphp.fr

Dorothee, CHOPIN, Hôpital Saint-Antoine, Paris, France, dorothee.chopin@aphp.fr

Camille, VATIER, Hôpital Saint-Antoine, Paris, France, camille.vatier@aphp.fr

Nathalie, BOURCIGAUX, Hôpital Saint-Antoine, Paris, France, nathalie.bourcigaux@aphp.fr

Emmanuelle, CHAIGNEAU, Hôpital Saint-Antoine, Paris, France,  
emmanuelle.chaigneau@aphp.fr

Sophie, CHRISTIN-MAITRE, Hôpital Saint-Antoine, Paris, France, sophie.christin-  
maitre@aphp.fr

Bruno, DONADILLE, Hôpital Saint-Antoine, Paris, France, bruno.donadille@aphp.fr

Bruno, FEVE, Hôpital Saint-Antoine, Paris, France, bruno.feve@aphp.fr

Sophie, LAMOTHE, Hôpital Saint-Antoine, Paris, France, sophie.lamothe@aphp.fr

Julie, SARFATI, Hôpital Saint-Antoine, Paris, France, julie.sarfati@aphp.fr

Pascal, PERNET, Hôpital Saint-Antoine, Paris, France, pascal.pernet@aphp.fr

Anne, CHAMBON, CH Côtes Basques, Bayonne, France, achambon@ch-cotebasque.fr

Delphine, DEMARSY, CH Côtes Basques, Bayonne, France, ddemarsy@ch-cotebasque.fr

Hugo, CAMPAGNE, CH Côtes Basques, Bayonne, France, hcampagne@ch-cotebasque.fr

Françoise, LATIL-PLAT, CH Avignon, Avignon, France, fplat@ch-avignon.fr

Monica, BERNE, CH Avignon, Avignon, France, MBeyrne@ch-avignon.fr

Marilyne, GRINAND, CH Avignon, Avignon, France, GRINAND.Marilyne@ch-avignon.fr

Marion, TOUZET, CH Avignon, Avignon, France, TOUZET.Marion@ch-avignon.fr

Audrey, ZABULON, CHU Martinique, Fort de France, France, audrey.zabulon@chu-  
martinique.fr

Jocelyne, CRASPAG, CHU Martinique, Fort de France, France, jocelyne.craspag@chu-martinique.fr

Catherine, LEDOUX, CHU Martinique, Fort de France, France, catherine.ledoux@chu-martinique.fr

Cédric, CONTARET, CHU Martinique, Fort de France, France, Cedric.CONTARET@chu-martinique.fr

Blandine, JANAND-DELENNE, CH du Pays d'Aix, Aix en Provence, France, bdelenne@ch-aix.fr

Anaïs, GIRAUD, CH du Pays d'Aix, Aix en Provence, France, agiraud@ch-aix.fr

Marie Lou, LACRIMINI, CH du Pays d'Aix, Aix en Provence, France, mlacrimini@ch-aix.fr

Joëlle, ARRIVIE, CH de Bigorre, Tarbes, France, jarrivie@ch-tarbes-vic.fr

Deborah, ANCELLE, CH Le Havre, Le Havre, France, deborah.ancelle@ch-havre.fr

Carine, GUILLOIS, CH Le Havre, Le Havre, France, carine.guillois@ch-havre.fr

Bénédicte, FREMY, CH Agen, Agen, France, fremyb@ch-agen-nerac.fr

Amina, CHAALAL, CH Agen, Agen, France, chaalalam@ch-agen-nerac.fr

Gaëlle, BARRANDE, CH Argenteuil, Argenteuil, France, gaelle.barrande@ch-argenteuil.fr

Anne, DORANGE, CH Le Mans, Le Mans, France, adorange@ch-lemans.fr

Eglantine, ROUANET, CH Le Mans, Le Mans, France, erouanet@ch-lemans.fr

Dominique, SERET-BEGUE, CH Gonesse, Gonesse, France, dominique.seret-begue@ch-gonesse.fr

Audrey, SAOUD, CH Gonesse, Gonesse, France, audrey.saoud@ch-gonesse.fr

Anne-Marie, GUEDJ, CH Nîmes, Nîmes, France, anne.marie.guedj@chu-nimes.fr

Nathalie, BEDOS, CH Nîmes, Nîmes, France, nathalie.bedos@chu-nimes.fr

Fritz-Line, VELAYOUDOM, CHU Guadeloupe, Les Abymes, France, fritz-line.velayoudom@univ-antilles.fr

Marie, DUMAS, Hôpital St Vincent de Paul, Lille, France, dumas.marie@ghicl.net

Benoite, GONDA, Hôpital St Vincent de Paul, Lille, France, Gonda.Benoite@ghicl.net

Christine, COFFIN, CH Périgueux, Périgueux, France, christine.coffin@ch-perigueux.fr



Stéphanie, GIBIAT, CH Périgueux, Périgueux, France, urc@ch-perigueux.fr

Myriam, LUNGO, CH de Bastia, Bastia, France, myriam.lungo@gmail.com

Chantal, BULLY, Les Portes du Sud, Vénissieux, France, C.BULLY@LESPORTESDUSUD.NET

Pierre, SERUSCLAT, Les Portes du Sud, Vénissieux, France, p.serusclat@lesportesdusud.net

Stella, BULLY, Les Portes du Sud, Vénissieux, France, stellabully.ecsel@gmail.com

Patricia, CARRE, Les Portes du Sud, Vénissieux, France, patcarre69@gmail.com

Jean-Philippe, LEBERRE, Medipôle Hôpital Mutualiste, Villeurbanne, France,  
j.leberre@resamut.fr

Carlos, ELKHOURY, Medipôle Hôpital Mutualiste, Villeurbanne, France,  
c.elkhoury@resamut.fr

Marine, THIEUX, Medipôle Hôpital Mutualiste, Villeurbanne, France, m.thieux@resamut.fr

Laetitia, PARADISI-PRIEUR, Medipôle Hôpital Mutualiste, Villeurbanne, France, l.paradisi-  
prieur@resamut.fr