



**HAL**  
open science

## Evidence of natural Wolbachia infections in field populations of *Anopheles gambiae*

Francesco Baldini, Nicola Segata, Julien Pompon, Perrine Marcenac, W Robert Shaw, Roch Dabiré, Abdoulaye Diabaté, Elena Levashina, Flaminia Catteruccia

► **To cite this version:**

Francesco Baldini, Nicola Segata, Julien Pompon, Perrine Marcenac, W Robert Shaw, et al.. Evidence of natural Wolbachia infections in field populations of *Anopheles gambiae*. *Nature Communications*, 2014, 5, pp.3985. 10.1038/ncomms4985 . hal-03280618

**HAL Id: hal-03280618**

**<https://hal.science/hal-03280618>**

Submitted on 7 Jul 2021

**HAL** is a multi-disciplinary open access archive for the deposit and dissemination of scientific research documents, whether they are published or not. The documents may come from teaching and research institutions in France or abroad, or from public or private research centers.

L'archive ouverte pluridisciplinaire **HAL**, est destinée au dépôt et à la diffusion de documents scientifiques de niveau recherche, publiés ou non, émanant des établissements d'enseignement et de recherche français ou étrangers, des laboratoires publics ou privés.



Distributed under a Creative Commons Attribution - NonCommercial - NoDerivatives 4.0 International License

ARTICLE

Received 6 Mar 2014 | Accepted 29 Apr 2014 | Published 6 Jun 2014

DOI: 10.1038/ncomms4985

OPEN

# Evidence of natural *Wolbachia* infections in field populations of *Anopheles gambiae*

Francesco Baldini<sup>1,2,†,\*</sup>, Nicola Segata<sup>3,\*</sup>, Julien Pompon<sup>4,\*</sup>, Perrine Marcenac<sup>2</sup>, W. Robert Shaw<sup>5</sup>, Roch K. Dabiré<sup>6</sup>, Abdoulaye Diabaté<sup>6</sup>, Elena A. Levashina<sup>7</sup> & Flaminia Catteruccia<sup>1,2</sup>

*Wolbachia* are maternally transmitted intracellular bacteria that invade insect populations by manipulating their reproduction and immunity and thus limiting the spread of numerous human pathogens. Experimental *Wolbachia* infections can reduce *Plasmodium* numbers in *Anopheles* mosquitoes in the laboratory, however, natural *Wolbachia* infections in field anophelines have never been reported. Here we show evidence of *Wolbachia* infections in *Anopheles gambiae* in Burkina Faso, West Africa. Sequencing of the 16S rRNA gene identified *Wolbachia* sequences in both female and male germlines across two seasons, and determined that these sequences are vertically transmitted from mother to offspring. Whole-genome sequencing of positive samples suggests that the genetic material identified in *An. gambiae* belongs to a novel *Wolbachia* strain, related to but distinct from strains infecting other arthropods. The evidence of *Wolbachia* infections in natural *Anopheles* populations promotes further investigations on the possible use of natural *Wolbachia*-*Anopheles* associations to limit malaria transmission.

<sup>1</sup>University of Perugia, Dipartimento di Medicina Sperimentale e Scienze Biochimiche, 05100 Terni, Italy. <sup>2</sup>Harvard School of Public Health, Department of Immunology and Infectious Diseases, 665 Huntington Avenue, Boston, Massachusetts 02115, USA. <sup>3</sup>University of Trento, Centre for Integrative Biology, 38123 Trento, Italy. <sup>4</sup>UPR9022 CNRS, U963 Inserm, University de Strasbourg, 15 rue R. Descartes, 67084 Strasbourg, France. <sup>5</sup>Imperial College London, Department of Life Sciences, London SW7 2AZ, UK. <sup>6</sup>Institut de Recherche en Sciences de la Santé/Centre Muraz, O1 BP 390 Bobo-Dioulasso 01, Burkina Faso. <sup>7</sup>Vector Biology Unit, Max-Planck Institute for Infection Biology, Chariteplatz 1, 10117 Berlin, Germany. \* These authors contributed equally to the work. <sup>†</sup>Present address: Institute of Biodiversity, Animal Health and Comparative Medicine, University of Glasgow, Glasgow G12 8QQ, United Kingdom. Correspondence and requests for materials should be addressed to E.A.L. (email: levashina@mpiib-berlin.mpg.de) or to F.C. (email: fcatter@hsph.harvard.edu).

Malaria-transmitting *Anopheles* mosquitoes are the deadliest animals on this planet, causing the death of more than 600,000 people each year and endangering the lives of half of the world's population<sup>1</sup>. Current insecticide-based control strategies to stop malaria transmission by targeting the mosquito vector are limited by the rapid spread of insecticide resistance<sup>2</sup>. In addition, these interventions target only indoor feeding and resting populations, with the use of insecticide-treated bednets and the application of indoor residual sprays, respectively. For decades, the use of *Wolbachia* endosymbionts has been proposed as an alternative to chemical strategies because of the ability of these bacteria to rapidly invade insect populations via cytoplasmic incompatibility<sup>3</sup>, and successful *Wolbachia* invasions in field settings have been demonstrated in the case of the dengue and yellow fever vector *Aedes aegypti*<sup>4</sup>. Recent proof that *Wolbachia* infections of *Anopheles* vectors limit the development of the *Plasmodium* parasites that cause malaria<sup>5–8</sup> makes these bacteria a particularly attractive tool for the control of both endo- and exophagic populations of malaria-transmitting anophelines. Long-standing limitations concerning the introduction of *Wolbachia* into laboratory colonies of *Anopheles* mosquitoes have been recently overcome<sup>5</sup>; however, the usefulness of this system for the control of *Anopheles* populations has been undermined by the apparent absence of natural infections. Indeed, while *Wolbachia* strains have been detected in many insects<sup>9,10</sup>, attempts to identify these bacteria in field *Anopheles* have failed, promoting the belief that these mosquitoes are not natural hosts for *Wolbachia*<sup>11–13</sup>.

In this study, we report evidence of natural *Wolbachia* infections in two incipient species of the major malaria vector, *Anopheles gambiae*. We isolate *Wolbachia*-specific 16S rRNA sequences from the reproductive organs and carcasses of adult mosquitoes and from larval carcasses in three different villages in Burkina Faso, West Africa. Whole-genome shotgun sequencing of two positive samples reveals a previously uncharacterized *Wolbachia* strain that is maternally transmitted in laboratory settings. These results open new avenues for exploiting *Wolbachia* infections for field applications targeting the malaria mosquito.

## Results

***Wolbachia* sequences detected in field *An. gambiae* populations.** We collected mating couples from natural *An. gambiae* mating swarms in Burkina Faso, West Africa, to identify the microbial populations of the male and female reproductive tracts. We analysed two reproductively isolated populations of *An. gambiae*, the M and S molecular forms, which do not interbreed in the field<sup>14</sup> and are now classified as two separate species (*An. coluzzii* and *An. gambiae*, respectively<sup>15</sup>). For simplicity, in the text and in the tables, we will refer to these two species as M and S forms. Our collections included 81 couples captured in three different villages: two villages in Vallée du Kou (VK5 and VK7), where the M form is prevalent, and one village in Soumouso, primarily populated with S form (Fig. 1, Supplementary Table 1).

An initial high-throughput sequencing of the 16S rRNA gene (variable region V4, average 23,589, s.d. 16,070 assembled reads per sample) amplified from ovaries and testes dissected from 30 mating couples produced a molecular fingerprint of the bacterial population of these reproductive tissues. Surprisingly, this analysis identified one sample, derived from the testes of an S form male collected in Soumouso, infected with *Wolbachia*. This sample contained 21.8% of reads (5,412 out of 24,800) matching the V4 regions of the *Wolbachia* 16S rRNA gene, with a percentage identity ranging between 95.3 and 97.6%. This percentage is fully consistent with the overall diversity of known *Wolbachia* V4 sequences (average identity 95.9%, s.d. 1.75%,

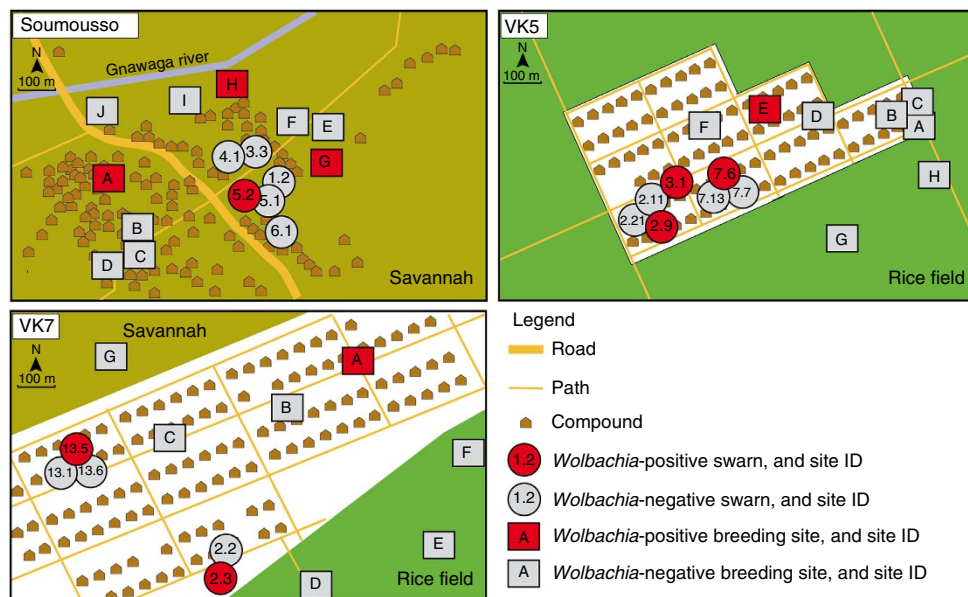
median 96.0% as estimated from available sequences, see Methods), while it is incompatible with any other sequenced bacterial 16S gene (closest matches at <89% identity). Phylogenetic analysis rooted the *Wolbachia* sequences into one of the two main subtrees of the genus, further confirming their taxonomic placement (Fig. 2).

The identification of *Wolbachia* sequences in the testes of an *An. gambiae* male prompted us to analyse the remaining mosquito specimens collected from the same mating swarms in the three villages. To this aim, a more sensitive PCR-based amplification and sequencing of a 16S rRNA gene segment comprising three variable regions (V6, V7 and V8) was utilized to specifically detect *Wolbachia* in ovaries and testes dissected from the remaining 51 mating couples, using previously validated primers<sup>16</sup>. The mosquito carcasses were also examined using the same method. Out of the 102 mosquitoes analysed, 11 were positive for *Wolbachia* 16S rRNA, leading to a frequency of infection of 10.8% similarly distributed between males and females (5 males and 6 females) (Supplementary Table 1). Interestingly, *Wolbachia* sequences were PCR amplified from either the reproductive tissues or from the carcasses, but never from both, with the exception of one male, where 16S sequences were identified by high-throughput sequencing in the testes and by PCR in the carcass. Although sequences corresponding to these endosymbionts were more prevalent in M mosquitoes, the difference in frequency between the two species was not statistically significant (12.8% in M samples compared with 4.2% in S samples). We also amplified DNA from fourth instar larvae collected from the same three villages (100 specimens from Soumouso, 80 specimens from VK5 and 70 specimens from VK7) using the same primer sets described above. *Wolbachia* sequences were found in five larval samples (three from Soumouso, one from VK5 and one from VK7), suggesting occurrence of maternal transmission (Supplementary Table 2).

***Wolbachia* sequences group into two different clusters.** Analysis of the amplified regions determined the presence of at least two distinct clusters of *Wolbachia* sequences (Supplementary Fig. 1). One cluster was identical to the reference strains *wAlbB* isolated from *A. albopictus*<sup>17</sup>, while the second was closely related to several *wPip* strains isolated from *Culex* mosquitoes and *Drosophila* species<sup>18</sup>. The *wAlbB*-like cluster was detected only in reproductive tissues (ovaries and testes), while *wPip*-like sequences were more widespread and were found in ovaries, carcasses and whole larvae (Supplementary Fig. 1). Although these *Wolbachia* ribosomal sequences are not host specific, the identification of two distinct clusters suggests the occurrence of independent *Wolbachia* infections in *An. gambiae*, as observed in other hosts<sup>19</sup>.

We next analysed the distribution of the *Wolbachia* sequences among the different villages. A larger number of positive individuals were isolated from mating swarms in VK5, where 7 out of the 36 collected mosquitoes showed evidence of infection (19.4%). The other 4 positive samples were found in VK7 (3 samples out of 42, 7.1%) and Soumouso (1 sample out of 24, 4.2%) (Supplementary Table 1). Strikingly, six of the seven positive samples isolated from VK5 had been collected in just two of the seven mating swarms analysed in that village (Supplementary Table 1). If confirmed, such clustering of *Wolbachia*-positive individuals in specific swarms would suggest that ecological and environmental factors might play a key role in the establishment of *Wolbachia* infections in the *An. gambiae* host.

**The *Wolbachia* strain belongs to a new phylogenetic group.** To expand the 16S rRNA-based analysis and better characterize the



**Figure 1 | Mosquito collection sites and distribution of *Wolbachia*-infected individuals.** The maps describe the three villages (Soumouso, VK5 and VK7) where *An. gambiae* couples from different mating swarms (indicated by circles) and larvae from different breeding sites (indicated by squares) were collected. Swarm sites and larval breeding grounds are identified by numbers and letters, respectively (see Supplementary Table 1 and 2). Sites where *Wolbachia*-positive mosquitoes were found are highlighted in red. Maps were adapted with permission from originals courtesy of A. A. Millogo, IRSS/Centre Muraz, Bobo-Dioulasso, Burkina Faso.

*Wolbachia* strain found in *An. gambiae*, we performed whole-genome shotgun (WGS) metagenomic sequencing of two of the *Wolbachia*-positive samples from mosquito ovaries (Supplementary Table 3). Sequences corresponding to the *An. gambiae* genome were screened out, and a pipeline for detecting *Wolbachia*-specific sequences based on the unique marker approach was applied<sup>20</sup> (see Methods). A total of 571 reads uniquely attributable to *Wolbachia* were detected (Fig. 3a,b, Supplementary Fig. 3a,b) with  $86 \pm 3.9$  and  $87.0 \pm 4.4\%$  average identity for the two samples analysed, which is in line with the sequence divergence observed for *Wolbachia* strains in different supergroups (Supplementary Fig. 2). These sequences matched 134 *Wolbachia* genes belonging to different functional categories (Fig. 3c, Supplementary Fig. 3c). The majority of reads (32.2% on average across the two samples) matched genes from metabolic pathways, while a relevant number of reads (13.3%) corresponded to *Wolbachia*-specific transposases; this is in line with the observation that transposases abundantly populate the genome of *Wolbachia* strains from many insects including mosquitoes (for example, transposases correspond to 8.32% of all genes annotated in the *wPip* genome<sup>18</sup>). Alignment of our reads to eight fully or partially sequenced *Wolbachia* reference genomes (Supplementary Table 4) demonstrated that the strain identified here belongs to a potential *Anopheles*-specific phylogenetic supergroup, distinct from the arthropod-associated and evolutionarily related supergroups A and B (Fig. 3d, Supplementary Fig. 3D). We henceforth call this strain *wAnga*.

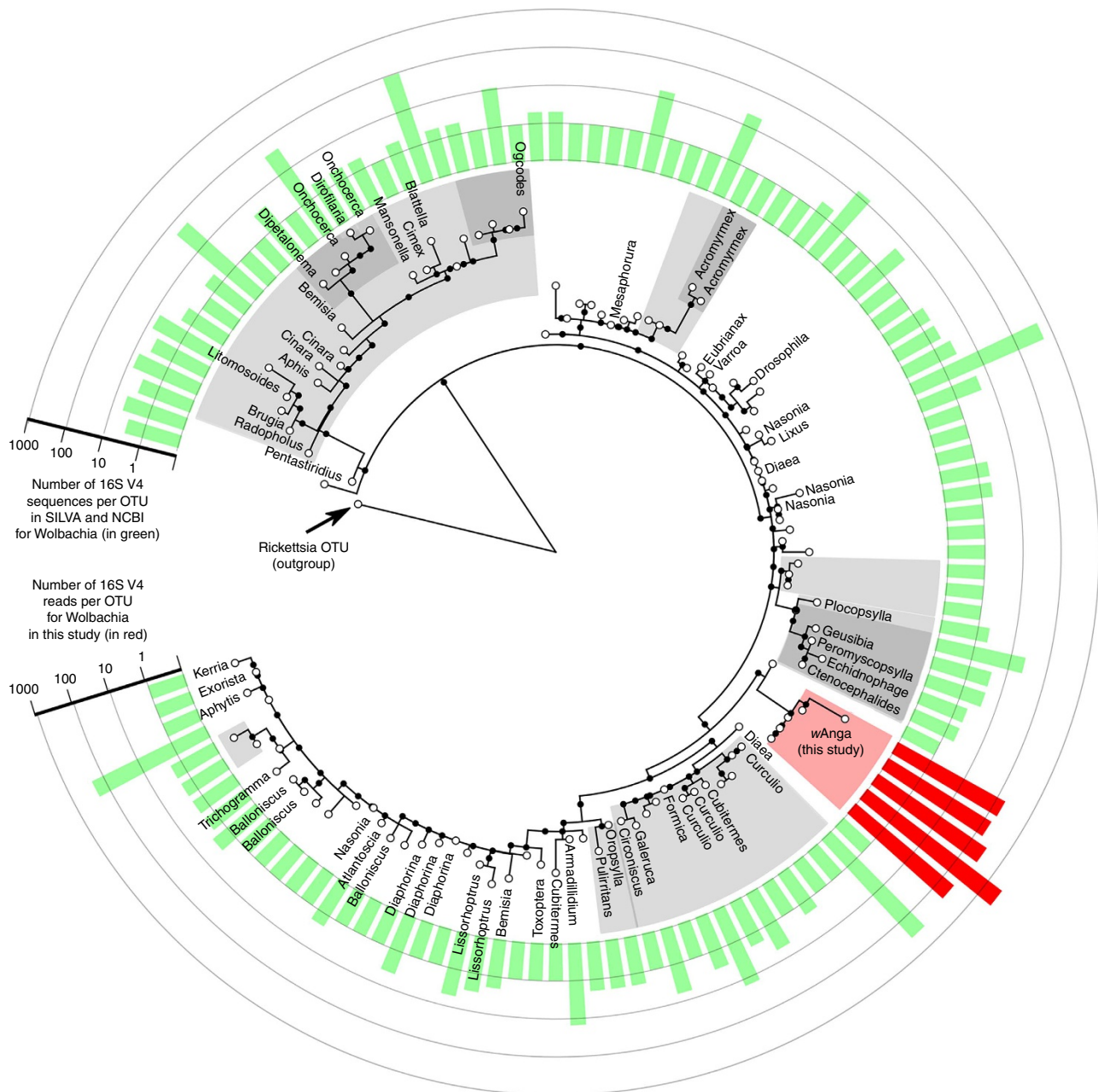
***wAnga* is maternally transmitted.** The presence of *Wolbachia* DNA in the reproductive tissues of female adults prompted the question of whether these bacteria are inherited from mother to offspring, an essential prerequisite for their spread through a population. To obtain irrefutable proof of vertical transmission and estimate its efficiency, semi-gravid females were collected from houses in VK5 two seasons after the initial collections. The same sets of *Wolbachia* 16S fragments were identified at a

frequency of 21% (19 out of 91 females), and the progenies of the 5 *Wolbachia*-positive females that laid eggs were then analysed for infection. Occurrence of maternal transmission was detected in all progenies, with an average maternal transmission frequency of 68% (ranging from 56 to 100%) (Fig. 4). Taken together, these data confirm the presence of *Wolbachia* sequences over the course of 2 years and indicate occurrence of vertical transmission from mother to offspring, as normally observed in *Wolbachia* infections.

## Discussion

The identification of genomic sequences from a novel *Wolbachia* strain in two incipient species of *An. gambiae* over the course of different seasons suggests that anopheline mosquitoes naturally harbour these bacteria, prompting renewed efforts to exploit *Wolbachia* to block malaria transmission. Past attempts to identify *Wolbachia* in these mosquitoes may have failed due to possible methodological limitations in the detection systems used, including non-optimal DNA amplification and extraction methods, and size of the sampled mosquito population<sup>11–13</sup>. In addition, the newly identified *wAnga* strain appears to be highly divergent from *Wolbachia* strains isolated in other insects. Indeed, our attempts to amplify by PCR two *Wolbachia*-specific genes commonly used in phylogenetic analyses, the *wolbachia* surface protein *wsp* and the fructose-biphosphate aldolase *fbpA*, were unsuccessful despite numerous attempts (see Supplementary Table 5 for primer sets used), suggesting a low degree of sequence conservation. Interestingly, in some *Wolbachia* strains infecting *C. pipiens*, the *wspB* gene is disrupted by the insertion of an IS256 transposon<sup>21</sup>, which belongs to the same family of transposons identified in *wAnga*. Similar transposon insertions into *wsp* may have occurred in the *Wolbachia* strain infecting *An. gambiae*, compromising the amplification of this gene.

Although examples of horizontal gene transfer (HGT) between *Wolbachia* and insect hosts are widespread<sup>22,23</sup>, two major observations strongly argue against the possibility of HGT of

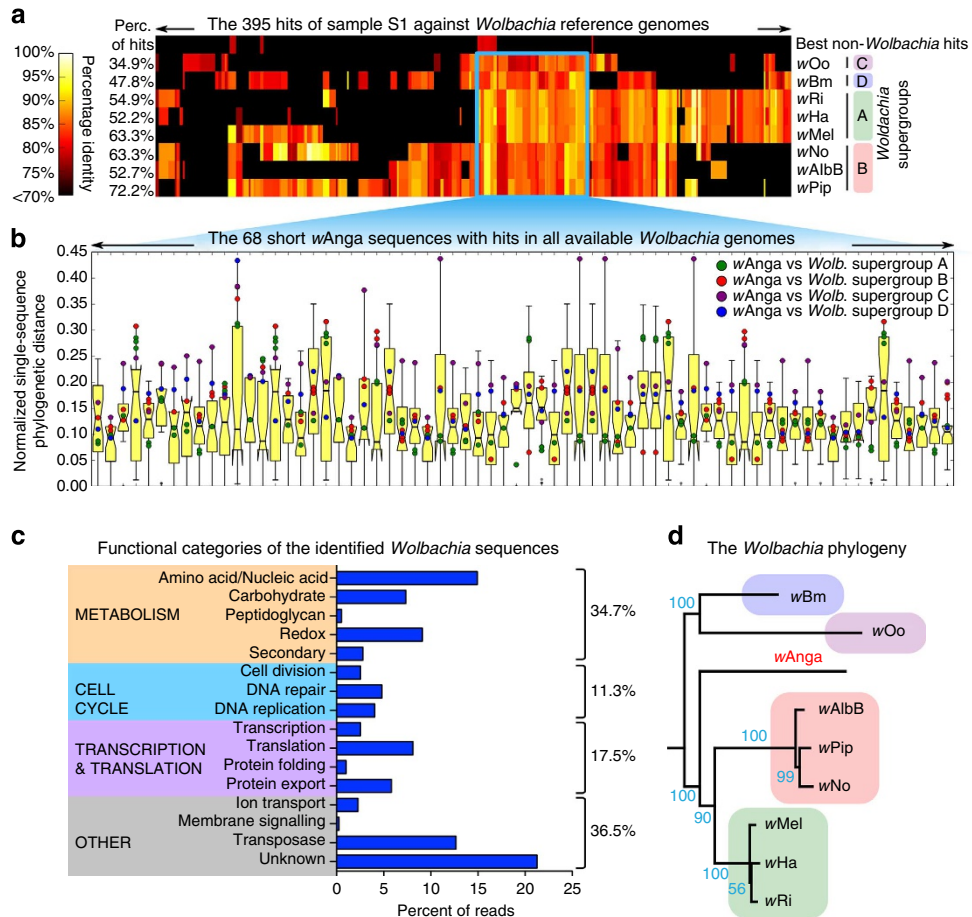


**Figure 2 | Phylogenetic tree for *Wolbachia* 16S rRNA sequences.** The tree was built using V4 16S rRNA fragments from *Wolbachia* reference sequences available in public repositories (NCBI and SILVA) and from the sequences obtained in this study. The sequences are clustered at 99% identity and the cardinality of each OTU obtained is reported in a logarithmic scale as a bar chart external to the tree (green for reference sequences and red for the new sequences). Shadings highlight subtrees with high bootstrapping support (>90%) and host organisms are reported for those OTUs in which at least one-third of the sequences are consistently associated to the same host.

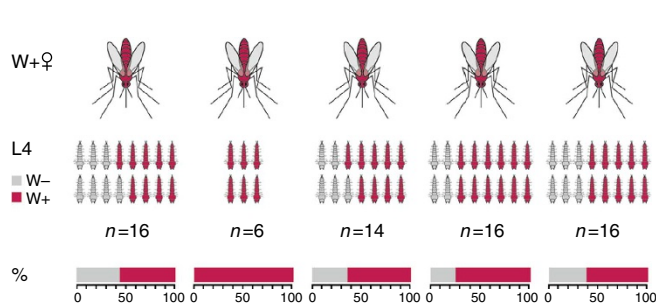
*Wolbachia* sequences into the *An. gambiae* genome: (1) with one exception, evidence of infection was identified in reproductive tissues (ovaries and testes) from nine females and males but not in the carcasses dissected from the same individuals, or vice versa, ruling against a possible transfer into the mosquito chromosomes; (2) the average coverage of *Wolbachia* in our WGS samples was lower than  $0.05 \times$ , which is incompatible with the three orders of magnitude higher coverage of the *An. gambiae* genome in the same samples ( $>75 \times$ ). Alternatively, HGT may have occurred into a bacterium or eukaryotic microorganism that infects the *Anopheles* germline and is maternally inherited from mother to progeny (based on the evidence of vertical transmission of 16S sequences). Regardless of their origin, the *Wolbachia* sequences

identified here may still be sufficient to induce *Wolbachia*-like reproductive phenotypes, such as bidirectional cytoplasmic incompatibility, that would impact future field deployments of experimental *Wolbachia* infections<sup>4</sup>.

The unexpected discovery in the mosquito germline of maternally inherited *Wolbachia* organisms will prompt further studies of the ecological, environmental and genetic determinants of susceptibility of *Anopheles* mosquitoes to *Wolbachia* infections. It will also spark critical investigation into whether natural *Wolbachia*-*Anopheles* associations limit the development of *Plasmodium* parasites in the mosquito host, thus aiding the design of novel effective bacterial infection strategies to control malaria transmission.



**Figure 3 | Whole-genome shotgun sequencing of a *Wolbachia*-positive sample identifies a new *Wolbachia* strain in *An. gambiae*.** Ovaries from a *Wolbachia*-positive female (sample S1) were sequenced using WGS. **(a)** Percentage (Perc.) identity of 395 short sequences uniquely attributable to *Wolbachia* from sample S1 versus eight sequenced strains. The *Wolbachia* reference strains and the supergroups are indicated with the corresponding percentage of assigned sequences. **(b)** Distribution of phylogenetic distances between different *Wolbachia* supergroups, from phylogenies reconstructed separately on each of the short sequences universally conserved within *Wolbachia* genomes (light blue inset in **a**). **(c)** Functional classification of *Wolbachia* loci identified by alignment to read sequences, based on NCBI annotated gene functions. **(d)** *Wolbachia* phylogeny, comprising the new *Wolbachia* strain *wAnga* isolated in *An. gambiae*, reconstructed from the concatenated sequences of **b**. These analyses show that *wAnga* is different from all other strains sequenced so far. The same analyses for another PCR-positive *Wolbachia* sample are available in Supplementary Fig. 3.



**Figure 4 | Vertical transmission of *Wolbachia* from mother to offspring.** A total of 14 *Wolbachia*-positive blood-fed *An. gambiae* females collected from houses in VK5 were allowed to lay eggs individually. The progeny of the five *Wolbachia*-positive females (W+) that laid eggs was screened for the presence of *Wolbachia* at the fourth larval developmental stage (L4). Red indicates *Wolbachia*-positive larvae and adults. The number of larvae screened is shown for each female (n).

**Methods**

**Mosquito collections.** Mosquito samples were initially collected during August–September 2011 in three different sites near Bobo-Dioulasso, Burkina Faso. The

village of Soumousso (11°00'N; 4°02'W) is located 55 km North-East of Bobo-Dioulasso. It is characterized by wooded savannah and by temporary breeding sites, more favourable to S form (*An. gambiae*)<sup>14</sup>. The two other collection sites are located in Vallée du Kou, a large rice-growing area situated 30 km North-West of Bobo-Dioulasso. The village of VK5 (11°23'N; 4°24'W) is completely surrounded by rice fields, while VK7 (11°24'N; 04°24'W) is characterized by rice fields to the South and by Savannah to the North. Because of the irrigation system, rice fields form permanent mosquito breeding sites in which the M form (*An. coluzzii*) thrives<sup>14</sup>. Nonetheless, few transient breeding sites could be found in depressions and ponds within the villages. Male and female adult mosquitoes were collected *in copula*<sup>24</sup> from an average of six mating swarms per collection day. Fourth instar larvae were also collected from temporary and permanent water pools from each site. A schematic representation of the villages and swarm locations is provided in Fig. 1. In August 2013, blood-fed *An. gambiae* females were collected inside the houses in VK5 and allowed to individually oviposit in the insectary.

**DNA extraction and species genotyping.** Genomic DNA was extracted from dissected reproductive tissues (testes and ovaries) using DNeasy kit (Qiagen), and from carcasses using NucleoSpin 96 Tissue kit (Macherey-Nagel). In 2013, to estimate *Wolbachia* maternal transmission, DNA was extracted using DNeasy kit (Qiagen) from whole females that were allowed to oviposit, and from their progenies. For M and S genotyping, DNA was extracted from a leg using a fast extraction method. In brief, individual legs were incubated in 40  $\mu$ l of grinding buffer (10 mM Tris-HCl pH 8.2, 1 mM EDTA, 25 mM NaCl) with 0.2 mg ml<sup>-1</sup> proteinase K for 45 min at 37 °C, then 5 min at 95 °C to inactivate the enzyme. DNA extracts (1  $\mu$ l) were then subjected to PCR amplification targeting the locus S200  $\times$  6.1 using specific primers (FWD: 5'-TCGCCTTAGACCTTGCGTTA-3';

and REV: 5'-CGCTTCAAGAATTTCGAGATAC-3')<sup>25</sup>. M and S genotyping was also used on larvae and adult carcasses. Larval DNA was used to determine the sex using Y-specific primers (F: 5'-CAAAACGACAGCAGTTCC-3'; and R: 5'-TAAACCAAGTCCGTCGCT-3').

**16S rRNA profiling and sequencing.** The 16S rRNA gene data set consisted of Illumina MiSeq sequences targeting the V4 variable region. Detailed protocols used for 16S amplification and sequencing were previously described<sup>26</sup>. In brief, genomic DNA from testes and ovaries was subjected to 16S rRNA amplifications using primers incorporating the Illumina adapters and a sample barcode sequence, allowing directional sequencing covering the variable region V4 (15F: 5'-GTGCC AGCMGCCGCGTAA-3'; and 806R: 5'-GGACTACHVGGGTWTCTAAT-3'). PCR mixtures contained 10 µl of diluted template (1:50), 10 µl of HotMasterMix with the HotMaster Taq DNA Polymerase (5 Prime) and 5 µl of primer mix (2 µM of each primer). The cycling conditions consisted of an initial denaturation at 94 °C for 3 min, followed by 30 cycles of denaturation at 94 °C for 45 s, annealing at 50 °C for 60 s, extension at 72 °C for 5 min and a final extension at 72 °C for 10 min. Amplicons were quantified on the Caliper LabChipGX (PerkinElmer, Waltham, MA), pooled in equimolar concentrations, size selected (375–425 bp) on the Pippin Prep (Sage Sciences, Beverly, MA) to reduce nonspecific amplification products from host DNA and a final library size and quantification was done on an Agilent Bioanalyzer 2100 DNA 1000 chips (Agilent Technologies, Santa Clara, CA). Sequencing was performed on the Illumina MiSeq v2 platform, according to the manufacturer's specifications with addition of 5% PhiX, generating paired-end reads of 175 bp in length in each direction. The overlapping paired-end reads were stitched together (~97 bp overlap) and size selected to reduce nonspecific amplification products from host DNA (225–275 bp).

**High-throughput 16S rRNA screening.** We first applied the QIIME pipeline version 1.6 (ref. 27) to the 16S rRNA data set that detected in the testis sample G23656 (male SMS5.1 in Supplementary Fig. 1) a total of 19.9% of reads assigned to *Wolbachia*. To specifically investigate and validate the prediction about the presence of *Wolbachia* in the sample, we implemented an additional pipeline. We first integrated all 16S rRNA sequences assigned to *Wolbachia* included in the SILVA<sup>28</sup> and NCBI repositories; we manually inspected those sequences with a > 3% nucleotide divergence from any other *Wolbachia* 16S, which let us exclude five sequences that were mislabeled with close endosymbionts such as *Bartonella*, *Rickettsia* and *Francisella*. We obtained a set of 2,064 *Wolbachia* 16S sequences from which the 253-nt-long V4 region was extracted and clustered at 99% identity, generating 115 operational taxonomic units (OTUs) covering the diversity in the *Wolbachia* genus. The all-versus-all mapping of the 115 OTU sequence representatives provided a lower-bound estimate of the genus' total diversity (average identity of 95.9%, s.d. 1.75%, median 96.0%).

We then performed the mapping of the 24,800 reads of sample G23656 against the full SILVA database, retaining only those sequences with full-length percentage identity of at least 95% with a *Wolbachia* 16S. The resulting 5,412 reads have a best hit other than *Wolbachia* at <89% identity, confirming that a fifth of the sample (21.82%) consists of V4 fragments from *Wolbachia* 16S rRNA. The percentage identity was in the 95.3–97.6% interval, which is fully consistent with the observed diversity in the V4 hypervariable region of the *Wolbachia* 16S rRNA genes (average 95.9%, s.d. 1.75% as reported above).

The V4 sequences from sample G23656 were then clustered into OTUs at 99% identity, discarding those OTUs with <50 sequences. The resulting OTUs were merged with the *Wolbachia* OTUs from the SILVA and NCBI repository (generated as described above) and aligned with MUSCLE version 3.8.31 (ref. 29). A V4 sequence representative of the *Rickettsia* 16S was added as outgroup. A phylogenetic tree was then built using RAXML version 7.4.2 (ref. 30) with the GTRGAMMA model, bootstrapping (1,000 replicates), best maximum likelihood tree inference, and displayed with GraPhlAn (<https://bitbucket.org/nsegata/graphlan>) representing the cardinality of the OTUs as circular barplots.

**Wolbachia-specific PCR detection and sequencing.** DNA from testes and ovaries was rehydrated from the 96-well Qiasafe plate (Qiagen) using 30 µl of water. A total of 2 µl of DNA was used for *Wolbachia* PCR detection using primers specific for *Wolbachia* 16S rDNA (W-Specif 5'-CATACCTATTCGAAGGGATA G-3', W-Specr 5'-AGCTTCGAGTGAACCAATTC-3') following standard procedures<sup>16</sup>. Positive samples showed a 438-bp band that was purified with QIAquick Gel Extraction kit (Qiagen) and sequenced (Eurofins MWG Operon, Ebersberg, Germany). Sample DNA quality was assessed with PCR using primers for the *Rps7* (AGAP010592) *An. gambiae* gene (FWD 5'-GGCGATCATCATCTACGTGC-3'; and REV 5'-GTAGCTGCTGCAAACTTCGG-3'). Similarly, a total of 2 µl of DNA was used for PCR detection of *wsp* and *fbpA* genes following standard procedures (see Supplementary Table 5 for primer sets used).

**WGS sequencing and analysis pipeline.** Shotgun metagenomic sequencing was performed on two mosquito samples from infected ovaries using the remainder of the DNA available after *Wolbachia*-specific PCR detection (1–2 ng). Due to this limiting condition, libraries were prepared with 1 ng DNA according to the Nextera XT protocol (Version Oct 2012). Briefly, the DNA was fragmented in 5 µl of

Amplicon Tagment Mix and 10 µl of Tagment DNA buffer (Illumina, San Diego, CA, USA). Tagmentation reactions were completed by incubation for 5 min at 55 °C followed by neutralization with 5 µl of Neutralise Tagment Buffer for 5 min. Tagmented DNA was used as the template in a 50-µl limited-cycle PCR (12 cycles) and processed as described in the Nextera XT protocol. Amplified DNA was purified with AMPure XP beads and then normalized to 2nM. Sequencing was performed on a HiSeq2000 (Illumina, San Diego, CA, USA) employing one full lane per library with 101 bp paired-end reads.

Raw WGS results consisting of >400 M 101-nt-long paired-end reads (Supplementary Table 3) were subject to quality control and sliding window trimming with a minimum resulting read length of 80 bp, and to sequencing artefact removal using PRINSEQ version 0.20.3 (ref. 31). As expected, *An. gambiae* DNA was quantitatively dominant in the read pool, and was removed by BowTie2 mapping<sup>32</sup> using the 'very-sensitive' preset option against the *An. gambiae* PEST reference genome (<http://www.vectorbase.org/>). Supplementary Table S2 reports the number of reads that were retained after each pre-processing step.

The resulting read set was mapped against the seven available *Wolbachia* genomes and the high-quality draft assembly of the *Wolbachia* strain wAlbB (Supplementary Table 4). To quantify the expected sequence divergence between *Wolbachia* strains and supergroups, we performed all-versus-all sequence mapping (with BLASTN) with all open reading frames (ORFs), considering as pairwise common ORFs those sequences with >80% identity over 50% of the ORF length (Supplementary Fig. 2). Reads were uniquely attributable to *Wolbachia* on the basis of the concept of unique marker sequences<sup>20</sup>, performed in four steps. First step: BowTie2 mapping against the eight *Wolbachia* reference genomes was performed to identify *Wolbachia* candidate reads. The mapping was performed with enhanced sensitivity (score-min L,-1.0,-1.0 -D 25 -R 5 -N 1 -L 12 -i S,2.0.25) to capture *Wolbachia* sequence divergence and host specificity as assessed by ORFs' sequence comparison among available *Wolbachia* genomes (Supplementary Fig. 3). The matches were also confirmed by BLASTN with word size of length 7. Second step: candidate reads coming from the small and large ribosomal units (16S rRNA and 23S rRNA genes) were screened out by sequence mapping against the comprehensive ribosomal sequences in the SILVA database release 111. Third step: the remaining ribosomal-free candidate reads were mapped against the full RefSeq genomic database version 60 to identify any non-*Wolbachia*-specific hits using BLASTN with word size of length 7. Fourth step: on the basis of the mapping results of steps 1 and 3, the final set of reads from the *Wolbachia* strain identified in *An. gambiae* (wAnga) was compiled selecting all reads showing >80% identity over >95 nt to at least one *Wolbachia* strain, and no hits longer than 80 nt to other organisms. Reads hitting non-*Wolbachia* genomes with identities below 80% and at least one *Wolbachia* genome at >90% were also retained. As control, the same procedure was also applied to the two genera closest to *Wolbachia* according to the PhyloPhlAn tree of life<sup>33</sup>, namely, *Anaplasma* (six reference genomes) and *Ehrlichia* (five reference genomes). No uniquely attributable reads were found in this analysis.

wAnga reads mapping to all seven *Wolbachia* genomes were then retained for phylogenetic analysis. The homologous sequences were extracted and aligned to each wAnga reads with MUSCLE version 3.8.31 (ref. 29) and the alignments edited to remove leading and ending gaps. Sequence-specific phylogenetic trees were built using RAXML version 7.4.2 (ref. 30) with the GTRGAMMA model, bootstrapping (1,000 replicates) and best maximum likelihood tree inference. Sequence-specific phylogenetic distances were computed inferring the patristic distances within each tree, and reported with box plots in Fig. 3b and Supplementary Fig. 3B. A final phylogenetic tree was also built using RAXML (GTRGAMMA model, 1,000 bootstrapping replicates) on the concatenated alignments (Fig. 3d, Supplementary Fig. 3D).

## References

- World Health Organization. *World Malaria Report: 2013* (World Health Organization, 2013).
- Ranson, H. *et al.* Pyrethroid resistance in African anopheline mosquitoes: what are the implications for malaria control? *Trends Parasitol.* **27**, 91–98 (2011).
- Walker, T. & Moreira, L. A. Can *Wolbachia* be used to control malaria? *Mem. Inst. Oswaldo Cruz* **106**, 212–217 (2011).
- Hoffmann, A. *et al.* Successful establishment of *Wolbachia* in *Aedes* populations to suppress dengue transmission. *Nature* **476**, 454–457 (2011).
- Bian, G. *et al.* *Wolbachia* invades *Anopheles stephensi* populations and induces refractoriness to *Plasmodium* infection. *Science* **340**, 748–751 (2013).
- Hughes, G. L., Koga, R., Xue, P., Fukatsu, T. & Rasgon, J. L. *Wolbachia* infections are virulent and inhibit the human malaria parasite *Plasmodium falciparum* in *Anopheles gambiae*. *PLoS Pathog.* **7**, e1002043 (2011).
- Kambris, Z. *et al.* *Wolbachia* stimulates immune gene expression and inhibits *Plasmodium* development in *Anopheles gambiae*. *PLoS Pathog.* **6**, e1001143 (2010).
- Murdoch, C. C., Blanford, S., Hughes, G. L., Rasgon, J. L. & Thomas, M. B. Temperature alters *Plasmodium* blocking by *Wolbachia*. *Sci. Rep.* **4**, 3932 (2014).
- Jeyaprakash, A. & Hoy, M. Long PCR improves *Wolbachia* DNA amplification: *wsp* sequences found in 76% of sixty-three arthropod species. *Insect Mol. Biol.* **9**, 393–405 (2000).

10. Hilgenboecker, K., Hammerstein, P., Schlattmann, P., Telschow, A. & Werren, J. H. How many species are infected with *Wolbachia*?—a statistical analysis of current data. *FEMS Microbiol. Lett.* **281**, 215–220 (2008).
11. Kittayapong, P., Baisley, K. J., Baimai, V. & O'Neill, S. L. Distribution and diversity of *Wolbachia* infections in Southeast Asian mosquitoes (Diptera: Culicidae). *J. Med. Entomol.* **37**, 340–345 (2000).
12. Ricci, I., Cancrini, G., Gabrielli, S., D'Amelio, S. & Favia, G. Searching for *Wolbachia* (Rickettsiales: Rickettsiaceae) in mosquitoes (Diptera: Culicidae): large polymerase chain reaction survey and new identifications. *J. Med. Entomol.* **39**, 562–567 (2002).
13. Rasgon, J. L. & Scott, T. W. An initial survey for *Wolbachia* (Rickettsiales: Rickettsiaceae) infections in selected California mosquitoes (Diptera: Culicidae). *J. Med. Entomol.* **41**, 255–257 (2004).
14. della Torre, A. *et al.* Speciation within *Anopheles gambiae*—the glass is half full. *Science* **298**, 115–117 (2002).
15. Coetzee, M. *et al.* *Anopheles coluzzii* and *Anopheles amharicus*, new members of the *Anopheles gambiae* complex. *Zootaxa* **3619**, 246–274 (2013).
16. Werren, J. H. & Windsor, D. M. *Wolbachia* infection frequencies in insects: evidence of a global equilibrium? *Proc. Biol. Sci.* **267**, 1277–1285 (2000).
17. Mavingui, P. *et al.* Whole-genome sequence of *Wolbachia* strain wAlbB, an endosymbiont of tiger mosquito vector *Aedes albopictus*. *J. Bacteriol.* **194**, 1840–1840 (2012).
18. Klasson, L. *et al.* Genome evolution of *Wolbachia* strain wPip from the *Culex pipiens* group. *Mol. Biol. Evol.* **25**, 1877–1887 (2008).
19. Ellegaard, K. M., Klasson, L., Näslund, K., Bourtzis, K. & Andersson, S. G. Comparative genomics of *Wolbachia* and the bacterial species concept. *PLoS Genet.* **9**, e1003381 (2013).
20. Segata, N. *et al.* Metagenomic microbial community profiling using unique clade-specific marker genes. *Nat. Methods* **9**, 811–814 (2012).
21. Sanogo, Y., Dobson, S., Bordenstein, S. & Novak, R. Disruption of the *Wolbachia* surface protein gene *wspB* by a transposable element in mosquitoes of the *Culex pipiens* complex (Diptera, Culicidae). *Insect Mol. Biol.* **16**, 143–154 (2007).
22. Hotopp, J. C. D. *et al.* Widespread lateral gene transfer from intracellular bacteria to multicellular eukaryotes. *Science* **317**, 1753–1756 (2007).
23. Robinson, K. M., Sieber, K. B. & Hotopp, J. C. D. A review of bacteria-animal lateral gene transfer may inform our understanding of diseases like cancer. *PLoS Genet.* **9**, e1003877 (2013).
24. Diabate, A. *et al.* Mixed swarms of the molecular M and S forms of *Anopheles gambiae* (Diptera: Culicidae) in sympatric area from Burkina Faso. *J. Med. Entomol.* **43**, 480–483 (2006).
25. Santolamazza, F. *et al.* Insertion polymorphisms of SINE200 retrotransposons within speciation islands of *Anopheles gambiae* molecular forms. *Malar. J.* **7**, 163 (2008).
26. Caporaso, J. G. *et al.* Ultra-high-throughput microbial community analysis on the Illumina HiSeq and MiSeq platforms. *ISME J.* **6**, 1621–1624 (2012).
27. Caporaso, J. G. *et al.* QIIME allows analysis of high-throughput community sequencing data. *Nat. Methods* **7**, 335–336 (2010).
28. Quast, C. *et al.* The SILVA ribosomal RNA gene database project: improved data processing and web-based tools. *Nucleic Acids Res.* **41**, D590–D596 (2013).
29. Edgar, R. C. MUSCLE: multiple sequence alignment with high accuracy and high throughput. *Nucleic Acids Res.* **32**, 1792–1797 (2004).
30. Stamatakis, A., Ludwig, T. & Meier, H. RAXML-III: a fast program for maximum likelihood-based inference of large phylogenetic trees. *Bioinformatics* **21**, 456–463 (2005).
31. Schmieder, R. & Edwards, R. Quality control and preprocessing of metagenomic datasets. *Bioinformatics* **27**, 863–864 (2011).

32. Langmead, B. & Salzberg, S. L. Fast gapped-read alignment with Bowtie 2. *Nat. Methods* **9**, 357–359 (2012).
33. Segata, N., Bornigen, D., Morgan, X. C. & Huttenhower, C. PhyloPhlAn is a new method for improved phylogenetic and taxonomic placement of microbes. *Nat. Commun.* **4**, 2304 (2013).

## Acknowledgements

We thank S. Ilboudo, H. Guel, D. D. Soma, S. Sawadogo and E. Bilgo for help with sample collection and dissection, V. De Sanctis and R. Bertorelli (NGS Facility at the Centre for Integrative Biology and LaBSSAH, University of Trento) for WGS sequencing and D.E. Neafsey and L. Waldron for helpful discussions. We thank the Broad sequencing platform for 16S sequencing. This work was funded by a European Research Council FP7 ERC Starting Grant project 'Anorep' (grant ID: 260897), a Biotechnology and Biological Sciences Research Council grant (grant BB/I002898/1) and a Wellcome Trust grant (grant ID: 093553) to F.C., by the European Union FP7 grant (PCIG13-618833) and startup funding at the Centre for Integrative Biology (University of Trento) to N.S., by the EC FP7 Networks of Excellence EVIMalaR (242095) to E.A.L. and F.C., and by an ANR-11-BSV7-009-01 GIME to E.A.L. F.C. was supported by a NIH grant (grant ID: NIH 1R01AI104956-01A1). J.P. was supported by fellowships from FRM and the Fondation Des Treilles.

## Author contributions

F.C., E.A.L., F.B., J.P., N.S. and A.D. designed the experiments. F.B., J.P., W.R.S. and P.M. performed the experiments. F.C., N.S., F.B., J.P. and E.A.L. analysed the data. N.S. performed the sequencing analysis. R.K.D. and A.D. provided samples for the analysis. F.C., N.S., F.B., J.P., E.A.L. and A.D. wrote the manuscript. F.B., N.S. and J.P. contributed equally to this study.

## Additional information

**Accession codes:** Nucleotide sequences of PCR-amplified fragments of *Wolbachia* 16S rRNA genes have been deposited in the GenBank nucleotide database under accession codes KJ728739 to KJ728755. Sequence reads for the same 16S-rRNA amplicon sequences have been deposited in the NCBI Sequence Read Archive (SRA) under accession code SRR610826. Sequence reads for the two whole-genome shotgun sequencing samples have been deposited in the NCBI Sequence Read Archive (SRA) under accession codes SRR1238105 to SRR1238106.

**Supplementary Information** accompanies this paper at <http://www.nature.com/naturecommunications>

**Competing financial interests:** The authors declare no competing financial interests.

**Reprints and permission** information is available online at <http://npg.nature.com/reprintsandpermissions/>

**How to cite this article:** Baldini, F. *et al.* Evidence of natural *Wolbachia* infections in field populations of *Anopheles gambiae*. *Nat. Commun.* 5:3985 doi: 10.1038/ncomms4985 (2014).



This work is licensed under a Creative Commons Attribution-NonCommercial-NoDerivs 3.0 Unported License. The images or other third party material in this article are included in the article's Creative Commons license, unless indicated otherwise in the credit line; if the material is not included under the Creative Commons license, users will need to obtain permission from the license holder to reproduce the material. To view a copy of this license, visit <http://creativecommons.org/licenses/by-nc-nd/3.0/>