



HAL
open science

Systematic Study of the Thermal Properties of Zeolitic Frameworks

Maxime Ducamp, François-Xavier Coudert

► **To cite this version:**

Maxime Ducamp, François-Xavier Coudert. Systematic Study of the Thermal Properties of Zeolitic Frameworks. *Journal of Physical Chemistry C*, 2021, 125 (28), pp.15647-15658. 10.1021/acs.jpcc.1c03975 . hal-03277362

HAL Id: hal-03277362

<https://hal.science/hal-03277362>

Submitted on 3 Jul 2021

HAL is a multi-disciplinary open access archive for the deposit and dissemination of scientific research documents, whether they are published or not. The documents may come from teaching and research institutions in France or abroad, or from public or private research centers.

L'archive ouverte pluridisciplinaire **HAL**, est destinée au dépôt et à la diffusion de documents scientifiques de niveau recherche, publiés ou non, émanant des établissements d'enseignement et de recherche français ou étrangers, des laboratoires publics ou privés.

Systematic Study of the Thermal Properties of Zeolitic Frameworks

Maxime Ducamp and François-Xavier Coudert*

*Chimie ParisTech, PSL Research University, CNRS, Institut de Recherche de Chimie
Paris, 75005 Paris, France*

E-mail: fx.coudert@chimieparistech.psl.eu

Abstract

We report a systematic study of the thermal and mechanical properties of 134 pure SiO₂ zeolites through DFT-based calculations by making use of the quasi-harmonic approximation (out of a total of 242 known fully ordered zeolitic frameworks). The comparison of our results with reported experimental data for several zeolites revealed a very good accuracy and validated our simulation methodology. We observe a wide range of thermal expansion coefficients (from -5 to -35 MK⁻¹), highlighting the great influence of the framework topology over this physical property, while demonstrating that all pure-silica zeolites exhibit negative thermal expansion (NTE). Our simulations also provide a path for the computation of the bulk modulus for each structure, as well as its pressure and temperature dependence. Results revealed a large gamut of bulk modulus values (from 8 to 134 GPa), showing that most frameworks display pressure-induced softening — but not all! Finally, this study provides some hints to the open question of experimental feasibility of zeolitic frameworks, showing that the experimentally synthesized structures appear to have a distinct distribution of thermal and mechanical properties.

Introduction

Pure silica zeolites are nanoporous phases of SiO_2 ,¹⁻³ that are metastable relative to the dense α -quartz phase. They are also known as all-silica zeolites, siliceous zeolites, or zeosils. In addition to the usual applications of microporous materials as molecular sieves (for adsorption, fluid separation and gas storage) and heterogeneous catalysts, they have specific applications due to the hydrophobicity of their internal surface: the combination of small pore size and nonwetting surface can be leveraged to adsorb, store, or dissipate energy.^{4,5} They have also been proposed for practical applications in the form of thin films as low- k materials, chemical sensors, membrane reactors, and microelectronic devices.⁶⁻⁸

The porous structure of zeolites find its root in their synthesis and crystallization in the presence of (typically organic) templating agents, before a calcination process that removes the template but retains the structural integrity, topological characteristics and porosity of the inorganic framework. Out of a combinatorial explosion of four-connected zeolitic nets (due to the corner-sharing nature of the $[\text{SiO}_4]$ tetrahedra), systematic exploration with classical interatomic potentials have shown that there are several hundred thousands of distinct low-energy frameworks possible.⁹⁻¹¹ Out of this large number, only 242 have been experimentally observed in natural or synthesized zeolitic materials, and less than a quarter of that number (46) have been experimentally obtained as pure silica compounds. While zeolites are amongst the most often used nanoporous materials at the industrial scale, these numbers highlight two very fundamental questions of zeolite science that are still widely open. First: what factors determine the viability, or experimental feasibility, of a given framework in a given chemical composition?¹²⁻¹⁴ It is known that energetic stability is not a sufficiently discriminating factor here, with many materials with low relative energy not being accessible by synthesis.¹⁰ Other criteria, such as entropy, mechanical stability, fit of the templating agent, etc. have been proposed but the question still remains mostly unanswered.¹⁵ Secondly: how can we establish structure-properties relationships within this large family of materials? On that front, there have been key advances for some properties, with large-scale

computational predictions of adsorption,¹⁶ gas separation,^{17,18} and more recently mechanical properties.^{19,20} However, there are other properties that still escape our understanding, having not been studied in a systematic manner: diffusion and transport, thermal behavior, and most non-linear responses such as pressure and temperature-dependent physical properties.

In the present paper, we report a large-scale study of the thermal properties of synthesized and hypothetical pure silica zeolites, through quantum chemistry calculations at the density functional theory (DFT) level. After validating the accuracy of our proposed methodology against the scarce experimental data available, we perform calculations in the harmonic and quasi-harmonic approximations in order to compute both the thermal properties of zeolites, as well as the pressure and temperature dependence of their mechanical behavior. We show that there is a large impact of framework topology on these physical properties, opening the way for a better understanding of the structure–property relationships and providing highly-accurate ab initio data for the development of future models, either at the force field level or through machine learning techniques.

Computational methods

Harmonic approximation

Let us consider a crystal in mechanical equilibrium with Cartesian coordinates $R_{\kappa,\alpha}$ (α representing the Cartesian x , y , z directions), and with a unit cell containing N atoms labelled κ . If $u_{\kappa,\alpha}$ represents the displacement of an atom κ from its equilibrium position in the direction α , the energy can be expressed as a Taylor expansion:

$$E = E_0 + \sum_{\kappa,\alpha} \left(\frac{\partial E}{\partial u_{\kappa,\alpha}} \right) u_{\kappa,\alpha} + \frac{1}{2} \sum_{\kappa,\kappa',\alpha,\alpha'} H_{\alpha,\alpha'}^{\kappa,\kappa'} u_{\kappa,\alpha} u_{\kappa',\alpha'} + \dots \quad (1)$$

where

$$H_{\alpha,\alpha'}^{\kappa,\kappa'} = \left(\frac{\partial^2 E}{\partial u_{\kappa,\alpha} \partial u_{\kappa',\alpha'}} \right) \quad (2)$$

are the second-order force constants, i.e., the elements of the Hessian matrix H . At equilibrium, residual forces are zero meaning that the first order term is null. The principle of the harmonic approximation is to neglect all anharmonic terms (corresponding to the third and higher order terms), keeping only the equilibrium lattice energy E_0 and the second-order term which corresponds to the harmonic energy.

For a periodic structure, we can write the displacements $u_{\kappa,\alpha}$ in terms of a plane wave with respect to the cell coordinates:

$$u_{\kappa,\alpha} = \varepsilon_{m\kappa,\alpha q} e^{(iq \cdot R_{\kappa,\alpha} - \omega_m t)} \quad (3)$$

With q a phonon wave vector and $\varepsilon_{m\kappa,\alpha q}$ a polarization vector. This leads to an eigenvalue equation involving the dynamical matrix which corresponds to the mass-reduced Fourier transform of the Hessian matrix:

$$D_{\alpha,\alpha'}^{\kappa,\kappa'}(q) \varepsilon_{m\kappa,\alpha q} = \omega_{m,q}^2 \varepsilon_{m\kappa,\alpha q} \quad (4)$$

With

$$D_{\alpha,\alpha'}^{\kappa,\kappa'} = \frac{1}{\sqrt{M_\kappa M_{\kappa'}}} \sum_a H_{\alpha,\alpha'}^{\kappa,\kappa'} e^{-iq \cdot r_a} \quad (5)$$

This eigenvalue equation can be solved numerically, and the eigenvalues are obtained as the square of the vibrational frequencies. Second order force constants, which are needed to solve this equation, can be obtained through DFT calculations either by using the finite-displacement method or the perturbation theory.²¹

While this approximation appears to be quite simple, its efficiency is no longer to be proven.²²⁻²⁴ The resulting mathematical model which admits exact solutions allows an accurate description of many features of the lattice dynamics such as the dependence of frequency on wave vector. However, despite being a reliable approximation for the description of lattice dynamics, it still shows some limitations. Indeed, under this approximation, vibrational

frequencies are defined as independent of the interatomic distance meaning that the vibrational part of the energy is considered independent of the volume. Such a description leads to the failure of computing some thermodynamical properties: for example, thermal expansion would be equal to zero and thermal conductivity would be infinite due to the phonon lifetimes being infinite.

Nevertheless, one of the strengths of this approximation is that it can be easily modified to incorporate the missing anharmonic terms into a model that looks like a harmonic model.

Quasi-harmonic approximation

To overcome the weaknesses invoked previously, it is possible to introduce explicitly the anharmonic effects. This would require the calculation of phonon-phonon interactions that are missing in the harmonic approximation by, for example, computing higher order interatomic force constants or with the vibrational perturbation theory.²⁵⁻²⁷ Such techniques are computationally demanding and are not adapted to the scale of this study. Therefore, we chose to use the quasi-harmonic approximation which provides a simple correction for most of the previously mentioned drawbacks of the HA.

In the QHA, the Helmholtz free energy F can be described as:

$$F(V, T) = U_0(V) - U_{vib}(V, T) + TS \quad (6)$$

Where U_0 is the zero-temperature lattice energy and U_{vib} , the vibrational part of the energy, can be written as:

$$U_{vib}(V, T) = E_0(V)k_B T \sum_k \left(\ln \left(1 - e^{-\frac{\hbar\omega_k(V)}{k_B T}} \right) \right) \quad (7)$$

Where $E_0(V)$ is the zero-point energy of the system, k_B is the Boltzmann's constant, \hbar is the Planck's constant and ω_k is the volume-dependent vibration frequency. Using 6, the calculation of the thermodynamical properties such as Gibbs free energy, thermal expansion,

bulk modulus or heat capacity can easily be achieved. As an example, Gibbs free energy can simply be obtained from the minimization of the following function with respect to the volume:

$$G(P, T) = \min (F(V, T) + PV) \quad (8)$$

From the volume-temperature relation $V(T)$ used to minimize $F(V, T)$, one can then determine the volumetric thermal expansion coefficient α_V as:

$$\alpha_V(T) = \frac{1}{V(T)} \left(\frac{\partial V(T)}{\partial T} \right)_{P=0} \quad (9)$$

Grüneisen formalism

Another useful formalism in this approximation is the Grüneisen parameter γ . This parameter has the advantage of linking directly the vibrational frequencies to the volume of the system, allowing then to study what effects the changes of temperature have on the crystal lattice dynamics. For each vibration mode i of the system, we can write a mode Grüneisen parameter as:

$$\gamma_i = -\frac{V_0}{\omega_i(V_0)} \frac{\partial \omega_i(V)}{\partial V} \quad (10)$$

An overall Grüneisen parameter can be obtained as the weighted average of all the mode Grüneisen parameter in terms of the corresponding contribution to the specific heat $C_{V,i}$:

$$\gamma(T) = \sum_i \frac{\gamma_i C_{V,i}(T)}{C_{V,i}(T)} \quad (11)$$

Using this average Grüneisen parameter, the previously defined thermal expansion can also be expressed as:

$$\alpha_V(T) = \frac{1}{V_0 K_T} \sum_i \gamma_i C_{V,i}(T) \quad (12)$$

Mechanical properties and their pressure and temperature dependence

In this section we list the methods used to obtain the mechanical properties described in this work.

Computation of the zero temperature bulk modulus K_0 and its derivative K'_0 was realized through fitting of the volume/energy data with the third-order Birch-Murnaghan equation of state (EOS):

$$E(V) = E_0 + \frac{9V_0K_0}{16} \left\{ \left[\left(\frac{V_0}{V} \right)^{\frac{2}{3}} - 1 \right]^3 K'_0 + \left[\left(\frac{V_0}{V} \right)^{\frac{2}{3}} - 1 \right]^2 \left[6 - 4 \left(\frac{V_0}{V} \right)^{\frac{2}{3}} \right] \right\} \quad (13)$$

Thermal effects on the bulk modulus were accounted for by making use of the QHA: The temperature dependent bulk modulus $K(T)$ was obtained as the isothermal second derivative of the free energy $F(V, T)$ with respect to the volume:

$$K(T) = V(T) \left(\frac{\partial^2 F(V, T)}{\partial V^2} \right)_T \quad (14)$$

Such relation allowed the computation of the bulk modulus for each zeolite over the range of 10 K to 300 K. Nevertheless, for the sake of clarity, we reported in this work only the values at 300 K.

Finally, we characterize the temperature evolution of the bulk modulus $K(T)$ by defining a temperature coefficient δ as:

$$\delta = \frac{1}{K(T)} \left(\frac{d K(T)}{dT} \right) \quad (15)$$

Calculation parameters

All the simulations in this work were realized under the density functional theory as implemented in the CRYSTAL17 code.^{28,29} All electron localized basis sets were used for both silicon and oxygen. They can be found on the CRYSTAL17 online library with the acronyms

and references as follow: Si_88_31G*_nada_1996³⁰ for silicon and O_8_411_muscat_1999³¹ for oxygen. Functionals B3LYP, PBE, PBESOL, PBE0 and PBESOL0 were tested for the description of the exchange and correlation term of the energy. We also tested the effect of Grimme-type dispersion corrections³² for each functional except PBESOL0³³ for which optimized coefficients are not currently available. However, this functional showed a better accuracy (compared to experimental data available) than the others, even without considering the dispersion corrections. Considering the fact that we want to look at properties arising from linear response to small perturbations (such as thermal expansion and bulk modulus), we believe that the impact of dispersion corrections is not crucial in this methodology. Therefore, we decided to choose PBESOL0 as the functional and did not use Grimme-type dispersion corrections in our calculations.

Mesh sampling was realized by using the Monkhorst-Pack scheme³⁴ with a k -point mesh of $3 \times 3 \times 3$. For all the structures, supercells were generated in order to contain 150 atoms at most to ensure convergence of the thermal properties. Geometries were optimized using CRYSTAL17 code along with the default convergence criteria (a maximum of 0.00045 a.u. on atomic displacements during one optimization step and 0.0018 a.u. on forces). Representative input files and optimized structures are available online at <https://github.com/fxcoudert/citable-data>.

Starting structures were taken from the International Zeolitic Association (IZA) database, considering only fully ordered frameworks, of which there are currently 242 known. Zeolites with unit cell containing more than 150 atoms were not considered, resulting in a set of 190 zeolites for which we optimized the geometry with a pure SiO₂ composition. 134 structures were found to achieve convergence within the time constraints imposed. Quasi-harmonic approximation calculations were conducted with the automated QHA algorithm implemented in CRYSTAL17³⁵⁻³⁸ : while keeping the symmetry, several isotropic deformations are performed on the lattice constants and the energies and vibration modes are computed for each resulting structure. After direct fitting of the phonon frequencies to the volume, the prop-

erties of interest can be derived as shown previously. We used the algorithm with a volume deformation range of -1.5% to 3% with 4 different volumes and thermal properties were computed over the range of 10 K to 300 K.

Results and discussion

Validation of the methodology

In order to validate our method and the various calculation parameters chosen (as described in the previous section), we selected 3 zeolitic structures for which experimental data are available: Linde type A (LTA framework), faujasite (FAU framework) and chabazite (CHA framework). We compare in this section our results, summarized in Table 1, with the experimental data from the literature. First, we relaxed the structures by optimizing both atomic positions and unit cell parameters. The unit cell parameters obtained are 12.014 Å for LTA and 24.650 Å for FAU (both cubic frameworks), with a difference of respectively 1.3% and 1.6% compared to the reported experimental values. The shifts are of the same order of magnitude for CHA (a trigonal crystal) with differences of 1.0% and 1.9% on the a and c parameters. These small differences can be ascribed to two factors: one is a possible thermal effect, as all calculated cell parameters are larger than experimental values, in line with a negative thermal expansion.

A second effect could be our methodology choices for basis set and functional. Indeed the PBE-based functional used here is known to usually overestimate cell parameters, and that is indeed what we observe here. Due to the volume of the unit cell being overestimated, it is notable that the phonon frequencies will be underestimated. This will lead to values of thermal expansion slightly overestimated and bulk moduli slightly underestimated. However, as showed later on, this did not prevent us from obtaining relevant results compared to the (scarce) experimental data available. The choice of basis set could be at play as well in the discrepancy observed as we chose a relatively small basis set — a more complete basis set

Table 1: Lattice parameters and linear thermal expansion coefficients of pure silica zeolites with LTA, FAU, and CHA frameworks. Calculated values of thermal expansion coefficients are given at 300 K.

CODE	Lattice parameter (Å)		Thermal expansion coefficient (10^{-6} K^{-1})	
	Expt.	Calc.	Expt.	Calc.
LTA	11.853 ³⁹	12.014	-7.4 ³⁹	-7.3
FAU	24.256 ⁴⁰	24.650	-3.92 ⁴⁰	-4.9
CHA	$a = 13.525^{42}$ $c = 14.734^{42}$	$a = 13.671$ $c = 15.015$	-4.2 ⁴¹ -0.5 ⁴²	-0.6

could reduce the difference observed in the unit cell parameters. However, considering the number of calculations to be done in this study, such a choice would increase too much the overall computational cost and would not allow for our systematic study. Moreover, given that we are aiming at calculating thermal properties and the evolution of cell parameters with respect to temperature, we considered that these small discrepancies were acceptable.

We then conducted quasi-harmonic (QHA) calculations for these 3 systems and computed their thermal properties over the range of 10 K to 300 K — with values reported at 300 K in this section. We found that all of the structures show a negative thermal expansion (more on that later) and determined values of $-7.3 \cdot 10^{-6} \text{ K}^{-1}$ and $-4.9 \cdot 10^{-6} \text{ K}^{-1}$ for the linear thermal expansion coefficients of LTA and FAU, respectively, at 300 K. These values are in very good agreement with the experimental measurements available: Carey et al³⁹ obtained a mean value of $-7.4 \cdot 10^{-6} \text{ K}^{-1}$ for LTA between 100 K and 300 K, very close to our calculated coefficient. As for the FAU framework, Leardini et al⁴⁰ reported a value of $-3.92 \cdot 10^{-6} \text{ K}^{-1}$ for a temperature range of 298–923 K while Attfield and Sleight⁴¹ obtained a coefficient of $-4.2 \cdot 10^{-6} \text{ K}^{-1}$ over a range of 25–573 K. Even if the temperature range studied by Leardini et al. differs from ours, the reported values for both experiments agree reasonably well with our results. This is also the case for CHA, for which we calculated a linear thermal expansion coefficient of $-0.6 \cdot 10^{-6} \text{ K}^{-1}$, while Woodcock and Lightfoot⁴² obtained a value of $-0.5 \cdot 10^{-6} \text{ K}^{-1}$ at 293 K.

ABW	ACO	AEI	AEL	AEN	AET	AFG	AFI	AFN	AFO	AFR	AFS	AFT	AFV	AFX
AFY	AHT	ANA	APC	APD	AST	ASV	ATN	ATO	ATS	ATT	ATV	AVE	AVL	AWO
AWW	BCT	BEC	BIK	BOF	BOG	BOZ	BPH	BRE	BSV	CAN	CAS	CDO	CFI	CGF
CGS	CHA	-CHI	-CLO	CON	CSV	CZP	DAC	DDR	DFO	DFT	DOH	DON	EAB	EDI
EEI	EMT	EON	EPI	ERI	ESV	ETL	ETR	ETV	EUO	EWO	EWS	EZT	FAR	FAU
FER	FRA	GIS	GIU	GME	GON	GOO	HEU	IFO	IFR	-IFT	-IFU	IFW	IFY	IHW
IMF	IRN	IRR	-IRY	ISV	ITE	ITG	ITH	ITR	ITT	-ITV	ITW	IWR	IWS	IWW
IWW	JBW	JNT	JOZ	JRY	JSN	JSR	JST	JSW	KFI	LAU	LEV	LIO	-LIT	LOS
LOV	LTA	LTF	LTJ	LTL	LTN	MAR	MAZ	MEI	MEL	MEP	MER	MFI	MFS	MON
MOR	MOZ	MRT	MSE	MSO	MTF	MTN	MTT	MTW	MVY	MWF	MWW	NAB	NAT	NES
NON	NPO	NPT	NSI	OBW	OFF	OKO	OSI	OSO	OWE	-PAR	PAU	PCR	PHI	PON
POR	POS	PSI	PTT	PTY	PUN	PWN	PWO	PWW	RHO	-RON	RRO	RSN	RTE	RTH
RUT	RWR	RWY	SAF	SAO	SAS	SAT	SAV	SBE	SBN	SBS	SBT	SEW	SFE	SFF
SFG	SFH	SFN	SFO	SFS	SFW	SGT	SIV	SOD	SOF	SOR	SOS	SOV	SSF	SSY
STF	STI	STT	STW	-SVR	SVV	SWY	-SYT	SZR	TER	THO	TOL	TON	TSC	TUN
UEI	UFI	UOS	UOV	UOJ	USI	UTL	UWY	VET	VFI	VNI	VSV	WEI	-WEN	YFI
YUG	ZON													

Figure 1: List of the 242 fully ordered zeolites from the IZA database. Red corresponds to synthesized structures, blue background corresponds to energy optimization and quasi-harmonic approximation calculations realized in this work and green background corresponds to energy optimization done in this work.

Although there are relatively few experimental values reported in the literature for pure-silica zeolites, the good quantitative agreement we found in these three different types of frameworks allowed us to validate our methodology and apply them to a large number of zeolitic frameworks.

Volumetric thermal expansion coefficients

We first turn our attention to a systematic assessment of the volumetric coefficients of thermal expansion of zeolitic frameworks. Within reasonable constraints on CPU time, we were able to obtain thermal expansion properties from QHA calculations for a total of 134 pure-silica zeolites (see Figure 1). We present in Figure 2 the distribution of volumetric thermal expansion coefficients (on the y axis). We see that the values range from -5 to -32 MK^{-1} (using for the sake of concision, the notation of MK^{-1} for 10^{-6} K^{-1}). So we first see that all zeolitic frameworks feature negative thermal expansion (NTE), contrary to most materials that expand when heated. In the past, specific zeolites have been shown to display NTE,^{42–44} and the mechanism has been solidly established — at least qualitatively — as being due to the presence of rigid unit modes,^{45,46} arising from the corner-sharing tetrahedral nature of zeolite structures.⁴⁷ Here, we show that this mechanism is actually entirely generic, and all

studied zeolitic frameworks display NTE in their pure SiO_2 form.

It was reported in the literature that some SiO_2 polymorphs (including zeolites) can exhibit positive thermal expansion (PTE)^{48,49} as does the nonporous α -quartz phase.⁵⁰ However, given that the scientific literature contains only a few examples of PTE, this should prompt a re-examination of these materials: it is possible that the negative thermal expansion comes not from the zeolitic framework itself, but from the nanoporous nature of zeolites. The space available in these frameworks could allow for the rotation of the corner-sharing tetrahedra leading to the presence of rigid unit modes thus giving rise to NTE. This would explain why a dense material like the α -quartz does not exhibit this behavior. It would also be the case for other zeolites with the presence of guest molecules converting them to dense materials, leading then to PTE. We note, however, that there is no broader correlation for zeolites between density and extent of thermal expansion — as shown in Figure S9.

The magnitude of the NTE displayed is on the same order of magnitude as some simple oxides and other porous materials, like AlPOs and metal-organic frameworks.^{51,52} While all zeolite frameworks are found to display NTE, we can also see on Figure 2 that the framework topology has an important impact on the thermal expansion of the crystalline structure — even with fixed chemical composition, as is the case here. This was already shown by Astala et al.⁵³ on a small number of zeolites and confirmed here with a much larger set of structures. Previous computational studies, through force-field based molecular dynamics, had drawn the conclusion that zeolites with only 1D channels tended not to show NTE behaviour, where as zeolites with 2D or 3D channels did.^{48,54,55} Our results here, obtained with a higher-accuracy methodology, do not confirm those trends. We have found no systematic and simple correlation between the characteristics of the zeolites (channel type, accessible pore volume, etc) and the value of the volumetric thermal expansion coefficient.

Moreover, we have not clearly identified a difference between zeolitic frameworks experimentally realized as pure-silica polymorphs, and other zeolitic frameworks (that have been obtained for chemical compositions other than SiO_2) — those are represented in red and

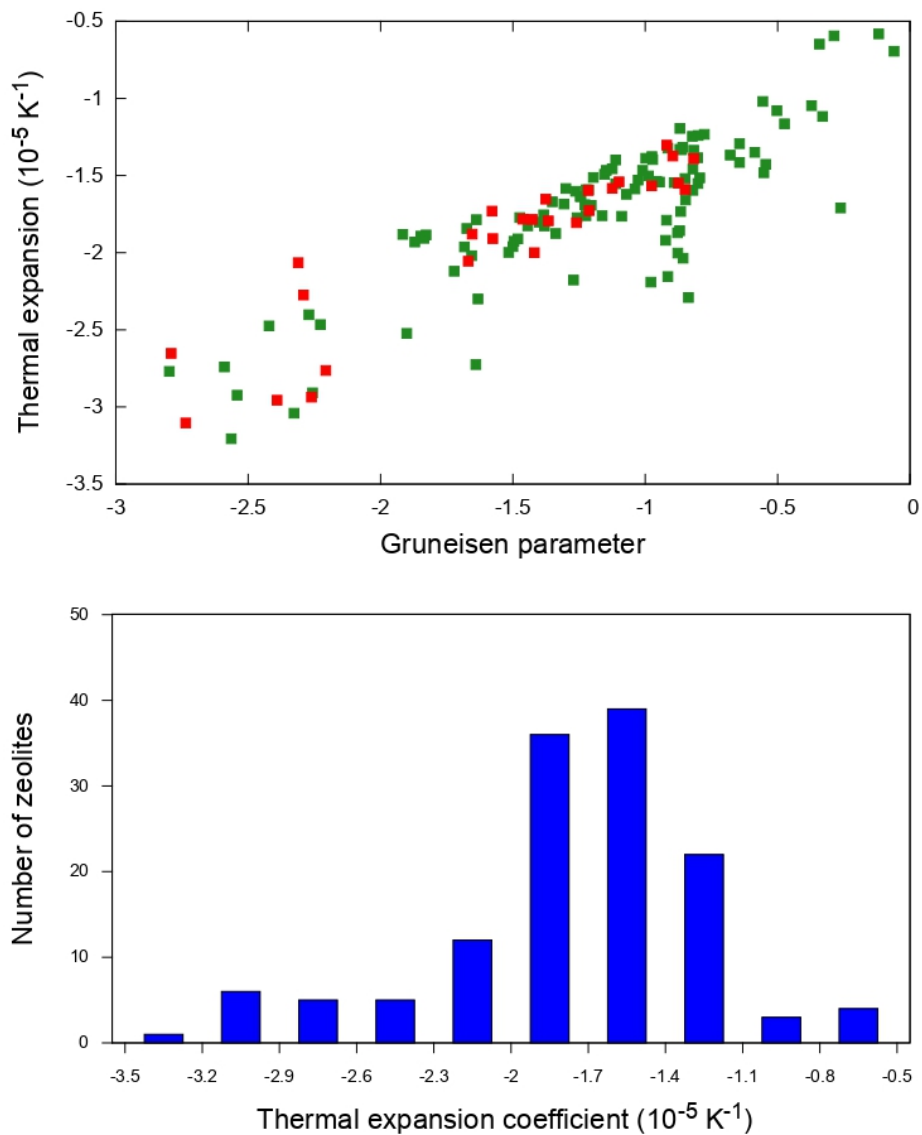


Figure 2: Top panel: Volumetric thermal expansion coefficients compared to the mean Grüneisen parameter for each zeolite at 300 K. Green squares correspond to hypothetical zeolitic structures and red ones correspond to experimentally synthesized pure-silica frameworks. Bottom panel: Distribution of the values of thermal expansion coefficients for all the frameworks.

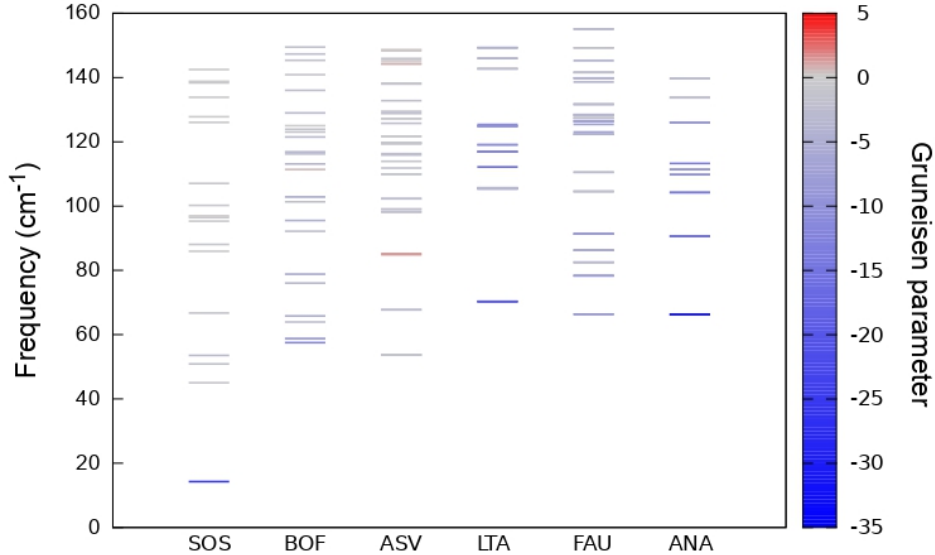


Figure 3: Representation of the mode Grüneisen parameter of 6 zeolites (SOS, BOF, ASV, LTA, FAU, ANA) for all the vibration modes under 160 cm^{-1} . Each line represent a vibration mode (possibly degenerate due to symmetry), and its color indicates the value of the mode Grüneisen parameter.

green respectively, on Figure 2. We do see that experimental structures cover almost the entire range, with perhaps a slight dominance over the high-NTE region, although that could be due to the relatively small size of our sampling of structures. This is in contrast with mechanical properties, where it was shown that experimental feasibility of the frameworks could be linked mechanical stability of the frameworks.¹⁹

Finally, we note that, on the temperature range studied here, the Grüneisen model for the study of the coupling of volume variations and vibrational properties⁵⁶ is reasonably valid: Figure 2 displays the thermal expansion coefficients α_V against the mean Grüneisen parameter for each zeolite, and there is a broad correlation overall. In order to confirm the validity of the Grüneisen model of thermal expansion, we have looked at the individual low-frequency vibration modes of different zeolites, 6 of which are depicted on Figure 3. We can see, and have confirmed on another number of frameworks, that the negative mean Grüneisen parameter is crucially influenced by only a relatively small number of low-frequency vibrations modes, with strongly negative individual Grüneisen parameter. Those modes are found to be associated with frequencies below 130 cm^{-1} , confirming the microscopic mechanism

behind the NTE as being linked to soft vibration modes, involving concerted rotations of corner-sharing $[\text{SiO}_4]$ tetrahedra.

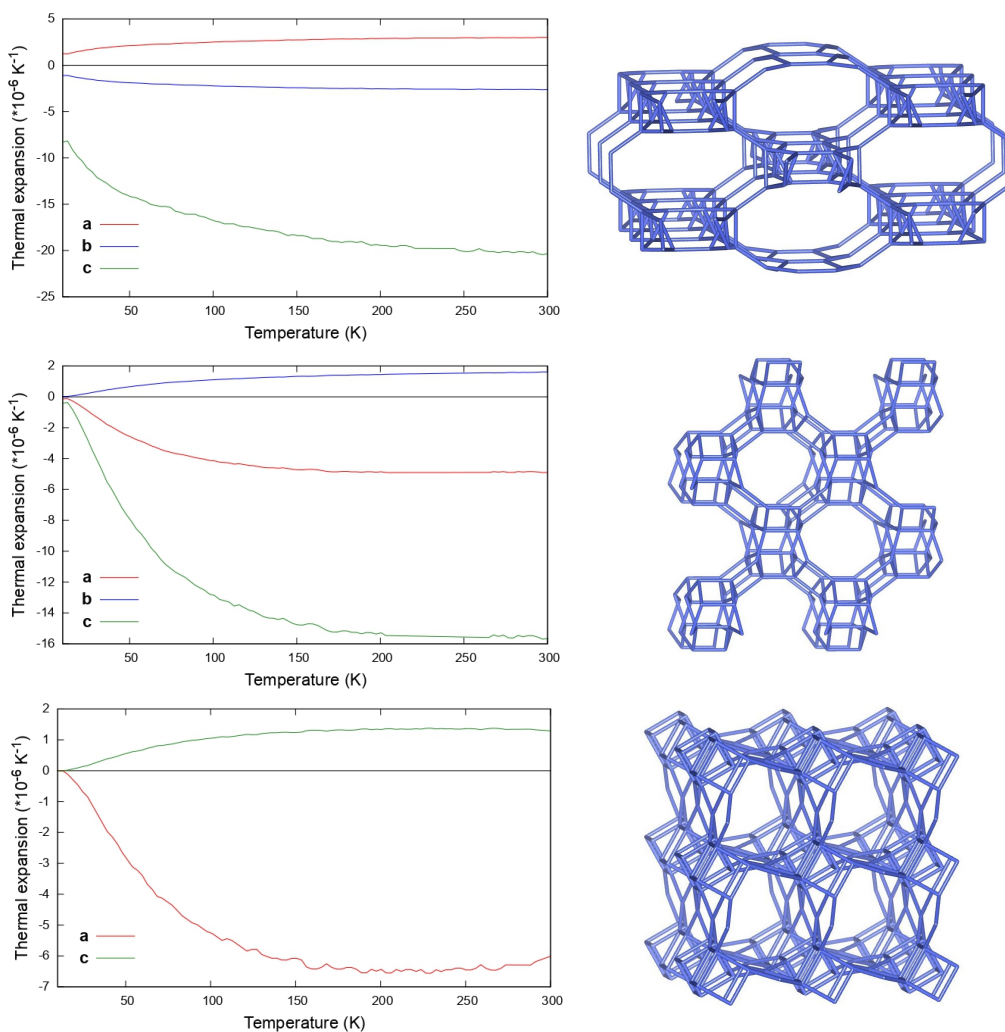


Figure 4: Evolution of the individual lattice parameters thermal expansion coefficients with respect to the temperature for the SOS, BOF, and ASV framework.

Anisotropy of thermal expansion

In the previous section, we reported on the volumetric thermal expansion behavior of zeolites. Although several of the frameworks studied here have cubic symmetry (12 out of the 134 frameworks calculated), some zeolites have lower symmetry and anisotropy can be present. In particular, we identified structures in which some directions of space have positive linear

thermal expansion — while others have a larger negative linear coefficient, contributing to the overall volumetric NTE. We depict in some detail the structure and thermal expansion profile of 3 such frameworks in Figure 4 — others can be found in the supporting information. In all three cases, the anisotropy can be clearly seen in the framework structure, and is giving rise to very modest positive coefficient along a single crystallographic axis. The number of such highly anisotropic materials is small (9 out of 134), although all non-cubic frameworks feature some level of anisotropy. It is interesting that the SOS framework type was previously demonstrated to have highly anisotropic mechanical properties, showing a link between thermal and mechanical properties through topology.¹⁹

Heat capacity and vibrational entropy

From our calculations, we also gain access to phonon thermodynamics and physical quantities such as vibrational entropy of the crystal and heat capacity — they are displayed on Figure 5 and supporting information Figure S1. They offer a stark contrast with the large dependence on topology observed for thermal expansion, as they vary very little within the family of zeolitic frameworks. Vibrational entropy at 300 K is found to vary between 37 and 43 $\text{J}\cdot\text{mol}^{-1}\cdot\text{K}^{-1}$ per SiO_2 unit, with the majority of frameworks around 39 $\text{J}\cdot\text{mol}^{-1}\cdot\text{K}^{-1}$. This is of relevance to the wider (and still pretty much open) question of relative stability and experimental feasibility of zeolites:^{12,57} how much does the entropic contribution affect the stability ordering of zeolitic frameworks? Based on the narrow distribution of S values, the impact of entropy on relative free energy ($F = U - TS$) is minimal: it is plotted as Figure S2. One can see that the free energy is dominated, at least at 300 K, by the energetic contribution. At most, the contribution from vibrational entropy depending on framework topology will affect the relative stability by up to $\pm 3 \text{ kJ}\cdot\text{mol}^{-1}$. This will be sufficient to affect the stability ordering of zeolitic frameworks only for those frameworks that are already energetically very close.

The distribution of heat capacity as a function of framework topology is every more nar-

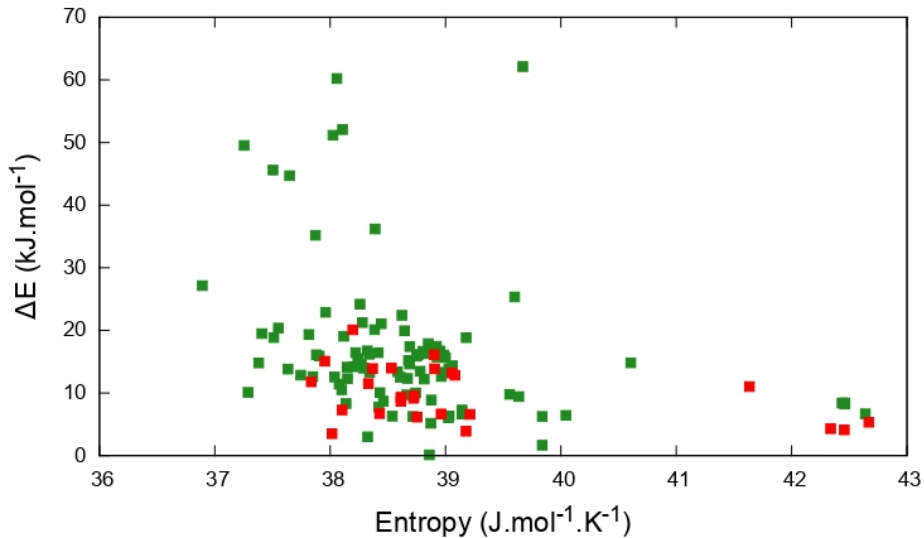


Figure 5: Energy relative to α -quartz (ΔE) plotted against the vibrational entropy at 300 K $S_{\text{vib}}(300 \text{ K})$; both quantities are normalised per SiO_2 unit. Green squares correspond to theoretical structures and red ones correspond to synthesized structures.

row, with constant-volume heat capacity C_V per SiO_2 unit between 41.3 and $42.4 \text{ J.mol}^{-1}.\text{K}^{-1}$ at 300 K. The influence of topology there is imperceptible, as for entropy, and in contrast with thermal expansion coefficients. This is explained by the link between the vibration modes and these physical properties: while thermal expansion is dominated by a small number of low-frequency modes, whose nature and frequencies are heavily dependent on the details of atomic arrangements, the entropy and heat capacity are averaged over all modes and therefore less sensitive to the topology of the framework, for a fixed chemical composition.

Mechanical properties

In previous computational studies, we have shown that the analysis of mechanical properties of inorganic framework materials in general,⁵⁸ and zeolites in particular,¹⁹ could provide valuable insight into the relationship between structure and physical properties. These properties are typically calculated through strain-stress relationships, whether it is at the quantum chemical (DFT) level,^{19,59} using classical force fields,⁶⁰ or through the application of machine learning methods.^{20,59} Whatever the accuracy of the interatomic description of

the system, these mechanical properties were however systematically calculated in the linear elastic regime at the zero Kelvin limit.^{61,62} In particular, the temperature and pressure dependence of the elastic coefficients or other derived mechanical properties (elastic moduli, Poisson’s ratio, etc.) have not been systematically studied. There is no data available in the literature on the range of values of those pressure and temperature dependence, nor on the impact of framework topology in a given class of materials.

Through the use of quasi-harmonic calculations, we were able to characterize for the first time not only the bulk modulus for each zeolitic structure, but also its pressure and temperature dependencies. We first present the distribution of bulk modulus values K in Figure 6: the average bulk modulus is ~ 78.5 GPa, and the distribution range is ~ 126 GPa (from 8 to 134 GPa). There is therefore a clear effect of framework topology, with a change of one order of magnitude between the softest and stiffest frameworks. In addition, by plotting the data against the relative polymorph energy ΔE (top panel of Figure 6) we observed two interesting effects: first, a weak correlation between K and ΔE , meaning that the less stable zeolitic frameworks also tend to be mechanically softer — an effect that is also linked to the density of the frameworks, known to be correlated with relative energy (see Figure S3). A second effect is a difference in behavior between experimentally known frameworks (in the SiO_2 composition) and others: it is clear that most experimentally feasible pure-silica zeolites are among those with highest bulk modulus.

We also have access, for the first time in a systematical way across the zeolite family, to derivatives of the bulk modulus with respect to pressure (Birch–Murnaghan K'_0 coefficient) and temperature (which we denote $\delta = (1/K)(\partial K/\partial T)$). We see on Figure 7 that there is a wide impact of framework topology on K'_0 , showing a range of values both negative and positive, from -25 to $+5$ (K'_0 is dimensionless). We see that many zeolites feature negative K'_0 , featuring an abnormal softening of the elastic modulus with compression — that can be linked to the mechanism already established for pressure-induced amorphization of zeolitic frameworks.^{63,64} Such a pressure-induced behavior has been previously identified

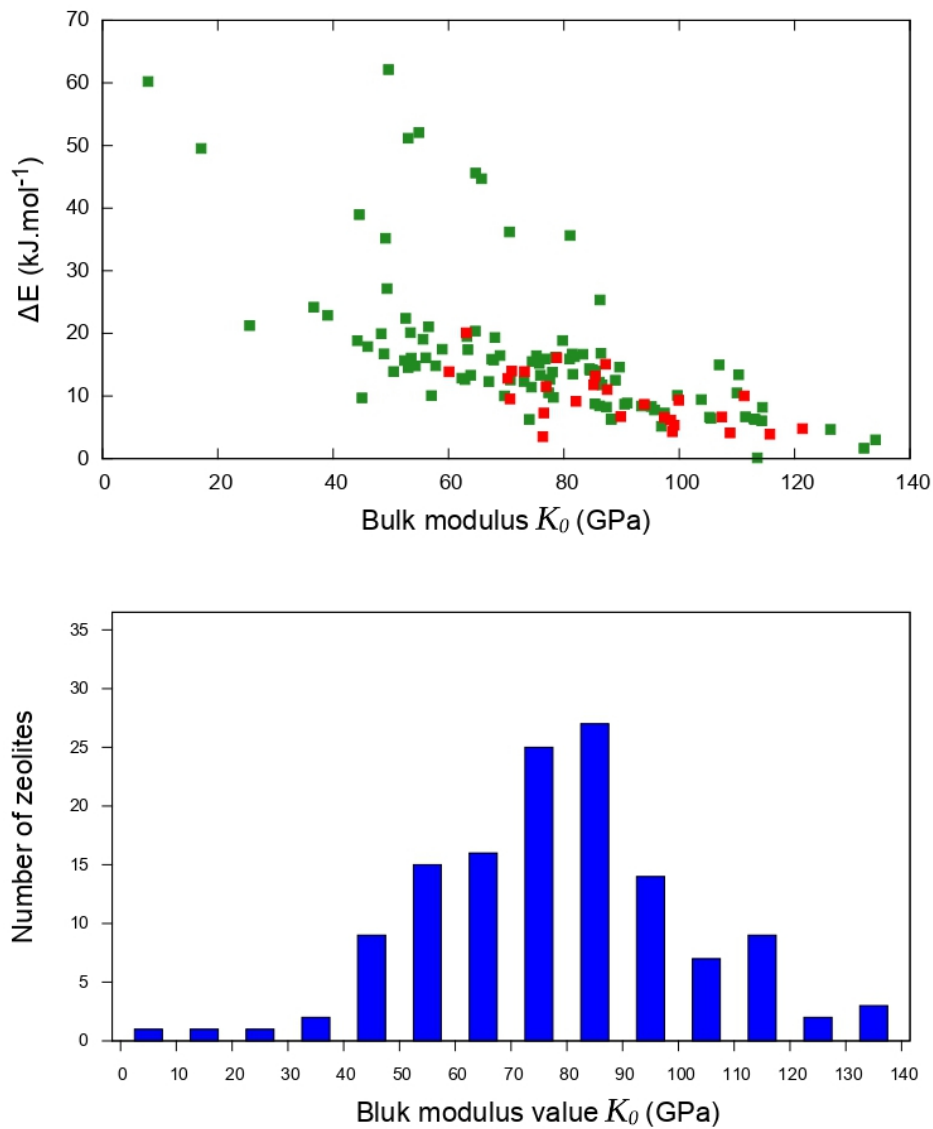


Figure 6: Top panel: Energy relative to α -quartz (ΔE) plotted against the bulk modulus K_0 obtained through the Birch–Murnaghan equation of state. Green squares correspond to theoretical structures and red ones correspond to synthesized structures. Bottom panel: distribution of the K_0 values for all the frameworks.

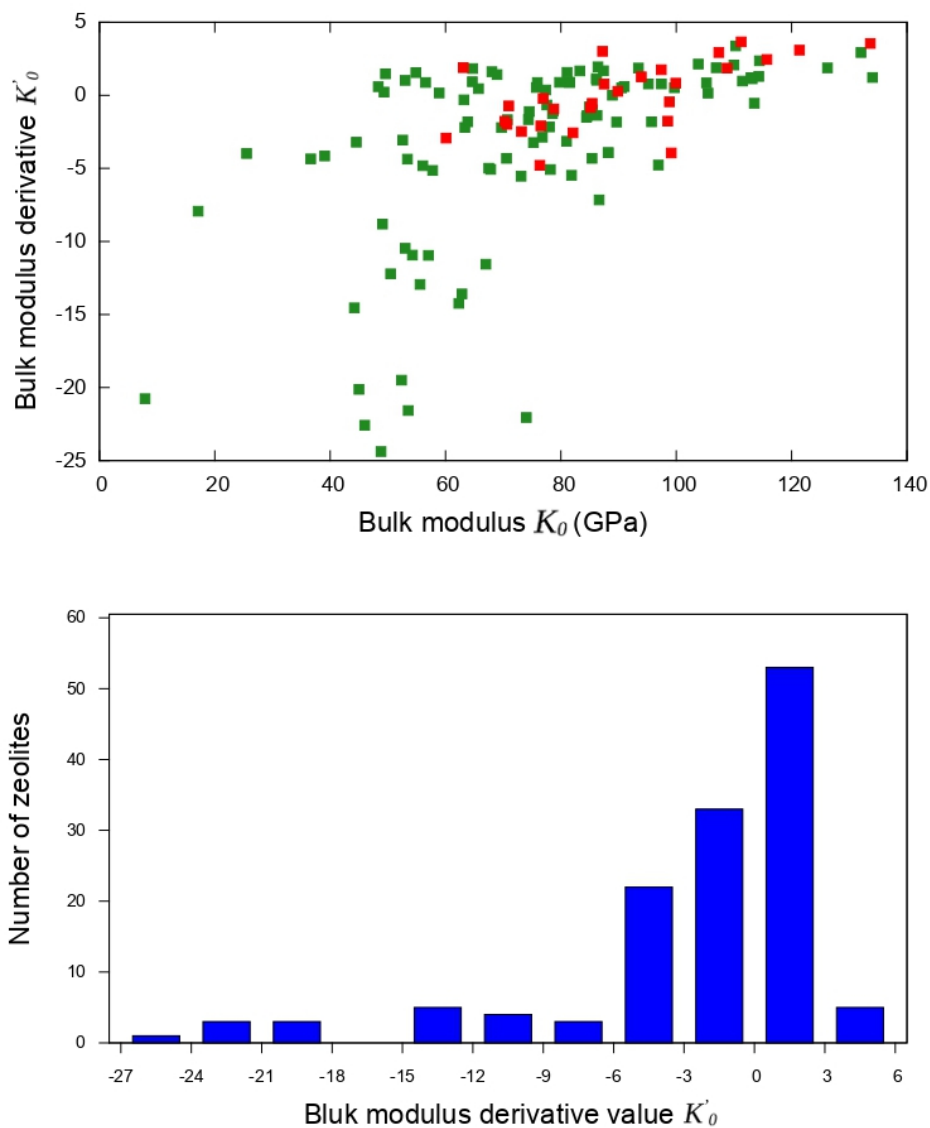


Figure 7: Top panel: Bulk modulus K_0 plotted against its pressure-derivative K'_0 for each zeolite. Green squares correspond to theoretical structures and red ones correspond to synthesized structures. Bottom panel: Distribution of the values of K'_0 for all the frameworks.

in a small number of framework materials (including porous inorganic compounds).^{65–67} It has even been suggested that pressure-induced softening could be generally linked to negative thermal expansion,^{68,69} although we show here that it is not direct and systematic link: all SiO₂ frameworks studied in this work show NTE, but only 56% exhibit pressure-induced softening (and the vast majority of structures are within the -5 to $+3$ range).

We note, in addition, that among the frameworks with large negative values of K'_0 , there are only structures that have not been synthesized in the SiO₂ form. We infer from, as well as the conclusions on K_0 above, a confirmation of the previously suggested mechanical criterion to the experimental feasibility of zeolites.

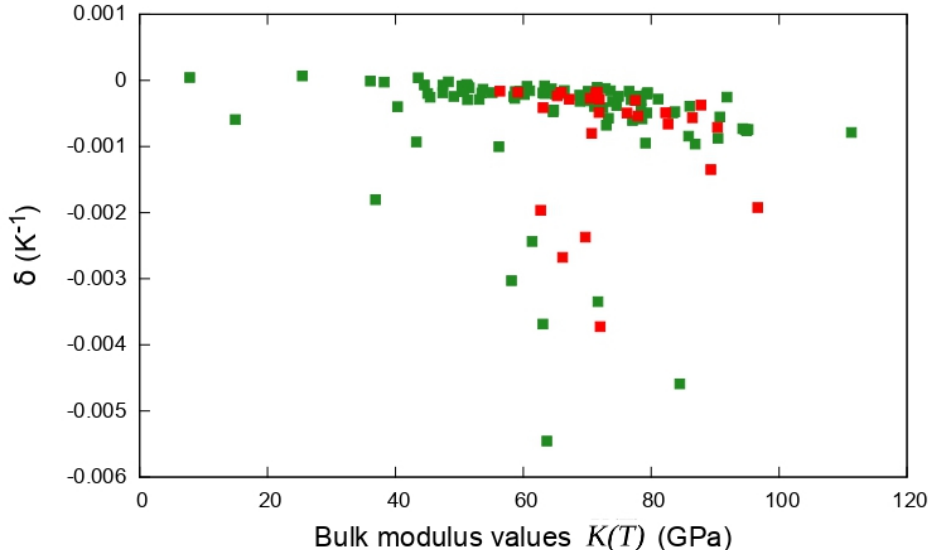


Figure 8: Temperature-dependent bulk modulus $K(T)$ compared to the temperature coefficient of elastic stiffness δ for all frameworks. Green squares correspond to theoretical structures and red ones correspond to synthesized structures.

Finally, we also investigated the temperature-dependence δ of the bulk moduli of the zeolitic frameworks. Contrary to the pressure-dependence, we see (Figure 8) that the impact of temperature is relatively small, making no marked change at 300 K to the overall values of bulk modulus, compared to $T = 0$ (Figure S7). Moreover, we observe that the effect of temperature always goes in the direction of a softening upon heating (all values of δ significantly different from zero, within our accuracy, are negative). We note that most values

are in the range of zero to -10^{-3} K^{-1} , with only a small number of exceptions — among which we find both theoretical and experimental SiO_2 frameworks.

Conclusions and perspectives

By a systematic study of 134 pure SiO_2 zeolites through quasi-harmonic calculations at the density functional theory (DFT) level, we have been able to characterize generic trends in the thermal and thermo-mechanical properties of zeolitic frameworks. We first validated the quasi-harmonic approximation through comparison with experimental data for several zeolites, demonstrating a very good accuracy for our simulation methodology. We observed a wide range of thermal expansion coefficients for zeolites (from -5 to -35 MK^{-1}), highlighting the important role of framework topology on thermal properties. We demonstrated, however, that all pure-silica zeolites exhibit negative thermal expansion (NTE), highlighting the systematic nature of this phenomenon in these four-connected nets. We could also probe the pressure and temperature dependence of the materials' bulk modulus, revealing a large gamut of bulk modulus values (from 8 to 134 GPa) and showing that most frameworks display pressure-induced softening. While this systematic study offers important new information on the range of possible thermal and thermo-mechanical behavior amongst zeolitic frameworks, we intend in the future to dig further into the microscopic details of these features, and use tools such as rigid-unit mode (RUM) analysis in order to identify the roots of such anomalous behaviors as pressure-induced softening.

This study also provides some more hints to the open question of experimental feasibility of zeolitic frameworks, showing that the experimentally synthesized structures display a distinct distribution of thermal and mechanical properties. While this does not solve the question, it does reinforce the idea that thermo-mechanical properties are a part of the criteria necessary to describe the feasibility of structures,¹⁹ in addition to more commonly considered criteria such as energetic stability, entropic stabilization, solvation energies, and template

effects. This can be understood if we interpret it this way: for a structure to be sufficiently stable for experimental synthesis, it needs to be a local energy minimum sufficiently deep that it can resist various stresses during synthesis and activation. It appears, however, that this criterion is *necessary* but not *sufficient* to describe experimental feasibility of zeolitic frameworks, as discussed in Ref. 19.

Within this work, we have generated dataset of *ab initio* information of relatively large size and scope, on a chemically homogeneous family of materials. Due to the nature of the calculations, this is more computationally costly than previous similar systematic studies focused on other physical properties, like elastic properties. But this also means that we now have access to more information about the behavior of the system, in the form of the Hessian matrices for both the relaxed structures but also strained frameworks with different values of volume. This data can be useful for future exploration and as a basis of high-accuracy quantum chemistry data for benchmarking other methods and developing new models. In particular, it could be used as a training database for a machine learning study of thermal and thermo-mechanical properties based on structural features.^{20,59} Another possible use of this *ab initio* data would be to improve upon the currently available force fields for zeolites,⁷⁰⁻⁷² by use for force field fitting techniques based on accurate quantum chemical reference data.⁷³⁻⁷⁵

Acknowledgement

We acknowledge financial support from the Agence Nationale de la Recherche under project “MATAREB” (ANR-18-CE29-0009-01) and access to high-performance computing platforms provided by GENCI grant A0090807069.

Supporting Information Available

Optimized structures, full tables of the thermal and mechanical properties and representative input files for the calculations are available online at <https://github.com/fxcoudert/citable-data>

References

- (1) S. M. Auerbach; K. A. Carrado; P. K. Dutta; Handbook of Zeolite Science and Technology, CRC Press, 2003.
- (2) Astala, R.; Auerbach, S. M.; Monson, P. A. Density Functional Theory Study of Silica Zeolite Structures: Stabilities and Mechanical Properties of SOD, LTA, CHA, MOR, and MFI. *J. Phys. Chem. B* **2004**, *108*, 9208–9215.
- (3) Piccione, P. M.; Laberty, C.; Yang, S.; Cambor, M. A.; Navrotsky, A.; Davis, M. E. Thermochemistry of Pure-Silica Zeolites. *J. Phys. Chem. B* **2000**, *104*, 10001–10011.
- (4) Eroshenko, V.; Regis, R.-C.; Soulard, M.; Patarin, J. Energetics: A New Field of Applications for Hydrophobic Zeolites. *J. Am. Chem. Soc.* **2001**, *123*, 8129–8130.
- (5) Fraux, G.; Coudert, F.-X.; Boutin, A.; Fuchs, A. H. Forced intrusion of water and aqueous solutions in microporous materials: from fundamental thermodynamics to energy storage devices. *Chem. Soc. Rev.* **2017**, *46*, 7421–7437.

- (6) Davis, M. E. Ordered porous materials for emerging applications. *Nature* **2002**, *417*, 813–821.
- (7) McLeary, E.; Jansen, J.; Kapteijn, F. Zeolite based films, membranes and membrane reactors: Progress and prospects. *Micropor. Mesopor. Mater.* **2006**, *90*, 198–220.
- (8) Caro, J.; Noack, M. Zeolite membranes – Recent developments and progress. *Micropor. Mesopor. Mater.* **2008**, *115*, 215–233.
- (9) Earl, D. J.; Deem, M. W. Toward a Database of Hypothetical Zeolite Structures. *Ing. Eng. Chem. Res.* **2006**, *45*, 5449–5454.
- (10) Pophale, R.; Cheeseman, P. A.; Deem, M. W. A database of new zeolite-like materials. *Phys. Chem. Chem. Phys.* **2011**, *13*, 12407.
- (11) Helfrecht, B. A.; Semino, R.; Pireddu, G.; Auerbach, S. M.; Ceriotti, M. A new kind of atlas of zeolite building blocks. *J. Chem. Phys.* **2019**, *151*, 154112.
- (12) Bushuev, Y. G.; Sastre, G. Feasibility of Pure Silica Zeolites. *J. Phys. Chem. C* **2010**, *114*, 19157–19168.
- (13) Sastre, G.; Corma, A. Predicting Structural Feasibility of Silica and Germania Zeolites. *J. Phys. Chem. C* **2010**, *114*, 1667–1673.
- (14) Liu, X.; Valero, S.; Argente, E.; Botti, V.; Sastre, G. The importance of T ... T ... T angles in the feasibility of zeolites. *Z. Kristallogr. Cryst. Mater.* **2015**, *230*, 27.
- (15) Li, Y.; Yu, J. New Stories of Zeolite Structures: Their Descriptions, Determinations, Predictions, and Evaluations. *Chem. Rev.* **2014**, *114*, 7268–7316.
- (16) Krishna, R.; van Baten, J. M. In silico screening of zeolite membranes for CO₂ capture. *J. Membrane Sci.* **2010**, *360*, 323–333.

- (17) Kim, J.; Abouelnasr, M.; Lin, L.-C.; Smit, B. Large-Scale Screening of Zeolite Structures for CO₂ Membrane Separations. *J. Am. Chem. Soc.* **2013**, *135*, 7545–7552.
- (18) Matito-Martos, I.; Martin-Calvo, A.; Gutiérrez-Sevillano, J. J.; Haranczyk, M.; Doblare, M.; Parra, J. B.; Ania, C. O.; Calero, S. Zeolite screening for the separation of gas mixtures containing SO₂, CO₂ and CO. *Phys. Chem. Chem. Phys.* **2014**, *16*, 19884.
- (19) Coudert, F.-X. Systematic investigation of the mechanical properties of pure silica zeolites: stiffness, anisotropy, and negative linear compressibility. *Phys. Chem. Chem. Phys.* **2013**, *15*, 16012.
- (20) Evans, J. D.; Coudert, F.-X. Predicting the Mechanical Properties of Zeolite Frameworks by Machine Learning. *Chem. Mater.* **2017**, *29*, 7833–7839.
- (21) Görling, A.; Levy, M. Exact Kohn-Sham scheme based on perturbation theory. *Phys. Rev. A* **1994**, *50*, 196–204.
- (22) Pascale, F.; Zicovich-Wilson, C. M.; Orlando, R.; Roetti, C.; Ugliengo, P.; Dovesi, R. Vibration Frequencies of Mg₃Al₂Si₃O₁₂ Pyrope. An ab Initio Study with the CRYSTAL Code. *J. Phys. Chem. B* **2005**, *109*, 6146–6152.
- (23) Carteret, C.; Pierre, M. D. L.; Dossot, M.; Pascale, F.; Erba, A.; Dovesi, R. The vibrational spectrum of CaCO₃aragonite: A combined experimental and quantum-mechanical investigation. *J. Chem. Phys.* **2013**, *138*, 014201.
- (24) Erba, A.; Casassa, S.; Dovesi, R.; Maschio, L.; Pisani, C. Periodic density functional theory and local-MP2 study of the librational modes of Ice XI. *J. Chem. Phys.* **2009**, *130*, 074505.
- (25) Adel, A.; Dennison, D. M. The Infrared Spectrum of Carbon Dioxide. Part I. *Phys. Rev.* **1933**, *43*, 716–723.

- (26) Wilson, E. B.; Howard, J. B. The Vibration-Rotation Energy Levels of Polyatomic Molecules I. Mathematical Theory of Semirigid Asymmetrical Top Molecules. *J. Chem. Phys.* **1936**, *4*, 260–268.
- (27) Nielsen, H. H. The Vibration-Rotation Energies of Polyatomic Molecules. *Phys. Rev.* **1941**, *60*, 794–810.
- (28) Dovesi, R.; Erba, A.; Orlando, R.; Zicovich-Wilson, C. M.; Civalleri, B.; Maschio, L.; Rérat, M.; Casassa, S.; Baima, J.; Salustro, S. et al. Quantum-mechanical condensed matter simulations with CRYSTAL. *Wiley Interdiscip. Rev. Comput. Mol. Sci.* **2018**, *8*, e1360.
- (29) Dovesi, R.;Saunders, V. R.;Roetti, C.;Orlando, R.;Zicovich-Wilson, C. M.;Pascale, F.;Civalleri, B.;Doll, K.;Harrison, N. M.;Bush, I. J.;D’Arco, P.;Llunell, M.; Causà, M.; Noël, Y.; Maschio, L.; Erba, A.; Rerat, M.; Casassa, S. CRYSTAL17 User’s Manual. University of Torino: Torino, 2017.
- (30) Nada, R.; Nicholas, J. B.; McCarthy, M. I.; Hess, A. C. Basis sets for ab initio periodic Hartree–Fock studies of zeolite/adsorbate interactions: He, Ne, and Ar in silica sodalite. *Int. J. Quantum Chem.* **1996**, *60*, 809–820.
- (31) J. Muscat, 1999, "The phase stability, surface structure and defect chemistry of titanium dioxide from first principles techniques", PhD Thesis, University of Manchester, Manchester.
- (32) Grimme, S. Semiempirical GGA-type density functional constructed with a long-range dispersion correction. *J. Comput. Chem.* **2006**, *27*, 1787–1799.
- (33) Perdew, J. P.; Ruzsinszky, A.; Csonka, G. I.; Vydrov, O. A.; Scuseria, G. E.; Constantin, L. A.; Zhou, X.; Burke, K. Restoring the Density-Gradient Expansion for Exchange in Solids and Surfaces. *Phys. Rev. Lett.* **2008**, *100*, 136406.

- (34) Monkhorst, H. J.; Pack, J. D. Special points for Brillouin-zone integrations. *Phys. Rev. B* **1976**, *13*, 5188–5192.
- (35) Erba, A. On combining temperature and pressure effects on structural properties of crystals with standard ab initio techniques. *J. Chem. Phys.* **2014**, *141*, 124115.
- (36) Erba, A.; Shahrokhi, M.; Moradian, R.; Dovesi, R. On how differently the quasi-harmonic approximation works for two isostructural crystals: Thermal properties of periclase and lime. *J. Chem. Phys.* **2015**, *142*, 044114.
- (37) Erba, A.; Maul, J.; Pierre, M. D. L.; Dovesi, R. Structural and elastic anisotropy of crystals at high pressures and temperatures from quantum mechanical methods: The case of Mg₂SiO₄ forsterite. *J. Chem. Phys.* **2015**, *142*, 204502.
- (38) Erba, A.; Maul, J.; Demichelis, R.; Dovesi, R. Assessing thermochemical properties of materials through ab initio quantum-mechanical methods: the case of α -Al₂O₃. *Phys. Chem. Chem. Phys.* **2015**, *17*, 11670–11677.
- (39) Carey, T.; Tang, C. C.; Hriljac, J. A.; Anderson, P. A. Chemical Control of Thermal Expansion in Cation-Exchanged Zeolite A. *Chem. Mater.* **2014**, *26*, 1561–1566.
- (40) Leardini, L.; Quartieri, S.; Vezzalini, G.; Arletti, R. Thermal behaviour of siliceous faujasite: Further structural interpretation of negative thermal expansion. *Micropor. Mesopor. Mater.* **2015**, *202*, 226–233.
- (41) Attfield, M. P. Strong negative thermal expansion in siliceous faujasite. *Chem. Commun.* **1998**, 601–602.
- (42) Woodcock, D. A.; Lightfoot, P.; Villaescusa, L. A.; Díaz-Cabañas, M.-J.; Cambor, M. A.; Engberg, D. Negative Thermal Expansion in the Siliceous Zeolites Chabazite and ITQ-4: A Neutron Powder Diffraction Study. *Chem. Mater.* **1999**, *11*, 2508–2514.

- (43) Woodcock, D. A.; Lightfoot, P.; Wright, P. A.; Villaescusa, L. A.; Cambor, M. A. Strong negative thermal expansion in the siliceous zeolites ITQ-1, ITQ-3 and SSZ-23. *J. Mater. Chem.* **1999**, *9*, 349–351.
- (44) Villaescusa, L. A.; Lightfoot, P.; Teat, S. J.; Morris, R. E. Variable-Temperature Microcrystal X-ray Diffraction Studies of Negative Thermal Expansion in the Pure Silica Zeolite IFR. *J. Am. Chem. Soc.* **2001**, *123*, 5453–5459.
- (45) Pryde, A. K.; Hammonds, K. D.; Dove, M. T.; Heine, V.; Gale, J. D.; Warren, M. C. Rigid unit modes and the negative thermal expansion in ZrW_2O_8 . *Phase Transitions* **1997**, *61*, 141–153.
- (46) Tucker, M. G.; Goodwin, A. L.; Dove, M. T.; Keen, D. A.; Wells, S. A.; Evans, J. S. O. Negative Thermal Expansion in ZrW_2O_8 : Mechanisms, Rigid Unit Modes, and Neutron Total Scattering. *Phys. Rev. Lett.* **2005**, *95*, 255501.
- (47) Tao, J.; Sleight, A. The role of rigid unit modes in negative thermal expansion. *J. Solid State Chem.* **2003**, *173*, 442–448.
- (48) Tschauferer, P.; Parker, S. C. Thermal Expansion Behavior of Zeolites and AlPO_4s . *J. Phys. chem.* **1995**, *99*, 10609–10615.
- (49) Park, S.; Kunstleve, R.-W. G.; Graetsch, H.; Gies, H. *Studies in Surface Science and Catalysis*; Elsevier, 1997; pp 1989–1994.
- (50) Kosinski, J.; Gualtieri, J.; Ballato, A. Thermal expansion of alpha quartz. Proceedings of the 45th Annual Symposium on Frequency Control 1991.
- (51) Barrera, G. D.; Bruno, J. A. O.; Barron, T. H. K.; Allan, N. L. Negative thermal expansion. *J. Phys.: Condens. Matter* **2005**, *17*, R217–R252.
- (52) Liu, Z.; Gao, Q.; Chen, J.; Deng, J.; Lin, K.; Xing, X. Negative thermal expansion in molecular materials. *Chem. Commun.* **2018**, *54*, 5164–5176.

- (53) Astala, R.; Auerbach, S. M.; Monson, P. A. Normal mode approach for predicting the mechanical properties of solids from first principles: Application to compressibility and thermal expansion of zeolites. *Phys. Rev. B* **2005**, *71*.
- (54) Miller, W.; Smith, C. W.; Mackenzie, D. S.; Evans, K. E. Negative thermal expansion: a review. *J. Mater. Sci.* **2009**, *44*, 5441–5451.
- (55) Bieniok, A.; Hammonds, K. D. Rigid unit modes and the phase transition and structural distortions of zeolite rho. *Micropor. Mesopor. Mater.* **1998**, *25*, 193–200.
- (56) Grüneisen, E. Theorie des festen Zustandes einatomiger Elemente. *Annalen der Physik* **1912**, *344*, 257–306.
- (57) Vieillard, P. A predictive model for the entropies and heat capacities of zeolites. *Eur. J. Mineral.* **2010**, *22*, 823–836.
- (58) Chibani, S.; Coudert, F.-X. Systematic exploration of the mechanical properties of 13 621 inorganic compounds. *Chem. Sci.* **2019**, *10*, 8589–8599.
- (59) Gaillac, R.; Chibani, S.; Coudert, F.-X. Speeding Up Discovery of Auxetic Zeolite Frameworks by Machine Learning. *Chem. Mater.* **2020**, *32*, 2653–2663.
- (60) Siddorn, M.; Coudert, F.-X.; Evans, K. E.; Marmier, A. A systematic typology for negative Poisson’s ratio materials and the prediction of complete auxeticity in pure silica zeolite JST. *Phys. Chem. Chem. Phys.* **2015**, *17*, 17927–17933.
- (61) Dagdelen, J.; Montoya, J.; de Jong, M.; Persson, K. Computational prediction of new auxetic materials. *Nature Commun.* **2017**, *8*, 323.
- (62) de Jong, M.; Chen, W.; Angsten, T.; Jain, A.; Notestine, R.; Gamst, A.; Sluiter, M.; Krishna Ande, C.; van der Zwaag, S.; Plata, J. J. et al. Charting the complete elastic properties of inorganic crystalline compounds. *Sci. Data* **2015**, *2*, 150009.

- (63) Coasne, B.; Haines, J.; Levelut, C.; Cambon, O.; Santoro, M.; Gorelli, F.; Garbarino, G. Enhanced mechanical strength of zeolites by adsorption of guest molecules. *Phys. Chem. Chem. Phys.* **2011**, *13*, 20096.
- (64) Ortiz, A. U.; Boutin, A.; Fuchs, A. H.; Coudert, F.-X. Investigating the Pressure-Induced Amorphization of Zeolitic Imidazolate Framework ZIF-8: Mechanical Instability Due to Shear Mode Softening. *J. Phys. Chem. Lett.* **2013**, *4*, 1861–1865.
- (65) Chapman, K. W.; Chupas, P. J. Pressure Enhancement of Negative Thermal Expansion Behavior and Induced Framework Softening in Zinc Cyanide. *J. Am. Chem. Soc.* **2007**, *129*, 10090–10091.
- (66) Fang, H.; Phillips, A. E.; Dove, M. T.; Tucker, M. G.; Goodwin, A. L. Temperature-dependent pressure-induced softening in $\text{Zn}(\text{CN})_2$. *Phys. Rev. B* **2013**, *88*, 144103.
- (67) Fang, H.; Dove, M. T. A phenomenological expression to describe the temperature dependence of pressure-induced softening in negative thermal expansion materials. *J. Phys. Condens. Matter* **2014**, *26*, 115402.
- (68) Fang, H.; Dove, M. T. Pressure-induced softening as a common feature of framework structures with negative thermal expansion. *Phys. Rev. B* **2013**, *87*, 214109.
- (69) Fang, H.; Dove, M. T.; Phillips, A. E. Common origin of negative thermal expansion and other exotic properties in ceramic and hybrid materials. *Phys. Rev. B* **2014**, *89*, 214103.
- (70) Tesson, S.; Louisfremea, W.; Salanne, M.; Boutin, A.; Rotenberg, B.; Marry, V. Classical Polarizable Force Field To Study Dry Charged Clays and Zeolites. *J. Phys. Chem. C* **2017**, *121*, 9833–9846.
- (71) Combariza, A. F.; Gomez, D. A.; Sastre, G. Simulating the properties of small pore silicazeolites using interatomic potentials. *Chem. Soc. Rev.* **2013**, *42*, 114–127.

- (72) Shi, H.; Migués, A. N.; Auerbach, S. M. Ab initio and classical simulations of the temperature dependence of zeolite pore sizes. *Green Chem.* **2014**, *16*, 875–884.
- (73) Bureekaew, S.; Amirjalayer, S.; Tafipolsky, M.; Spickermann, C.; Roy, T. K.; Schmid, R. MOF-FF - A flexible first-principles derived force field for metal-organic frameworks. *Phys. Status Solidi B* **2013**, *250*, 1128–1141.
- (74) Schmidt, J. R.; Yu, K.; McDaniel, J. G. Transferable Next-Generation Force Fields from Simple Liquids to Complex Materials. *Acc. Chem. Res.* **2015**, *48*, 548–556.
- (75) Li, Y.; Li, H.; Pickard, F. C.; Narayanan, B.; Sen, F. G.; Chan, M. K. Y.; Sankaranarayanan, S. K. R. S.; Brooks, B. R.; Roux, B. Machine Learning Force Field Parameters from Ab Initio Data. *J. Chem. Theory Comput.* **2017**, *13*, 4492–4503.

TOC Graphic

