



Scripting de técnicas cartográficas de R y GMT para el mapeo geomorfológico y topográfico del Perú

Polina Lemenkova

► To cite this version:

Polina Lemenkova. Scripting de técnicas cartográficas de R y GMT para el mapeo geomorfológico y topográfico del Perú. Entorno Geográfico, 2021, 22, pp.36-55. 10.25100/eg.v0i22.11331 . hal-03276386

HAL Id: hal-03276386

<https://hal.science/hal-03276386>

Submitted on 2 Jul 2021

HAL is a multi-disciplinary open access archive for the deposit and dissemination of scientific research documents, whether they are published or not. The documents may come from teaching and research institutions in France or abroad, or from public or private research centers.

L'archive ouverte pluridisciplinaire **HAL**, est destinée au dépôt et à la diffusion de documents scientifiques de niveau recherche, publiés ou non, émanant des établissements d'enseignement et de recherche français ou étrangers, des laboratoires publics ou privés.



Distributed under a Creative Commons Attribution - NonCommercial 4.0 International License

DOI: 10.25100/eg.v0i22.11331
Espacios y Territorios

Scripting cartographic techniques of R and GMT for geomorphological and topographic mapping of Peru

Scripting de técnicas cartográficas de R y GMT para el mapeo geomorfológico y topográfico del Perú

Polina Lemenkova

Instituto Schmidt de Física de la Tierra, Academia de Ciencias de Rusia. Departamento de Desastres Naturales, Riesgos Antropogénicos y Sismicidad de la Tierra. Laboratorio de Geofísica Regional y Desastres Naturales.
pauline.lemenkova@gmail.com | 0000-0002-5759-1089

Para citar este artículo: Lemenkova, P. (2021). Scripting de técnicas cartográficas de R y GMT para el mapeo geomorfológico y topográfico del Perú. *Entorno Geográfico*, (22), 36-55.
<https://doi.org/10.25100/eg.v0i22.11331>

Resumen

El artículo presenta el uso de técnicas cartográficas de scripting para la visualización de mapas topográficos y geomorfológicos por R y GMT. Los mapas temáticos pretenden analizar la región del Perú con un enfoque específico en su geomorfología: pendiente, aspecto, elevación y sombreado realizado en las bibliotecas R «raster» y «tmap». Los materiales integrados incluyen varios conjuntos de datos integrados en la biblioteca R "OpenStreetMap": Stamen, ESRI World Imagery, Bing Maps, National Park Service. La investigación muestra un ejemplo particular del uso de conjuntos de datos de código abierto y herramientas gratuitas disponibles para la educación e investigación en línea a distancia, que se convierte en una tendencia real en la investigación geográfica moderna.

Palabras clave: cartografía, GMT, lenguaje R, programación, Perú, geomorfología, topografía.

Abstract

The paper presents the use of scripting cartographic techniques for the visualization of topographic and geomorphological maps by R and GMT. The thematic maps intend to analyze the region of Peru with specific focus on its geomorphology: slope, aspect, elevation and hillshade performed in R libraries 'raster' and 'tmap'. The integrated free materials include several datasets embedded in R library 'OpenStreetMap': Stamen, ESRI World Imagery, Bing Maps, National Park Service. The research shows a particular example of the use of open source datasets and free tools available for distance-based online education and research, which becomes an actual tendency in modern geographic research.

Keywords: cartography, GMT, R language, programming, Peru, geomorphology, topography.

Recibido: 13 de diciembre de 2020

Aceptado: 19 de marzo del 2021

Introduction

Scripting techniques is a new approach in cartography with promising perspectives for data visualization and mapping in Earth science applications such as geography, geomorphology and topography. Since the first introduction of the concept of GIS in the early 1960s, it has



Esta obra está bajo licencia internacional Creative Commons Reconocimiento-NoComercial-CompartirIgual 4.0.

been a subject of constant development and methodological progress. For many years since then, and especially after the rapid computerization and development of personal computers in 1990s, technical evolution in methods and approaches of digital cartography has been a topic of concern in scientific community.

The advantages of various GIS in geomorphological mapping are diverse, since they provide various approaches to to accurately model, map, visualize, depict and spatially quantify the geographic phenomena on the Earth's surface. Various GIS have been utilized for geomorphological mapping, which differ in methodological functionality of geospatial data processing used to visualize spatial datasets.

The organization of the present study is as follows. The first Section (Introduction) includes several sub-sections introducing the study aim, scope and research problem and briefly discussing the need and actuality of scripting methods in modern cartography. The second Section (Study Area) presents a brief overview of the physical geography of Peru. The third Section (Materials and Methods) includes two subsections. The '3.1. Mapping in GMT' which discusses the scripting techniques in GMT and presents the code used for (Figure 1). and also demonstrates the effects of scripting for automatization in cartography. The subsection '3.2.

Source: Self made.

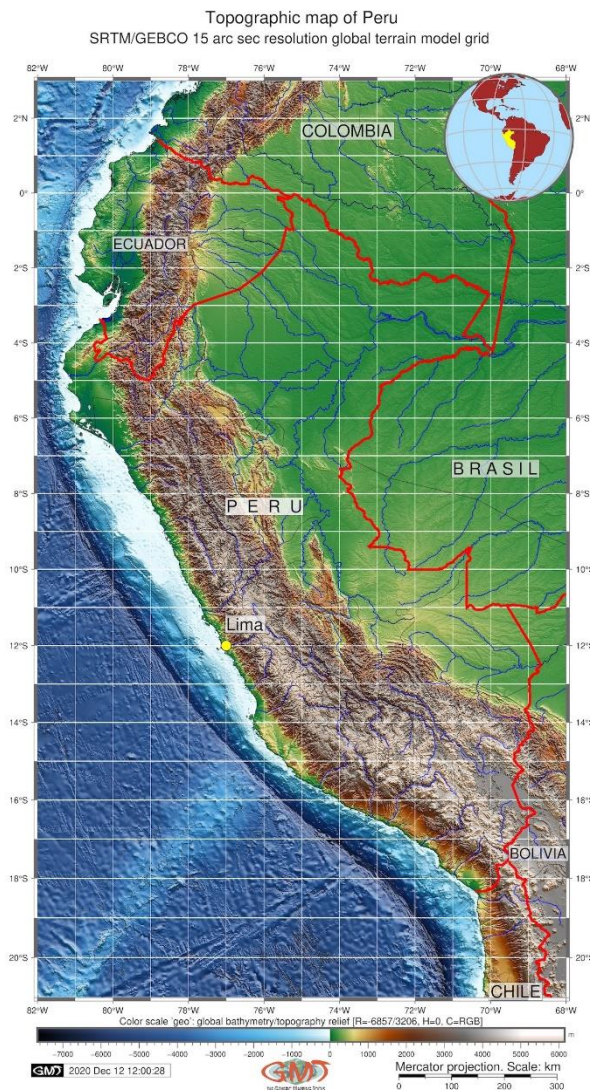


Figure 1. Map of Peru. Dataset: SRTM/GEBCO. Mapping: GMT

Plotting in R' presents methods of R programming languages used for cartographic plotting: the packages 'tmap', 'raster', and 'OpenStreetMap' with several examples of codes accompanied by technical explanations. This section covers the non-trivial application of R programming language for mapping and the significance of scripting automatization and integrating open datasets to topographic mapping which is achieved by the repeatability of codes using syntax of R language.

Section 4 (Results and Discussion) shows and discusses the findings of this study concerning the topographic and geomorphological settings of Peru. The remainder of the section follows both a brief discussion of the datasets availability (ESRI, Bing, Stamen, OpenStreetMap) for a thematic mapping using R libraries, and general discussion of the geomorphology of Peru. Section 5 'Conclusions' finalizes and summarizes the manuscript by giving conclusions, final notes and recommendations for future studies.

1.1. Research Focus

The study is presented at the level of a multi-disciplinary applied research combining technical cartographic scripting and geomorphological analysis. In such a way, this paper explores how the concept of scripting cartography can be used to support geomorphological and topographic mapping in a geographical context. A case study of this research is Peru, South America (Figure 1). The theoretical concept and practical development of the cartographic shell scripting places contemporary mapping in the context of high-level automatization of data visualization, which effectively presents the data-driven research. Although the traditional GIS are still widely used in research community (Alcalá-Reygosa et al. 2016; Suetova et al. 2005a, 2005b; Bromley et al. 2011; Klaučo et al. 2013, 2017; Lemenkova et al. 2012; Gohl et al. 2006a), this involves the shift of mapping paradigm to the process of coding in cartographic techniques.

A high-quality machine-based mapping offers large potential benefits not only to cartographers and map-makers, but also to a variety of Earth science disciplines, such as geomorphology, glaciology, geology and landscape studies. In this manner, the use of scripting in cartography recognizes the importance of automatization in data visualization and mapping (Schenke & Lemenkova, 2008; Lemenkova, 2019a, 2019b, 2020g; Lemenkov & Lemenkova, 2021). Another important focus of this study is the use of the open-source data. Hence, in light of the rapidly increasing amount of researchers (students, employees) working on a distance-based manner ('from home' or in 'online-mode'), the availability of the open source data and free programs become crucial factors for research process.

1.2. Innovation and Originality

Innovation of the scripting approach in cartography consists in the link between the two disciplines presenting the multi-disciplinary research approach: programming and geography. Thus, applying scripting techniques in cartography enables technically more accurate mapping which in turn provides a better understanding of the morphological structure in the Peruvian Andes. This is critical, given their prominent role in several aspects of the physical geography of the country: hydrology and glaciology (water supply and mountain glaciers), environment (unique ecosystems and mountain habitats for rare species), social and cultural values (development of the tourism in mountain areas), natural hazards (impacts of slope steepness on the landslides occurrence).

The new paradigm of scripting-based cartographic methods presents a novel approach of geographic knowledge generation which is based on 2 fundamental aspects: 1) open source

data; 2) free scripting programs for visualization of these data. The programs can include scripting tools such as Generic Mapping Tools (GMT), programming languages, such as R and Python or scripting-friendly GIS, (e.g. GRASS GIS). (Lemenkova, 2020f). The innovations of this research consist in the comparative mapping of the several datasets using R programming language for the study area of Peru. The wider use of the open source data and presented programming methods will eventually trigger a gradual decline of the commercial expensive GIS software and the onset of the open data research.

1.3. Research Goal

Hence, the goal of this study is to determine how efficient the application of the scripting methods in cartography really are, and to what extent the geomorphology of Peru reflects the geological and geographic setting of Andes. The document also considers various approaches of graphical data processing from the open sources on the visualization and mapping outputs, by comparing several datasets (OpenStreetMap, ESRI Topo, GEBCO, aerial imagery from Bing, National Park Service (NPS), SRTM) using an empirical scripting models of R and GMT that reads the raster formats for mapping. Of these, the free wiki world map OpenStreetMap (Figure 2) is widely used in the web-mapping and its application for academic studies is also advisable.

Source: Self made.

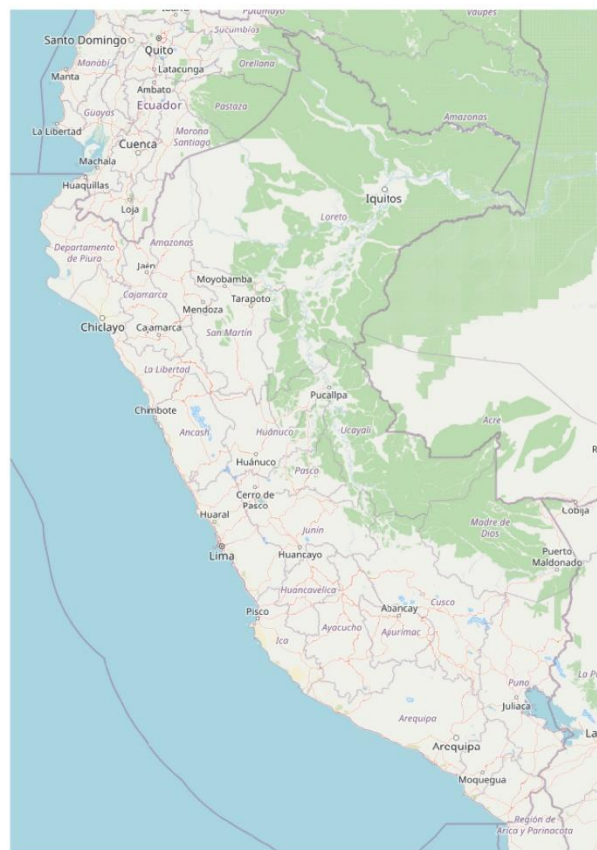


Figure 2. Map of Peru. Dataset OpenStreetMap. Mapping: R.

In contrast to the traditional GIS software in geographical research, cartographic shell scripting and open geographic datasets are publicly available for students and researchers searching for tools and materials for practical usage. Although applications of programming languages (R or Python), statistical libraries or scripting GIS has been adopted in a variety of research papers

(see Lemenkova, 2019c, 2019d, 2019e), there is little publications with special focus on application of specific cartographic packages (libraries) of R ('tmap', 'raster', 'OpenStreetMap') and visualization of the open datasets, such as Open Street Maps (Figure 2) or aerial imagery (Figure 3) by R language in topographic mapping and geomorphological analysis using RStudio environment.

Source: Self made.

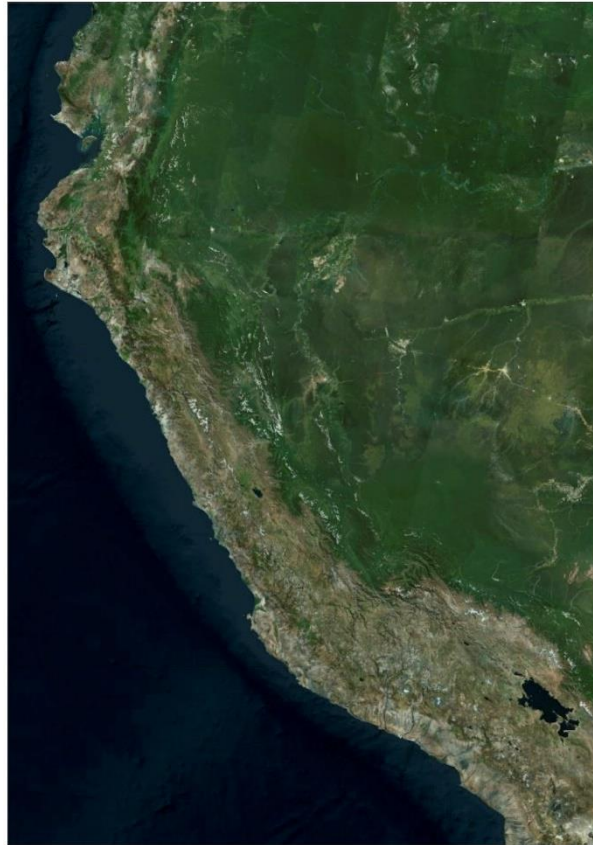


Figure 3. Map of Peru. Dataset: aerial imagery from Bing. Mapping: R.

1.4. Research Objectives

Therefore, the objectives in this paper are twofold.

- a. first to introduce an approach of two specific scripting tools – GMT and R – to cartographic workflow in general and in particular how the selected packages of R ('tmap', 'raster' and 'OpenStreetMap') and a set of GMT modules might assist with the cartographic data plotting.
- b. second to explore the topographic settings and geomorphology of Peru (Figure 1), a unique place in Latin America with complex elevation range of geomorphology.

1.5. Research Aims

The aim of this research is to demonstrate that the developing concepts of scripting cartography, such as those by R libraries designed specially for geoinformation mapping, or module of GMT, can assist in classifying the units of the geomorphometric variables (slope, aspect, hillshade, elevation mapping and processing DEM) and, in turn, assist in the discipline of physical

geography. Hence, in order to achieve this aim, this manuscript present the following methodological steps:

- a. review the geographical and geomorphological background of Peru to present the key setting in physical geography of the Peruvian Andes, their structure and special features;
- b. discuss the interplay between the geomorphology and physical geography of Peru;
- c. visualize several maps made using scripting techniques to prove that programming algorithms are acceptable for physical geographic studies in data visualization;
- d. demonstrate scripting snippets to show the technical use of the programming which assists in geomorphological mapping.

1.6. Research Questions

This study raises questions aimed to characterize variations in the geomorphology of Peru and perform mapping using various open source datasets using advanced methods of data analysis (GMT and R). Thus, to systematically visualize several geomorphometric variables and assess their values settings, as well as to visualize different open raster data on the topography of Peru, a combination of the GMT modules and R programming were applied.

Hence, research questions are as follows: 1) How does the slope steepness vary according to the DEM analysis of the geomorphology of Peru according to varying in-situ geological and geographic setting? 2) What factors affect the geomorphology of the Peruvian Andes and which of them are the most influencing regarding the relief of the country? 3) What libraries and algorithms of the R and GMT scripting toolsets can be suggested for similar geomorphological studies in other regions of Andes? The solutions to these questions are proposed using cartographic modeling for geomorphological data using DEM.

2. Study Area

Quaternary tectonics of Peru as a northern part of the South American continent largely affected its physical geographical setting. Specifically, the morphology of the river slopes and the steepness of the valleys, distribution of the glaciers, and coastlines are all the variables of the regional geomorphology of Peru which is the subject of strong tectonic and seismic processes sculpturing the face of the relief in the Peruvian Andes (Clapperton, 1993).

Physical geographic, geologic and environmental factors in Peru are highly correlated which is discussed in the existing papers (Cobbing, 1982; Weibel et al. 1978). For example, geophysical processes (seismic activity in the tectonically active Andes, repetitive volcanism and earthquakes) together with climate factors (e.g., intense precipitation) and geomorphology (strong to extreme slopes) generate major debris flows and landslides in the mountain rivers draining the Andes. According to Dornbusch (1998), most of the high-mountain area in the southern Peru (> 4000 m altitude) receive precipitation over 600 mm/yr, with many areas receiving even more than 800mm/yr. Together with extreme to steep gradient of the mountain slopes this points the question of the risk of landslides hazards.

The geomorphology of Peru is largely influenced by the extent of Andes that run parallel to the Pacific Ocean and determine the three major physical geographical regions of Peru: i) western coastal zone, a narrow plain, mostly arid excluding the valleys formed by seasonal rivers; ii) the highlands (sierra) which is the major region of the Andes including the Altiplano plateau and the highest peak of the country Huascarán (6,768 m); iii) the eastern region of jungles (selva) covered by the Amazon rainforests where several National Parks are situated (Figure 4). The geomorphology here is presented by flat wide terrain.

Source: Self made.



Figure 4. Map of Peru. Dataset: ESRI Topo. Mapping: R.

Climate setting of Peru controls the distribution and the extent of glacial sediments in the cold areas of the Peruvian Andes. Thus, glacial sediments here reach relatively low values (3650 m) in the surroundings of Pampa Galeras. Well developed glacial moraines can be found as close as 60km from the coast at only 4240m (Dornbusch, 2002, 2005). Active geomorphological processes control the distribution of habitats and vegetation in Peru that contribute to the soil properties. This illustrates the importance of considering a variety of processes, landscape elements and factors for physical geographic analysis.

Quaternary geology of Peru is significantly affected by the processes of Andean volcanism that changed both rock and soil properties and the geomorphological shape of the landscapes. The geomorphology of Peru includes a vast variety of complex landforms (plateaus, high mountains, hills, depressions, high, moraines) with distribution regulated by the situation in the Andes. General geomorphological division of the Peruvian landscapes includes the Andean high mountainous region, the alluvial basins, the Pacific coastal regions and the shield highlands with dominating plateau. Specific settings on geomorphology and mountain glaciers are further reviewed and described in a variety of papers (Rose, 1996; Ubeda, 2013; Schulz, 1994; Lemenkova, 2019f; Kull & Grosjean, 2000) to mention some of them for further reading.

3. Materials and Methods

3.1. Mapping in GMT

The proposed methodology of R and GMT based cartographic scripting demonstrated application of machine learning in visualization of geospatial data derived as open datasets. The topographic map (Figure 1) has been plotted using GMT cartographic scripting toolset (Wessel

& Smith, 1995) which is used in some papers focused on geophysical, geological and geomorphological research (Gauger et al. 2007; Lemenkova, 2020a, 2020b).

The plotting was based on using the sequence of codes calling various modules of GMT for mapping cartographic elements. The mapping uses the following sequence of commands:

1. In order to visualize the map extent in the given coordinates the raster file has been clipped. This was done by means of 'grdcut' using the coordinates determined by West-East-South-North convention. Thus, subsetting of the study area was done using the command: `gmt grdcut GEBCO_2019.nc -R278/292/-21/3 -Gperu_relief.nc`
2. The extent of the topographic data of the applied study area and the variations in its topography have to be known. Therefore, the utility of Geospatial Data Abstraction Library (GDAL) has been applied to check up the elevation range for Peru: `gdalinfo peru_relief.nc -stats`
3. A map has to be presented using appropriate color table. Therefore, a more accurate way is to use previously obtained elevation range and apply this actual extent for the raster image for the color palette as follows: `gmt makecpt -Cgeo.cpt -V -T-7668/6151 > myocean.cpt`
4. After the areas was clipped and color defined, the PostScript file has been generated as follows: `ps=Topography_Peru.ps`
5. Visualizing raster image has been done by 'grdimage' module: `gmt grdimage peru_relief.nc -Cmyocean.cpt -R278/292/-21/3 -JM6i -P -I+a15+ne0.75 -Xc -K > $ps`
6. The grid and ticks are then adjusted for the map individually and applied by the 'psbasemap' module as follows: `gmt psbasemap -R -J -Bpx1f1a2 -Bpyg1f1a2 -Bsxg1 -Bsyg -B+t"Topographic map of Peru" -O -K >> $ps`
7. Adding isolines: `gmt grdcontour peru_relief.nc -R -J -C1000 -W0.1p -O -K >> $ps`
8. Adding scale and directional rose has been carried out automatically: `gmt psbasemap -R -J -Lx12.7c/-2.3c+c50+w300k+l"Mercator projection. Scale: km"+f -UBL/-5p/-65p -O -K >> $ps`
9. From GSHHS (Global Self-consistent, Hierarchical, High-resolution Shoreline database) developed by Wessel and Smith (1996) vector data on coasts, borders, rivers have been derived and added on the map using the following code: `gmt pscoast -R -J -P -Ia/thinner,blue -Na -N1/thickest,red -W0.1p -Df -O -K >> $ps`
10. The use of the 'psscale' was a solution for automatic adding a legend: `gmt psscale -Dg278/-22.1+w15.2c/0.4c+h+o0.0/0i+ml -R -J -Cmyocean.cpt -Baf+l"Color scale 'geo': global bathymetry/topography relief [R=-6857/3206, H=0, C=RGB]" -I0.2 -By+lm -O -K >> $ps`
11. Adding texts (example for the country name, others are added using the same logic): `gmt pstext -R -J -N -O -K -F+jTL+f14p,Helvetica,black+jLB -Gwhite@20 -Wthinnest >> $ps << EOF 283 -8.5 P E R U EOF`
12. The process of adding cities is semi-automatic. Thus, adding a point for a capital city (Lima) with coordinates in 360° convention which has following meaning: '283' means 77°W, and '-12.0' means 12°S: `gmt psxy -R -J -Sc -W0.5p -Gyellow -O -K << EOF >> $ps 283 -12.0 0.3c EOF`
13. Inserting a global map has been done using a combination of modules 'psbasemap', 'pscoast' and 'psxy', as well as countries codes by a convention ISO 3166-1 alpha-2.

The reader can notice from the given above example that each line of the code has been written using a standard GMT syntax and has been added to the once generated PostScript file. The initial command is written using single quotes "> \$ps" followed by the next commands added by double quotes: '>> \$ps' Each line also corresponds to a specific cartographic element on a map (legend, grid ticks, visualization raster image grid, adding texts, etc). Each flag with detailed explanation can be found in the technical reference of GMT either online or in software standard help. The resulting map is presented in (Figure 1).

3.2. Plotting in R

The application of R libraries for cartographic purposes has to be based on programming principles of R syntax. An independent libraries (packages) have to be installed and uploaded as a pre-requisite of the workflow. The mapping has been performed in RStudio environment (RStudio Team, 2017) in R version 4.0.3 (R Core Team, 2020). Mapping in R had two major parts: 1) topographic visualization of Peru using 'OpenStreetMap' package of R (Figure 5 and 2) geomorphological modelling using 'raster' package of R followed by the 'tmap' package for finer cartographic visualization. The depending packages ('sp', 'ncdf4', 'RColorBrewer', 'sf') have been used for geomorphological modelling. Packages 'ggplot2', 'maps' were used during topographic plotting. Specifically, package 'maps' has been used for data capture.

Source: Self made.

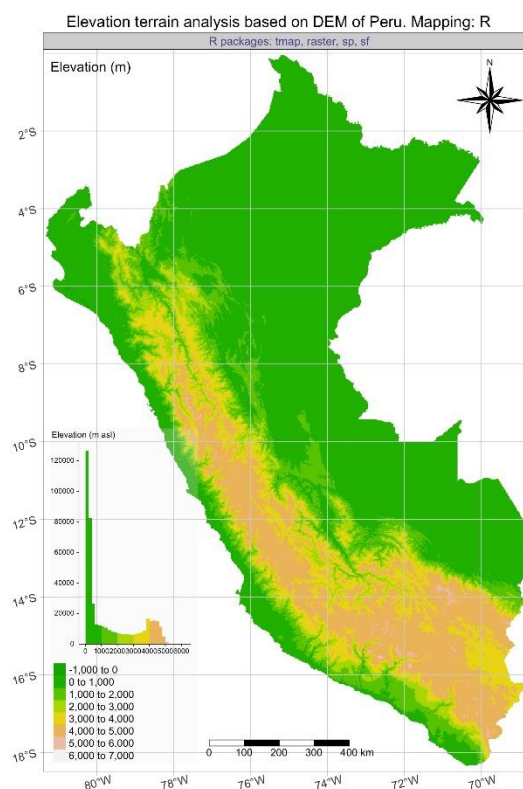


Figure 5. Elevation terrain analysis based on DEM of Peru. Mapping: R.

Topographic plotting has been done by the 'OpenStreetMap' package of R which accesses high-resolution raster cartographic datasets using the OpenStreetMap protocol. These includes data on road, satellite, and topographic map servers including Apple, ESRI-topo, Bing, and stamen,

as visualized in (Figures 2, 3, 4, 9, 10 and 11.) These raster maps were constructed using the direct coordinate input by the provided tile servers via the internet on-the-fly. The maps were hence plotted using either base graphics or 'OpenStreetMap' package.

Specifically, the topographic plotting was performed using the following sequence of codes. First, the coordinates for the upper left and lower right corners were read in as follows: `upper_left <- c(3, -82.0)`, `lower_right <- c(-22.0, -68)`. Then the map was visualized using the 'openmap' function of OpenStreetMap package as follows (here the example for the ESRI topo dataset visualized in (Figure 4): `map_osm <- openmap(upper_left, lower_right, type = c('esri-topo'))`. The plotting has been done using the straightforward function: `plot(map_osm)`. Besides the OpenStreetMap and ESRI topo, other datasets used in this study include the following ones: "stamen-terrain", "esri" and "nps" and visualized in (Figures 9, 10 and 11).

The next stage of the methodology included data processing for geomorphological terrain modelling. The data capture was made by defining input spatial data using 'getData' function of 'raster' package of R: `alt = getData("alt", country = "Peru", path = tempdir())`. Afterwards, the data were pre-processed before they were used as an input materials in RStudio. After the data were loaded, the dimensions of the table was checked up, and the column content.

The visualization of the maps in (Figures 5, 6, 7 and 8) was performed using 'tmap' library of R which defines the shape objects plotted on a map (Tennekes, 2018). Mapping DEM (Figure 5) was done using main function of R 'tmap' package 'tm_raster' with the following set up parameters: `tm_raster(title = "Elevation (m asl)", palette = terrain.colors(256), legend.show = T, legend.hist = T, legend.hist.z=0)`. The scale bar (Figure 6) was added as an additional cartographic element using 'tm_scale_bar' function of 'tmap' by the following code snippet: `tm_scale_bar(width = 0.25, text.size = 0.9, text.color = "black", color.dark = "black", color.light = "white", position=c("left", "bottom"), lwd = 1)`.

Here the flags and their parameters are self-explaining and the reader can understand their meaning easily. The compass has been added for orientation on all the maps using the 'tm_compass' function by the following code: `tm_compass(type = "8star", position=c("right", "top"), size = 6.0)`. Other options used on the maps include the following ones: "arrow", "4star", "8star", "radar", "rose". The calculation of the slope and aspect maps was done using the following codes: `slope = terrain(alt, opt = "slope")` and `aspect = terrain(alt, opt = "aspect")`, respectively (Figures 6 and 7).

Finally, the cartographic elements should always include the grid which was added on the maps (Figures 5, 6, 7 and 8) by the 'tm_graticules' option using this code: `tm_graticules(ticks = TRUE, lines = TRUE, labels.rot = c(15, 15), col = "azure3", lwd = 1, labels.size = 1.0)`. Since the syntax of R demonstrated here is logical, it does not require additional notations.

The rest of the cartographic elements were added using the `tm_layout()` function of 'tmap' where the following elements were defined: the title and the sub-title of the maps, legend, its position and text fonts, panel legends, added histograms of data distribution. Finally, the maps have been plotted and saved using the 'tmap_save' function of 'tmap' package by the following code snippet: `tmap_save(map4, "Peru_Elevation.jpg", dpi = 300, height = 10)`, where 'height = 10' stands for the physical dimensions of map (a cartographic layout) in inches.

Source: Self made.

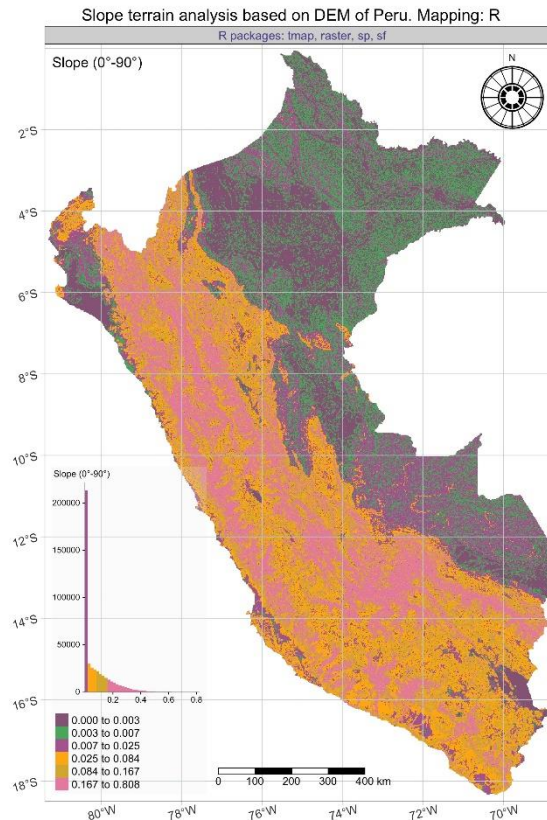


Figure 6: Slope terrain analysis based on DEM of Peru. Mapping: R

3.3. Trends in Data Analysis

General trends in contemporary data analysis and data science should be briefly mentioned in context with their applications in geographic data modeling. The development of the programming languages gradually evolved from the low level assembly languages where the code is often cryptic and not human-readable to the high-level scripting languages with more straightforward syntax and meaningful semantics (e.g. Python or R). This naturally included rapid development of data analysis, visualization and modeling through the sophisticated approaches and algorithms of graphical manipulation with data. Further advantages of this progress presented the extension of the programming to a wider range of disciplines, including Earth sciences and development of such special scripting toolsets as GMT that combines geographic analysis and scripting philosophy.

Comparing to the standard programming languages, the specifics of the GMT code techniques creates the possibility of data modeling and visualization in Earth science rather than general data analysis. Here syntax enables automated cartographic plotting, mapping and graphical data visualization of the readable formats which depicts geographic objects according to the selected modules (to a certain extent, the equivalent to the libraries of R).

The cartographic attributes can be derived from the raster or vector geodata formats and / or be converted using GDAL which is compatible with GMT. The connection of spatial data with tabular data is another important feature of GMT that enables to read in data from tables and visualize them as objects using coordinates and attribute values. The specific properties of R libraries enable to perform selected actions using data that facilitates the workflow of the data

analysis. Hence, rather than using the GIS, R enables to upload the selected libraries directly for the concrete needs which is a significant advantage of R.

Source: Self made.

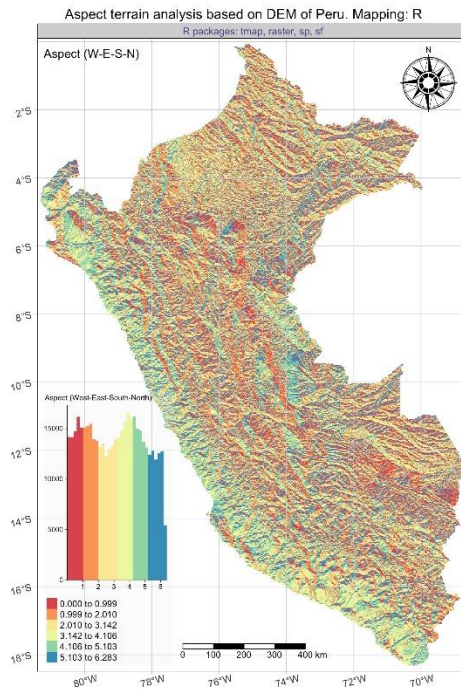


Figure 7: Aspect terrain map of Peru. Mapping: R.

Source: Self made.



Figure 8: Hillshade map of Peru. Mapping: R.

4. Results and Discussion

The R and GMT scripting algorithms were applied to study the variations in geomorphology and physical geographic setting over the region of Peru, assessing values of slope steepness, aspect and altitude and how these variables relate to the topography of the country in its three major physical-geographic zones: i) narrow arid plains of the Pacific coastal zone in the west, ii) highlands (sierra) of the Andes, iii) eastern region of jungles (selva) with the Amazon rainforests. The geomorphological mapping include complex computation of relief indices, for instance, sinuosity, asymmetry, basin elongation, ratio, hypsometry, raw and normalized slope steepness, concavity and others. Within the scope of this study, the most relevant geomorphic features have been included in this research. These refer to the geomorphometric variables embedded in R 'raster' package algorithm used for computation and mapping of the four parameters: 1) slope steepness, 2) aspect orientation, 3) visualization hillshade, 4) elevation based on the DEM of Peru.

The importance of the geomorphic computations consists in visualization of the terrain (slope, aspect, hillshade and elevation) which can be used as new data and added to the thematic research. In particular, new data and maps on geomorphological setting are applicable in geological and geographic studies. Other fields of application concerns natural risks analysis of hazardous events, such as landslides, computed using major geomorphometric variables: slope stability and instability, steepness and orientation among the other factors. Thorough analysis of the relief features enables to explain the vegetation distribution for landscape habitat analysis, since biogeographic studies need computations of the geomorphological parameters and terrain. altitude as a core information on landscapes. The information on slope steepness, orientation, aspect and DEM based terrain in used in hydrological and glaciological study.

Elevation based on DEM varies considerably between various regions of Peru (Figure 5), ranging from plains on the north-east of Peru including a vast area of Amazonian jungles in the Reserve Nacional Pacaya-Samiria, tropical rainforests in Park Nacional Alto Purús, a mix of Andean highlands, cloud forest and lowland jungle in the biosphere Park Nacional del Manú in south-west of Peru to the central highlands of Peru (Huancay, Cusco) and the highest mountain regions in the Peruvian Andes along the coasts of the Pacific Ocean.

Slope terrain analysis (Figure 6) includes the geomorphometric map showing variation of slope steepness ranging from gentle, moderate, strong, very strong, extreme and steep slopes of the country. The ranging of slopes (Figure 6) demonstrates automatic subdivision of the slope types according to the number of pixels in each group: over 200,000 pixels on a raster grid belongs to the 1st category with 0 to 3% (purple color), followed by 35,000 in a group of 2,5 to 8,4% (orange color), followed by a group of 8,4% to 16,7% not exceeding 25,000 (beige color) and a dominating group between 16,7 to 80,8% with not exceeding 20,000 (magenta color). The remaining two groups show clusters of 3,0 to 7,0% (green color) and 0,7 to 2,5% (dark eggplant color), (Figure 6).

The map of the slope aspect (Figure 7) shows the distribution of various aspect of slopes in terms of compass orientation to the West-North-East-South over the country. The distribution of data is shown in the histogram of the map. Accordingly, the map of hillshade (Figure 8) shows a visualization of the relief via the hypothetical illumination of the surface by the determined light source values for each cell in a raster. This has been achieved using the algorithms of R 'raster' package data processing.

The terrain map of Peru (Figure 9) was visualized based on the Stamen dataset of OpenStreetMap package. The 'stamen-terrain' was selected among the available types 'toner',

‘terrain’ and ‘watercolor’. It shows the standard terrain with added labels, lines and a background represented in traditional elevation color palette. The map features hill shading in natural topographic colors (Figure 10), yet lacks some advanced labeling and representing major generalization of the roads and country borders. It well suits as a base for the thematic maps.

Source: Self made.



Figure 9: Map of Peru. Dataset: stamen-terrain from the OpenStreetMap package. Mapping: R.

The ESRI (Environmental Systems Research Institute) dataset visualized from the OpenStreetMap package of R (Figure 11) shows the publicly available ESRI World Imagery. Among the other features, it visualizes major topographic features, national boundaries, text annotations for major cities and hill-shaded topographic relief. The hosted vector feature layers of ESRI as a replica of the OSM dataset which is available in the OpenStreetMaps package or R. The OSM suits various types of features (such as buildings in large-scaled maps, highways) based on the ESRI World Imagery which includes the 15-m resolution TerraColor imagery for mapping at small and mid-scales. The OpenStreetMap (Figure 2) shows the geocoded crowdsourced data, embedded in R, originally sourcing from the collaborative OSM project based on surveys, GPS devices, aerial photographs, built-in map data.

The visualized Bing map (Figure 3) is based on the Bing Maps (earlier: Microsoft Virtual Earth), an online cartographic platform, the Bing division of Microsoft. This platform is embedded in R and includes map tiles, map APIs and routing among the most important cartographic features. The Bing aerial imagery is available for purpose of contributing content to OpenStreetMap, that is to use the aerial imagery layer as background for OSM cartographic drawing, thematic mapping aimed for own study and research.

Source: Self made.



Figure 10: Map of Peru. Dataset: nps (National Park Service), OpenStreetMap. Mapping: R.

Questions of using machine learning in physical geographic studies are important due to the extended variety of the methodological approaches. Besides GIS, rapid development of the programming languages and data science algorithms brings along new automated methods in cartography. Speedy and more accurate machine plotting places cartography at the principally new level in technical sense. This includes the two major branches of geographic data analysis: cartographic visualization of maps (both raster and vector data) and modeling data according to attribute values using methods of statistical analysis.

In recent years, methods of cartographic data handling have reached a high level due to many innovations in field of machine learning and data science. These included the developed algorithms of data processing, elaborated GIS plugins and special packages of scripting languages, web tools of internet cartography and combined data analysis (e.g. integrating image processing with traditional maps).

The era of expanding computerization of Earth sciences has been extended significantly over the recent two decades in large part by the progress in programming algorithms of data analysis and modeling. Machine learning approaches made significant contributions as a branch of mathematical advances in the development of artificial intelligence and algorithms of data analysis. Selected parts of these efforts have involved the studies in Earth sciences, where the phenomena and processes are studied from analysis of the maps and models used for visualization. In view of this, new methods in cartography became of crucial importance.

Scripting as a paradigm of contemporary cartography involves the machine learning methods that can also be more sophisticated for the advanced cartographic tasks. Scripting is particularly suitable for the needs of topographic and geomorphological mapping closing the gap between the applied programming languages in data analysis and geographic studies. Its relatively

flexible approach in data handling and abundant set of algorithms results in a wide variety of modules and packages adjusted and tuned for different cartographic tasks.

Source: Self made.



Figure 11: Map of Peru. Dataset: ESRI from the OpenStreetMap package.

5. Conclusion

Cartographic methodology for automatic geomorphological and topographic mapping of Peru by open source datasets using scripting algorithms of GMR and R has been successfully tested and presented in this study. The actuality of this study is explained by unique local geomorphic and environmental settings of Peru, which is a part of the South American Andes.

The selected studied area is located in the tectonically active Andes. Natural hazards such as seismic activity and intense precipitation generate major debris flows and landslides in the steep slopes. The geomorphology of the landforms is formed as a result of complex interaction of the geologic, glacial, geophysical, geodynamic and tectonic settings, climate and sedimentation factors as discussed in various papers (Hall, 2009; Lemenkova, 2020c, 2020d, 2020e; Kelly et al. 2012; Gohl et al. 2006b; Kuhn et al. 2006; Alcalá et al. 2015).

Therefore, visualization of the geomorphologic maps, such as slope, aspect and relief is actual for the thematic geomorphological and topographic mapping of Peru. At the same time, mapping techniques are increasing and require higher degree of automatization along with the progress in scripting and integration of the programming language libraries in mapping. However, comparing to GIS, less examples has been given so far in demonstrating in detail and application of programming languages in cartography with respect to the physical geographic studies, except in GMT-based research papers.

The results obtained in this study for thematic mapping of Peru shown both imagery and raster maps processed by scripting cartographic techniques. The demonstrated approaches are

promising due to the cartographic quality and speed of data processing received through the automated scripting. With regard to the general trends in the development of contemporary cartography in Earth sciences, it is possible that the tendency of applied programming and scripting in geographic studies as also demonstrated in this research will continue to contribute to similar multi-disciplinary studies.

The paradigm of the open source data application in cartographic studies is explained by the recently shifted nature of research. Indeed, many researchers nowadays moved to the home- or distance-based work. As a consequence, the demand for the open source geographic data and free tools for the processing of these data is considerably increased. This paper demonstrated the use and applicability of such datasets and instruments that can be applied for solving these needs, which can be used in similar research. Among others, several packages of R and available free datasets are reviewed and demonstrated. The examples of GMT and R code scripting are presented for repeatability in similar works. Specifically, the demonstrated advantage of the open source geospatial data consists in availability for mapping which facilitates distance-based education and research.

Acknowledgement

This research was implemented into the framework of the project No. 0144-2019-0011, Schmidt Institute of Physics of the Earth, Russian Academy of Sciences. The author gratefully acknowledges two anonymous reviewers for their helpful comments and thoughtful reviews that improved the initial version of the manuscript.

Bibliographic References

- Alcalá, J., Palacios, D., Vázquez, L., & Zamorano, J. J. (2015). Timing of maximum glacial extent and deglaciation from HualcaHualca volcano (southern Peru), obtained with cosmogenic ³⁶Cl. *Geophysical Research Abstracts*, 17. EGU2015-12930-1
- Alcalá, J., Palacios, D., & Zamorano, J. J. (2016). Geomorphology of the Ampato volcanic complex (Southern Peru). *Journal of Maps*, 12(5), 1160–1169. <https://doi.org/10.1080/17445647.2016.1142479>
- Bromley, R. M., Hall, B. L., Schaefer, J. M., Winckeler, G., Todd, C. E., & Rademaker, K. M. (2011). Glacier fluctuations in the southern Peruvian Andes during the late-glacial period, constrained with cosmogenic ³He. *Journal of Quaternary Science*, 26(1), 37–43. <https://doi.org/10.1002/jqs.1424>
- Clapperton, C. M. (1993). *Quaternary geology and geomorphology of South America*. Elsevier Science.
- Cobbing, E. (1982). The segmented coastal batholith of Peru; its relationship to volcanicity and metallogenesis. *Earth-Science Reviews*, 18(3–4), 241–251. [https://doi.org/10.1016/0012-8252\(82\)90039-3](https://doi.org/10.1016/0012-8252(82)90039-3)
- Dornbusch, U. (1998). Current large-scale climatic conditions in Southern Peru and their influence on snowline altitudes. *Erdkunde*, 52(1), 41–54. <https://doi.org/10.3112/erdkunde.1998.01.04>
- Dornbusch, U. (2002). Pleistocene and present day snowline rise in the Cordillera Ampato, Western Cordillera, Southern Peru (15° 15' - 15°4'S and 73°30' - 72° 15' W). *Neues Jahrbuch für Geologie und Paläontologie Abhandlungen*, 225, 103–126. <https://doi.org/10.1127/njgpa/225/2002/103>

- Dornbusch, U. (2005). Glacier-rock glacier relationships as climatic indicators during the late Quaternary in the Cordillera Ampato, Western Cordillera of southern Peru. *Geological Society, London, Special Publications*, 242(1), 75. <http://dx.doi.org/10.1144/GSL.SP.2005.242.01.07>
- Gauger, S., Kuhn, G., Gohl, K., Feigl, T., Lemenkova, P., & Hillenbrand, C. (2007). Swath-bathymetric mapping. ANT-XXIII/4 R/V 'Polarstern'. *Reports on Polar and Marine Research*, 557, 38–45. <https://doi.org/10.6084/m9.figshare.7439231>
- Gohl, K., Eagles, G., Udintsev, G., Larter, R. D., Uenzelmann-Neben, G., Schenke, H.-W., Lemenkova, P., Grobys, J., Parsiegla, N., Schlueter, P., Deen, T., Kuhn, G., & Hillenbrand, C.-D. (2006a). Tectonic and sedimentary processes of the West Antarctic margin of the Amundsen Sea embayment and Pine Island Bay 2nd Scientific Committee on Antarctic Research Open Science Meeting. *Journal Contribution* 12–14. <https://doi.org/10.6084/m9.figshare.7435484>
- Gohl, K., Uenzelmann-Neben, G., Eagles, G., Fahl, A., Feigl, T., Grobys, J., Just, J., Leinweber, V., Lensch, N., Mayr, C., Parsiegla, N., Rackebrandt, N., Schlüter, P., Suckro, S., Zimmermann, K., Gauger, S., Bohlmann, H., Netzeband, G., & Lemenkova, P. (2006b). Crustal and Sedimentary Structures and Geodynamic Evolution of the West Antarctic Continental Margin and Pine Island Bay. *Expeditionsprogramm*, (75), 11–12. <https://doi.org/10.13140/RG.2.2.16473.36961>
- Hall, S. R., Farber, D. L., Ramage, J. M., Rodbell, D. T., Finkel, R. C., Smith, J. A., Mark, B. G., & Kassel, C. (2009). Geochronology of quaternary glaciations from the tropical Cordillera Huayhuash, Peru. *Quaternary Science Reviews*, 28,(25-26) 2991–3009. <https://doi.org/10.1016/j.quascirev.2009.08.004>
- Kelly, M. A., Lowell, T. V., Applegate, P. J., Smith, C. A., Phillips, F. M., & Hudson, A. M. (2012). Late glacial fluctuations of Quelccaya Ice Cap, southeastern Peru. *Geology*, 40(11), 991–994. <https://doi.org/10.1130/G33430.1>
- Klaučo, M., Gregorová, B., Koleda, P., Stankov, U., Marković, V., & Lemenkova, P. (2017). Land planning as a support for sustainable development based on tourism: A case study of Slovak Rural Region. *Environmental Engineering and Management Journal*, 16(2), 449–458. <https://doi.org/10.30638/eemj.2017.045>
- Klaučo, M., Gregorová, B., Stankov, U., Marković, V., & Lemenkova, P. (2013). Determination of ecological significance based on geostatistical assessment: a case study from the Slovak Natura 2000 protected area. *Open Geosciences*, 5(1), 28–42. <https://doi.org/10.2478/s13533-012-0120-0>
- Kull, C., & Grosjean, M. (2000). Late Pleistocene climate conditions in the north Chilean Andes drawn from a climate–glacier model. *Journal of Glaciology*, 46(155), 622–632. <https://doi.org/10.3189/172756500781832611>
- Kuhn, G., Hass, C., Kober, M., Petit, M., Feigl, T., Hillenbrand, C. D., Kruger, S., Forwick, M., Gauger, S., & Lemenkova, P. (2006). The response of quaternary climatic cycles in the south-east pacific: development of the opal belt and dynamics behavior of the west antarctic ice sheet. *Expeditionsprogramm* (75) ANT XXIII/4, AWI, Bremerhaven, Germany. <https://doi.org/10.13140/RG.2.2.11468.87687>
- Lemenkov, V., & Lemenkova, P. (2021). Using TeX Markup Language for 3D and 2D Geological Plotting. *Foundations of Computing and Decision Sciences*, 46(1), 43–69. <https://doi.org/10.2478/fcds-2021-0004>

- Lemenkova, P., Promper, C., & Glade, T. (2012). Economic Assessment of Landslide Risk for the Waidhofen a.d. Ybbs Region, Alpine Foreland, Lower Austria. *Protecting Society through Improved Understanding. 11th International Symposium on Landslides & the 2nd North American Symposium on Landslides & Engineered Slopes (NASL)*, June 2–8, 2012. Canada, Banff, 279–285. <https://doi.org/10.6084/m9.figshare.7434230>
- Lemenkova, P. (2019a). GMT Based Comparative Analysis and Geomorphological Mapping of the Kermadec and Tonga Trenches, Southwest Pacific Ocean. *Geographia Technica*, 14(2), 39–48. https://doi.org/10.21163/GT_2019.142.04
- Lemenkova, P. (2019b). Automatic Data Processing for Visualising Yap and Palau Trenches by Generic Mapping Tools. *Cartographic Letters*, 27(2), 72–89. <https://doi.org/10.6084/m9.figshare.11544048>
- Lemenkova, P. (2019c). Statistical Analysis of the Mariana Trench Geomorphology Using R Programming Language. *Geodesy and Cartography*, 45(2), 57–84. <https://doi.org/10.3846/gac.2019.3785>
- Lemenkova, P. (2019d). Testing Linear Regressions by StatsModel Library of Python for Oceanological Data Interpretation. *Aquatic Sciences and Engineering*, 34(2), 51–60. <https://doi.org/10.26650/ASE2019547010>
- Lemenkova, P. (2019e). AWK and GNU Octave Programming Languages Integrated with Generic Mapping Tools for Geomorphological Analysis. *GeoScience Engineering*, 65(4), 1–22. <https://doi.org/10.35180/gse-2019-0020>
- Lemenkova, P. (2019f). Geomorphological modelling and mapping of the Peru-Chile Trench by GMT. *Polish Cartographical Review*, 51(4), 181–194. <https://doi.org/10.2478/pcr-2019-0015>
- Lemenkova, P. (2020a). Variations in the bathymetry and bottom morphology of the Izu-Bonin Trench modelled by GMT. *Bulletin of Geography. Physical Geography Series*, 18(1), 41–60. <https://doi.org/10.2478/bgeo-2020-0004>
- Lemenkova, P. (2020b). Gebco Gridded Bathymetric Datasets for Mapping Japan Trench Geomorphology by Means of GMT Scripting Toolset. *Geodesy and Cartography*, 46(3), 98–112. <https://doi.org/10.3846/gac.2020.11524>
- Lemenkova, P. (2020c). Geomorphology of the Puerto Rico Trench and Cayman Trough in the Context of the Geological Evolution of the Caribbean Sea. *Annales Universitatis Mariae Curie-Sklodowska, sectio B – Geographia, Geologia, Mineralogia et Petrographia*, 75, 115–141. DOI: 10.17951/b.2020.75.115-141
- Lemenkova, P. (2020d). The geomorphology of the Makran Trench in the context of the geological and geophysical settings of the Arabian Sea. *Geology, Geophysics and Environment*, 46(3), 205–222. <https://doi.org/10.7494/geol.2020.46.3.205>
- Lemenkova, P. (2020e). Using GMT for 2D and 3D Modeling of the Ryukyu Trench Topography, Pacific Ocean. *Miscellanea Geographica*, 25(3), 1–13. <https://doi.org/10.2478/mgrsd-2020-0038>
- Lemenkova, P. (2020f). GRASS GIS for topographic and geophysical mapping of the Peru-Chile Trench. *Forum Geografic* 19(2), 143–157. DOI: 10.5775/fg.2020.009.d
- Lemenkova, P. (2020g). Métodos cartográficos de script de gmt para mapear as trincheiras da nova grã-bretanha e san cristobal, mar de salomão, papua-nova guiné. *Revista da Casa da Geografia de Sobral*, 22(3), 122–142. <https://doi.org/10.35701/rcgs.v22n3.717>

- Rose, J. (1996). Quaternary Geology and Geomorphology of South America. *Journal of Quaternary Science*, 11(5), 432–433. [https://doi.org/10.1002/\(SICI\)1099-1417\(199609/10\)11:5<432::AID-JQS246>3.0.CO;2-R](https://doi.org/10.1002/(SICI)1099-1417(199609/10)11:5<432::AID-JQS246>3.0.CO;2-R)
- R Core Team (2020). R: A language and environment for statistical computing. R Foundation for Statistical Computing, Vienna, Austria. <https://www.R-project.org/>
- RStudio Team (2017). RStudio: Integrated Development Environment for R. RStudio, Inc., Boston, MA. <https://www.RStudio.com/>
- Schenke, H. W., & Lemenkova, P. (2008). Zur Frage der Meeresboden-Kartographie: Die Nutzung von AutoTrace Digitizer für die Vektorisierung der Bathymetrischen Daten in der Petschora-See. *Hydrographische Nachrichten*, (81), 16–21. <https://doi.org/10.6084/m9.figshare.7435538>
- Schulz, G. (1994). Die pleistozane Vergletscherung der Anden Perus und Boliviens abgeleitet aus Formen einer flachendeckend-integrativen Höhenlinienanalyse. *Berliner Geographischen Abhandlungen*, (58). <https://doi.org/10.23689/fidgeo-3272>
- Suetova, I., Ushakova, L., & Lemenkova, P. (2005a). Geoinformation mapping of the Barents and Pechora Seas. *Geography and Natural Resources*, (4), 138–142. <https://doi.org/10.6084/m9.figshare.7435535>
- Suetova, I., Ushakova, L., & Lemenkova, P. (2005b). Geoecological Mapping of the Barents Sea Using GIS. *International Cartographic Conference*. <https://doi.org/10.6084/m9.figshare.7435529>
- Tennekes, M. (2018). tmap: Thematic Maps in R. *Journal of Statistical Software*, 84(6), 1–39. DOI:10.18637/jss.v084.i06
- Ubeda, J. (2013). Cronologías glaciales del sector NE del nevado Coropuna (Perú): implicaciones geomorfológicas y paleoclimáticas. *Boletín De La Asociación De Geógrafos Españoles*, 62. <https://doi.org/10.21138/bage.1576>
- Weibel, M., Frangipane-Gysel, M., & Hunziker, J. (1978). Ein Beitrag zur Vulkanologie Süd-Perus. *Geol Rundsch*, 67, 243–252. <https://doi.org/10.1007/BF01803264>
- Wessel, P., & Smith, W. H. F. (1996). A Global Self-consistent, Hierarchical, High-resolution Shoreline Database. *Journal of Geophysical Research Solid Earth*, 101(B4), 8741–8743. <https://doi.org/10.1029/96JB00104>
- Wessel, P., & Smith, W. H. F. (1995). New version of the Generic Mapping Tools released. *Eos Transactions of the American Geophysical Union*, 76(33), 329–329. <https://doi.org/10.1029/95EO00198>