



Reduced order modeling of an active multi-curve guidewire for endovascular surgery

A Badrou, Aline Bel-Brunon, Nahiene Hamila, Nicolas Tardif, Anthony Gravouil

► To cite this version:

A Badrou, Aline Bel-Brunon, Nahiene Hamila, Nicolas Tardif, Anthony Gravouil. Reduced order modeling of an active multi-curve guidewire for endovascular surgery. 45ème congrès de la Société de Biomécanique, Oct 2020, Metz, France. pp.S23 - S24, 10.1080/10255842.2020.1811497 . hal-03276104

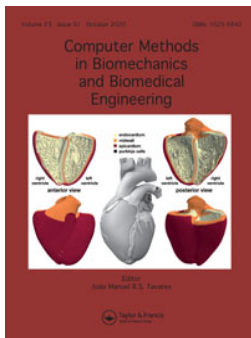
HAL Id: hal-03276104

<https://hal.science/hal-03276104>

Submitted on 1 Jul 2021

HAL is a multi-disciplinary open access archive for the deposit and dissemination of scientific research documents, whether they are published or not. The documents may come from teaching and research institutions in France or abroad, or from public or private research centers.

L'archive ouverte pluridisciplinaire **HAL**, est destinée au dépôt et à la diffusion de documents scientifiques de niveau recherche, publiés ou non, émanant des établissements d'enseignement et de recherche français ou étrangers, des laboratoires publics ou privés.



Computer Methods in Biomechanics and Biomedical Engineering

ISSN: 1025-5842 (Print) 1476-8259 (Online) Journal homepage: <https://www.tandfonline.com/loi/gcmb20>

Reduced order modeling of an active multi-curve guidewire for endovascular surgery

A. Badrou, A. Bel-Brunon, N. Hamila, N. Tardif & A. Gravouil

To cite this article: A. Badrou, A. Bel-Brunon, N. Hamila, N. Tardif & A. Gravouil (2020) Reduced order modeling of an active multi-curve guidewire for endovascular surgery, Computer Methods in Biomechanics and Biomedical Engineering, 23:sup1, S23-S24, DOI: 10.1080/10255842.2020.1811497

To link to this article: <https://doi.org/10.1080/10255842.2020.1811497>



© 2020 The Author(s). Published by Informa UK Limited, trading as Taylor & Francis Group



Published online: 02 Nov 2020.



Submit your article to this journal [↗](#)



Article views: 279



View related articles [↗](#)



View Crossmark data [↗](#)

Reduced order modeling of an active multi-curve guidewire for endovascular surgery

A. Badrou, A. Bel-Brunon, N. Hamila, N. Tardif and A. Gravouil

LaMCoS, INSA-Lyon, Université de Lyon, CNRS UMR 5259, France

1. Introduction

Endovascular therapies have developed significantly in recent years (Wilbring et al. 2016). This rise is joined with increasingly sophisticated innovations (coils, balloons, or endoprosthesis for instance) which need to navigate through vascular structures. Catheters and flexible guidewires carry out the navigation. The major difficulty comes from vascular tortuosities, leading to a lack of control for the surgeons who handle such devices. Our global research project aims at developing a numerical tool dealing with the navigation of a specific active guidewire made of SMA (Shape Memory Alloy) into the aorta. For the sake of generalization, we aim to simulate a large cohort of patients, requiring reduced order modelling. The present paper deals with the active guidewire modelling associated with a non-intrusive a posteriori reduction model method named HOPGD for High Order Proper Generalized Decomposition (Lu et al. 2018).

2. Methods

2.1. Numerical model

On a first approach, we use a simple 2D beam model to represent the active guidewire. As can be seen in Figure 1, two wires (\varnothing 0.2 mm) are attached to an 8 cm length central beam (\varnothing 0.5 mm) via springs (stiffness $k = 0.8$ N/mm) and rigid links at the end. The behaviour of materials is linear elastic with stiffer wires (Young modulus $E = 200$ GPa for the wires against 50 GPa for the central beam). The mesh is made of a 1 mm Hughes-Liu beam elements discretization. We took into account the shape memory effect of SMA by applying a negative coefficient of

thermal expansion to the wires. Thus, heating the wires causes them to shrink, allowing the beam to bend in a multi-curve way. One end of the central beam is fixed. Simulations are performed in Ls-Dyna (Livermore Software Technology Corporation (LSTC), CA., USA, 1976).

2.2. Model reduction by HOPGD

In order to cope with the parameter multiplicity and to prepare the navigation simulation into patient-specific vasculature models, we set up a model reduction procedure using HOPGD for the active guidewire. From precomputed snapshots obtained with the model described above, the HOPGD is used to seek separated representation of solutions. A relaxation method accelerates the global scheme to produce a multi-parametric computational vademecum. We decided to apprehend the HOPGD method by considering three parameters described in the chart (Table 1).

A dense grid with a coarse discretization of $3^3 = 27$ snapshots fed the HOPGD, each parameter taking its minimum, intermediate and maximum value alternatively. They correspond to the green dots in Figure 2. In order to validate the reduced model, we consider eight sets of parameters that are at the centers of the eight sub-domains of the grid described by the sub-cubes in Figure 2; for each set of parameters, we compute the reference result in LS-DYNA and the corresponding result using HOPGD method. If we note U and U_{red} the matrix containing the reference and the reduced model results respectively, we compute the relative error with the matrix norm as follows:

$$Error = \frac{\|U - U_{red}\|}{\|U\|}$$

3. Results and discussion

One of the precomputed snapshot is illustrated in Figure 1. The elapsed time for this simulation is 31 minutes and 12 seconds using six Intel Core i7 2.60 GHz cores.

Using the HOPGD, the computed time for each set of parameters is about 10^{-4} seconds (six Intel Core i7 2.60 GHz cores). With this method, we found a minimum error of 3% in the blue subdomain and a maximum error around 15% in the red subdomain

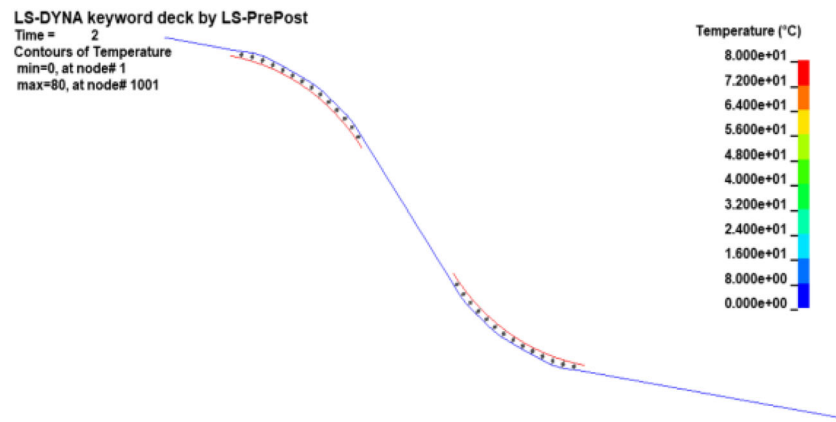


Figure 1. Activation of a simple guide wire model in LS-DYNA.

Table 1. Parameters and extrema values for the HOPGD method.

Parameter	Minimum (mm)	Intermediate (mm)	Maximum (mm)
1 st wire length (L1)	5	15	25
2 nd wire length (L2)	5	15	25
Distance between wires (d)	6	13	20

purpose is to use a more precise model for the active guidewire taking into account specificities inherent to SMA (Lagoudas 2008) and to develop a patient-specific endovascular navigation model. Then, these data will be considered to feed the HOPGD method in order to build an accurate numerical abacus.

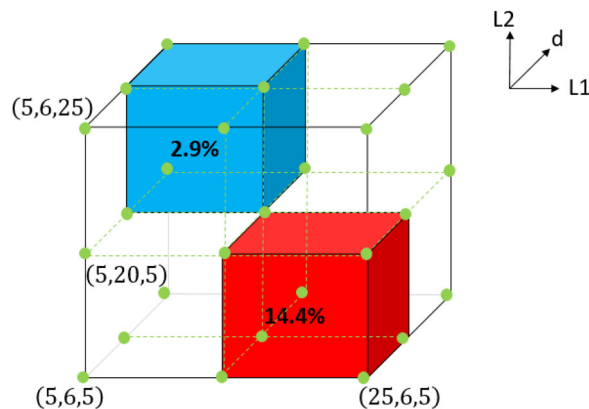


Figure 2. Dense grid for the HOPGD method: application in the case of three parameters.

depicted in Figure 2, which is already rather satisfying given the very limited number of snapshots. However, obtaining a large error in a subdomain means the latter should be fed with a denser grid of snapshots to improve the interpolation between snapshots.

4. Conclusions

We obtained promising results for the HOPGD method in a simple 2D beam case. Henceforth, our

Funding

This work was partially supported by French National Research Agency (ANR) through the DEEP project: Devices for augmented Endovascular navigation in complex Pathways (grant no. ANR-18-CE19-0027-01).

References

- Lagoudas DC. 2008. Shape memory alloys: modelling and engineering applications. College Station, TX: Texas A&M University.
- Lu Y, Blal N, Gravouil A. 2018. Adaptive sparse grid based HOPGD: towards a non-intrusive strategy for constructing space-time welding computational vademecum. *Int J Numer Methods Eng.* 114(13):1438–1461.
- Wilbring M, Rehm M, Ghazy T, Amler M, Matschke K, Kappert U. 2016. Aortic arch mapping by computed tomography for actual anatomic studies in times of emerging endovascular therapies. *Ann Vasc Surg.* 30: 181–191.

KEYWORDS Endovascular surgery; active guidewire; HOPGD; SMA

 arif.badrou@insa-lyon.fr