



**HAL**  
open science

# Geology, geochronology, lithogeochemistry and metamorphism of the Holberg-Winter Harbour area, northern Vancouver Island

Graham Nixon, Hammack Jean, Fabrice Cordey

## ► To cite this version:

Graham Nixon, Hammack Jean, Fabrice Cordey. Geology, geochronology, lithogeochemistry and metamorphism of the Holberg-Winter Harbour area, northern Vancouver Island. Geology, geochronology, lithogeochemistry and metamorphism of the Holberg-Winter Harbour area, northern Vancouver Island, 2011. hal-03275126

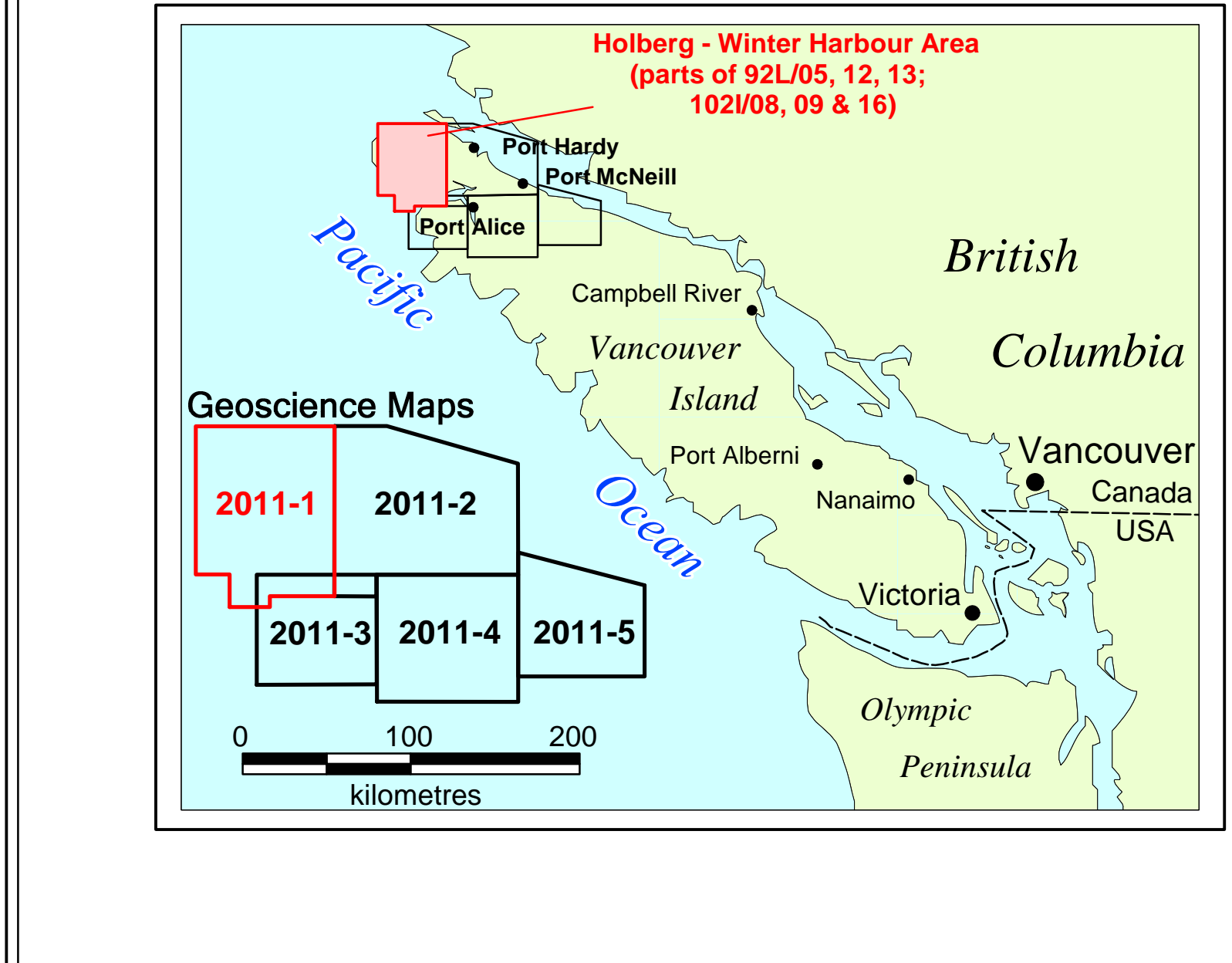
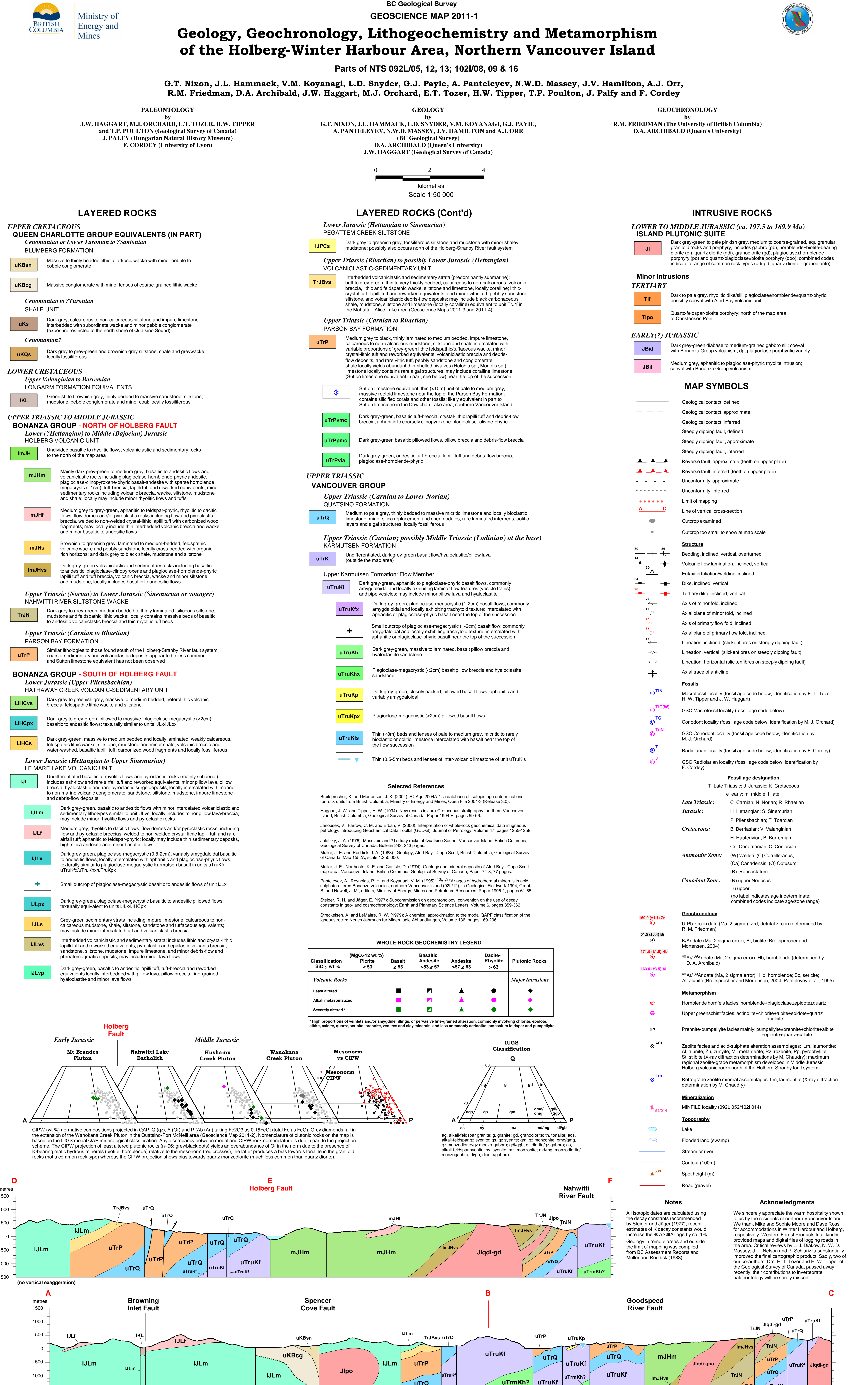
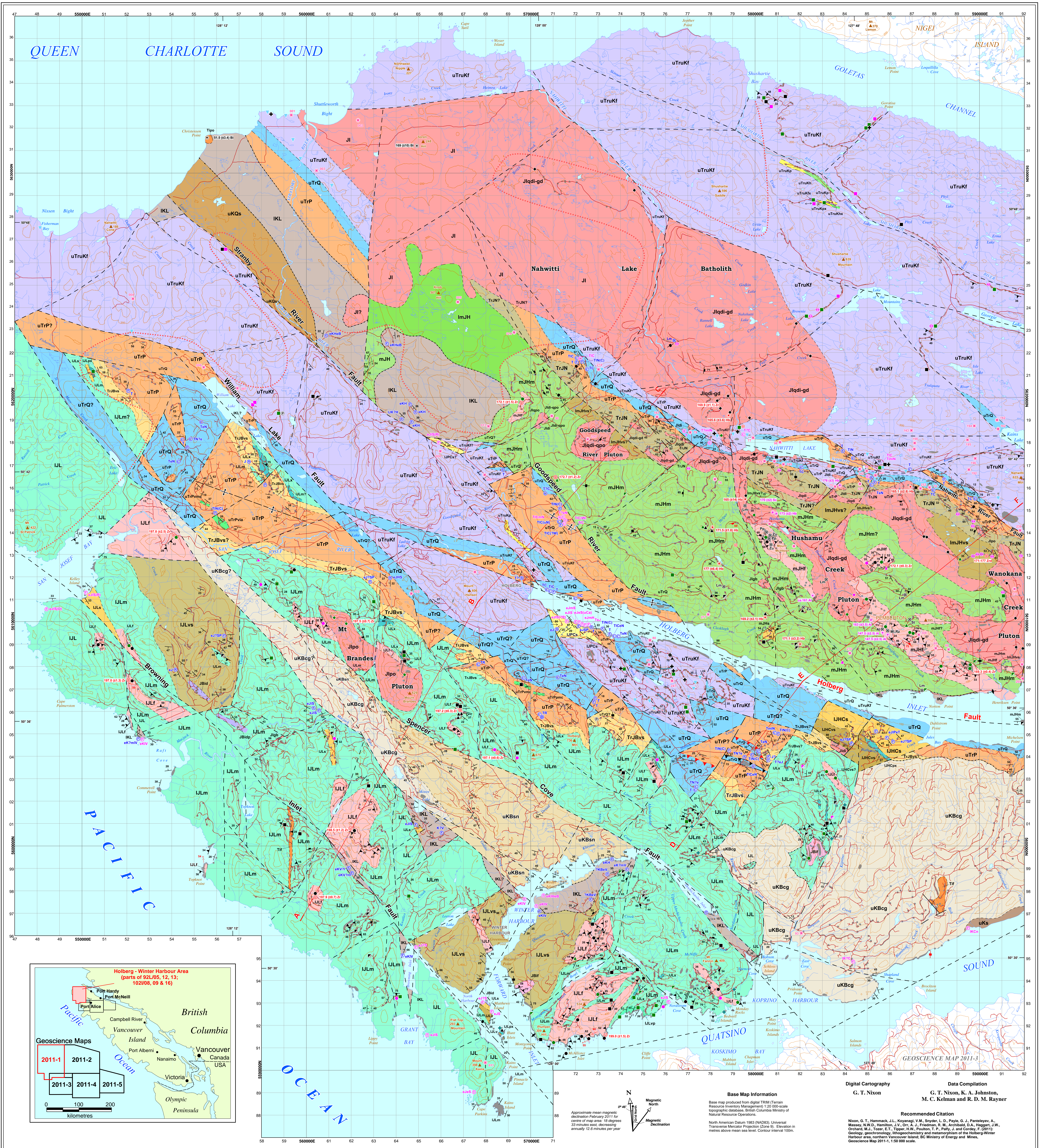
**HAL Id: hal-03275126**

**<https://hal.science/hal-03275126v1>**

Submitted on 30 Jun 2021

**HAL** is a multi-disciplinary open access archive for the deposit and dissemination of scientific research documents, whether they are published or not. The documents may come from teaching and research institutions in France or abroad, or from public or private research centers.

L'archive ouverte pluridisciplinaire **HAL**, est destinée au dépôt et à la diffusion de documents scientifiques de niveau recherche, publiés ou non, émanant des établissements d'enseignement et de recherche français ou étrangers, des laboratoires publics ou privés.



Geoscience Map 2011-1  
 Base Map Information  
 G.T. Nixon, K.A. Johnson, M.C. Kelman and R.D.M. Rayner  
 Recommended Citation  
 Nixon, G.T., Hammack, J.L., Koyanagi, V.M., Snyder, L.D., Payte, A., Panteleyev, N.W.D., Massey, J.V., Hamilton, A.J., Orr, R.M., Friedman, D.A., Archibald, J.W., Haggart, M.J., Orchard, E.T., Tozer, H.W., Tipper, T.P., Poulton, J., Palfy and F. Cordey  
 Geology, Geochronology, Lithochemistry and Metamorphism of the Holberg-Winter Harbour Area, Northern Vancouver Island, BC Ministry of Energy and Mines, Geoscience Map 2011-1, 1:50,000 scale.