



**HAL**  
open science

## **E2Clab: Reproducible Analysis of Complex Workflows on the Edge-to-Cloud Continuum**

Daniel Rosendo, Alexandru Costan, Gabriel Antoniu, Patrick Valduriez

### ► **To cite this version:**

Daniel Rosendo, Alexandru Costan, Gabriel Antoniu, Patrick Valduriez. E2Clab: Reproducible Analysis of Complex Workflows on the Edge-to-Cloud Continuum. IPDPS 2021 - 35th IEEE International Parallel and Distributed Processing Symposium, May 2021, Virtual, France. . <hal-03269852v2>

**HAL Id: hal-03269852**

**<https://hal.science/hal-03269852v2>**

Submitted on 7 Sep 2021

**HAL** is a multi-disciplinary open access archive for the deposit and dissemination of scientific research documents, whether they are published or not. The documents may come from teaching and research institutions in France or abroad, or from public or private research centers.

L'archive ouverte pluridisciplinaire **HAL**, est destinée au dépôt et à la diffusion de documents scientifiques de niveau recherche, publiés ou non, émanant des établissements d'enseignement et de recherche français ou étrangers, des laboratoires publics ou privés.



HAL Authorization

# E2Clab: Reproducible Analysis of Complex Workflows on the Edge-to-Cloud Continuum

**Daniel Rosendo**

University of Rennes  
Inria, CNRS, IRISA - Rennes, France  
daniel.rosendo@inria.fr

**Advisors:**

**Gabriel Antoniu**

University of Rennes  
Inria, CNRS, IRISA  
Rennes, France

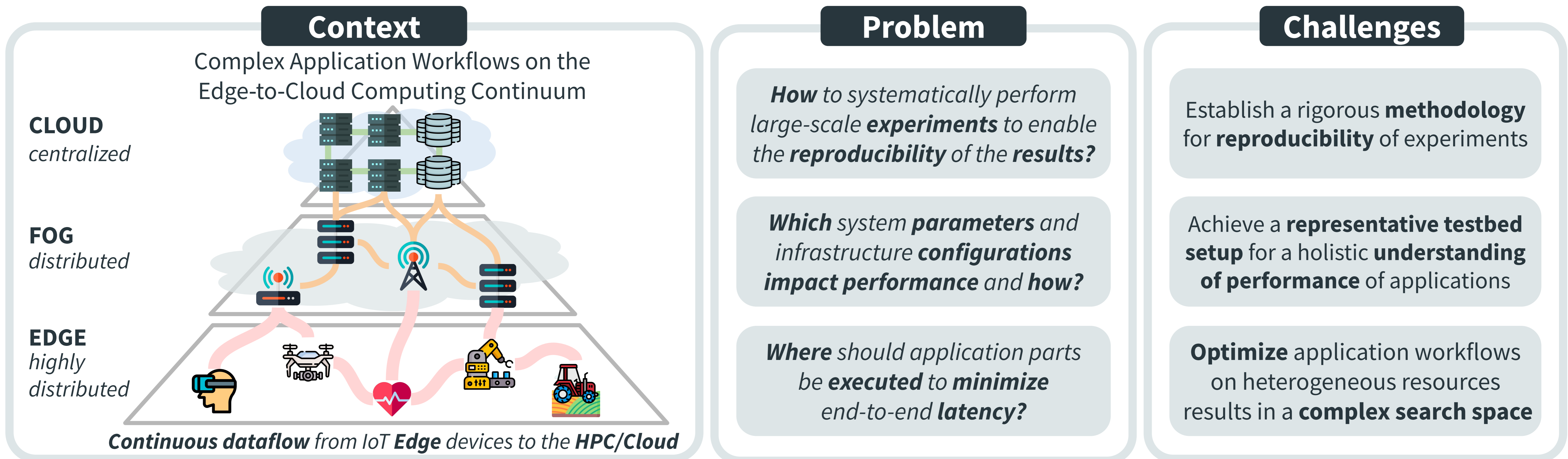
**Alexandru Costan**

University of Rennes  
Inria, CNRS, IRISA  
Rennes, France

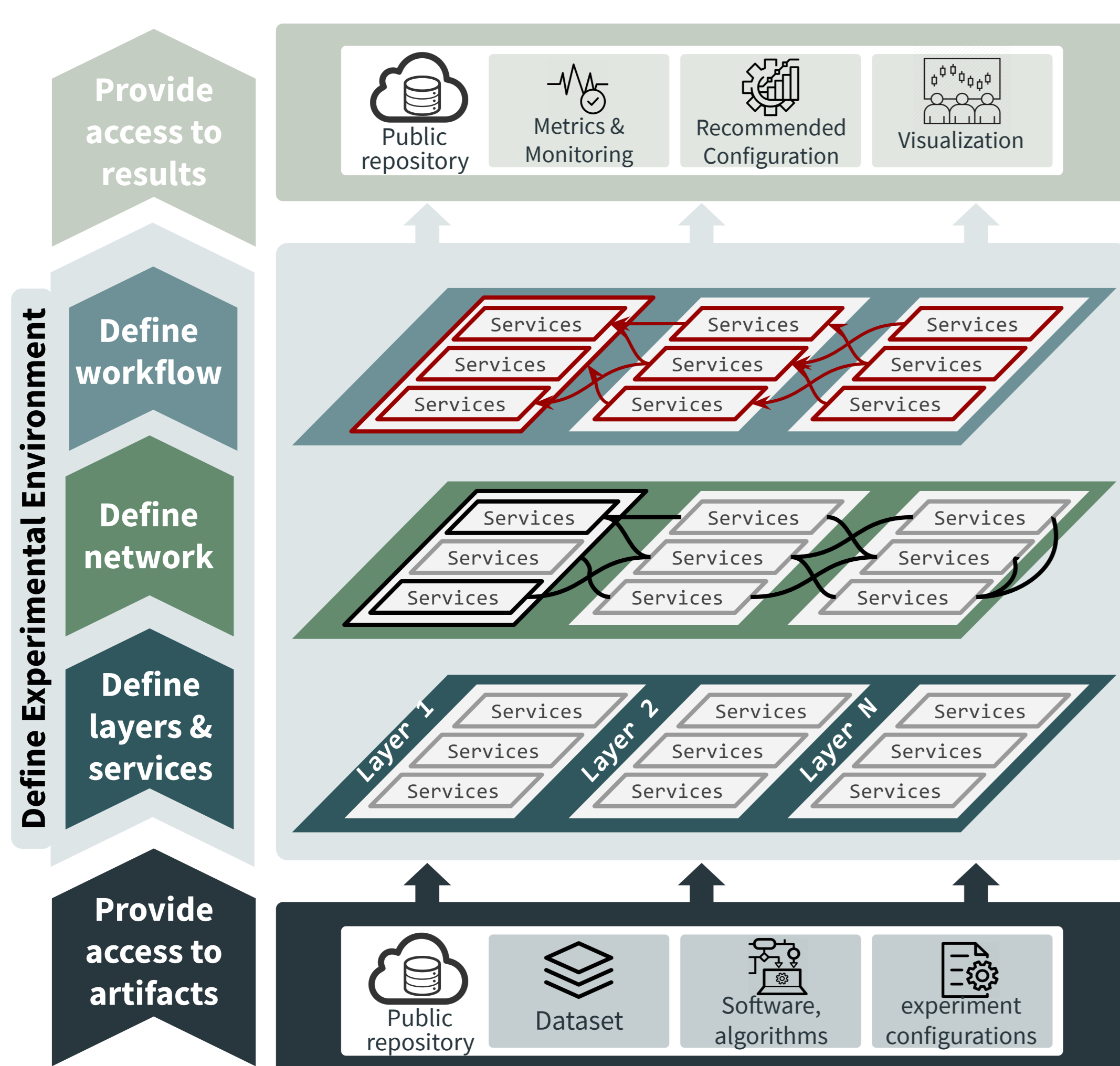
**Patrick Valduriez**

University of Montpellier  
Inria, CNRS, LIRMM  
Montpellier, France

## Introduction

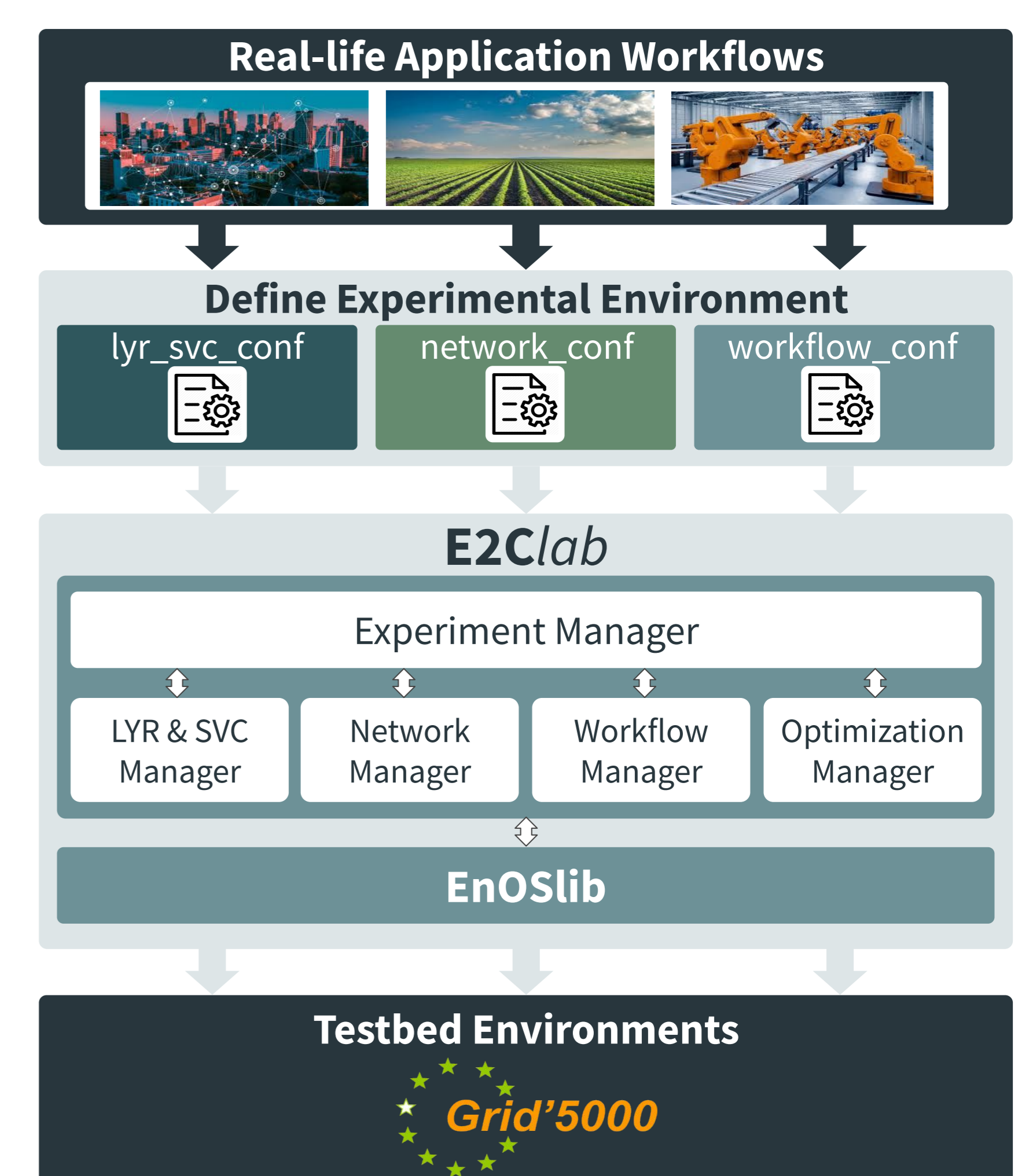


## Our Contribution

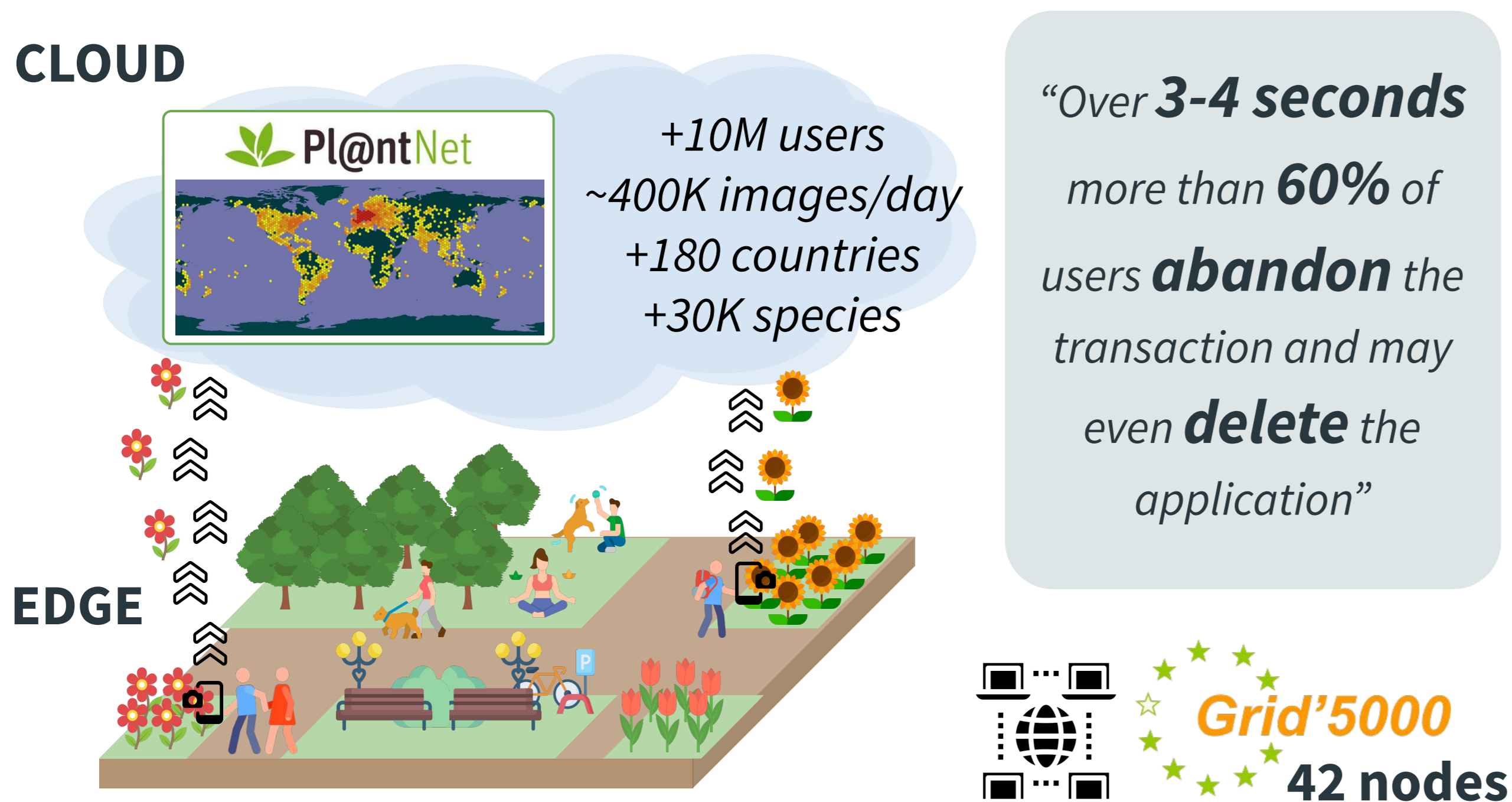


## Methodology

- ★ **Reproducible Experiments**  
Repeatability, Replicability & Reproducibility
- ★ **Mapping**  
Application parts & physical testbed
- ★ **Variation & Scaling**  
Experiment variation and transparent scaling
- ★ **Network Emulation**  
Edge-to-Cloud communication constraints
- ★ **Application Optimization**  
Parameter search of application and infrastructure configurations



## Validation with a Large-scale Real-life Application: Pl@ntNet

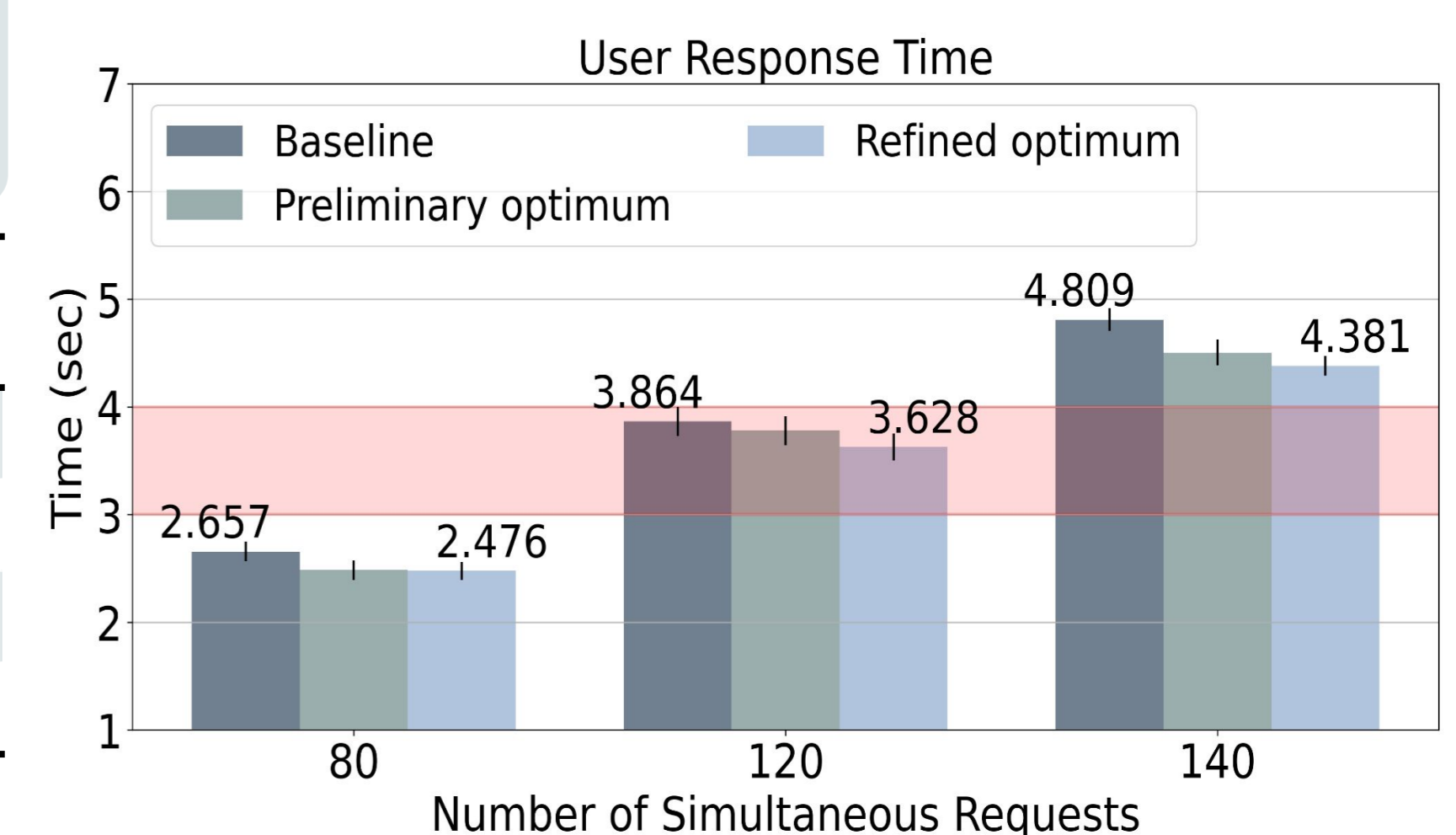


What is the software configuration that minimizes the user response time?

Find (http, download, simsearch, extract), in order to Minimize UserResponseTime  
Subject to  $20 \leq (\text{http, download, simsearch}) \leq 60$ , Pool Size.  $3 \leq (\text{extract}) \leq 9$ , Pool Size.

Thread pool	baseline	preliminary optimum	refined optimum
HTTP	40	54	54
Download	40	54	54
Extract	7	7	6
Simsearch	40	53	53
User resp. time (sec)	2.65	2.48	2.47

How does the number of simultaneous users accessing the application impact on the user response time?



## Takeaways

- Our methodology has proved useful for **understanding** and **improving** the **performance** of a real life application used at very large-scale.
- The configuration found by E2Clab can **process 35% more** requests and presents a **smaller user response time** compared to the baseline.

## Perspectives

- E2Clab enables the Computing Continuum vision by allowing **reproducible** experimental **research** on **large-scale testbeds**.
- E2Clab supports the complete experimental cycle across the Computing Continuum: **deployment, analysis, optimization**.