



HAL
open science

HCV Cure and Cannabis Abstinence Facilitate Tobacco Smoking Quit Attempts in HIV-HCV Co-Infected Patients (ANRS CO13 HEPAVIH Cohort Study)

Tangui Barré, Patrick Mercie, Fabienne Marcellin, Laure Esterle, Claudine Duvivier, Elina Teicher, Morgane Bureau, Julie Chas, Dominique Salmon-Ceron, Philippe Sogni, et al.

► **To cite this version:**

Tangui Barré, Patrick Mercie, Fabienne Marcellin, Laure Esterle, Claudine Duvivier, et al.. HCV Cure and Cannabis Abstinence Facilitate Tobacco Smoking Quit Attempts in HIV-HCV Co-Infected Patients (ANRS CO13 HEPAVIH Cohort Study). *AIDS and Behavior*, 2021, 25, pp.4141-4153. 10.1007/s10461-021-03277-x . hal-03268540

HAL Id: hal-03268540

<https://hal.science/hal-03268540>

Submitted on 13 May 2022

HAL is a multi-disciplinary open access archive for the deposit and dissemination of scientific research documents, whether they are published or not. The documents may come from teaching and research institutions in France or abroad, or from public or private research centers.

L'archive ouverte pluridisciplinaire **HAL**, est destinée au dépôt et à la diffusion de documents scientifiques de niveau recherche, publiés ou non, émanant des établissements d'enseignement et de recherche français ou étrangers, des laboratoires publics ou privés.

HCV cure and cannabis abstinence facilitate tobacco smoking quit attempts in HIV-HCV co-infected patients (ANRS CO13 HEPAVIH cohort study)

Tangui Barré^{1, 2}, Patrick Mercié³, Fabienne Marcellin¹, Laure Esterle⁴, Claudine Duvivier^{5, 6, 7, 8}, Elina Teicher^{9, 10, 11}, Morgane Bureau¹, Julie Chas¹², Dominique Salmon-Céron^{13, 14}, Philippe Sogni^{14, 15, 16}, Maria Patrizia Carrieri¹, Linda Wittkop^{4, 17}, Camelia Protopopescu¹, ANRS CO13 HEPAVIH Study Group

¹ Aix Marseille Univ, INSERM, IRD, SESSTIM, Sciences Économiques & Sociales de la Santé & Traitement de l'Information Médicale, Marseille, France

² ORS PACA, Observatoire régional de la santé Provence-Alpes-Côte d'Azur, Marseille, France

³ Centre Hospitalier Universitaire (CHU) de Bordeaux, Pôle Médecine Interne, Service de Médecine Interne et Immunologie Clinique, Bordeaux Population Health Research Center UMR 1219, CIC-EC 1401 Université de Bordeaux, France

⁴ Université de Bordeaux, ISPED, Inserm, Bordeaux Population Health Research Center, Team MORPH3EUS, UMR 1219, CIC-EC 1401, Bordeaux, France

⁵ Service de Maladies Infectieuses et Tropicales, Centre d'Infectiologie Necker-Pasteur, APHP-Hôpital Necker-Enfants Malades, Paris, France

⁶ IHU Imagine, Paris, France

⁷ Institut Cochin–CNRS 8104–INSERM U1016–RIL Team: Retrovirus, Infection and Latency, Université de Paris, Paris, France

⁸ Centre Médical de l'Institut Pasteur, Institut Pasteur, Paris, France

⁹ Centre Hépato-Biliaire, AP-HP Hôpital Paul-Brousse, Villejuif, France

¹⁰ DHU Hepatinov, Villejuif, France

¹¹ Service de Médecine Interne, AP-HP Hôpital Bicêtre, Le Kremlin-Bicêtre, France

¹² Service Maladies Infectieuses et Tropicales, Assistance Publique des Hôpitaux de Paris, Hôpital Tenon, Paris, France

¹³ Service Maladies Infectieuses et Tropicales, AP-HP, Hôpital Cochin, Paris, France

¹⁴ Université Paris Descartes, Paris, France

¹⁵ INSERM U1223, Institut Pasteur, Paris, France

¹⁶ Hôpital Cochin, Paris, France

¹⁷ Service d'information Médicale, CHU de Bordeaux, Pôle de santé publique, Bordeaux, France

Running head: HCV cure and tobacco smoking cessation in HIV-HCV patients

Declarations:

Funding: This study was sponsored and funded by the French National Agency for Research on Aids and Viral Hepatitis (ANRS).

Conflicts of interest/Competing interests: the authors have no conflicts of interest to declare that are relevant to the content of this article.

Ethics approval: The study was designed and implemented in accordance with the Declaration of Helsinki, and the protocol was approved by the ethics Committee of the Cochin University Hospital in Paris.

Consent to participate: all participants provided written informed consent.

Consent for publication: not applicable.

Availability of data and material: no data are available.

Code availability: not applicable.

Authors' contributions:

Tangui Barré: study conception, statistical analyses, original draft writing and editing.

Patrick Mercié: data collection and draft reviewing and editing.

Fabienne Marcellin: study conception and draft reviewing and editing.

Laure Esterle: data collection and draft reviewing and editing.

Claudine Duvivier: data collection and draft reviewing and editing.

Elina Teicher: data collection and draft reviewing and editing.

Morgane Bureau: draft reviewing and editing.

Julie Chas: data collection and draft reviewing and editing.

Dominique Salmon-Céron: data collection and draft reviewing and editing.

Philippe Sogni: data collection and draft reviewing and editing.

Maria Patrizia Carrieri: study conception and draft reviewing and editing.

Linda Wittkop: data collection, methodological support and draft reviewing and editing.

Camelia Protopopescu: study conception, statistical analyses and draft reviewing and editing.

Corresponding author:

Fabienne MARCELLIN

UMR 1252 SESSTIM

Aix-Marseille Univ

Faculté de Médecine

3e étage - Aile Bleue

27, boulevard Jean Moulin

13385 MARSEILLE cedex 5 - FRANCE

Email: fabienne.marcellin@inserm.fr

Tel: +33 4 13 73 22 79

Acknowledgements

This study was sponsored and funded by the French National Agency for Research on Aids and Viral Hepatitis (ANRS). The authors thank all the members of the ANRS-CO-13-HEPAVIH study group. Special thanks to all the physicians and nurses involved in the follow-up of the cohort and all patients who took part in this study. Finally, we thank Jude Sweeney for the English revision and editing of our manuscript.

The ANRS CO13 HEPAVIH Study Group:

Scientific Committee: D. Salmon (co-Principal investigator), L. Wittkop (co-Principal Investigator & Methodologist), P. Sogni (co-Principal Investigator), L. Esterle (project manager), P. Trimoulet, J. Izopet, L. Serfaty, V. Paradis, B. Spire, P. Carrieri, M.A. Valantin, G. Pialoux, J. Chas, I. Poizot-Martin, K. Barange, A. Naqvi, E. Rosenthal, A. Bicart-See, O. Bouchaud, A. Gervais, C. Lascoux-Combe, C. Goujard, K. Lacombe, C. Duvivier, , D. Neau,

P. Morlat, F. Bani-Sadr, L. Meyer, F. Boufassa, , B. Autran, A.M. Roque, C. Solas, H. Fontaine, D. Costagliola, L. Piroth, A. Simon, D. Zucman, F. Boué, P. Mialhes, E. Billaud, H. Aumaître, D. Rey, G. Peytavin, V. Petrov-Sanchez, A. Levier.

Clinical Centers (ward / participating physicians): APHP, Hôpitaux Universitaires Paris Centre, Paris (Médecine Interne et Maladies Infectieuses : D. Salmon, R. Usubillaga; Hépatogastro-entérologie : P. Sogni ; Anatomopathologie : B. Terris ; Virologie :P. Tremeaux) ; APHP Pitié-Salpêtrière, Paris (Maladies Infectieuses et Tropicales : C. Katlama, M.A. Valantin, H. Stitou ; Médecine Interne : A. Simon, P. Cacoub, S. Nafissa ; Hépatogastro-entérologie : Y. Benhamou ; Anatomopathologie : F. Charlotte ; Virologie : S. Fourati) ; APHM Sainte-Marguerite, Marseille (Service d'Immuno-Hématologie Clinique : I. Poizot-Martin, O. Zaegel, H. Laroche ; Virologie : C. Tamalet) ; APHP Tenon, Paris (Maladies Infectieuses et Tropicales : G. Pialoux, J. Chas; Anatomopathologie : P. Callard, F. Bendjaballah ; Virologie : C. Amiel, C. Le Pendeven) ; CHU Purpan, Toulouse (Maladies Infectieuses et Tropicales : B. Marchou ; Médecine interne : L. Alric ; Hépatogastro-entérologie : K. Barange, S. Metivier ; Anatomopathologie : J. Selves ; Virologie : F. Larroquette) ; CHU Archet, Nice (Médecine Interne : E. Rosenthal ; Infectiologie : A. Naqvi, V. Rio ; Anatomopathologie : J. Haudebourg, M.C. Saint-Paul ; Virologie : A. De Monte, V. Giordanengo, C. Partouche) ; APHP Avicenne, Bobigny (Médecine Interne – Unité VIH : O. Bouchaud ; Anatomopathologie : A. Martin, M. Ziol ; Virologie : Y. Baazia, V. Iwaka-Bande, A. Gerber) ; Hôpital Joseph Ducuing, Toulouse (Médecine Interne : M. Uzan, A. Bicart-See, D. Garipuy, M.J. Ferro-Collados ; Anatomopathologie : J. Selves ; Virologie : F. Nicot) ; APHP Bichat – Claude-Bernard, Paris (Maladies Infectieuses : A. Gervais, Y. Yazdanpanah; Anatomopathologie : H. Adle-Biassette ; Virologie : G. Alexandre, Pharmacologie : G. Peytavin) ; APHP Saint-Louis, Paris (Maladies infectieuses : C. Lascoux-Combe, J.M. Molina; Anatomopathologie : P. Bertheau; Virologie :M.L. Chaix, C. Delaugerre, S. Maylin) ; APHP Saint-Antoine (Maladies Infectieuses et

Tropicales : K. Lacombe, J. Bottero; J. Krause, P.M. Girard, Anatomopathologie : D. Wendum, P. Cervera, J. Adam ; Virologie : C. Viala) ; APHP, Hôpitaux Paris Sud, Bicêtre, Paris (Maladies Infectieuses et Tropicales : D. Vittecoq ; Médecine Interne : C. Goujard, Y. Quertainmont, E. Teicher; Virologie : C. Pallier) ; APHP Necker, Paris (Maladies Infectieuses et Tropicales : O. Lortholary, C. Duvivier, C. Rouzaud, J. Lourenco, F. Touam, C. Louisin : Virologie : V. Avettand-Fenoel, E. Gardiennet, A. Mélard) ; CHU Bordeaux Hôpital Pellegrin, Bordeaux (Maladies Infectieuses et Tropicales : D. Neau, A. Ochoa, E. Blanchard, S. Castet-Lafarie, C. Cazanave, D. Malvy, M. Dupon, H. Dutronc, F. Dauchy, L. Lacaze-Buzy, A. Desclaux; Anatomopathologie : P. Bioulac-Sage ; Virologie : P. Trimoulet, S. Reigadas) ; CHU Bordeaux Hôpital Saint-André, Bordeaux (Médecine Interne et Maladies Infectieuses : P. Morlat, D. Lacoste, F. Bonnet, N. Bernard, M. Hessamfar, J. F. Paccalin, C. Martell, M. C. Pertusa, M. Vandenhende, P. Mercié, D. Malvy, T. Pistone, M.C. Receveur, M. Méchain, P. Duffau, C Rivoisy, I. Faure, S. Caldato ; Anatomopathologie : P. Bioulac-Sage ; Virologie : P. Trimoulet, S. Reigadas, P. Bellecave, C. Tumiotto) ; CHU Bordeaux Hôpital du Haut-Levêque, Bordeaux (Médecine Interne : J.L. Pellegrin, J.F. Viillard, E. Lazzaro, C. Greib ; Anatomopathologie : P. Bioulac-Sage ; Virologie : P. Trimoulet, S. Reigadas) ; Hôpital FOCH, Suresnes (Médecine Interne : D. Zucman, C. Majerholc ; Virologie : M. Brollo, E. Farfour) ; APHP Antoine Béclère, Clamart (Médecine Interne : F. Boué, J. Polo Devoto, I. Kansau, V. Chambrin, C. Pignon, L. Berroukeche, R. Fior, V. Martinez, S. Abgrall, M. Favier ; Virologie : C. Deback) ; CHU Henri Mondor, Créteil (Immunologie Clinique : Y. Lévy, S. Dominguez, J.D. Lelièvre, A.S. Lascaux, G. Melica) ; CHU Nantes Hôpital Hôtel Dieu, Nantes (Maladies Infectieuses et Tropicales : E. Billaud, F. Raffi, C. Allavena , V. Reliquet, D. Boutoille, C. Biron; M. Lefebvre, N. Hall, S. Bouchez ; Virologie : A. Rodallec, L. Le Guen, C. Hemon) ; Hôpital de la Croix Rouse, Lyon (Maladies Infectieuses et Tropicales : P. Miaillhes, D. Peyramond, C. Chidiac, F. Ader, F. Biron, A. Boibieux, L. Cotte, T. Ferry, T. Perpoint, J. Koffi, F. Zoulim, F. Bailly, P.

Lack, M. Maynard, S. Radenne, M. Amiri, F Valour ; Hépatogastro-entérologie : J. Koffi, F. Zoulim, F. Bailly, P. Lack, M. Maynard, S. Radenne, C. Augustin-Normand ; Virologie : C. Scholtes, T.T. Le-Thi) ; CHU Dijon, Dijon (Département d'infectiologie : L. Piroth, P. Chavanet M. Duong Van Huyen, M. Buisson, A. Waldner-Combernoux, S. Mahy, A. Salmon Rousseau, C. Martins) ; CH Perpignan, Perpignan (Maladies infectieuses et tropicales : H. Aumaître, Virologie : S. Galim) ; CHU Robert Debré, Reims (Médecine interne, maladies infectieuses et immunologie clinique : F. Bani-Sadr, D. Lambert, Y Nguyen, J.L. Berger, M. Hentzien, Virologie : V. Brodard) ; CHRU Strasbourg (Le Trait d'Union : D Rey, M Partisani, ML Batard, C Cheneau, M Priester, C Bernard-Henry, E de Mautort, P.Fischer, Virologie : P Gantner et S Fafi-Kremer)

Data collection: F. Roustant, P. Platterier, I. Kmiec, L. Traore, S. Lepuil, S. Parlier, V. Sicart-Payssan, E. Bedel, S. Anriamiandrisoa, C. Pomes, F. Touam, C. Louisin, M. Mole, C. Bolliot, P Catalan, M. Mebarki, A. Adda-Lievin, P. Thilbaut, Y. Ousidhoum, F.Z. Makhoukhi, O. Braik, R. Bayoud, C. Gatey, M.P. Pietri, V. Le Baut, R. Ben Rayana, D. Bornarel, C. Chesnel, D. Beniken, M. Pauchard, S. Akel, S. Caldato, C. Lions, A. Ivanova, A-S. Ritleg, C. Debreux, L. Chalal, J.Zelie, H. Hue, A. Soria, M. Cavellec, S. Breau, A. Joulie, P. Fisher, S. Gohier, D. Croisier-Bertin, S. Ogoudjobi, C. Brochier, V. Thoirain-Galvan, M. Le Cam.

Management, statistical analyses: P. Carrieri, M. Chalouni, V. Conte, L. Dequae-Merchadou, M. Desvallees, L. Esterle, C. Gilbert, S. Gillet, R. Knight, T. Lemboub, F. Marcellin, L. Michel, M. Mora, C. Protopopescu, P. Roux, B. Spire, S. Tezkratt, T. Barré, T. Rojas Rojas, M. Baudoin, M. Santos V. Di Beo, M.Nishimwe, , L Wittkop.

1 **HCV cure and cannabis abstinence facilitate tobacco smoking quit**
2
3 **attempts in HIV-HCV co-infected patients (ANRS CO13 HEPAVIH cohort study)**
4
5
6
7

8
9 **Abstract**
10

11 **Background and aims.** In Western countries, tobacco smoking is highly
12 prevalent among patients co-infected with HIV and hepatitis C virus (HCV). In the era
13 of antiretrovirals and HCV cure, smoking-related health damages contribute greatly to
14 morbidity and mortality in HIV-HCV co-infected patients. We used longitudinal data
15 from the ANRS CO13 HEPAVIH cohort to identify the correlates of tobacco smoking
16 quit attempts (TSQA) in HIV-HCV co-infected patients.
17
18
19
20
21
22
23
24

25 **Methods.** TSQA were modelled using a multivariable discrete-time Cox
26 proportional hazards model in 695 HIV-HCV co-infected tobacco smokers.
27
28
29
30

31 **Results.** HCV cure was associated with a 76% higher chance of TSQA
32 (adjusted hazard ratio [95% confidence interval]: 1.76 [1.06-2.93], p=0.029), and
33 cannabis use with a 37% lower chance (0.63 [0.40-1.00], p=0.049), independently of
34 the mode of HIV transmission, other psychoactive substance use, and body mass
35 index.
36
37
38
39
40
41
42
43

44 **Conclusions.** Patients should be screened for tobacco and cannabis use at
45 HCV treatment initiation and during follow-up. They should also be provided with
46 comprehensive counselling and referral to addiction services. Non-smoking routes of
47 cannabis administration should be promoted for cannabis users who wish to quit
48 smoking tobacco.
49
50
51
52
53
54
55
56

57 **Key words:** cannabis; tobacco; smoking cessation; human immunodeficiency
58 virus; hepatitis C, chronic.
59
60
61
62
63
64
65

Introduction

Tobacco smoking prevalence among people living with HIV (PLWH) is over 50% in high-income Western countries (1). In France, it was estimated at 37.5% in a national representative survey of PLWH conducted in 2011, with variations according to both sex and epidemiological group (from 7.9% among female migrants from Sub-Saharan Africa to 74.3% and 79.9% for past or current male and female injecting drug users (IDU), respectively) (2). More recent hospital-based data (FHDH-ANRS CO4, 2014) showed a tobacco smoking prevalence of 43.2% among French PLWH (3), which is nearly twice that observed in the French general population (4). This high prevalence could be explained by several factors including socioeconomically deprived status, stress, depression, other substance use and poor access to tobacco cessation treatment (5), as well as an overrepresentation of men who have sex with men (MSM) and IDU, two populations with a high prevalence of tobacco smoking, irrespective of HIV status (6,7). Hepatitis C virus (HCV)-infected individuals are also more likely to smoke tobacco. A cohort representative of HCV-infected persons in France highlighted an estimated tobacco smoking prevalence of 62% (8), while in the United States, the estimated prevalence in this population was three times higher than in HCV-uninfected people (9). Similarly, tobacco smoking is very prevalent in HIV-HCV co-infected people (10,11), a population prone to both depression (12) and psychoactive substance use (13,14), two known risk factors of low success rates in smoking cessation in PLWH (15).

Thanks to highly active antiretroviral therapy (ART), the life expectancy of PLWH has dramatically increased in recent decades (16), while AIDS-related mortality has decreased (17). Today, cancer and cardiovascular diseases are two leading causes of death in this population. ART-treated PLWH who smoke tobacco

1
2
3
4
5
6
7
8
9
10
11
12
13
14
15
16
17
18
19
20
21
22
23
24
25
26
27
28
29
30
31
32
33
34
35
36
37
38
39
40
41
42
43
44
45
46
47
48
49
50
51
52
53
54
55
56
57
58
59
60
61
62
63
64
65

may now lose more life-years through smoking than through HIV infection (18).

Similarly, thanks to the scaling up of direct-acting antiviral treatment against HCV, it is expected that the related decrease in mortality in HCV mono-infected patients and HIV-HCV co-infected patients will be partially offset by tobacco-related mortality if nothing is done to reduce associated harms (19,20).

Engagement in HCV treatment has a positive impact on drug use and injection equipment sharing behaviors in IDU (21), but no such association with tobacco use has been found for HIV-HCV co-infected patients (22). Furthermore, data on changes in tobacco smoking behaviors following HCV cure in HIV-HCV co-infected patients are scarce.

Using data from the French National Agency for Research on Aids and Viral Hepatitis (ANRS) CO13 HEPAVIH cohort of HIV-HCV co-infected patients, we aimed to identify potential clinical (including HCV cure) and socio-behavioral correlates of tobacco smoking quit attempts (TSQA).

Materials and methods

Design of the cohort

ANRS CO13 HEPAVIH is an ongoing French national multicenter prospective cohort of HIV-HCV co-infected patients initiated in 2005 (recruitment ended in 2016) which provides a representative sample of the French co-infected population receiving care in hospitals (23). Only patients from the first recruitment phase (2005-2008) were included in the present study population, as the content and timing of the cohort study's socio-behavioral questionnaires were subsequently modified. In the first phase, consecutive patients attending outpatient services in 17 different hospitals were enrolled according to the following selection criteria: aged ≥ 18 years; infected with HIV-1; either chronically co-infected with HCV (as confirmed by an HCV

1 RNA assay) or HCV cured thanks to treatment. These participants had annual clinical
2 follow-up visits (biannual (i.e., six-monthly) for patients with cirrhosis), with additional
3
4 intermediate visits for patients initiating HCV treatment during follow-up.
5
6

7 Clinical data

8
9 Clinical, biological, and histological data were collected using standardized
10 medical forms completed by medical staff at each clinical visit. Collected data
11
12 included CD4-T cell count, plasma HIV RNA level, HIV transmission mode, time
13
14 since HIV and HCV diagnosis, HCV treatment status and information on sustained
15
16 virological response (HCV cure), serum alanine aminotransferase (ALT) and
17
18 aspartate aminotransferase (AST) levels, platelet counts, height and weight.
19
20
21
22
23

24 Socio-behavioral data

25
26 All patients (including cirrhotic patients) completed a self-administered
27
28 questionnaire at enrolment and at each annual visit during the five-year follow-up.
29
30 This questionnaire detailed sociodemographic characteristics (age, sex, living with a
31
32 partner or not, employment status, perceived comfort of housing, educational level),
33
34 psychosocial (depressive symptoms, previous treatment for depression, HIV-related
35
36 self-reported symptoms) and behavioral data (alcohol and coffee consumption, and
37
38 psychoactive substance use).
39
40
41
42
43

44 Tobacco smoking status

45
46 Tobacco smoking status was collected through a face-to-face interview with a
47
48 physician at each clinical visit and categorized as a time-dependent variable with the
49
50 following categories: 'non-smoker', 'former smoker', or 'current smoker'.
51
52
53
54
55
56
57
58
59
60
61
62
63
64
65

Study population

1
2 The present study used data from the five-year follow-up of HIV-HCV co-
3
4 infected patients enrolled in the first phase of HEPAVIH cohort between 2005 and
5
6 2008.
7

8
9 The study population comprised patients who had at least one follow-up visit
10
11 where they both reported being a current smoker and had available data from the
12
13 self-administered questionnaire, and whose smoking status was available for at least
14
15 one subsequent follow-up visit.
16
17

Study period

18
19 For each patient, the study period began at the first clinical visit where the
20
21 patient reported being a current smoker and where a self-administered questionnaire
22
23 was also available (hereafter 'baseline'). The study period ended at the first clinical
24
25 visit where the participant reported being a former smoker (corresponding to a
26
27 TSQA), or the last clinical visit with available tobacco smoking status during the
28
29 follow-up period (hereafter 'end-of-study visit').
30
31
32
33
34
35
36

Outcome

37
38 The study outcome was time to the first TSQA during follow-up, defined as the
39
40 time between baseline and the first transition from 'current smoker' to 'former smoker'
41
42 status. Accordingly, duration was not considered when defining TSQA, and therefore
43
44 TSQA included both temporary and definitive cessation events. As tobacco status
45
46 was recorded annually (biannually for patients with cirrhosis), the study outcome was
47
48 interval-censored.
49
50
51
52
53

Explanatory variables

54
55 All variables except sex, educational level and HIV transmission mode were
56
57 time-dependent.
58
59
60
61
62
63
64
65

1 HCV cure was evaluated at each follow-up visit. Patients who had a 12-week
2 sustained virological response at a given clinical follow-up visit, and those who
3
4 cleared HCV before enrolment in the cohort, were classified as cured.
5
6

7
8 Given the potential therapeutic use of cannabis in the course of HIV and HCV
9
10 infections (24–26) and the fact that its primary route of administration (i.e., smoking)
11
12 is the same as that for tobacco (27), cannabis use was tested separately from other
13
14 psychoactive substances (grouped together in the analysis) as a potential correlate of
15
16 TSQA. The frequency of recent cannabis use - understood here as during the
17
18 previous four weeks - was categorized as 'never', 'sometimes', 'regular' or 'daily', with
19
20 two variables tested as follows: never *versus* sometimes and more frequently (i.e., a
21
22 dichotomous variable), and never / sometimes / regular or daily (i.e., a three-level
23
24 variable). HIV transmission mode was categorized as 'IDU', 'MSM' and 'other'.
25
26 Recent use (i.e., in the previous four weeks) of psychoactive substances other than
27
28 cannabis (cocaine, heroin, crack, ecstasy, street buprenorphine, amphetamines and
29
30 LSD/other hallucinogens) was coded as 'yes' or 'no'.
31
32
33
34
35
36

37 Plasma HIV viral load was categorized as detectable *versus* undetectable,
38
39 according to the limit of detection of the laboratory test used in each of the
40
41 participating hospitals. Liver fibrosis was assessed using the FIB-4 index, which is a
42
43 non-invasive marker of fibrosis calculated using age, AST level, ALT level, and
44
45 platelet count with the following formula: $\text{age [years]} * \text{AST [IU/L]} / (\text{platelet count}$
46
47 $[\text{10}^9/\text{L}] * (\text{ALT [IU/L]})^{1/2}$. The presence of advanced fibrosis was defined as a FIB-4
48
49 index >3.25 (28). Body mass index (BMI) was calculated as the weight [kg] divided
50
51
52 by height squared [m²].
53
54
55
56

57 Employment status was categorized as 'unemployed' *versus* all other
58
59 situations (employed, retired, housewife/househusband). Perceived comfort of
60
61
62
63
64
65

1 housing was derived from the question 'Would you say that your current housing
2 is...?:' with 4 possible answers subsequently categorized as 'not comfortable' (which
3 included the answers 'not at all comfortable' and 'barely comfortable') *versus*
4 'comfortable' (which included 'quite' and 'very comfortable'). This variable was
5 designed and used as a proxy for standard of living. Educational level was
6 categorized as having a high-school certificate or not. The presence of depressive
7 symptoms was assessed using the CES-D scale (with cut-offs of 17 and 23 for men
8 and women, respectively) (29,30). The total number of HIV-related self-reported
9 symptoms in the previous four weeks was based on the 39-item ANRS AC24 self-
10 reported symptoms checklist (31), itself derived from the AIDS Clinical Trials Group
11 (ACTG) Symptom Distress Module (32). Alcohol consumption was assessed using
12 the Alcohol Use Disorders Identification Test-Concise (AUDIT-C) questionnaire (33),
13 and categorized as hazardous (score ≥ 4 and ≥ 3 for men and women, respectively)
14 or not. Coffee intake was categorized as daily (≥ 1 cup per day) *versus* non-daily.
15
16
17
18
19
20
21
22
23
24
25
26
27
28
29
30
31
32
33

34 [Statistical analyses](#)

35
36 We described the study population's main characteristics at the end-of-study
37 visit, and the number of events occurring during the study period for each category of
38 each explanatory variable.
39
40
41
42
43

44 For HEPAVIH participants (first phase of enrolment) who reported at least
45 once during their follow-up that they currently smoked tobacco, we compared age
46 and gender between included individuals (i.e., study population) and those excluded,
47 using Mann-Whitney and chi-squared tests.
48
49
50
51
52
53

54 Associations between clinical (including HCV cure) and socio-behavioral
55 characteristics and TSQA were assessed using a multivariable discrete-time
56 proportional hazards Cox model with the exact partial-likelihood method to deal with
57
58
59
60
61
62
63
64
65

1 tied failures. This type of model is recommended for survival analyses with interval-
2 censored data (34) - as was the case in the present study - where follow-up data are
3
4 collected on an annual or biannual basis. Missing values for explanatory time-
5
6 dependent variables were imputed according to the last observation carried forward
7
8 (LOCF) method. For each variable, this consisted in imputing each missing value with
9
10 the last observed available value of the individual, if such a value existed. In order to
11
12 minimize the risk of reverse causality, values at the $n-1$ visit for all time-dependent
13
14 variables were used in the model to explain tobacco status at the following n visit.
15
16
17 Depressive symptoms and a history of treatment for depression were tested
18
19 alternatively in the multivariable model.
20
21
22

23
24 Explanatory variables with a p-value < 0.20 (Wald test) in the univariable
25
26 analyses were tested in the multivariable analysis. Variables were then selected
27
28 using a stepwise backward procedure, based on the Wald test. Only those with a p-
29
30 value < 0.05 were retained in the final multivariable model.
31
32
33

34
35 The proportionality of hazards assumption was tested for all explanatory
36
37 variables in the final multivariable Cox model using graphical examination of Kaplan-
38
39 Meier estimates and statistical testing based on rescaled Schoenfeld residuals. We
40
41 hypothesized that loss-to-follow-up (due to missed clinical visits, cohort attrition, and
42
43 death) was non-informative (i.e., patients were lost to follow-up due to reasons
44
45 unrelated to the study outcome, and therefore Cox model results were unbiased).
46
47
48

49
50 Stata/SE 14.2 software (StataCorp LP, College Station, TX) was used for all
51
52 analyses.
53
54
55
56
57
58
59
60
61
62
63
64
65

Results

Characteristics of the study population

The study population comprised 695 participants (Figure 1), representing 59.1% of the individuals enrolled in the first phase of the HEPAVIH cohort, and 77.0% of the individuals who declared at least once during the follow-up that they currently smoked tobacco. Mann-Whitney and chi-squared tests revealed that that women accounted for a greater proportion of the participants, and that participants were slightly older than persons not included (data not shown). During the study period- which represented 2485 person-years - 88 TSQA were observed, leading to an incidence rate of 3.5 TSQA/100 person-years (95% confidence interval (CI) [2.87-4.36]). The median follow-up time of study participants was 48 months (interquartile range (IQR) [24-60]).

The study population's characteristics at the end-of-study visit are provided in Table 1. Patients were mainly male (70.5%) and HIV-infected through drug injection (72.5%). Median age was 47.0 years (IQR [44.0-50.0]). Median time since HIV and HCV diagnosis was 21 (IQR [16-24]) and 13 years (IQR [10-17]), respectively. At baseline, 10.7% were HCV cured, while at the end-of-study visit, 19.6% were HCV cured.

Factors associated with TSQA

In univariable analyses (Table 1), the following explanatory variables were associated with TSQA: HCV cure, cannabis use (dichotomous variable (see above)), age, BMI, HIV transmission mode, and recent substance use.

The following variables were retained in the final multivariable model: HCV cure, BMI, HIV transmission mode, cannabis use and other illegal substance use. The multivariable analysis confirmed the positive associations between HCV cure

1 and TSQA (adjusted hazard ratio (HR) [95% CI]: 1.76 [1.06-2.93], p=0.029) (Figure
2), between a higher BMI and TSQA (1.06 [1.00-1.13], p=0.040), and between MSM
3 transmission mode and TSQA (2.60 [1.44-4.70], p=0.002, *versus* IDU) (Table 1). By
4 contrast, cannabis use (0.63 [0.40-1.00], p=0.049) (Figure 3) and recent illegal
5 psychoactive substance use (0.35 [0.13-0.99], p=0.048) were independently
6 negatively associated with TSQA. Older age was no longer significantly associated
7 with the outcome in the multivariable analysis. The proportionality of hazards
8 assumption was verified for all explanatory variables in the final multivariable Cox
9 model (see Figure 2 for HCV cure status and Figure 3 for cannabis use).
10
11
12
13
14
15
16
17
18
19
20
21
22

23 Discussion

25 In this large cohort of HIV-HCV co-infected people in France, HCV cure was
26 associated with more than a 75% higher chance of TSQA. Recent cannabis use was
27 associated with a 37% lower chance of TSQA. Other illegal psychoactive substance
28 use was also identified as a main barrier to TSQA.
29
30
31
32
33
34

35 To our knowledge, the association we found between HCV cure and TSQA
36 has not been previously reported. However, it does reflect data from a large cohort of
37 HCV-infected veterans in the USA, where those who were treated were less likely to
38 be current smokers than the control group (35). Moreover, our results for TSQA
39 reflect observations in HCV-infected IDU, for whom treatment appeared to have a
40 positive impact on injecting behaviors, injection equipment sharing behaviors (21),
41 and hazardous alcohol use (36).
42
43
44
45
46
47
48
49
50
51
52

53 From a wider perspective, TSQA may be a manifestation of the psychosocial
54 benefits of HCV cure. More specifically, it has been shown that HCV cure has a
55 short-term positive impact on health-related quality of life, with noticeable
56 improvements in anxiety/depression (37). One could expect therefore that the
57
58
59
60
61
62
63
64
65

1 disappearance of HCV-related stress (38) alleviates the need to smoke in order to
2 cope with stress (39,40) and therefore fosters TSQA. In people with a history of
3
4 substance use, HCV treatment and/or HCV cure has been associated with increased
5
6 self-care (41,42), ability and motivation to plan for the future, self-confidence and
7
8 empowerment (42,43). These benefits are likely to foster TSQA. As smoking-related
9
10 deaths become more common than liver-related deaths in HIV-HCV co-infected
11
12 patients - thanks to HCV treatment scale-up (20) - HCV cure may participate in
13
14 raising awareness of tobacco-related harms and promote TSQA. HCV cure may also
15
16 be a proxy of social support (44), which fosters TSQA (45,46). Furthermore, it may
17
18 also reflect better engagement in care (47–49), implying more frequent exposure to
19
20 and/or better accepted short interventions or counselling about tobacco use (50,51).
21
22 All these results from the literature highlight the opportunity that medical visits -
23
24 whether during or after HCV treatment - represent for screening, interventions and
25
26 referral to a specialist smoking cessation service (50,52–54).
27
28
29
30
31
32

33
34 To our knowledge, this is also the first longitudinal study to show an
35
36 association between cannabis use and TSQA in PLWH, in HCV mono-infected
37
38 persons, and in HIV-HCV co-infected persons. Our results reflect those in other
39
40 studies on PLWH which found associations between cannabis use and tobacco
41
42 smoking status (55,56). A lower likelihood of smoking cessation in cannabis users
43
44 than in non-users has also been documented in the general population, both for non-
45
46 treatment seeking (57) and treatment-seeking smokers (58). Larger studies are
47
48 needed to confirm our primary result of the association between cannabis use and
49
50 TSQA. However, given the negative impact of tobacco smoking on survival in HIV-
51
52 HCV co-infected patients (26,59), we strongly recommend that this result be taken
53
54 into account immediately in clinical management and public health strategies.
55
56
57
58
59
60
61
62
63
64
65

1
2
3
4
5
6
7
8
9
10
11
12
13
14
15
16
17
18
19
20
21
22
23
24
25
26
27
28
29
30
31
32
33
34
35
36
37
38
39
40
41
42
43
44
45
46
47
48
49
50
51
52
53
54
55
56
57
58
59
60
61
62
63
64
65

Mechanisms fostering co-occurring tobacco and cannabis use have been identified, as have the potential benefits of dual abstinence (60). One possible major reason for cannabis use being a barrier to TSQA is that smoking is the primary route of cannabis administration. This is especially true in Europe (27). Other possible mechanisms include exposure to smoking cues (60) (which are maintained when tobacco is substituted with cannabis (61)), the putative potentiation of nicotine dependence by cannabis (62,63), and a desire to attenuate nicotine's undesirable effects or withdrawal symptoms (64). There is also evidence that detrimental neurocognitive effects in long-term cannabis users (65) may foster persistent tobacco use (66). Interestingly, we did not find any dose-dependent relationship between the frequency of cannabis use and tobacco TSQA.

Our results add evidence to the need to manage addictive behaviors using a holistic approach. It has been shown that having multiple concurrent substance use disorders is associated with a greater likelihood of substance use disorder persistence at a distance of three years (compared with having only one such disorder), and also with nicotine dependence (67). The positive effects of smoking cessation on substance use outcomes have previously been highlighted (68). However, substance substitution mechanisms have also been reported (69,70). Moreover, as some genetic vulnerabilities to addictions are related to pathways which are common to different substances (e.g., the reward pathway) (71), therapeutic programs targeting multiple substance use are likely to bring greater benefits than those only focusing on one substance. However, these programs would require treatment providers to undergo more in-depth training in order to be able to provide addiction care for a wide range of substances rather than just one. They would also

1
2
3
4
5
6
7
8
9
10
11
12
13
14
15
16
17
18
19
20
21
22
23
24
25
26
27
28
29
30
31
32
33
34
35
36
37
38
39
40
41
42
43
44
45
46
47
48
49
50
51
52
53
54
55
56
57
58
59
60
61
62
63
64
65

require patients who are willing and motivated to simultaneously reduce or stop co-use.

It is increasingly recognized that cannabis- and cannabinoid-based medicines provide relief for PLHW and HCV-infected persons (24–26). In the general population, cannabis - whether used for recreational or medical purposes - is a barrier to tobacco cessation (58). Accordingly, improving access to medical cannabis and cannabinoids which are tobacco-free and which are not administered through smoking (72,73), would appear to be an urgent public health issue, especially for PLWH and HCV-infected people. Our findings may also encourage research on ‘cannabis substitution’ as a therapeutic support mechanism for HIV-infected, HCV-infected and HIV-HCV co-infected patients who attempt to stop smoking tobacco. To date, nabiximols have shown mixed results as a cannabinoid agonist treatment (74–76).

More generally, substance use, including alcohol, has been identified as a barrier to smoking cessation in HIV-infected populations (77). Unsurprisingly therefore, in our study, recent use of psychoactive substances other than cannabis was associated with a 65% lower chance of TSQA. This reflects Encrenaz et al.’s finding of a lower TSQA incidence in IDU-infected PLWH (78). This finding may be partly due to greater baseline cigarette use and/or nicotine dependence (6), although we did not have these data in the present study. Furthermore, in line with Encrenaz et al.’s findings, the positive relationship we found between MSM HIV transmission mode and TSQA is likely due to the fact that our study population mainly comprised participants infected by HIV through IDU.

The positive association we found between BMI and TSQA is counter-intuitive. As weight gain is a widely-known consequence of tobacco cessation, it may hinder

1 motivation or confidence to stop tobacco smoking (79,80). Consequently, one would
2 expect people with higher BMI to be less likely to try to quit. However, it is also
3 possible that a higher BMI is a proxy for previous TSQA (81).
4
5
6

7 Depression was not a barrier to TSQA in our study. This reflects Benard *et al.*
8 who found no association between depressive symptoms and motivation to stop
9 smoking in a French cohort of HIV-infected people (55). In the general population,
10 depression appeared to be a barrier to quitting (82). This absence of any association
11 may be due to collinearity with cannabis use. Indeed, cannabis is frequently used by
12 PLWH to cope with depression (83), and depression and cannabis use have been
13 associated with each other in the general population (84), as well as in PLWH (85).
14 Unlike Regan *et al.*, who found that patients with a detectable HIV viral load were
15 significantly less likely to quit smoking than their virologically suppressed
16 counterparts (86), we did not find any association between HIV plasma load and our
17 study outcome.
18
19
20
21
22
23
24
25
26
27
28
29
30
31
32
33

34 The large sample size and the relatively long follow-up duration are the main
35 strengths of our study. However, several limitations must be acknowledged. First,
36 unfortunately, our study sample selection did not lead to a study sample
37 representative of the smokers in the original cohort (which is itself representative of
38 HIV-HCV co-infected people engaged in care in French hospitals), and duplication of
39 our results would be needed to ensure their generalizability. Second, due to the
40 interval-censored nature of the smoking status data collected during follow-up in the
41 cohort, we may have missed short-lived TSQA which occurred between two annual
42 or biannual (for people with cirrhosis) follow-up visits. Third, the LOCF method used
43 to account for missing data on explanatory variables is grounded in the assumption of
44 stability of these variables over time. As variables were mainly socio-behavioral, we
45
46
47
48
49
50
51
52
53
54
55
56
57
58
59
60
61
62
63
64
65

1 expect this assumption to be true, although we cannot confirm it. Fourth, we were not
2 able to characterize the duration of tobacco use or abstinence, and did not have
3 information on whether TSQA were self-helped or assisted. Finally, many patients did
4 not provide information on the number of cigarettes they smoked, and therefore data
5 on this variable could not be used here. Moreover, we had no information about the
6 factors related to people's motivation to quit smoking. However, as TSQA may be
7 considered part of the process leading to quitting (81), identifying modifiable factors
8 which facilitate them is of great clinical importance. Along with modifiable factors,
9 future research should explore the possible environmental factors (e.g., the presence
10 of smokers in the household) which may facilitate or impede TSQA.
11
12
13
14
15
16
17
18
19
20
21
22
23

24 To conclude, HCV cure was associated with a higher chance of tobacco
25 smoking quit attempts in the present study of HIV-HCV co-infected patients, a
26 population characterized by a high prevalence of both tobacco smoking and cannabis
27 use, and which is especially vulnerable to tobacco-related harms and mortality.
28 Conversely, cannabis use was associated with a lower chance of quit attempts.
29 Tobacco smoking should be systematically addressed during standard care of HIV-
30 HCV infected people. HCV treatment represents a good opportunity for screening,
31 comprehensive counselling, and referral to specialist tobacco cessation services.
32 Cannabis use should be screened concomitantly with tobacco use in HIV-infected,
33 HCV-infected and HIV-HCV co-infected smokers. Finally, for cannabis users who
34 wish to quit smoking tobacco, safer routes of cannabis administration should be
35 promoted which do not involve smoking cues such as vaporization. This would
36 reduce associated harms and help users in future tobacco smoking cessation
37 attempts.
38
39
40
41
42
43
44
45
46
47
48
49
50
51
52
53
54
55
56
57
58
59
60
61
62
63
64
65

References

1. Park LS, Hernández-Ramírez RU, Silverberg MJ, Crothers K, Dubrow R. Prevalence of non-HIV cancer risk factors in persons living with HIV/AIDS: a meta-analysis. *AIDS Lond Engl*. janv 2016;30(2):273- 91.
2. Tron L, Lert F, Spire B, Dray-Spira R, ANRS-Vespa2 study group. Tobacco smoking in HIV-infected versus general population in france: heterogeneity across the various groups of people living with HIV. *PLoS One*. 2014;9(9):e107451.
3. Conseil national du SIDA et des hépatites virales (CNS), Agence nationale de recherche sur le sida et les hépatites virales (ANRS). *Epidémiologie de l'infection à VIH en France (juillet 2017) [Epidemiology of HIV infection in France] [Internet]*. CNS/ANRS; 2017 [cité 10 juin 2020]. Disponible sur: https://cns.sante.fr/wp-content/uploads/2017/10/experts-vih_epidemio.pdf
4. Andler R, Richard J-B, Guignard R, Quatremère G, Verrier F, Gane J, et al. Reduction of daily smoking rate among adults: results from the 2018 Santé Publique France health barometer. *Bull Épidémiologique Hebd*. 2019;(15):271- 7.
5. Reynolds NR. CIGARETTE SMOKING AND HIV: MORE EVIDENCE FOR ACTION. *AIDS Educ Prev Off Publ Int Soc AIDS Educ*. juin 2009;21(3 Suppl):106- 21.
6. Marshall MM, Kirk GD, Caporaso NE, McCormack MC, Merlo CA, Hague JC, et al. Tobacco use and nicotine dependence among HIV-infected and uninfected injection drug users. *Addict Behav*. 26 sept 2010;36(1- 2):61- 7.
7. McKirnan DJ, Tolou-Shams M, Turner L, Dyslin K, Hope B. Elevated risk for tobacco use among men who have sex with men is mediated by demographic and psychosocial variables. *Subst Use Misuse*. 2006;41(8):1197- 208.
8. Barré T, Nishimwe ML, Protopopescu C, Marcellin F, Carrat F, Dorival C, et al. Cannabis use is associated with a lower risk of diabetes in chronic hepatitis C-infected patients (ANRS CO22 Hepather cohort). *J Viral Hepat*. 2020;27(12):1473- 83.
9. Kim RS, Weinberger AH, Chander G, Sulkowski MS, Norton B, Shuter J. Cigarette Smoking in Persons Living with Hepatitis C: The National Health and Nutrition Examination Survey (NHANES), 1999-2014. *Am J Med*. 2018;131(6):669- 75.
10. Chew KW, Bhattacharya D, McGinnis KA, Horwich TB, Tseng C-H, Currier JS, et al. Short Communication: Coronary Heart Disease Risk by Framingham Risk Score in Hepatitis C and HIV/Hepatitis C-Coinfected Persons. *AIDS Res Hum Retroviruses*. juill 2015;31(7):718- 22.
11. Knight R, Roux P, Vilotitch A, Marcellin F, Rosenthal E, Esterle L, et al. Significant reductions in alcohol use after Hepatitis C treatment: Results from the French ANRS CO13-HEPAVIH cohort: Significant Reductions in Alcohol Use. *Addiction*. 21 avr 2017;112.
12. Fialho R, Pereira M, Rusted J, Whale R. Depression in HIV and HCV co-infected patients: a systematic review and meta-analysis. *Psychol Health Med*. 2017;22(9):1089- 104.
13. Cacoub P, Dabis F, Costagliola D, Almeida K, Lert F, Piroth L, et al. Burden of HIV and hepatitis C co-infection: the changing epidemiology of hepatitis C in HIV-infected patients in France. *Liver Int Off J Int Assoc Study Liver*. janv 2015;35(1):65- 70.

14. Hagan H, Thiede H, Des Jarlais DC. HIV/hepatitis C virus co-infection in drug users: risk behavior and prevention. *AIDS Lond Engl.* oct 2005;19 Suppl 3:S199-207.
15. Kariuki W, Manuel JI, Kariuki N, Tuchman E, O'Neal J, Lalanne GA. HIV and smoking: associated risks and prevention strategies. *HIVAIDS Auckl NZ.* 24 déc 2015;8:17- 36.
16. Antiretroviral Therapy Cohort Collaboration. Life expectancy of individuals on combination antiretroviral therapy in high-income countries: a collaborative analysis of 14 cohort studies. *Lancet Lond Engl.* 26 juill 2008;372(9635):293- 9.
17. Morlat P, Roussillon C, Henard S, Salmon D, Bonnet F, Cacoub P, et al. Causes of death among HIV-infected patients in France in 2010 (national survey): trends since 2000. *AIDS Lond Engl.* 15 mai 2014;28(8):1181- 91.
18. Helleberg M, May MT, Ingle SM, Dabis F, Reiss P, Fätkenheuer G, et al. Smoking and life expectancy among HIV-infected individuals on antiretroviral therapy in Europe and North America. *AIDS Lond Engl.* 14 janv 2015;29(2):221- 9.
19. Gartner C, Miller A, Bonevski B. Extending survival for people with hepatitis C using tobacco dependence treatment. *The Lancet.* 4 nov 2017;390(10107):2033.
20. Kronfli N, Bhatnagar SR, Hull MW, Moodie EEM, Cox J, Walmsley S, et al. Trends in cause-specific mortality in HIV–hepatitis C coinfection following hepatitis C treatment scale-up. *AIDS.* 1 mai 2019;33(6):1013.
21. Caven M, Malaguti A, Robinson E, Fletcher E, Dillon JF. Impact of Hepatitis C treatment on behavioural change in relation to drug use in people who inject drugs: A systematic review. *Int J Drug Policy.* 2019;72:169- 76.
22. Yeung MW, Young J, Moodie E, Rollet-Kurhajec KC, Schwartzman K, Greenaway C, et al. Changes in quality of life, healthcare use, and substance use in HIV/hepatitis C coinfecting patients after hepatitis C therapy: a prospective cohort study. *HIV Clin Trials.* juin 2015;16(3):100- 10.
23. Loko M-A, Salmon D, Carrieri P, Winnock M, Mora M, Merchadou L, et al. The French national prospective cohort of patients co-infected with HIV and HCV (ANRS CO13 HEPAVIH): early findings, 2006-2010. *BMC Infect Dis.* 22 oct 2010;10:303.
24. Prentiss D, Power R, Balmas G, Tzuang G, Israelski D. Patterns of Marijuana Use among Patients with HIV/AIDS Followed in a Public Health Care Setting. *J Acquir Immune Defic Syndr* 1999. 1 févr 2004;35:38- 45.
25. Fischer B, Reimer J, Firestone M, Kalousek K, Rehm J, Heathcote J. Treatment for hepatitis C virus and cannabis use in illicit drug user patients: implications and questions. *Eur J Gastroenterol Hepatol.* oct 2006;18(10):1039- 42.
26. Santos ME, Protopopescu C, Sogni P, Yaya I, Piroth L, Bailly F, et al. HCV-Related Mortality Among HIV/HCV Co-infected Patients: The Importance of Behaviors in the HCV Cure Era (ANRS CO13 HEPAVIH Cohort). *AIDS Behav.* avr 2020;24(4):1069- 84.
27. Hindocha C, Freeman TP, Ferris JA, Lynskey MT, Winstock AR. No Smoke without Tobacco: A Global Overview of Cannabis and Tobacco Routes of Administration and Their Association with

Intention to Quit. *Front Psychiatry* [Internet]. 2016 [cité 22 mai 2020];7. Disponible sur: <https://www.frontiersin.org/articles/10.3389/fpsy.2016.00104/full>

28. Sterling Richard K., Lissen Eduardo, Clumeck Nathan, Sola Ricard, Correa Mendes Cassia, Montaner Julio, et al. Development of a simple noninvasive index to predict significant fibrosis in patients with HIV/HCV coinfection. *Hepatology*. 25 mai 2006;43(6):1317- 25.
29. Radloff LS. The CES-D Scale: A Self-Report Depression Scale for Research in the General Population. *Appl Psychol Meas*. 1 juin 1977;1(3):385- 401.
30. Fuhrer R, Rouillon F. La version française de l'échelle CES-D (Center for Epidemiologic Studies-Depression Scale). Description et traduction de l'échelle d'autoévaluation. *Psychiatrie & Psychobiologie*. 4(3). 1989;163- 6.
31. Rosenthal E, Fougerou-Leurent C, Renault A, Carrieri MP, Marcellin F, Garraffo R, et al. Efficacy, safety and patient-reported outcomes of ledipasvir/sofosbuvir in NS3/4A protease inhibitor-experienced individuals with hepatitis C virus genotype 1 and HIV coinfection with and without cirrhosis (ANRS HC31 SOFTRIH study). *HIV Med*. 2018;19(3):227- 37.
32. Ac J, W H, Al G, L R, R Z, G S, et al. Development and Validation of a Self-Completed HIV Symptom Index [Internet]. Vol. 54 Suppl 1, *Journal of clinical epidemiology*. *J Clin Epidemiol*; 2001 [cité 10 juin 2020]. Disponible sur: <https://pubmed.ncbi.nlm.nih.gov/11750213/>
33. Bush K, Kivlahan DR, McDonell MB, Fihn SD, Bradley KA. The AUDIT alcohol consumption questions (AUDIT-C): an effective brief screening test for problem drinking. Ambulatory Care Quality Improvement Project (ACQUIP). Alcohol Use Disorders Identification Test. *Arch Intern Med*. 14 sept 1998;158(16):1789- 95.
34. Allison PD. Discrete-Time Methods for the Analysis of Event Histories. *Sociol Methodol*. 1982;13:61- 98.
35. Butt AA, Yan P, Shuaib A, Abou-Samra A-B, Shaikh OS, Freiberg MS. Direct-Acting Antiviral Therapy for HCV Infection Is Associated With a Reduced Risk of Cardiovascular Disease Events. *Gastroenterology*. 1 mars 2019;156(4):987-996.e8.
36. Midgard H, Hajarizadeh B, Cunningham E, Conway B, Backmund M, Bruggmann P, et al. Changes in risk behaviours during and following treatment for hepatitis C virus infection among people who inject drugs: The ACTIVATE study. *Int J Drug Policy*. 1 juin 2017;47.
37. Juanbeltz R, Martínez-Baz I, Miguel RS, Goñi-Esarte S, Cabasés JM, Castilla J. Impact of successful treatment with direct-acting antiviral agents on health-related quality of life in chronic hepatitis C patients. *PLOS ONE*. 9 oct 2018;13(10):e0205277.
38. Castera L, Constant A, Bernard P-H, de Ledinghen V, Couzigou P. Psychological impact of chronic hepatitis C: comparison with other stressful life events and chronic diseases. *World J Gastroenterol*. 14 mars 2006;12(10):1545- 50.
39. Revell AD, Warburton DM, Wesnes K. Smoking as a coping strategy. *Addict Behav*. 1985;10(3):209- 24.
40. Fidler JA, West R. Self-perceived smoking motives and their correlates in a general population sample. *Nicotine Tob Res Off J Soc Res Nicotine Tob*. oct 2009;11(10):1182- 8.

- 1 41. Batchelder A, Peyser D, Nahvi S, Arnsten J, Litwin A. "Hepatitis C treatment turned me around:"
2 Psychological and Behavioral Transformation Related to Hepatitis C Treatment. *Drug Alcohol*
3 *Depend.* 1 août 2015;153:66- 71.
- 4 42. Torrens M, Soyemi T, Bowman D, Schatz E. Beyond clinical outcomes: the social and healthcare
5 system implications of hepatitis C treatment. *BMC Infect Dis* [Internet]. 24 sept 2020 [cité 29
6 oct 2020];20. Disponible sur: <https://www.ncbi.nlm.nih.gov/pmc/articles/PMC7517680/>
7
- 8 43. E Williams B, Nelons D, Seaman A, Witkowska M, Ronan W, Wheelock H, et al. Life projects: the
9 transformative potential of direct-acting antiviral treatment for hepatitis C among people who
10 inject drugs. *Int J Drug Policy.* 2019;72:138- 45.
- 11 44. Janda M, Mergenhagen KA. The Effect of Psychosocial Factors on Success Rates of Hepatitis C
12 Treatment. *Psychosomatics.* 1 nov 2017;58(6):624- 32.
- 13 45. de Dios MA, Stanton CA, Cano MÁ, Lloyd-Richardson E, Niaura R. The Influence of Social
14 Support on Smoking Cessation Treatment Adherence Among HIV+ Smokers. *Nicotine Tob Res*
15 *Off J Soc Res Nicotine Tob.* mai 2016;18(5):1126- 33.
- 16 46. Soulakova JN, Tang C-Y, Leonardo SA, Taliaferro LA. Motivational Benefits of Social Support and
17 Behavioural Interventions for Smoking Cessation. *J Smok Cessat.* déc 2018;13(4):216- 26.
- 18 47. Adeyemi OM, Jensen D, Attar B, Ghaoui R, Gallagher M, Wolen D, et al. Hepatitis C treatment
19 eligibility in an urban population with and without HIV coinfection. *AIDS Patient Care STDs.* avr
20 2004;18(4):239- 45.
- 21 48. Dillon JF, Lazarus JV, Razavi HA. Urgent action to fight hepatitis C in people who inject drugs in
22 Europe. *Hepatol Med Policy.* 30 juin 2016;1(1):2.
- 23 49. Dever JB, Ducom JH, Ma A, Nguyen J, Liu L, Herrin A, et al. Engagement in Care of High-Risk
24 Hepatitis C Patients with Interferon-Free Direct-Acting Antiviral Therapies. *Dig Dis Sci.*
25 2017;62(6):1472- 9.
- 26 50. De Socio GV, Ricci E, Maggi P, Orofino G, Squillace N, Menzaghi B, et al. Is it feasible to impact
27 on smoking habits in HIV-Infected patients? Mission impossible from the STOPSHIV Project
28 cohort. *J Acquir Immune Defic Syndr* 1999. 6 janv 2020;
- 29 51. Wray JM, Funderburk JS, Acker JD, Wray LO, Maisto SA. A Meta-Analysis of Brief Tobacco
30 Interventions for Use in Integrated Primary Care. *Nicotine Tob Res Off J Soc Res Nicotine Tob.*
31 15 2018;20(12):1418- 26.
- 32 52. Tesoriero JM, Gieryc SM, Carrascal A, Lavigne HE. Smoking among HIV positive New Yorkers:
33 prevalence, frequency, and opportunities for cessation. *AIDS Behav.* août 2010;14(4):824- 35.
- 34 53. Bains M, Britton J, Marsh J, Jayes L, Murray RL. Patients' and healthcare professionals' views on
35 a specialist smoking cessation service delivered in a United Kingdom hospital: a qualitative
36 study. *Tob Induc Dis.* 29 janv 2014;12(1):2.
- 37 54. Khara M, Okoli C, Nagarajan VD, Aziz F, Hanley C. Smoking cessation outcomes of referral to a
38 specialist hospital outpatient clinic. *Am J Addict.* 2015;24(6):561- 70.

- 1 55. Benard A, Bonnet F, Tessier J-F, Fossoux H, Dupon M, Mercie P, et al. Tobacco addiction and
2 HIV infection: toward the implementation of cessation programs. ANRS CO3 Aquitaine Cohort.
3 AIDS Patient Care STDs. juill 2007;21(7):458- 68.
- 4 56. Edwards SK, Dean J, Power J, Baker P, Gartner C. Understanding the Prevalence of Smoking
5 Among People Living with HIV (PLHIV) in Australia and Factors Associated with Smoking and
6 Quitting. AIDS Behav. avr 2020;24(4):1056- 63.
- 7 57. Weinberger AH, Pacek LR, Wall MM, Gbedemah M, Lee J, Goodwin RD. Cigarette smoking quit
8 ratios among adults in the USA with cannabis use and cannabis use disorders, 2002–2016. Tob
9 Control. 1 janv 2020;29(1):74- 80.
- 10 58. Voci S, Zawertailo L, Baliunas D, Masood Z, Selby P. Is cannabis use associated with tobacco
11 cessation outcome? An observational cohort study in primary care. Drug Alcohol Depend. 1
12 janv 2020;206:107756.
- 13 59. Klein MB, Rollet-Kurhajec KC, Moodie EEM, Yaphe S, Tyndall M, Walmsley S, et al. Mortality in
14 HIV-hepatitis C co-infected patients in Canada compared to the general Canadian population
15 (2003-2013). AIDS Lond Engl. 24 août 2014;28(13):1957- 65.
- 16 60. Agrawal A, Budney AJ, Lynskey MT. The co-occurring use and misuse of cannabis and tobacco: a
17 review. Addict Abingdon Engl. juill 2012;107(7):1221- 33.
- 18 61. McClure EA, Tomko RL, Salazar CA, Akbar SA, Squeglia LM, Herrmann E, et al. Tobacco and
19 cannabis co-use: Drug substitution, quit interest, and cessation preferences. Exp Clin
20 Psychopharmacol. juin 2019;27(3):265- 75.
- 21 62. Dierker L, Braymiller J, Rose J, Goodwin R, Selya A. Nicotine dependence predicts cannabis use
22 disorder symptoms among adolescents and young adults. Drug Alcohol Depend. 01
23 2018;187:212- 20.
- 24 63. Cohen C, Perrault G, Voltz C, Steinberg R, Soubrié P. SR141716, a central cannabinoid (CB(1))
25 receptor antagonist, blocks the motivational and dopamine-releasing effects of nicotine in rats.
26 Behav Pharmacol. sept 2002;13(5- 6):451- 63.
- 27 64. Rabin RA, George TP. A review of co-morbid tobacco and cannabis use disorders: Possible
28 mechanisms to explain high rates of co-use. Am J Addict. 2015;24(2):105- 16.
- 29 65. Ganzer F, Bröning S, Kraft S, Sack P-M, Thomasius R. Weighing the Evidence: A Systematic
30 Review on Long-Term Neurocognitive Effects of Cannabis Use in Abstinent Adolescents and
31 Adults. Neuropsychol Rev. 2016;26(2):186- 222.
- 32 66. Ashare RL, Schmidt HD. Optimizing treatments for nicotine dependence by increasing cognitive
33 performance during withdrawal. Expert Opin Drug Discov. juin 2014;9(6):579- 94.
- 34 67. McCabe SE, West BT. The Three-Year Course of Multiple Substance Use Disorders in the United
35 States: A National Longitudinal Study. J Clin Psychiatry. mai 2017;78(5):e537- 44.
- 36 68. McKelvey K, Thrul J, Ramo D. Impact of quitting smoking and smoking cessation treatment on
37 substance use outcomes: An updated and narrative review. Addict Behav. févr
38 2017;65:161- 70.

- 1
2
3
4
5
6
7
8
9
10
11
12
13
14
15
16
17
18
19
20
21
22
23
24
25
26
27
28
29
30
31
32
33
34
35
36
37
38
39
40
41
42
43
44
45
46
47
48
49
50
51
52
53
54
55
56
57
58
59
60
61
62
63
64
65
69. Subbaraman MS. Substitution and Complementarity of Alcohol and Cannabis: A Review of the Literature. *Subst Use Misuse*. 18 2016;51(11):1399- 414.
 70. Allsop DJ, Dunlop AJ, Saddler C, Rivas GR, McGregor IS, Copeland J. Changes in cigarette and alcohol use during cannabis abstinence. *Drug Alcohol Depend*. 1 mai 2014;138:54- 60.
 71. Ducci F, Goldman D. The Genetic Basis of Addictive Disorders. *Psychiatr Clin North Am*. juin 2012;35(2):495- 519.
 72. Loflin M, Earleywine M. No smoke, no fire: What the initial literature suggests regarding vapourized cannabis and respiratory risk. *Can J Respir Ther CJRT Rev Can Thérapie Respir RCTR*. 2015;51(1):7- 9.
 73. Lanz C, Mattsson J, Soydaner U, Brenneisen R. Medicinal Cannabis: In Vitro Validation of Vaporizers for the Smoke-Free Inhalation of Cannabis. *PLoS ONE* [Internet]. 19 janv 2016 [cité 8 sept 2020];11(1). Disponible sur: <https://www.ncbi.nlm.nih.gov/pmc/articles/PMC4718604/>
 74. Trigo JM, Soliman A, Quilty LC, Fischer B, Rehm J, Selby P, et al. Nabiximols combined with motivational enhancement/cognitive behavioral therapy for the treatment of cannabis dependence: A pilot randomized clinical trial. *PloS One*. 2018;13(1):e0190768.
 75. Lintzeris N, Bhardwaj A, Mills L, Dunlop A, Copeland J, McGregor I, et al. Nabiximols for the Treatment of Cannabis Dependence: A Randomized Clinical Trial. *JAMA Intern Med*. 15 juill 2019;
 76. Lintzeris N, Mills L, Dunlop A, Copeland J, Mcgregor I, Bruno R, et al. Cannabis use in patients 3 months after ceasing nabiximols for the treatment of cannabis dependence: Results from a placebo-controlled randomised trial. *Drug Alcohol Depend*. 1 oct 2020;215:108220.
 77. Rahmanian S, Wewers ME, Koletar S, Reynolds N, Ferketich A, Diaz P. Cigarette Smoking in the HIV-Infected Population. *Proc Am Thorac Soc*. 1 juin 2011;8(3):313- 9.
 78. Encrenaz G, Bénard A, Rondeau V, Bonnet F, Lazaro E, Neau D, et al. Determinants of smoking cessation attempts among HIV-infected patients results from a hospital-based prospective cohort. *Curr HIV Res*. avr 2010;8(3):212- 7.
 79. Weinberger AH, Seng EK, Esan H, Shuter J. Perceived risks and benefits of quitting smoking in a sample of adults living with HIV/AIDS. *AIDS Care*. 2018;30(5):564- 8.
 80. Peretti-Watel P, Garelik D, Baron G, Spire B, Ravaud P, Duval X, et al. Smoking motivations and quitting motivations among HIV-infected smokers. *Antivir Ther*. 2009;14(6):781- 7.
 81. Chaiton M, Diemert L, Cohen JE, Bondy SJ, Selby P, Philipneri A, et al. Estimating the number of quit attempts it takes to quit smoking successfully in a longitudinal cohort of smokers. *BMJ Open* [Internet]. 9 juin 2016 [cité 14 janv 2020];6(6). Disponible sur: <https://www.ncbi.nlm.nih.gov/pmc/articles/PMC4908897/>
 82. Shahab L, Gilchrist G, Hagger-Johnson G, Shankar A, West E, West R. Reciprocal associations between smoking cessation and depression in older smokers: findings from the English Longitudinal Study of Ageing. *Br J Psychiatry J Ment Sci*. sept 2015;207(3):243- 9.

- 1
2
3
4
5
6
7
8
9
10
11
12
13
14
15
16
17
18
19
20
21
22
23
24
25
26
27
28
29
30
31
32
33
34
35
36
37
38
39
40
41
42
43
44
45
46
47
48
49
50
51
52
53
54
55
56
57
58
59
60
61
62
63
64
65
83. Harris GE, Dupuis L, Mugford GJ, Johnston L, Haase D, Page G, et al. Patterns and correlates of cannabis use among individuals with HIV/AIDS in Maritime Canada. *Can J Infect Dis Med Microbiol.* 2014;25(1):e1- 7.
 84. Hasin D, Walsh C. Cannabis Use, Cannabis Use Disorder, and Comorbid Psychiatric Illness: A Narrative Review. *J Clin Med.* 23 déc 2020;10(1).
 85. Pacek LR, Towe SL, Hobkirk AL, Nash D, Goodwin RD. FREQUENCY OF CANNABIS USE AND MEDICAL CANNABIS USE AMONG PERSONS LIVING WITH HIV IN THE UNITED STATES: FINDINGS FROM A NATIONALLY REPRESENTATIVE SAMPLE. *AIDS Educ Prev Off Publ Int Soc AIDS Educ.* avr 2018;30(2):169- 81.
 86. Regan S, Meigs JB, Grinspoon SK, Triant VA. Determinants of Smoking and Quitting in HIV-Infected Individuals. *PLoS ONE [Internet].* 21 avr 2016 [cité 7 nov 2019];11(4). Disponible sur: <https://www.ncbi.nlm.nih.gov/pmc/articles/PMC4839777/>

16
17
18
19
20
21
22
23
24
25
26
27
28
29
30
31
32
33
34
35
36
37
38
39
40
41
42
43
44
45
46
47
48
49
50
51
52
53
54
55
56
57
58
59
60
61
62
63
64
65

Table 1: Factors associated with tobacco smoking cessation attempts (Cox proportional hazards models, ANRS CO13 HEPAVIH cohort, n=2485 person-years, n= 88 events)

| | n [#] | % of the study population | Number of events | Univariable analyses (n=695 patients, n=2485 person-years, n=88 events) | | | Multivariable analysis (n=666 patients, n=2356 person-years, n= 84 events) | | |
|--|----------------|---------------------------|------------------|---|-------------------------|---------|--|-------------------------|---------|
| Variable | | | | Hazard ratio | 95% confidence interval | p-value | Adjusted hazard ratio | 95% confidence interval | p-value |
| Age (in years)* | 47 [44-50] | | | 1.05 | 1.01-1.09 | 0.027 | | | |
| Sex | | | | | | | | | |
| Male (ref.) | 490 | 70.5 | 68 | 1 | | | | | |
| Female | 205 | 29.5 | 20 | 0.67 | 0.40-1.11 | 0.119 | | | |
| Living with a partner* (n=691) | | | | | | | | | |
| No (ref.) | 376 | 54.4 | 43 | 1 | | | | | |
| Yes | 315 | 45.6 | 45 | 1.23 | 0.80-1.88 | 0.341 | | | |
| Educational level (n=607) | | | | | | | | | |
| No high-school certificate (ref.) | 436 | 71.8 | 57 | 1 | | | | | |
| High-school certificate | 171 | 28.2 | 26 | 1.20 | 0.75-1.92 | 0.444 | | | |
| Perceived comfort of housing (n=692)* | | | | | | | | | |
| Not comfortable (ref.) | 126 | 18.2 | 16 | 1 | | | | | |
| Comfortable | 566 | 81.8 | 72 | 0.89 | 0.51-1.55 | 0.691 | | | |
| Employment (n=689)* | | | | | | | | | |

16
17
18
19
20
21
22
23
24
25
26
27
28
29
30
31
32
33
34
35
36
37
38
39
40
41
42
43
44
45
46
47
48
49
50
51
52
53
54
55
56
57
58
59
60
61
62
63
64
65

| | | | | | | | | | |
|--|------------------|------|----|------|-----------|-------|------|-----------|-------|
| Unemployed | 343 | 49.8 | 39 | 0.97 | 0.63-1.48 | 0.876 | | | |
| Other ¹ (ref.) | 346 | 50.2 | 49 | 1 | | | | | |
| Body mass index (n=693)* | 21.3 [19.4-23.9] | | | 1.09 | 1.03-1.15 | 0.002 | 1.06 | 1.00-1.13 | 0.040 |
| Daily coffee intake (n=693)* | | | | | | | | | |
| No (ref.) | 175 | 25.3 | 26 | 1 | | | | | |
| Yes | 518 | 74.7 | 62 | 0.77 | 0.48-1.23 | 0.270 | | | |
| Hazardous alcohol consumption (n=687)* | | | | | | | | | |
| No (ref.) | 426 | 62.0 | 59 | 1 | | | | | |
| Yes | 261 | 38.0 | 28 | 0.70 | 0.44-1.10 | 0.121 | | | |
| Cannabis use (n=670)* | | | | | | | | | |
| No | 284 | 42.4 | 48 | 1 | | | 1 | | |
| Yes | 386 | 57.6 | 36 | 0.49 | 0.32-0.76 | 0.001 | 0.63 | 0.40-1.00 | 0.049 |
| Frequency of cannabis use² (n=670)* | | | | | | 0.006 | | | |
| Never (ref.) | 284 | 42.4 | 48 | 1 | | | | | |
| Sometimes | 159 | 23.7 | 15 | 0.50 | 0.28-0.90 | 0.022 | | | |
| Regular or daily | 227 | 33.9 | 21 | 0.48 | 0.29-0.81 | 0.006 | | | |
| Recent use of illegal psychoactive substance³ (n=675)* | | | | | | | | | |
| No | 590 | 87.4 | 81 | 1 | | | 1 | | |
| Yes | 85 | 12.6 | 4 | 0.32 | 0.12-0.87 | 0.026 | 0.35 | 0.13-0.99 | 0.048 |
| HIV transmission mode | | | | | | 0.004 | | | 0.006 |
| IDU (ref.) | 504 | 72.5 | 52 | 1 | | | 1 | | |
| MSM | 69 | 9.9 | 17 | 2.52 | 1.44-4.41 | 0.001 | 2.60 | 1.44-4.70 | 0.002 |
| Other | 122 | 17.6 | 19 | 1.49 | 0.87-2.54 | 0.143 | 1.46 | 0.85-2.52 | 0.171 |
| Time since HIV diagnosis (in years) (n=692)* | 21 [16-24] | | | 1.02 | 0.98-1.06 | 0.418 | | | |

16
17
18
19
20
21
22
23
24
25
26
27
28
29
30
31
32
33
34
35
36
37
38
39
40
41
42
43
44
45
46
47
48
49
50
51
52
53
54
55
56
57
58
59
60
61
62
63
64
65

| | | | | | | | | | |
|--|---------------|------|----|------|-----------|-------|------|-----------|-------|
| CD4 count (in 100 cells/mm³)(n=694)* | 5.3 [3.4-7.4] | | | 0.94 | 0.88-1.02 | 0.143 | | | |
| Undetectable plasma HIV viral load (n=691)* | | | | | | | | | |
| No (ref.) | 162 | 23.4 | 27 | 1 | | | | | |
| Yes | 529 | 76.6 | 60 | 0.73 | 0.46-1.17 | 0.190 | | | |
| Time since HCV diagnosis (in years) (n=680)* | 13 [10-17] | | | 1.01 | 0.97-1.05 | 0.707 | | | |
| HCV cure* | | | | | | | | | |
| No (ref.) | 559 | 80.4 | 66 | 1 | | | 1 | | |
| Yes | 136 | 19.6 | 22 | 1.94 | 1.18-3.18 | 0.009 | 1.76 | 1.06-2.93 | 0.029 |
| Advanced liver fibrosis^{4*} | | | | | | | | | |
| No (ref.) | 569 | 81.9 | 74 | 1 | | | | | |
| Yes | 126 | 18.1 | 14 | 1.08 | 0.60-1.92 | 0.806 | | | |
| Depressive symptoms (n=660)* | | | | | | | | | |
| No (ref.) | 394 | 59.7 | 58 | 1 | | | | | |
| Yes | 266 | 40.3 | 28 | 0.68 | 0.43-1.08 | 0.101 | | | |
| History of treatment for depression⁵ (n=694)* | | | | | | | | | |
| No (ref.) | 354 | 51.0 | 54 | 1 | | | | | |
| Yes | 340 | 49.0 | 34 | 0.70 | 0.45-1.08 | 0.109 | | | |
| Total number of self-reported symptoms⁶ (n=674)* | 11 [5-18] | | | 1.00 | 0.97-1.03 | 0.962 | | | |

Descriptive statistics are given for the end-of-study visit. Median and interquartile range are given for continuous variables.

* Descriptive statistics of time-dependent variables are given for the lagged variables (measured at n-1).

¹ Employed, retired, being a housewife/househusband.

² Cannabis use was entered as a dichotomous variable in the final multivariable model as the alternate three-level variable was no longer significantly associated with the outcome during the stepwise procedure.

³ Illegal psychoactive substance use (excluding cannabis) in the previous 4 weeks. The illegal psychoactive substances evaluated were cocaine, heroin, crack, ecstasy, street Subutex, amphetamines and LSD/other hallucinogens.

⁴ Advanced liver fibrosis was defined as an FIB-4 index >3.25.

15
16
17
18
19
20
21
22
23
24
25
26
27
28
29
30
31
32
33
34
35
36
37
38
39
40
41
42
43
44
45
46
47
48
49
50
51
52
53
54
55
56
57
58
59
60
61
62
63
64
65

⁵ Depressive symptoms and history of treatment for depression were tested alternatively in the multivariable model.

⁶ From the ANRS AC24 self-reported symptoms checklist.
IDU, injecting drug user; MSM, men who have sex with men.

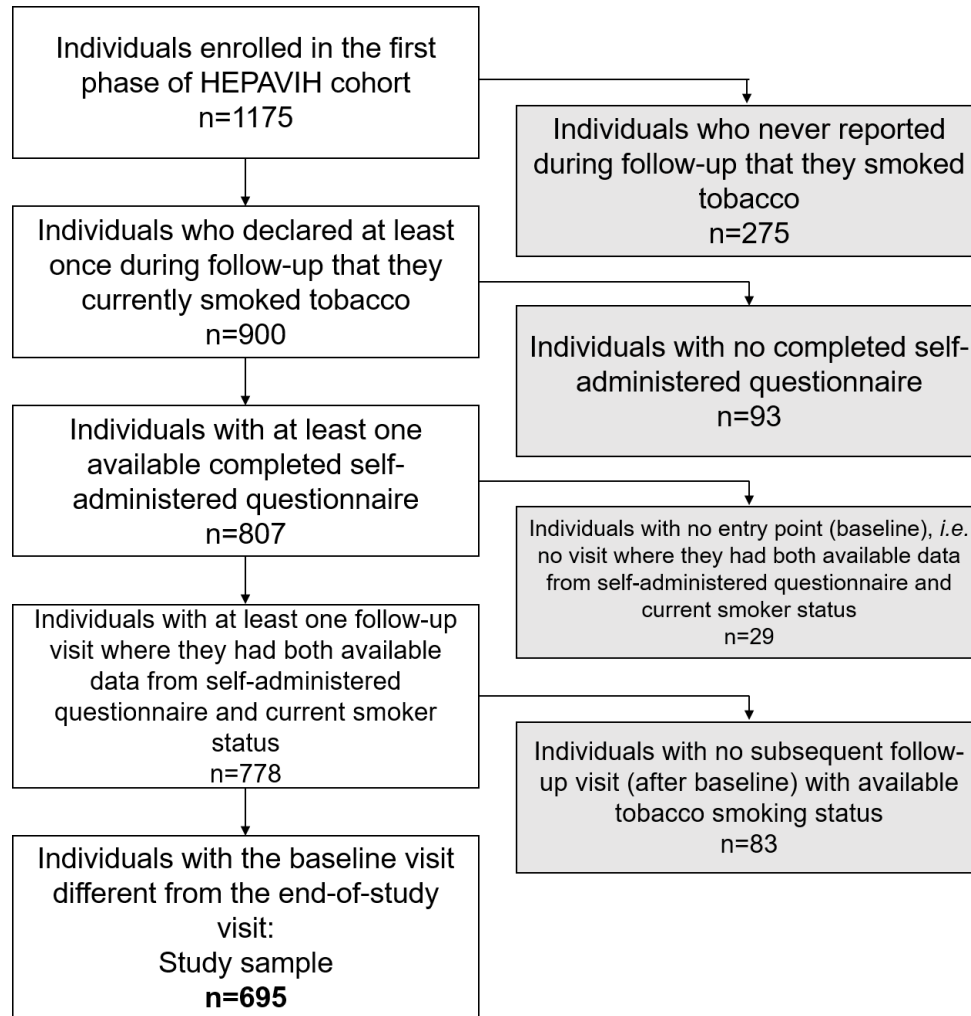


Figure 1: Flow chart of the study population (n=695, ANRS CO13 HEPAVIH cohort).

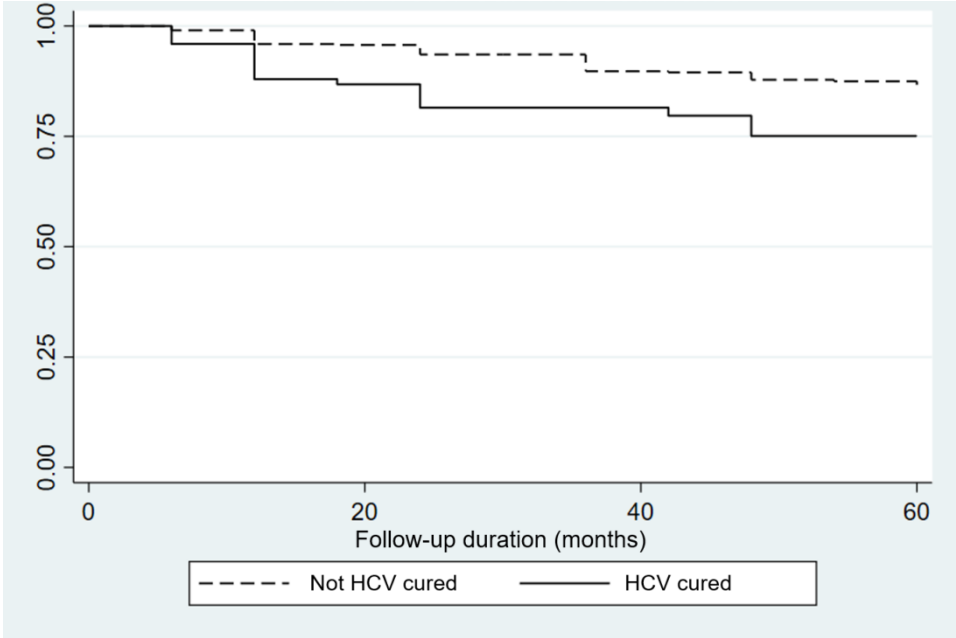


Figure 2: Probability of *no* tobacco smoking cessation attempt during follow-up according to HCV cure status.

16
17
18
19
20
21
22
23
24
25
26
27
28
29
30
31
32
33
34
35
36
37
38
39
40
41
42
43
44
45
46
47
48
49
50
51
52
53
54
55
56
57
58
59
60
61
62
63
64
65

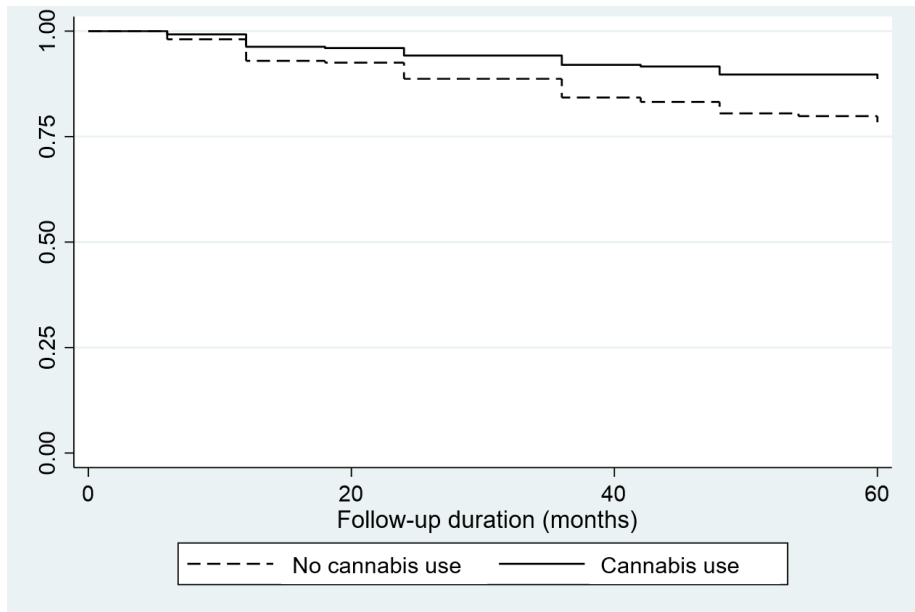


Figure 3: Probability of *no* tobacco smoking cessation attempt during follow-up according to cannabis use.

