

Cite this: *Lab Chip*, 2022, 22, 652

Correction: Quantifying nanotherapeutic penetration using a hydrogel-based microsystem as a new 3D *in vitro* platform

Saba Goodarzi,^a Audrey Prunet,^a Fabien Rossetti,^a Guillaume Bort,^a
Olivier Tillement,^a Erika Porcel,^b Sandrine Lacombe,^b Ting-Di Wu,^{cd}
Jean-Luc Guerquin-Kern,^{cd} H el ene Delano e-Ayari,^a
Fran ois Lux^{ae} and Charlotte Riviere^{*ae}

DOI: 10.1039/d1lc90127c

rsc.li/loc

Correction for 'Quantifying nanotherapeutic penetration using a hydrogel-based microsystem as a new 3D *in vitro* platform' by Saba Goodarzi *et al.*, *Lab Chip*, 2021, 21, 2495–2510, DOI: 10.1039/D1LC00192B.

In Fig. 2E the legend of the graph should be inverted. The corrected legend is: white bars#2D, black bars#3D. The corrected figure is shown below.

^a University of Lyon, Universit e Claude Bernard Lyon 1, CNRS, Institut Lumi ere Mati ere, F-69622, Villeurbanne, France. E-mail: charlotte.riviere@univ-lyon1.fr

^b Universit e Paris-Saclay, CNRS, Institut des Sciences Mol eculaires d'Orsay, 91405, Orsay, France

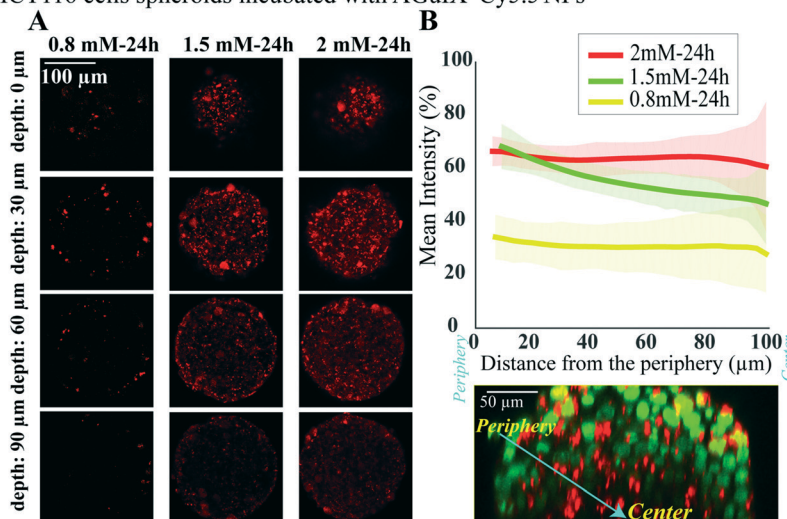
^c Institut Curie, Universit e PSL, Paris, France

^d Universit e Paris-Saclay, CNRS, Inserm, Centre d'Imagerie Multimodale, 91401, Orsay, France

^e Institut Universitaire de France (IUF), France



HCT116 cells spheroids incubated with AGuIX®Cy5.5 NPs



Monolayer HCT116 cells incubated with AGuIX®Cy5.5 NPs

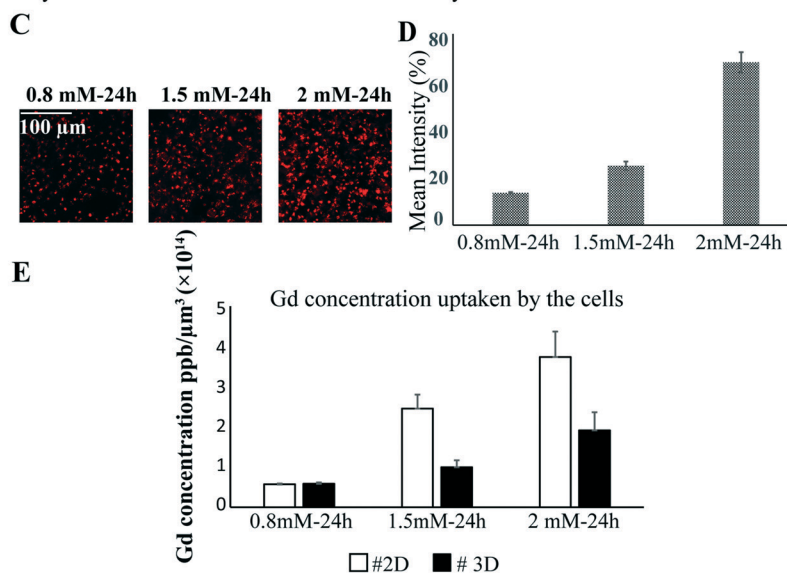


Fig. 2 Quantification of penetration and cellular uptake of AGuIX®-Cy5.5 nanoparticles in HCT-116 tumour spheroids and monolayer cell culture. (A) Representative confocal fluorescence images of HCT-116 spheroids incubated with 0.8, 1.5 and 2 mM concentration of AGuIX®-Cy5.5 for 24 h for four different depths (0, 30, 60 and 90 μm). (B) Mean intensity along with standard deviation (light colors) of AGuIX®-Cy5.5 as a function of the distance from the spheroid periphery (see the orthogonal view in the inset, green = nuclei, red = AGuIX®-Cy5.5) for 0.8 mM (yellow, $N = 73$), 1.5 mM (green, $N = 68$) and 2 mM (red, $N = 121$); three independent experiments. (C) Representative confocal fluorescence images of monolayer HCT-116 cells exposed to AGuIX®-Cy5.5 nanoparticles with 0.8, 1.5 and 2 mM concentration. (D) Quantification of the mean intensity of AGuIX®-Cy5.5 nanoparticles in maximal projection of confocal fluorescence images of monolayer cells after 24 h of incubation with different AGuIX®-Cy5.5 concentrations: 0.8 mM (yellow, $N = 40$), 1.5 mM (green, $N = 40$) and 2 mM (red, $N = 40$); three independent experiments. Error bars represent the standard deviations. (E) Mean and standard deviation of the concentration of Gd (ppb μm^{-3}) uptaken by the cells after incubation with 0.8, 1.5 and 2 mM concentration of AGuIX® for 24 h in HCT-116 cell spheroids and monolayer cell culture measured with ICP-MS ($N = 6$, two independent experiments).

The Royal Society of Chemistry apologises for these errors and any consequent inconvenience to authors and readers.

