



HAL
open science

The implementation of Climate Change Provisions in French Mountain Territories

Sabine Marie Moulin, Anouk Bonnemains

► **To cite this version:**

Sabine Marie Moulin, Anouk Bonnemains. The implementation of Climate Change Provisions in French Mountain Territories. International Mountain Conference, Sep 2019, Innsbruck, Austria. hal-03265734

HAL Id: hal-03265734

<https://hal.science/hal-03265734>

Submitted on 21 Jun 2021

HAL is a multi-disciplinary open access archive for the deposit and dissemination of scientific research documents, whether they are published or not. The documents may come from teaching and research institutions in France or abroad, or from public or private research centers.

L'archive ouverte pluridisciplinaire **HAL**, est destinée au dépôt et à la diffusion de documents scientifiques de niveau recherche, publiés ou non, émanant des établissements d'enseignement et de recherche français ou étrangers, des laboratoires publics ou privés.

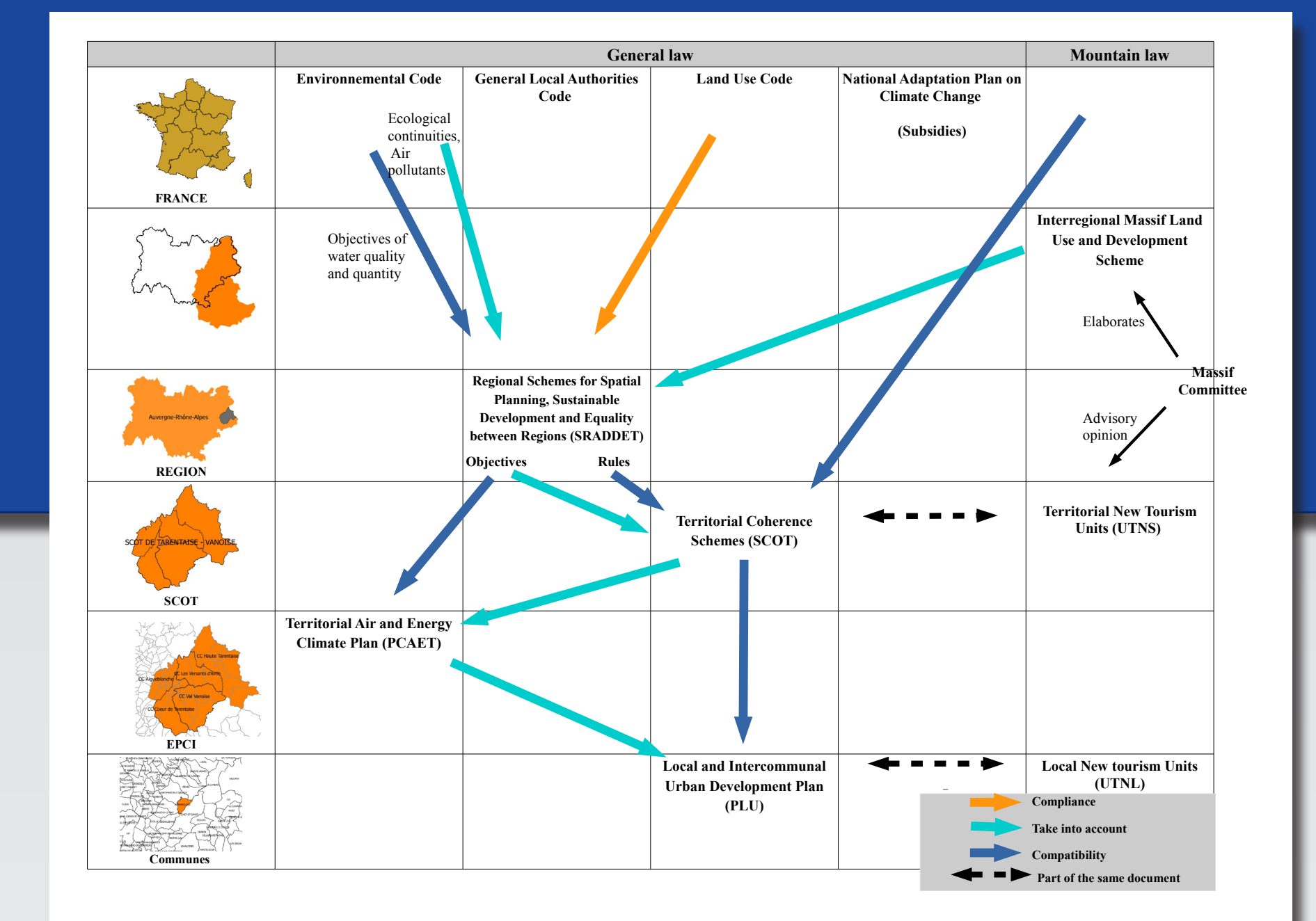
The implementation of Climate Change Provisions in French Mountain Territories

Anouk Bonnemains
anouk.bonnemains@univ-smb.fr
 Sabine Moulin
sabine.moulin@protonmail.com



CENTRE DE RECHERCHE EN DROIT ANTOINE FAVRE
 UNIVERSITÉ SAVOIE MONT BLANC

Hierarchy of French legal norms for climate change



Abstract

According to the 2019 declaration of Innsbruck on Alpine Climate Target System 2050, member states of the alpine convention acknowledged that “Spatial planning systems and strategies at transnational, national and regional level [...] give a strong priority to climate change considerations, including mitigation and adaptation aspects”. France translated this obligation through general land use law and Mountain law as it is one of few countries to give particular legal protection to its mountainous regions against the effects of climate change.

We choose three case studies in the Northern Alps to question urban plan developments at different spatial scales (municipalities’ plans, intermunicipalities’ plans and territorial coherence programs), as well as contexts (high and medium mountain areas) and development models. This analysis shows, from the dual perspective of a lawyer and a geographer, how climate change law is implemented in the spatial planning documents and the capacity of local authorities to adapt and transform their territories to limit climate change impacts. We want to know if this adaptation is incremental or transformational.



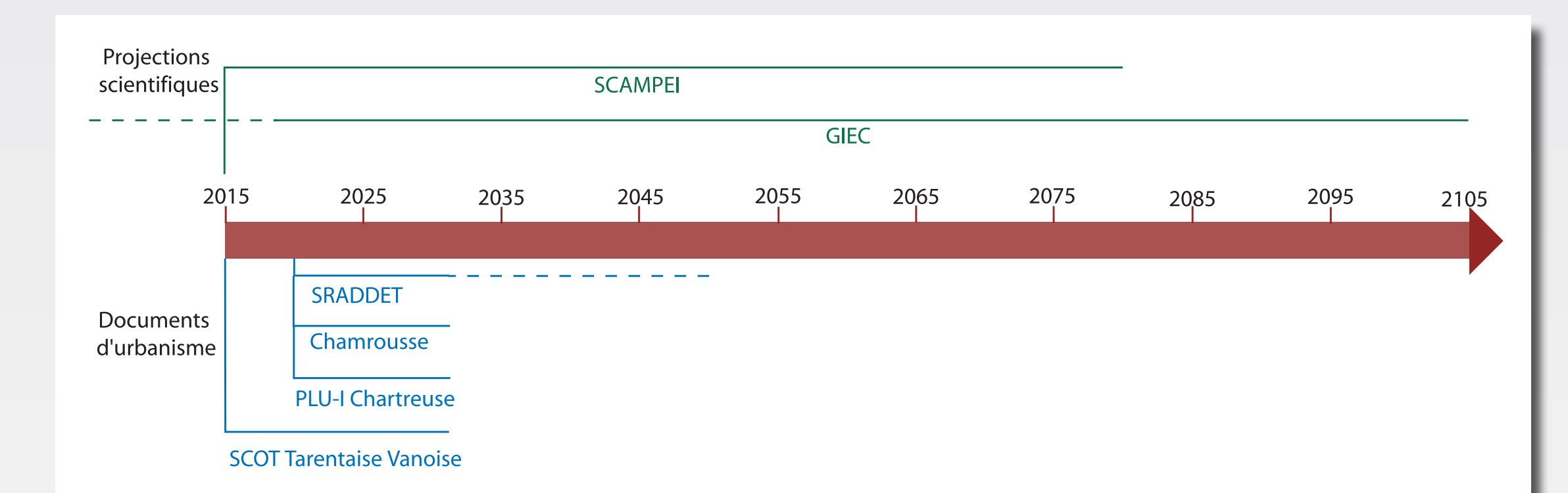
Main results

Our study shows that though there is a growing awareness of the particular vulnerability of mountain areas to climate change, **adaptation is mostly incremental. It relies on technology and development of complementary activities, and still gives priority to tourism as the single activity.**

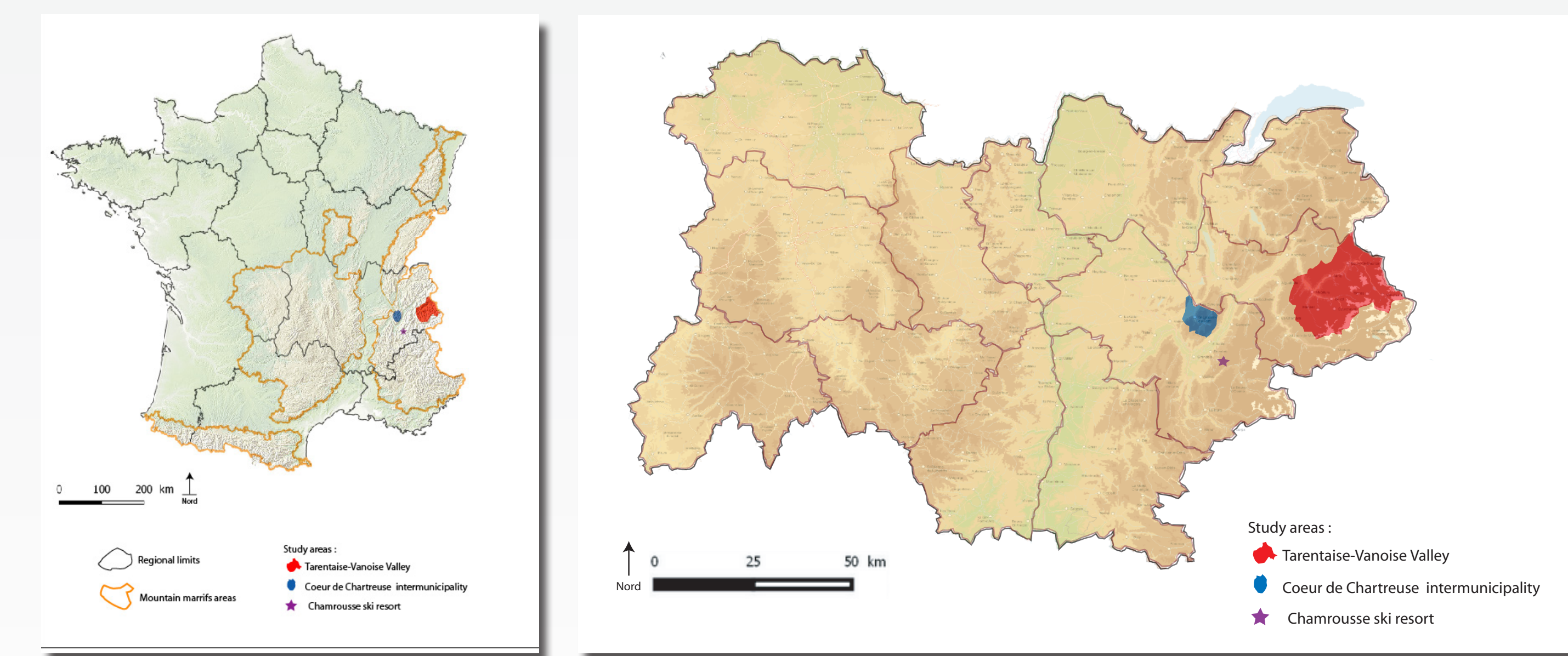
Transformational adaptation strategy is still in its infancy with a shift from intensive to extensive tourism and a will to have more permanent and residential activities.

It needs to be boosted through legal solutions (Climate change should be identified as the main issue and law shall require projects to be “climate-proof” and preserve soils), and financial incentives to renew resorts and maximize occupancy of existing accommodations. Climate-friendly initiatives should be supported and developing other activities (than tourism) encouraged.

Comparison of scientific and urban plan development temporalities



Location maps of the study areas



+ D'INFOS SUR NOTRE SITE INTERNET : www.fac-droit.univ-smb.fr