



**HAL**  
open science

# Tensile Properties of Mechanically-Defibrated Cellulose Nanofiber-Reinforced Polylactic Acid Matrix Composites Fabricated by Fused Deposition Modeling

Hiroki Kurita, Chrystelle Bernard, Agathe Lavrovsky, Fumio Narita

► **To cite this version:**

Hiroki Kurita, Chrystelle Bernard, Agathe Lavrovsky, Fumio Narita. Tensile Properties of Mechanically-Defibrated Cellulose Nanofiber-Reinforced Polylactic Acid Matrix Composites Fabricated by Fused Deposition Modeling. Transactions of Nanjing University of Aeronautics and Astronautics, 2021. hal-03265510

**HAL Id: hal-03265510**

**<https://hal.science/hal-03265510>**

Submitted on 21 Jun 2021

**HAL** is a multi-disciplinary open access archive for the deposit and dissemination of scientific research documents, whether they are published or not. The documents may come from teaching and research institutions in France or abroad, or from public or private research centers.

L'archive ouverte pluridisciplinaire **HAL**, est destinée au dépôt et à la diffusion de documents scientifiques de niveau recherche, publiés ou non, émanant des établissements d'enseignement et de recherche français ou étrangers, des laboratoires publics ou privés.

# Tensile Properties of Mechanically-Defibrated Cellulose Nanofiber-Reinforced Polylactic Acid Matrix Composites Fabricated by Fused Deposition Modeling

*Hiroki Kurita*<sup>\*1</sup>, *Chrystelle Bernard*<sup>2,3</sup>, *Agathe Lavrovsky*<sup>4</sup>, *Fumio Narita*<sup>1</sup>

1. Department of Frontier Sciences for Advanced Environment, Graduate School of Environmental Studies, Tohoku University, Sendai, Japan

2. Frontier Research Institute for Interdisciplinary Sciences, Tohoku University, Sendai, Japan

3. ELYTMAX UMI3757, CNRS–Université de Lyon–Tohoku University, International Joint Unit, Tohoku University, Sendai, Japan

4. Department of Materials Science and Engineering, National Institute of Applied Sciences of Lyon (INSA-LYON), Lyon, France

\*Corresponding author (Kurita H), E-mail address: [kurita@material.tohoku.ac.jp](mailto:kurita@material.tohoku.ac.jp)

**Abstract:** Biodegradable polymers are highly attractive as potential alternatives to petroleum-based polymers in an attempt to achieve carbon neutrality whilst maintaining the mechanical properties of the structures. Among these polymers, polylactic acid (PLA) is particularly promising due to its good mechanical properties, biocompatibility and thermoplasticity. In this work, we aim to enhance the mechanical properties of PLA using mechanically-defibrated cellulose nanofibers (CNFs), which exhibit remarkable mechanical properties and biodegradability. Moreover, we employ fused deposition modeling (FDM), one of the three-dimensional printing methods for thermoplastic polymers, for the low-cost fabrication of the products. In this study, mechanically-defibrated CNF-reinforced PLA matrix composites are fabricated by FDM. Their tensile properties are investigated in two printing directions (0°/90° and 45°/–45°) and discussed with regards to their microstructure and fracture surface observed from scanning electron microscopy.

**Key words:** cellulose nanofiber; polylactic acid; tensile property; fused deposition modeling

## 0 Introduction

Polymers are widely used due to their flexibility, low fabrication cost, workability and so on. However, nowadays, polymers have been pointed out for the enormous plastic pollution they generate in oceans and landfill. In addition, their recycling and incineration appears often complex and expensive. Therefore, interest in

biodegradable polymers, such as polylactic acid (PLA), polybutylene adipate terephthalate and polybutylene succinate<sup>[1]</sup>, has surged on the basis that they may be used as replacements for petroleum-based polymers, thereby assisting in achieving carbon neutrality. In particular, PLA attracts attention due to its strength, stiffness and biocompatibility, although it also possesses low

toughness and biodegradability, and is expensive<sup>[2-3]</sup>.

Cellulose nanofibers (CNFs) are regarded as promising next-generation fibers owing to their sustainability, outstanding mechanical properties, biodegradability and so on<sup>[4-5]</sup>. CNFs are generally obtained by either chemical treatment or mechanical defibrillation. 2,2,6,6-Tetramethylpiperidinyloxy (TEMPO) oxidation is one of the most well-known chemical treatments to obtain CNFs<sup>[6-7]</sup>. However, it has been reported that TEMPO is toxic and pollutes the environment<sup>[8]</sup>. In contrast, aqueous counter collision (ACC) methods based on mechanical defibrillation can obtain CNFs using only water, although CNF bundles (as opposed to single nanofibers) are often produced<sup>[9]</sup>.

Three-dimensional (3D) printing is a promising approach for the fabrication of complex products at low cost. Various methods, such as fused deposition modeling (FDM) and stereolithography for thermoplastic polymers, additive manufacturing for metals and direct ink writing for ceramics, have been studied<sup>[10]</sup>. In particular, FDM is a widely distributed 3D printing method for thermoplastic polymers, due to its low fabrication costs, capability of printing large-sized products, easy maintenance, and variation of raw filaments. The fabrication and mechanical properties of carbon fiber-reinforced thermoplastics by FDM have been recently reported by Li et al.<sup>[11]</sup>.

Xie et al.<sup>[12]</sup> reported that epoxy resin can be enhanced by the molecular chain cross-linkage of epoxy with extremely low CNF addition. This strengthening mechanism shifts to a rule of mixture (i.e. mechanical enhancement) with higher CNF addition. Moreover, Narita et al.<sup>[13]</sup> revealed

that agglomerated CNFs (i.e. a CNF bundle) can be regarded as single CNFs with a small aspect ratio by finite element analysis.

In this study, we fabricate CNF-reinforced PLA matrix composites by FDM. Considering environmental load, we select mechanically-defibrated CNFs by an ACC method. We investigate the tensile properties of the 3D-printed CNF-reinforced PLA matrix (PLA-CNF) composites in two printing directions of 0°/90° and 45°/-45°. Furthermore, we discuss these tensile properties on the basis of scanning electron microscopy (SEM) images.

## 1 Materials and Methods

As starting materials, we prepared PLA pellets (Terramac® TE-2000, Unitika Ltd., Japan) and mechanically-defibrated dry CNFs (BiNFi-s® WFo-UNDP, Sugino Mashine Ltd., Japan). The PLA pellets and CNF were mixed at 12000 rpm using a mixer (TM-8100, TESCOM Denki Co., Ltd., Japan) and the CNF volume fraction was controlled between 0 and 0.5 vol.%. After mixing, PLA-CNF filaments were prepared from the mixed powder at 168°C by an extruder (Filabot Ex2, Filabot, USA).

Tensile testing was performed in compliance with JIS K 7161 1BA. Tensile specimens (see Fig. 1) were printed by a 3D printer (L-DEVO M2030TP, Fusion technology Co., Ltd., Japan) with a printing speed of 30 mm/sec, a filling density of 100%, a lamination pitch of 0.2 mm, a nozzle temperature of 200°C and a nozzle hole diameter of 0.4 mm in two printing directions of 0°/90° and 45°/-45° (see Fig. 1). Fig. 2 shows the dimension of the tensile specimens. The stage temperature was controlled between 40 and 70°C. Tensile testing was carried out using a universal

testing machine (Autograph<sup>TM</sup> AG-Xplus, Shimadzu Corporation, Japan) with a crosshead speed of 1 mm/min. We assumed that the cross-sectional area proportionally decreases by applying the load and that the true strain ( $\varepsilon_T$ ) and true stress ( $\sigma_T$ ) were estimated as follows:

$$\varepsilon_T = \ln(1 + \varepsilon_N) \quad (1)$$

$$\sigma_T = \sigma_N(1 + \varepsilon_N) \quad (2)$$

where  $\varepsilon_N$  and  $\sigma_N$  are nominal strain and stress, respectively.

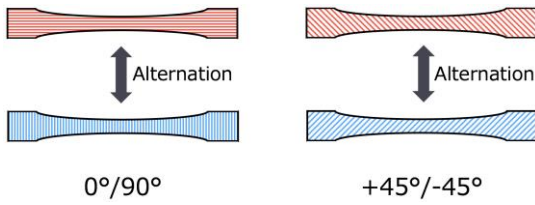


Fig. 1. The specimens have been 3D-printed using the fused deposition modeling in the a) 0°/90° and b) +45°/-45° direction.

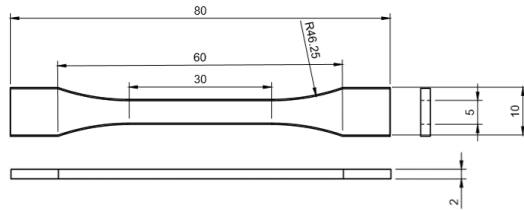


Fig. 2. Dimension of tensile specimens (JIS K 7161 1BA). All dimension are in mm.

After testing, the fracture surface of the PLA-CNF composite was analyzed by SEM. The preparation of the specimens consisted in (i) embedding 3D-printed PLA-CNF composites in acrylic resin, (ii) polishing them with waterproof SiC paper of #600, #1000, #1500, #2400 and diamond slurries of 6 and 1  $\mu\text{m}$ , (iii) polishing the

specimen surface by argon-ion sputtering, before (iv) coating with platinum. The microstructure and fracture surface of the 3D-printed PLA-CNF composites were observed by SEM (JSM-7800F, JEOL Ltd., Japan) with an accelerating voltage of 5 kV.

## 2 Results and Discussion

The CNFs were not burned during extrusion and white PLA-CNF filaments were obtained. The apparent CNF agglomeration was not visually observed. Fig. 3 shows the relationship between specimen shape and stage temperature. The specimens were deformed because of thermal shrinkage when the stage temperature was high. Therefore, we determined 40°C as the stage temperature in this study. Fig. 4 shows the printed PLA-CNF 0.5 vol.% tensile specimen in the 0°/90° direction. It is well known that voids are formed along the printing direction inside the fabricated products by FDM and the printing direction inside the tensile specimens was also visible<sup>[14]</sup>. Fig. 5 shows the SEM images of CNFs inside the PLA-CNF specimen. The CNFs were agglomerated in PLA at any CNF volume fraction and the number of agglomerated CNF clusters was proportionally increased with the CNF volume fraction. The PLA/CNF interface was not intimate, possibly because PLA is hydrophobic while CNF has hydrophilic groups on its surface<sup>[15-16]</sup>. This result implies that the load transfer efficiency at the PLA/CNF interface is low. Furthermore, the CNF orientation along the printing direction was not observed.

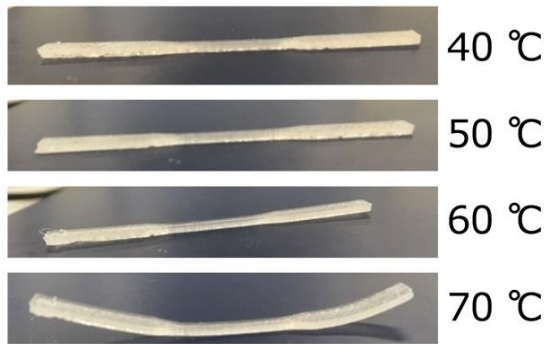


Fig. 3. Relationship between specimen shape and stage temperature.

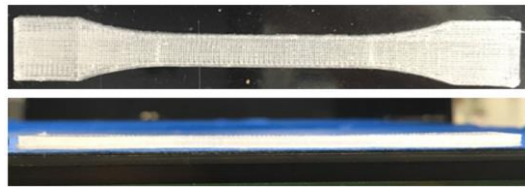


Fig. 4. Printed PLA-CNF 0.5 vol.% tensile specimen in the 0°/90° direction.

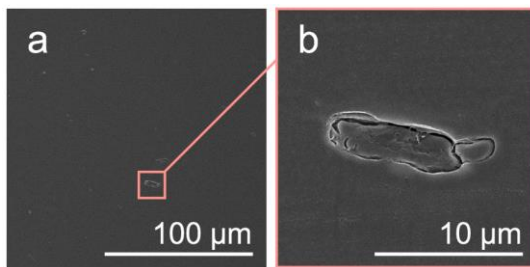


Fig. 5. CNF agglomeration in PLA-CNF 0.1 vol.% tensile specimen.

Fig. 6 shows typical stress-strain curves of the PLA-CNF composites printed in the 0°/90° and 45°/-45° directions. The PLA-CNF composites printed in 45°/-45° showed an apparent plastic deformation, while the PLA-CNF composites printed in 0°/90° showed a proportional relationship between tensile stress and strain and therefore, seems to exhibit a brittle behavior. Fig. 7 shows the CNF volume fraction versus ultimate tensile strength (UTS) and fracture elongation of the PLA-CNF composites. The UTS and fracture

elongation of the PLA-CNF composites printed in 45°/-45° were higher than the ones of the PLA-CNF composites printed in 0°/90°. The reason is the following (see Fig. 8): in the PLA-CNF composites printed at 0°/90°, the filament in the direction perpendicular to the loading direction does not contribute to bearing the applied tensile load. Thus, the stress concentrates in the void, at the intersection between the two directions. In contrast, for PLA-CNF composites printed at 45°/-45°, the filaments in both directions bear the applied tensile load. Moreover, it seems that the stretching of the filaments to the parallel and loading directions provides the apparent plastic deformation and higher fracture elongation. A CNF addition of only 0.1 vol.% increased the UTS and fracture elongation of PLA printed at 45°/-45° by 8% and 11%, respectively. However, it was inclined that a CNF addition higher than 0.3 vol.% decreased the UTS and fracture elongation of PLA.

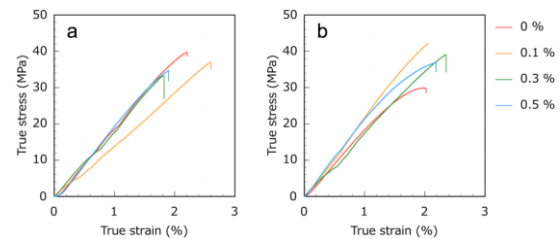


Fig. 6. Typical stress-strain curves of PLA-CNF composites printed at (a) 0°/90° and (b) 45°/-45°.

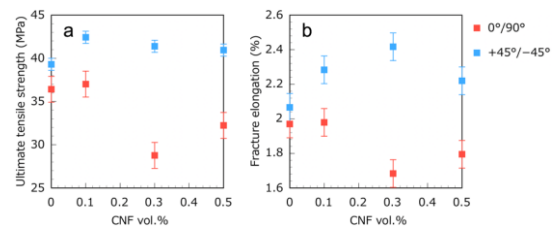


Fig. 7. CNF volume fraction versus (a) ultimate tensile strength and (b) fracture elongation of PLA-CNF composites printed in 0°/90° and 45°/-45°.

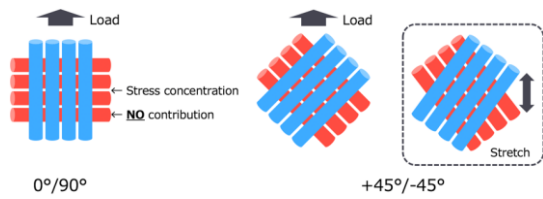


Fig. 8. Mechanical behavior of PLA-CNF composites printed a  $0^\circ/90^\circ$  and  $45^\circ/-45^\circ$  under tensile load.

Fig. 9 shows the SEM fractographs of the printed PLA-CNF composites. Many pores were observed between the printed filaments and the fracture surface appears flat (i.e. a typical fracture surface of brittle materials) (see Fig. 9a). Therefore, these fractographs support the stress-strain curves of the PLA-CNF composites. Few distributed CNFs were observed on the fracture surface (see Figs. 9b-d). These distributed CNFs were exposed without breaking. This result implies that the distributed CNFs were pulled out after bearing the applied tensile load. However, the agglomerated CNF clusters were broken and large pores were observed around them (Fig. 10). The number of agglomerated CNF clusters increased with the CNF volume fraction. It seems that the agglomerated CNF clusters decrease the tensile properties of PLA rather than increase them. Therefore, it is likely that homogeneously dispersed CNFs significantly increase the tensile properties of PLA.

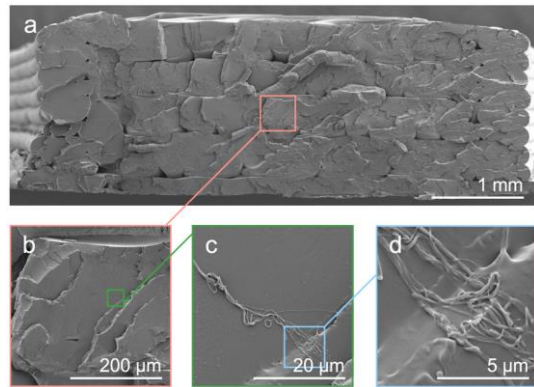


Fig. 9. SEM fractographs of PLA-CNF 0.1 vol.% composite printed in the  $0^\circ/90^\circ$  direction.

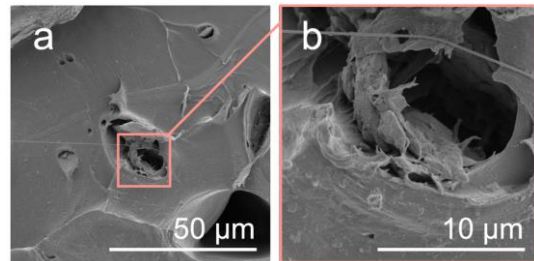


Fig. 10. CNF agglomeration on fracture surface of PLA-CNF 0.3 vol.% composite printed in  $0^\circ/90^\circ$ .

### 3 Conclusion

Mechanically-defibrated CNF-reinforced PLA matrix composites were fabricated by FDM. The tensile properties of the 3D-printed CNF-reinforced PLA matrix (PLA-CNF) composites were investigated in two printing directions:  $0^\circ/90^\circ$  and  $45^\circ/-45^\circ$ . The microstructure and fracture surface were also analyzed by SEM.

Several voids were observed inside the printed specimens along the printing direction, as reported in previous studies. CNFs were agglomerated in PLA and a number of agglomerated CNF clusters was proportionally increased with the CNF volume fraction. The delaminated PLA/CNF interface attributed to the mismatch of hydrophilicity implies that the load is not effectually transferred from PLA to CNFs at the PLA/CNF interface. The CNF orientation along the printing direction was

not observed.

The UTS and fracture elongation of the PLA-CNF composites printed at 45°/–45° were higher than the ones of the PLA-CNF composites printed at 0°/90°. In the PLA-CNF composites printed at 0°/90°, the filament in the direction perpendicular to the loading direction does not likely contribute to bearing the applied tensile load and the stress concentrate to the void between the filament. In contrast, in PLA-CNF composites printed at 45°/–45°, the load is beared by the filaments printed in both directions. The stretching of the filaments and their re-orientation in the loading direction induce apparent plastic deformation and higher fracture elongation.

The exposition of distributed CNFs without breaking, the failure of CNF clusters and large pores around CNF clusters were observed on the fracture surface. Hence, the agglomerated CNF clusters decrease the tensile properties of PLA rather than increase them. Consequently, it was revealed that homogeneously dispersed CNF significantly increase the tensile properties of PLA.

## References

- [1] Zhang K, Mohanty AK, Misra M. Fully Biodegradable and Biorenewable Ternary Blends from Polylactide, Poly(3-hydroxybutyrate-co-hydroxyvalerate) and Poly(butylene succinate) with Balanced Properties. *ACS Appl. Mater. Interfaces* 2012;4(6):3091–3101.
- [2] Karkhanis SS, Matuana LM. Extrusion blown films of poly(lactic acid) chain-extended with food grade multifunctional epoxies. *Polym. Eng. Sci.* 2019;59:2211–2219.
- [3] Barnes DKA, Galgani F, Thompson RC, Barlaz M. Accumulation and fragmentation of plastic debris in global environments. *Phil. Trans. R. Soc. B* 2009; 364:1985–1998.
- [4] Henriksson M, Berglund LA. Structure and properties of cellulose nanocomposite films containing melamine formaldehyde. *Journal of Applied Polymer Science* 2007;106(4):2817–2824.
- [5] Mörseburg K, Chinga-Carrasco G. Assessing the combined benefits of clay and nanofibrillated cellulose in layered TMP-based sheets. *Cellulose.* 2009;16(5):795–806.
- [6] Saito T, Kimura S, Nishiyama Y, Isogai, A. Cellulose nanofibers prepared by TEMPO-mediated oxidation of native cellulose. *Biomacromolecules* 2007;8(8): 2485–2491.
- [7] Shinoda R, Saito T, Okita Y, Isogai A. Relationship between length and degree of polymerization of TEMPO-oxidized cellulose nanofibrils. *Biomacromolecules* 2012;13(3):842–849.
- [8] Sehaqui H, Kulasinski K, Pfenninger N, Zimmermann T, Tingaut P. Highly carboxylated cellulose nanofibers via succinic anhydride esterification of wheat fibers and facile mechanical disintegration. *Biomacromolecules* 2017;18(1):242–248.
- [9] Kondo T, Kose R, Naito H, Kasai W. Aqueous counter collision using paired water jets as a novel means of preparing bio-nanofibers. *Carbohydrate Polymers* 2014; 112:284–290.
- [10] Vaezi M, Seitz H, Yang S A review on 3d micro-additive manufacturing technologies. *Int. J. Adv. Manuf. Technol.* 2013;67(5-8):1721–1754.
- [11] Li N, Li Y, Liu S. Rapid prototyping of continuous carbon fiber reinforced polylactic acid composites by 3D printing. *J. Mater. Process. Technol.* 2016;238:218–225.
- [12] Xie Y, Kurita H, Ishigami R, Narita F. Assessing the Flexural Properties of Epoxy Composites with Extremely Low Addition of

Cellulose Nanofiber Content. *Applied Sciences* 2020;10(3):1159.

[13] Narita F, Wang Y, Kurita H, Suzuki M. Multi-Scale Analysis and Testing of Tensile Behavior in Polymers with Randomly Oriented and Agglomerated Cellulose Nanofibers. *Nanomaterials* 2020;10:700.

[14] Lu W, William G, Gardner M, Douglas J. Improving the impact strength of poly(lactic acid) (PLA) in fused layer modeling (FLM). *Polymer*. 2017;114:242–248.

**Acknowledgements** This work was supported by Program for Creation of Interdisciplinary Research and Ensemble Program of Frontier Research Institute for Interdisciplinary Sciences, Tohoku University.

**Author** Assist. Prof. **KURITA Hiroki** received Ph.D. degree in materials science from Tohoku University in 2012. From 2018 to present, he is assistant professor in Tohoku University, Japan. He studies on natural fiber reinforced biodegradable polymer matrix composites (green composites). He is interested in the relationships between mechanical properties and decomposition level of natural fiber reinforced biodegradable polymer matrix composites.

Assist. Prof. **BERNARD Chrystelle** received Ph.D. degree in material sciences from Strasbourg University, France, in 2015. From 2016 to 2017, she was postdoctoral research fellow at Strasbourg University on ANR project. From 2016 to 2017, she became JSPS postdoctoral researcher at Tohoku University before becoming Assist. Prof. at Frontier Research Institute for Interdisciplinary Sciences, Tohoku University, Japan in 2017. Her research interests focused on the understanding of

[15] Halonen E, Pynttari V, Lilja J, Sillanpää H, Mäntysalo M, Heikkinen J, Mäkinen R, Kaija T, Salonen P. Environmental protection of inkjet-printed Ag conductors. *Microelectronic Engineering* 2011;88(9):2970–2976.

[16] Nitani M, Nakayama K, Maeda K, Omori M, Uno M. Organic temperature sensors based on conductive polymers patterned by a selective-wetting method. *Organic Electronics* 2019;71:164–168.

the deformation behavior of polymers and their thermomechanical modelling under finite strain. Ms. **LAVROVSKY Agathe** received Master degree in materials science from INSA-Lyon in 2020.

Prof. **NARITA Fumio** has served as a professor in the Department of Materials Processing at Tohoku University in Japan since 2017. His current research interests involve designing and developing piezoelectric and magnetostrictive materials for energy-harvesting for the Internet of Things (IoT), as well as developing wearable devices and smart sensors. He is making extensive use of state-of-the-art electromagnetomechanical characterization techniques in combination with computational multiscale modelling to gain insights into fundamental structure-property relationships of complex multifunctional composite materials. He is also developing biodegradable composites using natural materials such as cellulose nanofibers (CNFs).

**Author contributions** Conceptualization, H.K.; Methodology, H.K.; Validation, C.B, A.L.; Formal analysis, C.B, A.L.; Investigation, A.L.; Resources,



H.K., F.N.; Data Curation, A.L.; Writing - Original Draft, H.K.; Writing - Review & Editing, C.B, F.N.; Visualization, H.K.; Supervision, F.N.: Project administration, H.K.: Funding acquisition, H.K., C.B.

**Competing interests** The authors declare no competing interests.