



A MUSE view of the asymmetric jet from HD 163296

C. Xie, S.Y. Haffert, J. de Boer, M.A. Kenworthy, J. Brinchmann, J. Girard,
I.A. G. Snellen, C.U. Keller

► To cite this version:

C. Xie, S.Y. Haffert, J. de Boer, M.A. Kenworthy, J. Brinchmann, et al.. A MUSE view of the asymmetric jet from HD 163296. *Astronomy and Astrophysics - A&A*, 2021, 650, pp.L6. 10.1051/0004-6361/202140602 . hal-03260032

HAL Id: hal-03260032

<https://hal.science/hal-03260032>

Submitted on 20 Jun 2022

HAL is a multi-disciplinary open access archive for the deposit and dissemination of scientific research documents, whether they are published or not. The documents may come from teaching and research institutions in France or abroad, or from public or private research centers.

L'archive ouverte pluridisciplinaire **HAL**, est destinée au dépôt et à la diffusion de documents scientifiques de niveau recherche, publiés ou non, émanant des établissements d'enseignement et de recherche français ou étrangers, des laboratoires publics ou privés.

LETTER TO THE EDITOR

A MUSE view of the asymmetric jet from HD 163296

C. Xie (谢晨)^{1,2}, S. Y. Haffert^{3,2,*}, J. de Boer², M. A. Kenworthy², J. Brinchmann^{2,4}, J. Girard⁵,
I. A. G. Snellen², and C. U. Keller²

¹ Aix Marseille Univ, CNRS, CNES, LAM, Marseille, France
e-mail: chen.xie@lam.fr

² Leiden Observatory, Leiden University, PO Box 9513, 2300 RA Leiden, The Netherlands

³ Steward Observatory, 933 North Cherry Avenue, University of Arizona, Tucson, AZ 85721, USA

⁴ Instituto de Astrofísica e Ciências do Espaço, Universidade do Porto, CAUP, Rua das Estrelas, 4150-762 Porto, Portugal

⁵ Space Telescope Science Institute, Baltimore 21218, MD, USA

Received 18 February 2021 / Accepted 26 April 2021

ABSTRACT

Context. Jets and outflows are thought to play important roles in regulating star formation and disk evolution. An important question is how the jets are launched. HD 163296 is a well-studied Herbig Ae star that hosts proto-planet candidates, a protoplanetary disk, a protostellar jet, and a molecular outflow, which makes it an excellent laboratory for studying jets.

Aims. We aim to characterize the jet at the inner regions and check if there are large differences with the features at large separations. A secondary objective is to demonstrate the performance of Multi Unit Spectroscopic Explorer (MUSE) in high-contrast imaging of extended line emission.

Methods. MUSE in the narrow field mode (NFM) can provide observations at optical wavelengths with high spatial (~ 75 mas) and medium spectral ($R \sim 2500$) resolution. With the high-resolution spectral differential imaging technique, we can characterize the kinematic structures and physical conditions of jets down to 100 mas.

Results. We detect multiple atomic lines in two new knots, B3 and A4, at distances of $<4''$ from the host star with MUSE. The derived $\dot{M}_{\text{jet}}/\dot{M}_{\text{acc}}$ is about 0.08 and 0.06 for knots B3 and A4, respectively. The observed [Ca II]/[S II] ratios indicate that there is no sign of dust grains at distances of $<4''$. Assuming the A4 knot traced the streamline, we can estimate a jet radius at the origin by fitting the half width half maximum of the jet, which sets an upper limit of 2.2 au on the size of the launching region. Although MUSE has the ability to detect the velocity shifts caused by high- and low-velocity components, we found no significant evidence of velocity decrease transverse to the jet direction in our 500 s MUSE observation.

Conclusions. Our work demonstrates the capability of using MUSE NFM observations for the detailed study of stellar jets in the optical down to 100 mas. The derived $\dot{M}_{\text{jet}}/\dot{M}_{\text{acc}}$, no dust grain, and jet radius at the star support the magneto-centrifugal models as a launching mechanism for the jet.

Key words. stars: jets – stars: variables: T Tauri, Herbig Ae/Be – stars: individual: HD 163296 – ISM: jets and outflows – techniques: high angular resolution – techniques: imaging spectroscopy

1. Introduction

Protostellar jets have been observed in pre-main sequence stars across a wide range of masses (Frank et al. 2014), which have velocities of $50\text{--}400\text{ km s}^{-1}$ and are collimated via the magnetic hoop stress by the magnetic field that is threading the disk (Konigl & Pudritz 2000; Ferreira et al. 2006; Ray et al. 2007). The launching site of jets is thought to be at the innermost part of the disks within the 1 au scale (Lee et al. 2017), launched magneto-centrifugally from disks. Among the magneto-centrifugal models for jet launching, two competing models are the X-wind model (Shu et al. 2000) and the disk wind model (Konigl & Pudritz 2000). Adaptive-optics assisted integral-field spectrographs with medium spectral resolution can map the kinematics of jets in the inner region (less than a few hundred au), which can provide critical constraints in distinguishing between the X-wind and the disk wind models (Frank et al. 2014), as the ejection speed in the classical X-wind model is

similar at all angles (Shang et al. 2007). In contrast with the X-wind model, the disk wind model can produce velocity decreases transverse to the jet direction (Ferreira et al. 2006). SINFONI observations of DG Tau show an onion-like velocity structure within $1''$, disfavoring the classical X-wind model (Agra-Amboage et al. 2011). Here we focus on characterizing the jet in the inner region (<400 au) of the Herbig Ae star HD 163296.

HD 163296 is a 5–7 Myr old (Montesinos et al. 2009; Vioque et al. 2018) Herbig Ae star, which is located at a distance of 101.5 ± 1.2 pc (Gaia Collaboration 2016, 2018). Early observations by the *Hubble* Space Telescope discovered a bipolar jet, known as Herbig Haro (HH) object 409 (Grady et al. 2000; Wassell et al. 2006) and a large dust disk with a size of ~ 450 au (Grady et al. 2000; Wisniewski et al. 2008). Since then, numerous works have studied the spatially resolved disk with ground-based telescopes (Fukagawa et al. 2010; Garufi et al. 2014, 2017; Guidi et al. 2016, 2018; Isella et al. 2016, 2018; Monnier et al. 2017; Muro-Arena et al. 2018; Rich et al. 2019). In addition to the disk, the bipolar jet HH 409 shows complex

* NASA Hubble Fellow.

structures with the size of a few thousand au. A series of HH knots were first detected in the point spread function (PSF) subtracted image (Wassell et al. 2006). Klaassen et al. (2013) found a double-corkscrew molecular outflow in CO 2-1 emission, which extends ~ 1000 au along the flow direction. With VLT/X-shooter observations, Ellerbroek et al. (2014) presented the first optical to near-infrared spectra of the jet in HD 163296 down to $2''$ and detected more than 40 atomic lines. In this Letter we present the spectral analysis of the jet from HD 163296 at $<4''$ with an unprecedented spatial resolution of ~ 7 au, obtained with the optical integral-field spectrograph Multi Unit Spectroscopic Explorer (MUSE).

2. Observations and data reduction

HD 163296 was observed with MUSE (Bacon et al. 2010) in narrow field mode (NFM) during the night of 29 April 2019 (program 0103.C-0399(A), PI: de Boer). Laser tomography adaptive optics assisted NFM provided a spatial resolution of ~ 75 mas with the spatial pixel (spaxel) size of $25 \text{ mas} \times 25 \text{ mas}$ in a field of view of $7.5'' \times 7.5''$, covering 480 nm–930 nm with the spectral resolving power of 1740 at 480 nm and 3450 at 930 nm. The data were calibrated and reduced using the ESO MUSE pipeline, version 2.6. The details of the MUSE pipeline can be found in Weilbacher et al. (2020). Three exposure settings were adopted to optimize the observations of this bright star with an R band magnitude of 6.86 mag. The details of the MUSE observations can be found in Table A.1. Short exposures (2 s) were used to obtain the unsaturated stellar PSF and the stellar emission. Two long exposures of 250 s were obtained to perform the main analysis. Due to the brightness of the star, we masked the saturated data within a radius of $0.5''$ and replaced the data with the exposures of 8 s. We did not combine all the data with multiple exposure settings due to the read-out noise in 8s exposures, which degrades the signal-to-noise ratio (S/N) of the jet.

The jet emission is much fainter than the stellar halo. We used the high-resolution spectral differential imaging (HRSDI) technique to remove the stellar spectrum, which was first used in the discovery of the protoplanet PDS 70 c (Haffert et al. 2019). HRSDI is suitable to retrieve sharp emission line features while removing the stellar halo.

Xie et al. (2020) found MUSE has instrumental issues that limit its performance for the application of high-contrast imaging. Such issues are more severe for objects with strong line emissions (i.e., strong $H\alpha$ emission in HD 163296). We adopted a modified HRSDI that builds multiple reference spectra annularly (instead of single reference) with an extra wavelength calibration (see, Xie et al. 2020 and Appendix B for the details). Throughout the Letter, the velocities are relative to the stellar rest frame, for which we adopt $v_{\text{LSR}} = 5.8 \pm 0.2 \text{ km s}^{-1}$ from Qi et al. (2011). The dust extinction was considered to be zero along with the jet by Ellerbroek et al. (2014) and hence no extinction correction was applied to the data. A potential source of extinction is the protoplanetary disk, which is discussed in Sect. 4.1.

3. Analysis and characterization

3.1. Detection of asymmetric jet at $<4''$

HD 163296 is one of the targets in a search for protoplanets with MUSE and as such was briefly discussed in Xie et al. (2020), showing only the morphology of the asymmetric jet. Figure 1 shows the S/N map of the asymmetric jet traced by the [S II] $\lambda 673$ and $H\alpha$ lines. It highlights the imaging capability of MUSE

NFM that can probe the jet down to ~ 100 mas after the removal of the stellar emission. The red-shifted and blue-shifted jet lobes are resolved in the northeast (NE) and southwest (SW) direction, respectively.

For knot B3, we find that the jet diameter is $\sim 0.4''$. The jet diameter of knot A4 ranges from less than $0.075''$ – $0.65''$. The jet diameter was estimated by performing one-dimensional Gaussian fits to the intensity image transverse to the jet direction, and then corrected for the effects of the PSF by subtracting the full width half maximum (FWHM)¹. The intensity image was binned in steps of 10 spaxels along the jet direction to increase the S/N. The knot A4 has a conical shape with a half opening angle of $\sim 5.1^\circ$ at projected distances of $<2.7''$. An extrapolation to the origin of the jet suggests a launching radius of 0.95 ± 1.27 au after correction of the inclination (46.7° ; Isella et al. 2018), and assuming these cones traced the streamlines (see, Fig. 2). Due to the possible disk obscuration discussed in Sect. 4.1, the half opening angle of the B3 knot is $>3.3^\circ$ at projected distances of $<2.5''$.

Multiple atomic lines were detected and measured by fitting a single Gaussian in the spectral direction on the spatially integrated spectra, which are summarized in Table C.1. The corresponding line ratios are listed in Table 1. Figure C.1 shows the integrated jet spectra where we masked the stellar $H\alpha$ line ranging from 6561 \AA – 6566 \AA .

3.2. Kinematics

The wavelength offset of the emission line was converted to a radial velocity based on the Doppler effect. Besides the different morphology of the jet, the radial velocities are also asymmetric, with the blue-shifted lobe being faster ($\sim 280 \text{ km s}^{-1}$) and the red-shifted lobe being slower ($\sim 130 \text{ km s}^{-1}$). The radial velocity in the blue-shifted lobe obtained with MUSE is consistent with the VLT/X-shooter result of $270 \pm 20 \text{ km s}^{-1}$ in Ellerbroek et al. (2014) at larger angular separations (i.e., $>5''$). However, the red-shifted lobe observed with MUSE has a lower radial velocity of around 130 km s^{-1} , which is lower than $170 \pm 20 \text{ km s}^{-1}$ that was obtained at distances of $>9''$ (Ellerbroek et al. 2014). Nevertheless, our result is similar to the B2 knot² that was observed at a closer distance of $3.3''$ in 2011 (Günther et al. 2013), indicating a change in the radial velocity for the red-shifted lobe.

Considering the large extent ($\sim 4.5''$) of the blue-shifted lobe, we also measured the radial velocities for multiple lines as a function of the angular separation, which is shown in Fig. 2. The velocities of $H\alpha$ are consistent with other lines that were not affected by the strong stellar line emission, except for the radial velocity in $H\alpha$ at $\sim 0.62''$ that shows a larger velocity. This is likely caused by the residual from the wing of the stellar $H\alpha$ line emission, which broadens the jet $H\alpha$ line toward shorter wavelengths.

We constructed the 2D velocity map of the [S II] $\lambda 673$ and the $H\alpha$ lines for the B3 and A4 knots, respectively, with a binning of 2×2 spaxels (see, Fig. 1). We excluded the binned spaxels that the S/N of the line emission is less than 3σ and then performed a single Gaussian fitting in the spectral direction for each remaining spaxel. The velocity uncertainty map can be found in Appendix D.1, which shows the fitting error caused by the noise. Considering the uncertainty of around 10 km s^{-1} , the velocity of the A4 knot traced by $H\alpha$ shows a relatively uniform distribution

¹ The jet diameter $D_{\text{jet}}^2 = FWHM_{\text{obs}}^2 - FWHM_{\text{ins}}^2$.

² The definition of the jet knots can be found in Wassell et al. (2006) and Günther et al. (2013).

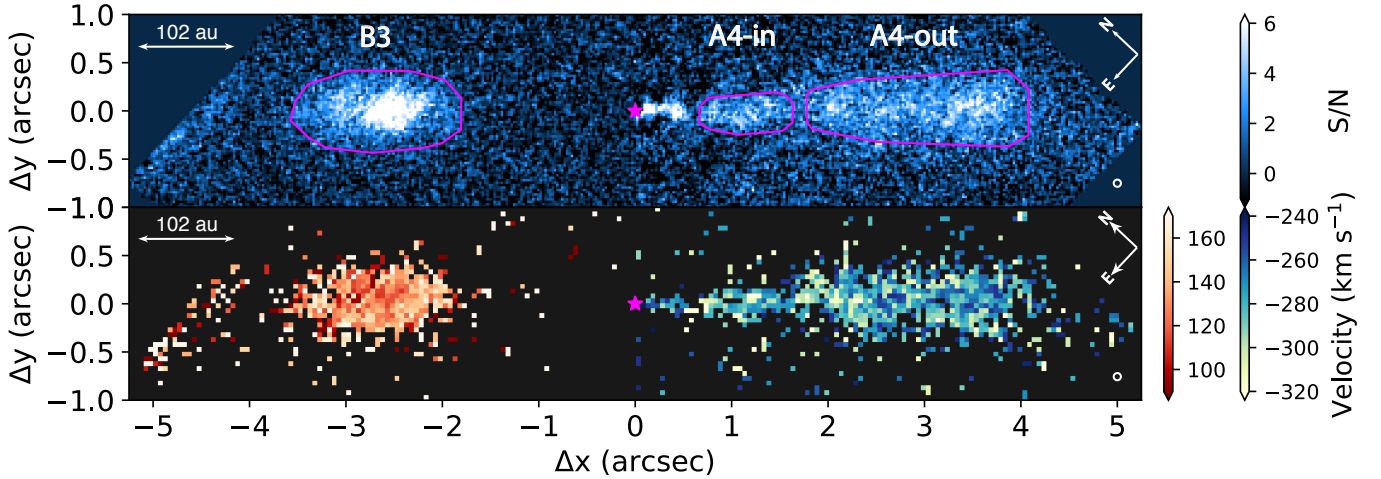


Fig. 1. S/N (*top*) and radial velocity (*bottom*) maps of the asymmetric jet in HD 163296 detected by MUSE, traced by [S II] $\lambda 673$ ($\Delta x < 0$) and H α lines ($\Delta x > 0$), respectively. The red-shifted lobe is at $\Delta x < 0$ and the blue-shifted lobe is at $\Delta x > 0$. The magenta polygon indicates the region where we measured the integrated jet flux. The spatial resolutions of the S/N and velocity maps are indicated by the white circles of ~ 75 mas in diameter in the bottom right of each panel, which are ~ 3 and ~ 1.5 (2×2 binning) spaxels across, respectively. Only spaxels that have the S/N of the line emission larger than 3σ were used to construct the velocity map. The velocity uncertainty map is shown in Fig. D.1. At the target distance of 101.5 pc, $1''$ corresponds to a scale of 102 au. The magenta star marks the star center.

down to 100 mas. We note that only the H α emission line has enough S/N to make the 2D velocity map for the A4 knot. As for the B3 knot, multiple lines (i.e., [S II] $\lambda 671$, [N II] $\lambda 658$, [O I] $\lambda 636$, and [Ca II] $\lambda 729$) have results consistent with [S II] $\lambda 673$ in Fig. 1, showing a uniform distribution without a significant velocity decrease transverse to the jet direction.

3.3. Physical conditions

Table 1 shows the physical conditions for the B3 and A4 knots, derived from commonly used line ratios (see Appendix E for details of the estimation). The most used indicator for the electron density is the line ratio of [S II] $\lambda 671$ and [S II] $\lambda 673$ (Proxauf et al. 2014), assuming an electron temperature of 10 000 K (Ellerbroek et al. 2014). From the ratio of the [S II] lines, we obtained an electron density of about 1700 cm^{-3} in knot B3. The electron density in knot A4 decreases along the jet lobe, from about 5100 cm^{-3} in knot A4-in at $\sim 1.1''$, to about 1000 cm^{-3} in knot A4-out at $\sim 3''$. At the larger distance ($> 4''$), Ellerbroek et al. (2014) reported an electron density of $\sim 500 \text{ cm}^{-3}$ for both the red-shifted and blue-shifted lobes and they also found that the electron density decreases with the distance from the star. We also observed a decreasing trend at the inner region. To illustrate this decreasing trend in knot A4, we show the line ratio as a function of angular distance in Fig. 2. The decreasing electron densities are revealed by an increasing [S II] $\lambda 671$ /[S II] $\lambda 673$ ratio along the jet lobe. This confirms that the electron densities decreases along both jet lobes.

To estimate the mass-loss rate, we followed Hartigan et al. (1994):

$$\dot{M}_{\text{jet}} = \mu m_{\text{H}} \langle n_{\text{H}} \rangle \pi R_{\text{J}}^2 v_{\text{J}}. \quad (1)$$

Here $\mu = 1.24$ is the mean molecular weight; m_{H} , $\langle n_{\text{H}} \rangle$, R_{J} , and v_{J} are the mass of the hydrogen atom, average density, the jet radius, and the jet velocity ($v_{\text{J}} = |v_{\text{r}}|/\cos i$), respectively. The average density can be estimated from electron density as $\langle n_{\text{H}} \rangle = \langle C \rangle^{-1/2} \langle I \rangle^{-1} n_{\text{e}}$ with the ionization fraction $\langle I \rangle$ and mean compression factor $\langle C \rangle$ listed in Table 1. The derived \dot{M}_{jet} are $(6.3 \pm 1.7) \times 10^{-10} M_{\odot} \text{ yr}^{-1}$, $(5.8 \pm 9.8) \times 10^{-10} M_{\odot} \text{ yr}^{-1}$, and

Table 1. Line ratios and physical conditions.

Name	B3	A4-in	A4-out
Line ratios			
H α / H β	–	–	2.66 ± 0.46
[S II]671 / [S II]673	0.68 ± 0.05	0.53 ± 0.16	0.80 ± 0.13
[O I]630 / H α	–	0.33 ± 0.07	0.12 ± 0.02
[S II] ^(a) / H α	–	0.62 ± 0.09	0.80 ± 0.07
[N II]658 / [O I]630	0.45 ± 0.05	1.95 ± 0.43	3.72 ± 0.69
[S II]673 / H α	–	0.40 ± 0.07	0.46 ± 0.05
[N II]658 / [S II] ^(a)	0.21 ± 0.02	1.04 ± 0.17	0.56 ± 0.07
[Ca II]729 / [S II]673	0.58 ± 0.03	0.36 ± 0.11	0.37 ± 0.06
Physical conditions			
Position	$\sim 2.5''$	$\sim 1.1''$	$\sim 3''$
R_{jet} (au)	21.0 ± 0.6	14.4 ± 1.1	33.9 ± 2.4
n_{e} (cm^{-3})	1715 ± 436	5131 ± 8586	978 ± 541
$n_{\text{H, pre}}$ (cm^{-3})	1000	1000	100
B ($\mu \text{ G}$)	10–100	100	10–100
v_{shock} (km s^{-1})	~ 50	80–100	80–100
$\langle I \rangle$	0.11 ± 0.01	0.42 ± 0.06	0.56 ± 0.02
$\langle C \rangle$	23 ± 1	18 ± 2	18 ± 3
$\langle n_{\text{H}} \rangle$ (cm^{-3})	3251 ± 880	2879 ± 4938	411 ± 230
\dot{M} ($10^{-10} M_{\odot} \text{ yr}^{-1}$)	6.3 ± 1.7	5.8 ± 9.8	4.5 ± 2.6

Notes. The detailed derivation of the physical parameters can be found in the main text and in Appendix E. ^(a)Here [S II] is the sum of [S II] $\lambda 671$ and [S II] $\lambda 673$ lines.

$(4.5 \pm 2.6) \times 10^{-10} M_{\odot} \text{ yr}^{-1}$ for knots B3, A4-in, and A4-out, respectively. The mass-loss rate in the inner and outer part of the A4 knot are consistent with each other. The large uncertainty of \dot{M}_{jet} at the A4-in knot is caused by the relatively large uncertainty in the line flux of [S II] $\lambda 671$, which can be significantly improved with a longer integration time. And the mass-loss rate in knot B3 is a factor of 1.5 higher than knot A4. While the jet knots we measured are not the same ones as in Günther et al. (2013) and

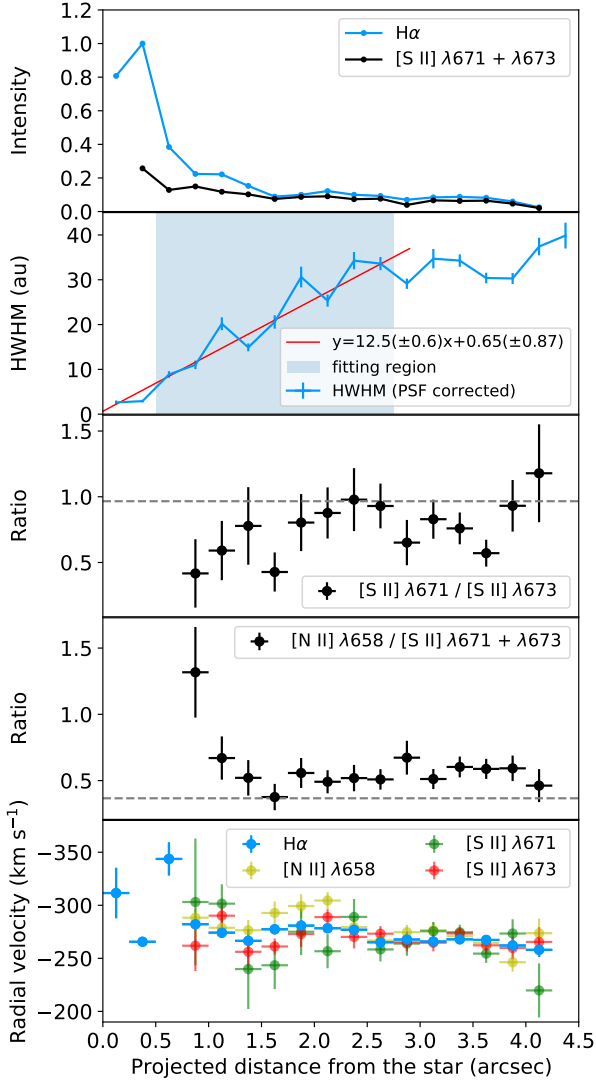


Fig. 2. Variation in the line properties along the blue-shifted jet lobe. *From top to bottom panel:* intensity profiles of the lines, PSF corrected jet half width half maximum (HWHM) at H α , observed ratios [S II] λ 671/[S II] λ 671 and [N II] λ 658/[S II] (λ 671+ λ 673), and radial velocities of lines. The red line shows the fitting result of the data in the fitting region, which gives a jet radius of 0.65 ± 0.87 au at the star, before correcting for the inclination effect. The gray dashed lines represent the minimum [S II] ratio and the maximum [N II]/[S II] ratio observed at the outer region in Ellerbroek et al. (2014), respectively.

Ellerbroek et al. (2014), our measurements show similar mass-loss rates to previous knots at larger distances.

The mass accretion rate of the star can be estimated from the line width as

$$\log(\dot{M}_{\text{acc}}) = -12.89(\pm 0.3) + 9.7(\pm 0.7) \times 10^{-3} \text{ H}\alpha(10\%), \quad (2)$$

where H α (10%) is the full width at 10% maximum of the H α line in km s $^{-1}$ and the unit of \dot{M}_{acc} is $M_{\odot} \text{ yr}^{-1}$ (Natta et al. 2004). Based on the unsaturated short exposures, the intrinsic stellar H α 10% width is 491 ± 23 km s $^{-1}$ after deconvolving for the spectral line spread function (LSF)³, which indicates a mass accretion rate of $7.5 \times 10^{-9.0 \pm 0.5} M_{\odot} \text{ yr}^{-1}$. Assuming a constant

³ $\text{H}\alpha(10\%) = \sqrt{\text{H}\alpha(10\%)_{\text{obs}}^2 - \text{H}\alpha(10\%)_{\text{ins}}^2}$. The $\text{H}\alpha(10\%)_{\text{ins}}$ is 211 km s $^{-1}$ at 6562.8 Å (Bacon et al. 2017).

\dot{M}_{acc} , the $\dot{M}_{\text{jet}}/\dot{M}_{\text{acc}}$ ratios are about 0.08 ± 0.09 and 0.06 ± 0.08 for knots B3 and A4, respectively. Our measurements at the inner region ($<4''$) are consistent with the $\dot{M}_{\text{jet}}/\dot{M}_{\text{acc}}$ ratios measured at the outer region ($>4''$) by Ellerbroek et al. (2014).

Shocks can destroy the dust grains and release the refractory atoms (such as Ca) back to the gas phase, which changes the [Ca II]/[S II] ratio. As a result, the line ratio of [Ca II] λ 729 and [S II] λ 673 traces the abundance of calcium in the gas phase and hence the presence of dust grains (Podio et al. 2006). We can look for the depletion of Ca by comparing the observed line ratio with a model prediction. As shown in Table 1, the measured [Ca II]/[S II] ratios are about 0.6 and 0.4 for the knots B3 and A4, respectively. These observed ratios are above the predicted line ratios (<0.4) when the Ca $^{+}$ ionization fraction is equal to the hydrogen ionization (see, Fig. 4 in Ellerbroek et al. 2014), indicating the absence of dust grains in the jet at $<4''$. From the H α /H β ratio of 2.7 ± 0.5 in the A4-out knot at $\sim 3''$, we can conclude that there is no significant amount of dust extinction since the ratio is close to the predicted value of ~ 3 for the shock velocity of 80–100 km s $^{-1}$ (Hartigan et al. 1994).

4. Discussion

4.1. A new knot possibly contradicting the 16 yr period

Based on observations obtained before 2014, a period of 16.0 ± 0.7 yr and proper motions of $0.28'' \text{ yr}^{-1}$ (receding) and $0.49'' \text{ yr}^{-1}$ (approaching) were found in the jet knots that were regularly spaced (Ellerbroek et al. 2014). The knots in the receding jet lobe shows a roughly equal space interval of $4.5''$. The B2 knot was detected at $3.4''$ in 2013 (Ellerbroek et al. 2014) and was expected to be located at $\sim 5.0''$ by the time of our observation in 2019, assuming a constant proper motion of $0.28'' \text{ yr}^{-1}$. If the 16 yr period is real, the next knot B3 would be located at $<1''$ in 2019. Interestingly, we detected a new knot B3 at $\sim 2.5''$ in 2019, which is too close to the B2 knot and seems to contradict the 16 yr period. The clear drop in the flux on both sides of the jet axis suggests that we either detected a new knot or we only detected the brighter part of the B2 knot.

Three possible explanations can account for the presence of the new red-shifted knot B3 detected in this work. The first explanation is that the new knot we detect belongs to the previous knot B2. The second hypothesis is that only the outer part of the new knot was detected due to the disk obscuration and that the period has not changed. This is supported as the red-shifted knot is close to the edge of the dust disk around 193 au^4 (Wassell et al. 2006; Wisniewski et al. 2008). Similarly, disk obscuration of a receding jet lobe has been observed in DG Tau (Agra-Amboage et al. 2011; White et al. 2014). Unfortunately, the H α emission in B3 is contaminated by the residual of the stellar emission due to the instrumental issues, which limit our use of the H α /H β ratio to characterize the extinction. The last explanation is an actual change in the period. During the launch of the B2 knot around 2002, an enhanced near-infrared excess was observed and thought to be caused by the launch of the dust cloud (Ellerbroek et al. 2014). A similar enhanced near-infrared excess was observed in the Ks-band in 2011 and 2012 (Ellerbroek et al. 2014; Rich et al. 2020), which maybe coincide

⁴ The surface brightness of the dust disk has three distinct power-law trends (Wisniewski et al. 2008). A relatively constant intensity extends up to $2.8''$, which corresponds to a projected separation of $1.9''$ or 193 au in the NE direction. Then the surface brightness follows an exponential $\sim r^{-4}$ decrease from $\sim 2.9''$ to $\sim 4.4''$, following with termination of the detection at $>4.5''$.

with the launch of the newly detected B3 knot around 2010. Furthermore, no significant enhancement of a near-infrared excess was found between 2016-2018 (Rich et al. 2020). Future observations with X-shooter will be able to determine whether the B3 knot is still part of the previous B2 knot. Higher S/N observations with MUSE NFM can also be used to determine the influence of the obscuration from the dust disk.

4.2. Velocity uncertainty

The velocity shifts transverse to the jet direction are on the order of about 50 km s^{-1} between high- and low-velocity components⁵ and less than 15 km s^{-1} for jet rotations. The error on the velocity measurement consists of two components, the calibration errors in the wavelength solution and the centroid fitting error of the line center caused by the measurement noise. For the case of HD 163296, the fitting error is smaller than 10 km s^{-1} for spaxels with S/Ns larger than 5 (see Fig. D.1). The total integration time we used is only 500 s. With an integration time of 3.5 h, the fitting error would be reduced by a factor of 5 as the fitting error $\sigma \propto (S/N)^{-1}$ (Porter et al. 2004), reaching the level of 2 km s^{-1} . This is only valid if the error budget is dominated by the photon noise, which is the case for MUSE at separations of $<1''$ (Xie et al. 2020).

The offset of the wavelength solution in MUSE can reach the level of 0.1 \AA (Weilbacher et al. 2020), which corresponds to $\sim 5 \text{ km s}^{-1}$ at $H\alpha$. For HD 163296, the average offset found during an extra round of wavelength calibration is around 0.25 \AA and 0.35 \AA for exposures of 250 s and 8 s, respectively. Tellurics (5577 \AA and 6300 \AA) were used in the MUSE pipeline to correct the offset caused by the temperature difference in the instrument between nighttime science images and daytime calibrations (Weilbacher et al. 2020). Without the additional calibration, the wavelength calibration errors are around 10 and 15 km s^{-1} at $H\alpha$ for exposures of 250 s and 8 s, respectively. To further reduce the calibration error, we applied an extra wavelength calibration using the stellar $H\alpha$ line, which is much stronger than telluric emission lines. Unfortunately, being a Herbig Ae star, HD 163296 does not have other prominent emission or absorption features. Hence, we cannot estimate the residual offset after our extra wavelength calibration.

Overall, MUSE can be used to observe the velocity shifts caused by high- and low-velocity components at $<1''$. However, the relatively large offset of the wavelength solution prevents us from measuring any potential jet rotation at a 5σ confidence level in the dataset of HD 163296. Future instruments will be able to measure the jet rotation in the visible and the near-infrared. For optical wavelengths, VLT/MAVIS (McDermid et al. 2020) will provide the necessary spatial and spectral resolving power ($R \approx 10000$), while VLT/ERIS (Davies et al. 2018), which has a similar resolving power, can be used to probe emission lines in the near-infrared. If we look further into the future, HARMONI (Rodrigues et al. 2018), the first generation IFU for the ELT, will provide even higher spatial and spectral resolution in the near-infrared.

4.3. Better measurement of $\dot{M}_{\text{jet}}/\dot{M}_{\text{acc}}$ ratios with MUSE

The mass-loss rate of the jet and the $\dot{M}_{\text{jet}}/\dot{M}_{\text{acc}}$ ratio are fundamental parameters to understand the jet efficiency in

regulating the star formation and disk evolution (Frank et al. 2014; Nisini et al. 2018). In general, the measurements of the $\dot{M}_{\text{jet}}/\dot{M}_{\text{acc}}$ ratio suffer from nonsimultaneous observations. There is a delay of several years to decades before jet knots are separated enough from their host star so that instruments such as X-shooter can observe the knots. MUSE can provide measurements of emission lines very close to a star ($<1''$), which reduces the time interval between the measurements of the \dot{M}_{jet} and \dot{M}_{acc} , leading to a more accurate ratio. Furthermore, MUSE can also measure the jet radius, which is a key parameter in determining \dot{M}_{jet} . It should be noted that the characterization of the innermost region depends on the S/N because MUSE does not have a coronagraph to block the stellar light.

5. Conclusions

We present the detailed spectral analysis of two new knots, B3 and A4, found by MUSE. Multiple atomic emission lines have been detected at $<4''$ after the removal of the stellar emission with HRSDI. With the MUSE NFM observation, we confirm that the HH 409 jet is asymmetric in morphology, velocity, and physical conditions down to 100 mas . The A4 knot is blue-shifted and has a radial velocity of about 280 km s^{-1} , which is consistent with knots at larger distances. The B3 knot is red-shifted and has a lower radial velocity of about 130 km s^{-1} . This knot also has a lower velocity compared to other receding knots at larger distances. Based on the increasing $[\text{S II}] \lambda 671/[\text{S II}] \lambda 673$ line ratios, we confirm that the electron densities decrease along both the receding and approaching jet lobes. The derived $\dot{M}_{\text{jet}}/\dot{M}_{\text{acc}}$ ratios are 0.08 and 0.06 for knots B3 and A4, respectively. No sign of dust grains is found in any of the knots based on the measured $[\text{Ca II}]/[\text{S II}]$ ratios. Assuming the knot A4 traces the streamline, we find a jet launching radius of $1.0 \pm 1.3 \text{ au}$. The derived $\dot{M}_{\text{jet}}/\dot{M}_{\text{acc}}$ ratios, the absence of dust grains in the high-velocity jet, and the jet launching radius support the magnetocentrifugal models for jet launching. Although MUSE has the ability to detect the velocity shifts caused by high- and low-velocity components, we found no significant evidence of velocity decrease transverse to the jet direction.

Our work demonstrates the capability of using MUSE NFM observations for detailed studies of the morphology, kinematic structure, and physical conditions of stellar jets at optical wavelengths down to separations of 100 mas . Future observations of HD 163296 with MUSE and with longer integration times are recommended to get better measurements of the kinematic structure of the jet.

Acknowledgements. This work is based on observations collected at the European Organisation for Astronomical Research in the Southern Hemisphere under ESO programmes 0103.C-0399(A). This research made use of Astropy (<http://www.astropy.org>), a community-developed core Python package for Astronomy (Astropy Collaboration 2013, 2018). Support for this work was provided by NASA through the NASA Hubble Fellowship grant #HST-HF2-51436.001-A awarded by the Space Telescope Science Institute, which is operated by the Association of Universities for Research in Astronomy, Incorporated, under NASA contract NAS5-26555.

References

- Agra-Amboage, V., Dougados, C., Cabrit, S., & Reunanen, J. 2011, *A&A*, **532**, A59
- Astropy Collaboration (Robitaille, T. P., et al.) 2013, *A&A*, **558**, A33
- Astropy Collaboration (Price-Whelan, A. M., et al.) 2018, *AJ*, **156**, 123
- Bacon, R., Accardo, M., Adjali, L., et al. 2010, in *Ground-based and Airborne Instrumentation for Astronomy III*, Proc. SPIE, **7735**, 773508
- Bacon, R., Conseil, S., Mary, D., et al. 2017, *A&A*, **608**, A1

⁵ Throughout the paper, we refer to a high-velocity component as its velocity $>100 \text{ km s}^{-1}$ and a low-velocity component as its velocity $<100 \text{ km s}^{-1}$.

- Davies, R., Esposito, S., Schmid, H. M., et al. 2018, in *Ground-based and Airborne Instrumentation for Astronomy VII*, eds. C. J. Evans, L. Simard, & H. Takami, *SPIE Conf. Ser.*, **10702**, 1070209
- Ellerbroek, L. E., Podio, L., Dougados, C., et al. 2014, *A&A*, **563**, A87
- Ferreira, J., Dougados, C., & Cabrit, S. 2006, *A&A*, **453**, 785
- Frank, A., Ray, T. P., Cabrit, S., et al. 2014, in *Protostars and Planets VI*, eds. H. Beuther, R. S. Klessen, C. P. Dullemond, & T. Henning, 451
- Fukagawa, M., Tamura, M., Itoh, Y., et al. 2010, *PASJ*, **62**, 347
- Gaia Collaboration (Prusti, T., et al.) 2016, *A&A*, **595**, A1
- Gaia Collaboration (Brown, A. G. A., et al.) 2018, *A&A*, **616**, A1
- Garufi, A., Quanz, S. P., Schmid, H. M., et al. 2014, *A&A*, **568**, A40
- Garufi, A., Meeus, G., Benisty, M., et al. 2017, *A&A*, **603**, A21
- Grady, C. A., Devine, D., Woodgate, B., et al. 2000, *ApJ*, **544**, 895
- Guidi, G., Tazzari, M., Testi, L., et al. 2016, *A&A*, **588**, A112
- Guidi, G., Ruane, G., Williams, J. P., et al. 2018, *MNRAS*, **479**, 1505
- Günther, H. M., Schneider, P. C., & Li, Z. Y. 2013, *A&A*, **552**, A142
- Haffert, S. Y., Bohn, A. J., de Boer, J., et al. 2019, *Nat. Astron.*, **3**, 749
- Hartigan, P., Morse, J. A., & Raymond, J. 1994, *ApJ*, **436**, 125
- Isella, A., Guidi, G., Testi, L., et al. 2016, *Phys. Rev. Lett.*, **117**, 251101
- Isella, A., Huang, J., Andrews, S. M., et al. 2018, *ApJ*, **869**, L49
- Klaassen, P. D., Juhasz, A., Mathews, G. S., et al. 2013, *A&A*, **555**, A73
- Konigl, A., & Pudritz, R. E. 2000, in *Protostars and Planets IV*, eds. V. Mannings, A. P. Boss, & S. S. Russell, 759
- Kramida, A., Ralchenko, Yu., Reader, J., & NIST ASD Team 2000, in *NIST Atomic Spectra Database (ver. 5.7.1)* (Gaithersburg, MD.: National Institute of Standards and Technology), [Online] Available: <https://physics.nist.gov/asd> [2020, July 29]
- Lee, C.-F., Ho, P. T. P., Li, Z.-Y., et al. 2017, *Nat. Astron.*, **1**, 0152
- McDermid, R. M., Cresci, G., Rigaut, F., et al. 2020, *ArXiv e-prints* [arXiv:2009.09242]
- Monnier, J. D., Harries, T. J., Aarnio, A., et al. 2017, *ApJ*, **838**, 20
- Montesinos, B., Eiroa, C., Mora, A., & Merín, B. 2009, *A&A*, **495**, 901
- Muro-Arena, G. A., Dominik, C., Waters, L. B. F. M., et al. 2018, *A&A*, **614**, A24
- Natta, A., Testi, L., Muzerolle, J., et al. 2004, *A&A*, **424**, 603
- Nisini, B., Antoniucci, S., Alcalá, J. M., et al. 2018, *A&A*, **609**, A87
- Podio, L., Bacciotti, F., Nisini, B., et al. 2006, *A&A*, **456**, 189
- Porter, J. M., Oudmaijer, R. D., & Baines, D. 2004, *A&A*, **428**, 327
- Proxauf, B., Öttl, S., & Kimeswenger, S. 2014, *A&A*, **561**, A10
- Qi, C., D'Alessio, P., Öberg, K. I., et al. 2011, *ApJ*, **740**, 84
- Ray, T., Dougados, C., Bacciotti, F., Eisloffel, J., & Chrysostomou, A. 2007, in *Protostars and Planets V*, eds. B. Reipurth, D. Jewitt, & K. Keil, 231
- Rich, E. A., Wisniewski, J. P., Currie, T., et al. 2019, *ApJ*, **875**, 38
- Rich, E. A., Wisniewski, J. P., Sitko, M. L., et al. 2020, *ApJ*, **902**, 4
- Rodrigues, M., Capone, J., Earle, A., et al. 2018, in *Ground-based and Airborne Instrumentation for Astronomy VII*, eds. C. J. Evans, L. Simard, & H. Takami, *SPIE*, **10702**, 2991
- Shang, H., Li, Z. Y., & Hirano, N. 2007, in *Protostars and Planets V*, eds. B. Reipurth, D. Jewitt, & K. Keil, 261
- Shu, F. H., Najita, J. R., Shang, H., & Li, Z. Y. 2000, in *Protostars and Planets IV*, eds. V. Mannings, A. P. Boss, & S. S. Russell, 789
- Vioque, M., Oudmaijer, R. D., Baines, D., Mendigutía, I., & Pérez-Martínez, R. 2018, *A&A*, **620**, A128
- Wassell, E. J., Grady, C. A., Woodgate, B., Kimble, R. A., & Bruhweiler, F. C. 2006, *ApJ*, **650**, 985
- Weilbacher, P. M., Palsa, R., Streicher, O., et al. 2020, *A&A*, **641**, A28
- White, M. C., Bicknell, G. V., McGregor, P. J., & Salmeron, R. 2014, *MNRAS*, **442**, 28
- Wisniewski, J. P., Clampin, M., Grady, C. A., et al. 2008, *ApJ*, **682**, 548
- Xie, C., Haffert, S. Y., de Boer, J., et al. 2020, *A&A*, **644**, A149

Appendix A: The observations

Table A.1. MUSE NFM observations of HD 163296.

$t_{\text{DIT}} \times n_{\text{DIT}}^{(a)}$	On-source time (s)	Derotation (degree)	Frames per rot.
2×4	8	0	4
8×40	320	45	8
250×2	500	0	2

Notes. ^(a) t_{DIT} is the exposure time per image frame in the unit of seconds and n_{DIT} is the number of image frames.

Appendix B: Stellar emission subtraction

The key to obtaining a higher contrast ratio is to subtract the observed stellar emission as accurately as possible with the best-matched reference spectra. Due to the instrumental issues of MUSE, the observed stellar line-to-continuum ratio varies across the field if stars have strong line emission, which is the case for HD 163296. We follow the modified HRSDI method described in Xie et al. (2020), which can effectively correct for such issues. Modified HRSDI only adjusts the way of building the reference spectrum, compared with standard HRSDI described in Haffert et al. (2019). According to the detailed description in Xie et al. (2020), we built reference spectra for several annuli. However, before the reference spectra were estimated, we applied an additional wavelength calibration using the strong stellar emission line (i.e., $H\alpha$). The regions of the jet were

masked when we built the stellar reference spectra to avoid influencing the stellar spectra with the jet emission. To avoid over-subtraction of the jet emission, no principal component analysis (PCA) was used for the correction of the high-order effect, while the residual remains relatively small thanks to the better-matched reference spectra and additional wavelength calibration.

For the blue part of the spectrum (4772 Å–5779 Å), the only prominent feature in the stellar spectrum is a strong and broad absorption at $H\beta$. Such a broad feature, which is five times wider than $H\alpha$ emission line, is not suitable for determining the offset of the wavelength solution. Therefore, we did not perform the extra wavelength calibration for the blue part of the spectrum.

As is shown in Xie et al. (2020), the instrumental issues led to strips in the images after removing the stellar emission. In the case of 250 s data without derotation (see, Table A.1), such strips are prominent spatially in the five horizontal IFUs in which the stellar PSF center is located and existed in the spectral channels around $H\alpha$ (6550 Å–6577 Å) and $H\beta$ (4856.61 Å–4864.11 Å). To further remove these strips, we applied a median filter spatially in each row among the five IFUs with a length of 55 spaxels. To avoid the influence of the jet emission, the jet was masked not only spatially but also spectrally because the jet is only present at certain wavelengths with a 10% width of ~ 6 Å.

Due to the poor AO performance at shorter wavelengths, the residual noise at the blue part of the spectrum is much larger than that at longer wavelengths. In addition to the noise, we also noticed a low-frequency variation in the residual with a period on the order of ~ 60 Å in the spectral direction. Hence, we adopted a high-pass filter only for the blue part of the integrated jet spectra, which are presented in Fig. C.1.

Appendix C: Observed emission lines

Table C.1. Jet properties.

Name	Line	$\lambda_{\text{rest frame}}$ (Å)	λ_{obs} (Å)	Radial velocity (km s ⁻¹)	Line flux ^(a) 1×10^{-16} (erg s ⁻¹ cm ⁻²)	$FWHM$ ^(b) (km s ⁻¹)
B3	$H\beta$	4861.35	4863.42	121.6 ± 7.4	32.5 ± 3.9	92.4 ± 60.4
	–	–	5160.38	–	22.3 ± 5.0	149.7 ± 37.8
	[O I]	6300.304	6303.11	127.4 ± 2.0	82.9 ± 2.6	125.5 ± 4.6
	[O I]	6363.776	6366.55	124.8 ± 6.6	24.7 ± 2.7	123.8 ± 15.0
	[N II]	6583.45	6586.44	130.1 ± 5.8	36.9 ± 3.8	113.4 ± 13.1
	[S II]	6716.440	6719.41	126.8 ± 3.1	70.9 ± 3.9	113.7 ± 7.2
	[S II]	6730.816	6733.86	129.6 ± 2.1	104.2 ± 3.9	114.7 ± 5.0
	[Fe II]	7155.1742	7158.39	129.0 ± 5.1	21.5 ± 2.4	96.6 ± 13.7
	[Ca II]	7291.47	7294.72	127.9 ± 2.4	60.5 ± 2.8	105.1 ± 5.9
	[Ca II]	7323.89	7327.13	126.9 ± 4.0	32.9 ± 2.8	98.8 ± 10.2
	–	–	7381.07	–	17.3 ± 2.4	113.3 ± 18.5
	[Fe II]	7452.54	7456.03	134.6 ± 19.3	10.3 ± 3.3	124.8 ± 45.7
	[Fe II]	8616.9498	8620.89	131.4 ± 1.8	25.9 ± 1.1	87.7 ± 4.6
A4-in	$H\beta$ ^(c)	4861.35	4857.8	-224.9 ± 13.7	84.0 ± 17.0	124.6 ± 24.6
	[O III]	5006.843	5001.98	-297.0 ± 21.4	63.0 ± 16.1	171.5 ± 50.6
	[O I]	6300.304	6293.58	-325.9 ± 25.3	35.4 ± 7.2	251.4 ± 59.4
	[N II]	6548.05	6542.02	-282.3 ± 23.0	23.0 ± 6.2	173.3 ± 54.1

Notes. For atomic lines we could not identify, only observed line properties are provided. The line properties were obtained by fitting a Gaussian profile. The rest-frame wavelength ($\lambda_{\text{rest frame}}$) is obtained from Kramida et al. (2000). ^(a)We did not correct for the flux loss caused by the low Strehl ratio (25% at $H\alpha$) because the Strehl ratios are relatively constant for most of line ratios we measured, except for $H\alpha/H\beta$ in A4-out. ^(b)The measured FWHM includes instrumental line broadening, which should be considered as the upper limit. The spectral LSF is about 116 km s⁻¹ at $H\alpha$ (Bacon et al. 2017). ^(c)The radial velocity of $H\beta$ at the inner region of A4 is not consistent with the rest of the lines. It is due to the residual of stellar $H\beta$ absorption features that are stronger close to the star.

Table C.1. continued.

Name	Line	$\lambda_{\text{rest frame}}$ (Å)	λ_{obs} (Å)	Radial velocity (km s ⁻¹)	Line flux ^(a) 1×10^{-16} (erg s ⁻¹ cm ⁻²)	$FWHM$ ^(b) (km s ⁻¹)
	H α	6562.8	6556.65	-287.0 ± 3.0	107.2 ± 5.3	125.6 ± 7.0
	[N II]	6583.45	6577.3	-285.9 ± 6.9	69.1 ± 6.1	160.3 ± 16.2
	[S II]	6716.440	6710.21	-284.2 ± 17.1	23.1 ± 5.9	136.9 ± 40.2
	[S II]	6730.816	6724.6	-282.8 ± 11.0	43.3 ± 6.8	142.5 ± 26.0
	[Fe II]	7155.1742	7148.1	-302.4 ± 21.5	14.6 ± 4.8	131.8 ± 50.4
	[Ca II]	7291.47	7284.61	-288.0 ± 13.9	15.6 ± 4.3	104.4 ± 34.5
	[Fe II]	8616.9498	8608.47	-301.1 ± 9.4	9.0 ± 2.6	73.4 ± 30.6
A4-out	H β	4861.35	4856.45	-302.5 ± 12.1	39.4 ± 6.6	142.9 ± 26.0
	[O III]	5006.843	5002.35	-275.2 ± 14.4	26.2 ± 5.4	145.5 ± 36.8
	[O I]	6300.304	6294.52	-281.4 ± 9.9	12.7 ± 2.0	126.8 ± 23.6
	[N II]	6548.05	6542.26	-271.0 ± 19.9	15.2 ± 4.6	134.5 ± 47.3
	H α	6562.8	6556.76	-281.8 ± 2.4	104.7 ± 4.3	119.0 ± 5.5
	[N II]	6583.45	6577.38	-282.3 ± 6.4	47.2 ± 4.6	134.6 ± 15.1
	[S II]	6716.440	6710.36	-277.3 ± 9.8	37.2 ± 4.9	150.8 ± 23.1
	[S II]	6730.816	6724.69	-278.7 ± 6.5	46.7 ± 4.6	132.9 ± 15.3
	[Fe II]	7155.1742	7148.51	-285.5 ± 11.7	6.2 ± 1.6	99.0 ± 31.2
	[Ca II]	7291.47	7284.52	-292.0 ± 8.3	17.5 ± 2.1	140.4 ± 19.4
	[Fe II]	8616.9498	8608.81	-289.4 ± 10.5	7.4 ± 1.5	103.5 ± 24.7

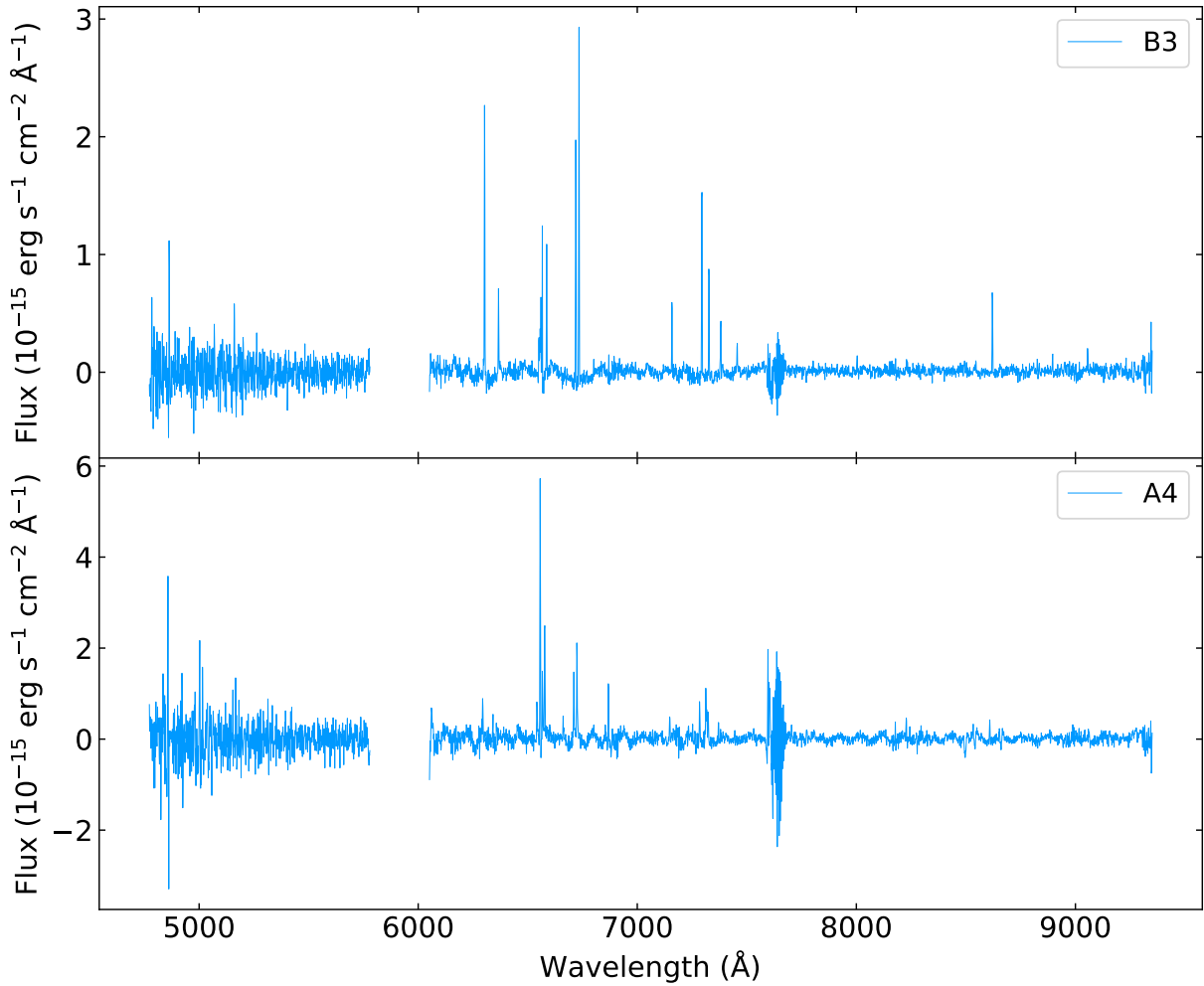


Fig. C.1. MUSE integrated spectra of the northeast (B3, *top panel*) and southwest (A4, *bottom panel*) jet knots in HD 163296, covering blue (4800–5750 Å) and red (6080–9300 Å) parts of spectra. The wavelength between 5780 Å–6050 Å was blocked to avoid contamination from the laser guide stars. The wavelength between 6561 Å–6566 Å was masked because of instrumental issues. The region where we measured the integrated jet flux is shown in Fig. 1. The line properties are presented in Tables 1 and C.1.

Appendix D: The velocity uncertainty maps

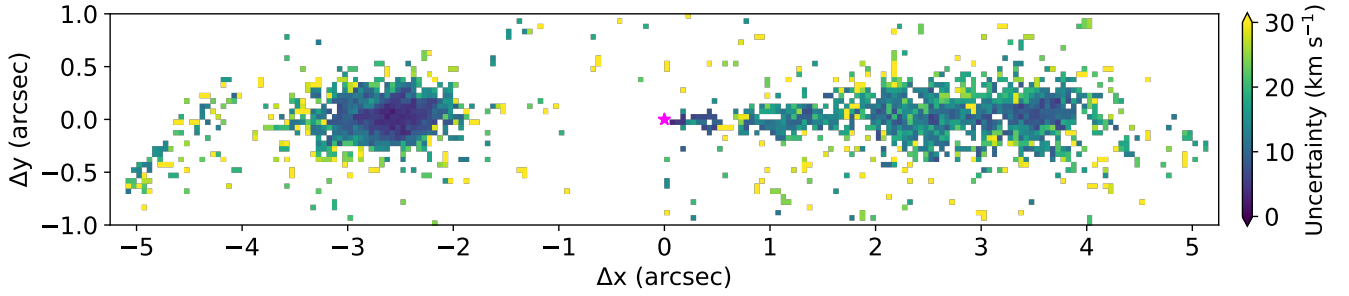


Fig. D.1. Velocity uncertainty map of the jet observed by MUSE, traced by [S II] $\lambda 630$ ($\Delta x < 0$) and $H\alpha$ ($\Delta x > 0$).

Figure D.1 shows the uncertainty in the radial velocity. The procedure to construct the radial velocity map and its uncertainty map is explained in Sect. 3.2. We note that only the uncertainty caused by the measurement noise is shown. We cannot estimate the residual offset after the extra wavelength calibration due to the lack of prominent emission or absorption features (see also, Sect. 4.2).

Appendix E: Physical conditions estimation

The physical conditions were estimated based on Hartigan et al. (1994), except for the observed electron density (n_e) in the post shock (Proxauf et al. 2014). The derived physical parameters are

summarized in Table 1. As shown in Fig. 3 in Ellerbroek et al. (2014), we estimated the pre-shock density ($n_{H, \text{pre}}$) and the magnetic field strength B based on the line ratios we measured. The shock velocities (v_{shock}) listed in Table 1 were suggested by the line ratios of [N II] $\lambda 658$ and [O I] $\lambda 630$, which agreed with the predictions of best represented models listed in Table 1.

We estimated the ionization fraction $\langle I \rangle$ based on the line ratios of [N II] $\lambda 658$ and [O I] $\lambda 630$ (see, Fig. 6 in Hartigan et al. (1994)), using $n_{H, \text{pre}}$ listed in Table 1. We adopted an average magnetic field strength of 30 μG if B ranges from 10 to 100 μG . The compression factor can then be estimated from the shock velocity (see, Fig. 17 in Hartigan et al. 1994). The average density ($\langle n_H \rangle$) can be expressed as $\langle n_H \rangle = n_e \langle C \rangle^{-1/2} \langle I \rangle^{-1}$ (Hartigan et al. 1994).