



HAL
open science

Mental health and stress among ICU healthcare professionals in France according to intensity of the COVID-19 epidemic

A. Laurent, Alicia Fournier, Florent Lheureux, Guillaume Louis, Saad Nseir, Gwenaëlle Jacq, Cyril Goulenok, Grégoire Muller, Julio Badie, Bélaïd Bouhemad, et al.

► To cite this version:

A. Laurent, Alicia Fournier, Florent Lheureux, Guillaume Louis, Saad Nseir, et al.. Mental health and stress among ICU healthcare professionals in France according to intensity of the COVID-19 epidemic. *Annals of Intensive Care*, 2021, 11 (1), pp.90. 10.1186/s13613-021-00880-y . hal-03258722

HAL Id: hal-03258722

<https://hal.science/hal-03258722v1>

Submitted on 13 Jun 2021

HAL is a multi-disciplinary open access archive for the deposit and dissemination of scientific research documents, whether they are published or not. The documents may come from teaching and research institutions in France or abroad, or from public or private research centers.

L'archive ouverte pluridisciplinaire **HAL**, est destinée au dépôt et à la diffusion de documents scientifiques de niveau recherche, publiés ou non, émanant des établissements d'enseignement et de recherche français ou étrangers, des laboratoires publics ou privés.




Distributed under a Creative Commons Attribution 4.0 International License

RESEARCH

Open Access



Mental health and stress among ICU healthcare professionals in France according to intensity of the COVID-19 epidemic

Alexandra Laurent^{1,2}, Alicia Fournier¹, Florent Lheureux³, Guillaume Louis⁴, Saad Nseir⁵, Gwenaëlle Jacq⁶, Cyril Goulenok⁷, Grégoire Muller⁸, Julio Badie⁹, Bélaïd Bouhemad², Marjolaine Georges¹⁰, Paul-Michel Mertes¹¹, Hamid Merdji^{12,13}, Vincent Castelain^{14,15}, Caroline Abdulmalak¹⁶, Olivier Lesieur¹⁷, Gaëtan Plantefeve¹⁸, Jean-Claude Lacherade¹⁹, Jean-Philippe Rigaud^{20,21}, Nicholas Sedillot²², Damien Roux^{23,24}, Nicolas Terzi²⁵, Pascal Beuret²⁶, Antoine Monsel^{27,28,29}, Anne-Laure Poujol^{27,30,31}, Khaldoun Kuteifan³², Thierry Vanderlinden³³, Anne Renault³⁴, Bérengère Vivet³⁵, Christophe Vinsonneau³⁶, Saber Davide Barbar³⁷, Gilles Capellier^{38,39}, Jean Dellamonica⁴⁰, Stephan Ehrmann^{41,42,43}, Thomas Rimmelé⁴⁴, Julien Bohé⁴⁵, Pierre Bouju⁴⁶, Sébastien Gibot⁴⁷, Bruno Lévy⁴⁸, Johanna Temime⁴⁹, Cyrille Pichot⁵⁰, David Schnell⁵¹, Diane Friedman⁵², Pierre Asfar⁵³, Eddy Lebas⁵⁴, Philippe Mateu⁵⁵, Kada Klouche⁵⁶, Juliette Audibert⁵⁷, Fiona Ecartot⁵⁸, Nicolas Meunier-Beillard^{59,60}, Mélanie Loiseau⁶¹, Irène François-Pursell⁶¹, Christine Biquet⁶² and Jean-Pierre Quenot^{63,64,65,66*}  on behalf of PsyCOVID-ICU Trial Investigators and the CRICS TRIGGERSEP Group (Clinical Research in Intensive Care and Sepsis Trial Group for Global Evaluation and Research in Sepsis)

Abstract

Background: We investigated the impact of the COVID-19 crisis on mental health of professionals working in the intensive care unit (ICU) according to the intensity of the epidemic in France.

Methods: This cross-sectional survey was conducted in 77 French hospitals from April 22 to May 13 2020. All ICU frontline healthcare workers were eligible. The primary endpoint was the mental health, assessed using the 12-item General Health Questionnaire. Sources of stress during the crisis were assessed using the Perceived Stressors in Intensive Care Units (PS-ICU) scale. Epidemic intensity was defined as high or low for each region based on publicly available data from Santé Publique France. Effects were assessed using linear mixed models, moderation and mediation analyses.

Results: In total, 2643 health professionals participated; 64.36% in high-intensity zones. Professionals in areas with greater epidemic intensity were at higher risk of mental health issues ($p < 0.001$), and higher levels of overall perceived stress ($p < 0.001$), compared to low-intensity zones. Factors associated with higher overall perceived stress were female sex ($B = 0.13$; 95% confidence interval [CI] = 0.08–0.17), having a relative at risk of COVID-19 ($B = 0.14$; 95%-CI = 0.09–0.18) and working in high-intensity zones ($B = 0.11$; 95%-CI = 0.02–0.20). Perceived stress mediated the impact of the

*Correspondence: jean-pierre.quenot@chu-dijon.fr

⁶³ Service de Médecine Intensive-Réanimation, CHU Dijon-Bourgogne, France-Equipe Lipness, centre de recherche INSERM UMR1231 et LabEx LipSTIC, Université de Bourgogne-Franche Comté, Dijon, France
Full list of author information is available at the end of the article

crisis context on mental health ($B=0.23$, 95%-CI = 0.05, 0.41) and the impact of stress on mental health was moderated by positive thinking, $b = -0.32$, 95% CI = $-0.54, -0.11$.

Conclusion: COVID-19 negatively impacted the mental health of ICU professionals. Professionals working in zones where the epidemic was of high intensity were significantly more affected, with higher levels of perceived stress. This study is supported by a grant from the French Ministry of Health (PHRC-COVID 2020).

Keywords: Mental health, Stress factors, ICU, Healthcare professionals, COVID-19

Introduction

The rapid spread of the SARS-CoV-2 epidemic in France in March 2020 led to the implementation of the national emergency preparedness plan in French hospitals. The plan involves wide-scale reorganization of healthcare institutions to respond to the massive influx of patients. Prior to the epidemic, there were 5432 available intensive care unit (ICU) beds, whereas during the peak of the epidemic in France, more than 80,000 patients were hospitalized and 13,677 required intensive care [1]. This massive and increasing influx of contaminated patients put hospitals, and particularly ICUs, under extreme tension. Even before the epidemic, the working conditions in intensive care were already identified as stressful for professionals, in particular due to the constant technological progress, the end-of-life challenges, issues relating to organ retrieval, high workload and night shifts [2, 3]. The COVID crisis added an additional degree uncertainty and insecurity, and was unprecedented for healthcare workers [4, 5]. It was also compounded by the risk of being contaminated or contaminating others, as well as by a lack of personal protective equipment for personnel, and a shortage of healthcare workers trained in intensive care. The lack of specific treatment for the infection, and the wide variability in the course of the disease contributed to generating contradictory information, forcing healthcare professionals to readjust management strategies constantly. Finally, the question of bed availability and the risk of patient triage raised numerous ethical and moral dilemmas within the caregiving teams, where the principles of collegiality and family presence were undermined [6].

The psychological impact of this health crisis on healthcare workers is a major concern. Studies conducted on the COVID-19 epidemic in China [7, 8], and in previous epidemics, e.g., H1N1 (2009) and SARS-CoV-1 (2003), reported that frontline professionals may show symptoms of anxiety, depression, sleep disorders, post-traumatic stress disorder and burnout [9–13], and symptoms may persist long after the crisis [11, 12]. A cross-sectional survey during the current pandemic among intensivists in Europe reported prevalence of anxiety, depression or severe burnout of 46.5%, 30.2%, and 51%, respectively, with significant variation across regions [14].

We report here the results of a French multicenter, cross-sectional survey (Psy-COVID-ICU [Psychological support for health care professions in intensive care units in the COVID-19 pandemic context]) that aimed to identify the impact of the crisis on the mental health of ICU professionals according to the intensity of the epidemic in France. We also examined whether job stress, coping strategies and socio-demographic characteristics of ICU professionals were associated with mental health.

Methods

Study design and oversight

The PsyCOVID-ICU study was conducted in 77 hospitals across France from 22 April 2020, to 13 May 2020. The complete list of participating sites is provided in Additional file 1: Appendix Table S1.

This study received approval for all participating centers from the Ethics Committee of the French Intensive Care Society (No 20–33). The study was overseen by a trial management committee. The first author drafted the manuscript, which was reviewed by the trial management committee. The authors attest that the study was performed in accordance with the protocol and vouch for the accuracy and completeness of the reported analyses. There was no commercial support for the trial. This study was supported by a grant from the French Ministry of Health (PHRC-COVID 2020).

Study procedures

Participants

The population study comprised ICU frontline healthcare workers directly involved in the diagnosis, treatment, and care of patients with COVID-19 (i.e., physicians, residents, nurses, nurses' aides, medical students and nursing managers) who consented to participate.

An online questionnaire was implemented using the Limesurvey platform. Health care professionals were informed orally and via posters about the study objectives and procedures. The posters gave the link to access the questionnaire. Healthcare professionals were required to read and accept the terms of the study briefing note before starting to respond. Responses to the questionnaires were anonymous and confidential. The Chief of each participating ICU completed a questionnaire

concerning the characteristics and volume of activity of their center. Each individual participant completed demographic data (Additional file 1: Appendix, Box S1).

Study outcomes

The primary endpoint was mental health, as assessed by the validated French version of the 12-item General Health Questionnaire (GHQ-12) [15]. The GHQ-12 is a self-report measure of the severity of psychological morbidity in non-psychiatric settings [16, 17]. It measures change in mental state following upsetting events, by assessing symptoms related to psychological distress and general functioning [18]. We used the standard scoring method (0–0–1–1), which gives a possible score ranging from 0 to 12. We used the total score, as recommended by Hystad and Johnsen [19], a higher score indicates a greater degree of psychological distress. A threshold of 3 or more has been used to identify the presence of distress in other studies [20–22]. To measure sources of stress in ICU during the COVID-19 crisis, we used 13 items specific to the epidemic context, taken from a scale developed by Khalid et al. during the 2015 MERS-CoV outbreak in Saudi Arabia [23] and 27 items from the Perceived Stressors in Intensive Care Units (PS-ICU) scale [24, 25]. Details of how these 27 items were selected are given in Additional file 1: Appendix, Box S2 and Table S2. From these items, we performed factor analysis with Oblimin rotation. Principal axis factoring revealed a factorial structure in six dimensions, namely one dimension specific to COVID-19 stressors (D1; e.g., “You developed respiratory symptoms and feared that you had COVID-19”), Patient- and family-related emotional load dimension (D2; e.g., “Death of a patient with whom I had developed special ties”), Complex/risky situations and skill-related issues dimension (D3; e.g., “Treating complex or serious pathologies”), Workload and human-resource management issues dimension (D4; e.g., “Continuous and heavy workload”), Difficulties related to the team-working dimension (D5; e.g., “Conflicts with members of the healthcare team”), and Care provided in sub-optimal or conflictual conditions dimension (D6; e.g., “Shortage of beds in the unit”) (Additional file 1: Tables S3 and S4). Items were rated on a 5-point Likert scale ranging from 0 (“I didn’t experience this situation”) to 4 (“I experienced this situation, and I was very much stressed”). An overall perceived stress score was calculated from the 40 items ranging from 0 to 160. Next, we assessed coping strategies using the Brief-COPE questionnaire [26]. Four types of coping were assessed (social support seeking, problem solving, avoidance and positive thinking) that are likely to act as a buffer against stressful

events [27, 28]. Higher scores reflect a greater tendency to implement the corresponding coping strategy.

Definition of epidemic intensity

The intensity of the epidemic for each region was defined according to the ratio of the maximum number of patients in the ICU during the 1st wave of the pandemic in each administrative area (department) (public data provided by the French public health agency, Santé Publique France—<https://geodes.santepubliquefrance.fr/#c=home>) to the maximum number of ICU beds available in the same area before the crisis (Statistique Annuelle des Etablissements (SAE) 2018 provided by the Direction de la Recherche des études, de l’évaluation et des statistiques (DREES)). High-intensity zones were defined as those with a ratio > 1. Zones with a ratio < 1 were classed as low-intensity.

Statistical analysis

Quantitative variables are described as mean ± SD and categorical variables as number (percentage). We compared GHQ-12 and perceived stress scores between areas with high and low epidemic intensity, using the z test or Welch’s F and Tukey statistics, as appropriate. To identify factors associated with perceived stress intensity, linear mixed effects modeling using the restricted maximum likelihood method was used via the lmer function in the R package lme4 [29, 30]. We estimated the effect of the epidemic intensity (high- vs. low-intensity zone) on the perceived stress of all professionals (as assessed by the composite scale comprising Khalid’s 13 items and 27 PS-ICU items), controlling for gender, having a family member at risk of developing COVID-19 (due to the presence of a chronic comorbidity or advanced age putting them at risk of a severe form of COVID-19), being a professional who usually works in ICU (versus professionals who usually work in other units, but were requisitioned or volunteered to work in the ICU during the crisis), and number of years’ experience (i.e., < 5 years, 5 to 10 years, > 10 years) in the occupation as fixed factors. Because the interclass correlation coefficients indicated that the variance in perceived stress could be attributed to differences between hospitals and occupational status (respectively, 7.9% and 7.6%), and because the likelihood ratio test statistics (LR) for each variable were significant ($p < 0.05$), we included hospitals and occupational status as random effects to take account of heterogeneity across clusters of participants. We selected the final model with the best fit and maintaining model parsimony using the Akaike Information Criterion (AIC) [31]. Finally, to explore the relation between stress intensity and mental health across zones with different levels of epidemic intensity, we performed causal mediation analysis of

multilevel data via the lmer function in the lme4 package [29] and the mediate function in the mediation package [32]. The impact of stress on overall health depends on the use of specific coping strategies [27]. Thus, we analyzed whether the intensity of the epidemic (high- vs. low-intensity zone) affected the mental health of ICU professionals, as measured by the GHQ-12 score, and hypothesized that the total stress measured by the perceived stress scale (Khalid and 27-item PS-ICU composite scale) functioned as the causal mechanism, with the effects on mental health being mediated by the use of the coping strategies measured by the Brief-COPE. We also introduced gender, having a family member at risk of developing COVID-19, being a professional who usually works in ICU, length of experience in the occupation, and occupational status as covariates and fixed variables. Hospital affiliation was introduced as a random variable to control for heterogeneity. We proceeded in the same manner for each dimension of the stress scale.

All data analyses were performed using R (version 4.0.3) and its interface R studio server (version 1.4.1103), and SPSS (version 26) for Macintosh. The significance threshold was set at $p < 0.05$.

Results

Demographic characteristics

A total of 2,643 healthcare professionals were included in this study, 1920 (72.6%) were women, more than half the population were nurses (1407, 53.2%) (Fig. 1—study flowchart). In total, 942 (35.64%) participants in low-intensity zones and 1701 (64.36%) in high-intensity zones (Table 1).

Impact of epidemic intensity on mental health

Compared with professionals working in low-intensity zones, professionals in high-intensity zones had a significantly higher GHQ-12 score ($p \leq 0.001$). Professionals in all zones had an average GHQ-12 score > 3 , indicating the presence of distress, regardless of epidemic intensity (Table 2).

Impact of epidemic intensity on perceived stress

Compared to professionals working in low-intensity zones, professionals in high-intensity zones had higher levels of overall perceived stress, as assessed by the stress scale ($p \leq 0.001$). In particular, they exhibited more stress related to workload and human resources management issues (Dimension 4) ($p \leq 0.001$), care provided in sub-optimal or conflictual conditions (Dimension 6) ($p \leq 0.001$) and more stress related to the emotional burden of the patient and family (Dimension 2) ($p \leq 0.001$) (Table 2). Average scores for the dimension “COVID-19 specific stressors” (Dimension 1) were significantly

higher than the average scores for the other dimensions in all intensity zones ($p \leq 0.001$ for all), despite the lack of difference in dimension “COVID-19 specific stressors” between high- and low-intensity zones ($p = 0.197$) (Additional file 1: Appendix Figs. S1 and S2).

Factors associated with job stress during the crisis

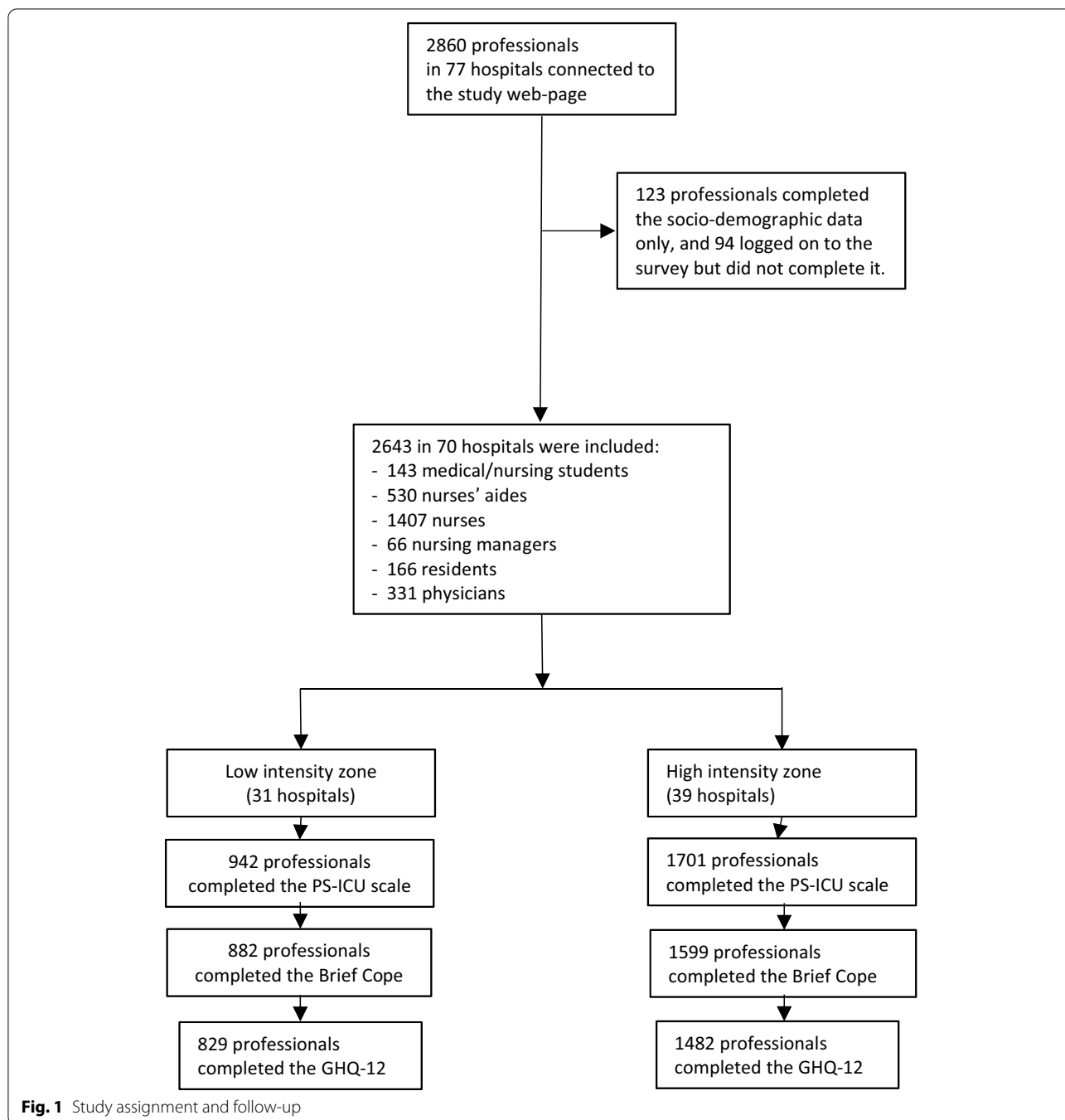
Linear mixed model analysis (Table 3) showed that, after controlling for hospital and occupational status, being a woman ($B = 0.13$; 95% confidence interval [CI], 0.08 to 0.17), having a relative at risk of developing COVID-19 ($B = 0.14$; 95% CI, 0.09 to 0.18) and working in a high-intensity zone were associated with higher overall perceived stress ($B = 0.11$; 95% CI, 0.02 to 0.20). Being an ICU professional (compared to staff from other departments requisitioned to work in the ICU during the crisis) had a protective effect ($B = -0.12$; 95% CI, -0.17 to -0.07). Analysis of residuals associated with occupational categories indicated that physicians had the lowest level of perceived stress, whereas nurses had the highest level of perceived stress [physicians (mean score ($M = 1.42$)) < nursing managers ($M = 1.43$) < medical students ($M = 1.45$) < residents ($M = 1.48$) < nurses’ aides ($M = 1.56$) < nurses ($M = 1.58$)].

Relation between epidemic intensity, coping strategies and mental health

When we compared the use of coping strategies across zones of epidemic intensity, the analyses showed that avoidance was the only coping strategy that was used more frequently by healthcare professionals working in zones with high epidemic intensity, as compared to low-intensity zones ($p = 0.001$) (Table 2).

We also analyzed the correlations between GHQ-12, and scores on the perceived stress scale and coping strategies. There was a positive correlation between GHQ-12 and the scores from the perceived stress scale, with each type of stressor contributing significantly to explaining the severity of psychological distress ($0.20 \leq r \leq 0.45$, $p < 0.001$), and the total score had the strongest correlation (0.52 , $p < 0.001$). Furthermore, there was a positive correlation between GHQ-12, and each of the following coping strategies: social support, problem solving, and avoidance ($0.19 \leq r \leq 0.36$, $p < 0.001$). There was a negative correlation between the positive reframing coping strategy and psychological distress ($r = -0.16$, $p < 0.001$) (Additional file 1: Appendix, Table S9).

Mediation and moderation analyses including hospital as a random variable revealed a significant indirect effect of the epidemic intensity on psychological distress, via the overall perceived stress score, ($b = 0.23$, 95% CI [0.05, 0.41]). Positive thinking coping strategies significantly moderated the association of stress with mental health



issues, $b = -0.32$, 95% CI $[-0.54, -0.11]$, whereby the more professionals used this type of coping, the smaller the association between job stress and their psychological distress. None of the other coping strategies was found to have a moderating effect. In addition, being an ICU professional (compared to staff from other departments requisitioned to work in the ICU during the crisis) was associated with an increase in the effect of epidemic

intensity on psychological distress, $b = 0.88$, $[0.63, 1.12]$ (Fig. 2). Among the six specific stress dimensions measured by the stress scale, the effect of the epidemic intensity on mental health was mainly driven by dimension 2 (patient- and family-related emotional load, $b = 0.13$, 95% CI $[0.03, 0.22]$) and dimension 6 (care provided in sub-optimal or conflictual conditions, $B = 0.09$, 95% CI $[0.02, 0.18]$) (Additional file 1: Appendix Figs. S3 to S8).

Table 1 Sociodemographic data of the overall population and according to epidemic intensity zone

	Epidemic intensity	
	Low (n, %)	High (n, %)
Overall	942 (100)	1701 (100)
Number of hospitals	31	39
Sex		
Women	715 (75.9)	1205 (70.84)
Men	227 (24.1)	496 (29.16)
Age, years		
20–34	458 (48.62)	914 (53.73)
35–49	396 (42.04)	622 (36.57)
50–65	88 (9.34)	160 (9.41)
> 65	0 (0)	5 (0.29)
Occupational status		
Healthcare students	40 (4.25)	103 (6.06)
Nurses' aides	222 (23.57)	308 (18.11)
Nurses	515 (54.67)	892 (52.44)
Nursing managers	27 (2.87)	39 (2.29)
Residents	52 (5.52)	114 (6.7)
Physicians	86 (9.13)	245 (14.4)
Marital status		
Single/divorced/separated/widowed	267 (28.34)	540 (31.75)
Married/living maritally	668 (70.91)	1142 (67.14)
Missing data	7 (0.74)	19 (1.12)
Increase in working time compared to usual		
Yes	382 (40.55)	935 (54.97)
No	512 (54.35)	692 (40.68)
Missing data	48 (5.1)	74 (4.35)
Duration of work experience		
< 5 years	243 (25.8)	545 (32.04)
5 to 10 years	276 (29.3)	458 (26.93)
> 10 years	408 (43.31)	667 (39.21)
Missing data	15 (1.59)	31 (1.82)
Working hours		
Part-time	97 (10.3)	204 (11.99)
Full-time	827 (87.79)	1470 (86.42)
Missing data	18 (1.91)	27 (1.59)
Pre-COVID position in ICU		
Yes	737 (78.24)	1199 (70.49)
No	205 (21.76)	502 (29.51)
COVID risk for a relative		
Yes	639 (67.83)	1199 (70.49)
No	279 (29.62)	459 (26.98)
Missing data	24 (2.55)	43 (2.53)

ICU intensive care unit

Discussion

This multicenter study involving 2,643 ICU professionals during the COVID-19 epidemic in France showed that the intensity of the epidemic had an impact on the mental

Table 2 Average scores on the study questionnaires among all professionals

	Epidemic intensity		Welch's F	p
	Low	High		
Mental health (/12)	3.86 (2.86)	4.33 (3.09)	13.43	< 0.001
Overall perceived stress (/4)	1.48 (0.52)	1.57 (0.54)	15.54	< 0.001
Dimension 1 (/4)	2.1 (0.75)	2.14 (0.76)	1.67	0.197
Dimension 2 (/4)	1.36 (0.81)	1.51 (0.82)	21.34	< 0.001
Dimension 3 (/4)	1.84 (0.76)	1.86 (0.73)	0.45	0.502
Dimension 4 (/4)	1.46 (0.73)	1.57 (0.77)	14.34	< 0.001
Dimension 5 (/4)	0.95 (0.87)	0.99 (0.91)	1.19	0.275
Dimension 6 (/4)	0.68 (0.73)	0.85 (0.75)	34.81	< 0.001
Coping strategies				
Social support (/4)	2.58 (0.82)	2.61 (0.84)	1.03	0.311
Problem solving (/4)	2.63 (0.92)	2.7 (0.92)	2.91	0.088
Avoidance (/4)	2.53 (0.97)	2.66 (0.96)	11.58	0.001
Positive thinking (/4)	2.86 (0.9)	2.82 (0.91)	1.2	0.273

Mean and standard deviation are reported. Dimension 1: COVID-19 specific stressors; Dimension 2: patient- and family-related emotional load; Dimension 3: complex/risky situations and skill-related issues; Dimension 4: workload and human resources management issues; Dimension 5: difficulties related to the team-working; Dimension 6: care provided in sub-optimal or conflictual conditions; PSI-CU: perceived stress scale in intensive care unit; GHQ-12: 12-item General Health Questionnaire

health of healthcare professionals. Professionals working in heavily impacted hospitals, in zones where the epidemic was of high intensity showed greater psychological distress linked to the crisis than healthcare professionals located in low-intensity zones. This psychological distress can be explained by the intensity of the job stress felt by healthcare professionals; the greater the stress, the greater the psychological distress. The impact of the crisis on the mental health of healthcare professionals was mainly explained by work situations related to the emotional intensity of the relationship with the patient and the family (Dimension 2: death, announcing a diagnosis, patient/family distress), and the feeling of inadequate and sub-optimal care (Dimension 6: lack of beds, conflicts in patient care and in the information given to the family).

In addition, regardless of the intensity of the epidemic, the mental health of the professionals working in ICUs was affected, with marked psychological distress. Our results showed the generalized state of tension among ICU professionals in France. Whatever the geographical area, situations related to COVID-19 (fear of transmission, fear of being contaminated or infecting others, lack of information, protection, treatment, etc.) are the sources of stress most intensely felt by healthcare professionals.

Our study also highlights several factors during the epidemic crisis that put healthcare professionals at risk

Table 3 Results from the linear mixed effects models for total stress scores

Overall perceived stress (AIC = 3781)	B	St err	t value	p	CI
Female	0.13	0.02	5.23	< 0.001	0.08, 0.17
ICU professional	-0.12	0.02	-5.01	< 0.001	-0.17, -0.07
Relatives with risk	0.14	0.02	6.13	< 0.001	0.09, 0.18
Experience 5 to 10 years	0.02	0.03	0.84	0.407	-0.03, 0.08
Experience >10 years	-0.04	0.03	-1.67	0.101	-0.09, 0.01
Epidemic intensity zone	0.11	0.05	2.37	0.023	0.02, 0.20

St err standard error, CI confidence interval

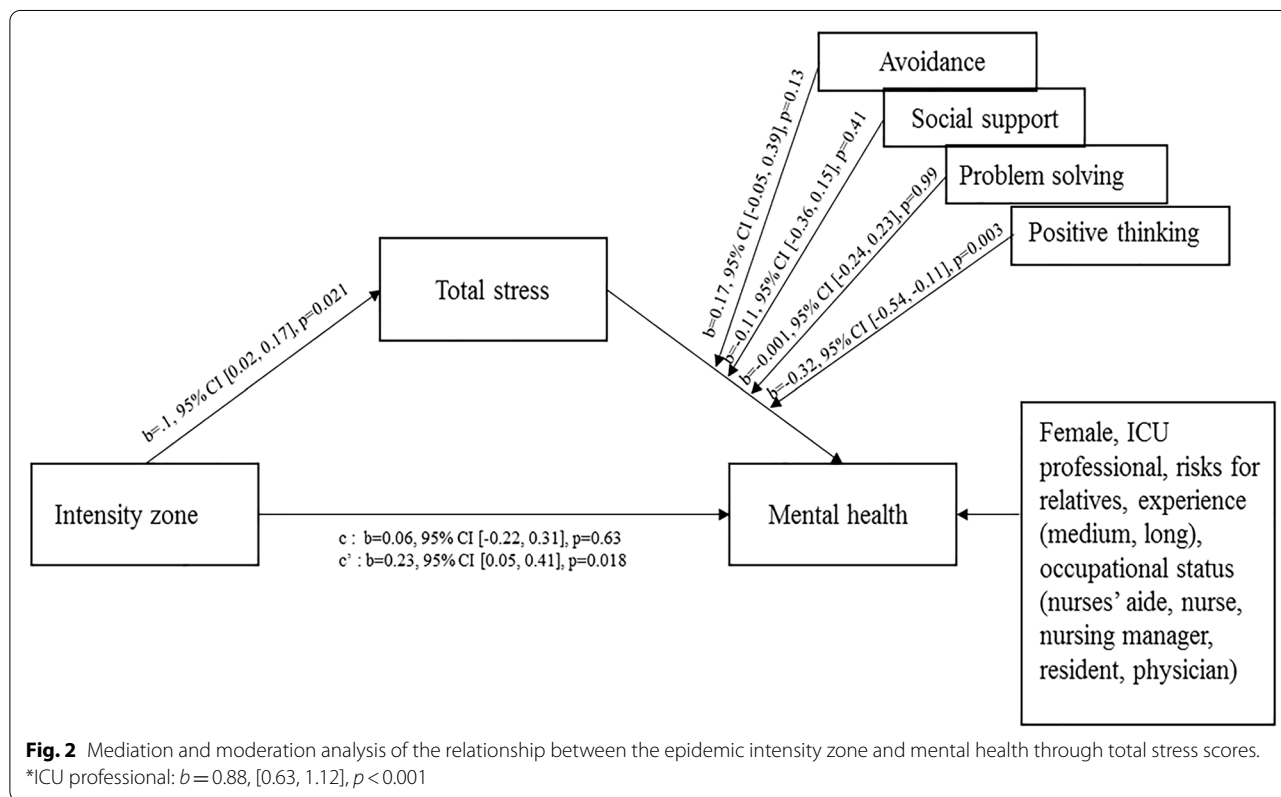


Fig. 2 Mediation and moderation analysis of the relationship between the epidemic intensity zone and mental health through total stress scores. *ICU professional: b = 0.88, [0.63, 1.12], p < 0.001

of developing psychological distress and high levels of stress. The socio-professional categories in closest contact with patients, namely nurses, residents, and nurses' aides, showed the highest levels of stress. Professionals who were not permanent members of the ICU staff (i.e., temporary support staff), women, and those with a relative at risk of developing complications during COVID-19 were also at higher risk. These results are consistent with the study by Lai et al. [8] showing that being a woman and a nurse during the COVID-19 epidemic in China was associated with severe symptoms of depression, anxiety, and distress, and the study by Azoulay et al. showing that female gender was

significantly associated with both anxiety and depression [14]. In addition, nurses have been identified as one of the professions with the highest level of stress in their daily work, outside the pandemic context [33–36]. However, this is likely explained by the fact that nurses are predominantly female, and tend to have high levels of perceived stress [37] given the demands of their profession, notably conflicts between the home life and work life [38]. A study by Khalid et al. [23] also underlined the importance of the stress caused by the fear of contaminating relatives. Thus, the COVID-19 crisis affects both the private and professional spheres, leading to a constant perception of risk.

To protect themselves from the crisis, healthcare professionals working in the most impacted areas most frequently used avoidance strategies, ranging from cognitive avoidance and resignation, to seeking satisfaction in order to stop thinking about the crisis. However, the coping strategy that was most effective in reducing the stress felt during the crisis was "positive thinking", as shown in our moderate mediation analysis. Positive thinking is a cognitive process that helps individuals to deal with stress more effectively, by enabling the person not only to look at the negative aspects of an event, but also the positive aspects, and to focus on a positive interpretation [39, 40]. Many aspects of the COVID-19 epidemic crisis are beyond the control of professionals, with a high level of uncertainty, so this strategy seems particularly well suited. Indeed, while the caregiver cannot change the situation, they can change their interpretation/representation by focusing on positive cognition that promotes positive mental states [41–43]. Targeted strategies focusing on positive thinking, notably in terms of positive leadership approaches by department chiefs and nursing managers, could help to mitigate the stress perceived by frontline healthcare workers in the epidemic context [44]. Regarding the coping strategy that consists in seeking social support, although it was not found here to have a moderating effect in the relation between epidemic intensity and mental health, it was nonetheless correlated with psychological distress. This is surprising, since research into social support shows that it generally tends to help preserve the mental health of those facing difficult situations [45]. However, the unique nature of the current pandemic context, with stress running high in both the personal and professional spheres, may have resulted in some negative emotional contagion in the close environment of these healthcare professionals [46]. Indeed, this finding has previously been reported in other studies [47, 48], but should be interpreted with caution here notably due to the cross-sectional nature of our study.

Our study has some limitations. Firstly, since only ICU professionals participated in this study, our results may not be generalizable to other contexts. Second, a total of 2860 healthcare professionals opened the link to the study page during the study period, of whom 94 did not go on to complete the questionnaire, and 123 completed only the socio-demographic data. These participants chose to connect to the study online after receiving the study information disseminated by the Department Chiefs in 77 hospitals in France. However, the actual number of potentially eligible ICU professionals (i.e., the denominator) is unknown. Participants were not contacted individually by name with an email or letter that could be followed up by a reminder. Third, the study period was short, but corresponded to

the peak of the first epidemic wave in France. Fourth, the stress scale used to evaluate stress in the ICU was developed recently, limiting the possibility for comparison with other studies. However, it enabled us to use an appropriate tool developed specifically for the ICU context, which best takes into account the unique features of the ICU environment. Fifth, only healthcare professionals in close contact with COVID patients were recruited for this study, and therefore, results may not be generalizable to other professions. Finally, we did not measure the baseline workload in the different zones, precluding any conclusion about whether the differences observed between high-intensity and low-intensity zones are due to unequal baseline workload. Similarly, different severity of the COVID patients may also have contributed to variations in baseline workload. However, the results obtained with the PS-ICU scale show that Factor 4 (workload and human resources management) did not have a significant effect, therefore suggesting that the baseline workload is not a major contributor to the differences observed.

In conclusion, the COVID-19 epidemic had a strong negative impact on the mental health of professionals working in the ICU. Healthcare professionals working in zones where the epidemic was of high intensity were significantly more affected, with higher levels of perceived stress. Healthcare professionals in closest contact with the patients had the highest levels of perceived stress, driven mainly by the emotional and ethical burden, and this can be alleviated by the use of coping strategies, particularly positive thinking.

Supplementary Information

The online version contains supplementary material available at <https://doi.org/10.1186/s13613-021-00880-y>.

Additional file 1. Additional figures and tables.

Acknowledgements

The authors thank all the participating ICUs as well as the members of the CIC-EC1432 involved in the project: Emilie Galizzi, for the practical coordination of the study, and Delphine Pecqueur, for the data management.

Authors' contributions

Study conception and design: AL, AF, FL, NMB, IFP, ML, JPQ, CB. Acquisition of data: AL, AF, FL, GL, SN, GJ, CG, GM, JBa, BB, MG, PMM, HM, VC, CA, OL, GP, JCL, JPR, NS, DR, NT, PaB, AM, ALP, KhK, TV, AR, BV, CV, SDB, GC, JD, SE, TR, JBo, PIB, SG, BL, JT, CP, DS, DF, PA, EL, PM, KaK, JA, NMB, ML, IFP. Analysis and interpretation of the data: AL, AF, FL, NMB, FE, IFP, JPQ, CB. Draft of article: AL, AF, FL, NMB, FE, IFP, JPQ, CB. Critical revision of the version to be submitted: all authors. All authors read and approved the final manuscript.

Funding

This study was funded by a grant (PHRC-COVID 2020) from the Programme Hospitalier de Recherche Clinique National, funded by the French Ministry of Health.

Data availability

Data are available from the corresponding author on reasonable request.

Declarations**Ethics approval and consent to participate**

This study received approval for all participating centers from the Ethics Committee of the French Intensive Care Society (No. 20–33). Consent was implied by the fact that all participants voluntarily connected to the study website and completed the forms. They also agreed to participation at the beginning of the survey before proceeding with completion of the forms.

Consent for publication

Not applicable.

Competing interests

Prof. Binquet reports grants from the PHRC-N, during the conduct of the study; Dr. Ehrmann reports grants, personal fees and non-financial support from Aerogen Ltd, grants and non-financial support from Fisher and Paykel, grants from Hamilton medical, personal fees and non-financial support from La Diffusion Technique Française, outside the submitted work; Dr. Levy reports grants, personal fees and non-financial support from Amomed, personal fees from Sanofi, personal fees from Novartis, grants and personal fees from Gettinge, grants, personal fees and non-financial support from Orion, outside the submitted work; Dr. Nseir reports personal fees from MSD, personal fees from Pfizer, personal fees from Gilead, personal fees from bioMérieux, personal fees from Bio-Rad, outside the submitted work; Dr. Rimmel reports grants and personal fees from Baxter, grants and personal fees from Fresenius Medical Care, personal fees from B Braun, personal fees from Estor, outside the submitted work; Dr. Roux reports personal fees from Astellas, outside the submitted work; Dr. Terzi reports personal fees from Pfizer, outside the submitted work. No other author has any conflict of interest to declare.

Author details

¹Laboratoire de Psychologie: Dynamiques Relationnelles et Processus Identitaires (PsyDREPI), Université de Bourgogne Franche-Comté, Dijon, France. ²Department of Anaesthesiology and Critical Care Medicine, Dijon University Medical Centre, Dijon, France. ³Laboratoire de Psychologie, Université de Bourgogne Franche-Comté, Besançon, France. ⁴Service de Réanimation Polyvalente et USC, Hôpital de Mercy, CHR Metz-Thionville, Thionville, France. ⁵Critical Care Center, CHU Lille and Lille University, Lille, France. ⁶Medical-Surgical Intensive Care Unit, CH de Versailles, Le Chesnay, France. ⁷Medical-Surgical Intensive Care Unit, Ramsay Générale de Santé, Hôpital Privé Jacques Cartier, Massy, France. ⁸Service de Médecine Intensive-Réanimation, CHR d'Orléans, Orléans, France. ⁹Service de Réanimation Polyvalente-USC, Hôpital Nord Franche-Comté, Trevenans, France. ¹⁰Service de Pneumologie, CHU Dijon, Dijon, France. ¹¹Department of Anesthesia and Intensive Care, Hôpitaux Universitaires de Strasbourg, Nouvel Hôpital Civil, Strasbourg, France. ¹²Faculté de Médecine, Université de Strasbourg (UNISTRA), Strasbourg, France. ¹³Service de Médecine Intensive-Réanimation, Hôpitaux Universitaires de Strasbourg, Nouvel Hôpital Civil, Strasbourg, France. ¹⁴Hôpitaux Universitaires de Strasbourg, Médecine Intensive – Réanimation, Hôpital de Hautepierre, Strasbourg, France. ¹⁵Fédération de Médecine Translationnelle de Strasbourg, Faculté de Médecine, Université de Strasbourg, Strasbourg, France. ¹⁶Service de Médecine Intensive-Réanimation, CH de Chalon sur Saône, Chalon sur Saône, France. ¹⁷Intensive Care Unit, Groupement Hospitalier La Rochelle-Ré-Aunis, La Rochelle, France. ¹⁸Service de Réanimation Polyvalente et USC, Argenteuil, France. ¹⁹Service de Médecine Intensive-Réanimation, CH de La Roche-sur-Yon, Chalon sur Saône, France. ²⁰Service de Médecine Intensive-Réanimation, CH de Dieppe, Dieppe, France. ²¹Espace de Réflexion Éthique de Normandie, Université de Caen, Caen, France. ²²Réanimation Polyvalente, CH de Bourg-en-Bresse, Bourg-en-Bresse, France. ²³Service de Médecine Intensive Réanimation, Assistance Publique - Hôpitaux de Paris, Hôpital Louis Mourier, Colombes, France. ²⁴Université de Paris, INSERM, UMR 1137 Infection, Antimicrobials, Modelling, Evolution, Paris, France. ²⁵Service de Réanimation Médicale, CHU de Grenoble, Grenoble, France. ²⁶Service de Réanimation-Soins Continus du CH de Roanne, Roanne, France. ²⁷Multidisciplinaire Intensive Care Unit, Department of Anaesthesiology and Critical Care, La Pitié-Salpêtrière Hospital, Assistance Publique-Hôpitaux de Paris, Sorbonne University, Paris, France. ²⁸Sorbonne University, INSERM, UMR-S 959,

Immunology-Immunopathology-Immunotherapy (I3), Paris, France. ²⁹Biotherapy (CIC-BTI) and Inflammation-Immunopathology-Biotherapy Department (DHU i2B), Hôpital Pitié-Salpêtrière, AP-HP, Paris, France. ³⁰Équipe VCR, École de Psychologues Praticiens, Université Catholique de Paris, EA, 7403 Paris, France. ³¹Laboratoire APEMAC, Université de Lorraine, EA 4360, Université de Lorraine, Metz, France. ³²Service de Réanimation Médicale, CH de Mulhouse, France. ³³Service de Médecine Intensive Réanimation, Groupe des Hôpitaux de L'Institut Catholique de Lille (GHICL), France, Université Catholique de Lille, Lille, France. ³⁴Service de Réanimation Médicale et Urgences Médicales, CHU de Brest, Brest, France. ³⁵Service de Réanimation Polyvalente, Groupe Hospitalier Intercommunal de La Haute-Saône, Site de Vesoul, Luxeuil-les-Bains, France. ³⁶Service de Médecine Intensive Réanimation-Unité de Sevrage Ventilatoire et Réhabilitation, CH de Bethune, Bethune, France. ³⁷Service des Réanimations, Faculté de Médecine de Montpellier-Nîmes, CHU de Nîmes, France and Université de Montpellier, Nîmes, France. ³⁸Réanimation Médicale, University Hospital Besançon, Besançon, France. ³⁹EA3920, University of Burgundy-Franche-Comté, Besançon, France. ⁴⁰Medical ICU University Hospital of Nice/UR2CA, Tours, France. ⁴¹Service de Médecine Intensive-Réanimation, Tours, France. ⁴²CIC INSERM 1415, CRICS-TriggerSep Network, Tours, France. ⁴³INSERM, Centre d'étude des pathologies respiratoires, Université de Tours, U1100 Tours, France. ⁴⁴Anesthesiology and Intensive Care Medicine, Edouard Herriot Hospital, Lyon, France. ⁴⁵Service D'anesthésie - Réanimation-Médecine Intensive, CH Lyon-Sud, Hospices Civils de Lyon, Pierre Bénite, Tours, France. ⁴⁶Service Réanimation Polyvalente, Groupe Hospitalier Bretagne Sud, Lorient, France. ⁴⁷Service de Réanimation Médicale, Hôpital Central, Nancy, France. ⁴⁸Service de Réanimation Médicale, Centre Hospitalier Universitaire Nancy Brabois, Nancy-France-Institut du Cœur et des Vaisseaux. Groupe Choc, équipe 2, Inserm U1116. Faculté de Médecine, Nancy-Brabois, France. ⁴⁹Service de Réanimation Polyvalente, Lens, France. ⁵⁰Unité de Surveillance Continue, CH de Dôle, Dôle, France. ⁵¹Service de Réanimation Polyvalente et USC, CH d'Angoulême, Angoulême, France. ⁵²Service de Médecine Intensive et Réanimation, Hôpital Raymond Poincaré, Garches, France. ⁵³Département de Médecine Intensive-Réanimation, CHU Angers, Angers, France. ⁵⁴Service de Réanimation-USC de Bretagne Atlantique, Vannes, France. ⁵⁵Service de Médecine Intensive-Réanimation-Unité de Recherche Clinique Ardennes Nord, CH de Charleville-Mézières, Charleville-Mézières, France. ⁵⁶Intensive Care Medicine Department, Lapeyronie Hospital, University Hospital of Montpellier-PhyMedExp, University of Montpellier, INSERM, CNRS, Montpellier, France. ⁵⁷Service de Réanimation Polyvalente, CH de Chartres, Hôpital Louis Pasteur, Le Coudray, France. ⁵⁸Department of Cardiology, University Hospital, Besançon, and EA3920, University of Burgundy-Franche-Comté, Besançon, France. ⁵⁹CIC 1432, Clinical Epidemiology, University of Burgundy, Dijon, France. ⁶⁰DRCI, USMR, Francois Mitterrand University Hospital, Dijon, France. ⁶¹Service de Médecine Légale CHU Dijon, Cellule d'Urgence Médico-Psychologique de Bourgogne Franche-Comté, Dijon, France. ⁶²Inserm et CHU Dijon-Bourgogne, CIC1432, Module Epidémiologie Clinique, Dijon, France. ⁶³Service de Médecine Intensive-Réanimation, CHU Dijon-Bourgogne, France-Equipe Lipness, centre de recherche INSERM UMR1231 et LabEx LipSTIC, Université de Bourgogne-Franche Comté, Dijon, France. ⁶⁴INSERM, Module Epidémiologie Clinique, Université de Bourgogne Franche-Comté, CIC 1432, Dijon, France. ⁶⁵Espace de Réflexion Éthique Bourgogne Franche-Comté (EREBFC), Besançon, France. ⁶⁶Critical Care Department, University Hospital François Mitterrand, 14 rue Paul Gaffarel, 21079 Dijon, France.

Received: 16 October 2020 Accepted: 21 May 2021

Published online: 04 June 2021

References

1. French National Public Health Agency (Santé Publique France). 2020 Hospital data relating to the COVID-19 epidemic. <https://www.data.gouv.fr/fr/datasets/donnees-hospitalieres-relatives-a-lepidemie-de-covid-19/#>. Accessed 29 July 2020.
2. Donchin Y, Seagull FJ. The hostile environment of the intensive care unit. *Curr Opin Crit Care*. 2002;8:316–20.
3. Embriaco N, Azoulay E, Barrau K, Kentish N, Pochard F, Loundou A, et al. High level of burnout in intensivists: prevalence and associated factors. *Am J Respir Crit Care Med*. 2007;175:686–92.
4. Bansal P, Bingemann TA, Greenhawt M, Mosnaim G, Nanda A, Oppenheimer J, et al. Clinician Wellness During the COVID-19 pandemic:

- extraordinary times and unusual challenges for the allergist/immunologist. *J Allergy Clin Immunol Pract.* 2020;8:1781–90.
5. Chen Q, Liang M, Li Y, Guo J, Fei D, Wang L, et al. Mental health care for medical staff in China during the COVID-19 outbreak. *Lancet Psychiatry.* 2020;7:e15–6.
 6. Robert R, Kentish-Barnes N, Boyer A, Laurent A, Azoulay E, Reigner J. Ethical dilemmas due to the Covid-19 pandemic. *Ann Intensive Care.* 2020;10:84.
 7. Arabi YM, Murthy S, Webb S. COVID-19: a novel coronavirus and a novel challenge for critical care. *Intensive Care Med.* 2020;46:833–6.
 8. Lai J, Ma S, Wang Y, Cai Z, Hu J, Wei N, et al. Factors associated with mental health outcomes among health care workers exposed to coronavirus disease 2019. *JAMA Netw Open.* 2020;3:e203976.
 9. Goulia P, Mantas C, Dimitroula D, Mantis D, Hyphantis T. General hospital staff worries, perceived sufficiency of information and associated psychological distress during the A/H1N1 influenza pandemic. *BMC Infect Dis.* 2010;10:322.
 10. Loutfy MR, Wallington T, Rutledge T, Mederski B, Rose K, Kwolek S, et al. Hospital preparedness and SARS. *Emerg Infect Dis.* 2004;10:771–6.
 11. Maunder RG, Lancee WJ, Balderson KE, Bennett JP, Borgundvaag B, Evans S, et al. Long-term psychological and occupational effects of providing hospital healthcare during SARS outbreak. *Emerg Infect Dis.* 2006;12:1924–32.
 12. McAlonan GM, Lee AM, Cheung V, Cheung C, Tsang KW, Sham PC, et al. Immediate and sustained psychological impact of an emerging infectious disease outbreak on health care workers. *Can J Psychiatry.* 2007;52:241–7.
 13. Tang L, Pan L, Yuan L, Zha L. Prevalence and related factors of post-traumatic stress disorder among medical staff members exposed to H7N9 patients. *Int J Nurs Sci.* 2017;4:63–7.
 14. Azoulay E, De Waele J, Ferrer R, Staudinger T, Borkowska M, Povoja P, et al. Symptoms of burnout in intensive care unit specialists facing the COVID-19 outbreak. *Ann Intensive Care.* 2020;10:110.
 15. Salama-Younes M, Montazeri A, Ismail A, Roncin C. Factor structure and internal consistency of the 12-item General Health Questionnaire (GHQ-12) and the Subjective Vitality Scale (VS), and the relationship between them: a study from France. *Health Qual Life Outcomes.* 2009;7:22.
 16. Hardy GE, Shapiro DA, Haynes CE, Rick JE. Validation of the General Health Questionnaire-12: using a sample of employees from England's health care services. *Psychol Assess.* 1999;11:159–65.
 17. Goldberg D, Williams PD. A user's guide to the General Health Questionnaire. Windsor, Berks, UK: NFER-NELSON; 1988.
 18. Henkel V, Mergl R, Kohnen R, Maier W, Moller HJ, Hegerl U. Identifying depression in primary care: a comparison of different methods in a prospective cohort study. *BMJ.* 2003;326:200–1.
 19. Hystad SW, Johnsen BH. The Dimensionality of the 12-Item General Health Questionnaire (GHQ-12): comparisons of factor structures and invariance across samples and time. *Front Psychol.* 2020;11:1300.
 20. Goldberg DP, Gater R, Sartorius N, Ustun TB, Piccinelli M, Gureje O, et al. The validity of two versions of the GHQ in the WHO study of mental illness in general health care. *Psychol Med.* 1997;27:191–7.
 21. Elovainio M, Hakulinen C, Pulkki-Raback L, Aalto AM, Virtanen M, Partonen T, et al. General Health Questionnaire (GHQ-12), Beck Depression Inventory (BDI-6), and Mental Health Index (MHI-5): psychometric and predictive properties in a Finnish population-based sample. *Psychiatry Res.* 2020;289:112973.
 22. Ogundipe OA, Olagunju AT, Lasebikan VO, Coker AO. Burnout among doctors in residency training in a tertiary hospital. *Asian J Psychiatry.* 2014;10:27–32.
 23. Khalid I, Khalid TJ, Qabajah MR, Barnard AG, Qushmaq IA. Healthcare workers emotions, perceived stressors and coping strategies during a MERS-CoV Outbreak. *Clin Med Res.* 2016;14:7–14.
 24. Laurent A, Fournier A, Lheureux F, Martin Delgado MC, Bocci MG, Prestifilippo A, et al. An international tool to measure perceived stressors in intensive care units: the PS-ICU scale. *Ann Intensive Care.* 2021;11:57.
 25. Laurent A, Lheureux F, Genet M, Martin Delgado MC, Bocci MG, Prestifilippo A, et al. Scales used to measure job stressors in intensive care units: are they relevant and reliable? A systematic review. *Front Psychol.* 2020;11:245.
 26. Carver CS. You want to measure coping but your protocol's too long: consider the brief COPE. *Int J Behav Med.* 1997;4:92–100.
 27. Kato T. Frequently used coping scales: a meta-analysis. *Stress Health.* 2015;31:315–23.
 28. Baumstarck K, Alessandrini M, Hamidou Z, Auquier P, Leroy T, Boyer L. Assessment of coping: a new French four-factor structure of the brief COPE inventory. *Health Qual Life Outcomes.* 2017;15:8.
 29. Bates D, Mächler M, Bolker B, Walker S. Fitting Linear Mixed-Effects Models Using lme4. *J Stat Softw.* 2015;67:1–48.
 30. Schwarz G. Estimating the dimension of a model. *Ann Stat.* 1978;6:461–4.
 31. Akaike H. A new look at the statistical model identification. *IEEE Trans Autom Control.* 1974;19:716–23.
 32. Tingley D, Yamamoto T, Hirose K, Keele L, Imai K. mediation: R Package for Causal Mediation Analysis. 2014. 2014;59:38.
 33. Chou LP, Li CY, Hu SC. Job stress and burnout in hospital employees: comparisons of different medical professions in a regional hospital in Taiwan. *BMJ Open.* 2014;4:e004185.
 34. Lee J, Daffern M, Ogloff JR, Martin T. Towards a model for understanding the development of post-traumatic stress and general distress in mental health nurses. *Int J Ment Health Nurs.* 2015;24:49–58.
 35. Mealer ML, Shelton A, Berg B, Rothbaum B, Moss M. Increased prevalence of post-traumatic stress disorder symptoms in critical care nurses. *Am J Respir Crit Care Med.* 2007;175:693–7.
 36. Wu SY, Li HY, Wang XR, Yang SJ, Qiu H. A comparison of the effect of work stress on burnout and quality of life between female nurses and female doctors. *Arch Environ Occup Health.* 2011;66:193–200.
 37. Vandevala T, Pavey L, Chelidoni O, Chang NF, Creagh-Brown B, Cox A. Psychological rumination and recovery from work in intensive care professionals: associations with stress, burnout, depression and health. *J Intensive Care.* 2017;5:16.
 38. Grace MK, VanHeuvelen JS. Occupational variation in burnout among medical staff: evidence for the stress of higher status. *Soc Sci Med.* 2019;232:199–208.
 39. Bekhet AK, Zauszniewski JA. Measuring use of positive thinking skills: psychometric testing of a new scale. *West J Nurs Res.* 2013;35:1074–93.
 40. Tod A. A critique of positive thinking for patients with cancer. *Nurs Stand.* 2011;25:43–7.
 41. Alsaleh M, Lebreuilly R, Lebreuilly J, Tostain M. The relationship between negative and positive cognition and psychopathological states in adults aged 18 to 20. *J de Thérapie Comportementale et Cognitive.* 2016;26:79–90.
 42. Marsh L, Edginton T, Conway MA, Loveday C. Positivity bias in past and future episodic thinking: relationship with anxiety, depression, and retrieval-induced forgetting. *Q J Exp Psychol (Hove).* 2019;72:508–22.
 43. Mezulis AH, Abramson LY, Hyde JS, Hankin BL. Is there a universal positivity bias in attributions? A meta-analytic review of individual, developmental, and cultural differences in the self-serving attributional bias. *Psychol Bull.* 2004;130:711–47.
 44. Rad AM, Yarmohammadian MH. A study of relationship between managers' leadership style and employees' job satisfaction. *Int J Health Care Qual Assur Inc Leadersh Health Serv.* 2006;19:xi-xxviii.
 45. Martinez JP, Mendez I, Ruiz-Esteban C, Fernandez-Sogorb A, Garcia-Fernandez JM. Profiles of Burnout, Coping Strategies and Depressive Symptomatology. *Front Psychol.* 2020;11:591.
 46. Petitta L, Jiang L, Hartel CEJ. Emotional contagion and burnout among nurses and doctors: do joy and anger from different sources of stakeholders matter? *Stress Health.* 2017;33:358–69.
 47. Babore A, Lombardi L, Viceconti ML, Pignataro S, Marino V, Crudele M, et al. Psychological effects of the COVID-2019 pandemic: Perceived stress and coping strategies among healthcare professionals. *Psychiatry Res.* 2020;293:113366.
 48. Flesia L, Monaro M, Mazza C, Fietta V, Colicino E, Segatto B, et al. Predicting perceived stress related to the covid-19 outbreak through stable psychological traits and machine learning models. *J Clin Med.* 2020;9:1.

Publisher's Note

Springer Nature remains neutral with regard to jurisdictional claims in published maps and institutional affiliations.