



**HAL**  
open science

## Foraging Capacities, Behaviors and Strategies of Otariids and Odobenids

Tiphaine Jeanniard-Du-Dot, Christophe Guinet

► **To cite this version:**

Tiphaine Jeanniard-Du-Dot, Christophe Guinet. Foraging Capacities, Behaviors and Strategies of Otariids and Odobenids. Claudio Campagna; Robert Harcourt. *Ethology and Behavioral Ecology of Marine Mammals*, Springer, pp.65-99, 2021, 978-3-030-59183-0. 10.1007/978-3-030-59184-7\_4. hal-03255230v2

**HAL Id: hal-03255230**

**<https://hal.science/hal-03255230v2>**

Submitted on 8 Feb 2024

**HAL** is a multi-disciplinary open access archive for the deposit and dissemination of scientific research documents, whether they are published or not. The documents may come from teaching and research institutions in France or abroad, or from public or private research centers.

L'archive ouverte pluridisciplinaire **HAL**, est destinée au dépôt et à la diffusion de documents scientifiques de niveau recherche, publiés ou non, émanant des établissements d'enseignement et de recherche français ou étrangers, des laboratoires publics ou privés.

# Chapter 4

## Foraging Capacities, Behaviors and Strategies of Otariids and Odobenids



Tiphaine Jeanniard-du-Dot and Christophe Guinet

**Abstract** Fur seals, sea lions and the walrus (*Odobenus rosmarus*) are breath-hold divers that rely on swimming at depth to feed at sea. As their diving capacities are more limited than phocids, otariids and odobenids are geographically constrained to highly productive environments and relatively shallow dive depths. They are also mostly coastal species, central place foragers with relatively limited foraging ranges. Diving patterns and strategies are diverse among the otariid group—although fur seals tend to be more pelagic and sea lions more benthic divers—, and driven by extrinsic factors such as the type of habitat they occupy, environmental factors, intra- or inter-specific density-dependent competition, predation risk and the behavior of the prey they feed on; as well as intrinsic factors such as age, sex, reproduction status, size and experience. There are usually several foraging strategies present within a species, and individuals tend to specialize to one of these strategies, with a degree of adaptability to changing conditions possible. Diving behaviors and strategies define the feeding success and foraging efficiency of individuals, and as such their capacities to successfully survive and reproduce in their environment. The diversity of these behaviors within otariid and odobenid populations are likely evolutionary stable strategies that provide a buffer under changing environmental conditions.

**Keywords** Diving physiology · Diving behavior · Energetics · Foraging strategies · Otariids · Odobenids · Fur seals · Sea lions · Walrus

---

T. Jeanniard-du-Dot (✉)

Department of Fisheries and Oceans Canada, Institut Maurice Lamontagne, Mont-Joli, QC, Canada

Centre d'Etudes Biologiques de Chizé - La Rochelle Université, UMR 7372, CNRS, Villiers-en-Bois, France

e-mail: [tiphaine.jeanniard-du-dot@cebc.cnrs.fr](mailto:tiphaine.jeanniard-du-dot@cebc.cnrs.fr)

C. Guinet

Centre d'Etudes Biologiques de Chizé - La Rochelle Université, UMR 7372, CNRS, Villiers-en-Bois, France

e-mail: [christophe.guinet@cebc.cnrs.fr](mailto:christophe.guinet@cebc.cnrs.fr)

© Springer Nature Switzerland AG 2021

C. Campagna, R. Harcourt (eds.), *Ethology and Behavioral Ecology of Otariids and the Odobenid*, Ethology and Behavioral Ecology of Marine Mammals, [https://doi.org/10.1007/978-3-030-59184-7\\_4](https://doi.org/10.1007/978-3-030-59184-7_4)

## 4.1 Introduction

Accurately determining dive behavior and underwater foraging of marine predators, including fur seals, sea lions and walruses (Fig. 4.1) is inherently difficult as they cannot be directly observed in the open oceans, and yet it is essential to determine, explain, and predict their foraging success, the use of prey resources in their environment, as well as their consequences on energetics and fitness (Costa et al.

**Fig. 4.1** Example of sea lions and fur seals of the family otariidae (**a** Steller sea lions, *Eumetopias jubatus*, **b** Antarctic fur seals, *Arctocephalus gazella*), and the family odobenidae (**c** walruses, *Odobenus rosmarus*). (Picture credits: **a, b** Tiphaine Jeanniard du Dot, **c** Brian Battaile)

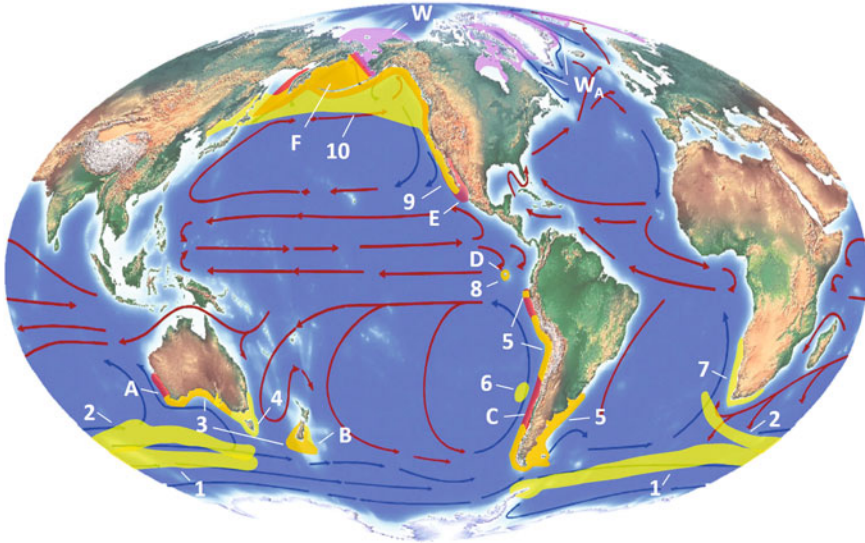


1989; Boyd 2002; Austin et al. 2006; Bost et al. 2007; New et al. 2014). However, technological advancements in the field of bio-logging and bio-telemetry, i.e. archival and satellite-transmitting devices attached to animals while they go at sea, has made it possible to collect information on these diving behaviors at an increasingly fine scale.

The first bio-loggers used on marine mammals were time-depth recorders (TDR) that recorded low resolution 2D dive patterns over a relatively short period of time (Kooyman 1965). Nowadays, new and miniaturized sensors, as well as improved processing capacities, large memory capabilities and battery life allows marine mammal scientists to record data about dive behavior and foraging success at a much finer scale and for up to several months. For example, tri-axial accelerometers, magnetometers or gyroscopes, recording data at 20 Hz, allow reconstruction of 3D underwater tracks of the animals. They can also provide indirect indices of swimming effort, feeding attempts and foraging success (Viviant et al. 2014; Jeanniard du Dot et al. 2016b; Ladds et al. 2017b). The field of bio-logging is in rapid development (the International Bio-logging Society was born in 2015, <https://www.bio-logging.net>). Currently, most loggers deployed on otariids incorporate pressure, temperature and light sensors. More recently other types of sensors (passive or active acoustics, salinity etc.) have allowed scientists to study animal behavior in relation to their immediate environment. This has shed light on the links between foraging behavior, feeding success and the oceanographic conditions.

Biologging-based studies of otariid diving behavior have exponentially increased over the last 30 years (McIntyre 2014). Some species have been intensely studied: Antarctic fur seals (*Arctocephalus gazella*), northern fur seals (*Callorhinus ursinus*), followed by New Zealand sea lions (*Phocarctos hookeri*), Steller sea lions (*Eumatopias jubatus*), and California sea lions (*Zalophus californianus*). On the other end of the spectrum, there is little information on dive behavior of Juan Fernandez fur seals (*Arctocephalus phillippii phillippii*) (Francis et al. 1998), Guadalupe fur seals (*Arctocephalus phillippii townsendi*) (Gallo-Reynoso et al. 2008) or southern sea lions (*Otaria flavescens*) (Werner and Campagna 1995; Mueller 2004). In addition, a majority of studies have focused on diving behavior of adult lactating females during the breeding season when they become central place foragers. Significantly less information is available for males or juveniles, even though efforts have been made to start bridging these gaps (Boyd et al. 1998; Baylis et al. 2017; Knox et al. 2018; Salton et al. 2019). Consequently, general knowledge of diving behavior of otariids and odobenids is inherently biased towards the taxa, season, and sex/age groups from which we have the most information.

Fur seals and sea lions are mostly coastal species, especially during breeding season, and their yearly movements can cover little variation in habitat use (Australian sea lion, *Neophoca cinerea*) to thousands of km for those with a pelagic phase (northern and Antarctic fur seals during their 8-month migration). Their distribution is concentrated in areas of high productivity, mostly in temperate to sub-polar latitudes, or near areas with cold upwellings for more tropical species (i.e. Humboldt or Cromwell current, Fig. 4.2). This pattern is a consequence of their relatively expensive lifestyle and their subsequent needs for high feeding rates to



**Fig. 4.2** Distribution of otariid and odobenid species worldwide. Fur seals species are shown in yellow and with numbers; sea lion species in red (with overlap between sympatric species resulting in orange) and in single letters, and walruses in purple and double letters. Otariid species are distributed worldwide in areas of cold ocean currents (blue arrows) or upwellings rather than warm ocean currents (red arrows). Legends corresponding to numbers and letters are as follow: 1. Antarctic fur seals—*Arctocephalus gazella*, 2. Sub-Antarctic fur seals—*Arctocephalus tropicalis*, 3. New Zealand fur seals—*Arctocephalus forsteri*, 4. Australian fur seals—*Arctocephalus pusillus doriferus*, 5. South American fur seals—*Arctocephalus australis*, 6. Juan Fernandez fur seals—*Arctocephalus philippii*, 7. Cape fur seals—*Arctocephalus pusillus pusillus*, 8. Galapagos fur seals—*Arctocephalus galapagoensis*, 9. Guadalupe fur seals—*Arctocephalus townsendi*, 10. Northern fur seals—*Callorhinus ursinus*, A. Australian sea lions—*Neophoca cinerea*, B. New Zealand (Hooker's) sea lions—*Phocartos hookeri*, C. South American sea lions—*Otaria flavescens*, D. Galapagos sea lions—*Zalophus californianus wollebaeki*, E. California sea lions—*Zalophus californianus californianus*, F. Steller sea lions—*Eumetopias jubatus*, W<sub>P</sub>. Pacific walruses—*Odobenus rosmarus divergens*, W<sub>A</sub>. Atlantic walruses—*Odobenus rosmarus rosmarus*

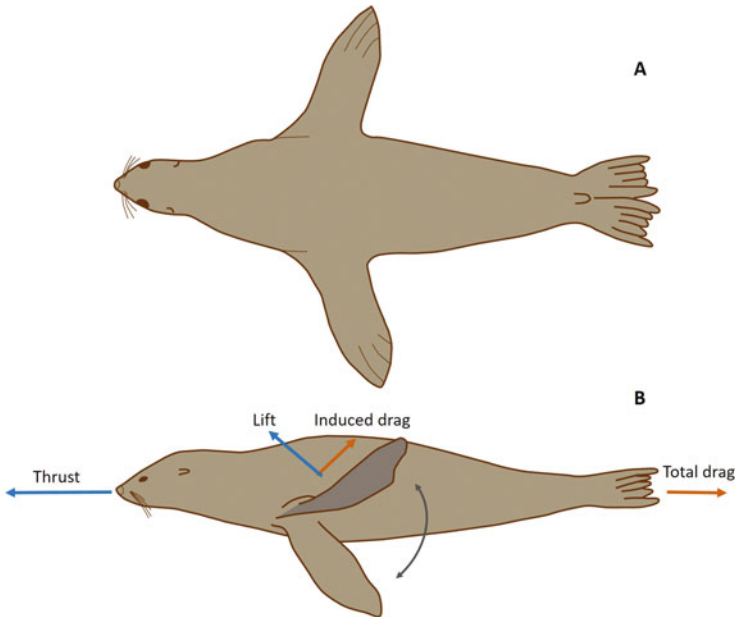
balance their energy budget (Boyd 2002; Costa and Toro, Chap. 2). As fur seals and sea lions travel and rest at the surface of the ocean, the main purpose of their diving is to feed at depth. Intrinsic factors such as phylogeny, sex, size, age, experience and reproductive status, as well as extrinsic factors including habitat characteristics, environmental factors, intra- or inter-specific density-dependent competition, predation pressure, food web structure and the distribution and behavior of the prey they feed upon, all influence diving behavior in otariids (Schoener 1974; Gentry and Kooyman 1986; Boyd 1996; Harcourt et al. 2002; Jeglinski et al. 2012; Benoit-Bird et al. 2013; Leung et al. 2014). Ultimately, these factors will shape the foraging efficiency of animals, i.e. the cost/benefit ratio of their foraging at sea and hence their body condition, survival and reproductive success and the resulting trends in population.

This chapter focuses on diving and foraging activities of fur seals and sea lions as a group—and to a lesser extent the walrus (*Odobenus rosmarus*)—, emphasizing phylogenetic similarities or differences between them or with the other major pinniped family, the phocidae. We look at how otariid diving is limited by physiological capacities, what diving strategies they display in the wild and what biological or environmental factors affect them. Finally, we discuss how diving patterns and strategies can be used to assess and understand foraging energetics and efficiency and ultimately how it shapes the capacity of fur seals and sea lions to survive and reproduce successfully in their environment.

## 4.2 Morphological and Physiological Diving Capacities of Fur Seals and Sea Lions

Diving behavior of fur seals and sea lions is constrained by their overall capacity to balance the energetic costs of moving effectively through water, a medium ~800 times denser than air and 25 times more heat conductive, while on a limited oxygen supply during apnea. The quantity of oxygen available in the body and the rate at which it is consumed (and carbon dioxide produced) by metabolic processes during a dive controls how long animals can remain underwater, given their total oxygen stores. Fur seals and sea lions have developed morphological and physiological adaptations to simultaneously decrease the costs of exercising underwater or diving metabolic rate and increase the magnitude of body oxygen stores and transport. Combined, these adaptations allow fur seals and sea lions to prolong the time spent at depth to forage, and so is essential to understanding diving behavior and foraging efficiencies of eared seals.

Morphologically, otariids have streamlined body shapes that reduce the drag created by, and thus the energetic cost of, moving through water (Fig. 4.3). Their body shape presents an average fineness ratio (~5.5, compared to the walrus with a fineness ratio ~1 for example) and a position of the maximum diameter of their body (shoulders area at ~40% of the total body length) close to the optimum for minimal drag given the body volume (Feldkamp 1987). Unlike phocids and odobenids who use caudal propulsion and lateral or vertical oscillations of their rear appendages to move through water, fur seals and sea lions use their pectoral flippers for propulsion in a 4-phase stroke pattern creating a horizontal thrust and vertical lift with little to no resulting distortion of the body (Feldkamp 1987). Otariid fore-flippers are hydrofoil-shaped and dorso-ventrally compressed which reduces pressure drag and improves lift during propulsion underwater (Fig. 4.3). Fore-flipper propulsion also offers high maneuverability at depth, as well as great speed and turning angle. These adaptations ensure efficient mechanical performance for swimming underwater at a much reduced energetic cost of swimming at depth (at optimum speed) compared to terrestrial mammals of similar sizes (Costa and Williams 1999). Other particularities of otariids amongst marine mammals are their limited fat content (especially in fur

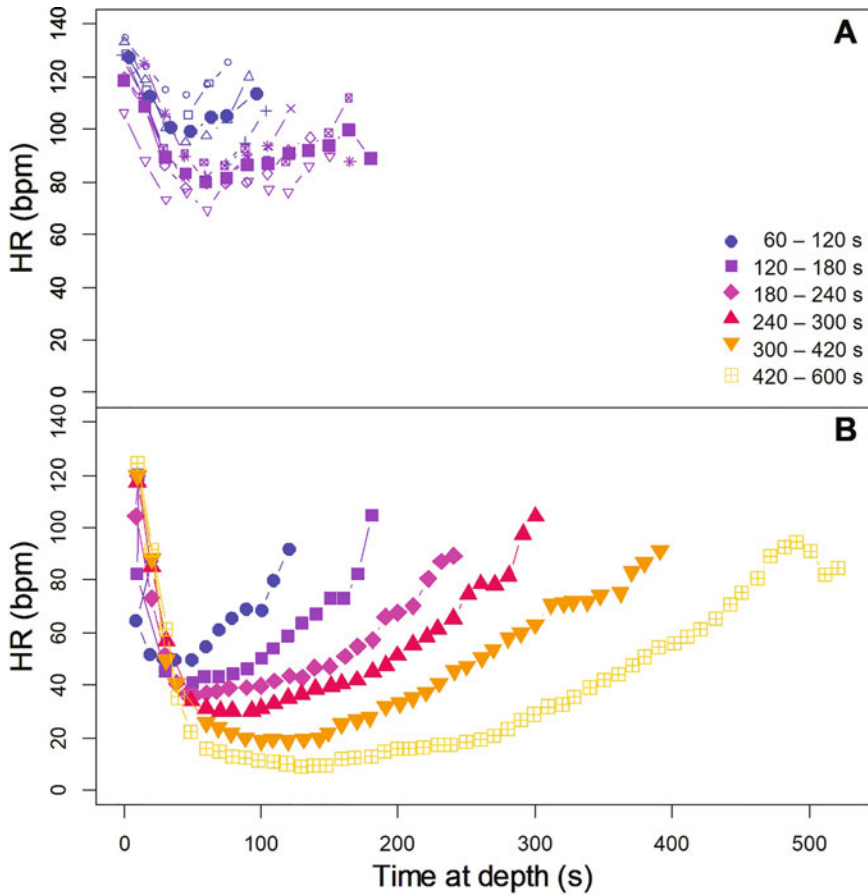


**Fig. 4.3** Morphological features of otariids with a view from above (a) or from the side (b). Notice the streamline body shape closely resembling a technical body of revolution designed to minimize drag underwater. The hydrofoil-shape fore-flippers are used for propulsion in a 4-phase stroke pattern and delivers a forward thrust and lift movement with little to no resulting distortion of this streamlined body shape (b)

seals) and their diving with inflated lungs, which both affect buoyancy and thus energetic costs of diving.

In addition to their morphology, fur seal and sea lion physiology has evolved to adapt to breath-hold diving. They possess a series of physiological adaptations which decrease the rate at which body oxygen stores are depleted underwater to prolong dive duration. These physiological adjustments are ubiquitous amongst marine mammals—although not to the same extent—and are together called the ‘dive response’ (Davis 2014). It mostly involves peripheral vasoconstriction and a decrease in heart rate (bradycardia) compared to ‘resting’ heart rates in response to asphyxia (diving heart rates decreasing to ~25% to 50% compared to eupneic levels, Ponganis 2015). Together these adjustments reduce the perfusion of blood to ‘non-essential’ organs—while maintaining adequate blood pressure and cardiac output to the heart and the brain—thereby limiting the overall rate of oxygen consumption. Free-ranging mammals (i.e. non-controlled and unrestrained conditions) show a wide range of physiological plasticity while diving and the extent of the ‘dive response’ cardiovascular adjustments is usually greater in longer dives (i.e. requiring greater conservation of  $O_2$ ) (Andrews et al. 1997).

Diving physiology has mostly been studied in deep diving phocid species, and few studies have measured these responses in the shallow and shorter-diver



**Fig. 4.4** Changes in heart rate (bpm) measured in free-ranging epipelagic Antarctic fur seals (upper graph, data from Boyd et al. 1999) and mesopelagic California sea lions (lower graph, data from McDonald and Ponganis 2014) during dives of various durations (see color-coded legend). For easier comparison, the dives of Antarctic fur seals lasting between 60 and 120 s (in blue open symbols) and between 120 and 180 s (in purple open symbols) were averaged (closed symbols) to match the time bins for California sea lions

otariids—mostly California sea lions, Steller sea lions and Antarctic fur seals (Andrews et al. 1997; Boyd et al. 1999; Hindle et al. 2010). Nevertheless, similar responses have been found in California sea lions which show extreme bradycardia to the same extent as the deepest diving phocid seals during very long dives (McDonald and Ponganis 2014). In pelagic shallow diving fur seals, however, the extent of these adjustments is not always as pronounced (Fig. 4.4). Even during long dives, heart rate is reduced by only ~33% of surface resting heart rate in Antarctic fur seals compared to up to 75% in other pinnipeds (Boyd et al. 1999). Interestingly, while California sea lions show intense bradycardia in deep dives, the profile of heart



**Table 4.1** Average oxygen carrying capacities of otariids compared to phocid seals

	Otariids	Phocids
Mass-specific total oxygen stores (ml O <sub>2</sub> /kg)	49.3 ± 11.0 <sup>a</sup>	69.6 ± 16.4 <sup>c</sup>
Hb concentration (g Hb/dl blood)	17.8 ± 2.3 <sup>a</sup>	22.9 ± 3.3 <sup>c</sup>
Mb concentration (g Mb/100g muscle)	3.7 ± 1.2 <sup>a</sup>	6.5 ± 1.7 <sup>c</sup>
Oxygen affinity, P <sub>50</sub> (mmHg)	28 ± 2 <sup>b</sup>	26.9 ± 1.2 <sup>d</sup> /30.5 ± 1.2 <sup>e</sup>

Species used in calculating these averages are indicated in footnote below. Values used to calculate these means can be found in Lenfant et al. (1970), Costa et al. (1998, 2001), Richmond et al. (2006), Fowler et al. (2007), Weise and Costa (2007), Villegas-Amtmann and Costa (2010), Hückstädt et al. (2016), Kirkman et al. (2019), Qvist et al. (1981), Kooyman (1989), Meir et al. (2009) and McDonald and Ponganis (2013). Values for phocids can be found in Table 4.2, 4.7 and 4.10 in Ponganis (2015). Values for the walrus *O. rosmarus* are 38 ml O<sub>2</sub>/kg, 16 g Hb/dl blood, and 3 g Mb/100 g muscle (Lenfant et al. 1970)

<sup>a</sup>*Z. californianus*, *Z. wollebaeki*, *E. jubatus*, *N. cinerea*, *C. ursinus*, *A. gazella*, *A. pusillus pusillus*, *O. byronia*

<sup>b</sup>*Z. californianus*

<sup>c</sup>*P. vitulina*, *P. groenlandica*, *P. hispida*, *P. sibirica*, *L. carcinophagus*, *L. weddellii*, *H. leptonyx*, *H. grypus*, *H. fasciata*, *C. cristata*, *M. angustirostris*

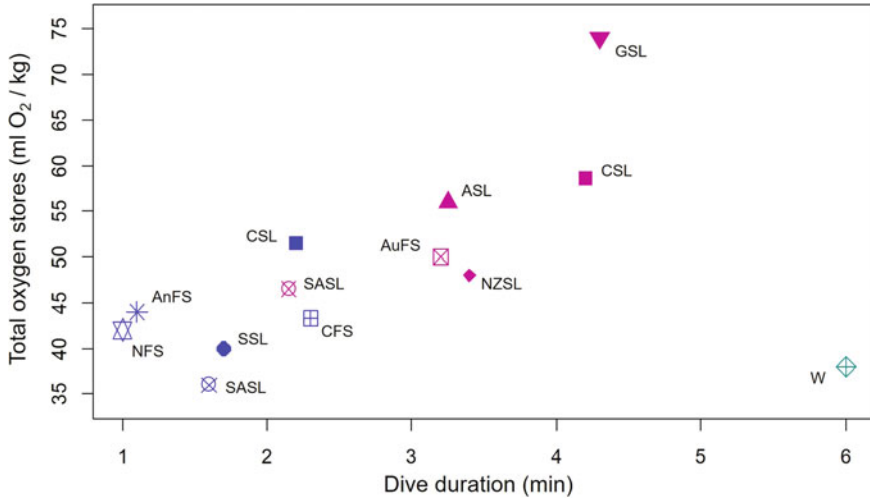
<sup>d</sup>*L. weddellii*

<sup>e</sup>*M. leonina*

rate decrease is slower than typical of phocid seals. This might be due to otariids inhaling before diving and so gas exchange continues underwater, while phocid seals exhale before diving (Hooker et al. 2005; McDonald and Ponganis 2014).

In addition to oxygen conservation mechanisms, oxygen stores in otariids are primarily located in the lungs, blood and muscles, and depends on their volume/mass as well as on hemoglobin (Hb) and myoglobin (Mb) concentrations in the body (Ponganis 2015). However, amongst pinnipeds, otariids have more limited diving capacities (shallower dive depths, shorter dive durations on average) than comparably sized phocids, which as a group possess larger oxygen stores relative to their mass than similar size otariids (Table 4.1, t-test  $p = 0.01$ ). This results from a lower Hb concentration despite relatively similar blood volumes ( $p = 0.008$ ) and arguably similar O<sub>2</sub> affinity (Qvist et al. 1981; Kooyman 1989; Meir et al. 2009; McDonald and Ponganis 2013) as well as lower Mb concentration ( $p = 0.001$ ). Together, blood and muscles represent ~75% to 90% of oxygen storage in fur seal and sea lions' bodies (Ponganis 2015), and the remaining ~10% to 25% reside in the lungs compared to only ~3% to 10% in phocids. The sixfold higher proportion of oxygen in otariids' lungs compared to blood—1:2.5 in otariids vs 1:12 in phocids—indicates substantial differences in diving strategy (Hooker et al. 2005).

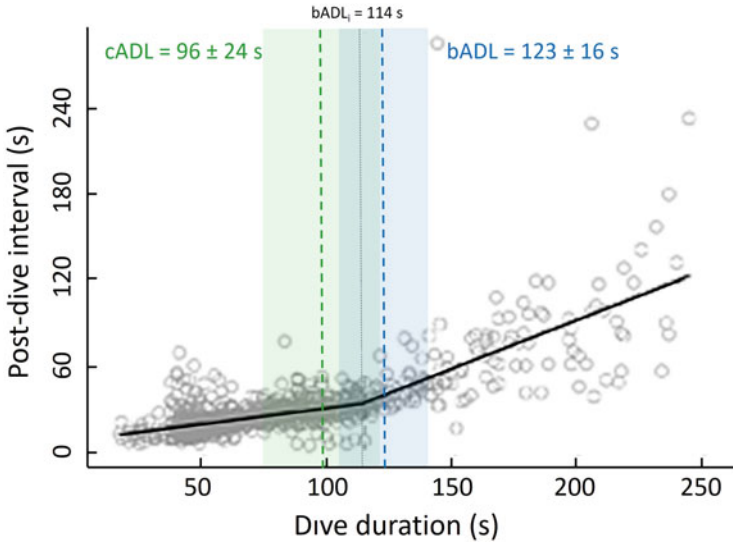
Interestingly, total O<sub>2</sub> stores have a scaling factor of 1 with body mass while metabolic rate a scaling factor of 0.75 (Costa 1993). This means that breath-hold diving capacities increase with body size for a given mass-specific O<sub>2</sub> store (Fig. 4.5). Consequently, larger sea lions and fur seals should have greater diving capacities than smaller ones (Baylis et al. 2015b). Alternatively, smaller animals should increase their mass-specific O<sub>2</sub> stores to maintain similar diving capacities as larger ones. This was observed intra-specifically among females in southern sea lions



**Fig. 4.5** Mass-specific total oxygen stores (ml O<sub>2</sub>/kg) related to dive duration (min) in 10 otariid species as well as the walrus for comparison. Different symbols indicate the species (NFS northern fur seal, AnFS Antarctic fur seal, SSL Steller sea lion, SASL South American sea lions, CFS Cape fur seal, CSL California sea lion, AuFS Australian fur seal, NZSL New Zealand sea lion, ASL, Australian sea lion, GSL Galapagos sea lion, and W Walrus). The symbol color indicates epi/mesopelagic otariid species in blue and benthic species in pink, with the walrus shown in green. California sea lions and South American sea lions are shown twice as shallow epipelagic and mesopelagic/benthic strategies are displayed in the population. Total oxygen store data from Lenfant et al. (1970), Costa et al. (1998, 2001), Richmond et al. (2006), Weise and Costa (2007), Fowler et al. (2007), Villegas-Amtmann and Costa (2010), Ponganis (2011) and dive duration data from Kuhn and Costa (2014), Costa and Gales (2003, 2000), Villegas-Amtmann et al. (2017), Jeanniard du Dot et al. (2018), Georges et al. (2000b), Gjertz et al. (2001). Australian fur seal and meso/benthic California sea lion data are taken from Costa et al. (2004), South American sea lion data from Hückstädt et al. (2016), and Cape fur seal data from Kirkman et al. (2019)

(Hückstädt et al. 2016), as well as in California sea lions where females compensated for their smaller body sizes and thus lower absolute oxygen stores, by having higher mass-specific O<sub>2</sub> stores compared to the larger males (Weise and Costa 2007). Similarly, the Galapagos sea lion is the smallest of all sea lion species (60–95 kg for females, Villegas-Amtmann et al. 2017), yet has the highest mass-specific oxygen stores (74 ml O<sub>2</sub>/kg, Villegas-Amtmann and Costa 2010)—and thus greatest diving capacities—, while the lowest mass-specific O<sub>2</sub> store is found in Steller sea lion (40 ml O<sub>2</sub>/kg, Richmond et al. 2006), the largest of otariids (150–300 kg for females, Calkins et al. 1998) (Fig. 4.5).

The time required to consume O<sub>2</sub> stores via aerobic metabolism while diving is thought to be the major determinant of diving performance (Boyd and Croxall 1996; Costa et al. 2004). The aerobic dive limit (ADL) is defined as the maximum dive duration before blood lactic acid levels rise, because of an increase in anaerobic metabolism. When seals exceed this aerobic threshold, the relative post-dive surface interval increases greatly as extra time is necessary to clear lactic acid accumulated



**Fig. 4.6** Example of post-dive interval durations (s) as a function of dive duration (s) of a female Antarctic fur seal during a foraging trip at sea used to determine, via broken-line models (solid black lines), the individual behavioral aerobic dive limit (bADL, dotted grey line, data from Viviant et al. 2016). For comparison, the average ( $\pm$ SD) bADL for 11 Antarctic fur seal females in Viviant et al. (2016) is shown in blue dashed line and shaded area, and the average ( $\pm$ SD) calculated aerobic dive limit (cADL) for 15 Antarctic fur seal females in Costa et al. (2004) is shown in green dashed line and shaded area

during the previous dive (Burns 1999; Horning 2012) resulting in a disproportionate increase in surface time and a decrease in foraging efficiency.

To overcome the technical difficulties of measuring blood lactate in free-ranging seals, two indirect estimates have been widely used in eared seal studies. Based on observations that most dives in wild seals are shorter than the measured ADL (Kooyman et al. 1980, 1983), the behavioral aerobic dive limit ( $ADL_B$ ), has been estimated as the dive duration below which 95%–97% of dives occur and after which surface intervals begin to disproportionately increase (Burns and Castellini 1996; Hindle et al. 2011). Alternatively, the calculated aerobic dive limit ( $ADL_C$ ) represents the total  $O_2$  stores divided by the diving metabolic rate (Costa et al. 2004) (Fig. 4.6).

Since its first mention in the 1980s (Kooyman et al. 1983), ADL has become a fundamental concept in the interpretation of diving physiology, diving behavior, and more widely foraging ecology of diving animals. Irrespective of the differences due to the ADL estimation method (2.0 min  $ADL_B$  versus 1.6 min  $ADL_C$  in Antarctic fur seals (Costa et al. 2004; Viviant et al. 2016); 2.3 min ADL in captive California sea lions versus 2.7–3.8 min  $ADL_C$  in wild counterparts (Ponganis et al. 1997; Costa et al. 2004)), there is a wide variation in ADL between species of eared seals from 1.3 to 1.7 min in southern sea lions and Australian fur seals (Costa et al. 2004;

Hückstädt et al. 2016) to 3.2 min in Galapagos fur seals (Horning 2012)—and 10.5–14.8 min for walrus (Wiig et al. 1993; Noren et al. 2015) (Table 4.2).

More interestingly, the difference in tendencies to exceed ADL between otariid species appears to depend on their foraging ecology (pelagic versus benthic divers) rather than their phylogeny (fur seals versus sea lions). Benthic fur seal and sea lion divers tend to exceed their ADL more often than pelagic divers (Costa and Gales 2000; Costa et al. 2004; Hückstädt et al. 2016). For example, benthic Australian sea lions exceed their  $ADL_C$  in almost 80% of their dives (Costa and Gales 2003),—likely to maximize time on the sea floor—, while the pelagic Antarctic fur seal only surpass it in ~16% of their dives (Viviant et al. 2016).

ADL should also not be considered a fixed unalterable threshold (see Costa and Valenzuela Toro, Chap. 2). In California and South American sea lions, exposure to different habitats and geographical locations dramatically altered individual ADL and overall diving physiology (Hückstädt et al. 2016). Shallow epipelagic California sea lions from San Nicholas island had an ADL of 2.7 min compared to 3.8 min for deeper mesopelagic counterparts off Los Islotes (Costa et al. 2004), while benthic southern sea lions in Southern Chile had greater mass-specific  $O_2$  stores than shallow diver counterparts in Uruguay (Hückstädt et al. 2016). This ‘training effect’ or ‘local adaptation’ from greater hypoxic exposure indicates that the physiology of fur seals and sea lions can be adjusted and improved to a certain extent depending on the ecological conditions to which they are routinely exposed. Consequently, diving behavior and overall foraging efficiency result not only from physiological constraints and capacities outlined above but from a complex interaction between genetics, physiology and the environment.

### 4.3 Diving Strategies of Fur Seals and Sea Lions

Diving strategies are diverse among the otariid group and can be classified as epi-/meso-pelagic (i.e. within the water column) or benthic (on the seafloor) (see also Costa and Toro, Chap. 2). Pelagic divers typically perform bouts of short shallow dives (10–60 m depth for 0.5–3.0 min) with a diurnal variation in dive depths (greater at dawn and dusk and shallow at night) that reflect the circadian migration of their prey to the surface. They spent 20%–35% of their time at sea diving. On the other hand, benthic divers forage mostly on continental shelf areas perform relatively deep and long dives with no obvious diurnal pattern (25–400 m depth for 1.5–7.0 min on average) with long periods at the bottom of their dive. They invest 50%–60% of their time at sea diving, performing 10–20 dives/h with bottom time representing 45%–55% of each dive (Werner and Campagna 1995; Thompson et al. 1998; Costa and Gales 2000, 2003) (Fig. 4.7 and Table 4.2). The maximization of bottom time for deeper dives can be achieved by faster descent rates through ‘burst and glide’ transit without an increase in swimming costs (Crocker et al. 2001). The deepest diving otariid is thought to be the benthic-feeding New Zealand sea lion, which can dive as deep as 600 m and as long as 20 min (Chilvers 2008b; Chilvers,

**Table 4.2** Summary of average size and foraging metrics for otariid and odobenid species

Species	Sex	Strategy	Location	Body mass (kg)	Body length (cm)	Mean dive depth (m)	Max dive depth (m)	Mean dive duration (min)	Max dive duration (min)	Trip duration (d)	Time spent diving (%)	Distance traveled (km)	ADL (min)	FMR (W/kg)	Note	References
Antarctic fur seal	F	Epi	Whole range	27.3–32.7	117–121	12.6–53.0	208	0.7–1.9	10.0	3.1–7.6	16.9–34.5	294–665	1.6–3.5	6.3–9.8		[1–9]
			<i>Kerguelen/Crozet</i>								22.5–34.5	665				
			<i>South Georgia/Bouvetoya</i>								16.9–20.4	~300				
	M	Epi/Meso	South Georgia	133	180	100.0	354	2.3	9.2	5.4	22.2	~140				[6, 10]
Subantarctic fur seal	F	Epi	Whole range	30.5–52.0	117–135	10.9–39.7	208	0.7–1.5	6.5	4.9–32.2	14.6–33.4	190–2248	2.3		<i>i</i>	[3, 11–18]
New Zealand Fur seal	F	Epi	New Zealand/Australia	36.4–42.4	135–138	37.0–53.0	318	1.9–2.7	11.2	2.9–16.6	25.5–37.6	171–727	3.5			[19–22]
	M	Epi/Meso	Australia	106.4	170	106.4	>380	3.6	14.8	9.1	31.7–33.2					[20]
Australian fur seal	F	Benthic	Australia	64.0–77.7	140–152	58.0–75.2	164	2.9–3.5	10.1	2.7–7.3	40.1–40.7	250–360	4.1		<i>ii</i>	[23–27]
	M	Benthic	Australia	138–238	175–201	79.8	283	3.8	9.8	3.4–6.9	39.3	530				[27–29]
Galapagos fur seal	F	Epi	Galapagos	27.8–28.8	105.2	22.1–32.0	169	1.3–1.7	6.5	0.8	23.7–24	44	3.2	5.0		[30–33]
South American fur seal	F	Epi	Falklands/Uruguay	35–51	128–137	43.0–61.0	170	1.8–2.8	7.1	2.1–15.2						[34–36]
Juan Fernandez fur seal	F	Epi	Juan Fernandez	45.0–49.8	142–148	4–12.3	169	0.4–0.8	5.1	12.3–28.0		1394–1778				[37, 38]
Cape fur seal	F	Epi/Meso	South Africa	53.8	136	59.6	454	2.3	9.8	5.4			3.8			[39, 40]
Guadalupe fur seal	F	Epi	Mexico	47.9–52.5	146	17.0	82	2.6	18.0	14.4	36.2	2375	3.8			[41]

Northern fur seal	F	All	Whole range	35.7–39.4	126–129	11.6–37.2	170	0.5–2.2	12.8	2.8–9.7	15.1–33.3	112–892	2.6	6.2–8.1	iii	[42–51]
		<i>Epi/Benthic</i>	<i>Pribilof</i>			26.8–37.5		1.3–2.2		7.1–7.9	28.4–33.3	585–655				
		<i>Epi</i>	<i>Pribilof</i>			16.9–22.0		0.6–1.6		7.4–9.7	24.7–28.4	690–892				
		<i>Epi</i>	<i>Bogoslof/Lovushki</i>			11.6–18.4		0.5–0.7		1.8–3.3	15.1–29.2	112–208				
South American Sea lion	F	Benthic	Whole range	92.7–126.2	162–191	18.0–75.0	325	1.3–3.1	12.1	0.5–4.4	52.7	103–752	1.3–4.7		iv	[52–59]
			<i>Northern Chile/Uruguay</i>			18.0–18.7		1.4–1.9		1.5		103				
			<i>Patagonia/Falklands</i>			37.2–75.0		1.3–3.1		0.5–4.4		206–752				
	M	Benthic	Patagonia/Falklands	250	221					2.9–5.7		591				[57]
Galapagos sea lion	F	All	Galapagos	58.4–85.9	156	19.7–153.0	593	1.8–4.9	11.5	0.3–2.5	43.7–65.7	14–76	4.1			[33, 60–66]
		<i>Epi</i>				19.7–45.5		1.8–2.9			62.0–65.7					
		<i>Meso</i>				53.9–100.9		2.5–4.5			43.7–56.2					
		<i>Benthic</i>				103.0–153.0		3.6–4.9			45.0–59.0					
California sea lion	F	All	California/Mexico	80.0–86.7	161–165	32.4–194.2	500+	1.7–5.0	9.9	2.2–5.4	23.3–50.2	167–348	1.2–5.8	4.9–5.9	v	[65, 67–73]
		<i>Epi</i>				32.4–55.1				5.4	36.3	348				
		<i>Epi/Benthic</i>				35.9–72.5				5.1	38.5	304				
		<i>Meso/Benthic</i>				133.6–152.2				3.5	23.3	16				
Australian sea lion	M	All	California	175–187	206	27.7–35.8	105	1.6–2.2		0.4–2.4	16.7–21.2	47–124	3.8–7.9			
	F	Benthic	Australia	77.8–89.2	160	32.9–71.0	105	2.7–3.5	8.3	1.2–3.6	52.7–60.7	68–88	2.3	6.8–7.1		[5, 74–78]

(continued)

Table 4.2 (continued)

Species	Sex	Strategy	Location	Body mass (kg)	Body length (cm)	Mean dive depth (m)	Max dive depth (m)	Mean dive duration (min)	Max dive duration (min)	Trip duration (d)	Time spent diving (%)	Distance traveled (km)	ADL (min)	FMR (W/kg)	Note	References
New Zealand Sea lion	F	Benthic	New Zealand	112–125	178	124.0–175.0	612	2.5–4.7	11.5	2.1–4.5	32.5–61.6	45–423	2.3–3.2	6.6–6.9	<i>vi</i>	[79–85]
			<i>Otago</i>			20.2		1.8		0.5		26				
			<i>Stewart</i>			59.6		2.5		0.5		45				
Steller Sea lions	F	Epi	Alaska/Russia	200–300	220–247	24.0–56.0	328	1.9–3.1	21.3	0.3–1.0	22.0–45.0	29	3.0–3.3			[45, 86–91]
Walrus	M	Benthic	Whole range	1350	320	~20	462	~6	49	2.3–7.9	44.0–56.3	10.5–15.0	3.4			[92–97]

Values are means or ranges of means (except for max dive duration and depth) available in the literature for adult free-ranging wild animals. Aerobic dive limit (ADL) values include eADL and bADL so ranges reflect differences due to methodology. At-sea field metabolic rate (FMR) only refers to measurements done on wild animals (ranges also reflecting differences of measurements and calculation methods). Strategies are either epipelagic (Epi), mesopelagic (Meso), or benthic and 'All' indicates every strategy displayed within the population. Values in *italic* indicate notable differences for specific parameters depending on location, foraging strategies within the population or environmental/seasonal conditions

i. Seasonal variations in foraging trip duration and distance traveled

ii. Seasonal variations

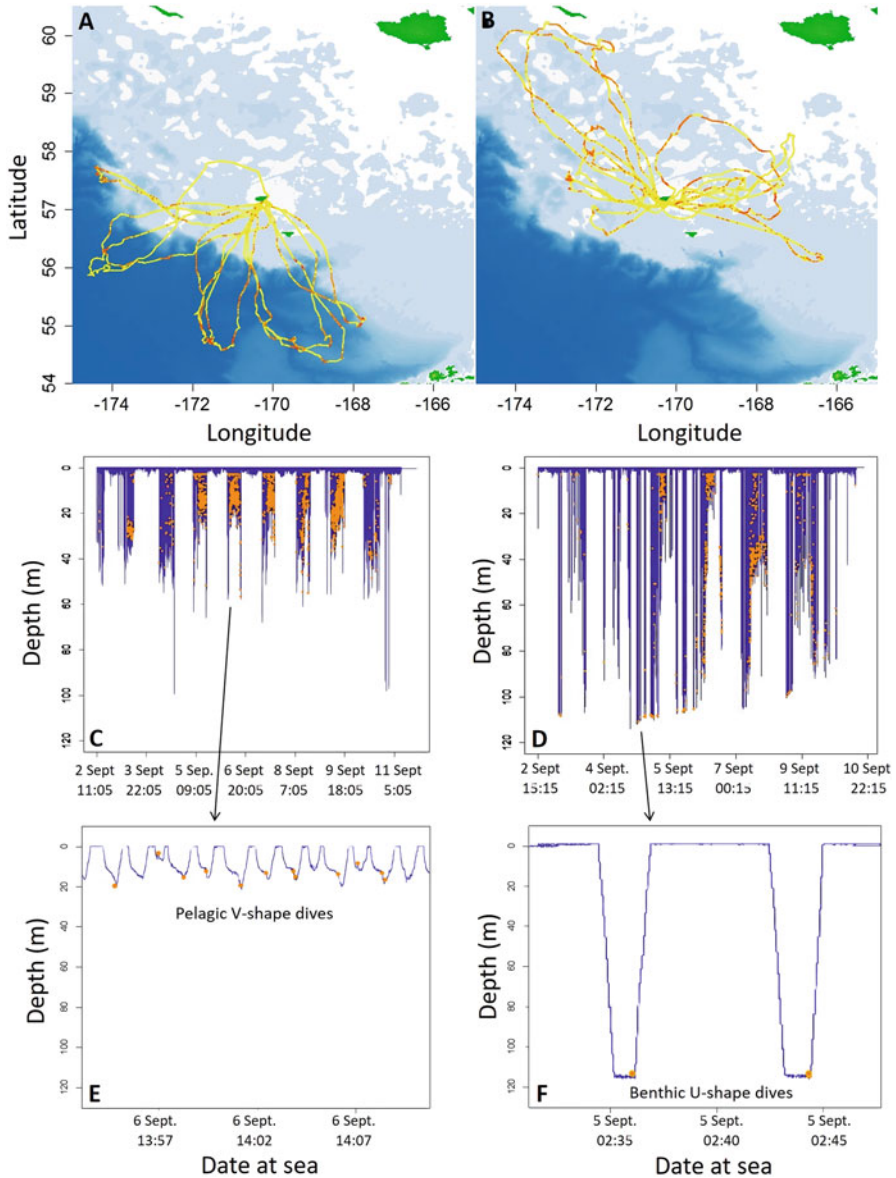
iii. Differences in foraging behaviors depending on bathymetry around breeding island—Pribilof Islands: shallow shelf, epi/benthic foraging; Bogoslof/Lavushki islands: oceanic deep basin, epipelagic foraging

iv. Variations in foraging behaviors depending on bathymetry around breeding island—Pribilof Islands: shallow shelf, epi/benthic foraging; Bogoslof/Lavushki islands: oceanic deep basin, epipelagic foraging

v. Variations in strategies throughout the range: more pelagic in northern Chile, mixed benthic/pelagic in southern Chile and the Falkland's and more benthic in Uruguay. Seasonal variations observed as well

vi. Overall averages of dive metrics consistent between studies to the exception of 2 colonies, Otago and Stewart, mentioned for comparison

1. Jeanniard du Dot et al. (2017a), 2. Lea et al. (2002), 3. Bailleil et al. (2005), 4. Costa et al. (2000), 5. Costa et al. (2001), 6. Staniand and Robinson (2008), 7. Costa et al. (1989), 8. Boyd and Croxall (1992), 9. Arnould et al. (1996), 10. Würsig et al. (2017), 11. Georges et al. (2000a), 12. Georges et al. (2000b), 13. Goldsworthy et al. (1997), 14. Beuquet et al. (2004), 15. Luque et al. (2007), 16. Kirkman et al. (2016), 17. de Bruyn et al. (2009), 18. Robinson et al. (2003), 19. Mattlin et al. (1998), 20. Page et al. (2005), 21. Baylis (2008), 22. Baylis et al. (2012), 23. Hoskins and Arnould (2014), 24. Hoskins et al. (2015), 25. Hoskins et al. (2017), 26. Arnould and Hindell (2001), 27. Kernaléguen et al. (2015b), 28. Knox et al. (2018), 29. Kirkwood et al. (2006), 30. Horning and Trillimich (1997), 31. Trillimich and Kooyman (2001), 32. Gentry and Kooyman (1986), 33. Villegas-Amtmann et al. (2013), 34. Thompson et al. (2003), 35. Baylis et al. (2018), 36. Trillimich et al. (1986), 37. Francis et al. (1998), 38. Osman (2007), 39. Kirkman et al. (2019), 40. David and Rand (1986), 41. Gallo-Reynoso et al. (2008), 42. Nordstrom et al. (2013), 43. Kuhn et al. (2010a), 44. Kuhn et al. (2012), 45. Waite et al. (2012), 46. Jeanniard du Dot et al. (2018), 47. Skinner et al. (2012), 48. Battaille et al. (2015a), 50. Shero et al. (2012), 51. Costa and Gentry (1986), 52. Baylis et al. (2015b), 53. Campagna et al. (2001), 54. Werner and Campagna (1995), 55. Hückstädt et al. (2016), 56. Sepúlveda et al. (2015), 57. Baylis et al. (2016), 58. Thompson et al. (1998), 59. Riet-Sapirza et al. (2013), 60. Jeglinski et al. (2012), 61. Paez-Rosas et al. (2017), 62. Villegas-Amtmann et al. (2017), 63. Villegas-Amtmann and Costa (2010), 64. Villegas-Amtmann et al. (2008), 65. Villegas-Amtmann et al. (2011), 66. Trillimich et al. (2014), 67. McHuron et al. (2016), 68. McHuron et al. (2018), 69. Kuhn and Costa (2014), 70. Melin et al. (2008), 71. Weise and Costa (2007), 72. Feldkamp et al. (1989), 73. Pongonis et al. (1997), 74. Hindell et al. (2016), 75. Costa and Gales (2003), 76. Lowther and Goldsworthy (2011), 77. Lowther et al. (2011), 78. Fowler et al. (2007), 79. Chilvers (2009), 81. Chilvers and Wilkinson (2009), 82. Chilvers (2018), 83. Chilvers et al. (2005), 84. Augé et al. (2011), 85. Crocker et al. (2001), 86. Gerlinsky et al. (2014), 87. Winship et al. (2001), 88. Merrick and Loughlin (1997), 89. Merrick et al. (1994), 90. Olivier (2015), 91. Lander et al. (2020), 92. Gjertz et al. (2001), 93. Jay et al. (2001), 94. Acquarone et al. (2006), 95. Garde et al. (2018), 96. Lowther et al. (2015), 97. Noren et al. (2015)



**Fig. 4.7** Foraging tracks (a, b) and dive profiles over a full foraging trip (c, d), and a 5-min period of diving (e, f) for lactating northern fur seals from Reef Rookery on St. Paul Island in the Bering Sea in 2011. Fur seals foraged either pelagically off the shelf in oceanic waters where bathymetry reaches 3000 m, (left panels,  $n = 8$ ) or benthically on the shallow ( $\sim 100$  m deep) shelf in neritic waters (right panels,  $n = 12$ ). Notice that pelagic divers display a typical circadian diving cycle (only at night, shallow at night and deeper at dawn and dusk, c), while benthic divers dive night and day at similar depths (d). Orange dots show spatial distribution of prey capture attempts in panels a, b (with yellow representing no prey capture attempt) and distribution of prey capture attempts over time and depth profiles in panels (c-f). Figure from Jeanniard du Dot et al. (2018)



Chap. 25), although recent studies have shown that the Galapagos sea lion can also perform dives within this range despite its smaller size (Villegas-Amtmann et al. 2017; Costa and Toro, Chap. 2).

It is generally recognized that fur seals are nocturnal epi-/meso-pelagic divers, while most sea lions—and walruses—are benthic divers. This general pelagic/benthic distinction is thought to result from a difference in insulation capacity and/or in size between taxa (Arnould and Costa 2006). Fur seals are indeed overall smaller (25–80 kg for females, Table 4.2) with consequently lower diving capacities, and rely on a layer of air trapped in their very dense fur for thermoregulation. On the other hand, sea lions are larger (70–300 kg for females, Table 4.2) with concomitant greater diving capacities and rely on a blubber layer for insulation. This taxon-derived dichotomy in diving strategy is however not entirely so clear cut. Australian fur seals are exclusive benthic divers (Kirkwood and McIntosh, Chap. 27) while California sea lions are epi-/meso-pelagic divers (Weise et al. 2010; Kuhn and Costa 2014, Costa and Toro, Chap. 2).

In addition, as the number of bio-logging studies increases and more individuals of different sex/age are tracked repeatedly over time, our understanding of intra-individuals/inter-populations variability gets refined. Several species of fur seals and sea lions seem to employ more than one of these diving strategies (Arnould and Hindell 2001; Chilvers and Wilkinson 2009; Kuhn et al. 2010b; Villegas-Amtmann et al. 2013; Baylis et al. 2015b). For example, northern fur seal females display epipelagic, benthic or mixed strategies when foraging in the Bering sea (Gentry et al. 1986; Kuhn et al. 2010a; Jeanniard du Dot et al. 2018) (Fig. 4.7 and Table 4.2). On the other hand, adult female southern sea lions breeding in northern Patagonia or the Falklands (Werner and Campagna 1995; Baylis et al. 2015b), New Zealand sea lions (Chilvers and Wilkinson 2009) and Galapagos sea lions (Villegas-Amtmann et al. 2008) have all been reported to show a pelagic strategy in tracked animals (Mattlin et al. 1998). Rarely have three foraging patterns (epipelagic, mesopelagic and benthic) been found in one species, with the exception of sea lions from the *Zalophus* genus (California and Galapagos sea lions) that seem to have high behavioral flexibility (Villegas-Amtmann et al. 2008, 2011; McHuron et al. 2016).

Individuals from the same species have a wide range of diving behaviors at their disposal likely driven by both intrinsic and extrinsic circumstances. Age, sex, and size can affect diving behavior. Younger animals are ontogenetically limited in their diving capacities and dive shallower than adults (Horning and Trillmich 1997; Baylis et al. 2005; Fowler et al. 2006; Verrier et al. 2011), while larger adult individuals have greater diving capacities than smaller ones as mentioned earlier (Boyd et al. 1998; Lea et al. 2006; Baylis et al. 2015b). There is also evidence that males have a very different foraging ecology compared to females in Antarctic and New Zealand fur seal males for example, but not necessarily in others species (Fea et al. 1999; Staniland and Robinson 2008; Kernaléguen et al. 2015b; Drago et al. 2016; de Albernaz et al. 2017). Alternatively, variation in diving strategies can be attributed to habitat characteristics, targeted prey type, behavior or prey availability in these habitats, and competition or predation pressure (Chilvers and Wilkinson 2009; Baylis et al. 2015b; Arthur et al. 2016; Paez-Rosas et al. 2017; Jeanniard du

Dot et al. 2018). For example, Galapagos sea lions foraging west of the archipelago displayed pelagic diving and fed on mesopelagic fish such as the Galapagos sardine (*Opisthonema berlangai*), while females foraging benthically south west of the Galapagos archipelago preyed upon larger fish from the Serranidae and Scorpenidae families in deep areas with rocky substrates (Villegas-Amtmann et al. 2017).

While several diving strategies exist amongst fur seal and sea lion species, it appears that adult individuals tend to remain faithful to specific diving strategies. A high degree of specialization was for example observed in female New Zealand sea lions (both within and between years, Chilvers 2008a, b, 2017), Australian sea lions (Lowther et al. 2013), Australian fur seals (Kernaléguen et al. 2015a) and Antarctic fur seals (Arthur et al. 2015), although it is less clear for New Zealand fur seals and California sea lions (Melin et al. 2008; Kuhn and Costa 2014; McHuron et al. 2016). Individual specialization is expected to occur more frequently in generalist top marine predators with a wide range of potential prey as it provides the ecological opportunity for different strategies to occur (Araújo et al. 2011), and when competition for resources is strong. This can be the case for breeding females nursing their offspring. As central place foragers, they are constrained to forage within limited areas around the breeding grounds and experience stronger intraspecific competition for resources, resulting in foraging niche segregation. Foraging niche segregation also occurs inter-specifically for sympatric otariid species such as Galapagos sea lions and Galapagos fur seals, New Zealand fur seals and Australian fur seals, and southern sea lions and South American fur seals with one of the two species being benthic and the other pelagic foragers.

It is difficult to know whether different diving strategies within a population have recently emerged as a result of changes in habitat characteristics or have been retained over time as Evolutionary Stable Strategies (Hines 1987). Regardless, they entail different trade-offs in terms of risks and benefits. Benthic foragers dive deeper for longer periods of time which results in animals surpassing their ADL more frequently with likely greater overall energy expenditure (Costa et al. 2004). However, one of the benefits of preying upon benthic prey is that they tend to be evenly distributed, predictable, relatively large and overall less susceptible to acute environmental changes or events such as El Niño (Miller and Sydeman 2004). By contrast, pelagic divers perform short and shallow dives rarely exceeding ADL, and prey upon small size fish that occur in high densities when they find them. However, mesopelagic prey tend to be patchily distributed, less predictable and more sensitive to oceanographic perturbations (Boyd 1996; Harcourt et al. 2002). Consequently, the different strategies might be more or less beneficial depending upon annual environmental conditions, and the existence of diversity in diving behaviors and strategies within population provides a buffer for species occupying changeable habitats (Villegas-Amtmann et al. 2008; Lowther et al. 2012; McHuron et al. 2016).

An essential component of understanding these diving strategies and the trade-offs they entail is to estimate the energetic costs associated with them. Studies on northern and Antarctic fur seals, and on Galapagos, Australian and New Zealand sea lions that simultaneously measured field metabolic rates (FMR) and foraging strategies in otariids show that energy expenditures of foraging otariids are influenced by

the variability of their behaviors at sea, i.e. their time-activity budget comprised of diving, traveling, and resting (Arnould et al. 1996; Costa and Gales 2000; Jeanniard du Dot et al. 2017b). Diving was found to be the most energetically expensive activity at sea in free-ranging northern and Antarctic fur seals (however, see Arnould et al. (1996)), in semi-captive Steller sea lions and others (Butler et al. 1995; Goundie et al. 2015; Jeanniard du Dot et al. 2017b), and deeper dives more costly than shallower dives of similar duration (Halsey et al. 2006). In addition, the most energetically efficient pattern of diving resides in sequences or bouts of multiple dives close to the ADL with short surface intervals (Goundie et al. 2015).

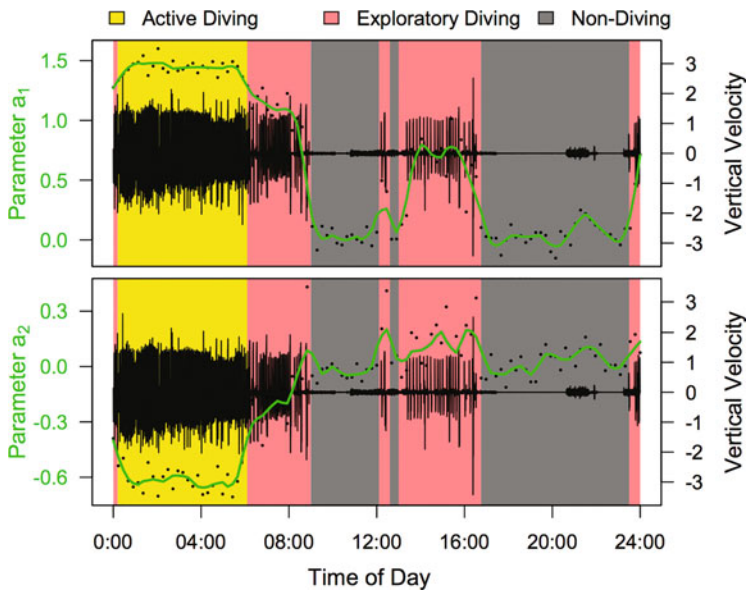
Consequently, benthic divers that dive deeper, for longer, and that overall exceed their ADL more often than pelagic divers, should have greater rates of energy expenditure at sea. It is, however, difficult to make definite conclusions about the relative energetic costs of each strategy in free ranging studies. First, fur seals and sea lions all seem to operate within a narrow range of FMR (6.25–7.05 W/kg, Table 4.2) with the exception of the deep diving Galapagos sea lions (4.08 W/kg, closer to the 3.36 W/kg of walruses) (Arnould et al. 1996; Costa and Gales 2000, 2003; Acquarone et al. 2006; Jeanniard du Dot et al. 2017a, 2018; Villegas-Amtmann et al. 2017). Second, finer patterns of field energy expenditures are not always consistent between and within otariids. Galapagos and California sea lions show a slight decrease in FMR when their time spent diving increases (Hurley and Costa 2001; Villegas-Amtmann et al. 2017). Deep diving New Zealand Sea lions experience lower FMR than shallow diving conspecifics (Costa and Gales 2000), whereas deep diving and shallow diving northern fur seals and California sea lions have similar FMR (Jeanniard du Dot et al. 2018; McHuron et al. 2018).

Otariids can adapt to different foraging habitat and/or environmental changes either behaviorally or physiologically. They tend to increase their time at sea rather than their FMR in poor foraging conditions (Trillmich 1990; Boyd 1999) (noting that foraging trip duration does not appear to impact FMR in either northern fur seals or New Zealand sea lions, Costa and Gales 2000; Jeanniard du Dot et al. 2018). Pelagic divers that forage at night on prey with a circadian migration pattern are limited in the opportunities to increase their diving effort in years of poor foraging conditions, as prey are not accessible to them during daylight. They have to respond by increasing their total time at sea. Deeper divers, or divers with more flexible foraging strategies such as California sea lions, can access prey during the day and increase their diving effort locally without the need to extend their total time at sea. Nevertheless, even for the few species that can increase their FMR, total metabolic changes remain limited. The overall low metabolic plasticity indicates that fur seals and sea lions most probably operate close to their metabolic ceiling with important implications for the scope of their adaptive capacities to environmental changes (Costa and Gales 2000, 2003; Arnould and Costa 2006; Ladds et al. 2017c; Villegas-Amtmann et al. 2017).

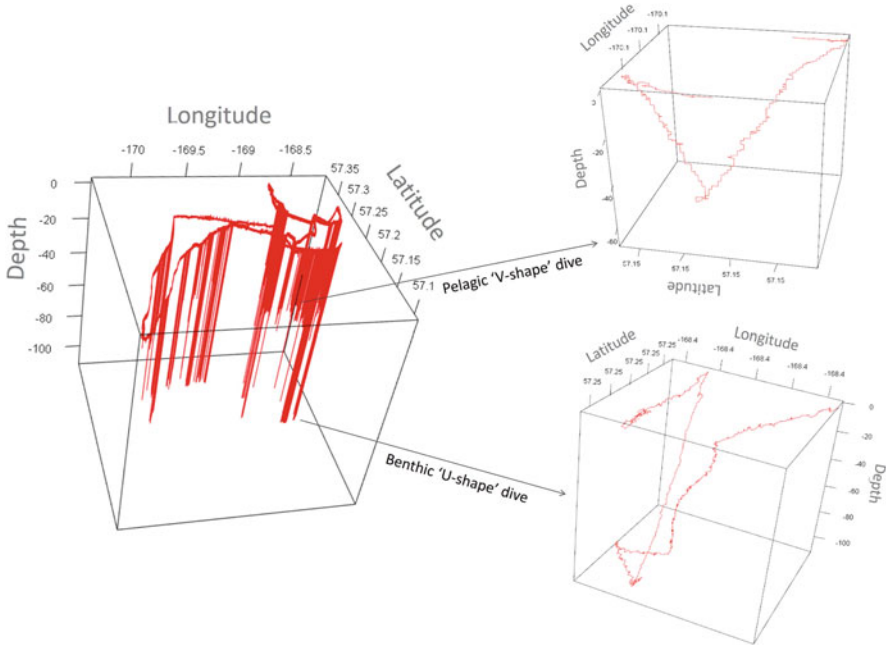
#### 4.4 Dive Metrics to Infer Behaviors and Energetics

Unlike phocids who travel and sleep underwater, fur seals and sea lions transit and rest at the surface of the ocean. The function of their diving is thus mainly to find and access patchily distributed prey resources in a three dimensional and dynamic environment. Ecologists have long attempted to transpose dive profiles into foraging behaviors, as well as use dive metrics—such as dive duration, maximum dive depth, surface interval duration, bottom duration, 2D dive shape, time-at-depth, ascent and descent rates, residuals of dive depth-duration models indicative of longer than average dives for a given depth, etc.—to quantify and predict energetic costs of diving and feeding success. The relationship between dive shape and behavior may however not be consistent between species, age classes or life history stages (Kuhn et al. 2009a; Carter et al. 2016).

More recently with high resolution datasets, different methods have emerged to partition and quantify time-activity budgets, foraging efforts and diving activities: the vertical area-restricted search, the vertical sinuosity at the bottom of dives, the vertical velocity used in hidden Markov models or behavioral state-space models for example (Joy et al. 2015; Arthur et al. 2016; Heerah et al. 2017) (Fig. 4.8). It is important to keep in mind however, that the application and the accuracy of each of



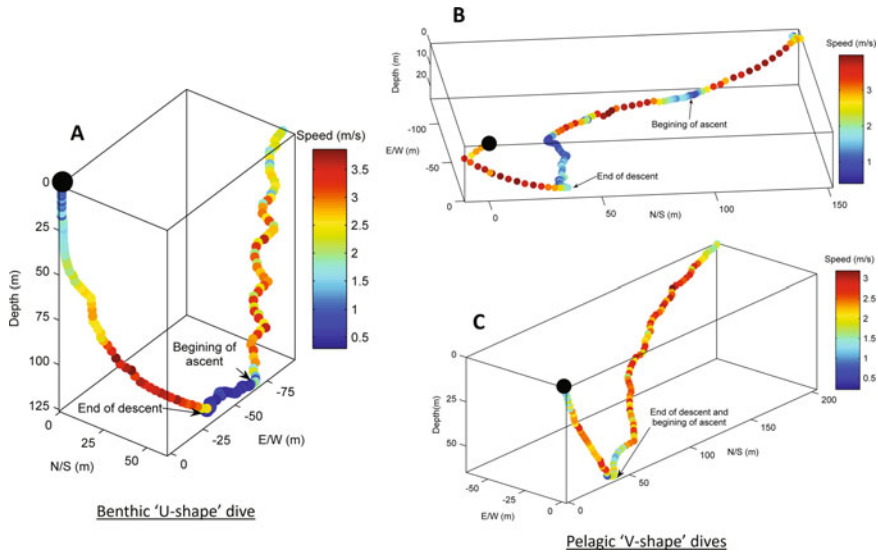
**Fig. 4.8** Foraging behaviors of a northern fur seal female breeding on St Paul Island, in the Bering sea during the breeding season 2006 inferred from a behavioral state-space model (results from model parameters  $a_1$  and  $a_2$  are shown with the green lines and original estimates with black dots), based on time series of vertical velocity (black lines). The yellow, pink and grey blocks correspond to active diving, exploratory diving, and non-diving, respectively (as diagnosed from values of  $a_1$  and  $a_2$  from the model). Figure from Joy et al. (2015).



**Fig. 4.9** Example of the 3D track of a foraging trip at sea from a female northern fur seal from St. Paul Island reconstructed using tri-axial acceleration, dive depths and GPS data from high-resolution bilogger (and using package TrackReconstruction in R colored by depth). Detailed 3D paths during a benthic (typically classified as U-shape in 2D) and a pelagic (typically classified as V-shape in 2D) are shown as examples

these methods and metrics depend on the resolution of the data and the temporal scale of analysis (Carter et al. 2016) as well as the minimum depth taken into account to define a dive. This parameter varies widely between studies (2–6 m minimum dive to define a dive, see Table 4.2) and induces significant variations in the mean diving depth and the percentage of time spent diving.

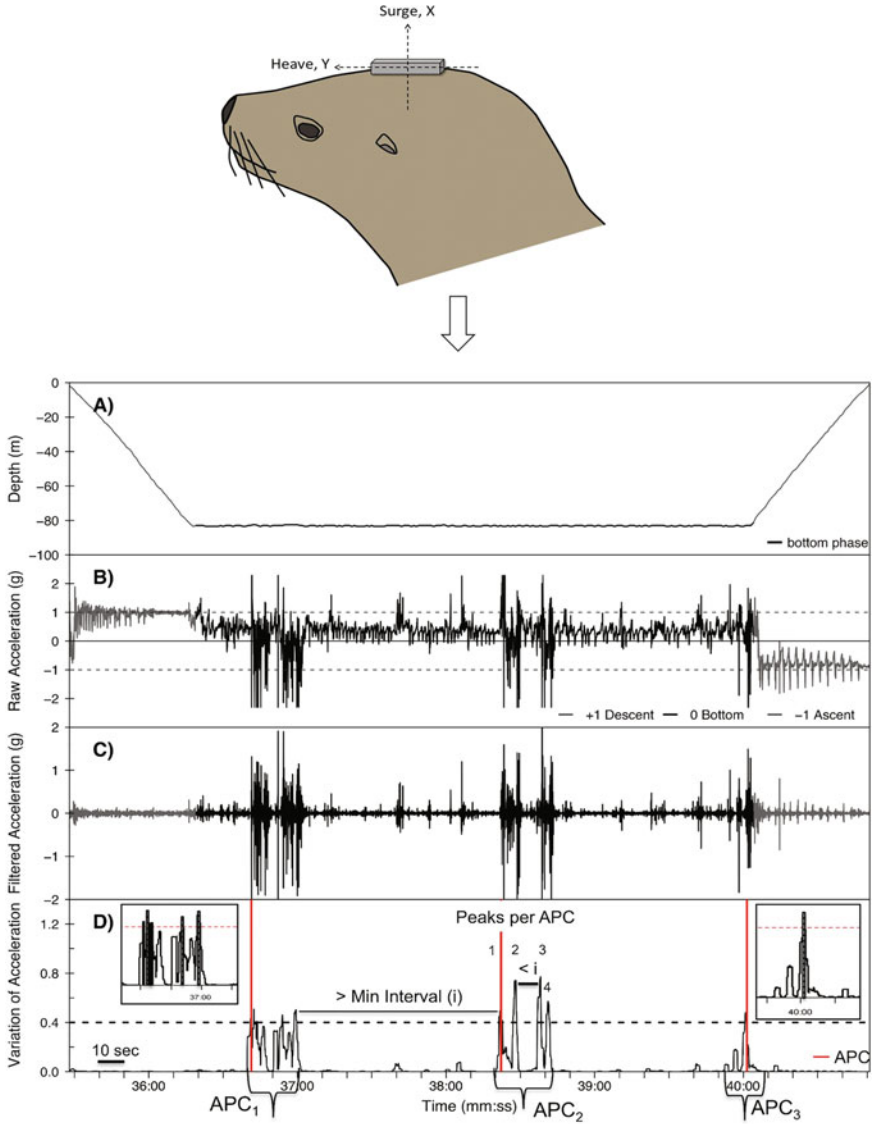
In addition, inferring tri-dimensional behaviors from two-dimensional information is inherently subjective as 2D dive profiles do not account for lateral displacement—or lack thereof—while underwater at a given depth (Harcourt et al. 2000). The development of new sensors such as tri-axial accelerometers and magnetometers have provided means to derive dive profile of animals in 3D (Figs. 4.9 and 4.10), as well as their body position in the water column, pitch, roll and yaw angles, as well as relative swimming effort (Fig. 4.10), and detailed behaviors using varied methods for example spectral analyses of tri-axial acceleration with unsupervised signal categorization (using available ethographer software, Battaile et al. 2015a), classification tree algorithms (Jeanniard du Dot et al. 2017b), or random forest models (Ladds et al. 2016). This new but complex information has shown that pinniped foraging behavior can be varied and complex and that 2D profiles used on their own



**Fig. 4.10** Example of dives performed by a female Steller sea lion from Lovushki Island, Russia, displayed in 3D, color-coded by swim speed and with the black dots representing the beginning of the dives. Graph (a) shows a typical benthic ‘U-shape’ dive with steep descent and ascent angles. The animal speeds up from surface to bottom of the dive, likely due to buoyancy-driven gliding strategy, displays a slow swimming speed at the benthos before barrel-rolling back to the surface (as observed in several species of otariids), slowing down towards the end of the ascent. Graphs (b, c) illustrate pelagic dives with more moderate descent and ascent angles. Graph (b) shows a dive where changes in swim speed are typical of a prey chase behavior. Graph (c) illustrates a typical pelagic ‘V-shape’ dive with a smaller range of swim speeds displayed. Figures from Olivier (2015)

may be overly simplistic (Davis et al. 1999; Harcourt et al. 2000; Simpkins et al. 2001; Hindell et al. 2002).

In addition, without direct validation, it remains unclear whether any of these dive and behavioral characteristics can be used to differentiate successful from unsuccessful foraging in diving pinnipeds. Stomach temperature pills (Kuhn and Costa 2006; Kuhn et al. 2009b) and head- or back-mounted accelerometers have been combined with TDR and video data to identify prey capture attempts in several fur seal and sea lion species (Fig. 4.11, and see Fig. 4.7 for example at sea) (Viviant et al. 2010; Volpov et al. 2016). The combination of dive profiles with these new indices of feeding attempts or events have provided opportunities to ground-truth time-at-depth dive metrics as indicators of foraging behaviors and success (Sala et al. 2011). For example Viviant et al. (2016), deployed accelerometers (measuring jaw-openings as a proxy for prey capture attempts) in conjunction with TDRs in Antarctic fur seals to test dive metrics including bottom duration, ascent and descent rates and maximum dive depth as predictors of foraging success. They concluded that the metrics to best predict foraging success depends on the timescale considered (from single dives, to bout or to nights).



**Fig. 4.11** Example of an otariid equipped with a head accelerometer showing the surge (X) and heave (Y) axes, and the process of identification of attempted prey captures (APC) from the recorded signal of depth and acceleration. Dive depth for a single dive is shown in panel (a), and raw surge acceleration (in g) in panel (b). Head movements were isolated from body movements with a 3 Hz high-pass filter (panel c) and variance of acceleration ( $g^2$ ) was calculated for each individual dive (panel d). Peaks in variance of acceleration above a threshold and within a minimum time interval (i) were used to estimate attempted prey capture (APC, panel d). Figure from Volpov et al. (2015)

Dynamic tri-axial acceleration metrics such as ODBA or VeDBA (Overall—or Vectorial—dynamic body acceleration) were hypothesized to be directly related to metabolic rate in free ranging animals (Gleiss et al. 2011). While studies have shown promising relationships between metabolic rate and ODBA on terrestrial animals (Halsey et al. 2009), this relationship is more controversial in captive or wild fur seals and sea lions (Fahlman et al. 2008; Dalton et al. 2014; Ladds et al. 2017a). In Antarctic and northern fur seals, ODBA did not correlate with doubly-labeled water measures of field metabolic rates over a full foraging trip at sea (Jeanniard du Dot et al. 2016a). This was argued to be due, amongst other reasons, to the difference in time-activity budgets between individuals by the authors, but it was later shown that relationships between ODBA/VeDBA and energy expenditure metrics was likely found significant due to a ‘time trap’, i.e. time being inherently conflated into the 2 tested variables (Halsey 2017; Ladds et al. 2017a). Whether or not ODBA/VeDBA can accurately measure field metabolic rate in free-ranging fur seals and sea lions, dynamic acceleration can certainly provide a relative index of swimming effort underwater between phases of dives, between dives, and over total foraging trips for a given individual (Miller et al. 2012). This refines the scale at which changes in swimming effort during dives can be estimated to an unprecedented level.

In addition to using dive profiles, ecologists have built theoretical frameworks to infer foraging efficiency in diving animals. These models were specifically adapted to diving animals from the Optimal Foraging Theory (OFT, MacArthur and Pianka 1966) taking into account the physiological needs to regularly return to breath at the surface of the water, i.e. leave the prey patch. OFT stipulates that natural selection favors animals that forage more efficiently, with foraging efficiency defined as the ratio of energy gained to energy expended to acquire food per unit of time. Consequently, individuals should maximize rate of energy intake while minimizing the rate of energy expenditure associated with prey searching, capture and handling, and thus concentrate their time in areas of successful feeding. Given this and the previously mentioned assumption that most foraging occurs during the bottom phase of dives, Optimal Diving models hypothesized that divers should maximize their time at the bottom phase, i.e. at the feeding depth, effectively increasing the probability of capturing prey while minimizing the time and energy spent traveling from and to the surface (descent and ascent phase), as well as the time recovering at the surface after the dive (post-dive surface interval) (Kramer 1988; Houston and Carbone 1992; Thompson et al. 1993). Within this framework, foraging success should thus increase with dive duration, bottom phase duration and dive frequency.

This was however not verified for wild benthic diving Australian fur seals regularly diving at the fairly constant benthos of the oceans. Neither bottom duration nor post-dive surface intervals were indicative of whether prey capture attempts occurred during dives, while descent rate was the best predictor of successful feeding dives (Volpov et al. 2016). In Australian and Antarctic fur seals, bottom time duration was not the best predictor of successful foraging which rather depended on the temporal scale at which the analyses occurred from single dives, to bout, nights etc. (Iwata et al. 2015; Foo et al. 2016; Viviant et al. 2016). This highlights the importance of the time scale and initial research question since predictors of foraging



success for a particular dive bout may not perform as well when applied across an entire foraging trip.

The distribution, accessibility and quality/density of prey patches, the level of competition for a given prey patch, as well as the physiological needs, capacities or degree of plasticity of diving animals are likely to influence their foraging strategies. Adding inferences about prey patch density and quality in the decision making process of diving seals (Marginal Value Theorem, Charnov 1976; Thompson and Fedak 2001) hypothesized that individuals should terminate a dive earlier (i.e. shorter dive and bottom durations) when there are no prey present or prey density is low, but that the benefit of early dive termination is reduced for deeper dives. These assumptions are however not clearly validated in wild otariids either. Antarctic fur seal females increased their foraging effort by diving more and spending more time searching for prey at the bottom of dives in poor-quality patches (Mori and Boyd 2004; Viviant et al. 2014). Similarly, Australian fur seals decreased bottom duration with increasing prey encounter rate at the scale of a dive, possibly to come back to the surface to consume larger prey items, but not at the scale of a bout (Foo et al. 2016). It is however interesting to note that Antarctic fur seals did tend to dive and forage at a depth shallower than the depth with the highest rate of prey capture attempts (Viviant et al. 2016). This is in accordance with Mori's model (1998) that postulates that if species are physically capable of reaching depths of highest prey densities, they will tend to dive at depths slightly shallower than the maximum prey density as a trade-off with physiological constraints of diving. This indicates that species favor foraging efficiency (i.e. the net energy gain taking into account diving costs) rather than just maximizing prey intake.

The wide breadth of these results highlights the complexity of the decision making process of fur seals and sea lions in the wild. They modify their dive behavior based on real-time evaluation of prey encounter rates during a given dive (especially if the first prey encounter occurs early in the dive, Foo et al. 2016), or during several preceding dives (Iwata et al. 2015; Viviant et al. 2016; Volpov et al. 2016) all while within their physiological constraints. Information gathered at any point in the foraging experience is thus essential in the multifactorial decision making process, and current theoretical foraging models using dive metrics only may be too simplistic to accurately represent such a complex ecological system.

To conclude, there is no doubt that dive-related data are a powerful resource to assess underwater behavior and quantify foraging efficiency in animals which cannot be observed directly. This is particularly relevant given the new types of data accessible from a wide range of additional sensors. However, these data should be used with a clear understanding of their limitations given the wide diversity of behaviors and the complexity of factors affecting the decision making process of individual animals even within the single otariid taxon itself.

## 4.5 Conclusion: Impacts of Diving Strategies on Fitness and Population Trends

The identification and behavioral characterization of foraging strategies is an important first step towards understanding the energetic consequences of the variability in foraging behaviors of fur seals and sea lions. In a population of Antarctic fur seal with a single foraging strategy, the time lactating females spend ashore was positively correlated with pup weaning mass (Doidge and Croxall 1989; Lunn et al. 1994); and mothers with diving patterns yielding a greater foraging efficiency during their trips at sea produced heavier pups more likely to survive during their first year at sea (Jeanniard du Dot et al. 2017a). Consequently, the resulting foraging efficiency ultimately impacts survival and reproductive capacities of individuals and the trend of their population both intra- and inter-specifically.

It has been suggested that the benthic feeding strategy inherently results in a higher foraging cost for likely similar energy gain (thus lower foraging efficiency) (Costa et al. 2004). In addition, benthic foragers usually exhibit smaller population sizes and lower population growth rates compared with those that feed in the water column (Arnould and Costa 2006). In northern fur seals and California sea lions, the pelagic strategy offers greater foraging efficiency than the benthic strategy, but females often have to travel further and spend more time at sea away from their pup to reach their foraging ground (McHuron et al. 2016; Jeanniard du Dot et al. 2018). Pup growth rates of benthic and pelagic females could not be measured in these two studies so it is difficult to tease apart what strategy would be more beneficial, if any. However, the population of northern fur seals from Bogoslof island, a breeding ground where only the pelagic diving strategy exists, is increasing while the Pribilof Island breeding population where both the pelagic and benthic strategies can be seen has been decreasing by 3.5% per year for the last 20 years (Muto et al. 2018). Similarly, adult female southern sea lions in northern Patagonia feeding on 'offshore' pelagic prey had higher pup growth rates than females with an 'inshore' benthic prey diet (in this particular study year, Dragon et al. 2010). Southern sea lions which have only a benthic feeding strategy in Uruguay are decreasing, while the population in the Falklands where some individuals display limited pelagic feeding is showing signs of recovery (Baylis et al. 2015a). Beyond the benthic/pelagic dichotomy, the deeper dive depths of Antarctic fur seals breeding on Heard Island compared to fur seals from Bird Island is hypothesized to be a reason for their low population growth rates and limited population recovery (Staniland et al. 2010). All these studies indicate that behavioral decisions related to diving and foraging affect pup growth and survival for income-breeding species, and shape population trends and structure.

Despite evidence that pelagic strategies seem to lead to higher population growth rates than benthic ones, the fact that diverging strategies are retained and co-exist within and between populations indicates that they have valuable benefits on the evolution time-scale. While the benthic diving strategy may inhibit rapid population growth compared to pelagic feeding, benthic prey are more predictable and stable

and so benthic strategies may buffer populations during times of drastic environmental change (see also Costa and Toro, Chap. 2). Given that our oceans are now facing major biochemical, biological and trophic alteration of marine ecosystems, there is a growing need to understand which factors influence long-term persistence of different strategies within and between species and hence what the broader implications of foraging decisions are over evolutionary time.

## References

- Acquarone M, Born EW, Speakman JR (2006) Field metabolic rates of Walrus (*Odobenus rosmarus*) measured by the doubly labeled water method. *Aquat Mamm* 32:363–369
- Andrews RD, Jones DR, Williams JD, Thorson PH, Oliver GW, Costa DP, LeBoeuf BJ (1997) Heart rates of northern elephant seals diving at sea and resting on the beach. *J Exp Biol* 200:2083–2095
- Araújo MS, Bolnick DI, Layman CA (2011) The ecological causes of individual specialisation. *Ecol Lett* 14:948–958
- Arnould J, Costa D (2006) Sea lions in drag, fur seals incognito: insights from the otariid deviants. In: *Sea lions of the world: proceedings of the symposium sea lions of the world: conservation and research in the 21st century*, Citeseer
- Arnould JPY, Hindell MA (2001) Dive behaviour, foraging locations, and maternal-attendance patterns of Australian fur seals (*Arctocephalus pusillus doriferus*). *Can J Zool* 79:35–48
- Arnould JPY, Boyd IL, Speakman JR (1996) The relationship between foraging behaviour and energy expenditure in Antarctic fur seals. *J Zool (Lond)* 239:769–782
- Arthur B, Hindell M, Bester M, Trathan P, Jonsen I, Staniland I, Oosthuizen WC, Wege M, Lea M-A (2015) Return customers: foraging site fidelity and the effect of environmental variability in wide-ranging Antarctic fur seals. *PLoS One* 10:e0120888
- Arthur B, Hindell M, Bester MN, Oosthuizen WC, Wege M, Lea M-A (2016) South for the winter? Within-dive foraging effort reveals the trade-offs between divergent foraging strategies in a free-ranging predator. *Funct Ecol* 30:1623–1637
- Augé AA et al (2011) In the shallow end: diving behaviour of recolonising female New Zealand sea lions (*Phocarctos hookeri*) around the Otago Peninsula. *Can J Zool* 89(12):1195–1205
- Austin D, Bowen WD, McMillan JI, Iverson SJ (2006) Linking movement, diving, and habitat to foraging success in a large marine predator. *Ecology* 87:3095–3108
- Bailleul F et al (2005) Differences in foraging strategy and maternal behaviour between two sympatric fur seal species at the Crozet Islands. *Mar Ecol Prog Ser* 293:273–282
- Battaile BC, Sakamoto KQ, Nordstrom CA, Rosen DAS, Trites AW (2015a) Accelerometers identify new behaviors and show little difference in the activity budgets of lactating northern fur seals (*Callorhinus ursinus*) between breeding islands and foraging habitats in the eastern Bering Sea. *PLoS One* 10:e0118761
- Battaile BC et al (2015b) Foraging a new trail with northern fur seals (*Callorhinus ursinus*): Lactating seals from islands with contrasting population dynamics have different foraging strategies, and forage at scales previously unrecognized by GPS interpolated dive data. *Mar Mamm Sci* 31(4):1494–1520
- Baylis AMM (2008) Seasonal and colony differences in the foraging ecology of New Zealand fur seals (*Arctocephalus forsteri*)
- Baylis AMM, Page B, Peters K, McIntosh R, McKenzie J, Goldsworthy S (2005) The ontogeny of diving behaviour in New Zealand fur seal pups (*Arctocephalus forsteri*). *Can J Zool* 83:1149–1161

- Baylis AMM et al (2012) Individual foraging site fidelity in lactating New Zealand fur seals: continental shelf vs. oceanic habitats. *Mar Mamm Sci* 28(2):276–294
- Baylis AMM, Orben RA, Arnould JPY, Christiansen F, Hays GC, Staniland IJ (2015a) Disentangling the cause of a catastrophic population decline in a large marine mammal. *Ecology* 96:2834–2847
- Baylis AMM, Orben RA, Arnould JPY, Peters K, Knox T, Costa DP, Staniland IJ (2015b) Diving deeper into individual foraging specializations of a large marine predator, the southern sea lion. *Oecologia* 179:1053–1065
- Baylis AMM et al (2016) Sexual segregation in habitat use is smaller than expected in a highly dimorphic marine predator, the southern sea lion. *Mar Ecol Prog Ser* 554:201–211
- Baylis AMM, Orben RA, Costa DP, Tierney M, Brickle P, Staniland IJ (2017) Habitat use and spatial fidelity of male south American sea lions during the non-breeding period. *Ecol Evol* 7:3992–4002
- Baylis AMM et al (2018) Geographic variation in the foraging behaviour of South American fur seals. *Mar Ecol Prog Ser* 596:233–245
- Beauplet G et al (2004) Foraging ecology of subantarctic fur seals *Arctocephalus tropicalis* breeding on Amsterdam Island: seasonal changes in relation to maternal characteristics and pup growth. *Mar Ecol Prog Ser* 273:211–225
- Benoit-Bird KJ, Battaile BC, Heppell SA, Hoover B, Irons D, Jones N, Kuletz KJ, Nordstrom CA, Paredes R, Suryan RM, Waluk CM, Trites AW (2013) Prey patch patterns predict habitat use by top marine predators with diverse foraging strategies. *PLoS One* 8:e53348
- Bost CA, Handrich Y, Butler PJ, Fahlgren A, Halsey LG, Woakes AJ, Ropert-Coudert Y (2007) Changes in dive profiles as an indicator of feeding success in king and Adélie penguins. *Deep Sea Res II* 54:248–255
- Boyd IL (1996) Temporal scales of foraging in a marine predator. *Ecology* 77:426–434
- Boyd IL (1999) Foraging and provisioning in Antarctic fur seals: interannual variability in time-energy budgets. *Behav Ecol* 10:198–208
- Boyd IL (2002) Energetics: consequences for fitness. In: Hoelzel AR (ed) *Marine mammal biology: an evolutionary approach*. Blackwell Sciences, Oxford, Malden
- Boyd IL, Croxall JP (1992) Diving behaviour of lactating Antarctic fur seals. *Can J Zool* 70 (5):919–928
- Boyd IL, Croxall JP (1996) Dive durations in pinnipeds and seabirds. *Can J Zool* 74:1696–1705
- Boyd IL, McCafferty DJ, Reid K, Taylor R, Walker TR (1998) Dispersal of male and female Antarctic fur seals (*Arctocephalus gazella*). *Can J Fish Aquat Sci* 55:845–852
- Boyd IL, Bevan RM, Woakes AJ, Butler PJ (1999) Heart rate and behavior of fur seals: implications for measurements of field energetics. *Am J Phys* 276:H844–H857
- Burns JM (1999) The development of diving behavior in juvenile Weddell seals: pushing physiological limits in order to survive. *Can J Zool* 77:737–747
- Burns JM, Castellini MA (1996) Physiological and behavioral determinants of the aerobic dive limit in Weddell seal (*Leptonychotes weddellii*) pups. *J Comp Physiol B* 166:473–483
- Butler PJ, Bevan RM, Woakes AJ, Croxall JP, Boyd IL (1995) The use of data loggers to determine the energetics and physiology of aquatic birds and mammals. *Braz J Med Biol Res* 28:1307–1317
- Calkins DG, Becker EF, Pitcher KW (1998) Reduced body size of female Steller Sea lions from a declining population in the Gulf of Alaska. *Mar Mamm Sci* 14:232–244
- Campagna C et al (2001) Movements and location at sea of South American sea lions (*Otaria flavescens*). *J Zool (Lond)* 257:205–220
- Carter MID, Bennett KA, Embling CB, Hosegood PJ, Russell DJ (2016) Navigating uncertain waters: a critical review of inferring foraging behaviour from location and dive data in pinnipeds. *Movement Ecol* 4:25
- Charnov EL (1976) Optimal foraging, the marginal value theorem. *Theor Popul Biol* 9:129–136
- Chilvers B (2008a) Foraging site fidelity of lactating New Zealand Sea lions. *J Zool* 276:28–36

- Chilvers BL (2008b) New Zealand Sea lions *Phocarctos hookeri* and squid trawl fisheries: bycatch problems and management options. *Endang Species Res* 5:193–204
- Chilvers BL (2009) Foraging locations of female New Zealand sea lions (*Phocarctos hookeri*) from a declining colony. *N Z J Ecol* 33(2):106–113
- Chilvers B (2017) Stable isotope signatures of whisker and blood serum confirm foraging strategies for female New Zealand Sea lions (*Phocarctos hookeri*) derived from telemetry. *Can J Zool* 95:955–963
- Chilvers BL (2018) Preliminary assessment of the foraging behaviour and population dynamics of a cryptic population of the endangered New Zealand sea lion. *N Z J Ecol* 42(1):48–57
- Chilvers BL, Wilkinson IS (2009) Diverse foraging strategies in lactating New Zealand Sea lions. *Mar Ecol Prog Ser* 378:299–308
- Chilvers B et al (2005) Summer foraging areas for lactating New Zealand sea lions *Phocarctos hookeri*. *Mar Ecol Prog Ser* 304:235–247
- Costa C (1993) The relationship between reproductive and foraging energetics and the evolution of the pinnipedia. *Symp Zool Soc Lond* 66:293–313
- Costa D, Gales N (2000) Foraging energetics and diving behavior of lactating New Zealand Sea lions, *Phocarctos hookeri*. *J Exp Biol* 203:3655–3665
- Costa DP, Gales NJ (2003) Energetics of a benthic diver: seasonal foraging ecology of the Australian sea lion, *Neophoca cinerea*. *Ecol Monogr* 73:27–43
- Costa DP, Gentry RL (1986) Free-ranging energetics of northern fur seals. In: Gentry RL, Kooyman GL (eds) *Fur seals: maternal strategies on land and at sea*. Princeton University Press, Princeton, NJ, pp 79–101
- Costa DP, Williams TM (1999) Marine mammals energetics. In: Reynolds JE, Rommel SA (eds) *Biology of marine mammals*. Smithsonian Institution Press, Washington, DC
- Costa DP, Croxall JP, Duck CD (1989) Foraging energetics of Antarctic fur seals in relation to changes in prey availability. *Ecology* 70:596–606
- Costa DP, Gales NJ, Crocker DE (1998) Blood volume and diving ability of the New Zealand Sea lion, *Phocarctos hookeri*. *Physiol Zool* 71:208–213
- Costa DP, Goebel ME, Sterling JT (2000) Foraging energetics and diving behavior of the Antarctic fur seal, *Arctocephalus gazella* at Cape Shirreff, Livingston Island. In: Davisons W, Howard-Williams C, Broady P (eds) *Antarctic ecosystems: models for a wider ecological understanding*. New Zealand Natural Sciences Press, Christchurch, New-Zealand, pp 77–84
- Costa DP, Gales NJ, Goebel ME (2001) Aerobic dive limit: how often does it occur in nature? *Comp Biochem Physiol A* 129:771–783
- Costa DP, Kuhn CE, Weise MJ, Shaffer SA, Arnould JPY (2004) When does physiology limit the foraging behaviour of freely diving mammals? *Int Congr Ser* 1275:359–366
- Crocker D, Gales NJ, Costa DP (2001) Swimming speed and foraging strategies of New Zealand Sea lions (*Phocarctos hookeri*). *J Zool (Lond)* 254:267–277
- Dalton AJM, Rosen DAS, Trites AW (2014) Season and time of day affect the ability of accelerometry and the doubly labeled water methods to measure energy expenditure in northern fur seals (*Callorhinus ursinus*). *J Exp Mar Biol Ecol* 452:125–136
- David JHM, Rand RW (1986) Attendance behaviour of South African fur seals. In: Gentry RL, Kooyman GL (eds) *Fur seals: maternal strategies on land and at sea*. Princeton University Press, Princeton, NJ, pp 126–141
- Davis RW (2014) A review of the multi-level adaptations for maximizing aerobic dive duration in marine mammals: from biochemistry to behavior. *J Comp Physiol B* 184:23–53
- Davis RW, Fuiman LA, Williams TM, Collier SO, Hagey WP, Kanatous SB, Kohin S, Horning M (1999) Hunting behavior of a marine mammal beneath the Antarctic fast ice. *Science* 283:993–996
- de Albemaz TL, Secchi ER, de Oliveira LR, Botta S (2017) Ontogenetic and gender-related variation in the isotopic niche within and between three species of fur seals (genus *Arctocephalus*). *Hydrobiologia* 787:123–139

- de Bruyn PJN et al (2009) Bathymetry and frontal system interactions influence seasonal foraging movements of lactating subantarctic fur seals from Marion Island. *Mar Ecol Prog Ser* 394:263–276
- Doidge DW, Croxall JP (1989) Factors affecting weaning weight in Antarctic fur seals, *Arctocephalus gazella* at South Georgia. *Polar Biol* 9:155–160
- Drago M, Franco-Trecu V, Cardona L, Inchausti P, Tapia W, Páez-Rosas D (2016) Stable isotopes reveal long-term fidelity to foraging grounds in the Galapagos Sea lion (*Zalophus wollebaeki*). *PLoS One* 11. <https://doi.org/10.1371/journal.pone.0147857>
- Dragon AC, Monestiez P, Bar-Hen A, Guinet C (2010) Linking foraging behaviour to physical oceanographic structures: southern elephant seals and mesoscale eddies east of Kerguelen Islands. *Prog Oceanogr* 87:61
- Fahlman A, Wilson R, Svard C, Rosen DAS, Trites AW (2008) Activity and diving metabolism correlate in Steller Sea lion *Eumetopias jubatus*. *Aquat Biol* 2:75–84
- Fea NI, Harcourt R, Lalas C (1999) Seasonal variation in the diet of New Zealand fur seals (*Arctocephalus forsteri*) at Otago peninsula, New Zealand. *Wildl Res* 26:147–160
- Feldkamp SD (1987) Swimming in the California Sea lion: morphometrics, drag and energetics. *J Exp Biol* 131:117–135
- Feldkamp SD, DeLong RL, Antonelis GA (1989) Diving patterns of California sea lions, *Zalophus californianus*. *Can J Zool* 67:872–883
- Foo D, Semmens JM, Arnould JPY, Dorville N, Hoskins AJ, Abernathy K (2016) Testing optimal foraging theory models on benthic divers. *Anim Behav* 112:127
- Fowler SL, Costa DP, Arnould JPY, Gales NJ, Kuhn CE (2006) Ontogeny of diving behaviour in the Australian sea lion: trials of adolescence in a late bloomer. *J Anim Ecol* 75:358–367
- Fowler SL, Costa DP, Arnould JPY, Gales NJ, Burns JM (2007) Ontogeny of oxygen stores and physiological diving capability in Australian sea lions. *Funct Ecol* 21:922–935
- Francis J, Boness D, Ochoa-Acuna H (1998) A protected foraging and attendance cycle in female Juan Fernandez fur seals. *Mar Mamm Sci* 14:552–574
- Gallo-Reynoso JP, Figueroa-Carranza A-L, Le Boeuf B (2008) Foraging behavior of lactating Guadalupe fur seal females. In: Lorenzo C, Espinoza E, Ortega J (eds) *Avances en el Estudio de los Mamíferos de México*, vol 2. Publicaciones Especiales, Mexico, pp 595–614
- Garde E et al (2018) Diving behavior of the Atlantic walrus in high Arctic Greenland and Canada. *J Exp Mar Biol Ecol* 500:89–99
- Gentry RL, Kooyman GL (eds) (1986) *Fur seals - maternal strategies on land and at sea*. Princeton University Press, Princeton, NJ
- Gentry RL, Kooyman GL, Goebel ME (1986) Feeding and diving behavior of northern fur seals. In: Gentry RL, Kooyman GL (eds) *Fur seals: maternal strategies on land and at sea*. Princeton University Press, Princeton, pp 61–78
- Georges JY, Bonadonna F, Guinet C (2000a) Foraging habitat and diving activity of lactating Subantarctic fur seals in relation to sea-surface temperatures at Amsterdam Island. *Mar Ecol Prog Ser* 196:291–304
- Georges J-Y, Tremblay Y, Guinet C (2000b) Seasonal diving behaviour in lactating subantarctic fur seals on Amsterdam Island. *Polar Biol* 23:59–69
- Gerlinsky CD, Trites AW, Rosen DAS (2014) Steller sea lions (*Eumetopias jubatus*) have greater blood volumes, higher diving metabolic rates and a longer aerobic dive limit when nutritionally stressed. *J Exp Biol* 217(5):769–778
- Gjertz I, Griffiths D, Krafft BA, Lydersen C, Wiig O (2001) Diving and haul-out patterns of walrus *Odobenus rosmarus* on Svalbard. *Polar Biol* 24(5):314–319
- Gleiss AC, Wilson RP, Shepard ELC (2011) Making overall dynamic body acceleration work: on the theory of acceleration as a proxy for energy expenditure. *Methods Ecol Evol* 2:23–33
- Goldsworthy S, Hindell M, Crowley H (1997) Diet and diving behaviour of sympatric fur seals *Arctocephalus gazella* and *Arctocephalus tropicalis* at Macquarie Island. In: *Marine mammal research in the Southern Hemisphere*

- Goundie ET, Rosen DA, Trites AW (2015) Dive behaviour can predict metabolic expenditure in Steller Sea lions. *Conserv Physiol* 3:1
- Halsey LG (2017) Relationships grow with time: a note of caution about energy expenditure-proxy correlations, focussing on accelerometry as an example. *Funct Ecol* 31:1176–1183
- Halsey L, Blackburn T, Butler P (2006) A comparative analysis of the diving behaviour of birds and mammals. *Funct Ecol* 20:889–899
- Halsey LG, Green JA, Wilson RP, Frappell PB (2009) Accelerometry to estimate energy expenditure during activity: best practice with data loggers. *Physiol Biochem Zool* 82:396–404
- Harcourt R, Hindell M, Bell DG, Waas JR (2000) Three-dimensional dive profiles of free-ranging Weddell seals. *Polar Biol* 23:479–487
- Harcourt RG, Bradshaw CJA, Dickson K, Davis LS (2002) Foraging ecology of a generalist predator, the female New Zealand fur seal. *Mar Ecol Prog Ser* 227:11–24
- Heerah K, Woillez M, Fablet R, Garren F, Martin S, De Pontual H (2017) Coupling spectral analysis and hidden Markov models for the segmentation of behavioural patterns. *Movement Ecol* 5:20
- Hindell MA, Harcourt R, Waas JR, Thompson D (2002) Fine-scale three-dimensional spatial use by diving, lactating female Weddell seals *Leptonychotes weddellii*. *Mar Ecol Prog Ser* 242:275–284
- Hindell MA, McMahon CR, Bester MN, Boehme L, Costa D, Fedak MA et al (2016) Circumpolar habitat use in the southern elephant seal: implications for foraging success and population trajectories. *Ecosphere* 7(5):1
- Hindle AG, Young BL, Rosen DAS, Haulena M, Trites AW (2010) Dive response differs between shallow- and deep-diving Steller Sea lions (*Eumetopias jubatus*). *J Exp Mar Biol Ecol* 394:141–148
- Hindle AG, Mellish JAE, Horning M (2011) Aerobic dive limit does not decline in an aging pinniped. *J Exp Zool A Ecol Genet Physiol* 315:544–552
- Hines WGS (1987) Evolutionary stable strategies: a review of basic theory. *Theor Popul Biol* 31:195–272
- Hooker SK, Miller PJO, Johnson MP, Cox OP, Boyd IL (2005) Ascent exhalations of Antarctic fur seals: a behavioural adaptation for breath-hold diving? *Proc R Soc Lond B* 272:355–363
- Horning M (2012) Constraint lines and performance envelopes in behavioral physiology: the case of the aerobic dive limit. *Front Physiol* 3. <https://doi.org/10.3389/fphys.2012.00381>
- Horning M, Trillmich F (1997) Ontogeny of diving behaviour in the Galapagos fur seal. *Behaviour* 134:1211–1257
- Hoskins AJ, Arnould JPY (2014) Relationship between long-term environmental fluctuations and diving effort of female Australian fur seals. *Mar Ecol Prog Ser* 511:285–295
- Hoskins AJ, Costa DP, Arnould JPY (2015) Utilisation of intensive foraging zones by female Australian fur seals. *PLoS One* 10(2):e0117997
- Hoskins AJ et al (2017) Foraging niche separation in sympatric temperate-latitude fur seal species. *Mar Ecol Prog Ser* 566:229–241
- Houston AI, Carbone C (1992) The optimal allocation of time during the diving cycle. *Behav Ecol* 3:255–265
- Hückstädt LA, Tift MS, Riet-Sapriza F, Franco-Trecu V, Baylis AM, Orben RA, Arnould JP, Sepulveda M, Santos-Carvallo M, Burns JM (2016) Regional variability in diving physiology and behavior in a widely distributed air-breathing marine predator, the south American sea lion (*Otaria byronia*). *J Exp Biol* 219:2320–2330
- Hurley JA, Costa DP (2001) Standard metabolic rate at the surface and during trained submersions in adult California Sea lions (*Zalophus californianus*). *J Exp Biol* 204:3273–3281
- Iwata T, Sakamoto KQ, Edwards EWJ, Staniland IJ, Trathan PN, Goto Y, Sato K, Naito Y, Takahashi A (2015) The influence of preceding dive cycles on the foraging decisions of Antarctic fur seals. *Biol Lett* 11:20150227
- Jay CV, Farley SD, Garner GW (2001) Summer diving behavior of male walruses in Bristol Bay, Alaska. *Mar Mamm Sci* 17(3):617–631

- Jeanniard du Dot T, Guinet C, Arnould JPY, Speakman JR, Trites AW (2016a) Accelerometers can measure total and activity-specific energy expenditures in free-ranging marine mammals only if linked to time-activity budgets. *Funct Ecol* 31:377–386
- Jeanniard du Dot T, Trites AW, Arnould JPY, Speakman JB, Guinet C (2016b) Flipper strokes can predict energy expenditure and locomotion costs in free-ranging northern and Antarctic fur seals. *Sci Rep* 6:33912
- Jeanniard du Dot T, Trites AW, Arnould JPY, Guinet C (2017a) Reproductive success is energetically linked to foraging efficiency in Antarctic fur seals. *PLoS One* 12:e0174001
- Jeanniard du Dot T, Trites AW, Arnould JPY, Speakman JR, Guinet C (2017b) Activity-specific metabolic rates for diving, transiting, and resting at sea can be estimated from time-activity budgets in free-ranging marine mammals. *Ecol Evol* 7:2969–2976
- Jeanniard du Dot T, Trites AW, Arnould JPY, Speakman JR, Guinet C (2018) Trade-offs between foraging efficiency and pup feeding rate of lactating northern fur seals in a declining population. *Mar Ecol Prog Ser* 600:207–222
- Jeglinski JW, Werner C, Robinson PW, Costa DP, Trillmich F (2012) Age, body mass and environmental variation shape the foraging ontogeny of Galapagos Sea lions. *Mar Ecol Prog Ser* 453:279–296
- Joy R, Dowd MG, Battaile BC, Lestenkof PM, Sterling JT, Trites AW, Routledge RD (2015) Linking northern fur seal dive behavior to environmental variables in the eastern Bering Sea. *Ecosphere* 6:art75
- Kernaléguen L, Arnould JPY, Guinet C, Cherel Y (2015a) Determinants of individual foraging specialization in large marine vertebrates, the Antarctic and subantarctic fur seals. *J Anim Ecol* 84:1081–1091
- Kernaléguen L, Cherel Y, Knox TC, Baylis AM, Arnould JP (2015b) Sexual niche segregation and gender-specific individual specialisation in a highly dimorphic marine mammal. *PLoS One* 10 (8). <https://doi.org/10.1371/journal.pone.0133018>
- Kirkman SP et al (2016) Foraging behavior of subantarctic fur seals supports efficiency of a marine reserve's design. *PLoS One* 11(5):e0152370
- Kirkman SP, Costa DP, Harrison A-L, Kotze PGH, Oosthuizen WH, Weise M, Botha JA, Arnould JPY (2019) Dive behaviour and foraging effort of female Cape fur seals *Arctocephalus pusillus pusillus*. *R Soc Open Sci* 6(10):191369
- Kirkwood R et al (2006) At-sea movements and habitat use of adult male Australian fur seals (*Arctocephalus pusillus doriferus*). *Can J Zool* 84(12):1781–1788
- Knox TC, Baylis AM, Arnould JP (2018) Foraging site fidelity in male Australian fur seals. *Mar Biol* 165:108
- Kooyman GL (1965) Techniques used in measuring diving capacities of Weddell seals. *Polar Rec* 12:391–394
- Kooyman GL (1989) *Diverse divers: physiology and behavior*. Springer, Berlin; New York
- Kooyman GL, Wahrenbrock EA, Castellini MA, Davis RW, Sinnett EE (1980) Aerobic and anaerobic metabolism during voluntary diving in Weddell seals: evidence of preferred pathways from blood chemistry and behavior. *J Comp Physiol* 138:335–346
- Kooyman GL, Castellini MA, Davis RW, Maue RA (1983) Aerobic diving limits of immature Weddell seals. *J Comp Physiol* 151:171–174
- Kramer DL (1988) The behavioral ecology of air breathing by aquatic animals. *Can J Zool* 66:89–94
- Kuhn CE (2011) The influence of subsurface thermal structure on the diving behavior of northern fur seals (*Callorhinus ursinus*) during the breeding season. *Mar Biol* 158(3):649–663
- Kuhn CE, Costa DP (2006) Identifying and quantifying prey consumption using stomach temperature change in pinnipeds. *J Exp Biol* 209:4524–4532
- Kuhn C, Costa D (2014) Interannual variation in the at-sea behavior of California Sea lions (*Zalophus californianus*). *Mar Mamm Sci* 30. <https://doi.org/10.1111/mms.12110>



- Kuhn CE, Crocker DE, Tremblay Y, Costa DP (2009a) Time to eat: measurements of feeding behaviour in a large marine predator, the northern elephant seal *Mirounga angustirostris*. *J Anim Ecol* 78:513–523
- Kuhn CE, Johnson DS, Ream RR, Gelatt TS (2009b) Advances in the tracking of marine species: using GPS locations to evaluate satellite track data and a continuous-time movement model. *Mar Ecol Prog Ser* 393:97–109
- Kuhn CE, Tremblay Y, Ream RR, Gelatt TS (2010a) Coupling GPS tracking with dive behavior to examine the relationship between foraging strategy and fine-scale movements. *Integr Comp Biol* 50:E94
- Kuhn CE, Tremblay Y, Ream RR, Gelatt TS (2010b) Coupling GPS tracking with dive behavior to examine the relationship between foraging strategy and fine-scale movements of northern fur seals. *Endang Species Res* 12:125–139
- Ladds MA, Thompson AP, Slip DJ, Hocking DP, Harcourt RG (2016) Seeing it all: evaluating supervised machine learning methods for the classification of diverse otariid behaviours. *PLoS One* 11:e0166898
- Ladds MA, Rosen DA, Slip DJ, Harcourt RG (2017a) Proxies of energy expenditure for marine mammals: an experimental test of “the time trap”. *Sci Rep* 7:1–10
- Ladds MA, Rosen DA, Slip DJ, Harcourt RG (2017b) The utility of accelerometers to predict stroke rate in captive fur seals and sea lions. *Biol Open* 6:1396–1400
- Ladds MA, Slip DJ, Harcourt RG (2017c) Intrinsic and extrinsic influences on standard metabolic rates of three species of Australian otariid. *Conserv Physiol* 5:cow074
- Lander ME et al (2020) Mixing it up in Alaska: habitat use of adult female Steller sea lions reveals a variety of foraging strategies. *Ecosphere* 11(2):e03021
- Lea MA et al (2002) Variability in the diving activity of Antarctic fur seals, *Arctocephalus gazella*, at Iles Kerguelen. *Polar Biol* 25:269–279
- Lea MA, Guinet C, Chereil Y, Duhamel G, Dubroca L, Pruvost P, Hindell M (2006) Impacts of climatic anomalies on provisioning strategies of a Southern Ocean predator. *Mar Ecol Prog Ser* 310:77–94
- Lenfant C, Johansen K, Torrance JD (1970) Gas transport and oxygen storage capacity in some pinnipeds and the sea otter. *Resp Physiol* 9:277–286
- Leung ES, Chilvers BL, Nakagawa S, Robertson BC (2014) Size and experience matter: diving behaviour of juvenile New Zealand Sea lions (*Phocartos hookeri*). *Polar Biol* 37:15–26
- Lowther AD, Goldsworthy SD (2011) Detecting alternate foraging ecotypes in Australian sea lion (*Neophoca cinerea*) colonies using stable isotope analysis. *Mar Mamm Sci* 27(3):567–586
- Lowther AD et al (2011) Creatures of habit: foraging habitat fidelity of adult female Australian sea lions. *Mar Ecol Prog Ser* 443:249–263
- Lowther AD, Harcourt RG, Goldsworthy SD, Stow A (2012) Population structure of adult female Australian sea lions is driven by fine-scale foraging site fidelity. *Anim Behav* 83:691–701
- Lowther AD, Harcourt RG, Page B, Goldsworthy SD (2013) Steady as he goes: at-sea movement of adult male Australian sea lions in a dynamic marine environment. *PLoS One* 8:e74348
- Lowther AD et al (2015) Identification of motivational state in adult male Atlantic walrus inferred from changes in movement and diving behavior. *Mar Mamm Sci* 31(4):1291–1313
- Lunn NJ, Boyd IL, Croxall JP (1994) Reproductive performance of female Antarctic fur seals: the influence of age, breeding experience, environmental variation and individual quality. *J Anim Ecol* 63:827–840
- Luque SP et al (2007) Foraging behaviour of sympatric Antarctic and subantarctic fur seals: does their contrasting duration of lactation make a difference? *Mar Biol* 152(1):213–224
- MacArthur RH, Pianka ER (1966) On optimal use of a patchy environment. *Am Nat* 100:603–609
- Mattlin RH, Gales NJ, Costa DP (1998) Seasonal dive behaviour of lactating New Zealand fur seals (*Arctocephalus forsteri*). *Can J Zool* 76:350–360
- McDonald BI, Ponganis PJ (2013) Insights from venous oxygen profiles: oxygen utilization and management in diving California Sea lions. *J Exp Biol* 216:3332–3341

- McDonald BI, Ponganis PJ (2014) Deep-diving sea lions exhibit extreme bradycardia in long-duration dives. *J Exp Biol* 217:1525–1534
- McHuron EA, Robinson PW, Simmons SE, Kuhn CE, Fowler M, Costa DP (2016) Foraging strategies of a generalist marine predator inhabiting a dynamic environment. *Oecol* 182 (4):995–1005
- McHuron EA, Peterson SH, Hückstädt LA, Melin SR, Harris JD, Costa DP (2018) The energetic consequences of behavioral variation in a marine carnivore. *Ecol Evol* 8:4340–4351
- McIntyre T (2014) Trends in tagging of marine mammals: a review of marine mammal biologging studies. *Afr J Mar Sci* 36:409–422
- Meir JU, Champagne CD, Costa DP, Williams CL, Ponganis PJ (2009) Extreme hypoxemic tolerance and blood oxygen depletion in diving elephant seals. *Am J Phys Regul Integr Comp Phys* 297:R927–R939
- Melin S, DeLong R, Siniff D (2008) The effects of El Niño on the foraging behavior of lactating California Sea lions (*Zalophus californianus californianus*) during the nonbreeding season. *Can J Zool* 86:192–206
- Merrick RL, Loughlin TR (1997) Foraging behavior of adult female and young-of-year Steller sea lions in Alaskan waters. *Can J Zool* 75(5):776–786
- Merrick RL et al (1994) Use of satellite-linked telemetry to study Steller sea lion and northern fur seal foraging. *Polar Res* 13(1):105–114
- Miller AK, Sydeman WJ (2004) Rockfish response to low-frequency ocean climate change as revealed by the diet of a marine bird over multiple time scales. *Mar Ecol Prog Ser* 281:207–216
- Miller PJO, Biuw M, Watanabe YY, Thompson D, Fedak MA (2012) Sink fast and swim harder! Round-trip cost-of-transport for buoyant divers. *J Exp Biol* 215:3622–3630
- Mori Y (1998) The optimal patch use in divers: optimal time budget and the number of dive cycles during bout. *J Theor Biol* 190:187–199
- Mori Y, Boyd IL (2004) The behavioral basis for nonlinear functional responses and optimal foraging in Antarctic fur seals. *Ecology* 85:398–410
- Mueller G (2004) The foraging ecology of south American Sea lions (*Otaria flavescens*) on the Patagonian shelf. PhD thesis, Christian-Albrechts-Universitaet zu Kiel, Germany
- Muto MM, Helker VT, Angliss RP, Allen BA, Boveng PL, Breiwick JM, Cameron MF, Clapham PJ, Dahle SP, Dahlheim ME (2018) Alaska marine mammal stock assessments, 2018. In: Commerce USDo (ed) NOAA Technical Memorandum Book NMFS-AFSC-393
- New LF, Clark JS, Costa DP, Fleishman E, Hindell MA, Klanjšček T, Lusseau D, Kraus S, McMahon CR, Robinson PW, Schick RS, Schwarz LK, Simmons SE, Thomas L, Tyack P, Harwood J (2014) Using short-term measures of behaviour to estimate long-term fitness of southern elephant seals. *Mar Ecol Prog Ser* 496:99–108
- Nordstrom CA et al (2013) Foraging habitats of lactating northern fur seals are structured by thermocline depths and submesoscale fronts in the eastern Bering Sea. *Deep Sea Res II Top Stud Oceanogr* 88–89:78–96
- Noren SR, Jay CV, Burns JM, Fischbach AS (2015) Rapid maturation of the muscle biochemistry that supports diving in Pacific walruses (*Odobenus rosmarus divergens*). *J Exp Biol* 218 (20):3319–3329
- Olivier P (2015) Foraging ecology of lactating Steller Sea lions (*Eumetopias jubatus*) at Lovushki Island, Russia. PhD, Texas A & M University, Texas, 95pp
- Osman LP (2007) Population status, distribution and foraging ecology of *Arctocephalus philippii* (Peters 1866) at Juan Fernandez archipelago. In: Facultad de Ciencias. Universidad Austral de Chile, Valdivia, p 107
- Paez-Rosas D, Villegas-Amtmann S, Costa D (2017) Intraspecific variation in feeding strategies of Galapagos Sea lions: a case of trophic specialization. *PLoS One* 12:e0185165
- Page B, McKenzie J, Goldsworthy SD (2005) Inter-sexual differences in New Zealand fur seal diving behaviour. *Mar Ecol Prog Ser* 304:249–264
- Ponganis PJ (2011) Diving mammals. Wiley, Hoboken, NJ

- Ponganis PJ (2015) Diving physiology of marine mammals and seabirds. Cambridge University Press, Cambridge
- Ponganis PJ, Kooyman GL, Winter IM, Starke LN (1997) Heart rate and plasma lactate responses during submerged swimming and trained diving in California Sea lions, *Zalophus californianus*. *J Comp Physiol B* 167:9–16
- Qvist J, Weber RE, Zapol WM (1981) Oxygen equilibrium properties of blood and hemoglobin of fetal and adult Weddell seals. *J Appl Physiol* 50:999–1005
- Richmond JP, Burns JM, Rea LD (2006) Ontogeny of total body oxygen stores and aerobic dive potential in Steller Sea lions (*Eumetopias jubatus*). *J Comp Physiol B* 176:535–545
- Riet-Sapirza FG et al (2013) Foraging behavior of lactating South American sea lions (*Otaria flavescens*) and spatial–temporal resource overlap with the Uruguayan fisheries. *Deep Sea Res II Top Stud Oceanogr* 88–89:106–119
- Robinson SA et al (2003) The foraging ecology of two sympatric fur seal species, *Arctocephalus gazella* and *Arctocephalus tropicalis*, at Macquarie Island during the austral summer. *Mar Freshw Res* 53(7):1071–1082
- Sala JE, Quintana F, Wilson RP, Dignani J, Lewis MN, Campagna C (2011) Pitching a new angle on elephant seal dive patterns. *Polar Biol* 34:1197
- Salton M, Kirkwood R, Slip D, Harcourt R (2019) Mechanisms for sex-based segregation in foraging behaviour by a polygynous marine carnivore. *Mar Ecol Prog Ser* 624:213–226
- Schoener TW (1974) Resource partitioning in ecological communities. *Science* 185:27–39
- Sepúlveda M et al (2015) Using satellite tracking and isotopic information to characterize the impact of South American Sea Lions on Salmonid aquaculture in Southern Chile. *PLoS One* 10(8):e0134926
- Shero MR et al (2012) Development of the aerobic dive limit and muscular efficiency in northern fur seals (*Callorhinus ursinus*). *J Comp Physiol B* 182(3):425–436
- Simpkins MA, Kelly BP, Wartzok D (2001) Three-dimensional analysis of search behaviour by ringed seals. *Anim Behav* 62:67
- Skinner JP, Burkanov VN, Andrews RD (2012) Influence of environment, morphology, and instrument size on lactating northern fur seal *Callorhinus ursinus* foraging behavior on the Lovushki Islands, Russia. *Mar Ecol Prog Ser* 471:293–308
- Staniland JJ, Robinson SL (2008) Segregation between the sexes: Antarctic fur seals, *Arctocephalus gazella*, foraging at South Georgia. *Anim Behav* 75:1581–1590
- Staniland I, Gales N, Warren N, Robinson S, Goldsworthy S, Casper R (2010) Geographical variation in the behaviour of a central place forager: Antarctic fur seals foraging in contrasting environments. *Mar Biol* 157:2383–2396
- Thompson D, Fedak MA (2001) How long should a dive last? A simple model of foraging decisions by breath-hold divers in a patchy environment. *Anim Behav* 61:287–296
- Thompson D, Hiby AR, Fedak MA (1993) How fast should I swim? Behavioural implications of diving physiology. *Symp Zool Soc Lond* 66:349–368
- Thompson D, Duck CD, McConnell BJ, Garrett J (1998) Foraging behaviour and diet of lactating female southern sea lions (*Otaria flavescens*) in the Falkland Islands. *J Zool Lond* 246:135–146
- Thompson D, Moss SEW, Lovell P (2003) Foraging behaviour of South American fur seals *Arctocephalus australis*: extracting fine scale foraging behaviour from satellite tracks. *Mar Ecol Prog Ser* 260:285–296
- Trillmich F (1990) The behavioral ecology of maternal effort in fur seals and sea lions. *Behaviour* 114:3–20
- Trillmich F, Kooyman GL (2001) Field metabolic rate of lactating female Galápagos fur seals (*Arctocephalus galapagoensis*): the influence of offspring age and environment. *Comp Biochem Physiol A Mol Integr Physiol* 129(4):741–749
- Trillmich F et al (1986) Attendance and diving behavior of South American fur seals during El Niño in 1983. In: Gentry RL, Kooyman GL (eds) *Fur seals: maternal strategies on land and at sea*. Princeton University Press, Princeton, NJ, pp 153–167

- Trillmich F et al (2014) The Galapagos sea lion: adaptation to spatial and temporal diversity of marine resources within the archipelago. In: The Galapagos marine reserve. Springer, New York, pp 61–70
- Verrier D, Guinet C, Authier M, Tremblay Y, Schaffer S, Costa DP, Groscolas R, Arnould JPY (2011) The ontogeny of diving abilities in subantarctic fur seal pups: developmental trade-off in response to extreme fasting? *Funct Ecol* 25:818
- Villegas-Amtmann S, Costa DP (2010) Oxygen stores plasticity linked to foraging behaviour and pregnancy in a diving predator, the Galapagos Sea lion. *Funct Ecol* 24:785–795
- Villegas-Amtmann S, Costa DP, Tremblay Y, Salazar S, Auriolles-Gamboa D (2008) Multiple foraging strategies in a marine apex predator, the Galapagos Sea lion *Zalophus wolfebaeki*. *Mar Ecol Prog Ser* 363:299–309
- Villegas-Amtmann S, Simmons SE, Kuhn CE, Huckstadt LA, Costa DP (2011) Latitudinal range influences the seasonal variation in the foraging behavior of marine top predators. *PLoS One* 6 (8):e23166
- Villegas-Amtmann S, Jeglinski JW, Costa DP, Robinson PW, Trillmich F (2013) Individual foraging strategies reveal niche overlap between endangered Galapagos pinnipeds. *PLoS One* 8:e70748
- Villegas-Amtmann S, McDonald BI, Páez-Rosas D, Auriolles-Gamboa D, Costa DP (2017) Adapted to change: low energy requirements in a low and unpredictable productivity environment, the case of the Galapagos Sea lion. *Deep Sea Res II Top Stud Oceanogr* 140:94–104
- Viviant M, Trites AW, Rosen DAS, Monestiez P, Guinet C (2010) Prey capture attempts can be detected in Steller Sea lions and other marine predators using accelerometers. *Polar Biol* 33:713–719
- Viviant M, Monestiez P, Guinet C (2014) Can we predict foraging success in a marine predator from dive patterns only? Validation with prey capture attempt data. *PLoS One* 9:e88503
- Viviant M, Jeanniard-du-Dot T, Monestiez P, Authier M, Guinet C (2016) Bottom time does not always predict prey encounter rate in Antarctic fur seals. *Funct Ecol* 30:1843–1844
- Volpov BL, Hoskins AJ, Battaile B, Viviant M, Wheatley KE, Marshall GJ, Abernathy K, Arnould JPY (2015) Identification of prey captures in Australian fur seals (*Arctocephalus pusillus doriferus*) using head-mounted accelerometers: field validation with animal-borne video cameras. *PLoS One* 10:e0128789
- Volpov BL, Rosen DA, Hoskins AJ, Lourie HJ, Dorville N, Baylis AM, Wheatley KE, Marshall G, Abernathy K, Semmens J (2016) Dive characteristics can predict foraging success in Australian fur seals (*Arctocephalus pusillus doriferus*) as validated by animal-borne video. *Biol Open* 5:262–271
- Waite JN et al (2012) Resource partitioning by sympatric Steller sea lions and northern fur seals as revealed by biochemical dietary analyses and satellite telemetry. *J Exp Mar Biol Ecol* 416–417:41–54
- Weise MJ, Costa DP (2007) Total body oxygen stores and physiological diving capacity of California Sea lions as a function of sex and age. *J Exp Biol* 210:278–289
- Weise MJ, Harvey JT, Costa DP (2010) The role of body size in individual-based foraging strategies of a top marine predator. *Ecology* 91:1004–1015
- Werner R, Campagna C (1995) Diving behaviour of lactating southern sea lions (*Otaria flavescens*) in Patagonia. *Can J Zool* 73:1975–1982
- Wiig O, Gjertz I, Griffiths D, Lydersen C (1993) Diving patterns of an Atlantic walrus *Odobenus Rosmarus Rosmarus* near Svalbard. *Polar Biol* 13:71–72
- Winship AJ, Trites AW, Calkins DG (2001) Growth in body size of the Steller sea lion (*Eumetopias jubatus*). *J Mammal* 82:500–519
- Würsig B, Thewissen J, Kovacs KM (2017) Encyclopedia of marine mammals. Academic Press, New York