



**HAL**  
open science

## **Influence of the emulsions to the interface formwork/concrete**

Laurent Libessart, Amine Lahlou, Chafika Djelal, Yannick Y. Vanhove  
Vanhove, Sandrine Mateo

► **To cite this version:**

Laurent Libessart, Amine Lahlou, Chafika Djelal, Yannick Y. Vanhove Vanhove, Sandrine Mateo.  
Influence of the emulsions to the interface formwork/concrete. 2nd Edition of the International Work-  
shop on Durability and Sustainability of Concrete Structures (DSCS 2018), 2018, Moscow, Russia.  
hal-03241240

**HAL Id: hal-03241240**

**<https://hal.science/hal-03241240v1>**

Submitted on 13 Nov 2023

**HAL** is a multi-disciplinary open access archive for the deposit and dissemination of scientific research documents, whether they are published or not. The documents may come from teaching and research institutions in France or abroad, or from public or private research centers.

L'archive ouverte pluridisciplinaire **HAL**, est destinée au dépôt et à la diffusion de documents scientifiques de niveau recherche, publiés ou non, émanant des établissements d'enseignement et de recherche français ou étrangers, des laboratoires publics ou privés.

**Influence of the emulsions to the interface formwork/concrete**

Laurent Libessart, Amine Lahlou, Chafika Djelal, Yannick Vanhove and Sandrine Mateo

**Synopsis:** The concrete is the ultimate building materials today and answers all the requirements of the modern architecture. The emulsion or the release agents are used to facilitate the concrete demoulding and to protect the formwork surfaces against corrosion. The final quality of the facings depends on the physicochemical characteristics of the demoulding products used. They must be selected according to the nature of the formwork and their compatibility with the casing skins. They must be consistently applied to the unit of the formwork, to a clean surface, in thin layers, uniform thickness. This agent must allow a placement of the more effective concrete while adhering perfectly to the formwork. The adherence of oil with the support is thus very important. It is studied by the determination of the adhesion energy Solid/Liquid on a formwork surface. This study is interested more particularly in the emulsions. Two forms are distinguished: Mineral reverses emulsion with the dispersed phase is water and Vegetable direct emulsion with the dispersed phase is oil. The first physicochemical results show an influence of the temperature on the adhesion energy. The quality of the concrete facings demoulded with emulsions appears better qualities that those carried out with oils demoulding.

**Keywords:** Emulsion, concrete, formwork, interface, adhesion energy, facing aspect, image analysis

# Influence of the emulsions to the interface formwork/concrete

1 **Laurent Libessart** is an Associate Professor in the Department of Civil Engineering at the University of Artois,  
2 Béthune, France. His research interest includes of concrete/formwork interface, characterization of release  
3 agents and composite materials.

4  
5 **Amine Lahlou** is a Graduate Student in the Department of Civil Engineering at Polytechnic school of Lille.

6  
7 **Chafika Djelal** is a Professor in the Department of Civil Engineering at the University of Artois, Béthune,  
8 France. She is a member of RILEM committee 266-MRP (Measuring Rheological Properties of Cement-based  
9 Materials). She is the head of the division *ogeo-materialsö* of the laboratory (LGCgE). Her research interests  
10 include of composite materials, self-consolidating concrete, concrete/formwork interface, tribology and  
11 rheology of cement based materials and reinforcement of concrete structures.

12  
13 **Yannick Vanhoveis** is a Professor in the Department of Civil Engineering at the University of Artois, Béthune,  
14 France. He is a member of RILEM committee 266-MRP (Measuring Rheological Properties of Cement-based  
15 Materials). His research interests include of self-consolidating concrete, form pressure generated by fresh  
16 concrete, tribology and rheology of cement based materials.

17  
18 **Sandrine Mateo** is the aesthetic research team leader in the R&D CHRYSO department.  
19

## 20 INTRODUCTION

21 Owing to its flexible setting conditions, concrete remains the most widely used material in the construction  
22 industry. The appearance of new concretes, coupled with the more demanding specifications imposed by project  
23 managers, has led to the marketing of increasingly efficient products (admixtures, demolding agents, etc.).  
24 However, the formwork removal step may give rise to certain problems, typically caused by an insufficient  
25 understanding of the mechanisms occurring at the concrete/formwork interface. In an effort to satisfy industry  
26 requirements as well as environmental protection and user safety conditions, many such products are plant-  
27 based. Among the array of demolding agents available on the market, emulsions meet the criteria for successful  
28 material placement due to their formwork removal attributes, in conjunction with cladding quality, which often  
29 raises conflict between project partners when works are submitted for acceptance. Over the past few years, this  
30 requirement has become a major economic challenge for the industry, yet emulsion use still tends to be limited.  
31 Moreover, the behavior of emulsions, whether plant-or mineral-based, has only received scant attention,  
32 especially as regards stability over time. This lack of investigation is in sharp contrast with the case of  
33 demolding oils, which have been extensively studied [1, 2], as evidenced in the bibliography. The emulsions  
34 make it possible to apply less oil to the formwork surface and thus to reduce the total quantity of product. It is  
35 important to control this application to ensure a good demolding. The suppliers advise the pulverization  
36 followed or not of a scraping or a brushing. After the application, latency is advised of approximately 15min to  
37 ensure a total evaporation of the absorbent phase.

38 As regards demolding agent classification, the SYNAD (French Association for Concrete and Mortar  
39 Admixtures) created an abacus [3] based on product composition as well as a set of criteria related to its use  
40 (fire safety, health, environmental considerations).

41 Concrete cladding is generally visible once the structure has been built; it forms the structural skin, which must  
42 resist the range of stresses acting on the structure throughout its service life and blend in with its environment as  
43 naturally as possible. Achieving high-quality cladding necessitates considerable attention in: designing the  
44 concrete mix, establishing component homogeneity, and laying out the various setting steps. The quality of  
45 formwork and demolding product, plus the casting sequence and use of vibration, all contribute to ensuring a  
46 satisfactory final result.

47 The goal of this study is to correlate the physicochemical properties of mineral-and plant-based emulsions with  
48 cladding appearance after formwork removal, as a means of improving understanding of the concrete/formwork  
49 interface. The main parameters analyzed are: type of emulsion and influence of both temperature and wait time  
50 prior to concrete casting.

## 51 EXPERIMENTAL INVESTIGATION

52 This section discusses the materials and physicochemical characterization techniques used to study emulsions.  
53 Also detailed here in will be the procedure for analyzing concrete cladding images.

### 54 **Materials**

#### 55 ***Release agents***

56 The demolding agents selected for this study are both mineral and plant emulsions.  
57

Two emulsion forms are distinguished (**Fig. 1**) [4]: a mineral-based inverse emulsion with water as the dispersed phase; and a direct plant-based emulsion with oil as the dispersed phase.

From a practical perspective, the majority of emulsions are composed of an aqueous liquid phase and a phase with limited water solubility.

In oily emulsions, the hydrophobic part of the emulsifier molecule is found in the dispersant phase (oil) and, conversely, in the other type of emulsion (as shown in **Fig. 1**). Emulsion formation relies heavily on a stable environment. To prepare an emulsion, the oily and aqueous phases need to be assembled and stirred together, along with the addition of one or more emulsifying agents. The efficiency of this emulsification process depends on both the stirring mode and intensity. The emulsifier must also be introduced under appropriate conditions; it must feature a structure capable of strengthening interphase linkage to the greatest extent possible. Such is a key element in ensuring mix stability [6].

**Table 1** lists the various characteristics provided by the manufacturer.

At construction project sites, the demolding agent is most often sprayed onto the formwork or spread after spraying with a rubber scraper in order to remove excess product relative to each single layer. For this experimental campaign, only the spray-on application will be studied.

**Concrete**

A CEMI 52.5 CP2 type of Portland cement was used for this investigation, while the concrete employed to study cladding aesthetics was of a conventional variety containing 28% cement paste. The workability, as measured by the Abrams cone test, must lie between 12 and 14 cm. The specific mix design is given in **Table 2**.

**Formwork**

Metal formwork is extensively introduced in the building trades; it serves to streamline concrete setting and enhances worksite productivity. Formwork reuse possibilities are substantial for structural elements repeated throughout a project, i.e.: vertical shear walls, floors, and columns. The use of stiffeners enables extending elements over large surface areas.

Before characterizing the wettability and determining the bonding energy of the various mix designs, the surface roughness was first measured.

This new formwork surface used [7] was homogeneous and devoid of any defects or particularities regarding its lamination. Its roughness was measured at 1.27  $\mu\text{m}$  [8].

**Mixing protocol**

Mixing was carried out in accordance with Standard NF P 18-404, entitled "Concretes: Mix design, suitability and inspection tests - Casting and storage of test specimens", which specifies the following operating procedure:



Tests were conducted in the laboratory at room temperature (around 20°C).

The cladding analysis relies on molds measuring 30\*30\*30 cm<sup>3</sup>. The concrete is cast in three layers and then vibrated at 5 points for 10 seconds per layer using a 40-mm diameter vibrating needle. The vibration step is carried out in five 10-second sequences per layer with the 40-mm needle. All emulsions studied were applied by spraying, with a wait time of 15 min prior to concrete casting. This application was completed without experiencing any leakage or overload.

**Methods for characterizing the physical chemistry of emulsions**

**Rheological properties**

The rheological properties of demolding oils exert a powerful influence on the behavior of the concrete/oil/formwork interface. This influence is directly felt on: wettability, friction stresses at the concrete/formwork interface, and ultimate cladding quality [9, 10]. The viscosity of the two oils is determined using a HAAKE VT550 single-speed viscometer, fitted with a 1° (PK5) cone. A constant volume of oil ( $v = 0.6 \text{ cm}^3$ ) is deposited on the plate with a pipette, and the cone is then lowered toward the plate. To obtain an accurate measurement, a 5- to 10-min wait time (depending on measurement temperature and after depositing the oil on the plate) is required for the oil to reach the desired temperature. During the testing phase, temperature must be held constant so as not to bias the reading. Viscosity measurements were conducted at three constant temperatures (10°C, 20°C and 40°C).

## Influence of the emulsions to the interface formwork/concrete

1  
2  
3  
4  
5  
6  
7  
8  
9  
10  
11  
12  
13  
14  
15  
16  
17  
18  
19  
20  
21  
22  
23  
24  
25  
26  
27  
28  
29  
30  
31  
32  
33  
34  
35  
36  
37  
38  
39  
40  
41  
42  
43  
44  
45  
46  
47  
48  
49  
50  
51  
52  
53  
54  
55  
56

### **Surface tension**

The liquid/vapor surface tension of a liquid is correlated with the value of the contact angle formed by a drop on a support [11]. Contact angles are a readily observable physical manifestation of the more fundamental concepts of energy and surface tension. This insight serves to determine the properties of wettability and adhesion of a film, which in turn makes it possible to predict the properties of a lining or detect the traces of surface pollutants. As part of a theoretical approach, adhesion energy values are calculated based on contact angle data. It may be considered that the liquid/solid adhesion energy value is representative of the adhesive strength between the liquid and the support.

Young [12] was the first researcher to derive an equation for the equilibrium of a drop of liquid placed on a given solid. This equation is expressed in the following form:

$$\gamma_{LV} \cos(\theta) = \gamma_{SV} - \gamma_{SL} \Leftrightarrow \gamma_{SL} = \gamma_{SV} - \gamma_{LV} \cos(\theta) \quad (1)$$

where  $\theta$  is the contact angle formed by the surface and the plane tangent to the meniscus,  $\gamma_{SV}$  the solid surface energy,  $\gamma_{LV}$  the liquid/vapor surface tension et  $\gamma_{LS}$  the liquid/solid interfacial tension.

The liquid/solid adhesion energy value is also representative of the adhesive force between a liquid and its support. Adhesion energies are calculated according to Zisman's Equation [13]:

$$\omega_{LS} = \gamma_{LV} \times (1 + \cos \theta) \quad (2)$$

In order to determine the solid/liquid adhesion energy, it is necessary to measure both the contact angle of the oil and the liquid/vapor surface tension.

The liquid/vapor surface tension was measured using Wilhelmy's plate method at 20°C. The device employed is a tension meter manufactured by the CAD firm (**Fig. 2**) fitted with a platinum blade. According to this method, a thin platinum plate is hooked to a Kahn scale and then immersed into a liquid contained in a tank. The surface tension is indicated by the meniscus formed along the plate boundary.

The material contact angle was determined using a PGX type of mobile goniometer. This device measures the contact angle at the interface between a liquid drop and the substrate surface where it has been deposited.

## EXPERIMENTAL RESULTS AND DISCUSSION

### **Dynamics viscosities**

**Table 3** presents the dynamic viscosities obtained by averaging the results from 3 tests. Given its low viscosity value, the EDV2 reference could not be measured. Results show that the demolding agents display a linear behavior without any yield point: the behavior of emulsions is thus Newtonian [10].

Viscosity decreases as a function of temperature, hence making it important to control the film application after spraying.

### **Liquid/vapor surface tension**

The L/V surface tension values, derived at 10°, 20° and 40°C, are given in **Figure 3**. These findings suggest that increasing the temperature causes the surface tension to drop. Since the molecules are becoming more thermally excited, they are more likely to leave the surface and move toward the interior. The force attracting molecules toward the interior should therefore decrease as temperature rises. This analysis demonstrates that film adhesion may be modified depending on temperature. Nonetheless, values remain in the vicinity of 30 mN/m, as recommended during previous studies [8]. For the remainder of this study, results will be exclusively analyzed at 20°C.

### **Wettability**

#### **Instantaneously**

The drop angles, provided in **Table 4**, all lie between 20° and 35°, with the inverse emulsions yielding the smallest angles. Emulsions must therefore stabilize over time, and it is preferable to track the evolution in wettability over time as well.

#### **Over time**

Measurements spanning a time period were carried out in order to study the variation in demolding agent wettability. **Figure 4** shows the evolution in wettability vs. time for the four tested emulsions. Wettability

1 stabilizes after some 7 min for EDV1 and at 5 min for EDV2 and EIM1. These values all lie between 10° and  
2 20°. It is also observed that prior to stabilizing the drop, a significant slope suddenly appears for both emulsions.  
3 This variation may be due to many parameters (e.g. type of emulsion, emulsion mix design, water evaporation).  
4 The surface tension balance becomes modified at the formwork surface. The plate roughness parameter might  
5 also serve to influence this variation. Water evaporation leads to greater emulsion wettability on the support as  
6 the drop spreads more readily.

### 8 **Adhesion energy**

#### 9 *Instantaneously*

10 **Figure 5** summarizes the various adhesion energy values at  $t = 0$  min and at 20°C. Emulsions EDV1, EIM1 and  
11 EIM2 all display a satisfactory adhesion energy level of at least 70 mN/m. Only the EDV2 value lies below this  
12 threshold. It can thus be concluded that demolding agents must exhibit the highest possible surface tension and  
13 the lowest drop angle.

#### 15 *Over time*

16 This change in wettability thus implies a change in adhesion energy between  $t = 0$  and  $t = 20$  min. **Figure 6**  
17 depicts such an evolution over time. The rise in adhesion energy values reveals the benefit of allowing the water  
18 contained in the emulsion to evaporate as a means of generating the best possible adhesion. It is preferable to let  
19 the evaporation step last at least 5min after emulsion application in order to ensure that all the water has  
20 evaporated and a homogeneous oil film has been obtained.

### 22 **Analysis of concrete cladding images**

23 The most significant cladding defect is a color variation, which produces a visual differentiation between large  
24 adjacent surface zones [14, 15]. This kind of alteration typically affects concrete over several millimeters of  
25 thickness. Two types of color variation exist, namely those between different concrete mixes on a single  
26 cladding, and those on the same mix. A rating scale with 7 shades of gray has been developed by CIB [16] (**Fig.**  
27 **7**). French Standard P18-503 also offers a guideline for evaluating the surface appearance of concrete cladding  
28 [17]. This standard is based on three characterization criteria: flatness, texture (bubbling), and hue. To analyze  
29 cladding and formwork surfaces, the rating criteria selected were those used by our team when testing for the  
30 influence of mix designs on cladding quality. For this cladding, a rating is determined 24hours nafter formwork  
31 removal. The cladding appearance, microbubbling, dusting, fouling, shading and snag points are all parameters  
32 capable of characterizing formwork removal quality [7].

34 The color variation analysis entails an image analysis. The cladding obtained was photographed on days 1, 3 and  
35 7 following formwork removal. The concrete blocks were released 12hours after casting and then stored indoors  
36 at a temperature of 20° +/- 2°C and at a constant humidity of 60% +/- 5%.

37 The first measurement stage consists of a general assessment of the cladding, complete with snapshots of its  
38 overall appearance.

40 To perform this assessment, the following procedures are required:

- 41 - Specify the average color through use of the color chart [16].
- 42 - Eliminate any artifacts attached to surface edges.
- 43 - Calculate the total cladding surface area.
- 44 - Determine the rate of color variation.

45 Two freeware applications are available for this step: GIMP 2.8, and ImageJ 1.48.

47 The types of cladding obtained with EDV1 and EIM1 are shown in **Figure 8**.

49 At first, the photograph is adjusted to yield an image without any background capable of influencing the image  
50 analysis. Next, the color, brightness and saturation are all improved, followed by a binarization operation  
51 involving threes holding. For the color variation, it is critical to select shade-of-gray 1 or 2 from **Figure 3** as the  
52 reference. This scale is then compared with the photograph taken of the concrete cladding. To determine the  
53 color variation rate value, an appropriate measurement scale needs to be defined. As a final step, the "black"  
54 zones are calculated. **Table 5** lists the full set of color variation results for the demolding agents studied herein.

56 No notable differences appear between the direct and inverse emulsions, nor in the selection of mineral-based  
57 vs. plant-based products, with very good cladding quality measured at 7 days.

## Influence of the emulsions to the interface formwork/concrete

1 The visual analysis reveals little fouling and few snag points; moreover, no dusting was detected on the  
2 cladding. Microbubbling was found to be relatively sparse (approx. 0.25%), which indicates that the emulsion  
3 composition does not prevent air bubbles from rising to the surface.

4  
5 **Figures 9 and 10** present the color variation for cladding obtained with emulsions EDV1 and EIM1. The black  
6 zones show the variation in color created with respect to the reference color chosen on the CIB scale. No shade  
7 of gray is identified, as all zones with a higher color value have been darkened. For purposes of this study, level  
8 1 was selected. Since bubbling may slightly alter the values, it needed to be removed from the calculation.

### CONCLUSIONS

11 The emulsions studied as part of this research have demonstrated strong physicochemical performances. Their  
12 viscosity values are lower due to the presence of water in their composition, hence making it possible to apply  
13 these emulsions using an adapted spraying protocol between 10°C and 40°C. The drop angles lie near 25°  
14 (especially for plant-based emulsions), while their liquid/vapor surface tension is close to 30 mN/m, thus  
15 providing for a good level of adhesion energy. The change in wettability over time serves to homogenize the  
16 surface of the film being applied; resulting in a greater bond with the surface, which further increases the  
17 adhesion energy value. It is thus essential to wait 5 - 10 minutes before setting the concrete into the formwork.  
18 Cladding quality improves over time; consequently, it is preferable to wait at least 7 days to derive an  
19 evaluation. While the color does visibly evolve, a homogeneous color pattern can be achieved after 7 days. It is  
20 also necessary to develop the images analysis on a microscopic scale (porosity analyses) and by  
21 spectrorimetry measurements. A complementary study can be realized to know the emulsion influence on  
22 the concrete friction on the formwork by tests with a plane/plane tribometer. The analysis of anti-corrosive  
23 protection can be given by Electrochemical Impedance Spectroscopy (EIS).

### FURTHER RESEARCH

24  
25 The continuation for the study will be to analyze the various types of application and to carry out an  
26 experimental campaign on a plane/plane tribometer in order to release the coefficients of friction of the concrete  
27 on the various formulations and thus to supplement the physicochemical study.

### ACKNOWLEDGMENTS

28  
29 The authors wish to express their gratitude and sincere appreciation to the CHRYSO SA industry for financing  
30 this research work.

### REFERENCES

- 31  
32 [1] Djelal C., De Caro P., Libessart L., Dubois I., Pébère N., "Comprehension of demoulding mechanics at the  
33 formwork/oil/concrete interface", *Materials and Structure*, V. 41, No. 3, 2008, pp. 571-581.  
34 [2] Hermann K., "Produits de décoffrage", *Bulletin du ciment*, n° 15, 1993.  
35 [3] Syndicat national des adjuvants pour bétons et mortiers (SYNAD), *Classification Synad des agents de*  
36 *démoulage*; 2014.  
37 [4] Zolfaghari R., Fakhruddin Razi A., Abdullah L.C., Elnashaie S., Pendashteh A., "Demulsification techniques of  
38 water-in-oil and oil-in-water emulsions in petroleum industry", *Separation and Purification Technology*, V. 170,  
39 2016, pp. 377-407.  
40 [5] Doumeix O., « Opérations unitaires en génie biologique - Tome 1 - Les émulsions », 2011, p.116  
41 [6] Fingas M., Fieldhouse B., "Studies of the formation process of water-in-oil emulsions", *Marine Pollution*  
42 *Bulletin*, V. 47, 2003, pp. 369-396.  
43 [7] Libessart L., Djelal C., De Caro P., "Influence of the type of release oil on steel formwork corrosion and  
44 facing aesthetics", *Construction & Building Materials*, V. 68, 2014, pp. 391-401.  
45 [8] Libessart L., de Caro P., Djelal C., Dubois I., "Correlation between adhesion energy of release agents on the  
46 formwork and demoulding performances", *Construction & Building Materials*, V. 76, 2015, pp. 130-139.  
47 [9] Hart I., "Concrete release agent, associated materials and surface finishes", *Concrete*, V. 28, No. 12, 1994,  
48 pp. 33-34.  
49 [10] De Caro P., Djelal C., Libessart L., Dubois I., "Influence of the nature of demoulding agent on the  
50 properties of the formwork/concrete interface", *Magazine of Concrete Research*, V. 59, No. 2, 2007, pp. 141-  
51 149.  
52 [11] Chappuis, J.; Georges, J-M. "Contribution to Study of Wetting - Analysis of a Measuring Method", *J.*  
53 *Chim. Phys. Phys. Chim. Biol.*, V. 71, 1974, pp. 567-575.  
54 [12] De Gennes P.G. "Wetting: statics and dynamics", *Reviews of modern physics*, V. 57 No. 3, 1985, pp.827-  
55 863.

1 [13] Zisman W.A., «Relation of the Equilibrium Contact angle to Liquid and Solid Constitution», Advances in  
 2 Chemistry, V. 43, 1964, pp1-51.  
 3 [14] Collection technique CimBéton. Bétons et ouvrages d'art ó La maîtrise esthétique des parements en béton.  
 4 T49; 2005.  
 5 [15] Lemaire G, Escadeillas G, Ringot E. «Evaluating concrete surfaces using an image analysis process»,  
 6 Construction & Building Materials, V. 19, 2005, pp. 604611.  
 7 [16] CIB, « Tolérances sur les défauts d'aspect du béton », Rapport n° 24 ó n°1189, 1973.  
 8 [17] ST P18-503, «Concrete surfaces and facing. Identification elements», ISSN:0335-3931, 1989.  
 9

10 **TABLES AND FIGURES**

11 **Table 1** Release agents properties

	EDV1	EDV2	EIM1	EIM2
Color	White	White	White	White
Nature	Mineral	Mineral	Vegetable	Vegetable
Flash point, °C	> 100	> 100	85	96
Density	< 1	0.985 ± 0.02	< 1	< 1

13 **Table 2** Concrete formulation

Concrete	B28
Paste volume (%)	28
Cement CEM I 52,5 CP2 (kg/m <sup>3</sup> )	232
Fillers (kg/m <sup>3</sup> )	77
Sand 0/4 (kg/m <sup>3</sup> )	838
Gravel 4/8 (kg/m <sup>3</sup> )	287
Gravel 6/20 (kg/m <sup>3</sup> )	778
Water (l)	176
W/B	0.57

17 **Table 3** Dynamic viscosity of emulsions

	Viscosity at 10°C (mPa.s)	Viscosity at 20°C (mPa.s)	Viscosity at 40°C (mPa.s)
EDV1	43.5 ± 0.7%	38.9 ± 7.1%	27.9 ± 1%
EDV2	ó	ó	ó
EIM1	62.8 ± 0.63 %	53.4 ± 7%	31.8 ± 6.7%
EIM2	79.1 ± 8.9%	60.6 ± 2.9 %	34.9 ± 2%

18 ó =not measured items.

19 **Table 4** Instantaneous contact angle of emulsions at 20°C

	Contact angle (°)
EDV1	33.3
EDV2	35.1
EIM1	28.2
EIM2	23.1

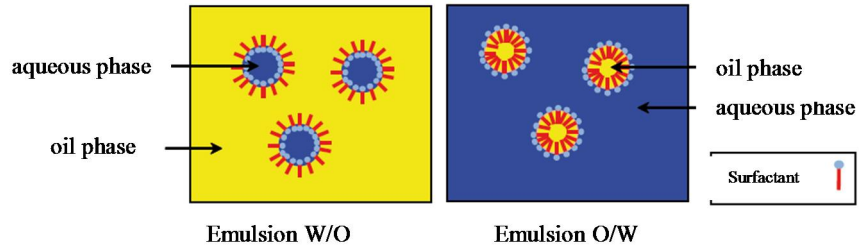
20 **Table 5** Percentage of color variation on days 1, 3 and 7

	1 day	3 days	7 days
EDV1	9.75	4.25	3.5
EDV2	13.45	5.11	2.65
EIM1	13.71	3.64	2.94
EIM2	7.23	5.43	3.31



# Influence of the emulsions to the interface formwork/concrete

1



2

3

4

Fig. 16 Emulsion forms [5]



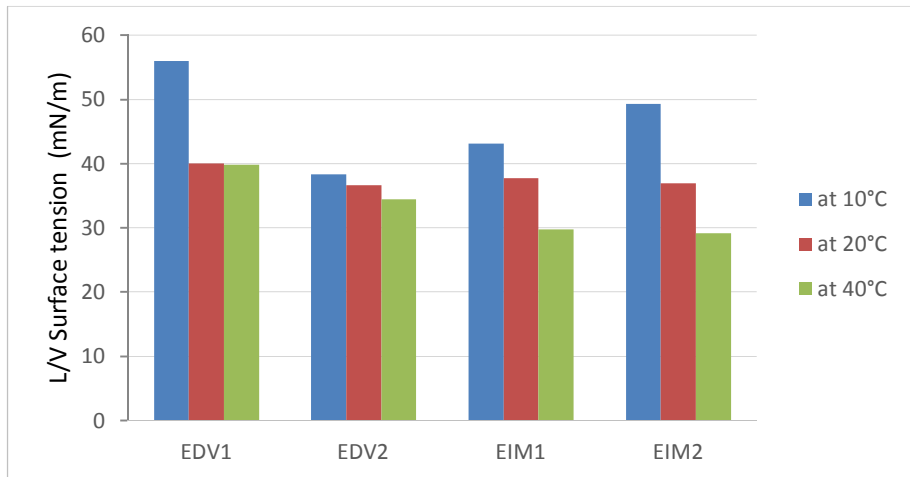
5

6

7

8

Fig. 26 CAD tensiometer

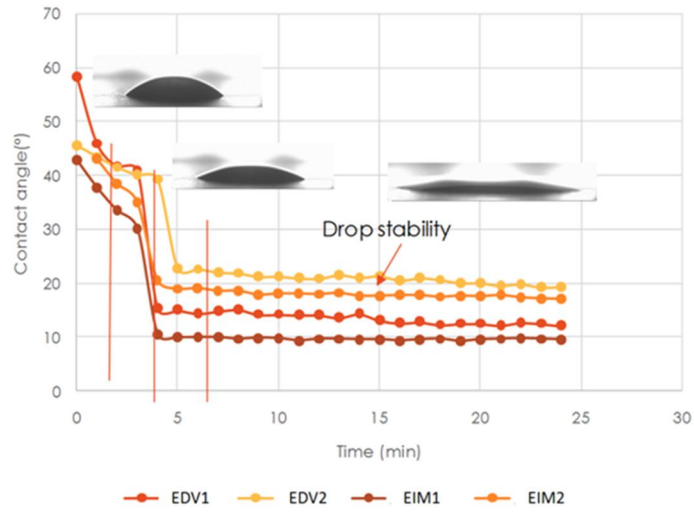


9

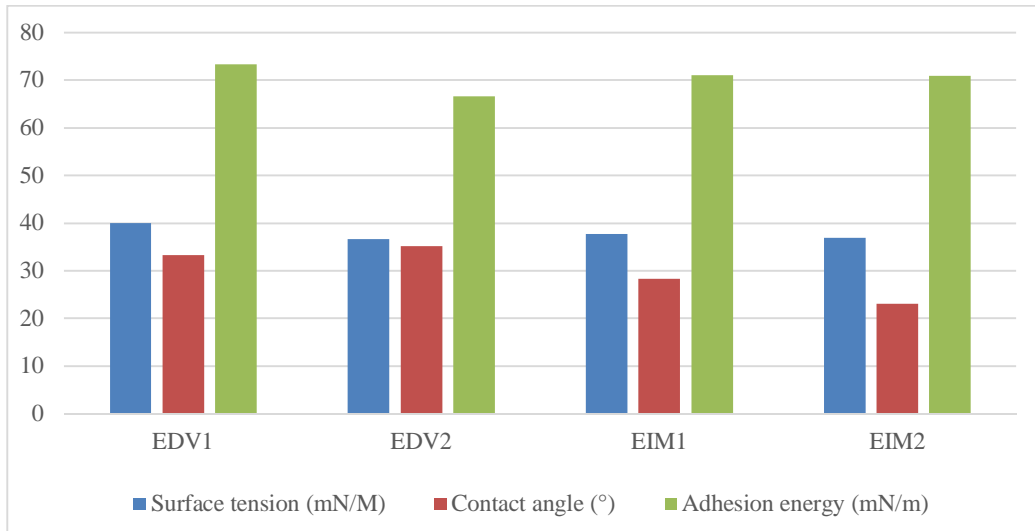
10

11

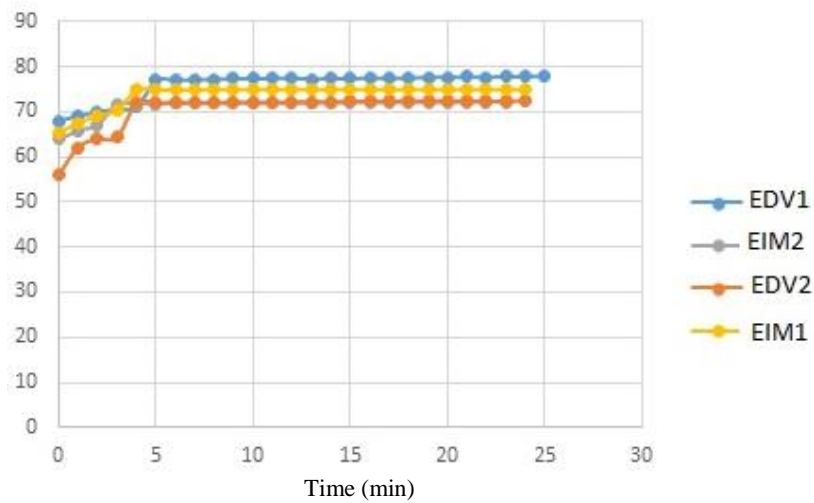
Fig. 36 Liquid/vapor surface tension (10°C, 20°C and 40 °C)



**Fig. 46** Evolution of the drop angles in time



**Fig. 56** Instantaneous adhesion energies of the emulsions



**Fig. 66** Over time evolution of adhesion energy

1  
2  
3  
4  
5

6  
7  
8  
9

10  
11  
12

# Influence of the emulsions to the interface formwork/concrete

1

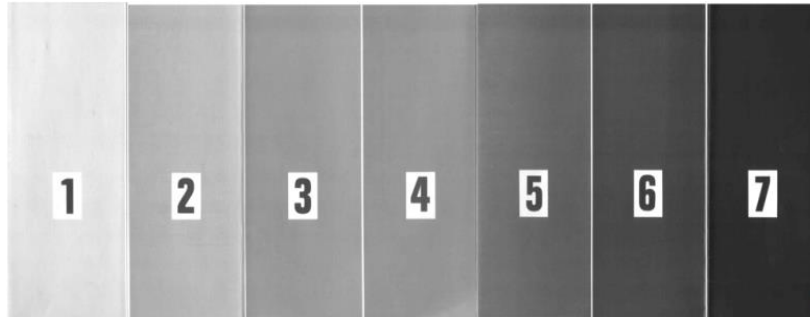


Fig. 76 CIB shades of gray

2  
3

4

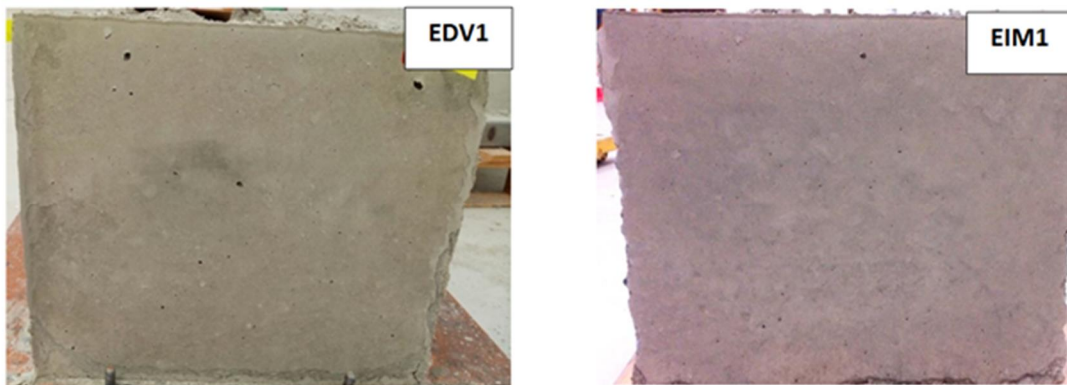


Fig. 86 Concretes cladding EDV1 and EIM1 on day 1

5  
6

7

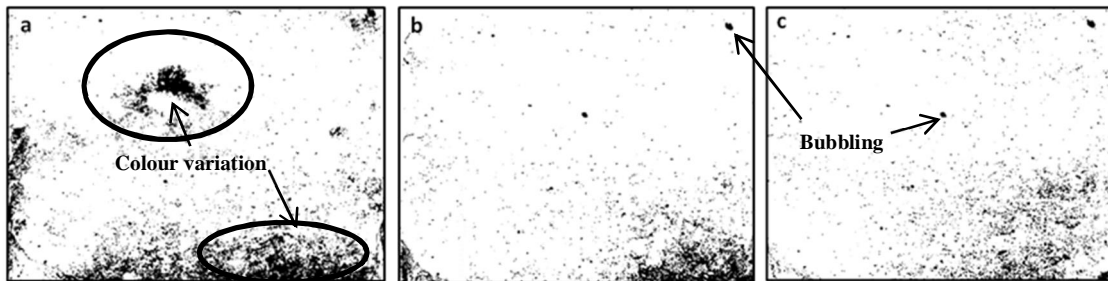


Fig. 96 Images analysis of EDV1 on days 1 (a), 3 (b) and 7(c)

8  
9  
10

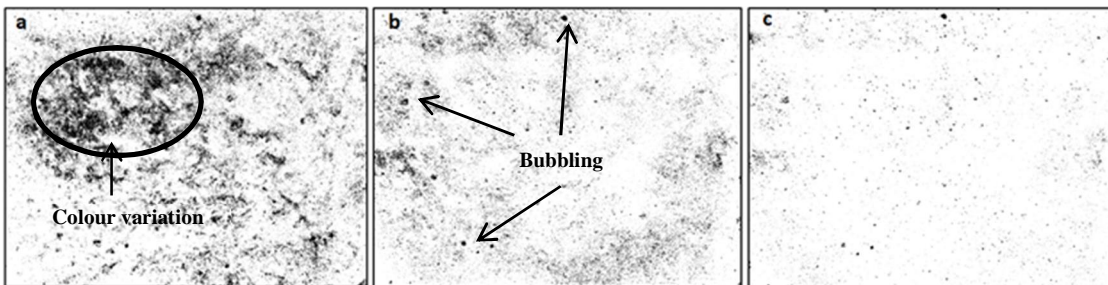


Fig. 106 Images analysis of EIM1 on days 1 (a), 3 (b) and 7(c)

11  
12  
13