



Possible observation of the signature of the bad metal phase and its crossover to a Fermi liquid in κ -(BEDT-TTF)₂Cu(NCS)₂ bulk and nanoparticles by Raman scattering

M Revelli Beaumont, Pierre Hemme, Y Gallais, A Sacuto, K Jacob, Lydie Valade, D de Caro, C Faulmann, M Cazayous

► To cite this version:

M Revelli Beaumont, Pierre Hemme, Y Gallais, A Sacuto, K Jacob, et al.. Possible observation of the signature of the bad metal phase and its crossover to a Fermi liquid in κ -(BEDT-TTF)₂Cu(NCS)₂ bulk and nanoparticles by Raman scattering. Journal of Physics: Condensed Matter, 2021, 33 (12), pp.125403. 10.1088/1361-648x/abd813. hal-03229011

HAL Id: hal-03229011

<https://hal.science/hal-03229011>

Submitted on 13 Oct 2021

HAL is a multi-disciplinary open access archive for the deposit and dissemination of scientific research documents, whether they are published or not. The documents may come from teaching and research institutions in France or abroad, or from public or private research centers.

L'archive ouverte pluridisciplinaire **HAL**, est destinée au dépôt et à la diffusion de documents scientifiques de niveau recherche, publiés ou non, émanant des établissements d'enseignement et de recherche français ou étrangers, des laboratoires publics ou privés.

Possible observation of the signature of the bad metal phase and its crossover to a Fermi liquid in κ -(BEDT-TTF)₂Cu(NCS)₂ bulk and nanoparticles by Raman scattering

M Revelli Beaumont^{1,2}, P Hemme¹, Y Gallais¹, A Sacuto¹, K Jacob², L Valade², D de Caro², C Faulmann² and M Cazayous^{1,*}

¹ Laboratoire Matériaux et Phénomènes Quantiques (UMR 7162 CNRS), Université de Paris, 75205 Paris Cedex 13, France

² Laboratoire de Chimie de Coordination (UPR 8241), Université Paul Sabatier Toulouse, France

E-mail: maximilien.cazayous@u-paris.fr

Abstract

κ -(BEDT-TTF)₂Cu(NCS)₂ has been investigated by Raman scattering in both bulk and nanoparticle compounds. Phonon modes from 20 to 1600 cm⁻¹ have been assigned. Focusing on the unexplored low frequency phonons, a plateau in frequencies is observed in the bulk phonons between 50 and 100 K and assigned to the signature of the bad metal phase. Nanoparticles of κ -(BEDT-TTF)₂Cu(NCS)₂ exhibit anomalies at 50 K associated to the crossover from a bad metal to a Fermi liquid whose origins are discussed.

Keywords: Raman, organics, phonons

1. Introduction

Organic compounds are usually electrical insulators. However, charge-transfer complexes and salts, in which the large intermolecular π -orbital overlaps create a conduction pathway. Organic conductors have been thus a focus in the development of innovative architectures based on emerging molecular devices [1]. From a fundamental point of view, organic compounds also present phases often in competition that have attracted attention [2–7]. Organic superconductors share various similarities with the phase diagram of high temperature copper oxide superconductors [8].

Among the charge transfer salts, κ -(BEDT-TTF)₂Cu(NCS)₂, with BEDT-TTF [bis(ethylene, dithio)tetrathiafulvalene] molecules commonly abbreviated as ET, is a well known organic compound due to the occurrence in its phase diagram of unconventional superconductivity close to an antiferromagnetic phase [3–6].

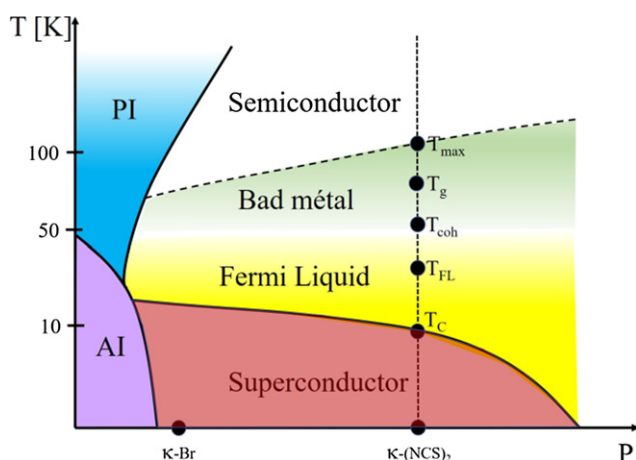


Figure 1. Schematic phase diagram of organic charge transfer salts as a function of chemical pressure (or external) for κ -(BEDT-TTF)₂Br and κ -(ET)₂Cu(NCS)₂. PI and AI correspond to paramagnetic insulator and antiferromagnetic insulator phases, respectively.

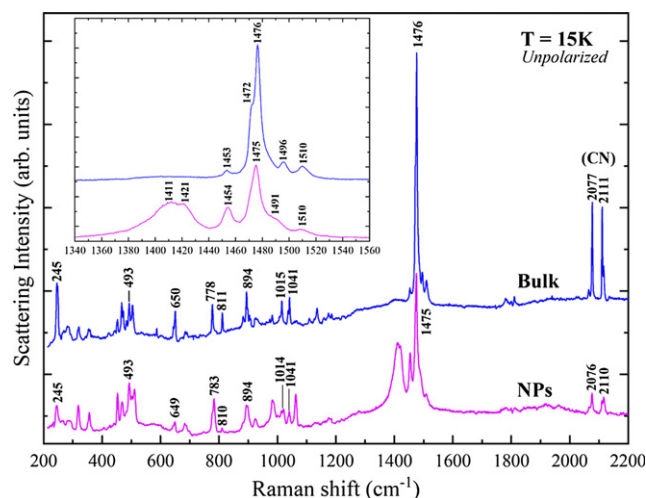


Figure 2. Unpolarized Raman spectra of NPs and bulk of κ -(ET)₂Cu(NCS)₂ at 15 K in the range of 200–2200 cm⁻¹. Inset: zoom in the range of 1340–1560 cm⁻¹.

Indeed, κ -(ET)₂Cu(NCS)₂ exhibits a complex phase diagram at ambient pressure (see figure 1). κ -(ET)₂Cu(NCS)₂ is superconducting up to the critical temperature $T_C = 10.4$ K [9, 10]. Between T_C and $T_{FL} = 20$ –25 K, the compound behaves like a Fermi liquid [11, 12] characterized by a quadratic temperature dependence in the resistivity [13–15]. Between T_{FL} and $T_{coh} \simeq 50$ K, the resistivity has no more a quadratic dependence, indicating the breakdown of true Fermi liquid behavior [14–16]. However, the charge transport is still dominated by coherent quasiparticles [12, 17, 18]. As the temperature is further raised above T_{coh} the resistivity continues to increase monotonically until a broad maximum is reached at $T_{max} \simeq 100$ K. The spectral weight at the Fermi energy is negligible [13, 14, 19–21] and the resistivity starts to decrease monotonically. The electron–electron interactions control this phase as shown by dynamical mean-field theory (DMFT) [14, 16, 19, 22]. This phase is described by a bad metal as an intermediate temperature state of a metal. It is characterized for example by ill-defined quasi-particles. Ultrasonic attenuation experiments show that the electron–phonon coupling is strong at the crossover between the two phases [18]. The vibrational degrees of freedom might thus be used as a signature of this transition. The electrical resistance of κ -(ET)₂Cu(NCS)₂ shows semiconductor behavior above T_{max} [23]. The Fermi-surface topology has also been investigated and determined by magnetotransport experiments [24, 25].

The spin degrees of freedom are strongly impacted with temperatures. Above $T_{coh} \simeq 50$ K, the spin correlations are captured by a phenomenological spin-fluctuation model from Millis *et al* [26–30] which quantitatively reproduces the monotonic increase in spin correlations observed in Nuclear Magnetic Resonance (NMR) experiments. DMFT calculations fail to depict the NMR experiment results below this temperature (strong decrease of the Knight shift, for example) [28]. Three hypotheses have been proposed to explain the NMR measurements below T_{coh} : the loss of the antiferromagnetic spin correlations below 50 K, the opening of a pseudogap or the opening of a real gap associated with T_{coh} on the small 1D-parts of the FS as opposed to a pseudogap on the major quasi-2D fractions [31]. However, the pseudogap opening has only been observed up to now in NMR experiments.

Note that the ET molecules are also involved in the physics of the metallic, insulating and superconducting phases [32–35]. The conformation of the ET molecules that can be staggered or eclipsed induces a glassy transition around $T_g = 80$ K. Above T_g there is a thermal distribution of staggered and eclipsed states whereas below T_g the dynamics of the terminal ethylene groups are strongly suppressed and an order–disorder transition is observed [32].

Table 1. Experimental frequencies (in cm^{−1}) of the intense phonons from figure 2. Calculated frequencies for ET^{0.5+}, corresponding symmetry and mode labels are also reported.

Assignment			Experimental			
ν_i	Symm	Calc. ET ^{0.5+}	295 K		15 K	
			Bulk	NPs	Bulk	NPs
2	$a(a_g)$	1508	1501	1501	1510	1510
27	$b(b_{1u})$	1478	1484	1484	1496	1491
3	$a(a_g)$	1460	1467	1466	1476	1475
					1472	
				1446	1453	1454
4	$a(a_g)$	1422		1413		1421
		1409		1402		1411
				1053		1063
58	$a(b_{3g})$	1035	1031	1030	1041	1041
47	$b(b_{2u})$	1011	1007	1010	1015	1014
6	$a(a_g)$	985	972	979	982	982
7	$a(a_g)$	899	893	893	894	894
	Anion		806		811	810
61	$a(b_{3g})$	782	772	773	778	783
8	$a(a_g)$	649	642		650	649
9	$a(a_g)$	498	500	502	504	502
34	$b(b_{1u})$	501	483	483	493	493
10	$a(a_g)$	462	466	462	467	468
	Anion		445	446	453	453
63	$a(b_{3g})$	351	354	352	354	356
11	$a(a_g)$	314	311	310	317	318
53	$b(b_{2u})$	263	262	262	267	267
	Anion		244	244	245	245

Most of the previous Raman scattering measurements on κ -(ET)₂Cu(NCS)₂ have been devoted to the study of the superconducting phase [36–39]. In particular, anomalies in the Raman shift and in the broadening of the phonon modes have been interpreted as the signature of the pair breaking energy [40]. In this work, we bring insight into the rich physics of κ -(ET)₂Cu(NCS)₂ through the study of the intermolecular phonon modes below 200 cm^{−1} which give access to the electron correlations and intermolecular magnetic coupling. We have implemented this approach in κ -(ET)₂Cu(NCS)₂ bulk and nanoparticles (NPs) in order to study the effects of the size reduction on the κ -(ET)₂Cu(NCS)₂ properties. In the low frequency phonons of the bulk, we point out the signature of the transition from a semiconductor behavior to the bad metal. For NPs, additional anomalies have been observed as a function of the temperature around $T_{coh} \simeq 50$ K and associated to the crossover from the bad metal to the Fermi liquid.

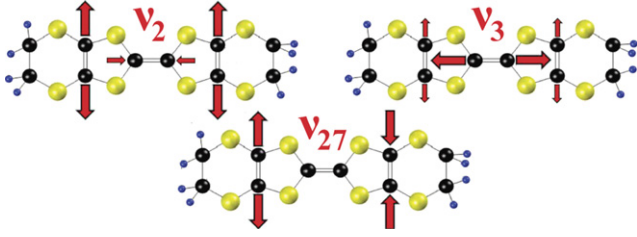


Figure 3. Atomic displacement vectors of the C=C stretching modes ν_2 , ν_3 and ν_{27} (see table 1) in the ET molecule [55].

2. Experimental details

High quality κ -(ET)₂Cu(NCS)₂ single crystals have been grown by electrocrystallization following the synthesis described in reference [10] and characterized by x-ray crystallography and resistivity measurements. Single-crystalline κ -(ET)₂Cu(NCS)₂ NPs with a mean diameter of 28 nm and a standard deviation of 4 nm, have been synthesized by chemical route using a biobased amphiphilic molecule, the dodecanoic acid C₁₁H₂₃COOH as the growth controlling agent. Their quality has been characterized by x-ray crystallography and IR measurements. Transmission electron microscopy measurements evidence roughly spherical NPs [41]. Note that NPs differ from powder by well defined and regular shapes and a controlled mean diameter with a small standard deviation.

The structure of mixed-valence salt κ -(ET)₂X consists of alternating layers of acceptors X and electron donor ET molecules. ET layers consist of pairs of ET molecules, which stacks almost perpendicular to each other, the long axis of the molecule always pointing in the same direction. This forms then a two dimensional conducting layer in the *bc*-plan [2, 4, 5], which alternates with the insulating layer of the polymeric anion along the *a*-direction. The ET molecule pairs donate an electron to the anion layer, leaving a hole in the highest occupied molecular orbital of ET. The κ -phases belong to the family of organic quasi-two-dimensional conductors with an in-plane conductivity much larger than the out-of-plane conductivity.

The Raman spectroscopy measurements were recorded using a triple substructure T-64000 Jobin–Yvon spectrometer with a cooled charge coupled device detector. The spectra were acquired with a 532 nm laser line (green light) from an Oxxius–Slim solid state laser, filtered both spatially and in frequency and obtained in quasi-backscattering geometry. Measurements between 15 and 300 K have been performed using an ARS closed-cycle He cryostat. In order to avoid heating and damaging of the sample, the incident laser beam power was kept at 2 mW with a spot size of 100 μ m diameter. Phonon modes were analyzed using a Lorentzian lineshape. The resolution of the phonon frequencies was around 0.2 cm⁻¹.

3. Results and discussion

3.1. Phonon modes in the high frequency region

Phonons in organic conductor salts are generally analyzed on the basis of the molecular vibrations in the neutral molecule. For κ -(ET)₂Cu(NCS)₂, observed vibrational peaks are assigned to the ET molecule.

Neglecting the staggered/eclipsed distortion, the ET molecules can be supposed to be flat except for the hydrogen atoms and belong to the *D*_{2h} point group. It has 72 possible phonon modes, of which 36 are Raman active [42]

$$\Gamma(D_{2h}) = 12a_g + 6b_{1g} + 7b_{2g} + 11b_{3g} + 7a_u + 11b_{1u} + 11b_{2u} + 7b_{3u}. \quad (1)$$

However, *ab initio* quantum chemical calculations show that ET is non planar [43, 44]. The stable boat structure of ET has *C*₂ symmetry, leading to the mode distribution

$$\Gamma(C_2) = 37a + 35b. \quad (2)$$

The reduction of symmetry is as follows [45]:

$$12a_g + 7a_u + 11b_{3g} + 7b_{3u} \rightarrow 37a \quad (3a)$$

$$11b_{1u} + 6b_{1g} + 11b_{2u} + 7b_{2g} \rightarrow 35b. \quad (3b)$$

As a consequence, all the vibrational modes are Raman as well as infrared active due to this low-symmetry structure (the unit cell does not possess inversion symmetry).

There have been several works devoted to assign the modes associated to the neutral ET molecule [46, 47]. Recently, *ab initio* calculations of the vibrational properties of some compounds from this series reveal that a simple distinction between molecular vibrations coupling the dimers and lattice vibrations cannot be sustained [48, 49]. This implies that the simple assignment of pure phonon modes is in principle incorrect. However, nowadays, there is no calculation of phonon modes frequencies taking into account all these interactions.

An assignment of high energy modes can be found in references [50, 51]. In addition, Sugai *et al* [52] assigned κ -(ET)₂Cu(NCS)₂ experimental vibrational modes using calculations made by Kozlov *et al* [42] on neutral molecule ET⁰ vibrations. On the other hand for IR measurements, Kornelsen *et al* [53] assigned κ -(ET)₂Cu(NCS)₂ experimental vibrational modes using calculations made by Kozlov *et al* [54] on cation ET⁺ vibrations.

Nevertheless, in κ -(ET)₂Cu(NCS)₂ the charge redistribution on the ET atoms causes a shift of vibrational energy [52]. The total charge per dimer is thus neither ET⁰ nor ET⁺ but ET^{0.5+}. Hence, we propose to assign ET vibration modes with respect to an averaged calculated value of ET⁰ and ET⁺.

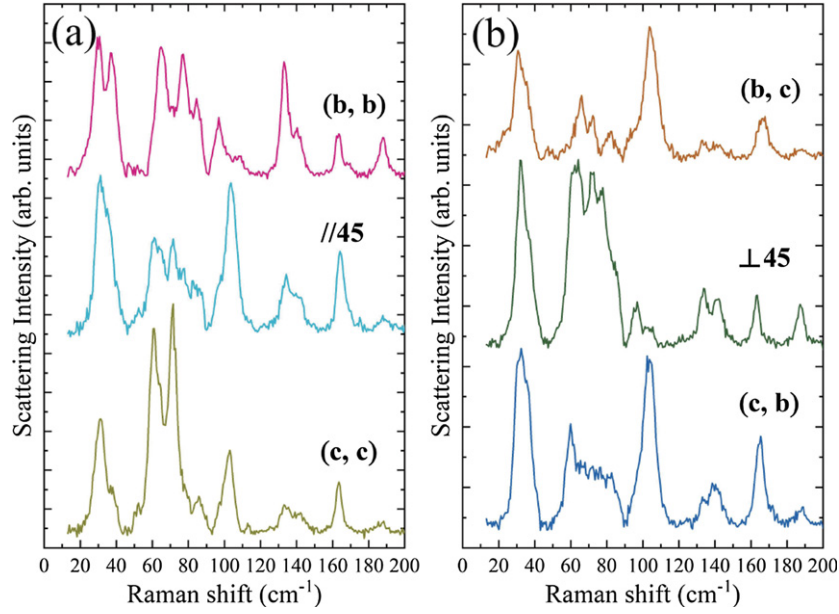


Figure 4. Polarized Raman spectra in the low frequency range measured at 15 K for the bulk using different polarization configurations as a function of the b and c axis of the crystal.

Figure 2 presents unpolarized Raman spectra at 15 K from 200 cm^{-1} to 2200 cm^{-1} of $\kappa\text{-(ET)}_2\text{Cu(NCS)}_2$ for bulk and NPs. Despite intensity variations and broadening of phonon peaks, there are no main differences in peaks positions between the NPs and the bulk. Since NPs are randomly oriented, there are no Raman selection rules. Phonons in NPs are an averaged response of all possible bulk orientations.

In table 1 are reported several phonon frequencies extracted from figure 2 measured in bulk and NPs ambient temperature and 15 K as well as their corresponding symmetry and calculated frequencies for $\text{ET}^{0.5+}$. The latter averaged was derived using calculations on ET^0 and ET^+ [45, 54]. Experimental frequencies at room temperature agree correctly with modes of $\text{ET}^{0.5+}$. Note that the 806 and 445 cm^{-1} modes are assigned to the anion modes [52]. At 15 K, additional modes are measured as the vibrations at 1472 and 1453 cm^{-1} in the bulk and the vibration at 1411 cm^{-1} in the NPs. Additional modes could have two origins, the splitting or degeneracy of predicted modes. Here, these modes might come from the ν_3 and ν_4 modes at 1460 cm^{-1} and 1422 cm^{-1} . Indeed, since the unit cell of $\kappa\text{-(ET)}_2\text{Cu(NCS)}_2$ contains four ET molecules, every internal molecular vibration ν_i splits theoretically into four components. In addition, the mode degeneracy can be lifted by strong dimer interaction leading to additional modes [55, 56]. As expected, modes at low temperature harden compared to room temperature.

Table 2. Frequencies (in cm^{-1}) of Raman $\kappa\text{-(ET)}_2\text{Cu(NCS)}_2$ modes measured on the bulk (cf figure 4) using several polarization configurations.

In our work						Pedron <i>et al</i> [58]	
(c, c)	(c, b)	//45	⊥45	(b, b)	(b, c)	(c, c)	(c, b)
					26.5		26.5
31.5	32.7	31.8	33.0	30.7	31.4	32.0	31.2
37.5	36.0	37.0	36.5	37.7	36.1	36.9	
52.6		52.6				51.9	51.0
61.3		61.5				60.4	60.9
	63.3	64.7	63.4			64.3	64.8
	66.2				66.1	66.2	
71.5	71.7	71.8	72.4	71.3	72.1		72.2
		77.1	77.2	77.4		74.6	75.0
	83.2			84.9	81.7	81.8	
90.0						90.5	83.1
		97.1	96.3	97.1			90.5
102.7	103.9	103.8		106.6	104.6	102.5	102.9
112.7							113.9
134.4	134.2	134.7	134.1	133.9	134.1		132.7
141.0	140.0	141.1	141.5	140.5	141.4		141.1
163.8		164.8	163.3	163.7		162.9	
	165.3			168.3	166.8		164.7
	188.4	188.5	187.8	188.3	188.1		

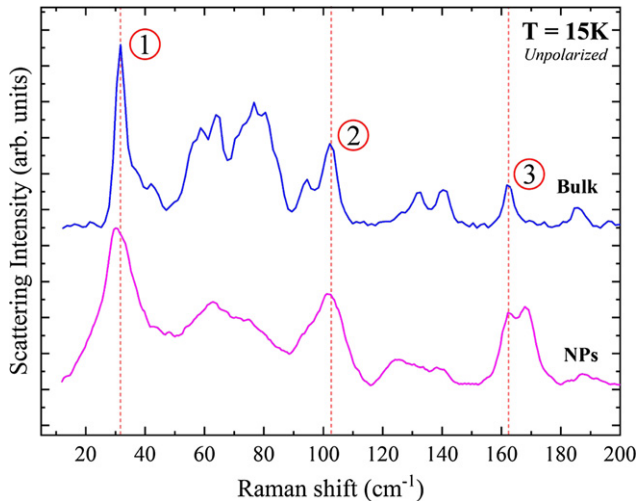


Figure 5. Unpolarized Raman spectra of bulk and NPs at 10 K in the low frequency range. Three phonons around 32 cm^{-1} , 103 cm^{-1} and 163 cm^{-1} are labeled 1, 2 and 3, respectively.

Let us discuss the origin of several modes. The peaks at 2076 and 2110 cm^{-1} in figure 2 are related to distinct CN environments in the unit cell [53]. The strong intensity of the mode at 1476 cm^{-1} suggests that this vibration is coupled to an electronic transition, leading to a resonant Raman scattering process. We have experimentally found that the intensity of the mode decreases at other wavelengths. Indeed, the laser wavelength (532 nm equivalent to $18\,797\text{ cm}^{-1}$) is close to an electronic transition at $20\,000\text{ cm}^{-1}$ [57]. This intense mode is assigned to the C=C stretching of the vibration of the central atoms of the ET molecule. The mode at 1510 cm^{-1} is assigned to the a_g vibration of the C=C ring. The peaks at 1421 and 1411 cm^{-1} are assigned to CH_2 bending modes [57]. It is interesting to note that the intensities of those peaks are strongly enhanced for the NPs. This could be a signature of a surface effect as ET molecules could be present at the surface of the NPs in a different arrangement than in the bulk and the ethylene groups less ‘bonded’ to the crystal. The mode at 1041 cm^{-1} is assigned to a C–C–H bending totally symmetric vibration and the mode at 778 cm^{-1} is assigned to the C–S stretching of the ET molecule [42]. To illustrate some vibrations, C=C stretching modes of the ET ν_2 , ν_3 and ν_{27} are represented in figure 3.

3.2. Phonon modes in the low frequency region

$\kappa\text{-(ET)}_2\text{Cu(NCS)}_2$ is monoclinic and crystallizes in the $P2_1$ space group with two formula units per cell ($Z = 2$). One unit cell is made of four ET molecules and two Cu(NCS)_2 zigzag polymeric chains. The ET molecules are paired and form two dimers in the cell. The unit cell contains 118 atoms, hence, the

phonon spectrum consists of 354 phonon branches of which 288 pertain to internal modes of the ET molecules and 30 to internal modes of the polymeric anion layers. The remaining 36 branches consist of intermolecular motions of the ET molecules and the anion modes (including the three acoustic phonon branches). This calculation was derived according to Pedron *et al* [37].

Due to the heavy mass of ET and $[\text{Cu(NCS)}_2]^-$, we expect intermolecular modes mostly in the low frequency spectral region.

Figure 4 shows Raman spectra measured on the bulk for six different polarizations at 15 K in the low frequency region. The polarization configuration (i, j) indicates that the incident and scattered light are polarized along the i and j axis of the crystal, respectively. Special notation $//45$ ($\perp 45$) indicates that the incident light is polarized at -45° with respect to the c axis and the scattered light at -45° ($+45^\circ$) with respect to the c axis. In total, 20 phonon modes are observed in this range. The frequencies of the observed phonons are listed in table 2 and compared to the measurements of reference [58]. One notice that both measurements are in good agreement.

Figure 5 shows unpolarized Raman spectra measured on the bulk and NPs at 15 K in the range of $20\text{--}200\text{ cm}^{-1}$. All the phonons measured in the bulk are found in the spectrum of NPs but with a larger width. Surface effect or grain boundaries in the NPs can explain a shorter phonon lifetime and therefore a larger width. In the low frequency regions, fewer Raman measurements have been made. Eldridge *et al* have detected phonons at 94 , 118 , 128 and 185 cm^{-1} and they have associated them with anion lattice modes [50, 51]. We have measured phonon modes at 97 , 113 , 134 , and 188 cm^{-1} , and additional modes at 141 and 164 cm^{-1} . In the common range in energy, our measurements are in good agreement with this previous work. In the next sections, we are following the temperature dependencies of three phonons around 32 cm^{-1} , 103 cm^{-1} and 163 cm^{-1} labeled 1, 2 and 3 in figure 5, respectively.

3.2.1. Bulk. Figure 6(a) shows unpolarized Raman spectra measured on the bulk for several selected temperatures. Figures 6(a)–(c) presents the temperature evolution of labeled phonons 1, 2 and 3 (cf figure 5). The frequencies of all three modes display essentially the same behavior, an increase down to $T_{\text{max}} \simeq 100\text{ K}$ followed by a plateau (or a very small increase in the case of peak 2) between T_{max} and $T_{\text{coh}} \simeq 50\text{ K}$ before an increase at lower temperature. Note that the increase of phonon 2 and 3 is very abrupt and strongly non anharmonic close to 100 K . Such a plateau is an unconventional behavior compared to the monotonous increase of the phonon frequency due to the thermal contraction of the lattice decreasing the temperature. X-ray measurements do not reveal any structural transition in this temperature range discounting the possibility that changes in the crystal structure could be responsible for the measured anomalies [59].

The three phonon modes heavily involve the movement of the anions with respect to the ET molecules but also a complete bending of the molecules within the dimers [48, 49]. The terminal ethylene groups are probably taking part in these modes.

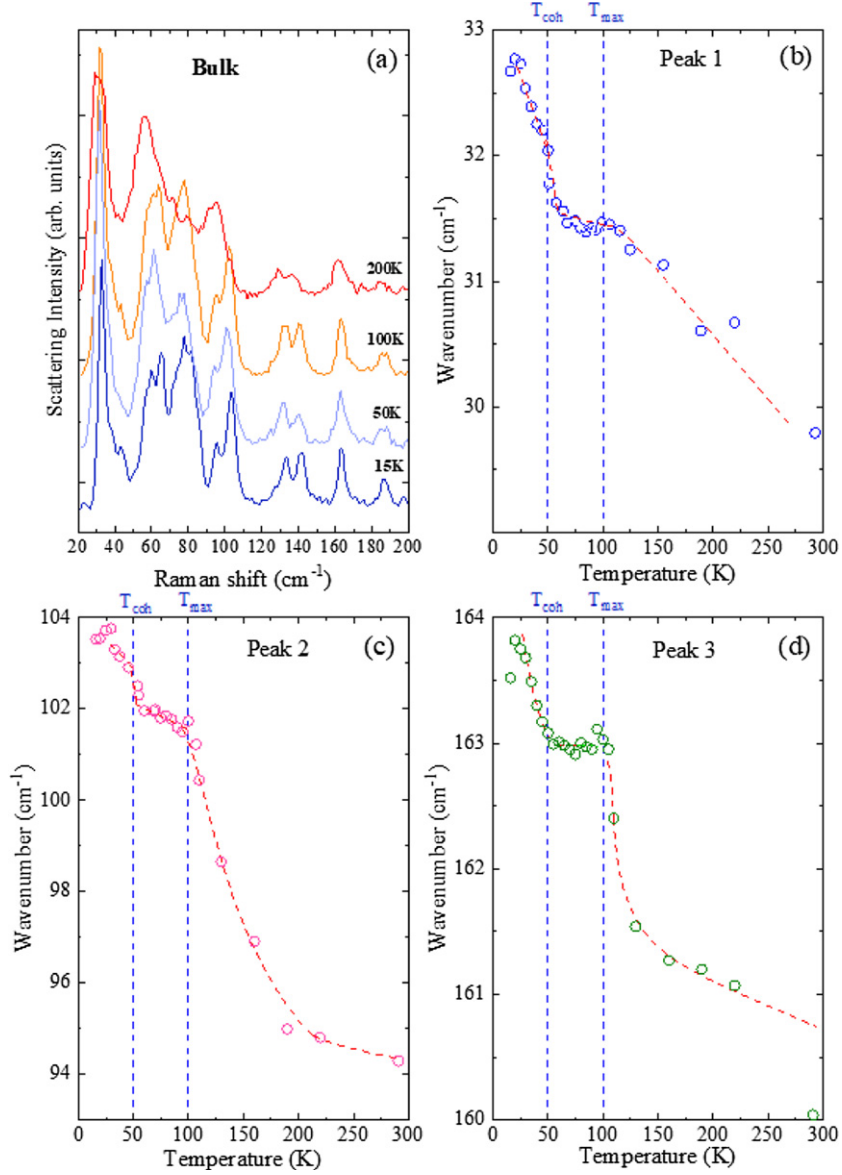


Figure 6. (a) Unpolarized Raman spectra measured on the bulk for several temperatures. (b)–(d) Frequencies of the 1, 2 and 3 phonon modes as a function of temperature, respectively. Experimental errors on phonons frequencies are around 0.2 cm^{-1} . The vertical lines corresponds to the transition temperatures $T_{\text{coh}} \simeq 50 \text{ K}$ and $T_{\text{max}} \simeq 100 \text{ K}$.

The glassy transition at $T_g \simeq 80 \text{ K}$ associated with the freezing of the terminal ethylene groups of the ET molecule [32], occurs in the middle of the temperature plateau. Therefore, the plateau observed in the phonon frequencies does not seem to be related to T_g . Moreover, if the glassy transition froze out the relevant phonon modes, pronounced changes in intensity and shifts in the energy position of the related phonon modes would be expected. This is supported by the work of Kuwata *et al* suggesting that the decrease in the ethylene motion at T_g does not contribute to the mechanism associated to T_{max} even if the mechanism causing the T_{max} anomalies is still under debate [23]. The resistivity maximum was assigned to Wigner Mott scaling, for instance [60].

The behavior of the phonon modes between 50 K and 100 K is rather similar to that observed in resistivity measurements. The resistivity increases lowering the temperature from room

temperature and reaches a broad maximum similar to a plateau around 100 K. The difference between our measurements and resistivity measurements appears at lower temperature. After the broad maximum, the resistivity falls rapidly decreasing the temperature [20]. This change in resistivity is understood in terms of the crossover from a bad metal at high temperatures to a Fermi liquid and the formation of quasiparticles [15, 16]. Here the three phonon modes at low energy seem to be sensitive to the bad metal phase.

3.2.2. Nanoparticles. Figure 7 shows unpolarized Raman spectra of the NPs at selected temperatures between 10 and 250 K and the evolution of phonons 1, 2 and 3 (cf figure 5). Note that no quadrupolar vibrational mode associated to the breathing mode of the NPs is observed [61]. The frequencies of all three modes display essentially the same behavior although the peak 2 presents attenuated anomalies compared to the other two peaks.

In figure 7, we can see a deviation from the standard phonon behavior below 100 K and a double hump for the three phonons with a first minimum closed to $T_{\text{coh}} = 50$ K and a small softening around $T_{\text{FL}} = 25$ K. Such behavior is different from the one observed in the bulk. Note that the amplitude of the minima are much higher than the experimental error on the frequency of the phonon modes (0.2 cm^{-1}).

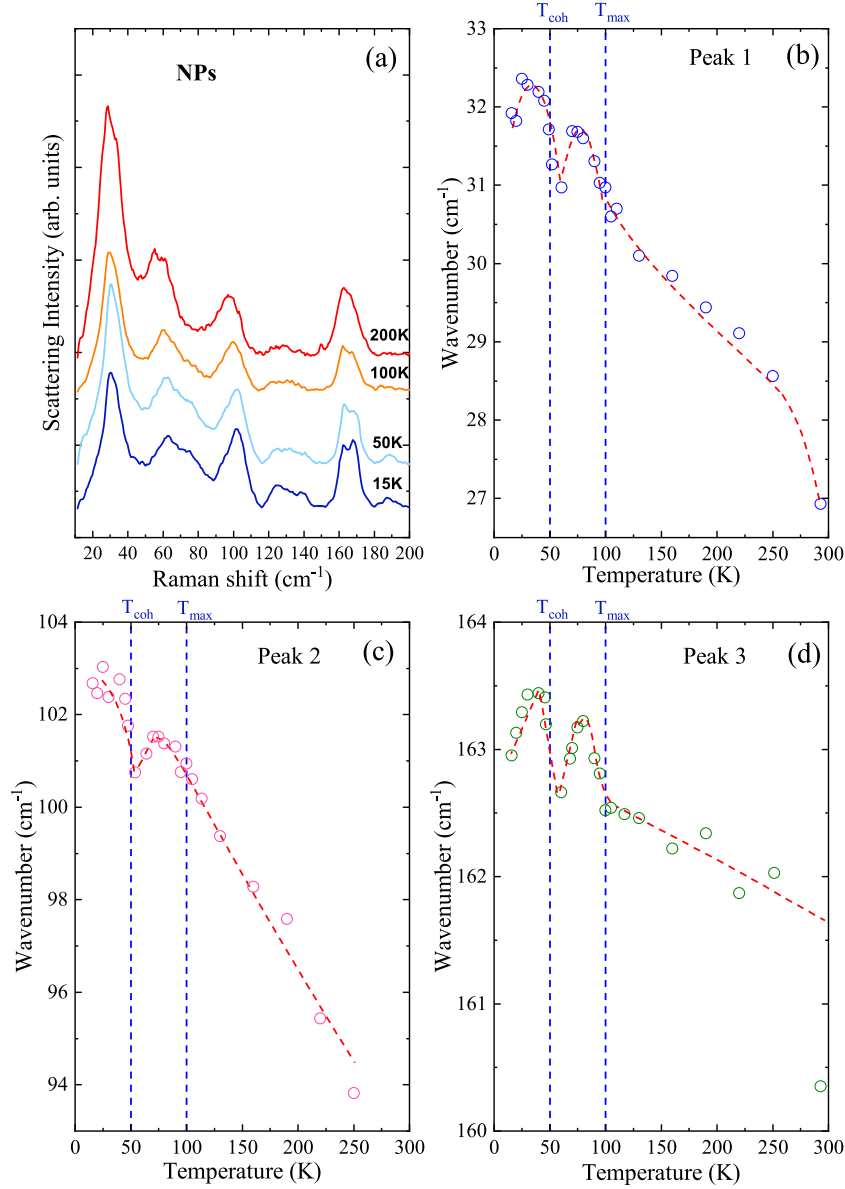


Figure 7. (a) Unpolarized Raman spectra of the NPs for several temperatures. (b)–(d) Frequencies of the 1, 2 and 3 phonon modes as a function of temperature, respectively. Experimental errors on phonons frequencies are around 0.2 cm^{-1} .

The softening of the phonon modes at 25 K might be related to the crossover to the pure Fermi liquid. This softening is also observed in the bulk (figure 6) but it is very small.

We can provide several approaches to explain the softening of the three phonon modes at $T_{\text{coh}} = 50$ K, temperature associated to the crossover from a bad metal to a Fermi liquid.

From a theoretical point of view, the Hubbard–Holstein model using DMFT has been able to predict the crossover from

We can provide several approaches to explain the softening of the three phonon modes at $T_{\text{coh}} = 50$ K, temperature associated to the crossover from a bad metal to a Fermi liquid.

From a theoretical point of view, the Hubbard–Holstein model using DMFT has been able to predict the crossover from a high temperature bad metal, characterized by the absence of quasiparticles, to a Fermi liquid, transition that occurs in $\kappa\text{-(ET)}_2\text{Cu(NCS)}_2$ at T_{coh} [62]. Anomalies in the real part of the phonon self energy have been calculated from this model. Such anomalies induce the softening of the phonon frequencies at $T_{\text{coh}} = 50$ K, the temperature associated to the quasiparticle formation, followed by the hardening of the frequencies at lower temperature. The trend of the phonon frequencies in figure 7 is similar to predicted modes with frequency around $U/2$ in reference [62]. U is the effective repulsion between two electrons on the same ET_2 dimer and $U/2$ is the location of the Hubbard bands in the spectral function [62]. The value of $U/2$ has been calculated [33, 63] and reasonably estimated [11] around 1000 cm^{-1} . Our observations on the low frequency phonons located in frequency well below this value can not be explained by this model. However, the Mott physics cannot be totally rule out. A strong enhancement of the low-energy spectral weight has been measured in the conductivity of related compounds as $\kappa\text{-(BEDT-TTF)}_2\text{Cu}_2(\text{CN})_3$ close to the Mott transition [64]. Note that, $\kappa\text{-(ET)}_2\text{Cu(NCS)}_2$ is located in the metallic side of the phase diagram of this family of compounds but it is not so far from the Mott transition. Similar to related organic compounds [11, 12, 65], pronounced spectral weight shifts are expected at low frequencies upon the crossover between bad metal and Fermi liquid.

From semiconducting to metallic phase, the electrodynamic response and the conductivity below 1000 cm^{-1} are strongly modified. As a consequence, the electronic background which is a function of the polarizability and the coupling to the phonons should change.

The opening of a pseudogap below $T_{\text{coh}} \simeq 50$ K or a rapid decay in the spin fluctuations associated with the formation of quasiparticles has been proposed to interpret nuclear magnetic resonance experiments where a sharp maximum in the spin fluctuations is observed at $T_{\text{coh}} \simeq 50$ K [29–31]. Both possibilities could be at the origin of the softening of the three phonon modes at $T_{\text{coh}} = 50$ K.

To distinguish them, a first argument is given by the expected signature of a pseudogap in Raman spectra. A pseudogap opening is characterized by a modification of spectral weight in the electronic background from above to below the pseudogap temperature. We did not observe such a behavior in the electronic background of our spectra. So far, no microscopic model has been developed to describe the phonon behavior in the presence of a pseudogap, however one knows that the opening of a gap can be associated to phonon softening. In high temperature superconductors, phonons with an energy below the energy of the pair-breaking peak soften, whereas they harden if their energies are above the gap [40, 66]. In our experiment, the phonon 3 in figure 7 softens significantly below T_{coh} . To be consistent with a possible gap opening, the energy of this gap must be equal to or higher than the energy of the highest phonon that is softening. This situation corresponds to an opening of a pseudogap above $163\text{ cm}^{-1} = 237$ K. However this energy is higher than T_{coh} .

This means that the softening of the three phonon modes at T_{coh} has little chance from being related to the opening of a pseudogap. Remain the rapid decay in the spin fluctuations associated with the formation of quasiparticles as a possibility to explain our measurements below 50 K in NPs. Under such a hypothesis, the spin–phonon coupling might be the link between the observed phonon anomalies and the spin fluctuations. Although we cannot accurately determine the origin of these phonon anomalies, the measured phonon softenings at T_{coh} show that these phonon modes are connected to the transition from the bad metal to the Fermi liquid phase.

One question remains. Why are these anomalies observed in the NPs and not in the bulk? NPs differ qualitatively from the bulk due to their larger surface-to-volume ratios. Knowing that our NPs are 28 nm diameter-large, the surfaces effects on the bulk properties can no longer be overlooked. Reduced symmetry at the surface increases surface anisotropy due to factors including broken exchange bonds and interatomic distance variation. This could be at the origin of the greater sensitivity of the phonons of NPs to spin fluctuations.

4. Conclusion

In summary, we have investigated the organic compound $\kappa\text{-(ET)}_2\text{Cu(NCS)}_2$ in the form of bulk and NPs by Raman light scattering and observed anomalies in the low frequency phonon energies as a function of temperature. In the bulk, the changes in peak energy between 100 and 50 K are attributed to the signature of the bad metal. For NPs, the anomalies around and below $T_{\text{coh}} \simeq 50$ K are related to the transition from the bad metal to the Fermi liquid and might be associated to spin fluctuations and their rapid decay.

Data availability statement

All data that support the findings of this study are included within the article (and any supplementary files).

ORCID iDs

M Cazayous  <https://orcid.org/0000-0003-0058-2154>

References

- [1] Jalabert A, Amara A and Clermidy F 2008 *Molecular Electronics Materials, Devices and Applications* (Berlin: Springer)
- [2] Dressel M 2018 *Cryst.* **8** 332
- [3] Ishiguro T, Yamaji K and Saito G 1998 *Organic Superconductors* (Berlin: Springer)
- [4] Lang M and Muller J 2004 and 2008 Organic superconductors *The Physics of Superconductors* vol II ed K H Bennemann and J B Ketterson (Berlin: Springer)
- [5] Powell B J and McKenzie R H 2006 *J. Phys.: Condens. Matter.* **18** R827
- [6] Lebed A 2008 *The Physics of Organic Superconductors and Conductors* (Berlin: Springer)
- [7] Drichko N, Hackl R and Schlueter J A 2015 *Phys. Rev. B* **92** 161112(R)
- [8] Keimer B *et al* 1992 *Phys. Rev. B* **46** 14034
- [9] Sugano T, Terui K, Mino S, Nozawa K, Urayama H, Yamochi H, Saito G and Kinoshita M 1988 *Chem. Lett.* **17** 1171
- [10] Urayama H *et al* 1988 *Chem. Lett.* **17** 55
- [11] Faltermeier D *et al* 2007 *Phys. Rev. B* **76** 165113
- [12] Merino J, Dumm M, Drichko N, Dressel M and McKenzie R H 2008 *Phys. Rev. Lett.* **100** 086404
- [13] Strack C *et al* 2005 *Phys. Rev. B* **72** 054511
- [14] Limelette P, Wzietek P, Florens S, Georges A, Costi T A, Pasquier C, Jérôme D, Mézière C and Batail P 2003 *Phys. Rev. Lett.* **91** 016401
- [15] Milbradt S, Bardin A A, Truncik C J S, Huttema W A, Jacko A C, Burn P L, Lo S-C, Powell B J and Broun D M 2013 *Phys. Rev. B* **88** 064501
- [16] Deng X, Mravlje J, Žitko R, Ferrero M, Kotliar G and Georges A 2013 *Phys. Rev. Lett.* **110** 086401
- [17] Dressel M and Drichko N 2004 *Chem. Rev.* **104** 5689
- [18] Frikach K, Poirier M, Castonguay M and Truong K D 2000 *Phys. Rev. B* **61** R6491
- [19] Merino J and McKenzie R H 2000 *Phys. Rev. B* **61** 7996
- [20] Analytis J G, Ardavan A, Blundell S J, Owen R L, Garman E F, Jaynes C and Powell B J 2006 *Phys. Rev. Lett.* **96** 177002
- [21] Su X, Zuo F, Schlueter J A, Kelly M E and Williams J M 1998 *Phys. Rev. B* **57** R14056
- [22] Kotliar G and Vollhardt D 2004 *Phys. Today* **57** 53
- [23] Kuwata Y, Itaya M and Kawamoto A 2011 *Phys. Rev. B* **83** 144505
- [24] Singleton J 2000 *Rep. Prog. Phys.* **63** 1111
- [25] Caulfield J *et al* 1995 *Synth. Met.* **70** 185
- [26] Moriya T and Ueda K 2000 *Adv. Phys.* **49** 555
- [27] Millis A J, Monien H and Pines D 1990 *Phys. Rev. B* **42** 167
- [28] Yusuf E, Powell B J and McKenzie R H 2007 *Phys. Rev. B* **75** 214515
- [29] Kawamoto A, Miyagawa K, Nakazawa Y and Kanoda K 1995 *Phys. Rev. Lett.* **74** 3455
- [30] Kawamoto A, Miyagawa K, Nakazawa Y and Kanoda K 1995 *Phys. Rev. B* **52** 15522
- [31] Powell B J and McKenzie R H 2011 *Rep. Prog. Phys.* **74** 056501
- [32] Müller J, Lang M, Steglich F, Schlueter J A, Kini A M and Sasaki T 2002 *Phys. Rev. B* **65** 144521
- [33] Scriven E and Powell B J 2009 *Phys. Rev. B* **80** 205107
- [34] Powell B J and McKenzie R H 2004 *Phys. Rev. B* **69** 024519
- [35] Taniguchi H, Kanoda K and Kawamoto A 2003 *Phys. Rev. B* **67** 014510
- [36] Dressel M, Eldridge J E, Williams J M and Wang H H 1992 *Physica C* **203** 247
- [37] Pedron D, Visentini G, Bozio R, Williams J M and Schlueter J A 1997 *Physica C* **276** 1
- [38] Lin Y, Eldridge J E, Schlueter J A, Wang H H and Kini A M 2001 *Phys. Rev. B* **64** 024506
- [39] Truong K D, Jandl S and Poirier M 2007 *Synth. Met.* **157** 252
- [40] Zeyher R and Zwicky G 1990 *Z. Phys. B* **78** 175
- [41] Revelli Beaumont M *et al* 2020 *Synth. Met.* **261** 116310
- [42] Kozlov M E, Pokhodnia K I and Yurchenko A A 1987 *Spectrochim. Acta A* **43** 323
- [43] Demiralp E and Goddard W A 1995 *Synth. Met.* **72** 297
- [44] Demiralp E, Dasgupta S and Goddard W A 1995 *J. Am. Chem. Soc.* **117** 8154
- [45] Demiralp E and Goddard W A 1998 *J. Phys. Chem. A* **102** 2466
- [46] Eldridge J E, Homes C C, Williams J M, Kini A M and Wang H H 1995 *Spectrochim. Acta A* **51** 947
- [47] Lin Y, Eldridge J E, Williams J M, Kini A M and Wang H H 1999 *Spectrochim. Acta A* **55** 839
- [48] Dressel M, Lazic P, Pustogow A, Zhukova E, Gorshunov B, Schlueter J A, Milat O, Gumhalter B and Tomic S 2016 *Phys. Rev. B* **93** 081201
- [49] Pinterić M *et al* 2016 *Phys. Rev. B* **94** 161105
- [50] Eldridge J E, Xie Y, Lin Y, Homes C C, Wang H H, Williams J M, Kini A M and Schlueter J A 1997 *Spectrochim. Acta A* **53** 565
- [51] Eldridge J E, Wang H H, Kini A M and Schlueter J A 2002 *Spectrochim. Acta A* **58** 2237
- [52] Sugai S, Mori H, Yamochi H and Saito G 1993 *Phys. Rev. B* **47** 14374
- [53] Kornelsen K, Eldridge J E, Wang H H and Williams J M 1991 *Phys. Rev. B* **44** 5235
- [54] Kozlov M E, Pokhodnia K I and Yurchenko A A 1989 *Spectrochim. Acta A* **45** 437
- [55] Maksimuk M, Yakushi K, Taniguchi H, Kanoda K and Kawamoto A 2001 *J. Phys. Soc. Japan* **70** 3728
- [56] Swietlik R, Garrigou-Lagrange C, Sourisseau C, Pages G and Delhaes P 1992 *J. Mater. Chem.* **2** 857
- [57] Zamboni R and Schweitzer D 1989 *Z. Naturforsch.* **44** 298
- [58] Pedron D, Bozio R, Schlueter J A, Kelly M E, Kini A M and Williams J M 1999 *Synth. Met.* **103** 2220
- [59] Wolter A U B, Feyerherm R, Dudzik E, Sullow S, Strack A, Lang M and Schweitzer D 2007 *Phys. Rev. B* **75** 104512
- [60] Radonjić M M, Tanasković D, Dobrosavljević V, Haule K and Kotliar G 2012 *Phys. Rev. B* **85** 085133
- [61] Duval E, Boukenter A and Champagnon B 1986 *Phys. Rev. Lett.* **56** 2052
- [62] Merino J and McKenzie R H 2000 *Phys. Rev. B* **62** 16442
- [63] Scriven E and Powell B J 2009 *J. Chem. Phys.* **130** 104508
- [64] Pustogow A *et al* 2018 *Nat. Mater.* **17** 773
- [65] Takenaka K, Tamura M, Tajima N, Takagi H, Nohara J and Sugai S 2005 *Rev. Lett.* **95** 227801
- [66] Bakr M, Schnyder A P, Klam L, Manske D, Lin C T, Keimer B, Cardona M and Ulrich C 2009 *Phys. Rev. B* **80** 064505