



HAL
open science

Do whales really care about conventional fisheries acoustics?

Leif Nøttestad, Patrice Brehmer, Erwan Josse, Lise Doksæter, Gianni Pavan, Gorka Sancho, Anne Lebourges-Dhaussy, Stratis Georgakarakos, Riaz Aumeeruddy, John Dalen

► To cite this version:

Leif Nøttestad, Patrice Brehmer, Erwan Josse, Lise Doksæter, Gianni Pavan, et al.. Do whales really care about conventional fisheries acoustics?. THE EFFECTS OF NOISE ON AQUATIC LIFE, Aug 2007, NYBORG, Denmark. 1 p. multigr. hal-03224799

HAL Id: hal-03224799

<https://hal.science/hal-03224799>

Submitted on 12 May 2021

HAL is a multi-disciplinary open access archive for the deposit and dissemination of scientific research documents, whether they are published or not. The documents may come from teaching and research institutions in France or abroad, or from public or private research centers.

L'archive ouverte pluridisciplinaire **HAL**, est destinée au dépôt et à la diffusion de documents scientifiques de niveau recherche, publiés ou non, émanant des établissements d'enseignement et de recherche français ou étrangers, des laboratoires publics ou privés.

Public Domain

Do whales really care about conventional fisheries acoustics?



Leif Nøttestad¹, Patrice Brehmer², Erwan Josse², Lise Doksaeter¹, Gianni Pavan³, Gorka Sancho⁴, Anne Lebourges-Dhaussy², Stratis Georgakarakos⁵, Riaz Aumeeruddy⁶ and John Dalen¹

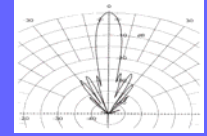
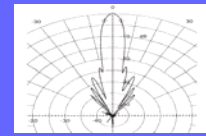
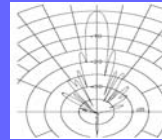
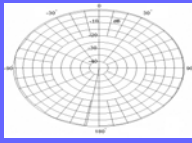
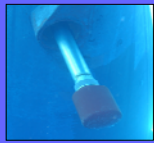
¹Institute of Marine Research, P.O.Box 1870 Nordnes, 5817 Bergen, Norway / ²Centre IRD Bretagne BP 70, 29280 Plouzane, France / ³Centro Interdisciplinare di Bioacustica e Ricerche Ambientali, Università degli Studi di Pavia, Via Taramelli 24, 27100 Pavia, Italia / ⁴Grice Marine Laboratory, College of Charleston, 205 Fort Johnson, Charleston, SC 29412, USA ⁵Fisheries and Sonar Laboratory Department of Marine Sciences, University of the Aegean, University Hill, 81100 Mytilini, Lesvos Island, Greece / ⁶Seychelles Fishing Authority, PO Box 449, Victoria, Seychelles

Introduction

Acoustic monitoring is considered essential for the modern exploration and understanding of marine communities and ecosystems. Nevertheless, underwater noise pollution may have potentially negative effects, particularly on marine mammal and fish physiology and behaviour. This study aims to quantify how offshore whales and dolphins react on conventional fisheries acoustics from both a stationary and moving research vessel.

Material & Methods

An acoustic monitoring methodology was applied with conventional fisheries acoustic instrumentation. A three-frequency echosounder (38, 70 and 120 kHz) and an omnidirectional multibeam sonar (24 kHz) were connected to artificial drifting Fish Aggregating Devices (FADs) during an international scientific cruise (February 2004) in the western Indian Ocean. A moving vessel equipped with multi-frequency echosounders (18, 38, 70, 120 and 200 kHz) and multibeam (20-30, 110-120 kHz) sonars was also used during an ecosystem survey in the Norwegian Sea. Digital filming and ping-to-ping sonar tracking of animals were used to study marine mammal behaviour and possible reaction patterns to emitted sound from hydro-acoustic instrumentation.



Sonar transducer.

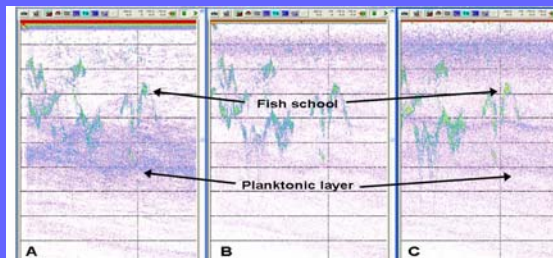
Horizontal directivity diagram.

Echosounder transducers.

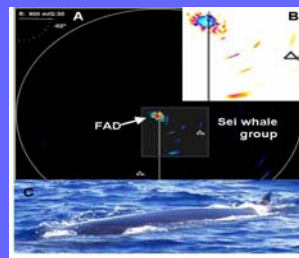
Longitudinal directivity diagrams of 38, 70 and 120 kHz Simrad EK60 transducers.

Results

When using conventional fisheries acoustics in the Indian Ocean, a group of sei whale approached a stationary vessel, providing some evidence that the acoustic signals did not cause a measurable avoidance response by the whales. Similarly, large whales (fin, humpback and sperm whales), and dolphins (pilot and killer whales) did not show measurable behavioural responses and avoidance reactions towards a moving vessel. Groups of whales and dolphins were actively feeding on herring, mackerel and krill for 10-40 minutes simultaneously as the vessel was within 50-800 meters distance at different speed (2-12 knots). Our results suggest that many marine mammals in open oceans do not actively avoid stationary or moving vessels applying fisheries acoustics.



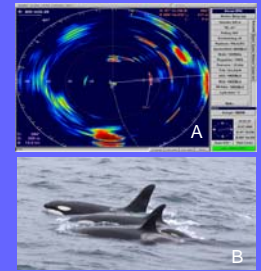
Echosounder multi-frequencies observations [from 0 to 100 m: (A) 38 kHz, (B) 70 kHz and (C) 120 kHz] allowed discrimination of deep scattering layers (DSL), large individual pelagic fish, as well as clearly detectable shoals and schools of fish in close distance to and near vicinity of the instrumented platform, here a FAD tied to a vessel in the Indian Ocean.



(A) Multibeam sonar allowed whale's detection in a diameter up to 1800 m. (B) Zoomed sonar picture of sei whale group visiting the FAD. (C) Sei whale (*Balaenoptera borealis*) observed at the surface beside the instrumented FAD.



(A) Multibeam sonar detection of two humpback whales (*Megaptera novaeangliae*) (B) picture of a diving humpback whale from the Norwegian Sea.



(A) Multibeam sonar detection of seven killer whales (*Orcinus orca*) hunting mackerel schools in the central Norwegian Sea. (B) corresponding picture.

Further studies are needed to find operational hydro-acoustic thresholds (intensity, time and frequency), according to species and area specific hearing sensibility and reaction patterns, and to enlighten the physical/physiological impacts of human induced acoustic stimuli on marine mammals. We stress the importance of defining "**Underwater Noise Tolerance Thresholds**", as other anthropogenic sounds may strongly influence marine mammal behaviour and physiology.

Acknowledgement: To JF Gosselin (Marine mammal Section, Institut Maurice-Lamontagne, Canada). Skippers and crew onboard Indian Ocean Explorer and Libas. These studies were supported by the FADIO project (EU Commission) and the Ministry of Fisheries and Coastal Affairs in Norway.

Contact person:
leif.nottestad@imr.no

