



HAL
open science

Determinants of Therapeutic Lag in Multiple Sclerosis

Izanne Roos, Emmanuelle Leray, Federico Frascoli, Romain Casey, J William L Brown, Dana Horakova, Eva Havrdova, Marc Debouverie, Maria Trojano, Francesco Patti, et al.

► **To cite this version:**

Izanne Roos, Emmanuelle Leray, Federico Frascoli, Romain Casey, J William L Brown, et al.. Determinants of Therapeutic Lag in Multiple Sclerosis. *Multiple Sclerosis Journal*, 2021, 27 (12), pp.1838-1851. 10.1177/1352458520981300 . hal-03223056

HAL Id: hal-03223056

<https://hal.science/hal-03223056>

Submitted on 20 May 2021

HAL is a multi-disciplinary open access archive for the deposit and dissemination of scientific research documents, whether they are published or not. The documents may come from teaching and research institutions in France or abroad, or from public or private research centers.

L'archive ouverte pluridisciplinaire **HAL**, est destinée au dépôt et à la diffusion de documents scientifiques de niveau recherche, publiés ou non, émanant des établissements d'enseignement et de recherche français ou étrangers, des laboratoires publics ou privés.

DETERMINANTS OF THERAPEUTIC LAG IN MULTIPLE SCLEROSIS

Authors:

Izanne Roos, Emmanuelle Leray, Federico Frascoli, Romain Casey, J. William L. Brown, Dana Horakova, Eva Kubala Havrdova, Marc Debouverie, Maria Trojano, Francesco Patti, Guillermo Izquierdo, Sara Eichau, Gilles Edan, Alexandre Prat, Marc Girard, Pierre Duquette, Marco Onofri, Alessandra Lugaresi, Pierre Grammond, Jonathan Ciron, Aurélie Ruet, Serkan Ozakbas, Jérôme De Seze, Céline Louapre, Hélène Zephir, Maria José Sá, Patrizia Sola, Diana Ferraro, Pierre Labauge, Gilles Defer, Roberto Bergamaschi, Christine Lebrun-Frenay, Cavit Boz, Elisabetta Cartechini, Thibault Moreau, David Laplaud, Jeannette Lechner-Scott, Francois Grand'Maison, Oliver Gerlach, Murat Terzi, Franco Granella, Raed Alroughani, Gerardo Iuliano, Vincent Van Pesch, Bart Van Wijmeersch, Daniele L.A Spitaleri, Aysun Soysal, Eric Berger, Julie Prevost, Eduardo Aguera-Morales, Pamela McCombe, Tamara Castillo Triviño, Pierre Clavelou, Jean Pelletier, Recai Turkoglu, Bruno Stankoff, Olivier Gout, Eric Thouvenot, Olivier Heinzlef, Youssef Sidhom, Riadh Gouider, Tunde Csepány, Abullatif Al-Khedr, Bertrand Bourre, Olivier Casez, Philippe Cabre, Alexis Montcuquet, Abir Wahab, Jean-Philippe Camdessanche, Aude Maurousset, Ivania Patry, Karolina Hankiewicz, Corinne Pottier, Nicolas Maubeuge, Céline Labeyrie, Chantal Nifle, Alasdair Coles, Charles B Malpas, Sandra Vukusic, Helmut Butzkueven and Tomas Kalincik

On behalf of the MSBase and OFSEP study groups

Affiliations:

Izanne Roos; CORe, Department of Medicine, University of Melbourne, Melbourne, Australia; Melbourne MS Centre, Department of Neurology, Royal Melbourne Hospital, Melbourne, Australia

Emmanuelle Leray; Rennes University, EHESP, REPERES – EA 7449, F-35000 Rennes, France; Univ Rennes, CHU Rennes, Inserm, CIC 1414 [(Centre d'Investigation Clinique de Rennes)], F-35000 Rennes, France

Federico Frascoli; Faculty of Science, Engineering and Technology, School of Science, Department of Mathematics, Swinburne University of Technology, Melbourne, Australia

Romain Casey; Université de Lyon, Université Claude Bernard Lyon 1, F-69000 Lyon, France; Hospices Civils de Lyon, Service de Neurologie, sclérose en plaques, pathologies de la myéline et neuro-inflammation, F-69677 Bron, France; Observatoire Français de la Sclérose en Plaques, Centre de Recherche en Neurosciences de Lyon, INSERM 1028 et CNRS UMR 5292, F-69003 Lyon, France; EUGENE DEVIC EDMUS Foundation against multiple sclerosis, state-approved foundation, F-69677 Bron, France.

J. William L. Brown; Department of Clinical Neurosciences, University of Cambridge, Cambridge, United Kingdom; CORe, Department of Medicine, University of Melbourne, Melbourne, Australia

Dana Horakova; Department of Neurology and Center of Clinical Neuroscience, First Faculty of Medicine, Charles University in Prague and General University Hospital, Prague, Czech Republic

Eva Kubala Havrdova; Department of Neurology and Center of Clinical Neuroscience, First Faculty of Medicine, Charles University in Prague and General University Hospital, Prague, Czech Republic

Marc Debouverie; Nancy University Hospital, Department of Neurology, Nancy, France. Université de Lorraine, APEMAC, F-54000 Nancy, France.

Maria Trojano; Department of Basic Medical Sciences, Neuroscience and Sense Organs, University of Bari, Bari, Italy

Francesco Patti; GF Ingrassia Department, University of Catania, Catania, Italy; Policlinico G Rodolico

Guillermo Izquierdo; Hospital Universitario Virgen Macarena, Sevilla, Spain

Sara Eichau; Hospital Universitario Virgen Macarena, Sevilla, Spain

Gilles Edan; Centre hospitalier universitaire de Rennes, Hôpital Pontchaillou, Service de neurologie, CIC1414 INSERM, F-35000 Rennes France.

Alexandre Prat; CHUM MS Center and Université de Montreal, Montreal, Canada

Marc Girard; CHUM MS Center and Université de Montreal, Montreal, Canada

Pierre Duquette; CHUM MS Center and Université de Montreal, Montreal, Canada

Marco Onofri; Department of Neuroscience, Imaging, and Clinical Sciences, University G. d'Annunzio, Chieti, Italy

Alessandra Lugaresi; IRCCS Istituto delle Scienze Neurologiche di Bologna, Bologna, Italia; Dipartimento di Scienze Biomediche e Neuromotorie, Università di Bologna, Bologna, Italia

Pierre Grammond; CISSS Chaudière-Appalache, Lévis, Canada

Jonathan Ciron; CHU de Toulouse, Hôpital Pierre-Paul Riquet, Department of Neurology, CRC-SEP, F-31059 Toulouse Cedex 9, France

Aurélie Ruet; Univ. Bordeaux, F-33000 Bordeaux; INSERM U1215, Neurocentre Magendie, F-33000 Bordeaux; CHU de Bordeaux, Department of neurology, CIC Bordeaux CIC1401, F-33000 Bordeaux, France.

Serkan Ozakbas; Dokuz Eylul University, Konak/Izmir, Turkey

Jérôme De Seze; CHU de Strasbourg, Department of Neurology and Clinical Investigation Center, CIC (centre d'investigation clinique) INSERM 1434, F-67000 Strasbourg, France

Céline Louapre ; Sorbonne Université, Institut du Cerveau, ICM, Assistance Publique Hôpitaux de Paris APHP, Département de neurologie, Hôpital de la Pitié Salpêtrière, Paris, France

Hélène Zephir; CHU Lille, CRCSEP Lille, Univ Lille, U1172, F-59000 Lille, France

Maria José Sá; Centro Hospitalar Universitário de São João and Universidade Fernando Pessoa, Porto, Portugal

Patrizia Sola; Department of Neuroscience, Azienda Ospedaliera Universitaria, Modena, Italy

Diana Ferraro; Department of Biomedical, Metabolic and Neurosciences, University of Modena and Reggio Emilia, Modena, Italy

Pierre Labauge; CHU de Montpellier, MS Unit, F-34295 Montpellier Cedex 5, France; University of Montpellier (MUSE), F-34000 Montpellier, France

Gilles Defer; CHU de Caen, MS expert centre, Department of Neurology, avenue de la Côte-de-Nacre, Normandy University, 14033 Caen France

Roberto Bergamaschi; IRCCS Mondino Foundation, Pavia, Italy

Christine Lebrun-Frenay; CRCSEP Nice, UR2CA, Université Nice Côte d'Azur, Centre hospitalier universitaire de Nice, Hopital Pasteur 2, 06002 Nice France

Cavit Boz; KTU Medical Faculty Farabi Hospital, Trabzon, Turkey

Elisabetta Cartechini; UOC Neurologia, Azienda Sanitaria Unica Regionale Marche - AV3, Macerata, Italy

Thibault Moreau; CHU de Dijon, Department of Neurology, EA4184, F-21000 Dijon, France

David Laplaud; CHU de Nantes, Service de Neurologie & CIC015 INSERM, F-44093 Nantes, France; CRTI-Inserm U1064, F-44000 Nantes, France

Jeannette Lechner-Scott; School of Medicine and Public Health, University Newcastle, Newcastle, Australia; Department of Neurology, John Hunter Hospital, Hunter New England Health, Newcastle, Australia

Francois Grand'Maison; Neuro Rive-Sud, Quebec, Canada

Oliver Gerlach, Department of Neurology, Zuyderland Medical Center, Sittard-Geleen, The Netherlands

Murat Terzi; Medical Faculty, 19 Mayıs University, Samsun, Turkey

Franco Granella; Department of Medicine and Surgery, University of Parma, Parma, Italy; Department of General Medicine, Parma University Hospital, Parma, Italy

Raed Alroughani; Division of Neurology, Department of Medicine, Amiri Hospital, Sharq, Kuwait

Gerardo Iuliano; Ospedali Riuniti di Salerno, Salerno, Italy

Vincent Van Pesch; Cliniques universitaires Saint-Luc, UCLouvain

Bart Van Wijmeersch; Rehabilitation and MS-Centre Overpelt and Hasselt University, Hasselt, Belgium

Daniele L.A Spitaleri; Neurological Unit AORN San G. Moscati, Avellino, Italy

Aysun Soysal; Bakirkoy Education and Research Hospital for Psychiatric and Neurological Diseases, Istanbul, Turkey

Eric Berger; CHU de Besançon, Department of Neurology, F-25000 Besançon, France

Julie Prevost; CSSS Saint-Jérôme, Saint-Jerome, Canada

Eduardo Aguera-Morales; Hospital Universitario Reina Sofia Cordoba (IMBIC), Cordoba, Spain

Pamela McCombe; University of Queensland, Brisbane, Australia; Royal Brisbane and Women's Hospital

Tamara Castillo Triviño; Instituto de Investigación Sanitaria Biodonostia, Hospital Universitario Donostia, San Sebastian, Spain

Pierre Clavelou; CHU Clermont-Ferrand, Department of Neurology, F-63000 Clermont-Ferrand; Université Clermont Auvergne, Inserm, Neuro-Dol, F-63000 Clermont-Ferrand, France France.

Jean Pelletier; Aix Marseille Univ, APHM, Hôpital de la Timone, Pôle de Neurosciences Cliniques, Service de Neurologie, 13005 Marseille, France.

Recai Turkoglu; Haydarpasa Numune Training and Research Hospital, Istanbul, Turkey

Bruno Stankoff; Sorbonne Universités, UPMC Paris 06, Brain and Spine Institute, ICM, Hôpital de la Pitié Salpêtrière, Inserm UMR S 1127, CNRS UMR 7225, and Department of Neurology, AP-HP, Saint-Antoine hospital, F-75000 Paris, France

Olivier Gout; Fondation Adolphe de Rothschild de l'œil et du cerveau, , Department of Neurology, F-75000 Paris, France

Eric Thouvenot; CHU de Nîmes, Department of Neurology, F-30029 Nîmes Cedex 9, France; Institut de Génomique Fonctionnelle, UMR5203, INSERM 1191, Université de Montpellier, F-34094 Montpellier Cedex 5, France

Olivier Heinzlef; Centre hospitalier intercommunal de Poissy Saint-Germain-en-Laye, Departement of Neurology, F-78300 Poissy, France

Youssef Sidhom; Department of Neurology -LR 18 SP03- CIC Neurosciences, Razi Hospital, La Manouba

Riadh Gouider; Department of Neurology -LR 18 SP03- CIC Neurosciences, Razi Hospital, La Manouba; Faculty of Medicine- UTM, Tunis, Tunisia

Tunde Csepany; Department of Neurology, Faculty of Medicine, University of Debrecen, Debrecen, Hungary

Abullatif Al-Khedr; Centre hospitalier universitaire d'Amiens Picardie, , Department of Neurology, F-80000 Amiens, France

Bertrand Bourre; Centre hospitalier universitaire Rouen Normandie, Hôpital Charles-Nicolle, Departement of Neurology, F-76000 Rouen, France

Olivier Casez; Centre hospitalier universitaire Grenoble-Alpes, Department of Neurology, F-38700 La Tronche/Grenoble, France

Philippe Cabre; Centre hospitalier universitaire de Martinique, Hôpital Pierre Zobda-Quitman, Department of Neurology, F-97200 Fort-de-France, France

Alexis Montcuquet; Centre hospitalier universitaire Limoges, Hôpital Dupuytren, Department of Neurology, F-87000 Limoges, France

Abir Wahab; Assistance publique des hôpitaux de Paris, Hôpital Henri Mondor, Department of neurology, F-94000 Créteil, France

Jean-Philippe Camdessanche; Centre hospitalier universitaire de Saint-Étienne, Hôpital Nord, Department of Neurology, F-42000 Saint-Étienne, France

Aude Maurousset; Centre hospitalier régional universitaire de Tours, Hôpital Bretonneau, CRC SEP and department of neurology, F-37000 Tours, France

Ivania Patry; Centre hospitalier sud francilien, Department of neurology, F-91160 Corbeil Essonnes, France

Karolina Hankiewicz; Department of neurology, Hôpital Pierre Delafontaine, Centre Hospitalier de Saint-Denis, F-93200 Saint-Denis, France

Corinne Pottier; Centre hospitalier de Pontoise, Hôpital René Dubos, Department of Neurology, F-95300 Pontoise, France

Nicolas Maubeuge; CHU La Milétrie, Hôpital Jean Bernard, Department of neurology, F-86000 Poitiers, France

Céline Labeyrie; Assistance publique des hôpitaux de Paris, Hôpital Bicêtre, Department of neurology, F-94275 Le Kremlin Bicêtre, France

Chantal Nifle; Centre hospitalier de Versailles, Hôpital André-Mignot, Departement of Neurology, F-78150 Le Chesnay, France

Alasdair Coles; Department of Clinical Neurosciences, University of Cambridge, Cambridge, United Kingdom

Charles B Malpas; CORe, Department of Medicine, University of Melbourne, Melbourne, Australia; Melbourne MS Centre, Department of Neurology, Royal Melbourne Hospital, Melbourne, Australia

Sandra Vukusic; Service de neurologie, sclérose en plaques, pathologies de la myéline et neuro-inflammation, Hôpital Neurologique Pierre Wertheimer, Hospices Civils de Lyon, 69677 Lyon/Bron, France; Centre des Neurosciences de Lyon, Observatoire Français de la Sclérose en Plaques, INSERM 1028 et CNRS UMR5292, 69003 Lyon, France; Université Claude Bernard Lyon 1, Faculté de médecine Lyon Est, F-69000 Lyon, France.

Helmut Butzkueven; Central Clinical School, Monash University, Melbourne, Australia; Department of Neurology, The Alfred Hospital, Melbourne, Australia; Department of Neurology, Box Hill Hospital, Monash University, Melbourne, Australia

Tomas Kalincik; CORe, Department of Medicine, University of Melbourne, Melbourne, Australia; Melbourne MS Centre, Department of Neurology, Royal Melbourne Hospital, Melbourne, Australia

Keywords:

Neurology, Multiple Sclerosis, Observational study, Therapeutic lag

Corresponding Author:

Tomas Kalincik

eMail: tomas.kalincik@unimelb.edu.au

Mailing address: L4 Centre, Melbourne Brain Centre at Royal Melbourne Hospital, Grattan Street, Parkville, VIC 3050, Australia

Telephone number: +61 3 9342 4404

Word Count: 3070

Abstract Word Count: 196
Reference count: 36

ABSTRACT

Background: A delayed onset of treatment effect, termed therapeutic lag, may influence the assessment of treatment response in some patient subgroups.

Objectives: Explore the associations of patient and disease characteristics with therapeutic lag on relapses and disability accumulation.

Methods: Data from MSBase, a multinational MS registry, and OFSEP, the French MS registry, were used. Patients diagnosed with MS, minimum 1-year exposure to MS treatment and 3-year pre-treatment follow-up were included in the analysis. Studied outcomes were incidence of relapses and disability accumulation. Therapeutic lag was calculated using an objective, validated method in subgroups stratified by patient and disease characteristics. Therapeutic lag under specific circumstances was then estimated in subgroups defined by combinations of clinical and demographic determinants.

Results: High baseline disability scores, annualised relapse rate (ARR) ≥ 1 and male sex were associated with longer therapeutic lag on disability progression in sufficiently populated groups: females with EDSS <6 and ARR <1 had mean lag of 26.6 weeks (95%CI 18.2-34.9), males with EDSS <6 and ARR <1 31.0 weeks (95%CI 25.3-36.8),

females with EDSS<6 and ARR>=1 44.8 weeks (95%CI 24.5-65.1), and females with EDSS>=6, ARR<1 54.3 weeks (95%CI 47.2-61.5).

Conclusions: Pre-treatment EDSS and ARR are the most important determinants of therapeutic lag.

INTRODUCTION

After starting a disease-modifying therapy (DMT), there is a delay to full clinically apparent treatment effect, referred to as 'therapeutic lag'.¹⁻⁵ As treatment decisions are often made in the face of ongoing disease activity, accurate expectations of timing of treatment effect is clinically relevant.⁶ Using an objective, differential calculus-derived method, the duration of therapeutic lag has been estimated to range between 12-30 weeks for relapses and 30-70 weeks for disability progression.⁷

It has been suggested that the duration of therapeutic lag is not uniform amongst patients, and may increase proportionate to the degree of pre-existing disability.³ A randomised placebo-controlled trial of interferon beta-1b in primary progressive MS failed to detect a beneficial treatment response after 2 years.⁸ When patient outcomes were revisited at year 7, after a 5-year treatment free period, cognitive and upper limb outcomes in patients initially randomised to interferon beta-1b were superior to those randomised to placebo.⁴ This suggests that in progressive MS, therapeutic lag may obscure a detectable effect of therapy if not accounted for analytically. As yet, therapeutic lag has not been incorporated into clinical trial design. Understanding the

effect of individual disease characteristics on the duration of therapeutic lag might aid personalised DMT decision-making.

In this study, we apply an objective, externally validated method to measure the duration of therapeutic lag with respect to disability progression and relapses. We aim to explore the associations of the duration of therapeutic lag with patient and disease characteristics.

METHODS

The MSBase registry⁹ (WHO ICTRP, ID ACTRN12605000455662) was approved by the Melbourne Health Human Research Ethics Committee, and by the local ethics committees in all participating centres. Written informed consent was obtained from enrolled patients as required. The Observatoire Français de la Sclérose en Plaques (OFSEP) cohort¹⁰ (WHO ICTRP, ID NCT02889965) was collected in accordance with French *Commission Nationale Informatique et Libertés* and French law relative to observational research.

Population and data collection

Longitudinal clinical and demographic data were extracted from the MSBase registry (125 centres in 37 countries) and OFSEP registry (39 French centres) in December 2018. Inclusion criteria consisted of: MS diagnosis as per the 2005¹¹ or 2010¹² McDonald Criteria, commencement of and persistence on a DMT for at least 12 months, minimum 3-year pre-treatment follow-up, yearly visits during the treatment

epoch (defined below) and availability of the minimum dataset. The minimum dataset consisted of patient age, sex, disease phenotype, disability (quantified by the Expanded Disability Status Scale (EDSS)) at baseline and two subsequent timepoints at least 6 months apart, MS duration, documentation of relapses, and date of treatment start and cessation (where applicable).

The prospective follow-up period was defined as time from first to the last available EDSS. Study baseline was defined as the start of the index DMT. All DMTs were eligible for study inclusion. A treatment epoch was defined as time including three years prior to baseline and one year (for the effect of relapses) and three years (for the effect on disability; see below) after baseline. In patients in whom multiple eligible baselines were identified, multiple eligible treatment epochs per patient were studied. Each treatment epoch was treated as independent.

All data were prospectively collected during routine clinical care predominantly from tertiary MS centres and entered near real-time into the iMed patient record or online data entry system for MSBase or EDMUS patient record for OFSEP. Standardised data quality processes were applied as previously described.¹³

Study outcomes

This study evaluated the time from treatment start to its full clinically manifest effect ('therapeutic lag') on disability progression and relapses in subgroups of patients with MS.

Disability progression was defined as an EDSS score increase of 1 point (1.5 points where EDSS is 0, 0.5 points if EDSS ≥ 6), confirmed over ≥ 6 months (in the absence of a relapse in the 30 days prior to confirmation), and sustained for the remainder of the treatment epoch.¹⁴ Relapses were defined as new symptoms or exacerbation of existing symptoms for at least 24 hours, in the absence of a concurrent illness or fever, and occurring at least 30 days after a previous relapse.¹⁵ The first episode of demyelination was considered a relapse. For analysis of disability, patients were required to be treated for at least one year, and all disability progression events recorded during a 3-year period were analysed, irrespective of treatment status. For the analysis of relapses patients were required to have one year on-treatment follow-up, and relapses recorded during this year were included in the analysis. Differences in analytical approaches are motivated by observations that DMTs effects on relapses is more immediate than the effect on disability.⁷

Classification of MS phenotype was analysed as documented by the treating physician. Additionally, secondary progressive MS (SPMS) was analysed as defined by an objective algorithm, which identifies SPMS with 87% accuracy in a timely manner.¹⁶ Annualised relapse rate (ARR) was calculated as the number of relapses in the three years before baseline. MS duration and onset were calculated from the first MS symptom.

By separately plotting the incidence of relapses and disability progression events in subgroups stratified by patient and disease characteristics, the duration of therapeutic lag was calculated by identifying the first local minimum of the first derivative after treatment start (supplementary figure 1).⁷ This local minimum represents the timepoint

at which stabilisation of the effect of treatment is reached on disability progression (T_d) and relapses (T_r). Therapeutic lag estimates were recalculated by non-parametric bootstrap with 10,000 repetitions.

Statistical analysis

Statistical analysis was conducted using *R* (version 3.5.3).¹⁷ Point and interval estimates of distribution were expressed as means with 95% confidence intervals, or medians with quartiles, as appropriate.

Therapeutic lag (T_d and T_r) was calculated for patient subgroups stratified by their demographic and clinical characteristics. As discussed elsewhere,⁷ a critical number of events are required to identify a stable, reliable estimate of therapeutic lag. Therefore, we only considered results from subgroups in whom more than 300 events were recorded (disability progression events or relapses), and for which T_d or T_r was identified in more than 80% of the bootstrap repetitions. Categorisation of continuous variables was performed by first computing quantiles and then aggregating the overlapping quantiles (supplementary table 1).

Studied potential baseline determinants of therapeutic lag were selected based on the results of prior studies (supplementary table 1).^{1, 3, 18-20} A prior analysis explored therapeutic lag in different DMTs: time to treatment effect for disability progression ranged between 30-52 weeks for all included therapies apart from interferon beta-1a IM (mean 70.4, 95% confidence interval [95%CI] 59.8-81.0) and time to treatment effect for relapses ranged between 9.4-19.8 weeks for all included therapies apart

from dimethyl fumarate (mean 30.2, 95%CI 26.6-33.7).⁷ Therefore, treatment identity was not considered to be a confounder of the estimated therapeutic lag and its effect on therapeutic lag was not evaluated in this study, unless dimethyl fumarate or interferon beta-1a IM were over-represented in any studied subgroup. In this circumstance the analysis was repeated after the exclusion of dimethyl fumarate (relapses) or interferon beta-1a (disability progression) treatment epochs.

Second, the patient characteristics identified by the above analysis as relevant determinants of T_d and T_r were included in pairwise analyses, in which therapeutic lag was estimated in groups defined by combinations of two characteristics. Third, combinations of determinants that consistently drove differences in therapeutic lag duration in the pairwise analyses were included in the final set of analyses in which groups were defined by combinations of multiple relevant patient characteristics. As mentioned above, we only considered results from sufficiently represented subgroups.

RESULTS

Patients and follow-up

A total of 5,415 patients (3,473 MSBase, 1,492 OFSEP) were included in the analysis of determinants of therapeutic lag for disability progression and 10,192 patients (6,051 MSBase, 4,141 OFSEP) in the determinants for relapses (figure 1). Supplementary table 2 shows the number of patients per contributing centre.

Although population characteristics were largely similar between registries, more patients in MSBase were commenced on an injectable therapy at baseline than those in OFSEP (disability cohort: MSBase 51.7%, OFSEP 41.4%; relapse cohort: MSBase 44.6%, OFSEP 33.1%). Details of the index DMT for each of the studied determinants of therapeutic lag are shown in supplementary table 4.

[[insert table 1 here]]

Therapeutic lag for disability progression

We identified three potential determinants of the duration of therapeutic lag for disability progression: disability (EDSS<6, 17.2 weeks, 13.6-20.5 [mean, 95% confidence interval]; EDSS≥6, 47.5, 23.7-71.3), relapse frequency (ARR<1, 29.2, 21.1-37.2; ARR≥1, 52.4, 38.9-65.9) and sex (female, 31.8, 26.2-37.5; male 55.8, 45.6-66.0) (figure 2). Patient and disease characteristics which did not influence T_d are shown in supplementary figure 2. For interferon beta-1a IM, in which we have previously shown longer T_d than the rest of the DMTs, we have assessed the differential use between the compared groups of patients (supplementary table 4a). As no substantial difference was apparent adjustment for treatment with interferon beta-1a IM was not necessary. All three individual determinants (EDSS, ARR and sex) contributed to differences in T_d when combined in pairwise analyses (supplementary table 5) and were included in the final set of analyses exploring all combinations of the three determinants. In these final models, T_d was calculated in 4 sufficiently represented groups (figure 3). In females with ARR<1 and EDSS<6 the mean T_d was 26.6 weeks (95%CI 18.2-34.9). This was 27.7 weeks shorter than the mean T_d among

females with $ARR < 1$ and $EDSS \geq 6$ (54.3, 95%CI 47.2-61.5), and not substantially different from males with $ARR < 1$ and $EDSS < 6$ (31.0, 95%CI 25.3-36.8).

Therapeutic lag for relapses

Baseline EDSS ($EDSS < 2$, 9.2 weeks, 7.0-11.4 [mean, 95% confidence interval]; $EDSS \geq 2$ and < 6 , 12.1, 11.1-13.2; $EDSS \geq 6$, 16.9, 13.8-19.9), ARR ($ARR < 2$, 14.9, 13.4-16.4; $ARR \geq 2$, 11.1, 9.3-12.8), sex (female, 14.3, 12.7-15.9; male, 9.8, 7.2-12.4), physician-defined MS phenotype (physician RRMS: 9.6, 7.5-11.6; physician SPMS: 14.7, 10.8-18.6) and algorithm-defined MS phenotype (algorithm RRMS: 10.0, 8.0-12.0; algorithm SPMS: 14.8, 11.8-17.7) were identified as potential determinants of T_r (figure 4); determinants which did not influence T_r are shown in supplementary figure 3. T_r was estimated in patients with RRMS and SPMS but not in patients with CIS or PPMS due to low total number of relapses (195 and 192 respectively). As T_r estimates for the algorithm-defined MS phenotype showed less overlap than for physician-defined MS phenotype, the former were used in subsequent analyses. For dimethyl fumarate, in which we have previously shown longer T_r than the rest of the DMTs, we have assessed the differential use between the compared groups of patients (supplementary table 4b). As no substantial difference was apparent adjustment for treatment with dimethyl fumarate was not necessary. Pairwise analyses of the individual determinants suggested that baseline EDSS, ARR and MS phenotype were independently associated with T_r (supplementary table 6) and were included in the set of analyses exploring all combinations of the four determinants. In these final models, T_r was calculated in 7 sufficiently represented groups (figure 5). Most notably, T_r was shorter in patients with RRMS and an $EDSS < 6$ compared to the other represented

groups. In patients with RRMS and $ARR < 2$, T_r was approximately 5 weeks shorter in patients with an EDSS < 6 compared to ≥ 6 . Detailed estimates of T_r in patient groups are shown in figure 5.

DISCUSSION

This study from the two largest MS registries showed that the time from commencing MS immunotherapy to its full clinically manifest effect (here termed therapeutic lag) is prolonged especially in patients with greater disability. Other contributing factors include low relapse frequency prior to commencement of therapy (associated with shorter therapeutic lag for disability progression events) and sex (with a mildly shorter time to maximum treatment effect on disability progression among females). Therapeutic lag for relapses was mildly prolonged in SPMS.

In contrast with evidence that DMTs reduce long term disability progression in RRMS, results in progressive MS have been comparatively disappointing. Beyond the pathologic differences in each disease stage, proposed methodological reasons have included patient selection, outcome selection, clinical trial design and therapeutic lag. Therapeutic lag was anecdotally observed when differences in disability outcomes occurred at year 7, but not year 2, of a randomised double-blind placebo-controlled trial of interferon beta-1b in PPMS.⁴ Our results show that T_r and T_d increase with baseline EDSS. Similarly, a post-hoc analysis of the SPECTRIMS (interferon beta-1a in SPMS)²¹ and PROMISE (glatiramer acetate in PPMS)²² trials reported that treatments influenced disability progression with a 2-2.5-year delay and that therapeutic lag duration increased with baseline EDSS.³ Whilst these findings mirror

our own, there were differences in the methodology used to estimate lag duration. Whereas the post-hoc analysis of the two clinical trials approximated the duration of *therapeutic lag (years) = baseline EDSS - 3 years*, we used an objective method based on differential calculus, suitable for calculation of therapeutic lag in sufficiently large subgroups, which we have validated in 2 non-overlapping registries.⁷

The role of MS phenotype in therapeutic lag was explored using both physician- and algorithm-defined definitions of SPMS; both definitions of MS phenotype led to similar estimates of lag. In the “multivariable” model that accounted for interactions among the individual determinants of T_r , the addition of MS phenotype contributed only minimally to the differences in the duration of T_r within the sufficiently populated groups - i.e. T_r was only 5 weeks longer in secondary progressive compared to relapsing-remitting patients with EDSS 2-6 and $ARR \leq 2$. MS phenotype did not significantly contribute to the duration of T_d . The observation that therapeutic lag duration was influenced by EDSS more consistently than MS phenotype supports the hypothesis that MS is a continuum, with elements of neuroaxonal loss and progression throughout its disease course, rather than a disease consisting of clearly separable phases.²³⁻²⁶

Whereas one prior study¹⁸ showed no difference in the time to the effect of natalizumab on relapses between patients with and without highly active MS (≥ 2 relapses in the year before baseline), ARR was a significant modifier of therapeutic lag for both disability progression and relapses in our analysis. Patients with $ARR \geq 2$ had a mean 4-week shorter T_r than those with $ARR < 2$. Considering the anti-inflammatory mechanisms of current DMTs for MS, it is not unexpected that they show more pronounced, and earlier, effect on the absolute drop in relapse incidence in

patients with higher pre-treatment ARR - a clinical presentation of episodic, therapeutically modifiable inflammatory activity.¹⁹ Conversely, our observation that higher pre-treatment ARR prolongs therapeutic lag for disability progression is consistent with previous research that showed a positive association between high ARR and worse disability outcomes in MS.^{27,28} Therefore, lowering of relapse activity below the critical level to enable stabilisation of (or recovery from) disability is expected to be prolonged among patients in whom the pre-treatment level of relapse activity was high.

Whilst male sex is associated with faster disability accrual^{14, 29-32}, the role of sex in therapeutic lag has not previously been explored. Male sex was weakly associated with longer T_d , but sex was not found to consistently drive differences in T_r .

Studies of observational data are subject to a number of potential limitations and biases, including selection bias and unmeasured confounders. Variable data quality was controlled through the use of a validated data quality control process.¹³ Selection and reporting bias was addressed through inclusion of two non-overlapping data sources from predominantly academic MS centres (MSBase, a global registry, and OFSEP, a national cohort) with near-real time data acquisition and prospectively defined observational plans. Detailed discussion of limitations related to the method used for therapeutic lag estimation is found elsewhere.⁷ T_d and T_r was only estimated for subgroups in which more than 300 relapses or progression events occurred as the underlying method is dependent on a critical mass of events to consistently identify the first local minimum of the first derivative of relapse incidence.⁷ Where an insufficient number of events were present analyses were discontinued. There are

therefore groups of determinants, particularly in the assessment of T_d in groups defined by multiple interacting patient characteristics, for which therapeutic lag could not be calculated. In an effort to maximise analytical power, we have combined data from the two largest MS registries. It is also reassuring that the sufficiently powered groups included in the analysis represent the most common clinical scenarios encountered in practice. Because the method requires that therapeutic lag is estimated within discrete groups, we have categorised continuous determinants. While this may lead to some loss of information, we have ensured that the groups defined on categorised variables are internally consistent with regards to the duration of therapeutic lag.

As this study did not include patients treated within 3 years of MS onset, or patients treated for less than 1 year, our conclusions cannot be generalised to these patient groups. Moreover, carryover effects of prior therapies were not considered. Too few patients with PPMS or CIS were included to explore the duration of therapeutic lag in these MS phenotypes; the characteristics of these patients are included for descriptive purposes only.

The EDSS has a number of limitations as a marker of disability progression³³; we have utilised this disability scale due to its widespread use in registry data, enabling combining information from two separate registries. We have aimed at improving intra- and inter-rater reliability by using specialist neurologist EDSS raters³⁴ and a robust definition of disability progression.¹⁴ Only clinical markers of therapeutic lag have been studied in this analysis as observational data, with semiquantitative imaging information acquired at varying intervals, is not suited to assess the radiological onset of treatment effect. Furthermore, drugs with other mechanisms of action are anticipated to have different lag durations than those represented.²

As MS is a heterogenous disease, it is highly desirable to personalise the evaluation of clinical treatment response based on patients' individual characteristics.³⁵ It has been recommended that an MRI assessment is performed in the months after starting a treatment with the aim of creating a new radiological 'baseline'.³⁶ Similarly, we suggest establishing a new baseline for clinical outcomes after the lapse of therapeutic lag. In the present study, we identified disability and relapse activity prior to commencing MS immunotherapy as factors that most consistently influence the duration of therapeutic lag for disability progression and relapses. Sex has additional influence on the lag of the effect of therapy on disability progression, and MS phenotype contributes to the duration of therapeutic lag with regards to relapses. Moreover, our findings are relevant to reanalysis of clinical trials in patients with more advanced disease and design of clinical trials in progressive MS. Treatment outcomes in cohorts enriched with patients with higher disability scores and relapse activity should be interpreted with the expected duration of therapeutic lag in sight.

ACKNOWLEDGEMENTS

We wish to thank all patients and their carers who have participated in this study and who have contributed data to the MSBase and OFSEP cohorts. Contributing members of OFSEP and the MSBase Study Group is given in the online supplement.

CONTRIBUTORS

IR conceptualised and designed the study, conducted and interpreted the analysis, wrote the first draft and revised the manuscript. TK conceptualised and designed the study, conducted and interpreted the analysis, contributed data, recruited patients and

drafted and edited the manuscript. HB, SV conceptualised and designed the study, recruited patients, contributed data, interpreted the results, revised the manuscript for intellectual content. EL, FF, RC, CBM conceptualised and designed the study, interpreted the results, drafted and edited the manuscript. JWLB, DH, EK, MD, MT, FP, GI, SE, GE, AP, MG, PD, MO, AL, PG, JC, AR, SO, JdS, CL, HZ, MJS, PS, DF, PL, GD, RB, CLF, CB, EC, TM, DL, JLS, FG, OG, MT, FG, RA, GI, VVP, BVM, DS, AS, EB, JP, EA, PM, TC, PC, JP, RT, BS, OG, ET, OH, YS, RG, TC, AA, BB, OC, PC, AM, AW, IP, KH, CP, NM, CL, CN, AC, recruited patients, major role in the contribution of data, interpreted the results, revised the manuscript. IR and TK had full access to the data in the study and take responsibility for the integrity of the data and accuracy of the data analysis.

COMPETING INTERESTS

The authors have received research support, support to attend conferences, speaker honoraria and fees for participation at advisory boards from Actelion, Almirall, Bayer-Schering, Biogen, BioCSL, Celgene, EMD, Geneuro, Medday, Merck, Myalin, Novartis, Roche, Sanofi-Genzyme, Teva, WebMD Global outside the submitted work.

Izanne Roos served on scientific advisory boards for Novartis and Merck and received conference travel support and/or speaker honoraria from Roche, Novartis, Biogen, Teva, Sanofi-Genzyme and Merck.

Emmanuelle Leray received grants from the French National Security Agency of Medicines and Health Products, the EDMUS Foundation and Roche SAS; and personal fees from Novartis, MedDay Pharmaceuticals and Roche SAS.

Federico Frascoli did not declare any competing interests.

Romain Casey did not declare any competing interests.

J William L Brown received travel expenses and nonfinancial support from Biogen, Novartis, Sanofi-Genzyme and personal fees, advisory board fees, and speaking honoraria from Biogen.

Dana Horakova received speaker honoraria and consulting fees from Biogen, Merck, Teva, Roche, Sanofi Genzyme, and Novartis, as well as support for research activities from Biogen and Czech Ministry of Education [project Progres Q27/LF1].

Eva Kubala Havrdova received speaker honoraria and consultant fees from Actelion, Biogen, Celgene, Merck, Novartis, Roche, Sanofi and Teva, and support for research activities from Czech Ministry of Education [project Progres Q27/LF1].

Marc Debouverie did not declare any competing interests.

Maria Trojano received speaker honoraria from Biogen-Idec, Bayer-Schering, Sanofi Aventis, Merck, Teva, Novartis and Almirall; has received research grants for her Institution from Biogen-Idec, Merck, and Novartis.

Francesco Patti received speaker honoraria or advisory board fees from Almirall, Bayer, Biogen, Celgene, Merck, Myalin, Novartis, Roche, Sanofi-Genzyme and TEVA. He received research funding from Ministero Italiano della Università e della Ricerca Scientifica, Fondazione Italiana Sclerosi Multipla, Biogen and Merck.

Guillermo Izquierdo received speaking honoraria from Biogen, Novartis, Sanofi, Merck, Roche, Almirall and Teva.

Sara Eichau did not declare any competing interests.

Gilles Edan received consultancy and lecturing fees from Bayer-Schering, Biogen, LFB, Merck, Novartis, Roche, Sanofi; research grants from Bayer, Biogen, Genzyme,

Mercks, Novartis, Roche, Teva, and the ARSEP foundation. He has been principal investigator in phase 2 and 3 clinical studies conducted by Bayer, Biogen, Merck, Novartis, Sanofi-Aventis Teva, and 4 academic programs (programmes hospitaliers de recherche clinique, PHRC) on MS sponsored by Rennes University Hospital.

Alexandre Prat did not declare any competing interests.

Marc Girard received consulting fees from Teva Canada Innovation, Biogen, Novartis and Genzyme Sanofi; lecture payments from Teva Canada Innovation, Novartis and EMD. He has also received a research grant from Canadian Institutes of Health Research.

Pierre Duquette served on editorial boards and has been supported to attend meetings by EMD, Biogen, Novartis, Genzyme, and TEVA Neuroscience. He holds grants from the CIHR and the MS Society of Canada and has received funding for investigator-initiated trials from Biogen, Novartis, and Genzyme.

Marco Onofrij did not declare any competing interests.

Alessandra Lugaresi served as a Bayer, Biogen, Merck, Novartis, Roche, Sanofi/Genzyme and Teva Advisory Board Member. She received travel grants and honoraria from Bayer, Biogen, Merck, Novartis, Roche, Sanofi/Genzyme, Teva and Fondazione Italiana Sclerosi Multipla (FISM). Her institution received research grants from Bayer, Biogen, Merck Serono, Novartis, Sanofi/Genzyme, Teva and Fondazione Italiana Sclerosi Multipla (FISM).

Pierre Grammond is a Merck, Novartis, Teva-neuroscience, Biogen and Genzyme advisory board member, consultant for Merck, received payments for lectures by Merck, Teva-Neuroscience and Canadian Multiple sclerosis society, and received grants for travel from Teva-Neuroscience and Novartis.

Jonathan Ciron received consulting and lecturing fees, travel grants from Biogen, Novartis, Merck, Teva, Genzyme and Roche

Aurélie Ruet received consultancy fees, speaker fees, research grants (non personal), or honoraria approved by the institutions from Novartis, Biogen Idec, Genzyme, Medday, Roche, Teva and Merck.

Serkan Ozakbas did not declare any competing interests.

Jérôme De Seze received consulting and lecturing fees, travel grants and unconditional research support from Biogen, Genzyme, Novartis, Merck Serono, Roche, Sanofi Aventis and Teva Pharma.

Céline Louapre received consulting or travel fees from Biogen, Novartis, Roche, Sanofi, Teva and Merck Serono, none related to the present work.

Hélène Zephir received consulting or lectures, and invitations for national and international congresses from Biogen, Merck, Teva, Sanofi-Genzyme, Novartis and Bayer, as well as research support from Teva and Roche, and academic research grants from Académie de Médecine, LFSEP, FHU Imminent and ARSEP Foundation

Maria Josa Sa did not declare any competing interests.

Patrizia Sola served on scientific advisory boards for Biogen Idec and TEVA, she has received funding for travel and speaker honoraria from Biogen Idec, Merck, Teva, Sanofi Genzyme, Novartis and Bayer and research grants for her Institution from Bayer, Biogen, Merck, Novartis, Sanofi, Teva.

Diana Ferraro received travel grants and/or speaker honoraria from Merck, TEVA,†Novartis, Biogen and Sanofi-Genzyme.

Pierre Labauge received consulting and lecturing fees, travel grants and unconditional research support from Biogen, Genzyme, Novartis, Merck Serono, Roche, and Teva Pharma

Gilles Defer received consulting and lecturing fees for Biogen, Novartis, Genzyme, Merck-Serono, Roche and Teva and funding for travel from Merck Serono, Biogen, Sanofi-Genzyme, Novartis and Teva. Institution granted for research supporting from Merck Serono, Biogen, Genzyme and Novartis.

Roberto Bergamaschi received speaker honoraria from Bayer Schering, Biogen, Genzyme, Merck, Novartis, Sanofi-Aventis, Teva; research grants from Bayer Schering, Biogen, Merck, Novartis, Sanofi-Aventis, Teva; congress and travel/accommodation expense compensations by Almirall, Bayer Schering, Biogen, Genzyme, Merck, Novartis, Sanofi-Aventis, Teva.

Christine Lebrun-Frenay received Consulting and lecturing fees for Biogen, Novartis, Genzyme, Merck-Serono, Roche and Teva and funding for travel from Merck Serono, Biogen, Sanofi-Genzyme, Novartis and Teva. Institution granted for research supporting from Merck Serono, Biogen, Genzyme and Novartis.

Cavit Boz received conference travel support from Biogen, Novartis, Bayer-Schering, Merck and Teva; has participated in clinical trials by Sanofi Aventis, Roche and Novartis.

Elisabetta Cartechini did not declare any competing interests.

Thibault Moreau received fees as scientific adviser from Biogen, Medday, Novartis, Genzyme, Sanofi.

David Laplaud served on scientific advisory boards for Roche, Sanofi, Novartis, MedDay, Merck and Biogen, received conference travel support and/or speaker

honoraria from Novartis, Biogen, Roche, Sanofi, Celgene and Merck and received research support from Fondation ARSEP and Agence Nationale de la Recherche.

Jeannette Lechner-Scott accepted travel compensation from Novartis, Biogen and Merck. Her institution receives the honoraria for talks and advisory board commitment from Bayer Health Care, Biogen, Genzyme Sanofi, Merck, Novartis and Teva, has been involved in clinical trials with Biogen, Novartis and Teva.

Francois Grand'Maison received honoraria or research funding from Biogen, Genzyme, Novartis, Teva Neurosciences, Mitsubishi and ONO Pharmaceuticals.

Oliver Gerlach did not declare any competing interests.

Murat Terzi received travel grants from Novartis, Bayer-Schering, Merck and Teva; has participated in clinical trials by Sanofi Aventis, Roche and Novartis.

Franco Granella received an institutional research grant from Biogen and Sanofi Genzyme, served on scientific advisory boards for Biogen, Novartis, Merck, Sanofi Genzyme and Roche, received funding for travel and speaker honoraria from Biogen, Merck, and Sanofi-Aventis.

Raed Alroughani received honoraria as a speaker and for serving on scientific advisory boards from Bayer, Biogen, GSK, Merck, Novartis, Roche and Sanofi-Genzyme.

Gerardo Iuliano had travel/accommodations/meeting expenses funded by Bayer Schering, Biogen, Merck, Novartis, Sanofi Aventis, and Teva.

Vincent Van Pesch received travel grants from Biogen, Sanofi, Roche, Merck, Teva and Novartis Pharma. His institution receives honoraria for consultancy and lectures from Biogen, Sanofi, Roche, Merck, Roche, Teva and Novartis Pharma, as well as research grants from Roche, Sanofi and Novartis Pharma.

Bart Van Wijmeersch received research and travel grants, honoraria for MS-Expert advisor and Speaker fees from Bayer-Schering, Biogen, Sanofi Genzyme, Merck, Novartis, Roche and Teva.

Daniele Spitaleri received honoraria as a consultant on scientific advisory boards by Bayer-Schering, Novartis and Sanofi-Aventis and compensation for travel from Novartis, Biogen, Sanofi Aventis, Teva and Merck.

Aysun Soysal did not declare any competing interests.

Eric Burger received honoraria and consulting fees from Novartis, Sanofi Aventis, Biogen, Genzyme, Roche and Teva Pharma.

Julie Prevost accepted travel compensation from Novartis, Biogen, Genzyme, Teva, and speaking honoraria from Biogen, Novartis, Genzyme and Teva.

Eduardo Aguera-Morales did not declare any competing interests.

Pamela McCombe did not declare any competing interests.

Tamara Castillo Triviño received speaking/consulting fees and/or travel funding from Bayer, Biogen, Merck, Novartis, Roche, Sanofi-Genzyme and Teva.

Pierre Clavelou received consulting and lecturing fees, travel grants and unconditional research support from Actelion, Biogen, Genzyme, Novartis, Medday, Merck Serono, Roche, and Teva Pharma.

Jean Pelletier received fees as scientific adviser and travel grants from Biogen, Merck-Serono, Novartis, Medday, Novartis, Genzyme, Roche, Sanofi, Teva and unconditional research support from Merck-Serono and Roche.

Recai Turkoglu did not declare any competing interests.

Bruno Stankoff received consulting and lecturing fees, travel grants from Biogen Idec, Merck-Serono, Novartis, Genzyme, and unconditional research support from Merck-Serono, Genzyme, and Roche.

Olivier Gout did not declare any competing interests.

Eric Thouvenot received consulting and lecturing fees, travel grants or unconditional research support from the following pharmaceutical companies: Actelion, Biogen, Genzyme, Merck Serono, Novartis, Roche, Teva pharma; has a patent pending for biomarkers of neurodegeneration and neuroregeneration and a patent pending for a diagnosis method of multiple sclerosis (EP18305630.8); and received academic research support from PHRC and ARSEP Foundation

Olivier Heinzlef received consulting and lecturing fees from Bayer Schering, Merck, Teva, Genzyme, Novartis, Almirall and BiogenIdec, travel grants from Novartis, Teva, Genzyme, Merck Serono and Biogen Idec and research support from Roche, Merck and Novartis

Youssef Sidhom did not declare any competing interests.

Riadh Gouider did not declare any competing interests.

Tunde Csepany received speaker honoraria/ conference travel support from Bayer Schering, Biogen, Merck, Novartis, Roche, Sanofi-Aventis and Teva.

Abullatif Al-Khedr did not declare any competing interests.

Bertrand Bourre served on scientific advisory board for Biogen, Genzyme, Merck Serono, Novartis, Roche and received funding for travel and honoraria from Biogen Idec, Merck Serono, Novartis, Sanofi-Genzyme, Roche and Teva

Olivier Casez received funding for travel and honoraria from Biogen, Merck Serono, Novartis, Sanofi-Genzyme and Roche.

Philippe Cabre did not declare any competing interests.

Alexis Montcuquet received honoraria and travel grants from Merck Serono, Teva, Novartis, Sanofi-Genzyme and Biogen

Abir Wahab received expert testimony from Roche and travel grants from Biogen.

Ivania Patry received honoraria and consulting fees from Novartis, Genzyme and Roche, research supports from Biogen and Novartis and travel grants from Genzyme, Novartis and Roche

Karolina Hankiewicz did not declare any competing interests.

Corinne Pottier did not declare any competing interests.

Nicolas Maubeuge received honoraria and travel grants from Merck Serono, Teva, Novartis, Sanofi-Genzyme and Biogen.

Céline Labeyrie received consulting and lecturing fees from Biogen, Novartis and Genzyme.

Chantal Nifle did not declare any competing interests.

Alasdair Coles reported receiving personal fees, honoraria for consulting, and travel expenses for attending meetings from Genzyme and having a patent pending on the dose regimen of alemtuzumab as a treatment of multiple sclerosis

Charles Malpas did not declare any competing interests.

Sandra Vukusic received grants, personal fees and non-financial support from Biogen, grants and personal fees from Geneuro, grants, personal fees and non-financial support from Genzyme, grants and personal fees from Medday, grants, personal fees

and non-financial support from Merck-Serono, grants, personal fees and non-financial support from Novartis, grants, personal fees and non-financial support from Roche, grants, personal fees and nonfinancial support from Sanofi, personal fees from Teva Helmut Butzkueven served on scientific advisory boards for Biogen, Novartis and Sanofi-Aventis and has received conference travel support from Novartis, Biogen and Sanofi Aventis. He serves on steering committees for trials conducted by Biogen and Novartis, and has received research support from Merck, Novartis and Biogen.

Tomas Kalincik served on scientific advisory boards for Roche, Sanofi-Genzyme, Novartis, Merck and Biogen, steering committee for Brain Atrophy Initiative by Sanofi-Genzyme, received conference travel support and/or speaker honoraria from WebMD Global, Novartis, Biogen, Genzyme-Sanofi, Teva, BioCSL and Merck and received research support from Biogen.

FUNDING

This study was supported by the EDMUS Foundation and NHMRC [1140766, 1129189, 1157717]. IR is supported by a MSIF-ARSEP McDonald fellowship grant and a Melbourne Research Scholarship. The MSBase Foundation is a not-for-profit organization that receives support from Biogen, Novartis, Merck, Roche, Teva and Sanofi Genzyme. The study was conducted separately and apart from the guidance of the sponsors. The Observatoire Français de la Sclérose en Plaques (OFSEP) is supported by a grant provided by the French State and handled by the "Agence Nationale de la Recherche," within the framework of the "Investments for the Future" program, under the reference ANR-10-COHO-002, by the Eugène Devic EDMUS Foundation against multiple sclerosis and by the ARSEP Foundation.

DATA AVAILABILITY STATEMENT

MSBase is a data processor, and warehouses data from individual principal investigators who agree to share their datasets on a project-by-project basis. Data access to external parties can be granted upon reasonable request at the sole discretion of each OFSEP and MSBase Principal Investigator (the data controllers), who will need to be approached individually for permission.

REFERENCES

1. Giovannoni G, Cutter G, Sormani MP, et al. Is multiple sclerosis a length-dependent central axonopathy? The case for therapeutic lag and the asynchronous progressive MS hypotheses. *Mult Scler Relat Disord* 2017; 12: 70-78. 2017/03/12. DOI: 10.1016/j.msard.2017.01.007.
2. Lanzillo R, Moccia M, Russo CV, et al. Therapeutic lag in reducing disability progression in relapsing-remitting multiple sclerosis: 8-year follow-up of two randomized add-on trials with atorvastatin. *Mult Scler Relat Disord* 2019; 28: 193-196. 2019/01/10. DOI: 10.1016/j.msard.2018.12.042.
3. Sormani MP and Giovannoni G. Therapeutic lag: is treatment effect delayed in progressive MS? *Multiple Sclerosis Journal* 2016; 22: 7-87. DOI: 10.1177/1352458516663068.
4. Tur C, Montalban X, Tintore M, et al. Interferon beta-1b for the treatment of primary progressive multiple sclerosis: five-year clinical trial follow-up. *Arch Neurol* 2011; 68: 1421-1427. Clinical Trial 2011/11/16. DOI: 10.1001/archneurol.2011.241.

5. Moccia M, Lanzillo R, Petruzzo M, et al. Single-Center 8-Years Clinical Follow-Up of Cladribine-Treated Patients From Phase 2 and 3 Trials. *Front Neurol* 2020; 11: 489. 2020/07/07. DOI: 10.3389/fneur.2020.00489.
6. Montalban X, Gold R, Thompson AJ, et al.ECTRIMS/EAN Guideline on the pharmacological treatment of people with multiple sclerosis. *Mult Scler* 2018; 24: 96-120. 2018/01/23. DOI: 10.1177/1352458517751049.
7. Roos I, Leray E, Frascoli F, et al. Delay from treatment start to full effect of immunotherapies for multiple sclerosis (in press). *Brain* 2020. DOI: 10.1093/brain/awaa231.
8. Montalban X, Sastre-Garriga J, Tintore M, et al. A single-center, randomized, double-blind, placebo-controlled study of interferon beta-1b on primary progressive and transitional multiple sclerosis. *Mult Scler* 2009; 15: 1195-1205. 2009/10/03. DOI: 10.1177/1352458509106937.
9. Butzkueven H, Chapman J, Cristiano E, et al. MSBase: an international, online registry and platform for collaborative outcomes research in multiple sclerosis. *Mult Scler* 2006; 12: 769-774. 2007/02/01. DOI: 10.1177/1352458506070775.
10. Vukusic S, Casey R, Rollot F, et al. Observatoire Francais de la Sclerose en Plaques (OFSEP): A unique multimodal nationwide MS registry in France. *Mult Scler* 2018: 1352458518815602. brief-report 2018/12/14. DOI: 10.1177/1352458518815602.
11. Polman CH, Reingold SC, Edan G, et al. Diagnostic criteria for multiple sclerosis: 2005 revisions to the "McDonald Criteria". *Ann Neurol* 2005; 58: 840-846. 2005/11/12. DOI: 10.1002/ana.20703.

12. Polman CH, Reingold SC, Banwell B, et al. Diagnostic criteria for multiple sclerosis: 2010 Revisions to the McDonald criteria. *Annals of Neurology* 2011; 69: 292-302. DOI: 10.1002/ana.22366.
13. Kalincik T, Kuhle J, Pucci E, et al. Data quality evaluation for observational multiple sclerosis registries. *Multiple Sclerosis Journal* 2017; 23: 647-655. 2016/08/03. DOI: 10.1177/1352458516662728.
14. Kalincik T, Cutter G, Spelman T, et al. Defining reliable disability outcomes in multiple sclerosis. *Brain* 2015; 138: 3287-3298. Article. DOI: 10.1093/brain/awv258.
15. Schumacher GA, Beebe G, Kibler RF, et al. Problems of Experimental Trials of Therapy in Multiple Sclerosis: Report by the Panel on the Evaluation of Experimental Trials of Therapy in Multiple Sclerosis. *Ann N Y Acad Sci* 1965; 122: 552-568. 1965/03/31. DOI: doi:10.1111/j.1749-6632.1965.tb20235.x.
16. Lorscheider J, Buzzard K, Jokubaitis V, et al. Defining secondary progressive multiple sclerosis. *Brain* 2016; 139: 2395-2405. 2016/07/13. DOI: 10.1093/brain/aww173.
17. R Core Team (2019). R: A language and environment for statistical computing. R Foundation for Statistical Computing, Vienna, Austria.
18. Kappos L, O'Connor PW, Polman CH, et al. Clinical effects of natalizumab on multiple sclerosis appear early in treatment course. *J Neurol* 2013; 260: 1388-1395. 2013/01/08. DOI: 10.1007/s00415-012-6809-7.
19. Hutchinson M, Kappos L, Calabresi PA, et al. The efficacy of natalizumab in patients with relapsing multiple sclerosis: subgroup analyses of AFFIRM and SENTINEL. *J Neurol* 2009; 256: 405-415. 2009/03/25. DOI: 10.1007/s00415-009-0093-1.

20. Lublin FD, Cutter G, Giovannoni G, et al. Natalizumab reduces relapse clinical severity and improves relapse recovery in MS. *Mult Scler Relat Disord* 2014; 3: 705-711. 2015/04/22. DOI: 10.1016/j.msard.2014.08.005.
21. Secondary Progressive Efficacy Clinical Trial of Recombinant Interferon-Beta-1a in M. S. Study Group. Randomized controlled trial of interferon- beta-1a in secondary progressive MS: Clinical results. *Neurology* 2001; 56: 1496-1504. 2001/06/13. DOI: 10.1212/wnl.56.11.1496.
22. Wolinsky JS, Narayana PA, O'Connor P, et al. Glatiramer acetate in primary progressive multiple sclerosis: results of a multinational, multicenter, double-blind, placebo-controlled trial. *Ann Neurol* 2007; 61: 14-24. 2007/01/31. DOI: 10.1002/ana.21079.
23. Kantarci OH, Lebrun C, Siva A, et al. Primary Progressive Multiple Sclerosis Evolving From Radiologically Isolated Syndrome. *Ann Neurol* 2016; 79: 288-294. 2015/11/26. DOI: 10.1002/ana.24564.
24. Kappos L, Butzkueven H, Wiendl H, et al. Greater sensitivity to multiple sclerosis disability worsening and progression events using a roving versus a fixed reference value in a prospective cohort study. *Mult Scler* 2018; 24: 963-973. 2017/05/31. DOI: 10.1177/1352458517709619.
25. Lorscheider J, Benkert P, Schädelin S, et al. ECTRIMS 2019 - Oral Presentation: Disability progression unrelated to relapses in relapsing-remitting multiple sclerosis: insights from the Swiss multiple sclerosis cohort study. *Multiple Sclerosis Journal* 2019; 25: 3-130. DOI: 10.1177/1352458519868070.
26. Lizak N, Lugaresi A, Alroughani R, et al. Highly active immunomodulatory therapy ameliorates accumulation of disability in moderately advanced and

advanced multiple sclerosis. *J Neurol Neurosurg Ps* 2017; 88: 196-203. 2016/09/30.

DOI: 10.1136/jnnp-2016-313976.

27. Jokubaitis VG, Spelman T, Kalincik T, et al. Predictors of long-term disability accrual in relapse-onset multiple sclerosis. *Ann Neurol* 2016; 80: 89-100.

2016/05/05. DOI: 10.1002/ana.24682.

28. Lublin FD, Baier ML and Cutter GR. Effect of relapses on development of residual deficit in multiple sclerosis. *American Academy of Neurology* 2003; 61: 1528-1532.

29. Leray E, Yaouanq J, Le Page E, et al. Evidence for a two-stage disability progression in multiple sclerosis. *Brain* 2010; 133: 1900-1913. 2010/04/29. DOI: 10.1093/brain/awq076.

30. Confavreux C, Vukusic S and Adeleine P. Early clinical predictors and progression of irreversible disability in multiple sclerosis: an amnesic process. *Brain* 2003; 126: 770-782. 2003/03/05.

31. Kalincik T, Vivek V, Jokubaitis V, et al. Sex as a determinant of relapse incidence and progressive course of multiple sclerosis. *Brain* 2013; 136: 3609-3617. 2013/10/22. DOI: 10.1093/brain/awt281.

32. Ribbons KA, McElduff P, Boz C, et al. Male Sex Is Independently Associated with Faster Disability Accumulation in Relapse-Onset MS but Not in Primary Progressive MS. *PLoS One* 2015; 10: e0122686. 2015/06/06. DOI: 10.1371/journal.pone.0122686.

33. Hobart J, Freeman J and Thompson A. Kurtzke scales revisited: the application of psychometric methods to clinical intuition. *Brain* 2000; 123 (Pt 5): 1027-1040. 2000/04/25. DOI: 10.1093/brain/123.5.1027.

34. D'Souza M, Yaldizli O, John R, et al. Neurostatus e-Scoring improves consistency of Expanded Disability Status Scale assessments: A proof of concept study. *Mult Scler* 2017; 23: 597-603. 2016/07/02. DOI: 10.1177/1352458516657439.
35. Rotstein D and Montalban X. Reaching an evidence-based prognosis for personalized treatment of multiple sclerosis. *Nature Reviews Neurology* 2019; 15: 287-300. DOI: 10.1038/s41582-019-0170-8.
36. Gasperini C, Prosperini L, Tintore M, et al. Unraveling treatment response in multiple sclerosis: A clinical and MRI challenge. *Neurology* 2019; 92: 180-192. 2018/12/28. DOI: 10.1212/WNL.0000000000006810.

Fig 1

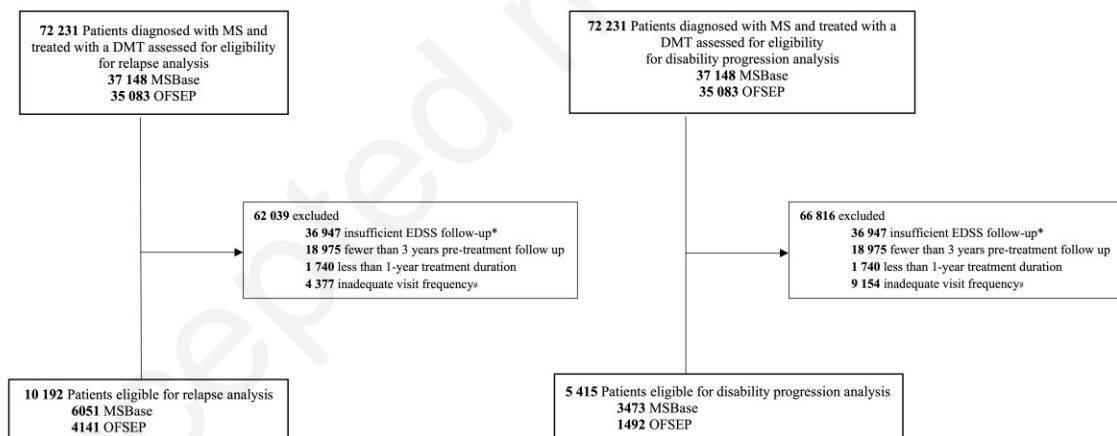


Fig 2

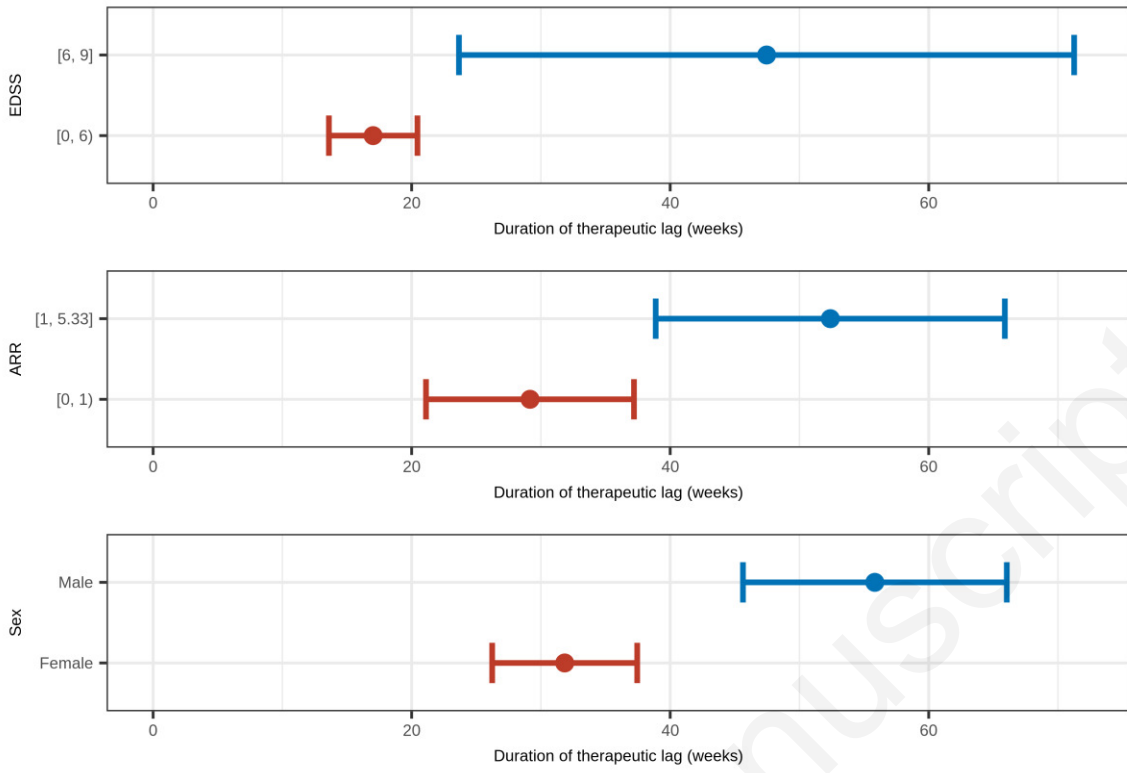


Fig 3

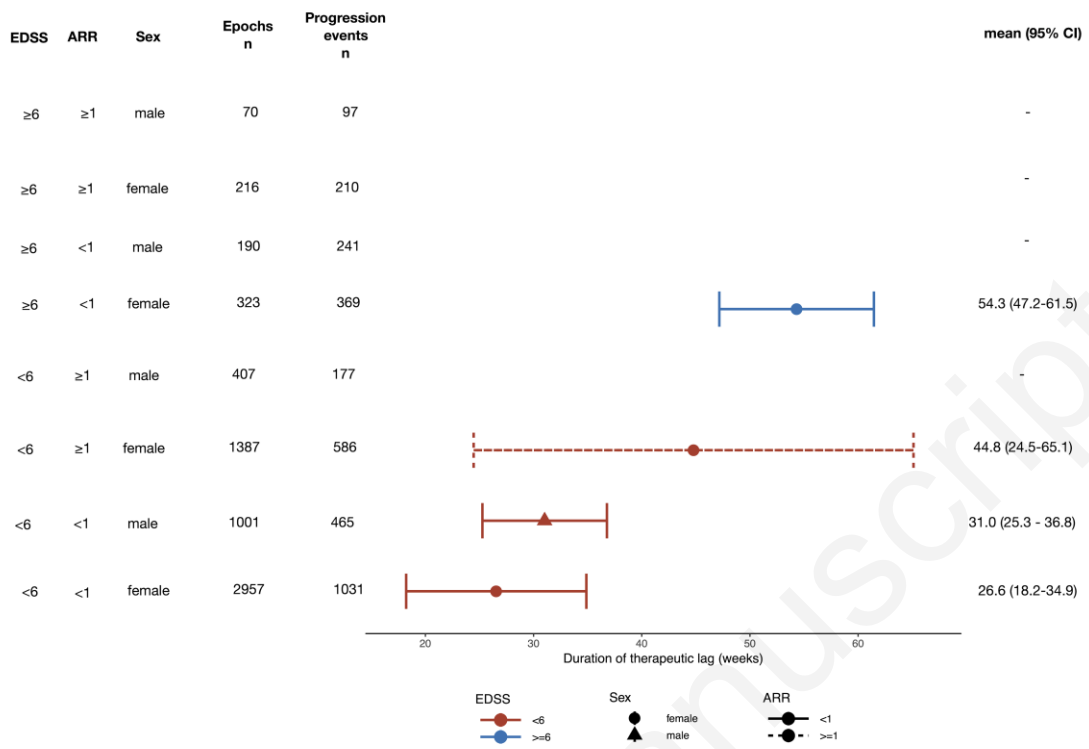


Fig 4

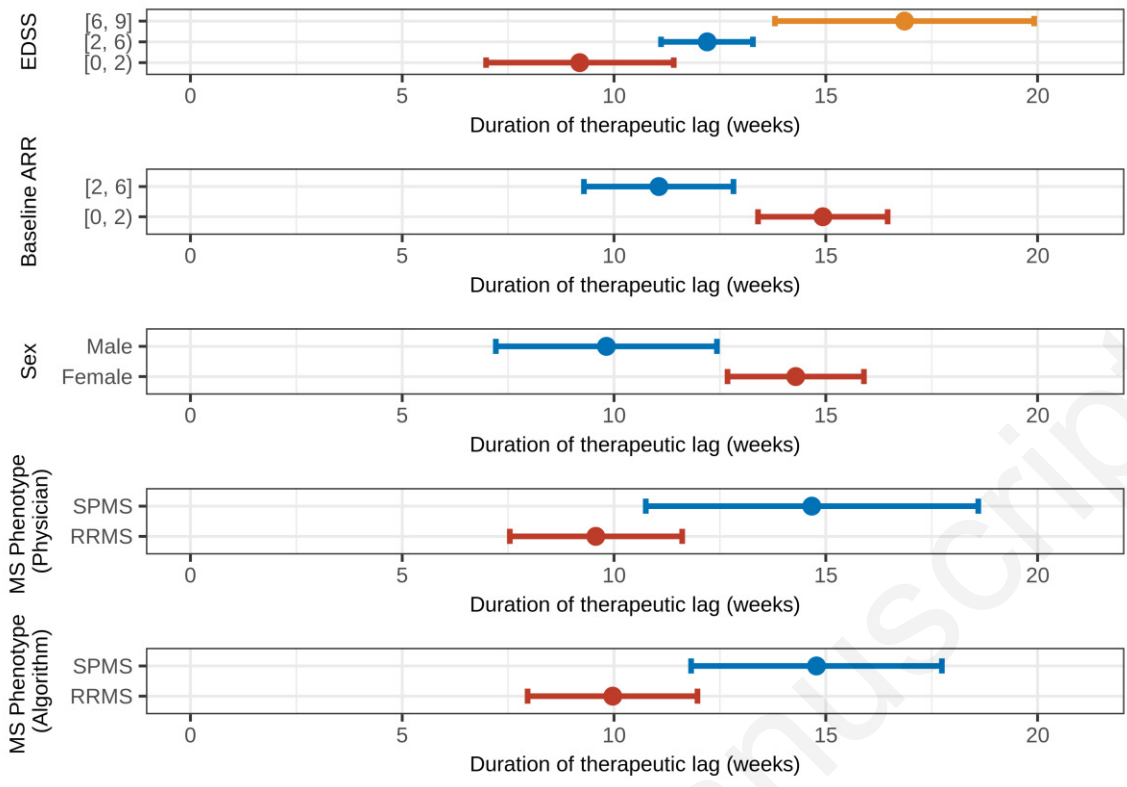
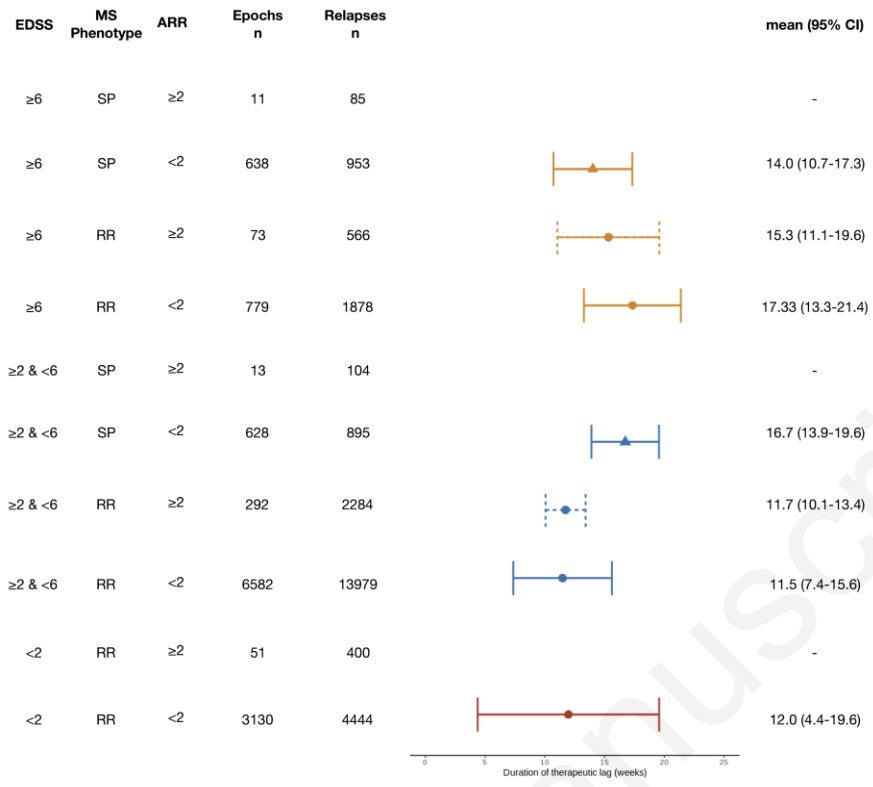


Fig 5



Accepted manuscript