



**HAL**  
open science

## To what extent can micro-and macroplastics be trapped in sedimentary particles? A case study investigating dredged sediments

Mel Constant, Claire Alary, Isabelle de Waele, David Dumoulin, Noémie Breton, Gabriel Billon

### ► To cite this version:

Mel Constant, Claire Alary, Isabelle de Waele, David Dumoulin, Noémie Breton, et al.. To what extent can micro-and macroplastics be trapped in sedimentary particles? A case study investigating dredged sediments. *Environmental Science and Technology*, 2021, 55 (9), pp.5898-5905. 10.1021/acs.est.0c08386 . hal-03219290

**HAL Id: hal-03219290**

**<https://hal.science/hal-03219290>**

Submitted on 6 May 2021

**HAL** is a multi-disciplinary open access archive for the deposit and dissemination of scientific research documents, whether they are published or not. The documents may come from teaching and research institutions in France or abroad, or from public or private research centers.

L'archive ouverte pluridisciplinaire **HAL**, est destinée au dépôt et à la diffusion de documents scientifiques de niveau recherche, publiés ou non, émanant des établissements d'enseignement et de recherche français ou étrangers, des laboratoires publics ou privés.

1 To what extent can micro- and macroplastics be  
2 trapped in sedimentary particles? A case study  
3 investigating dredged sediments.

4 *Mel Constant<sup>†\*</sup>, Claire Alary<sup>†</sup>, Isabelle De Waele<sup>‡</sup>, David Dumoulin<sup>‡</sup>, Noémie Breton<sup>‡</sup> and*  
5 *Gabriel Billon<sup>‡</sup>*

6 <sup>†</sup>Univ. Lille, Institut Mines-Télécom, Univ. Artois, Junia, ULR 4515 - LGCgE, Laboratoire  
7 de Génie Civil et géo-Environnement, F-59000 Lille, France

8 <sup>‡</sup>Univ. Lille, CNRS, UMR 8516 - LASIRE, Laboratoire Avancé de Spectroscopie pour les  
9 Interactions, la Réactivité et l'Environnement F-59000 Lille, France

10 Keywords: macroplastics, microplastics, dredging sediment, FTIR.

11

12 **Abstract**

13 Plastic wastes and their fragments (microplastics, MPs <5 mm) represent a global, persistent,  
14 and ubiquitous threat to ecosystems. Their sources, transfers and fates are still poorly  
15 understood, especially in rivers. To fill this gap, sediments were collected from two dredging  
16 disposal sites along the Aa River (France). Four pits were dug, and triplicate samples were  
17 obtained at four depths (down to 140 cm). The sediments were sieved to 5 mm to collect  
18 macroplastics (MaPs). MPs were separated from the sediment based on density using a NaI  
19 solution (1.6 g/mL). Suspected plastics were analyzed with Fourier Transform InfraRed  
20 (FTIR) spectroscopy. The studied sediments were found to be widely contaminated with  
21 concentrations ranging from 0.97 to 77 MaPs/kg and from 0.78 to 2800 MPs/kg, which were  
22 one to four orders of magnitude lower than those in most polluted European riverbeds. The  
23 MaPs were principally PE, PP, PS and PVC films, whereas the MPs were mainly PA and PES  
24 fibers. The plastic concentrations and features of the two sites, which were filled at two  
25 different times, differed. Several factors occurring before and after dredging operations may  
26 explain these discrepancies. Nevertheless, no relationships with the sediment features were  
27 noted, and thus, one major driving force could not be identified. At the site scale, more than 1  
28 ton of plastic could be stored. In conclusion, this study highlights the importance of dredged  
29 sediments for past plastic pollution studies and global plastic budget estimations.

## 30 **Introduction**

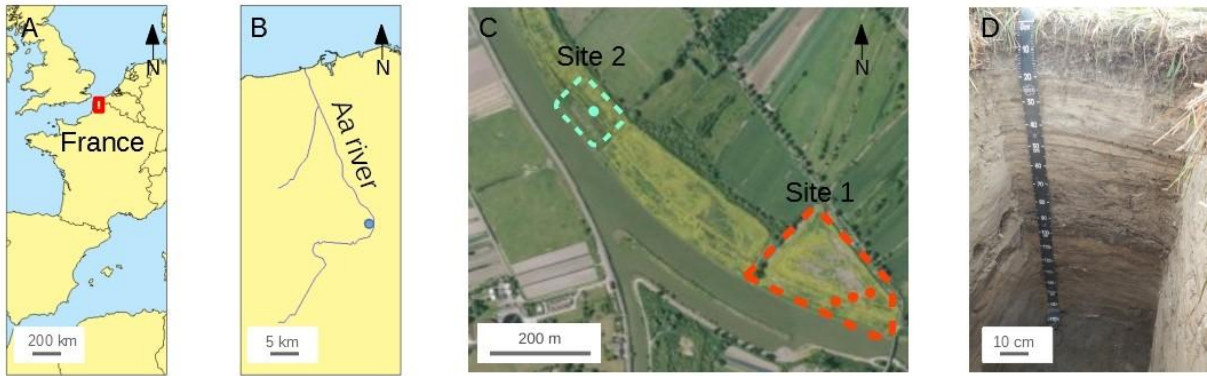
31 Anthropogenic litter, notably plastic pollution, is one of the most visible, ubiquitous and  
32 durable threats to terrestrial ecosystems<sup>1,2</sup>. Plastics can enter a broad range of animal bodies,  
33 including humans, through ingestion, breathing or trophic transfer<sup>3-5</sup> and are frequently  
34 associated with an extensive range of chemical substances<sup>6-8</sup>. This is particularly true for  
35 small pieces of plastic, commonly called microplastics (MPs <5 mm)<sup>9</sup>. These hazards are  
36 reinforced by the slow degradation of plastic, especially in environments with low UV  
37 radiation, temperature and oxygen, such as the deep sea and sediments<sup>10</sup>.

38 Data on plastic debris distributions in terrestrial environments are sparse compared with  
39 those in marine environments<sup>11</sup>. However, considerable amounts of anthropogenic litter sink  
40 in or transit through freshwater systems<sup>12</sup>. A limited number of studies have been conducted  
41 on plastic deposited in riverbeds<sup>13</sup>. Notably, to our knowledge, only one investigation has  
42 been conducted on MPs trapped in dredged sediment<sup>14</sup>. These materials can provide  
43 qualitative and quantitative information on past pollution. Because long-term monitoring is  
44 lacking, studying sediment records is notably interesting for unraveling the dynamic  
45 accumulation of MPs. In particular, dredged sediment may provide a snapshot of the pollution  
46 at a certain moment in time, because sediment removal stops hydrologic processes. This  
47 information is necessary for understanding the settlement of plastics, improving global  
48 budgets and predicting forthcoming trends. In addition, terrestrial deposit sites are often easier  
49 to sample than bed sediment. The challenging objectives of our study were to examine the  
50 quantitative (*i.e.*, density) and qualitative (*i.e.*, size, shape and polymer composition)  
51 distributions and properties of MaPs and MPs within sediments deposited during two periods.  
52 Our investigations provide relevant results concerning the knowledge of past plastic  
53 contamination in dredged sediments and open the way for further investigations in the near  
54 future.

55 **Methods**

56 ***Sediment collection***

57 Sediments were sampled in May 2019 at two sites in a dredging disposal area (Figures 1A,  
58 B and C). The sites (Site 1: 2004; Site 2: 2016) were filled with dredged materials from the  
59 Aa River, a North Sea coastal river with a small sparsely populated and industrialized  
60 drainage catchment area<sup>15,16</sup> (see Supporting Information (SI) for further details). At the first  
61 site, three pits (1.5 × 1.5 m) were dug 30 m apart to a depth of 1.5 m (Figure 1D). Overall, the  
62 sediments were coarse but with considerable horizontal (between pits) and vertical (between  
63 depths) heterogeneities (SI Table S1 and Figure S3). At the second site, only one pit (1.5 ×  
64 1.5 × 1.5 m) was dug, and the sediments were fine and homogeneous. The sediments were  
65 collected with a metal trowel at four depths (0-10, 20-30, 80-90 and 130-140 cm; see SI for  
66 details).



67

68 **Figure 1.** Location maps and pictures of the study area. A) General map of France. Red  
69 rectangle shows the Aa River location. B) Sampling site (circle) along the Aa River Basin. C)  
70 Aerial pictures of the sampling sites. Dashed polygons show the borders of each site, and  
71 circles indicate the positions of the pits. D) Picture of a pit at site 1.

72 ***Preparation of the samples prior to analysis***

73 MaPs were extracted using a 5 mm metal sieve (see SI for details). After removing most of  
74 the organic matter with H<sub>2</sub>O<sub>2</sub> (3%), the MPs were separated from the sediment using NaI (1.6  
75 g/mL) density-based extraction according to Claessens *et al.*<sup>17</sup>, which was adapted to our  
76 samples (see SI for details). Finally, the plastics were observed, photographed, measured and  
77 sorted into five shape categories using a dissecting stereomicroscope (SI Figures S1 and S2).

78 ***FTIR spectroscopy and granulometric analysis***

79 A total of 62 suspected MaPs (13% of the sorted particles) and 166 suspected MPs (14%)  
80 were analyzed by Fourier Transform InfraRed (FTIR) spectroscopy to determine whether they  
81 were actually plastics and, in this case, to determine their polymeric composition (see SI for  
82 details). Large particles (>500 µm) were analyzed by FTIR-ATR spectroscopy, whereas  
83 fibers, due to their small volumes, and other small particles (between 500 and 150 µm) were  
84 analyzed by micro-FTIR spectroscopy.

85 The sediment particle size distribution (between 0.04 and 1000 µm) was determined for  
86 each sample following standardized laser diffraction methods (see SI for details).

87 ***Data analysis***

88 FTIR analysis and contamination controls were used to correct the initial sorting and  
89 accurately identify true MaPs and MPs in our samples. First, the abundances of fibers in the  
90 controls (the only shape observed) were subtracted from the initial count. Blank-corrections  
91 represented less than 5% of the MP initial counts. Then, for each shape category, an identified  
92 plastic ratio was accordingly applied. This ratio was calculated by dividing the number of  
93 particles confirmed to be plastic by FTIR analysis by the total number of items analyzed and  
94 visually described as “potential plastics”. All the MaP and MP contents and the relative  
95 contents of the shapes given in the following text, figures and tables are based on the FTIR-  
96 and blank-corrected results. Ultimately, the concentrations of MaPs and MPs were estimated

- 97 by dividing the corrected numbers and mass of plastic items by the weight of the dry sediment
- 98 processed (items and mg/kg; for statistical analysis details, see SI).

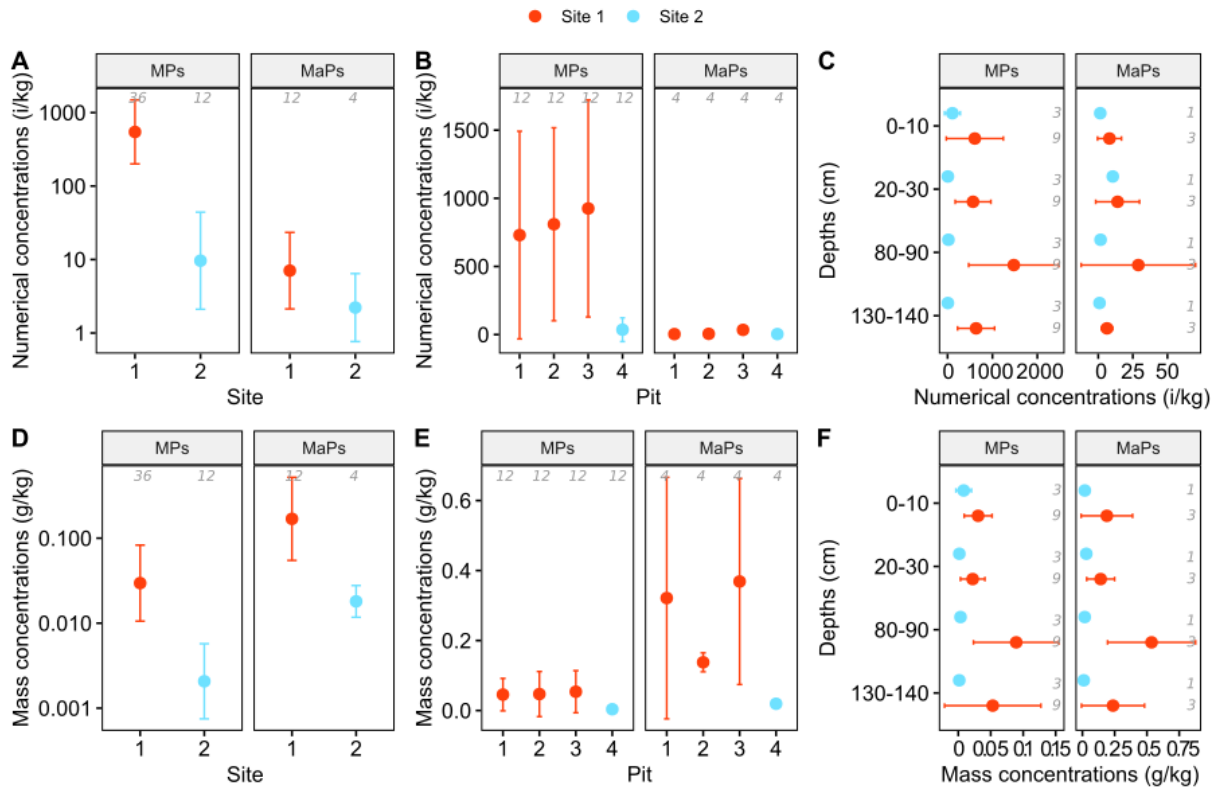


99 **Results**

100 *Plastic quantities*

101 Both macroplastics (MaPs) and microplastics (MPs) were detected in all the sediment  
102 samples. The concentrations were widely distributed over three to five orders of magnitude  
103 (SI Table S2). The MaP concentration ranged from 0.93 to 77 items/kg and from 11 to 760  
104 mg/kg. The MP concentration varied between 0.78 and 2,800 items/kg and between 0.38 and  
105 240 mg/kg.

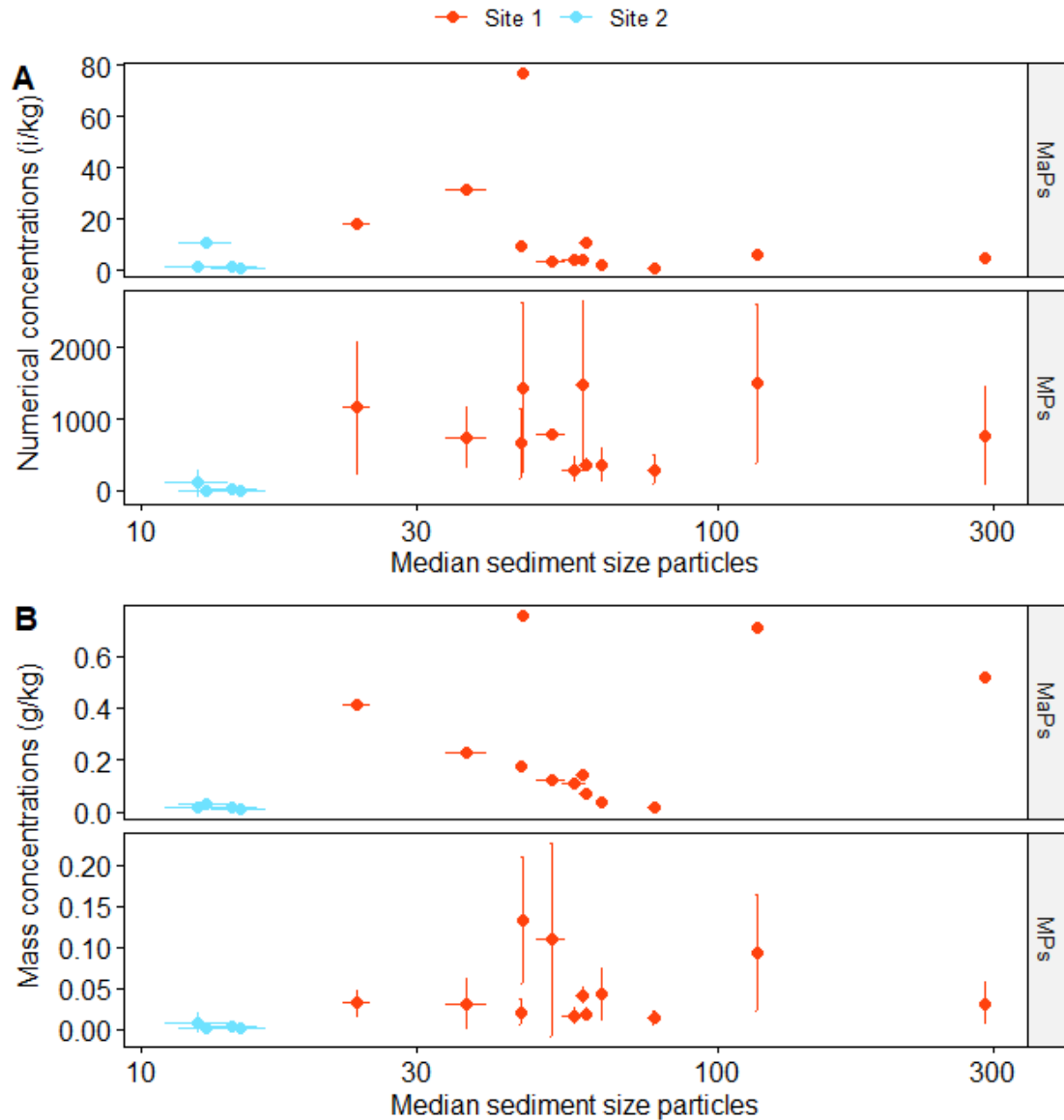
106 The concentrations, except the MaP numerical concentrations, at the two sites were  
107 significantly different (Wilcoxon test; Figures 2A and D and SI Table S3). At site 1, no  
108 significant differences were observed in the MP concentrations of concomitant samples  
109 collected 30 m apart (SHR test; Figures 2B and E). However, the MaP numerical  
110 concentrations at the pits were significantly different (SHR test; Figures 2B and E). The  
111 vertical patterns of the MPs and MaPs were relatively similar at site 1, but not at site 2  
112 (Figures 2C and F). At both sites, however, the concentrations at the different depths were not  
113 significantly different, except MP numerical concentrations (Kruskal-Wallis and SHR tests).



114  
 115 **Figure 2.** Mean plastic concentrations per kg of dry sediment (item/kg and g/kg). A, D)  
 116 Concentrations at both sites expressed in items/kg (A) and g/kg (D) (the horizontal axis is  
 117 scaled by a logarithm base 10 transformation). B, E) Concentrations in each pit at both sites  
 118 expressed in items/kg (B) and g/kg (E). C, F) Concentrations at each depth for both sites  
 119 expressed in items/kg (C) and g/kg (F). The bars represent the standard deviation from the  
 120 mean. The gray italic numbers indicate the number of samples.

121 ***Covariation between MaPs, MPs and environmental factors***

122 No relationship was observed between the concentration of plastics and the sediment  
123 features, such as the percentages of sediment smaller than 2 (clay), 20 (silt) and 200  $\mu\text{m}$   
124 (sand) or the particle size corresponding to 10%, 25%, and 50% of the accumulated volume of  
125 sediment (see, for instance, Figure 3). At site 1, the numerical and mass concentrations  
126 covaried significantly for both the MPs and MaPs (Pearson test; SI Figure S5A). Similarly,  
127 the masses of the MPs (average per sample) and MaPs exhibited a positive and significant  
128 linear relationship, in contrast to the numerical concentrations (Pearson test; SI Figure S5B).  
129 When the concentrations at site 2 were added to the data set, the p-values of the linear  
130 regressions were slightly improved, but the overall results remained similar (Pearson test).



131

132 **Figure 3.** Relationships between the plastic concentrations and sediment features. Numerical

133 (A) and mass (B) concentrations are plotted as functions of the median sediment grain sizes of

134 the macroplastics (MaPs) and microplastics (MPs). The concentrations are expressed in

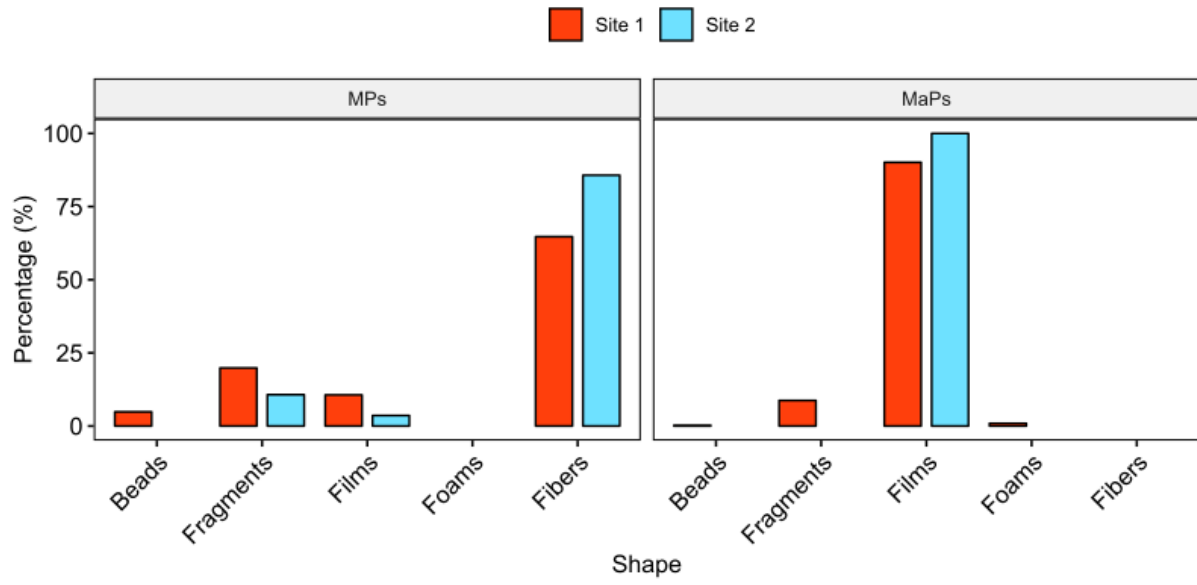
135 items/kg (A) and g/kg (B). The horizontal axis is scaled by a logarithm base 10

136 transformation.

137 *Plastic shapes*

138 Due to the large number of shape categories considered (SI Figures S1 and S2), data from  
139 independent samples were pooled within each study site. A similar distribution was observed  
140 at both sites, but the distributions of the MaPs and MPs were different. For the MaP size class,  
141 films were the most abundant shape found at site 1 (90%; Figure 4) and the only shape  
142 observed at site 2. Fragments were the second most abundant shape by number (9%) at site 1.  
143 The amounts of foams and microbeads were negligible (<1%) at both sites. No MaP fibers  
144 were observed at either site.

145 For the MP size class, fibers were the most abundant shape found at both sites (Site 1: 65%;  
146 Site 2: 86%), followed by fragments (Site 1: 20%; Site 2: 11%) and films (Site 1: 11%; Site 2:  
147 4%; Figure 4). Microbeads were less common (<5%) at site 1 and not found at site 2. No MP  
148 foam was observed at either site.



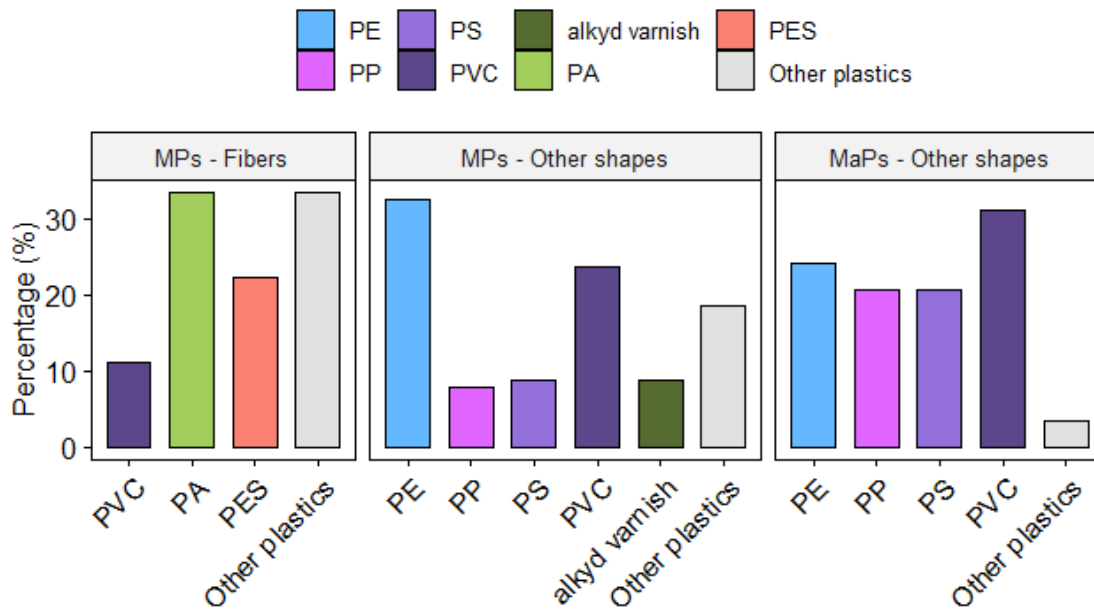
149

150 **Figure 4.** Shape distributions of the microplastics (MPs) and macroplastics (MaPs) found at

151 both sites.

152 ***Polymer composition***

153 Twenty different polymer types were identified from all the sediment samples. Only a  
154 limited number of suspected MaPs were not synthetic polymers (2/60 particles identified by  
155 FTIR spectroscopy; 60/62 particles were identified) but wood or cellulose (SI Figure S4).  
156 Therefore, the rate of correctly identified plastics was high (97%) for large particles.  
157 However, the results obtained by FTIR spectroscopy confirmed the necessity of performing  
158 plastic polymer analysis on small plastics, particularly fibers, for correcting the data. Indeed,  
159 we found that less than half (9/26 particles identified) of the binocular-sorted MP fibers were  
160 actually plastic. This low percentage (35%) of plastic is likely related to the difficulty in  
161 discriminating between plastic fibers and cotton and plant fibers with binoculars or a  
162 dissecting stereomicroscope. For the plastic fibers, polyamide (PA), polyester (PES) and  
163 polyvinyl chloride (PVC) were the three most abundant polymers (33, 22 and 11%,  
164 respectively; Figure 5). In contrast, the identification of other plastic shapes (films, fragments,  
165 foams and beads) was mostly successful (114/134 or 85%; 134/140 particles were identified).  
166 For those shapes, the polymers were mainly the same for both plastic size classes (Figure 4).  
167 The MaPs were principally made of PVC (31%), polyethylene (PE; 24%), polypropylene (PP;  
168 21%) and polystyrene (PS; 21%), and the MPs (other than the fibers) were mainly composed  
169 of PE (33%) and PVC (24%).



170

171 **Figure 5.** Synthetic organic polymer compositions of the MaPs and MPs found at both sites.

172 Shapes: fibers and other shapes (fragments, foams, films and beads). Polymers: polyethylene

173 (PE), polypropylene (PP), polystyrene (PS), polyvinyl chloride (PVC), alkyd varnish,

174 polyamide (PA), polyester (PES), other plastics (*e.g.*, polyethylene terephthalate,

175 polyurethane, polyacrylamide), as determined by FTIR spectroscopy analysis. See details in

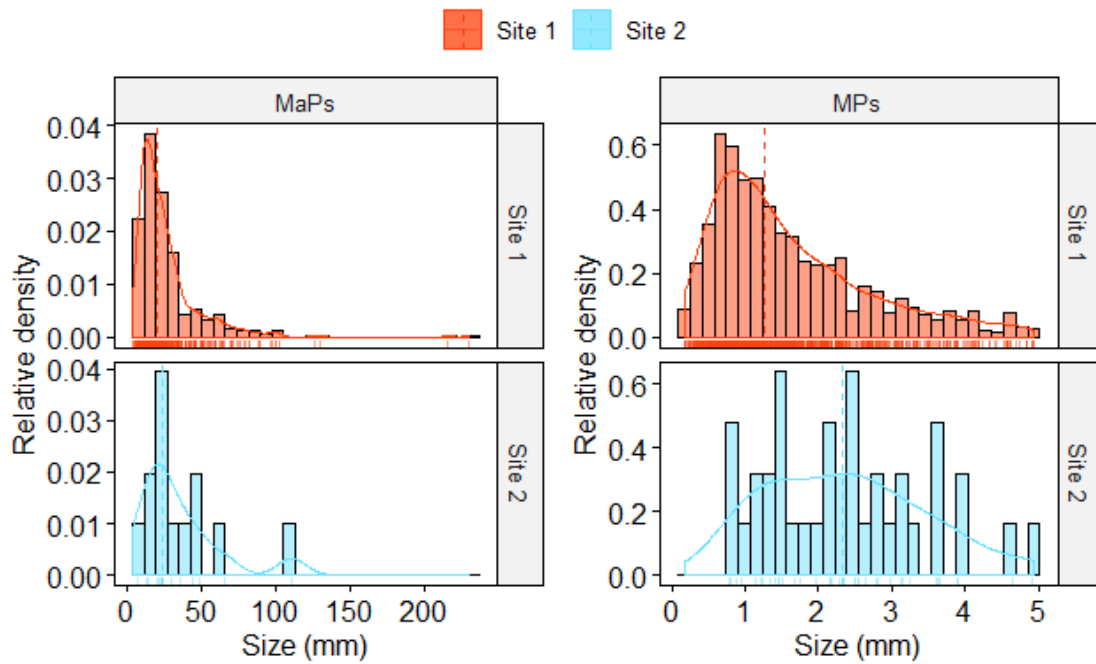
176 the FTIR spectroscopy section for polymer identification and SI Figure S4 for the percentages

177 of plastic, unidentified and non-plastic sorted particles.



178 ***Size***

179 After all the sorted particles were measured, no marked differences were observed between  
180 the MaP and MP size distributions of the two sites (Figure 6). The MaPs ranged from 5 to 230  
181 mm, and the MPs ranged from 167 to 4939  $\mu\text{m}$ . The MaPs exhibited a unimodal distribution  
182 skewed towards smaller size classes, and the medians were approximately 20 (site 1) and 24  
183 mm (site 2). The MP size distribution, which had a median of approximately 1 mm, was  
184 similar to the MaP size distribution at site 1. At site 2, the MPs exhibited a rather stochastic  
185 distribution. Only a few particles were observed in the size classes near the sieve meshes  
186 (MaPs: 5 mm; MPs: 125  $\mu\text{m}$ ), probably because the size was measured based on the longest  
187 dimension. These particles could pass through the sieve by their narrowest dimensions and  
188 were therefore not collected and counted.



189

190 **Figure 6.** Relative densities of the macroplastics (MaPs) and microplastics (MPs) within each  
 191 size class at each site. Size: longest dimension of the items. Density: number of plastics  
 192 within a size class, scaled to 1. Width of the size class bars: 8 mm (MaPs) and 0.17 mm  
 193 (MPs). The lines show the density curves, and the dashed lines indicate the median values.

194 **Discussion**

195 ***Plastic pollution in the Aa River***

196 In dredged sediments, buried plastics could indicate the average levels of the past plastic  
197 pollution of riverbed sediments. At the two studied sites, sediments were deposited at an  
198 approximate interval of a decade. The plastic quantities were more substantial at site 1  
199 (deposit date: 2004) than at the more recent site 2 (deposit date: 2016). Dissimilarities in the  
200 shape partitions were also observed, whereas differences of the polymer and size distributions  
201 were limited. The plastic quantities and features could change both before and after deposition  
202 through distinct processes. Before dredging operations, sediments and their pollutants are  
203 predominantly affected by river inputs, flow variations, sedimentation rates, resuspension  
204 events, *etc.* After the deposition of dredged sediments, the sediments evolve into new soil  
205 with the development of pioneer vegetation, as observed at our study site, and other  
206 mechanisms can occur (*e.g.*, slow reoxidation processes, infiltration, bioturbation,  
207 bioabsorption, *etc.*).

208 Before sediments are transferred to dredging deposition sites, they accumulate plastics that  
209 sediment into the riverbed. On the one hand, the deposition of plastics in riverbeds depends  
210 on the pool of plastics released to the environment, which is related to the local uses of  
211 plastics and waste management. Plastic production and consumption have increased since the  
212 middle of the twentieth century<sup>9</sup>. In developed countries, waste management has concurrently  
213 improved over the last decade. On the other hand, similar to the deposition rate of other  
214 suspended matter<sup>18</sup>, the plastic deposition rate may have changed due to a hydrodynamic  
215 change (*i.e.*, course of the river and/or river flow velocity)<sup>18</sup>. Accordingly, the dissimilarity of  
216 the sites in terms of both the sediment features and plastics may be related. Nevertheless, the  
217 mechanisms that govern the settling process of plastics into bed sediments are imperfectly

218 known. Moreover, the distribution of plastic debris is highly heterogeneous, even at a scale as  
219 small as a few meters<sup>19-22</sup>.

220 After dredging operations, the evolution of synthetic polymers over time within deposited  
221 sediments, similar to soils, remains largely unknown<sup>23</sup>. In our case, the development of  
222 pioneer vegetation is accompanied by other processes (*e.g.*, slow reoxidation processes,  
223 rainwater infiltration, bioturbation, bioabsorption). Therefore, the dredged sediments do not  
224 necessarily reflect the initial contamination state of the river. The conditions of the subsurface  
225 are rather stable, with moderate temperatures and no UV radiation, which is unfavorable for  
226 degradation<sup>10</sup>. Nevertheless, the initial quality and quantity of plastic may change, at least due  
227 to biodegradation<sup>24</sup>. In addition, initial plastic distributions can also change if particles  
228 migrate through infiltration and bioturbation<sup>25-27</sup>. The dredging processes in channeled rivers  
229 also result in an important perturbation and resuspension of settled particles. An unknown  
230 fraction of resuspended particles, including plastics, may finally migrate downstream in the  
231 river, reducing the total amount of plastic particles transferred to the deposition site.

232 At both sites, light plastic polymers were observed in non-negligible quantities (Figure 5).  
233 Among them, PE, PP and PS were logically the most abundant. They were among the most  
234 produced polymers during the last decade<sup>28</sup>. However, they have a density below or slightly  
235 higher than 1 g/cm<sup>3</sup> and should float in freshwater systems. Physical and biological processes  
236 can force buoyant plastics to sink<sup>29</sup>, but the observations needed to estimate their occurrences  
237 are lacking. In addition, after this extended period of storage, the most breakable plastics may  
238 have been fragmented through degradation, becoming smaller than our detection size limit.

239 Films were predominant in the MaPs, whereas they constituted a negligible fraction of the  
240 MPs (Figure 4). Similar to the ratio of polymers, a rather similar shape ratio could be  
241 expected along the plastic size range, from the longest MaPs to the smallest MPs, with the  
242 exception of fibers, which are primarily micrometric in size and consequently absent from the

243 MaPs<sup>30</sup>. These dissimilar patterns can indicate differences in the fragmentation rates of the  
244 shapes or in the sources. Plastic films are used in packaging or bags, which are short-life  
245 objects released into the environment in micrometric sizes. Indeed, they are among the most  
246 frequent MaPs found at river surfaces<sup>31</sup>. Fragments may be more prone to surface layer  
247 fragmentation, resulting in the release of smaller pieces that are not detectable by our  
248 procedure.

249 The size distribution at site 1, especially that of the MPs, was subtly shifted towards the  
250 smallest dimension compared with that at site 2, a pattern, which could indicate stronger  
251 degradation and is consistent with the historical context of the samples. Nonetheless, many  
252 other factors may affect the size distribution, including shape and polymer discrepancies.

253 By multiplying the median concentrations of the plastics (SI Table S2) by the volume of the  
254 sediment, we could roughly estimate that  $3 \times 10^{10}$  items ( $>125 \mu\text{m}$ ) or 9 tons of plastics are  
255 trapped within site 1 ( $3.8 \times 10^4 \text{ m}^3$ ) and  $5 \times 10^8$  items or 0.9 tons are trapped in site 2 ( $1.5 \times$   
256  $10^4 \text{ m}^3$ ). In France, more than  $1.4 \times 10^6 \text{ m}^3$  of riverbed sediments are dredged every year<sup>32</sup>.  
257 Plastic budget estimations do not currently incorporate those sections. Deposit sites constitute  
258 ultimate plastic sinks, which, unlike riverbeds, are unaffected by flooding and, if not  
259 perturbed by human activities, will persist. Once deposited, dredged sediments evolve into  
260 new soil, and the presence of plastics may have a significant and durable impact on soil  
261 ecosystem development<sup>33</sup>.

### 262 ***External forcing of the plastic distribution within dredged sediments***

263 As indicated above, plastics trapped in dredged sediments are not directly comparable to  
264 their counterparts settled in riverbeds. Within watersheds, plastic distributions depend on  
265 various factors, such as hydrology and human activities<sup>34</sup>. When dredged sediments are  
266 deposited at storage sites, this initial distribution is probably perturbed. First, sediments are  
267 taken out of the river and put in an intermediate container (*e.g.*, boats or trucks), which tends

268 to homogenize the grain size distribution and may result in the incorporation of new plastics  
269 from the container (*i.e.*, contamination). Then, the sediments are deposited at storage sites  
270 using pumps, which creates horizontal and vertical granulometric gradients. In fact, because  
271 large grains settle more rapidly, the size of the sediments gradually decreases from the pump  
272 to the opposite corner of the site and from the bottom to the surface.

273 Because the data at site 2 are limited, only the variability at site 1 is discussed. At this site, 3  
274 pits were dug 30 m apart. They were deposited during the same operation and came from the  
275 same river localization. Due to the filling process, the grain size at site 1 gradually decreased  
276 from pit 1 to pit 3 (south to north; Figure 1 and SI Figure S3). No covariations between the  
277 plastic concentrations and grain size distributions were observed (Figure 3). Plastics and  
278 sediments may behave and settle differently because of differences in the shape, size and  
279 density distributions<sup>35</sup>. More precisely, sediment shapes range from nearly spherical (*e.g.*,  
280 mature siliciclastic sediment) to nearly flat (*e.g.*, muscovite, biotite), MaPs are mostly films  
281 (~2D shape), and MPs are mainly fibers (elongated and thin cylinders). The medians of the  
282 sediment sizes ranged from 10 to 100  $\mu\text{m}$ , the MaP median was approximately 20-24 mm,  
283 and the MP median was 1 mm. Finally, the volumetric mass density of the sediments was  
284 greater than 2  $\text{g}/\text{cm}^3$ , and the densest polymers observed (PVC and PET) had a density of 1.4  
285  $\text{g}/\text{cm}^3$ .

286 Even if the plastics and sediments features are different, the plastic distribution could still  
287 follow the same gradient as the sediments, with larger, denser, more spherical and less  
288 weathered plastics settling deeper and closer to the pumps and thinner, lighter, more irregular  
289 and more weathered plastics settling at or near the surface and further from the pumps<sup>35,36</sup>.  
290 This behavior indicates an inverse relationship between MPs and MaPs, *i.e.*, samples from the  
291 beginning of the site contained large amounts of MaPs but few MPs, whereas few MaPs but  
292 numerous MPs would be observed at the opposite end. Therefore, the mass and numerical

293 concentrations should follow an inverse trend. However, a covariation between the masses of  
294 the MPs and MaPs was observed (SI Figure S5B), suggesting either similar deposition  
295 processes or the *in situ* degradation of MaPs to MPs. In any case, this relation could be  
296 extremely practical in large-scale investigations. Indeed, MaPs are easily measurable and  
297 could be used as a fingerprint to indicate the probable level of pollution by MPs. A  
298 covariation between the mass and number was also observed, suggesting a homogenized pool  
299 of plastics at the site (SI Figure S5A).

300 The plastic distribution in freshly dredged sediments, *i.e.*, just after the filling operation,  
301 might also change. Dredged sediments, similar to soils, evolve under the influences of  
302 external forcing. Water infiltration is one external force that may transfer particles from the  
303 surface to the bottom, and slightly higher concentrations were observed 1 m below the  
304 surface. Waldschläger and Schüttrumpf<sup>25</sup> suggest that the infiltration of plastics larger than  
305 100  $\mu\text{m}$  (*i.e.*, all plastics observed in this study) may occur in soils. Nevertheless, their  
306 experimental conditions (4600 mL/min of water flow for 1 hour through a 194 mm internal  
307 diameter column filled with glass spheres) were drastically different from the natural  
308 processes that occur in dredged sediments. Bioturbation may also vertically transfer particles.  
309 Rillig *et al.*<sup>27</sup> experimentally demonstrated that bioturbation could influence the plastic  
310 distribution, but the occurrence of this process in the natural environment remains largely  
311 unknown.

### 312 ***Levels of plastic pollution in European watersheds***

313 To our knowledge, only one study on plastic buried in dredged sediment has been  
314 reported<sup>14</sup>. Consequently, our results can be compared more significantly with studies of  
315 actual riverbed sediment, but direct comparisons should be made with caution. As previously  
316 mentioned, sediment dredging and deposition operations may change the initial riverbed  
317 plastic concentrations.

318 Likewise, no data are available for MaP concentrations in riverbed sediments in European  
319 watersheds. The MP concentrations measured at the two sites varied between  $9 \times 10^{-1}$  and  $3 \times$   
320  $10^3$  items/kg, corresponding to the lowest range of MP concentrations measured in various  
321 European riverbed locations to date (Table S4)<sup>1,19,37-39</sup>. Concentrations within the same order  
322 of magnitude should be considered, in a first approximation, as similar. Indeed, sample  
323 collection and treatment, especially visual sorting and FTIR validation, potentially create  
324 noticeable differences between studies. Horton *et al.*<sup>1</sup> found moderate concentrations ( $3 \times 10^2$   
325 items/kg) in the Thames River (United Kingdom; UK), despite their focus on larger MPs (>1  
326 mm). In other studies with similar concentrations to those in found in our study, lower  
327 percentages of fibers (<25%) were observed. On average, fibers accounted for 65% (site 1)  
328 and 86% (site 2) of all the MP items collected in our study. They were also predominant at the  
329 bottom of the canals in Amsterdam (Netherlands)<sup>40</sup> and reached up to 75% of the MPs in the  
330 riverbed sediment of the Ebro River (Spain)<sup>41</sup>. In both studies, the observed concentrations  
331 were one order of magnitude higher than ours. The concentrations observed in the Irwell and  
332 Mersey catchments (UK;  $7 \times 10^4$  items/kg), the Roter River (Germany;  $5 \times 10^4$  items/kg) and  
333 the Rhin River (Germany;  $10^5$  items/kg) were two orders of magnitudes higher, but a  
334 negligible amount of fibers was detected (<10%)<sup>18,34,42</sup>, and these studies had a lower size  
335 limit (<50  $\mu$ m). Note that Frei *et al.*<sup>42</sup> and Mani *et al.*<sup>18</sup> used a semi-automatic  $\mu$ FTIR  
336 procedure to analyze very small MPs.

337 Plastic fibers are also predominant in numerous other environmental settings, such as  
338 wastewater, atmospheric fallout and deep-sea sediment<sup>43-45</sup>. Textiles have been pinpointed as  
339 a major source of synthetic fibers<sup>30</sup>, but they can also originate from fishing lines and  
340 gear<sup>46,47</sup>. Notably, one major pathway for MPs to reach riverbed sediment is effluents from  
341 wastewater treatment plants (WWTPs). Indeed, WWTPs receive wastewater from washing  
342 machines, which can emit up to 700,000 fibers during a single wash<sup>30</sup>. Even when the



343 removal efficiency is high (up to 98%)<sup>45</sup>, the treated effluent flowing into rivers still contains  
344 massive amounts of MPs. Moreover, synthetic fibers are partly trapped in sewage sludge,  
345 representing a supplementary source to agricultural watersheds<sup>48</sup>.

346 Twenty distinct polymers were observed, but six of them (*i.e.*, PE, PP, PS, PA, PES and  
347 PVC) accounted for more than two-thirds of the total. They are among the most produced  
348 polymers<sup>49</sup>, and massive amounts of them are also found in other European riverbeds (Table  
349 S4). Horton *et al.*<sup>1</sup> observed a significant contribution of dyes (62%) to their polymer pool in  
350 the Thames River (UK) and a negligible proportion of low-density polymers (PE, PP and PS  
351  $\leq 5\%$ ). Low-density polymers represent more than half of the polymers detected in the MP and  
352 MaP fragments, films, foams and beads in our study. These results are in the range of  
353 observations made in the Tame River (UK; PE = 50%)<sup>39</sup> and Irwell and Mersey catchments  
354 (UK; 35%)<sup>34</sup> but lower than those made in Swiss floodplains ( $>88\%$ )<sup>19</sup>.

355 This study provides an accurate inventory of the qualities and quantities of plastics trapped in  
356 a dredging deposition site and discusses the possible role of external forcing on MaP and MP  
357 distributions. These initial promising data open the way for other studies, including those on  
358 the redistribution of this contamination in deposited sediments, the associations between  
359 plastics and other sedimentary particles, the transfer and degradation of plastics during soil  
360 placement, and matrix changes.

361 **Corresponding Author**

362 \* Corresponding author: [mel.constant@lilo.org](mailto:mel.constant@lilo.org)

363 **Author Contributions**

364 C.A and G.B. conceived the idea for this piece. M.C., C.A., and G.B. designed the research.

365 M.C. and N.B. conducted the data collection and analysis under the supervision of I.D.W.

366 M.C., C.A., I.D.W., D.D. and G.B. wrote the manuscript.

367 **Funding**

368 This research was supported by the European Fund for Regional Development Interreg.

369 **Acknowledgement**

370 We acknowledge the European Fund for Regional Development Interreg for funding the  
371 post-doc grant of Mel Constant and supported this research through the VALSE project. The  
372 Region Hauts de France and the French government are warmly acknowledged through the  
373 founding of the CPERs Climibio and ECRIN. We thank LASIRE lab member Myriam  
374 Moreau and LGCgE lab members Johanna Caboche, Guillaume Potier, Damien Betrancourt  
375 and Dominique Dubois for their helps with the samples preparation, and Vincent Thiery for  
376 his advises on the use of the dissecting stereo-microscope. We are also grateful to BRGM  
377 members Philippe Bataillard and Samuel Coussy, for coordinated the field campaign (and  
378 providing the site history).

379 **Supporting Information**

380 Method details on the study area, sediment collection, preparation of the samples prior to  
381 analysis, contamination protection, FTIR spectroscopy, sediment particle size distribution  
382 analysis and data analysis. Main features of the sampled sites (Table S1), mean and range of  
383 plastic concentrations (Table S2), results (P-values) of the statistical analysis (Table S3),  
384 plastics concentrations within European river sediment (Table S4), images of macroplastics  
385 (Figure S1) and microplastic shapes (Figure S2), grain size distribution of sediment samples

386 (Figure S3), overall FTIR spectroscopy analysis results (Figure S4), and the relationships  
387 between plastic concentrations (Figure S5)(PDF).

### 388 **Abbreviations**

389 MPs: microplastics; MaPs: macroplastics; FTIR: Fourier Transform InfraRed; PE:  
390 polyethylene; PP: polypropylene; PS: polystyrene; PVC: polychlorure vinyl; PA: polyamide;  
391 PES: polyester; POP: persistent organic pollutants; WWTP: wastewater treatment plant; ATR:  
392 Attenuated Total Reflection; DTGS: Deuterated Triglycine Sulfate; MCT: Mercuric  
393 Cadmium Telluride; SRH: Scheirer-Ray-Hare

- 395 (1) Horton, A. A.; Walton, A.; Spurgeon, D. J.; Lahive, E.; Svendsen, C. Microplastics in Freshwater  
396 and Terrestrial Environments: Evaluating the Current Understanding to Identify the  
397 Knowledge Gaps and Future Research Priorities. *Sci. Total Environ.* **2017**, *586*, 127–141.  
398 <https://doi.org/10.1016/j.scitotenv.2017.01.190>.
- 399 (2) Best, J. Anthropogenic Stresses on the World’s Big Rivers. *Nat. Geosci.* **2019**, *12* (1), 7–21.  
400 <https://doi.org/10.1038/s41561-018-0262-x>.
- 401 (3) Farrell, P.; Nelson, K. Trophic Level Transfer of Microplastic: *Mytilus Edulis* (L.) to *Carcinus*  
402 *Maenas* (L.). *Environ. Pollut.* **2013**, *177*, 1–3. <https://doi.org/10.1016/j.envpol.2013.01.046>.
- 403 (4) Rochman, C. M.; Tahir, A.; Williams, S. L.; Baxa, D. V.; Lam, R.; Miller, J. T.; Teh, F.-C.;  
404 Werorilangi, S.; Teh, S. J. Anthropogenic Debris in Seafood: Plastic Debris and Fibers from  
405 Textiles in Fish and Bivalves Sold for Human Consumption. *Sci. Rep.* **2015**, *5* (1), 1–10.  
406 <https://doi.org/10.1038/srep14340>.
- 407 (5) Watts, A. J. R.; Lewis, C.; Goodhead, R. M.; Beckett, S. J.; Moger, J.; Tyler, C. R.; Galloway, T. S.  
408 Uptake and Retention of Microplastics by the Shore Crab *Carcinus Maenas*. *Environ. Sci.*  
409 *Technol.* **2014**, *48* (15), 8823–8830. <https://doi.org/10.1021/es501090e>.
- 410 (6) Bakir, A.; Rowland, S. J.; Thompson, R. C. Transport of Persistent Organic Pollutants by  
411 Microplastics in Estuarine Conditions. *Estuar. Coast. SHELF Sci.* **2014**, *140*, 14–21.  
412 <https://doi.org/10.1016/j.ecss.2014.01.004>.
- 413 (7) Turner, A.; Holmes, L. A. Adsorption of Trace Metals by Microplastic Pellets in Fresh Water.  
414 *Environ. Chem.* **2015**, *12* (5), 600–610. <https://doi.org/10.1071/EN14143>.
- 415 (8) Teuten, E. L.; Rowland, S. J.; Galloway, T. S.; Thompson, R. C. Potential for Plastics to Transport  
416 Hydrophobic Contaminants. *Environ. Sci. Technol.* **2007**, *41* (22), 7759–7764.  
417 <https://doi.org/10.1021/es071737s>.
- 418 (9) GESAMP. *Sources, Fate and Effects of Microplastics in the Marine Environment: A Global*  
419 *Assessment*, IMO/FAO/UNESCO-IOC/UNIDO/WMO/IAEA/UN/UNEP/UNDP Joint Group of  
420 Experts on the Scientific Aspects of Marine Environmental Protection).; Rep. Stud. GESAMP;  
421 2015. <https://doi.org/10.13140/RG.2.1.3803.7925>.
- 422 (10) Andrady, A. L. Persistence of Plastic Litter in the Oceans. In *Marine Anthropogenic Litter*;  
423 Bergmann, M., Gutow, L., Klages, M., Eds.; Springer International Publishing, 2015; pp 57–72.  
424 [https://doi.org/10.1007/978-3-319-16510-3\\_3](https://doi.org/10.1007/978-3-319-16510-3_3).
- 425 (11) Rochman, C. M. Microplastics Research—from Sink to Source. *Science* **2018**, *360* (6384), 28–  
426 29. <https://doi.org/10.1126/science.aar7734>.
- 427 (12) Eerkes-Medrano, D.; Thompson, R. C.; Aldridge, D. C. Microplastics in Freshwater Systems: A  
428 Review of the Emerging Threats, Identification of Knowledge Gaps and Prioritisation of  
429 Research Needs. *Water Res.* **2015**, *75*, 63–82. <https://doi.org/10.1016/j.watres.2015.02.012>.
- 430 (13) Gong, J.; Xie, P. Research Progress in Sources, Analytical Methods, Eco-Environmental Effects,  
431 and Control Measures of Microplastics. *Chemosphere* **2020**, *254*, 126790.  
432 <https://doi.org/10.1016/j.chemosphere.2020.126790>.
- 433 (14) Ji, X.; Ma, Y.; Zeng, G.; Xu, X.; Mei, K.; Wang, Z.; Chen, Z.; Dahlgren, R.; Zhang, M.; Shang, X.  
434 Transport and Fate of Microplastics from Riverine Sediment Dredge Piles: Implications for  
435 Disposal. *J. Hazard. Mater.* **2021**, *404*, 124132.  
436 <https://doi.org/10.1016/j.jhazmat.2020.124132>.
- 437 (15) SmageAa. Rapport d’activité 2016, Syndicat Mixte Pour l’aménagement et La Gestion Des  
438 Eaux de l’Aa. **2016**. <https://www.smageaa.fr/le-rapport-dactivite-2016-est-en-ligne/>.
- 439 (16) CLC. CORINE Land Cover Database Hosted by the French Ministry for the Ecological Transition.  
440 **2012**. <https://www.statistiques.developpement-durable.gouv.fr/corine-land-cover-0>.
- 441 (17) Claessens, M.; Van Cauwenberghe, L.; Vandegehuchte, M. B.; Janssen, C. R. New Techniques  
442 for the Detection of Microplastics in Sediments and Field Collected Organisms. *Mar. Pollut.*  
443 *Bull.* **2013**, *70* (1–2), 227–233. <https://doi.org/10.1016/j.marpolbul.2013.03.009>.

- 444 (18) Mani, T.; Primpke, S.; Lorenz, C.; Gerdt, G.; Burkhardt-Holm, P. Microplastic Pollution in  
445 Benthic Midstream Sediments of the Rhine River. *Environ. Sci. Technol.* **2019**, *53* (10), 6053–  
446 6062. <https://doi.org/10.1021/acs.est.9b01363>.
- 447 (19) Scheurer, M.; Bigalke, M. Microplastics in Swiss Floodplain Soils. *Environ. Sci. Technol.* **2018**,  
448 *52* (6), 3591–3598. <https://doi.org/10.1021/acs.est.7b06003>.
- 449 (20) Constant, M.; Kerhervé, P.; Mino-Vercellio-Verollet, M.; Dumontier, M.; Sánchez Vidal, A.;  
450 Canals, M.; Heussner, S. Beached Microplastics in the Northwestern Mediterranean Sea. *Mar.*  
451 *Pollut. Bull.* **2019**, *142*, 263–273. <https://doi.org/10.1016/j.marpolbul.2019.03.032>.
- 452 (21) Constant, M.; Kerherve, P.; Sola, J.; Sanchez-Vidal, A.; Canals, M.; Heussner, S. Floating  
453 Microplastics in the Northwestern Mediterranean Sea: Temporal and Spatial Heterogeneities.  
454 In *Proceedings of the International Conference on Microplastic Pollution in the Mediterranean*  
455 *Sea*; Cocca, M., Di Pace, E., Errico, M. E., Gentile, G., Montarsolo, A., Mossotti, R., Eds.;  
456 Springer Water; Springer International Publishing: Cham, 2018; pp 9–15.  
457 [https://doi.org/10.1007/978-3-319-71279-6\\_2](https://doi.org/10.1007/978-3-319-71279-6_2).
- 458 (22) Constant, M.; Kerhervé, P.; Heussner, S. Source, Transfer, and Fate of Microplastics in the  
459 Northwestern Mediterranean Sea: A Holistic Approach. In *Fate and Impact of Microplastics in*  
460 *Marine Ecosystems*; Baztan, J., Jorgensen, B., Pahl, S., Thompson, R. C., Vanderlinden, J.-P.,  
461 Eds.; Elsevier, 2017; pp 115–116. <https://doi.org/10.1016/B978-0-12-812271-6.00111-3>.
- 462 (23) Accinelli, C.; Abbas, H. K.; Shier, W. T.; Vicari, A.; Little, N. S.; Aloise, M. R.; Giacomini, S.  
463 Degradation of Microplastic Seed Film-Coating Fragments in Soil. *Chemosphere* **2019**, *226*,  
464 645–650. <https://doi.org/10.1016/j.chemosphere.2019.03.161>.
- 465 (24) Eubeler, J. P.; Bernhard, M.; Knepper, T. P. Environmental Biodegradation of Synthetic  
466 Polymers II. Biodegradation of Different Polymer Groups. *TrAC Trends Anal. Chem.* **2010**, *29*  
467 (1), 84–100. <https://doi.org/10.1016/j.trac.2009.09.005>.
- 468 (25) Waldschläger, K.; Schüttrumpf, H. Infiltration Behavior of Microplastic Particles with Different  
469 Densities, Sizes, and Shapes—From Glass Spheres to Natural Sediments. *Environ. Sci. Technol.*  
470 **2020**, *54* (15), 9366–9373. <https://doi.org/10.1021/acs.est.0c01722>.
- 471 (26) O’Connor, D.; Pan, S.; Shen, Z.; Song, Y.; Jin, Y.; Wu, W.-M.; Hou, D. Microplastics Undergo  
472 Accelerated Vertical Migration in Sand Soil Due to Small Size and Wet-Dry Cycles. *Environ.*  
473 *Pollut. Barking Essex 1987* **2019**, *249*, 527–534. <https://doi.org/10.1016/j.envpol.2019.03.092>.
- 474 (27) Rillig, M. C.; Ziersch, L.; Hempel, S. Microplastic Transport in Soil by Earthworms. *Sci. Rep.*  
475 **2017**, *7*, 1362. <https://doi.org/10.1038/s41598-017-01594-7>.
- 476 (28) Geyer, R.; Jambeck, J. R.; Law, K. L. Production, Use, and Fate of All Plastics Ever Made. *Sci.*  
477 *Adv.* **2017**, *3* (7), e1700782.
- 478 (29) Frère, L.; Paul-Pont, I.; Rinnert, E.; Petton, S.; Jaffré, J.; Bihannic, I.; Soudant, P.; Lambert, C.;  
479 Huvet, A. Influence of Environmental and Anthropogenic Factors on the Composition,  
480 Concentration and Spatial Distribution of Microplastics: A Case Study of the Bay of Brest  
481 (Brittany, France). *Environ. Pollut.* **2017**, *225*, 211–222.  
482 <https://doi.org/10.1016/j.envpol.2017.03.023>.
- 483 (30) Napper, I. E.; Thompson, R. C. Release of Synthetic Microplastic Plastic Fibres from Domestic  
484 Washing Machines: Effects of Fabric Type and Washing Conditions. *Mar. Pollut. Bull.* **2016**,  
485 *112* (1–2), 39–45. <https://doi.org/10.1016/j.marpolbul.2016.09.025>.
- 486 (31) González Fernández, D.; Hanke, G.; Kideys, A.; Alicia, N.; Sanchez-Vidal, A.; Bruge, A.; Bayram,  
487 öztürk; Palma, C.; Santinelli, C.; Daan, D.; Damia, B.; Elias, D.; Rojo-Nieto, E.; Fernando, F.;  
488 Bessa, F.; Suaria, G.; Siedlewicz, G.; Castro-Jiménez, J.; Joana, G.; Yuri, G. *Floating Macro Litter*  
489 *in European Rivers-Top Items*; 2018. <https://doi.org/10.2760/316058>.
- 490 (32) Cerema. Rétrospective Des Dragages Fluviaux En France - Période 2006-2010. *Ed. Cerema*  
491 **2018**. [https://www.cerema.fr/fr/centre-ressources/boutique/retrospective-dragages-fluviaux-](https://www.cerema.fr/fr/centre-ressources/boutique/retrospective-dragages-fluviaux-france)  
492 [france](https://www.cerema.fr/fr/centre-ressources/boutique/retrospective-dragages-fluviaux-france).
- 493 (33) Boots, B.; Russell, C. W.; Green, D. S. Effects of Microplastics in Soil Ecosystems: Above and  
494 Below Ground. *Environ. Sci. Technol.* **2019**, *53* (19), 11496–11506.  
495 <https://doi.org/10.1021/acs.est.9b03304>.

- 496 (34) Hurley, R.; Woodward, J.; Rothwell, J. J. Microplastic Contamination of River Beds Significantly  
497 Reduced by Catchment-Wide Flooding. *Nat. Geosci.* **2018**, *11* (4), 251.  
498 <https://doi.org/10.1038/s41561-018-0080-1>.
- 499 (35) Waldschläger, K.; Schüttrumpf, H. Effects of Particle Properties on the Settling and Rise  
500 Velocities of Microplastics in Freshwater under Laboratory Conditions. *Environ. Sci. Technol.*  
501 **2019**, *53* (4), 1958–1966. <https://doi.org/10.1021/acs.est.8b06794>.
- 502 (36) Waldschläger, K.; Born, M.; Cowger, W.; Gray, A.; Schüttrumpf, H. Settling and Rising  
503 Velocities of Environmentally Weathered Micro- and Macroplastic Particles. *Environ. Res.*  
504 **2020**, 110192. <https://doi.org/10.1016/j.envres.2020.110192>.
- 505 (37) Guerranti, C.; Cannas, S.; Scopetani, C.; Fastelli, P.; Cincinelli, A.; Renzi, M. Plastic Litter in  
506 Aquatic Environments of Maremma Regional Park (Tyrrhenian Sea, Italy): Contribution by the  
507 Ombrone River and Levels in Marine Sediments. *Mar. Pollut. Bull.* **2017**, *117* (1–2), 366–370.  
508 <https://doi.org/10.1016/j.marpolbul.2017.02.021>.
- 509 (38) Rodrigues, M. O.; Abrantes, N.; Goncalves, F. J. M.; Nogueira, H.; Marques, J. C.; Goncalves, A.  
510 M. M. Spatial and Temporal Distribution of Microplastics in Water and Sediments of a  
511 Freshwater System (Antua River, Portugal). *Sci. Total Environ.* **2018**, *633*, 1549–1559.  
512 <https://doi.org/10.1016/j.scitotenv.2018.03.233>.
- 513 (39) Tibbetts, J.; Krause, S.; Lynch, I.; Sambrook Smith, G. Abundance, Distribution, and Drivers of  
514 Microplastic Contamination in Urban River Environments. *Water* **2018**, *10* (11), 1597.  
515 <https://doi.org/10.3390/w10111597>.
- 516 (40) Leslie, H. A.; Brandsma, S. H.; van Velzen, M. J. M.; Vethaak, A. D. Microplastics En Route: Field  
517 Measurements in the Dutch River Delta and Amsterdam Canals, Wastewater Treatment  
518 Plants, North Sea Sediments and Biota. *Environ. Int.* **2017**, *101*, 133–142.  
519 <https://doi.org/10.1016/j.envint.2017.01.018>.
- 520 (41) Simon-Sánchez, L.; Grelaud, M.; Garcia-Orellana, J.; Ziveri, P. River Deltas as Hotspots of  
521 Microplastic Accumulation: The Case Study of the Ebro River (NW Mediterranean). *Sci. Total*  
522 *Environ.* **2019**, *687*, 1186–1196. <https://doi.org/10.1016/j.scitotenv.2019.06.168>.
- 523 (42) Frei, S.; Piehl, S.; Gilfedder, B. S.; Löder, M. G. J.; Krutzke, J.; Wilhelm, L.; Laforsch, C.  
524 Occurrence of Microplastics in the Hyporheic Zone of Rivers. *Sci. Rep.* **2019**, *9* (1), 15256.  
525 <https://doi.org/10.1038/s41598-019-51741-5>.
- 526 (43) Dris, R.; Gasperi, J.; Saad, M.; Mirande, C.; Tassin, B. Synthetic Fibers in Atmospheric Fallout: A  
527 Source of Microplastics in the Environment? *Mar. Pollut. Bull.* **2016**, *104* (1), 290–293.  
528 <https://doi.org/10.1016/j.marpolbul.2016.01.006>.
- 529 (44) Sanchez-Vidal, A.; Thompson, R. C.; Canals, M.; de Haan, W. P. The Imprint of Microfibres in  
530 Southern European Deep Seas. *PLOS ONE* **2018**, *13* (11), e0207033.  
531 <https://doi.org/10.1371/journal.pone.0207033>.
- 532 (45) Murphy, F.; Ewins, C.; Carbonnier, F.; Quinn, B. Wastewater Treatment Works (WwTW) as a  
533 Source of Microplastics in the Aquatic Environment. *Environ. Sci. Technol.* **2016**, *50* (11),  
534 5800–5808. <https://doi.org/10.1021/acs.est.5b05416>.
- 535 (46) Claessens, M.; Meester, S. D.; Landuyt, L. V.; Clerck, K. D.; Janssen, C. R. Occurrence and  
536 Distribution of Microplastics in Marine Sediments along the Belgian Coast. *Mar. Pollut. Bull.*  
537 **2011**, *62* (10), 2199–2204. <https://doi.org/10.1016/j.marpolbul.2011.06.030>.
- 538 (47) Lots, F. A. E.; Behrens, P.; Vijver, M. G.; Horton, A. A.; Bosker, T. A Large-Scale Investigation of  
539 Microplastic Contamination: Abundance and Characteristics of Microplastics in European  
540 Beach Sediment. *Mar. Pollut. Bull.* **2017**, *123* (1), 219–226.  
541 <https://doi.org/10.1016/j.marpolbul.2017.08.057>.
- 542 (48) Zubris, K. A. V.; Richards, B. K. Synthetic Fibers as an Indicator of Land Application of Sludge.  
543 *Environ. Pollut.* **2005**, *138* (2), 201–211. <https://doi.org/10.1016/j.envpol.2005.04.013>.
- 544 (49) Plastics Europe. Plastics-The Facts - An Analysis of European Plastics Production, Demand and  
545 Waste Data. **2019**.
- 546

547 **Abstract Graphic:** For Table of Contents Only



548