



HAL
open science

An optimized calibration strategy for high order adaptive optics systems : the Slope-Oriented Hadamard Actuation

Serge Meimon, Thierry Fusco, Cyril Petit

► **To cite this version:**

Serge Meimon, Thierry Fusco, Cyril Petit. An optimized calibration strategy for high order adaptive optics systems : the Slope-Oriented Hadamard Actuation. 1st AO4ELT conference - Adaptive Optics for Extremely Large Telescopes, Jun 2009, Paris, France. pp.07009, <10.1051/ao4elt/201007009>. <hal-03215878>

HAL Id: hal-03215878

<https://hal.science/hal-03215878v1>

Submitted on 3 May 2021

HAL is a multi-disciplinary open access archive for the deposit and dissemination of scientific research documents, whether they are published or not. The documents may come from teaching and research institutions in France or abroad, or from public or private research centers.

L'archive ouverte pluridisciplinaire **HAL**, est destinée au dépôt et à la diffusion de documents scientifiques de niveau recherche, publiés ou non, émanant des établissements d'enseignement et de recherche français ou étrangers, des laboratoires publics ou privés.



HAL Authorization

An optimized calibration strategy for high order adaptive optics systems : the Slope-Oriented Hadamard Actuation

Serge Meimon^{1,a}, Thierry Fusco¹, and Cyril Petit¹

Office National d'Études et de Recherches Aéronautiques
 Département d'Optique Théorique et Appliquée
 BP 72, F-92322 Châtillon cedex, France

Abstract. The correct calibration of the interaction matrix D deeply affects the performance of an adaptive optics system. In the case of high-order systems, when the number of mirror modes is worth a few thousands, the actuation strategy is critical. This is a very first draft of a future paper, so feel free to contact the corresponding author for more accurate and up to date information.

1 Introduction

First, we propose a tractable interaction matrix quality criterion. Second, we derive its value in a calibration scheme context, and compare it to other interaction matrix calibration strategies (such as [1]) Last, we show simulation results in a SAXO-SPHERE case.

2 Interaction matrix quality criterion

Let M_{inf} be the influence function matrix – giving the modal decomposition of the shape of the mirror for a unitary displacement of each actuator – and M_{wfs} the wave front sensor (WFS) matrix – giving the WFS measurements for each phase mode. We suppose, with no lack of generality, that the phase modal basis size is very high, so the under-representation issues remain negligible.

The interaction matrix D gives the WFS measurements for a unitary displacement of each actuator:

$$D = M_{\text{wfs}} \cdot M_{\text{inf}}. \quad (1)$$

Let \hat{D} be the estimated interaction matrix. The true and estimated control matrices are given by:

$$M_{\text{com}} \stackrel{\Delta}{=} D^\dagger, \quad \hat{M}_{\text{com}} \stackrel{\Delta}{=} \hat{D}^\dagger \quad (2)$$

with X^\dagger the pseudo-inverse of X .

The first issue we address is to define a \hat{D} quality criterion, in order to compare various calibration strategies. To do so, we compute the residual phase and isolate the part due to miscalibration.

In a first step, we do not consider any dynamic (the impact of the control law will be discussed later): we put a known phase screen φ_{tur} in front of the AO system, we compute the correction the system would apply φ_{cor} , and we call φ_{res} the difference. It is a “one-shot” use of the AO system.

$$\varphi_{\text{res}}(t) = \varphi_{\text{tur}}(t) - \varphi_{\text{cor}}(t) = \varphi_{\text{tur}}(t) - M_{\text{inf}} \cdot \hat{D}^\dagger \cdot [M_{\text{wfs}} \cdot \varphi_{\text{tur}}(t) + \text{noise}]$$

This expression splits in the following terms:

$$\varphi_{\text{res}}(t) = \underbrace{\varphi_{\text{tur}}(t) - M_{\text{inf}} \cdot D^\dagger \cdot M_{\text{wfs}} \cdot \varphi_{\text{tur}}(t)}_{\text{fitting, aliasing}} - \underbrace{M_{\text{inf}} \cdot D^\dagger \cdot \text{noise}}_{\text{WFS noise}} + \underbrace{M_{\text{inf}} \cdot [D^\dagger - \hat{D}^\dagger] \cdot [M_{\text{wfs}} \cdot \varphi_{\text{tur}}(t) + \text{noise}]}_{\text{miscalibration}} \quad (3)$$

^a e-mail: authorname@onera.fr

The miscalibration term contains a noise term and a turbulent term. For a WFS noise much lower than the signal $M_{\text{wfs}} \cdot \varphi_{\text{tur}}(t)$, the miscalibration term is approximated by:

$$\varphi_{\text{res}}^{\text{cal}} \stackrel{\Delta}{=} M_{\text{inf}} \cdot [D^\dagger - \hat{D}^\dagger] \cdot M_{\text{wfs}} \cdot \varphi_{\text{tur}}(t). \quad (4)$$

This term belongs to the image of M_{inf} , *i.e.* it is in the mirror space. We assume that all the mirror modes are seen by the WFS (or conversely that all the unseen mirror modes are filtered). Therefore, all of $\varphi_{\text{res}}^{\text{cal}}$ is seen by the WFS. In other words, the projection of $\varphi_{\text{res}}^{\text{cal}}$ onto the phase subspace observable by the WFS is $\varphi_{\text{res}}^{\text{cal}}$ itself. Mathematically, we define $P_{\text{r}^{\text{obs}}} = M_{\text{wfs}}^\dagger \cdot M_{\text{wfs}}$, which is the projector onto the WFS observable subspace, and write $\varphi_{\text{res}}^{\text{cal}} = P_{\text{r}^{\text{obs}}} \varphi_{\text{res}}^{\text{cal}}$. With eqs. (1,4), it comes:

$$\varphi_{\text{res}}^{\text{cal}} = M_{\text{wfs}}^\dagger \cdot D \cdot [D^\dagger - \hat{D}^\dagger] \cdot M_{\text{wfs}} \cdot \varphi_{\text{tur}}(t) \quad (5)$$

We have $D \cdot [D^\dagger - \hat{D}^\dagger] = [\hat{D} - D] \cdot D^\dagger$ at the first order¹, so

$$\varphi_{\text{res}}^{\text{cal}} = M_{\text{wfs}}^\dagger [\hat{D} - D] \cdot D^\dagger \cdot M_{\text{wfs}} \cdot \varphi_{\text{tur}}(t) \quad (6)$$

An AO system is classically designed by optimizing the Strehl Ratio, or conversely by minimizing the temporal mean of the residual phase variance. Following this rationale, we define the interaction matrix quality by $Q(D) \stackrel{\Delta}{=} \langle \text{Var} \{ \varphi_{\text{res}}^{\text{cal}} \} \rangle_t$. We define $\Delta D \stackrel{\Delta}{=} \hat{D} - D$ and $C_{\text{slope}} = M_{\text{wfs}} \cdot \langle \varphi_{\text{tur}}(t) \cdot \varphi_{\text{tur}}(t)^T \rangle_t \cdot M_{\text{wfs}}^\dagger$. With the norm defined on a vector or matrix

$$\|M\|^2 = \sum_{i,j} |M_{i,j}|^2 = \text{Trace} [M \cdot M^T] = \text{Trace} [M^T \cdot M]$$

and equation 6, we obtain:

$$Q(\Delta D) = \left\| M_{\text{wfs}}^\dagger \cdot \Delta D \cdot D^\dagger \cdot \sqrt{C_{\text{slope}}} \right\|^2 \quad (7)$$

Of course, it is difficult to link this metric to the final contribution of the D error in a closed loop configuration: the miscalibration error will result in an additional delay which depends on the selected control law. However, the tendency will remain the same: two estimates of the calibration matrix with the same level of "static calibration error" $Q(\Delta D)$ will yield an equal delay in close loop (provided that the control law is linear). Therefore, the way to compare two strategies is the following: we compare the number of photons needed to reach the same level of static error for two calibration strategies. The best strategy is the less photon-consuming one.

3 Interaction matrix calibration strategy

In a calibration context, a set of actuation patterns V_i is applied to the system. Let V be the matrix which rows are the V_i . A classical way to proceed is to operate one actuator at a time, which corresponds to a diagonal matrix V . In what follows, we derive an optimized choice of V .

The set of measurements is $C = DV + N$, N being the noise matrix, $N_{i,j}$ is the noise on the i th slope measurement for the j th pattern.. The estimated interaction matrix is $\hat{D} = CV^\dagger$. We gather

$$\Delta D = -NV^\dagger$$

Therefore, with equation 7 we get:

$$Q(V) = \left\| M_{\text{wfs}}^\dagger \cdot NV^\dagger \cdot D^\dagger \cdot \sqrt{C_{\text{slope}}} \right\|^2 \quad (8)$$

¹ $D \cdot [D^\dagger - \hat{D}^\dagger] = [\hat{D} - D] \cdot D^\dagger \simeq [\hat{D} - D] \cdot D^\dagger$.

We assume that all the $N_{i,j}$ components are decorrelated, and that for a given subpupil, the noise variance should not change from one pattern to the other:

$$\langle N_{i,j}N_{k,l} \rangle = \delta_{i,k}\delta_{j,l}\sigma_i^2$$

With this assumption, we can show that, in average,

$$\langle Q(V) \rangle = \left\| M_{\text{wfs}}^\dagger \cdot \Sigma_N \right\|^2 \cdot \left\| V^\dagger \cdot D^\dagger \cdot \sqrt{C_{\text{slope}}} \right\|^2 \quad (9)$$

with $\Sigma_N = \text{Diag} \{ \sigma_i \}$. The optimum set of actuation patterns with respect to the residual phase variance is the one minimizing $\langle Q(V) \rangle$, or conversely, minimizing

$$Q(V) = \left\| V^\dagger \cdot D^\dagger \cdot \sqrt{C_{\text{slope}}} \right\|^2. \quad (10)$$

The minimization has to be done under some constraints:

Rank V must be of full rank, otherwise V^\dagger has no meaning;

DMSat $|V_i| \leq V_{\text{max}}$, V_{max} being the saturation level of the DM;

WFSsat $|[D \cdot V]_i| \leq S_{\text{max}}$, S_{max} being the limit of the linearity domain of the WFS.

4 Optimization methods

In the general case, this optimization problem is not easy, and we have not found a full optimization method. However, under some assumptions, the solution is straightforward.

Voltage Oriented Hadamard Actuation For instance, we consider the approximation

$$D^\dagger \cdot \sqrt{C_{\text{slope}}} \simeq \text{Id}, \quad (11)$$

and restrain the choice of V to invertible matrices (*i.e.* a set of N_{act} independent patterns), so that $V^\dagger = V^{-1}$). Taking into account only the constraints Rank and DMSat, the optimization problem reads:

$$V_{\text{opt}} = \arg \min_{|V_i| \leq V_{\text{max}}} \|V^\dagger\|^2 = \arg \max_{|V_i| \leq V_{\text{max}}, \det(V) \neq 0} \|V\|^2 \quad (12)$$

Let N_{act} be the number of actuators. So V_{opt} contains N_{act}^2 components lower than V_{max} in absolute value. Then $\|V_{\text{opt}}\|^2 \leq N_{\text{act}}^2 V_{\text{max}}$. The Hadamard matrices H_n are invertible (and orthogonal) matrices containing ± 1 components. The matrix $V_{\text{max}} \cdot H_{N_{\text{act}}}$ has a norm of $N_{\text{act}}^2 V_{\text{max}}$ and is invertible. It is therefore a solution to the optimization problem 12:

$$V_{\text{opt}} = V_{\text{max}} \cdot H_{N_{\text{act}}} \quad (13)$$

This solution has been proposed and qualified by [[1]], although it was obtained with a different approach.

Slope Oriented Hadamard Actuation First, the approximation 11 is questionable: it implies that statistically, all actuators displacements are decorrelated and have the same energy. Simulation on a SAXO case (with a r_0 of 18 cm at 0.7 microns) show that it is not the case (see fig. 1). However, the approximation

$$\sqrt{C_{\text{slope}}} \simeq \text{Id} \quad (14)$$

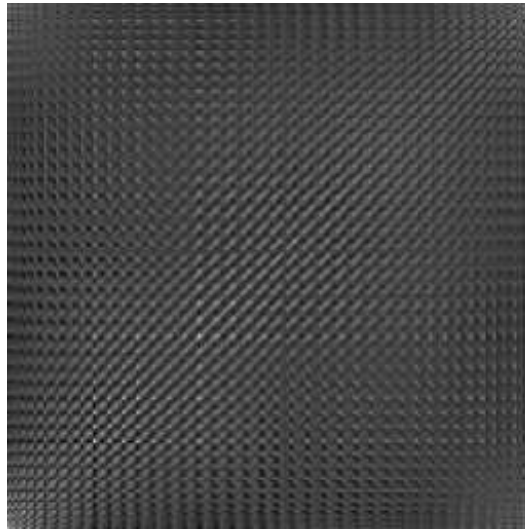


Fig. 1. Actuator voltages covariance matrix

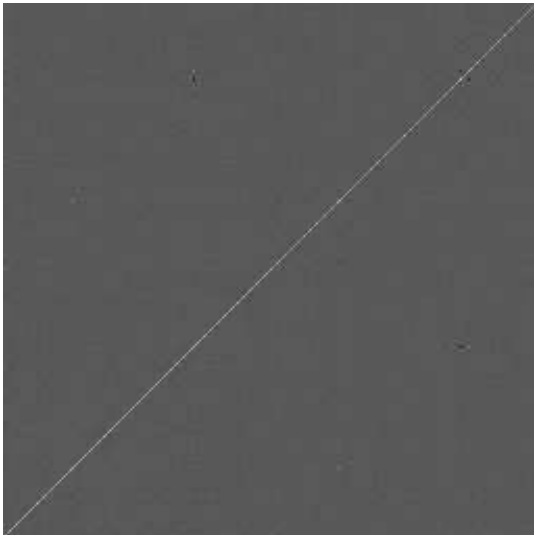


Fig. 2. Slopes covariance matrix

is valid at the first order² (see fig. 2).

Second, the constraint we have to keep is WFSsat, and not DMsat: the DM is designed to compensate for the turbulence whereas the WFS is designed to measure the *residual* turbulence. In a calibration scheme, the saturation limit of the WFS will be met much sooner than the DM saturation limit. The optimization problem then reads:

$$V_{\text{opt}} = \arg \min_{\|DV\|_1 \leq S_{\text{max}}} \|V^\dagger D^\dagger\|^2 \quad (15)$$

Although this optimization problem is not straightforward to solve, there exists a degraded solution directly computable. Let us suppose that both D and V are invertible. Then the optimization problem

² if we neglect the cross correlation of x/y slopes and the cross-correlation between sub-pertures distant of less than r_0 typically

reads:

$$V_{\text{opt}} = \underset{\|DV\| \leq S_{\text{max}}, \det(DV) \neq 0}{\text{arg max}} \|DV\|^2 \quad (16)$$

which has the same shape as 12 in the slope space. The obtained solution then verifies $DV_{\text{opt}} = S_{\text{max}} \cdot H_{N_{\text{slope}}}$, so

$$V_{\text{opt}} = S_{\text{max}} \cdot D^\dagger H_{N_{\text{act}}} \quad (17)$$

Here, the idea is to find the actuation pattern such that all the WFS slopes are at the saturation limit. It will yield the best SNR possible.

There are two drawbacks for this solution:

- it requires the knowledge of D^\dagger to be computed. In practice, a first rough estimate of D (with a high noise, or a synthetic matrix) can be used to compute V_{opt} . This V_{opt} is then used in a second step to perform a fine calibration;
- it is not an exact solution. Therefore, it might saturate the WFS : nothing ensures that $D \cdot V_{\text{opt}} = S_{\text{max}} \cdot D \cdot D^\dagger H_{N_{\text{act}}}$ has components lower than S_{max} in absolute value. However, the saturation level of a WFS is seldom a hard limit. Anyway, a tuning of S_{max} so that the WFS is not saturated is required. Actually, the voltage oriented Hadamard Actuation also requires some tuning to avoid WFS saturation, as proposed by [[1]], so this argument cannot be used to select one method or the other.

5 Simulation results

The total error on the interaction matrix contains a noise error and a linearity error: for high voltages, the SNR is better and the noise propagation is low, but the WFS saturation error is higher. To compare calibration strategies, one must tune the overall voltage gain so that the saturation error (*i.e.* the calibration error with no noise) is the same. Then, the strategy corresponding to the lowest noise propagation is the winner. We have performed a diffractive simulation of the calibration procedure in a SAXO case (40x40 subpupils, 6x6 pixels per sub pupil, pinhole diameter worth a 50th of the full pupil). We have assumed a uniform slope noise over all the subpupils. We have considered three strategies:

IF the influence function method, corresponding to sequential measurement for each actuator;
 HA the Hadamard Actuation method[1];
 SOHA the Slope Oriented Hadamard Actuation method, wich we previously described.

Overall voltage gains have been tuned so that all three yield the same saturation error.

We have previously shown that the approximation 14 is valid. With this, the interaction matrix error metric of eq. 7 becomes

$$Q(\Delta D) = \left\| M_{\text{wfs}}^\dagger \cdot \Delta D \cdot D^\dagger \right\|^2$$

. As previously mentioned, this quality criterion has no absolute meaning in a close loop operation. To give it more meaning, we normalize it by $Q(D)$, which is the error obtained with a null estimation ($\hat{D} = 0$):

$$\bar{Q} \triangleq \frac{Q(\Delta D)}{Q(D)}$$

It is equal to 100% if the error is 100% of the matrix itself. This is the metric used in fig 3. The rough estimate of D used for the SOHA method had a relative error slightly below 50% (dotted line).

The way to use these results is to compare the time (or photons) necessary for each method to reach one given quality of D estimation:

- the gain from IF to HA method is a 100 factor gain in calibration time in photon noise regime (or 6.3 magnitudes);
- the gain from HA to SOHA method is a 10 factor gain in calibration time in photon noise regime (or 2.1 magnitudes).

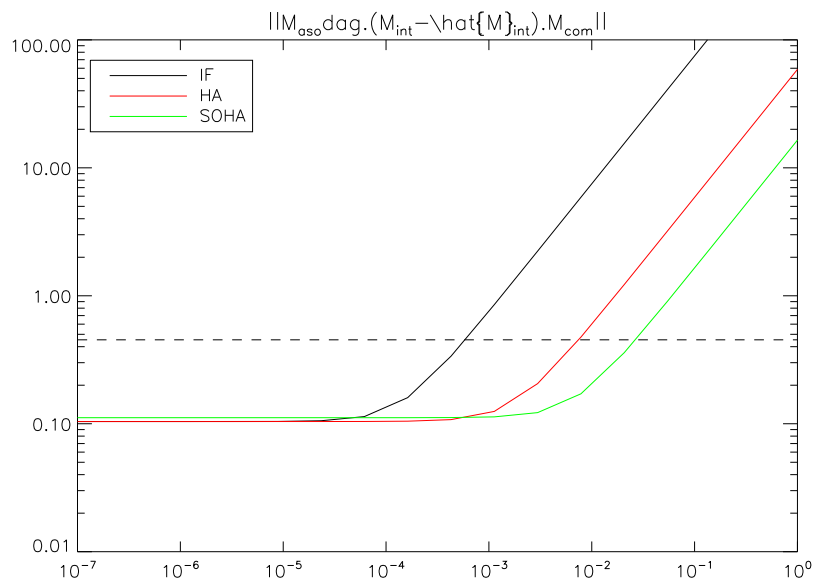


Fig. 3. Interaction matrix quality (\bar{Q}) in function of the slope measurement error (in radians edge to edge).

References

1. M. Kasper, E. Fedrigo, D. P. Looze, H. Bonnet, I. L., and S. Oberti, "Fast calibration of high-order adaptive optics systems," *J. Opt. Soc. Am. A* **21** (2004).