

1 **Late Quaternary fire regimes of Australasia**

2

3 Mooney, S.D.¹, Harrison, S.P.², Bartlein, P.J.³, Danialu A.-L.⁴, Stevenson, J.⁵,
4 Brownlie, K.C.⁶, Buckman, S.⁶, Cupper, M.⁷, Luly, J.⁸ Black, M.¹, Colhoun, E.⁹,
5 D'Costa, D.¹⁰, Dodson, J.¹¹, Haberle, S.⁵, Hope, G.S.⁵, Kershaw, P.¹², Kenyon, C.¹³,
6 McKenzie, M.¹² and Williams, N.¹⁴

7

- 8 1. School of Biological, Earth and Environmental Sciences, University of New
9 South Wales, NSW 2052, Australia.
- 10 2. School of Biological Sciences, Macquarie University, North Ryde, NSW 2109,
11 Australia.
- 12 3. Department of Geography, University of Oregon, Eugene, Oregon, USA.
- 13 4. School of Geographical Sciences, University of Bristol, Bristol, UK.
- 14 5. Dept of Archaeology and Natural History, Australian National University,
15 Canberra, ACT, Australia.
- 16 6. School of Earth and Environmental Sciences, University of Wollongong, NSW
17 2522, Australia.
- 18 7. School of Earth Sciences, The University of Melbourne, Victoria 3010,
19 Australia.
- 20 8. School of Earth and Environmental Sciences, James Cook University,
21 Townsville, 4811, Australia.
- 22 9. School of Geosciences, University of Newcastle, Callaghan, NSW 2308,
23 Australia.
- 24 10. School of Environment, University of Auckland, Private Bag 92019,
25 Auckland, New Zealand.
- 26 11. Australia Nuclear Science and Technology Organisation, Kirrawee, NSW 2232,
27 Australia.
- 28 12. School of Geography and Environmental Science, Monash University, Clayton,
29 Victoria, Australia.
- 30 13. Melbourne School of Land and Environment, The University of Melbourne,
31 Victoria, Australia 3010
- 32 14. New South Wales Department of Environment, Climate Change and Water,
33 Sydney, NSW 1232, Australia.
- 34

35 **Corresponding Author:**

36 Scott Mooney
37 School of Biological, Earth & Environmental Sciences
38 University of New South Wales,
39 Sydney, NSW, 2052,
40 Australia
41 Ph: +61 2 9385 8063
42 E: s.mooney@unsw.edu.au
43

44

45

1 **Abstract**

2

3 We have compiled 223 sedimentary charcoal records from Australasia in order to
4 examine the temporal and spatial variability of fire regimes during the Late
5 Quaternary. While some of these records cover more than a full glacial cycle, here we
6 focus on the last 70,000 years when the number of individual records in the
7 compilation allows more robust conclusions. On orbital time scales, fire in Australasia
8 predominantly reflects climate, with colder periods characterised by less and warmer
9 intervals by more biomass burning. The composite record for the region also shows
10 considerable millennial-scale variability during the last glacial interval (73.5 to 14.7
11 ka). Within the limits of the dating uncertainties of individual records, the variability
12 shown by the composite charcoal record is more similar to the form, number and
13 timing of Dansgaard-Oeschger cycles as observed in Greenland ice cores than to the
14 variability expressed in the Antarctic ice-core record. The composite charcoal record
15 suggests increased biomass burning in the Australasian region during Greenland
16 Interstadials and reduced burning during Greenland Stadials. Millennial-scale
17 variability is characteristic of the composite record of the subtropical high pressure
18 belt during the past 21 ka, but the tropics show a somewhat simpler pattern of
19 variability with major peaks in biomass burning around 15 ka and 8 ka. There is no
20 distinct change in fire regime corresponding to the arrival of humans in Australia at
21 50 ± 10 ka and no correlation between archaeological evidence of increased human
22 activity during the past 40 ka and the history of biomass burning. However, changes
23 in biomass burning in the last 200 years may have been exacerbated or influenced by
24 humans.

25

26

27

28 **Keywords:** charcoal records, fire, biomass burning, vegetation-fire interactions,
29 human impact on fire, Last Glacial Maximum, Holocene, Dansgaard-Oeschger
30 variability, ENSO variability.

31

32

1 **Introduction**

2

3 Australia includes some of the most fire-prone landscapes on Earth (Williams et al.,
4 2001; Bradstock et al., 2002; Bond and Keeley, 2005; Russell-Smith et al., 2007). Fire
5 has major impacts on the native flora and fauna, on landscape stability and on
6 biogeochemical cycling. Characteristics of the land cover and the release of gases and
7 particulates (CO₂, CO, CH₄, N₂O, BVOCs, black carbon) during bushfires affects air
8 quality, atmospheric composition and hence radiation budgets, and thus changes in
9 fire regimes through time could have important feedbacks to climate (Ramanathan
10 and Carmichael, 2008; Bowman et al., 2009; Arneth et al., 2010).

11

12 Australian vegetation has developed a variety of responses and morphological and
13 reproductive adaptations to fire, including the widespread use of resprouting (Purdie,
14 1977; Gill et al., 1981; Enright et al., 1998), suggesting that fire has played an
15 important role over evolutionary timescales. Many species require regular fire in order
16 to persist, and this is particularly evident in humid but intermittently drought-prone
17 environments where eucalypts dominate the vegetation. Other taxa, including species
18 typical of the more consistently humid east and northeastern coast, are fire sensitive
19 (Gill et al., 1981; Bradstock et al., 2002). In the tropical communities of Australasia,
20 fire often depends on drought and fires in the recent past have been linked to human
21 activity and El Niño events (van der Werf, 2008a; Lynch et al., 2007). Fire is thus a
22 fundamental issue in many Australasian landscapes and influences community
23 composition, the location of boundaries between communities and vegetation
24 dynamics through time.

25

26 There are persistent questions about the role of humans in the long-term history of fire
27 and vegetation in the Australasian region. It has been argued that the frequent use of
28 fire by Aboriginal people, to manipulate the availability of resources (Jones, 1969;
29 Nicholson, 1981), resulted in vegetation change and other environmental impacts in
30 the late Pleistocene (e.g. Singh et al., 1981; Flannery, 1994; Miller et al., 2005). Ideas
31 about pre-historic fire continue to influence debates concerning natural resource
32 management, with suggestions that Aboriginal-like fire management (i.e. frequent and
33 low intensity fires) could prevent conflagrations in the modern setting (e.g. Select
34 Committee on the Recent Australian Bushfires, 2003).

1
2
3
4
5
6
7
8
9
10
11
12
13
14
15
16
17
18
19
20
21
22
23
24
25
26
27
28
29
30
31
32
33
34

One of the earliest examinations of long-term changes in fire regimes and their impact on the development of Australian vegetation was provided by Gill et al. (1981). More recently, Kershaw et al. (2002) have summarised the long-term history of fire in Australia, although their discussion of the last 10,000 years focused solely on southeastern Australia and they used a qualitative assessment of *ca.* 60 sites. Nevertheless, Kershaw et al. (2002) indicated that there were differences in the timing of peak Holocene fires associated with different biomes across this region. The interval of least fire across all biomes was during the mid-Holocene (7000-5000 yr BP) and the maximum registration of fire occurred during the early European period. Lynch et al. (2007), which is the most recent review of Australian palaeofire regimes but only covers a small number of iconic records, also identifies the mid-Holocene as a time of low fire activity and argues that higher levels of biomass burning are associated with the onset or intensification of the El Niño-Southern Oscillation (ENSO) after *ca.* 4 ka. Lynch et al. (2007) conclude that the longer-term record of fire in Australia shows a gradual increase coincident with the purported long-term aridification of the continent (Hesse et al., 2004).

There have been several site specific or regional studies examining the interactions between vegetation and fire during the late Quaternary in Australia (e.g. Black et al., 2007). However, it is only recently, and largely through the efforts of the Global Palaeofire Working Group (GPWG: Power et al., 2008; Power et al., 2010), that sufficient data have become available at a continental scale to make it possible to apply robust statistical techniques to the analysis of past fire regimes. Power et al. (2008), based on an analysis of 355 charcoal records, showed that fire regimes globally reflected long-term climate changes. This compilation included only 48 records from “Australia”, (defined as mainland Australia, New Zealand and Pacific Islands west of 180°E, but not New Guinea which was included in south-east Asia). This preliminary analysis revealed distinctive patterns in fire regimes over the last 21 ka, with relatively little change during the late glacial and through the transition to the Holocene, and charcoal peaks around 15-16 ka, 11-10 ka and 4.5-2.5 ka (Power et al., 2008). Here, we present a more extensive synthesis of the charcoal data based on 223 sites from Australasia and analyse these data to determine how fire regimes have changed over centennial to multi-millennial timescales.

1
2
3 **Methods: Source and treatment of charcoal records**
4

5 Our focus in this paper is on the Australasian region, which we define here to include
6 tropical southeastern Asia, New Guinea, New Zealand and the islands of the western
7 Pacific. Southeastern Asia and New Guinea were included to set the records from
8 tropical Australia in a broader context. The inclusion of sites from the western Pacific
9 (including New Zealand) is partly motivated by the need to address the potential role
10 of changes in the ENSO on Australasian climates (McGlone et al., 1992; Shulmeister
11 and Lees, 1995; Lynch et al., 2007) and partly because this region has a different
12 settlement history from Australia (see e.g. Stevenson and Hope, 2005). We extracted
13 196 sedimentary charcoal records from this broadly defined Australasian region (20°N
14 - 50°S and 100°E to 177°W) from Version 2 of the Global Charcoal Database (GCD-
15 V2; Daniau et al., in preparation,) compiled by the Global Palaeofire Working Group
16 (GPWG: <http://gpwg.org/>). These data were supplemented by an additional 27 sites,
17 chosen to increase the number of long records and to improve the spatial coverage
18 (GCD-V2.5).

19
20 This GPWG database contains sedimentary charcoal records from both marine and
21 terrestrial sites. It includes descriptive data (metadata) about both the sites and the
22 methods used, and detailed information on site chronology (including information on
23 the number of radiometric dates and, for records extending back beyond the limits of
24 radiocarbon dating, details of correlative tie-points used to erect the chronology). All
25 radiocarbon dates have been calibrated and the age model for each site is expressed in
26 calendar years. Where multiple records (e.g. macro and micro-charcoal records) are
27 available at the same site, all are included in the database.

28
29 Since charcoal records are obtained using many different techniques and expressed
30 using a large range of metrics, the data were standardized to facilitate comparisons
31 between sites and through time (see Power et al., 2008 for a full description). The
32 protocol involved three steps. First, non-influx data (e.g. concentration expressed as
33 particles/cm³; charcoal-to-pollen ratios) were transformed to influx values (i.e.
34 particles/cm²/yr), or quantities proportional to influx, by dividing the values by
35 sample deposition times. Second, a Box-Cox transformation was used to homogenize

1 the inter-site variance by transforming individual charcoal records toward normality.
2 Finally, the data were rescaled using a common base period (0.2-21 ka) to yield z-
3 scores, so that all sites have a common mean and variance. Previous experimentation
4 has demonstrated that the choice of the base period does not affect the results
5 significantly (Marlon et al., 2008; Power et al., 2010) and standardization does not
6 alter the overall pattern of variability or “signal” in a record. For mapping purposes,
7 the z-scores were divided into five approximately equal groups: z-score $>+0.8$ (strong
8 positive anomalies compared to the long-term average over the base period), z-score
9 between $+0.4$ to $+0.8$ (positive anomalies), z-score between $+0.4$ to -0.4 (weak
10 positive or negative anomalies), z-score between -0.4 to -0.8 (negative anomalies),
11 and z-score <-0.8 (strong negative anomalies).

12

13 In order to summarise the broadest-scale history of changing fire regimes through
14 time, we constructed composite charcoal records for Australasia as a whole and for
15 various sub-regions. Composite curves were then obtained by fitting a locally
16 weighted regression (or “lowess” curve) to the pooled transformed and rescaled data
17 (see e.g. Marlon et al., 2008), using a fixed window width and a tricube weight
18 function with one “robustness iteration”. We used window half-widths of 100, 200,
19 400, or 2000 years, to emphasise different scales of temporal variability from
20 centennial variability in the past 2000 years through to multi-millennial variability in
21 the longer records. The windows were selected to avoid both over-smoothing, as
22 would result from selecting a large window width, and under-smoothing, leading to a
23 composite curve that was susceptible to the influence of individual data points. These
24 choices do not affect the results and conclusions.

25

26 Confidence intervals for each composite curve were generated by a bootstrap re-
27 sampling (with replacement) of individual sites over 1000 replications. This approach
28 differs from the usual bootstrap method in which individual observations are sampled
29 with replacement, and emphasizes the uncertainty in regression curves that arises
30 from the inclusion or exclusion of the whole record from individual sites. Bootstrap
31 confidence limits for each target point were taken as the 2.5th and 97.5th percentiles of
32 the 1000 fitted values for that target point. Our approach is therefore conservative
33 because it permits the identification of “signals” that may arise solely from the
34 influence of a particular site: when the bootstrap confidence intervals are wide, this

1 indicates greater uncertainty in the composite curve and greater sensitivity of that
2 curve to the addition/subtraction of an individual record. Minor fluctuations in the
3 composite curve during times when the bootstrap confidence intervals are wide are
4 most probably meaningless. Most of the time, the composite curve lies in the middle
5 of the bootstrap confidence intervals; when one confidence limit deviates from the
6 composite curve more than the other confidence limit, this too indicates that some
7 individual records depart markedly from the typical pattern of the time. Again, the
8 interpretation of minor fluctuations in the composite curve under these circumstances
9 is not likely to be meaningful. We also provide a measure of the number of
10 observations contributing to the composite curve (at each of the target points that
11 define the curve) as an additional measure of the confidence to be placed in the
12 reconstructions. Since this takes into account the number of points at each site that fall
13 within the window width for a particular target point, these curves are not a simple
14 measure of the number of sites.

15

16

17 **3. Results**

18

19 **3.1. Characteristics of the data set**

20

21 The geographic coverage of sites in the dataset is uneven (Figure 1), with few sites
22 from central and western Australia, but with eastern and especially southeastern,
23 Australia well represented. While there are some sites from tropical mainland
24 Australia, most of the tropical records are from Papua New Guinea, with a small
25 number of additional sites scattered throughout southeastern Asia as well as several
26 tropical Pacific Islands (Figure 1a). The coverage of records from New Zealand is
27 reasonable, although it does not approach the known number of records for the island.
28 The paucity of data from northern, western and central Australia is partially a
29 reflection of absence of suitable sites for the preservation of sedimentary charcoal
30 records (Pickett et al., 2004) and partially a function of the comparative difficulty of
31 working in these regions. Nevertheless, the data do provide a reasonably
32 comprehensive coverage of the range of climates and vegetation types found in
33 Australasia (Figure 1a-e).

34

35 The temporal coverage of the data set is also uneven (Table 1). There are 18 records
36 that extend back beyond 70 ka (Figure 1c). These sites are not spatially clustered, but

1 rather occur from just north of the equator to the South Island of New Zealand, and
2 therefore experienced very different climate and fire regimes from one another. There
3 are 19 sites that provide a record from the beginning of Marine Isotope Stage (MIS) 3
4 (here defined as 59.4 ka, following Sanchez Goñi and Harrison, 2010) and 40 sites
5 that are recording by the end of MIS 3 (here defined as 27.8 ka, following Sanchez
6 Goñi and Harrison, 2010). Over half of these records are sampled at an average
7 resolution of more than 1 sample per ka (Table 1). The number of records and their
8 spatial distribution during MIS 3 makes Australasia one of the best-documented
9 regions of the world for this period (see Daniau et al., 2010). The number of charcoal
10 records increases steadily during MIS 2 (27.8-14.7 ka), such that by the end of MIS 2
11 there are approximately 70 sites and by 10 ka there are about 110 sites recording fire.
12 Sampling resolution for sites covering the Holocene varies from ca 1 sample per ka to
13 1 sample per decade: the majority of the short records (i.e. those covering the last 1-
14 2ka) have been sampled at decadal resolution, while the majority of the late Holocene
15 records have centennial resolution.

16

17 The charcoal records from Australasia were obtained using several different
18 techniques (Table 1). The quantification of charcoal fragments on pollen slides
19 dominates the original records (80.4% of the sites where method was explicitly
20 recorded). However, 44 of the records (19.6% of the sites where method was
21 explicitly recorded) are macroscopic charcoal records obtained by wet sieving.
22 Macroscopic, sieved, charcoal records are more likely to provide a record of local
23 fires and provide more continuous temporal sequences than charcoal records obtained
24 through other means. Nevertheless, although differences between the macro- and
25 micro-charcoal records at individual sites have been used to infer the spatial scale of
26 fire events (Power et al., 2010), both microscopic and macroscopic records produce
27 comparable results in terms of broad-scale regional histories of fire (Tinner et al.,
28 2006; Conedara et al., 2009).

29

30

31 **3.2. Temporal trends in biomass burning**

32

33 There are relatively few sites with a record prior to MIS 4 and the composite curve for
34 the interval prior to 70 ka is too noisy to interpret. We have therefore chosen to focus

1 our analyses on the interval after 70 ka. The composite record from Australasia
2 (Figure 2, purple curve) shows a steady increase in biomass burning during the later
3 part of MIS 4 (73.5-59.4 ka). Biomass burning remains generally high through MIS 3,
4 but decreases at the beginning of MIS 2. Biomass burning levels are generally high
5 through the Holocene. This pattern, of higher levels of biomass burning during MIS 3
6 than MIS 4, the reduction of biomass burning at the beginning of MIS 2, and the
7 return to higher levels of biomass burning during the Holocene, is consistent with the
8 global pattern of less fire during cold stadial or glacial stages, and increased fire
9 during warmer interstadials and interglacials (Power et al., 2008; Danialu et al., 2010).
10 Although there are marked changes in fire activity during MIS 3 (see below), there is
11 no fundamental shift in the composite charcoal record that could be associated with
12 the colonization of Australia by Aboriginal people (50±10 ka: Bird et al., 2004).

13

14 Superimposed on these general trends, the composite record shows considerable
15 millennial-scale variability in biomass burning (Figure 2, black curve). This is most
16 marked in MIS 3, but can also be seen during the later part of MIS 4, with multiple
17 peaks in biomass burning in the 400-year smoothed record between 70 and 20 ka
18 (Figure 2, black curve). Some of these charcoal peaks appear to occur around the time
19 of the Dansgaard-Oeschger (D-O) warming events as described in Greenland ice-core
20 records (Figure 3). Other peaks in the charcoal record are not apparently coincident
21 with D-O warming events, but this may be a function of the considerable uncertainty
22 associated with the chronologies of individual charcoal records that are beyond the
23 limit of radiocarbon dating. Several of the records contributing to the composite
24 curve have been tuned to match assumed limits of the transition between the last
25 interglacial and the glacial (MIS 5/4 boundary) and the MIS 3/2 boundary on the basis
26 of changes in pollen stratigraphy, and this procedure could certainly add uncertainties
27 of several thousand years to the assumed age model. In terms of the number and shape
28 of the peaks, and in terms of the timing during the post-30 ka interval (when
29 radiocarbon dating is likely to be more reliable), the form of the composite charcoal
30 curve is more similar to the pattern of millennial-scale variability shown in the
31 NGRIP record than to the pattern shown by the EPICA deuterium record (Figure 3),
32 which shows a smaller number of lower amplitude “Antarctic Isotope Maxima” over
33 the same interval (EPICA Community Members, 2006). Furthermore, this pattern is
34 consistent with a global analysis of charcoal records that span the interval from 80 ka

1 to 10 ka (Daniau, et al., 2010) that show a consistent (across the D-O events) increase
2 in biomass burning accompanying D-O warming events.

3
4 There are relatively low levels of biomass burning between ca 24 to 18 ka (i.e. around
5 the time of the Last Glacial Maximum, LGM), but fire increases thereafter. The post-
6 glacial increase of biomass burning (Figure 4a) is expressed differently in the
7 Intertropical Convergence Zone belt (ITCZ, 20° N to 20° S, 100° E to 177° W) and
8 the subtropical high-pressure belt (STH, 25-45° S, 100° E to 177° W). In the tropics
9 (Figure 4b), biomass burning increases gradually after the LGM through to the early
10 Holocene, but with two broad peaks of increased fire centered around 15 ka and 8 ka.
11 There is a sharp decrease in biomass burning culminating at 6.5 ka. There is a rapid
12 recovery after this and the rest of the Holocene appears relatively complacent until the
13 last few hundred years. The records from the STH belt (Figure 4c) show a different
14 pattern, with no marked trends during the deglacial period, but there is a tendency
15 towards increased biomass burning during the first part of the Holocene culminating
16 around 6 ka and a decline in fire during the late Holocene. The STH record also
17 shows centennial- to millennial-scale variability throughout the last 21 ka. Again, the
18 most pronounced changes in STH fire regimes occur during the last few hundred
19 years.

20
21 The composite Australasian record of biomass burning over the past two millennia
22 (Figure 5a) is remarkably flat except for the pronounced increase in fire in the past
23 200 years. Marlon et al. (2008) showed that global biomass burning gradually
24 declined over most of the last two millennia in response to long-term cooling
25 culminating in the Little Ice Age. This is seen in the composite record from tropical
26 Australasia (Figure 5b) but not in the record from temperate Australasia (Figure 5c).
27 There is a pronounced increase in burning after ca 1800 A.D. in both the ITCZ
28 (Figure 5b) and STH regions (Figure 5c), and this increase is also seen in the
29 composite record of the Australian mainland (Figure 5d). The upturn is delayed
30 compared to the timing of the increase in global biomass burning which occurred ca
31 1750 A.D (Marlon et al., 2008). Although European colonization of Australia may
32 have been responsible for the upturn seen on the mainland, and in the composite
33 regional curve, it is more difficult to invoke this explanation for the record from

1 tropical Australasia (Figure 5b) which suggests that any anthropogenic influence was
2 exacerbated by changes in climate and vegetation productivity associated with the
3 post-industrial increase in atmospheric CO₂ concentration. The curves for all of the
4 regions show reduced fire during the last *ca.* 50 years, and this is despite the
5 widespread use of prescribed burning as a means of fire control in much of Australia.
6 The observed reduction in biomass burning in Australasia occurs a few decades after
7 the global reduction in biomass burning which Marlon et al. (2008) attribute to
8 increased landscape fragmentation and fire suppression. There are a number of
9 reasons why the last fifty or so years of the record might be less tightly constrained,
10 including issues with sampling (Mooney and Tinner, in press), problems with dating
11 and the potential impact of human activities on catchment processes and
12 sedimentation (Gale, 2009). Nevertheless, there are over 140 sites contributing to the
13 record during the 20th century and 168 sites recording the last two centuries, and thus
14 the recent downturn in fire appears to be a robust feature of the record. Furthermore,
15 Marlon et al. (2008) demonstrate (in their supporting information) that the rapid
16 increase in biomass burning followed by an abrupt decrease cannot be explained by
17 simple sedimentation rate variations at the top of cores.

18
19

20 **3.3. Spatial patterns in biomass burning since the Last Glacial Maximum**

21
22 Most of the sites in our data set are concentrated in eastern, particularly southeastern
23 Australia (Figure 1a). Nevertheless, there are spatial patterns in the changes in
24 biomass burning that are worth exploring. Here (Figure 6), we present maps of the
25 average z-scores for key intervals since the LGM to illustrate some of the regional
26 patterns of change: positive z-scores indicate more biomass burning and negative z-
27 scores less biomass burning than the long-term average for the base period (21-0.2
28 ka).

29

30 The LGM (Figure 6a) was characterized by low biomass burning in the tropics and
31 over most of Australia. A few sites in southeastern Australia and one site on the South
32 Island of New Zealand show higher-than-average z-scores. There is considerable
33 millennial-scale variability superimposed on the long-term increase in biomass
34 burning after the LGM (Figure 4) and this is reflected in the mapped patterns, with

1 individual sites showing more/less fire in succeeding 1000-yr intervals (not shown).
2 However, a more coherent spatial pattern is established during the Antarctic Cold
3 Reversal (ACR) (Figure 6b), with low biomass burning in southeastern Australia and
4 New Zealand contrasting with high biomass burning at many sites in the tropics. In
5 contrast, the beginning of the Holocene is marked by high biomass burning in
6 southeastern Australia and low biomass burning in the tropics (Figure 6c).

7
8 The most marked spatial feature of the Holocene record is the opposition in the
9 temperate latitudes between sites in southernmost southeastern Australia (including
10 Tasmania) and southeastern NSW (including the interior). In the early Holocene, here
11 illustrated by the interval centered on 8 ka (Figure 6d), the southern region is
12 characterized by high biomass burning and the region further north by low biomass
13 burning. By the mid-Holocene, here illustrated by the interval centered on 5.5 ka
14 (Figure 6e), sites in Tasmania and the southernmost tip of the continent show less
15 biomass burning and many sites further north show increased biomass burning. The
16 pattern has reversed again by the late Holocene (not shown). The pre-industrial era
17 (0.2-0.7 ka, Figure 6f) is characterized by high biomass burning along the east coast
18 of Australia, in New Zealand and over much of the tropics. However, Tasmania and
19 the southernmost part of southeastern Australia, and the limited number of sites from
20 western Australia, show less biomass burning than average.

21
22 Although there are robust, large-scale patterns in changes in biomass burning through
23 time, the changes within any one region through time are complex; adjacent sites can
24 show differences even in the sign of the change at particular times. This may, in part,
25 be a function of the quality of the data and of individual age models. It is also in the
26 nature of wildfires, which are spatially disjunct, influenced by topography and the
27 changing nature of the vegetation itself, and conditioned by timing of previous fires.

28
29

30 **3.4. Fire and humans during the late Pleistocene**

31 Smith et al. (2008) have used a data set of 971 radiocarbon ages from 286
32 archaeological sites in arid Australia (AustArch1) to illustrate the overall trend in

1 archaeological site incidence by summing the probability density functions of
2 individual radiocarbon ages, which they suggest can be interpreted as a first
3 approximation of human activity and population history through time. Smith et al.
4 (2008) stress the preliminary nature of this record, but nevertheless the compilation
5 allows us to explore the relationship between an approximate measure of human
6 activity and the charcoal-derived record of fire from Australia (Figure 7). Although
7 there are other compilations of archaeological information from Australia (e.g.
8 Lourandos and David, 1998; Lourandos and David, 2002; Turney and Hobbs, 2006),
9 the AustArch1 data set is the most comprehensive and the raw data are available in a
10 format which allows re-analysis.

11

12 There are relatively few archaeological dates, and little structure in the probability
13 density curve, prior to *ca.* 20 ka. In contrast, there are large changes in fire on
14 millennial timescales between 40-20 ka. The lack of congruence between the
15 archaeological and fire records during this period suggests that the changes in fire
16 activity do not reflect changes in human activity. Smith et al. (2008) identified six
17 intervals of increased “human activity” during the past 20 ka, including a major
18 increase in the late Holocene. Some of the reconstructed peaks in human activity
19 correspond to peaks in fire (e.g. 7-8 ka). However, other peaks in human activity
20 correspond to troughs in biomass burning (e.g. 5-4.5 ka) and there are peaks in
21 biomass burning that have no correspondence with changes in human activity (e.g. at
22 13 ka and 9.5 ka). Most importantly, the major inferred increase in population during
23 the late Holocene (‘intensification’) is not accompanied by an increase in fire. Thus,
24 this comparison does not support the hypothesis that changes in post-glacial fires in
25 Australia were caused by humans.

26

27

28 **4. Discussion and Conclusions**

29

30 We have presented an analysis of the long-term changes in fire regimes across
31 Australasia based on a comprehensive synthesis of over 200 charcoal records from the
32 region. Despite the supposed importance of fire for Australasian vegetation (Bowman,
33 2000; Bradstock et al., 2002), the long-standing arguments about the role of

1 Aboriginal colonisation on fire regimes (e.g. Singh et al., 1981; Horton, 2000;
2 Flannery, 1994; Kershaw et al., 2002; Black and Mooney, 2006), and the uncertainty
3 about the impact of climate change on fire regimes and fire-related disasters
4 (Chapman, 1999; Williams et al., 2001; Cary, 2002; Bushfire Co-operative Research
5 Centre, 2006; Russell-Smith et al., 2007), there have been relatively few analyses of
6 the palaeo-record of fire at a continental scale.

7
8 Previous reviews (see e.g. Singh et al., 1981; Kershaw et al., 2002; Lynch et al., 2007)
9 have been based on comparatively few sites and the assumption that iconic records
10 are characteristic of much broader geographic regions. Although there are obvious
11 spatial gaps in the data set used in this analysis, and some uncertainty associated with
12 pooling records with age models of very different quality, we have been able to
13 document robust changes in fire regime through time for which there are physically
14 plausible explanations. The analysis presented here is preliminary in nature: much
15 more could be done to explore the existing data set. Nevertheless, by demonstrating
16 the potential of large-scale syntheses of charcoal data to shed light on the
17 environmental history of the continent we hope to encourage the collection of
18 additional, high-quality data from the Australasian region.

19
20 On glacial-interglacial timescales, changes in fire regimes closely follow global
21 temperature: biomass burning is reduced during cold glacial or stadial intervals (MIS
22 4, MIS 2) and increased during warmer interglacial or interstadial intervals (MIS 3,
23 the Holocene). This finding is consistent with global analyses (e.g. Power et al., 2008;
24 Danialu et al., 2010) and presumably reflects the strong control of vegetation
25 productivity on the availability of fuel (Harrison et al., 2010). Although we have
26 confined our detailed analyses to the past 70 ka, we see no evidence for the expression
27 of long-term aridification of Australia (see e.g. Lynch et al., 2007) in the charcoal
28 records of fire regimes. The length of this interval of increasing aridity cited in the
29 literature is somewhat vague, but we see no evidence for a long-term trend in biomass
30 burning superimposed on the glacial-interglacial pattern.

31

1 The charcoal records show considerable millennial-scale variability during the glacial.
2 Given the limited radiometric age control on these records, and the widespread use of
3 correlation to assumed stage/event boundaries, it is unclear whether individual peaks
4 in charcoal correlate with specific D-O warming events registered in the Greenland
5 ice core and reflected in marine records from the North Atlantic. Nevertheless, the
6 shape of the charcoal curves is more reminiscent of the temperature changes in
7 Greenland than those recorded in Antarctica (Figure 3) and, in conjunction with the
8 number of events registered and the approximate temporal correlations of these
9 events, suggests that Australasian fire regimes have co-varied with D-O cycles: with
10 increased fire during warming events and Greenland Interstadials and reduced fire
11 during Greenland Stadials. Millennial-scale variability has been identified in several
12 individual records from Australasia (see e.g. Sikes et al., 2002; Turney et al., 2004;
13 Vandergoes et al., 2005; Kershaw et al., 2007), although with the caveat that the
14 dating was insufficient to determine whether this variability was in or out of phase
15 with the D-O cycles. However, Muller et al. (2008) have stated explicitly that warmer
16 intervals of the D-O cycles are associated with dry conditions at Lynch's Crater.

17

18 EPICA Community Members (2006) have demonstrated that the temperature records
19 from Greenland and Antarctica are out of phase, and this bi-polar temperature seesaw
20 is attributed to the shutdown or slowdown of the thermohaline circulation (see
21 Kageyama et al., 2010). However, the bi-polar seesaw hypothesis does not imply that
22 the opposition in the direction of the change in temperature shown by the ice-core
23 records is a pan-hemispheric phenomenon. In fact, decomposition of climate
24 variability during the deglaciation (Shakun and Carlson, 2010), based on 104 high-
25 resolution palaeoclimate records, has shown that approximately 60% of the climate
26 signal is common between the two hemispheres, while only 11% of the signal is
27 associated with the bi-polar see-saw. Shakun and Carlson (2010) attributed the
28 hemispheric synchronicity in climate to the influence of CO₂, although presumably
29 this argument would apply to all of the greenhouse gases. The greenhouse gas
30 synchronisation of hemispheric climate changes likely operated during the whole of
31 the glacial, where D-O variability was accompanied by changes in CO₂ of the order of
32 15-20 ppm and CH₄ values of the order of about 100 ppm, or about 20% and 50% of
33 their glacial-interglacial range, respectively (Ahn and Brook, 2008). There are other

1 mechanisms that could extend a northern hemisphere climate signal into the southern
2 hemisphere, through changes in atmospheric circulation that accompany THC shut-
3 down, as shown by freshwater-forcing experiments (Stouffer et al., 2006; Muller et
4 al., 2008; Kageyama et al., 2009; Kageyama et al., 2010). Thus, the observation that
5 Australasian fire regimes display some coherence with millennial-scale northern-
6 hemisphere climate variability is mechanistically credible (Clark et al., 2002; Muller
7 et al., 2008; Danialu et al., 2010). Furthermore, Southern Hemisphere vegetation
8 records show millennial-scale variability (see e.g. Hessler et al., 2010; Harrison and
9 Sanchez Goni, 2010), although the vegetation response appears to be more muted than
10 shown in European records (Fletcher et al., 2010) it is nevertheless in phase with D-O
11 events (Harrison and Sanchez Goni, 2010).

12

13 The pre-40 ka composite biomass-burning curve for Australasia is based on 25
14 individual records and this value rises to 38 sites by 30 ka. There is clearly a need for
15 more long records, sampling a wider geographic range of regional climates. Charcoal
16 records from marine cores are providing an increasingly detailed view of changes in
17 fire regimes during the glacial (see e.g. Beaufort et al., 2003; Thevenon et al., 2004;
18 Danialu et al., 2007; Danialu et al., 2009) with the added advantage that these records
19 can be linked, through isotope stratigraphy, directly to changes in sea-surface
20 temperatures and to changes recorded in ice cores. Marine records could be more
21 widely exploited for charcoal analysis in the Australasian region.

22

23 Low biomass burning was characteristic of the LGM. Vegetation reconstructions
24 show an expansion of xerophytic vegetation in southern Australia and of tropical
25 deciduous broadleaf forest and woodland in the tropics (both mainland Australia,
26 Papua and the islands of southeastern Asia) at the LGM (Pickett et al., 2004).
27 Although the number of records included in this synthesis is limited, particularly for
28 northern Australia, the interpretation is consistent with earlier reconstructions (see e.g.
29 Markgraf et al., 1992; Harrison and Dodson, 1993) showing expansion of drought-
30 tolerant vegetation during the LGM. Although superficially these changes could be
31 interpreted as an expansion of more fire-prone vegetation, they have been interpreted
32 as indicating colder and drier conditions. Indeed, Williams et al. (2009) argue for a
33 reduction in precipitation of ca 30-50% in the tropics and a significant reduction in

1 winter precipitation across the temperate zone, accompanied by reductions in
2 temperature of ca 3-8°C. The observed reduction in biomass burning must reflect a
3 significant reduction in fuel availability under cold, dry conditions, sufficient to offset
4 the increase in aridity and also the stronger winds that have been adduced from dune
5 evidence (e.g. Hesse et al., 2004).

6
7 Previous syntheses of palaeoenvironmental data from Australia have identified the
8 late glacial as an interval of aridity, more pronounced than during the LGM and
9 certainly than during the Holocene (see e.g. Harrison and Dodson, 1993; Kershaw et
10 al., 2003; Williams et al., 2009). The charcoal records show considerable spatial and
11 temporal variability during the deglaciation. There is no evidence for dry conditions
12 persisting for several thousand years, as postulated by earlier syntheses. However, the
13 charcoal records do appear to show a reduction in biomass burning during the ACR.
14 The ACR has been identified in palaeoenvironmental records from southeastern
15 Australia and New Zealand (see e.g. Barrows et al., 2007; Calvo et al., 2007;
16 Williams et al., 2009), although the recognition that this climate event could have had
17 an impact on fire regimes at a continental scale is new.

18
19 Vegetation reconstructions (see e.g. Harrison and Dodson, 1993; Pickett et al., 2004)
20 indicate that the mid-Holocene vegetation patterns of Australia were very similar to
21 those typical of the pre-industrial (and pre-European) era. Despite the lack of
22 vegetation change, Lynch et al. (2007) indicate that the interval between 7-5 ka
23 (which they call the “climatic optimum”) was one of reduced biomass burning in
24 southeastern Australia. They do not specify which records this assertion is based on,
25 and their conclusion is certainly not supported by the records presented here: most
26 sites in southeastern Australia show considerably higher-than-average levels of fire at
27 6 ka, although sites in the interior (and the limited number of sites in western and
28 northern Australia) show less-than-average biomass burning.

29
30 We have identified a tendency for sites in the southernmost part of southeastern
31 Australia to show an opposite pattern of change in biomass burning during the
32 Holocene from those further north and along the east coast. This spatial differentiation

1 was also identified by Pickett et al. (2004) in their reconstruction of mid-Holocene
2 vegetation shifts. They argued that sites in the far south show a shift towards more
3 moisture-stressed vegetation in the mid-Holocene, while sites in the Snowy
4 Mountains, on the Southern Tablelands and east of the Great Dividing Range have
5 more moisture- demanding vegetation in the mid-Holocene than today. These shifts in
6 vegetation are consistent with the reconstructed shifts in biomass burning, with the
7 former region characterised by more fire and the latter by less fire during the mid-
8 Holocene.

9

10 Lynch et al. (2007) have argued that the pronounced increase in biomass burning
11 after *ca.* 4 ka shown in the charcoal record from Lake Euramoo (Haberle, 2005), and
12 assumed to represent a regional signal, reflects an increase in climate variability
13 associated with ENSO. There is considerable evidence for an increase in ENSO
14 strength and/or variability after the mid-Holocene (see e.g. Rodbell et al., 1999;
15 Tudhope et al., 2001; Andrus et al., 2002, Koutavas et al., 2002) but the onset of
16 increased variability has been variously placed at 6.5 ka (Black et al., 2008), 5 ka
17 (McGlone et al. 1992), 4 ka (Shulmeister and Lees, 1995) and 3 ka (Gagan et al.,
18 2004) and reanalysis of the Lake Pallcacocha record (Rodbell et al., 1999) suggests
19 that variations on the ENSO time scale persisted throughout the Holocene (Rodó and
20 Rodriguez-Arias, 2004). Neither the composite nor regional charcoal records (Figure
21 4) show a clear relationship between changes in ENSO (e.g. Moy et al 2002) and
22 patterns of biomass burning. This suggests the need for a re-evaluation of the
23 relationship between biomass burning and changes in ENSO, over both late Holocene
24 and longer timescales, taking into account that the sign of the relationship between
25 biomass burning and ENSO may be different depending on the nature of the
26 vegetation.

27

28 Lack of data has bedevilled previous interpretations of both the fire history and, more
29 generally, the palaeoenvironmental history of Australasia. Reconstructed changes at
30 individual sites have often been used to draw quasi-continental scale inferences about
31 past climate and environmental changes. The fact that many of the conclusions drawn
32 from such iconic sites are not supported by the large-scale data synthesis of charcoal

1 records presented here argues for an urgent need to re-assess our understanding of the
2 late Quaternary history of Australia.

3

4 Chronology has also been a contentious issue for the interpretation of palaeo-fire
5 records from Australasia. Alternative age models have been proposed for several of
6 the longer records included in this synthesis (see for e.g. Lynch's Crater: Kershaw,
7 1986; Turney et al., 2001; Turney et al., 2004; Kershaw et al., 2007; Muller et al.,
8 2008; Lake George: Singh et al., 1981, Singh and Geissler, 1985; Fitzsimmons and
9 Barrows, 2010). In the interpretation of individual records, the quality of the age
10 model is of prime importance and reliance on assumed correlations with global events
11 or stratigraphic boundaries (e.g. the MIS boundaries) precludes detailed analysis of
12 the relationships between observed changes in fire and the global controls on regional
13 climate. The strength of the technique used here of compositing multiple records is
14 that it allows a robust assessment of the influence of individual records, and hence of
15 the chronological uncertainties of each record, on the shape of the composite curve.
16 By focusing on statistically robust features of the composite record, we are able to
17 draw plausible inferences about the controls on these features. Clearly, improvement
18 of the individual age models and increased reliance on radiometric dating would
19 substantially enhance the amount of detail that could be extracted from the composite
20 records. Nevertheless, our analyses show that there is considerable temporal structure
21 in the fire records and it is highly unlikely that this structure could be generated by
22 chance, particularly since the reconstructed changes in biomass burning through time
23 are consistent with current understanding of past climate changes.

24

25 The simplest interpretation of the charcoal records is that climate, and climate-
26 modulated changes in vegetation productivity and distribution, control fire regimes on
27 centennial to multi-millennial timescales. The observed changes in biomass burning
28 can be plausibly explained by current understanding of the broadscale changes in
29 climate over the last ca. 70 ka. However, there are many changes in the fire record for
30 which we still lack a robust mechanistic explanation. As previous work has shown
31 (e.g. Power et al 2008), simplistic explanations of fire records in terms of single
32 climate (or environmental) drivers are likely to be wrong. Similar changes in climate

1 can produce changes in biomass burning of opposite sign depending on the state of
2 the vegetation (van der Werf et al., 2008b; Harrison et al., 2010). For example, an
3 increase in precipitation will tend to suppress fires in most forests but could lead to an
4 increase in fire in areas where fuel is limited because it will support more plant
5 growth. Coeval changes in temperature can offset the impact of changes in
6 precipitation on vegetation productivity. Atmospheric CO₂ concentrations influence
7 vegetation productivity and distribution even without a change in climate (Harrison
8 and Prentice, 2003; Prentice and Harrison, 2009). Finally, fire regimes are affected by
9 the considerable heterogeneity of local climates. Sites in close geographic proximity
10 may nevertheless have different climates, particularly with respect to rainfall
11 seasonality. Shafer et al (2005), for example, have shown that large-scale changes in
12 atmospheric circulation lead to opposite changes in precipitation between sites in the
13 same region depending on whether they experience a summer or winter-rainfall
14 maximum and this in turn affects the response of the fire regime to these changes in
15 atmospheric circulation (Millsbaugh et al., 2004). Given all these competing
16 influences, it is unlikely that interpretations of the charcoal record in terms of climate
17 will be unequivocal. While speculations as to the causes of specific changes in fire
18 regimes are interesting as a source of hypotheses, we would argue strongly for the
19 combined use of observational data and modelling (see e.g. Webb et al., 1998;
20 Harrison et al., 2003) to interpret the observed changes in fire regimes through time.

21
22 The influence of humans in modifying natural fire regimes has been a major feature of
23 the interpretation of charcoal records from the Australasian region. The apparent
24 coincidence of increases in sedimentary charcoal at iconic sites (Lake George,
25 Lynch's Crater, Darwin Crater) with the arrival of Aboriginal people in Australia, has
26 been attributed to anthropogenic fire (e.g. see Turney et al., 2004). This has led to
27 circular arguments about the relationship between fire and people, including
28 assertions that people arrived on the continent before the last glacial (Jackson, 1999;
29 Singh et al., 1981). Changes in vegetation cover driven by anthropogenic modification
30 of fire regimes have been explicitly invoked as a mechanism for causing aridification
31 of Australia over the past 50-60 ka and for megafaunal extinctions (Miller et al.,
32 2005). This causal association of anthropogenic fire with changes in climate,
33 vegetation or fauna has remained seductive, despite several lines of contrary evidence.

1 This evidence includes major changes in Late Quaternary charcoal records and hence
2 fire prior to the arrival of humans (e.g. ca 130 ka: Singh et al., 1981; Dodson et al.,
3 2005); the fact that a broadly-synchronous transition to more xerophytic vegetation
4 has been found in New Caledonia, a region which was not settled by humans until ca
5 3000 years ago (Stevenson and Hope, 2005); and modeling evidence that the
6 purported changes in vegetation cover were insufficient to cause a sustained change in
7 Australasian climate (Pitman and Hesse, 2007). We have found no evidence of a
8 change in fire regimes at a continental scale at the time of Aboriginal colonisation of
9 Australia (50 ± 10 ka).

10

11 Changes in Aboriginal socio-economic relationships (Lourandos, 1980, 1983) have
12 been invoked as causing changes in fire regimes in the mid-to-late Holocene.
13 Lourandos (1980, 1983) suggested that the intensification of land use by Aboriginal
14 groups, including a shift from more nomadic to more sedentary populations, was
15 responsible for an increase in fire from *ca.* 5 ka onwards. Lynch et al. (2007) have
16 also argued for an increase in fire associated with people, although they suggest that
17 this occurred somewhat later after ca 3 ka. Again, we see no unequivocal relationship
18 between inferred populations and/or the intensity of Aboriginal occupation of the
19 continent and fire regimes during the past 21 ka, nor do the charcoal records show a
20 marked increase in fire during the late Holocene. The charcoal records support the
21 idea that fire regimes were controlled by changing climate and climate-induced
22 changes in vegetation, though it is possible that these natural changes had an impact
23 on Aboriginal populations through control of resources.

24

25 It is possible that our failure to identify a distinctive human fingerprint on fire activity
26 at a continental or regional scale, either at the purported time of Aboriginal settlement
27 of the Australian continent or over the past 21 ka, reflects the use of sedimentary
28 charcoal records or of analytical techniques that emphasize the composite signal of
29 many individual records. It could be argued, for example, that sedimentary charcoal is
30 an unreliable indicator of the small-scale or low intensity fires characteristic of
31 Aboriginal burning, particularly if the material burnt was primarily non-woody.
32 However, studies from other areas (e.g. Brown et al., 2005) show that predominantly

1 grassland fires are recorded by sedimentary charcoal. Furthermore, if sedimentary
2 charcoal records fail to capture smaller-scale fires, then the use of individual charcoal
3 records to identify human impact on the landscape is also suspect. In the absence of
4 independent archaeological evidence, the interpretation of local charcoal signals in
5 terms of human impact is at best equivocal as to causation even when accompanied by
6 changes in vegetation.

7

8 It is more plausible to argue that the compositing of individual charcoal records at
9 regional or continental scales is more likely to emphasise changes that are congruent
10 with climate or environmental changes that operate at similar spatial scales and less
11 likely to identify human impacts if these changes were time transgressive across a
12 region or highly localized. The timing of Aboriginal settlement of Australia is subject
13 to large uncertainty, and there is no clear agreement about whether settlement was
14 time transgressive or not (see discussion in Bird et al., 2004). Furthermore, the debate
15 about Aboriginal use of fire has focused on whether it resulted in widespread
16 transformation of the Australian vegetation (see e.g. Flannery, 1994; Horton, 2000;
17 Miller et al., 2005). Thus, while we cannot dismiss the idea that some individual
18 records may contain an overprint of human influence on the local fire regime, the
19 evidence presented here clearly demonstrates that the dominant control of fire activity
20 is climate or climate-modulated changes in vegetation cover.

21

22 In conclusion, compilation and analysis of charcoal records from Australasia have
23 allowed us to document changes in fire regimes over the past 70 ka and thus to
24 examine (and resolve) some persistent controversies about the relationship between
25 fire, climate and humans. We cannot, as yet, explain all of the features of the fire
26 record nor have we exhausted the potential of the current database. The ongoing
27 improvement of the database, through e.g. extension of the geographical coverage,
28 higher resolution sampling, and improvement of age models, will allow further
29 questions to be addressed. Community-based regional synthesis of charcoal and
30 vegetation records, particularly if this can be combined with carefully designed model
31 experiments, will continue to yield new insights into the behaviour of fire in response
32 to climate and other environmental factors on palaeo-timescales.

1

2

3 **Acknowledgements**

4 This paper is a contribution to the ongoing work of the QUAVIDA working group of
5 the ARC-NZ Network for Vegetation Function, to the UK Natural Environment
6 Research Council (NERC) funded project “Analysis of long-term Climate Change in
7 Australia (ACACIA)” and of the Global Palaeofire Working Group, supported by
8 NERC and the US National Science Foundation (NSF). Mike Smith (Australian
9 National Museum, Canberra) and Alan Williams (ANU, Canberra) supplied the
10 archaeological data for Figure 7. We thank Martin Williams for his helpful comments
11 on the manuscript.

12

13

1 **Figure and Table Captions**

2

3 **Figure 1:** Distribution of sites in (a) geographic space, (b) through time, (c, d)
4 bioclimate and vegetation space and (e) fire regime space. In (b), a site is counted if it
5 contributes data to a 4000-year wide bin. Bioclimate space is defined here by growing
6 degree days above 0° (GDD0: an index of summer warmth) and the ratio of actual to
7 equilibrium evapotranspiration (AE/PE: an index of effective moisture) calculated
8 using climate data from the CRU historical climatology data set (New et al., 2002).
9 The biome at each site (c) is based on a modern day simulation with the BIOME4
10 model (Kaplan et al., 2003) and has been grouped into major vegetation types
11 (megabiomes) following the classification in Harrison and Prentice (2003). The tree
12 cover (d) is derived from remotely-sensed vegetation data (De Fries et al., 2000). Fire
13 regimes (e) are represented by burnt area (annual average total burnt fraction) from
14 the GFED v2.1 data set (van der Werf et al., 2006).

15

16 **Figure 2:** Reconstruction of biomass burning over the period from 70 ka to present
17 for Australasia as a whole (20°N - 50°S; 100°E to 177°W). The curves have been
18 smoothed using a window of 2000 years (purple curve) to emphasize the long-term
19 trends and a window of 400 years (bold black curve) to emphasize the millennial-
20 scale variability. The number of observations contributing to the record within each
21 400-year window is also shown (blue curve). The limit for Marine Isotope Stage
22 (MIS) 1 is defined as 14.7 ka to present, MIS 2 (27.8-14.7 ka), MIS 3 (59.4-27.8 ka),
23 and MIS 4 (73.5-59.4 ka) (Sánchez Goñi and Harrison, 2010).

24

25 **Figure 3:** Millennial-scale variability in biomass burning during the glacial (70-20
26 ka) compared to temperature indices from the NGRIP and EPICA ice-core records.
27 Charcoal data are summarized using a lowess curve with a 400-year half-window
28 width (black). For comparison with the charcoal curve, the 20-year sampling
29 resolution NGRIP record (agecal. yr b1950) and EPICA are shown, along with a 400-
30 year smoothed curve (bold lines in blue and purple, respectively). The numbered
31 vertical lines mark the Dansgaard-Oeschger warming events. The ice core data were
32 obtained from the World Data Center for Palaeoclimatology hosted by NOAA/NGDC
33 (<http://www.ncdc.noaa.gov/paleo/paleo.html>).

1

2

3 **Figure 4:** Reconstruction of biomass burning for the last 21 ka for Australasia as a
4 whole (20°N-50°S, 100°E-177°W), the belt corresponding to the modern Inter-tropical
5 Convergence Zone (ITCZ: 20°N-20°S, 100°E to 177°W, broadly the tropical region)
6 and the modern sub-tropical high pressure belt (STH: 25°S-45°S, 100°E to 177°W,
7 broadly temperate Australasia). The curves have been smoothed using a window of
8 400 years (purple curve) and a window of 100 years (bold black curve) to emphasize
9 the centennial-scale variability. The bootstrapped confidence intervals are based on a
10 400-year smoothing of the curves. The number of observations contributing to the
11 record within each 400-year window is also shown (blue curves).

12

13 **Figure 5:** Reconstruction of biomass burning for the last 2 ka for Australasia as a
14 whole (20°N-50°S, 100°E-177°W), the belt corresponding to the modern Inter-tropical
15 Convergence Zone (ITCZ: 20°N-20°S, 100°E to 177°W, broadly the tropical region),
16 the modern sub-tropical high pressure belt (STH: 25°S-45°S, 100°E to 177°W, broadly
17 temperate Australasia), and for all sites on the Australian mainland. The curves have
18 been smoothed using a window of 100 years (bold black curve).

19

20 **Figure 6:** Reconstructions of the geography of changes in fire regimes, as expressed
21 by z-score anomalies from the long-term mean over the base period between 21-0.2
22 ka, at key time including (a) the Last Glacial Maximum (LGM, ca 21 ka), (b) the
23 Antarctic Cold Reversal, (ACR, 14.2-11.8 ka) (c) the beginning of the Holocene (BH,

1 10.5-9.5 ka), (d) the early Holocene (EH, 8.5-7.5 ka) (e) the mid-Holocene, (MH, 6-5
2 ka), (f) the pre-industrial period (PI, 0.7-0.2 ka).

3

4 **Figure 7:** Comparison of the composite charcoal curve for sites from the Australian
5 mainland over the last 40 ka (black curve) compared to probability density estimates
6 of human populations based on radiocarbon-dated archaeological records (green
7 infilled curve). Population data from the AustArch Database (see Smith et al., 2008
8 for fuller description of the methodology).

9

10 **Table 1:** Sites with charcoal records from the Australasian region used in this study.

11

12

13

1 **References**

- 2 Ahn, J., Brook, E.J., 2008. Atmospheric CO₂ and climate on millennial time scales
3 during the last glacial period. *Science* 322, 83 – 85.
- 4 Andrus, C.F.T., Crowe, D.E., Sandweiss, D.H., Reitz, E.J., Romanek, C.S., 2002.
5 Otolith $\delta^{18}\text{O}$ record of mid-Holocene sea surface temperatures in Peru.
6 *Science* 295, 1508 – 1511.
- 7 Arneth, A., Harrison, S.P., Zaehle, S., Tsigaridis, K., Menon, S., Bartlein, P.J.,
8 Feichter, H., Korhola, A., Kulmala, M., O'Donnell, D., Schurgers, S., Sorvari,
9 S., Vesala, T., 2010. Terrestrial biogeochemical feedbacks in the climate
10 system. *Nature Geoscience* 3, 525-532.
- 11 Barrows, T.T., Lehman, S., Fifield, L. K., De Deckker, P., 2007. Absence of cooling
12 in New Zealand and the adjacent ocean during the Younger Dryas
13 Chronozone. *Science* 318, 86-89.
- 14 Beaufort, L., de Gardiel-Thoron, T., Linsley, B., Oppo, D., Buchet, N., 2003. Biomass
15 burning and oceanic primary production estimates in the Sulu Sea area over
16 the last 380,000 yr and the East Asian monsoon dynamics. *Marine Geology*
17 201, 53-65.
- 18 Bird, M.I., Hope, G., Taylor, D., 2004. Populating PEP II: the dispersal of humans
19 and agriculture through Austral-Asia and Oceania. *Quaternary International*
20 118-119, 145-163
- 21 Black, M., Mooney, S. D., 2006. Holocene fire history from the Greater Blue
22 Mountains World Heritage Area, New South Wales, Australia: the climate,
23 humans and fire nexus. *Regional Environmental Change* 6, 41-51.
- 24 Black M. P., Mooney, S. D., Haberle, S. G., 2007. The fire, human and climate nexus
25 in the Sydney Basin, eastern Australia. *The Holocene* 17, 465-478.
- 26 Black M. P., Mooney, S. D., Attenbrow, V., 2008. Implications of a 14,200 year
27 contiguous fire record for understanding human-climate relationships at
28 Goochs Swamp, New South Wales, Australia. *The Holocene* 18, 437-447.
- 29 Bond W.J., Keeley, J.E., 2005. Fire as a global ‘herbivore’: the ecology and evolution
30 of flammable ecosystems. *Trends in Ecology & Evolution* 20, 387-394.
- 31 Bowman, D. M. J. S., 2000. Rainforests and flame forests: the great Australian forest
32 dichotomy. *Australian Geographical Studies* 38, 327-331.
- 33 Bowman, D.M.J.S., Balch, J.K., Artaxo, P., Bond, W.J., Cochrane, M.A., D’Antonia,
34 C.M., DeFries R.S., Doyle, J.C., Harrison, S.P., Johnston F.H., Keeley J.E.,
35 Krawchuk M.A., Kull C.A., Marston, J.B., Moritz, M.A., Prentice, I.C., Roos,
36 C.I., Scott, A.C., Swetnam, T.W., van der Werf, G.R., Pyne, S.J, 2009. Fire in
37 the earth system. *Science* 324, 481-484.
- 38 Bradstock, R.A., Williams, J.E., Gill, A.M., 2002. Flammable Australia: the fire
39 regimes and biodiversity of a continent. Cambridge University Press,
40 Cambridge.
- 41 Brown, K.J., Clark, J.S., Grimm, E.C., Donovan, J.J., Mueller, P.G., Hansen, B.S.C.,
42 Stefanova, I., 2005. Fire cycles in North American interior grasslands and
43 their relation to prairie drought. *PNAS* 102, 8865-8870.

- 1 Bushfire Co-operative Research Centre 2006. Climate change and its impacts on the
2 management of bushfire. Fire Note 4, [http://](http://www.bushfirecrc.com/publications/downloads/Firenote_climate190906.pdf)
3 [www.bushfirecrc.com/publications/downloads/ Firenote_climate190906.pdf](http://www.bushfirecrc.com/publications/downloads/Firenote_climate190906.pdf).
- 4 Calvo, E., Pelejero, C., De Deckker, P., Logan, G.A., 2007. Antarctic deglacial
5 pattern in a 30 kyr record of sea surface temperature offshore South Australia.
6 *Geophysical Research Letters* 34, 1-6.
- 7 Cary, G.J., 2002. Importance of a changing climate for fire regimes in Australia. In:
8 Bradstock, R.A., Williams, J.E., Gill, A.M. (Eds.) *Flammable Australia: the*
9 *fire regimes and biodiversity of a continent*. Cambridge University Press,
10 Cambridge, 26-48.
- 11 Chapman D. 1999. *Natural Hazards*. Oxford University Press, Oxford. 2nd ed.
- 12 Clark, P.U., Pisias, N.G., Stocker, T.F., Weaver, A.J., 2002. The role of the
13 thermohaline circulation in abrupt climate change. *Nature* 415, 863–869.
- 14 Conedera, M., Tinner, W., Neff, C., Meurer, M., Dickens, A.F., Krebs, P., 2009.
15 Reconstructing past fire regimes: methods, applications, and relevance to fire
16 management and conservation. *Quaternary Science Reviews* 28, 435-456.
- 17 Danianu, A.-L., Sánchez-Goñi, M.F., Beaufort, L., Laggoun-Défarge, F., Loutre, M.-
18 F., Duprat, J., 2007. Dansgaard–Oeschger climatic variability revealed by fire
19 emissions in southwestern Iberia. *Quaternary Science Reviews* 26, 1369-1383.
- 20 Danianu, A.-L., Sánchez-Goñi, M.F., Duprat, J., 2009. Last glacial fire regime
21 variability in western France inferred from microcharcoal preserved in core
22 MD04-2845, Bay of Biscay. *Quaternary Research* 71(3), 385–396.
- 23 Danianu, A.-L., Harrison, S.P., Bartlein, P.J., 2010. Fire regimes during the Last
24 Glacial. *Quaternary Science Reviews* 29, 2918-2930
- 25 De Fries, R. S., Hansen, M. C., Townshend, J. R.G., 2000. Global continuous fields of
26 vegetation characteristics: a linear mixture model applied to multi-year 8 km
27 AVHRR data. *International Journal of Remote Sensing* 21(6-7), 1389 – 1414.
- 28 Dodson, J.R., Robinson, M., Tardy, C., 2005. Two fine-resolution Pliocene charcoal
29 records and their bearing on pre-human fire frequency in south-western
30 Australia. *Austral Ecology* 30, 592 – 599.
- 31 Enright, N.J., Marsula, R., Lamont, B.B., Wissel, C., 1998. The ecological
32 significance of canopy seed storage in fire-prone environments: A model for
33 non-resprouting shrubs. *Journal of Ecology* 86, 946-959.
- 34 EPICA Community Members 2006. One-to-one coupling of glacial climate variability
35 in Greenland and Antarctica. *Nature* 444, 195-198.
- 36 Fitzsimmons, K.E., Timothy T. Barrows, T.T., 2010. Holocene hydrologic variability
37 in temperate southeastern Australia: An example from Lake George, New
38 South Wales. *The Holocene* 20, 585-597.
- 39 Flannery, T., 1994. *The Future Eaters: An Ecological History of the Australasian*
40 *Lands and People*. Reed Books, Port Melbourne, 423pp.
- 41 Fletcher, W., Sanchez-Goñi, M.F., Allen, J.R.M., Cheddadi, R., Combourieu Nebout,
42 N., Huntley, B., Lawson, I., Londeix, L., Magri, D., Margari, V., Müller, U.C.,

- 1 Naughton, F., Novenko, E., Roucoux, K., Tzedakis, P.C., 2010. Millennial-scale
2 variability during the last glacial in vegetation records from Europe. *Quaternary*
3 *Science Reviews* 29, 2839-2864.
- 4 Gagan, M.K., Hendy, E.J., Haberle, S.G., Hantoro, W.S., 2004. Post-glacial evolution
5 of the Indo-Pacific Warm Pool and El Niño-Southern oscillation. *Quaternary*
6 *International* 118-119, 127-143.
- 7 Gale S.J., 2009. Event chronostratigraphy: A high-resolution tool for dating the recent
8 past. *Quaternary Geochronology* 4, 391–399.
- 9 Gill, A.M., Groves, R.H., Noble, I.R., 1981. *Fire in the Australian Biota*. Australian
10 Academy of Science, Canberra.
- 11 Haberle, S.G. 2005. A 23,000-yr pollen record from Lake Euramoo, Wet Tropics of
12 NE Queensland, Australia. *Quaternary Research* 64, 343-356.
- 13 Harrison, S., Dodson, J.R., 1993. Climates of Australia and New Guinea since 18,000
14 yrs BP. In: Wright, H.E. Jr., Kutzbach, J. E. Webb III, T., Ruddiman, W.F.,
15 Street-Perrott, F.A., Bartlein, P.J. (Eds.), *Global Climates since the Last*
16 *Glacial Maximum*, University of Minnesota Press, Minnesota, 265-293.
- 17 Harrison, S.P., Prentice, I.C., 2003. Climate and CO₂ controls on global vegetation
18 distribution at the last glacial maximum: analysis based on palaeovegetation
19 data, biome modelling and palaeoclimate simulations. *Global Change Biology*
20 9, 983-1004.
- 21 Harrison, S.P., Sanchez Goni, M.F., 2010. Global patterns of vegetation response to
22 millennial-scale variability during the last glacial: A synthesis. *Quaternary*
23 *Science Reviews* 29, 2957-2980.
- 24 Harrison, S.P., Kutzbach, J.E., Liu, Z., Bartlein, P.J., Otto-Bleisner, B., Muhs, D.,
25 Prentice, I.C., Thompson, R.S., 2003. Mid-Holocene climates of the Americas:
26 a dynamical response to changed seasonality. *Climate Dynamics* 20, 663-688.
- 27 Harrison, S.P., Marlon, J., Bartlein, P.J., 2010. *Fire in the Earth System*. In: Dodson,
28 J. (Ed.), *Changing Climates, Earth Systems and Society*, Springer-Verlag.
- 29 Hesse, P.P., Magee, J.W., van der Kaars, S., 2004. Late Quaternary climates of the
30 Australian arid zone: a review. *Quaternary International* 118-119, 87-102.
- 31 Hessler, I., Dupont, L., Bonnefille, R., Behling, H., González, C., Helmens, K.F.,
32 Hooghiemstra, H., Lebamba, J., Ledru, M.P., Lézine, A.M., Maley, J., Marret,
33 F., Vincens, A., 2010. Millennial-scale changes in vegetation records from
34 tropical Africa and South America during the last glacial. *Quaternary Science*
35 *Reviews* 29, 2882-2899.
- 36 Horton, D.R., 2000. *The Pure State of Nature : sacred cows, destructive myths and the*
37 *environment*. Allen & Unwin, Sydney Australia.
- 38 Jackson, W.D., 1999. The Tasmanian legacy of man and fire. *Papers and Proceedings*
39 *of the Royal Society of Tasmania* 133, 1-14.
- 40 Jones, R., 1969. Fire-stick farming. *Australian Natural History* 16, 224-228.
- 41 Kageyama, M., Mignot, J., Swingedouw, D., Marzin, C., Alkama, R., Marti, O., 2009.
42 Glacial climate sensitivity to different states of the Atlantic Meridional
43 Overturning Circulation: results from the IPSL model. *Climate of the Past*

- 1 Discussions 5, 1–53.
- 2 Kageyama, M., Paul, A., Roche, D.M, Van Meerbeeck, C.J., 2010. Modelling glacial
3 climatic millennial-scale variability related to changes in the Atlantic
4 Meridional Overturning Circulation: a review. *Quaternary Science Reviews*
5 29, 2931-2956.
- 6 Kaplan, J.O., Bigelow, N.H., Bartlein, P.J., Christensen, T.R., Cramer, W., Harrison,
7 S.P., Matveyeva, N.V., McGuire, A.D., Murray, D.F., Prentice, I.C.,
8 Razzhivin, V.Y., Smith, B. and Walker, D.A., Anderson, P.M., Andreev, A.A.,
9 Brubaker, L.B., Edwards, M.E., Lozhkin, A.V., 2003. Climate change and
10 Arctic ecosystems II: Modeling, palaeodata-model comparisons, and future
11 projections. *Journal of Geophysical Research-Atmosphere* 108, 8171.
- 12 Kershaw, A. P., 1986. Climatic change and Aboriginal burning in north-east Australia
13 during the last two glacial/interglacial cycles. *Nature* 322, 47-49.
- 14 Kershaw, A.P., Clark, J.S., Gill, A.M., D’Costa, D.M., 2002. A history of fire in
15 Australia. In: Bradstock, R., Williams, J., and Gill., M. (Eds) *Flammable*
16 *Australia; the Fire Regimes and Biodiversity of a Continent*. Cambridge
17 University Press, pp. 1-25.
- 18 Kershaw, A.P., van Der Kaars, S., Moss, P.T., 2003. Late Quaternary Milankovitch-
19 scale climatic change and variability and its impact on monsoonal Australasia.
20 *Marine Geology* 201, 81-95.
- 21 Kershaw, A.P., Bretherton, S.C., van der Kaars, S., 2007. A complete pollen record of
22 the last 230 ka from Lynch’s Crater, north-east Australia. *Palaeogeography,*
23 *Palaeoclimatology, Palaeoecology* 251, 23-45.
- 24 Kershaw, A.P., McKenzie, G.M, Porch, N., Roberts, R.G., Brown, J., Heijnis, H., Orr,
25 L.M., Jacobsen, G., Newall, P.R., 2007. A high resolution record of vegetation
26 and climate through the last glacial cycle from Caledonia Fen, south-eastern
27 highlands of Australia. *Journal of Quaternary Science* 22, 481-500.
- 28 Koutavas, A., Lynch-Stieglitz, J., Marchitto Jr., T.M., Sachs, J.P., 2002. El Niño-Like
29 Pattern in Ice Age Tropical Pacific Sea Surface Temperature. *Science* 297,
30 226-230.
- 31 Lourandos, H., 1980. Change or stability? Hydraulics, hunter gatherers and
32 population in temperate Australia. *World Archaeology* 11, 245–266.
- 33 Lourandos, H., 1983. Intensification: a late Pleistocene–Holocene archaeological
34 sequence from southwestern Victoria. *Archaeology in Oceania* 18, 81–94.
- 35 Lourandos, H., David, B. 1998: Comparing long-term archaeological and
36 environmental trends: North Queensland, arid and semi-arid Australia. *The*
37 *Artefact* 21, 105–14.
- 38 Lourandos, H., David, B. 2002: Long-term archaeological and environmental trends:
39 a comparison from late Pleistocene–Holocene Australia. In Kershaw, P.,
40 David, B., Tapper, N., Penny, D. and Brown, J. (Eds), *Bridging Wallace’s*
41 *Line: the environmental and cultural history and dynamics of the SE Asian-*
42 *Australian region*. Catena Verlag, 307–38.
- 43 Lynch, A.H., Beringer, J., Kershaw, A.P., Marshall, A., Mooney, S., Tapper, N.,
44 Turney C., van der Kaars, S., 2007. Using the palaeorecord to evaluate

- 1 climate and fire interactions in Australia. *Annual Review of Earth and*
2 *Planetary Sciences* 35, 215-239.
- 3 Marlon, J. R., Bartlein, P. J., Carcaillet, C., Gavin, D. G., Harrison, S. P., Higuera, P.
4 E., Joos, F., Power, M. J., Prentice, I. C., 2008. Climate and human influences
5 on global biomass burning over the past two millennia. *Nature Geoscience* 1,
6 697-701.
- 7 Markgraf, V., Dodson J.R., Kershaw A.P., McGlone, M.S., Nicholls, N., 1992.
8 Evolution of late Pleistocene and Holocene climates in the circum-South
9 Pacific land areas. *Climate Dynamics* 6,193-211.
- 10 McGlone, M., Kershaw P.A., Markgraf, V., 1992. El Nino / southern Oscillation
11 climatic variability in Australasian and South American palaeoenvironmental
12 records. In: Diaz, H.F., Markgraf, V. (Eds.) *El Niño, Historical and*
13 *Paleoclimatic Aspects of the Southern Oscillation*. Cambridge University
14 Press, Cambridge, 435–562.
- 15 Miller, G.H., Fogel, M.L., Magee, J.W. Gagan, M.K., Clarke, S.J., Johnson B.J.,
16 2005. Ecosystem collapse in Pleistocene Australia and a Human role in
17 megafaunal extinction. *Science* 309, 287 – 290.
- 18 Millspaugh, S.H., Whitlock C., Bartlein, P., 2004. Postglacial fire, vegetation, and
19 climate history of the Yellowstone-Lamar and Central Plateau provinces,
20 Yellowstone National Park. In *After the Fires: The Ecology of Change in*
21 *Yellowstone National Park* (L. Wallace, ed.), pp. 10-28. Yale University
22 Press.
- 23 Mooney, S., Tinner, W., in press. The analysis of charcoal in peat and organic
24 sediments. *Peat and Mires*.
- 25 Moy, C.M., Seltzer, G.O., Rodbell, D.T., Anderson, D.M., 2002. Variability of El
26 Niño/Southern Oscillation activity at millennial timescales during the
27 Holocene epoch. *Nature* 420, 162 – 165.
- 28 Muller, J., Kylander, M.E., Wust, R.A.J., Weiss, D., Martinez-Cortizas, A.,
29 LeGrande, A., Jennerjahn, T., Behling, H., Anderson, W.T., Jacobson, G.,
30 2008. Possible evidence for wet Heinrich phases in tropical NE Australia: the
31 Lynch's Crater deposit. *Quaternary Science Reviews* 27, 468 – 475.
- 32 New, M., Lister, D., Hulme, M., Makin, I., 2002. A high-resolution data set of surface
33 climate over global land areas. *Climate Research* 21, 1–25.
- 34 Nicholson, P.H., 1981. Fire and the Australian Aborigine. In: Gill, A.M., Groves,
35 R.H., Noble, I.R., (Eds.) *Fire and the Australian biota*. Australian Academy of
36 Science, 23-54.
- 37 Pickett, E., Harrison, S.P., Hope, G., Harle, K., Dodson, J.R., Kershaw, A.P., Prentice,
38 I.C., Backhouse, J., Colhoun, E.A., D'Costa, D., Flenley, J., Grindrod, J.,
39 Haberle, S., Hassell, C., Kenyon, C., Macphail, M, Martin, H., Martin, A.H.,
40 McKenzie, M., Newsome, J.C., Penny, D., Powell, J., Raine, I., Southern, W.,
41 Stevenson, J., Sutra, J.P., Thomas, I., van der Kaars, S., Walker, D., Ward, J.,
42 2004. Pollen-based reconstructions of biome distributions for Australia, South
43 East Asia and the Pacific (SEAPAC region) at 0, 6000 and 18,000 ¹⁴C yr B.P.
44 *Journal of Biogeography* 31, 1381-1444.
- 45 Pitman, A.J., Hesse, P.P., 2007. The significance of large scale land cover change on

- 1 the Australian palaeomonsoon. *Quaternary Science Reviews* 26, 189-200.
- 2 Power M.J., Marlon J., Ortiz N., Bartlein P.J., Harrison S.P., Mayle F.E., Ballouche
3 A., Bradshaw R.H., Carcaillet, C., Cordova, C., Mooney, S., Moreno, P.,
4 Prentice, I.C., Thonicke, K., Tinner, W., Whitlock, C., Zhang, Y., Zhao, Y.,
5 Ali, A.A., Anderson, R.S., Beer, R., Behling, H., Briles, C., Brown, K.J.,
6 Brunelle, A., Bush, M., Camill, P., Chu, G.Q., Clark, J., Colombaroli, D.,
7 Connor, S., Daniau, A-L., Daniels, M., Dodson, J., Doughty, E., Edwards,
8 M.E., Finsinger, W., Foster, D., Frechette, J., Gaillard, M-J., Gavin, D.G.,
9 Gobet, E., Haberle, S., Hallett, D.J., Higuera, P., Hope, G., Horn, S., Inoue, J.,
10 Kaltenrieder, P., Kennedy, L., Kong, Z.C., Larsen, C., Long, C.J., Lynch, J.,
11 Lynch, E.A., McGlone, M., Meeks, S., Mensing, S., Meyer, G., Minckley, T.,
12 Mohr, J., Nelson, D.M., New, J., Newnham, R., Noti, R., Oswald, W., Pierce,
13 J., Richard, P.J.H., Rowe, C., Sanchez Goñi, M.F., Shuman, B.J., Takahara,
14 H., Toney, J., Turney, C., Urrego-Sanchez, D.H., Umbanhowar, C.,
15 Vandergoes, M., Vanniere, B., Vescovi, E., Walsh, M., Wang, X., Williams,
16 N., Wilmshurst, J., Zhang, J.H., 2008. Changes in fire regime since the Last
17 Glacial Maximum: an assessment based on a global synthesis and analysis of
18 charcoal data. *Climate Dynamics* 30, 887-907.
- 19 Power, M.J., Marlon, J.R., Bartlein, P.J., Harrison, S.P., 2010. Fire history and the
20 Global Charcoal Database: a new tool for hypothesis testing and data
21 exploration. *Palaeogeography, Palaeoclimatology, Palaeoecology* 291, 52-59.
- 22 Prentice, I.C., Harrison, S.P., 2009. Ecosystem effects of CO₂ concentration: evidence
23 from past climates. *Climates of the Past* 5, 297-307.
- 24 Purdie R. W., 1977. Early stages of regeneration after burning in dry sclerophyll
25 vegetation. I. Regeneration of the understorey by vegetative means. *Australian*
26 *Journal of Botany* 25, 21-34.
- 27 Ramanathan, V., Carmichael, G., 2008. Global and regional climate changes due to
28 black carbon. *Nature Geoscience* 1, 221–227.
- 29 Rodbell, D.T., Seltzer, G.O., Anderson, D.M., Abbott, M.B., Enfield, D.B., Newman,
30 J.H., 1999. An ~15,000-Year Record of El Niño-Driven Alluviation in
31 Southwestern Ecuador. *Science* 283, 516 – 520.
- 32 Rodó, X., Rodriguez-Arias, M., 2004. El Niño-Southern oscillation: absent in the
33 early Holocene? *Journal of Climate* 17, 423–426.
- 34 Russell-Smith, J., Yates, C.P., Whitehead, P.J., Smith, R., Craig, R., Allan, G.E.,
35 Thackway, R., Frakes, I., Cridland, S., Meyer, M.C.P., Gill, A.M., 2007.
36 Bushfires ‘down under’: patterns and implications of contemporary Australian
37 landscape burning. *International Journal of Wildland Fire* 16, 361–377.
- 38 Sanchez Goñi, M.F., Harrison, S.P., 2010. Millennial-scale climate variability and
39 vegetation changes during the last glacial: concepts and terminology.
40 *Quaternary Science Reviews* 29, 2823-2827.
- 41 Select Committee on the Recent Australian Bushfires, 2003. *A Nation Charred*. The
42 Parliament of the Commonwealth of Australia, Canberra.
- 43 Shafer, S.L., Bartlein, P.J., Whitlock, C., 2005. Understanding the spatial
44 heterogeneity of global environmental change in mountain regions. In Huber,

- 1 U., Reasoner M., Bugmann H. (eds.) *Global Change and Mountain Regions*.
2 Springer, 21-30.
- 3 Shakun, J.D., Carlson, A.E. 2010. A global perspective on Last Glacial Maximum to
4 Holocene climate change. *Quaternary Science Reviews* 29, 1801-1816.
- 5 Shulmeister, J. and Lees, B.G., 1995. Pollen evidence from tropical Australia for the
6 onset of an ENSO-dominated climate at c. 4000 BP. *The Holocene* 5, 10-18
- 7 Sikes, E. L., Howard, W. R., Neil, H. L., Volkman, J. K., 2002. Glacial-interglacial
8 sea surface temperature changes across the subtropical front east of New
9 Zealand based on alkenone unsaturation ratios and foraminiferal assemblages.
10 *Paleoceanography* 17, 10.1029/2001PA000640, 2002.
- 11 Singh, G., Geissler, E. A., 1985. Late Cainozoic history of vegetation, fire, lake levels
12 and climate at Lake George, New South Wales, Australia. *Philosophical*
13 *Transactions Royal Society London B* 311, 379-447.
- 14 Singh, G., Kershaw, A.P., Clark, R., 1981. Quaternary vegetation and fire history in
15 Australia. In: Gill, A.M., Groves, R.H., Noble, I.R. (Eds.), *Fire in the*
16 *Australian Biota*. Australian Academy of Science, Canberra, 23-54.
- 17 Smith, M.A., Williams, A.N., Turney, C.S.M., Cupper, M.L., 2008. Human—
18 environment interactions in Australian drylands: exploratory time-series
19 analysis of archaeological records. *The Holocene* 18, 389–401.
- 20 Stevenson, J., Hope, G.S., 2005. A comparison of late Quaternary forest changes in
21 New Caledonia and northeastern Australia. *Quaternary Research* 64, 372-383.
- 22 Stouffer, R. J., Dixon, K. W., Spelman, M. J., Hurlin, W., Yin, J., Gregory, J. M.,
23 Weaver, A. J., Eby, M., Flato, G. M., Robitaille, D. Y., Hasumi, H., Oka, A.,
24 Hu, A., Jungclaus, J. H., Kamenkovich, I. V., Levermann, A., Nawrath, S.,
25 Montoya, M., Murakami, S., Peltier, W. R., Vettoretti, G., Sokolov, A.,
26 Weber, S. L., 2006. Investigating the causes of the response of the
27 thermohaline circulation to past and future climate changes. *Journal of*
28 *Climate* 19, 1365-1387.
- 29 Thevenon, F., Bard, E., Williamson, D., Beaufort, L., 2004. A biomass burning record
30 from the West Equatorial Pacific over the last 360 kyr: methodological,
31 climatic and anthropic implications. *Palaeogeography, Palaeoclimatology,*
32 *Palaeoecology* 213, 83-99.
- 33 Tinner, W., Hofstetter, S., Zeuglin, F., Conedera, M., Wohlgemuth, T., Zimmermann,
34 L., Zweifel, R., 2006. Long-distance transport of macroscopic charcoal by an
35 intensive crown fire in the Swiss Alps - implications for fire history
36 reconstruction. *The Holocene* 16, 287-292.
- 37 Tudhope, A.W., Chilcott, C.P., McCulloch, M.T., Cook, E.R., Chappell, J., Ellam,
38 R.M., Lea, D.W., Lough, J.M., Shimmield, G.B., 2001. Variability in the El
39 Niño-Southern Oscillation through a glacial-interglacial cycle. *Science* 291,
40 1511-1517.
- 41 Turney, C.S.M., Hobbs, D., 2006. ENSO influence on Holocene Aboriginal
42 populations in Queensland, Australia. *Journal of Archaeological Science* 33,
43 1744–1748.
- 44 Turney, C.S.M., Kershaw, A.P., Moss, P., Bird, M. I., Fifield, L.K., Cresswell, R.G.,
45 Santos, G.M., di Tada, M.L., Hausladen, P. A., Zhou, Y., 2001. Redating the

- 1 onset of burning at Lynch's Crater (North Queensland): implications for
2 human settlement in Australia. *Journal of Quaternary Science* 16, 767-771.
- 3 Turney, C.S.M., Kershaw, P., Clemens, S., Branch, N., Moss, P. and Fifield, L.K.,
4 2004. Millennial and orbital variations of El Nino/Southern Oscillation and
5 high-latitude climate in the last glacial period. *Nature* 428, 306-310.
- 6 van Der Werf, G. R., Randerson, J. T., Giglio L., Collatz G.J., Kasibhatla P.S.,
7 Arellano Jr., A.F., 2006. Interannual variability of global biomass burning
8 emissions from 1997 to 2004. *Atmospheric Chemistry and Physics*
9 *Discussions* 6, 3175-3226.
- 10 van der Werf, G. R., Dempewolf, J., Trigg, S. N., Randerson, J. T., Kasibhatla, P. S.,
11 Giglio, L., Murdiyarso, D., Peters, W., Morton, D. C., Collatz, G. J., Dolman,
12 A. J., De Fries, R. S., 2008a. Climate regulation of fire emissions and
13 deforestation in equatorial Asia. *Proceedings of the National Academy of*
14 *Sciences of the United States of America* 105, 20350-20355.
- 15 van der Werf, G. R., Randerson, J. T., Giglio, L., Gobron, N., Dolman, A. J., 2008b.
16 Climate controls on the variability of fires in the tropics and subtropics. *Global*
17 *Biogeochemical Cycles* 22, doi:10.1029/2007GB003122.
- 18 Vandergoes, M.J., Newnham, R.M., Preusser, F., Hendy, C.H., Lowell, T.V.,
19 Fitzsimons, S.J., Hogg, A.G., Kasper, H.U., Schluechter, C., 2005. Regional
20 insolation forcing of Late Quaternary climate change in the Southern
21 Hemisphere. *Nature* 436, 242-245.
- 22 Webb III, T., Anderson, K.H., Bartlein, P.J., Webb, R.S., 1998. Late Quaternary
23 climate change in eastern North America: a comparison of pollen-derived
24 estimates with climate model results. *Quaternary Science Reviews* 17, 587-
25 606.
- 26 Williams, A.A.J., Karoly, D.J., Tapper, N., 2001. The sensitivity of Australian fire
27 danger to climate change. *Climatic Change* 49, 171 – 191.
- 28 Williams, M., Cook, E., van der Kaars, S., Barrows, T., Shulmeister, J., Kershaw, P.,
29 2009. Glacial and deglacial climatic patterns in Australia and surrounding
30 regions from 35,000 to 10,000 years ago reconstructed from terrestrial and
31 near-shore proxy data. *Quaternary Science Reviews* 28, 2398-2419
- 32 Williams, N.J., 2005. The environmental reconstruction of the last glacial cycle at
33 Redhead Lagoon in coastal eastern Australia. PhD Thesis, University of New
34 South Wales, Sydney, Australia.

35
36

Table 1: Sites with charcoal records from the Australasian region.

Site Name	Latitude (°)	Longitude (°)	Elevation (m)	Site type	Charcoal methods	Record length (age ka)	Resolution (samples/ka)	References
Aguai Ramata	-6.5639	145.211	1950	lacustrine	macro, sieved	15.84	32.88	Haberle, 2007
Aire Crossing	-38.6467	143.4797	180	terrestrial	micro, pollen slide	10.33	3.97	McKenzie and Kershaw, 2004
Ajax Hill	-46.4192	169.2922	680	mire	macro, sieved	14.21	4.01	McGlone, 2009
Ajkwa 1	-4.867	136.968	1.3	coastal	micro, pollen slide	6.16	4.38	Ellison, 2005
Ajkwa 2	-4.867	136.968	1.3	coastal	micro, pollen slide	10.43	5.85	Ellison, 2005
Ajkwa 3	-4.867	136.968	1.3	coastal	micro, pollen slide	2.96	13.83	Ellison, 2005
Ajkwa 4	-4.867	136.968	1.3	coastal	micro, pollen slide	5.55	4.86	Ellison, 2005
Ajkwa 5	-4.867	136.968	1.3	coastal	micro, pollen slide	5.55	7.38	Ellison, 2005
Allom Lake	-25.2333	153.1667	100	lacustrine	macro, sieved	57.00	2.14	Donders et al., 2006
Anggi Lake	-1.403	133.902	1945	lacustrine	micro, pollen slide	26.08	0.35	Hope, 2007a
Anumon Swamp	-20.163	169.828	45	mire	micro, pollen slide	1.87	4.27	Hope, 1996b
Argan Swamp	-10.05	142.06	3	coastal	macro, sieved	5.52	23.74	Rowe, 2006a
Aru	-5.917	134.2	1	terrestrial	micro, pollen slide	6.89	2.61	Hope and Aplin, 2005
Badu 15	-10.06	142.09	20	terrestrial	macro, sieved	4.19	7.63	Rowe, 2006a, b, 2007
Banda Sea Core SHI-9014	-5.76667	126.9667	-3163	marine	micro, pollen slide	173.31	0.54	van der Kaars et al., 2000
Bar20	-10.1	142.12	18	coastal	macro, sieved	2.83	25.42	Rowe, 2006a, 2007
Bega Swamp	-36.5167	149.5	1080	mire	micro, pollen slide	12.25	39.92	Polach and Singh, 1980
Black Swamp	-30.0206	151.4828	1450	mire	micro, pollen slide	10.62	6.21	Dodson et al., 1986
Blue Lake Kosciuzko	-36.141	148.437	1950	lacustrine	macro, sieved	8.18	60.43	Raine, 1974
Blundells Flat	-35.19	148.49	762	mire	macro, sieved	2.69	90.70	Hope et al., 2006b
Bobundara Swamp	-36.25	150.06	75	coastal	micro, pollen slide	8.01	9.99	Hope et al., 2006a
Boggy Swamp	-29.9611	151.4986	1160	mire	micro, pollen slide	12.49	6.73	Dodson et al., 1986

Boigu Gawat Core 1	-10.1	142.14	10	coastal	macro, sieved	4.57	10.94	Rowe, 2006a, 2007
Boigu Gawat Core 2	-10.1	142.14	10	coastal	macro, sieved	13.82	3.62	Rowe, 2007
Bolin Billabong combined core	-37.7667	145.0667	50	fluvial	micro, pollen slide	0.87	46.91	Leahy et al., 2005
Bonatoa	-18.07	178.53	4	mire	micro, pollen slide	5.41	5.18	Hope, 1996a; Hope et al., 1999
Bondi Lake Centre Core	-36.8061	149.9378	22	coastal	micro, pollen slide	1.16	34.40	Dodson et al., 1993
Bondi Lake South Core	-36.8061	149.9378	22	coastal	micro, pollen slide	2.12	13.19	Dodson et al., 1993
Boulder Flat	-37.45	148.92	25	terrestrial	micro, pollen slide	27.22	1.25	Kenyon, 1989
Breadalbane	-34.8	149.5167	694	lacustrine	micro, pollen slide	6.50	2.62	Dodson, 1986
Bridgewater Lake Core B	-38.3	141.3833	20	lacustrine	micro, pollen slide	4.86	7.62	Head, 1988
Brooks Ridge Fen	-36.1583	148.5944	1450	mire	micro, pollen slide	1.65	8.48	Mooney et al., 1997
Burruga Swamp	-32.0281	151.4334	1462	mire	micro, pollen slide	1.87	17.16	Dodson et al., 1994c
Burralow Creek Swamp	-33.5333	150.6333	320	mire	micro, pollen slide	1.05	12.34	Chalson, 1991
Butchers Swamp	-29.9722	151.4522	1230	mire	micro, pollen slide	14.21	2.25	Dodson et al., 1986
Buxton	-37.4483	145.6919	235	mire	micro, pollen slide	7.20	5.83	McKenzie, 2002
Byenup Lagoon Site 1	-34.4667	116.7333	175	lacustrine	micro, pollen slide	4.90	3.67	Dodson and Lu., 2000
Byenup Lagoon Site 2	-34.4667	116.7167	175	lacustrine	micro, pollen slide	13.20	1.36	Dodson and Lu., 2000
Caledonia Fen	-37.3333	146.7333	1280	mire	micro, pollen slide	140.72	1.21	Kershaw et al., 2007
Cameron's Lagoon	-41.967	146.683	1045	mire	micro, pollen slide	7.83	2.68	Thomas and Hope, 1994
Chapple Vale Swamp	-38.6261	143.323	30	mire	micro, pollen slide	7.16	9.64	McKenzie and Kershaw, 1997
Clarks Junction	-45.7181	170.1139	560	lacustrine	macro, sieved	16.80	2.20	McGlone, 2001
Club Lake	-36.4	148.3166	1980	lacustrine	micro, pollen slide	0.84	64.06	Dodson et al., 1994a
Cobrico Swamp	-38.3	143.0333	140	mire	micro, pollen slide	0.64	15.71	Dodson et al., 1994b
Core Fr10/95-GC-17	-22.0458	113.5018	-1093	marine	micro, pollen slide	101.64	0.96	Van der Kaars and De Deckker, 2002
Cotter Source Bog margin	-35.9667	148.8167	1755	mire	micro, pollen slide	10.68	1.68	Jones, 1990
Cotter Source Bog center	-35.9667	148.8167	1755	mire	micro, pollen slide	6.93	2.31	Jones, 1990; Hope and Clark, 2008

Cuddie Springs	-30.3795	147.3117	127	lacustrine	micro, pollen slide	57.45	0.54	Field et al., 2002
Dalhousie Springs	-26.4167	135.52	150	spring	micro, pollen slide	1.96	9.71	Boyd, 1990
Den Plain 3	-41.3	146.2	350	lacustrine	micro, pollen slide	2.38	5.04	Moss et al., 2007
Doge Doge	-17.9066	177.2776	8	fluvial	micro, pollen slide	8.58	1.86	Hope et al., 2009
Dove Lake	-41.66	145.96	934	lacustrine	micro, pollen slide	13.50	5.70	Dyson, 1995
Dublin Bog	-41.727	146.233	710	mire	macro, sieved	15.90	5.79	Colhoun et al., 1991
Egg Lagoon	-39.65	143.95	20	mire	micro, pollen slide	149.38	0.74	D'Costa et al., 1993
Evoran Pond	-18.7613	169.0118	194	lacustrine	micro, pollen slide	2.56	10.92	G. Hope, unpublished data
Eweburn Bog	-45.32	167.8089	320	mire	micro, pollen slide	10.61	5.75	Ogden et al., 1998
Fred South Swamp	-38.1368	141.7835	27	mire	micro, pollen slide	18.03	1.16	Builth et al., 2008
Gallahers Swamp	-34.29	150.43	535	mire	micro, pollen slide	22.21	0.90	Hope, 2005a
Galway Tarn	-43.4083	169.8733	130	lacustrine	macro, sieved	50.86	2.36	M. Vandergoes, unpublished data
Ginini Flats	-35.31	148.46	1590	mire	micro, pollen slide	3.45	4.35	Hope et al., 2005
Glendhu Bog	-45.8381	169.7264	600	mire	macro, sieved	12.00	5.17	McGlone and Wilmshurst, 1999
Goochs Swamp	-33.45	150.26	960	mire	macro, sieved	14.06	5.12	Black and Mooney, 2006
Greens Bush	-38.4333	144.9333	160	coastal	micro, pollen slide	5.77	4.85	Jenkins, 1992
Grey Pole Swamp	-32.6149	152.3173	9	mire	macro, sieved	5.38	46.44	Horn, 2005
Broughton Island	-33.2833	151	20	mire	macro, sieved	6.43	42.33	Mooney et al., 2007
Griffith Swamp	-33.2833	151	20	mire	macro, sieved	6.43	42.33	Mooney et al., 2007
Haeapugua	-5.8333	142.7833	1650	marsh	micro, pollen slide	25.50	3.22	Haberle and Ledru, 2001
Henty Bridge	-41.9922	145.4736	115	spring	micro, pollen slide	29.42	0.61	Colhoun, 1985
Hogan's Billabong	-36.025	146.7153	140	lacustrine	micro, pollen slide	1.92	18.23	Reid et al., 2007
Hogayaku	-3.983	137.383	3580	lacustrine	micro, pollen slide	5.37	10.43	Hope, 2007b
Hopwoods Lagoon	-33.217	150.9933	38	lacustrine	macro, sieved	0.66	60.94	Smeulders, 1999
Howes Waterhole	-33.0167	150.6667	280	mire	macro, sieved	2.37	75.95	Mason, 2004
Swamp	-33.0167	150.6667	280	mire	macro, sieved	2.37	75.95	Mason, 2004
Ijomba	-4.0333	137.2167	3630	mire	micro, pollen slide	17.91	2.46	Haberle and Ledru, 2001
Ingar Swamp	-33.7699	150.4563	584	mire	micro, pollen slide	8.01	2.62	Chalson, 1991

Jibbon Lagoon	-34.0833	151.15	65	mire	macro, sieved	1.58	48.75	Mooney et al 2001
Kaipo	-38.4	177.1	555	mire	micro, pollen slide	17.51	7.77	Newnham and Lowe, 2000; Hajdas et al., 2006
Katoomba Swamp	-33.7173	150.3189	950	mire	micro, pollen slide	7.16	3.63	Chalson, 1991
Kelela Swamp	-4.0207	138.9125	1650	mire	micro, pollen slide	11.67	3.17	Haberle et al., 1991
Kettlehole Bog	-43.0546	171.7862	600	mire	micro, pollen slide	17.45	5.16	McGlone et al., 2004
Killalea Lagoon	-34.6003	150.8678	22	coastal	micro, pollen slide	1.93	12.44	Dodson et al., 1993
Kings Tableland Swamp	-33.7333	150.4833	780	mire	micro, pollen slide	18.39	1.36	Chalson, 1991
Kings Tableland Swamp (short core)	-33.7333	150.4833	780	mire	macro, sieved	1.06	94.54	Chalson, 1991; Black, 2001
Kings Waterhole	-33.0167	150.6667	280	mire	macro, sieved	6.30	17.15	Black, 2001
Kohuora	-36.57	174.52	73	lacustrine	micro, pollen slide	32.43	4.87	Newnham et al., 2007a
Kosipe A	-8.4667	147.2	1960	marsh	micro, pollen slide	33.36	0.87	Hope, 2009
Kosipe C	-8.4667	147.2	1960	marsh	micro, pollen slide	55.00	0.80	Hope, 2009
Koumac	-20.65	164.283	2	coastal	micro, pollen slide	6.38	0.94	Hope et al., 1999
Kurnell Fen	-34.01	151.1	15	coastal	micro, pollen slide	9.19	3.59	Martin, 1994
Kurnell Swamp	-34.0333	151.2167	2	mire	micro, pollen slide	2.00	5.50	Martin, 1994
Lac Suprin	-22.18	166.59	230	lacustrine	micro, pollen slide	33.17	1.42	Hope and Pask, 1998
Lake Baraba	-34.2342	150.5397	305	lacustrine	macro, sieved	54.60	1.70	Black et al., 2006
Thirlmere Lakes								
Lake Condah	-38.0667	141.8333	60	lacustrine	micro, pollen slide	11.18	2.95	Builth et al., 2008
Lake Coomboo	-25.2195	153.1959	90	lacustrine	micro, pollen slide	202.31	0.31	Longmore, 1997
Lake Couridjah	-34.2322	150.542	310	lacustrine	macro, sieved	15.42	1.95	Clark, 1997
Thirlmere Lakes								
Lake Curlip	-37.8333	148.565	2	lacustrine	micro, pollen slide	0.32	99.96	Ladd, 1978
Lake Euramoo	-17.1599	145.6286	718	lacustrine	macro, sieved	23.48	32.71	Haberle, 2005
Lake Eyre (Core LE 82-2)	-28.5	137.25	-15	lacustrine	micro, pollen slide	39.18	1.51	Gillespie et al., 1991; Luly, 2001
Lake Flannigan King Island	-39.6	143.95	40	mire	micro, pollen slide	4.05	4.69	D'Costa, 1997
Lake Frome	-30.68	139.78	40	lacustrine	micro, pollen slide	22.68	5.07	Singh and Luly, 1991; Luly and Jacobsen, 2000; Luly, 2001
Lake George	-35.0656	149.4181	673	lacustrine	micro, pollen slide	116.71	0.58	Singh et al., 1981; Singh and Geissler, 1985

Lake Habbema	-4.1167	138.7	3120	lacustrine	micro, pollen slide	11.59	3.80	Haberle et al., 2001
Lake Hordern	-38.7833	143.4667	3	lacustrine	micro, pollen slide	4.80	4.59	Head and Stuart, 1980
Lake Hordorli	-2.533	140.55	680	mire	micro, pollen slide	63.45	0.95	Hope and Tulip, 1994
Lake Johnston	-41.8666	145.55	900	lacustrine	micro, pollen slide	11.72	4.52	Dodson et al., 1998; Anker et al., 2001
Lake Majo	-1.46667	127.4833	140	lacustrine	micro, pollen slide	5.80	4.14	Haberle and Ledru, 2001
Lake Mountain	-37.469	145.875	1450	mire	micro, pollen slide	8.66	2.42	McKenzie, 1997
Lake Selina	-41.8833	145.6	516	lacustrine	micro, pollen slide	130.24	0.62	Colhoun et al., 1999
Lake Surprise	-38.0612	141.9223	93	lacustrine	micro, pollen slide	33.30	2.34	Builth et al., 2008
Lake Tyrrell1	-35.31	142.78	42	lacustrine	micro, pollen slide	17.46	2.98	Longmore et al., 1986; Luly et al., 1986; Luly, 1993, 1998
Lake Tyrrell2	-35.31	142.78	42	lacustrine	micro, pollen slide	11.69	12.07	Longmore et al., 1986; Luly et al., 1986; Luly, 1993, 1998
Lake Wangoom LW87 core	-38.35	142.6	100	lacustrine	micro, pollen slide	196.60	0.52	Harle et al., 2002
Laravita	-8.3909	147.352	3570	mire	micro, pollen slide	16.14	1.92	Hope, 2009
Lashmars Lagoon	-35.8	138.0667	2	lacustrine	micro, pollen slide	12.95	5.41	Clark, 1983
Laukutu Swamp	-9.4794	160.0854	20	mire	micro, pollen slide	3.92	3.32	Haberle, 1996
Loch Sport Swamp	-37.9666	147.6833	2	mire	micro, pollen slide	9.26	3.13	Hooley et al., 1980
Lombok Ridge Core G6-4	-10.7833	118.0667	-3510	marine	micro, pollen slide	375.20	0.36	Wang et al., 1999
Long Swamp	-38.0833	141.0833	2	mire	micro, pollen slide	6.70	4.92	Head, 1988
Lynchs Crater	-17.3667	145.7	760	lacustrine	macro, sieved	234.75	1.11	Kershaw et al., 2007
Lynchs Crater (holocene core)	-17.3667	145.7	760	lacustrine	micro, pollen slide	7.39	3.52	Kershaw, 1983
Mago Island	-17.44	179.157	2	mire	micro, pollen slide	7.84	2.04	Hope et al., 2009
Main Lake Tower Hill	-38.3167	142.3667	20	lacustrine	micro, pollen slide	12.91	4.34	D'Costa et al., 1989
Maluyo Swamp	18.18	121.58	5	terrestrial	macro, sieved	6.26	95.79	J. Stevenson, unpublished data
McKenzie Road Bog	-38.4333	146.7667	50	mire	micro, pollen slide	0.17	301.17	Robertson, 1986
MD97-2140	2.0667	142.2667	-2547	marine	micro, imaging	364.65	0.32	Thevenon et al., 2004
Mela Swamp	-9.4794	160.0854	20	mire	micro, pollen slide	5.01	2.60	Haberle, 1996
Micalong Swamp	-35.3333	148.5167	1100	mire	micro, pollen slide	15.95	3.45	Kemp, 1993

Middle Patriarch Swamp	-39.998	148.181	19	lacustrine	micro, pollen slide	1.55	Ladd et al., 1992
Mill Creek	-33.4043	151.0303	4	terrestrial	micro, pollen slide	12.28	Devoy et al., 1994
Mountain Lagoon	-33.5	150.5167	604	lacustrine	micro, pollen slide	10.54	Robbie, 1998
Muellers Rock	-35.39	148.5	1102	mire	micro, pollen slide	23.82	Worthy et al., 2005
Mulloon	-35.4417	149.5567	799	mire	micro, pollen slide	10.57	G. Hope, unpublished data
Nadrau	-17.75	177.88	680	terrestrial	micro, pollen slide	3.95	Hope et al., 2009
Native Companion Lagoon	-27.6754	153.4107	20	coastal	micro, pollen slide	2.25	Petherick et al 2008
Navatu	-18.07	178.53	4	mire	micro, pollen slide	1.68	Hope et al., 2009
Nekkeng	7.45	134.52	9	terrestrial	micro, pollen slide	8.30	Athens and Ward, 2005
Neon	-8.4725	147.3099	2875	mire	micro, pollen slide	9.06	Hope, 2009
Newall Creek	-42.07	145.44	140	terrestrial	micro, pollen slide	13.00	Van de Geer et al., 1989
Newnes Swamp	-33.3825	150.2222	1060	mire	micro, pollen slide	23.09	Chalson, 1991
Ngardmau	7.608	134.57	10	terrestrial	micro, pollen slide	13.15	Athens and Ward, 2005
Ngerchau	7.63	134.52	9	terrestrial	micro, pollen slide	5.30	Athens and Ward, 2005
Ngerdok 2	7.52	134.603	25	lacustrine	micro, pollen slide	4.80	Athens and Ward, 2005
Ngerkell	7.605292	134.6259	10	terrestrial	micro, pollen slide	3.67	Athens and Ward, 2005
Nong Pa Kho	17.01	102.93	180	mire	micro, pollen slide	3.97	Penny and Kealhofer, 2004
Noreikora Swamp	-6.3333	145.8333	1750	marsh	micro, pollen slide	37.92	Haberle and Ledru, 2001
North Torbreck	-37.4814	146.9472	564	fluvial	micro, pollen slide	6.87	McKenzie, 2002
Northwest Crater Tower Hill	-38.3167	142.3667	20	lacustrine	macro, sieved	13.48	D'Costa et al., 1989
Notts Swamp	-33.8098	150.4076	682	mire	micro, pollen slide	25.85	Chalson, 1991
Nursery Swamp	-35.41	148.58	1092	mire	micro, pollen slide	7.94	Rogers and Hope, 2006
Oaks Creek	-37.5856	146.1667	610	mire	micro, pollen slide	11.28	McKenzie, 2002
ODP Site 820	-16.6333	146.3	-280	marine	micro, pollen slide	6.50	Moss and Kershaw, 2000
Okarito Pakihi	-43.2417	170.2167	70	mire	macro, sieved	100.50	Vandergoes et al., 2005; Newnham et al., 2007b
Olbed 1	7.5	134.54	20	terrestrial	micro, pollen slide	150.12	Athens and Ward, 2005
						7.98	

Paoay Lake LP3	18.2	120.54	15	lacustrine	macro, sieved	6.70	87.11	Stevenson et al., 2009
Paoay Lake LP4	18.12	120.54	15	lacustrine	macro, sieved	6.49	35.58	Stevenson et al., 2009
Pemerak Swamp	0.7888	112.05	40	mire	micro, pollen slide	35.54	0.82	Anshari et al., 2001
Penrith Lakes	-33.7139	150.6774	18	lacustrine	micro, pollen slide	37.88	1.74	Chalson, 1991
Pine Camp	-34.75	141.13	21.4	lacustrine	micro, pollen slide	30.76	1.56	Cupper, 2005, 2006
Plum Swamp	-22.26	166.61	40	mire	micro, pollen slide	23.05	3.38	Stevenson, 1998
Poets Hill	-41.883	145.559	600	lacustrine	micro, pollen slide	14.16	2.33	Colhoun, 1992
Poley Creek	-37.4078	145.2189	630	mire	micro, pollen slide	19.24	1.77	Pittock, 1989
Powelltown	-37.8667	145.7031	168	mire	micro, pollen slide	7.27	3.30	McKenzie, 2002
Quambie Lagoon	-12.5	131.17	20	lacustrine	macro, sieved	6.54	17.59	J. Stevenson, unpublished data
Queens Swamp Core QS 3	-33.9002	150.5916	665	mire	macro, sieved	10.67	22.21	S. Mooney, unpublished data
Rawa Danau	-6.1833	105.9667	100	lacustrine	micro, pollen slide	16.59	1.87	Haberle and Ledru, 2001
Redhead Lagoon	-32.9944	151.7208	65	lacustrine	micro, pollen slide	79.79	1.25	Williams, 2005
Rennix Gap	-36.22	148.3	1570	terrestrial	micro, pollen slide	11.94	3.02	G. Hope, unpublished data
Ringarooma Humus Site 1	-41.3	147.6167	885	terrestrial	micro, pollen slide	0.20	110.00	Dodson et al., 1998
Ringarooma Humus site 2	-41.3	147.6167	885	terrestrial	micro, pollen slide	0.32	53.13	Dodson et al., 1998
Ringarooma River site I	-41.3	147.6167	885	terrestrial	micro, pollen slide	0.39	56.24	Dodson et al., 1998
Ringarooma River Site II	-41.3	147.6167	885	terrestrial	micro, pollen slide	0.28	61.40	Dodson et al., 1998
Rock Arch Swamp	-34.3	150.39	575	mire	micro, pollen slide	10.87	1.20	Hope, 2005a
Rotten Swamp (high-res study)	-35.7	148.8833	1445	mire	micro, pollen slide	6.31	56.74	Hope and Clark, 2008
Rotten Swamp Core 4	-35.7	148.8833	1445	mire	micro, pollen slide	11.41	1.58	Clark, 1986
Ryans Swamp	-35.09	150.39	8	mire	micro, pollen slide	4.45	6.29	Radclyffe, 1993
Saint Louis Lac	-22.23	166.55	5	mire	micro, pollen slide	7.19	8.63	Stevenson, 2004
Sapphire Swamp	-30.0341	151.5604	1260	mire	micro, pollen slide	0.35	62.86	Dodson et al., 1986
Sari	-16.63	179.5	67	mire	micro, pollen slide	6.53	3.52	Hope et al., 2009

Snobs Creek	-37.558	145.928	775	mire	micro, pollen slide	15.32	2.02	McKenzie, 1997
Snowy Flats	-35.54	148.47	1618	mire	micro, pollen slide	9.18	2.72	Hope et al., 2005
Soleve	-17.25	-179.49	2	mire	micro, pollen slide	7.16	2.93	Clark and Hope, 1997
Solomons Jewel Lake	-41.8	146.2667	1185	lacustrine	micro, pollen slide	4.85	10.10	Dodson, 2001
Sondambile	-6.3453	147.1116	2850	lacustrine	macro, sieved	1.34	243.12	Haberle et al., 2005
South Salvation Creek Swamp	-33.6326	151.2587	132	mire	micro, pollen slide	4.78	4.19	Kodela and Dodson, 1988
Stockyard Swamp, Hunter Island	-40.55	144.75	65	mire	micro, pollen slide	5.83	2.40	Hope, 1999
Storm Creek	-37.45	145.8	1177	Mire	micro, pollen slide	29.33	1.40	McKenzie, 1997
Sundown Swamp	-41.1667	144.6667	10	mire	micro, pollen slide	4.15	2.65	Hope, 1999
Supulah Hill	-4.1167	138.9667	1580	mire	micro, pollen slide	39.00	0.95	Haberle et al., 1991; Hope, 1998
Tadpole Swamp	-38.1317	145.2756	60	mire	micro, pollen slide	10.24	1.85	Aitken and Kershaw, 1993
Tagamaucia	-16.49	-179.56	820	lacustrine	micro, pollen slide	16.36	3.79	Hope, 1996a
Talita Kupai	-10.1	142.12	33	coastal	macro, sieved	2.41	61.72	Rowe, 2006a
Tea Tree Swamp Core DRA	-37.2167	148.8333	900	mire	micro, pollen slide	0.03	490.20	Gell et al., 1993
Tea Tree Swamp Core DRE	-37.2167	148.8333	900	mire	micro, pollen slide	0.52	29.12	Gell et al., 1993
Tea Tree Swamp Core DRN-A	-37.2167	148.8333	900	mire	micro, pollen slide	0.54	126.80	Gell et al., 1993
Tiam Point	-10.12	142.18	3	coastal	micro, pollen slide	7.70	6.62	Rowe, 2006a, 2007
Tiger Snake Swamp	-38.1313	145.2758	60	mire	micro, pollen slide	8.41	2.73	Aitken and Kershaw, 1993
Tom Burns (D-section Core)	-37.3833	145.8167	1075	Mire	micro, pollen slide	12.07	2.57	McKenzie, 1997
Tom Burns (Missen Core)	-37.3833	145.8167	1075	Mire	micro, pollen slide	31.56	0.48	McKenzie, 1997
Tom Gregory Swamp	-35.38	148.49	1024	mire	micro, pollen slide	12.39	1.29	Hope, 2005b
Tugupugua	-5.6691	142.6108	2300	mire	micro, pollen slide	18.42	3.42	Haberle and Ledru, 2001
Tyrendarra Swamp	-38.1986	141.7626	13	marsh	micro, pollen slide	31.63	1.04	Builth et al., 2008
Voli Voli	-18.16	177.485	2	mire	micro, pollen slide	5.87	7.15	Dickinson et al., 1998
Vunimoli	-18.22	177.88	251	mire	micro, pollen slide	4.75	2.11	Hope et al., 1996, 1999
Waikaremoana	-38.45	177.02	582	lacustrine	micro, pollen slide	1.65	9.11	Newnham et al., 1998

Waitabu	-18.23	-178.781	43	other	micro, pollen slide	1.71	18.16	Latham et al., 1983
Wanda	-2.33	121.23	440	mire	micro, pollen slide	49.30	1.24	Hope, 2001
Wanum	-6.6365	146.7986	35	lacustrine	macro, sieved	3.89	72.92	Haberle et al., 2005
Warrananga	-33.97	141.56	22	lacustrine	micro, pollen slide	10.96	4.93	Cupper, 2005, 2006
Warrimoo Swamp	-33.7226	150.6162	195	mire	micro, pollen slide	4.63	6.27	Chalson, 1991
Waruid	-10.4	142.09	5	coastal	macro, sieved	7.20	27.10	Rowe, 2006a, 2007
Wet Lagoon	-34.47	149.25	700	mire	micro, pollen slide	2.30	12.17	Dodson, 1986
Whitehaven Swamp	-20.3	148.9	45	mire	micro, pollen slide	8.04	6.60	Genever et al., 2003
Wildes Meadow Swamp	-34.6208	150.5111	670	mire	micro, pollen slide	3.62	3.04	Kodela, 1996
Wilson Bog	-34.97	138.69	425	mire	macro, sieved	7.18	13.23	Buckman et al., 2009
Wingecarribee Swamp W2	-34.5666	150.5166	685	mire	macro, sieved	3.50	124.68	de Montford, 2008
Worimi Swamp	-32.5166	152.3333	8	mire	macro, sieved	2.46	36.53	Mooney and Maltby, 2006
Wyelangta	-38.6472	143.4614	450	fluvial	micro, pollen slide	223.93	0.23	McKenzie and Kershaw, 2000
Xere Wapo B	-22.29	166.97	220	lacustrine	micro, pollen slide	126.04	0.52	Stevenson and Hope, 2005
Xere Wapo C	-22.29	166.97	220	lacustrine	macro, sieved	78.80	3.55	Stevenson and Hope, 2005
Xere Wapo D	-22.29	166.97	220	lacustrine	macro, sieved	80.00	3.26	Stevenson and Hope, 2005
Yacata	-17.156	-179.51	2	mire	micro, pollen slide	6.50	4.77	Hope et al., 2009
Yano	7.38	134.54	40	terrestrial	micro, pollen slide	7.54	3.72	Athens and Ward, 2005
Yaouk Swamp	-35.49	148.5	1100	lacustrine	micro, pollen slide	12.01	2.50	J. Keaney and G. Hope, unpublished data
Yawi Ti	-6.6147	143.8863	1150	mire	macro, sieved	16.87	6.88	Haberle, 2007
Zurath Islet	-10.16	142.06	3	coastal	macro, sieved	11.83	5.41	Rowe, 2006a, 2007

Database References

- Aitken, D. L., Kershaw, A. P., 1993. Holocene vegetation and environmental history of Cranbourne Botanic Garden, Victoria. *Proceedings of the Royal Society of Victoria* 105 (1), 67-80.
- Anker, S. A., Colhoun, E. A., Barton, C. E., Petersen, M., Barbetti, M., 2001. Holocene vegetation and paleoclimatic and Paleomagnetic History from Lake Johnsten, Tasmania. *Quaternary Research* 56 (2), 264-274.
- Anshari, G., Kershaw, A. P., Van der Kaars, S., 2001. A Late Pleistocene and Holocene pollen and charcoal record from peat swamp forest, Lake Sentarum Wildlife Reserve, West Kalimantan, Indonesia. *Palaeogeography, Palaeoclimatology, Palaeoecology* 171, 637-655.
- Athens, J. S., Ward, J. V., 2005. Palau Compact Road Archaeological Investigations, Babeldaob Island, Republic of Palau. Unpublished Report,
- Black, M. P., 2001. Fire, vegetation, humans and climate: A record of change during the past millennium from the Kings Tablelands. Unpublished BSc Hons Thesis, School of Geography, UNSW, Sydney
- Black, M. P., Mooney, S. D., 2006. Holocene fire history from the Greater Blue Mountains world Heritage Area, NSW, Australia: The climate, humans and fire nexus. *Regional Environment Change* 6, 41-51.
- Black, M. P., Mooney, S. D., Martin, H. A., 2006. A >43,000-year vegetation and fire history from Lake Baraba, New South Wales, Australia. *Quaternary Science Reviews* 25 3003-3016.
- Boyd, W. E., 1990. Quaternary pollen analysis in the arid zone of Australia: Dalhousie Springs, central Australia. *Review of Palaeobotany and Palynology* 64 (1-4), 331-41.
- Buckman, S., Brownlie, K. C., Bourman, R. P., Murray-Wallace, C. V., Morris, R. H., Lachlan, T. J., Roberts, R. G., Arnold, L. J., Cann, J. H., 2009. Holocene palaeofire records in a high-level, proximal valley-fill (Wilson Bog), Mount Lofty Ranges, South Australia. *The Holocene* 19, 1017-1029.
- Builth, H., Kershaw, A. P., White, C., Roach, A., Hartney, L., McKenzie, M., Lewis, T., Jacobsen, G., 2008. Environmental and cultural change on the Mt Eccles lava-flow landscapes of southwest Victoria, Australia. *The Holocene* 18, 413-424.
- Chalson, J. M., 1991. The Late Quaternary vegetation and climatic history of the Blue Mountains, N.S.W. Australia. unpublished PhD thesis, University of N.S.W.,
- Clark, D. J., 1997. A palaeoenvironmental study of Thirlmere Lakes: Applications to contemporary vegetation management. Unpublished BSc Hons thesis, School of Geography, UNSW, Sydney
- Clark, R. L., 1983. Pollen and charcoal evidence for the effects of Aboriginal burning on the vegetation of Australia. *Archaeology in Oceania* 18 (2), 32-37.
- Clark, G., Hope, G. S., 1997. Preliminary report on archaeological and palaeoenvironmental investigations in northern Lau (Mago, Yacata-Kaibu and Vatuvara), Fiji. Unpublished report to National Museum, Fiji,
- Colhoun, E. A., 1985. Pre-last glaciation maximum vegetation history at Henty Bridge, western Tasmania. *New Phytologist* 100, 681-690.
- Colhoun, E. A., 1992. Late Glacial and Holocene vegetation history at Poets Hill Lake, Western Tasmania. *Australian Geographer* 23, 11-23.

- Colhoun, E. A., Pola, J. S., Barton, C. E., Heijnis, H., 1999. Late-Pleistocene vegetation and climate history of Lake Selina, western Tasmania. *Quaternary International* 57 (8), 5-23.
- Colhoun, E. A., Van de Geer, G., Hannan, D., 1991. Late Glacial and Holocene Vegetation History at Dublin Bog North-Central Tasmania. *Australian Geographical Studies* 29 (2), 337-354.
- Cupper, M. L., 2005. Last glacial to Holocene evolution of semi-arid rangelands in southeastern Australia. *The Holocene* 15, 541-553.
- Cupper, M. L., 2006. Luminescence and radiocarbon chronologies of playa sedimentation in the Murray Basin, southeastern Australia. *Quaternary Science Reviews* 25, 2594-2607.
- D'Costa, D. M., 1997. The Reconstruction of Quaternary Vegetation and Climate on King Island, Bass Strait, Australia. Unpublished PhD thesis, Monash University,
- D'Costa, D. M., Edney, P., Kershaw, P., De Deckker, P., 1989. Late Quaternary palaeoecology of Tower Hill, Victoria, Australia. *Journal of Biogeography* 16, 461-482.
- D'Costa, D. M., Grindrod, J., Ogden, R., 1993. Preliminary environmental reconstructions from the late Quaternary pollen and mollusc assemblages at Egg Lagoon, King Island, Bass Strait. *Australian Journal of Ecology* 18, 351-366.
- de Montford, M., 2008. Late Holocene fire history: Human impacts and climate variability at Wingecarribee Swamp. Unpublished BSc Hons Thesis, School of Biological, Earth & Environmental Sciences, UNSW, Sydney
- Devoy, R. J., Dodson, J. R., Thom, B. G., Nichol, S., 1994. Holocene environments in the Hawkesbury Valley, New South Wales: A comparison of terrestrial and marine records. *Quaternary Science Reviews* 13, 241-256.
- Dickinson, W. R., Burley, D. V., Nunn, P. D., Anderson, A., Hope, G., De Biran, A., Burke, C., Matararaba, S., 1998. Geomorphic and Archaeological Landscapes of the Sigatoka Dunes Site, Viti Levu, Fiji: Interdisciplinary Investigations. *Asian Perspectives* 31, 1-31.
- Dodson, J. R., 1986. Holocene Vegetation and Environments near Goulburn, New South Wales. *Australian Journal of Botany* 34, 231-49.
- Dodson, J. R., 2001. A vegetation and fire history in a subalpine woodland and rain-forest region, Solomons Jewel Lake, Tasmania. *The Holocene* 11, 111-116.
- Dodson, J. R., Lu, J. J., 2000. A Late Holocene Vegetation and Environment Record from Byenup Lagoon, South-western Australia. *Australian Geographer* 31 (1), 41-54.
- Dodson, J. R., De Salis, I., Myers, C. A., Sharp, A. J., 1994a. A thousand years of environmental change and human impact in the alpine zone at Mount Kosciusko, New South Wales. *Australian Geographer* 25, 77-87.
- Dodson, J. R., Frank, K., Fromme, M., Hickson, D., McRae, V., Mooney, S., Smith, J. D., 1994b. Environmental Systems and Human Impact at Cobrico Crater, South-western Victoria. *Australian Geographical Studies* 32, 27-40.
- Dodson, J. R., Greenwood, P. G., Jones, R. L., 1986. Holocene forest and wetland dynamics at Barrington Tops, NSW. *Journal of Biogeography* 13, 538-563.
- Dodson, J. R., McRae, V. M., Molloy, K., Roberts, F., Smith, J. D., 1993. Late Holocene human impact on two coastal environments in NSW, Australia: a comparison of Aboriginal and European impacts. *Vegetation History and Archaeobotany* 2, 89-100.

- Dodson, J. R., Mitchell, F. J. G., Bogeholz, H., Julian, N., 1998. Dynamics of temperate rainforest from fine resolution pollen analysis, upper Ringarooma river, northeastern Tasmania. *Australian Journal of Ecology* 23 (6), 550-561.
- Dodson, J. R., Roberts, F. K., De Salis, T., 1994c. Palaeoenvironment and human impact at Burruga Swamp in montane rainforest, Barrington Tops National Park, New South Wales, Australia *Australian Geographer* 25, 161-169.
- Donders, T. H., Wagner, F., Dilcher, D. L., Visscher, H., 2006. Mid- to late-Holocene El Niño-Southern Oscillation dynamics reflected in the subtropical terrestrial realm. *Proceedings of the National Academy of Sciences* 102 (31), 10904-10908.
- Dyson, W. D., 1995. A pollen and vegetation history from Lake Dove, western Tasmania. Unpublished Hons Thesis, Geography, UNSW, Kensington
- Edney, P. A., Kershaw, A. P., De Deckker, P., 1990. A late Pleistocene and Holocene vegetation and environmental record from Lake Wangoom, Western Plains of Victoria, Australia. *Palaeogeography, Palaeoclimatology, Palaeoecology* 80, 325-343.
- Ellison, J., 2005. Holocene palynology and sea-level change in two estuaries in Southern Irian Jaya. *Palaeogeography, Palaeoclimatology, Palaeoecology* 220, 291- 309.
- Field, J. H., Dodson, J. R., Prosser, I. P., 2002. A late Pleistocene vegetation history from the Australian semi-arid zone. *Quaternary Science Reviews* 21 (8), 1023-1037.
- Gell, P. A., Stuart, I. M., Smith, J. D., 1993. The response of vegetation to changing fire regimes and human activity in the Delegate River catchment, East Gippsland, Victoria. *The Holocene* 3, 150-160.
- Genever, M., Grinrod, J., Barker, B., 2003. Holocene palynology of Whitehaven Swamp, Whitsunday Island, Queensland, and implications for the regional archaeological record. *Palaeogeography, Palaeoclimatology, Palaeoecology* 201, 141-156.
- Gillespie, R., Magee, J. W., Luly, J. G., Dlugokencky, E., Sparks, R. J., Wallace, G., 1991. AMS radiocarbon dating in the study of arid environments: Examples from Lake Eyre, South Australia. *Palaeogeography, Palaeoclimatology, Palaeoecology* 84, 333-338.
- Haberle, S., 2005. A 23,000-yr pollen record from Lake Euramoo, Wet tropics of NE Queensland, Australia. *Quaternary Research* 64, 343-356.
- Haberle, S., Hope, G. S., DeFretes, Y., 1991. Environmental change in the Baliem Valley, Irian Jaya, Indonesia. *Journal of Biogeography*. *Journal of Biogeography* 18, 25-40.
- Haberle, S. G., 1996. Explanations for palaeoecological changes on the northern plains of Guadalcanal, Solomon Islands: the last 3200 years. *The Holocene* 6, 333-338.
- Haberle, S. G., 2007. Was the early Holocene characterised by “El Niño-like” or “La Niña-like” conditions? Evidence from terrestrial archives in the Western Pacific Warm Pool region. *Quaternary International* 167-168 Supplement (XVII INQUA Congress), 150.
- Haberle, S. G., Ledru, M. P., 2001. Correlations among Charcoal Records of Fires from the past 16,000 Years in Indonesia, Papua New Guinea, and Central and South America. *Quaternary Research* 55 (1), 97-104.
- Haberle, S.G., Hope, G.S. and Van der Kaars, W.A. (2001) Biomass burning in Indonesia and Papua New Guinea: natural and human induced fire events in

- the fossil record. *Palaeogeography, Palaeoclimatology, Palaeoecology*, 171, 259-268.
- Haberle, S. G., Stevenson, J., Black, M. P., Mooney, S. D., Sniderman, J. M. K., Willis, K. J., Bennett, K. D., 2005. Fire in the Tropics: A paleoclimatic assessment of charcoal records from the Western Pacific Warm Pool region. In *Prog. Abstr. Of the AGU Chapman*.
- Hajdas, I., Lowe, D. J., Newnham, R. M., Bonani, G., 2006. Timing of the late-glacial climate reversal in the Southern Hemisphere: a high-precision radiocarbon chronology for Kaipo bog, New Zealand. *Quaternary Research* 65, 340-345.
- Harle, K. J., Heijnis, H., Chisari, R., Kershaw, A. P., Zoppi, U., Jacobsen, G., 2002. A chronology for the long pollen record from Lake Wangoom, western Victoria (Australia) as derived from uranium/thorium disequilibrium dating. *Journal of Quaternary Science* 17, 707-720.
- Head, L., 1988. Holocene Vegetation, fire and environmental history of the Discovery Bay region, southwestern Victoria. *Australian Journal of Ecology* 13, 21-49.
- Head, L., Stuart, I. M. F., 1980. Change in the Aire-Palaeoecology and Prehistory in the Aire Basin, Southwestern, Victoria. *Monash Publications in Geography* 24, 1-97.
- Hooley, A. D., Southern, W., Kershaw, A. P., 1980. Holocene vegetation and environments of Sperm Whale Head, Victoria, Australia. *Journal of Biogeography* 7, 349-362.
- Hope, G., 2005a. Rock Arch and Gallaher's Swamps: Core Samples Collected In The Avon/Robertson Catchments 17 March 2005. Unpublished report to Sydney Water,
- Hope, G., 2009. Environmental change and fire in the Owen Stanley Ranges, Papua New Guinea. *Quaternary Science Reviews* 28, 2261-2276.
- Hope, G., Macphail, M., Keaney, B., 2005. Snowy Flat and Ginini Bogs, Brindabella Range, Australian Capital Territory. Unpublished report to Environment ACT and Ecowise Services,
- Hope, G., Pask, J., 1998. Tropical vegetational change in the late Pleistocene of New Caledonia. *Palaeogeography, Palaeoclimatology, Palaeoecology* 142, 1-21.
- Hope, G., Stevenson, J., Southern, W., 2009. Vegetation histories from the Fijian islands: Alternative records of human impact. *Terra Australis* 31, 63-87.
- Hope, G. S., 1996a. Quaternary change and historical biogeography of Pacific Islands. In: Keast, A. Miller, S. E. (Eds.), *The Origin and Evolution of Pacific Island Biotas, New Guinea to Eastern Polynesia: Patterns and Process*. SPB Publ, Amsterdam, pp. 165-190.
- Hope, G. S., 1996b. A reconnaissance survey of potential sites for pollen analysis on Aneityum Island, southern Vanuatu. Unpublished report to the Vanuatu Cultural Centre, Vanuatu
- Hope, G. S., 1998. Early fire and forest change in the Baliem Valley, Irian Jaya, Indonesia. *Journal of Biogeography* 25 (3), 453-461.
- Hope, G. S., 1999. Vegetation and fire response to late Holocene human occupation in island and mainland north west Tasmania. *Quaternary International* 59, 47-60.
- Hope, G. S., 2001. Environmental change in the Late Pleistocene and later Holocene at Wanda site, Soroako, South Sulawesi, Indonesia. *Palaeogeography, Palaeoclimatology, Palaeoecology* 171 (3-4), 129-145.

- Hope, G. S., 2005b. Tom Gregory Bog, an infilled meander of the upper Cotter River, Australian Capital Territory. Unpublished report to ECOWISE ACT and Environment ACT,
- Hope, G. S., 2007a. The history of human impact on New Guinea. In: Marshall, A. J. Beehler, B. M. (Eds.), *The Ecology of Papua*. Singapore, pp. 1087-1097.
- Hope, G. S., 2007b. Palaeoecology and palaeoenvironments of Papua. In: Marshall, A. J. Beehler, B. M. (Eds.), *The Ecology of Papua*. Periplus Editions, Singapore.
- Hope, G. S., Aplin, K., 2005. Environmental change in the Aru Islands. In: O'Connor, S., Spriggs, M. Veth, P. (Eds.), *The Archaeology of the Aru Islands Eastern Indonesia*. Pandanus Press, Canberra, pp. 25-40.
- Hope, G. S., Tulip, J., 1994. A long vegetation history from lowland Irian Jaya, Indonesia. *Palaeogeography, Palaeoclimatology, Palaeoecology* 109, 385-398.
- Hope, G. S., Clark, R. L., 2008. A tale of two swamps: subalpine peatlands in the Kelly-Scabby area of Namadgi National Park. In: McCue, K. Lenz, S. (Eds.), *Corridors for Survival in a Changing World*. National Parks Assoc. ACT, Canberra, pp. 61-76.
- Hope, G. S., Coddington, J., O'Dea, D., 2006a. Estuarine development and human occupation at Bobundara Swamp, Tilba Tilba, New South Wales, Australia. In: Lillie, M. Ellis, S. (Eds.), *Wetland Archaeology and Environments: Regional Issues, Global Perspectives*. Oxbow, Oxford, pp. 258-274.
- Hope, G. S., O'Dea, D., Southern, W., 1996. Le pacifique de 5000 à 2000 avant le présent. Suppléments à l'histoire d'une colonisation. *The Pacific from 5000 to 2000 BP. Colonisation and transformations. Actes du colloque Vanuatu*. Editions de l'ORSTOM, Paris.
- Hope, G. S., O'Dea, D., Southern, W., 1999. Holocene vegetation histories in the Western Pacific - alternative records of human impact. In: Lilley, I. Galipaud, J.-C. (Eds.), *Colonisation of the Pacific 3000-2000 BP*. ORSTOM, Port Vila.
- Hope, G. S., Stevenson, J., Haberle, S., 2006b. Palaeoecology of Blundells Flat, ACT. Unpublished report to Ecowise Services and ACT Forests,
- Horn, D., 2005. The fire history of Broughton Island. Unpublished BSc Hons Thesis, School of Biological, Earth & Environmental Sciences, UNSW, Sydney
- Jenkins, M. A., 1992. A Late Holocene vegetation record from an interdunal swamp, Mornington Peninsula, Victoria. Unpublished M. Env.Sci. thesis, Department of Geography and Environmental Science, Monash University, Melbourne
- Jones, R. L., 1990. Late Holocene vegetational changes on the Illawarra Coastal Plain, New South Wales, Australia. *Review of Palaeobotany and Palynology* 65, 37-46.
- Kemp, J., 1993. The end of the Pleistocene in the southern tablelands, southeastern Australia. Unpublished BA thesis, Dept Geography, ANU, Australia,
- Kenyon, C. E., 1989. A late Pleistocene and Holocene palaeoecological record from Boulder Flat, East Gippsland. BSc Honours Thesis, Department of Botany and Zoology, Monash University, Melbourne
- Kershaw, A.P., Bretherton, S.C., van der Kaars, S., 2007a. A complete pollen record of the last 230 ka from Lynch's Crater, north-east Australia. *Palaeogeography, Palaeoclimatology, Palaeoecology* 251, 23-45.
- Kershaw, A. P., McKenzie, G. M., Porch, N., Roberts, R. G., Brown, J., Heijnis, H., Orr, M. L., Jacobsen, G., Newall, P. R., 2007b. A high-resolution record of vegetation and climate through the last glacial cycle from Caledonia Fen,

- southeastern highlands of Australia. *Journal of Quaternary Science* 22, 481-500.
- Kodela, P. G., 1996. The vegetation of the Robertson Plateau, New South Wales: historical and contemporary issues. Unpublished PhD Thesis, UNSW, Australia, Sydney
- Kodela, P. G., Dodson, J. R., 1988. A late Holocene Vegetation and Fire Record from Ku-ring-gai Chase national park, NSW. *Proceedings of the Linnean Society* 110, 317-326.
- Ladd, P. G., 1978. Vegetation history at Lake Curlip in Lowland Eastern Victoria, from 5200 B.P. to Present. *Australian Journal of Botany* 26, 393-414.
- Ladd, P. G., Orchiston, D. W., Joyce, E. B., 1992. Holocene vegetation history of Flinders Island. *New Phytologist* 122, 757-767.
- Latham, M., Hughes, P. J., Hope, G., Brookfield, M., 1983. Sedimentation in the swamps of Lakeba and its implications for erosion and human occupation of the island. In: Latham, M., Brookfield, H. C. (Eds.), *The Eastern Islands of Fiji - a study of the natural environment, its use and man's influence on its evolution*. *Travaux et Documents de l'ORSTOM*, Paris, pp. 103-120.
- Leahy, P. J., Tibby, J., Kershaw, A. P., Heijnis, H., Kershaw, J. S., 2005. The impact of European settlement on Bolin Billabong, a Yarra River floodplain lake, Melbourne, Australia. *River Research Applications* 21, 131-149.
- Longmore, M. E., 1997. Quaternary Palynological Records from Perched Lake Sediments, Fraser Island, Queensland, Australia: Rainforest, Forest History and Climatic Control. *Australian Journal of Botany* 45 (3), 507-526.
- Longmore, M. E., Torgersen, T., O'Leary, B. M., Luly, J. G., 1986. Caesium-137 mobility in the sediments of the playa Lake Tyrrell, northwestern Victoria 1: Stratigraphy and caesium-137 mobility in the upper sediments. *Palaeogeography, Palaeoclimatology, Palaeoecology* 54, 181-196.
- Luly, J. G., 1993. Holocene palaeoclimates and environment around Lake Tyrrell, semi-arid northwestern Victoria, Australia. *Journal of Biogeography* 20, 587-598.
- Luly, J. G., 1998. Modern pollen dynamics and surface processes in salt lake environments of semi-arid northwestern Victoria, Australia. *Review of Palaeobotany and Palynology* 97, 301-318.
- Luly, J. G., 2001. On the equivocal fate of Late Pleistocene *Callitris* Vent. (Cupressaceae) woodlands in arid South Australia. *Quaternary International* 83-85, 155-168.
- Luly, J. G., Jacobsen, G. C., 2000. Two new AMS dates from Lake Frome, arid South Australia. *Quaternary Australasia* 18, 29-33.
- Luly, J. G., Bowler, J. M., Head, M. J., 1986. A radiocarbon chronology from the playa Lake Tyrrell, northwestern Victoria, Australia. *Palaeogeography, Palaeoclimatology, Palaeoecology* 54, 171-180.
- Martin, A. R. H., 1994. Kurnell Fen: an eastern Australian coastal wetland, its Holocene vegetation, relevant to sea-level change and aboriginal land use. *Review of Palaeobotany and Palynology* 80, 311-332.
- Mason, S., 2004. Late Holocene fire activity at Mellong Swamp, Wollemi National Park, NSW. Unpublished BSc Hons Thesis, School of Biological, Earth & Environmental Sciences, UNSW, Sydney
- McGlone, M. S., 2001. The origin of the indigenous grasslands of southeastern South Island in relation to pre-human woody ecosystems. *New Zealand Journal of Ecology* 25, 1-15.

- McGlone, M. S., 2009. Postglacial history of New Zealand wetlands and implications for their conservation. *New Zealand Journal of Ecology* 33, 1-23.
- McGlone, M., Wilmshurst, J. M., 1999. A Holocene record of climate, vegetation change and peat bog development, east Otago, South Island, New Zealand. *Journal of Quaternary Science* 14 (3), 239-254.
- McGlone, M. S., Turney, C. S. M., Wilmshurst, J. M., 2004. Late Glacial and Holocene vegetation and climatic history of the Cass Basin, central South Island, New Zealand. *Quaternary Research* 62, 267-279.
- McKenzie, G. M., 1997. The late Quaternary vegetation history of the south-central highlands of Victoria, Australia: I. Sites above 900m. *Australian Journal of Ecology* 22, 19-36.
- McKenzie, G.M., 2002. The late Quaternary vegetation history of the south-central highlands of Victoria, Australia. II. Sites below 900m. *Austral Ecology* 27, 32-54.
- McKenzie, G.M., Kershaw, A. P., 1997. A vegetation history and quantitative estimate of Holocene climate from Chapple Vale, in the Otway region of Victoria. *Australian Journal of Botany* 45, 565-581.
- McKenzie, G. M., Kershaw, A.P., 2000. The last glacial cycle from Wyelangta, the Otway region of Victoria, Australia. *Palaeogeography, Palaeoclimatology, Palaeoecology* 155, 177-193.
- McKenzie, G.M., Kershaw, A. P., 2004. A Holocene pollen record from cool temperate rainforest, Aire crossing, the Otway region of Victoria, Australia. *Review of Palaeobotany and Palynology* 132, 281-290.
- Mooney, S. D., Maltby, E. L., 2006. A synthesis of two proxy records revealing the late Holocene fire history at a site on the central coast of New South Wales, Australia. *Austral Ecology* 31, 682-695.
- Mooney, S. D., Radford, K. L., Hancock, G., 2001. Clues to the 'burning question': pre-European fire in the Sydney coastal region from sedimentary charcoal and palynology. *Ecological Management and Restoration* 2(3), 203-12.
- Mooney, S. D., Watson, J. R., Dodson, J. R., 1997. Late Holocene environmental change in an upper montane area of the Snowy Mountains, New South Wales. *Australian Geographer* 28, 185-200.
- Mooney, S. D., Webb, M., Attenbrow, V., 2007. A comparison of charcoal and archaeological information to address the influences on Holocene fire activity in the Sydney Basin. *Australian Geographer* 38, 177-194.
- Moss, P. T., Kershaw, A. P., 2000. The last glacial cycle from the humid tropics of northeastern Australia: comparison of a terrestrial and marine record. *Palaeogeography, Palaeoclimatology, Palaeoecology* 155, 155-176.
- Moss, P. T., Ian, A., Thomas, B., Macphail, M., 2007. Late Holocene vegetation and environments of the Mersey Valley, Tasmania. *Australian Journal of Botany* 55, 74-82.
- Newnham, R. M., Lowe, D. J., 2000. A fine-resolution pollen record of late glacial climate reversal from New Zealand. *Geology* 28, 759-762.
- Newnham, R. M., Lowe, D. J., Giles, T. M., Alloway, B. V., 2007a. Vegetation and climate of Auckland, New Zealand, since ca 32,000 cal yr ago: support for an extended LGM. *Journal of Quaternary Science* 22, 517-534.
- Newnham, R. M., Lowe, D. J., Matthews, B. W., 1998. A late Holocene and prehistoric tephropalynological record of environmental change from Lake Waikaremoana, New Zealand. *The Holocene* 8, 443-454.

- Newnham, R. M., Vandergoes, M. J., Hendy, C. H., Lowe, D. J., Preusser, F., 2007b. A terrestrial palynological record for the last two glacial cycles from southwestern New Zealand. *Quaternary Science Reviews* 26, 517-535.
- Ogden, J., Baher, L., McGlone, M., 1998. Fire, forest regeneration and links with Early Human habitation: evidence from New Zealand. *Annals of Botany* 81, 687-696.
- Penny, D., Kealhofer, L., 2004. Microfossil evidence of land-use intensification in north Thailand. *Journal of Archaeological Science* 32, 169-82.
- Petherick, L., McGowan, H., Moss, P., 2008. Climate variability during the Last Glacial Maximum in eastern Australia: evidence of two stadials? *Journal of Quaternary Science* 23, 787-802.
- Pittock, J., 1989. Palaeoenvironments of the Mt. Disappointment Plateau (Kinglake West, Victoria), from the late Pleistocene. Unpublished BSc (Hons.) thesis, Dept. of geography and Environmental Science, Monash University, Melbourne
- Polach, H., Singh, G., 1980. Contemporary 14C levels and their significance to sedimentary history of Bega Swamp, New South Wales. *Radiocarbon* 22, 398-409.
- Radclyffe, E., 1993. Fire and people in Jervis Bay: toward a fire history in an occupied landscape. Unpublished BA Honours thesis, Department of Geography, Australian National University,
- Raine, J. I., 1974. Pollen Sedimentation in Relation to Quaternary Vegetation History of the Snowy Mountains of New South Wales. Unpublished PhD thesis, Australian National University, Canberra,
- Reid, M. A., Sayer, C. D., Kershaw, A. P., Heininis, H., 2007. Palaeolimnological evidence for submerged plant loss in a floodplain lake associated with accelerated catchment soil erosion (Murray River, Australia). *Journal of Paleolimnology* 38, 191-208.
- Robbie, A., 1998. The history of the vegetation from the palynology of Mountain Lagoon, Blue Mountains, New South Wales. Unpubl. BSc Thesis, Biological Science, UNSW, Sydney
- Robertson, M., 1986. Fire regimes and vegetation dynamics: a case study examining the potential of fine resolution palaeoecological techniques. Unpublished BA (Hons.) thesis, Dept. of Geography, Monash University, Melbourne
- Rogers, J., Hope, G. S., 2006. The Holocene infill of Nursery Swamp, a large sedgeland in the Australian Capital Territory. Unpublished report to Environment ACT,
- Rowe, C., 2006a. A Holocene history of vegetation change in the western Torres Strait region, Queensland, Australia. Unpublished PhD thesis, School of Geography and Environmental Science, Monash University,
- Rowe, C., 2006b. Landscapes in western Torres Strait history. In: David, B., Barker, B., McNiven, I. (Eds.), *The Social Archaeology of Indigenous Societies*. Aboriginal Studies Press, Canberra, pp. 270-287.
- Rowe, C., 2007. A palynological investigation of Holocene vegetation change in Torres Strait, seasonal tropics of northern Australia. *Palaeogeography, Palaeoclimatology, Palaeoecology* 25 (1), 83-103.
- Singh, G., Geissler, E. A., 1985. Late Cainozoic history of vegetation, fire, lake levels and climate at Lake George, New South Wales, Australia. *Philosophical Transactions Royal Society London B* 311, 379-447.

- Singh, G., Kershaw, A. P., Clark, R., 1981. Quaternary vegetation and fire history in Australia. In: Gill, A. M., Groves, R. A., Noble, I. R. (Eds.), *Fire and the Australian Biota*. Australian Academy of Science, Canberra, pp. 23-54.
- Singh, G., Luly, J. G., 1991. Changes in vegetation and seasonal climate since the last full glacial at Lake Frome, South Australia. *Palaeogeography, Palaeoclimatology, Palaeoecology* 84, 75-86.
- Smeulders, D. M., 1999. A late Holocene environmental reconstruction using lake sediments from Hopwood's Lagoon, NSW. Unpublished BSc Hons Thesis, School of Geography, UNSW, Sydney
- Stevenson, J., 1998. Late Quaternary environmental change and the impact of Melanesian colonisation in New Caledonia. Unpublished PhD thesis, Geography, University of New South Wales,
- Stevenson, J., 2004. A late Holocene record of human impact from the southwest coast of New Caledonia. *The Holocene* 14, 888-898.
- Stevenson, J., Hope, G. S., 2005. A comparison of late Quaternary forest changes in New Caledonia and northeastern Australia. *Quaternary Research* 64, 372-383.
- Stevenson, J., Siringan, F., Finn, J., Madulid, M., Heijnis, H., 2009. Paoay Lake, northern Luzon, the Philippines: a record of Holocene environmental change. *Global Change Biology*, doi:10.1111/j.1365-2486.2009.02039.x.
- Thevenon, F., Bard, E., Williamson, D., Beaufort, L., 2004. A biomass burning record from the West Equatorial Pacific over the last 360 kyr: methodological, climatic and anthropic implications. *Palaeogeography, Palaeoclimatology, Palaeoecology* 213, 83-99.
- Thomas, I., Hope, G. S., 1994. An example of Holocene vegetation stability from Camerons Lagoon, a near treeline site on the Central Plateau, Tasmania. *Australian Journal of Ecology* 19, 150-158.
- Van de Geer, G., Fitzsimons, S. J., Colhoun, E. A., 1989. Holocene to middle last glaciation vegetation history at Newell Creek, Western Tasmania. *New Phytologist* 111, 549-558.
- van der Kaars, S., De Deckker, P., 2002. A late Quaternary pollen record from deep sea core Fr10/95, GC17 offshore Cape Range Peninsula, northwestern Western Australia. *Review of Palaeobotany and Palynology* 120, 17-39.
- van der Kaars, S., Wang, X., Kershaw, P., Guichard, F., Setiabudi, D. A., 2000. A late Quaternary palaeoecological record from the Banda Sea, Indonesia: patterns of vegetation, climate and biomass burning in Indonesia and northern Australia. *Palaeogeography, Palaeoclimatology, Palaeoecology* 155, 135-153.
- Vandergoes, M. J., Newnham, R. M., Preusser, F., Hendy, C. H., Lowell, T. V., Fitzsimons, S. J., Hogg, A. G., Kasper, H. U., Schlüchter, C., 2005. Regional insolation forcing of Late Quaternary climate change in the Southern Hemisphere. *Nature* 436, 242-245.
- Wang, X., van der Kaars, S., Kershaw, P., Bird, M., Jansen, F., 1999. A record of fire, vegetation and climate through the last three glacial cycles from Lombok Ridge core G6-4, eastern Indian Ocean, Indonesia. *Palaeogeography, Palaeoclimatology, Palaeoecology* 147, 241-256.
- Williams, N. J., 2005. The Environmental Reconstruction of the Last Glacial Cycle at Redhead Lagoon in Coastal, Eastern Australia. Unpublished PhD thesis, University of Sydney, Australia,
- Worthy, M., Macphail, M., Wasson, R., Hope, G., Olley, J., 2005. Environmental change of the alluvial infill of Muellers Rock Creek, Upper Cotter Valley, ACT. Unpublished report to ECOWISE ACT and Environment ACT,

Figure 1

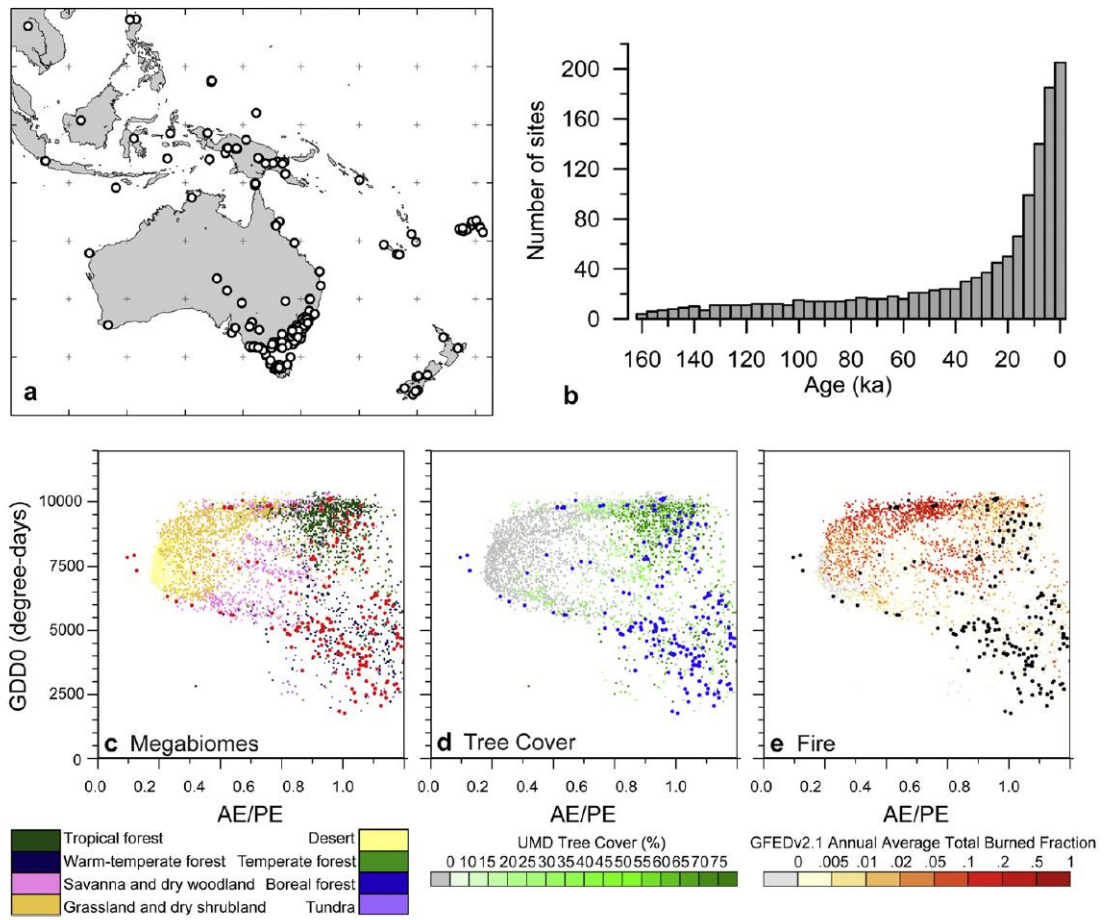


Figure 2

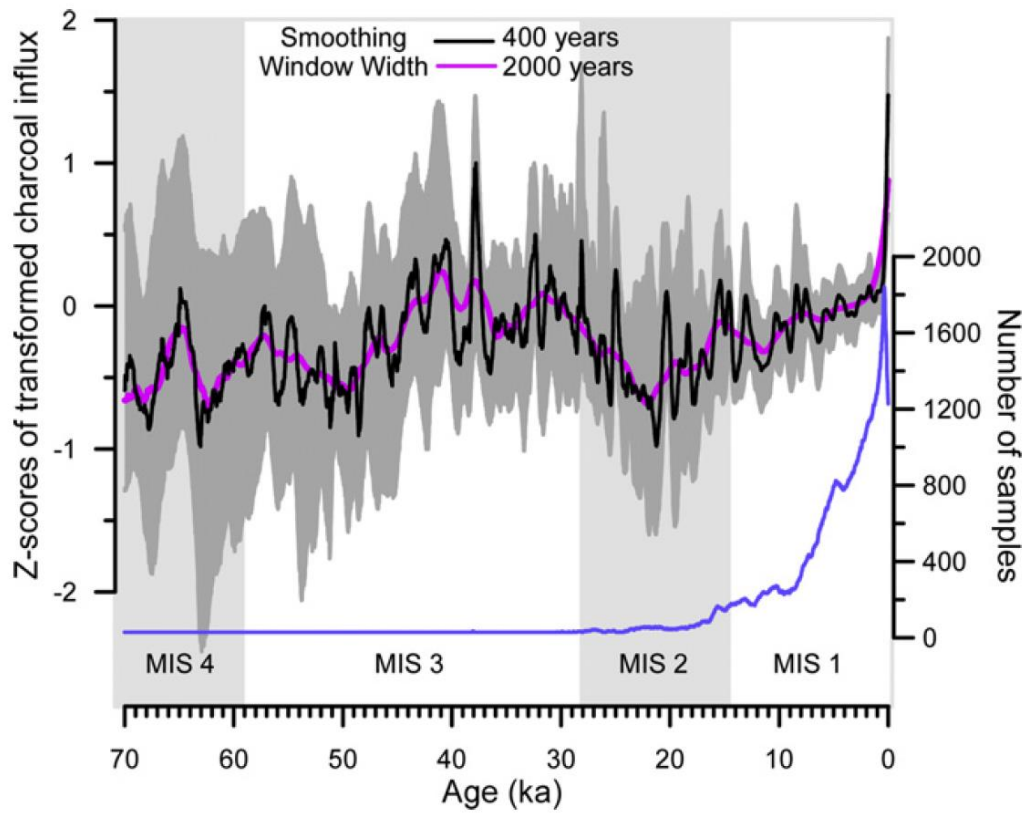


Figure 3

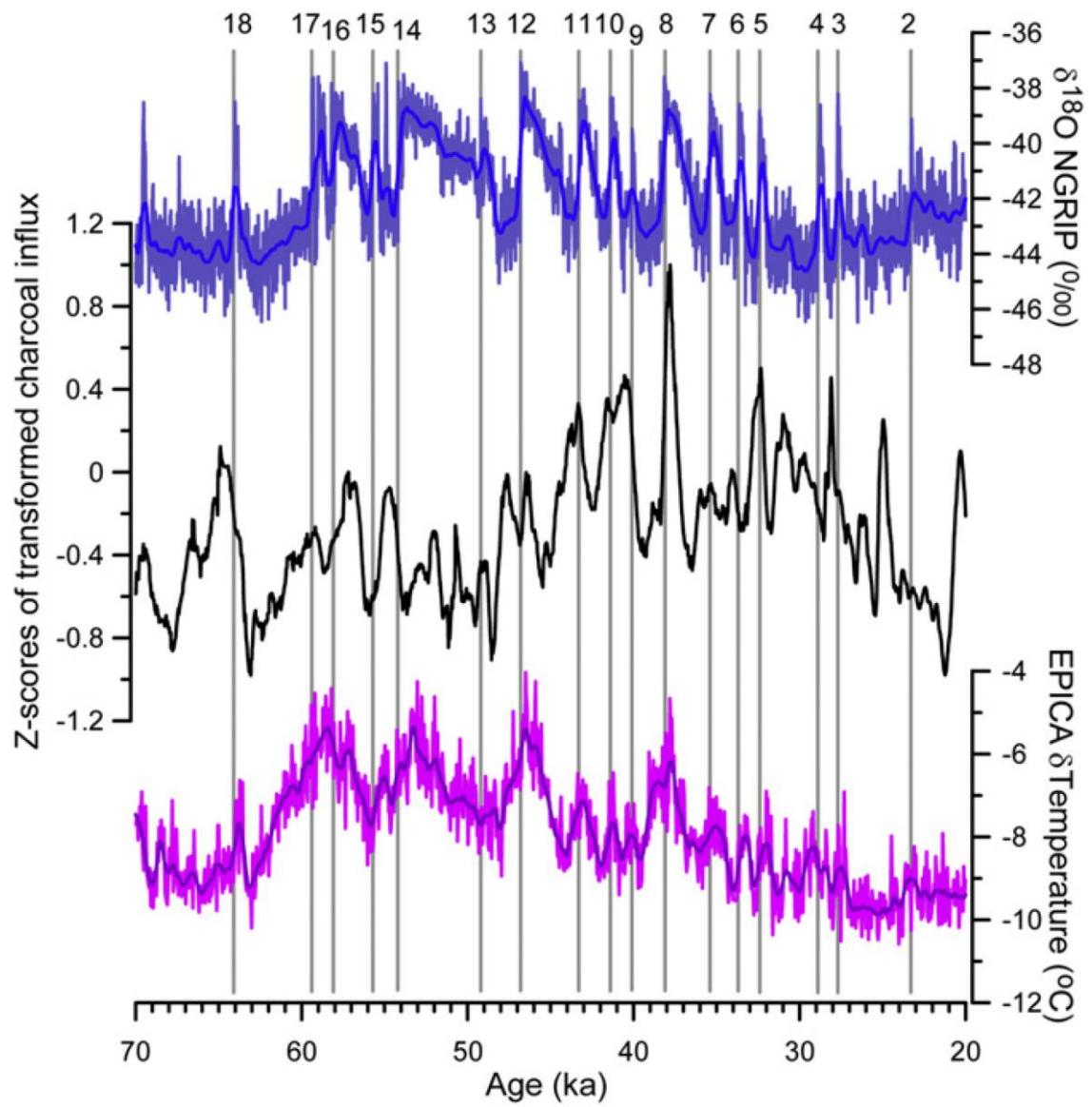


Figure 4

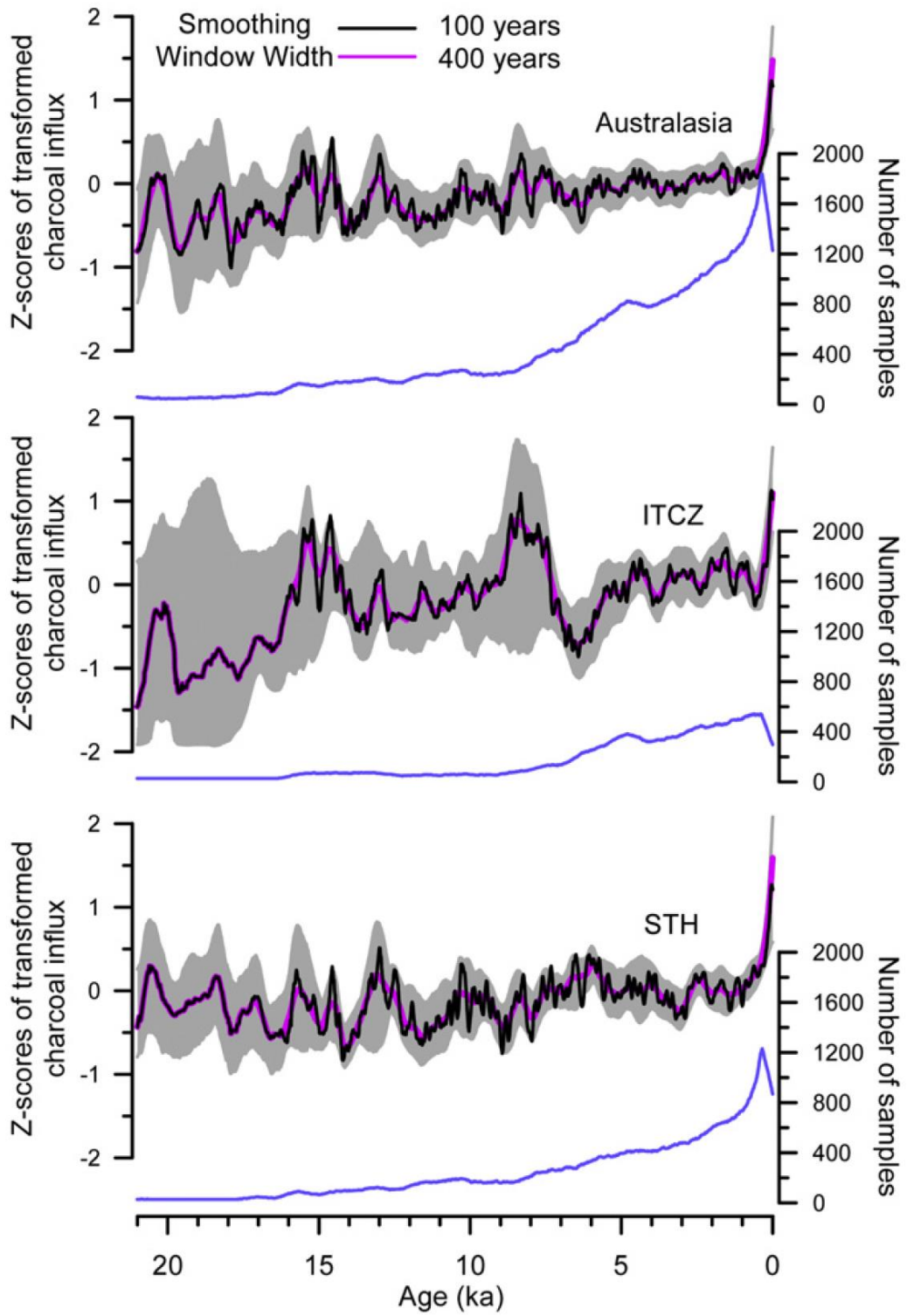


Figure 5

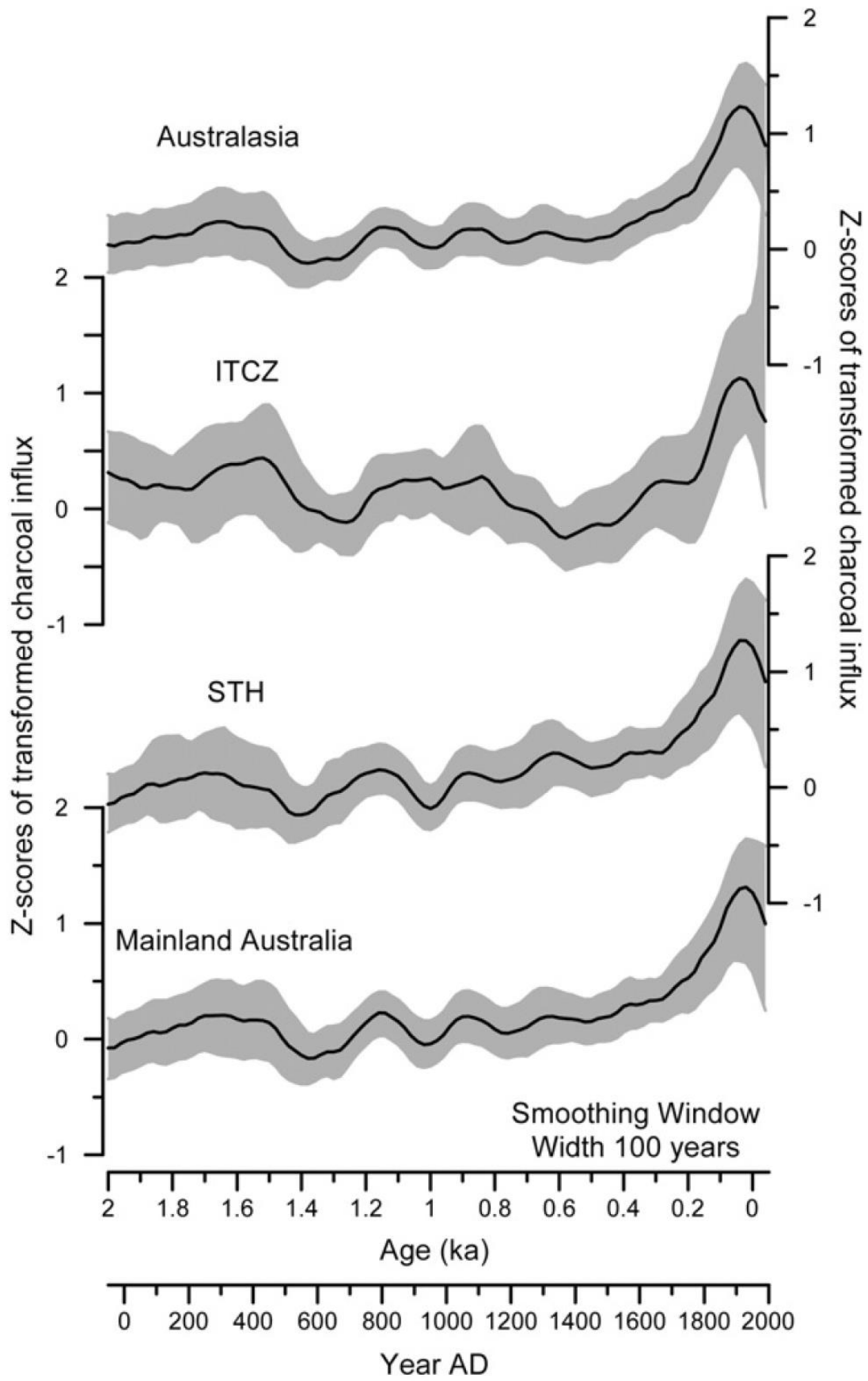


Figure 6

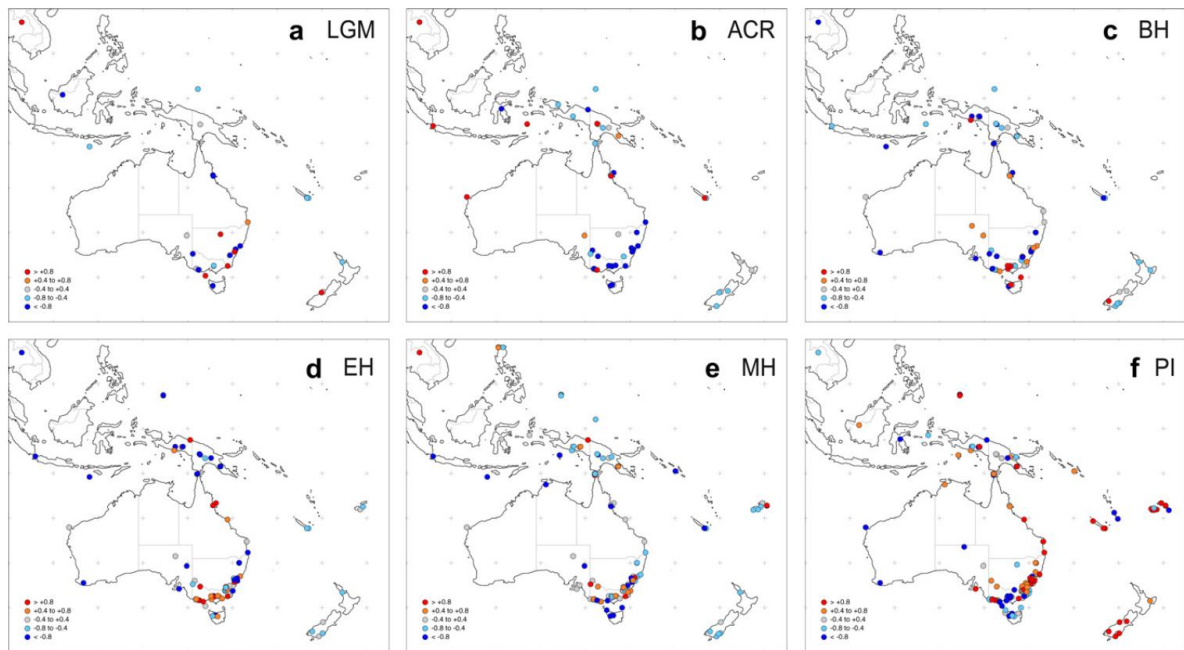


Figure 7

