



**HAL**  
open science

## A Unified Clumped Isotope Thermometer Calibration (0.5–1,100°C) Using Carbonate-Based Standardization

N. Anderson, J. Kelson, S. Kele, Mathieu Daëron, M. Bonifacie, J. Horita, T. Mackey, C. John, T. Kluge, P. Petschnig, et al.

► **To cite this version:**

N. Anderson, J. Kelson, S. Kele, Mathieu Daëron, M. Bonifacie, et al.. A Unified Clumped Isotope Thermometer Calibration (0.5–1,100°C) Using Carbonate-Based Standardization. *Geophysical Research Letters*, 2021, 48 (7), pp.e2020GL092069. 10.1029/2020GL092069 . hal-03207634

**HAL Id: hal-03207634**

**<https://hal.science/hal-03207634v1>**

Submitted on 2 Jun 2021

**HAL** is a multi-disciplinary open access archive for the deposit and dissemination of scientific research documents, whether they are published or not. The documents may come from teaching and research institutions in France or abroad, or from public or private research centers.

L'archive ouverte pluridisciplinaire **HAL**, est destinée au dépôt et à la diffusion de documents scientifiques de niveau recherche, publiés ou non, émanant des établissements d'enseignement et de recherche français ou étrangers, des laboratoires publics ou privés.

# Geophysical Research Letters

## RESEARCH LETTER

10.1029/2020GL092069

### Key Points:

- Reanalysis of previous  $\Delta_{47}$  calibration samples reconciles their discrepancies
- No statistically significant difference is observed across a wide range of temperature and sample character
- This  $\Delta_{47}$  calibration is near-identical to recent calcite calibrations using carbonate-based standardization

### Supporting Information:

Supporting Information may be found in the online version of this article.

### Correspondence to:

N. T. Anderson,  
[nanderso@mit.edu](mailto:nanderso@mit.edu)













### Citation:

Anderson, N. T., Kelson, J. R., Kele, S., Daëron, M., Bonifacie, M., Horita, J., et al. (2021). A unified clumped isotope thermometer calibration (0.5–1,100°C) using carbonate-based standardization. *Geophysical Research Letters*, 48, e2020GL092069. <https://doi.org/10.1029/2020GL092069>

Received 14 DEC 2020

Accepted 6 MAR 2021

## A Unified Clumped Isotope Thermometer Calibration (0.5–1,100°C) Using Carbonate-Based Standardization

N. T. Anderson<sup>1</sup> , J. R. Kelson<sup>2</sup> , S. Kele<sup>3</sup> , M. Daëron<sup>4</sup> , M. Bonifacie<sup>5</sup> , J. Horita<sup>6</sup>,  
 T. J. Mackey<sup>7</sup> , C. M. John<sup>8</sup> , T. Kluge<sup>9</sup> , P. Petschnig<sup>11</sup>, A. B. Jost<sup>1</sup> ,  
 K. W. Huntington<sup>10</sup> , S. M. Bernasconi<sup>11</sup> , and K. D. Bergmann<sup>1</sup> 

<sup>1</sup>Department of Earth, Atmospheric, and Planetary Sciences, Massachusetts Institute of Technology, Cambridge, MA, USA, <sup>2</sup>Department of Earth and Environmental Sciences, University of Michigan, Ann Arbor, MI, USA, <sup>3</sup>Institute for Geological and Geochemical Research, Research Centre for Astronomy and Earth Sciences, Budapest, Hungary, <sup>4</sup>Laboratoire des Sciences du Climat et de l'Environnement, LSCE/IPSL, CEA-CNRS-UVSQ, Université Paris-Saclay, Gif-sur-Yvette Cedex, France, <sup>5</sup>Université de Paris, Institut de Physique du Globe de Paris, CNRS, Paris, France, <sup>6</sup>Department of Geosciences, Texas Tech University, Lubbock, TX, USA, <sup>7</sup>Department of Earth and Planetary Sciences, University of New Mexico, Albuquerque, NM, USA, <sup>8</sup>Department of Earth Science and Engineering, Imperial College, London, UK, <sup>9</sup>Institute of Applied Geosciences, Karlsruhe Institute of Technology, Karlsruhe, Germany, <sup>10</sup>Department of Earth and Space Sciences and Quaternary Research Center, University of Washington, Seattle, WA, USA, <sup>11</sup>Department of Earth Sciences, ETH Zürich, Zürich, Switzerland

**Abstract** The potential for carbonate clumped isotope thermometry to independently constrain both the formation temperature of carbonate minerals and fluid oxygen isotope composition allows insight into long-standing questions in the Earth sciences, but remaining discrepancies between calibration schemes hamper interpretation of temperature measurements. To address discrepancies between calibrations, we designed and analyzed a sample suite (41 total samples) with broad applicability across the geosciences, with an exceptionally wide range of formation temperatures, precipitation methods, and mineralogies. We see no statistically significant offset between sample types, although the comparison of calcite and dolomite remains inconclusive. When data are reduced identically, the regression defined by this study is nearly identical to that defined by four previous calibration studies that used carbonate-based standardization; we combine these data to present a composite carbonate-standardized regression equation. Agreement across a wide range of temperature and sample types demonstrates a unified, broadly applicable clumped isotope thermometer calibration.

**Plain Language Summary** Carbonate clumped isotope thermometry is a geochemical tool used to determine the formation temperature of carbonate minerals. In contrast to previous carbonate thermometers, clumped isotope thermometry requires no assumptions about the isotopic composition of the fluid from which the carbonate precipitated. By measuring the clumped isotope composition ( $\Delta_{47}$ ) of carbonate minerals with a known formation temperature, we can construct an empirical calibration for the clumped isotope thermometer that is necessary to convert from a  $\Delta_{47}$  value to formation temperature. Many previous studies have created  $\Delta_{47}$  temperature calibrations, but differences between calibrations have led to large uncertainty in final  $\Delta_{47}$  temperatures. This study measures a large number of samples that span a wide range of temperatures (0.5–1,100°C) and include many different types of carbonates. These data show that a single calibration equation can describe many sample types and that when data are carefully standardized to a common set of carbonate materials, calibrations performed at different laboratories agree almost identically. We combine these data to present a carbonate clumped isotope thermometer calibration with broad applicability across the geosciences.

## 1. Introduction

Carbonate clumped isotope thermometry is a powerful geochemical tool that can determine the formation temperature of a carbonate mineral based on the temperature-dependent propensity for  $^{13}\text{C}$ - $^{18}\text{O}$  bond formation in the carbonate crystal lattice (Schauble et al., 2006). By reacting carbonate minerals with acid and measuring the resultant quantity of mass-47  $\text{CO}_2$  molecules ( $\delta^{47}$ ; a value primarily controlled by the abundance of  $^{13}\text{C}$ - $^{18}\text{O}$ - $^{16}\text{O}$  in the analyzed  $\text{CO}_2$ ) and comparing it to a stochastic distribution of mass-47

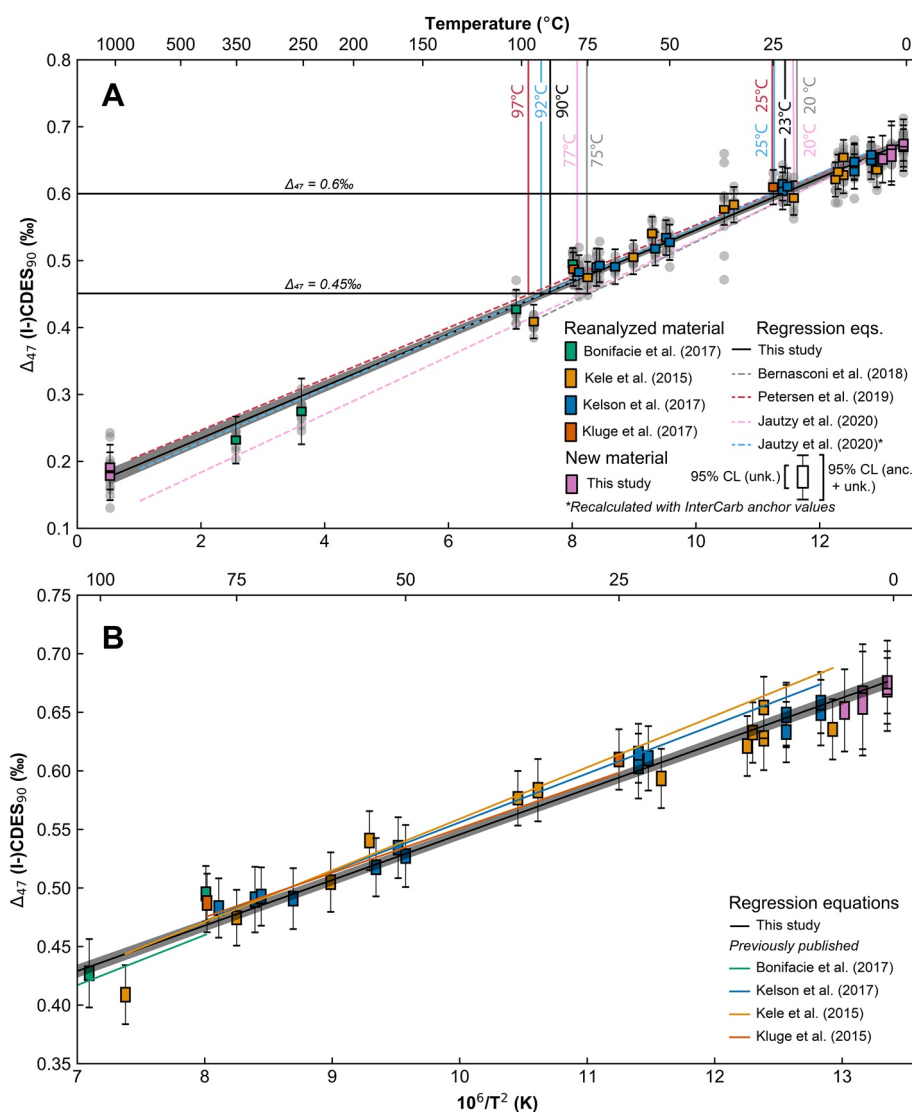
CO<sub>2</sub> with the same “bulk” isotopic composition ( $\delta^{18}\text{O}$ ,  $\delta^{13}\text{C}$ ), the excess abundance of the doubly substituted isotopologue ( $\Delta_{47}$ ) can be calculated (Ghosh et al., 2006; Schauble et al., 2006). Because  $\Delta_{47}$  reflects an internal state of isotope distribution within the carbonate mineral phase, it can be used to calculate mineral formation temperature ( $T_{\Delta_{47}}$ ) as well as the  $\delta^{18}\text{O}$  of the precipitating fluid. This duo can be leveraged to inform long-standing questions across many geoscience disciplines, including the temperature history of the Earth’s oceans, terrestrial paleotemperature, diagenetic history of carbonates, and, when coupled to chronology proxies, basin thermochronology (Finnegan et al., 2011; Lloyd et al., 2017; Mangenot et al., 2018; Snell et al., 2013; Winkelstern & Lohmann, 2016).

The calibration between  $\Delta_{47}$  and carbonate mineral formation temperature is a key intermediary between the measurement of CO<sub>2</sub> gas on a mass spectrometer and calculation of  $T_{\Delta_{47}}$ . Many laboratories have produced T- $\Delta_{47}$  calibrations since the initial study of Ghosh et al. (2006), spanning various temperatures, mineralogies, precipitation methods, analytical techniques, and data processing procedures (e.g., Bernasconi et al., 2018; Bonifacie et al., 2017; Dennis et al., 2011; Ghosh et al., 2006; Huntington et al., 2009; Jautzy et al., 2020; Kele et al., 2015; Kelson et al., 2017). While early attempts to compare empirical calibration studies across laboratories yielded large discrepancies (e.g., Dennis & Schrag, 2010; Ghosh et al., 2006), recent calibration studies have converged on statistically similar slopes for the T- $\Delta_{47}$  regression line when data is reduced consistently (Petersen et al., 2019). The convergence of these calibrations is promising, but current discrepancies between empirical calibration equations still lead to  $T_{\Delta_{47}}$  differences of  $\sim 10^\circ\text{C}$  for carbonates near Earth surface temperatures and tens of  $^\circ\text{C}$  for higher temperature samples (Figure 1; Jautzy et al., 2020; Petersen et al., 2019). Uncertainty from calibrations on this order compounds with analytical uncertainty and hampers interpretation of clumped isotope data.

The source of discrepancy between calibration efforts remains unclear. By reprocessing past calibration data with a consistent data reduction scheme and IUPAC parameter set (Brand et al., 2010; Daëron et al., 2016; Schauer et al., 2016), Petersen et al. (2019) reduced but did not eliminate differences between calibrations. The remaining offset in calibration schemes was attributed to one or more of the following: carbon dioxide equilibrium scale (CDES) standardization scheme (heated/equilibrated gas vs. carbonate-based standardization; number, composition, and distribution of standards), differences in the concentration, temperature, and application method of orthophosphoric acid, sample gas purification procedures, mass spectrometer methods, pressure baseline correction, and kinetic isotope effects during carbonate precipitation (Petersen et al., 2019).

The “InterCarb” carbonate clumped isotope inter-laboratory comparison project, following the principle of equal sample/standard treatment, demonstrated that using carbonate standards (as opposed to heated/equilibrated gases) to project raw  $\Delta_{47}$  values into the “I-CDES” scale yields reproducibility between 25 laboratories neither greater nor smaller than predicted based on fully propagating intra-laboratory analytical uncertainties (Bernasconi et al., n.d.; Daëron, n.d.). Furthermore, the InterCarb study found that  $\Delta_{47}$  values of measured carbonate standards are statistically indistinguishable irrespective of procedural differences between laboratories such as sample gas purification, mass spectrometer type, or sample acidification procedure. Jautzy et al. (2020) created a new calibration spanning  $5^\circ\text{C}$ – $726^\circ\text{C}$  using carbonate-based standardization and found the regression equation defined by the data was statistically indistinguishable from a series of previous calibration efforts using carbonate-based standardization (Bernasconi et al., 2018; Breitenbach et al., 2018; Daëron et al., 2019; Meinicke et al., 2020; Peral et al., 2018; Piasecki et al., 2019). Together, these studies support that varying preparation and measurement procedures between laboratories produce consistent results if data are standardized using common carbonate reference materials.

Given the promising inter-laboratory consistency of the InterCarb project (Bernasconi et al., n.d.), a new calibration encompassing a spectrum of carbonates relevant to geoscience researchers that is firmly anchored to the I-CDES using carbonate-based standardization is required. To ensure that this calibration is applicable across a wide range of sample material, we reanalyzed a sample suite consisting of natural and synthetic samples measured from four previously discrepant calibration efforts (Bonifacie et al., 2017; Kele et al., 2015; Kelson et al., 2017; Kluge et al., 2015) and analyzed a new suite of low-temperature lacustrine carbonates from the Dry Valleys, Antarctica and experimentally heated carbonate standards. This sample



**Figure 1.** (a) Linear  $1/T^2$ - $\Delta_{47}$  regression and 95% confidence interval (York et al., 2004) for samples (re)analyzed in this study shown with recently published calibrations. Solid vertical lines show approximate formation temperature for each calibration when  $\Delta_{47} = 0.45\text{‰}$  and  $\Delta_{47} = 0.6\text{‰}$ . Error bars correspond to 95% confidence limits accounting for error from unknown and anchor analyses; boxes correspond to 95% CL not accounting for normalization errors; gray circles show individual analyses. The regression from this study is nearly identical to the regression from Jautzy et al. (2020) when all  $\Delta_{47}$  values are calculated with “InterCarb” (Bernasconi et al., n.d.) anchor values. (b) T- $\Delta_{47}$  relationship for samples 0°C–100°C including regressions from studies with material reanalyzed for this study (Bonifacie et al. (2017), Equation 1; Kele et al. (2015), Equation 1; Kelson et al. (2017) Equation 1; Kluge et al. (2015), Table 1, “This study, linear fit”; all converted to 90°C acid temperature using AFF values from the study by Petersen et al., 2019).

suite spans broad ranges in temperature (0.5–1,100°C), precipitation method (active degassing, passive degassing, mixed solution, natural precipitation), mineralogy (calcite, dolomite, and minor aragonite), and initial bulk isotopic composition. Following the suggestions of the InterCarb project, the latest anchor values for carbonate standards (ETH-1–4, MERCK, IAEA-C2) were used for carbonate-based standardization, measurement of each sample was replicated at least six times (mean = 9), sample to standard ratio was 1:1, IUPAC parameters were used to correct raw data, and analytical uncertainty and uncertainty associated with creation of the reference frame was propagated throughout. We compare the regression derived from data presented here to a suite of previous studies using carbonate-based standardization (recalculated with InterCarb anchor values), and combine these datasets to propose a unified and broadly applicable clumped isotope thermometer calibration.

**Table 1**  
*Description of Analyzed and Reanalyzed Samples*

Reference	Mineralogy	Formation	Formation temp. range (°C) <sup>a</sup>	Samples analyzed (this study; orig. Study)
Bonifacie et al. (2017)	Dolo., proto-dolo.	Mixed solution	80–350	4; 17
Kele et al. (2015)	Calc. (minor arag.)	Tufa, travertine	5–95	12; 24
Kelson et al. (2017)	Calc. (minor arag.)	Active/passive degas, mixed sol'n	6–78	15; 56
Kluge et al. (2015)	Calc., arag.	Active degas	25–80	2; 29
This study	Calc.	Lacustrine, experimentally heated	0.5–1,100	8

<sup>a</sup>Temperature range is only for samples reanalyzed in this study.

## 2. Materials and Methods

### 2.1. Sample Collection and Preparation

A total of 41 carbonate samples with known precipitation temperatures from four previous calibration efforts (Bonifacie et al., 2017; Kele et al., 2015; Kelson et al., 2017; Kluge et al., 2015), a suite of Antarctic lacustrine carbonate, and a suite of experimentally heated ETH standards were (re)analyzed in this study. Sample formation temperature ranges from 0.5°C to 1,100°C. Three samples are stoichiometric dolomite, one sample is non-stoichiometric proto-dolomite, one sample is aragonite (with minor calcite) and the remainder is calcite (five with minor aragonite; one with minor goethite).

#### 2.1.1. Natural Precipitates

Six calcite samples were collected from three perennially ice-covered lakes in the Dry Valleys region of Antarctica: two from Lake Fryxell (see Jungblut et al., 2016), three from Lake Joyce (see Mackey et al., 2018), and one from Lake Vanda (see Mackey et al., 2017). These carbonates precipitated in association with microbial mats and are shown by previous work to have extremely low  $\delta^{18}\text{O}$  values of  $-30$  to  $-40\text{‰}$  (Mackey et al., 2018).

Ten tufa and travertine deposits were sampled from central Italy, Hungary, Yunnan Province (China), Yellowstone (USA), and Tenerife (Spain). A detailed description of sample localities and strategies is given by Kele et al. (2015) and references therein.

#### 2.1.2. Laboratory Precipitates

Aliquots of ETH-1 (Carrara marble) and ETH-2 (synthetic carbonate) were heated up to 1,100°C and pressurized at 2,000 bar for a period of 24 h at the ETH Zürich Cold Seal Pressure Vessel Laboratory. Following heating, samples were quenched to room temperature within seconds. See Text S1 in the supporting information for full methods.

15 calcite samples as studied by Kelson et al. (2017) were either precipitated with solutions of  $\text{NaHCO}_3$  and  $\text{CaCl}_2$  or by dissolving  $\text{CaCO}_3$  in  $\text{H}_2\text{O}$  with low pH from  $\text{CO}_2$  bubbling, and then inducing precipitation either through  $\text{N}_2$  bubbling or passive degassing. Carbonic anhydrase was added to four samples. Temperature precision was  $\pm 0.5^\circ\text{C}$ .

Two calcite samples as studied by Kluge et al. (2015) were precipitated by dissolving  $\text{CaCO}_3$  in  $\text{H}_2\text{O}$  and letting the solution equilibrate for 2–15 h, filtering out undissolved carbonate, and bubbling  $\text{N}_2$  through the solution.

Four (proto)dolomite samples used in this study were originally described in Horita (2014) and Bonifacie et al. (2017). The sample at 80°C was precipitated by mixing  $\text{MgSO}_4$ ,  $\text{Ca}(\text{NO}_3)_4\text{H}_2\text{O}$ , and  $\text{Na}_2\text{CO}_3$  in a sealed glass bottle for 41 days. The 100, 250, and 350°C samples were made by mixing ground natural aragonite or calcite with a Ca-Mg-(Na)-Cl solution and held within 2°C of prescribed value for 6–85 days.

## 2.2. Mass Spectrometry

### 2.2.1. This Study

Sample  $\Delta_{47}$  was measured from January 2018 to November 2020 at the MIT Carbonate Research Laboratory on a Nu Perspective dual-inlet isotope ratio mass spectrometer with a NuCarb automated sample preparation unit held at 70°C (see Mackey et al., 2020). Carbonate samples (including dolomite) weighing 400–600  $\mu\text{g}$  reacted for 25 min in individual glass vials with 150  $\mu\text{l}$  orthophosphoric acid ( $\rho = 1.93 \text{ g/cm}^3$ ). Evolved  $\text{CO}_2$  gas was purified cryogenically and by passive passage through a Porapak trap (1/4" ID; 0.4 g 50/80 mesh Porapak Q) held at  $-30^\circ\text{C}$ . Purified sample gas and reference gas of known composition were alternately measured on six Faraday collectors ( $m/z$  44–49) in 3 acquisitions of 20 cycles, each with 30 s integration time (30 min total integration time). Initial voltage was 8–20 V on the  $m/z$  44 beams with  $2 \times 10^8 \Omega$  resistors and depleted by approximately 50% throughout an analysis. Sample and standard gases depleted at equivalent rates from microvolumes over the integration time.

Each run of approximately 50 individual analyses began with each of ETH-1–ETH-4 in random order, and then alternated between blocks of three unknowns and two ETH anchors. Additionally, IAEA-C1, IAEA-C2, and MERCK were respectively measured once per run. Unknown to anchor ratio was planned at 1:1 for each run, although gas preparation or mass spectrometer error occasionally modified this ratio. The reference side of the dual-inlet was refilled with reference gas every 10–17 analyses. In total, unknowns were measured 6–16 times over the study interval (362 total unknown analyses).

### 2.3. Data Processing

Raw mass spectrometer data were first processed by removing cycles (i.e., single integration cycles) with raw  $\Delta_{47}$  values more than 5 “long-term” standard deviations (the mean of the respective cycle-level SD for ETH-1–4 over a 3-month period, 0.10‰) away from the median  $\Delta_{47}$  measurement for the analysis. Analyses with more than 20 cycles (out of 60 total cycles) falling outside the five long-term SD threshold were removed. In total, 0.81% of cycles and 0.42% of analyses were removed. No pressure baseline correction was applied. The long-term repeatability (1SD) of  $\Delta_{47}$  for all analyses (after data processing described above) is 0.036‰.

After cycle-level outlier removal, data were processed using the “D47crunch” Python package (Daëron, n.d.) using IUPAC  $^{17}\text{O}$  parameters, 70°C  $^{18}\text{O}$  acid fractionation factor of 1.00871 (Kim et al., 2007), and projected to the I-CDES with values for ETH-1–4, IAEA-C2, and MERCK from the InterCarb exercise (Bernasconi et al., n.d.), which uses nominal  $\Delta_{47}$  values for the carbonates determined at an acid reaction temperature of 90°C (0.088‰ lower than values determined at 25°C) after the study by Petersen et al. (2019). Raw  $\Delta_{47}$  measurements were converted to the I-CDES using a pooled regression approach that accounts for the relative mapping of all samples in  $\delta^{47}\text{-}\Delta_{47}$  space (Daëron, n.d.). Analytical uncertainty and error associated with the creation of the reference frame were fully propagated through the data set. A full description of the data reduction procedure used in D47crunch is detailed in (Daëron, n.d.). Each run (typically 50 analyses) was treated as an analytical session. IAEA-C1 was treated as an unknown and used as an internal consistency check ( $n = 16$ , mean = 0.292‰, 1SE = 0.098‰). Finally, Peirce’s criterion (Ross, 2003; Zaarur et al., 2013) was applied to the data set at the analysis level; a total of six analyses were marked as outliers and removed, followed by reprocessing of the dataset.

## 3. Results and Discussion

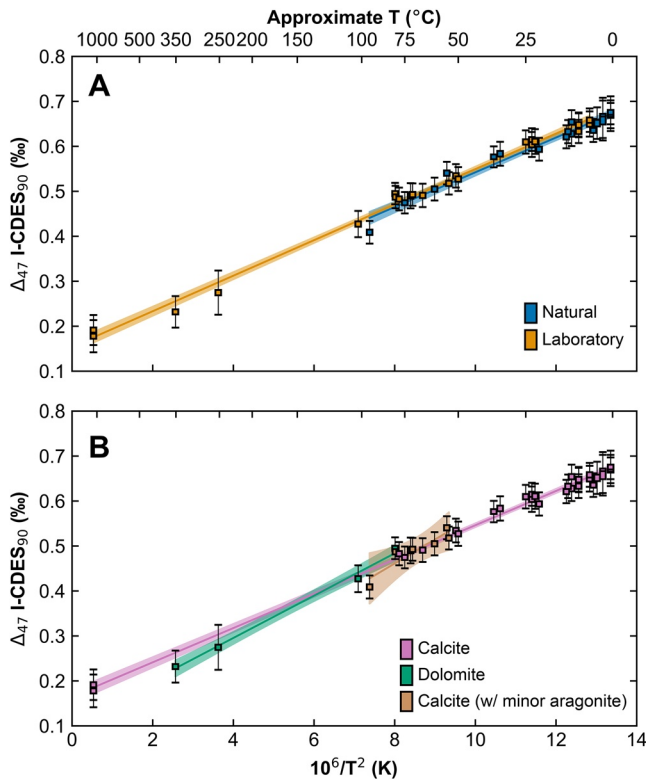
Results for all analyses (re)analyzed here are summarized at the sample level in Table 2 (see Data sets S1 and S2 for full results). Accounting for uncertainty in  $\Delta_{47}$  (long-term repeatability, 1SD) and formation temperature (0.5°C–10°C) with the regression method described in York et al. (2004), these data define a linear  $1/T^2\text{-}\Delta_{47}$  relationship from 0.5°C to 1,100°C that is shown in Figure 1.

### 3.1. Comparison of T- $\Delta_{47}$ Relationship Across Sample Types

After applying the 90°C acid fractionation factor of 0.088 ‰ (Petersen et al., 2019), the published regression equations from Bonifacie et al. (2017); Kele et al. (2015); Kelson et al. (2017); Kluge et al. (2015) all

**Table 2**  
*Final Corrected  $\delta^{13}C_{VPDB}$  (‰),  $\delta^{18}O_{VSMOW}$  (‰), and  $\Delta_{47(CDES90^{\circ}C)}$  (‰) Results*

Sample name	Author	Mineralogy	Method	T(°C)	N	$\delta^{13}C$	$\delta^{18}O$	$\Delta_{47}$	SE	95% CL
IPGP_100-A3	Bonifacie	Dolomite	Lab	102.3	9	-46.3	-17.4	0.427	0.015	0.029
IPGP_250-A5	Bonifacie	Dolomite	Lab	252.1	9	-52.8	-28.0	0.275	0.025	0.049
IPGP_350-A9	Bonifacie	Dolomite	Lab	351.4	10	-55.6	-32.0	0.232	0.018	0.035
IPGP_80-1	Bonifacie	Proto-dolo.	Lab	80.2	10	-6.9	-16.2	0.495	0.012	0.024
ETH-1-1100-SAM	This study	Calcite	Lab	1,100	10	2.0	-2.0	0.178	0.018	0.036
ETH-2-1100-SAM	This study	Calcite	Lab	1,100	10	-10.1	-18.4	0.192	0.017	0.034
HT_25C	Kluge	Calcite	Lab	25	9	2.1	-6.2	0.610	0.013	0.026
HT_80C	Kluge	Aragonite	Lab	80	9	1.1	-15.4	0.487	0.013	0.025
AQUA_BORRA	Kele	Calcite	Natural	36.1	11	1.7	-8.4	0.577	0.012	0.023
BUK_4	Kele	Calcite	Natural	54.9	9	2.2	-15.0	0.541	0.013	0.025
CANARIAN	Kele	Calcite	Natural	33.8	8	0.1	-10.2	0.584	0.014	0.027
CANNATOPA	Kele	Calcite	Natural	11	8	-4.1	-5.4	0.628	0.014	0.027
IGAL	Kele	Calcite	Natural	75	10	0.6	-13.5	0.475	0.012	0.024
LAPIGNA	Kele	Calcite	Natural	12.5	9	-11.4	-5.5	0.621	0.013	0.026
NG_2	Kele	Calcite	Natural	60.4	9	3.6	-24.6	0.505	0.013	0.025
P5_SUMMER	Kele	Calcite	Natural	12	9	5.4	-14.3	0.633	0.013	0.026
P5_WINTER	Kele	Calcite	Natural	5	10	5.1	-12.7	0.635	0.013	0.026
SARTEANO	Kele	Calcite	Natural	20.7	9	0.4	-7.3	0.594	0.013	0.025
SZAL-2	Kele	Calcite	Natural	11	9	-10.3	-8.2	0.654	0.013	0.026
TURA	Kele	Calcite	Natural	95	9	3.7	-23.2	0.409	0.013	0.025
LF2012-9_7-A	This study	Calcite	Natural	2.5	4	2.6	-27.2	0.663	0.023	0.045
LF2012-D1-A	This study	Calcite	Natural	2.5	4	3.4	-27.1	0.658	0.023	0.044
LJ2010-12A-Z1A	This study	Calcite	Natural	0.5	13	7.7	-39.4	0.668	0.014	0.028
LJ2010-12A-Z2A	This study	Calcite	Natural	0.5	6	8.1	-38.1	0.672	0.020	0.039
LJ2010-5B-A	This study	Calcite	Natural	0.5	11	8.1	-37.6	0.676	0.014	0.027
LV26NOV10-2A	This study	Calcite	Natural	4	6	11.2	-29.0	0.652	0.018	0.035
UWCP14_20C_9	Kelson	Calcite	Lab	23	8	-21.1	-10.8	0.604	0.014	0.028
UWCP14_20C_CA_11	Kelson	Calcite	Lab	23	10	-14.1	-10.9	0.615	0.013	0.025
UWCP14_21C_1	Kelson	Calcite	Lab	22	8	-18.6	-11.1	0.611	0.014	0.028
UWCP14_4C_3	Kelson	Calcite	Lab	6	8	-21.3	-6.6	0.650	0.014	0.028
UWCP14_4C_4	Kelson	Calcite	Lab	6	9	-23.4	-6.7	0.658	0.013	0.026
UWCP14_50C_2	Kelson	Calcite	Lab	51	9	-18.4	-16.4	0.534	0.013	0.026
UWCP14_50C_7	Kelson	Calcite	Lab	54	9	-0.2	-17.4	0.518	0.013	0.025
UWCP14_50C_CA_11	Kelson	Calcite	Lab	50	9	-18.5	-15.9	0.527	0.014	0.027
UWCP14_60C_2	Kelson	Calcite	Lab	66	9	-12.5	-18.2	0.491	0.013	0.026
UWCP14_70C_4	Kelson	Calcite	Lab	72	8	-17.7	-18.8	0.490	0.014	0.028
UWCP14_70C_CA_4	Kelson	Calcite	Lab	71	9	-0.2	-19.6	0.493	0.013	0.025
UWCP14_80C_2	Kelson	Calcite	Lab	78	9	-6.9	-20.9	0.483	0.013	0.025
UWCP14_8C_2	Kelson	Calcite	Lab	9	9	-15.1	-7.7	0.633	0.013	0.026
UWCP14_8C_6	Kelson	Calcite	Lab	9	9	0.4	-8.8	0.648	0.013	0.026
UWCP14_8C_CA_4	Kelson	Calcite	Lab	9	8	-17.4	-8.1	0.648	0.014	0.028



**Figure 2.** (a)  $1/T^2$ - $\Delta_{47}$  comparison of natural and laboratory precipitated sample material. Error bars correspond to 95% confidence limits accounting for error from both unknown and anchor analyses; boxes correspond to 95% CL not accounting for normalization errors. Natural samples have larger uncertainty of the estimate and a poorer fit, likely due to natural variability in the formation temperature and a smaller temperature range. (b) Comparison of calcite, (proto)dolomite, and aragonite sample material. The regression lines between calcite and dolomite diverge but 95% confidence intervals overlap; divergence of regression equations may be related to the small temperature range of dolomite (relative to calcite) measured in this study and the small number of dolomite samples.

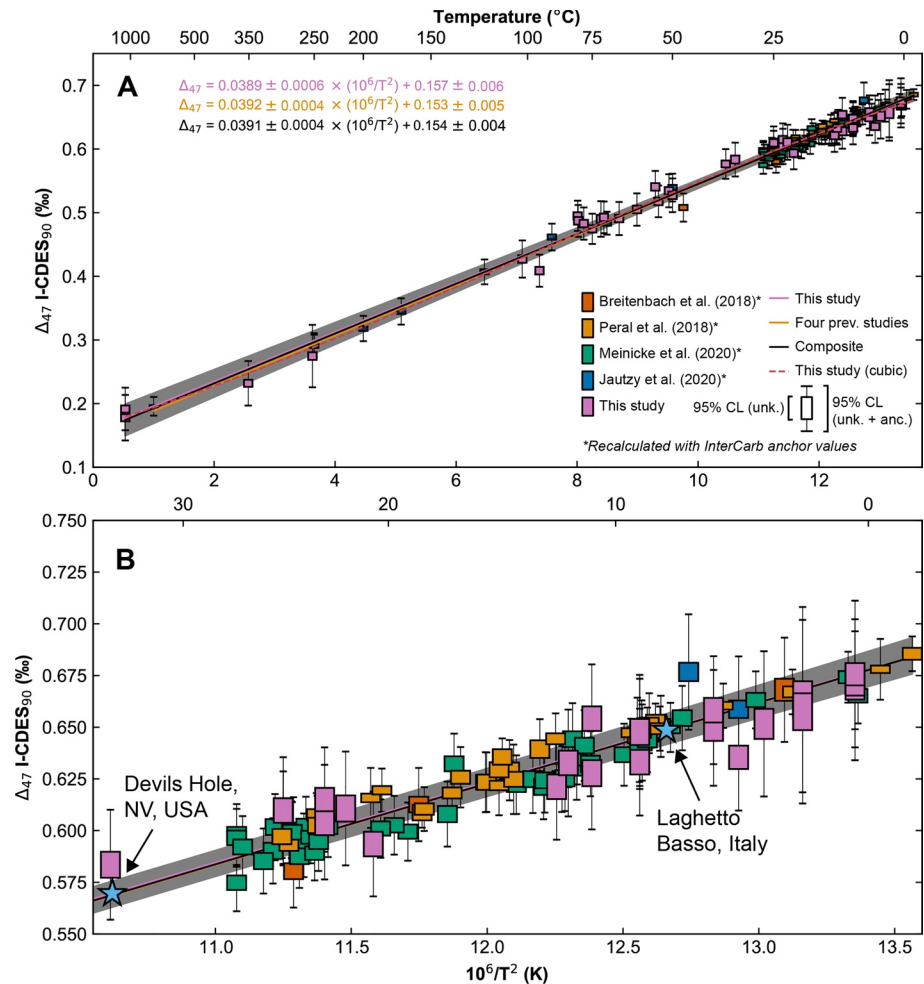
fall within the 95% confidence interval of the regressions defined by this study's reanalysis of their constituent samples (supporting information Figure S3). Natural and lab-precipitated samples fall on nearly identical regression lines (Figure 2a); analysis of covariance (ANCOVA) fails to reject the null hypothesis that both types of samples are characterized by a single regression line at the 95% confidence level at our typical sample precision levels (1SE) of  $\sim 10$  ppm ( $p_{\text{slope}} = 0.43$ ,  $p_{\text{intercept}} = 0.17$ ; see Table S1 in supporting information for the full table of ANCOVA analyses). Natural samples display a weaker correlation coefficient ( $r^2 = 0.96$  vs. 0.99) and larger error of the estimate, likely due to the greater variability of fluid temperature in natural settings.

Our reanalysis of samples precipitated study by Kelson et al. (2017) supports their conclusions: We observe no statistically significant  $\Delta_{47}$  offset between passively and actively degassed samples ( $p_{\text{slope}} = 0.19$ ,  $p_{\text{intercept}} = 0.79$ ) or with the addition of carbonic anhydrase ( $p_{\text{slope}} = 0.79$ ,  $p_{\text{intercept}} = 0.32$ ; Figure S1). Reanalysis of samples taken from the study by Kele et al. (2015) and Kelson et al. (2017) confirms the conclusions as studied by Kele et al. (2015) that there is no significant difference between samples precipitated at low ( $<7$ ) versus high ( $>7$ ) pH ( $p_{\text{slope}} = 0.4$ ,  $p_{\text{intercept}} = 0.99$ ) or intensive versus moderate precipitation rate ( $p_{\text{slope}} = 0.05$ ,  $p_{\text{intercept}} = 0.11$ ; Figure S2). The low number of rapid precipitates (particularly at low temperatures) makes the above claim inconclusive, but  $\Delta_{47}$  values for two extremely slow-growing samples re-analyzed for this study at LCSE on an Isoprime 100 mass spectrometer (see Text S3), respectively, from Devil's Hole, NV, USA, and Laghetto Basso, Italy (see Coplen, 2007; Daëron et al., 2019; Drysdale et al., 2012; Winograd et al., 2006), are within 0.001‰ of the expected values based on the calibration from this study (Figure 3b). Calcite-water fractionation in  $^{18}\text{O}$  calculated from a subset of 20 samples with fluid  $\delta^{18}\text{O}$  data (Figure S5) agrees closely with the equations of Coplen (2007) and Daëron et al. (2019). The microbially mediated lacustrine calcites from Antarctic show no discernible offset from the overall trend, but small sample numbers and limited temperature range prohibit formal analysis.

With only three stoichiometric dolomite samples, no stoichiometric dolomite samples below 100°C, and no calcite samples between 95°C and 1,100°C measured for this study, we cannot rigorously compare calcite and dolomite regressions; ANCOVA variably accepts/rejects the null hypothesis depending on the categorization of the single protodolomite sample. Therefore, we cannot assert that dolomite and calcite samples can be described using a single regression equation, as previously suggested by Bonifacie et al. (2017) and Petersen et al. (2019); analysis of dolomite samples with lower ( $<80^\circ\text{C}$ ) and higher ( $>350^\circ\text{C}$ ) formation temperature is needed. The regression through aragonite-containing samples (four samples  $<6\%$ ; one sample = 38%; one sample = 78%) is statistically similar to the regression through all calcite samples (Figure 2b). A single sample (Aqua Borra) with minor goethite (15%) has individual  $\Delta_{47}$  analyses both much higher and lower than expected but has a mean  $\Delta_{47}$  value that closely agrees with the regression presented here.

The absence of systematic offset in the  $T$ - $\Delta_{47}$  relationship corresponding to any known sample characteristic suggests that discrepancies between these exact samples from previous calibration efforts are not a function of the character of measured sample material (Bonifacie et al., 2017; Kele et al., 2015; Kelson et al., 2017; Kluge et al., 2015; Wacker et al., 2014). Furthermore, the consistency of the  $T$ - $\Delta_{47}$  relationship across a broad range of materials and temperatures (e.g., from Antarctic lacustrine microbially-mediated carbonates to laboratory-grown carbonates heated to 1,100°C) indicates that a single  $T$ - $\Delta_{47}$  calibration can adequately describe a wide variety of sample types.





**Figure 3.** (a) All  $\Delta_{47}$  results from this study shown with data from four recent studies using carbonate-based standardization using laboratory precipitates (Jautzy et al., 2020) and foraminifera (Breitenbach et al., 2018; Peral et al., 2018; Meinicke et al., 2020), recalculated here with InterCarb anchor values (Bernasconi et al., n.d.). Error bars correspond to 95% confidence limits accounting for error from both unknown and anchor analyses; boxes correspond to 95% CL not accounting for normalization errors. Regressions through this study (cubic and linear), previous data, and the composite dataset are nearly identical. (b) Inset of A from 0°C to 30°C. Slow-growing calcites respectively from Devils Hole, NV, USA, and Lagheto Basso, Italy, measured on an IsoPrime100 at LCSE (see supporting information Text S3) fall directly on the plotted regression lines.

### 3.2. Comparison Across Calibration Studies Using Carbonate-based Standardization

Reprocessing data from recent calibration studies (Breitenbach et al., 2018; Jautzy et al., 2020; Meinicke et al., 2020; Peral et al., 2018) with updated InterCarb anchor values (Bernasconi et al., n.d.) yields an almost identical regression to that calculated in this study (Figure 3). The near-perfect agreement of these calibrations ( $\sim 0.2^\circ\text{C}$  offsets near  $25^\circ\text{C}$  and  $100^\circ\text{C}$ ) despite differences in sample material and measurement method points to the strength of carbonate-based standardization and the potential of a unified clumped isotope calibration.

The clumped isotope calibration reported here covers the broadest range of temperatures, includes diverse carbonates, replicates measurements several times, and uses a low unknown: anchor ratio to firmly tie unknown measurements to the I-CDES. However, this calibration has an unequal distribution of samples in  $1/T^2$  space, is anchored at the coldest temperatures by unusual carbonates, and does not contain marine carbonates, which are of particular interest to the clumped isotope community. To address these weaknesses, we combine data from this study with four other carbonate-standardized calibrations (Jautzy et al., 2020; Meinicke et al., 2020; Peral et al., 2018; cave samples from Breitenbach et al., 2018) to present a composite

$1/T^2$ - $\Delta_{47}$  regression that has smaller temperature gaps, is anchored at low temperatures by a variety of samples, and extends the calibration to biogenic marine carbonates:

$$\Delta_{47(I-CDES90^\circ C)} = 0.0391 \pm 0.0004 \times \frac{10^6}{T^2} + 0.154 \pm 0.004 \quad (r^2 = 0.97) \quad (1)$$

Along with excellent agreement between laboratories using carbonate-based standardization, this data set and the community-developed InterCarb anchor values (Bernasconi et al., n.d.) narrow the discrepancy between calibrations using carbonate anchor values and heated/equilibrated gases, most notably Petersen et al. (2019). Specifically, calibrations given by Jautzy et al. (2020) and Petersen et al. (2019) differed by 5°C near 25°C and 20°C near 100°C; the composite calibration regression shown in Equation 1 differs from the study by Petersen et al. (2019) by 3°C near 25°C and by 7°C near 100°C (Figure 1a).

### 3.3. Non-Linearity of $1/T^2$ - $\Delta_{47}$ Relationship for High-Temperature Precipitates

At high temperatures, theory predicts a non-linear  $1/T^2$ - $\Delta_{47}$  relationship (e.g., Guo et al., 2009; Hill et al., 2014), supported by recent empirical calibrations (e.g., Jautzy et al., 2020; Müller et al., 2019). A third-order polynomial regression through our data falls within the 95% CL of our linear fit over the entire temperature range (Figure 3a) and does not improve the goodness of fit ( $r^2 = 0.97$  for both); we observe no evidence that a non-linear fit better describes high-temperature data.

## 4. Conclusions

When measured in a consistent analytical setting with carbonate-based standardization, no systematic offset is observed between samples precipitated across a broad spectrum of conditions that were previously determined to have disparate  $\Delta_{47}$  values. Among sample types measured here, we find no evidence that the particular character of sample material (e.g., mineralogy, the addition of carbonic anhydrase, pH, precipitation rate, biological mediation) influences the  $\Delta_{47}$  calibration, although calcite and dolomite agreement remain inconclusive.

Furthermore, when anchor values from the InterCarb exercise (Bernasconi et al., n.d.) are used with data reduction best practices (Petersen et al., 2019; Daëron, n.d.), the  $1/T^2$ - $\Delta_{47}$  regression defined by data presented here is nearly identical (0.2°C offset at 25°C and 100°C) to the regression defined by a suite of recent calibration studies (Breitenbach et al., 2018; Jautzy et al., 2020; Meinicke et al., 2020; Peral et al., 2018) and closely approximates the composite calibration of Petersen et al. (2019). Equation 1 spans the broadest range of temperatures measured in a consistent analytical setting and, when corrected with carbonate anchor values from the InterCarb exercise (Bernasconi et al., n.d.) or heated/equilibrated gases, may be applied across a wide range of natural and laboratory-grown carbonate material.

## Data Availability Statement

Regression equations from previous publications are included in cited papers. Sample and replicate level data are included in this manuscript in the supporting information and will be archived in the EarthChem database using a data template specifically designed for carbonate clumped isotope data (Petersen et al., 2019) pending acceptance of this manuscript; reprocessed data from Peral et al. (2018); Breitenbach et al. (2018); Meinicke et al. (2020); Jautzy et al. (2020) will be archived in the EarthChem database.

## References

- Bernasconi, S. M., Daëron, M., Bergmann, K. D., Bonifacie, M., Meckler, A. N., Affek, H. P., (n.d.). InterCarb: A community effort to improve inter-laboratory standardization of the carbonate clumped isotope thermometer using carbonate standards. *Geochemistry, Geophysics and Geosystems*. <https://doi.org/10.1002/essoar.10504430.410.1002/essoar.10504430.3ems>
- Bernasconi, S. M., Müller, I. A., Bergmann, K. D., Breitenbach, S. F. M., Fernandez, A., Hodell, D. A., et al. (2018). Reducing uncertainties in carbonate clumped isotope analysis through consistent carbonate-based standardization. *Geochemistry, Geophysics and Geosystems*, 19(9), 2895–2914. <https://doi.org/10.1029/2017GC007385>

### Acknowledgments

N.T. Anderson acknowledges the support of the J.H. and E.V. Wade Fellowship and the mTerra Catalyst Fund. Members of the Bergmann Lab (Marjorie Cantine, Athena Eyster, Sam Goldberg, and Julia Wilcots) provided helpful feedback on early drafts. K. Bergmann acknowledges support from the Packard Foundation, NASA Exobiology Grant 80NSSC19K0464, and the MIT Wade Fund.

- Bonifacie, M., Calmels, D., Eiler, J. M., Horita, J., Chaduteau, C., Vasconcelos, C., et al. (2017). Calibration of the dolomite clumped isotope thermometer from 25 to 350°C, and implications for a universal calibration for all (Ca, Mg, Fe)CO<sub>3</sub> carbonates. *Geochimica et Cosmochimica Acta*, 200, 255–279. <https://doi.org/10.1016/j.gca.2016.11.028>
- Brand, W. A., Assonov, S. S., & Coplen, T. B. (2010). Correction for the 17O interference in  $\delta(13C)$  measurements when analyzing CO<sub>2</sub> with stable isotope mass spectrometry (IUPAC Technical Report). *Pure and Applied Chemistry*, 82(8), 1719–1733. <https://doi.org/10.1351/PAC-REP-09-01-05>
- Breitenbach, S. F. M., Mleneck-Vautravers, M. J., Grauel, A.-L., Lo, L., Bernasconi, S. M., Müller, I. A., et al. (2018). Coupled Mg/Ca and clumped isotope analyses of foraminifera provide consistent water temperatures. *Geochimica et Cosmochimica Acta*, 236, 283–296. <https://doi.org/10.1016/j.gca.2018.03.010>
- Coplen, T. B. (2007). Calibration of the calcite-water oxygen-isotope geothermometer at Devils Hole, Nevada, a natural laboratory. *Geochimica et Cosmochimica Acta*, 71(16), 3948–3957. <https://doi.org/10.1016/j.gca.2007.05.028>
- Daëron, M., Blamart, D., Peral, M., & Affek, H. P. (2016). Absolute isotopic abundance ratios and the accuracy of  $\Delta 47$  measurements. *Chemical Geology*, 442, 83–96. <https://doi.org/10.1016/j.chemgeo.2016.08.014>
- Daëron, M., Drysdale, R. N., Peral, M., Huyghe, D., Blamart, D., Coplen, T. B., et al. (2019). Most Earth-surface calcites precipitate out of isotopic equilibrium. *Nature Communications*, 10(1), 1–7. <https://doi.org/10.1038/s41467-019-08336-5>
- Daëron, M. (n.d.). Full propagation of analytical uncertainties in  $\Delta 47$  measurements. *Geochemistry, Geophysics and Geosystems*. <https://doi.org/10.1002/essoar.10504430.410.1002/essoar.10505298.1>
- Dennis, K. J., Affek, H. P., Passey, B. H., Schrag, D. P., & Eiler, J. M. (2011). Defining an absolute reference frame for 'clumped' isotope studies of CO<sub>2</sub>. *Geochimica et Cosmochimica Acta*, 75(22), 7117–7131. <https://doi.org/10.1016/j.gca.2011.09.025>
- Dennis, K. J., & Schrag, D. P. (2010). Clumped isotope thermometry of carbonates as an indicator of diagenetic alteration. *Geochimica et Cosmochimica Acta*, 74(14), 4110–4122. <https://doi.org/10.1016/j.gca.2010.04.005>
- Drysdale, R. N., Paul, B. T., Hellstrom, J. C., Couchoud, I., Greig, A., Bajo, P., et al. (2012). Precise microsampling of poorly laminated speleothems for U-series dating. *Quaternary Geochronology*, 14, 38–47. <https://doi.org/10.1016/j.quageo.2012.06.009>
- Finnegan, S., Bergmann, K., Eiler, J. M., Jones, D. S., Fike, D. A., Eisenman, I., et al. (2011). The magnitude and duration of Late Ordovician–Early Silurian glaciation. *Science*, 331(6019), 903–906. <https://doi.org/10.1126/science.1200803>
- Ghosh, P., Adkins, J., Affek, H., Balta, B., Guo, W., Schauble, E. A., et al. (2006). 13C–18O bonds in carbonate minerals: A new kind of paleothermometer. *Geochimica et Cosmochimica Acta*, 70(6), 1439–1456. <https://doi.org/10.1016/j.gca.2005.11.014>
- Guo, W., Mosenfelder, J. L., Goddard, W. A., & Eiler, J. M. (2009). Isotopic fractionations associated with phosphoric acid digestion of carbonate minerals: Insights from first-principles theoretical modeling and clumped isotope measurements. *Geochimica et Cosmochimica Acta*, 73(24), 7203–7225. <https://doi.org/10.1016/j.gca.2009.05.071>
- Hill, P. S., Tripathi, A. K., & Schauble, E. A. (2014). Theoretical constraints on the effects of pH, salinity, and temperature on clumped isotope signatures of dissolved inorganic carbon species and precipitating carbonate minerals. *Geochimica et Cosmochimica Acta*, 125, 610–652. <https://doi.org/10.1016/j.gca.2013.06.018>
- Horita, J. (2014). Oxygen and carbon isotope fractionation in the system dolomite-water-CO<sub>2</sub> to elevated temperatures. *Geochimica et Cosmochimica Acta*, 129, 111–124. <https://doi.org/10.1016/j.gca.2013.12.027>
- Huntington, K. W., Eiler, J. M., Affek, H. P., Guo, W., Bonifacie, M., Yeung, L. Y., et al. (2009). Methods and limitations of 'clumped' CO<sub>2</sub> isotope ( $\Delta 47$ ) analysis by gas-source isotope ratio mass spectrometry. *Journal of Mass Spectrometry*, 44(9), 1318–1329. <https://doi.org/10.1002/jms.1614>
- Jautzy, J. J., Savard, M. M., Dhillon, R. S., Bernasconi, S. M., Smirnov, A., & Smirnov, A. (2020). Clumped isotope temperature calibration for calcite: Bridging theory and experimentation. *Geochemical Perspective Letters*, 14, 36–41. <https://doi.org/10.7185/geochemlet.2021>
- Jungblut, A. D., Hawes, I., Mackey, T. J., Krusor, M., Doran, P. T., Sumner, D. Y., et al. (2016). Microbial mat communities along an oxygen gradient in a perennially ice-covered Antarctic lake. *Applied and Environmental Microbiology*, 82(2), 620–630. <https://doi.org/10.1128/AEM.02699-15>
- Kele, S., Breitenbach, S. F. M., Capezzuoli, E., Meckler, A. N., Ziegler, M., Millan, I. M., et al. (2015). Temperature dependence of oxygen- and clumped isotope fractionation in carbonates: A study of travertines and tufas in the 6–95°C temperature range. *Geochimica et Cosmochimica Acta*, 168, 172–192. <https://doi.org/10.1016/j.gca.2015.06.032>
- Kelson, J. R., Huntington, K. W., Schauer, A. J., Saenger, C., & Lechler, A. R. (2017). Toward a universal carbonate clumped isotope calibration: Diverse synthesis and preparatory methods suggest a single temperature relationship. *Geochimica et Cosmochimica Acta*, 197, 104–131. <https://doi.org/10.1016/j.gca.2016.10.010>
- Kim, S.-T., Mucci, A., & Taylor, B. E. (2007). Phosphoric acid fractionation factors for calcite and aragonite between 25 and 75°C: Revisited. *Chemical Geology*, 246(3–4), 135–146. <https://doi.org/10.1016/j.chemgeo.2007.08.005>
- Kluge, T., John, C. M., Jourdan, A.-L., Davis, S., & Crawshaw, J. (2015). Laboratory calibration of the calcium carbonate clumped isotope thermometer in the 25–250°C temperature range. *Geochimica et Cosmochimica Acta*, 157, 213–227. <https://doi.org/10.1016/j.gca.2015.02.028>
- Lloyd, M. K., Eiler, J. M., & Nabelek, P. I. (2017). Clumped isotope thermometry of calcite and dolomite in a contact metamorphic environment. *Geochimica et Cosmochimica Acta*, 197, 323–344. <https://doi.org/10.1016/j.gca.2016.10.037>
- Mackey, T. J., Jost, A. B., Creveling, J. R., & Bergmann, K. D. (2020). A decrease to low carbonate clumped isotope temperatures in cryogenic strata. *AGU Advances*, 1(3). <https://doi.org/10.1029/2019av000159>
- Mackey, T. J., Sumner, D. Y., Hawes, I., & Jungblut, A. D. (2017). Morphological signatures of microbial activity across sediment and light microenvironments of Lake Vanda, Antarctica. *Sedimentary Geology*, 361, 82–92. <https://doi.org/10.1016/j.sedgeo.2017.09.013>
- Mackey, T. J., Sumner, D. Y., Hawes, I., Leidman, S. Z., Andersen, D. T., & Jungblut, A. D. (2018). Stromatolite records of environmental change in perennially ice-covered Lake Joyce, McMurdo Dry Valleys, Antarctica. *Biogeochemistry*, 137(1–2), 73–92. <https://doi.org/10.1007/s10533-017-0402-1>
- Mangenot, X., Gasparrini, M., Gerdes, A., Bonifacie, M., & Rouchon, V. (2018). An emerging thermochronometer for carbonate-bearing rocks:  $\Delta 47(U-Pb)$ . *Geology*, 46(12), 1067–1070. <https://doi.org/10.1130/G45196.1>
- Meinicke, N., Ho, S. L., Hannisdal, B., Nürnberg, D., Tripathi, A., Schiebel, R., & Meckler, A. N. (2020). A robust calibration of the clumped isotopes to temperature relationship for foraminifera. *Geochimica et Cosmochimica Acta*, 270, 160–183. <https://doi.org/10.1016/j.gca.2019.11.022>
- Müller, I. A., Rodriguez-Blanco, J. D., Storck, J.-C., do Nascimento, G. S., Bontognali, T. R. R., Vasconcelos, C., et al. (2019). Calibration of the oxygen and clumped isotope thermometers for (proto-)dolomite based on synthetic and natural carbonates. *Chemical Geology*, 525, 1–17. <https://doi.org/10.1016/j.chemgeo.2019.07.014>

- Peral, M., Daëron, M., Blamart, D., Bassinot, F., Dewilde, F., Smialkowski, N., et al. (2018). Updated calibration of the clumped isotope thermometer in planktonic and benthic foraminifera. *Geochimica et Cosmochimica Acta*, 239, 1–16. <https://doi.org/10.1016/j.gca.2018.07.016>
- Petersen, S. V., Defliese, W. F., Saenger, C., Daëron, M., Huntington, K. W., John, C. M., et al. (2019). Effects of Improved 17O Correction on Interlaboratory Agreement in Clumped Isotope Calibrations, Estimates of Mineral-Specific Offsets, and Temperature Dependence of Acid Digestion Fractionation. *Geochemistry, Geophysics and Geosystems*, 20, 3495–3519. <https://doi.org/10.1029/2018gc008127>
- Piasecki, A., Bernasconi, S. M., Grauel, A. L., Hannisdal, B., Ho, S. L., Leutert, T. J., et al. (2019). Application of clumped isotope thermometry to benthic foraminifera. *Geochemistry, Geophysics and Geosystems*, 20(4), 2082–2090. <https://doi.org/10.1029/2018GC007961>
- Ross, S. (2003). Peirce's criterion for the elimination of suspect experimental data. *Journal of Engineering Technology*, 20, 1–12
- Schauble, E. A., Ghosh, P., & Eiler, J. M. (2006). Preferential formation of 13C-18O bonds in carbonate minerals, estimated using first-principles lattice dynamics. *Geochimica et Cosmochimica Acta*, 70(10), 2510–2529. <https://doi.org/10.1016/j.gca.2006.02.011>
- Schauer, A. J., Kelson, J., Saenger, C., & Huntington, K. W. (2016). Choice of 17O correction affects clumped isotope ( $\Delta 47$ ) values of CO<sub>2</sub> measured with mass spectrometry. *Rapid Communications in Mass Spectrometry: Mass Spectrometry*, 30(24), 2607–2616. <https://doi.org/10.1002/rcm.7743>
- Snell, K. E., Thrasher, B. L., Eiler, J. M., Koch, P. L., Sloan, L. C., & Tabor, N. J. (2013). Hot summers in the Bighorn Basin during the early Paleogene. *Geology*, 41(1), 55–58. <https://doi.org/10.1130/G33567.1>
- Wacker, U., Fiebig, J., Tödter, J., Schöne, B. R., Bahr, A., Friedrich, O., et al. (2014). Empirical calibration of the clumped isotope paleothermometer using calcites of various origins. *Geochimica et Cosmochimica Acta*, 141, 127–144. <https://doi.org/10.1016/j.gca.2014.06.004>
- Winkelstern, I. Z., & Lohmann, K. C. (2016). Shallow burial alteration of dolomite and limestone clumped isotope geochemistry. *Geology*, 44(6), 467–470. <https://doi.org/10.1130/G37809.1>
- Winograd, I. J., Landwehr, J. M., Coplen, T. B., Sharp, W. D., Riggs, A. C., Ludwig, K. R., & Kolesar, P. T. (2006). Devils Hole, Nevada,  $\delta 18\text{O}$  record extended to the mid-Holocene. *Quaternary Research*, 66(2), 202–212. <https://doi.org/10.1016/j.yqres.2006.06.003>
- York, D., Evensen, N. M., Martínez, M. L., & De Basabe Delgado, J. (2004). Unified equations for the slope, intercept, and standard errors of the best straight line. *American Journal of Physics*, 72(3), 367–375. <https://doi.org/10.1119/1.1632486>
- Zaarur, S., Affek, H. P., & Brandon, M. T. (2013). A revised calibration of the clumped isotope thermometer. *Earth and Planetary Science Letters*, 382, 47–57. <https://doi.org/10.1016/j.epsl.2013.07.026>