



HAL
open science

SiO₂ Biogenic Nanoparticles and Asphaltenes: Interactions and Their Consequences Investigated by QCR and GPC-ICP-HR-MS

Nelson Acevedo, Vicmary Vargas, Vincent Piscitelli, Aurélie Le Beulze, Brice Bouyssière, Hervé Carrier, Jimmy Castillo

► **To cite this version:**

Nelson Acevedo, Vicmary Vargas, Vincent Piscitelli, Aurélie Le Beulze, Brice Bouyssière, et al.. SiO₂ Biogenic Nanoparticles and Asphaltenes: Interactions and Their Consequences Investigated by QCR and GPC-ICP-HR-MS. *Energy & Fuels*, 2021, 35 (8), pp.6566-6575. 10.1021/acs.energyfuels.0c04185 . hal-03191454

HAL Id: hal-03191454

<https://hal.science/hal-03191454v1>

Submitted on 7 Apr 2021

HAL is a multi-disciplinary open access archive for the deposit and dissemination of scientific research documents, whether they are published or not. The documents may come from teaching and research institutions in France or abroad, or from public or private research centers.

L'archive ouverte pluridisciplinaire **HAL**, est destinée au dépôt et à la diffusion de documents scientifiques de niveau recherche, publiés ou non, émanant des établissements d'enseignement et de recherche français ou étrangers, des laboratoires publics ou privés.

SiO₂ Biogenic Nanoparticles and asphaltenes: Interactions and their consequences investigated by QCR and GPC-ICP-HR-MS

*Nelson Acevedo^{1,2}, Vicmary Vargas^{1,3}, Vincent Piscitelli¹, Aurélie Le Beulze², Brice Bouyssiere²,
Hervé Carrier and Jimmy Castillo⁴*

¹ Facultad de Ciencias, Escuela de Química, Universidad Central de Venezuela, 1041,
Caracas, Venezuela

² Université de Pau et des Pays de l'Adour, E2S UPPA, CNRS, TOTAL, LFCR, Pau, France

³ Université de Pau et des Pays de l'Adour, E2S UPPA, CNRS, IPREM, Institut des Sciences
Analytiques et de Physico-chimie pour l'Environnement et les Matériaux, UMR5254,
Hélioparc, 64053 Pau, France

⁴ TOTAL S.E., CSTJF Research Center, 64018 Pau, France.

Keywords: Asphaltenes, Adsorption, Silica, Nanoparticles, Asphaltenes Aggregates,
characterization, QCR, GPC-ICP-HR-MS

ABSTRACT

The processes in which crude oil asphaltene aggregates are adsorbed onto surfaces have been the subject of debate in recent years. Different thermodynamic, theoretical and empirical models have been proposed to explain the interaction of asphaltenes with these surfaces and have found different behaviors. In this work, asphaltene adsorption onto SiO₂ biogenic nanoparticles was experimentally monitored by studying it through two analytical techniques, namely, Gel Permeation Chromatography coupled with Inductively Coupled Plasma and High Resolution Mass Spectrometry (GPC-ICP HR MS) to follow the changes in aggregates size distributions in solutions and a Quartz Crystal Resonator (QCR) sensor to detect and follow the destabilization with n-heptane, thus allowing the correlation of the different stabilities and deposition tendencies with the changes in aggregate size distributions. The results show that the nanoparticles interact in a preferential way with the larger asphaltene aggregates, and, once these large aggregates are adsorbed, there is no tendency for new large aggregate formation. Thus, a reduction in the deposition is observed. This indicates that, in this range of concentration, there is no equilibrium for aggregate formation and that these larger aggregates can be effectively removed. This finding opens new methodologies for study regarding asphaltene removal.

INTRODUCTION

Asphaltenes are operationally defined as the fraction of crude oil insoluble in light n-alkanes (pentane-heptane) but soluble in benzene or toluene, and they represent the most polar and heaviest crude oil compounds ¹. Their structure and molecular mass are not well defined yet, not only due to the great polydispersity of molecules that constitute them but also because they vary according to the origin of the oil ². However, an average molecular mass of 750 g.mol⁻¹ and two dominant models of possible individual molecules for the asphaltenes structure, “island” (consisting of one polyaromatic core stabilized or not by a shell of alkyl side chains) and “archipelago” (consisting on multiple aromatic cores connected by small alkyl chains), are well accepted ³. Recent studies have confirmed the coexistence of these two structures, with a prevalence of one over the other depending on the sample ⁴⁻⁶.

The exploitation of heavy and extra-heavy oils fields is often problematic mainly due to their higher viscosity, requiring the use of diluents or high temperature conditions to reduce it. These hydrocarbon reserves are also those with higher percentage of asphaltenes and sulfur compounds. Changes in thermophysical properties that aim to improve the mobility of oils also modify their chemical properties and in particular their solvent power. These changes may result in asphaltene precipitation and deposition in reservoirs or production facilities, causing economical losses⁷⁻¹⁰.

The selective removal and fractionation of asphaltenes is required to produce homogeneous feedstock, making them easier to upgrade or use in other chemical industries ³. For this purpose, the use of inhibitors that can prevent or delay asphaltene aggregation and deposition is a vast research field that goes from molecules, which can act as primary asphaltene dispersants or anti-flocculants ¹¹⁻¹⁷, to nanoparticles, which can adsorb asphaltenes and therefore inhibit their aggregation or deposition ¹⁸⁻²⁴. The use of nanoparticles can be advantageous over chemical inhibitors due to their easily tunable surface functionalities, high chemical and thermal stability

in harsh conditions (high temperature, high salinity, high pressure, etc.), high specific surface (area-to-volume ratio), and in some cases, catalytic and magnetic properties^{25,26}. Silica-based nanoparticles are among those commonly used primarily due to their wide availability, well-characterized surfaces that are easily modified and used as catalyst supports, but above all, because they have a high affinity for asphaltene adsorption^{3,27}.

Recent works have reported the use of different types of nanoparticles as asphaltene adsorbents^{20,21,28,29}. In many cases, these nanoparticles exhibit properties and functionalities higher than the macroscopic systems, although the adsorption mechanism is complex due to the competition of aggregation processes with adsorption on surfaces, this has made it difficult to discern between multilayer adsorption and aggregate adsorption. The mechanism is not fully understood and might be studied more. Nassar and collaborators present different thermodynamic models to explain this asphaltene adsorption process onto nanoparticles, and, in recent works, experimental data obtained can be fitted using simple models such as those based on the Langmuir theory, which considers only physical interaction with active sites, to more complicated models such as the Polanyi's modified theory or a theory based on chemical interaction to explain the adsorptive behavior^{30,31}.

The complex nature of asphaltenes has been extensively researched, and their characterization has been the subject of many studies using different techniques. Recent results from techniques such as gel permeation chromatography inductively coupled plasma high-resolution mass spectrometry (GPC ICP HR MS) and Fourier-transform ion cyclotron resonance mass spectrometry (FT-ICR-MS) demonstrate that asphaltenes are composed of low-medium, medium, high and super high molecular weight fractions, meaning that, by nature, asphaltenes form families of aggregates of different hydrodynamic volumes in solution³²⁻³⁷. This result can have an important impact on the understanding of asphaltene adsorption processes and may be the key to discerning the dynamics of the process.

Quartz crystal resonator sensors (also known as QCM) have been widely used for monitoring asphaltene flocculation and deposition processes³⁸⁻⁴³ due to their high sensitivity (a few nanograms), fast response and versatility. The latter factor can be evidenced by the multiple setups that have been employed, from batch cells^{39,42,44}, flow cells^{40,45-47} to high-pressure-high-temperature cells^{48,49}, to evaluate the aggregation process in different conditions and thus have a better understanding of the process.

In the present work, SiO₂ biogenic nanoparticles were used as the asphaltene sorbent. The resulting solutions were analyzed via GPC ICP HR MS and destabilized with n-heptane using a QCR sensor to follow the aggregation and deposition processes of unstable asphaltenes. Results show that the asphaltenes larger aggregates distributions (sHMW and HMW) have a dominant role in the stability and deposition characteristics compared to the smallest aggregates distributions (MMW and LMW). These results open the development of alternatives methodologies to minimize asphaltene aggregation and deposition.

EXPERIMENTAL SECTION

Chemicals and Materials. Venezuelan heavy crude oil, Cerro Negro (API= 8, asphaltene content of 8 wt%, Vanadium content of 1340 mg. Kg⁻¹ and Sulfur content of 5,64 wt%), was used for obtaining C₇ asphaltenes. Toluene (>99.8%) and n-heptane (>99%) were acquired from Fisher Scientific, while tetrahydrofuran (THF) (99.5%) was acquired from Scharlau. They were used as received, without further purification.

Asphaltene precipitation. Asphaltenes (Asph) precipitation was carried out according to the ASTM D 6560/IP 143 standard, as reported before³², mixing approximately 40 mL of n-heptane per gram of crude oil. The mixture was stored in darkness and at room temperature for 48 h.

The precipitate was collected by vacuum filtration on Whatman (grade 42) filter paper and rinsed with n-heptane. The solid was then subjected to a Soxhlet extraction with boiling n-heptane until complete transparency of the liquid was achieved. The solid was dried in vacuum at 40°C for 48 h.

Biogenic SiO₂ Nanoparticle Synthesis. Biogenic silica nanoparticles (Nps) were synthesized from rice husks using a calcination method previously reported by Castillo et al.⁵⁰. In brief, pre-washed rice husks were lixiviated with hydrochloric acid for 24 h and washed with water until a neutral pH was measured. The rinsed rice husks were dried in an oven at 110°C for 3 h, and then the temperature was raised to 700°C for 6 h. Finally, Nps were obtained after 12 h of grinding in a ball mill. The average size of the Nps, measured by dynamic light scattering, and the specific surface, measured by BET, are shown in Table 1.

Table 1 – Physical characteristics of SiO₂ biogenic nanoparticles.

Mean hydrodynamic diameter (nm)	Specific surface (BET) (m².g⁻¹)
40	234

Asphaltenes adsorption experiments. Dried asphaltenes were dissolved in toluene, providing a 600-mg/l stock solution. This solution was stored in the dark and at room temperature for 24 h. After this time, 25-mL aliquots of this solution (containing 15 mg of asphaltenes) were added to 7 vials containing different amounts of Nps from 0 to 1050 mg, as shown in **Table 2**. The mixture was placed in ultrasound for 5 minutes before storing in the dark and at temperature for 72 hours.

GPC ICP HR MS Measurements. Nanoparticles were separated from the liquid via centrifugation at 6000 rpm for 15 min at constant temperature (25°C). From the supernatant solutions, 1.5-mL aliquots were placed in an open vial and the toluene was evaporated to dryness. Solid asphaltenes were dissolved in 1.5 mL of THF and analyzed using GPC-ICP HR MS. For each sample, 20 μL was injected and eluted isocratically at a flow rate of 1 $\text{mL}\cdot\text{min}^{-1}$ of THF for 120 min using a Dionex (Amsterdam, The Netherlands) HPLC system consisting of an UltiMate 3000 microflow pump, an UltiMate 3000 autosampler, and a low port-to-port dead-volume microinjection valve. A post-column splitter was used to divide the flow (20:1). The low-flow outlet (50 $\mu\text{L}/\text{min}$) led to the ICP-HRMS using a DS-5 microflow (CETAC, Omaha, NE), and the high-flow outlet (950 $\mu\text{L}/\text{min}$) was sent to the UV-Visible spectrometer.

A Thermo Scientific Element XR sector field ICP-HRMS instrument operating at a resolution of 4000 (medium resolution) was used to access spectrally interfering isotopes of ^{60}Ni , ^{32}S and ^{51}V . An O_2 flow was continuously supplied to the nebulizer Ar gas flow. The ICP-HR MS was fitted with a modified DS-5 microflow total consumption nebulizer mounted on a laboratory-made, low-volume (8-mL), single-pass jacketed glass spray chamber without a drain, as described elsewhere^{51,52}. The spray chamber was set to 60°C with a thermostat.

Separations were conducted using three Styragel styrenedivinylbenzene gel permeation columns connected in series (7.8 \times 300 mm). These columns were HR4 (particle size, 5 μm ; exclusion limit, 600 000 Da of polystyrene [PS] equivalent), HR2 (particle size, 5 μm ; exclusion limit, 20 000 Da), and HR0.5 (particle size, 5 μm ; exclusion limit, 1000 Da). A Styragel guard column (4.6 \times 30 mm) was included before these three columns to protect them and prolong their lifetimes. A calibration of the columns with polystyrene standards (PS) was done and is shown in the Supporting Information SI.1.

The column calibration was only used to verify the performance of the columns and not to determine the MW of the asphaltenes, due to the difference in complexity between the polymer

standards and asphaltene's matrix. However, in our previous publications we have shown that HMW size distribution are primarily aggregate compounds, while LMW are "free" compounds, and MMW a mixture of "free" and aggregate compounds^{34,36,37}.

The ICP-HR MS conditions were controlled and optimized daily using a 1.0 ng g⁻¹ multielement (V, Ni, S and Fe) tuning solution in THF delivered via a syringe pump. The detailed experimental setup, conditions and procedure can be found in our previous work³².

The measurements of all samples were carried out once, and during the measurement sequence, a control asphaltenes solution was intercalated three times between the samples in the sequence to verify that the intensity and the profile distribution remained constant. The control sample presented a reproducible profile with an RSD below 1% within these 3 injections.

UV analysis. The concentrations of remnant solutions were obtained by measuring the absorbance spectra with an UV spectrophotometer Mettler- Toledo (UV7) using a 1 cm quartz cell and scanning from 190 to 1100 nm.

QCR Titration experiments. Equal amounts (22 g) of the remnant solutions were destabilized employing n-heptane as the flocculating agent. The aggregation and deposition process were monitored using a fully immersed QCR sensor, the setup of which is shown in Figure 1. The quartz crystal sensor was put inside the custom double-wall vessel at a constant temperature of 30°C, the temperature at which all the titration experiments reported in this article were carried out. A computer with a LabVIEW internally automated program was used for controlling a network analyzer Agilent E5071C for transmitting electrical signals and monitoring the QCR sensor response. The sensor was allowed to stabilize, which corresponds to frequency changes of less than 0.5 Hz, and the frequencies in air (background) were recorded. The sample solution was placed in the cell, and the system was left for approximately 30 min to reach a stable signal. The titration was carried out with n-heptane pumped at a constant speed

of 0.25 g/min, and the mixture in the vessel was stirred at a constant rate using a magnetic bar stirrer. The titration was finished once 80 wt.% n-heptane was reached.

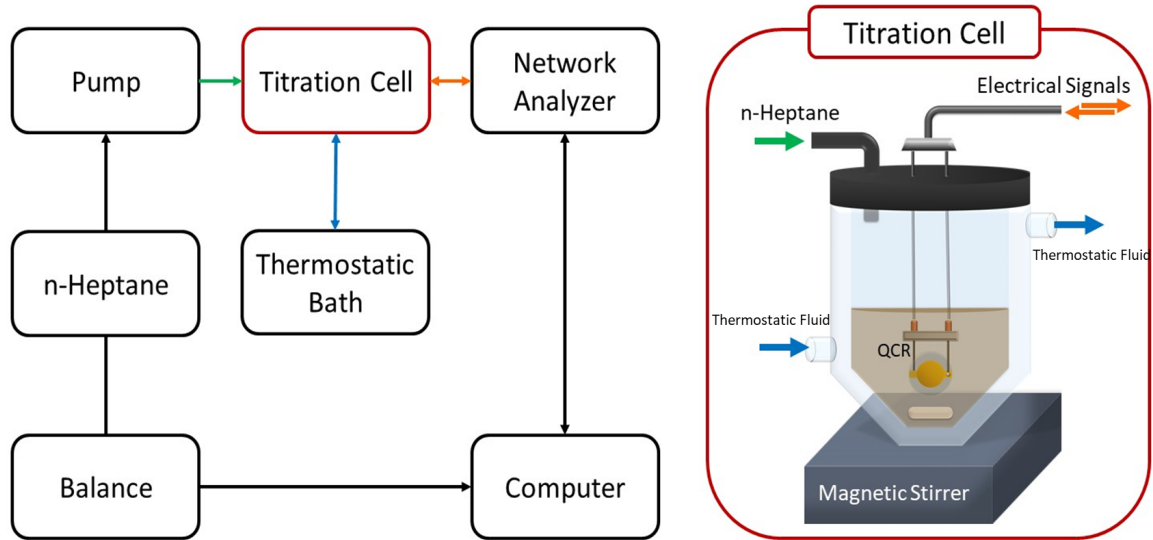


Figure 1. Experimental setup for n-heptane titration followed by the QCR sensor

The sensor consists of a polished AT-cut quartz crystal disc with 100-nm layers of gold as electrodes on each face and a 3-MHz nominal frequency. Frequency shifts (Δf) were calculated by subtracting the frequency in air and the frequency in the sample of the n^{th} harmonic during the titration process every 2 min.

During titration, n-heptane is progressively added, changing the properties of the medium and inducing asphaltene destabilization leading to aggregation and deposition. These phenomena can be correlated with changes in the oscillation parameters of the sensor. Using a simple mathematical model, frequency and dissipation shifts (Δf and $\Delta \Gamma$, respectively), can be used for determining the destabilization onset and the theoretical mass deposited on the quartz surface.

$$\Delta f_n = -n(2C_m \Delta m) - \sqrt{n} \frac{C_m}{\sqrt{\pi f_0}} \sqrt{\rho \eta} \quad \text{Eq. 1}$$

$$\Delta\Gamma_n = \sqrt{n} \frac{C_m}{\sqrt{\pi f_0}} \sqrt{\rho\eta} (1 + R) \quad \text{Eq. 2}$$

Here, C_m is a constant that depends on the crystal characteristics, Δm is the theoretical mass deposited on the quartz surface, $\rho\eta$ is the density-viscosity product of the medium, f_0 is the fundamental resonance frequency of the crystal, and R is an empirical correction term that accounts for viscous friction on rough surfaces⁸.

RESULTS

QCR Titration.

An example (Sample A) of the data obtained on the titration of the asphaltenes solutions is shown in Figure 2. Frequency shifts ($\Delta f_n = -n(2C_m\Delta m) - \sqrt{n} \frac{C_m}{\sqrt{\pi f_0}} \sqrt{\rho\eta}$ Eq. 1) are related to both mass loading (first term) and liquid loading effects (second term), while dissipation shifts ($\Delta\Gamma_n = \sqrt{n} \frac{C_m}{\sqrt{\pi f_0}} \sqrt{\rho\eta}(1 + R)$ Eq. 2) are related only to liquid loading effects. Thus, plotting the frequency shift as function of the dissipation shift (Figure 2a) allows estimation of the occurrence of the mass loading effect as a deviation from linear behavior (red dashed line). For the samples analyzed, this mass loading is related to the interaction of asphaltene particles with the quartz sensor, meaning that the composition at which this deviation occurs can be denoted as the destabilization onset (DO) of the asphaltenes (Figure 2b).

Before DO (light blue), there is a positive Δf due to the decrease of the $\rho\eta$ of the surrounding media. After DO (blue-gray zone), the destabilization of asphaltenes occurs, and flocculation and aggregation processes start. This phenomenon is taken into account in the first term of Eq. 1; thus, a change in the slope is observed, but still positive, due to the prevalence of the decrease of the $\rho\eta$ of the surrounding media. The purple zone, denoted by the prevalence of mass loading effects over the reduction of the $\rho\eta$, is where asphaltene aggregation and deposition are easily observed in Figure 2c and Figure 2d. The curves for the rest of the samples (B-H) can be found in the Supporting Information SI.3.

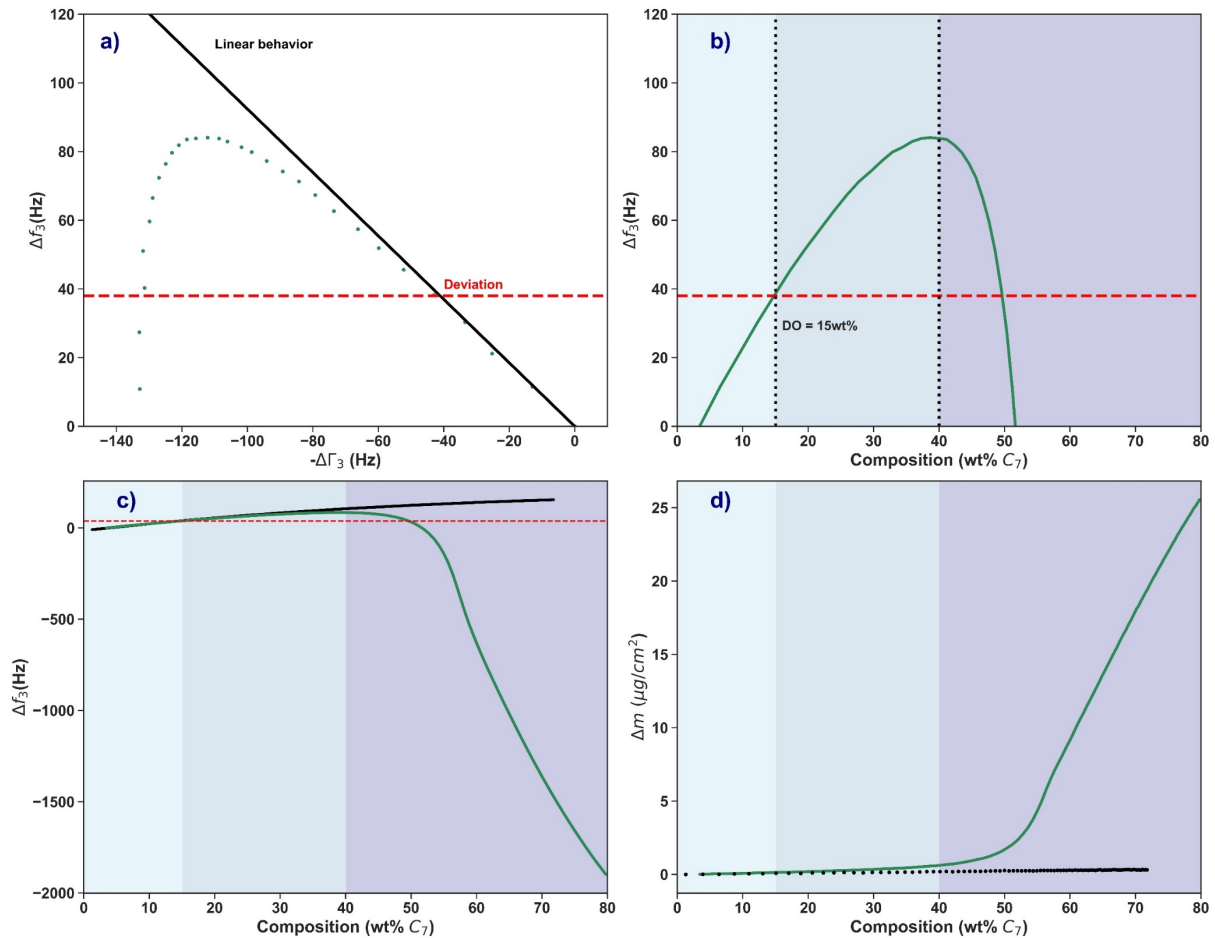


Figure 2. n-Heptane titration of asphaltenes (Sample A) followed by the QCR sensor at 30°C. a) Δf_3 vs $\Delta \Gamma_3$. b) Destabilization Onset (DO) estimation. c) Frequency shifts of the 3rd harmonic (Δf_3) as a function of composition. d) Theoretical deposited mass (Δm) as a function of composition. Light blue area represents the stable zone with mass loading effect = 0. Blue-gray area represents the unstable zone, with mass loading effect < liquid loading effect. The purple area represents the unstable zone with mass loading effect > liquid loading effect.

The theoretical deposited mass (Figure 2d **Erreur ! Source du renvoi introuvable.**) was determined by analyzing the 3rd, 5th, 7th and 9th harmonics and plotting the linear relation of Eq. 1. Details can be found in our most recent publication ⁴³.

The destabilization onset and theoretical deposited mass for all the samples are listed in Table 2, where it can be noted that the destabilization onset of pure asphaltenes (sample A) was found

to be 15 wt% of n-heptane. In contrast, for Nps-treated samples (samples B-H), the stability of the solution increased with the increase of NAMR. It is also clear that samples F-H do not form enough deposit (less than 0.5 $\mu\text{g}/\text{cm}^2$) compared to samples A-E (3-25 $\mu\text{g}/\text{cm}^2$) suggesting a complete adsorption of the unstable asphaltenes (at 80 w% of n-heptane composition) by the biogenic silica nanoparticles after NARM = 20.

Table 2. Samples mass compositions and destabilization characteristics of remnants solutions determined with the QCR sensor.

Sample	Mass Compositions		Remnants solution			
	Nps mass (mg \pm 1 mg)	NAMR [§]	Total Concentration* (mg/l)	V Concentration [¥] (mg/Kg)	Destabilization Onset (wt% n-heptane)	Deposited Mass (Δm) ($\mu\text{g}.\text{cm}^2$)
A	0	0	604	2057	15	25.6
B	30	2	508	1879	16	21.0
C	75	5	361	1465	17	16.0
D	150	10	220	1140	18	9.3
E	225	15	146	926	20	3.3
F	300	20	96	672	22	0.4
G	450	30	51	497	49	0.0
H	1050	70	33	377	66	0.0

§ Nanoparticles/ Asphaltenes Mass Ratio *Obtained via UV-Vis before titration ¥ Calculated from the GPC-ICP MS profile area and using a V concentration of 2057 mg.Kg-1 reported by Marcano et al. ⁵³ for this asphaltenes sample.

As samples F-H have very low concentrations (<100 mg/l), the low deposition detected could be attributed with the low amount of asphaltenes and not to the absence of unstable asphaltenes. To verify this, a titration experiment was performed on a diluted asphaltene solution (30 mg/l),

and the results are shown in Figure 3. Analysis of this figure clearly establishes that, even at a very low concentration (30 mg/l), the quartz can detect the destabilization onset, and this sample presented the same destabilization onset (15 wt%) as pure asphaltenes (Figure 3-b). Concerning the deposition (Figure 3-c), 30 mg/l solution still presented adsorption onto the quartz ($3.5 \mu\text{g}\cdot\text{cm}^{-2}$) compared to that obtained for samples F and G (0.4 and $0 \mu\text{g}\cdot\text{cm}^{-2}$), which suggests that nanoparticles effectively adsorb the part of the asphaltenes that is responsible for the destabilization and deposition phenomena.

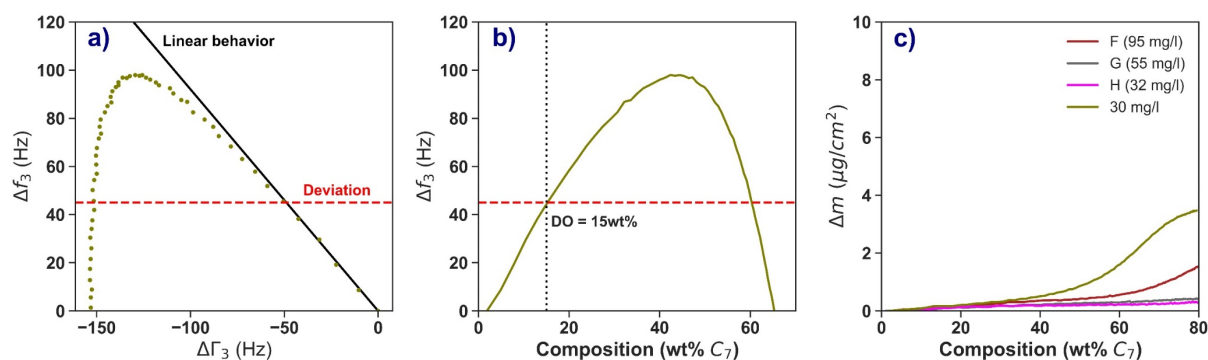


Figure 3. n-Heptane titration of diluted asphaltenes (30 mg/l) followed by the QCR sensor at 30°C. A) Δf_3 vs $\Delta \Gamma_3$. B) Destabilization onset (DO) estimation. C) Theoretical deposited mass comparison with samples A, F and G.

GPC-ICP-HR-MS Measurements. ^{32}S ulfur- (a) and ^{51}V anadium-containing compounds (b) chromatograms of the samples after the adsorption onto Nps are presented in Figure 4. A progressive reduction of the signal is observed compared to the pure asphaltenes sample (A) in the whole profile for the 5 first samples (B-G) with NAMR < 30. A different profile is obtained for samples G and H (NAMR= 30 and 70); the signals between 1000-1260 s are no longer present. The aggregate size distributions were defined as super-high molecular weight (sHMW), high molecular weight (HMW), medium molecular weight (MMW) and low

molecular weight (LMW) with ranges in time of 950-1250 s, 1140-1530 s, 1280-1820 s and 1600-1860 s, respectively

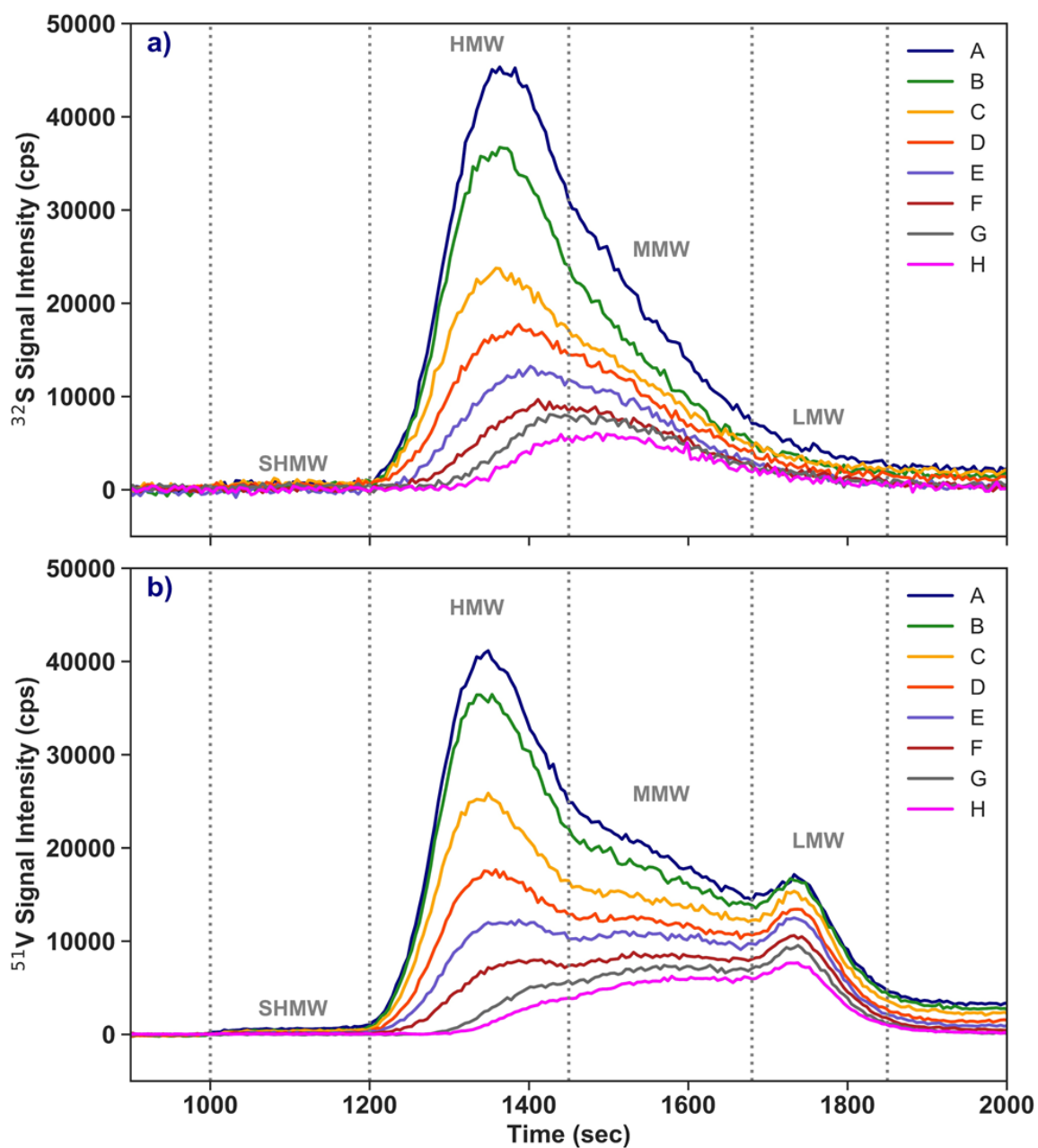


Figure 4. Sulfur- (a) and Vanadium-containing (b) compounds GPC-ICP HR MS chromatograms for asphaltene solutions before (A) and after (B-H) adsorption onto SiO₂ Bio-nanoparticles. sHMW, HMW, MMW, and LMW size distributions are separate by grey dashed lines.

It has been recently reported for Stöber-synthesized SiO₂ nanoparticles³² and also for SiO₂ biogenic nanoparticles⁵⁰ that asphaltene aggregates of higher molecular weights present stronger interactions with them due to Van der Waals forces. To verify this, a Gaussian fit was made, decomposing the signal into the four aggregates size distributions, based on the minimum observed in the profile. Complete explanation for the Gaussians choice for the signal decomposition can be found in the Supporting Information SI.4. Figure 5 shows an example of the Gaussian fit for Samples A and H (for the rest of the samples, see the Supporting Information SI.4), where it can be noted that HMW size distribution is composed by two families, denoted HMW₁ and HMW₂, while MMW size distribution is composed by three (MMW₁, MMW₂, MMW₃). The efficacy of the decomposition treatment can be noted in the almost perfect fit of the sum of the Gaussian functions (red dashed line) to the sample signal (dark solid line).

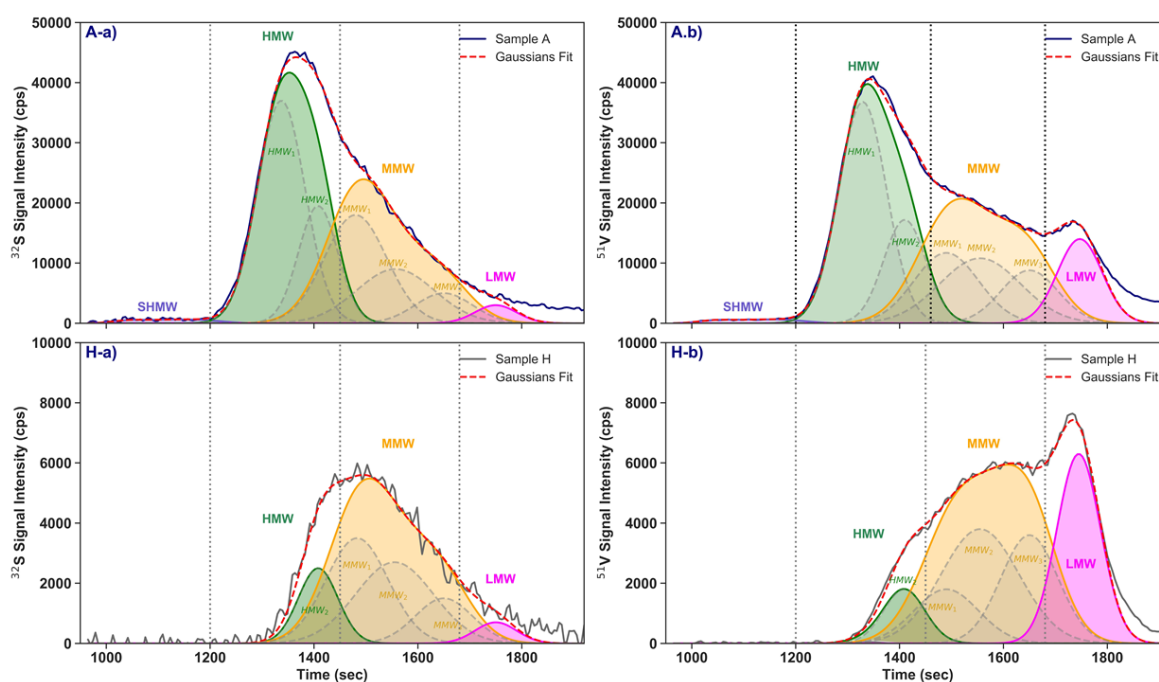


Figure 5. Gaussians fit and decomposition into four size distributions (sHMW, HMW, MMW and LMW) of GPC-ICP-HR-MS (a) Sulfur- and (b) Vanadium-containing compounds chromatograms for Sample A (upper panel) and Sample H (lower panel). Vertical dotted lines define the border of the corresponding size distribution.

This decomposition treatment allows calculation of the area under the curve for each size distribution and thus makes a clear evolution of each distribution in the adsorption, as shown in Figure 6. The disappearance of sHMW and HMW_1 compounds after samples D and F (NAMR = 15 and 20, respectively), confirms the previous assessment that SiO_2 nanoparticles interact preferably with larger nanoaggregates.

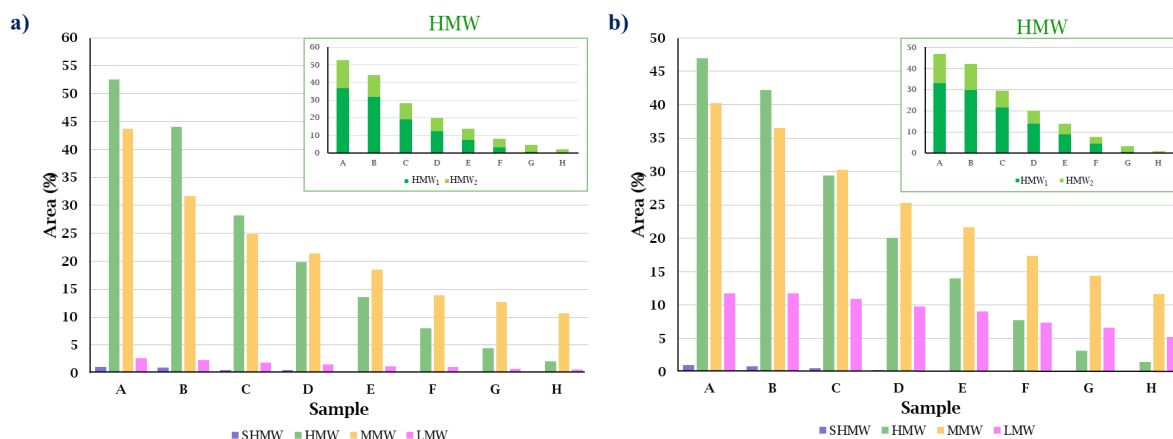


Figure 6. Aggregates size distribution areas of $^{33}\text{Sulfur}$ - (a) and $^{51}\text{Vanadium}$ containing compounds (b) obtained with the gaussian fitting for all samples. The green plot at the upper right panel, represent the variation of the two HMW families (HMW_1 and HMW_2). Areas for samples B-H are calculated respect to the total area of sample A.

The Gaussian fitting treatment shows that the sHMW and the main part of the HMW compounds, the HMW_1 family, are completely adsorbed while only a small fraction of the MMW and LMW compounds are adsorbed. It has been recently³⁷ reported that “free” porphyrins eluted in the LMW range, thus the low reduction of this size distribution observed in Figure 6.b suggests that’s these compounds do not interact strongly with the nanoparticles.

DISCUSSION

The analysis of asphaltene aggregate adsorption onto biogenic SiO_2 nanoparticles using a QCR and GPC-ICP-HR-MS analysis allowed the understanding of the nanoparticle effect and

the role of the different size distribution aggregates on the asphaltene stability and deposition characteristics.

The QCR results show that biogenic SiO₂ nanoparticles effectively adsorb the most unstable asphaltenes, leading into an increase of the destabilization onset from 15 wt% to 66 wt% of n-heptane composition for the remaining supernatant. A decrease in the deposited mass on the quartz surface was also observed until no deposit was detected.

There is not a significant amount of unstable asphaltenes detected by the QCR sensor for samples G-H, while the reduction of the GPC-ICP-HR-MS signal is incomplete for these samples with a total area that represents between 24-18% of the sulfur aggregates of the original asphaltenes. These factors suggest that the reduction in the deposition onto the quartz surface is not only due to a reduction of the total amount of asphaltenes, but that HMW aggregates play a major role in the asphaltene destabilization and deposition characteristics.

Recently, Taziketh et al.⁵³ reported that fewer and/or smaller agglomerates of asphaltenes precipitate, as determined via AFM, after asphaltene treatment with polythiophene-coated Fe₃O₄ nanoparticles. Our results confirm that nanoparticles not only reduce the amount of asphaltenes in solution but also decrease the size of the asphaltene aggregates in the remaining solution by adsorbing the most unstable and larger nanoaggregates.

Interestingly, the GPC-ICP MS Vanadium chromatogram of the samples G and H, with a signal starting from 1260s is very similar with the results reported in our previous works^{37,43}, for acetone fraction, with a GPC-ICP MS chromatogram starting at 22.5min (1272s) and presenting 3 maximums (23.2 min =1400s, 25.5min=1530s and 28.5=1710s). This acetone fraction also showed a very low tendency to form deposit on the quartz surface, and the FT-ICR MS analysis proved that it presents a higher aromaticity and more island-like structure than the other fractions (Hep/Tol and Tol/THF/MeOH). Also, Putman et al.^{34,35}, showed that the most abundant species in larger nanoaggregates are more aliphatic compounds, suggesting that London forces

leads asphaltene self-association. Thus, the results here suggest that nanoparticles interact with the more aliphatic archipelago-like compounds, presents in the larger nanoaggregates size distributions (sHMW and HMW), leaving in solution the smallest and more aromatic ones (MMW and LMW).

Figure 7 presents the slope of the variation of the deposited mass curve ($d\Delta m$) versus the composition of the system. This curve describes the growth rate of the asphaltene aggregates deposited on the QCR. With a simple calculation it's possible to estimate the mass quantity of asphaltene deposited on the surface, assuming a typical asphaltene molecule with a molecular weight of $700 \text{ g}\cdot\text{mol}^{-1}$ with a nanoaggregate composed by 7 molecules and a size of 3 nm^2 , an approximation of the number of aggregates deposited on a square area corresponding to the nano aggregate size (9-nm^2 area), the mass deposited during each step of the titration can be estimate, the values are shown by the blue axis in Figure 7. At the beginning of the titration from composition of 15 wt% n-heptane and up to 40 wt%, a constant number of nanoaggregates of approximately 0.7 a. u. are deposited on this 9 nm^2 area. After this composition, the number of aggregates increases significantly for solutions with more than 10% HMW nanoaggregates (A-D) while, when the % of HMW is below 10%, the number of aggregates adsorbed remain constant. This is because there is no formation of large aggregates in the solution, so the adsorbed mass shows linear growth with the composition.

At the beginning of the titration, only few nanoaggregates are adsorbed because the changes in this are occurring in the liquid. When formation of aggregates begins, the deposition leads to a significant growth in the adsorbed mass. An important observation of the obtained results is that once the large aggregates are extracted from the solution there is no formation of new large aggregates. As Figure 7 clearly shows, as the nanoparticles extract material from the solution, the deposition rate of molecules is slowed down, and further destabilization of the solution is required.

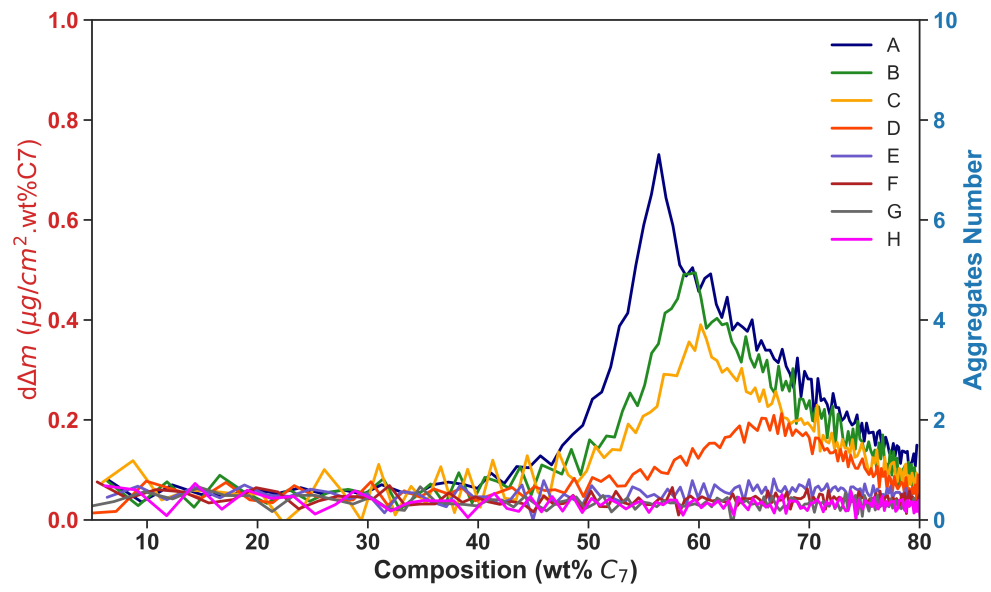


Figure 7. Deposited mass's slope ($d\Delta m$) vs. composition

CONCLUSIONS

In this study, pure asphaltenes in toluene solutions were treated with biogenic SiO₂ nanoparticles, and the remnants were analyzed via GPC-ICP HR-MS, destabilized using n-heptane, and the aggregation and deposition processes were followed using a QCR sensor. Results show that biogenic SiO₂ nanoparticles effectively remove the largest aggregates (sHMW and HMW) with no formation of new ones. The decrease of the amounts of sHMW and HMW nanoaggregates in the remnant's solutions enhanced stability and a decrease of the mass deposited on the QCR sensor after destabilization. Therefore, these size distributions play a major role in the asphaltene instability and deposition characteristics. The results show that the study of the absorption rate of the QCR sensor provides information about the type of destabilization.

ASSOCIATED CONTENT

Supporting Information

SI.1 – GPC Columns Calibration

SI Figure 1 – Calibration of the GPC columns. a) PS's molecular weight and elution times. b) Calibration curve.

SI.2 – Concentration of the remnant's solutions determined via UV-Vis.

SI Figure 2. Remnants solution's concentration obtained via UV-Vis. a) absorbance spectra of patron solutions. b) Calibration curve. c) absorbance spectra of remnants solutions. d) Concentration's values of remnants solutions.

SI.3 - Destabilization of remnants solutions with n-heptane followed by the QCR sensor.

SI Figure 3. Destabilization curves for remnants solutions. Left) Frequency shifts of the 3rd harmonic (Δf_3) as a function of composition. Right) Theoretical deposited mass (Δm) as a function of composition.

SI.4 - Decomposition treatment of the GPC-ICP MS chromatograms of vanadium and sulfur containing compounds and assignment in the different gaussians in the aggregates size distributions.

SI Figure 4. Gaussian fitting of the Sulfur (a) and Vanadium (b) GPC ICP MS chromatograms.

SI Figure 5. Gaussians fit and decomposition of the Sulfur GPC-ICP-HR-MS chromatograms for all samples.

SI Figure 6. Gaussians fit and decomposition of Vanadium GPC-ICP-HR-MS chromatograms for all samples.

AUTHOR INFORMATION

***Corresponding Author**

Tel: (+58) 212 605 11 58

Email: jimmy.castillo@ciens.ucv.ve

Tel: +33 (0) 559 407 752

Email: brice.bouyssi@univ-pau.fr

Funding Sources

Notes

The authors declare no competing financial interests.

ACKNOWLEDGMENT

The financial support provided by the Franco-Venezuelan Project RMR (Réseau Marcel Roche) is gratefully acknowledged.

REFERENCES

- (1) Speight, J. *The Chemistry and Technology of Petroleum, Fourth Edition*; 2006; Vol. 20064186. <https://doi.org/10.1201/9781420008388>.
- (2) Alimohammadi, S.; Zendeboudi, S.; James, L. A Comprehensive Review of Asphaltene Deposition in Petroleum Reservoirs: Theory, Challenges, and Tips. *Fuel* 2019, 252 (May), 753–791. <https://doi.org/10.1016/j.fuel.2019.03.016>.
- (3) Adams, J. J. Asphaltene Adsorption, a Literature Review. *Energy and Fuels* 2014, 28 (5), 2831–2856. <https://doi.org/10.1021/ef500282p>.
- (4) Chacón-Patiño, M. L.; Rowland, S. M.; Rodgers, R. P.; Chacón-Patiño, M. L.; Rowland, S. M.; Rodgers, R. P. Advances in Asphaltene Petroleomics. Part 1: Asphaltenes Are Composed of Abundant Island and Archipelago Structural Motifs. *Energy and Fuels* 2017, 31 (12), 13509–13518. <https://doi.org/10.1021/acs.energyfuels.7b02873>.
- (5) Chacón-Patiño, M. L.; Rowland, S. M.; Rodgers, R. P. Advances in Asphaltene Petroleomics. Part 2: Selective Separation Method That Reveals Fractions Enriched in Island and Archipelago Structural Motifs by Mass Spectrometry. *Energy and Fuels* 2018, 32 (1), 314–328. <https://doi.org/10.1021/acs.energyfuels.7b03281>.
- (6) Chacón-Patiño, M. L.; Rowland, S. M.; Rodgers, R. P. Advances in Asphaltene Petroleomics. Part 3. Dominance of Island or Archipelago Structural Motif Is Sample Dependent. *Energy and Fuels* 2018, 32 (9), 9106–9120. <https://doi.org/10.1021/acs.energyfuels.8b01765>.
- (7) Shah, A.; Fishwick, R.; Wood, J.; Leeke, G.; Greaves, M. A Review of Novel Techniques for Heavy Oil and Bitumen Extraction and Upgrading. 2010, 700–714. <https://doi.org/10.1039/b918960b>.

- (8) Speight, J. G. *Introduction to Enhanced Recovery Methods for Heavy Oil and Tar Sands*; 2016. <https://doi.org/10.1016/c2014-0-01296-8>.
- (9) Guo, K.; Li, H.; Yu, Z. In-Situ Heavy and Extra-Heavy Oil Recovery: A Review. *Fuel* 2016, *185*, 886–902. <https://doi.org/10.1016/j.fuel.2016.08.047>.
- (10) Mohd Afnan Ahmad; Samsuri, S.; Amran, N. A. Methods for Enhancing Recovery of Heavy Crude Oil, Processing of Heavy Crude Oils - Challenges and Opportunities. *IntechOpen* 2019, No. tourism, 13. <https://doi.org/http://dx.doi.org/10.5772/57353>.
- (11) Melendez-Alvarez, A. A.; Garcia-Bermudes, M.; Tavakkoli, M.; Doherty, R. H.; Meng, S.; Abdallah, D. S.; Vargas, F. M. On the Evaluation of the Performance of Asphaltene Dispersants. *Fuel* 2016, *179*, 210–220. <https://doi.org/10.1016/j.fuel.2016.03.056>.
- (12) Mardani, E.; Mokhtari, B.; Soulgani, B. S. Comparison of the Inhibitory Capacity of Vegetable Oils, and Their Nonionic Surfactants on Iran Crude Oil Asphaltene Precipitation Using Quartz Crystal Microbalance. *Pet. Sci. Technol.* 2018, *36* (11), 744–749. <https://doi.org/10.1080/10916466.2018.1445103>.
- (13) Madhi, M.; Kharrat, R.; Hamoule, T. Screening of Inhibitors for Remediation of Asphaltene Deposits: Experimental and Modeling Study. *Petroleum* 2018, *4* (2), 168–177. <https://doi.org/10.1016/j.petlm.2017.08.001>.
- (14) Alhreez, M.; Wen, D. Molecular Structure Characterization of Asphaltene in the Presence of Inhibitors with Nanoemulsions. *RSC Adv.* 2019, *9* (34), 19560–19570. <https://doi.org/10.1039/c9ra02664a>.
- (15) Balestrin, L. B. D. S.; Francisco, R. D.; Bertran, C. A.; Cardoso, M. B.; Loh, W. Direct Assessment of Inhibitor and Solvent Effects on the Deposition Mechanism of

- Asphaltenes in a Brazilian Crude Oil. *Energy and Fuels* 2019, 33 (6), 4748–4757.
<https://doi.org/10.1021/acs.energyfuels.9b00043>.
- (16) Raj, G.; Larkin, E.; Lesimple, A.; Commins, P.; Whelan, J.; Naumov, P. In Situ Monitoring of the Inhibition of Asphaltene Adsorption by a Surfactant on Carbon Steel Surface. *Energy & Fuels* 2019, 33 (3), 2030–2036.
<https://doi.org/10.1021/acs.energyfuels.8b04246>.
- (17) Campen, S.; Moorhouse, S. J.; Wong, J. S. S. Mechanism of an Asphaltene Inhibitor in Different Depositing Environments: Influence of Colloid Stability. *J. Pet. Sci. Eng.* 2020, 184 (May 2019). <https://doi.org/10.1016/j.petrol.2019.106502>.
- (18) Franco, C. A.; Nassar, N. N.; Ruiz, M. A.; Pereira-Almao, P.; Cortés, F. B. Nanoparticles for Inhibition of Asphaltenes Damage: Adsorption Study and Displacement Test on Porous Media. *Energy and Fuels* 2013, 27 (6), 2899–2907.
<https://doi.org/10.1021/ef4000825>.
- (19) Nassar, N. N.; Montoya, T.; Franco, C. A.; Cortés, F. B.; Pereira-Almao, P. A New Model for Describing the Adsorption of Asphaltenes on Porous Media at a High Pressure and Temperature under Flow Conditions. *Energy & Fuels* 2015, 29 (7), 4210–4221. <https://doi.org/10.1021/acs.energyfuels.5b00693>.
- (20) Betancur, S.; Carmona, J. C.; Nassar, N. N.; Franco, C. A.; Cortés, F. B. Role of Particle Size and Surface Acidity of Silica Gel Nanoparticles in Inhibition of Formation Damage by Asphaltene in Oil Reservoirs. *Ind. Eng. Chem. Res.* 2016, 55 (21), 6122–6132.
<https://doi.org/10.1021/acs.iecr.6b01187>.
- (21) Shojaati, F.; Riazi, M.; Mousavi, S. H.; Derikvand, Z. Experimental Investigation of the Inhibitory Behavior of Metal Oxides Nanoparticles on Asphaltene Precipitation.

- Colloids Surfaces A Physicochem. Eng. Asp.* 2017, 531 (June), 99–110.
<https://doi.org/10.1016/j.colsurfa.2017.07.087>.
- (22) Varamesh, A.; Hosseinpour, N. Prediction of Asphaltene Precipitation in Reservoir Model Oils in the Presence of Fe₃O₄ and NiO Nanoparticles by Cubic Plus Association Equation of State. *Ind. Eng. Chem. Res.* 2019, 58 (10), 4293–4302.
<https://doi.org/10.1021/acs.iecr.8b05432>.
- (23) Azizkhani, A.; Gandomkar, A.; Azizkhani, A.; Gandomkar, A. A Novel Method for Application of Nanoparticles as Direct Asphaltenes Inhibitors during Miscible CO₂ Injection. *J. pe* 2020, 185 (November 2019), 106661.
<https://doi.org/10.1016/j.petrol.2019.106661>.
- (24) Tazikeh, S.; Sayyad Amin, J.; Zendeboudi, S. Experimental Study of Asphaltene Precipitation and Metastable Zone in the Presence of Polythiophene-Coated Fe₃O₄ Nanoparticles. *J. Mol. Liq.* 2020, 301, 112254.
<https://doi.org/10.1016/j.molliq.2019.112254>.
- (25) Marei, N. N.; Nassar, N. N.; Vitale, G.; Hassan, A.; Pérez Zurita, M. J. Effects of the Size of NiO Nanoparticles on the Catalytic Oxidation of Quinolin-65 as an Asphaltene Model Compound. *Fuel* 2017, 207, 423–437.
<https://doi.org/10.1016/j.fuel.2017.06.106>.
- (26) Zhou, K.; Zhou, X.; Liu, J.; Huang, Z. Application of Magnetic Nanoparticles in Petroleum Industry: A Review. *J. Pet. Sci. Eng.* 2020, 188 (January), 106943.
<https://doi.org/10.1016/j.petrol.2020.106943>.
- (27) Montes, D.; Henao, J.; Taborda, E. A.; Gallego, J.; Cortés, F. B.; Franco, C. A. Effect of Textural Properties and Surface Chemical Nature of Silica Nanoparticles from

- Different Silicon Sources on the Viscosity Reduction of Heavy Crude Oil. *ACS Omega* 2020, 5 (10), 5085–5097. <https://doi.org/10.1021/acsomega.9b04041>.
- (28) Vargas, V.; Castillo, J.; Torres, R. ; Lienemann, C.-P.; Bouyssiére, B. Surface Modification of SiO₂ Nanoparticles to Increase Asphaltene Adsorption. *Pet. Sci. Technol.* 2018, 6466. <https://doi.org/10.1080/10916466.2018.1440300>.
- (29) Castillo, J.; Vargas, V.; Piscitelli, V.; Ordoñez, L.; Rojas, H. Study of Asphaltene Adsorption onto Raw Surfaces and Iron Nanoparticles by AFM Force Spectroscopy. *J. Pet. Sci. Eng.* 2017, 151 (October 2016), 248–253. <https://doi.org/10.1016/j.petrol.2017.01.019>.
- (30) Giraldo, J.; Nassar, N. N.; Benjumea, P.; Pereira-Almao, P.; Cortés, F. B. Modeling and Prediction of Asphaltene Adsorption Isotherms Using Polanyi's Modified Theory. *Energy and Fuels* 2013, 27 (6), 2908–2914. <https://doi.org/10.1021/ef4000837>.
- (31) Nassar, N. N.; Betancur, S.; Acevedo, S.; Franco, C. A.; Cortés, F. B. Development of a Population Balance Model to Describe the Influence of Shear and Nanoparticles on the Aggregation and Fragmentation of Asphaltene Aggregates. *Ind. Eng. Chem. Res.* 2015, 54 (33), 8201–8211. <https://doi.org/10.1021/acs.iecr.5b02075>.
- (32) Castillo, J.; Vargas, V.; Gonzalez, G.; Ruiz, W.; Gascon, G.; Bouyssiére, B. Development of a Methodology by GPC-ICP HR MS for the Study of the Adsorption of Asphaltene Aggregates on SiO Nanoparticles. *Energy and Fuels* 2020. <https://doi.org/10.1021/acs.energyfuels.0c00714>.
- (33) González, G.; Acevedo, S.; Castillo, J.; Villegas, O.; Ranaudo, M. A.; Guzmán, K.; Orea, M.; Bouyssiére, B. Study of Very High Molecular Weight Cluster Presence in THF Solution of Asphaltenes and Subfractions A1 and A2, by Gel Permeation

- Chromatography with Inductively Coupled Plasma Mass Spectrometry. *Energy & Fuels* 2020. <https://doi.org/10.1021/acs.energyfuels.0c02743>.
- (34) Putman, J. C.; Mouliau, R.; Smith, D. F.; Weisbrod, C. R.; Chacón-Patiño, M. L.; Corilo, Y. E.; Blakney, G. T.; Rumancik, L. E.; Barrere-Mangote, C.; Rodgers, R. P.; Giusti, P.; Marshall, A. G.; Bouyssièrè, B. Probing Aggregation Tendencies in Asphaltenes by Gel Permeation Chromatography. Part 2: Online Detection by Fourier Transform Ion Cyclotron Resonance Mass Spectrometry and Inductively Coupled Plasma Mass Spectrometry. *Energy and Fuels* 2020, 34 (9), 10915–10925. <https://doi.org/10.1021/acs.energyfuels.0c02158>.
- (35) Putman, J. C.; Mouliau, R.; Barrère-Mangote, C.; Rodgers, R. P.; Bouyssièrè, B.; Giusti, P.; Marshall, A. G. Probing Aggregation Tendencies in Asphaltenes by Gel Permeation Chromatography. Part 1: Online Inductively Coupled Plasma Mass Spectrometry and Offline Fourier Transform Ion Cyclotron Resonance Mass Spectrometry. *Energy & Fuels* 2020. <https://doi.org/10.1021/acs.energyfuels.0c01522>.
- (36) Putman, J. C.; Gutiérrez Sama, S.; Barrère-Mangote, C.; Rodgers, R. P.; Lobinski, R.; Marshall, A. G.; Bouyssièrè, B.; Giusti, P. Analysis of Petroleum Products by Gel Permeation Chromatography Coupled Online with Inductively Coupled Plasma Mass Spectrometry and Offline with Fourier Transform Ion Cyclotron Resonance Mass Spectrometry. *Energy and Fuels* 2018, 32 (12), 12198–12204. <https://doi.org/10.1021/acs.energyfuels.8b02788>.
- (37) Chacón-Patiño, M. L.; Mouliau, R.; Barrère-Mangote, C.; Putman, J. C.; Weisbrod, C. R.; Blakney, G. T.; Bouyssièrè, B.; Rodgers, R. P.; Giusti, P. Compositional Trends for Total Vanadium Content and Vanadyl Porphyrins in Gel Permeation Chromatography Fractions Reveal Correlations between Asphaltene Aggregation and Ion Production

- Efficiency in Atmospheric Pressure Photoionization. *Energy and Fuels* 2020.
<https://doi.org/10.1021/acs.energyfuels.0c03349>.
- (38) Ekholm, P.; Blomberg, E.; Claesson, P.; Auflem, I. H.; Sjöblom, J.; Kornfeldt, A. A Quartz Crystal Microbalance Study of the Adsorption of Asphaltenes and Resins onto a Hydrophilic Surface. *J. Colloid Interface Sci.* 2002, 247 (2), 342–350.
<https://doi.org/10.1006/jcis.2002.8122>.
- (39) Daridon, J.-L.; Cassiède, M.; Nasri, D.; Pauly, J.; Carrier, H. Probing Asphaltene Flocculation by a Quartz Crystal Resonator. *Energy and Fuels* 2013, 27 (8), 4639–4647.
<https://doi.org/10.1021/ef400910v>.
- (40) Tavakkoli, M.; Panuganti, S. R.; Vargas, F. M.; Taghikhani, V.; Pishvaie, M. R.; Chapman, W. G. Asphaltene Deposition in Different Depositing Environments: Part 1. Model Oil. *Energy and Fuels* 2014, 28 (3), 1617–1628.
<https://doi.org/10.1021/ef401857t>.
- (41) Campen, S.; Smith, B.; Wong, J. Deposition of Asphaltene from Destabilized Dispersions in Heptane-Toluene. *Energy and Fuels* 2018, 32 (9), 9159–9171.
<https://doi.org/10.1021/acs.energyfuels.8b01887>.
- (42) Saidoun, M.; Palermo, T.; Passade-Boupat, N.; Gingras, J. P.; Carrier, H.; Daridon, J.-L. Revisiting Asphaltenes Instability Predictions by Probing Destabilization Using a Fully Immersed Quartz Crystal Resonator. *Fuel* 2019, 251 (February), 523–533.
<https://doi.org/10.1016/j.fuel.2019.04.025>.
- (43) Acevedo, N.; Moulian, R.; Chacón-Patiño, M. L.; Mejia, A.; Radji, S.; Daridon, J. L.; Barrère-Mangote, C.; Giusti, P.; Rodgers, R. P.; Piscitelli, V.; Castillo, J.; Carrier, H.; Bouyssiere, B. Understanding Asphaltene Fraction Behavior through Combined Quartz

- Crystal Resonator Sensor, FT-ICR MS, GPC ICP HR-MS, and AFM Characterization. Part I: Extrography Fractionations. *Energy and Fuels* 2020, 34 (11), 13903–13915. <https://doi.org/10.1021/acs.energyfuels.0c02687>.
- (44) Goual, L.; Abudu, A. Predicting the Adsorption of Asphaltenes from Their Electrical Conductivity. *Energy and Fuels* 2010, 24 (1), 469–474. <https://doi.org/10.1021/ef900801n>.
- (45) Abudu, A.; Goual, L. Adsorption of Crude Oil on Surfaces Using Quartz Crystal Microbalance with Dissipation (QCM-D) under Flow Conditions. *Energy & Fuels* 2009, 23 (3), 1237–1248. <https://doi.org/10.1021/ef800616x>.
- (46) Subramanian, S.; Simon, S.; Gao, B.; Sjöblom, J. Asphaltene Fractionation Based on Adsorption onto Calcium Carbonate: Part 1: Characterization of Sub-Fractions and QCM-Measurements. *Colloids Surfaces A Physicochem. Eng. Asp.* 2016, 495, 136–148. <https://doi.org/10.1016/j.colsurfa.2016.02.011>.
- (47) Kuang, W.; Saraji, S.; Piri, M. A Systematic Experimental Investigation on the Synergistic Effects of Aqueous Nanofluids on Interfacial Properties and Their Implications for Enhanced Oil Recovery. *Fuel* 2018, 220 (July 2017), 849–870. <https://doi.org/10.1016/j.fuel.2018.01.102>.
- (48) Daridon, J.-L.; Carrier, H. Measurement of Phase Changes in Live Crude Oil Using an Acoustic Wave Sensor: Asphaltene Instability Envelope. *Energy and Fuels* 2017, 31 (9), 9255–9267. <https://doi.org/10.1021/acs.energyfuels.7b01655>.
- (49) Joonaki, E.; Burgass, R.; Hassanpouryouzband, A.; Tohidi, B. Comparison of Experimental Techniques for Evaluation of Chemistries against Asphaltene Aggregation and Deposition: New Application of High-Pressure and High-

Temperature Quartz Crystal Microbalance. 2018.
<https://doi.org/10.1021/acs.energyfuels.7b02773>.

- (50) Castillo, J.; Vargas, V.; Gonzalez, G.; Ruiz, W.; Bouyssiere, B. Evidence of Selective Asphaltene Subfraction Adsorption on SiO₂ Nanoparticles Studied by UV-Vis Absorbance and Fluorescence Spectroscopy. *J. Dispers. Sci. Technol.* 2020, 0 (0), 1–7. <https://doi.org/10.1080/01932691.2020.1845956>.
- (51) Caumette, G.; Lienemann, C. P.; Merdrignac, I.; Bouyssiere, B.; Lobinski, R. Fractionation and Speciation of Nickel and Vanadium in Crude Oils by Size Exclusion Chromatography-ICP MS and Normal Phase HPLC-ICP MS. *J. Anal. At. Spectrom.* 2010, 25 (7), 1123–1129. <https://doi.org/10.1039/c003455j>.
- (52) Pohl, P.; Dural, J.; Vorapalawut, N.; Merdrignac, I.; Lienemann, C. P.; Carrier, H.; Grassl, B.; Bouyssiere, B.; Lobinski, R. Multielement Molecular Size Fractionation in Crude Oil and Oil Residue by Size Exclusion Microchromatography with High Resolution Inductively Coupled Plasma Mass Spectrometric Detection (HR ICP MS). *J. Anal. At. Spectrom.* 2010, 25 (12), 1974–1977. <https://doi.org/10.1039/c0ja00076k>.
- (53) Marcano, F.; Flores, R.; Chirinos, J. J.; Ranaudo, M. A. Distribution of Ni and v in A1 and A2 Asphaltene Fractions in Stable and Unstable Venezuelan Crude Oils. *Energy and Fuels* 2011, 25 (5), 2137–2141. <https://doi.org/10.1021/ef200189m>.
- (54) Tazikeh, S.; Sayyad Amin, J.; Zendehboudi, S.; Dejam, M.; Chatzis, I. Bi-Fractal and Bi-Gaussian Theories to Evaluate Impact of Polythiophene-Coated Fe₃O₄ Nanoparticles on Asphaltene Precipitation and Surface Topography. *Fuel* 2020, 272 (January), 117535. <https://doi.org/10.1016/j.fuel.2020.117535>.

- (55) Acevedo, S.; Castillo, J.; Vargas, V.; Castro, A.; Delgado, O.; Cortés, F. B.; Franco, C. A.; Bouyssiere, B. Suppression of Phase Separation as a Hypothesis to Account for Nuclei or Nanoaggregate Formation by Asphaltenes in Toluene. *Energy and Fuels* 2018, 32 (6), 6669–6677. <https://doi.org/10.1021/acs.energyfuels.8b00949>.

TOC GRAPHIC

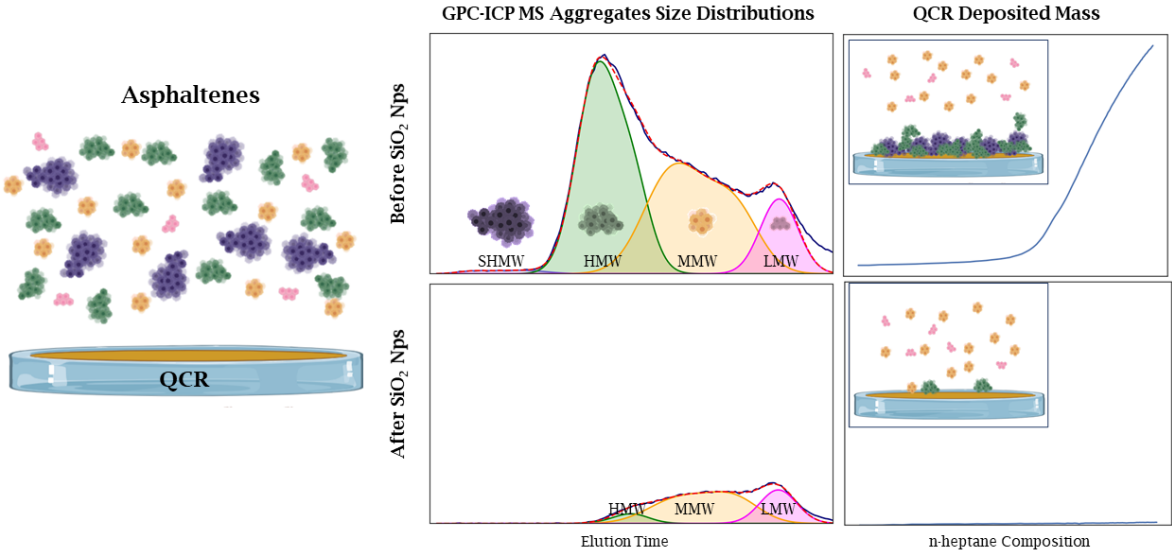


TABLE CAPTIONS

Table 1. Physical characteristics of SiO₂ biogenic nanoparticles.

Table 2. Samples mass compositions and destabilization characteristics of remnants solutions determined with the QCR sensor.

TABLES

Table 1. Physical characteristics of SiO₂ biogenic nanoparticles.

Mean hydrodynamic diameter (nm)	Specific surface (BET) (m².g⁻¹)
40	234

Table 2. Samples mass compositions and destabilization characteristics of remnants solutions determined with the QCR sensor.

Sample	Mass Compositions		Remnants solution			
	Nps mass (mg \pm 1 mg)	NAMR [§]	Total Concentration* (mg/l)	V Concentration [¥] (mg/Kg)	Destabilization Onset (wt% n-heptane)	Deposited Mass (Δ m) (μ g.cm ²)
A	0	0	604	2057	15	25.6
B	30	2	508	1879	16	21.0
C	75	5	361	1465	17	16.0
D	150	10	220	1140	18	9.3
E	225	15	146	926	20	3.3
F	300	20	96	672	22	0.4
G	450	30	51	497	49	0.0
H	1050	70	33	377	66	0.0

§ Nanoparticles/ Asphaltenes Mass Ratio *Obtained via UV-Vis before titration ¥ Calculated from the GPC-ICP MS profile area and using a V concentration of 2057 mg.Kg-1 reported by Marcano et al. ⁵³ for this asphaltenes sample.

FIGURE CAPTIONS

Figure 1. Experimental setup for n-heptane titration followed by the QCR sensor

Figure 2. n-Heptane titration of asphaltenes (Sample A) followed by the QCR sensor at 30°C. a) Δf_3 vs $\Delta\Gamma_3$. b) Destabilization Onset (DO) estimation. c) Frequency shifts of the 3rd harmonic (Δf_3) as a function of composition. d) Theoretical deposited mass (Δm) as a function of composition. Light blue area represents the stable zone with mass loading effect = 0. Blue-gray area represents the unstable zone, with mass loading effect < liquid loading effect. The purple area represents the unstable zone with mass loading effect > liquid loading effect.

Figure 3. n-Heptane titration of diluted asphaltenes (30 mg/l) followed by the QCR sensor at 30°C. A) Δf_3 vs $\Delta\Gamma_3$. B) Destabilization onset (DO) estimation. C) Theoretical deposited mass comparison with samples A, F and G.

Figure 4. Sulfur- (a) and Vanadium-containing (b) compounds GPC-ICP HR MS chromatograms for asphaltenes solutions before (A) and after (B-H) adsorption onto SiO₂ Bio-nanoparticles. sHMW, HMW, MMW, and LMW size distributions are separate by grey dashed lines.

Figure 5. Gaussians fit and decomposition into four size distributions (sHMW, HMW, MMW and LMW) of GPC-ICP-HR-MS (a) Sulfur- and (b) Vanadium-containing compounds chromatograms for Sample A (upper panel) and Sample H (lower panel). Vertical dotted lines define the border of the corresponding size distribution.

Figure 6. Aggregates size distribution areas of ^{32}S - (a) and ^{51}V - Vanadium containing compounds (b) obtained with the Gaussian fitting for all samples. The green plot at the upper right panel, represent the variation of the two HMW families (HMW_1 and HMW_2).

Figure 7. Deposited mass's slope ($d\Delta m$) vs. composition

FIGURES

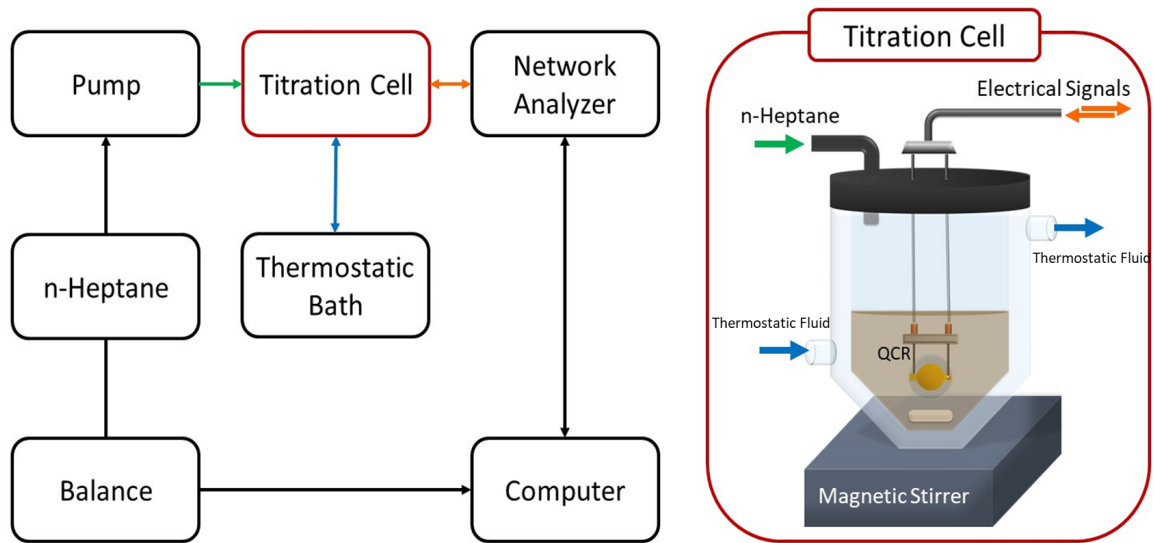


Figure 1. Experimental setup for n-heptane titration followed by the QCR sensor

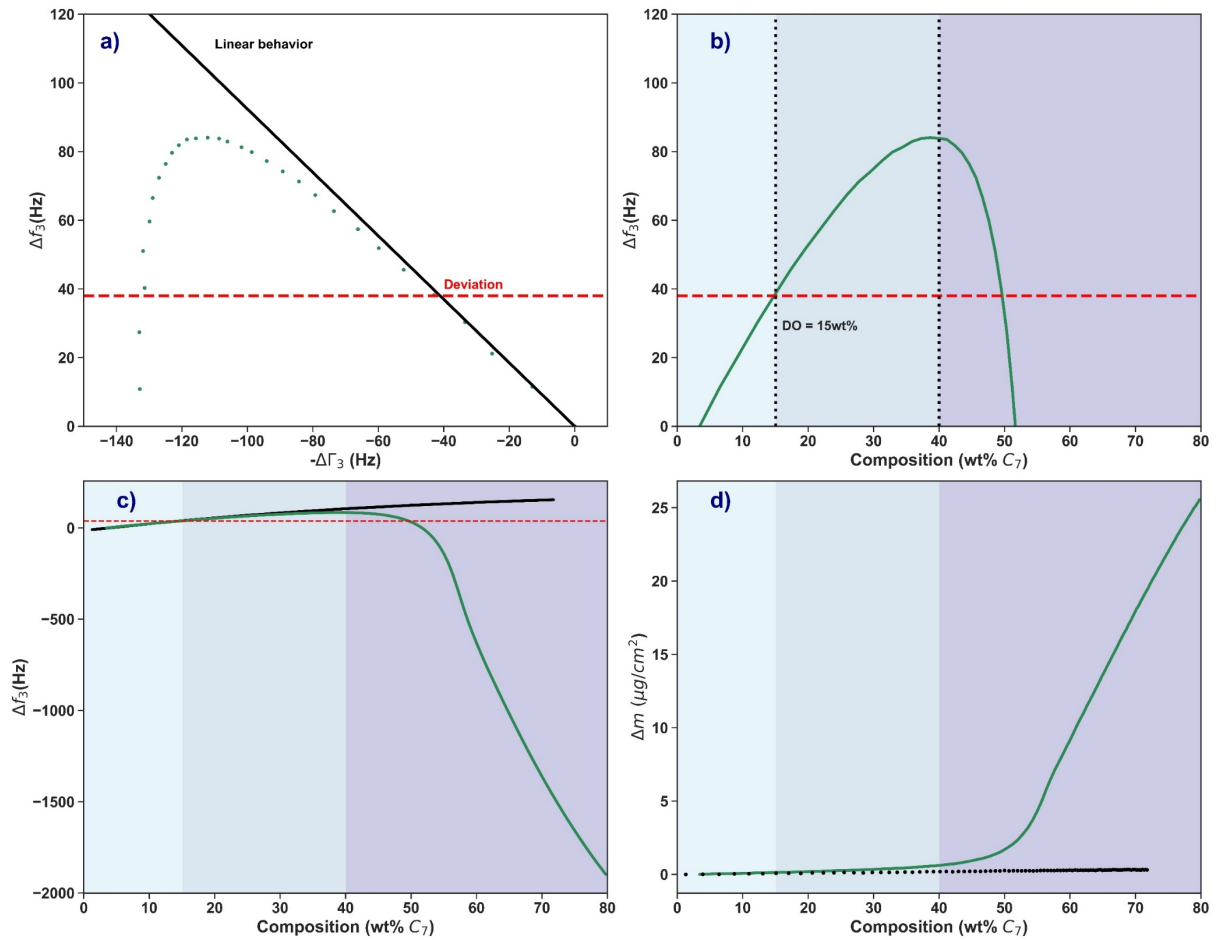


Figure 2. n-Heptane titration of asphaltenes (Sample A) followed by the QCR sensor at 30°C. a) Δf_3 vs $\Delta \Gamma_3$. b) Destabilization Onset (DO) estimation. c) Frequency shifts of the 3rd harmonic (Δf_3) as a function of composition. d) Theoretical deposited mass (Δm) as a function of composition. Light blue area represents the stable zone with mass loading effect = 0. Blue-gray area represents the unstable zone, with mass loading effect < liquid loading effect. The purple area represents the unstable zone with mass loading effect > liquid loading effect.

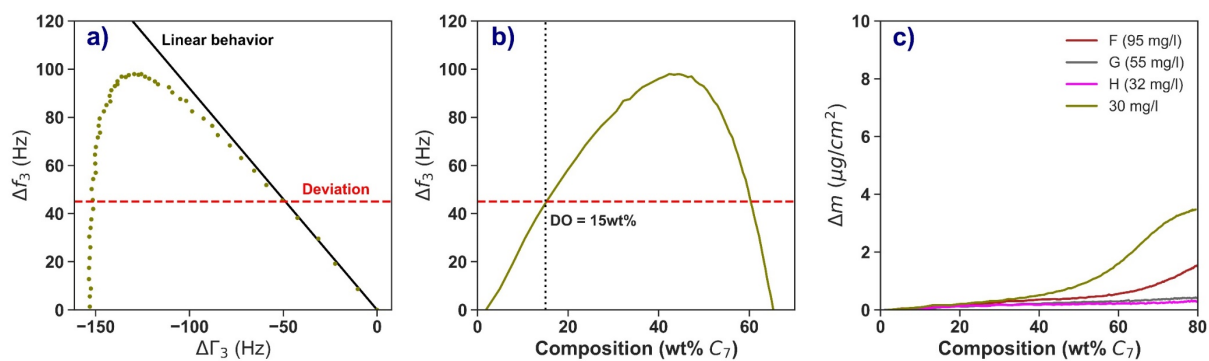


Figure 3. n-Heptane titration of diluted asphaltenes (30 mg/l) followed by the QCR sensor at 30°C. A) Δf_3 vs $\Delta \Gamma_3$. B) Destabilization onset (DO) estimation. C) Theoretical deposited mass comparison with samples A, F and G.

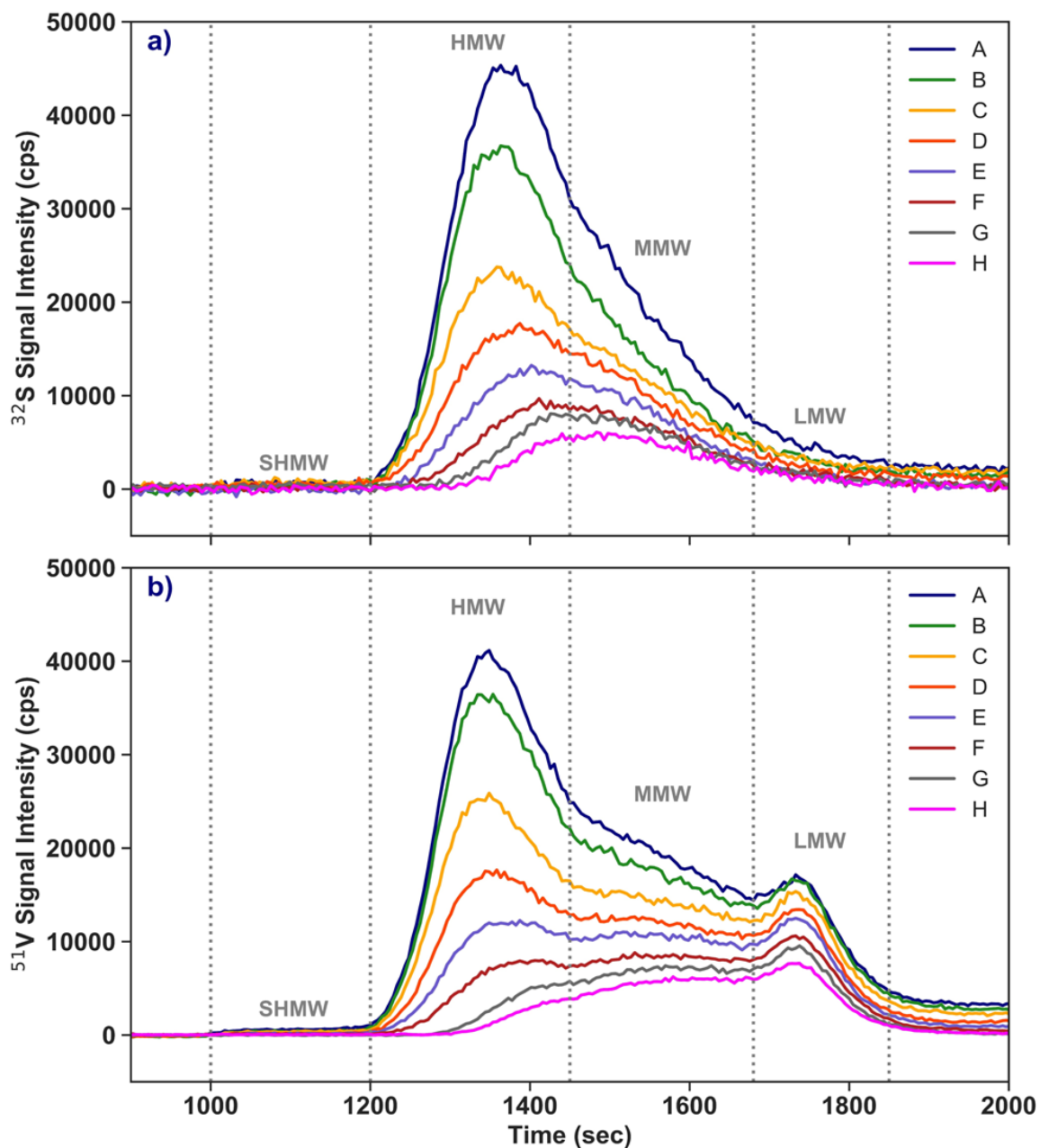


Figure 4. Sulfur- (a) and Vanadium-containing (b) compounds GPC-ICP HR MS chromatograms for asphaltene solutions before (A) and after (B-H) adsorption onto SiO₂ Bio-nanoparticles. sHMW, HMW, MMW, and LMW size distributions are separate by grey dashed lines.

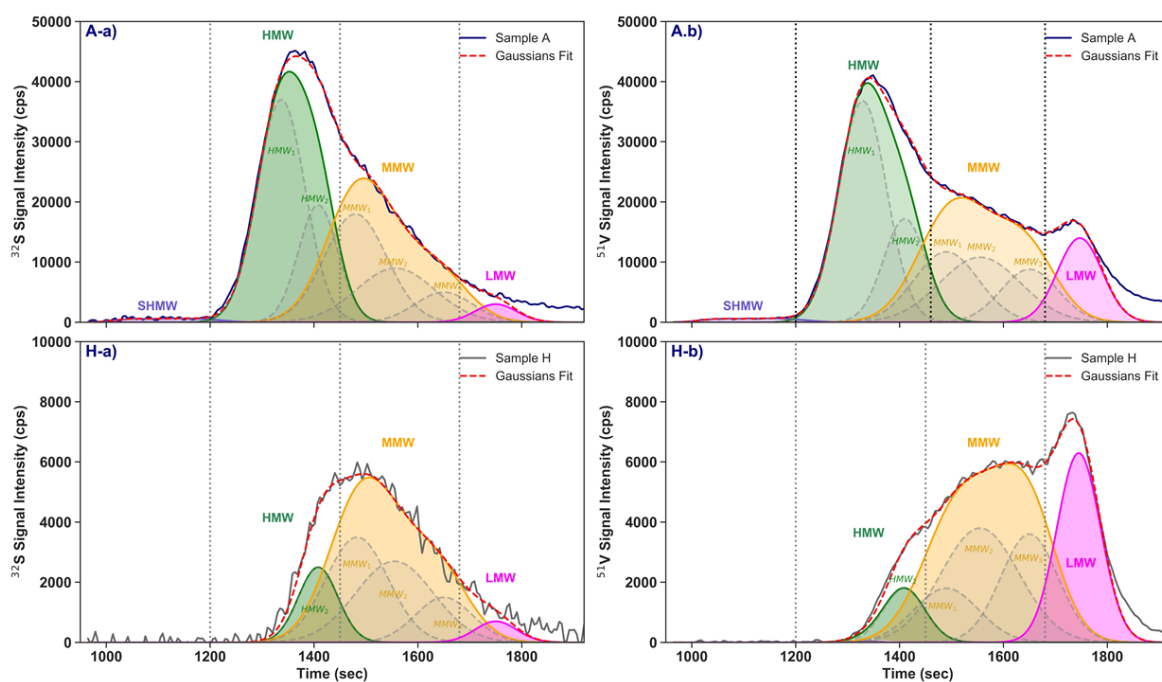


Figure 5. Gaussians fit and decomposition into four size distributions (sHMW, HMW, MMW and LMW) of GPC-ICP-HR-MS (a) Sulfur- and (b) Vanadium-containing compounds chromatograms for Sample A (upper panel) and Sample H (lower panel). Vertical dotted lines define the border of the corresponding size distribution.

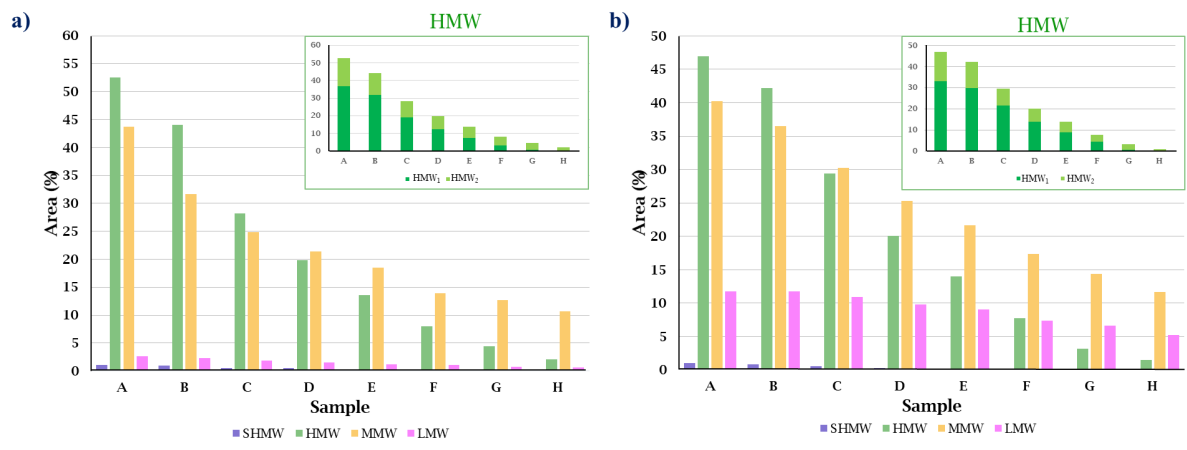


Figure 6. Aggregates size distribution areas of Sulfur- (a) and Vanadium containing compounds (b) obtained with the Gaussian fitting for all samples. The green plot at the upper right panel, represent the variation of the two HMW families (HMW₁ and HMW₂).

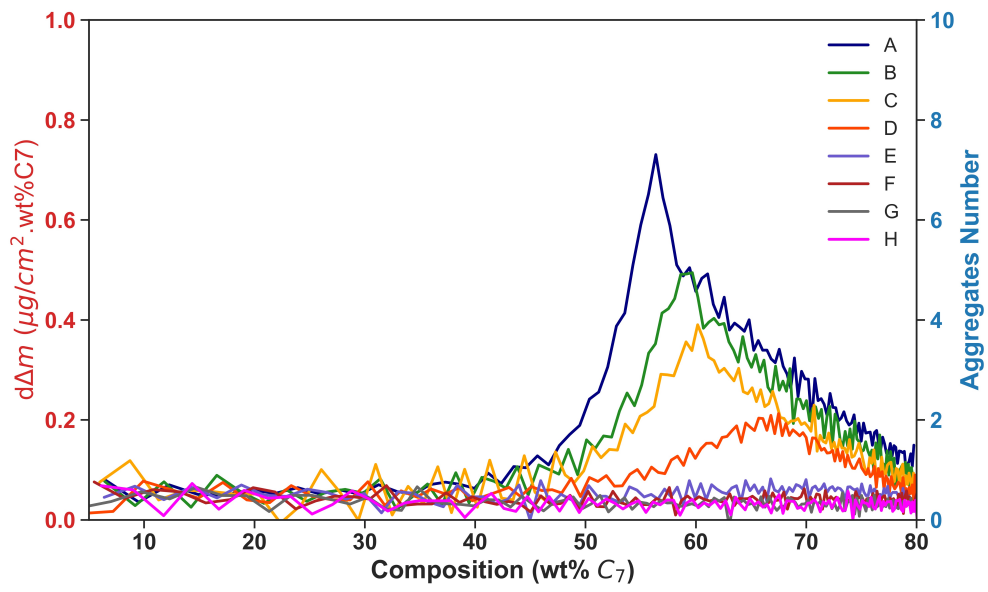


Figure 7. Deposited mass's slope ($d\Delta m$) vs. composition