



HAL
open science

Constraining the cosmic UV background at $z > 3$ with MUSE Lyman- α emission observations

Sofia G. Gallego, Sebastiano Cantalupo, Saeed Sarpas, Bastien Duboef, Simon Lilly, Gabriele Pezzulli, Raffaella Anna Marino, Jorryt Matthee, Lutz Wisotzki, Joop Schaye, et al.

► **To cite this version:**

Sofia G. Gallego, Sebastiano Cantalupo, Saeed Sarpas, Bastien Duboef, Simon Lilly, et al.. Constraining the cosmic UV background at $z > 3$ with MUSE Lyman- α emission observations. Monthly Notices of the Royal Astronomical Society, 2021, 504 (1), pp.16-32. 10.1093/mnras/stab796 . hal-03191142

HAL Id: hal-03191142






<https://hal.science/hal-03191142v1>

Submitted on 4 May 2023

HAL is a multi-disciplinary open access archive for the deposit and dissemination of scientific research documents, whether they are published or not. The documents may come from teaching and research institutions in France or abroad, or from public or private research centers.

L'archive ouverte pluridisciplinaire **HAL**, est destinée au dépôt et à la diffusion de documents scientifiques de niveau recherche, publiés ou non, émanant des établissements d'enseignement et de recherche français ou étrangers, des laboratoires publics ou privés.

Constraining the cosmic UV background at $z > 3$ with MUSE Lyman- α emission observations

Sofia G. Gallego ¹★, Sebastiano Cantalupo ^{1,2}, Saeed Sarpas,¹ Bastien Duboef,^{1,3} Simon Lilly,¹ Gabriele Pezzulli ^{1,4}, Raffaella Anna Marino,¹ Jorryt Matthee ¹, Lutz Wisotzki,⁵ Joop Schaye ⁶, Johan Richard,⁷ Haruka Kusakabe⁸ and Valentin Mauerhofer^{7,8}

¹Department of Physics, ETH Zürich, CH-8093 Zürich, Switzerland

²Department of Physics, University of Milan Bicocca, Piazza della Scienza 3, I-20126 Milano, Italy

³École Normale Supérieure de Paris-Saclay 4 Avenue des Sciences, F-91190 Gif-sur-Yvette, France

⁴Kapteyn Astronomical Institute, University of Groningen, Landleven 12, NL-9747 AD Groningen, the Netherlands

⁵Leibniz-Institut für Astrophysik Potsdam (AIP), An der Sternwarte 16, D-14482 Potsdam, Germany

⁶Leiden Observatory, Leiden University, PO Box 9513, NL-2300 RA Leiden, the Netherlands

⁷Univ Lyon, Univ Lyon1, Ens de Lyon, CNRS, Centre de Recherche Astrophysique de Lyon UMR5574, F-69230 Saint-Genis-Laval, France

⁸Observatoire de Genève, Université de Genève, 51 Chemin de Pégase, CH-1290 Versoix, Switzerland

Accepted 2021 March 15. Received 2021 March 12; in original form 2020 December 10

ABSTRACT

The intensity of the Cosmic UV background (UVB), coming from all sources of ionizing photons such as star-forming galaxies and quasars, determines the thermal evolution and ionization state of the intergalactic medium (IGM) and is, therefore, a critical ingredient for models of cosmic structure formation. Most of the previous estimates are based on the comparison between observed and simulated Lyman- α forest. We present the results of an independent method to constrain the product of the UVB photoionization rate and the covering fraction of Lyman limit systems (LLSs) by searching for the fluorescent Lyman- α emission produced by self-shielded clouds. Because the expected surface brightness is well below current sensitivity limits for direct imaging, we developed a new method based on 3D stacking of the IGM around Lyman- α emitting galaxies (LAEs) between $2.9 < z < 6.6$ using deep MUSE observations. Combining our results with covering fractions of LLSs obtained from mock cubes extracted from the EAGLE simulation, we obtain new and independent constraints on the UVB at $z > 3$ that are consistent with previous measurements, with a preference for relatively low UVB intensities at $z = 3$, and which suggest a non-monotonic decrease of Γ_{HI} with increasing redshift between $3 < z < 5$. This could suggest a possible tension between some UVB models and current observations which however require deeper and wider observations in Lyman- α emission and absorption to be confirmed. Assuming instead a value of UVB from current models, our results constrain the covering fraction of LLSs at $3 < z < 4.5$ to be less than 25 per cent within 150 kpc from LAEs.

Key words: galaxies: haloes – intergalactic medium – diffuse radiation – large-scale structure of Universe – ultraviolet: general.

1 INTRODUCTION

The evolution of the ionization state of baryonic matter in the Universe is largely determined by the Cosmic UV Background (UVB), the average bulk of ionizing photons coming from star-forming galaxies and active galactic nuclei (AGNs). In particular, these sources are responsible for the reionization of hydrogen and helium in the intergalactic medium (IGM) and for sustaining its highly ionized state up to the current epoch (see Meiksin 2005, and references therein). The epoch of reionization can be understood by studying the redshift evolution of the UVB right after this period. Current predictions require galaxies at the reionization era to be much more efficient at emitting ionizing photons than their low redshift counterparts. The efficiency of these galaxies is determined

by their ionizing escape fraction (f_{esc}) and their UV spectral shape (Dayal & Ferrara 2018). The UVB also regulates the temperature of the IGM (Miralda-Escudé & Rees 1994) and thence imposes a temperature threshold for galaxy formation in low-mass haloes (Gnedin 2000). Moreover, given that at least half of the baryonic material is predicted to be in the IGM (Peebles & Groth 1975; Bond, Kofman & Pogosyan 1996) and that galaxies cannot sustain their star formation rate (SFR) through cosmic time with their current gas content, a continuous accretion from the IGM is a necessary ingredient for galaxy evolution (e.g. Kereš et al. 2005; Fumagalli et al. 2011). The UVB affects this accretion by changing the thermal and ionization state of the gas, and therefore it plays a major role in cosmic structure and galaxy formation processes (e.g. Efstathiou 1992; Wiersma, Schaye & Smith 2009; Cantalupo 2010).

Determining the intensity of the UVB at high redshift by directly measuring the emission from individual sources of ionizing photons

* E-mail: sofia.gallego@gmail.com

is, however, an extremely challenging task. Many of the ionizing sources are too faint to be detected individually and part of the ionizing spectrum is highly absorbed by the IGM itself and by dust. Most of the previous studies have been focused instead on estimating the UVB indirectly by studying the properties of the IGM that are affected by the UVB photoionization rate of neutral hydrogen (Γ_{HI}). The first constraints on the high redshift IGM came from the study of the Lyman- α ($\text{Ly}\alpha$) absorption features, in particular the so-called ‘Ly α forest’ in the spectra of distant quasars (Lynds 1971). Early methods investigating the value of the UVB relied on measuring the redshift evolution of the Ly α transmission in the quasar surroundings (e.g. Bajtlik, Duncan & Ostriker 1988; Kulkarni & Fall 1993; Srianand & Khare 1996; Scott et al. 2000; Dall’Aglia, Wisotzki & Worseck 2008; Calverley et al. 2011; Wyithe & Bolton 2011; Romano et al. 2019), which depends on the escape fraction and mean free path of ionizing photons from the quasar and the quasar spectra. Such methods are affected by possible anisotropies of the quasar emission and by the fact that quasar environments are likely denser compared to those of typical galaxies. Other methods compare the Ly α forest data with cosmological simulations (e.g. Gaikwad et al. 2016) which depend on assumptions on the gas temperatures and the opacity of the IGM to Ly α and ionizing photons. Theoretical models of the UVB (Haardt & Madau 2001; Faucher-Giguère et al. 2009; Haardt & Madau 2012; Khaire & Srianand 2019) are constructed by solving the radiative transfer equation through cosmic times, and depend on a set of input parameters such as the evolution of the escape fraction of ionizing radiation (f_{esc}), the spectral shape of the UVB, galaxy, and AGN luminosity functions, the distribution in redshift and column density of the IGM absorbers, among other ingredients (e.g. Calverley et al. 2011; Wyithe & Bolton 2011; Becker & Bolton 2013; D’Aloisio et al. 2018).

Another way to estimate the intensity of the UVB seen by the IGM is through Ly α emission. When a hydrogen atom is ionized, it can recapture a free electron (recombination) and transition into the ground state by a succession of photon emissions, most of which ends up with Ly α . A good approximation is that the majority of Ly α photons are produced in optically thick clouds, defined as Lyman Limit Systems (LLS) with column densities (N_{HI}) above $10^{17.2} \text{ cm}^{-2}$, corresponding to an optical depth at the Lyman Limit (τ_{LL}) above 1 (Gould & Weinberg 1996). This process is called fluorescent Ly α emission, and in the absence of other Ly α emission mechanisms the expected surface brightness (SB) is directly proportional to the intensity of Γ_{HI} (Miralda-Escude & Ostriker 1990; Gould & Weinberg 1996; Bunker, Marleau & Graham 1998; Cantalupo et al. 2005).

For $z > 3$, $\text{SB}_{\text{Ly}\alpha}$ is predicted to be about $10^{-20} \text{ erg s}^{-1} \text{ cm}^{-2} \text{ arcsec}^{-2}$ (Gould & Weinberg 1996; Cantalupo et al. 2005; Furlanetto et al. 2005; Bertone & Schaye 2012; Witstok et al. 2019), well below current observational limits on individual detections. One way to enhance the Ly α emission is to look in the vicinity of quasars and AGN which increase the intensity of the ionizing radiation up to very large radii (Cantalupo et al. 2014; Cai et al. 2019; Arrigoni Battaia et al. 2019; Umehata et al. 2019). The detected emission is in this case independent on the value of the UVB and therefore these methods cannot be used to provide a constraint on the UVB. Therefore, the only viable method with current observations to increase the detectability of the UVB fluorescent emission requires the stacking of deep observations of average regions of the Universe where the fluorescent signal is expected to be present. In our previous work (Gallego et al. 2018), we developed a novel ‘oriented-stacking’ technique to detect the

Ly α fluorescent signal of the IGM around Ly α emitting galaxies (LAEs), tailored to highlighting the filamentary structure of the Cosmic Web. By stacking deep MUSE observations (Bacon et al. 2015, 2017), using Ly α emitting galaxies (LAEs) as reference points for the 3D orientation of each stacking element, extracting subcubes around them and transforming the coordinates of the field to align it with a neighbouring LAE, we reached a 2σ SB limit of $0.4 \times 10^{-20} \text{ erg s}^{-1} \text{ cm}^{-2} \text{ arcsec}^{-2}$, three times below expectations from Haardt & Madau (2012, hereafter HM12), under the assumption that all of the selected pairs of LAEs were connected by LLS filaments.

This, however, does not necessarily imply that the UVB is inconsistent with HM12; in fact, the largest source of uncertainty of this technique is the unknown fraction of LLS filaments between galaxy pairs, which will depend on the galaxies’ properties but especially on the distance between the selected pairs. Restricting the sample of galaxy pairs to the closest ones (e.g. below 2 cMpc) is not sufficient to compensate for the increased noise associated to a reduction of the sample size.

In this paper, we instead perform 3D radial stacking of LAEs to estimate the value of the UVB and specifically Γ_{HI} . Although we lose any information on the 2D spatial distribution of LLSs and the possible detection of cosmic filaments, the decrease in the average noise that results from stacking a larger number of pixels is sufficient to compensate for the decrease in the expected fluorescent signal. Because the expected signal in our stacking analysis depends both on the UVB intensity and the LLS covering fraction, our method can provide a constraint on the UVB only if the covering fraction of LLS around galaxies is known. Despite this limitation, we notice that this methodology does not require several of the assumptions made by previous studies and it could therefore provide an independent constraint on the value of the UVB. Given the lack of observational constraints on f_{LLS} around LAEs at the redshifts available for MUSE, we decided to estimate f_{LLS} from mock cubes obtained from the EAGLE simulation (Schaye et al. 2015). However, we emphasize that our observational results are independent of the estimated f_{LLS} from simulations, and therefore they can be used to estimate Γ_{HI} based on future studies of f_{LLS} . Moreover, our observational results may also be used as a prediction for the radial distribution of LLSs around galaxies given an assumed value of Γ_{HI} .

This paper is organized as follows: Section 2 describes the theoretical background on the estimation of Γ_{HI} from the expected IGM Ly α emission, Section 3 the observational data, data reduction, the galaxy catalogue, and stacking procedure, and Section 4 the mock cubes produced to estimate f_{LLS} and the uncertainties in the estimation. Results on the value of Γ_{HI} and the covering fraction of LLS from combining observations and simulations are shown in Section 5. A discussion on the assumptions on the calculation of Γ_{HI} and f_{LLS} and the implications for future observations are presented in Section 6 and a summary is presented in Section 7. Throughout the paper, we assume a flat Λ CDM cosmology with $H_0 = 69.6 \text{ km s}^{-1} \text{ Mpc}^{-1}$, $\Omega_{\text{m}} = 0.286$, $\Omega_{\Lambda} = 0.714$ (Bennett et al. 2014) and $\Omega_{\text{b}} h^2 = 0.02223$ (Bennett et al. 2013).

2 FLUORESCENT LY α EMISSION FROM THE UVB

In this section, we develop the formalism needed to calculate the expected Ly α SB produced by IGM clouds photoionized by the UVB, first developed in Gould & Weinberg (1996).

The rate at which the UVB photoionizes the neutral hydrogen (Γ_{HI}) is denoted as

$$\Gamma_{\text{HI}} = 4\pi \int_{\nu_0}^{\infty} \frac{J_\nu \sigma_\nu d\nu}{h\nu}, \quad (1)$$

where J_ν is the angled-averaged monochromatic intensity (per unit time, frequency, area, and solid angle), and σ_ν is the hydrogen photoionization cross-section. The integral lower limit is defined by the hydrogen ionization threshold ($\nu_0 = \nu_{\text{HI}}$, $h\nu_{\text{HI}} = 13.6 \text{ eV}$) and the upper limit is in principle infinity but in practice it is truncated at $\nu_{\text{HeII}} = 4\nu_0$ given that most of the radiation above that threshold is absorbed by helium and in general it contributes very little to the overall absorbed energy (Cantalupo et al. 2005).

In a self-shielded cloud the incident radiation will ionize the outermost layer and a fraction of the recombination radiation will be emitted as Ly α photons. The Ly α photon production per unit time, surface and solid angle can be expressed as

$$R_{\text{Ly}\alpha} = \epsilon_{\text{thick}} \int_{\nu_0}^{4\nu_0} \frac{J_\nu d\nu}{h\nu}, \quad (2)$$

where ϵ_{thick} is the fraction of recombinations leading to a Ly α photon, a factor that depends weakly on the temperature and varies between 0.61 to 0.68 for temperatures between 10^4 and 10^5 K and case B recombination.

If we approximate Γ_{HI} as:

$$\Gamma_{\text{HI}} \simeq 4\pi \bar{\sigma}_{\nu_{\text{HI}}} \int_{\nu_0}^{4\nu_0} \frac{J_\nu d\nu}{h\nu}, \quad (3)$$

where $\bar{\sigma}_{\nu_{\text{HI}}} \equiv \frac{\int_{\nu_0}^{4\nu_0} J_\nu / \nu \sigma_\nu d\nu}{\int_{\nu_0}^{4\nu_0} J_\nu / \nu d\nu}$ is the grey cross-section, we can rewrite equation (2) as

$$R_{\text{Ly}\alpha} \simeq \frac{\epsilon_{\text{thick}} \Gamma_{\text{HI}}}{4\pi \bar{\sigma}_{\nu_{\text{HI}}}}. \quad (4)$$

$R_{\text{Ly}\alpha}$ can be transformed into the observed surface brightness (SB):

$$\text{SB}_{\text{Ly}\alpha} \simeq \frac{R_{\text{Ly}\alpha} \times h\nu_{\text{Ly}\alpha}}{(1+z)^4}, \quad (5)$$

where the factor $(1+z)^4$ accounts for the cosmological SB dimming.

Assuming $\epsilon_{\text{thick}} = 0.65$ for $T = 2 \times 10^4 \text{ K}$, the expected equilibrium temperature for the photoionized self-shielded gas layers (Cantalupo et al. 2005), we estimate a Ly α SB of

$$\text{SB}_{\text{Ly}\alpha} \simeq 1.84 \times 10^{-17} \text{ erg s}^{-1} \text{ cm}^{-2} \text{ arcsec}^{-2} \left(\frac{\Gamma_{\text{HI}}}{10^{-12} \text{ s}^{-1}} \right) \left(\frac{\bar{\sigma}_{\nu_{\text{HI}}}}{10^{-18} \text{ cm}^2} \right)^{-1} (1+z)^{-4}. \quad (6)$$

Using the HI ionization cross-section from Osterbrock (1974), the grey cross-section $\bar{\sigma}_{\nu_{\text{HI}}}$ will depend only on the spectral shape of the UVB and therefore we expect $\text{SB}_{\text{Ly}\alpha}$ to be proportional to the photoionization rate. Assuming that the shape of the ionizing spectra does not change significantly between UVB models, the observed value of Γ_{HI} will be a simple rescaling of the observed SB (or upper limit) with respect to the SB expected for a given model:

$$\Gamma_{\text{HI}} \simeq 0.54 \times 10^{-12} \text{ s}^{-1} \left(\frac{\text{SB}_{\text{Ly}\alpha}}{10^{-17} \text{ erg s}^{-1} \text{ cm}^{-2} \text{ arcsec}^{-2}} \right) \left(\frac{\bar{\sigma}_{\nu_{\text{HI}}}}{10^{-18} \text{ cm}^2} \right) (1+z)^4. \quad (7)$$

$$\Gamma_{\text{HI}} = \text{SB}_{\text{Ly}\alpha, \text{obs}} \times \frac{\Gamma_{\text{HI, model}}}{\text{SB}_{\text{Ly}\alpha, \text{model}}}. \quad (8)$$

For the rest of the paper, we choose HM12 as our reference model, which for a value of the UVB of $\Gamma_{\text{HI}} = 0.7 \times 10^{-12} \text{ s}^{-1}$ at $z = 3.5$ we predict an SB of $1.14 \times 10^{-20} \text{ erg s}^{-1} \text{ cm}^{-2} \text{ arcsec}^{-2}$ (Gallego et al. 2018).

2.1 The covering fraction of Lyman limit systems

As discussed previously, equation (8) is valid for the Ly α SB arising from a single LLS. However we expect in general that only a fraction of a considered observed area would be covered by LLSs. Furthermore, some of the emission may arise from optically thin clouds as well. For simplicity, we encapsulate both effects in one parameter f_{LLS} (for a discussion of this approximation see Section 4.3.2), so that

$$f_{\text{LLS}} \times \Gamma_{\text{HI}} = \text{SB}_{\text{Ly}\alpha, \text{obs}} \times \frac{\Gamma_{\text{HI, model}}}{\text{SB}_{\text{Ly}\alpha, \text{model}}}. \quad (9)$$

From equation (9), we can infer either the average covering fraction of LLSs within the area where the SB is measured, by assuming a measured value of Γ_{HI} , or we can predict Γ_{HI} by assuming a value of f_{LLS} .

3 OBSERVATIONS

The Multi-Unit Spectroscopic Explorer (MUSE; Bacon et al. 2010), mounted on the Very Large Telescope (VLT) at the Paranal Observatory, is uniquely suited for the search of extended Ly α emission at high redshift. MUSE is a panoramic integral-field spectrograph with a field of view (FOV) of $1 \times 1 \text{ arcmin}^2$ and a sensitivity in the optical range ($470 \text{ nm} < \lambda < 940 \text{ nm}$), capable to detect Lyman alpha emission for $2.9 < z < 6.6$. The MUSE voxel (3D pixel) size of $0.2 \text{ arcsec} \times 0.2 \text{ arcsec} \times 1.25 \text{ \AA}$ is equivalent to a cube with a physical size of about $1.5 \text{ kpc} \times 1.5 \text{ kpc} \times 120 \text{ kpc}$ at redshift 3.5.

In this paper, we use the MUSE Ultra-Deep Field (UDF; Bacon et al. 2017), obtained during the Guaranteed Time Observations of the MUSE Consortium. The UDF consists of a mosaic of nine 10 h exposure fields with a total FOV of $3 \times 3 \text{ arcmin}^2$ (hereafter UDF-mosaic), plus one overlapping 31 h exposure in a 1.15 arcmin^2 field (hereafter UDF-10). The UDF-mosaic and UDF-10 achieve a 2σ emission line SB limit at 5500 \AA for an aperture of 1 arcsec^2 of about 1.3 and $0.8 \times 10^{-19} \text{ erg s}^{-1} \text{ cm}^{-2}$, arcsec^{-2} , respectively.

3.1 Data reduction

UDF-10 and UDF-mosaic data cubes have been reduced following the procedure described in Bacon et al. (2017) and Conseil et al. (2016). For the purposes of detection of Ly α emission up to large distances from galaxies and to reduce any low level systematics enhanced during stacking, we have extended the process of background correction.

The standard sky subtraction process assumes that astronomical objects have well-defined boundaries with respect to the background noise. In the case of faint haloes around galaxies, that extend below the noise level, this implies that some of the emission will be considered sky and therefore subtracted, especially in wavelengths with a high density of galaxies. This effect, although in general very small, is enhanced when performing stacking procedures and, for our case, its magnitude is about the same as the expected signal.

In order to correct for the oversubtraction, we recalculate the background layer-by-layer in the wavelength direction. First, we mask continuum sources with CubEx (Cantalupo, in preparation) on the white-light image. Secondly, we mask a region of 20 arcsec radius

and spectral width of 12.5\AA around the 3D peak of the detected LAEs, where we expect most of the extended Ly α emission to be present. We estimated the 3σ clipped average flux of the unmasked voxels and subtracted it from the layer flux. On the background corrected data cubes, we apply a continuum subtraction using a median filter with a wavelength width of 20 layers and a smoothing radius of 2 layers. Wavelengths with skylines are discarded.

3.2 Galaxy catalogue

We select high-redshift LAEs from an upgraded version of the galaxy catalogue presented in Inami et al. (2017). In Fig. 1 we plot the redshift distribution of LAEs in the MUSE UDF-10 and UDF-mosaic fields from our galaxy catalogue, compared with the *HST* photometric redshift catalogue from Rafelski et al. (2015) (within the UDF-mosaic field of view). The ratio between the LAEs detected in the MUSE catalogues with respect to the *Hubble Space Telescope* (*HST*) photometric catalogue (in the respective fields) is calculated for 50 redshift bins (Fig. 1, top panel). Because of the advantages of MUSE IFU with respect to *HST* (despite the atmosphere contamination), some regions have a ratio above 1. At least one clear overdensity in the redshift distribution of LAEs is observed at about $z = 3.7$, present in both the MUSE and the *HST* catalogues. This overdensity does not seem to artificially appear from a relative decrement in galaxy counts in their surroundings due to skylines. Since we expect that the local ionizing background around overdensities may be enhanced, e.g. by the presence of (undetected) AGN, and at the same time the covering fraction of LLS could be larger in these special volumes of the universe, we discarded in our main analysis LAEs within $\Delta z = 0.05$ from this known overdensity in order to not bias our measurements or possible constraints on the UVB (see Section 6.2 for an analysis on this region).

We remove LAEs from the UDF mosaic catalogue that are already present in the UDF-10 catalogue and those with poor signal-to-noise (SNR, confidence level below 2 on the catalogues) or closer than 10 pixels to the border of the UDF mosaic cube to avoid noisy pixels. With this selection criteria we end up with 138 LAEs for UDF-10 and 598 LAEs for UDF mosaic.

In order to maximize the SNR without extending to a redshift range where $\Gamma_{\text{H I}}$ and f_{LLS} may significantly evolve, we divide the galaxy catalogue into 4 redshift bins: [2.9, 3.4], [3.4, 4.5], [4.5, 5.5], and [5.5, 6.5], with mean redshifts 3.1, 3.9, 4.9, and 5.9, respectively.

3.3 Subcube extraction and stacking

We extract subcubes of $40\text{ arcsec} \times 40\text{ arcsec} \times 125\text{\AA}$ centred on the 3D peak of the Ly α emission of the selected galaxies. To correct for any local variations on the background noise of each subcube, we subtract the $3\text{-}\sigma$ clipped average level of voxels at a distance larger than 20 arcsec and 12.5\AA from the peak of the Ly α emission (the centre of the subcubes). This procedure is similar to the procedure adopted by Wisotzki et al. (2018), where the data beyond 6 arcsec of the detected LAEs was truncated to zero, but we extend the truncation radius to much larger values since we are interested in the emission well beyond the CGM scales. Since UDF-10 and UDF mosaic cubes have different integration times, we stack the extracted subcubes for each datacube separately. We apply an average $3\text{-}\sigma$ clipping algorithm with a single iteration for each voxel and later on combine the stacked cubes of the individual fields with a weight given by their relative depth.

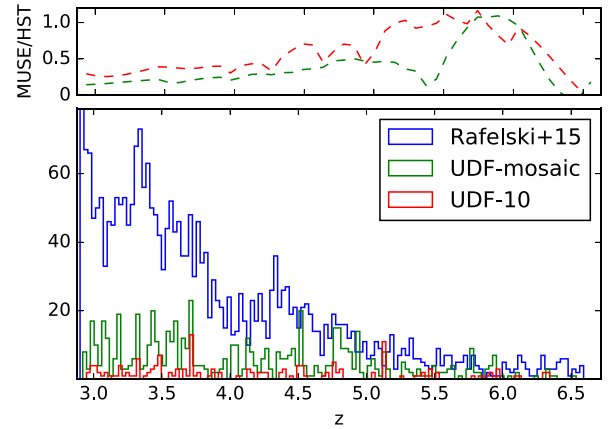


Figure 1. Lower panel: LAE redshift distribution for the UDF mosaic and UDF-10 MUSE spectroscopic catalogues and the Rafelski et al. (2015) *HST* photometric galaxy catalogue. Top panel: Ratio of the UDF mosaic and UDF-10 LAEs with respect to the *HST* catalogue (some regions are above 1 since more sources were detected with MUSE).

4 SIMULATIONS

Given the lack of observational constraints on the distribution of H I column densities around galaxies at the redshift range of our study, in particular on the covering fraction of LLSs around LAEs, we construct $\text{N}_{\text{H I}}$ mock cubes based on the EAGLE project (Crain et al. 2015; Schaye et al. 2015). EAGLE is a set of cosmological simulations performed with the smoothed particle hydrodynamics (SPH) code GADGET-3 (Springel 2005) with a modified implementation of SPH, time stepping, and subgrid models. AGN and stellar feedback are implemented with the prescription of Dalla Vecchia & Schaye (2012).

We use for our analysis the *Recal-L0025N752* simulation, with a periodic box of 25 comoving Mpc (cMpc), a baryonic mass resolution of $2.26 \times 10^5 M_{\odot}$, and a stellar and AGN feedback implementation recalibrated to fit the galaxy stellar mass function at redshift 0.

We choose the simulation with the highest mass resolution available in order to have better resolved properties of the simulated galaxies. Massive dark matter haloes are less abundant than in the larger box size simulation, although, since our stacking analysis is based on LAEs, which are believed to have halo mass below $10^{12} M_{\odot}$, the lack of massive haloes is not critical. Whereas the projected area of the simulation is several times larger with a shorter line of sight distance in comparison with the MUSE fields, the total simulation volume is large enough for a comparable sample of galaxies and it allows us to extend the analysis up to a larger projected distance than the MUSE fields.

4.1 Mock cubes

In order to create mock cubes from the simulation, we first convert the particle data of each EAGLE snapshot into a block-structured adaptively refined grid of rectangular cells using the SPH kernel to distribute the mass of each particle among its neighbouring cells.

The neutral hydrogen density ($n_{\text{H I}}$) for each cell is estimated by calculating the collisional and photoionization equilibrium using the on-the-spot approximation (Baker & Menzel 1962), assuming a homogeneous photoionization rate from the UVB with values taken by the model of Haard & Madau (2012, a newer model with respect to the Haardt & Madau 2001 used during the EAGLE simulations).

Table 1. Summary of mock cubes used in this work. The number of layers in the l.o.s. direction is selected to correspond to the MUSE wavelength width of 1.25 Å.

Snapshot	z	l.o.s. width (cMpc)	Δv (km s ⁻¹)	Δz
6	5.97	0.44	44.3	0.058
7	5.49	0.50	47.9	0.052
8	5.04	0.56	51.0	0.046
9	4.49	0.64	56.9	0.041
10	3.98	0.74	61.9	0.035
11	3.53	0.86	68.5	0.030
12	3.02	1.00	76.1	0.026
13	2.48	1.25	89.6	0.021
14	2.24	1.39	87.2	0.019

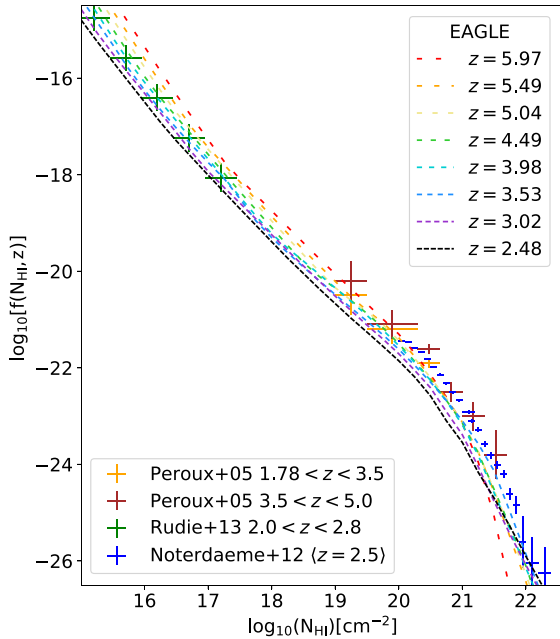


Figure 2. H I column density distribution function for the EAGLE mock cubes from the full simulation box. For comparison, observational data from absorption line studies is shown (Péroux et al. 2005; Noterdaeme et al. 2012; Rudie et al. 2013).

Following the previous work of Rahmati et al. (2013), we use a fitting function to adjust the equilibrium values to account for self-shielding and case A recombination. The hydrogen density and temperature of each cell are used for this calculation, although, since EAGLE imposes an equation of state for star-forming gas particles, we set the temperature for all star-forming particles to 10⁴ K.

Following the $n_{\text{H I}}$ estimation, the adaptively refined rectangular cells are converted into a regular grid with an average of 12 particles per cell, which results in a cube of 4096³ voxels. Finally, we convert $n_{\text{H I}}$ into column densities ($N_{\text{H I}}$) by collapsing one coordinate of the box into regular layers of about 1.25 Å. This specific width was chosen for a number of reasons: for an accurate comparison to the MUSE data that have the same wavelength width; to avoid projection effects in our $N_{\text{H I}}$ calculation and to have resolution elements that are much bigger than the typical size of LLS clouds. A summary of all the mock cubes is presented in Table 1.

4.2 Simulated galaxy catalogue

Galaxies in the *Recal-L0025N0752* simulation were obtained through the SQL query available at the EAGLE website¹ (McAlpine et al. 2016), where we retrieve their halo mass (M_{200}), SFR and their rest-frame U magnitude (M_U , as an indicator of continuum emission). Since there is no information about the Ly α luminosity of these galaxies, we do not know what fraction of them corresponds to the observed population of LAEs. As a simple approximation, we only select galaxies with a quoted SFR (SFR>0). Because star formation histories for galaxies with less than 100 stellar particles are affected by stochasticity, a fraction of the selected galaxies do not have an assigned M_U in the catalogue. Ignoring those galaxies decreases the number density of galaxies below the observed number density. To keep a sufficient number of simulated galaxies in our sample, we manually assign a value of M_U for these galaxies based on the instantaneous relation between M_U and SFR in the catalogue. Deviations from this relation are expected to be stochastic and therefore to cancel out on average in our analysis based on stacking.

Similarly as with the MUSE cubes, subcubes were extracted around the 3D positions of the selected galaxies.

4.3 Uncertainties in the predicted f_{LLS} from simulations

The uncertainties involved in our predicted gas density distribution, our assumption of self-shielded clouds as the only sources of Ly α photons, and the fact that the galaxies selected in the simulations may not correspond to the observed LAEs will all have an effect on the predicted f_{LLS} radial profile. These effects are relevant for our estimate of $\Gamma_{\text{H I}}$ as discussed below.

4.3.1 Column density distribution

To quantify the accuracy of our estimated column densities at different redshifts from EAGLE with respect to observations, we calculate the column density distribution function (CDDF), or equivalently the number of absorbers per unit column density ($dN_{\text{H I}}$) per unit absorption length ($dX = dz(H_0/H_z)(1+z)^2$). As shown in Fig. 2 our results agree well with the observational data, although we are below the observational results at higher column densities. The small disagreement at large $N_{\text{H I}}$ can be explained by the small number of massive haloes for the chosen simulation box and the decrease in resolution when converting particles from EAGLE into a grid, which can smooth-out the highest densities. None the less, a remarkable agreement is found when calculating $l(z)$ (Fig. 3), the number of absorbers above the Lyman limit threshold per unit redshift. Our values, compared the latest observational results (Crighton et al. 2019), are in much better agreement with respect to the estimated $l(z)$ from the CDDF of Rahmati et al. (2015),² which may be partly coincidental or partly due to the higher resolution of our chosen simulation box and/or to the different adopted UVB model. We stress however, that the detailed physical origin of the particular LLSs covering fraction used here are not important as long as they can be considered a good approximation of the real data.

¹<http://icc.dur.ac.uk/Eagle/database.php>

²*Ref-L100N1504*, adjusted to the Bennett et al. (2014) cosmology.

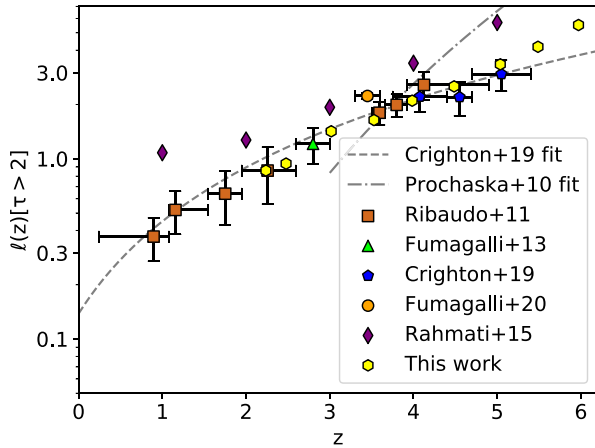


Figure 3. Number of LLSs per unit redshift obtained from the EAGLE N_{HI} mock cubes from Rahmati et al. (2015) and our work compared to observational constraints (Prochaska, O’Meara & Worseck 2010; Ribaudo, Lehner & Howk 2011; Fumagalli et al. 2013; Crighton et al. 2019; Fumagalli, Fotopoulou & Thomson 2020). We define an LLS as having an optical depth at the Lyman limit above 2, which corresponds to an HI column density of $10^{17.5} \text{ cm}^{-2}$.

4.3.2 Self-shielding transition

As described in Section 2, our Γ_{HI} prediction from equation (7) accounts for the maximum SB expected for a single self-shielded cloud, which happens above $N_{\text{HI}} \approx 10^{18} \text{ cm}^{-2}$. In practice, part of the Ly α emission will come from optically thin clouds ($N_{\text{HI}} < 10^{17} \text{ cm}^{-2}$) and especially between the transition between optically thin and optically thick clouds, where there is no observational constraints to date. Moreover, in the case of extended emission, an accurate estimation will require us to consider the fraction of the observed region that is covered by self-shielded clouds. We chose to account for both effects in f_{LLS} , which we assume to be the covering fraction of LLSs.

To estimate how accurate the approximation of a sharp transition between self-shielded and not self-shielded gas is, we convert a stacked N_{HI} profile (before converting to f_{LLS}) around galaxies at $z = 3.53$ into an expected SB (Fig. 4) using a simple fitting function between N_{HI} and SB from the output of the simulations presented in Cantalupo et al. (2005, fig. 6). If column densities above the LLS threshold emit 100 per cent of the maximum expected Ly α SB from fluorescence and everything below that threshold does not emit any Ly α , then the expected SB would match the dashed curve shown in Fig. 4. As we will see in Section 5, some of our observational results are upper limits on the expected SB. Given that our mock cubes slightly underestimate the abundance of high N_{HI} gas with respect to observational constraints, we choose not to correct for this effect.

4.3.3 Contribution of local ionizing sources in simulations

One of the main limitations of our mock cubes is that the impact of local ionizing sources on the N_{HI} distribution and Ly α emission is ignored. This can have two opposite consequences for the expected SB: an increase in the local ionizing radiation (increasing the rate of Ly α photons) and a decrease in the neutral hydrogen density (decreasing the rate of Ly α photons) due to that same radiation ionizing the gas. The relative importance of these effects will depend on the ionizing escape fraction from galaxies and the morphology of the surrounding gas, which are difficult to model. Given that we

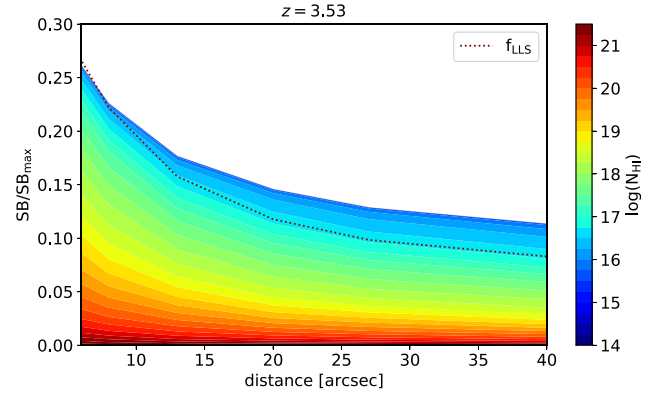


Figure 4. EAGLE Ly α SB profile expectations at redshift 3.5, colour coded by the differential contribution of different N_{HI} column densities, and normalized by the maximum expected emission from the UVB fluorescence. The Ly α SB was calculated using the Cantalupo et al. (2005) conversion between SB and N_{HI} , multiplied by the corresponding covering fraction of each N_{HI} bin. The dashed line represents the covering fraction of LLSs (i.e. $N_{\text{HI}} > 10^{17.5} \text{ cm}^{-2}$). If column densities above the LLS threshold would emit 100 per cent of the Ly α SB from fluorescence and everything below that threshold did not emit any Ly α , then the expected SB would match the dashed curve (f_{LLS}).

expect the contribution of local sources to be larger the closer we are to the central galaxies in our stacks, our estimated covering fractions will be less reliable at distances typical of the CGM, which makes any prediction at those scales uncertain. In order to have a better comparison, a full radiative transfer simulation with sufficiently large resolution for both the galaxies and their CGM would be necessary. In absence of these models, the currently simulated covering fraction could be considered as upper limits. We note, however, that numerical resolution could also have an important effect and some recent models suggest that increasing the resolution of the simulations should increase the covering fraction of LLSs, possibly balancing to some degree the lack of local ionizing sources.

4.3.4 Dependence of the covering fraction on galaxy properties

In order to obtain our simulated f_{LLS} radial profiles, we include all galaxies in the simulation with a measured SFR, which may in reality not correspond to our observed LAEs. Since there is no clear way to separate LAEs from non-LAEs in the simulations, we investigate the relation between the properties of the central galaxies and the radial f_{LLS} profiles. In Fig. 5 (more in Fig. A1) we plot the relative difference between the average profile and the profile for different bins of rest-frame U magnitude (M_U), SFR, halo mass (M_{200}), and the distance of the central galaxy to its fifth neighbour ($d_{5\text{th}}$), for $z = 3.02$.

In the case of $d_{5\text{th}}$ (Fig. 6), the enhancement becomes more relevant above 20 arcsec for $z = 3$ and $z = 2.2$. These results suggest that the IGM among more clustered galaxies is consistently denser up to very large distances. Since $d_{5\text{th}}$ is a much easier quantity to estimate observationally than the others – it only requires the position and redshift of the galaxies for a homogeneously sampled catalogue – it is potentially an excellent tool for surveys covering a large FoV.

5 RESULTS

In this section, we describe the results obtained on the Ly α stacking around MUSE galaxies, from which we obtain the observational

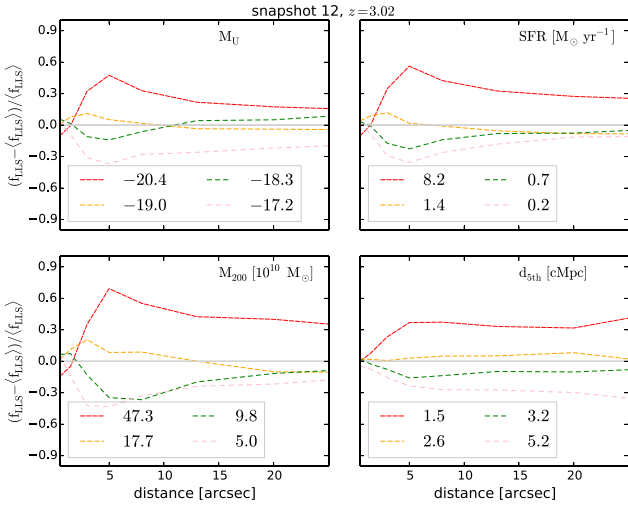


Figure 5. Differential f_{LLS} at redshift 3.02 for quartiles of different properties of the central simulated galaxies. The quoted number represents the mean of each quartile.

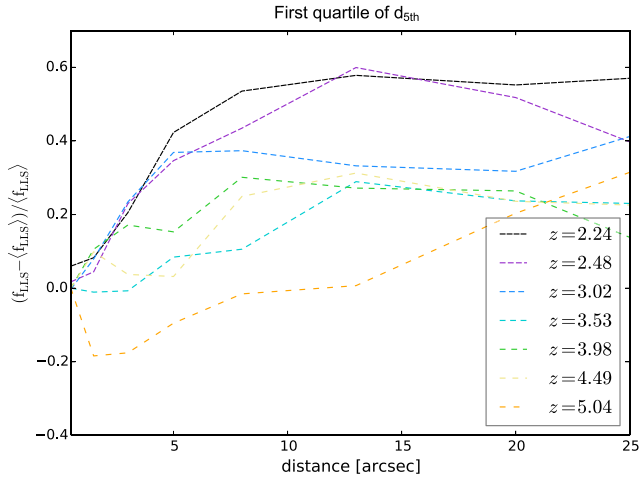


Figure 6. Redshift evolution of the differential f_{LLS} for the first quartile of $d_{5\text{th}}$ (distance of the central galaxy to its fifth neighbour).

constraints on Γ_{HI} assuming either 100 per cent covering fraction of LLS, or the covering fraction of LLS on mock cubes produced from the EAGLE simulation. Moreover, we constrain f_{LLS} around LAEs based on our observational results and assuming the latest UVB models.

5.1 MUSE stacked spectra

Figs 7 and 8 show the stacked spectra of the selected redshift bins in different radial annuli, centred on the spatial peak of the $\text{Ly}\alpha$ emission.

There is a clear detection of $\text{Ly}\alpha$ emission up to 8 arcsec for all redshift bins except the one at 5.9. The non-detection at $z = 5.9$ could be explained by the presence of more prominent skylines and the lower number of galaxies stacked which increase the overall noise. For the lower redshift bins, at distances above 8 arcsec we reached a 2σ SB limit of about $4 \times 10^{-22} \text{ erg s}^{-1} \text{ cm}^{-2} \text{ arcsec}^{-2}$, although there is no detection of extended emission. The SB limit was evaluated as

the standard deviation among the same chosen aperture on layers $\pm 2000 \text{ km s}^{-1}$ away from the central layer to avoid overestimating the noise due to the central $\text{Ly}\alpha$ emission.

Between 6 to 8 arcsec for the first two redshift bins, there is an indication that the peak of the $\text{Ly}\alpha$ emission is blueshifted with respect to the peak of $\text{Ly}\alpha$ emission of the central galaxy, this corresponds to about 3.75 \AA ($\approx -200 \text{ km s}^{-1}$). Previous studies have found that $\text{Ly}\alpha$ emission lines of LAEs are systematically redshifted with respect to the systemic redshifts of galaxies traced by additional lines (Shapley et al. 2003; McLinden et al. 2011; Rakic et al. 2011; Song et al. 2014; Hashimoto et al. 2015). Most recently, Muzahid et al. (2020) found an offset of $\approx 180 \text{ km s}^{-1}$ in a sample of MUSE detected LAEs by stacking their CGM absorption lines in background quasars. Our results seem to agree with previous studies and suggest that CGM $\text{Ly}\alpha$ emission is a better tracer of the true systemic redshift of LAEs.

5.2 Surface brightness profiles

Fig. 9 shows the SB and signal-to-noise ratio (SNR) radial profiles for the different redshift bins, with a wavelength width of 18.75 \AA . We choose to recenter our stacks by the observed shift of 3.75 \AA with respect to the peak of the $\text{Ly}\alpha$ emission of the central galaxies. The coloured dashed lines correspond to the 2σ noise levels. $\text{Ly}\alpha$ emission is detected (above 2σ) for $z = 3.9$ out to a maximum 10 arcsec ($\approx 70 \text{ kpc}$), slightly above the detection levels in the stacked spectra due to integration over a larger wavelength width. The profiles seem in agreement with the work of Wisotzki et al. (2016), but reaching a higher SNR at large radii.

From the works of Wisotzki et al. (2016) and Leclercq et al. (2017), based on a two-component model for the radial profiles of the galaxy and halo, we know that the characteristic scale length for $\text{Ly}\alpha$ haloes of LAEs is about 4.5 kpc, with some of the halo's scale lengths extending up to 20 kpc (below 3 arcsec). By focusing on the regions beyond 8 arcsec, i.e. beyond about 63 kpc (at $z \approx 3$), we are confident to be enough far away from the central regions of the haloes which could be affected by processes related to the galaxies themselves. Regarding the possible contribution of the local radiation field, we cannot exclude that some of our galaxies could be bright enough (especially in the case in which they could harbour an AGN or if they have for some reason a large escape fraction of ionizing photons) to contribute to the Γ_{HI} up to that distance. However, we think that by performing a stacking analysis these cases should not significantly affect our measurement, unless they are common. In the latter case, our estimates of Γ_{HI} should be considered as upper limits.

5.3 Γ_{HI} observational limits assuming an LLS covering fraction

If we assume that at a distance larger than 8 arcsec away from the observed galaxies all of the $\text{Ly}\alpha$ emission originates from $\text{Ly}\alpha$ fluorescence of optically thick HI clouds, that the ionizing light comes exclusively from the UVB and that we know the covering fraction of LLSs in the selected area, then we can make a first evaluation of the value of Γ_{HI} directly from the observations.

To estimate our constraints, we consider the region between 8 and 20 arcsec and a wavelength width of 18.75 \AA . In principle 5 \AA is already appropriate for an unresolved line but, given the uncertainties in the redshift estimation of the LAEs, most of them based on the $\text{Ly}\alpha$ line alone, the potential emission of individual lines in a stack could be dispersed by a few hundreds of km s^{-1} .

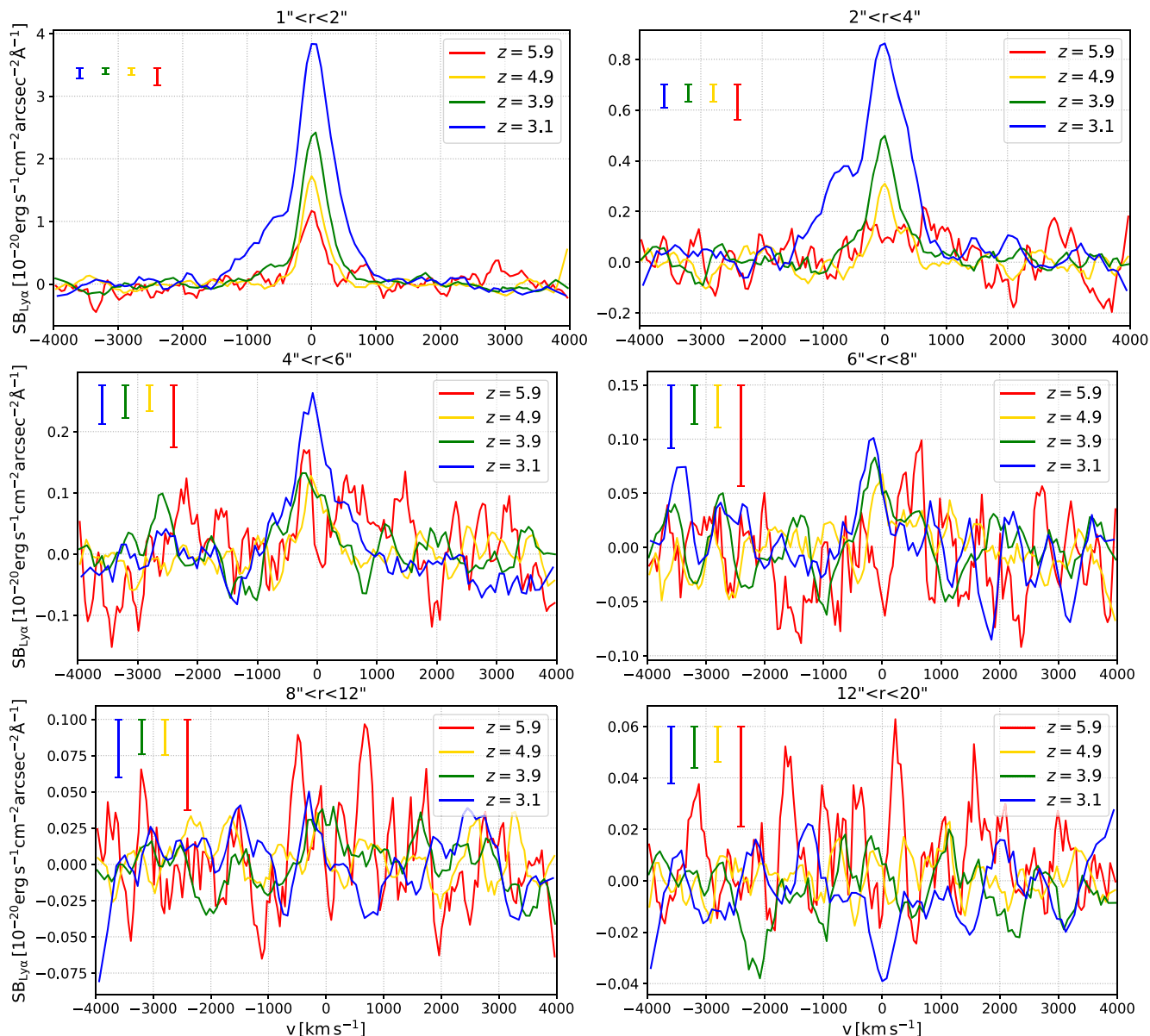


Figure 7. Stacked spectra at different radial annuli around LAEs. The centre is chosen as the 3-d peak of the Ly α emission. The vertical lines are the 1σ SB limit per redshift bin estimated on all layers excluding those within ± 2000 km s $^{-1}$ from the Ly α peak. The spectra have been smoothed for visualization purposes. Note the different vertical axis scales.

As seen in Table 2, the extreme assumption of an LLS covering fraction of 100 per cent results in upper limits of Γ_{HI} between 3 and 10 times below current constraints which we think to be not realistic. As expected, therefore, we do need to have an estimate of f_{LLS} in order to properly constrain the value of the UVB. This is done in Section 5.5 using the results from Section 4. On the other hand, by assuming a value for Γ_{HI} our observations could be used to constrain the average covering fraction of LLS around galaxies.

5.4 Observational upper limits on the LLS covering fraction assuming Γ_{HI} is known

If we assume current models of Γ_{HI} are correct, our observational results can be used to obtain an upper limit on the average covering fraction of LLSs in the selected region around our galaxies (see

Table 2). With this assumption, based on the HM12 UVB model we derive that LLSs cover at most 9 per cent and 50 per cent of the projected region, between 8 and 20 arcsec, for $z = 3.1$ and $z = 4.9$, respectively, and about 24 per cent ± 9 per cent for $z = 3.9$ in the same region. With the caveat that most of the obtained values are upper limits and not measurements, the decrease of f_{LLS} with cosmic time is consistent with the expected decrease of neutral hydrogen in the IGM due to the decreasing density (and correspondingly increasing recombination time) associated to the expansion of the Universe.

Given that currently there is a lack of observational constraints on the covering fraction at redshifts above 3, it is interesting to compare our results in the lowest redshift bin ($z = 3.1$) with studies at redshifts 2 to 3. Most of them are focused on understanding how the covering fraction at CGM scales up to several virial radii around massive galaxies (Rudie et al. 2012; Fumagalli et al. 2013; Prochaska

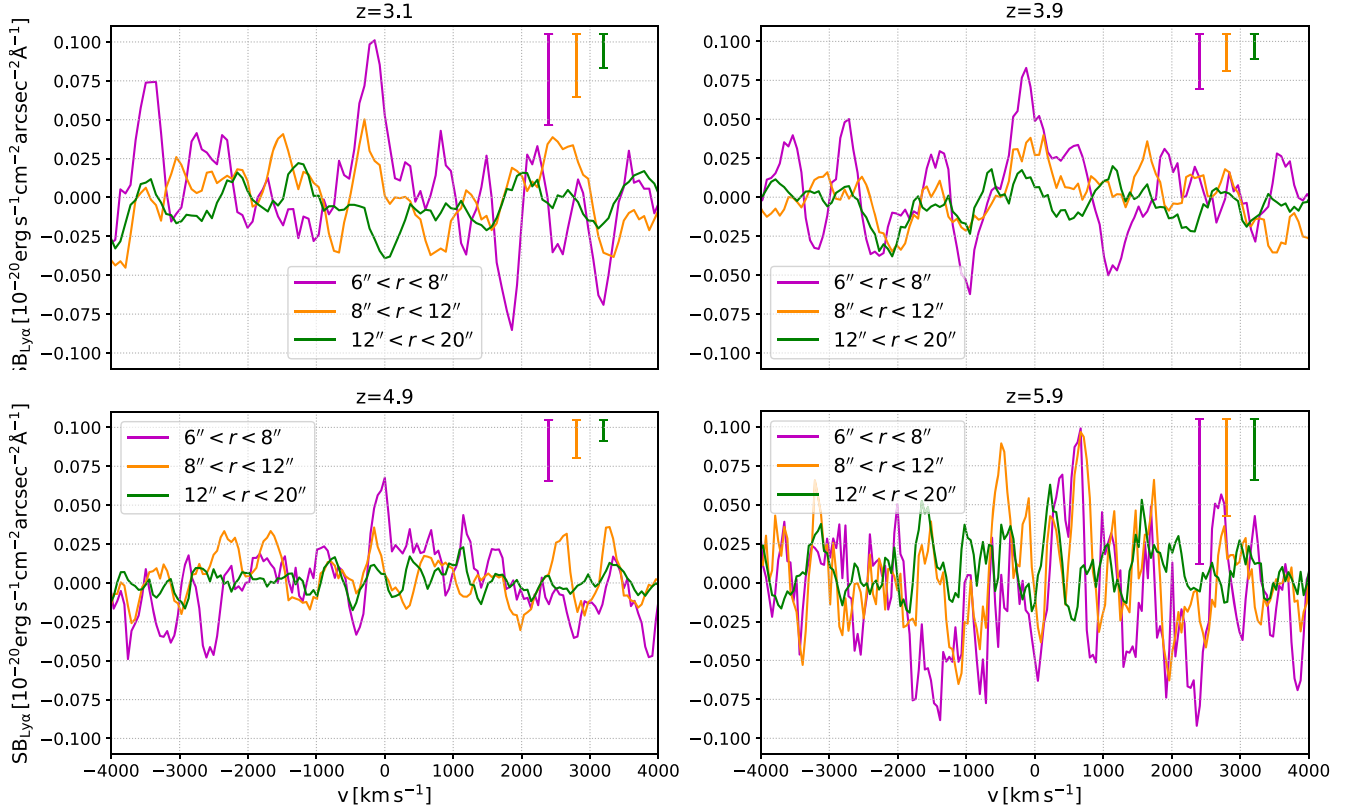


Figure 8. Same as Fig. 2 but showing the different radial bins at each redshift in order to better visualize the significance or absence of a possible detection individually for each redshift bin. The radial bins below 6 arcsec, which are very likely associated with the galaxy haloes themselves, are not shown here for clarity.

et al. 2013). Our estimated covering fraction $f_{\text{LLS}} < 10$ per cent is consistent with the low end of those studies. We think that this is reasonable since the region we have selected for our constraints goes far beyond the virial radius, our galaxies are far less massive than for most previous studies and our masking of continuum sources is very conservative.

For the annular region between 8 and 20 arcsec, the predicted LLS covering fraction in the EAGLE mock cubes for the redshift bins 3.1, 3.9, and 4.9 probed with MUSE are 8.3 per cent, 10.6 per cent, and 20.2 per cent, respectively. For the redshift bins 3.1 and 4.9, the predicted covering fraction from the mock cubes is below the observational upper limits calculated above assuming a HM12 UVB model (9 per cent and 50 per cent). For $z = 3.9$, the covering fraction inferred from the observations assuming HM12 (24 per cent ± 9 per cent) is more than two times above the value predicted from the EAGLE simulation. This may hint that the true value of Γ_{HI} is above the one predicted in HM12. If we use instead the model of Haardt & Madau (2001), the highest at that redshift range, we obtain that f_{LLS} is 15 per cent ± 5 per cent, consistent with the predicted value within error bars. Another explanation for the higher covering fraction may be that, even though the $l(z)$ in observations and simulations are similar (see Section 4.3.1), the slope of the radial profile of LLSs around galaxies in the simulations differs to the real one. It may be also that the selected galaxies on EAGLE represent a sample with lower column densities in their vicinities with respect to the MUSE sample. The latter is likely true for the UDF-mosaic sample because of the shallower data, which bias the selection towards more luminous and probably more massive galaxies.

5.5 Γ_{HI} from the observations and simulation constraints on f_{LLS}

Using the measured SB upper limits and detection for the expected fluorescent Ly α emission and the predicted LLS covering fraction from the EAGLE mock cubes in the same annular regions, we obtain upper limits on Γ_{HI} by combining both constraints, using equation (9), for the 3 lowest redshift bins (Figs 10, 11, and 12).

Clearly, the predicted Γ_{HI} at lower radii is much higher than the average Γ_{HI} , produced by the UVB only, for all redshift bins, very likely due to the local ionizing radiation or Ly α scattering produced by the central galaxy. At larger radii, where we expect the relative contribution of the UVB fluorescence to be maximal, and other mechanisms affecting the observed Ly α negligible, we should observe that the expected Γ_{HI} flattens to a given value. That seems to be the case at $z = 3.9$, where we detect Ly α up to large radii. This result could suggest that we are indeed detecting gas clouds that are illuminated by a uniform radiation field, and therefore by the UVB.

As seen in Fig. 13, our upper limits and detection at $z = 3.9$ are within expectations from the previous observational constraints (Calverley et al. 2011; Wyithe & Bolton 2011; Becker & Bolton 2013; D’Aloisio et al. 2018) and models (Haardt & Madau 2001, 2012; Khaire & Srianand 2019; Faucher-Giguère 2020) with indications of a non-monotonic decrease of Γ_{HI} with increasing redshift, as was also suggested by Becker & Bolton (2013). A summary of our UVB constraints is presented in Table 3.

6 DISCUSSION

As we have shown in the previous section, our method is able to provide direct observational constraints on the product of the UVB photoionization rate and the covering fraction of LLS at a given distance from galaxies. By assuming the covering fraction of LLS as given by the EAGLE cosmological simulation, we have been able to put some constraints on the value of $\Gamma_{\text{H I}}$ that are independent from previous measurements and which are consistent with the majority of them. In particular, we have obtained two upper limits and a possible measurement in our median redshift bin. Within the assumptions and caveats of our method, discussed in detail below, this seems to suggest that the intensity of the UVB could be not monotonically decreasing within redshift in the range $3 < z < 5.5$, contrary to what is suggested by the majority of the theoretical estimates of the UVB. Interestingly, our result seems compatible with the independent estimate made by Becker & Bolton (2013) and later reproduced in the model of Khaire & Srianand (2019) (which has adjusted the escape fraction in order to match the data). Our upper limit at $z \approx 3$ also seems to strengthen the suggestion made by previous studies that the Haardt & Madau (2001) model produces a $\Gamma_{\text{H I}}$ that is too high at this redshift.

In the following, we discuss the main uncertainties and limitation in our method and analysis.

6.1 Physical mechanisms affecting the observed Ly α

One of the basic assumptions in our calculation of $\Gamma_{\text{H I}}$ is that the only mechanism to produce Ly α photons at distances above 8 arcsec from galaxies is fluorescence from the UVB. Other mechanisms potentially affecting the expected Ly α emission include scattering, collisional excitation, local sources of ionizing, or Ly α photons, and absorption by dust. The temperature, density, and ionization state of the medium, and the properties of local sources of Ly α and ionizing photons, will mostly determine the relative importance of each process and therefore the expected rate of Ly α photons observed. Most of these effects increase the expected SB, and therefore we conclude that the real value of $\Gamma_{\text{H I}}$ is very likely not higher than our estimated upper limits and detection. Our main conclusions are therefore mostly unaffected by these uncertainties.

6.1.1 Ly α scattering

The expected Ly α SB could be increased by Ly α photons escaping from H II regions within the galaxies, and subsequently scattering across the CGM/IGM until being directed towards the observer. For Ly α scattering to be efficient up to very large distances it would be necessary for an optically thin to moderately optically thick medium to Ly α photons over several tens of kpc (i.e. a medium with an optical depth $\tau \sim 1$). Indeed, within very optically thick media, Ly α photons mostly diffuse in frequency rather than in space. Unless the velocity field around galaxies is properly arranged to produce such a relatively constant optical depth, we think that such a situation is difficult to be achieved for a large fraction of galaxies and be relevant therefore for our stacking analysis. In any case, even assuming that scattering does contribute to the emission our inferred upper limits on $\Gamma_{\text{H I}}$ and their interpretation would remain valid. If our detection at $z \approx 3.9$ is due to the contribution of scattering instead of UVB fluorescence, this would require a (unknown) mechanism that is able to boost scattering preferentially at this redshift.

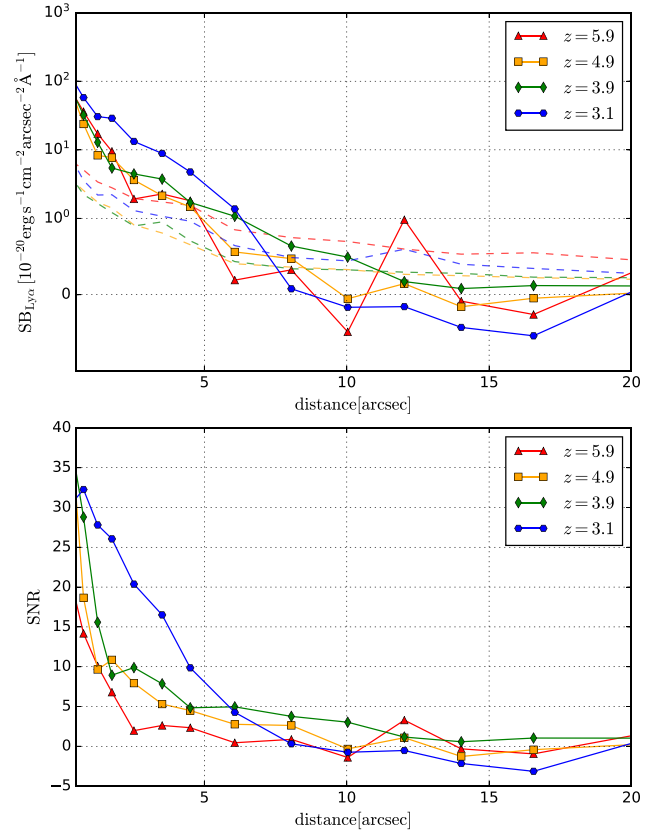


Figure 9. Top: Stacked SB profiles in function of distance from the galaxies for the different redshift bins probed in this study. The coloured dashed lines correspond to the 2σ noise levels. Bottom: Stacked signal-to-noise profiles.

6.1.2 Collisional excitation

Unlike recombination, collisional excitation is extremely sensitive to the temperature and requires a partially ionized medium to occur. In the CGM/IGM, assuming the neutral gas is confined in self-shielded clouds surrounded by an ionized medium, we expect some contribution of collisional excitation coming from the transition between the ionized exterior and the neutral interior of the clouds. The modelling of this process is very sensitive to several physical parameters and large variations could be expected depending on temperature and density distribution. Although redshift could also play some role, we are not aware of any mechanism that could be able to boost this radiation at $z \sim 4$ with respect to the other explored redshifts. Also in this case, if collisional excitation do contribute, this does not change the interpretation of our upper limits.

6.1.3 Ionizing radiation from the central galaxies

Similar to Ly α scattering, ionizing photons escaping from our selected galaxies could contribute to the total photoionization rate, and we expect their contribution to decay at least by the inverse-square law, therefore being less relevant the farther away we are from galaxies. How much do they contribute it is however difficult to estimate without a direct constraint on both their ionizing f_{esc} and their production rate of ionizing photons. UVB models do assume that galaxies are the dominant sources of ionizing photons

Table 2. Summary of observational results presented in this work. Columns include the selected redshift range, mean redshift, number of LAEs above confidence 2 in the MUSE catalogue, expected SB for the HM12 model in $10^{-20} \text{ erg s}^{-1} \text{ cm}^{-2} \text{ arcsec}^{-2}$ and the measured SB on the annular region between 8 and 20 arcsec away from galaxies, the predicted Γ_{HI} in 10^{-12} s^{-1} for a covering fraction $f_{\text{LLS}} = 1$, the last two columns are the predicted f_{LLS} on the same region obtained with equation (9), using the HM12 and Haardt & Madau (2001, HM01) UVB constraints. The quoted upper limits are 2σ above the mean.

z range	z mean	Number of LAEs (UDF-10, -mosaic)	Expected HM12 $\text{SB}_{\text{Ly}\alpha}$	Measured $\text{SB}_{\text{Ly}\alpha}$	Predicted $\Gamma_{\text{HI}} \times f_{\text{LLS}}$	Predicted f_{LLS} for HM12	Predicted f_{LLS} for HM01
2.9–3.4	3.1	33, 140	2.0	< 0.18	< 0.07	< 9 per cent	< 6 per cent
3.4–4.5	3.9	46, 242	0.79	0.19 ± 0.07	0.11 ± 0.05	24 ± 9 per cent	15 ± 5 per cent
4.5–5.5	4.9	43, 162	0.28	< 0.14	< 0.22	< 50 per cent	< 35 per cent
5.5–6.5	5.9	16, 54	0.1	< 0.36	< 1.0	< 100 per cent	< 100 per cent

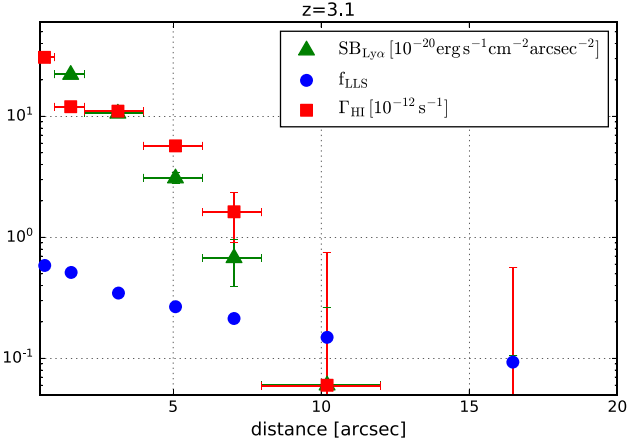


Figure 10. Radial profiles for $z = 3.1$. The blue dots correspond to the expected f_{LLS} taken from the EAGLE mock cubes. The green triangles are the measured SB at the different radial bins with a wavelength width of 18.75 \AA . The red squares are the predicted Γ_{HI} combining the respective SB and f_{LLS} using equation (9). Since there is no clear detection in this redshift bin at distances larger than 8 arcsec, the Γ_{HI} values should be considered upper limits.

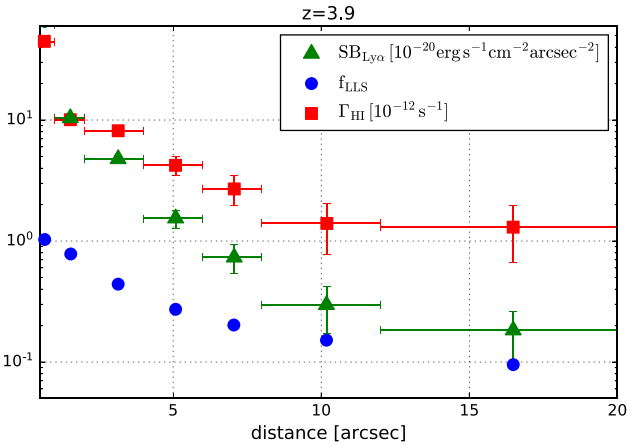


Figure 11. Same as Fig. 10 for $z = 3.9$. In this case, there is a significant detection in the outer radial bins (green triangles) which translates into a measurement of Γ_{HI} (red squares) using the covering fraction from EAGLE (blue dots). Although we have only two outer radial bins, the relatively constant value of the inferred Γ_{HI} , or, equivalently, the fact that the SB and covering fraction have the same slope at large distances could indicate that we are indeed tracing a background radiation rather than a possible galactic contribution.

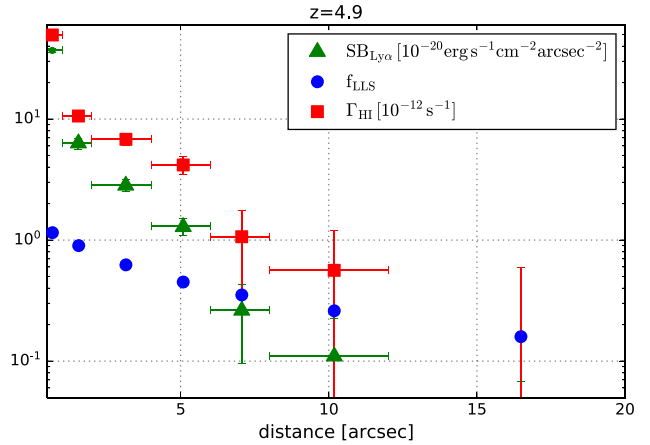


Figure 12. Same as Fig. 10 for $z = 4.9$.

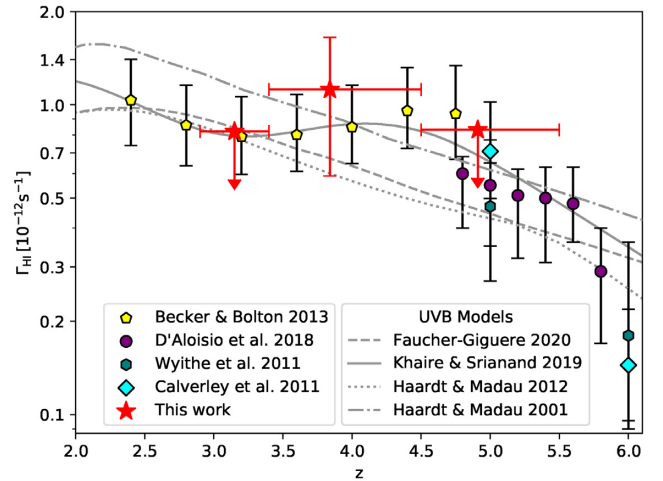


Figure 13. HI photoionization rates obtained with MUSE Ly α stacking and EAGLE simulation constraints on the covering fraction of LLS (red stars), in comparison with previous Ly α forest estimates (symbols) and models (lines; see legend for details). Upper limits are indicated by arrows. Model predictions and previous constraints dependent on several parameters, including the redshift evolution of the ionizing radiation escape fraction, the mean free path of ionizing photons, and the equation of state associated with Ly α forest clouds, while our results are mostly sensitive to the covering fraction of LLS around galaxies. Our results are in general in agreement with the Ly α forest constraints and strengthen the suggestion of a non-monotonic decrease of Γ_{HI} with increasing redshift which is not captured by the majority of the models (with the exception of Khaire & Srianand (2019) which has been designed, however, to reproduce such a trend by properly adjusting the escape fraction of ionizing photons from galaxies).

Table 3. Summary of the main results leading to the UVB measurements presented in Fig. 9. Columns include: (1) the mean redshift for each bin; (2) the measured upper limit for Ly α SB in units of 10^{-20} erg s $^{-1}$ cm $^{-2}$ arcsec $^{-2}$ on the annular region between 8 and 20 arcsec away from galaxies; (3) the estimated covering fraction (f_{LLS}) over the same region as estimated from the EAGLE mock cubes; (4) the resulting Γ_{HI} upper limits and detection in units of 10^{-12} s $^{-1}$ obtained with equation (9).

z mean	Measured SB $_{\text{Ly}\alpha}$	f_{LLS} EAGLE	Predicted Γ_{HI}
3.1	<0.18	8.3 ± 0.2 per cent	<0.82
3.9	0.19 ± 0.07	10.6 ± 0.4 per cent	1.12 ± 0.53
4.9	<0.14	20.2 ± 0.7 per cent	<0.85

in the universe above $z > 3$ and (arbitrarily) model their f_{esc} as monotonically increasing with increasing redshift between $3 < z < 6$ (this is necessary in these models to compensate the sharp decline in AGN number densities at high redshift and to fit reionization constraints). In this scenario, it would be difficult to explain our non-monotonic behaviour of Γ_{HI} with redshift and our detection for the median redshift bin as due to an increased contribution from the central galaxies. Our conclusion concerning the upper limits would be of course unchanged even considering a possible contribution from local sources.

6.1.4 Contribution from AGN

We expect that AGN activity could be especially important to provide additional ionizing photons, possibly on large scales depending on the AGN ionizing luminosity. Could our detection in the redshift bin $3.4 < z < 4.5$ be affected by an enhanced Γ_{HI} due to contribution of some AGN (either in the central galaxies or in their proximity)?

Within this redshift range, several AGN have been detected within the UDF mosaic area or in contiguous regions, particularly through their X-ray emission (e.g. Luo et al. 2017). The majority of the AGN with spectroscopic confirmation cluster in the redshift range $3.6 < z < 3.8$, which we have excluded and treated separately as discussed in Section 6.2. Apart from issues related with the spectroscopic confirmation of the detected AGN, current catalogues suffer from severe incompleteness at these redshifts already at moderate intrinsic luminosities due to obscuration along our line of sight (e.g. Vito et al. 2018). Such obscuration does not exclude however that ionizing radiation is emitted along other directions, as seen in several cases for type-II AGN (e.g. den Brok et al. 2020). Moreover, AGN are highly variable sources in all bands, including X-ray, on scales that can be as short as a few days, while the persistence of their observable effect on fluorescent emission depends on time-scales that are as large as the recombination time of the illuminated gas, i.e. several Myr. For all these reasons, a simple cross-check of the Luo et al. (2017) catalogue is not sufficient to exclude the possible contribution of AGN to the Γ_{HI} in a specific redshift range and area and we resort instead to the following statistical approach.

We first derive the expected number density of AGN per unit area in our redshift range (Σ_{AGN}), corrected for incompleteness, using the results of Vito et al. (2018), which are based on the Chandra Deep Field South (containing the UDF mosaic area). In particular, they have obtained that the volume density of AGN at $z \sim 3.9$ above a luminosity of $\log(L_X/[\text{erg/s}]) > 42.5$ in the 2–10 keV band, corrected for incompleteness, should be around 10^{-4} cMpc $^{-3}$ (this number decreases by a factor of about two if the incompleteness correction

is not included³). The comoving volume per square arcmin in the redshift range $3.4 < z < 4.5$ is around 3.5×10^3 cMpc 3 (using the conversion factor between area on the sky and physical distance at $z = 4$). Therefore, we do expect a $\Sigma_{\text{AGN}} \sim 0.35$ arcmin $^{-2}$ in our redshift range.

Next, we estimate what is the area of the proximity region produced by these AGNs, which depends on the radius at which the AGN ionizing flux is at least equal to the UVB one. This area would of course scale linearly with the ionizing luminosity of the AGN and there would be therefore a distribution of values for the proximity regions. For our statistical analysis however, it would be sufficient to obtain the average area. Thus, for simplicity, we assume that all AGNs have the average luminosity in the 2–10 KeV band as in the X-ray sample of Vito et al. (2018). Using their X-ray luminosity function within the range ($42.5 < \log(L_X/[\text{erg/s}]) < 45$) (at higher luminosities the luminosity function drops steeply), we obtain an average luminosity in the 2–10 keV band of about $\log(L_X/[\text{erg/s}]) \sim 43.7$. This luminosity is corrected for intrinsic absorption. We transform this intrinsic X-ray luminosity into a luminosity at the Lyman Limit (L_{LL}) using the linear 2–10 keV X-ray to bolometric correction and the bolometric to 1450 Å; correction factors of Runnoe, Brotherton & Shang (2012), and, finally, the 1450 Å; to 912 Å; correction factor of Lusso et al. (2012). The resulting average luminosity at the Lyman Limit is $L_{\text{LL}} \sim 2 \times 10^{29}$ erg s $^{-1}$ Hz $^{-1}$. All these corrections are associated with a large error (and still unclear dependencies on redshift, AGN type, luminosity, and spectral shape) which we neglect here for simplicity, therefore this conversion should be considered as an order of magnitude estimate. Moreover, we have assumed that the ionizing luminosity is emitted isotropically, while it is highly probable, especially for obscured AGN along our line of sight, that the emission is oriented along the plane of the sky (see e.g. den Brok et al. 2020, for a few examples, one of which in the UDF-mosaic area). In the case of anisotropic emission, since more radiation is emitted in some particular direction, the proximity regions would be larger, e.g. along the ionization cones, but absent in other directions. These two effects could somewhat balance each other in terms of area and we will neglect them here for simplicity.

The Γ_{HI} due to an AGN with a power-law spectrum of the form $f_\nu \propto f_0 \nu^\alpha$, in function of distance from the source (assumed to emit isotropically) is

$$\Gamma_{\text{HI}}(\text{AGN}) \simeq 2 \times 10^{-12} L_{\text{LL},30} \cdot R^{-2} \cdot \frac{4.45}{2.75 - \alpha}, \quad (10)$$

where $L_{\text{LL},30}$ is the luminosity at the Lyman Limit in units of 10^{30} erg s $^{-1}$ Hz $^{-1}$, R is the distance in units of physical Mpc. Using the estimated luminosity above, a value of $\alpha = -1.7$ (Lusso et al. 2012) and considering the Γ_{HI} from the HM12 model (which corresponds to about 0.6×10^{-12} at $z = 4$) as a reference value, we obtain a radius of the proximity region of about 0.8 physical Mpc (pMpc) or about 4 comoving Mpc (cMpc) at $z \simeq 3.9$. This distance corresponds to a circular, projected area of about 11 arcmin 2 for isotropic emission, which is a relatively large area, much larger than a single MUSE FoV and larger than the UDF-mosaic area. As a reference, in the assumptions above, the radius of the proximity region is simply connected to the absorption corrected 2–10 KeV

³This incompleteness correction is mostly relevant for obscured AGN along our line of sight which in Vito et al. (2018) are defined as sources with $\log(N_{\text{H}}[\text{cm}^{-2}]) > 23$

X-ray luminosity (L_X) by the following relation

$$R_{\text{eq}}^{\text{HM12}} \simeq 0.8 \times \left(\frac{L_X}{5 \times 10^{43} \text{ erg s}^{-1}} \right)^{1/2} \text{ pMpc.} \quad (11)$$

Combining the average area of the AGN proximity region with the value of Σ_{AGN} implies that each line of sight in the redshift range $3.4 < z < 4.5$ is expected to cross, on average, $N \simeq 4$ AGN proximity regions, i.e. regions in which the $\Gamma_{\text{H I}}$ is dominated by a local AGN rather than the UVB. This is also the same number that is expected if the observed FoV is smaller than the proximity region area, which is similar to our case. We stress that there is a large error associated with this number due to the several simplifications made but also due to cosmic variance and possible clustering effects that are especially relevant for small field of view observations.

It is difficult to estimate what would be the boost factor in $\Gamma_{\text{H I}}$ value associated with these proximity regions, as it would depend on several geometrical factors that are difficult to assess with a low number statistic. However, it is interesting to note that our simple calculation showed that across such a large redshift range there is a non-negligible probability of finding a few regions in which the $\Gamma_{\text{H I}}$ is boosted with respect to the average UVB value and such regions are not necessarily associated with a detectable AGN (either because of obscuration effects along our line of sight or short-term variability but also because the AGN could be outside of the FoV).

Taking the number calculated above at face value and considering the Δz associated with a proximity region would imply that within about 40 MUSE layers in our redshift range $3.4 < z < 4.5$ there could be a local enhancement in the $\Gamma_{\text{H I}}$ due to AGN. Assuming a uniform distribution of galaxies, this would imply that about 4 per cent of our galaxies are affected. Even considering possible clustering of galaxies in proximity of the AGN, this number is still small enough to not bias significantly our stacking analysis. However, our calculation hints at the necessity to build a large sample of galaxies and to follow a blind statistical approach, i.e. not based on a few individual detections even far away from galaxies, in order to estimate the average $\Gamma_{\text{H I}}$ due to the UVB alone.

6.1.5 Ionizing radiation and Ly α emission from undetected galaxies

Considering the uncertainties in the slopes of the UV and Ly α luminosity functions at low luminosities, undetected galaxies surrounding our selected galaxies could potentially contribute to both the Ly α and ionizing photons. Some theoretical models and observational results do suggest that less luminous galaxies could have a higher UV f_{esc} . Because we perform a stack and consider a large volume around galaxies in average regions of the universe, if undetected galaxies really contribute to the local $\Gamma_{\text{H I}}$ then we can consider their ionizing photons as a part of the total UVB budget. The situation is different however if they contribute to the Ly α emission and not to the $\Gamma_{\text{H I}}$. As discussed in the previous cases, however, this would not affect our conclusions which are mostly based on upper limits and would remain valid even including this contribution.

6.1.6 Ly α absorption by dust

Among the few mechanisms that could bias in the opposite direction our estimate of $\Gamma_{\text{H I}}$ there is the possibility that Ly α photons resulting from UVB fluorescence are absorbed by dust and therefore missing in our measurement. However, if the majority of LLSs that are emitting fluorescent radiation are intergalactic, as assumed here (consistently

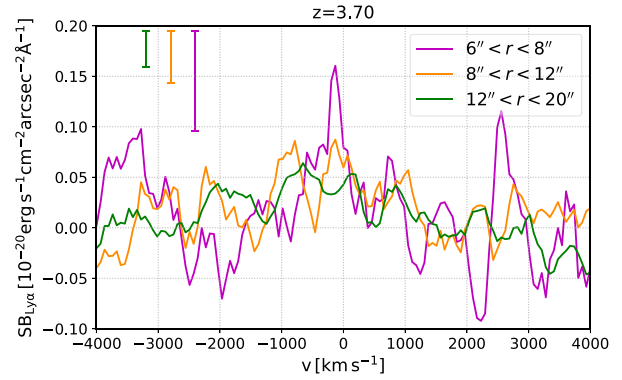


Figure 14. Stacked spectra extracted from three radial annuli around LAEs in the overdensity found at $z = 3.7$.

with current numerical simulations), we expect very little to no dust present in these systems.

6.2 $\Gamma_{\text{H I}}$ around galaxy and AGN overdensities: the effect of local sources

As discussed above, we do expect that some regions should have an enhanced $\Gamma_{\text{H I}}$ due to the presence of AGN and increased clustering of galaxies. One of these regions is the detected overdensity in the UDF mosaic at $z = 3.7$, which we have masked in our analysis to avoid any possible bias in our measurement. Within the redshift range $3.65 < z < 3.75$ there are 18 LAEs for UDF-10 and 45 for UDF mosaic. These numbers corresponds to a modest overdensity of only a factor 2.3 with respect to the full redshift range considered in our median bin. However, there are four spectroscopically confirmed and relatively bright AGN close or within the $3.65 < z < 3.75$ range and within about 7 arcmin from the centre of the UDF-10 and the UDF-mosaic (Luo et al. 2017) which do constitute a significant overdensity. We note that the two brightest AGNs, which are classified as type-II and which also show extended and bright Ly α nebulae (den Brok et al. 2020), are outside of the UDF-mosaic area (but within the MUSE-Wide survey area; Urrutia et al. 2019) and therefore their nebulae do not enter in our stacking analysis. Their intrinsic-absorption corrected X-ray luminosities (0.5 to 7 keV) are between 10^{44} and $5 \times 10^{44} \text{ erg s}^{-1}$, i.e. up to ten times brighter than the average X-ray luminosity considered in Section 6.1.4 (although the considered band is slightly different). Therefore, they could be associated with (possibly overlapping) proximity regions extending up to about a few tens of arcmin from the brightest source, clearly including the UDF-mosaic area. The spectra for the outermost radial bins and the radial profiles can be seen in Figs 14 and 15.

There is a clear detection of Ly α emission at all radial bins. From the outermost bins and using the covering fraction estimated from EAGLE we derive a $\Gamma_{\text{H I}} \simeq 6 \times 10^{-12}$, which is about five times higher than the measured $\Gamma_{\text{H I}}$ in the redshift bin $3.5 < z < 4.5$ and 10 times higher than expected using the Haardt & Madau (2012) model. This large boost is fully consistent with our expectations as discussed in Section 6.1.4. The detection of this signal has been likely possible both for the enhanced $\Gamma_{\text{H I}}$ over large scales and for the presence of a large number of galaxies, and therefore stacking elements, within such large AGN proximity regions.

We notice that the $\Gamma_{\text{H I}}$ estimate above is based on the covering fraction derived from the simulations which do not consider the effect of local ionizing sources such as AGN (discussed in Section 4.3.3) but also the possible increase in covering fraction due to clustering

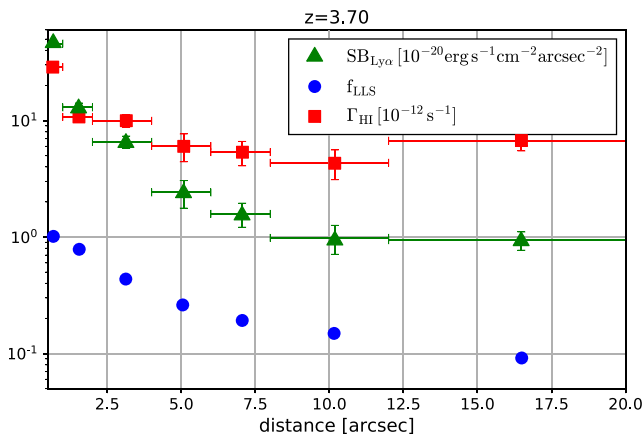


Figure 15. Similar to Fig. 10, but for the overdensity found at $z = 3.7$.

effects. We could try to estimate the latter effect, for instance, taking as a reference the correlation found for the distance to the fifth neighbour ($d_{5\text{th}}$) in Fig. 6. In this case, the covering fraction could be increased by as much as 20 per cent with respect to the mean. Clustering effects could therefore imply that the predicted Γ_{HI} could be lower by 20 per cent, which is still consistent with an enhancement due to local sources and in particular due to the presence of the detected AGN.

Finally, it is important to notice that our method is only able to give constraints on the integrated emission of the UVB which should be assumed in order to translate this information into a value of Γ_{HI} . The presence of local ionizing sources and especially potential AGN emission in some particular regions, could significantly change the shape of the UV spectra and therefore the inferred Γ_{HI} .

6.3 Prospects and strategies for the future

New deep observations can improve our constraints on Γ_{HI} using Ly α emission by increasing the sample of galaxies, exposure time, and extending our studies to lower redshifts. In this context, KCWI, and HETDEX IFU observations can extend our studies down to $z \sim 2$, by benefiting from the decreasing effect of the SB dimming compared to MUSE Ly α observations, and the connection with current H α observations which could disentangle the physical mechanisms responsible for the observed Ly α emission. In Fig. 16, we predict how the Ly α SB radial profiles around galaxies should look like assuming the HM12 model for the UVB and f_{LLS} profiles derived from EAGLE, which suggest the optimal detection redshift is between $2.2 < z < 2.5$. For KCWI (Morrissey et al. 2018), we benefit from a 2σ sensitivity of $7 \times 10^{-20} \text{ erg s}^{-1} \text{ cm}^{-2} \text{ arcsec}^{-2}$ in about 4 h at 4000 Å, although its small FOV would probably require targeting specific regions, especially around galaxies in more clustered environments as suggested by our analysis in Section 4.3.4 and Appendix A. Large statistical sample would be needed in any case to overcome the effect of local Γ_{HI} enhancements, as discussed in the previous section, due to local sources and especially AGN, which become also more abundant at lower redshift.

7 SUMMARY

The cosmic UV background shapes the ionization state and thermal evolution of the IGM, which is thus a crucial ingredient of cosmic structure formation models. Most previous studies attempting to

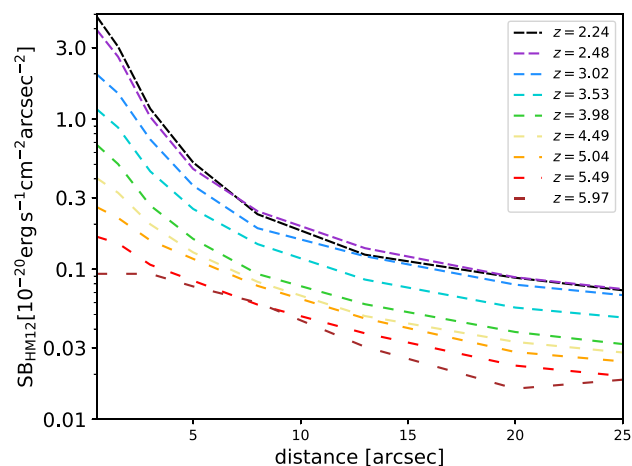


Figure 16. Predicted Ly α SB profiles at different redshifts. SB values were obtained by assuming a HM12 UVB photoionization model combined with EAGLE predictions for the LLS covering fraction.

measure the UVB focused primarily on characterizing the properties of the Ly α forest by comparison with numerical simulations or through theoretical models which assume parameters that are very difficult to estimate, such as the redshift evolution of the escape fraction of ionizing photons from faint galaxies.

Here we presented the results from an independent method to constrain the UVB and in particular, the photoionization rate of hydrogen Γ_{HI} , based on the detection of fluorescent Ly α emission produced by LLS illuminated by the UVB at $3 < z < 6.5$. In order to achieve the required sensitivity limits, we performed a 3D stacking analysis of the IGM around about 700 Ly α emitters detected within some of the deepest MUSE fields available to date. In particular, our method provides direct observational constraints on the product of the ionizing radiation field intensity (Γ_{HI}) and the covering factor of LLSs around our galaxies. Before performing our stacking analysis, we have divided our galaxy sample into four redshift bins roughly centred at $z \approx 3.1$, $z \approx 3.9$, $z \approx 4.9$, and $z \approx 5.9$ and we have excluded regions associated with clear galaxy and AGN overdensities for which the inferred Γ_{HI} is likely affected by local sources, as we have discussed and demonstrated in Sections 6.1.4 and 6.2.

Our results can be summarized as follows:

(i) Ly α emission is typically detected up to 8 arcsec away from galaxies in our stacks at all redshifts. We consider this emission as likely arising from processes related to the galaxies themselves and their CGM rather than fluorescence from the UVB, consistently with previous studies.

(ii) Ly α emission within 8 and 20 arcsec away from galaxies is detected at $z \approx 3.9$ at an SB level of 0.19 ± 0.07 times $10^{-20} \text{ erg s}^{-1} \text{ cm}^{-2} \text{ arcsec}^{-2}$, while for the other redshift bins we were only able to obtain upper limits to the SB (0.18, 0.16, and 0.36 times $10^{-20} \text{ erg s}^{-1} \text{ cm}^{-2} \text{ arcsec}^{-2}$ at 2σ for redshifts 3.1 and 4.9 and 5.9, respectively). We have not considered the $z \sim 5.9$ further given the poor constraint due to the low number of galaxies in the stacking analysis.

(iii) Assuming that the emission between 8 and 20 arcsec is mainly powered by UVB fluorescence, these SB translated into a value of $\Gamma_{\text{HI}} \times f_{\text{LLS}} \approx 0.19 \pm 0.06 \times 10^{-12} \text{ s}^{-1}$ at $z = 3.9$ and the following upper limits: $0.07 \times 10^{-12} \text{ s}^{-1}$ for $z = 3.1$, $0.11 \times 10^{-12} \text{ s}^{-1}$ for $z = 4.9$. These are direct observational constraints from which a value of

Γ_{HI} could be derived from future observational measurements of the covering fraction of LLS (f_{LLS}) around galaxies at these redshifts.

(iv) In absence of observational constraints on f_{LLS} at these redshifts, we have combined our results with the LLSs covering fraction estimated from the EAGLE cosmological simulation, obtaining the following values or (2σ) upper limits on Γ_{HI} : <0.82 , 1.12 ± 0.53 , and <0.85 times 10^{-12}s^{-1} for redshifts 3.1, 3.9, and 4.9, respectively. These values are consistent with the majority of other recent independent constraints (and in tension with the HM01 model at $z \approx 3$) and suggest a non-monotonic decrease of Γ_{HI} with increasing redshift between $3 < z < 5$ as also suggested by some other indirect measurements and models.

(v) Assuming instead a value of Γ_{HI} , we used our detected Ly α emission values and upper limits to obtain the covering fraction of LLSs around LAEs. In particular, assuming the HM12 UVB model, we derive a covering fraction of < 9 per cent, 22 per cent ± 8 , and < 41 per cent for redshifts 3.1, 3.9, and 4.9, respectively, within 150 kpc from our LAEs. We notice that our results at $z = 3.1$ are consistent with previous studies at redshifts $2 < z < 3$ (e.g. Rudie et al. 2012).

Despite the current observational and theoretical limitations, which we have discussed in this work, we have shown that the available and upcoming observational data sets are in principle deep enough to provide new constraints on the value of the UVB background at high redshift. Moreover, we have shown that local sources of radiation and especially AGN are expected to enhance the local radiation field in a non-negligible fraction of the volume probed by MUSE datacubes, hinting at the necessity of using a statistical approach and a large sample of stacking elements in order to avoid a possible bias. At the same time, new observational constraints on the covering fraction of LLSs at $z > 3$ in function of distance from galaxies are vital to reduce the possible uncertainty on the UVB estimated with the method and assumptions presented here. When combined to the upcoming ultra-deep data sets or large surveys expected to be completed soon, these observations could provide the strongest available constraints on the UVB and thus on the production and escape of ionizing photons from the whole population of star forming galaxies and AGN at high redshift.

ACKNOWLEDGEMENTS

This research made use of ASTROPY, a community developed core PYTHON package for Astronomy (Astropy Collaboration 2013). TOPCAT, a graphical tool for manipulating tabular data, was also utilized in this analysis (Taylor 2005). SG would like to thank Nastasha Wijers for the discussion on the column density distribution in EAGLE. SC gratefully acknowledges support from Swiss National Science Foundation grants PP00P2_163824 and PP00P2_190092, and from the European Research Council (ERC) under the European Union's Horizon 2020 research and innovation programme grant agreement No. 864361. GP acknowledges support from the Swiss National Science Foundation (SNF) and from the Netherlands Research School for Astronomy (NOVA).

DATA AVAILABILITY

The data underlying this article will be shared on reasonable request to the corresponding author.

REFERENCES

- Arrigoni Battaia F. et al., 2019, *A&A*, 631, A18
 Astropy Collaboration, 2013, *A&A*, 558, A33
 Bacon R. et al., 2010, *Proc. SPIE*, 7735, 773508
 Bacon R. et al., 2015, *A&A*, 575, A75
 Bacon R. et al., 2017, *A&A*, 608, A1
 Bajtlik S., Duncan R. C., Ostriker J. P., 1988, *ApJ*, 327, 570
 Baker J., Menzel D., 1962, in Menzel D., ed., *Selected Papers on Physical Processes in Ionized Plasmas*. Dover Publications Inc., 180 Varick Street, p. 58
 Becker G. D., Bolton J. S., 2013, *MNRAS*, 436, 1023
 Bennett C. L., Larson D., Weiland J. L., Hinshaw G., 2014, *ApJ*, 794, 135
 Bennett C. L. et al., 2013, *ApJS*, 208, 20
 Bertone S., Schaye J., 2012, *MNRAS*, 419, 780
 Bond J. R., Kofman L., Pogosyan D., 1996, *Nature*, 380, 603
 Bunker A. J., Marleau F. R., Graham J. R., 1998, *AJ*, 116, 2086
 Cai Z. et al., 2019, *ApJs*, 245, 23
 Calverley A. P., Becker G. D., Haehnelt M. G., Bolton J. S., 2011, *MNRAS*, 412, 2543
 Cantalupo S., 2010, *MNRAS*, 403, L16
 Cantalupo S., Arrigoni-Battaia F., Prochaska J. X., Hennawi J. F., Madau P., 2014, *Nature*, 506, 63
 Cantalupo S., Porciani C., Lilly S. J., Miniati F., 2005, *ApJ*, 628, 61
 Conseil S., Bacon R., Piqueras L., Shepherd M., 2016, preprint ([arXiv:1612.05308](https://arxiv.org/abs/1612.05308))
 Crain R. A. et al., 2015, *MNRAS*, 450, 1937
 Crighton N. H. M., Prochaska J. X., Murphy M. T., O'Meara J. M., Worseck G., Smith B. D., 2019, *MNRAS*, 482, 1456
 Dalla Vecchia C., Schaye J., 2012, *MNRAS*, 426, 140
 Dall'Aglio A., Wisotzki L., Worseck G., 2008, *A&A*, 491, 465
 Dayal P., Ferrara A., 2018, *Phys. Rep.*, 780, 1
 den Brok J. S. et al., 2020, *MNRAS*, 495, 1874
 D'Aloisio A., McQuinn M., Davies F. B., Furlanetto S. R., 2018, *MNRAS*, 473, 560
 Efstathiou G., 1992, *MNRAS*, 256, 43P
 Faucher-Giguère C.-A., 2020, *MNRAS*, 493, 1614
 Faucher-Giguère C.-A., Lidz A., Zaldarriaga M., Hernquist L., 2009, *ApJ*, 703, 1416
 Fumagalli M., Fotopoulou S., Thomson L., 2020, *MNRAS*, 498, 1951
 Fumagalli M., O'Meara J. M., Prochaska J. X., Worseck G., 2013, *ApJ*, 775, 78
 Fumagalli M., Prochaska J. X., Kasen D., Dekel A., Ceverino D., Primack J. R., 2011, *MNRAS*, 418, 1796
 Furlanetto S. R., Schaye J., Springel V., Hernquist L., 2005, *ApJ*, 622, 7
 Gaikwad P., Khaire V., Choudhury T. R., Srianand R., 2016, *MNRAS*, 466, 838
 Gallego S. G. et al., 2018, *MNRAS*, 475, 3854
 Gnedin N. Y., 2000, *ApJ*, 542, 535
 Gould A., Weinberg D. H., 1996, *ApJ*, 468, 462
 Haardt F., Madau P., 2001, in Neumann D. M., Tran J. T. V., eds, *Clusters of Galaxies and the High Redshift Universe Observed in X-rays*. CEA, 2002, Les Arcs, Savoie, France, p. 64
 Haardt F., Madau P., 2012, *ApJ*, 746, 125
 Hashimoto T. et al., 2015, *ApJ*, 812, 157
 Inami H. et al., 2017, *A&A*, 608, A2
 Kereš D., Katz N., Weinberg D. H., Davé R., 2005, *MNRAS*, 363, 2
 Khaire V., Srianand R., 2019, *MNRAS*, 484, 4174
 Kulkarni V. P., Fall S. M., 1993, *ApJ*, 413, L63
 Leclercq F. et al., 2017, *A&A*, 608, A8
 Luo B. et al., 2017, *ApJS*, 228, 2
 Lusso E. et al., 2012, *MNRAS*, 425, 623
 Lynds R., 1971, *ApJ*, 164, L73
 McAlpine S. et al., 2016, *Astron. Comput.*, 15, 72
 McLinden E. M. et al., 2011, *ApJ*, 730, 136
 Meiksin A., 2005, *MNRAS*, 356, 596
 Miralda-Escudé J., Ostriker J. P., 1990, *ApJ*, 350, 1
 Miralda-Escudé J., Rees M. J., 1994, *MNRAS*, 266, 343

- Morrissey P. et al., 2018, *ApJ*, 864, 93
 Muzahid S. et al., 2020, *MNRAS*, 496, 1013
 Noterdaeme P. et al., 2012, *A&A*, 547, L1
 Osterbrock D. E., 1974, A Series of Books in Astronomy and Astrophysics, Astrophysics of Gaseous Nebulae. Freeman, San Francisco
 Peebles P. J. E., Groth E. J., 1975, *ApJ*, 196, 1
 Prochaska J. X., O’Meara J. M., Worseck G., 2010, *ApJ*, 718, 392
 Prochaska J. X. et al., 2013, *ApJ*, 776, 136
 Péroux C., Dessauges-Zavadsky M., D’Odorico S., Sun Kim T., McMahon R. G., 2005, *MNRAS*, 363, 479
 Rafelski M. et al., 2015, *AJ*, 150, 31
 Rahmati A., Pawlik A. H., Raičević M., Schaye J., 2013, *MNRAS*, 430, 2427
 Rahmati A., Schaye J., Bower R. G., Crain R. A., Furlong M., Schaller M., Theuns T., 2015, *MNRAS*, 452, 2034
 Rakic O., Schaye J., Steidel C. C., Rudie G. C., 2011, *MNRAS*, 414, 3265
 Ribaud J., Lehner N., Howk J. C., 2011, *ApJ*, 736, 42
 Romano M., Grazian A., Giallongo E., Cristiani S., Fontanot F., Boutsia K., Fiore F., Menci N., 2019, *A&A*, 632, A45
 Rudie G. C., Steidel C. C., Shapley A. E., Pettini M., 2013, *ApJ*, 769, 146
 Rudie G. C. et al., 2012, *ApJ*, 750, 67
 Runnoe J. C., Brotherton M. S., Shang Z., 2012, *MNRAS*, 422, 478
 Schaye J. et al., 2015, *MNRAS*, 446, 521
 Scott J., Bechtold J., Dobrzycki A., Kulkarni V. P., 2000, *ApJS*, 130, 67
 Shapley A. E., Steidel C. C., Pettini M., Adelberger K. L., 2003, *ApJ*, 588, 65
 Song M. et al., 2014, *ApJ*, 791, 3
 Springel V., 2005, *MNRAS*, 364, 1105
 Srianand R., Khare P., 1996, *MNRAS*, 280, 767
 Taylor M. B., 2005, in Shopbell P., Britton M., Ebert R., eds, Proc. ASP Conf. Ser., Vol. 347, Astronomical Data Analysis Software and Systems XIV. Astron. Soc. Pac., San Francisco, p. 29
 Umehata H. et al., 2019, *Science*, 366, 97
 Urrutia T. et al., 2019, *A&A*, 624, A141
 Vito F. et al., 2018, *MNRAS*, 473, 2378
 Wiersma R. P. C., Schaye J., Smith B. D., 2009, *MNRAS*, 393, 99
 Wisotzki L. et al., 2016, *A&A*, 587, A98
 Wisotzki L. et al., 2018, *Nature*, 562, 7726
 Witsstok J., Puchwein E., Kulkarni G., Smit R., Haehnelt M. G., 2019, *A&A*, preprint (arXiv:1905.06954)
 Wyithe J. S. B., Bolton J. S., 2011, *MNRAS*, 412, 1926

APPENDIX: EAGLE RADIAL PROFILES FOR DIFFERENT GALAXY PROPERTIES

We explore how relevant are different galaxy properties on the expected f_{LLS} around galaxies in our simulations at different redshifts, which can be seen in Fig. A1 (see Fig. 5 for $z = 3.02$). For $z = 5$ we observe a clear positive correlation with M_{200} at small scales and with $d_{5\text{th}}$ at large scales. For $z < 4.5$ all properties are correlated with f_{LLS} with increasing significance up to $z = 2.2$. At $z = 2.2$, there is a sharp decrease in the correlation for all galaxy properties except $d_{5\text{th}}$. As discussed in Section 4.3.4, $d_{5\text{th}}$ is an easy property to estimate, potentially useful for IGM studies targeting regions with homogeneous galaxy surveys available at those redshifts.

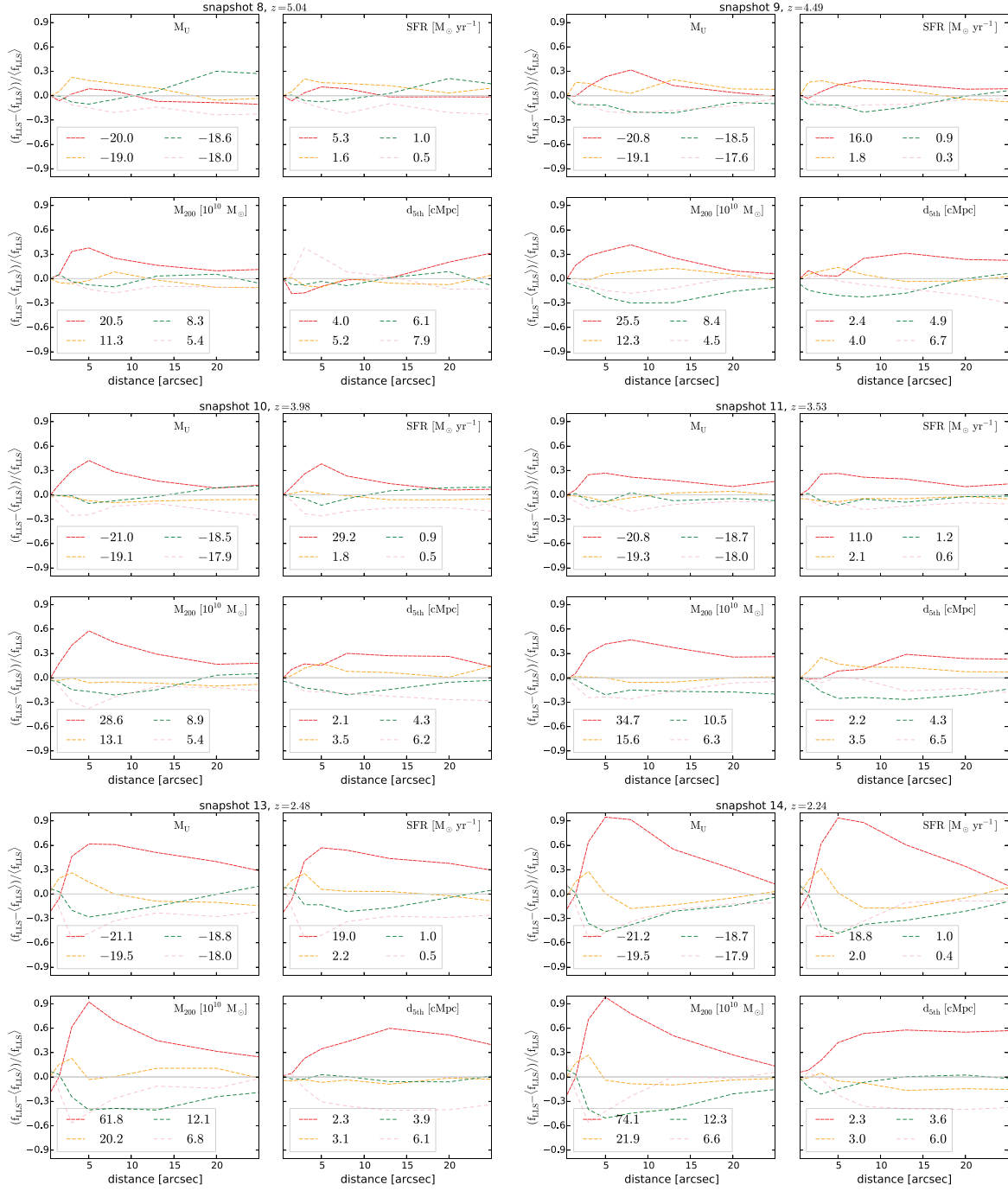


Figure A1. Same as Fig. 5 for the rest of the EAGLE mock cubes generated.

This paper has been typeset from a $\text{\TeX}/\text{\LaTeX}$ file prepared by the author.