



## The ultimate haptic device: first step

Guillaume Millet, Sinan Haliyo, Stephane Regnier, Vincent Hayward

### ► To cite this version:

Guillaume Millet, Sinan Haliyo, Stephane Regnier, Vincent Hayward. The ultimate haptic device: first step. Third Joint Eurohaptics Conference and Symposium on Haptic Interfaces for Virtual Environment and Teleoperator Systems, 2009, Salt Lake City, United States. pp.273-278, 10.1109/WHC.2009.4810858 . hal-03190980

**HAL Id: hal-03190980**

**<https://hal.science/hal-03190980>**

Submitted on 28 Apr 2021

**HAL** is a multi-disciplinary open access archive for the deposit and dissemination of scientific research documents, whether they are published or not. The documents may come from teaching and research institutions in France or abroad, or from public or private research centers.

L'archive ouverte pluridisciplinaire **HAL**, est destinée au dépôt et à la diffusion de documents scientifiques de niveau recherche, publiés ou non, émanant des établissements d'enseignement et de recherche français ou étrangers, des laboratoires publics ou privés.



Distributed under a Creative Commons Attribution 4.0 International License

# The Ultimate Haptic Device: First Step

Guillaume Millet\*

Sinan Haliyo†

Stéphane Régnier‡

Vincent Hayward§

UPMC Univ Paris 06, UMR 7222,  
Institut des Systèmes Intelligents et de Robotique, F-75005, Paris, France

## ABSTRACT

We describe a single-axis haptic interface which is based on a dual-stage actuator technique and which is aimed at achieving perfect transparency to a human user. The paper shows how all parasitic forces arising from inertia and friction can be brought below human detection thresholds, yet, the system is able to output significant torque. It has a stage with a large motor coupled to a distal stage with a smaller motor via a viscous coupler based on the principle of eddy current induction. The paper also describes its control principle and preliminary results.

**Index Terms:** H.5.2 [Information Interfaces and Presentation]: User Interface—Haptic I/O; H.5.1 [Information Interfaces and Presentation]: Multimedia Information Systems—Artificial, augmented, and virtual realities; H.1.2 [Information Systems]: User/Machine Systems—Human information processing

## 1 INTRODUCTION

The ultimate haptic device has no mass and has infinite bandwidth. In an effort to approach this ideal, it is worth considering what bounds performance above, that is, what is the maximum performance that can possibly be achieved, and what bounds it under, that is, how good performance should be. In the area of force feedback devices, the actuator performance is what bounds the performance above. With a given actuator, no matter how well transmissions and linkages, if any, are designed, these elements can only degrade key aspects of performance such as the dynamic range (ratio of the largest to the smallest specifiable force), the stiffness of the connection between the prime mover and the manipulandum, or the end-point inertia.

In this paper, we describe an approach to the design and construction of a single-axis haptic interface prototype that can cover a significant portion of the range of human sensorimotor performance. Perhaps, the most relevant aspect of human performance with respect to haptic device design, is the smallest human-detectable force. In an ideal device, the smallest detectable force should match the smallest force that can be commanded by the device and the largest force should match the normal operation of the human hand.

While actuator saturation (long and short term) is clearly the factor that determines the upper limit of the range, the determination of the lower limit merits some discussion. When a manipulandum interacts with a hand, it is subject to a number of forces (to simplify the discussion, for now no distinction is made between forces and torques). If we can neglect the effect of internal elastic forces, that is, if the device operates below its first resonant mode, these forces are: the actuator force, typically a Lorentz force developed in the motor windings; the forces due to viscous and friction losses

(if the device has sliding surfaces), plus those due to losses arising from induced currents and which also oppose motion; inertial forces to which each moving part is subjected; and the force applied by the hand which includes at least an inertial component, a viscous component, and an elastic component, all due to the movement of tissues. According to Newton's second law, all these forces must balance.

We now turn our attention to the problem of the design of a transducer able to command a known force at the interface between a manipulandum and the relatively soft load represented by a two-finger grip. We also desire that this force be commanded, not only at DC, but over a wide frequency range. It follows from the previous discussion that parasitic forces resulting from inertia and losses should be negligible. But how small is negligible?

We can look at this question from one of two possible, hopefully equivalent, viewpoints. Seen from the view point of the device, we could strive to engineer it so that the parasitic forces are smaller than the smallest human-detectable force under all desired operating conditions. Seen from the viewpoint of the hand, we could desire the device to have a mechanical impedance (ratio of force over displacement and derivative) that is significantly smaller than that of the fingertips since then, tissue deformations would not be the result of parasitic forces but from only commanded forces. We will examine some plausible numerical values in Section 3. It will soon become clear that a single standard electric motor, the actuator of choice when building impedance-based haptic devices, will not meet the desired objective.

The rest of this paper describes a two-actuator system depicted in Fig. 1 which is based on the principle of coupling a large actuator to a small one via a *viscous coupler* such that, seen from the manipulandum, *the system's apparent mechanical impedance and risetime is that of the small motor but the largest force it can deliver is that of the large motor*. If we can design a system which has these properties, then extremely high-performance can be achieved.

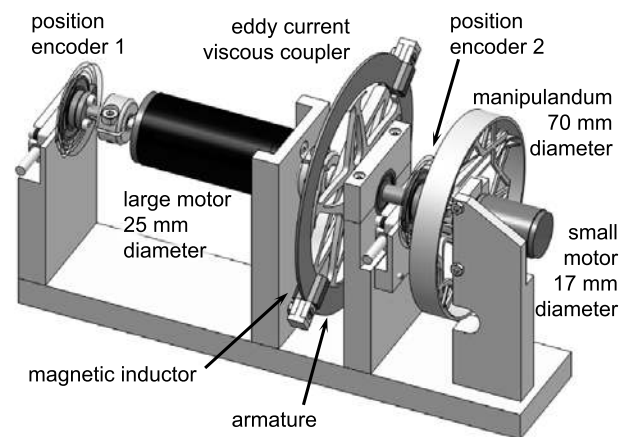


Figure 1: Computer-aided design representation of the prototype device showing the main components (Catia, Dassault Systèmes).

\*e-mail: millet@isir.fr

†e-mail: sinan.haliyo@upmc.fr

‡e-mail: stephane.regnier@upmc.fr

§e-mail: vincent.hayward@isir.fr

## 2 RELATED APPROACHES AND A NEW ONE

Dual-stage robotic devices go a long way back. There are several reasons for wanting to have more than one actuator per joint. Perhaps one of the oldest motivations is the desire to modulate the intrinsic dynamics of an actuated joint in a effort to imitate the antagonist action of skeletal muscles. References [27, 8, 26] describe examples of this approach to modulate elasticity with electric motors, and reference [2] discusses the modulation of viscosity with hydraulic motors. Recently these ideas have been developed further in a effort to make robots that can interact with people safely and which are surveyed in [1].

It is customary to use the word ‘series’ and ‘parallel’ to discuss the coupling options between mechanical elements. Unfortunately, this terminology can be confusing. In electrical circuits, when two elements are ‘in-series’ they share the same current. Confusion arises because there are two possible analogies between the mechanical and the electrical domains [16], the same mechanical elements could be ‘in-series’ or ‘in-parallel’ according to a choice. To prevent confusion, we discuss the methods of coupling between motors and loads, and avoid using the terms ‘series’ and ‘parallel’.

In the symbolism of Fig. 2, a rectangular box represents an inertia, two parallel lines represent a controllable source of force, typically a Lorentz force, a coil represents a spring, a piston represents a damper, a small circle represents the load, and a mechanical connection is a connection (common velocity). Referring to this figure, case **a** is an important one because it models many actual haptic devices. In effect, a preferred method of construction of these devices calls for grounding the actuators, therefore, there is at least an elastic element between the motor and the handle. If elasticity is built-in by design, then we have so-called “series elastic actuators” [20, 15], but for haptics we would rather try to make the spring as stiff as possible to raise the system natural frequency [11]. Configuration **b** corresponds to the standard, variously called coarse-fine or mini-macro manipulator design [22, 23, 21, 14, 12]. Here a large motor ‘carries’ a smaller one, but both share the same load since they are on the same load path. Such a scheme has been advocated for haptic devices [25, 30]. With proper control this configuration can reduce the apparent inertia of the whole system but the small motor must be able to bear the whole brunt of the load. This naturally leads to the arrangement **c** described in reference [17] which does not have this limitation and which also can be applied to making human-friendly robots [32]. The large motor supplies the largest portion of the force and the small motor “fills-in” during transients. With proper control, the user is exposed to the inertia of the small motor but not that of the large. A variant design is proposed in reference [5] where the large motor is replaced by a brake.

The haptic designer can use all three types of forces: elastic, dissipative, and inertial. From this view point, configuration **d** is an option. In fact, it is by inertial coupling (and other tricks) that portable phones and gaming pads give ‘force feedback’. So why not consider option **e** to achieve an effect similar to that of arrangement **c**? It is in principle possible but probably too complex to be practical. A first problem is the need for a slip-ring electrical connection, or other mechanisms accomplishing a similar function. A second problem is the need to include an additional control mechanism able to bring the “fly-wheel” velocity to zero on average.

This leaves us with dissipative forces to achieve desirable couplings. The counterpart of case **a**, case **f**, is described in reference [4] for robotic applications. At first sight, it is not very appealing for haptics since, say with an elastic load like a hand, this coupling will introduce an attenuation of 6 dB/octave on top of the 12 dB/octave attenuation due to the motor inertia. Although we could think of option **g** to ‘take up’ the response in the high-frequency, similarly to **b**, such configuration would have the same problems. Option **h** is worth mentioning. It has been shown to be able to generate distortion-free high-frequency haptic information

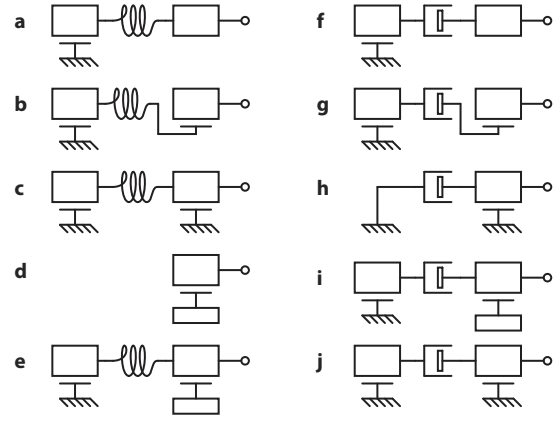


Figure 2: Several ways one or two motors can be coupled to a load. See text for discussion. Combination **j** is the combination adopted for the ‘ultimate haptic device’ described in this article.

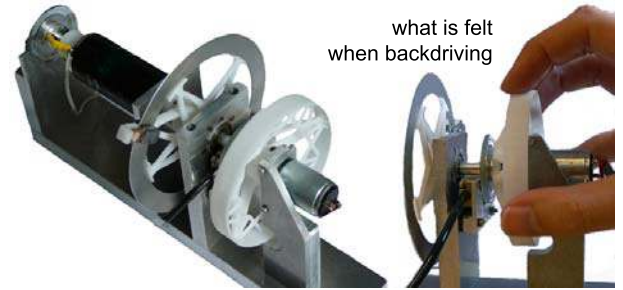


Figure 3: Prototype realized according to strategy **j**. Under proper control, the perceived inertia is that of a thin aluminum annulus plus a light-weight handle. Friction is negligible since it is a non-contact transmission relying on eddy current induction. This is illustrated in the right panel which shows only the moving parts that are felt.

up to 100 Hz [3]. We could propose the arrangement **i** but it would suffer from the same difficulties as **e**. This leaves us with design **j** which is further discussed in Section 4. Figure 3 shows our first realization where the coupler is a non-contact eddy-current clutch.

## 3 PERFORMANCE ESTIMATES

How good is good? The parasitic forces in a haptic device can, again, be put into three categories: inertial forces, dissipative forces, and elastic forces. For the later, we may simply consider that the effect of elasticity in a transmission is the occurrence of structural dynamics (resonances and anti-resonances) and hence can be quantified by the lowest natural frequency,  $F_0$ , that limits the range of operation. The other forces can be simply quantified by their greatest magnitude over the range of operation [11].

### 3.1 Time-Domain Performance of Fingertip Detection

The sought-after number depends on the task. One approach is to consider the human ability to discriminate short temporal events. According to reference [18], we can situate this number at 30 ms. On the other hand, vibrotactile studies, typically performed by measuring the displacement of an object in contact with the skin [28], indicate that fingertip displacements of the order of  $1 \mu\text{m}$  can be detected at 1 kHz, giving a number closer to 1 ms. Such a difference is to be expected since discrimination is a harder task than detection. In terms of a performance figure, we would desire a system risetime of 1 ms in the small signal range.

### 3.2 Smallest Human-Detectable Force at the Fingertip

There has been work on the discrimination of forces at the fingertip. One of the most relevant to our present purpose is described in reference [31]. Unfortunately, the present authors could find only one study where subjects were tested with very low forces [7], at the detection threshold, either statically or dynamically (testing with von Frey filaments wouldn't not be appropriate here), probably due to the limitations of current electromechanical stimulus generation methods. Nevertheless, we can arrive at a number indirectly. There are now good estimates of the tangential stiffness of a fingertip [19], suggesting the figure of  $0.2 \cdot 10^3 \text{ N}\cdot\text{m}^{-1}$ . As for the smallest detectable skin displacement, unfortunately the authors could not find a direct study either. Yet, from vibrotactile studies the smallest detectable displacement is very small, of the order of  $10^{-7} \text{ m}$ ! [28]. But it is implausible that at several hundred Hz, the interaction force be entirely attributed to elastic forces in the fingertip—there are also viscous and inertial forces at this frequency. The smallest detectable force would be extremely small, viz.  $10^{-4} \text{ N}$ . Statically, the skin can also detect very small displacements, but accounting for the discussions in references [13, 24], we could revise the estimate to  $10^{-5} \text{ m}$ , putting the smallest detectable force at  $10^{-2} \text{ N}$  in the low frequencies. As a sanity check, consider that the mass of a US cent coin is 2.5 g. When it is held between two fingers it statically loads the skin by about  $10^{-2} \text{ N}$  on each. This load seems to be at about static threshold. In summary, an ultimate device should specify forces at the fingertip within  $10^{-2} \text{ N}$  statically and within  $10^{-3} \text{ N}$  dynamically.

### 3.3 Hand Motor Capabilities

Given the vast range of human motor capabilities, perhaps the most reasonable manner to estimate the largest acceleration and velocity that can be expected is to consider a specific motor task such as reaching a target. The key reference is [9] where it is found that people tend to spend 0.2 s to reach a target separated by 5 cm from the initial position. At the scale considered, assuming a parabolic trajectory profile, from these numbers we can deduce that the finger acceleration could be roughly  $2 \text{ m}\cdot\text{s}^{-2}$  and that the velocity could reach  $0.2 \text{ m}\cdot\text{s}^{-1}$ . Accelerations and velocities are certainly much higher in non-informational and in ballistic tasks, but these need not be considered for a haptic interface.

### 3.4 Target Performance Figures

By combining the numbers found in the previous sections we are now in a position to specify the target performance figures for a haptic interface that can operate at the limits of human performance. These numbers are arrived at by considering that when the hand actively interacts with the handle, parasitic forces should be at threshold, thus not interfering with the Lorentz force produced by the motors. The results are collected in Table 1.

Table 1: Target performance figures and their angular equivalents are given for the case of a 70 mm handle.

| Quantity               | Unit                                      | Value               | Angular Unit   | Value                |
|------------------------|---|---------------------|--|----------------------|
| Mass <sup>a</sup>      | kg  | $0.5 \cdot 10^{-2}$ | kg·m <sup>2</sup>  | $61.3 \cdot 10^{-7}$ |
| Viscosity <sup>b</sup> | $\text{N}\cdot\text{s}\cdot\text{m}^{-1}$ | $0.5 \cdot 10^{-1}$ | $\text{N}\cdot\text{m}\cdot\text{s}\cdot\text{rad}^{-1}$ | $61.3 \cdot 10^{-6}$ |
| Friction <sup>c</sup>  | N   | $1.0 \cdot 10^{-3}$ | N·m  | $35.0 \cdot 10^{-6}$ |
| Risetime <sup>d</sup>  | s   | $1.0 \cdot 10^{-3}$ |  |                      |
| Max force <sup>e</sup> | N   | 5.0                 | N·m  | $17.5 \cdot 10^{-2}$ |

<sup>a</sup> obtained from largest acceleration and lowest statically detectable force.

<sup>b</sup> obtained from largest velocity and lowest statically detectable force.

<sup>c</sup> obtained from lowest dynamically detectable force (reversal transients).

<sup>d</sup> obtained from vibrotactile performance.

<sup>e</sup> obtained from common sense.

It is worth noting that the dynamic range from the lowest to the highest specifiable force turns out to cover four orders of magnitude and that the achievable dynamic range of a high-quality DC motor is only about two orders of magnitude. This observation vindicates the need for at least a two-stage design.

## 4 DESIGN

### 4.1 Rationale

Dual stage arrangements are common in electronic amplifier design (such as the “current dumping audio amplifier” of the QUAD company [29] or the classic Doherty scheme [6]) where a powerful amplifier supporting the brunt of the load is coupled to a high-quality fast-stage to fill-in the signal that the primary stage cannot supply during transients. Here we have a similar approach.

The spring coupling is an interesting coupling option, but springs have the property of storing energy. This is an advantage in applications where energy conservation is desirable, such as in a walking machine, but in haptics, energy storage is inconvenient, even hazardous. Humans interacts with devices typically at rather low velocities. For an elastic coupling to output a large torque, it must be wound up. If the output torque needs to be brought to zero abruptly, for instance when breaking contact with a virtual wall, the feedback system must be able to unwind the coupling at high speed since displacement is two integrals away from the output torque. Moreover, when letting go of a handle during interaction, the elastic energy would be uncontrollably converted to kinetic energy almost instantaneously, causing a hazard, since the output stage must be light and weak, hence unable to control movement.

A viscous coupling, in contrast, does not have these problems, or at least to a lesser extent. To produce torque, the large stage must spin, also storing energy in kinetic form. But this energy cannot transfer at the output transiently since the coupling is dissipative by construction. It will tend to dissipate energy in itself rather than in the user. Moreover, in contrast to the elastic coupling case, the output torque is only one integral away from the output torque. Hence, the basic servo mechanism that governs the large stage is a velocity servo, which is much easier to realize than a position servo (system has at least one fewer order). As an added benefit, the large stage can react more quickly than in the case of an elastic coupling, relying less on the small stage to produce an accurate output.

There are several other advantages of the viscous coupling over the elastic coupling. One of them is accuracy. Dual stage designs produce an accurate output force because, in essence, they are force-feedback systems. The feedback control system in an elastically coupled devices essentially attempts to regulate a spring deflection in a resonant system. So the design is complex, and if the spring is not of exacting quality, there will be hysteresis and distributed high-frequency modes. The viscous coupling in the present proposal is based on eddy current induction. This coupling technique is non-contact and is for all practical purposes perfectly linear (within many orders of magnitude) provided that the velocity is small enough. In haptics, the velocities of interest are much below the critical velocity at which an eddy current clutch becomes non-linear [10]. Provided that the relative velocities of the two shafts can be measured accurately, the viscous coupler is nothing but a very high quality non-contact force sensor.

### 4.2 Control System

For the time being and for experimentation purposes, we implemented a simple scheme. A simplified model of the electro-mechanical behavior of a device, as in Fig. 1 and Fig. 2j, is represented in Fig. 4, dashed line box. We have two electric motors driven in current mode and coupled by a viscous clutch  $b$ . The coupling produces an output torque,  $\tau_{\text{out}}$ , which is (exactly) proportional to the speed difference of the two shafts, give or take the inertia,  $J_2$ , of the distal stage and friction,  $\tau_{2\text{fric}}$ . The control system





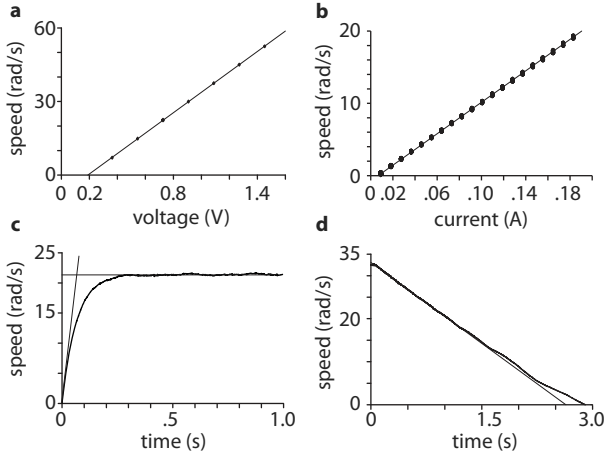


Figure 6: Raw data from measurement of the distal stage. Thin lines show the results of the regressions. Panel **a** shows how the torque constant was found; **b** shows the coefficient of the viscous coupler was found; **c** shows how the moment of inertia was found; and **d** shows how the friction torques was found.

state, when the coupler is disconnected, the mechanical response is  $\theta_2 = 1/k_2 u_2 - R_2/k_2 i_{2\text{fric}}$ , where  $i_{2\text{fric}}$  is the current needed to overcome friction. By varying the speed,  $k_2$  could be backed out of the measurements by linear regression, see Fig. 6a. Next, the viscous coupler was reconnected and the proximal stage clamped. The new dynamics, in the steady state, was  $\dot{\theta}_2 = k_2 i_2/b - \tau_{2\text{fric}}/b$  when the amplifier was switched to current mode. Similarly  $b$  could be estimated by linear regression, see Fig. 6b. To find the moment of inertia, a current step was given to the motor with the same conditions as before and the moment of inertia was deduced from the final angular velocity,  $J_2 = b\dot{\theta}_2/p$ , where  $p$  is the initial slope, see Fig. 6c. Finally, to find the friction torque, observe that if the handle is given an initial velocity, because of dry friction, the speed will decay at a constant rate,  $\dot{\theta}_2 = \dot{\theta}_2(0) - \tau_{2\text{fric}}/J_2$ . From this response, the friction torque could be measured by linear regression, see Fig. 6d. The results are collected in Table 2.

## 5.2 Time-Domain Performance

The system was tested by holding the manipulandum with a normal grip and demanding a step of torque with the feedback control turned on ( $K_p = 0.11$ ,  $T_i = 0.03$  s). The saturation levels were set to 8.5 mN·m for the small motor and 45 mN·m for the large one. The sampling rate was 5 kHz and the data logging rate was 500 Hz. Fig. 7 shows the results of demanding an up-step and a down-step of amplitude 10 mN·m each at time  $t = 0$ . The output torque is the sum of the clutch torque and of the small-motor torque,  $\tau_{\text{out}} = \tau_{\text{clutch}} + \tau_2$ . In Fig. 7a, it can be seen how the large motor, as can be expected, received a large command spike. Since it is working against the viscous coupler, this condition results in a smoothly rising torque over a 40 ms duration. The missing torque is taken up by the small motor resulting in a sharp output torque tracking the demand precisely. The imperfection is a rounded corner near the set point due to the small motor saturation. In the second example, Fig. 7b, friction contributes to damp the large motor which results in a perfectly sharp, unconditionally stable transient lasting less than 2 ms. In general, the mechanical time constant of the distal stage depends on the input step amplitude. For an up-step under the saturation level of the small motor, it is equal to the electrical time constant of the small motor, which is almost instantaneous.

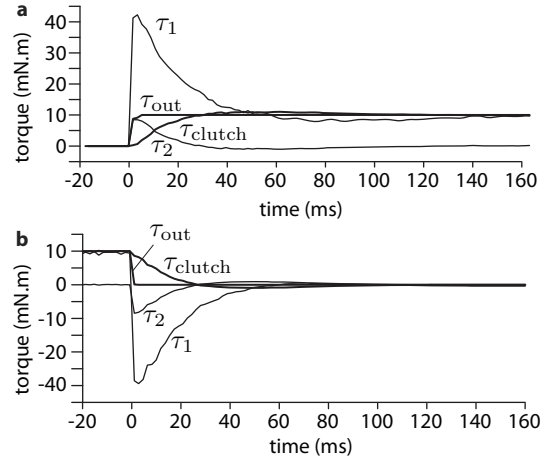


Figure 7: Time domain performance.

Table 2: Measured system parameters.

| Quantity              | Unit   | Value              |
|-----------------------|--|--------------------|
| $k_2$                 | $\text{N}\cdot\text{m}\cdot\text{A}^{-1}$                | $24 \cdot 10^{-3}$ |
| $b$                   | $\text{N}\cdot\text{m}\cdot\text{s}\cdot\text{rad}^{-1}$ | $22 \cdot 10^{-5}$ |
| $J_2$                 | $\text{kg}\cdot\text{m}^2$                               | $15 \cdot 10^{-6}$ |
| $\tau_{2\text{fric}}$ | $\text{N}\cdot\text{m}$                                  | $19 \cdot 10^{-5}$ |
| $\tau_{1\text{max}}$  | $\text{N}\cdot\text{m}$                                  | $45 \cdot 10^{-3}$ |

## 5.3 Discussion

While the advantages over a single motor design are not immediately apparent in the presently described proof-of-concept prototype, we anticipate two key advantages of the dual-motor design to be leveraged in future prototypes. Firstly, the effective inertia would always be determined by the inertia of the output moving parts, which become advantageous when high torques are needed and therefore when larger motors are used. In fact we expect this inertia to be always dominated by the handle but not by the motor. Our initial design does not achieve this because the large motor is too small and the disk too large. Similarly, the friction that the user experiences would always be limited to the friction due to the small motor instead of that of the large motor.

As can be seen from inspection of Table 1 and Table 2, the resulting system is not very far from meeting all the performance figures, which is an encouraging result given that the off-shelf parts were not specifically specified. Where the device is the weakest is in the maximum torque it can deliver. There is also too much friction by a factor 5.

None of these limitations present obstacles that could not be surmounted with extra care in the design of a second prototype which is under construction at the time of writing. The friction due to the brushes of small DC motors is typically about  $10^{-4}$  N. For achieving smaller friction, brushless technologies such as galvanometric motors or limited angle torque motors could be considered. We expect the next prototype to be able to meet the requirements set out in Table 1 and hence to be a haptic device which for all practical purposes is completely “transparent” to a human user as all parasitic forces will be reduced to sub-threshold levels, while being able to produce high torques within an extended bandwidth at low signal distortion levels.

## 6 CONCLUSION

We set out to design a single-axis haptic device capable of producing controllable forces that match the human motor and sensory performance, hence achieving perfect transparency. A dual stage design was selected and the preferred coupling method was a viscous clutch based on the principle of eddy currents. The objective of the closed loop control is to prevent the user to experienced the dynamics of the large proximal stage. The viscous coupler makes this objective somewhat easy to achieve since the system to be controlled reduces to what is essentially a first-order system. The distal stage supplies the missing transient in open-loop, yielding a system that is expected to be intrinsically robust and unconditionally stable without compromising performance.

Future work includes further optimization of the design. Additional engineering effort could yield integrated designs that would have a form factor similar to that of standard motors with the two rotors coupled by an eddy current inductor inside a common package. Such dual-stage motors could then be conveniently integrated into intrinsically-safe, high-performance robotic and haptic systems intended to interact with humans.

More generally, we believe that we have first proposed a macro-scale electromechanical system which can rightly be considered as a source of force with extremely low internal impedance ( $< 10^3$  N), negligible undesirable dynamics, a wide dynamic range (1:10.000), and a bandwidth as wide as the small motor. As such, its applications should far exceed those of haptic devices themselves.

## ACKNOWLEDGEMENTS

The authors wish to thank Andrew Gosline for advice on magnetic design of viscous couplers and Bruno Sauvet for help with prototype manufacturing. This work was supported by the ANR (Agence Nationale de la Recherche, France), project PACMAN “perception haptique des échelles micro et nanoscopiques”.

## REFERENCES

- [1] A. Bicchi, M. Peshkin, and J. E. Colgate. Safety for physical human-robot interaction. In *Springer Handbook of Robotics*, chapter 57, pages 1335–1348. Springer-Verlag, 2008.
- [2] B. Boulet. Modeling and control of a robotic joint with inparallel redundant actuators. Master’s thesis, Department of Electrical Engineering, McGill University, Montréal, Qc, Canada, 1990.
- [3] G. Campion, A. H. Gosline, and V. Hayward. Passive viscous haptic textures. In *Proceedings of the 16th Symposium on Haptic Interfaces For Virtual Environment And Teleoperator Systems*, pages 379–380, 2008.
- [4] M. Chew, G.-S. Hong, and W. Zhou. Series damper actuator: a novel force/torque control actuator. In *Proceedings of the 4th IEEE/RAS International Conference on Humanoid Robots*, pages 473–478, 2004.
- [5] F. Conti, O. Khatib, and C. Baur. A hybrid actuation approach for haptic devices. In *Proceedings of the Second Joint Eurohaptics Conference and Symposium on Haptic Interfaces for Virtual Environment and Teleoperator Systems, World Haptics 2007*, pages 367–372, 2007.
- [6] W. H. Doherty. A new high efficiency power amplifier for modulated waves. *Proceedings of the IRE*, 24(9):1163–1182, 1936.
- [7] J. Doshier and B. Hannaford. Human interaction with small haptic effects. *Presence: Teleoperators and Virtual Environments*, 14(3):329–344, 2005.
- [8] C. English and D. Russell. Implementation of variable joint stiffness through antagonist actuation using rolamite springs. *Mechanisms and Machine Theory*, 34(1):27–40, 1999.
- [9] P. M. Fitts. The information capacity of the human motor system in controlling the amplitude of movement. *Journal of Experimental Psychology*, 47(6):381–391, 1954.
- [10] A. H. Gosline and V. Hayward. Eddy current brakes for haptic interfaces: Design, identification, and control. *IEEE/ASME Transactions on Mechatronics*, 13(6):669–677, 2008.
- [11] V. Hayward and O. R. Astley. Performance measures for haptic interfaces. In G. Giralt and G. Hirzinger, editors, *Robotics Research: The 7th International Symposium*, pages 195–207, Heidelberg, 1996. Springer-Verlag.
- [12] R. L. Hollis, S. E. Salcudean, and A. P. Allan. A six-degree-of-freedom magnetically levitated variable compliance fine-motion wrist: Design, modeling, and control. *IEEE Transactions on Robotics and Automation*, 7(3):320–332, 1991.
- [13] R. S. Johansson and R. H. Lamotte. Tactile detection thresholds for a single asperity on an otherwise smooth surface. *Somatosensory and Motor Research*, 1(1):21–31, 1983.
- [14] O. Khatib. Reduced effective inertia in macro-/mini-manipulator systems. In H. Miura and S. Arimoto, editors, *Robotics Research 5*, pages 279–284. MIT Press, 1990.
- [15] M. Lauria, M.-A. Legault, M.-A. Lavoie, and F. Michaud. Differential elastic actuator for robotic interaction tasks. In *Proceedings of IEEE International Conference on Robotics and Automation*, pages 3606–3611, 2008.
- [16] J. Miles. Applications and limitations of mechanical-electrical analogies. *Journal of the Acoustical Society of America*, 14(3):183–192, 1943.
- [17] J. B. Morrell and J. K. Salisbury. In pursuit of dynamic range: Using parallel coupled actuators to overcome hardware limitations. In *Proceedings of the 4th International Symposium on Experimental Robotics IV*, volume 223 of *Lecture Notes in Control and Information Sciences*, pages 263–273. Springer-Verlag, 1995.
- [18] M. A. Pastor, B. L. Day, E. Macaluso, K. J. Friston, and R. S. J. Frackowiak. The functional neuroanatomy of temporal discrimination. *The Journal of Neuroscience*, 24(10):2585–2591, 2004.
- [19] T. C. Pataky, M. L. Latash, and V. M. Zatsiorsky. Viscoelastic response of the finger pad to incremental tangential displacements. *Journal of Biomechanics*, 38(7):1441–1449, 2005.
- [20] G. A. Pratt and M. M. Williamson. Series elastic actuators. In *Proceedings of the IEEE/RSJ International Conference on Intelligent Robots and Systems*, pages 399–406, 1995.
- [21] S. E. Salcudean and C. An. On the control of redundant coarse-fine manipulators. In *Proceedings of the IEEE International Conference on Robotics and Automation*, pages 1834–1840, 1989.
- [22] A. Sharon and D. E. Hardt. Enhancement of robot accuracy using endpoint feedback and a macro-micro manipulator system. In *Proceedings American Control Conference*, pages 1836–1842, 1984.
- [23] A. Sharon, N. Hogan, and D. E. Hardt. High bandwidth force regulation and inertia reduction using a macro/micro manipulator system. In *Proceedings of the IEEE International Conference on Robotics and Automation*, pages 126–132, 1988.
- [24] M. A. Srinivasan, J. M. Whitehouse, and R. H. LaMotte. Tactile detection of slip: surface microgeometry and peripheral neural codes. *Journal of Neurophysiology*, 63(6):1323–1332, 1990.
- [25] L. Stocco and S. E. Salcudean. A coarse-fine approach to force-reflecting hand controller design. In *Proceedings of the IEEE International Conference on Robotics and Automation*, pages 404–410, 1996.
- [26] S. Stramigioli and V. Duijndam. Variable spatial springs for robot control applications. In *Proceedings of the IEEE/RSJ International Conference on Intelligent Robots and Systems*, pages 1906–1911, 2001.
- [27] S. Sugano, S. Tsuto, and I. Kato. Force control of the robot finger joint equipped with mechanical compliance adjuster. In *Proceedings of the IEEE/RSJ International Conference on Intelligent Robots and Systems*, pages 2005–2013, 1992.
- [28] R. T. Verrillo. Effect of contactor area on the vibrotactile threshold. *Journal of the Acoustical Society of America*, 35(12):1962–1966, 1963.
- [29] J. P. Walker. Current dumping audio amplifier. *Wireless World*, 81:560–562, December 1975.
- [30] S. A. Wall and W. Harwin. A high bandwidth interface for haptic human computer interaction. *Mechatronics*, 11(4):371–387, 2001.
- [31] H. E. Wheat, L. M. Salo, and A. W. Goodwin. Human ability to scale and discriminate forces typical of those occurring during grasp and manipulation. *The Journal of Neuroscience*, 24(13):3394–3401, 2004.
- [32] M. Zinn, B. Roth, O. Khatib, and J. K. Salisbury. A new actuation approach for human friendly robot design. *International Journal of Robotics Research*, 23(4):379–398, 2004.