



**HAL**  
open science

# **Outbreaks of Vector-Borne and Zoonotic Diseases Are Associated With Changes in Forest Cover and Oil Palm Expansion at Global Scale**

Serge Morand, Claire Lajaunie

► **To cite this version:**

Serge Morand, Claire Lajaunie. Outbreaks of Vector-Borne and Zoonotic Diseases Are Associated With Changes in Forest Cover and Oil Palm Expansion at Global Scale. *Frontiers in Veterinary Science*, 2021, 8, <10.3389/fvets.2021.661063>. <hal-03188447>

**HAL Id: hal-03188447**

**<https://hal.science/hal-03188447v1>**

Submitted on 16 Nov 2021

**HAL** is a multi-disciplinary open access archive for the deposit and dissemination of scientific research documents, whether they are published or not. The documents may come from teaching and research institutions in France or abroad, or from public or private research centers.

L'archive ouverte pluridisciplinaire **HAL**, est destinée au dépôt et à la diffusion de documents scientifiques de niveau recherche, publiés ou non, émanant des établissements d'enseignement et de recherche français ou étrangers, des laboratoires publics ou privés.



Distributed under a Creative Commons CC BY 4.0 - Attribution - International License



# Outbreaks of Vector-Borne and Zoonotic Diseases Are Associated With Changes in Forest Cover and Oil Palm Expansion at Global Scale

Serge Morand<sup>1,2,3\*</sup> and Claire Lajaunie<sup>4</sup>

<sup>1</sup> CNRS ISEM—CIRAD ASTRE, Montpellier University, Montpellier, France, <sup>2</sup> Faculty of Veterinary Technology, Kasetsart University, Bangkok, Thailand, <sup>3</sup> Faculty of Tropical Medicine, Mahidol University, Bangkok, Thailand, <sup>4</sup> Inserm-Laboratoire Population Environnement Développement (Aix-Marseille Université, IRD), Marseille, France

## OPEN ACCESS

### Edited by:

Donato Traversa,  
University of Teramo, Italy

### Reviewed by:

Antonio Frangipane di Regalbono,  
University of Padua, Italy  
Hans-Peter Fuehrer,  
University of Veterinary Medicine,  
Vienna, Austria

### \*Correspondence:

Serge Morand  
serge.morand@umontpellier.fr

### Specialty section:

This article was submitted to  
Parasitology,  
a section of the journal  
Frontiers in Veterinary Science

**Received:** 30 January 2021

**Accepted:** 22 February 2021

**Published:** 24 March 2021

### Citation:

Morand S and Lajaunie C (2021)  
Outbreaks of Vector-Borne and  
Zoonotic Diseases Are Associated  
With Changes in Forest Cover and Oil  
Palm Expansion at Global Scale.  
*Front. Vet. Sci.* 8:661063.  
doi: 10.3389/fvets.2021.661063

Deforestation is a major cause of biodiversity loss with a negative impact on human health. This study explores at global scale whether the loss and gain of forest cover and the rise of oil palm plantations can promote outbreaks of vector-borne and zoonotic diseases. Taking into account the human population growth, we find that the increases in outbreaks of zoonotic and vector-borne diseases from 1990 to 2016 are linked with deforestation, mostly in tropical countries, and with reforestation, mostly in temperate countries. We also find that outbreaks of vector-borne diseases are associated with the increase in areas of palm oil plantations. Our study gives new support for a link between global deforestation and outbreaks of zoonotic and vector-borne diseases as well as evidences that reforestation and plantations may also contribute to epidemics of infectious diseases. The results are discussed in light of the importance of forests for biodiversity, livelihoods and human health and the need to urgently build an international governance framework to ensure the preservation of forests and the ecosystem services they provide, including the regulation of diseases. We develop recommendations to scientists, public health officers and policymakers who should reconcile the need to preserve biodiversity while taking into account the health risks posed by lack or mismanagement of forests.

**Keywords:** infectious diseases, zoonoses, vector-borne diseases, deforestation, oil palm, public health, governance

## INTRODUCTION

The COVID-19 pandemic has called to investigate the consequences of biodiversity loss for the emergence of zoonotic diseases (1–4). Deforestation is a major cause of biodiversity loss (5) and the latest report on forests by United Nations Food and Agriculture Organization (FAO) and United Nations Environment Programme (UNEP) has emphasized the negative impact of deforestation on human health (6). The Sustainable Development Goals (SDG) of the United Nations (UN) specifically refers to the importance of forests. More precisely, the SDG 15 has two indicators with the first one that measures the proportion of the global forest area and the second one that assesses progress toward Sustainable Forest Management. The Aichi target 5 of the Convention on Biological Diversity

(CBD) calls for a sharp decrease of the rate of loss of forests which should be to zero by 2020 (7). The Aichi targets 14 and 15, respectively, highlight the role of ecosystems in contributing to essential services and contributing to health as well as biodiversity conservation and climate change mitigation (7).

According to Curtis et al. (8) a quarter of global forest loss is due to the conversion of forest to produce commodities (beef, soy, palm oil, and wood fiber). The overall rate of this commodity-driven deforestation has not declined since 2001 (9). Forest conversion to commodities such as oil palm may affect several ecosystem functions such as carbon sequestration and soil regeneration (10). However, the loss of disease regulation during forest conversion has not been well-investigated. In Southeast Asia, a recent meta-analysis showed that increasing prevalence of vector-borne diseases such as dengue or chikungunya was associated with land conversion, including forests, to commercial plantations such as teak, rubber and oil palm (11). Nonetheless, it remains difficult to disentangle the respective influences of forest loss and conversion, other land use changes, demography, increased human and agricultural encroachments or the pressures of hunting on the rise of infectious diseases. Several studies have exemplified that multiple factors are responsible of the outbreaks of Ebola in Africa (12, 13), Nipah (14) or *Plasmodium knowlesi* in Southeast Asia (15). Not only the emergence of new diseases, but also epidemics of infectious diseases appear to be linked to deforestation as recently evidenced for malaria epidemics in Brazil (16). Afforestation can also create new risks of infectious diseases, especially when it comes to commercial plantations. Abandon of agriculture land creates patchy matrix of shrubs that may also lead to new risk of zoonoses such as Lyme disease in the Northern America and Europe (17) or scrub typhus in Taiwan (18).

The present study is a first attempt to investigate at global scale whether the loss and gain of forest cover can promote outbreaks of vector-borne and zoonotic diseases. Here, we examine the global trends between changes in forest cover in recent decades and epidemics of human infectious diseases, using the GIDEON global database, which is the best available dataset on infectious diseases that has already been used in several studies (2, 19–21). We also examine the global pattern between increasing areas of oil palm and epidemics of human infectious diseases. We hypothesize that zoonotic and vector-borne diseases should be favored both by deforestation and by the increase of commodity plantations like oil palm, taking into account the concomitant increase in the size of the human population.

The results of our global study linking geography and infectious diseases are discussed in light of the importance of forests for biodiversity, livelihoods and human health and the need to urgently tackle the building of international governance to ensure the preservation of forests and the ecosystem services they provide, including the regulation of diseases.

## MATERIALS AND METHODS

Data on forest cover (in share of total land area) by country from 1990 to 2016 were extracted from the World Bank (<https://www.worldbank.org/>). Data on oil palm harvested area by country were extracted from the FAOSTAT (<http://www.fao.org/faostat/>) of the Food and Agricultural Organization (FAO) of the United Nations. Data on population demography by country were also extracted from the World Bank (<https://www.worldbank.org/>).

Data on human infectious diseases were obtained from GIDEON ([www.gideononline.com](http://www.gideononline.com)), which contains information on the occurrence of epidemics of human infectious diseases in each nation [see (2)]. In the GIDEON database, an outbreak follows the general definition of the WHO as any grouping of cases, including family clusters and epidemics. We used the classification of vector-borne and zoonotic diseases provided by Smith et al. (20). The 1990–2016 extracted dataset contains 3,884 outbreaks of 116 zoonotic diseases and 1,996 outbreaks of 69 vector-borne infectious diseases.

General additive modeling (GAM), an extension of the generalized linear models, was used to investigate the relationships between outbreaks of infectious diseases and forest cover or oil palm areas taking into account both the spatial autocorrelation and the temporal autocorrelation. The model assumes that the response variable is dependent on the univariate smooth-terms of independent variables (22). All models were fitted using the “MGCV” package (23). We used the function `gam.check` to choose the basis dimension for each predictor according to estimated degrees of freedom value in the main effect. Outputs of GAM models were obtained using the packages “`gratia`” (24) and “`mgcViz`” (25).

A first GAM was developed to investigate the number of outbreaks of zoonotic or vector-borne diseases as a function of forest cover, human population size, spatial distribution (using the country centroids) and time (year) using a negative binomial link function. This first model was:

$$g(E(\text{outbreaks of infectious diseases})) = f_1(\text{long, lat}) + f_2(\text{forest cover, year}) + f_3(\text{human population size, year}) + b$$

A second GAM was developed to investigate the number of outbreaks of zoonotic or vector-borne diseases as a function of oil palm areas, human population size, spatial distribution (using the country centroids) and time (year) using a negative binomial link function. This second model was:

$$g(E(\text{outbreaks of infectious diseases})) = f_1(\text{long, lat}) + f_2(\text{oil palm area, year}) + f_3(\text{human population size, year}) + b$$

Data manipulation and their representation were performed using “`dplyr`” and “`ggplot2`” (26) in R (27). Smooth regression was used to visualize the trend of change over time (28). We featured the correlations between the number of outbreaks, zoonotic and vector-borne diseases, and the changes in forest cover or oil palm areas, by country and over years, using the package “`Hmisc`” (29) in R. Maps were drawn using the package “`rworldmap`” (30).

## RESULTS

Because of the time limitation of the datasets, analyses were narrowed to the period from 1990 to 2016 for disease outbreaks (GIDEON), share of forest cover and area of oil palm (FAOSTAT) by country. Globally, the number outbreaks of zoonotic diseases increased from the period 1990–2016 (Spearman Rho = 0.99,

$P < 0.00001$ ,  $n = 27$ , **Figure 1A**), as well as the number of outbreaks of vector-borne diseases (Spearman Rho = 0.94,  $P < 0.00001$ ,  $n = 27$ , **Figure 1B**). In the same period of time, the forest cover slightly but significantly decreased worldwide (Spearman Rho = 0.91,  $P < 0.00001$ ,  $n = 27$ , **Figure 1C**), while the total area of oil palm dramatically increased (Spearman Rho = 0.98,  $P < 0.00001$ ,  $n = 27$ , **Figure 1D**).

The above global trends resulted in significant increases in both zoonotic diseases outbreaks (Spearman Rho = 0.92,  $P < 0.00001$ ,  $n = 27$ , **Figure 2A**) and vector-borne diseases outbreaks (Spearman Rho = 0.94,  $P < 0.00001$ ,  $n = 27$ , **Figure 2B**) in relation with the decrease in forest cover. Similarly, significant increases in both zoonotic (Spearman Rho = 0.91,  $P < 0.00001$ ,  $n = 27$ , **Figure 2C**) and vector-borne diseases (Spearman Rho = 0.93,  $P < 0.00001$ ,  $n = 27$ , **Figure 2D**) with the increase of oil palm area were observed.

Relationships by country were investigated using GAM. The first GAM investigating the number of outbreaks of zoonotic or vector-borne diseases in humans explained respectively 53.4% [ $R^2$  (adj) = 0.65] and 40.5%; [ $R^2$  (adj) = 0.49] of the deviance (**Table 1**) with a significant influence of the forest cover ( $P < 0.00001$ , **Table 1**, **Figures 3A,C**) and human population size ( $P < 0.00001$ , **Table 1**, **Figures 3B,D**) taking into account the effect of year and the spatial autocorrelation ( $P < 0.00001$ , **Table 1**).

The second GAM model investigating the number of outbreaks of zoonotic or vector-borne diseases in humans explained, respectively, 55.1% [ $R^2$  (adj) = 0.65] and 49.3% [ $R^2$  (adj) = 0.54] of the deviance (**Table 1**) with a significant influence of human population size ( $P < 0.00001$ , **Table 1**, **Figures 3G,H**) taking into account the effect of year and the spatial autocorrelation ( $P < 0.00001$ , **Table 1**). However, the influence of the oil palm area was only significant for vector-borne diseases' outbreaks ( $P < 0.00001$ , **Table 1**, **Figure 3F**) and not for zoonotic diseases' outbreaks ( $P = 0.54$ , **Figure 3E**).

The investigation by country showed negative and positive associations (using Spearman correlation test) between the number of outbreaks of both zoonotic and vector-borne diseases and the changes in forest cover from 1990 to 2016 (**Figures 4A,B**). Significant associations between forest cover loss and zoonotic and vector-borne disease outbreaks were observed, respectively, for 47 and 49 countries, with the majority in tropical climate (**Annex 1, Supplementary Table 1**). Significant associations between forest cover gain and zoonotic or vector-borne outbreaks were observed for, respectively, 27 and 29 countries, the majority situated outside the tropical environment (see **Annex 1, Supplementary Table 2**).

Taking the example of vector-borne diseases, two groups of countries can be characterized. The first group of countries situated in tropical regions showed relatively high forest cover and high forest loss in association with increasing outbreaks (**Figure 5**). The second group of countries situated mostly in temperate zone showed relatively low forest cover and forest gain in association with increasing outbreaks (**Figure 5**).

## DISCUSSION

The results of the present analysis are in agreement with previous claims that linked emergence of zoonotic and vector-borne

diseases with deforestation (31, 32). Both zoonotic and vector-borne diseases showed an increase in the number of their outbreaks that appear to be linked with deforestation globally over the period of 1990 to 2016, with vector-borne diseases showing a most dramatic increase over the last years of the period considered. Our results also show a positive association between the number of vector-borne disease outbreaks and the increase in land areas converted to oil palm plantations. Reforestation may be also of concern by an increasing number of recorded epidemics, especially in non-tropical countries with low or moderate forest cover but also in countries with strong reforestation policies such as China and Vietnam.

## Deforestation and Disease Outbreaks

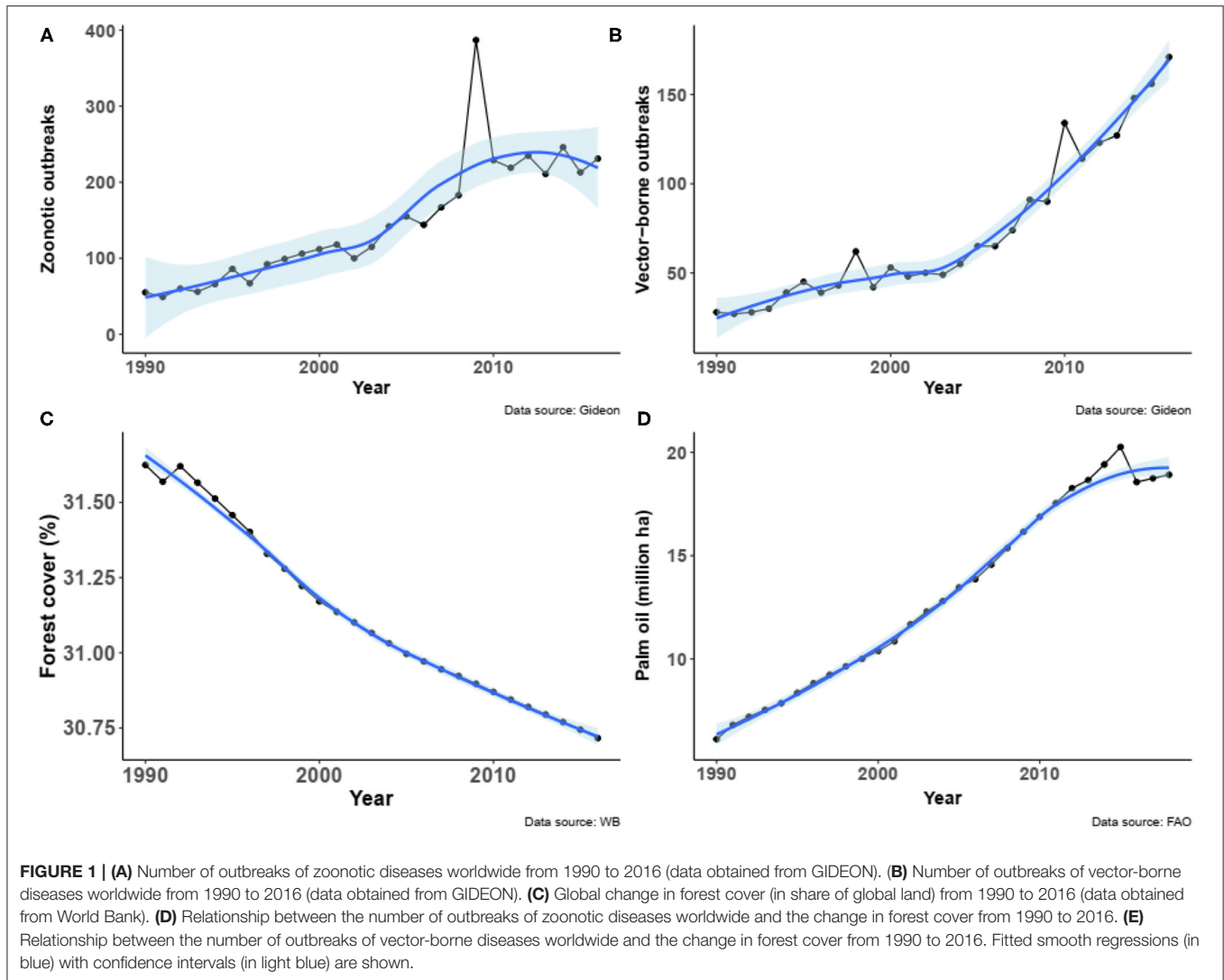
The significant associations observed between epidemics and deforestation mostly concerned the countries of the intertropical zone with high forest cover, such as Brazil, Peru, and Bolivia in South America, Democratic Republic of Congo and Cameroon in Africa, Indonesia, Myanmar and Malaysia in Southeast Asia, among others.

Several studies have already attested that deforestation has caused malaria epidemics in South America and that forest clearing had favored the mosquito vector *Anopheles darlingi* in Southeast Asia for the species complex *A. dirus*, *A. minimus*, *A. balabacensis* (33). Association between deforestation and outbreaks of malaria has been documented in Brazil (16). A comparative analysis of vector and non-vector species showed that the net effect of deforestation favors mosquitoes that serve as vectors of human diseases (34). Re-emergence of arthropod-borne leishmaniasis has also been put in relation with deforestation (35). The ecological mechanism proposed is that forest fragmentation, forest conversion and biodiversity loss lead to the loss of ecological regulation of small mammals, which are main reservoirs of *Leishmania* species (36). Moreover, zoophilic sandflies vectors have shown their ability to adapt to human blood and to human dwellings (peridomestic or synanthropic behavior) (33). Altogether deforestation and biodiversity regulation loss favor reservoir and/or vector populations, affect disease transmission dynamics and ultimately lead to increasing human contacts with vectors or reservoirs. Several studies have emphasized the role of forest deforestation in the emergence of zoonotic diseases such as Ebola in Africa (12, 13).

Our results find support from the recent study of Gibb et al. (37), which demonstrates how the global land use changes, including forest conversion, may favor zoonotic reservoirs and the risks of zoonotic diseases.

## Reforestation and Epidemics

Reforestation can increase biodiversity loss when forest expansion is made at the expense of grasslands, savannas, and open-canopy woodlands (38, 39). Afforestation and forest expansion can then decrease ecosystem services (39). According to the United Nations Food and Agriculture Organization (FAO) forests are land with a tree-canopy cover of more than 10%, which does not help to distinguish old-growth grasslands from anthropogenic vegetation neither natural forest expansion from forest regeneration nor plantations (39–41).



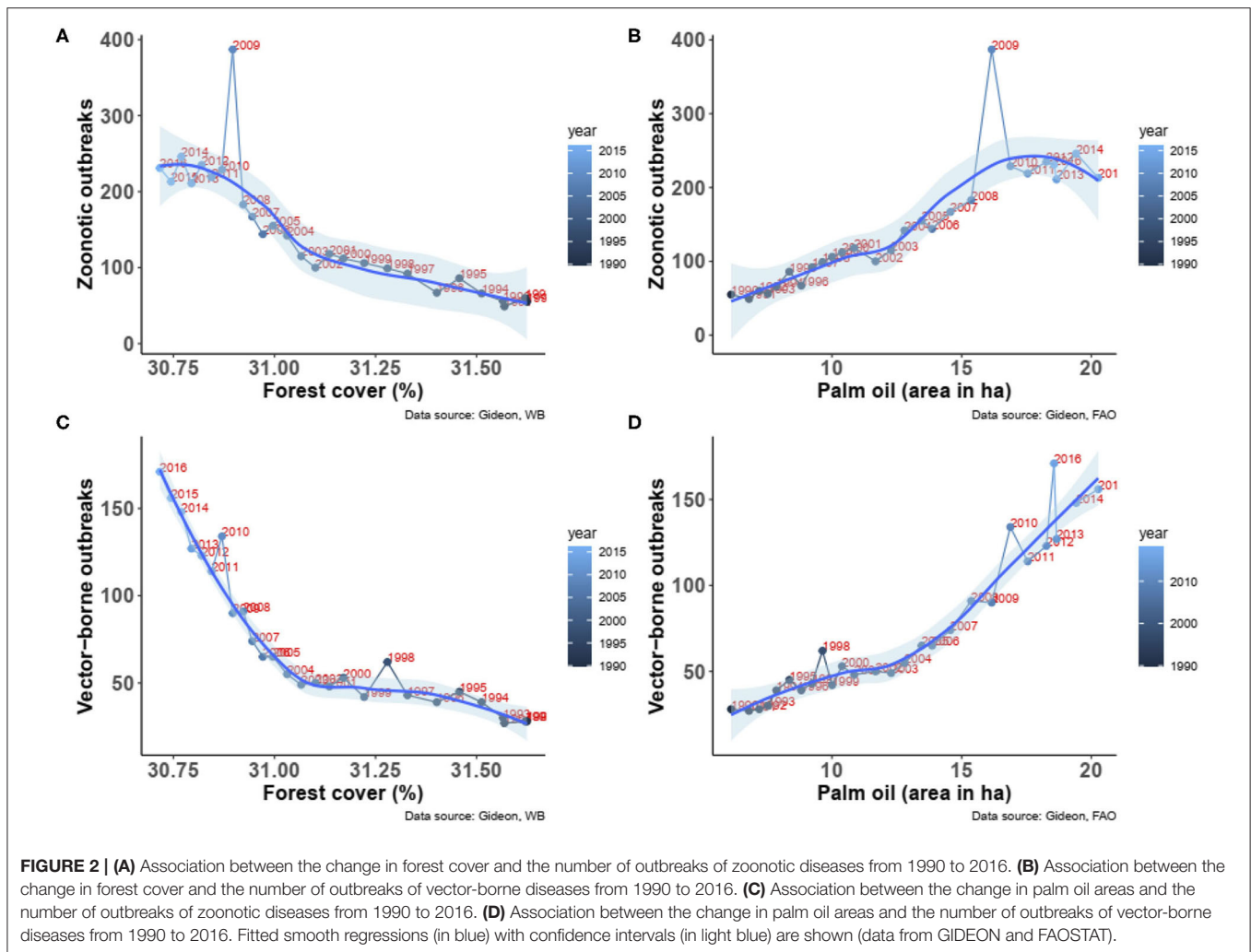
Our results clearly suggest that it is not only forest clearance that is responsible for outbreaks of infectious diseases (42), but also reforestation or afforestation, particularly in countries outside the tropical zone. However, the data used does not differentiate between the different kinds of reforestation: plantation for commodities, afforestation, or abandonment of agricultural lands.

Temperate and tropical countries with grassy biomes at risk of afforestation and forest expansion according to Veldman et al. (39) such as USA, European countries, China, Turkey, India or Vietnam are the ones showing a positive association between reforestation and disease transmission. Hence, the increase in incidence of tick-borne encephalitis in humans in Italy was explained by the ratio of coppice to high stand forest in Italy with natural reforestation that may favor the abundance of the small mammal reservoirs of tick-borne viruses (43). Similarly, reforestation and rebounding deer populations created ecological conditions for tick vectors and the reemergence of tick-borne diseases in USA (44).

Investigation of the trends in forest and agricultural land covers in several Asian countries from 1962 to 2011 showed that China, India, Philippines and Vietnam had a net increase in forest cover, with a parallel increase in the area of agricultural land in China and India, while Indonesia, Laos, and Malaysia had a net decrease in forest cover, with a consistent decrease in agricultural land in Malaysia (45). The results of our analysis fit quite well with these forest cover trends. The recent study of Sloan et al. (46) confirmed that major planted area expansion occurs in Southeast Asia alongside minor net forest cover change.

## Oil Palm and Epidemics

Vijay et al. (47) have emphasized the negative impact of oil palm expansion on biodiversity, especially in Southeast Asia and South America in comparison to Africa. Our results clearly show an association between the increasing number of outbreaks of vector-borne diseases and the increase of oil palm plantations. Interestingly, among them there were countries that were not



affected by deforestation, such as Thailand, or that actively promoted reforestation, such as China and Vietnam.

A meta-analysis quantified the exposure to infectious diseases in relation to land uses in Southeast Asia showing a strong effect for oil palm monoculture on the risks of infectious diseases, either zoonotic or vector-borne (46). Strong effects of oil palm monoculture were also observed for rickettsial diseases (scrub typhus, spotted fever group) and malaria. Studies have also documented increase of mosquito-borne viruses, such as *Aedes albopictus* and *Aedes aegypti*, in oil palm and rubber plantations (48, 49) favoring the spread of dengue, zika, chikungunya, and yellow fever. In the same manner, the populations of generalist vectors of *Trypanozoma cruzi*, the agent of Chagas disease, better developed in oil palm plantations in Columbia (50).

### Bias and Missing Factors

Several potential biases may limit the analyzes presented in this study. First, the registration of infectious diseases depends on several factors such as expenditure on public health services and the quality of the health surveillance system, which vary from country to country but also from year to year in relation to financial priorities, development aid, private sector participation,

among others (2). However, our analysis was limited from years 1990 to 2016 with a noticed improvement in global health surveillance. Second, as already mentioned, the definition of a forest by the FAO (30) does not help to distinguish the different types of forests. Third, there are potential confounding effects of climate change especially on vector-borne diseases such as dengue (51) and other vector-borne diseases. For example, the increase of incidence of scrub typhus in China and Northern Thailand was found correlated with the increase of mean temperature (52). Several other factors are potential drivers of emergence or of epidemics of zoonotic and vector-borne diseases such as livestock (2, 53), pets (54–57) and trade (58). The fact that many factors play important role in the emergence and epidemics calls for the development of more integrative research (59–61).

### International Governance of Forests and Their Contributions to Healthy Planet and People

Institutionally, the increase in epidemics due to land change and deforestation is acknowledged in the joint report of the Secretariat of the CBD and the WHO (62). While forests

**TABLE 1 |** Results of general additive modeling (GAM) explaining the number of outbreaks of infectious diseases, zoonotic or vector-borne, per country and per year, with forest cover or oil palm areas, human population size and the matrix of longitude/latitude of country centroids as independent variables, using a negative binomial link and controlling for spatial and temporal effects, with approximate significance of smooth terms (edf, estimated residual degrees of freedom; df, degree of freedom) (see Methods for the models, data from GIDEON, FAOSTAT and World Bank) (see **Figure 3**).

Response variable	Explanatory variables	edf	Chi <sup>2</sup> (df)	P-value	Deviance (in%), R <sup>2</sup> adjusted, n
1. Outbreaks of zoonotic diseases	(Forest cover, year)	19.7	106 (29)	<0.0001	53.4, 0.65, 5311
	(Population size, year)	19.9	1,250 (28)	<0.0001	
	(Longitude, latitude)	24.1	645 (29)	<0.0001	
2. Outbreaks of vector-borne diseases	(Forest cover, year)	13.4	52.5 (29)	<0.0001	40.5, 0.49, 4784
	(population size, year)	17.0	619.8 (28)	<0.0001	
	(Longitude, latitude)	21.2	348.1 (29)	<0.0001	
3. Outbreaks of zoonotic diseases	(Oil palm area, year)	0.001	0.0 (29)	0.54	55.1, 0.65, 1126
	(Population size, year)	15.1	488 (28)	<0.0001	
	(Longitude, latitude)	11.7	161 (29)	<0.0001	
4. Outbreaks of vector-borne diseases	(Oil palm area, year)	1.74	6.79 (29)	0.0029	49.3; 0.54, 1072
	(Population size, year)	11.05	127.34 (28)	<0.0001	
	(Longitude, latitude)	11.25	81.74 (29)	<0.0001	

have been on the international legal agenda since the 1960s, the Earth Summit of 1992 failed to produce a convention on forests due to the diverging interests between developed countries claiming that forests should be considered as a global common on the one hand, and developing countries asserting that forests are a sovereign national resource (63) on the other hand. Nevertheless, the Earth Summit produced a declaration on “forest principles” (Non-legally Binding Authoritative Statement of Principles for a Global Consensus on the Management, Conservation and Sustainable Development of All Types of Forests) which gave birth to the Intergovernmental Forum on Forests (Intergovernmental Panel on Forest in 1992) notably to implement the forest principles and the Chapter 11 of the Agenda 21 on Deforestation in 1992 (64). Apart from the 1983 international agreement, renewed in 1994 and 2006, on tropical timber harvesting, the International Tropical Timber Agreement organizing the work of the International Tropical Timber Organization, no other international convention has been devoted exclusively to forests. This text does not mention biodiversity but focuses on the promotion of the sustainable management of tropical timber and the expansion and diversification of International trade in tropical timber (Article 1, ITTO 2006) (65).

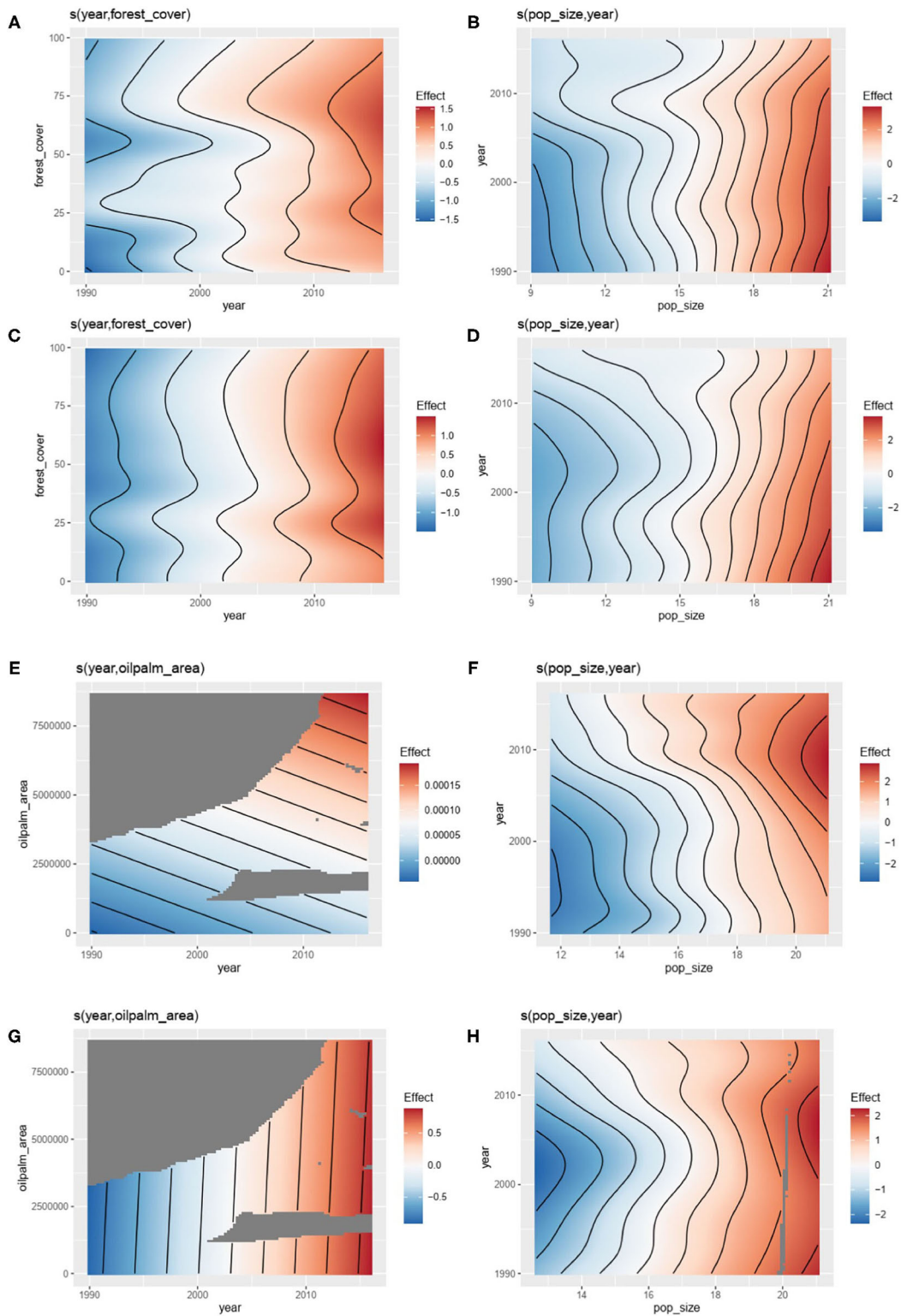
In 2011, the Bonn Challenge made the goal to restore 150 million hectares of forest by 2020. It has been coupled with a joint initiative between ITTO and the CBD to enhance biodiversity conservation in tropical forests with the direct participation of local stakeholders, addressing the main drivers of biodiversity loss in tropical forests: deforestation and forest degradation (ITTO CBD, 2011). In 2014, The New York Declaration on Forests (66) endorsed the Bonn Challenge goal. The Declaration on Forests commits to halving the rate of deforestation by 2020, ending it by 2030, and restoring hundreds of millions of hectares of degraded land. However, the Declaration on Forests is based on voluntary, non-legally binding political declaration between governments, businesses and representatives of civil society [on

the authoritative but non-legally binding principles (67)]. The World Commission on Forests and Sustainable Development created in 1995 authored a report in 2000 “Our forests, our future” which advocated for the use of the Forest Capital Index using different indicators of forest qualities such as: surface area; standing biomass; net primary productivity; species richness and diversity; age class of trees; leaf area index; soil fertility measures; soil organic matter content; and the health of forest stands. Forest health is defined as a characteristic of forests that are naturally resilient to damage based on factors such as biological diversity and ecosystem stability (68). Recently, Dobson et al. (1) have called for major investments to prevent tropical deforestation as a way to protect against future zoonosis outbreaks, but incidentally without referring to any international declarations and engagements and particularly the Bonn Challenge. However, the Second Bonn Challenge progress report (69) mentioned only two times the word “health” and only in reference to healthy environment and the word “disease” was used only for forest disease without mentioning human disease.

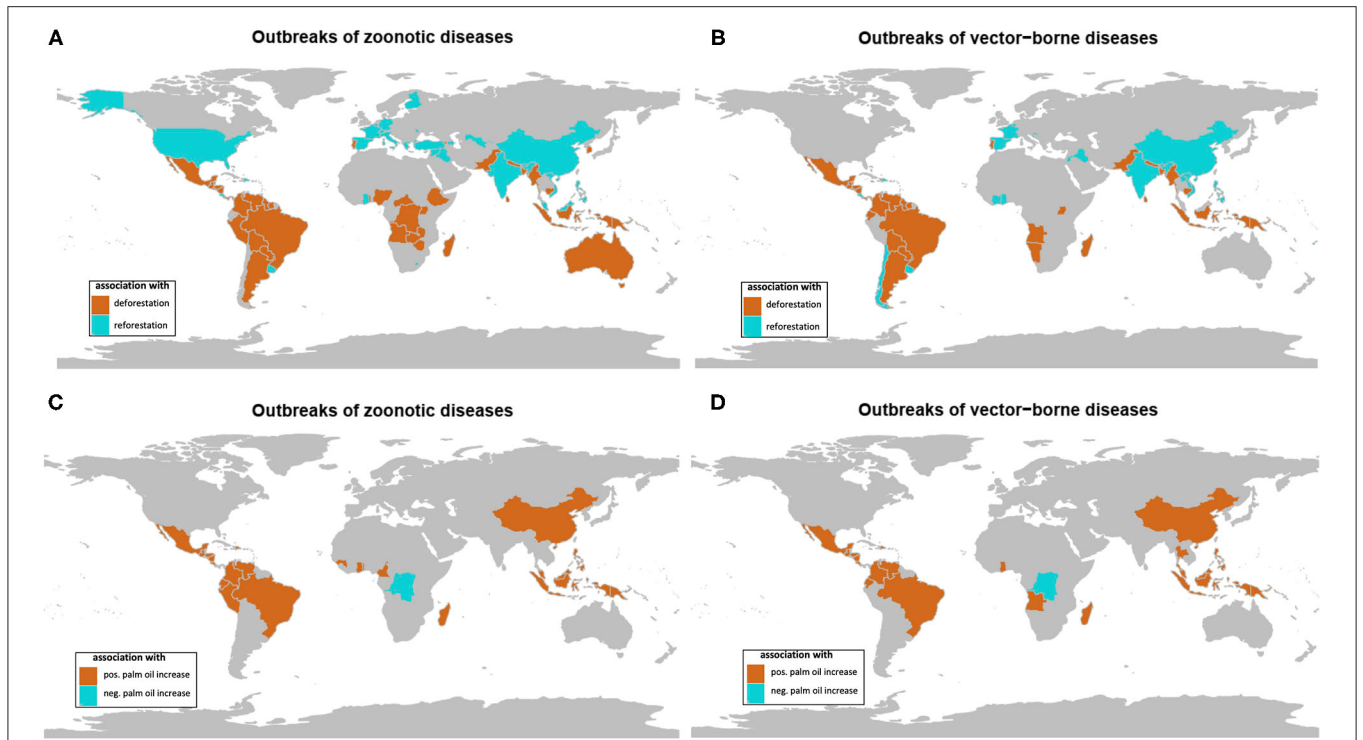
## Recommendations for Science and Policy

Based on the results of our study, two main outputs should be stated. First, emerging zoonotic and vector-borne diseases are important threats, but it is also crucial to acknowledge the high burdens of neglected zoonotic and vector borne diseases in tropical countries. Second, while our study gives new support for a link between global deforestation and outbreaks of zoonotic and vector-borne diseases, our study also evidences that reforestation and plantations may also contribute to epidemics of infectious diseases.

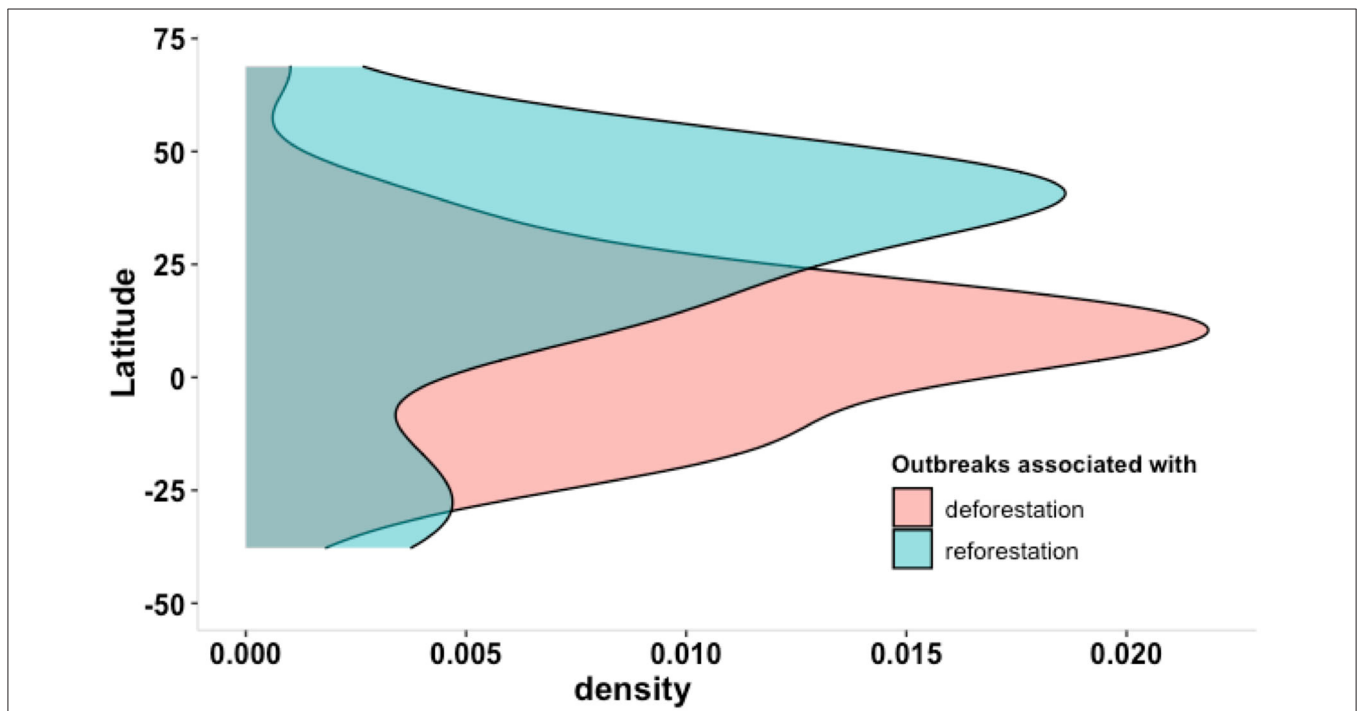
In 2015, representatives of civil society from across Asia, Africa, and Latin America called on the European Parliament to halt the demand for biofuels in Europe and refrain from using biofuels derived from oil palm plantations considering that industrial oil palm plantations are one of



**FIGURE 3 |** Results of General additive modeling (GAM) explaining: the number the number of outbreaks of zoonotic diseases with (A) forest cover (controlling for year) and (B) human population size (controlling for year) (see Table 1, model 1); the number the number of outbreaks of vector-borne diseases with (C) forest cover (controlling for year) and (D) human population size (controlling for year) (see Table 1, model 2); the number the number of outbreaks of zoonotic diseases with (E) oil palm area (controlling for year) and (F) human population size (controlling for year) (see Table 1, model 3); the number the number of outbreaks of vector-borne diseases with (G) oil palm area (controlling for year) and (H) human population size (controlling for year) (see Table 1, model 4) (data from GIDEON, FAOSTAT and World Bank).



**FIGURE 4 |** Maps of significant association between forest cover change (deforestation in brown, reforestation in blue) and **(A)** outbreaks of zoonotic diseases and **(B)** outbreaks of vector-borne diseases on temporal trends from 1990 to 2016. Maps of significant association between oil palm area change and **(C)** outbreaks of zoonotic diseases and **(D)** outbreaks of vector-borne diseases (positive association in brown, negative association in blue) on temporal trends from 1990 to 2016 (data from GIDEON and FAOSTAT) (see **Supplementary File**).



**FIGURE 5 |** Density plot of significant association between outbreaks of zoonotic and vector-borne diseases with deforestation (in red) or reforestation (in green) in relation to latitudinal gradient.

the world's largest contributors to greenhouse gas emissions. While the European Union proposes to phase out palm oil-based biofuels by 2030, Malaysia follows Indonesia and prepares dispute settlement proceedings before the World Trade Organization against the European Union's proposal which constitutes a damage to the oil palm industry. Our result shows that oil palm plantations may also constitute a threat to global health by favoring zoonotic and vector-borne diseases.

Then, what is needed is a better way to stop both the loss of biodiverse native forests and a better management of afforestation to increase their contribution not only to biodiversity, or carbon sequestration, but to local livelihood and health.

Scientists, public health and policymakers should reconcile the need to preserve biodiversity while taking into account the health risks posed by lack or mismanagement of forest (both deforestation and afforestation) by considering the following recommendations:

- halt deforestation by implementing an international governance of forests and their contributions to healthy planet and people;
- develop research on disease regulating service provided by forests and other ecosystems, which may help at better manage forested and planted areas;
- recognize that forests and plantations not only contribute to carbon sequestration but to biodiversity and global health;
- following Veldman et al. (39), revise the forest definitions of the FAO as to avoid afforestation, forest expansion, and agricultural conversion of grasslands.

## REFERENCES

1. Dobson AP, Pimm SL, Hannah L, Kaufman L, Ahumada JA, Ando AW, et al. Ecology and economics for pandemic prevention. *Science*. (2020) 369:379–81. doi: 10.1126/science.abc3189
2. Morand S. Emerging diseases, livestock expansion and biodiversity loss are positively related at global scale. *Biol Conserv*. (2020) 248:108707. doi: 10.1016/j.biocon.2020.108707
3. Roche B, Garchitorena A, Guégan JF, Arnal A, Roiz E, Morand S, et al. Was the COVID-19 pandemic avoidable? A call for a “solution-based” approach in pathogen evolutionary ecology to prevent future outbreaks. *Ecol Lett*. (2020) 23:1557–60. doi: 10.1111/ele.13586
4. Garine-Wichatitsky M, Binot A, Morand S, Kock R, Roger F, Wilcox BA, et al. Will COVID-19 crisis trigger One Health coming-of-age? *Lancet Planet Health*. (2020) 4:e377–8 doi: 10.1016/S2542-5196(20)30179-0
5. Giam X. Global biodiversity loss from tropical deforestation. *Proc Natl Acad Sci USA*. (2017) 114:5775–7. doi: 10.1073/pnas.1706264114
6. FAO & UNEP, The State of the World's Forests 2020. *Forests, Biodiversity and People*. Rome: FAO & UNEP. (2020).
7. CBD/Aichi Biodiversity Targets. (2011). Available online at: <https://www.cbd.int/sp/targets/> (accessed March 06, 2021).
8. Curtis PG, Slay CM, Harris NL, Tyukavina A, Hansen MC. Classifying drivers of global forest loss. *Science*. (2018) 361:1108–11. doi: 10.1126/science.aau3445
9. Song XP, Hansen MC, Stehman SV, Potapov PV, Tyukavina A, Vermote EF, et al. Global land change from 1982 to 2016. *Nature*. (2018) 560:639–43. doi: 10.1038/s41586-018-0411-9

Finally, and taking the words of Humphreys (70), a democratic and publicly accountable global governance is needed to “address the deep causes of deforestation, principally predatory and unregulated corporations that profit from the degradation and destruction of forest public goods.”

## DATA AVAILABILITY STATEMENT

All data are available from GIDEON, FAOSTATS and World Bank. Raw statistics for **Figure 4** were given in **Supplementary File**.

## AUTHOR CONTRIBUTIONS

SM gathered the data and performed the analyses. SM and CL wrote the manuscript. All authors contributed to the article and approved the submitted version.

## FUNDING

This work was part of the FutureHealthSEA Predictive scenarios of health in Southeast Asia project funded by the French ANR (ANR-17-CE35-0003-01). SM was supported by the Thailand International Cooperation Agency (TICA) Animal Innovative Health.

## SUPPLEMENTARY MATERIAL

The Supplementary Material for this article can be found online at: <https://www.frontiersin.org/articles/10.3389/fvets.2021.661063/full#supplementary-material>

10. Qaim M, Sibhatu KT, Siregar H, Grass I. Environmental, economic, and social consequences of the oil palm boom. *Annu Rev Resour Econ*. (2020) 12:6.1–24. doi: 10.1146/annurev-resource-110119-024922
11. Shah HA, Huxley P, Elmes J, Murray KA. Agricultural land-uses consistently exacerbate infectious disease risks in Southeast Asia. *Nature Comm*. (2019) 10:4299. doi: 10.1038/s41467-019-12333-z
12. Olivero J, Fa JE, Real R, Márquez AL, Farfán MA, Vargas JM, et al. Recent loss of closed forests is associated with Ebola virus disease outbreaks. *Sci Rep*. (2017) 30:14291. doi: 10.1038/s41598-017-14727-9
13. Rulli MC, Santini M, Hayman DTS, D'Odorico P. The nexus between forest fragmentation in Africa and Ebola virus disease outbreaks. *Sci Rep*. (2017) 7:41613. doi: 10.1038/srep41613
14. Pulliam JRC, Epstein JH, Dushoff J, Rahman SA, Bunning M, Jamaluddin AA, et al. Agricultural intensification, priming for persistence and the emergence of Nipah virus: a lethal bat-borne zoonosis. *J R Soc Interface*. (2012) 9:89–101. doi: 10.1098/rsif.2011.0223
15. Hawkes FM, Manin BO, Cooper A, Daim S, Homathevi R, Jelip J, et al. Vector compositions change across forested to deforested ecotones in emerging areas of zoonotic malaria transmission in Malaysia. *Sci Rep*. (2019) 9:13312. doi: 10.1038/s41598-019-53744-8
16. MacDonald AJ, Mordecai EA. Amazon deforestation drives malaria transmission, and malaria burden reduces forest clearing. *Proc Natl Acad Sci USA*. (2019) 116:22212–8. doi: 10.1073/pnas.1905315116
17. Kilpatrick AM, Dobson ADM, Levi T, Salkeld DJ, Swei A, Ginsberg HS, et al. Lyme disease ecology in a changing world: consensus, uncertainty and critical gaps for improving control. *Philos Trans R Soc London B*. (2017) 372:20160117. doi: 10.1098/rstb.2016.0117

18. Kuo CC, Huang JL, Shu PY, Kelt DA, Wang HC. Cascading effect of economic globalization on human risks of scrub typhus and tick-borne rickettsial diseases. *Ecol Appl.* (2012) 22:1803–16. doi: 10.1890/12-0031.1
19. Dunn RR, Davies J, Harris NC, Gavin MC. Global drivers of human pathogen richness and prevalence. *Proc R Soc London B.* (2010) 277:2587–95. doi: 10.1098/rspb.2010.0340
20. Smith KE, Goldberg M, Rosenthal S, Carlson L, Chen J, Chen C, et al. Global rise in human infectious disease outbreaks. *J R Soc Interface.* (2014) 11:20140950. doi: 10.1098/rsif.2014.0950
21. Morand S, Walther B. Individualistic values are related to an increase in the outbreaks of infectious diseases and zoonotic diseases. *Sci Rep.* (2018) 8:3866. doi: 10.1038/s41598-018-22014-4
22. Hastie TJ, Tibshirani RJ. *Generalized Additive Models.* New York, NY: Chapman and Hall/CRC (1990).
23. Wood SN. *Generalized Additive Models: An Introduction with R.* 2nd ed. New York: Chapman and Hall/CRC (2017).
24. Simpson GL. *gratia: Graceful 'ggplot'-Based Graphics and Other Functions for GAMs Fitted Using 'mgcv'.* R package version 0.2-8 (2019). Available online at: <https://gavinsimpson.github.io/gratia> (accessed March 06, 2021).
25. Fasiolo M, Nedellec R, Goude Y, Wood SN. Scalable visualisation methods for modern generalized additive models. *ArXiv.* (2018) 1809.10632.
26. Wickham H. *ggplot2: Elegant Graphics for Data Analysis.* New York, NY: Springer-Verlag (2016).
27. R Development Core Team. *R: A Language and Environment for Statistical Computing.* Vienna: R Foundation for Statistical Computing (2019). Available online at: <http://www.R-project.org>. (accessed March 06, 2021).
28. Harrell F. *Regression Modeling Strategies: With Applications to Linear Models, Logistic and Ordinal Regression, and Survival Analysis.* New York, NY: Springer (2015).
29. Harrell F. *Hmisc: Harrell Miscellaneous.* R package version 4.2-0. (2019). Available online at: <https://cran.r-project.org/web/packages/Hmisc/index.html> (accessed March 06, 2021).
30. South A. *rworldmap: a new r package for mapping global data.* *R J.* (2011) 1:35–43. doi: 10.32614/RJ-2011-006
31. Wilcox BA, Ellis B. Forests and emerging infectious diseases of humans. *Unasylva.* (2006) 57:11–18.
32. Jones KE, Patel NG, Levy MA, Storeygard A, Balk D, Gittleman JL, et al. Global trends in emerging infectious diseases. *Nature.* (2008) 451:990–4. doi: 10.1038/nature06536
33. Walsh JF, Molyneux DH, Birley MH. Deforestation: effects on vector-borne disease. *Parasitology.* (1993) 106:S55–75. doi: 10.1017/S0031182000086121
34. Burkett-Cadena ND, Vittor AY. Deforestation and vector-borne disease: forest conversion favors important mosquito vectors of human pathogens. *Basic Appl Ecol.* (2018) 26:101–10. doi: 10.1016/j.baae.2017.09.012
35. Chaves LF, Cohen JM, Pascual M, Wilson ML. Social exclusion modifies climate and deforestation impacts on a vector-borne disease. *PLoS Negl Trop Dis.* (2008) 2:e176. doi: 10.1371/journal.pntd.0000176
36. Gottwalt A. Impacts of deforestation on vector-borne disease incidence. *Global J Health Sci.* (2013) 3:16–9. doi: 10.7916/theigh.v3i2.4864
37. Gibb R, Redding DW, Chin KQ, Donnelly CA, Blackburn TM, Newbold T, et al. Zoonotic host diversity increases in human-dominated ecosystems. *Nature.* (2020) 584:398–402. doi: 10.1038/s41586-020-2562-8
38. Bremer LL, Farley KA. Does plantation forestry restore biodiversity or create green deserts? A synthesis of the effects of land-use transitions on plant species richness. *Biodiv Cons.* (2010) 19:3893–915. doi: 10.1007/s10531-010-9936-4
39. Veldman JW, Overbeck GE, Negreiros D., Mahy G, Le Stradic S, Fernandes GW, et al. Where tree planting and forest expansion are bad for biodiversity and ecosystem services. *BioScience.* (2015) 65:1011–8. doi: 10.1093/biosci/biv118
40. FAO. Global forest resources assessment 2010 main report. *FAO Forestry.* Paper no. 163 (2010).
41. Putz FE, Redford KH. The importance of defining “forest”: tropical forest degradation, deforestation, long-term phase shifts, and further transitions. *Biotropica.* (2010) 42:10–20. doi: 10.1111/j.1744-7429.2009.00567.x
42. Faust CL, McCallum HI, Bloomfield LSP, Gottdenker NL, Gillespie TR, Torney CJ, et al. Pathogen spillover during land conversion. *Ecol Lett.* (2018) 21:471–83. doi: 10.1111/ele.12904
43. Rizzoli A, Hauffe HC, Tagliapietra V, Neteler M, Rosà R. Forest structure and roe deer abundance predict tick-borne encephalitis risk in Italy. *PLoS ONE.* (2009) 4:e4336. doi: 10.1371/journal.pone.0004336
44. Eisen RJ, Kugeler KJ, Eisen L, Beard CB, Paddock CD. Tick-borne zoonoses in the United States: Persistent and emerging threats to human health. *ILAR J.* (2017) 58:319–35. doi: 10.1093/ilar/ilx005
45. Ashraf J, Pandey R, de Jong W. Assessment of bio-physical, social and economic drivers for forest transition in Asia-Pacific region. *Forest Policy Econ.* (2017) 76:35–44. doi: 10.1016/j.forpol.2016.07.008
46. Sloan S, Meyfroidt P, Rudel TK, Bongerse F, Chazdon R. The forest transformation: planted tree cover and regional dynamics of tree gains and losses. *Glob Envir Change.* (2020) 59:101988. doi: 10.1016/j.gloenvcha.2019.101988
47. Vijay V, Pimm SL, Jenkins CN, Smith SJ. The impacts of oil palm on recent deforestation and biodiversity loss. *PLoS ONE.* (2016) 11:e0159668. doi: 10.1371/journal.pone.0159668
48. Young KI, Mundis S, Widen SG, Wood TG, Tesh RB, Cardosa J, et al. Abundance and distribution of sylvatic dengue virus vectors in three different land cover types in Sarawak, Malaysian Borneo. *Parasit Vectors.* (2017) 10:406. doi: 10.1186/s13071-017-2341-z
49. Zahouli JBZ, Koudou BG, Müller P, Malone D, Tano Y, Utzinger J, et al. Effect of landuse changes on the abundance, distribution, and host-seeking behavior of Aedes arbovirus vectors in oil palm-dominated landscapes, southeastern Côte d'Ivoire. *PLoS ONE.* (2017) 12:e0189082. doi: 10.1371/journal.pone.0189082
50. Erazo D, Gottdenker NL, González C, Guhl F, Cuellar M, Kieran TJ, et al. Generalist host species drive Trypanosoma cruzi vector infection in oil palm plantations in the Orinoco region, Colombia. *Parasi Vectors.* (2019) 12:274. doi: 10.1186/s13071-019-3519-3
51. Lee JS, A. Farlow, The threat of climate change to non-dengue-endemic countries: increasing risk of dengue transmission potential using climate and non-climate datasets. *BMC Public Health.* (2019) 19:934. doi: 10.1186/s12889-019-7282-3
52. Wangrangsimakul T, Elliott I, Nedsuwan S, Kumlert R, Soawapak H, et al. The estimated burden of scrub typhus in Thailand from national surveillance data. (2003–2018). *PLoS Negl Trop Dis.* (2020) 14:e0008233. doi: 10.1371/journal.pntd.0008233
53. Lo Iacono G, Cunningham AA, Bett B, Grace D, Redding DW, Wood JLN. Environmental limits of Rift Valley fever revealed using ecoepidemiological mechanistic models. *Proc Natl Acad Sci USA.* (2018) 115:E7448–56. doi: 10.1073/pnas.1803264115
54. Morelli S, Colombo M, Dimzas D, Barlaam A, Traversa D, Di Cesare A, et al. Leishmania infantum seroprevalence in cats from touristic areas of Italy and Greece. *Front Vet Sci.* (2020) 7:616566. doi: 10.3389/fvets.2020.616566
55. Morelli S, Crisi PE, Di Cesare A, De Santis F, Barlaam A, Santoprete G, et al. Exposure of client-owned cats to zoonotic vector-borne pathogens: clinic-pathological alterations and infection risk analysis. *Comp Immunol Microbiol Infect Dis.* (2019) 66:101344. doi: 10.1016/j.cimid.2019.101344
56. Diakou A, Di Cesare A, Morelli S, Colombo M, Halos L, Simonato G, et al. Endoparasites and vector-borne pathogens in dogs from Greek islands: pathogen distribution and zoonotic implications. *PLoS Negl Trop Dis.* (2019) 13:e0007003. doi: 10.1371/journal.pntd.0007003
57. Simonato G, Cassini R, Morelli S, Di Cesare A, La Torre F, Marcer F, et al. Contamination of Italian parks with canine helminth eggs and health risk perception of the public. *Prev Vet Med.* (2019) 172:104788. doi: 10.1016/j.prevetmed.2019.104788
58. Sadeghieh T, Waddell LA, Ng V, Hall A, Sargeant J. A scoping review of importation and predictive models related to vector-borne diseases, pathogens, reservoirs, or vectors (1999–2016). *PLoS ONE.* (2020) 15:e0227678. doi: 10.1371/journal.pone.0227678
59. Wilson AL, Courtenay O, Kelly-Hope LA, Scott TW, Takken W, Torr SJ, et al. The importance of vector control for the control and elimination of vector-borne diseases. *PLoS Negl Trop Dis.* (2020) 14:e0007831. doi: 10.1371/journal.pntd.0007831
60. de Garine-Wichatitsky M, Binot A, Ward JR, Caron A, Perrotton A, Ross H, et al. “Health in” and “Health of” Social-Ecological Systems: a practical framework for the management of healthy and resilient

- agricultural and natural ecosystems. *Front Public Health*. (2021) 8: 616328. doi: 10.3389/fpubh.2020.616328
61. Wilcox BA, Pierre Echaubard P, de Garine-Wichatitsky M, Ramirez B. Vector-borne disease and climate change adaptation in African dryland social- ecological systems. *BMC Infect Dis Poverty*. (2019) 8:36. doi: 10.1186/s40249-019-0539-3
  62. World Health Organization. (*WHO*) and Secretariat of the Convention on Biological Diversity (CBD), *Connecting Global Priorities: Biodiversity and Human Health: A State of Knowledge Review*. Geneva: World Health Organization Press (2015).
  63. Humphreys D. The elusive quest for a Global Forests Convention. *RECIEL*. (2005) 14:1–10. doi: 10.1111/j.1467-9388.2005.00418.x
  64. United Nations, Department of Economic and Social Affairs Forests. (2020). Available online at: <https://www.un.org/esa/forests/> (accessed March 06, 2021).
  65. *International Trade in Tropical Timber Organization*. (ITTO). Available online at: <https://www.itto.int/> (accessed March 06, 2021).
  66. *New York Declaration on Forests*. (2014). Available online at: <https://nydfglobalplatform.org/> (accessed March 06, 2021).
  67. Bodansky D. *The Art and Craft of International Environmental Law*. Cambridge, MA: Harvard University Press (2010).
  68. *World Commission on Forests and Sustainable Development*. (2009). Available online at: <https://uia.org/s/or/en/1100019223>
  69. Dave R, Saint-Laurent C, Murray L, Antunes Daldegan G, Brouwer R, de Mattos Scaramuzza CA, et al. *Second Bonn Challenge Progress Report. Application of the Barometer in 2018*. (2019) Gland: IUCN. doi: 10.2305/IUCN.CH.2019.06.en
  70. Humphreys D. *Logjam: Deforestation and the Crisis of Global Governance*. (2006) London: Routledge, The Earthscan.
- Conflict of Interest:** The authors declare that the research was conducted in the absence of any commercial or financial relationships that could be construed as a potential conflict of interest.
- Copyright © 2021 Morand and Lajaunie. This is an open-access article distributed under the terms of the Creative Commons Attribution License (CC BY). The use, distribution or reproduction in other forums is permitted, provided the original author(s) and the copyright owner(s) are credited and that the original publication in this journal is cited, in accordance with accepted academic practice. No use, distribution or reproduction is permitted which does not comply with these terms.