



HAL
open science

Depth for Curve Data and Applications

Pierre Lafaye de Micheaux, Pavlo Mozharovskyi, Myriam Vimond

► **To cite this version:**

Pierre Lafaye de Micheaux, Pavlo Mozharovskyi, Myriam Vimond. Depth for Curve Data and Applications. *Journal of the American Statistical Association*, 2021, 116 (536), pp.1881-1897. 10.1080/01621459.2020.1745815 . hal-03188029

HAL Id: hal-03188029

<https://hal.science/hal-03188029v1>

Submitted on 19 Jul 2024

HAL is a multi-disciplinary open access archive for the deposit and dissemination of scientific research documents, whether they are published or not. The documents may come from teaching and research institutions in France or abroad, or from public or private research centers.

L'archive ouverte pluridisciplinaire **HAL**, est destinée au dépôt et à la diffusion de documents scientifiques de niveau recherche, publiés ou non, émanant des établissements d'enseignement et de recherche français ou étrangers, des laboratoires publics ou privés.

Depth for Curve Data and Applications

Pierre Lafaye de Micheaux

School of Mathematics and Statistics, UNSW Sydney
and

Pavlo Mozharovskyi

LTCI, Télécom Paris, Institut Polytechnique de Paris
and

Myriam Vimond

Univ Rennes, Ensai, CNRS, CREST - UMR 9194

February 20, 2020

Abstract

John W. Tukey (1975) defined statistical data depth as a function that determines centrality of an arbitrary point with respect to a data cloud or to a probability measure. During the last decades, this seminal idea of data depth evolved into a powerful tool proving to be useful in various fields of science. Recently, extending the notion of data depth to the functional setting attracted a lot of attention among theoretical and applied statisticians. We go further and suggest a notion of data depth suitable for data represented as curves, or trajectories, which is independent of the parametrization. We show that our curve depth satisfies theoretical requirements of general depth functions that are meaningful for trajectories. We apply our methodology to diffusion tensor brain images and also to pattern recognition of hand written digits and letters. Supplementary Materials are available online.

Keywords: data depth, space of curves, unparametrized curves, nonparametric statistics, curve registration, DT-MRI fibers, classification, DD-plot.

1 Introduction

We propose an extension of the notion of depth for curve data. An (unparameterized) curve datum is a set of points of \mathbb{R}^d which can be described by an unspecified continuous function from a sub-interval of \mathbb{R} to \mathbb{R}^d . Our original motivation to study such data was to solve a neuroimaging problem involving brain fibers of elderly twins.

Data depth was originally introduced in a seminal paper by [Tukey \(1975\)](#) to measure the degree of centrality of a multivariate point x with respect to a given data cloud. His approach consists in computing, for every halfspace H containing x , the fraction of points from the data cloud enclosed in H . He then retains the minimum of these fractions as a measure of centrality

of x ; see also [Donoho & Gasko \(1992\)](#). Since then, several other notions of data depth have been proposed. For example, using random simplices (i.e., generalizations of the notion of a triangle to arbitrary dimensions), [Liu \(1990\)](#) proposed a similar measure of “insideness” called simplicial depth. For a comprehensive survey on multivariate data depths the reader is referred to [Zuo & Serfling \(2000\)](#).

Thanks to these theoretical developments, it has become possible to extend standard univariate descriptive statistics based on ranks to analyze multivariate observations (see, e.g., [Oja 1983](#), [Liu et al. 1999](#)). New classical inferential statistical tools or techniques using these depth measures or some refinements have also been developed, such as p -values ([Liu & Singh 1997](#)), confidence regions ([Yeh & Singh 1997](#), [Lee 2012](#)), regression ([Rousseeuw & Hubert 1999](#), [Hallin et al. 2010](#)), multivariate nonparametric testing ([Li & Liu 2004](#), [Zuo & He 2006](#), [Chenouri & Small 2012](#)), classification ([Li et al. 2012](#), [Lange et al. 2014](#), [Paindaveine & Van Bever 2015](#), [Dutta et al. 2016](#)) and estimation of extreme quantiles ([He & Einmahl 2017](#)). See [Mosler \(2013\)](#) for a nice introduction showing the richness and usefulness of depth techniques.

In recent years, statisticians have been facing complex types of data that they analyze using a functional depth ([Fraiman & Muniz 2001](#), [López-Pintado & Romo 2009](#), [Narisetty & Nair 2016](#)) or even a multivariate functional depth approach ([Claeskens et al. 2014](#)). These new techniques have proven to be very useful for data visualization, to estimate a measure of location or spread, to detect outliers (see also [Hubert et al. 2015](#)), for clustering, or to detect if two groups of functions come from the same population.

However, functional depths are sensitive to parametrization of curves. Figures 1 and 2 illustrate the impact of two different parametrizations on depths rankings of curves provided by the *multivariate functional halfspace depth* (MFHD) developed by [Claeskens et al. \(2014\)](#) (with weight function set to a constant) and by the *modified simplicial band depth* (mSBD) developed by [López-Pintado et al. \(2014\)](#).

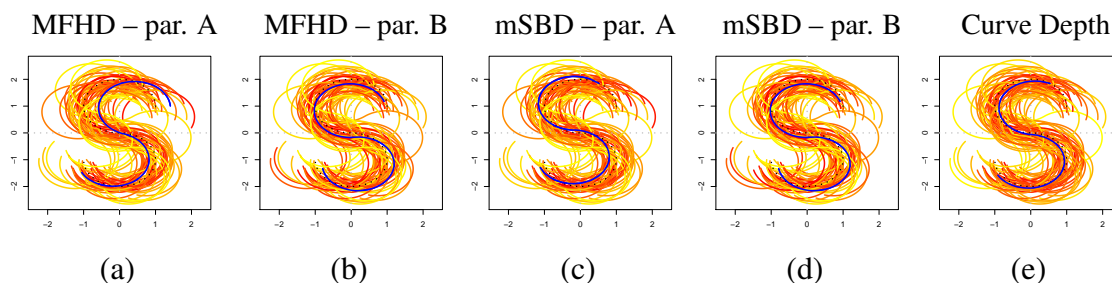


Figure 1: Comparison of depth based ordering for two parametrizations A and B provided respectively by MFHD (a)–(b), mSBD (c)–(d), and by our new depth for unparameterized curves (e). The depth increases from yellow to red. Each deepest curve is plotted in blue. The center of symmetry of the distribution is plotted using black dots. Source: an ensemble of 50 simulated S letters; see Section 1.1 in Supplementary Materials.

In Figure 1 (a)–(d), we see that the choice of a parametrization (A or B) has a clear impact on which curve is identified as the deepest (in blue). Moreover, unlike MFHD and mSBD, our unparameterized approach finds a deepest curve which is very close to the center of symmetry (the dotted curve). Also, we observe that some curves with high depth (in red) seem to be outliers (Figure 1 (a) and (c), upper right) and some curves with low depth (in yellow) are close to the

deepest curve (Figure 1 (b) and (d)). This problem is even more striking on Figure 2. There, many simulated hurricane tracks are identified as outliers (in red, on panels (a)–(d)) by MFHD and mSBD (with two different parametrizations) even if they are close to the center of distribution of the curves (in dark blue). This is in agreement with (Mirzargar et al. 2014, Section 5) who note that “*the time-parameterization is more sensitive to the velocity outlier as a parameterization-dependent feature, the arc-length and life-time percentage parameterization are more sensitive to shape and positional outliers.*” Here again our unparameterized approach correctly identifies outliers (panel (e)).

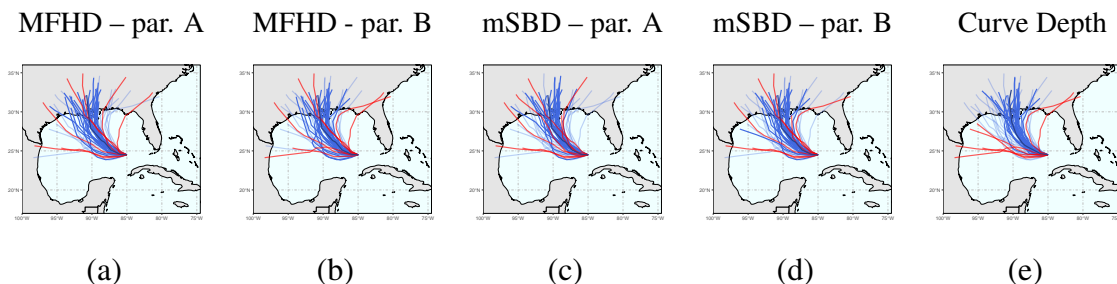


Figure 2: Comparison of the depth based ordering for two parametrizations A (time) and B (arc-length) provided respectively by MFHD (a)–(b), mSBD (c)–(d), and by our new depth for unparameterized curves (e). Curves with low value of depth are plotted in red, the others in blue. Each deepest curve is plotted in dark blue. Source: an ensemble of 50 simulated hurricane tracks (Mirzargar et al. 2014).

Note that MFHD and mSBD depths are computed by comparing each point on a given curve only to points (from the other curves) that “occur at the same time”. Curves are thus compared pointwisely and not globally (this is a direct consequence of parametrization). We believe this is the cause of the aforementioned artefacts.

Of course, depending on the context, working with a proper parametrization of curves can be relevant. For instance, if available, one could use speed of writing as a meaningful parametrization in a handwriting recognition problem; see Section 1.2 in Supplementary Materials. For further discussion on the importance and possible choices of a proper parametrization when employing functional data depth, see, e.g., López-Pintado et al. (2014), Mirzargar et al. (2014) and references therein.

In this paper we aim to define a depth which is invariant to the choice of a parametrization of the curves. This was originally motivated by the need to analyze a very large number of bundles of white matter fibers obtained through diffusion tensor imaging (an MRI-based neuroimaging technique) among a population of elderly twins. These neuronal fibers, also called axons, are nerve cell extensions that transmit electrical information between different regions of the brain. The aim of the study was to investigate if genetics plays a role in the spatial organization of these fibers.

In our setting, a mathematical curve describing a given fiber should be understood as the set of all points that describe the location in space of one of these fibers, *with no focus whatsoever on any parametrization*. Indeed, as outlined by Kurtek et al. (2012) “a parameterization is merely for the convenience of analysis and is not an intrinsic property of a curve” which leads them to advocate that “the shape analysis should be invariant not only to rigid motions and global

scalings, but also to their parameterizations”. Intuitively, we want to distinguish curves solely by how they bend and twist, as well as by their lengths and relative locations in space. Consequently, the concept of functional data depth should not be used here (this is further investigated in Section 6.1).

One could think of using one of a few other existing approaches that deal specifically with curves. Goldie & Resnick (1995) considered 2D observation records that are joined in a sequence, while Sangalli et al. (2009) estimated centreline curves (and their curvature functions) of internal carotid artery vessels using three-dimensional free-knot regression splines. Unfortunately, these two methods also rely on some parametrization. Mani et al. (2010) and Kurtek et al. (2012) use a Riemannian framework invariant to the parametrization while Zhang et al. (2015) developed a Bayesian version; see also Srivastava & Klassen (2016) for a monograph on the statistical analysis of the shapes of curves. However, it is difficult to find a software to apply these methods on our data.

With this motivation in mind, we developed a new concept of *depth for curves* that is invariant to the choice of the parametrization. It will be broadly applicable, thanks to our freely available R/C++ package `curveDepth` (Mozharovskiy et al. 2019), to many other similar types of data. One can mention a few examples such as textile fibers (Xu et al. 2001), blood clot fibers (Collet et al. 2005), blood vessels centrelines (Sangalli et al. 2009), moving objects such as birds migrating (Su et al. 2014, Yuan et al. 2017), multidimensional data sets obtained by constructing principal curves (Hastie & Stuetzle 1989).

The outline of the paper is as follows. In Section 2, curves are defined formally and we introduce a statistical model for sampled curves. Section 3 contains a definition of the new data depth for curves. In Section 4, we discuss implementation issues. In Section 6, we present simulation results. We also apply our curve depth to analyze brain imaging data sets, and to classify hand-written digits. There, our curve depth is compared to other existing depths, namely MFHD (Claeskens et al. 2014), the *modified multivariate band depth* (mMBD) of Ieva & Paganoni (2013), the multivariate functional *skew-adjusted projection depth* (saPRJ) of Hubert et al. (2015), the *simplicial band depth* (SBD) of López-Pintado et al. (2014) and its modified version (mSBD).

Section 7 gathers some concluding remarks. Supplementary Materials collect all technical proofs, along with the necessary codes and data to reproduce all our numerical and graphical results.

2 A Statistical Model for Sampled Curves

In what follows we introduce the space of unparameterized curves and define a statistical model on it. For a comprehensive reference the reader is referred to Kemppainen & Smirnov (2017, Section 2) which borrowed material from Aizenman & Burchard (1999, Section 2.1) and Burago et al. (2001, Section 2.5). For additional details see Section 2 in the Supplementary Materials.

2.1 The Space of Unparameterized Curves

Let $d \geq 1$ be an integer. Let $(\mathbb{R}^d, |\cdot|_2)$ be the d -dimensional Euclidean space, $\mathcal{C}([0, 1], \mathbb{R}^d)$ be the space of continuous functions defined on the interval $[0, 1]$ and taking values in \mathbb{R}^d and Γ be the set of increasing continuous functions $\gamma : [0, 1] \rightarrow [0, 1]$ such that $\gamma(0) = 0$ and $\gamma(1) = 1$. A *parameterized curve* β , also called a *path*, is an element of $\mathcal{C}([0, 1], \mathbb{R}^d)$. The image of β , denoted as $S_\beta = \beta([0, 1])$, is called the *locus* of β . Informally if $\beta(t)$ describes the position of

a moving particle at time t , then S_β describes the physical route taken by this particle with no consideration being given to stops or goings backward occurring on its trajectory. The function $\beta : [0, 1] \mapsto \mathbb{R}^d$, a parametrization of S_β with parameter t , provides an ordering along S_β . Note that there might exist an infinite number of different parametrizations describing the same locus.

Remark 1. *The start point of S_β is the image of 0 by β . The end point is the image of 1. The locus of a trivial curve coincides with a singleton, i.e., a single point of \mathbb{R}^d .*

Formally, unparameterized curves are usually defined via an equivalence relation on the set of parameterized curves in \mathbb{R}^d up to the set of monotonic functions from $[0, 1]$ to $[0, 1]$. Roughly speaking, two curves β_1 and β_2 are said equivalent if they share the same locus and visit its points continuously and in the same order, possibly at a different speed. Hereafter, we restrict ourselves to the set of all curves equivalent to β that start at $\beta(0)$ and stop at $\beta(1)$. More precisely, we say that two parameterized curves β_1 and β_2 are equivalent whenever there exist two reparametrizations $\gamma_1, \gamma_2 \in \Gamma$ such that $\beta_1 \circ \gamma_1 = \beta_2 \circ \gamma_2$. We then define the *unparameterized curve* \mathcal{C}_β as the set of all paths equivalent to β , that is the equivalence class of β up to this equivalence relation. Informally, \mathcal{C}_β describes the trajectory from $\beta(0)$ to $\beta(1)$, with no information about the location at any time. Note that in our context, it would be possible to consider the general definition, i.e., to walk a path β from $\beta(1)$ to $\beta(0)$, or the other way around. But restricting all our definitions by considering the set of parameterized curves in \mathbb{R}^d only up to the set of reparametrizations Γ greatly simplifies exposition; see Remark 5. In the sequel, an unparameterized curve will be generically denoted \mathcal{C} . Notice that all parameterized curves in the same equivalence class \mathcal{C} share the same locus, which enables one to talk about the locus of \mathcal{C} , denoted thereafter as $S_\mathcal{C}$.

The *space of unparameterized curves* is then defined as

$$\mathfrak{C} = \{\mathcal{C}_\beta : \beta \in \mathcal{C}([0, 1], \mathbb{R}^d)\}.$$

In other words, \mathfrak{C} is the quotient space of $\mathcal{C}([0, 1], \mathbb{R}^d)$ by the equivalence relation on the set of parameterized curves

Following [Kempainen & Smirnov \(2017\)](#), we endow the space of curves \mathfrak{C} with the Fréchet metric $d_\mathfrak{C}$ defined as

$$d_\mathfrak{C}(\mathcal{C}_1, \mathcal{C}_2) = \inf \{\|\beta_1 - \beta_2\|_\infty; \beta_1 \in \mathcal{C}_1, \beta_2 \in \mathcal{C}_2\}, \quad \mathcal{C}_1, \mathcal{C}_2 \in \mathfrak{C}, \quad (2.1)$$

where $\|\beta\|_\infty = \sup_{t \in [0, 1]} |\beta(t)|_2$ for $\beta \in \mathcal{C}([0, 1], \mathbb{R}^d)$. The resulting metric space $(\mathfrak{C}, d_\mathfrak{C})$ is non linear. It inherits the properties of separability and completeness from $\mathcal{C}([0, 1], \mathbb{R}^d)$; see Section 2.2 in the Supplementary Materials. This guarantees the existence of non-atomic probability measures on $(\mathfrak{C}, d_\mathfrak{C})$. Moreover, according to [Parthasarathy \(1967, Theorems 1.2, 3.2 and 8.1\)](#), every probability measure defined on \mathfrak{C} is regular and tight.

2.2 The Arc-Length Probability Measure of a Curve

The length $L(\beta)$ of a parameterized curve $\beta \in \mathcal{C}$ is defined as

$$L(\beta) = \sup_{\tau} \{L_\tau(\beta); \tau \text{ a partition of } [0, 1]\}, \quad (2.2)$$

where $L_\tau(\beta) = \sum_{j=1}^J |\beta(\tau_j) - \beta(\tau_{j-1})|_2$ is the *chordal length* of β associated with the partition $\tau = \{\tau_0, \dots, \tau_J; 0 = \tau_0 < \dots < \tau_J = 1, J \in \mathbb{N}^*\}$. Informally $L(\beta)$ is the total distance

travelled by a particle moving from $\beta(0)$ to $\beta(1)$ along the support \mathcal{S}_β of the curve β (taking into account any backward steps). Then all parameterized curves in \mathcal{C} have the same length. Consequently, the length of \mathcal{C} , denoted $L(\mathcal{C})$, is defined by $L(\mathcal{C}) = L(\beta)$, for any $\beta \in \mathcal{C}$. Note that the function $L : \mathfrak{C} \rightarrow [0, +\infty]$ is not continuous, but it is measurable (Lemma 2.3). In the following we assume that all unparameterized curves belong to the measurable set $\mathfrak{C}_L = \{\mathcal{C} \in \mathfrak{C}; 0 < L(\mathcal{C}) < \infty\} \subset \mathfrak{C}$, the subset of *rectifiable* (i.e., of finite length) unparameterized curves with a positive length.

According to Väisälä (2006, Theorem 2.4), each curve $\mathcal{C} \in \mathfrak{C}_L$ contains a unique parametrization $\beta_{\mathcal{C}} : [0, 1] \rightarrow \mathbb{R}^d$, called *the arc-length parametrization*, whose restrictions to the intervals $[0, t]$, noted $\beta_{\mathcal{C}}^t$, satisfy $L(\beta_{\mathcal{C}}^t) = tL(\mathcal{C})$, for all $t \in [0, 1]$. Informally, with $\beta_{\mathcal{C}}$, the locus $S_{\mathcal{C}}$ is visited at a constant speed. Then any rectifiable curve \mathcal{C} may be expressed as

$$\mathcal{C} = \{\beta_{\mathcal{C}} \circ \gamma; \gamma \in \Gamma\}.$$

Using the arc-length parametrization $\beta_{\mathcal{C}}$ of an unparameterized curve \mathcal{C} , one can thus define the *line integral* of a non-negative Borel function $f : \mathbb{R}^d \rightarrow \mathbb{R}$ over \mathcal{C} as

$$\int_{\mathcal{C}} f(s) ds := \int_0^1 f(\beta_{\mathcal{C}}(t)) L(\mathcal{C}) dt, \quad (2.3)$$

where the integral on the right is a Riemann integral. Furthermore, we define the *arc-length probability measure* of \mathcal{C} as the probability distribution $\mu_{\mathcal{C}}$ on the Borel sets of \mathbb{R}^d :

$$\text{for any borel set } A \text{ of } \mathbb{R}^d, \quad \mu_{\mathcal{C}}(A) = \frac{1}{L(\mathcal{C})} \int_{\mathcal{C}} \mathbb{1}_A(s) ds, \quad (2.4)$$

where the indicator function $\mathbb{1}_A(x)$ takes the value 1 if $x \in A$ and 0 otherwise.

From (2.3) and (2.4), we immediately get

$$\int_{\mathcal{C}} f(s) d\mu_{\mathcal{C}}(s) = \int_0^1 f(\beta_{\mathcal{C}}(t)) dt. \quad (2.5)$$

Also, note that $\mu_{\mathcal{C}}$ only contains information about the support $S_{\mathcal{C}}$ of \mathcal{C} and the frequency at which its points are visited. Roughly speaking, $\mu_{\mathcal{C}}(A)$ can be interpreted as a ratio: the distance travelled by a particle on the subset $S_{\mathcal{C}} \cap A$ divided by the total distance it travels on $S_{\mathcal{C}}$. (Note that $L(\mathcal{C})$ can be different from the length of $S_{\mathcal{C}}$.) It is somehow a normalised measure of how much of curve \mathcal{C} intersects with A .

2.3 A Nonparametric Statistical Model for a Sample of Curves

We denote by \mathcal{P} the set of all probability measures defined on the Borel σ -algebra of the Borel sets of $(\mathfrak{C}, d_{\mathfrak{C}})$ whose support is a subset of rectifiable curves of positive length (to exclude singletons):

$$\mathcal{P} = \left\{ P, \text{ a probability measure on } (\mathfrak{C}, d_{\mathfrak{C}}); P(\mathfrak{C}_L) = 1 \right\}.$$

Consider a random unparameterized curve \mathcal{X} , namely a random element taking “values” in the space of unparameterized curves \mathfrak{C} , whose probability distribution $P \in \mathcal{P}$ is unknown. We define the probability distribution Q_P as follows:

$$\text{for all borel sets } A \text{ of } \mathbb{R}^d, \quad Q_P(A) = \int_{\mathfrak{C}} \mu_{\mathcal{C}}(A) dP(\mathcal{C}) = E_P[\mu_{\mathcal{X}}(A)], \quad (2.6)$$

a measure of how much (on average) a curve generated by \mathcal{X} intersect with A .

Remark 2. In Section 2.3 in the Supplementary Materials, we show that for any Borel bounded function $f : \mathbb{R}^d \rightarrow \mathbb{R}$, the function $\mathcal{C} \in \mathfrak{C}_L \mapsto \int_{\mathcal{C}} f d\mu_{\mathcal{C}} \in \mathbb{R}$ is measurable. Consequently, Q_P is well-defined.

The statistical model considered in this article is to assume that the data to be observed are n random unparameterized curves $\mathcal{X}_1, \dots, \mathcal{X}_n$, which are independent copies of the random element \mathcal{X} , that is to say

$$\mathcal{X}_1, \dots, \mathcal{X}_n \text{ are i.i.d. from } P \in \mathcal{P}. \quad (2.7)$$

In the next section, we define a population data depth for unparameterized curves, and its sample version.

3 Data Depth for Unparameterized Curves

3.1 Population and Sample Versions

Let y^\top denote the transpose of the column vector $y \in \mathbb{R}^d$ and \mathcal{S} be the unit-sphere in \mathbb{R}^d . For a pair $(u, x) \in \mathcal{S} \times \mathbb{R}^d$, let $H_{u,x}$ denote the closed halfspace $\{y \in \mathbb{R}^d : y^\top u \geq x^\top u\}$ whose frontier is orthogonal to the vector u and goes through the point x . Notice that if $d = 1$, the unit-sphere is $\{-1, 1\}$.

Definition 3.1 (Curve depth, population version). *Let $\mathcal{C} \in \mathfrak{C}_L$ be an unparameterized curve and let $P \in \mathcal{P}$ be a probability measure. We define the curve depth of \mathcal{C} w.r.t. P , denoted $D(\mathcal{C}|P)$, by the mapping*

$$\begin{aligned} D : \mathfrak{C}_L \times \mathcal{P} &\rightarrow \mathbb{R} \\ (\mathcal{C}, P) &\mapsto D(\mathcal{C}|P) = \int_{\mathcal{C}} D(x|Q_P, \mu_{\mathcal{C}}) d\mu_{\mathcal{C}}(s), \end{aligned} \quad (3.1)$$

where the above line integral is computed via (2.3) using, for any $d \geq 1$ and any $x \in S_{\mathcal{C}}$,

$$D(x|Q_P, \mu_{\mathcal{C}}) = \inf_{u \in \mathcal{S}} \frac{Q_P(H_{u,x})}{\mu_{\mathcal{C}}(H_{u,x})}, \quad (3.2)$$

with the convention that $a/0 = +\infty$ for all $a > 0$ and $0/0 = 0$ in the above ratio.

The term $D(x|Q_P, \mu_{\mathcal{C}})$ aims to compare the two distributions Q_P and $\mu_{\mathcal{C}}$ around $x \in S_{\mathcal{C}}$. For u and x fixed, recall from (2.4) and from (2.6) that $\mu_{\mathcal{C}}(H_{u,x})$ measures (the fraction of length of) how much the curve \mathcal{C} delves into the halfspace $H_{u,x}$, whereas $Q_P(H_{u,x})$ measures (the expected fraction of length of) how much a random curve \mathcal{X} (with distribution P) delves into $H_{u,x}$. Consequently, the ratio $Q_P(H_{u,x})/\mu_{\mathcal{C}}(H_{u,x})$ is small when we expect curves generated according to P to enter less into $H_{u,x}$ than the curve \mathcal{C} . Getting a value $r > 1$ (resp. $r < 1$) for this ratio, indicates that \mathcal{X} generates curves that enter into $H_{u,x}$, on average, r times more (resp. $1/r$ times less) than \mathcal{C} does; see Figure 20 for a visual aid.

Then, similarly to the original Tukey depth, to obtain $D(x|Q_P, \mu_{\mathcal{C}})$, we consider all possible rotations of the halfspace $H_{u,x}$ around x to find the one that discriminates the most the curve \mathcal{C} from a curve generated according to P . We shall call $D(x|Q_P, \mu_{\mathcal{C}})$ as the *point curve depth* at $x \in S_{\mathcal{C}}$. Then (3.1) defines the depth of \mathcal{C} w.r.t. P as the mean of the point curve depths at all x in its locus $S_{\mathcal{C}}$.

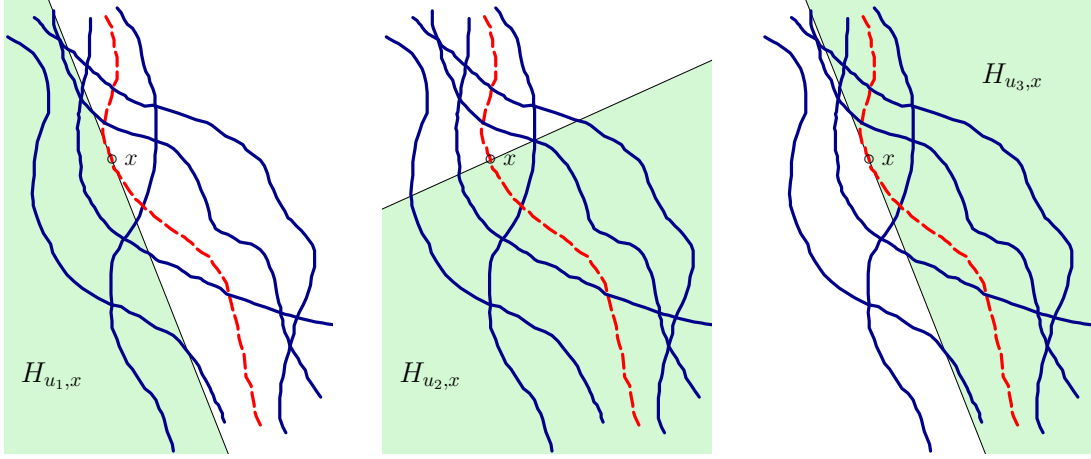


Figure 3: Illustrations of the statistical model and depth calculation (3.2) for three halfspaces with a sample of five curves generated by \mathcal{X} in blue and the curve \mathcal{C} in red. We consider all halfspaces whose frontier contains the point x and pick up the smallest ratio of the probability measures between Q_P and $\mu_{\mathcal{C}}$: (left) $\frac{Q_P(H_{u_1,x})}{\mu_{\mathcal{C}}(H_{u_1,x})} = 9.714$, (middle) $\frac{Q_P(H_{u_2,x})}{\mu_{\mathcal{C}}(H_{u_2,x})} = 0.999$, (right) $\frac{Q_P(H_{u_3,x})}{\mu_{\mathcal{C}}(H_{u_3,x})} = 0.618$

Notice that if there exists $u \in \mathcal{S}$ such that $Q_P(H_{u,x}) = 0$, then x is an outlier w.r.t. Q_P , and thus the contribution of $x \in S_{\mathcal{C}}$ to the depth of \mathcal{C} w.r.t. P is set to zero, that is $D(x|Q_P, \mu_{\mathcal{C}}) = 0$.

If $Q_P(H_{u,x}) > 0$ for all $u \in \mathcal{S}$, that means x lies in the convex hull of the support of Q_P . Our aim is to calculate the depth of $x \in S_{\mathcal{C}}$ w.r.t. Q_P relatively to the measure $\mu_{\mathcal{C}}$, that is why we consider the ratio $Q_P(H_{u,x})/\mu_{\mathcal{C}}(H_{u,x})$ in the definition of $D(x|Q_P, \mu_{\mathcal{C}})$. In this case, we can show that there exists u such that $\mu_{\mathcal{C}}(H_{u,x}) \geq Q_P(H_{u,x}) > 0$ (Lemma 3.1 in the Supplementary Materials), so that $x \mapsto D(x|Q_P, \mu_{\mathcal{C}})$ is bounded by 1. Moreover, $x \mapsto D(x|Q_P, \mu_{\mathcal{C}})$ is measurable as a limit of measurable functions (see Lemma 3.4 in the Supplementary Materials).

Definition 3.2 (Curve depth, sample version). *Let $\mathcal{X}_1, \dots, \mathcal{X}_n$ be a random sample of unparameterized curves belonging to \mathfrak{C}_L a.s. and let $\mathcal{C} \in \mathfrak{C}_L$ be a rectifiable unparameterized curve. With a slight abuse of notation, and thanks to (2.3), we define the curve depth of \mathcal{C} w.r.t. $\mathcal{X}_1, \dots, \mathcal{X}_n$ by the mapping*

$$D : \quad \mathfrak{C}_L \times \{\mathfrak{C}_L\}^n \quad \rightarrow \mathbb{R} \tag{3.3}$$

$$(\mathcal{C}, \mathcal{X}_1, \dots, \mathcal{X}_n) \quad \mapsto D(\mathcal{C}|\mathcal{X}_1, \dots, \mathcal{X}_n) = \int_{\mathcal{C}} D(s|Q_n, \mu_{\mathcal{C}}) d\mu_{\mathcal{C}}(s),$$

where $Q_n = (\mu_{\mathcal{X}_1} + \dots + \mu_{\mathcal{X}_n})/n$ and $\beta_{\mathcal{C}}$ is the arc-length parametrization of \mathcal{C} .

Remark 3. *In a sense, our depth may be seen as a generalization of the Tukey halfspace depth in \mathbb{R}^d . If \mathcal{C} is a trivial curve, that is $L(\mathcal{C}) = 0$ and $S_{\mathcal{C}} = \{y\}$ for some $y \in \mathbb{R}^d$, we define $\mu_{\mathcal{C}}$ as the dirac measure δ_y at y . Then, if $\mathcal{X}_1, \dots, \mathcal{X}_n$ are also trivial curves, that is $S_{\mathcal{X}_i} = \{x_i\}$, $i = 1, \dots, n$, we get*

$$D(\mathcal{C}|\mathcal{X}_1, \dots, \mathcal{X}_n) = D(y|Q_n, \delta_y)$$

$$= \inf_{u \in \mathcal{S}} \frac{1}{n} \sum_{i=1}^n \mathbf{1}_{x_i \in H_{u,y}}.$$

Theorem 3.1 below states that the sample version of the curve depth (3.3) converges in probability to the population version (3.1) as $n \rightarrow \infty$.

Theorem 3.1. *Let $\mathcal{C} \in \mathcal{C}_L$ be an unparameterized curve such that $\mu_{\mathcal{C}}$ is non-atomic. Let P be a probability measure in the space of unparameterized curves such that $P \in \mathcal{P}$ and Q_P is non-atomic. Then the sample curve depth $D(\mathcal{C}|\mathcal{X}_1, \dots, \mathcal{X}_n)$ converges in probability to $D(\mathcal{C}|P)$ as $n \rightarrow \infty$.*

3.2 Properties

The main aim of the proposed curve depth is to provide a meaningful statistical ordering of the observed curve data, which is experimentally studied and illustrated on real-data examples in Section 6. Theorem 3.1 states the consistency of our sample depth under mild assumptions and in this subsection we discuss its properties.

Following the suggestion of Liu (1990) for simplicial depths, Zuo & Serfling (2000) have defined four properties to be satisfied by a proper multivariate depth function: affine invariance, maximality at the center of symmetry, monotonicity relative to the deepest point and vanishing at infinity. (For a slightly different version of the postulates see also Dyckerhoff (2004) and Mosler (2013).) For a functional depth, Nieto-Reyes & Battey (2016) suggest that six properties need to be satisfied, but Gijbels & Nagy (2017) argue that some of them could be demanding.

The situation appears to be even more challenging for the space of unparameterized curves. Indeed, (loci of) unparameterized curves can be seen as subsets of \mathbb{R}^d which are parameterized by paths up to the same order of visit of their points. These mathematical objects can thus be thought of as being “between” functional data and set data. Moreover, since no canonical mandatory postulates for a functional depth have been established yet, and since the existing postulates are mainly inherited from those for the multivariate depth function, we base the following analysis on the latter.

Since the length is an important characteristic of an unparameterized curve, similarity invariance, which is associated with a similarity group preserving orientation and ratio of lengths, seems to be more appropriate than affine invariance in our context. Moreover, the space of unparameterized curves is not a vector space. For instance the surjection $\beta \mapsto \mathcal{C}_\beta$ is not linear (there is no natural way to define the addition of two unparameterized curves and thus no line segment between two unparameterized curves, a crucial point for the monotonicity property). It is thus not possible to extend the classical formulation of a depth using results from Dutta et al. (2011) or Mosler & Polyakova (2018), say. Similarly, there is no universal way to define a notion of symmetry for unparameterized curves, no symmetry center can be defined either. The vanishing at infinity property can be directly extended to the space of curves. Below we state the properties satisfied by our curve depth function and summarize them in Theorem 3.2.

Boundness. Calculating the curve depth (3.1) consists in integrating a non-negative function bounded by one w.r.t. a probability measure. This fulfills one of the basic requirements of a depth function: to take values on the unit interval.

Similarity invariance. For a multivariate depth, affine invariance is required for changelessness w.r.t. an affine change of the coordinate system. For the space of unparameterized curves, we consider affine transformations that also preserve ratios of the lengths of curves, i.e., similarities. (Note that the length of an unparameterized curve is a property of the equivalence class.)

A similarity $f : \mathbb{R}^d \rightarrow \mathbb{R}^d$ is an affine transform, $f(x) = rAx + b$ such that A is an orthogonal matrix, r is a positive factor and $b \in \mathbb{R}^d$ is a vector. In particular, for all x and y in \mathbb{R}^d , we have $|f(x) - f(y)|_2 = r|x - y|_2$. We denote by P_f the distribution of the image under f of a stochastic process having a distribution P . A map D satisfies the property of similarity invariance if for every rectifiable curve \mathcal{C} and every similarity map $f : \mathbb{R}^d \rightarrow \mathbb{R}^d$, it holds $D(\mathcal{C}, P) = D(f \circ \mathcal{C}, P_f)$.

Vanishing at infinity. The farther away an unparametrized curve is from a data cloud of curves, the smaller its depth should be. To formulate the vanishing at infinity property of our curve depth D , we consider any sequence $(\mathcal{C}_n)_n$ of curves in \mathfrak{C}_L such that $\mu_{\mathcal{C}_n}$ is a non-atomic measure for all n and $\lim_{n \rightarrow \infty} d_{\mathfrak{C}}(\mathcal{C}_n, 0) = \infty$, where 0 denotes the set of parametrized curves equivalent to the constant curve $t \mapsto \beta(t) = 0$ for all $t \in [0, 1]$. However, such a formulation involves sequences of curves whose length tends to infinity. To exclude these cases, we assume that there exists some $\ell > 0$ such that $L(\mathcal{C}_n) < \ell$ for all n . This guarantees that only the location of these curves tends to infinity. We then prove that

$$\lim_{n \rightarrow \infty} D(\mathcal{C}_n, P) = 0.$$

Theorem 3.2. *Under the assumptions of Theorem 3.1, our curve depth is a depth function in \mathfrak{C}_L , i.e., it takes values in $[0, 1]$, is similarity-invariant and is vanishing at infinity.*

4 Implementation

Even if the curves $\mathcal{X}_1, \dots, \mathcal{X}_n$ and \mathcal{C} are known, it may not be possible to obtain explicit expressions of $\mu_{\mathcal{C}}(H)$ and $Q_n(H)$ for an arbitrary halfspace H . This might prevent one to compute a value for (3.3) (via (3.2)). In fact, it appears that computation of the point curve depth $D(x|Q_n, \mu_{\mathcal{C}})$, $x \in S_{\mathcal{C}}$, in (3.3) demands algorithmic elaboration. We describe in the Supplementary Materials (Section 3.1) a Monte Carlo scheme to approximate $D(\mathcal{C}|\mathcal{X}_1, \dots, \mathcal{X}_n)$. This is summarized in Algorithm 1.

The main idea is to generate 3 samples. First, a sample of size m is used in order to approximate $\mu_{\mathcal{C}}$ (Line 2). Next, a (stratified) sample of size nm is used to approximate the $\mu_{\mathcal{X}_i}$ (Lines 3–5) and Q_n (Line 6). (See Lemma 2.4 in the Supplementary Materials for the procedure to generate these samples.) These are the two ingredients involved in the approximation of $D(x|Q_n, \mu_{\mathcal{C}})$.

The last sample (Line 7) consists of points generated along the curve $\beta_{\mathcal{C}}$. It is used to approximate the line integral of $D(\cdot|Q_n, \mu_{\mathcal{C}})$ with respect to $\mu_{\mathcal{C}}$ (Line 11). A Monte Carlo approximation of (3.2) is obtained (Lines 8–10) by using an adaptation of a minimization algorithm from (Rousseeuw & Ruts 1996) for dimension 2 and one from (Dyckerhoff & Mozharovskiy 2016) for higher dimensions; see our Algorithms 1 and 2 in Section 6.1 in the Supplementary Materials. These original algorithms were developed for the computation of the multivariate Tukey depth. They need to be adapted to our context as follows. Given that we are looking to estimate a ratio whose denominator can be arbitrarily small, we introduce a threshold Δ in order to control the stochastic convergence of the proposed algorithm (see Theorem 3.1 in the Supplementary Materials). Formal algorithms for dimensions 2 and 3 are stated and described in the Supplementary Materials (Section 6.1). The latter can be easily extended to higher dimensions.

Algorithm 1 Monte Carlo approximation of $D(\mathcal{C}|\mathcal{X}_1, \dots, \mathcal{X}_n)$ in (3.3); m denotes the Monte Carlo sample size of points generated uniformly on each curve (taking into account their length); Δ_m is a threshold parameter such that $\Delta_m \xrightarrow{m \rightarrow \infty} 0$; $\mathcal{H}_{\Delta_m}^{n,m}$ is the collection of closed halfspaces H such that either $\hat{Q}_{m,n}(H) = 0$ or $\hat{\mu}_m(H) > \Delta_m$.

- 1: **procedure** MCAPPROX($\mathcal{C}, \mathcal{X}_1, \dots, \mathcal{X}_n, m, \Delta_m$)
 - 2: Generate Y_1, \dots, Y_m i.i.d. from $\mu_{\mathcal{C}}$ and set $\hat{\mu}_m = m^{-1} \sum_{j=1}^m \delta_{Y_j}$.
 - 3: **for** $i = 1 : n$ **do**
 - 4: Generate X_{i1}, \dots, X_{im} i.i.d. from $\mu_{\mathcal{X}_i}$ and set $\hat{\mu}_{\mathcal{X}_i} = m^{-1} \sum_{j=1}^m \delta_{X_{i,j}}$.
 - 5: **end for**
 - 6: Set $\hat{Q}_{m,n} = n^{-1} \sum_{i=1}^n \hat{\mu}_{\mathcal{X}_i} = (nm)^{-1} \sum_{i=1}^n \sum_{j=1}^m \delta_{X_{i,j}}$ to estimate (2.6).
 - 7: Generate (independently from the Y_j 's) Z_1, \dots, Z_m i.i.d. from $\mu_{\mathcal{C}}$.
 - 8: **for** $k = 1 : m$ **do** \triangleright An approximation of $D(Z_k|Q_n, \mu_{\mathcal{C}})$ from (3.2)
 - 9: Compute $\hat{D}(Z_k|\hat{Q}_{m,n}, \hat{\mu}_m, \mathcal{H}_{\Delta_m}^{n,m})$ as the smallest ratio of $\hat{Q}_{m,n}(H_{u,Z_k})$ to $\hat{\mu}_m(H_{u,Z_k})$ over a (random or deterministic) grid of points $u \in \mathcal{S}$ selected in such a way that $H_{u,Z_k} \in \mathcal{H}_{\Delta_m}^{n,m}$. See Algorithms 1 and 2 in Section 6.1 in the Supplementary Materials for a way to build a grid achieving exactly the infimum in \mathbb{R}^2 or \mathbb{R}^3 .
 - 10: **end for**
 - 11: **return** $m^{-1} \sum_{k=1}^m \hat{D}(Z_k|\hat{Q}_{m,n}, \hat{\mu}_m, \mathcal{H}_{\Delta_m}^{n,m})$ as an estimate of (3.3).
 - 12: **end procedure**
-

Overall, time complexity is $O(m^d n^{d-1} \log(mn))$ if $D(x|Q_n, \mu_{\mathcal{C}})$ is computed exactly, where n is the size of the sample of curves, and m is the size of the Monte Carlo sample of points which are sampled on each curve involved in the depth computation. Time complexity is $O(km^2n)$ if $D(x|Q_n, \mu_{\mathcal{C}})$ is approximated using projections on k random directions (i.e., the minimum ratio in Step 9 of Algorithm 1 is searched over k random directions u only).

In (2.1), we introduced the Fréchet distance $d_{\mathcal{C}}(\mathcal{C}_1, \mathcal{C}_2)$ between any two curves \mathcal{C}_1 and \mathcal{C}_2 belonging to the space of curves \mathcal{C} . This distance will be useful for two applications of Section 6; namely for curve registration in the brain and also for an adaptation of the unsupervised classification method of Jörnsten (2004). When calculating $d_{\mathcal{C}}(\mathcal{C}_1, \mathcal{C}_2)$, one has to search for a parameterized curve in \mathcal{C}_1 and a parameterized curve in \mathcal{C}_2 that are as close as possible, in terms of their supremum distance. Numerically, this can be done as follows. Consider a set of points on \mathcal{C}_1 and a corresponding relocation of each one of these points to \mathcal{C}_2 , preserving their ordering. The goal is to minimize the largest Euclidean distance between any one point on \mathcal{C}_1 and any of its relocated counterpart on \mathcal{C}_2 . The formal algorithm together with an illustrative explanation is stated in the Supplementary Materials (Section 6.2).

Numerical computation of our curve depth and of the above-mentioned distance are implemented in the R package CurveDepth (Mozharovskiy et al. 2019) which is available on the CRAN (R Core Team 2019).

5 Numerical Experiments Using Simulations

5.1 Simulated examples with a closed-form depth formula

The particular geometrical aspects of the curves in the following examples allows one to gain a better insight in the behavior of our curve depth and its potential limitations. More details on the computations are provided in the Supplementary Materials (Section 7.1).

Segments on a line. We observe a sample of n non-overlapping segments $[a_k, b_k]$, $k = 1, \dots, n$, on a line. Without loss of generality, we denote by \mathcal{X}_k the k^{th} segment, from left to right (see Figure 4 top). The curve depth of \mathcal{X}_k w.r.t $\mathcal{X}_1, \dots, \mathcal{X}_n$ is

$$D(\mathcal{X}_k | \mathcal{X}_1, \dots, \mathcal{X}_n) = \begin{cases} 1/n & \text{if } k = 1 \text{ or } k = n \\ 1/n - ((n-1)/n) \log \left((1-t_k)^{1-t_k} t_k^{t_k} \right) & \text{otherwise,} \end{cases}$$

where $t_k = (k-1)/(n-1)$. The deepest curve is the segment for which t_k is the closest point to $1/2$. Our curve depth induces the same ordering as when one computes the original Tukey depth of the middle points of the segments. It is worthwhile noting that when the sample size n increases, $D(\mathcal{X}_k | \mathcal{X}_1, \dots, \mathcal{X}_n)$ tends to the Shannon entropy (in base $b = e$) of a Bernoulli(t_k) random variable. Thus our segment depth is maximum at $1/2$ (its value being equal to $\log(2)$) and minimal (i.e., equal to 0) close to 0 and 1. Outliers correspond to minimal depth and minimal entropy.

Parallel segments on a rectangle. Let \mathcal{C}_y be the segment of $[0, 1]^2$ defined as the set $\{(x, y); x \in [0, 1]\}$. We define $\mathcal{X} \sim P$ as the random curve generated from the following scheme (see Figure 4, bottom left) :

$$\mathcal{X} = \mathcal{C}_Y \text{ with } Y \sim \mathcal{U}[0, 1].$$

The population version of our curve depth is

$$D(\mathcal{C}_y | P) = \min(y, 1-y) = 1/2 - |y - 1/2| \text{ for } y \in [0, 1].$$

Our curve depth induces the same ordering as when one computes the Tukey depth of the abscissa of the segments. Notice that due to the particular geometry of the distribution of the segments, our curve depth is unable to detect as outliers vertical segments lying in the interior of the support of the measure Q_P (here it is the unit square).

Star segments. Let \mathcal{C}_θ be the segment in \mathbb{R}^2 from $(0, 0)$ to the point $(\cos(\theta), \sin(\theta))$, for $\theta \in [0, 2\pi)$. We define $\mathcal{X} \sim P$ as the random curve generated from the following scheme (see Figure 4, bottom right) :

$$\mathcal{X} = \mathcal{C}_\theta \text{ with } \theta \sim \mathcal{U}[0, 2\pi].$$

By symmetry, every segment has the same depth, which is equal to 0.255.

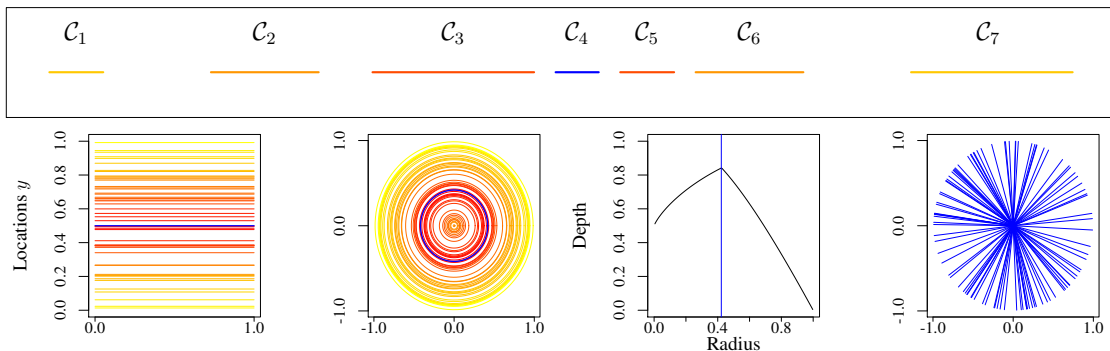


Figure 4: Illustration of examples : (top) Sample of $n = 7$ non-overlapping segments on a line, (bottom left) Sample of $n = 50$ parallel segments, (bottom middle) Sample of $n = 100$ concentric circles and the associated population version of our curve depth as a function of the radius, (bottom right) Sample of $n = 100$ star segments. For each scenario, the deepest curves are plotted in blue while darker red indicates a higher value of depth.

Concentric circles. Let \mathcal{C}_r be the circle in \mathbb{R}^2 of center 0 and radius $r > 0$. We define $\mathcal{X} \sim P$ as the random curve generated from the following scheme (see Figure 4, bottom middle-left) :

$$\mathcal{X} = \mathcal{C}_R \text{ with } R \sim \mathcal{U}[0, 1].$$

The population version of our curve depth is plotted on Figure 4 (bottom middle-right). The deepest circle is the circle with a radius $r = 0.425$. It is worthwhile noting that our approach do not incorrectly lead to the deepest curve being the circle with a null radius. This being said, one may have expected the deepest curve to be the circle with radius $r = 1/2$.

5.2 Monte Carlo Approximation of the Curve Depth

In most cases, it is not possible to get an explicit expression of our curve depth since it requires to compute for all $x \in S_{\mathcal{C}}$ an infimum of the ratio $Q_n(H_{x,u})/\mu_{\mathcal{C}}(H_{x,u})$ over all $u \in \mathcal{S}$. Section 4 describes a Monte Carlo estimate of $D(\mathcal{C}|\mathcal{X}_1, \dots, \mathcal{X}_n)$; see Algorithm 1. This approximation is consistent according to Theorem 3.1. We conducted a Monte Carlo study to assess this convergence in several scenarios in Section 7.2 of the Supplementary Materials. Here, we only give a brief summary of these results.

Scheme 1 : Concentric circles. We consider the population of concentric circles with radius lying in the interval $(0, 1)$ described in Subsection 5.1. For a given sample of circles $\{\mathcal{X}_1, \dots, \mathcal{X}_n\}$, we have an explicit expression both for $D(\mathcal{C}_r|\mathcal{X}_1, \dots, \mathcal{X}_n)$ and $D(\mathcal{C}_r|P)$, where \mathcal{C}_r is the circle of radius $r \in (0, 1)$. This example has the particularity that the functions $x \in S_{\mathcal{C}} \mapsto D(x|Q_n, \mu_{\mathcal{C}})$ and $x \in S_{\mathcal{C}} \mapsto D(x|Q_P, \mu_{\mathcal{C}})$ are constant over their domain. Our main findings are the following.

1. *The Monte Carlo estimator of the sample curve depth converges in probability as the Monte Carlo sample size m goes to infinity*; see Figure 24 in the Supplementary Materials. Monte Carlo estimates (see Algorithm 1) tend in average to underestimate the sample curve depth. Observing such a negative bias is not surprising since we aim to compute an infimum over all directions $u \in \mathcal{S}$. However this bias and the standard deviation depend on the value of the radius (i.e., on

the position of the curve \mathcal{C} w.r.t. the sample of curves) and they both decrease towards zero as m gets large.

2. *The sample curve depth converges in probability to the population curve depth.* The bias and the standard deviation of the sample curve depth computed over 5,000 replications decrease towards zero as n goes to $+\infty$; see Table 2 in the Supplementary Materials. Moreover, the standard deviation of $D(\mathcal{C}_r|\mathcal{X}_1, \dots, \mathcal{X}_n)$ seems to be dependent on the value of the radius r . As expected, the Monte Carlo estimator of the population curve depth (see Algorithm 1) also converges in probability for increasing values of both n and m . The rate of convergence of the latter is slightly smaller, with on average a greater impact on its bias than on its standard deviation.

Scheme 2 and scheme 3 : functional data. We consider two example of simulated functional data from [Claeskens et al.](#) (see paragraph 4.2.1 in [2014](#)) and from [Cuevas et al. \(2007\)](#). Here we consider as unparametrized curve the collection of points,

$$\mathcal{X} = \{(t, \mathbf{x}(t)) : t \in [0, 1]\}$$

where $\mathbf{x}(t)$ is a continuous function from $[0, 1]$ to \mathbb{R} . The sample processes of these example admit a symmetry around their respective mean function. Moreover these mean functions are known (see the black curves in Figure 5). Notice that for these examples, we have no explicit formula for the sample curve depth and the population curve depth.

1. *The convergence of the Monte Carlo estimate of the sample curve depth.* For a given sample of curves, $\{\mathcal{X}_1, \dots, \mathcal{X}_n\}$, we observe that the Monte Carlo estimate of $D(\mathcal{C}|\mathcal{X}_1, \dots, \mathcal{X}_n)$ converges in probability to a constant with m goes to ∞ and with $\min(n, m)$ goes to ∞ . Moreover, we don't observe an impact of the threshold Δ in the computation of the depth.

2. *The most central curves are located in a neighborhood of the mean curves.* According to the previous simulations, we estimate the Monte Carlo error of the deepest curve (shown in red in Figure 5) and we select the curves whose depth belongs to the 97.5%-confidence (shown in orange in Figure 5). These curves appear to be located reasonably close to the center of the stochastic process (the black mean curves).

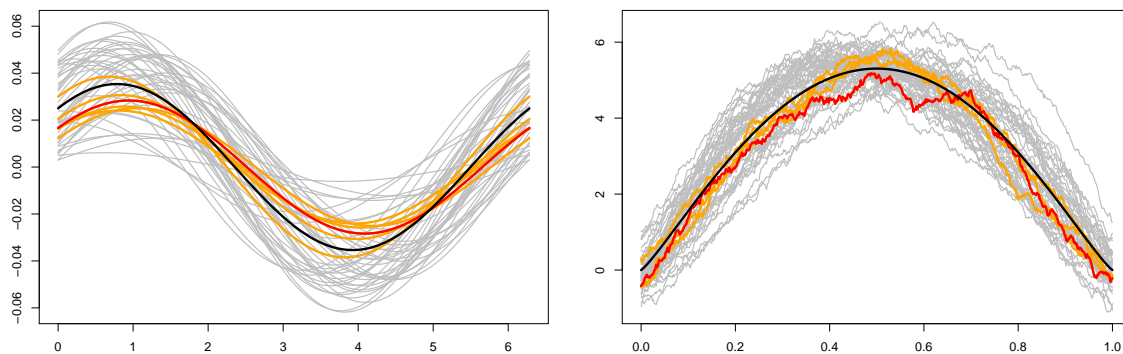


Figure 5: Two samples of $n = 50$ gray curves generated according to two simulation schemes: (left) the one proposed by [Claeskens et al. \(2014\)](#), (right) the one proposed by [Cuevas et al. \(2007\)](#). The deepest curve, computed using our new method (taking $\Delta_m = 1/(10m^\alpha)$ with $m = 500$ and $\alpha = 1/8$), is plotted in red; its depth is 0.744 (left) and 0.752 (right). The mean curves, plotted in black, have a depth of 0.727 (left) and 0.571 (right). The curves having a depth lying in the 0.975 Monte Carlo confidence interval are plotted in orange.

5.3 Outlier detection

We explored the ability of our curve depth to detect outlying observations in a sample of curves, on two visual examples; see Figure 6.

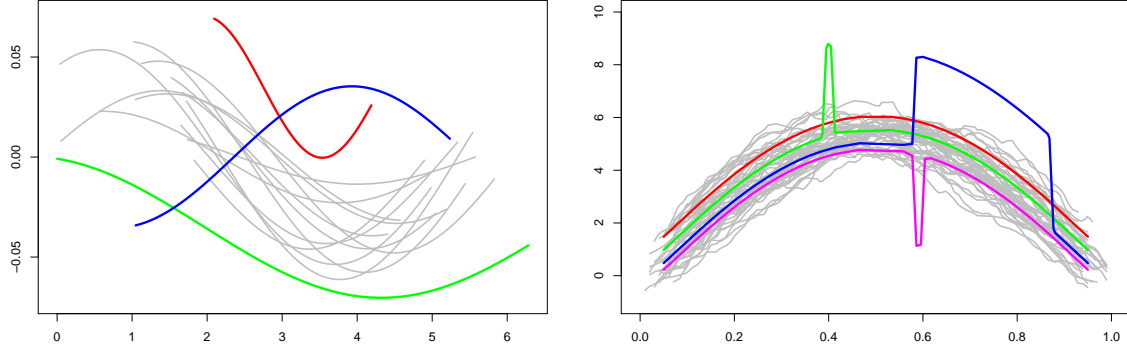


Figure 6: Curve data with outliers. Left: 15 smooth curves with two shift-shape (red and green) and one purely shape (blue) outliers. Right: 50 oscillating curves with one smooth shift outlier (red), one isolated outlier (green), one persistent outlier (blue), and one isolated outlier with a negative peak (magenta).

For the first scenario, we generated a sample of 12 2D-curves according to the following random generating process (inspired from (Claeskens et al. 2014, Section 4.2.1)):

$$\mathcal{X} = \{(x, A_1 \sin(2\pi x) + A_2 \cos(2\pi x)); x \in [L, U]\},$$

where $A_1, A_2 \sim \mathcal{U}[0, 0.05]$, $L \sim \mathcal{U}[0, \frac{2\pi}{3}]$, and $U \sim \mathcal{U}[\frac{4\pi}{3}, 2\pi]$, all independent. We then added three outlier curves: two (red and green) are shift-shape outliers, while the third one (blue) is a purely shape outlier (for a taxonomy of multivariate functional outliers see, e.g., Hubert et al. 2015).

For the second scenario, we generated a sample of 46 2D-curves according to the following random generating process:

$$\mathcal{Y} = \{(x, 30(1-x)^{1+W}x^{1.5-W} + U_x); x \in [L, U]\}$$

where $\{U_t; t \in [0, 1]\}$ is a zero mean stationary Gaussian process with covariance function $t \mapsto 0.2e^{-\frac{1}{0.3}|t|}$, $W \sim \mathcal{U}[0, 0.5]$, $L \sim \mathcal{U}[0, 0.1]$, $U \sim \mathcal{U}[0.9, 1]$, all independent. We then added four outliers: a shift outlier (red), an isolated outlier (green), a persistent outlier (blue), and to be fair to the other depth measures, another isolated outlier with a negative peak (magenta). All the outliers (slightly) differ in shape.

Plots of the ordered depths of the curves in these two samples, computed using mSBD, saPRJ and MFHD (using an arc-length parametrization) as well as our curve depth are displayed on Figure 7.

Our curve depth is the only one able to correctly identify the three outliers added to the \mathcal{X} curves. saPRJ and MFHD only identify the two shift-shape outliers while mSBD identifies just one. None of these three other depth methods sees the pure shape outlier.

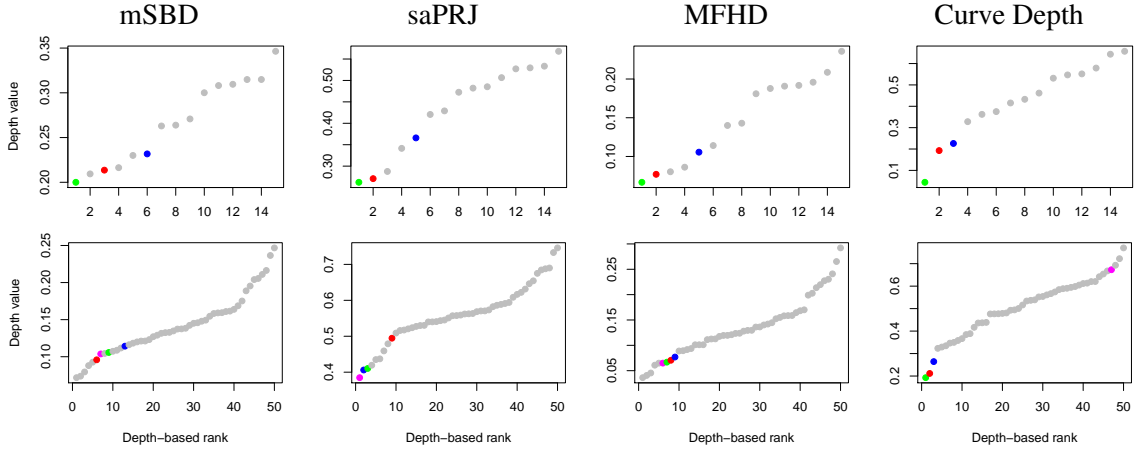


Figure 7: Values of depth in ascending order for two samples drawn from \mathcal{X} (top) and \mathcal{Y} (bottom) contaminated with a few outlying observations (colored as in Figure 6).

For the second scenario, mSBD and MFHD are not able to identify any outlier added to the \mathcal{Y} curves, while saPRJ only fails to find the shift outlier. Our curve depth perfectly distinguishes all outliers but the negative isolated outlier which is assigned a rather large value of depth. This failure was to be expected since a building block of our approach is to use halfspaces, as illustrated in Figure 20. Somehow, a similar behaviour was observed when we slightly underestimated the depth of the deepest curve in the concentric circles example of Section 5.1.

6 Application to Real Data

6.1 Application to the Older Australian Twins Study Data

White matter (WM) in the brain is made up of long myelinated axonal fibers generally regarded as passive routes connecting several gray matter regions (the ones containing neurons) to permit flow of information across them. In such tissue, water tends to diffuse mostly along the direction of the fibers. The ratio of axial and radial movement is called fractional anisotropy. Diffusion Tensor Magnetic Resonance Imaging (DTI) measures the motion of hydrogen atoms within water in all three dimensions.

We had access to DTI scans from the Older Australian Twins Study (OATS), an ongoing longitudinal study investigating genetic and environmental factors and their associations and interactions in healthy brain ageing and ageing-related neurocognitive disorders for people aged 65+ years (Sachdev et al. 2009). The DTI data considered in the current article were drawn from 34 twin pairs, aged between 67.3 and 84.2 years. Eleven of the 34 pairs were dizygotic (DZ) twin pairs (i.e., non-identical twins sharing 50% of their genes) and 23 monozygotic (MZ) twin pairs (i.e., identical twins sharing 100% of their genes). Using MRtrix software (Tournier et al. 2012) to extract corticospinal fiber tracts from the DTI scans (an operation called tractography), the resulting data sets were two bundles of around 1,000 fibers each per subject (see Figure 8; left). Other pre-processing steps are described in the Supplementary Materials, Section 8.

It is quite a challenging task to visualize brain fibers. Consequently this information is difficult to use in a clinical environment (e.g., for surgery planning). New tools are thus needed for

efficiently representing these *tractograms*. An interesting approach by [Mercier et al. \(2018\)](#) consists in progressively simplifying tractograms by grouping similar fibers into a specific geometric representation.

We believe that the depth for curves developed here can also help neuroscientists to visualize a 3D bundle of fibers. One can follow the approach adopted by [Mercier et al. \(2018\)](#) by grouping curves according to their depths. It is also possible to assign a transparency value to each curve equal or proportional to its depth value (see Figure 8; left) to inspect the whole bundle at once. Similarly, one can instead assign a low transparency value to the least deep curves in order to visualize outliers (see Figure 8; right). Outliers can eventually be removed before further statistical analyses are conducted.

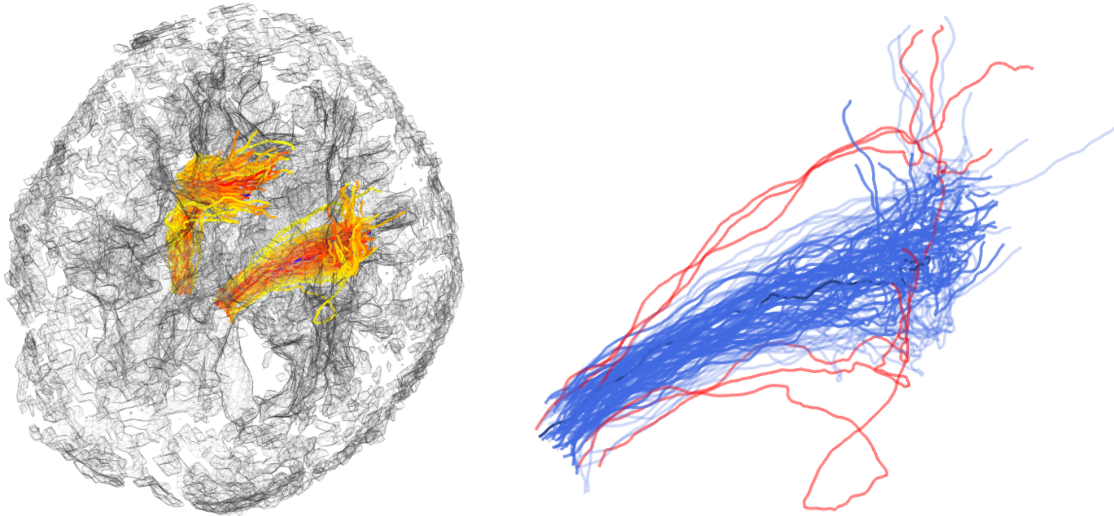


Figure 8: Illustrations of the ordering of the white matter fibers for one subject using our curve depth. (Left) Whole brain fiber data set for one twin; see <http://biostatisticien.eu/DataDepthFig8> for an interactive 3D applet. (Right) Result of bundle ordering for the right side of the brain only. We only display the first 100 fibers in the data set, among which 6 are identified as outliers and colored in red (their depth is less than 0.075).

We demonstrate on Figure 9 that our curve depth approach gives better results in terms of outlier detection than four other existing depth measures that can be applied to three-dimensional curves. These multivariate functional depth-based competitors (with an arc-length parametrization) are the *modified multivariate band depth* (mMBD), SBD, mSBD, saPRJ, and our curve depth. We observe that the 15 fibers having the lowest depth as computed by our curve depth are located outside of the bundle, while there are fibers with a low depth value inside this bundle for the competitors. Furthermore the range of depth values associated to our curve depth is the widest among the 5 methods considered here. And there is a clearer separation between the depths of outliers and the other fibers. Notice that it is hard to distinguish outliers using SBD and mSBD and that the bottom fiber which is clearly outside the bundle is not detected as an outlier by SBD. Finally, mMBD and saPRJ detect fewer outliers than our curve depth, some of them being the same as the ones detected by our approach.

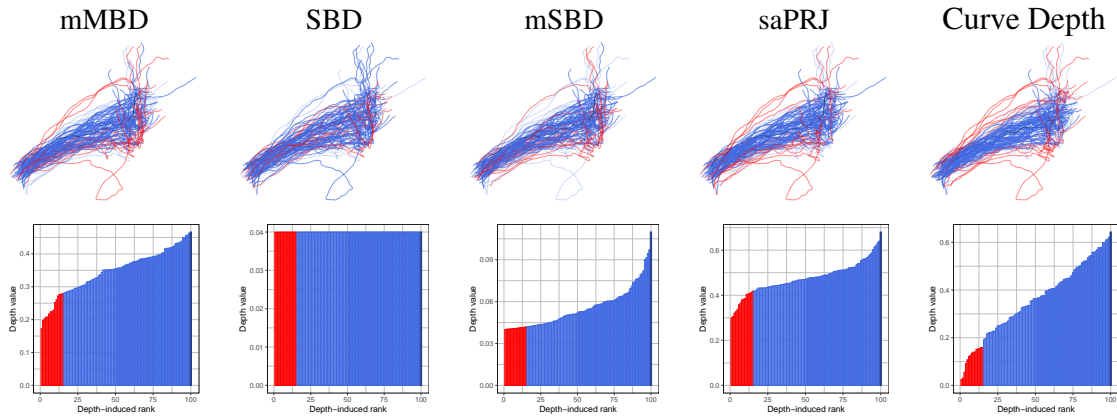


Figure 9: Top: Curve boxplots for a sample of 100 WM-fibers from the right side of the brain. The set of 100 curves is partitioned into 15/35/49/1 curves: 15 with the smallest value of depth, considered as outliers (red), 35 with a larger value of depth, considered as outer curves (light blue), 49 with the largest value of depth, considered as the more central curves (blue), and finally the deepest curve of all (dark blue). Depth methods are (from left to right) mMBD, SBD, mSBD, saPRJ, and our *curve depth*. Bottom: Corresponding depth-ranked histograms.

6.1.1 Curve Registration

Image registration is one of the main pre-processing steps in any statistical analysis of brain imaging data. Its aim is to geometrically match up image volumes of brain structures, for example for structure localization or difference detection. Broadly, this consists in finding rotation and translation parameters that will minimize a certain cost function (e.g., least squares or mutual information) which quantifies how well aligned two images are. Image registration is an active field of research since existing algorithms still have defects, for example they might suffer from directionality bias (Modat et al. 2014). All standard libraries dedicated to the analysis of fMRI, MRI and DTI brain imaging data contain an image registration procedure; see, e.g., `RNiftyReg` (Clayden et al. 2017) in the R software (R Core Team 2019).

Here, our approach to register the bundles at hand is to first extract one single best representative curve for each bundle (namely the deepest one; see the dark blue fiber in Figure 8) and then to match these representatives as best as possible. In the twin DTI data set considered here, our aim was to register 68 bundles, of about 1,000 fibers each, located in the left hemisphere say. To reach this goal, we first computed the deepest fiber within each bundle, noted thereafter d_j , $j = 1, \dots, 68$. We then computed the deepest fiber among d_1, \dots, d_{68} , which is denoted D . Finally, for each bundle j , we found the rigid transformation (in terms of rotation, translation and centering) that minimizes the distance (2.1) between the curves d_j and D . Registration is then achieved by applying each one of these rigid transformations to all the fibers within the corresponding bundle. This process is illustrated in Figure 10.

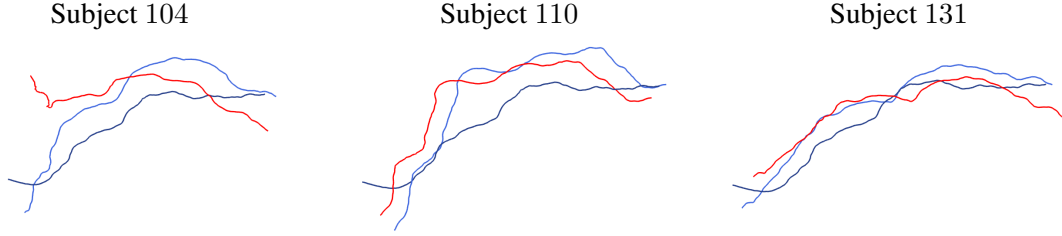


Figure 10: Illustration of the registration process. Subject 235 is the reference subject (i.e., the subject whose deepest curve is D , the *deepest of all*). The red and the dark blue curves are the deepest curves (before registration) of the given subject and of subject 235, respectively. We bring the red curve as close as possible, in terms of distance (2.1), to the dark blue curve. The transformed curve (i.e. after registration) is the light blue curve. Distances from each red curve (i.e., before registration) and from each light blue curve (i.e., after registration) to the deepest of all are 10.271 and 3.245 (for subject 104), 4.539 and 3.395 (for subject 110), and 3.329 and 2.084 (for subject 131), respectively.

6.1.2 A Statistical Comparison Between MZ and DZ Twins

After having performed curve registration, comparison of the empirical distributions is possible. Given two distributions $P_0, P_1 \in \mathcal{P}$ on the space of curves \mathcal{C} , we consider the mapping that yields the DD -plot (Liu et al. 1999):

$$\mathcal{C} \rightarrow [0, 1]^2, \mathcal{C} \mapsto (D(\mathcal{C}|P_0), D(\mathcal{C}|P_1)). \quad (6.1)$$

For two random samples of curves $\{\mathcal{X}_1^{(0)}, \dots, \mathcal{X}_{n_0}^{(0)}\}$ and $\{\mathcal{X}_1^{(1)}, \dots, \mathcal{X}_{n_1}^{(1)}\}$ from P_0 and P_1 respectively, the empirical DD -plot can be constructed as:

$$\bigcup_{k=0,1} \left\{ \left(D(\mathcal{X}_i^{(k)} | \mathcal{X}_1^{(0)}, \dots, \mathcal{X}_{n_0}^{(0)}), D(\mathcal{X}_i^{(k)} | \mathcal{X}_1^{(1)}, \dots, \mathcal{X}_{n_1}^{(1)}) \right), i = 1, \dots, n_k \right\}.$$

For six pairs of twins, DD -plots are presented in Figure 11, whose contribution is twofold. First, as a proof of concept, the empirical distributions of two MZ twins are very similar since the points are concentrated around the diagonal of the DD -plot while those of DZ twins differ (see also Liu et al. 1999). Second, this closeness of the MZ twins underlines the high quality of the curve registration using the geometrical matching (Section 6.1.1) in the sense that (each of) these two bundles of curves are meant to substantially coincide.

Recently, neuroscientists have discovered that several structures in the brain are influenced by our genetics; see, e.g., (Wen et al. 2016). This suggests a genetically-driven spatial organisation of corticospinal brain fibers. This biological hypothesis can be statistically confirmed by applying the depth-based Wilcoxon testing procedure introduced by Liu & Singh (1993) and further described in (López-Pintado & Romo 2009). For each pair of twins, we considered 500 fibers selected at random from the first twin as a reference sample. We then used 50 fibers from each twin (selected at random among the remaining fibers) to calculate the test statistic value. The p -values, computed using the normal asymptotic null distribution given by Lehmann & D'Abbrera (1975), are provided in Figure 11. They are small for DZ twins and large for MZ twins, a statistical evidence in favour of this biological hypothesis.

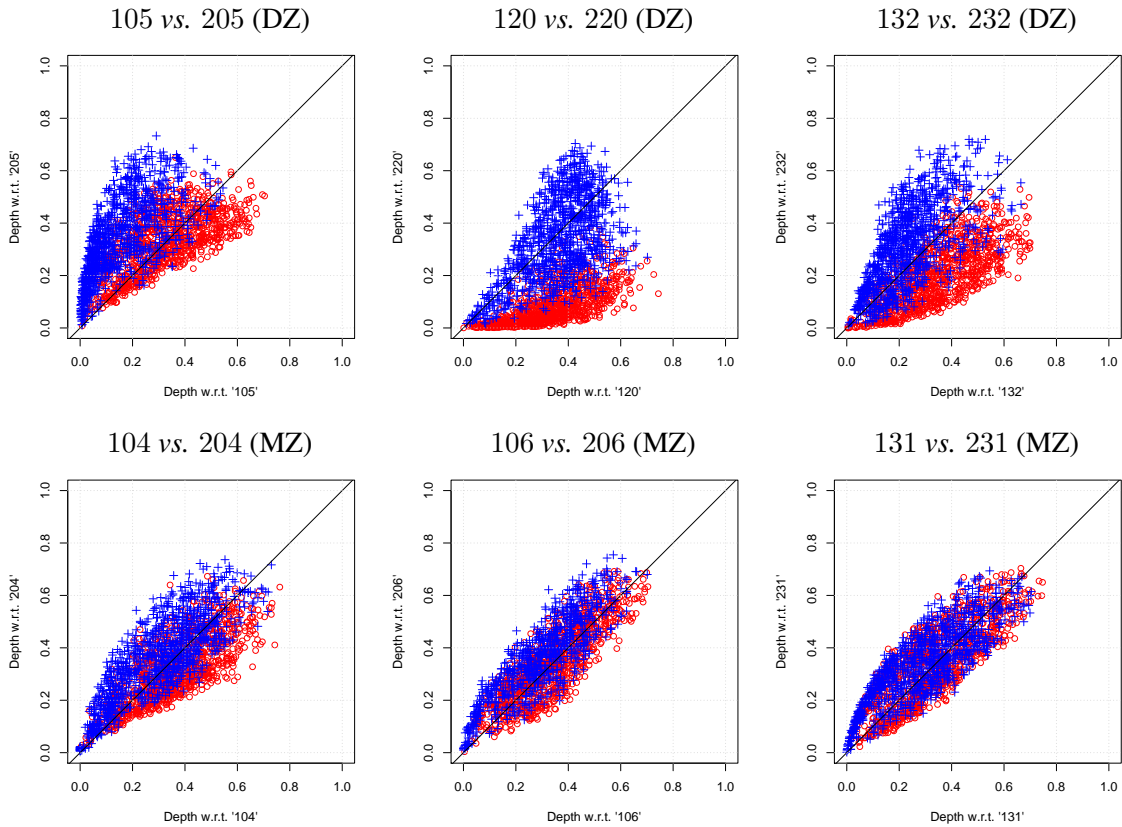


Figure 11: DD -plots of six pairs of twins (red circles for 1xx; blue “+” signs for 2xx) with associated p -values in parenthesis. (Top) three DZ, namely: 105 and 205 ($1 - e_9$), 120 and 220 (0.017), 132 and 232 (0.003). (Bottom) three MZ: namely 104 and 204 (0.733), 106 and 206 (0.366), 131 and 231 (0.366).

6.2 Classification Algorithms for Unparameterized Curves

Automatic clustering of white matter fibers is an important sub-task in understanding brain connectivity and integrity, see e.g., [Jin et al. \(2014\)](#). With this motivation in mind, we extend to the context of curves two classification algorithms: the DD -plot procedure ([Li et al. 2012](#)) and the unsupervised depth-based clustering ([Jörnsten 2004](#)). To illustrate the performance of these two procedures when used in conjunction with our curve depth, we start by considering the problem of recognition of hand-written digits from the now famous training MNIST data set¹. This is done in a supervised way in Section 6.2.1 and in an unsupervised way in Section 6.2.2. Finally, in Section 6.2.3 we produce an unsupervised clustering of the DT-MRI brain fibers in a data set previously studied by [Kurtek et al. \(2012, Section 4\)](#).

¹<http://yann.lecun.com/exdb/mnist/>

6.2.1 Supervised Classification of Hand-written Digits

As a proof-of-concept, we show that our curve depth can be used to produce a linear classifier able to discriminate between two classes of images representing the digits ‘0’ and ‘1’. We illustrate its results on 100 observations from each class. The original MNIST images have been preprocessed in order to transform them into pixelized curves (i.e., each pixel of an image should have at most two neighboring pixels on the vertical, horizontal and diagonal directions). A few examples of the preprocessed digit images are plotted in Figure 12.

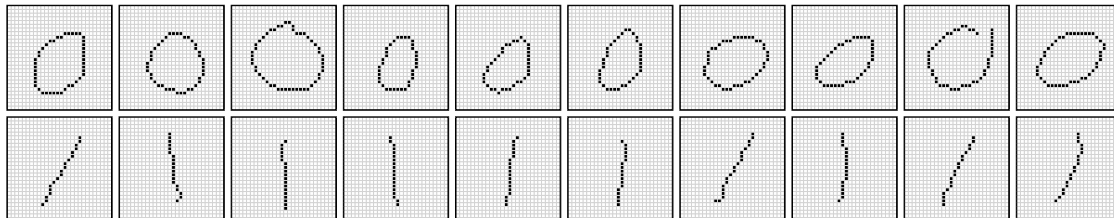


Figure 12: First ten images from each of the two classes of curve-preprocessed MNIST digits.

A DD -plot built using our curve depth (see Section 6.1.2) can be exploited to classify curves. Indeed, this task is greatly simplified in the DD -plot space since a rule separating two classes needs only to be found in a Euclidean space of dimension two. For the sample consisting of 100 ‘0’s and 100 ‘1’s, we applied the $DD\alpha$ -procedure (an iterative heuristics in the DD -plot; see Lange et al. (2014) for a detailed description). The resulting separation rule is plotted in solid green on Figure 13.

One can observe (for this particular sample) the perfect separation of the two classes by a linear rule. In Figure 13, on the right-hand side of the DD -plot ‘magnified’ observations (‘1’ and ‘0’) having the highest depth in each class are pictured; they are trivially well classified. On the left-hand side of the DD -plot, we paint the most doubtful observations, i.e., those lying closest to a member of the opposite class. The ‘1’ here corresponds to the observation with the lowest depth in the sample of ‘1’s; this can also be regarded as an atypical observation. The situation is different with the ‘0’ lying closest to the set of ‘1’s. It has a rather average depth in its own class, but due to its oblong shape resembles a ‘1’ and thus has a high depth value in the class of ‘1’s relative to its depth in the class of ‘0’s.

6.2.2 Unsupervised Classification of Hand-written Digits

Jörnsten (2004) proposes the DDClust algorithm for clustering. This non-parametric method is based on both distance-based distortion (captured by the silhouette width) and geometry of the curves (captured by the relative depth). We propose the original method with slight modifications and we illustrate it on the MNIST-digits data. Let $\{\mathcal{C}_1, \dots, \mathcal{C}_n\}$ be an observed sample of curves from \mathcal{C} . Our aim is to partition the data set into K groups. DDClust proceeds iteratively by assigning a curve \mathcal{C}_i at each instance to the cluster where it has the highest depth.

For $k = 1, \dots, K$, we denote by I_k the set of indices of observations belonging to the cluster k and by P_k the probability measure on \mathcal{C} defined as

$$P_k = \frac{1}{n_k} \sum_{i \in I_k} \delta_{\mathcal{C}_i},$$

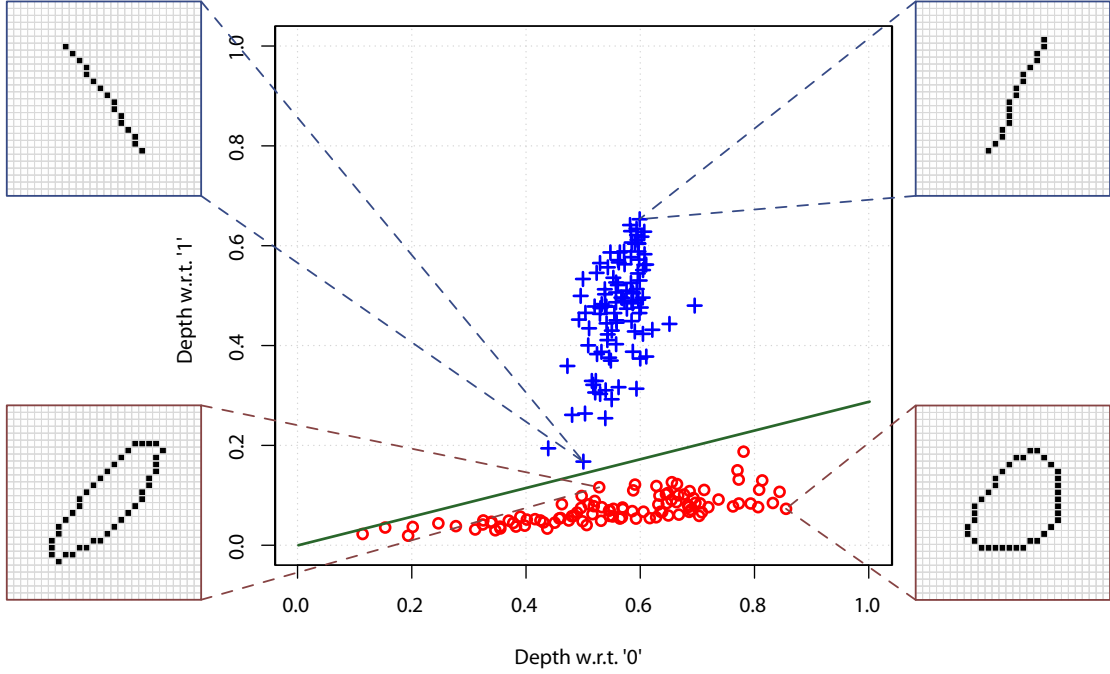


Figure 13: DD_α -classifier for a subsample of 100 ‘0’s and 100 ‘1’s taken from the MNIST data set. For each one of the two classes, ‘magnified’ observations correspond to the one having the highest depth value in its class (on the right-hand side), and to the one lying closest to the opposite class (on the left-hand side).

where n_k is the size of the cluster I_k . Then $\mathcal{I} = \{I_1, \dots, I_K\}$ is a partition of $\{1, \dots, n\}$.

The within-cluster data depth of an observation $i \in I_k$ is $D(\mathcal{C}_i|P_k)$. The between-cluster data depth of an observation $i \in I_k$ is $\min_{\ell \neq k} D(\mathcal{C}_i|P_\ell)$. The relative depth of an observation $i \in I_k$ is then defined as

$$ReD_i(\mathcal{I}) = D(\mathcal{C}_i|P_k) - \min_{\ell \neq k} D(\mathcal{C}_i|P_\ell). \quad (6.2)$$

The within-cluster average distance of an observation $\mathcal{C}_i \in I_k$ is

$$d(\mathcal{C}_i|k) = \frac{1}{n_k - 1} \sum_{j \in I_k \setminus \{i\}} d_{\mathcal{C}}(\mathcal{C}_i, \mathcal{C}_j),$$

where $n_k - 1$ is the size of $I_k \setminus \{i\}$. The closest average distance of an observation $i \in I_k$ among foreign clusters is $\min_{\ell \neq k} d(\mathcal{C}_i|\ell)$. The silhouette width of an observation i belonging to cluster k is

$$Sil_i(\mathcal{I}) = \frac{\min_{\ell \neq k} d(\mathcal{C}_i|\ell) - d(\mathcal{C}_i|k)}{\max\{d(\mathcal{C}_i|k), \min_{\ell \neq k} d(\mathcal{C}_i|\ell)\}}. \quad (6.3)$$

The clustering cost of an observation i for the partition $\mathcal{I} = \{I_1, \dots, I_K\}$ is

$$C_i(\mathcal{I}) = (1 - \lambda)Sil_i(\mathcal{I}) + \lambda ReD_i(\mathcal{I}), \quad (6.4)$$

where $\lambda \in [0, 1]$ being a constant defining trade-off between depth and distance. The total clustering cost can then be formulated as

$$C(\mathcal{I}) = \frac{1}{n} \sum_{k=1}^K \sum_{i \in I_k} C_i(\mathcal{I}). \quad (6.5)$$

Here we employ the original clustering algorithm by Jörnsten (2004) with slight modifications, which we briefly describe right below and send the reader to the source for details. For a fixed number of clusters K , we start with an initial partition \mathcal{I} which may be generated at random. For each observation $i = 1, \dots, n$, we compute its clustering cost $C_i(\mathcal{I})$. Then the set of observations considered for a potential reallocation is defined as the set of indices:

$$\mathcal{R} = \{i : C_i(\mathcal{I}) < T\},$$

where $T \leq 0$ is a prefixed threshold. For a random subset E from \mathcal{R} , we reallocate each index in E to its closest cluster (the one with highest depth for this observation) getting a new partition $\tilde{\mathcal{I}}$ that is accepted if $C(\tilde{\mathcal{I}}) > C(\mathcal{I})$ and with probability $1 - \exp\left(\beta(C(\mathcal{I}) - C(\tilde{\mathcal{I}}))\right)/2$ otherwise (β is a temperature parameter). The whole procedure is given in Algorithm 5, which can be found in Section 6.3 of the Supplementary Materials.

We ran our clustering algorithm DDCLUSTCURVE (with $K = 3$) on a set of 300 preprocessed MNIST images of the digits ‘0’, ‘1’ and ‘7’. The results are very satisfactory (empirical error rate = 1%, 3 errors). The resulting $C_i(\mathcal{I})$ -s are plotted in Figure 14.

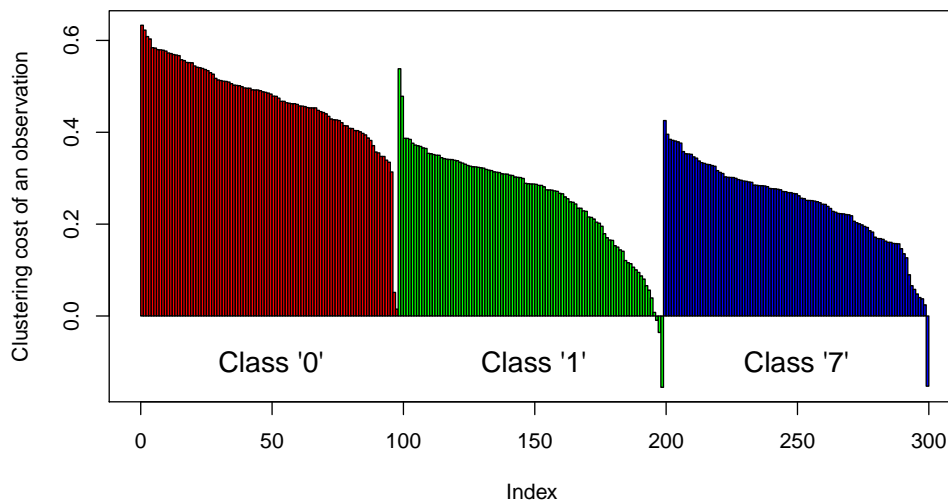


Figure 14: Clustering cost (ordered decreasingly within each class) of 300 digits from the MNIST library after convergence of the clustering algorithm (Algorithm 5 in the Supplementary Materials, an adaptation of Jörnsten (2004)’s algorithm). The colors correspond to the correct classes of digits ‘0’ (red), ‘1’ (green), and ‘7’ (blue). According to the clustering criterion (threshold T set at 0), only 3 observations from class ‘1’ and 1 observation from class ‘7’ are misclassified; the (true) clustering error is 1% (or 3 observations).

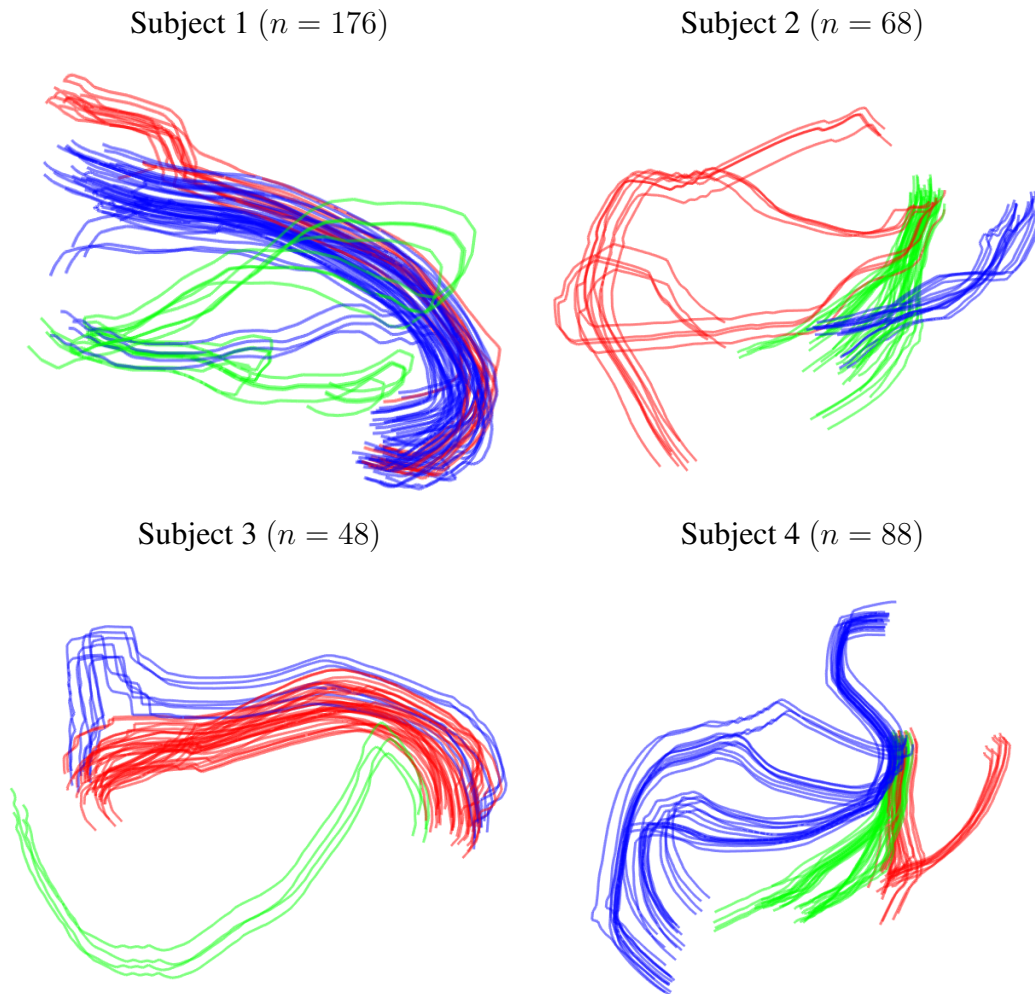


Figure 15: Clustering of DT-MRI fibers (Source: [Kurtek et al. 2012](#)).

6.2.3 Unsupervised Classification of DT-MRI Fiber Tracts

To further illustrate the exploratory potential of the proposed depth notion, we additionally apply the clustering Algorithm 5 by [Jörnsten \(2004\)](#) to the DT-MRI brain fibers considered previously by [Kurtek et al. \(2012, Section 4\)](#). Automatic clustering of white matter fibers is an important sub-task in understanding brain connectivity and integrity, see e.g., [Jin et al. \(2014\)](#).

The data consist of one bundle of fibers for each one of four subjects. These bundles contain 176, 68, 48 and 88 fibers respectively. The results of our clustering coincide for subjects 1 and 3 with those obtained by [Kurtek et al. \(2012, Figure 4\)](#). The results differ for subjects 2 and 4 but our own interpretation is geometrically sound; see Figure 15. For subject 2, the original red and blue groups in [Kurtek et al. \(2012\)](#) are grouped together into one single group (the red one in Figure 15), while their original green group is split in two parts (green and blue in Figure 15). It is worthwhile noting that a closer look to the scatter plot in [Kurtek et al. \(2012, bottom of second column in Figure 4\)](#) tends to justify this splitting. Subject 4, on the other hand, illustrates that our approach takes into account different features of the data.

7 Concluding Remarks

In this work, we introduced a new notion of depth for continuous curves having finite length and we investigated its properties (boundedness, similarity invariance, vanishing at infinity). By construction, our curve depth is invariant to reparametrizations and it is defined on a non-linear space, namely the space of unparametrized curves. It is applicable to curve data embedded in a space of any (finite) dimension. It is a tool that can advantageously compete with functional data depths when dealing with curve objects that should not be considered as functional data (e.g., DTI data). In that sense, our curve depth can be seen as an extension of the notion of statistical depth function to non-standard data types; see also the works by [Ley et al. \(2014\)](#) and [Paindaveine & Van Bever \(2018\)](#). We envision a rich palette of applications for this curve depth. We gave various examples of its use, e.g., for the spatial alignment or unsupervised classification of brain fibers. We illustrated its superiority to other existing depth methods for some applications, for instance in terms of its ability to detect spatial outliers. One can think of other interesting applications of our curve depth, e.g., for handling handwriting data, or 2D and 3D trajectories of animal species or vehicles. A ready-to-use implementation of algorithms that approximate depths of curves via Monte Carlo or that compute the distance between two curves suggests a basis for direct application of the developed methodology in other contexts. Being the most time demanding part of the algorithm, the computation of our point curve depth can be performed efficiently in dimension two while approximations can be successfully used in higher dimensions, which is illustrated in the performed experiments. These computations are moderately sensitive to the choice of the size m of Monte Carlo samples or smooth curves. This is confirmed by simulation and for real data applications (e.g., we took $m = 50$ to cluster brain imaging data obtained from [Kurtek et al. \(2012\)](#)). Implementation of the proposed methodology can be found in the R-package `curveDepth` ([Mozharovskiy et al. 2019](#)) available on the CRAN ([R Core Team 2019](#)). The data on brain fibers used in this article are available from the authors.

Supplementary Materials

Additional results: These contain theoretical details on the space of curves, definitions of our curve depth function and its properties, algorithms, additional simulation results and some details on data preprocessing. (“CurveDepthSupplement.pdf”)

Reproducing scripts: Reproducing R-scripts for experiments contained in the article with descriptions included in files. (“CurveDepthReproduce.zip”)

Animations: A depth-colored animation of a few brain fibers (<http://biostatisticien.eu/DataDepthFig8>) and an illustration of two parametrizations of an ‘S’-shaped curve (<http://biostatisticien.eu/EquivalentCurves>).

Acknowledgments

The authors are grateful to Wei Wen for providing the OATS dataset and to Zhaohua Ding and Sebastian Kurtek for providing the DT-MRI brain fibers dataset used in Section 6.2. We would like to thank Gery Geenens, Karl Mosler and Lionel Truquet for fruitful discussions about the-

oretical aspects. This paper includes results produced on the computational cluster Katana at UNSW Sydney.

References

- Aizenman, M. & Burchard, A. (1999), ‘Hölder regularity and dimension bounds for random curves’, *Duke Mathematical Journal* **99**(3), 419–453.
- Billingsley, P. (2013), *Convergence of Probability Measures (2nd Edition)*, Wiley Series in Probability and Statistics, John Wiley & Sons, New York.
- Broda, S. A. & Kan, R. (2016), ‘On distributions of ratios’, *Biometrika* **103**(1), 205–218.
- Burago, D., Burago, Y. & Ivanov, S. (2001), *A Course in Metric Geometry*, Vol. 33 of *Graduate Studies in Mathematics*, American Mathematical Society, Providence, RI.
- Chenouri, S. & Small, C. G. (2012), ‘A nonparametric multivariate multisample test based on data depth’, *Electronic Journal of Statistics* **6**, 760–782.
- Claeskens, G., Hubert, M., Slaets, L. & Vakili, K. (2014), ‘Multivariate functional halfspace depth’, *Journal of the American Statistical Association* **109**(505), 411–423.
- Clayden, J., Modat, M., Presles, B., Anthopoulos, T. & Daga, P. (2017), *RNiftyReg: Image Registration Using the ‘NiftyReg’ Library*. R package version 2.6.1.
- Collet, J.-P., Shuman, H., Ledger, R. E., Lee, S. & Weisel, J. W. (2005), ‘The elasticity of an individual fibrin fiber in a clot’, *Proceedings of the National Academy of Sciences of the United States of America* **102**(26), 9133–9137.
- Cuevas, A., Febrero, M. & Fraiman, R. (2007), ‘Robust estimation and classification for functional data via projection-based depth notions’, *Computational Statistics* **22**(3), 481–496.
- Donoho, D. L. & Gasko, M. (1992), ‘Breakdown properties of location estimates based on halfspace depth and projected outlyingness’, *The Annals of Statistics* **20**(4), 1803–1827.
- Dutta, S., Ghosh, A. K. & Chaudhuri, P. (2011), ‘Some intriguing properties of Tukey’s halfspace depth’, *Bernoulli* **17**(4), 1420–1434.
- Dutta, S., Sarkar, S. & Ghosh, A. K. (2016), ‘Multi-scale classification using localized spatial depth’, *Journal of Machine Learning Research* **17**(218), 1–30.
- Dyckerhoff, R. (2004), ‘Data depths satisfying the projection property’, *Allgemeines Statistisches Archiv* **88**(2), 163–190.
- Dyckerhoff, R. & Mozharovskiy, P. (2016), ‘Exact computation of the halfspace depth’, *Computational Statistics & Data Analysis* **98**, 19–30.
- Embrechts, P. & Hofert, M. (2013), ‘A note on generalized inverses’, *Mathematical Methods of Operations Research* **77**(3), 423–432.
- Fraiman, R. & Muniz, G. (2001), ‘Trimmed means for functional data’, *Test* **10**(2), 419–440.

- Gijbels, I. & Nagy, S. (2017), ‘On a general definition of depth for functional data’, *Statistical Science* **32**(4), 630–639.
- Goldie, C. M. & Resnick, S. I. (1995), ‘Many multivariate records’, *Stochastic Processes and their Applications* **59**(2), 185–216.
- Hallin, M., Paindaveine, D. & Šiman, M. (2010), ‘Multivariate quantiles and multiple-output regression quantiles: from L_1 optimization to halfspace depth’, *The Annals of Statistics* **38**(2), 635–669.
- Hastie, T. & Stuetzle, W. (1989), ‘Principal curves’, *Journal of the American Statistical Association* **84**(406), 502–516.
- He, Y. & Einmahl, J. H. J. (2017), ‘Estimation of extreme depth-based quantile regions’, *Journal of the Royal Statistical Society. Series B (Statistical Methodology)* **79**(2), 449–461.
- Hubert, M., Rousseeuw, P. J. & Segaert, P. (2015), ‘Multivariate functional outlier detection’, *Statistical Methods & Applications* **24**(2), 177–202.
- Hubert, M. & Vakili., K. (2013), *MFHD: Multivariate Functional Halfspace Depth*. R package version 0.0.1.
- Ieva, F. & Paganoni, A. (2013), ‘Depth measures for multivariate functional data’, *Communications in Statistics: Theory and Methods* **41**, 1265–1276.
- Jin, Y., Shi, Y., Zhan, L., Gutman, B. A., de Zubicaray, G. I., McMahon, K. L., Wright, M. J., Toga, A. W. & Thompson, P. M. (2014), ‘Automatic clustering of white matter fibers in brain diffusion MRI with an application to genetics’, *Neuroimage* **100**, 75–90.
- Jörnsten, R. (2004), ‘Clustering and classification based on the L_1 data depth’, *Journal of Multivariate Analysis* **90**(1), 67–89.
- Kemppainen, A. & Smirnov, S. (2017), ‘Random curves, scaling limits and Loewner evolutions’, *The Annals of Probability* **45**(2), 698–779.
- Kurtek, S., Srivastava, A., Klassen, E. & Ding, Z. (2012), ‘Statistical modeling of curves using shapes and related features’, *Journal of the American Statistical Association* **107**(499), 1152–1165.
- Lange, T., Mosler, K. & Mozharovskyi, P. (2014), ‘Fast nonparametric classification based on data depth’, *Statistical Papers* **55**(1), 49–69.
- Lee, S. M. S. (2012), ‘Hybrid confidence regions based on data depth’, *Journal of the Royal Statistical Society. Series B (Statistical Methodology)* **74**(1), 91–109.
- Lehmann, E. & D’Abrera, H. (1975), *Nonparametrics: Statistical Methods Based on Ranks*, Holden-Day series in probability and statistics, Holden-Day.
- Ley, C., Sabbah, C. & Verdebout, T. (2014), ‘A new concept of quantiles for directional data and the angular Mahalanobis depth’, *Electronic Journal of Statistics* **8**(1), 795–816.

- Li, J., Cuesta-Albertos, J. A. & Liu, R. Y. (2012), ‘*DD*-classifier: nonparametric classification procedure based on *DD*-plot’, *Journal of the American Statistical Association* **107**(498), 737–753.
- Li, J. & Liu, R. Y. (2004), ‘New nonparametric tests of multivariate locations and scales using data depth’, *Statistical Science* **19**(4), 686–696.
- Liu, R. Y. (1990), ‘On a notion of data depth based on random simplices’, *The Annals of Statistics* **18**(1), 405–414.
- Liu, R. Y., Parelius, J. M. & Singh, K. (1999), ‘Multivariate analysis by data depth: descriptive statistics, graphics and inference’, *The Annals of Statistics* **27**(3), 783–858. With discussion and a rejoinder by Liu and Singh.
- Liu, R. Y. & Singh, K. (1993), ‘A quality index based on data depth and multivariate rank tests’, *Journal of the American Statistical Association* **88**(421), 252–260.
- Liu, R. Y. & Singh, K. (1997), ‘Notions of limiting P values based on data depth and bootstrap’, *Journal of the American Statistical Association* **92**(437), 266–277.
- López-Pintado, S. & Romo, J. (2009), ‘On the concept of depth for functional data’, *Journal of the American Statistical Association* **104**(486), 718–734.
- López-Pintado, S., Sun, Y., Lin, J. K. & Genton, M. G. (2014), ‘Simplicial band depth for multivariate functional data’, *Advances in Data Analysis and Classification* **8**(3), 321–338.
- Mani, M., Kurtek, S., Barillot, C. & Srivastava, A. (2010), A comprehensive Riemannian framework for the analysis of white matter fiber tracts, in ‘2010 IEEE International Symposium on Biomedical Imaging: From Nano to Macro’, pp. 1101–1104.
- Mercier, C., Gori, P., Rohmer, D., Cani, M.-P., Boubekour, T., Thiery, J.-M. & Bloch, I. (2018), Progressive and Efficient Multi-Resolution Representations for Brain Tractograms, in ‘Eurographics Workshop on Visual Computing for Biology and Medicine’, The Eurographics Association.
- Mirzargar, M., Whitaker, R. T. & Kirby, R. M. (2014), ‘Curve boxplot: Generalization of boxplot for ensembles of curves’, *IEEE Transactions on Visualization and Computer Graphics* **20**(12), 2654–2663.
- Modat, M., Cash, D., Daga, P., Winston, G., Duncan, J. & Ourselin, S. (2014), ‘Global image registration using a symmetric block-matching approach’, *Journal of Medical Imaging* **1**(2).
- Mosler, K. (2013), Depth statistics, in ‘Robustness and Complex Data Structures: Festschrift in Honour of Ursula Gather’, Springer, Berlin, Heidelberg, pp. 17–34.
- Mosler, K. & Polyakova, Y. (2018), ‘General notions of depth for functional data’, *arXiv e-prints* p. arXiv:1208.1981.
- Mozharovskiy, P., Lafaye De Micheaux, P. & Vimond, M. (2019), *curveDepth: Tukey Curve Depth and Distance in the Space of Curves*. R package version 0.1.0.12.

- Narisetty, N. N. & Nair, V. N. (2016), ‘Extremal depth for functional data and applications’, *Journal of the American Statistical Association* **111**(516), 1705–1714.
- Nieto-Reyes, A. & Battey, H. (2016), ‘A topologically valid definition of depth for functional data’, *Statistical Science* **31**(1), 61–79.
- Oja, H. (1983), ‘Descriptive statistics for multivariate distributions’, *Statistics & Probability Letters* **1**(6), 327–332.
- Paindaveine, D. & Van Bever, G. (2015), ‘Nonparametrically consistent depth-based classifiers’, *Bernoulli* **21**(1), 62–82.
- Paindaveine, D. & Van Bever, G. (2018), ‘Halfspace depths for scatter, concentration and shape matrices’, *The Annals of Statistics* **46**(6B), 3276–3307.
- Parthasarathy, K. R. (1967), *Probability Measures on Metric Spaces*, Academic Press, New York.
- R Core Team (2019), *R: A Language and Environment for Statistical Computing*, R Foundation for Statistical Computing, Vienna, Austria.
- Ramsay, J. O., Wickham, H., Graves, S. & Hooker, G. (2017), *fda: Functional Data Analysis*. R package version 2.4.7.
- Rousseeuw, P. J. & Hubert, M. (1999), ‘Regression depth’, *Journal of the American Statistical Association* **94**(446), 388–433. With discussion and a reply by the authors and Stefan Van Aelst.
- Rousseeuw, P. J. & Ruts, I. (1996), ‘Algorithm AS 307: Bivariate location depth’, *Journal of the Royal Statistical Society. Series C (Applied Statistics)* **45**(4), 516–526.
- Sachdev, P., Lammel, A., Trollor, J., Lee, T., Wright, M., Ames, D., Wen, W., Martin, N., Brodaty, H., Schofield, P. & the OATS research team (2009), ‘A comprehensive neuropsychiatric study of elderly twins: The Older Australian Twins Study’, *Twin Research and Human Genetics* **12**(6), 573–582.
- Sangalli, L. M., Secchi, P., Vantini, S. & Veneziani, A. (2009), ‘Efficient estimation of three-dimensional curves and their derivatives by free-knot regression splines, applied to the analysis of inner carotid artery centrelines’, *Journal of the Royal Statistical Society. Series C (Applied Statistics)* **58**(3), 285–306.
- Shorack, G. R. & Wellner, J. A. (2009), *Empirical Processes with Applications to Statistics*, Vol. 59 of *Classics in Applied Mathematics*, Society for Industrial and Applied Mathematics (SIAM), Philadelphia, PA.
- Srivastava, A. & Klassen, E. P. (2016), *Functional and Shape Data Analysis*, Springer Series in Statistics, Springer, New York.
- Su, J., Kurtek, S., Klassen, E. & Srivastava, A. (2014), ‘Statistical analysis of trajectories on Riemannian manifolds: Bird migration, hurricane tracking and video surveillance’, *The Annals of Applied Statistics* **8**(1), 530–552.

- Tournier, J., Calamante, F. & Connelly, A. (2012), 'MRtrix: diffusion tractography in crossing fiber regions', *International Journal of Imaging Systems and Technology* **22**(1), 53–66.
- Tukey, J. W. (1975), Mathematics and the Picturing of Data, in R. D. James, ed., 'International Congress of Mathematicians 1974', Vol. 2, pp. 523–532.
- Väisälä, J. (2006), *Lectures on n-Dimensional Quasiconformal Mappings*, Lecture Notes in Mathematics, Springer, Berlin Heidelberg.
- Wen, Thalamuthu, Mather, Zhu, Jiang, Lafaye De Micheaux, Wright, Ames & Sachdev (2016), 'Distinct Genetic Influences on Cortical and Subcortical Brain Structures', *Scientific Reports* **6**, 32760.
- Xu, Y., Cheng, L., Zhang, L., Yin, H. & Yin, X. (2001), 'Mechanical properties of 3D fiber reinforced C/SiC composites', *Materials Science and Engineering: A* **300**(1), 196–202.
- Yeh, A. B. & Singh, K. (1997), 'Balanced confidence regions based on Tukey's depth and the bootstrap', *Journal of the Royal Statistical Society. Series B (Statistical Methodology)* **59**(3), 639–652.
- Yuan, G., Sun, P., Zhao, J., Li, D. & Wang, C. (2017), 'A review of moving object trajectory clustering algorithms', *Artificial Intelligence Review* **47**(1), 123–144.
- Zhang, Z., Pati, D. & Srivastava, A. (2015), 'Bayesian clustering of shapes of curves', *Journal of Statistical Planning and Inference* **166**, 171–186.
- Zuo, Y. & He, X. (2006), 'On the limiting distributions of multivariate depth-based rank sum statistics and related tests', *The Annals of Statistics* **34**(6), 2879–2896.
- Zuo, Y. & Serfling, R. (2000), 'General notions of statistical depth function', *The Annals of Statistics* **28**(2), 461–482.

Depth for Curve Data and Applications Supplementary Materials

Pierre Lafaye de Micheaux
School of Mathematics and Statistics, UNSW Sydney, Australia
and
Pavlo Mozharovskyi
LTCI, Télécom Paris, Institut Polytechnique de Paris
and
Myriam Vimond
Univ Rennes, Ensai, CNRS, CREST - UMR 9194

February 20, 2020

1 Impact of Parametrization on Functional Depth

1.1 Simulated S Letters

We parameterize a 2D S-shaped curve (the red one in Figure 17 (a)) using either parametrization A:

$$\begin{aligned}x_1(t) &= -(\cos(t) + 1)\mathbb{1}\{t < \frac{3\pi}{2}\} - (\cos(3t - 3\pi) + 1)\mathbb{1}\{t \geq \frac{3\pi}{2}\} + 1, \\x_2(t) &= (\sin(t) + 1)\mathbb{1}\{t < \frac{3\pi}{2}\} - (\sin(3t - 3\pi) + 1)\mathbb{1}\{t \geq \frac{3\pi}{2}\},\end{aligned}\tag{1.1}$$

or parametrization B:

$$\begin{aligned}x_1(t) &= -(\cos(3t) + 1)\mathbb{1}\{t < \frac{\pi}{2}\} - (\cos(t + \pi) + 1)\mathbb{1}\{t \geq \frac{\pi}{2}\} + 1, \\x_2(t) &= (\sin(3t) + 1)\mathbb{1}\{t < \frac{\pi}{2}\} - (\sin(t + \pi) + 1)\mathbb{1}\{t \geq \frac{\pi}{2}\}.\end{aligned}\tag{1.2}$$

For parametrization A (1.1), the argument t “moves slowly” on the first half of the curve while it “moves fast” on the second half. This pattern is reversed for parametrization B (1.2); see Figure 16 and also <http://biostatisticien.eu/EquivalentCurves> for an interactive visualization.

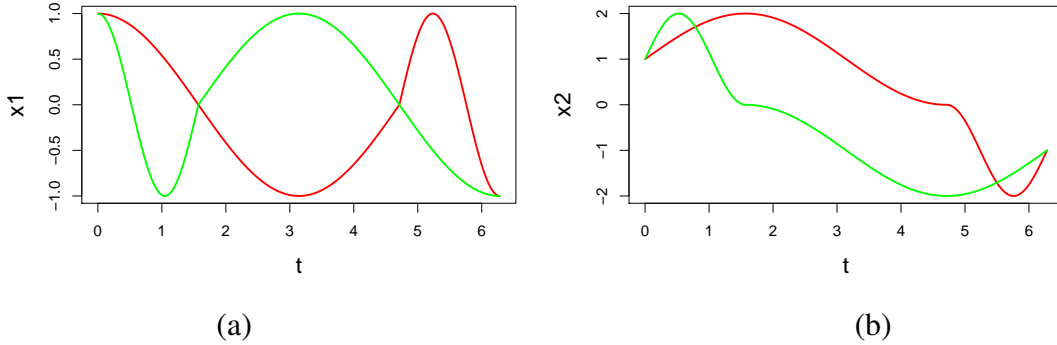


Figure 16: Parametrization A (in red) and parametrization B (in green) for coordinates x_1 (a) and x_2 (b).

A set of 50 S-shaped curves is then obtained by randomly shifting and rotating an “ideal” S-curve, as well as changing its length; see Figure 17 (a). More precisely, both location coordinates, the rotation angle, and the difference of length w.r.t. the beginning and the end of the “ideal” S-curve are drawn from a normal distribution centered at zero.

Depth-based rankings given by MFHD (Claeskens et al. 2014) and mSBD (López-Pintado et al. 2014), both using parametrizations A and B, are displayed in Figure 17 (b) and (c), respectively.

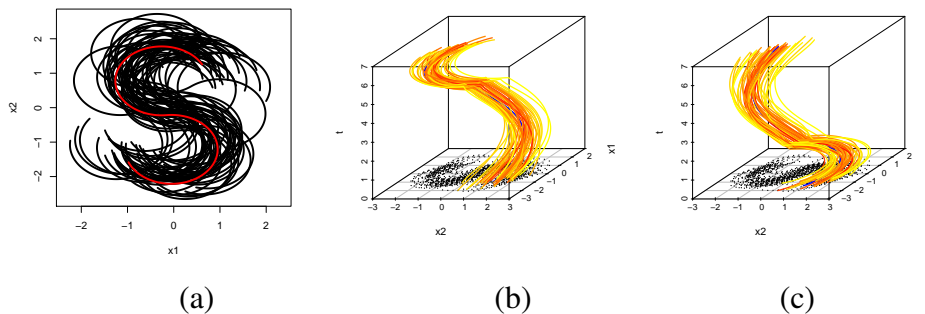


Figure 17: A set of 50 curves derived from the red pattern (a), together with their corresponding depth-colored functional representations for parametrizations A (b) and B (c). The depth of each curve is calculated w.r.t. to the same sample of 50 curves. Here, we used the multivariate functional halfspace depth by Claeskens et al. (2014). The depth increases from yellow to red, the deepest curve being colored in blue.

1.2 Cursive Handwriting Sample

We applied the multivariate functional halfspace depth developed by Claeskens et al. (2014) (with weight function set to a constant) to a set of 20 planar curves taken from (Ramsay et al. 2017, Cursive handwriting sample). These curves were parameterized via two continuous functions $u \mapsto (x(u), y(u)) \in \mathbb{R}^2$, where the parameter $u \in [0, 1]$ represents either the time or the

arc-length. (Note that an equivalent representation of such a curve, standard in multivariate functional data analysis, is through a vector of two real-valued functions defined over $[0, 1]$, as in the previous subsection.) Depth rankings are different depending on the parametrization chosen; see Figure 18.

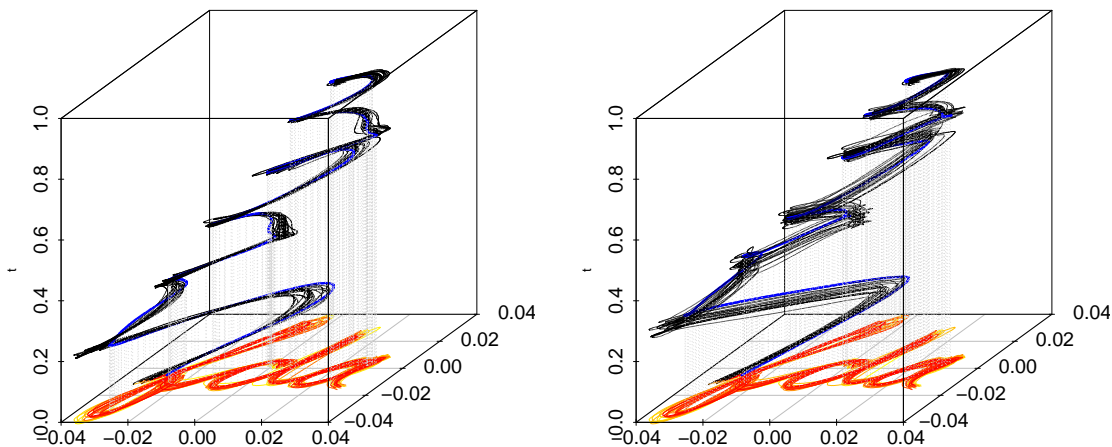


Figure 18: Functional depth based ranking (obtained using the multivariate functional half-space depth by Claeskens et al. (2014)) of plane curves for parametrization by time (left) or by arc-length (right) obtained using the package MFHD (Hubert & Vakili. 2013). The depth increases from yellow to red in the two dimensional trace. The 3-dimensional blue curve indicates the observation with the extreme rank difference for the two parametrizations (rank 1 for time parametrization and rank 13 for arc-length parametrization). Source: data set `handwrit` of the R-package `fda` (Ramsay et al. 2017).

Only four curves out of twenty are assigned the same ranks (namely 3, 10, 19 and 20). For the sixteen others, depth-induced rankings are different, sometimes by a large amount. For instance, one curve is ranked 1 (minimal depth) for one parametrization and 13 (quite high depth) over 20 for the other; see Table 1.

Table 1: Depth ranks for parametrization by time or by arc-length.

Time	2	3	13	12	4	8	1	17	11	9	7	19	15	20	18	16	14	5	6	10
Length	6	3	16	14	5	7	13	11	1	17	2	19	8	20	12	18	15	4	9	10

It thus appears that to obtain meaningful results, a proper parametrization of curves is needed. (This could be the speed of writing in this handwriting recognition example.)

1.3 Historic Hurricanes Tracks

We applied the multivariate functional halfspace depth developed by Claeskens et al. (2014) and the multivariate simplicial depth developed by López-Pintado et al. (2014) to the historical hurricane tracks (obtained from <https://coast.noaa.gov/hurricanes/>) that go through

the circular region of size 56 nautical miles centered at location 24.5N by 78W. We considered two parametrizations : the arc-length parametrization (A) and the parametrization by the time (B); see Figure 19. In this example, the results we obtained seem less sensitive to the choice of a parametrization than in the previous subsections. Nevertheless, this illustrates that multivariate functional depth functions tend to detect outliers which do not appear to be geometrically aberrant.

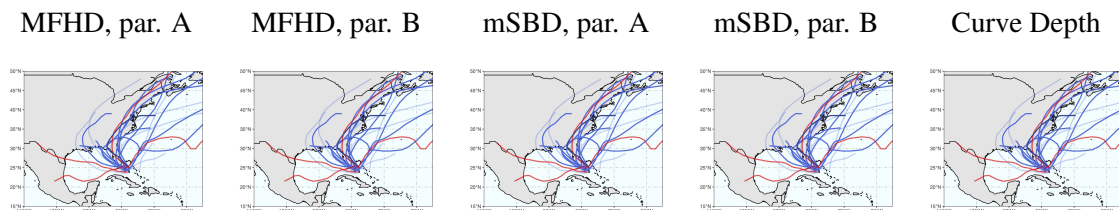


Figure 19: Comparison of depth based ordering for two parametrizations A (time) and B (arc length) provided respectively by MFHD (a)–(b), mSBD (c)–(d), and by our new depth for unparameterized curves (e). The depth increases from yellow to red. Deepest curves are plotted in blue. Curves with low value of depth are plotted in red. Source: an ensemble of 23 historic hurricane tracks originating in the Gulf of Mexico between 1918 - 2018.

2 The Space of Unparametrized Curves

Several of the results in this section can be found in (Kemppainen & Smirnov 2017, Section 2). The authors of this article borrowed material from Aizenman & Burchard (1999, Section 2.1) and Burago et al. (2001, Section 2.5).

2.1 Equivalence Relation for Parametrized Curves

We denote Γ the set of increasing continuous functions $\gamma : [0, 1] \rightarrow [0, 1]$ such that $\gamma(0) = 0$ and $\gamma(1) = 1$. Two parametrized curves $\beta_1 : [0, 1] \rightarrow \mathbb{R}^d$ and $\beta_2 : [0, 1] \rightarrow \mathbb{R}^d$ are equivalent (i.e., describe the same unparametrized curve) if and only if there exist two reparametrizations $\gamma_1, \gamma_2 \in \Gamma$ such that $\beta_1 \circ \gamma_1 = \beta_2 \circ \gamma_2$.

In order to describe the equivalence class associated to β_1 , we consider never-locally-constant functions. A parametrized curve $\beta : [0, 1] \rightarrow \mathbb{R}^d$ is said to be *never-locally-constant* if there exists no non-empty sub-interval $(a, b) \subset [0, 1]$ such that the restriction of β to the interval $[a, b]$, denoted as $\beta|_{[a,b]}$, is a constant function. According to Burago et al. (2001, Exercice 2.5.3), each equivalence class admits one representative which is never-locally-constant, for example its arc-length parametrization. The equivalence class associated to the never-locally-constant path β in $\mathcal{C}([0, 1], \mathbb{R}^d)$ is,

$$\mathcal{C} = \{\beta \circ \gamma : \gamma \in \Gamma\}.$$

The set of unparametrized curves \mathfrak{C} is the quotient space of $\mathcal{C}([0, 1], \mathbb{R}^d)$ by the equivalence relation defined above.

2.2 The Metric Space of Unparametrized Curves

Following [Kemppainen & Smirnov \(2017\)](#), we endow the space of curves \mathfrak{C} with the Fréchet metric $d_{\mathfrak{C}}$ defined as

$$d_{\mathfrak{C}}(\mathcal{C}_1, \mathcal{C}_2) = \inf \{ \|\beta_1 - \beta_2\|_{\infty}, \beta_1 \in \mathcal{C}_1, \beta_2 \in \mathcal{C}_2 \}, \quad \mathcal{C}_1, \mathcal{C}_2 \in \mathfrak{C}, \quad (2.1)$$

where $\|\beta\|_{\infty} = \sup_{t \in [0,1]} |\beta(t)|_2$ for $\beta \in \mathcal{C}([0,1], \mathbb{R}^d)$.

Lemma 2.1. *The metric space $(\mathfrak{C}, d_{\mathfrak{C}})$ is separable and complete.*

Proof of Lemma 2.1 relies on the following lemma.

Lemma 2.2. *Let β_1 and β_2 be two never-locally-constant paths on $[0, 1]$. Let \mathcal{C}_i be the unparametrized curve associated to β_i and*

$$\mathcal{C}_i^{\text{Hom}} = \{ \beta_i \circ \psi; \quad \psi : [0, 1] \rightarrow [0, 1] \text{ is homeomorphic increasing continuous} \},$$

a subset of \mathcal{C}_i , $i = 1, 2$. Then, we have

$$d_{\mathfrak{C}}(\mathcal{C}_1, \mathcal{C}_2) = d_{\mathfrak{C}}(\mathcal{C}_1^{\text{Hom}}, \mathcal{C}_2^{\text{Hom}}).$$

Proof of Lemma 2.2. We note that for every reparametrization $\gamma \in \Gamma$, there exists a sequence $(\psi_n)_n$ of increasing homeomorphisms that converges uniformly to γ . Then using the uniform continuity of the parametrized curves, we deduce that every point of the equivalence class \mathcal{C}_i is the uniform limit of sequence of $\mathcal{C}_i^{\text{Hom}}$ for $i = 1, 2$. \square

Proof of Lemma 2.1. First, note that $(\mathfrak{C}, d_{\mathfrak{C}})$ is a metric space ([Aizenman & Burchard 1999](#), Lemma 2.1). It remains to prove that it is separable and complete.

1. *The topological space $(\mathfrak{C}, d_{\mathfrak{C}})$ is separable.* The topological space $(\mathcal{C}([0, 1], \mathbb{R}^d), \|\cdot\|_{\infty})$ is separable ([Billingsley 2013](#), Exemple 1.3), so by definition it contains a countable dense subset \mathbb{D} . Then the set of equivalence classes associated to the paths of \mathbb{D} is a countable dense subset of $(\mathfrak{C}, d_{\mathfrak{C}})$.

2. *The topological space $(\mathfrak{C}, d_{\mathfrak{C}})$ is complete.* Let $(\mathcal{C}_m)_m$ be a Cauchy sequence of $(\mathfrak{C}, d_{\mathfrak{C}})$. Let $(\epsilon_k)_k$ be a sequence of positive real numbers such that the series of general term (ϵ_k) converges. Using Lemma 2.2 it is possible to build a sub-sequence $(n_k)_k$ and a sequence of never-locally-constant parametrizations β_{n_k} of \mathcal{C}_{n_k} such that,

$$\forall k \leq 1, \quad \|\beta_{n_k} - \beta_{n_{k+1}}\|_{\infty} \leq \epsilon_k.$$

Then (β_{n_k}) is a Cauchy sequence of the complete space $(\mathcal{C}([0, 1], \mathbb{R}^d), \|\cdot\|_{\infty})$. There exists $\beta \in \mathcal{C}([0, 1], \mathbb{R}^d)$ such that $\lim_{k \rightarrow \infty} \|\beta_{n_k} - \beta\|_{\infty} = 0$. Since the sequence $(\mathcal{C}_n)_n$ is a Cauchy sequence and that β_{n_k} is a parametrization of \mathcal{C}_{n_k} , we deduce that $(\mathcal{C}_n)_n$ converges to the equivalence class of β in $(\mathfrak{C}, d_{\mathfrak{C}})$. \square

2.3 Mesurability of the Line Integral

The length of a parametrized curve β , denoted $L(\beta)$, is defined as the supremum of the set of chordal lengths,

$$L_{\tau}(\beta) = \sum_{j=1}^J |\beta(\tau_j) - \beta(\tau_{j-1})|_2, \quad (2.2)$$

corresponding to all finite partitions τ of $[0, 1] : 0 = \tau_0 < \tau_1 < \dots < \tau_J = 1$. A parametrized curve β is *rectifiable* if $L(\beta)$ is finite.

Remark 4. For a rectifiable parametrized curve β , we have,

$$L(\beta) = \lim_{J \rightarrow \infty} \sum_{j=1}^J |\beta(j/J) - \beta((j-1)/J)|_2.$$

The length is a property of the equivalence class : all parametrizations of $\mathcal{C} \in \mathfrak{C}$ have the same length. We denote by $L(\mathcal{C})$ the length of \mathcal{C} .

For a rectifiable parametrized curve β , we define the length reparametrization (see Väisälä 2006, Theorem 1.3) :

$$\begin{aligned} s_\beta : [0, 1] &\rightarrow [0, 1] \\ t &\mapsto L(\beta^t)/L(\beta), \end{aligned}$$

where β^t is the restriction of β to the interval $[0, t]$. The function s_β is increasing and continuous, that is $s_\beta \in \Gamma$. Moreover, one can define the generalized inverse of s_β ,

$$\begin{aligned} q_\beta : [0, 1] &\rightarrow [0, 1] \\ u &\mapsto \inf\{t : s_\beta(t) \geq u\}. \end{aligned}$$

The function q_β is left continuous and admits a limit from the right for all $u \in [0, 1]$ (see Embrechts & Hofert 2013, Proposition 1). According to Väisälä (2006, Theorem 2.4), for each rectifiable curve \mathcal{C} there exists a unique parametrization $\beta_{\mathcal{C}} : [0, 1] \rightarrow \mathbb{R}^d$, called *the arc-length parametrization*, such that $L(\beta_{\mathcal{C}}^t) = tL(\mathcal{C})$, for all $t \in [0, 1]$. The arc-length parametrization is never-locally-constant.

Lemma 2.3. Let \mathfrak{C}_L be the set of rectifiable unparametrized curves with a positive length.

1. $L : \mathfrak{C} \rightarrow [0, +\infty]$ is measurable and \mathfrak{C}_L is a measurable set.
2. Let $u \in [0, 1]$ be fixed. The application,

$$\begin{aligned} \{\beta \in \mathcal{C}([0, 1], \mathbb{R}^d) : L(\beta) < \infty\} &\rightarrow [0, 1] \\ \beta &\mapsto q_\beta(u) \end{aligned}$$

is measurable.

3. For all non negative bounded functions $f : \mathbb{R}^d \rightarrow \mathbb{R}$, the application

$$\begin{aligned} I : \mathfrak{C}_L &\rightarrow \mathbb{R} \\ \mathcal{C} &\mapsto \int_{\mathcal{C}} f(s) ds := \int_0^1 f(\beta_{\mathcal{C}}(t)) dt \end{aligned}$$

is measurable.

Proof of Lemma 2.3. 1. L is measurable. Let τ be a partition of $[0, 1]$. The function $\beta \in \mathcal{C}([0, 1], \mathbb{R}^d) \mapsto L_\tau(\beta) \in \mathbb{R}_+$ is measurable. Then the length function $\beta \mapsto L(\beta)$ is measurable as the limit of measurable functions. Moreover, for A a borelian of $[0, \infty]$, we have :

$$\beta \in L^{-1}(A) \text{ if and only if } \mathcal{C}_\beta \subset L^{-1}(A).$$

Then $L : \mathfrak{C} \rightarrow [0, +\infty]$ is measurable and $\mathfrak{C}_L = L^{-1}(]0, \infty[)$.

2. $\beta \mapsto q_\beta(u)$ is measurable. From the previous item, we deduce that for all $t \in [0, 1]$, the function

$$\begin{aligned} \{\beta \in \mathcal{C}([0, 1], \mathbb{R}^d) : L(\beta) < \infty\} &\rightarrow [0, 1] \\ \beta &\mapsto s_\beta(t) \end{aligned}$$

is measurable. Let u be in $[0, 1]$ fixed. We remark that,

$$\{\beta \in \mathcal{C}([0, 1], \mathbb{R}^d) : 0 < L(\beta) < \infty \text{ and } q_\beta(u) \leq t\} = \{\beta \in \mathcal{C}([0, 1], \mathbb{R}^d) : 0 < L(\beta) < \infty \text{ and } s_\beta(t) \geq u\}.$$

Then $\beta \mapsto q_\beta(u)$ is measurable too.

3. $I : \mathcal{C} \mapsto I(\mathcal{C})$ is measurable. It suffices to prove the lemma when f is continuous. Let \mathcal{C} be in \mathfrak{C}_L . Using Riemann sums we have:

$$I(f) = \lim_{n \rightarrow \infty} I_n(\mathcal{C}), \quad \text{where } I_n(\mathcal{C}) = \frac{1}{n} \sum_{i=1}^n f(\beta_{\mathcal{C}}(i/n)).$$

Let β be a parametrization of \mathcal{C} , then $\beta = \beta_{\mathcal{C}} \circ s_\beta$ and $\beta_{\mathcal{C}} = \beta \circ q_\beta$. Then we can rewrite $I_n(\mathcal{C})$ as

$$I_n(\beta) = \frac{1}{n} \sum_{i=1}^n f(\beta(q_\beta(i/n))).$$

We deduce from the previous point that the function,

$$\{\beta \in \mathcal{C}([0, 1], \mathbb{R}^d) : 0 < L(\beta) < \infty\} \rightarrow \mathbb{R}, \quad \beta \mapsto I_n(\beta),$$

is measurable, and its limits is measurable too. □

Further, we define the probability distribution $\mu_{\mathcal{C}}$ on the Borel sets of \mathbb{R}^d

$$\text{for all borel sets } A \text{ of } \mathbb{R}^d, \quad \mu_{\mathcal{C}}(A) = \frac{1}{L(\mathcal{C})} \int_{\mathcal{C}} \mathbb{1}_A(s) ds,$$

with $\mathbb{1}_A(x)$ being the indicator function that takes the value 1 if $x \in A$ and 0 otherwise.

Lemma 2.4. *Let β be a parametrisation of \mathcal{C} . Let U_J be a random variable such that its distribution is a mixture distribution,*

$$\sum_{j=1}^J \frac{|\beta(j/J) - \beta((j-1)/J)|_2}{L_{\tau_J}(\beta)} \mathcal{U}_{[(j-1)/J, j/J]},$$

where $L_{\tau_J}(\beta)$ is the chordal-length (2.2) associated to the partition $\tau_J = (j/J)_{j=0, \dots, J}$ and $\mathcal{U}_{[a, b]}$ is the uniform distribution on the interval $[a, b]$. The sequence of random variables $(\beta(U_J))_{J \geq 1}$ converges in distribution to $\mu_{\mathcal{C}}$.

Proof of Lemma 2.4. Let $\ell_\beta(t) = L(\beta|_{[0, t]})$ be the length of the parametrized curve β on $[0, t]$. Let $f : \mathbb{R}^d \rightarrow \mathbb{R}$ be a continuous bounded function. Using that the functions $f, \beta, \beta_{\mathcal{C}}$ and ℓ_β are continuous (and uniformly continuous on a compact set), for all $\epsilon > 0$ there exists $J_\epsilon \geq 1$ such that,

$$\forall J \geq J_\epsilon, |L(\mathcal{C}) - L_{T_J}(\beta)| < \epsilon L(\beta)/2 \quad \text{and} \quad L(\mathcal{C})/2 < L_{T_J}(\beta),$$

$$\forall J \geq J_\epsilon, \forall t \in [0, 1], \exists j \in \{1, \dots, J\} : t \in [(j-1)/J, j/J] \text{ and } |f \circ \beta(j/J) - f \circ \beta(t)| < \epsilon.$$

Then we can show that

$$\begin{aligned}\lim_{J \rightarrow \infty} \mathbb{E}_P(f(\beta(U_J))) &= \lim_{J \rightarrow \infty} \sum_{j=1}^J \frac{|\beta(j/J) - \beta((j-1)/J)|_2}{L(\mathcal{C})} f(\beta(j/J)), \\ \int f d\mu_{\mathcal{C}} &= \lim_{J \rightarrow \infty} \sum_{j=1}^J \frac{\ell_{\beta}(j/J) - \ell_{\beta}((j-1)/J)}{L(\mathcal{C})} f(\beta(j/J)).\end{aligned}$$

Noticing that for all $j = 1, \dots, J$, $\ell_{\beta}(j/J) - \ell_{\beta}((j-1)/J) \geq |\beta(j/J) - \beta((j-1)/J)|_2$, we can bound the difference,

$$\begin{aligned}\left| \sum_{j=1}^J \frac{\ell_{\beta}(j/J) - \ell_{\beta}((j-1)/J)}{L(\mathcal{C})} f(\beta(j/J)) - \sum_{j=1}^J \frac{|\beta(j/J) - \beta((j-1)/J)|_2}{L(\mathcal{C})} f(\beta(j/J)) \right| \\ \leq \frac{\max_{t \in [0,1]} |f(\beta(t))|}{L(\mathcal{C})} (L(\mathcal{C}) - L_{\tau_J}(\beta)).\end{aligned}$$

□

Remark 5 (The order does not matter). *In the paper, we define an unparametrized curve $\mathcal{C} = \mathcal{C}_{\beta}$ with an order : the starting point is $\beta(0)$ and the end point is $\beta(1)$. We can also define an unparametrized curve without orientation via an equivalence relation on the set of parametrized curves up to a larger set of reparametrization,*

$$\begin{aligned}\Gamma_{new} = \{ \gamma : [0, 1] \rightarrow [0, 1] : \gamma \text{ is continuous and monotonic,} \\ (\gamma(0), \gamma(1)) \in \{(0, 1), (1, 0)\} \}.\end{aligned}$$

Using the same arguments, one can show that the resulting space of curves endowed with the associated Frechet metric is separable and complete. The difference is that there exist two arc-length parametrizations : one $\beta_{\mathcal{C}}^+$ from $\beta(0)$ to $\beta(1)$ and the other $\beta_{\mathcal{C}}^-$ from $\beta(1)$ to $\beta(0)$ such that,

$$\beta_{\mathcal{C}}^-(t) = \beta_{\mathcal{C}}^+(1 - t).$$

Then the definition of the probability measure $\mu_{\mathcal{C}}$ is invariant whether we use $\beta_{\mathcal{C}}^+$ or $\beta_{\mathcal{C}}^-$ to define it.

3 Definition of the Depth Functions

In order to prove that our curve depth is well defined, we have to show that the function $x \mapsto D(x|Q_P, \mu_{\mathcal{C}})$ is measurable and that $D(\mathcal{C}|Q_P)$ is bounded by 1 for all $\mathcal{C} \in \mathfrak{C}_L$. This requires the use of a Monte Carlo scheme that we describe in the next subsection.

3.1 Monte Carlo Approximation of the Curve Depth

Notice that the curves $\mathcal{X}_1, \dots, \mathcal{X}_n$ and \mathcal{C} are known, so this means that $\mu_{\mathcal{C}}$ and Q_n are formally known too. However, the computation of $\mu_{\mathcal{C}}(H)$ and $Q_n(H)$ for an arbitrary halfspace H can be untractable. Consequently, it is necessary to estimate $\mu_{\mathcal{C}}(H)$ using either a quadrature formula

or a Monte Carlo approach. We choose here a Monte Carlo approximation of (3.3). In Section 7 we conduct a simulation study on the size m of the Monte Carlo scheme.

We generate samples of size m from the observed (realized) curves $\mathcal{X}_1, \dots, \mathcal{X}_n$:

for all $i = 1, \dots, n$, given \mathcal{X}_i , $X_{i,1}, \dots, X_{i,m}$ are i.i.d. distributed from $\mu_{\mathcal{X}_i}$,

and two independent samples from the curve \mathcal{C} ,

Y_1, \dots, Y_m are i.i.d. distributed from $\mu_{\mathcal{C}}$,

Z_1, \dots, Z_m are i.i.d. distributed from $\mu_{\mathcal{C}}$.

We use $\mathbb{Y}_m = \{Y_1, \dots, Y_m\}$ to estimate the distribution $\mu_{\mathcal{C}}$ by the empirical distribution $\hat{\mu}_m$:

$$\hat{\mu}_m = m^{-1} \sum_{j=1}^m \delta_{Y_j},$$

where δ_x stands for the Dirac measure at $x \in \mathbb{R}^d$.

Furthermore, we remark that the marginal distribution of $X_{i,j}$ is Q_P (see Remark 2). Then, let $\hat{Q}_{m,n}$ be the empirical distribution of the random sample $\mathbb{X}_{n,m} = \{X_{i,j}, i = 1, \dots, n; j = 1, \dots, m\}$:

$$\hat{Q}_{m,n} = (mn)^{-1} \sum_{i=1}^n \sum_{j=1}^m \delta_{X_{i,j}}.$$

Let H be a closed halfspace of \mathbb{R}^d . A plug-in estimator of $Q_n(H)/\mu_{\mathcal{C}}(H)$ is $\hat{Q}_{m,n}(H)/\hat{\mu}_m(H)$.

To ensure the consistency of the Monte Carlo estimate of (3.3) we need to control the ratio $\hat{Q}_{m,n}(H)/\hat{\mu}_m(H)$ for all H such that $\mu_{\mathcal{C}}(H) > 0$, given that $\mu_{\mathcal{C}}(H)$ is approximated by $\hat{\mu}_m(H)$. This is known to be a challenging problem having no general solution, see e.g., Broda & Kan (2016). To circumvent this, we consider only a subset of all halfspaces in \mathbb{R}^d for the computation of the Monte Carlo estimate of the depth. Let Δ be in $(0, 1/2)$. We denote by $\mathcal{H}_{\Delta}^{n,m}$ the collection of closed halfspaces H such that either $\hat{Q}_{m,n}(H) = 0$ or $\hat{\mu}_m(H) > \Delta$, almost surely. For all x in the locus of \mathcal{C} , we define

$$\hat{D}(x|\hat{Q}_{m,n}, \hat{\mu}_m, \mathcal{H}_{\Delta}^{n,m}) = \inf_{u \in \mathcal{S}} \left\{ \hat{Q}_{m,n}(H_{u,x}) / \hat{\mu}_m(H_{u,x}) : H_{u,x} \in \mathcal{H}_{\Delta}^{n,m} \right\}. \quad (3.1)$$

Then, we use $\mathbb{Z}_m = \{Z_1, \dots, Z_m\}$ to estimate the integral (3.3) w.r.t. the probability measure $\mu_{\mathcal{C}}$,

$$\hat{D}_{n,m,\Delta}(\mathcal{C}|\mathcal{X}_1, \dots, \mathcal{X}_n) = \frac{1}{m} \sum_{i=1}^m \hat{D}(Z_i|\hat{Q}_{m,n}, \hat{\mu}_m, \mathcal{H}_{\Delta}^{n,m}). \quad (3.2)$$

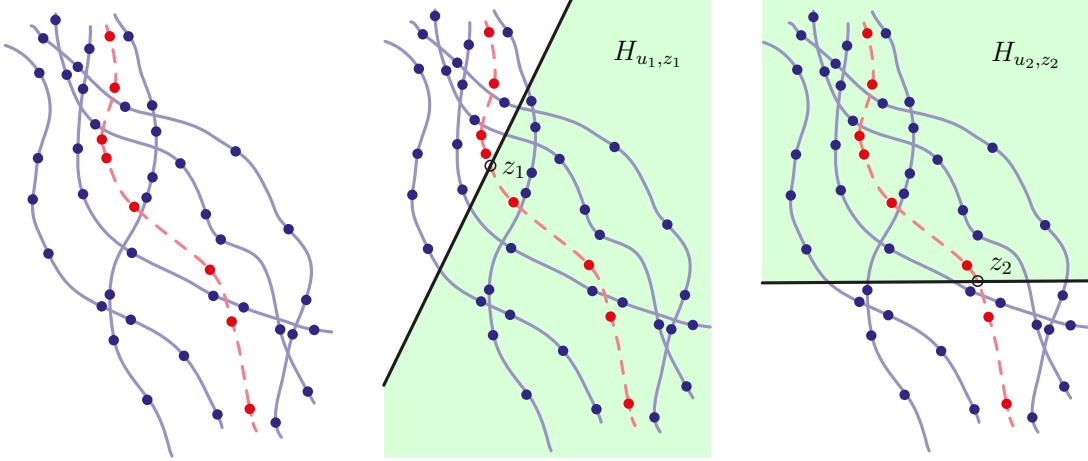


Figure 20: Illustrations to the statistical model and Monte Carlo approximation of the depth with a sample of five curves in blue and the curve \mathcal{C} in red: (left) samples $\mathbb{X}_{n,m}$ (blue) and \mathbb{Y}_m (red) of points on the observed curves; (middle and right) illustration of calculations of (3.1) for z_1 and z_2 on the red curve see Remark 6.

Remark 6. To provide an intuitive reasoning, we artificially restrict the choice of the infimum in (3.1) to two halfspaces where the number of observed curves is $n = 5$ and the size of the Monte Carlo sample for each curve is $m = 8$; see Figure 20. Let z_1 and z_2 be two points in the locus of \mathcal{C} (red middle curve). Consider two halfplanes, say H_{u_1, z_1} and H_{-u_1, z_1} , yielded by the line in Figure 20, middle, when calculating $\widehat{D}(z_1 | \widehat{Q}_{m,n}, \widehat{\mu}_m)$. For each of these halfplanes, we obtain $(\widehat{Q}_{m,n}(H_{u_1, z_1}) = 25/40, \widehat{\mu}_m(H_{u_1, z_1}) = 4/8)$ and $(\widehat{Q}_{m,n}(H_{-u_1, z_1}) = 15/40, \widehat{\mu}_m(H_{-u_1, z_1}) = 4/8)$, respectively. Among H_{u_1, z_1} and H_{-u_1, z_1} , H_{-u_1, z_1} will be chosen as $\widehat{Q}_{m,n}(H_{-u_1, z_1}) < \widehat{Q}_{m,n}(H_{u_1, z_1})$ and $\widehat{\mu}_m(H_{u_1, z_1}) = \widehat{\mu}_m(H_{-u_1, z_1})$, and thus the rationale follows the traditional multivariate Tukey depth as this would be the case in the absence of the denominator $\widehat{\mu}_m(H_{\cdot, z_1})$. On the other hand, in Figure 20, right, the values of the denominators in (3.1) differ giving pairs of portions equal to $(\widehat{Q}_{m,n}(H_{u_2, z_2}) = 25/40, \widehat{\mu}_m(H_{u_2, z_2}) = 6/8)$ and $(\widehat{Q}_{m,n}(H_{-u_2, z_2}) = 15/40, \widehat{\mu}_m(H_{-u_2, z_2}) = 2/8)$. In this case, halfplane H_{u_2, z_2} with higher portion of $\widehat{Q}_{m,n}$ will be chosen due to the difference of $\widehat{\mu}_m(H_{u_2, z_2})$ and $\widehat{\mu}_m(H_{-u_2, z_2})$.

Theorem 3.1 below states that the Monte Carlo approximation of the curve depth (3.2) converges in probability to the population version (3.1) when $n, m \rightarrow \infty$ or to the sample version (3.3) when $m \rightarrow \infty$. Then Theorem 3.1 holds. Let μ be a probability measure defined on \mathbb{R}^d , and let $\widehat{\mu}_m$ be the empirical measure defined on a m -sample of μ . We denote by \mathcal{H} the collection of all halfspaces in \mathbb{R}^d and define

$$\|\widehat{\mu}_m - \mu\|_{\mathcal{H}} := \sup_{H \in \mathcal{H}} |\widehat{\mu}_m(H) - \mu(H)|.$$

According to Shorack & Wellner (2009, Chapter 26, Theorem 1), the class \mathcal{H} satisfies the Glivenko-Cantelly property. Then $\|\widehat{\mu}_m - \mu\|_{\mathcal{H}}$ converge a.s. to zero as $m \rightarrow +\infty$. Moreover, we have

$$\overline{\lim}_m \lambda_m^{-1} \|\widehat{\mu}_m - \mu\|_{\mathcal{H}} \leq C \quad \text{a.s.}, \quad (3.3)$$

where $C = \sqrt{d+1} + 1/2$ and $\lambda_m = (\log(m)/m)^{1/2}$; see Shorack & Wellner (2009, Chapter 26, Exercise 2).

Theorem 3.1. Let $\mathcal{C} \in \mathfrak{C}_L$ be an unparametrized curve such that $\mu_{\mathcal{C}}$ is non-atomic. Let P be a probability measure in the space of curves such that $P \in \mathcal{P}$ and Q_P is non-atomic. Let (Δ_m) be a decreasing sequence of positive numbers such that (Δ_m) and (λ_m/Δ_m^2) converge to zero as $m \rightarrow \infty$. Then:

- the Monte Carlo approximation $\widehat{D}_{n,m,\Delta_m}(\mathcal{C}|\mathcal{X}_1, \dots, \mathcal{X}_n)$ converges in probability to $D(\mathcal{C}|\mathcal{X}_1, \dots, \mathcal{X}_n)$ as $m \rightarrow \infty$,
- the Monte Carlo approximation $\widehat{D}_{n,m,\Delta_m}(\mathcal{C}|\mathcal{X}_1, \dots, \mathcal{X}_n)$ converges in probability to $D(\mathcal{C}|P)$ as $m, n \rightarrow \infty$,
- the sample Tukey curve depth $D(\mathcal{C}|\mathcal{X}_1, \dots, \mathcal{X}_n)$ converges in probability to $D(\mathcal{C}|P)$ as $n \rightarrow \infty$.

To prove the boundness of the curve depth, it suffices to show that for all x , $D(x|Q_P, \mu_{\mathcal{C}})$ is bounded by 1.

3.2 Boundness of Data Depth

Let A be a Borel set of \mathbb{R}^d , we denote by ∂A the boundary of the set A . For instance the boundary of $H_{x,u}$ is $\partial H_{x,u} = \{y \in \mathbb{R}^d : (y-x)^\top u = 0\}$, $u \in \mathcal{S}$, $x \in \mathbb{R}^d$.

Lemma 3.1. Let μ and Q be non-atomic measures on \mathbb{R}^d , $d \geq 1$. For all $x \in \mathbb{R}^d$, there exists a closed halfspace $H \in \mathcal{H}$ such that $x \in \partial H$ and $Q(H)/\mu(H) \leq 1$ (with a convention $0/0 = 0$).

Proof of Lemma 3.1. Let x be a fixed point of \mathbb{R}^d .

1. *The one-dimensional case, $d = 1$.* Since Q_P and $\mu_{\mathcal{C}}$ are non-atomic measures, we get either $Q_P((-\infty, x]) \leq \mu_{\mathcal{C}}((-\infty, x])$ or $Q_P([x, +\infty)) \leq \mu_{\mathcal{C}}([x, +\infty))$, for all $x \in \mathbb{R}$. Then the lemma is proved.

2. *The multi-dimensional case, $d \geq 2$.* If there exists $u \in \mathcal{S}$ such that $Q(\partial H_{u,x}) = \mu(\partial H_{u,x}) = 0$, then the lemma is proved. We show recursively that, for $k = 1, \dots, d-1$, there exists an affine subspace A_k of dimension k such that $Q(A_k) = \mu(A_k) = 0$ and $x \in A_k$. Then we consider $u \in \mathcal{S}$ such that $\partial H_{u,x} = A_{d-1}$ and the first assertion is true.

For $k = 1$, let \mathcal{A}_n be the set of affine subspaces of dimension 1 such that for all $A \in \mathcal{A}_n$: $x \in A$ and either $Q(A) > 1/n$ or $\mu_{\mathcal{C}}(A) > 1/n$. The set \mathcal{A}_n is finite since the intersection of $A \in \mathcal{A}_n$ is the singleton $\{x\}$ (and $Q(\{x\}) = \mu(\{x\}) = 0$),

$$1 \geq \mu(\cup_{A \in \mathcal{A}_n} A) = \sum_{A \in \mathcal{A}_n} \mu(A) > \#\mathcal{A}_n/n.$$

Then the set

$$\cup_{n \geq 1} \mathcal{A}_n = \{A \text{ affine subspaces of dimension 1} : x \in A \text{ and } \mu(A) > 0 \text{ or } Q(A) > 0\}$$

is countable as the countable union of finite sets. Since the set of affine subspaces of dimension 1 which contain x is continuous, there exists $A_1 \notin \mathcal{A}_n$ such that $Q(A_1) = \mu_{\mathcal{C}}(A_1) = 0$ and $x \in A_1$.

Assume that $k \geq 2$. Using the recursive assumption for $k-1$, there exists an affine subspace A_{k-1} of dimension $k-1$ such that $Q(A_{k-1}) = \mu(A_{k-1}) = 0$ and $x \in A_{k-1}$. Let \mathcal{A}_n be the set of affine subspaces A of dimension k such that $A_{k-1} \subset A$, $Q(A) > 1/n$ or $\mu(A) > 1/n$. Using the same previous argument the subset \mathcal{A}_n is finite and there exists $A_k \notin \cup_{n \geq 1} \mathcal{A}_n$. \square

3.3 Mesurability

To prove the measurability, it suffices to show that $x \mapsto D(x|Q_P, \mu_C)$ and $x \mapsto D(x|Q_n, \mu_C)$ are the limits of measurable functions (see Lemma 3.4 and Lemma 3.5 respectively).

Lemma 3.2. *The function $x \in \mathbb{R}^d \mapsto \widehat{D}(x|\widehat{Q}_{m,n}, \widehat{\mu}_m, \mathcal{H}_{\Delta}^{n,m}) \in \mathbb{R}_+$ is measurable a.s.*

Lemma 3.3. *Let $\mathcal{C} \in \mathfrak{C}_L$ be an unparametrized curve such that μ_C is non-atomic. The function $x \mapsto \widehat{D}(x|\widehat{Q}_{m,n}, \widehat{\mu}_m, \mathcal{H}_{\Delta}^{n,m}) \in \mathbb{R}_+$ is bounded μ_C -a.s. by 1 if $\Delta \leq 1/m$ and by $(1 - \Delta)^{-1}$ otherwise.*

Lemma 3.4. *Let $\mathcal{C} \in \mathfrak{C}_L$ be an unparametrized curve such that μ_C is non-atomic. Let P be a probability measure on the space of curves such that $P \in \mathcal{P}$ and Q_P is non-atomic. Let (Δ_m) be a decreasing sequence of positive numbers such that (λ_m/Δ_m^2) and (Δ_m) converges to zero as $m \rightarrow \infty$. Then for all $x \in \mathbb{R}^d$, $\widehat{D}(x|\widehat{Q}_{m,n}, \widehat{\mu}_m, \mathcal{H}_{m,n})$ converges almost surely to $D(x|Q_P, \mu_C)$ as $n, m \rightarrow \infty$.*

Lemma 3.5. *Let $\mathcal{C} \in \mathfrak{C}_L$ be an unparametrized curve such that μ_C is non-atomic. Let P be a probability measure in the space of curves such that $P \in \mathcal{P}$ and Q_P is non-atomic. Let (Δ_m) be a decreasing sequence of positive numbers such that (λ_m/Δ_m^2) and (Δ_m) converges to zero as $m \rightarrow \infty$. Then for all $x \in \mathbb{R}^d$, $\widehat{D}(x|\widehat{Q}_{m,n}, \widehat{\mu}_m, \mathcal{H}_{m,n})$ converges almost surely to $D(x|Q_n, \mu_C)$ as $m \rightarrow \infty$.*

In what follows, we introduce the probability space $(\Omega, \mathcal{F}, \mathbb{Q})$ generated by the sequences $(X_{i,j})_{j \geq 1, i \geq 1}$, $(Y_j)_{j \geq 1}$ and $(Z_j)_{j \geq 1}$ (P and \mathcal{C} are fixed). For $\omega \in \Omega$, we denote by $X_{i,j}(\omega)$, $Y_j(\omega)$ and $Z_j(\omega)$ the respective coordinates of ω for the variables $X_{i,j}$, Y_j and Z_j . Similarly, let T be a random variable which is a function of $(X_{i,j})_{i \geq 1, j \geq 1}$, $(Y_j)_{j \geq 1}$ and $(Z_j)_{j \geq 1}$. We denote by $T(\omega)$ the value taken by this variable at points $(X_{i,j}(\omega))$, $(Y_j(\omega))$ and $(Z_j(\omega))$.

Applying (3.6) to the empirical measures $\widehat{\mu}_m$ and $\widehat{Q}_{m,n}$ with the assumptions of Theorem 3.1, there exists $\tilde{\Omega} \subset \Omega$ such that $\mathbb{Q}(\tilde{\Omega}) = 1$ and for all $\omega \in \tilde{\Omega}$ there exists $N_\omega \in \mathbb{N}$:

$$\forall m \geq N_\omega, \forall n \geq 1, \quad \|\widehat{\mu}_m(\omega) - \mu_C\|_{\mathcal{H}} \leq 2C\lambda_m \quad \text{and} \quad \|\widehat{Q}_{m,n}(\omega) - Q_n\|_{\mathcal{H}} \leq 2C\lambda_m, \\ 2C\lambda_m < \Delta_m,$$

$$\forall m \geq N_\omega, \forall n \geq N_\omega, \quad \|\widehat{Q}_{m,n}(\omega) - Q_P\|_{\mathcal{H}} \leq 2C\lambda_{mn}.$$

Proof of Lemma 3.4. We introduce the variable,

$$D(x|Q, \mu, \mathcal{H}_{\Delta}^{n,m}) = \inf \left\{ Q(H_{u,x})/\mu(H_{u,x}), u \in \mathcal{S}, H_{u,x} \in \mathcal{H}_{\Delta}^{n,m} \right\},$$

where Q and μ are two probability measures on \mathbb{R}^d . It is straightforward to show that, for all $\omega \in \tilde{\Omega}$, there exists $N_\omega \in \mathbb{N}$ such that for all $m, n \geq N_\omega$, we get,

$$\sup_{x \in \mathbb{R}^d} \left| \widehat{D}(x|\widehat{Q}_{m,n}(\omega), \widehat{\mu}_m(\omega), \mathcal{H}_{\Delta_m}^{n,m}(\omega)) - D(x|Q_P, \widehat{\mu}_m(\omega), \mathcal{H}_{\Delta_m}^{n,m}(\omega)) \right| \leq \frac{\|\widehat{Q}_{m,n}(\omega) - Q_P\|_{\mathcal{H}}}{\Delta_m}, \\ \sup_{x \in \mathbb{R}^d} \left| D(x|Q_P, \widehat{\mu}_m(\omega), \mathcal{H}_{\Delta_m}^{n,m}(\omega)) - D(x|Q_P, \mu_C, \mathcal{H}_{\Delta_m}^{n,m}(\omega)) \right| \leq \frac{\|\widehat{\mu}_m(\omega) - \mu_C\|_{\mathcal{H}}}{\Delta_m^2 (1 - 2C\lambda_m/\Delta_m)}.$$

Then we deduce that the variable

$$\sup_{x \in \mathbb{R}^d} \left| D(x|\widehat{Q}_{m,n}, \widehat{\mu}_m, \mathcal{H}_{\Delta_m}^{n,m}) - D(x|Q_P, \mu_C, \mathcal{H}_{\Delta_m}^{n,m}) \right|$$

converges a.s. to zero. It remains to show that $D(x|Q_P, \mu_C, \mathcal{H}_{\Delta_m}^{n,m})$ converges a.s. to $D(x|Q_P, \mu_C)$ as $m, n \rightarrow \infty$ for a fixed point $x \in \mathbb{R}^d$.

Case 1 : there exists $u_0 \in \mathcal{S}$ such that $Q_P(H_{u_0,x}) = 0$. Then for all (m, n) , $H_{u_0,x} \in \mathcal{H}_{\Delta_m}^{n,m}$, and $D(x|Q_P, \mu_C) = D(x|Q_P, \mu_C, \mathcal{H}_{\Delta_m}^{n,m})$ a.s.

Case 2 : for all $u \in \mathcal{S}$, $Q_P(H_{u,x}) > 0$. Due to the fact that $D(x|Q_P, \mu_C)$ is bounded by 1 (see Lemma 3.1) there exists a sequence (u_k) of \mathcal{S} such that

$$D(x|Q_P, \mu_C) = \lim_{k \rightarrow \infty} \frac{Q_P(H_{u_k,x})}{\mu_C(H_{u_k,x})}, \quad \text{and} \quad Q_P(H_{u_k,x}) \geq \mu_C(H_{u_k,x}) > 0.$$

First we consider the sub-case where the sequence $(\mu_C(H_{u_k,x}))$ is lower-bounded by a positive constant $\kappa > 0$ (if $d = 1$, only this case occurs because \mathcal{S} is a finite set). Since (λ_m) and (Δ_m) are decreasing sequences, we have $\mu_C(H_{u_k,x}) \geq 2C\lambda_m + \Delta_m$, for m large enough and for all $k \in \mathbb{N}$. Then for all $\omega \in \tilde{\Omega}$, there exists $N_\omega \in \mathbb{N}$ such that

$$\forall m \geq N_\omega, \forall k \in \mathbb{N}, \quad \hat{\mu}_m(\omega)(H_{u_k,x}) \geq \mu_C(H_{u_k,x}) - \|\hat{\mu}_m(\omega) - \mu_C\|_{\mathcal{H}} \geq \Delta_m,$$

which means that $\forall m \geq N_\omega, \forall k \in \mathbb{N}, H_{u_k,x} \in \mathcal{H}_{\Delta_m}^{n,m}(\omega)$. Therefore we have, for all $m \geq N_\omega$, $D(x|Q_P, \mu_C) = D(x|Q_P, \mu_C, \mathcal{H}_{\Delta_m}^{n,m}(\omega))$.

A second sub-case occurs when the sequence $(\mu_C(H_{u_k,x}))$ is decreasing to zero, i.e., for all m there exists $M_m \in \mathbb{N}$ such that for all $k > M_m$, $\mu_C(H_{u_k,x}) < 2C\lambda_m + \Delta_m$. Let $m_0 \in \mathbb{N}$ such that there exists $k_0 \in \mathbb{N}$ for which $\mu_C(H_{u_{k_0},x}) \geq 2C\lambda_{m_0} + \Delta_{m_0}$. Then we consider the increasing sequence $(k_m)_{m \geq m_0}$ of integers defined recursively by,

$$k_{m_0} = k_0 \quad \text{and} \quad k_{m+1} = \sup\{k \geq k_m : \mu_C(H_{u_{k_{m+1}},x}) \geq 2C\lambda_{m+1} + \Delta_{m+1}\}.$$

For all $\omega \in \tilde{\Omega}$, there exists $N_\omega \in \mathbb{N}$ such that,

$$\forall m \geq N_\omega, \quad \hat{\mu}_m(\omega)(H_{u_{k_m},x}) \geq \Delta_m,$$

i.e., $H_{u_{k_m},x} \in \mathcal{H}_{\Delta_m}^{n,m}(\omega)$. Thus we obtain for all $\omega \in \tilde{\Omega}$, for all $m \geq N_\omega$ that

$$D(x|Q_P, \mu_C) \leq D(x|Q_P, \mu_C, \mathcal{H}_{\Delta_m}^{n,m}(\omega)) \leq \frac{Q_P(H_{u_{k_m},x})}{\mu_C(H_{u_{k_m},x})} \quad \text{and} \quad \lim_{m \rightarrow \infty} \frac{Q_P(H_{u_{k_m},x})}{\mu_C(H_{u_{k_m},x})} = D(x|Q_P, \mu_C).$$

□

Proof of Lemma 3.5. As the proof of Lemma 3.4, we have that, for all $\omega \in \tilde{\Omega}$, there exists $N_\omega \in \mathbb{N}$ such that for all $m \geq N_\omega$, and for all $n \geq 1$,

$$\sup_{x \in \mathbb{R}^d} \left| \hat{D}(x|\hat{Q}_{m,n}(\omega), \hat{\mu}_m(\omega), \mathcal{H}_{\Delta_m}^{n,m}(\omega)) - D(x|Q_n, \hat{\mu}_m(\omega), \mathcal{H}_{\Delta_m}^{n,m}(\omega)) \right| \leq \frac{\|\hat{Q}_{m,n}(\omega) - Q_n\|_{\mathcal{H}}}{\Delta_m},$$

$$\sup_{x \in \mathbb{R}^d} \left| D(x|Q_n, \hat{\mu}_m(\omega), \mathcal{H}_{\Delta_m}^{n,m}(\omega)) - D(x|Q_n, \mu_C, \mathcal{H}_{\Delta_m}^{n,m}(\omega)) \right| \leq \frac{\|\hat{\mu}_m(\omega) - \mu_C\|_{\mathcal{H}}}{\Delta_m^2 (1 - 2C\lambda_m/\Delta_m)}.$$

Then we deduce that the random variable

$$\sup_{x \in \mathbb{R}^d} \left| D(x|\hat{Q}_{m,n}, \hat{\mu}_m, \mathcal{H}_{\Delta_m}^{n,m}) - D(x|Q_n, \mu_C, \mathcal{H}_{\Delta_m}^{n,m}) \right|$$

converges a.s. to zero. It remains to show that $D(x|Q_n, \mu_C, \mathcal{H}_{\Delta_m}^{n,m})$ converges a.s. to $D(x|Q_P, \mu_C)$ as $m \rightarrow \infty$ for a fixed point $x \in \mathbb{R}^d$.

Case 1 : there exists $u_0 \in \mathcal{S}$ such that $Q_n(H_{u_0,x}) = 0$. Then for all m , $H_{u_0,x} \in \mathcal{H}_{\Delta_m}^{n,m}$, and $D(x|Q_n, \mu_C) = D(x|Q_n, \mu_C, \mathcal{H}_{\Delta_m}^{n,m})$ a.s.

Case 2 : for all $u \in \mathcal{S}$, $Q_n(H_{u,x}) > 0$. Due to the fact that $D(x|Q_n, \mu_C)$ is bounded by 1 (see Lemma 3.1) there exists a sequence (u_k) of \mathcal{S} such that,

$$D(x|Q_n, \mu_C) = \lim_{k \rightarrow \infty} \frac{Q_n(H_{u_k,x})}{\mu_C(H_{u_k,x})}, \quad \text{and} \quad Q_n(H_{u_k,x}) \geq \mu_C(H_{u_k,x}) > 0.$$

First we consider the sub-case where the sequence $(\mu_C(H_{u_k,x}))$ is lower-bounded by a positive constant $\kappa > 0$ (if $d = 1$, only this case occurs). Since (λ_m) and (Δ_m) are decreasing sequences, we have $\mu_C(H_{u_k,x}) \geq 2C\lambda_m + \Delta_m$, for m large enough and for all $k \in \mathbb{N}$. Then for all $\omega \in \tilde{\Omega}$, there exists $N_\omega \in \mathbb{N}$ such that,

$$\forall k \in \mathbb{N}, \quad \hat{\mu}_m(\omega)(H_{u_k,x}) \geq \mu_C(H_{u_k,x}) - \|\hat{\mu}_m(\omega) - \mu_C\|_{\mathcal{H}} \geq \Delta_m,$$

i.e., $\forall k \in \mathbb{N}$, $H_{u_k,x} \in \mathcal{H}_{\Delta_m}^{n,m}$. Therefore we have for all $m \geq N_\omega$ that $D(x|Q_n, \mu_C) = D(x|Q_n, \mu_C, \mathcal{H}_{\Delta_m}^{n,m}(\omega))$.

A second sub-case occurs when the sequence $(\mu_C(H_{u_k,x}))$ is decreasing to zero, i.e., for all m there exists $M_m \in \mathbb{N}$ such that for all $k > M_m$ $\mu_C(H_{u_k,x}) < 2C\lambda_m + \Delta_m$. Let $m_0 \in \mathbb{N}$ such that there exists $k_0 \in \mathbb{N}$ for which $\mu_C(H_{u_{k_0},x}) \geq 2C\lambda_{m_0} + \Delta_{m_0}$. Then we consider the increasing sequence $(k_m)_{m \geq m_0}$ of integers defined recursively by,

$$k_{m_0} = k_0 \quad \text{and} \quad k_{m+1} = \sup\{k \geq k_m : \mu_C(H_{u_{k_{m+1}},x}) \geq 2C\lambda_{m+1} + \Delta_{m+1}\}$$

For all $\omega \in \tilde{\Omega}$, there exists $N_\omega \in \mathbb{N}$ such that,

$$\forall m \geq N_\omega, \quad \hat{\mu}_m(\omega)(H_{u_{k_m},x}) \geq \Delta_m,$$

that means $H_{u_{k_m},x} \in \mathcal{H}_{\Delta_m}^{n,m}(\omega)$. Thus we obtain for all $\omega \in \tilde{\Omega}$, for all $m \geq N_\omega$ that

$$D(x|Q_n, \mu_C) \leq D(x|Q_n, \mu_C, \mathcal{H}_{\Delta_m}^{n,m}(\omega)) \leq \frac{Q_n(H_{u_{k_m},x})}{\mu_C(H_{u_{k_m},x})} \quad \text{and} \quad \lim_{m \rightarrow \infty} \frac{Q_n(H_{u_{k_m},x})}{\mu_C(H_{u_{k_m},x})} = D(x|Q_n, \mu_C).$$

□

Proof of Lemma 3.2. Notice that the function $(x, z, u) \in \mathbb{R} \times \mathbb{R}^d \times \mathcal{S} \mapsto u^\top(x - z) \in \mathbb{R}$ is measurable, and that the function

$$w : \mathbb{R}^d \times \mathcal{S} \rightarrow \mathbb{R}_+ \cup \{+\infty\} \times \mathbb{R}_+ \\ (x, u) \mapsto \left(\hat{Q}_{m,n}(H_{u,x}) / \hat{\mu}_m(H_{u,x}), \hat{\mu}_m(H_{u,x}) \right)$$

is also measurable and takes a finite number of values. We denote by $0 = v_0 < v_1 < \dots < v_p = +\infty$ the collection of values which are taken by the first coordinate of w . Let V_q be the inverse image of $\{v_q\} \times [\Delta, 1]$ under w , $q = 0, \dots, p$. We may rewrite $D(x|\hat{Q}_{m,n}, \hat{\mu}_m, \Delta)$ as

$$\hat{D}(x|\hat{Q}_{m,n}, \hat{\mu}_m, \Delta) = \sum_{q=0}^p v_q \mathbb{1}_{B_q}(x),$$

where $(B_q)_{q=0,\dots,p}$ are measurable subsets of \mathbb{R}^d defined recursively by

$$B_0 = \left\{ x \in \mathbb{R}^d : \exists u \in \mathcal{S}, \widehat{Q}_{m,n}(H_{u,x}) = 0 \right\},$$

$$B_q = \left\{ x \in \mathbb{R}^d : \exists u \in \mathcal{S}, (x, u) \in V_q \right\} \setminus \left\{ \bigcup_{r=0}^{q-1} B_r \right\}, \quad q = 1, \dots, p.$$

□

Proof of Lemma 3.3. Let x be a fixed point of the locus of \mathcal{C} . Since $\mu_{\mathcal{C}}$ is a non-atomic measure, x is not in $\mathbb{Y}_m \cup \mathbb{X}_{n,m}$ almost surely. Let $\omega \in \Omega$ be fixed.

1. *The one-dimensional case, $d = 1$.* We have that $\widehat{Q}_{m,n}(\partial H_{u,x}) = \widehat{\mu}_m(\partial H_{u,x}) = 0$, for all $u \in \{-1, 1\}$.

2. *The multi-dimensional case, $d \geq 2$.* Assume there exists a.s. an affine subspace A_{d-1} of dimension $d - 1$ such that $\widehat{Q}_{m,n}(A_{d-1}) = \widehat{\mu}_m(A_{d-1}) = 0$ and $x \in A_{d-1}$. Since $0 < \Delta < 1/2$, there exists $u \in \mathcal{S}$ such that $\partial H_{u,x} = A_{d-1}$ and $\widehat{\mu}_m(H_{u,x}) > \Delta$. Then we define the non-empty subset \mathcal{S}_x of \mathcal{S} such that

$$\mathcal{S}_x = \left\{ u \in \mathcal{S} : H_{u,x} \in \mathcal{H}_{\Delta}^{n,m} \text{ and } \widehat{Q}_{m,n}(\partial H_{u,x}) = \widehat{\mu}_m(\partial H_{u,x}) = 0 \text{ a.s.} \right\}.$$

If there exists $u \in \mathcal{S}_x$ such that $\widehat{Q}_{m,n}(H_{u,x})/\widehat{\mu}_m(H_{u,x}) \leq 1$, the lemma is proved. Otherwise for all $u \in \mathcal{S}_x$, we have

$$\widehat{Q}_{m,n}(H_{u,x})/\widehat{\mu}_m(H_{u,x}) > 1, \text{ and } 0 < \widehat{\mu}_m(H_{-u,x}) < \Delta.$$

If $\Delta < 1/m$, then there exists $u \in \mathcal{S}_x$ such that $\widehat{Q}_{m,n}(H_{u,x})/\widehat{\mu}_m(H_{u,x}) \leq 1$ by the *reductio ad absurdum* argument. If $\Delta > 1/m$, then for all $u \in \mathcal{S}_x$, $\widehat{Q}_{m,n}(H_{u,x})/\widehat{\mu}_m(H_{u,x}) \leq 1/(1 - \Delta)$. It remains to show the existence for $d \geq 2$ of such an affine subspace A_k recursively on the dimension $k = 1, \dots, d - 1$ of A_{d-1} .

For $k = 1$, there exists a finite number (at most $m + nm$) of affine lines which contain x and a point of the sample $\mathbb{Y}_m(\omega) \cup \mathbb{X}_{n,m}(\omega)$. Since the set of affine lines which contain x is continuous, there exists an affine line A_1 such that $\widehat{Q}_{m,n}(w)(A_1) = 0$ and $\widehat{\mu}_m(w)(A_1) = 0$.

Assume that $k \geq 2$. Using the recursive assumption, there exists an affine subspace A_{k-1} of dimension $k - 1$ such that $\widehat{Q}_{m,n}(\omega)(A_{k-1}) = \widehat{\mu}_m(\omega)(A_{k-1}) = 0$ and $x \in A_{k-1}$. Let \mathcal{A} be the set of affine subspaces A of dimension k such that $A_{k-1} \subset A$. Then there exist at most $m + nm$ affine subspaces of \mathcal{A} which contain at least one point of the sample $\mathbb{Y}_m(\omega) \cup \mathbb{X}_{n,m}(\omega)$. Then there exists an affine subspace A_k which contains no points of the sample $\mathbb{Y}_m(\omega) \cup \mathbb{X}_{n,m}(\omega)$. □

4 Proof of Theorem 3.1

Conditionally on the samples $\mathbb{X}_{n,m}$ and \mathbb{Y}_m , we apply the Hoeffding inequality on the independent sum of bounded variables $\widehat{D}(Z_i | \widehat{Q}_{m,n}, \widehat{\mu}_m, \mathcal{H}_{\Delta_m}^{n,m})$. Then for all $\epsilon > 0$, we get that the event

$$\Omega_\epsilon = \Omega \setminus \left(\left| \widehat{D}_{n,m,\Delta}(\mathcal{C} | \mathcal{X}_1, \dots, \mathcal{X}_n) - \int_{\mathcal{C}} D(x | Q_n, \mu_{\mathcal{C}}, \mathcal{H}_{\Delta_m}^{n,m}) d\mu_{\mathcal{C}}(x) \right| > \epsilon \right)$$

has a probability larger than $1 - 2 \exp(-2\epsilon^2 m)$. Using Lemma 3.5 and Lemma 3.3, the dominated convergence theorem implies that given $\mathcal{X}_1, \dots, \mathcal{X}_n$,

$$\forall \omega \in \Omega_\epsilon, \quad \lim_{m \rightarrow \infty} \int_{\mathcal{C}} \widehat{D}(s | \widehat{Q}_{m,n}(\omega), \widehat{\mu}_m(\omega), \mathcal{H}_{\Delta_m}^{n,m}(\omega)) d\mu_{\mathcal{C}}(s) = \int_{\mathcal{C}} D(s | Q_n, \mu_{\mathcal{C}}) d\mu_{\mathcal{C}}(s).$$

Then we deduce that $\widehat{D}_{n,m,\Delta}(\mathcal{C} | \mathcal{X}_1, \dots, \mathcal{X}_n)$ converges in probability to $D(\mathcal{C} | \mathcal{X}_1, \dots, \mathcal{X}_n)$ as $m \rightarrow \infty$.

Similarly, conditionally on the samples $\mathbb{X}_{n,m}$ and \mathbb{Y}_m , the Hoeffding inequality on the independent sum of bounded variables $D(Z_i | \widehat{Q}_{m,n}, \widehat{\mu}_m, \mathcal{H}_{\Delta_m}^{n,m})$ allows to consider,

$$\Omega_\epsilon = \Omega \setminus \left(\left| \widehat{D}_{n,m,\Delta}(\mathcal{C} | \mathcal{X}_1, \dots, \mathcal{X}_n) - \int_{\mathcal{C}} D(x | Q_P, \mu_{\mathcal{C}}, \mathcal{H}_{\Delta_m}^{n,m}) d\mu_{\mathcal{C}}(x) \right| > \epsilon \right),$$

where $\epsilon > 0$ and $\mathbb{Q}(\Omega_\epsilon) \geq 1 - 2 \exp(-2\epsilon^2 m)$. Using Lemma 3.4 and Lemma 3.3, the dominated convergence theorem implies that given the sequence $(\mathcal{X}_i)_{i \geq 1}$,

$$\forall \omega \in \Omega_\epsilon, \quad \lim_{m,n \rightarrow \infty} \int_{\mathcal{C}} D(s | \widehat{Q}_{m,n}(\omega), \widehat{\mu}_m(\omega), \mathcal{H}_{\Delta_m}^{n,m}(\omega)) d\mu_{\mathcal{C}}(s) = \int_{\mathcal{C}} D(s | Q_P, \mu_{\mathcal{C}}) d\mu_{\mathcal{C}}(s).$$

Then we deduce that $\widehat{D}_{n,m,\Delta}(\mathcal{C} | \mathcal{X}_1, \dots, \mathcal{X}_n)$ converges in probability to $D(\mathcal{C} | P)$ as $n, m \rightarrow \infty$ and therefore that $D(\mathcal{C} | \mathcal{X}_1, \dots, \mathcal{X}_n)$ converges in probability to $D(\mathcal{C} | P)$ as $n \rightarrow \infty$.

5 Properties of the Curve Depth

Lemma 5.1. *The depth of a curve is invariant up to the similarities group,*

$$D(rAC + b | Q_{P_{rAX+b}}) = D(\mathcal{C} | Q_{P_{\mathcal{X}}}),$$

where A is a $d \times d$ orthogonal matrix, $r > 0$ and $b \in \mathbb{R}^d$.

Proof of Lemma 5.1. Let b be a translation vector in \mathbb{R}^d , $r > 0$ be a scalar and A be a $d \times d$ orthogonal matrix. The arc-length parametrization of the curve $rAC + b$ is $t \mapsto rA\beta_{\mathcal{C}}(t) + b$. We notice by using the substitution rule $u = t/r$ that

$$\begin{aligned} \mu_{rAC+b}(rA\mathcal{H} + b) &= \int_0^1 \mathbb{1}_{rA\beta_{\mathcal{C}}(t) + b \in rA\mathcal{H} + b} dt \\ &= \int_0^1 \mathbb{1}_{\beta_{\mathcal{C}}(t) \in \mathcal{H}} dt \\ &= \mu_{\mathcal{C}}(\mathcal{H}). \end{aligned}$$

Denote by Q_X the distribution of a given random vector X . We deduce that

$$Q_{rAX+b}(rA\mathcal{H} + b) = \int \mu_{rAC+b}(rA\mathcal{H} + b) dP(\mathcal{C}) = Q_X(\mathcal{H}).$$

Then we get

$$D(rAC + b | Q_{P_{rAX+b}}) = \int_0^1 D(rA\beta_{\mathcal{C}}(t) + b | Q_{rAX+b}, \mu_{rAC+b}) dt,$$

where

$$\begin{aligned} D(rA\beta_C(t) + b | Q_{rAX+b}, \mu_{rAC+b}) &= \inf_{u \in \mathcal{S}} \left\{ \frac{Q_{rAX+b}(rAH_{u,x} + b)}{\mu_{rAC+b}(rAH_{u,x} + b)} \right\} \\ &= \inf_{u \in \mathcal{S}} \left\{ \frac{Q_X(H_{u,x})}{\mu_C(H_{u,x})} \right\} = D(x | \mathcal{C}, P_X). \end{aligned}$$

□

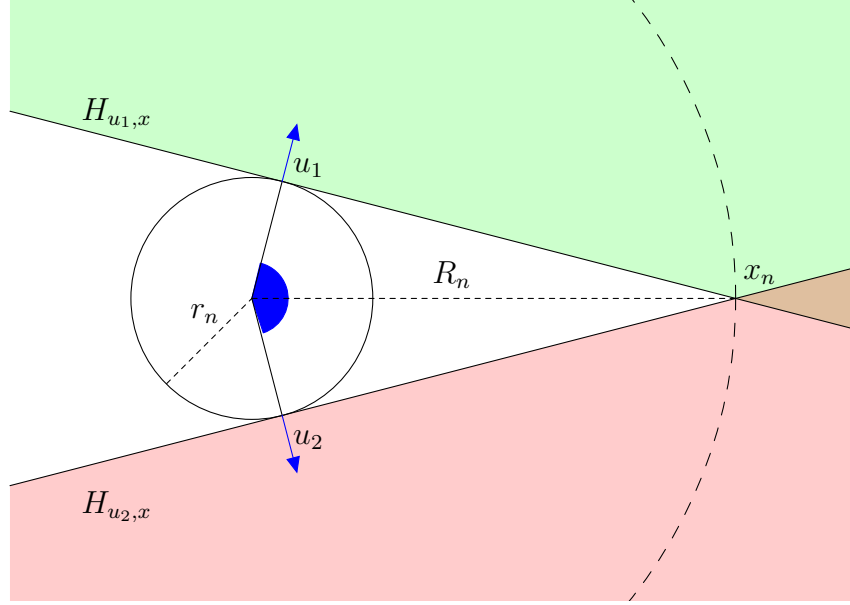


Figure 21: Illustration for the proof of “Vanishing at infinity” property

Lemma 5.2. Let (C_n) be a sequence of unparametrized curves of length ℓ such that μ_{C_n} is nonatomic, and

$$R_n = \inf_{x \in S_{C_n}} |x|_2, \quad \text{and} \quad \lim_{n \rightarrow \infty} R_n = +\infty.$$

Then the sequence of depths $(D(C_n | P))$ converges to 0 as $n \rightarrow \infty$.

We introduce the following notations and definitions. We denote by $S_r = \{x \in \mathbb{R}^d : |x|_2 = r\}$ the sphere of radius $r > 0$. A halfspace H is *tangent* to S_r if its boundary ∂H is tangent to S_r and $H \cap S_r$ is a singleton.

Lemma 5.3. Let $x \in \mathbb{R}^d$ such that $|x|_2 = R$ and $d \geq 2$. Let $y \in \mathbb{R}^d$ such that $|y|_2 \geq |x|_2$ and $|x - y|_2 \leq \ell < r$. There exist $u_1, u_2, \dots, u_{2d-2} \in \mathcal{S}$ such that

- for all $i = 1, \dots, 2d - 2$, $H_{u_i, x}$ is a tangent halfspace to S_r ,
- $y \in \bigcup_{i=1}^{2d-2} H_{u_i, x}$.

Proof of Lemma 5.2. Since Q_P is a probability measure on \mathbb{R}^d , Q_P is tight. Then we can consider an increasing sequence r_n such that:

$$\begin{aligned} 1 - \epsilon_n &= Q_P(\{x : |x|_2 \leq r_n\}) \quad \text{and} \quad \lim_n \epsilon = 0, \\ \ell &< r_n < R_n / \sqrt{2} \quad \text{and} \quad \epsilon_n \leq 1/(4d^2). \end{aligned}$$

Let Δ_n be a subset of S_{C_n} defined as

$$\Delta_n = \{x \in S_{C_n} : \forall u \in \mathcal{S}, Q_P(H_{u,x}) > \epsilon_n \text{ or } \mu_{C_n}(H_{u,x}) < \sqrt{\epsilon_n}\}.$$

Then for all $x \notin \Delta_n$, $D(x|\mu_{C_n}, Q_P) \leq \sqrt{\epsilon_n}$. It suffices to show that $\mu_{C_n}(\Delta_n) < 4d\epsilon_n$ and the lemma is proved. We define,

$$R_n + \ell_n = \max_{x \in S_{C_n}} |x|_2,$$

$$F_n(t) = \mu_{C_n}(\{x : |x|_2 \leq R_n + t\}).$$

Since S_{C_n} is a compact set, we get that $0 < \ell_n < \ell$, and F_n is a cumulative distribution function (c.d.f.) whose support is $[0, \ell_n]$.

1. *The one-dimensional case, $d = 1$.* The c.d.f. F_n is a non atomic cumulative distribution function because μ_{C_n} is non-atomic. Let t_n be the quantile of order $1 - \sqrt{\epsilon_n}$ of F_n . Then Δ_n is included in the set of $x \in S_{C_n}$ such that $|x|_2 > t_n$, that is $\mu_{C_n}(\Delta_n) \leq \sqrt{\epsilon_n}$.

2. *The multi-dimensional case, $d \geq 2$.* The c.d.f. F_n may have atoms. First assume that $\mu_{C_n}(\{x : |x|_2 = R_n\}) \geq 1 - (2d - 2)\sqrt{\epsilon_n}$. We aim to show that $\Delta_n \subset \{x : |x|_2 > R_n\}$ and then $\mu_{C_n}(\Delta_n) < 4d\epsilon_n$. Let $x \in S_{C_n}$ be such that $|x|_2 = R_n$ and $x \in \Delta_n$. Then for all $y \in S_{C_n}$, $|y|_2 \geq |x|_2$ and $|x - y|_2 \leq \ell$. Using Lemma 5.3, there exist $u_1, \dots, u_{2d-2} \in \mathcal{S}$ such that :

$$S_{C_n} \subset \cup_{i=1}^{2d-2} H_{u_i, x} \quad \text{and} \quad \forall i = 1, \dots, 2d - 2, \quad \mu_{C_n}(H_{u_i, x}) < \sqrt{\epsilon_n},$$

which is absurd. Then $\Delta_n \subset \{x : |x|_2 > R_n\}$ and $\mu_{C_n}(\Delta_n) < 4d\epsilon_n$.

Secondly assume that $\mu_{C_n}(\{x : |x|_2 = R_n\}) < 1 - (2d - 2)\sqrt{\epsilon_n}$: there exists a non negligible part of the curve C_n outside of \mathcal{S}_{R_n} . Under this assumption, we distinguish two cases. The first sub-case is when $\mu_{C_n}(\{x : |x|_2 = R_n + \ell_n\}) \geq (2d - 2)\sqrt{\epsilon_n}$. If $x \in \Delta_n$ then for all $y \in \{z : |z|_2 = R_n + \ell_n\} \cap S_{C_n}$, $|x|_2 \leq |y|_2$ and $|x - y|_2 \leq \ell$. Using Lemma 5.3, there exist $u_1, \dots, u_{2d-2} \in \mathcal{S}$ such that :

$$S_{C_n} \cap \{x : |x|_2 = R_n + \ell_n\} \subset \cup_{i=1}^{2d-2} H_{u_i, x} \quad \text{and} \quad \forall i = 1, \dots, 2d - 2, \quad \mu_{C_n}(H_{u_i, x}) < \sqrt{\epsilon_n},$$

which is absurd. Then $\Delta_n = \emptyset$ and $\mu_{C_n}(\Delta_n) < 4d\epsilon_n$.

The second sub-case is when $\mu_{C_n}(\{x : |x|_2 = R_n + \ell_n\}) < (2d - 2)\sqrt{\epsilon_n}$. Let t_n be the quantile of order $1 - (2d - 2)\sqrt{\epsilon_n}$ of F_n . We know that $0 < t_n \leq \ell_n$. Using the same argument, we show that $\Delta_n \subset \{x : |x|_2 \geq t_n\}$. If $\mu_{C_n}(\{x : |x|_2 = t_n\}) \geq (2d - 2)\sqrt{\epsilon_n}$, one can show that Δ_n is a subset of $\{x : |x|_2 < t_n\}$ and $\mu_{C_n}(\Delta_n) \leq (2d - 2)\sqrt{\epsilon_n}$. If $\mu_{C_n}(\{x : |x|_2 = t_n\}) < (2d - 2)\sqrt{\epsilon_n}$, then

$$\mu_{C_n}(\Delta_n) \leq \mu_{C_n}(\{x : |x|_2 = t_n\}) + \mu_{C_n}(\{x : |x|_2 > t_n\}) \leq 4d\sqrt{\epsilon_n}.$$

□

6 Algorithms

6.1 Procedures for Calculating Point Curve Depth

Calculation of the point curve depth $\widehat{D}(x|\widehat{Q}_{m,n}, \widehat{\mu}_m, \mathcal{H}_{\Delta}^{n,m})$ in \mathbb{R}^2 relies on the work by [Rousseeuw & Ruts \(1996\)](#). The main idea is to regard all possible closed halfplanes by rotating a line containing x in a counter-clockwise way. Here, the modifications are straightforward

and narrow down to accounting for two differing samples $\widehat{Q}_{m,n}$ and $\widehat{\mu}_m$, threshold Δ , and minimization functional represented by a ratio. The formal algorithm is detailed in Algorithm 2, where w.l.o.g. $x = 0$ due to translation invariance of the depth for convenience. The complexity of the algorithm is $O(mn \log(mn))$.

Algorithm 3 calculates $\widehat{D}(x|\widehat{Q}_{m,n}, \widehat{\mu}_m, \mathcal{H}_\Delta^{n,m})$ in \mathbb{R}^3 modifying in the similar way the work by Dyckerhoff & Mozharovskyi (2016), and exploits Algorithm 2 as its basic element. The main idea is to perform Algorithm 2 for a projection of $\widehat{Q}_{m,n}$ and $\widehat{\mu}_m$ onto a plane orthogonal to the line connecting 0 and one of the points from $\widehat{Q}_{m,n}$ and $\widehat{\mu}_m$. It can be easily extended to higher dimensions by additionally accounting for different combinations of points lying on this line on different sides from the (hyper)plane. The complexity of the algorithm is $O(m^2n^2 \log(mn))$.

Algorithm 2 Routine for computing $D(\mathbf{0}|\widehat{Q}_{m,n}, \widehat{\mu}_m, \Delta)$ in dimension 2

```

1: function PTCD.2D( $\mathbf{y}_1, \dots, \mathbf{y}_m, \mathbf{x}_1, \dots, \mathbf{x}_{m \cdot n}, \Delta$ )      ▷ Point Tukey curve depth of 0
2:    $n_y^z \leftarrow 0$                                               ▷ Number of  $\mu$ -points in the origin
3:    $n_x^z \leftarrow 0$                                               ▷ Number of  $Q$ -points in the origin
4:    $n_y^h \leftarrow 0$                                               ▷ Number of  $\mu$ -points in the halfplane
5:    $n_x^h \leftarrow 0$                                               ▷ Number of  $Q$ -points in the halfplane
6:   for  $i = 1 : m$  do                                           ▷ Go through all points sampled on  $\mu$ 
7:     if  $|\mathbf{y}_i| = 0$  then
8:        $n_y^z \leftarrow n_y^z + 1$                                 ▷ Count  $\mu$ -points in the origin
9:     else
10:       $P(i - n_y^z) \leftarrow (\alpha = \text{ATAN2}(\mathbf{y}_i(2), \mathbf{y}_i(1)), c = 0)$   ▷ Save to all points
11:      if  $\text{ATAN2}(\mathbf{y}_i(2), \mathbf{y}_i(1)) < 0$  then
12:         $n_y^h \leftarrow n_y^h + 1$                                 ▷ Count  $\mu$ -points in the (lower) halfplane
13:      end if
14:    end if
15:  end for
16:  for  $i = 1 : (m \cdot n)$  do                                     ▷ Go through all points sampled on  $Q$ 
17:    if  $|\mathbf{x}_i| = 0$  then  $n_x^z \leftarrow n_x^z + 1$                 ▷ Count  $Q$ -points in the origin
18:    else
19:       $P(m - n_y^z + i - n_x^z) \leftarrow (\alpha = \text{ATAN2}(\mathbf{x}_i(2), \mathbf{x}_i(1)), c = 1)$   ▷ Save to
all
20:      if  $\text{ATAN2}(\mathbf{x}_i(2), \mathbf{x}_i(1)) < 0$  then
21:         $n_x^h \leftarrow n_x^h + 1$                                 ▷ Count  $Q$ -points in the (lower) halfplane
22:      end if
23:    end if
24:  end for
25:   $k \leftarrow (m + m * n) - (n_y^z + n_x^z)$ 
26:  Sort  $P$  w.r.t.  $\alpha$ s in ascending order
27:   $D \leftarrow \frac{n_x^h / (m \cdot n)}{n_y^h / m}$                                 ▷ Initialize the depth value
28:   $j \leftarrow n_y^h + n_x^h + 1$ 

```

Algorithm 2 Routine for computing $D(\mathbf{0}|\widehat{Q}_{m,n}, \widehat{\mu}_m, \Delta)$ in dimension 2 (continued)

```
29:         ▷ Turn around counter-clockwise from the lower to the upper halfplane
30:   for  $i = 1 : (n_y^h + n_x^h + 1)$  do
31:     while  $j \leq k$  and  $((i = n_y^h + n_x^h + 1)$  and  $(P(j).\alpha \leq \pi)$ ) or
32:        $(P(j).\alpha - \pi \leq P(i).\alpha)$ ) do
33:       if  $P(i).c = 0$  then  $n_y^h \leftarrow n_y^h + 1$            ▷ Add the point to the halfplane
34:       else  $n_x^h \leftarrow n_x^h + 1$ 
35:       end if
36:       if  $(j < k)$  and  $(P(j+1).\alpha = P(j).\alpha)$  then           ▷ If next point a tie ...
37:          $j \leftarrow j + 1$ ; continue                               ▷ ... go directly to it
38:       end if
39:       if  $(i = n_y^h + n_x^h + 1)$  or  $(P(j).\alpha - \pi \leq P(i).\alpha)$  then   ▷ If last point ...
40:         if  $n_x^h = 0$  then
41:           return 0                                               ▷ ... stop if zero depth achieved ...
42:         end if
43:         if  $n_y^h/m > \Delta$  then                                   ▷ ... otherwise still update the depth
44:            $D \leftarrow \min\{D, \frac{n_x^h/(m \cdot n)}{n_y^h/m}\}$ 
45:         end if
46:       end if
47:        $j \leftarrow j + 1$                                            ▷ Add point to the halfplane
48:     end while
49:     if  $i = n_y^h + n_x^h + 1$  then break                               ▷ No more points to remove from the
halfplane
50:     end if
51:     if  $P(i).c = 0$  then  $n_y^h \leftarrow n_y^h - 1$            ▷ Remove the point from the halfplane
52:     else  $n_x^h \leftarrow n_x^h - 1$ 
53:     end if
54:     if  $(i < n_y^h + n_x^h)$  and  $(P(i+1).\alpha = P(i).\alpha)$  then           ▷ If next point a tie ...
55:       continue                                                 ▷ ... go directly to the next iteration
56:     end if
57:     if  $n_x^h = 0$  then
58:       return 0                                               ▷ Stop if zero depth achieved
59:     end if
60:     if  $n_y^h/m > \Delta$  then                                       ▷ Update the depth
61:        $D \leftarrow \min\{D, \frac{n_x^h/(m \cdot n)}{n_y^h/m}\}$ 
62:     end if
63:   end for
64:    $j \leftarrow 0$ 
```

Algorithm 2 Routine for computing $D(\mathbf{0}|\widehat{Q}_{m,n}, \widehat{\mu}_m, \Delta)$ in dimension 2 (continued)

```
65:         ▷ Turn around counter-clockwise from the upper to the lower halfplane
66:   for  $i = (k - (n_y^h + n_x^h) + 1) : (k + 1)$  do
67:     while  $j \leq k < (n_y^h + n_x^h)$  and  $((i = k + 1)$  and  $(P(j).\alpha \leq 0)$ ) or
68:        $(P(j).\alpha + \pi \leq P(i).\alpha)$ ) do
69:       if  $P(i).c = 0$  then  $n_y^h \leftarrow n_y^h + 1$            ▷ Add the point to the halfplane
70:       else  $n_x^h \leftarrow n_x^h + 1$ 
71:       end if
72:       if  $(j < k - (n_y^h + n_x^h))$  and  $(P(j + 1).\alpha = P(j).\alpha)$  then           ▷ If a tie ...
73:          $j \leftarrow j + 1$ ; continue                                           ▷ ... add it as well
74:       end if
75:       if  $(i = k + 1)$  or  $(P(j).\alpha + \pi \leq P(i).\alpha)$  then           ▷ If last point ...
76:         if  $n_x^h = 0$  then
77:           return 0                                           ▷ ... stop if zero depth achieved ...
78:         end if
79:         if  $n_y^h/m > \Delta$  then           ▷ ... otherwise still update the depth
80:            $D \leftarrow \min\{D, \frac{n_x^h/(m \cdot n)}{n_y^h/m}\}$ 
81:         end if
82:       end if
83:        $j \leftarrow j + 1$                                            ▷ Add point to the halfplane
84:     end while
85:     if  $i = k + 1$  then           ▷ If last point ...
86:       break ▷ ... no points to remove from the halfplane, so stop the outer loop
87:     end if
88:     if  $P(i).c = 0$  then  $n_y^h \leftarrow n_y^h - 1$            ▷ Remove the point from the halfplane
89:     else  $n_x^h \leftarrow n_x^h - 1$ 
90:     end if
91:     if  $(i < k)$  and  $(P(i + 1).\alpha = P(i).\alpha)$  then           ▷ If next point a tie ...
92:       continue                                           ▷ ... go directly to the next iteration
93:     end if
94:     if  $n_x^h = 0$  then
95:       return 0                                           ▷ Stop if zero depth achieved
96:     end if
97:     if  $n_y^h/m > \Delta$  then           ▷ Update the depth
98:        $D \leftarrow \min\{D, \frac{n_x^h/(m \cdot n)}{n_y^h/m}\}$ 
99:     end if
100:   end for
101:   return  $D$ 
102: end function
```

Algorithm 3 Routine for computing $D(\mathbf{0}|\widehat{Q}_{m,n}, \widehat{\mu}_m, \Delta)$ in dimension 3

```

1: function PTCD.3D( $\mathbf{y}_1, \dots, \mathbf{y}_m, \mathbf{x}_1, \dots, \mathbf{x}_{m \cdot n}, \Delta$ )    ▷ Point Tukey curve depth of 0
2:    $D \leftarrow 1$ 
3:   for  $i = 1 : (m + m \cdot n)$  do                                ▷ For each point of the both samples
4:     if  $i \leq m$  then  $\mathbf{z} \leftarrow \mathbf{y}_i$ 
5:     else  $\mathbf{z} \leftarrow \mathbf{x}_{i-m}$ 
6:     end if
7:     Compute a basis  $\mathbf{A} = [\mathbf{a}_1, \mathbf{a}_2]$  of the hyperplane with normal  $\mathbf{z}$ 
8:      $n_y^a = 0$                                                     ▷ Number of  $\mu$ -points in the origin above halfplane
9:      $n_y^b = 0$                                                     ▷ Number of  $\mu$ -points in the origin below plane
10:     $n_y = 0$                                                     ▷ Number of  $\mu$ -points not in the origin in the plane
11:    for  $j = 1 : m$  do                                          ▷ Go through all points sampled on  $\mu$ 
12:      if  $\mathbf{A}^\top \mathbf{y}_i = \mathbf{0}$  then                                  ▷ If projected in the origin
13:        if  $\mathbf{z}^\top \mathbf{y}_i > 0$  then  $n_y^a \leftarrow n_y^a + 1$       ▷  $\mathbf{y}_i$  above the plane
14:        else if  $\mathbf{z}^\top \mathbf{y}_i < 0$  then  $n_y^b \leftarrow n_y^b + 1$   ▷  $\mathbf{y}_i$  below the plane
15:        else  $\mathbf{y}'_{n_y+1} \leftarrow \mathbf{A}^\top \mathbf{y}_i; n_y \leftarrow n_y + 1$   ▷ Add  $\mathbf{y}_i$ 's projection to the
plane
16:      end if
17:      else  $\mathbf{y}'_{n_y+1} \leftarrow \mathbf{A}^\top \mathbf{y}_i; n_y \leftarrow n_y + 1$   ▷ Add  $\mathbf{y}_i$ 's projection to the plane
18:      end if
19:    end for
20:     $n_x^a = 0$                                                     ▷ Number of  $Q$ -points in the origin above halfplane
21:     $n_x^b = 0$                                                     ▷ Number of  $Q$ -points in the origin below halfplane
22:     $n_x = 0$                                                     ▷ Number of  $Q$ -points not in the origin in the plane
23:    for  $j = 1 : (m \cdot n)$  do                                  ▷ Go through all points sampled on  $Q$ 
24:      if  $\mathbf{A}^\top \mathbf{x}_i = \mathbf{0}$  then                                  ▷ If projected in the origin
25:        if  $\mathbf{z}^\top \mathbf{x}_i > 0$  then  $n_x^a \leftarrow n_x^a + 1$       ▷  $\mathbf{x}_i$  above the plane
26:        else if  $\mathbf{z}^\top \mathbf{x}_i < 0$  then  $n_x^b \leftarrow n_x^b + 1$   ▷  $\mathbf{x}_i$  below the plane
27:        else  $\mathbf{x}'_{n_x+1} \leftarrow \mathbf{A}^\top \mathbf{x}_i; n_x \leftarrow n_x + 1$   ▷ Add  $\mathbf{x}_i$ 's projection to the
plane
28:      end if
29:      else  $\mathbf{x}'_{n_x+1} \leftarrow \mathbf{A}^\top \mathbf{x}_i; n_x \leftarrow n_x + 1$   ▷ Add  $\mathbf{x}_i$ 's projection to the plane
30:      end if
31:    end for
32:     $D \leftarrow \min\{D, pTcd.2d(\mathbf{y}_1, \dots, \mathbf{y}_{n_y}, \mathbf{x}_1, \dots, \mathbf{x}_{n_x}, n_y^a, n_y^b, n_x^a, n_x^b, \Delta)\}$     ▷
Update depth
33:  end for
34:  return  $D$ 
35: end function

```

6.2 Procedure for Calculating the Distance Between Two Curves

When calculating the metric $d_{\mathcal{C}}(\mathcal{C}_1, \mathcal{C}_2)$ in (2.1) one searches for two parametrizations that minimize the maximum norm between the two corresponding parametrized curves. Numerically this can be done by looking for a possible relocation of points from one curve to another keeping their order, in such a way that the distance of the longest relocation is minimal. Below we state the formal algorithm (Algorithm 4) and demonstrate it on an example of calculation of distance between two digits. The complexity of the algorithm is $O(m_1 m_2 \log(m_1 m_2))$ with m_1 and m_2 being the number of points of each of the curves \mathcal{C}_1 and \mathcal{C}_2 , respectively.

In Figure 22, two curves (digits '1') are given in a pixel form, or more precisely by the coordinates of the corresponding pixel centers ordered from below to above in the image. Their mutual pixel-wise distances can be represented as a distance matrix; see Figure 23. Keeping in mind that curves are (piece-wise) connected curves (in \mathbb{R}^2 , here), optimal relocation of points will be approximated by a path in the matrix connecting the most upper left and the most bottom right cells in Figure 23, such that the largest cell of this path will have smallest possible value. Algorithm 4 starts by eliminating the cells with the highest values and continues until any such path is blocked. The blockage of the path is identified when either at least one row or at least one column does not contain a single cell. Note that unreachable cells (while the path can proceed only right and down) are immediately deleted as well on each iteration of the algorithm.

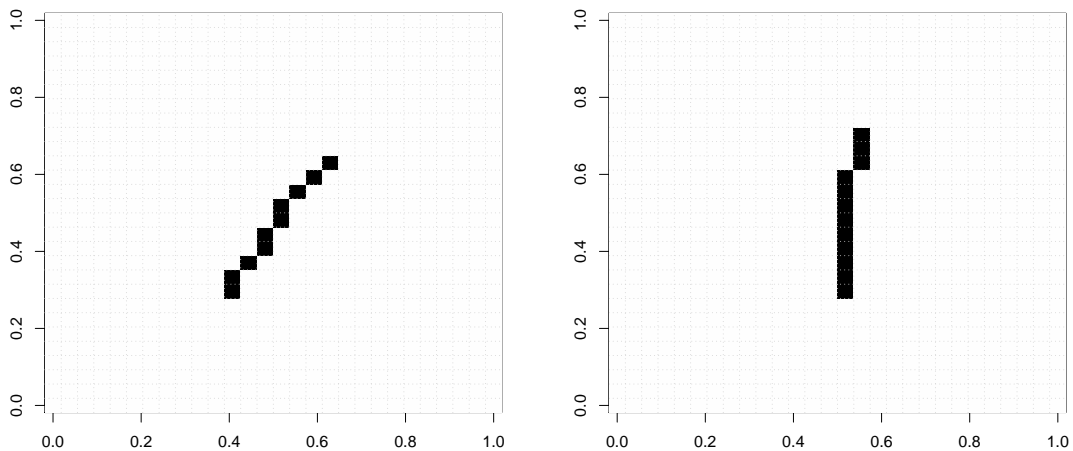


Figure 22: Two digits '1' used as an example to demonstrate calculation of the metric $d_{\mathcal{C}}$.

0.107	0.113	0.129	0.152	0.179	0.208	0.240	0.272	0.305	0.352	0.385	0.418
0.113	0.107	0.113	0.129	0.152	0.179	0.208	0.240	0.272	0.319	0.352	0.385
0.101	0.080	0.071	0.080	0.101	0.129	0.160	0.192	0.226	0.272	0.305	0.339
0.113	0.080	0.051	0.036	0.051	0.080	0.113	0.147	0.182	0.226	0.260	0.295
0.147	0.113	0.080	0.051	0.036	0.051	0.080	0.113	0.147	0.192	0.226	0.260
0.179	0.143	0.107	0.071	0.036	0.000	0.036	0.071	0.107	0.147	0.182	0.217
0.214	0.179	0.143	0.107	0.071	0.036	0.000	0.036	0.071	0.113	0.147	0.182
0.253	0.217	0.182	0.147	0.113	0.080	0.051	0.036	0.051	0.071	0.107	0.143
0.295	0.260	0.226	0.192	0.160	0.129	0.101	0.080	0.071	0.051	0.080	0.113
0.339	0.305	0.272	0.240	0.208	0.179	0.152	0.129	0.113	0.071	0.080	0.101

Figure 23: Pixel-wise distance matrix for the two digits '1' from Figure 22.

Algorithm 4 Routine for computing $d_{\mathcal{C}}(\mathcal{C}_1, \mathcal{C}_2)$

```

1: function DISTANCE( $\mathbf{x}_1, \dots, \mathbf{x}_{m_1}, \mathbf{y}_1, \dots, \mathbf{y}_{m_2}$ )  ▷ Distance between sampled curves
2:   for  $i = 1 : m_1$  do
3:     for  $j = 1 : m_2$  do
4:        $cells(m_2(i - 1) + j) = (i, j, d_{ij} = \|\mathbf{x}_i - \mathbf{y}_j\|_2)$   ▷ Calculate cell-wise
        distances
5:     end for
6:   end for
7:   Sort  $cells$  w.r.t.  $d_{\cdot}$ -s in descending order
8:    $M = (0, \dots, 0)_{m_1} \times (0, \dots, 0)_{m_2}$   ▷  $m_1 \times m_2$  matrix filled with 0
9:    $rowMaxs = (m_2, \dots, m_2)_{m_1}$   ▷ Vector of length  $m_1$  having all entries equal  $m_2$ 
10:   $rowMins = (0, \dots, 0)_{m_1}$   ▷ Vector of length  $m_1$  having all entries equal 0
11:   $colMaxs = (m_1, \dots, m_1)_{m_2}$   ▷ Vector of length  $m_2$  having all entries equal  $m_1$ 
12:   $colMins = (0, \dots, 0)_{m_2}$   ▷ Vector of length  $m_2$  having all entries equal 0
13:   $k = 1$ 

```

Algorithm 4 Routine for computing $d_{\mathcal{C}}(\mathcal{C}_1, \mathcal{C}_2)$ (continued)

```
14:   while  $k \leq m_1 \cdot m_2$  do
15:      $d = \text{cells}(k).d_{ij}$ 
16:     while  $\text{cells}(k).d_{ij} = d$  do
17:        $M(i, j) = 1$ 
18:       if  $\text{rowMaxs}(i) = j + 1$  then           ▷ If blocking cells above, then ...
19:          $l \leftarrow j$ 
20:         while  $l \geq 1$  and  $M(i, l) = 1$  do
21:            $M(0 : i, l) \leftarrow 1; l \leftarrow l - 1$            ▷ ... mark cells above
22:         end while
23:          $\text{rowMaxs}(i) = l + 1$            ▷ Update maximum row's extension
24:       end if
25:       if  $\text{rowMins}(i) = j - 1$  then           ▷ If blocking cells below, then ...
26:          $l \leftarrow j$ 
27:         while  $l \leq m_2$  and  $M(i, l) = 1$  do
28:            $M(i : m_1, l) \leftarrow 1; l \leftarrow l + 1$            ▷ ... mark cells below
29:         end while
30:          $\text{rowMins}(i) = l - 1$            ▷ Update minimum row's extension
31:       end if
32:       if  $\text{colMaxs}(j) = i + 1$  then           ▷ If blocking cells to the left, then ...
33:          $l \leftarrow i$ 
34:         while  $l \geq 1$  and  $M(l, j) = 1$  do
35:            $M(l, 0 : j) \leftarrow 1; l \leftarrow l - 1$            ▷ ... mark cells to the left
36:         end while
37:          $\text{colMaxs}(j) = l + 1$            ▷ Update maximum column's extension
38:       end if
39:       if  $\text{colMins}(j) = i - 1$  then           ▷ If blocking cells to the left, then ...
40:          $l \leftarrow i$ 
41:         while  $l \leq m_1$  and  $M(l, j) = 1$  do
42:            $M(l, j : m_2) \leftarrow 1; l \leftarrow l + 1$            ▷ ... mark cells to the left
43:         end while
44:          $\text{colMins}(j) = l - 1$            ▷ Update minimum column's extension
45:       end if
46:        $k \leftarrow k + 1$ 
47:     end while
48:     if  $\min \text{rowMaxs} = 1$  or  $\max \text{rowMins} = m_2$  or  $\min \text{colMaxs} = 1$  or
49:      $\max \text{colMins} = m_1$  then           ▷ If the route through the matrix is blocked
50:       break
51:     end if
52:   end while
53:   return  $d$ 
54: end function
```

6.3 Procedure for the Clustering of Curves

Algorithm 5 Clustering of curves (following Jörnsten 2004)

```

1: function DDCLUSTCURVE( $\mathcal{C}_1, \dots, \mathcal{C}_n$ )                                ▷ Input unlabeled curves
2:   Initialize  $\{I_k\}_1^K$  randomly
3:    $m \leftarrow 0; \beta \leftarrow -1; i \leftarrow 0$                                 ▷ Initialize iterated variables
4:   while  $m < M$  or  $j < \text{maxIter}$  do                                        ▷ Termination criterion
5:     Calculate  $C_i(\{I_k\}_1^K), i = 1, \dots, n$ 
6:     Identify a set  $S = \{i : C_i(\{I_k\}_1^K) \leq T\}$                                 ▷ Candidates for reallocation
7:      $f \leftarrow \text{false}$ 
8:     while  $S \neq \emptyset$  do
9:       For a random subset  $E \subset S$ , reallocate observations to get partitioning
           $\{\tilde{I}_k\}_1^K$ 
10:      if  $C(\{\tilde{I}_k\}_1^K) > C(\{I_k\}_1^K)$  or  $\mathcal{B}\left(P(C(\{I_k\}_1^K) - C(\{\tilde{I}_k\}_1^K), \beta) \sim b = 1\right)$ 
11:         $I_k \leftarrow \tilde{I}_k, k = 1, \dots, K; f \leftarrow \text{true}$                                 ▷ Accept reallocation
12:      end if
13:       $S \leftarrow S \setminus E$ 
14:    end while
15:     $\beta \leftarrow 2\beta; j \leftarrow j + 1$                                 ▷ Increase simulated-annealing temperature
16:    if  $f = \text{true}$  then
17:       $m \leftarrow 0$ 
18:    else
19:       $m \leftarrow m + 1$                                 ▷ No changes on current iteration
20:    end if
21:  end while
22:  return  $\{I_k\}_1^K$                                 ▷ Output the final clustering
23: end function

```

7 Numerical experiments and Applications

In this section, some additional materials are proposed in order to illustrate the convergence of the Monte Carlo approximation of our curve depth with the size n of the sample of curves and the size m of the Monte Carlo sample. We conduct the Monte Carlo study with three models of two-dimensional curves.

7.1 Simple examples and their explicit depth expression

Segments on a line. We observe n non-overlapping segments on a line. Without loss of generality, we denote by \mathcal{X}_k the k^{th} segment ($k = 1, \dots, n$), from left to right. For $t \in [0, 1]$, we have

$$\begin{aligned} \text{for } k \in \{1, n\}, \quad D(\beta_{\mathcal{X}_k}(t)|Q_n, \mu_{\mathcal{X}_k}) &= 1/n, \\ \text{for } k \notin \{1, n\}, \quad D(\beta_{\mathcal{X}_k}(t)|Q_n, \mu_{\mathcal{X}_k}) &= \frac{t + (n-1)t_k}{nt} \mathbb{1}_{t \geq t_k} + \frac{1-t + (n-1)(1-t_k)}{n(1-t)} \mathbb{1}_{t < t_k}, \end{aligned}$$

where $t_k = (k-1)/(n-1)$.

Star segments. Let \mathcal{C}_θ be the segment in \mathbb{R}^2 of starting point $(0, 0)$ and ending point $(\cos(\theta), \sin(\theta))$, for $\theta \in [0, 2\pi)$. We define $\mathcal{X} \sim P$ as the random curve generated from the following scheme :

$$\theta \sim \mathcal{U}[0, 2\pi], \quad \mathcal{X} = \mathcal{C}_\theta.$$

For $t \in [0, 1]$, we have

$$D(\beta_{\mathcal{C}_\theta}(t)|Q, \mu_{\mathcal{X}}) = \begin{cases} 1/2, & \text{if } t = 0, \\ g(t), & \text{if } t \in (0, 1), \\ 0, & \text{if } t = 1, \end{cases}$$

where $g : (0, 1) \rightarrow (0, 1)$ is a function defined by

$$\begin{aligned} g(t) &= \min \left\{ \frac{1}{2}, \inf_{\alpha \in (0, \pi/2)} \frac{qt_\alpha}{1-t}, \inf_{\alpha \in (-\pi/2, 0)} \frac{1-qt_{-\alpha}}{t}, \inf_{\alpha \in (-\pi, -\pi/2)} \frac{1-qt_{\pi+\alpha}}{t}, \inf_{\alpha \in (\pi/2, \pi)} \frac{qt_{\pi-\alpha}}{1-t} \right\}, \\ qt_\alpha &= \frac{\pi - \sin^{-1}(t \sin \alpha)}{2\pi} - \frac{t \sin(\alpha)}{2\pi} \log \frac{1 + \cos[\sin^{-1}(t \sin(\alpha))]}{1 - \cos[\sin^{-1}(t \sin(\alpha))]} \end{aligned}$$

The population version of the curve depth is defined as

$$D(\mathcal{C}_\theta|P) = \int_0^1 g(r) dr.$$

Concentric circles. Let \mathcal{C}_r be the circle of center 0 and radius $r > 0$ in \mathbb{R}^2 . We define $\mathcal{X} \sim P$ as the random curve generated from the following scheme :

$$R \sim \mathcal{U}[0, 1], \quad \mathcal{X} = \mathcal{C}_R.$$

The population version of the curve depth is defined as

$$\begin{aligned} D(\mathcal{C}_r|P) &= 0 \text{ if } r = 1; \\ D(\mathcal{C}_r|P) &= \min \left\{ 1, \frac{\cos^{-1}(r)}{\pi} - \frac{r}{\pi} \log \left(\frac{1 + \sin \cos^{-1}(r)}{r} \right), \right. \\ &\quad \left. \inf_{\alpha \in (0, \pi/2)} \frac{2\pi - 2 \cos^{-1}(r \sin \alpha)}{\pi + 2\alpha} + \frac{2r \sin(\alpha)}{\pi + 2\alpha} \log \frac{1 + \sin[\cos^{-1}(r \sin(\alpha))]}{r \sin(\alpha)}, \right. \\ &\quad \left. \inf_{\alpha \in (0, \pi/2)} \frac{2 \cos^{-1}(r \sin \alpha)}{\pi - 2\alpha} - \frac{2r \sin(\alpha)}{\pi - 2\alpha} \log \frac{1 + \sin[\cos^{-1}(r \sin(\alpha))]}{r \sin(\alpha)} \right\}. \end{aligned}$$

For $n \geq 1$, we denote by R_i the radius of the circle \mathcal{X}_i for all $i = 1, \dots, n$. The sample depth of \mathcal{C}_r with respect to $\{\mathcal{X}_1, \dots, \mathcal{X}_n\}$ is

$$D(\mathcal{C}_r | \mathcal{X}_1, \dots, \mathcal{X}_n) = 0 \text{ if } r \geq \max_{i=1 \dots n} R_i; \quad (7.1)$$

$$D(\mathcal{C}_r | \mathcal{X}_1, \dots, \mathcal{X}_n) = \min \left\{ 1, \inf_{\alpha \in (0, \pi/2)} \frac{2\pi}{n(\pi - 2\alpha)} \sum_{i=1}^n \frac{\cos^{-1}(r \sin(\alpha))}{\pi} \mathbb{1}_{R_i > r \sin(\alpha)}, \right. \\ \left. \inf_{\alpha \in (0, \pi/2]} \frac{2\pi}{n(\pi + 2\alpha)} \sum_{i=1}^n \left(\mathbb{1}_{R_i \leq r \sin(\alpha)} + \frac{\cos^{-1}(r \sin(\alpha))}{\pi} \mathbb{1}_{R_i > r \sin(\alpha)} \right) \right\}.$$

7.2 Monte Carlo Approximation of the Curve Depth

We illustrate the convergence of the Monte Carlo approximation of our curve depth according to the size n of the sample and the Monte Carlo size m on three simulation schemes.

Scheme 1 : Concentric circles. First, we consider the population of concentric circles with radius lying in the interval $(0, 1)$ described in Section 7.1. We fix the sample size n of $\{\mathcal{X}_1, \dots, \mathcal{X}_n\}$, and we compute the depth of circles \mathcal{C}_r of radius $r \in \{0.1, 0.4, 0.5, 0.6, 0.9\}$.

In the companion package of the paper, we propose an algorithm to approximate the depth $D(\mathcal{C} | \mathcal{X}_1, \dots, \mathcal{X}_n)$ using a Monte Carlo estimate (see line 11 of Algorithm 1):

$$\frac{1}{m} \sum_{k=1}^m \widehat{D}(Z_k | \widehat{Q}_{m,n}, \widehat{\mu}_m, \mathcal{H}_{\Delta}^{n,m}),$$

where $\widehat{Q}_{m,n}$ is the empirical measure associated to an i.i.d. sample $\mathbb{X}_{n,m} = (X_{i,j})_{i=1, \dots, n; j=1, \dots, m}$ from Q_{P_n} , where $\widehat{\mu}_m$ is the empirical measure associated to an i.i.d. sample $\mathbb{Y}_m = (Y_j)_{j=1, \dots, m}$ from $\mu_{\mathcal{C}}$ and $(Z_j)_{j=1, \dots, m}$ is an i.i.d. sample from $\mu_{\mathcal{C}}$. Theorem 3.1 states that this Monte Carlo estimator is consistent as m goes to $+\infty$. We emphasize that the threshold Δ is here useless due to the geometry of circles : the halfspaces $H_{x,u}$ such that $\mu_{\mathcal{C}}(H_{x,u})$ is small are those for which the ratio $\widehat{Q}_{n,m}/\widehat{\mu}_m(H_{x,u})$ is larger than 1.

First, we fix the sample $\mathcal{X}_1, \dots, \mathcal{X}_n$ and we compute 100 replications of the Monte Carlo estimate of $D(\mathcal{C}_r | \mathcal{X}_1, \dots, \mathcal{X}_n)$; see Figure 24. The Monte Carlo estimates tend to underestimate the sample depth. Moreover the variability of the Monte Carlo estimates depends on the position of the circle \mathcal{C} with respect to the sample of curves. Nevertheless both the bias and the variance decrease as m increases.

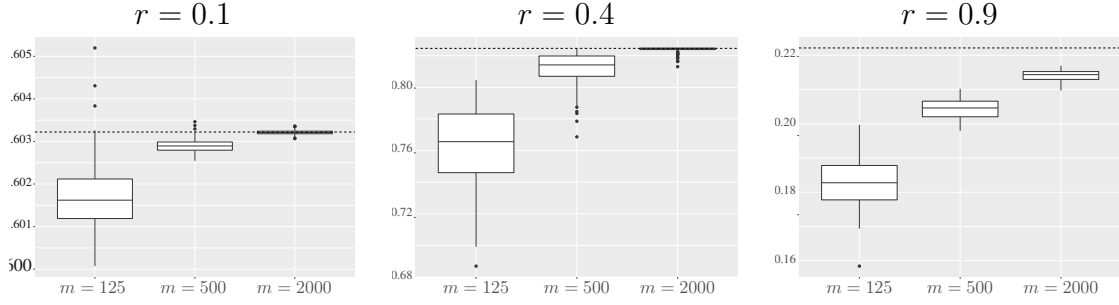


Figure 24: Boxplot of Monte Carlo estimates of the sample depths (Algorithm 1) for curves \mathcal{C}_r with respect to a sample of $n = 25$ concentric circles over 100 replications : (left) $r = 0.1$, (middle) $r = 0.4$, (right) $r = 0.9$. The Monte Carlo sample sizes considered are $m \in \{125, 500, 2000\}$. The horizontal dotted line is at the value $D(\mathcal{C}_r | \mathcal{X}_1, \dots, \mathcal{X}_n)$.

Table 2 illustrates the convergence in probability of the sample depth $D(\mathcal{C} | \mathcal{X}_1, \dots, \mathcal{X}_n)$ and of its Monte Carlo approximation (see Algorithm 1) to $D(\mathcal{C} | P)$ as $n \rightarrow \infty$ over 5,000 replications. For every replicated sample, we compute the depth of \mathcal{C}_r using Equation (7.1) and its approximation using Algorithm 1. The sample size m in Algorithm 1 is set to 500. As expected, both the empirical bias of the sample curve depth and its empirical standard deviation converge to zero for every value of r . The sample curve depth is on average smaller than the population depth. Moreover the standard deviation of $D(\mathcal{C}_r | \mathcal{X}_1, \dots, \mathcal{X}_n)$ is a function of the radius.

Since the Monte Carlo approximation tends to underestimate the sample depth, its average is expected to be smaller than the population depth : the bias of the Monte Carlo approximation is then larger than that of the sample curve depth. We may expect a larger variance for the Monte Carlo estimate. In this example the variability due to the Monte Carlo estimate is quite weak, and tends to be equivalent to the variability of the sample curve depth for a large enough sample size.

	r	0.1	0.4	0.5	0.6	0.9
	$D(\mathcal{C}_r P)$	0.627	0.830	0.758	0.629	0.169
$n = 50$	$D(\mathcal{C}_r \mathcal{X}_1, \dots, \mathcal{X}_n)$	0.627	0.808	0.744	0.617	0.161
		(0.020)	(0.031)	(0.071)	(0.083)	(0.062)
	MC-estimate	0.627	0.782	0.697	0.574	0.144
		(0.020)	(0.041)	(0.071)	(0.078)	(0.056)
$n = 200$	$D(\mathcal{C}_r \mathcal{X}_1, \dots, \mathcal{X}_n)$	0.627	0.825	0.756	0.628	0.167
		(0.010)	(0.011)	(0.037)	(0.042)	(0.031)
	MC-estimate	0.627	0.799	0.705	0.581	0.149
		(0.010)	(0.022)	(0.038)	(0.040)	(0.028)
$n = 800$	$D(\mathcal{C}_r \mathcal{X}_1, \dots, \mathcal{X}_n)$	0.627	0.830	0.758	0.629	0.169
		(0.005)	(0.005)	(0.019)	(0.021)	(0.015)
	MC-estimate	0.627	0.806	0.707	0.582	0.151
		(0.005)	(0.015)	(0.021)	(0.022)	(0.014)

Table 2: Average of sample depths and their Monte Carlo approximations (with $m = 500$) for the curves \mathcal{C}_r and their corresponding standard deviations (in parentheses) with respect to increasing sample sizes n over 5,000 replications.

Scheme 2 : (see paragraph 4.2.1 in [Claeskens et al. 2014](#)). We consider an i.i.d. sample $\mathcal{X}_1, \dots, \mathcal{X}_n$, from the process \mathcal{X} proposed by (see paragraph 4.2.1 in [Claeskens et al. 2014](#)),

$$\mathcal{X} = \{(x, A_1 \sin(2\pi x) + A_2 \cos(2\pi x)); x \in [L, U]\},$$

where $A_1, A_2 \sim \mathcal{U}[0, 0.05]$, $L \sim \mathcal{U}[0, \frac{2\pi}{3}]$, and $U \sim \mathcal{U}[\frac{4\pi}{3}, 2\pi]$, all independent. The mean of the process is denoted as $\mathcal{C}_\mathcal{X}$ with the value $a_1 = a_2 = 0.025$ of A_1 and A_2 . Using the Monte Carlo approximation for a fixed values of m and Δ , we compute the depth of $\mathcal{C}_\mathcal{X}$. We repeat the experiment 1,000 times for different values of n , m and Δ .

First we fix the $n = 50$ curves of the sample, and we aim to measure the effect of m and Δ on the computation of the depth of $\mathcal{C}_\mathcal{X}$ given the sample $\mathcal{X}_1, \dots, \mathcal{X}_n$. Table 3 indicates the average depths and their standard deviations (in parentheses) for the curve $\mathcal{C}_\mathcal{X}$ for different choices of m and Δ . From the simulations, the threshold Δ in the chosen range seems to have very limited influence on the estimated depth value. Further simulations indicate that averages of the depths converge (the consecutive differences decrease) and their standard deviations decrease towards zero as m increases as expected from Theorem 3.1. Figure 25 (right) indicates that a subsample of deepest curves is located nearby the center of the stochastic process.

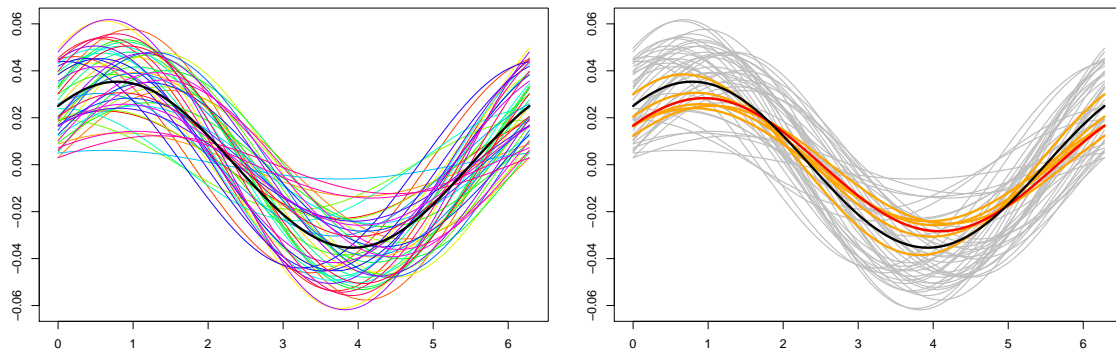


Figure 25: Illustration of the sample of $n = 50$ curves for Simulation 1. In the left panel, the curves \mathcal{X}_i are plotted in different colors and the mean curve $\mathcal{C}_\mathcal{X}$ in black. In the right panel, the curves with depth larger than $0.727 - 2 \times 0.014$ (with $m = 500$ and $\alpha = 1/8$, see Table 3) are plotted in orange, where 0.727 is the depth of the mean curve, the deepest curve having depth 0.744 in red.

Lastly, we aim to measure the effect of the size n of the sample of curves on the computation of the depth. Here, we sample $m = 1,000$ points on each curve. For every Monte Carlo replication, we generate a new i.i.d. sample $\mathcal{X}_1, \dots, \mathcal{X}_n$ from the process \mathcal{X} defined above. Table 4 shows the average depths and their standard deviations (in parentheses) of the curve $\mathcal{C}_\mathcal{X}$. We can see that the depth of $\mathcal{C}_\mathcal{X}$ converges as expected in Theorem 3.1. Note that, compared to Table 3, the standard deviations take into account additionally the variation of the curves' sample, cf. 0.010 for $\alpha = 1/8$, $m = 1000$ in Table 3 and 0.023 for $n = 50$ in Table 4.

Simulation 2 : [Cuevas et al. \(2007\)](#). We consider an i.i.d. sample $\mathcal{Y}_1, \dots, \mathcal{Y}_n$ from the process \mathcal{Y} proposed by [Cuevas et al. \(2007\)](#):

$$\mathcal{Y} = \{(x, 30(1-x)^{1+W}x^{1.5-W} + U_x); x \in [L, U]\}$$

Table 3: Average depths for the mean curve \mathcal{C}_X and their corresponding standard deviations (in parentheses) with respect to a sample of size $n = 50$ for Simulation 1 over $N = 1,000$ Monte Carlo repetitions with differing m and $\Delta = 1/(10m^\alpha)$.

$\alpha \backslash m$	20	50	100	200	500	1000	2000	5000	10000
0	0.616 (0.055)	0.685 (0.040)	0.721 (0.030)	0.745 (0.023)	0.764 (0.015)	0.772 (0.010)	0.777 (0.007)	0.781 (0.004)	0.782 (0.003)
1/8	0.62 (0.056)	0.69 (0.040)	0.726 (0.029)	0.749 (0.022)	0.767 (0.014)	0.774 (0.010)	0.778 (0.006)	0.781 (0.004)	0.782 (0.003)
1/4	0.615 (0.054)	0.686 (0.039)	0.723 (0.031)	0.747 (0.022)	0.766 (0.014)	0.773 (0.010)	0.778 (0.007)	0.781 (0.004)	0.782 (0.003)

Table 4: Average depths for the mean curve and their corresponding standard deviations (in parentheses) for Simulation 1 over $N = 1,000$ Monte Carlo repetitions, $m = 1,000$, and $\alpha = 1/8$ with growing n .

n	20	50	100	200	500	1000	2000	5000	10000
\mathcal{C}_X	0.730 (0.044)	0.751 (0.023)	0.759 (0.016)	0.762 (0.012)	0.764 (0.009)	0.765 (0.009)	0.766 (0.008)	0.765 (0.008)	0.766 (0.007)

where $\{U_t; t \in [0, 1]\}$ is a zero mean stationary Gaussian process with covariance function $t \mapsto 0.2e^{-\frac{1}{0.3}|t|}$, $W \sim \mathcal{U}[0, 0.5]$, $L \sim \mathcal{U}[0, 0.1]$, $U \sim \mathcal{U}[0.9, 1]$, all independent. The mean of the process is denoted as \mathcal{C}_Y with the parametrization $\mathbf{y}(t) = 15(1-t)t(\sqrt{1-t}-\sqrt{t})/(\log(1-t)-\log(t))$. Notice that since the curves \mathcal{Y}_i are noisy, they may not be in fact rectifiable. While in practice such curves are discretely observed, they can be approximated by affine functions with a finite length.

Similarly to the last scheme, we fix the $n = 50$ curves of the samples. In Figure 26 (right), we depict the first Monte Carlo replication with the deepest curve \mathcal{Y}_1 and a subsample of curves with a depth closest to it in depth. Note that the depth of \mathcal{C}_Y is around 0.6 while the depth of the deepest curve in the sample is about 0.8. Although the mean curve \mathcal{C}_Y is fairly central, the deepest curve \mathcal{Y}_1 is a better representative of the sample because of the smoothness of \mathcal{C}_Y . Table 5 indicates the average depths and their standard deviations (in parentheses) for the curves \mathcal{C}_Y and \mathcal{Y}_1 (notice that due to the variation of the points on the curves, \mathcal{Y}_1 is not always the deepest curve for all Monte Carlo replications). Even though the standard deviations are of the same order as in the previous simulation, we remark that the depths of \mathcal{Y}_1 are twice more dispersed than those of \mathcal{C}_Y .

Table 5: Average depths for the mean curve \mathcal{C}_Y and the deepest curve \mathcal{Y}_1 and their corresponding standard deviations (in parentheses) for Simulation 2 over $N = 1,000$ Monte Carlo repetitions, $n = 50$ curves and $\alpha = 1/8$.

m	20	50	100	200	500	1000	2000	5000	10000
\mathcal{C}_Y	0.497 (0.055)	0.54 (0.039)	0.557 (0.031)	0.568 (0.021)	0.576 (0.014)	0.58 (0.010)	0.583 (0.007)	0.584 (0.004)	0.585 (0.003)
\mathcal{Y}_1	0.633 (0.069)	0.694 (0.061)	0.726 (0.049)	0.746 (0.038)	0.761 (0.026)	0.768 (0.018)	0.772 (0.013)	0.774 (0.008)	0.774 (0.006)

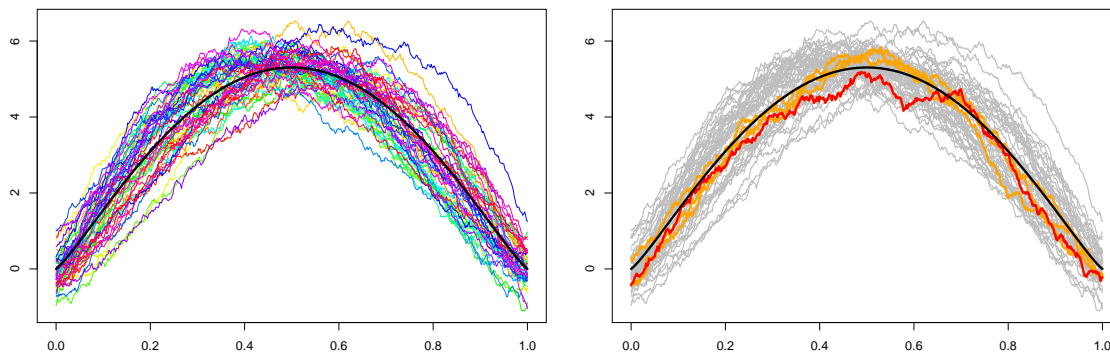


Figure 26: Illustration of the sample of $n = 50$ curves for Simulation 2. In the left panel, the curves \mathcal{Y}_i are plotted in different colors and the mean curve \mathcal{C}_Y in black. In the right panel, the curves with depth larger than $0.752 - 2 \times 0.026$ (with $m = 500$ and $\alpha = 1/8$, see Table 5) are plotted in orange, where the deepest curve having depth 0.752 is plotted in red, the depth of the mean curve is 0.571.

8 Pre-processing of DTI Scans

DTI scans were acquired from all 34 twin pairs on a Philips 3T Achieva Quasar Dual MRI scanner (Philips Medical System, Best, The Netherlands), using a single-shot echo-planar imaging (EPI) sequence (TR = 7115 ms, TE = 70 ms). For each diffusion scan, 32 gradient directions ($b = 1000$ s/mm²) and a non-diffusion-weighted acquisition ($b = 0$ s/mm²) were acquired over a 96mm² image matrix (FOV 240 mm \times 240 mm²); with a slice thickness of 2.5 mm and no gap, yielding 2.5 mm isotropic voxels.

We used the MRtrix software (Tournier et al. 2012) to extract fiber tracts from the DTI scans and we chose corticospinal tract (both left and right) here because corticospinal tracts are long and could be identified and extracted relatively accurately and reliably in comparison to other shorter and more ambiguous fiber tracts of the human brain. We used the seed region of interest on an axial slice on which the cerebral peduncle was visible. The resulting data sets were two bundles of around 1,000 fibers each per subject. Each fiber was described by a set of around 400 successive 3D locations. The size of a single file containing only one bundle of fibers was around 12MB, so that altogether the $34 \times 2 \times 2$ files weigh around 1.6GB.