



**HAL**  
open science

## O-Band Emitting InAs Quantum Dots Grown by MOCVD on a 300 mm Ge-Buffered Si (001) Substrate

Oumaima Abouzaid, Hussein Mehdi, Mickael Martin, Jérémy Moeyaert, Bassem Salem, Sylvain David, Abdelkader Souifi, Nicolas Chauvin, Jean-Michel Hartmann, Bouraoui Ilahi, et al.

► **To cite this version:**

Oumaima Abouzaid, Hussein Mehdi, Mickael Martin, Jérémy Moeyaert, Bassem Salem, et al.. O-Band Emitting InAs Quantum Dots Grown by MOCVD on a 300 mm Ge-Buffered Si (001) Substrate. *Nanomaterials*, 2020, 10 (12), pp.2450. 10.3390/nano10122450 . hal-03185296

**HAL Id: hal-03185296**

**<https://hal.science/hal-03185296v1>**

Submitted on 27 Sep 2024

**HAL** is a multi-disciplinary open access archive for the deposit and dissemination of scientific research documents, whether they are published or not. The documents may come from teaching and research institutions in France or abroad, or from public or private research centers.

L'archive ouverte pluridisciplinaire **HAL**, est destinée au dépôt et à la diffusion de documents scientifiques de niveau recherche, publiés ou non, émanant des établissements d'enseignement et de recherche français ou étrangers, des laboratoires publics ou privés.



Distributed under a Creative Commons Attribution 4.0 International License



Article

# O-Band Emitting InAs Quantum Dots Grown by MOCVD on a 300 mm Ge-Buffered Si (001) Substrate

Oumaima Abouzaid <sup>1,2</sup>, Hussein Mehdi <sup>1</sup> , Mickael Martin <sup>1</sup>, Jérémy Moeyaert <sup>1</sup>, Bassem Salem <sup>1,\*</sup> , Sylvain David <sup>1</sup>, Abdelkader Souifi <sup>3</sup> , Nicolas Chauvin <sup>3</sup> , Jean-Michel Hartmann <sup>4</sup>, Bouraoui Ilahi <sup>5</sup> , Denis Morris <sup>5</sup> , Ali Ahaitouf <sup>2</sup> , Abdelaziz Ahaitouf <sup>6</sup> and Thierry Baron <sup>1,\*</sup>

<sup>1</sup> Univ. Grenoble Alpes, CNRS, CEA-Leti, Grenoble INP, LTM, F-38054 Grenoble, France; abouzaidoumaima@gmail.com (O.A.); hussein.mehdi@cea.fr (H.M.); mickael.martin@cea.fr (M.M.); Jeremy.moeyaert@cea.fr (J.M.); Sylvain.david@cea.fr (S.D.)

<sup>2</sup> SIGER Laboratory, Faculty of Sciences and Technology, Université Sidi Mohammed Ben Abdellah, Fès BP. 2202, Morocco; ali.ahaitouf@usmba.ac.ma

<sup>3</sup> Institut des Nanotechnologies de Lyon (INL)-UMR5270-CNRS, Université de Lyon, INSA-Lyon, 7 avenue Jean Capelle, 69621 Villeurbanne, France; abdelkader.souifi@insa-lyon.fr (A.S.); nicolas.chauvin@insa-lyon.fr (N.C.)

<sup>4</sup> Univ. Grenoble Alpes, CEA-LETI, F-38054 Grenoble, France; jean-michel.hartmann@cea.fr

<sup>5</sup> Institut Quantique et Laboratoire Nanotechnologies Nanosystèmes (LN2)-CNRS UMI-3463, 3IT, Université de Sherbrooke, Sherbrooke, QC J1K 2R1, Canada; bouraoui.ilahi@usherbrooke.ca (B.I.); Denis.Morris@USherbrooke.ca (D.M.)

<sup>6</sup> Faculté Polydisciplinaire Taza, Université Sidi Mohammed Ben Abdellah, LSI, Taza B.P. 1223, Morocco; abdelaziz.ahaitouf@usmba.ac.ma

\* Correspondence: bassem.salem@cea.fr (B.S.); Thierry.baron@cea.fr (T.B.)

Received: 23 October 2020; Accepted: 3 December 2020; Published: 7 December 2020



**Abstract:** The epitaxy of III-V semiconductors on silicon substrates remains challenging because of lattice parameter and material polarity differences. In this work, we report on the Metal Organic Chemical Vapor Deposition (MOCVD) and characterization of InAs/GaAs Quantum Dots (QDs) epitaxially grown on quasi-nominal 300 mm Ge/Si(001) and GaAs(001) substrates. QD properties were studied by Atomic Force Microscopy (AFM) and Photoluminescence (PL) spectroscopy. A wafer level  $\mu$ PL mapping of the entire 300 mm Ge/Si substrate shows the homogeneity of the three-stacked InAs QDs emitting at  $1.30 \pm 0.04 \mu\text{m}$  at room temperature. The correlation between PL spectroscopy and numerical modeling revealed, in accordance with transmission electron microscopy images, that buried QDs had a truncated pyramidal shape with base sides and heights around 29 and 4 nm, respectively. InAs QDs on Ge/Si substrate had the same shape as QDs on GaAs substrates, with a slightly increased size and reduced luminescence intensity. Our results suggest that 1.3  $\mu\text{m}$  emitting InAs QDs quantum dots can be successfully grown on CMOS compatible Ge/Si substrates.

**Keywords:** Quantum Dots (QDs); semiconductor III-V; Metal Organic Chemical Vapor Deposition (MOCVD)

## 1. Introduction

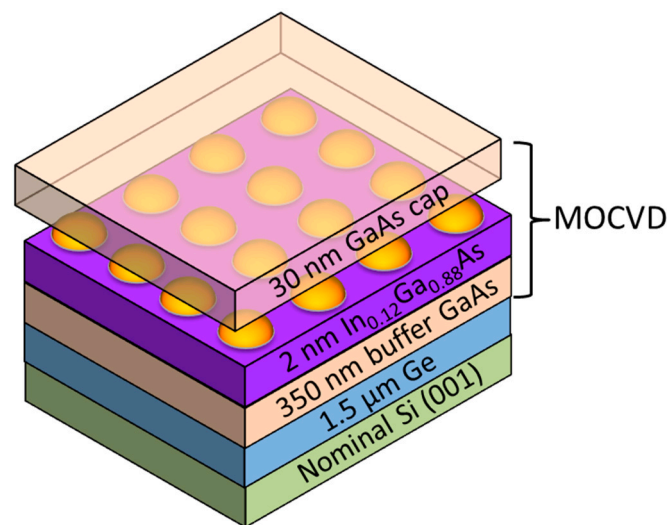
III-V compounds have unique properties such as direct bandgap and high electron mobility, which are decisive for applications ranging from high frequency data transmission to light emission or photo-detection [1]. Combining these advantages with the maturity of the silicon CMOS industry opens the way towards Si photonic devices [2,3]. Bonding of III-V devices on silicon platforms is already a reality. A more prospective way could be the integration of III-V semiconductors directly on silicon

wafers by heteroepitaxy [4]. This solution remains very challenging due to differences in polarity [5], lattice parameter [6], and thermal expansion coefficient between III-V and silicon [7], resulting in structural defects which are detrimental for electronic and optical properties. Those hurdles can be overcome by growing quantum dots instead of 2D epitaxial films [8]. Furthermore, high crystalline quality Ge layers on Si substrates help in obtaining superior quality III-V QDs on Si wafers [9]. In addition to their robustness against structural defects [8], InAs QDs offer widely tunable emission wavelengths that can be controlled in-situ [10] or ex-situ [11], offering the opportunity to integrate various III-V optoelectronic devices on Si substrates.

In this study, we carried out the growth as well as the structural and the optical characterization of InAs quantum dots on 300 mm quasi-nominal Si(001) substrates covered by Ge/GaAs bilayer buffers. We also combined optical emission at 1.3  $\mu\text{m}$  on silicon substrates and numerical modeling to predict the QDs' typical size and shape. A  $\mu\text{PL}$  mapping on the whole 300 Si substrate was carried out on more than 600 points. This study is an important step towards the integration of III-V semiconductors on 300 mm diameter Si substrates used in mainstream CMOS fabrication lines.

## 2. Experiments

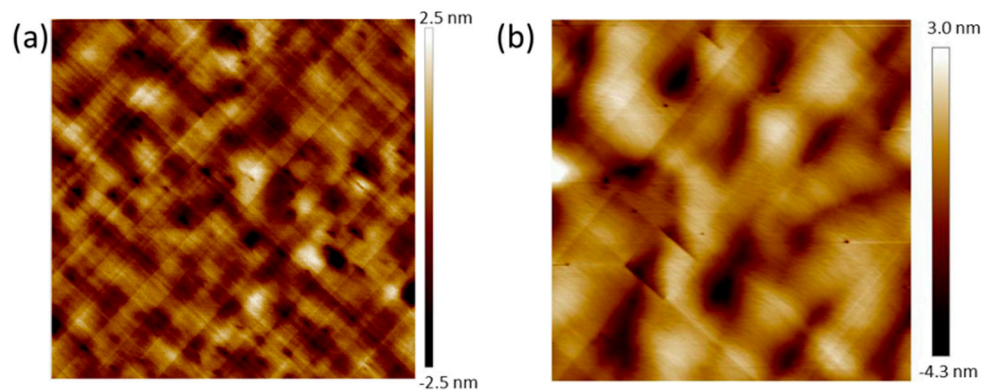
The III-V epitaxy of InAs/GaAs QDs (Figure 1) was performed in an Applied Materials Metal Organic Chemical Vapor Deposition (MOCVD) reactor (Santa Clara, California, United States of America) on 300 mm Si(001) substrates with an offcut angle below  $0.5^\circ$  towards one of the crystallographic  $\langle 110 \rangle$  directions. Those Si starting wafers are fully compatible with the silicon manufacturing industry.



**Figure 1.** InAs/GaAs quantum dot structure grown on Ge on quasi-nominal Silicon(001) substrates.

First, 1.5  $\mu\text{m}$  thick Ge Strain-Relaxed Buffers (SRBs) were grown in an Epi Centura Reduced Pressure-Chemical Vapor Deposition (RP-CVD) industrial cluster tool from Applied Materials (Santa Clara, California United States of America). Germane ( $\text{GeH}_4$ ) diluted in  $\text{H}_2$  was used as a Ge source. A low temperature/high temperature approach (more precisely, 400  $^\circ\text{C}$ , 100 Torr/750  $^\circ\text{C}$ , 20 Torr) was used, together with some short duration thermal cycling between 750 and 875  $^\circ\text{C}$ , to minimize the Threading Dislocations Density (TDD) [12,13]. With this growth method, we obtained smooth, cross-hatched Ge buffers with a surface root mean square roughness (RMS) around 0.8 nm for 20  $\mu\text{m} \times 20 \mu\text{m}$  Atomic Force Microscopy (AFM) (Figure 2a) images and a Threading Dislocation Density (TDD) around  $10^7 \text{ cm}^{-2}$  [9]. Prior to GaAs heteroepitaxy, a Siconi<sup>TM</sup> treatment followed by an annealing at 700  $^\circ\text{C}$  under hydrogen was used to remove native oxide on the Ge SRBs and prepare the surface [8]. After that, Ge/Si wafers were loaded in the MOCVD chamber equipped with

Trimethylgallium (TMGa), tertiarybutylarsine (TBAs) and trimethylindium (TMIn) organometallic precursors (Ga, As, and In sources, respectively).



**Figure 2.** (a) A  $20\ \mu\text{m} \times 20\ \mu\text{m}$  AFM image of the surface of a  $1.5\ \mu\text{m}$  thick Ge SRB on a Si(001) substrate; and (b) a  $5\ \mu\text{m} \times 5\ \mu\text{m}$  AFM image of the  $350\ \text{nm}$  thick GaAs buffer on a Ge-buffered silicon (001) substrate.

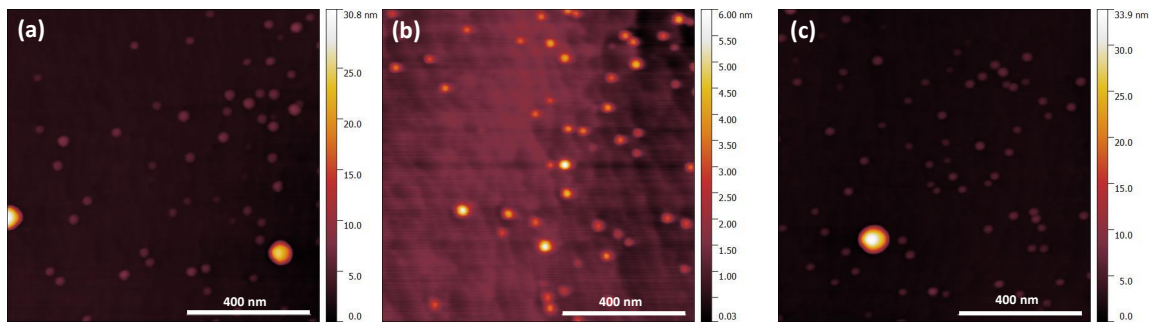
A  $350\ \text{nm}$  thick GaAs buffer was grown at a temperature of  $620\ ^\circ\text{C}$  and a pressure between 20 and 100 Torr, with no Anti-Phase Boundaries (APBs) as shown in AFM with a RMS roughness of  $1.09\ \text{nm}$  (Figure 2b) [14]. Then, InAs QDs were grown at a temperature of  $520\ ^\circ\text{C}$  for 40 s. The growth was then interrupted for 20 s under TBAs. Their growth rate was estimated at  $0.18\ \text{\AA}/\text{s}$ , as we have no in-situ control of the amount of deposited indium. The QDs laid on top of a  $2\ \text{nm}$  thick  $\text{In}_{0.12}\text{Ga}_{0.88}\text{As}$  underlying layer. A  $30\ \text{nm}$  GaAs cap was added at  $520\ ^\circ\text{C}$  to complete the heterostructure. Using Ge SRBs, with a lattice parameter close to that of GaAs ( $a_{\text{Ge}} = 5.658\ \text{\AA} \Leftrightarrow a_{\text{GaAs}} = 5.653\ \text{\AA}$ ), between the Si substrate and the GaAs buffer, significantly reduced the TDD, typically from  $10^9\ \text{cm}^{-2}$  to  $10^7\ \text{cm}^{-2}$ , which should improve the optical properties of InAs/GaAs QDs. Reference samples were grown on GaAs(001) substrates with the same growth conditions.

Photoluminescence measurements were performed at 300 K using a  $532\ \text{nm}$  diode-pumped solid-state laser with an excitation power density of  $273\ \text{W}/\text{cm}^2$ . Micro-photoluminescence measurements were performed at 300 K using a  $780\ \text{nm}$  diode-pumped solid-state laser with an excitation power density between  $100\ \text{W}/\text{cm}^2$  and  $21\ \text{kW}/\text{cm}^2$ . Then, the PL emission was dispersed by a spectrometer and detected by liquid nitrogen cooled InGaAs (IGA) photodetector. Micro-PL ( $\mu\text{PL}$ ) enabled us to achieve higher power densities for the same nominal laser power (around  $4\ \mu\text{m}$  spot size in  $\mu\text{PL}$  against around  $200\ \mu\text{m}$  in PL). Finally, tapping-mode AFM measurements were carried out on a Bruker FastScanTM equipment.

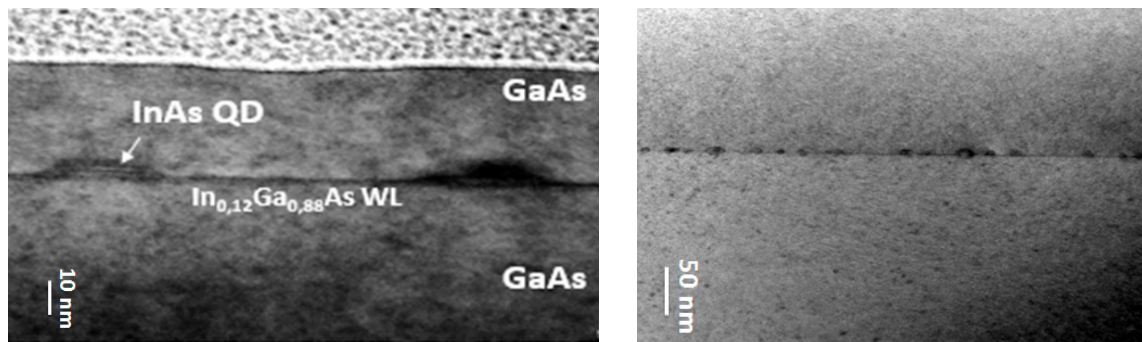
### 3. Results and Discussion

Figure 3a–c shows  $1\ \mu\text{m} \times 1\ \mu\text{m}$  AFM images of uncapped InAs QDs from the center, the mid-radius, and the edge of the wafer, respectively. The QDs density is rather uniform over the whole  $300\ \text{mm}$  wafer surface, ranging from  $6 \times 10^9\ \text{cm}^{-2}$  at the center and mid-radius to  $5 \times 10^9\ \text{cm}^{-2}$  at the wafer edge. The average QD's height is around  $5 \pm 0.11\ \text{nm}$ , while the diameter is close to  $40 \pm 3\ \text{nm}$  for the biggest ones.

However, it is well known that the capping process changes the QDs' shape and size [15]. For that reason, cross-sectional TEM images of InAs QDs capped with  $30\ \text{nm}$  of GaAs are presented in Figure 4. QDs have a truncated pyramidal shape, a base length of  $30\ \text{nm}$  and a height of  $5\ \text{nm}$ . Eisele et al. [15] explained that the truncated pyramidal structure was due to diffusion during the capping.



**Figure 3.** The  $1\ \mu\text{m} \times 1\ \mu\text{m}$  AFM images of uncapped InAs/GaAs QDs grown on a Ge/Si 300mm substrate: (a) the center; (b) the mid-radius; and (c) close to the edge.



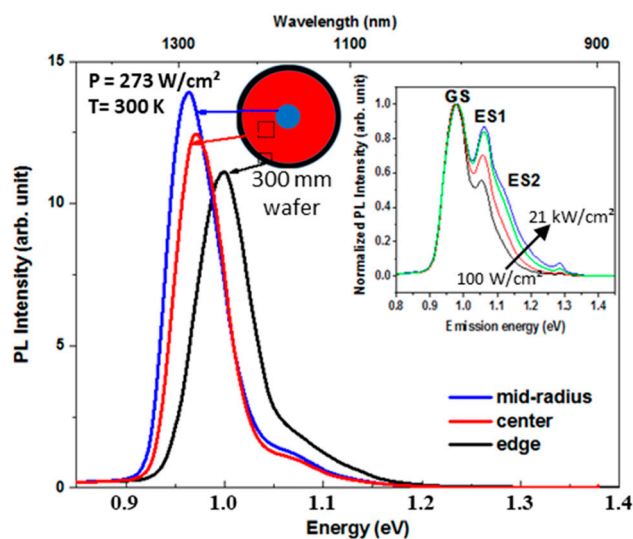
**Figure 4.** Cross-sectional TEM images of InAs/GaAs quantum dots grown on Ge/Si 300 mm quasi-nominal substrates.

To investigate the optical properties of these QDs, PL measurements at 300 K were performed at three different positions: the center, mid-radius, and edge of the wafer (Figure 5). Three peaks are identified by  $\mu\text{PL}$ . The peak at 0.96 eV is the ground state (GS). The ones at 1.05 and 1.12 eV that increased with the optical power density are the first (1ES) and second (2ES) excited states, respectively. The PL intensity of InAs QDs grown on GaAs/Ge/Si is lower than the reference one on a GaAs substrate (not shown here) by a factor of 4. This could be explained by the remaining threading dislocations in the GaAs/Ge/Si structure acting as non-radiative recombination centers [16]. PL peak's Full Width at Half Maxima (FWHM), around 70 meV, are very close for both samples.

To evaluate the mean shape and size of a large number of buried QDs contributing to the observed PL band, numerical modeling, combined with PL spectroscopy can be efficiently employed [17]. Indeed, InAs QDs ground and excited states emission energies can be numerically determined by solving the single-band 3D Schrödinger equation in Cartesian coordinates using the finite elements method within the effective mass approximation [18,19]. The Schrödinger equation, given by Equation (1), is solved for electrons and heavy holes.

$$-\frac{\hbar^2}{2} \nabla \left( \frac{1}{m^*(\vec{r})} \nabla \varphi(\vec{r}) \right) + V(\vec{r}) \varphi(\vec{r}) = E \varphi(\vec{r}) \quad (1)$$

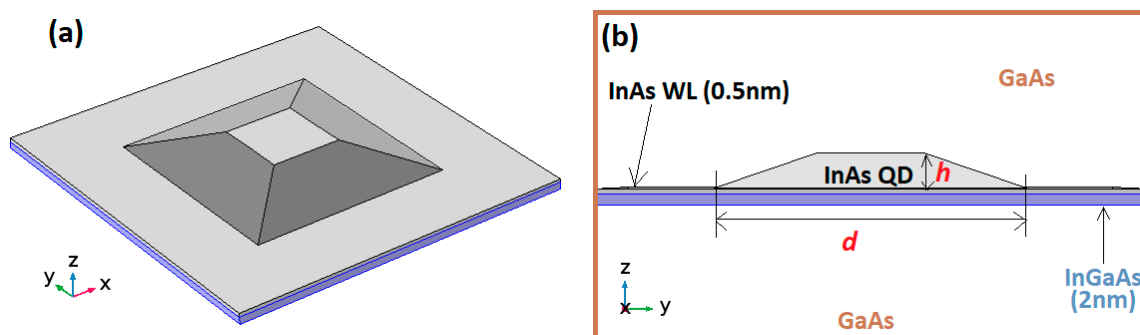
$m^*$ ,  $E$ , and  $\varphi$  are the carrier's effective mass, confined energy levels, and wave function, respectively.  $V$  is the confining potential barrier considering the lattice mismatch induced strain effects [17] and  $r$  is the Cartesian coordinates' vector.



**Figure 5.** Room temperature PL spectra from InAs QDs grown on GaAs/Ge/Si structure at the center, at the mid-radius and the edge of the wafer with a power density of  $273 \text{ W/cm}^2$ . The inset shows the evolution of the normalized  $\mu\text{PL}$  spectra as function of the increased optical power density from  $100 \text{ W/cm}^2$  (black line) to  $21 \text{ kW/cm}^2$  (blue line).

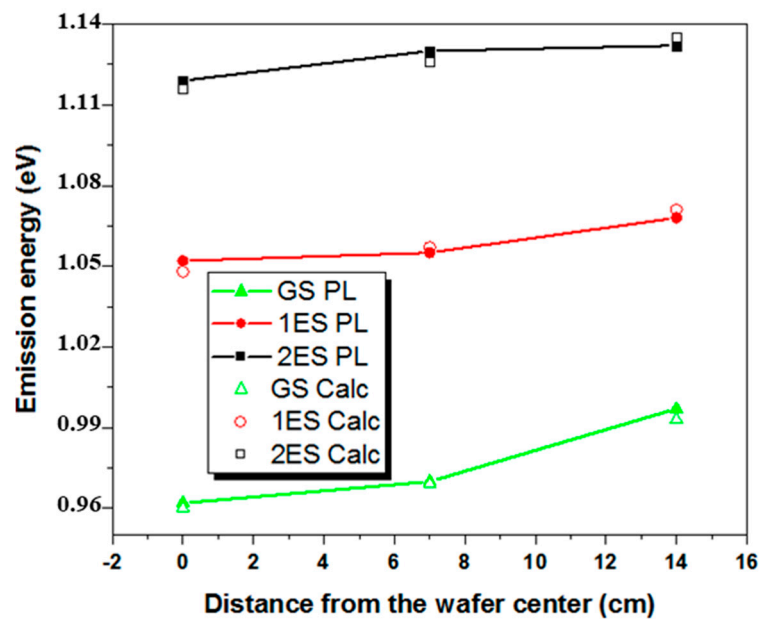
InAs and GaAs parameters were taken from [20]. Calculations were performed assuming the QDs have a truncated pyramidal shape, in line with TEM observations (Figure 4). Furthermore, the In/Ga intermixing at the QDs/barrier interface was assumed to be negligible, enabling us to consider QDs to be made of pure InAs in our calculations. Indeed, stabilized surfaces with bonded InAs are favorable in MOCVD, preventing indium segregation and intermixing at temperatures higher than those typically employed in solid source molecular beam epitaxy [21,22]. Furthermore, the low InAs deposition rate results in bigger dots which are less sensitive to interface intermixing [23]. Additionally, the presence of InGaAs underlying layer may also have minimized the intermixing at the QD bottom [24].

Inter-band transition energies were numerically tuned by changing the truncated pyramid height, base length, and ratio between upper and base surfaces. The matching of the theoretical emission energies with the PL emission peak's maxima yielded an accurate estimation of the buried QD size and shape. Figure 6 shows a schematic of the modeled QD.



**Figure 6.** Schematics of the modeled QD structure: (a) 3D view; and (b) cross-sectional view showing the layers thicknesses and QD dimensions.  $h$  and  $d$  are the QDs' height and base side length, respectively.

Experimental and theoretical emission energies associated with the ground states and the first and second excited states of InAs QDs at the center, mid radius and close to the edges of the 300 mm wafer are provided in Figure 7. Data show the best matching from simulations.

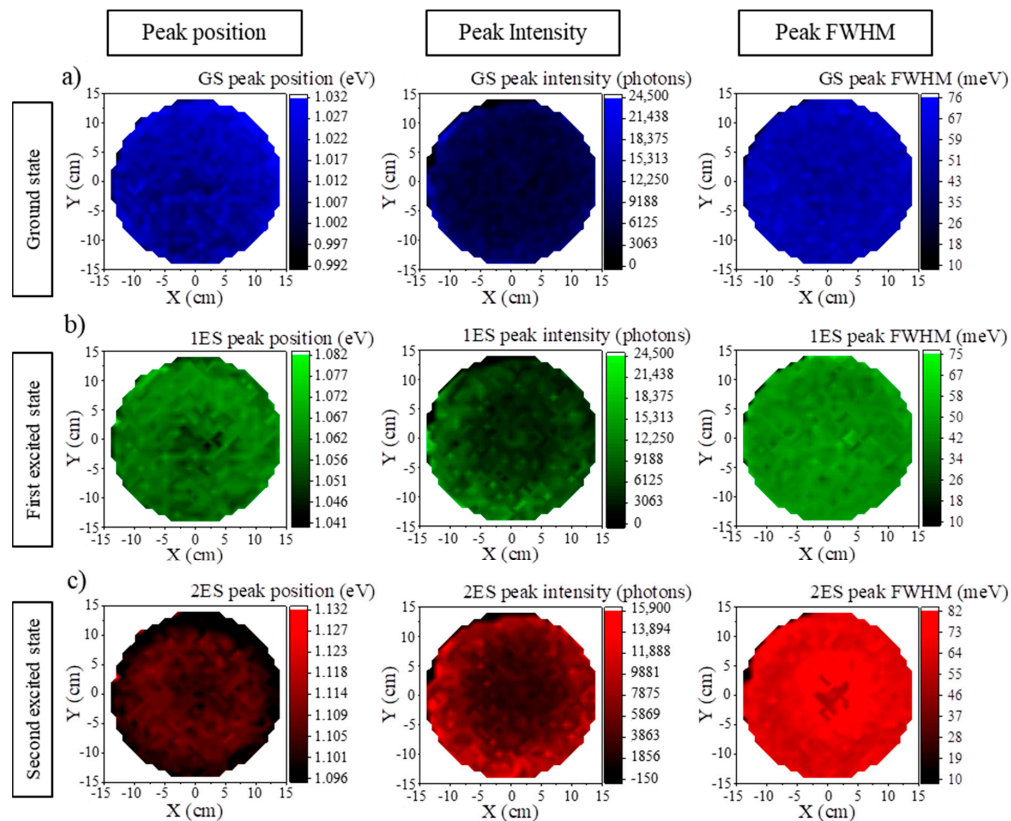


**Figure 7.** Experimental and calculated emission energies from the QDs' Ground states (GS) (black squares) and first (1ES) (red circles) and second excited states (2ES) (green triangles) used to determine the mean dots size and shape: lines and full symbols are experimental PL data while empty symbols show the numerical values. The error made on the determination of the peak position is estimated to be less than 1%.

QDs are found to have a constant base side around 29 nm regardless of their position on the wafer. However, the mean dots' height decreases, from 4.8 nm at the wafer center to 4.6 nm at mid radius, together with a small increase of the top to base surface ratio, from 20% to 25%. However, at the wafer's edges, the QD height and top to base surface ratio were found to be 3.8 nm and 35%, respectively. The decrease of the QD size at the wafer edge is consistent with the small dot's density difference evidenced by AFM. In other words, QDs size and density changes are rather small over the surface of the wafer. Following the same procedure for the reference InAs QDs grown on GaAs substrate also yielded truncated pyramidal shaped dots, with base lengths of 28.5 nm and heights of 4.1 nm.

QDs' dimensions from simulations are slightly lower than those from cross-sectional TEM. They are nevertheless in reasonable agreement. Simulated values show the good uniformity, over the wafer surface, of the QDs dimensions, and the limited impact of intermixing at the interfaces. Further characterization by HR-TEM would nevertheless be required for confirmation. Three-period {InAs QDs/GaAs caps} superlattices were grown on GaAs/Ge/Si(001) instead of a single bi-layer, to be closer to actual devices, where high efficiency emission in the active region is required. Room temperature  $\mu$ PL measurements were carried out automatically on 673 different positions to map the entire 300 mm wafer. We analyzed the three main peaks corresponding to the ground state, GS, and the two excited states, 1ES and 2ES. For clarity, we chose to present their: (i) wavelength position; (ii) intensity; and (iii) FWHM maps (Figure 8).

This figure shows that the  $\mu$ PL signal is uniform over the wafer for the three-period InAs QDs. The energies are centered at  $1.000 \pm 0.006$  (GS),  $1.040 \pm 0.005$  (1ES), and  $1.090 \pm 0.004$  eV (2ES). Their full widths at half maximums (FWHM) are  $54 \pm 5$ ,  $46 \pm 5$ , and  $66 \pm 7$  meV over the 300 mm wafer. Clearly, this cartography confirms the homogeneity of three-period InAs QDs, which is mandatory for O-band emitting light source fabrication in an CMOS industrial environment.



**Figure 8.** Room temperature  $\mu$ PL 300 mm mapping of the energy, intensity, and FWHM for three stacked InAs QDs grown on GaAs/Ge/Si (001) structure for: (a) GS peak; (b) 1ES peak; and (c) 2ES peak. Spectra are acquired at 673 different positions to map entirely the Si 300 mm wafer.

#### 4. Conclusions

O-band emitting InAs/GaAs quantum dots were grown in an industrial MOCVD reactor on 300 mm diameter Ge-buffered Si (001) substrates. Morphological investigation by AFM showed a good uniformity of the dots size and distribution over the 300 mm wafer surface. TEM, PL spectroscopy, and numerical modeling revealed that InAs QDs capped with GaAs had a truncated pyramidal shape with a mean height around 4.8 nm and a base length of 29 nm. InAs QDs on Ge/Si substrates had properties similar to those of QDs on GaAs substrates. A slight size increase and a reduced luminescence intensity, most likely due to the higher TDD, were evidenced. Our results demonstrate that InAs/GaAs QDs can be successfully grown on 300 mm Ge/Si substrates, paving the way towards the low-cost integration of O-band emitting light sources on Si(001) wafers.

**Author Contributions:** Formal analysis, O.A., H.M., M.M., J.M., D.M., B.I., S.D.; investigation J.-M.H., D.M., A.S., N.C., T.B., B.S.; writing—original draft preparation, O.A., H.M., D.M., N.C., A.S., B.I., A.A. (Abdelaziz Ahaitouf), A.A. (Ali Ahaitouf); writing—review and editing: O.A., H.M., D.M., N.C., B.I., B.S., T.B. All authors have read and agreed to the published version of the manuscript.

**Funding:** This research was funded by IRT Nanoelec and ANR grant number ANR-10-IRT-05 and ANR-15-IDEX-02.

**Conflicts of Interest:** The authors declare no conflict of interest.



## References

1. Roelkens, G.; Abassi, A.; Cardile, P.; Dave, U.; De Groote, A.; De Koninck, Y.; Dhoore, S.; Fu, X.; Gassenq, A.; Hattasan, N.; et al. III-V-on-silicon photonic devices for optical communication and sensing. *Photonics* **2015**, *2*, 969–1004. [[CrossRef](#)]
2. Mi, Z.; Yang, J.; Bhattacharya, P.; Qin, G.; Ma, Z. High-performance quantum dot lasers and integrated optoelectronics on Si. *Proc. IEEE* **2009**, *97*, 1239–1249. [[CrossRef](#)]
3. Yodo, T.; Tamura, M.; Saitoh, T. Relationship between the optical and structural properties in GaAs heteroepitaxial layers grown on Si substrates. *J. Cryst. Growth* **1994**, *141*, 331–342. [[CrossRef](#)]
4. Lourdudoss, S. Heteroepitaxy and selective area heteroepitaxy for silicon photonics. *Curr. Opin. Solid State Mater. Sci.* **2012**, *16*, 91–99. [[CrossRef](#)]
5. Kroemer, H. Polar-on-nonpolar epitaxy. *J. Cryst. Growth* **1987**, *81*, 193–204. [[CrossRef](#)]
6. Ward, T.; Sánchez, A.M.; Tang, M.; Wu, J.; Liu, H.; Dunstan, D.J.; Beanland, R. Design rules for dislocation filters. *J. Appl. Phys.* **2014**, *116*, 63508. [[CrossRef](#)]
7. Yang, V.K.; Groenert, M.; Leitz, C.W.; Pitera, A.J.; Currie, M.T.; Fitzgerald, E.A. Crack formation in GaAs heteroepitaxial films on Si and SiGe virtual substrates. *J. Appl. Phys.* **2003**, *93*, 3859–3865. [[CrossRef](#)]
8. Gérard, J.M.; Cabrol, O.; Sermage, B. InAs quantum boxes: Highly efficient radiative traps for light emitting devices on Si. *Appl. Phys. Lett.* **1996**, *68*, 3123–3125. [[CrossRef](#)]
9. Hartmann, J.M.; Aubin, J. Assessment of the growth/etch back technique for the production of Ge strain-relaxed buffers on Si. *J. Cryst. Growth* **2018**, *488*, 43–50. [[CrossRef](#)]
10. Hino, Y.; Ozaki, N.; Ohkouchi, S.; Ikeda, N.; Sugimoto, Y. Growth of InAs/GaAs quantum dots with central emission wavelength of 1.05  $\mu\text{m}$  using In-flush technique for broadband near-infrared light source. *J. Cryst. Growth* **2013**, *378*, 501–505. [[CrossRef](#)]
11. Ilahi, B.; Salem, B.; Aimez, V.; Sfaxi, L.; Maaref, H.; Morris, D. Post-growth engineering of InAs/GaAs quantum dots' band-gap using proton implantation and annealing. *Nanotechnology* **2006**, *17*, 3707–3709. [[CrossRef](#)]
12. Bogumilowicz, Y.; Hartmann, J.M.; Rochat, N.; Salaun, A.; Martin, M.; Bassani, F.; Baron, T.; David, S.; Bao, X.-Y.; Sanchez, E. Threading dislocations in GaAs epitaxial layers on various thickness Ge buffers on 300 mm Si substrates. *J. Cryst. Growth* **2016**, *453*, 180–187. [[CrossRef](#)]
13. Hartmann, J.M.; Abbadie, A.; Barnes, J.P.; Fédéli, J.M.; Billon, T.; Vivien, L. Impact of the H<sub>2</sub> anneal on the structural and optical properties of thin and thick Ge layers on Si; Low temperature surface passivation of Ge by Si. *J. Cryst. Growth* **2010**, *312*, 532–541. [[CrossRef](#)]
14. Bogumilowicz, Y.; Hartmann, J.M.; Cipro, R.; Alcotte, R.; Martin, M.; Bassani, F.; Moeyaert, J.; Baron, T.; Pin, J.B.; Bao, X.; et al. Anti-phase boundaries-Free GaAs epilayers on 'quasi-nominal' Ge-buffered silicon substrates. *Appl. Phys. Lett.* **2015**, *107*, 212105. [[CrossRef](#)]
15. Eisele, H.; Lenz, A.; Heitz, R.; Timm, R.; Dähne, M.; Temko, Y.; Suzuki, T.; Jacobi, K. Change of InAs/GaAs quantum dot shape and composition during capping. *J. Appl. Phys.* **2008**, *104*, 124301. [[CrossRef](#)]
16. Li, K.; Liu, Z.; Tang, M.; Liao, M.; Kim, D.; Deng, H.; Sanchez, A.M.; Beanland, R.; Martin, M.; Baron, T.; et al. O-band InAs/GaAs quantum dot laser monolithically integrated on exact (001) Si substrate. *J. Cryst. Growth* **2019**, *511*, 56–60. [[CrossRef](#)]
17. Souaf, M.; Baira, M.; Nasr, O.; Alouane, M.H.H.; Maaref, H.; Sfaxi, L.; Ilahi, B. Investigation of the InAs/GaAs quantum dots' size: Dependence on the strain reducing layer's position. *Materials* **2015**, *8*, 4699–4709. [[CrossRef](#)]
18. Califano, M.; Harrison, P. Presentation and experimental validation of a single-band, constant-potential model for self-assembled InAs/GaAs quantum dots. *Phys. Rev. B* **2000**, *61*, 10959. [[CrossRef](#)]
19. Salhi, A.; Alshaibani, S.; Ilahi, B.; Alhamdan, M.; Alyamani, A.; Albrithen, H.; El-Desouki, M. Tailoring the optical properties of InAs/GaAs quantum dots by means of GaAsSb, InGaAs and InGaAsSb strain reducing layers. *J. Alloys Compd.* **2017**, *714*, 331–337. [[CrossRef](#)]
20. Vurgaftman, I.; Meyer, J.R.; Ram-Mohan, L.R. Band parameters for III–V compound semiconductors and their alloys. *J. Appl. Phys.* **2001**, *89*, 5815–5875. [[CrossRef](#)]
21. Sato, M.; Horikoshi, Y. Effect of indium replacement by gallium on the energy gaps of InAs/GaAs thin-layer structures. *J. Appl. Phys.* **1991**, *69*, 7697–7702. [[CrossRef](#)]

22. Drozdov, Y.N.; Baidus, N.V.; Zvonkov, B.N.; Drozdov, M.N.; Khrykin, O.I.; Shashkin, V.I. Segregation of indium in InGaAs/GaAs quantum wells grown by vapor-phase epitaxy. *Semiconductors* **2003**, *37*, 194–199. [[CrossRef](#)]
23. Joyce, P.B.; Krzyzewski, T.J.; Bell, G.R.; Jones, T.S.; Malik, S.; Childs, D.; Murray, R. Effect of growth rate on the size, composition, and optical properties of InAs/GaAs quantum dots grown by molecular-beam epitaxy. *Phys. Rev. B* **2000**, *62*, 10891. [[CrossRef](#)]
24. Bruls, D.M.; Vugs, J.W.A.M.; Koenraad, P.M.; Salemink, H.W.M.; Wolter, J.H. Determination of the shape and indium distribution of low-growth-rate InAs quantum dots by cross-sectional scanning tunneling microscopy. *Appl. Phys. Lett.* **2002**, *81*, 1708. [[CrossRef](#)]

**Publisher's Note:** MDPI stays neutral with regard to jurisdictional claims in published maps and institutional affiliations.



© 2020 by the authors. Licensee MDPI, Basel, Switzerland. This article is an open access article distributed under the terms and conditions of the Creative Commons Attribution (CC BY) license (<http://creativecommons.org/licenses/by/4.0/>).