



HAL
open science

Improved response of triploid citrus varieties to water deficit is related to anatomical and cytological properties

Radia Lourkisti, Julie Oustric, Yann Quilichini, Yann Froelicher, Stéphane Herbette, Raphael Morillon, Liliane Berti, Jérémie Santini

► To cite this version:

Radia Lourkisti, Julie Oustric, Yann Quilichini, Yann Froelicher, Stéphane Herbette, et al.. Improved response of triploid citrus varieties to water deficit is related to anatomical and cytological properties. *Plant Physiology and Biochemistry*, 2021, 162, pp.762-775. 10.1016/j.plaphy.2021.03.041 . hal-03183940

HAL Id: hal-03183940

<https://hal.science/hal-03183940>

Submitted on 24 Apr 2023

HAL is a multi-disciplinary open access archive for the deposit and dissemination of scientific research documents, whether they are published or not. The documents may come from teaching and research institutions in France or abroad, or from public or private research centers.

L'archive ouverte pluridisciplinaire **HAL**, est destinée au dépôt et à la diffusion de documents scientifiques de niveau recherche, publiés ou non, émanant des établissements d'enseignement et de recherche français ou étrangers, des laboratoires publics ou privés.



Distributed under a Creative Commons Attribution - NonCommercial 4.0 International License

1 Improved response of triploid citrus varieties to water deficit
2 is related to anatomical and cytological properties

3
4
5 Radia Lourkisti^{✉1}, Julie Oustric^{✉1}, Yann Quilichini², Yann Froelicher³, Stéphane Herbette⁴,
6 Raphael Morillon⁵, Liliane Berti¹, Jérémie Santini^{*1}

7 ¹CNRS, Equipe « Biochimie et Biologie moléculaire du végétal », UMR 6134 SPE,
8 Université de Corse, Corsica, France ; ²CNRS, Equipe « Parasites et Ecosystèmes
9 méditerranéens, UMR 6134 SPE, Université de Corse, Corsica, France ; ³CIRAD UMR
10 AGAP, Station INRA, San Giuliano, Corsica, France; ⁴UCA, INRA, PIAF, Clermont-Ferrand,
11 France ; ⁵Equipe « Amélioration des Plantes à Multiplication Végétative », UMR AGAP,
12 Département BIOS, CIRAD, Petit-Bourg, Guadeloupe

13 ***Corresponding author:** Dr. Jérémie Santini, santini_j@univ-corse.fr, Université de Corse
14 Pascal Paoli, CNRS UMR 6134 SPE, Bat PPDB, 1^{er} étage, Campus Grimaldi, 20250 Corte,
15 France.

16 [✉]These authors have contributed equally to this work.

17
18

19 **Abstract**

20 Polyploidy plays a major role in citrus plant breeding to improve the adaptation of polyploid
21 rootstocks as well as scions to adverse conditions and to enhance agronomic characteristics.
22 In *Citrus* breeding programs, triploidy could be a useful tool to react to environmental issues
23 and consumer demands because the produced fruits are seedless. In this study, we compared
24 the physiological, biochemical, morphological, and ultrastructural responses to water deficit
25 of triploid and diploid citrus varieties obtained from ‘Fortune’ mandarin and ‘Ellendale’
26 tangor hybridization. One diploid clementine tree was included and used as a reference. All
27 studied scions were grafted on C-35 citrange rootstock. Triploidy decreased stomatal density
28 and increased stomata size. The number of chloroplasts increased in 3x varieties. These
29 cytological properties may explain the greater photosynthetic capacity (P_{net} , g_s , F_v/F_m) and
30 enhanced water-holding capacity (RWC, proline). In addition, reduced degradation of
31 ultrastructural organelles (chloroplasts and mitochondria) and thylakoids accompanied by less
32 photosynthetic activity and low oxidative damages were found in 3x varieties. Triploid
33 varieties, especially T40-3x, had a better ability to limit water loss and dissipate excess energy
34 (NPQ) to protect photosystems. Higher starch reserves in 3x varieties suggest a better carbon
35 and energy supply and increases in plastoglobuli size suggest less oxidative damage (H_2O_2 ,
36 MDA), especially in T40-3x, and preservation of photosynthetic apparatus. Taken together,
37 our results suggest that desirable cytological and ultrastructural traits induced by triploidy
38 improve water stress response and could be a useful stress marker during environmental
39 constraints.

40 **Keywords: chloroplast ultrastructure, leaf gas exchange, polyploidy, stomatal response,**
41 **oxidative status, water deficit**

42 **1. Introduction**

43 Polyploidy plays a major role in plant evolution and is considered an effective tool for
44 crop improvement (Adams & Wendel, 2005; Comai, 2005). Polyploidy can occur
45 spontaneously from unreduced gametes of somatic hybridization. Allopolyploids can thus
46 combine polyploid advantages and heterosis that refers to the phenomenon that hybrid
47 offspring have greater biomass and faster growth than the average of both parents (Birchler et
48 al., 2010). Polyploid plants are widely associated with desirable traits such as large leaves and
49 flowers, bigger leaf thickness, darker green coloration of leaves and changes in stomatal cell
50 size and density (Allario et al., 2013; Santana-Vieira et al., 2016; Xue et al., 2017). Such
51 anatomical, morphological, physiological and gene expression changes confer superior
52 adaptation to a wider range of environmental stresses (Tan et al., 2015). Thus, examining
53 cytological properties related to physiological and biochemical parameters may be an
54 effective tool for explaining the better tolerance to abiotic stresses including drought. Some
55 studies have shown the relationship between morphological variations and physiological
56 changes with better tolerance of polyploid plants, especially tetraploids, under stressful
57 conditions relative to their diploid counterparts (Allario et al., 2013; Bondada & Syvertsen,
58 2003; Oustric et al., 2019). However, the tolerance of seedlings achieved by other
59 economically relevant ploidy levels, such as triploidy, has not been studied.

60 Drought is the main environmental factor impacting crop yield and fruit quality
61 (Chaves & Oliveira, 2004; LAWLOR, 2002). As climate prediction models show increased
62 occurrences of drought episodes (IPCC 2014), global crop production will continue to be
63 challenged. This trend is particularly worrying in the Mediterranean region which will
64 experience more frequent periods of intensive drought, resulting in the extension of arid areas
65 (Gao & Giorgi, 2008). Drought-sensitive plants exhibit various anatomical features including
66 leaf wilting and leaf shedding that disrupt plant growth. Stomatal closure is among the first
67 response of plants upon exposure to water-deficit and aims to limit water loss through
68 transpiration (Farooq et al., 2012). However, it also limits CO₂ influx resulting in a lower
69 photosynthesis rate. Although stomatal limitations may be the key factor responsible for the
70 lower photosynthesis rate, non-stomatal limitations can occur and may be more important
71 during severe water deficit (Farooq et al., 2009; Flexas et al., 2004). These limitations include
72 the decline of major components of photosynthetic capacity, as the maximum carboxylation
73 rate related to Rubisco activity, the light-saturated rate of electron transport and triose-
74 phosphate used for starch and sucrose synthesis (Urban et al., 2017). The disturbance of

75 photosynthetic activity triggers oxidative stress and the accumulation of reactive oxygen
76 species (ROS) in plant cells (Choudhury et al., 2017). ROS are ubiquitous in the cell and their
77 production is localized in chloroplasts, mitochondria and peroxisomes. They contribute to
78 extensive cell damage including lipid peroxidation and dysfunction of plant physiological and
79 molecular processes which accelerate chlorophyll degradation and loss of cellular integrity.
80 To cope with ROS accumulation, plants have developed complex antioxidant defence
81 strategies. These include the up-regulation of enzymes such as superoxide dismutase (SOD),
82 catalase (CAT), ascorbate peroxidase (APX) and dehydroascorbate reductase (DHAR) and
83 molecules including ascorbate, proline, and glutathione (Mittler, 2002). Moreover, stress
84 response in plants can be influenced by genotype (Zandalinas et al., 2017), the severity of
85 stress conditions (Hong-Bo et al., 2006) and by ploidy level (Dutra de Souza et al., 2017).
86 Given the above described physiologic and metabolic changes, it is not surprising that the
87 ultrastructure of cell components, such as chloroplast, goes through dramatic changes during
88 abiotic stress. Such modifications include changes in the number and size of chloroplasts,
89 plastoglobules and starch reserves (Shao et al., 2016; Zellnig et al., 2010). Thus, analysing
90 their structure and ultrastructure may be a reliable marker of abiotic stress in crop plants,
91 associated with physiological and biochemical parameters related to stress tolerance.

92 *Citrus* is one of the main commercial fruit crops and the Mediterranean area is an
93 extensive citrus producer, especially for mandarins. The harvest season of mandarin,
94 clementine, and other hybrids is extended from September to February. The lack of citrus fruit
95 production (especially small fruits like mandarin) beyond this period and the steady rise in
96 both consumption and consumer expectations, such as the seedlessness, highlight the need to
97 find suitable varieties to satisfy the market demand, mainly between February and May. The
98 creation of triploid hybrids may be a promising breeding strategy to develop new seedless
99 citrus varieties. Citrus trees are mostly diploid with a basic chromosome number in citrus
100 fruits and related genera of $x=9$ (Krug, 1943). However, some exceptions can occur in natural
101 triploid, especially ‘Tahiti’ lime, and in the tetraploid kumquat (Ollitrault et al., 2007).
102 Triploid production has been already extended in the Mediterranean basin particularly in the
103 mandarin breeding program (Ahmed et al., 2020; Aleza et al., 2010; Cuenca et al., 2010).
104 Diploid x diploid hybridization is one of the main ways to produce triploid hybrids (Aleza et
105 al., 2012; Ollitrault et al., 2008). Successful hybridization is mainly determined by the
106 frequency of unreduced gametes by the female parent. In citrus triploid breeding programs,
107 the ‘Fortune’ mandarin displayed the greatest frequency of triploid hybrids (Aleza et al.,
108 2010; Navarro et al., 2015). Because of its polyploidy and fixed heterosis, triploid citrus can

109 have many benefits over their corresponding diploids including lower fertility, higher growth
110 rate, larger leaf area and greater stress tolerance. These characteristics are very useful for
111 economic and ecological purposes.

112 While the greater genetic variability of tetraploids has widely been used in citrus
113 rootstocks to improve stress tolerance (Allario et al., 2013; Balal et al., 2017; Khalid et al.,
114 2020; Oustric et al., 2019), few reports have focused on the improved stress tolerance of
115 triploid citrus plants (Lourkisti et al., 2020). In addition, modifications in cell morphology
116 induced by polyploidy could also affect the response to abiotic stresses, including water
117 deficit (Khazaei et al., 2010; Leal-Bertioli et al., 2012; Xue et al., 2017). Thus, the hypothesis
118 we want to verify in this study is that the better response of citrus triploids to water deficit
119 could be partly explained by their cytological and anatomical characteristics. Therefore, the
120 INRA-CIRAD research centre (San Giuliano, Corsica France) has developed a crossbreeding
121 program between ‘Fortune’ mandarin and ‘Ellendale’ tangor to generate innovative seedless
122 citrus hybrids (Ahmed et al., 2020). The hybridization resulted in diploid and triploid
123 populations. While the ‘Fortune’ mandarin was chosen for its ability to produce triploid
124 hybrids and its pomological features, the ‘Ellendale’ tangor was chosen for its later
125 production (April) and its organoleptic quality.

126 This study sought to decipher the response of 3x compared to 2x under water deficit
127 conditions taking account of the cytological traits changes induced by ploidy in the scion. To
128 achieve this, we evaluate the drought tolerance mechanisms through the analysis of RWC and
129 proline content. The impact of water deficit was evaluated through the analysis of
130 photosynthetic capacity (leaf gas exchange, carboxylation efficiency and chlorophyll
131 fluorescence) and oxidative stress (oxidative markers and antioxidant defences). Structural
132 and ultrastructural traits were also studied to determine if the cellular properties of polyploids
133 could explain the differences in water deficit responses between the varieties.

134

135 **2. Materials and methods**

136 **2.1. Plant material and experimental design**

137 Diploid (2x) and triploid (3x) citrus trees were generated from a hybridization between
138 the ‘Fortune’ mandarin (*Citrus reticulata* Blanco) and the ‘Ellendale’ tangor [*Citrus reticulata*
139 Blanco x *Citrus sinensis* (L) Osb.]. Diploid common clementine was also integrated in the
140 study. Diploid and triploid scions were grafted on Citrange C-35 rootstock (*Citrus sinensis*
141 ‘Ruby Blood’ x *Poncirus trifoliata*) and grown in a greenhouse during seven months at the

142 INRA-CIRAD experimental station in San Giuliano, Corsica, France, 50 m above sea level
143 (42°17'07.5" N, 9°31'21.9" E). C-35 rootstock was chosen for its tolerance to abiotic
144 (drought, cold) and biotic (Tristeza, Phytophthora) stresses. C-35 seedlings used for the
145 experiment were chosen carefully in the nursery to eliminate off-types. The 2x (D40-2x) and
146 3x varieties (T1-3x and T40-3x) were selected as described in a previous study (Lourkisti et
147 al., 2020). Six seedlings of each variety (a total of 24 plants) were transferred to 10 L pots
148 containing a substrate (topsoil, sand, and peat Klasmann TS1, 1:1:2) and grown under
149 identical conditions (photoperiod of 16h with day/night 27-30°C /20-25°C and the relative
150 humidity varying daily between 60% to 80%) in a greenhouse. The same weight of soil was
151 used so that the weight of each pot was 7 kg. During the acclimation period, plants were
152 watered near field capacity (FC) and fertilized with a nutrient solution with nitrogen,
153 phosphorous, potassium (N: 20, P: 5, K: 10, fertilizer unit), magnesium oxide and trace
154 elements.

155 One month before the experiment, plants were pruned to normalize tree size. To obtain
156 the maximum water holding capacity, the plants were watered until saturation and the excess
157 water was allowed to drain overnight. After draining, the pots were weighed to determine the
158 weight at FC. Each pot was then enclosed in a plastic bag to prevent water loss. The plants
159 were then divided into two randomized blocks: 12 plants (three independent biological
160 replicates per variety) were assigned as control plants and continuously irrigated near FC by
161 successive watering and 12 others plants (three independent biological replicates per variety)
162 were subjected to water stress so that the soil water content was only 35% to 45% of FC.
163 Watering was performed in each pot when the assigned minimal soil water content was
164 reached. To maintain this water condition, each pot was weighed daily before and after
165 irrigation. The water deficit lasted 6 days. At the end of the water deficit treatment period, the
166 physiological parameters were recorded. Three independent biological leaf sample replicates
167 were also harvested from each variety and treatment (control and water deficit), frozen
168 immediately, ground in liquid nitrogen and stored at -80°C for biochemical analysis.
169 Concomitantly with physiological measurements and samplings, five 1 cm² and 2 mm² pieces
170 were sampled from the mid-laminar areas of both sets of leaves to perform scanning and
171 transmission electron microscopy.

172 2.2. Water potential and relative water content

173 Pre-dawn (Ψ_{PD}) water potential was determined in one fully expanded leaf per plant
174 (three independent biological replicates per variety) taken from the basal part of the primary

175 branch, using a Scholander-type chamber (PMS Instruments Co., Corvallis, OR, United
176 States) as described by Scholander et al. (1965). Ψ_{PD} was recorded between 04:00 and 06:00
177 am solar time, at the beginning and the end of the water deficit period.

178 Leaf relative water content (RWC) was determined at midday as described by Barrs &
179 Weatherley (1962). Three discs from pooled samples of each variety were cut out with a cork
180 borer between 11:00 am and 12:00 pm, and immediately weighed to determine their fresh
181 weight (FW). The leaf discs were then immersed in distilled water, stored at 4°C in the dark
182 for 24 hours and weighed afterwards to assess their turgid weight (TW). Then, the leaf discs
183 were dried in a forced air circulation oven at 80°C for 24 hours until their weight was
184 constant; the dry weight (DW) was measured. RWC was calculated with the following
185 equation (1):

$$186 \quad RWC (\%) = \frac{\text{Fresh weight} - \text{Dry weight}}{\text{Turgid weight} - \text{Dry weight}} \times 100 \quad (1)$$

187 **2.3.** Leaf gas exchange and chlorophyll fluorescence

188 Before the beginning of the experiment, five mature leaves per plant were selected and
189 marked for all physiological measurements (15 independent biological replicates per variety).
190 For each treatment, the measurements were performed between 09:00 and 11:00 am.

191 Net photosynthesis (P_{net}), stomatal conductance (g_s) and transpiration (E) were
192 monitored with an infrared gas analyser LCPRO-SD (ADC, BioScientific Ltd., UK) fitted
193 with the broad-leaf chamber with the photosynthetic photon flux maintained at 1400 $\mu\text{mol}\cdot\text{m}^{-2}\cdot\text{s}^{-1}$.
194 The CO_2 concentration of 380 $\mu\text{mol}\cdot\text{mol}^{-1}$, air flow of 200 $\mu\text{mol}\cdot\text{s}^{-1}$ and leaf temperature
195 were fixed according to the environmental values. Data were recorded when the parameters
196 stabilized (3-6 min).

197 The chlorophyll fluorescence of dark and light-adapted leaves was determined with an
198 OS1p chlorophyll fluorometer (Opti-Sciences, Inc. Hudson, United States). The maximum
199 (F_m), and variable (F_v) fluorescence were measured under steady-state conditions in dark-
200 adapted leaves (30 minutes) and were used to calculate the maximal quantum yield of PSII
201 (F_v/F_m). Also, the same measurements were recorded under light-adapted conditions, being
202 referred to as F'_o and F'_m (minimum and maximum fluorescence, respectively). These
203 parameters were used to calculate the non-photochemical quenching (NPQ) as $\text{NPQ} = [(F_m -$
204 $F'_m)/F'_m]$. NPQ referred to the efficiency of heat dissipation according to Baker et al. (2007).

205 **2.4.** Scanning electron microscopy (SEM)

206 At the end of the water deficit treatment period, leaf pieces (1 cm²) were sampled from
207 mid-laminar areas of mature leaves and fixed immediately in cold 2.5% glutaraldehyde in 100
208 mM sodium cacodylate buffer (pH 7.2). Fixed tissue was then rinsed in 100 mM sodium
209 cacodylate buffer (pH 7.2) and dehydrated with a range of calibrated ethanol concentrations
210 (30%, 50%, 75%, 90%, and 100%). Tissues were dried with CO₂ in an Emitech K850 critical
211 point dryer (Quorum Technologies Ltd, Ashford, United Kingdom). The sample was then
212 mounted on aluminium beads with double-sided carbon adhesive discs, coated with
213 gold/palladium in a SC7640 sputter-coater (Quorum Technologies Ltd, Newhaven, United
214 Kingdom) and analysed with an S-3400N scanning electron microscope (Hitachi High-
215 Technologies Corporation, Tokyo, Japan) at an accelerating voltage of 5Kv at the University
216 of Corsica (Corte, France).

217 SEM measurements were performed using the microscope's software. Estimates of
218 length and width of stomata and ostioles were made using 30 independent measurements on
219 three different leaves for each variety and each condition (n=30). Stomatal density was
220 estimated in five independent measurements on three different leaves for each variety and
221 each condition (n=5) using Adobe Photoshop software. The number of stomata was counted
222 on the photographs and the stomata cut at the edge of the image was recorded on only two
223 adjacent sides.

224 2.5. Transmission electron microscopy (TEM)

225 At the end of the water deficit period, leaf pieces (1 mm²) were sampled from mid-
226 laminar areas of mature leaves and fixed immediately in cold 2.5% glutaraldehyde in 100 mM
227 sodium cacodylate (pH 7.2). Fixed tissue was then rinsed in a 100 mM cacodylate buffer (pH
228 7.2), post-fixed in cold 1% osmium tetroxide in the same buffer for 1 hour, dehydrated
229 through a graded ethanol series (70% and 100%) and propylene oxide, embedded in Spurr,
230 and polymerized at 60°C for 24 hours. Ultra-thin sections (60-90 nm) were cut with Power
231 tome PC ultramicrotome (RMC Boeckeler, Tuscon, USA). The sections were placed on 200
232 copper grids and stained with UranylLess (Delta Microscopies, France) and lead citrate.
233 Sections were examined on a Hitachi H-7650 (Hitachi High-Technologies Corporation,
234 Tokyo, Japan) at an accelerating voltage of 80 Kv at the University of Corsica (Corte,
235 France).

236 TEM measurements were performed using the microscope's software. The length,
237 width, and thickness of cells and length, and the number of chloroplasts, starches,
238 plastoglobuli, and mitochondria were estimated on 10 cells of each variety, each treatment,

239 and each parenchyma type. The length and width of chloroplast, plastoglobuli, starches,
240 mitochondria, grana, the number of grana per cell section, and the number of thylakoids per
241 granum were estimated on 30 independent measurements of each variety, each treatment, and
242 each parenchyma type.

243 2.6. Biochemical analysis

244 Three independent biological replicates of leaves samples (n=3) for each variety and
245 each treatment were harvested for biochemical analysis.

246 Lipid peroxidation was evaluated using the malondialdehyde concentration and was
247 determined in leaf samples as described by Santini et al. (2013). Frozen leaf powder (80 mg)
248 was homogenized in 2 mL 80% ethanol (v/v) and centrifuged at 3000 \times g for 10 min at 4°C.
249 Absorbance was measured at 440, 535, and 600 nm against a blank.

250 The hydrogen peroxide concentration was determined using a PeroxiDetect Kit
251 (Sigma, Aldrich, St. Louis, MO, United States) as described by Lourkisti et al. (2020). Frozen
252 leaf powder (150 mg) was homogenized in 300 μ L of distilled water and centrifuged at
253 21,000 \times g for 15 min at 4°C. Absorbance was read at 560 nm with a microplate reader
254 (MULTISKAN FCTM, Thermo Scientific, Waltham, MA, United States).

255 The concentration of proline was assayed as described by Carillo et al. (2011). Frozen
256 leaf powder (40 mg) was homogenized in 70% ethanol (v/v) and centrifuged at 15,000 \times g for
257 15 min at 4°C. The absorbance was read at 520 nm with a microplate reader (MULTISKAN
258 FCTM, Thermo Scientific, Waltham, MA, United States).

259 For measurements of antioxidant enzymatic activity, frozen powder (54 mg) was
260 homogenized in 2 mL of extraction buffer and centrifuged at 13,000 \times g for 30 min at 4°C.
261 The supernatant was used to determine the activities of SOD (EC 1.15.1.1), CAT (EC
262 1.11.1.6), APX (EC 1.11.1.11), and DHAR (EC 1.8.5.1) as described by Santini et al. (2013).
263 Time-course measurements were done using a V-630 spectrophotometer (Jasco Inc., Tokyo,
264 Japan).

265 2.7. Statistical analysis

266 Data were analysed with R statistical software (<http://www.R-project.org>). Multi-way
267 ANOVAs followed by the LSD test (P<0.05) were used to evaluate the influence of varieties
268 and treatments. A heat map was generated with RStudio software to determine the differences
269 between varieties and treatments for abaxial epidermis and ultrastructural spongy and
270 palisadic mesophyll features.

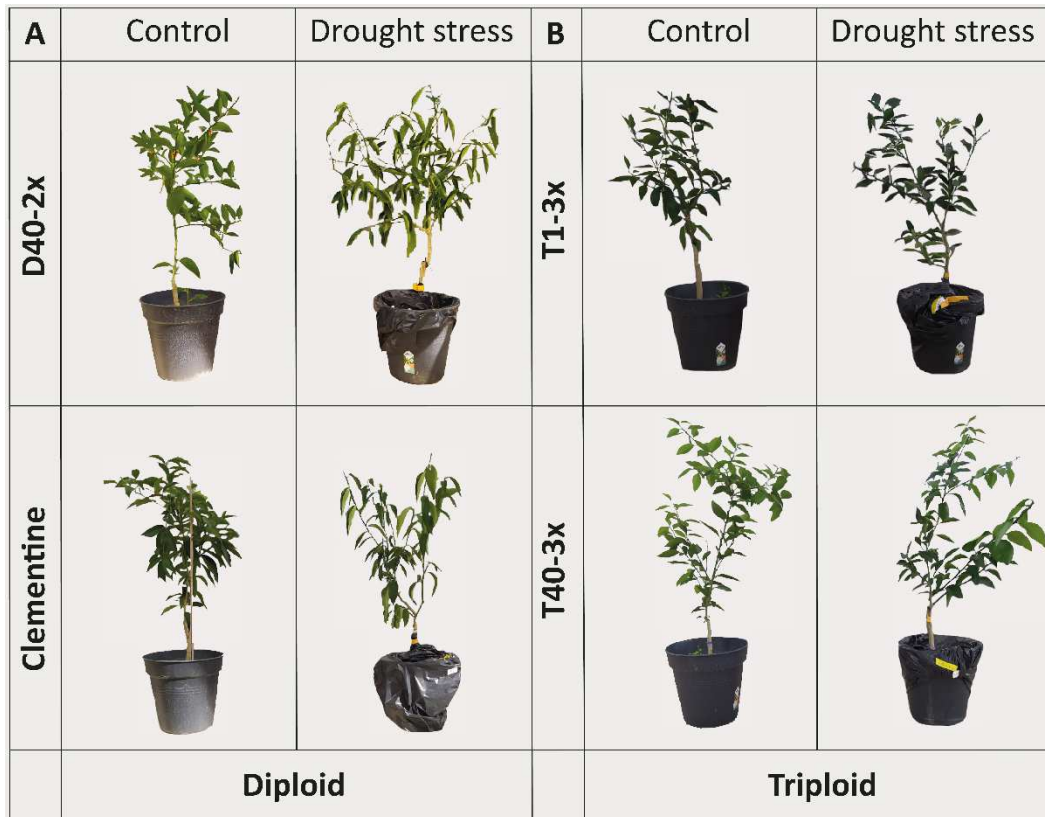


Figure 1: Morphological changes of control and drought-stressed plants in (A) diploid and (B) triploid varieties.

272 **3. Results**

273 **3.1. Leaf damages**

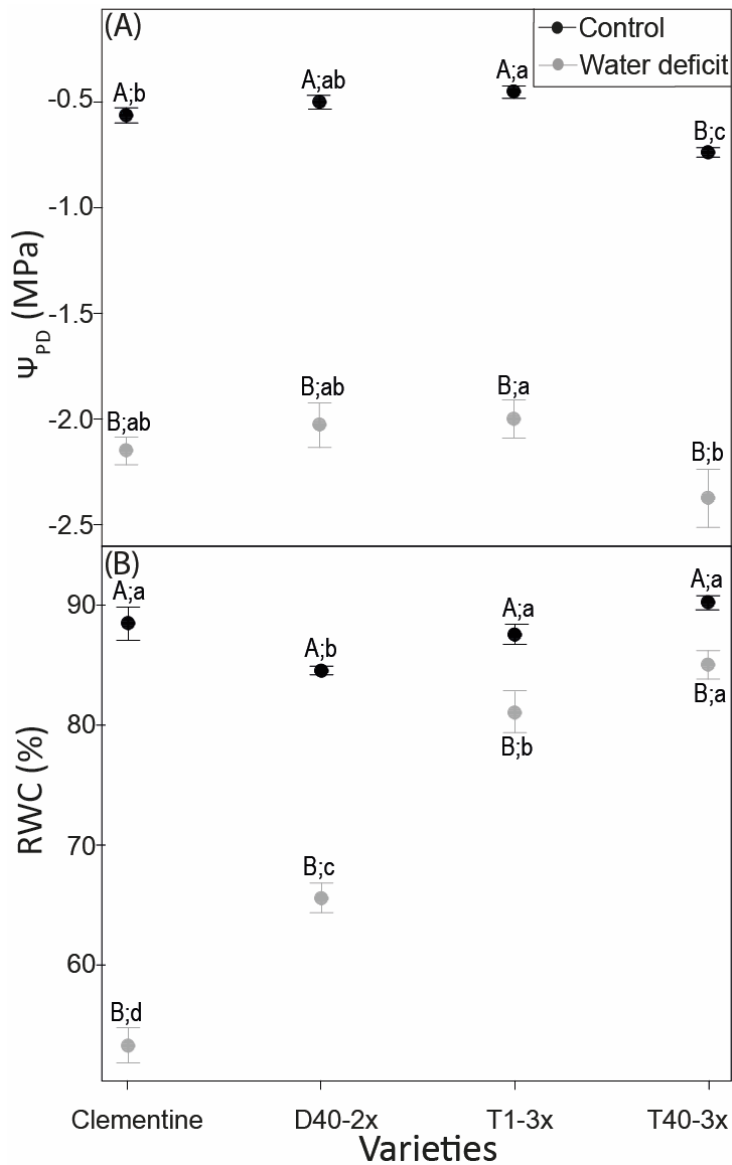
274 Water deficit induced leaf wilting in 2x varieties (D40-2x and clementine) while no
275 severe symptoms were observed in 3x varieties (Figure 1).

276

277 **3.2. Plant water status**

278 Under well-watered plants, leaf ψ_{PD} was similar through the studied varieties and reach
279 -0.7 MPa (Figure 2A). Water deficit resulted in a decrease in ψ_{PD} in all varieties and T40-3x
280 variety showed the lowest value (-2.4 MPa) under water deficit.

281 In control plants, leaf RWC was similar between varieties, except for D40-2x which
282 exhibited the lowest value (84%) (Figure 2B). During water deficit, leaf RWC declined
283 significantly in all varieties. In comparison with 2x varieties, 3x varieties showed highest
284 values of RWC (between 81 and 85%).



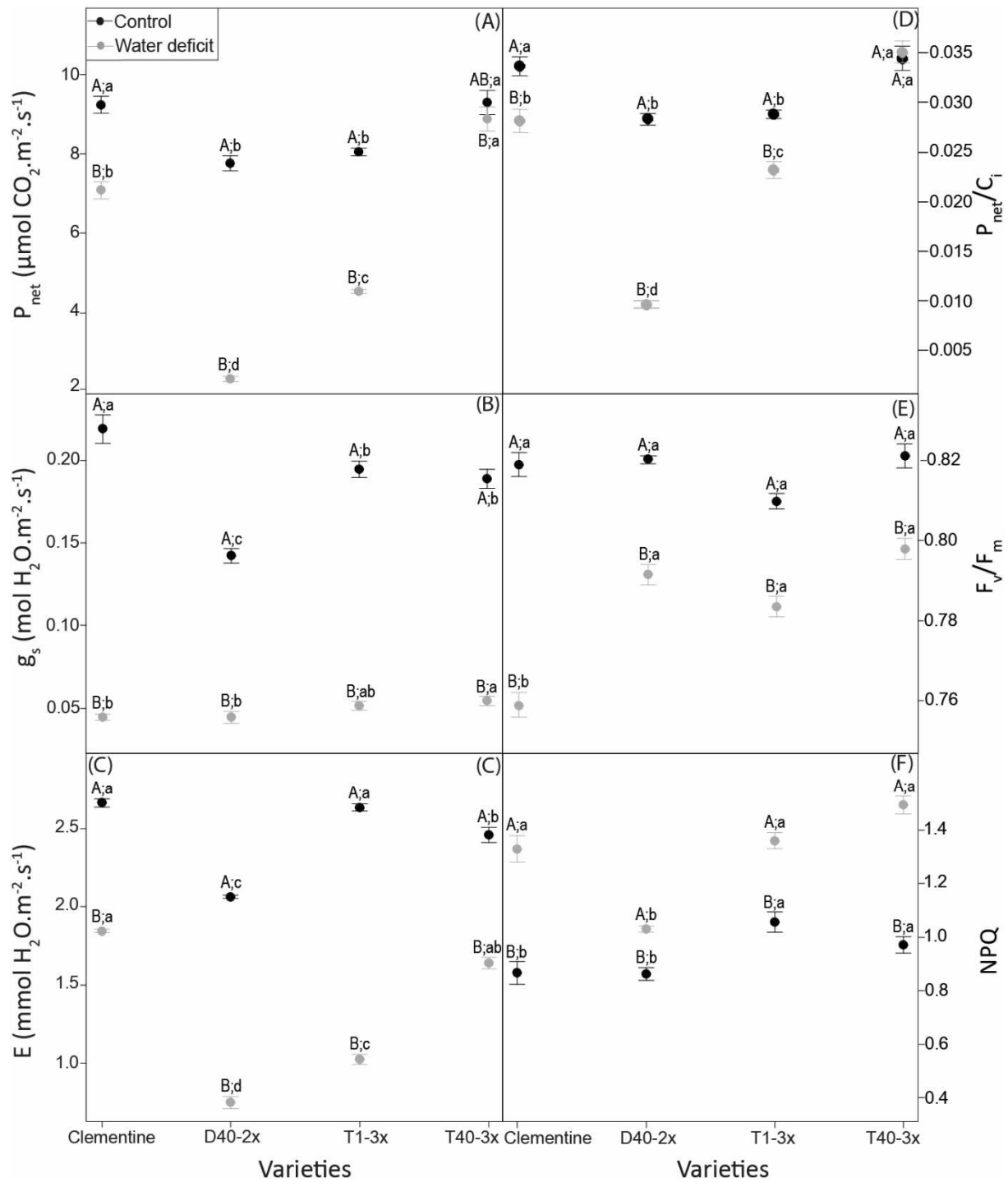
285

Figure 2: Changes in (A) pre-dawn leaf water potential (Ψ_{PD}) and (B) leaf relative water content (RWC) in varieties under control (black point) and water deficit (grey points) treatment. Data are mean values (\pm S.E.) of 3 independent measurements for Ψ_{PD} and RWC and 15 independent measurements ($n=15$). Data were analysed using ANOVA and Fisher's LSD test ($P<0.05$). Different uppercase letters show significant changes between the treatments (control and water deficit) for each variety and different lowercase letters show changes between the varieties for each treatment

286 **3.3. Photosynthetic parameters**

287 Photosynthesis rate (P_{net}) varied significantly among genotypes under well-watered
288 plants where higher values were found in clementine and T40-3x variety (Figure 3A). Water
289 deficit induced a sharp drop of P_{net} except in all varieties except for T40-3x which values
290 were similar to control (Figure 3A). Similarly, significant differences in stomatal conductance
291 (g_s) were found among genotypes as well as among treatments (Figure 3B). Under water
292 deficit, g_s declined significantly in all varieties where values were broadly similar among the
293 varieties (Figure 3B). Transpiration rate (E) varied significantly among genotypes and among
294 water regimes (Figure 3C). In control plants, the lowest value was found in D40-2x, while
295 clementine and T1-3x exhibited the highest value. Water deficit resulted in decline in E in all
296 varieties. Under water deficit, D40-2x variety showed the lowest value while the greatest
297 value was found in clementine. In response to water deficit, carboxylation efficiency
298 (P_{net}/C_i) decreased in all varieties except for T40-3x (Figure 3D).

299 Similar values of the maximum quantum yield of efficiency (F_v/F_m) were found in
300 well-watered plants (Figure 3E). In response to water deficit, F_v/F_m decreased in all varieties,
301 although values of F_v/F_m was near to physiological value for T40-3x (Figure 3E). Non-
302 photochemical quenching varied significantly among genotypes and treatments (Figure 3F).
303 In control plants, 3x varieties showed the highest NPQ rate. Water deficit leads to an increase
304 in NPQ rate in all varieties (Fig. 3F). While the NPQ rate was similar between clementine and
305 3x varieties, the latter had greater values than D40-2x variety.



30[~] **Figure 3:** Changes in (A) net photosynthesis (P_{net}), (B) stomatal conductance (g_s), (C) transpiration rate (E), (D) carboxylation efficiency (P_{net}/C_i), (E) maximal quantum yield of PSII (F_v/F_m) and (F) non-photochemical quenching (NPQ) rate in varieties under control (black points) and water deficit (grey points) treatments. Data are means values (\pm S.E.) of 15 independent measurements ($n=15$). Data were analysed using ANOVA and Fisher's LSD test ($P < 0.05$). Different uppercase letters show significant changes between the treatments (control and water deficit) for each variety and different lowercase letters

307 **3.4.Oxidative status**

308 Hydrogen peroxide (H₂O₂) and malondialdehyde (MDA) contents varied significantly
309 among genotypes and treatments (Figure 4). Water deficit induced increase in H₂O₂ content in
310 D40-2x and T1-3x varieties while values of H₂O₂ content under water deficit were close to
311 those obtain in control plants both in clementine and T40-3x (Figure 4A). A sharp increase in
312 MDA content was also observed in clementine in response to water deficit (Figure 4B).

313 Antioxidant defences in terms of proline (Figure 4C) and antioxidant enzymes (SOD,
314 CAT and APX) (Figures 4D, E, F) were also studied. Proline content rose in D40-2x and T40-
315 3x in response to water deficit while a sharp decline was found in clementine (Figure 4C).
316 The highest proline content was also observed in T40-3x under water deficit. Water deficit
317 resulted in increase in SOD activity in clementine and T1-3x variety, while no significant
318 change was observed in D40-2x and a decline was found in T40-3x (Figure 4D). Despite this
319 decrease, this 3x variety still had higher activity than D40-2x. Except for clementine, a
320 decline or a stability in CAT activity was observed in varieties in response to water deficit
321 (Figure 4E). APX activity raised under water deficit in all varieties except for clementine
322 where the same activity was reported in well-watered and drought-stressed plants (Figure 4F).

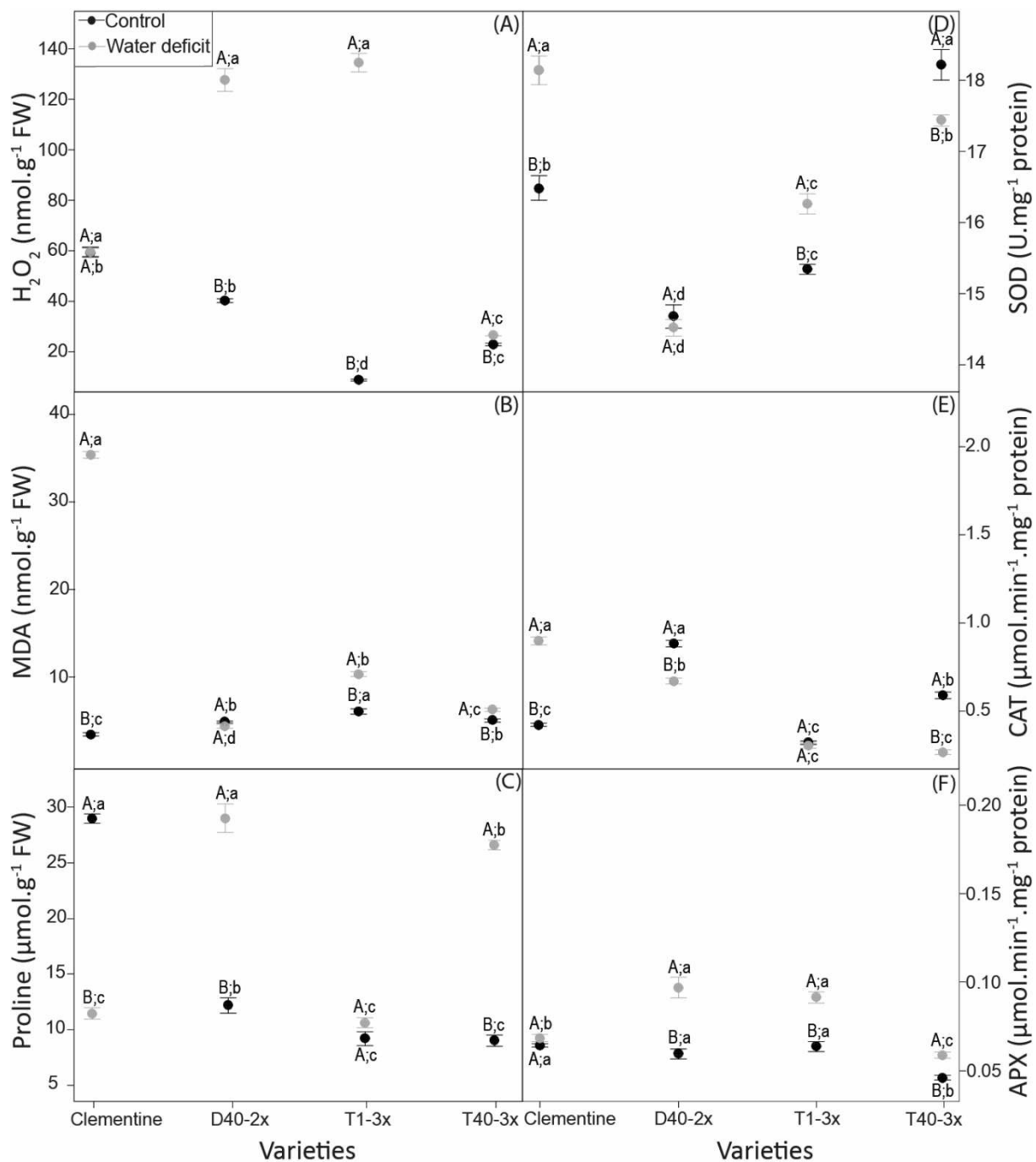


Figure 4: Changes in (A) malondialdehyde (MDA), (B) hydrogen peroxide (H₂O₂), (C) proline contents, (D) superoxide dismutase (SOD), (E) catalase (CAT) and (F) ascorbate peroxidase (APX) enzymatic activities in varieties under control (black points) and water deficit (grey points) treatments. Data are means values (\pm S.E.) of 15 independent measurements ($n=15$). Data were analysed using ANOVA and Fisher's LSD test ($P<0.05$). Different uppercase letters show significant changes between the treatments (control, water deficit, recovery) for each variety and different lowercase letters show changes between the varieties for each treatment.

324 **3.5. Structural and ultrastructural changes in leaves**

325 **3.5.1. Stomatal characteristics**

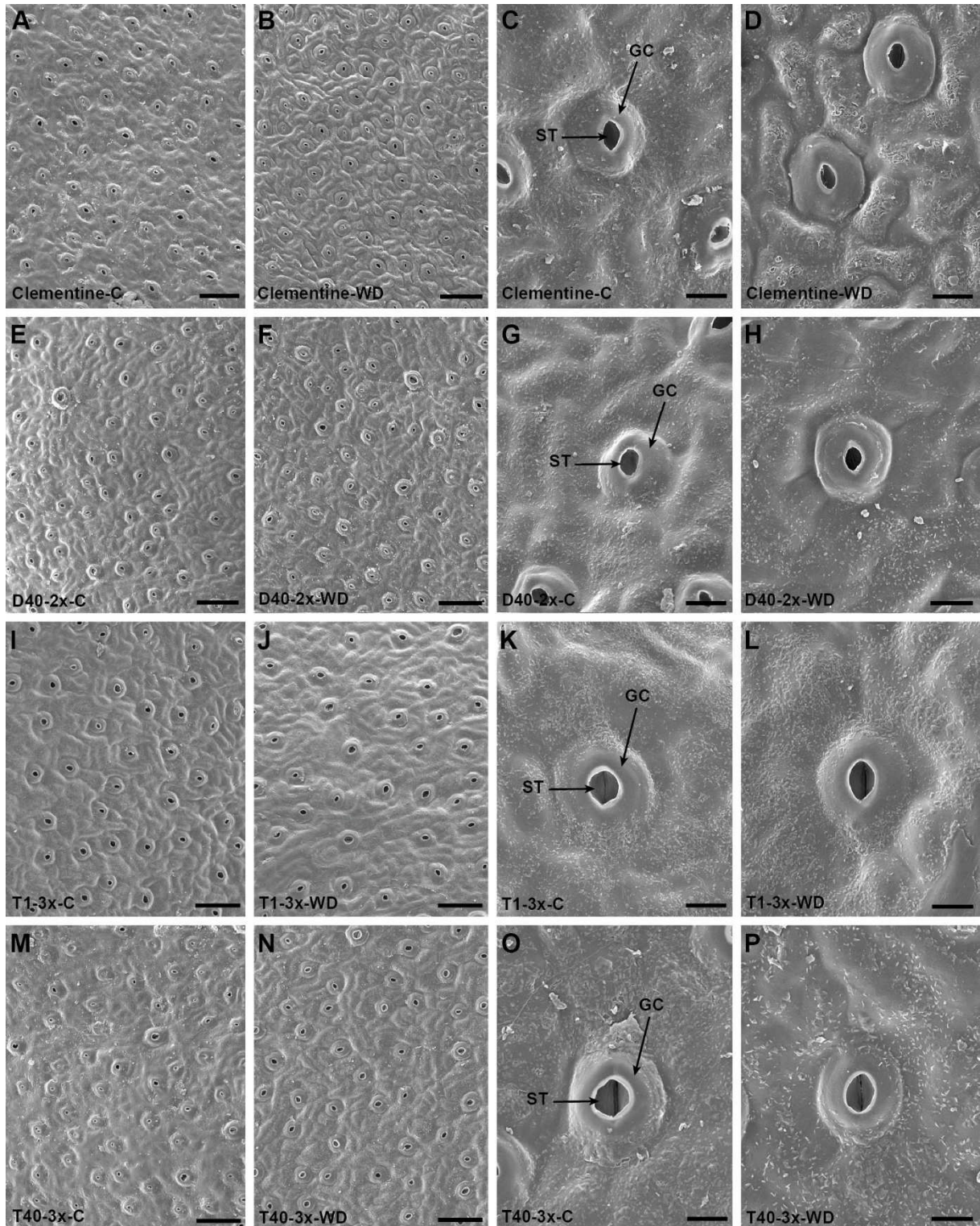
326 Stomata of all varieties were anomocytic (stomata surrounded by four subsidiary cells)
327 and present on leaf abaxial surfaces. The epidermal carpet architecture was devoid of
328 trichome (Figure 5). Stomata size and stomatal density varied among the ploidy level and
329 treatment (Figs. 5, 6 and supplementary table 1). Triploidy was associated with increased
330 stomata size and decreased stomatal density. Water deficit resulted in decline in ostiole
331 size in D40-2x, T1-3x and T40-3x. This latter also showed a decrease in stomatal density
332 under water deficit conditions (Figs. 5, 6).

333 **3.5.2. Structural and ultrastructural changes in whole mesophyll cells and**
334 **chloroplasts**

335 Transmission electron micrographs of whole mesophyll cells of palisade and spongy
336 parenchyma revealed several changes in the size of cells and chloroplasts among varieties and
337 treatments (Figures 7;8;9;10 and supplementary tables 2, 3). Triploid varieties had a higher
338 number of chloroplast, starches, mitochondria and grana in palisade parenchyma (Figs. 7; 8)
339 while the number of these components differed greatly among the varieties in spongy
340 parenchyma (Figs. 9; 10). A greater number of mitochondria was found in the spongy
341 parenchyma of 3x varieties. Chloroplast of control plants were elongated with a typical
342 disposition of thylakoid membranes with intact stacks of grana and stroma (Figs. 7, 9). Starch
343 grains, plastoglobuli and mitochondria size were greater in 3x varieties both in palisade and
344 spongy parenchyma (Figs. 8, 10).

345 Water deficit resulted in a decrease in components of mesophyll and spongy
346 mesophyll cells (chloroplasts, starches and mitochondria) both in 2x and 3x varieties (Figs. 8,
347 10 and supplementary tables 2, 3). The number of chloroplasts found in both palisade and
348 mesophyll parenchyma of 3x varieties was still higher than that of diploids under water deficit
349 conditions. Water deficit resulted in damages in the ultrastructure of chloroplasts of
350 mesophyll cells in 2x and 3x varieties (Figs. 7, 9). Less chloroplast damage was found in 3x
351 varieties in comparison with 2x ones which had swollen thylakoids and dilated thylakoid
352 membranes. Chloroplast of spongy mesophyll cells of D40-2x variety showed the most severe
353 damage with undulated and disorganized thylakoid (Figure 9). Under water deficit, number
354 and size of starch grain sharply declined in 2x and 3x varieties (Figs. 8, 10 and supplementary
355 tables 2, 3). Starch grain number was more important in 3x varieties while D40-3x used all of
356 its starch reserves in response to water deficit (Figs.7, 8, 9 and 10). Plastoglobuli decreased in

357 response to water deficit with some exceptions and a significant increase in length and width
358 of PGs was observed in clementine and 3x varieties that had the highest values (Figs. 8, 10
359 and supplementary tables 2, 3).



36
Figure 5: SEM micrographs of abaxial epidermis (1A, 1B, 1E, 1F, 1I,1J,1M, 1N; scale bar: 50 μ m) and stomata (1C, 1D, 1G, 1H, 1K, 1L, 1O, 1P; scale bar: 10 μ m) in diploid (clementine, D40-2x) and triploid (T1-3x and T40-3x) varieties under control (C) and water deficit (WD) conditions. GC: guard cells; ST: ostiole (Stoma).

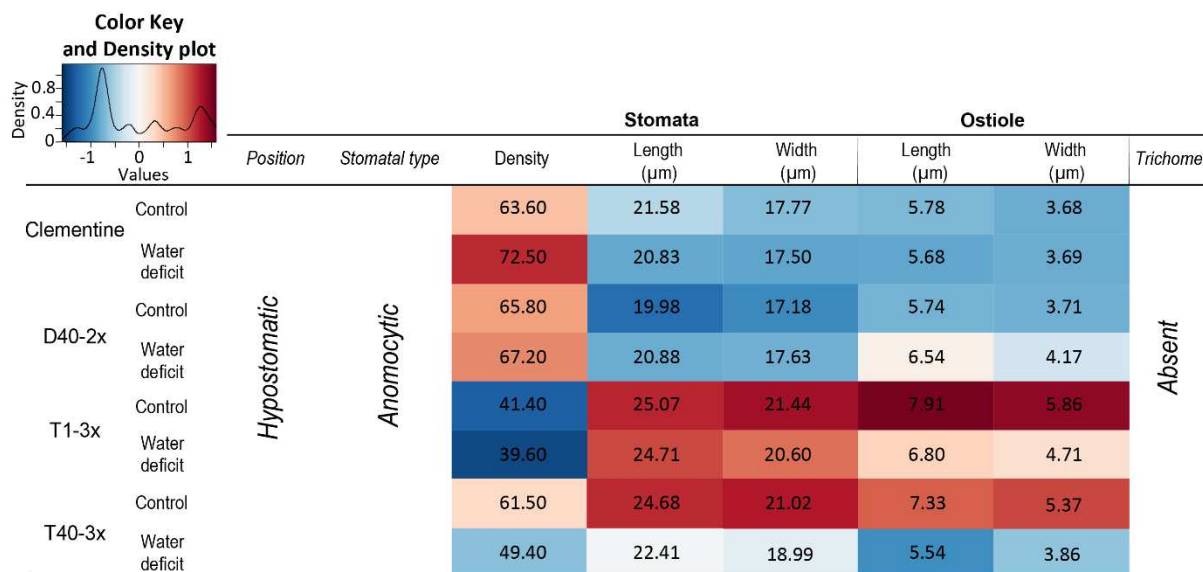


Figure 6: Heatmap showing changes between varieties and treatments (control and water deficit) for stomata and ostioles characteristics on leaf abaxial surface. Values are means of thirty independent measurements on five distinct leaves ($n=150$) for length and width of stomata and ostiole and of five independent measurements on five distinct leaves ($n=25$) for stomatal density. Values are associated with colour ranging from blue (low) to dark red (high).

361

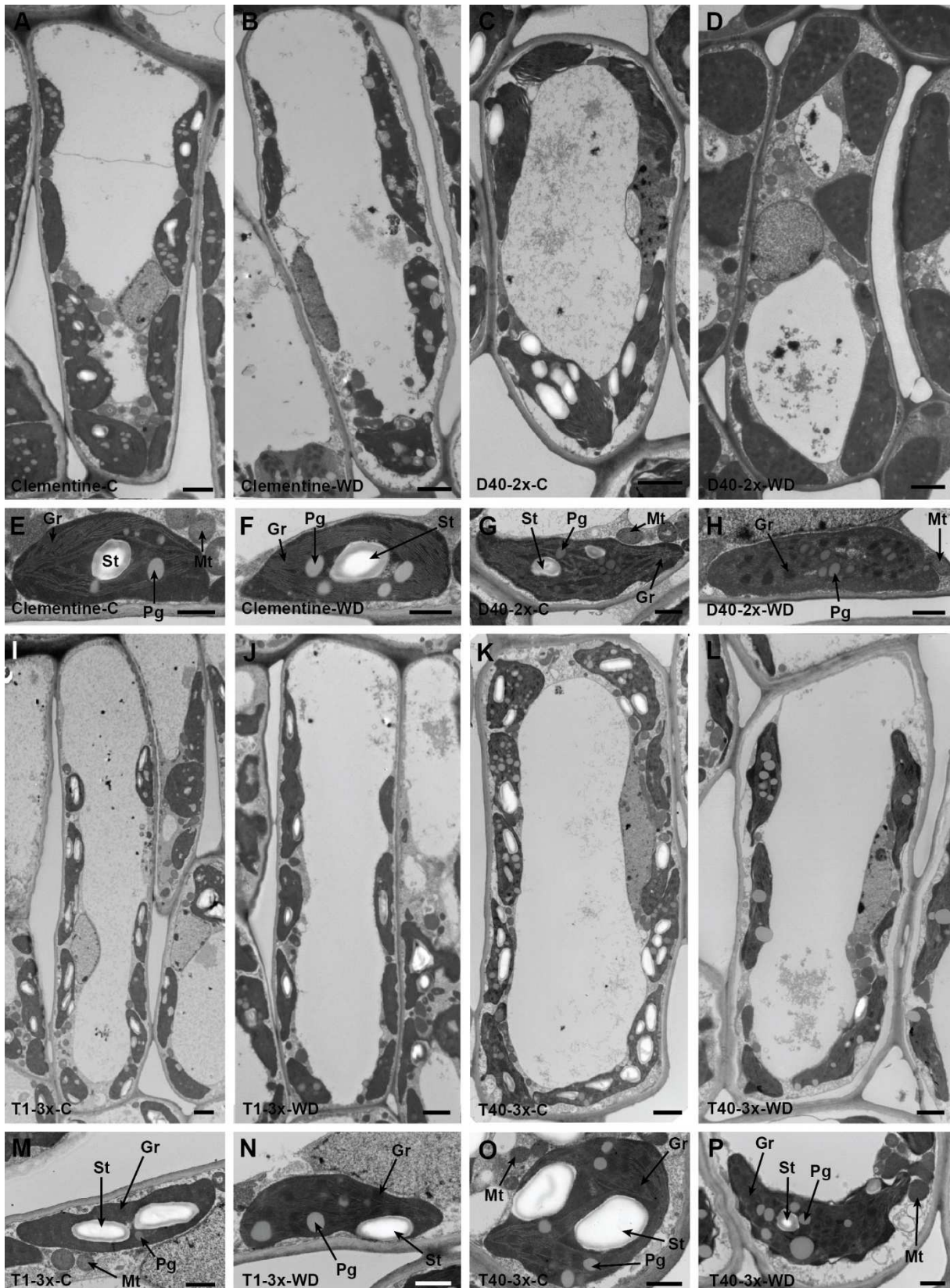
362

4. Discussion

4.1. Differences in water status in triploid and diploid varieties under water deficit

In the present study, the decrease in soil water potential showed that a water deficit occurred in all scions grafted to the same rootstock (Fig. 2A). However, we may not exclude that depending of the rootstock/scion association and the ploidy of the scion, the root development may have been changed and may have in turn modified the physiology of the tree. Water deficit induced significant changes in plant water relationships (Farooq et al., 2009) as evidenced by the decline in leaf relative water content (RWC) in all varieties in the present study (Figs. 2B). Triploid varieties were more capable of maintaining their water balance under severe water deficit as indicated by higher rates of RWC (Fig. 2B) in comparison with diploids which exhibited severe symptom as leaf wilting (Fig. 1A), at the same pre-dawn water potential (Fig. 2A). These results were in agreement with other studies on the effect that polyploidy has on water relations (Allario et al., 2013; Van Laere et al., 2011; Wang et al., 2012; Zandalinas et al., 2016). Further, osmotic adjustment referring to accumulation of several compounds such as soluble proline or sugars has been commonly observed in drought-stressed plants to help lower water potential and maintain turgor pressure (Kiani et al., 2007; Souza et al., 2004; Van Laere et al., 2011). In our study, proline accumulation was found in T40-3x variety (Fig. 4C). Related to high RWC, this could indicate a better osmotic adjustment under sever water deficit. However, high proline content was also observed in D40-2x which present low RWC and leaf wilting. Thus, the maintenance of water status in 3x varieties may be also due to accumulation of other osmolytes as soluble sugars (Al-Yasi et al., 2020; Blum, 2017). In the present study, the sharp decrease in starch grain size in chloroplasts of triploid and diploid varieties during water deficit suggested conversion of starch to soluble sugars to provide carbon and energy to the plant (Figs.7, 8,9, 10). Yang et al. (2004) reported that the decrease in starch reserves under drought conditions is mainly due to downregulation of enzymes involved in starch synthesis and upregulation of starch degradation. Hence, lower activity of starch synthesis enzymes (soluble starch synthase, sucrose synthase, and ADP Glucose pyrophosphorylase), resulting in an accumulation of sugars, were reported in plant cells' response to drought stress (Yang et al., 2019; Zhang et al., 2017). In the present study, 3x varieties had more starch grains even after its use (Figs. 8, 10). Associated with high RWC, this result suggested a better osmotic adjustment which probably resulted from soluble sugars in response to water deficit in triploids. Du et al. (2020) found that genes related to sucrose and starch metabolism were

397 upregulated in allotriploid *Populus* indicating the greater ability of triploids to metabolize
398 sugar and sucrose and their high starch reserves and utilization. Since some studies suggested
399 that carbon depletion was a mechanism underlying tree mortality during drought (McDowell
400 et al., 2008), the increased carbon reserves induced by triploidy could play a significant role
401 to withstand under severe water deficit conditions. Triploids showed a better water-holding
402 capacity which seems to be associated with enhanced osmotic adjustment that may be crucial
403 for better physiological and biochemical performance in water-limited conditions.



404 **Figure 7:** TEM micrographs of palisade mesophyll cells (3A; 3B; 3C; 3D; 3I; 3J; 3K; 3L; scale bar: 50 μm) and their respective chloroplasts (3E; 3F; 3G; 3H; 3M; 3N; 3O; 3P; scale bar: 1 μm) in diploid (clementine and D40-2x) and triploid (T1-3x and T40-3x) varieties control (C) and water deficit (WD) conditions. Gr: granum; Mt: mitochondria; Pg: plastoglobule; St: starch.

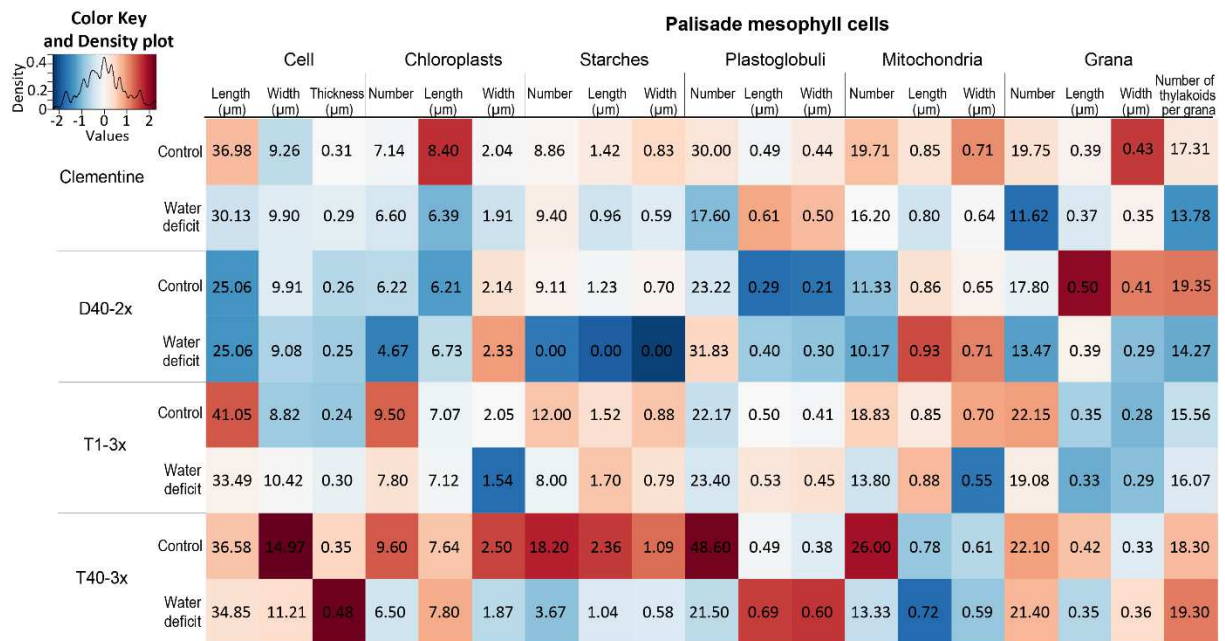


Figure 8: Heatmap showing changes between varieties and treatments (control and water deficit) for ultrastructure of palisade mesophyll cells. Values are means of independent measurements on five separate cell sections ($n=5$) for cell length, width and thickness and for cell constituents number (chloroplasts, starches, plastoglobuli, mitochondria) and of thirty independent measurements on separate cell sections ($n=30$) for cell constituents size, grana number per cell and thylakoid number per granum. Values are associated with colour ranging from blue (low) to dark

406 **4.2.Impact of water deficit on the photosynthetic activity of triploid and diploid** 407 **varieties**

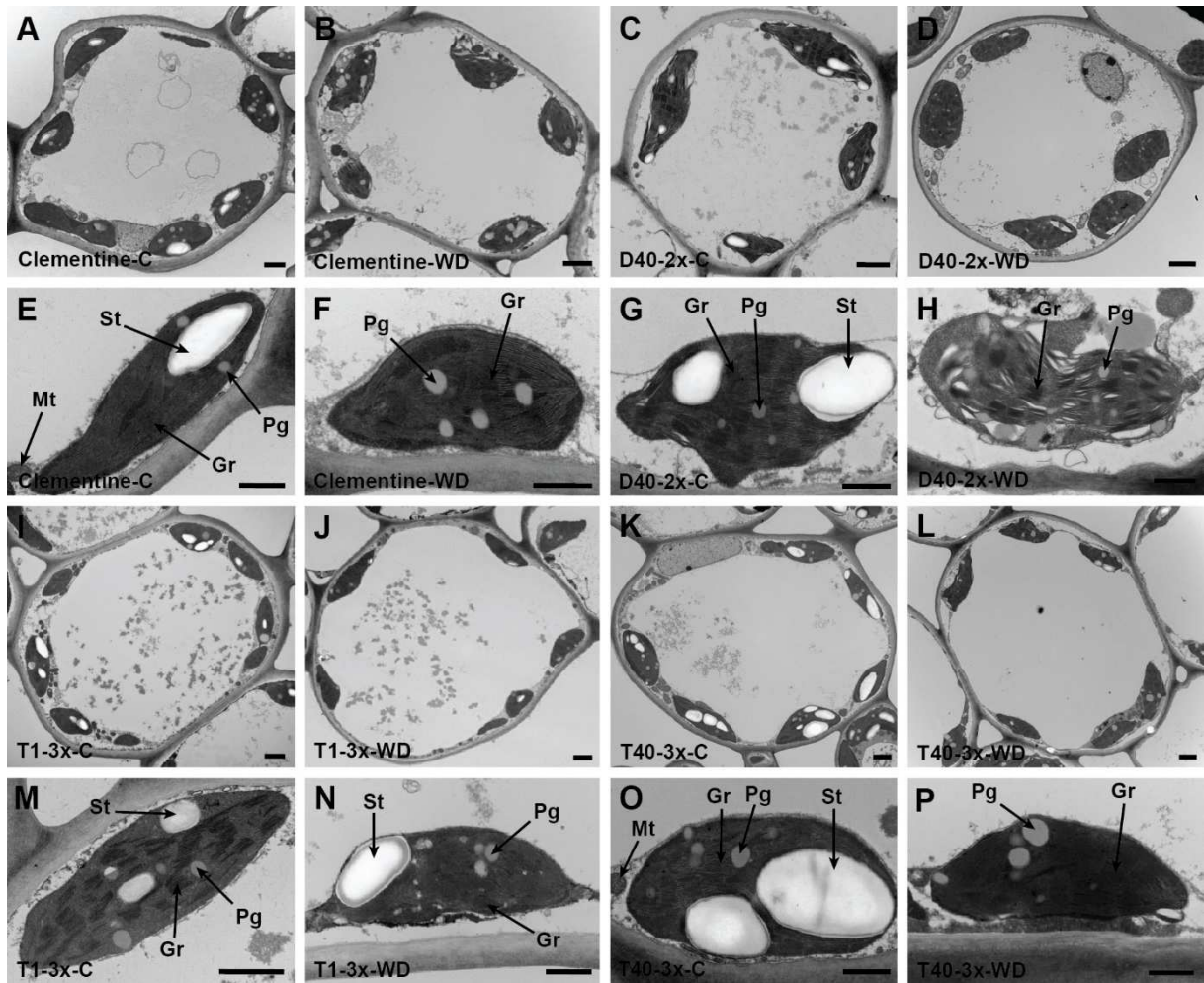
408 It is well known that stomatal closure appears to be the main physiological response to
409 water deficit and aims to minimize water loss (Chaves et al., 2003). In our study, water deficit
410 induced a sharp drop of g_s in all varieties where values were broadly similar among the
411 varieties indicating an effective stomatal response to water deficit (Fig. 3B). Stomatal traits
412 such as stomatal density and stomata size are vastly different across plant species (Caine et
413 al., 2019) and ploidy level (Chen, 2010) and thus are the main factors affecting leaf gas
414 exchange. Although Franks & Beerling (2009) reported that maximum stomatal conductance
415 to water vapor is negatively related to stomatal size in several species, some studies have
416 shown that higher stomatal conductance can be found in polyploid plants and resulted from
417 greater stomatal opening (Monda et al., 2016). In our study, stomatal changes induced by
418 triploidy, such as large stomata size and low stomatal density (Fig. 5; 6) could explain the
419 higher leaf gas exchange (Figs. 3) with greater RWC found in 3x varieties. In contrast, the
420 high transpiration rate in clementine could also be explained by high stomatal density found
421 under water deficit (Fig. 3C, 6). Muchow & Sinclair (1989) also suggested that water loss
422 above guard cell teichodes became a significant of water loss when stomata were nearly
423 closed. Our results suggested that maintenance of water balance in 3x varieties can protect
424 photosynthetic activity under water deficit conditions (Figs 2; 3). Similar relationships have
425 been found when comparing 4x and 2x citrus seedlings (Allario et al., 2013). Van Laere et al.
426 (2011) found that higher resistance of polyploid cultivars to drought stress was associated
427 with desirables changes in stomatal characteristics resulting in less disturbance of
428 photosynthetic capacity and better maintenance of water balance. Furthermore, studies
429 conducted on 3x *Populus* seedlings reported that both heterosis and polyploidy features
430 related to triploids were associated with better stomatal regulation in response to drought (Du
431 et al., 2020). Liqin et al. (2019) demonstrated that plant hormone-related genes involved in
432 the regulation of stomatal development were upregulated only in 3x *Populus* resulting in an
433 enhancement of auxin levels and an inhibition of stomatal development. These authors also
434 reported that the ABCG25 gene, involved in ABA signal stimulation, was upregulated in
435 triploids, compared to diploid and tetraploid *Populus* seedlings, leading to an enhancement of
436 ABA levels in guard cells and an inhibition in stomatal development.

437 Photosynthesis decline is one of the first consequence of stomatal closure (Flexas et
438 al., 1999) and can result from biochemical limitations especially under severe water deficit

439 (Manuela M. Chaves et al., 2003; Lawlor & Cornic, 2002). The P_{net}/C_i ratio is a useful
440 indicator for estimation of Rubisco activity indicating its limitations under stressful conditions
441 (Niinemets et al., 2009; Silva et al., 2013). In the present study, T40-3x maintained higher P_{net}
442 rates than diploids, without decreasing P_{net}/C_i ratio (Figs. 3A, 3D) at the same water stress
443 intensity (Fig. 2A). This result suggested that photosynthetic capacity was less affected and
444 that the decrease in P_{net} was mainly induced by stomatal factor (Farquhar & Sharkey, 1982).
445 In contrast, the decline of P_{net}/C_i ratio in D40-2x variety and to a lesser extent in clementine
446 and T1-3x varieties indicated the decline in activity of CO₂ assimilation mechanisms at severe
447 water deficit. Decrease in P_{net}/C_i ratio was also accompanied by a sharp drop in starch grain in
448 D40-2x (Figs. 3D, 8, 10). This result suggested that production rather than utilization of
449 photosynthates is reducing. Moreover, soluble sugars produced from starch conversion,
450 particularly hexoses, may repress photosynthetic gene expression as gene encoding Rubisco
451 nuclear sub-unit reducing Rubisco content and CO₂ assimilation (Sheen, 1994). Associated
452 with low RWC, this result indicated that D40-2x variety was more affected by water deficit.
453 Less disturbance of photosynthetic activity has already been reported in polyploid citrus
454 genotypes under abiotic stresses (Khalid et al., 2020; Lourkisti et al., 2020; Oustric et al.,
455 2019). For example, Li et al. (2009) showed that gas exchange and chlorophyll fluorescence
456 were less affected for honeysuckle tetraploid cultivars than the diploids.

457 As a consequence, restricted CO₂ availability could lead to enhanced susceptibility to
458 photo-damage and excess energy which must be dissipated. In our study, the maximum
459 quantum yield of efficiency (F_v/F_m) decreased in all varieties in response to water deficit (Fig.
460 3E). Although low F_v/F_m (under the physiological value ~0.83) usually suggests PSII damage
461 (Maxwell & Johnson, 2000), a decrease in F_v/F_m could also illustrate dynamic photoinhibition
462 of the PSII and involvement of photoprotective mechanisms (Lambrev et al., 2012). Non-
463 photochemical quenching (NPQ) is one of the major protective mechanisms that eliminates
464 excess energy by heat dissipation and has been related to the xanthophyll cycle (Muller, 2001;
465 Ruban, 2016). In the present study, water deficit leads to an increase in NPQ rate in all
466 varieties (Fig. 3F). While the NPQ rate was similar between clementine and 3x varieties, the
467 latter had greater values than D40-2x variety suggesting the effective removal of excess
468 energy. Triploid varieties were less affected in terms of leaf gas exchange and chlorophyll
469 fluorescence that may alleviate ROS accumulation in 3x varieties.

470



471

Figure 9: TEM micrographs of spongy mesophyll cells (3A; 3B; 3C; 3D; 3I; 3J; 3K; 3L; scale bar: 50 μ m) and their respective chloroplasts (3E; 3F; 3G; 3H; 3M; 3N; 3O; 3P; scale bar: 1 μ m) in diploid (Clementine and D40-2x) and triploid (T1-3x and T40-3x) varieties control (C) and water deficit (WD) conditions. Gr: granum; Mt: mitochondria; Pg: plastoglobule; St: starch.

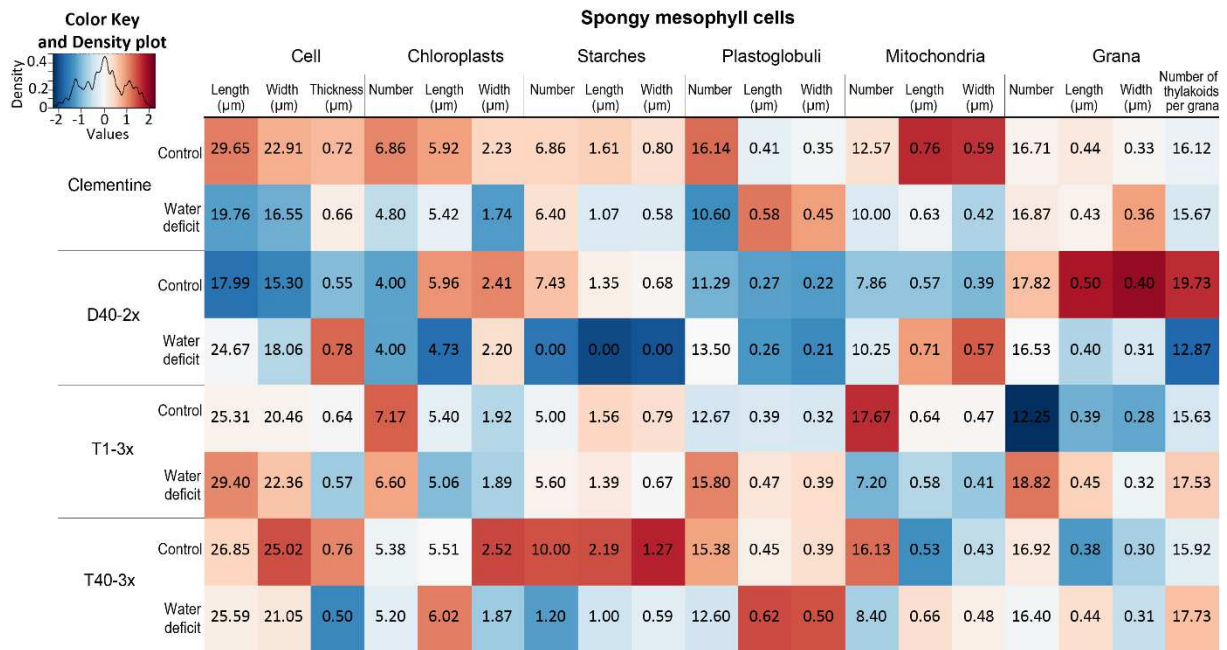


Figure 10: Heatmap showing changes between varieties and treatments (control and water deficit) for ultrastructure of spongy mesophyll cells. Values are means of independent measurements on five separate cell sections ($n=5$) for cell length, width and thickness and for cell constituents number (chloroplasts, starches, plastoglobuli, mitochondria) and of thirty independent measurements on separate cell sections ($n=30$) for cell constituents size, grana number per cell and thylakoid number per granum. Values are associated with colour ranging from blue (low) to dark red (high).

472 **4.3. Role of the antioxidant system of 3x genotypes in water deficit tolerance**

473 Exposure to adverse environmental conditions, including drought, can lead to
 474 oxidative stress when ROS production, such as hydrogen peroxide (H_2O_2), increases (Miller
 475 et al., 2010). Chloroplasts are a major source of ROS production and are consequently
 476 sensitive to oxidative damage when subjected to environmental stress including heat (Xu et
 477 al., 2006), drought (Wang et al., 2012) and nutrient deficiency (Oustric et al., 2019).
 478 Therefore, abiotic stresses were expected to induce damage due to ROS accumulation on
 479 chloroplast ultrastructure targeting thylakoid membranes and causing lipid peroxidation (Shao
 480 et al., 2016). In our study, T40-3x variety had the lowest oxidative markers levels (Fig. 4A,
 481 4B) and both T1-3x and T40-3x exhibited less chloroplast damage (Figs.7, 9). While
 482 antioxidant enzyme activities did not discriminate 2x from 3x response (Figs. 4D, 4E, 4F),
 483 high proline content found in T40-3x (Fig. 4C) may explain less chloroplast damages since
 484 proline is involved in protection of membrane integrity and ROS scavenging (Dien et al.,
 485 2019; Szabados & Saviouré, 2010). Triploid varieties had less cellular damage as a result of

486 water deficit (Figs.7 and 9) which was consistent with their water relationship and their gas
487 exchange being less sensitive to water deficit (Figs. 2 and 3). Despite a sharp decrease, the
488 number of chloroplasts found in both palisade and mesophyll parenchyma of 3x varieties was
489 still higher than that of diploids (Figs. 8, 10) and could explain their better ability to maintain
490 photosynthetic activity (Fig. 3). This result, associated with high RWC, indicated that
491 triploids were less affected by water scarcity. In contrast, 2x varieties showed great content of
492 H₂O₂ (D40-2x) and MDA (clementine) associated with more chloroplast damages (Figs. 3A,
493 3B, 9). Despite high activity of CAT and APX (Figs. 4E, 4F), 2x varieties showed severe
494 damages as swollen thylakoids which were eventually destroyed (Fig. 9). Enhanced
495 antioxidant activity, correlated with less oxidative damage, was also found in tetraploid citrus
496 subjected to salinity stress (Khalid et al., 2020). Less chloroplast damage was also observed in
497 polyploid citrus subjected to nutrient deficiency (Oustric et al., 2019) and polyploid apple
498 rootstocks subjected to drought stress (Wang et al., 2012).

499 Plastoglobuli (PGs) containing lipids and antioxidants such as tocopherols, carotenes,
500 and plastoquinones (Rottet et al., 2015) decreased in response to water deficit, with some
501 exceptions (Figs. 7; 8; 9 and 10). However, a significant increase in length and width of PGs
502 was observed in clementine and 3x varieties that had the highest values (Figs. 8, 10). This
503 could illustrate an efficient antioxidant system, particularly in T40-3x. The involvement of
504 PGs has already been proposed in response to drought stress (Mutava et al., 2015; Rey et al.,
505 2000) although the mechanisms regulating this are still unclear. Moreover, an increase in PG
506 size is suggestive of better metabolic exchange between the thylakoid membranes and PGs by
507 storing destabilized lipids generated by oxidative stress and preserving thylakoid membranes
508 (Figs. 4, 7, and 9).

509 **5. Conclusion**

510 The present study provides evidence that the better response of triploid varieties to water
511 deficit can be attributed to changes in their morphological and cytological structure that
512 provide more energy to adapt to adverse environments. The phenotypical advantages offered
513 by triploidy results in greater water-holding capacity which seems to result from enhanced
514 osmotic adjustment and protect the photosynthetic activity under drought conditions. The high
515 carbohydrate reserve induced by triploidy results in better energy mobilization and may
516 explain the better response to water deficit conditions in triploid varieties. It would be
517 appropriate to dig deeper into the relationship between carbon storage and the tolerance to
518 abiotic stress. This integrative approach also provides a deeper understanding of the basic
519 mechanisms conferring water deficit tolerance. Combined with physiological and biochemical
520 stress parameters, ultrastructural changes would be affected by various stresses and therefore
521 appear to be suitable stress marker. Ploidy breeding to induce drought-tolerance-related
522 morphological and physiological traits could be a useful tool leading to commercial success in
523 fruit crops. The metabolic characterization of fruits of these new triploid varieties should be
524 the next step before their introduction in the citrus market.

525 Author contributions

526 **Radia Lourkisti:** Acquisition of data, investigation, Formal analysis, Writing - original draft.

527 **Julie Oustric:** Acquisition of data, Investigation, Formal analysis, Writing – original draft.

528 **Yann Quilichini:** Formal analysis. **Yann Froelicher:** Writing – original draft. Supervision,

529 Validation. **Stéphane Herbette:** Supervision, Validation, Writing – original draft. **Raphael**

530 **Morillon:** Supervision, Validation, Writing – original draft. **Liliane Berti:** Supervision,

531 Validation. **Jérémie Santini:** Formal analysis, Investigation, Methodology, Supervision,

532 Validation, Visualization, writing – original draft, Writing – review & editing.

533 Funding

534 This work was supported by the “Collectivité de Corse” as part of the research project

535 “Innov’agrumes” (FEDER).

536 **REFERENCES**

- 537 Adams, K. L., & Wendel, J. F. (2005). Polyploidy and genome evolution in plants. *Current*
538 *Opinion in Plant Biology*, 8(2), 135–141. <https://doi.org/10.1016/j.pbi.2005.01.001>
- 539 Ahmed, D., Evrard, J.-C., Ollitrault, P., & Froelicher, Y. (2020). The effect of cross direction
540 and ploidy level on phenotypic variation of reciprocal diploid and triploid mandarin
541 hybrids. *Tree Genetics & Genomes*, 16(1), 25. [https://doi.org/10.1007/s11295-020-](https://doi.org/10.1007/s11295-020-1417-7)
542 [1417-7](https://doi.org/10.1007/s11295-020-1417-7)
- 543 Aleza, P., Juárez, J., Cuenca, J., Ollitrault, P., & Navarro, L. (2012). Extensive citrus triploid
544 hybrid production by 2x × 4x sexual hybridizations and parent-effect on the length of
545 the juvenile phase. *Plant Cell Reports*, 31(9), 1723–1735.
546 <https://doi.org/10.1007/s00299-012-1286-0>
- 547 Aleza, Pablo, Juárez, J., Ollitrault, P., & Navarro, L. (2010). Polyembryony in non-apomictic
548 citrus genotypes. *Annals of Botany*, 106(4), 533–545.
549 <https://doi.org/10.1093/aob/mcq148>
- 550 Allario, T., Brumos, J., Colmenero-Flores, J. M., Iglesias, D. J., Pina, J. A., Navarro, L.,
551 Talon, M., Ollitrault, P., & Morillon, R. (2013). Tetraploid Rangpur lime rootstock
552 increases drought tolerance via enhanced constitutive root abscisic acid production.
553 *Plant, Cell & Environment*, 36(4), 856–868. <https://doi.org/10.1111/pce.12021>
- 554 Al-Yasi, H., Attia, H., Alamer, K., Hassan, F., Ali, E., Elshazly, S., Siddique, K. H. M., &
555 Hessini, K. (2020). Impact of drought on growth, photosynthesis, osmotic adjustment,
556 and cell wall elasticity in Damask rose. *Plant Physiology and Biochemistry*, 150, 133–
557 139. <https://doi.org/10.1016/j.plaphy.2020.02.038>
- 558 Baker, N. R., Harbinson, J., & Kramer, D. M. (2007). Determining the limitations and
559 regulation of photosynthetic energy transduction in leaves. *Plant, Cell & Environment*,
560 30(9), 1107–1125. <https://doi.org/10.1111/j.1365-3040.2007.01680.x>

561 Balal, R. M., Shahid, M. A., Vincent, C., Zotarelli, L., Liu, G., Mattson, N. S.,
562 Rathinasabapathi, B., Martínez-Nicolas, J. J., & Garcia-Sanchez, F. (2017). Kinnow
563 mandarin plants grafted on tetraploid rootstocks are more tolerant to Cr-toxicity than
564 those grafted on its diploids one. *Environmental and Experimental Botany*, *140*, 8–18.
565 <https://doi.org/10.1016/j.envexpbot.2017.05.011>

566 Barrs, H., & Weatherley, P. (1962). A Re-Examination of the Relative Turgidity Technique
567 for Estimating Water Deficits in Leaves. *Australian Journal of Biological Sciences*,
568 *15*(3), 413. <https://doi.org/10.1071/BI9620413>

569 Birchler, J. A., Yao, H., Chudalayandi, S., Vaiman, D., & Veitia, R. A. (2010). Heterosis. *The*
570 *Plant Cell*, *22*(7), 2105–2112. <https://doi.org/10.1105/tpc.110.076133>

571 Blum, A. (2017). Osmotic adjustment is a prime drought stress adaptive engine in support of
572 plant production. *Plant, Cell & Environment*, *40*(1), 4–10.
573 <https://doi.org/10.1111/pce.12800>

574 Bondada, B. R., & Syvertsen, J. P. (2003). Leaf chlorophyll, net gas exchange and chloroplast
575 ultrastructure in citrus leaves of different nitrogen status. *Tree Physiology*, *23*(8), 553–
576 559. <https://doi.org/10.1093/treephys/23.8.553>

577 Caine, R. S., Yin, X., Sloan, J., Harrison, E. L., Mohammed, U., Fulton, T., Biswal, A. K.,
578 Dionora, J., Chater, C. C., & Coe, R. A. (2019). Rice with reduced stomatal density
579 conserves water and has improved drought tolerance under future climate conditions.
580 *New Phytologist*, *221*(1), 371–384.

581 Carillo, P., Gibon, Y., & contributors, P. (2011). PROTOCOL: Extraction and determination
582 of proline. *PrometheusWiki*.

583 Chaves, M. M., & Oliveira, M. M. (2004). Mechanisms underlying plant resilience to water
584 deficits: prospects for water-saving agriculture. *Journal of Experimental Botany*,
585 *55*(407), 2365–2384. <https://doi.org/10.1093/jxb/erh269>

- 586 Chaves, M. M., Maroco, J. P., & Pereira, J. S. (2003). Understanding plant responses to
587 drought — from genes to the whole plant. *Functional Plant Biology*, 30(3), 239–264.
588 <https://doi.org/10.1071/fp02076>
- 589 Chen, Z. J. (2010). Molecular mechanisms of polyploidy and hybrid vigor. *Trends in Plant*
590 *Science*, 15(2), 57–71. <https://doi.org/10.1016/j.tplants.2009.12.003>
- 591 Choudhury, F. K., Rivero, R. M., Blumwald, E., & Mittler, R. (2017). Reactive oxygen
592 species, abiotic stress and stress combination. *The Plant Journal: For Cell and*
593 *Molecular Biology*, 90(5), 856–867. <https://doi.org/10.1111/tpj.13299>
- 594 Comai, L. (2005). The advantages and disadvantages of being polyploid. *Nature Reviews.*
595 *Genetics*, 6(11), 836–846. <https://doi.org/10.1038/nrg1711>
- 596 Cuenca, J., Aleza, P., Juárez, J., Pina, J. A., & Navarro, L. (2010). ‘Safor’ Mandarin: A New
597 Citrus Mid-late Triploid Hybrid. *HortScience*, 45(6), 977–980.
598 <https://doi.org/10.21273/HORTSCI.45.6.977>
- 599 Dien, D. C., Mochizuki, T., & Yamakawa, T. (2019). Effect of various drought stresses and
600 subsequent recovery on proline, total soluble sugar and starch metabolisms in Rice
601 (*Oryza sativa* L.) varieties. *Plant Production Science*, 22(4), 530–545.
602 <https://doi.org/10.1080/1343943X.2019.1647787>
- 603 Du, K., Liao, T., Ren, Y., Geng, X., & Kang, X. (2020). Molecular Mechanism of Vegetative
604 Growth Advantage in Allotriploid Populus. *International Journal of Molecular*
605 *Sciences*, 21(2). <https://doi.org/10.3390/ijms21020441>
- 606 Dutra de Souza, J., de Andrade Silva, E. M., Coelho Filho, M. A., Morillon, R., Bonatto, D.,
607 Micheli, F., & da Silva Gesteira, A. (2017). Different adaptation strategies of two
608 citrus scion/rootstock combinations in response to drought stress. *PLoS ONE*, 12(5).
609 <https://doi.org/10.1371/journal.pone.0177993>

- 610 Farooq, M., Hussain, M., Wahid, A., & Siddique, K. H. M. (2012). Drought Stress in Plants:
611 An Overview. In R. Aroca (Ed.), *Plant Responses to Drought Stress: From*
612 *Morphological to Molecular Features* (pp. 1–33). Springer.
613 https://doi.org/10.1007/978-3-642-32653-0_1
- 614 Farooq, M., Wahid, A., Kobayashi, N., Fujita, D., & Basra, S. M. A. (2009). Plant drought
615 stress: effects, mechanisms and management. *Agronomy for Sustainable Development*,
616 29(1), 185–212. <https://doi.org/10.1051/agro:2008021>
- 617 Farquhar, G.D., & Sharkey, T. D. (1982). Stomatal Conductance and Photosynthesis. *Annual*
618 *Review of Plant Physiology*, 33(1), 317–345.
619 <https://doi.org/10.1146/annurev.pp.33.060182.001533>
- 620 Flexas, J., Bota, J., Loreto, F., Cornic, G., & Sharkey, T. D. (2004). Diffusive and metabolic
621 limitations to photosynthesis under drought and salinity in C(3) plants. *Plant Biology*
622 *(Stuttgart, Germany)*, 6(3), 269–279. <https://doi.org/10.1055/s-2004-820867>
- 623 Flexas, J., Badger, M., Chow, W. S., Medrano, H., & Osmond, C. B. (1999). Analysis of the
624 Relative Increase in Photosynthetic O₂ Uptake When Photosynthesis in Grapevine
625 Leaves Is Inhibited following Low Night Temperatures and/or Water Stress. *Plant*
626 *Physiology*, 121(2), 675–684. <https://doi.org/10.1104/pp.121.2.675>
- 627 Franks, P. J., & Beerling, D. J. (2009). Maximum leaf conductance driven by CO₂ effects on
628 stomatal size and density over geologic time. *Proceedings of the National Academy of*
629 *Sciences*, 106(25), 10343–10347. <https://doi.org/10.1073/pnas.0904209106>
- 630 Gao, X., & Giorgi, F. (2008). Increased aridity in the Mediterranean region under greenhouse
631 gas forcing estimated from high resolution simulations with a regional climate model.
632 *Global and Planetary Change*, 62(3–4), 195–209.
- 633 Hong-Bo, S., Xiao-Yan, C., Li-Ye, C., Xi-Ning, Z., Gang, W., Yong-Bing, Y., Chang-Xing,
634 Z., & Zan-Min, H. (2006). Investigation on the relationship of proline with wheat anti-

635 drought under soil water deficits. *Colloids and Surfaces. B, Biointerfaces*, 53(1), 113–
636 119. <https://doi.org/10.1016/j.colsurfb.2006.08.008>

637 IPCC (2014). Climate change 2014: synthesis report. Contribution of working groups I, II and
638 III to the fifth assessment report of the intergovernmental panel on climate change.
639 eds. Core Writing Team, R. K. Pachauri and L. A. Meyer (Geneva: IPCC), 151.

640 Khalid, M. F., Hussain, S., Anjum, M. A., Ahmad, S., Ali, M. A., Ejaz, S., & Morillon, R.
641 (2020). Better salinity tolerance in tetraploid vs diploid volkamer lemon seedlings is
642 associated with robust antioxidant and osmotic adjustment mechanisms. *Journal of*
643 *Plant Physiology*, 244, 153071. <https://doi.org/10.1016/j.jplph.2019.153071>

644 Khazaei, H., Monneveux, P., Hongbo, S., & Mohammady, S. (2010). Variation for stomatal
645 characteristics and water use efficiency among diploid, tetraploid and hexaploid
646 Iranian wheat landraces. *Genetic Resources and Crop Evolution*, 57(2), 307–314.

647 Kiani, S. P., Talia, P., Maury, P., Grieu, P., Heinz, R., Perrault, A., Nishinakamasu, V., Hopp,
648 E., Gentzbittel, L., Paniego, N., & Sarrafi, A. (2007). Genetic analysis of plant water
649 status and osmotic adjustment in recombinant inbred lines of sunflower under two
650 water treatments. *Plant Science*, 172(4), 773–787.
651 <https://doi.org/10.1016/j.plantsci.2006.12.007>

652 Krug, C. A. (1943). Chromosome Numbers in the Subfamily Aurantioideae with Special
653 Reference to the Genus Citrus. *Botanical Gazette*, 104(4), 602–611.
654 <https://doi.org/10.1086/335173>

655 Lambrev, P. H., Miloslavina, Y., Jahns, P., & Holzwarth, A. R. (2012). On the relationship
656 between non-photochemical quenching and photoprotection of Photosystem II.
657 *Biochimica et Biophysica Acta (BBA) - Bioenergetics*, 1817(5), 760–769.
658 <https://doi.org/10.1016/j.bbabi.2012.02.002>

659 Lawlor, D. W. (2002). Limitation to Photosynthesis in Water-stressed Leaves: Stomata vs.
660 Metabolism and the Role of ATP. *Annals of Botany*, 89(7), 871–885.
661 <https://doi.org/10.1093/aob/mcf110>

662 Lawlor, D. W., & Cornic, G. (2002). Photosynthetic carbon assimilation and associated
663 metabolism in relation to water deficits in higher plants. *Plant, Cell & Environment*,
664 25(2), 275–294. <https://doi.org/10.1046/j.0016-8025.2001.00814.x>

665 Leal-Bertioli, S. C. M., Bertioli, D. J., Guimarães, P. M., Pereira, T. D., Galhardo, I., Silva, J.
666 P., Brasileiro, A. C. M., Oliveira, R. S., Silva, P. Í. T., Vadez, V., & Araujo, A. C. G.
667 (2012). The effect of tetraploidization of wild *Arachis* on leaf morphology and other
668 drought-related traits. *Environmental and Experimental Botany*, 84, 17–24.
669 <https://doi.org/10.1016/j.envexpbot.2012.04.005>

670 Li, W.-D., Biswas, D. K., Xu, H., Xu, C.-Q., Wang, X.-Z., Liu, J.-K., & Jiang, G.-M. (2009).
671 Photosynthetic responses to chromosome doubling in relation to leaf anatomy in
672 *Lonicera japonica* subjected to water stress. *Functional Plant Biology*, 36(9), 783–792.
673 <https://doi.org/10.1071/FP09022>

674 Liqin, G., Jianguo, Z., Xiaoxia, L., & Guodong, R. (2019). Polyploidy-related differential
675 gene expression between diploid and synthesized allotriploid and allotetraploid
676 hybrids of *Populus*. *Molecular Breeding*, 39(5), 69. [https://doi.org/10.1007/s11032-](https://doi.org/10.1007/s11032-019-0975-6)
677 [019-0975-6](https://doi.org/10.1007/s11032-019-0975-6)

678 Lourkisti, R., Froelicher, Y., Herbette, S., Morillon, R., Tomi, F., Gibernau, M., Giannettini,
679 J., Berti, L., & Santini, J. (2020). Triploid Citrus Genotypes Have a Better Tolerance
680 to Natural Chilling Conditions of Photosynthetic Capacities and Specific Leaf Volatile
681 Organic Compounds. *Frontiers in Plant Science*, 11.
682 <https://doi.org/10.3389/fpls.2020.00330>

683 Maxwell, K., & Johnson, G. N. (2000). Chlorophyll fluorescence--a practical guide. *Journal*
684 *of Experimental Botany*, 51(345), 659–668.

685 McDowell, N., Pockman, W. T., Allen, C. D., Breshears, D. D., Cobb, N., Kolb, T., Plaut, J.,
686 Sperry, J., West, A., Williams, D. G., & Yezpez, E. A. (2008). Mechanisms of plant
687 survival and mortality during drought: why do some plants survive while others
688 succumb to drought? *New Phytologist*, 178(4), 719–739.
689 <https://doi.org/10.1111/j.1469-8137.2008.02436.x>

690 Miller, G., Suzuki, N., Ciftci-Yilmaz, S., & Mittler, R. (2010). Reactive oxygen species
691 homeostasis and signalling during drought and salinity stresses. *Plant, Cell &*
692 *Environment*, 33(4), 453–467. <https://doi.org/10.1111/j.1365-3040.2009.02041.x>

693 Mittler, R. (2002). *Oxidative stress, antioxidants and stress tolerance*. 6.

694 Monda, K., Araki, H., Kuhara, S., Ishigaki, G., Akashi, R., Negi, J., Kojima, M., Sakakibara,
695 H., Takahashi, S., & Hashimoto-Sugimoto, M. (2016). Enhanced stomatal
696 conductance by a spontaneous Arabidopsis tetraploid, Me-0, results from increased
697 stomatal size and greater stomatal aperture. *Plant Physiology*, 170(3), 1435–1444.

698 Muchow, R., & Sinclair, T. (1989). Epidermal conductance, stomatal density and stomatal
699 size among genotypes of *Sorghum bicolor* (L.) Moench. *Plant, Cell & Environment*,
700 12(4), 425–431.

701 Muller, P. (2001). Non-Photochemical Quenching. A Response to Excess Light Energy.
702 *PLANT PHYSIOLOGY*, 125(4), 1558–1566. <https://doi.org/10.1104/pp.125.4.1558>

703 Mutava, R. N., Prince, S. J. K., Syed, N. H., Song, L., Valliyodan, B., Chen, W., & Nguyen,
704 H. T. (2015). Understanding abiotic stress tolerance mechanisms in soybean: A
705 comparative evaluation of soybean response to drought and flooding stress. *Plant*
706 *Physiology and Biochemistry*, 86, 109–120.
707 <https://doi.org/10.1016/j.plaphy.2014.11.010>

708 Navarro L., Aleza P., Cuenca J., Juárez J., José A. Pina, Carmen Ortega, Antonio Navarro, &
709 Violeta Ortega. (2015). THE MANDARIN TRIPLOID BREEDING PROGRAM IN
710 SPAIN. *Acta Horticulturae*, 1065, 389–395.
711 <https://doi.org/10.17660/ActaHortic.2015.1065.48>

712 Niinemets, U., Díaz-Espejo, A., Flexas, J., Galmés, J., & Warren, C. R. (2009). Importance of
713 mesophyll diffusion conductance in estimation of plant photosynthesis in the field.
714 *Journal of Experimental Botany*, 60(8), 2271–2282.
715 <https://doi.org/10.1093/jxb/erp063>

716 Ollitrault, P., Guo, W., & Grosser, J. W. (2007). Somatic hybridization. In I. A. Khan (Ed.),
717 *Citrus genetics, breeding and biotechnology* (pp. 235–260). CABI.
718 <https://doi.org/10.1079/9780851990194.0235>

719 Ollitrault, Patrick, Dambier, D., Luro, F., & Froelicher, Y. (2008). Ploidy Manipulation for
720 Breeding Seedless Triploid Citrus. In *Plant Breeding Reviews* (pp. 323–352). John
721 Wiley & Sons, Ltd. <https://doi.org/10.1002/9780470380130.ch7>

722 Oustric, J., Morillon, R., Luro, F., Herbette, S., Martin, P., Giannettini, J., Berti, L., & Santini,
723 J. (2019). Nutrient Deficiency Tolerance in Citrus Is Dependent on Genotype or
724 Ploidy Level. *Frontiers in Plant Science*, 10. <https://doi.org/10.3389/fpls.2019.00127>

725 Rey, P., Gillet, B., Römer, S., Eymery, F., Massimino, J., Peltier, G., & Kuntz, M. (2000).
726 Over-expression of a pepper plastid lipid-associated protein in tobacco leads to
727 changes in plastid ultrastructure and plant development upon stress. *The Plant*
728 *Journal: For Cell and Molecular Biology*, 21(5), 483–494.
729 <https://doi.org/10.1046/j.1365-313x.2000.00699.x>

730 Rottet, S., Besagni, C., & Kessler, F. (2015). The role of plastoglobules in thylakoid lipid
731 remodeling during plant development. *Biochimica et Biophysica Acta (BBA) -*
732 *Bioenergetics*, 1847(9), 889–899. <https://doi.org/10.1016/j.bbabi.2015.02.002>

733 Ruban, A. V. (2016). Nonphotochemical Chlorophyll Fluorescence Quenching: Mechanism
734 and Effectiveness in Protecting Plants from Photodamage1. *Plant Physiology*, 170(4),
735 1903–1916. <https://doi.org/10.1104/pp.15.01935>

736 Santana-Vieira, D. D. S., Freschi, L., Almeida, L. A. da H., Moraes, D. H. S. de, Neves, D.
737 M., Santos, L. M. dos, Bertolde, F. Z., Soares Filho, W. dos S., Coelho Filho, M. A.,
738 & Gesteira, A. da S. (2016). Survival strategies of citrus rootstocks subjected to
739 drought. *Scientific Reports*, 6(1), 38775. <https://doi.org/10.1038/srep38775>

740 Santini, J., Giannettini, J., Pailly, O., Herbette, S., Ollitrault, P., Berti, L., & Luro, F. (2013).
741 Comparison of photosynthesis and antioxidant performance of several Citrus and
742 Fortunella species (Rutaceae) under natural chilling stress. *Trees*, 27(1), 71–83.
743 <https://doi.org/10.1007/s00468-012-0769-5>

744 Scholander, P. F., Bradstreet, E. D., Hemmingsen, E. A., & Hammel, H. T. (1965). Sap
745 Pressure in Vascular Plants: Negative hydrostatic pressure can be measured in plants.
746 *Science*, 148(3668), 339–346. <https://doi.org/10.1126/science.148.3668.339>

747 Shao, R. X., Xin, L. F., Zheng, H. F., Li, L. L., Ran, W. L., Mao, J., & Yang, Q. H. (2016).
748 Changes in chloroplast ultrastructure in leaves of drought-stressed maize inbred lines.
749 *Photosynthetica*, 54(1), 74–80. <https://doi.org/10.1007/s11099-015-0158-6>

750 Sheen, J. (1994). Feedback control of gene expression. *Photosynthesis Research*, 39(3), 427–
751 438.

752 Silva, M. de A., Jifon, J. L., Santos, C. M. dos, Jadoski, C. J., & Silva, J. A. G. da. (2013).
753 Photosynthetic capacity and water use efficiency in sugarcane genotypes subject to
754 water deficit during early growth phase. *Brazilian Archives of Biology and*
755 *Technology*, 56(5), 735–748. <https://doi.org/10.1590/S1516-89132013000500004>

756 Souza, R. P., Machado, E. C., Silva, J. A. B., Lagôa, A. M. M. A., & Silveira, J. A. G. (2004).
757 Photosynthetic gas exchange, chlorophyll fluorescence and some associated metabolic

758 changes in cowpea (*Vigna unguiculata*) during water stress and recovery.
759 *Environmental and Experimental Botany*, 51(1), 45–56.
760 [https://doi.org/10.1016/S0098-8472\(03\)00059-5](https://doi.org/10.1016/S0098-8472(03)00059-5)

761 Szabados, L., & Savouré, A. (2010). Proline: a multifunctional amino acid. *Trends in Plant*
762 *Science*, 15(2), 89–97. <https://doi.org/10.1016/j.tplants.2009.11.009>

763 Tan, F.-Q., Tu, H., Liang, W.-J., Long, J.-M., Wu, X.-M., Zhang, H.-Y., & Guo, W.-W.
764 (2015). Comparative metabolic and transcriptional analysis of a doubled diploid and
765 its diploid citrus rootstock (*C. junos* cv. Ziyang xiangcheng) suggests its potential
766 value for stress resistance improvement. *BMC Plant Biology*, 15.
767 <https://doi.org/10.1186/s12870-015-0450-4>

768 Urban, L., Aarouf, J., & Bidel, L. P. R. (2017). Assessing the Effects of Water Deficit on
769 Photosynthesis Using Parameters Derived from Measurements of Leaf Gas Exchange
770 and of Chlorophyll a Fluorescence. *Frontiers in Plant Science*, 8.
771 <https://doi.org/10.3389/fpls.2017.02068>

772 Van Laere, K., França, S. C., Vansteenkiste, H., Van Huylenbroeck, J., Steppe, K., & Van
773 Labeke, M.-C. (2011). Influence of ploidy level on morphology, growth and drought
774 susceptibility in *Spathiphyllum wallisii*. *Acta Physiologiae Plantarum*, 33(4), 1149–
775 1156.

776 Wang, S., Liang, D., Li, C., Hao, Y., Ma, F., & Shu, H. (2012). Influence of drought stress on
777 the cellular ultrastructure and antioxidant system in leaves of drought-tolerant and
778 drought-sensitive apple rootstocks. *Plant Physiology and Biochemistry: PPB*, 51, 81–
779 89. <https://doi.org/10.1016/j.plaphy.2011.10.014>

780 Xu, S., Li, J., Zhang, X., Wei, H., & Cui, L. (2006). Effects of heat acclimation pretreatment
781 on changes of membrane lipid peroxidation, antioxidant metabolites, and ultrastructure
782 of chloroplasts in two cool-season turfgrass species under heat stress. *Environmental*

783 *and Experimental Botany*, 56(3), 274–285.
784 <https://doi.org/10.1016/j.envexpbot.2005.03.002>

785 Xue, H., Zhang, B., Tian, J.-R., Chen, M.-M., Zhang, Y.-Y., Zhang, Z.-H., & Ma, Y. (2017).
786 Comparison of the morphology, growth and development of diploid and autotetraploid
787 ‘Hanfu’ apple trees. *Scientia Horticulturae*, 225, 277–285.
788 <https://doi.org/10.1016/j.scienta.2017.06.059>

789 Yang, H., Gu, X., Ding, M., Lu, W., & Lu, D. (2019). Activities of starch synthetic enzymes
790 and contents of endogenous hormones in waxy maize grains subjected to post-silking
791 water deficit. *Scientific Reports*, 9(1), 7059. [https://doi.org/10.1038/s41598-019-](https://doi.org/10.1038/s41598-019-43484-0)
792 [43484-0](https://doi.org/10.1038/s41598-019-43484-0)

793 Yang, J., Zhang, J., Wang, Z., Xu, G., & Zhu, Q. (2004). Activities of Key Enzymes in
794 Sucrose-to-Starch Conversion in Wheat Grains Subjected to Water Deficit during
795 Grain Filling. *Plant Physiology*, 135(3), 1621–1629.
796 <https://doi.org/10.1104/pp.104.041038>

797 Zandalinas, S. I., Balfagón, D., Arbona, V., & Gómez-Cadenas, A. (2017). Modulation of
798 Antioxidant Defense System Is Associated with Combined Drought and Heat Stress
799 Tolerance in Citrus. *Frontiers in Plant Science*, 8.
800 <https://doi.org/10.3389/fpls.2017.00953>

801 Zandalinas, S. I., Rivero, R. M., Martínez, V., Gómez-Cadenas, A., & Arbona, V. (2016).
802 Tolerance of citrus plants to the combination of high temperatures and drought is
803 associated to the increase in transpiration modulated by a reduction in abscisic acid
804 levels. *BMC Plant Biology*, 16(1), 105. <https://doi.org/10.1186/s12870-016-0791-7>

805 Zellnig, G., Perktold, A., & Zechmann, B. (2010). Fine structural quantification of drought-
806 stressed *Picea abies* (L.) organelles based on 3D reconstructions. *Protoplasma*, 243(1–
807 4), 129–136.

808 Zhang, W., Gu, J., Wang, Z., Wei, C., Yang, J., & Zhang, J. (2017). Comparison of Structural
809 and Functional Properties of Wheat Starch Under Different Soil Drought Conditions.
810 *Scientific Reports*, 7(1), 12312. <https://doi.org/10.1038/s41598-017-10802-3>