



HAL
open science

Zircon age of vaugnerite intrusives from the Central and Southern Vosges crystalline massif (E France): contribution to the geodynamics of the European Variscan belt

François Guillot, Olivier Averbuch, Michel Dubois, Cyril Durand, Pierre Lanari, Arnaud Gauthier

► To cite this version:

François Guillot, Olivier Averbuch, Michel Dubois, Cyril Durand, Pierre Lanari, et al.. Zircon age of vaugnerite intrusives from the Central and Southern Vosges crystalline massif (E France): contribution to the geodynamics of the European Variscan belt. Bulletin de la Société Géologique de France, 2020, 191, pp.26. 10.1051/bsgf/2020027. hal-03177061

HAL Id: hal-03177061

<https://hal.science/hal-03177061>

Submitted on 23 Mar 2021

HAL is a multi-disciplinary open access archive for the deposit and dissemination of scientific research documents, whether they are published or not. The documents may come from teaching and research institutions in France or abroad, or from public or private research centers.

L'archive ouverte pluridisciplinaire **HAL**, est destinée au dépôt et à la diffusion de documents scientifiques de niveau recherche, publiés ou non, émanant des établissements d'enseignement et de recherche français ou étrangers, des laboratoires publics ou privés.



Distributed under a Creative Commons Attribution 4.0 International License

Zircon age of vaugnerite intrusives from the Central and Southern Vosges crystalline massif (E France): contribution to the geodynamics of the European Variscan belt

François Guillot^{1,*}, Olivier Averbuch¹, Michel Dubois², Cyril Durand², Pierre Lanari³ and Arnaud Gauthier²

¹ Univ. Lille, Univ. Littoral Côte d'Opale, CNRS, UMR 8187, LOG, Laboratoire d'Océanologie et de Géosciences, F-59000 Lille, France

² Univ. Lille, EA4515, LGCgE, Laboratoire de Génie Civil et de géoEnvironnement, F-59655 Villeneuve-d'Ascq cedex, France

³ Institute of Geological Sciences, University of Bern, Baltzerstrasse 1 + 3, CH-3012 Bern, Switzerland

Received: 7 October 2019 / Accepted: 27 June 2020

Abstract – To provide a better picture of the active geodynamics along the Variscan suture zones during the late collisional stage (particularly regarding the evolution of the orogenic system towards HT conditions), we focused here on vaugnerites, which consist of mafic ultra-potassic magmatic rocks, intrusive into the granite-gneiss sequences of the Variscan Vosges crystalline massif. Those rocks, though subordinate in volume, are frequently associated with late-collisional granites. In the Central-Southern Vosges, they appear either as (1) pluton margin of the Southern Vosges Ballons granite complex or (2) composite dykes intrusive into migmatite and metamorphic sequences classically referred to as granite-gneiss unit (Central Vosges). Both types correspond to melanocratic rocks with prominent, Mg-rich, biotite and hornblende (20–40% vol., $64 < \text{mg\#} < 78$), two-feldspar and quartz. Those Vosges vaugnerites display geochemical signatures characteristic of ultra-potassic mafic to intermediate, metaluminous to slightly peraluminous rocks. Zircon U-Pb ages were obtained by Laser Ablation Inductively Coupled Plasma Mass Spectrometry. Zircon grains were extracted from a sillimanite-bearing gneiss from the granite-gneiss unit hosting the Central Vosges vaugnerites. They yielded an age at 451 ± 9 Ma, indicating a pre-Variscan Upper Ordovician protolith for the host sequence. Zircon from the four vaugnerite intrusives display U-Pb ages ($\pm 2\sigma$) of 340 ± 2.5 Ma (Ballons), 340 ± 25 Ma, 340 ± 7 Ma and 336 ± 10 Ma (Central Vosges). Synchronous within uncertainty, vaugnerite age data suggest a relatively early emplacement during the Late Variscan collisional history (*i.e.* Middle Viséan times). These results are in line with previously published ages from the Southern Vosges volcano-sedimentary sequences (Oderen-Markstein) and the nearby ultra-potassic granite complexes from the Central and Southern Vosges (Ballons, Crêtes) thereby arguing for a magmatic event of regional significance. Recent petrological studies on vaugnerites suggest that they derive from partial melting of a metasomatized mantle contaminated to some different degrees by elements of continental crust. We propose here that the major ultra-potassic magmatic pulse at 340–335 Ma is a consequence of a significant change into the dynamics of the Rheohercynian subduction system below the Central-Southern Vosges. In the light of recent thermo-mechanical modelling experiments on mature continental collision, magmatism could result from a syn-collisional lithospheric delamination mechanism involving (1) first, continental subduction evolving towards (2) the underthrusting of the Avalonian continental margin lower crust and (3) the initiation of lithospheric delamination within the supra-subduction retro-wedge (Saxothuringian-Moldanubian continental block). This delamination would drive the emplacement of an asthenospheric upwelling, initially localized along the Variscan suture zones, and gradually propagating towards the southern front of the belt during the Late Carboniferous, as the delamination front migrated at the base of the crust.

Keywords: Variscan orogeny / Vosges / vaugnerites / ultra-potassic magmatism / Viséan / syn-collisional lithospheric delamination

* Corresponding author: francois.guillot@univ-lille.fr

Résumé – Datation du zircon de vaugnérites des Vosges centrales et méridionales : contribution à la géodynamique de l’orogène varisque d’Europe. Afin d’avancer dans la compréhension de la géodynamique des zones de suture varisque au stade tardif de la collision (en particulier au regard de l’évolution du système orogénique en contexte de HT), nous nous sommes intéressés à la mise en place des vaugnérites, roches basiques ultra-potassiques intrusives au sein des ensembles granito-gneissiques de la croûte varisque des Vosges. Ces roches, souvent associées aux ensembles granitiques tardi-collisionnels, sont de faible extension mais quasiment toujours présentes au sein de ces systèmes. Elles affleurent (1) dans les Vosges méridionales, en masses plutoniques marginales du Granite des Ballons et (2) dans les Vosges centrales (région de Plainfaing), en filons composites, intrusifs dans un complexe de migmatites et de roches métamorphiques appelées granite-gneiss. Les vaugnérites sont des roches mélanocrates à biotite et hornblende magnésiennes (20 à 40 % vol, $64 < \text{mg\#} < 78$), présentant des signatures géochimiques caractéristiques de roches ultra-potassiques mafiques à intermédiaires, métalumineuses à légèrement peralumineuses. L’âge U-Pb obtenu par ablation laser ICP-MS du zircon d’un gneiss à sillimanite du granite-gneiss encaissant des vaugnérites est de 451 ± 9 Ma, révélant un bâti pré-varisque à protolithe ordovicien supérieur. Les grains de zircon extraits de quatre vaugnérites donnent des âges U-Pb ($\pm 2\sigma$) de $340 \pm 2,5$ Ma (Ballons), 340 ± 25 Ma, 340 ± 7 Ma et 336 ± 10 Ma (Vosges centrales). Les données de datation des vaugnérites, identiques aux incertitudes de mesure près, apparaissent donc cohérentes et révèlent un âge assez précoce dans l’histoire tardi-collisionnelle de la chaîne. Ces données, en accord avec les âges publiés préalablement sur ce secteur, montrent que les vaugnérites se mettent en place au Viséen moyen, au cours d’un événement magmatique majeur, exprimé tant dans les séries volcano-sédimentaires (Séries Oderen-Markstein) que dans les granitoïdes ultra-potassiques des Vosges méridionales (Ballons) et centrales (Crêtes). Les études pétrologiques récentes sur les vaugnérites suggèrent qu’elles dérivent de la fusion partielle d’un manteau métasomaté et contaminé à différents degrés par des éléments de croûte continentale fondue. Nous proposons ici que ce « pulse » magmatique ultra-potassique d’ampleur à 340–335 Ma soit le signe une évolution majeure dans la dynamique de la subduction de la lithosphère rhéohercynienne sous les Vosges centrales et méridionales. Sur le modèle d’expériences thermomécaniques récentes simulant le déroulement d’une collision continentale mature, il pourrait traduire les premiers effets d’un phénomène de délamination lithosphérique syn-collisionnelle impliquant (1) une subduction continentale relayée (2) par le sous-charriage d’une lame de croûte inférieure de la marge continentale avalonienne et (3) l’initiation de la délamination lithosphérique au sein du prisme orogénique supra-subduction qu’était le bloc continental saxothüringien-moldanubien. Ce processus conduirait à la mise en place d’un « upwelling » asthénosphérique, initialement localisé aux zones de suture varisque et se propageant au cours de la fin du Carbonifère vers le front sud de la chaîne à mesure de la propagation du front de délamination à la base de la croûte.

Mots clés : orogénèse varisque / Vosges / vaugnérites / magmatisme ultra-potassique / Viséen / délamination lithosphérique syn-collision

1 Introduction

The European Variscan orogenic belt developed during Upper Paleozoic times (*i.e.* Mid-Devonian-Upper Carboniferous) in response to the broad scale collision of the megacontinents Laurussia and Gondwana and the closure of intervening oceanic realms. Although studied for more than a century, the geodynamical history of this large belt still remains a matter of debate (*e.g.*, Franke, 2006; Ballèvre *et al.*, 2009; Faure *et al.*, 2009; Franke *et al.*, 2017). The subduction dynamics of involved oceanic plates and associated continental margins are still highly debated mainly due to a major late orogenic lithospheric reworking including pervasive magmatism, high temperature metamorphism and extensional deformations, that obliterated the initial collisional structure of the belt (Ledru *et al.*, 1989; Burg *et al.*, 1994; Costa and Rey, 1995; Faure, 1995; Gardien *et al.*, 1997; Janousek *et al.*, 2012; Schulmann *et al.*, 2014). Such event, often referred to as late orogenic extensional collapse, included extensive melting of the crustal units involved in the Variscan orogenic wedge in response to a lithospheric-scale thermal imprint. Based on combined geophysical, petrological and numerical modeling

arguments, this scenario was recently linked to mantle delamination below the Variscan suture zones (Schott and Schmelling, 1998; Henk *et al.*, 2000; Gayk and Kleinschrodt, 2000; Prijac *et al.*, 2000; Arnold *et al.*, 2001; Ledru *et al.*, 2001; Femenias *et al.*, 2004; Finger *et al.*, 2009; Averbuch and Piromallo, 2012; Laurent *et al.*, 2017) but no integrated model is so far available.

The involvement of the mantle in this late orogenic event has been proposed, in particular, through the existence within the anatectic granitic suites of peculiar ultra-potassic mafic magmatic rocks: vaugnerite-durbachite and lamprophyre-type rocks (*e.g.* Gerdes *et al.*, 2000; Bonin, 2004; Janousek and Holub, 2007; von Raumer *et al.*, 2013; Couzinié *et al.*, 2016; Soder and Romer, 2018; Janousek, 2019). These specific rocks, also referred to in the recent literature as Mg-K (*e.g.* Tabaud *et al.*, 2015) or Post Collisional Mafic Magmas (Couzinié *et al.*, 2016), are characterized by magmatic assemblages with dominant dark minerals including Mg-rich biotite (phlogopite-eastonite), Mg-rich amphibole and/or Mg-rich pyroxene associated to various amount of plagioclase and alkali feldspars, with generally minor quartz. Due to such peculiar and variable composition, they are difficult to fit into classical

classifications of magmatic rocks but were generally referred to, in the literature, as melasyenitic to dioritic-gabbroic type rocks (e.g. Janousek and Holub, 2007; Tabaud *et al.*, 2015; Laurent *et al.*, 2017). Those rocks display complex and heterogeneous petrological characters and geochemical signatures involving variable proportions of crustal and mantellic sources (e.g., Couzinié *et al.*, 2016). Hence they received various interpretations in the past invoking either late metasomatic, or cumulative mechanisms (e.g., Montel and Weisbrod, 1986 and references herein). In more recent times, however, they have been generally considered to originate from partial melting of a metasomatized mantle, variably enriched by crustal contamination, presumably associated to former or possibly still on-going continental subduction (e.g., Sabatier, 1980; Montel and Weisbrod, 1986; Rossi, 1986; Michon, 1987; Banzet, 1987; Turpin *et al.*, 1988; Sabatier, 1991; Foley, 1992; Holub, 1997; Debon and Lemmet, 1999; Gerdes *et al.*, 2000; Bonin, 2004; Solgadi *et al.*, 2007; Scarrow *et al.*, 2008; Parat *et al.*, 2010; von Raumer *et al.*, 2013; Couzinié *et al.*, 2016; Moyen *et al.*, 2017; Laurent *et al.*, 2017; Förster *et al.*, 2019).

Vaugnerites appear generally as subordinate magmatic bodies but occur throughout the basement massifs cropping out along the Variscan suture zones (Fig. 1) *i.e.* the French Massif Central (Sabatier, 1980; Montel and Weisbrod, 1986; Michon, 1987; Barbey *et al.*, 2015; Solgadi *et al.*, 2007; Couzinié *et al.*, 2014; 2016; Laurent *et al.*, 2017), the Armorican and Cornwall massifs (Exley *et al.*, 1983; Le Gall *et al.*, 1989; Dupuis *et al.*, 2015), the Vosges-Black Forest-Saxothuringian massifs (Gagny, 1978; André, 1981; Hegner *et al.*, 1998; von Seckendorff *et al.*, 2004b; Tabaud *et al.*, 2014; Tabaud *et al.*, 2015; Soder and Romer, 2018), the Bohemian massif (Holub, 1997; Gerdes *et al.*, 2000; Seifert, 2008; Zeitlhofer *et al.*, 2016; Kubínová *et al.*, 2017), the External Crystalline massifs of the Western Alps and Corsica (Banzet, 1987; Bussy *et al.*, 1998; Bonin *et al.*, 1998; Debon *et al.*, 1998; Rossi *et al.*, 2009) and some Variscan massifs from Spain (Scarrow *et al.*, 2008, 2011).

Radiogenic dating of these ultra-potassic mafic magmatic suites reveals a rather large time-span for their emplacement ranging between ca 340 Ma to ca 265 Ma, *i.e.* mid-Carboniferous to mid-Permian (Schaltegger and Corfu, 1992; Hegner *et al.*, 1998; Schulmann *et al.*, 2002; von Seckendorff *et al.*, 2004a; Scarrow *et al.*, 2006; Seifert, 2008; von Raumer *et al.*, 2013; Couzinié *et al.*, 2014; Dupuis *et al.*, 2015; Tabaud *et al.*, 2015; Laurent *et al.*, 2017). This large time-span might indicate the existence of superimposed magmatic pulses associated to various mantle melting events in connection with multiple Variscan collisions and orogenic root removals along successive suture zones (von Raumer *et al.*, 2013; Skrzypek *et al.*, 2014; Kubínová *et al.*, 2017). Alternatively, one could advocate a single magmatic event associated to mantle upwelling, presumably due to lithospheric delamination, propagating outward from the suture zones at the end of the collision period (Laurent *et al.*, 2017).

The time-space evolution of these late orogenic ultra-potassic mantle-derived magmatic suites is thus critical to further constrain the Variscan orogen geodynamical models and, more generally, the late evolution of collisional mountain belt at a lithospheric-asthenospheric scale. In this perspective, we focused here on some vaugnerite magmatic bodies from

the Central and Southern Vosges massifs in Eastern France (Fig. 1). These bodies are associated in subordinate amounts to the Variscan basement massifs of gneiss and granite. In Southern Vosges, they occur as mafic margin of the co-genetic ultra-potassic granitoid Ballons pluton. In Central Vosges, they crop out as isolated dykes or stocks across a so-called “granite-gneiss” massif. In the following, we present new results of petrological and zircon dating analyses by Laser Ablation Inductively Coupled Plasma Mass Spectrometry (LA-ICP-MS) for four rock samples of vaugnerite intrusives of the Central-Southern Vosges and one of the “granite-gneiss”. These results are integrated in the geodynamical evolution of the Vosges massif and, at a larger scale, of the equivalent massifs along the Variscan suture zones thereby leading to a revised lithospheric-scale geodynamical model for the late evolution of the belt.

2 Geological setting

The study of the geological evolution of the Vosges crystalline Massif, since the nineteenth century, has successively obeyed very diverse paradigms. Hence the prevailing ideas upon the Vosges massif endured several upheavals, their final sum being all but easy to decipher and practically impossible to summarize. Hereafter, we will present a synthesis of the most recent views but we will also refer to some older observations that proved useful.

2.1 Outline of the geological evolution of the Variscan Vosges Massif

The Vosges crystalline massif (Eastern France) and its homolog in Western Germany, the Black Forest Massif (Fig. 1), have been exhumed in Tertiary times as the uplifted shoulders of the Rhine graben (e.g. Bourgeois *et al.*, 2007 and references herein). The Vosges mountains exhibit metamorphic and magmatic Paleozoic rocks juxtaposed during the Variscan orogenic cycle as the result of superimposed nappe stacking, extensional detachment and transcurrent faulting with synchronous volcanism and granitoid intrusions (Fluck *et al.*, 1989; Edel and Fluck, 1989; Eisbacher *et al.*, 1989; Rey *et al.*, 1991; Piqué *et al.*, 1994; Lardeaux *et al.*, 2014; Skrzypek *et al.*, 2014; Tabaud *et al.*, 2014, 2015). This resulted in a complex structural pattern and rather contrasted exhumation pathways as exemplified by the main tectonic boundary across the massif *i.e.* the Lalaye-Lubine Fault Zone (LLFZ, Figs. 1 and 2).

The Lalaye-Lubine Fault Zone separates the low-grade Lower Paleozoic meta-sedimentary rocks of the Northern Vosges domain (Piqué *et al.*, 1994; Skrzypek *et al.*, 2014) from the HP-HT Eclogite-Granulite-Migmatite complex of the Central Vosges (Fluck, 1980; Rey *et al.*, 1989; Latouche *et al.*, 1992; Altherr and Kalt, 1996; Skrzypek *et al.*, 2012b; Altherr and Soder, 2018). Despite polyphase reworking of its initial structure, it was generally considered to localize the Mid-Upper Devonian (ca. 380 Ma) early Variscan suture zone between the Northern Saxothuringian and the Southern Moldanubian domains (Fig. 1) (Wickert and Eisbacher, 1988; Fluck *et al.*, 1989; Edel and Fluck, 1989; Rey *et al.*, 1991; Piqué *et al.*, 1994; Franke, 2000). Based on a Bohemian

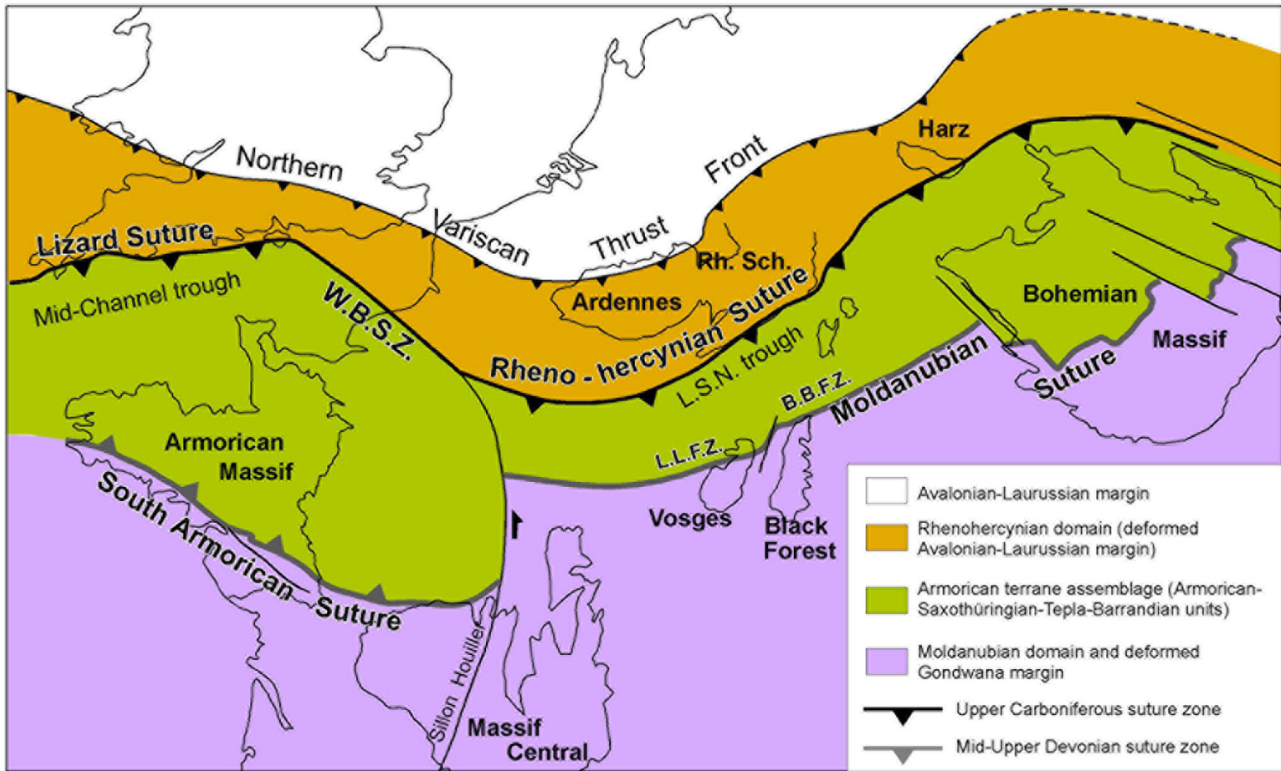


Fig. 1. General geodynamical framework of the Variscan belt in Western and Central Europe (chiefly based on the map of [Edel *et al.*, 2013](#)). LLFZ: Lalaye-Lubine fault zone; BBFZ: Baden-Baden fault zone; L.S.N.: Lorraine-Sarre-Nahe; W.B.S.Z.: Isle-of-Wight-Bray suture zone; Rh. Sch: Rhenish Slate Massif.

massif analogy, some slightly different views have been proposed recently by [Skrzypek *et al.* \(2014\)](#) suggesting the amalgamation of the Saxothuringian-Tepla-Barrandian-Moldanubian domains within a very restricted area bordering to the North the Lalaye-Lubine dislocation. Those contrasting interpretations have some important consequences on the inferred vergence of the associated subducted slabs and NW- as well as SE-dipping slabs have been considered depending on the way this major northern Vosges tectonic boundary is connected laterally to adjacent suture zones (*e.g.* [Matte, 2001](#); [Franke, 2006](#); [Ballèvre *et al.*, 2009](#); [Edel *et al.*, 2013](#); [Lardeaux *et al.*, 2014](#); [Skrzypek *et al.*, 2014](#); [Franke *et al.*, 2017](#)). Whatever the precise location of this suture zone, as observed throughout the internal zones of the belt (*i.e.* South Armoricain domain, Massif central, Bohemian massif), this early collisional phase is marked by widespread remnants of HP and UHP rocks buried during continental subduction and then partly melted or affected by a significant HT metamorphic imprint during their exhumation ([Matte, 1998](#); [Lardeaux *et al.*, 2001](#); [Faure *et al.*, 2008](#); [Ballèvre *et al.*, 2009](#); [Faryad and Kachlyk, 2013](#); [Lardeaux *et al.*, 2014](#)).

The subsequent Carboniferous evolution of the Vosges massif is dominantly controlled by its localization in a supra-subduction position with regards to the south-directed Rhenohercynian subducted slab ([Fig. 1](#)) ([Skrzypek *et al.*, 2012a](#); [Edel *et al.*, 2013](#)). Such evolution is particularly well exemplified in the Northern Vosges units (*i.e.* north of the Lalaye-Lubine Fault Zone, LLFZ) where a long-lasting calc-alkaline activity evidences

a magmatic arc throughout the Carboniferous ([Piqué *et al.*, 1994](#); [Altherr *et al.*, 2000](#); [Tabaud *et al.*, 2014](#)), interpreted as the western prolongation of the Saxothuringian Mid-German Crystalline Rise ([Oncken, 1997](#); [Skrzypek *et al.*, 2014](#)). This Northern Vosges magmatism evolved from arc-type calc-alkaline (*c.* 335 Ma) to high-K calc-alkaline (*c.* 325–320 Ma) ([Tabaud *et al.*, 2014](#)). Peraluminous anatectic granites and ultra-potassic (Mg-K) magmatic intrusives emplaced within the Northern Vosges magmatic complex at *c.* 310–290 Ma ([Tabaud *et al.*, 2014](#)) sign the thermal imprint observed throughout the Variscan supra-subduction crustal domains during the late collisional stage. This Late Variscan magmatic event also produced a wealth of effusive rocks as exemplified by the Northern Vosges Nideck volcanic system ([Edel and Schneider, 1995](#)) and the numerous volcanic layers deposited in the nearby Late Carboniferous-Early Permian Lorraine-Saar-Nahe intermontane basin (L.S.N. trough in [Fig. 1](#)) ([von Seckendorff *et al.*, 2004b](#)). The development of highly subsiding rift basins on top and at the northern border of the Vosges basement massif (*i.e.* the Lorraine-Saar-Nahe ([Donsimoni, 1981](#); [Henk, 1993](#); [Stollhofen, 1998](#); [Edel and Schulmann, 2009](#)) and the St Dié-Villé basins ([Carasco, 1989](#); [Durand, 2014](#)), points to a general transition from compression to extension within the Variscan orogenic wedge, characteristic of the tectonic collapse stage. The localization of Late Carboniferous (Stephanian) molasses along the Lalaye-Lubine fault zone ([Durand, 2014](#)) suggests that the former Early Variscan Saxothuringian-Moldanubian suture zone was reactivated as a normal fault during the development of the late orogenic St Dié-Villé basin as

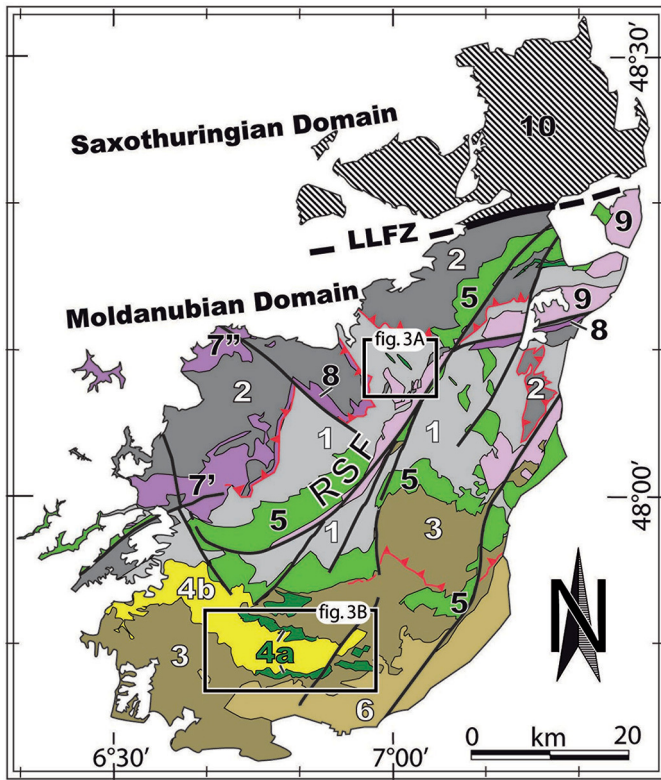


Fig. 2. Geological map of the Vosges massif, mainly after von Eller *et al.* (1972), Fluck *et al.* (1989), M enillet *et al.* (1989), Skrzypek *et al.* (2012a, 2012b), and the present study. 1. Granite-gneiss units 2. Migmatites and granulitic gneiss \pm pods of garnet pyroxenite and eclogite. 3. Early-Middle Visean volcano-sedimentary sequences, mostly marine. 4. Mg-K granitoids, 4a: vaugnerite-durbachite, 4b: Ballons pluton monzogranite (both intruded 1 and 3). 5. Mg-K granitoids, Amp-Bt monzogranite plutons (“Granite des Cr etes”, intruded 1, 3). 6. Late Visean, mostly volcanic deposits, post-plutonic *versus* 4a, 4b of which they contain reworked pebbles. 7', 7". resp. Remiremont Granite, Epinal Granite. 8. Straiture and Bilstein syntectonic granite. 9. Late-tectonic, Upper Carboniferous leucogranites. 10.- Northern Vosges, undifferentiated (see text). RSF. – Retournemer– Sainte-Marie-aux-Mines Fault. LLFZ. – Lalaye-Lubine Fault Zone.

also observed in the Rhenohercynian suture zone at the northern border of the Lorraine-Sarre-Nahe basin (Oncken *et al.*, 2000; Averbuch and Piromallo, 2012). This scenario was also proposed by Skrzypek *et al.* (2014) as this major boundary was interpreted as a significant detachment fault active during the late evolution of the belt.

The Vosges units south of Lalaye-Lubine fault zone (*i.e.* the classically called Moldanubian Vosges) (Fig. 2) should have experienced roughly the same evolution during Carboniferous times as no remaining oceanic realm is considered to exist between the northern and central Vosgian blocks at that time. Such interpretation is also suggested by the magmatic affinity trends recorded within the Lower Carboniferous volcanic sequences interlayered within the Southern Vosges volcano-sedimentary basin *i.e.* arc-tholeiites-calc-alkaline to high-K calc-alkaline to shoshonitic affinities (Lef evre *et al.*,

1994; Lakhriissi, 1996; Eisele *et al.*, 2000). The volcanic activity was restricted to a narrow range of 5 Ma at c. 345–340 Ma (Schaltegger *et al.*, 1996) but this age pattern appears in contradiction with proposed stratigraphic ages (up to ca 330 Ma) of foraminifera included in associated limestone turbidites (Montenari, 1999; Franke, 2000) thereby suggesting reworking of volcanic layers. As shown by detailed mapping (*e.g.* M enillet *et al.*, 1989, and references therein), these effusive sequences were co-magmatic with the hosted Ballons plutonic complex (4a + 4b in Fig. 2), which also displays an ultra-potassic (shoshonitic) pattern (Pagel and Leterrier, 1980). These data are in line with the view that, during Carboniferous times, the Northern and Central-Southern Vosges evolved as a coherent crustal domain (Fluck, 1980; Boutin *et al.*, 1995) submitted to the main influence of the underlying Rhenohercynian subduction (Eisele *et al.*, 2000). Skrzypek *et al.* (2014) and Tabaud *et al.* (2015) proposed an alternative geodynamical model including some residual decoupling between the Northern and Central Vosges associated to the subducted (*i.e.* Upper Devonian) Saxothuringian continental slab controlling the Central and Southern Vosges magmatism (considered as overall ultra-potassic (Mg-K) associations) through relamination below the Moldanubian lithosphere. Such debated Central-Southern Vosges magmatic events are further discussed in the following sections.

As previously mentioned, the kinematics of deformation during Carboniferous of the Vosges and Black Forest massifs involves superimposed extensional and compressional events (Eisbacher *et al.*, 1989; Echtler and Chauvet, 1992; Rey *et al.*, 1991), difficult to resolve in space and time. The upper plate of the Rhenohercynian subduction, the formerly thickened lithosphere of the Vosges, is likely to have experienced compressional and extensional deformation in relation with the internal slab dynamics *i.e.* coupling *versus* decoupling conditions at the trench (*e.g.*, Guillaume *et al.*, 2009). The development of the Southern Vosges volcano-sedimentary basin during latest Devonian-Middle Visean times (*e.g.*, Schneider, 1990) argues however for a long-term subsidence of the lithosphere coeval with the development of the magmatic arc of the Northern Vosges. This strongly supports a first-order back-arc extensional (or at least transtensional) context of the supra-subduction Southern Vosges crustal domain during most of Carboniferous times up to mid-Visean times (Schaltegger *et al.*, 1996; Eisele *et al.*, 2000; Schulmann *et al.*, 2002).

The subsequent involvement of the Lower Carboniferous volcano-sedimentary complex into South-verging thrusts (the Southern Vosges Klippen Belt: Fluck *et al.*, 1989; Skrzypek *et al.*, 2012a) as well as the evolution from marine turbidites to continental molasses within the Southern Vosges basin (Eisele *et al.*, 2000) points to a transition towards a compressional environment, very likely from Middle Visean times ca. 340 Ma onward (Petri and Burg, 1998; Schulmann *et al.*, 2002). Coeval southward thrusting and induced mylonitic deformation are also recorded in orthogneisses from the Southern Black Forest (Echtler and Chauvet, 1992; Chen *et al.*, 2003; Vaida *et al.*, 2004) thereby confirming an overall compressional setting within the upper plate of the Rhenohercynian subduction. Such deformations likely generated a larger-scale Saxothuringian retro-wedge (Sch afer *et al.*, 2000).

As suggested by Schäfer *et al.* (2000) and supported by analogue modeling experiments (Hoth *et al.*, 2008), this transfer of shortening backward into the upper plate by Mid-Upper Carboniferous times was kinematically coupled to the Rhenohercynian pro-wedge characterized by the deposition within its foredeep of Viséan turbidites grading upward into Namurian-Westphalian molasses (Ricken *et al.*, 2000). Such pervasive orogenic markers are likely to mark the onset of the collision. It is possible that mantle peridotite slivers were incorporated at the base of the crust during this incipient collision as suggested by garnet-peridotite lenses included in the granulite-migmatite complexes of the Central Vosges at c. 340–335 Ma (Gayk and Kleinschrodt, 2000). The very fast velocities required for their exhumation are suggested to result from the final late-orogenic tectonic collapse event (Gayk and Kleinschrodt, 2000) that reworked thoroughly the primary collisional structure through the development of crustal-scale extensional detachments (Rey *et al.*, 1991; Echter and Chauvet, 1992; Skrzypek *et al.*, 2014) and pervasive crustal melting (Tabaud *et al.*, 2014, 2015).

2.2 Outcrop-scale observations and sampling

The vaugnerites were sampled in the Central-Southern Vosges crystalline complex referred to as the Moldanubian Vosges units. This unit exhibits two main subdomains, from N to S:

- a gneiss-granulite belt (*i.e.* the *sensu stricto* Moldanubian metamorphic units; Rey *et al.*, 1991; Latouche *et al.*, 1992) that some authors recently divided into a felsic granulite and varied/monotonous gneiss units based on a Bohemian massif perspective (Skrzypek *et al.*, 2014) but that was also assigned previously to the “Leptyno-Amphibolite” complex of the French Massif central (Fluck *et al.*, 1989; Lardeaux *et al.*, 2014);
- a Late Devonian-Lower Carboniferous volcano-sedimentary basin filled by mainly marine turbidites grading upward into continental molasses at the top of the clastic sequence (Fluck *et al.*, 1989; Schneider, 1990; Skrzypek *et al.*, 2014).

Voluminous ultra-potassic plutons defined as Mg-K type following Tabaud *et al.* (2015) or KCG type (high-K Calc-alkaline Granites) following Barbarin (1999) as well as anatectic granites were emplaced across those two subdomains (Fig. 2; see the recent synthesis of Tabaud *et al.*, 2015 for a description of the various magmatic suites). Some major venues of the ultra-potassic mantle-derived magmas intruded along, or branched upon, the nearly-vertical Retournemer-Sainte-Marie-aux-Mines NE-SW-striking shear zone (RSF in Figs. 2 and 3A). The RSF syn-kinematic granite band, referred to as Granite des Crêtes and emplaced at ca 337 Ma (Tabaud *et al.*, 2015), offsets sinistrally the Central Vosges granite-gneiss and migmatites-granulite and bounds the fossiliferous volcano-sedimentary units of the Southern Vosges intruded by the Ballons granite complex. It is worth noting that numerous lamprophyre dykes are present across the Central and Southern Vosges units (Soder and Romer, 2018), very likely associated to the vaugnerite intrusions and the ultra-potassic Crêtes and Ballons granitoid complexes. Age data are lacking to provide

a precise view of the dynamics of this major late-orogenic ultra-potassic magmatic event.

Three vaugnerite outcrops from Central Vosges were sampled near the Clefcy, Barançon and Habeaurupt villages (samples Vo15-01, Vo15-04 and Vo15-07, resp., in Fig. 3A). The vaugnerites were mapped (Ménillet *et al.*, 1978) as NW-SE trending, nearly vertical bodies, featuring dykes within host formations referred to as the granite-gneiss complex (GGC). The contacts of the vaugnerites with this host-rock are scarcely observable, adding some uncertainty to the chronology of the metamorphic/magmatic events.

Delesse (1851) first gave a mineralogical description and a chemical analysis of the Clefcy vaugnerite, that he reported as a “micaceous diorite” embedded in “the” granite and cut by reddish-white, cm-thick granite veins (Fig. 4A, D). He described transitional contacts with the host, reddish or pink granite. Indeed, from what we observed at Habeaurupt and at Clefcy, those reddish granites do not present any foliation, alike the vaugnerite itself. By contrast, the nearby granite-gneiss is foliated (Fig. 4C) and experienced a solid-state deformation before the emplacement of the vaugnerite. The reddish or pink veins (Fig. 4A, and lower part of Fig. 4D) might rather be viewed as co-magmatic to the vaugnerite, both being magmatically emplaced later than the solid-state deformation of their host-GGC. The close association of vaugnerite with synchronous leucosome was also described by Couzinié *et al.* (2014) in the Velay orthogneiss (French Massif Central) and interpreted as magmatic intrusion in a partially molten host.

History of GGC interpretations. The granite-gneiss complex (GGC), defined by German authors during the nineteenth century, was long considered as a Precambrian sedimentary sequence “granitized” during supposedly Caledonian events (“granite fondamental” for Hameurt, 1966; Camboly, 1966; Camboly *et al.*, 1967; Ménillet *et al.*, 1978). Those authors, relying upon a model called “zonéographie du métamorphisme” (Jung and Roques, 1952) that invoked pervasive and strong metasomatic effects as the major granite-forming mechanism (analog of palingenesis elsewhere, as recalled by Sawyer, 2008), assumed that the vaugnerites were primitively basaltic sills, secondarily granitized and “feldspathized” together with their host-rock, itself viewed as a granitized grauwacke series. In fact, such an explanation can be easily discarded for the vaugnerites considering their normal order of crystallization (Ap-Hbl-Bt-Pl + Kfs-Qz), where biotite is euhedral, magmatic and obviously not a secondary mineral (see Figs. 4 and 5 for thin section images). The extant Gérardmer sheet at 1/50,000 scale, edited by the French Geological Survey (Ménillet *et al.*, 1978), was probably a source of confusion, exposing initially biased interpretations of the GGC. Blumenfeld and Bouchez (1988) instead called the GGC “Axial Unit (granitic and gneissic formations)”. Fluck *et al.* (1989) divided the GGC into three formations: “biotite or two-mica anatectic granites of the basement”, “anatectic granites of the Devono-Dinantian cover” and “Crêtes Granite”. Rey *et al.* (1991) rather distinguished “undeformed granite” and “solid-state deformed granite” out of the GGC, with no clear reference to the previously published maps. In recent times, the GGC was generally referred to as “anatectic granite”, designation indeed somewhat simplified regarding the heterogeneity of this rock complex (Schaltegger *et al.*, 1999; Kratinová *et al.*, 2007;

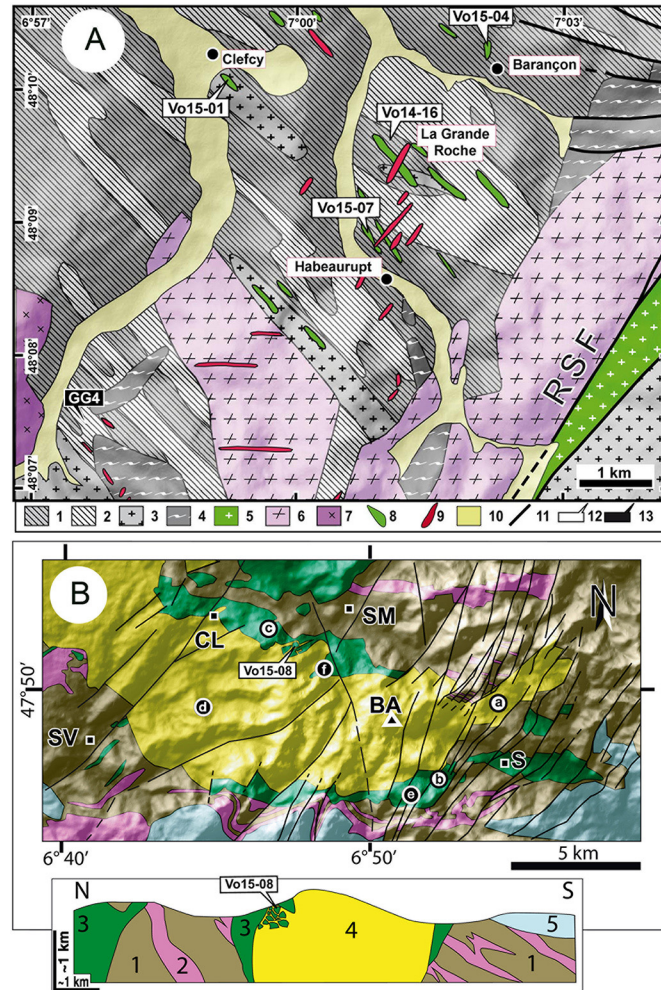


Fig. 3. Geological context of the dated samples. — A. Geological context of Central Vosges samples after maps (Hameurt, 1966; von Eller *et al.*, 1970; Ménillet *et al.*, 1978) merged and redrawn using results from the present work. Background digital elevation map from GeoMapApp.org, with illumination from NW. RSF, see Fig. 2. 1: Bt-Sil Granite-Gneiss main body. 2: Andalusite Granite-Gneiss. 3: Bi-Act Granite-Gneiss and “Granite Fondamental”, anatectic bodies. 4: cloudy, Grt-Crd “Gneiss Perlé” granulitic migmatite. 5: porphyritic, Hbl-Bt monzogranite (“Granite des Crêtes”). 6: porphyritic leucogranite (Vic leucogranite and Valtin two-mica granite). 7: syn-thrusting Straiture Granite. 8: vaugnerite dyke. 9: microgranite dyke. 10: Quaternary river deposit. 11: major fault. 12: sample for geochronology (this paper). 13: sample GG4 from Tabaud *et al.* (2015) – see text for discussion. — B. Geological map of Southern Vosges vaugnerites and explanatory cross-sectional sketch (not to scale), redrawn and oversimplified after André (1983), Ménillet *et al.* (1989), Théobald *et al.* (1974); background digital elevation map from GeoMapApp.org, illuminated from NW. 1: Devonian to Early Visean deposits. 2: Early-Middle Visean volcanics and intrusives. 3: syenite, vaugnerite, monzonite and gabbro. 4: Ballons monzonitic, KF-porphyritic, cpx-bio granite. 5: Late Visean, mainly volcanic deposits. Location of rocks dated by U-Pb on zircon: Vo15-08: LA-ICP-MS, this study. a: $340 \pm 4 \pm 2$ Ma, and b + c: 342 ± 1 Ma, ID-TIMS by Schaltegger *et al.* (1995); d: 336.3 ± 3.5 Ma (sample BA11), e: 345.5 ± 2.2 Ma (sample BAB5), and f: 345.3 ± 2.5 Ma (BAB4): LA-ICP-MS by Tabaud *et al.* (2015). Named places: S, Sewen; BA, Ballon d’Alsace; SM, St-Maurice-sur-Moselle; SV, Servance; CL, Château-Lambert.

Schulmann *et al.*, 2002). The most recent tectonic-metamorphic-magmatic studies on the Vosges Variscan massif (Skrzypek *et al.*, 2014; Lardeaux *et al.*, 2014; Tabaud *et al.*, 2015) adopted this general view, the GGC complex being simply defined as “Central Vosges Granite” of anatectic origin, admitting the strongly heterogeneous character of this unit with weakly foliated parts and relicts of para- and orthogneisses. To better constrain the dynamics of the GGC, the granite-gneiss sequence hosting the vaugnerites was sampled at La Grande Roche (Vo14-16, loc. in Fig. 3A). The foliation planes of this leucocratic, biotite-spotted

gneiss (Fig. 4C) have a violet luster, usual in sillimanite-bearing rocks.

One vaugnerite was sampled in the Southern Vosges, near the Tête des Sapins at the northern border of the Ballons granite (loc. in Fig. 3B: Vo15-08). It belongs to mafic plutonic sub-units of diorite to vaugnerite occurring on the margins of the main Ballons granite pluton. Their contact with the granite was detailed by André and Gagny (1981), André and Bébien (1983a, 1983b) and André (1983). The magmatic brecciation of vaugnerite by granite attests to the anteriority of the vaugnerite upon the granite. The same authors proposed that the

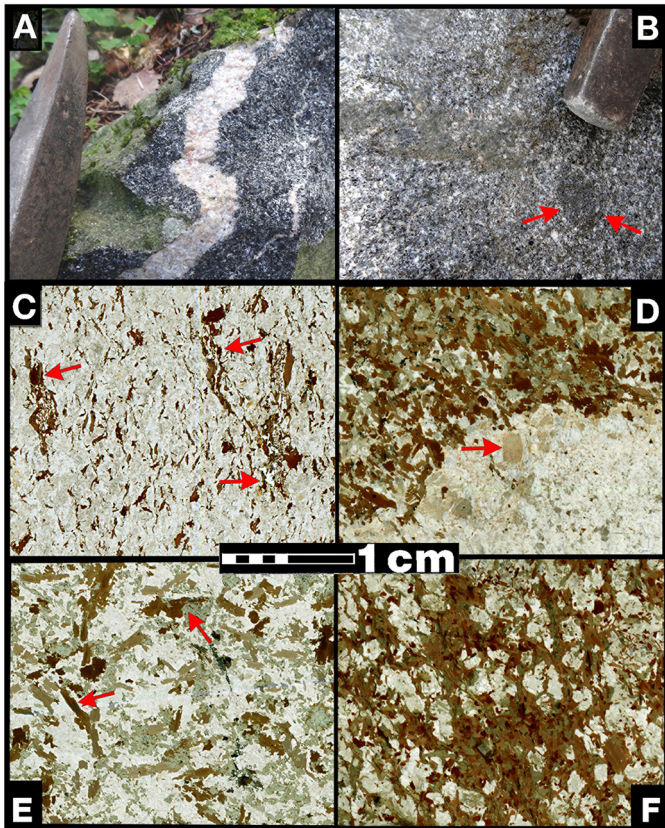


Fig. 4. Texture of the dated rocks, outcrop pattern (A, B) and scanned thin sections (C to F). — A, Clefcy quarry dark vaugnerite with pink, light syenite vein and veinlet. Hammer-pick for scale. — B, Habeauprupt vaugnerite with transitional contact between a leucocratic type (left) and a mesocratic type (right), with a darker enclave (arrows). Hammer-head for scale. — C, granite-gneiss, relatively fine-grained, its foliation marked by sub-parallel, elongated and sinuous biotite sections (arrows). — D, Clefcy melanocratic vaugnerite (top: Bt~40% Amp~30%) and a biotite-free vein of pink syenite-granite, its color due to hematite dust in albite phenocrysts (arrow). — E, Barañon vaugnerite, characterized by its oversized biotite crystals (arrows) even in this mesocratic type, with green amphibole ± chlorite. — F, Habeauprupt vaugnerite, biotite-dominated, melanocratic type.

vaugnerite might be sub-contemporaneous with the adjoining Visean volcanics, while the granite should be Namurian in age. However, conventional U-Pb dating on zircon (Isotope Dilution-Thermal Ionization Mass Spectrometry, ID-TIMS) yielded ages indistinguishable within error for the vaugnerite and the granite, around 340 Ma *i.e.* Middle Visean (Schaltegger *et al.*, 1996: Fig. 3B, a to c). Recent LA-ICP-MS U-Pb zircon age determinations (Tabaud *et al.*, 2015: Fig. 3B, d to f) for other rocks of the Ballons granite complex confirm the general view of an age spectrum spanning from 345 to 336 Ma.

3 Analytical methods

3.1 Petrology, mineralogy and whole-rock geochemistry

Polished thin sections of rocks were observed under optical microscope and mineral chemistry data were acquired using

Scanning Electron Microscopy (SEM) operated by Philippe Recourt at LOG (CNRS – Univ. Lille – ULCO), using a model Quanta 200 from FEI, equipped with an energy dispersive spectroscopy (EDS) Quantax (Bruker) micro-analyser for non-destructive back scattered electron (BSE) imaging and chemical mapping, and with a Centaurus detector with 300–650 nm photomultiplier for cathodoluminescence (CL) imaging. SEM-EDS chemical maps and analyses were aimed at obtaining a preliminary thermometry from zoned feldspars, at detecting Ti-rich mineral phases required for Ti-in-zircon thermometry—see below details about zircon chemistry acquisition—and at imaging zircon morphology (BSE) and zircon sections (BSE + CL) prior to laser ablation. Whole-rock geochemical analyses were performed for each of the dated rocks, on lithium tetraborate-fused pellets. The major elements and Ba, Be, Sc, Sr, V, Y, Zr were analyzed by Inductively Coupled Plasma-Atomic Emission Spectrometry (ICP-AES), and the other trace elements by ICP-Mass Spectrometry (ICP-MS), all listed below with their detection limits.

3.2 Zircon analyses

3.2.1 Zircon extraction

The rocks were jaw-crushed and sieved under water into granulometric fractions at 50 μm , 100 μm , 160 μm and 250 μm thresholds. Only the 100–160 μm fraction was further used to avoid disturbed isotopic compositions, for example related to Pb-loss that is enhanced for small zircon grains. In order to spare heavy liquids and considering the abundance of modal biotite—that host the bulk of Fe in those rocks—the 100–160 μm fraction was first reduced (of 60% to 90% for the vaugnerite samples) using a magnetic Frantz Isodynamic Separator. The heavy grains of the remaining, non-magnetic fraction (at longitudinal angle 25°, lateral angle 7°, maximum intensity ~ 1.8 A) were further separated using heavy liquids (lithium-sodium tetratungstate at $d \sim 2.84$, and di-iodomethane at $d \sim 3.23$). Zircon crystals were picked under binocular and laid upon a double-faced adhesive tape on a glass plate.

The granite-gneiss yielded limpid, prismatic and pyramid-terminated crystals. By contrast, the vaugnerite zircon crystals frequently possess strongly irregular, abnormal shapes (platelets, or very thin needles), unclassical optical characters (*e.g.* sphenelike, opaque to dark brown or dark green) and may also look milky to opaque, *i.e.* highly metamict. Therefore the grains were first observed in BSE, checking their mineral species and imaging the outer morphology of crystals, before being mounted into epoxy and polished so as to expose their equatorial section. The polished grain sections were then imaged, again using SEM-EDS, in BSE and CL to locate fractures, and to detect inherited cores and magmatic zoning.

3.2.2 Zircon dating and zircon chemistry

Zircon U-Pb isotope measurements and trace element analysis were performed via LA-ICP-MS using a GeoLas-Pro 193 nm ArF Excimer laser system (Lambda Physik) coupled with an Elan DRC-e quadrupole mass spectrometer (Perkin Elmer) at the Institute of Geological Sciences, University of Bern. Ablation was performed with a fluence of 2.5 $\text{J}\cdot\text{cm}^{-2}$, a repetition rate of 9 Hz and a laser diameter of 32 μm . A mixture of He (1 $\text{L}\cdot\text{mn}^{-1}$) and H₂ (0.008 $\text{L}\cdot\text{mn}^{-1}$) was used for

Table 1. Definition of the QC quality index for the LA-ICP-MS data.

if $ a-b /(\Delta a + \Delta b) >$	2	1.4	1	0.7	0.2	0.1	else
then QC =	0.01	0.10	0.25	0.50	0.75	0.90	1.00

$a \pm \Delta a$, $b \pm \Delta b$ (2σ) are the apparent $^{206}\text{Pb}/^{238}\text{U}$ and $^{207}\text{Pb}/^{235}\text{U}$ ages \pm errors of a laser spot.

aerosol transport from the ablation cell to the plasma. For U-Pb measurements, the instrument tuning was optimized to increase the sensitivity of heavy masses and to minimize the oxide production, monitored with $\text{ThO}^+/\text{Th}^+ < 0.005$. Unknowns were bracketed by zircon standards GJ-1 (Jackson *et al.*, 2004) and NIST SRM-612, which was used for the standardization of element concentration using ^{29}Si as an internal standard. Accuracy and long-term reproducibility were monitored by measuring the zircon standard Plesovice (Sláma *et al.*, 2008). Data reduction was done with the software Iolite 2.5 (Paton *et al.*, 2011) using the Visual age data reduction scheme (Chew *et al.*, 2014) and the error propagation method build into Iolite. For trace element measurements of zircon, the instrument was optimized to ensure a good sensitivity over all masses, maintaining a low oxide production rate. NIST SRM 612 was used as external references standard and ^{29}Si as internal standard. Data reduction was done using SILLS 1.3.2 (Guillong *et al.*, 2008).

3.2.3 Data reduction

A 2007 version for Macintosh™ of the Excel™ add-in ISOPLOT3.0 (Ludwig, 2003) was used for plotting U-Pb data and computing age estimates. Moreover, we devised a Quality of Concordance index (QC) quantifying for each U-Pb analysis the closeness of its apparent $^{206}\text{Pb}/^{238}\text{U}$ and $^{207}\text{Pb}/^{235}\text{U}$ ages to concordance. Denoting those ages as $a \pm \Delta a$ (2σ) and $b \pm \Delta b$ (2σ), the ratio of the absolute value of $a-b$ to $\Delta a + \Delta b$ was computed (Tab. 1). The QC index is best adapted to datasets for which the error ellipses are of comparable sizes. It proved also practical at sorting out vast numbers of LA-ICP-MS data found in the literature, for evaluating their final interpretation, especially for the sample GG4 (loc. Fig. 3A, and see below).

4 Results

4.1 Petrological data and mineral chemistry

Here we provide a preliminary inventory, illustrating the main differences between the GGC and the vaugnerites, in view of their contrasted geochronological results.

Major mineral constituents common to the granite-gneiss and to the various vaugnerites are quartz, two feldspars, and biotite. First order differences appear in modal compositions (Fig. 4), with seemingly inverse proportions of quartz (30 vol% versus 5%, resp.) and biotite (3% versus 25%, resp.). Sillimanite and muscovite (up to 1 vol%) are present only in the granite-gneiss, amphibole (up to 20%) only in the vaugnerites (green sections in Fig. 4D–F). The leucocratic granite-gneiss exhibits a fine-grained grano-lepidoblastic texture with bent biotite flakes, corresponding to a metamorphic foliation (Fig. 4C), while the meso- to melanocratic vaugnerites have an isotropic, much coarser-grained, undeformed granitic texture (Fig. 4A, B, D, E, F, Fig. 5A), with euhedral biotite sections.

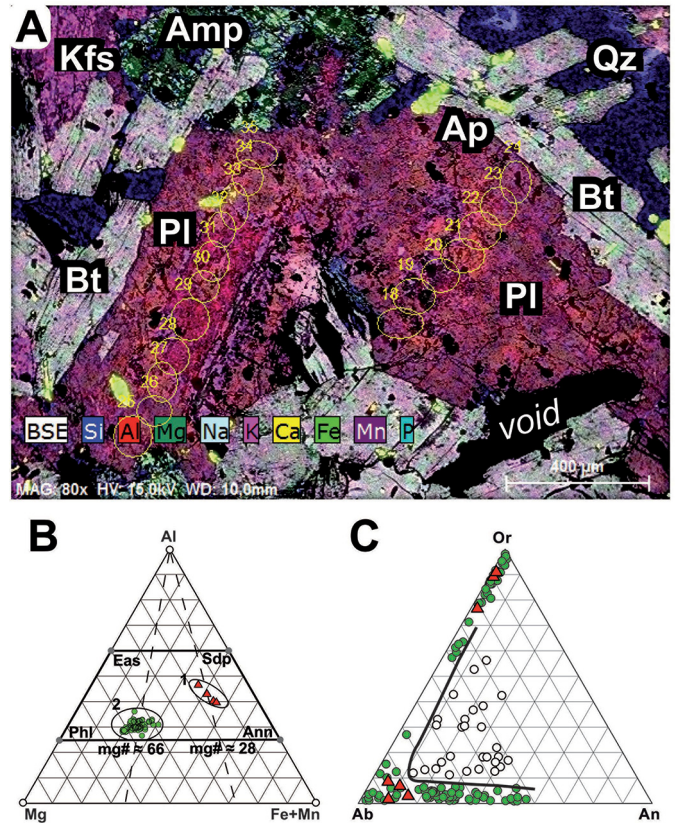


Fig. 5. Mineral chemistry. — A, example of Clefcy vaugnerite microchemical map: mineral abbreviations following Whitney and Evans (2010). Yellow ovals locate feldspar areal-analyses through SEM-EDS. Note the variegated core (Pl±Kfs±sericite) due to subsolidus unmixing, the more uniform rim (oligoclase), and the euhedral biotite (Bt) laths enclosing most of the apatite crystals (Ap). — B, Al-Fe + Mn-Mg (at.) triangle with biotite SEM-EDS point-analyses for: 1, the Vo14-16, dated granite-gneiss; 2, various vaugnerites. — C, triangle Ab-Or-An (mol.), using same symbols as B for point analyses, plus areal-analyses of vaugnerite plagioclase crystals (including the ovals in A) plotted as empty circles to the right of the black line.

SEM-EDS analyses of feldspar and biotite also suggest clear-cut differences between the granite-gneiss and the vaugnerites (Fig. 5). The biotite crystals (Fig. 5B) from all vaugnerites are Mg-rich and Al-poor and plot across the phlogopite-biotite join at mg# of 68 ± 10 . The presumably older, metamorphic biotite of the granite-gneiss plots towards the Fe,Al-rich siderophyllite end-member at mg# of 28 ± 8 . Based on mineral section shapes (euhedral Bt and Amp, subhedral Pl, interstitial Qz), inclusion relationships (e.g. Ap in Bt, Bt and Amp in poikilitic Kfs), the crystallization sequence proceeded following the canonical order: (Ap±Thr), Zrn,

([Cpx?]Amp + Bt), Pl, Kfs, Qz (although a different scenario might be evoked from the image of the Habaurupt vaugnerite, Fig. 4F, where biotite veins seem to enclose light-colored blasts, hence might have overgrown during a secondary thermal pulse). This order of crystallization was proposed as early as 1968 by Gagny, who also listed the relevant crystallization temperature range for each mineral phase, from 1100–1000 °C for Amp + Bt down to less than 700 °C for the late Kfs + Qz. By contrast, the sillimanite-bearing granite-gneiss has a granoblastic texture, probably solid-state generated at amphibolite-grade, hence presumably at a much lower temperature (~550–650 °C) than that of the vaugnerite source magmas during their emplacement.

Further indications on the emplacement conditions of the vaugnerites can be sought in their feldspar microchemistry. The pink granite to syenite veins crosscutting Clefcy and Habaurupt vaugnerites contain red, hematite-rich, subhedral feldspar crystals (Fig. 4D). It is known that Fe in feldspar can growingly substitute to Al at higher temperatures (Bambauer *et al.*, 1974), before getting exsolved during post-magmatic cooling. Hence, such hematite-rich feldspar might represent a destabilized relict of a syn-intrusive, high-T feldspar. A tentative feldspar thermometry is attempted here upon zoned plagioclase clasts from the Clefcy vaugnerite (Fig. 5A), using the ability to defocus the beam of the SEM-EDS. That allows areal-analyses that may yield a local average approaching the primitive high-T compositions inside zoned plagioclase, presumably grown from ternary high-T feldspars. Indeed, those areal-analyses plot into high-T regions of the feldspar triangle (Fig. 5C). On the same triangle it should be noted that granite-gneiss feldspars (red triangles) are restricted to the alkaline terms, opposed to a much broader range of vaugnerite feldspar compositions (green and empty circles). The black line added to this diagram (Fig. 5C) approximates the 900 °C isotherm line near a H₂O pressure at 0.1 GPa (as recently recalled by Kawabata and Shimura, 2019). Hence it can be provisionally proposed that the Clefcy plagioclase (Fig. 5A) began growing as a ternary Ca-Na-K core at T > 900 °C, now dissociated to Pl + Kfs, overgrown under decreasing T by a more albitic rim, itself enclosed by the ultimate freezing of poikilitic/interstitial Kfs + Qz. Based on more accurate techniques, a similar temperature range was also invoked (Altherr *et al.*, 2019) for a Mg-K, syntectonic, red I-type granite from Schwarzwald.

4.2 Whole-rock geochemistry

Geochemical data (Tab. 2) allow (1) the five dated rocks to be classified as ultra-potassic (Fig. 6A); (2) a comparison with the nearby Ballons and Crêtes Mg-K granites (Fig. 6A–B); (3) the assessment of a “vaugnerite identity” among the ultra-potassic clan (Fig. 6C–D), and (4) to comfort the differences between the vaugnerite and the granite-gneiss already observed in the above-listed petrological characters.

Vaugnerite data. With SiO₂ from 48 to 58 wt.%, the vaugnerites have Al-saturation index (ASI) in the range 0.70–1.21, denoting basic to intermediate, metaluminous to slightly peraluminous rocks. High Cr-contents (in the range 270–950 µg/g) and Ni-contents (60 to 250 µg/g), MgO-contents from 5 to 15 wt.% with mg# in the 64–78 range, suggest a mantle source.

The ratios Ba/Rb are smaller than 20 (at 4 to 10) and Rb/Sr is greater than 0.1 (at 0.4 to 0.9), in line with the presence of phlogopite, rather than amphibole, at the source (Furman and Graham, 1999). K₂O-contents from 2.7 to 5.3 wt.% evidence ultra-K rocks that plot in the shoshonite field of the K₂O-SiO₂ diagram (Fig. 6A). In addition, the ∑REEs (in µg/g) are in the 107–318 µg/g range and (La/Yb)_N in the 9–25 µg/g range (Tab. 2). Further characters are listed hereafter because they are also valid for other rocks.

Regional affinities. The Ballons and Crêtes Mg-K granites (Tabaud *et al.*, 2015) also plot in the ultra-K field (Fig. 6A) but most samples are intermediate to acid. Two groups are identified based on the REE-normalized profiles (Fig. 6B). The group of the Crêtes granite is characterized by high (La/Yb)_N from 14 to 30 and ∑REE from 230 to 340 µg/g (Fig. 6B), hence overlapping with the three Central Vosges vaugnerites. Based on the same parameters, with 5 to 19 and 106 to 235 µg/g respectively, the second group comprises the Ballons rocks, to which belongs the Vo15-08 Ballons vaugnerite (Fig. 3B). Along with their high K-content, as shown by spider-diagrams (see Fig. S1) Th-, U-, and Pb-enrichments of our vaugnerites and pronounced Nb-, Ti-depletions again match the Ballons and Crêtes Mg-K granites.

Vaugnerite name. A geochemical classification of high-K granitoid rocks was proposed by Scarrow *et al.* (2008) based on an extensive literature coverage. Using their vaugnerite data collection, a spider-diagram—their Fig. 2E—normalized to N-MORB is reproduced here (Fig. 6C). The analyses of the vaugnerites were superimposed. The coincidence is not absolutely perfect but strong Ti, Nb depletions and K, Pb, Th, U enrichments of our samples, and the general shape of the spiders, do match the database (note that the same highs and lows appear using a primitive mantle reference, Fig. S1). The authors also performed a factor analysis separating high-K granitoids into three families, namely vaugnerite, shoshonite and K-rich lamprophyre. Their principal factors fn1 and fn2 have been computed (Tab. 2) for each of the four dated vaugnerites. By contrast with the simplistic K₂O-SiO₂ diagram (Fig. 6A), here (Fig. 6D) none of our samples plots into the field of shoshonites. Three of them plot in the vaugnerite field but the Clefcy vaugnerite Vo15-01 deviates by an exceptionally high factor fn1, out of any of the established families of ultra-potassic rocks. This is due to its high Th- and high P-contents (Fig. 6C), linked to the presence of thorite among the heavy minerals (see Fig. 7), and to ubiquitous apatite observed in thin section.

Other individual differences with the reference set of vaugnerites (grey background on Fig. 6C, + in Fig. 6D) of Scarrow *et al.* (2008) also appear (Fig. 6C) for the Ballons sample (Vo15-08), due to its relatively low La, Ce, Nd contents. No interpretation of this discrepancy is evident although apatite depletion could be invoked. This rock-type belongs to a pluton, compared to the much smaller bodies constituted by the dykes where the other vaugnerites were sampled. Similar pluton/dyke differences have also been noticed by Kubínová *et al.* (2017) in the Bohemian massif: vaugnerite has “higher amount of mantle-incompatible elements (e.g. Rb, Cs, Ba, Pb, Th, U)” than the “syenite porphyry”, considered as parent rock and daughter rock, respectively.

Table 2. Geochemical data for the dated rocks.

Rock-type		Granite-Gneiss	Vaugnerite	Vaugnerite	Vaugnerite	Vaugnerite
Location		Grande Roche	Clefcy quarry	Barañon quarry	Habeaurupt roadside	Tête des Sapins
Sample #		Vo14-16	Vo15-01	Vo15-04	Vo15-07	Vo15-08
Easting (°)		7.01681	6.98594	7.03574	7.01245	6.78311
Northing (°)		48.15902	48.16719	48.17156	48.14884	47.84628
Major elements (%) by ICP-AES						
	<i>DL</i>					
SiO ₂	0.01	73.06	48.3	55.46	58.21	49.27
Al ₂ O ₃	0.01	13.36	9.47	15.48	16.08	10.86
Fe ₂ O ₃ (T)	0.01	2.04	8.11	7.71	5.63	9.08
MnO	0.001	0.02	0.126	0.11	0.073	0.161
MgO	0.01	0.33	14.74	6.84	5.32	15.21
CaO	0.01	0.51	6.44	5.23	3.38	8.56
Na ₂ O	0.01	2.57	1.14	2.68	2.58	1.15
K ₂ O	0.01	5.29	5.3	3.39	5.55	2.73
TiO ₂	0.001	0.232	1.045	0.876	0.993	0.519
P ₂ O ₅	0.01	0.2	1.96	0.32	0.66	0.19
LOI	0.01	0.76	2.04	1.33	1.35	2.72
Total		98.37	98.69	99.42	99.82	100.4
Trace elements (µg/g) by ICP-AES						
Sc	1	4	20	17	15	37
Be	1	3	7	4	8	2
V	5	16	124	126	106	157
Ba	3	364	1472	827	1868	961
Sr	2	52	427	406	520	266
Y	2	44	31	21	25	19
Zr	4	153	315	223	448	131
Trace elements (µg/g) by ICP-MS						
Cr	20	<20	950	310	270	910
Co	1	2	47	32	22	56
Ni	20	<20	250	110	60	250
Cu	10	<10	20	30	30	30
Zn	30	<30	70	80	70	50
Ga	1	18	14	20	24	10
Ge	1	2	1	1	2	1
As	5	<5	7	<5	8	17
Rb	2	315	370	155	280	97
Nb	1	11	20	15	21	3
Mo	2	<2	<2	<2	<2	<2
Ag	0.5	<0.5	<0.5	<0.5	0.9	<0.5
In	0.2	<0.2	<0.2	<0.2	<0.2	<0.2
Sn	1	10	9	7	11	3
Sb	0.5	<0.5	<0.5	<0.5	<0.5	1.1
Cs	0.5	23.2	34.2	17.1	35.9	11.9
La	0.1	23	53.5	47.3	72	20.4
Ce	0.1	49.9	120	89.3	143	41.8
Pr	0.05	5.7	16.3	10.2	16	4.94
Nd	0.1	19.9	75.8	36	58.4	20.9
Sm	0.1	4.7	19.3	6.9	9.7	4.7
Eu	0.05	0.5	3.12	1.45	2.03	1.28
Gd	0.1	4.8	11.9	4.8	6.2	4.6
Tb	0.1	0.9	1.3	0.7	0.9	0.7
Dy	0.1	6.4	6	3.9	4.5	3.7
Ho	0.1	1.3	1	0.7	0.7	0.7
Er	0.1	4	2.7	1.8	2.1	1.7
Tm						

Table2. (continued).

Rock-type		Granite-Gneiss	Vaugnerite	Vaugnerite	Vaugnerite	Vaugnerite
	<i>0.05</i>	0.61	0.34	0.29	0.32	0.23
Yb	<i>0.1</i>	3.8	2.2	1.7	2	1.5
Lu	<i>0.04</i>	0.57	0.33	0.27	0.32	0.24
Hf	<i>0.2</i>	3.7	1.9	5.2	9.1	2.6
Ta	<i>0.1</i>	1.7	1.5	1.4	2.2	0.1
W	<i>1</i>	6	1	2	5	2
Tl	<i>0.1</i>	1.7	4.4	1.3	1.8	0.9
Pb	<i>5</i>	19	21	35	35	14
Bi	<i>0.4</i>	<0.4	<0.4	<0.4	<0.4	<0.4
Th	<i>0.1</i>	16.2	48.7	19.6	19.1	12.2
U	<i>0.1</i>	4.1	19.9	4.4	11.3	4.4
Selected parameters						
mg#		24	78	64	65	77
fn1 (Fig. 6D)			6.85	-0.11	2.40	0.35
fn2 (Fig. 6D)			1.31	0.94	1.29	0.87
ASI		1.28	0.70	1.21	1.21	0.86
\sum REE		126	314	205	318	107
Eu/Eu*		0.32	0.63	0.77	0.80	0.84
(La/Yb) _N		4	17	19	24	9
Ba/Rb		1.2	4.0	5.3	6.7	9.9
Rb/Sr		6.1	0.9	0.4	0.5	0.4
Tsat Zr (°C) (1)		801	641	758	844	606

DL: detection limit. LOI: loss on ignition. mg# = $100 \times \text{Mg}/(\text{Fe}_{\text{total}} + \text{Mg})$ (atomic ratios). fn1 and fn2 are composite factors computed after [Scarrow *et al.* \(2008\)](#) classification of K-rich granitoids. ASI = $\text{Al}/(\text{Na} + \text{K} + 2\text{Ca})$ (at.), aluminium saturation index. $(./.)_{\text{N}}$ denotes a ratio of values normalized to the chondrite reference of [Sun and McDonough \(1989\)](#). Eu/Eu* is the square root of $(\text{Eu}/\text{Gd})_{\text{N}} \times (\text{Eu}/\text{Sm})_{\text{N}}$. (1) TSatZr are zircon saturation temperatures computed after [Watson and Harrison \(1983\)](#).

Granite-gneiss. Alike the Mg-K granites and the vaugnerites, the granite-gneiss Vo14-06 plots in the ultra-high-K field (Fig. 6A). However, compared to the vaugnerites, this rock is more felsic (SiO_2 at 73.06 wt.%) and has lower Fe-, Ca- and Mg-contents and low mg# at 24. The ratio $(\text{La}/\text{Yb})_{\text{N}}$ is also much lower at 4, corresponding to higher HREEs, and lower LREEs contents than the vaugnerites (Tab. 2 and Fig. 6B). Interestingly, the Vo14-16 granite-gneiss analysis also presents strong similarities with the GG4 granite-gneiss analysis of [Tabaud *et al.* \(2015\)](#), for example by its K_2O and SiO_2 contents (Fig. 6A). The same conclusion can be reached based on their REE profiles (Fig. 6B), spider diagrams (Fig. S1) and other geochemical classification diagrams obtained using the GCDkit plotting facility ([Janousek *et al.*, 2006](#)). Both samples display a flat HREE pattern, classically attributed to the presence of garnet in the source, together with a marked negative europium anomaly linked to plagioclase crystallization. Their relatively low normalized ratio $(\text{La}/\text{Yb})_{\text{N}}$ evokes transitional felsic magmas and possibly an anorogenic tectonic context because a similar profile is known for A-type granitoids ([Guillot *et al.*, 1993](#)). The high K_2O -content of GG4 (5.11 wt.%, comparable to 5.29 wt.% for Vo14-06) was instead privileged by [Tabaud *et al.* \(2015\)](#) for proposing a crustal pattern for the anatectic unit. As a main component of the Kfs + Qz leucosome, K is a probably a highly mobile element in anatectic environment, so this point would deserve further field work, sampling and petrographic investigations. Whatever the nature

of the granite-gneiss protolith, potentially obscured by the HT-metamorphism, the marked REE-pattern discrepancy with respect to the vaugnerites precludes at least an hypothesis suggested by the above quoted “anatectic granite” designation of the GGC: the vaugnerites are not derived from partial melts from their host granite-gneiss or, at least, not from this type of granite-gneiss.

4.3 Zircon typology

SEM imaging of zircon grains as well as the optical characters observed during zircon separation and sorting (Fig. 7; Tab. 3) revealed contrasted patterns. The granite-gneiss Vo14-16 yielded mostly euhedral, convex and limpid zircon grains (Fig. 7A). Their sections observed in cathodoluminescence (CL) show an oscillatory zoning (Fig. 7B). Both features, indeed typical of “classical” zircon grains, point to a magmatic protolith, most probably a granite. By contrast, the Clefcy vaugnerite Vo15-01 zircons display soccer ball shapes, were frequently grown together with thorite and/or apatite (Fig. 7C), and look highly metamict (opaque to dark brown in transmitted light) with a very weak CL suggesting a highly radioactive content (Fig. 7D). Flat-lozenge to arrowhead-shaped zircons, deprived of a prismatic part (outgrown by faster growth of the pyramidal faces), were found in the Vo-15-04 vaugnerite (Fig. 7E, F), again with very weak CL. Needle-shaped, often euhedral zircons characterize Vo15-07

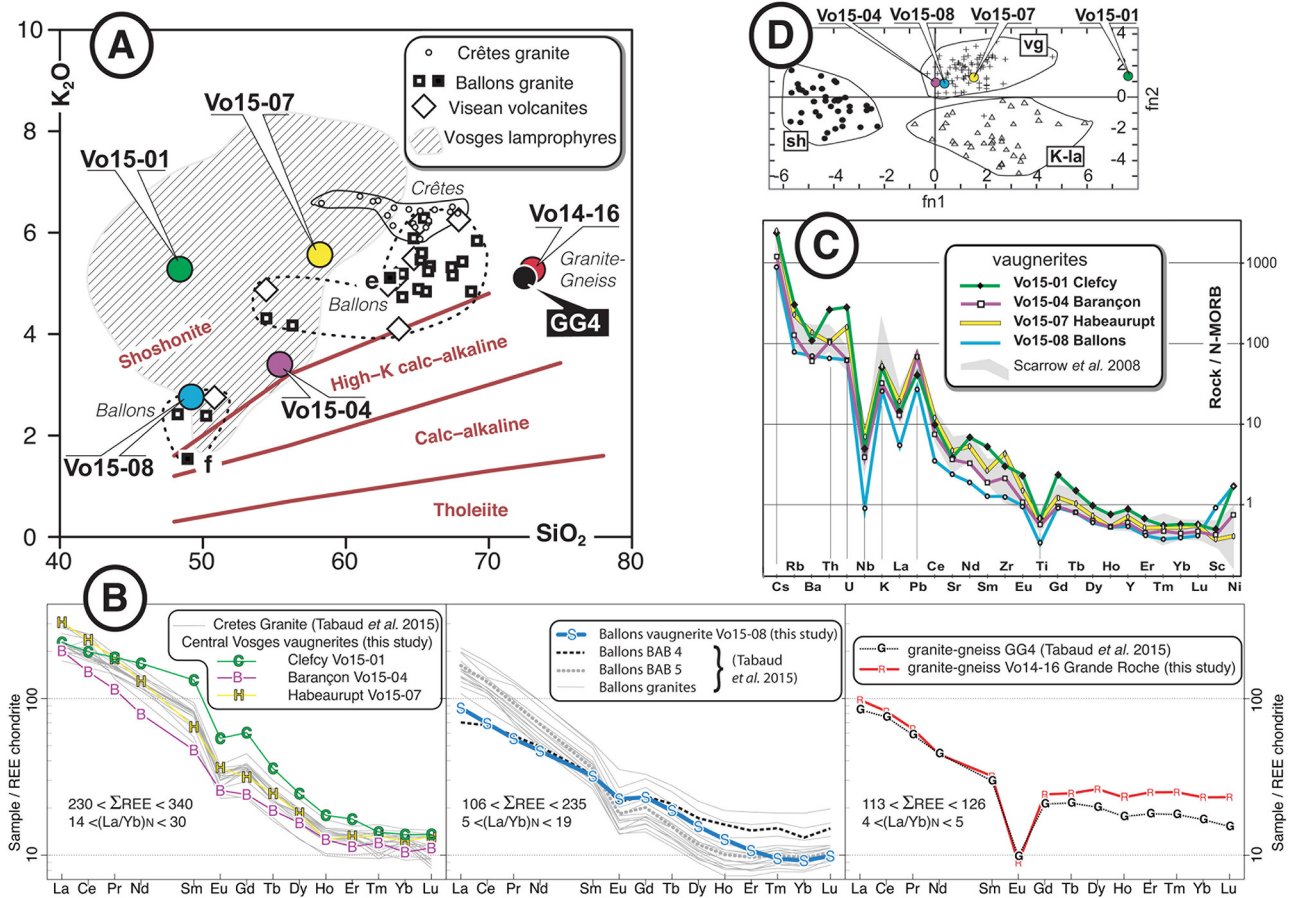


Fig. 6. Geochemistry. — A: K_2O versus SiO_2 plot after Peccerillo and Taylor (1976) for ultra-potassic Vosges rocks. *Labelled colour circles*: dated rocks of the present study, and granite-gneiss GG4 (loc. Fig. 3A; analysis from Tabaud *et al.*, 2015). *Crêtes granite*, *Ballons granite*, *Visean volcanites*: data from Tabaud *et al.* (2015) and André (1983). *Vosges lamprophyres* are 57 analyses from Soder and Romer (2018). *Small circles*: Crêtes Mg-K granites (18 anal. labelled “CS” and “CN” by Tabaud *et al.*, 2015). *Empty squares*: Ballons vaugnerites PR1 and 4N from André (1983), and 19 Ballons Mg-K porphyritic granites, labelled “BA” by Tabaud *et al.* (2015). *Black squares*: Ballons basic rocks, labelled BAB5 and BAB4 (e and f, resp., as in Fig. 3B). *Empty diamonds*: Ballons Visean volcanic rocks (8 anal. “VO” from Tabaud *et al.*, 2015). — B: REE profiles for the dated rocks of the present study (reference chondrite values from Anders and Grevesse, 1989) grouped with profiles of selected samples (see A for details) from Tabaud *et al.* (2015), with mention for each group of the sum of the rare earth element contents (in $\mu g/g$) and the normalized ratio $(La/Yb)_N$ — C: spidergram of the dated vaugnerites, reference N-MORB values from Hofmann (1988) following J. Scarrov (pers. comm. to FG). *Grey*: vaugnerite compilation by Scarrov *et al.* (2008, their Fig. 2E). — D: *Labelled colour circles*: dated vaugnerites of the present study, plotted using factors $fn1$ and $fn2$ of Scarrov *et al.* (2008, their Tab. 3 and Fig. 8) with their compiled data of: sh, shoshonites (●) – K-la, K-lamprophyres (Δ) – vg, vaugnerites (+).

and Vo15-08 vaugnerites (Fig. 7G–J), with a stronger CL signature revealing a slightly oscillatory zoning with rarer sector zoning and a frequent axial, tubular cavity that is commonly observed in zircons of subvolcanic, rapidly emplaced magmatic rocks (Pupin, 1980). Those last characters evoke a fast growth, far from equilibrium conditions, related below to a probable fast undercooling of the vaugnerite magma. Whatever their interpretation is, the poorly zoned CL-sections have to be related to the fact that, during the LA-ICP-MS runs, no clear cut age or chemistry differences were found between various locations in the same zircon crystal (Fig. 7F).

4.4 Zircon chemistry and thermometry

4.4.1 Zircon Th and U

From average Th and U contents obtained during the zircon microchemical analyses (Tabs. S4–S5), Th/U ratios were

compared to the host rock ratios (Tab. 4). They confirm the highly radioactive character of zircons from Clefcy (Vo15-01) and Barançon (Vo15-04) vaugnerites with the sum of Th- and U-content averages at 6753 and 3750 $\mu g/g$, respectively. This has to be kept in mind for the interpretation of the U-Pb isotopic data, since such high U- and Th-contents in zircon favour its metamictization and enhance radiogenic Pb-loss, hence disturbing the U-Pb isotopic ratios and hampering precise age determinations. The average Th/U_{Zm} ratios, from 0.27 to 0.72 (Tab. 4), exceed 0.1 and hence point to zircons originated from magmatic rocks (Rubatto, 2002), alike the above listed petrological features. Zircon-rock distribution coefficients ($D_{Zm/rock}$ in Tab. 4) were used to compute the associated equilibrium temperature (Wang *et al.*, 2011; Kirkland *et al.*, 2015). The latter (T_{eq} in Tab. 4), higher than the zircon saturation temperatures (Tab. 2) suggest that zircons grew under disequilibrium conditions (Kirkland *et al.*, 2015). Overcooling conditions leading to supersaturation may be

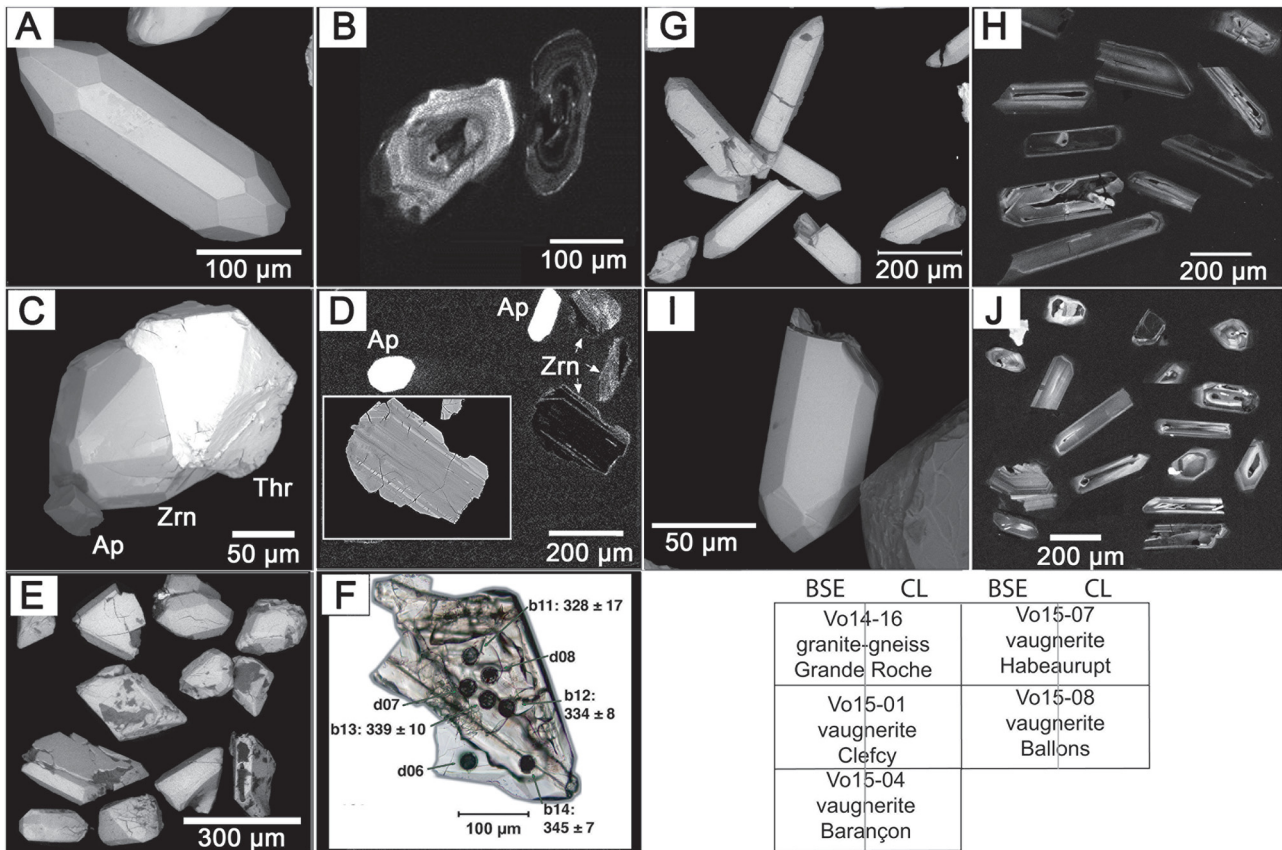


Fig. 7. Zircon grain morphology observed under SEM-BSE (A, C, E, G, I) and zircon section observed under SEM-BSE (insert in D), SEM-CL (B, D, H, I), and optically (F, transmitted light). In C and D, Ap, Zrn, Thr are apatite, zircon, thorite grains, resp. Dark circles in F are LA-ICP-MS craters; d06 to d08: trace-element analyses; b11 to b14: U-Pb isotopic analyses, with the related age (in Ma, $\pm 2\sigma$).

Table 3. Zircon external and internal morphology. Indexing after [Caruba and Turco \(1971\)](#) for prismatic (100 and 110) and pyramidal faces (211 and 101).

Sample	Extracted zircon ($\mu\text{g/g}$)	Whole-rock Zr content ($\mu\text{g/g}$)	Zircon grains	Zircon sections
Vo14-16	159	153	Clear, euhedral, 100 < 110 et 211 > 101	Concentrically zoned in CL
Vo15-01	<607	315	Short, multi-faceted soccerballs, cracked by internal inflation; highly metamict, creamy pattern under direct light (binocular); almost opaque, dark brown in transmitted light	KF, biot, thorite, apatite inclusions, very dark in CL
Vo15-04	230	223	Pale pink and milky but transparent; often irregularly, step-faceted, or as easily broken arrowheads; looking corroded and/or fast crystallized	Dark in CL
Vo15-07	261	448	Mostly elongate needles, clear, euhedral, 100 > 110 up to 100 alone, 101 > 211 up to 101 alone	Dark in CL, biotite inclusions, axial (glassy?) inclusions in elongate sections
Vo15-08	191	131	Colourless, clear, many broken needles, plus shorter well-terminated euhedral grains, 100 > 110 and 101 > 211	Axial (glassy?) inclusions in elongate sections, concentric zoning in CL for shorter sections

Table 4. Averages of zircon Th- and U-contents ($\mu\text{g/g}$) and of Th/U ratios.

Sample	<i>n</i>	Th _{Zrn}	±	U _{Zrn}	±	Th/U _{Zrn}	±	Th/U _{rock}	D _{Zrn/rock}	T _{eq} (°C)
Vo14-16	15	142	148	617	504	0.27	0.33	3.95	0.06	1253
Vo15-01	15	2306	1636	4447	2392	0.47	0.16	2.45	0.21	881
Vo15-04	18	1318	1208	2432	1311	0.46	0.23	4.45	0.12	1010
Vo15-07	12	305	278	847	519	0.33	0.08	1.69	0.21	880
Vo15-08	30	476	243	692	366	0.72	0.21	2.77	0.25	850

linked to fast cooling, with two transitional saturation thresholds inducing transitions from bulky to hopper, and from hopper to dendritic crystal morphologies (Sunagawa, 1981). That may account for the above-imaged arrowhead or acicular zircon crystal shapes (Fig. 7).

4.4.2 Zircon REE profiles

Ninety zircon chemical analyses are listed as supplementary data (Tab. S4). This dataset was filtered and reduced based on the anomalous or normal pattern of the REE profiles. At first glance (Fig. 8A–E), the profiles are somewhat erratic for the Clefey vaugnerite zircons (Fig. 8B) and for the Barañon vaugnerite (Fig. 8D), a little less disordered for the granite-gneiss zircons (Fig. 8C) that have the highest HREE contents, and still better grouped for the Habaurupt (Fig. 8E) and Ballons (Fig. 8F) vaugnerites, the latter showing the most coherent data. Anomalous REE-profiles were sorted out using a chemical alteration index from the literature (Bell *et al.*, 2019). According to their chaotic pattern, none of the Clefey zircon profiles passed this test (Fig. 8B) and only 3 among 12 Barañon (Fig. 8D) profiles succeeded, 4 among 12 for the Habaurupt vaugnerite (Fig. 8E) with the best score (7 among 15, Fig. 8F) for the Ballons vaugnerite.

Comparing the zircon profiles with reference data from the literature (Fig. 8G–H) shows a distinct HREE enrichment of the granite-gneiss zircons coupled with LREE sometimes below detection limits (Fig. 8I), a pattern mainly observed in zircons from anorogenic contexts. By contrast, the vaugnerite zircon profiles present relatively low HREE, a typical feature of zircons from continental arc granitoid or continental post-collisional granitoid (Belousova *et al.*, 2002; Rubatto, 2002), with the lowest values for the Ballons sample (Fig. 8L) that has the most coherent, best grouped data.

4.4.3 Zircon thermometry

Two methods were applied. The first is based on the zircon Ti-content, that increases with T and at fixed T with the activity of TiO₂ in the magma (Watson *et al.*, 2006). The Ti-content was determined during the LA-ICP-MS runs (Tab. S4). The second (Watson and Harrison, 1983), using whole-rock contents (Tab. 2) of Zr, Si, Al, Ca, Na, K, is an estimate of the zircon saturation temperature, the T-threshold under which zircon starts crystallizing.

Ti-in-zircon. With this thermometry in view, a SEM session was devoted at detecting Ti-rich minerals in our thin sections. No titanite was found. Rutile in vaugnerites was found exclusively as exsolutions, less than 20 μm in size, in biotite and to a lesser extent in amphibole. The rutile grains

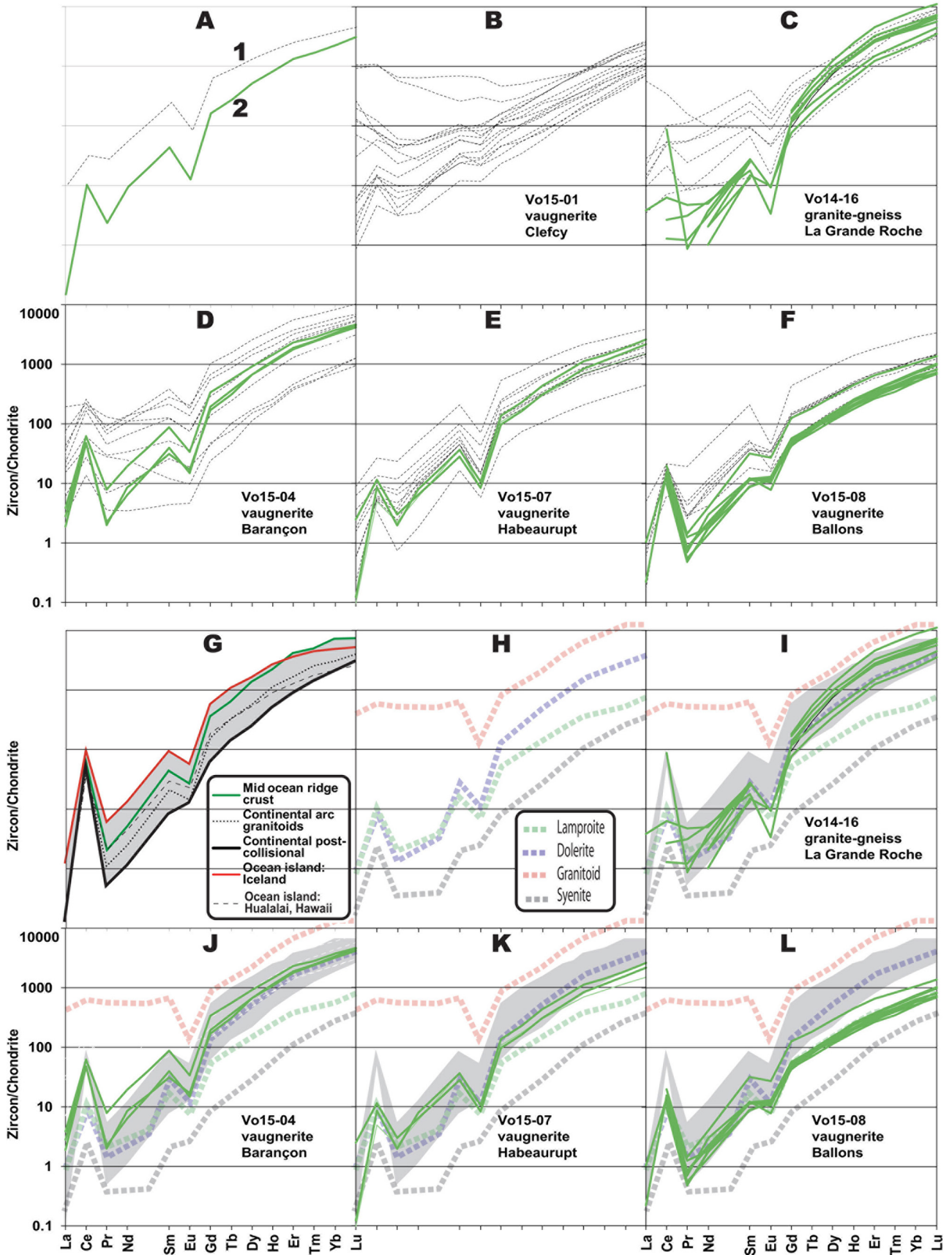
were apparently grown during late- to post-magmatic destabilization of their hosts. During the magmatic stage, Ti was mainly fixed as a constituent of biotite (where we measured up to 3 wt.% TiO₂) and the TiO₂-activity was probably low. By contrast, dendritic TiO₂ was observed in the granite-gneiss as mm-sized sections in the Qz + Kfs + Bt background, and also as exsolutions inside biotite sections. Thus, Ti-in-zircon temperatures (Fig. 9) were computed for two values of a_{TiO_2} , namely 1, possibly valid for the granite-gneiss pre-metamorphic protolith, and 0.1, preferred value for vaugnerites. The zircon of the granite-gneiss have crystallized at a minimal temperature of 755 °C, and those of vaugnerites from 875 °C to 1076 °C depending on the activity of TiO₂ (Fig. 9). The thermometry results in the granite should be considered at best as minimal estimates after Schiller and Finger (2019), and might underestimate the zircon crystallization temperature by as much as 70 °C. Considering also the dispersion of the experimental points, a minimum ± 70 °C error is proposed for each result.

Zircon saturation. Obtained following Watson and Harrison (1983) the results are listed along with the geochemical data (Tab. 2) from which they are directly computed. The granite-gneiss zircon saturation temperature, at 801 °C, is within uncertainty in line with the Ti-in-zircon figure. For the vaugnerites the concordance between the two methods is far from good, with definitely lower zircon saturation temperatures (Tab. 2), but the conditions recommended for this parameter, namely “crustal anatectic melts” (Watson and Harrison, 1983) are probably not fulfilled by the vaugnerites.

As a whole, estimating temperature for zircon crystallization is certainly not a straightforward task for vaugnerites (Fig. 9). According to Kirkland *et al.* (2015), our results show that the vaugnerite zircons have endured a disequilibrium crystallization at temperatures definitely lower than the equilibrium temperature T_{eq} (theoretical, corresponding to crystallization from a melt) from the same authors. The temperature pattern of zircon from the plutonic vaugnerite Vo15-08 (Ballons) suggest a relatively quiet, stable plutonic environment when compared to the erratic results obtained for some vaugnerite dykes (Vo15-01, Vo15-07), presumably much more forcefully and turbulently emplaced.

4.5 U-Pb dating of zircon

Age determinations rely on selected graphical representations (Fig. 10). Supplementary data comprise the rough data (Tab. S5) together with normal (Fig. S2) and inverse (Fig. S3) Concordia plots. Apparent ages are ²⁰⁶Pb/²³⁸U and errors are given at 2 sigma-level.



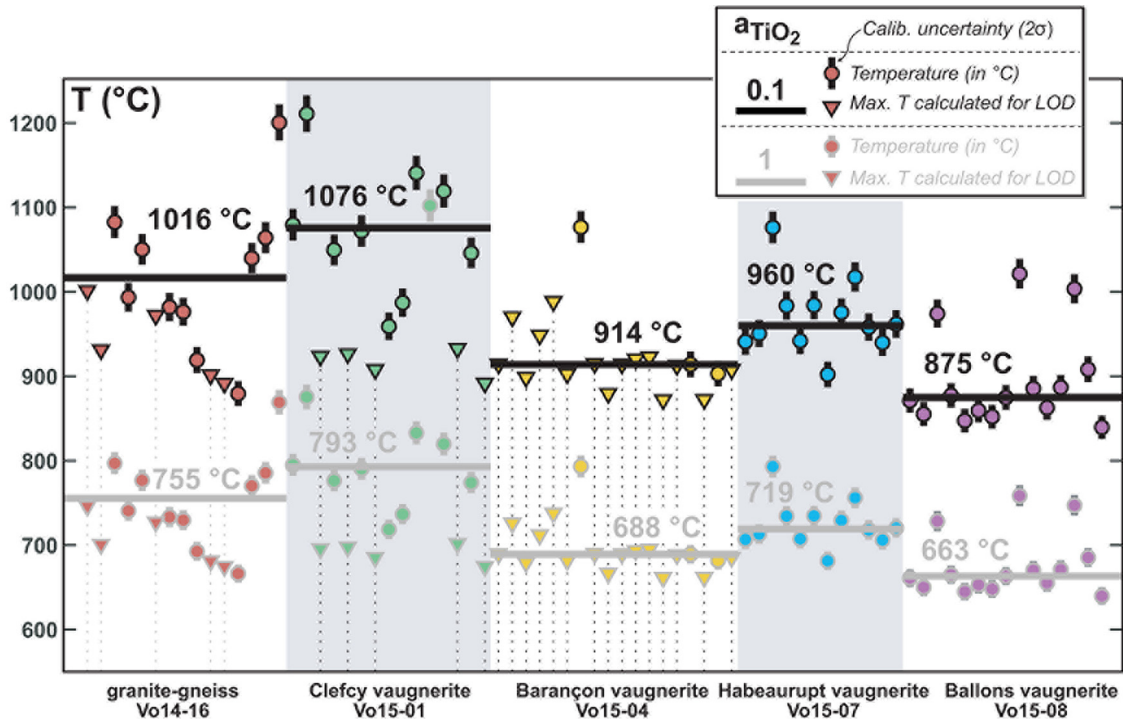


Fig. 9. Ti-in-zircon temperatures obtained using the calibration of [Watson *et al.* \(2006\)](#) for $a_{\text{TiO}_2} = 1$ (gray lines) and $a_{\text{TiO}_2} = 0.1$ (black lines). Triangle markers indicate maximal temperatures calculated using the limit of detection (LOD) value obtained with the method of [Pettke *et al.* \(2012\)](#). Calibration uncertainty from [Watson *et al.* \(2006\)](#) is given at the 2σ level. The best Ti-in-zircon temperature estimate of each sample was taken as the median of all analyses above LOD, following [Schiller and Finger \(2019\)](#).

4.5.1 Vo14-16, granite-gneiss (Central Vosges): sillimanite-bearing leucocratic gneiss

After 80 runs on unknown zircon grains and standards, among 44 spots on 29 zircon sections, 32 sub-concordant to concordant dates were retained (graph A1 in [Fig. 10](#)), all with $\text{QC} \geq 0.5$. The distribution of the $^{206}\text{Pb}/^{238}\text{U}$ apparent dates, removing three outliers (at 334 ± 7 , 545 ± 21 , 558 ± 18 Ma), shows 29 dates in the range 424 to 489 Ma, with a WBEM at 451 ± 7 Ma (A2 in [Fig. 10](#)). Keeping only the twelve data that score at $\text{QC} \geq 0.90$, the WBEM yields 455 ± 12 Ma (excluding two outliers at 334 and 545 Ma). Repeated on the ten remaining data, computing the WBEM yields 451 ± 9 Ma, excluding the oldest result at 486 Ma. As a whole, a conservative estimate of the age of the protolith of the leucocratic gneiss is thus 451 ± 9 Ma. Older concordant ages at 545 ± 21 and 558 ± 18 Ma might represent inherited Precambrian xenocrysts, while the only younger age at 334 ± 7 Ma matches the emplacement age of the vaugnerites. This age suggests a metamorphic imprint linked to the vaugnerite emplacement.

To our knowledge, only one attempt was made for dating a sample of granite-gneiss. [Tabaud *et al.* \(2015\)](#) found a sub-concordant cluster and a lower intercept age of 321.6 ± 2.8 Ma,

that they retained for a sample GG4 called “western Central Vosges Granite”, a choice comforted by concordant data from monazite extracted from another granite. Nevertheless, among their 38 spots on zircon for this GG4 sample of granite-gneiss (see above, [Fig. 3A](#), [Fig. 6A, B](#)), the best QC’s (=1) are for $^{206}\text{Pb}/^{238}\text{U}$ ages at 346, 429, 459 and 466 Ma and the whole data set averages at 384 ± 100 Ma (2σ). The above-mentioned clustered dates from 318 to 333 Ma have QC’s of 0.01 or 0.25 for 5 among 9 data. Oppositely, 15 of their data are grouped between 420 and 460 Ma, *i.e.* equal within error to our age estimate. Such pattern points to the particularly heterogeneous, probably polyphase character of the granite-gneiss unit.

4.5.2 Vo15-08, Ballons peri-plutonic vaugnerite (Southern Vosges)

From a total of 45 runs, among 23 operated on 18 zircon sections, 21 yielded sub-concordant or better results. The $^{206}\text{Pb}/^{238}\text{U}$ dates scatter from 338 ± 5 to 370 ± 6 Ma (B1 in [Fig. 10](#)), with sixteen spots having a QC at 0.75, three spots at 0.9 and two spots at 1 (B2 in [Fig. 10](#)), at 338 ± 5 Ma and 339 ± 6 Ma. The WBEM of the $^{206}\text{Pb}/^{238}\text{U}$ dates for these 5 best data yields an estimate of 343 ± 10 Ma, with, however,

Fig. 8. Zircon REE-profiles. A to F: all analyses. The data have been filtered using the Light Rare Earth Element Index $\text{LREEI} = (\text{Dy}/\text{Nd}) + (\text{Dy}/\text{Sm})$ alike [Bell *et al.* \(2019\)](#). A, caption for B to F with: 1: $\text{LREEI} < 40$, altered zircon. 2: $\text{LREEI} > 40$, valid zircon chemistry. Only valid data (C to F) have been further used, excluding Clefcy zircon data (B). G: reference profiles according to plate tectonics context ([Grimes *et al.*, 2015](#), to which missing Pr values were added stating $(\text{Nd}/\text{Pr})_{\text{N}} = 2.2$, based on the average of our valid zircon profiles). H: reference profiles according to host rock-types ([Belousova *et al.*, 2002](#)). I to L, valid zircon profiles from our dated rocks, with grey background showing the range of the reference profiles G, and dotted lines for H profiles, respectively.

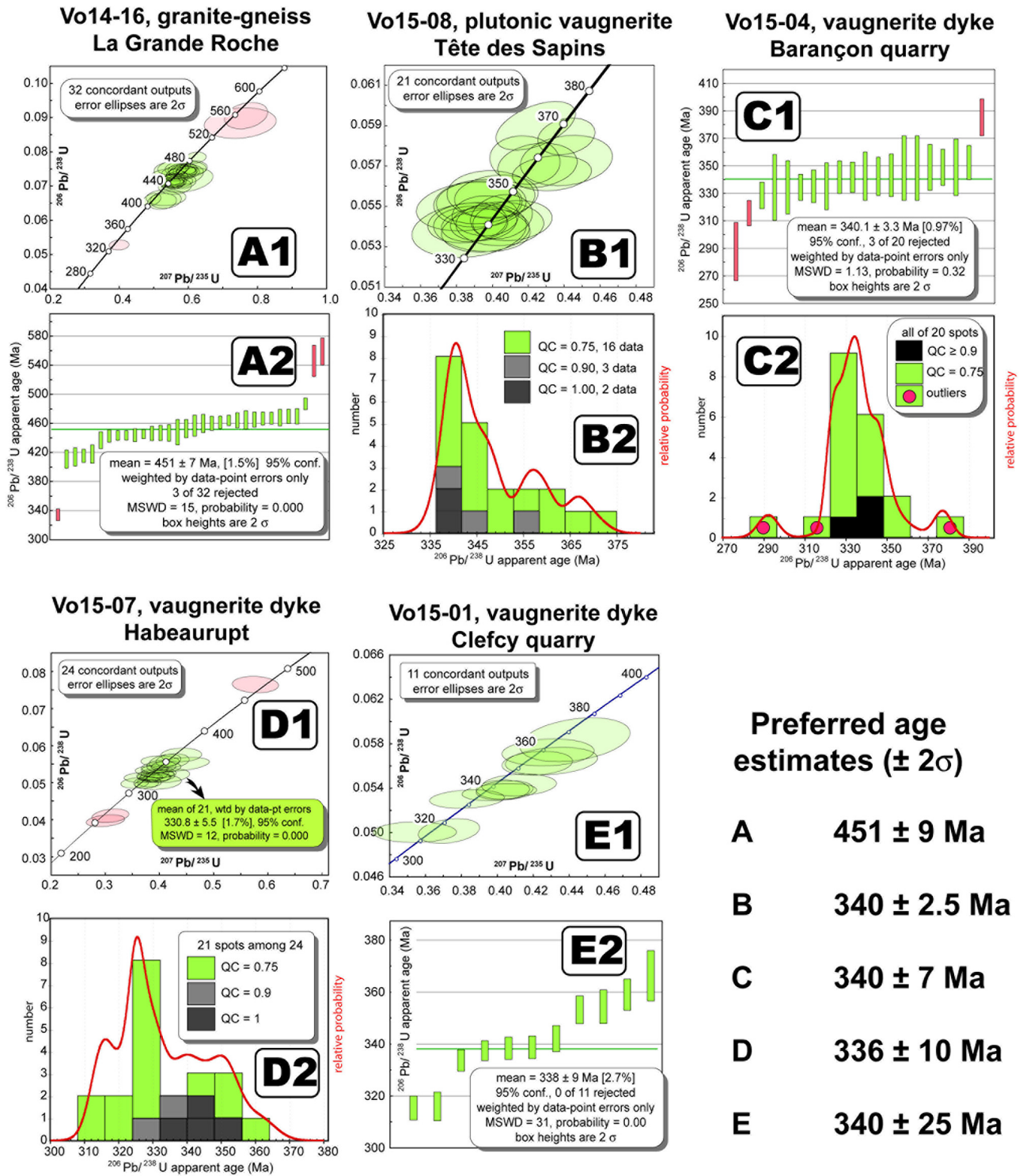


Fig. 10. Geochronology U-Pb. Concordia diagrams (A1, B1, D1, E1), probability density plot of $^{206}\text{Pb}/^{238}\text{U}$ ages (B2, C2, D2), weighted average plot of $^{206}\text{Pb}/^{238}\text{U}$ ages (A2, C1, E2).

one spot at 359 ± 6 Ma apart from a group of four that stay within error into the [333,348] interval (B2 in Fig. 10). Hence, computing the WBEM on these four spots, an age of 340 ± 2.5 Ma can be proposed as the best estimate for the magmatic age of this plutonic vaugnerite.

This matches closely the ID-TIMS results of Schaltegger *et al.* (1996), with 342 ± 1 and 339.5 ± 2.5 Ma found for the Ballons granite and for a “monzodiorite satellite intrusion”, respectively. Their monzodiorite corresponds closely to our vaugnerite, following the minute descriptions of André (1983).

Indeed, this good match is also suggestive of the pertinence, in this easy case, of the above-defined QC index.

4.5.3 Vo15-04, Barañon quarry vaugnerite dyke (Central Vosges)

After fifty runs, 17 zircon grains were tried that yielded 20 sub-concordant data. Their WBEM $^{206}\text{Pb}/^{238}\text{U}$ age at 340.1 ± 3.3 Ma (C1 in Fig. 10), based on seventeen data (3 outliers at 377, 292, and 322 Ma) matches, within error, the location of the three best QC: 335 ± 7.4 at 1; 337.6 ± 7.3 at 0.9; 355 ± 19 at 1 (C2 in Fig. 10). The rather large uncertainties of those data are taken into account by proposing a generously conservative estimate at 340 ± 7 Ma as the emplacement age of the Barañon vaugnerite.

4.5.4 Vo15-07, Habeaurupt vaugnerite dyke (Central Vosges)

Twenty-four concordant dates were obtained after 48 laser runs, among which three outliers at 254, 262 and 474 Ma are clearly separated from a main group in the 314 to 362 range (D1 in Fig. 10). The distribution of the 21 remaining data yields a main mode (8 data) at 330 Ma, beside the group of best concordant data (QC ≥ 0.9 ; $n=6$) that centers around 342 ± 10 Ma (D2 in Fig. 10). Taking into account such a discrepancy, the Habeaurupt vaugnerite dyke emplacement can be (very) conservatively estimated at 336 ± 10 Ma.

4.5.5 Vo15-01, Clefcy quarry vaugnerite dyke (Central Vosges)

Standards and unknown zircons were subjected to 59 laser runs, where 22 spots on 17 zircon sections yielded only 11 sub-concordant to concordant results, broadly scattered within error from 310 to 376 Ma (E1 in Fig. 10).

Among the 11 sub-concordant remaining data, the best QC-index of 1 corresponds to a $^{206}\text{Pb}/^{238}\text{U}$ age at 359 ± 6 Ma, two at 0.9 are for 366 ± 10 and 353 ± 5 Ma, the eight remaining data (QC = 0.75) ranging from 316 ± 5 (2 data) to 354 ± 6 . A central, numerically dominant group of five data clusters near 340 Ma. Hence, with such a tri-modal distribution of concordant results (E2 in Fig. 10; WBEM at 338 ± 9 Ma but with MSWD of 31), it is difficult to assess a crystallization age for the Clefcy vaugnerite more precise than 340 ± 25 Ma.

Here is obviously a difficult case, where the QC-index does not yield a straightforward interpretation. It is worth noting that the Clefcy vaugnerite zircons were suspected not to be optimal candidates for dating based on their corroded and opaque pattern observed during the separation (Tab. 3), their abnormal geochemistry (Fig. 8) and their close association with thorite (Fig. 7C). Their peculiar richness in U and Th (Tab. 4), also observed on Vo15-01 whole-rock geochemistry (Tab. 2), is suggested to have enhanced radiogenic Pb-loss. The dispersion of apparent ages would be thus the result of such anomalous characters rather than faithfully reflecting superimposed crystallization ages.

5 Discussion and integration into the Vosges Variscan geodynamical framework

The zircon ages obtained by laser ablation ICP-MS for the 3 vaugnerite dyke samples of Central Vosges and 1 peri-plutonic vaugnerite intrusive at the northern border of the Ballons granitic complex in the Southern Vosges provide consistent ages of 340 ± 7 Ma for zircon crystallization in the Barañon dyke, 336 ± 10 Ma for the Habeaurupt dyke, 340 ± 2.5 Ma for the peri-plutonic Ballons intrusive and 340 ± 25 Ma for the Clefcy dyke. Despite some partial alteration of the radiochronometric signal, in particular for the Clefcy vaugnerite (see above), the measured age pattern can be interpreted as related to the emplacement of the vaugnerite intrusives in a relatively short time span of 5 Ma *i.e.* from ca 340 to 335 Ma.

The leucocratic sillimanite-bearing granite-gneiss at La Grande Roche in Central Vosges yields a weighted average zircon age of 451 ± 9 Ma that indicates a pre-Variscan protolith of Upper Ordovician age. This granite-gneiss belongs to the highly heterogeneous Central Vosges Granite-Gneiss Complex (Fig. 2; see also Sect. 2.3, above) that can be considered as a large migmatite complex incorporating relicts of the granulite-facies gneiss units, *i.e.* the Monotonous and Varied gneiss units of Skrzypek *et al.* (2014) and “western Central Vosges Granite” dated at 321.6 ± 2.8 in the Gérardmer area by Tabaud *et al.* (2015). Slightly older ages were found for the anatexis event in the eastern part of the Central Vosges *i.e.* $329 \text{ Ma} \pm 2$ Ma and 326 ± 5 Ma (Schulmann *et al.*, 2002) suggesting a relatively long-lasting crustal melting event, subsequent to the emplacement of the vaugnerite intrusives.

Our data thus argue for the vaugnerite intrusions to appear as a relatively early magmatic phase within the Late Variscan orogenic period (*i.e.* Middle Visean in age). They thus corroborate the results of Tabaud *et al.* (2015), considering the vaugnerite intrusives as the mafic expressions of the more felsic ultra-potassic magmatic suites of the Central and Southern Vosges dated at 337 Ma for the syn-kinematic “granite des Crêtes” and between 345 and 336 Ma for the “granite des Ballons” complex. Volcanic venues evolving towards high-K to shoshonitic affinities on top of the Visean turbidite sequence of the Southern Vosges volcano-sedimentary basin (Lefèvre *et al.*, 1994; Lakhri, 1996) and dated by conventional U-Pb methods at $340 \text{ Ma} \pm 2$ and $336 + 3/-5$ (Schaltegger *et al.*, 1996), are also likely surface products of this pervasive ultra-potassic magmatic event.

At a larger scale, this ca 340–335 Ma-old Central-Southern Vosges ultra-potassic magmatism can be associated to widespread coeval high-K events along the Variscan suture zones (von Raumer *et al.*, 2013) *i.e.* from the Moldanubian units of the Bohemian massif to the East (between 338 and 335 Ma after Janousek and Holub, 2007; $338.6 \text{ Ma} \pm 0.7$ and $337.9 \text{ Ma} \pm 0.2$ after Kubinová *et al.*, 2017) to the northern border of the French Massif Central to the West (*i.e.* Monts du Lyonnais at $335.7 \text{ Ma} \pm 2.1$, Laurent *et al.*, 2017) through the external Alps (*i.e.* Belledonne massif between 343 and 335 Ma, Debon *et al.*, 1998; Aar massif at $334 \text{ Ma} \pm 2.5$ Ma, Schaltegger and Corfu, 1992). In the Moldanubian units of the Bohemian massif, moreover, this pervasive ultra-potassic

magmatism occurs in close connection with HT-HP felsic granulites, another expression of a major thermal imprint upon the previously thickened crust (Janousek and Holub, 2007). The geodynamic origin remains debated, for this coherent magmatic event at the orogen scale, but it implies a major change in the dynamics of the lithospheric-scale subduction-collision system.

The vaugnerites studied here display heterogeneous petrological characters as well as hybrid geochemical signatures. Recently published petrogenetic models of Variscan vaugnerite-durbachite-lamprophyre type rocks and their association with more felsic high-K plutons in the Bohemian massif (Holub, 1997; Gerdes *et al.*, 2000; Parat *et al.*, 2010; Krmicek *et al.*, 2016; Kubínová *et al.*, 2017), the Vosges massif (Tabaud *et al.*, 2015) and the French Massif central (Couzinié *et al.*, 2016; Laurent *et al.*, 2017; Martin *et al.*, 2017) invariably support some partial melting of a primary metasomatized mantle source (*i.e.* phlogopite- and/or amphibole-bearing peridotite; see also Condamine and Médard, 2014; Förster *et al.*, 2019 and Gao *et al.*, 2019 for a more general perspective) and contamination at lower crustal depths by variable amount of crustal sources (Gerdes *et al.*, 2000; Couzinié *et al.*, 2016). This implies high heat flux at the base of the lithosphere, classically interpreted as resulting from significant thermal erosion of the lithospheric mantle in relation with sub-continental asthenosphere upwelling (*e.g.*, Henk *et al.*, 2000). These conditions can be achieved either within the mantle wedge above an active subduction (*i.e.* a supra- subduction setting (*e.g.*, Menant *et al.*, 2018) or in post-orogenic settings, associated to the different types of removal of the lithospheric roots of subduction-collision systems (slab break-off, convective removal of the thermal boundary layer, lithospheric delamination; *e.g.* Henk *et al.*, 2000 and references herein). The post-orogenic setting was generally considered in the Bohemian and Vosges massifs, relating the ultra-potassic magmatism and the coeval felsic granulites emplacement to the break-off and/or sinking of previously (*i.e.* Late Devonian) subducted slabs (*i.e.* a Saxothuringian slab for Janousek and Holub, 2007; a Rheic slab for von Raumer *et al.*, 2013; a Moldanubian slab for Kubínová *et al.*, 2017) as well as underplating of associated continental crust (*i.e.* the Saxothuringian crust after Skrzypek *et al.*, 2014 and Tabaud *et al.*, 2015). The latter model, referred to as relamination, differs from others in that the heat necessary for melting both the lithospheric mantle and the crust is produced *in situ* by radiogenic heating associated to the long-term burial (around 10–15 Ma) of the subducted Saxothuringian continental crust at the base of the Moldanubian crust (Lexa *et al.*, 2011).

Whatever the precise proposed mechanism is, such post-orogenic models strongly minimize the role of the active Rheohercynian subduction which, considering the geological context of the Vosges massif, implies a total decoupling between the Northern and Central-Southern Vosges along the Lalaye-Lubine fault zone. Moreover, they also disconnected the ca 340 Ma ultra-potassic magmatism from the major geodynamical change recorded in the Vosges at the same time: the transition from a pervasive extensional (or transtensional) stage expressed by the strong subsidence of the Southern Vosges volcano-sedimentary basin to the compressional orogenic wedge stage from Middle Viséan times onward (*e.g.*, Schulmann *et al.*, 2002).

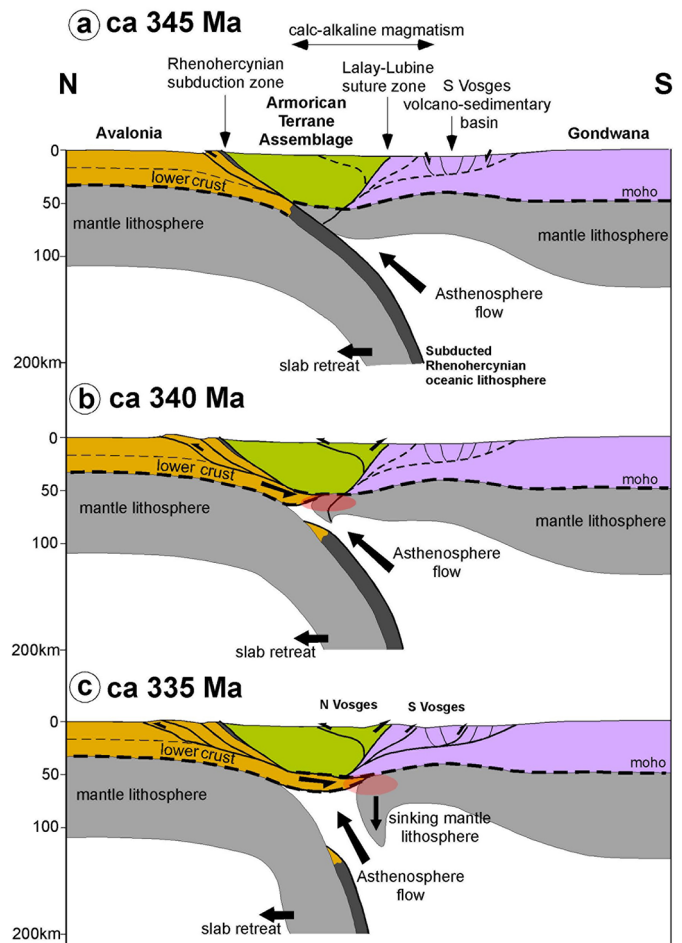


Fig. 11. Sketch geodynamical model of the syn-collisional lithosphere delamination process proposed as the main driving mechanism for the development of the major ultra-potassic magmatic pulse in the Central-Southern Vosges at ca 340–335 Ma. a. ca 345 Ma stage: transition from oceanic to continental subduction along the Rheohercynian trench; note the development of arc-type calc-alkaline magmatism forming the western extension of the Mid-German Crystalline Rise and back-arc extension localizing the Southern Vosges volcano-sedimentary basin. b. ca 340 Ma stage: onset of the colliding process and mantle lithosphere delamination; note the underthrusting of the Avalonian lower crust in between the Saxothuringian crust and mantle. The red zone refers to the possible zone of melting of the metasomatized mantle forming the initial source of the vaugnerites. c. ca 335 Ma stage: Southward (*i.e.* retro) propagation of thrusting within the Central-Southern Vosges massif and of the subcrustal delamination front with progressive sinking of the decoupled mantle lithosphere. Note the resultant parallel migration of the asthenospheric upwelling and of the associated melting zone of the metasomatized mantle (red zone).

We propose here an alternative model integrating the whole geological data into a consistent geodynamical framework connected to the dynamics of the Rheohercynian subduction-collision system. Syn-collisional delamination of the supra-subduction mantle lithosphere is proposed (Fig. 11), following the general model of mature collision proposed by Gray and Pysklywec (2012) based on thermo-mechanical

models. As emphasized by Eisele *et al.* (2000), the development of the Late Devonian-Lower Carboniferous Southern Vosges sedimentary basin together with widespread coeval calc-alkaline volcanic activity can be regarded as the arc-back-arc extensional system of the retreating Rhenohercynian subduction slab. They can also be considered as the markers of a long-lasting thermal erosion of the mantle lithosphere below the previously thickened Saxothuringian-Moldanubian orogenic complex, very likely associated to protracted asthenospheric flow inside the Rhenohercynian subduction wedge (Fig. 11a). Considering such a situation by Latest Devonian times, the orogenic roots of the Eovariscan Saxothuringian-Moldanubian wedge are necessary to have been removed by slab break-off much earlier, possibly during the early (ca 380–370 Ma) exhumation of HP-UHP rocks as proposed by Matte (1998) based on the continental subduction models of Chemenda *et al.* (1996).

As shown by thermo-mechanical simulations (Morency and Doin, 2004), protracted asthenospheric flow within the supra-subduction mantle wedge and the associated thermal erosion of the mantle lithosphere can promote the favorable thermal conditions at the base of the crust for the decoupling of the lithospheric mantle from the overlying crust (*i.e.* Moho temperatures above around 800°C following Morency and Doin, 2004), thereby enhancing the initiation of mantle delamination (Fig. 11b). The latter is expected subsequently to propagate away from the trench, *i.e.* the later suture zone, by propagation at the base of the crust of a localized shear zone and progressive sinking of the mantle lithosphere due to its negative buoyancy with respect to the underlying asthenosphere (Fig. 11c) (Schott and Schmelling, 1998; Houseman and Molnar, 2001; Morency and Doin, 2004; Gray and Pysklywec, 2012).

Another piece of evidence for the decoupling of the crust and the mantle lithosphere in the supra-subduction Saxothuringian-Moldanubian plate can be found in the lack of around 200 km of thinned Avalonian lower crust within the Rhenohercynian thrust wedge as emphasized by large-scale balanced cross sections (Oncken *et al.*, 2000). This critical point implies that the Avalonian lower crust was detached from its upper crust (accreted inside the Rhenohercynian wedge) and subsequently involved in the subduction channel to some lithospheric mantle depth, in a transient state, then very likely underplated at the base of the Saxothuringian-Moldanubian crustal assemblage (Oncken, 1997; Franke and Stein, 2000; Krawczyk *et al.*, 2000). As noted in a recurrent way for the European Variscan belt (*e.g.* Ménard and Molnar, 1988), this configuration is strongly comparable to that of the Himalaya-Tibet orogenic belt where a sheet of Indian lower crust is considered to be largely underthrust below the Asian crust, possibly by around 300 km to the north of the suture zone (*e.g.*, DeCelles *et al.*, 2002). A lower crustal underthrust requires the mechanical decoupling of crust and mantle lithosphere for both the subducted plate (*i.e.* the Avalonian plate) and the supra-subduction plate (*i.e.* the Saxothuringian-Moldanubian assemblage) (Fig. 11b–c) forming a double delamination type of wedges following the classification of Moore and Wiltschko (2004). An alternative scenario involves the underplating of the Avalonian lower crust enhanced by the break-off of the underlying slab as proposed recently by Magni *et al.* (2017). In absence of any argument supporting slab break-off in our case,

a retreating Rhenohercynian mantle slab is sufficient to account for some total decoupling with the comparatively buoyant underplated Avalonian continental lower crust. The detachment at depth of the subducted Avalonian lower crust from its lithospheric mantle and its propagation between the Saxothuringian-Moldanubian crust and mantle necessarily implies some transfer of shortening into adjacent crustal units thereby marking the onset of collision.

On the other hand, fluids expelled from the long-lasting Rhenohercynian subducted crust are likely to have participated to metasomatizing the overlying lithospheric mantle (Martin *et al.*, 2017). Some asthenospheric retro-propagating corner flow at the zone of contact in between the advancing underplated Avalonian continental lower crust and the delaminated upper-plate lithospheric mantle would enhance partial melting of both the metasomatized lithospheric mantle and surrounding continental crustal blocks (Avalonia, Armorican Terrane Assemblage, Gondwana; see reddish zone in Fig. 11b–c) thereby producing the hybrid magmas at the origin of the observed ultra-potassic magmatism. The contribution of these different continental units to the parental magmas is possible to partly account for to the various crustal sources involved in the Central and Southern Vosges magmatic suites (respectively, deeply subducted mature and juvenile crustal material) as suggested by Sr-Nd isotopic data (Tabaud *et al.*, 2015). The migration of these hybrid magmas into the upper-plate is likely to be controlled by active thrust faults (probably partly inherited from the Eovariscan shortening) and more generally, by “uplift channels of exhumed HP rocks” as proposed in the Bohemian massif by Finger *et al.* (2009) which could explain the preferential localization of the vaugnerites and related high-K associations within the exhumed granulites of the Central Vosges.

In the proposed model, the extensive ca 340–335 Ma ultra-potassic magmatic event observed in the Central-Southern Vosges represents the onset of the syn-collisional delamination of the mantle lithosphere above the Rhenohercynian subduction. As proposed by Gray and Pysklywec (2012), the propagation of the delamination front away from the suture zone and the related subcrustal asthenospheric upwelling (Fig. 11c) is expected to induce a parallel delay in the emplacement of ultra-potassic magmatic associations. Such southward migration is not possible to be investigated directly on a transverse passing through the Vosges. The N-S evolution of zircon ages of vaugnerites from the eastern Massif Central (from ca 337 Ma in the Monts du Lyonnais area to ca 300 Ma in the Velay dome) supports, however, the existence of such a long-lasting delamination-induced magmatic event, inducing coeval crust and mantle melting, and propagating southward from the suture zone towards the southern Variscan thrust front (Laurent *et al.*, 2017). Such a southward migration was also noted by Finger *et al.* (2009) for the Saxo-Danubian Granite Belt, interpreted as a whole as a result of some Late Variscan mantle lithosphere delamination.

In the Vosges massif, such persistent thermal anomaly, due to the syn-collisional mantle lithosphere delamination from 340 Ma on, can have triggered the protracted pervasive migmatization recorded in the Central Vosges granite-gneiss unit at least from 329 to 322 Ma (Tabaud *et al.*, 2015). On the other hand, the progressive retreat of the Rhenohercynian mantle slab and the related propagation of the asthenosphere

wedge (Fig. 11c) would possibly explain the general younger ages of both the high-K associations and the subsequent anatectic granites in the Northern Vosges units (respectively at ca 312 Ma \pm 2 Ma and ca 300 Ma following Tabaud *et al.*, 2014). A main point to emphasize on a tectonic point of view is that most of these magmatic intrusives emplaced within a predominant collisional setting propagating outward towards the Northern and Southern Variscan thrust front up to the Late Westphalian times (Upper Pennsylvanian, at ca 305 Ma) (*e.g.*, Oncken, 1997; Matte, 2001; Averbuch *et al.*, 2004). The sub-crustal delamination is suggested, however, to localize bands of syn-convergent extension within the internal parts of the orogen as shown by the thermo-mechanical modelling simulations of Gray and Pysklywec (2012) accounting for the synorogenic extension frequently characterized in the Variscan internal massifs (Burg *et al.*, 1994; Faure, 1995; Faure *et al.*, 2009). The extensive extensional collapse of the Variscan belt was effective only by Stephanian-Lower Permian times (305–280 Ma) as recorded by the widespread highly subsiding rift-related intermontane troughs of the Variscan internal massifs (*i.e.* the Lorraine-Sarre-Nahe and St Dié-Villé basins considering the Vosges massif region) (Averbuch and Piromallo, 2012) thereby giving rise to a basin-and-range like Late Variscan morphology (Ménard and Molnar, 1988). Driving mechanisms for such a transition are still unclear (see for example the discussion in Henk, 1997) but regarding the syn-collisional delamination model proposed here, the final slab break-off of the Rhenohercynian mantle slab (and possibly that of the delaminated Saxothuringian-Moldanubian-Gondwanian lithospheric mantle) are considered as plausible mechanisms to enhance the onset of a stage of post-orogenic tectonic collapse. By the Late Carboniferous-Early Permian times, delamination resulted in a large scale heat anomaly and rejuvenation of the mantle lithosphere below the Variscan internal zones that can be considered as the main trigger for the subsequent long-term thermal subsidence of the NW European Upper Permian-Mesozoic successor basins such as the Paris basin (Prijac *et al.*, 2000; Averbuch and Piromallo, 2012).

6 Conclusion

The data presented in this study for four Vosges vaugnerite yield additional constraints on the time-space distribution of the well-developed, ultra-potassic, mantle-derived, magmatic suites, typical of the late collisional evolution of the Variscan suture zones. Here the vaugnerites appear either as a basic rim of the Ballons granite pluton in Southern Vosges, or as isolated dykes cutting across the GGC, a large heterogeneous migmatite unit of the Central Vosges. In “La Grande Roche” quarry, the GGC is shown here to comprise a sillimanite-bearing, leucocratic gneiss, that yielded LA-ICP-MS U-Pb zircon age of 451 \pm 9 Ma. This “granite-gneiss” derives from a pre-Variscan Upper Ordovician protolith

The four vaugnerite intrusives display specific magmatic characters expressed by assemblages composed of 20–40% vol of Mg-rich biotite [\pm amphibole] at 64 < mg# < 78, as well as by mafic to intermediate, metaluminous to slightly peraluminous geochemical signatures. Geochemical data preclude the

possibility for the vaugnerites to result from the partial melting of the surrounding GGC.

Zircon grains extracted from the different vaugnerite samples recorded U-Pb ages of 340 \pm 2.5 Ma (Southern Vosges), 340 \pm 25 Ma, 340 \pm 7 Ma and 336 \pm 10 Ma (Central Vosges). Within uncertainty, the Southern Vosges pluton-like type and the Central Vosges dyke-like type vaugnerites thus display the same age around 340–335 Ma *i.e.* mid-Viséan, that can be interpreted as the age of emplacement of the vaugnerite intrusives into the host gneissic sequence. This age interval corresponds to that of the major Central-Southern Vosges granite complexes (ca. 337 Ma for the syn-kinematic “granite des Crêtes” and in between 345 and 336 Ma for the “granite des Ballons” complex; Tabaud *et al.*, 2015) as well as that of the major high-K volcanic rocks within the Late Devonian-Viséan Southern Vosges turbidite basin (340 Ma \pm 2 and 336 + 3/-5; Schaltegger *et al.*, 1996).

As previously stated by Tabaud *et al.* (2015) in the Vosges and as also recognized on a broader scale from the northern Massif Central to the Bohemian massif (*e.g.*, Janousek and Holub, 2007; von Raumer *et al.*, 2013; Kubínová *et al.*, 2017; Laurent *et al.*, 2017), the vaugnerite intrusions form part of an extensive mid-Viséan ultra-potassic magmatic event indicative of a significant partial melting of the metasomatized mantle below these Variscan internal domains. The onset of this magmatic pulse at ca. 340 Ma corresponds in the Vosges to a major geodynamical change (*e.g.*, Schulmann *et al.*, 2002) with the transition from an extensional (or transtensional) setting controlling the development of the S Vosges Late Devonian-Lower Viséan turbidite volcano-sedimentary basin (very likely in a back-arc position with regards to the underlying Rhenohercynian subduction; Eisele *et al.*, 2000; Tabaud *et al.*, 2014) towards a compressional setting inducing the southward propagation of thrusting and deformation into the turbidite basin (Petrini and Burg, 1998; Skrzypek *et al.*, 2012a). The ultra-potassic magmatic event thus signs in the Vosges the transition from supra-subduction to collision.

Based on the results of thermo-mechanical simulations of mature collisional systems (Gray and Pysklywec, 2012), we propose that this pervasive mantle melting event was associated to the syn-collisional lithospheric delamination of the Saxothuringian-Moldanubian supra-subduction continental block above the Rhenohercynian slab. Delamination of the lithospheric mantle is suggested to occur as the result of increasing temperature at the Moho through a protracted asthenospheric flow into the Rhenohercynian subduction wedge. The progressive southward (retro-verging) decoupling and sinking of some mantle lithosphere slab resulted in the parallel propagation of both the deformation front and the late-collisional ultra-potassic magmatism as suggested by the progressive younger ages of the Late Variscan vaugnerites towards the southern parts of the Eastern Massif Central *i.e.* from ca. 335 Ma in the Monts du Lyonnais to ca. 300 Ma in the Velay area (Laurent *et al.*, 2017). Such course of events, initiated in a collisional context at ca. 340 Ma along the suture zones, finally resulted in the extensional collapse of the Variscan belt, the associated extensive crustal anatexis and detachment faulting reworking thoroughly the initial collisional structure of the belt. The related pervasive rejuvenation of the mantle lithosphere is proposed to be a major element to

consider in the development of the subsequent long-term thermal subsidence of the lithosphere that controlled successor Upper Permian-Mesozoic basins such as the Paris basin (Prijac *et al.*, 2000; Averbuch and Piromallo, 2012).

Supplementary material

Fig. S1. Multi-element spider plots. A: granite-gneiss.

B: Ballons and S-Vosges vaugnerite (Vo15-08). C: Crêtes

and Central Vosges vaugnerites (Vo15-01, Vo15-04, Vo15-07).

Fig. S2. Wetherill Concordia plots for the dated rocks.

Fig. S3. Tera-Wasserburg Concordia plots for the dated rocks.

Tab. S4. Zircon LA-ICP-MS microchemical data. A: Vo14-16

granite-gneiss. B: Vo15-01 Clefcy vaugnerite. C: Vo15-04

Barançon vaugnerite. D: Vo15-07 Habeaurupt vaugnerite.

E: Vo15-08 Ballons vaugnerite.

Tab. S5. Zircon LA-ICP-MS isotopic U-Pb-Th data. QC:

quality of concordance (cf. Tab. 1). LOD: limit of detection.

A: Vo14-16 granite-gneiss. B: Vo15-01 Clefcy vaugnerite.

C: Vo15-04 Barançon vaugnerite. D: Vo15-07 Habeaurupt

vaugnerite. E: Vo15-08 Ballons vaugnerite.

The Supplementary material is available at <https://www.bsgf.fr/10.1051/bsgf/2020027/olm>.

Acknowledgements. This work was funded by the IREPSE federative research program of the University of Lille and by own scientific funds of the LGCgE. It benefitted also from the support of the INSU-SYSTER program of the CNRS (DELAM project, PI O.A). J.-F. Moyen, J. Von Hunen, A. Gébelin, L. Beccaletto, G. Mohn, D. Frizon de Lamotte and F. Roure are particularly acknowledged for the fruitful discussions on the lithospheric delamination process held in the frame of the DELAM project workshops. Philippe Recourt is greatly thanked for his support during the SEM sessions. Jane Scarrow kindly provided N-MORB and chondrite references used in her 2008 paper, and Anne-Sophie Tabaud is thanked for information on the GG4 sample. The authors are very thankful to Cyrille Delangle (Terra Genesis) for presenting various interesting outcrops of the Vosges Massif. Constructive reviews by J. Melleton and an anonymous reviewer greatly improved a first version of this article.

References

- Altherr R, Kalt A. 1996. Metamorphic evolution of ultrahigh-pressure garnet peridotites from the Variscan Vosges Mts. (France). *Chemical Geology* 134: 27–47.
- Altherr R, Henjes-Kunst F, Langer C, Otto J. 1999. Interaction between crustal-derived felsic and mantle-derived mafic magmas in the Oberkirch Pluton (European Variscides, Schwarzwald, Germany). *Contributions to Mineralogy and Petrology* 137: 304–322.
- Altherr R, Hanel M, Schwarz WH, Wimmenauer W. 2019. Petrology and U–Pb zircon age of the Variscan porphyroclastic Rand Granite at the southeastern margin of the Central Schwarzwald Gneiss Complex (Germany). *International Journal of Earth Sciences* 108: 1879–1895.
- Altherr R, Holl A, Hegner E, Langer C, Kreuzer H. 2000. High-potassium, calc-alkaline I-type plutonism in the European Variscides: northern Vosges (France) and northern Schwarzwald (Germany). *Lithos* 50: 51–73.
- Altherr R, Soder CG. 2018. Sapphirine as a breakdown product of garnet in a Variscan UHP/HT peridotite from the Vosges Mountains (France) – An indication of near-isothermal decompression. *Journal of Petrology* 59: 2221–2243.
- Anders E, Grevesse N. 1989. Abundances of the elements: meteoritic and solar. *Geochimica et Cosmochimica Acta* 53: 197–214.
- André F. 1981. Un exemple de vaugnérite, cumulat d’une association gabbro-dioritique dans le massif des Ballons (Vosges méridionales, France). *Comptes rendus de l’Académie des sciences. Série II* 293: 445–448.
- André F. 1983. Pétrologie structurale et pétrogenèse des formations plutoniques septentrionales du Massif des Ballons (Vosges, France). Unpubl. mem., thèse Université Nancy 1, Faculté des sciences, 298 p. Available at: tel.archives-ouvertes.fr/tel-01782377 (last consult: 2020/05/05).
- André F, Bébien J. 1983a. Déchirures continentales et plutonisme : étude pétrologique et structurale comparée de l’association ignée de Guévnguéli (Macédoine grecque) et des formations plutoniques basiques situées en bordure nord du Massif des Ballons (Vosges, France). *Bulletin de la Société géologique de France* 25: 291–299.
- André F, Bébien J. 1983b. Minéralogie et pétrologie des cumulats gabbro-dioritiques situés en bordure septentrionale du massif des Ballons (Vosges méridionales, France) : cristallisation d’un magma basique en domaine « orogénique » intracontinental. *Bulletin de minéralogie* 106: 341–351.
- André F, Gagny C. 1981. Proposition d’un âge namurien pour le granite porphyroïde des Ballons, témoin vosgien du plutonisme à potentialité molybdifère au Carbonifère supérieur. *Congrès national des Sociétés savantes* 106: 287–296.
- Arnold J, Jacoby WR, Schmelting H, Schott B. 2001. Continental collision and the dynamic and thermal evolution of the Variscan orogenic crustal root-numerical models. *Journal of Geodynamics* 31: 273–291.
- Averbuch O, Mansy J-L, Lamarche J, Lacquement F, Hanot F. 2004. Geometry and kinematics of the Boulonnais fold-and-thrust belt (N France): implications for the dynamics of the Northern Variscan thrust front. *Geodinamica Acta* 17: 163–178.
- Averbuch O, Piromallo C. 2012. Is there a remnant Variscan subducted slab in the mantle beneath the Paris basin? Implications for the late Variscan lithospheric delamination process and the Paris basin formation. *Tectonophysics* 558–559: 70–83.
- Ballèvre M, Bosse V, Ducassou C, Pitra P. 2009. Palaeozoic history of the Armorican Massif: models for the tectonic evolution of the suture zones. *Comptes rendus geoscience* 341: 174–201.
- Bambauer HU, Kroll H, Nager HE, Pentinghaus H. 1974. Feldspat-Mischkristalle: eine Übersicht. *Bulletin de la Société française de minéralogie et de cristallographie* 97: 313–345.
- Banzet G. 1987. Interactions croûte-manteau et genèse du plutonisme subalcalin du Haut-Dauphiné occidental (massifs cristallins externes, Alpes) : vaugnérites, durbachites et granitoïdes magnésio-potassiques. *Géologie alpine* 63: 95–117.
- Barbarin B. 1999. A review of the relationships between granitoid types, their origins and their geodynamic environments. *Lithos* 46: 605–626.
- Barbey P, Villaras A, Marignac C, Montel J-M. 2015. Multiphase melting, magma emplacement and P-T-time path in late-collisional context: the Velay example (Massif Central, France). *Bulletin de la Société géologique de France* 186: 93–116.
- Bell EA, Boehnke P, Barboni M, Harrison TM. 2019. Tracking chemical alteration in magmatic zircon using rare earth element abundances. *Chemical Geology* 510: 56–71.
- Belousova EA, Griffin WL, O’Reilly SY, Fisher NI. 2002. Igneous zircon: trace element composition as an indicator of source

- rock type. *Contributions to Mineralogy and Petrology* 143: 602–622.
- Blumenfeld P, Bouchez J-L. 1988. Shear criteria in granite and migmatite deformed in the magmatic and solid states. *Journal of Structural Geology* 10: 361–372.
- Bonin B, Azzouni-Sekkal A, Bussy F, Ferrag S. 1998. Alkali-calcic and alkaline post-orogenic (PO) granite magmatism: petrologic constraints and geodynamic settings. *Lithos* 45: 45–70.
- Bonin B. 2004. Do coeval mafic and felsic magmas in post-collisional to within-plate regimes necessarily imply two contrasting, mantle and crustal, sources? A review. *Lithos* 78: 1–24.
- Bourgeois O, Ford M, Diraison M, Le Carlier de Veslud C, Gerbault M, Pik R, *et al.* 2007. Separation of rifting and lithospheric folding signatures in the NW-Alpine foreland. *International Journal of Earth Sciences* 96: 1003–1031.
- Boutin R, Montigny R, Thuizat R. 1995. Chronologie K-Ar et ^{39}Ar -40 du métamorphisme et du magmatisme des Vosges. Comparaison avec les massifs varisques avoisinants. *Géologie de la France* (1): 3–25.
- Burg JP, Van den Driessche J, Brun JP. 1994. Syn-to post-thickening extension in the Variscan Belt of Western Europe: modes and structural consequences. *Géologie de la France* (3): 33–51.
- Bussy F, Delitroz D, Fellay R, Hernandez J. 1998. The Pormenez monzonite (Aiguilles-Rouges, Western Alps): an additional evidence for a 330 Ma-old magnesio-potassic magmatic suite in the Variscan Alps. *Schweizerische mineralogische und petrographische Mitteilungen* 78: 193–194.
- Camboly J. 1966. Étude pétrographique et géochimique des granites de la région du Vic-Habeauru (Vosges) et de leurs enclaves. Unpubl. mem., Thèse Faculté des Sciences, Université de Nancy, 87 p.
- Camboly J, Hameurt J, Rocci G. 1967. Relations génétiques entre vaugnérite et kersantite et hypothèse originale sur la genèse des lamprophyres des Vosges. *Comptes rendus de l'Académie des sciences. Série D* 264: 25–28.
- Carasco B. 1989. Lacustrine sedimentation in a Permian intermontane basin: the Villé graben (Vosges, France). *Paleogeography, Paleoclimatology, Paleocology* 70: 179–186.
- Caruba R, Turco G. 1971. Mise au point sur la notation des faces du zircon. Élaboration d'une méthode d'indexation rapide des faces des zircons accessoires des roches par utilisation d'abaques. *Bulletin de la Société française de minéralogie et de cristallographie* 94: 427–436.
- Chemenda AI, Mattauer M, Bokun A. 1996. Continental subduction and a mechanism for exhumation of high-pressure metamorphic rocks: new modelling and field data from Oman. *Earth and Planetary Science Letters* 143: 172–182.
- Chen F, Todt W, Hann HP. 2003. Zircon and garnet geochronology of eclogites from the Moldanubian zone of the Black Forest, Germany. *Journal of Geology* 111: 207–222.
- Chew DM, Petrus JA, Kamber BS. 2014. U-Pb LA-ICPMS dating using accessory mineral standards with variable common Pb. *Chemical Geology* 363: 185–199.
- Condamine P, Médard E. 2014. Experimental melting of phlogopite-bearing mantle at 1 GPa: implications for potassic magmatism. *Earth and Planetary Science Letters* 397: 80–92.
- Costa S, Rey P. 1995. Crustal rejuvenation and growth during post-thickening collapse: insights from a crustal cross-section through a variscan metamorphic core complex. *Geology* 23: 905–908.
- Couzinié S, Laurent O, Moyen J-F, Zeh A, Bouilhol P, Villaros A. 2016. Post-collisional magmatism: crustal growth not identified by zircon Hf-O isotopes. *Earth and Planetary Science Letters* 456: 182–195.
- Couzinié S, Moyen J-F, Villaros A, Paquette J-L, Scarrow JH, Marignac C. 2014. Temporal relationships between Mg-K mafic magmatism and catastrophic melting of the Variscan crust in the southern part of Velay Complex (Massif Central, France). *Journal of Geosciences* 59: 69–86.
- Debon F, Guerrot C, Ménot R-P, Vivier G, Cocherie A. 1998. Late Variscan granites of the Belledonne massif (French Western Alps): an Early Viséan magnesian plutonism. *Schweizerische mineralogische und petrographische Mitteilungen* 78: 67–85.
- Debon F, Lemmet M. 1999. Evolution of Mg/Fe ratios in Late Variscan plutonic rocks from the external crystalline massif of the Alps (France, Italy, Switzerland). *Journal of Petrology* 40: 1151–1185.
- DeCelles PG, Robinson DM, Zandt G. 2002. Implications of shortening in the Himalayan fold-thrust belt for uplift of the Tibetan plateau. *Tectonics* 21: 1062. <https://doi.org/10.1029/2001TC001322>.
- Delesse A. 1851. Sur la composition minéralogique et chimique des roches des Vosges. *Annales des mines* 19: 149–183. Available at: patrimoine.mines-paristech.fr/items/viewer/103#page/Image+74/mode/2up (last consult: 2020/05/05).
- Donsimoni M. 1981. Le bassin houiller lorrain. Synthèse géologique. *Mémoires du Bureau de recherches géologiques et minières* 117, 102 p.
- Durand M. 2014. Le bassin permien de Saint-Dié. In: Gély J-P, Hanot F, eds. Le bassin parisien, un nouveau regard sur la géologie. Paris: Association des géologues du Bassin, 139 p.
- Dupuis NE, Braid JA, Brendan Murphy J, Shail R, Archibald DA, Nance D. 2015. $^{40}\text{Ar}/^{39}\text{Ar}$ phlogopite geochronology of lamprophyre dykes in Cornwall, UK: new age constraints on Early Permian post-collisional magmatism in the Rheohercynian Zone, SW England. *Journal of the Geological Society, London* 172: 566–575.
- Echtler HP, Chauvet A. 1992. Carboniferous convergence and subsequent crustal extension In the southern Schwarzwald (SW Germany). *Geodinamica Acta* 5: 37–49.
- Edel JB, Fluck P. 1989. The Upper Rhenish Shield basement (Vosges, upper Rhinegraben and Schwarzwald): main structural features deduced from magnetic, gravimetric and geological data. *Tectonophysics* 169: 303–316.
- Edel J-B, Schneider J-L. 1995. The late Carboniferous to early Triassic geodynamic evolution of Variscan Europe in the light of magnetic overprints in Early Permian rhyolites from the Northern Vosges (France) and central Black Forest (Germany). *Geophysical Journal International* 122: 858–876.
- Edel JB, Schulmann K. 2009. Geophysical constraints and model of the “Saxothuringian and Rheohercynian subductions-magmatic arc system” in NE France and SW Germany. *Bulletin de la Société géologique de France* 180: 545–558.
- Edel JB, Schulmann K, Skrzypek E, Cocherie A. 2013. Tectonic evolution of the European Variscan belt constrained by paleomagnetic, structural and anisotropy of magnetic susceptibility data from the Rheohercynian magmatic arc (Northern Vosges, Eastern France). *Journal of the Geological Society, London* 170: 785–804.
- Eisbacher GH, Lüschen E, Wickert F. 1989. Crustal-scale thrusting and extension in the Hercynian Schwarzwald and Vosges, central Europe. *Tectonics* 8: 1–21.
- Eisele J, Gertisser R, Montenari M. 2000. Geochemistry and provenance of Devonian-Carboniferous volcano-sedimentary sequences from the Southern Vosges Basin and the geodynamic implications for the Western Moldanubian Zone. In: Franke W, Haak V, Oncken O, Tanner D, eds. Orogenic processes:

- quantification and modelling in the Variscan Belt. *Geological Society, London, Special Publications* 179: 433–444.
- Exley CS, Stone M, Floyd PA. 1983. Composition and petrogenesis of the Cornubian granite batholith and post-orogenic volcanic rocks in southwest England. In: Hancock PL, ed. *The Variscan Fold belt in the British Isles*. Bristol: Adam Higer Ltd, pp. 153–177.
- Faryad SW, Kachlyk V. 2013. New evidence of blueschist facies rock and their geotectonic implication for Variscan suture(s) in the Bohemian Massif. *Journal of Metamorphic Geology* 31: 63–82.
- Faure M. 1995. Late orogenic carboniferous extensions in the Variscan French Massif Central. *Tectonics* 14: 132–153.
- Faure M, Bé Mézème E, Cocherie A, Rossi P, Chemenda A, Boutelier D. 2008. Devonian geodynamic evolution of the Variscan Belt, insights from the French Massif Central and Massif Armoricain. *Tectonics* 27: 27, TC2005. <https://doi.org/2010.1029/2007TC002115>.
- Faure M, Lardeaux J-M, Ledru P. 2009. A review of the pre-Permian geology of the Variscan French Massif Central. *Comptes rendus géoscience* 341: 202–213.
- Femenias O, Coussaert N, Berger J, Mercier J-C, Demaiffe D. 2004. Metasomatism and melting history of a Variscan lithospheric mantle domain: evidence from the Puy Beaunit xenoliths (French Massif Central). *Contributions to Mineralogy and Petrology* 148: 13–28.
- Finger F, Gerdes A, Rene M, Riegler G. 2009. The Saxo-Danubian Granite belt: magmatic response to post-collisional delamination of mantle lithosphere below the south-western sector of the Bohemian massif (Variscan orogen). *Geologica Carpathica* 60: 205–212.
- Fluck P. 1980. Métamorphisme et magmatisme dans les Vosges moyennes d'Alsace, contribution à l'histoire de la chaîne varisque. *Sciences géologiques (bulletin et mémoires), Strasbourg* 62: 1–247.
- Fluck P, Edel J-B, Gagny C, Montigny R, Piqué A, Schneider J-L, et al. 1989. Carte synthétique et géotransverse N-S de la chaîne varisque des Vosges (France). Synthèse des travaux effectués depuis deux décennies. *Comptes rendus de l'Académie des sciences. Série II* 309: 907–912.
- Foley S. 1992. Vein-plus-wall-rock melting mechanisms in the lithosphere and the origin of potassic alkaline magmas. *Lithos* 28: 435–453.
- Förster MW, Prelevic D, Buhre S, Mertz-Kraus R, Foley SF. 2019. An experimental study of the role of partial melts of sediments versus mantle melts in the sources of potassic magmatism. *Journal of Asian Earth Sciences* 177: 76–88.
- Franke W. 2000. The mid-European segment of the Variscides: tectonostratigraphic units, terrane boundaries and plate tectonic evolution. In: Franke W, Haak V, Oncken O, Tanner D, eds. *Orogenic processes: quantification and modelling in the Variscan Belt*. *Geological Society, London, Special Publications* 179: 35–61.
- Franke W, Stein E. 2000. Exhumation of high-grade rocks in the Saxo-Thuringian Belt: geological constraints and geodynamic concepts. *Geological Society, London, Special Publications* 179: 337–354.
- Franke W. 2006. The Variscan orogen in Central Europe: construction and collapse. *Geological Society, London, Memoirs* 32: 333–343.
- Franke W, Cocks LRM, Torsvik TH. 2017. The Palaeozoic Variscan oceans revisited. *Gondwana Research* 48: 257–284.
- Furman T, Graham D. 1999. Erosion of lithospheric mantle beneath the East African Rift system: geochemical evidence from the Kivu volcanic province. *Lithos* 48: 237–262.
- Gagny C. 1968. Pétrogenèse du Granite des Crêtes, Vosges méridionales – France. Thèse Fac. Sci. Univ. Nantes, 548 p. Available at: orange.univ-lorraine.fr/files/original/0ed0aab7e3ef1852f88f6696e12631bc.pdf (last consult: 2020/05/05).
- Gagny C. 1978. Vaugnérites et durbachites sont des cumulats de magma granitique (l'exemple du magma des Crêtes, Vosges). *Comptes rendus de l'Académie des sciences. Série D* 287: 1361–1364.
- Gardien V, Lardeaux J-M, Ledru P, Allemand P, Guillot S. 1997. Metamorphism during late orogenic extension: insights from the French Variscan Belt. *Bulletin de la Société géologique de France* 168: 271–286.
- Gao M, Xu H, Zhang J, Foley SF. 2019. Experimental interaction of granitic melt and peridotite at 1.5 GPa: implications for the origin of post-collisional K-rich magmatism in continental subduction zones. *Lithos* 350–351: 105241.
- Gayk T, Kleinschrodt R. 2000. Hot contacts of garnet peridotites in middle/upper crustal levels: new constraints on the nature of the late Variscan high-T/low-P event in the Moldanubian (Central Vosges/NE France). *Journal of Metamorphic Geology* 18: 293–305.
- Gerdes A, Worner G, Finger F. 2000. Hybrids, magma mixing and enriched mantle melts in post-collisional Variscan granitoids: the Rastenberg Pluton, Austria. In: Franke W, Haak V, Oncken O, Tanner D, eds. *Orogenic processes: quantification and modelling in the Variscan Belt*. *Geological Society, London, Special Publications* 179: 415–431.
- Gray R, Pysklywec RN. 2012. Geodynamic models of mature continental collision: evolution of an orogen from lithospheric subduction to continental retreat/delamination. *Journal of Geophysical Research* 117: B03408. <https://doi.org/10.1029/2011JB008692>.
- Grimes CB, Wooden JL, Cheadle MJ, John BE. 2015. “Fingerprinting” tectono-magmatic provenance using trace elements in igneous zircon. *Contributions to Mineralogy and Petrology* 170: 46.
- Guillaume B, Martinod J, Espurt N. 2009. Variations of slab dip and overriding plate tectonics during subduction: insights from analogue modelling. *Tectonophysics* 463: 167–174.
- Guillong M, Meier DL, Allan MM, Einrich CA, Yardley BWD. 2008. SILLS: a Matlab-based program for the reduction of Laser Ablation ICP-MS data of homogeneous materials and inclusions. *Mineralogical Association of Canada Short Course* 40, Vancouver, BC: 328–333.
- Guillot F, Desmons J, Ploquin A. 1993. Lithostratigraphy and geochemical composition of the Mt. Pourri volcanic basement, Middle Penninic W-Alpine zone, France. *Schweizerische mineralogische und petrographische Mitteilungen* 73: 319–334.
- Hameurt J. 1966. Idées nouvelles sur la géologie des terrains cristallophylliens des Vosges moyennes lorraines. *Comptes rendus de l'Académie des sciences. Série D* 263: 1928–1931.
- Hameurt J. 1970. Les terrains cristallins et cristallophylliens du versant occidental des Vosges moyennes. *Mémoires du service de la carte géologique d'Alsace et de Lorraine* 26: 402 p.
- Hegner E, Chen F, Hann HP. 2001. Chronology of basin closure and thrusting in the internal zone of the Variscan belt in the Schwarzwald, Germany: evidence from zircon ages, trace element geochemistry, and Nd isotopic data. *Tectonophysics* 332: 169–184.
- Hegner E, Kölbl-Ebert M, Loeschke J. 1998. Post-collisional Variscan lamprophyres (Black Forest, Germany): $^{40}\text{Ar}/^{39}\text{Ar}$ phlogopite dating, Nd, Pb, Sr isotope, and trace element characteristics. *Lithos* 45: 395–411.
- Henk A. 1993. Late orogenic evolution in the Variscan Internides: the Saar-Nahe Basin, southwest Germany. *Tectonophysics* 223: 273–290.
- Henk A. 1997. Gravitational orogenic collapse vs plate-boundary stresses: a numerical modelling approach to the Permo-Carboniferous evolution of Central Europe. *Geologische Rundschau* 86: 39–55.
- Henk A, von Blanckenburg F, Finger F, Schaltegger U, Zulauf G. 2000. Syn-convergent high-temperature metamorphism and magmatism in the Variscides: a discussion of potential heat sources. In: Franke W, Haak V, Oncken O, Tanner D, eds. *Orogenic processes: quantification and modelling in the Variscan Belt*. *Geological Society, London, Special Publications* 179: 387–399.

- Hofmann AW. 1988. Chemical differentiation of the Earth: the relationship between mantle, continental crust, and oceanic crust. *Earth and Planetary Science Letters* 90: 297–314.
- Holub FV. 1997. Ultrapotassic plutonic rocks of the Durbachite Series in the Bohemian Massif: petrology, geochemistry and petrogenetic interpretation. *J. Geol. Sci., Economic Geol. Mineralogy* 31: 5–26.
- Hoth S, Kusowski N, Oncken O. 2008. Distant effects in bivergent orogenic belts – How retro wedge erosion triggers resource formation in pro-foreland basins. *Earth and Planetary Science Letters* 273: 28–37.
- Houseman G, Molnar P. 2001. Mechanisms of lithospheric rejuvenation associated with continental orogeny. In Miller JA, Holdsworth REE, Buick IS, Hand M. eds. Continental reactivation and reworking. *Geological Society, London, Special Publications* 184: 13–38.
- Jackson SE, Pearson NJ, Griffin WL, Belousova EA. 2004. The application of laser ablation-inductively coupled plasma-mass spectrometry to *in situ* U-Pb zircon geochronology. *Chemical Geology* 211: 47–69.
- Janousek V, Farrow CM, Erban V. 2006. Interpretation of whole-rock geochemical data in igneous geochemistry: introducing geochemical data toolkit (GCDkit). *Journal of Petrology* 47: 1255–1259.
- Janousek V, Holub FV. 2007. The causal link between HP-HT metamorphism and ultrapotassic magmatism in collisional orogens: case study from the Moldanubian Zone of the Bohemian Massif. *Proceedings of the Geologists' Association* 118: 75–86.
- Janousek V, Lewa O, Schulmann K, Maierova P. 2012. What drives remelting of thickened continental crust in the Bohemian Massif? *Géologie de la France* 2012–1: 130–131.
- Janousek V. 2019. Variscan odyssey of the Bohemian Massif and the related plutonic activity. *Geologica Carpathica* 70: 50–53.
- Jung J, Roques M. 1952. Introduction à l'étude zonéographique des formations cristallophylliennes. *Bulletin du service de la carte géologique de la France* 50: 1–64.
- Kawabata H, Shimura T. 2019. Three-dimensional visualization of ternary prisms (T–prism): development of a spreadsheet-based tool for Earth and material sciences. *Journal of Mineralogical and Petrological Sciences* 114: 142–148.
- Kirkland CL, Smithies RH, Taylor RJM, Evans N, McDonald B. 2015. Zircon Th/U ratios in magmatic environs. *Lithos* 212–215: 397–414.
- Kratinová Z, Schulmann K, Edel J-B., Jezek J, Schaltegger U. 2007. Model of successive granite sheet emplacement in transtensional setting: integrated microstructural and anisotropy of magnetic susceptibility study. *Tectonics* 26: TC6003. <https://doi.org/6010.1029/2006TC002035>.
- Krawczyk CM, Stein E, Choi S, Oettinger G, Schuster K, Gotze H-J, *et al.* 2000. Geophysical constraints on exhumation mechanisms of high-pressure rocks: the Saxo-Thuringian case between the Franconian Line and Elbe Zone. In: Franke W, Haak V, Oncken O, Tanner D, eds. Orogenic processes: quantification and modelling in the Variscan Belt. *Geological Society, London, Special Publications* 179: 303–322.
- Krmicek L, Romer RL, Ulrych J, Glodny J, Prelevic D. 2016. Petrogenesis of orogenic lamproites of the Bohemian massif: Sr-Nd-Pb-Li isotope constraints for Variscan enrichment of ultra-depleted mantle domains. *Gondwana Research* 35: 198–216.
- Kubínová S, Faryad SW, Verner K, Schmitz M, Holub F. 2017. Ultrapotassic dykes in the Moldanubian Zone and their significance for understanding of the post-collisional mantle dynamics during Variscan orogeny in the Bohemian Massif. *Lithos* 272–273: 205–221.
- Lakhrissi MA. 1996. Pétrologie, minéralogie, géochimie du volcanisme dévono-dinantien des Vosges méridionales (France). Sa place dans le contexte géodynamique varisque. Unpubl. mem., Thèse Doct. Univ. Lille, 414 p. Available at: ori.univ-lille1.fr/notice/view/univ-lille1-ori-133205 (last consult: 2020/05/12).
- Lardeaux JM, Ledru P, Daniel I, Duchêne S. 2001. The Variscan French Massif Central — a new addition to the ultra-high pressure metamorphic “club”: exhumation processes and geodynamic consequences. *Tectonophysics* 332: 143–167.
- Lardeaux JM, Schulmann K, Faure M, Janousek V, Lexa O, Skrzypek E, *et al.* 2014. The Moldanubian Zone in the French Massif Central, Vosges/Schwarzwald, and Bohemian Massif revisited: differences and similarities. *Geological Society, London, Special Publications* 405: 7–43.
- Latouche L, Fabriès J, Guiraud M. 1992. Retrograde evolution in the Central Vosges mountains (northeastern France): implications for the metamorphic history of high-grade rocks during the Variscan orogeny. *Tectonophysics* 205: 387–407.
- Laurent O, Couzinié S, Zeh A, Vanderhaeghe O, Moyen J-F, Villaros A, *et al.* 2017. Protracted, coeval crust and mantle melting during Variscan late-orogenic evolution: U-Pb dating in the eastern French Massif Central. *International Journal of Earth Sciences* 106: 421–451.
- Le Gall J, Doré F, Gresselin F, Pareyn C. 1989. Le magmatisme alcalin de la distension post-varisque dans le nord du Massif Armoricaïn : exemples des volcanites carbonifères du bassin de Carentan et des lamprophyres du Nord Cotentin. *Annales de la Société géologique du Nord* 108: 25–33.
- Ledru P, Lardeaux J-M, Santallier D, Autran A, Quénardel J-M, Floc'H J-P, *et al.* 1989. Où sont les nappes dans le Massif central français ? [Where are the nappes in the French Massif central?]. *Bulletin de la Société géologique de France* 5(8): 605–618.
- Ledru P, Courrioux G, Dallain C, Lardeaux JM, Montel JM, Vanderhaeghe O, Vitel G. 2001. The Velay dome (French Massif Central): melt generation and granite emplacement during orogenic evolution. *Tectonophysics* 342: 207–237.
- Lefèvre C, Lakhrissi M, Schneider J-L. 1994. Les affinités magmatiques du volcanisme dinantien des Vosges méridionales (France) ; approche géochimique et interprétation. *Comptes rendus de l'Académie des sciences. Série II* 319: 79–86.
- Lexa O, Schulmann K, Janousek V, Stipska P, Guy A, Racek M. 2011. Heat sources and trigger mechanisms of exhumation of HP granulites in Variscan orogenic root. *Journal of Metamorphic Geology* 29: 79–102.
- Ludwig KR. 2003. ISOPLOT 3.0: a geochronological toolkit for Microsoft Excel. Berkeley Geochronology Center, Special Publication No. 4.
- Magni V, Allen MB, Van Hunen J, Bouillol P. 2017. Continental underplating after slab break-off. *Earth and Planetary Science Letters* 474: 59–67.
- Martin AM, Médard E, Richter K, Lanzirotti A. 2017. Intraplate mantle oxidation by volatile-rich silicic magmas. *Lithos* 292–293: 320–333.
- Matte P. 1998. Continental subduction and exhumation of HP rocks in Paleozoic orogenic belts: Uralides and Variscides. *Geol. Soc. Sweden (G.F.F.)* 120: 209–222.
- Matte P. 2001. The Variscan collage and orogeny (480–290 Ma) and the tectonic definition of the Armorica microplate: a review. *Terra Nova* 13: 122–128.
- McDonough WF, Sun S-S. 1995. The composition of the Earth. *Chemical Geology* 120: 223–253.
- Menant A, Jolivet L, Tuduri J, Loiselet C, Bertrand G, Guillou-Frottier L. 2018. 3D subduction dynamics: a first-order parameter of the transition from copper- to gold-rich deposits in Eastern Mediterranean region. *Ore Geology Reviews* 94: 118–135.
- Ménard G, Molnar P. 1988. Collapse of a Hercynian Plateau into a late Paleozoic European basin and range province. *Nature* 334: 235–237.

- Ménillet F, Fluck P, Flageollet J-C., Maïaux C, Lougnon J. 1978. Gérardmer. Notice explicative de la Carte géologique de la France à 1/50 000. *Bur. Rech. Géol. Min.* eds, Orléans, 341: 73 p.
- Ménillet F, Coulon M, Fourquin C, Paicheler J-C., Lougnon J-M., Lettermann M. 1989. Thann. Notice explicative de la Carte géologique de la France à 1/50 000. *Bur. Rech. Géol. Min.* eds, Orléans 412: 137 p.
- Michon G. 1987. Les vaugnérites de l'Est du Massif central français : apport de l'analyse statistique multivariée à l'étude géochimique des éléments majeurs. *Bulletin de la Société géologique de France* 3(8): 591–600.
- Montel J-M, Weisbrod A. 1986. Characteristics and evolution of “vaugneritic magmas”: an analytical and experimental approach, on the example of the Cévennes Médiannes (French Massif Central). *Bulletin de minéralogie* 109: 575–587.
- Montenari M. 1999. Calciclastic turbidites from the Southern Vosges basin (Central Variscan Belt): reconstruction of a lost Carboniferous Carbonate platform. *Journal of Conference Abstracts EUG* 10 (4): 742.
- Moore VM, Wiltzsko DV. 2004. Syncollisional delamination and tectonic wedge development in convergent orogens. *Tectonics* 23: TC2005. <https://doi.org/10.1029/2002TC001430>.
- Morency C, Doin M-P. 2004. Numerical simulations of the mantle lithosphere delamination. *Journal of Geophysical Research* 109: B03410. <https://doi.org/10.1029/2003JB002414>.
- Moyen J-F, Laurent O, Chelle-Michou C, Couzinié S, Vanderhaeghe O, Zeh A, *et al.* 2017. Collision vs. subduction-related magmatism: two contrasting ways of granite formation and implications for crustal growth. *Lithos* 277: 154–177.
- Oncken O. 1997. Transformation of a magmatic arc and an orogenic root during oblique collision and its consequences for the evolution of the European Variscides (Mid-German Crystalline Rise). *Geologische Rundschau* 86: 2–20.
- Oncken O, Plesch A, Weber J, Ricken W, Schrader S. 2000. Passive margin detachment during arc-continent collision (Central European Variscides). In: Franke W, Haak V, Oncken O, Tanner D, eds. Orogenic processes: quantification and modelling in the Variscan Belt. *Geological Society, London, Special Publications* 179: 199–216.
- Pagel M, Leterrier J. 1980. The subalkaline potassic magmatism of the Ballons Massif (Southern Vosges, France): Shoshonitic affinity. *Lithos* 13: 1–10.
- Parat F, Holtz F, René M, Almeev R. 2010. Experimental constraints on ultrapotassic magmatism from the Bohemian Massif (durbachite series, Czech Republic). *Contributions to Mineralogy and Petrology* 159: 331–347.
- Paton C, Hellstrom J, Paul B, Woodhead J, Hergt J. 2011. Iolite: freeware for the visualisation and processing of mass spectrometric data. *Journal of Analytical Atomic Spectrometry* 26: 2508–2518.
- Petrini, K, Burg JP. 1998. Relationship between deformation, plutonism and regional metamorphism in the Markstein area (southern Vosges). *Géologie de la France* 1998: 13–23.
- Pettke T, Oberli F, Audétat A, Guillong M, Simon AC, Hanley JJ, *et al.* 2012. Recent developments in element concentration and isotope ratio analysis of individual fluid inclusions by laser ablation single and multiple collector ICP-MS. *Ore Geology Reviews* 44: 10–38.
- Piqué A, Fluck P, Schneider J-L, Whitechurch H. 1994. The Vosges Massif. In: Keppie JD, Chantraine J, Rolet J, Santallier DS, Piqué A, eds. Pre-Mesozoic geology in France and related areas. Berlin Heidelberg: Springer-Verlag, pp. 416–425.
- Prijac C, Doin MP, Gaulier JM, Guillocheau F. 2000. Subsidence of the Paris Basin and its bearing on the late Variscan lithosphere evolution: a comparison between Plate and Chablis models. *Tectonophysics* 323: 1–38.
- Pupin J-P. 1980. Zircon and granite petrology. *Contributions to Mineralogy and Petrology* 73: 207–220.
- Rey P, Burg J-P, Lardeaux J-M, Fluck P. 1989. Évolutions métamorphiques contrastées dans les Vosges orientales : témoins d'un charriage dans la chaîne varisque. *Comptes rendus de l'Académie des sciences. Série II* 309: 815–821.
- Rey P, Burg J-P, Caron J-M. 1991. Tectonique extensive ductile et plutonisme viséo-namurien dans les Vosges. *Comptes rendus de l'Académie des sciences. Série II* 312: 1609–1616.
- Ricken W, Shrader S, Oncken O, Plesch A. 2000. Turbidite basin and mass dynamics related to orogenic wedge growth; the Rheno-Hercynian case. In: Franke W, Haak V, Oncken O, Tanner D, eds. Orogenic processes: quantification and modelling in the Variscan Belt. *Geological Society, London, Special Publications* 179: 257–280.
- Rossi P. 1986. Organisation et genèse d'un grand batholite orogénique, le batholite calco-alcalin de la Corse. Thèse Univ. Toulouse, Documents du BRGM 107, 292 p.
- Rossi P, Oggiano G, Cocherie A. 2009. A restored section of the “southern Variscan realm” across the Corsica-Sardinia micro-continent. *Comptes rendus géoscience* 341: 224–238.
- Rubatto D. 2002. Zircon trace element geochemistry: partitioning with garnet and the link between U-Pb ages and metamorphism. *Chemical Geology* 184: 123–138.
- Sabatier H. 1980. Vaugnérites et granites : une association particulière de roches grenues. *Bulletin de minéralogie* 103: 507–522.
- Sabatier H. 1991. Vaugnerites: special lamprophyre-derived mafic enclaves in some Hercynian granites from Western and Central Europe. In: Didier J, Barbarin B, eds. Enclaves and Granite Petrology. Amsterdam: Elsevier, pp. 63–81.
- Sawyer EW. 2008. Atlas of migmatites. The Canadian Mineralogist Special Publication. Canadian Science Publishing eds, 389 p.
- Scarrow JH, Bea F, Montero P, Molina JF. 2008. Shoshonites, vaugnerites and potassic lamprophyres: similarities and differences between 'ultra'-high-K rocks. *Earth and Environmental Science Transactions of the Royal Society of Edinburgh* 99: 159–175.
- Scarrow JH, Bea F, Montero P, Molina JF, Vaughan APM. 2006. A precise late Permian $^{40}\text{Ar}/^{39}\text{Ar}$ age for Central Iberian camptonitic lamprophyres. *Geologica Acta* 4: 451–459.
- Scarrow JH, Molina JF, Bea F, Montero P, Vaughan APM. 2011. Lamprophyre dikes as tectonic markers of late orogenic trans-tension timing and kinematics: a case study from the Central Iberian Zone. *Tectonics* 30: TC4007. <https://doi.org/10.1029/2010TC002755>.
- Schäfer F, Oncken O, Kemnitz H, Romer RL. 2000. Upper-plate deformation during collisional orogeny: a case study from the German Variscides (Saxo-Thuringian Zone). In: Franke W, Haak V, Oncken O, Tanner D, eds. Orogenic processes: quantification and modelling in the Variscan Belt. *Geological Society, London, Special Publications* 179: 281–302.
- Schaltegger U, Corfu F. 1992. The age and source of late Hercynian magmatism in the central Alps: evidence from precise U-Pb ages and initial Hf isotopes. *Contributions to Mineralogy and Petrology* 111: 329–344.
- Schaltegger U, Fanning CM, Günther D, Maurin JC, Schulman K, Gebauer D. 1999. Growth, annealing and recrystallization of zircon and preservation of monazite in high-grade metamorphism: conventional and *in-situ* U-Pb isotope, cathodoluminescence and microchemical evidence. *Contributions to Mineralogy and Petrology* 134: 186–201.

- Schaltegger U, Schneider J-L, Maurin J-C, Corfu F. 1996. Precise U–Pb chronometry of 345–340 Ma old magmatism related to syn-convergence extension in the Southern Vosges/Central Variscan Belt. *Earth and Planetary Science Letters* 144: 403–419.
- Schiller D, Finger F. 2019. Application of Ti-in-zircon thermometry to granite studies: problems and possible solutions. *Contributions to Mineralogy and Petrology* 174: 51.
- Schneider J-L. 1990. Enregistrement de la dynamique varisque dans les bassins volcano-sédimentaires dévono-dinantiens. Exemple des Vosges du sud (zone moldanubienne). Unpubl. PhD Thesis, Université de Strasbourg, 222 p.
- Schott B, Schmelling H. 1998. Delamination and detachment of a lithospheric root. *Tectonophysics* 296: 225–247.
- Schulmann K, Schaltegger U, Jezek J, Thompson AB, Edel J-B. 2002. Rapid burial and exhumation during orogeny: thickening and synconvergent exhumation of thermally weakened and thinned crust (Variscan orogen in western Europe). *American Journal of Science* 302: 856–879.
- Schulmann K, Lexa O, Janousek V, Lardeaux J-M, Edel JB. 2014. Anatomy of a diffuse cryptic suture zone: an example from the Bohemian Massif, European Variscides. *Geology* 42: 275–278.
- Seifert T. 2008. Metallogeny and Petrogenesis of Lamprophyres in the Mid-European Variscides: Post-collisional Magmatism and Its Relationship to Late-Variscan Ore Forming Processes in the Erzgebirge (Bohemian Massif). IOS Press, 303 p.
- Siebel W, Eroglu S, Shang C, Rohrmuller J. 2012. Zircon geochronology and Sr-Nd isotope geochemistry of two Variscan granitoids from the Odenwald-Spessart crystalline complex (Mid-German Crystalline Rise). *Mineralogy and Petrology* 105: 187–200.
- Skrzypek E, Tabaud A-S, Edel J-B, Schulmann K, Cocherie A, Guerrot C, *et al.* 2012a. The significance of Late Devonian ophiolites in the Variscan orogen: a record from the Vosges Klippen Belt. *International Journal of Earth Sciences* 101: 951–972.
- Skrzypek E, Stipská P, Cocherie A. 2012b. The origin of zircon and the significance of U-Pb ages in high-grade metamorphic rocks: a case study from the Variscan orogenic root (Vosges Mountains, NE France). *Contributions to Mineralogy and Petrology* 164: 935–957.
- Skrzypek E, Schulmann K, Tabaud A-S, Edel J-B. 2014. Palaeozoic evolution of the Variscan Vosges Mountains. *Geological Society, London, Special Publications* 405: 45–75.
- Sláma J, Kosler J, Condon DJ, Crowley JL, Gerdes A, Hanchar JM, *et al.* 2008. Plesovice zircon – A new natural reference material for U-Pb and Hf isotopic microanalysis. *Chemical Geology* 249: 1–35.
- Soder CG, Romer RL. 2018. Post-collisional potassic-ultrapotassic magmatism of the Variscan Orogen: implications for mantle metasomatism during continental subduction. *Journal of Petrology* 59: 1007–1034.
- Solgadi F, Moyen J-F, Vanderhaeghe O, Sawyer EW, Reisberg L. 2007. The role of crustal anatexis and mantle-derived magmas in the genesis of synorogenic Hercynian granites of the Livradois area, French Massif Central. *Canadian Mineralogist* 45: 581–606.
- Stollhofen H. 1998. Facies architecture variations and seismogenic structures in the Carboniferous-Permian Saar-Nahe Basin (SW Germany): evidence for extension-related transfer fault activity. *Sedimentary Geology* 119: 47–83.
- Sun S-S, McDonough WF. 1989. Chemical and isotopic systematics of oceanic basalts: implications for mantle composition and processes. *Geological Society, London, Special Publications* 42: 313–345.
- Sunagawa I. (1981). Characteristics of crystal growth in nature as seen from the morphology of mineral crystals. *Bulletin de minéralogie* 104: 81–87.
- Tabaud A-S. 2012. Le magmatisme des Vosges: conséquence des subductions paléozoïques (datation, pétrologie, géochimie, ASM). Thèse Université de Strasbourg NNT: 2012STRAH003: 227 p. Available at: tel.archives-ouvertes.fr/tel-00755354 (last consult: 2020/05/05).
- Tabaud A-S, Whitechurch H, Rossi P, Schulmann K, Guerrot C, Cocherie A. 2014. Devonian-Permian magmatic pulses in the northern Vosges Mountains (NE France): result of continuous subduction of the Rhenohercynian Ocean and Avalonian passive margin. *Geological Society, London, Special Publications* 405: 197–223.
- Tabaud A-S, Janoušek V, Skrzypek E, Schulmann K, Rossi P, Whitechurch H, *et al.* 2015. Chronology, petrogenesis and heat sources for successive Carboniferous magmatic events in the Southern-Central Variscan Vosges Mts (NE France). *Journal of the Geological Society, London* 172: 87–102.
- Théobald N, Thiébaud J, Bernatzky M. 1974. Giromagny. Notice explicative de la Carte géologique de la France à 1/50 000. *Bur. Rech. Géol. Min.* eds 411: 23 p.
- Turpin L, Velde D, Pinte, G. 1988. Geochemical comparison between minettes and kersantites from the Western European Hercynian orogen: trace element and Pb-Sr-Nd isotope constraints on their origin. *Earth and Planetary Science Letters* 87: 73–86.
- Vaida M, Hann HP, Sawatzki G, Frisch W. 2004. Ordovician and Silurian protolith ages of metamorphosed clastic sedimentary rocks from the southern Schwarzwald, SW Germany: a palynological study and its bearing on the Early Palaeozoic geotectonic evolution. *Geological Magazine* 141: 629–643.
- von Eller J-P, Fluck P, Hameurt J. 1970. Carte géologique des Vosges moyennes, partie centrale et partie orientale. *Bulletin du Service de la carte géologique d'Alsace et de Lorraine* 23: 29–50. Available at: https://www.persee.fr/doc/sgeol_0037-2560_1970_num_23_1_1366 (last consult: 2018/12/26).
- von Eller J-P, Fluck P, Hameurt J, Ruhland M. 1972. Présentation d'une carte structurale du socle vosgien. *Sciences Géologiques. Bulletin* 25: 3–20. Available at: https://www.persee.fr/doc/sgeol_0302-2692_1972_num_25_1_1401 (last consult: 2018/12/30).
- von Raumer JF, Finger F, Vesela P, Stampfli GM. 2013. Durbachites-Vaugnerites-a geodynamic marker in the Central European Variscan orogen. *Terra Nova* 26: 85–95.
- von Seckendorff V, Arz C, Lorenz V. 2004a. Magmatism of the late Variscan intermontane Saar-Nahe Basin (Germany): a review. *Geological Society, London, Special Publications* 223: 361–391.
- von Seckendorff V, Timmerman MJ, Kramer W, Wrobel P. 2004b. New ⁴⁰Ar/³⁹Ar ages and geochemistry of late Carboniferous-early Permian lamprophyres and related volcanic rocks in the Saxothuringian Zone of the Variscan Orogen (Germany). *Geological Society, London, Special Publications* 223: 335–359.
- Wang X, Griffin WL, Chen J, Huang P, Li X. 2011. U and Th contents and Th/U ratios of zircon in felsic and mafic magmatic rocks: improved zircon-melt distribution coefficients. *Acta Geologica Sinica – English Edition* 85: 164–174.
- Watson EB, Harrison TM. 1983. Zircon saturation revisited: temperature and composition effects in a variety of crustal magma types. *Earth and Planetary Science Letters* 64: 295–304.
- Watson EB, Wark DA, Thomas JB. 2006. Crystallization thermometers for zircon and rutile. *Contributions to Mineralogy and Petrology* 151: 413–433.
- Whitney DL, Evans BW. 2010. Abbreviations for names of rock-forming minerals. *American Mineralogist* 95: 185–187.
- Wickert F, Eisbacher GH. 1988. Two-sided Variscan thrust tectonics in the Vosges Mountains, northeastern France. *Geodinamica Acta* 2: 101–120.

Wiebe RA, Collins WJ. 1998. Depositional features and stratigraphic sections in granitic plutons: implications for the emplacement and crystallization of granitic magma. *Journal of Structural Geology* 20: 1273–1289.

Zeitlhofer H, Grasemann B, Petrakakis K. 2016. Variscan potassic dyke magmatism of durbachitic affinity at the southern end of the Bohemian Massif (Lower Austria). *International Journal of Earth Sciences* 105: 1175–1197.

Cite this article as: Guillot F, Averbuch O, Dubois M, Durand C, Lanari P, Gauthier A. 2020. Zircon age of vaugnerite intrusives from the Central and Southern Vosges crystalline massif (E France): contribution to the geodynamics of the European Variscan belt, *BSGF - Earth Sciences Bulletin* 191: 26.