



Recent and massive invasion of *Aedes* (*Stegomyia*) *albopictus* (Skuse, 1894) in Phnom Penh, Cambodia

P.O. Maquart, Didier Fontenille, S. Boyer

► To cite this version:

P.O. Maquart, Didier Fontenille, S. Boyer. Recent and massive invasion of *Aedes* (*Stegomyia*) *albopictus* (Skuse, 1894) in Phnom Penh, Cambodia. *Parasites & Vectors*, 2021, 14, pp.113. 10.1186/s13071-021-04633-5 . hal-03170217

HAL Id: hal-03170217

<https://hal.science/hal-03170217>

Submitted on 27 Apr 2021

HAL is a multi-disciplinary open access archive for the deposit and dissemination of scientific research documents, whether they are published or not. The documents may come from teaching and research institutions in France or abroad, or from public or private research centers.

L'archive ouverte pluridisciplinaire **HAL**, est destinée au dépôt et à la diffusion de documents scientifiques de niveau recherche, publiés ou non, émanant des établissements d'enseignement et de recherche français ou étrangers, des laboratoires publics ou privés.



Distributed under a Creative Commons Attribution 4.0 International License

SHORT REPORT

Open Access



Recent and massive invasion of *Aedes (Stegomyia) albopictus* (Skuse, 1894) in Phnom Penh, Cambodia

P. O. Maquart^{1*} , D. Fontenille^{1,2} and S. Boyer¹

Short note

Dengue fever and dengue haemorrhagic fever are two of the most important mosquito-borne viral diseases of public health significance [1, 2]. Their geographical spread is increasing: while only 5 countries documented dengue cases in the 1950s, more than 100 countries reported the incidence of dengue fever and dengue haemorrhagic fever in 2005 [3]. In Cambodia, since the massive epidemic in 1995, accounting for more than 400 deaths, the number of cases has been monitored every year [4, 5]. Major dengue epidemics outbreaks happened in 2007 (39,618 cases with 396 deaths), 2012 (42,362 cases with 189 deaths) and 2019 (68,597 cases with 48 deaths) (Ministry of Health, Phnom Penh, Cambodia). In 2018 and 2019, the capital Phnom Penh city was terribly affected as never before with respectively 9445 and 9298 cases (Ministry of Health, Phnom Penh, Cambodia).

Hosting about 2.13 million of the 15.3 million inhabitants of Cambodia, Phnom Penh is a rapidly developing city [6]. The multiple potential mosquito breeding sites created in the urban centre can favour vector proliferation, particularly dengue vectors [7].

The two main mosquito species responsible for the transmission of dengue virus are *Aedes aegypti* (Linnée, 1789) and *Aedes albopictus* (Skuse, 1894) [8–10]. The latter species, originating from the forests of Southeast Asia, where it was likely zoophilic (i.e. feeding on wildlife), progressively adapted to anthropogenic changes to the environment, which provided alternative blood sources (domestic animals and humans) and water collections for

larval habitats [9, 11]. This species is a competent vector for all four serotypes of dengue and can transmit at least 22 arboviruses [9, 12]. Human migration favoured its spread into new areas, and it rapidly became an opportunistic container breeder, using either natural or artificial containers, having the ability to survive in small collections of water in tires, plastic buckets, and plastic cups. Today, it mainly occurs in suburban and rural areas [9].

While *Ae. albopictus* is known to originate from South-east Asia, and known from Cambodia [13], its presence was never attested in the capital city. In 1966, its presence was declared in the rural part of Chhru Chang War, a district facing Phnom Penh, located on the eastern side of the Mekong River [14]. Despite the extensive work realised in the beginning of the 2000s [7, 13, 15, 16] in which the distribution, occurrence, and genetics of *Ae. aegypti* in the Cambodian capital were extensively studied, *Ae. albopictus* was never collected inside Phnom Penh itself (Paupy, personal communication 2020).

In 2019, an entomological survey was performed by the Medical and Veterinary Entomology Unit of the Institut Pasteur du Cambodge in 42 randomly distributed sites across Phnom Penh (Fig. 1). Each location was visited every 2 months. As expected, *Ae. aegypti* was found in all sites. Surprisingly, *Ae. albopictus* was found in 40 sites including urban areas. This result attests to its recent and massive installation and distribution throughout the entire city. Meanwhile, this spreading and establishment occurred not only in Phnom Penh, but also in tropical and temperate cities worldwide [17], demonstrating that a recent invasive population has emerged [18].

*Correspondence: pomaquart@pasteur.kh.org

¹ Medical and Veterinary Entomology Unit, Institut Pasteur du Cambodge
5, Blvd. Monivong, BP 983, Phnom Penh 12201, Cambodia
Full list of author information is available at the end of the article



© The Author(s) 2021. This article is licensed under a Creative Commons Attribution 4.0 International License, which permits use, sharing, adaptation, distribution and reproduction in any medium or format, as long as you give appropriate credit to the original author(s) and the source, provide a link to the Creative Commons licence, and indicate if changes were made. The images or other third party material in this article are included in the article's Creative Commons licence, unless indicated otherwise in a credit line to the material. If material is not included in the article's Creative Commons licence and your intended use is not permitted by statutory regulation or exceeds the permitted use, you will need to obtain permission directly from the copyright holder. To view a copy of this licence, visit <http://creativecommons.org/licenses/by/4.0/>. The Creative Commons Public Domain Dedication waiver (<http://creativecommons.org/publicdomain/zero/1.0/>) applies to the data made available in this article, unless otherwise stated in a credit line to the data.

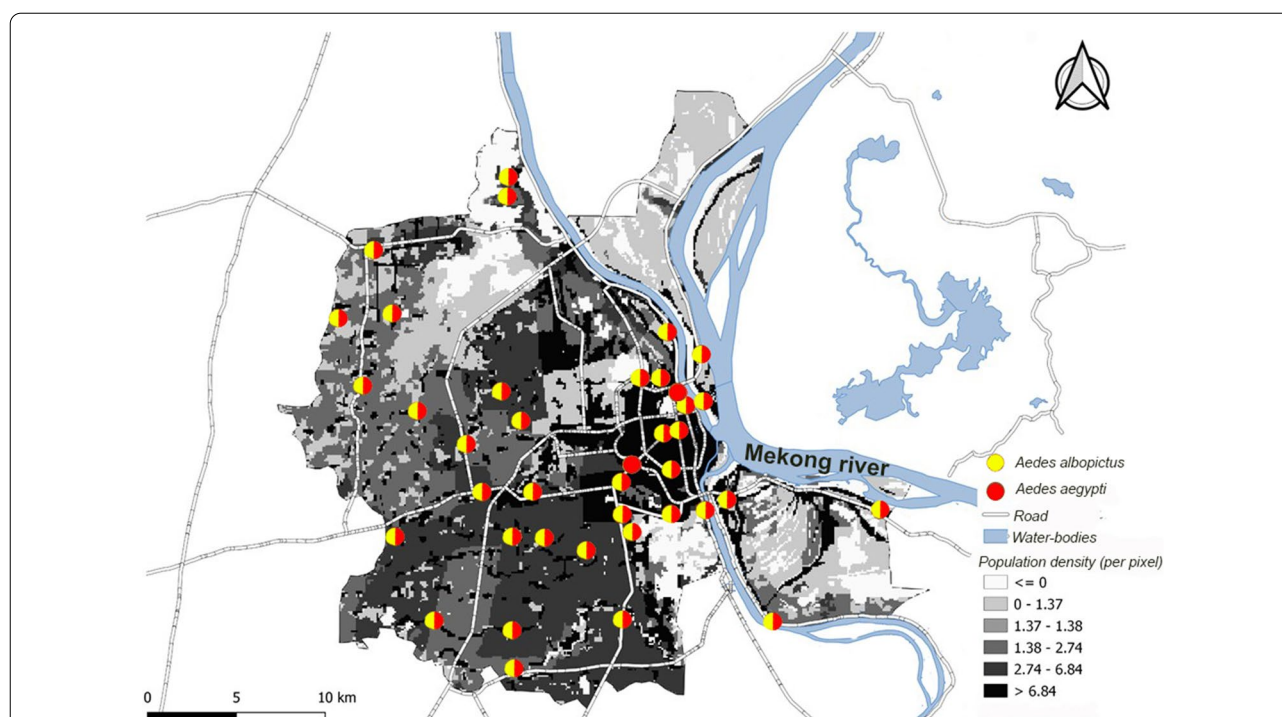


Fig. 1 Location of the different sampling points in Phnom Penh (Cambodia) and presence of the two different species of *Aedes*: *Ae. albopictus* and *Ae. aegypti*. Density data gathered from Open Development Cambodia. Map created via QGIS.

Although *Ae. aegypti* and *Ae. albopictus* are competent vectors for dengue virus, it has been hypothesized that they might play different roles in contributing to a dengue outbreak. *Ae. aegypti* might initiate a cluster, leading to an outbreak, which could then be sustained by *Ae. albopictus*, expanding the scale of the virus propagation [8]. This observation made in Taiwan needs to be investigated in Phnom Penh, as does the temporal succession of each species locally.

Consequently, it is important to consider the ecology and seasonality of *Ae. albopictus* alongside that of *Ae. aegypti* when developing vector/disease control programs in Phnom Penh. This information is important for the Ministry of Health in Phnom Penh as evidence of the need to increase surveillance and control of this species in suburban and rural areas (Additional file 1: Table S1).

Supplementary Information

The online version contains supplementary material available at <https://doi.org/10.1186/s13071-021-04633-5>.

Additional file 1: Table S1. Total number of *Aedes aegypti* and *Aedes albopictus* collected in each trapping location inside Phnom Penh.

Acknowledgements

The authors would like to thank the Institut Pasteur du Cambodge, who funded this internal project, as well as all the Medical and Veterinary

Entomology Unit team members, without whom this study would not have been possible.

Authors' contributions

POM, DF, SB. Conceptualization: POM, DF, SB. Data curation: POM, DF, SB. Funding acquisition: DF, SB. Methodology: POM, DF, SB. Supervision: POM, DF, SB. Writing-original draft: POM, DF, SB. Writing-reviews and editing: POM, DF, SB. All the authors read and approved the final manuscript.

Funding

The study was supported by an internal funding of the Institut Pasteur du Cambodge. The funder had no role in study design, data collection and analysis, decision to publish, or preparation of the manuscript.

Availability of data and materials

All relevant data are within the paper and its supporting information files.

Ethics approval and consent to participate

Not applicable.

Consent for publication

Not applicable.

Competing interests

The authors have declared that no competing interests exist.

Author details

¹Medical and Veterinary Entomology Unit, Institut Pasteur du Cambodge 5, Blvd. Monivong, BP 983, Phnom Penh 12201, Cambodia. ²MIVEGEC, Université de Montpellier, IRD (Institut de Recherche et du Développement), CNRS, 911 Avenue Agropolis, 34394 Montpellier, France.

Received: 30 November 2020 Accepted: 8 February 2021

Published online: 18 February 2021

References

1. Gubler DJ. Dengue and dengue hemorrhagic fever. *Clin Microbiol Rev*. 1998;11(3):480–96.
2. Wilder-Smith A, Ooi EE, Horstick O, Wills B. Dengue. *Lancet*. 2019;393(10169):350–63.
3. Guha-Sapir D, Schimmer B. Dengue fever: new paradigms for a changing epidemiology. *Emerg Themes Epidemiol*. 2005;2(1):1.
4. Huy R, Buchy P, Conan A, Ngan C, Ong S, Ali R, Duong V, Yit S, Ung S, Te V, Chroeung N, Pheakra NC, Uok V, Chroeung N. National dengue surveillance in Cambodia 1980–2008: epidemiological and virological trends and the impact of vector control. *Bull World Health Organ*. 2010;88:650–7.
5. Vong S, Khieu V, Glass O, Ly S, Duong V, Huy R, Ngan C, Wichman O, Letson GW, Margolis HS, Buchy P. Dengue incidence in urban and rural Cambodia: results from population-based active fever surveillance, 2006–2008. *PLOS Negl Trop Dis*. 2010;4(11):e903.
6. Than C. General population census of the Kingdom of Cambodia 2019. *Natl Inst Stat Minist Plan*. 2019;53:1–50.
7. Paupy C, Chantha N, Vazeille M, Reynes J-M, Rodhain F, Failloux A-B. Variation over space and time of *Aedes aegypti* in Phnom Penh (Cambodia): genetic structure and oral susceptibility to a dengue virus. *Genet Mol Res*. 2003;82:171–82.
8. Yang C-F, Hou J-N, Chen T-H, Chen W-J. Discriminable roles of *Aedes aegypti* and *Aedes albopictus* in establishment of dengue outbreaks in Taiwan. *Acta Trop*. 2014;130:17–23.
9. Paupy C, Delatte H, Bagny L, Corbel V, Fontenille D. *Aedes albopictus*, an arbovirus vector: from the darkness to the light. *Microbes Infect*. 2009;11(14–15):1177–85.
10. Souza-Neto J, Powell JR, Bonizzoni M. *Aedes aegypti* vector competence studies: a review. *Infect Genet Evol*. 2019;67:191–209.
11. Boyer S, Foray C, Dehecq JS. Spatial and temporal heterogeneities of *Aedes albopictus* density in La Reunion Island: rise and weakness of entomological indices. *PLoS ONE*. 2014;9(3):e91170.
12. Peirera-dos-Santos T, Roiz D, Lourenço-de-Oliveira R, Paupy C. A systematic review : is *Aedes albopictus* an efficient birdge vector for zoonotic arboviruses ? *Pathogens*. 2020;9:266. <https://doi.org/10.3390/pathogens9040266>.
13. Paupy C, Chantha N, Reynes JM, Failloux AB. Factors influencing the population structure of *Aedes aegypti* from the main cities in Cambodia. *Heredity*. 2005;95(2):144–7.
14. Mouchet J, Chastel C. Resistance to insecticides in *Aedes aegypti* L. and *Aedes albopictus* in Phnom Penh (Cambodia). *Med trop*. 1966;26(5):505–15.
15. Paupy C, Chantha N, Huber K, Lecoz N, Reynes JM, Rodhain F, Failloux A-B. Influence of breeding sites features on genetic differentiation of *Aedes aegypti* populations analyzed on a local scale in Phnom Penh Municipality of Cambodia. *Am J Trop Med Hyg*. 2004;71(1):73–81.
16. Paupy C, Orsoni A, Mousson L, Huber K. Comparisons of amplified fragment length polymorphism (AFLP), microsatellite, and isoenzyme markers: population genetics of *Aedes aegypti* (Diptera: Culicidae) from Phnom Penh (Cambodia). *J Med Entomol*. 2004;41(4):664–71.
17. Kreamer M, Sinka M, Duda K, Mylne A, Shearer F, Barker C, Moore C, Carvalho R, Coelho G, Van Bortel W, Hendrickx G, Schaffner F, Elyazar I, Teng H-J, Brady O, Messina J, Pigott D, Scott T, Smith D, Wint G, Golding N, Hay. The global distribution of the arbovirus vectors *Aedes aegypti* and *Ae. albopictus*. *eLife* 2015;4:e08347.
18. Delatte H, Bagny L, Brengue C, Bouetard A, Paupy C, Fontenille D. The invaders: Phylogeography of dengue and chikungunya viruses *Aedes* vectors, on the South West islands of the Indian Ocean. *Infect Genet Evol*. 2011;11(7):1769–81.

Publisher's Note

Springer Nature remains neutral with regard to jurisdictional claims in published maps and institutional affiliations.

Ready to submit your research? Choose BMC and benefit from:

- fast, convenient online submission
- thorough peer review by experienced researchers in your field
- rapid publication on acceptance
- support for research data, including large and complex data types
- gold Open Access which fosters wider collaboration and increased citations
- maximum visibility for your research: over 100M website views per year

At BMC, research is always in progress.

Learn more biomedcentral.com/submissions

